

Mid-Michigan Buyers Guide

SUNDAY, JULY 31, 2016

Serving Clare, Gladwin, Gratiot, Isabella, Montcalm, & Southern Roscommon Counties

Morning Star
Publishing Company powered by digitalfirst

Masonic
PATHWAYS
A Legacy of Caring

*Bring your magic carpets,
blankets and chairs to
watch the movie!*

*Featuring
the movie:*

Aladdin

Movie starts at 7:30 p.m!

FUN
for the whole family!
PLEASE LEAVE YOUR PETS
AT HOME.

FREE COMMUNITY NIGHT!

FRIDAY, AUGUST 5

STARTING AT 4:00 P.M.



*Cookies and lemonade in FREE MONKEY CUPS
with Jasmine, Aladdin and the Genie on THE FRONT PORCH!*

Bring your cameras to take a photo of your little prince or princess with the Aladdin characters.

- FACE PAINTING • MUSIC • CLOWNS & FREE BALLOONS
- BELLY DANCERS - (2) 20 MINUTE SHOWS @5:30 AND 6:30 P.M.



Classic Car Show

OVER 200 CARS ON DISPLAY
FROM 4 - 7:00 P.M.



New animal
every 30
minutes!

Nelson's



WILDLIFE SAFARI

FOOD AND BEVERAGES AVAILABLE FOR PURCHASE

- Cotton Candy • Caramel Corn • Hot Dogs • Tacos
- Pretzels • Chili Cheese Fries • Hamburgers
- Onion Rings • Chips • Nachos • Snow Cones
- Popcorn • Beverages



LIVE
CAMELS
to pet!

ON THE MASONIC PATHWAYS CAMPUS: 1200 WRIGHT AVE. ALMA, MI

Haupt Sweet Corn Is Ready!

August 1st
1246 S. Gilmore Rd.
Mt Pleasant MI 48858
989-644-3390

JACK OF ALL TRADES COINS

1028 S. Mission
(next to Jon's Country Burger)

I BUY ALL COINS
Silver and Gold
FREE APPRAISALS
we will come to your home
to do free appraisals for
your convenience.
Over 25 Years experience!

Do not take your coins,
jewelry, gold, & silver to
the we buy gold places
they are not experts! We
are your only experts!
**WE PAY YOU MORE
THAN ANYONE!**

**I BUY ALL
COLLECTIONS**
FROM ONE COIN TO A
DUMP TRUCK FULL

**We are a Full
Buy • Sell • Trade shop!**
ANTIQUES • COINS
Jewelry • Collectibles & more!

**Stop in or call Matt for
your free appointment**
517-204-0787

DO YOU HAVE A CAR FOR SALE?
How about a boat? Or furniture? Any unwanted items?
Call to place a **Classified Ad** to sell your stuff **FAST**

Evans Eye Centers

*Are you suffering from
cataracts?*

Get Started today. Call for an Evaluation.

120 Warwick Alma, MI 48801 989-463-Eyes (3937)	1203 S. Mission Mt Pleasant, MI 48858 989-775-Eyes (3937)
--	---

A-1 MOBILE A-1 ROOF-OVER SYSTEM

Michigan's Oldest and Finest
Roof Replacement System
FREE ESTIMATES
12X60 14x70
Installed
\$3,280 \$3,980
**Conserves Energy
Made in Michigan**

1-800-872-2089
www.mobilehomeroofsmi.com

visit our website!

RE/MAX

River Haven
Each Office Independently Owned and Operated
777 W. Cedar Ave • Gladwin, MI 48624
Lowes4realestate@gmail.com

Chris Lowes
Associate Broker®
Cell: 989-741-3989
Call or Text

3961 LUTZKE - \$28,000
Wixom Lake access. 3 BR, full bath home on 2 lots.
Privacy fence. Updates include new roof 2014, electric service,
vinyl windows throughout, water heater, well pump.
Cathedral Ceiling and Bay Window. Private beach access.

5482 MORROW - \$44,900
2 BR 2 bath home. Paved drive. Garage. Laundry.
Gas log fireplace. Nice Yard. Sheds. Central location.
Great Vacation or full-time home. Furnished.

3865 WOODS - \$44,500
Single BR year-round residence with Garage and Carport.
Complete remodel. Laundry hookups. Natural Gas heat.
Big yard. Close to ORV state land trailhead, several lakes,
convenient location outside of Harrison.

www.Lowes4realestate.com

Husky METAL ROOFS INC.

CLARE, MI 989-386-5100

Made in Michigan!
989-386-5100

- Residential
- Contractors
- Cabins
- Do-It-Yourself

METAL ROOFING IS ALL WE DO!
Standing Seam • Steel Shingles • Barn Steel • Expert Installation
Material Only Sales • Custom Trim • On-Site Roll Forming

www.huskyroofs.com

Heart Worm Test

Special July Rates

\$30⁰⁰

Reg \$35.⁰⁰

By Appt. 426-0203
Flexible Hours

KELLY'S KRUISSING
KRITTER KARE
Kelly Jo Kelley, DVM

Central Eavestroughing, LLC

LICENSED & INSURED • FREE ESTIMATES

**Quality
& Service
Are #1!**

**Get Your
Gutters
Ready for
Spring!**

**.032 Gauge
Aluminum
Hidden Screw
Hangers**

QUALITY WORKMANSHIP • FAST FRIENDLY SERVICE
Jeb Gilbert • (989) 828-6279 • Shepherd, MI

WATCHA LOOKIN' AT?

**You Saw It In
The Classifieds!
So Will Others
Call Today!**

Steve's Country Market

989-539-3110 3170 North Clare Ave., Harrison 44 Feet of Old Fashioned Meat Counter with Good Old Fashioned Service

Hours: Sun. - Mon. 8-8 Bridge Card & Wic Accepted

Sale Dates: August 1 - August 7, 2016

Top Quality Meats At Rock Bottom Prices! **100% Satisfaction Guaranteed** Michigan Lottery and ATM Machine
stevescountrymarket.com

Fresh Meat, Seafood & Deli Items	GROUND CHUCK FAMILY PACK  \$2.49 LB.	USDA CHOICE BONELESS ENGLISH ROAST  \$2.99 LB.	PORK STEAK OR WESTERN STRIPS  \$1.69 LB.	BONELESS CHICKEN BREAST  \$1.79 LB.	BONELESS PORK LOINS  \$1.79 LB. <small>SLICED FREE!</small>	
	OLD FASHIONED SPARE RIBS  \$1.79 LB.	STEVE'S OWN MARKET MADE BRATS  \$3.69 LB.	MARINATED CHICKEN BREAST  \$2.69 LB.	BABY BACK RIBS  \$3.49 LB.	STEVE'S OWN MARKET MADE BULK SAUSAGE  \$1.69 LB.	
	TILAPIA FILLETS  \$3.49 LB.	POLLOCK FILLETS 10 LB.  \$15.00 EA.	COD LOINS  \$5.99 LB.	ECKRICH HARD SALAMI  \$4.49 LB.	ECKRICH DELI HAM  \$3.99 LB.	SANDWICH SWISS CHEESE  \$4.99 LB.

Fresh Produce	Fresh Dairy And Frozen	Grocery	
LOCALLY GROWN SWEET CORN  6/\$2.00	FLORIDA NATURAL ORANGE JUICE 59 OZ.  \$2.99 EA.	NABISCO SNACK CRACKERS SELECT VARIETIES 6.5-10 OZ.  2/\$5.00	RUFFLES POTATO CHIPS 9-13 OZ.  2/\$5.00
SEEDLESS GRAPES RED, GREEN, OR BLACK  \$1.69 LB.	DIGIORNO PIZZAS 27.5-31.5 OZ.  2/\$11.00	AUNT MILLIE'S FAMILY STYLE BREADS 22-24 OZ.  2/\$3.00	AUNT MILLIE'S HOMESTYLE HONEY HAMBURG OR HOT DOG BUNS 8 CT.  \$1.69 EA.
DOLE SALADS 5-12 OZ.  2/\$5.00	PRAIRIE FARMS ICE CREAM 1/2 GAL  2/\$7.00	NUNN BETTER BIRD SEED 18 LB.  2/\$5.00	BUD AND BUD LIGHT 15 PK. CANS PLUS DEPOSIT  \$9.95 EA.
LOCALLY GROWN SLICING TOMATOES  99¢ LB.	LOTTA POPS 20 CT.  \$2.49 EA.	TOSTITOS TORTILLA CHIPS 9-10 OZ.  2/\$6.00	GRAND TRAVERSE SELECT WINES 750 ML.  \$8.99 EA.

While supplies last. Not responsible for printing errors.

Vote August 2nd for Angie Thompson for Gratiot County Clerk

Conducting elections is very complicated and demanding of time, knowledge and expertise. The County Clerk duties include providing candidates and entities with the correct petitions, number of signatures required, campaign finance paperwork and reviewing all for acceptance, sending out proof ballots to all candidates and overseeing the production and ordering of ballots. In addition, the County Clerk is responsible for certifying all election inspectors every two years and holding trainings for local clerks. The Clerk drafts election ads, communicates with the Bureau of Elections, post election night results, oversees the canvass and any recounts, and distributes election results to the locals.



The County Clerk also clerks the Board of Commission meetings and is responsible for following the Open Meetings Act, posting notices for public hearings, preparing and distributing and archiving the agenda, board packets, materials and meeting Minutes. Additionally, the County Clerk is responsible for advertising of boards and committee vacancies, notifying current appointees of their terms about to expire and informing them of new appointments. The County Clerk is the keeper of the records for birth, death, marriage, concealed pistol permits, military discharge, assumed name and Circuit Court records and reporting and serves on the Election Commission and Apportionment Commission.

Angie Thompson has 20 years of experience as Clerk of Elba Township and voting member of the board, having run elections, accepted candidate filings, trained inspectors and conducted many elections. In addition, she has prepared board agendas, packets, prepared Minutes, distributed and archived the same. Angie Thompson has 26 years of customer service in the banking business and understands the importance of detailed recording keeping, preparing detailed documents and following specified laws.

Angie Thompson has our support for Gratiot County Clerk on August 2, 2016. Carol Vernon, Gratiot County Clerk Jodie L. Reeves, Emerson Twp Clerk Laura Crocker, Washington Twp Clerk Kathy Keiffer, North Shade Twp Clerk Carlene McGill, Sumner Twp Clerk Heidi Drowley, North Star Twp Clerk Alfred Silhavy, Arcada Twp Clerk Greg and Tresha Mikek, Bethany Twp Clerk Sara Canfield, Fulton Twp Clerk Mike Rademacher, Pine River Twp Clerk Margaret Roth, Newark Twp Clerk John Schuiling, Seville Twp Clerk

Paid for the committee to elect Angie Thompson for County Clerk, 102 South Quarterline St., Ashley MI 48806 Thank you!

Summer of fun with your RV!

Don't be caught broke down on the side of the road on vacation.
Let us at Quality Truck and Tire take care of your needs.

Let us
keep you by the
fire longer.



10532 N. Mission Rd., Clare, MI 48617
(989) 802-0800

**QUALITY TRUCK
AND TIRE**
Heavy Duty Truck and Trailer Repair



Bulk Food • Deli

2 Miles South of Rosebush • 2020 North Mission
Mt. Pleasant • 989-433-8200
8:30am-5:30pm, Monday-Thursday
8:30am-7:00pm, Friday • 8:30am-4pm, Saturday

Large Selection of Freezer
Food at Discounted Prices

SPECIALS OF THE WEEK

Great Selection of Bulk Foods
We Accept Bridge Cards &
All Major Credit Cards

Walnut Creek
Havarti Cheese



Walnut Creek
Hard Salami



Sale
\$3.19
Reg. \$4.19 lb.

Sale
\$3.19
lb. Reg. \$4.19 lb.

MORE SPECIALS

Walnut Creek
Meltz Cheesy
2 lb.



Walnut Creek
**Baby Back
Ribs**
16 oz.



Walnut Creek
**Salad
Dressing**
30 oz.

\$4.29 ea.

\$5.99 ea.

\$1.99 ea.

Walnut Creek
Vinegar



NEW ITEMS Walnut Creek
Beans
Black beans, Pinto beans, Dark Red Kidney
Beans, Great Northern Beans,
Light Red Kidney Beans • 15.5 oz

CIDER GAL.
\$3.29 ea.

WHITE GAL.
1.99 ea.

INTRO PRICE **69¢** ea. !!!

Coffee of the week: Guatamala 17

Largest Selection of Clean Used Cars in Central Michigan

**GM Certified Pre-owned Vehicles = 2 Years of Oil Changes
& Tire Rotations + 12 Month or 12,000 Mile Bumper to Bumper Warranty**

USED CARS

2016 BUICK LACROSSE CXL V6, Quicksilver, 21,000 Miles.....	\$26,900
2016 CHEVROLET MALIBU LTZ Silver, 11,000 Miles, 4 Cyl.....	\$21,900
2016 CHEVROLET CRUZE LT Dk. Gray, 13,000 Miles, 4cyl.....	\$18,900
2015 BUICK REGAL Black/Black Leather, 13,000 Miles, Sunroof.....	\$22,900
2014 BUICK LACROSSE Champagne Silver, 4 Cyl, 25,000 Miles.....	\$18,900
2013 BUICK LACROSSE Crystal Red, 34,000 Miles, CXL, Certified.....	\$21,900
2013 BUICK REGAL PREMIUM Diamond White, 24,000 Miles, Loaded.....	\$18,900
2013 BUICK LACROSSE CXL 41,000 Miles, Champagne Silver.....	\$18,900
2013 BUICK REGAL Silver, 30,000 Miles, 1-Owner.....	\$17,900
2013 CHEVY CRUZE LT Blue, 27,000 Miles, 4Cyl.....	\$13,900
2013 CHEVY IMPALA LT Red, 31,000 Miles.....	\$16,900
2013 BUICK LACROSSE Champagne Silver, 72,000 Miles, Leather.....	\$15,900
2012 BUICK LACROSSE CX Carbon Black, With E/Assist, 36,000 Miles, Certified.....	\$16,900
2012 BUICK VERANO White Diamond, 4 Cyl, 69,000 Miles.....	\$13,900
2011 BUICK REGAL CXL Majestic Blue, 69,000 Miles.....	\$14,900
2010 PT CRUISER Burgundy, 90,000 Miles, Locally Owned, 4 Cyl.....	\$7,900
2009 CHEVROLET MALIBU LT Burgundy, 115,000 Miles.....	\$8,900
2007 BUICK LUCERNE CXL Dk. Blue, 3800 V6, 127,000 Miles, Leather.....	\$10,900
2007 CHEVROLET HHR LT Blue, 125,000 Miles.....	\$7,900
2005 PONTIAC BONNEVILLE SSE 119,000 Miles, Silver, Sunroof, Hands up Display.....	\$7,900

USED SUVS

2015 BUICK ENCLAVE CXL AWD, Silver Ebony, Leather, 20,000 Miles.....	\$34,900
2015 CHEVROLET TRAVERSE AWD Black, 21,000 Miles, Certified.....	\$28,900
2014 GMC ACADIA AWD SLE Summit White, 30,000 Miles, Certified.....	\$27,900
2014 GMC TERRAIN SLE FWD Ashen Gray, 20,000 Miles, 4 Cyl.....	\$21,900
2013 BUICK ENCLAVE CXL PREMIUM AWD Crystal Red, 107,000 Miles, 1-Owner.....	\$25,900
2013 GMC TERRAIN FWD SLE 31,000 Miles, White, 4 Cyl.....	\$19,900
2013 CHEVY EQUINOX FWD Crystal Red, 24,000 Miles.....	\$19,900
2013 BUICK ENCORE AWD Expresso Brown, 62,000 Miles, 1-Owner.....	\$18,900
2012 GMC TERRAIN AWD SLT 27,000 miles, Gray Green.....	\$23,900
2012 FORD EXPLORER XLT 4WD Brown, 63,000 Miles.....	\$21,900
2012 BUICK ENCLAVE CXL Cocoa Tan Interior, 87,000 miles, FWD.....	\$20,500
2012 GMC TERRAIN SLE FWD Burgundy, 71,000 Miles.....	\$16,900
2012 CHEVROLET EQUINOX LT FWD 102,000 Miles, Goldmist.....	\$13,900
2011 GMC TERRAIN SLT AWD 69,000 Miles, 6 Cyl.....	\$18,900
2011 GMC TERRAIN FWD SEL Goldmist, 4cyl, 32,000 Miles.....	\$16,900
2010 BLACK CADILLAC SRX Black, V6, 94,000 Miles.....	\$17,900
2009 BUICK ENCLAVE CXL FWD 92,000 Miles, Silver.....	\$16,900
2009 FORD ESCAPE XLT Med Red, FWD, 109,000 Miles, Clean.....	\$9,900
2008 BUICK ENCLAVE Burgundy, FWD, CX V6, Locally Owned, 110,000 Miles.....	\$12,900
2007 GMC YUKON SLT 4X4 5.3 V8, White, 116,000 Miles.....	\$18,900
2007 TAHOE LT 4WD Amber Bronze, Leather, Sunroof, 168,000 Miles, 1-Owner.....	\$16,900

USED TRUCKS

2014 GMC SIERRA DOUBLE CAB 4X4 Burgundy, 70,000 Miles, All Terrain.....	\$30,900
2014 CHEVROLET SILVERADO 1500 4WD, Reg. Cab, Shortbox, 30,000 Miles.....	\$26,900
2013 CHEVROLET SILVERADO CREW CAB 4X4 LTZ Mocha Steel, 29,000 Miles, Rear Camera/Remote Start.....	\$32,900
2013 GMC SIERRA CREW CAB ALL TERRAIN Black w/ Leather, 5.3 V8, 62,000 Miles.....	\$29,900
2013 CHEVROLET SILVERADO EXT. CAB 4X4 Grey, 5.3 V8, Trailer Pkg, 34,000 Miles.....	\$25,900
2013 GMC SIERRA EXT. CAB SLE w/ Leather, 65,000 Miles, Steel Gray.....	\$24,900
2012 GMC SIERRA CREW CAB 2500 DENALI 4X4 Duramax Diesel, 71,000 miles.....	\$41,900
2012 GMC SIERRA EXT. CAB SLT Black, 28,000 Miles, 5.3 V8, 1-owner.....	\$29,900
2012 CHEVY SILVERADO LT CREW CAB 4X4 Gray, 107,000 Miles, 5.3 V8,.....	\$21,900
2012 GMC SIERRA EXT. CAB SLE 4X4 5.3 V8, Mocha Steel, 73,000 Miles.....	\$23,900
2011 CHEVROLET SILVERADO Grey, 4x4, 107,000 Miles.....	\$19,900
2010 GMC EXT CAB SLE 4X4 White, 5.3 V8, 134,000 Miles.....	\$16,900
2009 GMC SIERRA EXT. CAB W/T 6.0 V8, White, 199,000 Miles, 3/4 Ton.....	\$13,900
2007 CHEVROLET SILVERADO CREW CAB 4X4 Desert Brown, 141,000 Miles.....	\$15,900
2007 GMC SIERRA CREW CAB SLE 5.3 V8, 170,000 Miles, Silver.....	\$15,900

USED VANS

2012 CHRYSLER TOWN & COUNTRY Dk. Gray, 54,000 Miles, Stow & Go.....	\$18,900
2009 DODGE GRAND CARAVAN Dk. Green 132,000 Miles, Stow & Go Seating.....	\$8,900

BENCHLEY BROS., INC.

1 Mile East of Doherty • US-10, Clare • Sales (989) 386-9900

Voted Clare Counties #1 Dealership

HOURS
8-6 Mon-Fri
9-2 Sat

Specializing in



For more info log on to: www.benchleybros.com

Parts & Service (989) 386-3197

SUMMER CLEARANCE

OUR LOWEST PRICES EVER!!

Bedroom

8" Futon Mattresses-Black, Khaki or Red/Black

\$329.00 **Clearance \$97.00**

Twin Hickory Finish Head Board

\$149.00 **Clearance \$37.00**

Full Shaker Headboard-Dark Oak Finish

\$219.00 **Clearance \$97.00**

Full Bookcase Headboard-Dark Oak Finish

\$269.00 **Clearance \$117.00**

4 Drawer Chest-Dark Oak Finish

\$359.00 **Clearance \$157.00**

**Big 11½" Profile**

Comfort 100 Tight Top

Retail: \$999
\$247

Retail: \$1099
\$297

Retail: \$1199
\$347

Retail: \$1799
\$547



Made in USA!

FREE

Pillow, Frame, Sheet Set & Mattress Pad on Most Mattress Sets! Up to \$208.00 Value FREE

Facts About Symbol Mattress

- * Symbol Mattress is the 3rd largest manufacturer in the Midwest and 12th largest in the United States out of 600.
- * Symbol Mattress has a higher customer satisfaction rating than both Serta & Sealy
- * Symbol Mattress sets normally sell for 20-30% less than the equivalent Serta or Sealy model

See our Website for Pictures & Descriptions:
www.STATESTREET-FURNITURE.COM

5 Drawer Chest-Dark Oak Finish
\$419.00 Clearance \$177.00

7 Drawer Chest W/Mirror-Dark Oak Finish
\$698.00 Clearance \$297.00

Full Size Bed Headboard, Footboard & Rails-White Metal
\$699.00 Clearance \$217.00

Full Size Bed Headboard, Footboard & Rails-White & Brass
\$799.00 Clearance \$267.00

Queen Mattress Set-Sleep Number Airbed
\$4399.00 Clearance \$1,197.00

**Big 13" Profile**

Comfort 200 Pillow Top

Retail: \$1099
\$297

Retail: \$1199
\$347

Retail: \$1299
\$397

Retail: \$1899
\$597



Made in USA!

Accents

See our Website for Pictures & Descriptions: www.STATESTREET-FURNITURE.COM

Wooden Magazine Rack
\$89.00 Clearance \$27.00

Coat Racks
\$99.00 Clearance \$27.00

Snack Tables
\$129.00 Clearance \$27.00

End Tables
\$200.00 Clearance \$47.00

Ottoman
\$179.00 Clearance \$47.00



7Pc
42" x 72" Dining Hand Planed Table Top
W/18" x 18" w/6 padded side chairs
\$2,899.00 Retail Clearance \$947.00

ALL OVER 80% OFF

Limited Quantities



5 Tier Corner Display Shelf
Retail \$89.00
Clearance \$17.00

Plant Stands
Retail \$149.00
Clearance \$27.00



Jewelry Armoire
Retail \$249.00
Clearance \$47.00

Oak Finish Vanity w/Bench
Retail \$299.00
Clearance \$57.00



Spider Lamp
Retail \$299.00
Clearance \$57.00

Padded Storage Bench
2dr. Cappuccino Finish
Retail \$499.00
Clearance \$97.00



End Tables
\$309.00 Clearance \$87.00

Pine Toy Box
\$499.00 Clearance \$97.00

TV Stand
\$799.00 Clearance \$227.00

3Pc End Table Set-Black with Gold Trim
\$799.00 Clearance \$297.00

Various Floor Lamps
\$169.00 - \$429.00 Clearance \$47.00 - \$117.00

Limited Time Only!



9pc Dinette Set
44" x 96" Traditional Mission Style Table
W/2 12" Leaves w/6 Upholstered Side Chairs & 2 Upholstered Arm Chairs
\$3,799.00 Retail Clearance \$1,197.00

Living Room

Queen Ann Chairs 6 Fabrics
Sonata Sand, Victoria Sage or Plantation

Scarlet, Fudge, Sapphire, Wine
\$599.00 Clearance \$197.00

Apartment Size Sofa-Surfer Maize
\$699.00 Clearance \$267.00

Rocker Recliner-Mustang Charcoal
\$899.00 Clearance \$327.00

Big Leather Rocker Recliners-Chocolate, Black or Mushroom
\$1099.00 Clearance \$387.00

Camouflage Rocker Recliner w/cup holder-Camo
\$1099.00 Clearance \$387.00

Limited Time Only!



Daybed w/Top Spring White Metal
Retail \$499.00
Clearance \$97.00

Futon w/6 "Mattress
Retail \$548.00
Clearance \$107.00



Padded Storage Bench w/2 Wicker Basket
Retail \$599.00
Clearance \$117.00

Leather Love Seats
Tan or Olive
Retail \$899.00
Clearance \$177.00



See our Website for Pictures & Descriptions:
www.STATESTREET-FURNITURE.COM

Love Seat Fortress Cream
\$1199.00 Clearance \$457.00

Sofa-Bounce Tan
\$999.00 Clearance \$397.00

Love Seat-Bounce Tan
\$899.00 Clearance \$347.00

Chair-Bounce Tan
\$799.00 Clearance \$297.00

Love Seat-Sienna Peat Microfiber
\$899.00 Clearance \$347.00

Chair-Sienna Peat Microfiber
\$799.00 Clearance \$297.00

Love Seat-Coil Spring Cushion-Blast Sage Brush
\$1299.00 Clearance \$447.00

Limited Time Only!

***Up To 36 Months NO INTEREST Financing**

Minimum Monthly Payment Required...Minimum purchase required

Check out our Clearance Selection on our website

STATE ST
FURNITURE

318 N State St • Alma, MI 48801
(989) 463-1037 • Hours: 9-6 M-F • 9-5 Sat.
www.StateStreet-Furniture.com
***See Store for Details**





**PLEASE RECYCLE
THIS
NEWSPAPER**



Thank You

**Mr. and Mrs. Jeffreys
Ms. McCune**

for joining the Culligan family and becoming valued customers.

**Culligan Worldwide
Celebrating 80 years**

Ken's Culligan • Alma

**Spend
Your
Pennies
Close
To Home**



**Shopping
Local
keeps your
Money
Local**

ATV-WATERCRAFT-MOTORCYCLE

AUCTION

Saturday August 6, 2016 @ 8:45 am

One mile east of Bronson Michigan on US-12
LIVE ON-SITE BIDDING PLUS LIVE ON-LINE
INTERNET BIDDING.



**YOU CAN
BUY OR SELL.
ONLY \$25 &
2% TO SELL**

**Over 100, including ATV's,
watercraft, trailers,
bikes, cars, trucks,
go carts, lawn equipment,
golf carts, jet skis,
snowmobiles, 4 wheelers,
and much more.**

Inventory pictures, auction price reports,
motel listings, maps, & all info at

SNOWMOBILEAUCTION.COM

White Star Motorsport Auctions

Phone 517-369-1153 10% buyer's premium

Lambert's Meat Market

Taste the difference "FRESH" makes!

624 E. Cedar Ave., Gladwin (next to Family Dollar)



989-246-1850

New Hours: Monday-Thursday 7-7, Friday 7-8,
Saturday 7-6, Sunday 8-4

Sale Dates Monday, August 1 through Saturday, August 6, 2016



10lb or more Sale!

**USDA Choice Denver
Steaks or English
Roast
\$3.49 lb.**

**Boneless Skinless
Chicken Breast
\$1.69 lb.**

**Family Pack Ground
Beef from Chuck
\$2.49 lb.**

**Family Pack
Hamburger
(73% lean)
\$1.99 lb.**

**Boneless
Pork Loins
\$1.69 lb.**

**Chicken
Leg 1/4's Fresh
never Frozen!
\$4.90 10lb. bag**

**Xtra Lean
Ground Round
\$3.69 lb.**

**Pork Steak,
Pork Strips,
Shoulder Roast
or Country
Style Sausage
\$1.69 lb.**

**CELEBRATE NATIONAL BRAT DAY WITH LAMBERT'S!
NATIONAL BRAT DAY IS TUESDAY AUGUST 16TH.**

**WE WILL HAVE OVER 35 VARIETIES OF BRATS
AVAILABLE AUGUST 16TH, WITH SPECIAL PRICES!!**

WATCH FOR OUR AD IN THE BUYER'S GUIDE

AND ON OUR FACEBOOK PAGE

Like us on Facebook! Lambertsmeatmarket.webs.com

No Rainchecks • Not Responsible for Printing Errors

**RE/MAX®
RIVER HAVEN, INC.**

Open Seven Days a Week to Serve You!

www.riverhavenhomes.com

Wayne R. Walts - Broker

**DeShano
CUSTOM
HOMES**

Main Office
777 W. Cedar
Riverwalk Place
989-426-6893

Wixom Lake Office
1239 Estey Road,
Beaverton
989-435-7755

Sugar Springs Office
1415 W. Sugar River Rd.
Gladwin, MI 48824
989-426-9239



Meredith Area - 3 bedroom,
2 bath, 24x32 garage,
nearly 5 wooded acres.
Quite area yet close to state
land and recreation area.

ONLY \$129,900
MLS#165010



Indian Lake - Lovely 4
bedroom, 2 bath home with
2 car garage. 220 ft of lake
frontage and over 4 acres of
land. What a deal!

\$88,500
MLS#166126



Lake Lancer - Sugar Springs
- Neat and clean 2 bedroom
ranch with 71 ft of sandy beach
on 750 acre all sports lake.
Large deck overlooking water.

\$159,900
MLS#166154

**I NEED YOUR VOTE
AUGUST 2ND**

DALE REYBURN

State Representative 70th House District



ENDORSED BY RIGHT TO LIFE

- ★ Endorsed by Right to Life of Michigan PAC
- ★ Marched in Washington five times
- ★ Helped start Greenville's Life Chain
- ★ Supporter of Alpha Family Center
- ★ 21 years of Presidency or VP of Flat River Right to Life

PRO-BUSINESS

- ★ Member of NFIB
- ★ Self-employed Business Person 41 years
- ★ Voted for Renaissance Zones in Montcalm County in 1990's

WWW.REYBURNFORREP.ZOHOSITES.COM

PRO-EDUCATION

- ★ Former Substitute Teacher
- ★ B.S. In Secondary Education
- ★ **CURRENT POSITIONS**
- ★ County Commissioner
- ★ Greenville City Planning Commissioner
- ★ Financial Planner with Lincoln Investment Planning Inc.

PAST POSITIONS

- ★ Substitute Teacher
- ★ B.S. Secondary Education, CMU
- ★ President of Flat River Right to Life
- ★ Board Member of Preferred Federal Credit Union

PAID FOR BY THE COMMITTEE TO ELECT DALE REYBURN • 798 N. CLAY, GREENVILLE, MI 48838 • 616-754-7742



LIVE AUCTION

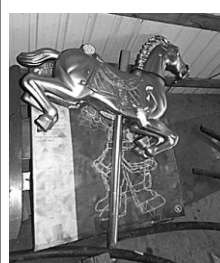


SATURDAY AUGUST 6, 2016

Starting at 10:00 am.

5712 Roosevelt Rd., Middleton, MI 48856

DIRECTIONS: From the intersection of M-57 and Ely Hwy. Middleton MI.,
Follow Ely Hwy. South 1 mile to Roosevelt Rd. then go West to sale site.
Follow auction signs.



Collectibles; Antiques, Glassware & Primitives; Car, Tools &
Garage; Household & Furniture – Something for everyone!

FOR COMPLETE LISTINGS, PHOTOS & TERMS, PLEASE VISIT:

sherwoodauctionservicellc.com



Sherwood Auction Service, LLC

Joe Sherwood, Owner/Auctioneer

Jerry Hecht Associate Auctioneer

Office 989-763-3101 or (989) 640-9401 Call or Text

Email: sherwoodauctioninfo@yahoo.com



**Vote Republican
Jim Lower for
State Representative!**



Pro Life

Endorsed by Right to Life of Michigan



Pro Jobs

Endorsed by MI Chamber of Commerce,
MI Farm Bureau, Small Business
Association of MI, and Several Local
Business Owners



Pro Family Values

Active Member of Nativity of the Lord
Parish in Alma



Pro Second Amendment

Only Candidate Endorsed by the NRA

**Jim believes "We the People"
must be in charge of our own
government.**

Endorsed by term-limited Representative Rick Outman

Paid for by The Committee to Elect James Lower, PO Box 115, Cedar Lake MI 48812





SHORLAND MOVING AUCTION

HAVING SOLD OUR FARM ON THE LAKE, WE WILL SELL THE FOLLOWING AT PUBLIC AUCTION. LOCATED: FROM DOWNTOWN GLENNIE (M-65 & MARATHON GAS STATION), GO EAST 1 1/4 MILE ON F-30 TO NORTH LAKE RD., THEN NORTH 3/4 MILE TO THE FARM.

1950 Ford F-4 Flatbed Truck • Windmill • Tools • Antiques • Collectibles • Farm Primitives

Glennie, MI

Thursday Afternoon, August 4, 2016 • 4:00 P.M.

1950 FORD F-4 FLATBED FARM TRUCK, WINDMILL, ANTIQUES, COLLECTIBLES, TOOLS, FARM & RANCH ITEMS: 1950 FORD F-4 FLATBED TRUCK W/ BADGER 8' X 10' HOIST GRAIN BOX, THIS RARE FIND FEATURES: A FLATHEAD V-8, 4 SPD. TRANS., BODY IS STRAIGHT & RUST FREE, TRUCK HAS AFTERMARKET TURN SIGNALS, ONLY 23,000 ACTUAL MILES, DEMPSTER #15 WINDMILL, COMPLETE (NICE), METAL ADVERTISING SIGNS TO INCLUDE: DOUBLE SIDED OVAL SHAPE PENNZOIL, MI. BELL, GM, MARLBORO, NO DUMPING • PENNZOIL TRASH CAN • EARLY FRIGIDAIRE REFRIG. • EARLY PORCELAIN ELEC. COOK STOVE • CAST IRON PARLOR STOVE • PORCELAIN SINK • WROUGHT IRON PATIO FURNITURE • PRIMITIVE 2 DOOR CABINET • ASST. VINTAGE TABLES & CHAIRS • LARGE ORIENTAL RUGS • H.P. VINTAGE TABLE LAMPS • OIL LAMPS & LANTERNS • COCA-COLA COOLER • VINTAGE COLEMAN COOLER • COPPER WEATHER VANE • SHIPPING TRUNK • RED JACKET PITCHER PUMP • FARM BARREL DOLLY • SCYTHES • HAY FORKS • OLD YARD TOOLS • NAIL KEGS • WRENCHES • OLD DAIRY PUMP • CLOCK • ANTLER SHEDS • COPPER PCS. • ASST. WOODEN FRAMED WINDOWS • WOODEN MILK PARLOR BENCH • OLD MAGAZINES • BLOW TORCH • METAL IMPLEMENT SEAT • ASST. GALVANIZE TUBS • COLORADO LICENSE PLATE COLLECTION • HUB CAP COLLECTION • MANY MORE COLLECTIBLES TO BE FOUND • LAWN/GARDEN & SPORTING RELATED TO INCLUDE: TRAC-VAC PULL TYPE GAS LEAF VACUUM SYSTEM • CRAFTSMAN 5 H.P. SNOW BLOWER • TORO 6 1/2 H.P. PERSONAL PACE LAWN MOWER • 22" PUSH LAWN MOWER • (6) CHAIN SAWS • (2) GAS WEED WHACKERS • (3) WHEEL BARROWS • NUMEROUS YARD TOOLS • NISSAN 8 H.P. BOAT MOTOR • ACHILLES 10' RUBBER BOAT • WOODEN BOAT OARS • (5) BICYCLES • LIVESTOCK CORRAL, TOOLS, SCRAP & MISC.: STEEL 10 SECTION PORTABLE LIVESTOCK CORRAL • COLEMAN 6250 WATT GENERATOR • ENGINE STAND • 2 H.P. AIR COMPRESSOR • AIR TANK • MILWAUKEE SAWZALL • JACKS & JACK STANDS • TOOL BOXES • H.D. COME ALONG • NUMEROUS HAND & POWER TOOLS • LOTS OF PIPE, COPPER, WIRING, BATTERIES, AIR COMPRESSORS, WATER PUMPS, WELDER, ROTOTILLER, AIR CONDITIONERS, ETC. • MISC. AROUND THE FARM TO INCLUDE: (3) CAST IRON STOVES • FARM WAGON LOADS OF ITEMS FROM THE BARN • NUMEROUS HOUSEHOLD FURNISHINGS • AUCTIONEERS NOTE: PLAN TO ATTEND THIS GOOD AFTERNOON AUCTION IN A NICE FARM/LAKE SETTING. YOUR ATTENDANCE AT THE SHORLAND MOVING AUCTION IS APPRECIATED. TERMS OF SALE: CASH, CHECK OR CREDIT CARDS ACCEPTED.

TO VIEW A COMPLETE LISTING WITH PHOTO'S VISIT JOHNPECKAUCTIONS.COM

Silver Acres Farm

Steve & Marlene Shorland, Owners

2850 North Lake Rd., Glennie, MI 48737

JOHN PECK AUCTIONS LLC

Gladwin, MI (989) 426-8061

COLLINS MOVING AUCTION

DUE TO HEALTH REASONS & SELLING OUR HOME, WE WILL SELL THE FOLLOWING AT PUBLIC AUCTION. LOCATED: 2 MILES SOUTH OF BEAVERTON ON M-18 TO DALE RD., THEN WEST 3 MILES TO TOWNHALL RD., THEN SOUTH 1 MILE TO WATSON RD., THEN EAST 1/4 MILE, TO THE END OF THE ROAD.

New Holland Loader/Backhoe Tractor • Equipment • Shop Tools

Beaverton, MI

Saturday, August 6, 2016 • 10 A.M.

NEW HOLLAND LOADER/BACKHOE TRACTOR, EQUIPMENT, SHOP TOOLS & MISC. ITEMS: NEW HOLLAND MODEL TC40DA (40 H.P.) 4 W.D. LOADER/BACKHOE DIESEL TRACTOR, HYDRO. TRANS., CAB, N.H. 757C BACKHOE (24" BUCKET), N.H. 16LA 72" FRONT END LOADER BUCKET & SET OF FORKS, ONLY 1225 ONE OWNER HRS. VERY GOOD COND. & ALWAYS STORED INSIDE WHEN NOT IN USE • WOODS BRUSH BULL MODEL 72" 3 PT. BRUSH HOG • LAND PRIDE #LR1584 (7") H.D. LANDSCAPE RAKE • "THE BOSS" STANDARD-DUTY TRUCK SNOW PLOW (BRAND NEW) • NORTH STAR 10,000 WATT (16 H.P.) GENERATOR • 3 PHASE INDUSTRIAL HYDRAULIC PUMP • INDUSTRIAL UPRIGHT AIR COMPRESSOR 220V • LARGE INDUSTRIAL HEATER FOR HOT WATER BOILER UNIT • ACETYLENE TORCH SET W/ SMITH GAUGES & TORCH TIPS ON CART • KOBALT 10 DRAWER ROLL AROUND TOOL CABINET W/ 9 DRAWER TOOL CHEST • KOBALT 6 DRAWER ROLL AROUND TOOL CABINET W/ 7 DRAWER TOOL CHEST • OTHER SMALL TOOL BOXES • B&D 10" RADIAL ARM SAW • BENCH TOP DRILL PRESS • DELTA XL-10 TABLE SAW • WARDS WELDER • ARMY GENERATOR • SEVERAL ASST. RIDGID PIPE WRENCHES • SEVERAL ASST. RIDGID PIPE CUTTERS • RIDGID PIPE HANDLE W/ SET OF DIES UP TO 2" • RIDGID TRI-POD STAND • SEVERAL OTHER PLUMBING RELATED TOOLS • SEVERAL CHANNEL LOCKS • SEVERAL CRESCENT WRENCHES • SEVERAL SCREW DRIVERS • SEVERAL ASST. PLIERS • PUNCHES & CHISELS • H.D. COME-A-LONGS • GREASE GUNS • (2) 20 TON HYD. FLOOR JACKS • JACK STANDS • H.D. TIE DOWN STRAPS • CHAINS W/ HOOKS • AIRLESS PAINT SPRAYER • HIGH PRESSURE GAS HOSE • (2) NEW WATER HYDRANTS • FOLDING ALUM. LOADING RAMPS • EARTHQUAKE 24" ROTOTILLER • POST HOLE DIGGERS • ASST. YARD TOOLS • PROPANE POOR HEATER • IMPLEMENT TOP LINKS • ASST. COPPER FITTINGS • (2) NEW BOXES OF NAILS • (3) WOODEN 2 DOOR CABINETS • ALUM. EXT. LADDERS • SHEETS OF TIN • SHEETS OF PLYWOOD • SHEETS OF OSB BOARD • 4' FLOURSCENT LIGHT FIXTURES • CROSS BOW • STACK WASHER & GAS DRYER • OLD PUMPS & MOTORS • SCRAP & MISC. ITEMS • FARM WAGON LOAD OF TOOLS • THIS IS A PARTIAL LISTING! AUCTIONEERS NOTE: PLAN TO ATTEND THIS GOOD AUCTION. TERMS OF SALE: CASH, CHECK OR CREDIT CARDS ACCEPTED.

TO VIEW A COMPLETE LISTING WITH PHOTO'S VISIT JOHNPECKAUCTIONS.COM

Dale & Anna Collins, Owners

4367 Watson Rd., Beaverton, MI. 48612

JOHN PECK AUCTIONS LLC

Gladwin, MI (989) 426-8061

No Buyers
Premium!

AUCTION

Jerry Johnston has decided to sell the listed farm equipment at public auction located at 5821 N. Crystal Rd Vestaburg MI. 48891.

Directions- Sale will be held in vacant field just around the corner from farm on Lake Montcalm Rd. From the intersection of M-46 and Crystal Rd., travel south 2 miles on Crystal Rd to Lake Montcalm, then west 1/4 mile to sale site. From Crystal travel north 10 on Crystal Rd. to Lake Montcalm Rd., then west 1/4 mile to sale site. Watch for Pioneer Auction Signs!

Saturday, August 13, 2016 @ 10am

Tractors/ Attachments • Combine/ Heads • Grain Drills/ Tillage • Hay Equipment • Wagons/ trailers • Livestock Equipment • Trucks • Ag Tires • Tools/ Miscellaneous items



Questions on sale items contact Jerry Johnston 989-388-2298

Auctioneers Note: This is a nice little farm sale. Most of the equipment is field ready. Sale will not take long so please be on time. Sale is around the corner from farm on Lake Montcalm Rd in wheat field. Plenty of off road parking. Loader available sale day. Lunch wagon and two porta jons on site. We hope to see you there!

Terms and Conditions: Cash or good personal check with proper ID. All out of state checks must have a letter from bank verifying funds. No credit cards accepted. All property to be settled for day of sale. No property to be removed from premises until settled for. Not responsible for accidents or goods after sold. Auctioneers and sale personnel act as selling agents only and assume no liability or guarantees. Announcements day of sale take precedence over printed matter.

PIONEER AUCTION SERVICE, LLC

(989) 621-7194



Auctioneer
Jason Clark



Auctioneer
Dick Clark

For more pics and info visit us on www.pioneerauctionservice.com



No Buyers
Premium!

AUCTION

Jim and Linda Burkett have decided to sell their beautiful home and personal property at public auction located at 119 Belding St. Crystal MI. 48818.

Directions - From downtown Crystal- travel south 1/4 mile on Main St (Crystal Rd) to Belding St, then west 1 block to sale site. Watch for Pioneer Auction Signs!

Saturday, August 6, 2016 @ 10am

REAL ESTATE

Open House / Inspection Date

Sunday July 24 @ 1pm to 4pm



REAL ESTATE: Beautifully maintained and updated 3 bedroom single-story ranch-style home on large corner parcel includes 3 shaded lots and is only a 2-block walk away from Crystal Lake. Home includes a 3-car garage with workshop, huge extra storage shed, and a scenic back yard, including expansive deck with gazebo and patio area.

REAL ESTATE Terms & Conditions: Buyers should pre-inspect property and prearrange finances before auction. High bidder will pay a \$3000.00 nonrefundable deposit due on auction day at time of accepted high bid. Buyer and seller will split closing cost 50/50. Seller will provide owners title insurance. Closing will be within 30 days of auction!

Pontoon/ Car Hauler-

1994 Playboy pontoon boat w/ trailer, comes w/ 1995 Evinrude outboard engine, all new upholstery, licensed until 2018, sharp!

Mac Lander 18' tandem axle car hauler w/ 7000 lb axes, steel deck, ramps, 2.5/16 ball



Guns/ Sporting Goods • Household/ Collectibles • Shop Tools • Lawn & Garden/ Buildings • Miscellaneous items

Questions on contents call Jim or Linda Burkett 989-235-6311

AUCTIONEERS NOTE: - We would like to thank Jim and Linda for this opportunity. This is a very clean auction sale with high quality name brand items. From the real estate to the contents, everything is very well taking care of, stored inside or under cover. Two auction rings running so please bring and friend. Guns and Ammo sell at 11:30, followed by Auto. Real Estate sells a Noon! Lunch wagon and two porta jons on site. We'll see you there!

TERMS & CONDITIONS: - Cash or good personal check with proper ID. All out of state checks must have a letter from bank verifying funds. No credit cards accepted. All property to be settled for day of sale. No property to be removed from premises until settled for. Not responsible for accidents or goods after sold. Auctioneers and sale personnel act as selling agents only and assume no liability or guarantees. Announcements day of sale take precedence over printed matter. A current purchase permit or CPL will be needed on Auction day to buy a handgun. Purchase permits are available at any law enforcement agency in Michigan. You will need to register with a Michigan photo I.D. Buyers of all guns must sign they have no felony or criminal background and can legally buy a firearm.

PIONEER AUCTION SERVICE, LLC

(989) 621-7194



Auctioneer
Jason Clark



Auctioneer
Dick Clark

For more pics and info visit us on www.pioneerauctionservice.com



BUY • SELL • HUNT FOR A JOB
CLASSIFIEDS WORK. CALL TODAY!



MILLER EVENING AUCTION



Moving out of state and will offer the following at Public Auction. Located: 1 Mile North of McBain, MI, on 66 to W. Geers Rd. East 4 miles to Vandermullen Rd. North 1/4 mile to Sale. 8770 S. Vandermullen Rd., McBain, MI 49657. Follow Yoder Bros. Auction Signs!

FRIDAY EVENING, AUGUST 5th, 2016 @ 4:00 P.M. - McBain, MI

HORSES, BUGGIES, and HARNESSSES <ul style="list-style-type: none">• Bill and Barney • IN. Style Surrey IN. Style Single Buggy HORSE DRAWN FARM MACHINERY <ul style="list-style-type: none">• N.H. 477 • Case • McCormick No. 9 • Shop Built • N.I. • N.I. 2 Wh. Manure Spreader • Pioneer • Shop Built • Black Hawk • N.I. No. 8	SHOP RELATED ITEMS <ul style="list-style-type: none">• Power Unit System • Ridgid • DeWalt • Rockwell • Wood Master 24" • Honda • Delta • Shop Built • Honda • Kreg • Porter Cable • Makita • Energy Storm • Ryobi • Kremlin CABIN AND STORAGE BUILDINGS <ul style="list-style-type: none">• 12' x 16' Cabin w/6' Open Porch LAWN, GARDEN and OUTDOOR RECREATION <ul style="list-style-type: none">• 2012 ExMark • Eagle Star • Troybilt • P.S.C. • Hoyt • Fuji Roubaix I.I.	MISC ITEMS AROUND THE FARM <ul style="list-style-type: none">• Approx 2 Misc Goodie Wagons! FURNITURE & HOUSEHOLD RELATED ITEMS <ul style="list-style-type: none">• Kitchen Queen • Cunningham • Maytag MANY MORE ITEMS TOO NUMEROUS TO MENTION!
--	---	---

OWNERS: ERNEST and MARY MILLER and Family

8770 S. Vandermullen Rd. • McBain, MI 49657

Yoder Brothers Auction Service

Specializing in Successful Auctions

Auctioneers LeRoy and Willis Yoder

9484 S. Rogers Ave., Clare, MI

PH: 989-386-9082



AUCTIONEERS NOTE: Sale order: Misc Goodie Wagon followed by Farm machinery and Hay. 12:00 Noon Dairy Cattle followed by Horses. Plan on attending this nice clean auction. Attend on time, not many small items. *Low*

AUCTION TERMS: Cash or approved check with proper I.D. Nothing to be removed until settled for. Not responsible for accidents. Lunch on grounds. All announcements made day of sale take precedence over all printed materials. Out of state buyers must have bank letter of credit.

THOMBS MOVING AUCTION

HAVING SOLD MY HOME ON THE LAKE, I WILL SELL THE FOLLOWING AT PUBLIC AUCTION. LOCATED: 6 MILES NORTH & WEST OF GLADWIN ON M-18 TO F-97, THEN NORTH 3 MILES TO GRASS LK. RD., THEN EAST 1 MILE TO QUEENS WAY THEN SOUTH & EAST 1 MILE. OR FROM M-30, GO WEST 4 1/2 MILES ON SUGAR RIVER RD. TO KINGS WAY, THEN SOUTH & WEST 1 1/2 MILE TO QUEENS WAY, THEN SOUTH & EAST 1 MILE. (WATCH FOR AUCTION SIGNS).

(Sugar Springs) Gladwin, MI

Friday Afternoon, August 5, 2016 • 4:00 P.M.

ANTIQUE FURNITURE, COLLECTIBLES & GLASSWARE: 18TH CENTURY SOLID CHERRY 36" SECRETARY • CHERRY CHINA CABINET • HUDSON OAK ICE BOX • WALNUT 3 DRAWER CHEST OF DRAWERS W/ MARBLE TOP • CHERRY 6 DRAWER CHEST OF DRAWERS • VANITY W/ APPLIED CARVINGS • SMALL SQUARE FRONT OAK CURIO CABINET • GATE-LEG TABLE • CHILD'S WRITING DESK/SECRETARY • (2) ROSEWOOD SITTING CHAIRS W/ NEEDLE POINT BOTTOMS • COMBINATION TABLE W/ FLIP UP BENCH • 3 DRAWER SEWING TABLE • SEWING TABLE W/ WHITE ROTARY SEWING MACHINE BUILT INSIDE • CANE BACK & BOTTOM ROCKING CHAIR • NEW HAVEN BANJO CLOCK • COPPER BOILER W/ LID • TIFFANY STYLE TABLE LAMP • WOODEN TAVERN SERVING ASH TRAY STAND • NUMEROUS POLITICAL BUTTONS • WIND UP TOY CAR • MANY YOUTH TOYS & GUNS • LOUIS MARX TRAIN CARS & TRACKS • NUMEROUS CUB & BOY SCOUT PATCHES & METALS • QUANTITY OF COSTUME JEWELRY • SEVERAL PICTURES W/ FRAMES • 5 GALLON CLAY JUG • ART DECO SERVING PLATTER • BRASS PCS. • NUMEROUS FIESTA WARE CHINA • SET OF HAVILAND CHINA • OCCUPIED JAPAN H.P. PCS. • HALL AUTUMN TEA PCS. • (15) H.P. BONE CHINA CUPS & SAUCERS • ETCHED DEPRESSION GLASSWARE • BLUE TEAPOT • TEA SET • HOBNAIL FENTON PCS. • LOTS OF CLEAR & COLORED GLASSWARE • (2) FOX MOUNTS • HOUSEHOLD FURNISHINGS: REMOTE CONTROL RECLINER CHAIR • UPHOLSTERED SWIVEL ROCKING CHAIR • (4) SWIVEL UPHOLSTERED DINING ROOM CHAIRS • COFFEE & EGGS TABLES • QUEEN SIZE MATTRESS • WOODEN 3 TIER SHELVING UNIT • HALL TREE • (2) SEWING MACHINES W/ CASES • QUILTS • FLOOR & TABLE LAMPS • POTS & PANS • KITCHEN UTENSILS • CHILDREN'S TOYS • NUMEROUS GOOD BOX LOTS • FISHING BOAT, RIDING LAWN TRACTOR, SNOW BLOWER & OUTDOOR ITEMS: SEA NYMPH 16" DEEP-V ALUM. FISHING BOAT W/ 25 H.P. MERCURY MOTOR & TRAILER • CRAFTSMAN DGT6000 RIDING LAWN TRACTOR, 27 H.P. KOHLER V-TWIN ENGINE, 54" MOWER DECK & REAR BAGGER SYSTEM (LIKE NEW) • MTD GOLD SERIES 8 1/2 H.P. SNOW BLOWER, ELEC. START & 6 SPD. • PATIO CHAIRS • SHELVING UNITS • GAS GRILLE • RUBBERMAID STORAGE CONTAINER • MISC. TOOLS • (2) HAND CARTS • LADDERS • SHEPARD'S HOOKS • LIKE NEW PUSH LAWN MOWER • WHEEL BARROW • YARD TOOLS • MANY MORE ITEMS • MANY MORE ITEMS • THIS IS A PARTIAL LISTING! AUCTIONEERS NOTE: PLAN TO ATTEND THIS GOOD AFTERNOON SUGAR SPRINGS AUCTION, @ THIS BEAUTIFUL HOME ON THE LAKE. TERMS OF SALE: CASH, CHECK OR CREDIT CARDS ACCEPTED.

TO VIEW A COMPLETE LISTING WITH PHOTO'S VISIT JOHNPECKAUCTIONS.COM

June Thombs, Owner

4530 Queens Way, (Sugar Springs) Gladwin, MI.

JOHN PECK AUCTIONS LLC

Gladwin, MI (989) 426-8061

WWW.SYKORAAUCTIONS.COM PRESENTS!

STINSON TRUST

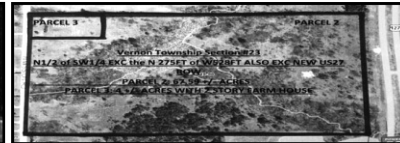
LARGE 2 DAY LIVE ON-SITE AUCTION

REAL ESTATE & PERSONAL PROPERTY

ROSEBUSH, MI. 48878

IN ORDER TO SETTLE THE JAMES G. & BONNIE G. STINSON TRUST, THE FOLLOWING WILL BE SOLD AT A LIVE PUBLIC AUCTION LOCATED 1/4 MILE WEST OF THE 4 WAY STOP IN DOWNTOWN ROSEBUSH, MI. TO 3699 E. ROSEBUSH RD. (ISABELLA CO.)

AUCTION #1 FRIDAY AUGUST 12TH, 2016 @ 10:00AM *PICKUP, TRACTOR, FARM IMPLEMENTS, SHOP TOOLS, TRAILERS, & 3 HOMES & 70 ACRES OF VACANT REC. LAND * REAL ESTATE @ 6PM!
AUCTION #2 FRIDAY AUGUST 19TH, 2016 @ 10:00AM, *HOME FURNISHINGS, APPLIANCES & NEW COLLECTIBLES & QUALITY USABLE ITEMS!



ALL REAL ESTATE PARCELS OFFERED ON DAY #1 FRIDAY AUGUST 12TH ONSITE AT PARCEL #1 @ 6:00 PM
PARCEL 1 - LOCATED AT 3691 E. ROSEBUSH RD. ROSEBUSH, MI. 48878 2 STORY 3 BEDROOM 2 BATH COBBLESTONE FARM HOUSE W/ MANY UPDATES AND HIP ROOF BARN SITTING ON 2.3 +/- ACRES 250'X400' IN ISABELLA TWP. PARCEL ID# 09-010-40-003-03
PARCEL 2 - LOCATED 8410 MISSION RD. CLARE, MI. 48617 67+- VACANT RECREATIONAL LAND PARCEL W/ OLDER POLE BLDG. BORDERS MISSION RD. & US -127 FREEWAY. INSPECTION ON THIS PARCEL IS ANYTIME AT YOUR WILL. IN VERNON TWP. PARCEL ID# 3 15-023-30-010-00
PARCEL 3 - LOCATED 8496 MISSION RD. CLARE, MI. 48617 4+- ACRES W/ 2 STORY OLDER FARMHOUSE AND 2 BEDROOM 79 SCHULT MOBILE HOME IN VERNON TWP. PARCEL ID# 15-023-30-010-01
OPEN HOUSE INSPECTION TUESDAY JULY 19, 2016 @ PARCEL #1 6 PM. TO 7PM AUCTIONEER ON SITE
• **REAL ESTATE TERMS:** 10% EARNEST DEPOSIT, BALANCE DUE AT CLOSING APPROX. 45 DAYS, TITLE BY WARRANTY DEED & TITLE INS. FURNISHED, TAXES PRORATED AT CLOSING. **NO BUYERS PREMIUM** - More detailed information and viewing appts. Will be available by contacting the Sales Manager Frank Robison 989-429-5381 @Century 21 Pioneer (or) the Auctioneer, John McConnell at 989-429-0444 / mconnell148622@gmail.com **FORD TRUCK & TRAILERS TRACTOR & IMPLEMENTS - - HAND/POWER TOOLS & GARAGE ITEMS LAWN TRACTORS & OUTDOOR - 7 FIREARMS & 4 PISTOLS - STORAGE BUILDINGS TO BE REMOVED**
MISC. ESTATE ITEMS - PERSONAL ITEMS AM SALVAGE ONLY - AUCTIONEER NOTE: THIS LIST ONLY DESCRIBES THE SURFACE OF THIS ESTATE. THERE IS LITERALLY HUNDREDS OF NEW AND SLIGHTLY USED SMALL ITEMS AND MULTIPLES OF EACH. PLAN ON ATTENDING 2 FUN FILLED ACTION PACKED AUCTION DAYS!!!!!!

JAMES G. & BONNIE G. STINSON TRUST



SYKORA AUCTION SERVICE INC.

Scott Sykora, Auctioneer

John McConnell, Auctioneer

989-386-9694 • Fax 989-386-2246

989-588-9591

Clare, Michigan • Visit our Web Site www.sykorauctions.com

AUCTION

Rent It All • Going Out of Business Sale

430 N State St. • Big Rapids, MI

DIRECTION: ON STATE ST. IN THE CITY OF BIG RAPIDS, AT MAPLE (EAST M-20) AND STATE ST. (OLD 131/NORTHLAND DRIVE) GO NORTH 2 1/2 BLOCKS TO SALE SITE.

SATURDAY, AUG. 6 ★ 10:00 AM

CEMENT TOOLS <ul style="list-style-type: none">3 concrete floor saws 14"1 cut off saw 12"6 Wacker compactors -<ul style="list-style-type: none">1 rammer & 5 plate2 Wacker power trowels5 concrete jack hammers -<ul style="list-style-type: none">3 air hammers & 2 air chipping hammers2 mortar mixers4 bull floats1 Belle floor grinder1 Fast Cut 12" electric cut off saw2 Fast Cut 14" electric cut off saw PLUMBING <ul style="list-style-type: none">2 water rammanual pipe diesmanual pipe cutters3 Electric Eel power sewer augers1 Wacker 3" trash pump2 Pashin 3" trash pump1 Pashin 2" trash pump2 diaphragm pumps1 pipe thawer2 Electric Eel drill sink augers1 closet auger LADDERS <ul style="list-style-type: none">1 shingle lift2 fiberglass 28' extension ladders1 aluminum 36' extension ladderladder jacksscaffolding 20 pieces 5'x5' end frames, 2 pieces 2 1/2'x5'2 step ladders 6'2 step ladders 12'quantity of roof jacks AUTOMOTIVE <ul style="list-style-type: none">1 ball joint press3 torque wrenches1 cylinder hone1 ridge reamer1 polisher1 grinder2 transmission jacks2 floor jacks2 Blue Bird engine hoist1 engine stand1 battery charger	<ul style="list-style-type: none">1 ring compressor2 Roto puller boardschains1 Ryker 17001 timing lightsmall engine toolsmetric wrenches1 Handblock 5 ton chain fall ELECTRIC TOOLS <ul style="list-style-type: none">4 Hitachi electric miter saw4 Bosch breaker hammers5 demolition / rotary hammers1 hammer drill 1/2"1 planer1 Milwaukee router1 Makita sawzall1 Skil sawzall1 sabre saw4 wet tile saws1 sander1 Felker 10" circular saw1 nibbler1 cordless drill 9.6v1 cordless drill 12v1 Skil 10" table saw PARTY <ul style="list-style-type: none">4 curques 20'x20' 2 canopies20'x30'330 folding chairs32 folding tables 8'2 grills1 coffee pot3 chafing dishessilver platter2 thermo jugsDRYWALL & REPAIR6 Palmit drywall lifts: 1 15' & 5 11'1 drywall screw gun1 pair drywall stilts2 Hiretech wallpaper streamers1 wallpaper table LAWN & GARDEN <ul style="list-style-type: none">1 Ryan aerator1 Bandit chipper3 Little Wonders leaf blowers3 BCS rear tire tillers3 Maxim front time tillers	<ul style="list-style-type: none">3 log splitters: 1 electric Flowtron & 2 gas MTA2 Stihl chainsaws2 Blue Bird thresher1 DR mower1 mower with sickle1 mower with sickle & tiller4 post hole diggers - 2 Generals & 2 Stihl1 Stihl weed cutter2 electric hedge trimmers3 wheel barrows2 lawn rollers - 1 flat & 1 with aerator1 stump grinder CONTRACTOR <ul style="list-style-type: none">1 generator1 Termite backhoe1 aluminum brake1 large 8' x small air compressor6 Hattachi air coil nailer2 Hattachi air strip nailer1 Hattachi brad nailer2 hot pressure washers 3000 psi5 cold pressure washers 35 psi2 arc welders/generators1 Hobart & 1 Generac2 stud drivers2 transit & laser3 angle jacks6 bottle jacks2 Lindsay sand blasters - 1 small & 1 large1 furnace lift1 magnetic roller</
---	---	---

WE'RE CELEBRATING *Christmas In July* With Gifts For YOU!



FREE

**Complete Electronic
Hearing Screening
and Consultation**

WITH OUR HEARING SPECIALISTS

Buy One, Get One 50% OFF

**Buy One Fully Digital
Miracle-Ear Hearing Aid
and Get the Second
One 50% off!**

Offer valid on all models of Hearing Solutions.
No other offer or discounts apply. Offer cannot
be combined and does not apply to prior sales.
See participating Miracle-Ear stores for details.
Offer expires 8/1/16



FREE BATTERY CHARGER WITH PURCHASE



Keep your hearing aids
charged all day with No need to keep
buying batteries.

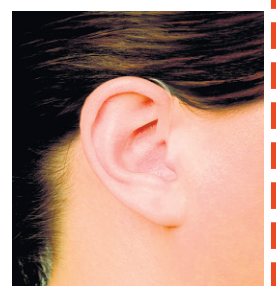
Free charger with the purchase of any Miracle-Ear® ME-1, ME-2, and ME-3 Hearing Solutions (2
aids) with rechargeable battery options. Not valid with any other discount or offer. Does not apply to
prior purchases. Offer expires 8/1/16.

TRY OUR HEARING AIDS FOR FREE*

*You Won't Believe How
Natural They Sound!*

**NEARLY
INVISIBLE
HEARING AIDS!**
No One Will Notice!

*Free in-office demonstration



3YEAR All Parts and Labor Warranty

Valid on ME-1, ME-2, ME-3, ME-4 Solutions



Mt. Pleasant
100 S. Mission, Suite G
Across from Rite Aid
Local Toll Free Call
(866) 981-3022

Miracle-Ear Alma
116 W. Superior
Heritage Towne Sq.
(888) 381-0571

Miracle-Ear Midland
6841 Eastman Ave.
Behind Olive Garden
(866) 979-2860



DEWEY'S TRADING POST

Maple Rapids • 682-4158

Monday-Saturday: 8 am - 7 pm, Closed Sunday

Prices In This Ad Good for week of August 1st - August 6th 2016

WIC • Bridge Card • VISA • Mastercard • Discover • American Express • Debit Card & Chamber Bucks Gift Certificates.



"Whole" "Select" New York Strip  \$4.49 LB	"Whole" Pork Tenderloins  \$4.99 LB	"Our Own" Teriyaki Pineapple Brats  \$2.99 LB
"Our Own" Ball Park Brats  \$2.99 LB	"Our Own" "Fully Cooked" Smoked Brisket  \$6.99 LB	"Our Own" Smoked Polish Sausage  \$3.99 LB
Koegel's Pickled Bologna or Red Hots  \$9.99 JAR	Koegel's Bulk Slicing Bologna  \$3.69 LB	"Whole" Boneless Pork Loins  \$1.99 LB
Choice T-Bone Steaks  \$8.99 LB	Boneless Butterfly Chops  \$2.99 LB	Breaded Pork Cutlets  \$2.99 LB
Choice Boneless Arm Roast  \$2.99 LB	Choice Boneless Patio Steak  \$3.99 LB	Ground Chuck 80/20  \$1.745 BAG
Lipari Canadian Maple or Brown Sugar Ham  \$5.99 LB	Lipari Deli Chicken Buffalo or Oven Roasted  \$6.99 LB	Tilapia Fillets  \$13.99 BAG
Ocean Perch Fillets  \$17.99 BAG	Raw Shrimp  \$8.99 BAG	Cod Fillets  \$8.99 BAG

www.deweystradingpost.com
 LIKE us on facebook & see our WEEKLY SPECIALS!




Cub Cadet

Great Financing

Come in and Check out Sales on 2015 Models

Service. Knowledge. Selection. Financing. Delivery.

Check Us Out!

GRATIOT OUTDOOR EQUIPMENT

Commercial-Industrial-Residential

"We Service All Makes of Outdoor Equipment"

On M-46 in Breckenridge • **842-3844**

*See dealer for details

Visit us on Facebook at www.facebook.com/ValleyFoodCenter

SHAVED HAM, TURKEY

\$2.99
LB.

Valley Food Center

"OUR ONE AND ONLY LOCATION IN PINCONNING"

989-879-3311 • 101 E. SECOND • PINCONNING

WE WELCOME THE BRIDGE CARD, GIFT CERTIFICATES

NOT RESPONSIBLE FOR PRINTING ERRORS • ALL LOTTERY GAMES AND LOTTO HERE

We Now Take Credit Cards! Visa, Mastercard & Discover

MON. - SAT. 8-8, SUN. 8-6 • PRICES GOOD SUNDAY, JULY 31ST THROUGH SATURDAY, AUGUST 6TH, 2016

SMOKED PORK LOINS

\$2.99
LB.

KOEGEL PRODUCTS VIENNAS 10# BOX \$34.90 SKINLESS FRANKS 4# PKG \$12.69 BIG OR RING BOLOGNA \$3.29 PICKLED BOLOGNA \$9.99 VIENNAS 24 CT. PK. \$12.99 NUBBINS 10# BOX \$31.90	FRESH POLISH SAUSAGE 10# OR MORE \$1.89 CHICKEN NUGGETS 5# OR MORE \$1.99 HOMEMADE BULK SAUSAGES REG, ITALIAN \$1.49 BONELESS PORK LOIN MAKES GREAT ROAST SEASONED AND CUT FREE \$1.69 PORK STEAK, BUTT ROAST OR FINGER RIBS \$1.55 NEW YORK STRIP CUT FREE \$3.29 WELL TRIMMED \$1.99 STUFFED PORK CHOPS \$1.99 ROUND STEAK \$2.99 BOTTOM ROUND ROAST \$3.99 BONELESS BUTT ROAST \$1.99 DAY OLD BRATS 10 LBS. ALL VARIETY \$1.99 WHILE SUPPLIES LAST	CO-JACK, LONGHORN OR MOZZARELLA CHEESE ANY SIZE CHUNK \$2.99 BONE IN BEEF SHOULDER ROAST \$2.99 ROLL YOUR OWN TOBACCO KENTUCKY SELECT 16 oz. \$1.29 5.99 6 oz. AUSABLE RIVER TOBACCO 12 oz. bag \$1.15 BUSCH BEER REG OR LITE 30 PK CANS \$16.49 RED RIVER 16 oz. \$9.75 4.25 6 oz. DENVER, SWISS OR GRILL STEAK \$2.99 Leg 1/4's 49¢ BULK SLICED BACON 10 LB. OR MORE \$3.49 \$3.29 LB. SHORT LOIN - T-BONE \$5.99 BIG BAG FRENCH FRIS 5 LBS. OR MORE \$4.50 SELECT RIB EYE LOINS WHOLE OR HALF \$7.99 Cut Free! HOMEMADE BACON SAUSAGE \$1.99 LB.
--	---	---

Lower the cost of Living
-Not the Quality!



Rentals starting at \$600/month
FIRST MONTH RENT FREE

 *Scotsdale Estates*
A Premier Manufactured Home Community

Come see our premier
manufactured
home community.

I M C HOMES
imchomesales@gmail.com
www.scotsdaleestates.com

Scotsdale Estates
3382 Alma Dr
Alma, MI
Across from Meijer
989-463-3212

Brad Malley Well Drilling, Inc.



**Mid Michigan's
Most Experienced Well Drillers!**

MALLEY CONSTRUCTION INCORPORATED

**5th
Generation
Driller
With Over
100 YEARS
Combined
Experience
4 Licensed
Drillers**

The One Contractor That Can Do It All!



- Drilling Service & Repair
- 5" PVC Water Wells
- 24 Hour Service
- Complete Worksite

- Packages Available**
- Water Conditioning
 - Geo Thermal Drilling
 - Industry
 - Agriculture

- Financing Available
- Constant Pressure Water Systems Available

AFFORDABLE WELL PACKAGES
All Major Pump Brands Available

FREE ESTIMATES

SERVING ALL OF MID MICHIGAN • LICENSED WELL DRILLER • LICENSED CONTRACTOR
MT. PLEASANT • WWW.BRADMALLEYWELLDILLING.COM • 989.772.2765 / 800.717.6022

Concrete

- Poured Basement Walls
- Poured Crawl Space Walls
- Garage Foundations
- Flat Work
- Curb & Gutters
- Retaining Walls

Excavation

- Septic Systems
- Residential
- Commercial
- Road Building
- Demolition

- Water & Sewer
- Driveways
- Land Development
- Land Clearing
- Pond Excavation
- Hydro-Seeding

Trucking

- Sand
- Gravel
- Stone
- Topsoil
- Move & Set Mobile/Modular Homes

MDOT PREQUALIFIED • RESIDENTIAL & COMMERCIAL

800
Products

18
States

57M
Americans



Your Career Begins Now

Digital First Media, a leading provider of local news and information, is recruiting Account Executives to join our fun, fast-paced, professional team. You will have an opportunity to sell to a growing audience across an expanding network of digital platforms.

digitalfirst
M E D I A

**www.digitalfirstmedia.com and
www.adtaxinetworks.com**

Please forward your resumé to
tgoodrich@digitalfirstmedia.com

Digital First Media is an EEO Employer, M/F/D/V

CENTRAL MICHIGAN CARPET CLEANING

989-773-3130

Call the professionals at
*Central Michigan
Carpet Cleaning*
today.

*Satisfaction
guaranteed.*

3 Rooms
\$115

(Expires 8/15/16)

Central Michigan Carpet Cleaning
989-773-3130

Sofa
\$65

With Carpet Cleaning

(Expires 8/15/16)

Central Michigan Carpet Cleaning
989-773-3130

3 Rooms
\$165

With Scotchgard

(Expires 8/15/16)

Central Michigan Carpet Cleaning
989-773-3130



Steam Cleaning • Deodorizing
Shampooing • Stain Guard
Strip & Wax Tile Floors
Clean Ceramic Tile & Grout
Motor Homes!

*** Licensed & Insured ***

24 Hour Emergency Water Damage Restoration

WE BEAT ALL COMPETITORS PRICING!



WEST BRANCH FURNITURE'S

OPEN
SUNDAY
11AM-3PM

SIZZLING SUMMER SAVINGS

NO INTEREST
UNTIL
JULY 2016!*

Ashley Dailey Midnight Sofa
(Choose From 3 Colors)



\$399

Ashley Micro Fiber 90" Sofa Sleeper



\$599

Ashley Garek Cocoa Reclining Sofa



\$599

Ashley Harlington 4-Piece Bedroom



\$699

Ashley 3-Piece Dinette



\$299

Twin/Full Wood Bunkbed



\$269



\$179

Coaster Wallaway Chaise Recliner



\$299

Chaise Rocker Recliner
Choice of colors umber, blue or merlot



\$399

Big Man Size Rocker Recliner
3 colors to choose from

Nothing says a Cool Night's Sleep like Serta!

SERTA SUMMER SIZZLER

Mattress Sale!

SPECIAL PURCHASE
Queen Size Sets
starting at **\$299**

WE STOCK KING SIZE MATTRESSES

Red Hot Buys

7series

7comfort

The comfort of memory foam infused with the support and cooling touch of gel.

A unique hybrid of dual-action gel memory foam and Serta's most advanced innerspring.

Smart Mattress
Voted #1 Memory Foam Mattress by Leading Consumer Magazine!



\$269

Ashley Darcy Rocker Recliner Or Wallaway
Your Choice 6 Colors



\$359

Winfrey Rocker or Wallaway Recliner
4 colors to choose from

	TWIN SET	FULL SET	QUEEN SET	KING SET
MajesticSleep Davey Euro Top or Firm	\$279 2 Pc. Set	\$369 2 Pc. Set	\$399 2 Pc. Set	\$599 3 Pc. Set
MajesticSleep Gallion Euro Top or Comfort Firm	\$349 2 Pc. Set	\$459 2 Pc. Set	\$499 2 Pc. Set	\$799 3 Pc. Set
MajesticSleep Raftery Plush Comfort or Firm	\$459 2 Pc. Set	\$559 2 Pc. Set	\$599 2 Pc. Set	\$899 3 Pc. Set
MajesticCrown Perfect Sleeper Silverthorne Pillow Top	\$579 2 Pc. Set	\$669 2 Pc. Set	\$699 2 Pc. Set	\$999 3 Pc. Set

*Financing available to qualifying buyers. Minimum purchase \$599 with approved credit. Not available on prior purchases. See store for details.
* Tables and lamps may not be as shown in picture.



136 S. Fifth St.
West Branch
located block south of
Mercantile Bank off Houghton Ave.
989-345-5326

www.westbranchfurnitureoutlet.com

***12 Months
No Interest**



Find us on
facebook



"The Outlet Store That
Saves You More!"



Sunday 11-3 Mon.-Fri. 10-6 Sat. 10-5

Summer is here


5
YEAR NO RECALL
WARRANTY

10% OFF REGULAR RETAIL PRICES

- Chain saws
- Trimmers
- Blowers



Building Materials for Your Projects:

Large Selection
of Oregon
Lawn Mower Blades
In-Stock
Starting at
\$8.95

OREGON
Lumber, OSB, Treated Posts
Trusses, Windows, Doors,
Concrete Blocks, Mortar,
Redi-mix Concrete

Welcome to the Big Green Egg®
the Original American Designed Ceramic Cooker
A Smoker • A Grill • An Oven

COMPLETE OUTDOOR COOKER



- Compost • Potting Soils
- Seed Starter • Plant Mixes & More!

HERSHBERGER'S PRO HARDWARE

10289 N. Leaton Rd., Clare, MI 48617-9107

(989) 386-5338

Full Line of Hardware & Building Supplies
Stove & Furnaces All Fuel Chimneys

Quality Built. Quality Features.

**Stop By & Check Out Our Fresh New Selection
Of Buildings On The Lot Ready To Go!**

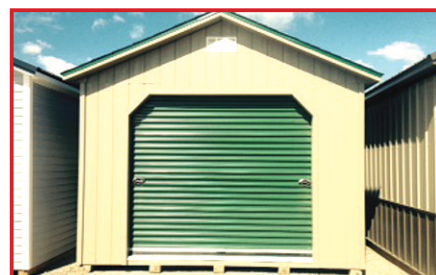
**DON'T WASTE YOUR SUMMER
VACATION TRYING TO BUILD YOUR OWN
STORAGE BUILDING. COME SEE US,
WE WILL BUILD IT FOR YOU!!**



10x12 1 window 6' loft,
\$2,035



12x24 Side Entry Door, 3
Windows, 8' Loft, **\$4,729**



12x20 4' Loft,
\$3,458



10x20 Quaker,
\$3,610

Free Delivery w/ in 70 miles • Statewide Delivery Available

Miller's Woodworking

3209 E. Beaverton Road • Clare, MI 48617

(Voicemail) 989-465-8172

Old US 127 to Surrey West on Surrey to Grant 1 mile north on Grant

7:30am-5:00pm Evening by Chance or Appointment
Closed Sunday

BRIAN'S FRUIT & MEAT MARKET

We accept all major credit cards & EBT card

**2167 S. M-76 • West Branch
(Across from Kmart)**

While Supplies Last • Not responsible for printing errors
Prices good Sunday, July 31st thru Friday, August 5th, 2016
New store hours: Open Sundays 8am - 7pm • Mon.-Sat. 7am-8pm

WE ARE A PACKAGED LIQUOR DEALER

BRIAN'S MEATS: 989-345-3709
LIKE US ON FACEBOOK

WWW.BRIANSFRUITANDMEATMARKET.COM

Butterball Brand SLICED OVEN-ROASTED TURKEY BREAST \$5.99 lb.	Great Lakes Brand SLICED SWISS CHEESE \$5.99 lb.	Eckrich Brand SLICED PREMIUM DELI HAM \$3.49 lb.	Potato, Mac & Slaw YODER'S 2 LB. PREMIUM SALADS 2/\$7.00	Fire Up The Grill BONELESS BEEF NEW YORK STRIP STEAKS \$8.49 lb.	Beef... It's What's For Dinner BONELESS BEEF TOP ROUND ROASTS & STEAKS \$3.99 lb.
Fresh Ground FRESH GROUND BEEF FROM ROUND \$3.49 lb.	BBQ Time FROZEN BABY BACK RIBS \$2.99 lb. frozen 3 pks.	Pork... The Other White Meat FRESH CUT PORK STEAKS \$1.99 lb.	Lean & Meaty PORK COUNTRY STYLE SHOULDER STRIPS \$1.99 lb.	10LB. FAMILY PACK SPECIALS	
Great For Pulled Pork SEMI-BONELESS PORK BOSTON BUTT ROAST \$1.89 lb.	Ass'd. Varieties BRIAN'S HOMEMADE FRESH BRATS \$3.99 lb.	BLT Time SMOKED RANCH STYLE BACON \$3.99 lb.	Fresh Never Frozen FRESH BONELESS SKINLESS CHICKEN BREAST \$1.99 lb.	FRESH GROUND CHUCK \$2.89 lb. FRESH BONELESS SKINLESS CHICKEN BREAST \$1.89 lb. KOEGEL VIENNA HOTDOGS \$4.00 10lb. box FRESH CHICKEN LEG 1/4'S \$6.50 10lb. bag HOMEMADE BULK BREAKFAST SAUSAGE \$2.49 lb. PACIFIC COD LOINS \$4.00 10lb. box POLLOCK FILLETS \$19.00 10lb. box	

BRIAN'S PRODUCE: 989-345-2891

BAREMAN'S DAIRY MILK \$2.49 gal. Whole/2% \$2.39 gal. Skim/1%	MICHIGAN BLUEBERRIES \$10.99 5 lb. box	MICHIGAN SWEET CHERRIES \$2.99 lb.	BAY COUNTY SWEET CORN 6/\$1.99	SEEDLESS WATERMELONS \$3.99 each	DAIRY FRESH POTATO CHIPS 2/\$5.00 11.5 oz.
GREEN ONIONS 3/\$1.00	MICHIGAN PICKLING CUCUMBERS 99¢ lb.	MICHIGAN CELERY 99¢ each	LARGE FARM FRESH WHITE EGGS 89¢ dozen	ROMAINE HEARTS 2/\$3.00 3 pack	WILLIAM'S BRAND SAVE CHEESES \$5.49 1 1/2 lb. block
				BUSCH & BUSCH LIGHT \$15.99 30 pk. cans + dep. + tax	



Summer Sales & Specials



CUSTOM DESIGNS
Buy Direct & Save

Indoor Showroom

Also Available
Cremation Vaults and Urns

Brewer Bouchey Monument Co.
Family Owned Since 1895
211 N. Mill St. • Downtown St. Louis
989-681-3300 • Toll Free 888-362-2920
Hours: Mon.-Fri. 9-5; Sat. By Appt.
www.brewer-bouchey.com



Respite Care
Health Monitoring
Recreation & Exercise
Socialization
Intergenerational Activities

We're just a phone call away.

The Isabella County Adult Day Program offers aging adults the opportunity to socialize and enjoy peer support in a homelike setting. Specially designed activities promote a sense of accomplishment and maintain current levels of cognitive and physical functioning. Transportation and funding available to qualifying Gratiot County residents.

Isabella County Adult Day Program
1222 North Drive, Mt. Pleasant, MI 48856
www.isabellacounty.org
(989) 779-5558 phone | (989) 772-3669 fax
dnariker@isabellacounty.org email

*For more information, contact Deb Nariker,
Program Manager at (989) 779-5558.*

Free Half-Day Trials | (989) 779-5558

Public Land Auction

The following County Treasurers will be offering tax-reverted real estate at public Auction on August 22nd, 2016:
Clare & Gladwin.

The Auction will be held at The Doherty Hotel and Convention Center, 604 N McEwan, Clare, MI 48617. Registration will begin at 11:30am, Auction will begin at 12:00pm.

Online bidding will be available via www.tax-sale.info.

For more information or for a list of the properties being sold, visit our website at www.tax-sale.info or call 1-800-259-7470. Sale listings are also available at your local County Treasurer's Office.

Business Card Directory

TO RESERVE YOUR SPOT IN THIS DIRECTORY

CALL:
506-4640

CIRCULATION ISSUES:
(989) 779-6000 PRESS 2



Hunting Property

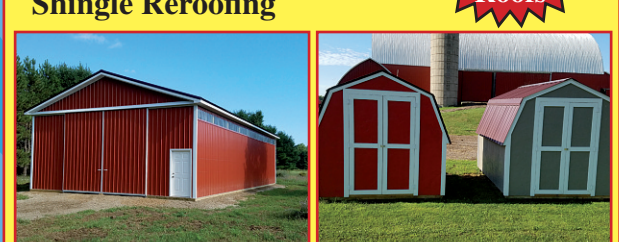
80 acres of premium Hunting Property in Northern Isabella County on Stevenson Lake Rd. ¼ mile W. of Vandecar Rd. w Cabin, Outhouse & Pitcher Pump!
\$179,000

Call: (989)506-1037

DUTCH BARNS
and
Construction

We Specialize in Mini Barns, Pole Barns and Metal or Shingle Reroofing

40 yr. Warranty on Metal Roofs



Delivery available

Eli and Irene Beechy
10454 E. McBride Rd.
Vestaburg, MI 48891
989-833-2865

VALET AUTO CARE, INC.
Since 1983

- A.R.E. Pickup Toppers
- Over 100 New & Used Toppers in Stock
- Truck Accessories
- Tonneau Covers
- Detailed Car Cleaning

James Motz - Owner
610 N. Mission
(3 blocks S. of Meijer)
Mt. Pleasant

(989) 773-3477

PROPANE SOLD HERE

SALE!!
20 LB. CYLINDER FILL
\$9.99
GPC

PROPANE • HVAC • REFRIGERATION
8512 E. M-46 – VESTABURG
800-991-7477
gasproductioncompany.com

DUTCH BARNS
and
Construction

We Specialize in Mini Barns, Pole Barns and Metal or Shingle Reroofing

40 yr. Warranty on Metal Roofs



Delivery available

Eli and Irene Beechy
10454 E. McBride Rd.
Vestaburg, MI 48891
989-833-2865

digitalfirst
MEDIA

Kindra Norlander
Account Executive
The Morning Sun
The Mid-Michigan Buyers Guide

Call for Quotes on digital advertising, print & deliver, pre prints and print advertising

knorlander@michigannewspapers.com Cell: 989-506-4640

COUNTY WIDE
SEPTIC TANK CLEANING

- Septic Tank Cleaning
- Tank Risers & Filters
- Portal Toilet / Sink Rental
- Drain Line Cleaning & Camera
- New Septic System Installation
- Existing Septic System Repairs
- Gravel / Sand / Stone / Topsoil

State Licensed & Fully Insured • Residential & Commercial

"#1 IN A #2 BUSINESS"
(989) 588-4140

PROFESSIONAL ROOF CLEANING
BY J.B. ENTERPRISE
Safe, Soft Wash Cleaning



Does your home's roof look like the left or right side of these roofs? The left side of these roofs were cleaned with our non-pressure washer system.

We also clean... • Decks • Patios • Siding

Handy Man:
Fix Up, Repair, Reside, Reroof Homes and Garages

CALL TODAY
John Brenneman • 989-386-8024

CAL'S PAINTING

Over 30 Years Experience
COMMERCIAL & RESIDENTIAL

- Interior & Exterior • Power Washing & Deck Care
- Window Washing & Gutter Cleaning
- Drywall Repair • Cleaning and Refinishing Log Homes
- Cabinet, Woodwork, Door & Furniture Refinishing

GO CALL TODAY!
(989) 258-9638

• Free Estimates • Work Gauranteed • Insured
Winter Rates Available

Stutzman's Metal Roofing Sales



Quick Turnaround
Ask about our **HEAT-Formed Metal Roofing**

Complete Pole Barn and Roof Packages Available!

Be sure to price accessories, we will save you money!

NORTH STAR
METALS MFG CO.

Special:
Lifetime Warranty
20 Steel Colors To Choose From
\$1.85 Lin. Ft.

Farmers Contractors Homeowners

Check out our prices, you will be **AMAZED!**

Statewide Delivery

Installation Available

Everlast Roofing, Inc.
Authorized Dealer

Reuben & Lydia Stutzman • 9736 Tobacco Dr., Clare, MI • 989-386-3013

PROFESSIONAL ROOF CLEANING
BY J.B. ENTERPRISE
Safe, Soft Wash Cleaning



Does your home's roof look like the left or right side of these roofs? The left side of these roofs were cleaned with our non-pressure washer system.

We also clean... • Decks • Patios • Siding

Handy Man:
Fix Up, Repair, Reside, Reroof Homes and Garages

CALL TODAY
John Brenneman • 989-386-8024

Brad Malley Well Drilling, Inc.

Mid Michigan's Most Experienced Well Drillers!

MALLEY CONSTRUCTION
INCORPORATED

The One Contractor That Can Do It All!
AFFORDABLE WELL PACKAGES
All Major Pump Brands Available

FREE ESTIMATES
SERVING ALL OF MID MICHIGAN
LICENSED WELL DRILLER
LICENSED CONTRACTOR
MT. PLEASANT

WWW.BRADMALLEYWELLDRIILLING.COM
989.772.2765 / 800.717.6022

Business Card Directory

Shop these local Professionals

Call 989-506-4647
for Advertising Info

Gladwin Hobby Shop
Stay Fit & Have Fun

RADIO CONTROL AND BICYCLES*
SALES AND SERVICE \$ CASH

- Plastic Model Kits
- Testors Paints
- ESTES Rockets
- Pinewood Derby

for Old Coins & Currency!

WE BUY OLD TRAINS

Puzzles, Rock Polishers, Gift Certificates Available
Balsa & Bass Woods, and more. Visit us on Facebook

400 E. Cedar Ave. Gladwin, MI • 989-426-7300

STORAGE
SPACE AVAILABLE

Paved Driveway Security Gate

420 Units

5'x12', 10'x12', 10'x20' Stalls

MIDSTATE RENTAL AND STORAGE, INC.

1 MILE EAST OF GLADWIN ON M-61

426-2981

FOR ALL YOUR RENTAL NEEDS

MON.-SAT. 8AM-5PM

FREE Hearing Test & Consult

bieri
HEARING SPECIALISTS

888-641-0087

Clare and Midland Locations

www.bierihearing.com

Pioneer Metal Roofs
Residential Steel Roofing

7325 S. Clare Ave.
Clare, MI 48617
(989) 386-4444 (Office)
(800) 292-0679

www.pioneermetalroofs.com

digitalfirst
M E D I A

Marlene Bennett
Account Executive

The Morning Sun • The Mid-Michigan Buyers Guide

mbennett@michigannewspapers.com

For Advertising call 989-506-4647 or 989-779-6119

For Circulation call 989-779-6000 Press 3

SECOND LAKE MARINA ON THE WATER
989-426-7700

2631 Lakeshore Dr. • Gladwin, MI 48624
secondlakemarina.com
email secondlakemarina@gmail.com

SECOND LAKE MARINA

Sales • Service • Parts • Storage
Bennington Pontoons
Mercury, Yamaha, Outboard Motors
Pontoon Rentals • Boat Lift & Docking

Scott Grattop Sales Manager/Owner Fax 989-426-5493

"Our Customers are our Warmest Friends"
Guaranteed On Time Certified

FREE TANK SETS

COYNE OIL & PROPANE

Clare • Gladwin • Harrison • Evart
800-386-7731 • 989-386-7731

RESIDENTIAL • COMMERCIAL INDUSTRIAL • FARM

Talk to your neighbors, then talk to me.

See why State Farm® insures more drivers than GEICO and Progressive combined. Great service, plus discounts of up to 40 percent.*

Like a good neighbor, State Farm is there.®

CALL FOR QUOTE 24/7.

State Farm

Maury Irwin, Agent
305 S McEwan Street
Clare, MI 48617
Bus: 989-386-4141
maury.irwin.18g2@statefarm.com

1001174.1

*Discounts vary by states. State Farm Mutual Automobile Insurance Company State Farm Indemnity Company, Bloomington, IL

O-ink
WE CUT THE FAT OUT OF INK PRICES

600 S. Mission St.
Mt. Pleasant, MI 48858

989-779-7227
989-772-5009

Printer Ink & Toner,
Cartridge Refilling & Recycling,
Desktop & Laptop Repair,
Virus/Malware Removal

BURKHART - PRESIDIO INSURANCE AGENCY
Auto • Home • Life • Business • Amenities

"Over 60 Years of Professional Insurance Service"

222 W. Cedar Ave. • Gladwin
989-426-9278 • www.burkhart-presidio.com

Dirk Presidio Michael Murray Jim Jacobs

Auto-Owners Insurance

ECOWATER SYSTEMS

Lindsay Soft Water Co.

1209 Michigan Ave. St. Louis, MI 48880
(989) 681-5436 1-800-244-3464

P.O. Box 401 Gladwin, MI 48624
(989) 426-4220 Cell (989) 620-1263

www.ecowater.com

GABE EAREGOOD
Water Specialist

Pole Barn Kits

Now Available

CALL OR STOP BY FREE ESTIMATES

Luthy Metal Sales
Manufacturing, Roofing, Siding & Accessories

989.433.5705
5145 N. Mission Rd. Rosebush

CONLAY'S POWER WASHING

Concrete Siding • Decks Deck Staining Tractor • Trailer Store Fronts Snow Plowing Lawn Care

Farm Equipment Acid Washing 210" Water

Over 18 Years Experience
Business & Residential

989-429-9211 Farwell

Experience You Can Trust • www.conlayspowerwashing.com

Weidman Business Association Bingo

Every Wednesday. First game at 6:30.

\$500 Jack Pot on Big Game this week. In the Community Building

Located behind Baumanns Food Pride grocery store and Isabella bank.

\$1000 off any in-stock & non-sale pair of shoes

Expires 8.6.16

CIRCLE QUALITY SHOES

Specializing in hard to fit sizes-100's of styles to pick from
• Birkenstock • Clarks • Merrell • SAS

208 Cambridge St. 835-4853 • circlequalityshoes.com

ABC Auto Body

313 W. Knox Road, Beaverton, MI
1/2 Mile West of M-30
989-435-2707

We Take Pride In Your Ride!

- Quality Collision Repair
- Free Estimates
- Insurance Work Welcome
- Custom Color Matching & Painting
- We Repair All Makes and Models
- Car/Light Truck
- Genuine Original Equipment Parts

HENRY EXCAVATING CONCRETE & TREE SERVICE LLC

POURED WALLS • CRAWL SPACES • BASEMENTS
OVER 30 YEARS EXPERIENCE • LICENSED & INSURED

COMMERCIAL & RESIDENTIAL

- Excavation
- Site Clearing
- Septic Systems
- Back hoe & Dozing
- Flat Work
- Demolition
- Driveways
- Tree Service

989-539-7542 • 3620 N. Clare Ave., Harrison

James Henry Cell 989-429-1175 Michael Henry (Tree Service) Cell 989-339-4377

TOM'S POLE BUILDINGS
Over 30 Years Experience

Special! POLE BUILDINGS & GARAGES ROOFING & SIDING CONCRETE FLOORS DRIVEWAYS & FENCING

FEATURING ULTRA 2000 19 colors to choose from And A 45 YEAR WARRANTY

From Beginning permit To Cleanup, We Do It All!
1-800-541-3974

We accept major credit cards. • email: tomspolebuildings@yahoo.com

Newcombe's Family Restaurant
27 S Coldwater Rd Lake Isabella, MI 48893
(989) 644-8380

FOOD SO GREAT YOU'LL SCRAPE YOUR PLATE

Sunday 7am-8pm
Mon.-Thurs. 7am-9pm
Fri & Sat 7am-10pm

Like us on Facebook

PIONEER POLE BUILDINGS INC.

7400 S. Clare Ave. • Clare, Michigan 48617
800-292-0679
www.pioneerpole.com

DEBRIS HAULING

- Clean Outs
- Basements Attics & Garages
- Tear Downs Sheds & Garages
- Scrap Metal
- Commercial Buildings

Free Estimates

DEBRIS HAULING
Good & Fast MOUNT PLEASANT No One Does It For Less. NO ONE!!!
Less than the price of a dumpster!

989-773-0735 10 Yards \$285 Dan Syzak

Adam Breault Auctions

Next Auction July 29th @ 6 pm

(7) Firearms, Furniture, Lawn & Garden Equipment, Water Sports, Silver Coins, Jewelry, Power Tools, Wooden Airplane Propeller and Much More!

New location:
895 Industrial Drive, Gladwin

Visit adambreault.com for complete details.

Tag's Auto Repair

2 yr. 25,000 mile warranty nationwide on parts & labor

- Computer Diagnostic Service • 2 and 4 Wheel Alignment
- BRAKES & FRONT END REPAIR!**

Receive a **\$25 VISA** prepaid card on qualifying purchase of \$250 or more made on Drive Card

FREE Roadside Assistance
Program Towing, Flats, Lockouts, More!
Call Us For Details!

Auto Value SERVICE CENTER

3780 N. Clare Ave. Harrison
Hours M-F 8-5, Sat 10-2
989-539-1986

Gilboe's LOCK & SAFE

Commercial • Residential • Industrial • Auto
SALES AND SERVICE

Lock Outs • Rekey • New Locks • Deadbolts • Safes (Record, Gun, Cash)
Hardware • Special Finishes & Textures • Access Control • Keyless Entry • Digital Video Surveillance

24 Hour Emergency Mobile Service

VISA Serving Central MI Since 1956

8529 E. PICKARD RD., MT. PLEASANT
773-1470 • 800-459-3336
www.gilboes.com

E & K EXCAVATING

- SEPTIC SYSTEMS
- PONDS
- DRIVEWAYS AND ROADS
- LAND CLEARING

LICENSED EDWIN STEINER

2239 EAST DENVER RD. ROSEBUSH, MI 48878
989-433-0004

You looked here and your customers will, too.

Call 989-506-4647 for more info.

PAINTBALL SUPPLIES

PAINTBALL
2000 CASE
\$30⁹⁵

CO₂ FILLS, HPA FILLS
FREE FILL w/purchase
of CO₂ or HPA Tank

GUNS, MASKS, TANKS

GLADWIN TRADE & SALES
989-426-6811

Get More Bass For Your Bucks

CAR AUDIO

****Pre-Owned & New****

- Amplifiers
- Subwoofers
- Woofer Boxes
- Speakers & Speaker Boxes
- Amp Kits
- Install Kits

GLADWIN TRADE & SALES
989-426-6811 • 1739 N. State St. • Gladwin

PAWN SHOP
Buy, Sell, Pawn

3 Month Pawn
3% + 1.00 Storage
Firearms, Gold
& More

Gladwin Trade & Sales
989-426-6811

BUCKLE-UP!

The quickest way to become extinct is to NOT advertise!

Call today & let us help keep you off the Endangered List

Park it in the CLASSIFIEDS

and watch it go fast!

HELP WANTED GENERAL

MAINTENANCE MECHANIC
Louisiana Pacific Corporation, Newberry Siding, is looking for a qualified individual to fill the position of **MAINTENANCE MECHANIC (MILLWRIGHT)**. The primary responsibility of this position is to provide mechanical support in a manufacturing setting. This individual must possess the combination of education and experience to work on a variety of mechanical systems. Four years of experience in all aspects of industrial maintenance including: Welding, cutting and fabrication, installation and repair of pumps, conveyance, power-transmission, hydraulic and pneumatic systems. Complete benefit package with 401k. Qualified candidates can view the full job description and apply at www.lpcorp.com/careers Job #8887
LOUISIANA PACIFIC CORPORATION IS AN EQUAL OPPORTUNITY EMPLOYER

DRIVERS

GET PAID TO TRAVEL
Wanted Motor Coach Driver. PT, CDL required. Gladwin, **989-423-0524**

INSTALLATION/MAINTENANCE

Seeking **MAINTENANCE TECH** for part time work at AFC Homes. Must have own tools and valid drivers license. Please apply online at: <https://bayhs.applicantpro.com>

RESTAURANT FOOD SERVICE

MAINSTREET PIZZA-ITHACA
Part/full time available \$9-\$12/hr DOE. Apply in person

AUCTIONS

CROSSBID ONLINE Consignment Auction. Accepting Bids Now, ends August 11 at 6pm EST. Trucks, Vans, Cars, Boats, Mowers, Tools and MORE! www.CrossBid.com Call Vic 616.608.8421

GERBER COLLISION Online Equipment Auction. Accepting Bids Now, Ends August 9 at 6PM EST. Automotive Lifts, Welders, Air Compressors, Prep/Paint Booths & MORE! www.CrossBid.com - Steve 616.608.8414

AUCTIONS

HUGE MOTORSPORTS and Watercraft Auction - Saturday, August 6, 2016 at 8:45 am. Buy or sell. Information at www.snowmobileauction.com or call 517-369-1153. WhiteStar Motorsports Auction, US 12, Bronson, Michigan.

LAKE MICHIGAN Real Estate, Backhoe Loader, Crawler Dozer, (60) Guns, Ammo, Tools Auction. Saturday, August 6TH 2016, 10 AM, Ludington, MI. For complete list and photos visit MerrittAuctionService.com 616-754-9437.

LIVE AUCTION Saturday, August 6, 2016 - 10:00 AM. 5712 Roosevelt Rd., Middleton, MI. 48856. Collectibles; Antiques, Glassware, Primitives; Car, Tools & Garage; Household & Furniture. Details at: Sherwoodauctionservicellc.com 989-640-9401.

FIREWOOD

BUDD LOGGING LLC
Hardwood, slab wood or logs (989)329-1578

BUYING: STANDING TIMBER
and wood lots. Soft & Hard woods. Call Shelly: **989-235-3094**

FIREWOOD for sale. Log length loads, \$100 per full cord. 9 cord min. No Deliver charge within 30 miles. Stock up now. 989-235-3094

FULL CORD of hardwood slabs, delivered. 989-965-0530

FURNITURE

AMISH LOG Beds, Dressers, Rustic Table and Chairs, Mattresses for Cabin or Home. Lowest price in Michigan! dandanthemattressman.com 989-923-1278

AN AMISH Log Headboard and Queen Pillow Top Mattress Set. Brand new-never used, sell all for \$275. Call anytime 989-832-2401.

MISCELLANEOUS

A place for mom. The nation's largest senior living referral service. Contact our trusted, local experts today! Our service is FREE/no obligation. CALL 1-800-520-3521

A TEMPERPADIC/STYLE Memory Foam Mattress Set Queen, new-never used, as seen on TV, with warranty. Cost \$1,800, sell \$475. 989-832-2401.

MISCELLANEOUS

ACORN STAIRLIFTS The AFFORDABLE solution to your stairs! **Limited time -\$250 Off Your Stairlift Purchase!** Buy Direct & SAVE. Please call 1-800-280-1897 for FREE DVD and brochure.

AT&T U-VERSE Internet starting at \$15/month or TV & Internet starting at \$49/month for 12 months with 1-year agreement. Call 1-800-906-1524 to learn more.

BUILT BEST BARN
Michigan's Largest Pole Barn Company Best Quality, Best Service, Summer Specials
24'x24'x8'=\$6995.00;
24'x32'x8'=\$7995.00;
24'x40'x10'=\$9995.00;
30'x40'x10'=\$10,995.00;
32'x48'x12'=\$15,995.00.
Completely Built, (Concrete Floor Optional) License/Insured
1-877-802-9591 (Office)
989-205-2534 (Cell)

BUILT RITE POLE
BUILDINGS State-wide, 24x40x10=\$10,100.00 30x40x10=\$12,900.00. Erected on your site. Call for price not shown on any size building or go to www.builtritepolebuildings.net Toll Free 1-877-296-6802.

Central Boiler certified Classic OUTDOOR WOOD FURNACE. The perfect combination of performance and value. Call today! Beaverton Outdoor Wood Furnace 989-435-9240

DISH TV 190 channels plus Highspeed Internet Only \$49.94/mo! Ask about a 3 year price guarantee & get Netflix included for 1 year! Call Today 1-800-930-8959

FAST INTERNET! HughesNet Satellite Internet. High-Speed. Avail Anywhere. Speeds to 15 mbps. Starting at \$59.99/mo. Call for Limited Time Price! 1-800-491-8935

FREE PILLS! Viagra!! Call today to find out, how to get your free Pills! Price too low to Mention! Call today 1-877-602-0194.

LUNG CANCER? And 60 Years Old? If So, You And Your Family May Be Entitled To A Significant Cash Award. Call 800-871-9061 To Learn More. No Risk. No Money Out Of Pocket.

PIONEER POLE BUILDINGS
Free Estimates Licensed and Insured. 2x6 Trusses. 45 Year Warranty Galvalume Steel-19 Colors. Since 1976 #1 in Michigan Call Today 1-800-292-0679

SAVE ON internet and TV bundles! Order the best exclusive cable and satellite deals in your area! If eligible, get up to \$300 in Visa Gift Cards. CALL NOW! 1-800-807-1095

SOCIAL SECURITY Disability Claims and Appeals. 800-900-4440. Let the Bull Dogs work for you - we don't give up.

STOP OVERPAYING for your prescriptions! Save up to 93%! Call our licensed Canadian and International pharmacy service to compare prices and get \$15.00 off your first prescription and FREE Shipping. 1-800-697-1808

ULTIMATE BUNDLE from DIRECTV & AT&T. 2-Year Price Guarantee -Just \$89.99/month (TV/fast internet/phone) FREE Whole-Home Genie HD-DVR Upgrade. New Customers Only. Call Today 1-800-917-3607

VACATION CABINS for Rent in Canada. Fish for abundant walleye, perch, northern pike. Boats, motors, gasoline included. For free brochure call Hugh 1-800-426-2550 WWW.BESTFISHING.COM

MUSICAL INSTRUMENTS

1976 Kimball upright piano. Excellent condition. Appraised \$1,800, asking \$900 o.b.o. (989)330-2344

ESTATE SALES

HOFMEISTER QUALITY MOVING SALE
870 HIAWATHA DR.
MT.PLEASANT MI. 48858
THURS. AUG.4TH 9-6:00
FRI. AUG. 5TH 9-6:00

DIRECTIONS: From the corner of W. M20 & Meridian Rd. turn Left (South) Proceed 1 Mile to W. Broomfield Rd turn Right (West) go 1 Mile to Hiawatha Dr. Turn Left (South) to sale. Follow signs

"BEST" TAN SOFA W/2 RECLINERS, TAN LOVESEAT W/2 RECLINERS, TAN RECLINER; 1930'S DINING TABLE W/ONE LEAF & 5 CHAIRS; MARQUETRY BUFFET; (2) MATCHING BERNE SOFAS; OAK BOOKCASE; OAK DESK; NIAGARA ADJUSTABLE TWIN BED; AMISH HEATER; AREA RUG 8'X5' ORIENTAL STYLE; SMALL STANDS; NIGHTSTANDS; 53 PC. LENOX CHINA "ADRIENNE"; ROYAL COPENHAGEN TEAPOT; CRYSTAL DECANTER SET; SET 6 SPODE COLLECTOR BIRD PLATES; PATIO TABLE W/6 CHAIRS (like new); (2) PATIO CHAISE LOUNGES; NEX-GRILL; NINTENDO wii GAMES & GUITAR; BOOKS; CD'S; HOLIDAY DECOR; CHESS SET; WESLO PURSUIT E45 STATIONARY BIKE; 16 GAL. CRAFTMAN SHOP-VAC; GARDEN COMPOSTER; HUSKY 1750 PSI POWER WASHER; CRAFTSMAN RADIAL ARM SAW; 20' EXTENSION LADDER; CHAIN LADDER; GARAGE SHELVING; HONDA PUSH MOWER; SNOWBLOWER; YARD TOOLS; ROSS 20 SPEED BIKE; SCWINN 20 SPEED BIKE; CHILD'S BIKE; PROJEX 10 OVERHEAD PROJECTOR W/SCREEN
OPEN 9:00/ CASH
Central Estate Sale Service
Jerry M. 989-854-1571
Patty G. 989-772-2053

BUILDING MATERIALS & SUPPLIES

BUILT BEST BARN
Michigan's Largest Pole Barn Company Best Quality, Best Service, Spring Specials
24'x24'x8'=\$6995.00
24'x32'x8'=\$7995.00
24'x40'x10'=\$9995.00
30'x40'x10'=\$10,995.00
32'x48'x12'=\$15,995.00
Completely Built, (Concrete Floor Optional) License/Insured
1-877-802-9591 (Office)
989-205-2534 (Cell)

PIONEER POLE BUILDINGS
Free Estimates Licensed and Insured. 2x6 Trusses. 45 Year Warranty Galvalume Steel-19 Colors. Since 1976 #1 in Michigan Call Today 1-800-292-0679

AGRICULTURE & FARM

EXCELLENT BLACK DIRT: Recycled cow manure; \$25/ pick-up load. I load, you haul. Lots of repeat customers. Gladwin area 989-426-9691

FARM FEED & SUPPLIES

ALFALFA: 2nd Cutting, \$10/ bale 2nd Cutting \$8; Straw, \$4/Bale; Cracked Corn \$12/100, Shelled-Corn \$10/100, Cob-Corn \$5/Bag, Rye, Barley, Wheat, Oats \$12/ bag. Delivery-Available. (989)433-5418 Cell# (989)965-1391

GIVE YOUR AD SOME *Attitude*
WITH ONE OF OUR EYE CATCHERS
we can help get your ad noticed!
CALL THE
CLASSIFIED DEPARTMENT
Today For More Information

APARTMENTS FOR RENT (UNFURNISHED)

MOVE IN BEFORE SCHOOL STARTS

Pinewinds Apartments

1050 Bridge Ave.
Alma, MI 48801
989-463-2586
TDD# 711
Office Hours 8-12, 1-5
1-2 Bedroom
Rent based on income starting at
\$380 1 bedroom
\$400 2 bedroom
Barrier free units
Security Deposit Required
"This Institution is an Equal Opportunity Provider"

MOBILE HOMES FOR RENT

14X70, 3 bedroom. Shingled roof, vinyl sided Mobile on 1 acre. Ithaca Area. 989-875-3676, 989-763-9551 and leave message. No Pets.

PASSENGER CARS

2006 BUICK LUCERNE

CXL, leather interior, only 68,000 miles, elderly owned, fantastic condition.

ONLY \$8,995 or \$179/mo.

Dick Sovo Auto
989-828-6032
dicksovaautosales.com

2011 CHEVY EQUINOX

AWD, FULL POWER

ONLY \$14,995, OR \$259/mo.

Dick Sovo Auto
989-828-6032
dicksovaautosales.com

2013 DODGE JOURNEY

SXT full power, low miles,

WHAT A BUY!

ONLY \$16,995 or \$259/mo.

Dick Sovo Auto
989-828-6032
dicksovaautosales.com

2014 BUICK ENCLAVE

Premium edition, only 16,000 miles, AWD, heated and cooled seats, show room new

ONLY \$34,995 or about \$459/mo.

Dick Sovo Auto
989-828-6032
dicksovaautosales.com

2015 FORD F-150

Extended cab 4x4, less than 2,000 miles, (not even broke in yet), ecoboost engine, full power, **compare anywhere!**

ONLY \$32,995 or about \$439/mo.

Dick Sovo Auto
989-828-6032
dicksovaautosales.com

PARTS & SERVICE

AUTO REPAIR mechanical & body, auto parts, used & new, mostly mopower 989 835 8987 partsatmostllymopower@gmail.com

NEED HELP? CALL A LOCAL PROFESSIONAL FROM OUR

Professional Services Directory

ACCOUNTING & FINANCIAL

SOCIAL SECURITY DISABILITY BENEFITS. Unable to work? Denied benefits? We Can Help! WIN or Pay Nothing! Contact Bill Gordon & Associates at 1-800-731-5703 to start your application today

HEALTH & FITNESS

VIAGRA!! 52 Pills for only \$99.00. Your #1 trusted provider for 10 years. Insured and Guaranteed Delivery. Call today 1-800-404-1282

LANDSCAPE & TREE MAINTENANCE

ARBOR TREE SERVICE. Storm Damage, Landscaping, Tree Trimming & Removing. Call 989-763-3830

GARAGE SALES

YARD, RUMMAGE & GARAGE SALES

3 FAMILY GARAGE SALE. Computer table, TV stand, teen girls clothing, women's clothing 12-14, ice fishing & hunting equip. **Aug 5 & 6, 9-5, Third house S. of Weidman School.**

HUGE GARAGE SALE: Lots of toys, household goods, boys & designer women's clothing, bikes. **909 1/2 Crosslanes, Mt. Pleasant. Sat & Sun July 30 & 31, 9-4**

HUGE YARD SALE. **AUG 5 & 6, Fri & Sat. 3554 S. Gilmore Rd, Mt. Pleasant**
Piano rolls, exerciser, artificial flowers, crafts, hand quilted Navy insignia quilt. Hundreds of: LP's, cassettes, books (paperback & hardback Christian & secular). Clothes, storage totes, much more!

CASH FOR OLD COINS & CURRENCY

Paying book price. Will look up each coin with you. **989-426-7300.**

YARD, RUMMAGE & GARAGE SALES

MT. PLEASANT Huge Multi-Family Kid Sale! 1518 Carnahan, Sat. 8/6, 9am-2pm. Lots of toys, clothes, books, & misc. household. *No Early Sales!*

MT. PLEASANT: Fri, 9-6, Sat, 9-1! Multi-Family Sale! 612 S. Kinney. Furniture, 6 pc queen bedroom set, household items, clothing for all ages.

YARD SALE, 14ft flat bottom boat, motor & trailer, set of ATV tires, welder, portable dishwasher, like new, glassware, knic knacs, tools saws, lots of misc things. 1/2 mile south of M20 on Wise Rd. Mt. Pleasant, Aug. 4-7, 8am-6pm.

MISCELLANEOUS

AMISH BUILT STORAGE SHEDS AND HUNTING/RECREATION CABINS DELIVERED TO YOUR SITE ANYWHERE IN MICHIGAN! STARTING UNDER \$1,000.00. 989-832-1866.

NOTICE OF HERBICIDE APPLICATION

Isabella County Residents - Be Green, Inc. 9085 S. Vande-car, Shepherd, MI 48883 has been contracted by the Isabella County Road Commission to perform chemical brush control along designated roadsides throughout the county using Met-sulfuron, Triclopyr, 2,4-D and/or Picloram thru December. Additional information may be requested at 989.866.6188.

Look twice... Save a life!



Motorcycles are EVERYWHERE

Kubin's Mattress Sale!



Serta Select Twin Mattress \$99

Add a Pivot Head Up Box for \$544 on most models

Guaranteed Lowest Prices ON ALL SERTA MATTRESSES!

	TWIN 2pc set	FULL 2pc Set	QUEEN 2pc Set	KING 3pc set
Majestic Davey Gentle Eurotop	\$299 Sale Compare At \$449	\$379 Sale Compare At \$569	\$399 Sale Compare At \$599	\$599 Sale Compare At \$899
Majestic Gallion Support Firm or Support Eurotop	\$349 Sale Compare At \$529	\$449 Sale Compare At \$679	\$499 Sale Compare At \$749	\$799 Sale Compare At \$1199
Majestic Raftery Premium Choice Plush or Firm	\$449 Sale Compare At \$679	\$549 Sale Compare At \$829	\$599 Sale Compare At \$899	\$899 Sale Compare At \$1349
Majestic Stowcroft Choice of Super Pillowtop or Firm	\$649 Sale Compare At \$979	\$749 Sale Compare At \$1129	\$799 Sale Compare At \$1199	\$1099 Sale Compare At \$1649
Kubin's Exclusive, Perfect Sleeper Regal Suite, 2 Sided flipable mattress Choice of Plush or Extra Firm	\$549 Sale Compare At \$829	\$699 Sale Compare At \$1049	\$799 Sale Compare At \$1199	\$1099 Sale Compare At \$1649
Serta Perfect Sleeper Swan Harbor Choice of Luxury Pillowtop or Firm	\$899 Sale Compare At \$1349	\$969 Sale Compare At \$1459	\$999 Sale Compare At \$1499	\$1299 Sale Compare At \$1949
Serta Perfect Sleeper Hatters Evercool & Gel Memory Foam	\$899 Sale Compare At \$1349	\$969 Sale Compare At \$1459	\$999 Sale Compare At \$1499	\$1299 Sale Compare At \$1949



Helps reduce tossing and turning

ComfortRight™ Layers

This advanced system of foams and fluffy fibers is designed to provide instant comfort. This helps reduce the pressure points that can cause tossing and turning so you can sleep more comfortably through the night.

Minimize impact from partner movement

TrueSense® Design

Serta's exclusive design helps minimize the impact of partner movements, working to isolate motion at its source so you can enjoy a peaceful night's sleep with fewer disruptions.

Encourages proper back support & alignment

Custom Support® System

Every Perfect Sleeper features a system of durable, yet flexible carbon steel coils that work to promote proper support and alignment across the entire body.

Resists sagging & edge roll-off

ComfortLast® Construction

Designed to enhance durability of the mattress and is thoroughly tested beyond industry standards to make sure it can resist sagging and edge roll-off. This enhanced durability can help extend the comfort life of your mattress.

Promotes a balanced sleep temperature

CoolBalance® Technology

A unique combination of high-performance heat and moisture-regulating fabric and an overall mattress design that helps promote airflow. Together, these help provide a comfortable, balanced sleep temperature.

5 reasons
to never count sheep again.



The Good Stuff on Clearance!

Top Quality, Name Brand Furniture, Rock Bottom Prices!
All pieces subject to prior sale. No raincheck. No layaway.



Driftwood & Tile End Table

Regular	Sale	Clearance
\$349	\$229	\$99



Cozzia 3D Zero Gravity Massage Chair

Regular	Sale	Clearance
\$6799	\$4499	\$1999



Small Gray Rocker/ Recliner

Regular	Sale	Clearance
\$779	\$519	\$299



Large 2 Drawer Coffee Table

Regular	Sale	Clearance
\$369	\$239	\$50



Best Power Reclining Sofa

Regular	Sale	Clearance
\$1899	\$1199	\$799



LaZBoy Reclining Sofa

Regular	Sale	Clearance
\$1349	\$899	\$599



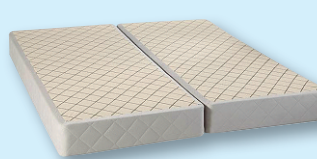
60" TV Stand Credenza

Regular	Sale	Clearance
\$569	\$349	\$229



LaZBoy Green Rocker/Recliner

Regular	Sale	Clearance
\$699	\$469	\$299



Closeout Boxspring Foundations

Regular	Sale	Clearance
\$249	\$160	\$79



LaZBoy Gray Rocker/Recliner

Regular	Sale	Clearance
\$999	\$649	\$349



Kubin's Furniture & Mattresses

101 N Mill St, Corner of M46, St. Louis, Michigan, (989) 681-5043

Hours: Mon-Thurs: 9-6, Fri: 9-8, Sat: 9-5, Closed Sunday

Sign up Your Email at: <http://www.kubins.com/signup.htm>



*SEE STORE FOR DETAILS

Gladwin City Housing Commission

Low Income Housing • Community Development Program

**NO
SMOKING
FREE HEAT
AND RENT BASED
ON INCOME**

989-426-5721



Gladwin City
**HOUSING
COMMISSION**
989-426-5721
www.gladwinhc.net

GA
COUNCIL ON AGING
Serving Gladwin County
989-426-5450
www.gladwincoa.org

Equal Opportunity
Employer and Service
Organization

Like us on Facebook

426-6514
Transit
www.gladwintransit.com



If you or a family member is in need of an apartment, the Gladwin City Housing Commission has smoke-free affordable apartments in downtown Gladwin and Beaverton. Seniors and disabled citizens can rent a one bedroom apartment for 30% of their income. This includes appliances, gas, electric and water. Small pets are welcome.

You'll also have access to a laundry room, arts & crafts room and lounge. Other services available include curb side pickup from the City County Transit and lunch at the Council on Aging dining centers. You do not have to live in Gladwin or Beaverton to qualify for this low income housing. So contact the Gladwin City Housing Commission at 426-5721 to see if you qualify. An Equal Housing Opportunity

LOW OR NO INTEREST LOANS AVAILABLE to Gladwin County residents for home repairs.

- Roof • Windows • Furnace • Water Heater • Insulation • Electrical • Plumbing • Well
- Septic Tank • Drain Field • Ramp • And More

- Must be income eligible
- Own your home or purchasing it through a mortgage or land contract
- Be your principal residence for minimum of 1 year
- All property taxes must be paid up to date
- Current homeowner's insurance is required

For more information call Karen at (989) 426-5721
Gladwin City Housing Commission.
An Equal Housing Opportunity!

