

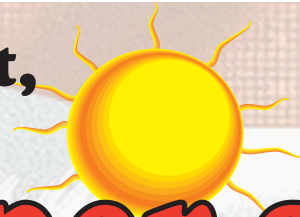
FREE!

16

Years



Hot, Hot, Hot!



PRSR STD
ECRWSS
U.S. POSTAGE PAID
GREENVILLE, TX.
PERMIT #60

Millennium Shopper.com



115 Jefferson
P.O. Box 1037
Sulphur Springs, Tx. 75483

(In The Shade of The Courthouse)

903-885-9966



VOL. 17 ISSUE 858, August 4, 2016

Greenville, Sulphur Springs, Commerce, Cumby, Campbell, Lone Oak, Brashear, Caddo Mills, Quinlan, Cash, East & West Tawakoni, Emory, Pickton, Como, Point, Winnsboro, Lake Fork, Yantis, Farmersville, Merit, Princeton and McKinney!

e-mail: ads@millenniumshopper.com
www.millenniumshopper.com

THIS SUMMER, GET A GREAT DEAL ON YOUR FAVORITE CHEVY.



FIND YOUR TAG, GET

16% OF MSRP CASH BACK

ON SELECT REMAINING 2016 VEHICLES IN STOCK¹

2016 SILVERADO 1500
CREW CAB LT ALL STAR 4WD

\$47,360 MSRP



FIND YOUR TAG, GET

16% OF MSRP CASH BACK

ON SELECT REMAINING 2016 VEHICLES IN STOCK

THAT'S

\$7,577 CASH BACK¹

ON THIS SILVERADO

2016 TRAVERSE LT FWD

\$36,715 MSRP



FIND YOUR TAG, GET

16% OF MSRP CASH BACK

ON SELECT REMAINING 2016 VEHICLES IN STOCK

THAT'S

\$5,874 CASH BACK¹

ON THIS TRAVERSE

2016 EQUINOX LT FWD

\$31,460 MSRP



FIND YOUR TAG, GET

16% OF MSRP CASH BACK

ON SELECT REMAINING 2016 VEHICLES IN STOCK

THAT'S

\$5,062 CASH BACK¹

ON THIS EQUINOX

2016 MALIBU LT

\$30,630 MSRP



FIND YOUR TAG, GET

16% OF MSRP CASH BACK

ON SELECT REMAINING 2016 VEHICLES IN STOCK

THAT'S

\$4,900 CASH BACK¹

ON THIS MALIBU

2016 CRUZE LT

\$22,975 MSRP



FIND YOUR TAG, GET

16% OF MSRP CASH BACK

ON SELECT REMAINING 2016 VEHICLES IN STOCK

THAT'S

\$3,676 CASH BACK¹

ON THIS CRUZE

FIND NEW ROADS™

903-886-2188 - www.CommerceChevroletBuick.com



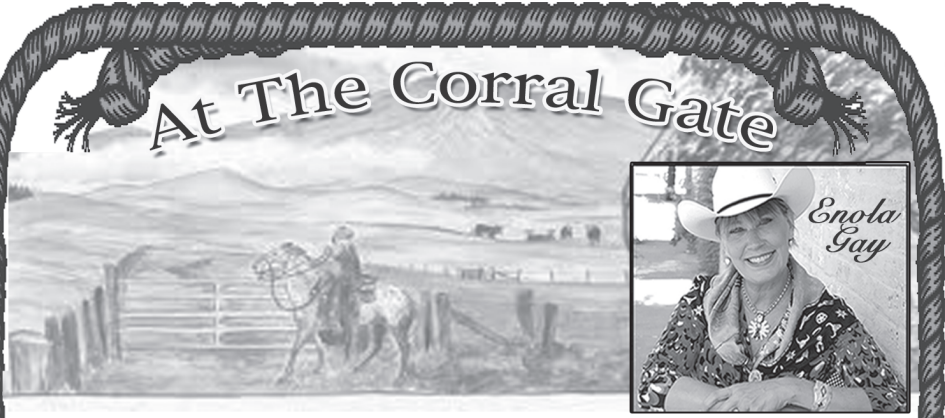
COMMERCE CHEVROLET
1621 HIGHWAY 50
COMMERCE, TX. 75428

CHEVROLET

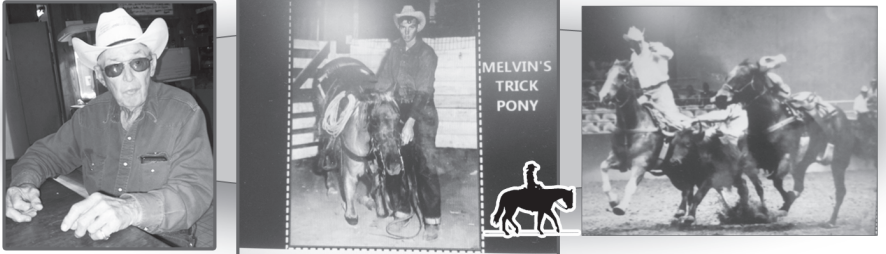


¹ Limited to 10% of select vehicles in dealer stock. For vehicle eligibility, visit chevybonustag.com. Not available with special finance, lease or other offers. 2016 Silverado 1500 Crew Cab LT All Star 4WD based on MSRP of \$00,000. 2016 Traverse LT FWD based on MSRP of \$00,000. 2016 Equinox LT FWD based on MSRP of \$00,000. 2016 Malibu LT based on MSRP of \$00,000. 2016 Cruze LT based on MSRP of \$00,000. Take delivery by 8/31/16. See dealer for details. ©2016 General Motors.

MorrellAutoGroup.com
 2845 N.E. Loop 286 Paris, Texas - Next To Tamolly's
 800-569-3647 ★ 903-785-7556 ★ Mon.-Fri. 8:30 AM - 6:00 PM ★ Saturday: 8:30 AM - 3 PM



So often, it is a person's obituary that brings to light the life between birth and death dates..."the dash" referred to by poet Linda Ellis. Recently, I had the privilege of attending a unique funeral tribute to a unique horseman and self-taught auctioneer, Melvin Pinson. His pastor Kevin Lane of Bois D' Arc Creek Cowboy Church of Bonham delivered an auctioneer's eulogy to over 200 friends and mourners gathered at the sale ring of the Red River Horse Sale in Savoy, Texas on Saturday July 30, 2016, and here are excerpts from it:



Ya'll come on in, this horse sale is gettin' started! Make your checks good now, high bidder wins!"
 Lots of saddles, thousands and thousands, have gone from seller to buyer in this ring over the past 30 years. There's a buyer for everything from top class to bottom at a sale, and in life. "Here's a little cavalry saddle, whatdya wanna give for it?"
 Many, many head of horses came through this ring during his weekly sales. Melvin would tel the audience what the seller had told him.
 "Here's a little bay mare, solid and sound...she's never bucked in the whole time her owner has owned her. Whatdya wanna give for her?"
 Melvin's set-in price and his "whatdya wanna give" chant established the value of the horse, mule or tack being sold. He was an observer of people, he genuinely liked them and became a mentor to many. He was good with young horses and young people too. He never bragged, and his honest reputation was known throughout the region. A 1932 model, Dallas-born Texan, Melvin got connected with Neal Gay and Jim Shoulders and worked for their rodeo for years as pick-up man, farrier and stockman. Later, he left rodeo and became a businessman, running the Lawson Road Sale in Dallas County then his own Red River Sale Barn. He understood that bidding in the sale was important, but it set merely a monetary value on an item that might carry a whole lot more personal value to the one selling that day.
 "I've got a bid now, whatdya wanna give? Once the bidding closes, boys, it won't open up again!"
 In the end, God had the high bid on Melvin, not the devil, because He alone establishes the value of a man. So who's got the high bid on you?
 When you hear "going once...going twice...all in, all done?" be sure you've made that choice for yourself before you hear "Sold!"



"A long line of pickups and cars traveled the short distance from the sale barn to the shady Hampton Cemetery at Edhube, just outside of Bonham. After the service, I made acquaintance with two cowgirls who came to pay their respects to Melvin and to Beverly, his companion of many years. Teddy Lamb Jacobs and her sister Betty were trick riders, mentored by Melvin during their early lives. The sisters also trained racing quarter horses in the days before women were allowed to ride on the thoroughbred tracks. As a child, she connected with dogs and ponies through the Dallas SPCA. Teddy was a schoolmate of Melvin's from back in their South Dallas childhood. She makes her home at Wills Point and still trains cattle dogs.



Teddy Jacobs and Loretta Shuler

Loretta Manuel Shuler started out riding in a wild west show at age 15 and then barrel racing became her passion. She married saddle-bronc rider Howard Manuel and as a young couple they traveled the US competing on the rodeo circuit. She is a 2-time World Champion in the WPRA (Women's Professional Rodeo Association) and competed at NFR in Oklahoma City prior to it's move to Las Vegas. She is enjoying retirement with her horses in Celeste.
 Summer 2016 has been a good season for meeting new friends and renewing old acquaintances. If you've been missing an old friend or relative, why not give them a call or e-mail, or better yet, just write them an old fashioned letter? Getting back in touch and the lines of communication open again might be one of the most satisfying small gestures you can make, for both of you!

Til next week, I'll be watching for you at the corral gate!

Visit our website...
www.flippinprinting.com
 115 Jefferson St. Sul. Spgs. 903-885-3633

CLASSIFIED ADS GET RESULTS!
\$3⁵⁰ 15 words or less, over 15 words 20¢ a word.
 PLACE YOUR AD TODAY.
 Call 903-885-9966

Answers to Word Search

R	J	S	A	M	I	S	I	R	H	C	L	A	R	O	H	C
H	A	K	L	O	P	D	N	A	B	G	T	B	H	C	A	Y
T	Z	C	T	H	N	E	W	W	A	V	E	M	I	I	B	W
E	Z	O	A	V	A	N	I	G	A	R	D	E	P	T	M	A
R	A	R	M	E	R	E	N	G	U	E	A	N	H	S	A	L
A	C	C	T	L	E	D	E	H	C	Y	S	P	O	U	S	T
B	A	I	I	D	A	I	A	B	N	G	P	Y	P	O	H	Z
A	P	S	B	N	D	T	R	C	A	A	L	U	O	C	E	T
C	E	S	S	N	O	C	I	N	I	L	I	C	N	A	A	A
T	L	A	I	A	A	R	G	N	I	D	N	D	N	K	V	N
N	L	L	L	D	R	S	T	B	M	E	R	A	N	G	Y	G
E	A	C	W	O	T	G	A	C	M	U	C	O	O	I	M	O
I	C	A	S	A	U	K	E	A	E	I	S	T	C	K	E	C
B	Y	N	R	O	C	N	L	U	X	L	H	I	L	K	T	S
M	L	A	A	O	U	F	G	E	L	I	E	O	C	U	A	I
A	P	E	R	D	S	L	M	E	C	B	F	W	O	R	L	D

PEPE ARANDA'S MULTI-LAYERED LIFE



Tumbleweed Smith

Tumbleweed Smith

When I spoke at the Carrizo Springs chamber banquet a couple of years ago, I met Pepe Aranda of Eagle Pass. He had hauled in all sorts of sound and light equipment for a dance after the banquet. The equipment was first class and added a festive atmosphere. This year, after speaking at the Eagle Pass chamber banquet, I interviewed Pepe. He has done a bunch of things.

When he was growing up he developed an interest in music and played saxophone with a band. He worked part-time at HEB while in high school, but music was his passion and he wanted to be a high school band director. One day the manager of the store told Pepe that he should give up on music, that he couldn't make any money with it. He showed Pepe the stub of his paycheck. Pepe was impressed because he knew how little money the local high school band director made. The store manager recommended Pepe enroll in HEB's manager training course. He took the advice and at age 19 was a department head. He earned an HEB college scholarship and later managed HEB stores throughout the border area for 20 years.

After his career with HEB Pepe started a company that produced chorizo sausage and cracklings made from pigskins. It grew and eventually he had 16 employees and was distributing products from Little Debbie and Pepperidge Farm.

After selling that business he became a consultant to the Kickapoo Indian tribe and later went into real estate.

He served two terms as mayor of Eagle Pass and served eight years as county judge of Maverick County. Once while a committee was organizing a Christmas party for county employees, Pepe suggested instead of hiring someone to play live music during dinner he would set up some sound equipment he had bought for his son, who had aspirations of becoming a musician and play recorded music. The committee thought that was a good idea.

While he was setting up his equipment, the caterer asked Pepe if he was a DJ. Pepe thought about thirty seconds and replied, "Yes, I am." He was invited to provide sound for an upcoming quinceanera. He discovered the event was for his niece, so he gave her the \$400 he earned for playing DJ. The caterer invited Pepe to play for an upcoming dance. The jobs just kept coming. Pepe got serious about buying equipment and subscribing to various online music providers and now invests 30 percent of his DJ income to buying new equipment. He is pretty much at the top of his field with light and sound and travels all over the state nearly every weekend with his DJ show.

When Pepe was running for mayor, he got some help from his young son, EJ, who was in pre-kindergarten,
 "He came home one day and told me I had nothing to worry about the election because he had talked to his classmates and they said their parents would vote for you."
 www.tumbleweedsmith.com



REAL ESTATE GUIDE

Looking for a new home, apartment or land? Check here first!

Help Wanted

Health & Fitness

Help Wanted

Owner operators! Home Daily, Benefits! CDL-A, 1 Yr. Exp, Great Driving Record, Pneumatic Tank & End Dump. Sunsetlogistics.com 817-589-1455 or 888-215-4285 AA-H4

VIAGRA 100MG and CIALIS 20mg! 50 pills \$99.00 FREE shipping! 100% guaranteed. CALL NOW 1-866-312-6061 - Hablamos Espanol

CARS / TRUCKS WANTED!!! All Makes/ Models 2000-2016! Any Condition. Running or Not. Top \$\$\$ Paid! Free Towing! We're Nationwide! Call Now: 1-888-985-1806

Want To Buy

CASH PAID - up to \$25/Box for unexpired, sealed DIATETIC TEST STRIPS. 1-DAY PAYMENT. 1-800-371-1136

Wants to purchase minerals and other oil and gas interests. Send details, P O Box 13557, Denver, Co 80201

Miscellaneous

AVIATION Grads work with JetBlue, Boeing, Delta and others - start here with hands on training for FAA certification. Financial aid if qualified. Call Aviation Institute of Maintenance 866-453-6204

Advertise in the Millennium Shopper Call 903-885-9966 Find Great Deals Every Week



AIRLINE CAREERS

Get FAA approved maintenance training at campus coast to coast. Job placement assistance. Financial Aid for qualifying students. Military friend

Call Aviation Institute of Maintenance **800-481-7894**

NEXIUM®, PRILOSEC®, PREVACID® LINKED TO SEVERE KIDNEY COMPLICATIONS



If you or a loved one has suffered kidney complications after using one of these common heartburn drugs contact us today to complete a FREE intake!

1-855-461-5753
www.RobertGardnerLaw.com

Robert Gardner is licensed to practice law in MN with principal offices in Bloomington, MN and associates with experienced lawyers through the U.S.

EMORY AUTO SALES

Call Us At **903-473-0147**

Don't Pass By Without Looking!!!



Check Out Our Used Cars & Trucks!!!

Lowest Down Payment **\$500!!**
Lowest Payment - **\$50 per week**

New Arrivals Daily!

PREMIUM PRE-OWNED VEHICLES!

We Finance! Buy Here, Pay Here!

Located at 110 E. Lemon Drive - Corner of Hwy. 19 & 69 Emory, Texas

Hours: Mon. - Fri. 9 am to 5 pm

Saturday 9 AM - 12 Noon

903-473-0147 * Fax 903-474-2111

emoryautosales.com

Check Our Website



www.millenniumshopper.com

Did You Know...

that we can help you with all of your advertising needs? We can get your message out to 7 counties!



Joy Wilson 903-348-3546



Jan Massey 903-243-5575

Call us....

903-885-9966!

www.millenniumshopper.com
Millennium Shopper.com
Joy and Jim Wilson, Owners
115 Jefferson St.
Sul. Spgs., Tex.

PUPPIES FOR SALE?

Call 903-885-9966 To Place An Ad And Sell Them Today!

Toby Boatman Garage Doors

P.O. Box 445 ★ Como, TX 75431

- * Sales
- * Service
- * Installation
- * Doors
- * Electric Door Openers

- * Residential
- * Commercial

348-6170 ★ 903-438-1970

Are you caring for someone with memory loss?

Join **"Terrific Tuesdays"**

a Sulphur Springs Respite Care Program for seniors with memory loss.

This program is open to everyone with Alzheimer's or dementia. It gives the participants an opportunity to spend each Tuesday meeting new friends and participating in cooperative activities.

It also gives the caregiver a few hours to run errands and to take care of personal healthcare needs, etc. knowing that their loved one is well taken care of in a safe and enjoyable environment.

The cost is \$20 each Tuesday from 9 a.m. to 2 p.m. and that includes lunch!

"Terrific Tuesdays" meets at The First United Methodist Church Family Life Center at 301 Church Street, Sulphur Springs.

Contact Joyce McDonald at 903-243-5620 for more information.

Jack be Nimble, Jack be Quick!
Jack got in on a really good Pick!
Jack went over to **SULPHUR SPRINGS ANTIQUE GALLERY**
And found it before y'all!!

1130 Shannon Road East ★ 903-569-4257
Open Monday, Thursday, Friday, Saturday & Sunday!!!

MAILBOX + EXPRESS

314 W. Lennon - Emory
903-473-4449

UPS/FED EX/USPS/WESTERN UNION

Drive-Up Window

Quick-Pay Bills - Copies - Faxing - Computer & Internet Work Space - Passport Photos - Mailboxes & Mail Forwarding - Moving Boxes & Supplies - Gift Wrapping

Open Mon.-Fri. 9 am to 5 pm

GUN & KNIFE SHOW

AUGUST 6TH & 7TH SATURDAY 9-5 & SUNDAY 9-4

Hopkins County Civic Center
1200 Houston St. • Sulphur Springs, Tx.

BUY-SELL-TRADE

Guns • Knives • Coins • Jewelry
• Reloading Supplies • Accessories

For Info Call Allen:

918-658-4500

Sulphur Springs TEXAS

Just play. Have fun. Celebrate!

Sulphur Springs Activities

Fri, August 5, 8pm - 10pm - Jurassic World showing in Celebration Plaza at Dark. 100 Church St, Sulphur Springs, TX 75482.

Sat, August 6, 9am - 10am - Yoga on the Square. Celebration Plaza, 100 Church St, Sulphur Springs, TX 75482.

Sat, August 6, 9am - 6pm - Allen Bowles Knife and Gun Show Hopkins County Civic Center, 1200 Houston St., Sulphur Springs, TX

Sat, August 6, 6pm - 10pm - Battle of the Bands on Celebration Plaza Celebration Plaza, 100 Church St, Sulphur Springs, TX 75482.

Dance/DJ

Fri, August 12, 8pm - 10pm - The Minions showing in Celebration Plaza at Dark. Celebration Plaza, 100 Church St, Sulphur Springs, TX 75482.

Sat, August 13, 9am - 10am - Yoga on the Square. Celebration Plaza, 100 Church St, Sulphur Springs, TX 75482.

Sat, August 13, 7pm - 9pm - Matt Dunn on Celebration Plaza. Celebration Plaza, 100 Church St, Sulphur Springs, TX 75482. Southern Rock

Fri, August 19, 7pm - 9pm - Emerald City on the Square. Celebration Plaza, 100 Church St, Sulphur Springs, TX 75482. Concert

Sat, August 20, 8am - 10am - Family Fun Run! Sulphur Springs Country Club, 511 Co Rd 3451, Sulphur Springs, TX 75482. Benefitting the FILL THE BUS event with CANhelp, this run will be at the country club. tickets are \$10 per individual, \$30 per family. The course is about 2.2 miles.

Celebration Market! On The Square Every Saturday 6 p.m. to 10 p.m.

LIVE MUSIC AND MORE!!!!



Know Vendors who may be interested in sell at Celebration Market? Contact Sarah Dicus by calling 903.885.7541 ext. 744.

Joy and Jim Wilson
FLIPPIN
 printing
 115 Jefferson Sul. Spgs. 903-885-3633

GOBER Post Frame Buildings
 Shops, Garages, Houses, Agriculture, Commercial
1-405-595-0770

30'x40'x10' - \$11,500
 30'x40'x12' - \$12,700
 30'x50'x10' - \$13,800
 30'x50'x12' - \$14,900

With 4" Concrete, Fully Insulated,
 1 Commercial Overhead,
 1 Entry Door, #1 29 Ga.
 40yr. Painted Metal,
 Built on Your Level Site,
 Additional Sizes Available
 Mileage or Higher Concrete
 Prices May Apply

Protect Your Home And Property!!!
 Make Sure Your Contractor is Following Law.
 Ask For General Liability and Workers Comp. Insurance

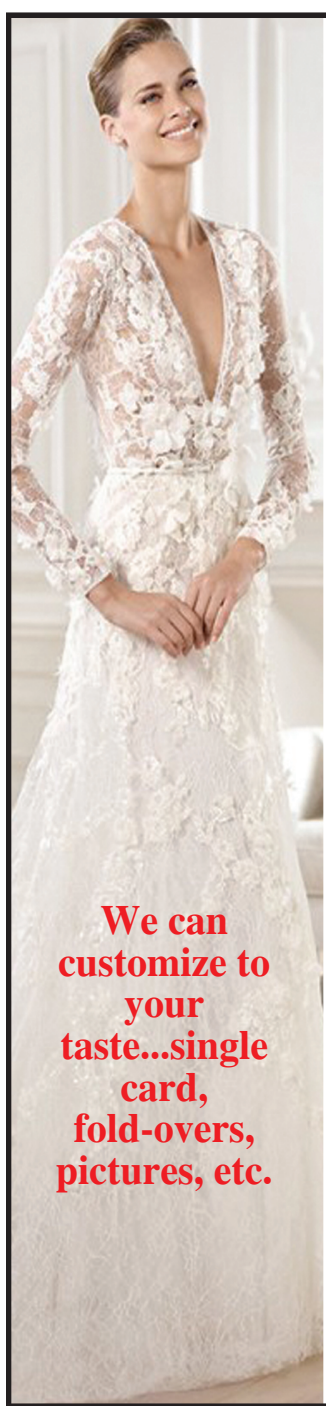
www.goberconstruction.com

Millennium Shopper.com

FREE weekly shopper published on Thursdays reaching over 45,000 readers in Hunt, Hopkins, Rains, Franklin, Collin, and Wood Counties.

Direct mailed to Brashear, Campbell, Commerce, Cumby, Greenville, Lone Oak and Sulphur Springs with carrier routes in Greenville, Sulphur Springs, Commerce, Caddo Mills, Quinlan, Neylandville, Caddo Mills, Lone Oak, Quinlan, Commerce, Sulphur Springs, Merit, Point, Emory, Farmersville, Princeton, McKinney, Como, Pickton, Winnsboro, Mt. Vernon, Mt. Pleasant, Pittsburg, Quitman, Lake Fork, Cash, Cumby, Brashear and Yantis.

Jim and Joy Wilson, Owners
 115 Jefferson, P.O. Box 1037, Sul. Spgs, Tx.
 903-885-9966, 1-877-455-5959
ads@millenniumshopper.com
www.millenniumshopper.com



We can customize to your taste...single card, fold-overs, pictures, etc.

~ Save the Date
 ~ Thank You's
 ~ Invitations
 ~ Wedding Programs
 ~ Engagement Parties
 ~ Rehearsal Dinner
 ~ Napkins

Wedding Stationery
FLIPPIN
 printing
 115 Jefferson St. Sul. Spgs. 903-885-3633

CARPET WORLD 2115 . Loop 286 * Paris, TX.
903-785-8317
 Mon.-Fri. 8 am - 6 pm • Sat. 9 am - 2 pm

NEED FLOORING REPLACEMENT DUE TO WATER OR FIRE?
 Our Pricing Can Reduce Or Even Eliminate Your Deductible!

Plush Carpet (Example) 12'x12' Bedroom = \$104.00 \$7.99 / Sq. Yd.	No Wax Vinyl (Example) 12'x12' Kitchen = \$63.84 \$4.99 / Sq. Yd.
Ceramic Tile (Example) 12'x12' Kitchen = \$99.36 79¢ / Sq. Ft.	Level Loop Carpet (Example) 12'x12' Room = \$79.84 \$5.99 / Sq. Yd.
Laminate (Example) 12'x12' Den = \$128.16 99¢ / Sq. Ft.	Engineered Hard Wood Flooring (Example) 12'x12' Room = \$401.76 \$279 / Sq. Ft.

LARGEST FLOORING INVENTORY
 in NE Texas & SE Oklahoma

SULPHUR SPRINGS HEALTH & REHAB
 FINEST REHAB IN HOPKINS COUNTY
 OUR FAMILY CARING FOR YOUR FAMILY!

BE HAPPY AND SMILE!

Very Good

Ms. Modene
 admiring her beautiful artwork done at Sulphur Springs Health and Rehab arts and crafts provided by Abacus Home Health. Our residents enjoy all activities but this one has seemed to be the most favorite to date. Ms. Modene would like Abacus Home Health to know how much fun she had and she is looking forward to the next activity they provide. Thank you Abacus for the fun cute signs for our residents here at Sulphur Springs Health and Rehab.

Call Jan Hawkins or Chelsea Jordan For More Information.

903-885-7668 - Fax 903-885-8037
 411 AIRPORT ROAD - SULPHUR SPRINGS, TX. 75482

We are proud of the many success stories we have at Sulphur Springs Health & Rehab!

WELCOME TO STRONGSVILLE

ALL-AROUND STRENGTH.

Z-FORCE SX SERIES
 ZERO-TURN RIDERS
 Starting at: \$5,499**

XT2
 LAWN TRACTORS
 Starting at: \$1,799**

SIGNATURE CUT SERIES
 SELF-PROPELLED WALK-BEHINDS
 Starting at: \$299**

EXCEPTIONAL FINANCING OFFERS AVAILABLE
 OFFER SUBJECT TO CREDIT APPROVAL. SOME RESTRICTIONS APPLY. SEE STORE ASSOCIATE FOR DETAILS.

FOR FULL PRODUCT SPECS **Cub Cadet** VISIT CUBCADET.COM

Hooten's Hardware
903-473-8788
 1139 W Lennon Dr. Emory, TX 75440

*Product Price - Actual retail prices are set by dealer and may vary. Taxes, freight, setup and handling charges may be additional and may vary. Models subject to limited availability. Specifications and programs are subject to change without notice. Images may not reflect dealer inventory and/or unit specifications.
 **Built using the highest quality components sourced locally and globally.
 © 2016 Cub Cadet FULL LINE_Q

11th Annual HERITAGE SQUARE CAR SHOW

Rain Or Shine!

SATURDAY, NOVEMBER 5, 2016

JUDGED AWARDS

- ★ Nolan Cason Memorial Award
- ★ Top 15
- ★ Best of Show
- ★ Best Paint
- ★ Best Mopar-Car
- ★ Best GM Car
- ★ Best Ford Car
- ★ Best Foreign Car
- ★ Best Engine
- ★ Best Rat Rod
- ★ Best Interior
- ★ Peoples Choice
- ★ Participants Pick
- ★ Best Mopar-Truck
- ★ Best GM Truck
- ★ Best Ford Truck
- ★ Mayor's Pick
- ★ Best Race Car
- ★ Best Street Rod
- ★ Best Original
- ★ Unfinished
- ★ Best Tri 5
- ★ Best Original Foreign
- ★ Best Customized Foreign



★ BEST OF SHOW 2015



★ 2015 PARTICIPANTS PICK

Vehicles Must Be 1987 Or Older To Participate.

First 50 entries receive dash plaques. Registration Begins At 8 a.m. to 12 Noon.

AWARDS AT 3 P.M.

CASH DRAWINGS! Registered Participants In The Heritage Square Car Show Will Be Entered In 4 Drawings For Cash Prizes Of **\$1,000.00 \$500.00 \$250.00 \$250.00**

Entry Fee \$20 (Please make checks payable to SSDBA)
Pre-registered entries must be received before October 15, 2016
PRE-REGISTER FOR FREE T-SHIRT!

Mail to: Heritage Square Car Show, c/o Edwards Used Cars, 211 Gilmer, Sulphur Springs, Tx. 75482

Name _____ Year/Make of Vehicle _____
Address _____ City/State/Zip _____
Phone # _____ Free Event Shirt Size _____
Email Address _____

sears HOMETOWN STORE

LOCALLY OWNED AND OPERATED

WEDNESDAY, AUGUST 10TH, 2016 ONLY

extra 10% off

ALMOST EVERYTHING!

EXCLUDES CLEARANCE AND CLOSEOUT ITEMS.
*WITH VALID IDENTIFICATION

UP TO 25% OFF APPLIANCES!

AMERICA'S APPLIANCE EXPERTS

28% OFF SAVE \$550

\$1349.99 FINAL

AFTER 10% SAVINGS

24.7-cu. ft. french door refrigerator
04688593/AF12539ERM
Reg. 1899.99

32% OFF

SAVE \$720

\$1529.99 FINAL

AFTER 10% SAVINGS

Craftsman® 22-hp V-Twin Briggs & Stratton Platinum series engine with 42-in. deck and automatic transmission
07120390

UP TO 20% OFF ON ALL POWER LAWN & GARDEN EQUIPMENT*

PLUS SPECIAL FINANCING AVAILABLE. SEE STORE FOR DETAILS.

(1) Advertised savings are valid in-store only and range from 5%-25% (1,3,4). Exclusions apply. See below for details. (2) Additional savings are valid in-store only and range from 5%-25% (1,3). Exclusions apply. See below for details. (3) Additional savings are valid in-store only and range from 5%-25% (1,3). Exclusions apply. See below for details. (4) Additional savings are valid in-store only and range from 5%-25% (1,3). Exclusions apply. See below for details. (5) Additional savings are valid in-store only and range from 5%-25% (1,3). Exclusions apply. See below for details. (6) Additional savings are valid in-store only and range from 5%-25% (1,3). Exclusions apply. See below for details. (7) Additional savings are valid in-store only and range from 5%-25% (1,3). Exclusions apply. See below for details. (8) Additional savings are valid in-store only and range from 5%-25% (1,3). Exclusions apply. See below for details. (9) Additional savings are valid in-store only and range from 5%-25% (1,3). Exclusions apply. See below for details. (10) Additional savings are valid in-store only and range from 5%-25% (1,3). Exclusions apply. See below for details. (11) Additional savings are valid in-store only and range from 5%-25% (1,3). Exclusions apply. See below for details. (12) Additional savings are valid in-store only and range from 5%-25% (1,3). Exclusions apply. See below for details. (13) Additional savings are valid in-store only and range from 5%-25% (1,3). Exclusions apply. See below for details. (14) Additional savings are valid in-store only and range from 5%-25% (1,3). Exclusions apply. See below for details. (15) Additional savings are valid in-store only and range from 5%-25% (1,3). Exclusions apply. See below for details. (16) Additional savings are valid in-store only and range from 5%-25% (1,3). Exclusions apply. See below for details. (17) Additional savings are valid in-store only and range from 5%-25% (1,3). Exclusions apply. See below for details. (18) Additional savings are valid in-store only and range from 5%-25% (1,3). Exclusions apply. See below for details. (19) Additional savings are valid in-store only and range from 5%-25% (1,3). Exclusions apply. See below for details. (20) Additional savings are valid in-store only and range from 5%-25% (1,3). Exclusions apply. See below for details. (21) Additional savings are valid in-store only and range from 5%-25% (1,3). Exclusions apply. See below for details. (22) Additional savings are valid in-store only and range from 5%-25% (1,3). Exclusions apply. See below for details. (23) Additional savings are valid in-store only and range from 5%-25% (1,3). Exclusions apply. See below for details. (24) Additional savings are valid in-store only and range from 5%-25% (1,3). Exclusions apply. See below for details. (25) Additional savings are valid in-store only and range from 5%-25% (1,3). Exclusions apply. See below for details. (26) Additional savings are valid in-store only and range from 5%-25% (1,3). Exclusions apply. See below for details. (27) Additional savings are valid in-store only and range from 5%-25% (1,3). Exclusions apply. See below for details. (28) Additional savings are valid in-store only and range from 5%-25% (1,3). Exclusions apply. See below for details. (29) Additional savings are valid in-store only and range from 5%-25% (1,3). Exclusions apply. See below for details. (30) Additional savings are valid in-store only and range from 5%-25% (1,3). Exclusions apply. See below for details. (31) Additional savings are valid in-store only and range from 5%-25% (1,3). Exclusions apply. See below for details. (32) Additional savings are valid in-store only and range from 5%-25% (1,3). Exclusions apply. See below for details. (33) Additional savings are valid in-store only and range from 5%-25% (1,3). Exclusions apply. See below for details. (34) Additional savings are valid in-store only and range from 5%-25% (1,3). Exclusions apply. See below for details. (35) Additional savings are valid in-store only and range from 5%-25% (1,3). Exclusions apply. See below for details. (36) Additional savings are valid in-store only and range from 5%-25% (1,3). Exclusions apply. See below for details. (37) Additional savings are valid in-store only and range from 5%-25% (1,3). Exclusions apply. See below for details. (38) Additional savings are valid in-store only and range from 5%-25% (1,3). Exclusions apply. See below for details. (39) Additional savings are valid in-store only and range from 5%-25% (1,3). Exclusions apply. See below for details. (40) Additional savings are valid in-store only and range from 5%-25% (1,3). Exclusions apply. See below for details. (41) Additional savings are valid in-store only and range from 5%-25% (1,3). Exclusions apply. See below for details. (42) Additional savings are valid in-store only and range from 5%-25% (1,3). Exclusions apply. See below for details. (43) Additional savings are valid in-store only and range from 5%-25% (1,3). Exclusions apply. See below for details. (44) Additional savings are valid in-store only and range from 5%-25% (1,3). Exclusions apply. See below for details. (45) Additional savings are valid in-store only and range from 5%-25% (1,3). Exclusions apply. See below for details. (46) Additional savings are valid in-store only and range from 5%-25% (1,3). Exclusions apply. See below for details. (47) Additional savings are valid in-store only and range from 5%-25% (1,3). Exclusions apply. See below for details. (48) Additional savings are valid in-store only and range from 5%-25% (1,3). Exclusions apply. See below for details. (49) Additional savings are valid in-store only and range from 5%-25% (1,3). Exclusions apply. See below for details. (50) Additional savings are valid in-store only and range from 5%-25% (1,3). Exclusions apply. See below for details. (51) Additional savings are valid in-store only and range from 5%-25% (1,3). Exclusions apply. See below for details. (52) Additional savings are valid in-store only and range from 5%-25% (1,3). Exclusions apply. See below for details. (53) Additional savings are valid in-store only and range from 5%-25% (1,3). Exclusions apply. See below for details. (54) Additional savings are valid in-store only and range from 5%-25% (1,3). Exclusions apply. See below for details. (55) Additional savings are valid in-store only and range from 5%-25% (1,3). Exclusions apply. See below for details. (56) Additional savings are valid in-store only and range from 5%-25% (1,3). Exclusions apply. See below for details. (57) Additional savings are valid in-store only and range from 5%-25% (1,3). Exclusions apply. See below for details. (58) Additional savings are valid in-store only and range from 5%-25% (1,3). Exclusions apply. See below for details. (59) Additional savings are valid in-store only and range from 5%-25% (1,3). Exclusions apply. See below for details. (60) Additional savings are valid in-store only and range from 5%-25% (1,3). Exclusions apply. See below for details. (61) Additional savings are valid in-store only and range from 5%-25% (1,3). Exclusions apply. See below for details. (62) Additional savings are valid in-store only and range from 5%-25% (1,3). Exclusions apply. See below for details. (63) Additional savings are valid in-store only and range from 5%-25% (1,3). Exclusions apply. See below for details. (64) Additional savings are valid in-store only and range from 5%-25% (1,3). Exclusions apply. See below for details. (65) Additional savings are valid in-store only and range from 5%-25% (1,3). Exclusions apply. See below for details. (66) Additional savings are valid in-store only and range from 5%-25% (1,3). Exclusions apply. See below for details. (67) Additional savings are valid in-store only and range from 5%-25% (1,3). Exclusions apply. See below for details. (68) Additional savings are valid in-store only and range from 5%-25% (1,3). Exclusions apply. See below for details. (69) Additional savings are valid in-store only and range from 5%-25% (1,3). Exclusions apply. See below for details. (70) Additional savings are valid in-store only and range from 5%-25% (1,3). Exclusions apply. See below for details. (71) Additional savings are valid in-store only and range from 5%-25% (1,3). Exclusions apply. See below for details. (72) Additional savings are valid in-store only and range from 5%-25% (1,3). Exclusions apply. See below for details. (73) Additional savings are valid in-store only and range from 5%-25% (1,3). Exclusions apply. See below for details. (74) Additional savings are valid in-store only and range from 5%-25% (1,3). Exclusions apply. See below for details. (75) Additional savings are valid in-store only and range from 5%-25% (1,3). Exclusions apply. See below for details. (76) Additional savings are valid in-store only and range from 5%-25% (1,3). Exclusions apply. See below for details. (77) Additional savings are valid in-store only and range from 5%-25% (1,3). Exclusions apply. See below for details. (78) Additional savings are valid in-store only and range from 5%-25% (1,3). Exclusions apply. See below for details. (79) Additional savings are valid in-store only and range from 5%-25% (1,3). Exclusions apply. See below for details. (80) Additional savings are valid in-store only and range from 5%-25% (1,3). Exclusions apply. See below for details. (81) Additional savings are valid in-store only and range from 5%-25% (1,3). Exclusions apply. See below for details. (82) Additional savings are valid in-store only and range from 5%-25% (1,3). Exclusions apply. See below for details. (83) Additional savings are valid in-store only and range from 5%-25% (1,3). Exclusions apply. See below for details. (84) Additional savings are valid in-store only and range from 5%-25% (1,3). Exclusions apply. See below for details. (85) Additional savings are valid in-store only and range from 5%-25% (1,3). Exclusions apply. See below for details. (86) Additional savings are valid in-store only and range from 5%-25% (1,3). Exclusions apply. See below for details. (87) Additional savings are valid in-store only and range from 5%-25% (1,3). Exclusions apply. See below for details. (88) Additional savings are valid in-store only and range from 5%-25% (1,3). Exclusions apply. See below for details. (89) Additional savings are valid in-store only and range from 5%-25% (1,3). Exclusions apply. See below for details. (90) Additional savings are valid in-store only and range from 5%-25% (1,3). Exclusions apply. See below for details. (91) Additional savings are valid in-store only and range from 5%-25% (1,3). Exclusions apply. See below for details. (92) Additional savings are valid in-store only and range from 5%-25% (1,3). Exclusions apply. See below for details. (93) Additional savings are valid in-store only and range from 5%-25% (1,3). Exclusions apply. See below for details. (94) Additional savings are valid in-store only and range from 5%-25% (1,3). Exclusions apply. See below for details. (95) Additional savings are valid in-store only and range from 5%-25% (1,3). Exclusions apply. See below for details. (96) Additional savings are valid in-store only and range from 5%-25% (1,3). Exclusions apply. See below for details. (97) Additional savings are valid in-store only and range from 5%-25% (1,3). Exclusions apply. See below for details. (98) Additional savings are valid in-store only and range from 5%-25% (1,3). Exclusions apply. See below for details. (99) Additional savings are valid in-store only and range from 5%-25% (1,3). Exclusions apply. See below for details. (100) Additional savings are valid in-store only and range from 5%-25% (1,3). Exclusions apply. See below for details.

PLUS **5% OFF ALL APPLIANCES*** WITH YOUR SEARS CARD OR **12 MONTHS SPECIAL FINANCING*** ON ALL APPLIANCES OVER \$499 WITH A QUALIFYING SEARS CARD OR **FREE DELIVERY*** ON APPLIANCES OVER \$499 WITH YOUR SEARS CARD

Sulphur Springs
1402 Mockingbird Lane, Suite 3
Sulphur Springs, Texas 75482
903 885 2135

Monday-Friday 9 :30 am to 7:00 pm | Saturday 9:00 am to 6:00 pm | Sunday 12 :00 pm to 5:00 pm



OUR MOBILE MAMMOGRAPHY COACH IS COMING YOUR WAY IN AUGUST BECAUSE

Mammograms Are for Life.

- 2 HUNT REGIONAL MEDICAL PARTNERS FAMILY PRACTICE-EMORY ON TUESDAY, AUG. 2
- 3 HUNT REGIONAL EMERGENCY MEDICAL CENTER IN COMMERCE ON WEDNESDAY, AUG. 3
- 4 MCKESSON IN GREENVILLE ON THURSDAY, AUGUST 4, AT 9 A.M.
- 4 QUINLAN ISD ON THURSDAY, AUGUST 4, AT 5 P.M.
- 6 LEONARD HIGH SCHOOL IN LEONARD ON SATURDAY, AUGUST 6
- 8 THE OFFICE OF DR. CHAIM BANJO IN TERRELL ON MONDAY, AUGUST 8
- 9 PCA IN LEONARD ON TUESDAY, AUGUST 9
- 11 PCA IN ROYSE CITY ON THURSDAY, AUGUST 11, AT 9 A.M.
- 11 RAINS ISD IN EMORY ON THURSDAY, AUGUST 11, AT 4 P.M.
- 12 LONE OAK MIDDLE SCHOOL ON FRIDAY, AUGUST 12
- 15 HUNT REGIONAL OPEN IMAGING IN ROCKWALL ON MONDAY, AUGUST 15
- 16 DAVITA DIALYSIS IN GREENVILLE ON TUESDAY, AUGUST 16
- 19 CASH SPECIAL UTILITY DISTRICT ON FRIDAY, AUGUST 19
- 22 LAKEVIEW CHURCH IN QUINLAN ON MONDAY, AUGUST 22
- 23 HUNT REGIONAL EMERGENCY MEDICAL CENTER IN QUINLAN ON TUESDAY, AUG. 23
- 25 SPRING VILLAGE SHOPPING CENTER IN SULPHUR SPRINGS ON THURSDAY, AUG. 25

Hunt Regional Healthcare is bringing mammography to your busy life.

contact Texas AgriLife at 903.590.2988 or The Bridge Breast Network at 214.821.3820, ext 21.

Most insurance, including all insurance accepted by Hunt Regional, is accepted at the mobile mammography coach. This includes Medicare and Medicaid.



Also, for your convenience as well as others', appointments and preregistration are requested.

Resources may be available for uninsured/income-eligible women as well as for those who choose to pay cash. For more information,

Taking care of that is as easy as giving us a call at 903.408.5010. We're sure to find a time that works best for you.



SET UP YOUR TIME TODAY • CALL 903.408.5010

Obits



Gary Doss

April 08, 1953 - August 01, 2016

Graveside Services for Gary Doss, age 63 of Sulphur Springs, were held Wednesday, August 3, 2016 at 11:00 A.M. at Ridge-way Cemetery, with Lisa Sprague, Angela Boarden, Brian Pennington, and Bryan McAllister officiating. Visitation was held Tuesday, August 2, 2016 from 6-8 p.m., at Murray-Orwosky Funeral Home.

Gary passed away Monday, August 1, 2016 at his residence.

Robert Lee Self

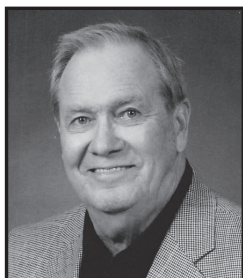
Robert Lee Self, 75 of Scroggins, TX. passed away on July 30, 2016. Robert was born January 27, 1941 in Blue Ridge, GA. He was preceded in death by his father, Charlie Self and mother, Fannie Bell Self, brothers Roy, RB, JC, Hershel (PeeWee), and Lloyd; daughters, Sandra D. Self, Sheila Rae Self, and grandson, Aaron Lee Self.

He had a great love for family, fishing, gardening, and cooking for family and friends. He was well known for his work in the family stucco business, where he worked many years. He is survived by his brothers, Vance & Floyd Self; daughters, Sheryl Lowder and Susan Lamont; and sons Ira Lee Self, John Kingsley and Bob Self.

He has eight grandchildren and seven great grandchildren.

Visitation will be August 5th 2016 at 1:00 PM with funeral services following at 2:00 pm, at the Beaty Funeral Home in Winnsboro, Texas.

Pallbearers will be, David Martin, Jr., Wayne Self, Shane Martin, Shawn Smith, Allen Smith, Arthur Cambell and Chad Self.



Charles Johnson

Funeral services for Charles Johnson, age 80, of Sulphur Springs will be conducted at 2:30 p.m., Thursday, August 4, 2016 at Wesley United Methodist Church with Rev. Steve Cook officiating. Visitation was from 5:30 to 7:30 p.m., Wednesday, August 3, 2016 at West Oaks Funeral Home. Interment will follow at Brashear Cemetery with Sam Johnson, Todd Nance, Chris Kelly, David Kelly, Scott Hammans, Scotty Stewart, Christopher Taliaferro and Owen Kelly serving as pallbearers. Honorary pallbearers will be the Wesleyan Sunday School Class. Mr. Johnson passed away Sunday, July 31, 2016 at U. T. Southwestern Medical Center of Dallas.

Mr. Johnson was born on March 23, 1936 in Sulphur Springs the son of E. A. Johnson and Clemmie Slatter Johnson. He married Marge Stewart on October 26, 1957 in Brashear. She survives. Mr. Johnson retired as production planner for Raytheon for 38 years. He was a member of Wesley United Methodist Church.

In addition to his wife Marge he is survived by two sons, Jeff Johnson and wife Debbie, Kent Johnson and wife Jozie all of Sulphur Springs, daughter, Jill Kelly and husband Chris of Prosper, grandchildren, Rachel Taliaferro and husband Christopher, Brooke Dederick and husband Doug, Chris Kelly, David Kelly, Owen Kelly, Scott Hammans and wife Stephanie and Ashley Johnson, great-grandchildren, Autumn, John, Aysia, Kloie, Shev and Grace.

He was preceded in death by his parents, two brothers, Paul Johnson and Kenneth Johnson. In lieu of flowers the family request donations to Wesley Methodist Church, 614 Texas Street, Sulphur Springs, TX 75482.



James W. Thompson III

Funeral services for James W. Thompson III, age 45, of Greenville will be conducted at 11:00 a.m., Friday August 5, 2016 at West Oaks Funeral Home Chapel with Bro. Bradley D. Reed officiating. Interment will follow at Seymore Cemetery with Eric Kelley, Lance Guthrie, Mike Simmons, Kolton Vandergriff, Bobby Thompson, Buddy Walters, Ryan Prather, Todd Charles and Landon Shearer serving as pallbearers. Visitation will be from 6:00 to 8:00 p.m., Thursday August 4, 2016 at West Oaks Funeral Home. James and his beloved wife Niki Arlene McCoy Thompson were killed in a car accident in Euless, TX, Saturday, July 30, 2016. He and Niki married on November 6, 2010 in Greenville, TX. James was born on December 21, 1970 in Greenville, TX. James was a supervisor for L-3 in Greenville for 9 years and he was also a member of the First Baptist Church of Quitman. He is survived by his father, James Wilson Thompson, Jr, mother, Margaret Price Toon and husband Brad of Cooper, daughters, Caitlin Brown, Taylor Thompson and Cheyenne Thompson all of Sulphur Springs, son, Jeremy

Thompson of Flint, step-daughters, Ashley Faulkner and husband Shawn and Lauryn Prather both of Greenville, previous step-daughter, Samantha Weeks, step-son, Ryan Prather of Dallas, sister, Tami Brown of McKinney, step-brothers, Bradley Toon and wife Carrie of Georgia, Rodney Toon and wife Jorjanna of Midlothian, Ryan Toon and wife of Rocio of Nederland, and Bud Toon of Cooper, grandchildren, Addison Brown and Desiree Thompson, grandmother, Mary Thompson of Coke, best friends, Eric and Cassie Kelley, his beloved pet "Jax" and numerous nieces, nephews and cousins. Memorials may be made to Seymore Cemetery, 309, PR 5885, Yantis, TX 75497. Arrangements are under the direction of West Oaks Funeral Home. www.westoaksdfuneralhome

Jeanne Wilson

Funeral services for M. Jeanne Wilson, age 64, of Sulphur Springs, were held at 10:00 a.m. Wednesday, August 3, 2016 at West Oaks Funeral Home Chapel with Rev. L. D. Baxter and Rev. Bobby Keller officiating. Interment will follow at Como Cemetery with Chris Hight, Nathan Hight, Jeremiah Hight, Ronin Hight, Gunnar Gatlin, and Dr. Darren Arnecke as pallbearers. Honorary pallbearers will be Don Odom, Jephtha Hight, Chris Gentry, Seth Kinsey, Luke Wilson and Christopher Wilson. Visitation was held 6:00 to 8:00 p.m. Tuesday, August 2, 2016 at West Oaks Funeral Home. Jeanne passed away on Friday, July 29, 2016 at her residence.

Jeanne was born September 5, 1951 in Robstown, TX, daughter of Delma Jeanne Rosenberger Reeves. She married Jerry Lynn Wilson on December 25, 1969 in Kingsville, TX, he preceded her in death. Jeanne was a ward clerk for Hopkins County Memorial Hospital for many years. She was a member of the Fellowship Baptist Church of Como. She is survived by her son, Jerry Wilson and wife Nancy of Anchorage, AK, daughters, Linda Hight and husband Chris of Combine, TX, Tammy Gatlin and husband Chris Gentry of Sulphur Springs, sisters, Vicki Armstrong and husband Donald, Janet Keller and husband Bobby, Darla Coker and Linda Sharp and husband Paul, grandchildren, Nathan Hight and wife Demetra, Alexa Hight, Sara Hight, Jeremiah Hight, Ronin Hight, Jeanne Hight, Jephtha Hight, Heaven Gatlin, Darcy Gatlin, Gunnar Gatlin, Natalie Wilson, Katie Wilson, Luke Wilson, and Chris Wilson, great-grandchildren, Teagan, Collin, Jude and Sawyer.

In addition to her husband she is preceded in death, by her mother, great-grandson, William Hight.

Jeanne requested that everyone wear bright and beautiful colors to her service to celebrate her love of life.

THE IDLE AMERICAN

A Tip-Off to Truckers...

Commentary by Dr. Don Newbury

Somewhere between pig Latin and social media's abbreviations substituted for words--perhaps a quarter-century ago--American drivers communicated on CB (citizens' band) radios.

Truckers used CBs best, and probably still do, warning of wrecks up ahead, bad weather and "smokies"--the "do right" guys who write tickets when excessive speed is detected.

I miss the chatter, including such expressions as "breaker one/nine" and "got your ears on?" I also enjoyed random chats with "good buddies" on the "super slab." A preacher caught up in "CB talk" ended a prayer one Sunday with "catch you on the flip/flop" rather than "amen." And a trucker asked, "Hey, Van Gogh, got your EAR on?..."

Since most truckers still have CBs, I'm counting on them to spread the news about food that's "larrapin' good" at a restaurant in the innards of a swanky resort hotel in San Diego.

Though the hotel is unique, the eatery--in appearance, anyway--isn't. Tucked away at the Town and Country Resort on Interstate 5, "Charlie's" depends on clientele who arrive there "on purpose."

It has true "Texan appeal," meat cooked on a custom stainless steel smoker on a trailer. The servings are so generous the plates need sideboards. Once drivers of 18-wheelers visit, they depart with enough left-overs for their next meals. And they spread the news on their CBs....

Texans know the secret to finding good grub is to stop where trucks are stacked up. Truckers know.

Town and Country has been around more than 60 years, beginning with 47 units when many travelers called road lodgings "tourist courts." There are almost 1,000 units now, and they're on the front-end of an \$80-million makeover.

While we were there, hundreds of ballroom dancers converged from across the nation. The resort--awash in conventions--recently hosted men's and women's body building competition. Another, a "Steampunk" gathering, featured guests dressed in period costumes. (Truckers may gawk, of course, but are reminded their stops are for victuals.)...

Chef Paul McCabe, who doesn't have enough walls or shelves to display his awards, directs food and beverage operations. Charlie's seems to be a pet project, featuring his "Texas-style" brisket.

We were encouraged to try his "poutine appetizer," a dish of Canadian origin. With ingredients including fries, burnt brisket ends, gravy, fried cheese curds and celery, one order would feed a scout troop, perhaps even a fleet of truck drivers.

Enough said.....

San Diego is a favorite destination, for us and millions of others. It's the largest city in the world with a single airport runway--it stays hot. The arrival gate is one of the happiest anywhere, but boarding on return flights is sad. It's a city tough to leave.

We loved the "hop on, hop off" trolley tour. Timed correctly, visitors can hop off at Old Town, if only to grab grub at the world-famous Coyote Café, then hop back on.

At our stop in Coronado, American flags flew in great numbers. Riders grew silent upon learning the flags honored the memory of a Navy seal, slain by ISIS and trained at the Coronado seal training school. Such poignant moments are too rarely experienced.....

Little wonder that the late Dr. Theodor Geisel resided in nearby La Jolla during the last half of his life. Most of his writing was inspired by experiences there. A wise and unique author, he founded the Geisel Foundation. It continues to support many causes, locally and beyond.

He didn't mind the "Dr. Seuss" pen name that was always mispronounced. It is, indeed, his middle name. Correct pronunciation of "Seuss"--of Bavarian origin--actually rhymes with the word "choice." They said he preferred the mispronunciation; it rhymes with "goose." Worse would have been use of his nickname: "The Kaiser." Need more be said?

Folks with at least casual interest in the life of this brilliant writer should "Google" away. Better yet, visit his museum in La Jolla, CA. It's just a few pebble tosses from San Diego, a destination city that's the starting point for many adventures. In the words of Dr. Seuss, "Try it, try it, you will see."...

Dr. Newbury is a speaker in the Dallas/Fort Worth Metroplex. Inquiries/comments to: newbury@speakerdoc.com. Phone: 817-447-3872. Web site: www.speakerdoc.com. Columns archived at venturegalleries.com, newbury blog. (More San Diego information at Town and County, destinationhotels.com; sandiego.org)

CALL
903-885-9966
to
place your ad in
The
Millennium Shopper
today!

A Tisket, A Tasket, put some money in your basket!!
Sulphur Springs Antique Gallery is now a mall!
Come join us & we'll sell it all y'all!!
Sulphur Springs Antique Gallery
1130 Shannon Road East ★ 903-569-4257
Open Monday, Thursday, Friday, Saturday & Sunday!!!

We Print **EVERYTHING!**
If you can tell us what you need...then we can print it!

- Business Cards •Fliers •Rubber Stamps •Brochures •Envelopes
- Announcements •Business Forms •Letterheads •Post Cards (for open houses)
- Raffle Tickets •Menus •Door Hangers •Gift Certificates
- Invitations •Note Pads •Tags •Labels •Business Checks •Note Cards
- Invoices •NCR Forms •Desk Name Plates •Reunion Books
- Special Event Programs



FLIPPIN

115 Jefferson St., Sul. Spgs.
Located inside
The Millennium Shopper

903-885-3633

Call Joy or Pat!

WORD SEARCH

R J S A M T S I R H C L A R O H C
H A K L O P D N A B G I B H C A Y
T Z C T H N E W W A V E M I I B W
E Z O A V A N T G A R D E P T M A
R A R M E R E N G U E A N H S A L
A C C I L E D E H C Y S P O U S T
B A I I D A I A B N G P Y P O H Z
A P S B N D T R C A A L U O C E T
C E S S N O O I N I L I C N A A A
T L A I A A R G N I D N D N K V N
N L L L D R S T B M E R A N G Y G
E A C W O T G A C M U C O O I M O
I C A S A U K E A E I S T C K E C
B Y N R O C N L U X L H I L K T S
M L A A O U F G E L I E O C U A I
A P E R D S L M E C B F W O R L D

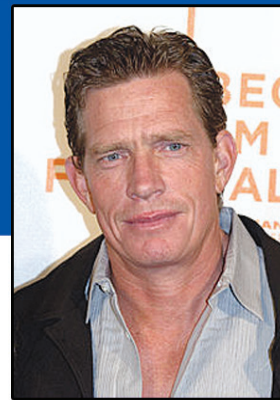
ACAPPELLA	CHRISTMAS	HIP HOP	PSYCHEDELIC
ACID ROCK	CLASSIC ROCK	INDIAN	PUNK
ACOUSTIC	DANCE	INDIE	ROCKABILLY
AMBIENT	DISCO	JAZZ	SAMBA
AVANT-GARDE	ELECTRONICA	LATIN MUSIC	SOUL
BIG BAND	FLAMENCO	LOUNGE	TANGO
BLUEGRASS	FOLK	MERENGUE	WALTZ
BROADWAY	GANGSTA RAP	MEXICAN	WORLD
CABARET	GOthic	NEW WAVE	
CHORAL	HEAVY METAL	POLKA	



FAMOUS TEXANS

Thomas Haden Church

American Actor, Director and Writer.



Thomas Haden Church (born Thomas Richard McMillen; June 17, 1960) is an American actor, director and writer. After co-starring in the 1990s sitcom Wings, Church became known for his film roles, including his performance in Sideways and his role as the Sandman in Spider-Man 3. He also made his directorial debut with Rolling Kansas.

Early life

Church was born in Woodland, California, the son of Maxine (née Sanders) and Carlos "Carl" Richard McMillen, who served for eight years in the Marines and saw action in the Korean War; after 1962, Carlos worked as a surveyor for Yolo County, California. Church's parents divorced and his mother moved to Texas. She remarried in 1969, to widower George A. Quesada, a veteran of an Army Air Forces reconnaissance unit which served in Guam in World War II. Church took his stepfather's surname for a time. He was raised in Texas: first in Laredo, then in Harlingen. He left high school in 1977 to work in the oil fields of Louisiana, but he returned to graduate from Harlingen High School in 1979. He attended the University of North Texas while living in Dallas.

Career

Church started in the entertainment business as a radio personality and doing voice-over work. He changed his name to "Thomas Haden Church", taking "Haden" and "Church" from his ancestry. A part in an independent film convinced him to move to California to pursue an acting career. He played the part of slow-witted aircraft mechanic Lowell Mather for six seasons (1990–1995) on the NBC sitcom Wings.

He worked in television for two more seasons with a lead role on Ned & Stacey opposite Debra Messing. He has had supporting roles in films such as Tombstone, George of the Jungle, and The Specialists. Church often plays villains or comic relief in films, most evident by turns in Demon Knight and Over the Hedge. Church bought a ranch in Texas in 1998. In late 2000 he took a break from films. After having small roles in films such as Monkeybone and 3000 Miles to Graceland, he made his directorial debut with Rolling Kansas in 2003. He has voice over work in commercials, such as for Merrill Lynch and Icehouse beer.

In 2003, director Alexander Payne called him regarding the role of "Jack", the selfish best friend to Paul Giamatti's character, in Sideways. During the audition, Church stripped naked to read the audition scene, later saying "To me it was painfully obvious... I was reading the scene where Jack comes in naked and there has to be in-born vulnerability in the scene." (He later found that he was the only actor to strip down for the audition). Sideways earned acclaim for Church. He won an IFP Independent Spirit Award and was nominated for the Academy Award for Best Supporting Actor.

He has since appeared in films such as Idiocracy, done voice-over work on films such as Over the Hedge and starred in one of AMC's highest rated television productions, Broken Trail, with Robert Duvall, in 2006, for which he won an Emmy. In 2007, he appeared as the villain Sandman in Sam Raimi's Spider-Man 3 starring Tobey Maguire and Kirsten Dunst.

In 2005, he was invited to join the Academy of Motion Picture Arts and Sciences. On September 16, 2007, he won an Emmy Award for Outstanding Supporting Actor in a Miniseries or Movie for his role of Tom Harte on AMC's Broken Trail. In October 2008, Church appeared as "Joe Six-Pack" in a video on funnyordie.com, challenging Joe the Plumber by drinking more beer. Church starred in the FEARnet webseries, Zombie Roadkill, alongside David Dorfman.

Personal life

Church lives on his 2,000-acre ranch in Kerrville, Texas. Church and former adult model Mia Zottoli have a daughter. Church's biological father died in 2008, and his stepfather in 2012.

Matthew Jerome "Matt" Barr American Actor



Matthew Jerome "Matt" Barr (born February 14, 1984) is an American actor. He is best known for his roles as Johnse Hatfield in Hatfields & McCoy's with Kevin Costner, Mike Fleming in Commander in Chief, Ian Banks in One Tree Hill, Christopher Sullivan in the mystery-horror miniseries Harper's Island, and Dan Patch in The CW's series Hellcats.

Early life

Matthew Jerome Barr was born February 14, 1984 in Allen, Texas, a suburb of Dallas. He is the son of Mike Barr, a former football coach at Purdue University and Southern Methodist University, who is now in the real estate business, and DeDe Barr, a portrait artist. Barr has a younger brother, Luke Barr, and sister, Sara Barr. In Barr's fourth grade, his family moved to Fairview, Texas, another Dallas suburb.

Barr was active in the Allen High School theater program, and had major roles in many school plays and musical theater productions. This included the role of Tommy in Meredith Willson's The Music Man, and a court jester in the school's madrigal dinner. While a senior at Allen High School, Barr learned that Richard Linklater was planning a film about football in Austin, Friday Night Lights. He auditioned for a role. Although this movie ended up being put on hold for another two years and Richard Linklater was replaced by Peter Berg as director, Barr made some favorable impressions. Producer Ann Walker Mclay and Linklater, collaborator and director Clark Lee Walker offered him the lead role in their film Levelland that was being shot in Austin in the late spring and early summer of 2002.

Half a year after the filming of Levelland ended, in January 2003, Barr moved to Los Angeles, where his first acting job was a scene on the television show ER.

Career

Some of Barr's roles include playing Ian Banks, Peyton Sawyer's (played by Hilarie Burton) stalker on One Tree Hill. Barr has also portrayed guest and recurring roles on popular television series ER, Bones, The O.C. and Commander in Chief. He starred as "David Stanley" in the direct to DVD film, Protecting the King as Elvis Presley's youngest step-brother.

Barr appeared in the 2008 film The House Bunny as Tyler, one of the university's students.

He portrayed David "Puck" Rainey, one of the alumni of The Real World: San Francisco, in Pedro, Nick Oceano's 2008 biographical film on the life of AIDS educator Pedro Zamora. In 2009, Barr costarred in the mystery/horror miniseries Harper's Island as Christopher "Sully" Sullivan. Between 2009 and 2010 he guest starred in many TV series, such as Castle, Trauma, Friday Night Lights, and CSI: Crime Scene Investigation.

Courtesy of Wikipedia

Want to reach customers in a 7 county area?

Let Jan help you with all of your advertising needs!

Call today at
903-885-9966 or
903-243-5575
www.millenniumshopper.com



Jan Massey

Millennium Shopper.com

115 Jefferson St. Sul. Spgs.

Need Printing?

- Business Cards •Fliers •Rubber Stamps •Brochures
- Envelopes •Announcements •Business Forms •Letterheads
- Post Cards (for open houses) •Raffle Tickets •Menus
- Door Hangers •Gift Certificates •Invitations •Note Pads
- Tags •Labels •Business Checks •Note Cards •Invoices
- NCR Forms •Desk Name Plates •Cookbooks •Calendars
- Reunion Books •Special Event Programs

903-885-3633

FLIPPIN
printing



Joy Wilson

115 Jefferson St. Sul. Spgs.

Member FDIC

CNB
CITY NATIONAL BANK

A part of Sulphur Springs, Texas history since 1889!

201 Connally St.
903-885-7523

1133 Mockingbird Lane
903-885-5432

1106 S. Broadway
903-439-0654



The Six Flags of Texas