

**Looking to ROLLOVER your 401K to an IRA? Call me!**

**Bradford T. Martin, CLTC**  
Financial Advisor  
Office: 641-664-2169  
Cell: 641-799-4770

**Ameriprise Financial**

- Professional investment manager 401K/IRA
- Retirement & tax strategy specialist
- Financial Planning

# Tri-County SHOPPER

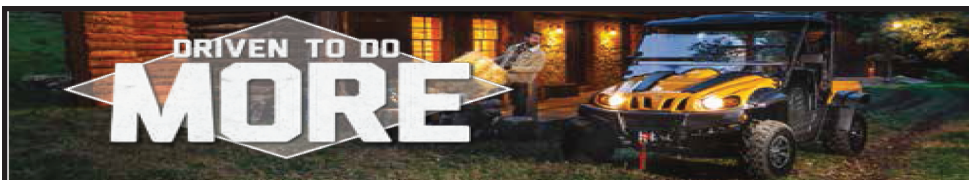


STANDARD MAIL  
U.S. POSTAGE  
**PAID**  
TRI-COUNTY SHOPPER, INC.  
POST OFFICE BOXHOLDER  
LOCAL RURAL BOXHOLDER  
OCCUPANT  
**CIRCULATION OVER 11,750 THIRD CLASS**

P.O. Box 168 • Bloomfield, IA 52537 • [www.tri-countyshopper.com](http://www.tri-countyshopper.com)  
Phone 641-664-1333 • Fax 641-664-3761 • Email [shopper@netins.net](mailto:shopper@netins.net)



Vol. 44, No. 32  
Wednesday, August 10, 2016



**CHALLENGER® 500 CREW**  
UTILITY VEHICLE

Fully engineered, reinforced frame and adjustable 4-wheel suspension with oversized hardware.

STARTING AT:  
**\$8,499<sup>99</sup>\***



LOADED STANDARD EQUIPMENT PACKAGE



**CHALLENGER® 700 CREW**  
UTILITY VEHICLE

Digital dash display, bumper guard and large profile 26" off-road tires.

STARTING AT:  
**\$9,499<sup>99</sup>\***



STRENGTH TO RIDE HARDER, LONGER



**CHALLENGER® 750 CREW**  
UTILITY VEHICLE

Equipped with a loaded standard equipment package - one of the best on the market.

STARTING AT:  
**\$10,999<sup>00</sup>\***



POLISHED ALLOY WHEELS AND HEAVY-DUTY BEARINGS

FOR FULL PRODUCT SPECS **Cub Cadet** VISIT [CUBCADET.COM](http://CUBCADET.COM)

**YOUR INDEPENDENT CUB CADET DEALER—EXPERT SERVICE. LOCALLY OWNED.**  
THE ADVICE, SERVICE, SELECTION AND SUPPORT YOU NEED TO FIND THE RIGHT FIT FOR YOU.

**Greiner Implement Company**

10845 73rd Street  
Ottumwa IA 52501  
(641) 683-1691

\*Product Price — Actual retail prices are set by dealer and may vary. Taxes, freight, setup and handling charges may be additional and may vary. Models subject to limited availability. Specifications and programs are subject to change without notice. Images may not reflect dealer inventory and/or unit specifications.  
†Built using the highest quality components sourced locally and globally.  
© 2016 Cub Cadet UV\_Q



## Your harvest season HEADQUARTERS.

Oil and Filter Sale  
the entire month of August

**12% off** & **10% off**  
all in-stock filters\* John Deere branded oil\*

Your Partner in Growing a Better Tomorrow | Visit us at [www.sydenstrickers.com](http://www.sydenstrickers.com)

**MEXICO** | Hwy 54 South • 573-581-5900  
**MACON** | Jct 36 & 63 • 660-385-2177  
**ROCHEPORT** | 1500 North Route J • 573-446-3030  
**KIRKSVILLE** | Hwy 63 North • 660-665-1500  
**CHILLICOTHE** | Hwy 36 East • 660-646-5493  
**PALMYRA** | Hwys 61 & 24 • 573-769-2112

**MOSCOW MILLS** | 155 John Deere Drive • 636-366-9400  
**CURRYVILLE** | 3691 Hwy 54 • 573-594-6493  
**TIPTON** | 31217 Hwy 5 • 660-433-5596  
**HERMANN** | 1854 Hwy 100 West • 573-486-3204  
**DUTZOW** | 14400 Hwy TT • 636-433-2256

\*Offers ends 8/31/2016. Restrictions may apply. See dealer for details.

**JOHN DEERE** | **SYDENSTRICKER**

**READY FOR A NEW BARN?**

**TIRED OF THIS OLD BARN?**

**Let us build your new barn!  
We will design & customize!**

**WAGLER METALS, LLC**

19049 Ice Ave., Bloomfield, IA  
641-722-3692

M-F 7:30AM - 5PM • Sat. 8-11:30 AM

Crews available!  
**FREE estimates!**

**IT'S TIME TO RETIRE!**

**After 26 years, I am retiring from Davis County Courthouse.**

**I will be continuing my plumbing & electrical services!**

**Russell Lundstrum**  
**Russell's Repair**



## Exceeding Your Expectations

# He'll pick his birthday

## You pick the place!

The Women & Family Center at Ottumwa Regional Health Center is dedicated to meeting the healthcare needs of growing families from prenatal through delivery and beyond. In fact, more than 500 babies were delivered at our hospital last year, more than any hospital in southeast Iowa. All of our physicians are board certified and one of them is always on call, 24 hours a day. Our skilled and knowledgeable nursing staff brings years of experience in maternal and pediatric care. Our spacious labor & delivery rooms are all-private and we feature the area's only Level II nursery. From prenatal education to high-risk pregnancy care to breastfeeding consultation and post-partum care, expect the best when you're expecting from Ottumwa Regional Health Center. Inspired medicine, extraordinary care.

For more information or to schedule a personal tour, visit us online or call

**641-684-2626**

**ottumwaregionalhealth.com**

The Women & Family Center  
1001 Pennsylvania Avenue  
Ottumwa, IA 52501



**OTTUMWA  
REGIONAL  
HEALTH CENTER**

## COLLISION REPAIR

The  
**RIGHT**  
place for  
all your  
auto body  
repair  
needs!



**Walker  
Motors**  
COLLISION REPAIR, INC.

660-465-2159  
Shop phone/fax

375 S. Main St.  
Memphis, MO

**Hertz**

Guaranteed Paint Match • Free Estimates • Hertz Rental Cars

**fresh  
MARKET  
VALUES**

**CHERRY TOMATOES**  
89¢/PINT

**CANNING TOMATOES**  
25¢/LB.

**FOLGERS COUNTRY ROAST**  
\$6<sup>49</sup>

**MILK**  
\$2<sup>65</sup>/GAL.

**PLUMS**  
79¢/LB.

**CHECK OUT OUR NEW ITEMS!**

**Village Market**

Rt. 3 Box 168-A (Hwy 136 & Hwy 15)  
Memphis, MO 63555 • 660-465-7307  
Mon. - Fri. 8:30 - 6:00 • Sat. 8:30 - 5:00 • Sun. Closed

**EBT WELCOMED!**

Like us on  
**facebook**

**FOR SALE:** Kewanee 14' culti-mulcher, crows feet front rollers, two new tires, new cylinder, good shape, \$2,850. Holland gas grill with tank, good shape, \$285.  
PH:641-208-5946 34

## JOB OPENINGS

### KEOSAUQUA, IA

**Machine Operator**  
\$10/Hr. Days/Eves

### BONAPARTE, IA

**Machine Operator**  
\$10.00-\$10.15 3P-11P & 11P-7A

### FAIRFIELD, IA

**Woodworker**  
Days \$12.00

**Dietary**  
\$9.00-\$10.34

**Grinder**  
6:30P-5A, \$13.80

**Grinder**  
5A-1P, \$12.00

**Housekeeping**  
FT \$10.75 2:30P-11P M-F  
PT \$9.50, 6A-2:30P

**Assembly FT**  
Days, \$9.00

**Machine Operators**  
2nd & 3rd Shift,  
\$11.50-\$13.50

**Machine Operator**  
7A-3P, M-F, \$11.50

**Foundry Laborer**  
9P-6:30A, Sun-Wed,  
\$12.00

**TEMP ASSOCIATES**

200 W. Lowe Ave.  
Suite 106, Fairfield, IA  
Open Mon - Fri  
8AM-Noon & 1PM-5PM  
641-472-2025  
Like us on Facebook

**YODER'S INDIAN CREEK FURNITURE:** Maintenance free outdoor poly wood furniture. Great selection in stock! Dining sets, pub sets, gliders, rockers, and swings. Available in 24 different color combinations. Check with us before you buy! Located 4 miles North of Cantril on RT. V64, 22769 Rt. V64 Milton, Iowa. TF

**MOVING SALE:** Thursday 8/11, Friday 8/12 and Saturday 8/13 8:00-5:00. 28337 225th St., Pulaski. Larry Bollman. Tools & wrenches; Ford 8600 tractor with woods loader; bale fork; 4 ft. brush cutter; 7 ft. 3 pt. blade; post hole digger; hay rake; lumber, pine, oak & walnut; miscellaneous home decor.  
PH: 515-669-4815



### The family of George "Stuart" Lynch

would like to extend our deep appreciation to everyone who sent cards, donated to the memorial, brought food, sent flowers, and/or all the thoughts and prayers sent our way during this difficult time. We also send our gratitude to Pastor Marvin Martin for officiating the service and the members of the Dunnville Baptist Church for generously providing the meal for our family and friends. The many acts of kindness from all who reached out have not gone unnoticed and continue to be a great comfort.

**Thank You**

**BLOOD DRIVE:** Floris Baptist Church will host a community blood drive rom 3:00pm to 6:30pm on Monday, August 22 at 502 S. Allen St., inside Fellowship Hall. To donate, please contact Pastor Gordon Hawkins at 641-459-3840 or visit [www.bloodcenterimpact.org](http://www.bloodcenterimpact.org) and use code 5290 to locate the drive.

## LakeWood RV Sales & Rentals



### Gear Up for Adventure

#### 2007 BIG HORN

• Model 30RLS • Clear Title  
• 30' • 2 slides

2007 BIG HORN Fifth Wheel with 2 slide-outs; sleeps 4; nice large corner shower, mirrored closet doors, well maintained.

**\$11,500**

**CALL TODAY!**

Hwy. 136 E., Downing, MO  
9 miles W. of Memphis or  
1 1/2 miles E. of Downing  
[www.lakewoodrvsales.com](http://www.lakewoodrvsales.com)

Tues. - Fri. 8-5 • Sat. 8-Noon.  
Closed Sundays & Mondays  
Phone: 660-379-2763  
Cell: 660-341-1927  
Fax: 660-379-2792



## QUALITY INVENTORY AT GREAT PRICES!

**\$URPLUS  
BARGAIN  
BARN**

- HOUSEWARE ITEMS
- KITCHEN ITEMS
- BABY ITEMS

- FURNITURE
- LAMPS
- RUGS



**COME GET IT WHILE WE HAVE IT!**

BLOOMFIELD, IA

2 1/2 MILES W. OF BLOOMFIELD ON HWY. 2  
MON.-FRI. 9AM - 5PM • SAT. 9AM - 4PM



FOR SALE: 1999 F250 Crew Cab, 4x4, 7.3 diesel, rust free truck, runs good, engine has "miss" \$8,000.

PH: 641-799-7720

33

FOR SALE: 48" near new lawn aerator, \$175. 48" dethatcher, \$75 or both for \$210.

PH: 641-777-7197

32

BLOOMFIELD MINI STORAGE. Serving you from 2 safe, convenient locations.

PH: 641-664-1066.

TF

# REMINDER



**Deadline to remove arrangements from the IOOF Cemetery & Bloomfield Cemetery (South Cemetery) is August 21, 2016.**

*City workers will begin clean-up August 22, 2016.*

**Thank You, City of Bloomfield**

HOME FOR SALE: 2 acres with 3 bedroom, 2 bath home with open floor plan. Attached garage. 3 miles North of Pulaski.

PH: 515-669-4815 or

515-669-6964.

32

ADOPT: Happy loving couple wishes to raise your newborn with care, warmth & love. Liz & Dominic.

Call: 1-877-274-4824

Text: 1-740-552-4384

33

FOR SALE: 2 older riding mowers. 42" run great. Priced to sell.

PH: 641-208-5858

33

## NEW MATTRESSES FOR SALE!

Selling individually or in sets. Factory warranty.

**TWIN - FULL - QUEEN - KING**

**641-664-3060**

FOR SALE: Kel-tec PF-9 9mm pistol, \$230. 223 Federal American Eagle varmit tip 50 grain ammo, \$9/box. CCI standard velocity 22 LR ammo, \$5/box. Ottumwa.

PH: 641-680-3876

34

RUMMAGE SALE: July 28th & July 29th, 8:30am - 4:00pm. 102 North Street, Drakesville. Sewing machine with table, new roaster, 2 small vacuum cleaners, exercise bike, books, lots of odds & ends.

## L&M Country Store

1 1/2 miles south of west Hwy 2 & 63 jct.

Mon-Sat. 8am-5pm CLOSED SUNDAYS

VM: 641-664-1936

3 lb. Oreo Cookies.....	\$4.99
5 lb. Tub Vanilla Yogurt.....	\$2.50
Cantaloupe (while supplies last).....	2/\$1
8 oz. Shredded Cheese.....	99¢
Springhill Ham.....	\$1.29/lb.
Chocolate Carmel Peanut Clusters.....	\$1.89/lb.

**FRESH TOMATOES  
TAKING ORDERS FOR CONCORD GRAPES  
& BARTLETT PEARS!**



**Poly Lawn Furniture**



VM: 641-664-0207

1 Mile East of Drakesville

on Jade Ave.

Mon.-Sat. 9:00 AM - 5:00 PM

JOE'S BARBER SHOP  
Hours: Thursday & Friday 8:00-5:00 & Saturday 8:00-Noon. 210 E. Franklin St., Bloomfield, IA.

PH: 641-664-2020, 641-208-5561

TF

FOR SALE BEST OFFER: 3 bedroom, 2 bath home, central air, newer furnace, on one acre, machine shed & 2 car garage, includes 2 bedroom rental home. Glenwood, Missouri.

\$125,000 OBO.

PH: 660-457-3524

34

## SHADY LANE VARIETY

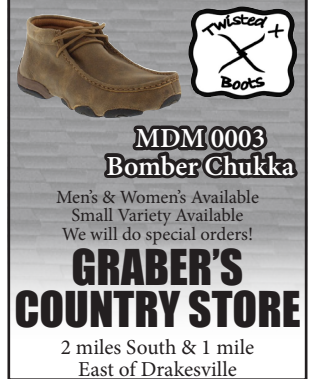


**1 mi. E. of Drakesville on Jade Ave. • 641-664-0207**

FOR SALE: 1983 BassTracker boat & trailer, 15 ft. outboard, 25 hp Mercury motor, new Minn Kota trolling motor, live wells, runs good, Asking \$1,500.

PH: 660-346-8128.

33



FOR SALE: Child's wooden table and 2 chairs; Child's inside fold-out playhouse including furniture; outside playhouse size 8'x6" height, 8'x2" length, 6'x3" width; standard size pool table.

PH: 641-226-1246

33

## Slayton Polaris

Authorized Polaris dealer since 1988



**New & Used Polaris ATVs & Rangers**

**BLOOMFIELD, IA 660-328-6627**

8 mi. S. & W. from Pulaski or 6 mi. W. of Memphis then 13 mi. N. on Route B

ATTENTION: Now would be a good time to have your chimneys & stoves serviced.

**Gingerich Stoves & Plumbing**

Call: 641-664-2814

TFE

FOR SALE: Wood burning stove with glass door, \$300 OBO. Electric refrigerator, make offer.

Leave Message: 641-664-1459

33

**TIME TO TRADE?**  
**CHECK OUT OUR GREAT VEHICLES TO CHOOSE FROM!**

**2005 BUICK LESABRE  
LEATHER, ONLY  
58,000 MILES**



**\$7,900**

2011 Buick Luncheon CXL.....	\$13,925
2010 Silverado 1500, LTZ, Leather, 4 Door, 4WD.....	\$22,000
2010 GMC 1500, Denali, Leather, 4 Door, 4WD.....	\$26,500
2013 GMC 1500, SLE, Cloth, 4 Door, 4WD.....	\$26,500
2013 Silverado 2500, HD, LT, 6.0 Gas, 4 Door, 4WD.....	\$31,500
2011 Ford Ranger, 4 Door, 4WD, Sport, 29,000 Miles.....	\$14,900

**Kollision Korner**

504 South Drake St. • Bloomfield, IA 52537  
PH: 641-664-2648 Fax: 641-664-2948



"Like us on Facebook!" for more pictures.

**BACK TO SCHOOL SUMMER CLEARANCE!**

**RED TAG - 1 rack of Graphic T's**  
**2 for the price of 1**

**RED TAG - Shorts at \$9.99**

**RED TAG - Ladies Blouses & Apparel**

**Table of Shoes & Boots**  
\$19.99 • \$39.99 • \$79.99 • \$99.99

**Hush Puppies Men & Women 20% OFF**

**Jeans, Slacks, Shorts**  
1/2 Price with one at regular price

**Shirts - T's, SS, Long Sleeve**  
1/2 Price with one at regular price

**Wigwam Socks - Munsingwear - Hanes**  
**Railroad Sock - Made in Missouri**

**CLEANUP & CLOSEOUT SPECIALS**

**Cook's Mens Store**  
116 S. Market • E. side of Square • Memphis, MO  
Ph. 660-465-2511 • Fax 660-465-8905  
Monday-Friday: 8-5 & Saturday: 8-9  
Short-Big-Tall • Narrow to Extra Wide • Tux Rentals

**TINGLEY DeLONG** **Lyatone Belts** **Samsonite**





**karaoke**  
\$2.50 DOMESTIC BEER  
Bottles & Cans!

**Sat., August 13 th**  
9pm-1am

**SLICK'S**  
641-242-1008  
East Side of Bloomfield Square

**HELP WANTED**

City of Milton is seeking a city clerk, part time, Monday - Friday, 3 hours a day. Salary based on experience.

If interested drop off or mail in resume to:  
City of Milton, PO Box 220, Milton, IA 52570

All resumes must be received by 11:00 AM  
Tuesday, August 23, 2016.



**SLICK'S**  
**CATFISH TOURNAMENT**

**CASH PRIZES & RAFFLE!!**

**SATURDAY, AUGUST 20<sup>TH</sup>**  
4:00 - 10:00PM • Check in 3:30PM  
100% Payback  
2 Person Teams, \$10/Team

**FISH FRY & PRIZES AWARDED ON**  
**SUNDAY, AUGUST 21<sup>ST</sup> • 4:00 PM**

**SLICK'S** 641-242-1008  
East Side of Bloomfield Square



Davis County Fair Officers & Directors Would Like to Wish

**Clarabell Knapp**

*Good Luck*

at the  
Iowa State Fair Queen Contest!!  
Clarabell Knapp, 2016 Davis County Fair Queen

## OLD SETTLERS PARTICIPANTS - FISHING DERBY 2016



Corbyn Swaim - 1st Place  
Laird Knott - 2nd Place  
Ridgley Knott - 3rd Place  
Ty Swaim, Bryc Swaim, Tyler Closser, & Lane Johnson

BOYS PICTURED LEFT TO RIGHT: RIDLEY, LAIRD, TYLER, LANE, TY, BRYC, CORBYN

A special thanks to Donna Eaves for her time and donations!



## DAVIS COUNTY SCHOOL BUS TRIAL RUN

Wed., Aug. 17, 2016

On the 17th of August, the Davis County School buses will make a trial run on "ONLY THE MORNING BUS ROUTE" to help parents establish the atomic time the school buses will leave their house. The school bus will completely stop at each student's house or pick-up point on the gravel roads. On the highways, the bus will slow down but not stop. Please call 664-2200 ext. 1133 if the bus does not stop for your child.

**Youth Flag Football**  
Grades 1-6  
Cost is \$25.00  
Games Will Be Played At The High School Practice Field on Saturday Mornings.

**Youth Soccer**  
Grades K-6  
Cost is \$25.00  
Games Will Be Played At Middle School Football Field on Saturdays.

**Deadline for sign-up is**  
**Wednesday, August 31st!**  
**Projected Start date: Saturday, Sept. 17th**  
**Call 641-664-3939 to sign up!**

**Mutchler Community Center**  
900 E. North, Bloomfield  
641-664-3939



**MEMPHIS MERCHANTILE**  
EST 2010

115 E. MONROE • MEMPHIS, MO  
South Side of the Square  
**660-465-2102**  
M-F: 8am-6pm;  
SAT.: 8am-3pm; CLOSED SUNDAY

**Red & Blue Rubbermaid & Playmate 5 QUART COOLERS**

**MAKES A GREAT LUNCH BOX!**

**CHECK OUT OUR SCHOOL SUPPLIES!**  
WE'VE GOT EVERYTHING YOU NEED!

**FOR SALE:** Large Hobart industrial meat grinder, 3 phase with a single phase converter motor, ready to use, \$1,000 OBO. 6x8 walk in freezer and compressor, \$5,000 OBO. Compressor for a walk in cooler and over hanging cooler unit (both), \$3,000 OBO. Wheel rolling meat hooks, \$20 each. **Delbert Jones (Delbert's Deer Processing)**  
Call or Text: 641-208-6869

**MAST OVERHEAD DOORS, INC.**  
105 S. Dodge St., Bloomfield, IA 52537



**GARAGE DOORS**  
Residential & Commercial  
Doors & Operators

**641-680-2016**

**CALL FOR AN APPOINTMENT**

Quality Products  
+ Quality Workmanship  
= Quality Customers

Free Estimates We Fix Doors

**WANTED:** 17' to 19' travel trailer. Must have good AC, fridge, etc. In good working condition.

PH: 660-949-2780

33

**FOR SALE:** Best way power steel frame pool. 48" deep, 14 ft. diameter. Complete with electricals.

Call VM: 641-929-3013

33

**MULTI-FAMILY GARAGE SALE:** Thursday, August 4th, 6-8 p.m., Friday, August 5th, 8 a.m.-5 p.m., Saturday, August 6th, 8-12 noon. Brand name kids clothes, patio chairs, antique doors, window frames, etc. 16613 Hwy. 63, 1st house North of Drakesville turnoff.

**160 ACRE FARM FOR SALE:** 100 acres tillable, 60 acres of good timber, pond with concrete waterer, 4 bedroom house, vinyl siding, new metal roof, newer septic system, 30x50 metal building. Savannah, Iowa area. \$3,800/acre FIRM!

PH: 641-750-5558

34

**FOR SALE:** Nice older Remington wingmaster, 16 gauge, \$375. Super clean SKB semi auto, 20 gauge, \$400. Ottumwa.

PH: 641-208-1591

33

**FOR SALE:** Oat straw, \$3.50 per bale, 20 bale minimum. 19636 Flora Ave., Bloomfield. Call Levi Mast: 641-722-3080

**Apple Tree Watch & Jewelry**

**Quality Estate & Antique Jewelry**  
Buying All Watches, Clocks & Jewelry



**Watch & Clock Repair**

1805 180th St. Donnellson IA

Located 4 miles North of Donnellson along Hwy. 27

Wed-Sat 10-5, Sun 12-4, Closed Mon & Tues

**Phone 319-470-9795**

**FOR SALE:** Alfalfa small square bales; 1st cutting, \$4; 2nd cutting, \$5; 3rd cutting, \$5.50. Delivery Available.

PH: 319-540-0313

33

**FOR SALE:** Australian Shepard heeler cross puppies, had all shots & wormed. 8 weeks old, good working parents, \$100 OBO. Downing, area.

Call: 660-988-1200

34

**FOR SALE:** Red heeler puppies, 6 weeks old August 5th, \$80. Nelson Gingerich 1 mile east & 1 mile north of Drakesville.

PH: 641-722-3002 ext. 2

34

**FOR SALE:** 2000 Toyota Camry, 4 cyl. Auto, 140k miles, good condition, \$2,500.

PH: 515-681-7823

34

**FOR SALE:** Oat straw, \$3.50 per bale, 20 bale minimum. 19636 Flora Ave., Bloomfield. Call Levi Mast: 641-722-3080

34

**PULASKI LUMBER Co.**

**We provide materials & expertise for all building projects.**

**OWENS CORNING**

**New Homes Remodels Decks Kitchens ICF Basements Pole Buildings**

Josh & Emily Hill  
218 S. 2nd St. • Pulaski, IA  
**641-675-3405**

**OPEN ALL SUMMER**

**WE STILL HAVE A GOOD SUPPLY OF ANNUALS & PERENNIALS!**

**HANGING BASKETS**

**STOP IN AND SEE WHAT WE'VE GOT!**

**Lilac Hill GREENHOUSE**  
660-342-9554

25957 US Hwy 136 • Lancaster, MO  
Between Lancaster & Downing  
Mon. - Fri. 8am-8pm • Sat. 8am-5pm • Closed Sunday

**HOURS**  
8:00 A.M. to 5:00 P.M.  
**DAILY EXCEPT SUNDAY**

**Zimmerman's Store**  
Rutledge, MO  
**660-883-5766**

**Our Everyday Low Prices!**

Red Haven Peaches #2's ..... \$17.95/bushel (wed 17th)  
Michigan Lodi Apples..... \$16.50/bushel  
Pristine Apples..... \$11.50/bushel  
10# Fresh Michigan Blueberries (while supplies last) ..... \$21.50  
Local Grown Large Green Bell Peppers..... 2/79¢  
Local Grown Large Candy Onions ..... \$1.19/lb.

**50# Granulated Beet Sugar ..... \$22.14**  
**50# Granulated Cane Sugar ..... \$24.08**  
**50# Raw Evaporated Cane Sugar ..... \$33.02**  
**50# Organic Raw Evaporated Cane Sugar ..... \$41.17**  
**Bagged Granulated Sugar ..... 51¢/lb.**  
**Bagged Raw Sugar ..... 66¢/lb.**

32 oz. Dextrose Natural Sweetener Non-GMO ..... \$4.19  
2.5# Xylitol 100% Pure Natural Sweetener Non-GMO ..... \$10.95  
Also Erythritol, Stevia, Better Stevia, Coconut Sugar, Splenda

1# Saf-Instant Yeast ..... \$2.95  
1# Red Star Yeast..... \$3.09  
33.8 oz. Danncy Rooster Vanilla Dark or Light..... \$4.95  
32 oz. Butler Imitation Vanilla ..... \$5.29  
32 oz. Butler Pure Almond Flavoring ..... \$7.49

**3 lbs. 3 oz. Gatorade Thirst Quencher, Powder Drink Mix**  
**Lemon Lime - Fruit Punch - Orange - Glacier Freeze \$7.95/ea.**  
**8.5 oz. Gatorade Flavors ..... \$1.79/ea.**

**8 pk. Washcloth \$5.39**  
**Heavy Weight Bath Towel \$5.29**  
**Cowhide Glove Medium, LG & XLG \$7.98**

**FREE TO GOOD HOME:** Beagle/Terrier female, 2 years old, house dog.

PH: 641-680-8752

32

**FOR SALE:** 6'x4' book cases, oak bullnose, will deliver for small fee. \$50 each.

PH: 641-936-7123

32

**FOR SALE:** 32'x48' house & buildings. Selling 6.3 acres or up to 40 acres.

PH. 641-664-1740.

33

**LINE-X OF OTTUMWA**

**KEEP YOUR RIDE IN GREAT SHAPE!**  
PROTECT IT WITH A LINE-X COATING!

**Bring it in and we can LINE-X® it!**

**641-683-9334**

Brad Lisk  
15514 Blackhawk Rd., Ottumwa, IA

Gift Cards Available!

**BLOOD DRIVE:** Mennonite Pulaski will host a community blood drive from 9:00am to 1:00pm on Friday, August 12 at 28026 270th St., inside Sanctuary. To donate, please contact Pastor Darrell Zook at 641-675-3845 or visit [www.bloodcenterimpact.org](http://www.bloodcenterimpact.org) and use code 5051 to locate the drive.

**GENE'S SURPLUS**

*Brands you like at prices you love*

**ANOTHER SHIPMENT HAS ARRIVED!**

**Electronic Gadgets**  
Sheet Sets  
Comforter Sets  
Portable Air Conditioners

**Garment Steamers**  
Small Kitchen Appliances  
Health & Beauty Items  
Robotic Vacuums

**Pet Items**  
• Beds  
• Steps  
• Fences  
• Baskets  
• Etc.

**MANY MORE ITEMS TOO NUMEROUS TO MENTION!**

**COME CHECK OUT WHAT'S NEW!**

**HWY 136 WEST • MEMPHIS, MO • 660-465-7445**  
**MON-FRI 8:00 TO 5:30, SAT 8:00 TO 4:00**

*Thought of the week:* He is no fool who gives what he cannot keep, to gain what he cannot lose.



# 2016 GLENWOOD REUNION

FRIDAY, AUGUST 12<sup>TH</sup> & SATURDAY, AUGUST 13<sup>TH</sup>  
AT THE GLENWOOD PARK "WHERE OLD FRIENDS MEET!"

## FRIDAY, AUGUST 12<sup>TH</sup>

4:30 PM Cook Shack Opens  
5:30 PM Opening Prayer  
6:30 PM Baby Show  
7:00 PM Live Band  
"No Apology's"

BRING  
YOUR  
LAWN  
CHAIRS!

## SATURDAY, AUGUST 13<sup>TH</sup>, CONTD.

2:00 PM Car Show Awards  
7:00 PM Live Band  
One Horse Town  
SUNDAY, AUGUST 14<sup>TH</sup>  
11:15 AM Worship Service

## SATURDAY, AUGUST 13<sup>TH</sup>

10:30 AM Cook Shack Opens  
Car Show Registration Starts  
12:30 PM Cook Shack Closes  
will Re-open after Parade  
1:00 PM Parade Starts

### FRIDAY & SATURDAY EVENTS!

- 3 Drawings During the Evenings!  
- Grand Prize Friday: \$100  
- Grand Prize Saturday: Freezer (Nelson Elec.)
- Children's Activities!

### CAR SHOW INFO.

Rain or shine! Participant judging, ballots due by end of parade! Drawing for drivers & car owners, products donated by local merchants. Call Larry 660-651-0989

### QUILT SHOW INFO.

Area exhibitors will be showing their work. There will be some special memory quilts! Exhibitors welcome! Call Rosemary 660-216-7017 or Bernice 660-457-2255.

### BABY SHOW INFO.

Age groups: 0-3 mos., 4-6 mos., 7-11 mos., 1-2 yrs., 2-3 yrs., 3-4 yrs. No outfit requirement or restriction. Sponsored by Sew Real Designs. Call Cindy at 660-216-0350 after 5PM.

Queen City

Sidwell Seeds

660-766-2737

Greentop

Western's Smokehouse  
Kevin Western, Manager

660-949-2445

Downing

Feeds & Needs

660-379-2055

Lancaster

Edward M. Norman, DDS, PC

660-457-3235

Queen City

660-766-2505

Schuyler County Mutual Insurance

FARMUTUAL Insurance

Margaret Sapp  
Stephanie March

Lancaster

660-457-3728

MFA Agri Service

Kirkville  
660-665-4695

Queen City

Chuck's Body Shop & Garage LLC

660-766-2312

Queen City

Schuyler County Nursing Home

660-766-2291

Memphis

660-328-6211

Crop Production Services



Queen City  
660-766-2325

Downing

Ruth Enterprise

COUNTRY CLIPPER

660-379-2391

Lancaster

Beeler Motor Company

660-457-3718

Lancaster

Norman Funeral Home

660-457-3137

Bloomfield

Tri-County Shopper

641-664-1333

Glenwood

Glenwood Elevator



660-457-3973

Lancaster

Casey's General Store

660-457-2140

Lancaster

Tri-County Electric Coop

660-457-3733



# RED-HOT DOG DAYS OF SUMMER SALE



While supplies last



19686 Hwy. 2, Bloomfield, IA • Approx. 2 miles west of Bloomfield • Mon. - Sat. 8:00 - 5:00 • VM: 641-664-1187

**ERRORS:** When your ad is printed, please check for errors. Any error must be reported to our office within three (3) days after publication. If not reported within this time, the SHOPPER assumes no responsibility for correction. If the error is found to be made by the SHOPPER, we will change the error only, free of charge. However if the wrong information was given, the SHOPPER will not change the ad, unless customer wants to run another ad at full price. We will not be responsible for errors made on advertising given to us that is not legible. **CREDIT POLICY:** All advertising submitted is subjected to credit review and restriction. Publication may be withheld on the basis of unpaid past due balance or poor credit history. The SHOPPER reserves the right to refuse or reject, without prior notice, any copy submitted for publication.

**Trailer Sale!** 7'X14' 14,000lb. Dump trailer \$135.00 month; 6'X12' V-nose ramp door \$75.00 month; 8.5'X20'+4' 14,000lb. skid-loader trailer \$110.00 month. 150 trailers in-stock. Trailer repairs and 100's of parts & tires in-stock. Inventory prices: [www.FortDodgeTrailerWorld.com/Trailersin-stock.html](http://www.FortDodgeTrailerWorld.com/Trailersin-stock.html) 515-972-4554 (MCN)

**HELP WANTED: OTR DRIVERS.** Ewy Trucking seeking Owner/Operators & Company Drivers. Valid Class A CDL. Home on weekends if desired. Pulling hopper bottoms across the US. Minnesota Based. Call 507-421-3680. (MCN)

**ALL THINGS BASEMENT!** Basement Systems Inc. Call us for all of your basement needs! Waterproofing, Finishing, Structural Repairs, Humidity and Mold Control. FREE ESTIMATES! Call 1-800-640-8195 (MCN)

**MOTORCYCLES: TOP CASH PAID!** For Old Motorcycles! 1900-1979. DEAD OR ALIVE! 920-371-0494

**DISH TV 190 channels plus Highspeed Internet Only \$49.94/mo!** Ask about a 3 year price guarantee & get Netflix included for 1 year! Call Today 1-800-390-3140 (MCN)

**SAVE on internet and TV bundles!** Order the best exclusive cable and satellite deals in your area! If eligible, get up to \$300 in Visa Gift Cards. **CALL NOW!** 1-800-925-0146 (MCN)

**FAST Internet!** HughesNet Satellite Internet. High-Speed. Avail Anywhere. Speeds to 15 mbps. Starting at \$59.99/mo. Call for Limited Time Price - 1-800-715-1644 (MCN)

**d Internet.** Plans from \$39/mo. Blazing Fast Broadband in areas cable can't reach. Great for business or home. We Install Fast. 1-888-800-8236 (MCN)

**CASH PAID** for unexpired, sealed **DIABETIC TEST STRIPS!** 1 DAY PAYMENT & PREPAID shipping. **HIGHEST PRICES!** Call 1-888-389-0695. [www.cash4diabeticsupplies.com](http://www.cash4diabeticsupplies.com) (MCN)

## Hawkins - Harrison Insurance



SHOPPER ADS CAN BE DROPPED OFF HERE!

Proud to be your partner.

P.O. Box 365  
Lancaster, MO  
63548  
660-457-3020

103 W. Monroe St.,  
Memphis, MO  
63555  
660-465-8533

**TRUCK DRIVERS.** CDL-A Company Drivers and Owner Operators. Great pay and benefits. Driver friendly. All miles paid. Many bonuses. Home when needed. Nice equipment. Paid weekly. [WWW.MCFGTL.COM](http://WWW.MCFGTL.COM) Call now 507-437-9905 (MCN)

**MAKE \$1,000 WEEKLY!** Paid in advance! Mailing Brochures at Home! Easy pleasant work. Begin Immediately! Age unimportant! [www.homemoney77.com](http://www.homemoney77.com) (MCN)

Are you in **BIG** trouble with the IRS? Stop wage & bank levies, liens & audits, unfiled tax returns, payroll issues, & resolve tax debt **FAST.** Call 888-606-6673 (MCN)

**STUDENT LOAN PAYMENTS** got you down? We can help reduce payments and get finances under control, call: 866-871-1626 (MCN)

Got Knee Pain? Back Pain? Shoulder Pain? Get a pain-relieving brace at little or NO cost to you. Medicare Patients Call Health Hotline Now! 1- 800-604-2613 (MCN)

**ATTENTION: VIAGRA AND CIALIS USERS!** A cheaper alternative to high drugstore prices! 50 Pill Special - \$99 **FREE** Shipping! 100 Percent Guaranteed. **CALL NOW:** 1-800-795-9687 (MCN)

**Curts**  
**Yard & Garden**

Sales & Service of Outdoor Power Equipment

641-664-2784  
502 E. Franklin • Bloomfield, IA

Switch to **DIRECTV** and get a \$100 Gift Card. **FREE** Whole-Home Genie HD/DVR upgrade. Starting at \$19.99/mo. New Customers Only. Don't settle for cable. Call Now 1-800-203-4378 (MCN)

**PAID IN ADVANCE!** **MAKE \$1000 Weekly!!** Mailing Brochures From Home. Helping home workers since 2001. No Experience Required. Start Immediately! [www.centralmailing.net](http://www.centralmailing.net) (VOID IN SD, WI) (MCN)

**NOW TAKING  
ORDERS FOR  
CONCORD  
GRAPES!**

1/2 bushel boxes  
Only \$10<sup>99</sup>/ea.

19686 Hwy. 2  
Bloomfield, IA  
Approx. 2 miles west of  
Bloomfield

Mon. - Sat. 8:00 - 5:00  
VM: 641-664-1187

While supplies last

**100.5 FM - AMERICA'S BEST COUNTRY**

REQUEST LINE ..... 660-465-2715  
TOLL FREE AT ..... 800-748-7875

**ON THE RADIO**

**KMEM RADIO • MEMPHIS, MO**

JOIN **DONNIE MIDDLETON** EVERY SUNDAY NIGHT FOR **NOSTALGIA SUNDAY.** **DONNIE** PLAYS THE CLASSIC HITS YOU GREW UP WITH FROM THE 50'S, 60'S, 70'S AND THE 80'S EVERY SUNDAY NIGHT FROM 6 TO MIDNIGHT ON **KMEM 100.5 MEMPHIS, MISSOURI.** GIVE **DONNIE** A CALL FOR YOUR FAVORITE SONG AT 660-465-7225 OR TOLL FREE 800-748-7875. AN INSTITUTION FOR 30 YEARS IN THE TRI-STATES, IT'S **KMEM, DONNIE MIDDLETON AND NOSTALGIA SUNDAY!**

**WWW.KMEMFM.COM**



View the Shopper's FREE digital edition now!  
[www.Tri-CountyShopper.com](http://www.Tri-CountyShopper.com)



## Exceptional Craftsmanship

Imagine the convenience. Imagine the beauty. Imagine the luxury. Your kitchen and bath can be everything you've always imagined, for a price that's far less than you'd ever expect.

Order your Cabinet Set Close to Home

Kitchen Cabinets      Millwork  
 Custom Furniture      Stairways

## Kuntryside Cabinets, LLC

641-664-1677

Kenneth Yoder, Owner

15641 175th St. • Drakesville, IA 52552

FOR SALE: 60 Gold Star pullets. Just started laying. 20 weeks old. \$8.00 ea.  
 PH. 641-664-1768.      32

WANTED: A child size wheel chair.  
 Paul Joseph Yoder  
 VM: 641-722-3445.      34

Garages • Pole Barns Commercial      Free Estimates

LAN-DOW BUILDINGS

We Stock a Complete Line of Building Materials      Complete Buildings or Packages Available

**Lancaster Lumber, Inc.**

Toll Free 800-424-5071 Fax 660-457-3133

Ron Oliver, Owner Lancaster, MO 63548  
[www.lancasterlumber.com](http://www.lancasterlumber.com)

FOR SALE: LX255 JD lawn mower, 42" deck, excellent, \$1,250 OBO.  
 PH: 641-777-1358      34

LOOKING TO BUY: Small farm or acreage in Davis County School District.  
 PH. 641-208-6538.      34

**TIM SKINNER**

**Trucking & Excavation**

FLOTATION AGLIME SPREADING  
 Standard Application  
 GPS Variable Rate Application

**HAULING**  
 Aglime, Rock, Sand, Black Dirt or Clay  
 Also doing all types of excavation & dozing work

Call for pricing today  
 Tim Cell: 641-777-6053  
 Home: 641-682-6003



## We Have

- Sprayer Parts
- Hydraulic Fluid
- Hydraulic Hoses
- Belts
- Filters

- Cattle Rubs • Bullets & Dusters • Fly Tags

Complete line of  
 Animal Liquid  
 Insecticide & Dust

## Full Line of Animal Health Supplies

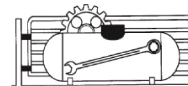
- Vaccines
- Wormers
- Numbered Ear Tags



Don't Forget  
**CONTRACT**  
 LP NOW FOR  
 YOUR WINTER  
 NEEDS!

## Hamilton Produce Co.

641-664-2459 or  
 1-800-469-7749



105 W. Franklin  
 Bloomfield

FOR SALE: Australian Shepard heeler cross puppies, had all shots & wormed. 8 weeks old, good working parents, \$100 OBO. Downing, area.  
 Call: 660-988-1200      34

WANTED TO BUY: 100-160 acres of pasture brush. Southern Iowa or Northern Missouri. FOR SALE: 80 acres located on edge of Ottumwa.  
 PH: 641-680-8752      33

WANTED: 900x20 truck tires. Milton, IA.  
 PH. 515-419-1232.      33

FOR SALE: Weber Spirit grill, gas, like new, \$250; Browning A5 20 gu., Belgium made, \$750.  
 PH. 319-494-7733.      34

HAY FOR SALE: 46 big round bales, 1st cutting, \$45 each + extra for delivery. Contact Roger Marlow  
 PH: 641-799-8365      33

## Heating & Cooling Appliance Repair and Sales

*Charlie's Repair*



Brian Armstrong

New and used appliances

641-208-0333

**HANKOOK DEALS**

PURCHASE A SET OF FOUR SELECT HANKOOK TIRES  
 08/01/16 - 09/30/16

**\$100 REBATE UP TO**

**Hankook** driving emotion

**NEW LOAD JUST ARRIVED!**

**WEATHERTECH FLOOR LINERS**

**ZIMMERMAN AUTO LLC TRAILER INC.**



WE KEEP THE MOST POPULAR LINERS IN INVENTORY!

**WeatherTech**  
 Authorized Diamond Dealer

101 North St. • Cantril, IA  
 319-397-2406





**Dutchman's**  
an old time general store.



# DOG DAYS SALE



**Wheat Montana**  
**SALE**  
**20% OFF**  
All- Wheat Montana Flour & Wheat



**\$1.39**  
per lb.  
**Whole Boneless Pork Loin**



**49¢**  
per lb.  
Smokehouse  
**Frozen Ham Slices**



We have ...  
Illinois & Missouri  
**PEACHES**  
by the bushel  
or the pound  
Coming in Fresh Daily  
**LOCAL GROWN PRODUCE**



**2/\$5**  
Try Some!  
**Sterzing's**  
**Potato Chips**



**\$4.99**  
per lb.  
**Whole Boneless Ribeye Steak**



**\$2.99**  
per lb.  
**Troyer® Hard Salami**  
Sliced Smoked Cheddar Cheese **\$1.99** per lb.



Pure Cane White Sugar **\$21**  
50# bag  
Fine Flake Canning Salt **39¢** per lb.



**3/\$1**  
Local Grown  
**Green Bell PEPPERS**



Bartlett Pears  
Available Next Week  
**\$15.95** - bushel  
**Baby Gold PEACHES**  
Available End of August  
Concord Grapes  
Available Week of  
September 26



**\$9.95**  
12/18 oz.  
That's only 83¢ each  
**Gold Peak TEA**



**\$1.25**  
10 oz.  
**Little Debbie® Mini Donuts**



**\$1.75**  
per lb.  
**Snickers Almond Minis Candy Bars**



**\$1.25**  
gallon  
**Heinz® Bread N Butter PICKLE CHIPS**



**\$1.75**  
gallon  
Garden Harvest®  
**White Vinegar**  
Garden Harvest®  
Apple Cider Vinegar **\$2.59** gallon



**DUTCHMAN'S STORE** Division Street - CANTRIL, IA - (319) 397 2322 **SALE PRICES Aug. 10-16 2016**  
STORE HOURS • Weekdays, 8a.m. - 6 p.m. • Saturday 8a.m. - 5 p.m. • Sunday Closed • View our specials at - [www.DutchmansStore.com](http://www.DutchmansStore.com)

FOR SALE: Purebred Katahdin bucks. PH. 641-680-1904. 33  
CUSTOM: Round baling and cattle hauling. PH: 641-208-5961 32

FOR SALE: Jan. 2016 black face and white face buck lambs. Bloomfield, IA. PH: 641-777-7060 33

SWEET CORN DESILKER FOR RENT Bloomfield Rent-All 641-664-3806. 33


FOR SALE: 2016 Alfalfa, large squares and large rounds. PH: 641-919-9447 40

FOR SALE: 1999, 2 door, Chevy tracker, \$3,000. 11 used brass carriage lamps for house lighting, \$220 or \$25/piece. Cattle creep feeder on wheels, no gates, \$500. PH: 641-208-0318 34

FOR SALE: Firewood at RJ Lumber, \$15 a pickup load. 18989 160th St., Drakesville, IA 52552. TF

FOR SALE: 250 bales mixed grass and legumes. Some rain. \$2.50/bale \$2.25/100. N. of Drakesville. PH: 641-722-3283 34


FOR SALE: 30' REC poles. 2 like new, \$75 each, 2 still usable, \$30 each. PH. 660-341-7263. 33



**Davis County HOSPITAL**  
Dedicated. Compassionate. Healthcare.

**PUSH YOURSELF TO BE HEALTHY**

## QUIT smoking Today!



**Freedom from Smoking Class**  
September 6th - October 18th  
Tuesday Nights, 5:30pm - 6:30pm  
@ Davis County Hospital, Conf Room D  
Cost to participate: \$60

Call 641-664-7136  
to reserve your spot today!



**IT'S TIME TO GET YOUR GAME FACE ON!**

Give us a call today,  
to get your free  
estimate for those  
home run building  
projects!

**Cantril Lumber & Hardware**  
319-397-2351 or 319-397-2354  
Mon-Fri 7-5 & Sat 7-12





# BIG SALE

## dac<sup>®</sup>

"IT MAKES A WORLD OF DIFFERENCE"

# ALL OF AUGUST



Available at:  
**dac<sup>®</sup> Dealer Aaron Yoder**  
 17911 Husky Trail  
 Drakesville, IA 52552  
 (641) 664-2753 voicemail

Also available at these fine locations:  
 Farmers Harness, JR Feed and Supply, Bloomfield Harness

Direct Action Company, Inc. | Andy Ellsworth, Territory Manager | (515)370-2555 | andy@feeddac.com | WWW.FEEDDAC.COM

**Fuller Brush Co. Distributors Needed.** Start your own Home Based Business! Looking for people to earn extra money servicing people in your areas. No investment required. Call 800-882-7270 www.joannefullerlady.com (MCN)

**PREGNANT? CONSIDERING ADOPTION?** Call us first. Living expenses, housing, medical, and continued support afterwards. Choose adoptive family of your choice. Call 24/7. 855-390-6047 (MCN)

**FOR SALE:** Reg. Angus and Charloais Bulls. With all the data. Trojan Hill Farm, Bloomfield, IA. Phil Archer: 641-680-6769 32

**FOR SALE:** Taurus PT111 millenium G2, 9mm, 2 - 12 round mags. Only shot 1 box of rounds, \$260. Ottumwa. PH: 641-680-3876 32

**FOR SALE:** 2 gravity wagons, have 6 bolt hubs, \$400 each. A.C. 10' tandem wheel disc, \$350. PH: 319-750-1968 32

**FOR SALE:** Small square bales of hay, mostly alfalfa. 19636 Flora Ave., Bloomfield. Call Levi Mast: 641-722-3080 33

### LILAC LANE VARIETY

Shoes & boots, material, dishes, Immergood freezers, lawn mowers & More!

5% OFF Kipling Shoes IN STOCK  
 AUG. 8TH - AUG. 20TH

Mon, Tues,  
 Thurs, Fri, Sat. 8-5  
 (Wed. by chance)

Queen City, MO  
 (From 63 E 1 mile on Hwy. E)

### Vinyl Windows

Replacement & New Construction

Window Features...  
 Fusion Welded  
 Triple Weather Strip  
 Aluminum Reinforced



"Quality products since 1932"

FREE ESTIMATES

**Yoder Glass & Window**  
 641-722-3667  
 19467 Driftwood Blvd.  
 Bloomfield, IA 52537

**A PLACE FOR MOM.** The nation's largest senior living referral service. Contact our trusted, local experts today! Our service is FREE/no obligation. CALL 1-800-442-5148 (MCN)



**YODER EQUIPMENT**  
 BLOOMFIELD, IOWA

FLY CONTROL  
 MINERAL  
 FEEDERS

30 YEAR SYP  
 TREATED POSTS

CONTINUOUS  
 FENCING

LARGE VARIETY  
 OF FARM GATES

19887 Jade Ave  
 2 1/2 Miles W of Bloomfield  
 V.M. 641-664-2797

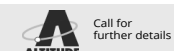


### WHY HUGHESNET?

- High-Speed Performance
- Available Anywhere
- No Phone Line Required

### INSTANT SAVINGS

- FREE Standard Installation\*
- Speeds up to 15mbps
- Packages Starting at \$59.99/mo



1-800-715-1644

## SPILMAN AUTO PARTS

20311 Old Hwy. 2 • Bloomfield, IA  
 641-664-2463 • 1-800-477-1367  
 M-F 8-5 • Sat. 8-12 • www.SpilmanAuto.com



With the right auto parts you can stand out too!

## GREAT BUILDING LOT! NEW LISTING



17 COUNTRY CLUB DR. • BLOOMFIELD • LISTING #20165486

Lot #17 in Country Club Estates Subdivision

**Lynch**  
 REALTY, INC.

641-664-2275  
 lynchrealtyinc.com

### CHECK IT OUT!

103 E. Franklin  
 Bloomfield, IA  
 Licensed in Iowa  
 Stephanie Lynch, Broker





**BCS** **MOW ANYWHERE** **BEST WARRANTY**

HANDLES ROTATE 180°

ALL GEAR DRIVE

BCS Two Wheel Tractors will tackle any mowing job not suited for larger four wheel machines with front mounted attachments like the **Sickle Bar Mower, Flail Mower, Brush Mower, Lawn Mower, and more.**

**Sickle Bar Mower**



Lawn Mower w/ Sulky



Brush Mower

## Homestead Valley Sales

22271 Ice Avenue, Bloomfield, IA 52537 (641) 664-1209

## WELDERS & GENERAL LABORERS

Since 1966, Mid-States Manufacturing & Engineering has proven to be a leader and a major manufacturer in the material handling industry. Located in Milton, Iowa, our worldwide customer base relies on us for all non-powered material handling equipment needs.

Mid-States is currently looking for Welders and General Laborers. Starting pay is \$11/hour for Welders, and \$10/hour for General Labor. If you are able to demonstrate commitment to be present on all scheduled shifts, perform to our quality of standards, and demonstrate strong team skills and ability to be an individual contributor to our workforce!



**We want You!**

Stop in to pick up an application, or go online to [www.Mid-States1.com](http://www.Mid-States1.com). Mid-States offers affordable medical insurance as well as other optional insurance and employer-paid disability. In addition, we offer a 401(k) investment opportunity, paid vacation/personal days, and paid holidays.

## ATTENTION CONTRACTORS!

We stock push fit fittings, valves, toilets, faucets, Pex, PVC, CPVC, Copper Pipe & Fittings.



19091 180th St  
Bloomfield, IA  
VM 641-664-2814

3/4 miles east of Drakesville, south side

**FOR SALE TRAVEL TRAILER:** See to appreciate! 2004 Dutchman Classic 29RK, 2 power slides, living room & bedroom, walk-in shower. Private bathroom, ducted air & heat, queen size bed, foldout couch & recliner. Nice kitchen, lots of storage, near new tires. Book price \$12,800. Asking \$10,000 OBO. PH: 641-722-3799 or 641-799-6569. 34

**FOR SALE:** 14' Loe v boat, aluminum, \$750. 16' Larson tri-hull fiberglass boat, 115HP outboard, \$1,750. Stihl handle bar string trimmer, \$100. '88 Honda Goldwing, 42K miles, runs great, tall windshield, air wings, \$4,500. Nordic Trac elite 5.4 recumbant bike, new, \$450. Hay bale ring, bale saver, \$100 each. Pressure canners, canning jars, granite canners, exercise bike, wooden king headboard, 2 glass punch bowls with cups. PH: 641-208-6010 32

**FOR SALE:** Wood heating pellets 2,000 + pounds, very small amount of corn mixed in. \$150 OBO, Bloomfield. PH: 515-303-0152 33

**FOR SALE:** 2010 Ford Fusion SEL, AWD, V6, loaded, black leather interior, tinted windows, prior salvage title, 61,000 miles. \$8,500 OBO. PH: 660-216-7516 32

## SURPLUS AUCTION

There will be a Public Auction of Surplus Equipment and Furniture for Truman State University at the Dulaney/Baldwin Building #4 on LaHarpe Street in Kirksville, Missouri on:

**Saturday, August 13, 2016 at 9:00 a.m.**

Announcements made the day of the sale take precedence over all other advertising.

**Computer Equipment:** Dell computers/monitor/keyboards/mice/speaker/docking station, Apple computers and accessories, scanners, projectors, printers, fax machines, televisions, camcorder, digital camera, chairs, desks, tables, antique drafting table, bookshelves, glass racks, sofa, photo-copiers; **Athletic Equipment:** exercise mat, training videos and books, pickleball rackets, volleyball equipment; **Music Equipment:** (5) Roland HP-700 Digital Piano, Hamilton upright piano, (2) Hamilton-Baldwin piano, Yamaha P22 piano, (2) Mackie M-800 amplifier, set of 4 Ludwig tympani; **Kitchen Equipment:** (74) stainless steel pans, (2) stainless steel colander, stainless steel strainer, utility cart, refrigerated revolving display, pizza prep tables, ice maker, refrigerated condiment cooler, (3) Federal Viscooler, Victory freezer, RPI cooler, (3) Delfield coldwell, (3) Delfield hotwell, True Plate cooler, Roundup bun toaster, Soup well, (2) Wells hotwell, (2) Herrick cooler, Precision hotwell, (2) Lincoln pizza oven, pizza display case, Hatco rotary display, Star panini press, Continental Prep refrigerator, Traulsen holding cabinet, microwaves, Atlas condiment drop well; **Bicycles:** (66) bicycle including Schwinn, Roadmaster, Huffy, GMC, Free Spirit, Pacific, Mongoose brands; **Vehicles:** 2006 Ford Crown Victoria (mileage 110,193).

**This is a partial list of items being offered for sale.** To view the full sale bill and pictures of items, please go to: <http://www.truman.edu/businessoffice/surplus/>. **All items will be sold "as is, where is" with no guarantees stated or implied.** All sales are final and the high bidder is to pay for and remove the items from the property on the day of the sale. **(No exceptions)** The University will not be liable for accidents or lost and stolen merchandise.

Terms of payment are cash, personal check, MasterCard, Visa, American Express, Discover, or purchase order (if prior arrangements have been made). Sales tax will be collected unless the buyer has a tax number on file with the University.

Guest Auctioneers

Gary Fagan  
Truman State University  
(660) 342-2800

Jerry McMain  
Truman State University  
(660) 665-9380

**C.H.I. MIDWEST Overhead Door**

✓ Out Our Competitive Prices! 21387 Route V64 Keosauqua, IA 52565 **660-216-0812**

Our goal is to keep your doors rolling smooth!

Sales • Parts • Service ~ Free Estimates

We sell new doors and openers or we'll service your old one.

## AUCTION Monterey Auction House Sunday, August 14<sup>th</sup>, 11:00 am

Located 10 miles S. of Bloomfield on 63 then 4 miles W. on J51 or 10 mi. N. of Lancaster, then 4 mi. W. on J51

Chicago electric 10" com miter saw, used once; Sear Craftsman 2 HP planer - molder; 4 new 2"x27" ratchet tie downs; angle grinder; air hose; (7) 32 gallon Rubbermaid trash cans with lids; new Kellar 6' fiberglass step ladder; 4 wheel hand truck; cartoon glasses; 30x50 binoculars; 2 wood bird cages; rabbit bottles and crocks; stainless steel pet pans; milk bottles; tools; tool belt; 4 ft. wood level; old Mickey Mouse sweater; brass items; Minnie Mouse desk phone in box; Johnson CB radio phone; metal Tonka truck; iron skillet; galvanized buckets; green fruit jars; old bottles; tackle boxes; outside flower pots; fold up wire cages; pair boat oars; garden hose and reel; youth golf clubs; child's folding table & chairs; old scales; large wood duftailed box; Craftsman tool box; Coleman heater; foosball table; showcase 8 ft. long 27" wide 28" tall needs some work; Freedom alert still in box; lots of glassware.

All Consignments Welcome!  
Announcements made day of sale take precedence over any advertising. Not responsible in case of accidents.

**LAWSON AUCTION SERVICE**  
For More Info.: John Lawson 641-895-3852



505 S Washington St. • Bloomfield, IA • (641)664-3000

## DUMP TRAILERS

- Industry Best Warranty
- Free Roadside Assistance
- Attractive Design
- Radial Tires Standard
- Sealed Wiring Harness







# PUBLIC AUCTION

**From Bloomfield Ia.**

Go West 5 mile on Hwy 2 to Jct. 63  
Then South 2 mile to 240th Street.  
Then East to Auction site.

*Ed Mast and Ervin & Regina Mast*  
*17532 240th Street - Bloomfield, Iowa 52537*  
*For info, contact Ed at: 641-664-1688*

## Saturday, August 13, 2016 @ 9:00 a.m.

### Machinery & Mowers

Gateway 35 hp. Vanguard PTO cart w/ hillside steering, brakes, live hyd. and sliding axle like new (only 11 hr.)  
White Horse 628 hydraulic cart w/ hyd. steering  
24 hp. Onan engine w/ mount for Pioneer cart  
Gateway forecart on steel - homemade forecart power unit w/ hyd.  
Gateway forecart w/ brakes - (2) 6' Pioneer blades  
Lower Valley #512 rolling basket 8' cultimulcher (like new)  
NH 488 haybine - 2 NH 56 hayrakes (1 for parts)  
IHC 1100 pull type sickle bar mower w/ 9' bar (on steel)  
Pequea 710 hay tedder - JD 5' pull type brush cutter  
McCormick Deering #9 hay mower w/ truck and new tongue  
7' pull type brush cutter - Pioneer sulky plow w/ KV bottom  
JD sulky plow - Emerson sulky plow - 7' single disc w/ trucks  
10' tandem disc on steel - JD single disc - 8' single disc w/ trucks  
New Farm-Built 6 ton wagon gear on steel - bale cart w/ spike  
7'x14' hayrack on Farm-Built gear - gravity flow on Farm-Built gear  
(2) Electric 5 bolt wagon gears on rubber - IH #21 manure spreader  
IHC #200 manure spreader (original) - IHC endgate seeder  
IH horsedrawn manure spreader (galvanize) - IHC 1 row cultivator  
JD 4 horse 2 row cultivator - MM 4 horse 2 row cultivator  
3 section spring tooth harrow - 2 HD section spike tooth harrow  
Kewanee #500 elevator 30' - Little Giant 40' elevator w/ power lift  
3 pt. potato plow - bobsled - flare box on steel - push lawn mower  
Bachtold weed mower - weed mower w/ 8 hp. Honda motor  
Snapper 21" lawn mower - other misc. items

### Shop & Farm Misc.

(2) 500 gal. air tanks - hyd. unit on wheels - 5.5 hp. Honda motor  
SS bulk tank - Puma air compressor w/ 5.5 hp. Honda  
SS milk strainers - hyd. bearing press - Post drill press  
300 gal. fuel barrel w/ stand - Landis #2 leather sewing machine  
Potato plow - 6" bench vise - 2" water pump - 2 elevators for bunks  
100 gal. steel water tank - 2 big bale rings for horses - pitchforks  
7 corral gates, 1 walk thru - mineral feeder - feed bunk  
4' roll chicken wire - used steel fence posts - 2 lightning rods w/ wire  
Sheet rock stilts - post pounder - several air tools - hammers - tiller  
5 new Flexeel 100' air hoses - Ridgid pipe cutter, threader & pipe wrenches  
DA Hochstetler wagon springs - bench grinder - push lawn sweep  
Earthway garden seeder - Seymour 2 wheel wheel barrow - wrenches  
2 Farmall 350 series narrow front ends - Farmall pulley mount  
Silage forks - shovels - tool boxes - misc. lumber, doors, deck boards etc.

**Auctioneers Note:** Folks, make plans to attend. This will be an interesting auction with something for everyone. Due to the size of the auction, we anticipate running 2 rings so bring an extra bidder!! Loader and personnel available on day of auction. *thanks, Randy*

**High Auction Service LLC ~ Randy High 660.216.0515 - Clair High 660.341.1687**

**listing & photos: [www.auctionzip.com](http://www.auctionzip.com)**

**e-mail: [highauction@marktwain.net](mailto:highauction@marktwain.net)**

Cash or check with proper ID. Not responsible for accidents or theft. Announcements day of sale take precedence over any advertising.

**FOR SALE:** 1986 Dodge Conversion Van, updated AC system, bed, table, swivel chairs, 68,000 miles. See to appreciate! Value \$5,000, asking \$3,400. **PH: 641-777-7197**

**FREE TO GOOD HOME:** 3 Corgi/Terrier cross males, 1 year old, outside dogs.  
**PH: 641-814-2825** 32

**FOR SALE:** New Idea 2 row corn picker, \$1,500 OBO.  
**Leave Message: 641-664-1459** 33

**FRIESEN CONSTRUCTION**  
**New Houses Remodeling**  
**Garages Electrical Plumbing Custom Cabinets**

**Arlen 664-3270**  
**Cell 641-208-0170**  
**Bloomfield, Iowa**

**FOR SALE:** Large covered wagon with brakes, just in time for Ft. Madison ride, \$1,600 OBO.  
**PH: 641-722-3230 ext. 3** 34

**FOR SALE:** 1st cutting grass alfalfa hay, square bales.  
**PH: 641-722-3881** 32

**MAST VINYL WINDOWS**  
**THERMO-PRO WINDOWS**  
**Custom Size Is Our Specialty**  
*Professional Installation Available*  
**THERMA-TRU DOORS**  
**FREE ESTIMATES**  
22172 Hwy. 63  
Bloomfield, IA 52537  
**800-206-9949**

## Estate Auction

To settle the estate of Francis Selix we will sell at Public Auction the following real estate and personal property located at 108 West 1st Street, Moulton, Iowa on

**Saturday, August 13, 2016**  
**starting at 10:00 a.m. Sharp.**

### Real estate sells at 11 a.m.



*This is an all modern 3 bedroom home with 1 1/2 baths, attached breezeway, central air, electric heat pump, attached 2 car garage that is insulated, heated and AC. This home is handicap accessible with wide hallways and doorways all on one level situated on nice level lot on paved street. This will be a rare opportunity to bid on a nice home in Moulton, Iowa that has been very well maintained. Make your arrangements and come prepared to buy.*

*Terms: 20% down at close of auction with balance due at closing upon delivery of deed and abstract showing marketable title.*  
*Taxes: Prorated to date of possession.*  
*Possession: At closing.*  
*To view this home prior to auction date contact Auction Company or Gary Harris in Moulton at 641-799-4006.*

### Household Goods, Antiques, Collectibles and Misc.

Whirlpool 30" electric range  
Kitchen Aid 21.6 cu. ft. side by side refrigerator

Whirlpool auto washer  
Whirlpool matching electric dryer  
Kenmore 21.7 cu. ft. upright deep freeze  
Small chest type deep freeze  
RCA TV  
VCR  
Tru-Test TV with DVD player  
(2) Electric portable heaters  
Round table with matching chairs  
China cabinet with glass doors, lighted  
Pie safe, not old  
Wooden utility cabinet  
Curio cabinet, lighted  
Bradbury piano  
Curved glass China cabinet  
Swivel rocker  
Round coffee table with drawers  
Loveseat sofa with reclining ends  
Lift chair  
Drop leaf table

Octagon end table  
Glider rocker  
Table and floor lamps  
Kirby upright sweeper  
Oreck XL sweeper  
Drum table with drawers  
Telephone stand  
Queen size 3 piece bedroom suite  
Rocker recliner  
Wooden quilt rack  
Some bedding  
Small roll-top desk  
Wooden desk  
Sofa hide-a-bed  
End table  
Card table and chairs  
Metal file cabinets  
Cedar lined quilt chest  
Wooden gun cabinet, holds 10 guns  
Queen size bed, complete  
Dresser with mirror  
Entertainment center  
Sofa  
Hall tree  
Coffee table  
Oak bar stools  
King size bed, complete, near new  
Patio glider  
Metal file cabinets  
Cooking utensils, dishes, pots and pans  
Lots of knick knacks  
Cuckoo clock  
Armour

### Tools and Misc.

Small garden tiller  
Snapper riding lawn mower  
Step ladder  
Hand and garden tools  
Portable LP gas heater  
12 gal. shop vac  
Rascal battery power scooter  
Pride battery power scooter

**Metal 10x18 storage building on skids, has loft, nice unit**

*Many more items too numerous to mention. Most of the furniture has been purchased new in the last few years. Has been well cared for.*

## Francis M. Selix Estate

108 West 1st Street, Moulton, Iowa

Linda Trogdon, Des Moines, Iowa and Gary Harris, Moulton, Iowa—Co-Executors for Estate  
John Martin, Bloomfield, Iowa —Attorney for Estate

**Terms: Cash or good check.**  
**\$35.00 returned check fee. Not responsible in case of accident.**  
The information in this sale brochure was obtained from the best reliable sources available to us. However, the Auctioneers or their employees will not be held liable should the above information be incorrect. Any announcement made day of sale will take precedence over any previous advertising.

### SALE CONDUCTED BY

**Don Horn Auctioneering Service**

209 East Jefferson, Bloomfield, IA  
Phone: 641-664-1385 • 641-722-3796 -Home  
641-208-0254 -Cell

**"We don't talk service, we give it."**

### Auctioneers:

Don Horn • Jerry Bish

Rodney Lawson • Josh Williams

**RENT TO OWN**

**15 YEARS Experience**

**CUSTOM BUILT PAINTED & VINYL BUILDINGS & SHEDS**

SIZES FROM 6X8 UP TO 12X24  
MANY STYLES & OPTIONAL FEATURES AVAILABLE  
FREE DELIVERY WITHIN 30 MILES

**Hillview Mini Barns**

**DAVID W. SCHROCK VM: 641-664-2842**  
15383 180TH ST. • DRAKESVILLE, IA

**FREE ESTIMATES**

# Troyer Seeds

**Cover Crops**

~ Tillage Radishes  
~ Deep Root Annual Rye Grass  
~ Hairy Vetch

**Seeds In Stock**

~ Crimson Clover  
~ Turnips  
~ Mixes, Available

**• SMALL GRAINS** ~ Improve Soil Fertility  
**• ALFALFA CLOVER** ~ Reduces Compaction  
**• GRASSES** ~ Increase Yields

12722 245th Street  
Moulton, IA 52572

Emanuel Troyer

**641-664-1381**

## LANDSCAPE SPECIALS

**8 FT. RAILROAD TIES!**

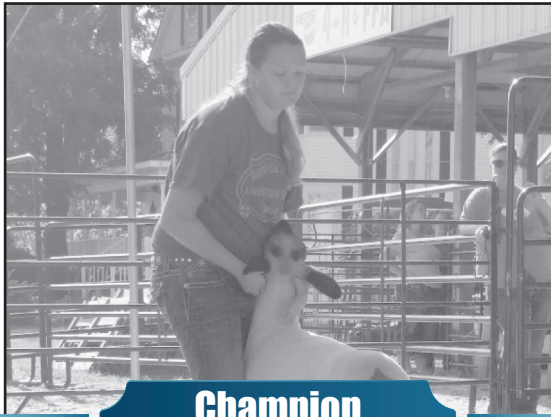
**Check them out at...**

**Spilman's Auto Parts**

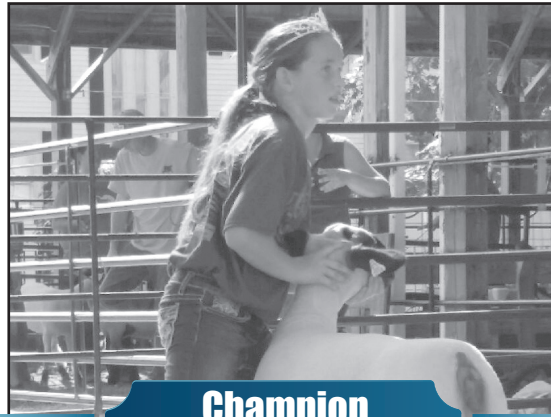
20311 Old Hwy. 2 • Bloomfield, IA

**641-664-2463**





**Champion**  
**HANNAH WHITLOCK**  
Ewe Lamb



**Champion**  
**SIDNEY AESCHLIMAN**  
Market Lamb



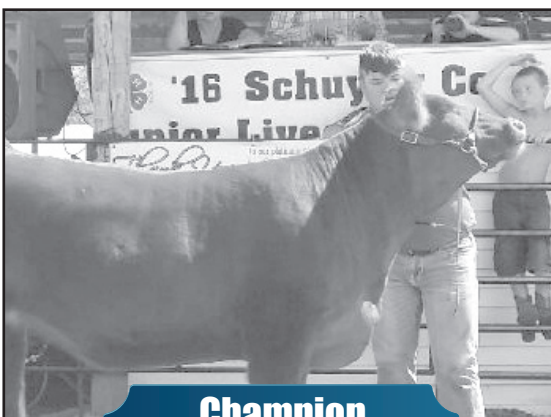
**Champion**  
**SHAELYNN SCOON**  
Ayrshire Female

# '16 QUEEN CITY PIONEER DAYS AND JUNIOR LIVESTOCK SHOW RESULTS

CONGRATULATIONS TO ALL PARTICIPANTS.  
THIS IS ONLY A PARTIAL LISTING!



**Reserve Champion**  
**MAKINLEY AESCHLIMAN**  
Market Beef



**Champion**  
**WYATT HOMER**  
Market Beef



**Reserve Champion**  
**RILEY VEATCH**  
Female



**Champion**  
**ASHLYN LAWS**  
Female







# LARGE "ABSOLUTE" MACHINERY CONSIGNMENT AUCTION

**EVERY ITEM SELLS AT  
"ABSOLUTE AUCTION" WITH NO  
MINIMUMS OR RESERVES!**

## MONDAY, AUGUST 22, 2016 • STARTING AT 8:00 A.M. CST

SULLIVAN AUCTIONEERS, LLC'S MACHINERY LOT, LOCATED ALONG US HWY. 136, 1½ MILES EAST OF HAMILTON, IL



**THIS IS AN ABBREVIATED LISTING...GO TO OUR WEBSITE FOR FULL LISTING,  
OWNERS' CONTACT INFO. & COLOR PHOTOS:**

**www.SullivanAuctioneers.com**

**CHECK WEBSITE OFTEN, AS LISTING WILL BE UPDATED DAILY!**

### CONSIGNMENTS INCLUDE:

**TRACTORS:** (2) C-IH 580 QuadTrac; C-IH 450 RowTrac; C-IH 550 QuadTrac; (2) JD 9530 4wd; JD 9520 4wd; (2) C-IH 485 4wd; JD 8360R; JD 8345R; JD 8335RT; JD 8320R; C-IH Magnum 310; C-IH Magnum 235; JD 7280R; C-IH Magnum 210 CVT; JD 8285R; JD 8430; JD 8420; JD 6190R; JD 6170R; JD 6150R; JD 6140M; C-IH MX270; C-IH MX240; Cat 95E track; JD 8110 MFWD; JD 8200 MFWD; JD 8100 MFWD; (4) C-IH Maxxum 125 MFWD; Kubota M108S MFWD; C-IH MXU110 MFWD; C-IH CX100 MFWD; C-IH 7140 MFWD; JD 7400; JD 4555; JD 4455; JD 4960; (2) JD 4840; JD 4640; (2) JD 4240; (2) JD 4430; JD 7520 4wd; Case 2870 4wd; Versatile 946; C-IH 5250; IH 5288; IH 1486; MF 1100; JD 2640; JD 4020 diesel; C-IH Farmall 31; JD 4610. **COMBINES & HEADS:** JD S680 4wd; JD S670; C-IH 7230; JD 9870; JD 9770; JD 9660; (2) JD 9560; JD 9750; JD 9650; (3) JD 9500; JD 9400; (2) C-IH 2388; MF 750; Capello 18R20" chopping; MacDon 40' flex draper; JD 612C 12R20"; (4) JD 612C 12R30"; JD 640FD; JD 635F flex; JD 635F; Drago N6 6R30"; Geringhoff FD1230 12R30"; Geringhoff 8R30"; JD 608C 8R30"; Geringhoff RD800/B; C-IH 3408 8R30"; JD 893 8R30"; JD 693 6R30"; JD 643 6R30" poly; (2) JD 925F; C-IH 1020 30"; C-IH 3208 8R30"; several head carts. **PLANTING:** JD 1770NT 16R30"; Kinze 3600 12/23; JD 750 15' no-till drill; Beline 3224 air seeder. **SPRAYERS:** JD 4940; JD 4830; JD 4730; JD 4720; JD 4920 w/ dry box; TerraGator 1803 w/ dry box. **TILLAGE:** Salford 41' VT; Landoll 7431 VT; Aerway 30' VT; (2) Salford 7-shank 3 pt. rippers; C-IH 870 disc ripper; McFarlane RD-4025-RB reel disk; JD 630 disk; JD 2210 28' field cult.; DMI 5-shank disc-ripper; C-IH 496 24' disk; JD 980 28' field cult.; JD 1710A 9-shank disc-chisel; GP 2332SC 32' seedbed conditioner. **GRAIN HANDLING:** Unverferth 1310 grain cart; J&M 1000-20 grain cart; Brent 880 grain cart; J&M 875 grain cart; Kinze 840 grain cart; Demco 750 grain cart; EZ Trail 710 grain cart; (2) Kinze 640 grain carts; Kinze 600 grain cart; Lundell 2500 gravity wagon; Brent 740 gravity wagon; (2) Brent 444 gravity wagons; Several gravity wagons; (3) ADS 4-box bulk seed buggies; Several augers. **TRUCKS & TRAILERS:** (2) IH 9400i day cabs; IH Eagle 9200; KW T300 service truck; Volvo day cab; White semi; IH 9200 tandem grain truck; Stoughton 40' hopper bottom; (3) Wilson PaceSetter DWH500 hopper bottoms; Wilson 41' hopper bottom; Alumatech 39' alum. dump trailer; Trailstar 39' frameless dump trailer; IH 9400 grain truck; Freightliner FLD120 dump truck; (2) IH 4900; Freightliner tandem grain truck; Chevy C70 grain truck; Chevy C65 grain truck & other grain trucks; Chevrolet 3500 4wd dually pickup; Ford F-550 w/ feed bed; Kaufman 36' GN flatbed trailer; 30' GN triple axle flatbed trailer; Barrett 7'x 24' alum. GN livestock trailer. **HAY EQUIPMENT:** JD 568 baler; JD 567 baler; JD 956 moco; JD 946 moco; JD 1219 moco; Vermeer R2800 hyd. hay rake; Miller Pro 7914 hay merger. **FARM EQUIPMENT:** Oxbow pull-type dry fert. spreader; JD CX20 batwing; (2) JD HX15 batwings; Bush Hog 2615L batwing; Schuler 220BF feed wagon; Limbsaw hyd. driven chainsaw; JD 4239T diesel power unit. **CONSTRUCTION EQUIPMENT:** JD 490 excavator; Case 580B backhoe; JD 326E skid loader; JD 320E skid loader; Bobcat 863 skid loader; Eversman 3-yard dirt scraper; Long 1199 3 pt. backhoe. **ALSO SELLING LARGE SELECTION OF AMS EQUIPMENT INCLUDING 2630 DISPLAYS, ETC.**

### AUCTIONEERS' NOTE

Be sure to attend our large "ABSOLUTE" unreserved equipment auction Monday, August 22 at 8:00 A.M. Sharp! Every item sells unreserved to the highest bidder!

Owners' names and telephone numbers are available on our website at **www.sullivanauctioneers.com**. Feel free to give our consignors a phone call, as they would be glad to answer any questions you have.

Items from several closeouts and retirements, plus many other pieces of good used farm machinery & construction equipment from individuals, dealers and secured creditors.

Approximate sale order will be posted online closer to sale date. Loading dock and auction personnel available to assist in loading out. Live internet bidding on the major items!

**BUYER REGISTRATION ON SUNDAY FROM 8:00 AM TO 5:00 PM AND SALE DAY BEGINNING AT 6:00 AM.** We encourage you to pre-register on Sunday to beat the crowd and be ready for the 8:00 AM starting time. Buyer registration will be video taped.

Everything must be settled for in full sale day. Not responsible for accidents, errors or omissions. Announcements sale day take precedence. List subject to change.



## KEOSAUQUA SALE CO.

20511 Hwy. 1, Keosauqua, IA

### Results from August 6<sup>th</sup>

Butchers.....\$47.00-\$54.00/cwt	over 110 lbs. \$152.00-\$158.75/cwt
Sows.....\$35.00-\$53.75/cwt	Ewes.....\$50.00-\$68.50/cwt
Lambs	Kid Goats 40-70 lbs.....\$67.50-\$160.00/hd
under 80 lbs \$158.00-\$197.00/cwt	Cull Nannies..\$85.00-\$195.00/hd

#### STEERS

BLK.....307.....178.00
RED.....551.....163.00
BLK.....649.....158.00
BLK.....724.....150.75
MIX.....770.....145.50
MIX.....848.....140.10

#### HEIFERS

BLK.....495.....161.00
BLK.....543.....159.50
BLK.....617.....150.50
BLK.....693.....143.00
BLK.....881.....129.50

#### Pound Cows

Low yielding.....\$64.00-\$72.00/cwt	High yielding... \$76.00-\$80.00/cwt
Pound bulls.....\$94.00-\$106.00/cwt	

**REGULAR SALE**  
**Saturday, August 13<sup>th</sup>**

**REGULAR SALE**  
**Saturday, August 20<sup>th</sup>**

**SPECIAL CATTLE SALE**  
**Saturday, August 27<sup>th</sup>**

Thank You For Your Business!

For More  
Information Contact:

#### Selling Times

Hogs.....9:30 a.m.
Sheep & Goats.....10:00 a.m.
Outside Merch.....11:00 a.m.
Cattle.....Noon

Keosauqua Sale Co.  
319-293-3508

Bill Goehring  
641-919-9365

[www.keosauquasaleco.com](http://www.keosauquasaleco.com)

*We'll Get You On The Road With Our...*  
**Complete Trailer  
Repair & Accessories.**

Wood Rot, Rubber Roofs,  
Siding Repairs, Insurance Work.



*Boat Repairs • Boat Accessories  
• Pickup Accessories*

**Whitney RV & Marine**

☎ 641-684-8284 VISA

9418 151st Ave., Ottumwa  
Mon. - Fri. 8 a.m. - 5 p.m.

## Scotland County LIVESTOCK AUCTION

P.O. Box 111 • Hwy 15 North • Memphis, MO  
**660-465-7213 • Jerry & Barb Blomme**  
**660-341-0069 • Grant Blomme**

### SPECIAL CATTLE SALE

**Saturday, August 13<sup>th</sup>**  
**Outside at 12:00 PM**  
**Cattle at 12:30 PM**

#### Early Listings:

22 Head Partial Local Herd Dispersal Consisting of  
Mated to LBW Red Angus Bulls, start Calving Sept.  
15th for 45 days consisting of:

- 14 Black Cows, some with calves at side, bred black
- 15 Head Red Angus 4 to 5yr olds
- 7 Head Red Angus Middle Aged Cows
- 22 Head Black Strs. & Hfrs., 400-500 lbs.
- 25 Head Char. X Bulls & Hfrs., 500 lbs.
- 15 Head Black Strs. & Hfrs., 400 lbs.
- 25 Black X Strs. & Hfrs., 500 lbs.

Check website for early listing updates and picture.

**RESULTS OF DAIRY SALE, WED., AUG. 3<sup>RD</sup>:** Springers: \$835 to \$1525; Fresh Cows: \$700 to \$1025; Open Heifers: 290 lbs. \$500; 595 lbs. \$885, 785 lbs. \$1075; Holstein Steers: 288 lbs. \$150, 355 lbs. \$146, 433 lbs. \$132, 447 lbs. \$133 Hol. X 588 lbs. \$118, 633 lbs. \$107; Started Calves under 300 lbs: \$250 to \$350 per head; Veal Calves: \$160 to \$225. Thank you to all buyers and consigners.

[www.ScotlandCountyLivestock.com](http://www.ScotlandCountyLivestock.com)



**HOLY MOLY!**  
**Look at my Pfister  
bumper crop!**

Call John today, for  
all your seed, feed  
& fertilizer needs!

## CROP SERVICES, INC

John & Kathy Bos, Owners  
Drakesville, IA • 641-722-3293

Nutrena

Pfister

**FOR SALE:** 6 ft. Bushhog  
brush cutter, trailer type  
with hard wheels, \$600.  
New Pioneer fore cart with  
Torsion axles, fenders,  
hydraulic brakes, bench seat  
and shafts on rubber, \$1,050.  
Yoder's Repair 1 mi. N. of  
Belknap.  
PH: 641-722-3230 33

**FOR SALE:** Jersey cross  
family cow, very gentle &  
Jersey baby heifer. If doesn't  
sell by August 13th will be  
at Ed Mast Sale.  
PH: 641-664-1671 33

**BLOOD DRIVE:**  
Community 1st Credit  
Union will host a  
community blood drive  
from 9:00am to 12:30pm on  
Friday, August 19 at 301 E.  
Franklin, inside MVRBC  
Donor bus. To donate,  
please contact member of  
Bloomfield Staff at 641-  
664-2885 or visit [www.bloodcenterimpact.org](http://www.bloodcenterimpact.org) and  
use code 5116 to locate the  
drive.

## The Car Spa

Auto Body Shop  
Auto Glass  
Automotive Restoration  
Hand Detailing Service

**KARR  
COLLISION  
CENTER  
& AUTO DETAILING**

Shawn Scott, Owner  
701 Karr Ave. • Bloomfield, IA  
641-664-1024

CAR DETAILING GIFT  
CERTIFICATES AVAILABLE!



**FOR SALE:** 3rd cutting  
small square bales, 65 lbs.,  
JD baler & accumulator, can  
load you right in the field.  
PH: 641-777-7815 34

**TRACTOR FOR SALE:** JD  
3020 gas 70 HP, 4 cyl., 704  
hours, enclosed cab, Koyker  
loader spear, \$9,000.  
PH: 641-208-6162 34

**FOR SALE:** 50" Snapper  
zero turn mower. 24 horse  
engine, good condition,  
1,000 hours.  
PH: 641-929-3007 34



## Fox Valley Welding

No matter what size the project customer  
satisfaction is always our first priority.

Tig & Aluminum  
Welding  
Milwork

Lathe  
New Steel

Fabricating  
CNC Machining  
CNC Cutting

Hours: M-F 8-5:30

641-656-4684 • 12190 East Hwy. 2 • Milton, IA

**Lynch Boys You Betcha Online Only**

## AUCTION

Download the "Lynch Boys" App today  
from your smartphone device  
or go to [www.lynychboys.com](http://www.lynychboys.com)  
to place your bids!!



**Bidding starts Aug 4th and ends August 15th at 7 p.m.**



Mono Mixer 1210 feed wagon  
1998 31' dual tandem H&H gooseneck  
deckover trailer, dovetail, dual jacks  
1997 Trailerman 20' deckover flat deck w/ramps  
2 wheel car dolly  
2011 Chevy 3500 box van, duramax, 238,000 miles  
Ford 8000 delivery truck 5.9 cummins  
Poly 3 ton bulk bin  
(4) rolls 42" woven wire 100' rolls  
16' bumper hitch stock trailer  
4x8 steel enclosed trailer  
New Idea manure spreader  
Mulkey 16' hay elevator  
4 hole mirafount livestock waterer  
(8) unit Surge milking station  
(2) Richie livestock waterers  
Lil spring 3100 livestock waterer  
4-5 ton bulk bin  
misc lots of numerous gates and panels  
John Deere 655B crawler dozer  
runs good 5485 hours  
John Deere 540 single wheel rake  
6x8 single axle tilt bed trailer  
(2) 2015 23' boat trailer, like new, new tires

2015 24' boat trailer, like new, new tires  
21 ft Bayliner cuddy cabin 5.7 motor,  
w/ full roller trailer  
2015 Besler 3050 bale bed, short bed  
John Deere 2002 325 skid loader, heat, ac, cab,  
solid tires, 3700 hrs, 100 hrs on new engine  
John Deere 318 lawnmower, 42" deck, 873 hrs  
2002 Ford Toterhome, F800, diesel,  
10 speed, air brakes



**Terms:** All items are sold "as is". All items must be paid for prior to removal.

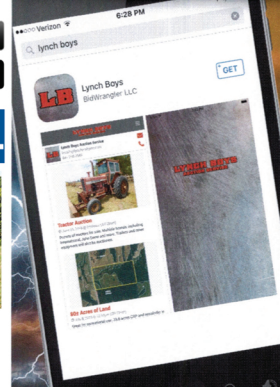
All announcements made day of sale take precedence over ad. Not responsible for accidents or theft.

**WWW.LYNCHBOYS.COM**

Bloomfield, IA • 641-208-3649

Ryan Anderson 641-226-1884 • Zac Sprouse 641-777-3683

**Front Row  
GUARANTEED**



**Lynch Boys  
Auction Service**

641.664.2275  
[WWW.LYNCHBOYS.COM](http://WWW.LYNCHBOYS.COM)





# BLOOMFIELD LIVESTOCK MARKET

Wed., August 17th ..... NO SALE

Wed., August 24th ..... Special Feeder Sale ..... 11:00 AM

**TUESDAY POUND COW SALE EVERY WEEK**  
10:30 a.m. Fat Cattle, Butcher Cows, Bulls, Veals

**SALE BARN OPEN UNTIL 9:00 PM**  
**EVERY MONDAY TO RECEIVE LIVESTOCK**

Phil Schooley ..... 641-664-3450  
Ron Schooley ..... 641-777-0302  
Roman Schooley ..... 515-450-3685

*We appreciate your business!*

Tyler Schooley ..... 641-208-5442  
Barn Phone ..... 641-664-2435

**HWY. 63 NORTH • BLOOMFIELD, IA**

FOR SALE: 2002 Ford Taurus SEL, black with gray leather interior, moon roof, new rotors, brakes, ball joints & wheel bearings up front, like new rubber, cold air, 152,000 miles, runs great, \$1250.

PH: 660-341-7263

31

BRIDGE PLANKS FOR SALE: All lumber is creosote treated, 3x12 up to 24', 4x16 up to 30'. 12x12 beams various sizes and lengths available. Also railroad ties up to 16'. 30' Pony truss structures with components.

PH: 660-216-7168

33

FOR SALE: 2005 Ford Escape Limited, 4x4, tan with gold leather interior, moon roof, remote start, like new rubber. Other than a little hail real good condition. \$3,250.

PH. 660-341-7263.

31

Central Boiler certified Classic Edge OUTDOOR WOOD FURNACE. The perfect combination of performance and value. Call Today! Backyard Depot 641-722-3641

32

FOR SALE: Firewood. Get it now while the gettin' good, at "Summer" prices! Cut to length \$25.00 for full size pickup. 48" bundles \$5.00. We can also fill wagons or trailers. BEECHY SAWMILL, 4 miles West of Drakesville, 16611 Eagle Blvd.

PH. 641-664-2437.

44

FOR SALE: 3 month old Riccar Retriever vacuum, \$300 OBO. Also, self propelled Kirby vacuum with shampooer, \$125.

Call: 660-988-5711

32

## Pork Production

Fox Ridge Pork, a farrow to wean farm has an immediate opening in its Gestation Dept. This position is located in the Bloomfield, Iowa area. We are looking for an individual with experience in sow breeding, that can work in a fast paced team environment. Further, this employee must be willing to hold the biosecurity of the farm in the highest regard. Fox Ridge prides itself on its long term work force it maintains, through hiring individuals with a good work ethic, are reliable, and respect their fellow co-workers. Salary is commensurate with qualifications, experience and desire. Average of 45 hour work week with rotating weekends. Work clothing provided.

**Fox Ridge Pork**  
Ph.: 641-680-2292  
Fax: 641-682-3637  
Email: foxridgepork@gmail.com

## Post Frame Building Kits



- Buy Direct & Save
- Fast Service
- Premium Products
- Professional Contractors Available

**A W Metal LLC**  
**Metal Roofing Headquarters**

641-664-3990 • awmetal.net

**WD 63 PIPE & STEEL**

PIPE SIZES 3/4" - 60" any size or thickness

BEST PRICES AND UNMATCHED QUALITY!

HEAVY GATES AVAILABLE! 4' TO 18' LONG 5, 6, 7 BAR

**NEW & USED PIPE**  
GALVANIZED ROAD & CULVERT TUBES 8"-30" PLUS SIZES AVAILABLE  
SEEP COLLARS

**BIG SALE ON CORRAL PIPE & PANELS!!**

660.216.9061  
660.341.4753

JUST SOUTH OF LANCASTER, MO OFF HWY. 63

**RAILROAD TANKERS & BOX CARS**

INSTALLATION & ESTIMATES AVAILABLE • LIVESTOCK HANDLING EQUIPMENT

## THIRD ANNUAL BENEFIT

# AUCTION

**SATURDAY AUGUST 20, 2016 9:30**

@ ED'S USED MACHINERY  
Memphis, MO

## Help Support



*the*  
**Clinic for**  
**Special Children**

The Clinic for Special Children is a non-profit medical and diagnostic service for children with inherited metabolic disorders

**BAR-B-Q MEAL**  
Chicken Leg & Thigh  
Pork Sandwich  
Fresh-cut French Fries  
Soft-serve Ice-cream  
Doughnuts & Pie  
& more  
Start serving at 10:30



**Partial Listing:**  
10x12 Mini Shed  
Chicken Bar-B-Q Grill  
4 Big Square Alfalfa Hay  
4 Big Square Alfalfa/Grass Hay  
New Danuser Brand Skid Loader  
Pallet Fork w/48" Forks, 4500lb cap.  
New Hoover Skidloader  
Dirt Bucket (any size)  
1 day Pontoon Rental  
Quilts & Crafts  
Theme Baskets  
Indoor & Outdoor Furniture  
Gift Certificates  
& Much More....



**New, quality donations are always appreciated!**

Donations can be dropped off at Ed's Machinery the week of the sale or, for other pick-up locations and questions contact:  
Brian Burkholder 660.342.2733 - Harlan Burkholder 660.341.4113  
Ed Lynn Good 660.341.3040 - Matt Witmer 660.342.0130  
Nevin Horning 660.216.0196

Candy Drop  
by airplane  
@ 9:30  
Bounce House  
all day



**YODER Lumber**

Trusses Engineered and Designed to Your Specs

**Full Line of Building Materials**

**Paslode Guns & Nails**

Bring your plans in for a FREE ESTIMATE

**DAYSTAR**  
High Performance Natural Lighting Systems

**OWENS CORNING**  
INNOVATIONS FOR LIVING™

**Andersen**

**C.H.I.**  
OVERHEAD DOORS

17893 212th Street • Bloomfield, IA 52537  
641-722-3605 • Mon.-Fri. 7 AM to 5 PM