

Mid-Michigan Buyers Guide

SUNDAY, AUGUST 28, 2016

Serving Clare, Gladwin, Gratiot, Isabella, Montcalm, & Southern Roscommon Counties

Morning Star Publishing Company powered by digitalfirst

WITBECK'S AND STEVE'S ECKRICH LABOR DAY & BACK TO SCHOOL SAVINGS!

SALE DATES:
MONDAY AUGUST 29TH -
MONDAY SEPTEMBER 5TH, 2016

MEAT DEPARTMENT SPECIALS



5/\$5.00

**ECKRICH BOLOGNA
REGULAR AND THICK
14 OZ
MIX AND MATCH**



5/\$5.00

**ECKRICH FRANKS
REGULAR AND CHEESE.
12 TO 14 OZ
MIX AND MATCH**



2/\$4.00

**ECKRICH
SMOK-Y LINKS
ASST. FLAVORS
8.3 OZ**



2/\$5.00

**ECKRICH
6-1 GRILLING LINKS
13 TO 14 OZ
ASST. FLAVORS**



\$4.99

**ECKRICH SMOKED AND
POLISH FAMILY PACK
SAUSAGE
42 OZ**



\$4.99

**ARMOUR
SUMMER SAUSAGE
24 OZ.**



2/\$4.00

**ARMOUR FUN KITS
WITH DRINK
ASST. KINDS**



5/\$5.00

**ARMOUR
PEPPERONI
2.50 OZ.**



5/\$5.00

**ARMOUR
LUNCHMAKERS
ASST. FLAVORS**

DELI SPECIALS



\$2.99
LB.

**ECKRICH PREMIUM
COOKED HAM**



\$5.49
LB.

**ECKRICH PREMIUM
OVEN ROASTED
TURKEY**



\$4.99
LB.

**ECKRICH PREMIUM
HARD SALAMI**



\$4.99
LB.

**ECKRICH PREMIUM
HONEY OR
VIRGINIA HAM**

Available at

Steve's Country Market

Hours: Mon - Sun 8-8
3170 North Clare Ave.,
Harrison
(989) 539-3110



Store Hours:
Seven Days A Week
6:30 am - 11 pm
1026 McEwan
Clare
(989) 386-7591

#1 in Customer Satisfaction

BUMPER TO BUMPER
Certified Service Centers

\$15.95
Oil Change
Most cars & trucks
(some restrictions apply)

Celebrate Labor Day
with 20% Off
Auto Repair
with coupon only

FREE Brake & Safety Inspection

Dagwood's
Auto Repair
"Common Sense Auto Repair"
30 YEARS EXPERIENCE

524 W. Fifth St.
CLARE
989-386-8000
M-F 8-5, Sat. 9-12
After Hours by Appt.

1001 N. Fancher
MT. PLEASANT
989-772-9500
M-F 8-5

VISA MasterCard ASE CERTIFIED



GET MORE BANG FOR YOUR BUCKS

Quality New & Pre-Owned

- RIFLES • SHOTGUNS
- SCOPES • AMMO
- Cross Bows
- Comp Bows

FREE
Boresite With Purchase
Of Rifle Or Scope

ECONOMICAL PRE -OWNED ITEMS SAVE EXTRA CASH

GLADWIN TRADE & SALES
1-989-426-6811 • 1739 N. State St. (N-M18) • Gladwin

Thank you
for not driving
buzzed last night.
You saved my life.

Liz Osaki

SAVE A LIFE. DON'T DRIVE HOME BUZZED.
BUZZED DRIVING IS DRUNK DRIVING.

Ad Council U.S. Department of Transportation

Steve's Country Market

989-539-3110 3170 North Clare Ave., Harrison 44 Feet of Old Fashioned Meat Counter with Good Old Fashioned Service

Hours: Sun. - Mon. 8-8 Bridge Card & Wic Accepted

Sale Dates: August 29 - September 4, 2016

Top Quality Meats At Rock Bottom Prices! 100% Satisfaction Guaranteed Michigan Lottery and ATM Machine

stevescountrymarket.com

Fresh Meat, Seafood & Deli Items

GROUND CHUCK FAMILY PACK \$2.69 LB.	WHOLE NEW YORK STRIP LOIN \$3.69 LB. SLICED FREE!	USDA CHOICE T BONE STEAKS \$7.99 LB.	BLACK CANYON ANGUS NEW YORK STRIP STEAKS \$8.99 LB.	FRESH GROUND ROUND \$3.99 LB.
WHOLE BONELESS PORK LOINS \$1.99 LB. SLICED FREE!	CENTER CUT PORK CHOPS REGULAR OR STUFFED \$1.99 LB.	STEVE'S OWN MARKET MADE BRATS \$3.69 LB.	STEVE'S OWN MARKET MADE BEEF PATTIES \$4.49 LB.	BAR-S HOT DOGS Jumbo Franks 99¢ EA.
POLLOCK FILLETS 10 LB. BOX \$15.99 EA.	TILAPIA FILLETS \$3.49 LB.	COD LOINS \$5.99 LB.	ECKRICH HARD SALAMI \$4.99 LB.	ECKRICH DELI HAM \$2.99 LB.
			SANDWICH SWISS CHEESE \$4.99 LB.	PROVOLONE CHEESE \$4.99 LB.

Fresh Produce	Fresh Dairy And Frozen	Grocery
MICHIGAN WHITE POTATOES 10 LB. BAG \$2.49 EA.	YODER'S SHREDDED OR BAR CHEESE 8 OZ. 2/\$4.00	NABISCO SNACK CRACKERS 7.5-10 OZ. 2/\$5.00
WHOLE SEEDLESS WATERMELONS \$3.49 EA.	COLE'S GARLIC BREAD SELECT VARIETIES 10.5-16 OZ. \$1.99 EA.	JIF PEANUT BUTTER 16 OZ. \$1.99 EA.
DOLE SALADS SELECT VARIETIES 5-12 OZ. 2/\$5.00	4 QUART PAIL ICE CREAM \$4.99 EA.	SWEET BABY RAY'S BBQ SAUCE 18 OZ. \$1.29 EA.
LOCALLY GROWN SWEET CORN 8/\$2.00	NORTHSTAR NOVELTIES VARIETY PACK 40 CT. \$12.99 EA.	BAREFOOT WINES 750 ML. \$5.49 EA.
		FOLGER'S COFFEE 24.2-30.5 OZ. \$6.99 EA.
		LAY'S POTATO CHIPS 9.5-10 OZ. BUY ONE GET ONE FREE
		BUD AND BUD LIGHT 15 PK. CANS \$9.95 EA. PLUS DEPOSIT
		DASANI WATER 24 PK. \$3.99 EA.

While supplies last. Not responsible for printing errors.

FREE ACTIVATION
\$25.00 Value
Good thru 8/31/16

\$5.00 CHARGERS
Good thru 8/31/16

1028 S. Mission, Suite 3
Mt. Pleasant, MI 48858

Join the **Boost Family** plan and get up to 5 lines as low as

\$95 PER MONTH

Good thru 8/31/16

boost mobile

1028 S. Mission St. • Suite 3 • Mt. Pleasant, MI 48858
Hours: Mon-Sat 10am - 8pm • Sun 1pm - 5pm

NEXT TO JON'S COUNTRY BURGERS
989-317-8500

ELITE TRANSPORTATION
of Michigan

989-400-0070

NEED A RIDE? WE CAN HELP!
LIFT BUS AVAILABLE

Airline Vouchers Accepted
Airport Pick Up/Drop Off
Ski Resorts
Sporting Events
Casino Trips
Weddings
Senior Transport
Medical Transport
Corporate Accounts
Party Buses
Bar Runs
Golf Course Trips

*Available for all of your transportation needs!
No distance too far!*

Attention Bowlers.

Gateway Lanes
in Clare League Openings

Mon & Wed Men
Tues & Wed Ladies
Tues & Sun Co-Ed

1410 McEwan • Clare MI 48617
Call 989-239-9550 or 989-239-9551 for Further Information.
www.gatewaylanes.com
Like Us On Facebook

Gateway Lanes
& Lounge

MAKE YOUR GARAGE SALE A SUCCESS

With A Classified Ad

Country Corner MARKET

Bulk Food • Deli
2 Miles South of Rosebush • 2020 North Mission
Mt. Pleasant • 989-433-8200
8:30am-5:30pm, Monday-Thursday
8:30am-7:00pm, Friday • 8:30am-4pm, Saturday

Large Selection of Freezer Food at Discounted Prices

SPECIALS OF THE WEEK

Walnut Creek **Horseradish Cheese**
Sale **\$2.59 lb.**
Reg. \$3.59 lb.

Walnut Creek **Honey Ham**
Sale **\$2.79 lb.**
Reg. \$3.79 lb.

MORE SPECIALS

Walnut Creek **Thick Slice Bacon** 16 oz. **\$3.29 ea.**

Walnut Creek **Buttermilk** Quart **\$1.99**

Walnut Creek **Applesauce** Qt. • All varieties **\$2.99 ea.**

Walnut Creek **Potato Chips** Single Serve **JUST 65¢ ea.**

We have **Canning supplies** for all your canning needs!!
Mums are in!!
\$7.49 ea.

Coffee of the week: Mocha Java

Husky
METAL ROOFS INC.
CLARE, MI 989-386-5100

FALL SPECIAL
Book Before
October 1st and Save 10%

Mobile Home/Modular Roofing Solutions

12x60 Starting at \$4195
14x70 Starting at \$4695

www.huskyroofs.com



110th ANNUAL Farwell Labor Day Celebration September 2nd - 5th

Friday, Sept 2nd

3:00pm Midway Opens featuring
"Beers & Jessop's Amusements"
3-8:00pm Enter Exhibits
5:00pm Entertainment on the
Open Stage

A Special Thanks to The Village of Farwell,
DPW, Surrey Township Fire Department,
Dent's Dumpsters & MMR

Saturday, Sept 3rd

11:00am Enter Exhibits
12:00pm Midway Opens
12:00pm Petting Zoo Opens
12:00pm Pixie's Ponies
(by the Petting Zoo)
12-3:00pm Entertainment Stage Opens
(contests, performers & fun)
1:00pm Carnival Bingo
1 & 3pm Gordon the Magician
(under the Pavillion)
4:00pm Carnival Bingo
4:00pm Kids Games & Activities
(at the Entertainment Stage)
6:00pm Red Hat Strutters
(at the Entertainment Stage)
7:30pm USA Figure 8 Derby
Dusk Fireworks Display
(following the Derby)

Sunday, Sept 4th

9am-Noon Judge Exhibits
12:00pm Midway Opens
12:00pm Petting Zoo Opens
12:00pm Pixie's Ponies
12:00pm Free Senior Bingo
1:00pm Carnival Bingo
1:00pm Steven D and the Keys
(on the Entertainment Stage)
4:00pm Carnival Bingo
4:00pm Karaoke Contest
(on the Entertainment Stage)

This Schedule subject to change without notice

Monday, Sept 5th

8:30am Parade Registration
(at Little League Field)
10:00am Parade (down Main Street)
(Lineup at Isabella Bank)
Parade Theme "Legos"
11:00am Midway Opens
11am-1pm FUMC Pulled Pork Dinner
(at the Farwell United
Methodist Church)
12:00pm Kids Games
(at the Entertainment Stage)
1:00pm Kids Bicycle Drawing
2:00pm Pick Up Exhibits
2-4:00pm Entertainment on the
Open Stage
4:00pm Events Conclude

KARAOKE CONTEST

Entry & Prize Information

\$5.00 - Kids (5-15)
\$50.00 - Grand Prize
\$10.00 - Adults (16 & up)
\$100.00 - Grand Prize

COYNE OIL & PROPANE

"Our Customers are our Warmest Friends"
Guaranteed On Time and Certified
FREE TANK SETS
Clare • Gladwin • Harrison • Evart
800-386-7731
989-386-7731

RESIDENTIAL • COMMERCIAL
INDUSTRIAL • FARM

This page made possible by these caring Businesses



SUMMER SPECIAL
\$35.00
18 Holes with Cart
Monday-Friday

SENIOR SPECIAL
\$25.00
18 Holes with Cart
Monday-Friday

1251 Clubhouse Drive
Farwell
(989) LUV-GOLF
588-4653
(989) 588-4424
www.golfeagleklen.biz

- Golf Outings
- Leagues
- Pro Shop
- Membership
- Deluxe Driving Range

WELCOME TO
**FARWELL'S
LABOR DAY
CELEBRATION!**

See our flyer for our Store Specials!!

Carrows

SUPER MARKET, INC.
FARWELL, MICH
STORE HOURS MONDAY - SUNDAY 8AM - 9PM
Phone: 588-6682 Fax: 588-9399

3 MILES WEST OF FARWELL ON M115
• FOOD STAMP SHOPPERS WELCOME
• PACKAGE LIQUOR • WE ACCEPT WIC COUPONS
• WESTERN Union Now Available

We also offer Fax Service and Money Orders

Major Credit Cards accepted. See store for details.
VISA MasterCard DISCOVER
NYCE WIC

JBC

GOLF CARTS

SALES • SERVICE • RENTALS

989-339-7215

YAMAHA ClubCar EZGO

www.JBCGOLFCARTS.com



WELCOME TO
FARWELL'S LABOR DAY CELEBRATION!

NAPA AUTO PARTS

FOSTER AUTOMOTIVE
270 East Ludington Dr.
Farwell, MI 48622
989-588-6151

Fairchild & Green Realty

Serving Clare County since 1982.
We make property MOVE!

274 Lake George Avenue,
Lake George, MI 48633
(989) 588-5026
Fax (989) 588-5046

www.fairchildgreen.com

Safe. Sound. Secure.® Since 1916

Save money with Auto-Owners Insurance
Multi-Policy Discounts!

Call or visit us today!

TAYLOR INSURANCE AGENCY

Farwell • 989-588-8055
Jan Owens, Agent

Auto-Owners Insurance

"A SIGN OF TRADITION SINCE 1947"

Thinking of Selling?

575 East Main Street Farwell

Contact Us:
Donna Browne, Charles Gaskill,
Cheryl Marshall, Alan Reiss,
Herschel Reiss

**REISS
REAL ESTATE**

- Acreage
- Homes
- Cottages
- Farms

989.588.9621
800.642.3708

reissrealestate.com

Palmer's

HARDWARE

Auto parts
Car Care

989-588-9951

Kelly Palmer 126 W. Main St.
Manager Farwell



KAPS KOINS, LLC, owned and operated by Tom and Valencia Kapuscinski along with their three children, is a one stop shop for coins, currency and precious metals. Located in downtown Clare, next to the Whitehouse Restaurant and Ideal Theater, they are open from 9:30 am until 5:30 pm Mon.-Fri. and from 10 am until 2 pm on Saturdays. We can also make house calls if necessary.

Visitors to **KAPS KOINS, LLC** can find numerous coins and currency along with a vast array of supplies, reference books and other periodicals for the novice collector or the experienced collector.

So if you're looking for Integrity, Honesty and Peace of Mind from your local coin dealer, come see us at **KAPS KOINS, LLC**.

Wheat 1¢ 1909-1958 	10¢, 25¢ & 50¢ 1964 & Earlier 	Morgan & Peace Silver Dollar \$1 	Kennedy Half's 1965-1970 	Proof Sets & Mint Sets 	Sterling Silver 	Scrap Gold Jewelry & Fine Gold Jewelry 10k/18k 	Old Pocket Watches
----------------------------------	-------------------------------------------------	----------------------------------------------------	----------------------------------------	---------------------------------------	----------------------------	------------------------------------------------------------------	-------------------------------

KAPS KOINS LLC

ANA Member



Located across from Doherty Hotel

Buyer & Seller of Silver & Gold Open: M-F 9:30-5:30 Saturdays 10:00-2:00 or by appointment

RARE COINS WARRANT HIGHER PREMIUMS

Contact Tom today at
989-386-6500
611 N. McEwan Street
Clare, MI 48617

INTEGRITY, HONESTY & PEACE OF MIND!

Lambert's Meat Market and Bakery

Taste the difference "FRESH" makes!

624 E. Cedar Ave., Gladwin (next to Family Dollar) **989-246-1850**



Hours: Mon-Thurs 7-7, Fri 7-8, Sat 7-5, Sun 8-4
Sales Dates Monday, August 29 through Sunday September 4, 2016



10LBS OR MORE SALE!

USDA Choice Denver Steaks or English Roast \$3.19 lb	Pork Steak, Strips, Pork Shoulder Roast, Country Style Sausage \$1.59 lb	Boneless Skinless Chicken Breast \$1.99 lb	Family Pack Ground Beef from Chuck \$2.59 lb	Wayside Bacon \$17.90 10 lb box	Chicken Leg 1/4's \$3.90 ea.
Whole New York Strip Loins \$4.19 lb CUT FREE!	Whole Ribeye Loins \$4.49 lb CUT FREE!	Whole Boneless Pork Loins \$1.69 lb CUT FREE!	Whole Beef Tenderloin Butt Ends (2-3 lb avg) \$8.99 lb CUT FREE!	Porterhouse Steaks \$7.99 lb.	Sweet Pineapple Teriyaki Brats or Sweet Onion Apple Bacon Brats \$3.49 lb.

FROM OUR BAKERY

Mini Crumb Pies * Apple, Blueberry, Cherry * \$2.99 ea	Hamburger or Hotdog Buns \$2.99 8 ct	Brat Buns or Onion Kaiser Buns \$1.99 4 pk.
-----------------------------------------------------------------------------	-----------------------------------------------------------	------------------------------------------------------------------

ADVERTISEMENT

Doctor's Memory Breakthrough

One Simple Trick to Reversing Memory Loss

World's Leading Brain Expert and Winner of the Prestigious Kennedy Award, Unveils Exciting News For the Scattered, Unfocused and Forgetful



Dr. Meir Shinitzky, Ph.D. a former visiting professor at Duke University and a recipient of the prestigious J.F. Kennedy Prize

By Steven Wuzubia
Health Correspondent;

Clearwater, Florida: Dr. Meir Shinitzky, Ph.D., is a former visiting professor at Duke University, recipient of the prestigious J.F. Kennedy Prize and author of more than 200 international scientific papers on human body cells. But now he's come up with what the medical world considers his greatest accomplishment — A vital compound, so powerful, it's reported to repair... even regrow damaged brain cells. In layman's terms — Bring back your memory power. And leave you feeling more focused and clear-headed than you have in years!

Dr. Shinitzky explains this phenomenon in simple terms; "Science has shown when your brain nutrient levels drop, you can start to experience memory problems and overall mental fatigue. Your ability to concentrate and stay focused becomes compromised. And gradually, a "mental fog" sets in. It can damage every aspect of your life". Not only do brain cells die but they become dysfunctional as if they begin to fade away as we age. This affects our ability to have mental clarity and focus and impacts our ability to remember things that were easy for us to do in our 20's and 30's.

Scientists think the biggest cause of brain deterioration in older people is the decreased functioning of membranes and molecules that surround the brain cells. These really are the transmitters that connect the tissues or the brain cells to one another that help us with our sharp memory, clear thinking and mental focus, even our powers to reason well. "When we are in our 20's" according to Dr. Shinitzky "our body produces key substances like phosphatidylserine and phosphatidic acid"...unfortunately they are believed to be critical essential nutrients that just fade away with age, much like our memories often do leading to further mental deterioration.

As we get older it becomes more frustrating as there is little comfort when you forget names... misplace your keys...or just feel "a little confused". And even though your foggy memory gets laughed off as just another "senior moment," it's not very funny when it keeps happening to you.

The Missing Link is Found and Tested

It's hard to pronounce that's for sure, but it certainly appears from the astounding clinical research that this one vital nutrient phosphatidylserine (PS) can really make a huge difference in our mental wellness. 17 different double blind studies with placebo controlled groups have been involved in the clinical research of PS with patients between the ages of 55-80 years of age. Periodically the researchers gave these patients memory and cognitive tests and the results were simply amazing:

- 1) PS patients outperformed placebo patients in All 5 Tests - 100% Success Rate
- 2) After only 45 days there was a measurable improvement in mental function
- 3) After 90 days, there was an impressive and amazing improvement in mental function

The group taking phosphatidylserine, not only enjoyed sharper memory, but listen to this... they were also more upbeat and remarkably more happy. In contrast, the moods of the individuals who took the placebo (starch pill), remained unaffected...no mental or mood improvement at all.

Vital Nutrient Reverses "Scatter Brain"

This incredible PS nutrient feeds your brain the vital nutrient it needs to stay

healthy... PS now has the attention of some of the world's most prominent brain experts. It has been written up and published in leading science and medical journals and its findings have electrified the International scientific community.

Earth-Shaking Science

Published, clinical reports show replenishing your body's natural supply of Phosphatidylserine, not only helps sharpen your memory and concentration — but also helps "perk you up" and put you in a better mood. PS as it turns out also helps to reduce everyday stress and elevate your mood by lowering your body's production of the hormone cortisol. When cortisol levels are too high for too long you experience fatigue, bad moods and weakness. This drug-free brain-boosting formula enters your bloodstream fast (in as little as thirty minutes).

Officially Reviewed by the U.S. Food and Drug Administration: PS is the ONLY Health Supplement that has a "Qualified Health Claim for both Cognitive Dysfunction and Dementia".



My Memory Started to Scare Me.

I would forget all kinds of things and something that I just said earlier in the day would have completely slipped my mind. I almost forgot my granddaughter's birthday and that would have been horrible. I had forgotten lots of other little things along the way. I was worried about it.

Over the last several months I've noticed my memory seemed to be getting pretty unreliable and so I thought I'd better do something about it now. So when I read about this amazing PS nutrient and how much it would help me with my memory I wanted to try it.

It's great! I have actual recall now, which is super. After about 6 weeks of taking it on a daily basis is when I began to notice that I wasn't forgetting things anymore.

Thanks to PS for giving me my memory back. It's given me a lot more self-confidence and self-esteem. I would not trust my memory without it.

- Ethel Macagnoney

Special Opportunity For Our Readers

We've made arrangements with the distributor of this proprietary blend of PS, which combines with several other proven special brain boosting natural ingredients to give you the mental clarity and memory gain that you need, to give you a Risk-Free trial supply. This is a special "Readers Only Discount". This trial is 100% risk-free.

It's a terrific deal. If Lipogen PS Plus doesn't help you think better, remember more... and improve your mind, clarity and mood — you won't pay a penny! (Except S&H).

But you must act fast. Your order can only be guaranteed if it comes in within the next 7-days. After that, supplies could run out. And your order may not be fulfilled until they are replenished.

So don't wait. Now you can join the thousands of people who think better, remember more — and enjoy clear, "fog-free" memory. Call today, toll-free at 1-800-792-5679. Think of it as making a "wake-up call" to your brain.

Wolverine Optical
EYE EXAMS • GLASSES • CONTACTS • BIFOCALS • REPAIRS • TINTING
DOCTORS APPOINTMENTS AVAILABLE TUESDAY AFTERNOON, WEDNESDAY ALL DAY, THURSDAY AFTERNOON AND FRIDAY APPOINTMENTS ARE SOMETIMES AVAILABLE.
MONDAY - THURSDAY 8:00AM - 5:00PM
CLOSED FRIDAY
AND 12:00PM - 1PM DAILY
BCBS, VSP, EYE MED & DAVIS, VISION INSURANCE, MCLAREN, MERIDIAN AND STRAIGHT MEDICAID
463-1838 • 7314 ALGER RD., ALMA, MI 48801

Thank You
Mr. and Mrs. Meinhardt Abernathy/Alma College
for joining the Culligan family and becoming valued customers.
Culligan Worldwide Celebrating 80 years
Ken's Culligan • Alma

Want fast cash?
Our Classified advertisers get great results. If you have merchandise to sell, place a classified ad.

Do you have a car for sale?
CLASSIFIEDS
How about a boat? Or maybe some furniture?
Call to place a classified ad with one of our helpful representatives & sell your no-longer-wanted items FAST!

RE/MAX RIVER HAVEN, INC. Open Seven Days a Week to Serve You!
www.riverhavenhomes.com
Wayne R. Walts - Broker

Main Office 777 W. Cedar Riverwalk Place 989-426-6893	Wixom Lake Office 1239 Estey Road, Beaverton 989-435-7755	Sugar Springs Office 1415 W. Sugar River Rd. Gladwin, MI 48824 989-426-9239
-----------------------------------------------------------------------	---------------------------------------------------------------------------	---------------------------------------------------------------------------------------------

REDUCED TO: \$79,999 \$379,900 \$159,900
MLS#165959 MLS#166316 MLS#166305

Visit us on Facebook at www.facebook.com/ValleyFoodCenter

SHAVED HAM, TURKEY \$2.99 LB. **SMOKED PORK LOINS \$2.99 LB.**

Valley Food Center
989-879-3311 • 101 E. SECOND • PINCONNING
WE WELCOME THE BRIDGE CARD, GIFT CERTIFICATES
NOT RESPONSIBLE FOR PRINTING ERRORS • ALL LOTTERY GAMES AND LOTTO HERE
We Now Take Credit Cards! Visa, Mastercard & Discover

KOEGEL PRODUCTS VIENNAS 10# BOX \$34.90 SKINLESS FRANKS 8# PKG \$12.69 BIG OR KING BOLOGNA \$3.29 LB. PICKLED BOLOGNA \$9.99 2.5# JAR VIENNAS 24 CT. PK. \$12.99 NUBBINS 10# BOX \$31.90	FRESH POLISH SAUSAGE 10# OR MORE \$1.89 LB. CHICKEN NUGGETS \$1.99 5# OR MORE HOMEMADE BULK SAUSAGES REG, ITALIAN \$1.19 LB. BONELESS PORK LOIN MAKES GREAT ROAST SEASONED AND CUT FREE \$1.69 LB. PORK STEAK, BUTT ROAST OR FINGER RIBS \$1.29 LB. NEW YORK STRIP CUT FREE WELL TRIMMED \$2.99 LB. STUFFED PORK CHOPS \$1.99 LB. ROUND STEAK \$2.99 LB. BOTTOM ROUND ROAST \$3.99 LB. BONELESS BUTT ROAST \$1.99 LB.	CO-JACK, LONGHORN ANY SIZE CHUNK OR MOZZARELLA CHEESE \$2.99 LB. BONE IN BEEF SHOULDER ROAST \$2.99 LB. ROLL YOUR OWN TOBACCO KENTUCKY \$1.29 16 oz. SELECT \$5.99 6 oz. AUSABLE RIVER TOBACCO \$1.15 12 oz. bag BUSCH BEER REG OR LITE 30 PK CANS \$16.49 RED RIVER \$9.99 16 oz. \$4.35 6 oz. DENVER, SWISS OR GRILL STEAK \$2.99 LB. Leg 1/4's 49¢ LB. BULK SLICED BACON \$3.49 10 LB. OR MORE \$3.29 LB. SHORT LOIN - T-BONE \$5.99 LB. BIG BAG FRENCH FRIES \$4.50 5 LBS. OR MORE SELECT RIB EYE LOINS WHOLE OR HALF \$7.99 LB. Cut Free! HOMEMADE BACON SAUSAGE \$1.99 LB.
-------------------------------------------------------------------------------------------------------------------------------------------------------------------------------------------------------------------	------------------------------------------------------------------------------------------------------------------------------------------------------------------------------------------------------------------------------------------------------------------------------------------------------------------------------------------------------------------------------------------------------------------------------------------------------------------------------------------------------------------------	---------------------------------------------------------------------------------------------------------------------------------------------------------------------------------------------------------------------------------------------------------------------------------------------------------------------------------------------------------------------------------------------------------------------------------------------------------------------------------------------------------------------------------------------------------------------------------------------------------------------------------------------------------------------------------------------------------------------------

SPARERIBS \$1.95 LB.
HAMBURGER \$2.79 10 LB. BAG less than 10lbs. \$3.19lb
WAYSIDE BACON \$1.89 10# BOX
OUR BEST GROUND CHUCK \$2.99 10 LB. BAG 10lbs or less \$3.49lb
HAMBURGER PATTIES \$2.49 10 LBS. OR MORE
FRESH BONELESS CHICKEN BREASTS \$1.79 10# OR MORE Less than 10#'s \$1.99lb
50/50 GRIND 10 lbs. OR MORE \$2.59 10lbs. or less
END CUT PORK CHOPS 99¢ LB.
PORK LOIN ROAST 99¢ LB.
COUNTRY STYLE RIBS 99¢ LB.
BLUE RIBBON HAMS \$2.49 LB.
WAGON MASTER BACON ENDS & PIECES \$3.99 3LB. PKG.

CLEARANCE ON 2015 & 2016 MODELS

SALE

Cub Cadet
YOU CAN'T GET ANY BETTER

Financing Available!

Service. Knowledge. Selection. Financing. Delivery.

Check Us Out!
GRATIOT OUTDOOR EQUIPMENT
Commercial-Industrial-Residential
"We Service All Makes of Outdoor Equipment"
On M-46 in Breckenridge • **842-3844**
*See dealer for details

THESE STATEMENTS HAVE NOT BEEN EVALUATED BY THE US FOOD AND DRUG ADMINISTRATION. THESE PRODUCTS ARE NOT INTENDED TO DIAGNOSE, TREAT, CURE OR PREVENT ANY DISEASE. RESULTS BASED UPON AVERAGES. MODELS ARE USED IN ALL PHOTOS TO PROTECT PRIVACY

Heart Worm Test
Special August Rates

\$30⁰⁰

Reg \$35.00

By Appt. 426-0203
Flexible Hours

KELLY'S KRUISSING
KRITTER KARE
Kelly Jo Kelley, DVM



CUSTOM DESIGNS
Buy Direct & Save

Also Available
Cremation Vaults and Urns

Brewer Bouchey Monument Co.
Family Owned Since 1895
211 N. Mill St. • Downtown St. Louis
989-681-3300 • Toll Free 888-362-2920
Hours: Mon.-Fri. 9-5; Sat. By Appt.
www.brewer-bouchey.com

Indoor Showroom



Houghton Lake Arts & Crafts Association
LABOR DAY - 23rd Annual Craft Show

Door Prizes Sat. Sept. 3, 9 a.m. - 5 p.m.
Food Available Sun. Sept. 4, 10 a.m. - 4 p.m.

Middle School Indoors & Outdoors

Booth fees support education by providing library books, supplies, & scholarships for students in the H.L. School District, and projects for the betterment of the community.

No Pets Allowed **989-366-8511**

REMEMBER... Classified Does It ALL!

CLASSIFIEDS



Find out how to keep your skilled workers when layoffs are on the horizon.

For information about Michigan's Work Share program, visit

michigan.gov/uia

or call 1-844-WORKSHR (967-5747)

WorkShare A Smart Alternative to Layoffs

OPEN LABOR DAY
REGULAR HOURS
PHARMACIES CLOSED

FAMILY FARE
SUPERMARKETS

Ground Fresh Throughout the Day
80% Lean Ground Beef Value Pack

\$2.99 lb. with yes

On Labor Day, Celebrate America's Great Workforce!

Fuel Up your BBQ!

Blue Rhino Propane Tank Exchange each
Item may not be available at all locations

\$3 OFF! with yes




Whole Seedless Watermelon
10 - 12 lb. avg. each

\$2.99 with yes



Bi-Color Sweet Corn
In the Husk each

10/\$3 with yes



Pork Loin Fresh, **All-Natural** Boneless Center Cut New York Chops

open acres

BUY 1 PKG GET 1 PKG OF EQUAL OR LESSER VALUE with yes

FREE



Beef Loin Fresh, **All-Natural** Boneless Sirloin Sizzler Steak Value Pack

TENDER RIDGE ANGUS

\$4.99 lb. with yes



Lay's Family Size Potato Chips (9.75 - 10.25 oz.) or Tostitos Tortilla Chips (9 - 14 oz.)

\$1.97 with yes



Hudsonville Ice Cream 1.75 qt.

3/\$10 with yes



Coca Cola or Pepsi Products 24 pk., 12 oz. cans (plus deposit)

2/\$11 When you buy 2 Lesser or Greater Quantities \$7.99 with yes





DEWEY'S TRADING POST

Maple Rapids • 682-4158

Monday-Saturday: 8 am - 7 pm, Closed Sunday

Prices In This Ad Good for week of August 29th - September 3rd 2016

WIC • Bridge Card • VISA • Mastercard • Discover
American Express • Debit Card & Chamber Bucks Gift Certificates.

OPEN LABOR DAY
10am - 4pm

<p>"Whole" Select New York Strips 13 lb. Avg.</p> <p>\$4.49 LB.</p>	<p>Koegel's 4 lb. Skinless Franks</p> <p>\$12.99 PKG.</p>	<p>"Our Own" Regular Brats</p> <p>\$2.99 LB.</p>
<p>"Our Own" Honey Mustard Brats</p> <p>\$2.99 LB.</p>	<p>"Our Own" Smoked Beef Salami</p> <p>\$4.99 LB.</p>	<p>"Our Own" Roasted Sausage</p> <p>\$6.99 LB.</p>
<p>"Choice" T-Bone Steak</p> <p>\$7.99 LB.</p>	<p>"Fresh" Whole Briskets</p> <p>\$3.99 LB.</p>	<p>Fresh "Slab" Pork Ribs</p> <p>\$1.99 LB.</p>
<p>"Fresh" 5 lb. Bag Ground Chuck 80/20</p> <p>\$17.45 A BAG!!</p>	<p>Baby Back Ribs</p> <p>\$2.99 LB.</p>	<p>Eckrich Virginia or Honey Ham</p> <p>\$4.99 LB.</p>
<p>Bulk Colby or Co-Jack Cheese</p> <p>\$3.99 LB.</p>	<p>Boneless Pork Sirloin Chops</p> <p>\$1.99 LB.</p>	<p>Fresh Pork Cutlets</p> <p>\$2.99 LB.</p>
<p>Fresh Jumbo Chicken Wings</p> <p>\$1.99 LB.</p>	<p>Whole Fresh Fryer Chicken</p> <p>99¢ LB.</p>	<p>"Our Own" Bulk Bacon Reg. or Peppercorn</p> <p>\$2.99 LB.</p>
		<p>"Our Own" Smoked Brisket</p> <p>\$6.99 LB.</p>

Baking Season is just around the corner!!
Don't forget about all of our Bulk Seasonings, Flours, Sugars etc for your baking needs!!

SAVE!! SAVE!! SAVE!! SAVE!!

Check out all of our Frozen Fish

www.deweystradingpost.com

LIKE us on facebook & see our WEEKLY SPECIALS!

YODER'S

QUILT AUCTION AND FLEA MARKET

Location: 3 miles east of Clare on U.S. 10, then 1/3 mile south on North Leaton Road.

September 2 & 3

Friday, Sept. 2 starting at 9 a.m. Selling all unpieced QUILTS and WALL HANGERS, All small craft items, rugs and QUILT tops.

Saturday, Sept. 3 starting at 9 a.m. Selling all pieced QUILTS and WALL HANGERS. "Only" Cloth Crafts.

Over 500 pieces of hand quilted quilts, wall hangers, table runners, quilt tops, rugs and small cloth craft items. Also over 400 vendor booths with lots of crafts, antiques, collectables, candles, furniture, glassware, jewelry and tools. You name it, you can find it here! Also lots of good food, baked goods and homemade ice cream. Tell your friends and come and enjoy the two days with us!

For More Information Contact:

YODER'S QUILT AUCTION • SIMON YODER

10885 N. Leaton Rd. CLARE • Phone: (989) 386-2872

NO DOGS ALLOWED IN FLEA MARKET AREA

Clare County Transit will go from Clare to the sale site every 1/2 hour.

ISABELLA COUNTY PEOPLE'S CHOICE

Vote for your #1 person, place or thing in Isabella County and win!

For completing and sending in your ballot, you will be entered a drawing.
(Please, one entry per person).

First Prize \$100 • Second Prize \$50 • Third Prize \$25

The winners of the people's Choice Awards will be published in the Mid-Michigan Buyers Guide on September 25, 2016.

1. Accountant/CPA _____
2. Appliance Store _____
3. Asian Food _____
4. Attorney _____
5. ATV/Motor Sports Equipment _____
6. Auctioneer _____
7. Auto Body Shop _____
8. Auto Mechanic (Full name & shop) _____
9. Auto Oil/Lube _____
10. Auto Parts Store _____
11. Auto Salesperson (New) _____
12. Auto Salesperson (Used) _____
13. Auto Service Department (Used) _____
14. Auto/Truck Detailer _____
15. Barber Shop _____
16. Bakery _____
17. Bartender (Full name & Restaurant or bar) _____
18. Bar/Tavern/Pub _____
19. Best Wings _____
20. Bicycle Shop _____
21. Bowling Alley _____
22. Breakfast _____
23. Car Dealer (New) _____
24. Car Dealer (Used) _____
25. Car Wash _____
26. Carpet Cleaner _____
27. Carpet/Floor Covering _____
28. Catering _____
29. Cell Phone Store _____
30. Chiropractor _____
31. Christmas Tree _____
32. Coffee _____
33. Computer Repair _____
34. Contractor _____
35. Convenience/Party Store _____
36. Craft Beer Selection _____
37. Day Care _____
38. Deli _____
39. Dentist/Orthodontist _____
40. Dessert _____
41. Dry Cleaner _____
42. Electrician _____
43. Eye Doctor _____
44. Fast Food _____
45. Financial Advisor _____
46. Financial Institution _____
47. Flower Shop _____

47. Friday Fish Fry _____
48. Furniture Store _____
49. Gas/Service Station _____
50. Gift Specialty Shop _____
51. Golf Course _____
52. Grocery Cashier (Full name & establishment) _____
53. Grocery Store _____
54. Gym/Health Club _____
55. Hair Stylist (Full name & establishment) _____
56. Hamburger _____
57. Hardware Store _____
58. Health Food Store _____
59. Heating/Air Conditioning _____
60. Hobby Shop _____
61. Home Cookin' _____
62. Hotel _____
63. Ice Cream Shop _____
64. Insurance Agent _____
65. Jewelry Store _____
66. Loan Officer (Full name & institution) _____
67. Lumber Company/Home Improvement _____
68. Manufactured Housing _____
69. Massage _____
70. Meat Counter/Market _____
71. Mexican Food _____
72. Nail Salon _____
73. Nursery/Landscaper _____
74. Paint & Wallpaper _____
75. Pediatrician _____
76. Perennials _____
77. Pet Supplies _____
78. Pharmacy _____
79. Photographer _____
80. Physical Therapy Office _____
81. Physician _____
82. Picture Framing _____
83. Pizza _____
84. Plumber _____
85. Print Shop _____
86. Produce _____
87. Propane/Alternative fuel provider _____
88. Real Estate Agent & Office _____
89. Restaurant (Friendliest/Best Service) _____
90. Restaurant (Overall) _____
91. Salad Bar _____

92. Sandwiches _____
93. Seafood Buffet _____
94. Shoe Store _____
95. Sporting Goods _____
96. Steak _____
97. Sunday Brunch _____
98. Tire Store _____
99. Towing Service _____
100. Truck Dealer (New) _____
101. Truck Dealer (Used) _____
102. Veterinarian _____
103. Waiter/Waitress (Full name & restaurant or bar) _____

Name _____

Address _____

City _____

Phone _____

One entry per person. No photo copies accepted. Must be 18 or older to enter contest. **TO BE ELIGIBLE, YOU MUST FILL OUT AT LEAST 50% OF THE POLL.** Morning Star Publishing Co. employees & their families not eligible for contest. Winners determined by ballots returned by our readers.

Entries due by Friday, September 2, 2016
Mail entire ballot to

Mid-Michigan Buyers Guide

Attn: People's Choice
311 E. Superior Street, Alma, MI 48801

SUMMER CLEARANCE

SALE ENDS SATURDAY SEPTEMBER 3

OUR LOWEST PRICES EVER!!

Living Room

Queen Ann Chairs 5 Fabrics to Choose From

\$599.00 **Clearance \$197.00**

Apartment Size Sofa-Surfer Maize

\$699.00 **Clearance \$267.00**

Big Leather Rocker Recliners-Chocolate, Black or Mushroom

\$1099.00 **Clearance \$387.00**

Camouflage Rocker Recliner w/cup holder-Camo

\$1099.00 **Clearance \$387.00**

Sofa-Tan

\$999.00 **Clearance \$397.00**

Love Seat-Tan

\$899.00 **Clearance \$347.00**

FINAL WEEK!

ALL OVER 80% OFF Limited Quantities



Spider Lamp
Retail \$299.00
Clearance \$57.00

Padded Storage Bench
2dr. Cappuccino Finish
Retail \$499.00
Clearance \$97.00



Daybed w/Top Spring
White Metal
Retail \$499.00
Clearance \$97.00

Padded Storage Bench
w/2 Wicker Basket
Retail \$599.00
Clearance \$117.00



See our Website for Pictures & Descriptions:
www.STATESTREET-FURNITURE.COM

Chair-Tan

\$799.00 **Clearance \$297.00**

Sofa Chocolate Microfiber

\$999.00 **Clearance \$417.00**

Love Seat Peat or Chocolate Microfiber

\$899.00 **Clearance \$347.00**

Chair Peat or Chocolate Microfiber

\$799.00 **Clearance \$297.00**

Sofa Sage or Camel

\$899.00 **\$377.00 Clearance**

Love Seat Sage or Camel

\$799.00 **\$317.00 Clearance**

FINAL WEEK!

Accents

See our Website for Pictures & Descriptions: www.STATESTREET-FURNITURE.COM

Coat Racks \$99.00

Clearance \$27.00

Snack Tables \$129.00

Clearance \$27.00

End Tables \$200.00

Clearance \$47.00

Ottoman \$179.00

Clearance \$47.00

TV Stand \$799.00

Clearance \$227.00

3 Pc End Table Set-Black with Gold Trim
\$799.00

Clearance \$297.00

Various Floor Lamps

\$169.00 - \$429.00 **Clearance \$47.00 - \$117.00**

FINAL WEEK!

FINAL WEEK!



7 Pc Dinette

42" x 86" Table Rustic Amber and Black Finish w/6 Black Finished Upholstered Seat Side Chairs

\$2,899.00 Retail **Clearance \$947.00**

Found on Major Websites on sale for \$1,300.00 - \$1,900.00



5 Pc Dinette

42" Round White Finish Table w/4 Side Chairs our choice White, Light Blue, Mint Green or Teal

Retail \$949.00 **Clearance \$277.00**

Found on Major Websites on sale from \$380.00 - \$450.00



5 Pc Dinette

40" x 60" Oval White Finish Table w/4 Side Chairs your choice White, Light Blue, Mint Green or Teal

Retail \$999.00 **Clearance \$297.00**

Found on Major Websites on Sale from \$390.00-\$540.00

Bedroom

8" Futon Mattresses-Black, Khaki or Red/Black

\$329.00 **Clearance \$97.00**

Twin Hickory Finish Head Board

\$149.00 **Clearance \$37.00**

Full Shaker Headboard-Dark Oak Finish

\$219.00 **Clearance \$97.00**

Full Bookcase Headboard-Dark Oak Finish

\$269.00 **Clearance \$117.00**

FINAL WEEK!

FREE

Pillow, Frame, Sheet Set & Mattress Pad on Most Mattress Sets! Up to \$208.00 Value FREE

Facts About Symbol Mattress

* Symbol Mattress is the 3rd largest manufacturer in the Midwest and 12th largest in the United States out of 600.

* Symbol Mattress has a higher customer satisfaction rating than both Serta & Sealy

* Symbol Mattress sets normally sell for 20-30% less than the equivalent Serta or Sealy model

See our Website for Pictures & Descriptions:
www.STATESTREET-FURNITURE.COM

7 Drawer Chest W/Mirror-Dark Oak Finish

\$698.00 **Clearance \$297.00**

Full Size Bed Headboard, Footboard & Rails- White & Brass \$799.00

Clearance \$267.00

Queen Mattress Set-Sleep Number Airbed

\$4399.00 **Clearance \$1,197.00**

FINAL WEEK!

Symbol Mattress Big 11 1/2" Profile

Comfort 100 Tight Top

Quilt
HIGH LOFT FR Fiber
11/16" Symbol Foam
2" Comfort Layer
High Profile 7" Bonnell 390 13ga Coil System
2" Support Core

Made in USA!

Twin Set Retail: \$999 **\$247**

Full Set Retail: \$1099 **\$297**

Queen Set Retail: \$1199 **\$347**

King Set Retail: \$1799 **\$547**

Symbol Mattress Big 13" Profile

Comfort 200 Pillow Top

Quilt
HIGH LOFT FR Fiber
11/16" Symbol Foam
2" Comfort Layer
High Profile 7" Bonnell 390 13ga Coil System
2" Support Core

Made in USA!

Twin Set Retail: \$1099 **\$297**

Full Set Retail: \$1199 **\$347**

Queen Set Retail: \$1299 **\$397**

King Set Retail: \$1899 **\$597**



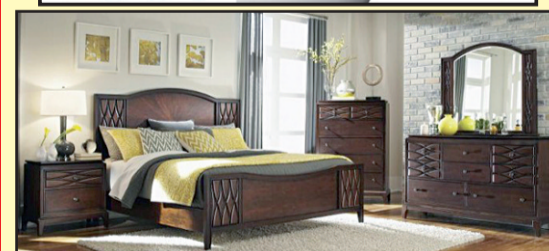
5 Pc Bedroom Outfit

Antique Oak Embossed and Sand Through Black Finish, Bed Features Tall Headboard, Rustic Finish, Queen Size, 6 Drawer Dresser, Mirror, 5 Drawer Chest and 2 Drawer Night Stand

*Mattress NOT Included

Retail \$4,099.00 **Clearance \$1,247.00**

Found on Major Websites on Sale From \$1,900.00 - \$2,300.00



5 Pc Bedroom Outfit

3D Quilted Diamond Design Crafted with a Gorgeous Rich Brown Finish Queen Size Bed, Headboard, Footboard & Side Rails (Mattress NOT Included) 8 Drawer dresser, Mirror 6 Drawer Chest & 2 Drawer Night Stand

Retail \$4,899.00 **Clearance \$1,497.00**

Found on Major Websites on Sale From \$2,200.00 - \$2,700.00

***Up To 36 Months NO INTEREST Financing**

Minimum Monthly Payment Required...Minimum purchase required

Check out our Clearance Selection on our website

STATE ST FURNITURE

318 N State St • Alma, MI 48801
(989) 463-1037 • Hours: 9-6 M-F • 9-5 Sat.
www.StateStreet-Furniture.com
*See Store for Details





DeShano
COMPANIES, INC.
CONSTRUCTION

*Proudly Serving Central
& Northern Michigan
Since 1966*

✓ New Homes
✓ Remodeling
& Additions

*Pella
Certified
Contractor*



deshano.com
989/426-2521

DeShano
RESTORATION

FIRE - FLOOD - SMOKE - STORM

Contents restoration *Storm damage clean-up & repair*
Ultrasonic cleaning *Demolition, clean-up & disposal*
Fire damage cleaning & repair *General contracting & construction*
Smoke damage cleaning & repair *Tarp & board-up*
Water damage drying & repair *Mold removal & remediation*

Fire • Flood • Smoke • Storm



DeShano
RESTORATION

800-234-0800

DeShanoRestoration.com



We all have locks and keys for a number of things that we want kept secure—automobiles, homes, safes, businesses. This makes having an expert and dependable locksmith shop essential. Gilboe's Lock & Safe serves the Mid Michigan area with the finest in sales, service an installation of all types of locks, keys and security systems.

Gilboe's offers full range of locksmith services. Their fully trained and competent staff are bonded and insured for your protection. They can replace lost keys, change or re-key locks, change auto door locks and ignition cylinders, open and repairs safes, change combinations and provide master keying services. Deadbolt locks, window locks and high security systems for home, businesses and commercial use are installed and repaired.

Gilboe's is only a phone call away in emergencies and lock out situations. Their 24 hour radio dispatched mobile service will respond promptly to your call. They have the "key" to all your loss prevention needs.



Gilboe's
LOCK & SAFE

Commercial • Residential • Industrial • Auto

SALES AND SERVICE

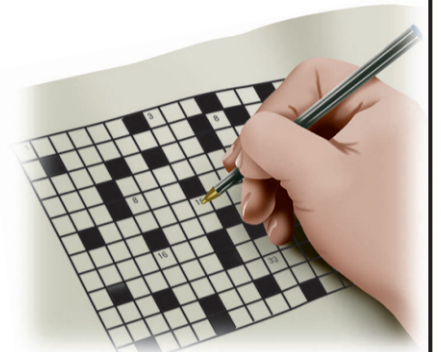
- Lock Outs • Rekey • New Locks • Deadbolts
- Safes (Record, Gun, Cash)
- Hardware - Special Finishes & Textures
- Access Control - Keyless Entry
- Digital Video Surveillance

24 Hour Emergency Mobile Service
Serving Central MI Since 1956

VISA 8529 E. PICKARD RD., MT. PLEASANT • www.gilboes.com

773-1470 • 800-459-3336

Look for
**PUZZLE
POWER**
every Sunday in
your Morning Sun.



Pages of Crossword fun for all skill levels.

To subscribe to the Morning Sun:

logon to
themorningsun.com/newstart
or call
989.533.3106

Morning Sun



Ivy Terrace Senior Residences
402 Joseph Drive, Midland

Luxury living for seniors aged 55 and older
1 & 2 bedroom apartments

Heat, water, sewer, trash and Wi-Fi charges included in rent. High-end finishes, Caribbean room, hot tub, pool table, beauty salon, smoke free, washer & dryer in unit, carpools, scheduled activities.

989.486.9494

ivyterrace@gldmanagement.com



Stratford Place Apartments
4835 E. Patrick, Midland

1 & 2 bedroom apartments featuring central air, dishwasher, garbage disposal, range, refrigerator and washer/dryer in unit

Water, sewer and trash charges included in rent. Picnic and playground areas. Located in city limits with a country feel.

989.839.9089

stratford@gldmanagement.com



Park Place Apartments
430 Parkside Lane, Hemlock

1 & 2 bedroom apartments and 3 bedroom townhomes, close to school and park

Low Income Housing Tax Credit Property. Income Limits & Student Restrictions Apply. Section 8 Vouchers Accepted. Water, sewer and trash charges included in rent.

989.839.9089

stratford@gldmanagement.com



Countryside Apartments
1346 Charles Avenue, Alma

1, 2 & 3 bedroom apartments and 3 bedroom townhomes

Low Income Housing Tax Credit Property. Income Limits & Student Restrictions Apply. Section 8 Vouchers Accepted. Water, sewer and trash charges included in rent.

989.466.5971

countryside@gldmanagement.com



3 Bedroom - 2 Bath Home
1601 Lee Street, Midland

Central Air, refrigerator, microwave, range, garbage disposal, range, washer & dryer and garage included.

\$690 per month. Tenant responsible for all utilities.

Low Income Housing Tax Credit Property. Income Limits & Student Restrictions Apply. Section 8 Vouchers Accepted.

989.839.9089

stratford@gldmanagement.com

These properties are professionally managed by:

GLD Management Company

GLD is a property management company located in Central Lower Michigan. We have extensive experience in developing, building and managing residential communities.

Our portfolio includes over 72 communities, providing rental homes for approximately 2,030 families and individuals throughout Central and Northern Michigan.

www.gldmanagement.com

This institution is an equal opportunity provider

150 Commerce Court,
Gladwin, MI 48624

989.426.0986
TDD 711





NORTH CENTRAL ARTS COUNCIL

Presents
Houghton Lake's Finest

24th Annual

LABOR DAY WEEKEND ARTS & CRAFTS SHOW

~ Between the Library and the HLHS Football Stadium ~

FRIDAY, SEPT. 2ND 9AM - 5PM
SATURDAY, SEPT. 3RD 9AM - 5 PM
SUNDAY, SEPT. 4TH 9AM - 4 PM

Free Admission - Concessions Available
 ~ NO PETS PLEASE ~
 No use of tobacco, drugs or alcohol products allowed on school grounds

For More Information
 Contact (989) 389-4500 (text) • email: craftncac16@yahoo.com

Knights of Columbus Council 5280
 Will Hold It's 54th Annual

Chicken Bar-B-Q!



Sunday, September 4. 12:00 pm to 5:00 pm
 Location: 751 S. M18, Gladwin, MI 48624

Lunch or Dinner includes:
 1/2 Whole Chicken, Corn on the Cobb, Steak fries or boiled potatoes, Baked Beans & Cole Slaw, Beverages



Delicious Assorted Pie's for dessert!

Adults \$10.00 Kid's Meal 12 and younger \$6.00
 Carry-out Available

Quality Built. Quality Features.

TIRED OF A FULL GARAGE?
 Stop by our lot. We have the perfect storage solution for you. Place your order now and beat the fall rush.

COME SEE US, WE GOT YOU COVERED



12x20 High Barn 8ft loft.
1 window, steel roof \$3,600



10x12 Quaker
\$2,600



8x8 Gable
\$1,200



12x16 Gable
2 windows, \$3,256

Visit Our Booth At Yoder's Quilt Auction
 Supplying Michigan with quality built portable building for over 20 yrs.

Miller's Woodworking

3209 E. Beaverton Road • Clare, MI 48617
 (Voicemail) 989-465-8172
 Old US 127 to Surrey West on Surrey to Grant 1 mile north on Grant
 7:30am-5:00pm Evening by Chance or Appointment
 Closed Sunday

END of Summer Sale!



ALL NURSERY STOCK
30% OFF
 REGULAR PRICES



ALL PERENNIALS
30% OFF
 REGULAR PRICES
 EXCLUDES HARDY MUMS



ALL ROSES 50% OFF



FRIDAY, SEPTEMBER 2ND
THROUGH
MONDAY, SEPTEMBER 5TH

ALL COTTON FABRICS BY THE YARD
20% OFF
 reg. prices
 (1/2 yd cut minimum)

ALL SALE FABRICS
 TAKE AN ADDITIONAL 10% OFF THE ALREADY LOW PRICE
 (1 yd cut minimum)

ALL PACKAGED BATTINGS
 25% OFF



ALL SPOOLED SEWING THREADS
 25% OFF



INSIDE END OF SEASON SPECIALS
 Many items at Low Markdowns!!!
 Select from Gift, Craft and Garden

BIRD SEED SPECIALS



BLACK OIL SUNFLOWER SEED (50 LB).... \$16.99 reg. \$17.99

STANDARD MIXED SEED W/ CORN (40 LB).... \$14.99 reg. \$16.99

PREMIUM MIXED SEED (40 LB).... \$16.99 reg. \$18.99

SUET CAKES
starting at **.79 cents each**

THISTLE SEED.... .99 cents lb



Elm Creek Ltd

Lawn • Garden • Crafts • Fabric

2609 W. Surrey Rd. Farwell, MI 48622
 (989)588-6061 www.elmcreekltd.com

Visit Our Website
To Join Our Newsletter

Receive All Of Our
Sales & Promotions
Faster & Sooner
Than Everyone Else!

JACK OF ALL TRADES COINS

1028 S. Mission
(next to Jon's Country Burger)

I BUY ALL COINS
Silver and Gold
FREE APPRAISALS
we will come to your home
to do free appraisals for
your convenience.
Over 25 Years experience!

Do not take your coins,
jewelry, gold, & silver to
the we buy gold places
they are not experts! We
are your only experts!
**WE PAY YOU MORE
THAN ANYONE!**

I BUY ALL COLLECTIONS
FROM ONE COIN TO A
DUMP TRUCK FULL

**We are a Full
Buy • Sell • Trade shop!**
ANTIQUES • COINS
Jewelry • Collectibles & more!

Stop in or call Matt for
your free appointment
517-204-0787



RE/MAX

River Haven
Each Office Independently Owned and Operated
777 W. Cedar Ave • Gladwin, MI 48624
Lowe4realestate@gmail.com



480 MILL - \$74,900
3 BR Home has Full Basement. Plenty of closets. Master Bedroom has full bath with shower. Main bath has tub, Wood floors. Natural Gas. 2 Car Garage with workshop and loft storage. Paved Drive. Wrap around front deck. Nice Yard.



221 JOHNSON - \$67,000
3 BR 1.5 bath with Family Room. Deep crawl space. Oversized Garage 30x52. State Land at end of road. Muskegon River close. Vacant lot next door included - power pole, older well & septic unknown condition.



1184 PINEVIEW - \$52,500
3 BR 2 bath home with beach access to all-sports Long Lake. Walkout basement has fireplace in Family room & half bath. Nice corner lot. Price Reduced!!



Chris Lowes
Associate Broker®
Cell: 989-741-3989
Call or Text

www.Lowe4realestate.com

Central Eavestroughing, LLC

LICENSED & INSURED • FREE ESTIMATES

**Quality & Service
Are #1!**

**.032 Gauge
Aluminum
Hidden Screw
Hangers**

**Get Your
Gutters
Ready for
Fall**

QUALITY WORKMANSHIP • FAST FRIENDLY SERVICE
Jeb Gilbert • (989) 828-6279 • Shepherd, MI

Summer of fun with your RV!

*Don't be caught broke down on the side of the road on vacation.
Let us at Quality Truck and Tire take care of your needs.*

*Let us
keep you by the
fire longer.*



10532 N. Mission Rd., Clare, MI 48617
(989) 802-0800

**QUALITY TRUCK
AND TIRE**
Heavy Duty Truck and Trailer Repair

DOVER ROAD WOODWORKING

*Where you will find everyday low prices on
top quality handcrafted oak & cherry furniture*



BYLER'S
Quality Furniture

Come see us
at Yoder's Quilt
Auction and Flea
Market



Stop in and compare!
Quality craftsmanship
has to be seen to be
appreciated.
*We have the lowest
prices in the Central
Michigan area ...
visit us today!*

2643 E. Dover Road • Farwell, MI 48622
3 miles north of Clare on Old 27 • 1 1/2 miles west on Dover Road
Open From Dawn To Dusk Monday through Saturday • No Sunday Sales



Largest Selection of Clean Used Cars in Central Michigan

**GM Certified Pre-owned Vehicles = 2 Years of Oil Changes
& Tire Rotations + 12 Month or 12,000 Mile Bumper to Bumper Warranty**

USED CARS	USED SUVs	USED TRUCKS
2016 BUICK LACROSSE CXL V6, Quicksilver, 21,000 Miles..... \$26,900	2016 GMC TERRAIN SLT White Frost, 4,000 Miles, 4 Cyl, Front Wheel Drive..... \$28,900	2014 GMC DENALI CREW CAB White Diamond, Sunroof, 48,000 miles..... \$39,900
2016 CHEVROLET MALIBU LTZ Silver, 11,000 Miles, 4 Cyl..... \$21,900	2015 BUICK ENCLAVE CXL AWD, Silver Ebony, Leather, 20,000 Miles..... \$34,900	2014 CHEVROLET SILVERADO 1500 4WD, Reg. Cab, Shortbox, 30,000 Miles, White..... \$26,900
2016 CHEVROLET CRUZE LT Dk. Gray, 13,000 Miles, 4cyl..... \$18,900	2014 GMC ACADIA AWD Champagne Silver, 28,000 miles, SLT..... \$32,900	2013 CHEVROLET SILVERADO CREW CAB 4X4 LTZ Mocha Steel, 29,000 Miles, Rear Camera/Remote Start..... \$32,900
2015 BUICK REGAL Black/Black Leather, 13,000 Miles, Sunroof..... \$22,900	2014 BUICK ENCLAVE CXL FWD Crystal Red, 29,000 Miles..... \$29,900	2013 GMC SIERRA CREW CAB ALL TERRAIN Black w/ Leather, 5.3 V8, 62,000 Miles..... \$29,900
2014 BUICK LACROSSE Champagne Silver, 4 Cyl, 25,000 Miles..... \$18,900	2014 CHEVROLET TRAVERSE AWD Black, 33,000 Miles..... \$29,900	2013 CHEVROLET SILVERADO EXT. CAB 4X4 Grey, 5.3 V8, Trailer Pkg, 34,000 Miles..... \$25,900
2013 BUICK LACROSSE Crystal Red, 34,000 Miles, CXL, Certified..... \$21,900	2014 GMC TERRAIN SLE FWD Ashen Gray, 20,000 Miles, 4 Cyl..... \$21,900	2013 GMC SIERRA EXT. CAB SLE w/ Leather, 65,000 Miles, Steel Gray..... \$24,900
2013 BUICK REGAL PREMIUM Diamond White, 24,000 Miles, Loaded..... \$18,900	2013 BUICK ENCLAVE CXL FWD 49,000 Miles, 1-Owner..... \$25,900	2012 GMC SIERRA EXT. CAB SLT Black, 28,000 Miles, 5.3 V8, 1-owner..... \$29,900
2013 BUICK LACROSSE CXL 41,000 Miles, Champagne Silver..... \$18,900	2013 GMC TERRAIN SLE FWD 4 Cyl, Silver, 72,000 Miles..... \$16,900	2012 CHEVY SILVERADO LT CREW CAB 4X4 Gray, 107,000 Miles, 5.3, V8,..... \$21,900
2013 BUICK REGAL Silver, 30,000 Miles, 1-Owner..... \$17,900	2013 CHEVY TRAVERSE AWD Silver Ice, 83,000 miles..... \$16,900	2012 GMC SIERRA EXT. CAB SLE 4X4 5.3 V8, Mocha Steel, 73,000 Miles..... \$23,900
2013 CHEVY CRUZE LT Blue, 27,000 Miles, 4Cyl..... \$13,900	2013 GMC TERRAIN FWD SLE 31,000 Miles, White, 4 Cyl..... \$19,900	2011 CHEVROLET SILVERADO Grey, 4x4, 107,000 Miles..... \$19,900
2013 CHEVY IMPALA LT Red, 31,000 Miles..... \$16,900	2013 CHEVY EQUINOX FWD Crystal Red, 24,000 Miles..... \$19,900	2010 GMC EXT CAB SLE 4X4 White, 5.3 V8, 134,000 Miles..... \$16,900
2013 BUICK LACROSSE Champagne Silver, 72,000 Miles, Leather..... \$15,900	2013 BUICK ENCORE AWD Expresso Brown, 62,000 Miles, 1-Owner..... \$18,900	2009 GMC SIERRA EXT. CAB W/T 6.0 V8, White, 199,000 Miles, 3/4 Ton..... \$13,900
2012 BUICK LACROSSE CX Carbon Black, With E/Assist, 36,000 Miles, Certified..... \$16,900	2012 GMC TERRAIN AWD SLT 27,000 miles, Gray Green..... \$23,900	2007 CHEVROLET SILVERADO CREW CAB 4X4 Desert Brown, 141,000 Miles..... \$15,900
2011 BUICK REGAL CXL Majestic Blue, 69,000 Miles..... \$14,900	2012 BUICK ENCLAVE CXL Cocoa Tan Interior, 87,000 miles, FWD..... \$20,500	2007 GMC SIERRA CREW CAB SLE 5.3 V8, 170,000 Miles, Silver..... \$15,900
2010 CHEVY MALIBU Silver, 51,000 Miles, Great M.P.G..... \$10,900	2012 GMC TERRAIN SLE FWD Burgundy, 71,000 Miles..... \$15,900	2007 CHEVROLET EXT CAB 4X4 White, 5.3 V8, 112,000 miles, Very Clean..... \$13,900
2010 PT CRUISER Burgundy, 90,000 Miles, Locally Owned, 4 Cyl..... \$7,900	2012 CHEVROLET EQUINOX LT FWD 102,000 Miles, Goldmist..... \$13,900	
2009 CHEVROLET MALIBU LT Burgundy, 115,000 Miles..... \$8,900	2011 GMC ACADIA AWD Med Brown, 158,000 miles, Locally Owned..... \$13,900	
2007 BUICK LUCERNE CXL Dk. Blue, 3800 V6, 127,000 Miles, Leather..... \$10,900	2011 GMC TERRAIN SLT AWD 69,000 Miles, 6 Cyl,..... \$18,900	
2007 CHEVROLET HHR LT Blue, 125,000 Miles..... \$14,900	2011 GMC TERRAIN FWD SEL Goldmist, 4cyl, 32,000 Miles..... \$16,900	
	2011 JEEP COMPASS Silver, 4 cyl, 80,000 miles..... \$10,900	
	2010 BLACK CADILLAC SRX Black, V6, 94,000 Miles..... \$17,900	
	2009 BUICK ENCLAVE CXL FWD 92,000 Miles, Silver..... \$16,900	
	2009 FORD ESCAPE XLT Med Red, FWD, 109,000 Miles, Clean..... \$9,900	
	2008 BUICK ENCLAVE Burgundy, FWD, CX V6, Locally Owned, 110,000 Miles..... \$12,900	
	2007 TAHOE LT 4WD Amber Bronze, Leather, Sunroof, 168,000 Miles, 1-Owner..... \$16,900	
	2005 JEEP WRANGLER Brown, 196,000 Miles, Stick Straight 6..... \$8,900	
		USED VANS
		2015 DODGE GRAND CARAVAN 39,000 Miles, Med Gray..... \$20,900

BENCHLEY BROS., INC.

1 Mile East of Doherty • US-10, Clare • Sales (989) 386-9900

For more info log on to: www.benchleybros.com Parts & Service (989) 386-3197

HOURS
8-6 Mon-Fri
9-2 Sat

Voted Clare Counties #1 Dealership





Shop Early & Save - Limited Time Only!



Labor Day SALE! SUPER SAVINGS STOREWIDE!



**Serta Select
Twin Mattress
\$99**



**Add a
Pivot Head Up Box
for \$544 on
most models**

**Guaranteed Lowest Prices
ON ALL SERTA MATTRESSES!**

	TWIN 2pc set	FULL 2pc Set	QUEEN 2pc Set	KING 3pc set
Majestic Davey Gentle Eurotop	\$299 Sale Compare At \$449	\$379 Sale Compare At \$569	\$399 Sale Compare At \$599	\$599 Sale Compare At \$899
Majestic Gallion Support Firm or Support Eurotop	\$349 Sale Compare At \$529	\$449 Sale Compare At \$679	\$499 Sale Compare At \$749	\$799 Sale Compare At \$1199
Majestic Raftery Premium Choice Plush or Firm	\$449 Sale Compare At \$679	\$549 Sale Compare At \$829	\$599 Sale Compare At \$899	\$899 Sale Compare At \$1349
Majestic Stowcroft Choice of Super Pillowtop or Firm	\$649 Sale Compare At \$979	\$749 Sale Compare At \$1129	\$799 Sale Compare At \$1199	\$1099 Sale Compare At \$1649
Kubin's Exclusive, Perfect Sleeper Regal Suite, 2 Sided flipable mattress Choice of Plush or Extra Firm	\$549 Sale Compare At \$829	\$699 Sale Compare At \$1049	\$799 Sale Compare At \$1199	\$1099 Sale Compare At \$1649
Serta Perfect Sleeper Swan Harbor Choice of Luxury Pillowtop or Firm	\$899 Sale Compare At \$1349	\$969 Sale Compare At \$1459	\$999 Sale Compare At \$1499	\$1299 Sale Compare At \$1949
Serta Perfect Sleeper Hatters Evercool & Gel Memory Foam	\$899 Sale Compare At \$1349	\$969 Sale Compare At \$1459	\$999 Sale Compare At \$1499	\$1299 Sale Compare At \$1949

- Helps reduce tossing and turning**
ComfortRight™ Layers
This advanced system of foams and fluffy fibers is designed to provide instant comfort. This helps reduce the pressure points that can cause tossing and turning so you can sleep more comfortably through the night.
- Minimize impact from partner movement**
TrueSense® Design
Serta's exclusive design helps minimize the impact of partner movements, working to isolate motion at its source so you can enjoy a peaceful night's sleep with fewer disruptions.
- Encourages proper back support & alignment**
Custom Support® System
Every Perfect Sleeper features a system of durable, yet flexible carbon steel coils that work to promote proper support and alignment across the entire body.
- Resists sagging & edge roll-off**
ComfortLast® Construction
Designed to enhance durability of the mattress and is thoroughly tested beyond industry standards to make sure it can resist sagging and edge roll-off. This enhanced durability can help extend the comfort life of your mattress.
- Promotes a balanced sleep temperature**
CoolBalance® Technology
A unique combination of high-performance heat and moisture-regulating fabric and an overall mattress design that helps promote airflow. Together, these help provide a comfortable, balanced sleep temperature.

**5 reasons
to never count
sheep again.**



Serta icomfort
**FREE BOXSPRING
OR SAVE UP TO \$800**
on a Serta® Adjustable Mattress Set*



**Queen
Mattresses
as low as
\$244**



CHOOSE GEL MEMORY FOAM OR HYBRID TECHNOLOGY!

Serta icomfort

Advanced memory foam mattress featuring Triple Action gel memory foam for:

- Pressure Relieving Comfort
- Added Support
- Temperature Regulation

Serta icomfort Savant III Flat Set Price After FREE Boxspring Savings

Twin XL	\$1149	
Full	\$1599	Save...\$200
Queen	\$1774	Save...\$225
King	\$2299	Save...\$300

Serta icomfort Prodigy III Flat Set Price After FREE Boxspring Savings

Twin XL	\$1749	
Full	\$1899	Save...\$200
Queen	\$2074	Save...\$225
King	\$2599	Save...\$300

Serta icomfort HYBRID

Unique combination of Triple Action gel memory foam and an advanced coil support system.

Serta icomfort Applause II Flat Set Price After FREE Boxspring Savings

Twin XL	\$749	
Full	\$899	Save...\$200
Queen	\$1074	Save...\$225
King	\$1599	Save...\$300

Serta icomfort Observer Flat Set Price After FREE Boxspring Savings

Twin XL	\$949	
Full	\$1099	Save...\$200
Queen	\$1274	Save...\$225
King	\$1799	Save...\$300



FREE Local Delivery with Icomfort Set Purchase

FREE Set Up with Icomfort Set Purchase

FREE Removal of old bedding when delivered

EXTRA BONUS
up to **18 MONTHS No Interest FINANCING!** W.A.C.



Kubin's Furniture & Mattresses
101 N Mill St, Corner of M46, St. Louis, Michigan, (989) 681-5043
Hours: Mon-Thurs: 9-6, Fri: 9-8, Sat: 9-5, Closed Sunday
Sign up Your Email at: <http://www.kubins.com/signup.htm>



Hurry In For West Branch Furniture's Incredible Labor Day Mattress Savings



FREE BOXSPRING OR SAVE UP TO **\$800**

on a Serta® Adjustable Mattress Set*



HOT BUY
 Queen size Set
\$299



Always Comfortables.™

	TWIN SET	FULL SET	QUEEN SET	KING SET
MajesticSleep Davey Euro Top or Firm	\$279 2 Pc. Set	\$369 2 Pc. Set	\$399 2 Pc. Set	\$599 3 Pc. Set
MajesticSleep Gallion Euro Top or Comfort Firm	\$349 2 Pc. Set	\$459 2 Pc. Set	\$499 2 Pc. Set	\$799 3 Pc. Set
MajesticSleep Raftery Plush Comfort or Firm	\$459 2 Pc. Set	\$559 2 Pc. Set	\$599 2 Pc. Set	\$899 3 Pc. Set
MajesticSleep Storecraft Super Pillow Top or Fine	\$649 2 Pc. Set	\$749 2 Pc. Set	\$799 2 Pc. Set	\$1099 3 Pc. Set



NO INTEREST FOR 12 MONTHS



**Micro Fiber
Wallaway
Recliner**

\$179

Ashley Dailey Midnight Sofa
(Choose From 3 Colors)




\$399

Simmons Sofa & Loveseat
(2pc set)




\$699

Ashley Man Size Rocker Recliner




\$349



**Rustic
Rugs**

\$69

Assorted patterns

Franklin Rocker Recliner

- Handle Rocker Recliner
- Arm Storage
- Padded Chaise and Arms
- Wow Seating System
- Made in America




\$299

Ashley 3-Piece Dinette




\$299

Ashley Darcy Sofa Sleeper
(5 Colors to choose from)




\$599

Ashley Windmaster Taupe Bonded Leather Sofa



\$469

As-Is

Woodcrest 2x4 Wooded Bunkbed



\$179

Ashley Chairside Tables
(Your Choice)




\$119

Ashley Owingsville 5-Piece Dinette




\$499

*Financing available to qualifying buyers. Minimum purchase \$599 with approved credit. Not available on prior purchases. See store for details.
 * Tables and lamps may not be as shown in picture.



136 S. Fifth St.
West Branch
 located block south of
 Mercantile Bank off Houghton Ave.
989-345-5326

www.westbranchfurnitureoutlet.com
***12 Months
No Interest**
 SUNDAY 11-3 MON.-FRI. 10-6 SAT. 10-5



A-1 MOBILE A-1 ROOF-OVER SYSTEM



Michigan's Oldest and Finest Roof Replacement System
FREE ESTIMATES
12x60 14x70
 Installed
\$3,280 \$3,980
 Conserves Energy
 Made in Michigan

1-800-872-2089
 www.mobilehomeroofsmi.com

LOT REDUCTION SALE
 Save Thousands off MSRP

TRAVEL LITE TRUCK CAMPERS

MODELS		MSRP	SALE
2016 Rayzr	7'5"	\$11,672	\$8,777
2016 770 SL	7'7"	\$12,830	\$9,998
2016 800	8'	\$15,950	\$12,988
2016 800X	8'	\$16,785	\$13,825
2017 700	7'	\$15,197	\$11,988
2017 840SBRX	8'4"	\$20,285	\$15,988
2016 Bunk Trailer	21'	\$17,224	\$13,480
2016 Pre-Owned Truck Camper 890R	8'9"	\$16,995	\$15,995

15% OFF ALL RV Supplies & Parts in Stock

Northland Trailers
 Northland Celebrating Their 40th Anniversary!

RV Parts & Accessories 903 N Mitchell St., Cadillac
 Service on all RVs • Hitches • Wiring

231-775-3101
 www.northlandtrailer.net



Safe. Sound. Secure.® Since 1916

Save money with Auto-Owners Insurance
 Multi-Policy Discounts!

Call or visit us today!

TAYLOR INSURANCE AGENCY
 Farwell • 989-588-8055
 Jan Owens, Agent

Auto-Owners Insurance

Evans Eye Centers



Are you suffering from cataracts?
 Get Started today. Call for an Evaluation.

120 Warwick Alma, MI 48801 989-463-Eyes (3937)
 1203 S. Mission Mt Pleasant, MI 48858 989-775-Eyes (3937)

800 Products 18 States 57M Americans



It's Time For Change

Digital First Media, a leading provider of local news and information, is recruiting Account Executives to join our fun, fast-paced, professional team. You will have an opportunity to sell to a growing audience across an expanding network of digital platforms.

Please forward your resumé to tgoodrich@digitalfirstmedia.com

digitalfirst MEDIA
 www.digitalfirstmedia.com and www.adtaxinetworks.com



Fair Salvage Co.

SCRAP METALS BOUGHT AND SOLD!

WE ALSO BUY:

- Copper
- Brass
- Aluminum
- Any Ferrous Metal
- Light and Heavy Iron
- Converters

We Buy Junk Vehicles!



FAIR Salvage Co.

2731 E. Grass Lake Rd
CLARE
 (2 miles south of Clare on Mission (Old 27)
 1 1/4 miles west on East Grass Lake Rd.)
989-386-7552

Another Division at
 8702 US 10
CHASE
231-832-2955



LS TRACTOR SUMMER CLEARANCE



LS XR4145
45HP, 4WD, Platform,
Loader, Hydrostat
Dual Remotes, Skid Steer Bucket
Was \$30,900
NOW \$26,400

As Low As
\$229/month*

LS XJ2025
24.4HP, 4WD, Hydro,
Loader, 3PT
Was \$19,130
NOW \$14,250

As Low As
\$145/month*



As Low As
\$175/month*

LS XG3032
32HP, Hydrostat w/loader
Was \$25,425
NOW \$19,800

ALL LS TRACTORS HAVE A 5 YEAR
ENGINE/DRIVETRAIN WARRANTY!
*See store for details



Nagy's TRACTOR SALES, INC.
1980 W. US-23, OMER, MI
989-653-3173
www.nagystractor.com

LS TRACTOR Family Owned Since 1946
*SEE STORE FOR DETAILS FINANCING AVAILABLE
*WITH APPROVED CREDIT. CALL FOR DETAILS!

VISA, MasterCard, DISC, VER, Like us on Facebook

Your \$OLUTION to HIGH HEATING COSTS

Fire Chief FC0S1800D Outdoor Furnace
Wood Burning
1500-2500 sq. ft
Forced Air
28" Log 1800 CFM
Made Entirely In USA
Top Quality



Comfort Max Coal Burning

Secondary Combustion System
92% Efficient
70,000 BTU
Superior Cast Iron Shaker Grates



Blaze King



Burn 33% less wood
The combination of our exclusive thermostat and catalytic combustor technology makes your Blaze King stove one of the most efficient wood stoves in the world.
Blaze King has the top 2 most efficient wood stoves in North America and builds 5 of the top 8 most efficient stoves.

- Efficiency
 - Long Burn Times
 - Thermostat Control
 - Low Emissions
- Wood Pellets • Anthracite Coal
Wood, Coal, Corn & Pellet Stoves
All Fuel Chimney Systems

Mr. Heater

Vent Free Propane & Natural Gas Wall Heaters w/ Thermostat & Blower Starting at \$149.00

Mr. Heater Portable Buddy
Indoor Safe Propane Heater

Large Selection of Mr. Heater Propane Heaters at **Low, Low Prices**
Buddy Heater \$59.99

HERSHBERGER'S PRO HARDWARE
10289 N. Leaton Rd., Clare, MI 48617-9107
(989) 386-5338
Full Line of Hardware & Building Supplies
Stove & Furnaces All Fuel Chimneys

"I came to New York to be a dancer, but I knew that was a short-lived career. So I got my real-estate license and started selling houses. And turned out, I love it."
- Charles Murray, Real Estate Agent

Search LOCATION NAME jobs and find the one that's right for you at COBRAND URL



2016 AGRI-FIT CHALLENGE

Saturday, September 17 at 8 AM
McNabb Park, 932 S. Pine River Road,
Ithaca, MI 48847

An Agricultural themed 5K Run/Walk featuring obstacles that farmers face every day. We will be adding new fun and challenging obstacles for 2016 as well as keeping some old favorites

Examples Include:

Bale Out (climb over round bales), Mud crawl, Back Scratcher (under barbed wire), Tractor Pull (pulling tractor tires), Traction Torture (through a loaded semi), Ladder Up (climbing over pod boxes), Pack Mule (carrying), Pipe Dream (crawling through drainage tube), Ring of Fire and much more. Check out the Agri-Fit Challenge Facebook page for updates.

New this year:

Kid's Course - Race at 8:30 am

Visit runsignup.com/Race/MI/Ithaca/AgriFitChallenge to register

Sign-up Deadline **September 14, 2016**



MEDILODGE
REHABILITATION & WELLNESS CENTER

Recover. Rejuvenate. Revitalize. Return Home.

SCHEDULE YOUR PERSONAL TOUR TODAY.



24-Hour Skilled Nursing Care



Physical, Occupational, & Speech Therapy



7-day a Week Physician Coverage



Hospice Support Services



Respite Stays



Palliative Care



Short & Long Term Care



Respiratory Program with Trach Care

MediLodge of Midland

4900 Hedgewood Dr
Midland, MI 48640
Phone 989.631.9670
Fax 989.631.6899
www.MediLodgeofMidland.com

MediLodge of Clare

600 S.E. 4th Street
Clare, MI 48617
Phone 989.386.7723
Fax 989.386.5646
www.MediLodgeofClare.com

MediLodge of Mt. Pleasant

1524 Portabella Trail
Mt. Pleasant, MI 48858
Phone 989.772.2967
Fax 989.779.9060
www.MediLodgeofMTPleasant.com

BRIAN'S FRUIT & MEAT MARKET

2167 S. M-76 • West Branch (Across from Kmart)

While Supplies Last • Not responsible for printing errors
Prices good Sunday, August 28th thru Friday, September 2nd, 2016
New store hours: Open Sundays 8am - 7pm • Mon.-Sat. 7am-8pm

WE ARE A PACKAGED LIQUOR DEALER

We accept all major credit cards & EBT card

BRIAN'S MEATS: 989-345-3709

LIKE US ON FACEBOOK



WWW.BRIANSFRUITANDMEATMARKET.COM

 Butterball Brand SLICED OVEN ROASTED TURKEY BREAST \$5.99 lb.	 Great Lakes Brand SLICED SWISS CHEESE \$5.99 lb.	 Eckrich Brand SLICED PREMIUM DELI HAM \$3.49 lb.	 Potato, Mac, Potato, Mac & Slaw YODER'S 2LB. PREMIUM DELI SALADS 2/\$7.00	 Fire Up the Grill BONELESS BEEF NEW YORK STRIP STEAKS \$7.99 lb.	 Beef...it's what's for Dinner BONELESS BEEF FLANK STEAK \$6.49 lb.	 Store Ground FRESH GROUND BEEF FROM CHUCK \$2.99 lb.
 Sliced Free WHOLE BONELESS PORK CENTERLOINS \$1.99 lb.	 Great for Pulled Pork SEMI-BONELESS PORK BOSTON BUTT ROAST \$1.89 lb.	 BBQ Time FROZEN BABY BACK RIBS \$2.99 lb. Frozen 3-pks	 Assorted Varieties BRIAN'S HOMEMADE FRESH BRATS \$3.99 lb.	 Breakfast Time BRIAN'S HOMEMADE BULK BREAKFAST SAUSAGE \$2.49 lb.	 Fresh Never Frozen FRESH BONELESS SKINLESS CHICKEN BREAST \$2.39 lb.	 Koege's Fine Meats KOEDEL'S VIENNA HOT DOGS \$40.00 10#box

BRIAN'S PRODUCE: 989-345-2891

 PRAIRIE FARMS MILK \$2.49 gal. Homo/2% \$2.39 gal. Skim/1%	 ORGANIC MILK \$2.99 1/2 gallon	 RED HAVEN PEACHES \$18.99 1/2 bushel	 CANNING TOMATOES \$10.99 1/2 bushel	 HARDY FALL MUMS \$7.99 2 gallon pot
 BAY COUNTY PEACHES 'N CREAM SWEET CORN 6/\$1.00	 BETTER MADE POTATO CHIPS 2/\$4.00	 DUTCH FARMS SHREDDED OR CHUNK OR SINGLE SLICE CHEESES 2/\$3.00 6 or 8 oz. pkgs.	 ASSORTED FLAVORS DUTCH FARM BAGELS 99¢ 5 ct. pkg.	 FALL SQUASH 49¢ lb.
 COOKING ONIONS 99¢ 3 lb. bag	 BAREFOOT WINES 2/\$10.00 750 ml bottle	 COCA-COLA PRODUCTS \$5.99 20 pk. cans + deposit	 POWERADE \$10.99 15 ct. 32 oz. bottles	 MILWAUKEE'S BEST BEER \$7.99 18 pk. cans + tax + deposit
				 MILLER LITE \$12.99 20 pk. bottles + tax + deposit

ADAM BREAUULT AUCTIONS
AUGUST 29TH @ 6 PM
 Furniture, Lawn & Garden Equipment, Appliances, Geese/ Duck Decoys, Silver Coins, Jewelry, Power Tools & More!
 Visit www.adambreault.com for complete details, pictures and online reserve bidding.
Adam Breault Auctions
 895 Industrial Dr. • Gladwin (989) 329-0399
ACCEPTING CONSIGNMENTS

PAWN SHOP
Buy, Sell, Pawn
 3 Month Pawn
 3% + 1.00 Storage
 Firearms, Gold & More
 Gladwin Trade & Sales
989-426-6811


Caught Ya Lookin' Classifieds Work!

LOCAL SHOPPING. LOTTA SAVINGS!

Park it in the CLASSIFIEDS *and watch it go fast!*



HELP WANTED SEASONAL

MOST DEER PROCESSING
 989-236-7755

DRIVERS

Andersen Brothers is hiring people for **TRUCK DRIVING** harvest season. No CDL or experience necessary.
 Call 989-427-3476 or stop by at 2583 Schmeid Rd Blanchard MI 49310

LOCAL MILK ROUTE DRIVERS

Home every Night. Positions available in Alma, Cass City and St. Johns. \$1,000/wk & benefit package. Also **HEAVY DUTY TRUCK MECHANIC** position open. Fax Resume 989-681-5921 or apply in person 9575 N. Alger Rd Alma, MI email: kathy@ispmtg.com.

Part Time Motorcoach Drivers wanted. Will Train. Must Have Good Driving Record.
 Call 989-426-2511
 Mon - Fri 8-4pm

RESTAURANT FOOD SERVICE

MAINSTREET PIZZA-ITHACA
 Part/full time available \$9-\$12/hr DOE. Apply in person

WAITRESS NEEDED
 Part time nights and week-ends. Apply in person after 3 PM Tues - Sat
 PIZZA SAMS, Alma.

HELP WANTED

Applications now being taken for Routes in Gratiot County and Surrounding areas.

Applicants must be available to deliver early morning hours, have dependable vehicle with current auto insurance and a valid driver's License.

Call Kathy at 989-533-3106 or 989-533-3108.

FIREWOOD

BUDD LOGGING LLC
 Hardwood, slab wood or logs (989)329-1578

BUYING: STANDING TIMBER
 and wood lots. Soft & Hard woods. Call Shelly:
 989-235-3094

FIREWOOD for sale. Log length loads, \$100 per full cord. 9 cord min. No Deliver charge within 30 miles. Stock up now. 989-235-3094

FULL CORD of hardwood slabs delivered or Cut to length \$55 per face cord, 989-965-0530

PRIME SEASONED hardwood. No delivery. \$45 per face cord 989-572-8705

MISCELLANEOUS

Better efficiency and more heat output than traditional wood heating. Central Boiler Classic Edge **OUTDOOR WOOD FURNACE**. Call today! Beaverton Outdoor Wood Furnace 989-435-9240

FOR SALE
 2007 Kabota Tractor
 70 Horse, 3,275 hours, Cab, Loader, Radio, Air and Heater. Must be seen to be appreciated. Please only serious buyers (231) 972-8742

MERCHANDISE WANTED

45 RPM Records Wanted
 (the small ones w/big hole) 50's-60's-70's. 517-775-3989

ESTATE SALES

2 FAMILY GARAGE SALE. Sept. 2, 9-5, Sept. 3, 9-2. 3759 S. Loomis Rd, Mt. Pleasant. Book shelves, exercise bike, canning jars, file cabinets & misc.

CASH FOR OLD COINS & CURRENCY

Paying book price. Will look up each coin with you.
989-426-7300.

BUILDING MATERIALS & SUPPLIES

BUILT BEST BARN
 Michigan's Largest Pole Barn Company
 Best Quality, Best Service, Summer Specials
 24'x24'x8'=\$7495.00
 24'x32'x8'=\$8495.00
 24'x40'x10'=\$10,495.00
 30'x40'x10'=\$11,495.00
 32'x48'x12'=\$16,495.00
 Completely Built, (Concrete Floor Optional)
 License/Insured
 1-877-802-9591 (Office)
 989-205-2534 (Cell)

PIONEER POLE BUILDINGS
 Free Estimates
 Licensed and Insured.
 2x6 Trusses.
 45 Year Warranty
 Galvalume Steel-19 Colors.
 Since 1976 #1 in Michigan
 Call Today 1-800-292-0679

AGRICULTURE & FARM

EXCELLENT BLACK DIRT:
 Recycled cow manure; \$25/ pick-up load. 1 load, you haul. Lots of repeat customers. Gladwin area 989-426-9691

FARM FEED & SUPPLIES

ALFALFA: 4th Cutting, \$10/ bale 2nd Cutting \$8; Straw, \$4/Bale; Cracked Corn \$12/100, Shelled-Corn \$10/100, Cob-Corn \$5/Bag, Rye, Barley, Wheat, Oats \$12/ bag. Delivery-Available. (989)433-5418 Cell# (989)965-1391

APARTMENTS FOR RENT (UNFURNISHED)

MAPLEVIEW APARTMENTS
 Is accepting applications for a 2 bedroom apartment home. Immediate occupancy. Rent based on income, starting at \$560. Heat and water included. Call today 989-682-4660 or visit at 378 S. Poplar, Maple Rapids, MI 48853 Equal Housing Opportunity TDD# 711

This Institution is an Equal Opportunity Provider and Employer




PASSENGER CARS

2014 CHEVY TRAVERSE
 LT, only 16,000 miles, heated seats, full power, show room new
Only \$26,995 or about \$389/mo.
Dick Sovo Auto 989-828-6032 dicksovaautosales.com

2015 FORD F-150
 Crew Cab, 4 door, only 6,000 miles, 20" factory chrome wheels, must see this truck!
Only 36,995
Dick Sovo Auto 989-828-6032 dicksovaautosales.com

YOU'LL NEVER KNOW THE VALUE of CLASSIFIED UNTIL YOU USE IT!

GARAGE SALES

YARD, RUMMAGE & GARAGE SALES

BEAVERTON: Barn Sale-Multi-Family. 4221 S. Oak Dr./All bright Shores; Sept 2 & 3, 9-5pm.

CLARE: 1101 Park St. Sept. 2-3, 9-4pm. Guitars, Dobro, tools, bike, table, much more!

GARAGE SALE- 567 Hill Crest Dr., Lake Sept. 3-5, 9am-2pm. Tools, reloading equipment, hardware, engine hoist, etc.

GARAGE SALE- Rain or shine Friday 9/2 & Saturday 9/3, 8 AM-5PM. 4545 Maple Drive Mt. Pleasant, (Meridian Rd. South to Bluegrass West to Maple Drive). Tools, home goods/decor, Bedroom Set & much more....

YARD SALE Rain or Shine Sept 2-11, 8am-6pm 6122 N. Roggers Avenue Harrison, MI

PASSENGER CARS

SPECIAL! 2015 FORD EXPLORER
 XLT, 4x4, Full Power, Third Rear Seat.
Fantastic Price
Only \$26,995 or about \$389/mo
Dick Sovo Auto 989-828-6032 dicksovaautosales.com

PARTS & SERVICE

AUTO REPAIR mechanical & body, auto parts, used & new, mostly mopower 989 835 8987 partsatmostlymopower@gmail.com

Don't Drink & Drive



KEEPING HEALTHY IS UP TO YOU!

PROMOTE YOUR GARAGE SALE

Print

Place Your Ad In The Classifieds Today

Do you have a car for sale? How about a boat? Or maybe some furniture?

Call to place a classified ad with one of our helpful representatives & sell your no longer wanted items **FAST!**





ARNIE'S
ARTS 'N' CRAFTS

LABOR DAY TENT EVENT

**5 Days
of
HUGE
SAVINGS!**

**Thursday, September 1st
through
Monday, September 5th**

SALE TENT ITEMS INCLUDE:

**Hundreds of
Clothing Items**

**Fleece
Jackets
T-Shirts**

**Sweatshirts
Hoodies & More**

All Remaining

**Varsity
Jackets**

\$25.00

**Adult Coloring Books
Markers &
Pencil Sets**

Specialty Yarn

String Beads

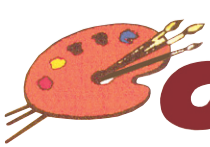
Easels

Back Packs

Scrapbooking

Art Kits

Crafts & More



ARNIE'S
ARTS 'N' CRAFTS

Houghton Lake
989-366-8794

Mon.-Sat. 9am-5:30pm Sun. 10am-4pm

www.arnies.com

www.basketpatterns.com

**Sizzling
Summer
Sell Off!**

The **AUTO GROUP**
OF MT. PLEASANT

**Lifetime Engine
Warranty**
"You Deserve Peace of Mind"

Over 100 Vehicles To Choose From! Check Out Our Whole Inventory At www.theautogroup.biz

• LIFETIME ENGINE WARRANTY • LIFETIME ENGINE WARRANTY • LIFETIME ENGINE WARRANTY • LIFETIME ENGINE WARRANTY •

 2007 RANGER XLT 4X4 Stk. #7555X \$8,900	 2009 EDGE LIMITED AWD Stk. #7627 \$14,900	 2014 JEEP PATRIOT SPORT Stk. #7624 \$15,400	 2007 SILVERADO LT 4X4 Stk. #7608 \$15,900
 2011 CANYON Stk. #7523 \$15,900	 2013 TOYOTA PRIUS Sips gas, Stk. #7505A \$15,900	 2008 GMC SIERRA 4X4, Stk. #7441 \$16,495	 2011 TERRAIN SLT 2 AWD Stk. #7580 \$16,495
 2013 ESCAPE SEL 4X4, Stk. #7545 \$16,495	 2015 DODGE CHARGER Stk. #7558 \$18,400	 2011 F150 EXT CAB XLT Loaded, Stk. #7629 \$18,900	 2014 JEEP COMPASS LATITUDE Stk. #7617 \$18,900
 2011 JEEP GRAND CHEROKEE LTD. Stk. #7565 \$19,900	 2012 FORD F150 4X4, Stk. #7528 \$20,400	 2013 FORD F150 EcoBoost, Stk. #7465 \$20,900	 2014 CHRYSLER 300 Stk. #7443 \$21,400
 2012 GMC SIERRA SLE 4X4 Stk. #7477A \$21,900	 2012 CADILLAC CTS PREMIUM Stk. #7530A \$21,900	 2011 F150 XLT 4X4 Stk. #7616 \$23,900	 2012 EXPLORER LIMITED Stk. #7571 \$23,995
 2013 RAM SLT QUAD CAB Loaded, Stk. #7208B \$24,900	 2011 F350 CREW XLT 4X4 Low Miles, Stk. #7610 \$26,900	 2014 YUKON SLE Loaded, Stk. #7583 \$29,995	 2014 SILVERADO LIKE NEW 8K Miles, Stk. #7556 \$31,300
 2014 GMC SIERRA Loaded, Stk. #7560 \$31,900	 2014 FORD F150 FX4 Stk. #7550 \$32,500	 2014 GMC SIERRA 4X4, Stk. #7549 \$32,500	 2015 F150 SUPERCAB FX4 8,000 Miles, Stk. #7513 \$32,900
 2014 CHEVY SILVERADO Loaded, Stk. #7561 \$32,995	 2016 RAM 2500 QUAD 4X4 Stk. #7623 \$35,900	 2016 SILVERADO LT 4X4 3K Miles, Stk. #7562 \$36,995	 2011 SILVERADO LT DURAMAX Stk. #7600 \$37,900
 2012 CADILLAC ESCALADE Low Miles, Stk. #7564 \$37,900	 2015 F150 CREW LARIAT 4K Miles, Stk. #7618 \$44,900	 2015 F150 CREW LARIAT 4X4 Stk. #7628 \$45,900	 2016 SIERRA HD CREW Diesel, Stk. #7586 \$56,995

• LIFETIME ENGINE WARRANTY • LIFETIME ENGINE WARRANTY • LIFETIME ENGINE WARRANTY • LIFETIME ENGINE WARRANTY •

EVERYONE IS APPROVED!!! Regardless Of Your Credit History!
Let Our In-House Finance Experts Help Get You Into The Vehicle Of Your Dreams!

AUTO GROUP

4720 E. Pickard (M-20) • Mt. Pleasant, MI
877-772-1113 OR 989-772-1113

All prices plus tax, title, plate & doc fees.

VIEW ALL OF OUR INVENTORY AT
www.theautogroup.biz