

Age 59 1/2? It's time!

CALL ME! ←

Bradford T. Martin,
Financial Advisor
An Ameriprise Financial Franchise

Ameriprise Financial
105 E. Locust St., Ste 1
Bloomfield, IA
641-664-2169
bradford.t.martin@ampf.com
www.ameripriseadvisors.com/bradford.t.martin

Tri-County SHOPPER



STANDARD MAIL
U.S. POSTAGE
PAID
TRI-COUNTY SHOPPER, INC.
POST OFFICE BOXHOLDER
LOCAL RURAL BOXHOLDER
OCCUPANT
**CIRCULATION OVER 11,750
THIRD CLASS**

P.O. Box 168 • Bloomfield, IA 52537 • www.tri-countyshopper.com
Phone 641-664-1333 • Fax 641-664-3761 • E-mail shopper@netins.net



Vol. 43, No. 17
April 29, 2015



BIGGEST SALE EVER

LIMITED-TIME OFFER!

OUR BEST PACKAGE AT OUR BEST PRICE

Smart Pack \$34.99/mo ACT NOW \$19.99/mo FOR 12 MONTHS 55+ Channels Not eligible for Hopper or HD offers.	America's Top 120 \$34.99/mo ACT NOW \$29.99/mo FOR 12 MONTHS 190+ Channels Everyday price \$59.99/mo.	America's Top 200 \$44.99/mo ACT NOW \$39.99/mo FOR 12 MONTHS 240+ Channels Everyday price \$74.99/mo.	BEST DEAL America's Top 250 \$49.99/mo ACT NOW \$39.99/mo FOR 12 MONTHS 290+ Channels Everyday price \$84.99/mo.
---	--	--	--

WHY PAY MORE FOR DIRECTV?

TAKE THE DISH CHALLENGE
Switch to DISH and if we can't save you more than \$250, we'll give you \$250. Guaranteed.



Must mention "Challenge" at time of sale. If first year savings are determined to be less than \$250, customer will receive a check in the amount of \$250 after new service activation. Savings based on estimated comparison of customer's last monthly DIRECTV bill and first DISH bill for comparable service and equipment as determined by DISH. Requires direct installation of customer's last monthly DIRECTV bill within 60 days of activation. Allow 2-4 weeks after activation for delivery of check. Requires qualifying credit. American programming, and 24-month commitment with AutoPay and Paperless Billing. Not available in 100/999. Offer expires 4/30/15.

SPECIAL OFFERS INCLUDE:

FREE PREMIUM CHANNELS for 3 months



Offer subject to change based on premium channel availability. *Free premium offer available with all plans. Note: Encore is included in America's Top 250.

FREE HD FOR LIFE*

Available with qualifying packages

LOCAL CHANNELS included

Ask about **FREE NEXT-DAY INSTALLATION** in up to 6 rooms

All offers require 24-month commitment and credit qualification.

Terra Signal Satellite of Bloomfield
641-664-DISH (3474)

TerraSignalSatellite.com
On the Bloomfield Square
Serving Southern Iowa & Northern Missouri



Important Terms and Conditions: Promotional Offers: Require activation of new qualifying DISH service. All prices, fees, charges, packages, programming, features, functionality and offers subject to change without notice. After 12-month promotional period, then-current monthly price applies and is subject to change. **ETP:** If you cancel service during first 24 months, early termination fee of \$20 for each month remaining applies. **Additional Requirements: HD Free for Life:** Additional \$10/mo HD fee waived for life of current account; requires continuous enrollment in AutoPay with Paperless Billing. **Premium Channels:** Premium offer value is up to \$132; after 3 months, then-current monthly prices apply and are subject to change. **Installation/Equipment Requirements:** Free Standard Professional Installation only. Leased equipment must be returned to DISH upon cancellation or unreturned equipment fees apply. Upfront and additional monthly fees may apply. **Miscellaneous:** Offers available for new and qualified former customers, and subject to terms of applicable Promotional and Residential Customer agreements. State reimbursement charges may apply. Additional restrictions and taxes may apply. **Offers end 6/10/15.** SHOWTIME is a registered trademark of Showtime Networks Inc., a CBS Company. STARZ and related channels and service marks are property of Starz Entertainment, LLC. ENCORE and related channels and service marks are the property of Starz Entertainment, LLC. Visit encortv.com for air dates/times.

High Auction Service, LLC

Real Estate AUCTION

formerly MJ's Flowers & Landscapes

1012 West Grant Street Lancaster Mo. 63548

Thursday, May 7, 2015 @ 6:30 p.m.

This property is located just off Highway 63 in Lancaster, Missouri. The property includes 24'x30' of commercial space complete with walk-in cooler, work area w/sink & bathroom. (It has been used as a Flower Shop for the past 2 years.) Adjoining the commercial space is 36'x30' living quarters (completely remodeled in 2012) with large eat-in kitchen, 2 bedrooms, and bathroom w/laundry area. Extras include lots of cabinets and counter space, "eat at" bar, closets with built-in shelves, extra deep tub & shower, and unique planked ceiling throughout. Appliances included are: Frigidaire front loading washer & dryer, Amana electric range, built-in GE dishwasher and GE microwave. The living quarters has an electric water heater and propane furnace. There is also an attached 30'x80' garage/shop with concrete floor with ramp and drain, (2) 12' overhead doors, bathroom, and newer roof. It is insulated, has lots of shelving, and new wiring and plumbing. The combined spaces are 4,200 square feet.

Terms of Real Estate: This property will be sold at public auction. The successful bidder will pay a non-refundable 10% of the bid price day of the auction and sign in written contract. Balance will be due at closing. Full possession will be given at time of closing. The 2015 Real Estate taxes will be prorated to date of closing. Closing cost will be split 1/2 equally between buyer and seller. Buyers should inspect the property to their satisfaction. There are no warranties pertaining to the property. Real Estate is being sold AS IS. Any announcements made day of sale take precedence over any advertising. Legal description: all of the west half of lot two (2) in block eleven (11) of Downings additional to the original town of Lancaster, Missouri, except the North 180 feet thereof subject to sewer and septic tank reservations.

Closing and title work done by Schuyler County Abstract 660-457-3804 To view the property, feel free to contact Megan 641-680-3536

Auctioneers Note: This property has lots of potential.

If you are looking for a home with good location, or for a small business opportunity - do not miss this one! We will be selling property only, please be on time. *Thanks Randy!*

High Auction Service LLC ~ Randy High 660.216.0515 ~ Clair High 660.341.1687

www.auctionzip.com e-mail: highauction@marktwain.net

Cash or check with proper ID. Not responsible for accidents or theft. Announcements day of the sale take precedence over any advertising.

GINGERICH GREENHOUSE AND SHADY LANE VARIETY

Celebrating our 20th Anniversary for Gingerich Greenhouse, and our 10th Anniversary for Shady Lane Variety!!

Join us for our **Open House** on **Saturday, May 2nd**

Ball Seed Sales Reps will be here from 9:00 a.m. to 2:00 p.m.??

GINGERICH GREENHOUSE

Large Selection of Annuals & Perennials
Bulk Garden Seed & Vegetable Plants
Flowering Shrubs, Fruit Trees, Weeks Roses
Hanging Baskets and Decorative Planters
Lawn & Garden Care Products
Potting Soil and Top Soil
We grow our own!!



SHADY LANE VARIETY

• Gifts • Rhythm Motion Clocks • Housewares • Ertl Toys
• Large Book Selection • Wind Chimes • Area Rugs
• Stamp Supplies and More!

7% off everything in stock!

Open House Hours: 7:30 a.m. - 6:00 p.m.
Hours: 8:00 a.m.-6:00 p.m. Monday - Saturday

1 mile East & 1/2 mile North of Drakesville at 16577 Jade Ave.
Voicemail: 641-664-0212

SHOW YOUR SCHOOL SPIRIT! 2015

CARDINALS VS. PADRES

MUSTANGS VS. ROCKETS

ST. LOUIS CARDINALS/DAVIS COUNTY MUSTANG BASEBALL TICKET CONTEST


CITIZENS MUTUAL IS GIVING AWAY 4 TICKETS TO THE JULY 5, 2015 CARDINALS VS. PADRES / DAVIS COUNTY MUSTANGS VS E-B-F ROCKETS GAMES!

HOW TO ENTER:
ENTRY DEADLINE IS MAY 6, 2015
VIDEOS MUST BE POSTED TO OUR FACEBOOK PAGE
INCLUDE NAME AND A BRIEF DESCRIPTION OF THE VIDEO
LIMIT ONE ENTRY PER PERSON

RULES:
MUST BE A CUSTOMER OF CITIZENS MUTUAL
CONTEST IS OPEN TO CUSTOMERS OF ALL AGES
PERSON SUBMITTING THE VIDEO IS CONSIDERED THE CONTEST ENTRY/WINNER
FAMILY OF CITIZENS MUTUAL EMPLOYEES ARE NOT ELIGIBLE TO ENTER
VIDEO MUST BE A CURRENT VIDEO
VIDEO IS TO BE NO MORE THAN 2 MINUTES IN LENGTH
VIDEO MUST BE POSTED TO OUR FACEBOOK PAGE OR EMAILED TO INFO@CITIZENSMUTUAL.COM

ANY CUSTOMER OF CITIZENS MUTUAL IS ELIGIBLE TO SUBMIT A VIDEO SHOWING THEIR MUSTANG SPIRIT. VIDEOS MUST BE CURRENT AND NO MORE THAN TWO MINUTES IN LENGTH.

THE WINNER WILL RECEIVE 4 TICKETS TO THE CARDINALS VS PADRES GAME SUNDAY, JULY 5, 2015 AT 1:35PM AT BUSCH STADIUM FOLLOWED BY OUR DAVIS COUNTY MUSTANGS AS THEY TAKE THE FIELD AGAINST THE E-B-F ROCKETS.



FOR SALE: Approx. 830 board feet white oak lumber, 1" thick by random width. 40¢ per board foot. Would work well for lining horse stalls.

Gingerich Sawmill
641-722-3002

FOR SALE: House to be moved. 3 bedroom 1 bathroom, approximately 1,200 sq. ft. Buyer assumes cost of moving. \$10,000 OBO. Located near Ottumwa, IA.

PH: 641-680-1566

FOR SALE: John Deere Van Brunt 10' wheat drill seed attachment, hydraulic, double openers, \$800.

PH. 660-341-3379.

JOE'S BARBER SHOP visit our new location at 210 E. Franklin St., Bloomfield, IA. PH: 641-664-2020, 641-208-5561

HUNGRY FOR CHICKENS? Taking orders now for homegrown fryers. Pastured, non-GMO.

PH: 641-722-3640

FOR SALE: Tractor digger Danuser, 16 inch auger with extension. Charles Comstock, Downing, MO. PH: 660-379-2430

NEW LISTINGS!

FOR SALE!

309 S. East St. • Bloomfield, IA

NEW LISTING



MLS#17322
2 Beds
2 Bath

Nice 2 bedroom, 2 bath home. Has had a number of updates, roof, windows, all solid wood doors, Furnace and Central air as well as on demand hot water heater. Appliances- Stove, Refrigerator, Washer & Dryer and 2 garden sheds remain with the property.

PROPERTY FOR SALE!

Gregory Lane • Bloomfield, IA • MLS#17321

This property is set up for 30 mobile homes. Located within close proximity of Hwy. 63, coming into Bloomfield from the north. This property, I'm thinking might also work as a setting for a commercial business.



641-664-2275
lynchrealtyinc.com

Give us a call today!

103 E. Franklin • Bloomfield, IA
641-664-2275
Licensed in Iowa
Stephanie Lynch, Broker



RUSTIC ACRES

Greenhouse & Produce

OPEN HOUSE!

Saturday, May 2nd
Discounts & A Free Flower Plant With Purchase!

- Garden Seeds
- Seed Potatoes
- Onion Sets
- Herbs

- Flowers
- Vegetables
- Strawberry Plants

Expanded selection of bedding plants!

On Hwy. 2,
West Grove

641-929-3056

FOR SALE: New 12'x16' storage building with vinyl siding & metal roof, includes 6'x7' roll-up door & 3'x3' window, \$3,150. Includes local delivery. Steven Keim 18155 Iris Blvd. Bloomfield, IA 52537.
VM: 641-664-2583



Paint Match...

Guaranteed!

Walker Motors

COLLISION REPAIR, INC.

660-465-2159
Shop phone/fax

375 South Main St. Memphis, MO 63555

RENT HERE



Give Us A Call Today!

Rental Cars Available For All Occasions
Great Rates - Unlimited Miles

SPILMAN'S MAKES IT EASY TO FIND AUTO PARTS!

MUCH EASIER THAN THIS...



Spilman Auto Parts

20311 Old Hwy. 2 • Bloomfield, IA

641-664-2463

GETTIN A ROOT CANAL IS PAINFUL

SPILMAN'S IS NOT!




Style Mom Will Love

BUY MOM SOMETHING SPECIAL

Brand Name:
Blouses
Pants
Capris
Summer Dresses
Purses
Hats
Jewelry
Home Decor

SOMETHING FOR EVERYONE

AT A PRICE YOU CAN AFFORD!

Gently used consignment shopping!
WE HAVE GIFT CERTIFICATES



2110 N. Court, Ottumwa
641-682-1393
Facebook/My Chic Boutique Ottumwa
Open Tues.-Sat. 10:00 AM



L&M Country Store

1 1/2 miles south of west Hwy 2 & 63 jct.
Mon-Sat. 8am-5pm CLOSED SUNDAYS
VM: 641-664-1936

Local Grown Greenhouse Tomatoes



Frozen 32 oz. Premium Pork Sausage with Spiral Ham \$1.50




Frozen 16 oz. Mild Pork Sausage.....	99¢
16 oz. Greek Yogurt (Plain)	60¢
3 lb. All Vegetable Shortening.....	\$2.59
Lipton Unsweetened Iced Tea (Makes 30 qts.)	\$1.99



ASSORTED HANGING FLOWER BASKETS





Charlie Bigsby
 Parents: Brian & Valerie Bigsby
 Davis County Elementary Mrs. Ellis (2nd Grader)

Charlie always chooses to be a honest kid of character even when a teacher or adult isn't around. He likes recess and math. At home Charlie likes to read, play football and ride his bike.

Congratulations Charlie! You've won a kids meal at Subway of Bloomfield!

Crop Production Services
 641-664-1045
 Bloomfield, IA

FOR SALE: 605 F Vermeer baler, Hesston hay conditioner, hay rake, no till planter, Bear Cat mill and more.
 PH. 319-498-4621. 19

FOR SALE: DMI rolling basket cumbler, 30 ft. wide, field ready. Richard Harper, Memphis, MO.
 PH: 660-328-6216 or 660-341-4327 19



FOR SALE
660-341-8738

2004 Chevy 3/4 ton, heavy duty Silverado, 8100 engine, 4WD, good truck.
\$15,500

WESTERN'S SMOKEHOUSE

- Nationwide Shipping
- Cut to Order Meat Bundles

Gourmet Cheeses
 Award Winning Sausages

Snack Sticks & Beef Jerky

Visit our retail shop in Greentop, MO
 www.westerns-smokehouse.com
 Mon. - Fri. 7am - 5pm • Sat. 8am - 4pm
 660-949-2445 • 1-800-456-0250


Hersberger's Bulk Food and GROCERY

FRESH Maple Syrup

Baby Carrots69¢/lb.
 Bacon\$1.49/lb.
 Smithfield Premium Pork Sausage.....69¢/lb.
 Cottage Cheese, 24 oz. (limit 6)\$1.79
 Land O Lakes Butter\$2.29 lb.

3/4 mi. E. of Drakesville, IA on 180th St.
 HOURS: 8 a.m.-5 p.m. Mon.-Sat.
 VM: 641-664-2661

Food Supplements
now
 Vitamins



Happy Birthday JoLynne

Thursday, April 30th

We hope you have a wonderful day!
 Jeri Lyn, Bruce, Emily & Natalie

GARAGE SALE: 205 S. East St., Bloomfield. May 2nd 8am-12pm. Boys and Woman's plus size clothing, toys and lots of misc. items.

FOR SALE: Wolf Creek Diablo dog proof trap, brand new.
 PH: 641-664-2549 19

A LITTLE BIT OF EVERYTHING at Burley Isaac's What Not Shop. 104 Division, St., Cantril, IA. 417-531-0629
 Lookers wanted, buyers needed! Come and see, thanks! 19

TRUE VALUE IN BLOOMFIELD, IOWA FINAL LIQUIDATION SALE. LOOK for our auction ad on page 14. Quality Mark, LLC. Auction Services.

FOR SALE: 1976 MG Midget Convertible, 57,000 miles, runs well, \$2,000.
 PH: 319-750-1968 19

YARD SALE! PROCEEDS GO TOWARDS RELIEF EFFORTS!
 Saturday, May 2nd from 8:30am-5:00pm near T Corner Furniture (1 mile east of Drakesville)

FOR SALE: 28' storage trailer on wheels, asking \$1,000.
 VM: 641-664-3571 ext. 2 19

Hawkins - Harrison Insurance

SHOPPER ADS CAN BE DROPPED OFF HERE!

Proud to be your partner.

P.O. Box 365 Lancaster, MO 63548 660-457-3020

103 W. Monroe St., Memphis, MO 63555 660-465-8533

Trusted Choice

Slayton Polaris

POLARIS The Way Out. Authorized Polaris dealer since 1988

New & Used Polaris ATV's



BLOOMFIELD, IA
 8 mi. S & W from Pulaski or 6 mi. W of Memphis then 13 mi. N on Route B
660-328-6627



FOR SALE
3 Bedroom | 1 Bath
\$59,900
 Nice 3 bedroom, 1 bath ranch style home in Pulaski, Iowa.
641-929-3326

LANDSCAPE SPECIALS

8 FT. RAILROAD TIES!
 Check them out at...

Spilman's Auto Parts
 20311 Old Hwy. 2 • Bloomfield, IA
641-664-2463

2009 CHEVY IMPALA
 LT, 68K MILES, LOADED, LEATHER



NOW \$10,200

Kollision Korner 504 South Drake St. Bloomfield, IA 52537
 PH: 641-664-2648 Fax: 641-664-2948

Like us on facebook "Like us on Facebook!" for more pictures.

Danner SINCE 1932
 Pronghorn
 2 miles South and 1 mile East of Drakesville
Graber's Country Store

FARMER'S COUNTRY MARKET

DOG FOOD RE-STOCKED!
 Similar Formula
 26% Protein 16% Fat

NEW SUPPLY BREAKFAST CEREAL
CRISCO CANOLA OIL
 48 oz. \$2.15

COCKTAIL SMOKIES
 12 oz. .75¢

CHECK FOR OUR MANY SPECIALS!

18786 200th St. • Bloomfield, IA
 VM: 515-830-2971
 Open Monday-Saturday 8-5,
 Closed on Sundays

ANNUAL 4-H PLANT SALE

Saturday, May 2nd
8:00 AM - NOON
Davis County Extension Office

Perennials • Most plants \$1.00
 Come out and support our youth!

Southfork MOTEL & GRILL

JUNCTION OF HWY 2 & 63
 BLOOMFIELD • 641-664-1063

Breakfast • Lunch • Dinner
 Daily Hot Specials and Evening Features
 Prime Rib Capital of the World!
 Friday & Saturday Nights
 Banquet Facilities Available for All Occasions • Catering
"Where Quality and Consistency Matter!"

Tues - Thurs 7am-9pm • Fri - Sat 7am-10pm
 Sunday 7am-2pm • Closed Monday

THANK YOU!

to all the citizens of Davis County for allowing me the privilege of serving you as Davis County Treasurer Tax Deputy for the past 15 1/2 years. It has been an honor to serve you to the best of my ability. Due to circumstances beyond my control I will be retiring earlier than I had previously planned.

Coleen Hootman

Thanks

FOR BLESSINGS
God is still good

Thank You, Thank You, Thank You to my wonderful friends & churches for praying for me, sending me cards, flowers, texts and for lifting me and my family up to Our Lord. It's paid off. My cancer is in remission. Again praise the Lord and it's all because of you, my prayer warriors. I love and appreciate you all, and thank my Lord everyday for your faithfulness.

Love
Ramona Schooley & Family

FISH FOR STOCKING LAKES AND PONDS

6-8" and 8-10" Catfish, Albino Catfish, Redear Sunfish, Minnows, Bluegills, Hybrid Bluegills, Bass, Grass Carp, Crappies, & Koi

SATURDAY, MAY 2ND
 OTTUMWA - TRACTOR SUPPLY FROM 9:00-10:00 AM
 BLOOMFIELD - TROY ELEVATOR FROM 11:00-12 NOON
 DRAKESVILLE - ADAM'S AMMO FROM 12:30-1:30 PM

THURSDAY, MAY 7TH
 LANCASTER - MFA FROM 12:30-1:30 PM

CASH OR CHECK ONLY
 Please bring your own POND water. Private delivery available
 TAKING WALLEYE ORDERS FOR FALL DELIVERY

To order call **BLYZO FISH FARM** FISH FARM OPEN BY APPT.
 641-874-5907

BEE!

A Local Shopper...



FIRST BAPTIST CHURCH

(Affiliated with G.A.R.B.C.)
Sunday:
 Sunday School 9:30 A.M.
 (all ages)
 Morning Worship .. 10:30 A.M.
 Evening Worship.....6:00 P.M.
Wednesday:
 Midweek Service.....7:00 P.M.
 Youth Meetings.....7:00 P.M.

East of Middle School
 on North Street
 401 Crestview Ave.
 Bloomfield, Iowa 52537
 Phone 641-664-2240

www.bloomfieldfirstbaptist.com


MAY MENU

1. Fish Will's B'day	15. Fish
4. Meatloaf Roy's B'day	18. Brats
5. Chicken Strips or Liver & Onions	TACO BAR 5-7
6. Chicken	Sylvia's B'day
7. Tator Tot Casserole	19. Goulash
8. Fish	20. Chicken
9. Wayne & Marjorie's Anniversary, Terence's B'day	21. Country Fr. Steak
11. Tenderloin	22. Fish
12. Salmon Patty	25. Chiligetti
13. Chicken	26. Pork Roast
14. Chicken Tenderloin	27. Chicken
	28. Wraps
	29. Fish
	31. Rob's B'day

"Where the floor show is free!"

M'S PLACE - BROCK

7 miles N of Memphis on Hwy. 15
 660-328-6649 Mon.-Fri. 7 am - 2 pm




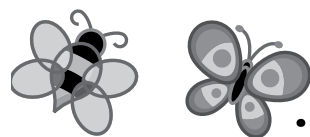
Happy Birthday
to our Grandma Joyce
from your 5 favorite little people

RunAge SALE

Bloomfield United Methodist Church

Thursday, April 30th
 7:00 AM - 6:00 PM

Friday, May 1st
 8:00 AM - NOON
 Friday fill a sack for \$1

IOWA THEATER BLOOMFIELD, IOWA

"Furious 7"



Friday, May 1
 Saturday, May 2
 7:00 PM
 Sunday, May 3
 4:00 PM

PG-13
 Coming Soon:
 "Mall Cop 2"

Friday, May 1st

Jumbo Shrimp

with sides Serving at 6:00 P.M.

Dine In **722-3355** Carry Out

RAY'S LONGBRANCH

Drakesville, IA

NOTICE OF SPECIAL ELECTION

Tuesday, May 5, 2015
Polls Open NOON to 8:00 P.M.

City of Bloomfield (All) - Bloomfield Fire Station,
 501 S. West St., Bloomfield, IA.
 Central Precinct - Southern Iowa Electric Cooperative,
 22458 Hwy 2, Bloomfield
 Northwest Precinct - Drakesville Shelter House, Drakesville
 Northeast Precinct - Community Hall, Floris
 Southeast Precinct - Pulaski Fire Station,
 106 S. Second Street, Pulaski
 Southwest Precinct - West Grove Township Hall,
 West Grove

Vote will be on the following proposition:
 "Shall the county of Davis, State of Iowa, enter into a loan agreement and issue its general obligation bonds in an amount not exceeding the amount of \$5,800,000, for the purpose of acquiring real estate, preparing a site and constructing, furnishing and equipping a County Law Center that will provide space for the jail and administrative office space for the County Sheriff, the Bloomfield City Police Department and the E911 Communications?"

Absentee ballot requests and registration forms available through the Davis County Auditor's Office at the following:
 Ph. 641-664-2101 email: auditor@daviscountyiowa.org.
 website: www.daviscountyiowa.org

MAST MEATS, LLC

Hwy 63
 Queen City, MO




Now setting appointments for Custom Exempt Slaughter and Processing.
Please stop by or call
660-766-2211 or Tim's Cell 804-366-0626
Check out our retail beginning May 5th!



THE OUTLET & FIREWORKS LAND

Hwy. 63 Lancaster, Missouri • 660-216-7632
Hours: Mon.-Thur. 9:00 AM - 6:00 PM • Fri. & Sat. 9:00 AM - 7:00 PM • Sun. 10:00 AM - 7:00 PM

CELEBRATE MOTHER'S DAY & GRADUATIONS AT THESE 2 STORES

3 1/2 MILES SOUTH OF THE LINE • AMERICAN OWNED STORE

- CIGARETTE SPECIALS
- NOVELTIES
- NEW FURNITURE ITEMS

60 NEW ITEMS!

OPEN 7 DAYS A WEEK

ANTIQUES • USED FURNITURE • NOVELTIES • NEW ITEMS ARRIVING DAILY

Give Mom a gift from the heart



One of a kind just like Mom

The Flower Shop

641-664-2222
North Side Sq. • Bloomfield

Owned & Operated by Bonny Davis, Iowa Master Florist




We provide materials & expertise for all building projects.



New Homes Remodels Decks Kitchens ICF Basements Pole Buildings

Josh & Emily Hill
218 S. 2nd St. • Pulaski, IA

641-675-3405



Fox Valley Welding

No matter what size the project customer satisfaction is always our first priority.

Tig & Aluminum Welding Milwork

Lathe New Steel Fabricating

Hours: M-F • 8-5:30 641-656-4684
12190 East Hwy. 2 • Milton, IA

FOR SALE: 2013 Dodge Grand Caravan, flex fuel, stow & go seats, good condition, well maintained, 114,000 miles. \$11,500 OBO. PH: 641-226-8042 19

FOR SALE: Wringer washer speed queen, 2 rinse tubes, \$75; '67 Thunderbird, 4 door, nice; '78 Granada SS, 4 door, extra nice! PH: 641-459-3888 19

FOR SALE: 2009 Dodge Caravan SE, flex fuel, stow & go seats, good condition, well maintained, 143,000 miles. \$9,500 OBO. PH: 641-226-8042 19

HOUSE FOR SALE: 3 bedroom house in Lancaster. PH: 660-457-3369 19

BLOOD DRIVE: Drakesville United Methodist Church will host a community blood drive from 3:00 pm to 7:00 pm on Tuesday, May 5 at 201 N. Madison, inside Fellowship hall. To donate, please contact Eileen Bolin at 641-722-3761 or visit www.bloodcenterimpact.org and use code 5093 to locate the drive.

GARAGE SALE: Saturday May 2, 8am - ? (No early sales) 1009 Morningside Drive, Bloomfield. Stock up now so that you can have a garage sale of your own. Lots of elegant x'mas decorations, mens & womens clothes, patterned glass jelly jars, plastic tote tubs, many fishing lures in tackle boxes, fishing rods & reels (some G. Loomis) 6 cubic ft. Kenmore deep freeze, sewing fabric, quilt batting, light house bird feeder, small rugs, luggage, small room humidifier, 8 ft. step ladder, 8 ft. H.D. folding table, set of golf clubs (2 are Taylormades), hand made comforts, lots of miscellaneous stuff. Jack & Beverly Woolard (Not responsible for accidents or brain lapses)




BENEFITS OF POLY FURNITURE

- *No Maintenance
- *Termite Resistant
- *Will not crack, splinter, warp, or rot
- *Will not Promote bacteria growth or mildew
- *Will not weather from natural elements

- *U.V. stabilized (fade proof)
- *Assembled with stainless steel hardware
- *Chairs, Gliders and Swings reinforced with aluminum angle braces
- *7 colors with a wide variety of variations



VM: (641) 664-0207
1 Mile East of Drakesville on Jade Ave.
Hours: Mon.-Sat. 9:00 AM - 5:00 PM

Personal, Quality Primary Care Close to Home



Trina Settles, D.O.

Board Certified Family Practice Physician

Specializes In:

- ◆ Comprehensive Care for the Entire Family
- ◆ Women's Health
- ◆ Preventative Medicine

Serving patients in all of Southeast Iowa and Northeast Missouri
To schedule an appointment please dial **641-664-3832**

Davis County

MEDICAL ASSOCIATES

Dedicated. Compassionate. Healthcare.

509 N. Madison, Suite 100
Bloomfield, IA 52537
DavisCountyHospital.org

Village Market

IN-STORE SPECIALS ALL WEEK!

Hwy 136 just 1 mile west of Memphis, MO Hrs: Mon - Fri 8:30 to 6 Sat. 8:30 to 5

660-465-7307



MOTHER'S DAY GIFT CERTIFICATE SALE!

Make Mom's Day Beautiful

Spoil Mom with the gift of beauty and relaxation for Mother's Day.

Stop in and purchase a gift certificate & receive a BIG discount!

SIGN UP FOR DOOR PRIZES!



Brenda Williams-Stylist/Owner
Tiffany Panos-Stylist
Barbie Slayton-Stylist

107 1/2 E. Jefferson, Bloomfield

641-664-1650

Open Monday - Friday

Linda King-Nail Technician
Kele-Stylist
Brittany-Stylist



BLOMME
CONSTRUCTION
Sales & Installation
BRITESPAN
BUILDING SYSTEMS INC 660.216.0012

ARE YOU READY FOR THE PURPLE MARTINS? STOP BY YODER'S INDIAN CREEK FURNITURE FOR ALL YOUR BIRD NEEDS. Wood & poly Martin houses. Available with fiberglass pole & winch. Gourds & gourd racks available with fiberglass pole & winch. Houses & gourds have Starling resistant holes. Also have Bluebird & Wren houses. Located 4 miles North of Cantril on RT. V64, 22769 Rt. V64 Milton, Iowa. TF



Shears To You
Rochelle Garretson
Owner/Stylist

Happy Mother's Day

Open
Mon, Tues, Thurs, Fri
By Appointment or
Walk-Ins Welcome

**Gift Certificates
Make Wonderful
Mother's Day Gifts!**

307 S. West St.
Bloomfield
641-664-1821



OPEN HOUSE

Saturday, May 2nd 8am-6pm
Sunday, May 3rd 1-5pm

**Johns Seed & Supply
GREENHOUSE**

**Hanging Baskets
Bedding Plants
Vegetables & Flowers**

Asparagus Roots
Strawberry Plants
Rhubarb Roots
Sweet Potato Plants

**BULK GARDEN SEED
ONION SETS / PLANTS**

**Mulch • Potting Soil • Top Soil
Garden Lime & Fertilizer**

Hwy 63 North • Queen City, MO
660-766-2711
Monday-Saturday
8 a.m. - 6 p.m.
Sunday 1 p.m. - 5 p.m.



Simplicity

Test Drive COMFORT Today!

COMFORT
IT'S IN THE SPRINGS

Available on lawn tractors
& zero turn mowers

502 E. Franklin • Bloomfield, IA • 641-664-2784

FOR SALE: Used 14' trusses, \$10 each. Grease guns, your choice, \$10 each.
PH: 641-929-3056 18

WANTED: Good used kitchen cabinets.
VM: 641-664-3571 ext. 2 18

FOR SALE: old Troy-Bilt pony tiller, 5 hp roller bearing Briggs & Stratton. 1st \$150; a few 1-1/2 year old hens, \$2; WANTED: 1/2 gallon canning jars, regular mouth.
PH. 641-682-8333. 18

FOR SALE: Tiller - rear tine Cub Cadet model RT65, Honda engine, 4 years old, \$825 new, little use, asking \$550.
PH. 319-494-7733. 18

FOR SALE: 2 portable table top ovens; wood burning smoker, like new; variety of woven rugs; old Smith Corona manual typewriter.
PH. 641-919-4617. 17



MAST OVERHEAD DOORS
105 S. Dodge St., Bloomfield, IA 52537

RAYNOR
AUTHORIZED DEALER

641-680-2016

Garage Doors
Residential & Commercial
Doors & Operators
Free Estimates We Fix Doors

Quality Products
+ Quality Workmanship
= Quality Customers



WE are YOUR Collision Specialists!

**fredWRECKS
Collision Repair**

Mike Frederick
Owner

127 N. Main St. Memphis, MO 63555
Phone/Fax: 660-465-2114
fredwrecks@yahoo.com



Cub Cadet
YOU'LL FIND STRENGTH
IN EVERY TURN.

RZT® S SERIES
FOUR-WHEEL STEER ZERO-TURN RIDERS

• Cub Cadet set the standard for zero-turns with steering wheel control and four-wheel steering, delivering superior handling on varied terrain, including hills
• 42" and 50" heavy-duty stamped decks deliver the beautiful results of the Cub Cadet Signature Cut™
• Available 46" and 54" fabricated decks feature exclusive tunnel design for the best-in-class cut and durability
• 3-year/120-hour limited warranty**

STARTING AT \$2,699**

EXCEPTIONAL FACTORY FINANCING AVAILABLE

GREINER IMPLEMENT CO.
10845 73RD STREET | OTTUMWA, IA 52501
641.683.1691

(1) Subject to credit approval on a Cub Cadet credit card account. Not all customers qualify. Additional terms may apply. Please see your local Cub Cadet dealer for details.
** Product Price - Actual sales prices are set by dealer and may vary. Taxes, freight, setup and handling charges may be additional and may vary. Models subject to limited availability.
*** See your local dealer for limited warranty details and information. Certain restrictions apply. Specifications and programs are subject to change without notice. Dealers may not reflect dealer inventory and/or with specifications.
The Best Buy Seal and other licensed materials are registered certification marks and trademarks of Consumer's Digest Communications, LLC, used under license. For award information, visit Consumer's Digest Communications, LLC. © 2015 Cub Cadet - CT-CH3001-2x9



Scotland County Care Center
434 E. Sigler Ave., Memphis, MO

Seeking kind, compassionate individuals to fill the following positions:

C.N.A./N.A. - All shifts
Housekeeping - Days
Full Or Part Time Positions
Long Term Care Experience Preferred,
But Not Required
Paid Time Off
Must Be Able To Pass A Drug Test
Must Be 18 For Most Positions
We Will Certify N.A.'s On-site

Apply in the Business Office
Monday-Friday 8:00 a.m.-4:00 p.m.
or online at www.scotlandcountycarecenter.com

For more information contact
Sheena Nichols, DON or
Tammy Kirchner, H.R.
(660) 465-7221 E.O.E.



**Lilac Hill
GREENHOUSE**
660-342-9554

OWNERS
IVAN & NANCY MARTIN

HAPPY MOTHER'S DAY

Hanging Baskets
\$22 EACH
or 2/\$40
FOR CHILDREN ONLY!
**8" WAVE PETUNIA
KIDS HANGING BASKET**
\$1 EACH
WHILE SUPPLIES LAST

12 INCH

**SHOP EARLY FOR
BEST SELECTIONS!**

- Hanging Baskets
- Patio Pots
- Bedding Plants
- Perennials & Annuals
- Potting Soil
- Mulch
- Planting Supplies
- And much more...

For Sale

- * Onion Sets
- * Seed Potatoes
- * Bulk & Packaged Garden Seeds
- * Vegetable & Flower Bedding Plants
- * Asparagus Roots

Your Source for Proven Winners **PW** **PROVEN WINNERS**

25957 US Hwy 136 • Lancaster, MO
M-F 8:00 AM - 8:00 PM • Sat. 8:00 AM - 6:00 PM • Closed Sundays

Shower Mom

Stop in and stock up for spring!



Garden Gloves
Watering Cans
Rakes
Miracle Grow
Hoses
Sprinklers
Hoes
Weeders

Grass Seed
Wheel Barrows
Rubber Maid Carts
Tomato Cages
Liquid Deer Fence
Grub Beater
Garden Sprayers
1, 2 & 3 GALLONS

Hamilton Produce Co. 105 W. Franklin
Bloomfield, IA
641-664-2459 or 1-800-469-7749

FOR SALE: Pump organ in good shape, bellows broken, includes stool. \$1,000
Call: 319-397-2266 17

WANTED: Used kitchen cabinets in good condition.
PH. 641-664-1964, ext. 1 18

FOR SALE: Handicap Legend-XL Pride scooter, lights, horn, turn lights, basket, 2 chargers, lift & ramp. Call Larry 641-208-1631. Can be seen at Bloomfield. 18

FOR SALE: Marshfield mobile home 66x14 upgraded with plywood floors, gabled steel roof & modern windows, all electric. Includes appliances, 10x25 covered porch & 8x12 enclosed mud room. Must be moved. \$5,000 OBO 12 mile SE from Bloomfield, IA. Call after 7pm.
PH: 641-208-5115 17

FOR SALE: Black & white spotted draft, 3 yrs. old, gelding.
PH: 641-929-3341 18

Imagine the possibilities...



Your Start-to-Finish Building Supply Center

We offer one-stop shopping and great advice for every phase of every project.

- Metal Roofing
- FREE estimates!
- Crews available
- Call today!

WAGLER METALS

19049 Ice Ave., Bloomfield, IA
641-722-3692



**JUST IN
Fresh Butter
& Cheese**



Velveeta

1# Box
\$1.99



Original V8



64 oz.
99¢

**Ol Jacks
Dog Food**



21% Protein
8% Fat 50 lb.
\$18.00

**Chicken Breast
Nuggets**



Fully Cooked
\$1.39/lb.

**Tropicana
Orange Juice**



100% Pure
1 gal.
\$2.49

**M&Ms
Peanut Or
Milk Chocolate**



12.60 oz.
\$1.50

**Werthers
Original Carmel
Popcorn**



1.5 oz.
25¢

Tide Ultra Original....Pwd. 180 load....\$20.89

Tide Original..... Liquid 5 gal.. \$29.99

Amish Laundry Detergent..Dry 12# over

160 loads\$4.65

**Ultra Premium Bath Tissue..45 rolls 220 sheets
per roll.....\$18.00**

Campbells Cream Of Mushroom Soup

10.75 oz.....65¢ or 24 ct. for 55¢

**Campbells Chunky Ckn. Broccoli Cheese
with Potato 18.8 oz. 85¢**

**Campbells Chunky Mush. Swiss Burger
18.8 oz..... \$1.19**

Carriage Trade White Potatoes 50 lb.\$6.99

Angus Chuck Ground Beef Patties

3-3.5 lb. pkgs. 10.5# Box..... \$2.29/lb.

Turkey Breast Lobes \$1.32/lb.

Center Cut Pork Butts 3-4# \$1.59/lb.

Pork Rib Tips \$1.49/lb.

Lil' Smokies...4 lb. pkg. Only \$1.45/lb..\$5.80

Black Oak

Carving Ham No Bone.....99¢/lb.

While supplies last

**19686 Hwy. 2 Bloomfield, IA
Approx. 2 miles west of Bloomfield**

**Keebler
Red Velvet
Fudge Strips**



NEW
11.5 oz.
\$1.50

**Keebler
Simply Made
Butter Cookies**



10 oz.
\$1.25

Pamper Mom!

- Wine
- Gift Certificates
- Lottery Tickets

Call ahead for large orders!

SMOKERZ OUTLET
SUN - TH 8AM - 9PM
FRI & SAT 8AM - 10PM
660-457-3088

FOR SALE: 2008 Ford Focus for parts, has been wrecked, 40,000 miles, runs & drives, \$850 OBO. also 3 good big hedge posts, \$70.
PH. 641-799-3687. 19

Mississippi Valley Regional Blood Center mobile drew 12 pints of life-saving blood on April 20th at the Floris Baptist Church blood drive.

TRUE VALUE IN BLOOMFIELD, IOWA FINAL LIQUIDATION SALE. LOOK for our auction ad on page 14. Quality Mark, LLC. Auction Services.

FOR SALE: JD 4 bar rake, good condition, \$450. 490 JD corn planter, \$300.
PH: 319-750-1968 19

LOST: Male tri-colored treeing Walker coonhound. Last seen in Livonia, Mo. area. Slipped has collar, generous reward.
PH. 660-216-1121. 19

MOVING SALE: Rigenbach 106 N. Howard, Bloomfield, IA. April 30th 8:30-6; May 1st 8:30-6; May 2nd 8:30-Noon. Recliner, mirrored dresser, desk, chair, dresser. Lots of girls to size 5, boys to size 3, junior clothing to size 5, toys, high chair, crib, books, kitchen & misc.

MEMPHIS MERCANTILE

MOTHER'S DAY Special

- Craft Supplies
- Kitchenware
- Scrapbooking
- Vitamins/Herbs
- Books & Bibles
- Baby Items & Toys
- Cricut Supplies & Rentals
- Fabrics & Sewing Notions
- Primitive & Inspirational Décor

20% OFF! All SWEATERS!

20% OFF!
1 regular priced item of your choice!
1 coupon per person, must present coupon
Coupon Valid: 5/4 - 5/9
MEMPHIS MERCANTILE
660-465-2102

MOTHER'S DAY CARDS!

115 E. MONROE • MEMPHIS, MO • 660-465-2102
M-W & F: 9am-5pm; THUR: 9am-6pm; SAT: 9am-3pm; CLOSED SUNDAY

We will be closed Ascension Day Thursday, May 14th

FOR SALE: Janome electric sewing machine with accessories. Small chest of drawers, antique wooden rocker and other assorted small furniture. (2) double size beds complete with headboard, mattress & springs, metal wardrobe.
13852 195th St., Drakesville, IA. PH: 641-208-7008 17

Fabius Creek Livestock Solutions LLC.
Open for Appointments Evenings & Weekends
12713 275th Street • Bloomfield, IA 52537
641-895-0128

ADM Alliance Nutrition[®] TARTER[®]

WHAT A DEAL!

Three little words that sum up our really big sale.

TRUCKLOAD SALE
Gwaltney
MILD Pork Sausage
99¢
1 lb. pack
Ground - Mild Pork Sausage

\$1.49
per lb.
sold as 10# box - \$14.90
Assorted - Breaded & Battered
POLLOCK FISH

GREAT PRICE!
99¢
per lb.
Deli Sliced - White Turkey Breast

99¢
per lb.
sold as 4# - \$3.99
CornKing[®] - Smoked Boneless Flat Ham

DEAL!
\$6.99
50# bag
That's only 14¢ lb.
WHITE Potatoes

3/1
5 oz. - 11ct.
Annie's - Pepperoni PIZZA POPPERS

\$7.99
2-Ply Giant 8 roll pk.
Sparkle
SPARKLE Paper Towels w/Thirst Pocket

\$18.95
35 lb. JUG
Clear Liquid FRY OIL

99¢
1.75 Qt.
Chocolate, Choc. Chip, Vanilla, Neop.
Family Pak[®]
Ice Cream

\$15 OFF
Carhartt Footwear

\$2
Lady's Straw Hat
Check out our large Selection of STRAW HATS for Summer Sun Protection

\$1.99
1 oz.
Terro
Ant Killer

Buy A CROCK
Get the Lid 1/2 OFF
1-2-3-5 gal. sizes
Stoneware CROCKS

\$39.95
SALE regular \$42.95
GRABER GRILL
Campfire Grilling Made Easy

DUTCHMAN'S STORE Division Street - CANTRIL, IA - (319) 397 2322 SALE PRICES April 29-May5
STORE HOURS • Weekdays, 8a.m. - 6 p.m. • Saturday 8a.m. - 5 p.m. • Sunday Closed • View our specials at - www.DutchmansStore.com

Burkholder's Greenhouse

Rose Bushes Lots of Perennials

Coming this week
Large Shipment of Shrubs

Hydrangeas, Butterfly Bush, Lilacs, Barberry, Spirea, Weigela, Viburnum, Knock Roses, Evergreens, and more...

Asparagus Crowns, Strawberry Plants, Rhubarb Plants, Vegetable Plants Large Selection of Shade Trees, Fruit Trees and Ornamental Trees.

Now is a good time to plant...
Fruit Trees • Grape Vines • Raspberry, Blackberry & Blueberry Plants
Come see our selection!

Spring Hours 660-397-4115
Mon-Sat 8 am to 5 pm 660-341-5777
See Our Catalog at 4 Miles North of Edina, MO
www.burkholdergreenhouse.com

GET SERIOUS - GET HOYT. We got serious so we got Hoyt. With all in stock Hoyt bows get up to \$150 free accessories. W.C. OUTDOORS, 16660 240th Street, Bloomfield, IA. PH. 641-929-3025. 18

COUNTRY ROADS GREENHOUSE IS OPEN! Hanging baskets and tomato plants ready now! 2 miles South, 2 1/4 miles West of Pulaski. 17

FOR SALE:
New Mattresses, selling individually or in sets. Factory warranty. Twin, Full, Queen & King Sizes.
641-664-3060

BLOOMFIELD MINI STORAGE. Serving you from 2 safe, convenient locations. PH. 641-664-1066. TF

FOR SALE: 2014 Alfalfa Hay, large squares & rounds. Mark Rogers PH:641-919-9447 22

COUPLE NEEDING TO RENT 3-4 bedroom home semi rural in Davis/Monroe/West Wapello or East Jefferson County, prefer one level. Need to be closer to employment in Ottumwa. Have outdoor pets. 1-2 car garage. PH. 417-505-0955 or 417-505-9055. markenpet@yahoo.com 18

FOR SALE: John Deere STX46, 46" deck, 15hp Kohler motor w/hydrostat, needs work \$150. PH: 641-459-3461 18

GREENHOUSE, PLANTS, & HANGING BASKETS

10% OFF!

4 PACKS \$1.19 & UNDER! BASKETS STARTING AT \$11

BAGGED & BULK MULCH

5% OFF!

BAGGED MULCH STARTS AT \$3.29 BULK MULCH AS LOW AS \$14/SCOOP

LOUISIANA® & HOLLAND® GRILLS

10% OFF!

\$599 AND UP!

POLY FURNITURE

15% OFF!

CHOOSE YOUR COLOR COMBO, 3 WEEK ORDER, MOST ON DISPLAY!

ANNUAL SPRING OPEN HOUSE!
SALE PRICES ARE FOR MAY 7th-9th ONLY!

Village Market

Rt. 3 Box 168-A (Hwy 136 & Hwy 15)
Memphis, MO 63555 • 660-465-7307
Hours: Mon. - Fri. 8:30 - 6:00 • Sat. 8:30 - 5:00 • Sun. Closed

EBT WELCOMED!

Like us on facebook

BLOOMFIELD GREENHOUSES

Spring Open House Refreshments

SHRUBS & TREES! DOOR PRIZES!

Saturday, May 2nd
8:30 am - 6:00 pm

LOTS OF FLOWERS & VEGETABLES HANGING BASKETS

708 East Arkansas Ave., Bloomfield
641-664-1622

Kirksville FLOOR★MART In business for over 30 years!

Name Brands WAREHOUSE PRICES!

SmartStrand SR Armstrong Congoleum WEAR-DATED
MOHAWK Shaw FLOORS Mathews & Parlo Your Carpet Source DreamWeaver
MANNINGTON BEAULIEU of AMERICA Ansohylon daltile DESIGN WITH CONFIDENCE

Laminate Flooring Shaw Reclaimed Collection \$169 sq. ft.

Navigator Luxury Vinyl Plank Shaw FLOORS \$199 sq. ft.

Get the feel of softness underfoot...with new carpet from FloorMart!

Atlas II 52 oz. Soft Carpet \$178 sq. ft.

Masterwork II Boulder Gray \$139 sq. ft.

Buy Now Pay later with easy financing, ask for details!! with approved credit through Synchrony Financing

Meteor Brown Glazed Porcelain Tile MOHAWK \$179 sq. ft.

Color Point Vinyl Composition Tile MANNINGTON 66¢ sq. ft.

Rustic Manor Laminate Flooring - Antique \$189 sq. ft.

CARPET • HARDWOOD • TILE • LAMINATE • VINYL • HARDWOOD • RECLINERS & MORE!

We can arrange Easy Flooring installation for you!

21374 Parallel Rd Kirksville, MO (660) 665-7717

Carpet Plus! FLOOR★MART

9 am - 6 pm Mon. - Fri. & Sat. 9 am - 4 pm

VISA MasterCard Discover American Express

Carpet & FLOOR★MART Wal-Mart Hwy 63 Hwy 157

OPEN HOUSE

Friday, May 1 &
Saturday, May 2

7% OFF EVERYTHING

Rhubarb, Raspberry, Strawberry,
Gooseberry, Grapes, Blueberry, Apple,
Cherry, Peach, Thornless Blackberry,
Currant, Apricot & Plum Tree

HILLTOP GREENHOUSE

11049 HWY 2, MOULTON IA
BETWEEN WEST GROVE & MOULTON

Dogwood Tree, Gold Forsythia,
Wisteria, Button Bushes, Crab Apple,
Maple Tree & Red Bud Tree
Onion Sets & Plants, Garlic
VEGETABLE SEEDS ALL ON SALE

- | | |
|------------------|-------------------|
| • Knockout Roses | • Bleeding Hearts |
| • Clematis | • Mini Roses |
| • Lilac Bushes | • Oriental Hybrid |
| • Rose of Sharon | • Lilies |
| • Garden Phlox | • Creeping Phlox |
| • Annuals | • Hostas |
| • Astilbes | • Peonies |
| • Hydrangeas | • Salvia |
| • Garden Phlox | • Hen & Chicks |
| • Peony | • Delosperma |
| • Lily | • Yucca |

Mon-Sat
8:00 A.M.-6:00 P.M.
641-929-3036

DOOR PRIZES
REFRESHMENTS

80 ACRE FARM FOR
SALE: in Scotland County,
MO. 3 bedroom, 2 1/2 bath,
A-frame house, 30 acres,
alfalfa. \$325,000.
PH: 660-216-4968

FOR SALE: 1990 35' Cobra
travel trailer \$4,300, no
leaks, good condition; 1986
class A motor home \$4,000,
no leaks.
PH: 641-226-1769



Tim Kraber
641-799-8961
Ottumwa, IA



BLOOD DRIVE Good
Shepherd Lutheran Church
will host a community
blood drive from 3:00-7:00
pm on Monday, May 4th at
Good Shepherd Lutheran
Church, 19419 Lilac Ave.,
inside Fellowship Hall.
To donate, please contact
Shirley Arndt at 641-
664-1776 or visit www.bloodcenterimpact.org and
use code 5265 to locate the
drive.



\$5.00 OFF
Hanging
Baskets

Fabulous Florals

for a fabulous mom!

Hanging Baskets
Outdoor Planters
Fresh Arrangements

Making Memories
Flowers & Gifts

Owners: Scott & Brandi Moore
M-F 9:00-5:30, Sat. 9:00-1:00

641-664-1600
108 S. Madison, Bloomfield

IMAGINE THE POSSIBILITIES



Really Spoil Mom

WE CUSTOM BUILD

- PICNIC TABLES
- SWINGS
- DOG HOUSES
- HORSE BARNs

GIFT CERTIFICATES AVAILABLE

GARDEN TOOLS

- HOES
- SHOVELS
- RAKES
- HOSES



Cantril Lumber & Hardware

888-791-9273 • Mon-Fri 7-5 & Sat 7-12

Davis County Walk For Life

Saturday, May 2nd, 2015 • 11:00 A.M.

Davis County Courtyard (\$25 fee, registration begins at 10:00 A.M.)



Iowa Cattleman's Association
will serve food from 11:00 - 1:00

Proceeds will help the Walk for Life cause!

This year's event will be held on the Davis County Court Yard
Those unable to make the walk from the square to the hospital
are invited to enjoy the entertainment provided by Thadd Gray.

Registration:

T-shirts will be available to all walkers who register
prior to April 5th. T-shirts & sizes for those whom
register after the 5th will be limited or will receive
following the event.

You may register by mail, in person at the
hospital, or at the event!



This Year's Event is Dedicated to



Rose Wheaton

Breast Cancer Survivor Since 2012

SPONSORED BY: Davis County Hospital, Davis County Hospital
Foundation, Davis County Hospital Auxiliary, 1st Iowa State Bank,
Kincart Physical Therapy Services, Bloomfield Care Center & Mulberry
Place, Kollision Korner, Success Bank, Carol Howard, Southern Iowa
Electric Cooperative, Inc.

The "Walk for Life" fund is dedicated to the memory of Debbie Mincks-
Lindeen, a brave and caring lady who lost her fight against breast cancer in 1989.



OPEN HOUSE

Saturday, May 2

8am - 5pm

Serving Coffee, Donuts, and Ham & Cheese Sandwiches!
DOOR PRIZES!



STIHL

chainsaws, trimmers, tillers,
shop vacs, & hand tools.



Troy Bilt
Tillers



EXmark Mowers
Demos on site



Grillo
Walk Behind
Tractors

5% Discount
STOREWIDE

GINGERICH LOGGING

Hrs: Mon.- Fri. 8-5; Sat. 7:30-12:00 Noon
1 mile East of Drakesville 1/4 mile North
VM 641-722-3414



ACTION Pest Management

Billy & Meshara McAlister, Owners
2620 Eastridge Dr.
Centerville, IA 52544
641-895-5657
Commercial | Residential | Industrial
Family owned & operated for over 30 years

FOR SALE: Rhode Island Red started chicks. Also, colorful S.R. chicks and a few hens and roosters too. Bloomfield.
PH: 641-664-3442 18

FOR SALE: 2003 Toyota Prius. As is, \$1,200.
PH: 641-722-3114 18

WANTED: Custom farm work, no-till drilling & farm labor.
PH: 660-216-7696 18

FOR SALE: Wood chips for landscaping & mulching. \$5/cu. yd. Miller's Crating & Pallet
PH: 641-929-3704 15,17



HELP WANTED

POSITIONS AVAILABLE
Trailer Manufacturing Welder
ZIMMERMAN AUTO LLC TRAILER INC.
101 North St. • Cantril, IA • 319-397-2406



HELP WANTED

POSITIONS AVAILABLE
Mechanics
ZIMMERMAN AUTO LLC TRAILER INC.
101 North St. • Cantril, IA • 319-397-2406

A Mother's Love Never Stops Growing

Find a beautiful way to say thanks this Mother's Day.



CROP SERVICES, INC

John & Kathy Bos, Owners
Drakesville, IA
641-722-3293

Nutrena pfister

SPRING IS HERE!

Get your projects done to your satisfaction!

Pole Buildings • Siding • Decks
Metal Roofing • Garages

Davis County Enterprises

641-208-6503
FREE ESTIMATES



SALES REPRESENTATIVE

Poultry Equipment
Iowa/Missouri

Georgia Poultry Equipment Company, a division of Hog Slat, Inc. - the world's largest provider of equipment and turnkey facilities to the swine and poultry industries, is seeking an exceptional Sales Representative experienced with the parts & equipment used in modern poultry barns to join our team in So. Iowa/No. Missouri. The primary role of the person in this position will be to develop relationships and grow Georgia Poultry's business with farmers involved in poultry production in the Midwestern US. Successful candidates for this position will have 5 or more years experience selling agricultural products and/or other capital goods to poultry producers. A proven track record of sales success is required. The IDEAL CANDIDATE for this position will be familiar with this territory and more specifically with the decision makers in the area's poultry industry.

For additional information on these positions, or to apply, please:
Visit our Career Website
<http://careers.hogslat.com>
E.O.E.

Georgia Poultry is a division of Hog Slat, Inc. HOG SLAT



It's the Details That Count!

We work hard to make sure your car looks great, right down to the last detail.

GLASS REPAIR
AUTO DETAILING

Karr Collision Center

701 Karr Ave.
Bloomfield, IA
641-664-1024

FOR SALE: Fresh local free range brown chicken eggs. Monday & Thursday only 9 a.m.-4 p.m. 12063 Burnsway, Greentop, Mo. 63546. Directions: F/Kirksville go North til Ft. Madison Way approx. 7 miles, East 3 miles until Burnsway, North until 1st place on left. 18

FOR SALE: 1 bedroom apartment Milton, IA. Kitchen appliances furnished. Very reasonable rent.
PH: 641-757-0201 18

HELP WANTED

Experienced tree cutter for logging crew. Must be able to travel.
Call for details.
319-721-2149



LINE-X OF OTTUMWA

Bring in this coupon & receive **\$50 OFF** with Purchase of a Bedliner
one coupon per person

Brad Lisk • Kevin Webster
15514 Blackhawk Rd., Ottumwa, IA
641-683-9334
Gift Cards Available!

VISA MasterCard

- #1 Rated Bedliner in customer satisfaction
- Guaranteed with a Nationwide Lifetime Warranty

Bring it in and we can LINE-X® it!

WRAP UP YOUR Mother's Day SHOPPING HERE!

Gift Certificates Available!

Heads Up Styling Salon

Trudy Bennett, Owner & Stylist
Hours:
Wednesdays, Thursdays & Fridays

114 N. Dodge, Bloomfield, IA (former USDA building)
641-208-0133

NOW TAKING APPLICATIONS!

Taking Applications For:

Welders

Starting wage \$10.00/hour
Call 660-465-8572 or allstate@nemr.net
ALL-STATES EQUIPMENT, INC
908 N. Browning St,
Memphis, MO 63555 E.O.E

Garages • Pole Barns Commercial Free Estimates

LAN-DOW BUILDINGS

We Stock a Complete Line of Building Materials Complete Buildings or Packages Available
Lancaster Lumber, Inc.
Toll Free 800-424-5071 Fax 660-457-3133
Ron Oliver, Owner Lancaster, MO 63548
www.lancasterlumber.com

SCHUYLER COUNTY NURSING HOME

CERTIFIED NURSE AIDES ALL SHIFTS
EXPERIENCED MEDICARE BILLING CLERK PART TIME
Apply at Schuyler County Nursing Home, Queen City, Missouri. Applications for other positions accepted. An equal opportunity employer, services provided on a non-discriminatory basis.
CALL 660-766-2291
or stop by and pick up an application.
We are located on Hwy. 63 north in Queen City, MO

GARMAN? FLOWERS

4 Miles North of Memphis to on Hwy. 15 to Rt. CC,
1 1/2 miles west to first gravel road on the right.

Memphis, MO

660-328-6318 • 660-341-9586
BP Station (Gas & More) in Memphis

Large Selection of
Beautiful combo hanging
baskets and patio pots.

**Knockout
Roses!**

**4" Hybrid
Wave Petunia!**
Flat of 18...\$1⁹⁹/each
16 Colors to choose from!
(Regular price \$2⁵⁹)

**Nursery
Plants!**

Grapes
Black Raspberry
Blackberry
Strawberry
Rhubarb

Bearguard Sweet
Potato Plants
(prize winner in sweet potatoes)

Large Selection of
Calibrachoa (million bells)
20 COLORS!

Come see what's new for 2015!!

FOR RENT: In Bloomfield,
1 bedroom. \$350 rent +
deposit.
PH: 641-208-2076 19

FOR SALE: 24' x 48' double
wide home, 3 bedroom & 2
bath, kitchen, living room,
utility, skirting & decks,
6" walls, insulated glass
windows. \$28,500.
PH: 660-341-8738 19

BLOOD DRIVE: Davis
County High School
Community Blood Drive
from 9:00am to 2:00pm on
Wednesday, May 6 at 106 N.
E. St., inside concession's
area. To donate, please
contact a member of
student council or visit
www.bloodcenterimpact.
org and use code 5015 to
locate the drive.

FOR SALE

Top Soil
\$9.00/ton

LOCATED AT
NEMO Feed
50226 State HWY 15
Baring, MO 63531
660-892-4537
LOADER & SCALES ON SITE

**NEMO
FEED LLC**

FOR SALE: John Deere F930
lawn mower. Deck good
condition, engine needs
work, \$425.
PH: 641-722-3080 19

FOR SALE: 35 round bales
2nd cutting grass 1,600 lbs.
\$40.
PH: 641-722-3230 19

FOR RENT: In Bloomfield,
2 bedroom house, washer/
dryer, 1 car garage. \$450 +
deposit.
PH: 641-208-2076 19

BOAT FOR SALE: 16x48
Generation 3 aluminum
with 48 horse outboard with
power tilt, ready to fish.
PH: 641-664-2148 ext. 1 19

FOR SALE: IH 1100 pull-
type sickle mower, 7', new
sickles, new belt, ready
to go, way above average
condition, \$1,250. John
Deere 640 5 bar hay rake,
used last year, looks nice
& in excellent condition,
\$1,500. Dixie chopper, zero
turn lawn mower, one
owner, 50" cut, 430 actual
hours, excellent condition,
asking \$2,900. DR Trimmer,
one owner, cast iron base,
like new for it's age, \$400.
PH: 641-208-0297 19

SUNSHINE HILL GREENHOUSE
KEITH & ALMA HIGH, OWNERS

FRUIT TREES
STRAWBERRY PLANTS
RHUBARB
HANGING BASKETS
POTTING SOIL
PERENNIALS

**16TH ANNIVERSARY
CELEBRATION!**
SATURDAY, MAY 2ND
9 AM - 6 PM
FREE DONUTS & COFFEE
REGISTER FOR FREE TULIP TREE

641-656-4203
641-208-7609
1 MILE EAST OF MILTON ON HWY. 2

5 COLORS OF LILACS
**LARGE SELECTION
OF TOMATOES!**

Eliminate High Heating Bills!

Central Boiler

Backyard Depot
Bloomfield, IA
641-722-3641

All E-Classic outdoor wood furnaces adapt easily to new or existing heating systems. It's important that your outdoor furnace and system be properly sized and installed. See your local dealer for more information.

CentralBoiler.com

FOR SALE: 28 ft. '91 Excel
5th wheel, nice inside & out,
abundance of oak cabinets,
sofa bed & matching chair in
living room. Walk through
bath, queen size bed, large
closet, furnace & air. \$3,000
FIRM.
PH: 641-684-4715 19

FOR SALE: H&S manure
spreader single axle, single
beater, end gate. Real good
condition.
PH: 641-777-1358 19

FOR SALE: 11 used trailer
tires (23580 16").
PH: 641-664-1470 ext. 2 19

HOURS
8 A.M.
to
5:00 P.M.
DAILY EXCEPT
SUNDAY

**Zimmerman's
Store**
Rutledge, MO
660-883-5766

**Our
Everyday
Low Prices!**

BEDDING PLANTS & BULK SEEDS

Packet Seed..... Buy 2 get 1 FREE
White Onion Sets..... 1/2 PRICE

NOW Stevia Pure Organic Extract Powder..... 4 oz. \$17.29
No fillers or added flavors - 1/4 tsp. has the sweetness of approx. 1/8 cup sugar.
Stevia does not provide the bulk that sugar does in baking recipes.

Country Time Lemonade Drink Mix 23.9 oz.\$2.89
Nestle Nesquick Chocolate Flavor Drink Mix 48.7 oz.\$7.98

Panner Strawberry Jelly and Peanut Butter 18 oz.	\$1.39
Algood Creamy Peanut Butter 16 oz.	\$1.39
Lipton Unsweetened Instant Iced Tea Mix (Makes 30 qts.).....	\$1.15
Valutime Regular Marshmallows 10 oz.....	\$1.15
Savory Ranch Salad Dressing	
Loretta Mac & Cheese Dinner 8 oz.	\$1.09
Bull Dog Sardines in Mustard Sauce 3.75 oz.....	98¢
Forrelli Olives 5.47 oz.	\$1.19
Whole Garlic Cloves in Brine 8 oz.	\$1.09
Minced Garlic in Water 4.5 oz.	98¢
Bread & Loaf Pan Heavyweight Steel.....	\$1.19
19" Energy Saving Desk Lamp with Bulb	\$4.98
Soft Balls	\$2.98/each
Citronella Bucket Candle for outdoor use only 32 oz.	\$2.59

DRIVE A LITTLE & SAVE A LOT

**GINGERICH
STOVES and
PLUMBING**

✓ us out for all your
plumbing needs!

Hitz Halter Insul.
In-Stock for Radiant Floor Heat

19041 180TH St., Bloomfield, 52537 • V.M. 641-664-2814
Hours: M-F: 7:30 A.M. - 5:00 P.M. • Sat., 7:30 A.M. - 12 P.M.

Fittings & Accessories

**Competitive
pricing &
also
contractors
discount.**

1/2"x100' Pex Waterline 25¢
3/4"x100' Pex Waterline 45¢
1/2"x1000' Pex Oxygen Barrier 30¢
1/2"x300' Pex Oxygen Barrier 30¢
200 lb. Test 1"x100' - 500' 44¢
200 lb. Test 1 1/4"x500' 72¢
Any Flow 4' Bury Hyd. \$95
Iowa 4' Bury Hyd. \$112
Iowa 5' Bury Hyd. \$120

**FRIESEN
CONSTRUCTION**

**New Houses
Remodeling
Garages Electrical
Plumbing
Custom Cabinets**

**Arlen 664-3270
Cell 641-208-0170
Bloomfield, Iowa**

Vinyl Windows
Replacement &
New Construction

Window Features...
Fusion Welded
Triple Weather Strip
Aluminum Reinforced

**Sliding/Swinging
Patio Doors**

Gerkin
"Quality products since 1932"

FREE ESTIMATES

Yoder Glass & Window
641-722-3667
19467 Driftwood Blvd.
Bloomfield, IA 52537

TIM SKINNER

trucking & excavation
FLOTATION AGLIME SPREADING
Standard Application
GPS Variable Rate Application
HAULING
Aglime, Rock, Sand, Black Dirt or Clay
ALSO DOING ALL TYPES OF
EXCAVATION & DOZING WORK

Call for pricing today
Tim Cell: 641-777-6053
Home: 641-682-6003

Iowa FARM & HOME REAL ESTATE



Shellie Tedrow
Sales Agent

Here to assist with all your real estate needs

701 Broad St
Keosauqua, IA 52565
319-293-3064 Office
319-293-3147 Fax
641-680-7168 Cell
shelli@iowafarmandhomerealestate.com
www.iowafarmandhomerealestate.com

We BUY used Manufactured Homes, Single and Double Wides. Call 641-672-2344 (MCN)

Mother's Day Gifts for that Special Woman! Don't forget about gift certificates!



Car Cleaning Supplies



Mud Flaps



Oil Changes



Rain Guards & Bug Shields



ZIMMERMAN AUTO LLC TRAILER INC.

101 North St. • Cantril, IA • 319-397-2406

FOR SALE: Black machine planter, 12 row 30", 13 row 15", Kinze units 3000 monitor radar, no-till coulters; C-IH 4800 30' field cultivator hitch & hyd. for harrow or basket; JD 1010 30' field cultivator. **Milton, IA**
PH: 641-208-6073 18

CDL TRUCK DRIVERS For Harvest. From Texas To North Dakota. May-November. \$3000 Starting Wage, Plus Housing With Year End Bonus! Call Stan: 785-545-5966 (MCN)

FOR SALE: 1998 CHEVROLET 1500 Silverado, extended cab 4WD, topper, 113K, fair condition, automatic, maroon, \$4,500 OBO. 608-778-4727 (MCN)

REDUCE YOUR PAST TAX BILL by as much as 75 Percent. Stop Levies, Liens and Wage Garnishments. Call the Tax DR Now to see if you Qualify - 1-800-721-2793 (MCN)

SUPPORT our Service Members, Veterans and their Families in Their Time of Need. For more information visit the Fisher House website at www.fisherhouse.org (MCN)



FOR SALE



2 YEAR OLD & YEARLING SIMXANG BULLS. Sired by UPGRADE. YEARLING RED ANGUSXSHORTHORN SOLID DARD RED BULL

Semen Checked and ready to work for you to add pounds to your calf crop. Super gentle and easy to handle. Heifer safe!

CR Cattle Company
Douds, Iowa
Jennifer Gardner, Owner
Cell: 641-895-4116 | Home: 641-936-4390

FOR SALE

FOR SALE

YODER EQUIPMENT
BLOOMFIELD, IOWA

CONTINUOUS FENCING
BALE RINGS
Extra Heavy 10 gauge
GATES & CORRALS

19887 Jade Ave
2 1/2 Miles W of Bloomfield
V.M. 641-664-2797

FOR ALL YOUR SPRING DRY FERTILIZER NEEDS... CALL US!

CUSTOM SPRAYING AVAILABLE!



MFA

AGRI SERVICES



Lancaster 660-457-3729
Kirkville 660-665-4695

Barnhart Inc.

FOR SALE

2000 Volvo N14 Cummins, Super 10 trans. Wet kit

Contact: Brett Barnhart
641-208-1577



Win A \$25 Beef Certificate!

Visit one of the sponsoring businesses below and enter for a chance to win a \$25 beef gift certificate! There will be one winner drawn from each location!



DRAWING WILL BE HELD FRIDAY, MAY 15TH

1 HASTINGS MEAT PROCESSING

Josh & Amanda White, Owners
701 S. East St. • Bloomfield, IA
641-664-2195
M-F: 7:30am - 5:00pm
Sat: 8:00am - Noon

2 VILLAGE MARKET OF MEMPHIS

Rt. 3 Box 168-A (Hwy 136 & Hwy 15)
Memphis, MO 63555
660-465-7307
Mon. - Fri. 8:30 - 6:00 • Sat. 8:30 - 5:00
Sun. Closed

3 Keith's Foods

641-664-2539
207 E. Locust • Bloomfield, IA
www.keithsfoods.com

4 Dutchman's
an old time general store.

319-397-2322
103 Division St.
Cantril, IA

M AUCTION M

Saturday, May 2nd, 2015 10:00 am

Martin Auction Center

We will sell the following merchandise for Jane Caylor, Tom & Mardin Adam, Douds Lumber and Terence Baptie. Take Highway 34 west of Fairfield to Fesler's Auto Mall, turn north (right) on Brookville Road continue for 1.8 miles to the Martin Auction Center.

Viewing on Friday, 05/01/2015, from 4:00pm-6:00pm.

ANTIQUES, COLLECTIBLES AND FURNITURE: Oak mission style bedroom outfit (queen bed, 2 night stands and chest of drawers), oak drop leaf table with 4 chairs, trundle bed, glass curio cabinet, computer station, light house picture, brown recliner, rooster and chicken picture, American Flag, Formica kitchen table and chairs, cloth recliner couch, oak desk, oak book case, 4 drawer dresser, 2 single beds-like new, floor lamps, cloth recliner, walnut stereo center, pine dresser, leather love seat w/recliner, pine desk, oak gentleman's dresser, oak drop front book case, queen size oak bedframe, single bed (clean), mahogany stand, rocking chair, wood ¼ bushel basket, pic nick basket, Pentax camera, sun dial, doll house, wood stool, small cedar chest, wood baby high chair, oak leaf handle dresser, hat boxes, wood baby highchair, horse collection, whicker baby buggy, baby crib, steam truck, cast iron-Wagner, copper/brass milk keg (Neville Griffin), large cedar chest, hand sewn quilts, quilt top, lamp legs, glass bottle box, iron bookends, tin sign, granite cooker and creamers, glass basket, red lends kerosene lamp, bird cage, AL BAHR hats in case, pendants, bowtie, grandfather clock, advertisement pocket knives, wrist watches, oak cabinet, high boy wishbone mirror dresser, camel back trunk, sewing material, Michael Hoban USA millennium jacket, office chair, VIZIO flat screen, Oreck sweeper, dehumidifier, large assortment of doll making items (molds, eyes, arms, legs etc.), two kiln ovens, leather St. John's Bay jacket, San Diego Chargers jacket, CAT jacket, Miller Light jacket, bull head picture, Federal League Park 1915 picture, East meets West picture, life size cardboard cutout of Dale Earnhardt, Casey Kayne and Michael Jordan, 50th Anniversary NASCAR autographed print in frame-(Earnhardt, Pearson, Allison, Petty, Johnson, Thomas and Waltrip), #24 curtains and bed spread set, John Deere clock, and NASCAR toys. **TOOLS & MISC:** hand plane, computer w/ 4 screens, laptop, sting ray Schwinn bikes, 2 single speed bikes, self-propelled lawn boy, 22" push mower, water tanks, work bench, hd wheel barrow, door frame, led glass windows, vinyl glass windows, Anderson aluminum clad door, Shelter vinyl window, Pella double hung aluminum clad window, pool ladder, gas leaf blower, chain saw, Coleman stove, sidewalk edger, Craftsman roll around tool box full of tools, wood step ladder, gas mini grill, lawn chairs, shovel, 2 wheeled carts, car stands, coolers, charbroiled gas grill, car ramps, creepers, 215/45R17 tires, 100's of boxes of NEW merchandise (nuts, bolts, anchors, lights etc.), gold clubs, golf bags, **APPLIANCES:** Wards compact 10 deep freezer, **VEHICLES ETC.:** 1989 Chevy 4x4 pickup, Dodge Caravan Sport, 1999 Lincoln signature series town sedan w/ 92,000 miles was always kept in the garage and in excellent condition, 38" Simplicity riding lawn mower, 8N Ford w/ blade tractor, WD Allis-Chalmers tractor. **GUNS:** Stevens Model 15 .22 Rifle, Marlin .22 Rifle, NEW Bushmaster 5.56 x M15-25 (L309539), NEW AR 15 Upper Half Model 7H, Beretta .22, 21A-22BCS 34904, Ruger .40, SR40C 343-04051, Lorcin Model L380 .380 Cal Auto (Extra Long Clips Included), and Revolver, Model Ta76 .22 Cal, Long Rifle, 2 Cylinders. **COINS:** American eagle 1oz silver, 1922-1923 peace dollar, 1899 Morgan dollar, Eisenhower dollar, Susan B Anthony, and 50 state quarter set.

Car and tractors sell at noon guns and coins sell at 1:00. The items in this sale are in A-1 condition!! Any announcement mad day of sale takes precedence over printed advertising. Not responsible in case of accidents.

AUCTIONEER: Royce Martin 641-919-8209 Bob Hayes

CLERKS & CASHIERS: Bobbi, Alison and Stacey

MARTIN AUCTION SERVICE

1835 BROOKVILLE ROAD • FAIRFIELD, IOWA 52556 • www.martinauctionservice.org

YODER'S INDIAN CREEK FURNITURE HAS A COMPLETE LINE OF OUTDOOR PATIO FURNITURE available in polywood, cedar, & pine! Polywood is maintenance free, available in 3 styles and 24 color combinations. In stock chairs, gliders, rockers, bar sets, dining sets, swings, playsets, & more! Also, great selection of firepits! **Located 4 miles North of Cantril on RT. V64, 22769 Rt. V64 Milton, Iowa.**

22

AUCTION

SATURDAY, MAY 2, 2015 • 10:00 AM
SALE TO BE CONDUCTED AT THE PROPERTY LOCATED
25211 MONARCH TRAIL, FLORIS, IA

OR South of Ottumwa or North of Bloomfield on U.S. Hwy. 63 to the Davis-Wapello Co. Line. Then East on Mink Blvd. (Old 63) to Monarch Trail, then 3 miles East on Monarch Trail. Auction Signs Will Be Posted

TRUCKS, CAMPER & TRAILERS: 2005 Ford F150 PU, 4x2, V8, auto, air, new tires, approx. 107,000 miles; 1995 Ford L-8000 heavy-duty truck, diesel, auto, air, w/Heil 11' dump box, air gate, w/50,000 act. miles; 1998 Ford F700, single-axle truck, V8, auto, air, 24' cargo box, roll-up rear door, runs good, 96,000 miles; 1998 Toyota Tacoma PU, 4x2, 4cyl, 5-sp, air, 160,000 miles; 1997 Chev. 3500 1T. truck, V8, auto, w/8' flatbed, one owner, approx. 99,000 miles; 1998 Prairie Schooner fifth-wheel 35' camper, w/slide-out, front & rear doors, awning & roof air; 25' tandem-axle flatbed trailer w/beavertail & ramps, 7,000-lb. axles; Shop-built 16' flatbed trailer; Shop-built 10' flatbed trailer; Dirt bucket & tooth bar for skidloader; Large asst. of new & used trailer & truck tires; (4) Hard rubber demolition skidloader wheels & tires; Skidloader concrete bucket.

GUNS: Browning 12-ga. Belgium-made shotgun; Winchester Model 94 30-30 rifle; Winchester Model 36 rim-fire shotgun; Winchester Model 12 12-ga. Fred Etchen Special 1941; Winchester Model 150 22 lever-action rifle; Remington Model 31 20-ga. shotgun w/2 barrels; Remington 11-48 20-ga. shotgun; Remington Model 121 Fieldmaster 22-cal. pump; Marlin 22 rifle w/scope; Stevens 22-cal. rifle; High Standard M-101 22-cal. pistol; Hopkins & Allen Model 1901 revolver; H & R Model 676 revolver; Wildcat 22 rifle; Jukar 45-cal. black powder rifle. **GUN PERMIT REQUIRED FOR THE PURCHASE OF ALL FIREARMS.**

EQUIPMENT & TOOLS: Target Pal IV 13hp walk-behind concrete saw; Target 20" 4cyl. concrete saw; Miller Side Kick XL 220 wire welder; Ingersoll Rand 5hp upright air compressor; Wacker gas-powered plate compactor; (2) Bosch elec. jack hammers; Parts washer; Power anchor driver; Paselode framing nailer; Bench-mount drill press; (3) Chain hoists; Air grease gun; 2-meter 1200-amp rain-proof box; Large asst. of electrical items incl. breakers & conduit; Bench grinder & stand; Insulation blower; Toolboxes; Snap-on wheel balancer; Hydraulic jacks; (2) Hydraulic pallet jacks; Louden overhead crane w/extra beams; 18' port. belt conveyor; New 40' extension ladder; 12' fiberglass stepladder; Roof jacks; Forklift mast w/cylinders; (5) David Bradley garden tractors w/accessories; Air & hydraulic cylinders; Several single & 3-phase elec. motors; Power hacksaw; Shop vac; Large asst. of concrete equipment incl. trowels, brooms, concrete blankets, asst. of flexible & rigid concrete forms, double-riding power trowel for parts & other concrete equipment items. Power Mole pipe pusher; Freight cart; Bander & crimper.

CONCRETE STATUARY, ORNAMENTAL OUTDOOR DECORATING: Over 1,000 pieces of ornamental concrete incl. benches, birdbaths, figurines, pallets of stepping stones; Flagstone; Large asst. of new brick-approx. 2,500; Concrete splash blocks; Decorator rock for landscaping; Old iron wheel wagon; Hand well pumps; Flag pole.

COLLECTIBLES: Extremely large collection of pennies incl. wheat pennies & books; Old dinner bell; Wooden pulleys; Old lamps; Ice tongs; Cast-iron; Cigar boxes; Crocks, vases & jugs; Carbide light; Old tins; Cream cans; Implement seats; (2) Wooden trunks.

AUCTIONEER'S NOTE: Jeff Hall has been in the concrete business for many years. This is only a sampling of what you will find at this sale. There will be many unadvertised items. Be sure & attend & bring your truck. We will be starting on tools & collectibles promptly at 10:00 AM, with guns & coins to be sold at 11:30; Trucks & vehicles at Noon.

TERMS: CASH/GOOD CHECK

POSITIVE ID REQUIRED

*All property must be settled for before removal – All items sold as is where is
Not responsible in case of accident.*

Announcements made day of sale take precedence over any advertising.

HALL ENTERPRISES - JEFF HALL, OWNER

JIM KOSMAN, ROGER CLINGAN, & TODD CARROLL – AUCTIONEERS
AL MARTIN REAL ESTATE & AUCTION CO., INC.
307 Church St., Ottumwa, IA 52501
Phone: 641-682-5465 Website: www.almartinauction.net

LARGE BUSINESS LIQUIDATION AUCTION

MAY 2, 2015

START TIME: 9:30 A.M.

ADDRESS: 608 S. WEST ST. • BLOOMFIELD, IA 52537
OLD TRUE VALUE BUILDING



General Merchandise

Housewares items
Ice maker filters
Vacuum bags and parts
Automotive parts
Cleaning supplies
Paint - True Value & Dutch Boy
Concrete stain and sealer
Deck cleaner and stains
Paint sundries, brushes, rollers, and applicators
Putty knives, paint scrapers, related tools
National brand hardware and general hardware items
Key machine with lots of blank key rings
Wallpaper adhesives/carpet trims
Thoroseal basement coatings
Aluminum stock in 6' lengths (variety of shapes)
HyKo brand sign sliding 6' display rack with inventory (house numbers, etc.)
Drapery rods and accessories
Appliance parts - Maytag, Whirlpool, Frigidaire - LG
Paracclipse Fly Patrol systems
Screen wire and glass/related repair items
Yaktrax traction wear

Tool Dept.

Drill bits, staples, and saw blades
Hand tools, tool boxes
Masonry tools, concrete tools
Levels, squares, hammers, snips
(2) Delta truck tool boxes

Electrical Dept.

Wire materials: THHN, NM, UF and MC several part rolls
URD wire 4/0 AL and 2 AL
URD (200 and 100 amp underground)
Thermostat wire, some full rolls
EMT and Carlon pvc conduit fittings
Wide assortment of light bulbs
Lots of electrical fittings, outlets, switches, boxes, controls

Plumbing Dept.

Wirsbro washing machine box with single handle valves (3)
Floor drains
Copper sweat fittings 1/2" & 3/4"
PVC drain fittings 1 1/2" through 4"
PVS and CPVC fittings 1/2"

through 1"
Brass valves (Sweat and threaded, 1/2" through 2")
Lots of flexible faucet supply lines and valves
Lots of tubular drain fittings
Shower heads and accessories
30 gallon electric water heater 240V
Heat tapes
Toilet tanks and bowls
Advance Drainage Systems pipe 4"x100' and 4" fittings
Chimney and class A venting supplies 4" SDR35 drain pipe

Roofing Materials

1 and 2 square rolls water shield underlayment
ODE Roof edge and style D roof edge
Gutter apron and perry starter edging
17 squares of Certainteed XT30 Weatherwood 3 tab shingles
Coil roofing nails
Lomanco Ridge vent sections
Elastomeric roof coating
Several pails of roof coating materials by Tamko

Building Materials & Hardware

Simpson joist hangers, plywood clips
Weiser passage and privacy locksets
Siding J blocks and dryer hoods
Nails, drywall screws, deck screws in bulk
Bostitch framing nails, coil and stick
National Brand sliding door track, covered white & uncovered
Klauser steel siding trims, ridge cap, starter, R&K trims
Klauser gutter and parts
Certainteed vinyl siding trims and some siding 4x8 and 4x9 T-111 fir plywood siding (4 sheets each)
3/4" T&G fir flooring plywood (7 sheets)
Several 2x8-12' and 16' Doug Fir and 2x10-12' and 16' 1x4 and 1x6 white pine boards
1x4 premium oak boards
1x12 cedar tight knot boards/1x3 St. Mary's River V bevel T&G boards
8" cedar beveled siding rab-

bited edge/cedar siding nails
stainless steel
Wainscot paneling, medium oak color approx. 14 sheets
Retaining wall blocks/exposed aggregate stepping stones/concrete paver stones

Selling at Noon

LG DLEX2501W Steam Dryer Electric - New
Blaze King Chinook wood stove w/catalytic combustor - New
Wood stove floor protector Dary Gray tile with steel frame - New
Flammable goods cabinet - used
Simplicity Lawn mower - used
Old True Value 3 panel signs (2)
Old round Mule Hide roofing sign
Acrylic True Value sign face 4'x8'
Steel incinerator made out of LP tank
6 door locker (black) - used
Delta dust collector model AP400 w/hose - used
Pella Security Pro632 fire-proof safe w/S&G lock - used
77"x12' red Doolittle utility trailer single axle - used
8'x16' White Doolittle cargo trailer with E track installed - used
1997 red Ford XLT F250 pickup with Tommy Lift gate. Under 83,000 miles. 5.7 gas, automatic, four wheel drive. Includes tool box, original tailgate, and chrome rear bumper.
Hyster 8,000# forklift with cab. Semi pneumatic tires, GM Vortex V6 engine. Low hours at 2,200 hours.

Forklift Buyer Forklife must stay for up to one week for load out.

Selling at 4 PM

Lozier fixtures and miscellaneous parts
Pegboard hooks, display items, dump bins
Heavy duty Interlake pallet racking and Equipto pallet racking components.

Any announcement made the day of the auction takes precedent over any published or oral statements. Items may be picked up by appointment within one week. Payment is by cash or good approved check. Debit cards or credit cards will be charged a 5% convenience fee. All retail items will be charged the Iowa and local 7% sales tax unless a sales tax form is submitted when you get your bidder number. Only exception is fixtures to be used in a business setting. Titles will be mailed once funds are confirmed unless paid with cash.

*Terms are cash or good check. Final sale is subject to seller approval.
Require bank letter of credit for all out of state checks.*

For more information:
www.qualitymarkllc.com

AUCTIONEER'S COMMENTS

This auction consists of new retail hardware and lumber inventory, retail fixtures, trailers, trucks and forklift. Dealers are welcome. We will run two rings most of the day. We will go to one ring at noon to sell items listed on right side of sale bill. There is simply too much inventory to list, good clean stock, so try to get here early to preview! This event is held mostly indoors, so held rain or shine. Bring a friend, a truck and trailer, and prepare to have fun!



This Auction Arranged & Conducted by:

Quality Mark LLC Auction Services

Col. Michael Howk, Auctioneer

For questions, please call 641-208-6453 or email questions to qualitymarkllc@gmail.com.

See us at Auctionzip! #38275 or

View more pictures on www.qualitymarkllc.com

Indoor Facility • Rain or Shine
Food Service by L&M Quick Shop



Check us out on Facebook!

REAL ESTATE AND PERSONAL PROPERTY AUCTION
SAT, MAY 16TH - 10 AM

408 W. Elm, Memphis, MO

OPEN HOUSE: FRIDAY MAY 8TH 5-6 PM

Selling a 3 bedroom, 1 1/2 bath spacious home with attached 1 car garage setting on large city tract of land. Also selling auto, golf cart, antiques, collectibles and household misc.

Mary Bell Moffett, Seller

McAfee/Hayes Auction Service, LLC
 660-727-3796
 www.mcafeeauctionservice.com

FOR SALE: (2) chain link dog pens, 12'x8' & 10'x10', also large dog house.
 PH: 641-682-3555 17

FOR SALE: '95 Dodge Spirit, 6 cyl., 142K, good condition, cold air.
 PH: 641-777-3321 17

LakeWood RV Sales & Rentals

NEW ARRIVAL!
 2014 PUMA Fifth Wheel with double bunks makes it a super family friendly camper! Sleeps up to 9 or 10 people! U-shaped dinette makes it easier for eating. Like NEW!

2014 PUMA
 Double Bunks • Clear Title • 27'

\$19,500

Hwy. 136 E., Downing, MO
 9 miles W. of Memphis or
 1 1/2 miles E. of Downing
 www.lakewoodrvsales.com

Tues.-Fri. 8-5 • Sat. 8-Noon,
 Closed Sundays & Mondays
 Phone: 660-379-2763
 Cell: 660-341-1927
 Fax: 660-379-2792

KEOSAUQUA SALE CO.
 20511 Hwy. 1, Keosauqua, IA

Results from April 25

Butchers.....	\$42.00-\$45.50/cwt
Sows.....	\$26.00-\$31.25/cwt

Lambs
 under 80 lbs.....\$190.00-\$216.00/cwt
 over 110 lbs.....\$137.00-\$140.00/cwt

Ewes..... \$60.00-\$75.00/cwt
 Kid goats 40-70 lbs.....\$80.00-\$162.50/hd

Cull nannies.....\$95.00-\$180.00/hd
 1st Calf Heifer Pairs.....\$3000-\$3400
 5-8 Year Old Pairs.....\$2500-\$3100
 SS & Aged Pairs.....\$1950-\$2600

Heiferettes, cows going home.....
\$127.50-\$147.50/cwt
 Pound Cows.....\$95.00-\$114.50/cwt
 Pound Bulls.....\$125.00-\$147.50/cwt

Early Listings for Saturday, May 2nd

22 hd 550-600 blk & bwf str & hfrs - Remick
 70 hd 500-650 blk bwf str & hfrs - Gooden
 23 hd 500-600 blkx str & hfrs - Brown
 25 hd 450-550 blk & bwf str & hfrs - Strait Family
 31 hd 500-600 blk & bwf str & hfrs - Hamberg
 22 hd 400-600 blkx bulls & hfrs - Cooper
 8 hd 450-550 blk str & hfrs - Durham

Thank You For Your Business!

Selling Times
 Hogs.....9:30 a.m.
 Sheep & Goats.....10:00 a.m.
 Outside Merch.....11:00 a.m.
 Cattle.....Noon

For More Information Contact:
 Keosauqua Sale Co.
 319-293-3508
 Bill Goehring
 641-919-9365

www.keosauquasaleco.com

JUST ARRIVED!

Chaffhaye
 Feeds in A Bag

Fresh Supply of Pasture In A Bag!
 We are the only Chaffhaye dealer in northern Missouri & southern Iowa!

In Demand Forage For All Species!
 Consistent quality feed, everytime!
 • All Natural • No Mess • No Waste

FEEDS & NEEDS

1 mile N of Downing, MO on Rt N • Mon-Fri: 8-5 • 660-379-2055

Perfect for taking to shows!
 100% Alfalfa

FREE SAWDUST: We will load. Delivery also possible. Our sawdust is always dry.
RJ LUMBER
 PH: 641-722-3348 TF

FOR SALE: Good heavy railroad ties. \$10 each. **RJ Lumber** 18989 160th St., Drakesville.
 Call: 641-722-3348 17

CHRISTENSEN FARMS
 Explore the Possibilities!

Christensen Farms
 is hiring
Animal Care Workers
 near Bloomfield, IA

No experience required.

Starting wage at \$11.75/hr.
 with an increase to \$12.80/hr.
 after 180 day training period.

Duties include pig production tasks such as breeding, farrowing, giving vaccinations, feeding, and record keeping.

Full time schedule with day hours.
 Excellent benefit package including health, dental, 401K, vacation, and much more!

Apply online at **www.christensenfarms.com**
1-800-889-8531
 Equal Opportunity Employer

Kirksville Livestock LLC

ANNUAL MAY BRED HEIFER, COW & BULL SALE
 Friday, May 1st - 6:00 PM

Expecting 250 head cows & cow calf pairs and 50 head breeding bulls of all breeds.

Early Listings
 25 red cow/calf pairs, 3 yrs old
 22 blk cows, 6 to aged, bred to blk bulls
 10 angus cow/calf pairs, 5 to aged
 15 red angus hfrs, bred to red bull for Sept 1 calving, 70 day calving period
 5 blk cows, 4-6 yrs, bred to blk bull for fall calves
 8 blk heifer pairs
 5 blk cows, RA, bred to blk bull for fall calves
 22 blk & blkwf cows, RA, bred to blk bulls, some with calves by side
 20 red & mx cows, RA, bred to blk bulls, some with calves by side
 18 blk & blkwf cows, RA, calving now
 6 blk cows, 4 & 5, bred to blk bulls
 6 blk hf pairs
 Pending: 30 mix cows, RA, bred to blk bulls, some with calves, complete dispersal
 1 - 18 month red angus bull
 2 yearling red ang bulls
 3 hereford yearling bulls
 1 - 3 yr old Normandy bull
 5 yearling red angus bulls
 1 - 2 yr old angus bull, Schaff Angus Bismark
 1 - 2 yr old red ang bull
 2 - 18 month char bulls

"Proud to Serve Area Livestock Producers"
Your Business Is Very Much Appreciated
We are open on Sundays to receive your livestock.

Phone for information:
 Nancy Baker, Office 660-665-9804
 Caleb Randolph 641-919-8539, Chuck Ambrosia 660-342-3530,
 Harry Durlinger 660-341-1080, Mark Herbold 515-720-8667
 Al Ashmead 660-216-8730, Roger Jarman 660-651-3683

Visit our website at **www.kirksvillivelivestock.com**

FOR RENT IN BLOOMFIELD: 2 bedroom ground floor apartment, heat and water furnished. Garage stall and access to washer/dryer. Tenant pays own electric. \$425 month + \$425 depost.
 PH. 641-919-0972. 17

FOR SALE: Mossberg 500 shotgun 20 ga. Bantam youth model, vent rib, bead sights, 3 years old, put 10 shells through it, same as new, \$235; Federal auto match 22 LR, 325 round box \$34. Ottumwa.
 PH: 641-680-3876 17

JR FEED & SUPPLY
641-722-3045
 17599 200TH STREET • BLOOMFIELD
 STOP BY MON.-FRI. 8-5 & SAT. 8-12

Complete line of bagged feed in stock!
CUSTOM BULK
 Non GMO Poultry Feed we deliver!

BIRD FEEDING NEEDS WILD BIRD SEED
 SUNFLOWERS/CHIPS

Scotland County LIVESTOCK AUCTION

P.O. Box 111 • Hwy 15 North • Memphis, MO
660-465-7213 • Jerry & Barb Blomme
660-341-0069 • Grant Blomme

CATTLE SALE
 Sat., May 2 at 12:30 p.m.

DAIRY SALE
 Wed., May 6 at 10:30 a.m.

Early Listings:
 -10 Holstein Springers, 1,200 lbs.
 -6 Holstein Springers, 1,100 lbs.
 -6 Holstein Springers, 1,200 lbs.
 -10 Holstein Open Heifers, 500 lbs.
 -12 Holstein Open Heifers, 750 lbs.
 -1 Holstein Bull, 14 months, Semen checked
 -50 Holstein Steers, 430 lbs.
 -40 Holstein Steers, 500 lbs.
 -20 Holstein Steers, 500-550 lbs.
 -20 Holstein Steers, 300 lbs.
 -22 Holstein X Steers, 200 lbs.
 -25 Holstein Steers, 450-500 lbs.
 -20 Holstein/Black Strs. & Hfrs., 500 lbs.
 -21 Jersey Steers, 300-400 lbs.
 -20 Holstein Steers, 200 lbs.
 -30 Jersey Steers, 450 lbs.
 -25 Holstein Steers, 550 lbs.
 -20 Holstein Steers, 700 lbs.
 Expecting more cattle by sale time!

MARKET RESULTS FOR SAT., APRIL 25: STEERS: 370 lbs. \$345; 454 lbs. \$298; 472 lbs. \$281; 558 lbs. \$274.50; 564 lbs. \$275; 618 lbs. \$248; 630 lbs. \$249.50; 695 lbs. \$224. BULLS: 385 lbs. \$338; 510 lbs. \$277.50; 578 lbs. \$235; 615 lbs. \$217; 686 lbs. \$205; HEIFERS: 310 lbs. \$306; 419 lbs. \$280; 464 lbs. \$279; 484 lbs. \$262; 520 lbs. \$257. VEALS: \$250-\$375; LB. COWS: \$90-\$123.

www.ScotlandCountyLivestock.com

BLOOMFIELD LIVESTOCK MARKET

Wed., April 29th.....Bred Cow/Pair, Feeder Sale.....11:00 AM
 Wed., May 6thNO SALE
 Wed., May 13th.....Special Calf/Yearling Sale.....11:00 AM
 Wed., May 20thNO SALE

TUESDAY POUND COW SALE EVERY WEEK
 10:30 a.m. Fat Cattle, Butcher Cows, Bulls, Veals

**SALE BARN OPEN UNTIL 9:00 PM
 EVERY MONDAY TO RECEIVE LIVESTOCK**

Top Consignor's Report For April 22, 2015.
 Selling 2290 head.

STEERS			
Donna Byrn.....	5 blk	320 lbs ...	\$376.00
Carol Lawson.....	5 b/ch	311 lbs ...	\$357.50
Shawn Robertson..	8 blk	345 lbs ...	\$354.00
Dustin Lawson	24 blk	445 lbs ...	\$318.00
Debbie McGoldrick	31 blk	509 lbs ...	\$298.00
N&W Farm.....	11 blk	552 lbs ...	\$297.00
Talbert Cattle LLC	35 r/b.....	498 lbs ...	\$295.00
Chad Wuthrich.....	12 blk	556 lbs ...	\$287.50
Mark Vandolah	7 blk	574 lbs ...	\$279.00
Daniel Gingerich ..	4 blk	580 lbs ...	\$275.50
Brian Knapp.....	16 blk	569 lbs ...	\$270.00
Phil Snowbarger..	11 blk	615 lbs ...	\$268.00
Leroy & Donna Yoakum	5 blk	625 lbs ...	\$265.50
Richard Western..	5 b/ch	650 lbs ...	\$259.00
Rob Scott.....	82 blk	604 lbs ...	\$255.25
Jim Hamburg	40 b/r.....	612 lbs ...	\$254.00
Roger Labertew ..	5 blk	736 lbs ...	\$236.50
Nathan Wettstein ..	64 blk	754 lbs ...	\$234.00
Stanley Baughman	13 blk	733 lbs ...	\$231.00
Allen Martin.....	36 blk	761 lbs ...	\$230.50
John C. Davenport.	11 blk	786 lbs ...	\$228.00
Brian Scott.....	25 blk	732 lbs ...	\$227.75

Holtkamp Corp.....	20 b/ch ..	805 lbs ...	\$214.50
James Martin	65 blk	825 lbs ...	\$213.75
Heath Thomas	13 ch/b ..	879 lbs ...	\$198.50

HEIFERS			
Donna Byrn	6 blk	366 lbs ..	\$300.00
Triple B	4 blk	389 lbs ...	\$290.00
Talbert Cattle LLC	7 blk	423 lbs ...	\$279.00
Triple B	11 blk	476 lbs ...	\$272.50
Donna Byrn.....	16 blk	498 lbs ...	\$261.00
Jim Gonnerman...	6 blk	522 lbs ...	\$257.00
Jim Hamburg.....	34 b/r.....	536 lbs ...	\$255.25
Rob Scott.....	21 blk	470 lbs ...	\$254.00
Phil Snowbarger ..	10 blk	590 lbs ...	\$246.50
Stanley Baughman .	6 blk	595 lbs ...	\$241.00
John C. Davenport..	5 blk	638 lbs ...	\$225.50
Adam Smith	7 b/r.....	701 lbs ...	\$218.00
Jeff Stodghill	3 bbwf ...	713 lbs ...	\$216.00
Ervin & Arlene Nolt..	91 blk	726 lbs ...	\$212.75
James Martin.....	73 b/r.....	715 lbs ...	\$211.25
Dwayne Canny	14 blk	743 lbs ...	\$210.00
Allen Martin.....	39 b/ch ..	763 lbs ...	\$202.50

Phil Schooley..... 641-664-3450
 Ron Schooley 641-777-0302
 Roman Schooley 515-450-3685

We appreciate your business!

Tyler Schooley 641-208-5442
 Barn Phone..... 641-664-2435

HWY. 63 NORTH • BLOOMFIELD, IA


WANTED: 300 gal. field sprayer, culti-packer or mulcher, flarebox wagon w/hoist, 24T baler. State condition.
 VM: 641-664-2997 ext.1 17

FOR SALE: Used garden tillers rear & front tine. All sizes and makes includes Troy-Bilt & Mantis tillers. Kahoka, MO
 PH: 660-216-1809 21

FOR SALE: "Pioneer" photo techometer, model 12. Instruction manual dated 1961. Excellent condition in wooden box. Best offer.
 PH: 641-929-3056 18

FOR SALE: 1985 CruiseMaster RV, good tires, clean, sleeps 6, driver captains chairs, \$4,000 or reasonable offer.
 PH. 641-208-5155. 18

HARRY HOWK'S CONSTRUCTION



- Backhoe • Skid Loader
- Trenching • Dump Trucks
- New Septic System
- Sand Filters • Waterers
- Water Lines & Hydrants
- Post Hole Digging
- Truss Setting • Plumbing

Home: 641-675-3636 or Cell #: 641-208-5757

LILES WRECKONDITION

AUTO BODY, PAINT, & REPAIR

From minor to major, we fix it all!

- Restoration • Deer Hits • Maintenance
- Paint • Rebuildable • Dent Repair & More!

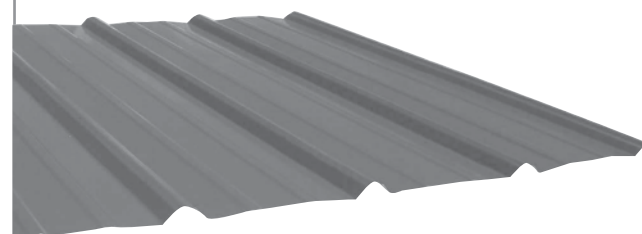
FREE ESTIMATES!

Tracy Liles, Owner
 312 E. Main • Floris, IA
641-208-5282



meeting customer needs for 30 years!

Premium Metal Roofing



- Buy Direct & Save
- Fast Service
- Cut-to-length
- Professional Contractors Available

A W Metal Inc.
Metal Roofing Headquarters

641-664-3990 • awmetal.net

HORSE FOR SALE: 8 yr. old well broke Mountain Paint gelding. Call Evenings
 PH: 660-883-5353 17

FOR SALE: 2004 Volkswagon Jetta, 130,000 miles, loaded with leather & sunroof, black, manual transmission. Call Evenings
 660-883-5353 17

FOR SALE: #153 IHC 6 row 30" cultivator; JD 567 baler, nice one; JD 530 baler, good shape. Milton, IA.
 PH: 515-419-1232 18

HELP WANTED: Mowing & other small chores. Call if interested. Floris area.
 PH: 641-680-1077 18

SPRING IS HERE!

100% Energy Free Waterers



HAWKEYE HARNESS

14314 202nd St.
 Bloomfield, IA 52537
641-722-3188
 Fri. & Sat. 8am-5pm
 for other days call



Bring your plans in for a FREE ESTIMATE

Trusses Engineered and Designed to Your Specs



Complete building packages for:



- Commercial • Agriculture •
- Residential •

17893 212th Street • Bloomfield, IA 52537
 641-722-3605 • Mon.-Fri. 7 AM to 5 PM