

**Time is your biggest asset!**

**CALL ME!**

**Bradford T. Martin,**  
Financial Advisor  
An Ameriprise Financial Franchise

**Ameriprise Financial** 105 E. Locust St., Ste 1  
Bloomfield, IA  
641-664-2169  
bradford.t.martin@ampf.com  
www.ameripriseadvisors.com/bradford.t.martin

# Tri-County SHOPPER



STANDARD  
MAIL  
U.S. POSTAGE  
**PAID**  
TRI-COUNTY  
SHOPPER, INC.  
POST OFFICE BOXHOLDER  
LOCAL RURAL BOXHOLDER  
OCCUPANT  
**CIRCULATION  
OVER 11,750  
THIRD CLASS**

P.O. Box 168 • Bloomfield, IA 52537 • www.tri-countyshopper.com  
Phone 641-664-1333 • Fax 641-664-3761 • E-mail shopper@netins.net



Vol. 43, No. 21  
May 27, 2015



## MORE TV. LESS MONEY.

**LIMITED-TIME  
OFFER!**

### OUR BEST PACKAGE AT OUR BEST PRICE

**Smart Pack**  
~~\$34.99~~ **mo**  
**ACT NOW \$19.99**  
**FOR 12 MONTHS**  
55+ Channels

Not eligible for Hopper or HD offers.

**America's Top 120**  
~~\$34.99~~ **mo**  
**ACT NOW \$29.99**  
**FOR 12 MONTHS**  
for 12 months  
190+ Channels

Everyday price \$59.99/mo.

**America's Top 200**  
~~\$44.99~~ **mo**  
**ACT NOW \$39.99**  
**FOR 12 MONTHS**  
for 12 months  
240+ Channels

Everyday price \$74.99/mo.

**BEST DEAL**  
**America's Top 250**  
~~\$49.99~~ **mo**  
**ACT NOW \$39.99**  
**FOR 12 MONTHS**  
for 12 months  
290+ Channels

Everyday price \$84.99/mo.

### FREE HOPPER UPGRADE UNBEATABLE WHOLE-HOME HD DVR

- Watch all your live and recorded TV anywhere
- Instantly skip commercials
- Store up to 2,000 hours of your favorite shows
- Record up to 8 different shows at the same time\*

\*Requires Super Joey. Features must be enabled by customer. Available with qualifying packages. Monthly fees apply: Hopper, \$12; Joey, \$7; Super Joey, \$10. Requires Internet connection.

### SPECIAL OFFERS INCLUDE:

**FREE** PREMIUM CHANNELS for 3 months



Offer subject to change based on premium channel availability. \*Free premiums offer available with all plans. Note, Encore is included in America's Top 250.

**FREE** HD FOR LIFE® Available with qualifying packages

**LOCAL** CHANNELS included

Ask about **FREE** NEXT-DAY INSTALLATION in up to 6 rooms

All offers require 24-month commitment and credit qualification.

**Terra Signal Satellite of Bloomfield**  
**641-664-DISH (3474)**

TerraSignalSatellite.com  
On the Bloomfield Square  
Serving Southern Iowa & Northern Missouri



**Important Terms and Conditions: Promotional Offers:** Require activation of new qualifying DISH service. All prices, fees, charges, packages, programming, features, functionality and offers subject to change without notice. After 12-month promotional period, then-current monthly price applies and is subject to change. **ETF:** If you cancel service during first 24 months, early termination fee of \$20 for each month remaining applies. **Additional Requirements: Hopper: Monthly fees:** Hopper, \$12; Joey, \$7; Super Joey, \$10. With PrimeTime Anytime record ABC, CBS, FOX and NBC plus two channels. With addition of Super Joey record two additional channels. Commercial skip feature is available at varying times, starting the day after airing, for select primetime shows on ABC, CBS, FOX and NBC recorded with PrimeTime Anytime. Recording hours vary: 2000 hours based on SD programming. Equipment comparison based on equipment available from major TV providers as of 12/01/14. Watching live and recorded TV anywhere requires an Internet-connected, Sling-enabled DVR and compatible mobile device. **HD Free for Life:** Additional \$10/mo HD fee waived for life of current account, requires continuous enrollment in AutoPay with Paperless Billing. **Premium Channels:** Premium offer value is up to \$132; after 3 months, then-current monthly prices apply and are subject to change. **Installation/Equipment Requirements:** Free Standard Professional Installation only. Leased equipment must be returned to DISH upon cancellation or unreturned equipment fees apply. Upfront and additional monthly fees may apply. **Miscellaneous:** Offers available for new and qualified former customers, and subject to terms of applicable Promotional and Residential Customer agreements. State reimbursement charges may apply. Additional restrictions and taxes may apply. **Offers end 6/10/15.** SHOWTIME is a registered trademark of Showtime Networks Inc., a CBS Company. STARZ and related channels and service marks are property of Starz Entertainment, LLC. ENCORE and related channels and service marks are the property of Starz Entertainment, LLC. Visit encoretv.com for air dates/times.

# DAVIS COUNTY TIRE TRUCK SERVICE CENTER IS

**now open**

**WE TAKE CARE OF IT ALL!**  
SEMIS, MOTOR HOMES, BUSSES, DUMP TRUCKS, ETC.  
**MAKE US YOUR TIRE SHOP WITH ALL MAJOR BRANDS AVAILABLE!**

**BRAKES**

**SHOCKS**

**ALL FRONT END WORK**

**FULL-TIME MECHANIC ON HAND**

**TRAILER ALIGNMENT**

**TRUCK ALIGNMENT**



108 Smith Street • Bloomfield  
TOLL FREE 1-888-855-8740  
641-664-1801





## Meet our Team! Allergy & Pulmonary Clinic Open House



Pictured left to right: Teresa Sayre, Megan Noll, Dr. Ron Graeff, Cathy Bedner-Keith, Julie Goode

**Thursday, May 28 • 4-6 p.m.**

Come enjoy refreshments & view our newly remodeled space for Dr. Ron Graeff, Allergist at Davis County Hospital.

*Davis County*  
HOSPITAL

Dedicated. Compassionate. Healthcare.

509 N. Madison • Bloomfield, Iowa 52537  
www.DavisCountyHospital.org • 641-664-2145

FOR SALE: 56" 1/2 P.O.A. pony mare, Palomino color, broke to ride or drive, big enough for adult riders. **Paul Hochstedler.** VM: 641-664-2997 21

IN NEED OF...woman's bicycle or bike seat. My bike was vandalized and I'm on a limited budget. Any help appreciated. PH. 641-664-1883

## HILLTOP GREENHOUSE

11049 HWY 2, MOULTON, IA  
BETWEEN WEST GROVE & MOULTON

Dogwood Tree, Gold Forsythia, Wisteria, Button Bushes, Crab Apple, Maple Tree & Red Bud Tree

Onion Sets & Plants, Garlic  
VEGETABLE SEEDS ALL ON SALE

12" Colorful Baskets only \$15!!  
CHECK OUT OUR FLAT SALE!!

- Knockout Roses
- Clematis
- Lilac Bushes
- Carex Perennial Grasses
- Annuals
- Astilbes
- Hydrangeas
- Garden Phlox
- Lily
- Bleeding Hearts
- Mini Roses
- Oriental Hybrid Lilies
- Creeping Phlox
- Hostas
- Peonies
- Salvia
- Hen & Chicks
- Delosperma
- Yucca

Mon-Sat  
8:00 A.M.-6:00 P.M.  
641-929-3036

FLAT SALE  
THROUGH  
MAY 31ST



Test Drive COMFORT Today!

COMFORT  
IT'S IN THE SPRINGS

Available on lawn tractors  
& zero turn mowers



502 E. Franklin • Bloomfield, IA • 641-664-2784



## GARMAN? FLOWERS

4 Miles North of Memphis to on Hwy. 15 to Rt. CC,  
1 1/2 miles west to first gravel road on the right.

Memphis, MO

660-328-6318 • 660-341-9586

BP Station (Gas & More) in Memphis



on Million Bells  
By the Flat (18 or more)

\$1.99 reg. \$2.59

All Perennials,  
Hanging Baskets  
& Strawberries

10%  
OFF

FOR SALE: Mobile home 66x14, \$3,500. Plywood floors, modern windows, steel roof, many extras, you move. PH: 641-208-5115 23

FOR SALE: Ferguson 2 bottom plow. Massey 8' 3 pt. disc. Fred Cain 7' 3 pt. cultivator. \$350/each or all \$900. PH. 319-494-7733. 23

## SUNSHINE HILL GREENHOUSE

KEITH & ALMA HIGH, OWNERS

STRAWBERRY PLANTS

RHUBARB  
CLEMATIS  
POTTING SOIL  
PERENNIALS  
BUTTERFLY BUSH  
WISTERIA



BLUEBERRIES  
GRAPES  
RASPBERRIES



641-656-4203  
641-208-7609

1 MILE EAST OF MILTON ON HWY. 2

DOGWOOD TULIP TREE  
LARGE SELECTION  
OF TOMATOES!

FOR SALE: (10) 7 gallon Brower chicken waterers, (10) hanging chicken feeders, (10) 1 gallon chick waterers. PH: 641-664-3571 ext 1. 23

FOR SALE: 2000 Buick Regal LS, unknown miles; A.C.; refrigerator; table & 4 chairs, wood; blue recliner; hide-away bed sofa; queen bed complete, nice. PH: 641-895-2966 21

## Burkholder's Greenhouse

Hanging Baskets  
Patio Pots



Great Selection of Annuals

Large Variety  
of Shrubs

Perennials

Fruit, Shade, &  
Ornamental Trees

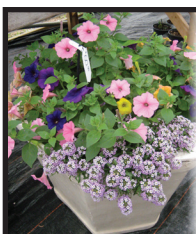
Tomato Plants - We have your kind.  
Peppers - Red, Orange, Yellow, Purple  
Sweet Potato Plants

Blueberry Plants; Concord & Seedless Grapes

Bulk Mulch, Topsoil, Compost,  
Landscaping Blocks, Flagstone

Hours Mon-Sat 8 am to 6 pm  
See Our Catalog at  
www.burkholdergreenhouse.com

660-397-4115  
660-341-5777  
4 Miles North  
of Edina, MO



Unbelievable  
DEAL

BUY ONE...GET ONE  
FREE

ONE WEEK ONLY! May 29th-June 6th

EXCLUDES PERENNIALS, MULCH AND MUM PLUGS

Hanging Baskets  
Patio Pots  
Annuals  
Vegetable Plants



25% OFF PERENNIALS  
SHOP EARLY FOR BEST SELECTION!

ONE WEEK ONLY!  
May 29th-June 6th

If you want to establish mums as perennials, plant these small plants in your flowerbeds now. We have many colors and kinds to choose from.



Mum Plugs  
\$1.50 Each

25957 US Hwy 136  
Lancaster, MO

M-F 8:00 AM - 8:00 PM  
Sat. 8:00 AM - 6:00 PM • Closed Sundays

Most Combined Years Of Experience In The Area

✓ Guaranteed Craftsmanship

✓ Works Well With All  
Insurance Companies



✓ Guaranteed Paint Match

✓ Free Estimates

**Walker Motors**  
COLLISION REPAIR, INC.



375 South Main St. Memphis, MO 63555

Give Us A  
Call Today!

**Hertz**

Rental Cars Available  
For All Occasions  
Great Rates  
Unlimited Miles

RENT  
HERE

**FRIESEN  
CONSTRUCTION**

New Houses  
Remodeling  
Garages Electrical  
Plumbing  
Custom Cabinets

Arlen 664-3270  
Cell 641-208-0170  
Bloomfield, Iowa



## DAVIS COUNTY MEDICAL ASSOCIATES

...making a commitment to becoming more accessible.

Introducing Haleigh Skaggs, Licensed Nurse Practitioner.

SEEING NEW PATIENTS SPRING OF 2016!



Haleigh Skaggs, ARNP

To schedule an appointment with a Davis County Medical Associates provider, call 641-664-3832.

**NOW TAKING NEW PATIENTS.**

*Davis County*  
MEDICAL ASSOCIATES  
Dedicated. Compassionate. Healthcare.

509 N. Madison, Suite 100 • Bloomfield, Iowa 52537  
www.DavisCountyHospital.org • 641-664-3832

**STRAWBERRIES FOR SALE:** Ready by June! Fresh, homegrown, no chemicals. Place your order now. Drop-ins welcome too! John Earl Kuhns, 3/4 mile E 3/4 mile N of Drakesville on Jade Ave. PH: 641-664-2336 23

CDL Drivers needed to haul livestock, home on weekends. Great Benefit Package for Full-Time Drivers! www.lynchlivestock.com or call Angie @ 563-776-3051 for more information. EOE (MCN)

### MAST OVERHEAD DOORS

105 S. Dodge St., Bloomfield, IA 52537



641-680-2016

Quality Products  
+ Quality Workmanship  
= Quality Customers

### Garage Doors

Residential & Commercial  
Doors & Operators

Free Estimates We Fix Doors

**FOR SALE:** Grinding hay, large round bales, net wrapped. \$30.

PH: 641-895-3084

21

**FOR SALE:** Trek bicycle, blue & silver model 2.1, never ridden, \$600.

Call: 641-656-4269

21

## MEMPHIS MERCANTILE

- Craft Supplies
- Kitchenware
- Scrapbooking
- Vitamins/Herbs
- Books & Bibles
- Baby Items & Toys
- Cricut Supplies & Rentals
- Fabrics & Sewing Notions
- Primitive & Inspirational Decor



**New Arrivals!**  
Spring  
Outdoor Decor

Mason Jar Solar  
Lights & Tiki Torches for  
your garden!



115 E. MONROE • MEMPHIS, MO • 660-465-2102  
M-W & F: 9am-5pm; THUR: 9am-6pm; SAT.: 9am-3pm; CLOSED SUNDAY



**HUGE NEW SHIPMENT OF HEALTH & BEAUTY ITEMS! GREAT SAVINGS!**

18786 200th St. • Bloomfield, IA  
VM: 515-830-2971  
Open Monday-Saturday 8-5,  
Closed on Sundays

**FOR SALE:** Laying hens, nesting boxes & feeders. Daniel J. Yoder 1 mi. North of Belknap.

PH: 641-722-3230

21

**Gingerich Greenhouse & Shady Lane Variety**

1 mile E. & 1/2 mile N. or Drakesville on Jade Ave.

**PW PROVEN WINNERS**

HOURS  
Monday - Saturday  
8:00 am - 6:00 pm

Variety of Colorful Hanging Baskets  
Nice Selection of Bedding Plants  
Lots of Rhubarb, Blackberry, Blueberry, Raspberry Plants & Grape Vines

**NICE SELECTION OF PLANTERS**

Mississippi Valley Regional Blood Center mobile drew 39 pints of life saving blood on May 6th at the Davis County High School blood drive.

**FOR SALE:** Miniature donkey Jenny, 4 months old, very cute, \$100.

PH: 660-342-7083

22

## L&M Country Store

1 1/2 miles south of west Hwy 2 & 63 jct.

Mon-Sat. 8am-5pm **CLOSED SUNDAYS**

VM: 641-664-1936



**GOLDEN DELICIOUS & CAMEO APPLES**

Strawberry Danish Dessert Mix..... \$3.69/lb.

Oat Cluster Cereal 14 oz. with Cherries & Almonds... \$1.19

Buttery Popcorn Topping 16 oz. .... \$3.99

Sweet Puff Wheat 15.3 oz. .... \$1.25

Light Brown Sugar 25 lbs. .... \$14.29

Pure Cane White Sugar 50 lbs. .... \$23.99



**LOCAL GROWN GREENHOUSE TOMATOES**



**DISH TV Starting at \$19.99/month (for 12 mos.) SAVE!** Regular Price \$34.99. Call Today and Ask About FREE SAME DAY Installation! CALL Now! 866-488-2971 (MCN)

### PART-TIME TELLER

Join the teller team at Community 1<sup>st</sup> Credit Union in Bloomfield! You'll provide excellent service by greeting members with a smile and assisting with account transactions and inquiries. Customer service and cash-handling experience preferred, and attention to detail is a must. If you're a team player who enjoys recognition for a job well done and opportunity for growth, then come join C1<sup>st</sup> today! Starting pay \$10/hour.



**COMMUNITY 1<sup>ST</sup> CREDIT UNION**

To apply, visit:  
[www.c1stcu.com/careers](http://www.c1stcu.com/careers)

**Danner**  
#13858

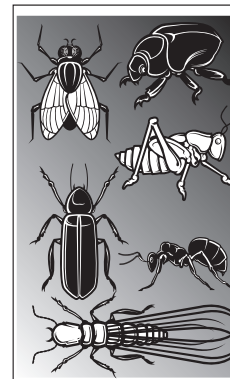
**GRABER'S COUNTRY STORE**

2 miles South & 1 mile East of Drakesville

**FOR SALE:** 14' semi v aluminum fishing boat & trailer, \$400.

PH: 641-777-3321

21



### ACTION Pest Management

Billy & Meshara McAlister, Owners

2620 Eastridge Dr.  
Centerville, IA 52544

**641-895-5657**

Commercial | Residential | Industrial

Family owned & operated for over 30 years

Garages • Pole Barns  
Commercial

Free  
Estimates

**LAN-DOW BUILDINGS**

We Stock a  
Complete Line  
of Building  
Materials

**Lancaster Lumber, Inc.**

Complete  
Buildings or  
Packages  
Available

Toll Free 800-424-5071 Fax 660-457-3133

Ron Oliver, Owner Lancaster, MO 63548  
[www.lancasterlumber.com](http://www.lancasterlumber.com)

## Slayton Polaris

**POLARIS**  
The Way Out.

Authorized Polaris dealer since 1988

**New & Used Polaris ATV's**



**BLOOMFIELD, IA**  
8 mi. S & W from Pulaski or 6 mi. W of Memphis then 13 mi. N on Route B  
**660-328-6627**

## 2009 CHEVY IMPALA

LT, 68K MILES, LOADED, LEATHER



**NOW \$10,200**

**Kollision Korner**

504 South Drake St.  
Bloomfield, IA 52537

PH: 641-664-2648  
Fax: 641-664-2948



"Like us on Facebook!"  
for more pictures.





**Friday, May 29th**

**Choice of 12 or 14 oz. Ribeye**  
with sides Serving at 6:00 P.M.

Dine  
In

**722-3355**

Carry  
Out

**RAY'S LONGBRANCH**  
Drakesville, IA

**LAUNCH YOUR SUMMER FUN WITH  
VACATION BIBLE SCHOOL!**



**June 8th - 12th**  
**9:00 AM - 12:00**  
**Kindergarten - 6th**

FOR MORE INFORMATION CALL AND TO  
PRE-REGISTER  
641-664-2240 • 641-675-3720

**First Baptist Church**  
401 Crestview Ave. • Bloomfield, IA



**MOVING SALE!**

Friday, May 29<sup>th</sup> 9-5  
& Saturday, May 30<sup>th</sup> 9-1  
27308 Mulberry Ave.  
Bloomfield.

MC 4 bottom plow,  
3 hitch; old harrow;  
Lawn Boy mower; air  
compressor; electric  
trimmer; snowblower;  
quilt frame; fabric;  
bedroom set; canning  
jars; misc.

**DOWNING DEPOT  
MUSEUM**

**ANNUAL SMORGASBORD**

**SUNDAY, JUNE 7**  
**11:30 A.M.**

**AT THE DOWNING CITY PARK**

**FREE WILL DONATION**



**Saturday**  
**June 6**  
**2015**

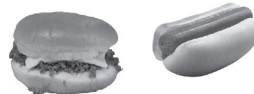
**GREENTOP  
CITY WIDE  
YARD SALES!**

Starting at 6:00 am the  
Greentop Fire Assoc.  
will be serving their  
annual breakfast &  
lunch at the Greentop  
Fire Station.

Come & dunk your  
favorite county & city  
officials in the  
Dunk Tank!

For information call  
**660-988-2611**

**FREE  
LUNCH!**



Need a ride? Call 664-3242  
Worship time: Sunday 9:00 AM

**Saturday, May 30<sup>th</sup>**

**11:00 A.M. - 12:30 P.M.**

**Loose meat sandwiches, hotdogs, chips,  
other trimmings & drink**

*Shepherd's Closet Will Be Closed*

**GOOD SHEPHERD LUTHERAN CHURCH**  
19419 Lilac Avenue, Bloomfield, North end of West St.  
Delivery in Bloomfield after 12:15 P.M.

**IOWA THEATER**  
Bloomfield, Iowa

**The Iowa Theater will  
be closed for the  
summer season.  
Thank you for your  
patronage.**



**MOTEL & GRILL**

JUNCTION OF HWY 2 & 63  
BLOOMFIELD • 641-664-1063

Breakfast • Lunch • Dinner  
Daily Hot Specials and Evening Features  
Prime Rib Capital of the World!  
Friday & Saturday Nights

Banquet Facilities Available for All Occasions • Catering  
*"Where Quality and Consistency Matter!"*

Tues - Thurs 7am-9pm • Fri - Sat 7am-10pm  
Sunday 7am-2pm • Closed Monday

**Davis County Fair**  
**July 14<sup>th</sup>-19<sup>th</sup>**

**Advanced Carnival Coupons**

**for rides July 14<sup>th</sup>-18<sup>th</sup>**

\$20 in advance - \$25 at the Fair

**AVAILABLE JUNE 1<sup>ST</sup>-JULY 13<sup>TH</sup> AT  
THE FOLLOWING BLOOMFIELD  
LOCATIONS:**

Bank of the West  
Community 1st Credit Union  
1st Iowa State Bank  
Success Bank

Advance coupons also available  
**TWO DAYS ONLY JULY 13<sup>th</sup>** from  
9am-6pm & **JULY 14<sup>th</sup>** from 9am-Noon  
at the Fair Administration Office.



East of Middle School  
on North Street  
401 Crestview Ave.  
Bloomfield, Iowa 52537  
Phone 641-664-2240

www.bloomfieldfirstbaptist.com

**FIRST  
BAPTIST  
CHURCH**

(Affiliated with G.A.R.B.C.)

**Sunday:**  
Sunday School ..... 9:30 A.M.  
(all ages)  
Morning Worship.. 10:30 A.M.  
Evening Worship..... 6:00 P.M.  
**Wednesday:**  
Midweek Service..... 7:00 P.M.  
Youth Meetings..... 7:00 P.M.

**BLOOMFIELD FARMER'S MARKET**



**BLOOMFIELD, IA COURTHOUSE LAWN**

**TUESDAYS**

**3:00 - 6:00 PM**

**SATURDAYS**

**8:30 - 11:30 AM**

For more information  
contact Patsy Boas  
**641-459-3387**



Now accepting  
Seniors, WIC, CVV, & Food Stamps

**FIND YOUR JOB AT**

**WEDNESDAY, JUNE 3, 2015**

**10:00 AM - 12:00 NOON & 1:00 - 6:00 PM**

**OPENINGS FOR BAKERY/DELI, CASHIERS & CARRY OUTS • PART TIME**

**STOP IN & TALK TO BOB**

207 E. Locust • Bloomfield, IA • www.keithsfoods.com • E.O.E

**Keith's  
Foods**

**641-664-2539**

**BILL RILEY TALENT SEARCH**

Sunday, July 19<sup>th</sup> at 2:00 P.M.  
in the Blue Ribbon Barn.

Two age groups (2-12 & 13-21)

Pre-register by calling Lyle Stirling at 641-208-6012

www.daviscountyfair.org



Come Join Us For  
**Picnic & Politics Fundraiser**  
 visit with the candidates  
 When: Saturday, May 30<sup>th</sup>  
 5:00 P.M.  
 Where: D.C. Fairgrounds, 4-H bldg.  
 Picnic Menu &  
 Pie Auction Following  
 Free-will Offering  
 PAID FOR BY DC DEMOCRATICS

10TH ANNUAL DAN LARSON MEMORIAL BULL RIDE & BARRELS  
 Saturday, June 6th at 7:30 P.M. Monroe Co. Fairgrounds, Albia, IA. More information  
 PH: 660-216-9759 21  
 cowboycalendar.com

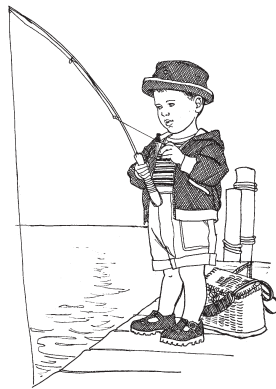
**WESTERN'S SMOKEHOUSE**  
 • Nationwide Shipping  
 • Cut to Order Meat Bundles  
 Gourmet Cheeses  
 Award Winning Sausages  
**Snack Sticks & Beef Jerky**  
 Visit our retail shop in Greentop, MO  
 www.westerns-smokehouse.com  
 Mon. - Fri. 7am - 5pm • Sat. 8am - 4pm  
 660-949-2445 • 1-800-456-0250

**BLOOD DRIVE:** Bloomfield Care Center will host a community blood drive from 11:00am to 2:00pm on Monday, June 1 at 800 N. Davis, inside MVRBC Donor Bus. To donate, please contact Kristal Phillips at 641-664-2699 or visit www.bloodcenterimpact.org and use code 5340 to locate the drive.

**SCHUYLER COUNTY NURSING HOME**  
 RN & LPN FULL TIME & PART TIME  
 CERTIFIED NURSE AIDES ALL SHIFTS  
 HOUSEKEEPER PART TIME  
 DIETARY AIDE PART TIME  
 EXPERIENCED MEDICARE BILLING CLERK PART TIME  
 Apply at Schuyler County Nursing Home, Queen City, Missouri. Applications for other positions accepted. An equal opportunity employer; services provided on a non-discriminatory basis.  
**CALL 660-766-2291**  
 or stop by and pick up an application.  
 We are located on Hwy. 63 north in Queen City, MO

**LIVING WITH KNEE PAIN?** Medicare recipients that suffer with knee pain may qualify for a low or no cost knee brace. Free Shipping. Call now! 855-948-5623 (MCN)

# Youth Fishing Derby



The Davis County Conservation Board will be holding a youth fishing derby  
**SATURDAY, JUNE 6th, 2015**  
**10:00 AM - 12:00 PM**

McGowen Wildlife and Recreation Area  
 County Road J-40, East of Bloomfield  
 at the Pond by the Office.

Bait will be provided and some poles will be on hand for use.

**FOR SALE:** Goodyear Dyna Torque 13-6-28 tractor tire and tube. 90% cleats, good rubber, no cracks, \$195 OBO. PH. 660-216-2623. 21

**T-CORNER FURNITURE**  
 WE CARRY  
**MATTRESSES & BOX SPRINGS!**  
 Pillow Tops  
 Special Sizes  
 Double Sided Mattresses  
 20 yr Warranty  
 12 ga. Innerspring  
 1 Mile East • Drakesville  
 VM (641) 664-0207  
 Hrs: Mon. - Sat. ~9-5

**FOR RENT:** 3 bedroom remodeled farm house. 3 miles South of Bloomfield at 23355 Mallard Ave. \$650/month. Call: 641-208-0318 21

**FOR SALE:** Land Pride AT 2572-6' finishing mower, extra blades, \$650 OBO. PH: 641-777-3915 22

## Vinyl Windows

Replacement & New Construction

Window Features...

Fusion Welded Triple Weather Strip Aluminum Reinforced

Sliding/Swinging Patio Doors

Gerkin  
 "Quality products since 1932"

FREE ESTIMATES

Yoder Glass & Window  
 641-722-3667  
 19467 Driftwood Blvd.  
 Bloomfield, IA 52537

## What's Cooking?



Featuring some of Marilyn Downing's favorites...

### BBQ MEAT BALLS WITH BEANS

1 1/2 lb. hamburger  
 1 egg  
 1/4 C dry bread crumbs  
 2 T shortening  
 1 can 30 oz (or smaller) Pork & Beans  
 BBQ sauce (see recipe below)

Combine first 4 ingredients and mix thoroughly. Form into small balls, and brown in hot fat over medium heat. Place beans in greased casserole. Arrange meat balls over top of beans; spoon on BBQ sauce. Cover. Bake at 350 degree oven for 30 minutes. Uncover and bake for 40 minutes longer.

### Barbeque Sauce:

1/2 C catsup  
 2 tsp Worcestershire Sauce  
 2 T brown sugar  
 1/2 C chopped onion  
 2 T vinegar  
 Combine ingredients, bring to boil, then simmer 5 minutes, stirring occasionally. Use as directed above.

**JOE THE BARBER:** Will be closed starting May 26th for 6-8 weeks for surgery and rehab. TFN

**FOR SALE:** 14' semi v aluminum fishing boat & trailer, \$400. PH: 641-777-3321 21

## MEMPHIS, MO

REQUEST LINE (660) 465-2715  
 OR TOLL FREE AT (800) 748-7875

**KMEM**  
 100.5 FM

## AMERICA'S BEST COUNTRY

EVERY SUNDAY NIGHT FROM 6PM TO MIDNIGHT TUNE IN TO NOSTALGIA SUNDAY WITH DONNIE MIDDLETON. IT'S A FIXTURE IN THE TRI STATE AREA. DONNIE PLAYS THE GREAT ROCK AND ROLL HITS YOU GREW UP WITH FROM THE 50'S, 60'S 70'S AND THE 80'S. CALL IN FOR YOUR FAVORITE SONG AT 660-465-7225 OR TOLL FREE



1-800-748-7875 AND MAYBE, JUST MAYBE DONNIE WILL SING ALONG WITH IT. WELL, IT'SY - BITSY TEENIE WEENIE YELLOW POKA DOT BIKINI, ANYWAY. NOSTALGIA SUNDAY WITH DONNIE MIDDLETON ON KMEM FM 100.5 OR kmemfm.com STREAMING AUDIO!!

The music you grew up on. From today's newest Country to the Classics of years gone by.

**B A B Y S I T T E R**  
**AVAILABLE:** \$3.15 per child per hour. Experienced, first aid class.  
 PH: 641-208-1375 21

**FOR HIRE:** House & deck power washing and deck refinishing, gutter cleaning, etc.  
 PH: 641-208-6336 22

**WANTED:** 3"x2" used wood flooring for log cabin restoration. Drakesville Park, Dean Stocker  
 PH: 641-722-3859 21

## SMOKERZ OUTLET

LOWEST PRICED GUARANTEED

CIGARETTES • BEER • ADULT NOVELTIES

now hiring

APPLY IN PERSON  
 NO PHONE CALLS

- HARD WORKER
- MUST HAVE RELIABLE TRANSPORTATION
- DEPENDABLE
- SELF MOTIVATED
- PAY BASED ON EXPERIENCE
- MONDAY-FRIDAY, HOURS AND DAYS WILL VARY

IOWA/MISSOURI LINE • N. HWY 63  
 LANCASTER, MO • 660-457-3088

Summer Hours:  
 Sun. - Thur. 7AM - 9PM  
 Fri. & Sat. 7AM - 10PM

## \$URPLUS BARGAIN BARN

JUST ARRIVED  
 Variety of  
 Patio Sets!

Inventory  
 Changes  
 Weekly!

A LITTLE SOMETHING FOR EVERYONE!

Home • Outdoor • Seasonal

21021 Jewel Avenue  
 Bloomfield, IA

2 1/2 MILES WEST OF BLOOMFIELD ON HWY. 2

REGULAR HOURS:  
 MONDAY - FRIDAY 9:00AM - 6:00 PM  
 SATURDAY 8:00AM - 2:00 PM

- Small Kitchen Appliances
- Indoor/Outdoor Toys
- Cookware & Dishes
- Exercise Equipment
- Sporting
- Tools





**EAGLE EYE**  
Specializing in:  
**Walls and Flat Pours**  
**660. 342. 6393**  
**CONCRETE**  
OWNER: Curvin Good

FOR SALE: Extensive Line of Plumbing Supplies; Gas Ranges and Water Heaters; Faucets; Toilets; Hydrants - Iowa and any flow; Push to fit fittings; Brass - Copper - Galv-Black fittings; Pex-PVC-CPVC-Galv-Black pipe fittings; black poly pipe, 200 lb. test, 3/4" thru 1 1/4"; Tile pipe from 3" thru 6"; Also accessories for sand

DISH NETWORK - Get MORE for LESS! Starting \$19.99/month (for 12 months). PLUS Bundle & SAVE (Fast Internet for \$15 more/month). CALL Now 1-800-390-3140 (MCN)

filters; Ezy flow peanuts, 5' and 10'; rockless pipe 10" X 10' and 20'; Hitz Halter insulation for radiant floor heat; competitive pricings and contractors discounts on most items. Gingerich Stoves and Plumbing LLC. 19091 180th St. Bloomfield, IA 52537  
PH: 641-664-2814



**YODER EQUIPMENT**  
BLOOMFIELD, IOWA  
**CONTINUOUS FENCING**  
**MINERAL FEEDERS**  
**WATER TANKS**  
**GATES & CORRALS**  
19887 Jade Ave  
2 1/2 Miles W of Bloomfield  
V.M. 641-664-2797

FOR SALE: 2015 Ram 2500, mega cab, 6.7L Cummings diesel, Laramie & Ramboxes.  
PH: 641-208-0987 22

FOR SALE: Hyd. markers off 750 JD no-till drill, complete.  
PH: 660-216-9967 or 660-341-8666 22

**GENEALOGY HELP!**  
Have any info on Fredrich Georg Wilhelm, born Germany 1832, died U.S. 1876 (Illinois?)? Father of Henry/Anna Louise/Adolphine. Adolphine's descendants: Edna/Elmer/George Vordrider & Dorothy/Edward/Norman Schrader. Any info please leave message 509-783-5632. elon39@gmail.com (MCN)

**AUTO INSURANCE**  
STARTING at \$25/Month!  
Call 877-929-4394 (MCN)

FOR SALE: Angus and Balancer 14-20 month old bulls. 50 years developing practical, predictable, proven performance genetics. Conditioned to work. Semen checked and vaccinated. Neese Angus, Rutledge, MO.  
PH: 660-883-5556 or 641-344-4565 21

**YODER'S INDIAN CREEK FURNITURE**  
HAS A COMPLETE LINE OF OUTDOOR PATIO FURNITURE available in polywood, cedar, & pine! Polywood is maintenance free, available in 3 styles and 24 color combinations. In stock chairs, gliders, rockers, bar sets, dining sets, swings, playsets, & more! Also, great selection of firepits! Located 4 miles North of Cantril on RT. V64, 22769 Rt. V64 Milton, Iowa 22

FOR SALE: Electric water heater. Also, electric ceiling fans, in good condition.  
PH: 641-664-1567 ext. 3 22

FOR SALE: 2014 Alfalfa Hay, large squares & rounds. Mark Rogers  
PH: 641-919-9447 22



**MAST VINYL WINDOWS**  
THERMO-PRO WINDOWS  
Custom Size Is Our Specialty  
Professional Installation Available  
THERMA-TRU DOORS  
**FREE ESTIMATES**  
22172 Hwy. 63  
Bloomfield, IA 52537  
**800-206-9949**

**\$14.99 SATELLITE TV.**  
Includes free installation. High speed internet for less than \$.50 a day. Low cost guarantee. Ask about our FREE IPAD with Dish Network. Call today 1-855-331-6646 (Not available in NE) (MCN)

**Good Money! Weekly!**  
Processing Mail! Free Supplies! Postage! Bonuses! Start Immediately! www.processingmail777.com (MCN)

**Truckload SALE**  
**POTATO PRODUCTS**  
**59¢** per lb.  
5-6 lb. bags  
**Shoestring Fries & Battered Potato Wedges**  
**69¢** per lb.  
5 lb. bag  
**Curly Fries & Tater Tots Potatoes**

**Old-Time VALUE**  
**PERFECT FOR THE GRILL**  
**\$1.49** per lb.  
Frozen  
\*CheddarWurst  
\*Smoked Sausage  
\*Polish Kielbasa  
**SALE**  
**\$1.19** 16 oz.  
**Springhill® & Our Farm® Sliced Bacon**

**Dutchman's**  
an old time general store.  
**99¢** per lb.  
45lb. block  
**Kraft® Smaller cuts \$1.49 lb. Processed American Cheese Spread**

**59¢** per lb.  
**Yellow Del. Pink Lady Jonagold Cameo Apples**

**39¢ - 59¢** per lb.  
**Assorted Bulk PASTA**

**99¢** 10 oz.  
**Sugardale® Stick Pepperoni**

**99¢** per lb.  
4 lb. **Corn King® Smoked Flat Ham**

**\$2.59** regular \$3.59 per lb.  
**Troyer® Virginia & Honey Ham**

**\$2.99** SALE  
**Lifeguard Style STRAW HAT**  
Assorted **\$1.99** SUNGLASSES

**Repels GNATS**  
**20% OFF**  
**BUG SOOTHER**  
Insect Repellent

**PURE HONEY**  
12lb. - \$39.99 5lb. - \$17.99 2lb. - \$7.99

**75¢** 10 oz.  
**Classic Wheat Crackers**

**\$3.29** regular \$4.75 per lb.  
**Troyer® Mild Swiss Cheese**

**DUTCHMAN'S STORE** Division Street - CANTRIL, IA - (319) 397 2322 SALE PRICES May 27- June 2

STORE HOURS • Weekdays, 8a.m. - 6 p.m. • Saturday 8a.m. - 5 p.m. • Sunday Closed • View our specials at - [www.DutchmansStore.com](http://www.DutchmansStore.com)





**Spring**  
into your new building with

**WAGLER METALS**

19049 Ice Ave., Bloomfield, IA  
641-722-3692

Now stocking framing nails by the box/pallets. Call for pricing!

- Metal Roofing
- Crews Available
- FREE Estimates
- CALL TODAY!

**TRAILER SALE & REPAIRS!!** 6'x12' V-nose ramp door \$2,750.00; 7'x10' (TRIKE) V-nose ramp door \$2,990.00; 14' 14,000# Dump trailer with tarp \$6,757.00; 102"x25'+5' 24,000# gooseneck with 3 ramps & spare \$8,657.00; 5'x8' solid side utility \$986.00. 120 trailers in-stock! 515-972-4554 Information & prices: www.FortDodgeTrailerWorld.com (MCN)

Get CABLE TV, INTERNET & PHONE with FREE HD Equipment and install for under \$3 a day! Call Now - Toll Free! 1-844-260-0669 (MCN)



**LINE-X OF OTTUMWA**

Bring in this coupon & receive  
**\$50 OFF**  
with Purchase of a Bedliner  
one coupon per person

Brad Lisk • Kevin Webster  
15514 Blackhawk Rd., Ottumwa, IA  
641-683-9334  
Gift Cards Available!

• #1 Rated Bedliner in customer satisfaction  
• Guaranteed with a Nationwide Lifetime Warranty

Bring it in and we can LINE-X® it!

**Want A Career Operating Heavy Equipment? Bulldozers, Backhoes, Excavators. Hands On Training!** Certifications Offered. National Average 18-22hr. Lifetime Job Placement. VA Benefits Eligible! 1-866-362-6497 (MCN)

**GET HELP NOW!** One Button Senior Medical Alert. Falls, Fires & Emergencies happen. 24/7 Protection. Only \$14.99/mo. Call NOW 1-888-840-7541 (MCN)

**SAFE STEP WALK-IN TUB:** Alert for Seniors. Bathroom falls can be fatal. Approved by Arthritis Foundation. Therapeutic Jets. Less than 4 Inch Step-In. Wide Door. Anti-Slip Floors. American Made. Installation Included. Call 800-985-0685 for \$750 Off (MCN)



It's the Details That Count!

We work hard to make sure your car looks great, right down to the last detail.

**GLASS REPAIR**

**AUTO DETAILING**

**Karr Collision Center**  
701 Karr Ave.  
Bloomfield, IA  
641-664-1024



**TIME FOR HAY PREPARATION**

- Rake Wheels
- Twine
- Baler Teeth
- Sickles & Sections
- Bale Spears
- Bale Wraps
- PTO Parts

Gardening Items

- Hand Tools
- Lawn Seed
- Yard & Weed Spray

**Hamilton Produce Co.** 105 W. Franklin  
Bloomfield, IA  
641-664-2459 or 1-800-469-7749



**SPILMAN'S MAKES IT EASY TO FIND AUTO PARTS!**  
**MUCH EASIER THAN THIS...**

**SITTING IN TRAFFIC IS A PAIN**  
**SPILMAN'S IS NOT!**

**Spilman Auto Parts**  
20311 Old Hwy. 2 • Bloomfield, IA  
www.spilmanauto.com  
641-664-2463

MasterCard VISA

**NEW DOUBLE-WIDE** for \$65,900, three bedroom, two bath Century Elite with 1,009 square feet. Delivered and set anywhere in Iowa, concrete piers, skirting and central air. CENTURY HOMES OF OSKALOOSA 1-877-241-3621 (MCN)

**\*BEEN DENIED SOCIAL SECURITY DISABILITY?** Thousands of disabled Americans are denied each year. We may be able to help. Free initial consultation. Please call Carter Law Firm 1-800-808-9630 (MCN)



**Village Market**

**IN-STORE SPECIALS ALL WEEK!**

Hwy 136 just 1 mile west of Memphis, MO Hrs: Mon - Fri 8:30 to 6  
Sat. 8:30 to 5

We BUY used Manufactured Homes, Single and Double Wides. Call 641-672-2344 (IOWA ONLY) (MCN)

**VIAGRA 100mg, CIALIS 20mg, 40 tabs +10 FREE, \$99 and FREE SHIPPING.** 1-888-836-0780 or Metro-Meds.net (MCN)



**Body Waxing**

Our body waxing is for both male and female clients including: facial hair removal, arms, under arms, legs, back, chest.

For the female clients only, we offer bikini and full Brazilian services.

**Book Today!**

**Essential MASSAGE & SPA**

119 W. Second St.  
Ottumwa  
(641) 684-3717  
101 E. Franklin, Suite 2,  
Bloomfield  
(641) 664-1022



**HOURS**  
8 A.M.  
to  
5:00 P.M.  
DAILY EXCEPT  
SUNDAY



Our  
Everyday  
Low Prices!

**FROZEN SPECIALS**



**FROZEN SPECIALS**

2.5# "Ohse" Hot Links .....\$2.89 case of 8 \$22.10  
3 lbs. Farmland Hot Link Sausage.....\$3.85 case of 4 \$14.25  
5# Frozen French Fries ..... ONLY \$5.25  
5# Frozen Tater Tots..... \$6.29  
3# Frozen Loose Shredded Hash Browns..... \$3.98  
CHEAPER BY THE 20-30# BOXES  
Frozen Strawberries .....\$1.66/lb.  
Frozen Blackberries .....\$1.98/lb.  
Frozen Black Raspberries .....\$5.96/lb.  
Frozen Blueberries.....\$2.05/lb.  
Frozen Gooseberries.....\$3.04/lb.  
Frozen Rhubarb .....\$1.45/lb.  
6.5# Frozen Sliced Strawberries Sugar Added..... \$9.98 in container  
5# Red Pie Cherries IQF..... \$10.55  
MORE FROZEN FRUITS & VEGETABLES

3# "Ohse" Polish Kielbasa- Smoked .....\$4.25  
Pork Picnic Roll ..... \$3.20/lb. by the 5-6# Roll



Super Sweet Seedless Watermelon ..... \$2.35/each  
Sweet Life Cantaloupes..... \$1.39/each  
Bag of Mixed Fruit 10 ct..... \$4.20  
Home Grown Red Beets, Radishes, Rhubarb, Asparagus & More As in Season

Window No Escape Fly Catchers 4 strips in box .....\$2.19  
Fly Catcher Ribbon box of 5.....\$1.25  
Wasp & Hornet Spray Can .....\$2.89  
Jumbo Fly Catcher 8 ft. Long.....\$3.98

More Kinds of Fly & Insect Catchers

MORE NEW QUILTING FABRIC • LOTS OF QUILT BOOKS - SOME NEW  
JUMBO THREAD SPOOL 400 YD. ....\$1.29

**BLOOD DRIVE:** Davis County PM will host a community blood drive from 8:30am to 12:30pm on Friday, May 29 at 22458 Hwy. 2, inside Southern Iowa Electric Cooperative. To donate, please contact the Blood Center at 800-452-1097 or visit [www.bloodcenterimpact.org](http://www.bloodcenterimpact.org) and use code 5013 to locate the drive.

**NO JOB IS  
TOO BIG  
OR TOO SMALL**



**PLUMBING**

- Septic Systems
- Water Lines
- Sanitary Sewer
- Cattle Waters
- Much More

**EXCAVATING**

- Basements
- Fence Rows
- Pond Cleaning
- Crossings
- All Demolitions
- Much More

**HAULING**

- Rip Rap
- Busted Concrete
- Black Dirt
- Fill Dirt (Clay)
- Much More

**DC PLUMBING  
& EXCAVATING**

**641-226-2049**  
LICENSED, BONDED & INSURED

**LOOK TWICE  
SAVE A LIFE  
MOTORCYCLES ARE EVERYWHERE**



Most of what comes standard on the best selling vehicles in America is missing on motorcycles. That's why it's so important for all drivers to help keep motorcyclists out of crashes.

**LOOK TWICE**



**PULASKI LUMBER CO.**

We provide materials & expertise for all building projects.

**OWENS CORNING**

**New Homes Remodels Decks Kitchens ICF Basements Pole Buildings**

Josh & Emily Hill  
218 S. 2nd St. • Pulaski, IA

**641-675-3405**

**BLOOD DRIVE:** West Grove will host a community blood drive from 2:00pm to 7:00pm on Wednesday, May 27 at 22050 Eden Ave., inside MVRBC Donor bus. To donate, please contact the Blood Center at 800-452-1097 or visit [www.bloodcenterimpact.org](http://www.bloodcenterimpact.org) and use code 5336 to locate the drive.

**Eliminate High Heating Bills!**

**CENTRAL BOILER**

**Backyard Depot Bloomfield, IA**

**641-722-3641**

All E-Classic outdoor wood furnaces adapt easily to new or existing heating systems. It's important that your outdoor furnace and system be properly sized and installed. See your local dealer for more information.

**CentralBoiler.com**

**WE are YOUR Collision Specialists!**

**fredWRECKS Collision Repair**

**Mike Frederick Owner**

127 N. Main St. Memphis, MO 63555  
Phone/Fax: 660-465-2114  
[fredwrecks@yahoo.com](mailto:fredwrecks@yahoo.com)

**STRAWBERRIES:** Place your orders! Bring containers, 2 miles South of Drakesville, 3/8 mile West on 200th St. Signs Posted. VM: 641-664-1896 22

**FOR SALE:** Ponies 5 to choose from, priced right. Leave message and I'll call back. PH: 641-722-3209 21

**WANTED:** If you have tree tops left from logging & want tree tops cleaned up within a 25 mile radius of Lancaster, MO please call 660-956-2177 also, **FOR SALE:** Kent Del Rio 26" red bicycle, 7 speed, all aluminum, new, \$75 OBO; New torque convertor for Ford C6 transmission; (2) front fenders and radiator support for late 70s Ford pickup; Drive shaft front & rear for '78 Ford 3/4 ton 4x4 pickup. PH: 660-956-2177 23

**LIVE BAIT!**

**KICKOFF YOUR SUMMER WITH A COLD BEER!**

**GREAT BEER PRICES WITH NO DEPOSIT!**

**SMOKERZ OUTLET**

**LOWEST PRICED GUARANTEED**

**CIGARETTES • BEER • ADULT NOVELTIES**

Summer Hours: Sun. - Thur. 7AM - 9PM • Fri. & Sat. 7AM - 10PM

**IOWA/MISSOURI LINE • N. HWY 63 LANCASTER, MO • 660-457-3088**

**COLDEST BEER ON THE LINE!!**

**LIVE BAIT!**

**WIPER BLADES** **RAIN-X** **CAR SOAP** **WASH SPONGES** **TURTLE WAX**

**VARIETY OF SIZES** **VARIETY OF TYPES** **CAR CLEANING SET**

**FOR SALE:** 2006 Yellowstone Gulfstream motor-home, Ford V10, 18,000 miles, 2 slide-outs, backup camera, all new tires, microwave, TV, maintenance check by Whitney RV in 2014, excellent condition, \$45,000. PH. 641-777-7869 or 641-777-7769. 22

**FOR SALE:** Balers: JD 567 kicker edge wrap, very nice one. JD 535 kicker, net wrap, hydraulic feed table clean. JD 530 new parts, good older baler. IHC 6 row 30" cultivator. AC 18 ft. hydraulic fold field cultivator. Milton, IA PH: 515-419-1232 22

**FOR SALE:** New Holland 1465 mower conditioner, good condition. PH: 641-664-1187 22

**CUSTOM ROUND BALING, NETWRAP OR TWINE** PH: 641-208-5961 24

**BOAT FOR SALE:** 1991 Maxum Ski boat with a 75hp force motor, runs great! PH: 660-341-0638 21

**Fox Valley Welding**

No matter what size the project customer satisfaction is always our first priority.

**Tig & Aluminum Welding Milwork** **Lathe New Steel Fabricating**

Hours: M-F • 8-5:30 641-656-4684  
12190 East Hwy. 2 • Milton, IA

**STRAWBERRIES FOR SALE:** \$3 qt. Please bring your own containers. Ammon Bornreger, 1/2 mile North of Hwy. 2 & 1/2 mile East off V56. 22

**FOR SALE:** Crosley stackable washer & dryer, 2 months old, \$1,100. PH. 641-664-3822. 23

**FOR RENT:** Memphis home. 1 bedroom, 1 bath, 2 car garage. No smoking, no pets. \$375. PH: 660-342-5280 21

**FOR SALE:** Massey Harris 33 new battery, carburetor kit, 3 pt., starts & runs good. \$1,150. PH: 660-457-3083 22

**BUILDING FENCE?**

**POST DRIVER FOR HIRE UP TO 8"X10' POSTS**

**641-799-0492**

**FOR SALE:** Two new wedding dresses, size small. One dry cleaned & in box, \$125. Other dress \$200 OBO. PH: 660-651-8383 23

**LANDSCAPE SPECIALS**

**8 FT. RAILROAD TIES!**

Check them out at...

**Spilman's Auto Parts**

20311 Old Hwy. 2 • Bloomfield, IA

**641-664-2463**

**TIM SKINNER**

**trucking & excavation**

**FLOTATION AGLIME SPREADING**

Standard Application  
GPS Variable Rate Application  
**HAULING**

Aglime, Rock, Sand, Black Dirt or Clay  
ALSO DOING ALL TYPES OF  
EXCAVATION & DOZING WORK

**Call for pricing today**  
Tim Cell: 641-777-6053  
Home: 641-682-6003

**FOR SALE:** 2015 Ram 2500, mega cab, 6.7L cummings diesel, Laramie & Ramboxes. PH: 641-208-0987 22

**FOR SALE:** '03 TTR 225 dirt bike, electric start, rear back tire excellent condition, \$1,000. No Sunday calls. PH: 641-208-7619 22

**FOR SALE:**

**New Mattresses, selling individually or in sets. Factory warranty. Twin, Full, Queen & King Sizes.**

**641-664-3060**





## EQUIPMENT AND PERSONAL PROPERTY AUCTION

**SATURDAY, MAY 30<sup>TH</sup> - 10 AM**

Located 4 miles North of Memphis, MO on Hwy. 15,  
then 1/4 mile East on Rte. BB.



Selling 1964 JD 3020 W.F. tractor with loader; MF 135 (G) tractor; 16' trailer; 3 pt. equipment; 2001 JD 6x4 Gator; 1992 27' Dutchman fifth wheel camper; Lawn and garden related; Shop and tool related; Guns, ammo, and related items; Game mounts and taxidermy supplies; Household Misc.; Pool table, 12' bar, brewery lights.

**Leroy Simmons & Carol Richards, Sellers**

**McAfee/Hayes Auction Service, LLC**  
660-727-3796

[www.mcafeeauctionservice.com](http://www.mcafeeauctionservice.com)

**FREE SAWDUST:** We will BLOOMFIELD MINI  
load. Delivery also possible. STORAGE. Serving you  
Our sawdust is always dry. from 2 safe, convenient  
RJ LUMBER locations.  
PH: 641-722-3348 TF PH: 641-664-1066. TF

**WOODRUFF ANGUS**  
**MILTON, IA**  
**Roy 641-799-6912**  
**Randy 319-470-6999**

# PUBLIC AUCTION

Sat., May 30th at 9 A.M.

**Rathbun Regional Water Assoc., Inc.**  
16166 Hwy. J29 • Centerville, IA 52544

Rathbun Regional Water Assoc. will sell at public auction the following  
pickups, pickup tool boxes and other miscellaneous items.

**Auction will be held at:**

**RRWA Service Facility (1/2 mile north of Centerville on Hwy. 5**

### PICKUPS & EQUINOX

#30076 **2006 Chevy Equinox**, LT, AWD, 4x4, auto., V6, 94,296 miles.

#30094 **2008 Chevy Silverado**, 1/2T, Ext. Cab, 4x4, auto., 5.3L, V8, 168,544 mi.

#30099 **2008 Chevy Silverado**, 1/2T, Ext. Cab, 4x4, auto., 5.3L, V8, 163,012 miles.

#30101 **2010 Ford F150**, 1/2T, ext. cab, 4X4, auto., V6, Ecoboost, 151,367 miles.

*All mileages are as of April, 1<sup>st</sup> 2015*

**Vehicle consigned by RRWA employee**

**2007 Chevy Silverado**, LTZ, 1/2T, 4 dr., 4x4, auto., 5.3L, loaded, 98,000 miles

**RRWA RESERVES THE RIGHT TO REFUSE ANY & ALL BIDS**

**Vehicles consigned by Iowa Rural Water Assoc.**

**2005 Chrysler Sebring**, silver, 111,721 miles.

**2005 Dodge Ram 1500**, 4x4, Quad cab SLT, lt. almond pearl, 198,850 miles

**2008 Saturn Outback**, XE, FWD, silver, 169,190 miles

**2012 Chevy Impala**, LT, gold mist metallic, 45,496 miles.

**2008 Saturn Outback**, XE, FWD, silver, 169,230 miles.

**IRWA RESERVES THE RIGHT TO REFUSE ANY & ALL BIDS**

## FOR SALE BY BID

1998 Jeep Grand Cherokee Laredo/TSI;  
4WD; V6; 130,000 miles; good body;  
new tires; can be viewed at Davis County  
Courthouse/Assessor's office.

**Accepting Bids thru Monday, June 1, 2015.**

**Davis County Assessor's Office**

**100 Courthouse Square, Ste. 11**

**Bloomfield, IA 52537**

**641-664-3101**

The right to refuse any or all bids is reserved

**FOR SALE:** Brand new rim  
& tire for 567-566 JD baler,  
\$250. Call: 641-208-0318

**FOR SALE:** Hesston mower  
conditioner, Model #1120.  
PH. 641-208-5374. 21

## LakeWood RV Sales & Rentals



**2011 Big Horn**

• 3 Slides • 33' • Clear Title

**SUPER NICE!!**  
Washer/dryer,  
fireplace, matching  
chairs with ottomans  
by the large windows,  
Queen bedroom,  
large corner  
shower! Must see to  
appreciate!!

**\$32,500**

Hwy. 136 E., Downing, MO  
9 miles W. of Memphis or  
1 1/2 miles E. of Downing  
[www.lakewoodrvsales.com](http://www.lakewoodrvsales.com)

Tues. - Fri. 8-5 • Sat. 8-Noon.  
Closed Sundays & Mondays  
Phone: 660-379-2763  
Cell: 660-341-1927  
Fax: 660-379-2792

**FOR SALE:** '08 F150, blue,  
crew cab, 137,000 miles,  
\$14,000 OBO. No sunday  
calls.

PH: 641-208-7985

21

**FOR SALE:** Reconditioned  
riders: various brands  
including JD 320, 445, 485,  
495. Trade-in possible. Also  
tillers.

PH. 641-932-2618, 820 3rd  
Ave. East, Albia, IA. 22

## Cantril Feed & Grain

**Feed Train  
Creep Feeder  
155 bu.**



**Also Available:**

**Bale Rings**

**Feed Bunks**

Gallagher  
Fencing

Bagged  
Feed

Corral  
Gates

**Call us for  
competitive pricing!**

**WE DELIVER!**

**610 West North St. Cantril, Iowa**

**319-397-2215**



**ARE YOU READY FOR THE PURPLE MARTINS?**  
**STOP BY YODER'S INDIAN CREEK FURNITURE FOR**  
**ALL YOUR BIRD NEEDS.** Wood & poly Martin houses.  
Available with fiberglass pole & winch. Gourds & gourd  
racks available with fiberglass pole & winch. Houses &  
gourds have Starling resistant holes. Also have Bluebird &  
Wren houses. **Located 4 miles North of Cantril on RT. V64,**  
**22769 Rt. V64 Milton, Iowa.** TF

**FOR SALE:** Used garden  
tillers rear & front tine. All  
sizes and makes includes  
Troy-Bilt & Mantis tillers.

**Kahoka, MO**

PH: 660-216-1809

21



## PUBLIC AUCTION

**Saturday, May 30, 2015 @ 10:00 a.m.**

*Maxine & the late Leon Schmitter* Located on the edge of  
Queen City Mo.  
watch for Auction signs!

### *Tractor - Trailers - Machinery*

IH 424 gas Tractor WF, S# 05430, (runs good)  
Bush Hog 105 3 pt. brush cutter - small metal mixer  
Douglas 5' 3 pt. tiller - (2) 3 pt. carry-alls - 3 pt. boom  
NH #55 hay rake - 3 pt. dirt scoop - 3 pt. root ripper  
JD hand crank corn sheller w/ electric motor  
3 pt. King Cutter carry-all - front end blade  
Ford 706 3 pt. dirt scoop - 3 pt. 2 bottom plow  
Mohawk mod. 150 3 pt. 5' blade - AC 3 bottom plow  
Older mounted posthole digger - old running gears  
Sickle mower (for parts) - tractor wheel weights  
PTO manure spreader, partial rebuilt - PTO shield  
3 pt. 6' box blade - Dearborn 10-14 1 bottom plow  
(2) stock racks for pickup - misc. tractor chains  
Toplinks - PTO - old Freeman loader - older trailer  
14' tandem axle car trailer - 1974 Hale livestock trailer  
Torsion axle - old JD #8 mounted sickle mower  
Wood barge box on David Bradley gear (full of car corn)  
**Scrap buyers: There will be old machinery and iron!!!**

### *Fencing - Lawn n Garden - Etc.*

Steel T-posts - anchors - several weed eaters  
Garden cultivators - push lawn mowers - (4) vinyl windows  
Garden seeder - Longwood furnace  
approx. 12 old IH tractor & auto manuals  
Approx 40 straw bales - misc. Household items

### *Shop Tools - Equipment*

Craftsman bench grinder on stand - (2) bench vises  
(4) older Craftsman 10" table saws - BelSaw sander  
Simo sickle grinder - Duracraft bench grinder on stand  
Makita circular saw - Craftsman 3/4" drill - shop vac  
Craftsman miter saw - Craftsman 1/2" elec. impact  
Belsaw blade sharpener - propane Reddy heater  
1 1/2 hp electric motor - 3 sets tap & die  
Machine vise - metal work bench - 110 water pump  
Craftsman 3" belt sander - 5 gallon air compressor  
Craftsman 250 amp AC/DC rod welder  
Several Makita & Craftsman power tools  
9 drawer Snap-On tool box - old S&K tool box  
C-Aire 60 gal. 5 hp upright air compressor, works good  
Small air compressor - small organizers  
Guardian Power 5/8" bench type drill press  
Old Lincoln welder - air hose on reel - hand saws  
Guardian Power 5/8" floor model drill press  
Craftsman 6 drawer tool box - handyman jacks  
Log chains - Ridgid pipe cutters & vises  
Crow bars - comealongs - sewer snakes  
Floor jacks - concrete wire - car ramps  
Chain hoist - creepers - cant hook  
Bolt cutters - chain binders  
Trailer sway bars - Lots of misc. hand tools

**Auctioneers Note:** Folks, as Maxine has made the decision to sell the  
property and move, we will be selling the personal property at auction.  
It was impossible to list everything, so expect surprises. Loader and  
personnel available on day of auction. *Thanks, Randy*

Lunch available  
on grounds.

go to  
[www.auctionzip.com](http://www.auctionzip.com)  
for more photos

High Auction Service LLC ~ Randy High 660.216.0515 ~ Clair High 660.341.1687

[www.auctionzip.com](http://www.auctionzip.com) e-mail: [highauction@marktwain.net](mailto:highauction@marktwain.net)

Cash or check with proper ID. Not responsible for accidents or theft. Announcements day of the sale take precedence over any advertising.



# KEOSAUQUA SALE CO.

20511 Hwy. 1, Keosauqua, IA

## BRED COW & BREEDING BULL SALE SAT., MAY 30

Thank You For Your Business!

For More  
Information Contact:

### Selling Times

Hogs.....9:30 a.m.  
Sheep & Goats.....10:00 a.m.  
Outside Merch.....11:00 a.m.  
Cattle.....Noon

Keosauqua Sale Co.  
319-293-3508

Bill Goehring  
641-919-9365

[www.keosauquasaleco.com](http://www.keosauquasaleco.com)

**REDUCE YOUR PAST TAX BILL by as much as 75 Percent.** Stop Levies, Liens and Wage Garnishments. Call the Tax DR Now to see if you Qualify - 1-800-721-2793 (MCN)

**SELL YOUR STRUCTURED SETTLEMENT** or annuity payments for CASH NOW. You don't have to wait for your future payments any longer! Call 1-800-891-2635 (MCN)

**PAID IN ADVANCE! MAKE \$1000 A WEEK mailing brochures from home!** Genuine Opportunity! No experience required. Start Immediately! [www.localmailers.net](http://www.localmailers.net) (VOID IN SD, WI) (MCN)

**MAKE \$1,000 WEEKLY! Paid in advance! Mailing Brochures at Home!** Easy pleasant work. Begin Immediately! Age unimportant! [www.HomeProfitsBiz45.com](http://www.HomeProfitsBiz45.com)

## ANNUAL RECREATION & MACHINERY AUCTION SATURDAY, MAY 30, 2015 • 10 AM

Located at Jefferson County Fairgrounds, Fairfield, Iowa

**TOOLS:** Grizzly 15" industrial planer; Delta dust vac system; portable sand blaster; Craftsman 14" band saw; 10" Craftsman table saw; Hitachi cut-off saw on stand/belt & disc sander/Delta 12 1/2" portable planer; Craftsman radial arm saw; drill joiner; Craftsman twin cutter; portable plate joiner; Craftsman cutter router; nail guns; 60 gallon Campbell Hausfeld vertical air compressor; bench grinders; 40 gallon vertical air compressor; small portable air compressors; Rockwell oscillator; Kreg Jig ProPack; cordless drill sets; Ryobi drum sander; Dado saw set; Craftsman angle drill; circular saws; Craftsman 15" drill press; industrial drill press; wood workbench with vises; clamps; wrench & socket sets; torch set; Lincoln welder; metal lathe; Roto zip saw; chain hoist; tire bead breaker; chain saws; Craftsman 8" drill press; 2 wheel refrigerator cart; hydraulic jacks; kerosene heater; Salamander heater; paint spray guns; floor roll-around toolbox; several aluminum ext. ladders; lots of misc. hand tools. These are very nice tools from Roy Goettsche.

**WOOD:** Rough sawed oak, walnut, & maple. **GUNS & EQUIPMENT:** Mauser model 98; (2) 303 British infilds; British #4 MK1; (2) Springfield M1 30 cal; (2) Arisakas; M38 Swedish 6.5x55 Mauser; M1 Carbine 30 cal; 6.5 Carcano; Sears model 21 20 gauge; Mauser; Sears model 42 22; Colt (the Colteer 1) 22 mag; Mossberg 500 12 gauge pump shotgun; Mossberg model 4445 bolt action 22; Taurus 357 Magnum; 44 cal black powder pistol; Davis model D-32 Derringer pistol; Heritage rough rider 22 pistol; 50 cal muzzle loader; Stevens model 355 12 gauge double barrel; Topper model 158; Steven model 58 12 gauge; 5 mm air rifle; pellet guns; several bows; arrows; all kinds of ammo; several scopes; misc. sights; lots of misc. barrels & parts; reloading equipment; gun smithing tools; several fishing poles; tackle boxes; ice auger; 3 sets of snow shoes; lots of traps; deer racks; fish trap; Minn Kota trolling motor w/ foot control. This is a nice collection of over 40 guns from local estate. **ATV & YARD EQUIPMENT:** 2010 Polaris 500 side-by-side (like new); front blade for side-by-side; ATV seeder; ATV elec. sprayer; Jonsered 2145 turbo chainsaw; several rush mowers; all kinds of yard & garden tools; yard carts & trailers; weed eaters; heavy duty log splitter on wheels with 10hp motor; new & used cattle gates; panels & posts; cable. **TRACTORS & EQUIPMENT:** JD 4430; JD 2640 w/ 145 loader; 1950 JD-A; 1950 Farmal C; 1957 Ferguson 35; these 3 collector tractors are completely restored & nice. AC D15 series II; case vac; 3 pt. blades; Dearborn plow; AC 3 bottom plow; 2 row JD planter; dirt scoop; JD 8 disk; Harrow; 2-5' brush cutters; New Idea sickle mower; IH 1250 grinder mixer; JD 410 baler; 6 bale hay trailer; flare box wagons; lots more. **VEHICLES, BOATS, RV, TRAILERS:** 2000 Ford Explorer; Chevy 750 with 350 bushel grain box; 1988 Jeep Wrangler 4x4; 1979 Ford F150 4x4; '97 Ford F150; 16' Jon boat with trailer & motor; 1985 GMC motor home like new inside & out; 16' & 20' car trailers. **NEW BUILDING:** New doors; windows; misc. hardware supplies. **This will be a large sale! We will be taking consignments up 'til sale day. We are getting more consigned every day. Watch website for more additions & pictures.**

Rick Spees  
641-919-4786

Matt McWhirter  
319-931-6620

REALTOR  
**Rick Spees**  
AUCTIONEER

Not responsible  
in case of  
accident.

1960 Libertyville Rd., Fairfield, IA

Any announcement made day of auction holds precedence over advertising.  
See complete listing at [www.speesauction.com](http://www.speesauction.com)



## FEED & SUPPLY

# 641-722-3045

17599 200TH STREET • BLOOMFIELD  
STOP BY MON.-FRI. 8-5 & SAT. 8-12

**BIRD FEEDING NEEDS**

WILD BIRD SEED  
SUNFLOWERS/CHIPS

**Complete line of bagged feed in stock!**

**CUSTOM BULK**

**Non GMO Poultry Feed we deliver!**

**DRIVERS WANTED: LME Inc needs Local CDL Drivers (P&D) and Line Haul. Be home daily! No weekend work. Benefit package available. Must meet hiring guidelines. Kelsey: 651-628-2334. Apply at: [www.LME4me.com](http://www.LME4me.com) (MCN)**

## MAST VINYL WINDOWS

THERMO-PRO WINDOWS

Custom Size Is Our Specialty

Professional Installation Available

THERMA-TRU DOORS

### FREE ESTIMATES

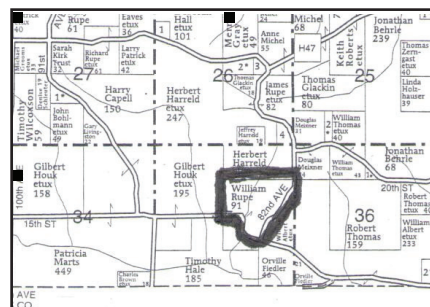
22172 Hwy. 63  
Bloomfield, IA 52537  
**800-206-9949**

**NOTICE: STRAWBERRY SEASON APPROACHING!!** Place your order now. Please bring containers. Pick up your berries at "The Fabric Hut's" front porch. Se you there. Yoder's - located at 14543 195th St., Drakesville, IA 52552. VM: 641-664-3445, ext. 2. 22

**FREE:** Puppies, small to medium sized. PH: 641-226-4860 22

## LAND AUCTION

**SATURDAY, JUNE 13, 2015 • 10:00 AM**  
SALE TO BE CONDUCTED AT THE PROPERTY LOCATED  
**1424 82ND AVENUE, ELDON, IOWA**  
OR South of Ottumwa on US Hwy. 63 to Copperhead Road (Hickory Grove Community Church) Then East 5 Miles to 82nd Ave, OR North of Floris on Quail Ave. 3 Miles to 15th Street, then East 3/4 Mile to sale site  
Auction Signs Will Be Posted



**91 ACRES m/l - Section 35, Keokuk Township.** Situated on this farm is a 2-bedroom earth-berm home, constructed in 2002, with large living room, kitchen, dining area, 2 spacious bedrooms, utility room and full bath. This home has gas forced-air heat and large front patio that overlooks pond. 44'x50' pole barn, built in 1972 plus 3,000-bushel grain bin. Farm is currently all seeded and used as pasture land. Excellent hunting with plenty of wildlife cover.

**TERMS:** 20% down day of sale, balance in cash upon delivery of a Court Officer Deed, accompanied by Abstract of Title showing merchantable title. Real estate taxes will be pro-rated to possession date, possession given upon settlement.

**REAL ESTATE WILL SELL PROMPTLY AT 10:00 AM FOLLOWED BY PICKUP, CAR, TRACTOR & HOUSEHOLD ITEMS**

For further particulars or an appointment to inspect the property, please call the auction company: 641-682-5465. Watch future publication for a complete sale ad of pickup, car, tractor & household items.

**TERMS: CASH/GOOD CHECK POSITIVE ID REQUIRED** **MASTERCARD/VISA DEBIT/CREDIT CARDS**  
All property must be settled for before removal - All items sold as is where is  
Not responsible in case of accident.  
Announcements made day of sale take precedence over any advertising.

**WILLIAM H. (BILL) RUPE ESTATE, OWNER**  
Lisa Rogers, Executor Box & Box, Attorney  
JIM KOSMAN, ROGER CLINGAN, & TODD CARROLL - AUCTIONEERS  
**AL MARTIN REAL ESTATE & AUCTION CO., INC.**  
307 Church St., Ottumwa, IA 52501  
Phone: 641-682-5465 Website: [www.almartinauction.net](http://www.almartinauction.net)



## Fabius Creek Livestock Solutions LLC.

### BUY 9 GET 1 FREE

ALL PURPOSE BEEF MINERAL



**Open by Appointments Evenings & Weekends**

12713 275th Street • Bloomfield, IA 52537  
**641-895-0128**




ADM ADM Alliance Nutrition®  
FARM AND RANCH EQUIPMENT

**START A NEW CAREER in Graphic Arts, Healthcare, Business or Information Tech. If you have a GED, call toll free: 1-855-400-3996 (MCN)**

**TAKE VIAGRA/CIALIS? 40 100mg/20mg Pills, only \$99! Get 4 BONUS Pills! Satisfaction or Money Refunded! Call 1-888-796-8871 (MCN)**

## REAL ESTATE AUCTION WED., MAY 27, 2015 • 5:30 PM

SALE TO BE CONDUCTED AT  
109 S ELM; MOULTON, IA 52572

This 3 Bedroom, One Bath Home sets on 6 lots (just shy of 1 acre m/l) and includes Storage Shed. Real Estate is being sold in "as is" condition with no warranties implied nor consented. Property will be shown by appointment or can be viewed starting at 4:30 PM Sale Day.



**TERMS:** \$1,000 OF THE FINAL BID TO BE PAID DOWN AT CLOSE OF THE AUCTION, WITH THE SIGNING OF THE REAL ESTATE PURCHASE AGREEMENT, BALANCE DUE UPON DELIVERY OF MERCHANTABLE TITLE AND ABSTRACT AT CLOSING. POSSESSION AT CLOSING. TAXES WILL BE PRO-RATED TO DATE OF CLOSING. THIS PROPERTY IS NOT BEING SOLD CONTINGENT ON THE BUYER OBTAINING FINANCING. SALE OF PROPERTY IS SUBJECT TO COURT APPROVAL.

INFORMATION PROVIDED IS BELIEVED TO BE RELIABLE, HOWEVER BUYERS ARE RESPONSIBLE FOR THEIR OWN EXERCISE OF DUE DILIGENCE IN THE INSPECTION OF THE PROPERTY AND DOCUMENTS OF THE SALE. WEBER REAL ESTATE AND GARRETSON AUCTION SERVICES ARE NOT RESPONSIBLE FOR ACCIDENTS OR INADVERTANT ERRORS IN ADVERTISING. ANNOUNCEMENTS DAY OF AUCTION TAKE PRECEDENCE OVER ANY ADVERTISING.

**PAUL DULEY ESTATE**  
Representing Attorney, Debra George

FOR INFORMATION CONTACT  
MELANIE COWAN, BROKER/OWNER  
WEBER REAL ESTATE  
208 N 12TH ST. CENTERVILLE, IA 52544  
641-437-1111

WEBERREALESTATE.COM  
MARK GARRETSON, REALTOR®/AUCTIONEER  
GARRETSON AUCTION SERVICES  
641-895-1030  
GARRETSONAUCTIONSERVICES@GMAIL.COM



MLS





**BLOOMFIELD****LIVESTOCK MARKET**

Wed., June 3rd .....NO SALE  
 Wed., June 10th .....NO SALE  
 Wed., June 17th.....Special Feeder Sale

**TUESDAY POUND COW SALE EVERY WEEK**  
 10:30 a.m. Fat Cattle, Butcher Cows, Bulls, Veals

**SALE BARN OPEN UNTIL 9:00 PM**  
**EVERY MONDAY TO RECEIVE LIVESTOCK**

Phil Schooley ..... 641-664-3450  
 Ron Schooley ..... 641-777-0302  
 Roman Schooley ..... 515-450-3685

*We appreciate your business!*

Tyler Schooley ..... 641-208-5442  
 Barn Phone..... 641-664-2435

**HWY. 63 NORTH • BLOOMFIELD, IA**

**FOR SALE: Seconds Insulated Garage Door Panels.** Three widths in stock 18", 21", & 24", x 8' to 18' long. Also a limited amount of 20' to 30'. These can be used structurally, for a completely finished inside or outside R-14 insulated wall. Some window options available. Prices start at 95¢ sq. ft. Also in stock, 3/4" fiberglass coated plywood up to 8'x26'. **Ezra A. Schrock** 12654 Hwy 2, Moulton, IA 52572, located 10 miles west of Bloomfield, on Highway 2. 641-929-3030

**METAL ROOFING**

NEW Location!

17079 Hwy 2,  
Bloomfield IA

- Buy Direct & Save
- Fast Service
- Cut-to-length

**AW Metal Inc.**  
**Metal Roofing Headquarters**

641-664-3990 • awmetal.net

**BOAT FOR SALE:** 1991 Maxum Ski boat with a 75hp force motor, runs great!  
 PH: 660-341-0638 21

**CUSTOM ROUND BALING, NETWRAP OR TWINE**  
 PH: 641-208-5961 24

**PRICE REDUCED!**

708 West  
 Bloomfield, IA  
 2 beds | 1.0 baths  
 MLS# 17031

Come check out this home, sitting on a beautiful park like acreage. Approx. 2 acres of peaceful, well-groomed outdoor space. House has newer roof, but is a fixer-upper. Has a 22x24 detached garage, & also a 24x30 steel building, built in 1980.

**DEAL ALERT****CASH BACK AT CLOSING!**

302 Madison  
 Bloomfield, IA  
 4 beds | 2.0 baths  
 MLS# 17137

4 Bedrooms, 2 full baths both with whirlpool tubs, large living room, main floor laundry, large den. All woodwork and cabinets are Cherry. Updated windows, roof, electrical, plumbing & siding. Front loading washer/dryer and refrigerator remain with the sale. 2+ car garage, 2 overhead steel doors with auto openers. Seller is offering a \$10,000 credit to the buyer at closing towards kitchen improvements. You can choose your own cabinets and counter tops, etc.

**Lynch**  
 REALTY, INC.

641-664-2275  
 lynchrealtyinc.com

103 E. Franklin  
 Bloomfield, IA  
 641-664-2275  
 Licensed in Iowa  
 Stephanie Lynch, Broker



**FOR SALE:** 10' Marlist NT Drill 7.5" spacing, grass seed, spring tooth harrow, double disk openers, set of narrow and wide press wheels, less than 1100 acres. \$6,800.  
 PH: 641-722-3217

**STRAWBERRY SEASON IS NEAR!**

Approximately 1st week in June will take orders. **R&S Strawberry Farm.** 1.2 miles S of Hwy. 2 on Rt. V56, Milton. 22

**GELBIEH BULLS FOR SALE:** 2 quality red yearling bulls, excellent breeding, price reasonable. **Hobbs Gelbvieh.** PH: 641-766-6779 or 641-203-0863 22

**FOR SALE:** Shopsmith woodworking systems with attachments including saw, lathe, disc sander, shaper, & more. \$550 GREAT VALUE! PH: 641-919-1145 21

**MOTORHOME FOR SALE:** 1990 33 ft. Fleetwood Bouncer, 8 cylinder gas, 45,503 actual miles, in great condition. \$8,900. PH: 641-459-3366 22

**FOR SALE:** DR Field & brush mower, 17hp, new battery. \$2,000  
 Call: 641-656-4269 21

**FOR SALE:** 1 male Beagle, proven breeder & hunts good. Also, 1 female Beagle.  
 PH: 641-664-1567 ext. 1 21

**Cantril Lumber & Hardware**

FREE ESTIMATES

319-397-2351  
 Mon-Fri 7-5 & Sat 7-12



Customizable Chicken Coops!



Built to suit your needs!

Stiletto Hammers

\$165<sup>00</sup>

**Call for all your building needs!**

**WE ALSO CUSTOM BUILD**

- Barns
- Dog Houses
- Picnic Tables
- Much More

**summer's coming!**

2011 Ford Focus  
 Clean Title, 110K Miles  
 Automatic

PRICE REDUCED **\$7,900**

**CRUISE IN STYLE**

**RT Auto**  
 (641) 664-3000

505 S Washington St.  
 Bloomfield, IA  
 M-F: 7:30 - 6 • Sat: 8 - 3

**YODER Lumber**

Bring your plans in for a **FREE ESTIMATE**



**Trusses Engineered and Designed to Your Specs**

**Imagine a Lifetime of Beauty with the strength of steel.**

As the original stone coated steel roofing system, the DECRA product line represents a perfect blending of over 50 years of research and practical experience. Offering the ultimate in performance and engineering design is what DECRA roofing systems are all about.

**SHINGLE XD DECRA SHAKER XD**  
 Stone Coated Steel Roofing Systems



17893 212th Street • Bloomfield, IA 52537  
 641-722-3605 • Mon.-Fri. 7 AM to 5 PM