

MANCHESTER

B U S I N E S S



BONNAROO GIVES BACK

Through philanthropic initiatives, the mega festival demonstrates its ongoing commitment to the Manchester Community.

PLANNING FOR THE FUTURE

Motlow's new president describes increasing adult enrollment, advancing sports programs and creating new two-year degrees as some of the community college leadership's goals moving forward.

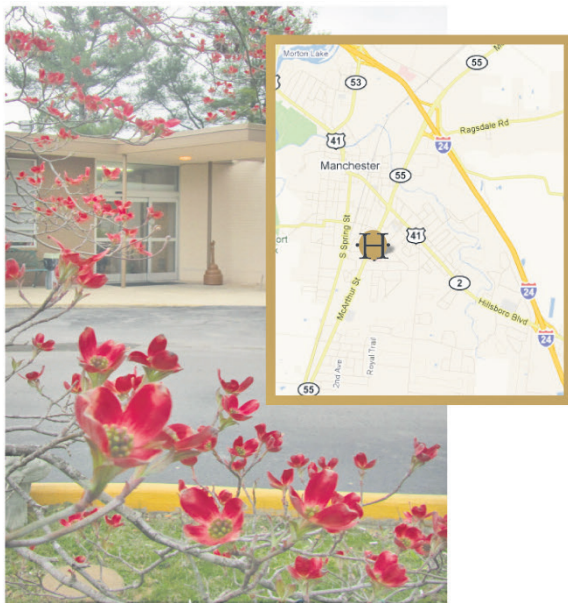
INCREASING VALUE

New executive director reflects on her first year at the helm as the Chamber aims to provide increased value for members.





Partners on your path to wellness



Conveniently located off of Interstate 24. At Exit 111, head west 1.8 miles, turn left on Keylon Street, just past the United Regional Medical Center Entrance. Our building is on the immediate left.

Skilled Nursing • Physical Therapy
Occupational Therapy • Speech Therapy
Respite Care • Memory Care Unit
In-House Nurse Practitioner

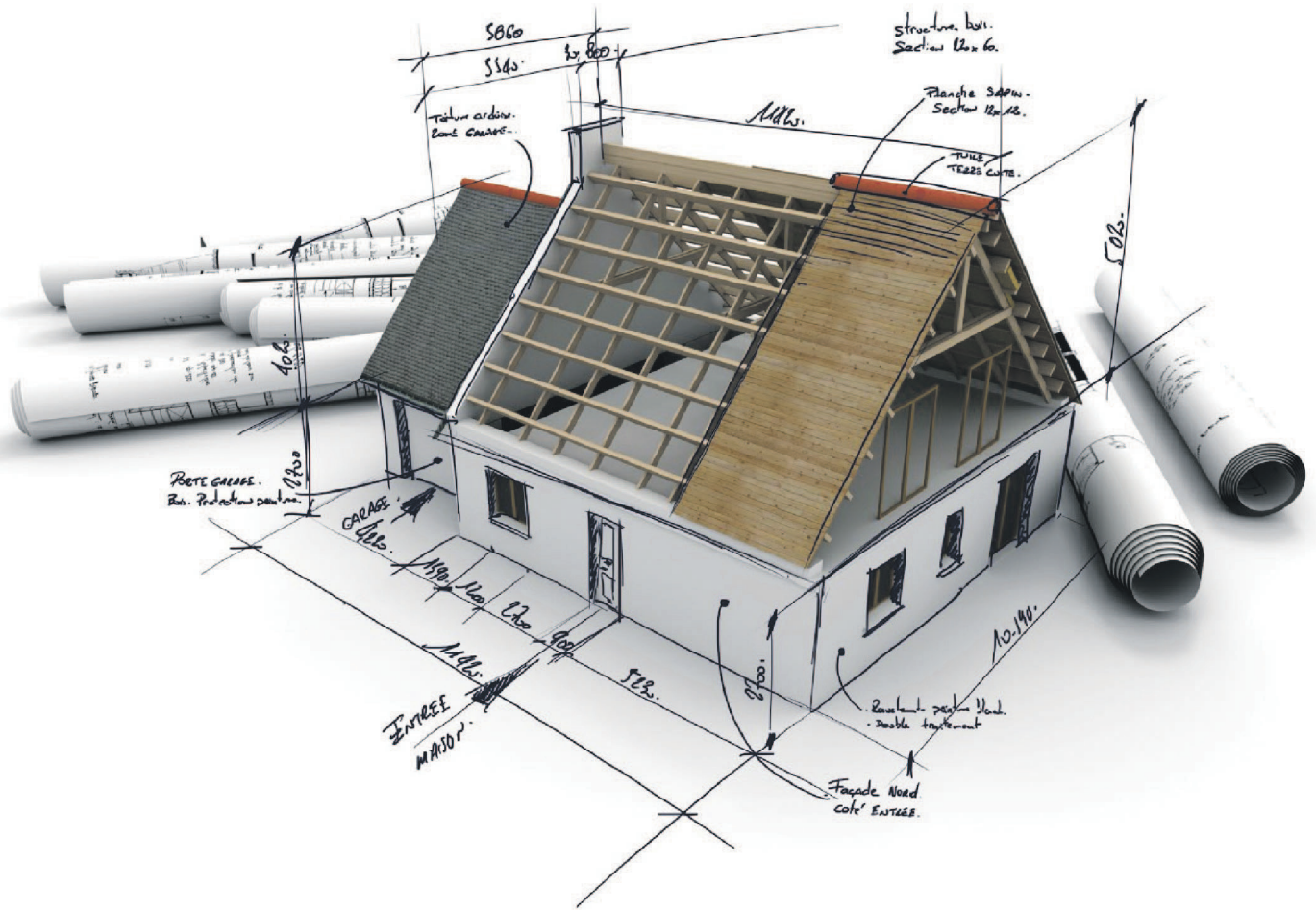
Manchester's hometown choice
for comprehensive nursing and
rehabilitative services.

931-728-3599

811 Keylon St.

Suzie Qualls - Admissions (931) 652-3911

Quality Care... Caring People



Build - Buy - Refi

Mortgage Rates are still low
Don't miss this opportunity

American City Bank



931.728.9907 - www.americancitybank.com





TABLE OF CONTENTS

6

OUR STAFF



12

INCREASED VALUE FOR OUR MEMBERS



18

PLANS FOR THE FUTURE



20 BONNAROO GIVES BACK



36 NEWCOMER'S GUIDE



UE
ERS



24 RESTAURANT ROYALTY



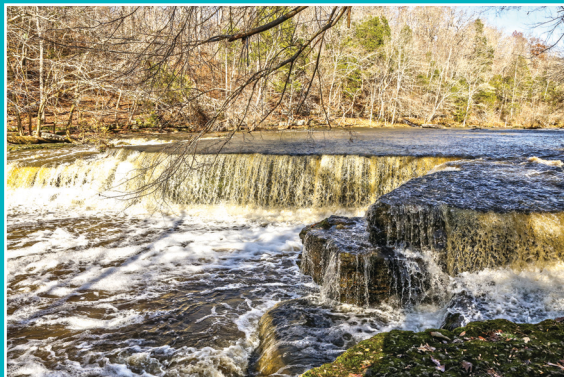
42 OFFICIALS



54 CATEGORY LISTINGS

FUTURE

28 BOOSTING TOURISM



ACCOUNTING

Allen, McGee & Associates
110 N. Jackson St. • Tullahoma, TN 37388
Mark Allen • 931-393-3307

Edmondson Betzler & Montgomery
132 Avery Court • Manchester, TN 37355
Tai Jones • 931-588-1519

ANSWERING SERVICES

Mid-State Communications
504 Hillsboro Blvd. • Manchester, TN 37355
Darlene Sitz • 931-393-6700

APARTMENTS

Carden Estates Apartments
1700 Summer Street • Manchester, TN 37355
Angela Donn • 931-723-1333

Char- El Apartments
607 Woodbury Highway • Manchester, TN 37355
Daniel Powers • 931-728-2230

Continental Arbors Apartments
185 Ester Lane • Manchester, TN 37355

ATTORNEYS

Eric J. Burch, Attorney
200 S. Woodland St. • Man
931-723-7997

Cynthia Cheatham, A
209 South Woodland Street
931-728-5313

Keeton & Perry, PLLC
401 Murfreesboro Hwy. • I
C. Brent Keeton • 931-723

Rogers, Duncan & No
100 N. Spring Street • Man
Christina Duncan • 931-72

The Stanford Law Fir
909 Hillsboro Blvd. • Manc
Chris Stanford • 931-954-5

Shawn C. Trail, Attor
117 South Spring Street • I
Shawn Trail • 931-728-041

AUTO DEALER PARTS & REPAI



["WHAT A GREAT TIME TO BE IN
MANCHESTER, TN!!"]

- Terri Hudson Executive Director
terri@manchestertnchamber.org

There is a level of energy here like never before. The spirit of collaboration is echoing throughout Coffee County. Lifelong residents are falling in love with this community all over again. Our three mayors are displaying an eagerness to come together on projects and initiatives that will benefit every citizen. Our Industrial Board is talking about possibilities and strategies with an increased zeal.

I'm inspired to see educators from separate school systems coming together for the good of every child, ready to roll up their sleeves and find ways to improve our workforce.

Young professionals of integrity are forming networking groups to explore ways that they can plug in and invest in our community.

The truth is there is a tremendous amount of human capital in Coffee County, and when we put our skill sets together toward a common goal, there is no telling what we can accomplish. The future of Manchester and Coffee County is promising.

OUR MISSION

THE MANCHESTER AREA CHAMBER OF COMMERCE IS A PROACTIVE, HIGH-ENERGY PARTNER WITH CITIZENS AND GOVERNMENT, WITH AN INVOLVED AND INFORMED MEMBERSHIP FOCUSED ON RECRUITING, PROMOTING AND CELEBRATING BUSINESS IN THE MANCHESTER AREA.



- Brandy Hayes
Director of Member Relations
brandy@manchestertnchamber.org



- Margie Lowe
Director of Events
margie@manchestertnchamber.org

OUR STAFF



110 East Main Street
Manchester, TN 37355
Phone: 931-728-7635
Fax: 931-723-0736

"The Area's Most Trusted Name In Real Estate"



Let Us Help With All Of Your Real Estate Needs!

931-728-2800

532 Hillsboro Blvd.
Manchester, TN



931-455-3000

2104 N. Jackson
Tullahoma, TN



Locally owned and operated by Jimmy and Nancy Jernigan

www.coffeerealty.com

Visit our website to view all of our current listings and upcoming auction information!

1 & 2 Bedroom Apartments Available



Contact Us for
More Information



96 Joe Hickerson Rd.
Manchester, TN 37355
(931) 728-5290

Locally Owned
by
JR
&
PROPERTIES

A NOTE FROM OUR PRESIDENT



Welcome to Manchester. I'm happy you have this Chamber of Commerce directory. On the following pages you will find the businesses and individuals

"MANCHESTER IS TRULY A DIVERSE AND DYNAMIC CITY"

that make up our dynamic community. I hope you will call on these folks when you are looking for goods and services in our area.

STAN TEAL
2016 CHAMBER PRESIDENT

Whether you are visiting or moving to our city let me share some of the things that we feel make our city so special. Manchester is located on I-24 half way between Nashville and Chattanooga. We are surrounded by beautiful mountains and three of the best recreational lakes in the state. In addition, we have one of the most popular golf courses in the mid-state, and a state of the art Recreation Center. If you enjoy the great outdoors, Manchester is your kind of place.

We also take great pride in our industrial base which offers exceptional job opportunities. We are adjacent to Arnold Engineering Development Center (AEDC), which is the largest test facility of its kind in the world. Add to that two thriving Industrial Parks. Don't forget our 13,000 square foot Conference Center. If you stay for any period of time you will have the opportunity to attend events here that you won't want to miss.

We also take great pride in two of the best school systems in the state of Tennessee. You may want to visit some area attractions that guests come from far and wide to experience. Old Stone Fort is a beautiful state park with several hiking trails with views of water falls on the Duck River, and be sure to check in to Jack Daniels Distillery & George Dickel's Distillery, which is right down the road. In addition, Manchester is proud to be home to the award winning Bean's Creek Winery.

While Manchester is a small city most of the year, we are proud to be the 7th largest city in Tennessee four days of the year when 80,000+ guests arrive from around the world to attend Bonnaroo. This is regarded as one of the best music festivals worldwide. Yes, we are proud to host them every June. Manchester is truly a diverse and dynamic city.

If you are passing through we hope you return; if you plan to stay we can't wait to meet you!



- 1960 - Dr. Ewing Threet
- 1961 - Dr. Virgil Rhodes
- 1962 - Russ Daniel
- 1963 - Mr. Tom Brown
- 1964 - Jesse West
- 1965 - R. W. Walker
- 1966-68 - David Gold
- 1969 - Dr. Ben Spaulding
- 1970 - Buster Bush
- 1971 - Dick Baldwin
- 1972 - Roy Worthington
- 1973 - Ray Kahle
- 1974 - Dow Carter
- 1975 - Tony Tidwell
- 1976 - Cliff Klutts
- 1977 - Roger Dotson
- 1978 - Charles Myers
- 1979 - Ed Matheson
- 1980 - Mike LaChapelle
- 1981 - Wayne Hudgens
- 1982 - Shaw Jared
- 1983 - Shaw Jared
- 1984 - Bobby Vann
- 1985 - Gary Hunt, CPA
- 1986 - Wayne Bramblett
- 1987 - Johnny Murray
- 1988 - Alma Sain
- 1989 - Coolidge Holt
- 1990 - Coolidge Holt
- 1991 - Jim Higbee
- 1992 - Elmer Morris
- 1993 - Buster Bush
- 1994 - Rebecca Turpin
- 1995 - Ray Johnson
- 1996 - Sherri Willis
- 1997 - Craig Johnson
- 1998 - Eugene Wust
- 1999 - Harold Cody
- 2000 - Jewell Noblitt
- 2001 - Heather Duncan
- 2002 - Helen DeBellis
- 2003 - Mike Toney
- 2004 - Patricia Pinegar
- 2005 - Brent Parsley
- 2006 - Mark Williams
- 2007 - Don Rogers
- 2008 - Roger Dotson
- 2009 - Melinda Ashburn
- 2010 - Amber Dotson
- 2011 - Mark Shugerman
- 2011 - Bill Nickels
- 2012 - Bill Nickels
- 2013 - Jon Bell
- 2014 - Carter Sain
- 2015 - Carla Clay

"The Hometown Experts with a World of Experience"
Serving Coffee County & Middle Tennessee



Freda K. Jones
 Owner/ Principal Broker
 931-581-4310



Shanelle Gray
 Owner/ Realtor
 931-273-5358



Sam Rittenberry
 Managing Broker
 931-409-6031



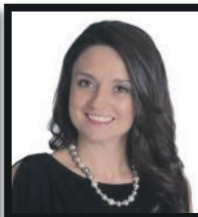
Kelly Anderson
 931-212-4391



Gary Benton
 931-273-3040



Lisa Bryan
 931-212-6211



Kate Bryant
 931-409-5069



Dana Dillinger
 931-434-2491



Casey Jacobs
 931-808-3996



Christy Lewis
 931-808-8322



Shirley Magouirk
 931-409-7994



Tee Miller
 931-273-7804



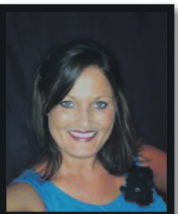
Rhonda Smith
 931-273-7165



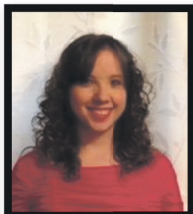
Betty Swayze
 931-588-6204



Michael Woods
 931-841-0884



Dusty Crawford
 Office Manager



Kelly Smith
 Office Assistant

Each office independently owned & operated

2016 CHAMBER OF COMMERCE BOARD OF DIRECTORS

OFFICERS:

President: Stan Teal – Traders Bank

President Elect: Martha McCormick – Unity Medical Center

Secretary: Kevin Sherrill – Sherrill Pest Control

Treasurer: Carter Sain – American City Bank

Parliamentarian: Chris Stanford – The Stanford Law Firm, PLLC.

Past President: Carla Clay – First National Bank

Board at Large

David Cleveland – CFC Recycling

Jon Bell – First Vision Bank

Marlena Scott – SMS Transport

Amber Kelly – Holiday Inn Express & Suites

Sherry Douglas – Metro Industrial Services

Kayla Transue – Comfort Suites

Mike Niederhauser

Roxanne Patton – Coffee County Mayor's Office

Joe Franks – fischer USA



Your Health. Our Mission.



CommUNITY

A combined team from the former United Regional
Medical Center & Medical Center of Manchester

United Regional Medical Center
& Medical Center of Manchester
Have Combined.



"Unity Medical Center is proud to serve Coffee County and the surrounding areas. Now that the two hospitals have been merged, we are strategically developing new services to better serve our market."

- Martha McCormick

"We have developed a strong foundation focused on delivering excellent patient care and are very confident that we will be successful."

- Bobby Couch

931-728-6354

481 Interstate Drive (Off Interstate 24 at Exits 110 & 111)

CHAMBER AIMS TO PROVIDE

BY KRISTIN LUNA

INCREASED VALUE FOR MEMBERS





Terri Hudson had her eye on Manchester for some time—long before she made the move to the area at the beginning of 2015. The native of Richmond, Ky., a city of 33,000 residents just outside of Lexington, was working as vice president of operations for the non-profit Bluegrass Tomorrow but had hoped a job would open up at the Manchester Area Chamber of Commerce so she could relocate and use her skillset to further improve a community with untapped potential.

“Working at chambers [in Kentucky] was the best work I ever did. You feel like you’re making an impact, pulling folks in and thinking about the greater good,” she explains. “You have the opportunity to make so many friends along the way, as well as help others make those connections and create friendships and business partnerships. That’s the really rewarding part of this kind of work.”

Then the position for executive director came available, and Terri wasted no time getting hired and jumping right in. One of her first ideas to take flight was a summit, Coffee County 2020: Positioning for Growth, held in December with former Nashville mayor, Karl Dean, as keynote and other speakers from neighboring chambers in Williamson, Rutherford, Davidson, Maury, Montgomery and Murray counties.

“They talked about best practices. They basically told us their stories, how they make things work in their communities, how it’s created jobs and how they, at one point, were kind of like we are,” she recaps. “To my knowledge, right

now [in Manchester] we don’t have any private investment in growth. These communities are all saying [in order to be successful], ‘it takes buy-in from everybody.’”

More than 100 locals—a mix of county officials, city planners, education professionals, business owners and regular citizens—attended the inaugural summit, and Terri says she was extremely happy with the outcome and the discussion it sparked. Session topics included Coffee County’s positioning in rural tourism, making strides toward workforce development, engaging Millennials and economic development alliances.

“The event was intended to plant the seeds, not to strong-arm anybody, to say ‘hey, this is how they’re doing it. If it

and give us their input and perceptions,” Terri says. “I want people to feel like their membership is an investment in their business and in the community.”

While she has other big plans she wants to put in motion, Terri says getting the education initiative back up and running is a top concern, as is building stronger ties in the industrial community—both among different businesses and between industry and the chamber. Additionally, she will continue to focus on the organization’s two major annual events: the awards banquet in January and the golf tournament at WillowBrook each May.

And ultimately, she just wants to provide all members, new and old, with value. Boasting a directory of more than 300 members, the chamber is not dedicated solely to growing enrollment, but rather to catering to the needs and goals of its existing members.

NEW EXECUTIVE DIRECTOR REFLECTS ON HER FIRST YEAR AT THE HELM.

will work there, maybe it will work here,” she says. “I think that’s what the chamber’s role is: to show that leadership.”

A year into her job, many of Terri’s other efforts have centered upon fostering engagement through events like Coffee Connect, a before-hours program, and Thursday Night Live after work. Both networking series offer members the opportunity to get to know one another, as well as provide a platform for the host businesses to show off all they have to offer.

“Country-wide, chambers often have this perception of: ‘what do they do for me?’ I really want the Manchester chamber to be inclusive. I’ve tried to start new committees so anybody can come in

“Absolutely we want to continue to grow, but membership has not been a top priority for me this first year, as I want to get programs in place first that we can be proud of. They need to be able to see what we’re doing and the product we’re selling,” Terri shares. “I want businesses to realize this is an investment in their community. In the year I’ve been here, I’ve really tried to listen—listen to the members, listen to the people, listen to the lifelong residents, get a feel for what really needs to happen. What are they hungry for? I want people to really love this place and really love each other. To bring a sense of unity and working together has been one of my biggest goals and will continue to be.”

COFFEE COUNTY CRAFT ASSOCIATION Foothills Crafts

The Coffee County Craft Association is a non-profit association formed in 1981 following two years of research by a committee formed by Jeanne G. Webb, Extension Home Agent in Coffee County and the UT Agriculture Department, Knoxville, TN.

The purpose of the formation was to provide a retail store Foothills Crafts, for crafts members

to exhibit and sell their products, and also to offer instruction in various craft skills to others.

120 exhibiting members volunteer four or more hours staffing the shop (which is open 7 days a week from 9:00 AM to 5:00 PM – Monday through Saturday and 1 PM to 5 PM on Sunday) all these volunteers have made the shop what it is today.

For the past 25 years Foothills Crafts has

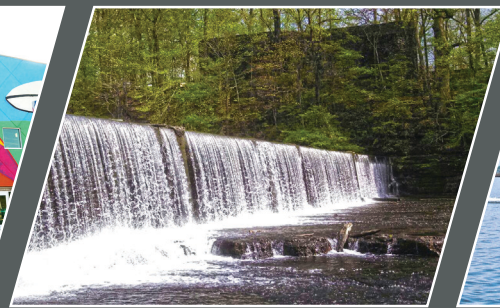
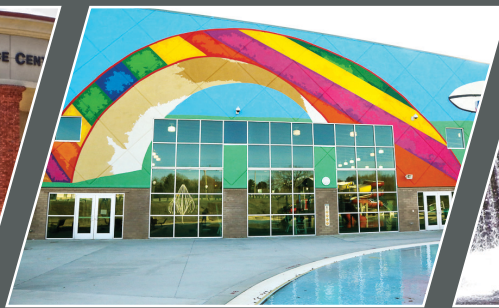
sponsored a craft festival. Which is now at the Manchester-Coffee County Conference Center the second weekend in November.

MANCHESTER - COFFEE COUNTY CONFERENCE CENTER

Where gourmet meets good ol' southern cooking; where classy meets southern hospitality and where Manchester, Coffee County and Middle Tennessee go to host business meetings, class reunions, weddings, receptions and Christmas parties. The Manchester-Coffee County Conference Center has a meeting space and menu for every occasion.

With a total of nine meeting spaces, two Executive Boardrooms and a Grand ballroom the staff at the Manchester-Coffee County Conference Center is excited to host any event. There are various meal options from breakfast, buffets, Hors d'Oeuvres, plated meals, and snacks. The Conference Center is also licensed to serve alcoholic beverages and can arrange to have a hosted bar or cash bar at your event.

The Conference Center is conveniently located between Nashville and Chattanooga, directly off of Interstate 24 on Exit 114. Directly behind and connected to the Holiday Inn Express. Combined with the Comfort Suites hotel located directly out the front doors of the center, it makes for easy accommodations for business travelers, wedding guests or family and friends. 931-723-8283.



MANCHESTER PARKS AND RECREATION

The Manchester Parks and Recreation Department is a publicly funded department that offers quality recreation programs and facilities affordable to all members of our community. Our Recreation Complex is a 64,000 square foot facility that contains racquetball courts, gymnasium, indoor walking/jogging track, wellness room, aerobics room, youth wellness room, casual care nursery, indoor 25 yard competition pool, indoor warm water therapy and kiddie pool, and an outdoor leisure pool with water slides, water

playground, and current river. The Recreation Complex is open 7 days a week and has a wide variety of fitness and aquatic fitness classes including our very own Makos Swim Team.

The Recreation Complex is also a great place to have a birthday party and we have special packages for people to choose for pool parties, lock ins, and our Youth Wellness Room. If you enjoy the experience of walking or jogging outdoors, then our Little Duck River Greenway is the spot for you.

The Little Duck River Greenway is an 8ft. wide concrete walkway that is currently 2.2 miles long and is slated for expansion in the next year.

The Manchester Parks and Recreation Department fees, program information with schedules, and facility information is all available online at www.cityofmanchestertn.com/recreation or call 931-728-0273.

OLD STONE FORT STATE PARK

The Old Stone Fort is a 2000 year-old American Indian ceremonial site. It consists of mounds and walls that combine with cliffs and rivers to form an enclosure measuring 1-1/4 miles around. The 50-acre hilltop enclosure mound site is believed to have served as a central ceremonial gathering place for some 500 years. It has been identified as, perhaps, the most spectacularly sited sacred area of its period in the United States and the largest and most complex hilltop enclosure in the south. Settlers tended to name such enclosures "forts."

At the narrow neck of land between the two rivers there is a set of parallel mound walls oriented to within

one degree of the summer solstice sunrise. It was typical of ancient societies to recognize this significant farthest north sunrise and to hold reenactments of creation myths at such times. Mound sites such as the 50-acre Old Stone Fort provided modified landscapes for ceremonies that may have represented in some way the culture's concept of their place in the cosmos and a separation of the sacred and mundane or pure and impure.

This State Archaeological Park is dedicated to the preservation, protection, study and interpretation to the public of this significant survival of ancient culture. The park offers educational and entertaining programs, which increase understanding of the Old Stone Fort,

archaeology, and Native American cultures. The museum includes exhibits that orientate the visitor to the Old Stone Fort and its setting, the hilltop enclosure mound site's broader significance and the culture of its builders.

The 876-acre park also offers a variety of activities including fishing, camping and hiking. Old Stone Fort Golf Course is the only 9-hole course in the Tennessee Golf Trail. The course lies along the pastoral Duck River with mature trees encompassing each hole. Call 931-723-5073 for more information.

LOCAL ATTRACTIONS

The care you need close to home.



Hospital Information

- Licensed beds: 135
- Physicians: Active: 60; Courtesy: 33; Provisional: 21

Recognition Awards for Quality

- Accredited by The Joint Commission
- Top Performer on Key Quality Measures® by The Joint Commission
- Accredited Chest Pain Center – by the Society of Cardiovascular Patient Care

Specialties

- Cardiology
- Emergency Medicine
- Family Practice
- General Surgery
- Hematology
- Internal Medicine
- Nephrology
- Neurology
- Neurosurgery
- Obstetrics/Gynecology
- Oncology
- Ophthalmology
- Oral/Maxillofacial Surgery
- Orthopedics/Orthopedic Surgery
- Pain Management
- Pediatrics
- Plastic Surgery
- Podiatry
- Pulmonology
- Radiation Oncology
- Radiology
- Sleep Medicine
- Urology
- Vascular Surgery

Service Highlights

- Cardiac Services (Angiography, Cath Lab, Pulmonary Function Lab, Rehabilitation, Telemetry)
- Cardiopulmonary/Respiratory Services (Arterial Blood Gas, Bronchoscopy, Cardiac Stress Test, Cardiolite Stress Test, Echocardiogram, Electrocardiogram, EEG, EKG, EMG, Event Monitor, Holter Monitor, Pulmonary Function Test, Stress Testing)
- Dialysis – Inpatient
- Emergency Department
- GI/Endoscopy Lab
- ICU/CCU (MSIC)
- Imaging (64-Slice CT Scanner, Digital Mammography, Lithotripsy, MRA, MRI, Nuclear Medicine, PET Scanner, Ultrasound)
- Labor & Delivery/Level II Nursery
- Laboratory Services
- Pain Management
- Rehabilitation – Inpatient/Outpatient (Physical Therapy, Speech)
- Sleep Lab/Neurosciences Center
- Surgery – Inpatient, Same Day
- Wound Care/Hyperbaric Oxygen Therapy

Need a physician?

Call our physician referral line at
931-455-9387.



**HARTON REGIONAL
MEDICAL CENTER**

1801 North Jackson Street, Tullahoma, TN 37388
931-393-3000 • HartonMedicalCenter.com

AREA LAKES

There are 3 Area Lakes Within Minutes of Manchester: Tims Ford Lake, Normandy Reservoir and Woods Reservoir.

Tims Ford was impounded in 1970 when the Tennessee Valley Authority built a hydro-electric dam across the Elk River. The 10,700-acre lake is one of the most picturesque in Tennessee and is regarded as one of the top bass fishing and recreational lakes in the Southeast. The lakes deep clear water has made it famous for those in search of smallmouth bass. In addition the lake hosts excellent populations of largemouth bass, Kentucky bass, Rockfish, hybrids, crappie and catfish.

Normandy Lake was impounded in 1976. The lake offers a number of public boat ramps, and campgrounds. Not only does Normandy Lake provide countless hours of on the water recreation in addition it provides the water supply for Manchester and surrounding areas.

Normandy Lake covering 3,160 acres offers anglers superb fishing opportunities. The Tennessee Wildlife Resources Agency and the U.S. Fish & Wildlife Agency regularly stock rainbow trout in the Duck River below Normandy Dam. The lake boasts sizeable populations of largemouth bass, smallmouth bass and is one of the top spots to tangle with the feisty Kentucky bass. In recent years thanks to a very successful stocking

program by the TWRA walleye have taken the spotlight from late spring through summer as a preferred quarry by many anglers. Crappie anglers fish the lake year round.

Some areas around the lake have been designated as wildlife refuges by the Tennessee Valley Authority. These are public use areas that attract deer, turkey and small game hunters. Consult any Normandy Lake map to locate these special areas. Fishing and hunting aside the lake offers remarkable scenery, abundant wildlife, miles of uninhabited shoreline and billowing waterfalls.

Woods Reservoir was the only recreational lake in the area for decades. Impounded in 1952 by the Air Force as a water supply for Arnold Air Force base the lake soon became Middle Tennessee's favorite outdoors recreation site.

Woods Reservoir could be described as two lakes in one. The lower end below Morris Ferry Bridge on Highway 127 is open with sharp points that drop off into the river channel. The area above the bridge is very similar to many river run lakes. Here Woods Reservoir narrows. Boaters discover that once out of the main channel the lake exhibits large flats and shallow coves

with an abundance of cane grass. The tiny 4,000 acre lake is considered one of the best crappie lakes in the south offering year around activity. Bass anglers find an abundance of both largemouth and smallmouth bass. Another favorite quarry for visiting anglers is catfish. The lake is loaded with them.

The lake is very popular with duck hunters also. During duck season the lake is off limits to anglers in some sections on certain days of the week. The lower end near the dam is a designated wildlife reserve area which is closed to all boat traffic several weeks each winter. Check the Tennessee Wildlife Resources Agency Hunting Guide for details. Both hunting and fishing guides are available at area license dealers and on the web at www.state.tn.us/twra.

Additional information on Tims Ford and Normandy lakes including generation times, lakes levels and current news may be found on the Tennessee Valley Authority web site at www.tva.gov under the lakes and recreation tab. Woods Reservoir information may be obtained at www.arnold.af.mil

ARTICLE CONTRIBUTED BY TOM WAYNICK A FREELANCE WRITER FROM NORMANDY TN.



SPIRITS & WINE TRAIL

Our area proudly boasts having two award-winning whiskey distilleries and Manchester's very own winery.

Tennessee Backroads Heritage has developed and produced a Spirits & Wine Driving Trail for Middle Tennessee travelers that can be found at any of the state's welcome centers, area Chambers of Commerce and members' establishments of Tennessee Backroads.

In quaint Lynchburg, Tennessee, is Jack Daniel's Distillery. In Normandy, Tennessee, is beautiful Cascade Hollow, home of George Dickel Distillery. Both distilleries have visitor's centers. Cascade

Hollow has the only working post office at any distillery in the U.S. Directions to George Dickel: Take I-24 Exit 105. Turn on 41 South then turn right onto Blanton Chapel Road. Turn left onto Lyndell Bell Road and soon after take a right onto Frank Hines Road. Follow the signs to Normandy. Go straight on Cascade Hollow Road. Distillery is 1.5 miles.

View beautiful vineyards and sample fine wine at Beans Creek Winery. The winery, formed in 2003 by Tom and Becky Brown and a group of Tennessee winegrowers, began as a dream no larger than a grape. Tom has spent 27 years perfecting our award-winning wine style using grapes and fruit that grow well in Tennessee. The wines offered range from dry

full-bodied reds through sweet whites and fruit wines. We now invite you to enjoy a taste of Beans Creek! Directions: From Nashville take I-24 East to Manchester, TN, exit 111. From Chattanooga take I-24 West to Manchester, TN, exit 111. From either direction: turn right from the exit ramp onto Hwy. 55. Take your first right onto Ragsdale Rd. The Winery is approximately five miles ahead.

Wherever you visit the "trail", remember to "come on back."

LOCAL ATTRACTIONS

Let Us Help You Take Hold of Your Dream Home

First National Bank Mortgage



FNB
FIRST NATIONAL BANK
Manchester ~ Woodbury ~ Murfreesboro
www.fnbmwm.com

100 West High St., Manchester, TN 37355

931-728-3518

1814 Hillsboro Blvd., Manchester, TN 37355

931-728-4444





NEW MOTLOW PRESIDENT TALKS

BY KRISTIN LUNA

PLANS FOR THE FUTURE

Photo of Dr. Kinkel – Photo Provided by Shelby County
Photo of Motlow Moore County Campus – Photo Provided by Motlow State Community College

Increasing adult enrollment, advancing sports programs and creating new two-year degrees are some of the community college leadership's goals moving forward.

As part of a mission for higher education, workforce and economic development, Governor Bill Haslam's Tennessee Promise offers two years of tuition-free community or technical college to high school graduates—and this initiative is starting to attract out-of-state talent like Dr. Anthony G. Kinkel who want to be a part of such an innovative system.

"The Tennessee Promise is huge. Forty-nine other states are raising the price of higher education at a community college," Dr. Kinkel says. "Tennessee is trying to lower it, and that's phenomenal."

In August, Dr. Kinkel succeeded Dr. MaryLou Apple as the new leader of Motlow State Community College. With 30 years of public education experience bolstering his resume, the former president of Wichita Area Technical College was a natural fit for the job—and he just happened to be seeking employment in the state when the opportunity arose.

"Having served as a college president for 12 years in four different states, I'm very familiar with what's going on nationally, and clearly Tennessee has become a national leader in community

college education," he explains. "I was attracted to the state, and I'd been watching to see if there were any job openings, and lo and behold, I saw the job at Motlow and I applied."

During his five-year tenure in Wichita, the former Minnesota Senator grew the school's enrollment 15 percent, and he has similar plans for Motlow, which is the fastest growing college in the state, of both two- and four-year institutions. Dr. Kinkel is a big supporter of Drive to 55, another Haslam initiative that gets more adults in the classroom, with

the eventual goal of ensuring 55 percent of Tennesseans are equipped with a college degree or certificate by the year 2025.

"Thousands of Tennesseans have gone to college, but they didn't finish, so this is an attempt to get them to complete their degree," Dr. Kinkel says. "The performance-funded model that they have here is unique; they tie your state appropriation to your outcomes. They're doing a lot of things really well, and for people like me who have worked nationally, [Tennessee] is a very attractive place to work."

Ultimately, Motlow's overall potential drew Dr. Kinkel to the



Photo Provided by Motlow State Community College

role specifically, he says. Not only does the community college boast a solid educational program, but the largest of its four campuses, Smyrna, is located in one of the fastest growing counties in the country (Rutherford). The community college also reigns as the number one feeder school for Middle Tennessee State University, sending more transfer students there than any other college in Tennessee.

During Dr. Apple's nine years as president, she spearheaded a world-class Ecotronics program in partnership with Bridgestone, in addition to establishing an impressive nursing program with

the number one passing rate in the state. Dr. Kinkel praises her work in both realms and plans to build on her success, as well as to continue to enhance the athletic programs.

"We either need to do athletics first class or not do it at all. I think the college really wants to strengthen the athletics program, and I believe you'll see Motlow become very competitive in athletics," Dr. Kinkel states. "It gives a whole set of young people a chance to go to college who would have never gone to college without athletics."

Dr. Kinkel's first order of business to address such goals has been to establish a "reimagining

program" with his new faculty and staff, which includes "adjusting and aligning the organization to where the students are," he explains, by working with high schools on dual enrollment and using technology to revolutionize the way Motlow teaches and learns—and to also take advantage of both credit and non-credit workforce opportunities.

"For years, Motlow has focused on high school students who want to come and transfer, and that's wonderful, but there are a lot of adult students out there who can benefit by coming back to college and getting a degree," he says. "We're going to really focus on

recruiting adult students."

While Dr. Kinkel has grand plans for the future of the community college, he's the first to admit that not everything can happen instantaneously; instead, he'll be rolling out his ideas slowly, starting with creating a research and development fund.

"We need to reimagine the type of programs we offer. We'll always be a strong transfer institution, but we also need to develop additional two-year degrees for adults who never want to leave Coffee County," he concludes. "That's an ambitious agenda, and it won't happen overnight, but it's one we feel we need to embark on."



BONNAROO GIVES BACK

BY KRISTIN LUNA

For 15 years, Bonnaroo Music Festival has provided Coffee County residents with something to look forward to for four days each June. But its impact extends beyond the world-class acts it brings in, which have included Billy Joel, Elton John, Lionel Richie and Mumford & Sons in recent years. In addition to providing ticket-holders with ample live music, food and art for the duration of the festival, Bonnaroo also contributes \$270,000 to the Coffee County Government annually.

And that's just in direct funds. Bonnaroo creates a total impact of \$51.1 million each year in the state of Tennessee, including \$36 million in direct expenditures. Each attendee is reported to spend \$86 daily, much of which is used locally on gas and groceries, and Coffee County receives \$3 per each ticket sold, as well as \$435,000 in sales, fuel

and hotel tax as a result of the festival.

"We like to think globally but act locally," Jeff Cuellar, Bonnaroo Director of Community Relations, says. "We are an industry, just like Newell Rubbermaid and the Air Force base, that creates jobs and drives economic development to the community."

Bonnaroo debuted in 2002; five years later, the Bonnaroo partnership purchased Great Stage Park, the 750-acre farm where the event is held. In 2015, Live Nation Entertainment assumed a controlling stake in Bonnaroo, though founding promoters Superfly and AC continue to handle operations and day-to-day execution of the fest. The new partnership has produced even more directed efforts at using Great Stage Park for other events throughout the year, though the challenges,

Cuellar admits—like staffing and infrastructure—are many.

"We've always had an eye toward, 'what else can we be doing out here?'" Cuellar reveals. "Now that we are partners with Live Nation, we're going to start seeing a lot of that ramp out—that was a big reason as to why this partnership happened. Conversations were always around the property—we are aggressively working toward setting up additional events on the Farm."

Bonnaroo alone impacts hundreds of businesses in the area—from restaurants to convenience stores, tow trucks to mechanics—who reap the benefits of 100,000 visitors descending upon the town for one week each year, during which the grounds become the seventh largest city in the state. Organizations like the Manchester Area Chamber

of Commerce set up shop as on-site vendors, and Bonnaroo outsources services such as plaque engraving to local businesses like A Winning Attitude.

"Any way we can engage the local community, we will," Cuellar states. "Our goal is to really give back to the community that we call home." The benefits of 'Roo transcend the financial, too: Though the fest was founded on a commitment to sustainability, its philanthropic offerings seem to increase exponentially by the year. In 2009, its charitable arm, Bonnaroo Works Fund, was formally established, creating new initiatives to better the community and reduce the environmental footprint.

"Our goal [with the Bonnaroo Works Fund] is to stay within the area of arts, education and the environment," Cuellar says.



“We take a look at all things that can positively impact the community.”

Some of the environmental initiatives include a permanent solar installation; the Refill Revolution, which encourages fest-goers to

stop using plastic bottles through reusable cups and hydration stations; a comprehensive waste management program, which includes

an on-site compost pile; and Root for Roo, an ongoing effort that allows people to leave a permanent mark on the farm by purchasing a tulip poplar or oak tree for themselves or in memory of a loved one.

“Root for Roo is a way for

someone to have a piece of the property, to feel some ownership. There’s so much community around the festival grounds itself and being a part of the event, and this our way to say, ‘OK, now you can be a part of the

and recently committed a sizable donation of computers to the school system. From the beginning, Bonnaroo also has aimed to improve Manchester’s aesthetic, little by little, starting first with the skate park and

Cuellar says. “We can’t do everything, but we do hope the things we’ve accomplished thus far demonstrate our dedication to the people, to the businesses, to the leadership—not only to Manchester and to Coffee

County but to the state of Tennessee as a whole.

“Right now, we’re just in the beginning,” he continues. “We allow for an open dialogue, and I encourage anyone to reach

THROUGH PHILANTHROPIC INITIATIVES, THE MEGA FESTIVAL DEMONSTRATES ITS ONGOING COMMITMENT TO THE MANCHESTER COMMUNITY.

grounds,” Cuellar explains. Bonnaroo’s commitment to Manchester has been demonstrated in its “Rockets to Rock Stars” public art initiative, a collaboration with the Manchester Arts Center in the late Roger Dotson’s memory,

the sign welcoming visitors to the area, in addition to the bright, new mural that appeared on the pool-facing wall of the Manchester Recreation Complex last October.

“We’re citizens, we’re members of this community,”

out to me with ideas, thoughts, concerns—anything that they may have. Because if we don’t have that feedback, we can’t get better, and our goal is to always be the best we can be and to create a positive, lasting impact in the community as a whole.”



OVER
\$400,000
DONATED EACH YEAR
TO LOCAL CHARITIES &
COMMUNITY ORGANIZATIONS

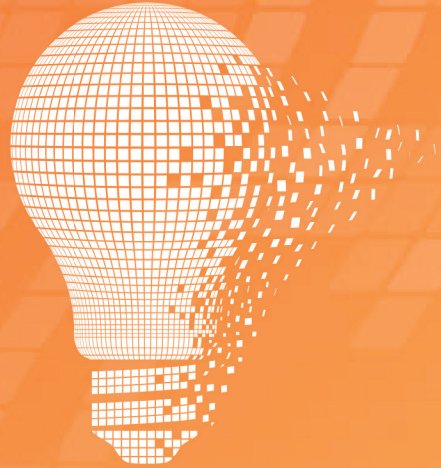
\$37 MILLION
TOTAL ECONOMIC IMPACT
ON COFFEE COUNTY

JUNE 9-12TH, 2016
MANCHESTER, TENNESSEE
MUSIC, COMEDY, FILM, ART, FOOD & MORE!

15
YEARS
OF MAGIC

CHECK FOR
UPDATES AT
BONNAROO.COM

*Thank You
for many years of partnership and loyalty
from your friends at*



Advanced Network Solutions

820 Palmer Place | Nashville, TN 37203 | 615-277-0500
www.ansolutions.com

*First National Bank of Manchester
Peoples Bank & Trust
First Vision Bank*

We provide intelligent Managed IT Solutions for clients
with an emphasis on heavily regulated industries.
For more information call 615-277-0532.

ONE LOCAL TRAILBLAZER AND HIS FAMILY COMMEMORATE 50 YEARS IN THE FOOD BUSINESS.



RESTAURANT

BY KRISTIN LUNA

Effervescent and animated, the multifaceted David Pennington seems to have enjoyed many lives in his 65 years: He's been a restaurant owner, he sits on Harton Regional Medical Center's board, he's been featured on countless TV shows (e.g. Tennessee Crossroads and Personal FX), he manages more than a dozen rental

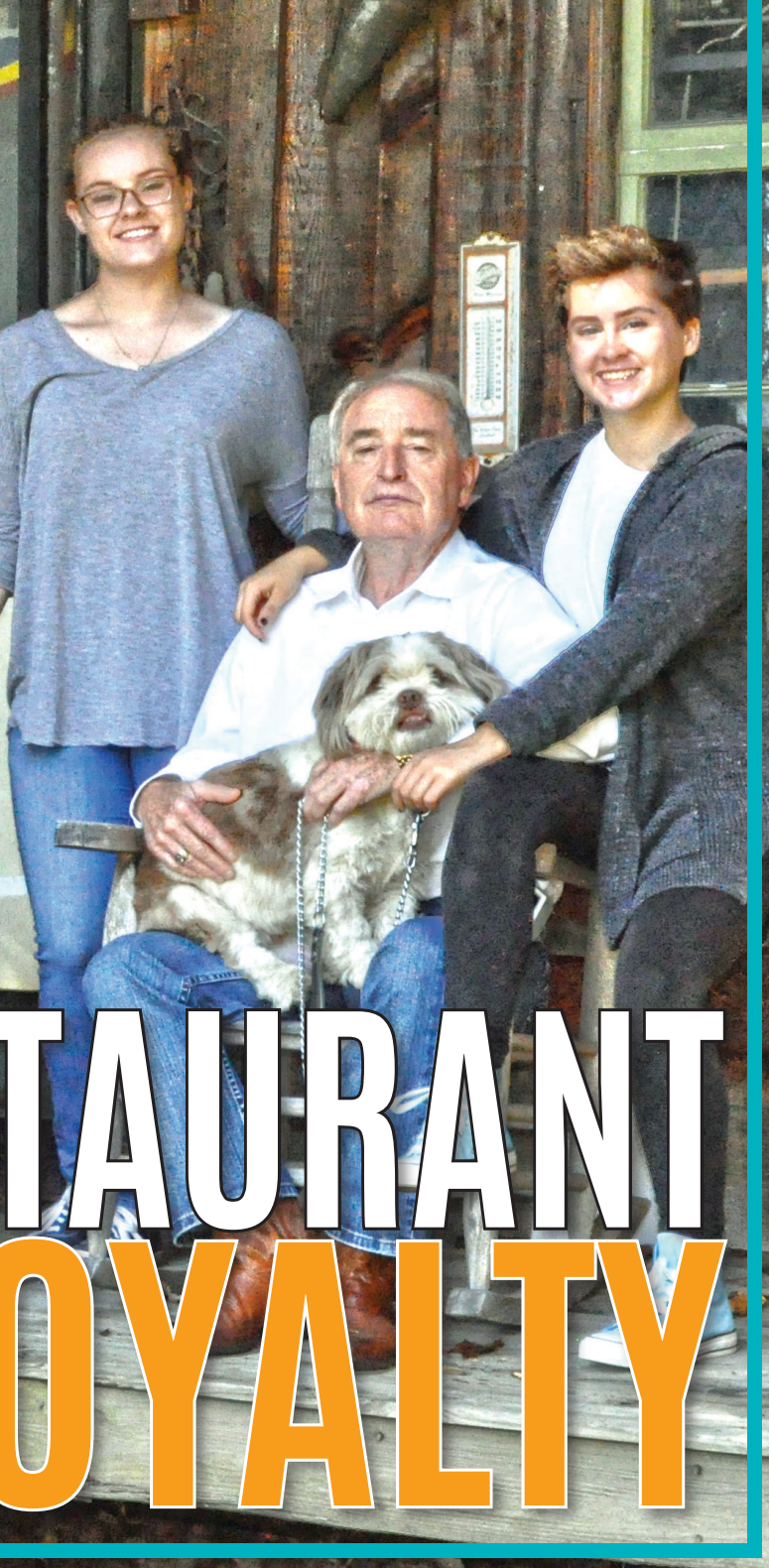
properties and, of course, he served eight years as Coffee County Mayor.

But after stepping down from his post in 2014 following two terms, the long-time owner of Jiffy Burger retired from politics—as well as the day-to-day grind of running a restaurant—to focus on his true passion: collecting.

"I was a picker before they even came up with that term," David exclaims.

His wife of 48 years, Nancy Pennington, adds: "He's a true collector, he swaps and he trades. If someone has something that he wants, he'll swap with them. But it's very rare that he sells."

Seller or not, David is sitting on a gold mine: a 5,000-square-foot warehouse that houses more than 20,000 square feet of things he has collected over the years, from comics to original Star Wars figurines, to vintage gas station pumps and Manchester's first fire truck—not to mention, plenty of Bonnaroo memorabilia, including 57



RESTAURANT LOYALTY

signed guitars from past acts. He's even accumulated a handful of Confederate certificates, as well as a lock of Abraham Lincoln's hair.

"With technology progressing the way it is, you never know when cloning might become a viable option," he jokes.

David had always been interested in cultivating a treasure trove of such unique items, but didn't really make it a priority until the mid-1980's; the introduction of eBay only added fuel to his stockpiling fire. Despite the thousands of items in his possession, the history buff seems to know where every last one is stored away—many, in fact,

have graced the walls of the Jiffy Burger at some point or another, as he is constantly swapping out the décor depending on his whims.

David comes by his entrepreneurial spirit honestly. His parents, Helen and JW Pennington, first purchased the restaurant—which originally housed a root beer stand that opened in 1957—in 1965 after operating Salty's Drive-In in Tullahoma; they sold that business and moved to Manchester to build Jiffy Burger into the institution it's become today. Just three years later, David met Nancy, and eventually the couple married and took over.

Though David's recent "retirement" means he has found more time to indulge his whims, that doesn't signal that things are slowing down at the burger emporium he's made sure was hopping since he first started working there at 15 years old—hardly. Nancy and their daughter, Tracy Pennington St. John, divide and conquer, sharing Jiffy Burger duties and splitting shifts, while David pops in and helps with maintenance and other chores, like swapping out the bric-a-brac and memorabilia adorning the walls.

Building a business is no easy feat, the Penningtons will be the first to admit; creating an empire that stands the test of time is even tougher. Though the Bonnaroo crowds, in particular, flock to Jiffy Burger on the way to or from the Farm each June, the truth is that there's never a time of day or day of the year when the restaurant isn't busy. Many of its patrons are locals, regulars who have been dining at the iconic spot known for its curbside service for much of their lives, while others are tourists who have traveled from near and far for a good, old-fashioned burger.

On top of plenty of national print press, Jiffy Burger also gets its share of social media love (it's currently the top-rated restaurant in Manchester on user-generated review site Trip Advisor with 79 reviews and a four-and-a-half-star average). David attributes this widespread word-of-mouth success to consistency of service and sticking to what they do best—burgers, and fresh, high-end ground chuck patties at that—even though his wife, the true cook in the family, is itching to try out other recipes.

"We have tried to change our menu, and every time we do, our customers do not like it. So we always leave it the same," says Nancy, who pounds burger patties each night and still famously cooks a huge Sunday brunch spread and Monday night supper for the whole family week after week. "I've always said if I could have my the type of restaurant that I would really like to have, it would be exactly what we have but all the other Southern foods I like to cook. That's the thing I do the best—cooking is just something that I love to do. I like a challenge when it comes to food."

Aside from their children, Tracy and Bryan Pennington, David and Nancy have two granddaughters, Hayley and Emily St. John; the former is a college student on track to become a doctor, while the latter, it seems, may be destined to continue the family legacy for another 50 years. At 15 years old, Emily already helps out at the restaurant and even manages its Instagram account (@jiffyburger).

"A century old—wouldn't that be something?" David says. "We're successful because we're good at what we do—that's why we're always busy. And we'd love to be doing this another 50 years from now."

CHANGING OF THE GUARD

BY KRISTIN LUNA

Fresh off a stint at Edwards Air Force Base in California, Colonel Rodney F. Todaro assumed command of the largest, most advanced complex of flight simulation test facilities in the world last year. “It was my leadership in the Air Force touch center as an operations group commander at Edwards that helped me get selected for this position,” says Col. Todaro, who relocated to Coffee County for the role of commander at Arnold Air Force Base this past July.

In addition to his education—he obtained his bachelor of science in aeronautical engineering from the United States Air Force Academy and master

program management.

As one of the largest employers in Middle Tennessee with more than 2,100 staff spread among the 28 aerospace test facilities, AEDC always has a number of complex initiatives in the works, a few of which Col. Todaro shares: wind tunnel testing for the Navy on the F/A-18, engine testing for the DoD’s newest fighter, F-35, and work for Defense Advanced Research Projects Agency.

“We’ve also got a new helicopter rotor out in our facility in California that the Army is testing,” he says. “It’s a pretty broad cross-section of things that we’re doing on any given day.”

Annually, the base exceeds \$600 million in impact

**AEDC SEES CHANGE UNDERWAY
WITH THE ADDITION OF A NEW
COLONEL IN COMMAND.**

of science in aeronautical engineering from Auburn University—the master navigator brings more than 2,500 hours in 35 different aircraft types to the table. He’s also a Department of Defense Acquisition Corps member and holds Level 3 certification in test and evaluation, as well as Level 2 certification in

on the greater area, the colonel shares, and with a new commander at the helm, there are a number of significant changes in effect. One of the biggest is the transition from a single-partner model to one comprising six smaller contracts instead.

“It’s a little bit different than how we’ve done

things in the past. Whereas before, there were just two of us—the contractor and the government—now there are seven of us, so it really drives the importance of communication between all of those parties,” he explains. “Previously, we relied on internal communication with one organization. Now, we have to make sure all these contractors and us are talking to each other about what we need to get done.”

Another major change, he adds, is the move to a Combined Test Force (CTF) structure.

“Instead of having folks matrixed into an organization but reporting to somebody else, they all now report directly to the combined test force director. The line of authority is very clear now, and that person is a government official who has authority over everything that happens in that combined test force,” he says. “That’s a pretty significant change. It puts us more in line with the rest of the Air Force test center.”

Additionally, Col. Todaro says AEDC will change the way it compensates its government civilians, moving from a Government Services (GS) to the Acquisition Workforce Personnel Demonstration Project (AcqDemo) pay system where employees are paid based on their contribution to the mission.

“We’re just rolling that out now, and as we go forward into the new year, that’s one of the big things we’re going to try to achieve,” he says.

While all of changes should translate to efficiency through the restructuring, the Colonel says, he’s the first to admit that the base will experience challenges simultaneously, as well.

“Our workload is actually increasing—pretty significantly actually—to levels that it hasn’t been in some time,” he explains.

“That’s good, but part of that is we’ve been given quite a bit of resources by the Air Force to maintain and upgrade our facilities, so balancing the maintenance upgrade and restoration of our facilities with that increasing workload is a significant operational challenge. We’ve all got to come together to make that work as we go forward in the next three to five years.”



Photo courtesy of United States Air Force/Arnold Air Force Base



COFFEE COUNTY SETS ITS SIGHTS ON

BY KRISTIN LUNA

BOOSTING TOURISM

Through key strategy and new programs, Manchester ramps up efforts to drive visitors to the area.

For more than 30 years, the Manchester Tourism and Community Development Commission has worked for the City of Manchester in a number of ways: from projects like Manchester's downtown renovation to hanging decorations on the light poles throughout town and installing irrigation systems for the soccer complex to various park beautification effort.

In 2014, the State of Tennessee's Department of Tourist Development committed to one of the most ambitious branding strategies in the nation. The challenge: leveraging Tennessee's unique attributes across its 455 miles, while embracing Southern hospitality, heritage and pride. The result: The "Made in Tennessee" slogan was born.

"The Soundtrack of America, Made in Tennessee' brand is the inspiration from which vacationers can create an amazing vacation experience," said Cindy Dupree, director of public relations, Tennessee Department of Tourist Development. "The Soundtrack of America includes the sounds of music at Bonnaroo, but it is also the sounds of leaves under foot on a nature hike, the sounds of family laughter around a campfire, the sounds of cannons firing at a Civil War reenactment, and so much more—all made in Tennessee." Cindy Dupree, spokesperson for the state, says.

During her 12 years of steady leadership, former tourism commissioner, Susan Whitaker, pioneered the concept of embracing the spirit that Tennessee embodies, launching a strategy that not only tied communities together but also married music to family and experiences. That torch has since been passed on, improved and fully embraced by new commissioner, Kevin Triplett.

Fresh off a major commitment to the Downtown Square Renovation,

the Manchester Tourism and Community Development Commission quickly set course to not only adopt the new strategy the state had launched but help lead in the mission of building an industry development strategy for the sixth through 95th ranking counties in the tourism category.

"I think before we started to develop a new strategy, we all needed to understand what the goal should be. In Manchester, what is tourism?" ponders Ryan French, Manchester Tourism and Community Development chairman and the city's vice mayor. "I know that seems to be a pretty simple answer: Tourism is largely thought of as visiting someplace like Jack Daniel's, George Dickel, Bonnaroo or Old Stone Fort. But when you think about tourism on the economic impact scale, things become less clear.

"Ultimately, however, tourism as an industry is measured by one thing: dollars," he continues. "These dollars are generated in the hotel/motel category, the sales tax category or even in payroll, and all these measurements ultimately define what tourism is in a community. Our community ranks 22nd in tourism, yet attraction-based communities like Lynchburg rank near the bottom. Manchester has the outlets—hotels, restaurants, gas stations—to absorb the revenue generated by a visitor while our neighbors may not. This creates a very regional industry, one we have fully embraced in this strategy."

In September 2015, the commission formalized months of discussion with a new multi-year strategy for the community's tourism efforts. Strengthen, Develop & Grow focuses on an array of categories that will grow the local revenue streams without adding new tax categories or tax increases. In support of this strategy, Tourism is rolling out three



key initiatives: Eat, Shop & Stay Manchester, The Manchester | Coffee Co. Events Committee and The Manchester | Coffee Co. Hospitality Roundtable. These initiatives—along with marketing, a Commerce Development Scholarship, a Community Event Support Scholarship and investments into community infrastructure—will begin to take shape in the first quarter of 2016.

The Eat, Shop & Stay program will be a partnership between Tourism, the Chamber of Commerce, and local merchants, restaurants and hotels and is designed to drive traffic while events are in town.

“We want to make sure no matter what is going on in town, our guests are welcomed into our community to eat, shop and stay here,” French says. “This program will focus on guests and provide great tips, discounts, and value across the board while they are in town.”

The Manchester | Coffee Co. Events Committee will establish the first effort to not only recruit more events into the area but also to advocate for policies to better the process for hosting events in the city and lobby for local governments to make the proper investments into event space such as schools, various public properties, or parks.

The Manchester | Coffee Co. Hospitality Roundtable ties all of these efforts together. Driving more patrons into shops and restaurants, along with recruiting more events into the community, is key. The roundtable will not only serve as pivotal communication tool for the industry but will also work with partners to provide training and information, as well as maintain a community-wide schedule of events and oversee a network of volunteers to assist the industry in providing a positive experience.

“I’m not going to lie, this is a pretty bold strategy,” French admits. “For months, we have been developing relationships and bridging

industry gaps to build the network of participants that this strategy is going to need. On each of these programs, the Tourism Commission will fund and oversee the effort to insure it fits our mission.

“But we would be pretty naive to think we could pull this off alone,” he adds. “The list of partners included in these efforts are: The Manchester Area Chamber of Commerce, The City of Manchester Mayor’s Office, The Coffee County Mayor’s Office, The Manchester Coffee County Conference Center, The Manchester Parks and Recreation Department, The Manchester Arts Commission, The Coffee County Health Welfare and Recreation Board, Coffee County Schools and Manchester City Schools, along with hotel industry leaders, restaurant industry leaders, media industry leaders and private citizens. Our Commission understands the importance of regional impact and how Jack Daniel’s, Cumberland Caverns, the Mountain Goat Trails and George Dickel all play a huge part in Coffee County’s tourism industry.”

Hospitality and tourism ranks as the second largest industry in Tennessee, producing \$17.7 billion in expenditures on a budget of \$27 million, only \$18 million of which is state investment. Coffee County ranked 22nd in tourism in 2014, producing \$84.2 million in expenditures on a budget of only \$75,000—all of which is produced by the occupancy tax, rather than sales or property taxes. Since 2012, industry expenditures have increased by \$8.1 million in Coffee County, rising from \$76.1 million in 2012 to \$79.9 million in 2013 and \$84.2 million in 2014. These expenditures result in a local taxpayer savings of more than \$2.2 million.



UTSI



THE UNIVERSITY of TENNESSEE SPACE INSTITUTE



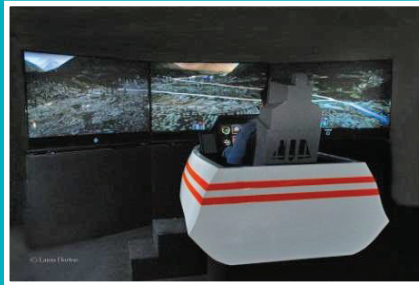
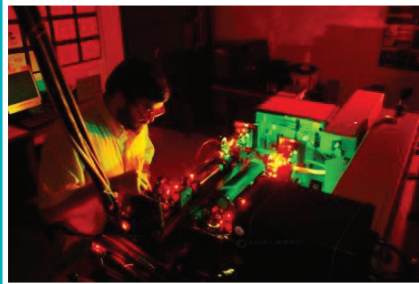
Since 1964, The University of Tennessee Space Institute (UTSI) has been providing graduate level education and research. The Space Institute, so named because of its emphasis on aerospace and aeronautical studies in the early days of space exploration, was initially established for the educational needs of the engineers and scientists of the Air Force and the Arnold Research Organization. Since the establishment of UTSI, the Institute has graduated over 2,000 students from around the world.

For more than 50 years, research has been the heartbeat of UTSI and revolves around active programs in mechanical, aerospace, and biomedical engineering (MABE), physics, flight test engineering, engineering management, and a variety of other activities.

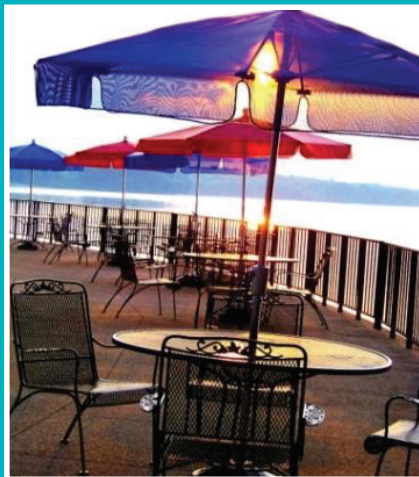
Many students earn their degrees through funding provided by Graduate Research Assistantships (GRA) made possible through research contracts. A GRA provides students with the advantage of getting hands-on experience in the Institute's laboratory research facilities.

Within several diverse research areas, faculty-student teams of aerospace engineers, mechanical engineers, and physicists perform problem-oriented, multidisciplinary research.

UTSI is home to the Center for Laser Application (CLA), one of ten Centers of Excellence within the UT system. The diverse background of the CLA faculty and staff provides a blend of applied and basic research at the Institute.



Come And Try Us Out!



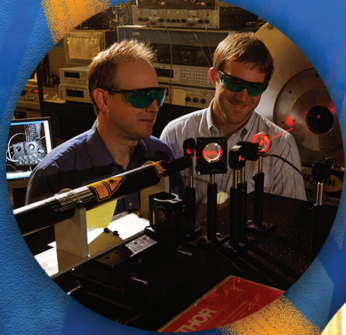
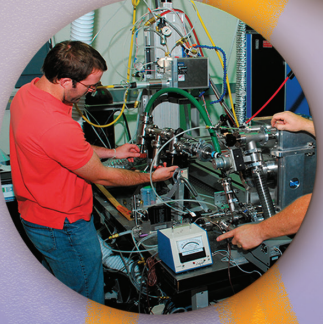
Housing a fleet of research aircraft at the Tullahoma Airport, the university offers a Master's degree in Flight Test Engineering; formerly known as Aviation Systems (AS). This program is a unique blend of aerospace engineering, aviation technology, with hands-on flight test engineering and research. Twelve astronauts have attended UTSI, with nine graduating with their Master's degree; eight were in the former AS program.

The Space Institute has made great progress over the past academic year to revitalize the academic programs. Dr. John Schmisser was recently hired as the H. H. Arnold Chair and Goethert Professor in the Department of Mechanical, Aerospace, and Biomedical Engineering (MABE). Dr. Schmisser is an authority in hypersonic research and he is leading the research initiative in high-speed innovations. Additional faculty searches are ongoing and we hope to fill three vacancies in 2015.

UTSI's Continuing Education program provides a Short Course program that serves industry and academia alike. These unique courses earn Continuing Education Credits (CEU's).

The UTSI dining hall, also known as "The View," is located on the shores of Wood's Reservoir in the Andy Holt Student Center. Not only does "The View" provide outstanding food, but also provides an exceptional "View" of the lake. Lunch is served Monday through Friday from 11:00 - 1:30.

Come and try us out!



**PROVIDING
GRADUATE STUDY,
RESEARCH & INNOVATION
WHILE
PARTNERING WITH
GOVERNMENT
& INDUSTRY**

*CENTER FOR LASER APPLICATIONS
WATER & WIND TUNNEL FACILITIES
VACUUM CHAMBER FACILITY
FLIGHT SYSTEMS TESTING
ADVANCED LABORATORIES
ADVANCED MATERIALS
PROPULSION FACILITIES
COMPUTATIONAL FLUIDS
STRUCTURAL DYNAMICS*

*GRADUATE DEGREES IN:
MECHANICAL ENGR
AEROSPACE ENGR
BIOMEDICAL ENGR
ENGINEERING SCIENCE
(FLIGHT TEST ENGR CONCENTRATION)
INDUSTRIAL & SYSTEMS ENGR
(ENGR MANAGEMENT CONCENTRATION)
PHYSICS*

UTSI

THE UNIVERSITY of TENNESSEE **SPACE INSTITUTE**

**TULLAHOMA, TN
WWW.UTSI.EDU
1-888-822-UTSI**



HALFWAY BETWEEN
NASHVILLE & CHATTANOOGA

MANCHESTER TENNESSEE

www.movingmanchesterforward.com



QUICK FACTS

- 5 Exits Off Tennessee's Interstate 24
- Daily Traffic Counts Ranging From 36,278 to 41,223
- Tennessee's Seventh Largest City During Bonnaroo Music Festival. (Bonnaroo Music & Arts Festival Generated Direct Expenditures in Coffee County of \$76.09 Million in 2012)
- Just under an hour to Nashville Intl. Airport
- 3 Industrial Parks Including a Joint Coffee County Industrial Park
- Population Growth by 22% from 2000-2010
- Access to several short line railroads including Caney Fork and Western Railroad
- Over 13,000 sq. ft. of Conference & Meeting Space at the Manchester-Coffee County Conference Center.



MAJOR INDUSTRIES

(Employees)

Aerospace Testing Alliance	1,761
M-Tek, Inc.	1,507
Batesville Casket Co.	408
Viam MFG INC.	370
Van-Rob / Kirchhoff Automotive.....	300
Great Lakes Cheese	200



Education

Coffee County Central High School Ranked #12 High School in Tennessee by U.S. News & World Report

Coffee County Public Schools Student to Teacher Ratio is ≤18:1

University of TN Space Institute.....	21 Minutes
Motlow State Community College	27 Minutes
University of the South	32 Minutes
Tennessee College of Applied Technology	34 Minutes
Middle Tennessee State University	35 Minutes
Vanderbilt University	60 Minutes
Belmont University.....	60 Minutes
Trevecca Nazarene University	60 Minutes
University of Alabama in Huntsville	90 Minutes



- Restaurants:**
- Starbucks
 - Logan's Roadhouse
 - O'Charley's
 - Taco Bell
 - Baskin Robbins
 - Wendy's
 - Little Caesar's
 - Captain D's
 - Zaxby's (Coming Soon)
 - Cracker Barrel
 - McDonald's
 - Burger King
 - Arby's
 - Hardee's
 - Krystal
 - Sonic Drive-In
 - Farmer's Family Restaurant
 - 41 South Sports Bar & More

- Shopping:**
- Walmart Super
 - The Home Depot
 - Ace Hardware
 - GameStop
 - Walgreen's
 - Rite Aid
 - Hibbett Sports
 - Shoe Show
 - Merle Norman
 - Factory Connection
 - Tractor's Supply (Coming Soon)
 - Food Lion
 - Save-A-Lot Food Store
 - Russell Stover's Outlet
 - Sally Beauty Supply
 - Dollar General x2
 - Family Dollar
 - Dollar Tree
 - Advanced Auto Parts
 - O'Reilly Auto Parts
 - Auto Zone
 - & More

Hotels: (Over 1,200 Rooms City-Wide)

- Comfort Inn & Suites
- Hampton Inn
- Holiday Inn Express
- Red Roof Inn
- Days Inn
- Sleep Inn & Suites
- Hampton Inn
- & More

With daily traffic counts from 36,278 to 41,223 Manchester's accessibility and convenience, along with over 1,200 hotel rooms, make it a welcomed stop for travelers and commuters!



15 Minute Driving Radius Data

- Population 2013: 23,496
- 2018 Projection: 24,541
- Total Households: 9,097
- Avg. Household Income: \$52,041
- Median Household Income: \$41,525

NEWCOMER'S GUIDE

New to the area? This guide is designed to help you get up to speed in Manchester!

GET UTILITIES

ELECTRIC

Duck River Electric

209 East Fort Street • Manchester, TN 37355
931-728-7547 • www.dremc.com
Hours: Monday – Friday 8:00 A.M. - 5:00 P.M.

WATER

Manchester Water Department

200 W. Fort St. • Manchester, TN 37355
931-728-7171 • www.cityofmanchestertn.com
Hours: Monday – Friday • 7:30 A.M. – 4:00 P.M.

Hillsboro Utilities District

117 North Irwin Street • Manchester, TN 37355
931-728-1242
Hours: Monday – Friday • 8:30 A.M. – 4:00 P.M.

NATURAL GAS

Elk River Public Utilities District

1524 Hillsboro Hwy. • Manchester, TN 37355
931-728-3332 • www.erpud.com
Hours: Monday - Friday • 7:30 A.M. - 4:30 P.M.

TELEPHONE, TV, INTERNET & CABLE

AT&T

www.att.com

Ben Lomand Rural Telephone Corp.

1-800-974-7779
www.benlomand.net

Charter Communications

888-438-2427
www.charter.com

GARBAGE AND RECYCLING

Manchester City Limits

1005 Madison St., Manchester • 728-6903

County Convenience Centers

Rural Solid Waste • 2180 Murfreesboro Hwy. • 723-5139

Asbury

2922 Hillsboro Hwy., Manchester • 723-0916

Belmont

4120 New Tullahoma Hwy., Manchester • 723-3908

Blanton's Chapel

4412 Power's Bridge Rd., Manchester • 723-3819

New Union

177 Brandon Rd., Manchester • 723-3805

Ninth Model

Ninth Model Rd., Manchester • 723-4554

North Coffee

75 Cantrell LN., Manchester • 723-2966

Summitville

Shady Grove Rd., Manchester • 728-9838

FIND YOUR SCHOOL COFFEE COUNTY SCHOOLS

Coffee County Schools Director's Office

Dr. LaDonna McFall, Director of Schools

Joe Pedigo, Deputy Director of Schools

Coffee County Administrative Plaza, 1343 McArthur Dr., Manchester, TN 37355
931-723-5150 • www.coffeecountyschools.com

Coffee County Central High School

Joey Vaughn, Principal

100 Red Raider Drive, Manchester, TN 37355 • 931-723-5159

Coffee County Raider Academy

Angela Gribble, Principal

865 McMinnville Hwy., Manchester, TN 37355 • 931-723-3309

Continued on Page 36

Visit Us At Our New Location!
1642 McArthur Street
Manchester, TN

Dr. Jeremy W. Anderson O.D., *Optometrist*
 Dr. Summer Truesdale Anderson O.D., *Optometrist*

ANDERSON **eye** CARE PLLC

Phone (931) 728-1315 • Fax (931) 728-1779
www.dranderseyecare.com

ACES

A Copier Equipment Specialist
 Fax: 931-635-2237
www.acescopiers.com

Craig E. Abbott 931-247-8706  Laurisa Abbott 931-728-4948

The equipment you need.

The support you deserve.


Sales • Rentals • Parts • Service

THOMPSON MACHINERY
 3565 New Tullahoma Highway
 Manchester, Tennessee
931.461.5000



Thompson CAT

SLEEP INN & SUITES



- FREE Deluxe Continental Breakfast
- 100% Smoke Free
- Fitness Center
- Indoor Heated Salt Water Pool
- FREE WiFi - High Speed Wireless Internet
- Pet Friendly - Fee Applies



84 Relco Drive • Manchester, TN 37355
(931) 954-0580
www.choicehotels.com



NEWCOMER'S GUIDE

Coffee County Middle School

Kim Aaron, Principal
3063 Woodbury Hwy., Manchester, TN 37355 • 931-723-5177

Deerfield Elementary

Traci McCoy, Principal
9123 Woodbury Highway, Manchester, TN 37355 • 931-570-2652

East Coffee Elementary

Kelvin Shores, Principal
6264 McMinnville Hwy., Manchester, TN 37355 • 931-723-5185

Hickerson Elementary

Jimmy Anderson, Principal
5017 Old Manchester Hwy., Tullahoma, TN 37388 • 931-455-9576

Hillsboro Elementary

Angela Harris, Principal
284 Winchester Hwy., Hillsboro, TN 37342 • 931-596-2775

New Union Elementary

Michelle Hummel, Principal
3320 Woodbury Hwy., Manchester, TN 37355 • 931-723-5187

North Coffee Elementary

Adam Clark, Principal
6790 Murfreesboro Hwy., Manchester, TN 37355 • 931-723-5183

Koss Center

Major Shelton, Principal
1756 McMinnville Hwy., Manchester, TN 37355 • 931-723-5189
Transportation Tim Morris – 723-5157
Maintenance Brian Goodman – 723-5158

MANCHESTER CITY SCHOOLS

Manchester City Schools Director's Office

Dr. Keith Brewer, Director
215 East Fort Street, Manchester, TN 37355 • 931 728-2316

College Street Elementary

Thomas Jacobs, Principal
405 College Street, Manchester, TN 37355 • 931-728-2805

Westwood Elementary

Thomas Fuhrman
921 Oakdale Street, Manchester, TN 37355 • 931-728-3412

Westwood Middle School

Chad Fletcher
505 Taylor Street, Manchester, TN 37355 • 931-728-2071

PRIVATE SCHOOLS

St. Andrew's – Sewanee School

Rev. John T. Thomas (30 minutes)
290 Quintard Road, St. Andrews, TN 37372
931-598-5651 • www.sasweb.org • Grades 6 through 12

Webb School

Raymond Broadhead, Head of School
(30 minutes)
319 Webb Road East, Bell Buckle, TN 37020
888-SEE-WEBB • www.thewebbschool.com
Grades 6 - 12

Temple Baptist Christian School

Jeff Stewart, Administrator
66 Fairlane Drive, Manchester, TN 37355
931-728-4911 • www.templeministries.com
Grades Pre-K through 12

VOCATIONAL-TECHNICAL SCHOOLS

State Area Vocational

Tennessee College of Applied Technology- Shelbyville

(45 Minutes)
1405 Madison Street, Shelbyville, TN 37160 • 931-685-5013
Full Time Programs:

- Administrative Office Technology
- Automotive Technology
- Collision Repair
- Computer Information Technology
- Drafting and CAD Technology
- Heating, Ventilation, Air Conditioning and Refrigeration Technology
- Industrial Electricity
- Industrial Maintenance
- Machine Tool Technology
- Patient Care Technician/Medical Assistant
- Practical Nursing
- Truck Driving
- Welding

Tennessee Technology Center at McMinnville

(30 minutes)
241 Vo-Tech Drive, McMinnville, TN 37110 • 931-473-5587
Courses of Study:

- Automotive Technology
- Business Systems Technology
- Computer Information Technology
- Electronics Technology
- Industrial Maintenance
- Machine Tool Technology
- Medical Assistant
- Practical Nursing
- Surgical Technology
- Technology Foundations

Continued on Page 38

Bell & Alexander Title Services, Inc



John H. Bell
Vice-President, Operations

928 Jackson St., Manchester, TN 37355
931-728-7948 • Fax: 931-728-7951
john.bell@bellalexander.com
www.bellalexander.com

"We've Got Everything But You!"

Duplexes • Condos
Daniel C. Powers



Char-El
Apartments
& Home Rental

Office:
607 Woodbury Hwy.
Manchester

- 1, 2, 3 Bedroom
- Laundry Facilities
- Lawn Maintenance
- TV Cable Available
- Carport-Garage
- Patios
- Furnished or Unfurnished
- Washer & Dryer Conn.
- Carpet
- Mini Blinds
- Kitchen Appliances
- Central Heat & Air

Six Locations

931-728-7181

char-elapartments.com

POWERS STORAGE

All sizes • Climate Control Units • U-Lock U-Keep • Well Lighted • Fenced • Office On-Site
607 Woodbury Hwy, Manchester • **931-728-7181** • powersstorage.com



Ronald Clower
Cyndi Clower
Jay Crouch
Since 1979

1406 McArthur Street
New Tullahoma Hwy/Hwy 55
Manchester, Tn 37355
(across from the Coffee Co. Admin Building)

WOODARD'S

DIAMONDS & DESIGN



Family Owned & Community Supportive
Area's Largest PANDORA Dealer
Custom Design & Repairs

931-454-9383 • woodards.net
Northgate Mall, Tullahoma

MANCHESTER, TENNESSEE



BY CHOICE HOTELS



(800) 4Choice

152 Hospitality Blvd.
Manchester, TN 37355

931.728.1301

choicehotels.com

NEWCOMER'S GUIDE

COLLEGES AND UNIVERSITIES

Motlow State Community College

(30 minutes)
P.O. Box 8500, Lynchburg, TN 37352
931-393-1500 • 1-800-654-4877 • www.mscc.edu
Motlow offers a two year degree program, dual enrollment, 2+2, and University Parallel programs.

University of Tennessee Space Institute

(25 minutes)
411 BH Goethert Parkway, Tullahoma, TN 37388
931-393-7432 • www.utsi.edu
The University of Tennessee Space Institute (UTSI) is a graduate education and research institution located adjacent to the U.S. Air Force Arnold Engineering Development Center. UTSI was established in 1964 as part of The University of Tennessee and has become an internationally recognized institution for graduate study and research in engineering, physics, mathematics, and aviation systems.

Middle Tennessee State University

(40 minutes)
1301 East Main Street, Murfreesboro, TN 37132
(615) 898-2300 • www.mtsu.edu

The University of the South

(45 minutes)
735 University Avenue, Sewanee, TN 37383
931-598-1000 • www.sewanee.edu

SAFETY FIRST

LAW ENFORCEMENT AGENCIES

Coffee County Sheriff's Department

728-3591

Manchester City Police

728-2099

Consumer Affairs Division

1-800-342-8385

Environmental Protection Agency Hotline

1-800-241-1754

Highway Traffic Safety Administration

1-800-424-9153

Wildlife Resources


1-800-624-7406



Rusty TENSFIELD
HEATING & COOLING

4630 Mt View Rd.
Manchester, TN 37355
rustytensfield@gmail.com

931-212-4910
931-954-5541 fax
RustyTensfieldHandC.co.nf




From The Ground Up!!!

In 1940, Camp Forrest sprang to life in Tullahoma, TN. There wasn't a local crushing plant that could provide material to the base. Rogers Group Inc. Established a quarry in Hillsboro, TN in 1940 to supply material for the base. Because of the support of our Coffee County families, we have been providing services and materials to everyone in the community for seventy years. For all your stone/asphalt material needs, please call 931-596-2691.

We are a proud partner of Manchester, TN and are grateful for all the opportunities it has provided us!

ROGERS GROUP, INC.
1008 S. Washington St. • Tullahoma, TN 37388



Building communities
from the ground up



931-454-2222 • 931-455-7278
 54 Recycle Dr. & Hwy. 55
 Tullahoma, TN 37388
www.cfcrecycling.net

We Buy Scrap Metal

Junk Cars • Aluminum • Cans • Appliances • Farm Equipment
 Steel • Brass • Copper

Need Parts?

Come see us at Pick & Pull!

We have over 1,000 vehicles on our lot to choose from!

Scrap Yard Now Open On Saturdays! 8:00 A.M. - 11:30 A.M.
Pick & Pull Open 7 Days A Week!



Specializing in Roll-off containers for residential, commercial and industrial waste removal.
 Serving Manchester and the Southern Middle Tennessee area.

**From Sports To Gifts...
 We Have It!**



**GIFT SHOP
 OPEN!**

CS Cooper Sports & More
 1073 Murfreesboro Hwy • Manchester, TN 37355
 931-728-2323 • 931-723-2626
 Store Hours: Mon.-Fri. 9:00 A.M. - 5:30 P.M. • Sat. 9:00 A.M. - 2:00 P.M.
 Gift Shop Hours: Closed Mon., Tues. - Thurs. 9:00 A.M. - 5:00 P.M.
 Fri. 1:00 P.M. - 5:00 P.M., Sat. 9:00 A.M. - 2:00 P.M.

COWAN
 COWAN BENEFIT SERVICES

JIM CAVENDISH
 Senior Account Executive
jcavendish@cowanbenefit.com

A wellness plan
 leads to better health
 and lower costs to you.

Let us show you how.

P.O. Box 1511
 Manchester, TN 37355
 O 931.723.6609
 C 615.210.5895
 F 931.914.1216



Senior Center

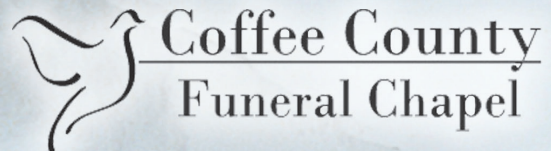
- Daily Activities
- Planned Trips
- Meals
- Exercise
- Social Gathering
- Education Programs
- Health Screenings

Coffee County Senior Citizens, Inc.

Tullahoma: 410 North Collins St. • 931-455-2504

Manchester: 603 Woodbury Hwy. • 931-723-8288

Coffee County Senior Citizens, Inc. is an equal opportunity provider and employer.
 (Title VI of the Civil Rights Acts of 1964)



786 McMinnville Hwy.
 Manchester, TN 37355

(931) 723-3330

www.coffecountyfuneralchapel.com

CIVIC GROUPS

Al-Anon

St. Bede's Episcopal Church
Tuesdays 7:30 P.M. & Saturdays 8:00 P.M.

Alcoholics Anonymous

(Closed discussion • Non-smoking)
St. Bede's Episcopal Church • Tuesdays & Thursdays 7:30 P.M.
AA Hotline: 800-559-2252

Alzheimer's Support

Autumn Oaks
4th Thursday 10:00 A.M. • 800-272-3900

American Diabetes Association

800-342-2383

Bradford Health Services

Parent & Family Support Group

Mondays 6:00 P.M.
931-728-4442; 800-464-0824

Coffee County

Anti-Drug Coalition

Coffee County School Board Meeting Room • 3rd Thursday 12:00 P.M.
931-570-4484

Coffee County Fair Association

H.D. Crosslin • 931-841-0531
Hendrixson Dr., Manchester, TN • 931-723-1546
Fair Grounds Office • 4th Monday 6:30 P.M.

Coffee County Farmer's Market

Wendell McCullough, President
225 East Main St.
Manchester, TN 37355
Saturdays, April - October 6:00 A.M.

Coffee County Historical Society

Patricia Burgess, President • 931-728-0145
Coffee County Court House
3rd Tuesday every other month starting in January 7:00 P.M.

Coffee County Humane Society

P.O. Box 252, Manchester, TN 37355
931-728-0903

Dig N' Dream Garden Club

Ernestine Badman • 931-728-2471
155 Angwen Ave. • Manchester, TN 37355

Haven of Hope Victims of Domestic Violence

800-435-7739

Highland Masonic Lodge #214

Bill Travis • 931-588-9182
1313 Hillsboro Blvd.
Manchester, TN 37355
1st Tuesday 7:00 P.M.

Hillsboro Masonic Lodge #382

Jerry Bartlett • 931-728-2021
7790 Hillsboro Hwy.
Hillsboro, TN 37342
2nd Thursday 7:00 P.M.

Keep Coffee County Beautiful

Tonya Wilkinson • 931-728-6729
1335 McArthur Dr.
Manchester, TN 37355
2nd Tuesday of Every Month

Kiwanis Club of Manchester

Rosie Henley • 931-728-4605
Oak Restaurant
1st & 3rd Thursdays 6:00 P.M.

Legal Aid Society

Provides free civil legal assistance to low-income families and elderly on such issues as protecting income, healthcare benefits, domestic violence, tax problems & housing
123 NW Atlantic St.
Tullahoma, TN 37388
Monday-Friday 9:00 A.M. - 5:00 P.M.

Manchester BPW

Oak Restaurant
3rd Thursday 6:30 P.M.

Manchester Lions Club

Gary Trail, President • 931-728-4987
Oak Restaurant
2nd & 4th Tuesdays, Eat at 5:30 P.M.
Meeting at 6:30 P.M.
Sight Services 931-563-3568

Manchester Rotary Club

Dr. LaDonna McFall, President
931-723-5150
Coffee Cafe • Thursdays 7:00 A.M.

Sons of Confederate Veterans Camp 2

Oak Restaurant
4th Tuesday 6:00 P.M.

Sportsmen & Businessmen's Charitable Organization

931-728-5048

United Daughters of the Confederacy

Oak Restaurant
2nd Wednesday 11:00 A.M.

Veterans of Foreign Wars

Post 10904 & Auxillary
Veteran's Building
130 Shelton Rd., Manchester
2nd Monday 6:00 P.M.

Farm Bureau INSURANCE

Tennessee

Auto • Home • Life

Mark McBride, Agency Manager,
Brian Wheeler, Brad Davenport, Derek McKee & Scott Thomas
225 East Main St • (931) 728-4637

Everything Handcrafted!

Coffee County Craft Association

Sponsors Foothills Arts & Crafts Festival
2nd Weekend of November

Foothills Crafts Gift Shop



418 Woodbury Hwy., Exit. 110
Manchester, TN • 931-728-9236

Hours: Mon. - Sat. 9:00 A.M. - 5:00 P.M.; Sun. 1:00-5:00 P.M.



JACK DANIEL'S

150TH

1866 2016

ANNIVERSARY

OF THE
JACK DANIEL
DISTILLERY

NOT A TRIP. A PILGRIMAGE.

A trip to Jack Daniel's Country is about more than whiskey. It's a way to savor small town life, handicraft and history - all in one picturesque place tucked in the Tennessee hills.

Enjoy a taste of country cooking around a family table at Miss Mary Bobo's Boarding House Restaurant. Shop the historic town square for everything from local crafts to Jack Daniel's licensed goods at the Lynchburg Hardware & General Store. Or drink a bit of history when you visit America's Oldest Registered Distillery on a sampling or traditional tour.

There's so much to see and do as the Jack Daniel Distillery celebrates its 150th year and invites you to come home to Lynchburg, Tennessee.

182 Lynchburg Hwy, Lynchburg
(931) 759-6357

PLEASE DRINK RESPONSIBLY.

©2015 Jack Daniel's. All rights reserved. JACK DANIEL'S and OLD NO. 7 are registered trademarks.

We Offer Full Auto Repair

GOODYEAR
Firestone
UNIROYAL
MICHELIN

Business Hours
Mon.-Fri. 7-5
Sat. 7-Noon

Kevin Vaught
Owner

MANCHESTER
Tire & Brake

1604 Hillsboro Blvd
Manchester, TN
Ph.931.728.5097
Fax 931.728.5099



EXIT REALTY PARTNERS

www.MyExitPartners.com

931-723-3300

This is EXIT Country

STATE OFFICIALS

COFFEE COUNTY IS IN THE 6TH CONGRESSIONAL DISTRICT,
16TH SENATE DISTRICT, 47TH HOUSE DISTRICT
WWW.TN.GOV



US Senator Lamar Alexander

455 Dirksen Senate Office Bldg.
Washington DC 20510
202-224-4944
Nashville Address
3322 West End Avenue, #120
Nashville, TN 37203
615-736-5129



US Senator Bob Corker

185 Dirksen Senate Office Building
Washington DC 20510
202-224-3344
Nashville Address
3322 West End Ave., Suite 610
Nashville, TN 37203
615-279-8125



Governor Bill Haslam

1st Floor, State Capitol
Nashville, TN 37243
(615) 741-2001



US Congresswoman Diane Black

Gallatin District Office
355 N Belvedere Drive, Ste. 308
Gallatin, TN 37066
615-206-8204



State House Representative Judd Matheny

Nashville Address
301 6th Avenue North
Suite 215 War Memorial Bldg.
Nashville, TN 37243
Phone 615-741-7448
rep.judd.matheny@capitol.tn.gov



State Senator Janice Bowling

Nashville Address
301 6th Avenue North
Suite 310 A, War Memorial Bldg.
Nashville, TN 37243
615-741-6694
sen.janice.bowling@capitol.tn.gov

Building the Community, One Project at a Time.



Come to us for all of your
design and construction needs.

931-684-1771

826 N Jefferson St. • Shelbyville, TN

**LEE
ADCOCK**
CONSTRUCTION
Commercial & Industrial

OFFERING SUPERIOR VALUE AS A FULL SERVICE ELECTRICAL CONTRACTOR.

- Industrial
- Commercial
- Institutional Government
- Residential
- Specialty Services
- Over 80 Years Of Service

160 Harmon Lane
Manchester, TN 37355
(931) 728-9511

Lawson
ELECTRIC CO.

www.lawsonelectric.com



CALL US FOR ALL
Your Residential, Commercial &
Maintenance Needs!

H&S MECHANICAL
MECHANICAL CONTRACTORS

Commercial • Residential • Refrigeration • Heating & Cooling

815 McARTHUR ST., MANCHESTER

931-954-6060

HANDSMECHANICAL.NET

10% OFF
for
Veterans



Get The Straight Answer
Servicing All Makes
and Model Equipment



Know Your Local Agent

Brett Chaffin

(931) 563-5243

FARMERS
INSURANCE

204 N Washington St
Tullahoma, TN 37388

FREE DISTILLERY TOURS

MONDAY - SATURDAY from 9AM - 4:30PM
LAST TOUR STARTS AT 3:30PM



931.857.4110

WWW.GEORGEDICKEL.COM

YOUR FRIENDS AT CASCADE HOLLOW REMIND YOU TO SIP RESPONSIBLY. GEORGE DICKEL
NO. 12 TENNESSEE WHISKY. 45% ALC/VOL. ©2015 GEO. A. DICKEL & CO., TULLAHOMA, TN.

COUNTY OFFICIALS



GARY CORDELL
COFFEE COUNTY MAYOR

As mayor of Coffee County, I would like to extend the County's hospitality. Coffee County is a wonderful place to live and visit. The county includes an excellent interstate, highway, rural road system, natural beauty and a productive economy. We have been experiencing an exponential growth in residential and commercial markets. Coffee County has four industrial parks including Manchester Industrial Park, the Coffee County Interstate Park, Coffee County Joint Industrial Park, Tullahoma Industrial Park and Airport Industrial Park. In addition to these industrial developments; Coffee County is proud to be the home of the Arnold Engineering Development Complex where critical and vital technology is researched and developed.

The County is home to many beautiful areas such as Old Stone Fort State Park, Short Springs Natural Area and The Normandy Lake Reservoir. We have many natural treasures like the Duck River. Recent biological surveys of the Duck River indicate that it is one of the most bio-diverse rivers in North America. "Free flowing for most of its 269 miles and brimming with species, the Duck River is one of the last rivers of its kind anywhere in the nation." The County is inundated with natural beauty from its rolling landscape to its rivers and streams and I invite you to explore them.

MEET YOUR COUNTY COMMISSIONERS

District 1

Warren G. Walker
107 West Harp St., 37355
(931) 247-0018 D

District 2

Steven R. Jones
505 West Short St., 37355
(931) 409-4279 D

District 3

Michael "Todd" Crockett
568 Indian Springs Circle
(931) 434-2069 • (931) 409-6691 R

District 4

Sam Mai
331 Duck River Rd., 37355
(931) 728-5528 • (931) 273-7835 R

District 5

Bobby H. Bryan
343 Cotton Cunningham Rd., 37342
(931) 467-3613 • (931) 205-0788 D

District 6

Dennis Hunt
220 Dennis Hunt Lane, 37342
(931) 596-2561 R

District 7

Margaret Cunningham
1843 Sainville Rd., 37355
(931) 728-1881 • (931) 703-3215 I

District 8

Kerry Farrar
535 Pomroy Rd., 37355
(931) 728-0215 • (931) 808-7467 D

District 9

David Orrick
7795 Maple Springs Rd., 37355
(931) 728-2192 D

District 10

Harold G. Speer
629 Lynah Lane, 37018
(931) 827-1922 R

District 11

Diane Argraves
261 Bush Rd., 37355
(931) 728-6610 D

District 12

Tim Morris
277 Rhoton Road, 37355
(931) 728-6878 • (931) 247-4179 D

District 13

Major Shelton
1255 M G England Rd., 37355
(931) 728-9422 D

District 14

Missy Deford
373 Belmont Rd., 37355
(931) 247-5847 D

District 15

Mark C. Kelly
303 Somerset Lane, 37388
(931) 455-8826 • (931) 247-5249 R

District 16

Timothy Stubblefield
101 Twelve Oaks, 37388
(931) 455-6410 R

District 17

Kimberly Martin
316 Helen St., 37388
(931) 434-1786 R

District 18

Barbara Buckner
103 Lakeway Circle, 37388
(931) 454-2334 R

District 19

Jackie Duncan
507 S. Washington St., 37388
(931) 455-2199 • (931) 841-0860 D

District 20

Rosemary Crabtree
220 Greenfield Ave., 37388 D
(931) 393-3347

District 21

B. Rush Bricken
317 Sharondale Dr., 37388
(931) 455-6003 • (931) 588-9331 R



Visit our webpage:
cityofmanchestertn.com
or join us on Facebook!

ELECTED COUNTY OFFICIALS

County Mayor

Gary Cordell
723-5100
2014-2018

County Trustee

John Marchesoni
723-5128
2014-2018

Sheriff

Steve Graves
728-3591
2014-2018

Circuit Court Clerk

Heather Hinds Duncan
723-5110
2014-2018

County Clerk

Teresa Henegar McFadden
723-5132
2014-2018

Register Of Deeds

Donna Toney
723-5130
2014-2018

Road Superintendent

Benton Bartlett
728-3321
2014-2018

District Atty. General

Craig Northcott
723-5055
2014-2018

Circuit Court Judge

L. Craig Johnson
728-2847
Part I 2006-2018

Circuit Court Judge

Vanessa A. Jackson
728-3659
Part II 2010-2018

General Sessions Judge

Timothy R. Brock
723-5117
Part I 2006-2014

General Sessions Judge

Jere Ledsinger
723-8786
Part II 2006-2014

Public Defender

454-1929
2006-2018

Assessor Of Property

Jimmy White
723-5126
2012 - 2018

Superintendent Of Schools

LaDonna McFall
723-5150
Appointed

ROAD COMMISSIONERS

Seat 1 (Districts 5 & 6)

James Grady Weaver
580-1556

Seat 2 (Districts 7 & 8)

Marshall Qwalls
728-3815

Seat 3 (Districts 9 & 10)

Jeff Bush
954-5232

Seat 4 (Districts 11 & 12)

Raymond J. Duke (D)
728-6200

Seat 5 (Districts 13 & 14)

Ricky Harris
808-5398



Need A New Roof? We've Got You Covered! Watson Metals LLC.

- 3' Metal Roofing Tuff Rib\ R Panel
- Standing Seam Roofing 12"-16" wide
- Metal Shingles Many Profiles
- All Products Can Be Delivered
- Metal and Wood Trusses
- Serving Middle TN Since 1997

- Complete Building Packages Available
- Outstanding Service

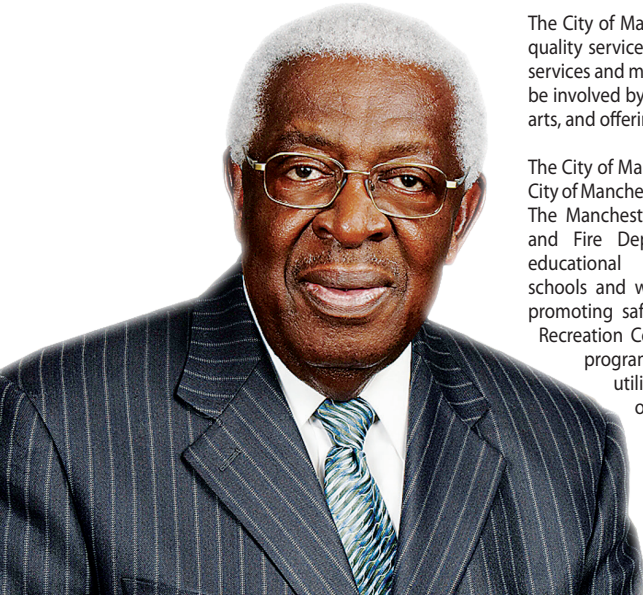
238 Interstate Drive • Manchester, TN 37355
931-728-8185 • 1-888-638-2581

OPEN MONDAY - FRIDAY 7 A.M. - 5 P.M.

WWW.WATSONMETALSLLC.COM



CITY OFFICIALS



LONNIE NORMAN
CITY OF MANCHESTER MAYOR

The City of Manchester utilizes its property tax base and local sales dollars to provide its citizens and guest with maximum quality service with nominal spending while encouraging growth. The City is constantly working with on-line technology services and making applications available as they are critiqued. Citizens are given the highest regards and are encouraged to be involved by joining committees and commissions to assist with planning events, promoting projects, participating in the arts, and offering suggestions.

The City of Manchester has two elementary schools and one middle school recognized for their educational excellence. The City of Manchester Westwood Elementary School was third under the SCORE Program acknowledged by the State of Tennessee.

The Manchester Police Department and Fire Department work with educational programs in local schools and within the community promoting safety. The Manchester Recreation Complex offers healthy programs, exercise regiments utilizing various types of equipment for all ages, swimming, and basketball. The Manchester City Parks offer soccer fields, baseball fields, skate park, extended greenways for walking and jogging along the river and throughout the parks with picnic and playground areas. The Art Center has recently been renovated to offer more education in theater and amusement.

THE CITY OF MANCHESTER
A GROWING COMMUNITY

The City of Manchester is proud with its recent growth of industry through the planning efforts with Coffee County and the State of Tennessee in the Manchester Industrial Park and Manchester Joint Industrial Park. The City of Manchester Water Department and Public Works Department along with other utility companies has worked with the City officials assisting the growth of restaurants and retail companies. There are five exits from Interstate 24 and three major thoroughfares encouraging potential growth and access to the beautiful City of Manchester in Coffee County.

You are welcome to be part of a growing innovated community to start a business, attend events, obtain an education, work, play, live, practice in the arts, or attend a place of worship.

MEET YOUR CITY OF MANCHESTER BOARD OF MAYOR, ALDERMEN & OTHER CITY OFFICES.

Mayor Lonnie Norman
931-728-4652
mayor@cityofmanchestertn.com

Vice-Mayor Ryan French
931-728-6589
rfrench@cityofmanchestertn.com

Aldermen
Tim Pauley
tpauley@cityofmanchestertn.com

Russell Bryan
rbryan@cityofmanchestertn.com

Cheryl Swan
Cswan@cityofmanchestertn.com

Tim Kilgore
tkilgore@cityofmanchestertn.com

Lana Sain
lsain@cityofmanchestertn.com

Police Chief
Mark Yother
myother@cityofmanchestertn.com
931-728-2099

Internal Affairs/Citizen Liason
Terry Dendy
tdendy@cityofmanchestertn.com
931-728-4652 Ext. 1101

Information Systems Director
Tennie Smotherman
tsmotherman@cityofmanchestertn.com

Finance Director
Bridget Anderson
banderson@cityofmanchestertn.com
931-461-3517

Public Works
Brent Carter
1210 Oakdale Dr.
Manchester, TN 37355
931-728-6903
bcarter@cityofmanchestertn.com

Fire Chief
George DeShields
1509 Hillsboro Blvd.
Manchester, TN 37335
931-728-2999
gdeshields@cityofmanchestertn.com

Recreation Director
Bonnie Gamble
557 N. Woodland Street
Manchester, TN 37355
931-728-0273
bgamble@cityofmanchestertn.com

Water & Sewer Manager
Bryan Pennington
236 West High St.
Manchester, TN 37355
931-728-1273
water@cityofmanchestertn.com

Codes Director
Paul Guess
236 West High St.
Manchester, TN 37355
931-723-1464
pguess@cityofmanchestertn.com

COMMITTEES AND COMMISSIONS

- Animalcontrol@cityofmanchestertn.com
- Manchester Regional Planning Commission
- Water & Sewer Commission
- Recreation Commission
- Manchester Housing Authority
- Tourism & Community Development Commission

- ADA Compliance Committee
- Coffee County Industrial Development Board
- Beer Board
- Duck River Utilities Commission
- Historical Zoning Commission
- Central Tennessee Solid Waste Planning Board

- Health, Education, & Housing Facility Board
- Manchester Arts Commission
- Finance Committee
- Street Committee
- Safety Committee

We do more than light your homes..... We Light Your Lives!



One of the seven cooperative principles is commitment to community. Duck River EMC strives to fulfill that principle everyday, through programs such as Project Help, where you can add dollar or more to your electric bill to help those in need.



You're more than
a customer...
You're a member



A Touchstone Energy® Cooperative



www.dremc.com

931- 728-7547

Making A Difference In Women's Lives

- Breast & Cervical Cancer Screenings
- Women's Reproductive Health
- High Risk Pregnancy
- Laproscopic Surgery
- Menopausal Counseling
- Incontinence
- In Office 3D/4D Ultrasound
- Non Patients Welcome

Premier
Women's Health Center



Bryan Myers, M.D., PC
Ashley De Witt, D.O., P.C.
Michael Nobles, M.D., P.C.
Melody Harrison, NP-C
Saharra Jewell, APN

All Major Insurance Accepted Including ALL TennCare Products

161 Shirley Dr., Winchester, TN 931-962-0450 1402 Willow Dr., Manchester, TN

www.obgyntn.com

Customer Service & Satisfaction Is Still 1st

Mills

Residential & Commercial Floor Covering

Family Owned & Operated
Kirt Mills, Willard & Myrl Mills

(931) 728-7674

1663 Hillsboro Blvd., Manchester, TN 37355

- Residential/Small Commercial
- Custom Homes • Additions • Decks
- Garages • Pole Barns • Steel Buildings



MARK LEMONS
CONSTRUCTION
General Contractor
LICENSED & BONDED
RESIDENTIAL AND SMALL COMMERCIAL
Custom Homes • Additions • Steel Buildings • Garages • Decks
MANCHESTER, TENNESSEE
931-723-0764

Manchester
Funeral Home
& Crematory

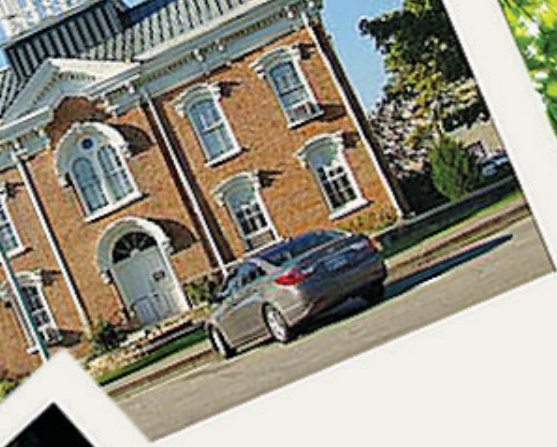
Coffee County's Only, On-Site Crematory
Serving Coffee County Since 1932

214 E. Main St. • Manchester, TN 37355

(931) 728-3505

www.manchesterfuneralhome.com

Join Now!



Home

Meet Our Members

Become a Member

Get to K



VISIT OUR NEW WEBSITE WWW



Manchester Chamber of Commerce

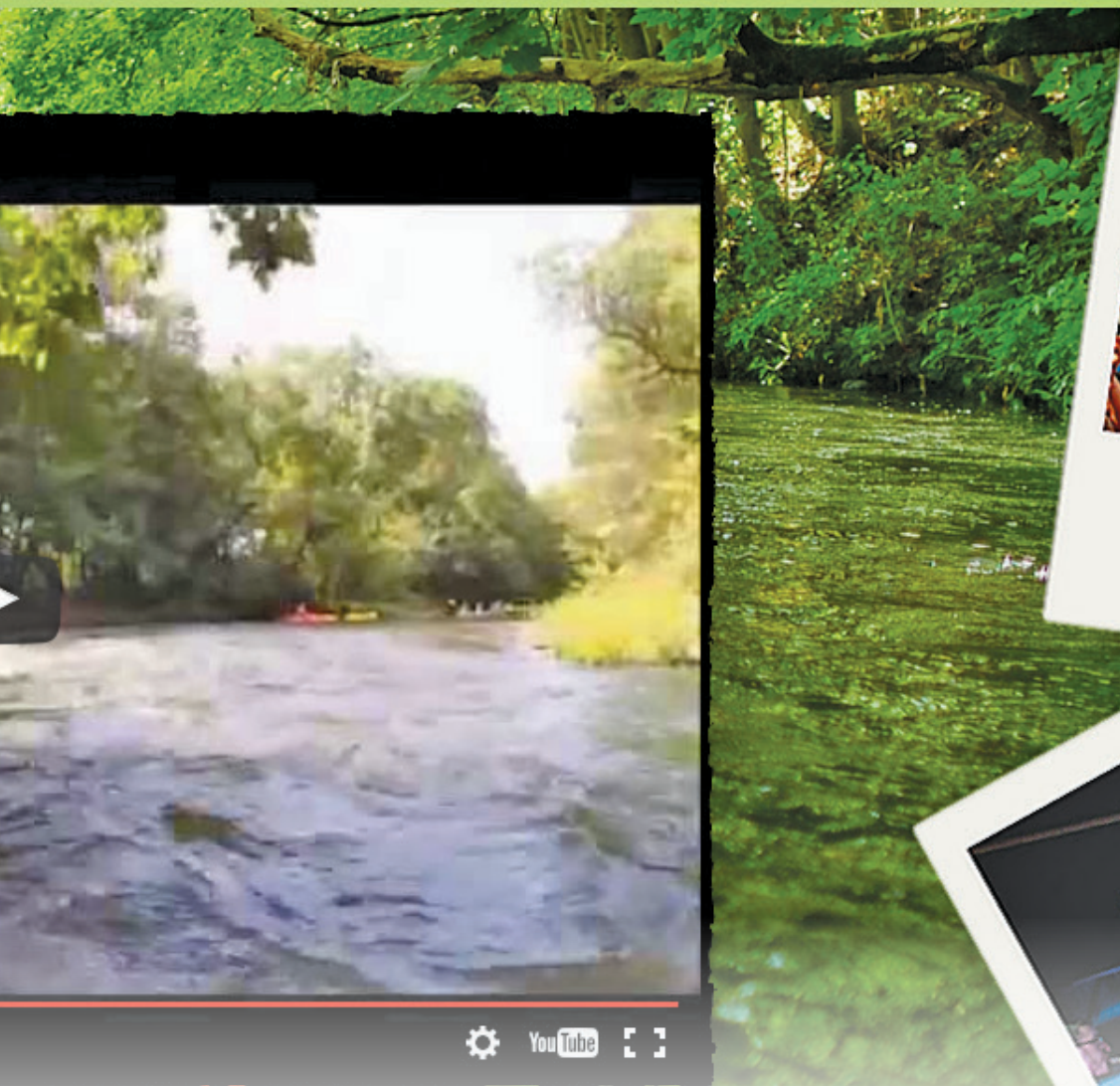


Know Manchester, TN

Get Involved

Events

Contact Us



MANCHESTERTNCHAMBER.ORG

Coming
in 2016 to
Manchester!

High Speed Internet



*With speeds approaching
1 Gig, we move your
home or business at
the speed of light.*



www.benlomandconnect.com 450-1252



"Serving Coffee County For 23 Years"



2166 Hillsboro Blvd. • Manchester, TN 37355
931-728-1130



FISCHER
TOOL & DIE CORP

Temperance, MI

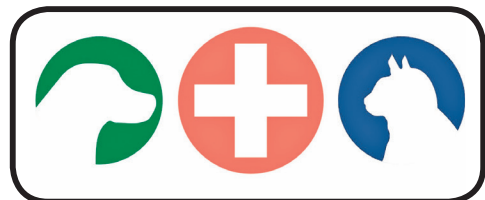


7155 Industrial Drive
Temperance, MI 48182
734.847.4788

Tullahoma, TN



37 Murray Drive
Tullahoma, TN 37388
931.563.8024



Animal Health Clinic

1722 Hillsboro Blvd.
Manchester, TN 37355

(931) 728-6633
www.AnimalHealthVet.com

Chris Blevins, DVM Tom Harbin, DVM

The Bachelor's Degree for Working Adults
WHAT YOU DO TODAY COULD CHANGE YOUR LIFE TOMORROW
The MMC Flex Program



Choose from Four Exciting
 Majors All Leading to the
 Bachelor of Science Degree

1. Business Management
2. Criminal Justice
3. Psychology/Human Services
4. Elementary Education K-5

Apply Now

Suzanne McAfee Hillhouse
Office of Admissions • 931-363-9831 or 800-467-1273
www.martinmethodist.edu
Martin Methodist, your neighbor since 1870...



Martin Methodist College does not discriminate on the basis of race, sex, color, religion, national origin, age, handicap or veteran status in provision of educational opportunities or employment opportunities and benefits.



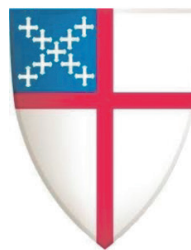
VR Manchester
 1021 Volunteer Parkway
 Manchester, TN, USA 37335



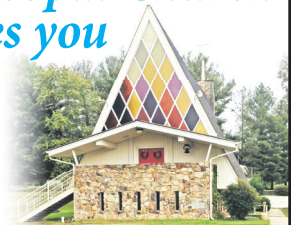
A ZERO Landfill Company

Office: 931.461.9353
 Fax: 931.728.4092

Web: www.van-rob.com



The Episcopal Church
welcomes you



St. Bede's Episcopal Church

93 St. Bede's Drive, Manchester, TN 37355

931-728-4463

Holy Eucharist - Sunday 10:30 A.M.
 The Rev. Mary B. Hassell

*"...Be strong and
 courageous. Do not
 be afraid; do not be
 discouraged, for the
 LORD your God will
 be with you wherever
 you go." - Joshua 1:9*

Providing Year Round Home Comfort

SHELTON'S

70° Heating & Cooling



Free Installation Estimates • 24 Hr. Emergency Service
We Service All Brands • Financing Available

931-723-4996

1005 Murfreesboro Hwy., Manchester, TN



www.Sheltonshvac.com • Terry Shelton, Owner

SPRING STREET MARKET

**Proud To Provide
 the Freshest Meat
 and Best Value to
 Manchester.**



Corner of Spring and Coffee Street

Mon. - Sat. 7 A.M. - 7:30 P.M. • Open Sun. 11 A.M. - 6 P.M. • 728-3421



2016 INDUSTRIAL BOARD OF DIRECTORS

Chairman:	Roland Segroves	County
Vice-Chairman:	Buster Bush	Tulahoma
Secretary/Treasurer:	Jesse Overall	Manchester
	Karl Boehm	Tulahoma
	David Young	County
	Bill Johnson	County
	Richard Kulp	County
	Marvin McKee	Tulahoma
	Brent Parsley	Manchester
	Mary Niederhauser	Manchester
	Bill Comer	Manchester

**1329 McArthur St., Suite 4, Manchester, TN 37355 • Phone: (931) 723-5120
Fax: (931) 723-5121 • Email ~ ib@coffeetn.com**

Ted L. Hackney, Executive Director; Teresa Burnett, Executive Assistant;
Kimber Sharp; Administrative Assistant



ST. ANDREW'S SEWANEE

St. Andrew's-Sewanee School (SAS) is a private, coeducational, Episcopal, college preparatory school serving 255 students in grades six through twelve. Day students travel from communities across Middle Tennessee to attend this outstanding school. Boarding students hail from 17 countries and more than a dozen states.

St. Andrew's-Sewanee School traces its history back more than 145 years. The school's history goes back to the Sewanee Grammar School (est. 1869) and St. Andrew's School (est. 1905). It became known as St. Andrew's-Sewanee School in 1981.

SAS believes that education should be much more than a desk job. The school takes full advantage of its beautiful 550-acre mountaintop campus. The SAS farm, ongoing watershed research, adventure education and outing programs are just a few of the

many ways that SAS connects its students to the land and introduces them to the joys of outdoor recreation.

SAS inspires curiosity. SAS encourages students to take increasing responsibility for their own learning. The curriculum focuses on critical thinking, creativity, and communication. Classes are active. The Learning Resources Center helps students assess their learning styles and organize their studies. Students seeking additional challenge may take courses at the University of the South or conduct independent study.

SAS teaches to the child. Small classes allow teachers to provide instruction to meet a child's individual needs. Qualitative comments help parents get the story behind their child's grades and test scores. Work periods within the school day allow students who need extra help to get it without having to sacrifice after school activities.

SAS is a community. Teachers and students know each other well and work, play, and live in an intentionally small school that values trust and high expectations.

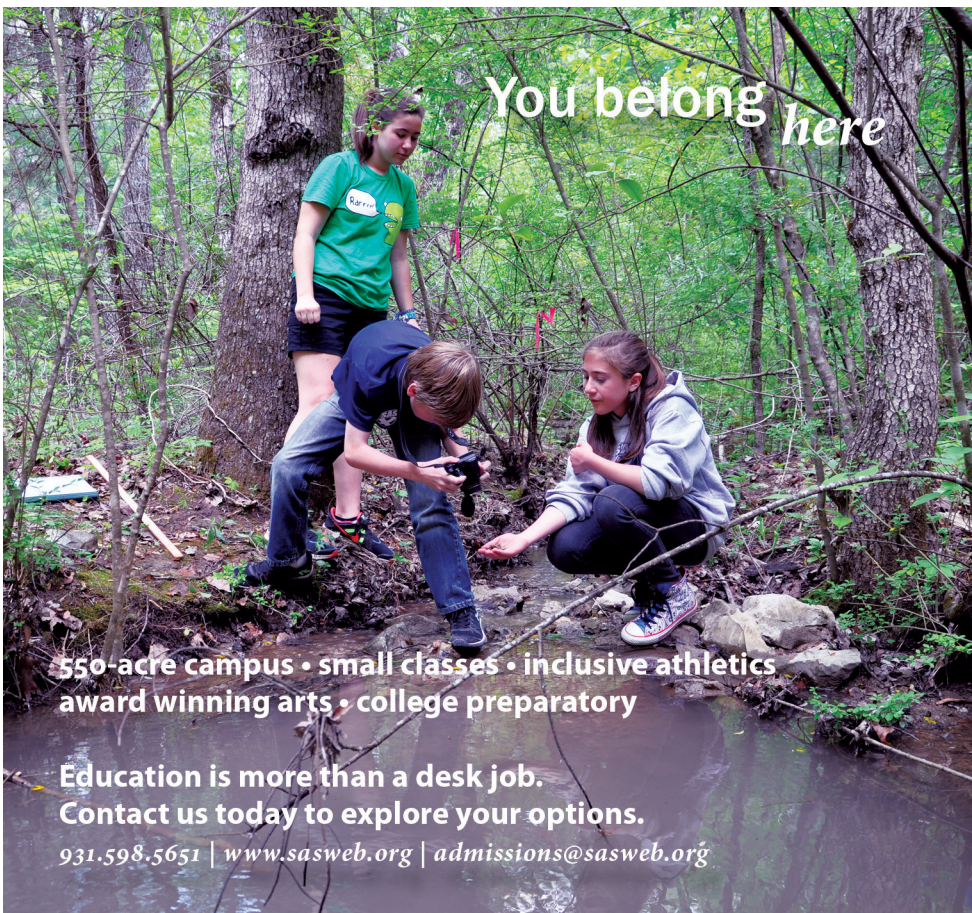
SAS believes in a healthy balance between work and play. The school fields teams in 13 sports, including mountain biking, and offers afternoon courses in arts, outdoor adventure, and farming. Private music and dance lessons are available on campus. The school's Winterim allows students to explore unique areas of interest from woodworking to creative writing. Traditions, including the Earth Day celebration and

house competitions, help students to see that a well-crafted life incorporates growth with fun.

SAS believes college is one of many steps on life's journey. College counseling focuses on the needs of each student, including the financial needs of the family. The school helps students to develop a résumé and a personal creedal statement to help them understand where they have been and where they are going. Alumni brag that they were more prepared than their college classmates, not just academically, but in their ability to advocate for themselves, communicate cross-generationally, and live independently.

SAS models generosity and grace. SAS is committed to providing educational opportunities for those who might not otherwise find them. The school welcomes students seeking more intellectual challenge, a less homogeneous community, and a community that recognizes that mistakes are part of the learning process. Through outreach activities and campus work responsibilities, the school encourages students to pass their talents and gifts along to others.

SAS believes in the God-given value of every individual. SAS embraces and encourages conversations about faith and values. Students meet three times a week for Chapel gatherings, including a weekly Eucharist service. An institution of the Episcopal Church, SAS is committed to a diverse and inclusive community with respect to race, national origin, religion, gender, sexual orientation, family status, economic circumstance, age, and physical disability.



550-acre campus • small classes • inclusive athletics
award winning arts • college preparatory

Education is more than a desk job.
Contact us today to explore your options.

931.598.5651 | www.sasweb.org | admissions@sasweb.org



ST. ANDREW'S SEWANEE

AN EPISCOPAL BOARDING & DAY
SCHOOL SINCE 1868

LOCAL MEMBERSHIP

ACCOUNTING

Allen, McGee & Associates

110 N. Jackson St. • Tullahoma, TN 37388
Mark Allen • 931-393-3307

Edmondson Betzler & Montgomery

132 Avery Court • Manchester, TN 37355
Tai Jones • 931-588-1519

ANSWERING SERVICES

Mid-State Communications

504 Hillsboro Blvd. • Manchester, TN 37355
Darlene Sitz • 931-393-6700

APARTMENTS

Carden Estates Apartments

1700 Summer Street • Manchester, TN 37355
Angela Donn • 931-723-1333

Char- El Apartments

607 Woodbury Highway • Manchester, TN 37355
Daniel Powers • 931-728-2230

Continental Arbors Apartments

185 Ester Lane • Manchester, TN 37355
Ronnie Randall • 931-728-1693

ASSISTED LIVING

Autumn Oaks

1621 McMinnville Highway • Manchester, TN 37355
Stephanie Swan • 931-728-0200

Bailey Manor

1707 McMinnville Hwy. • Manchester, TN 37355
Cherie Rice • 931-728-9033

McArthur Manor

119 Bryan Ave. • Manchester, TN 37355
Amanda Gilliam • 931-954-0250

ATTORNEYS

Eric J. Burch, Attorney

200 S. Woodland St. • Manchester, TN 37355
931-723-7997

Cynthia Cheatham, Attorney at Law

209 South Woodland Street • Manchester, TN 37355
931-728-5313

Keeton & Perry, PLLC

401 Murfreesboro Hwy. • Manchester, TN 37355
C. Brent Keeton • 931-723-7145

Rogers, Duncan & North

100 N. Spring Street • Manchester, TN 37355
Christina Duncan • 931-728-0820

The Stanford Law Firm, PLLC

909 Hillsboro Blvd. • Manchester, TN 37355
Chris Stanford • 931-954-5577

Shawn C. Trail, Attorney

117 South Spring Street • Manchester, TN 37355
Shawn Trail • 931-728-0419

AUTO DEALERS, PARTS & REPAIR

Al White Motors

2002 Hillsboro Blvd. • Manchester, TN 37355
Jerry White • 931-728-2402

Caldwell Tire & Service

515 Hillsboro Blvd. • Manchester, TN 37355
Ronald Caldwell • 931-728-7277

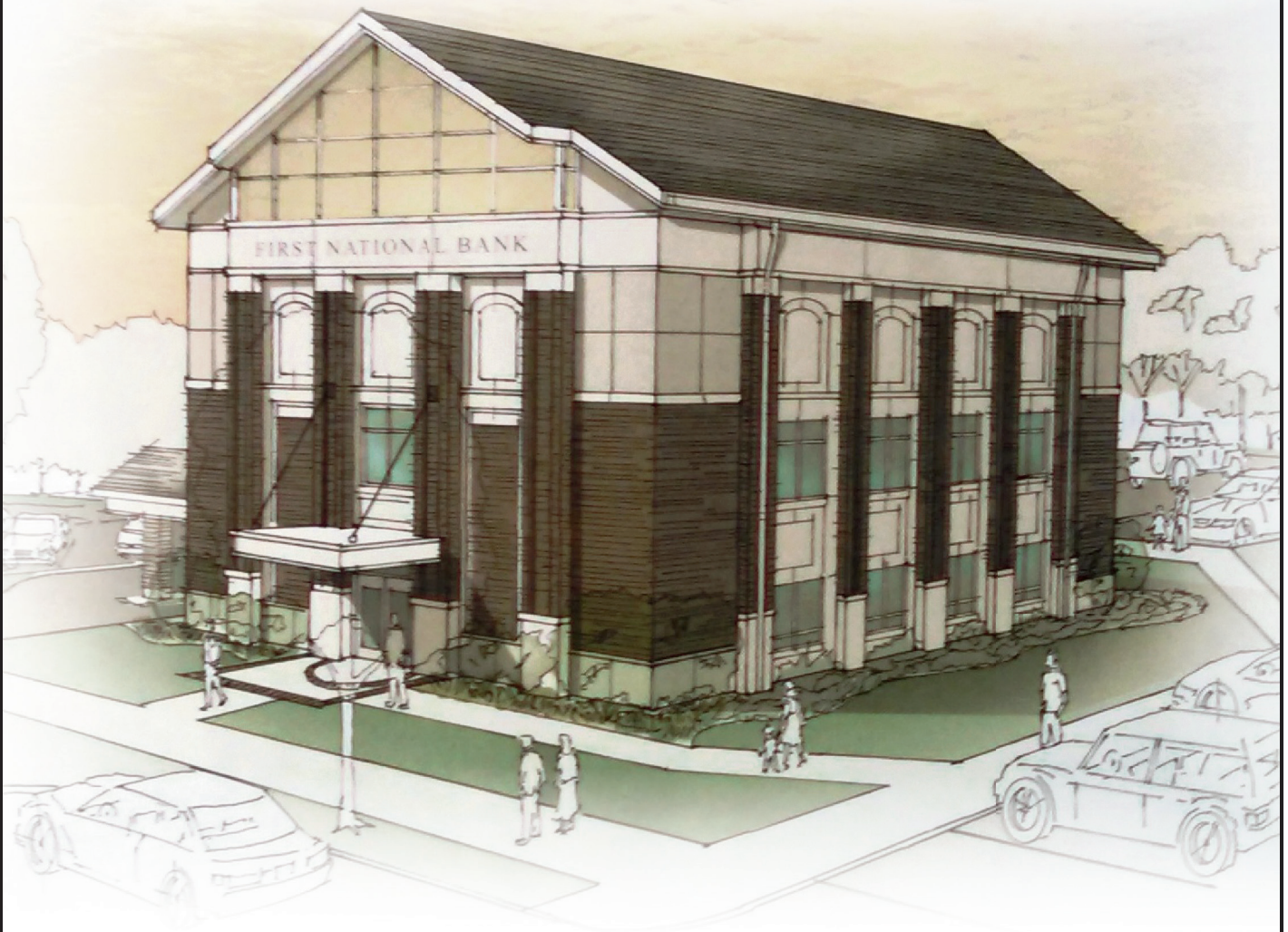
Clower Automotive

1406 McArthur Drive • Manchester, TN 37355
Ron or Cyndi Clower • 931-728-9898

Gateway Tire & Service Center

378 McMinnville Hwy. • Manchester, TN 37355
Jeff Cox • 931-723-3701

A NEW YEAR BRINGS A NEW LOOK



Manchester - Woodbury - Murfreesboro TN

www.fnbmwm.com

Member
FDIC

100 West High Street
931-728-3518

*Proudly Serving Manchester
for Over 100 Years*

- 8 ATM Locations
- Text Banking
- Internet Banking
- Bill Pay
- E-Statements
- Mobile Banking
- Direct Deposit
- 24 Hour Phone Banking

J & W Repair

2030 Murfreesboro Hwy • Manchester, TN 37355
Wyatt Nettles Jr. • 931-728-1583

LKQ of TN

3055 Hillsboro Hwy. • Manchester, TN 37355
Bob Wilson • 931-728-6900

Manchester Tire & Brake

1604 Hillsboro Blvd. • Manchester, TN 37355
Kevin Vaught • 931-728-5097

BANKS

American City Bank

1500 Hillsboro Blvd. • Manchester, TN 37349
Amanda Montes • 931-728-9907

Coffee County Bank

2070 Hillsboro Blvd. • Manchester, TN 37355
Brenda Ashby • 931-728-1975

First National Bank

100 High Street • Manchester, TN 37355
Tim Spry • 931-728-3518

First Vision Bank

2134 Hillsboro Blvd. • Manchester, TN 37355
Jon Bell • 931-723-3224

Peoples Bank & Trust

1203 Hillsboro Blvd. • Manchester, TN 37355
Philip Calahan • 931-728-3381

Traders Bank

1207 Hillsboro Blvd. • Manchester, TN 37355
Stan Teal • 931-728-1474

US Bank

1000 Hillsboro Blvd. • Manchester, TN 37355
Patricia Pinegar • 931-728-1002

BEVERAGE SUPPLIERS

Beans Creek Winery, LLC

426 Ragsdale Road • Manchester, TN 37355
Tom Brown • 931-723-2294

George Dickel Distillery

P.O. Box 490 • Tullahoma, TN 37388
Allisa Henley • 931-857-3124

Jack Daniels Vistors Center

182 Lynchburg Highway • Lynchburg, TN 37352
Steve May • 931-759-6144

Manchester Liquors

1656 Hillsboro Blvd. • Manchester, TN 37355
Orville Foster • 931-723-1770

Mld-South Distributing

400 South Anderson Street • Tullahoma, TN 37388
Rick Gerwe • 931-455-6210

Ole Shed Brewing

516 East Carroll Street • Tullahoma, TN 37388
Mike Thornburg • 931-212-4277

CELLULAR RETAILERS

A Wireless

2532 Hillsboro Rd. Suite C. • Manchester, TN 37355
931-728-6780

DTC Wireless

199 Relco Drive • Manchester, TN 37355
Rene Wilson • 800-772-8645



Academic Choices

- Career Path Programs in accounting, business, mechatronics, nursing, technology and more
- Over 40 University Path Programs

Flexible Pathways

- Traditional and Online Courses
- Dual/Joint Enrollment for high school students
- ACE (Adult College Express) for busy adults

www.mscc.edu • 800-654-4877

Moore County - McMinnville - Fayetteville - Smyrna



Metro Industrial Services

2081 Hillsboro Blvd, Manchester, TN 37355
Local 931-723-7810 or Toll Free 1-855-715-5627

- Staffing** - Industrial & Clerical, Temporary & Direct Hire
- Professional Training** - Leadership Development & Team Building
- Industrial Training** - Forklift, Welding & Assembly
- HR Onboarding** - Drug Screen, Background Checks, Testing, Training, Medical & Triage
- Logistics** - Picking, Packing, Sorting, Assembly, Shipping
- Supplies** - Safety & Janitorial Supplies, Office & Restaurant Paper Products

www.metroindustrialservices.com



Kokomo Grain Co.



185 Interstate Dr. Bruce Brandon 931-728-3065
Manchester, TN Ray Keith 800-666-7229
kokomograin.com

Russell Cellular/Verizon Wireless

1313 Hillsboro Blvd. • Manchester, TN 37355
Nathan George • 931-723-0480

CHURCHES

Canvas Community Church

1886 McArthur Street • Manchester, TN 37355
Johnny Chase • 931-205-4388

First Presbyterian Church

1101 Jackson St. • Manchester, TN 37355
C. J. Thompson • 931-728-3009

St. Bede's Episcopal Church

93 St. Bede's Drive • Manchester, TN 37355
Rev. Mary Hassell • 931-334-9910

CITY OF MANCHESTER

City of Manchester Finance Director

200 West Fort Street • Manchester, TN 37355
Bridgett Anderson • 931-461-3517

City of Manchester Alderman Bryan

200 West Fort Street • Manchester, TN 37355
Russell Bryan • 931-728-4652

Chief George Chambers

200 West Fort Street • Manchester, TN 37355
George Chambers • 931-728-2999

City of Manchester Alderman French

200 West Fort Street • Manchester, TN 37355
Ryan French • 931-728-4652

City of Manchester Recreation Director

557 North Woodland Street • Manchester, TN 37355
Bonnie Gamble • 931-728-0273

City of Manchester Alderman Kilgore

200 West Fort Street • Manchester, TN 37355
Tim Kilgore • 931-728-4652

City of Manchester Mayor Norman

200 West Fort Street • Manchester, TN 37355
Lonnie Norman • 931-728-4652

City of Manchester Alderman Pauley

200 West Fort Street • Manchester, TN 37355
Tim Pauley • 931-728-4652

City of Manchester Alderman Sain

200 West Fort Street • Manchester, TN 37355
Lana Matthews-Sain • 617-945-6887

City of Manchester Alderman Swan

200 West Fort Street • Manchester, TN 37355
Cheryl Swan • 931-728-4652

City of Manchester Police Chief

200 West Fort Street • Manchester, TN 37355
Mark Yother • 931-728-2099

CLEAN UP & RESTORATION SERVICES

ServPro of CFW

1286 Murfreesboro Hwy. • Manchester, TN 37355
Michelle Shepard • 931-723-8088

COFFEE COUNTY EMPLOYEES

Circuit Court Judge Part 1

300 Hillsboro Blvd., Box 1 • Manchester, TN 37355
Craig Johnson • 931-728-2847

Coffee County Mayor

1329 McArthur St. Suite 1 • Manchester, TN 37355
Gary Cordell • 931-723-5100

Coffee County School Superintendent

1343 McArthur St. • Manchester, TN 37355
LaDonna McFall • 931-723-5150

Coffee County Property Assessor Office

Manchester, TN 37355
Elissa Fletcher • 931-723-5126

Coffee County County Clerk

1327 McArthur St. • Manchester, TN 37355
Teresa McFadden • 931-723-5106

Craig Northcott District Attorney

409 Madison Street • Manchester, TN 37355
Craig Northcott • 931-723-5055

Roxanne Patton

County Mayor Office

Manchester, TN 37355 • Roxanne Patton
931-723-5100

Coffee County Register of Deeds

1341 McArthur Street • Manchester, TN 37355
Donna Toney • 931-723-5130

CONSTRUCTION, BUILDING & MAINTENANCE

Barrett Construction & Renovation, LLC

905 Kennedy Drive • Manchester, TN 37355
Russ Barrett • 931-728-2664

C & H Contractors

1517 Bartlett Drive • Manchester, TN 37355
Don Hershman • 931-728-3864

D & R Siding Co.

2320 Hwy 41A South • Shelbyville, TN 37160
Shawn & Kimberly Roberts • 931-684-1685

Dennis Hunt & Co. LLC

354 Campground Rd. • Manchester, TN 37355
Dennis Hunt • 931-728-2894

Lawson Electric Company

160 Harmon Lane • Manchester, TN 37355
Tom McColloch • 931-728-9511

Lee Adcock Construction Co.

826 North Jefferson St. • Shelbyville, TN 37160
Kent Holt • 931-684-1771

Mark Lemons Construction

217 Shacin Lane • Manchester, TN 37355
Mark Lemons • 931-723-0764

McMahan Construction

136 Bashaw Creek Road • Manchester, TN 37355
Ken McMahan • 931-728-0501

Mills Floor Covering

1663 Hillsboro Blvd. • Manchester, TN 37355
Willard Mills • 931-728-7674

Pete Jackson Floor Covering

812 McArthur • Manchester, TN 37355
Haskel & Phyllis Franklin • 931-728-1419

Rogers Group

1008 South Washington St. • Tullahoma, TN 37388
Steve Moran • 931-393-2691

Sain Construction

713 Vincent Street • Manchester, TN 37355
James Sain • 931-728-7644

Tri-County Roofing

210 Woodbury Hwy. • Manchester, TN 37355
Brent Bates • 931-728-1664

Watson Metals, LLC

238 Interstate Drive • Manchester, TN 37355
Nate Heisey • 931-728-8185

CONVENIENCE STORES

55 West Tobacco & Beverage Depot

2032 McArthur Street • Manchester, TN 37355
Dorothy Foster • 931-728-4477

DANCE STUDIO

Duck River Dance

200 E. McLean St. • Manchester, TN 37355
Danelle Afflerbaugh • 931-570-1763

DENTAL

Dr. Timothy Brown DDS

116 E. Fort Street • Manchester, TN 37355
931-728-3861

Boskey's Grille

Located at:
6751 McMinnville Hwy.
Manchester TN 37355

931-723-7955 or 931-728-8989
Boskey's WB Pro Shop

Find us on: **facebook**

Visit us online at: www.golfwillowbrook.net

VIAM

VIAM Manufacturing, Inc.
87 Park Tower Drive
Manchester, TN 37355
931-461-2300

Honeycutt Family Denistry

1240 McArthur Street • Manchester, TN 37355
Paul Honeycutt DDS • 931-728-3501

Charlie D. Manning, D.D.S.

1056 McArthur Street • Manchester, TN 37355
Robin Shofner • 931-728-4143

Matthew Nichols DDS Oral and Facial Surgery

1425 McArthur Street • Manchester, TN 37355
931-954-5244

EDUCATION

Coffee County CTE

100 Red Raider Drive • Manchester, TN 37355
Richard Skipper • 931-222-1228

Coffee County Skills USA

100 Red Raider Dr. • Manchester, TN 37355
Mindy Acklen • 931-723-5159

Love Beauty School

1161 Murfreesboro Hwy. • Manchester, TN 37355
Christie Fults • 931-723-8188

Manchester City School Supt.

215 E. Fort Street • Manchester, TN 37355
Sandra Morris • 931-728-2316

Martin Methodist College

433.W. Madison St. • Pulaski, TN 38478
Edna Luna • 931-363-9824

Motlow State Community College

P.O. Box 8500, Department 100
Lynchburg, TN 37352-8500
Dr. Anthony Kinkel • 931-393-1682

St. Andrew's - Sewanee School

290 Quintard Road • Sewanee, TN 37375
Sherri Bergman • 931-598-5651

The Literacy Council

510 S. Jackson • Tullahoma, TN 37388
Roland Seagroves • 931-455-5481

The Webb School

319 Webb Rd. E. • Bell Buckle, TN 37020
Aimee Hoover • 931-389-5721

Trevecca Nazarene University

P.O. Box 8500 • Lynchburg, TN 37210
Julie Rigsby • 800-818-4256

EMPLOYMENT SERVICES

Hamilton-Ryker

2161 Hillsboro Blvd; Suite 2 • Manchester, TN 37355
Tammie Patterson • 931-728-0515

Metro Industrial Services

2081 Hillsboro Blvd. • Manchester, TN 37355
Tanya Amis • 931-723-7810

Randstad Staffing Service

313 Hillsboro Blvd • Manchester, TN 37355
Gloria Bryant • 931-728-1727

ResourceMFG

1877 Volunteer Parkway • Manchester, TN 37355
Michele Simmons • 931-841-8131

Staffing Solutions

1802 N. Jackson St., Ste 840 • Tullahoma, TN 37388
Tiffany Felver • 931-455-6004

TN Career Center @ Tullahoma

111 E. Lincoln Street • Tullahoma, TN 37388
Karen Woosley • 931-454-1905



Delivering the News to Your
**DOORSTEP,
DESKTOP
OR DEVICE**

Inside Every Issue:
Local News
Special Events & Local Entertainment
Local Sports Coverage
Auto, Real Estate, Jobs & Classifieds
Home, Cooking & Lifestyle Features

Nothing connects you to your community quite like your local newspaper. Our trusted, locally focused publication is an unrivaled resource for area news, perspectives and events, as well as local sports coverage. Try our home delivery service today at a great low rate, and see what you've been missing!

One Year Subscription
\$38 (Local Delivery Only. Includes Free Access to Our Online Edition.)

** NEW for our subscribers, make sure to get your *MT Press Pass Perks Card* to receive exclusive money-saving offers at participating local retailers. **

To Subscribe, call 931-728-7577

THE MANCHESTER TIMES
In print, online, mobile and social!
www.manchestertimes.com

Workforce Solutions

410 Wilson Ave. • Tullahoma, TN 37388
Diane Stoker • 931-455-9596

ENGINEERING & ENVIROCON

St. John Engineering, LLC

923 Jackson Street • Manchester, TN 37355
Scot St. John • 931-728-2638

ENTERTAINMENT

AC Entertainment

507 S Gay St. Suite 1100 • Knoxville, TN 37902-2132
Jeff Cuellar • 865-523-2665

Manchester Arts Center

128 East Main Street • Manchester, TN 37355
Noel Clements • 931-728-3434

Millennium Repertory Co.

PO Box 805 • Manchester, TN 37349
Rachel Garrard • 931-409-7810

Myers Concert Productions, LLC

3448 TN-82 • Beechgrove, TN 37018
DJ Myers • 931-841-2523

Stage Tops USA

781 Benson Road • Manchester, TN 37355
Kevin Greenwood • 931-723-3900

EQUIPMENT RENTAL

Christopher Equipment

2009 McArthur St. • Manchester, TN 37355
Max Christopher • 931-728-5484

EVENT VENUES & MEETING SPACES

Manchester/Coffee Co. Conference Center

147 Hospitality Boulevard • Manchester, TN 37355
Alyce Heifner • 931-723-8283

The Motlow House

7871 Lynchburg Highway • Tullahoma, TN 37388
Jane McChesney • 408-710-1287

FINANCIAL SERVICES

Advance Financial 24/7

1401 Hillsboro Blvd. • Manchester, TN 37355
Jamie Saltzman • 615-341-5900

Ascend Federal Credit Union

1929 McArthur St. • Manchester, TN 37355
Michelle Shields • 800-342-3086

Peoples Bank & Trust

1203 Hillsboro Blvd. • Manchester, TN 37355
Philip Calahan • 931-728-3381



**K&S STEEL
FABRICATION**

“QUALITY SINCE 1990”
828 Interstate Dr. Manchester, TN 37355
Phone: (931) 728-1338 • Fax: (931) 728-8474



MERLE NORMAN®



Merle Norman Cosmetics
1909 McArthur Street
Manchester, TN 37355
931-728-0440



*Handbags, Jewelry
and Accessories*

JENNY JACKSON • CINDY WEST
Owners



**1, 2 & 3
BEDROOM
SPACIOUS
APARTMENTS**

- Washer & Dryer Connections
- Central Heat & Air
- Computer Room w/Internet Access
- Dishwasher
- Patio/Balcony
- Laundry Facility
- Garbage Disposal
- Garbage Disposal
- Bulk Cable
- Playground or Picnic Area



**Rivendell
APARTMENTS**

Rivendell Apartments
Ask For Donna Neel **931-723-8022**
555 Expressway Dr., Manchester • 9 A.M.-4 P.M.

First National Bank

100 High Street • Manchester, TN 37355
Carla Clay • 931-728-3518

Edward Jones

1416 McArthur St. • Manchester, TN 37355
Bruce Shaw • 931-728-8398

First National Mortgage Services

304 N. Spring Street • Manchester, TN 37355
Lana Esslinger • 931-954-5560

People's Bank & Trust Company

1203 Hillsboro Blvd. • Manchester, TN 37355
Brad Goodwin • 931-728-3381

H&R Block

2161 Hillsboro Blvd. - Suite 8 • Manchester, TN 37355
Rosalyn Partin • 931-728-9462

First National Bank

100 High Street • Manchester, TN 37355
Denton Jones • 931-728-3518

McCay Wealth Advisory

624 N. Woodland Street • Manchester, TN 37355
Brent McCay • 931-728-2130

Peoples Bank & Trust Company

1203 Hillsboro Blvd. • Manchester, TN 37355
Jay Nogodula • 931-728-3381

First National Bank

100 High Street • Manchester, TN 37355
Brent Parsley • 931-728-3518

World Finance Corporation

195 Relco Drive • Manchester, TN 37355
Ashleigh Burks • 931-723-8808

FUNERAL HOMES

Central Funeral Home, LLC

2812 Hillsboro Blvd. • Manchester, TN 37355
Randy Buckner • 931-723-7774

Coffee County Funeral Chapel

786 McMinnville Hwy. • Manchester, TN 37355
Sherry O'Neal • 931-723-3330

Manchester Funeral Home

214 East Main Street • Manchester, TN 37355
Tim Kilgore • 931-728-3505

GLASS

ALL GLASS

215 Murfreesboro Hwy. • Manchester, TN 37355
Tim or Teya Lowery • 931-728-6447

GROCERY

Food Lion

944 Hillsboro Blvd. • Manchester, TN 37355
John Nolan • 931-728-0995

Spring Street Market

801 Spring Street • Manchester, TN 37355
Kenneth Duke • 931-728-3421

HAIR SALONS, NAILS

Posh Nails

191 Relco Drive • Manchester, TN 37355
Trieu Vo • 931-450-1100



Always A  at Eaton's

Plumbing & Electrical, Garden, Tools, Hardware, Paint

Eaton ACE Hardware

1084 Murfreesboro Hwy., Manchester, TN
931-728-3568 • 931-728-3238
Monday - Friday 7:00 A.M. - 6:00 P.M., Saturday 7:30 A.M. - 4:00 P.M.



Coffee County Bank

Your Home Town Bank

931-728-1975
www.coffeecountybank.com

Member
FDIC

 EQUAL HOUSING
LENDER

HEATING & AIR CONDITIONING

H & S Mechanical

815 McArthur Street • Manchester, TN 37355
Melisa Sands • 931-954-6060

Roscoe Brown Heating & AC

410 South Roosevelt • Tullahoma, TN 37388
Mike Hutchins • 931-461-7441

Rusty Tensfield Heating & Cooling

4630 Mt. View Rd. • Manchester, TN 37355
Rusty Tensfield • 931-212-4910

Shelton's Heating & Cooling

1005 Murfreesboro Hwy. • Manchester, TN 37355
Terry Shelton • 931-723-4996

HEAVY EQUIPMENT

Thompson Machinery/Thompson Power

3565 New Tullahoma Highway
Manchester, TN 37355
Tim Williams • 931-461-5000

HOTELS/LODGING

Ambassador Inn & Luxury Suites

925 Interstate Drive • Manchester, TN 37355
Ken Waggoner • 931-728-2200

Comfort Suites

152 Hospitality Blvd. • Manchester, TN 37355
Kayla Transue • 931-728-1301

Hampton Inn & Suites

1143 Woodbury Hwy. • Manchester, TN 37355
Jay Patidar • 931-728-9533

Holiday Inn Express & Suites

111 Hospitality Blvd • Manchester, TN 37355
Amber Kelley • 931-728-9383

Holiday Inn Express & Suites

2030 N. Jackson St. • Tullahoma, TN 37388
Lyndsay Dorman • 931-222-1414

Manchester KOA

586 Campground Road • Manchester, TN 37355
Barbara Dale • 931-728-9777

Sleep Inn/Choice Hotels

84 Relco Drive • Manchester, TN 37355
Jay Kalvala • 615-496-5271

The Leming House

414 East Main Street • Manchester, TN 37355
Sherry Cook • 931-728-5005

INDIVIDUAL

Barbara Arp

132 Magnolia Glen Circle • Manchester, TN 37355
931-728-4016

Evans Baird

200 Bob White Drive • Manchester, TN 37355
931-607-3865

Lowell Duke

8751 Maple Springs Rd. • Morrison, TN 37357
931-728-9477

John Greeter

4108 Old Tullahoma Hwy. • Manchester, TN 37355
931-723-1451

Where Great Deals Happen Every Day!

MEADOWS HOMES
EST. 1983

OF **McMINNVILLE**
4651 MANCHESTER HWY
(931)668-7300
MEADOWSHOMES.COM

MEMBER **energyright** solutions TVA
PREFERRED PARTNERS NETWORK

Wilson Henley

140 Scott Swinney Drive • Manchester, TN 37355
931-728-5690

John Hershman

PO Box 828 • Manchester, TN 37349
931-273-4252

Coolidge Holt c/o Susan Yother

321 Belmont Rd. • Manchester, TN 37355
931-728-3925

Shaw Jared

200 South Woodland • Manchester, TN 37355
931-808-3701

Bill Johnson

25 Big Falls Circle • Manchester, TN 37355
931-728-5010

Claude Morse

PO Box 10 • Manchester, TN 37349
931-728-0431

Mary H. Niederhauser

1106 Hillsboro Blvd. • Manchester, TN 37355
931-728-0354

Mike Niederhauser

280 Westwood Ct. • Estill Springs, TN 37330
931-247-0935

Coy Noblitt

134 Magnolia Glen Circle • Manchester, TN 37355
931-728-4987

Jewell Noblitt

134 Magnolia Glen Circle • Manchester, TN 37355
931-728-4987

Glen Norfleet

98 Bob White Drive • Manchester, TN 37355
931-728-7508

Dr. Prater Powell

909 Mayfield St. • Manchester, TN 37355
931-728-2024

Dr. Charles L. Rogers

202 Hillwood Circle • Manchester, TN 37355
931-728-2026

Sally Singles

146 Fredonia Road • Manchester, TN 37355
931-450-2147

Dr. Harold Speer

629 Lynah Ln. • Beech Grove, TN 37018
931-312-9695

Don Wheeler

1521 Bains Road • Hillsboro, TN 37342
931-224-8806

Eugene Wust

P.O. Box 1362 • Manchester, TN 37349
931-723-0744

INDUSTRIAL/ MANUFACTURING

Aerospace Testing Alliance

100 Kindel Drive, Suite B212
Arnold AFB, TN 37389-2212
Kathy Gattis • 931-454-5655

Barfield Manufacturing

621 Park Tower Drive • Manchester, TN 37355
Larry Surles • 931-723-0507

Batesville Casket Company

175 Monogard Road • Manchester, TN 37355
Randy Glenn • 931-728-2231

Fischer Tool & Die Corp

37 Murray Drive • Tullahoma, TN 37388
Greg Fox • 931-563-8024

fischer USA Stainless Steel Tubing

1120 AEDC Access Road • Manchester, TN 37355
Joe Franks • 931-596-3566

Industrial Board of Coffee County

1329 McArthur St., Suite 4 • Manchester, TN 37355
Ted Hackney • 931-723-5120

K & S Steel Fabricators

828 Interstate Drive • Manchester, TN 37355
Ray Koon • 931-728-1338

Kokomo Grain Company

185 Interstate Drive • Manchester, TN 37355
Bruce Brandon • 931-728-3065

M-TEK, Inc.

1020 Volunteer Parkway • Manchester, TN 37355
Tsutae (Sti) Sowell • 931-728-4122

Newell/Rubbermaid

831 Volunteer Parkway • Manchester, TN 37355
Jim Cunningham • 931-728-9819

Ravago

405 Park Tower Drive • Manchester, TN 37355
Tina Warren • 931-728-7009

Scan Technology, Inc.

170 Keele Road • Manchester, TN 37355
Mike Flowers • 931-723-0304

Van-Rob

1021 Volunteer Pkwy. • Manchester, TN 37355
Steve Falter • 931-461-9353

VIAM

87 Park Tower Drive • Manchester, TN 37355
Tammy May • 931-461-2301

INSURANCE

Bill Nickels Insurance

107 E. McLean Street • Manchester, TN 37355
Bill Nickels • 931-728-9623

Billy Levensgood Agency - Farmers Insurance

202 Woodbury Hwy. Suite 500
Manchester, TN 37355
Billy Levensgood • 931-570-4320

Blue Cross Blue Shield of TN

400 ML King Blvd. • Chattanooga, TN 37402
Shea Phillips • 423-290-3578

Brett Chaffin Agency

Farmer's Insurance • Tullahoma, TN 37388
Brett Chaffin • 931-563-5243

Bush Insurance

110 Fort Street • Manchester, TN 37355
Buster Bush • 931-728-4605

Cowan Benefit Services

241 Camille St. • Manchester, TN 37355
Jim Cavendish • 931-723-6609

Farm Bureau Insurance

225 East Main Street • Manchester, TN 37355
Mark McBride • 931-728-4673

Farm Credit Mid-America

1508 New Smithville Hwy. • McMinnville, TN 37110
Kristin Mackie • 931-473-8436

WE LOVE TO BUILD!

- Custom Homes • Water Remediation • Smoke & Fire Restorations
- Renovations • Roofing • Additions

Custom homes or renovations, we do it all. We can make your dream a reality.

*"We Love To
To Build"*



Construction & Renovation LLC

(931) 728-2664

Russ Barrett - Owner

When a disaster strikes, call the professionals.
We work with several insurance companies to
get you back in your home & on with your life.

931-728-2664

905 Kennedy Dr. | Manchester TN
www.barrettconstructionco.com
welovetobuild1@aol.com



MANCHESTER HAPPENINGS

Guess Insurance Agency

101 South Woodland St. • Manchester, TN 37355
Roger Guess • 931-728-8845

New York Life Insurance Co.

1703 Sycamore Circle • Manchester, TN 37355
Lynn Cimino-Hurt • 931-691-2703

State Farm Insurance

540 Hillsboro Hwy. • Manchester, TN 37355
Jerry Stephens • 931-728-4741

INTERNET/CABLE TV/ PHONE SERVICE

AT&T

200 West MLK, Suite 1202 • Chattanooga, TN 37402
Mary Stewart Lewis • 423-265-2224

Ben Lomand Rural Telephone Coop.

P. O. Box 670 • McMinnville, TN 37111-0670
Susan Bain • 800-974-7779

Spectrum Business

215 Industrial Blvd. • Tullahoma, TN 37388
888-438-2427

IT SERVICES & COMPUTER TECHNOLOGY

Advanced Network Solutions

820 Palmer Place • Nashville, TN 37203
Richard Pinson • 615-277-0500

On Site Technology

301 N. Jackson St. • Tullahoma, TN 37388
Matt Palmer • 931-461-5750

Up Tech Services, LLC

101 South East Atlantic St. • Tullahoma, TN 37388
Jeremy Stoner • 931-461-5391

JEWELERS

Hoover's Jewelers, Inc.

1301 Hillsboro Blvd. • Manchester, TN 37355
Marlin Hoover • 931-728-2905

Woodard's Diamonds & Design

1600 North Jackson Street • Tullahoma, TN 37388
Jim Woodard • 931-454-9383

LANDSCAPING/ LAWN MAINTENANCE

Mr. T's Landscaping Service

161 EZ Lane • Manchester, TN 37355
Ron Turgeon • 931-219-2123

Perry's Lawnscape & Property Management

5423 McMinnville Hwy. • Manchester, TN 37355
David Perry • 931-393-3040

MEDIA

105.3 WOW Country

230 West Colville Street • McMinnville, TN 37110
Lana Whitlock • 931-473-9253

Community Creations Inc.

P. O. Box 307241 • Columbus, OH 43230
Joe Genco • 614-460-3656

Enternet International

356 Ridgefield Circle • Winchester, TN 37398
Dave & Lilli Stevens • 931-273-5484

Exchange, Inc.

109 West Lincoln Street • Tullahoma, TN 37388
Will Thomas • 931-728-3273

Fantasy Radio WFTZ-FM

1027 Hillsboro Blvd. • Manchester, TN 37355
Amber Dotson • 931-728-3458

Local Cable Channel 6

PO BOX 1662 • Tullahoma, TN 37388
Jim Fuller • 931-393-0081

Manchester Times

300 N. Spring St. • Manchester, TN 37355
Josh Peterson • 931-728-7577

MEDICAL/HEALTH & WELLNESS

Air Evac Lifeteam

1592 Volunteer Parkway • Manchester, TN 37355
Josh Reive • 931-723-2934

Blood Assurance

1500 North Jackson St. • Tullahoma, TN 37388
Vicky Shelton • 931-461-5773

Bradford Health Services

1601 McArthur • Manchester, TN 37355
Judy Rickett • 931-728-4442

Care South Homecare Professionals

2068 Cowan Highway • Winchester, TN 37398
Tara Tucker • 800-342-3454

Carson Chiropractic Clinic

1502 McArthur St. • Manchester, TN 37355
Marvin Carson • 931-723-4878



- Long Term Care
- Respite Care
- Adult Daycare

Manchester
931-728-9033

Winchester
931-962-3014

Fayetteville
931-438-9035

baileymanors.com



ALL GLASS

Commercial & Residential



*New And Used Tires
Available With Mount
And Balance*

- Auto Glass
- Chip Repair
- Custom Mirrors
- Shower Doors
- Plate Glass
- Store Fronts
- Door Repair

215 Murfreesboro Hwy.
Manchester, TN 37355

931-728-6447 • 931-952-0347
allglassmanchester@att.net



Community Cancer Care

2114 North Jackson St. • Tullahoma, TN 37388
Donna Bradford • 931-454-9002

Delta Rehab

852 Interstate Drive • Manchester, TN 37355
Briana Hendrix • 931-728-5479

Fast Pace Urgent Care

1415 Hillsboro Boule - Suite 106
Manchester, TN 37355
Barrett Wilson • 855-632-4700

Harton Regional Medical Center

1801 North Jackson Street • Tullahoma, TN 37388
Ava Lynch • 931-393-7901

Horizon Health & Rehab Center

811 Keylon Street • Manchester, TN 37355
Blaine Lee • 931-728-3599

Manchester Health Care

395 Interstate Drive • Manchester, TN 37355
Christopher Green • 931-723-8744

Manchester/Tullahoma Pediatrics

1911 McArthur Street • Manchester, TN 37355
Judy Kemp • 931-455-2674

Mid-Town Medical Clinic

1815 Hillsboro Blvd. • Manchester, TN 37355
Rebecca Norfleet • 931-728-3712

Middle TN Urology Specialists

1747 Medical Center Parkway
Murfreesboro, TN 37129
Kim Bullock • 615-893-1600

Partners for Healing

109 W Blackwell St. • Tullahoma, TN 37388
Belle Ruyten • 931-455-5014

Premiere Women's Health Center

1402 Willow Drive • Manchester, TN 37355
Nick Knight

Star Physical Therapy

585 Interstate Drive, Suite A • Manchester, TN 37355
Leslie Trussler • 931-723-7156

Sweet Pea 3D/4D Boutique

115 N. Woodland St. • Manchester, TN 37355
Christy Vann • 931-723-7904

Trussler, Jay M. DOPC

585 Interstate Drive - Suite B • Manchester, TN 37355
Brooke Sain • 931-728-9000

Unity Medical Center

481 Interstate Drive • Manchester, TN 37355
Martha McCormick • 931-728-6354

MOBILE HOMES

Meadows Homes

PO Box 8246 • McMinnville, TN 37111
Rob Steg • 931-668-7300

OFFICE EQUIPMENT

ACES

335 Beechwood Circle • Manchester, TN 37355
Craig Abbott • 931-247-8706

RJ Young Company

807 Nashville Hwy. • Columbia, TN 38401
Kerry Norris • 931-455-8215

OPTOMETRY

Anderson Eye Care

1642 McArthur Street • Manchester, TN 37355
Summer Anderson • 931-728-1315

PAWN SHOPS

KK's Music, Loan & Jewelry

809 Hillsboro Blvd. • Manchester, TN 37355
Ken Huddleston • 931-728-4242

Toliver's Pawn Shop

110 North Spring Street • Manchester, TN 37355
Michael Bass • 931-728-2360

PEST CONTROL

Burl's Termite & Pest Control

105 Ake Street • Estill Sprints, TN 37330
Burl Hiles • 931-455-1191

Patton Pest Control

4979 Murfreesboro Hwy. • Manchester, TN 37355
Tyler Patton • 931-247-0781

Cash in on Free Listings

Place two free ads over the phone each week or *list unlimited free ads online.*



Call 433-9737 or go online Exchange931.com

*Free Ads placed over the phone must contain single items listed below \$1,000.
Animals and services are excluded from free ads over the phone.*

Exchange931.com

Our Team

404 Main Ave. South, Fayetteville, TN 37334
109 West Lincoln St., Tullahoma, TN 37388
Monday Thru Friday 8:00 AM - 5:00 PM
931-728-3273 | www.Exchange931.com
Copyright 2016 Exchange Inc.

Publisher | Will Thomas
Director of Sales | Katie Thomas
Founder | Bill Thomas (1940-2010)
Market Manager | Hayden Hamilton
Sales Representatives | Stacy Flynt, Hope Sartain, Sandra Thomas,
Circulation Manager | Greta Painter
Production Artists | Melissa Hyde, Ben Adams, Todd Pitts, Gabrielle Mullins, Travis Crabtree
Operations Manager | Judy Flynt
Operations | Liz Ferrell, Barb Hargrove, Tracey Pollock

Sherrill Pest Control

3731 New Tullahoma Hwy. • Manchester, TN 37355
Vernon Sherrill • 931-728-4290

PHARMACIES

Baker Brothers Drug Company

120 East Main Street • Manchester, TN 37355
Dawn Hafer • 931-728-3226

Marcrom's Pharmacy

1277 McArthur Street • Manchester, TN 37355
Ray Marcrom • 931-728-1100

Walgreen's Pharmacy

806 McArthur St. • Manchester, TN 37355
Trey Gooch • 931-728-0874

PHOTOGRAPHY

Miller Photography

3379 Highland Road • McMinnville, TN 37110
David & Shelly Miller • 931-668-1969

PRINT, SIGNS & PROMOTIONAL PRODUCTS

J Mac Promotional Products

PO Box 196 • Manchester, TN 37349
Joni McReynolds • 703-408-5851

Silver Lining Signs

926 Highland Drive • Manchester, TN 37355
Frank Lee • 931-723-4155

Totalgraphics, INC

105 West High St. • Manchester, TN 37355
Amanda Ham • 931-728-8081

REAL ESTATE & TITLE COMPANIES

Bell & Alexander Title Services, Inc

928 Jackson St • Manchester, TN 37355
Mark Bell • 931-728-3070

Coffee County Realty & Auction

532 Hillsboro Blvd. • Manchester, TN 37355
Jimmy/Nancy Jernigan • 931-728-2800

Exit Realty Partners

861 McArthur St. • Manchester, TN 37355
Mitch Umbarger • 931-723-3300

Ron Mayes - Realtor

861 McArthur Street • Manchester, TN 37355
931-580-2240

Metropolitan Escrow, Inc.

1415 N Jackson St. • Tullahoma, TN 37388
Cindy Putman • 931-454-0668

Middle TN Assoc. of Realtors

311 Butler Drive • Murfreesboro, TN 37127
Candy Joyce • 877-893-2242

RE/MAX 1st Realty

2830 Woodbury Hwy. • Manchester, TN 37355
Freda Jones • 931-728-5552

Sam Rittenberry - Realtor

1893 Warren Road • Manchester, TN 37355
931-728-7570

Brad Weibert - Realtor

861 McArthur Street • Manchester, TN 37355
931-723-3300

Weichert Realtors

309 South Jackson Street • Tullahoma, TN 37388
Kathy Orr • 931-455-0555

Woodland Title & Escrow

1500 McArthur St. • Manchester, TN 37355
Judy Lamb • 931-954-5900

RECREATION, SPORTS & FITNESS

Old Stone Fort State Archaeological Park

732 Stone Fort Drive • Manchester, TN 37355
Keith Wimberley • 931-723-5073

Snap Fitness

1216 Hillsboro Blvd. • Manchester, TN 37355
Sarah Jordan • 931-450-3430

Willowbrook Golf Club

6751 McMinnville Highway • Manchester, TN 37355
David Burris • 931-728-8989

RECYCLING

CFC Recycling, Inc.

PO Box 1225 • Tullahoma, TN 37388
David Cleveland • 931-454-2222

Southern Central Waste Services

4530 Manchester Hwy. • McMinnville, TN 37110
David Cleveland • 931-668-8044

Top Secret Document Destruction

4478 Old Manchester Hwy. • Tullahoma, TN 37388
Melia Davis • 931-454-9878

RESTAURANTS

41 South Sports Bar & Grill

2011 Hillsboro Blvd. • Manchester, TN 37355
Donald Hart • 931-723-8988

Captain D's Seafood Restaurant

2166 Hillsboro Blvd. • Manchester, TN 37355
Scott Jones • 931-728-1130

Coffee Cafe

108 W. McLean Street • Manchester, TN 37355
Jeff/Lisa Moreland • 931-954-0440

Cracker Barrel

103 Paradise • Manchester, TN 37355
Melissa Fernandez • 931/723-1358

Fuel So Good Coffee Roasters

1407 North Jackson Street • Tullahoma, TN 37388
Brenda Lavieri • 931-993-5664

J & G Pizza & Steak House

520 McMinnville Hwy • Manchester, TN 37355
Jim & Lisa Rouvelas • 931-728-9696

Jiffy Burger

1001 Hillsboro Blvd. • Manchester, TN 37355
Tracy St. John • 931-728-4452

Logan's Roadhouse

205 Relco Drive • Manchester, TN 37355
Morgan Holder • 931-723-7796

Manchester CHILL Frozen Yogurt & Dessert

2161 Hillsboro Blvd. - Suite 13 • Manchester, TN 37355
Michelle Hummel • 931-954-5722

Prater's Bar-B-Que

620 Woodbury Hwy. • Manchester, TN 37355
Gary Prater • 931-954-5377



Russell Stover

2244 Hillsboro Boulevard

Manchester, TN 37355

931-723-2488

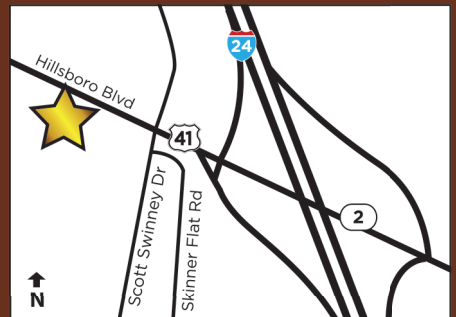
West of I-24 at exit 114

Simply Perfect
Ice Cream Sundaes

Gourmet Jumbo
Caramel Apples

Silky Handmade Fudge

Huge savings on factory
overstocks & "Bloopers"



Russell Stover

20% OFF

YOUR ENTIRE PURCHASE



CP00321500001

Bring this coupon to the Manchester, TN Russell Stover store to receive 20% off of your entire purchase. Gift Cards, Intermediates, and Bloopers are excluded. Offer valid through 12-31-16; not valid with orders placed online or by phone. Cannot be combined with other offers or discounts.

Sweet Tea Bakery & Cafe'

115 West Main Street • Manchester, TN 37355
Erica Colter • 931-954-0021

Zaxby's

2161 Hillsboro Blvd. • Manchester, TN 37355
Andrew May • 931-

RETAIL SHOPPING

Aficionado's Fine Cigars

1524 Murfreesboro Hwy. • Manchester, TN 37355
Greg Lemons • 931-954-6150

Chattanooga Goodwill Industries

2161 Hillsboro Blvd. • Manchester, TN 37355
Dee Dee Carlton • 931-723-4078

Cooper Sports & More

1073 Mufressboro Hwy • Manchester, TN 37355
Linda Cooper • 931-728-2323

Eaton Home Center

1084 Murfreesboro, Hwy. • Manchester, TN 37355
Jim Cartwright • 931-728-3568

Enchanted Planet

26 Sitz Dr. • Manchester, TN 37355
Louis Berbert • 931-954-6121

Factory Connection, LLC

1238 Hillsboro Blvd. • Manchester, TN 37355
Sherry Driver • 931-723-1319

Merle Norman Cosmetics

1907 McArthur St. • Manchester, TN 37355
Jenny/Cindy Jackson/West • 931-728-0440

North Side Clocks

1654 McArthur St. • Manchester, TN 37355
Howell Rust • 931-728-4307

Russell Stover Candies

2244 Hillsboro Blvd. • Manchester, TN 37355
Rita Church • 931-723-2488

Tasty Vape Shop

101 Murfreesboro Hwy. • Manchester, TN 37355
Tera Sons • 931-723-6428

The Home Depot

187 Roberts Lane • Manchester, TN 37355
Brandon Creekmore • 931-728-1224

Tractor Supply Co.

2161 Hillsboro Blvd. • Manchester, TN 37355
Jeremy Angel • 931-723-4195

Walker Gardens Gift Shop

8509 McMinnville Hwy. • Morrison, TN 37357
Rhonda Walker • 931-743-6861

Wal-Mart

2518 Hillsboro Blvd. • Manchester, TN 37355
Pebbles Martin • 931-728-3196

SECURITY SYSTEM PROVIDERS

Life Communications & Security, Inc.

919 North Washington St. • Tullahoma, TN 37388
Jeff Wooten • 931-455-9016

SERVICE ORGANIZATIONS

Better Business Bureau

PO Box 198436 • Nashville, TN 37219
Teri Page • 615-867-0032

Casa Works, Inc.

1301 E. Carroll St. • Tullahoma, TN 37388
Wanda Strayhorn • 931-455-7426

**Family is
why we
do it all.**

We all feel the same commitment to care for our families. Helping you meet your insurance needs is part of my commitment to you.

Like a good neighbor, State Farm is there.®

CALL ME TODAY.



Jerry L. Stephens, Agent

540 Hillsboro Hwy
Manchester, TN 37355
Bus: 931-728-4741
Fax: 931-728-4743

www.jerrystephensagency.com



0907504.1

State Farm, Home Office, Bloomington, IL

Coffee County Anti Drug Coalition
122 McMinnville Hwy. • Manchester, TN 37355
Kristina Clark • 931-247-2542

Coffee County Children's Advocacy Center
104 North Spring St. • Manchester, TN 37355
Joyce Prusak • 931-723-8888

Coffee County Drug Court
604 College St. • Manchester, TN 37355
Mike Lewis • 931-723-3051

Coffee County Fair Association
PO Box 269 • Manchester, TN 37349
Sammy Long • 931-394-2499

Coffee County Humane Society
PO Box 252 • Manchester, TN 37349
931-728-0903

Coffee County Imagination Library
PO Box 117 • Tullahoma, TN 37388
Frances Samples • 931-455-2648

Foothills Crafts
418 Woodbury Highway • Manchester, TN 37355
Phyllis Dix • 931-728-9236

Gattis Leadership
PES - 128 S. 1st Street • Pulaski, TN 38478
Susan Carlisle • 931-638-3539

Girl Scouts
506 Hillsboro Blvd. - Suite 103 • Manchester, TN 37355
Tammy Lambert • 615-460-0256

Hands-On Science Center
101 Mitchell Blvd. • Tullahoma, TN 37388
931-455-8387

Highland Rim Habitat For Humanity, Inc.
PO Box 1295 • Tullahoma, TN 37388-1295
Jim Miller • 931-393-2383

Hospice of the Highland Rim Foundation
110 E. Lauderdale St. • Tullahoma, TN 37388
Jennifer Lazenby • 931-563-7439

Keep Coffee County Beautiful
1335 McArthur St; Suite 4-B • Manchester, TN 37355
Tonya Wilkinson • 931-728-6729

Life Choices Pregnancy Support Center
37 Sunrise Park Drive • Winchester, TN 37398
Donna Malone • 931-962-8822

Manchester Housing Authority
710 Butler Circle • Manchester, TN 37355
Nancy Huddleston • 931-728-2596

Manchester Lions Club
134 Magnolia Glen Circle • Manchester, TN 37355
Jewel Noblitt • 931-728-4987

Manchester Rotary Club
PO Box 575 • Manchester, TN 37355
Dr. LaDonna McFall • 931-723-5150

South Central Human Resource Agency
PO Box 638 • Fayetteville, TN 37334
James Anderson • 931-433-7182

Sportsmen & Businessmen's Charitable Organization
PO Box 1078 • Manchester, TN 37349
931-728-5048



Batesville Manufacturing, Inc.

A HELLENBRAND INDUSTRY

MANCHESTER, TENNESSEE

175 Monogard Drive • Manchester, TN 37355

(931) 728-2231

United Way Of Coffee & Moore Counties

P.O. Box 27 • Tullahoma, TN 37388

Alisha Bell • 931-455-5678

SKIN CARE

The Spa In Manchester

211 Woodland St. • Manchester, TN 37355

Michelle Valeri • 615-542-5874

STORAGE FACILITIES

Henley's Mini Storage

106 East Fort St. • Manchester, TN 37355

Brett Henley • 931-728-7817

Powers Mini Storage

607 Woodbury Hwy. • Manchester, TN 37355

Daniel Powers • 931-728-7181

TRUCKING & TRANSPORT

SMS Transport

PO Box 233 • Hillsboro, TN 37342

Marlena Scott • 931-596-4112

UTILITIES

Duck River Electric

P.O. Drawer 1139 • Manchester, TN 37349-1139

Michael Milraney • 931-728-7547

Elk River Public Utilities District

217 South Jackson Street • Tullahoma, TN 37388

Becky Huddleston • 931-728-3332

VETERINARY

All Creatures Veterinary Clinic, PC

1567 McMinnville Hwy. • Manchester, TN 37355

Gary Nester • 931-723-0551

Animal Health Clinic

1722 Hillsboro Blvd. • Manchester, TN 37355

Chris Blevins • 931-728-6633



We Go Above & Beyond...

Serving Manchester Since 1985
Certified Auto Technicians • Diagnostics Tune Ups • Brakes
• Electrical • A/C & Heating • Gas or Diesel
Transmission & Engine Replacements • Autos, Trucks & Tractors

Locally Owned
& Operated

J&W
Since 1985
REPAIR
A Cut Above

728-1583

MOST ESTIMATES FREE • TOWING AVAILABLE

Hwy. 41 N. • 2030 Murfreesboro Hwy. • Manchester
Mon. - Fri. 8 A.M. - 5 P.M. - Sat 8 A.M. - Noon



fischer
group

fischer USA
1120 AEDC Access Road
Manchester, TN 37355

931-596-3566
fischer-usa.com





**Proudly Supporting
The Community Of
Manchester, TN**



Ravago Manufacturing Americas
405 Park Tower Dr. • Manchester, TN • www.Ravago.com

We Have You Covered

Pete Jackson

Pete Jackson Floor Covering
815 McArthur St.
Manchester, TN 37355
931-728-1419
Mon.-Fri. 8:00 A.M. - 5:00 P.M.
Sat. 8:00 A.M. - Noon



**WITH LIVE MUSIC
EVERY WEEKEND!**

Prater's
**Bar-B-Que
& Catering**

931-954-5377

MON - THUR 11 AM - 9 PM • FRI & SAT 11 AM - 10 PM
SUN 11 AM - 3 PM
620 Woodbury Hwy.
Manchester, TN 37355

**PIG OUT
THEN
Jam Out**

GRAB SOME BUDS

Prater's Bar-B-Que & Catering



MANCHESTER HAPPENINGS



ALPHABETICAL LISTINGS

105.3 WOW Country

230 W. Colville St., McMinnville, TN 37110
Lana Whitlock • 931-473-9253

41 South Bar & Grill

2011 Hillsboro Blvd., Manchester, TN 37355
Donald Hart • 931-723-8988

55 West Tobacco & Beverage Depot

2032 McArthur Street, Manchester, TN 37355
Orville Foster • 931-728-4477

AC Entertainment

507 S. Gay St. Suite 1100, Knoxville, TN 37902-2132
Jeff Cuellar • 865-523-2665

A Wireless Premium Retailer

2532 Hillsboro Rd., Ste. A, Manchester, TN 37355
Tara Nelson • 931-728-6780

ACES

335 Beechwood Cir., Manchester, TN 37355
Craig Abbott • 931-247-8706

Advanced Network Solutions

820 Palmer Place, Nashville, TN 37203
Richard Pinson • 615-277-0500

Advance Financial 24/7

1401 Hillsboro Blvd., Manchester, TN 37355
Jamie Saltzman • 931-570-4293

Aerospace Testing Alliance

100 Kindel Drive, Suite B212, Arnold AFB, TN 37389
Kathy Gattis • 931-454-5655

Aficionado's Fine Cigars

1524 Murfreesboro Hwy., Manchester, TN 37355
Greg Lemons • 931-954-6150

Air Evac Lifeteam

1592 Volunteer Pkwy., Manchester, TN 37355
David Copeland • 931-723-2934

Al White Motors

2002 Hillsboro Blvd., Manchester, TN 37355
Jerry White • 931-728-2402

All Creatures Veterinary Clinic

1567 McMinnville Hwy., Manchester, TN 37355
Gary Nester • 931-723-0551

All Glass

215 Murfreesboro Hwy., Manchester, TN 37355
Tim or Teya Lowery • 931-728-6447

Allen, McGee & Associates

110 N. Jackson St., Tullahoma, TN 37388
Mark Allen, CPA • 931-393-3307

Ambassador Inn & Luxury Suites

925 Interstate Dr., Manchester, TN 37355
Ken Wagner • 931-728-2200

American City Bank

1500 Hillsboro Blvd., Manchester, TN 37355
Amanda Montes • 931-728-9907

Anderson, Bridgett

City of Manchester Finance Director
200 W. Fort St., Manchester, TN 37355 • 931-461-3517

Anderson Eye Care

1642 McArthur Street, Manchester, TN 37355
Summer Anderson • 931-728-1315

Animal Health Clinic

1722 Hillsboro Blvd., Manchester, TN 37355
Chris Blevins • 931-728-6633

Arp, Barbara

2477 Woodbury Hwy., Manchester, TN 37355
Barbara Arp • 931-728-4016

Ascend Federal Credit Union

1929 McArthur St., Manchester, TN 37355
Michele Shields • 800-342-3086

AT&T

200 West MLK, Suite 1202, Chattanooga, TN 37402
Mary Stewart Lewis • 423-265-2224

Autumn Oaks

1621 McMinnville Hwy., Manchester, TN 37355
Stephanie Swan • 931-728-0200

Bailey Manor

1707 McMinnville Hwy., Manchester, TN 37355
Cherie Rice • 931-728-9033

Baird, Evans

200 Bob White Dr., Manchester, TN 37355

Baker Brothers Drug Co.

120 East Main St., Manchester, TN 37355
Dawn Hafer • 931-728-3226

Barfield Manufacturing

621 Park Tower Dr., Manchester, TN 37355
Larry Surles • 931-723-0507

Barrett Construction & Renovation, LLC

905 Kennedy Dr., Manchester, TN 37355
Russ Barrett • 931-728-2664

Batesville Casket Company

175 Monogard Rd., Manchester, TN 37355
Randy Glenn • 931-728-2231

For All Your Insurance Needs!



Bush Insurance Agency, Inc.
110 W. Fort St.
Manchester, TN 37355
931-728-4605

Beans Creek Winery, LLC

426 Ragsdale Rd., Manchester, TN 37355
Tom B. Brown • 931-723-2294

Bell & Alexander Title Services, Inc

928 Jackson St., Manchester, TN 37355
John Bell • 931-728-3070

Ben Lomand Rural Telephone Coop.

P.O. Box 670, McMinnville, TN 37111-0670
Susan Bain • 800-974-7779

Better Business Bureau

P.O. Box 198436, Nashville, TN 37219
Teri Page • 615-867-0032

Bill Nickels Insurance

107 E. McLean St., Manchester, TN 37355
Bill Nickels • 931-728-9623

Billy Levensgood Agency

Farmers Insurance
202 Woodbury Hwy., Ste. 500
Manchester, TN 37355
Billy Levensgood • 931-570-4320

Blood Assurance

1500 North Jackson St., Tullahoma, TN 37388
Vicky Shelton • 931-461-5773

Blue Cross Blue Shield of TN

400 MLK Blvd., Chattanooga, TN 37402
Shea Phillips • 423-762-5914

Bradford Health Services

1601 McArthur, Manchester, TN 37355
Judy Rickett • 931-728-4442

Brett Chaffin Agency

Farmer's Insurance
204 N. Washington St., Tullahoma, TN 37388
Brett Chaffin • 931-563-5243

Brown, Dr. Timothy

116 E. Fort St., Manchester, TN 37355
Timothy Brown • 931-728-3861

Bryan, Russell – Alderman

200 West Fort Street, Manchester, TN 37355
931-728-4652

Burch, Eric J.

200 S. Woodland St., Manchester, TN 37355
Eric Burch • 931-723-7997

Burl's Termite & Pest Control

105 Ake St., Estill Springs, TN 37330
Burl Hiles • 931-455-1191

Bush Insurance

110 Fort St., Manchester, TN 37355
Buster Bush • 728-4605

C & H Contractors

1517 Bartlett Dr., Manchester, TN 37355
Don Hershman • 931-728-3864

Calahan, Philip

Peoples Bank & Trust
1203 Hillsboro Blvd., Manchester, TN 37355
931-728-3381

Caldwell Tire & Service

515 Hillsboro Blvd., Manchester, TN 37355
Ronald Caldwell • 931-728-7277

Canvas Community Church

1886 McArthur St., Manchester, TN 37355
Johnny Chase • 931-728-7070

Captain D's Seafood Restaurant

2166 Hillsboro Blvd., Manchester, TN 37355
Scott Jones • 931-728-1130

Carden Estates Apts.

1700 Summer St., Manchester, TN 37355
Angela Donn • 931-723-1333

CareSouth

2068 Cowan Hwy., Winchester, TN 37398
Tara Tucker • 800-342-3454

Carson Chiropractic Clinic

1502 McArthur St., Manchester, TN 37355
Marvin Carson • 931-723-4878

Casa Works, Inc.

1301 E. Carroll St., Tullahoma, TN 37388
Wanda Strayhorn • 931-455-7426

Central Funeral Home, LLC

2812 Hillsboro Hwy., Manchester, TN 37355
Randy Buckner • 931-723-7774

CFC Recycling, Inc.

54 Recycle Dr., Tullahoma, TN 37388
David Cleveland • 931-454-2222

Chambers, George

Fire Chief
1509 Hillsboro Blvd., Manchester, TN 37355
931-728-2999

Char-El Apartments

607 Woodbury Hwy., Manchester, TN 37355
Daniel Powers • 931-728-2230

Chattanooga Goodwill Industries

2161 Hillsboro Blvd., Manchester, TN 37355
Dee Dee Carlton • 931-723-4078

Cheatham, Cynthia, Attorney at Law

209 S. Woodland St., Manchester, TN 37355
Cynthia Cheatham • 931-728-5313

Christopher Equipment

2009 McArthur St., Manchester, TN 37355
Max Christopher • 931-728-5484

Circuit Court Judge Part I

300 Hillsboro Blvd., Box 1, Manchester, TN 37355
Craig Johnson • 931-728-2847

Clay, Carla

First National Bank
100 High St., Manchester, TN 37344
931-728-3518

Clower Automotive

1406 McArthur Dr., Manchester, TN 37355
Ronald or Cyndi Clower • 931-728-9898



Coffee Café

108 W. McLean St., Manchester, TN 37355
Lisa Moreland • 931-954-0440

Coffee County Anti-Drug Coalition

116 West Fort Street, Manchester, TN 37355
Kristina Clark • 931-247-2542

Coffee County Bank

2070 Hillsboro Blvd., Manchester, TN 37355
Brenda Ashby • 931-728-1975

Coffee County Children's Advocacy Center

104 North Spring St., Manchester, TN 37355
Joyce Prusak • 931-723-8888

Coffee County CTE

100 Red Raider Dr., Manchester, TN 37355
Richard Skipper • 931-222-1228

Coffee County Drug Court

604 College St., Manchester, TN 37355
Mike Lewis • 931-723-3051

Coffee County Fair Association

378 Hoodo Rd., Beech Grove, TN 37018
Sammy Long • 931-394-2499

Coffee County Funeral Chapel

786 McMinnville Hwy., Manchester, TN 37355
Sherry O'Neal • 931-723-3330

Coffee County Humane Society

PO Box 252, Manchester, TN 37349
931-728-0903

Coffee County Imagination Library

c/o The City of Tullahoma
P.O. Box 117, Tullahoma, TN 37388
Frances Samples • 931-455-2648

Coffee County Mayor

1329 McArthur St., Ste. 1, Manchester, TN 37355
Gary Cordell • 931-723-5100

Coffee County Realty & Auction

532 Hillsboro Blvd., Manchester, TN 37355
Jimmy & Nancy Jernigan • 931-728-2800

Coffee County School Superintendent

1343 McArthur St., Manchester, TN 37355
Dr. LaDonna McFall • 931-723-5150

Coffee County Skills USA

100 Red Raider Dr., Manchester, TN 37355
Mindy Acklen • 931-723-5159

Comfort Suites

152 Hospitality Blvd., Manchester, TN 37355
Kayla Transue • 931-728-1301

Community Cancer Care

2114 North Jackson St., Tullahoma, TN 37388
Donna Bradford • 931-454-9002

Community Creations Inc.

P.O. Box 307241, Columbus, OH
Joe Genco • 614-460-3656

Continental Arbors Apartments

185 Ester Lane, Manchester, TN 37355
Ronnie Randall • 931-728-1693

Cooper Sports & More

1073 Mufressboro Hwy., Manchester, TN 37355
Linda Cooper • 931-728-2323

Cowan Benefit Services

241 Camille St., Manchester, TN 37355
James B. Cavendish • 931-723-6609

Cracker Barrel

103 Paradise, Manchester, TN 37355
Melissa Fernandez • 931-723-1358

D&R Siding

2320 Hwy. 41A South, Shelbyville, TN 37160
Shawn and Kimberly Roberts • 931-684-1685

Delta Rehab

852 Interstate Dr., Manchester, TN
Briana Hendrix • 931-728-5479

Dennis Hunt & Co. LLC

354 Campground Rd., Manchester, TN 37355
Dennis Hunt • 931-728-2894

At Traders, Our Branches Are Strong & Our Roots Run Deep.



Where do you turn when times are tough? To friends & neighbors who've seen you through good times & bad. Ever since Traders Bank opened its doors in 1889. We've been the area's leading bank, here to serve you & meet all your financial needs. And though our branches are modern and our technology is first-rate, some things at Traders have never changed. We still greet you with a smile & call you by name. When a Traders Employee says "You're welcome," you are. *And you always will be.*



1207 Hillsboro Blvd.
Manchester
931-728-1474

1602 North Main St.
Shelbyville
931-680-3500

120 North Jackson St.
Tullahoma
931-455-3426

412 W. Lincoln St.
Tullahoma
931-455-2391

2695 Dechard Blvd.
Winchester
931-967-3755

DTC Wireless

199 Relco Dr., Manchester, TN 37355
Rene Wilson • 931-723-2688

Duck River Dance

200 E. McLean St., Manchester, TN 37355
Danelle Afferbaugh • 931-570-1763

Duck River Electric

209 East Fort St., Manchester, TN 37355-1139
David Young • 931-728-7547

Duke, Lowell

8751 Maple Springs Rd., Morrison, TN 37357
931-728-9477

Eaton Home Center

1084 Murfreesboro, Hwy., Manchester, TN 37355
Jim Cartwright • 931-728-3568

Edmondson Betzler & Montgomery

202 Woodbury Hwy., Ste. 300, Manchester, TN 37355
Tai Jones • 931-588-1519

Edward Jones

1416 McArthur St., Manchester, TN 37355
Bruce Shaw • 931-728-8398

Elk River Public Utilities District

217 S. Jackson St., Tullahoma, TN 37388
Becky Huddleston • 931-728-3332

Enchanted Planet

26 Sitz Dr., Manchester, TN 37355
Louis Berbert • 931-954-6121

Enternet International

356 Ridgefield Cir., Winchester, TN 37398
Dave & Lilli Stevens • 931-954-6121

Exchange, Inc.

111 West Lincoln, Tullahoma, TN 37388
Will Thomas • 931-728-3273

Exit Realty Partners

861 McArthur St., Manchester, TN 37355
Mitch Umbarger • 931-723-3300

Factory Connection, LLC

1238 Hillsboro Blvd., Manchester, TN 37355
Sherry Driver • 931-723-1319

Fantasy Radio WFTZ-FM

1027 Hillsboro Blvd., Manchester, TN 37355
Amber Dotson • 931-728-3458

Farm Bureau Insurance

225 East Main Street, Manchester, TN 37355
Mark McBride • 931-728-4637

Farm Credit Services Mid-American

1508 New Smithville Hwy., McMinnville, TN 37110
Scott Holmes/Kristin Mackie • 931-473-8436

Fast Pace Urgent Care

1415 Hillsboro Blvd. Ste. 106
Manchester, TN 37355
Barrett Wilson • 931-954-5605

First National Bank

100 High St., Manchester, TN 37355
931-728-3518

First National Mortgage Services

304 N. Spring St., Manchester, TN 37355
Lana Esslinger • 931-954-5560

First Presbyterian Church

1101 Jackson St. • Manchester, TN 37355
C. J. Thompson • 931-728-3009

First Vision Bank

2134 Hillsboro Rd. • Manchester, TN 37355
Jon Bell • 931-723-3224

Fischer Tool

37 Murray Dr., Tullahoma, TN 37388
Greg Fox • 931-563-8024

fischer USA

1120 AEDC Access Rd., Manchester, TN 37355
Joe Franks • 931-596-3566

Fletcher, Elissa

Coffee County Property Assessor's Office
1341 McArthur St., Ste. 3, Manchester, TN 37355
931-723-5126



Judy Lamb
Jack Gritton
1500 McArthur St., Manchester
WoodlandEscrow.com

Phone (931) 954-5900
Fax (931) 954-5950
Cell (931) 842-0036
Judy@TitleServices.email

Care is in everything we do.



Autumn Oaks
assisted living
by **Americare**

931.728.0200
1621 McMinnville Highway in Manchester
www.americareusa.net



PEOPLES BANK
& TRUST COMPANY

Phone 931-728-3381 • Fax 931-728-3255
1203 Hillsboro Blvd. • Manchester, TN
www.bankwithpeoples.com



Member **FDIC**

Food Lion

944 Hillsboro Blvd., Manchester, TN 37355
John Noland • 931-728-0995

Foothills Crafts

418 Woodbury Hwy., Manchester, TN 37355
Phyllis Dix • 931-728-9236

French, Ryan

Alderman • 200 West Fort St., Manchester, TN 37355
931-728-4652

Fuel So Good Coffee Roasters

407 N. Jackson St., Tullahoma, TN 37388
Brenda Lavieri • 931-993-5664

Gamble, Bonnie

Recreational Director
557 North Woodland St., Manchester, TN 37355
931-728-0273

Gateway Tire & Service Ctr.

378 McMinnville Hwy., Manchester, TN 37355
Jeff Cox • 931-723-3701

Gattis Leadership

PES/128 S. 1st St., Pulaski, TN 38478
Susan Carlisle • 931-638-3539

George Dickel Distillery

P.O. Box 490, Tullahoma, TN 37388
Allisa Henley • 931-857-3124

Girl Scouts

506 Hillsboro Blvd., Ste. 103
Manchester, TN 37355
Tammy Lambert • 615-460-0256

Goodwin, Brad

Peoples Bank & Trust
1203 Hillsboro Blvd., Manchester, TN 37355
931-728-3381

Greeter, John

4108 Old Tullahoma Hwy., Manchester, TN 37355
John Greeter • 931-723-1451

Guess Insurance Agency

101 S. Woodland St., Manchester, TN 37355
Roger Guess • 931-728-8845

H & R Block

2161 Hillsboro Blvd., Ste. 8, Manchester, TN 37355
Rosalyn Partin • 931-728-9462

H & S Mechanical

815 McArthur St., Manchester, TN 37355
Melisa Sands • 931-954-6060

Hamilton-Ryker

2161 Hillsboro Blvd. Ste. 2, Manchester, TN 37355
Tammie Patterson • 931-728-0515

Hampton Inn & Suites

1143 Woodbury Hwy., Manchester, TN 37355
Jay Patidar • 931-728-9528

Hands-On Science Center

101 Mitchell Blvd., Tullahoma, TN 37388
Scott Riddell • 931-455-8387

Hartou Regional Medical Center

1801 North Jackson St., Tullahoma, TN 37388
Ava Lynch • 931-393-7901

Henley, Wilson

140 Scott Swinney Dr., Manchester, TN 37355
931-728-5690

Henley's Mini Storage

106 East Fort St., Manchester, TN 37355
Brett Henley • 931-728-7817

Hershman, John

P.O. Box 828, Manchester, TN 37349
931-273-4252

Highland Rim

Habitat For Humanity, Inc.
P.O. Box 1295, Tullahoma, TN 37388
Jim Miller • 931-393-2383

Holiday Inn Express & Suites

111 Hospitality Blvd., Manchester, TN 37355
Amber Kelley • 931-728-9383

Holiday Inn Express & Suites

2030 North Jackson St., Tullahoma, TN 37388
Lyndsay Dorman • 931-222-1414



Joe Orr & Associates



309 South Jackson St.
Tullahoma, TN 37388

931-455-0555 / 800-489-0555

www.weichertjoeorr.com or www.weichert.com



Weichert Works!

Each Weichert Affiliate Office is Independently owned & operated

Make More Memories



Established radiation therapy for the past fifteen years.

Community Cancer Care

"Where Hope and Healing Come Together"

2114 North Jackson St., Tullahoma, TN 37388

1-844-HOPE NOW

www.communitycancercare.net

Holt, Coolidge

321 Belmont Rd., Manchester, TN 37355
931-728-3925

Honeycutt Family Dentistry

1240 McArthur St., Manchester, TN 37355
Paul Honeycutt, DDS • 931-728-3501

Hoover's Jewelers, Inc.

1301 Hillsboro Blvd., Manchester, TN 37355
Marlin Hoover • 931-728-2905

Horizon Health & Rehab Center

811 Keylon St., Manchester, TN 37355
Blaine Lee • 931-728-3599

Hospice of the Highland Rim Foundation, INC

110 E. Lauderdale St., Tullahoma, TN 37388
Jennifer Lazenby • 931-563-7439

Industrial Board of Coffee County

1329 McArthur St., Ste. 4 Manchester, TN 37355
Ted Hackney • 931-723-5120

J & G Pizza & Steak House

520 McMinnville Hwy., Manchester, TN 37355
Jim & Lisa Rouvelas • 931-728-9696

J & W Repair

2030 Murfreesboro Hwy., Manchester, TN 37355
Wyatt Nettles Jr. • 931-728-1583

J Mac Promotional Products

P.O. Box 196, Manchester, TN 37349
Joni McReynolds • 703-408-5851

Jack Daniels Visitors Center

182 Lynchburg Hwy., Lynchburg, TN 37352
Steve May • 931-759-6183

Jared, Shaw

200 South Woodland, Manchester, TN 37355
931-808-3701

Jiffy Burger

1001 Hillsboro Blvd., Manchester, TN 37355
Tracy St. John • 931-728-4452

Johnson, Bill

25 Big Falls Circle, Manchester, TN 37355
931-728-5010

Jones, Denton

First National Bank
100 High St., Manchester, TN 37355
931-728-3518

K & S Steel Fabricators

828 Interstate Dr., Manchester, TN 37355
Ray Koon • 931-728-1338

Keep Coffee County Beautiful

1335 McArthur St., Ste. 4-B Manchester, TN 37355
Tonya Keener • 931-728-6729

Keeton & Perry, PLLC

401 Murfreesboro Hwy., Manchester, TN 37355
C. Brent Keeton • 931-723-7145

Kilgore, Tim

Alderman • 200 West Fort St., Manchester, TN 37355
931-728-4652

KK's Music, Loan & Jewelry

809 Hillsboro Blvd., Manchester, TN 37355
Ken Huddleston • 931-728-4242

Kokomo Grain Company

185 Interstate Dr., Manchester, TN 37355
Bruce Brandon • 931-728-3065

Lawson Electric Company

160 Harmon Lane, Chattanooga, TN 37355
Tom McColloch • 931-728-9511

Lee Adcock Construction Co.

826 North Jefferson St., Shelbyville, TN 37160
Kent Holt • 931-684-1771

Life Choices Pregnancy Support Center

37 Sunrise Park Dr., Winchester, TN 37398
Donna Malone • 931-962-8822

Life Communications & Security, Inc.

919 North Washington St., Tullahoma, TN 37388
Jeff Wooten, President • 931-455-9016



Ambassador Inn
& Extended Stay Suites

2 Room Suites with Full Kitchen
Fitness Center
Free Wi-Fi
Onsite Guest Laundry
Free Hot Breakfast



I-24 @ Exit #110
Manchester, TN

1-800-237-9228



Your Satisfaction is Guaranteed

- Custom Manufacturing
- All Work Done On Site
- Computer Engraving

HOOVER'S JEWELERS

1301 Hillsboro Blvd., Manchester, TN • 931-728-2905
Open Monday - Friday 9:00 A.M. - 5:00 P.M. • Saturday 9:00 A.M. - 12:00 P.M.



christopher equipment Rental Center

- Tullahoma • 2117 N. Jackson St. 931-455-3900
- Shelbyville • 1198 Madison St. 931-684-0505
- Manchester • 2009 McArthur Dr. 931-728-5484

www.ChristopherEquipment.com

LKQ of TN

3055 Hillsboro Hwy., Manchester, TN 37355
Bob Wilson • 931-728-6900

Local Cable Channel 6

P.O. Box 1662, Tullahoma, TN 37388
Jim Fuller • 931-393-0081

Logan's Roadhouse

205 Relco Dr., Manchester, TN 37355
Morgan Holder • 931-723-7796

Love Beauty School, Inc.

1161 Murfreesboro Hwy., Manchester, TN 37355
Cristie Fults • 931-723-8188

Manchester Arts Center

128 E. Main St., Manchester, TN 37355
931-728-3434

Manchester CHILL Frozen Yogurt & Dessert Bar

2161 Hillsboro Blvd., Ste. 13
Manchester, TN 37355
Michelle Hummel • 931-954-5722

Manchester City Schools Superintendent

215 East Fort St., Manchester, TN 37355
Sandra Morris • 931-728-2316

Manchester Funeral Home

214 East Main St., Manchester, TN 37355
Tim Kilgore • 931-728-3505

Manchester Health Care

395 Interstate Dr., Manchester, TN 37355
Steve Dunson • 931-723-8744

Manchester Housing Authority

710 Butler Circle, Manchester, TN 37355
Nancy Huddleston • 931-728-2596

Manchester KOA

586 Campground Rd., Manchester, TN 37355
Barbara Dale • 931-728-9777

Manchester Lions Club

134 Magnolia Glen Circle, Manchester, TN 37355
Jewell C. Noblitt • 931-728-4987

Manchester Liquors

1656 Hillsboro Blvd., Manchester, TN 37355
Orville Foster • 931-723-1770

Manchester Pediatrics

1911 McArthur St., Manchester, TN 37355
Judy Kemp • 931-455-2674

Manchester Rotary Club

P.O. Box 575, Manchester, TN 37349
Jon Bell • 931-723-3224

Manchester Times

300 N. Spring Rd., Tullahoma, TN 37388
Josh Peterson • 931-728-7577

Manchester Tire & Brake

1604 Hillsboro Blvd., Manchester, TN 37355
Kevin Vaught • 931-728-5097

Manchester-Coffee Co. Conference Center

147 Hospitality Blvd., Manchester, TN 37355
Alyce Heifner • 931-723-8283

Manning, Dr. Charlie, D.D.S.

1056 McArthur St., Manchester, TN 37355
Robin Shofner • 931-728-4143

Marcrom's Pharmacy

1277 McArthur St., Manchester, TN 37355
Ray Marcrom • 931-728-1100

Mark Lemons Construction

217 Shacin Lane, Manchester, TN 37355
Mark Lemons • 931-723-0764

Martin Methodist College

433 W. Madison St., Pulaski, TN 38478
Edna Luna • 931-363-9824

Mayes, Ron

861 McArthur St., Manchester, TN 37355
931-580-2240

McArthur Manor

119 Bryan Ave., Manchester, TN 37355
Amanda Gilliam • 931-954-0250

Quality Care...
Is Only A Phone Call Away

Physical Therapy • Nursing • Aide Services
Please contact us for your homecare needs.




CARE SOUTH
HOMECARE PROFESSIONALS

2068 Cowan Hwy., Winchester, TN
931-967-0633 | 800-342-3454




**MARCROM'S
PHARMACY**
& Wellness Center

Your hometown discount pharmacy and so much more!

www.marcromspharmacy.com
pharmacy@marcromspharmacy.com


Fax: 723-4137
1277 McArthur Drive • **728-1100** • Manchester



**A DOWN HOME WINERY SERVING
AWARD WINNING WINE**

Call To Book Private Tastings and Tours

**FREE GRAPE JAM
MUSIC SERIES**
May - Sept.
See Our Website for Details



(931) 723-2294 426 Ragsdale Rd. • Manchester

www.beanscreekwinery.com

McCay Wealth Advisory

624 N. Woodland St., Manchester, TN 37355
Brent McCay • 931-728-2130

McFadden, Teresa

1327 McArthur St., Manchester, TN 37355
931-723-5106

McMahan Construction

136 Bashaw Creek Rd., Manchester, TN 37355
Ken McMahan • 931-728-0501

Meadows Homes

4651 Manchester Hwy., McMinnville, TN 37110
Rob Steg • 931-668-7300

Merle Norman Cosmetics

1907 McArthur St., Manchester, TN 37355
Jenny Jackson/Cindy West • 931-728-0440

Metro Industrial Jobs

1208 Hillsboro Blvd., Manchester, TN 37355
Tanya Amis • 931-723-7810

Metropolitan Escrow, Inc.

1415 N Jackson St., Tullahoma, TN 37388
Cindy Putman • 931-454-0668

Middle TN Association of Realtors

311 Butler Dr., Murfreesboro, TN 37127
Candy Joyce • 877-893-2242

Middle TN Urology Specialists

482 Interstate Dr., Ste. C, Manchester, TN 37355
Kim Bullock • 615-893-1600

Mid-South Distributing

410 S. Anderson St., Tullahoma, TN 37388
Rick Gerwe • 931-455-6210

Mid-State Communications

504 Hillsboro Blvd., Manchester, TN 37355
Darlene Sitz • 931-393-6700

Mid-Town Medical Clinic

1815 Hillsboro Blvd. Manchester, TN 37355
Rebecca Norfleet • 931-728-3712

Millennium Repertory Co.

P.O. Box 805, Manchester, TN 37349
Rachel Garrard • 931-570-4489

Miller Photography

3379 Highland Rd., McMinneville, TN 37110
David & Shelly Miller • 931-668-1969

Mills Floor Covering

1663 Hillsboro Blvd., Manchester, TN 37355
Willard Mills • 931-728-7674

Morse, Claude S.

P.O. Box 10, Manchester, TN 37349
931-728-0431

Motlow State Community College

P.O. Box 8500, Dept. 100, Lynchburg, TN 37352-8500
Dr. Mary Lou Apple, President • 931-393-1682

Mr. T's Landscaping Service

161 EZ Lane, Manchester, TN 37355
Ron Turgeon • 931-219-2123

M-TEK, Inc.

1020 Volunteer Pkwy., Manchester, TN 37355
Howard Tucker • 931-728-4122

Myers Concert Productions, LLC

3448 TN 82, Beech Grove, TN 37018
DJ Myers • 931-841-2523

Newell/Rubbermaid

831 Volunteer Pkwy., Manchester, TN 37355
Jim Cunningham • 931-728-9819

New York Life Insurance Co.

Cimino-Hurt Financial Group LLC
1703 Sycamore Circle, Manchester, TN 37355
Lynn Cimino-Hurt • 931-691-2703

Nichols, Matthew, DDS

Oral & Facial Surgery
1425 McArthur St., Manchester, TN 37355
931-954-5244

Niederhauser, Mary

1106 Hillsboro Blvd., Manchester, TN 37355
931-728-0354

Niederhauser, Mike

280 Westwood Ct., Estill Springs, TN 37330
931-247-0935

Noblitt, Coy

134 Magnolia Glen Cir., Manchester, TN 37355
931-728-4987

Noblitt, Jewell

134 Magnolia Glen Cir., Manchester, TN 37355
931-728-4987

Nogodula, Jay

Peoples Bank & Trust
1203 Hillsboro Blvd., Manchester, TN 37355
931-728-3381

Norfleet, Glenn

98 Bob White Dr., Manchester, TN 37355
931-728-7508

Norman, Lonnie, Manchester Mayor

200 West Fort St., Manchester, TN 37355
931-728-4652

Northcott, Craig, District Attorney

409 Madison St., Manchester, TN 37355
931-723-5055

North Side Clocks

1654 McArthur St., Manchester, TN 37355
Howell Rust • 931-728-4307

Old Stone Fort State Archaeological Park

732 Stone Fort Dr., Manchester, TN 37355
Keith Wimberley • 931-723-5073

Ole Shed Brewing

516 East Carroll St., Tullahoma, TN 37388
Mike Thornburg • 931-212-4277

On-Site Technology

301 N. Jackson St., Tullahoma, TN 37388
Matt Palmer • 931-461-5750

Parsley, Brent

First National Bank
100 High St., Manchester, TN 37355 • 931-728-3518



Ken K. Huddleston, Jr.

Kenneth K. Huddleston, Sr.

KK's JEWELRY
Complete Sizing • Repair Department



GIA CERTIFIED

(931) 455-2255
(931) 728-4242
809 Hillsboro Blvd.
Manchester, TN

Partners for Healing

109 W Blackwell St., Tullahoma, TN 37388
931-455-5014

Patton, Roxanne

1329 McArthur St., Ste. 1, Manchester, TN 37355
931-723-5100

Patton Pest Control

4979 Murfreesboro Hwy., Manchester, TN 37355
Tyler Patton • 931-247-0781

Pauley, Tim

Alderman
200 West Fort St., Manchester, TN 37355
931-728-4652

Peoples Bank & Trust

1203 Hillsboro Blvd., Manchester, TN 37355
Phillip Calahan • 931-728-3381

Perry's Lawnscape & Property Management

5423 McMinnville Hwy., Manchester, TN 37355 David
Perry • 931-723-3979

Pete Jackson Floor Covering

812 McArthur St., Manchester, TN 37355
Haskel & Phyllis Franklin • 931-728-1419

Posh Nails

191 Relco Dr., Manchester, TN 37355
Trieu Vo • 931-450-1100

Powell, Prater, Dr.

909 Mayfield St., Manchester, TN 37355
931-728-2024

Powers Mini Storage

607 Woodbury Hwy., Manchester, TN 37355
Daniel Powers • 931-728-7181

Prater's Bar-B-Que

620 Woodbury Hwy., Manchester, TN 37355
Gary Prater • 931-954-5377

Premier Women's Health Center

1402 Willow Dr., Manchester, TN 37355
Nick Knight • 931-455-0247

Randstad Staffing Service

313 Hillsboro Blvd., Manchester, TN 37355
Gloria Bryant • 931-728-1727

Ravago MSG.LLC

405 Park Tower Dr., Manchester, TN 37355
Tina Warren • 931-728-7009

RE/Max 1st Realty

2830 Woodbury Hwy., Manchester, TN 37355
Freda K. Jones • 931-728-5552

ResourceMFG

1802 North Jackson St., Suite 840
Tullahoma, TN 37388
Michele Simmons • 931-841-8131

Rittenberry, Sam, Realtor

1893 Warren Rd., Manchester, TN 37355
931-728-7570

RJ Young Company

807 Nashville Hwy., Ste. 15, Columbia, TN 38401
Kerry Norris • 931-455-8215

Rogers Group

1008 S. Washington St., Tullahoma, TN 37388
Steve Moran • 931-393-2691

Rogers, Dr. Charles L.

202 Hillwood Circle, Manchester, TN 37355
931-728-2026

Rogers, Duncan & North

100 N. Spring St., Manchester, TN 37355
Christina Duncan • 931-728-0820

Roscoe Brown Heating & AC

410 South Roosevelt, Tullahoma, TN 37388
Mike Hutchins • 931-461-7441

Russell Cellular/Verizon Wireless

1313 Hillsboro Blvd., Manchester, TN 37355
Nathan George • 931-723-0480

Russell Stover Candies

2244 Hillsboro Blvd., Manchester, TN 37355
Rita Church • 931-723-2488

Rusty Tensfield Heating & Cooling

4630 Mt. View Rd., Manchester, TN 37355
Rusty Tensfield • 931-212-4910

Sain Construction

713 Vincent St., Manchester, TN 37355
James L. Sain • 931-728-7644

Sain, Lana Matthews

34 Northridge Dr., Manchester, TN 37355
617-945-6887

Scan Technology, Inc.

170 Keele Rd., Manchester, TN 37355
Mike Flowers • 931-723-0304

ServPro of CFW

1286 Murfreesboro Hwy., Manchester, TN 37355 Michelle
Shepard • 931-723-8088

Shelton's Heating & Cooling

1005 Murfreesboro Hwy., Manchester, TN 37355
Terry Shelton • 931-723-4996

Sherrill Pest Control

3731 New Tullahoma Hwy., Manchester, TN 37355
Vernon Sherrill • 931-728-4290

Silver Lining Signs

926 Highland Dr., Manchester, TN 37355
Frank Lee, Jr. • 931-723-4155

Singles, Sally

146 Fredonia Rd., Manchester, TN 37355
931-450-2147

Sleep Inn/Choice Hotels

84 Relco Dr., Manchester, TN 37355
Jay Kalvala/Jose Orozco • 931-954-0580

SMS Transport

P.O. Box 233, Hillsboro, TN 37342
Steven & Marlena Scott • 931-596-4112

South Central Human Resource Agency

P.O. Box 638, Fayetteville, TN 37334
James Coy Anderson • 931-433-7182



Trust Local Experience
Bill Nickels Insurance Agency, LLC

107 E. McLean St. • P.O. Box 927 • Manchester, TN
931-728-9623 • Cell: 931-247-5549 • Fax: 931-728-6493
bill@billnickelsins.com • www.bni-llc.com

Auto-Owners Insurance



Southern Central Waste Services

4530 Manchester Hwy., Manchester, TN 37110
David Cleveland • 931-668-8044

Spectrum Business

215 Industrial Blvd., Tullahoma, TN 37388
888-438-2427

Speer, Harold, Dr.

629 Lynah Lane, Beech Grove, TN 37018
931-312-9695

Sportsmen & Businessmen's Charitable Organization

205 East Coffee St., Manchester, TN 37355
931-728-5048

Spring Street Market

801 Spring St., Manchester, TN 37355
Kenneth Duke • 931-728-3421

St. Andrew's Sewanee School

209 Quintard Rd., Sewanee, TN 37375
Sherri Bergman • 931-598-5651

St. Bede's Episcopal Church

93 St. Bede's Dr., Manchester, TN 37355
Rev. Mary Hassell • 931-728-4463

St. John Engineering, LLC

923 Jackson St., Manchester, TN 37355
Scot St. John • 931-728-2638

Staffing Solutions

1802 N. Jackson St., Ste. 840, Tullahoma, TN 37388
Tiffany Felver • 931-455-6004

Stage Tops USA

781 Benson Rd., Manchester, TN 37355
Kevin Greenwood • 815-269-4015

Star Physical Therapy

585 Interstate Dr., Ste. A, Manchester, TN 37355
Leslie Trussler • 931-723-7156

State Farm Insurance

540 Hillsboro Hwy., Manchester, TN 37355
Jerry Stephens • 931-728-4741

Swan, Cheryl, Alderman

200 West Fort St., Manchester, TN 37355
931-728-4652

Sweet Pea 3D/4D Boutique

115 N. Woodland St., Manchester, TN 37355
Christy Vann • 931-723-7904

Sweet Tea Bakery & Café

115 West Main St., Manchester, TN 37355
Erica Colter • 931-954-0021

Tasty Vape Shop

101 Murfreesboro Hwy., Manchester, TN 37355
Tera Sons • 931-581-9947

The Home Depot

187 Roberts Lane, Manchester, TN 37355
Joey Neal • 931-728-1224

The Leming House

414 East Main St., Manchester, TN 37355
Sherry Cook • 931-728-5005

The Motlow House

7871 Lynchburg Hwy., Tullahoma, TN 37388
Jane McChesney • 408-710-1287

The Literacy Council

510 S. Jackson, Tullahoma, TN 37388
Roland Segroves • 931-455-5481

The Spa in Manchester

211 Woodland St., Manchester, TN 37355
Michelle Valeri • 615-542-5874

The Stanford Law Firm PLLC

909 Hillsboro Blvd., Manchester, TN 37355
Chris Stanford • 931-954-5577

The Webb School

319 Webb Rd. E., Bell Buckle, TN 37020
Aimee Hoover • 931-389-5721

Thompson Machinery/Thompson Power

3565 New Tullahoma Hwy. Manchester, TN 37355
Ronnie Perry • 931-461-5000

TN Dept. of Labor and Workforce Development

111 East Lincoln St., Tullahoma, TN 37388
Karen Woosley • 931-454-1905

Toliver's Pawn Shop

110 N. Spring St., Manchester, TN 37355
Michael Bass • 931-728-2360

Toney, Donna, Register of Deeds

1341 McArthur St., Manchester, TN 37355
931-723-5130

Top Secret Document Destruction

4478 Old Manchester Hwy. Tullahoma, TN 37388
Melia Davis • 931-454-9878

TotalGraphics

105 W. High St., Manchester, TN 37355
Amanda Ham • 931-728-8081

Traders Bank

1207 Hillsboro Blvd., Manchester, TN 37355
Stan Teal • 931-728-1474

Trail, Shawn C., Attorney

117 South Spring St., Manchester, TN 37355
Shawn C. Trail • 931-728-0419

Tractor Supply Co.

2161 Hillsboro Blvd., Manchester, TN 37355
Jeremy Angel • 931-723-4195

Trebecca Nazarene University

P.O. Box 8500, Lynchburg, TN 37210
Julie Rigby • 800-818-4256

Tri-County Roofing

210 Woodbury Hwy., Manchester, TN 37355
Brent Bates • 931-728-1664

Trussler, Jay M. DOPC

585 Interstate Dr., Manchester, TN 37355
Brooke Sain • 931-728-9000

Unity Medical Center

481 Interstate Dr., Manchester, TN 37355
Martha McCormick • 931-728-6354

Here For All Your Pest Control Needs

**Residential & Commercial
Pest & Termite Elimination**

Serving Middle Tennessee Since 1965



**SHERRILL
PEST CONTROL**

3731 New Tullahoma Hwy., Manchester, TN 37355
www.SherrillPest.com • Manchester: 931-728-4290 • Tullahoma: 931-454-0788

United Way of the Highland Rim

P.O. Box 27, Tullahoma, TN 37388
Sande Hayes • 931-455-5678

Up Tech Services, LLC

101 SE Atlantic St., Tullahoma, TN 37388
Katie Sides • 931-461-5391

Urgent Team

1802 North Jackson St., Ste. 850
Tullahoma, TN 37388
Claire Mason • 615-864-8705

US Bank

1000 Hillsboro Blvd., Manchester, TN 37355
Patricia Pinegar • 931-728-1002

Van Rob

1021 Volunteer Pkwy., Manchester, TN 37355
Steve Falter • 931-461-9353

VIAM

87 Park Tower Dr., Manchester, TN 37355
Tammy May • 931-461-2301

Walgreen's Pharmacy

806 McArthur St., Manchester, TN 37355
Trey Gooch • 931-728-0653

Walker Gardens Gift Shop

8509 McMinnville Hwy., Morrison, TN 37357
Rhonda Walker • 931-743-6861

Walmart

2518 Hillsboro Blvd., Manchester, TN 37355
Pebbles Martin • 931-728-6000

Watson Metals, LLC

238 Interstate Dr., Manchester, TN 37355
Nate Heisey • 931-728-8185

Weibert, Brad

861 McArthur St., Manchester, TN 37355
931-723-3300

Weichert Realtors Joe Orr & Associates

309 S. Jackson St., Tullahoma, TN 37388
Kathy Orr • 931-455-0555

Wheeler, Don

1521 Bains Rd., Hillsboro, TN 37342
931-224-8806

Willowbrook Golf Club

6751 McMinnville Hwy., Manchester, TN 37355
David Burris • 931-728-8989

Woodard's Diamond Showroom

1600 N. Jackson, Tullahoma, TN 37388
Jim Woodard • 931-454-9383

Woodland Title & Escrow

1500 McArthur St., Manchester, TN 37355
Judy Lamb • 931-954-5900

Workforce Solutions

410 Wilson Ave., Tullahoma, TN 37388
Diane Stoker • 931-455-9596

World Finance Corporation

195 Relco Drive, Manchester, TN 37355
Ashleigh Burks • 931-723-8808

Wust, Eugene

P.O. Box 1362, Manchester, TN 37349
Eugene Wust • 931-723-0744

Yother, Mark

Police Chief
200 West Fort St., Manchester, TN 37355
931-728-2099

Zaxby's

2161 Hillsboro Blvd.
Manchester, TN 37355
Andrew May • 931-461-9640

Supplying You With Clean, Efficient & Dependable Natural Gas Since 1955



Elk River Public Utility District

WWW.ERPUD.COM

217 S. Jackson St., Tullahoma, TN 37388 • 931-455-9311
1524 Hillsboro Blvd., Manchester, TN 37355 • 931-728-3332
635 Dinah Shore Blvd. Winchester, TN 37398 • 931-967-3642
"Your Hometown Natural Gas Provider Since 1955"



Hospice of the Highland Rim Foundation, Inc. is the only non-profit charitable organization to assist hospice patients on our local communities.

Donations go directly towards making a difference in the lives of hospice patients by:

- Helping to support our mission to assist hospice patients whose needs fall outside the realm of hospice care
- Relieving financial distress/hardship during this time in the life of the hospice patient and their family
- Educational grants for hospice paraprofessionals and individuals who want to work in field of hospice care.

To Donate To HOSPICE OF HIGHLAND RIM FOUNDATION, Please Contact:



110 E. Lauderdale St., • Tullahoma, TN 37388 • 931.563.7439

Like Us On Facebook! • www.hospiceofthehighlandrimfoundation.org
HHR Foundation is qualified under section 501 (3) (c) of the Internal Revenue Code.
Donations are tax-deductable to-the-full extent of the law.



BUSINESS & INDUSTRY CLASSIC GOLF TOURNAMENT



When the
COUNTRY LIFE
is calling, we'll help you answer.

**FLEXIBLE FINANCING FOR LAND,
CONSTRUCTION AND HOMES.**

farmCREDIT
MID-AMERICA

McMinnville Office
1508 Smithville Hwy., McMinnville, TN 37110
931-304-2550

Thank You ★ Thank You
First Vision
BANK
Local Partners, Personal Solutions

Thank You ★ Thank You
10th
Anniversary

Manchester (931)723-3224
Franklin County (931)968-0065

Tullahoma (931)454-0500
Murfreesboro (615)494-5950

firstvisionbank.com

INDEX OF ADVERTISERS

ACES	35	Comfort Suites.....	37
Advanced Network Solutions	23	Community Cancer Care.....	81
All Glass.....	67	Cooper Sports and More	39
Ambassador Inn.....	82	Cowan Benefits	39
American City Bank	3	Duck River Electric	47
Anderson Eye Care.....	35	Elk River Public Utility District.....	87
Animal Health Clinic.....	50	Exchange.....	69
Ascend Federal Credit Union	92	Exit Realty Partners	41
Autumn Oaks	80	Farm Bureau	41
Bailey Manor	67	Farm Credit.....	88
Barrett Construction & Renovation, LLC.....	65	Farmers Insurance / Brett Chaffin.....	43
Batesville Casket Co.....	73	First National Bank Manchester	55
Beans Creek Winery	83	First Vision Bank.....	88
Bell & Alexander Title Services, Inc.	37	Fischer Tool and Die Corporation	50
Ben Lomand Telephone Coop, Inc.	50	Fischer USA.....	74
Bill Nickels Insurance Agency Inc.	85	Foothills Crafts.....	41
Bush Insurance	77	George Dickel Tennessee Whisky	43
Captain D's.....	50	H & S Mechanical	43
CareSouth Homecare Professionals.....	83	Harton Regional Medical Center.....	15
Central Funeral Home.....	78	Holiday Inn Express - Manchester	91
CFC Recycling, Inc.	39	Hoover's Jewelers.....	82
Char El Apartments.....	37	Horizon Health and Rehab.....	2
Christopher Equipment	82	Hospice of the Highland Rim	87
Clover Automotive.....	37	J & W Repair	74
Coffee County Bank.....	62	Jack Daniel's Visitor Center	41
Coffee County Funeral Chapel.....	39	K and S Steel Fabrication, Inc.	61
Coffee County Realty - Manchester	7	KK's Jewelry	84
Coffee County Senior Citizens, Inc.	39	Kokomo Grain.....	57



ROS COE BROWNTM
HEATING & COOLING

Since 1940

Carrier
turn to the experts
www.carrier.com

Tullahoma's Finest Heating & Air For 8 Years

931-461-7441

Visit us at 410 S. Roosevelt St., Tullahoma, TN 37388
www.roscoebrown.com

Free Estimates & 100% Financing Available

Voted Manchester's Finest Senior Care Facility!

McArthur Manor

ASSISTED LIVING COMMUNITY

119 Bryan Avenue, Manchester, TN 37355

931-954-0250

www.mcarthurmanoral.com

The Area's Only Premier Boutique Assisted Living

<p><i>Services</i></p> <ul style="list-style-type: none"> ◆ Medication management ◆ Weekly personal laundry service ◆ Weekly linen service ◆ Daily tidying of apartment ◆ Weekly housekeeping ◆ Daily reminders ◆ Twenty four hour nurse call system ◆ Twenty four hour fire and alarm system ◆ Twenty four hour staffing 	<p><i>Amenities</i></p> <ul style="list-style-type: none"> ◆ Menu style dining ◆ Gourmet coffee from our Corner Bistro ◆ Delicious snacks ◆ Social, recreational & cultural activities ◆ Six spacious floor plans ◆ All utilities ◆ Wellness spa ◆ Salon ◆ Movie theatre ◆ Library with computer center
--	---



Lawson Electric.....	43
Lee Adcock Construction	43
Manchester Coffee County Conference Center.....	91
Manchester Funeral Home.....	47
Manchester Housing Authority.....	61
Manchester Times	60
Manchester Tire & Brake	41
Marcrom's Pharmacy.....	83
Mark Lemons Construction	47
Martin Methodist College	51
McArthur Manor.....	90
Meadows Homes.....	63
Merle Norman.....	61
Metro Industrial - Manchester	57
Mills Floor Covering.....	47
Motlow State Community College.....	56
Peoples Bank.....	80
Pete Jackson Floor Covering	75
Prater's BBQ Manchester.....	75
Premier Women's Health Center.....	47
Ravago Manufacturing Americas	75
Remax 1st Realty	9
Rogers Group.....	38
Roscoe Brown, Inc.	90
Russell Stovers	71
Rusty Tensfield.....	38
Sheltons Heating and Cooling.....	51
Sherrill Pest Control	86
Sleep Inn & Suites.....	35
Spring Street Market	51
St. Andrew's Sewanee.....	53
St. Bede's Episcopal Church	51
State Farm Insurance.....	72
Thompson Machinery.....	35
Traders Bank - Manchester.....	79
Tulahoma Manchester Pediatrics	89
Unity Medical Center	11
University of Tennessee Space Institute.....	31
Van-Rob.....	51
Viam Manufacturing	59
Watson Metals LLC.	45
Weichert Realtors/Joe Orr Realtor.....	81
WillowBrook Golf Club	59
Woodards Diamonds & Design	37
Woodland Title and Escrow	80



• Free High Speed Internet •



- 80 Rooms Including Jacuzzi & Business Suites
- Deluxe Breakfast Bar
- Indoor Pool/Spa, Fitness Center
- Free Cable with HBO
- Two Phones w/Data Port and Voice Mail in Every Room



I-24 & U.S. 41 Exit 114
 111 Hospitality Blvd. • Manchester, Tennessee 37355
(931) 728-9383
 e-mail: amber.kelly@gibsonhotels.com

MAKING CONNECTIONS HAPPEN

MANCHESTER COFFEE COUNTY CONFERENCE CENTER

931.723.8283 • MCCCC.COM

MANCHESTER | COFFEE COUNTY
CONFERENCE CENTER

TULLAHOMA



MANCHESTER/ROYAL
Pediatrics PLLC

Where Children Receive Royal Treatment

Dr. Clifford Seyler

Jennifer Goodwin, FNPC, Marcia Cowan, CPNP, Kari Pitchko, CPNP,
Kara Hall, FNPC, Carol Landerman, FNPC

3 Locations

Tullahoma Office

1330 Ceder Lane
Building B Suite 900

Manchester Office

1911 McArthur St.

Fayetteville Office

1421 Huntsville Hwy.
931-297-2223

931-455-2674

Hours: Monday - Friday 8:00 A.M. - 5:00 P.M.

Our providers have been caring for children for over
35 years. We offer state of the art facilities
and electronic medical records.
Accepting New Patients



WWW.TULLAHOMAPEDIATRICS.COM



Reaching THE NEXT GOAL *together*



Sixty-five years is a milestone. That's how long we've been helping individuals and families in Middle Tennessee reach their goals. A first car. A more comfortable home. Funds for continued education, home renovation, a vacation, retirement, and so much more. And with a growing number of locations, mobile account access and more than 50,000 ATMs worldwide, we're convenient – right where you need us, when you need us.

How can Ascend help you reach your next goal? Call 800-342-3086 or visit your nearest financial center, and *let's start working on the next 65 years, together.*



ASCENDFCU.ORG / 800-342-3086

Federally insured by the NCUA. Membership is limited. All loans subject to credit approval.