



IMPACT

Postal Customer Local
PRSR
STD
US Postage Paid
IMPACT
ECRWSS



2016 Loblolly Festival in Downtown Laurel...page11

LRMA Heritage Arts Festival...page13

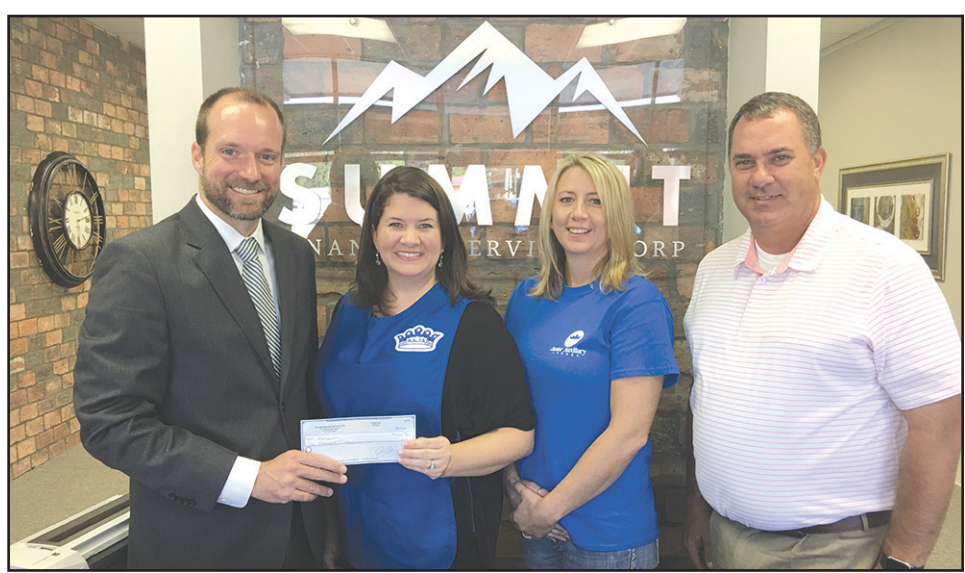
LJA's Secret Meals receives donation from local business

Submitted
The Junior Auxiliary of Laurel has many projects that positively impact the children of Laurel and Jones County. One of the projects they are most proud of is called "Secret Meals." Currently the JA of Laurel helps to provide food for 35 local elementary school children who would otherwise go hungry on the weekends. The nutritious food is secretly packed into their backpacks on Fridays.

Summit Financial Services heard about this amazing service project and wanted to make a monetary contribution toward the cost of food for these children. Summit Financial Services, Corp. is a locally owned, full service consumer loan company with locations throughout Mississippi. Opened in April of 2015, Summit now has eight locations with a multi-million dollar loan portfolio and 15 employees. Their various locations in Laurel,

Ellisville, Hattiesburg, Oak Grove, and Magee allow customers to take advantage of a full array of offerings including check cashing, cash advance loans, and title loans. In Ellisville, Laurel and Richton, they also offer consumer loans up to \$15,000, with affordable monthly payments and an easy approval process.

In addition to the monetary donation, Summit Financial has offered three of their offices to be used as a drop-off location for food donations. Anyone from the community can donate items that will provide nutrition to at-risk elementary school children. Following is a list of the locations and the food items accepted for Secret Meals: Jones County Finance - 105 S. 16th Avenue, Suite C, Laurel; Summit Financial Services Corp - 1592 Hwy. 15N, Suite B Laurel; and Summit Financial Services Corp - 103 Hwy. 11S Ellisville.



Pictured from left to right: Jeremy Felder, Chief Financial Officer at Summit; Anna Thornton, JA of Laurel President; Cindy Miles, Chairwoman of Secret Meals Committee; and Co-Owner of Summit Kelvin Hall, Chief Operating Officer Photo/submitted

DERKSEN PORTABLE BUILDINGS

BUY OR RENT TO OWN starting at... **\$69²¹** PER MONTH
NO CREDIT CHECK!

- FREE DELIVERY & SET-UP
- NO SECURITY DEPOSIT • NO SLAB NEEDED

ALL STYLES AVAILABLE • CABINS • BARNES
• UTILITY/SIDE UTILITY • GARAGES • CARPORTS

AS SHOWN 10X12 \$123.84 MONTH Rent to Own

WWW.ELLISVILLEMOTORS.COM **601-323-0464**
12 Months SAC *wac 303 HWY. 11 S. ELLISVILLE, MS • LOCATED BETWEEN PIZZA HUT & JCJC

PAYNE PORTABLE BUILDINGS

601-426-9484
601-319-3555

Office located at 342 Maxey Rd. • Hwy. 84 W, Laurel
12 MO. SAME AS CASH or RENT TO OWN FINANCING AVAILABLE. WAC

SANDRA HANCOCK MINISTRIES "Come Expecting Your Miracle"

Saturday • October 8, 2016 • 10 AM - 1 PM

THE GATHERING PLACE 3227 AUDUBON DRIVE • LAUREL, MS
OVERFLOW PARKING IN THE REAR OF BUILDING

Faith EXPLOSION

Guest Speakers:

Ladies Conference
FREE ADMISSION!

Ladies Groups & Church Groups Welcome
For more information: 1.800.579.7350
www.sandrahancock.org

Total Foot Care Clinic of Laurel

NOW OPEN EVERY THURSDAY

Specializing in surgical and non surgical treatment of foot problems.
Do you have a bunion problem?

A **BUNION** is a bony bump that forms on the joint at the base of your big toe.

Dr. Michael Zaleski, Diplomate Board Certified
Dr. Gachavis M. Green, Board Qualified Foot Doctor

• Medicare • Medicaid • BlueCross BlueShield & most insurances accepted

601.268.0400
30 Circle J Drive • Laurel

WE HAVE ASHLEY FURNITURE!

HURRY IN FOR A TOTAL MAKEOVER!

ASHLEY SIGNATURE DESIGN SOFA... **\$499**
ASHLEY SIGNATURE DESIGN DINING SET... **\$399**
RUSTIC QUEEN BED... **\$299**

24 MONTHS FINANCING WAC • HURRY IN FOR THE BEST SELECTION!
DON'T MISS OUT ON THIS OPPORTUNITY TO GIVE YOUR HOME A TOTAL MAKEOVER!

SOUTHERN FURNITURE & MATTRESS

2909 WHEELER DR., LAUREL **601-649-0733**

BIG WAREHOUSE SALE!

LOCATED 1 BLOCK SOUTH OF SUNFLOWER!

HURRY! QUANTITIES LIMITED! WHILE SUPPLIES LAST!

October 6th, 7th & 8th Only!

SAVE UP TO **80% OFF**

DON'T MISS THIS SALE! DO NOT DELAY!

- CLOSEOUTS
- SCRATCH AND DENT
- DISCONTINUED ITEMS
- ODD PIECES

COME EARLY FOR BEST SELECTION!

GOLDEN UPHOLSTERED CHAIRS REG. \$349 NOW \$85	3 PIECE OCCASIONAL TABLE SET REG. \$499 NOW \$99	LEGACY CLASSIC DINING ROOM TABLE REG. \$799 NOW \$149
LANE RECLINER REG. \$999 NOW \$299	JACKSON UPHOLSTERED SOFA REG. \$999 NOW \$175	4 DRAWER CHEST REG. \$149 NOW \$99
SOFA TABLE REG. \$449 NOW \$299	ARTIFICIAL TREES REG. \$89 NOW \$20	ARTIFICIAL PLANTS REG. \$49 NOW \$10
	ASSORTED LAMPS REG. \$99 NOW \$25	5 DRAWER CHEST REG. \$199 NOW \$139

Alexander's

BAY SPRINGS FURNITURE
1 BLOCK SOUTH OF SUNFLOWER

Classified Index

Apartments for Rent	7
Appliances	8
Attorneys	3
ATVs	10
Auctions	8
Autos - Cars	9
Auto Services	9
Autos - Motorcycles	10
Autos - Sports	10
Autos - SUVs	10
Autos - Trucks	10
Buildings	9
Campers	8
Carports	10
Commercial	8
Estate Sale	8
Farm	3
Firewood	9
Fish	8
Flea Market	8
Furniture	8
Garage Sales	9
General	3
Help Wanted	8
Houses for Rent	7
Houses for Sale	7
Land	3
Massage	8
Mobile Home for Rent	7
Mobile Home Lots	7
Mobile Homes	7
Musical	9
Pets	8
Portable Buildings	9
Produce	8
Services Offered	6
Special	10
Timber and Lumber	8
Wanted to Buy	8

JCJC English instructor selected as Miss. Humanities Teacher of the Year

By Teresa McCreery,
JCJC Media-Public Relations Director

Jones County Junior College English instructor, Missie Meeks has been selected as the JCJC 2016 Mississippi Humanities Teacher of the Year. She will be honored by the Mississippi Humanities Council on Tuesday, October 18 at 10:30 a.m. in the Fine Arts Auditorium at JCJC. The public is welcome to see Meeks' free presentation, "Using Technology to Build Composition Skills."

"I am so very honored and humbled to receive this award. I hope to use this platform as an opportunity to inspire other educators to find innovative ways to use technology in their classroom to engage students and prepare students for the workforce," said Meeks.

Meeks' Division Chair and friend, Cheryl Windham, said she is very proud for Meeks being honored by the MHC. Windham added, "She is a skilled classroom instructor, but her expertise in technology cannot be overemphasized. In fact, it is safe to say that she is the main reason that the Humanities Division has become one of the more 'tech savvy' groups on campus. As for me personally, I absolutely depend on her help in understanding technology and also incorporating it into my classes. I am so thankful for her willingness to assist me, not to mention everyone else in the division. Needless to say, this award is a well-deserved honor for one of Jones' most capable, hardest working and highly skilled instructors whose contributions to the college are numerous, varied, and completely invaluable."



JCJC English instructor, Missie Meeks is this year's Mississippi Humanities Teacher of the Year. She will be giving a presentation about using technology in the classroom on Tuesday, October 18, at 10:30 a.m. at JCJC's M.P. Bush Auditorium. Photo/Teresa McCreery

One of her English colleague's, Dr. David Lowery said he also appreciates Meeks' work in the classroom and has noticed the impact it has on her peers and students. "Missie is very deserving of this honor. She is one of the hardest-working people that I know, and this award helps acknowledge her hard work and dedication to teaching," he said.

For the last 16 years, Meeks has been teaching students English and Composition. For most of that time, she has incorporated technology, which she believes

See TEACHER, page 13

"K9s in Flight" new attraction at South Mississippi Fair

Submitted

K9s in Flight are the country's top premier K9 Sports entertainers, with over 15 years of professional experience, they have dazzled audiences all across America and beyond.

K9s in flight have been seen on The Discovery Channel, ESPN, The Disney Channel, Animal Planet, HBO, The Jerry Lewis Telethon, MTV Music Television, and more. They have been featured in Dog Fancy Magazine, National Geographic for Kids, Dog and Kennel Magazine, and over 25 Major National Newspapers.

They have toured with Animal Planet, The NFL Experience and The Greatest Show on Earth. K9s in Flight has performed their one of kind Ground Act Show and Halftime Show in over 200 cities across America, people all over the country have enjoyed their cutting edge, high flying acrobatics.



Photo/submitted

Jerri Mashburn wins cash prize for participating in IMPACT survey



Jerri Mashburn of Buckatunna was the recent winner of a \$250 cash prize giveaway for participating in an IMPACT survey. Jerri has been reading IMPACT for 25 years. She said she enjoys looking at the paper in general and using the coupons she finds in it. "I forgot that I filled out the survey," she said. "When they called, I thought it was a prank." Jerri said she might use the extra money to buy a better mattress. Pictured with Jerri is Zach Buckley (left), one of the owners of IMPACT.

FALL PLANTING IS HERE!

Game Mixes from:

- Pennington
- Southern Seed
- Buckbusters
- Whitetail
- Wildlife Management Solutions

TRIPLE CLEAN CORN
50 Lb. Bag
\$6⁵⁰

- MOULTRIE ATV Spreaders
- Chapin Shoulder Seeders

Rechargeable L Volt Batteries
\$11⁹⁹ up to \$19⁹⁹

FALL GARDEN SEED AND PLANTS ARE HERE!!!
• Turnip • Collard • Mustard seeds are ready to go!!

We have Loyall Grain Free Dog Food
30 Lb. Bag... **\$32⁹⁵**

OLD SOUTH FARM SUPPLY

Bo Welborn-Owner • Mickey Holloway-Manger

244 E. Hickory Street • Laurel • 601-428-7447

ATTENTION CDL DRIVERS

Peco Foods has job opportunities for CDL drivers in our Feed Haul Division in Bay Springs, MS. Applicants must have 1-year verifiable experience and a clean driving record.

Home Daily

Local Driving

Competitive Pay

Paid Holidays

Paid Vacation

All interested drivers please contact Kristen Allen or Michael Nelson at (601) 764-4964, or come by and fill out an application at the Live Production Office located at 3683 Highway 15 North Bay Springs MS, 39422.

EOE/M/F/D/V

Enjoy The Cooler Weather

SPINDLE HIGH-BACK UNFINISHED OAK ROCKER

\$99.99

only plus tax

STORE HOURS
Mon. - Fri.: 7am - 5pm
Sat.: 7am - 12pm
Closed on Sunday

Alexander's

HARDWARE, CO.
601-764-2161
2488 Hwy 15 S • Bay Springs, MS

IMPACT

#1 in Advertising

Ronnie Buckley
Publisher

Kevin Williamson
Manager

Jerry Clark
Circulation Supervisor

Ryan Griffin
National Sales Consultant

Betty Busby
Laurel Sales Representative

Kim Willbanks
Laurel Sales Representative

Trish Irwin
Laurel Graphic Artist

Jennifer Clark
Graphic Production Manager

Trerica Roberson
Graphic Artist

Candice Pittman
Graphic Artist

Russ Farris
Graphic Artist

Sherry Hearn
Administrative Assistant

Linda Cranford
Writer/Photographer

WHILE THE IMPACT makes every effort to verify the offerings made in these ads, we cannot guarantee the integrity of every advertiser. We strongly recommend that readers investigate the companies involved before sending them any money.

Classified and ROP Ad Deadline
Sunday Edition -
Wednesday at 12:00 Noon
Wednesday Edition -
Thursday at 3:00

IMPACT

1010 N. 16th Ave
Laurel, MS 39441
Ph. 601.649.1129
Fax: 601.649.0424
Email:
admin@laurelimpact.com

EDA

INDEPENDENT FREE PAPERS OF AMERICA

of Jones County

LOW COST DENTURES SINCE 1978
DENTAL SERVICES OF SOUTH MS. P.A.
GENERAL DENTISTS
 2019 Hardy Street • Hattiesburg, MS

- Dentures • Reline
- Partial • Repair

Call Toll Free
 Within 55 Mile Radius
(601) 545-1905
(877) 545-1905

LISTING OF THESE PREVIOUSLY MENTIONED AREAS OF PRACTICE DOES NOT INDICATE ANY CERTIFICATION OF EXPERTISE THEREIN.

Your Protection Is Personal

Nationwide
 "On Your Side"
 203 Main St., Collins
AUTO • HOME • LIFE • BUSINESS

Patricia Goldin-Rayborn W 601.765.4060
 Associate Agent C 601.307.6132

Nationwide Mutual Insurance Company and Affiliated Companies. Home office: Columbus, Ohio 43215-2220. Nationwide Life Insurance Company, Nationwide, the Nationwide Framework and On Your Side are service marks of Nationwide Mutual Insurance Company. Subject to underwriting guidelines, review and approval. Nationwide, Nationwide Insurance, the Nationwide Framework, Nationwide is On Your Side and Join the Nation are service marks of Nationwide Mutual Insurance Company. © 2013 Nationwide Mutual Insurance Company. All rights reserved. NPO-0194MI (01/13)

If Yours Is A Chiropractic Case Nothing Else Will Help You!
Make An Appointment With Us And Find Out!

We Accept Blue Cross Blue Shield, United Health Care, Medicaid and most other insurance.

DR. A. R. OLSON
 134 Russell Dr. • Waynesboro, MS
Phone 601-735-9373

OFFICE HOURS: MON., WED., & FRI.: 8a.m. - 12p.m. 1p.m. - 5p.m.
 Tues. & Sat. 8a.m. - 11a.m.

GENERAL

Flagpole Super Sale: Get Our 22-foot Tall Patriot Flag Poles With a Free 3x5 American Flag For \$159.00. Show your Patriotism - call American Flagpole Company: 601-649-0748 God Bless America!

Pebbles in home daycare is now taking application for 6week /up, 601 549-2458, Hattiesburg area .

Ski Colorado. Novelist or beginners. Arapahoe, Vail, Aspen, Breckenridge, you name it we ski it. Healing with a personal touch. john.stone82.js@gmail.com. Call 601-319-1068.

Emery Memorial Home of Richton Reunion. Reunion in Hattiesburg Fri., Set. 30 through Sun., Oct. 2, 2016. For more information contact Eva Wingfield, 703-861-1172 or by email at sistaeva@aol.com. Reunion begins 5 p.m. Friday at 215 Main Street in Hattiesburg.

Westover Wine & Liquor. Now Open. Best prices! Great location! Super Sale on 1 item every day. More than 1000 varieties of Wine & Liquor! Happy Hour, Mon.-Thurs., 10:00AM to 2:00PM. 5% discount. Special attractions: Discounts on mix and match cases. Military discounts every day, Student discounts every Tuesday and Thursday, special discount on your birthday. 120 Westover Drive, Suite 20, Hattiesburg (opp. Gander Mountain) 601-602-2949.

Flags: USA - Mississippi - Confederate - Police - Military. Plus flag poles. 10 a.m. - 5 p.m. Monday - Saturday. Flag Heads, 490 Hwy. 49, Seminary. 601.466.4141. "You Won't Find It At Walmart!"

Need Prayer? Sick? Depressed? Financial Problems? (21) I tell you the truth, if you have faith and do not

doubt. (22) If you believe, you will receive whatever you ask for in prayer. Matthew 21:21-22. Call us anytime free of charge. 24/7. We are here for you. Elder McDaniel. Amazing Grace Prayer Ministries: 662-207-2936

Lawncare: Serving Hattiesburg, Lumberton, Laurel, Sumrall, Petal, Brooklyn, Ellisville, Purvis and Moselle areas. Reasonable rates. 601-325-5008. www.fullservicelawnca-rems.com

Divorce, Criminal Defense, Death Claims, Personal Injury, Bankruptcy, DUI Defense, Offshore, 18 wheeler accidents. Call for your consultation today. Jones Law Office. 2219 Columbia Avenue, Prentiss, MS. 601-582-9177

Automobile accidents, bankruptcy, divorce, off-shore boat accidents, 18-wheeler accidents, criminal defense and more. For all your legal needs, contact a professional. Jones Law Firm 601-582-9177. Let me know you saw my ad in IMPACT.

Grand Opening. October 6th at 5:00 p.m. Large selection of Wine & Spirits. Drawings, food. Discounts for Military and Emergency Responders. The Wine Cellar, 102 Carterville Road, Petal. New owners. Hours: Mon.-Sat., 10AM-10PM. Locally owned and operated. 10% off total purchase, 10-6-16 Only. 601-544-2883.

ATTORNEYS

Automobile accidents, bankruptcy, divorce, off-shore boat accidents, 18-wheeler accidents, criminal defense and more. For all your legal needs, contact a professional. Jones Law Firm 601-582-9177. Let me know you saw my ad in IMPACT.

FARM

Deer corn, 2016 crop, triple cleaned., 50lb sacks, \$6.25. Jones County Hwy 84W, Hebron. 601-433-5063.

Farm Barns. 40x30x16-\$9500. 30x30x10-\$7500. Metal roof and sides. Price includes labor. 601-296-0550.

Hay, Hay Hay! 4x5 rolls Bahia grass. \$20. Good. 601-425-3084.

For Sale: Service Age - Simmental & Sim-Angus Bulls. Calving ease, high Growth with excellent EPD's and Blood Lines. Semen Checked; Ready to Go!! Call 601-543-3042 or 601-408-4186.

Soggy Bottom Game Birds. Quail hunts, \$125, guns and bows. Fast birds. 601-319-1068. Dog training and lessons \$50.

Hay for Sale: Square bales, \$3.50 each and 4x5 rolls, \$30.00 each of bahia grass, hay fertilized and sprayed for weeds. 601-596-3241.

1949 8N Ford Tractor restored. \$3000 firm. 601-549-4752 after 5pm.

Bantam Chics, 2 weeks old. \$3 each. 601-319-5291.

Mahindra 3016s tractor implement package and trailer. Mahindra 3016s tractor purchased 2015. Has less than 12 hours on it. 4 wheel drive. Front end loader. 18 foot trailer disc harrow 16x18 feet, cutter = 5-foot standard. Bushog. \$18,500. Call 601.335.2690.

LAND

Clarke Co. 336+/- Acres: Road frontage, planted pines, excellent hunting, plenty of good home sites.

\$588,000.00. Call Ron at 4 Corner Properties, LLC. 601-410-3089. www.4cplandandhomes.com

Jones County +/- 123 Acres. Located 5 miles from downtown Ellisville off of HWY 29 South on Pecan Grove Road. This Property has endless opportunities! From hunting, fishing, building a home/farm, or just for an investment. Property contains mature pine plantation and a fully stocked pond that would be great to build a home/camp next too. \$455,100. For more details, call Bennett today 601-913-0340 at Walley Properties, LLC. Or visit our website walleyproperties.com for maps and more information of this listing.

11.5 acres for sale. Hwy 15 South of Tucker's Crossing. Trailer pad. \$28,000. Call 601-433-9023.

29 acres Jones County. Sharon Community, Bullock Road. Will subdivide. Andrew, 601-323-3335.

Jasper Co. 42+/- Acres: Rolling terrain, pine plantation, mixed pine/hardwood, good hunting \$125,000. Call Dennis at 4 Corner Properties, LLC. 601-248-4396. www.4cplandandhomes.com

"Price Reduced" Jasper Co. 302+/- Acres: Pasture, Tallahala Creek with hardwood, pine timber, lake. Near Louin. \$2,250/ac. Call Dennis at 4 Corner Properties, LLC. 601-248-4396. www.4cplandandhomes.com.

+/- 83 Acres Located on 5 miles South of Ellisville, MS with road frontage on both Augusta Road and Kitchens Loop. Clear Creek running through the property. Merchantable

Mixed pine/hwd timber and good road system. Power and water available. \$207,500. Call us for a free consultation. 601-408-0615. McCraw Forest Management, www.mfmland.com.

20 acre farm/ranch in Janice, Ms. With custom built home, wrap around porch, Pond, horse stalls, fenced and cross fenced, huge shop. Bordered on two sides by National Forest lands. Lots of wildlife call Shawn, Southern Coastal Realty, LLC 601-408-3570.

Covington County +/- 74 Acres. Located 4 miles from downtown Seminary off hwy 590 on the corner of Shirley Sanford Road and Johnny Sanford Road. This property would be perfect for a home-site with plenty of recreational opportunities. Property consist of mature pine plantation, gorgeous hardwoods, and a stream that flows throughout the property. Great for hunting. \$244,200. For more details, call Bennett today 601-913-0340 at Walley Properties, LLC. Or visit our website walleyproperties.com for maps and more information of this listing.

Jones County +/- 29 Acres Must See! Only 5 miles south of Ellisville down Hwy 29 East located on Busby Road. This Property with road frontage has recently been chipped, leaving residential/shade trees which would make for a perfect home-site, or mini farm. \$71,050. For more information call Bennett 601-913-0340 at Walley Properties LLC or visit walleyproperties.com for maps of this listing

Jones County +/- 35 Acres with 1850 sqft home. Great Location!! Located in Southeast Jones County on Old Progress Road just minutes from Hattiesburg. This property consist of a 3br/2ba house along with shop. Timber has recently been harvested and chemical has been sprayed for replanting. \$230,000. Call Bennett 601-913-0340 at Walley Properties, LLC. Please visit walleyproperties.com for maps of this listing.

+/- 145 Acres Located on County Line Road just off of Whitfield Road Northwest Perry County, MS. This tract consists of +/-50 acres of Hardwood Bottom and +/-95 acres in 6 year old pine plantation. Has small pipeline running across the property. Less 1/2 mile to National Forest Service. Great Hunting and Recreation!! \$210,250. Call us for a free consultation. 601-408-0615. McCraw Forest Management, www.mfmland.com.

Continued on ... Page 5

WALLEY PROPERTIES LLC.
LAND? BUYING OR SELLING
 www.walleyproperties.com
601-477-3014

NOW OPEN

BAY SPRINGS FINANCE LLC

Located next to Big O's Seafood in the Bay Center Shopping Center

Call or come by and see Savannah or Pat

601-764-2251

www.ChathamEnterprisesInc.com

CHATHAM ENTERPRISES
 Portable Buildings & Metal Roofing

Guaranteed Best Quality and Lowest Prices on:

- Portable Building • Carports
- On Site Steel Buildings • Custom Covers
- Metal Roofing (Painted or Bare Galvalume)

Many Sizes To Choose From

Portable Buildings		Metal Roofing	
10x12	12x20	29 Gauge Bare Galvalume.....	\$1.29/ft.
12x12	12x24	29 Gauge Painted.....	\$1.49/ft.
12x16	12x28	29 Gauge Painted (w/ 40 Year Warranty).....	\$1.79/ft.

Prices are Subject to Change.

WE HAVE RENT TO OWN AVAILABLE FOR THE PORTABLE BUILDINGS!

601-727-4951
 Located in Rose Hill, MS

BIG fall Sales Event

ALSO

- Collegiate
- Home Decor
- Linens
- Frames

City Home Center
 2139 HWY. 15 North • Laurel
601-426-2800
 M-F 8:30-5:30, Sat. 8:30-1:00

Darlene "Shorty" King
 For tips on holiday decorating, watch the "Shorty Shares" video, available on our Facebook.

BUDDY'S HOME FURNISHINGS
BUDDYRENTS.COM

Tackle These GREAT OFFERS!

60" LED SMART TV
 ONLY \$25.99 wk
 21 mo \$103.99
 cash price \$1199.99
 Own it in 91 weeks

SHARP 55" TV + 32" TV
 ONLY \$25.99 wk
 21 mo \$103.99
 cash price \$1199.99
 Own it in 91 weeks

STREAM SMART
 ONLY \$22.99 wk
 Cash Price \$499
 Eliminate Cable TV

2031 B HWY. 15 N. • Laurel
601-651-6117

YOU'RE PRE-APPROVED TO RECEIVE UP TO \$3,000 IN-STORE CREDIT AT BUDDY'S!

ELECTRONIS • FURNITURE • APPLIANCES • COMPUTERS • SMARTPHONES

ACER Amana ASHLEY ASUS DELL Kenmore LG MAYTAG SAMSUNG SHARP SONY TOSHIBA Whirlpool

LEASE OWNERSHIP NO CREDIT NEEDED LEASE OWNERSHIP NO CREDIT NEEDED

Losing two legends of broadcasting

By Dale McKee

This week, Major League baseball closed the curtains on the 2016 regular season. I was disappointed and saddened that we would be losing to retirement two of the great baseball announcers of my generation in Vin Scully and Dick Enberg. As I switched back and forth Sunday between the San Diego Padres and Los Angeles Dodgers TV games, I realized what treasures baseball fans would be losing. How many millions of fans have these two giants entertained since 1950?



They are the Babe Ruth of play-by-play men! Scully (89) has been announcing the Dodger games in Brooklyn and Los Angeles for the last 67 years. He also dabbled in NFL football and pro golf but has been known for the last seven decades as the voice of the Dodgers. He is truly the top baseball announcer of all time. His call of Kirk Gibson's home run in the 1988 World Series was a classic call. "In a year that has been so improbable the impossible has happened." In his less extensive football-announcing career, he called the famous "catch" between Dallas and San Francisco in the 1981 NFC Championship for CBS-TV. His calm, even-tempered voice was also made for golf as he called several golf championships.

Enberg (81) has been around for five decades, beginning in the 60s. Enberg worked for NBC from 1975-2000 and announced the 1982 World Series, 42 NFL seasons, ten Super Bowls, nine Rose Bowls, 15 Final Fours, that included several Masters and U.S. Opens, along with the French and Wimbledon Tennis Championships. In all, he called 71 tennis championships. He began his full-time baseball-announcing career in 1965 doing the L.A. Angels' games. During his nine-year broadcasting stint with UCLA basketball, the Bruins won eight NCAA titles. Enberg broadcast two of the most famous college basketball games of all time, the "game of the century" when Houston, led by Elvin Hayes, snapped Lew Alcindor and the UCLA Bruins' 47-game winning streak back in 1968. Enberg and Al McGuire teamed up to broadcast the '79 NCAA basketball finals with Magic Johnson and Larry Bird as the lead players. The last seven years, Enberg has been in the San Diego Padres' booth.

Both Scully and Enberg have God-given magical voices that will never be duplicated, and they were both blessed with the talent to tell a story. I would eavesdrop on these two during the late summer nights when their teams were playing at home on the West Coast just to listen to their amazing stories of past baseball heroes.

Conservative • Honest Integrity

TRAVIS MAC HAYNES
VOTE
November 8, 2016
District 89 Representative

October 7
Huge rummage sale at the American Legion Post II, 1108 North 9th Ave., Laurel, beginning on Friday, October 7 from 3:00 p.m. until 6:00 p.m. and Saturday, October 8 from 8:00 a.m. until. All proceeds go to the American Legion Post II.

You are cordially invited to the 10th year singing anniversary for "Renewed Spirit" that will be Friday, October 7 and Saturday, October 8 at Triumph the Church and Kingdom of God in Christ of Vossburg. Services will begin at 7:00 p.m. For more info contact Sherry Bridges at 601-935-0518.

The Northeast Jones High School Class of 1996 will be holding their 20-year class reunion on October 7-8. For more information, please email nejseniors96@yahoo.com.

The Ellisville Masonic Lodge will have delicious pulled pork barbeque plates for sale on Friday from 8:00 a.m. to noon. The \$10 per plate includes pulled pork, beans, slaw, dessert. Limited number available, so order yours now. 601-477-9608 or 601-433-5229.

Wayne County High School will honor the 1976 Beat Four High School football Tigers. The '76 Tigers are the only undefeated team in the history of Beat Four High School. The Danny Adams coached Tigers also won the Ellisville Jaycee Bowl. The team will be recognized at the Wayne County vs. West Jones football game on Friday, October 7. The team, cheerleaders, coaches and teachers will have a meet and greet in the WCHS Library beginning at 5:30 p.m. The team, cheerleaders and coaches will be introduced that night in pre-game ceremonies. For more information, contact WCHS at 601-735-2851.

October 8
Women of Power Fellowship will be held Saturday at 11:00 a.m. at New Life in Christ Ministry, 226 Ellisville Blvd., Laurel. The speaker will be Lady Stephanie Bolton of Sweet Hope Ministry, Laurel.

Faith Explosion Ladies Conference is being hosted by Sandra Hancock Ministries on Saturday from 10 a.m. to 1 p.m. at "The Gathering Place," 3227 Audubon Dr. in Laurel. In addition to Sandra, speakers will include Pastor Hannah Cowling, Pastor Cheryl Lankford, and Minister Hannah Hopkins. There are no admission costs! For more information, call 1-800-579-7350 or see our webpage at www.sandrahancock.org.

be obtained by calling Mary Graham @601-344-7284 or Gwen Mitchell @601-319-0606.

The Jones County Alcorn Chapter will meet Saturday at noon at the Cook Avenue Center. We are asking all Alcornites to please attend. For more information, contact Ann Martin at 601-729-2334.

The William Chapel UM Church family cordially invites you to their 8th Annual Prayer Breakfast on Saturday at 8:00 a.m. The speaker for this occasion will be Pastor Eddie Lee Jones. The theme is, "Casting Down Imaginations Through the Power of Prayer!" Scripture: 2 Corinthians 10:3-5. For more information, you may contact the prayer breakfast coordinator, Henrietta Brown, at 601-425-2230.

October 9
Mt. Moriah MB Church, 4055 Sharon Road, Laurel, invites you to join us as we celebrate 13 years of teaching and preaching the spoken word of Pastor Elbert & Sis. Dorothy Lewis at 2:30 p.m. Our guest speaker will be Pastor Carl Burkett of Shiloh Baptist Church and Mt. Vernon Baptist Church of Petal.

You are cordially invited to attend our Mt. Vernon's Family and Friends Day on Sunday at 2:00 p.m. The speaker for the occasion will be Rev. Arthur L. Siggers, pastor of Mt. Olive Baptist Church, Hattiesburg.

Mt. Olive MB Church, Laurel, invites you to Pastor Buxton and First Lady Buxton's "Six Year Anniversary" on Sunday at 2:30 p.m. Rev. George Ducksworth, pastor of Shady Grove Baptist Church, will be the speaker.

Providence MB Church, 1908 N. Joe Wheeler Avenue, Laurel, invites you to our annual fall revival, October 9-12, with Sunday services beginning at 3:00 p.m. Monday -Wednesday services will begin at 7:15 nightly. There will be a different guest speaker each night.

Oak Grove Baptist Church, Ellisville, invites you to our annual fall revival October 9-14. Our guest speaker for Sunday will be Dr. Geveion Booth, pastor of Blue Mountain Baptist Church, Bay Springs. Services Sunday will begin at 2:00 p.m. Nightly services will begin at 7:00 with a different guest speaker for each night.

Ovett Eastern Star will host its Annual Fall Festival from 5:30 p.m. until 8:30 p.m. on Saturday at the Eastern Star Building in downtown Ovett. We will have games for children such as sand dig, ring toss, cake walk, golf, basketball, duck pond, princess tent, fishing booth, bean bag baseball, ring-a-drink, football throw, limbo, pumpkin toss and much more, such as our Country Store with homemade baked items and Bingo. This is an ole-fashion community event for children of all ages. In addition, we will have a cake baking contest with judging starting at 5:30 p.m. The cakes will be judged by a panel of three distinguished guest judges. Entry fee is \$3.00 per cake. Entry forms may

You are cordially invited to Sweet Hope MB Church Pastor's Aide Program on Sunday, October 9 at 3:00 p.m. The church is located at 925 South 6th Avenue, Laurel.

The public is cordially invited to attend the annual fall revival of Mallalieu UM Church, located at 1114 North Joe Wheeler Avenue, Laurel, beginning Sunday October 9 through October 12. Services will begin at 11:00 a.m. October 9th with our own Rev. Irvin King, who will also be the evangelist from October 10-12. Monday through Wednesday services will begin at 7:00 p.m.

East Pleasant Grove MB Church invites you to the 27th Men and Women's Day program at 2:30 p.m. The speaker for this occasion will be Rev. Joe Wiley, pastor of Holy Temple of Faith Baptist Church, Petal.

Gospel meeting, October 9-12, at Church of Christ on 2830 Audubon Drive, Laurel. There will be a different guest speaker each night. The public is invited to attend. For more information, call 601-426-6209.

Shelton Baptist Church, Moselle, will hold Homecoming/revival services October 9 - 12. Sunday service at 10 a.m. followed by potluck meal. Monday - Wednesday services at 7 p.m. Speaker will be Jim Futral; music will be led by Slater Murphy.

Pet of the Week
SPONSORED BY: JIM CLARK

Gretel is a calm, affectionate kitten who is between five and six months old. She has been vaccinated and spayed. Gretel and her brother Hansel, along with many other kittens, are available at the Animal Rescue League, located at 2511 Moose Drive in Laurel. ARL is open Monday-Saturday, from 9 a.m.-1 p.m. If you have any questions about adopting, volunteering, or donating, you can call us at 601-649-0821. You can also find us on Facebook as the Laurel Jones County Animal Rescue League or visit our website at <http://arllaurel.webs.com>. ARL is currently in need of cat litter, Kitten Chow, laundry detergent, and bleach.

Save a lot

907 Herbert's Mart Shopping Center
Waynesboro, MS
Wed., Oct. 5 - Tues., Oct. 11, 2016
OPEN 7 DAYS A WEEK - 8A.M. - 8P.M.
WE RESERVE THE RIGHT TO LIMIT QUANTITIES

YOU SAVE BY SHOPPING SAVE A LOT vs. COST PLUS

Family Pack Fresh GROUND BEEF \$1.98 Lb. <small>The Price You See Is The Price You Pay</small>	Family Pack COUNTRY STYLE RIBS \$1.58 Lb. <small>The Price You See Is The Price You Pay</small>	10 Lb. Bag LEG QUARTERS \$3.98 Ea. <small>The Price You See Is The Price You Pay</small>
Assorted 28 Oz. Can WYWOOD VEGETABLES 10/\$10 <small>We don't add 10% at the register</small>	Assorted 5.6 Oz. Pkgs. KNORR'S SIDE DISHES 10/\$10 <small>We don't add 10% at the register</small>	Assorted 15.25 Oz. BETTY CROCKER CAKE MIX 10/\$10 <small>We don't add 10% at the register</small>

GOOD FRIDAY, OCTOBER 7, 2016 ONLY!

Guidry's 4 Lb. Box CATFISH FILLETS \$19.98 Ea. <small>Our competitors add 10% at the register</small>	Assorted 12 Ct Boxes HOT POCKETS \$9.97 <small>Our competitors add 10% at the register</small>	Totino's 120 Count PIZZA ROLLS \$7.97 Ea. <small>Our competitors add 10% at the register</small>
--	--	---

State Farm®
 Providing Insurance and Financial Services

Jim Clark, Agent
 P.O. Box 548 • Ellisville, MS
 601.477.9336
jim.clark.b2r5@statefarm.com

Like a good neighbor, State Farm is there.®

NEWSOM'S PORTABLE BUILDINGS
 Free Delivery within 30 Miles



COMPARE OUR QUALITY

- 2X6 CEILING JOIST
- FOAM FILLED SEAMS
- SHUTTERS • DEADBOLT
- 2X6 TREATED FLOOR JOIST

12 Months Same As Cash! *wac Azalea Mart • Waynesboro 601-735-3300

Need your building Relocated?? CALL US!!

It's Fair Time! "PICK A PAYMENT" LOAN FROM ACCEPTANCE LOAN COMPANY, INC.

\$529.36 LOAN AMOUNT \$70⁰⁰ MONTHLY PAYMENT <small>*12 month term •46.05% APR with opt. insurance</small>	\$1037.43 LOAN AMOUNT \$100⁰⁰ MONTHLY PAYMENT <small>*18 month term •43.38% APR with opt. insurance</small>	\$1503.65 LOAN AMOUNT \$120⁰⁰ MONTHLY PAYMENT <small>*24 month term •41.52% APR with opt. insurance</small>
--	--	--

Select the amount you need or call if you need more or less! *Subject to our standard credit approval procedures

2001 MS HWY. 15N. • SUITE A • LAUREL • 601-425-7140

Covington County 85 +/- Acres. Price Reduced! Located in the Seminary School District 4 miles North of Seminary at the intersection of Hwy 535 and Lebanon Church Road. Would make for a great home site. Features a mix of young pine plantations and hardwood stands along the creek bottom. Excellent timber investment and hunting opportunity. \$191,250 Call Bennett 601-913-0340 at Walley Properties LLC. Please visit walleyproperties.com for maps of this listing.

ner Properties, LLC. 601-278-5434. www.4cplandandhomes.com

Highlands. Finance a lot, \$1500 down, pay for your lot over 3 years - then use your lot as down payment at your bank. Call: 601-649-9459.

Smith Co. 25+/- Acres: Small farm, fields. Brick home, barn, pine timber, 4br/2.5ba near Raleigh. \$250,000. Call Bert at 4corner Properties, LLC. 601-466-6428. www.4cplandandhomes.com.

4 3/4 acre homesite, \$28,000 South Jones County, Blueberry Lane off Jordan Rd. between Ellisville and Moselle. Heavily wooded. No trailers allowed. Also +/- 5 acre corner lot, Jordan Rd. and Blueberry Lane. Lots of trees. Land has been groomed. Desirable neighborhood, only lots left. 601-310-6525. Only \$35,000.

Covington County +/- 24 Acres. Located 4 miles from downtown

Seminary off hwy 590 on Shirley Sanford Road. This road frontage property is the perfect location for a house/mini-farm. Property consist of un-thinned pine plantation with a good interior road for hunting opportunities. \$86,400. For more details, call Bennett today 601-913-0340 at Walley Properties, LLC. Or visit our website walleyproperties.com for maps and more information of this listing.

Lake Eddins: A Great Place to be!! Small offwater lots up to 5.5 acre lots. Waterfront lots, Camps and Homes. Call CrossRoad Realty for more info: 601-727-7653.

Land sales: Let us assist you with your land sale or purchase. We provide full service forestry consulting and land brokerage. Call McCraw Forest Management for a free consultation. 601-498-9143

+/- 60 Acres Located on Holliman Road just West of Richton, this tract consists of +/- 55 acres in 2 year old pine plantation and +/- 5 acres in hardwoods. Power and water available. Asking \$150,000. Call us for a free consultation. 601-408-0615. McCraw Forest Management, www.mfmland.com.

Greene Co. 75+/- Acres: Fenced pasture, barn, pond. Hwy. 42 frontage near State Line. \$225,000. Call Ron at 4 Corner Properties, LLC. 601-410-3089. www.4cplandandhomes.com

3 acres for \$25,000, beautiful home-sites, utilities available. South Jones Schools. 601-466-2267.

+/- 54 Acres Located on CR 220 just East of Heidelberg, MS this tract consists of 9 year old pine plantation with hardwoods in drains. Road frontage with power/water available. \$105,300. Call us for a free consultation. 601-408-0615. McCraw Forest Management, www.mfmland.com.

80 acres timberland, Paulding. Road frontage, good hunting. \$150,000. 601-580-0191.


I buy timber and timberlands. Call Shawn at 601 408 3570.

+/- 219 Acres priced to Sell Quick! Located on just outside of Topton, AL, and one hour from Mobile, AL. Has road frontage on CR 19 along with power and water available. Has great secluded House/Camp Site. Bilbo Creek runs through the property. Has Lake. REDUCED \$306,600. Call us for a free consultation. 601-408-0615. McCraw Forest Management, www.mfmland.com.

Clarke Co. 37.5+/- Acres: Road frontage, clear cut and sprayed, excellent hunting or farm/home. \$50,000.00. Call Ron at 4 Corner Properties, LLC. 601-381-3320. www.4cplandandhomes.com

Continued on ... Page 6

Alive 96.5
 presents
Dead Doctors Don't Lie
 with Dr. Joel Wallach



Monday - Friday
2pm - 3pm

www.aliveyougevity.com

LIVE: Monday - Friday 2-3pm
ENCORE: Monday - Sunday, 11pm - Midnight

CATTLE BUYING YARD

Buying All Classes of Yearlings & Calves

NO COMMISSION & NO SHRINK

Every Monday: 7 a.m. - 12 p.m.
 Or By Appointment

CALL FOR DIRECTIONS
Levi Rogers: 601-315-1009



REASONABLE TRUCKING IS AVAILABLE...CALL FOR A QUOTE

Hwy 28, 7 Miles West of Magee, Mississippi

KEY FURNITURE CO.



Motion Furniture
 Sectional with Reclining Chaise

New Bedding for Fall



SPRING AIR BACK SUPPORTER
 Flip or No Flip in stock

LOOSE LAY VINYL FLOOR COVERING **NO GLUE!**

Whirlpool APPLIANCES

707 WAYNE ST. • WAYNESBORO
 (located next to Walker Memorial Co.) **601-735-2919**

FALL SAVINGS!

LAY-A-WAY NOW FOR CHRISTMAS!

Carhartt SHORTS
\$29⁹⁵

BOOTS • BUCKLES • HATS
SPURS • SUSPENDERS

Liberty OVERALLS **\$34⁹⁵** and up

Twisted X HOOEY BOOTS
\$209⁹⁵

Carhartt T-SHIRTS
\$17⁹⁵

WALLETS
\$33⁰⁰ and up

New Styles of
Kid's Boots

Wrangler Denim Shirts
\$27⁹⁵

CLOSE OUT BOOTS **\$99.95**

George Strait
JEANS **\$36⁹⁵**

Ely Snap Button
WORK SHIRTS
 Long Sleeve **\$22⁹⁵**
 Short Sleeve **\$19⁹⁵**

Carhartt LIGHT WEIGHT PANTS **\$34⁹⁵**

SHIRTS **\$49⁹⁵**

We Now Have
Fire Retardant

- Jeans
- Shirts
- Coveralls

New
Boots By
 •Ariat
 •Twisted X

Fancy
WESTERN SHIRTS
\$29⁹⁵ and up

Wrangler
JEANS
\$27⁹⁵

Steel Toe WORK BOOTS
 RED WING, JUSTIN, WOOLVERINE, GEORGIA, JOHN DEERE, & TONY LAMA

Carhartt Denim OVERALLS
\$44⁹⁵

ROYALS WESTERN STORE

Downtown Soso • 601-729-2143

Hours:
 Monday - Friday
 8:00a.m. - 6:00p.m.
 Saturday
 8:00a.m. - 4:00p.m.



SERVICE DIRECTORY

Where the Pine Belt goes to get things done!

Right at Home
In Home Care & Assistance

THE RIGHT CARE--RIGHT AT HOME
Locally Owned

Do you or someone you know need help with:

- Transportation to Appointments
- Grocery Shopping/Hair Appointments
- Light Housekeeping
- Recovering from a Hospital Stay
- Basic Companionship
- And Much More!

FREE CONSULTATIONS
601.426.6333

A&A SEPTIC SERVICES, LLC

Install and Repair

- Septic tanks
- Treatment Plants
- Field Line • Grease Traps

In business for 34 years

FAMILY OWNED AND OPERATED
601-649-8838
601-433-2947
IN GOD WE TRUST

SLATON'S FURNITURE UPHOLSTERY

- Commercial & Residential
- Free Pickup & Delivery
- Furniture Refinishing & Repair
- 42 Years Experience
- Large Selection of Fine Fabrics to choose from

514 Front Street
Laurel, MS
601-428-8756

LAUREL A-1 TIRE CENTER
Right behind the Laurel Police Department

TIRE SPECIAL

- P225/60R16.....\$52.95
- P215/60R16.....\$48.95

Trailer Tires

- ST205/75R14 \$48.95 Each PLUS INSTALLATION
- ST205/75R15 \$58.95 PLUS INSTALLATION

219 Ellisville Blvd., Laurel, MS
M-F 7:30 A.M.-5:00 P.M. SAT. 7:30 - NOON
601.425.4616

DANIELS PLUMBING SERVICES

Your plumbing problem now has a solution
Call Day or Night

735-1827
381-1040

Owner: Michael Daniels
Waynesboro

KC CONSTRUCTION
Kimble Coats Owner

- New Construction
- Remodeling
- Decks
- Vinyl Siding
- General Construction
- Foundations & Slabs

601-433-6996

Jones County +/- 30 Acres Located just minutes from the Howard Technology Park, I-59/Hwy 590/Hwy 11, and Ellisville. This property has paved road frontage on Dacetown Road and has a 10 yr. old pine plantation. \$89,500. Call Bennett 601-913-0340 at Walley Properties LLC. Please visit walleyproperties.com for maps of this listing.

+/- 120 Acres Located on 3 miles South of Waynesboro off Hwy 63 in Clara, 13 Year old pine plantation. \$330,000. Call us for a free consultation. 601-408-0615. McCraw Forest Management, www.mfmland.com.

\$49,000 Call us for a free consultation. 601-408-0615. McCraw Forest Management, www.mfmland.com.

14 acres outside of city limits. Road frontage on Clark Dirt Pit Road behind Kroger and north end of Wansley Road. West Jones School District. Will not divide. Make offer. Call 601-319-5229 or 601-498-5808. Great investment.

serving Pine Belt area, 601-283-8667

Dozer/trackhoe services, Dirt hauling. Residential/commercial sitework, land clearing, dozer/trackhoe work, trailer/house pads, roads, ponds, etc. We haul gravel, fill dirt, topsoil, sand, wash gravel, slag. For estimate call 601-498-8485.

Miller Tree Service: bucket truck, professional, 30 years experience, insured; bob cat - dump truck and chipper available, senior citizen discount, free estimates. 601-498-3836, 601-649-0174.

Reed's Metals, Inc. Metal roofing, metal buildings, pole barns. Buy direct from the manufacturer and save! 601-823-6516. www.reeds-metals.com

Flowers, Sand & Gravel: We now install septic systems, grinder pumps and spray systems. We deliver all types of gravel, fill material, sand, rock and topsoil, soil mix and mulch. Dozier and track-hoe service available. Foundations, roads, ponds, etc. We also have Above Ground Precast Storm Shelters, several sizes available. Give us a call. 601-498-5983 or 601-477-2767.

Sims Construction: Remodeling of all kinds. Kitchens, baths, whole house, decks, sun rooms, additions and painting. 3rd generation builder. 601-310-3473.

Herrington's REMODELING & REPAIR SPECIALIST

NO JOB TOO LARGE OR TOO SMALL

JUSTIN HERRINGTON
601-319-2436

GMW Siding Specialist

- Mastic Elite Contractor
- 34th Year serving the Pine Belt
- Winner of "7" National Awards
- Mastic Vinyl Siding Products
- 6" Seamless Gutter

601-428-5595

DS CONCRETE CONSTRUCTION SERVICES

No job too LARGE or small

- FINISHING • SET-UP • FOUNDATIONS
- PATIOS • SIDEWALKS • DRIVEWAYS

DARREL SPEED-Owner
601.433.1073 Cell
601.729.8228 Home

MISSISSIPPI WATER WELL DRILLING AND SERVICE

OVER 36 YEARS OF EXPERIENCE

601-344-1005
601-716-6837
662-285-7046

Nelson Cain - Owner
OVETT, MS

Lawncare: Serving Hattiesburg, Lumberton, Laurel, Sumrall, Petal, Brooklyn, Ellisville, Purvis and Mosele areas. Reasonable rates. 601-325-5008. www.fullservicelawnca-rems.com

Dozer, trackhoe, backhoe, bush-hogging work, fill dirt, clay, gravel, sand, delivered, mobile home pads, ponds, driveways built, repaired, clearing, site prep, Mark Butler, 601-433-6459 or 601-425-1747

Tom's Trees: Professional bucket truck service. 30 years experience in the Pine Belt area. We do precision take down, shaping, trimming, and dead limbing. Free estimates, fully insured. Call cell: 601-433-0518 or 601-787-4783

Lonnie LOFTON
Roofing Contracting
Since 1968
Free Estimates
All Work Guaranteed
Laurel, MS PHONE (601) 425-4484

Flooring Hardwood floors, ceramic tile, linoleum. For all your flooring needs. Quality work, references available. Licensed & Insured. Wilson 8:21 LLP II Corinthians 8:21. 601-268-7603.

House Leveling Foundation Repairs. Replace bad sills, floor joist, or flooring. Sagging or shaky floor or dragging door, we can fix this. Let us make your foundation safe. Insured. 601-543-7007

FARRIS Mobile Home TRANSPORT

Statewide Moving
Licensed & Insured
Transporting since 1979

Tony Farris
601-422-4144

HAIGLER ROOFING & REPAIR

- New Construction • Leaks
- Repairs • Shingles • Metal
- Flat Roofs • Chimneys

FREE ESTIMATES
30 Yrs. Experience

Call Dennis Haigler
601-319-2522

Jones County +/- 57 Acres: Must see! Located in South Jones County on Rainey Road. 10 Miles from Hattiesburg and Laurel right off the Sanford Road Exit on I-59. This property would be perfect for a home-site or mini-farm with plenty of recreational opportunities. Price: \$153,500. For more details, call Bennett today 601-913-0340 at Walley Properties, LLC. Or visit our website walleyproperties.com for maps and more information of this listing.

+/- 35 Acres Located South of Quitman, MS on CR 276 just off of CR 250 in the Hale Community, this tract has Mixed Hwd/Pine Timber. Great Home or Camp Sites. Great Hunting. Power/Water Available.

PINE BELT GUTTERS & REMODELING

Specializing in seamless gutters, vinyl siding, patio covers, replacement windows & doors. We also offer gutter cleaning.

WE WILL BEAT ANY COMPETITOR'S PRICE!
FREE ESTIMATES 601-265-6010

Quality Pressure Washing at affordable prices. Licensed, Insured, Affordable, Professional, Christian company. Free Estimates. References available Commercial and Residential. Wilson 8:21 Painting & More. II Corinthians 8:21. 601-268-7603

KC Construction, Kimble Coats owner. New construction, remodeling, decks, vinyl siding, foundations, slabs. 601-433-6996

Thrash Pressure Washing: Residential & Concrete. Call 601-470-2296.

GMW Siding Specialist: Mastic Elite Contractor. 34th Year serving the Pine Belt. Winner of "7" National Awards. Mastic Vinyl Siding products. 6" Seamless Gutter. 601-428-5595.

Tom's Trees: Professional bucket truck service. 30 years experience in the Pine Belt area. We do precision take down, shaping, trimming, and dead limbing. Free estimates, fully insured. Call cell: 601-433-0518 or 601-787-4783

Frontier Land Clearing: Environmentally Friendly Land Clearing. Brush & stump removal. Mulch your underbrush and unwanted tress flush to the ground. We do all the work for you. No Piles. No Hauling. No Burning. Jason Cooley, Owner. 601-310-2402.

C&T CASH
Formerly 16th Ave. Cash

- We hold your check for 30 days
- Get up to \$400 Cash for 30 days

601-428-1650
327 Magnolia St. • Laurel

BOLIVAR'S Mobile Home Delivery & Setup

Statewide Moving

- Licensed
- Insured

Nathan Bolivar
601-580-9900

Warehouse Services Company, LLC

Nemo Clark Dr. Greater Laurel Industrial Park

- Sizes Range From 25,000 sq ft to 63,000 sq ft
- Short Term and Long Term Leases Available

Commercial & Industrial Storage
601.433.3988 • 601.433.4140

JAMES RHODES
• CARPENTRY
• PAINTING

No Job too small or too large

601-319-3811

ADVERTISE YOUR BUSINESS HERE!
601.649.1129
IN PACT

LS Tractor
Excel in Your Field

Fall into a GREAT DEAL!

XJ2025H LS Tractor w/4WD >>> \$14,299⁺ tax

- 25 HP with Front End Loader
- Landscape Rake 5'

XG3135 LS Tractor w/4WD >>> \$21,999⁺ tax

- 35 HP with Front End Loader
- Landscape Rake 6'
- 48" Open Bottom Grapple with hydraulics in place

XR4145 Cab LS Tractor w/4WD >>> \$29,099⁺ tax

- 45 HP with Front End Loader
- Landscape Rake 6'
- Pallet Forks (rated for 3500#)

WE QUOTE CUSTOM PACKAGES EVERY DAY

WWW.TRACTORSUNLIMITEDMS.COM

TRACTORS UNLIMITED, LLC
601-583-6453 1507 N. MAIN HATTIESBURG **800-321-2701**

FINANCING AVAILABLE UP TO 84 MONTHS (WAC) 5 YR DRIVE TRAIN WARRANTY
MON-FRI 7:30-4:30, SAT 8:00-4:00

Continued on ... Page 7

NEED CASH FAST?

COME SEE TIFFANY
CITY PAYDAY LOANS
CAR TITLE LOANS
716 SPRING STREET
WAYNESBORO
601-735-5353

Propane Industrial Gases

RESIDENTIAL COMMERCIAL INDUSTRIAL TANK SET SPECIAL

Ellisville: 601-477-3462
Collins: 601-765-6800
Hattiesburg: 601-583-6269
Taylorsville: 601-785-4789
Mon.-Fri. 7 A.M. - 4 P.M.

MAGNOLIA STORAGE BUILDINGS, INC.

- Utility
- Storage
- Office
- Workshop
- Barns
- Custom Outbuildings of all types...

244 E. Hickory St.
Exit 96B / Hwy. 15 S.
Laurel

Tony Thornsberry
Cell: (601)577-0927

COOK AVENUE APARTMENTS

Now Accepting Application for Low Income Apartments for Persons 50 Years or Older Disabled or Handicapped

• Central Heat & Air • Stove • Refrigerator

For More Information Call 649-4204
Office Located 415 Sorrell Dr., Laurel, MS
Hours: 8 a.m. • 5 p.m., Mon. - Fri.

Law Office in Prentiss, MS. Divorce, Criminal Defense, Death Claims, Personal Injury, Bankruptcy, DUI Defense, Offshore, 18 wheeler accidents. Call for your consultation today. Jones Law Office, 2219 Columbia Avenue, Prentiss, MS. 601-582-9177.

Painting, Remodeling, Drywall, Pressure Washing, Decks, Cabinets and more! Licensed, Insured, Affordable, honest, dependable Christian company. Commercial and Residential. Quality, professional work. Over 20 years experience. References available. Call for a free estimate. If no answer, please leave a message. We will return your call. Wilson 8:21 Painting & More. 11 Corinthians 8:21. 601-268-7603.

Kool-Seal Mobile homes, travel trailers, campers, sheds, etc. Energy efficient, 10% reduction. Pressure washing available. Call Craig or leave message, 601-544-9614

Daniels Plumbing Services, Waynesboro, Your plumbing problem now has a solution, call day or night, 601-735-1827, 601-381-1040

B&B Tree Service: Call the best for less, fully insured, senior citizen discount, 38 years experience. We do all tree work and clean up at your request - bucket truck also available; call day or night, free estimates. May God bless you. Proverbs 11:30. 601-433-5257

GOOD CREDIT. BAD CREDIT. NO CREDIT. NO PROBLEM!
NEW, USED & REPO HOMES AVAILABLE. NO CREDIT CHECK. OVER 100 HOMES TO CHOOSE FROM. Payments starting at \$250 per month
For more info, call Howard at 601-447-4538

16th Avenue Check Cashing: we hold your check for 30 days, get up to \$400 cash for 30 days. 124 North 16th Avenue, Laurel, 601-428-1650.

Farris Mobile Home Transporting: Statewide moving, licensed & insured. Transporting since 1979. Tony Farris 601-422-4144.

Single, low as \$375 month, double-wide, low as \$550 month. Call 601-307-2114.

Good credit, bad credit, no credit. Call the credit expert, Repo Man, 601-310-9262.

"Who Let the Dogs Out" 16x80 Belmont, 3BR/2BA., this spacious home has new carpet, paint and vinyl flooring with built-in entertainment center, very large rooms and island bar in kitchen, won't last long, \$17,900. 601-520-0710 or check TB Sales @ Facebook.

Foreclosure's, Repo's, Used and New Mobile Homes. Call Magic Steve Today. 601-402-1139.

Stop renting and own your own home now. Single wides for \$400.00 a month and double wides for \$600.00 a month. Call 601-307-2114.

ELLISVILLE APARTMENTS

Now accepting applications for Low Income Apartments

2 BEDROOM/1 BATH

• Central Heat/Air • Stove • Refrigerator • Garbage and Water Included

for more information come by our office at 200 Hulon St., Ellisville, MS or call 601.477.8425
office hours: Monday, Wednesday & Friday 9:00 AM - 12:00 PM

tained. Non smoker Hattiesburg, MS. \$42,000 must be moved. 601-520-4540 or 601-520-0699. Have A Blessed Day!

New-used homes, whatever you are looking for I probably have and if not I can get it. Call 601-307-2114.

Used singlewide under \$400 with taxes and insurance included. Call Blake at 601-319-1316.

"Big boy" 28x80, 4br/3ba., home has new carpet and new paint and vinyl flooring with home office, large kitchen with an island bar and laundry w/sink, home has huge master bed and bath, own this Big Boy today for only \$36,900. 601-520-0710.

Wholesalemobilehomecenter.com has new, used and repo singlewides and doublewides. Lowest prices in the state. Check us out on the web or call 601-296-7960.

"The Biggest and Best" Summer quick sales. 32x80, 5BR/3BA., vinyl sided, shingle roof with fireplace, sliding glass back door, huge rooms and kitchen with island bar home, only \$29,900. 601-520-0710 or TB Sales @ Facebook.

Factory Direct pricing. Nobody beats our prices. wholesalemobilehomecenter.com 601-296-7960.

NEED A HOME? PAST CREDIT PROBLEMS?
We have new, used, & repos with low monthly payments
601-296-7960

For sale/rent to own 1976 mobile home 14x70, 3br/2ba, plywood floors, all appliances included. Sale for \$4500 cash. Rent to own for \$350 for 15 consecutive months with \$1000 down. Tucker's Crossing - Hwy 15 South area. Call 601-319-1901.

5 bedrooms, 3 bath double as low as \$500.00 a month. Call 601-307-2114.

"Mobile homes, mobile homes" arriving daily at TB Sales on Hwy 49 North, Hattiesburg, next to the Bouie River. We have used, repo, remodeled, fixer upper, all homes, all sizes at unbelievable prices, our guarantee no one will beat our prices for what we do. 601-520-0710 or TB Sales @ Facebook.

Largest used home selection in the South. Call 601-307-2114.

Need Zone II or III home? Call 601-307-2114.

1999 Doublewide, 4BR/2BA., delivered, \$22,000. 601-307-2114.

"Used and Repo Dealer" 10 acres of mobile homes, sold as is or completely remodeled. Have it your way at TB Sales. We will get you in the right home. 601-520-0710.

Single wide, \$350 a month and double wides around \$550 a month. Call Chase today at 601-310-9262

Foreclosures, repos, used, land home packages, and New mobile homes. Call Chase today for details 601-310-9262

2004, Zone 2, 16x80, total remodeled job, delivered for \$22,900. Call 601-307-2114.

Used, 28x50 doublewide, must be moved. Only \$7,000. Call 601-307-2114.

2016 MODELS MUST GO! 2017 ARRIVING! NEW DOUBLEWIDES AS LOW AS \$399 PER MO. 601-296-7960
wholesalemobilehomecenter.com

MOBILE HOME FOR RENT

2000 14x60 3br/1ba, all electric c/h/a. Water provided. Burnt Bridge Rd., South Jones area. \$400 & \$200 deposit, in trailer park. 601-498-2488, Rhonda.

2br/2ba, c/h/a, South Jones area. On private property. \$700 deposit and \$750 rent. Call 601-433-2490.

1997 14x50, 2br/2ba, all electric c/h/a. Rose Lane, West Jones area. Water and garbage provided, in trailer park. \$400 month, \$200 deposit. 601-498-2488, Rhonda.

3BR and 2BR mobile homes. Weekly payments available. Pendorf area. West Jones School District. \$150/deposit, rent starting \$250 up. 601-577-7385, 601-577-2055.

3br/2ba, Moselle, plain, quiet, \$500/mth, \$300/dep. 601-606-2433.

1994 16x80 3br/2ba, all electric c/h/a. West Jones area, water and garbage provided. In trailer park, 461 Rose Lane. \$450, \$200 deposit. 601-498-2488.

THE MISSION STORE
Thrift Shop
5445 Hwy. 11 N. Ellisville • 601.394.3507
Entire Store 50% off
T-F 9a-5p • Sat. 9a-3p

Fall is in the air!!
New cypress wood furniture, picture frames and fall yard decor!!

Greenhouse full of Mums!

IMPORTS & BEYOND
601-671-0525
911 AZALEA DR. • WAYNESBORO

MOBILE HOME LOTS

Four months free space rent. Move your mobile home in with us! Spaces available at Bellecrest. Nicest mobile home park in Hattiesburg. Bellecrest Mobile Home Park 63 Sullivan Kilrain Road Hattiesburg, MS. 601-545-1300

HOUSES FOR SALE

4 Bedrooms, 3 Full and 1 Half Bath. 5,311 Sq. Ft. \$55/Sq. Ft. Beautiful high-grade, wood-grain vinyl flooring. Garage workshop, basement concrete storm shelter. Small pond in backyard. 3 hot water heaters. 5'x39' front porch. Covered 9'x39' back porch. 2.0 Acres. 46 Mar Ree Drive, Laurel. Contact Jim Johnson at Howard Johnson Properties, LLC 601-573-8686. www.hojopro.com

Jones Co. House W/11 acres: 3BR/2.5BA, in ground pool, large shop, barn, Reedy Creek, on Sharon Road. \$235,000.00. Call Ryan at 4 Corner Properties, LLC. 601-381-3320. www.4cplandandhomes.com

For sale by owner: Spacious and comfortable 5br/3ba home in Lake Heritage Estates. This beautiful 3400 s.f. home sits on a 2.5 acres corner lot and comes with full lake privileges for your recreational enjoyment. Call 601-729-2323 today.

3br/2ba approximately 1800 sq.ft., w/carport on approx 2 acres, Northeast Jones School District, Powers Community. For more information call 601-498-7213 or 601-498-9227.

107 Mississippi Drive, Waynesboro, MS. 3br/2ba, approximately 1800 sq.ft. living area. Porches and enclosed carport approximately 650 sq.ft. 601-394-7060.

House for sale: 26 Buckelew Rd. 2br/1ba, kitchen and living together. 601-577-9085.

2702sqft under roof + acreage 3br,2.5ba gourmet kitchen, safe rm, hardwood floors, 3 car garage, SJ school district, MSTA. \$282,500.00. (601) 517-1025.

Home for sale. Furnished 3br/2ba, military style shop 32x68x16, located in Northeast Wayne Co. 2.2 acres surrounded by 100's of acres for hunting, shooting house, big deer, walk to local creeks, dog kennels. Possible owner financing. 601-381-6603.

Clara/Wayne County: 3Br, 2BA, 2 car garage, pool, on 2 +/- acres. \$140,000. Call Dennis at 4 Corner Properties, LLC. 601-248-4396. www.4cplandandhomes.com

HOUSES FOR RENT

2/3 bedroom homes for rent. 601-649-4075.

1, 2, 3, and 4 bedroom homes and mobile homes. Hattiesburg. Call for list. 601-336-5808.

North Laurel Will accept section 8. 2803 Carter Ave 2 Bed 1 Bath \$400.00 deposit. \$575 Month. 601-319-2938

Continued on ... Page 8

FISH DAY!
IT'S TIME TO STOCK YOUR POND!
Delivery Will Be:
Wednesday, October 19
Taylorsville 3:30-4:15 pm
At Taylorsville Farm Supply
Thursday, October 20
Ellisville 12:45-1:30 p.m.
At Ellisville Farm & Garden
Bay Springs 2:15-3:00 p.m.
At Circle L Farm Supply
"LIKE" us on Facebook!
FISH WAGON
To Place an Order Call
1-800-643-8439
WWW.FISHWAGON.COM

FALL SALE

Diamond Engagement Ring

Regular \$470⁰⁰
\$199⁰⁰

*ACTUAL SET MAY VARY. PICTURE USED FOR ILLUSTRATION PURPOSES ONLY

REED Jewelers

Gardiner Center Laurel

601-428-0048

• Ring Sizing
• Cash for Scrap Gold

All Major Credit Cards Accepted

Watch Batteries

Butler Dental
Across from Court House, Butler, Alabama
Julie Utsey, D.M.D.P.C.
General Dentistry
205-459-2700 1-888-851-8512
Tuesday thru Friday 8 a.m. - 5 p.m.

- ONE DAY DENTURES
- PARTIALS AND EXTRACTIONS
- FREE CONSULTATIONS

	Single	Set
Set Standard Dentures.....	\$200.00	\$300.00
Set Deluxe Dentures.....	\$350.00	\$600.00
*Reline Included: Savings of \$130.00 per unit		
Set Custom Deluxe Dentures	\$550.00	\$1,000.00
*Reline Included: Savings of \$130.00 per unit		
Cast Metal Partial - \$625.00	• Acrylic Partial - \$200.00	
• Extractions - \$100.00	• X-Rays Included	
• Simple Extraction - \$70.00	• Surgical - \$100.00	

THIS WINTER SAVE MONEY HEATING YOUR HOME

Kozy-World gas space heaters are available with infrared or blue flame burners. There are multiple sizes, heat outputs, and heat control options available.

Both types operate with 99% efficiency and provide fast, continuous heat for only pennies an hour.

See The Full Line Today At
Alexander's
SELECTION • SERVICE • VALUE

Bay Springs 601-764-2161
Ellisville 601-477-3312

REED Jewelers

Gardiner Center Laurel

601-428-0048

• Ring Sizing
• Cash for Scrap Gold

All Major Credit Cards Accepted

Watch Batteries

Positions Available!

**CNA's 3-11 & 11-7 Shifts - Full Time
Competitive Pay & Benefits Package**

"We are building a TEAM at MS Care Center of Raleigh!"

MS Care Center Of Raleigh

309 Magnolia Drive • Raleigh, MS
601-782-4244

Please apply in person Monday - Friday from 8:00am - 4:30pm



Positions Available!

**LPN's 3-11 & 11-7 Shifts - Full Time
Competitive Pay & Benefits Package**

"We are building a TEAM at MS Care Center of Raleigh!"

MS Care Center Of Raleigh

309 Magnolia Drive • Raleigh, MS
601-782-4244

Please apply in person Monday - Friday from 8:00am - 4:30pm



\$300 SIGN ON BONUS

1121 North 9th Avenue, Laurel. 3br/1ba, \$600 month, \$600 deposit. 601-438-4388.

2129 North 5th Avenue, Laurel. 4bd/2ba, \$850 month, \$800 deposit. 601-438-4388.

APARTMENTS FOR RENT

Move In Special. 1BR, \$525 month in Oak Grove. Washer/dryer included. Gated Complex. Good deal, 1/2 off rent, 1st month. Better Deal! Bring a friend and both get 1/2 off for 2 months, (2 leases). 1-866-991-7444, Ext. 117.

Highlands. Paying Rent?? A house payment could be less. Call us today and see how you can build your dream home. Call: 601-649-9459.

COMMERCIAL

Cap Stone Business Park. Quality and affordable office/retail space. Flexible leasing for as low as \$99 per month. 4010 O'Ferral St., Hattiesburg, Ms. (next to Home Depot). capstonebusinesspark.com. 601-408-0296.

Jones Co. Commercial: 215 Burnt Bridge Rd. Laurel. 10+/-

acres, fenced, warehouse. \$275,000. Call Dennis at 4 Corner Properties, LLC. 601-248-4396. www.4cplandandhomes.com.

HELP WANTED

Concrete pump operator Southeastern Concrete is seeking an experienced concrete pump operator. REQUIRED EXPERIENCE: Experience operating concrete pumps. Valid CDL, DOT and medical card. We conduct both drug testing and background screening. Competitive salary and benefit package. Call 601-544-7000 for additional info, or apply in person at 105 Industrial Drive Hattiesburg, MS 39401

Now taking applications for lube bay technicians. Apply in person. Spee Dee Midas, Highway 98, Hattiesburg. No phone calls please.

Mr. Rooter Plumbing seeks highly motivated individuals for drain cleaner plumber, plumbers technician, pump truck driver, septic system cleaning technician and CSR dispatcher. Join a growing company, a family environment. We offer bonuses based on performance. Company supplied van, equipment, and uniform. Candidates must have a clean driving record. This winning team

maintains a drug free environment. Call 601-671-3444 or 251-846-2565.

Building Material sales position: Building Materials sales company, United Unlimited Sales, is expanding its sales force. Seeking highly motivated self-starting sales individuals. Excellent benefit package. Salary + highest commission paid. Surplus and salvage building materials sales experience a plus. Email resume only to john@uusales.com. 100% confidential.

Salesperson needed for Furniture Store in Hattiesburg area. Good pay. Call for details. 601-264-0098.

MASSAGE

Massage One. \$45.00 Introductory 1 Hr. Massage session. By Robert Lowe L.M.T.#1362. Call to book yours today! 601-466-2199 www.MassageOne.us May your days be stress free!

PRODUCE

Green Peanuts - (30 lb. bags) - Jumbo-\$25, Virginia-\$20. Machine harvested, machine cleaned, unwashed. Rogers Farm (Hwy 37N). Call 601-765-8668 for availability!

directions. Collins. Closed on Sundays.

Great prices at Open Air Market on Mums, Marigolds, Pumpkins, Sweet Potatoes, Fresh Greens, Peas and Butterbeans, Gulf Shrimp, "The Best Boiled Peanuts" around and much, much more! 605 Cross Street in Laurel. 601-399-4877.

Pecans for sale, call Donald Bryant, 601-545-2215 or 601-402-1370.

PETS

Mixed Lab puppies. Would be good to train for service or companion animals. Had 4 shots and wormed. 601-323-6031.

ESTATE SALE

Large estate sale: Oct. 6-7, 7am-3:30pm; Oct. 8, 7am-12pm. Springbank Church Road, Hwy 56 West of Chatham, AL. 251-689-5265. Also Oct. 13-14, 7am-3:30pm.

FURNITURE

Going Out of Business Sale. Everything Must Go!! Mattresses as low as \$88. Bedroom sets, living room sets, dining room sets, occasional table sets, lamps, rugs and so much more. 0%/24 months SAC. No credit check, financing available. Furniture South Homestore, 6190 Hwy 98, Hattiesburg (bottom of the Hill) 601-264-0098.

2 brown cloth covered recliners, in good condition. \$75 each. Call 601-323-2221.

For sale: very nice desk for home use. \$150. 601-649-0021.

Blue couch that makes into queen size bed. \$175. 601-550-2571.

Mama's Mattress Max!!! 20 different styles to try out. Sets start at twin \$145, full \$165, queen \$185, king \$295. Will split sets. Blackwell's Furniture 5200 Hwy 84 West at Calhoun. 601.649.6111.

APPLIANCES

For sale - older GE microwave. \$50. 601-649-9050.

FISH

Slade Channel Catfish Fingerlings, Bass, Bream, Grass Carp, KOI fathead-tuffy Minnows, Electrofishing, etc. Free water analysis. State licensed. Randall Slade 601-796-2000 www.sladesfish.com

Hendry's Catfish Farm: Channel Catfish, Catfish Fingerlings, all sizes, Grass Carp, Koi (Japanese Goldfish), Coppernose Bream, Red Ear Native Bream. Florida Bass, Large Mouth Bass. Pond Management. 601-735-9870, 601-818-3182, Waynesboro, State Licensed Hatchery, a private enterprise.

Brewer Fishery. Coppernose, Shellcracker and Hybrid Bream, Black Crappie, Channel Catfish fingerlings, Bass, Fathead Minnows, Grass Carp, and Gold Fish. State licensed and delivery available. www.istockponds.com 601-270-1268, 601-989-2466.

CAMPERS

RV for sale: 2004 36' Holiday Rambler. In Excellent Condition with 2 Slides. 1 1/2 bath 44,000 miles. 1 owner, located in Purvis, asking \$45,000. Call 601-794-8539

2004 Itasca Meridian motorhome 36.5 ft. 2 slides, DIESEL, excellent

condition, garage kept, \$68,000. 321-231-2324.

WANTED TO BUY

I buy junk cars, buses and heavy equipment. U Call. We Haul! We pickup 24/7. Call 601-297-2778.

Need extra cash? I buy junk cars. Call 601-543-6583. Buses, metals, heavy equipment. Free pickup.

AUCTIONS

European Antique Auction, Bull- ock Road Seminary, MS. Special Auction of fine antique furniture October 1 at 4 pm Auctioneer Steve Neeley Lic#1325 www.eaa2.com. 601-543-3629 / 601-722-0130

TIMBER AND LUMBER

J and R Timber, Heidelberg, MS. 30 years experience in timber. Small and large tracts. Call cell: 601.319.3261 or 601.319.8298

Know the value of your timber before you sell. We provide timber appraisals and help landowners market their timber for the highest value. Walley Forestry Consultants, Inc., www.walleyforestry.com, 601-477-3014.

Cypress Lumber for sale. Rough or planed. T&G&V and beaded. Beveled and log siding, white and yellow pine and Poplar. T&G&V. Cypress beams, cut up to 32 foot long. Open 7:00AM-3:30PM, Monday-Friday, Saturday, 7:00AM-12PM. 601-315-5533, fax 601-344-0950. frankssawmill.com

Continued on ... Page 9

DRIVERS, are you tired of having to jump through hoops, such as gimmicky revenue and retention bonuses? Do you want to earn what you are worth? At **Baggett Transportation**, we pay you what you are worth, without the hassle!

We offer the best benefits in town, which include

- Health Insurance • Company Matching 401-K Plan • Paid Vacation




Pay starting at

42¢

per mile!

Now leasing
Owner Operators!
Flats or Vans.
Call for
details.

601-426-3462 or 855-435-5021

Call for more information or apply in person at: 2815 Industrial Blvd. • Laurel, MS

AUTO EXPRESS

**NOW HIRING
EXPERIENCED AUTO MECHANIC**

- Must be highly skilled technician
- References required.

Call 601-335-4075
or apply in person at Auto Express
1397 Ellisville Blvd. • Laurel MS

Stockstill Trucking, Inc.



158 Central Industrial Row
Purvis, MS
601.794.5577
800.794.5578



HELP WANTED

FULL TIME MILLWRIGHT & WHEEL LOADER

**401 K Retirement
Vacation
Insurance**

**Apply in person:
72 County Road 1527
Bay Springs, MS**

State of Mississippi



State Veterans Affairs Commission

**NOW ACCEPTING
APPLICATIONS FOR**

- Activities Assistant
- RN Supervisor (3-11)
- RN Unit Manager
- LPN's (All Shifts)
- CNA's (All Shifts)

APPLY IN PERSON AT:
Ms State Veterans Home
3261 Hwy 49 South • Collins
Covington County, MS

Apply on the MS State Personnel Board website:
WWW.MSPB.MS.GOV
Equal Opportunity Employer

A Civil Service Examination for the position of
FIELD INSPECTOR
in the City of Laurel Inspection Department

will be given on Saturday, October 15, 2016
at 11:00 a.m. at the Laurel Police Department
Training Center, 930 Hillcrest Drive, Laurel, MS.

*All interested applicants must sign up
to take this test by*
Thursday, October 13, 2016 at 4:30 p.m.

For qualifications and requirements, please visit
www.laurelms.com/jobs
or view at 401 N 5th Ave., Laurel, MS
in the Human Resources Office.
The City of Laurel is an Equal Opportunity Employer.

A Civil Service Examination for the position of
BUILDING INSPECTOR
in the City of Laurel Inspection Department

will be given on Saturday, October 15, 2016
at 8:00 a.m. at the Laurel Police Department
Training Center, 930 Hillcrest Drive, Laurel, MS.

*All interested applicants must sign up
to take this test by*
Thursday, October 13, 2016 at 4:30 p.m.

For qualifications and requirements, please visit
www.laurelms.com/jobs
or view at 401 N 5th Ave., Laurel, MS
in the Human Resources Office.
The City of Laurel is an Equal Opportunity Employer.

Need Cash for all the Fall Fun? Come see Dot, Shelly or Steve!

for a loan from...

MONEY LENDERS FINANCE COMPANY INC.

79915

601-426-7600

FLEA MARKET

49 Flea Market, under new ownership. Free parking, free admission. Heated & cooled. 200 booths, antiques, collectibles, Amish store, wood work, jewelry, glassware, furniture, vintage cars, football memorabilia, evapor shop, baseball cards, caribbean art, Rada cutlery, knives, art, books, beauty products, home and lawn decor, ammo, pottery, scrubs, and flower arrangements. Eades Cafe, open Friday, 9-5, Saturday, 8-5, Sunday, 9-5. There is something for everyone. 49 Flea Market, 19 DeWitt Carter Road, Hattiesburg. Across from Paul B Johnson State Park. 601-583-4554.

FIREWOOD

Seasoned split oak and pecan firewood, 30+ years experience. Free delivery. 601-550-2502, 601-319-3711 or 601-583-6310.

GARAGE SALES

Rummage house, 3160 Ellisville Blvd., Laurel. Clothes all sizes, shoes, odds & ends, appliances, furniture. 601-433-9856. Mon-Fri 9-5, Sat. 7-2.

Rummage sale Oct. 7-8, #12 Robert Gentry Rd, off Lower Myrick Rd., behind David's Grocery. All proceeds go to Guy adoption.

Large Rummage Sale: 804 Reid Road, Saturday, Oct. 8th 7am-until. Furniture, clothes, glassware, tools, toys, Christmas items, other numerous items.

Oct. 6,7,8 at 30 Reid Road. Go Lower Myrick Road to Caution light. Follow signs, 1st house on the right.

Multi-family rummage sale, October 8th, 7am-until, 1209 Sandersville Heidelberg Road. Follow signs. All size clothes, furniture, lots more.

Rummage Sale: Friday, Oct. 7, Saturday, Oct. 8, 7am. Appliances, piano, curtains, clothing, etc. Florence CM Church. East of Sandersville.

Saturday, October 8th, 7am-1pm. 723 Northwood Drive, Laurel. Rugs, chandeliers, lamp, baskets, Christmas tree, fall decor, designer clothes, shoes, fur jacket, books, 50's records, household items, jewelry, Sony radio, heater.

MUSICAL

Lynn Evans Piano Service: Registered craftsman with Piano Technicians Guild. Used pianos for sale. B.M.E. USM. 601-729-2823

Casio keyboard with stand, new condition. \$75. 601-319-4892.

BUILDINGS

Farm Barns. 40x30x16-\$9500. 30x30x10-\$7500. Metal roof and sides. Price includes labor. 601-296-0550.

Carpports and Buildings: Financing Available! 22Wx26Lx9T- \$5,050 , 24Wx31Lx9T- \$6,010 Fully Enclosed with two 9X8 Roll-up Doors. Price includes installation. We also offer storage buildings and barns. Call John @ 601-323-0464, 303 Hwy 11 S, Ellisville (between Pizza Hut & J.C.JC)

PORTABLE BUILDINGS

Office Bldg., tiny house, or hunting camp. Finished on inside. Too much to list. \$7500. 14'x30'. 601-433-7292.

For Lease: 40/50 Metal building located in Seminary on Cranford Drive. 2000 SQ FT, Commercial Grade. Double roll up doors, extra re-enforced concrete slab, and multiple electrical outlets on interior. For more information; or to schedule a walk thru call 601.517.7222

WHITESTONE TRANSPORTATION



Welcome to our home

NOW HIRING DRIVERS

- OTR/Regional Drivers, Short and Long Haul
- Dedicated Lanes, Reefer and Flatbed
- Sign-on Bonuses
- Bonuses for Performance, Safety Teams & Specialty Hauls
- Blue Cross and Blue Shield Insurance

Moselle 800-408-5542

WHITESTONETRANS.COM

Payne Portable Buildings. 12 months Same as Cash or Rent to Own Financing Available wac. Office located at 342 Macey Rd., Hwy 84W, Laurel. 601-426-9484 or 601-319-3555.

AUTO SERVICES

Hartfield's Auto Repair 25 years experience. Located in Stringer MS. Open Monday - Thursday, 8-5. Friday 8-3. Call 601-470-3220

AUTOS - CARS

2007 Lincoln Town Car 84,000 miles. \$9000. 601-477-9747.

2004 Pontiac Grand Prix. \$7,995 at Hattiesburg Cars. Call our Local toll free number 855-242-0775 or text JU10 to 27414. See more at Cars601.com

2012 Nissan Altima. \$12,500 at Aaron Williams Auto. Call 855-637-1021 or text 2QWB to 27414. See more at cars601.com.

2007 Nissan Maxima. \$5,999 at Toyota of Hattiesburg. Call 855-221-8310 or text B395 to 27414. See more at Cars601.com

2006 Volkswagen New Beetle. \$8,395 at Bellevue Motors. Call 855-713-0084 or text M2CG to 27414. See more at Cars601.com

2015 Ford Taurus. \$20,900 at Southeastern Auto Brokers. Call 844-312-8785 or text DXK4 to 27414. See more at Cars601.com.

2008 Buick Lucerne \$6,497 at Mack Grubbs Hyundai. Call 844-373-0806 or text PSS0 to 27414. See more at cars601.com.

2010 Nissan Sentra, \$4963 at Mack Grubbs Hyundai. Call 844-373-0806 or text 4U2I to 27414. See more at Cars601.com

2005 Lincoln Town Car. \$8500 at Ryan Chevrolet. Call 855-534-3769 or text BNZ5 to 27414. See more at Cars601.com.

Continued on ... Page 10



U-SAVE

CAR & TRUCK RENTAL

NEW LOCATION NOW OPEN!

7204 HWY 98 West • HATTIESBURG

601.602.6408

HATTIESBURG

1510 West Pine Street
601.545.9555

LAUREL

114 North 16th Avenue
601.428.4405

COLLINS

3049 Highway 49
601.765.3333

"If you reserve it from us, we guarantee to have it there!"

COOLEY MOTOR COMPANY

FALL Clean-up SALE



BODY SHOP

It's your choice where you have your car fixed! Don't settle for sub-par work. Let our Body Shop staff fix your vehicle the right way! With over 65 years of combined experience, Dana, Dale and Billy will make your car look new!

FREE ESTIMATES!



SERVICE DEPARTMENT

We service all makes and models! Oil changes to engine overhauls - we can take care of your vehicle.



Lawn Tractor & 50" Lawn Sweeper!

Payments only
\$58 per month*

*Financing Available - With Approved Credit

We're open from 7:30 a.m. - 5 p.m.
Monday through Friday!

Since 1928
Hwy 45 North • Waynesboro, MS
601-735-4323 or 1-800-748-8838

Kim's
CAR CARE
WE'VE MOVED!
Come see us at our new location
2100 Hwy 11S • Laurel
(across from Paul's Discount Glass)
601-498-0859

NEED CASH?
Call Verna She will hold your personal check and give you **CASH!**
Loans from \$50 to \$410
LAUREL CHECK CASHING
134 Beacon St., Ste. C
Laurel • 601-426-2432

Quality Aluminum Fencing & Automated Security Systems
Commercial & Residential
Many Styles
TONY THORNSBERRY
601.577.0927

FARRIS
MOBILE HOME TRANSPORTING
Statewide moving, licensed & insured.
Transporting since 1979
Tony Farris
601-422-4144

2015 Chevrolet Sonic. \$12,500 at Ryan Chevrolet. Call 855-534-3769 or text 8GWK to 27414. See more at Cars601.com.

2000 Mercury Grand Marquis - \$6,950 at Mack Grubbs Hyundai. Call 844-373-0806 or text HAON to 27414. See more at cars601.com.

or text 10B0 to 27414. See more at Cars601.com

2008 Buick LaCrosse, \$9500 at Laurel Ford, Lincoln, Kia. Call 844-319-5854 or text 52WT to 27414. See more at Cars601.com

2007 Buick Lucerne CX. New Tires, \$6,995. Call 601-764-4552.

kers in Hattiesburg. Call 844-312-8785 or text M4K3 to 27414. See more at Cars601.com

2012 Chevy Cruze. \$10,500 at Ryan Chevrolet. Call 855-534-3769 or text 3QGI to 27414. See more at Cars601.com.

2009 Lincoln MKS. \$15,655 at Woolwine Ford. Call 844-332-1854 or text 69BJ to 27414. See more at Cars601.com

Affordable Auto Insurance, especially if you don't have any now. Call 601-765-4060

2015 Chevrolet Malibu LTZ, silver \$19,888. Call 601-764-4552.

Need a ride? Credit not so good? I can help. Good credit, bad credit, no credit. Give Tom a call, 601-545-9555.

2007 Toyota Camry. \$8,995 at Hattiesburg Cars. Call our Local toll free number 855-242-0775 or text UO3V to 27414. See more at Cars601.com

2005 Buick Lacrosse CXL Only \$6,995. Call Brandon today. 601-765-8287

2014 Ford Escape - \$14,899 at Woolwine Ford. Call 844-332-1854 or text 4M01 to 27414. See more at Cars601.com

2014 Nissan Versa. \$10,985 at Southern Motor Co. Call our Local toll free number 855-215-1918 or text C5VP to 27414. See more at Cars601.com

2006 Toyota Camry LE, 2.3 I4 Sedan, Desert Sand/Beige, 109k miles, Extra Clean, \$8,250. Limited Warranty. 601.580.0358. See more at www.EllisvilleMotors.com.

2012 Chevy Malibu: \$7995 at Mack Grubbs Hyundai. Call 844-373-0806 or text 42LF to 27414. See more at Cars601.com

2010 Kia Optima \$7,999 at Auto Express in Laurel. Call 844-402-3154 or text O3YQ to 27414. See more at Cars601.com

2002 Chrysler Town & Country Van, \$3000. Loaded, 144k miles. 601-580-8686.

In the market for a new or quality preowned vehicle? We have plenty of inventory available, new vehicles arriving daily. Concerned about less than perfect credit? I have many years of experience. Give me a call let me see if I can help you. William Hickman 601-520-1354.

2014 Ford Focus. \$11,975 at Southern Motor Co. Call our Local toll free number 855-215-1918 or text JY28 to 27414. See more at Cars601.com

2010 Lincoln MKZ. \$10,200 at Aaron Williams Auto. Call 855-637-1021 or text 0R86 to 27414. See more at cars601.com.

Looking for a dependable vehicle but have less than perfect credit? Don't give up! give me a call, I may can get you financed. Matt Dilmore, new & used sales. 601-323-1620. mdilmore@ryanauto.com.

2004 Jeep Grand Cherokee. \$6,000 at Ryan Chevrolet. Call 855-534-3769 or text 6ZA2 to 27414. See more at Cars601.com.

2013 Hyundai Elantra. \$10,777, at Petro Nissan. Call 844-846-0057 or text HM7O to 27414. See more at Cars601.com

2015 Nissan Altima, \$13,990 at Southeaster Auto Brokers in Hattiesburg. Call 844-312-8785 or text E05G to 27414. See more at Cars601.com

2015 Chevrolet Malibu LTZ only \$19,724. Call Blake @ 601-765-8287.

2006 Dodge Charger \$7,995 at Bellevue Motors. Call 855-713-0084 or text RT18 to 27414. See more at Cars601.com

2007 Ford Five Hundred. \$5,995 at Hattiesburg Cars. Call our Local toll free number 855-242-0775 or text FY12 to 27414. See more at Cars601.com

2004 Jeep Grand Cherokee. \$6,000 at Ryan Chevrolet. Call 855-534-3769 or text 6ZA2 to 27414. See more at Cars601.com.

Advertise for Free! Online classifieds are free at www.impactads.com. Just go to the Impact Web site and click on the button at the top right hand side of the page that says "Place a Free Online Only Classified."

2010 Chevrolet Impala. \$7,950 S59L at Paul Garner Motors in Taylorsville. Call 844-452-4569 or text S59L. See more at Cars601.com

2006 Nissan Altima, Reduced Price. Call Auto Credit of Collins. 601-765-0013.

2013 Hyundai Sonata. \$10,000 at Laurel Ford, Lincoln, Kia. Call 844-319-5854 or text 4FZ6 to 27414. See more at Cars601.com.

2015 Ford Taurus - \$15,990 at Woolwine Ford. Call 844-332-1854 or text JF8U to 27414. See more at Cars601.com

2013 Buick Verano. \$14,877 at Petro Nissan. Call 844-846-0057 or text D6QG to 27414. See more at Cars601.com

2013 Kia Soul. \$11,500 at Ryan Chevrolet. Call 855-534-3769 or text EV2C to 27414. See more at Cars601.com

2001 Ford Crown Victoria. \$6,950 at Paul Garner Motors in Taylorsville. Call 844-452-4569 or text S548 to 27414. See more at Cars601.com

2001 Chevrolet Impala. \$5,950 at Paul Garner Motors in Taylorsville. Call 844-452-4569 or text S500 to 27414. See more at Cars601.com

2006 Honda Civic. \$5,450 at Aaron Williams Auto. Call 855-637-1021 or text 0R7J to 27414. See more at cars601.com.

Advertise for Free! Online classifieds are free at www.impactads.com. Just go to the Impact Web site and click on the button at the top right hand side of the page that says "Place a Free Online Only Classified."

AUTOS - MOTORCYCLES

2009 Nissan Versa. \$7,646 at Mack Grubbs Hyundai. Call 844-373-0806 or text 8AEA to 27414. See more at cars601.com.

2015 Hyundai Sonata, \$13,150 at Southern Motor Co. in Laurel. Call 855-215-1918 or text SZ6V to 27414. See more at Cars601.com

Advertise for Free! Online classifieds are free at www.impactads.com. Just go to the Impact Web site and click on the button at the top right hand side of the page that says "Place a Free Online Only Classified."

2012 Ford Focus: \$10,200 at Laurel Ford, Lincoln, Kia. Call 844-319-5854 or text 4YWE to 27414. See more at Cars601.com

2014 Chevy Cruze: \$11,450 at Southern Motor Co. in Laurel. Call 855-215-1918 or text JYV4 to 27414. See more at Cars601.com

2003 Yamaha Road Star 1600. Excellent shape, fully loaded, low mileage. \$3600 firm. 601-381-4511.

2000 Nissan Sentra. \$3,500 at Ryan Chevrolet. Call 855-534-3769 or text I32R to 27414. See more at Cars601.com

2013 Nissan Altima. \$11,544 at Petro Nissan. Call 844-846-0057

2010 Nissan Versa. \$7997 at Petro Nissan. Call 844-846-0057 or text 1BTO to 27414. See more at Cars601.com

1996 Nissan Maxima. \$4,999 at Toyota of Hattiesburg. Call 855-221-8310 or text 38AA to 27414. See more at Cars601.com

2008 Toyota Prius - \$7995 - at Hattiesburg Cars. Call our Local toll free number 855-242-0775 or text UO35 to 27414. See more at Cars601.com

AUTOS - SUVs

EAGLE CARPORTS & BUILDINGS
NOW OFFERING RENT TO OWN
NO CREDIT CHECK
• Garages • Combo Units
• Horsebarns • Most Carports
Like our page Eagle Metal Buildings on Facebook
CALL JOHN FOR DETAILS 601-323-0464
WWW.ELLISVILLEMOTORS.COM • 303 HWY. 11 S. ELLISVILLE, MS • LOCATED BETWEEN PIZZA HUT & JCJC

Norman's Food Outlet
#209 Waynesboro Food Outlet
PRICES EFFECTIVE OCTOBER 5 - OCTOBER 11, 2016

USDA FRESH CUT SIRLOIN TIP ROAST \$2.74 LB. Plus 10% at Checkout	WEISS LAKE MEDIUM 2 1/2 DOZEN EGGS 98¢ EA. Plus 10% at Checkout
13 OZ. BRYAN PREMIUM SMOKED SAUSAGE \$1.98 EA. Plus 10% at Checkout	USDA FRESH CUT T-BONE STEAKS \$4.95 LB. Plus 10% at Checkout
3 LB. BOX RUDY'S FARM SAUSAGE PATTIES \$5.95 EA. Plus 10% at Checkout	2 LITER "ALL FLAVORS" PEPSI PRODUCTS 82¢ EA. Plus 10% at Checkout

WE'VE APPRECIATED YOUR BUSINESS OVER THE LAST 9 YEARS AND WE WILL CONTINUE TO STRIVE IN THE FUTURE TO HELP YOUR FAMILY BY LOWERING YOUR GROCERY BILL
GREAT PRICES • GREAT TASTE • GREAT SAVINGS
OPEN 7 DAYS A WEEK
MONDAY - SATURDAY 7 A.M. - 7:30 P.M. / SUNDAY 8 A.M. - 6 P.M.
LOCATED IN THE AZALEA MART SHOPPING CENTER WAYNESBORO, MS **601-735-4344**

FOR RENT TAYLORSVILLE
ONE BEDROOM APARTMENT
\$500 DOWN
\$500 MONTHLY
601.649.9459

Southern HENS EMPLOYMENT OPPORTUNITIES
NOW HIRING
FOR ALL POSITIONS NEW & HIGHER WAGES
Benefits include Life/Health Insurance, Paid Holidays, Paid Vacations, 401K Retirement Plan, Dental/Cancer Insurance Available.
• Applications taken Mon.-Fri at 7:30 AM
EOE
329 Moselle-Seminary Rd. • Moselle, MS
Resumes for Management & Supervisory Positions: recruiting@southernhens.com
601-584-4752

2008 Toyota Corolla. \$7599 at Toyota of Hattiesburg. Call 855-221-8310 or text 75WX to 27414. See more at Cars601.com

2010 Chevrolet Cobalt: \$7900 at Paul Garner Motors in Taylorsville. Call 844-452-4569 or text S52O to 27414. See Cars601.com for more.

2011 Toyota Camry. \$14,638 at Petro Nissan. Call 844-846-0057 or text KQ4Z to 27414. See more at Cars601.com

2011 Mini Cooper Countryman: \$13,900 at Southeaster Auto Bro-

2010 Chevrolet Equinox. \$9,500 at Ryan Chevrolet. Call 855-534-3769 or text OXX7 to 27414. See more at Cars601.com

2008 Chevrolet Trailblazer LT, 4x4, 4.2L I6, Cloth Interior, Graystone Paint, 143K miles, \$8,900. Limited Warranty. 601.580.0358. See more at www.EllisvilleMotors.com.

2010 Dodge Journey \$8,999 at Auto Express in Laurel. Call 844-402-3154 or text M32V to 27414. See more at Cars601.com

2009 GMC Yukon xl, SLT, Leather, Bose, Nav, DVD, Rear Buckets, White/Beige, 130k Miles, \$21,950. Limited Warranty. 601.580.0358. See more at www.EllisvilleMotors.com.

2007 Hummer H3. \$17,495 at Bellevue Motors. Call 855-713-0084 or text RT1A to 27414. See more at Cars601.com

2011 GMC Terrain. \$9,990 at Woolwine Ford. Call 844-332-1854 or text 7PMO to 27414. See more at Cars601.com

2007 Cadillac Escalade: \$19,900 at Southeaster Auto Brokers. Call 844-312-8785 or text M4LB to 27414. See more at Cars601.com.

2015 Chevrolet Captiva LT, silver. \$16,488. Call 601-764-4552.

2008 GMC Acadia. \$14,995 at Bellevue Motors. Call 855-713-0084 or text RT16 to 27414. See more at Cars601.com

2005 Toyota Highlander. \$8995 at Hattiesburg Cars. Call our local toll free number 855-242-0775 or text Q9P4 to 27414. See more at Cars601.com

2015 Chevrolet TRAX LS Low Miles! Only \$18,242. Call Michael 601-765-8287.

2008 Chevrolet Tahoe. \$12,500 at Aaron Williams Auto. Call 855-637-1021 or text 482F to 27414. See more at cars601.com.

2015 Jeep Cherokee Trailhawk, 40,000 miles, ordered with every option, like new. NADA value \$31,500. Asking \$30,000 firm. Call 251-605-5049.

2008 Lincoln MKX 4 Dr. SUV only. \$10,995. Call 601-765-1828.

2016 Loblolly Festival in Downtown Laurel *Photos by Linda Cranford*



Central Avenue looking east.



Samantha Ausbon and her dog Dutches, stop off at the Stringer Alpaca booth.



Enjoying delicious corndogs is the Fernandez family, who just moved to Laurel a couple of months ago. L-R, Dr. Diego Fernandez, his wife Teresa, and their three sons, Lucas, Nicholas and Elias.



Boochie Brothers BBQ and Catering was serving up delicious BBQ chicken, ribs, sausage, pulled pork, potato salad and baked beans. Center, Yvonne Boochie, back, L-R, Sandra Shelby, Angela McCurdy, Julian Boochie, and Donnis Boochie.



Chainsaw Art Sculptor Dayton Scoggins produced three or four sculptures during the day including this Herring.



Chainsaw Art Sculptor Dayton Scoggins had several of his finished pieces for sale.

LAUREL A-1 TIRE CENTER

Right behind the Laurel Police Department

OIL CHANGE \$24⁹⁵ <small>most cars</small>	ALIGNMENT \$44⁹⁵ <small>4 Wheel most cars</small>	ROTATE & BALANCE \$30⁰⁰ <small>most cars</small>
--	---	--

Prices subject to change without notice.

FULL TIME MECHANIC ON DUTY

Monday - Friday 7 a.m. - 4:30 p.m. • Saturday 7:30 a.m. - 11:30 a.m.

219 Ellisville Blvd., Laurel, MS 601.425.4616

M-F 7:30 A.M.-5:00 P.M. SAT. 7:30 - NOON



Artist Joan Adams with her Women Standing Tall. Adams said the sculpted clay pottery pieces represent the strength of women who after fighting through adversity emerge standing tall.

2010 Ford Edge \$15,490 at Woolwine Ford. Call 844-332-1854 or text 5C30 to 27414. See more at Cars601.com

2005 GMC Yukon, color white, Clean, \$7,888. Call 601-764-4552.

2002 Ford Expedition, color beige. Priced to Move \$3,888. Call 601-764-4552.

2005 Gmc envoy. \$8525 at Laurel Ford, Lincoln, Kia. Call 844-319-5854 or text 5OKD to 27414. See more at Cars601.com.

2005 Chevrolet Suburban, LT, 5.3 L V8, White/Beige, Heated Leather, Bose, DVD, Nav, 20" Wheels, 147k miles, \$12,950. Limited Warranty. 601.580.0358. See more at www.EllisvilleMotors.com.

AUTOS - SPORTS

2011 Nissan Versa. \$10,987 at Petro Nissan. Call 844-846-0057 or text 419Y to 27414. See more at Cars601.com

2006 Toyota Tundra. \$16,477 at Petro Nissan. Call 844-846-0057

or text 712T to 27414. See more at Cars601.com

AUTOS - TRUCKS

2003 Nissan Frontier \$4,500 at Ryan Chevrolet. Call 855-534-3769 or text 6HYC to 27414. See more at Cars601.com

1993 International 4700 with 26ft. box, 6 speed standard, motor runs good, transmission needs repair, selling as/is. Ron Buckley, 601-670-5806. \$3250.

2005 F150 Lariat 4WD Crew Cab 159k miles. \$11,900. Call 601-394-9313.

2008 Dodge Ram 1500. Quad Cab, SLT, 4x4, Long Horn Edition, Nice Cloth Seats, XD Wheels, 151k Miles, \$15,999. Limited Warranty. 601.580.0358. See more at www.EllisvilleMotors.com.

Advertise for Free! Online classifieds are free at www.impactads.com. Just go to the Impact Web site and click on the button at the top right hand side of the page that says

"Place a Free Online Only Classified."

1993 International 4700 with 26ft. box, 6 speed standard, motor runs good, transmission needs repair, selling as/is, Ron Buckley. 601-670-5806. \$3250.

2008 Honda Ridgeline RTL Leather, Super Nice! Asking \$11,788. Call Dean 601-765-8287

2012 Chevrolet Silverado 1500 -- \$16,788 at Petro Nissan. Call 844-846-0057 or text D6NP to 27414. See more at Cars601.com

2013 Toyota Tacoma Super Clean. \$30,780. Call Maurice today 601-765-8287.

2008 model, 2500 Duramax crew cab LWB, 154,000 miles bullydog, 35" BFG KM2, Tough Country Heavy Duty bumper with M12000 warm winch, remote start, Kenwood with nav, extra set of wheels with 33" BFG KO. Asking \$24,000, neg. Call 251-605-5049.

2013 Nissan Frontier. \$17,457 at Petro Nissan. Call 844-846-0057 or

text O9WE to 27414. See more at Cars601.com

Want to buy: old F-150. 1991-1996. 601-422-5886.

2011 Toyota Tundra at Toyota of Hattiesburg. Call 855-221-8310 or text 3GAL to 27414. See more at Cars601.com

2005 Chevy 1500 LT Crew Cab 220k miles. Runs Great! \$7,900. Call 601-394-9313.

2007 Chevrolet Avalanche. \$12,000 at Ryan Chevrolet. Call 855-534-3769 or text E2P2 to 27414. See more at Cars601.com

2004 Chevrolet Silverado 2500. \$10,900 at Bellevue Motors. Call 855-713-0084 or text M2ON to 27414. See more at Cars601.com

Deal of the week 2010 4-Runner Loaded! Navigation, Sunroof, and much more. Asking \$23,900. Call Cole 601-517-8404.

One owner 2004 Chevrolet Silverado, Crew Cab, 4x4, Duramax, 6.6Li Diesel, Cloth Interior, Excellent Condition, 184k Miles, \$17,950. Call 601.580.0358 See more at www.EllisvilleMotors.com.

2008 Chevrolet Silverado LT, Excellent Black Leather, Coco Paint Color, 20" Wheels, Step Bars, 133k miles, \$16,950! Limited Warranty. 601.580.0358. See more at www.EllisvilleMotors.com.

Advertise for Free! Online classifieds are free at www.impactads.com. Just go to the Impact Web site and click on the button at the top right hand side of the page that says

"Place a Free Online Only Classified."

2002 Chevrolet Avalanche. \$8999 at Aaron Williams Auto. Call 855-637-1021 or text 451T to 27414. See more at cars601.com.

2009 Dodge ram 1500, Slit, 4x2. \$18,995. Call 601-765-1828.

2006 Dodge Ram 1500, SLT, Quad Cab, 4x4, TRX4 Off Road Package, Cloth Interior, White/Gray, 155k miles, \$13,850. Limited Warranty.

2000 Ford F250, Crew Cab, 7.3Li V8 Diesel, Super Clean, Leather, Fresh Service, 251k miles, \$10,500. Limited Warranty, 601.580.0358. See more at www.EllisvilleMotors.com.

2014 GMC Sierra 1500 SLE 4x4. Asking \$34,995. Call 601-765-1828.

2009 GMC Truck, crew. \$18,750. Call 601-764-4552.

2013 Chevrolet CC Crew. \$25,888. Call 601-764-4552.

2011 Chevrolet 1500 Extended Cab Standard Box 2-Wheel Drive LT. Black in color. Only 51,380 miles. Very clean 1 owner truck. Only asking \$22,550. Call Dean for details. 601-433-0796.

2007 Gmc sierra slit, Crew Cab, 4x4, Sunroof, DVD, Leather, Nav, 20" Wheels, 118k miles, \$20,950. Limited Warranty, 601.580.0358. See more at www.EllisvilleMotors.com.

Advertise for Free! Online classifieds are free at www.impactads.com. Just go to the Impact Web site and click on the button at the top right hand side of the page that says

"Place a Free Online Only Classified."

2002 Chevrolet Avalanche. \$8999 at Aaron Williams Auto. Call 855-637-1021 or text 451T to 27414. See more at cars601.com.

2009 Dodge ram 1500, Slit, 4x2. \$18,995. Call 601-765-1828.

2006 Dodge Ram 1500, SLT, Quad Cab, 4x4, TRX4 Off Road Package, Cloth Interior, White/Gray, 155k miles, \$13,850. Limited Warranty.

601.580.0358 See more at www.EllisvilleMotors.com.

02 Chevy 1500 p/u, high mileage, rebuilt transmission, new battery. Runs and drives. \$1200 obo. 601-698-4633.

Advertise for Free! Online classifieds are free at www.impactads.com. Just go to the Impact Web site and click on the button at the top right hand side of the page that says

"Place a Free Online Only Classified."

2009 Dodge ram 1500, Slit, 4x2. \$18,995. Call 601-765-1828.

ATVS

EML Motorsports, 2116 North Frontage Road, Meridian, MS, authorized dealer for HiSun & Linhai ATVs/UTVs. Great deals on motorcycles, scooters and go-carts. We service Harley Davidson, Victory and Indian Motorcycles. info@emlmotorsports.com. 601-207-5058.

SPECIAL

Stylist Spaces/Barber Spaces for rent, Kitchen For rent. 2 Electric Deep fryers New in Box, Snow Cone Shaver used 2 times, Office Space. 601-270-5008

CARPORTS

Carpports and Buildings: Financing Available! 18x21 carport \$795; includes installation! All sizes available. We also offer storage buildings & barns. Call John at 601-323-0464, 303 Hwy 11 South, Ellisville MS (between Pizza Hut and JJC)



HAS IMMEDIATE OPENINGS FOR GOOD OTR Truck Drivers and Owner Operators

HIRING ALL DIVISIONS

Benefits include:

- Health Insurance • Vision Insurance
- Dental Insurance • Paid Vacation

NOW OFFERING SIGN ON BONUS

- SAFETY BONUS • REVENUE BONUS
- RETENTION BONUS

If You Want To Work For A Great Company With Great Benefits

call us at 601-342-2314 today!

Located in Ellisville, MS

**BUY IT...
SELL IT...
TRADE IT...**

**THE MOST
COVERAGE FOR
YOUR MONEY!
CALL TODAY
601.649.1129**

IMPACT



Southern Tire Mart
Best in Class Service on America's Favorite Brands

TIRE SPECIALS

- P205/75R15.....\$44.95
- P225/60R16.....\$53.95
- P225/75R15.....\$55.95
- P215/60R16.....\$49.95

2926 ELLISVILLE BLVD. • LAUREL • 601-428-4375
STMTIRES.COM • M-F: 7A-5P / SAT: 8A-12P



Southern Tire Mart
Best in Class Service on America's Favorite Brands



2926 Ellisville Blvd., Laurel
stmtires.com
601-428-4375
M-F: 7a-5p Sat: 8a-12p



MICHELIN
Do More for More Miles

MICHELIN® DEFENDER® LTX® M/S

NOW OFFERING PM SERVICE ON SEMI TRUCKS AND TRAILERS



- FULL SERVICE
- 3 AXLE ALIGNMENT
- A/C SERVICE
- SHOCKS
- KING PINS
- BUSHINGS
- TRAILER ALIGNMENT
- BRAKES

3 AXLE ALIGNMENT

\$225

WITH COUPON Expires 10/31/16
CAN NOT BE COMBINED WITH OTHER OFFERS

\$50 CREDIT

TOWARDS FIRST SERVICE

WITH COUPON Expires 10/31/16
CAN NOT BE COMBINED WITH OTHER OFFERS

10% OFF

- SUSPENSION
- A/C
- BRAKES
- TUNE UP
- BATTERIES
- LEVELING KITS
- OIL CHANGE
- ALIGNMENT

WITH COUPON Expires 10/31/16
CAN NOT BE COMBINED WITH OTHER OFFERS

FULL SYNTHETIC OIL CHANGE

UP TO 5 QTS **\$39⁹⁵**

Most vehicles, excludes diesels

WITH COUPON Expires 10/31/16
CAN NOT BE COMBINED WITH OTHER OFFERS

OIL CHANGE SPECIAL

UP TO 5 QTS **\$29⁹⁵**

Most vehicles, excludes diesels

WITH COUPON Expires 10/31/16
CAN NOT BE COMBINED WITH OTHER OFFERS

4 WHEEL ALIGNMENT

Most Vehicles **\$49⁹⁵**

WITH COUPON Expires 10/31/16
CAN NOT BE COMBINED WITH OTHER OFFERS

LRMA's Annual Heritage Arts Festival

Photos by Linda Cranford



The front lawn of the Lauren Rogers Museum of Art was filled Saturday, October 1, for the museum's annual Heritage Arts Festival. This year's theme was "Fall Fun." The above pictured mural depicts the festival's theme and the children were given an opportunity to paint a portion of the mural.



Making owls



Little Aubrey Sherman gets her face painted by LRMA volunteer Catherine Nowicki.



Making Scarecrow Hats.



Left, Pyrography Artist George McLeod displayed his wood carving, wood burning, and leather burning art pieces, and made personalized leather necklaces for the children.



Photosubmitted

Cornerstone event celebrates Southern Eye Center's third location opening in early 2017

Submitted

The cornerstone was officially set on Tuesday, September 27 at Southern Eye Center's newest location in Laurel, Mississippi. Construction is underway and the practice's third location is scheduled to open early next year. The new office will be Southern Eye Center's second satellite location. The flagship office is located in Hattiesburg with another satellite location in Picayune.

"The Laurel location will have an ambulatory surgery center so patients will be able to have procedures in Laurel, just like they do in our Hattiesburg office," said Jaime Hill, practice development director at Southern Eye Center. "All of our physicians will be available to see patients in our new location. We anticipate opening early 2017."

Jones County patients who previously have had to travel to Hattiesburg for their vision procedures can now stay in Laurel. "It's great any time we can expand our services and add new partners to our medical offerings for the community," said Larkin Simpson, vice president of the Economic Development Authority of Jones County. "Having Southern Eye Center open in Laurel will make it easier for residents to get the medical care they need."

Southern Eye Center Surgeons Kiper Nelson, Cameron Griffith, Jaime Jimenez, Abumere Akinwale, Stan Saulny and Joseph Childs have specialties that include caring for retinal disorders, diabetic disease, glaucoma, cataracts, LASIK, cosmetic procedures and corneal inlay procedures for reading vision. All are fellowship trained in their area of expertise.

"The citizens of Laurel and surrounding areas will now have access to eye treatments and procedures across all our specialties, including cataract, retina, cornea and glaucoma. We're excited that the full range of services that we offer in Hattiesburg will now be available to patients right here in Laurel," said Dr. Kiper Nelson.

The new Laurel location of Southern Eye Center tops 10,000 square feet, with state-of-the-art technology and a complete surgical suite, where all offered procedures can be performed. The address is 1923 West 10th Street, Laurel. Southern Eye Center was founded in 1977 by Dr. Lynn McMahan, who retired in December after a distinguished career, leaving a legacy of excellence and compassionate care. Southern Eye Center is a nationally recognized practice for its commitment to state-of-the-art technology and service to the community.

TEACHER, continued from page 2

has enhanced learning.

"I have found students are engaged in the class and these activities when technology is used. When students use the Peer Edit program, they will sometimes spend over an hour editing the paper for another student. The technology also gives privacy, so students are usually more thorough with their feedback," said Meeks.

As an English instructor at JCJC since 2003, Meeks has also found English instructors like using the available technology. Some of the programs used in her classes include Turnitin, which detects plagiarism and teaches students how to paraphrase. The Canvas program allows papers to be graded electronically, allowing students to also see their grades and corrections. Google Docs is probably her favorite because it saves work on its server so students cannot lose their work accidentally.

"Technology is an important part of education today, especially in English classes. This generation of college students has used technology practically since they were toddlers. They learn best when they can interact with what they are learning and engage with the content or subject.

The use of technology also reaches different learning styles and keeps students' attention. I think it is important to discuss this information and the impact technology has in the classroom. There are so many useful technology tools available for composition that tremendously help students improve their writing," shared Meeks.

Meeks is a graduate of South Jones, JCJC and USM. She earned her Masters of Education from William Carey University. Last year, she was designated as the Advisement Coordinator for the Humanities Department at JCJC. She is the sponsor for the Sigma Kappa Delta English Honor Society chapter at JCJC and a member of the Two-Year College English Association. In addition to her professional work, for the last six years, Meeks has coordinated JCJC's Kids' College, which is a week-long summer camp for children under 12 years of age. She was honored in 2010 as a Mississippi Lamp-lighter for Outstanding Teachers. In 2011, Meeks was also honored with the Barbara and Gary Sauls Humanities Award and in 2012 she received the Faculty Award for Excellence in Work and College Service at JCJC.

RENT TO OWN!

NO CREDIT CHECK!

COUNTRY FOLKS PORTABLE BUILDINGS OF HATTIESBURG

High Quality Storage Buildings at a price you can afford

From Antiques to Hay, Lark Is the Way!



1-ROLL UP DOOR, 1-48 INCH DOOR, 4 LARGE WINDOWS, WIRED, DELIVERED, SET UP, ANCHORED

\$25300 MO.



\$19800 MO.

FREE DELIVERY TO MOST AREAS



ADD-A-ROOM, INSULATED & WIRED!

\$32100 MO.

- Choose Your Colors (15 to choose from)
 - Choose Your Size (Too many to list)
 - Choose Your Design (Custom orders welcome)
 - Delivered & Set Up at NO Charge!
- RENT TO OWN**
- NO CREDIT CHECK!**
- GREAT FOR STORAGE, WORKSHOPS, OFFICE**
- OUR BUILDINGS ARE MADE IN THE USA VIDALIA, GA**
- SUITABLE FOR RESIDENTIAL NEIGHBORHOODS & MOBILE HOME PARKS**



\$5500 MO.



\$9200 MO.

RENT TO OWN! NO CREDIT CHECK!



\$8200 MO.



\$32100 MO.

We Carry Playhouses & Gazebos

RENT TO OWN • PURCHASE • FINANCE
12 MONTHS SAME AS CASH - WITH APPROVED CREDIT

4885 US HWY 49 SOUTH HATTIESBURG, MS 1-866-703-8559

18335 US HWY 49 SAUCIER, MS 228-832-7946

ON THE RIGHT JUST PAST BILLY McGEE LAW ENFORCEMENT COMPLEX, ACROSS HWY FROM DAN'S DINER TRUCK STOP

IN BUSINESS FOR OVER 40 YEARS!
*PHOTO FOR ILLUSTRATION PURPOSES ONLY

War Eagles to continue win streak against Mustangs

By Zac Chamblee

I'm coming off my best week yet after going 13-2 with my week seven picks. Hopefully I can do even better this week with another great slate of games. So here we go!



West Jones (3-3) @ Wayne County (2-4): You can always throw the records out when it comes to this game. The Mustangs and War Eagles reunite for another installment of one of Mississippi's biggest football rivalries. Wayne County has won 5 straight against the Mustangs, and for a while, it looked like West Jones could easily end that streak this year. The Mustangs started the season red-hot at 3-0, while Wayne County struggled mightily out of the gate at 0-4. Roles have reversed since. Wayne County has won two in a row, while West Jones has lost three straight. Momentum alone makes it six straight for the War Eagles.

Wayne County - 28
West Jones - 21

Wingfield (4-2) @ Laurel (5-1): I'll go on record here and say that Laurel is the class of 5A. Yes, I think they're better than Hattiesburg, even though they lost to the Tigers in week two. The "week two" version of Laurel is miles behind where the Golden Tornadoes are now. The difference? TyQuan Ulmer. Since Ulmer was named the team's starting quarterback in week three, the Golden Tornadoes have won four in a row, beating the likes of Petal, Oak Grove, West Jones and Natchez along the way. Laurel has a ton of momentum, whereas Wingfield has lost two straight. All signs point to a big L-Town win between the bricks.

Laurel - 45
Wingfield - 14

Northeast Jones (4-2) @ West Lauderdale (7-0): Keith Braddock has got his Tigers playing their best ball of the season right now. We'll find out a lot about his team this week against the West Lauderdale Knights, who have pitched shutouts in three of their four home games this season. I don't see another one coming this week against a NEJ offense that's humming and is led by running back KD Newell. Newell will face a Knight defense that has played really well against the run, limiting opponents to about 80 rushing yards a game. Newell is averaging over 120 by himself. He and Tiger quarterback Tyler Landrum have big nights, and the Tigers get a big win.

Northeast Jones - 24
West Lauderdale - 21

Petal (4-2) @ Brandon (5-2): This was one of those games that I circled weeks before the season started. Why? Because aside from maybe the Clinton or Tupelo, you could make a legit argument that these are the two best teams in the state. What makes the game even sweeter is the recent history between the two. Brandon won last year's regular season match-up in a blowout, while Petal went on to win a nail-biter in the playoffs. I'm expecting the latter in Friday's game. The real question is, what Petal team will we see? Will we see the Panther team that beat Oak Grove and Hattiesburg or the team that lost to Gulfport and Laurel? On paper, Petal should win this one. When they're clicking on offense, few teams can stop them, and defensively I believe they have one of the best units in the state. Plus, it's on the road, which seems to bring out the best in this team. Dating back to 2015, the team has won six of their last eight road contests. To me, all signs point to a Petal win.

Petal - 34
Brandon - 28

Hattiesburg (5-2) @ Picayune (6-0): Talk about an incredible Region 4-5A showdown! About the only thing similar between these two are their records. Folks attending this one can expect to see a complete contrast of offensive philosophies. Picayune prides itself on their power running game, while Hatties-

burg runs more of a spread. That Tiger offense versus the defense of Picayune should be an interesting match-up. The Tigers are averaging 47 points a game, while the Maroon Tide are only allowing 18. Even against top-notch defenses though, Hattiesburg has scored a lot of points this season. Against Petal and Laurel, the Tigers put up 42 and 31 points, respectively. For my money, that's two of the best defenses you'll see. So can Picayune's offense keep up with that of the Tigers and manage to win a shootout if needed? I just do not see that happening.

Hattiesburg - 42
Picayune - 28

Meridian (5-2) @ Oak Grove (3-4): Oak Grove is 3-4. That just sounds downright weird. The Warriors have just been wildly inconsistent to this point. If they're gonna start to turn things around this week, they'll have to beat one of their biggest rivals, the Meridian Wildcats. The good for Oak Grove heading into this one is that quarterback John Rhys Plumlee didn't miss a beat last week in his return from a concussion. The bad is that he'll face a staunch defense when Meridian comes to town. Against Starkville (defending 6A champs), Wayne County (defending 5A champs), Noxubee County (defending 4A champs), and South Panola (need I explain?), the Wildcats have given up a combined 57 points. And yes, they're 4-0 in those games. Just too much for Oak Grove to deal with.

Meridian - 31
Oak Grove - 17

PCS (7-0) @ Lamar (6-2): The Bobcats are set to face one of their toughest challenges yet. Feels like I've been saying that week after week, and every time the Bobcats have prevailed. Scoring 40 points a game certainly never hurts. One possible concern this week for the Bobcats could be the fact that their two lowest point totals of the season have come in their two road games at Jackson Academy and Perry Central. The team hasn't actually played on the road in nearly a month. That doesn't really concern me that much though, because PCS has a defense that travels. Those two lowest scoring games? They were actually two of the team's better defensive performances. Give me PCS in a close one.

PCS - 34
Lamar - 31

Greene County (2-4) @ Purvis (4-2): The Tornadoes have won four straight and are really starting to look like a contender. Big wins over Bassfield, Sumrall, East Central and Mendenhall have this team playing with a whole lot of confidence right now. This game being at their place is huge too. On the other side, Greene County is 1-12 in their last 13 road games dating back to 2014. In that same span, Purvis has won 15 games at home. History and pretty much everything else says Purvis wins big in this one. The Tornadoes could be on the verge of stirring up something memorable this season!

Purvis - 38
Greene County - 10

- Other Games of Interest:**
- *Natchez (1-5) @ South Jones (6-1): South Jones 38, Natchez 17
 - *Bay Springs (5-2) @ Heidelberg (4-3): Bay Springs 35, Heidelberg 21
 - *Raleigh (7-0) @ Magee (4-3): Raleigh 41, Magee 24
 - *Sumrall (4-3) @ Columbia (1-4): Sumrall 34, Columbia 13
 - *Salem (1-5) @ Sacred Heart (3-3): Sacred Heart 28, Salem 10
 - FCAHS (2-4) @ Poplarville (4-1): Poplarville 42, FCAHS 24
 - *North Forrest (1-6) @ Richton (1-6): North Forrest 21, Richton 20
 - Taylorville (1-5) @ Mize (2-5): Mize 28, Taylorville 20
 - Copiah Academy (6-1) @ Sylva Bay Academy (3-4): Copiah Academy 38, Sylva Bay Academy 21
 - Newton County Academy (3-3) @ Wayne Academy (3-4): Newton County Academy 27, Wayne Academy 24

MAGNIFICENT MILE OF CARS SELLABRATION *in Laurel*



- **Over 1500 Cars, Trucks and SUV's to choose from.**
 - **Up to \$12,000 off MSRP**
 - **0% financing for 72 months**
- **4 Locations and 14 Franchises to choose from**
 - **You'll Get More for Your Trade!**
 - **Used Cars Starting at \$4,995.**
 - **Zero Down Financing Available**
 - **Up to 90 Days Till Your First Payment**
 - **Bad Credit, No Credit, No Problem**
- **Six Days and Six Days Only (October 3rd - October 8)**
- **Over 40 Available Lenders for Immediate Delivery.**



**Toyota - Dodge
Jeep - Ram - Chrysler**



GMC



**LAUREL FORD
LINCOLN**

**Bob Palmer
Chancellor Motor
Group**

OCTOBER AUCTION SPECIALS



2006 PONTIAC GRAND PRIX \$3,495
A0014A



2002 GMC YUKON \$3,995
A0079A



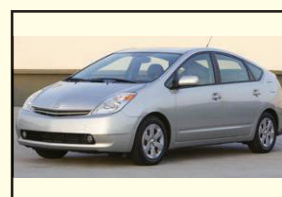
2006 CHEVY IMPALA \$3,995
A0043A



2008 DODGE AVENGER \$3,995
A0012A



2005 CHEVY MALIBU \$4,995
NI6010A



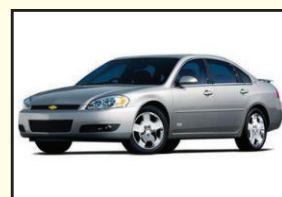
2005 TOYOTA PRIUS \$4,995
A0054A



2006 FORD MUSTANG \$7,995
N160008B



2007 FORD EXPEDITION \$7,995
A0045A



2008 CHEVY IMPALA \$7,995
P3982A



2008 FORD EDGE \$7,995
N16004AB



2007 DODGE NITRO \$8,995
A0037A



Bob Palmer's Chancellor Motor Group
2820 Highway 15 N,
Laurel, MS 39440
(601) 651-4358

FALL CLEAN UP SALE!

844-319-5854
WWW.LAURELFORDLINCOLN.COM
WWW.KIAOFLAURELMS.COM

LAUREL
FORD • KIA • LINCOLN

DEAL OF THE WEEK

Leather Loaded



2010 VOLKSWAGON PASSAT \$4,995
TEXT 360PTO 27414

LAUREL FORD SERVICE CENTER

OIL CHANGE \$39.95

\$20 OFF **\$19.95** 1 Filter 5Qts. Oil
INCLUDES MULTI-POINT INSPECTION
EXP 11-5-16 • MUST HAVE COUPON



2012 CAN-AM SPYDER 1600 \$13,995
2297AA



2002 Nissan Frontier SEV 6, Crew cab \$7,995
18770A TEXT 71MGTO 27414



2008 BUICK LACROSSE \$7,995
8419A TEXT 52WT TO 27414



2008 FORD EDGE Leather, Loaded \$10,870
2357A TEXT 5263 TO 27414



2006 FORD EXPLORER Leather \$7,995
18769B TEXT IW9L TO 27414



2012 KIA FORTE Low Miles \$9,840
18447B TEXT 39YN TO 27414



2013 FORD FIESTA \$9,475
8435A TEXT 4F7L TO 27414



2012 FORD FOCUS \$9,950
2235A TEXT 4YWE TO 27414



2011 FORD FUSION \$8,940
8405A TEXT 7GA8 TO 27414

GM Certified USED VEHICLES

2012 CHEVROLET SONIC LS

- 2 Years Maintenance Included
- XM Radio Subscription
- 3 Years **FREE** OnStar
- 12/12 Bumper to Bumper **FREE**

Several to choose from

\$0 DOWN \$129 PER MO.**



35 MPG! STK #16U651

2014 CHEVROLET EQUINOX LS



\$0 DOWN \$239 PER MO.**
32 MPG, STK #16UT662

2016 CHEVROLET IMPALA LT



\$0 DOWN \$299 PER MO.**
29 MPG, STK #16U443

2014 CHEVROLET CRUZE



\$0 DOWN \$199 PER MO.**
38 MPG, STK #16U413

2016 CHEVROLET MALIBU LTD



\$0 DOWN \$249 PER MO.**
34 MPG, STK #16U409

PAST CREDIT PROBLEMS? THE SALES TEAM AT RYAN MOTORS CAN MAKE IT HAPPEN!



2006 GMC CANYON



4D Crew Cab STK #16UT609 **\$8,500***

2005 LINCOLN TOWN CAR



Perfect Condition! STK #16U657 **\$8,995***

2011 CHEVROLET EQUINOX



32 MPG! STK #16U631 **\$9,500***

2013 KIA SOUL



29 MPG! STK #16U565 **\$11,500***

2013 HYUNDAI SONATA GLS



35 MPG! STK #16U559 **\$13,500***

2008 CHEVROLET SILVERADO



1500 LT STK #16UT538 **\$16,000***

2014 FORD MUSTANG PREMIUM



V6, Affordable Fun! STK #16U661 **\$19,000***

2014 GMC YUKON SLT



LIKE NEW! STK #16UT566 **\$34,000***

2015 CHEVROLET FLATBED



Really Nice! STK #16UT441 **\$39,500***

HUNTING SALE!



1997 CHEVROLET C/K 1500 **\$6,995***
V8, 2D Ext. Cab STK #16UT608

2015 CHEVROLET TAHOE LT



Auto, V8 STK #16UT549 **\$42,000***

2000 NISSAN SENTRA



CASH ONLY! STK #16U537 **\$3,000***

2006 NISSAN ALTIMA



CASH ONLY! STK #16U600 **\$3,500***

1999 TOYOTA TACOMA



CASH ONLY! STK #16UT633 **\$5,000***

2004 JEEP GRAND CHEROKEE



4X4 STK #16UT604 **\$6,000***



WWW.RYANCREDITDOCTOR.COM
RYANCREDITDOCTOR
ALL APPLICATIONS ACCEPTED!

24 HOUR **CREDIT DOCTOR**
ALL APPLICATIONS ACCEPTED
PAUL SANCHEZ

Since 1956 **RYAN** CHEVROLET

#1 GM Certified Used Car Superstore in Mississippi

1501 W. Pine Street, Hattiesburg
1-855-534-3769
601-584-8451

FIND NEW ROADS

WWW.RYANAUTO.COM