

Deadline to set up or change your Small Business Retirement (Simple) IRA is December 31st
We Should Talk...

Bradford T. Martin, CLTC
 Financial Advisor
 Office: 641-664-2169
 Cell: 641-799-4770

Ameriprise Financial

- Professional investment manager 401K/IRA
- Retirement & tax strategy specialist
- Financial Planning

Tri-County SHOPPER



STANDARD MAIL U.S. POSTAGE PAID TRI-COUNTY SHOPPER, INC.
 POST OFFICE BOXHOLDER LOCAL RURAL BOXHOLDER OCCUPANT
 CIRCULATION OVER 11,750 THIRD CLASS

P.O. Box 168 • Bloomfield, IA 52537 • www.tri-countyshopper.com
 Phone 641-664-1333 • Fax 641-664-3761 • Email shopper@netins.net



Vol. 44, No. 44
 Wednesday, November 2, 2016



Give Us A Call
 for all your last minute projects before Old Man Winter starts to blow!

**Free estimates on any/all building packages*

Cantril Lumber & Hardware

319-397-2351 or 319-397-2354
 Mon-Fri 7-5 & Sat 7-12



HIGH PERFORMANCE TIRES FOR HIGH PERFORMANCE

When it's time to get in your fields, you can't afford long delays....

Our Emergency On-The-Farm Service will get you going in no time!

108 Smith Street • Bloomfield
 TOLL FREE 1-888-855-8740
 641-664-1801

You've Got the Whole FARM in Your Hands
 Order your 2017 seed!
 We've got a special deal!

Start saving now! See John or Pete for all your early seed order discounts!

pfister

CROP SERVICES, INC

Drakesville, IA • 641-722-3293
 John & Kathy Bos, Owners

Get DISH in Southern Iowa and Northern Missouri

SHOP LOCAL

Create your own TV package | Introducing the new Flex Pack™

STEP 1 Get your favorite channels.

Plus More!

STEP 2 Choose extra Channel Packs made for you. First Channel Pack included

Kids, News, Locals, Variety, and many more!

FREE
HD for Life®

\$39⁹⁹
/mo.
Guaranteed for 2 years

FREE
Standard Professional Installation

Call your friendly neighborhood DISH retailer today!

Terra Signal Satellite
(641) 954-4043
112 South Washington St in Bloomfield
www.terrasignalsatellite.com

AUTHORIZED RETAILER

All offers require credit qualification, 2-year commitment with early termination fee and eAutoPay.
Offer for new and qualified former customers only.
Important Terms and Conditions:
Qualification: Advertised price requires credit qualification and eAutoPay. Upfront activation and/or receiver upgrade fees may apply based on credit qualification.
Offer ends 1/16/17. 2-year commitment: Early termination fee of \$20/mo. remaining applies if you cancel early. Included in 2-year price guarantee at \$39.99 advertised price: Flex Pack plus one add-on Pack, HD service fees, and equipment for 1 TV. Available with 2-year price guarantee for additional cost: Programming package upgrades (\$54.99 for AT120+, \$64.99 for AT200, \$74.99 for AT250), monthly fees for additional receivers (\$7 per additional TV, receivers with additional functionality may be \$10-\$15) and monthly DVR service fees (\$10). NOT included in 2-year price guarantee or advertised price (and subject to change): Taxes & surcharges, add-on programming (including premium channels), Protection Plan, and transactional fees. Other: All packages, programming, features, and functionality are subject to change without notice. After 6 mos., you will be billed \$8/mo. for Protection Plan unless you call to cancel. After 2 years, then-current everyday prices for all services apply. For business customers, additional monthly fees may apply.
BORIVE_19054

The Car Spa

Auto Body Shop
Auto Glass
Automotive Restoration
Hand Detailing Service

KARR COLLISION CENTER & AUTO DETAILING

Shawn Scott, Owner
701 Karr Ave. • Bloomfield, IA
641-664-1024

CAR DETAILING GIFT CERTIFICATES AVAILABLE!

NEED CHRISTMAS GIFT IDEAS? Stop in at **T-CORNER FURNITURE & SHADY LANE VARIETY** stores, conveniently located 1 mile East of Drakesville, IA at 16961 Jade Ave., featuring gifts for young & old alike. From heritage quality solid hardwood furniture, locally made poly furniture to toys, books, puzzles, games, Rythym clocks, plus lots more unique gift items.
STORE HOURS: Mon. - Sat. 8 A.M - 5 P.M.

HOUSE FOR SALE: 524 E. Arkansas Ave. Bloomfield, IA. Ranch Home. 3 bd. or (2 bd. w/office - shop & separate entrance.) 4 bath, large Livingroom & Family room w/ fireplace. Furnished apartment & finished basement. Has 2 additional bedrooms , kitchen & bath. New roof, new ground source heating & AC. Close to schools. **Patty Spurgeon Estate.** \$115,000 PH: 641-680-2152

FOR SALE: Firewood. Get it now while the gettin' good, at "Summer" prices! Cut to length \$25.00 for full size pickup. 48" bundles \$5.00. We can also fill wagons or trailers. **BEECHY SAWMILL, 4 miles West of Drakesville, 16611 Eagle Blvd.** PH. 641-664-2437. 44

FOR SALE: Riverfront property in Van Buren County, IA. 2-3 bedroom, 2+ car garage, 1.93 acres. Incredible view, access to water, 400+ acres public hunting close by. PH. 641-777-4872. 45

NEW MATTRESSES FOR SALE!
Selling individually or in sets. Factory warranty.

TWIN - FULL - QUEEN - KING

641-664-3060

FOR SALE: Guineas. Drakesville area. PH: 641-895-3135 44

Yard 'N' Garden

Sales & Service of Outdoor Power Equipment

641-664-2784
502 E. Franklin • Bloomfield, IA

MAST OVERHEAD DOORS, INC.
105 S. Dodge St., Bloomfield, IA 52537

GARAGE DOORS
Residential & Commercial
Doors & Operators

641-680-2016 **CALL FOR AN APPOINTMENT**

Quality Products + Quality Workmanship = Quality Customers Free Estimates We Fix Doors

FOR SALE: Puppies, medium sized, various colors, 7 weeks old, \$15 each. PH: 660-328-6698 46

FOR SALE: Pug & Beagle cross pups. Wormed & shots, Born 8-18, \$50 each OBO. 23631 Dogwalk Dr. Lancaster, MO 63548 45

COLLISION REPAIR

The RIGHT place for all your auto body repair needs!

Walker Motors
COLLISION REPAIR, INC.

660-465-2159
Shop phone/fax

375 S. Main St.
Memphis, MO

Guaranteed Paint Match • Free Estimates • Hertz Rental Cars

MFA Agri Services Memphis

Made For Agriculture • Call us today! (660) 465-2603 or (660) 341-1422

If you're a cattleman, you can do the numbers in your head: To add 100 pounds of beef to those five weight calves, you only need 400 pounds of MFA Cattle Charge. That's a 4 to 1 feed conversion that nets you more dollars per head after feed costs than if you'd sold the calves at weaning. Plug in the numbers. Any way you add it up, MFA Cattle Charge is a good deal - and a great way to put more money in your pocket. MFA Cattle Charge...

It will make a believer out of you!

<p>FOR SALE: Collie cross pups, 6 weeks old. David Graber Bloomfield, IA PH: 641-664-1558 46</p>	<p>FOR SALE: Massey Ferguson 1085 tractor, mechanic special, runs, \$2,500 OBO. PH: 660-341-2766 46</p>
---	--



Fall into a New Building with Wagler Metals!

Agricultural Commercial Residential Industrial

Specializing on Pole Barn Packages
Metal Roofing • Crews Available
Free Estimates on Complete Packages

WAGLER METALS

19049 Ice Ave., Bloomfield, IA
641-722-3692
M-F 7:30AM-5PM • Sat. 8-11:30AM

Even a FREE Thanksgiving turkey!

Find out more in store!

RED AND GREEN GRAPES

99¢ LB.

WHOLE TURKEY

\$1.19 LB.

LOUANA FRYING OIL 3 GAL

\$10% OFF

FRESH GROUND PEANUT BUTTER

MOZZARELLA

\$2.39/LB.

GAL. MILK

\$2.49

Village Market

Rt. 3 Box 168-A (Hwy 136 & Hwy 15)
Memphis, MO 63555 • 660-465-7307
Mon. - Fri. 8:30 - 6:00 • Sat. 8:30 - 5:00 • Sun. Closed

EBT WELCOMED!

*Building Tradition From Our Past
Offering Excellence In Our Present
Strengthening Our Foundation For The Future*

CELEBRATING 30 YEARS

CUSTOMER APPRECIATION CELEBRATION & Anniversary Open House
Thursday, November 10, 2016
 11:00 am – 2:00 pm

Join us in celebrating **30 Years** of Business with Many More to Come!

Refreshments • Fellowship • Door Prizes

\$100 CASH PRIZE GIVEN EACH HOUR
 Noon • 1:00 pm • 2:00 pm
Need not be present to win.

Everyone Welcome!

Cornerstone Investments
 CHUCK RIGGENBACH
 Financial Planner
 108 W. JEFFERSON ST. • PO BOX 11 • BLOOMFIELD, IA 52537 • 641.664.3700

Securities offered through Questar Capital Corporation (QCC) Member FINRA/SIPC. Advisory Services offered through Questar Asset Management (QAM) a registered investment advisor. Cornerstone Investments is independent of QCC and QAM.

For the past 30 years, Cindy and I have served our clients with honesty, integrity, and compassion. Through all the ups and downs of the stock market and all the vast changes in health care, our clients' loyalty and friendship has blessed us beyond measure. From the bottom of our hearts we want to say "Thank you for the first 30 years," and we look forward to being here for many more.
 Chuck & Cindy

GINGERICH STOVES and PLUMBING LLC

Extra Discounts & Rebates Available
 Indoor Model
 Fire Chief 500 or 700



**19091 180th St
 Bloomfield, IA
 VM 641-664-2814**
 3/4 Miles East of Drakesville, South Side

THANKSGIVING SUPPER & TALENT AUCTION: Barker United Methodist Church, north of Downing or South of Bloomfield on the Iowa/Missouri line. Saturday, November 19th at 6:00 PM. Turkey, dressing, ham balls, noodles, home made rolls, delicious salads and desserts. Supper followed by auction of beautiful hand crafted items and baked goods. Something for everyone. Door Prizes. Free Will Offering. Great place to do your Christmas shopping. For more information or directions call: 641-675-3439, 641-664-3859, 660-379-2615, 660-379-2848. 46

GARAGE SALE: Rutledge Missouri. South of Rutledge Meats, Thursday - Saturday November 3rd-5th 8:00AM-4:00PM. Tupperware, hens-on-nests, linens, etc. I moved. I.W.

FOR RENT: 3 bedroom apartment in Bloomfield. Immediate possession. PH: 641-722-3395 46

SHADY LANE VARIETY

Winter is coming!
 Check us out for your gloves, scarves & thermal wear!

GET READY FOR THE HOLIDAYS!
 Lots of great gift ideas to choose from. Also Boxed Christmas Cards Just Arrived.

1 mi. E. of Drakesville on Jade Ave. • 641-664-0207

Danner SINCE 1932

45009 Hunting Boot
 Men's & Women's Available
 Small Variety Available
 We will do special orders!

Graber's COUNTRY STORE LLC
 2 miles South & 1 mile East of Drakesville

FOR SALE: Portable washing machine, hooks up to kitchen sink like portable dish washer. PH: 660-216-0214 46

FOR RENT: 2 bedroom duplex at 401 N. Pine St., Bloomfield. Utilities & cable TV included. \$685 per month. PH. 641-208-0285. 47

Slayton Polaris Authorized Polaris dealer since 1988

Where your hunting ride begins.

New & Used Polaris ATV's



660-328-6627 BLOOMFIELD, IA
 8 mi. S. & W. from Pulaski or 6 mi. W of Memphis then 13 mi. N. on Route B

FOR SALE: New bee equipment. 9 5/8 in. painted hive body with frames and foundation, \$45. 6 5/8 in. painted medium supers with frames and foundation, \$40. JERRY STUTZMAN ADDRESS: 12216 255TH ST. MILTON, IA 52570. 45

PARADE TRACTOR NEEDS RESTORED. 1973 IH 1466 w/original manual \$8,900; also 1947 M Farnall WF 12B on steel, \$2,350. PH. 641-208-6610 10 a.m.-2 p.m. 44

FOR SALE: Meat saw and grinder combination. \$150. PH: 641-664-1780 PH: 319-929-3931 45

FOR SALE: 2016 Alfalfa, large squares and large rounds. PH: 641-919-9447 51

FOR SALE: Pullets brown egg layers, started to lay, Non GMO raised, \$8.00 ea. Noah Yoder: 2 miles South of Pulaski to 270th St. left 1 mile to Umber Ave. right 1 1/2 miles to 27645 Umber.

FOR SALE: 18 ewe lambs. Breeding age, 150 lbs., mostly black-face, foot rot free. Take your pick, \$225 each. Chrissie Hochstetler, 11589 255th St., Milton, IA 52570. 45

FOR SALE: Registered Beagle male puppy. Born Sept. 6, 2016. Will have all shots by 11-1-16; Also Muddy Tree outdoors hang on stand. VM: 641-664-2436, Ext. 1. 44

Joe's Barber Shop

Thursdays & Fridays 8AM - 5PM **Saturdays 8AM - NOON**

Shop: 641.664.2020 **Cell: 641.208.5561**

Call or come in today for a hot new cut and style!

haircuts • highlights • color

Stylists *Stylist & Owner*
 Apryl Kay Rhonda (Queenie) Fenton
 Hannah Deb
 Ashley Kathy
 Nail Technician
 Sonia

Shear Perfection
 641-664-3655
 210 E. Franklin St. • Bloomfield, IA



Country Side Grocery

Large Eggs 79¢ Dozen
 Green Grapes \$1.39 lb.
 Cottage Cheese, 24 oz. \$1.59
 Fresh Minnesota White Potatoes, 25# .. \$3.75
 Oreo Cookies, 10 pk. \$4.49
 Creamy Peanut Butter, 5# Tub \$6.99

3/4 mi. E. of Drakesville, IA on 180th St.
 Mon-Sat: 8:30am - 5:00pm
 VM: 641-664-2661

Food Supplements

Vitamins

RE-ELECT LINDA HUMPHREY

Democrat for Davis County Auditor

I appreciate your vote and your continued support.

Ad Paid For By Linda Humphrey
 26634 215th St.
 Bloomfield, IA 52537



THANKS VETERANS!

2012 GMC 1500
 4 DR., LEATHER, 4 WD, 33,000 MILES

2010 Silverado 1500
 LTZ, Leather, 4 Door, 4WD
NOW \$21,500

Kollision Korner
 504 South Drake St. Bloomfield, IA 52537
 PH: 641-664-2648 • Fax: 641-664-2948
 John says, "Like us on Facebook!"





NOW IS THE TIME TO PLAN YOUR HOLIDAY PARTY!!

Dates are filling up fast, reserve yours today.

Breakfast • Lunch • Dinner
Daily Hot Specials and Evening Features

Southfork MOTEL & GRILL
"Where Quality and Consistency Matter!"

Prime Rib Capital of the World! Friday & Saturday Nights
Catering • Banquet Facilities Available for All Occasions

JUNCTION OF HWY 2 & 63 • BLOOMFIELD • 641-664-1063
Tues - Thurs 7am-9pm • Fri - Sat 7am-10pm • Sunday 7am-2pm • Closed Monday

Election Day Lunch

Tuesday, November 8th
Bloomfield Christian Church
107 N. Davis St., Bloomfield, IA
11:00 a.m. - 1:00 p.m. *Serving Lunch*

Lunch Menu: *Homemade Soups (Chili and Potato), Hot Sandwiches (Chicken, Sloppy Joe) Homemade Pie (Fruit, Soft, Pecan, Pumpkin) Scrumptious Cookie Table*

DRAWING FOR ALL HANDMADE DWF QUILT AT 1 PM

EVERYONE WELCOME

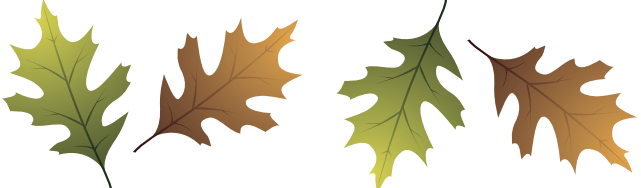
LANCASTER METHODIST CHURCH FALL FESTIVAL

FRIDAY, NOVEMBER 4TH
Lancaster, MO

BAKE SALE - 8:00 AM
And silent auction of themed baskets

LUNCH - 11:30 AM
Free will offering
Choose from homemade soups, sandwiches, and dessert bars

SMORGASBORD - 5:00 PM
\$8.00 • Children 12 & under \$3.00
Meat Loaf, Pork Loin, Turkey with all the trimmings, fresh baked rolls & homemade pies.



Election Day Soup Supper & Bake Sale

Soups, Sandwiches & Drink
\$5.00 per person
Tuesday, November 8th
4:30 pm - 8:00 pm
Get-To-Gather Room
North Side of the Square in Bloomfield
Bake Sale & Pre-Order Holiday Party Trays

Sponsored by: Grace Pointe Church of the Nazarene • All Proceeds go towards Missions

Saturday Nov. 12th

Annual Auction
from 1 to 4pm

Annual Smorgasbord
from 4:30 to 7pm

Living Hope Bible Church
201 W. Walnut, Eldon
641-652-3420

IOWA THEATER BLOOMFIELD, IOWA

"Jack Reacher: Never Go Back"

Friday, Nov. 4th
Saturday, Nov. 5th
7:00 PM
Sunday, Nov. 6th
4:00 PM

PG-13

60th Annual Douds Pancake Day
Saturday, November 12th • 7-10 AM
Douds Community Center

All you can eat:
Pancakes, Moore's Sausage, Coffee, Milk & Juice
Free Will Donation for Community Projects

Brought to you by: The Douds Community Club & Christ United Methodist Church, Wendi Dixon, Douds Masonic Lodge, Farmers & Traders Savings Bank, Jon & Debbie Finney, The Lunch Box Cafe, Ostrander's Florist, Pedrick Funeral Homes, Tri County Grain, Wayne Hootman Trucking

Veteran's Day Supper

Friday., Nov. 11th
6-7 P.M. Social Hour
7 P.M. Meal
American Legion Hall
Bloomfield, IA

ALL VETERANS & THEIR FAMILIES INVITED.

Meat entrees & beverage provided.
Please bring a covered dish.

BLOOMFIELD UNITED METHODIST CHURCH
NOVEMBER 12, 2016

HANDMADE QUILT **HAWKEYE TICKETS**

CANDIES **LOCALLY RAISED MEAT**

Gift Certificates From Local Businesses

Country Store: 3:00 pm
Dinner: 5:00 pm
Ham Balls and Cheesy Potatoes
Green Beans, Assorted salads and Desserts
Coffee, tea and rolls

Auction: 6:30 pm
Auction Items: Sports Memorabilia, collectables, pies, cakes and many other items!

CRAFTS
County Memorabilia

Davis County Veterans Appreciation Breakfast

Friday, November 11, 2016
7:00 A.M. - 9:00 A.M.

Location:
Bloomfield Christian Church
(handicap accessible)

FREE TO ALL DAVIS COUNTY VETERANS & SPOUSES

Sponsored by Veterans & Friends

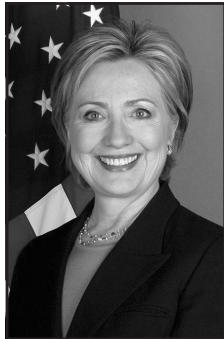
Friday, November 4th

Jumbo Shrimp
with sides Serving at 6:00 P.M.

Dine In **722-3355** Carry Out

RAY'S LONGBRANCH
Drakesville, IA


**SUPPORT THESE DEMOCRATS ON
TUESDAY, NOVEMBER 8TH, 2016**



Hillary Clinton
President



Tim Kaine
Vice President



Patty Judge
United States Senate



Dave Loebsack
United States
Congress



Curt Hanson
IA House
Representative



Dan Hutchings
Davis County Board
of Supervisors



Linda Humphrey
Davis County Auditor



Dave Davis
Davis Co. Sheriff

These candidates are working hard for you at the county, state & federal levels. Support them on November 8th.

If you need a ride to the polls call: 641-680-0851

Paid for by the Davis Co. Democrats.
Gloria Bailey Treasurer

C.H.I. MIDWEST LiftMaster
Overhead Door

✓ *Out Our Competitive Prices!* 21387 Route V64 Keosauqua, IA 52565 *Our goal is to keep your doors rolling smooth!*

660-216-0812

Sales • Parts • Service ~ Free Estimates
We sell new doors and openers or we'll service your old one.

ANNUAL THANKSGIVING SALE!
November 1 - December 31

We are thankful for another year of doing business with our friends, our customers!

Girl's & Ladies, Men's & Boys' Slacks & Jeans - 1/2 Price w/ purchase of one at regular price Dockers - Lee - Key - Levi Wrangler - Carhartt - Riggs	Men's & Boys' Shirts - 1/2 Price w/ purchase of one at regular price Western - Dress - Flannel Sport - Work
PJs, Robes, & House Slippers 20% OFF	Caps - Stetson Hats 20% OFF Western - Dress - Hunting
20% OFF - Insulated Coveralls Carhartt, Brown Duck, Big Smith, Treebark, Walls, Lee, Key, Polar Fleece & Realtree Insulated & Regular Overalls - 10% OFF Chestnut, Brown, Blue & Black	
Sweaters - Vests - Jackets - Suits Topcoats - Leathers - Sportcoats 20% - 40% OFF	Socks - Underwear 2nd Pair or Package 1/2 Price Wigwam - CoolMax - Outlast - Hanes Burlington - Munsingwear
Suits - Sportcoats - 20% OFF Dress - Sports - Western - Leather Superior - Panhandle Slim - Circle 8 - Sewell	Ties - Scarves - Belts - Billfolds - Gloves Suspenders - Samsonite Luggage 20% OFF
Men's - Boys' - Ladies' Rubber Insulated Boots & Overshoes - 20% OFF Northern - Red Bull - Muck - Irish Setter	
Shoes - Boots - Slippers - 20% to 40% OFF Western - Work - Fashion - Moccasin - Canvas - Leather - Insulated Rocky - Gore Tex - Hush Puppies - New Balance - Chippewa Wolverine - Justin - Durango - Red Wing - Tony Lama	

Cook's Mens Store
116 S. Market • E. side of Square • Memphis, MO
Ph. 660-465-2511 • Fax 660-465-8905
Monday-Friday: 8-5 & Saturday: 8-9
Short-Big-Tall • Narrow to Extra Wide • Tux Rentals
Gift Certificates

FOR SALE: Hydro feeder BLOOMFIELD MINI box. Also water pump, 5 STORAGE. Serving you from 2 safe, convenient hp motor with all the hoses, locations.
new. PH. 641-664-1066. TF
VM: 641-722-3045. 44

**HARRY HOWK'S
CONSTRUCTION**




- Backhoe • Skid Loader
- Trenching • Dump Trucks
- New Septic System
- Sand Filters • Waterers
- Water Lines & Hydrants
- Post Hole Digging
- Truss Setting • Plumbing

Home: 641-675-3636 or Cell #: 641-208-5757

FOR SALE: Young laying FIREWOOD FOR SALE: hens. Roosters also. \$50 a load. You haul.
PH. 641-208-5879. 45 PH. 641-208-5812. 44

**NOTICE OF
GENERAL ELECTION**

Tuesday, Nov. 8th, 2016
Open 7:00 am - 9:00 pm

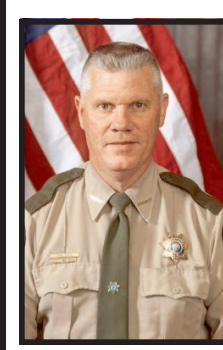


First Ward - Mutchler Community Center
Second Ward - Bloomfield Fire Station
Third Ward - Bloomfield Fire Station
Central Precinct - Southern Iowa Electric Cooperative
Northeast Precinct - Floris Community Hall
Northwest Precinct - Drakesville Shelter House
Southeast Precinct - Pulaski Community Center
Southwest Precinct - West Grove Township Hall

Any voter who is physically unable to enter a polling place has the right to vote in the voter's vehicle. For further information, please contact the County Auditor's Office at the telephone or e-mail address listed below:
Telephone: 641-664-2101 • Email: auditor@daviscountyia.org

Anyone wishing an absentee ballot mailed to them must first make application to the Davis County Auditor's Office. Printed application forms for absentee ballot requests and voter registration forms are available in the Auditor's Office or on the Auditor's page of the county website at www.daviscountyia.org.

Davis County Auditor's Office
Phone: 641-664-2101 • Fax: 641-664-1395
Email: auditor@daviscountyia.org



I would appreciate your support in the upcoming general election.

**Re-Elect
DAVE DAVIS
For Sheriff**

***Honest *Hard Working *Professional**

Paid for by Dave Davis
16721 276th St. Bloomfield, IA



★★★★ VOTE ★★★★★

ALAN YAHNKE

FOR DAVIS COUNTY SUPERVISOR

Alan Yahnke would appreciate your vote on

TUESDAY, NOVEMBER 8TH, 2016

AID FOR BY ALAN YAHNKE

22633 195TH ST., BLOOMFIELD



115 E. MONROE • MEMPHIS, MO
South Side of the Square
660-465-2102
M-F: 8 am - 6 pm
SAT.: 8 am-3 pm; CLOSED SUNDAY

We are your fall craft project headquarters!

Felt • Glue Embellishments Tulle • Cardstock Stickers • Paints Much More!

- Scrapbooking/Craft Supplies
- Primitive & Inspirational Décor
- Fabrics & Sewing Notions
- Socks & Sweaters
- Kitchenware
- Vitamins/Herbs/Oils
- Books & Bibles
- Baby Items & Toys
- Cricut Supplies & Rentals

FOR SALE: 16 ft. flatbed trailer, rails, \$900; 7 cement blocks, \$10 all; oak coffee table, \$40; 2 matching round glass top tables & built in lamps, \$40 pair; manual tire machine, \$300.
PH. 641-208-5136. 45

FOR SALE: DR Brush Mowers, located at Cross Road Furniture, 17982 200th st., Bloomfield, IA. South of Drakesville on Ice Ave.
PH: 660-216-1809 46

FOR SALE: Acorn and Butternut Squash. Straw and New Crop Honey. 1/4 mi. East of Drakesville during daylight hours.
PH. 641-722-3507. 44

Scotland County Care Center

434 E. Sigler Ave • Memphis, MO

Seeking kind, compassionate individuals to fill the following positions:

- L.P.N. - PRN, variable shifts
- C.M.T. - Full time, Days or Evenings
- C.N.A./N.A. - Full time, all shifts
- Dietary Aide - Part time
- Housekeeping/Laundry - Part time

Long term care experience preferred, but not required. We offer competitive wages, Paid time off, Health benefits offered to full time employees. Must be able to pass a drug test. Must be 18 except for Dietary Aide. We will certify N.A.'s on-site

Apply in the business office Mon-Fri 8 am-4 pm or online at www.scotlandcountycarecenter.com.

For more information contact
Tammy Kirchner, H.R.
(660) 465-7221 E.O.E.

HAWKEYE HARNESS

5% OFF BUY NOW FOR THE BEST PRICING!
5% discount going on until November 13th

1 hole • 25" diameter • 68" tall • 1 year Warranty on all parts
Easy to Clean • Options: Pond or Rural Water

DEALER OF GEOSTAR ENERGY FREE WATERERS.

14314 202nd St. • Bloomfield, IA Monday-Saturday 8-5 **641-722-3188**

FOR SALE: Round bales hay, no rain, net wrapped by JD568 baler, 3rd cutting alfalfa/grass mix; \$70. 2nd cutting grass \$50. Loader Available.
PH: 641-682-1455 44

FOR SALE: New electric farm motor, 1 1/2 hp, 1725 RPM, 115 or 230 volt, \$100; bench vice with w/pipe holder, \$40; bench grinder 3/4 hp, 6 inch wheels, \$40.
PH. 641-722-3075. 44

PRIDE LIFT CHAIRS

The World's #1 Lift Chair

Years of experience in manufacturing. Backed by up to a 3 year warranty!

Try our rent to own program!

- Sit with security
- Stand with confidence
- Finger tip controls
- Economically Priced Medicare & Insurance Billing

Friendly Service

SOUTHSIDE DRUG

337 Church St. • Ottumwa, IA
Hours: Mon.-Sat. 8-8 • Sun. 9-5
641-682-3467

FOR SALE: 1949 John Deere A tractor with 3 point hitch, \$2,800.
PH: 660-216-5281 46

FOR SALE: Mobile Homes! Prices starting at \$3,500. Financing available.
PH. 641-680-3713 44

FOR SALE: 1955 Ford 900, Runs Good, Good Tires; \$2,000 OBO.
PH: 641-664-2591 46

We BUY used manufactured homes, single wides and double wides. Call 641-672-2344 (MCN)

Davis County HOSPITAL

Dedicated. Compassionate. Healthcare.

NOVEMBER Specialty Clinic Schedule

Dr. Ron Graeff	Allergy/Pulmonology	641-664-3840	M, T, W, Th
Dr. Jake Settles	General Surgery	641-664-7091	Tues & Thurs
Dr. Boling	OBI/GYN	641-664-7091	8
Dr. Burchett	Ear, Nose, Throat	641-664-7091	10
Dr. Ciesemier	Allergy/Immunology	641-664-7091	11
Dr. Cleaver	Dermatology	660-627-7546	7
Dr. Homedan	Orthopedics	641-664-7091	2, 9, 16, 23, 30
Dr. Holte	Podiatry	641-664-7091	18
Dr. Jackson	Rheumatology	641-664-7091	1, 8, 15, 22, 29
Dr. Malik	Cardiology	641-682-5349	3, 17
Linda Schilling, ARNP	Dermatology	641-664-7091	14, 28
Dr. Shaeffer	Urology	641-682-5481	Mon, Tues, Fri
Susan Turner, ARNP	Women's Health	641-664-7091	3, 10, 17

509 N. Madison • Bloomfield, Iowa 52537
www.DavisCountyHospital.org

SALE! SALE! SALE!

20% off all camo clothes and hunting items!

Come see our new line of Illinois Industrial tools...

and hand tools for the handy man. A good tool for the right price!

Restocking Anything Constantly

\$URPLUS BARGAIN BARN

BLOOMFIELD, IA
2 1/2 MILES W. OF BLOOMFIELD ON HWY. 2
OPEN TUESDAY, FRIDAY, SATURDAY 9-5

L&M Country Store

1 1/2 miles south of west Hwy 2 & 63 jct.
Mon-Sat. 8am-5pm CLOSED SUNDAYS
VM: 641-664-1936

Apples: Jonathan, Yellow Delicious & Jona Golds

16 oz. Like Velveeta Cheese \$1.29 each or
..... 12 count for \$1.19 each

Frozen 3# Irregular Sliced Ham..... 59¢/ lb.

Local Grown Turnips 29¢ lb.

23 oz. Golden Puff Cereal..... \$1.89

4.5 oz. Assorted Gravy Mixes..... 99¢

Raw Spanish Peanuts..... \$1.19 lb.
..... or 10 lbs. or more \$1.09 lb.

20 oz. Kraft Marshmallows..... \$1.25

Homemade fruit cakes & candies.

AUCTION

SATURDAY • NOV. 5TH • 2016 - 10 AM

OLD SCHOOL • 200 E. LOCUST ST.
BLOOMFIELD, IA



Large quantity of quality antique furniture, clocks, and paintings. Rheinland wall clock, Piper grandfather clock, Ridgeway grandfather clock, Hammond grandfather clock, Versailles 2 piece clock, Howard-Miller grandfather clock, Sligh grandfather clock, Super anchors mantel clock, Ridgeway grandfather clock, misc desktop clocks, Glass top harvest table, oak library table, Royal Albert 12 piece china set, pink depression glass, blue edgewood plates, glass front hutch, misc original artwork, (3) marble top parlor tables, framed wall mirror, mandalin guitar, lavender oil lamp, leaded glass table, (2) oak claw foot parlor tables, antique radio cabinet exc condition, wicker iron trunk, ornate carved queen sized bed, wrought iron quilt rack, free standing mirror, 6 drawer dresser, metal train w/ 3 cars, oak stand, (2) marble top tables, tan couch and love seat, oak buffet, 8 drawer dresser, 4 post wrought iron twin bed, (3) art easels, (2) drafting tables, kitchen aid mixer, oversized aluminum dough roller, small amount of stainless kitchen equipment, Bunn coffee machine

Betty Shaffer Estate

This is a brief description of all items with many misc items that will add to this sale. Quality items throughout the entire sale. Be sure to check out updated pictures at www.lynychboys.com



Terms: All items are sold "as is". All items must be paid for prior to removal. All announcements made day of sale take precedence over ad. Not responsible for accidents or theft.

WWW.LYNCHBOYS.COM

BLOOMFIELD, IA
641-2083649

FAST Internet! HughesNet Satellite Internet. High-Speed. Avail Anywhere. Speeds to 15 mbps. Starting at \$59.99/mo. Call for Limited Time Price - 1-800-715-1644 (MCN)

Are you in BIG trouble with the IRS? Stop wage & bank levies, liens & audits, unfiled tax returns, payroll issues, & resolve tax debt FAST. Call 888-606-6673 (MCN)

GET HELP NOW! One Button Senior Medical Alert. Falls, Fires & Emergencies happen. 24/7 Protection. Only \$14.99/mo. Call NOW 1-888-840-7541 (MCN)

McFarland Truck Lines drivers were averaging over \$.50/mile and are now getting a new bonus for high miles! Drive the newest trucks, be home when needed. WWW.MCFGTL.COM Call now 507-437-9905 (MCN)

STUDENT LOAN PAYMENTS got you down? We can help reduce payments and get finances under control, call: 866-871-1626 (MCN)

Tired of the snow? Become a Winter Texan where the sun meets the gulf. Over 100 RV resorts and retirement communities for you to choose from. RV sites, fully furnished rentals and more. For more information visit www.rgvparks.org. (MCN)

Make the most of your insurance deductibles.



Want to Know How You Can Outsmart YOUR DEDUCTIBLE?

HERE'S A WAY TO FEEL SMART when it comes to medical insurance. If you've been putting off a minor surgery or an important test your doctor has recommended, the end of the year is a good time to take care of those overdue medical needs. Here's why. Deductibles under most health insurance plans will reset to the full amount beginning in January. So if you've met your deductible payments for the current year and are able to complete additional procedures before year-end, your out-of-pocket medical expenses could be minimal or even zero.

Screenings & Tests

- Bone Densitometry
- Cardiac Stress Test
- Colonoscopy
- CT Scan
- Digital Mammography
- Fluoroscopy
- General X-ray
- Lab Test/Blood Exam
- MRI Scan
- Ultrasound

Surgeries & Other Procedures

- Abdominal Surgery
- Ankle Injury
- Angiography
- Angioplasty Stent Placement
- Arthroscopy
- Cataract Surgery
- Endoscopies
- Foot Surgery
- General Vascular Surgery
- Hand/Wrist Surgery
- Hemodialysis Access
- Hemorrhoidectomy
- Hernia Surgical Repair
- Hip Replacement
- Hysterectomy
- Knee Replacement
- Lumpectomy
- Nasal Surgery
- Pancreatectomy
- Parathyroidectomy
- Pelvic Floor Surgery
- Shoulder Repair
- Splenectomy
- Thyroidectomy
- Tonsillectomy
- Vasectomy
- Wound Care

If you know you need a screening or surgery call us today.
641-684-2461



1001 Pennsylvania Ave., Ottumwa, IA 52501

©2016 BCI

NEW ITEMS!
COME CHECK
THEM OUT



24OZ. PRAIRIE FARMS Cottage Cheese
\$1.99

4 PK. 4 OZ. BREAKSTONES Cottage Cheese
99¢

32 OZ. YOPLAIT & DANNON Vanilla Yogurt
99¢

48 - 4 OZ. CUPS DANNON Straw-Banana Yogurt
\$2.50

7 DIFFERENT VARIETYS Apples
\$49¢/ LB



VELVEETA 2 PK. 2 - 32 oz. Loaves
\$8.95

GWALTHEY Mild Pork Sausage
1 LB. ROLL 49¢

V-8 ENERGY 12 in a case
\$5.99 A CASE

VARIETY OF CANNED PIE FILLING - 21 OZ.
\$1.35 & UP

BUSHES BAKED BEANS
\$7.79 GALLON

HOMEMADE NOODLES
\$2.99 LB.

While supplies last

19686 Hwy. 2, Bloomfield, IA • Approx. 2 miles west of Bloomfield • Mon. - Sat. 8:00 - 5:00 • VM: 641-664-1187



REED-WHISLER POST 78 BLOOMFIELD, IOWA

**WANTS YOU!
NEEDS YOU!**



Join us for
GOD and COUNTRY
Since 1919

HONOR • SERVICE • DUTY

REED-WHISLER POST 78, AMERICAN LEGION
BLOOMFIELD, IOWA 52537 641.664.2446

\$1.49
per lb.



10# roll
80/20 Frozen Ground Beef

\$1.69
per lb.



Brakebush®
Savory Breaded Chicken Breast Fillets

\$1.99
per lb.



Wright®
Hickory Smoked Sliced Bacon
Sold as a 2.5# pack for \$4.99

\$1.25
22 oz.



Dutchman's
an old time general store.
Kraft Ranch Dressing



\$1.19
96 oz.



Tang Orange Drink

\$1.99
10 oz.



Summer Sausage

69¢
per lb.



Frozen Genoa Salami Ends & Pcs

\$1.49
per lb.



Frozen Whole Boneless Pork Loin

\$2.99
45 oz.



Extra Large Pepperoni PIZZA

99¢
4 stick pack



WESTERNS SMOKEHOUSE
Snack Sticks

99¢
per lb.



Smoked Gouda Trim Cheese

\$1.49
30 oz.



Kraft
Miracle Whip & Mayo

2/\$4



Local Grown Hydroponic LETTUCE

49¢
per lb.



Fresh Sweet Potatoes

\$4.99
per lb.



Bulk Raw No Salt Almonds

\$3.69
30 oz.



BUTCHER BOY® COCONUT OIL

\$5.95
18 pack



Gourmet Blend COFFEE

\$1.59
10.7 oz.



S'MORES Oreo Cookies

\$1.99
24 oz.



Nabisco® PREMIUM Saltine Crackers

83¢
per pair when you buy 12



Sold as a 12 pack for \$9.95
Coated Knit Work Gloves



DUTCHMAN'S STORE Division Street - CANTRIL, IA - (319) 397 2322 **SALE PRICES NOVEMBER 2-8, 2016**
STORE HOURS • Weekdays, 8a.m. - 6 p.m. • Saturday 8a.m. - 5 p.m. • Sunday Closed • View our specials at - www.DutchmansStore.com

ALWAYS HAVE EYES THAT SEE THE BEST IN PEOPLE.



Tell Them You Saw It In The **Tri-County SHOPPER**

MAKE \$1,000 WEEKLY!
Paid in advance! Mailing Brochures at Home! Easy pleasant work. Begin Immediately! Age unimportant! www.homemoney77.com (MCN)

A PLACE FOR MOM. The nation's largest senior living referral service. Contact our trusted, local experts today! Our service is FREE/ no obligation. CALL 1-800-442-5148 (MCN)

19.99/mo. for DIRECTV - HD Channels + Genie HD DVR + 3 months FREE HBO, SHOW, MAX & STARZ + FREE NFL Sunday Ticket! Call Now 1-888-552-7314 (MCN)



BBB

Fox Valley Welding
No matter what size the project customer satisfaction is always our first priority.

Tig & Aluminum Welding Milwork Lathe New Steel Fabricating CNC Machining CNC Cutting

Hours: M-F 8-5:30
641-656-4684 • 12190 East Hwy. 2 • Milton, IA

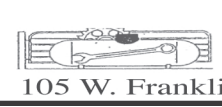
Ritchie Waterers

Thrifty King

Omni Founts



\$50 Mail-in Rebates.
Now through the end of January.



Hamilton Produce Co.
105 W. Franklin Bloomfield 641-664-2459

HOURS
8 A.M.
to
5:00 P.M.
DAILY EXCEPT
SUNDAY

**Zimmerman's
Store**
Rutledge, MO
660-883-5766

Our
Everyday
Low Prices!

Large cabbage heads \$1.50 EACH
Fresh bin in Friday

Fresh load of apples in by Friday
Jonathan, JonaGold, Red Delicious, Paula Red, Idared, Fuji, Golden
Delicious, Cortland, Gala • ALL \$12.50 a bushel

Miracle Whip.....	\$3.90 a gallon
Ground Beet, 5 lbs.....	#11.50
Velveeta Cheese, 2 lbs.....	\$4.98
Polish Style Chicken & Beef Hot Dogs, 30 lbs.....	\$15.75
6 pk. Select-A-Size 70-2 ply Sheets Bounty Paper Towels.....	\$7.19
12 Rolls Panda Bath Tissue.....	\$5.59
Kraft Jet-Puffed Marshmallow Cream, 7 oz.....	99¢
Italian Pizza Sauce, 6 lb. 9 oz.....	\$5.49
True Mashed Potatoes, 2.72 lbs, Makes 72 Servings.....	\$4.19
Bush's Best Bean Pot Baked Beans, 117 oz.....	\$6.89
Stuffed Olives, 240-260 Size, 1 Gallon.....	\$13.15

FISHARS 8" SCISSOES \$12.95
FISHARS 45MM ROTARY CUTTER \$10.50
WOODEN HANG UPS TO HAND UP QUILTS & WALL HANGINGS
LG. \$6.59 SM. \$4.69

100% cotton flannel, \$2.98 yd. & up
Asst. John Deere, Ford, Case IH, Farmall fabrics
Key coveralls, jackets, insul. and uninsul. bib overalls
Lacrosse insul. and uninsul boots
Brown & black gum boots

DRIVE A LITTLE & SAVE A LOT

Huge Savings! 2,106 Sq.Ft. Modular Home. Ready to be delivered and set on your foundation for only \$149,900. Meets or Exceeds All Iowa Residential Building Codes. Century Homes of Oskaloosa 641-672-2344

DONATE YOUR CAR, TRUCK OR BOAT TO HERITAGE FOR THE BLIND. Free 3 Day Vacation, Tax Deductible, Free Towing, All Paperwork Taken Care Of. 1-800-283-0205 (MCN)

Central Boiler certified Classic Edge OUTDOOR WOOD FURNACE. The perfect combination of performance and value. Call Today! Backyard Depot 641-722-3641

All the Auto Parts You Need ...and then some!

Tires • Parts • Accessories
Wash & Wax • Fluids & Chemicals
Service & Installation

Can't find it?
Ask us to locate the item you need.
If we don't have it, we'll get it!

**SPILMAN
AUTO PARTS**

Old Hwy. 2 & 63 W.
P.O. Box 31, Bloomfield IA
Ph. 641-664-2463 • 1-800-477-1367
www.spilmanauto.com

Anti-Freeze Sale!

Cardinal / Green Anti-Freeze
\$9.25/ gal

RV Anti-Freeze
\$4.34/ gal

Buy a Case of any Anti-Freeze get
10% OFF

Champion Universal Anti-Freeze
\$12.95/ gal

**ZIMMERMAN
AUTO LLC
TRAILER INC.**

101 North St. • Cantril, IA • 319-238-7398

Are you getting TIRED of the COLD WINTERS where you are? Why don't you get in your RV Camper and come to J-5 in Mission TX. We are located in the Rio Grande Valley. Average winter temps are 70 degrees daytime and 50 nighttime. We are a small park in a country setting but have stores and restaurants near by. We have specials for first time visitors. Call us at 956-682-7495 or email info@j5rvparktexas.com, www.j5rvparktexas.com Tom and Donna Tuttle Managers (MCN)

Tired of cold weather? Escape to Llano Grande Resort in South Texas' Rio Grande Valley! RV sites, cottages, fully furnished rentals available. Enjoy our golf course, heated swimming pools, full schedule of activities, top-notch entertainment, breathtaking sunsets, and endless fun. Ask about our complimentary 30-day stay. 800-656-2638 www.lanogranderesort.com (MCN)

FOR SALE: 17 Acres M/L Home, Large Barn, Small Shop, \$150,000. Kirksville, MO. PH: 660-341-8738 45

FOR SALE: 650 Small square bales, 4th cutting approximatly 65# alfalfa. Mike Christensen PH: 641-777-7815 46

My little girl stuck a bead up her nose.

South Main/ER Entrance

URGENT CARE

Saturdays 8 am - 2 pm and Sundays 10 am - 4 pm

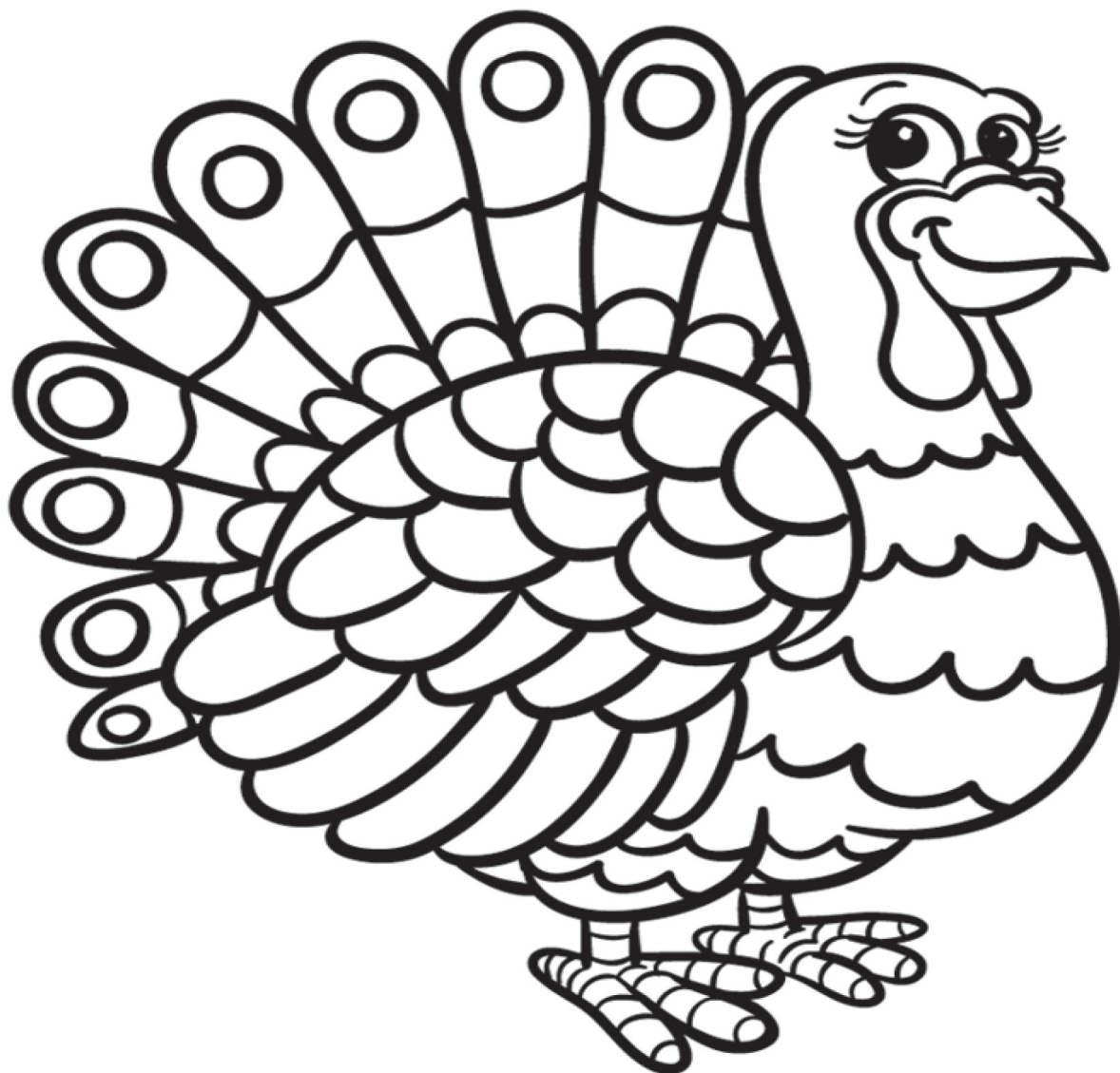
Scotland County Hospital

Memphis, MO • 660-465-8511

Sundays 10 am-4 pm
Starting October 2nd

Minor emergencies.
Major attention.

Thanksgiving Coloring Contest



\$25 Gift Certificate Sponsors:

Success BANK

109 N. Madison
Bloomfield, IA
641-664-2006

FDIC Offices in Moulton & Milton



TALLMAN AUTO PARTS

Patrick & Joanna Tallman, Owners
M-F 8:00am - 5:00pm • Sat. 8:00am - 12:00pm
660-457-2191



Dutchman's Store

Cantril IA 319 397-2322

'Old Time General Store'

Hours:
Monday - Friday
8am - 6pm
Saturday
8am - 5pm



Southern Iowa Electric Cooperative

A Touchstone Energy® Cooperative

(641)664-2277
sie.coop

22458 Hwy. 2
Bloomfield, IA

Mail in or drop off entries at:

Tri-County Shopper
208 Weaver Road
P.O. Box 168
Bloomfield, IA 52537

Other drop off locations include:

Dutchman's Store (Cantril)
Don Harrison (Memphis & Lancaster)
Memphis Mercantile (Memphis)

The winners of all four categories will be published in the following Shopper November 23, 2016

Name: _____
Parent/Guardian: _____
Address: _____
Age: _____
Phone: _____

Coloring Contest Rules:

1. There will be four age groups: 3 & under, 4-5, 6-7 & 8-9. One \$25 prize will be presented to the winner of each age group.
2. Complete the picture with crayons or colored pencils only. An adult may assist on filling out the form, but not coloring the entry.
3. One entry per child.
4. All entries must be received by Wednesday, November 16th at 5:00 p.m.
5. Form below picture and picture must be completed to qualify to win the \$25 value prize.

Walker Motors Collision Repair
Van Mersbergen Insurance
Feeds & Needs
Hamilton Produce
FredWRECKS
Sidwell Seeds
Crop Services, Inc.
Harris Distributing
Crop Production Services

Citizens Mutual
J.C. Zeitler, DVM
Cantril Lumber
Community Insurance Agency
Davis County Tire
Slayton Polaris
J's One Stop
Northside Insurance Inc.
1st Iowa State Bank

Spilman Auto Parts
Memphis Auto & Truck Parts
Karr Collision Center
Memphis Mercantile
Tri-County Shopper



HELP WANTED

SEEKING OVER THE ROAD DRIVER

- CLASS A CDL
- CLEAN DRIVING RECORD A MUST
- PAY BASED ON EXPERIENCE



SNYDER FARMS
BLOOMFIELD, IA

CALL Jesi
641-799-9995

FOR SALE: Registered Chihuahua breeding stock. 4 females, 2 bred, 2 males. Proven & healthy, \$2,000. PH. 660-342-7083. 44

FOR SALE: Mass Murder of the Bentler Family on e-book by GiAnna Moratelli, available at barnesandnoble.com & Smashwords.com 45

NOW IS THE TIME TO BOOK YOUR FARM NUTRIENTS FOR FALL APPLICATIONS!

Available in 24 ton truck loads. Multiple load discount. All prices delivered in Bloomfield, IA. Also available in granular form.

- LAYER CHICKEN MANURE - \$60.00 A TON
- HI-CAL LIME - \$45.00 A TON
- GYPSYM - \$75.00 A TON
- SOFT ROCK PHOSPHATE - \$175.00 A TON

David Yoder
18392 200th St. • Bloomfield, IA
641-722-3037 Ext. 1

TIM SKINNER



Trucking & Excavation

FLOTATION AGLIME SPREADING
Standard Application
GPS Variable Rate Application

HAULING
Aglime, Rock, Sand, Black Dirt or Clay
Also doing all types of excavation & dozing work

Call for pricing today
Tim Cell: 641-777-6053
Home: 641-682-6003

FOR SALE

2009 Case IH
3412 12 Row
Corn Head,
Great Condition

\$40,000

CALL JIM @
641-242-0558

FOR SALE: Gravity wagons: EZ Flow 300, EZ Flow 150 and J&M 300. All in good condition, call for details.

PH: 641-208-5946 46

MAST VINYL WINDOWS
THERMO-PRO WINDOWS
Custom Size Is Our Specialty
Professional Installation Available
THERMA-TRU DOORS
FREE ESTIMATES
22172 Hwy. 63
Bloomfield, IA 52537
800-206-9949

FARM FOR SALE BY OWNER: 40 acres open pasture with new fence. Set up for cattle. 3 ponds and 4 automatic waterers. Rural water installed with 2 additional hydrants. Morton building, 54'wx98'1 with 16 ft. walls & doors. Some steel corral fencing. Excellent building site, great deer and turkey hunting plus fishing. Bloomfield, IA. PH. 641-680-2152. TF

EYE EXAMS GIVEN
At James & Elva Hoover Knox City, Mo. on **Nov. 28th, 2016**
Call 660-434-5184 for appointment (2 wks in advance)
By: Dr. Daniel Jones (27 yr. experience)
Children to 18 yrs. \$50.00
Adults: \$60.00
Good Quality Stainless Steel and Titanium Frames Here To Choose From
\$18.00 - \$61.00

FOR SALE: Brickline wood stove w/glass door and blower, \$250. Also baby bed, \$10. Call after 6 p.m. 641-936-7255. 44

FOR SALE

Driveway Fabric Rolls
Commercial, Heavy Duty, Designed for Heavy Traffic

12' 6" Wide
432' Long
\$370/roll

660-216-0938

FOR SALE: 45 4th cutting alfalfa square bales, 3x3x8, \$50 each. 35 3rd cutting grass hay, 3x3x8 square bales, \$45 each.; 55 round clean-wheat straw bales, \$40 each. 20 big round 3rd cutting alfalfa/grass hay, \$60 each. No rain. Always shedded. PH. 641-722-3075 44

Friesen Excavating

Specializing in Septic Systems
Certified For Peat Tanks and Sand Filters.
Can Also Do Other Drains and Water Lines
Call or Text Shawn @
641-208-0861
Bloomfield, IA
Free Quotes Available

Garages • Pole Barns Commercial Free Estimates

LAN-DOW BUILDINGS

We Stock a Complete Line of Building Materials Complete Buildings or Packages Available

Lancaster Lumber, Inc.

Toll Free 800-424-5071 Fax 660-457-3133

Hardware • Plumbing • Electrical • Paint
500 Green Street • Lancaster, MO 63548

LANDSCAPE SPECIALS

8 FT. RAILROAD TIES!
Check them out at...

Spilman's Auto Parts
20311 Old Hwy. 2 • Bloomfield, IA
641-664-2463

Colony Store

Open Friday and Saturday
November 4th & 5th
and
Friday and Saturday
November 11th & 12th

20 % OFF ENTIRE STOCK

COLONY STORE Colony, MO
8:00 AM - 5:00 PM
660-341-2966
660-434-5502

NEED CHRISTMAS GIFT IDEAS? Stop in at **T-CORNER FURNITURE & SHADY LANE VARIETY** stores, conveniently located 1 mile East of Drakesville, IA at 16961 Jade Ave., featuring quality solid hardwood furniture, locally made poly furniture to toys, books, puzzles, games, Rythym clocks, plus lots more unique gift items.
STORE HOURS: Mon. - Sat. 8 A.M - 5 P.M.

FOR SALE: Small square bales 1st cutting grass hay. Memphis.
Randy Garnett
PH. 660-216-4651. 50

ADOPT: Happy loving couple wishes to raise your newborn with care, warmth & Love. Liz & Dominic.
Call: 1-877-274-4824
Text: 1-740-552-4384 48

FOR SALE: Brinkmann wood burning smoker, good condition. Douds, IA.
PH. 641-919-4617. 45

FOR SALE: Firewood at RJ Lumber, \$15 a pickup load. 18989 160th St., Drakesville, IA 52552. TF

WANTED: Cattle Head Chutes. Pefer not the auto catch. PH: 641-242-0273

Hawkins - Harrison Insurance

Trusted Choice

SHOPPER ADS CAN BE DROPPED OFF HERE!

Proud to be your partner.

P.O. Box 365
Lancaster, MO 63548
660-457-3020

103 W. Monroe St.,
Memphis, MO 63555
660-465-8533

Davis County, Iowa Land & Personal Property Auction

Saturday, November 19, 2016

Personal Property: 10 a.m. Real Estate: 11 a.m.
150 acres m/I—2 Tracts

Land is located in Sections 11-13 Marion Township, Davis County, Iowa. Sale will be held at 12197 Flax Blvd. 15 miles northwest of Bloomfield, Iowa or 16 miles southwest of Ottumwa, Iowa to sale site.

Real Estate sells at 11 a.m.

Tract I: Consists of 110 acres of open pasture land and some timberland. Excellent hunting with abundance of deer, turkey, etc. 3 bedroom

home with full basement, needs some repair.

Tract II: 40 acres of open hayground.

Terms: 20% down at close of Auction; balance due at closing

upon delivery of deed and abstract.

Taxes: Prorated to date of possession.

Possession: At closing. For more information contact Auction Company.

Watch this paper for a complete listing of personal property.

Dorothy Roberts Estate Danny Roberts Estate Lynn Roberts

Sharon Bolin, Personal Representative of Dorothy and Danny Roberts Estate.
John B. Martin, Attorney for Personal Representative

Rick Lynch, Attorney for Lynn Roberts

Terms: Cash or good check. \$35.00 returned check fee. Not responsible in case of accident
The information in this sale brochure was obtained from the best reliable sources available to us. However, the Auctioneers or their employees will not be held liable should the above information be incorrect. Any announcement made day of sale will take precedence over any previous advertising.

SALE CONDUCTED BY
Don Horn Auctioneering Service
209 East Jefferson, Bloomfield, IA
Phone: 641-664-1385 • 641-722-3796 -Home
• 641-208-0254 -Cell
"We don't talk service, we give it."
Auctioneers:
Don Horn • Jerry Bish
Rodney Lawson • Josh Williams • Trevor Nightingale

RENT TO OWN **CUSTOM BUILT** **16 YEARS EXPERIENCE**
PAINTED & VINYL BUILDING & SHEDS
Many Styles & Optional Features Available
FREE DELIVERY WITHIN 30 MILES

Hillview Mini Barns

DAVID W. SCHROCK VM: 641-664-2842
15383 180TH ST. • DRAKESVILLE, IA

FOR RENT: 14 X 70 Mobile Home south of Ottumwa, IA; \$500 a month plus deposits.
PH: 641-680-6199 46

FOR SALE: 93' 1500 Chevy Pickup, 350/350 HP, 4 WD, Power windows & locks; \$2,500 OBO.
PH: 641-242-0250 46

FOR SALE: 1966 Ford 5000 diesel tractor w/complete engine overhaul. Also includes #8 Shaver post driver and F8 Danhauser digger with new 12" bit. Must sell together. \$5,500 Firm on price.
PH. 641-777-7712. 47

FOR SALE: Recreational boat & trailer, 150 hp Mercury. Excellent condition, 4 passenger, all accessories. Got to make room, MUST SELL! Best offer.
PH. 641-777-3181. 44

Estate Auction

To settle the Estate of Tom Gummert I will sell at Public Auction the following personal property located at 29200 Kite Avenue, Bloomfield, Iowa on

Saturday, November 5, 2016

starting at 10:00 a.m. Sharp.

Watch for auction signs at the east edge of Savannah, Iowa.

Tractor and Equipment

1949 Ford 8N tractor, new rear tires, new battery, runs good
Dearborn 6' HD rear blade
Two bottom Ferguson plow, 3 pt.
3 pt. seeder
6' 3 pt. disk
Two row JD cultivator
Husquarvana riding lawn mower, 46" cut
(2) Garden tillers
Weed eater, walk behind

Tools and Misc.

Lincoln 225 amp welder
Battery charger
Floor jack
(2) Wagon hoists
Shovels, rakes, hayrack items
Hand and garden tools
Bulk bins
Shop vac
Feed bunks
Lawn chairs
Fishing equipment
Gas grill
Picnic table
(6) Antique wagon wheels
Ladders
Extension cords
Weed eater
Portable air tank
Barn fan
Wood stove
Shop lights
Work bench
Tool box

Household Goods and Collectibles

Jewell tea dishes
Glasswares
(2) Reclining chairs
Small sofa
Table with six matching chairs
End table
Pole lamp
Lamps
(2) Occasional chairs
32" Flat screen TV with convertor
Cuckoo clock
Old wooden buffet
Hall tree
Old dresser
Wood bed frame
(2) Wooden rocking chairs
Sofa hide-a-bed
Dresser with mirror
Small wooden dresser
(2) Metal frame full-size beds
Twin bed with frame
Cash register
Bird cage
Chest of drawers

Guns

12 ga. Damacus Twist steel barrel double hammer shotgun
Mossberg 410 shotgun, 3 shot with clip
Double barrel 410 shotgun
S&W 357 686 ported barrel
Hi-Standard Double Nine 22 Revolver

Please note: You must have a valid gun permit to purchase hand guns.
Many more items too numerous to mention.

Tom Gummert Estate

29200 Kite Ave., Bloomfield, Iowa

Terms: Cash or good check. \$35.00 returned check fee. Not responsible in case of accident
The information in this sale brochure was obtained from the best reliable sources available to us. However, the Auctioneers or their employees will not be held liable should the above information be incorrect. Any announcement made day of sale will take precedence over any previous advertising.

SALE CONDUCTED BY
Don Horn Auctioneering Service
209 East Jefferson, Bloomfield, IA
Phone: 641-664-1385 • 641-722-3796 -Home
• 641-208-0254 -Cell
"We don't talk service, we give it."
Auctioneers:
Don Horn • Jerry Bish
Rodney Lawson • Josh Williams • Trevor Nightingale

Schedule Ordering Options
Competitive Prices

Order Anytime, Anywhere
Shop Hundreds of Products

Manufacture Guaranteed Products

Spend less time shopping so you can spend more time with your horse.



601 Weaver Rd.
Bloomfield, IA

Clearview Animal Hospital P.C.
641-664-2399

GET STARTED AT
CLEARVIEWANIMALHOSPITAL.COM!

VOTE NOV. 8TH

DAN HUTCHINGS

FOR COUNTY SUPERVISOR

A lifetime of community involvement and work to improve the lives of Davis County Citizens.

Paid for by Dan Hutchings
21442 Hwy 63, Bloomfield, IA



MACHINERY & COLLECTORS AUCTION

SATURDAY, NOVEMBER 5TH AT 10:00AM

Located 2685 Cass Ave, Mt Pleasant, Iowa
Go west of Rome on Hwy. 34 to Benton Ave., go south 3 miles to 260th, go east 2 miles to Cass Ave, then south 1 mile.

CONSTRUCTION EQUIPMENT: D7 Cat dozer; D7 Cat dozer for parts; V30 Ditch Witch trencher; Vermeer trencher; 1983 GMC firetruck; 2 - Chevy bucket trucks; GMC 3500 cube truck (needs work); 580 Case backhoe, 3 pt. box blade, 3 pt. blades; 3 pt. forklift; Ford 900 tow truck. **HORSE DRAWN EQUIPMENT:** Fancy set of harness with collars; 2-2 seated buggies; 3 buckboard wagons; horse-drawn road grader; 2 steel wheeled manure spreaders; steel wheeled running gear; horse-drawn plows. **TRAILERS:** 16' American cargo trailer; United cargo trailer; 20' Mustang flatbed with beaver tail; 10' trailer; 16' home-made flatbed trailer; several lawn mower & utility trailers; 8' aluminum hog pickup topper; 16' livestock trailer; 20' fifth wheel livestock trailer. Large PTO driven sawmill on wheels; train & tracks - homemade Cub Cadet powered engine & cars. Amusement park sized. **COLLECTOR VEHICLES & TRACTORS:** 1951 Desoto car; 1964 Dodge truck; 5-JD A, M Farmalls, one with wide front; 300 utility IH; 400 Farmall diesel; 560 Farmall; 1750 Oliver tractor; 8N Ford; AC CA; 3 steel wheeled 2 bottom plows; 1976 GMC pickup. **VEHICLES:** 2000 GMC 4x4 pickup; 2001 GMC Denali; 1993 Isuzu pickup; several 1980s Ford F250 pickups; several Chrysler minivans & cars; 1984 Chevy grain truck. **BOATS, CAMPER, 4-WHEELERS & MOWERS:** 14' Lowe boat with vanguard tiller & 23HP motor; new Guidesman canoe; 2 ski boats (need work); Arctic Cat 300 4-wheeler; swamp buggy; 626 JD & 600 AMT JD Gators; Swisher 60" pull behind mower; Swisher 22 ton log splitter; JD 50 yard kart; JD 425 mower; jon boat; JD 110 & 140 collectors mowers; 2 Sears super 12 collector mowers; Cushman Frontline 114 mower (needs work); 12' pull-type finishing mower; JD rider tiller. **FARM EQUIPMENT:** 1486 IH tractor (needs motor work); 2 Parker 2500 gravity flow wagons; Huskee 225 gravity flow wagon; 8 & 10 hay bale wagons; several hay racks; 2 JD 7000 JD planters; JD 24T & Oliver square balers; elevator; several different length augers; JD machinery trailer; 1440 IH combine; 2 4 row IH corn heads; 2 16' IH bean heads; 4 & 5 bottom IH plows; 3 pt. bale stabbers; 2 JD 494 planters; JD side rake; several steel wheel rakes; 20' Bush Hog disc; JD 220 disc; 8' disc; 3 woods 14' brush cutter (needs repair); New Holland mower conditioner; chisel plow; flare box wagons; JD 12' drill; 6600 JD combine (needs work); combine head mower trailers; Ryan feeder wagon; 2 AC pull type combines; 5' brush cutters; 1 row JD planter; harrow & kart; lost misc. machinery for parts or scrap. **MISC:** air compressor 60 gallon; hydraulic cylinders; antique barn top; 500 & 250 gallon fuel barrels; pickup job boxes; 5 gallon buckets; hydraulic oil; 1000 gallon LP tank; Delta Industrial router; misc. tools; misc. collectibles; traps; tire changer; Hobart wire welder; jointer; huge pile of hedge & pine posts. **GUNS:** Mossberg 410; Winchester model 94; 30-30 Stevens 22 rifle; master-piece 9mm pistol; Liverty Arms 22 pistol; Iver Johnson 22 pistol; Traditions Back Proline 50 cal.; Remington 870 12 gauge; Winchester model 94 22 rifle; Stevens rifle; Winchester model 1300; 12 gauge shotgun.

Auctioneer's Note: This will be a huge auction. We are still digging machinery out of fence rows - come see what we dig out! **Pictures:** www.spesauction.com

Owners: Barton Farms & Lisa Stagner

REALTOR
Rick Spees
AUCTIONEER

Rick Spees
641-919-4786

Not responsible
in case of
accident.

1960 Libertyville Rd., Fairfield, IA
Any announcement made day of auction holds precedence over advertising.
See complete listing at www.spesauction.com

CONSIGNMENTS WANTED

Southern Iowa Produce Auction

Sales every 2nd & 4th Saturday, November thru March

Next Sale

Friday, November 12th - 10 A.M.

For advertising your consignments they must be called in by 10 A.M. Monday on the week of sale.

Unloading available by appointment.

19141 Ice Ave. Bloomfield, IA

Call 641-722-3623 on auction days or leave a message.
Market Report or Information call 712-432-8593

KEOSAUQUA SALE CO.

20511 Hwy. 1, Keosauqua, IA

Results from Oct 29
Butchers \$29.00-32.50/cwt
Sows \$24.00-35.00/cwt
Lambs over 110#\$133.00-137.50/cwt
Ewes\$62.00-76.00/cwt
Kid goats
..... 40-70# \$42.50-117.00/hd
Cull nannies.....\$45.00-160.00/hd

Pound Cows: Low yielding \$ 47.00-53.00/cwt
High yielding \$54.00-61.00/cwt

Pound Bulls: \$73.00-81.00/cwt

Annual Customer Appreciation BBQ & Cattle Sale Sat Nov 5

100 hd 450-650 angus str & hfrs fancy Sherod
100 hd 450-600 angus charx str & hfrs fancy Plenge
25 hd 400-500 blk & bwf str & hfrs nice 1 round shots
C Westercamp
30 hd 400-600 red & blk str & hfrs Keller
24 hd 500-600 blkx str & hfrs 1 round shots long time weaned
Eichleberger
10 hd 400-700 blkx str weaned no implants S Campbell
30 hd 350-500 Angus str & hfrs 7 way vaccine green Wilson
12 hd 450-550 blk & bwf str & hfrs 1 round shots Strait Family
120 hd 450-600 Angus str & hfrs 1 round shots no implants
D Westercamp
12 hd 500-600 Angus str & hfrs 2 round shots weaned J Mullett
40 hd 400-550 Angus & rwf str & hfrs 1 round shots green Gaston
90 hd 650-800 blkx yearling str Utt
120 hd 550-650 xbred hfrs 2 rounds shots weaned PBS
80 hd 800-850 xbred yearling str L & C
130 hd 825-925 xbred yearling str Musser

Thank You For Your Business! For More Information Contact:
Selling Times
Hogs.....9:30 a.m.
Sheep & Goats.....10:00 a.m.
Outside Merch.....11:00 a.m.
Cattle.....Noon
Keosauqua Sale Co.
319-293-3508
Bill Goehring
641-919-9365

www.keosauquasaleco.com

BLOOD DRIVE: Van Buren High School will host a community blood drive from 11:00 am to 3:15 pm on Tuesday, November 8th at 405 Fourth St, Keosauqua, IA. inside the gym. All donors will be entered to win a \$ 25 Casey's Gift Card! To donate, please contact a member of Student Council or Ms. Kathleen Humble at (319)-293-3183 or visit www.bloodcenterimpact.org and use code 5286 to locate the drive.

Scotland County LIVESTOCK AUCTION

P.O. Box 111 • Hwy 15 North • Memphis, MO
660-465-7213 • Jerry & Barb Blomme
660-341-0069 • Grant Blomme

DAIRY SALE
Wed., November 2nd at 10:30 AM

SPECIAL CATTLE SALE
Sat., November 5th at 12:30 PM

Early Listings:

110 Blk & BWF Yearling Steers 650-700# Off Grass
100 BLK & BWF Steers 500-600#
80 Mostly BLK Heifers 650#
40 Yearling Heifers Off Grass 650#
50 BLK Steers & Heifers 500#
44 BLK Steers & Heifers 550-600#
47 BLK Steers & Heifers 550-600#
60 BLK Steers & Heifers 400-500#
20 Mostly BLK Steers & Heifers 500-600#
40 MXD Steers & Heifers 500-600#
20 MXD Steers & Heifers 600#
14 BLK Steers & Heifers 600-650#
50 MXD Mostly Heifers & Steers 500#
40 BLK Bulls & Heifers 500#
12 BLK Cows 3-5 years-Bred BLK

Expecting more Cattle by Sale Time Thank You.

www.ScotlandCountyLivestock.com

Kirksville Livestock LLC

Kirksville, Missouri

SPECIAL BRED HEIFER, COW, & BULL SALE
Friday, November 4th • 6:00 PM

EARLY LISTINGS:

- 40blk heifers, bred to calving ease bulls, Final Answer and Ballot of Belladrum, Feb. 10th calving, 30 day calving period, comp vac & health program.
- 65 bred heifers including; 35 blk, 15 blkwf, 15 red; blk & blkwf are A-I'd to Sub Zero and red hfrs are A-I'd to Conqueror, for Feb. 15th calving.
- 27 blk heifers, bred to easy calving angus bulls (Galaxy Beef & Sydenstricker bulls), comp health program, start calving Feb. 12th.
- 18 blk heifers, bred to blk calving ease bull, start calving Feb. 25th, full health program.
- 150 head, from 1 farm, all home raised, complete vac program. Including: 65 mostly blk coming 3 yrs. old, bred to blk bulls for Apr. calving & 85 mostly blk cow/ calf pairs, 3-5 yrs old.
- 26 blk cows, 3-SS, bred to blk bulls (Woodruff breeding) Mar. calving.
- 14 blk & blkwf cow/calf pairs, 4-BM, bred back to blk bulls.

This ad written 10 days in advance of sale, please check web site for more listings: www.kirkvillelivestock.com

MONDAY, NOV. 7TH - 9:30 A.M.
Special Sheep & Goat Sale

UPCOMING BREEDING STOCK SALES:
• **FRIDAY, NOV. 18TH - 6:30P.M.**
Show-Me Select

North Central Missouri Bred Heifer Sale

• **SATURDAY, DEC. 2ND**
Special Bred Heifer, Cow & Bull Sale
This sale will include a complete dispersal of 200 head.

"Proud to Serve Area Livestock Producers"
YOUR BUSINESS IS VERY MUCH APPRECIATED
We are open on Sundays to receive your livestock.

Phone for information: Nancy Baker, Office 660-665-9804

Chuck Ambrosia...660-342-3530	Al Ashmead..... 660-216-8730
Caleb Randolph641-919-8539	Roger Jarman 660-651-3683
Harry Durlinger... 660-341-1080	Doug Fleshman.....660-626-7148
Mark Herbold.....515-720-8667	Daniel Smith 660-341-8396

Visit our website at www.KirkvilleLivestock.com

HAY FOR SALE: Alfalfa/ Grass mix. Square bales & Big round bales. Charles Comstock
PH: 660-341-1819 or 660-379-2430

FOR RENT: 1 or 2 bedroom apartments Milton, IA. Kitchen appliances & heat furnished. Very reasonable rent.
PH: 641-757-0201

38th Annual HAWK EAGLE SIMMENTAL SALE 2016



Lot 13: Sired by Coleman Regis



Lot 40: Sired by WS A Step Up



Scan this code to view catalog online and contact the breeders of this sale!

Sunday, November 6
12:00 Noon
Bloomfield Livestock Market
Hwy 63 North, Bloomfield, IA
81 SimGenetic Lots Sell!



Lot 28: Sired by Coleman Regis



Lot 43: Sired by W/C Lock Down

Professional Sale Management:

Val & Lori Eberspacher
2904 Co. Rd 6, Marshall, MN
Office 507-532-6694
Val 612-805-7405
Kelly 406-599-2395
sales@ebersale.com

Can't make the sale?
Bid Online at:

LiveAuctionsTV

Catalog & Sale Details online: www.Ebersale.com



We provide materials & expertise for all building projects.



**New Homes
Remodels
Decks
Kitchens
ICF Basements
Pole Buildings**

Josh & Emily Hill
218 S. 2nd St. • Pulaski, IA

641-675-3405

YODER'S INDIAN CREEK FURNITURE: Maintenance free outdoor poly wood furniture. Great selection in stock! Dining sets, pub sets, gliders, rockers, and swings. Available in 24 different color combinations. Check with us before you buy! Located 4 miles North of Cantril on RT. V64, 22769 Rt. V64 Milton, Iowa. TF

FRIESEN CONSTRUCTION

**New Houses
Remodeling
Garages Electrical
Plumbing
Custom Cabinets**

**Arlen 664-3270
Cell 641-208-0170
Bloomfield, Iowa**

NEED CHRISTMAS GIFT IDEAS? Stop in at T-CORNER FURNITURE & SHADYLANE VARIETY stores, conveniently located 1 mile East of Drakesville, IA at 16961 Jade Ave., featuring gifts for young & old alike. From heritage quality solid hardwood furniture, locally made poly furniture to toys, books, puzzles, games, Rythym clocks, plus lots more unique gift items.
STORE HOURS: Mon. - Sat. 8 A.M - 5 P.M.

HONEY FOR SALE:
The Bushel Basket
660-216-1710 48

Vinyl Windows
Replacement & New Construction

Window Features...
Fusion Welded
Triple Weather Strip
Aluminum Reinforced

Sliding/Swinging
Patio Doors

Gerkin
Quality products since 1932

FREE ESTIMATES

Yoder Glass & Window
641-722-3667
19467 Driftwood Blvd.
Bloomfield, IA 52537

LINE-X OF OTTUMWA

**KEEP YOUR RIDE IN GREAT SHAPE!
PROTECT IT WITH A LINE-X COATING!**

Bring it in and we can LINE-X® it!

Brad Lisk
15514 Blackhawk Rd., Ottumwa, IA

Gift Cards Available!
VISA MasterCard

641-683-9334

HughesNet REGISTERED RESIDENT HIGH-SPEED INTERNET AVAILABLE ANYWHERE

WHY HUGHESNET?

- High-Speed Performance
- Available Anywhere
- No Phone Line Required

INSTANT SAVINGS

- FREE Standard Installation*
- Speeds up to 15mbps
- Packages Starting at \$59.99/mo

1-800-715-1644



**RANGER™
LIMITER**

CANTRIL FEED & GRAIN

NOW CARRYING RANGER LIMITER FEED!!!

The RANGER™ Advantage...

- Predictable daily intake control system.
- Works great in self feeders.
- Keeps cattle green while they are growing.
- Provides economical gains when supplementing abundant, low quality forage.
- **New Technology...NO FISHMEAL!**

Use Ranger™ Limiter in nearly any cattle feeding operation where limiting intakes.
Condition Bulls • Replacement Heifers • Growing Calves • Cows • Creep Feeds

TAKE THIS COUPON INTO CANTRIL FEED & GRAIN TO TRY RANGER LIMITER TODAY!!

**RANGER™
LIMITER**

Customer Name _____

Product _____

Number of Bags or tons _____

Price per Bag or Ton (retail) _____

\$20 off per ton

Total Mixed Ranger Ration
(Limit 5 Ton Max)

Redeemable only at Cantril Feed & Grain (319) 397-2251

This coupon is good towards any Cargill® Ranger™ Limiter Product. Limit one coupon per household. Expires October 31st 2016. Not valid with any other offers.

BLOOMFIELD



LIVESTOCK MARKET

Wed., Nov. 9th...Fat Cattle, Slaughter Cows & Bulls 9AM Feeders to Follow... 10AM

Wed., Nov. 9th.....Special Bred Cow/Pair/Heifer Sale6:00 PM

Early Listings:

Grim/ TF Cattle- 53 Red Angus/Simmental cross 4 year old bred cows. Mated to Top selling BWF Simmental/ Angus from Schooley Cattle that was named power bull Champion in Denver. 25 blk coming 3 year old bred cows.

All cows will start calving Jan.3 for 90 days. Complete vaccine program along with Scour Bos.

Calves were weaned in September and will sell Nov. 2. Top set of young Cows!

Freyenberger- 6 Big Blk Angus bred Heifers. Mated to LBW Angus Bulls, start calving Feb.25 for 60 days. Complete vaccine program.

Wed., Nov. 16th.....Fat Cattle, Slaughter Cows & Bulls.....9:00 AM

Wed., Nov. 16th.....Special Yearling Calf Sale 11:30 AM

Wed., Nov. 23rd...Fat Cattle, Slaughter Cows & Bulls 9AM Feeders to Follow.. 10AM

Sat., Nov. 26th.....Special Thanksgiving All Calf Sale..... 11:00 AM

Wed., Nov. 30th...Fat Cattle, Slaughter Cows & Bulls 9AM Feeders to Follow.. 10AM

**SALE BARN OPEN UNTIL 9:00 PM
EVERY TUESDAY TO RECEIVE LIVESTOCK**

IMBIO SALE RESULTS For October 24th, 2016.

Lot/Pen#	HD	Weight	AVWT	Color	Price	Lot/Pen#	HD	Weight	AVWT	Color	Price
STEERS						HEIFERS					
602	5	1640	328	Black	\$154.00	601	10	3940	394	Black	\$125.00
600	31	14170	457	Black	\$142.00	704	46	22725	494	Black	\$125.00
701	96	53530	558	Black	\$136.25	705	93	52395	563	Black	\$120.00
708	24	13335	556	CHCR	\$130.00	707	22	12755	580	CHCR	\$118.75
702	88	53700	610	Black	\$130.25	706	45	28375	631	Black	\$116.00
703	80	55045	688	Black	\$134.00						

We appreciate your business!

Phil Schooley 641-664-3450
 Ron Schooley..... 641-777-0302
 Roman Schooley 515-450-3685

Tyler Schooley 641-208-5442
 Barn Phone 641-664-2435

HWY. 63 NORTH • BLOOMFIELD, IA

FOR SALE: 2010 Jeep Patriot Sport. 96,000 miles, excellent condition. Retail price is \$9,320. Must sell at \$7,600. Greentop, MO.
 PH: 660-988-6944 45

FOR SALE: 9 ducks and 2 grey geese. Need a home before winter.
 PH: 641-664-1923 45

FOR SALE: Brinkmann wood burning smoker, good condition. Douds, IA.
 PH. 641-919-4617. 45

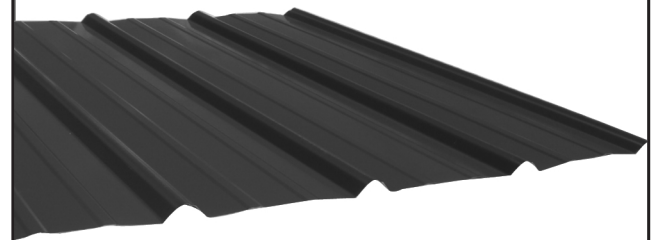
FOR SALE: Large Belgian Gelding, 8yrs. old, weight approximatly 2,200 lbs.; Green broke to work & ride. Gentle.
 PH: 641-664-2278 45

FOR SALE: Purebred black Angus bulls. 1 1/2 years old. Out of Hoover Dam and Aberdeen bulls with great disposition. Whittington Angus
 641-208-6010. 44

FOR SALE: Bulk oats, \$1.50 bu.; also square bales of straw, wire tied, \$4.00.
 PH. 641-777-0417. 44

GARAGE SALE: 17877 Nuthatch Ave. Friday, November 4th 5-8 & Saturday, November 5th 9-3. Lough, Boyd, Hootman. Boys clothes 3-24 month, baby items, girls clothing 10-12 up to women's plus size. Men's clothing (Cinch & Wrangler), new & used tupperware, odds & ends.

Premium Metal Roofing



- Buy Direct & Save
- Fast Service
- Cut-to-length
- Professional Contractors Available



641-664-3990 • awmetal.net

ANGUS BULLS

TOP QUALITY • PRICED RIGHT



Thick and fertile yearlings to breed your fall calving cows or heifers.

- ★ CALVING EASE
- ★ GROWTH
- ★ VERY GENTLE

Sired by Musgrave Reachout 530

SELECT YOUR BULL NOW

**DORAN BOLLMAN
PULASKI, IOWA
641-675-3467**



Bring your plans in for a **FREE ESTIMATE**



Trusses Engineered and Designed to Your Specs

Complete building packages for:



- Commercial • Agriculture • Residential •

17893 212th Street • Bloomfield, IA 52537
 641-722-3605 • Mon.-Fri. 7 AM to 5 PM



\$2875

FROM BIG TO SMALL, DUMP TO HAUL WE'VE GOT THEM ALL! CALL NOW FOR PRICES & AVAILABILITY!

2017 6' x 12' x 6'6"; ProStar Windbreaker Single 3500lb Axle with 15" tire, Rear Ramp, Side Door, 16" Center Walls

RT Auto 505 S Washington St. • Bloomfield, IA
 (641)664-3000

YODER EQUIPMENT
 BLOOMFIELD, IOWA

GEO STAR & PRIDE OF THE FARM

ENERGY FREE WATERS

Extra Heavy 10 Gauge Bale Rings

- CONTINUOUS FENCING
- LARGE VARIETY OF FARM GATES

19887 Jade Ave
 2 1/2 Miles W of Bloomfield
 V.M. 641-664-2797