

# AMERICAN FARM & RANCH CLASSIFIEDS

**FREE TAKE ONE!**

7734 Madison Blvd. Suite 115, Huntsville, AL 35806

**256-533-4285**

TOLL-FREE 1-866-533-4285

FAX LINE: (256) 533-4295

BBB Email: contactus@amclassmedia.net

Place Ads Online at [www.TNValleyStuff.com](http://www.TNValleyStuff.com)

Digital Edition: Amclassonline.com

Your Classifieds Specialist

Distributed Every Month

Vol. 12 No. 5 November, 2016

## Quality Products Made From Deer

Deer Burger and Steaks - Hickory Smoked Sausages - Breakfast Sausage - Smoked Link Sausage - Smoked Polish Keilbasa Sausage - Salisbury Steak Patties - Cured Smoked Hams - Fresh Italian Sausage - Smoked Bratwurst - German Bologna - Venison Jerky - Summer Sausage w/Cheese - Hotdogs - Snack Sticks - Snack Sticks w/cheese



## DEER HUNTERS

Set Your Sights On Quality Meat Processing!

Weaver Meat Processing

2098 Hwy 55W., Hartselle, AL 35640

**(256)462-1034**



## INDEX

- Mobile Homes, Spaces & Lots.....2
- Real Estate Wanted.....2
- Acreage, Farms & Lots.....2
- Appliances.....2
- Building Materials.....2
- Furniture.....2
- General Merchandise.....2
- Heavy Equipment.....2
- Miscellaneous.....2
- Jewelry & Watches.....2
- Lawn & Garden.....2
- Machinery & Tools.....2-4
- Steel/Storage Buildings.....4
- Tractors.....4
- Trailers.....4
- TV/Video/Audio.....4
- Farm Equipment.....4
- Livestock/Poultry/Supplies.....4
- Motorcycles/ATVs/Gocarts.....4
- Auto Parts & Service.....4
- Autos Wanted.....4
- Autos For Sale.....4-6
- Antique/Classic Vehicles.....4-6
- Sport Utility Vehicles.....6
- Trucks.....6

**BARN, CABINS AND SHEDS** No Credit Check! Buy or Rent To Own! Fast and Free Delivery to most locations. Sizes 8x12 - 14x40. Call 256-221-7062.

**CADILLAC: ATS, 2014** \$24,600. 22k miles, tinted windows, moonroof, beige, Cadillac wheels, Vogue tires. Excellent condition. 256-801-9484.

**MADE RIGHT METAL BUILDINGS** We do all types of buildings. Fully customizable to meet your needs! 205-712-2115

**WE CUSTOMIZE SHOPS, BARN, Garages, Warehouses, Storage Buildings or anything that fits your needs!** K&G Metals 256-878-7227.

**MOULTON: A JR'S MOBILE** Home Sales. Buying & Selling used Mobile Homes. Also moving & set up mobile homes. For Best Prices call JR 256-974-5478 Deborah 256-522-9487.

**LOG CABIN \$4,800.** (ORIGINAL Price \$23,800) Moving and must sell. 768 sq ft. (expandable to 1152 sq. ft.). 101 solid oak logs. Full dovetailed. Complete precut wall set with all plans for stone fireplace, high pitched roof, 10' high ceilings, porch. Stack walls in two days. Extra nice. Pay when received. (Will haul to Huntsville for \$1,850). Tremendous Bargain! 870-577-5757.

**CHEVROLET: MONZA, 1976 DRAG CAR** race ready. Tube chassis, big tires, 383 stroker, glide/brake, all electronics, 9" 4 link and strange, willwood/more. \$12,000. Call 256-776-4870.

**ALL AMERICAN HANDYMAN & Drive-way** Pressure Washing. Vietnam Vet with 45 years experience. Call 256-503-1993.

**CHEVROLET: CORVETTE, 1999 RED** convertible, 6-speed manual, 95,000 miles, like new, asking \$14,500 obo. 931-244-6502.

**WE CUSTOMIZE SHOPS, BARN, Garages, Warehouses, Storage Buildings or anything that fits your needs!** K&G Metals 256-878-7227.

**CONVENTIONAL PROPANE SMOKER** WITH tank and regulator, \$50 256-759-8005

**CHEVROLET: COLORADO, 2012 EXT** Cab auto, air, power windows, 119k miles \$179 monthly. Call 256-536-7976

**NEW MARKET AREA** 1 38/100 acres, Wooded, good view, \$25,000 256-604-0394

**DECATUR CO. TN (WEST of Wayne Co)** 178.5 Acres timber, springs, Lots of deer/turkey. \$895 per Acre. Call JR Rochelle 931-629-0595 or Coldwell Banker 931-762-3399

**ZERO TURN ZOOM MAX 60, 5' deck, 25 hp.** Kohler. Low hrs. Like new, \$3,650. Need to Sell! Make an offer. 256-505-2890

**NISSAN: ROGUE SL, 2012** \$14,300. Fully loaded, leather/heated seats, sunroof, backup camera, Bose sound system, Bluetooth, Premium wheels, Very good shape, clean 256-227-0580

**PERRY CO. TN (JUST FALL & WINTER BLOOMING** Camellias now in stock. Call 256-837-3039.

**CHEVROLET: CORVETTE, 1996** \$11,500. White with red interior, 47,000 miles, automatic. Excellent condition. (828) 448-2723

**DEER HUNTERS SET YOUR Sights On Quality Meat Processing!** Weaver Meat Processing 2098 Hwy 55W., Hartselle, AL 35640. Call 256-462-1034

**20 GAL. GAS TANK CHEVROLET: AVALANCHE, 2002 4X4** Buy Here Pay Here \$50 weekly. Call 256-837-9511

**HARBOR FREIGHT TOOLS GREAT** Quality Tools at the LOWEST Prices! 100% Satisfaction Guaranteed; No Hassle Return Policy; Lifetime Warranty on All Hand Tools! Huntsville 256-895-6030; Tullahoma 931-454-9960.

**2007 CHEVROLET SUBURBAN LTZ,** 198,000 miles, loaded, white excellent condition, \$13,900. 256-460-8504 or 256-412-4242

## BUY FRESH BUY LOCAL

[www.BuyLocalAlabama.com](http://www.BuyLocalAlabama.com)

## WE SELL METAL ROOFING \$1.75/ft

**WE SELL METAL ROOFING! ORDER & PICKUP SAME DAY!**

**Local Installations In 2 Weeks**

**IN-HOUSE ROLL FORMER**  
Metal Roofing Starting @ \$1.50/ft  
40 Year Metal \$1.95/ft

## CARPORTS RENT TO OWN

AS LOW AS

# \$66.26/mo

12 MONTHS

Same As Cash!

NO CREDIT CHECK!

## STORAGE BUILDINGS RENT TO OWN

As Low As \$58<sup>75</sup> Per Month\*

SUBCONTRACTORS NEEDED! BUSINESS IS GROWING!

Email Resume To: [qualityalabama@gmail.com](mailto:qualityalabama@gmail.com)

256-381-8121

888-805-8699

[www.qualityoutdoor.net](http://www.qualityoutdoor.net)

108 HWY 43S., Tuscumbia, AL 35674

(Across from fairgrounds)

NORTH ALABAMA STATE FAIRGROUNDS

HWY 43S

HWY 72

**HEN FARM, TWO 400 ft.** chicken houses, 15 acres, Double Wide, \$320,000. No Sunday Calls Please. 256-502-1605

**FORD: ESCAPE, 2013 SEL,** loaded, 72K miles, heated seats, leather, excellent condition \$14,900 less than loan value 256-412-8350

**MOULTON: A JR'S MOBILE Home Sales.** Buying & Selling used Mobile Homes. Also moving & set up mobile homes. For Best Prices call JR 256-974-5478 Deborah 256-522-9487.

**CONVENTIONAL PROPANE SMOKER WITH tank and regulator,** \$50 256-759-8005

**GRAND OPENING! ATHENS FINANCE** Loans \$200 - \$900. 30 Minute Approval. Call 256-230-6764

**GRAND OPENING! ATHENS FINANCE** Loans \$200 - \$900. 30 Minute Approval. Call 256-230-6764

**WE CUSTOMIZE SHOPS, BARNs, GARAGES, WAREHOUSES, STORAGE BUILDINGS OR ANYTHING THAT FITS YOUR NEEDS! K&G METALS 256-878-7227.**

**Watkins & Sons**  
Manufacturing, Inc.

**Real Estate Wanted**

**WANTED! WANTED! LAND THAT'S** too wet or too far back for most swamp, old farm, hunting land 256-684-3407.

**Building Materials**

**HARBOR FREIGHT TOOLS GREAT** Quality Tools at the LOWEST Prices! 100% Satisfaction Guaranteed; No Hassle Return Policy; Lifetime Warranty on All Hand Tools! Huntsville 256-895-6030; Tullahoma 931-454-9960.

**BARNs, CABINS AND SHEDS** No Credit Check! Buy or Rent To Own! Fast and Free Delivery to most locations. Sizes 8x12 - 14x40. Call 256-221-7062.

**ALL AMERICAN HANDYMAN & Drive-way Pressure Washing.** Vietnam Vet with 45 years experience. Call 256-503-1993.

- Grain Bins
- Feed Tanks
- Elevators
- Loop Systems
- Air Transfer Systems
- Grain Dryers Augers
- Bin Erectors
- Stirrer
- Feed Systems
- Aeration & Dryer Fans

**Decatur Co. TN (WEST of Wayne Co)** 178.5 Acres timber, springs, Lots of deer/turkey. \$895 per Acre. Call JR Rochelle 931-629-0595 or Coldwell Banker 931-762-3399

**MADE RIGHT METAL BUILDINGS** We do all types of buildings. Fully customizable to meet your needs! 205-712-2115

**GRAIN BINS, FEED TANKS, Elevators, Feed Systems, Aeration & Dryer Fans and much more.** Watkins & Sons Manufacturing, Inc. 800-227-4631.

**DEER HUNTERS SET YOUR Sights On Quality Meat Processing!** Weaver Meat Processing 2098 Hwy 55W., Hartselle, AL 35640. Call 256-462-1034

**67 Watkins Lane | Linden, TN 37096**  
**(800) 227-4631**

**NEW MARKET AREA** 1 38/100 acres, Wooded, good view, \$25,000 256-604-0394

**QUALITY OUTDOOR PRODUCTS. CARPORT** Kits Starting at \$495. We have repos, call for details. Rent to own, no credit checks. We sell metal roofing \$1.68/ft. We have portable storage buildings, barns, garages. 256-381-8121.

**QUALITY OUTDOOR PRODUCTS. CARPORT** Kits Starting at \$495. We have repos, call for details. Rent to own, no credit checks. We sell metal roofing \$1.68/ft. We have portable storage buildings, barns, garages. 256-381-8121.

**GRAND OPENING! ATHENS FINANCE** Loans \$200 - \$900. 30 Minute Approval. Call 256-230-6764

**LOG CABIN \$4,800. (ORIGINAL Price \$23,800)** Moving and must sell. 768 sq ft. (expandable to 1152 sq. ft.). 101 solid oak logs. Full dovetailed. Complete precat wall set with all plans for stone fireplace, high pitched roof, 10' high ceilings, porch. Stack walls in two days. Extra nice. Pay when received. (Will haul to Huntsville for \$1,850). Tremendous Bargain! 870-577-5757.

**QUALITY OUTDOOR PRODUCTS. CARPORT** Kits Starting at \$495. We have repos, call for details. Rent to own, no credit checks. We sell metal roofing \$1.68/ft. We have portable storage buildings, barns, garages. 256-381-8121.

**Lawn & Garden**

**BULK MULCH RED & Brown; Bulk Gravel Pea & Landscaping; Crusher Run Driveway Gravel.** 256-837-3039.

**FALL & WINTER BLOOMING** Camellias now in stock. Call 256-837-3039.

**FULL LINE OF SHURBS & Trees!** Beautiful Hanging Baskets 256-837-3039.

**QUALITY OUTDOOR PRODUCTS. CARPORT** Kits Starting at \$495. We have repos, call for details. Rent to own, no credit checks. We sell metal roofing \$1.68/ft. We have portable storage buildings, barns, garages. 256-381-8121.

**ZERO TURN ZOOM** MAX 60, 5' deck, 25 hp. Kohler. Low hrs. Like new, \$3,650. Need to Sell! Make an offer. 256-505-2890

**WANTED! WANTED! LAND THAT'S** too wet or too far back for most swamp, old farm, hunting land 256-684-3407.

**SALE UNDERPINNING 11'X9'X16" WIDE** panel 5 colors to choose from. Sale price \$10.25. Call 256-355-3559

**BARNs, CABINS AND SHEDS** No Credit Check! Buy or Rent To Own! Fast and Free Delivery to most locations. Sizes 8x12 - 14x40. Call 256-221-7062.

**LAWRMORE TRAILERS FULL LINE** of parts and supplies. Complete line of hardware, plumbing and electrical. 256-784-6000.

**NEED A LOAN? REBUILD** your credit Auto Loans, Personal Loans, Vacations. We report to the credit bureau. Call Priority Lending, Inc. 256-852-1869.

**ROTO TILLER REAR TINES** \$100, twin size bed \$50, other miscellaneous items 505-859-1464

**MADE RIGHT METAL BUILDINGS** We do all types of buildings. Fully customizable to meet your needs! 205-712-2115

**HARBOR FREIGHT TOOLS GREAT** Quality Tools at the LOWEST Prices! 100% Satisfaction Guaranteed; No Hassle Return Policy; Lifetime Warranty on All Hand Tools! Huntsville 256-895-6030; Tullahoma 931-454-9960.

**CHOOSE FROM** 1,150 trucks online in the Tennessee Valley. Find It, Drive It, Buy It at www.TNValley-Wheels.com

**WE CUSTOMIZE SHOPS, BARNs, GARAGES, WAREHOUSES, STORAGE BUILDINGS OR ANYTHING THAT FITS YOUR NEEDS! K&G METALS 256-878-7227.**

**MADE RIGHT METAL BUILDINGS** We do all types of buildings. Fully customizable to meet your needs! 205-712-2115

**MADE RIGHT METAL BUILDINGS** We do all types of buildings. Fully customizable to meet your needs! 205-712-2115

**NEED INSURANCE? IT'S THE Law!** A&A Insurance rates starting at \$29 monthly 256-489-9735.

**GRAND OPENING! ATHENS FINANCE** Loans \$200 - \$900. 30 Minute Approval. Call 256-230-6764

**NEW SELECTION OF CONCRETE** Statues & Pavers. Stop by Harvest Feed Mill 256-837-3039.

**Machinery & Tools**

**HARBOR FREIGHT**  
QUALITY TOOLS AT RIDICULOUSLY LOW PRICES

**How Does Harbor Freight Sell GREAT QUALITY Tools at the LOWEST Prices?**

We have invested millions of dollars in our own state-of-the-art quality test labs and millions more in our factories, so our tools will go toe-to-toe with the top professional brands. And we can sell them for a fraction of the price because we cut out the middle man and pass the savings on to you. It's just that simple! Come visit one of our 700+ Stores Nationwide.

**700+ Stores Nationwide**

**SUPER COUPON**  
**FREE**  
WITH ANY PURCHASE

**PITTSBURGH 1" x 25 FT. TAPE MEASURE**  
\$4.97 VALUE

ITEM 69031/69030 shown  
LIMIT 1 - Cannot be used with other discount, coupon or prior purchase. Coupon good at our stores, HarborFreight.com or by calling 800-423-2567. Offer good while supplies last. Shipping & Handling charges may apply if not picked up in-store. Non-transferable. Original coupon must be presented. Valid through 3/31/17. Limit one coupon per customer per day.

**VALID NOW ON 5,000+ ITEMS**  
**20% OFF**  
ANY SINGLE ITEM

Limit 1 coupon per customer per day. Save 20% on any 1 item purchased. \*Cannot be used with other discount, coupon or any of the following items or brands: Inside Track Club membership, Extended Service Plan, gift card, open box item, 3 day Parking Lot Sale item, automotive lifts, compressors, floor jacks, saw mills, storage cabinets, chests or carts, trailers, trenchers, welders, Admiral, Badland, Bremen, CoverPro, Creekstone, Daytona, Diablo, Doyle, Drummond, Earthquake, Franklin, Hercules, Holt, Jupiter, Lynox, Maddox, Portland, Predator, Quinn, Stormchick, Union, Viking, Pro, Vantage, Vantage Pro, Vantage Pro 2, Vantage Pro 3, Vantage Pro 4, Vantage Pro 5, Vantage Pro 6, Vantage Pro 7, Vantage Pro 8, Vantage Pro 9, Vantage Pro 10, Vantage Pro 11, Vantage Pro 12, Vantage Pro 13, Vantage Pro 14, Vantage Pro 15, Vantage Pro 16, Vantage Pro 17, Vantage Pro 18, Vantage Pro 19, Vantage Pro 20, Vantage Pro 21, Vantage Pro 22, Vantage Pro 23, Vantage Pro 24, Vantage Pro 25, Vantage Pro 26, Vantage Pro 27, Vantage Pro 28, Vantage Pro 29, Vantage Pro 30, Vantage Pro 31, Vantage Pro 32, Vantage Pro 33, Vantage Pro 34, Vantage Pro 35, Vantage Pro 36, Vantage Pro 37, Vantage Pro 38, Vantage Pro 39, Vantage Pro 40, Vantage Pro 41, Vantage Pro 42, Vantage Pro 43, Vantage Pro 44, Vantage Pro 45, Vantage Pro 46, Vantage Pro 47, Vantage Pro 48, Vantage Pro 49, Vantage Pro 50, Vantage Pro 51, Vantage Pro 52, Vantage Pro 53, Vantage Pro 54, Vantage Pro 55, Vantage Pro 56, Vantage Pro 57, Vantage Pro 58, Vantage Pro 59, Vantage Pro 60, Vantage Pro 61, Vantage Pro 62, Vantage Pro 63, Vantage Pro 64, Vantage Pro 65, Vantage Pro 66, Vantage Pro 67, Vantage Pro 68, Vantage Pro 69, Vantage Pro 70, Vantage Pro 71, Vantage Pro 72, Vantage Pro 73, Vantage Pro 74, Vantage Pro 75, Vantage Pro 76, Vantage Pro 77, Vantage Pro 78, Vantage Pro 79, Vantage Pro 80, Vantage Pro 81, Vantage Pro 82, Vantage Pro 83, Vantage Pro 84, Vantage Pro 85, Vantage Pro 86, Vantage Pro 87, Vantage Pro 88, Vantage Pro 89, Vantage Pro 90, Vantage Pro 91, Vantage Pro 92, Vantage Pro 93, Vantage Pro 94, Vantage Pro 95, Vantage Pro 96, Vantage Pro 97, Vantage Pro 98, Vantage Pro 99, Vantage Pro 100. Non-transferable. Original coupon must be presented. Valid through 3/31/17.

**WOW SUPER COUPON**  
**2 HP, 8 GALLON 125 PSI PORTABLE AIR COMPRESSOR**  
CENTRAL PNEUMATIC  
SAVE \$59  
Customer Rating  
ITEM 69667/68740 shown  
\$99.99 \$119.99 comp at \$159

LIMIT 3 - Good at our stores or HarborFreight.com or by calling 800-423-2567. Cannot be used with other discount or coupon or prior purchases after 30 days from original purchase with original receipt. Offer good while supplies last. Non-transferable. Original coupon must be presented. Valid through 3/31/17. Limit one coupon per customer per day.

**SUPER COUPON**  
**40" x 72" MOVING BLANKET**  
HaulMaster  
ITEM 47262 shown  
69504/62336  
SAVE 73%  
\$3.99  
Customer Rating  
\$4.99 comp at \$14.99

LIMIT 8 - Good at our stores or HarborFreight.com or by calling 800-423-2567. Cannot be used with other discount or coupon or prior purchases after 30 days from original purchase with original receipt. Offer good while supplies last. Non-transferable. Original coupon must be presented. Valid through 3/31/17. Limit one coupon per customer per day.

**SUPER COUPON**  
**18 VOLT CORDLESS 3/8" DRILL/DRIVER WITH KEYLESS CHUCK**  
Includes one 18V NiCd battery and charger.  
Customer Rating  
ITEM 69651/62668/62873/68239 shown  
SAVE 65%  
\$16.99  
\$19.99 comp at \$49.21

LIMIT 7 - Good at our stores or HarborFreight.com or by calling 800-423-2567. Cannot be used with other discount or coupon or prior purchases after 30 days from original purchase with original receipt. Offer good while supplies last. Non-transferable. Original coupon must be presented. Valid through 3/31/17. Limit one coupon per customer per day.

**SUPER COUPON**  
**26" 4 DRAWER TOOL CART**  
US\*GENERAL  
580 lb. capacity  
Customer Rating  
SAVE \$219  
ITEM 95659 shown  
61634/61952  
\$99.99 \$159.99 comp at \$319.01

LIMIT 3 - Good at our stores or HarborFreight.com or by calling 800-423-2567. Cannot be used with other discount or coupon or prior purchases after 30 days from original purchase with original receipt. Offer good while supplies last. Non-transferable. Original coupon must be presented. Valid through 3/31/17. Limit one coupon per customer per day.

**SUPER COUPON**  
**PITTSBURGH RAPID PUMP® 3 TON HEAVY DUTY STEEL FLOOR JACK**  
Weighs 74 lbs.  
ITEM 69227/62116/62584/68048 shown  
Customer Rating  
\$74.99  
\$89.99 comp at \$141.88  
SAVE \$66

LIMIT 4 - Good at our stores or HarborFreight.com or by calling 800-423-2567. Cannot be used with other discount or coupon or prior purchases after 30 days from original purchase with original receipt. Offer good while supplies last. Non-transferable. Original coupon must be presented. Valid through 3/31/17. Limit one coupon per customer per day.

**SUPER COUPON**  
**PITTSBURGH 1000 LB. CAPACITY MOTORCYCLE LIFT**  
ITEM 69904/68892 shown  
SAVE \$874  
\$299.99  
\$429.99 comp at \$1173.99

LIMIT 5 - Good at our stores or HarborFreight.com or by calling 800-423-2567. Cannot be used with other discount or coupon or prior purchases after 30 days from original purchase with original receipt. Offer good while supplies last. Non-transferable. Original coupon must be presented. Valid through 3/31/17. Limit one coupon per customer per day.

**SUPER COUPON**  
**10" PNEUMATIC TIRE**  
ITEM 69385/62388/62409/62698/30900 shown  
SAVE 73%  
Customer Rating  
\$3.99 \$5.99 comp at \$14.99  
Not for highway use.

LIMIT 6 - Good at our stores or HarborFreight.com or by calling 800-423-2567. Cannot be used with other discount or coupon or prior purchases after 30 days from original purchase with original receipt. Offer good while supplies last. Non-transferable. Original coupon must be presented. Valid through 3/31/17. Limit one coupon per customer per day.

**SUPER COUPON**  
**8750 PEAK/7000 RUNNING WATTS 13 HP (420 CC) GAS GENERATORS**  
76 dB Noise Level  
Wheel kit and battery sold separately.  
Customer Rating  
ITEM 68530/63086/63085/69671 shown  
ITEM 68525/69677/63087/63088 CALIFORNIA ONLY  
\$529.99 \$599.99 comp at \$999

LIMIT 4 - Good at our stores or HarborFreight.com or by calling 800-423-2567. Cannot be used with other discount or coupon or prior purchases after 30 days from original purchase with original receipt. Offer good while supplies last. Non-transferable. Original coupon must be presented. Valid through 3/31/17. Limit one coupon per customer per day.

**SUPER COUPON**  
**PITTSBURGH 12" RATCHET BAR CLAMP/SPREADER**  
ITEM 62123/46807/68975/69221/63017/69222 shown  
SAVE 85%  
\$2.99 \$3.99 comp at \$20.76

LIMIT 9 - Good at our stores or HarborFreight.com or by calling 800-423-2567. Cannot be used with other discount or coupon or prior purchases after 30 days from original purchase with original receipt. Offer good while supplies last. Non-transferable. Original coupon must be presented. Valid through 3/31/17. Limit one coupon per customer per day.

**BOAZ, AL (256) 593-7531      DECATUR, AL (256) 340-8631      FLORENCE, AL (256) 765-0641      HUNTSVILLE, AL (256) 895-6030      TULLAHOMA, TN (931) 454-9960**  
2083 US Highway 431      1605 Beltline Road SW, Suite A-1      1604 Florence Boulevard, Suite B      4321 University Drive NW, #C      1600 North Jackson Street, Suite 320

- 100% Satisfaction Guaranteed
- Over 30 Million Satisfied Customers
- No Hassle Return Policy
- 700+ Stores Nationwide
- Lifetime Warranty On All Hand Tools
- HarborFreight.com
- 800-423-2567

# BUILDING SPECIAL!

24'x30'x8' Metal Building  
2 - 9'x7' Roll Up Doors  
1 - 3' Walk-In Door

**\$7,500**

Installed On Your Prepared Site.  
\*Prices are subject to change

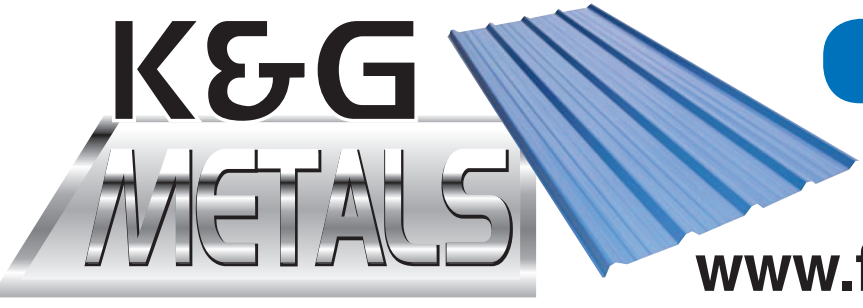
Let us know you saw our ad in **American Classifieds Farm and Ranch!**



- Metal Roofing
- Metal Buildings
- 1st Quality Vinyl Siding
- Portable Buildings
- Garage Doors



We Customize Shops, Barns, Garages, Warehouses, Storage Buildings or anything that fits your needs!



**Celebrating 10 Years! Est. 2005**

**256-878-7227**

[www.facebook.com/kandgmetals.com](http://www.facebook.com/kandgmetals.com)

**11011 US HWY 431, Albertville, AL**  
(Across From Lowes)

**[www.kandgmetals.com](http://www.kandgmetals.com)**



# TN ValleyWheels.com

Go to [TNValleyWheels.com](http://TNValleyWheels.com) to find your next car or truck from great local dealerships.

# Find it. Buy it. Drive it.

TN ValleyWheels.com

**CUSTOMIZE SHOPS, BARNs, Garages, Warehouses, Storage Buildings or anything that fits your needs! K&G Metals 256-878-7227.**

**WE CUSTOMIZE SHOPS, BARNs, Garages, Warehouses, Storage Buildings or anything that fits your needs! K&G Metals 256-878-7227.**

**END OF YEAR CLEARANCE** No Reasonable Offer Refused! 380B Case w/case loader, QA bucket and forks, Diesel, 3pt, live pto, shuttle trans. \$7500. 256-974-8588

**I BUY TRACTORS & equipment good running condition. 256-361-3874.**

**QUALITY OUTDOOR PRODUCTS. CARPORT Kits Starting at \$495. We have repos, call for details. Rent to own, no credit checks. We sell metal roofing \$1.68/ft. We have portable storage buildings, barns, garages. 256-381-8121.**

**GOLF CARTS:** Excellent condition. Gas or electric. Trojan batteries. Call Decatur Golf Carts 256-353-2757; 256-309-7695.

**BMW: 335i, 2012 CONVERTIBLE, Folding Hard Top, Leather, Navigation, 53K miles. \$17,900. Call 256-247-0472.**

**CHEVROLET: CORVETTE, 1996 \$11,500.** White with red interior, 47,000 miles, automatic. Excellent condition. (828) 448-2723

**Steel/Storage Buildings**

**Tractors**

**CHOOSE FROM 1,150 trucks online in the Tennessee Valley. Find It, Drive It, Buy It at www.TNValleyWheels.com**

**END OF YEAR CLEARANCE** No Reasonable Offer Refused! 2040S John Deere C/A, single remote, cold air! 4,500 hours. Price reduced \$9350. 256-974-8588

**GRAIN BINS, FEED TANKS, Elevators, Feed Systems, Aeration & Dryer Fans and much more. Watkins & Sons Manufacturing, Inc. 800-227-4631.**

**POLARIS SPORTSMAN 700 4** wheeler, 780 miles, automatic, push button 4x4, Warn winch, brush guard, gun rack, \$3,600. 1 owner. 256-974-4294 or 256-522-8336.

**BUICK: LACROSSE, 2007 \$4,700** obo. 3800 engine, garage kept, very nice condition. 256-275-2276.

**CHEVROLET: CORVETTE, 1999 RED convertible, 6-speed manual, 95,000 miles, like new, asking \$14,500 obo. 931-244-6502.**

**JL MOBILE HOME PARTS**  
**256-355-3559**  
**WE'VE MOVED!**  
**725 Beltline Road SW**  
**Decatur, AL 35601**  
 (Next To The Honda Dealership)

**STORM WINDOWS IN STOCK!**  
**20% OFF**  
**HURRY WHILE SUPPLIES LAST!**

**UNDERPINNING** Starting @ **\$1025**  
**11'9" x 16" Wide Panel**

**MOBILE HOME SUPER STORE!**  
 Visit Us @ [JLmobilehomeparts.com](http://JLmobilehomeparts.com)  
**HOURS:** Monday - Friday 8am-5pm **OPEN Saturday 8am-12pm**

**Trailers**

**CUSTOM BUILT TRAILERS, UTILITY Trailers.** Lawmore Trailers 256-784-6000.

**TV/Video/Audio**

**GRAND OPENING! ATHENS FINANCE** Loans \$200 - \$900. 30 Minute Approval. Call 256-230-6764

**SEARCH OVER 4,000 vehicles** at the click of a mouse on [www.TNValleyWheels.com](http://www.TNValleyWheels.com)

**Farm Equipment**

**BARNs, CABINS AND SHEDs** No Credit Check! Buy or Rent To Own! Fast and Free Delivery to most locations. Sizes 8x12 - 14x40. Call 256-221-7062.

**END OF YEAR CLEARANCE** No Reasonable Offer Refused! M4900 Kubota, 4x4, C/A, all new tires, shuttle trans. New price! \$15,900. 256-974-8588

**END OF YEAR CLEARANCE** No Reasonable Offer Refused! 2200D Kubota, 4x4, w/lr., 60" mower deck. New price! \$6850. 256-974-8588

**Livestock/Poultry/Supplies**

**20 GAL. GAS TANK** for 1960-1966 Chevrolet or GMC pickup. \$75. 205-465-9051.

**1987 CUSHIONMAN, 3 WHEEL truckster,** great condition, runs and drives great! \$2,300 obo. 205-993-4562 or 256-483-2143. \*Will consider trade.

**1996 HARLEY DAVIDSON HERITAGE** Softail, Nostalgia, 38,000 miles, loaded with chrome, \$8,500 firm. 256-303-0687.

**2005 700 Polaris** LIKE NEW, \$4,500. 256-412-2933.

**2008 GOLDING TRIKE 30,000 miles,** always garaged, matching helmets, AM/FM, CD, intercom. Loaded with extra chrome, lights, and upgrades. New tires. Must see. 24,000 256-945-7665

**2010 YAMAHA XV 250** 67 miles, excellent condition, \$2,500 firm. 256-627-1942.

**2015 HARLEY 883 SPORTSTER** white/blue, vance and hines pipes, mag wheels, like brand new only 35 miles \$6950. Firm 256-990-1003

**Auto Parts & Service**

**AUTO HEADLINERS** PROFESSIONALLY INSTALLED at your location. Starting at \$69! Call Randy at 256-891-3317.

**MAGIC USED TIRES:** QUALITY at reasonable prices. Sizes 13,14,15 up to 22. Open 7 days. 3001 Governors Drive Huntsville, AL 256-489-1314

**USED RIMS! OVER 200 sets** to choose from. We also buy rims. A&A Used Tires 256-489-3415.

**USED TIRES \$7.95 AND up!** A&A Used Tires 256-489-3415.

**Autos Wanted**

**ARE YOU TIRED OF** looking at those old Junk Vehicles? We pay top dollar. No title no problem. Call 256-604-3531

**TOP DOLLAR PAID FOR Junk Cars.** We buy all types of vehicles, running or not! Call 256-714-5668 or 256-529-3413.

**Autos For Sale**

**1997 COUGAR, EXCELLENT CONDITION,** \$2,500. 256-766-3922 or 256-740-6902

**BUICK: LACROSSE, 2011 CXL 85K miles,** \$13,990. Call 256-382-3317

**BUICK: REGAL, 2004 GS V6, FWD, auto \$4,777.** Call 256-586-6041

**BUICK: REGAL, 2012 PREMIUM 44K miles,** \$15,990. Call 256-382-3317.

**CADILLAC: ATS, 2014 \$24,600.** 22k miles, tinted windows, moonroof, beige, Cadillac wheels, Vogue tires. Excellent condition. 256-801-9484.

**CADILLAC: CTS, 2012 ROOF,** leather, \$279 monthly. Call 256-248-9763.

**CADILLAC: DEVILLE, 2001 \$10,000.** 4 door, 14K actual miles, loaded, heated front/rear, Bose. 256-221-7052.

**CADILLAC: SRX, 2014 8,500 miles,** older woman driven, garage kept, asking \$37,000 OBO. 256-381-4916.

**CHEVROLET: CAMARO, 2013 2LT,** auto, sunroof, leather \$349 monthly. 256-248-9763.

**CHEVROLET: CAVALIER, 1999 \$1,800** obo. 4 cylinder, auto, 30 miles to the gallon, runs good, cold air. Call 256-565-8531.

**CHEVROLET: CORVETTE, 1994 WHITE,** 128K miles, runs good, \$7,900. 256-366-4323 Killen

**CHEVROLET: CORVETTE, 1999 RED convertible,** 6-speed manual, 95,000 miles, like new, asking \$14,500 obo. 931-244-6502.

**CHEVROLET: CORVETTE, 1999 RED convertible,** 6-speed manual, 95,000 miles, like new, asking \$14,500 obo. 931-244-6502.

**CHEVROLET: CORVETTE, 2010 LEATHER,** auto, low miles \$369 month. 256-248-9763.

**CHEVROLET: CORVETTES TWO 1986** Corvettes. \$3,800 for one and \$2,800 for one. Chrome 20" tires and rims, \$200. Set of tires, 235/65RX18 \$150. Call 256-776-4870.

**CHEVROLET: CRUZE, 2012 \$9,500.** One owner, SUPER clean, white/grey, 55K miles. 256-412-7351

**CHEVROLET: IMPALA, 2007 LS 96K miles,** 6cyl., 3.5L \$6956 call 256-534-2236

**CHEVROLET: IMPALA, 2015 LTZ leather loaded** \$349 monthly. Call 1-877-701-4650.

**CHEVROLET: MONTE CARLO, 2001 Air,** 140k miles, \$2,500. 256-359-4696.

**CHEVROLET: MONZA, 1976 DRAG CAR** race ready. Tube chassis, big tires, 383 stroker, glide/brake, all electronics, 9" 4 link and strange, willwood/more. \$12,000. Call 256-776-4870.

**CHRYSLER: 300, 2012 LOCAL trade** \$14,950. Call 256-417-6279

**EQUIPMENT REDUCTION SALE!**  
**End Of The Year Clearance**  
**NO REASONABLE OFFER REFUSED!**



**380B Case w/case loader, QA bucket and forks, Diesel, 3pt, live pto, shuttle trans. \$7,500**



**3020 John Deere w/48 ldr. RARE! low profile utility model, runs and works great! \$10,800**



**2040S John Deere C/A, single remote, cold air! 4,500 hrs. Price Reduced \$9,350**



**4230 John Deere, C/A, NEW 134A system, Quad-range, 6,480 hrs. One of a Kind! \$21,500**



**M4900 Kubota, 4x4, C/A, all new tires, shuttle trans. New Price! \$15,900**



**2200D Kubota, 4x4, w/lr, 60" mower deck. New Price! \$6,850**



**6200 John Deere, 4x4, canopy, good tires, single remote, high hrs. but very sound. New Price! \$11,500**



**1520 New Holland, 4x4, 60" mower deck, w/bagger, power steering, Nice! New Price! \$8,850**

**SALES & SERVICE**  
**TAC ENTERPRISES**  
**AGRICULTURE & HEAVY EQUIPMENT RESOURCE GUIDE**  
**3330 Alabama Hwy. 36, Moulton, AL 35650**  
 Auctioneer: Ken Nelson, AL #1326 · Hours: 8:00-5:00 Monday-Friday  
[www.tactractors.com](http://www.tactractors.com)  
**256-974-8588**

# HARVEST FEED MILL

## WINTERIZE YOUR LAWN NOW!

Fall Mums, Gourds, & Edible Squash  
Shrubs & Trees For Fall Planting!

FALL & WINTER  
Blooming  
Camellias

**BULK TOP SOIL  
& FILL DIRT**

**BULK MULCH**  
Red & Brown  
**BULK GRAVEL**  
Pea & Landscaping  
**CRUSHER RUN**  
Driveway Gravel

**FALL PLANTS  
& SEED  
ARE HERE**

Selection of Concrete Statuaries, Pavers, Concrete Steps,  
Splash Blocks, & Concrete PreFabs For Automatic Waterer

**Custom Grinding & Mixing To Your Specifications**

Canning Supplies - Garden Seeds - Muck Boots - Wild & Caged Bird Feed - Horse Tack -  
Case, Harley Davidson Case Knives and Smith & Wesson Knives - Animal Health Products  
Pennington Seed - Fencing - Bulk Pea Gravel Sand - Decorative Rocks  
Full Line of Quiet Time Pet Beds - Fertilizer - Camo Gear

### TNT CARPORTS

Double Carport **\$795**  
18x21, 14 Gauge

VARIETY OF SIZES. FREE INSTALLATION!

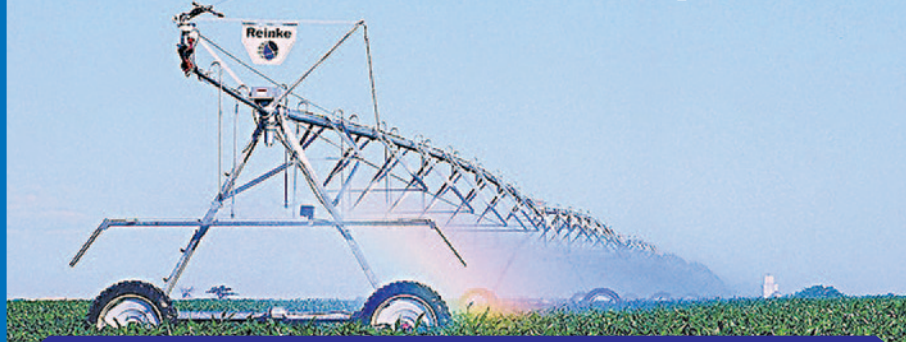


4266 Old Railroad Bed Rd. **(256) 837-3039**  
Harvest, AL 35749

Watkins & Sons Manufacturing, Inc.  
67 Watkins Lane | Linden, TN 37096  
(800) 227-4631

Watkins Irrigation - Alabama, Inc.  
14827 Main St. | Town Creek, AL 35672  
Dwight Lansdell **(256) 415-0677**

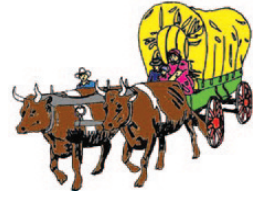
More independent.



We're proud to be associated with Reinke Manufacturing.  
All Reinke irrigation systems use high-strength steel for the  
best value in center pivots. Contact us for Reinke irrigation  
systems and components.



SMART PHONE SCAN HERE



More independent.



[www.watkinsandsons.com](http://www.watkinsandsons.com)

Lawrimore Manufacturing, Inc.



# Lawrimore Trailers.com

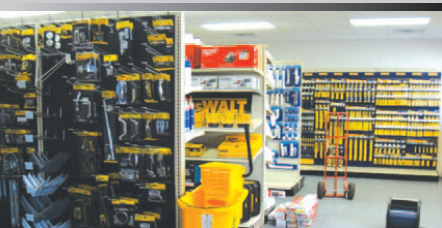
OPEN 6 Days  
A WEEK!

**We Carry Hardware**

Mon-Fri 8-5  
Sat 8-12

Plumbing - Electrical - Tools - Oak Rocking Chairs

**25 Years In Business!**



**We Are Expanding With A  
Complete Line of Hardware**



**Cargo  
Trailers**

**\*Buyers Tool Boxes  
\*Utility Trailers  
\*Full Line of Parts  
& Supplies**



**Custom Car  
Hauler**



**Gooseneck  
Trailers**



**Bobcat Trailers**



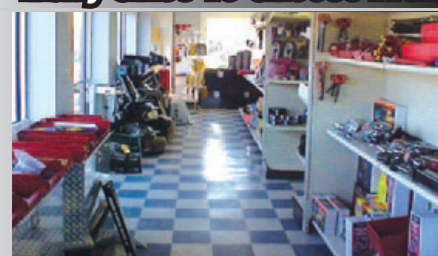
**Circle W Stock Trailers  
Many Sizes To Choose From**



**Custom Built  
Trailers**



**Wood Haulers**



**Total Parts  
& Accessories**

194 Buster Dr.  
Falkville, AL

**256.784.6000**

[www.lawrimoretrailers.com](http://www.lawrimoretrailers.com)

**CHRYSLER: 200, 2012 \$11,500** OBO. Loaded. Navigation, sunroof, leather, heated seats, premium wheels, V6, 22k. 256-627-9671.

**CHRYSLER: 300, 2013 \$229** monthly. Call 256-248-9763.

**CHRYSLER: SEBRING, 1997 LXI** fully loaded, leather, one owner, garage kept, 63k miles, \$3956. Call 256-534-2236

**CUSTOM CAR HAULER, GOOSE** Neck Trailers. Lawrimore Trailers 256-784-6000.

**DODGE: AVENGER, 2009 SXT** only 58k miles, \$8,500. Call 256-417-6279

**DODGE: CHARGER, 2013 AIR,** power, CD, 89K miles \$279 monthly. 256-536-7976.

**DODGE: INTREPID, \$599** Down plus T&T. Buy Here Pay Here. All loans approved! No Credit Check. Call 256-797-6161

**FIAT: 500C, 2012 5** speed, air, power windows and locks, cruise \$6990. Call 256-660-1655.

**FORD: FIESTA, 2011 SEL** Buy Here Pay Here \$50 weekly. Call 256-837-9511

**FORD: FIESTA, 2012 36K** miles, one owner. \$8950. Call 256-536-7976.

**FORD: FOCUS SES, 2007** \$5,500. OBO Moulton area, Black, 2.0 engine, 118,000 miles, auto, cold air, PSPW, cruise control, new battery, no damage, clean 256-905-0718

**FORD: FOCUS, 2010 SE** auto, air, all power, tilt, cruise \$5990. Call 256-660-1655.

**FORD: FOCUS, 2012 S** power windows and locks \$149 monthly. Call 256-248-9763.

**FORD: FOCUS, 2012 SFE** auto, air, power windows and locks, CD \$6995. Call 256-837-7379

**FORD: FOCUS, 2013 SE** Local trade \$8,950. Call 256-417-6279

**FORD: FOCUS, 2014 SE** 33K miles, \$11,990. Call 256-382-3317

**FORD: FUSION, 2009 SEL** auto, keyless entry, loaded, leather, sunroof, CD \$4995. Call 256-837-7379

**FORD: FUSION, 2010 SE,** silver, 116k miles, clean title, no accidents, everything works, excellent vehicle. Sell for \$6,200. 256-335-5435 or 256-767-1028.

**FORD: FUSION, 2014 BY** Owner, Titanium Eco boost. Full power. Sunroof. Leather. Heating/Cooling seats. Take over payment 256-466-6284

**FORD: FUSION, 2015 SE** auto, one owner, 12K miles \$17,777. Call 256-586-6041

**FORD: TAURUS, 2006 \$2,500.** 167k miles. Call 256-577-3299 after 5 p.m.

**FORD: TAURUS, 2008 SEL** alloys, leather, sharp, 103K miles, \$5950. Call 256-247-0472.

**FORD: TAURUS, 2012 60K** miles, 6 cylinder, leather \$299 monthly. Call 256-536-7976.

**GRAND OPENING! ATHENS FINANCE** Loans \$200 - \$900. 30 Minute Approval. Call 256-230-6764

**HONDA: ACCORD LX 1990** \$2,000. 151k mi. Runs and drives good, brown, 4 door, 256-303-4430

**HONDA: ACCORD, 2004 AUTOMATIC,** V6, sunroof, loaded, leather, spoiler. We finance 256-288-3725.

**HONDA: ACCORD, 2012 LEATHER,** roof, \$15,500 call 256-417-6279.

**LINCOLN: MKS, 2009 \$12,597.** Call 256-533-9975

**HONDA: ACCORD, 2016 \$25,900.** 4 door Sedan, EX-L V6, white with beige interior, 13,600 mi. No accidents, spotless. Clean Car Fax. Call after 5pm 256-810-6926

**LINCOLN: TOWN CAR, 1996 \$1,995.** Lincoln In Great Shape 144k miles Signature Series 256-614-5714

**HYUNDAI: SONATA, 2012 GLS** \$10,487. Call 256-533-9975.

**HYUNDAI: SONATA, 2015 LIMITED,** loaded, warranty! 5 to choose. \$289 monthly. 256-248-9763.

**KIA: AMANTI, 2008 LEATHER,** sunroof, all power. We finance 256-288-3725.

**KIA: OPTIMA, 2015 LOW** miles, extra clean \$239 monthly. Call 256-536-7976.

**KIA: SPECTRA, 2007 4-DOOR,** clean, \$6,200. 256-810-6660 or 256-978-0183.

**LEXUS: 460L, 2009 LOADED,** super sharp, like new. Call 256-536-7976.

**LEXUS: GS 300, 2003** only 88k miles, \$8,500. Call 256-417-6279

**LEXUS: LS 460, 2007** Excellent condition; 81,600 miles; \$23,000. 256-740-9178

**MAZDA: MIATA MX-5, 2008** 101K miles \$9,990. Call 256-382-3317.

**MERCEDES-BENZ: C-CLASS, 2010 LOW** miles, loaded \$259 monthly. 256-248-9763.

**MERCEDES-BENZ: CLA, 2014 LEATHER,** loaded, \$339 monthly. Call 256-248-9763.

**NEED A LOAN? RE-BUILD** your credit Auto Loans, Personal Loans, Vacations. We report to the credit bureau. Call Priority Lending, Inc. 256-852-1869.

**NISSAN: ALTIMA, 2005 AUTOMATIC,** air, CD, all power. We finance 256-288-3725.

**NISSAN: ALTIMA, 2008 BUY** Here Pay Here \$50 weekly. Call 256-837-9511

**NISSAN: SENTRA, 2006 AUTOMATIC,** all power, cd, spoiler, 113K miles. We finance 256-288-3725.

**NISSAN: VERSA, 2014 SV** FWD, all power, 42K miles, \$12,777. Call 256-586-6041

**OLDSMOBILE: 2000, 4 DOOR,** \$1,500. OBO. Runs good, 4 cylinder. 256-652-3110

**PONTIAC: G6, 2008 GT** Retractable Hard Top Convertible, fully loaded, 106K miles, \$7956. Call 256-534-2236

**PONTIAC: GRAND AM, 2003** SE cold air, 4 cylinder, excellent condition, \$2456. Call 256-534-2236

**PORSCHE: 911, 2001 2** wheel drive, 83k miles, garage kept, daily driven. \$15,500. 256-275-1896.

**TOYOTA: CAMRY, 1988 \$1,200.** 4 cylinder, 256-468-6226 or 256-652-3110

**TOYOTA: CAMRY, 1996 RUNS,** \$500 obo. Call 256-694-5364

**TOYOTA: CAMRY, 2002 XLE** auto, V6, loaded, leather, sunroof, alloys \$4995. Call 256-837-7379

**TOYOTA: CAMRY, 2007 \$2500** Down! Everyone's Approved. Bentley Wholesale 256-829-0844

**TOYOTA: CAMRY, 2014 LE** \$14,500. Call 256-417-6279

**TOYOTA: CAMRY, 2015 LE** like new, \$16,777 Call 256-536-7976

**TOYOTA: CAMRY, 2016 \$299** monthly. Call 256-248-9763.

**TOYOTA: COROLLA S, 2010** automatic, CD sunroof, spoiler. We finance 256-288-3725.

**VOLKSWAGEN: BEETLE, 1973 \$12,000.** Body off Restoration. New parts, motor with chrome, new steering sector, 5 new tires, runs/looks/sounds great. 256-710-1157

**VOLKSWAGEN: BRUSH BUGGY, 1961** \$4,000. Manx Clone, fiber glass body, new brakes, bushings and seals. Fun Ride. 256-789-7030 or 530-515-7093

**VOLVO: S40, 2004 \$2,200** obo. 132K mi., very sporty, black/black, leather, looks nice, runs good. 256-366-1883.

**VOLVO: V70 XC WAGON,** 1998 \$2,000. Daily driver, \$6,000. in repairs, great car, very safe car. 256-673-1064

**ANTIQUE/CLASSIC VEHICLES**

**1953 150 CHEVY 2** door Sedan. Older restoration, all new glass, upholstery, floors, extremely straight car. \$5000. 251-454-8692

**1967 MUSTANG 351-B-TO** 408, lots of detail very good condition, \$6,400. For pic 256-740-1100

**NISSAN: ALTIMA, 2008 BUY** Here Pay Here \$50 weekly. Call 256-837-9511

**NISSAN: SENTRA, 2006 AUTOMATIC,** all power, cd, spoiler, 113K miles. We finance 256-288-3725.

**NISSAN: VERSA, 2014 SV** FWD, all power, 42K miles, \$12,777. Call 256-586-6041

**OLDSMOBILE: 2000, 4 DOOR,** \$1,500. OBO. Runs good, 4 cylinder. 256-652-3110

**PONTIAC: G6, 2008 GT** Retractable Hard Top Convertible, fully loaded, 106K miles, \$7956. Call 256-534-2236

**PONTIAC: GRAND AM, 2003** SE cold air, 4 cylinder, excellent condition, \$2456. Call 256-534-2236

**PORSCHE: 911, 2001 2** wheel drive, 83k miles, garage kept, daily driven. \$15,500. 256-275-1896.

**TOYOTA: CAMRY, 1988 \$1,200.** 4 cylinder, 256-468-6226 or 256-652-3110

**TOYOTA: CAMRY, 1996 RUNS,** \$500 obo. Call 256-694-5364

**TOYOTA: CAMRY, 2002 XLE** auto, V6, loaded, leather, sunroof, alloys \$4995. Call 256-837-7379

**TOYOTA: CAMRY, 2007 \$2500** Down! Everyone's Approved. Bentley Wholesale 256-829-0844

**TOYOTA: CAMRY, 2014 LE** \$14,500. Call 256-417-6279

**TOYOTA: CAMRY, 2015 LE** like new, \$16,777 Call 256-536-7976

**TOYOTA: CAMRY, 2016 \$299** monthly. Call 256-248-9763.

**TOYOTA: COROLLA S, 2010** automatic, CD sunroof, spoiler. We finance 256-288-3725.

**VOLKSWAGEN: BEETLE, 1973 \$12,000.** Body off Restoration. New parts, motor with chrome, new steering sector, 5 new tires, runs/looks/sounds great. 256-710-1157

**VOLKSWAGEN: BRUSH BUGGY, 1961** \$4,000. Manx Clone, fiber glass body, new brakes, bushings and seals. Fun Ride. 256-789-7030 or 530-515-7093

**VOLVO: S40, 2004 \$2,200** obo. 132K mi., very sporty, black/black, leather, looks nice, runs good. 256-366-1883.

**VOLVO: V70 XC WAGON,** 1998 \$2,000. Daily driver, \$6,000. in repairs, great car, very safe car. 256-673-1064

**ANTIQUE/CLASSIC VEHICLES**

**1953 150 CHEVY 2** door Sedan. Older restoration, all new glass, upholstery, floors, extremely straight car. \$5000. 251-454-8692

**1967 MUSTANG 351-B-TO** 408, lots of detail very good condition, \$6,400. For pic 256-740-1100

**CHEVROLET: MAS-TER, 1937 \$12,000.** Restored, all new, but needs upholstery, dual exhaust, split headers, twin carbs 719-426-1680

**CHEVROLET: SSR, 2004 \$34,500** obo. Red, 5.3 L engine, all original, 24K miles, includes cover. 256-637-0265

**DODGE: M37, 1952 (POWER** Wagon) 3/4 ton military truck. Recently installed all new wiring brakes and fuel tank. Mostly original, nearly everything works. Runs and drives. Oil pressure and compression are low. \$5000 Call 256-732-3137

**FORD: F-100, 1975 4X4,** 4 speed, Restored! 460 engine (built) \$8950. 256-974-8588

**FORD: MODEL A, 1930** \$15,500. Completely restored inside and out, runs great, red and black, very nice car 719-426-1680

**FOUR RAT RODS, \$20,000** each. Call Larry Bigbee 256-810-1540

**PONTIAC: FIRE-BIRD, 1969 \$25,000** obo. Original condition, auto 350, lime-light green, very solid, 256-275-3338. Call 4PM-7PM

**PONTIAC: TRANS AM, 2002 \$15,900.** 2002 Pontiac Trans Am Convertible, navy blue, tan top, 54,000 miles, great condition, AUTO 350, Ram air, \$15,900 OBO. 256-345-8088

**SPORT UTILITY VEHICLES**

**1999 JEEP WRANGLER, RED,** one owner, 4-cylinder, 5-speed, 186,000 miles, very good condition. \$7,000. 256-350-0248

**2007 CHEVROLET SUBURBAN LTZ,** 198,000 miles, loaded, white excellent condition, \$13,900. 256-460-8504 or 256-412-4242

**CADILLAC: ESCALADE, 2012 PREMIUM** all options, power, running boards, heated/cooled seats \$499 monthly. 256-248-9763

**CHEVROLET: TAHOE, 2005 2** wheel drive, full power, CD. Call 256-466-6284.

**CHEVROLET: TRAX, 2014 LS** Certified, all power \$279 monthly. Call 256-248-9763.

**CHRYSLER: PT CRUISER, 2008 \$700** Down! Everyone's Approved. Bentley Wholesale 256-829-0844

**FORD: ESCAPE, 2012 POWER,** air, cd \$12,950. Call 256-536-7976.

**FORD: ESCAPE, 2013 SEL,** loaded, 72K miles, heated seats, leather, excellent condition \$14,900 less than loan value 256-412-8350

**FORD: ESCAPE, XLS \$799** Down plus T&T. Buy Here Pay Here. All loans approved! No Credit Check. Call 256-797-6161

**FORD: EXPLORER, 2014 XLT** auto, \$19,777. Call 256-586-6041

**GMC: ENVOY, 2004 AUTOMATIC,** running boards, tow package, more \$4995. Call 256-837-7379

**HONDA: ELEMENT, 2009 \$1200** Down! Everyone's Approved. Bentley Wholesale 256-829-0844

**HUMMER: H3, 2007 5** speed manual, 79K miles \$18,777. Call 256-586-6041

**HYUNDAI: SANTA FE, 2005 \$800** OBO. Grey, needs motor, 137K miles. 256-652-1794

**HYUNDAI: VERACRUZ, 2008 GLS** \$9,799. Call 256-533-9975.

**IF YOU WORK YOU** Ride! EZ Ride Auto Sales 104 Woodward Ave. Muscle Shoals 256-320-2056.

**JEEP: COMPASS, 2012 SPORT,** 4x4, 71K miles, \$12,777. Call 256-586-6041

**JEEP: COMPASS, 2013 SPORT** low miles \$199 monthly. Call 256-248-9763.

**JEEP: GRAND CHEROKEE, 2015** Laredo, only 10k miles \$24,950. Call 256-417-6279

**JEEP: GRAND CHEROKEE, 2015** Limited leather, navigation, only 4600 miles \$429 monthly. Call 256-248-9763.

**JEEP: WRANGLER, 1999 SPORT** \$11,500. Call 256-729-1980.

**JEEP: WRANGLER, 2002 SAHARA** \$13,450. Call 256-729-1980.

**JEEP: WRANGLER, 2003 X** \$14,500. Call 256-729-1980.

**JEEP: WRANGLER, 2012 6** speed, one owner \$21,500. Call 256-417-6279

**JEEP: WRANGLER, 2012 SPORT** 4x4, low miles, sharp \$349 monthly. Call 256-248-9763.

**JEEP: WRANGLER, 2013 SAHARA** 6 speed manual, 40K miles \$28,777. Call 256-586-6041

**NISSAN: PATHFINDER, 2006 AUTO,** alloys, all power, super clean. Call 256-735-2898.

**NISSAN: ROGUE SL, 2012** \$14,300. Fully loaded, leather/heated seats, sunroof, backup camera, Bose sound system, Bluetooth, Premium wheels, Very good shape, clean 256-227-0580

**SATURN: VUE, 2009 LOW** miles \$9950. Call 256-536-7976.

# WANTED! WANTED!

We want any land that's too wet or too far back for most!!! We will look at about any land that can be duck hunting land. We want wetlands, hardwood bottoms, swamps, old farm that floods too much to farm, Also like the mountains for deer and turkey. Contact us. We might just want what you haven't been able to sell.

**256-684-3407 • www.BerryLandCo.com**

# Barns, Cabins & Sheds

## No Credit Check!

**BUY or RENT to OWN**  
NO CREDIT CHECK!

**6 YEAR FRONT-TO-BACK WARRANTY**

**Lowest Prices!**

**More Warranty!**

Order Online! [www.BamaBarns.com](http://www.BamaBarns.com)

# \$0 DOWN

## Rent to Own\*

- Fast and Free Delivery to most locations
- Sizes 8x12 - 14x40
- Payments starting at only \$66.46 plus tax (9x12)

# Rocket City

4 CONVENIENT LOCATIONS

East Limestone, West Athens, Huntsville, and Guntersville

\*\$0 Down available on sized 8x12-12x32. Requires auto payments from checking account. Don't like that? No problem - only a 5% refundable deposit.

CALL or TEXT 7 Days  
**256-221-7062**

**TOYOTA: CAMRY, 2015 LE** like new, \$16,777 Call 256-536-7976

**TOYOTA: CAMRY, 2016 \$299** monthly. Call 256-248-9763.

**TOYOTA: COROLLA S, 2010** automatic, CD sunroof, spoiler. We finance 256-288-3725.

**VOLKSWAGEN: BEETLE, 1973 \$12,000.** Body off Restoration. New parts, motor with chrome, new steering sector, 5 new tires, runs/looks/sounds great. 256-710-1157

**VOLKSWAGEN: BRUSH BUGGY, 1961** \$4,000. Manx Clone, fiber glass body, new brakes, bushings and seals. Fun Ride. 256-789-7030 or 530-515-7093

**VOLVO: S40, 2004 \$2,200** obo. 132K mi., very sporty, black/black, leather, looks nice, runs good. 256-366-1883.

**VOLVO: V70 XC WAGON,** 1998 \$2,000. Daily driver, \$6,000. in repairs, great car, very safe car. 256-673-1064

**ANTIQUE/CLASSIC VEHICLES**

**1953 150 CHEVY 2** door Sedan. Older restoration, all new glass, upholstery, floors, extremely straight car. \$5000. 251-454-8692

**1967 MUSTANG 351-B-TO** 408, lots of detail very good condition, \$6,400. For pic 256-740-1100

**CHEVROLET: MAS-TER, 1937 \$12,000.** Restored, all new, but needs upholstery, dual exhaust, split headers, twin carbs 719-426-1680

**CHEVROLET: SSR, 2004 \$34,500** obo. Red, 5.3 L engine, all original, 24K miles, includes cover. 256-637-0265

**DODGE: M37, 1952 (POWER** Wagon) 3/4 ton military truck. Recently installed all new wiring brakes and fuel tank. Mostly original, nearly everything works. Runs and drives. Oil pressure and compression are low. \$5000 Call 256-732-3137

**FORD: F-100, 1975 4X4,** 4 speed, Restored! 460 engine (built) \$8950. 256-974-8588

**FORD: MODEL A, 1930** \$15,500. Completely restored inside and out, runs great, red and black, very nice car 719-426-1680

**FOUR RAT RODS, \$20,000** each. Call Larry Bigbee 256-810-1540

**PONTIAC: FIRE-BIRD, 1969 \$25,000** obo. Original condition, auto 350, lime-light green, very solid, 256-275-3338. Call 4PM-7PM

**PONTIAC: TRANS AM, 2002 \$15,900.** 2002 Pontiac Trans Am Convertible, navy blue, tan top, 54,000 miles, great condition, AUTO 350, Ram air, \$15,900 OBO. 256-345-8088

**SPORT UTILITY VEHICLES**

**1999 JEEP WRANGLER, RED,** one owner, 4-cylinder, 5-speed, 186,000 miles, very good condition. \$7,000. 256-350-0248

**2007 CHEVROLET SUBURBAN LTZ,** 198,000 miles, loaded, white excellent condition, \$13,900. 256-460-8504 or 256-412-4242

**CADILLAC: ESCALADE, 2012 PREMIUM** all options, power, running boards, heated/cooled seats \$499 monthly. 256-248-9763

**CHEVROLET: TAHOE, 2005 2** wheel drive, full power, CD. Call 256-466-6284.

**CHEVROLET: TRAX, 2014 LS** Certified, all power \$279 monthly. Call 256-248-9763.

**CHRYSLER: PT CRUISER, 2008 \$700** Down! Everyone's Approved. Bentley Wholesale 256-829-0844

**FORD: ESCAPE, 2012 POWER,** air, cd \$12,950. Call 256-536-7976.

**FORD: ESCAPE, 2013 SEL,** loaded, 72K miles, heated seats, leather, excellent condition \$14,900 less than loan value 256-412-8350

**FORD: ESCAPE, XLS \$799** Down plus T&T. Buy Here Pay Here. All loans approved! No Credit Check. Call 256-797-6161

**FORD: EXPLORER, 2014 XLT** auto, \$19,777. Call 256-586-6041

**GMC: ENVOY, 2004 AUTOMATIC,** running boards, tow package, more \$4995. Call 256-837-7379

**HONDA: ELEMENT, 2009 \$1200** Down! Everyone's Approved. Bentley Wholesale 256-829-0844

**HUMMER: H3, 2007 5** speed manual, 79K miles \$18,777. Call 256-586-6041

**HYUNDAI: SANTA FE, 2005 \$800** OBO. Grey, needs motor, 137K miles. 256-652-1794

**HYUNDAI: VERACRUZ, 2008 GLS** \$9,799. Call 256-533-9975.

**IF YOU WORK YOU** Ride! EZ Ride Auto Sales 104 Woodward Ave. Muscle Shoals 256-320-2056.

**JEEP: COMPASS, 2012 SPORT,** 4x4, 71K miles, \$12,777. Call 256-586-6041

**JEEP: COMPASS, 2013 SPORT** low miles \$199 monthly. Call 256-248-9763.

**JEEP: GRAND CHEROKEE, 2015** Laredo, only 10k miles \$24,950. Call 256-417-6279

**JEEP: GRAND CHEROKEE, 2015** Limited leather, navigation, only 4600 miles \$429 monthly. Call 256-248-9763.

**JEEP: WRANGLER, 1999 SPORT** \$11,500. Call 256-729-1980.

**JEEP: WRANGLER, 2002 SAHARA** \$13,450. Call 256-729-1980.

**JEEP: WRANGLER, 2003 X** \$14,500. Call 256-729-1980.

**JEEP: WRANGLER, 2012 6** speed, one owner \$21,500. Call 256-417-6279

**JEEP: WRANGLER, 2012 SPORT** 4x4, low miles, sharp \$349 monthly. Call 256-248-9763.

**JEEP: WRANGLER, 2013 SAHARA** 6 speed manual, 40K miles \$28,777. Call 256-586-6041

**NISSAN: PATHFINDER, 2006 AUTO,** alloys, all power, super clean. Call 256-735-2898.

**NISSAN: ROGUE SL, 2012** \$14,300. Fully loaded, leather/heated seats, sunroof, backup camera, Bose sound system, Bluetooth, Premium wheels, Very good shape, clean 256-227-0580

**SATURN: VUE, 2009 LOW** miles \$9950. Call 256-536-7976.

**TRUCKS**

**CHEVROLET: AVA-LANCHE, 2002 4X4** Buy Here Pay Here \$50 weekly. Call 256-837-9511

**CHEVROLET: COLO-RADO, 2006 Z71,** crew cab, 192,000 miles, \$8,800. 256-345-5920.

**CHEVROLET: COLO-RADO, 2012 EXT** Cab auto, air, power windows, 119k miles \$179 monthly. Call 256-536-7976

**CHEVROLET: SILVER-ADO, 2004 CREW** Cab, \$11,900. Call 256-586-6041



# SEVERE WEATHER ALERTS

Stay ahead of bad weather. Notifications Sent To Your Phone When Severe Weather Is Headed Your Way.



# BREAKING NEWS ALERTS

In Addition To Severe Weather Alerts You Will Also Get Breaking News In Your Area!

## FREE TO DOWNLOAD

**TN Valley Media Alerts App**



Once downloaded enable your alerts by accessing the drop down menu on the top left of the App, tap "Safetynet Alerts" then tap "preferences" to enable your alerts.

## FEATURES

- Integrated Weather Alerts
- 7-Day Forecasts
- Forecast Conditions Based on City, Zip Code Or Your Current Location
- Interactive Weather Map
- National Weather Service Storm Warnings
- Breaking News Alerts

# Made Right Metal Buildings

**(205) 712-2115**

**CALL TODAY  
FOR A  
FAST QUOTE!**



## Deluxe Buildings Available!

**30x36x12 Top  
2 -14' Sheds  
\$7,900 Erected**

**40x60x12  
2 Roll-Up Doors  
Walk Door  
\$22,900 Erected**

**30x30x9  
1 Roll-Up Door  
Concrete Slab  
\$9,950 Erected**



**Includes Concrete Slab - Erected!**

**We Do All Types of Buildings.  
Shops - Garages - Hay Sheds  
Storage - You Name It!**

**We Have THE BEST PRICES  
On Erected Buildings!  
No Hidden Costs!  
The Strongest Buildings  
Available in ANY Size You Want!**

**Fully Customizable  
To Meet Your Needs!  
Ask About Insulation!**

***Our Goal Is To Provide You With An Affordable,  
Attractive, Long-Lasting Building Solution!***

**[www.MadeRightBuildings.com](http://www.MadeRightBuildings.com)**