

FREE!

15

Years

Millennium Shopper.com



115 Jefferson
P.O. Box 1037
Sulphur Springs, Tx. 75483



(In The Shade of The Courthouse)



903-885-9966 VOL. 16 ISSUE 814, September 24, 2015

Greenville, Sulphur Springs, Commerce, Cumby, Campbell, Lone Oak, Brashear, Caddo Mills, Quinlan, Cash, East & West Tawakoni, Emory, Pickton, Como, Point, Winnsboro, Lake Fork, Yantis, Farmersville, Merit, Princeton and McKinney!

Member of Texas Community Newspaper Association
e-mail: ads@millenniumshopper.com
www.millenniumshopper.com

PRSR STD
ECRWSS
U.S. POSTAGE PAID
GREENVILLE, TX.
PERMIT #60



YOU WON'T BELIEVE THE SAVINGS!

Financing - Simple, Easy, Fast, Quick Approval!

APPLY NOW!!!

Credit Decision In Minutes!!!

GOOD CREDIT ★ BAD CREDIT ★ NO PROBLEM ★ APPLY ONLINE

www.sulphurspringsdodge.com

WE ALSO HAVE A GREAT SELECTION OF LIFTED VEHICLES

Service Department Open Mon. - Sat. **1-800-363-4340**
 SALES PEOPLE: Ryan - Bob - Sheri - Randy - Tammi - Brian S. - Josh - Jane - Randy B. - Gary
 1505 Industrial Drive West



DOWNTOWN DENTAL

\$99 EXAM, X-RAY & CLEANING
 (PERIODONTAL SCALING NOT INCLUDED)

NOW ACCEPTING DentaQuest - Medicaid & CHIPS

25% Discount On Any Treatment Over \$500⁰⁰

- ACCEPTING NEW PATIENTS OF ALL AGES.
- IN NETWORK WITH AN ACCEPTING MOST INSURANCES.
- WE FILE YOUR INSURANCE CLAIM FOR YOU.
- FOR YOUR CONVENIENCE WE OFFER CONSCIOUS SECCATION AND NITROUS OXIDE
- FOR PATIENTS WITHOUT INSURANCE. A DISCOUNT WILL BE TAKEN OFF OF OFFICE FEE SCHEDULE.

903-558-1868

226 MAIN ST. SULPHUR SPRINGS

The Community Players, Inc. Presents

THE MIRACLE WORKER

BY WILLIAM GIBSON

at The Main St. Theatre | 227 Main St. | Sulphur Springs, TX

SEPTEMBER 17-27

9/17, 9/18, 9/19, 9/24, 9/25, 9/26 at 7p.m.
9/20, 9/27 at 2p.m.

\$10 / Person

Buy your tickets online at
mainsttheatre.com

We only accept credit/debit card payments online at this time or make your reservation by calling

903.885.0107

To pay cash at the door.



The Miracle Worker is presented by special arrangement with SAMUEL FRENCH, INC.

Miscellaneous

DIRECTV Starting at \$19.99/mo. Free installation., 2015 NFL Sunday Ticket included (select packages)!! Free 3 months of HBO SHOWTIME CINEMAX STARZ Mew customers only. Call 1-877-634-4759

DISH TV Starting at \$19.99/months (for 12 mos.) Save! Regular price \$34.99 Ask about free same day installation. Call now! 877-477-9659

DISH TV Starting at \$19.99/month (for 12 mos.). Save! Regular price \$34.99 Ask about free same day installation! Call now! 877-468-0096

DISH TV Starting at \$19.99/month (for 12 mo) SAVE! Regular price \$34.99 ask about FREE SAME DAY installation! CALL now! 877-648-0096

CASH FOR CARS any make or Model! Free towing Sell it today. Instant offer: 1-800-864-5784

Want To Buy

Wants to purchase minerals and other oil and gas interests. Send details to P.O. Box 13557, Denver Co. 80201

CASH PAID - up to \$25/box for unexpired, sealed **DIABETIC TEST STRIPS**. 1-DAYPAYMENT. 1-800-371-1136

Health & Fitness

VIAGRA 100mg. 40 tabs + 10 free, \$99 includes FREE SHIPPING 1-888-836-0780 or MetroMeds.net

Health & Fitness

VIAGRA 100MG and **CIALIS** 20mg! 50 pills \$99.00. FREE shipping! 100% guaranteed. Call now! 1-866-312-6061

Help Wanted

NEED MONEY? SurveySoup.Com shows you how to earn \$4500 every month. 100% FREE. Start Now

Read us online at: www.millenniumshopper.com

Millennium Shopper.com
903-885-9966
115 Jefferson St.



Millennium Shopper.com

FREE weekly shopper published on Thursdays reaching over 45,000 readers in Hunt, Hopkins, Rains, Franklin, Collin, and Wood Counties.

Direct mailed to Brashear, Campbell, Commerce, Cumby, Greenville, Lone Oak and Sulphur Springs with carrier routes in Greenville, Sulphur Springs, Commerce, Caddo Mills, Quinlan, East and West Tawakoni, Winnsboro, and racks in Greenville, Neylandville, Caddo Mills, Lone Oak, Quinlan, Commerce, Sulphur Springs, Merit, Point, Emory, Farmersville, Princeton, McKinney, Como, Pickton, Winnsboro, Mt. Vernon, Mt. Pleasant, Pittsburg, Quitman, Lake Fork, Cash, Cumby, Brashear and Yantis.



Jim and Joy Wilson, Owners
115 Jefferson, P.O. Box 1037, Sul. Spgs, Tx.
903-885-9966, 1-877-455-5959
ads@millenniumshopper.com
www.millenniumshopper.com

GOBER Post Frame Buildings

Shops, Garages, Houses, Agriculture, Commercial

1-405-595-0770

- 30'x40'x10' - \$11,500
- 30'x40'x12' - \$12,700
- 30'x50'x10' - \$13,800
- 30'x50'x12' - \$14,900

With 4" Concrete, Fully Insulated, 1 Commercial Overhead, 1 Entry Door, #1 29 Ga. 40yr. Painted Metal, Built on Your Level Site, Additional Sizes Available Mileage or Higher Concrete

Protect Your Home And Property!!! Prices May Apply
Make Sure Your Contractor is Following Law.
Ask For General Liability and Workers Comp. Insurance

www.goberconstruction.com



Come In And Enjoy The "Memory Lane" Family Atmosphere At

THE POTATO HOUSE

204 Connally St.

903-243-7225

WE HAVE MORE THAN POTATOES!!!

- Chili - Sandwiches
- Salads - Plate Lunches
- Cheesecake and Desserts Daily



Delivery Starts At 10:30 A.M. Dine In, Take Out, Curb Service.

We Accept Cash, Checks, Debit/Credit

FREE DRINK with food purchase. Must present Coupon. Expires Dec. 31, 2015

Try our famous BANANA PUDDING and homemade DESSERTS!

SOUPS DAILY!

WE HAVE THE LARGEST INVENTORY AROUND!

2114 N.E. Loop 286 ★ Paris, Tx. ★ 903-785-8317



LARGEST FLOORING INVENTORY IN NORTHEAST TEXAS & SOUTHEAST OKLAHOMA!

Mon.-Fri. 8 am-6 pm ★ Sat. 9 am - 2 pm

Need Flooring Replacement Due To Water Or Fire?

Our Prices Can Reduce or Even Eliminate Your Deductible

FREE ESTIMATES



WALL TO WALL

IN-STALLS

If You Want It, Chances Are We Have It In Stock TODAY!

Plush Carpet (Example) 12'x12' Bedroom = \$104.00 **\$7.99** sq. yd.

Engineered Hardwood Flooring (Example) 12'x12' Room = \$401.76 **\$279** sq. ft.

Ceramic Tile (Example) 12'x12' Bedroom = \$113.76 **79¢** sq. ft.

No Wax Vinyl (Example) 12'x12' Room = \$63.84 **\$4.99** sq. yd.

Laminate (Example) 12'x12' Den = \$142.00 **99¢** sq. ft.

Level Loop Carpet (Example) 12'x12' Room = \$79.84 **\$5.99** sq. yd.

CASH & CARRY PRICING

Sulphur Springs Health & Rehab

Our Family Caring For Your Family!!!



Congratulations!!!! Lynda!

Lynda Sinclair pictured with Steve Wolanski, COTA

Lynda has completed her rehab

Our Goal Is To Get You Back Home!!!

CALL JAN HAWKINS OR MARY GRANT FOR MORE INFORMATION.

903-885-7668 - Fax 903-885-8037

411 AIRPORT ROAD - SULPHUR SPRINGS, TX. 75482



REAL ESTATE GUIDE

Looking for a new home, apartment or land?
Check here first!

Automobiles

\$500 DOWN. '01 Saturn SC1 & '99 Regal GS. We Finance. No Credit Check. www.TrackSideMotorcars.com, 903/454-9899, 3012 Wesley St, Greenville.

Automobiles

\$550 DOWN. '02 Saturn & '00 Ford Focus ZX3. We Finance. No Credit Check. www.TrackSideMotorcars.com, 903/454-9899, 3012 Wesley St, Greenville.

Automobiles

\$600 DOWN. '01 PT Cruiser Limited & '99 Durango SLT. We Finance. No Credit Check. www.TrackSideMotorcars.com, 903/454-9899, 3012 Wesley St, Greenville.

Toby Boatman Garage Doors

P.O. Box 445 ★ Como, TX 75431

- * Sales
- * Service
- * Installation
- * Doors
- * Electric Door Openers

Residential
Commercial

348-6170 ★ 903-438-1970

\$600 DOWN. '00 Ford Explorer & '03 Mercury Sable GS. We Finance. No Credit Check. www.TrackSideMotorcars.com, 903/454-9899, 3012 Wesley St, Greenville.

Fallow Deer

Buy ~ Sell ~ Trade (All Ages)



903-994-2504
Cell 520-661-5597

\$600 DOWN. '00 Volvo S70 & '02 Mazda MPV. We Finance. No Credit Check. www.TrackSideMotorcars.com, 903/454-9899, 3012 Wesley St, Greenville.

\$650 DOWN. '00 Town Car Executive & '05 Pontiac Sunfire. We Finance. No Credit Check. www.TrackSideMotorcars.com, 903/454-9899, 3012 Wesley St, Greenville.

\$700 DOWN. '96 Ford Ranger & '00 Grand Prix GTP. We Finance. No Credit Check. www.TrackSideMotorcars.com, 903/454-9899, 3012 Wesley St, Greenville.

SOMETHING TO SELL?

Sell It In The Millennium Shopper Classifieds.
\$3.50 for 15 words or less!
Call 903-885-9966

\$700 DOWN. '01 Chevy Blazer LS & '05 PT Cruiser. We Finance. No Credit Check. www.TrackSideMotorcars.com, 903/454-9899, 3012 Wesley St, Greenville.

\$700 DOWN. '04 Saturn Ion & '00 Lincoln Continental. We Finance. No Credit Check. www.TrackSideMotorcars.com, 903/454-9899, 3012 Wesley St, Greenville.

\$750 DOWN. '04 Ford F150 & '01 Chevy Camaro. We Finance. No Credit Check. www.TrackSideMotorcars.com, 903/454-9899, 3012 Wesley St, Greenville.

\$800 DOWN. '00 Jeep Grand Cherokee & '06 Ford Taurus SE. We Finance. No Credit Check. www.TrackSideMotorcars.com, 903/454-9899, 3012 Wesley St, Greenville.

WANTED OLD JAPANESE MOTORCYCLES

KAWASAKI- Z1-900(1972-75), KZ900, KZ1000(1976-1982), Z1R, KZ1000MK2(1979,80), W1-650, H1-500(1969-72), H2-750(1972-1975), S1-250, S2-350, S3-400, KH250, KH400, SUZUKI-GS400, GT380, HONDA-CB750K(1969-1976), CBX1000(1979,80)



\$\$ CASH \$\$

1-800-772-1142

1-310-721-0726

usa@classicrunners.com

\$800 DOWN. '06 Kia Optima LX. We Finance. No Credit Check. www.TrackSideMotorcars.com, 903/454-9899, 3012 Wesley St, Greenville.

\$850 DOWN. '04 Hyundai Santa Fe & '03 Kia Sorento EX. We Finance. No Credit Check. www.TrackSideMotorcars.com, 903/454-9899, 3012 Wesley St, Greenville.

17TH ANNUAL GARAGE SALES

10 miles long ★ Sales Held At Individual Homes
Dike, Mahoney, Flora Communities

I-30 East of Sulphur Springs take exit 131, take FM 69 North

COMING SOON!

Oct. 9th & 10th

FRIDAY & SATURDAY RAIN OR SHINE!!!

Come Shop In The Country. Worth The Drive!!

WATCH FOR THE WEBSITE LATER!!

Holiday Villages Resort Communities



ATTENTION ALL FISHERMEN

CHAMPION BASS LAKE!

BE A LAND OWNER IN 2015!

Owner Financed Land - Central Water & Sewer

Paved Roads ★ Picnic & Fishing Areas ★ Lake Front Lots Available ★ Double Boat Ramps
★ New Pier House "Ready To Use" ★ RV Hook Ups
CONDOS ★ POOL & TANNING BEDS

Hwy. 154 - Lake Fork - Quitman, Texas 75783

Call Today For Your Appointment

903-878-7263

www.holidayvillages.com



AIRLINE CAREERS

Get FAA approved maintenance training at campuses coast to coast. Job placement assistance. Financial Aid for qualifying students. Military friendly.

Call Aviation Institute of Maintenance

800-481-7894

WWW.MYCARTOWN.COM ★ WWW.MYCARTOWN.COM ★ WWW.MYCARTOWN.COM ★

CAR TOWN MOTORS

Buy Here. Pay Here.

COME IN TODAY

EXPERIENCE TRUE IN HOUSE FINANCING WITH NO CREDIT CHECK!

CALL US AT

903-527-3744



CAR TOWN MOTORS IS THE #1 SOURCE FOR USED CAR SALES & FINANCING IN THE AREA!!!!

You Can Shop With Confidence For A Quality Pre-Owned Vehicle With Easy Terms & Affordable Monthly Payments...

GUARANTEED!

We now report your payment status each month to **EXPERIAN CREDIT BUREAU!!**

Don't miss this opportunity to build your credit score while purchasing your vehicle.

New Customers: Meet These Requirements for Immediate Approval!!

1. Must Have a Valid Tx. Drivers License
2. Must Be at Least 18 Years Old
3. Must Have 6 mos. Residency in the Area
4. Must Have Proof of Income

AFFORDABLE PAYMENTS!!!

2005 Chevrolet Tahoe LS.....	\$11,950
2010 Toyota Yaris.....	\$11,550
2010 Kia Soul Exclamation.....	12,550
2006 Chevrolet Trail Blazer.....	\$9,950
2008 Nissan Sentra.....	\$9,950
2011 Hyundai Sonata GLS.....	\$12,950
2013 Chevrolet Sonic 2LS.....	\$11,950
2007 Kia Optima LX.....	\$8,550
2004 Ford F150 XCab XL.....	\$12,950
2010 Hyundai Accent GLS.....	\$7,950
2009 Chevrolet Cobalt LT.....	\$9,950
2007 Saturn Ion.....	\$9,950
2008 Mercury Mountaineer Premier.....	\$12,550
2010 Hyundai Accent GLS.....	\$9,550
2008 Ford F150 RCab XL.....	\$11,950
2009 Pontiac G6.....	\$9,950
2013 Chevrolet Spark LS.....	\$11,950
2008 Toyota Yaris.....	\$9,550
2008 Ford F150 XL.....	\$13,550
2010 Kia Forte.....	\$10,950
2010 Chevrolet Cobalt LT.....	\$10,950

2010 Nissan Cube.....	\$9,950
2008 Ford Mustang.....	\$12,950
2006 Chrysler PT Cruiser.....	\$5,950
2007 Chevrolet Cobalt LS.....	\$7,550
2010 Mitsubishi Galant.....	\$11,950
2007 Chevrolet Impala LS.....	\$9,550
2008 Ford Escape XLT.....	\$13,550
2011 Hyundai Sonata GLS.....	\$12,950
2011 Ford Focus S.....	\$10,550
2009 Chevrolet Cobalt.....	\$9,950
2008 Buick Lucerne CX.....	\$12,950
2009 Toyota Camry LE.....	\$12,550
2006 Hyundai Santa Fe GLS.....	\$8,950
2006 Chevrolet Silverado RCab.....	\$11,950
2011 Mitsubishi Galant.....	\$10,950
2008 Ford Edge Limited.....	\$12,550
2007 Ford Mustang.....	\$11,950
2006 Scion XA.....	\$9,950
2007 Kia Sportage EX.....	\$10,950
2009 Optima LX.....	\$10,550
2011 Ford Fusion SE.....	\$13,550

NO HASSLES!! EZ TERMS!!

We Have New Arrivals Daily!

Many More To Choose From!

For More Information, Pictures & A Complete Vehicle Listing, Visit Us Online At www.mycartown.com ~ 3006 Hwy. 66, Caddo Mills, Tx.

WWW.MYCARTOWN.COM ★ WWW.MYCARTOWN.COM ★ WWW.MYCARTOWN.COM ★



September 21-26, 2015

ADULT

MAKEAConnection. Real People, Flirty Chat. Meet singles right now! Call LiveLinks. Try it FREE. Call now 1-800-319-9484, 18+.

CAREER TRAINING

AIRLINE CAREERS begin here - Get started by training as FAA certified Aviation Technician. Financial aid for qualified students. Job placement assistance. Call Aviation Institute of Maintenance 1-888-896-8006.

FINANCIAL SERVICES

RECEIVING PAYMENTS from real estate you sold? Get cash now! Call Steve. 1-888-870-2243 . www.SteveCashesNotes.com

To Advertise Texas-Wide!

Call this newspaper or the Texas Community Newspaper Association's Texas-wide Advertising Program at

1.931.698.4096

HEALTH & WELLNESS

Got Knee Pain? Back Pain? Shoulder Pain? Get a pain-relieving brace -little or NO cost to you. Medicare Patients Call Health Hotline Now! 1-800-791-2335

Stop OVERPAYING for your prescriptions! Save up to 93%! Call our licensed Canadian and International pharmacy service to compare prices and get \$15.00 off your first prescription and FREE Shipping. 1-800-317-6360.

Got Knee Pain? Back Pain? Shoulder Pain? Get a pain-relieving brace -little or NO cost to you. Medicare Patients Call Health Hotline Now! 1-800-791-2335

DISCLAIMER: This publication does not warrant or guarantee the accuracy of any advertisement, nor the quality of the goods or services offered. Readers are cautioned to thoroughly investigate all claims made and to use good judgment and reasonable care when dealing with persons unknown to you. We suggest never sending money until you are certain of the company.

SATELLITE TV

Switch & Save Event from DirecTV! Packages starting at \$19.99/mo. Free 3-Months of HBO, STARZ, SHOWTIME & CINEMAX FREE GENIE HD/DVR Upgrade! 2015 NFL Sunday Ticket Included with Select Packages. Some exclusions apply - Call for details 1-800-413-9179

To Advertise Texas-Wide!

Call this newspaper or the Texas Community Newspaper Association's Texas-wide Advertising Program at

1.931.698.4096

MorrellAutoGroup.com **HERE TO HELP YOU!**

★ LOAN PROGRAM ★ LOW INTEREST RATES ★ FINANCE FOR EVERYONE
★ 19 YEARS IN BUSINESS ★ WARRANTY AVAILABLE
★ CLEAN, LATE MODELS, LOW MILEAGE ★ QUALITY VEHICLES

**Buy Here
Pay Here!**

1625 N.E. Loop 286 Paris, Texas

800-569-3647 ★ 903-785-7556 ★ Mon.-Fri. 8:30 AM - 6:00 PM ★ Saturday: 8:30 AM - 3 PM

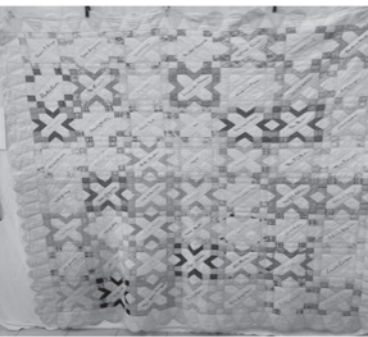


Quilts are part of our American heritage...and quilts can be said to be "in our blood!" as Texans. The love that Sulphur Springs has for this usable art and living history was evident at the recent Quilt Show. The members of the local Lone Star Heritage Quilt Guild have preserved our place on the circuit of the better shows in N E Texas. On September 18 and 19, 2015, hundreds of spectators flocked to The Roc in Sulphur Springs to view the collection of 155 quilts hung for display in the spacious gym area. In the quilt "trade show" you could find fabric, supplies, books and patterns in all price ranges. There were even some scraps and completed blocks on hand for beginners to start with! Though there's no way to do justice to the collection in this small space, I want to show you some of the ones I liked best.



Best of Show in the Master Quilts Category ... a holiday creation called "Twas the Night Before Christmas" was completed in 2014 by Linda Neal and quilted by Jackie Brown. Santa and 12 other motif blocks are intricately pieced and embroidered onto a stark white background, finished as a sampler of dense quilting styles. An edging, done with skill and patience, was composed of 368 tiny fabric loops of red print around the entire perimeter of the quilt, putting a final loving touch on the valuable keepsake.

Rockdale School Quilt, 1936 ... the maker is unknown but the quilt is owned by Charlotte McDowell. It was presented to her schoolteacher father Howard Smith from his students at the country school in Hopkins County. The names of the students are embroidered in cursive writing in the centers of the star-patterned blocks, which are set together without strips or squares. The fabrics used are charming prints of the day, some probably from flour sacks. This quilt won an award in the Antiques Category.



Community Quilt ... owner Billie Ruth Standbridge is identified as "little Billie Ruth Mote", in embroidery on one of the blocks of this 1930 quilt. Her grandmother Ruth Mote of Starr Ridge in Hopkins County was making this quilt with the help of neighbor ladies who met on Sunday afternoons to hand quilt and visit. The quilting frame was lowered from the ceiling of her home and each week the group would pick up where they left off. Friends and relatives of Mrs. Mote also embroidered their names on the quilt. It was an award-winner in the Antiques Category.

"Texas, Deep in the Heart" Special Exhibits Category ... out of fifteen entries of lap-size quilts and wall hangings, these three won top honors. Makers are not known, as they were entered anonymously. Some depicted other places the maker had lived before arriving here. These three seemed to illustrate the joy of being Texan, whether native or "got here as soon as I could!"



"Texas is Best" (blue ribbon) celebrates Texas with its most famous state symbols. The letters are in a light red print, similar to "Turkey Red", a family of luscious red shades produced by a colorfast dyeing process from the Middle East popular in the mid-1800's.

"Git Along Little Doggie" (red ribbon) reminisces the maker's childhood game of "wagon train" where she used stuffed animals as the horses pulling her wagon west. On a whim, the quiltmaker placed a dachshund in the traces, delivering the wagon to her late-life home in Hopkins County.

"Deep in the Heart" (white ribbon) is small but strong in its color-message. The cowboy boot holds an American flag, and red, blue and yellow blossoms which are native to Texas. The still-life is applied on a Western tan background and framed with fabric borders of gentle haymeadow green and piercing bluebonnet blue.

Well, readers, if you went to the quilt show, you likely have your own take on the event. You probably selected your own favorites out of the collection. You might be a quilter too, or maybe just a collector. But one thing that binds us together is that we are admirers of this timeless art form and the fond memories evoked by handmade quilts. Now, as Autumn comes on and summer ends, there's plenty to keep us busy getting ready for winter. Honk when you go by, and I'll watch for you at the corral gate.

\$850 DOWN. '01 Grand Cherokee & '04 Freestyle SEL. We Finance. No Credit Check. www.TrackSideMotorcars.com, 903/454-9899, 3012 Wesley St, Greenville.

CASH FOR CARS any make or Model! Free towing Sell it today. Instant offer: 1-800-864-5784

DIABETIC TEST STRIPS. 1-DAY PAYMENT. 1-800-371-1136

\$900 DOWN. '04 Honda Odyssey LX (minivan). We Finance. No Credit Check. www.TrackSideMotorcars.com, 903/454-9899, 3012 Wesley St, Greenville.

\$1000 DOWN. '04 Lincoln LS & '07 Dodge Calibur SXT. We Finance. No Credit Check. www.TrackSideMotorcars.com, 903/454-9899, 3012 Wesley St, Greenville.

\$1250 DOWN. '04 Audi A4 Avant Quattro AWD. We Finance. No Credit Check. www.TrackSideMotorcars.com, 903/454-9899, 3012 Wesley St, Greenville.

Answers to Word Search

T	I	D	E	S	G	P	S	A	S	E	A	V	O	R
Y	M	I	L	L	U	S	T	R	A	T	I	O	N	S
P	A	G	E	S	E	B	O	A	T	S	R	H	O	H
E	G	W	O	B	S	E	R	V	A	T	I	O	N	S
S	E	E	X	O	T	I	C	U	S	P	O	O	N	A
J	J	B	J	F	S	H	H	L	S	I	L	K	S	G
S	K	I	N	G	E	E	W	U	H	M	E	H	R	
O	F	R	N	G	T	V	S	R	M	M	E	D	O	E
L	D	T	U	S	I	N	G	H	E	I	S	S	U	E
I	I	H	F	E	U	A	T	O	W	N	S	Y	T	D
D	C	F	C	A	H	R	A	L	U	E	I	D	S	S
H	U	E	T	L	A	C	E	L	S	R	N	A	W	C
P	R	P	L	E	N	T	Y	O	A	N	G	R	Y	A
A	V	O	I	D	D	I	N	W	A	R	M	E	R	R
S	E	E	M	S	Y	C	I	G	A	R	M	S	D	E

DRIVING TO THE PACIFIC AND BACK

Tumbleweed Smith



Tumbleweed Smith

We drove to Carlsbad, California to meet our two sons and their families for a long weekend visit. It was a leisurely drive westward, with stops in Las Cruces, New Mexico and Yuma, Arizona. It's about a thousand-mile trip and the most we drove in one day was about 400 miles.

We played in the surf, walked along the beach and some of our group went to LEGOLAND. It was a relaxing trip, with all nine of us sharing meals together. In the evenings we played games and visited. I don't think we even turned on the television.

We journeyed down to San Diego to visit a wild game park and tour the famous movie star hangout, the Hotel del Coronado (known as THE DEL). When everybody departed for home and went their separate ways, they did so with a good feeling about our time together. With everybody's busy schedules (especially those for the 9 and 12-year olds) it's difficult to get together. But we make time for reunions.

On our return trip we stayed in Tucson and El Paso. I was smitten by Tucson, with its location and architecture. Homes are of the old adobe style, and blend perfectly with the desert landscape. They are one story, low and long, and reflect the area's Native American and Spanish histories. Saguaro cactus and other desert flowers and plants surround the structures.

We had a few hours before time to leave for El Paso, so we picked up a brochure that indicated a scenic drive around Mount Lemmon, a little over 9,000 feet high located in the Coronado National Forest. We followed directions on the brochure, which led us to a place called Oracle. We stopped for coffee at a small café and talked to some folks there about the scenic drive. One man who seemed to be the local historian said, "I hope you have a 4-wheel drive vehicle. That road is not paved." He said he had driven over it recently in a jeep and was glad to finally reach the highway. "It's just 26 miles long but took hours," he said. I told him I was driving a crossover SUV and he said, "You might be all right." So we ventured on.

The road is dirt and gravel and is just a series of twists and turns that go all the way to the top of the mountain. We never traveled more than ten miles an hour and when we did, it felt like we were flying. We were always going uphill on the narrow road that skirted the edge of some sheer drop-offs that led to deep canyons below. As we climbed up the dangerous road, I considered all the things that might happen to us. We had no phone service. What if the car got hot (it was 117 degrees down below) or we blew a tire? We were in the wilderness. Nobody around for miles. Just beautiful mountain scenery and 70 degree temperatures which tended to lose their fascination. We were ready for pavement. After about 5 hours on that road we finally reached a highway. We went back to Tucson on what is called the Catalina Highway, which offered spectacular views. Why didn't we just take that road to begin with? We wrote the tourist office and suggested a change in the brochure's map showing the scenic highway.

Tumbleweed Smith was born in Waco, raised in Fort Worth and now lives in Big Spring. Contact him at ts@tumbleweedsmith.com

\$1250 DOWN. '04 Chevy www.TrackSideMotorcars.com
 TrailBlazer LS & '06 [com](http://www.com), 903/454-9899, 3012
 Hyundai Tucson GL. We Wesley St, Greenville.
 Finance. No Credit Check.

RED ROOSTER ANTIQUES

GOING OUT OF BUSINESS SALE

Welcome ★ Make Offer

1007 N. Center St. ★ Bonham, Tx.
903-583-0948

We Print EVERYTHING!

If you can tell us what you need...then we can print it!

- Business Cards •Fliers •Rubber Stamps •Brochures •Envelopes
- Announcements •Business Forms •Letterheads •Post Cards (for open houses) •Raffle Tickets •Menus •Door Hangers •Gift Certificates
- Invitations •Note Pads •Tags •Labels •Business Checks •Note Cards
- Invoices •NCR Forms •Desk Name Plates •Reunion Books
- Special Event Programs

Usually a 2-3 day turn around!

FLIPPIN printing

903-885-3633



Call Joy!

115 Jefferson St., Sul. Spgs.
 Located inside
The Millennium Shopper



Call Pat!



GAS AND SUPPLY

PROPANE SALES
GASANDSUPPLY.COM

FOR THE MONTH OF SEPTEMBER

FANTASTIC FALL FILL-UP

SAVE UP TO 40¢ PER GALLON OF PROPANE

YETI PRODUCTS!!

Wildly stronger! Keep ice longer!

Be entered for a chance to WIN a FREE Yeti product with every 100 gallons of propane purchased!!

* Gas must be paid for in full before September 30th in order to be eligible to win.

* Minimum of 100 gallons. * Offer good for residential customers only.

Campbell (903) 454-6565 ★ Terrell (972) 551-1099

sears HOMETOWN STORE
 LOCALLY OWNED AND OPERATED

SUNDAY, SEPT. 27TH & MONDAY, SEPT. 28TH, 2015

EXTRA 10% OFF APPLIANCES, TOOLS & ALMOST EVERYTHING ELSE⁵

EXTRA 5% OFF LAWN & GARDEN⁵

great tool savings

PLUS save on all POWER LAWN & GARDEN EQUIPMENT AND OUTDOOR STORAGE BUILDINGS

UP TO 25% OFF KENMORE APPLIANCES¹

UP TO 10% OFF OTHER APPLIANCE BRANDS²

PLUS EXTRA 5% OFF ALL APPLIANCES¹ WITH YOUR SEARS CARD

OR 12 MONTHS SPECIAL FINANCING¹ ON ALL APPLIANCES OVER \$299 WITH A QUALIFYING SEARS CARD

OR FREE DELIVERY ON APPLIANCES OVER \$499 WITH YOUR SEARS CARD
In participating stores. Local curb side delivery. Additional fees may apply. See store for details.

(1) Advertised savings are valid in-store only and range from 5%-25%. (2) Advertised savings are valid in-store only and range from 5%-10%. (1,2,3,4) Exclusions apply. See The Details section. See store for additional exclusions. Offers good thru 10/3/15. (5) Excludes consumer electronics, hot buys and super hot buys. Additional exclusions apply. See The Details section. Offers valid 9/27 and 9/28/15.

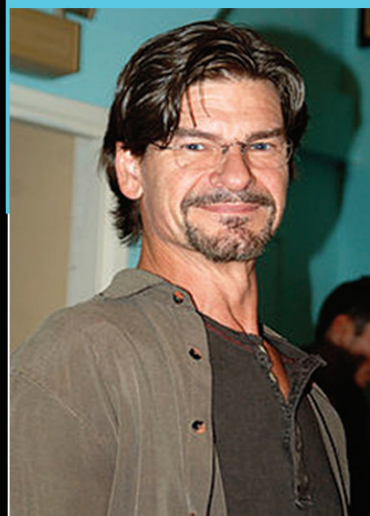
THE DETAILS

IMPORTANT SPECIAL FINANCING/DEFERRED INTEREST DETAILS (when offered): Interest will be charged to your account from the purchase date if the purchase balance is not paid in full within the promotional period or if you make a late payment. Minimum payments required. With credit approval, for qualifying purchases made on a Sears card (Sears Commercial One® accounts excluded) Sears Home Improvement Account™ valid on installed sales only. Offer is only valid for consumer accounts in good standing; is subject to change without notice; see store for details. May not be combined with any other promotional offer. Sears cards: As of 7/7/2015, API for purchases: VARIABLE 7.24%-27.24% or NON-VARIABLE 14.00%-29.99%. MINIMUM INTEREST CHARGE: UP TO \$2. See card agreement for details, including the APRs and fees applicable to you. Sears cards are issued by Citibank, N.A. APPLIANCE OFFER: (1) Advertised savings are valid in-store only and range from 5%-25%. (2) Advertised savings are valid in-store only and range from 5%-10%. (1,2,3) Bosch®, Whirlpool®, KitchenAid®, Maytag®, Amana®, LG® and Samsung® appliances limited to 10% off. Offers exclude Hot Buys, Super Hot Buys, Special Purchases, Jenn-Air®, Dacor, GE®, GE Profile™, GE Café™, air conditioners, water heaters, water softeners, dehumidifiers, clearance, closeouts and Everyday Great Price items. See store for additional exclusions. Offers good thru 10/3/15. (3) Cannot be combined with other Sears card discounts. Excludes Sears Commercial One® accounts and Outlet Stores. Sears Home Improvement Account™ applies on installed merchandise only. (4) Offer applies to appliances over \$299 after discounts and coupons when you use a qualifying Sears card. See above for Important Special Financing/Deferred Interest Details. Excludes Outlet Stores. Offer good thru 10/3/15. FAMILY & FRIENDS OFFER: (5) Offers exclude Hot Buys, Super Hot Buys, consumer electronics and clearance items. Offers valid 9/27 and 9/28/15. EXTRA 5% OFF lawn & garden and lawn & garden protection agreements. EXTRA 10% OFF mattresses, tools and tools protection agreements, fitness, game room & sporting goods, seasonal and patio furniture & grills, home appliances, home appliance protection agreements and floor care. 5% and 10% savings off regular and sale prices apply to merchandise only. May not be used to reduce a layaway or credit balance. Not valid on Super Hot Buys, Hot Buys, Special Purchases, Everyday Great Price items, Stearns & Foster, iComfort, iSeries, Simmons Beautyrest Elite, Jenn-Air®, Dacor, GE®, GE Profile™, GE Café™, air conditioners, water heaters, water softeners, dehumidifiers, generators, snow throwers and gift cards. Bosch®, Whirlpool®, KitchenAid®, Maytag®, Amana®, LG®, Samsung®, Electrolux™ and Electrolux Icon appliance brands limited to 10% off. Not valid on commercial orders or previous purchases. Tax and shipping not included. Available only at Sears Hometown Stores. Family & Friends offers valid for all stores all day Sunday, 9/27 and Monday, 9/28/15. We offer product warranty.

Sears Hometown Stores may be independently operated by authorized dealers of Sears Authorized Hometown Stores, LLC or by authorized franchisees of Sears Home Appliance Showrooms, LLC. THE SEARS mark is a service mark of Sears Brands, LLC.

Sulphur Springs
 1402 Mockingbird Lane, Suite 3
 Sulphur Springs, Texas 75482
 903 885 2135

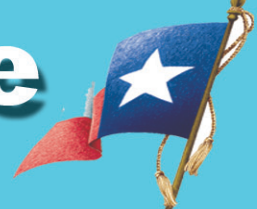
903 885 2135



FAMOUS TEXANS

Don Swayze

Patrick Swayze's Brother



Don Swayze (born August 10, 1958) is an American actor, noted for character acting in dramatic series and soap operas, as well as several feature films, and theatrical work, including comedy. He is a younger brother of actor Patrick Swayze. Swayze was born in Houston, Texas, the middle son of Patsy Yvonne Helen (née Karnes), a choreographer, dance instructor, and dancer, and Jesse Wayne Swayze, an engineering drafter. He is a younger brother of the late actor Patrick Swayze and of sister Vicky Lynn, and the older brother of Sean Kyle and adopted sister Bora Song (nicknamed Bambi). He is a sixth cousin once removed of commentator John Cameron Swayze and a relative of noted Texas Revolution soldier Henry Karnes.

Swayze's film work has included an appearance as a dancer in the 1980 film Urban Cowboy, as Ruben in the film Father for Charlie, and as Mark in the film Shy People. He also played Col. Sherman Rutherford in a western-noir hybrid titled Heathens and Thieves in 2012. He also starred in the film Death Ring, and as the Alamo courier James Bonham in Alamo: Price of Freedom, an IMAX film shown in San Antonio, Texas.

Swayze is currently appearing in two soap operas, The Young and the Restless and Days of Our Lives. In 2010, Swayze guest starred in six episodes in a recurring role as Gus, a werewolf, on the HBO series True Blood. His television drama work includes multiple appearances in Murder She Wrote, The X Files, NYPD Blue, Days of Our Lives, NCIS, Carnivàle, and dozens of other programs. Swayze had a role as a mentally handicapped man suspected of murder in an episode of the television drama Matlock. He played Jesse James in a season-two episode of Lois & Clark: The New Adventures of Superman. He had a recurring role on Criminal Minds, specifically the episodes "The Big Game" and "Revelations", in which he played Charles Hankel, the father and alternate personality of serial killer Tobias Hankel. On Cold Case, Swayze played the adult Grant Hall. Swayze had a small guest appearance on It's Always Sunny In Philadelphia as a crazy boat captain. He has also appeared on Beyond Belief, and The Bridge. Swayze also appeared in an episode of Sons of Anarchy, season 7.

In 2001, Don was on stage as Pedro in Man of La Mancha, at the Simi Valley Cultural Arts Center.

In 2005, he played Roy in the comedy Lone Star at the Beverly Hills Playhouse. In the fall of 2011, he co-starred with Anne Archer in an original stage play titled Jane Fonda: In the Court of Public Opinion, at the Edgemar Theater in Santa Monica, California; he played U.S. Army Sgt. Don Simpson (retired), a wounded veteran of the Vietnam War.

Don is an avid skydiver and cyclist, and races cross country mountain bikes in his spare time. Don is married to Charlene Swayze.

Member FDIC

CNB
CITY NATIONAL BANK

A part of Sulphur Springs, Texas history since 1889!

201 Connally St.
903-885-7523

1133 Mockingbird Lane
903-885-5432

1106 S. Broadway
903-439-0654

NOW OPEN IN SULPHUR SPRINGS AT 1135 S. BROADWAY

LA VICTORIA

CARNICERIA

meat • produce • taqueria



Shop our meat market plus fresh produce, hand-made tortillas and baked goods daily.

ALSO VISIT OUR ROCKWALL LOCATION!!

2335 E. I-30 ★ ROCKWALL, TEXAS ★ 214-771-0088

Enjoy authentic Mexican specialties in our taqueria.

903-885-2999



email - lavictoria1@yahoo.com
website - www.lavictoriacarniceria.com
facebook - [lavictoriacarniceria](https://www.facebook.com/lavictoriacarniceria)



OPEN 7 DAYS A WEEK AT 7 A.M.

\$1300 DOWN. '06 Pontiac Vibe & '05 Chrysler Pacifica. We Finance. No Credit Check. www.TrackSideMotorcars.com, 903/454-9899, 3012 Wesley St, Greenville.

\$1500 DOWN. '06 Trail Blazer 3rd Row & '05 Dodge Durango. We Finance. No Credit Check. www.TrackSideMotorcars.com, 903/454-9899, 3012 Wesley St, Greenville.

Help Wanted

DRIVERS: \$3,000.00 Orientation Completion Bonus! Dedicated, Regional, OTR & Point to point lanes. Great pay. (new hires min 800.00/wk guarantee)! Ask about no credit/money down lease purchase CDL-A 1 yr. exp. 1-855-314-1138 AA//I1

Land For Sale

Southern Hopkins County minutes from Lake Fork.
2 acres to 13 acres (restricted to new double wide or new construction)
34 acres
105 acres
Owner Financing Available. 903-348-1052 GCP/TF

Miscellaneous

. THREE CUTE KITTENS, 7 weeks old. Mother a great mouser. 903-438-9124 BR/TF

Land For Sale

UNDER 1/4 Acre lot on Lake Fork. Low Down, Low Monthly Payment. \$91 per month. 903-878-7265 HV/TF

Auto Wanted

LOOKING for a Chevy Ventura or a Dodge Caravan. Contact by phone at 903-440-0677 or email anacuevas@gmail.com AC/I24

Miscellaneous

CASH PAID for unexpired, sealed **DIABETIC TEST STRIPS** - **HIGHEST PRICES!** Shipping prepaid. **1 DAY PAYMENT.** 1-888-366-0958

Animals For Sale

FOR SALE: 4 Pet Pygmy Does, 4 Pet Pygmy Billies 5 months-903-488-0077 Leave number LS/I24

Garage Sale

TIRA COMMUNITY Garage Sale. Highway 19 North - Follow the signs. October 2nd and 3rd.

Tractor For Sale

FOR SALE: 445A Tractor with box blade, front end loader and 12 ft disk. 903-356-3196 LY/J11

Are you caring for someone with memory loss?

Join "Terrific Tuesdays"

a Sulphur Springs Respite Care Program for seniors with memory loss.

This program is open to everyone with Alzheimer's or dementia. It gives the participants an opportunity to spend each Tuesday meeting new friends and participating in cooperative activities.

It also gives the caregiver a few hours to run errands and to take care of personal healthcare needs, etc. knowing that their loved one is well taken care of in a safe and enjoyable environment.

The cost is \$20 each Tuesday from 9 a.m. to 2 p.m. and that includes lunch!

"Terrific Tuesdays" meets at The First United Methodist Church Family Life Center at 301 Church Street, Sulphur Springs.

Contact Joyce McDonald at 903-243-5620 for more information.

The Easiest Way to Sell a Car

HASSLE-FREE + FAIR PRICE

1-888-524-9668

- ✓ 1999-2015 Vehicles
- ✓ Running or Not
- ✓ Cash Paid on the Spot
- ✓ Nationwide Free Towing

Licensed — Professional

CASHFORCARS.COM

Strategic Webs

Designing & Creating your Website doesn't have to be hard...

Let Us Help...& Discover What We Can Do For You...

Website Design & Hosting

Custom Designed Packages Starting at \$199.00

Hosting Packages Starting at \$12.95 per Month

Ron Beaver

903-287-0010
Canton, Texas 75103
Ron@Strategicwebs.com

Word Search

T I D E S G P S A S F A V O R
Y M I L L U S T R A T I O N S
P A G E S E B O A T S R H O H
E G W O B S E R V A T I O N S
S E E X O T I C U S P O O N A
J J B J F S H H L S I L K S G
S K I I N G E E W U H M E H R
O F R N G T V S R M M E D O E
L D T U S I N G H E I S S U E
I I H F E U A T O W N S Y T D
D C F C A H R A L U E I D S S
H U E T L A C E L S R N A W C
P R P L E N T Y O A N G R Y A
A V O I D D I N W A R M E R R
S E E M S Y C I G A R M S D E

- | | | | |
|---------|---------------|--------------|---------|
| Agreed | Drift | Lifted | Silks |
| Alarm | Earth | Messing | Skiing |
| Angry | Exotic | Miner | Solid |
| Arctic | Favor | Noses | Spoon |
| Assume | Goose | Observations | Strong |
| Avoid | Guests | Pages | There |
| Birth | Handy | Plenty | Tides |
| Boats | Hollow | Puffs | Torches |
| Brushes | Hooked | Receive | Towns |
| Cigar | Illustrations | Scare | Types |
| Clumsy | Image | Sealed | Urged |
| Curve | Insure | Seems | Using |
| Dares | Issue | Shouts | Warmer |
| | Jewel | | |

Sulphur Springs TEXAS
Just play. Have fun. Celebrate!

DOWNTOWN ACTIVITIES

Arts & Music

September 26th - Cole Risner on Celebration Plaza - LIVE MUSIC!!

Other Activities

- September 26th - Blue Santa Motorcycle Rally @ Redneck Roadhouse
- September 26th - 3rd Annual Hopkins County "Walk Like MADD"
- October 2nd @ dark - Lights of Life Half Marathon Movie on Celebration Plaza - **Forrest Gump**
- October 3rd - Lights of Life Half Marathon
- October 8th - Sassy Classy Afternoon Tea @ City Hall
- October 10th - Battle of the Bands @ Muddy Jakes - Round 2
- October 16th - Ribeye Roundup, NETBIO - Texas Beef Council; w/ Johnny Lee and The Urban Cowboy Band on Celebration Plaza

Sunrise Market



Every Saturday Morning!!!

Fresh Agriculture Goods Each Saturday Morning from 8 am - Noon on Celebration Plaza



Join us each Saturday night for the Celebration Market. Live Music and More.

Obits



Lena Katherine Smith Formby

Funeral Services for Lena Katherine Smith Formby was held at 2:00 p.m. Sunday, September 20, 2015 at Cumby Methodist Church with Rev. Duncan Graham officiating. Interment followed at Cumby Cemetery with John Smith, Eric Smith, Dustin Smith, Ryan Smith, Gordon Ensley, and Danny Beasley serving as pallbearers. Keith Smith served as an honorary pallbearer. A visitation was held from 6:00-8:00 p.m. Saturday, September 19, 2015 at Tapp Funeral Home.

Mrs. Formby passed away Friday, September 18, 2015 at Hopkins County Memorial Hospital. She was born May 16, 1925 in Cumby to Henry and Ibra Beasley. She married Oneal Smith in Cumby on July 3, 1943; he preceded her in death in 1981. She later married Billy Paul Formby; he preceded her in death, and Phillip Payne, who also preceded her in death. Mrs. Formby was a Homemaker and member of the Cumby Methodist Church.

She is survived by: sons, Ronny Smith and wife, Judy, of Sulphur Springs, Steven Smith and wife, Carol, of Cumby; daughter, Paula Ferrell and husband, Bruce, of Sulphur Springs; grandchildren, Tammy Smith, Keith Smith, Angie Wilson, Ryan Smith, Lori McAfee, John Smith, Eric Smith, Dustin Smith, and Erin Vermillion; great-grandchildren, Abby McAfee, Savanna McAfee, Taytum Smith, Brooke McGee, Blake Chester, Haylee Chester, and Emma Vermillion; sister, Ozell Ensley; and brother, Bill Beasley.

She is also preceded in death by: step-mother, Bessie Beasley; brothers, Duane, Fred, Morris, Theodore, and R.L. Beasley; sister, Jean Duvall; and great-grandson, Jaden Chester.

Johnnie Mae Froneberger

Mrs. Johnnie Mae Froneberger, age 81, of Sulphur Springs, passed away on Tuesday, September 22, 2015, at Carriage House Manor. Arrangements are pending with West Oaks Funeral Home.

Catherine Petty

Graveside services for Catherine Petty, age 79 of Cumby will be held at 11:00 a.m. on Thursday, September 17, 2015 at Cumby Cemetery with Rev. Howard Strickland officiating. There will be no formal visitation.

Catherine passed away on Monday, September 14, 2015 at Hunt Regional Medical Center in Greenville. She was born on May 6, 1936 in Greenville, the daughter of H.E. and Austin (Girdner) Swann. She was married to Dr. Dane Petty, who preceded her in death in 2015. She was a retired teacher and had a Bachelor's degree. She was of the Methodist faith.

She is survived by her son, Greg Petty of Cumby; daughter Stefanie Petty of Cumby and sister, Mary Callan of Cumby.

She was preceded in death by one son, Brett Petty.

Memorials can be made to the Cumby Cemetery Association, P.O. Box 734, Cumby, Texas 75433.



Shelba Lynn Wall Dobbs

Funeral service for Shelba Lynn Wall Dobbs, age 32 of Ft. Hood, TX, will be conducted at 10:00 a.m. Thursday, September 17, 2015 at West Oaks Funeral Home Chapel with Rev. Al Davis officiating. Interment will follow at Rockdale Cemetery with Neil Dobbs, Raymond Wall, Gary Brown, Will Nation, Huey Sessions, and Roger Adams serving as pallbearers. Honorary Pallbearers will be Paul Kjelsberg, David Perez, Kyle Bush, and J. J. Watt, visitation will be held from 9:00 to 10:00 a.m. one hour prior to service. Shelba passed away Thursday, September 10, 2015 at Ft. Hood, TX.

Shelba was born March 31, 1983, in Norman, OK, the daughter of Wesley Wall and Paula Adams Wall. She married Derek Dobbs on September 10, 2003 in Humble, TX. He survives. She was a homemaker, graduated from Pflugerville High School, and had an Associates, Bachelor's and Master Degree from the University of Phoenix and was a member of the First United Methodist Church of Killeen.

In addition to her husband she is survived by son Matthew Dobbs of Ft. Hood, TX, a daughter Allyson Dobbs of Ft. Hood, TX, a brother Sean Gibson of San Angelo, TX, sisters Andra Arcenaux and fiancé Will Nation, of Sulphur Springs, TX, Tessa and husband Huey Sessions III of Ore City, TX, father and mother in-law, David and Abby Dobbs of San Antonio, TX, brother and sister in -law Neil Dobbs and wife Amanda of San Antonio, TX, numerous nieces, nephews, aunts, uncles, cousins, friends and pet dog named Rowdy and cat named Sissy.

She is preceded in death by grandparents, Meemaw and GrandPa Wall, Granny and Grandpa Adams, Mammaw Theda Reeves, aunts, Sunny Turner, Donna Graf and June Newcomb.

Arrangements are under the direction of West Oaks Funeral Home.

Wanda Lou Dunn

Graveside services for Wanda Lou Dunn, age 74, of Sulphur Springs will be conducted at 2:00 p.m., Friday, September 18, 2015 at Ridgeway Cemetery with Samuel Glenn officiating. There will be no formal visitation. Mrs. Dunn passed away Tuesday, September 15, 2015 at Rock Creek Health and Rehab.

Mrs. Dunn was born on September 30, 1940 in Bell City, MO, the daughter of Henry Phillip Bollinger and Nellie Francis Guffy Bollinger. She married Clyde Doyle Dunn and he survives. Mrs. Dunn was a homemaker and worked in retail. In addition to her husband she is survived by one son, Robert Dean Dunn of Waipahu, Hawaii, one sister, Ann Bea Bell of California City, CA.

She was preceded in death by her parents, brothers, Claude Lee Bollinger, Robert Glenn Bollinger and Willey Gene Bollinger, sister, Barbara Jean Bollinger.

Arrangements are under the direction of West Oaks Funeral Home.

Roy Pelton

Funeral arrangements for Roy Pelton, age 82, of Sulphur Springs are pending with Murray-Orwosky Funeral Home.

Mr. Pelton passed away Saturday, September 19, 2105 at Craig General Hospital in Vinita, Oklahoma.

Miscellaneous

Struggling with DRUGS or ALCOHOL? Addicted to PILLS? Talk to someone who cares. Call The Addiction Hope & Help line for a free assessment. 800-793-1951

AVIATION Grads work with JetBlue, Boeing, Delta and others - start here with hands on training for FAA certification. Financial aid if qualified. Call Aviation Institute of Maintenance 866-453-6204



Need some Custom Note Cards?

We can print anything that you can imagine!

Give us a call or drop by and see Pat or Joy.

903-885-3633



FLIPPIN
printing

115 Jefferson St.

Sul. Spgs.

RUSTIC & MORE FURNITURE
3740 PINE MILL (BEHIND WAL-MART) • 903-784-5624

<p>Twin, Full & Queen: \$199 King: \$219 Chest: \$199 <small>Add \$20 For Stars</small></p>	<p>King & Queen Size Quilt Sets With Matching Shams. Many Colors & Designs \$49</p>
<p>Queen: \$299 King: \$319 <small>Add \$20 For Stars</small></p>	



HELP-A-CHILD

Annual Tractor Pull and Chili Cook-off

Sulphur Springs, TX

Saturday, October 10, 2015

Parker Auction Complex ~ 4163 Hwy 19 South ~ Sulphur Springs, Texas

9:00 A.M. Antique Tractor Pull & Show

Conducted by the Lake Country Antique Tractor Association (www.LCATA.com)
No Admission Fee
Donations Accepted for our Charities

11:30 A.M. Begin Serving Bowls of Chili from Chili Cook-off

Great Prizes!
\$5 All-You-Can-Eat-Chili and Dutch Oven Cobbler
Auction to follow & Ag project show winners announced

3:00 P.M. Brisket Cook-off Judging

Brisket to be sold in concessions starting at 5:00pm

5:00 P.M. Texas Pistoleros Entertainment & Twist-It Creations - Balloon Entertainment

6:00 P.M. Hot-Rod Garden Tractor Pull

\$10 Entry Fee - tickets sold at gate (LSGTPA.com)
Gates will open at 4:00pm



Thank you to our Presenting Sponsors



Sponsored By

- Sulphur Bluff Masonic Lodge #246
- Sulphur Springs Masonic Lodge #221
- Hopkins Masonic Lodge #180
- Delta Masonic Lodge #1240



All Proceeds Benefit



For More Information, Please Call: Wade Bartley (903) 348-1878
For Brisket & Chili Cook-off Contest, Contact: Robert Cash (903) 335-3018

LOAD THE WAGON AND SADDLE UP FOR ST. JUDE TRAIL RIDE

NOVEMBER 14, 2015

Lunch (donations accepted)

Join us in helping St. Jude Children's Research Hospital fight cancer and other catastrophic diseases by participating in Saddle Up for St. Jude.

EVENT

Trail Ride, Horses, Mules and Wagons
Coggins Required

TIME

Gates Open @ 7:00 A.M. Ride Out @ 10:00 A.M.
Saddle Up @ 9:30 A.M. Lunch @ 12:00 Noon

LOCATION

Two J Ranch
993 CR 2331 • Como, Tx. 75431

CONTACT INFORMATION:

- Jean & Jim Murray
twojranch@argontech.net 903-488-3030
- Cathi & Jim Wright
mscuttinup@yahoo.com 903-348-4811
- Sandy Billodeau
sandybillodeau@hotmail.com 903-488-3311
- J.R. "Junior" Gregg 903-488-3685
- Don Meeks 903-488-3456
- Mike Mund 903-439-7299
- T.W. Little 903-850-2193
- Daniel Walker 903-438-6425
- Carole Hatch 760-250-1211
- Jo Marie Neal 903-335-1032

St. Jude Children's Research Hospital
ALSAC • Danny Thomas, Founder

Additional Event Details

NO HORSE, NO WAGON? COME ANYWAY!
WAGON SEATS AVAILABLE....OR JUST COME FOR LUNCH & AUCTION!
TRAIL RIDE MINIMUM DONATION - \$10.00

GMC SUMMER SELL DOWN

ACT NOW FOR THE BEST SELECTION!

THIS IS HUGE AND WE ARE MOVING INVENTORY FAST!

'15 GMC TERRAIN²

Starting at...

\$23,999



'15 GMC SIERRA 1500³ THE ALL NEW ELEVATION EDITION!!



\$29,620

2015 GMC SIERRA 1500 • 4x4 TEXAS EDITION

\$9,000 OFF MSRP!¹



GO ONLINE FOR A HUGE SELECTION of 2015 YUKONS!

www.SouthWestBuickGMC.com for the lowest prices you will find!!



BUICK SUMMER SELL DOWN

2015 BUICK ENCORE⁵

\$19,999

2015 BUICK VERANO⁴ \$20,999



See what a difference a dealership can make!

GMC Certified Service



SouthWest AUTO MALL



BUICK

GMC

4205 I-30 • Greenville • 800-291-2036
www.SouthWestBuickGMC.com

Pictures for illustration only. See dealer for details, all offers on in stock units only and are subject to change. Prices plus TT&L. *VOTED BEST New & Used Car & Truck Dealer in the Greenville Herald Banner's Hunt County Readers' Choice Awards 2013. 1. STOCK#FZ306647, MSRP \$45,515, SWBGMC Discount \$5751, \$1,000 - Chevy-GMC Special Package Consumer Cash. Exp. 11/02, \$1,500 - General Motors Consumer Cash Program. Exp. 11/02, \$750 - Buick GMC National Purchase Bonus Cash. Exp. 09/30 2. STOCK# F6167669, MSRP \$27,485, SWBGMC Discount \$2486, \$1,000 - General Motors Consumer Cash Program. Exp. 08/31. 3. STOCK#FZ312132, MSRP \$35,620, SWBGMC Discount \$3750, \$1,500 - General Motors Consumer Cash Program. Exp. 11/02, \$750 - Buick GMC National Purchase Bonus Cash. Exp. 09/30. 4. STOCK#F4194642, SWBGMC Discount \$1956, \$1,000 - General Motors Consumer Cash Program. Exp. 11/02, \$1,000 - Buick Conquest Private Offer. Exp. 11/02---must own a 99 or newer NON GM Vehicle. 5. STOCK#FB186730, MSRP \$24,990, SWBGMC Discount \$2250, \$1,000 - Buick Conquest Private Offer. Exp. 11/02---must own a 99 or newer NON GM Vehicle, \$750 - Buick GMC National Purchase Bonus Cash. Exp. 09/30, \$1,000 - South Central Region Buick / GMC Bonus Cash. Exp. 09/30