

# Mid-Michigan Buyers Guide

SUNDAY, NOVEMBER 20, 2016

Serving Clare, Gladwin, Gratiot, Isabella, Montcalm, & Southern Roscommon Counties

Morning Star Publishing Company powered by digitalfirst



## C & M Homes, Inc.



Modular Homes

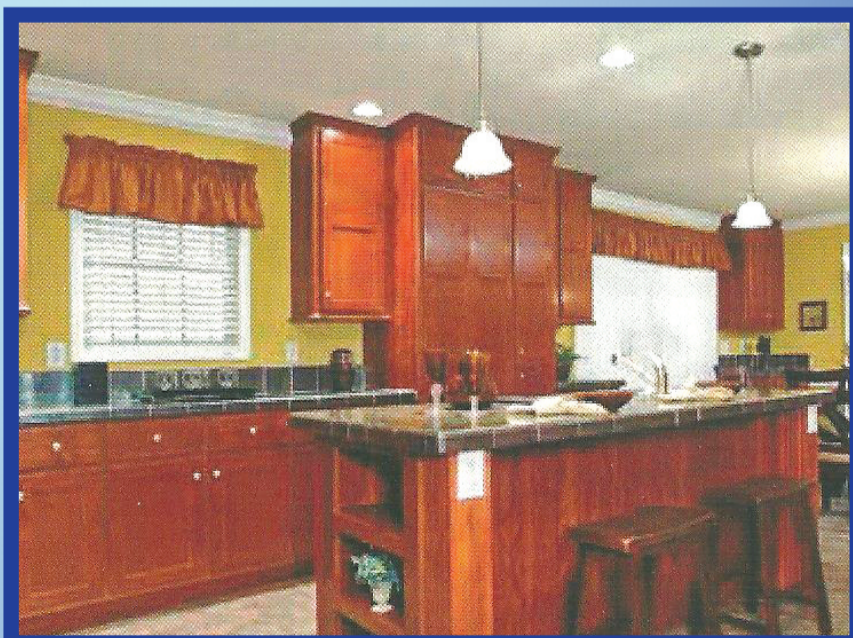
**OPEN  
7 DAYS**



### FINANCING AND TURN KEY PACKAGES AVAILABLE!

*We Beat Any Competitor's Pricing In Michigan  
Taking Orders for Spring Layaway*

## Redman Champion Home Center



*2 Locations to Serve You*

3603 North M-30 • Sanford 989-687-9461 | 241 S. Graham Rd. • Saginaw 989-781-8747

[cmhomesinc.com](http://cmhomesinc.com)

Mid Michigan's #1 Manufactured & Modular Home Dealer

# Largest Selection of Clean Used Cars in Central Michigan

**GM Certified Pre-owned Vehicles = 2 Years of Oil Changes & Tire Rotations + 12 Month or 12,000 Mile Bumper to Bumper Warranty**

USED CARS	USED SUVs	USED TRUCKS
<b>2016 BUICK LACROSSE CXL FWD</b> Champagne Silver, 19,000 Miles, V-6, Sunroof, Leather, Heated Seats, Certified... <b>\$25,900</b>	<b>2016 GMC ACADIA SLT AWD</b> Ebony Twilight, 32,000 Miles... <b>\$35,900</b>	<b>2015 GMC DOUBLE CAB SLT</b> Black 4X4 5.3 V8, 27,000 Miles, Leather... <b>\$35,900</b>
<b>2016 CHEVY IMPALA LT</b> Silver, V6, 29,000 Miles... <b>\$21,900</b>	<b>2016 CHEVY TRAVERSE FWD</b> Black, 26,000 Miles, Certified... <b>\$26,900</b>	<b>2014 GMC DOUBLE CAB ALL TERRAIN PKG</b> 41,000 Miles, White, 6.2 V8, Leather... <b>\$34,900</b>
<b>2016 CHEVROLET CRUZE LT</b> Dk. Gray, 13,000 Miles, 4cyl... <b>\$18,900</b>	<b>2016 JEEP CHEROKEE</b> White, 28,000 Miles, 4Cyl, Sunroof... <b>\$24,900</b>	<b>2014 GMC SIERRA CREW CAB 4X4 SLE</b> Bronze, Alloy, 49,000 MILES... <b>\$30,900</b>
<b>2013 BUICK LACROSSE</b> Crystal Red, 34,000 Miles, CXL, Certified... <b>\$21,900</b>	<b>2015 GMC ACADIA</b> All Wheel Drive, Crimson Red, Leather, Power Lift Gate, 48,000 Miles, Heated Seats, Remote Start... <b>\$31,900</b>	<b>2014 CHEVROLET SILVERADO DOUBLE CAB LT</b> Burgundy, 54,000 Miles... <b>\$29,900</b>
<b>2013 BUICK REGAL PREMIUM</b> Diamond White, 24,000 Miles, Loaded... <b>\$18,900</b>	<b>2014 GMC TERRAIN DENALI</b> Crystal Red, FWD, 1-owner, 28 miles, 4 Cyl... <b>\$26,500</b>	<b>2014 GMC SIERRA DOUBLE CAB 4X4</b> Burgundy, 54,000 Miles, SLE... <b>\$27,900</b>
<b>2013 BUICK LACROSSE CXL</b> 41,000 Miles, Champagne Silver... <b>\$18,900</b>	<b>2014 BUICK ENCORE FWD</b> Brilliant Blue, 52,000 Miles... <b>\$18,900</b>	<b>2014 CHEVROLET SILVERADO 1500</b> 4WD, Reg. Cab, Shortbox, 30,000 Miles, White... <b>\$26,900</b>
<b>2013 BUICK LACROSSE CXL</b> Storm Gray, Leather, Heated Seats, 4 Cyl. up to 40 MPG, 39,000 Miles... <b>\$17,900</b>	<b>2013 CHEVY TAHOE LT</b> Burgundy/Tan leather, 55,000 Miles, Sunroof... <b>\$35,900</b>	<b>2013 CHEVROLET SILVERADO CREW CAB 4X4 LTZ</b> Mocha Steel, 29,000 Miles, Rear Camera/Remote Start... <b>\$32,900</b>
<b>2013 BUICK REGAL</b> Blue, 49,000 Miles, Leather, Locally Owned... <b>\$16,900</b>	<b>2013 BUICK ENCORE AWD</b> 43,000 Miles, Silver... <b>\$19,900</b>	<b>2013 GMC SIERRA CREW CAB ALL TERRAIN</b> Black w/ Leather, 5.3 V8, 62,000 Miles... <b>\$29,900</b>
<b>2013 CHEVY IMPALA LT</b> Red, 31,000 Miles... <b>\$16,900</b>	<b>2013 GMC TERRAIN</b> Front Wheel Drive, SLT, Black, 47,000 Miles, Leather... <b>\$19,900</b>	<b>2013 CHEVROLET SILVERADO EXT. CAB 4X4</b> Grey, 5.3 V8, Trailer Pkg, 34,000 Miles... <b>\$25,900</b>
<b>2013 BUICK LACROSSE</b> Champagne Silver, 72,000 Miles, Leather... <b>\$15,900</b>	<b>2013 GMC TERRAIN FWD SLE</b> 31,000 Miles, White, 4 Cyl... <b>\$19,900</b>	<b>2012 GMC SIERRA EXT. CAB SLT</b> Black, 28,000 Miles, 5.3 V8, 1-owner... <b>\$29,900</b>
<b>2011 BUICK REGAL CXL</b> Majestic Blue, 69,000 Miles... <b>\$14,900</b>	<b>2013 CHEVY EQUINOX FWD</b> Crystal Red, 24,000 Miles... <b>\$19,900</b>	<b>2012 GMC SIERRA EXT. CAB SLE 4X4</b> 5.3 V8, Mocha Steel, 73,000 Miles... <b>\$23,900</b>
<b>2010 BUICK LUCERNE CXS</b> White Diamond, V8, 57,000 Miles... <b>\$15,900</b>	<b>2013 GMC TERRAIN SLE FWD</b> 4 Cyl, Silver, 72,000 Miles... <b>\$16,900</b>	<b>2010 GMC CANYON EXT. CAB SLE 4X4</b> Silver, 31,000 Miles w/ plow... <b>\$18,900</b>
<b>2010 PT CRUISER</b> Burgundy, 90,000 Miles, Locally Owned, 4 Cyl... <b>\$7,900</b>	<b>2012 GMC TERRAIN FWD SLE</b> Black, 59,000 Miles... <b>\$16,900</b>	<b>2010 GMC EXT CAB SLE 4X4</b> White, 5.3 V8, 134,000 Miles... <b>\$16,900</b>
<b>2009 CHEVROLET MALIBU LT</b> Burgundy, 115,000 Miles... <b>\$8,900</b>	<b>2012 CHEVROLET EQUINOX LT FWD</b> 102,000 Miles, Goldmist... <b>\$13,900</b>	<b>2009 GMC SIERRA EXT. CAB</b> V8, White, 68,000 Miles, 2 Wheel... <b>\$15,900</b>
<b>2007 CHEVROLET HHR</b> Black, 77,000 Miles, 4 Cyl, 1-Owner... <b>\$9,900</b>	<b>2011 CHEVY TAHOE LT</b> Leather, 133,000 Miles, Black... <b>\$18,900</b>	<b>2007 GMC SIERRA CREW CAB DENALI</b> Black, Loaded, 184,000 Miles... <b>\$16,900</b>
<b>2007 BUICK LUCERNE CXL</b> Dk. Blue, 3800 V6, 127,000 Miles, Leather... <b>\$8,900</b>	<b>2011 GMC TERRAIN SLT AWD</b> 69,000 Miles, 6 Cyl... <b>\$18,900</b>	<b>2007 CHEVROLET SILVERADO CREW CAB 4X4</b> Desert Brown, 141,000 Miles... <b>\$15,900</b>
<b>2007 CHEVROLET HHR LT</b> Blue, 125,000 Miles... <b>\$7,900</b>	<b>2011 GMC TERRAIN FWD SEL</b> Goldmist, 4cyl, 32,000 Miles... <b>\$16,900</b>	<b>2007 GMC SIERRA CREW CAB SLE</b> 5.3 V8, 170,000 Miles, Silver... <b>\$15,900</b>
<b>2006 CADILLAC DTS</b> Silver, 147,000 miles, locally owned... <b>\$7,900</b>	<b>2011 GMC TERRAIN SLE FWD</b> Steel Blue, 4 Cyl... <b>\$14,900</b>	<b>2007 CHEVROLET EXT CAB 4X4</b> White, 5.3 V8, 112,000 miles, Very Clean... <b>\$14,900</b>
<b>2001 CADILLAC DEVILLE DHS</b> Silver, 91,000 Miles... <b>\$6,900</b>	<b>2011 GMC ACADIA AWD</b> Med Brown, 158,000 miles, Locally Owned... <b>\$13,900</b>	<b>2007 GMC SIERRA EXT. CAB SLE 4X4</b> 5.3 V8, New Tires, Silverbirch... <b>\$14,900</b>
	<b>2009 BUICK ENCLAVE CXL FWD</b> 92,000 Miles, Silver... <b>\$16,900</b>	
	<b>2007 TAHOE LT 4WD</b> Amber Bronze, Leather, Sunroof, 168,000 Miles, 1-Owner... <b>\$16,900</b>	
	<b>2005 JEEP WRANGLER</b> Brown, 196,000 Miles, Stick Straight 6... <b>\$7,500</b>	

## BENCHLEY BROS., INC.

1 Mile East of Doherty • US-10, Clare • Sales (989) 386-9900

For more info log on to: [www.benchleybros.com](http://www.benchleybros.com)

Parts & Service (989) 386-3197

HOURS  
8-6 Mon-Fri  
9-2 Sat



# Steve's Country Market

989-539-3110 3170 North Clare Ave., Harrison 44 Feet of Old Fashioned Meat Counter with Good Old Fashioned Service

Hours: Sun. - Mon. 8-8 Bridge Card & Wic Accepted

Sale Dates: November 21 - November 27, 2016

Top Quality Meats At Rock Bottom Prices!

100% Satisfaction Guaranteed

Michigan Lottery and ATM Machine [stevescountrymarket.com](http://stevescountrymarket.com)

<b>Fresh Meat, Seafood &amp; Deli Items</b>	<b>GROUND CHUCK FAMILY PACK</b> 5 LBS. OR MORE <b>\$2.69 LB.</b>	<b>BONELESS CHICKEN BREAST</b> <b>\$1.69 LB.</b>	<b>FRESH GROUND ROUND</b> <b>\$3.99 LB.</b>	<b>USDA CHOICE T BONE STEAKS</b> <b>\$5.99 LB.</b>	<b>WHOLE BONELESS PORK LOINS</b> <b>\$1.79 LB.</b>		
	<b>PLATTER BACON</b> <b>\$3.99 LB.</b>	<b>AMISH VALLEY FRESH TURKEYS</b> <b>\$1.69 LB.</b>	<b>DEARBORN SPIRAL HAMS</b> <b>\$3.79 LB.</b>	<b>ORDER YOUR TURKEY OR HAM TODAY</b>			
	<b>POLLOCK FILLETS</b> 10 LB. BOX <b>\$15.99 EA.</b>	<b>WHOLEY BRAND TILAPIA FILLETS</b> <b>\$2.99 LB.</b>	<b>COOKED SHRIMP</b> 41/50 CT. 1 LB BAG <b>\$7.99 EA.</b>			<b>COD LOINS</b> <b>\$5.99 LB.</b>	<b>ECKRICH HARD SALAMI</b> <b>\$4.49 LB.</b>

### Fresh Produce

### Fresh Dairy And Frozen

### Grocery

<b>MICHIGAN RUSSET POTATOES</b> 10 LB. BAG <b>\$2.99 EA.</b>	<b>PRAIRIE FARMS SOUR CREAM OR DIPS</b> 16 OZ. <b>2/\$3.00</b>	<b>NABISCO SNACK CRACKERS</b> 7.5-10 OZ. <b>2/\$5.00</b>	<b>AUNT MILLIE'S HOMESTYLE BREAD</b> 24 OZ. <b>BUY 1 GET 1 FREE</b>
<b>MICHIGAN YELLOW ONIONS</b> 3 LB. BAG <b>99¢ EA.</b>	<b>YODER'S SHREDDED OR BAR CHEESE</b> 8 OZ. <b>2/\$4.00</b>	<b>GENERAL MILLS CHEX CEREAL</b> 12-14 OZ. <b>2/\$5.00</b>	<b>AUNT MILLIE'S DINNER ROLLS</b> 12 CT. <b>BUY 1 GET 1 FREE</b>
<b>CALIFORNIA NAVAL ORANGES</b> 4 LB. BAG <b>2/\$6.00</b>	<b>IGA FROZEN VEGETABLES</b> 16 OZ. <b>99¢ EA.</b>	<b>TOSTITOS TORTILLA CHIPS</b> 9-10 OZ. <b>2/\$6.00</b>	<b>COKE PLUS DEPOSIT</b> 12 PK. CANS <b>3/\$12.00</b>
<b>BABY CARROTS</b> 1 LB. <b>2/\$3.00</b>	<b>COLE'S GARLIC BREAD</b> 10.5-16 OZ. <b>2/\$4.00</b>	<b>LAY'S POTATO CHIPS</b> 9.5-10 OZ. <b>BUY 1 GET 1 FREE</b>	<b>BUD &amp; BUD LIGHT</b> 15 PK. CANS PLUS DEPOSIT <b>\$9.99 EA.</b>
<b>BANANAS</b> <b>49¢ LB.</b>	<b>PRAIRIE FARMS ICE CREAM</b> 1/2 GALLON <b>\$2.99 EA.</b>		

While supplies last. Not responsible for printing errors.

# BLACK FRIDAY SAVINGS HAPPENING NOW



Closed Thanksgiving Day 11/24

<p><b>2008 CHEVROLET AVEO AVE05 LS</b> 114,284 MILES 608</p> <p><b>• \$59/MO</b> \$3,900</p>	<p><b>2003 GMC YUKON XL 1500 4 DR</b> 187,911 MILES 603</p> <p><b>• \$59/MO</b> \$3,900</p>	<p><b>2003 GMC ENVOY SLE 4 DR</b> 126,693 MILES 600</p> <p><b>• \$83/MO</b> \$5,500</p>	<p><b>2006 FORD FUSION V6 SE</b> 81,690 MILES 644</p> <p><b>• \$101/MO</b> \$6,650</p>	<p><b>2005 MERCURY GRAND MARQUIS GS 4 DR</b> 75,027 MILES 628</p> <p><b>• \$103/MO</b> \$6,800</p>
<p><b>1999 GMC SIERRA 2500 SLE 3 DR</b> 184,544 MILES 636</p> <p><b>• \$106/MO</b> \$5,900</p>	<p><b>2009 DODGE GRAND CARAVAN SXT</b> 158,663 MILES 630</p> <p><b>• \$106/MO</b> \$5,900</p>	<p><b>2003 CHEVROLET AVALANCHE 4 DR</b> 232,948 MILES 598</p> <p><b>• \$114/MO</b> \$7,500</p>	<p><b>2008 BUICK LACROSSE CXL 4 DR</b> 129,727 MILES 610</p> <p><b>• \$114/MO</b> \$7,500</p>	<p><b>2007 CHEVROLET SILVERADO 1500 LT 4 DR</b> 174,623 MILES 596</p> <p><b>• \$114/MO</b> \$14,800</p>
<p><b>2007 MERCURY MONTEGO BASE</b> 134,650 MILES 621</p> <p><b>• \$118/MO</b> \$6,600</p>	<p><b>2008 CHEVROLET TRAILBLAZER LT 4 DR</b> 171,658 MILES 658</p> <p><b>• \$124/MO</b> \$6,900</p>	<p><b>2005 MAZDA TRIBUTE S 4 DR</b> 158,390 MILES 647</p> <p><b>• \$124/MO</b> \$6,900</p>	<p><b>2010 CHEVROLET MALIBU LTZ 4 DR</b> 136,085 MILES 661</p> <p><b>• \$129/MO</b> \$8,500</p>	<p><b>2009 KIA SPORTAGE LX</b> 93,321 MILES 539</p> <p><b>• \$130/MO</b> \$8,550</p>
<p><b>2009 CHEVROLET IMPALA LT</b> 119,251 MILES 638</p> <p><b>• \$134/MO</b> \$7,500</p>	<p><b>2010 FORD ESCAPE XLT 4 DR</b> 126,734 MILES 615</p> <p><b>• \$135/MO</b> \$8,900</p>	<p><b>2004 MINI COOPER BASE</b> 51,048 MILES 645</p> <p><b>• \$140/MO</b> \$7,800</p>	<p><b>2015 FORD FIESTA SE 5 DR</b> 41,297 MILES 676</p> <p><b>• \$150/MO</b> \$9,900</p>	<p><b>2013 CHEVROLET EQUINOX LS 4 DR</b> 157,466 MILES 597</p> <p><b>• \$150/MO</b> \$9,900</p>
<p><b>2009 CHEVROLET COBALT LT</b> 59,556 MILES 640</p> <p><b>• \$158/MO</b> \$8,800</p>	<p><b>2010 DODGE JOURNEY SXT 4 DR</b> 138,136 MILES 644</p> <p><b>• \$158/MO</b> \$8,800</p>	<p><b>2012 CHEVROLET MALIBU LT</b> 136,412 MILES 213047</p> <p><b>• \$160/MO</b> \$8,900</p>	<p><b>2013 CHRYSLER 200 TOURING</b> 54,733 MILES 612</p> <p><b>• \$164/MO</b> \$10,800</p>	<p><b>2012 FORD FOCUS SEL 5 DR</b> 71,509 MILES 654</p> <p><b>• \$174/MO</b> \$9,700</p>
<p><b>2012 VOLKSWAGEN JETTA SEL PZEV 4 DR</b> 71,456 MILES 627</p> <p><b>• \$176/MO</b> \$11,600</p>	<p><b>2010 MERCURY MILAN I-4</b> 82,336 MILES 653</p> <p><b>• \$176/MO</b> \$9,800</p>	<p><b>2009 HONDA ACCORD EX-L</b> 134,825 MILES 650</p> <p><b>• \$176/MO</b> \$9,800</p>	<p><b>2006 DODGE RAM PICKUP 1500 SLT 4 DR</b> 128,111 MILES 689</p> <p><b>• \$181/MO</b> \$11,900</p>	<p><b>2015 NISSAN ALTIMA S 4 DR</b> 41,493 MILES 553</p> <p><b>• \$191/MO</b> \$12,550</p>
<p><b>2015 VOLKSWAGEN BEETLE 1.8T CLASSIC PZEV</b> 46,703 MILES 579</p> <p><b>• \$193/MO</b> \$12,700</p>	<p><b>2008 CHRYSLER TOWN &amp; COUNTRY TOURING</b> 97,916 MILES 646</p> <p><b>• \$194/MO</b> \$10,800</p>	<p><b>2013 CHEVROLET CRUZE LS AUTO 4 DR</b> 42,191 MILES 626</p> <p><b>• \$194/MO</b> \$10,800</p>	<p><b>2012 DODGE JOURNEY SXT 4 DR</b> 53,084 MILES 609</p> <p><b>• \$196/MO</b> \$12,900</p>	<p><b>2009 FORD FLEX SEL 4 DR</b> 86,710 MILES 629</p> <p><b>• \$210/MO</b> \$13,800</p>
<p><b>2014 FORD TAURUS SEL 4 DR</b> 49,780 MILES 575</p> <p><b>• \$211/MO</b> \$13,900</p>	<p><b>2013 FORD EDGE LIMITED 4 DR</b> 225,516 MILES 620</p> <p><b>• \$211/MO</b> \$13,900</p>	<p><b>2007 CHEVROLET SILVERADO 1500 LT 4 DR</b> 174,623 MILES 596</p> <p><b>• \$225/MO</b> \$14,800</p>	<p><b>2007 GMC YUKON SLT 4 DR</b> 156,430 MILES 590</p> <p><b>• \$225/MO</b> \$14,800</p>	<p><b>2013 FORD ESCAPE SE 4 DR</b> 46,088 MILES 038033</p> <p><b>• \$238/MO</b> \$15,650</p>
<p><b>2011 FORD RANGER SPORT 4 DR</b> 53,114 MILES 571</p> <p><b>• \$243/MO</b> \$13,550</p>	<p><b>2007 CHEVROLET TAHOE LS 4 DR</b> 143,534 MILES 657</p> <p><b>• \$251/MO</b> \$13,995</p>	<p><b>2007 GMC SIERRA 1500 CLASSIC SLE 4 DR</b> 57,978 MILES 587</p> <p><b>• \$257/MO</b> \$16,900</p>	<p><b>2009 DODGE RAM PICKUP 1500 SLT 4 DR</b> 92,746 MILES 584</p> <p><b>• \$269/MO</b> \$17,700</p>	<p><b>2011 BUICK ENCLAVE CXL-2</b> 76,558 MILES 622</p> <p><b>• \$287/MO</b> \$18,900</p>
<p><b>2013 FORD F-150 STX 2 DR</b> 28,604 MILES 565</p> <p><b>• \$296/MO</b> \$19,500</p>	<p><b>2013 GMC TERRAIN SLE-2 4 DR</b> 28,219 MILES 625</p> <p><b>• \$303/MO</b> \$19,920</p>	<p><b>2011 CHEVROLET SUBURBAN LT 1500 4 DR</b> 129,769 MILES 551</p> <p><b>• \$309/MO</b> \$20,350</p>	<p><b>2012 CHRYSLER TOWN &amp; COUNTRY TOURING-L</b> 53,157 MILES 649</p> <p><b>• \$319/MO</b> \$17,800</p>	<p><b>2014 CHEVROLET SILVERADO 1500 LT 4 DR</b> 42,408 MILES 560</p> <p><b>• \$377/MO</b> \$24,550</p>
<p><b>2012 CHEVROLET SUBURBAN LT 1500 4 DR</b> 123,058 MILES 631</p> <p><b>• \$403/MO</b> \$22,500</p>	<p><b>2012 JEEP WRANGLER SPORT 2 DR</b> 31,148 MILES 652</p> <p><b>• \$409/MO</b> \$22,800</p>	<p><b>2013 DODGE DURANGO CREW 4 DR</b> 93,525 MILES 673379</p> <p><b>• \$409/MO</b> \$22,800</p>	<p><b>2014 FORD F-150 XLT 4 DR</b> 23,349 MILES 659</p> <p><b>• \$516/MO</b> \$28,800</p>	<p><b>2015 LINCOLN MKC BASE</b> 19,714 MILES 655</p> <p><b>• \$516/MO</b> \$28,800</p>

PRICE & PAYMENT ARE BASED ON APPROVED CREDIT OF \$0 DOWN AND 2.9% FOR 60 MONTHS. TAX, TITLE AND DOC NOT INCLUDED. DOWN PAYMENT OR TRADE EQUITY WILL LOWER PAYMENT. ALL VEHICLES ARE SUBJECT TO PRIOR SALE. SEE DEALER FOR DETAILS.



2662 N. Eastman Road Midland, MI 48642

Call Us: (989) 837-2886

www.wholesaleautoco.com



**!!!MONTHLY SALE!!!**  
**Saturday, November 26, 2016**  
 (Last Saturday of the month)  
 Dec., Jan., Feb., Mar.  
**Location:**  
**Clare County Produce Auction Building**  
 6820 E. Colonville Rd., Clare, MI 48617  
 (989) 802-1766 • (989) 386-6876  
**Time: 12:00 NOON**  
 Accepting Consignments  
 Firewood, Hay (big & small bales),  
 Surplus Building Materials  
**Auctioneer: Andy Hostetler**  
*We have the right to turn down junk*

**GET MORE BANG FOR YOUR BUCKS**  
**Quality New & Pre-Owned**  
 • RIFLES • SHOTGUNS • Pyrodex  
 • SCOPES • AMMO • Muzzle Loading Supplies  
  
**FREE**  
 Bore-site With Purchase  
 Of Rifle Or Scope  
**ECONOMICAL PRE-OWNED ITEMS SAVE EXTRA CASH**  
**GLADWIN TRADE & SALES**  
 1-989-426-6811 • 1739 N. State St. (N-M18) • Gladwin

**Grave Blankets \$38**  
**VanderSys Tree Farm**  
 Enjoy the Tradition of a  
**Fresh-Cut Christmas Tree**  
 Fraser Fir \* Balsam Fir \* Pine \* Spruce  
 We continue to have fresh-cut trees drilled, shaken, and baled by our friendly staff at the same location, 913 E. Pickard, in front of Meijer. Stands, wreaths, roping and grave blankets available also.  
**37th Year in Mt. Pleasant**  
**OPEN 7 DAYS A WEEK!**  
**OPEN 9AM TO 8PM**  
**989-330-3781**   
 Full Range of Sizes and Prices for Everyone!  
**FREE Loading, Wrapping & Shaking**  
 We are pleased to announce that we are back at the VanderSys tree farm and will be open for Christmas season. This year we will have choose and cut and pre-cut trees, wreaths, garland and grave blankets. We will also have everything available at the red and white tent in front of Meijer. Watch for us!  
 Steve, Laura, Jacob, Stephanie, Hanna, and Jeb  
 vandersysreefarm.com  
 1350 N. Coldwater Rd., Weidman

**Maple Manor**  
 130 W. Maple St, Gladwin, MI 48624  
**Apartments for Seniors**  
 • Independent Living • Cable TV Available  
 • Non Smoking • Security Camera  
 • One Bedroom Apartments • Intercom System  
 • Rent Based on Income • Laundry Facilities  
 • Utilities Included in Rent • Small Pets Welcome  
 • Stove and Refrigerator Furnished • Prompt Professional Staff  
 • Meal Program on Site  
 • Organized Activities  
 • County Transportation  
 Call us at 989-426-5721 or visit us at;  
 www.gladwinchc.net

Another Happy Customer...   
**CLEAR VISION WINDOWS SIDING & ROOFING**  
 "Clearly the Best Choice"  
 Toll Free (888) 834-0542  
**Free Estimates**   
**FALL SAVINGS EVENT**  
 Hurry Offers Expire 12.3.16  
 (989) 633-0000  
**18 MONTHS SAME AS CASH\***  
 \*AVAILABLE  
**Siding • Windows**  
**\$7500 TRADE IN**  
 FOR EACH OF YOUR OLD WINDOWS  
 3 windows - \$225 • 6 windows - \$450 • 9 windows - \$675  
 Expire on: 12.3.16

# Lambert's Meat Market and Bakery

Taste the difference "FRESH" makes!

624 E. Cedar Ave., Gladwin (next to Family Dollar) **989-246-1850**



Hours: Mon-Fri 7-7; Sat 7-6; Sun 8-4 • Sales Dates Monday, November 21 through Saturday, November 26, 2016  
We will be closed Thanksgiving Day

**DEER PROCESSING STARTING AT \$75**



**PRE-ORDER YOUR AMISH TURKEYS \$1.99 LB (limited supplies)**

**10LB OR MORE SALE!**

**USDA Choice Denver Steaks or English Roast**



**\$2.99** lb.

**Boneless Skinless Chicken Breast**



**\$1.49** lb.

**Pork Steak, Strips, Shoulder Roast or Country Style Sausage**



**\$1.49** lb.

**Family Pack Ground Beef Hamburger 73% lean**



**\$2.19** lb.

**Family Pack Ground Beef from Chuck**



**\$2.49** lb.

**Boneless Pork Loins**



**\$1.69** lb.

**CUT FREE!**

**USDA NR Whole New York Strip Loins**



**\$3.29** lb.

**CUT FREE!**

**Lambert's Old World Fresh Polish Sausage**



**\$3.99** lb.

**Argentine Red Shrimp 16-20ct**



**\$7.99** 1 lb.

**Dairy Fresh 8oz Shredded or Bar Cheese**



**\$1.99** ea.

**Lambert's Own Spinach Dip or Chili Con Queso Dip**



**\$4.99** lb.

**FROM OUR BAKERY**

**9" Traverse City Cherry or Traverse City Blueberry Crumb Pies**



**\$10.99** ea.

**Swirl Rye Bread**



**\$2.99** ea.

**Round Pumpernickle Bread**



**\$2.99** ea.

**Potato Rolls**



**\$2.99** dz.

**Stop in and check out our New Deli Salad and Deli Meat Selections!**

No Rainchecks • Not Responsible for Printing Errors

## CALL NOW! BUY FACTORY DIRECT!

Houseful of Windows Only

**\$1995**

Complete With Installation\*

Plus Buy Our Premium Windows & We'll Add

**FREE Low-E Glass &**

**FREE Marble Sills!!**

**We Will NOT Be Undersold!**

That's Why Over 39,000 Homeowners Have Chosen Paramount



Bay & Bow Windows



Payments as low as \$75 a month.

\*Based on 7 double hung or slider windows up to 1200 sq. inches each. Includes basic installation.



**SIDING & ROOFING**

**50% OFF**

**Any Roofing & Siding Installation Labor**

**FREE Gutters with Roofing + Siding That's A \$1600 Value**

Factory Direct Windows

**We Repair HAIL DAMAGE**



**METAL ROOFS**

**WE OFFER NO INTEREST FINANCING OR NO PAYMENT UNTIL 2019**

**Don't Buy Until We Quote You We Will Beat Their Price On Any Comparable Product!**

Celebrating 27 Years of Business Since 1990  
**Paramount**  
HOME IMPROVEMENTS, LLC  
Statewide Coverage  
Windows • Siding • Sunrooms • Roofing  
License #2101109016

Call Us Today For Your Free Estimate!

**1-800-288-4385**



Or Visit Our Website At [www.paramountimprovements.com](http://www.paramountimprovements.com)



**CUSTOM DESIGNS**  
Buy Direct & Save *Indoor Showroom*

Also Available  
Cremation Vaults and Urns

**Brewer Bouchey Monument Co.**  
Family Owned Since 1895  
211 N. Mill St. • Downtown St. Louis  
989-681-3300 • Toll Free 888-362-2920  
Hours: Mon.-Fri. 9-5; Sat. By Appt.  
www.brewer-bouchey.com

**Don't Wreck Your Life!**

**Goetze Dairy Farm**  
Complete Herd Dispersal Auction  
**90 Days**  
Head Sell

Thursday December 1, 2016 9AM  
On The Farm Carsonville, MI  
Milking Cows, Dry Cows & Springers

Friday December 2, 2016 11AM  
UPI Cass City Barn Cass City, MI  
Shortbred, Open Heifers & Calves

**Holstein, Xbreds, & Brown Swiss**

\*480 Milking Cows Avg 60# 4.2 3.4  
\*SCC-Mid 2's \*Parlor / Freestall  
\*150 Cows & Hfrs Fresh Last 90 Days  
\*120 Dry Cows & Springers  
\*100 Shortbred Heifers  
\*230 Open Heifers & Calves  
\*Vaccinated & Regular Herd Health  
\*Catalog w/ individual Milk & SCC Data

Call or Watch for More Information  
Directions, Videos & Catalog at  
www.uproducers.com/dairy-sales/  
Trucking & Lunch Available

Owners:  
**Goetze Dairy Farm**  
1180 Goetze Rd Carsonville, MI  
Gert van der Ham 810-710-6009

Sale Managers & Auctioneers  
**United Producers, Inc**  
Dairy Cattle Marketing Services

Paul Warner 614-296-5038  
Chad Kreeger 517-294-3484

**RE/MAX**  
River Haven  
Each Office Independently Owned and Operated  
777 W. Cedar Ave • Gladwin, MI 48624  
Lowe4realestate@gmail.com

**Chris Lowes**  
Associate Broker®  
Cell: 989-741-3989  
Call or Text

**2351 DEER LAKE - \$97,000**  
Waterfront! 3 Acres on Private Lake. 2 BR Home. 2 sheds. Must See!!

**107 LAKEVIEW - \$79,000**  
Adorable Cottage on Smallwood Lake. Paved Drive. 2+Car Garage.  
Low maintenance.

**6804 SWALLOW - \$64,900**  
Dodge Lake Waterfront lot + 2 BR cabin across the street. Nice Lots.

**4964 WOODSDALE - \$24,900**  
Lake Access! 2 BR Cabin. Arnold Lake beach & boat launch.

**1748 BARBARA - \$24,900**  
2 BR Cabin w/Garage on 1/2 Acre at Dead End of Road. Full Bath.

www.Lowe4realestate.com

**The quickest way to become extinct is to NOT advertise!**

Call today & let us help keep you off the Endangered List

**REAL ESTATE AUCTION**  
41 ACRES HUNTING PROPERTY W/HOME • GRATIOT COUNTY

Undersigned, Todd Mills Estate will offer for sale the following real estate at public auction on site at 937 West County Line Rd. SUMNER, MICHIGAN. Or 12 miles west of Ithaca on Washington Rd. to West County Line Rd. Turn south 1 mile to the property. OR 12 miles east of Stanton, Mi. on Ithaca/Stanton Rd. to West County Line Rd., turn south to property. Gratiot County.

**THURSDAY, DECEMBER 8 \*12:00 NOON**  
(SALE HELD ON SITE)

\*41.4 Acres wooded property  
\*Nearly all woods.  
\*Mostly big oak & hardwoods, some thickets  
\*Open power-line runs along edge of woods  
\*Surrounding woods and agricultural fields  
\*Property includes 1997 Man. Home w/1,296 sq.ft.  
\*2 bedrooms, 1 full bathroom  
\*Full finished basement w/2 bedrooms & bath w/walk out patio doors  
\*30x60 metal pole barn w/ cement, power & OH doors  
\*Excellent Hunting property  
\*Notorious "Big Buck" Country  
\*see www.PavlikLLC.com for aerials, maps, photos & all information

**INSPECTIONS:**  
Home open & Auctioneer on site on Wednesday, November 23 & 30, \*11am-1pm\* each day. Feel free to inspect the property at your convenience!

**Todd Mills Estate**  
CALL AUCTION COMPANY FOR MORE INFORMATION 989-463-4903

**PAVLIK AUCTION SERVICE**  
**JOHN PAVLIK & JOHN C. PAVLIK, SR.**  
AUCTIONEERS/REALTORS  
Pavlik Auction & Real Estate, LLC., Alma, MI 48801  
www.pavlikLLC.com

**SHOP MOM-&-POP!**

Support locally owned businesses.

**PUHAR ESTATE AUCTION**

IN ORDER TO SETTLE THE AL PUHAR ESTATE, THE FOLLOWING WILL SELL AT PUBLIC AUCTION. LOCATED: 8 MILES NORTH & WEST OF GLADWIN ON M-18 TO CHAPPLE DAM RD., THEN NORTH 4 MILES. OR 1 MILE WEST OF GLADWIN ON M-61 TO CHAPPLE DAM RD., THEN NORTH 10 MILES. OR FROM M-30 & SUGAR RIVER RD., GO WEST 8 MILES ON SUGAR RIVER RD. (SALE IS ON THE CORNER OF CHAPPLE DAM & SUGAR RIVER RD.)

Gladwin, MI

**Saturday, November 26, 2016 • 11:00 A.M.**

**RIDING GARDEN TRACTOR SHOP TOOLS & MISC. ITEMS:** CASE INGERSOLL 222 RIDING GARDEN TRACTOR W/ 44" MOWER DECK • (2) PULL TYPE DUMP CARTS • CRAFTSMAN 9 DRAWER ROLL AROUND TOOL CABINET W/ 10 DRAWER TOOL CHEST LOADED W/ TOOLS • BELSAW #9103 FLOOR MOD. WOOD PLANER • GENERATOR W/ WISCONSIN MOTOR • LINCOLN 225 AMP WELDER • COMPLETE RIDGID PIPE THREADING SET • ROCKWELL 14" BAND SAW • CRAFTSMAN 15 1/2" DRILL PRESS • CRAFTSMAN 10" RADIAL ARM SAW • DELTA DISC SANDER • CRAFTSMAN 10" TABLE SAW • CRAFTSMAN 12" WOOD LATHE MTD. ON A TABLE • LATHE TURNING TOOLS • BLACKHAWK STAND BEHIND HYD. JACK • CRAFTSMAN 3 H.P. AIR COMPRESSOR W/ 20 GAL. TANK • DAVID WHITE TRANSIT W/ TRIPOD & STICK • ROCKWELL JOINTER PLANER • SEVERAL ROUTERS • 4 1/2" BELT SANDER W/ DISC SANDER • CRAFTSMAN PEDESTAL GRINDER • 1 TON CHAIN FALL • (2) 1 TON RATCHET HOISTS • TOOL BOXES W/ TOOLS • GEAR PULLERS • PORTA POWER • 100 LB. ANVIL • BENCH VISES • CRAFTSMAN SOCKET SETS • SEVERAL ASST. HAND & POWER TOOLS TO INCLUDE DRILLS, SANDERS, AIR TOOLS & LOTS OF HAND TOOLS • DREMEL FLEX SHAFT GRINDER • SECCO FRAMING NAILER • SEVERAL ASST. BAR CLAMPS • CRAFTSMAN GRINDER • SEVERAL CRAVING TOOLS & SETS • H.D. WELDING LEADS • H.D. ACETYLENE CART • NUMEROUS ASST. HARDWARE • FIBERGLASS EXT. LADDER • ALUM. EXT. LADDER • TILT BED SNOWMOBILE TRAILER • HONDA 175 MOTORCYCLE • 12V YARD SPRAYER • DR WALK BE-HIND WEED TRIMMER • HUSQUARNA STRAIGHT SHAFT WEED WHACKER • H.D. PIPE DRIVER • SALAMANDER HEATER • PROPANE TURKEY FRYER • WOOD BURNER

**FARM WAGON LOADS OF ITEMS FROM THE BARN • HOUSEHOLD FURNISHINGS ANTIQUES & COLLECTIBLES:** OAK DINING ROOM SUITE W/ 1 LEAF & 4 PRESSED BACK CHAIRS • 3 PC. QUEEN SIZE MISSION STYLE BEDROOM SUITE TO INCLUDE: QUEEN BED, 8 DRAWER DRESSER & 6 DRAWER CHEST DRAWERS • KENMORE WASHER & DRYER • LOVESEAT W/ END RECLINER • LAZY BOY CHAIR • OAK END TABLES • OAK ENTERTAINMENT CENTER • LAMP STANDS • COLLECTIBLES TO INCLUDE: FISH MOUNTS • DEER ANTLERS • CEDAR CHEST • (4) WATER FOWL PRINTS BY DAVID MASS • CANOE SHELF • JIM BEAM DECANTERS • BEER ADV. SIGN • 10 LB. HANGING COUNTRY STORE SCALES • DINNER BELL • VINTAGE COLEMAN LANTERNS & COOLERS • WOOD BLOCK PLANES • DRAW SHAVE • SPOKE SHAVES • TOBOGGAN • RUNNER SLED • THIS IS A PARTIAL LISTING! AUCTIONEERS NOTE: PLAN TO ATTEND THIS GOOD ESTATE AUCTION. YOUR ATTENDANCE AT THE PUHAR ESTATE SALE IS APPRECIATED. TERMS OF SALE: CASH, CHECK OR CREDIT CARDS ACCEPTED.

TO VIEW A COMPLETE LISTING WITH PHOTO'S VISIT JOHNPECKAUCTIONS.COM

**The Al Puhar Estate**  
5499 N. Chapple Dam Rd., Gladwin, MI  
**JOHN PECK AUCTIONS LLC**  
Gladwin, MI (989) 426-8061

**Fall Clearance on 2016 Cub Cadet Lawn Tractors**  
Limited Quantity Left

**24, 36, or 48 MONTHS NO INTEREST**

**Cub Cadet**  
YOU CAN'T GET ANY BETTER

Check out Our Snow Blowers

We Are Now a Husqvarna Dealer

**Service. Knowledge. Selection. Financing. Delivery.**

**Check Us Out!**  
**GRATIOT OUTDOOR EQUIPMENT**  
Commercial-Industrial-Residential  
"We Service All Makes of Outdoor Equipment"  
On M-46 in Breckenridge • **842-3844**

Open M-F 8 a.m. - 5 p.m. • Sat. 8 a.m. - 12 Noon  
\*See dealer for details

**Online Only Real Estate Auction**  
Ends December 4, 7:00 PM 2016

Directions: M46 Gratiot Road to Merrill Road, then north approximately 3 miles. Subject property on west side of road.

What a great opportunity to acquire this cute ranch north of Merrill on a paved road.

2 Bedrooms, 1 Bathroom, Kitchen and Dining Living Room 16x12 Interior Features • Pantry, 2 Car Attached Garage with Outbuilding.

The bidding period ends Sunday December 4th so get your financing and inspections out of the way soon. Move right in day of close, includes all appliances.

Real Estate Terms. Sale will be by online auction. Sale subject to seller confirmation and high bidder will be required to execute buy/sell agreement and tender a non-refundable earnest deposit of 5% of the accepted purchase price within 2 business days of the auction. Bidders must provide proof of funds prior to bidding. Contact listing agent for more details and to arrange showing Lee Aldrich CELL: 989-763-1042 OFFICE: 989-775-3344 RICHMAR REALTY.

There is a 5% buyer's premium to the winner of this auction. **Details at sherwoodauctionservicellc.com**

**SHERWOOD AUCTION SERVICE, LLC**  
989-640-9401

**MACON MOVING AUCTION**

HAVING SOLD OUR HOME, WE WILL SELL THE FOLLOWING AT PUBLIC AUCTION. LOCATED: FROM THE SHELL STATION IN STERLING, GO NORTH & WEST 1/2 MILE ON M-76 TO GAVORD RD., THEN TURN RIGHT & GO 1 MILE TO SALE. OR FROM THE BLINKING LIGHT @ THE NORTH END OF STANDISH (US-23 & RICHARDSON CHEVY DEALERSHIP), GO NORTH 6 MILES ON M-76 TO 780 GAVORD RD.

Sterling, MI

**Classic Automobiles • Rinker Boat • 4x4 Compact Tractor • EZ-GO RXV**  
• Antiques & Collectibles • Household & Office Furnishings

**Sunday, November 27, 2016 • 12:00 Noon**

**CLASSIC AUTOMOBILES, RINKER BOAT, CUB CADET COMPACT TRACTOR, EZ-GO RXV, HOUSEHOLD & MISC. ITEMS:** 1953 PONTIAC CHIEFTAIN 2 DOOR HARD TOP, FLATHEAD STRAIGHT 8, P.S., P.B., CURVE CONTROL SUSPENSION, LOTS OF CHROME, BUMPER GUARDS, WHITE WALLS, PROFESSIONALLY RESTORED, A REAL BEAUTY • 1958 FORD EDEL CATION FOUR DOOR HARD TOP, V-8 W/ 4 BARREL CARB., IN STAGES OF RESTORING • 1949 DODGE CORONET FOUR DOOR HARD TOP, FLAT HEAD STRAIGHT 6, 3 SPD. FLUID DRIVE TRANS., IN STAGES OF RESTORING • 1997 RINKER 260 FIESTA VEE 28' CRUISER/FISHING BOAT W/ MERCURISER I.O. & TRAILER • 2012 CUB CADET YANMAR SC2400 SUB-COMPACT 4X4 DIESEL TRACTOR, 2 RANGE HYDRO. TRANS., P.S., 3 PT. W/ 60" BELLY MOWER, 48" LOADER, 45" FRONT MTD. SNOW BLOWER & FULL ENCLOSED CAB, W/ LESS THAN 200 HRS., SELLS AS A COMPLETE PACKAGE, (LIKE NEW) • 2008 EZ-GO RXV, GAS, LIFTED, LIGHTS, KNOBBY TIRES & DUMP BOX (LIKE NEW) • ANTIQUES & COLLECTIBLES TO INCLUDE: HAND CARVED WOODEN 6' CIGAR STORE INDIAN • LARGE EARLY SIMPLEX WOODEN TIME CLOCK MACHINE • (2) OAK ROCKERS • FLY ROD & REEL • FISHING TACKLE BOX W/ OLD RADIOS • VINTAGE HUNTING CLOTHING • 2 PLANET JR. HAND PLANTERS • ANTIQUE SLED • ANTIQUE TRUNK • RADIO FLYER RED WAGON • MANY MORE COLLECTIBLES • HOUSEHOLD & OFFICE FURNISHINGS TO INCLUDE: 48" OAK ROUND TABLE W/ 3 LEAVES & 6 PRESSED BACK CHAIRS • LEATHER DAVENPORT • OFFICE DESKS, CHAIRS & FILE CABINET • SEVERAL FANS • WOODEN BENCH • SEVERAL ASST. CHAIRS • MAPLE CHEST OF DRAWERS • KITCHENWARE • (2) CEILING FANS • CHANDELIER • WOODEN FIREPLACE MANTEL • NUMEROUS BOX LOTS • MISC. ITEMS TO INCLUDE: 3 H.P. SNOW BLOWER • 3 H.P. ROTOTILLER • PUSH MOWER • (2) MOUNTAIN BIKES • SHOP VAC • 2 DRAW BARS • COLEMAN LANTERN • LARGE GLASS TOP PATIO SET W/ 4 CHAIRS & CUSHIONS • PROPANE GRILL & TURKEY FRYER • YARD TOOLS • FARM WAGON LOADS OF ITEMS FROM THE POLE BARN • THIS IS A PARTIAL LISTING AS THE HOME & POLE BARN ARE PACKED FULL! AUCTIONEERS NOTE: PLAN TO ATTEND THIS GOOD AUCTION, IN A NICE COUNTRY SETTING. LARGE POLE BUILDING IN CASE OF INCLEMENT WEATHER. YOUR ATTENDANCE AT THE MACON MOVING AUCTION IS APPRECIATED. INSPECTION: MORNING OF SALE ONLY. TERMS OF SALE: CASH, CHECK OR CREDIT CARDS ACCEPTED.

TO VIEW A COMPLETE LISTING WITH PHOTO'S VISIT JOHNPECKAUCTIONS.COM

**Dr. Timothy & Paulette Macon, Owner's**  
780 Gavord Rd., Sterling, MI. 48659  
**JOHN PECK AUCTIONS LLC**  
Gladwin, MI (989) 426-8061



# PRE-BLACK FRIDAY Blowout Event!

Sale Starts Today! Ends November 28th!

Everything is on Sale! Up to 55% Off!



**ASHLEY**  
3 Drawer Chest  
**\$99**  
Compare at \$229



**ASHLEY**  
Floor Lamp  
**\$69**  
Compare at \$219



**ASHLEY**  
Drawer End Table  
**\$99**  
Compare at \$239



**Vaughan-Bassett**  
Storage Bed  
Queen Size  
**\$599**  
Compare at \$1249



Storage Seat  
Hall Tree  
**\$369**  
Compare at \$869



**Best**  
Home Furnishings  
Club Chair with  
FREE Ottoman  
**\$499**  
Compare at \$1199  
Ottoman not shown



**Best**  
Home Furnishings  
Dual Power  
Reclining Sofa  
**\$799**  
Compare at \$1799



**Best**  
Home Furnishings  
Swivel Chair  
**\$229**  
Compare at \$569



**LA Z BOY**  
Espresso La-Z-Boy  
**\$349**  
Compare at \$749



**LA Z BOY**  
Rachel Premier  
LaZboy Sofa  
**\$599**  
Compare at \$1199

Pictured products are closeouts, while quantities last, no layaway or rain check.



# Kubin's Mattress Sale!

**Serta**  
iComfort  
**FREE**  
BOXSPRING  
OR SAVE  
UP TO **\$1000**  
on Select Serta® iComfort™ Adjustable  
Mattress Sets\*



**Helps reduce tossing and turning**  
**ComfortRight™ Layers**  
This advanced system of foams and fluffy fibers is designed to provide instant comfort. This helps reduce the pressure points that can cause tossing and turning so you can sleep more comfortably through the night.

**Minimize impact from partner movement**  
**TrueSense™ Design**  
Serta's exclusive design helps minimize the impact of partner movements, working to isolate motion at its source so you can enjoy a peaceful night's sleep with fewer disruptions.

**Encourages proper back support & alignment**  
**Custom Support™ System**  
Every Perfect Sleeper features a system of durable, yet flexible carbon steel coils that work to promote proper support and alignment across the entire body.

**Resists sagging & edge roll-off**  
**ComfortLast™ Construction**  
Designed to enhance durability of the mattress and is thoroughly tested beyond industry standards to make sure it can resist sagging and edge roll-off. This enhanced durability can help extend the comfort life of your mattress.

**Promotes a balanced sleep temperature**  
**CoolBalance™ Technology**  
A unique combination of high-performance heat and moisture-regulating fabric and an overall mattress design that helps promote airflow. Together, these help provide a comfortable, balanced sleep temperature.

**5 reasons**  
to never count  
sleep again.



**Add a  
Pivot Head Up Box  
for \$544 on  
most models**

**BEST SALE  
OF THE YEAR!**

**Guaranteed Lowest Prices  
ON ALL SERTA MATTRESSES!**

	TWIN 2pc set	FULL 2pc Set	QUEEN 2pc Set	KING 3pc set
<b>Majestic Davey</b> Gentle Eurotop	<b>\$299</b> Sale Compare At \$449	<b>\$379</b> Sale Compare At \$569	<b>\$399</b> Sale Compare At \$599	<b>\$599</b> Sale Compare At \$899
<b>Majestic Gallion</b> Support Firm or Support Eurotop	<b>\$349</b> Sale Compare At \$529	<b>\$449</b> Sale Compare At \$679	<b>\$499</b> Sale Compare At \$749	<b>\$799</b> Sale Compare At \$1199
<b>Majestic Raftery</b> Premium Choice Plush or Firm	<b>\$449</b> Sale Compare At \$679	<b>\$549</b> Sale Compare At \$829	<b>\$599</b> Sale Compare At \$899	<b>\$899</b> Sale Compare At \$1349
<b>Majestic Stowcroft</b> Choice of Super Pillowtop or Firm	<b>\$549</b> Sale Compare At \$829	<b>\$649</b> Sale Compare At \$979	<b>\$699</b> Sale Compare At \$1049	<b>\$999</b> Sale Compare At \$1498
<b>Kubin's Exclusive, Perfect Sleeper Regal Suite, 2 Sided flipable mattress</b> Choice of Plush or Extra Firm	<b>\$549</b> Sale Compare At \$829	<b>\$699</b> Sale Compare At \$1049	<b>\$799</b> Sale Compare At \$1199	<b>\$1099</b> Sale Compare At \$1649
<b>Serta Perfect Sleeper Swan Harbor</b> Choice of Luxury Pillowtop or Firm	<b>\$899</b> Sale Compare At \$1349	<b>\$969</b> Sale Compare At \$1459	<b>\$999</b> Sale Compare At \$1499	<b>\$1299</b> Sale Compare At \$1949
<b>Serta Perfect Sleeper Hatters</b> Evercool & Gel Memory Foam	<b>\$899</b> Sale Compare At \$1349	<b>\$969</b> Sale Compare At \$1459	<b>\$999</b> Sale Compare At \$1499	<b>\$1299</b> Sale Compare At \$1949

**GET A  
\$50  
VISA PREPAID CARD**  
by mail or online rebate when you use your  
Serta® Credit Card at participating stores on  
a qualifying in-store purchase of \$999 or more  
OFFER VALID 11/1-11/30/16  
Details >  
(Subject to credit approval.  
Click "Details" for more information.)

**TRIPLE SAVINGS  
Free Boxspring**  
*Plus*  
**\$50 Citibank Gift Card\***  
With Approved Credit  
*Plus*  
**\$100 Rebate**  
On Any Perfect Sleeper or  
iComfort Set \$999 or more.

\*Purchase any Serta iComfort® or iComfort® Hybrid mattress set between November 9, 2016 and November 28, 2016 and receive either a free standard box spring (same size as the mattress purchased) or up to \$800 off a qualified Serta adjustable foundation. Savings offers on the adjustable foundations will vary by model and size and are available only with the Pivot™ iC, Motion Perfect® III and Motion Custom® II adjustable foundation models. Maximum \$1000 savings applies only to King size Foresight mattress and Motion Custom® II adjustable mattress sets. Offer available only on qualified purchases made at participating retailers while supplies last. Product availability, pricing and offer dates may vary by retail location. Void where prohibited by law. © 2016 Serta, Inc



**Kubin's Furniture & Mattresses**

101 N Mill St, Corner of M46, St. Louis, Michigan, (989) 681-5043  
Hours: Mon-Thurs: 9-6, Fri: 9-8, Sat: 9-5, Closed Sunday  
Sign up Your Email at: <http://www.kubins.com/signup.htm>



\*SEE STORE FOR DETAILS

# BLACK FRIDAY ALL WEEK

## LOWEST PRICES AROUND PLUS NO SALES TAX COMPARE ANYWHERE!



**\*Every Serta Recliner Over 50% OFF  
Plus Buy 2 and Get 2nd One at Another  
\$100.00 OFF!**



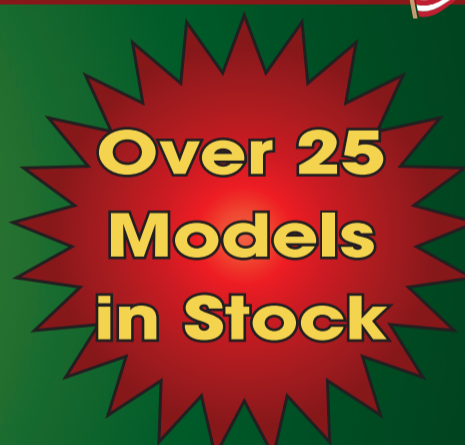
**\*Every Serta Sofa, Every Love Seat & Every  
Chair over 50% OFF  
Plus Buy any 2pc Set and Get an extra  
\$150.00 OFF 2nd Piece**

REGISTER FOR A DRAWING FOR \$1,000 IN GIFT CERTIFICATES.  
**GRAND PRIZE OF \$400.00**  
**2 SECOND PLACE WINNERS OF \$200.00**  
**4 THIRD PLACE WINNERS OF \$50.00**  
STOP IN EVERY DAY AND ENTER DRAWING. DRAWING TO BE HELD DECEMBER 14TH  
NO PURCHASE NECESSARY

### SYMBOL MATTRESS SALE

**All Mattress Sets  
55-75% OFF**

Twin Sets Starting at \$179.00  
Full Sets Starting at \$229.00  
Queen Sets Starting at \$279.00  
King Sets Starting at \$429.00



#### Facts About Symbol Mattress

- \* Symbol Mattress is the 3rd largest manufacturer in the Midwest and 12th largest in the United States out of 600.
- \* Symbol Mattress has a higher customer satisfaction rating than both Serta & Sealy
- \* Symbol Mattress sets normally sell for 20-30% less than the equivalent Serta or Sealy model

# FREE

Sheet Set & Mattress Pad with all  
10 Year Warranty Mattress Sets  
Up to \$128.00 Value FREE

## ALL CLEARANCE MERCHANDISE OVER 70% OFF

See Our Website for Pictures and Prices  
[www.StateStreet-Furniture.com](http://www.StateStreet-Furniture.com)

\*Up To 36 Month No Interest Financing Available

**Free Layaway**

318 N State St • Alma, MI 48801  
(989) 463-1037 • Hours: 9-6 M-F • 9-5 Sat.

[www.StateStreet-Furniture.com](http://www.StateStreet-Furniture.com)

\*See Store for Details







**MIAL MEADOWS MHP**  
IS NOW UNDER NEW OWNERSHIP  
WE HAVE VACANT LOTS AVAILABLE  
WE ALSO HAVE 1 MOBILE HOME FOR SALE OR RENT CONTACT OUR OFFICE AT  
**PH: 989-463-5187**  
TERESA & JIM DAVIDSON  
RESIDENT MANAGERS  
411 S. GROVER, #31  
ALMA, MI 48801



**C & G Tree Farm**  
Christmas Trees & Wreaths  
\$15 - \$40  
**OPEN November 25, 26 and 27 only**  
Blue Spruce, Serbian Spruce, White and Scotch Pine and Douglas Fir  
Free shaking/bailing/Wagon Rides  
Gift Shop  
Limited amount of trees over 7 ft.  
4304 Renas Rd. - Gladwin. **989-426-7825**  
Member MCTA 9-5 Fri., Sat., & Sun.

**November Specials**  
**7 in 1 Dog & Puppy Shot**  
**Special \$20.00** Reg. \$25.00  
By Appt. **426-0203**  
Flexible Hours  
**KELLY'S KRUIRING**  
**KRITTER KARE**  
Kelly Jo Kelley, DVM

**RE/MAX RIVER HAVEN, INC.** Open Seven Days a Week to Serve You!  
**www.riverhavenhomes.com**  
Wayne R. Walts - Broker  
MICHIGAN CUSTOM HOMES COMPANIES

<p><b>Main Office</b> 777 W. Cedar Riverwalk Place 989-426-6893</p> <p><b>Wixom Lake Office</b> 1239 Estey Road, Beaverton 989-435-7755</p> <p><b>Sugar Springs Office</b> 1415 W. Sugar River Rd. Gladwin, MI 48824 989-426-9239</p>	 Wixom Lake-2 bedroom, 2 bath ranch on the north end of 2000 acre all sports lake. Has deck overlooking water, fireplace, 2+ car garage. <b>\$132,000</b> MLS#166603	 Beaverton Area-3 bedroom, including loft, chalet on 80 mostly wooded acres. Secluded. Must see. <b>REDUCED TO: \$209,900</b> MLS#162819	 Gladwin-Harrison area-Newer 4 bedroom, 3 bath, 2300+ sq ft of living area, ranch on 20 acres. Has 2 car att garage, PLUS 2 other 2 car garages. Many extras, move in condition. <b>\$259,900</b> MLS#166169
---	--	--	--



**BUCKLE-UP!**



**Thanksgiving Favorites**



**Valley Food Center** Join us on Facebook  
"OUR ONE AND ONLY LOCATION IN PINCONNING"  
989-879-3311 • 101 E. SECOND • PINCONNING  
WE WELCOME THE BRIDGE CARD, GIFT CERTIFICATES  
NOT RESPONSIBLE FOR PRINTING ERRORS • ALL LOTTERY GAMES AND LOTTO HERE  
MON.-SAT. 8-8, SUN. 8-6 • PRICES GOOD SUNDAY, NOVEMBER 20TH THROUGH SATURDAY, NOVEMBER 26TH, 2016

<b>MEAT SPECIALS</b>	<b>BEEF</b>	<b>PORK</b>	<b>CHICKEN</b>
	GROUND CHUCK (10 LB. BAG) \$33.90 LESSER QUANTITIES \$3.69 lb.	BONELESS PORK LOIN (whole or half) \$2.19 lb.	BONELESS SKINLESS CHICKEN 10LB BAG \$1.69 lb.
	GROUND HAMBURGER (10 LB. BAG) \$31.90 LESSER QUANTITIES \$3.49 lb.	FINGER RIBS OR PORK STEAK \$1.69 lb.	LESSER QUANTITIES \$2.19 lb.
	<b>HOT BUY!</b> USDA SELECT OR HIGHER T-BONE OR PORTERHOUSE \$4.99 lb.	BOSTON BUTT ROAST \$1.59 lb.	LEG QUARTERS 59¢
<b>SEAFOOD, DAIRY &amp; DELI SPECIALS</b>	<b>HUNTERS SPECIALS</b>	<b>DELI</b>	<b>FROZEN</b>
POLLOCK FILLETS 10LB BOX \$19.90	BUSCH OR BUSCH LIGHT 30 PK. XXX \$16.99	LONGHORN/CHEESE; MILD CHEDDAR, CO-JACK, PEPPER JACK, FIRE JACK (SLICED/FREE) \$3.99 lb.	FROZEN VEGETABLES (CORN, MIXED VEG, PEAS, CUT, GREEN BEANS) 5 LB. TATER TOT \$8.99
NEW YORK STRIPS (whole or half) \$3.49 lb.	BETTER MADE POTATO CHIPS 2/\$5.00	BLUE RIBBON SMOKED DELI HAM \$3.99 lb.	JJ WILK PIEROGIES 2LB \$2.99
DENVER STEAK \$2.99 lb.	ECKRICH SMOKED SAUSAGE OR KIELBASA 42 OZ. \$6.99	WHOLE OR HALF \$3.19	CENSEA 31/40 COOKED SHRIMP \$6.99 lb.
ENGLISH ROAST \$2.79 lb.	ECKRICH SMOK-Y LINKS 2/\$4.00	HOMEMADE SANDWICH SPREAD \$3.19 lb.	KLUSKI NOODLES (KRZYSIAK'S HOUSE) \$2.99
	TROLL HOUSE SNACK STICKS \$7.49	KOWALSKI HUNTER STICKS (MILD OR HOT) \$8.49 lb.	
	TROLL HOUSE CHEESE CURDS \$4.99		
	ASELTINE'S APPLE CIDER 1/2 GAL \$2.99		

Visit us on Facebook at [www.facebook.com/valleymarket](http://www.facebook.com/valleymarket)  
Or check out our new website at: [www.valleymarketmi.com](http://www.valleymarketmi.com)

**You May Not Be Ready For Winter, But Your Vehicle Can Be!**

**\$12.95 Oil Change** Most cars & trucks (some restrictions apply)

**FREE Winter Inspection** to Winterize Your Vehicle

**FREE Brake & Safety Inspection**  
**HAPPY THANKSGIVING**

**Dagwood's Auto Repair**  
524 W. Fifth St. CLARE 989-886-8000 / M-F 8-5, Sat. 9-12 After Hours by Appt.  
1001 N. Fancher MT. PLEASANT 989-772-9500 M-F 8-5

"Common Sense Auto Repair"  
**30 YEARS EXPERIENCE**  
We Will Meet or Beat any Written Estimate

Apple Pay, American Express, Visa, MasterCard

**season 2016 of wishes**

**MAKE-A-WISH**



**Hunter Douglas**

Pirouette® Window Shadings

**season of style SAVINGS EVENT**

**Fashionably early.**  
Order your shades now and be ready for holiday parties. Plus, save \$100 with rebates on select purchases of Hunter Douglas window fashions, now through 12/12/16.\*

Gratiot County's favorite floor store 17 straight years!

**NEEDHAM'S Home Center**

Real Floors for Your Real Life • Since 1977  
945 W. Monroe Road (M-46), St. Louis, MI 48880  
Phone (989) 681-5393  
Hours: Mon.-Fri. 8:30am-5:30pm; Sat. 9am-3pm; Evenings by appointment

DISCOVER, MasterCard, VISA

\*Manufacturer's mail-in rebate offer valid for qualifying purchases made 9/17/16-12/12/16 from participating dealers in the U.S. only. For certain rebate-eligible products, the purchase of multiple units of such product is required to receive a rebate. If you purchase fewer units than the required multiple you will not be entitled to a rebate; partial rebates will not be awarded. Rebate will be issued in the form of a prepaid reward card and mailed within 6 weeks of rebate claim receipt. Funds do not expire. Subject to applicable law, a \$2.00 monthly fee will be assessed against card balance 6 months after card issuance and each month thereafter. Additional limitations may apply. Ask participating dealer for details and rebate form. ©2016 Hunter Douglas. All rights reserved. All trademarks used herein are the property of Hunter Douglas or their respective owners. 3740403

**WISHWednesday**  
Wednesday, November 23<sup>rd</sup> - ALL DAY

Donate \$5 or more to Make-A-Wish® to take advantage of our **Thanksgiving Doorbusters early!** Skip the long lines on Thanksgiving and help make wishes come true!

**November 2<sup>nd</sup> - December 31<sup>st</sup>**  
Customers can donate any dollar amount this holiday season to help make wishes come true!

sears  
**HOMETOWN STORE**  
sears  
APPLIANCE & HARDWARE  
sears  
HOME APPLIANCE SHOWROOM  
searsoutlet

Visit [SearsOutlet.com](http://SearsOutlet.com) for your local store.  
Between November 2 - December 31, 2016, Sears Hometown & Outlet Stores will donate 100% of customer donations to Make-A-Wish, with a minimum guarantee of \$150,000 from all in-store holiday promotions. For more information, visit [wish.org](http://wish.org).

**Clare Automotive Inc.** BUMPER TO BUMPER  
 214 W. Fourth St, Clare • 989-386-7200  
 www.clareauto.com Auto Parts Specialists



**RV Antifreeze**  
**\$2.99**  
**ALCOHOL FREE!**

**BUY • SELL • HUNT FOR A JOB**  
**CLASSIFIEDS WORK. CALL TODAY!**

**JACK OF ALL TRADES**  
**COINS**

1028 S. Mission  
 (next to Jon's Country Burger)

**I BUY ALL COINS**  
 Silver and Gold  
**FREE APPRAISALS**  
 we will come to your home  
 to do free appraisals for  
 your convenience.

*Over 25 Years experience!*

Do not take your coins,  
 jewelry, gold, & silver to  
 the we buy gold places  
 they are not experts! We  
 are your only experts!  
**WE PAY YOU MORE  
 THAN ANYONE!**

**I BUY ALL  
 COLLECTIONS**

FROM ONE COIN TO A  
 DUMP TRUCK FULL

**We are a Full  
 Buy • Sell • Trade shop!**

**ANTIQUES • COINS**

*Jewelry • Collectibles & more!*

Stop in or call Matt for  
 your free appointment  
**517-204-0787**



*Are you suffering from*  
**cataracts?**

Get Started today. Call for an Evaluation.

120 Warwick  
 Alma, MI 48801  
**989-463-Eyes (3937)**

1203 S. Mission  
 Mt Pleasant, MI 48858  
**989-775-Eyes (3937)**



SALE PRICES GOOD:  
**NOV.21 - NOV. 27**

**SAVINGS GALORE**

WE ARE YOUR NEIGHBORHOOD SPARTAN STORES



  
**Ribeye Steak**  
 Family Pack  
**\$5.99**

  
 Lays  
**Potato Chips**  
**BUY ONE,  
 GET ONE FREE**  
 9.75-10.25

  
 Idaho  
**Potatoes**  
**\$2.99**  
 8 lbs.

  
**Cool Whip**  
 Whipped Topping  
**99¢**  
 8 Oz.

  
**Chicken**  
**Drumsticks**  
 & Thighs  
 Family Pack  
**79¢**  
 Lb.

  
 Bone-In  
**Pork Sirloin**  
 Roast  
**99¢**  
 Lb.

  
 90/10% Lean  
**Ground Beef**  
 From Round  
**\$3.29**  
 Lb.

  
 Bar S  
**Hot Dogs**  
**99¢**  
 16 Oz.

  
**Sweet**  
**Potatoes**  
**49¢**  
 Lb.

  
**Cranberries**  
**2/\$3**  
 12 Oz.

  
 Red or Gold Delicious,  
 Gala & McIntosh  
**Apples**  
**\$2.49**  
 3 Lbs.

  
**Halo**  
**Clementines**  
**\$3.88**  
 3 Lbs.

  
**Bakery Fresh**  
**Strudel**  
 Bites  
**\$2.99**  
 20 Ct.

  
**Lofthouse**  
**Cookies**  
**\$2.99**

  
**Bakery Fresh**  
**Pies**  
**\$4.99**

  
**Dutch Farms**  
**Butter**  
**\$2.49**  
 16 Oz.

  
**Libby's**  
**Canned Pumpkin**  
 or Pie Mix  
**\$2.99**  
 29-30 Oz.

  
**Bruce's**  
**Yams**  
**\$2.49**  
 40 Oz.

  
**Spartan**  
**Paper**  
 Towels  
**\$4.99**  
 6 Ct.

  
**Sara Lee**  
**Pies**  
**\$4.99**  
 19 - 34 Oz.

  
**Stove Top**  
**Stuffing**  
 Mix  
**2/\$3**  
 6 Oz.

  
**Spartan**  
**Cranberry**  
 Sauce  
**99¢**  
 14 Oz.

  
**Aunt Millie's**  
**Hawaiian & White**  
 Dinner Rolls  
**2/\$3**  
 12 Ct.

  
**Koeplinger's**  
**Wheat Bread**  
 & Aunt Millie's  
 Italian Bread  
**2/\$3**  
 24 Oz.

  
**Spartan**  
**Rolled**  
 Pie Crust  
**2/\$4**  
 15 Oz.

  
**Faygo**  
**88¢**  
 2 Liters

  
**Heinz**  
**Gravy**  
**2/\$3**  
 12 Oz.

  
**Busch** or  
**Busch Light**  
**\$17.99**  
 30 Pack

6403 S. GREENVILLE RD. | GREENVILLE | 616.225.9570

1111 E. MAIN ST. | EDMORE | 989.427.3489



TWO CONVENIENT LOCATIONS  
**SAME GREAT SAVINGS**

Like us on 

Cheese • Full Service Deli • Fresh Meat Cut Daily  
 Huge Selection of Beer & Wine • Package Liquor • Gas • Lottery

Bakery • Full Service Deli • Fresh Meat Cut Daily  
 Huge Selection of Beer & Wine • Package Liquor • Lottery

# BIG NEWS

For People With Hearing Loss



**SAVE 60% OFF MSRP on the latest hearing aid technology through November**

## You want SoundLens Synergy delivers

**• An invisible and custom fit**

Hearing aids fit deep inside your ear canal and are personally customized to you for all-day comfort.

**• To easily adapt to new sounds**

Our new feature speeds your transition to hearing aids by gradually adjusting settings to allow your brain to get used to new sounds.

**• Better wireless streaming**

Technology that provides consistent wireless performance while streaming TV, music and other media with SurfLink® Mobile 2 and other SurfLink accessories.

**• A comfortable, personalized listening experience**

Sound comfort technology designed to provide distortion-free listening comfort for loud sounds while ensuring ultimate clarity for soft sounds.

**• No buzzing or whistling**

Our best-in-class feedback cancellation system providing feedback-free, comfortable listening all day long.

**• Music the way it was meant to be heard**

Designed to allow you to experience music in a whole new way. Now you can hear every note the way the artist intended – with pure, refined sound quality.

**• Customizable tinnitus relief**

Advanced Multiflex Tinnitus Technology integrated into the hearing aids brings relief to those who suffer from ringing in the ears.



SoundLens  
[Synergy]

## Z Series wireless hearing aids are designed to:

• Help you hear and understand conversations better in noisy environments like restaurants

• Make loud sounds more comfortable while boosting soft sounds

• Stream TV, phone calls and more, directly to your Z-Series hearing aids



Z series

## Starkey Halo 2

connects directly to your iPhone via Bluetooth to allow you to easily adjust sound settings to any particular environment. These hearing aids virtually function like wireless headphones.

Call today for a free demonstration.



**0% Interest! JUST 1/2 DOWN and LOW Monthly Payments WITH NO INTEREST!**

### HEAR What Our Customers Say!

Serving the area since 1986



One of the best decisions that I have made in a long time was when I decided to open the door at Long's Hearing Care in Cadillac Michigan. I went in for a hearing test. I was treated with respect from the second that walked in the door. Melissa met me at the front counter and took care of my needs in a very professional manner. I was tested and diagnosed for hearing aids. I was then fitted and when I returned back in 3 days my hearing life was changed. I now don't have to ask people to repeat what they said or have to guess an answer to a question that I really didn't even hear. Today I hear everything loud and clear. Life has completely changed for me. Thank you to Melissa and Mike at Long's Hearing Care!!

Bob McKenzie, Grand Rapids Michigan

With the latest technological advances, it's never been more comfortable or less noticeable to improve your hearing with the help of the newest technology from



**FREE HEARING SCREENING**  
Stop making others repeat themselves or raise their voices! Do something today for the ones you love...  
Call for your appointment.

- Friendly, knowledgeable staff
- Free in-office visits for checkups and cleaning for the life of your hearing aid
- Lifetime free service • 100% money back guarantee
- In-home testing and service
- On premises service to senior care

Always FREE Cleaning!

FREE Hearing Test!

Over 30 YEARS in Business!

**CALL US TODAY FOR AN APPOINTMENT!!**

# Long's Hearing Care Systems

www.longshearingcare.com

CADILLAC LOCATION • CALL TOLL FREE 1-800-286-1378

1027 N. Mitchell St. • 231-779-0400

PRUDENVILLE • 1070 W. Houghton Lake Dr.

CALL TOLL FREE 1-800-286-1378  
(located in the TDM Realtors North Bldg.)

TRAVERSE CITY • 4000 Eastern Sky Drive

CALL TOLL FREE 1-800-286-1378  
(Off Silver Lake Road and Copper Ridge)

Rudyard Michigan Upper Peninsula Community Center



We accept most insurance plans. Payment plans also available

# THANKSGIVING SAVINGS



**ANNOUNCE • SELL • ADVERTISE**



**CLASSIFIEDS WORK ALL DAY • ALL NIGHT**

**Business Card Directory**

**CIRCULATION ISSUES:**  
**(989) 779-6000 PRESS 2**  
 TO RESERVE YOUR SPOT IN THIS DIRECTORY  
**CALL: 506-4640**

**HARD DRIVE & CELL PHONE DESTRUCTION**  
 Arnold Center's  
 Hard Drive/Cell phone Destruction Services.  
 Reduce/Eliminate data breaches. Certification.  
 Pickup or drop off. Details/ Pricing:  
[www.arnoldcenter.org](http://www.arnoldcenter.org) or call  
 Greg, (989) 631-9570 ext. 21

**CAL'S PAINTING**  
 Over 30 Years Experience  
**COMMERCIAL & RESIDENTIAL**  
 • Interior & Exterior • Power Washing & Deck Care  
 • Window Washing & Gutter Cleaning  
 • Drywall Repair • Cleaning and Refinishing Log Homes  
 • Cabinet, Woodwork, Door & Furniture Refinishing  
**GO CALL TODAY!**  
**(989) 258-9638**  
 • Free Estimates • Work Gauranteed • Insured  
 Winter Rates Available

**MARTIN HEATING & COOLING**  
 DTE \$300 Rebates Available on New Furnaces for a Limited Time  
 Installation • Service • Parts • Free Estimates  
  
**Amana** Heating & Air Conditioning  
 LASTS AND LASTS AND LASTS: 546 W. 5th street, Clare (989) 386-3791  
 Ask about Geothermal Systems and heat pumps

**ICDC Thrift Shop**  
 307 S. Mission, Mt. Pleasant  
**BIG SALE**  
**ALL WHITE TAGS**  
**1/2 OFF!!**  
**TWO WEEKS**  
**NOV. 21 - DEC. 3**  
**OPEN 10-4 DAILY, 11-3 SAT.**  
 You save - our kids benefit.

**J.B. ENTERPRISE**  
 Specializing:  
**Repair, Reside,**  
**Reroof Homes,**  
**Decks & Garages**  
**CALL TODAY • Let the phone ring several times!**  
**John Brenneman • (989) 386-8024**

**VALET AUTO CARE, INC.**  
 Since 1983  
 • A.R.E. Pickup Toppers  
 • Over 100 New & Used Toppers in Stock  
 • Truck Accessories  
 • Tonneau Covers  
 • Detailed Car Cleaning  
  
 Because you love your truck  
[www.valetauto.com](http://www.valetauto.com)  
**James Motz - Owner**  
 610 N. Mission  
 (3 blocks S. of Meijer)  
 Mt. Pleasant (989) 773-3477

**Brad Malley Well Drilling, Inc.**  
 Mid Michigan's Most Experienced Well Drillers!  
**& MALLEY CONSTRUCTION INCORPORATED**  
 The One Contractor That Can Do It All!  
**AFFORDABLE WELL PACKAGES**  
 All Major Pump Brands Available  
**FREE ESTIMATES**  
 SERVING ALL OF MID MICHIGAN  
 LICENSED WELL DRILLER  
 LICENSED CONTRACTOR  
 MT. PLEASANT  
[WWW.BRADMALLEYWELLDILLING.COM](http://WWW.BRADMALLEYWELLDILLING.COM)  
**989.772.2765 / 800.717.6022**

**PROPANE SOLD HERE**  
**SALE!!**  
 20 LB. CYLINDER FILL  
**\$9.99**  
**GPC**  
 We make custom hoses & fittings!  
 PROPANE • HVAC • REFRIGERATION  
 8512 E. M-46 - VESTABURG  
 800-991-7477  
[gasproductioncompany.com](http://gasproductioncompany.com)

**digitalfirst MEDIA**  
**Kindra Norlander**  
 Account Executive  
 The Morning Sun  
 The Mid-Michigan Buyers Guide  
 Call for Quotes on digital advertising, print & deliver, pre prints and print advertising  
[knorlander@michigannewspapers.com](mailto:knorlander@michigannewspapers.com) Cell: 989-506-4640

# Business Card Directory

Shop these local Professionals

Call 989-506-4647 for Advertising Info



**PIONEER POLE BUILDINGS INC.**

7400 S. Clare Ave. • Clare, Michigan 48617  
**800-292-0679**  
[www.pioneerpole.com](http://www.pioneerpole.com)



600 S. Mission St.  
 Mt. Pleasant, MI 48858  
 989-779-7227  
 989-772-5009

Computer Center  
 Computer Repair • Used Computers  
 Custom Built • Virus Removal  
 And More

"Our Customers are our Warmest Friends"  
 Guaranteed On Time Certified  
**FREE TANK SETS**  
**COYNE OIL & PROPANE**  
 Clare • Gladwin • Harrison • Evart  
**800-386-7731 • 989-386-7731**

RESIDENTIAL • COMMERCIAL  
 INDUSTRIAL • FARM

**STORAGE SPACE AVAILABLE** 420 Units

Paved Driveway Security Gate

FOR ALL YOUR RENTAL NEEDS

5'x12', 10'x12', 10'x20' Stalls  
**MIDSTATE RENTAL AND STORAGE, INC.**  
 1 MILE EAST OF GLADWIN ON M-61  
**426-2981** MON.-SAT. 8AM-5PM

I've got service yes i do...  
 And, I am ready to prove it.

CALL FOR A QUOTE 24/7



Maury Irwin, Agent  
 305 S McEwan Street  
 Clare, MI 48617  
 Bus: 989-386-4141  
[maury.irwin.18gz@statefarm.com](mailto:maury.irwin.18gz@statefarm.com)  
 P097276.1



State Farm Fire and Casualty Company • Bloomington, IL

**Pole Barn Kits**



Now Available

CALL OR STOP BY **FREE ESTIMATES**

**Luthy Metal Sales**  
 Manufacturing, Roofing, Siding & Accessories  
**989.433.5705**  
 5145 N. Mission Rd. Rosebush

**BURKHART - PRESIDIO INSURANCE AGENCY**  
 Auto • Home • Life • Business • Amenities

"Over 60 Years of Professional Insurance Service"

222 W. Cedar Ave. • Gladwin  
 989-426-9278 • [www.burkhart-presidio.com](http://www.burkhart-presidio.com)  
 Dirk Presidio Michael Murray Jim Jacobs

**Auto-Owners Insurance**

**ECOWATER SYSTEMS** Lindsay Soft Water Co.

1209 Michigan Ave. P.O. Box 401  
 St. Louis, MI 48880 Gladwin, MI 48624

(989) 681-5436 (989) 426-4220  
 1-800-244-3464 Cell (989) 620-1263  
[www.ecowater.com](http://www.ecowater.com)

GABE EAREGOOD  
 Water Specialist



**Weidman Business Association Bingo**

No Bingo on Nov. 23. Next Bingo on Nov. 30.  
 First game at 6:30. HAPPY THANKSGIVING!

**\$750** Jack Pot on Big Game Nov. 30.  
 In the Community Building

Located behind Baumanns Food Pride grocery store and Isabella bank.

You looked here and you will, too.

Call **989-506-4647** for more info.

**MARTI'S ROLLER RINK**

FRIDAY 7:00-10:30 PM **OPEN SKATING**  
 SATURDAY 7:00 - 10:30 PM **OPEN SKATING**  
 SUNDAY **CLOSED**

Complete Snack Bar

**\$5.50 Admission** Includes Skate Rental  
 Call for Birthday Parties Friday and Saturday only

Owner Marti Miller  
**989-426-6734**  
 4861 W. M-18 Gladwin, MI 48624

**\$1000 off** any in-stock & non-sale pair of shoes

Expires 12.3.16

**CIRCLE QUALITY SHOES**

Specializing in hard to fit sizes-100's of styles to pick from  
 • Birkenstock • Clarks • Merrell • SAS

208 Cambridge St. 835-4853 • [circlequalityshoes.com](http://circlequalityshoes.com)

**ABC Auto Body**

313 W. Knox Road,  
 Beaverton, MI  
 1/2 Mile West of M-30  
**989-435-2707**

**We Take Pride In Your Ride!**

- Quality Collision Repair
- Free Estimates
- Insurance Work Welcome
- Custom Color Matching & Painting
- We Repair All Makes and Models
- Car/Light Truck
- Genuine Original Equipment Parts

**HENRY EXCAVATING CONCRETE & TREE SERVICE LLC**

POURED WALLS • CRAWL SPACES • BASEMENTS  
 OVER 30 YEARS EXPERIENCE • LICENSED & INSURED

**COMMERCIAL & RESIDENTIAL**

- Excavation
- Site Clearing
- Septic Systems
- Back hoe & Dozing
- Flat Work
- Demolition
- Driveways
- Tree Service

989-539-7542 • 3620 N. Clare Ave., Harrison

James Henry Cell 989-429-1175 Michael Henry (Tree Service) Cell 989-339-4377

**DEBRIS HAULING**

- Clean Outs Basements Attics & Garages
- Tear Downs Sheds & Garages
- Scrap Metal
- Commercial Buildings

Free Estimates

**DEBRIS HAULING**  
 Quick & Fast! Quick & Quality Service  
 MOUNT PLEASANT AREA  
 Less than the price of a dumpster!

989-773-0735 10 Yards \$285 Dan Syzak

You looked here and you will, too.

Call **989-506-4647** for more info.

**Tag's Auto Repair**

2 yr. 25,000 mile warranty nationwide on parts & labor

- Computer Diagnostic Service • 2 and 4 Wheel Alignment
- BRAKES & FRONT END REPAIR!**

Receive a \$25 VISA prepaid card on qualifying purchase of \$250 or more made on Drive Card

**FREE** Roadside Assistance Program Towing, Flats, Lockouts, More!  
 Call Us For Details!

**Auto Value SERVICE CENTER**

3780 N. Clare Ave. Harrison  
 Hours M-F 8-5, Sat 10-2  
**989-539-1986**

Sewing Machines starting at **\$149**

Large Selection of Reconditioned Sewing Machines starting at **\$50**

**FREE ESTIMATES WITH SERVICE**

1900 S. SAGINAW RD., MIDLAND IN THE KMART PLAZA  
**(989)-839-0800**

**digitalfirst MEDIA**

Call for Quotes on digital advertising, print & deliver, pre prints and print advertising

**Marlene Bennett**  
 Account Executive

The Morning Sun • The Mid-Michigan Buyers Guide  
[mbennett@michigannewspapers.com](mailto:mbennett@michigannewspapers.com)  
 For Advertising call **989-506-4647** or **989-240-0473**  
 For Circulation call 989-779-6000 Press 3

**FREE Hearing Test & Consult**

**bieri HEARING SPECIALISTS**

**888-641-0087**  
 Clare and Midland Locations  
[www.bierihearing.com](http://www.bierihearing.com)

**TOM'S POLE BUILDINGS**  
 Over 30 Years Experience

**Special!** POLE BUILDINGS & GARAGES ROOFING & SIDING  
 CONCRETE FLOORS DRIVEWAYS & FENCING

FEATURING ULTRA 2000 19 colors to choose from  
 And A 45 YEAR WARRANTY

From Beginning permit To Cleanup, We Do It All!  
**1-800-541-3974**  
 We accept major credit cards. • email: [tomspolebuildings@yahoo.com](mailto:tomspolebuildings@yahoo.com)

24x40x10 10% Down Today Guarantees Prices

**Newcombe's Family Restaurant**

27 S Coldwater Rd Lake Isabella, MI 48893  
 (989) 644-8380

**FOOD SO GREAT YOU'LL SCRAPE YOUR PLATE**

Sunday 7am-8pm  
 Mon.-Thurs. 7am-9pm  
 Fri & Sat 7am-10pm

Like us on Facebook

**Pioneer Metal Roofs**  
 Residential Steel Roofing



7325 S. Clare Ave.  
 Clare, MI 48617  
 (989) 386-4444 (Office)  
 (800) 292-0679

[www.pioneermetalroofs.com](http://www.pioneermetalroofs.com)

## Bulk Food • Deli

2 Miles South of Rosebush • 2020 North Mission Mt. Pleasant • 989-433-8200  
8:30am-5:30pm, Monday-Thursday  
8:30am-7:00pm, Friday • 8:30am-4pm, Saturday

Large Selection of Freezer Food at Discounted Prices

**SPECIALS OF THE WEEK**

Great Selection of Bulk Foods  
We Accept Bridge Cards & All Major Credit Cards

**Walnut Creek Provolone Cheese**

**Sale \$2.99 lb.**  
Reg. \$3.99 lb.

**Walnut Creek Mesquite Smoked Turkey Breast**

**Sale \$3.89 lb.**  
Reg. \$4.89 lb.

**MORE SPECIALS**

**NEW!** Walnut Creek Frozen Pie Crust 2 pk. Introductory Price

**\$2.59**

Walnut Creek Peanut Butter All varieties

28 oz. **\$3.29**  
40 oz. **\$5.29**

**In stock for the holidays - Holiday Candies and baking supplies!**

**NEW!** Kaukauna Cheese Balls

**\$3.99 ea.**

**NEW!** Hospitality Frosting Four Flavors

**\$1.79 ea.**

**Coffee of the week: Costa Rican Supremo**

# Thanksgiving

# DINNER

...begins at your local grocer!

Enjoy a family tradition with a

## Fresh Cut Christmas Tree

Pre-Cut Display and Choose & Cut  
Full Range of Sizes and prices for Everyone

- Blue Spruce • Canaan Fir • Fraser Fir

Open November 25<sup>th</sup> to December 23<sup>rd</sup>  
Thurs, through Sun. 10:00 a.m. to Dark.

## Swan's Christmas Tree Farm

(989) 644-3141

At our Farm: 6250 W. River Rd, Weidman  
(10 miles west of Mt. Pleasant)

FREE Drilling, Shaking & Bundling at request.

Handmade

**WREATHS**

**GRAVEBLANKETS**

Large Wreaths by Order

Coldwater Rd. ★ River Rd. N

M-20 W E

Winn Rd. S

"A Family Business Serving Our Community For Over 40 Years."

Look for

# PUZZLE POWER

every Sunday in your Morning Sun.

Pages of Crossword fun for all skill levels.

To subscribe to the Morning Sun:  
logon to  
[themorningsun.com/newstart](http://themorningsun.com/newstart)  
or call  
**989.533.3106**

# Morning Sun

**DEWEY'S TRADING POST**

Maple Rapids • 682-4158

Monday-Saturday: 8 am - 7 pm, Closed Sunday

Prices In This Ad Good for weeks of November 14, 2016 - November 26, 2016

WIC • Bridge Card • VISA • Mastercard • Discover  
American Express • Debit Card & Chamber Bucks Gift Certificates.

<p><b>Our Double Smoke Hams</b> 14 lb Avg</p> <p><b>\$299</b> <small>WHOLE OR 1/2</small> LB</p>	<p><b>Fresh Turkeys</b> Assorted Sizes Limited Supply</p> <p><b>\$279</b> LB</p>	<p><b>Frozen Turkeys</b> "Assorted Sizes"</p> <p><b>\$169</b> LB</p>	<p><b>Frozen Fresh Turkey Drumsticks</b></p> <p><b>89¢</b> LB</p>
<p>5 lb. Bags 80/20 Ground Chuck</p> <p><b>\$14.95</b> BAG</p>	<p><b>Koegel's Ring Bologna</b></p> <p><b>\$3.49</b> LB</p>	<p><b>Bulk Colby or Colby-Jack Cheese</b></p> <p><b>\$3.99</b> LB</p>	<p><b>"Our Own" Homemade German Bologna</b></p> <p><b>\$6.99</b> LB</p>
<p><b>"Our Own" Smoke Roasted Sausage</b></p> <p><b>\$5.99</b> LB</p>	<p><b>Whole New York Strips</b> 13 lb</p> <p><b>\$3.69</b> <small>CUT FREE!</small> LB</p>	<p><b>Bulk Sausage Links</b></p> <p><b>\$2.99</b> LB</p>	<p><b>"Bulk" Bacon</b></p> <p><b>\$3.19</b> LB</p>
<p><b>"Boneless" Whole Pork Loins</b> 9 lb Avg</p> <p><b>\$1.89</b> LB</p>	<p><b>Whole Pork Butts</b> 9 lb Avg</p> <p><b>\$1.39</b> LB</p>		

Stop and Check Out our Bulk Spices & Baking Supplies for your Holiday needs!!  
Best Prices around

**PRODUCE**

<p>10 lb. Russet Potatoes "Michigan"</p> <p><b>\$2.99</b></p>	<p>Jumbo Yams</p> <p><b>39¢</b> LB</p>	<p>Celery Hearts</p> <p><b>\$1.99</b> BUNCH</p>
<p>Winter Squash "Assorted Kinds"</p> <p><b>79¢</b> LB</p>	<p>Michigan Cranberries 12 oz.</p> <p><b>\$1.89</b></p>	

www.deweystradingpost.com  
LIKE us on facebook & see our WEEKLY SPECIALS!

## Fall Inventory Sale

<p><b>Gable</b> 10x16, 1 Window</p> <p>Reg. Price <b>\$2,290</b> Sale Price <b>\$2,200</b></p>	<p><b>Highbarn</b> 10x14, 2 Windows, 2-4 Ft. Lofts</p> <p>Reg. Price <b>\$2,620</b> Sale Price <b>\$2,530</b></p>	<p><b>Gable</b> 10x14, 4 Ft. Loft</p> <p>Reg. Price <b>\$2,385</b> Sale Price <b>\$2,300</b></p>
<p><b>Gambrel</b> 10x12</p> <p>Reg. Price <b>\$1,655</b> Sale Price <b>\$1,590</b></p>	<p><b>Gable</b> Side Entry Door, 12x20, 1 Window, 4 Ft. Loft</p> <p>Reg. Price <b>\$4,108</b> Sale Price <b>\$3,975</b></p>	<p><b>Highbarn</b> 10x16, 2-4 Ft. Lofts, 1 Window</p> <p>Reg. Price <b>\$2,320</b> Sale Price <b>\$2,260</b></p>
<p><b>Gable</b> 12x12</p> <p>Reg. Price <b>\$2,100</b> Sale Price <b>\$2,025</b></p>	<p><b>Gable</b> 8x16, 2 Windows, 2-4 Ft. Lofts, 2 Windows</p> <p>Reg. Price <b>\$2,143</b> Sale Price <b>\$2,020</b></p>	<p><b>Quaker</b> 10x16, 2 Windows</p> <p>Reg. Price <b>\$3,190</b> Sale Price <b>\$3,070</b></p>

Statewide Delivery - Free Delivery w/ in 70 miles!  
Supplying Michigan with quality built portable building for over 25 yrs.

## Miller's Woodworking

3209 E. Beaverton Road • Clare, MI 48617  
(Voicemail) 989-465-8172

Old US 127 to Surrey West on Surrey to Grant 1 mile north on Grant  
7:30am-5:00pm Evening by Chance or Appointment  
Closed Sunday

Attention Deer Hunters  
Deer Blinds In Stock

\*Sale Price - In Stock Inventory Only

**Your \$OLUTION to HIGH HEATING COSTS**

**Comfort Max Coal Burning**  
**Fire Chief FCoS1800D Outdoor Furnace**  
 Wood Burning 1500-2500 sq. ft  
 Forced Air 28" Log 1800 CFM  
 Made Entirely In USA  
 Top Quality

**Secondary Combustion System**  
 92% Efficient  
 70,000 BTU  
 Superior Cast Iron Shaker Grates

**Mr. Heater Buddy**  
 Portable Propane Heater  
 Indoor Safe Propane Heater  
 Large Selection of Mr. Heater Propane Heaters at **Low, Low Prices**  
 Buddy Heater \$59.99

**Mr. Heater**  
 Vent Free Propane & Natural Gas Wall Heaters w/ Thermostat & Blower Starting at \$149.00

**Blaze King**

**Burn 33% less wood**  
 The combination of our exclusive thermostat and catalytic combustor technology makes your Blaze King stove one of the most efficient wood stoves in the world.  
 Blaze King has the top 2 most efficient wood stoves in North America and builds 5 of the top 8 most efficient stoves.

Wood Pellets  
 Anthracite Coal  
 Wood, Coal, Corn & Pellet Stoves  
 All Fuel Chimney Systems

- Efficiency
- Long Burn Times
- Thermostat Control
- Low Emissions

**HERSHBERGER'S PRO HARDWARE**  
 10289 N. Leaton Rd., Clare, MI 48617-9107  
**(989) 386-5338**  
 Full Line of Hardware & Building Supplies  
 Stove & Furnaces All Fuel Chimneys

**ANNUAL Christmas Open House**

**Nov. 25<sup>th</sup> & 26<sup>th</sup>**  
 Friday and Saturday after Thanksgiving  
 Refreshments served

**Gift certificates available**

**ALL CHRISTMAS 25% OFF**  
 Includes Ornaments, Decorations & Artificial Greens & Trees

**BOLTED CHRISTMAS FABRICS**  
**25% OFF**  
 1/2 yard cut minimum

**ALL REGULAR BOLTED FABRIC**  
**20% OFF**  
 1/2 yard cut minimum

**FRESH GRAVE BLANKETS & WREATHS**  
**10% OFF**

**GREAT GIFT IDEAS AND STOCKING STUFFERS FOR EVERYONE ON YOUR LIST!**

**STORE HOURS: Monday - Saturday 9-5 • Sunday 10-4**

**ELM CREEK Elm Creek Ltd**  
 Lawn • Garden • Crafts • Fabric  
 2609 W. Surrey Rd. Farwell, MI 48622  
 (989)588-6061 www.elmcreekltd.com

Visit Our Website To Join Our Newsletter  
 Receive All Of Our Sales & Promotions Faster & Sooner Than Everyone Else!

**BRIAN'S FRUIT & MEAT MARKET**

**2167 S. M-76 • West Branch (Across from Kmart)**

While Supplies Last • Not responsible for printing errors  
 Prices good Sunday, November 20th thru Friday, November 25th, 2016  
 Store Hours: Sunday 8am - 6pm • M,T,Th,Sat. 7am-7pm • Fridays 7am - 8pm

**WE ARE A PACKAGED LIQUOR DEALER**

We accept all major credit cards & EBT card

**BRIAN'S MEATS: 989-345-3709** **LIKE US ON FACEBOOK** **WWW.BRIANSFRUITANDMEATMARKET.COM**

<b>NOW TAKING ORDERS FOR Thanksgiving</b> Turkeys, Hams, etc. Stop In or Call Today!	<b>Butterball Brand</b> SLICED OVEN ROASTED TURKEY BREAST <b>\$5.99</b> lb.	<b>Great Lakes Brand</b> SLICED SWISS CHEESE <b>\$5.99</b> lb.	<b>Eckrich Brand</b> SLICED PREMIUM DELI HAM <b>\$3.49</b> lb.	<b>Koegel's Fine Meats</b> KOEGELS PICKLED BOLOGNA & RED HOT <b>\$10.49</b> each 2.5 lb. jar	<b>Fire Up the Grill</b> BONELESS BEEF NEW YORK STRIP STEAKS <b>\$7.99</b> lb.	<b>Best of the West</b> BONELESS BEEF CHUCK ROAST <b>\$4.49</b> lb.	<b>Star Brand</b> FRESH GROUND BEEF FROM CHUCK <b>\$2.89</b> lb.	<b>Holiday Favorite</b> GROUND VEAL & PORK MEATBALL MIX <b>\$4.99</b> lb.	<b>HOLIDAY HORS D'OEUVRE AND DINNER CLASSICS</b>
<b>Starts Nov. 15th</b> FRESH AMISH TURKEYS <b>\$1.99</b> lb.	<b>Pork the Other White Meat</b> BONELESS BUTTERFLY PORK CHOPS <b>\$2.69</b> lb.	<b>X-tra Lean</b> BONELESS PORK TENDERLOINS <b>\$2.99</b> lb.	<b>Assorted Varieties</b> BRIAN'S HOMEMADE FRESH BRATS <b>\$3.99</b> lb.	<b>Great Mixed with Versatility</b> SEMI BONELESS PORK BOSTON BUTT ROAST <b>\$1.69</b> lb.	<b>Fresh Never Frozen</b> FRESH BONELESS SKINLESS CHICKEN BREAST <b>\$1.69</b> lb.	<b>Best of Turkey</b> MICHIGAN BRAND ASST. FLAVORED JERKY <b>\$13.99</b> lb.	<b>BBQ Time</b> FROZEN BABY BACK RIBS <b>\$2.99</b> lb. Frozen 3 pks	<b>WHOLE OR HALVES</b> DEARBORN SPIRAL SLICED HAMS <b>\$4.49</b> lb. <b>GLAZED \$4.99</b> lb.	<b>DEARBORN BRAND</b> WHOLE AND HALF SEMI-BONELESS CLASSIC HAMS <b>\$3.49</b> lb.
								<b>DAIRYFIELD BRAND</b> SMOKED PICNIC HAMS <b>\$1.99</b> lb.	
								<b>31/40 COUNT COOKED, PEELED &amp; DEVEINED SHRIMP</b> <b>\$7.99</b> lb.	
								<b>26/30 COUNT RAW, PEELED &amp; DEVEINED SHRIMP</b> <b>\$7.99</b> lb.	
								<b>16/20 COUNT COOKED, PEELED &amp; DEVEINED SHRIMP</b> <b>\$10.99</b> lb.	
								<b>KIN OF ROASTS BONE-IN STANDING RIB ROAST</b> <b>\$9.69</b> lb. <b>BONELESS \$9.99</b> lb. <small>.50 cents extra for Seasoning</small>	

**BRIAN'S PRODUCE: 989-345-2891**

<b>BAREMAN'S DAIRY MILK</b> 1% / gal. <b>\$2.49</b> 2% / Whole gal. <b>\$2.69</b>	<b>PRAIRIE FARMS SOUR CREAM &amp; CHIP DIP</b> <b>\$1.69</b> 16 oz tub	<b>PRAIRIE FARMS COTTAGE CHEESE</b> <b>\$1.69</b> 16 oz tub	<b>WILLIAM'S BRAND SAVE CHEESES</b> <b>\$5.99</b> 1-1/2 lb. block	<b>DUTCH FARMS SHREDS, CHUNKS &amp; SHINGLE CHEESES</b> <b>2/\$3.00</b> 6 oz - 8 oz.	<b>BETTER MADE POTATO CHIPS</b> <b>2/\$4.00</b>	<b>CAULIFLOWER</b> <b>\$1.99</b> ea.
<b>FRESH CRANBERRIES</b> <b>\$1.99</b> ea.	<b>MICHIGAN WHITE POTATOES</b> <b>\$1.99</b> 10 lb. bag	<b>AVOCADOS</b> <b>2/\$1.00</b>	<b>TEXAS RUBY RED GRAPEFRUIT</b> <b>2/\$5.00</b> 5 lb. bags	<b>LETTUCE</b> <b>89¢</b> ea.	<b>CUKES, GREEN PEPPERS AND GREEN ONIONS</b> <b>2/89¢</b>	
<b>BROCCOLI</b> <b>99¢</b> ea.	<b>YAMS</b> <b>69¢</b> lb.	<b>HARD SQUASH</b> <b>49¢</b> lb.	<b>GRAPE TOMATOES</b> <b>99¢</b> ea.	<b>COOKING ONIONS</b> <b>99¢</b> 3 lb. bag	<b>BUDWEISER &amp; BUD LIGHT</b> <b>\$15.99</b> 24pk cans + tax + deposit	<b>GATO NEGRO WINES</b> <b>3/\$12.00</b> assorted flavors 750 ml.

**PAWN SHOP**  
Buy, Sell, Pawn

3 Month Pawn  
3% + 1.00 Storage  
Firearms, Gold  
& More

Gladwin Trade & Sales  
989-426-6811

*Thank You*

G. I. R. E. S. D./Michigan Works  
Alma College/Nursing Dept.

for joining the Culligan family and becoming valued customers.

**Culligan Worldwide**  
Celebrating 80 years

Ken's Culligan • Alma

**LOCAL SHOPPING. LOTTA SAVINGS!**

Park it in the  
**CLASSIFIEDS**



and watch it go fast!

**ACCESSORIES & JEWELRY**

**SHOP MICHIGAN** to keep jobs and support your community! Buy Nearby all year, especially for the holidays! Find out more at BuyNearbyMI.com

**FURNITURE**

**AMISH BUILT** mini cabins or storage sheds delivered to your site anywhere in Michigan! Starting **UNDER \$1,000.00**. mynextbarn.com 989-832-1866

**AMISH LOG** Beds, Dressers, Rustic Table and Chairs, Mattresses for Cabin or Home. Lowest price in Michigan! dandanthemattressman.com 989-923-1278

**AN AMISH** Log Headboard and Queen Pillow Top Mattress Set. Brand new-never used, sell all for \$275. Call anytime 989-832-2401.

**FOAM SHEETS:** Pole Barn Insulation, Dow Styrofoam, R-Tech, long lengths, Under Concrete foam, foam for under siding in stock or special cuts. No seconds, delivery, silver sheeting. www.williamsinsulationinc.com 800-262-5774

**MISCELLANEOUS**

A PLACE for mom. The nation's largest senior living referral service. Contact our trusted, local experts today! Our service is FREE/no obligation. CALL 1-800-520-3521

**ACORN STAIRLIFTS** The AFFORDABLE solution to your stairs! \*\*Limited time -\$250 Off Your Stairlift Purchase!\*\* \*\*Buy Direct & SAVE. Please call 1-800-280-1897 for FREE DVD and brochure.

**ADJUSTABLE BED** Brand New with Imcomfort gel memory foam mattress. Retail Cost \$5,900.00, sacrifice for \$997.00. Call for showing or delivery: 989-615-2951.

**BUILT BEST BARN** Michigan's Largest Pole Barn Company. Best Quality, Best Service, Fall Specials.  
24'x24'x8'=\$7495.00,  
24'x32'x8'=\$8495.00,  
24'x40'x10'=\$10,495.00,  
30'x40'x10'=\$11,495.00,  
32'x48'x12'=\$16,495.00. Completely Built, (Concrete Floor Optional) License/Insured, 1-877-802-9591 (Office) 989-205-2534 (Cell)

**DIRECTV.** NFL Sunday Ticket (FREE!) w/Choice All-Included Package. \$60/mo for 24 months. No upfront costs or equipment to buy. Ask about next day installation! 1-800-917-3607

**DISH NETWORK? NEW FLEX PACK**-Select the Channels You Want. FREE Installation. FREE Streaming \$39.99/24 months. ADD Internet for \$14.95 a month. CALL 1-800-930-8959

Drive with Uber. No experience is required, but you'll need a Smartphone. It's fun and easy. For more information, call: 1-800-853-0167

**FAST INTERNET!** HughesNet Satellite Internet. High-Speed. Avail Anywhere. Speeds to 15 mbps. Starting at \$59.99/mo. Call for Limited Time Price! 1-800-491-8935

**FREE PILLS!** Viagra!! Call today to find out, how to get your free Pills! Price too low to Mention! Call today 1-877-602-0194.

**GET CLEAN TODAY.** FREE 24/7 HELPLINE FOR ALCOHOL & DRUG ADDICTION TREATMENT. GET HELP! IT IS TIME TO TAKE YOUR LIFE BACK! CALL NOW: 855-667-5329

**GRAVE BLANKETS,** 4 1/2 ft., hand made, \$40/ each. Gladwin. Call: (989) 578-0820

**KILL BED BUGS & THEIR EGGS!** Buy Harris Bed Bug Killers/ KIT Complete Treatment System. Available: Hardware Stores, The Home Depot, homedepot.com

**LUNG CANCER?** And 60 Years Older? If So, You And Your Family May Be Entitled To A Significant Cash Award. Call 800-871-9061 To Learn More. No Risk. No Money Out Of Pocket.

**NEW AT&T INTERNET OFFER.** \$20 AND \$30/MO PLANS AVAILABLE WHEN YOU BUNDLE. 99% RELIABLE. 100% AFFORDABLE. HURRY. OFFER ENDS SOON, CALL NOW 1-800-830-3921

**MISCELLANEOUS**

**ONLINE ONLY** Estate Auctions, 2 auctions monthly. Selling Everything from Antiques; Autos; Firearms; Tools and more. For more information and to register go to sherwoodauctionservicellc.com 989-640-9401

**PIONEER POLE BUILDINGS** Free Estimates Licensed and Insured. 2x6 Trusses. 45 Year Warranty Galvalume Steel-19 Colors. Since 1976 #1 in Michigan Call Today 1-800-292-0679

Reach Across Michigan with a MegaMarket Statewide Classified Ad! Over 1.2 million weekly circulation just \$249 per week! Buy 3 - Get 1 Free! Call 800.783.0267

**SAVE ON** internet and TV bundles! Order the best exclusive cable and satellite deals in your area! If eligible, get up to \$300 in Visa Gift Cards. CALL NOW! 1-800-807-1095

**STOP OVERPAYING** for your prescriptions! SAVE! Call our licensed Canadian and International pharmacy, compare prices and get \$25.00 OFF your first prescription! CALL 1-800-697-1808 Promo Code CDC201625

**TOP CASH PAID!** For old motorcycles! 1900-1979. Dead or alive! 920-371-0494.

**MERCHANDISE WANTED**

**45 RPM Records Wanted** (the small ones w/big hole) 50's-60's-70's. 517-775-3989

**BUILDING MATERIALS & SUPPLIES**

**BUILT BEST BARN**

Michigan's Largest Pole Barn Company Best Quality, Best Service, Fall Specials  
24'x24'x8'=\$7495.00  
24'x32'x8'=\$8495.00  
24'x40'x10'=\$10,495.00  
30'x40'x10'=\$11,495.00  
32'x48'x12'=\$16,495.00  
Completely Built, (Concrete Floor Optional) License/Insured 1-877-802-9591 (Office) 989-205-2534 (Cell)

**PIONEER POLE BUILDINGS**

Free Estimates Licensed and Insured. 2x6 Trusses. 45 Year Warranty Galvalume Steel-19 Colors. Since 1976 #1 in Michigan Call Today 1-800-292-0679

**FARM FEED & SUPPLIES**

**ALFALFA:** 4th Cutting, \$10/ bale 2nd Cutting \$8; Straw, \$4/Bale; Cracked Corn \$12/100, Shelled-Corn \$10/100, Cob-Corn \$5/Bag, Rye, Barley, Wheat, Oats \$12/ bag. Delivery-Available. (989)433-5418 Cell# (989)965-1391

**ALFALFA:** 4th Cutting, \$10/ bale 2nd Cutting \$8; Straw, \$4/Bale; Cracked Corn \$12/100, Shelled-Corn \$10/100, Cob-Corn \$5/Bag, Rye, Barley, Wheat, Oats \$12/ bag. Delivery-Available. (989)433-5418 Cell# (989)965-1391

**APARTMENTS FOR RENT (UNFURNISHED)**

**2 BEDROOM** apartment, stove, refrigerator, washer/dryer included. Central heat/air. \$575/month, \$575 security deposit. Elm Hall 989-533-9938

**A 1 bdrm** apartment, 2 miles from Casino, No dogs, \$425/month. Mount Pleasant. No sec dep. (Cell) 989-600-6238

**FOR LEASE** Mt. Pleasant: Clean, spacious, 1 family, 2 bedroom Duplex. Ready 12/1/16. 269-244-5562.

**MOBILE HOMES FOR RENT**

**RIVERDALE:** 2 bdrm mobile home for rent at 11029 W. Van Buren Rd., approx 1 mile from the Elm Hall convenience store. Large yard. Call (989) 833-7653

**MERCHANDISE WANTED**

**CASH FOR OLD COINS & CURRENCY**

Paying book price. Will look up each coin with you. 989-426-7300.

**PASSENGER CARS**

**2009 FORD ESCAPE**

XLT, 4x4, only 51,000 miles, full power, sunroof, immaculate condition.

**ONLY \$11,995 or about \$219/mo.**

**Dick Sova Auto**  
989-828-6032  
dicksovaautosales.com

**2010 CHEVY IMPALA**

Only 44,000 miles, full power, local trade, immaculate.

**ONLY \$9,995 or about \$179/mo.**

**Dick Sova Auto**  
989-828-6032  
dicksovaautosales.com

**2014 CHEVY IMPALA (New body Style)**

LT, V6 motor, full power, brand new tires, local trade.

**WOW! ONLY \$15,995 or about \$259/mo.**

**Dick Sova Auto**  
989-828-6032  
dicksovaautosales.com

**2014 GMC TERRAIN**

Only 18,000 miles, full power, special chrome appearance package, beautiful!

**ONLY \$19,995 or about \$289/mo.**

**Dick Sova Auto**  
989-828-6032  
dicksovaautosales.com

**2015 DODGE JOURNEY**

Only 6,000 miles, heated leather, 3rd rear seat (7 passenger), show room new.

**ONLY \$21,995 or about \$329/mo.**

**Dick Sova Auto**  
989-828-6032  
dicksovaautosales.com

**2016 FORD EDGE SEL**

All wheel drive, jet black, absolutely beautiful!

**ONLY \$27,995 or about \$379/mo.**

**Dick Sova Auto**  
989-828-6032  
dicksovaautosales.com

**2016 JEEP CHEROKEE**

4x4, limited, heated leather, chrome wheels, full power

**ONLY \$24,995 or about \$349/mo.**

**Dick Sova Auto**  
989-828-6032  
dicksovaautosales.com

NEED HELP?  
CALL A LOCAL PROFESSIONAL FROM OUR

**Professional Services Directory**

**ACCOUNTING & FINANCIAL**

**SOCIAL SECURITY DISABILITY BENEFITS.** Unable to work? Denied benefits? We Can Help! WIN or Pay Nothing! Contact Bill Gordon & Associates at 1-800-731-5703 to start your application today!

**HEALTH & FITNESS**

**VIAGRA!!** 52 Pills for only \$99.00. Your #1 trusted provider for 10 years. Insured and Guaranteed Delivery. Call today 1-800-404-1282

**HEALTH & FITNESS**

**OXYGEN** - Anytime. Anywhere. No tanks to refill. No deliveries. Only 4.8 pounds and FAA approved for air travel! May be covered by medicare. Call for FREE info kit: 855-970-1066

**LANDSCAPE & TREE MAINTENANCE**

**ARBOR TREE SERVICE.** Storm Damage, Landscaping, Tree Trimming & Removing. Call 989-763-3830

great **BIG ADS**

great **BIG RESULTS**

We simplify digital marketing for businesses everywhere.

We strive to build strong, long-term partnerships built on transparency, trust, and most importantly, performance.

Our clients' goals are at the center of our operation. We are focused on driving results, ROI, and customer experience.

We have a continually expanding portfolio of solutions. Digital moves fast. It's extremely important to maintain mastery of the basics: Premium News, Programmatic, and Search, as these are the most common building blocks for successful campaigns.

The world of digital marketing is in a constant state of change. Solutions that are effective today may be rendered obsolete tomorrow. Adtaxi stays ahead of the curve. Furthermore, we learn from experience and leverage our institutional knowledge to develop key digital insights and best practices.

We are your partner, not your vendor.

If It's not right for our client, It's not right.

We focus on our core competencies.

We continue to learn and Innovate.

adtaxi - Morning Sun  
Mid Michigan Buyers Guide  
Contact a representative for more information  
989-779-6000 or 989-463-6071 • www.adtaxi.com

**Don't Wreck Your Life!**

**Celebrate Responsibly**  
Please Don't Drink and Drive



# Falling Leaves... Falling Prices!

BUY ONE  
GET ONE **50% off**

On all  
**GENIUS™**  
Technology  
Hearing Solutions\*



GENIUS™ provides up to 25% better speech recognition in challenging listening environments than people with normal hearing.

Hearing aids do not restore natural hearing. Effectiveness depends on severity of loss, accuracy of evaluation and ability to adapt to hearing aids. Exp. XX/XX/XX. SAVE 50% on Genius™ ME1-ME4 solutions.

FIRST 15 CALLERS

RECEIVE A

**FREE**

Holiday Turkey  
Certificate<sup>§</sup>

<sup>§</sup>Holiday turkey certificate awarded upon completion of free electronic hearing screening, evaluation and video otoscope inspection.

SAVE INCREDIBLE  
OVER SAVINGS  
**\$1 295**

**40% off**



Digital,  
Programmable,  
Completely  
in the Canal  
with Lifetime  
Aftercare!

Model Audiotone Pro - Reg. \$2390  
\*One year all parts and labor warranty, free cleanings, checkups and adjustment.  
Exp. XX/XX/XX.



**(888) 381-0571**

Miracle-Ear Alma  
116 W. Superior  
Heritage Towne Square

Miracle-Ear Prudenville  
828 W. Houghton Lake Dr.  
(Corner of M55 and M18)

Miracle-Ear Gladwin  
127 N. Arcade, Suite 2  
In the Neely Building

Miracle-Ear Clare  
1430 N. McEwan - Carousel Mall  
(Across from Woods & Punches)

Miracle-Ear Mt. Pleasant  
100 S. Mission, Suite G  
Just south of Rite Aid



*We Make the Outdoors Affordable*  
**Northwoods Wholesale Outlet**

Come SEE THE **NEW** Northwoods - We've enlarged a lot!  
 • Wider Aisles  
 • More Cash Registers - Checkouts  
 • New Blacktop Parking Lot  
 • Thousands of New Items

Exit 181 Then 2.5 miles to the light just 2 blocks East of the light off M-13 in Piconning then right on Van Etten St.

**DON'T FORGET YOUR HUNTING LICENSES**

**(989) 879-1110**  
[www.northwoodsoutlet.com](http://www.northwoodsoutlet.com)

**229 W 5th St.  
 Pinconning, MI 48650**  
 Open 6 am to midnight now through December 23rd Closed Thanksgiving and Christmas

**CASH AND CREDIT CARDS ONLY**  
 Now accepting American Express  
**WHILE SUPPLIES LAST - NO RAINCHECKS -**  
 Not Responsible for Printing Errors

**weber** *AT NORTHWOODS RETAILS SO LOW WE CANNOT ADVERTISE*

**WE NOW CARRY WEBER PROPANE, AND CHARCOAL GRILLS**  
**PERFECT GIFT FOR THE GRILLMASTER IN YOUR LIFE**

**Even More Great Deals!**

**Holiday Slider Ziploc Bags**

15 ct. gallon  
 20 ct. quart

Reg. \$2.99  
**OUR PRICE 3/\$5.00**



**Pringles Potato Chips**

5.96 oz.  
 Reg. \$1.79

**OUR PRICE \$1.00**  
 SAVE 79¢



**Russell Stover Chocolates**

• All Milk Chocolate  
 • Pecan Delight  
 • Assorted Creams  
 12 oz.

Reg. \$9.99  
**OUR PRICE \$4.99**  
 SAVE \$5.00

**Whitman's Boxed Chocolates**

12 oz.

Reg. \$9.99

**OUR PRICE \$4.99**  
 SAVE \$5.00



**Cheez-It Crackers**

13.7 oz.  
 Regular and White Cheddar

Reg. \$4.99  
**OUR PRICE 3/\$5.00**



**Krave Beef Jerky**

Black Cherry, BBQ, Garlic, Chili Pepper, Sweet, Chipotle, Sea, Salt Original

Reg. \$5.99 ea

**OUR PRICE 2/\$5.00**

**Hershey's Milk Chocolate Mini Kisses**

10 oz. pkg

Reg. \$2.49

**OUR PRICE 4/\$5.00**



**Assorted Candy Canes**

12 oz box

Reg. \$3.49

**OUR PRICE \$1.00**  
 SAVE \$2.49

**Star Snacks**

• Mixed Nuts  
 2.75 lb.  
 • Roasted Salted Peanuts 4 lbs.



Reg. \$19.99

**OUR PRICE \$9.99**  
 SAVE \$10.00

**HOLIDAY GIFT BAGS**

• 3PK



Reg. \$9.99

**OUR PRICE \$4.99**  
 SAVE \$5.00

**ERTL MONSTER TREADS REMOTE CONTROL TRACTOR**



Reg. \$59.99

**OUR PRICE \$19.99**  
 SAVE \$40.00



**BROWNING SOCKS WOOL BLEND**

2 PACK

Reg. \$24.99

**OUR PRICE \$7.99**  
 SAVE \$17.00



**3pk. Realtree Everyday Socks**

Reg. \$14.99

**OUR PRICE \$4.99**  
 SAVE \$10.00

**South Bend Neoprene Gloves**

Reg. \$12.99

**OUR PRICE \$3.99**  
 SAVE \$9.00



**Browning Hoodies**

Reg. \$19.99

**OUR PRICE \$9.99**  
 SAVE \$10.00

**Black Oil Sunflower Seeds**

*Our Prices are for the Birds!*



**Sunflower/Thistle Seed Feeder**

Reg. \$7.99

**OUR PRICE \$3.99**  
 SAVE \$4.00



**\$12.99**  
 40 lb. bag



**Suet Cakes**

**79¢** cake

12 pk.  
 11.25 oz. cakes

**\$7.99** case



**Wild Bird Seed**

**AMAZING DEAL!**

**\$8.99**  
 40 lb. bag

**TRICK YOUR RIDE WITH THESE FINE CAMO AUTOMOTIVE ACCESSORIES**

**2-Piece Bone Collector Floor Mat**



Reg. \$34.99  
**OUR PRICE \$14.99**  
 SAVE \$20.00

**Mossy Oak Utility Floor Mat**



Reg. \$14.99  
**OUR PRICE \$4.99**  
 SAVE \$10.00

**Bone Collector Universal Bench Seat Cover**



Reg. \$49.99  
**OUR PRICE \$19.99**  
 SAVE \$30.00

**Realtree Universal Seat Cover**



Reg. \$34.99

**OUR PRICE \$12.99**  
 SAVE \$22.00

**Browning Neoprene Steering Wheel Cover with Pink Trim**



Reg. \$14.99

**OUR PRICE \$4.99**  
 SAVE \$10.00

**FISHING - CAMPING - HUNTING | OUTDOOR SUPERSTORE SALE GOOD THROUGH 11/27/16 • WHILE SUPPLIES LAST**