

Mid-Michigan Buyers Guide

SUNDAY, JANUARY 15, 2017

Serving Clare, Gladwin, Gratiot, Isabella, Montcalm, & Southern Roscommon Counties

Morning Star
Publishing Company powered by digitalfirst

Gladwin City Housing Commission

Low Income Housing • Community Development Program

**NO
SMOKING
FREE HEAT
AND RENT BASED
ON INCOME**

989-426-5721



Gladwin City
**HOUSING
COMMISSION**
989-426-5721
www.gladwinhc.net

GA
COUNCIL ON AGING
Serving Gladwin County
989-426-5450
www.gladwincoa.org

Equal Opportunity
Employer and Service
Organization

Like us on Facebook

426-6514
Transit
www.gladwintransit.com



If you or a family member is in need of an apartment, the Gladwin City Housing Commission has smoke-free affordable apartments in downtown Gladwin and Beaverton. Seniors and disabled citizens can rent a one bedroom apartment for 30% of their income. This includes appliances, gas, electric and water. Small pets are welcome.

You'll also have access to a laundry room, arts & crafts room and lounge. Other services available include curb side pickup from the City County Transit and lunch at the Council on Aging dining centers. You do not have to live in Gladwin or Beaverton to qualify for this low income housing. So contact the Gladwin City Housing Commission at 426-5721 to see if you qualify. An Equal Housing Opportunity

LOW OR NO INTEREST LOANS AVAILABLE to Gladwin County residents for home repairs.

- Roof • Windows • Furnace • Water Heater • Insulation • Electrical • Plumbing • Well
- Septic Tank • Drain Field • Ramp • And More

- Must be income eligible
- Own your home or purchasing it through a mortgage or land contract
- Be your principal residence for minimum of 1 year
- All property taxes must be paid up to date
- Current homeowner's insurance is required

For more information call Karen at (989) 426-5721
Gladwin City Housing Commission.
An Equal Housing Opportunity!



**12 Months Interest
Free Financing Available
With Approved Credit.**

\$300 Minimum purchase,
monthly payments required.

LARGEST RECLINER SELECTION IN MICHIGAN! SEE FOR YOURSELF!

IN STOCK AND ON SALE NOW:

Power Recliners ■ Leather Recliners ■ Big Mans Recliners ■ Ladies Recliners ■ Gliding Recliners ■ Swivel Rocker Recliners ■ Wing Chair Recliners ■ Heat & Massage Recliners ■ Life Chair Recliners ■ Reclining Loveseats ■ Reclining Sofas ■ Children's Recliners

**People's Choice #1
Furniture Store #1
Customer Service #1
Web Site**



L A Z B O Y®

Flexsteel®
America's Seating Specialist

Best
Home Furnishings

Kubin's Mattress Sale!

OFFICIAL MATTRESS

**NATIONAL SLEEP
FOUNDATION**

Waking America to the Importance of Sleep

www.sleepfoundation.org

**Serta Select Twin
Mattress \$99**

**Add a
Pivot Head Up Box
for \$544 on
most models**

**Guaranteed Lowest Prices
ON ALL SERTA MATTRESSES!**

	TWIN 2pc set	FULL 2pc Set	QUEEN 2pc Set	KING 3pc set
Majestic Davey Gentle Eurotop	\$299 Sale Compare At \$449	\$379 Sale Compare At \$569	\$399 Sale Compare At \$599	\$599 Sale Compare At \$899
Majestic Gallion Support Firm or Support Eurotop	\$349 Sale Compare At \$529	\$449 Sale Compare At \$679	\$499 Sale Compare At \$749	\$799 Sale Compare At \$1199
Majestic Raftery Premium Choice Plush or Firm	\$449 Sale Compare At \$679	\$549 Sale Compare At \$829	\$599 Sale Compare At \$899	\$899 Sale Compare At \$1349
Majestic Stowcroft Choice of Super Pillowtop or Firm	\$549 Sale Compare At \$829	\$649 Sale Compare At \$979	\$699 Sale Compare At \$1040	\$999 Sale Compare At \$1498
Kubin's Exclusive, Perfect Sleeper Regal Suite, 2 Sided flipable mattress Choice of Plush or Extra Firm	\$549 Sale Compare At \$829	\$699 Sale Compare At \$1049	\$799 Sale Compare At \$1199	\$1099 Sale Compare At \$1649
Serta Perfect Sleeper Swan Harbor Choice of Luxury Pillowtop or Firm	\$899 Sale Compare At \$1349	\$969 Sale Compare At \$1459	\$999 Sale Compare At \$1499	\$1299 Sale Compare At \$1949
Serta Perfect Sleeper Hatters Evercool & Gel Memory Foam	\$899 Sale Compare At \$1349	\$969 Sale Compare At \$1459	\$999 Sale Compare At \$1499	\$1299 Sale Compare At \$1949



**Helps reduce
tossing and turning**

ComfortRight™ Layers

This advanced system of foams and fluffy fibers is designed to provide instant comfort. This helps reduce the pressure points that can cause tossing and turning so you can sleep more comfortably through the night.

**Minimize impact from
partner movement**

TrueSense® Design

Serta's exclusive design helps minimize the impact of partner movements, working to isolate motion at its source so you can enjoy a peaceful night's sleep with fewer disruptions.

**Encourages proper
back support & alignment**

Custom Support® System

Every Perfect Sleeper features a system of durable, yet flexible carbon steel coils that work to promote proper support and alignment across the entire body.

**Resists sagging
& edge roll-off**

ComfortLast® Construction

Designed to enhance durability of the mattress and is thoroughly tested beyond industry standards to make sure it can resist sagging and edge roll-off. This enhanced durability can help extend the comfort life of your mattress.

**Promotes a balanced
sleep temperature**

CoolBalance® Technology

A unique combination of high-performance heat and moisture-regulating fabric and an overall mattress design that helps promote airflow. Together, these help provide a comfortable, balanced sleep temperature.

**5 reasons
to never count
sleep again.**



**FURNITURE
LIFESTYLE**
BRAND SOURCE® NATIONAL BUYING POWER



Kubin's Furniture & Mattresses

101 N Mill St, Corner of M46, St. Louis, Michigan, (989) 681-5043

Hours: Mon-Thurs: 9-6, Fri: 9-8, Sat: 9-5, Closed Sunday

Sign up Your Email at: <http://www.kubins.com/signup.htm>



*SEE STORE FOR DETAILS



DEWEY'S TRADING POST
Maple Rapids • 682-4158
Monday-Saturday: 8 am - 7 pm, Closed Sunday
Prices In This Ad Good for weeks of January 16, 2017 - January 21, 2017
WIC • Bridge Card • VISA • Mastercard • Discover
American Express • Debit Card & Chamber Bucks Gift Certificates.



FEATURE MEAT BUNDLE 35LB \$99.99
10LB CHICKEN LEG QUARTERS, 10LB GROUND CHUCK,
5LB COUNTRY STYLE RIBS, 5LB PATIO STEAK, 5LB HOT DOGS
CUSTOM VAC PACKED FOR YOUR FAMILY SIZE!!

Koegel's 4lb Skinless Franks  \$12.99 PKG	Select New York Strips 13 lb Avg  \$3.19 LB CUT FRESH	Smoked Picnics 9 lb Avg  \$1.19 LB WHILE SUPPLIES LAST!!
"Our Own" All Beef Philly Steak Brats  \$3.99 LB	"Our Own" Sweet Italian Brats  \$2.99 LB	"Our Own" Bacon Ranch Brats  \$2.99 LB
Lean-n-Meaty Pork Steak  \$1.79 LB	Boneless Country Style Ribs  \$2.19 LB	"Whole" Pork Butt Roast  \$1.69 LB
Choice "Boneless" Arm Roast  \$2.99 LB	Choice "Boneless" Patio Steak  \$3.49 LB	Boneless & Skinless Chicken Breast  \$1.49 LB

Equal Dollar Substitution
24 Hour Notice Please!!
9 Different Bundles Available

FISH

10lb Boxes Pollock  \$19.99 BOX	5lb Bag Tilapia  \$13.99 BAG	5lb Bag Ocean Perch  \$17.99 BAG	2 1/2 Bag Cod  \$9.99 BAG	"Individual" Tuna Steaks  \$3.99 LB
---	--	--	---	--

www.deweystradingpost.com
LIKE us on facebook & see our WEEKLY SPECIALS!



GET MORE BANG FOR YOUR BUCKS
GOOD, CLEAN, QUALITY PRE OWNED MERCHANDISE

Jewelry 	TVs 	Wii, Xbox One PS3, PS4 
Firearms  Muzzle Loader Gear	Musical Instruments 	Tools 
Paintball Equipment 	SPECIAL Xbox One System \$175	

DIRT CHEAP • CAR AUDIO • NEW & USED
Tested & Inspected. Why Pay New Prices?
GLADWIN TRADE & SALES
1-989-426-6811
1739 N. State St. • Gladwin



Lambert's Meat Market and Bakery

Taste the difference "FRESH" makes!

624 E. Cedar Ave., Gladwin (next to Family Dollar) 989-246-1850

Winter Hours: Mon-Friday 8-6:30; Saturday 8-6:00; Sunday 8-4:00 • Sales Dates Monday, January 16 through Saturday, January 21, 2017



CHECK OUT OUR DELICIOUS BAKERY ITEMS!

10LB OR MORE SALE!

Wayside Bacon 10lb box  \$16.90	Pork Steak, Strips, Shoulder Roast or Breakfast Sausage Mix or Match  \$1.59 lb.	Ground Beef Hamburger 73% Lean  \$2.29 lb.	Ground Beef from Chuck 80% Lean  \$2.49 lb.
USDA Choice Denver Steaks or English Roast Mix or Match  \$3.19 lb.	Boneless Skinless Chicken Breast 40lb bulk case \$51.60 =\$1.29/lb  \$1.49 lb.	Chicken Leg Quarters 10lb  \$3.90	Boneless NR Ribeye Loins  \$3.89 lb. CUT FREE!!

BAKERY AND DELI DEALS

Bakery Pecan Sticky Cinnamon Rolls  \$4.99 6ct	Hamburger or HotDog Buns  \$1.99 8ct	Mini Oatmeal Raisin Cookies  \$1.69 dozen	
Deli Baby Swiss  \$5.99 lb.	Boiled Ham  \$2.49 lb.	Dairy Fresh Bar or Shredded Cheese  \$1.99 8oz.	Argentine Red Shrimp 16-20 ct  \$7.99 1 lb.

No Rainchecks • Not Responsible for Printing Errors

PUBLIC SERVICE MESSAGE

HEALTH NOTIFICATION

Do You Struggle to Hear in Noisy Places?



A major name brand hearing aid provider wishes to field test a remarkable new digital hearing instrument in the area. This offer is free of charge and you are under no obligation.

These 100% Digital instruments use the very latest technology to comfortably and almost invisibly help you hear up to 25% BETTER THAN NORMAL HEARING! New GENIUS™ technology provides you up to 25% BETTER SPEECH RECOGNITION in challenging listening environments than people with normal hearing.* With the amazing directional focus feature, you are able to zoom in on a conversation, even with people who are on the side or behind you!

If you wish to participate, you will be required to have your hearing screened in our office FREE OF CHARGE to determine candidacy and review your results with the hearing instruments with our hearing aid specialist.

At the end of this evaluation, you may purchase this same model instrument, if you so desire, at a TREMENDOUS SAVING for participating in this test. Special testing will be done to determine the increased benefits of this technology.

Benefits of hearing aids vary by type and degree of hearing loss, noise environment, accuracy of hearing test, and proper fit. This is a wonderful opportunity to determine if hearing help is available for your hearing loss and get hearing help at a very affordable price.

We have set aside 30 spots for FREE testing next week. Do not delay; again, there is no cost or obligation to participate. Local testing will take place at the location listed below.

CALL NOW IF YOU WISH TO BE INCLUDED
IN THIS FIELD TEST.

LIMITED TIME ONLY!
30 SPOTS AVAILABLE NEXT WEEK!

Do you have insurance coverage?
If so, you may qualify for hearing
aids fully covered under your
insurance plan.



Miracle-Ear Alma
116 W. Superior
Heritage Towne Sq.

Miracle-Ear Clare
1430 N. McEwan - Carousel Mall
(Across from Woods & Punches)

Miracle-Ear Gladwin
127 N. Arcade, Suite 2
In the Neely Building

Miracle-Ear Prudenville
828 W. Houghton Lake Dr.
(Corner of M55 and M18)

Miracle-Ear Mt. Pleasant
100 S. Mission, Suite G
Just south of Rite Aid

Call Kim to schedule an
appointment for the
center nearest you

(888) 381-0571

*Hearing screening is always free. Not a medical exam. Audiometric test to determine proper amplification needs only. **Hearing aids do not restore natural hearing ability. Individual experiences vary depending on severity of hearing loss, accuracy of evaluation, proper fit and ability to adapt to amplification. ^See yourr Miracle Ear representative for complete details. Field test is an in-ficce demonstration. Not valid with any other offer or discount. See your Miracle-Ear representative for complete details on all offers presented in this advertisement. Studies conducted at the University of Northern Colorado (2014) and Oldenburg Horzentrum (2013) showed that Speech Reception Thresholds (SRT) in cocktail-party situations improved up to 2.9 dB for wearers with mild to moderate hearing loss using GENIUS with Directional Focus, compared to people with normal hearing. This corresponds to over 25% improvement in speech understanding.

Thank You
**Ms. Sumner
Ms. Burch**
for joining the Culligan family and becoming valued customers.

Culligan Worldwide
Celebrating 80 years

Ken's Culligan • Alma



RE/MAX® Open Seven Days a Week to Serve You!
RIVER HAVEN, INC. www.riverhavenhomes.com
Wayne R. Walts - Broker

Main Office
777 W. Cedar
Riverwalk Place
989-426-6893

Wixom Lake Office
1239 Estey Road,
Beaverton
989-435-7755

Sugar Springs Office
1415 W. Sugar River Rd.
Gladwin, MI 48824
989-426-9239



Farwell-Lake area-2 bedroom cottage with garage, shed, close to lake access.
\$16,800
MLS#166803

Sugar Springs-3 bedroom, 2 bath chalet with decks, 2 car att garage, across street from beach access.
\$105,000
MLS#166797

Wixom Lake-2 bedroom ranch with 2 2 car garages, 76 ft on 2000 acre all sports lake.
\$109,900
MLS#166804

CUSTOM DESIGNS
Buy Direct & Save

Also Available
Cremation Vaults and Urns

Brewer Bouchey Monument Co.
Family Owned Since 1895
211 N. Mill St. • Downtown St. Louis
989-681-3300 • Toll Free 888-362-2920
Hours: Mon.-Fri. 9-5; Sat. By Appt.
www.brewer-bouchey.com



**SHOP
MOM-&-POP!**

**Support
locally
owned
businesses.**



RABIES CLINIC
Special January Rates

\$15⁰⁰

Reg \$20.⁰⁰

By Appt. 426-0203
Flexible Hours

KELLY'S KRUISING
KRITTER KARE
Kelly Jo Kelley, DVM



**BUY • SELL • HUNT FOR A JOB
CLASSIFIEDS WORK. CALL TODAY!**

Friday January 20, 2017
11:00 AM M-66 Marion, MI



MARION
January Dairy Sale

Groups Of Fresh Cows & Heifers, Springers, Shortbreds, Open Heifers, Calves & Bulls are being consigned
Call Today to Consign Your Cattle or for more Information

Early Groups Include
21 Fresh Heifers/Cows – Many Blessings 50 Open Heifers From One Dairy !!
Updated Information will be at
www.uproducers.com/dairy-sales/
Trucking & Lunch Available

United Producers, Inc.
Dairy Cattle Marketing Services

Paul Warner
614-296-5038

Chad Kreeger
517-294-3484

SOLD!



800 Products
18 States
57M Americans



It's Time For Change

Digital First Media, a leading provider of local news and information, is recruiting Account Executives to join our fun, fast-paced, professional team. You will have an opportunity to sell to a growing audience across an expanding network of digital platforms.

digitalfirst
MEDIA

www.digitalfirstmedia.com and
www.adtaxinetworks.com

Please forward your resumé to
tgoodrich@digitalfirstmedia.com


Digital First Media is an EEO Employer, M/F/D/V

Heated Indoor Auction! **2 LARGE AUCTION RINGS!**

Chippewa Beverage & Dharma Mojo Tea Bar & Grill Equipment Liquidation
Due to closing the doors on both business's, management has decided to sell the listed items at public auction located at 210 W. Pickard St., Mt. Pleasant, MI. 48858.

Directions- From the intersection of Pickard St. and Mission St. (Meijer) travel west 1/2 mile on Pickard St. to sale site. (Auction is in large yellow warehouse) Watch for Pioneer Auction Signs!
Sale will be indoors in a heated warehouse w/ plenty of room!

Saturday, January 21 @ 10am



Van/Tractor/Brush hog-
1998 Ford E250 extended cargo van, 135,344 miles, 5.4 ltr. V8 gas, auto trans, vin# 1FTN524L2XHA57599
1968 Ford 4000 Select-O- loader tractor, 2199 hrs, 46 hp, Diesel, select-O- speed shift, trans mission, 540 pto, 3pt. 2 outlet, power steering, 16 0-30 tires 80%, Sharp tractor
King Kutter 6' brush hog, 3pt, 540 pto

Forklift/Floor Cleaners-
Caterpillar 35 propane forklift, 1140 hours, solid tires, 5000lb. lift.
Caterpillar 35 propane forklift, 5737 hours, solid tires, 5000lb. lift.
Linde ECU20 electric pallet jack
Cat pallet jack
Cascade 350 cartoon clamp, forklift attached

Newer Tennant 8120 Ride a Long sweeper/scrubber, propane eng, 530 hrs. nice unit
Clarke America Lincoln 930i electric walk behind floor cleaner w/ charger
Hako Hampster 800E electric walk behind floor cleaner

**Beer Advertising/ Memorabilia
Office Furniture/ Supplies
Shop Tools/Parts**

**Restaurant Equipment
Pallet Racks/ Recycling Equipment
Lawn & Garden/ ATV/ Misc. Items**

Much More, lots of items from each category
QUESTIONS ON SALE ITEMS CONTACT RICK AT 269-718-1982

Auctioneers Note: Whether you're a business owner looking for tools and supplies or an individual looking to ad on to their rec. room or man cave, this sale has it all. A lot of the items are new still in the boxes. Auction will be in the comfort of a very large well heated warehouse with 2 auction rings running so please come prepared. Forklifts available for loading. Lunch wagon and 2 porta jons on site. We hope to see you there!

Terms and Conditions: Cash, good personal check with proper ID, accepting Visa, MasterCard and Discover w/ a 3% processing fee. All out of state checks must have a letter from bank verifying funds. All property to be settled for day of sale. No property to be removed from premises until settled for. Not responsible for accidents or goods after sold. Auctioneers and sale personnel act as selling agents only and assume no liability or guarantees. Announcements day of sale take precedence over printed matter.

PIONEER AUCTION SERVICE, LLC
(989) 621-7194

Auctioneer Jason Clark

Auctioneer Dick Clark

NAA
Auctioneer

For more pics and info visit us on www.pioneerauctionservice.com

**Buy!
Sell!
Trade!**



WINTER
Clearance
EXTREMELY LOW SALE PRICES
Plus an Extra 20% OFF
STOREWIDE
And An Extra 50% OFF

**ALL INSPIRATIONAL GIFTS
BY MANUAL WEAVERS & WOODWORKERS
CLOCKS, PLAQUES, COASTERS,
PILLOWS, FIBER OPTIC WALL HANGINGS,
THROWS & WALL HANGINGS**

Symbol Mattress Blow Out
EVERY MATTRESS SET AT
LOWEST SALE PRICE

Plus an Extra 20% OFF

Facts About Symbol Mattress

- * Symbol Mattress is the 3rd largest manufacturer in the Midwest and 12th largest in the United States out of 600.
- * Symbol Mattress has a higher customer satisfaction rating than both Serta & Sealy
- * Symbol Mattress sets normally sell for 20-30% less than the equivalent Serta or Sealy model

LAYAWAY NOW
FOR TAX REFUND

***Up To 36 Month No Interest Financing Available**

Free Layaway

STATE ST
FURNITURE

318 N State St • Alma, MI 48801
(989) 463-1037 • Hours: 9-6 M-F • 9-5 Sat.
www.StateStreet-Furniture.com

***See Store for Details**






SAVING ENERGY AT HOME
IS EASIER
THAN YOU THINK




Start today with these simple tips.

- LOOK FOR THE STAR**
When replacing appliances or electronics—including clothes washers, dishwashers, refrigerators and TVs—be sure to select ENERGY STAR® models.
- CHANGE YOUR BULBS**
LEDs use 70 to 90 percent less energy and last up to 15 times longer.
- GET WITH THE PROGRAM**
Set your programmable thermostat at a lower temperature during times when no one is home and while you sleep.

ONLINE: michigan-energy.org PHONE: 877.296.4319

 **Energy Optimization**

 **HOMEWORKS** Tri-County Electric Cooperative

Evans Eye Centers

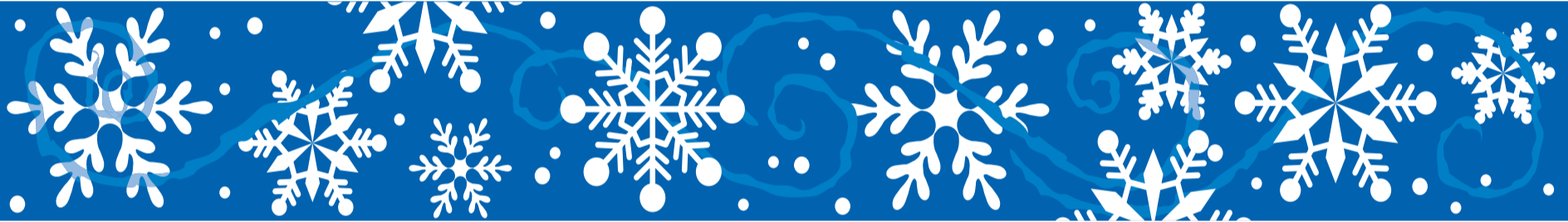


Are you suffering from
cataracts?

Get Started today. Call for an Evaluation.

120 Warwick
Alma, MI 48801
989-463-Eyes (3937)

1203 S. Mission
Mt Pleasant, MI 48858
989-775-Eyes (3937)



Largest Selection of Clean Used Cars in Central Michigan

GM Certified Pre-owned Vehicles = 2 Years of Oil Changes & Tire Rotations + 12 Month or 12,000 Mile Bumper to Bumper Warranty

USED CARS	USED SUVS	USED TRUCKS
2016 CHEVROLET IMPALA LT Black, 24,000 Miles..... \$21,900	2016 JEEP RENEGADE 4X4 Silver, 19,000 Miles, Sharp..... \$24,900	2016 GMC CREW CAB SLT Red, 5.3 V8, 11,000 Miles, Leather, Loaded..... \$44,900
2016 CHEVROLET CRUZE LT Dk. Gray, 13,000 Miles, 4cyl..... \$16,900	2016 CHEVROLET EQUINOX AWD LT 24,000 Miles, Silver Ice..... \$24,900	2016 GMC SIERRA DOUBLE CAB 4X4 SLE Red, 9,000 Miles, 1-Owner, 5.3 V8..... \$34,900
2014 BUICK LACROSSE CXL FWD Crystal Red, 51,000 Miles..... \$19,900	2016 JEEP CHEROKEE LIMITED 4 Cyl, 4 Wheel Drive, Black, 26,000 Miles..... \$24,900	2016 GMC SIERRA REG. CAB 2 Wheel, 6,000 Miles, V6, Tilt, Cruise, Air..... \$22,900
2013 BUICK LACROSSE Crystal Red, 34,000 Miles, CXL, Certified..... \$21,900	2015 JEEP RUBICON WRANGLER 4DR Silver, 27,000 Miles..... \$38,900	2015 GMC DOUBLE CAB SLT Black 4X4 5.3 V8, 27,000 Miles, Leather..... \$35,900
2013 BUICK REGAL PREMIUM Diamond White, 24,000 Miles, Loaded..... \$18,900	2015 GMC ACADIA SLT Dk. Blue, AWD, 45,000 Miles, 1-Owner..... \$33,900	2014 GMC CREW SLT Black, 13,000 Miles, 1-Owner, Loaded..... \$37,900
2013 BUICK LACROSSE CXL 41,000 Miles, Champagne Silver..... \$18,900	2015 GMC ACADIA All Wheel Drive, Crimson Red, Leather, Power Lift Gate, 48,000 Miles, Heated Seats, Remote Start..... \$31,900	2014 GMC DOUBLE CAB ALL TERRAIN PKG 41,000 Miles, White, 6.2 V8, Leather..... \$34,900
2013 BUICK LACROSSE CXL Storm Gray, Leather, Heated Seats, 4 Cyl. up to 40 MPG, 39,000 Miles..... \$17,900	2015 GMC TERRAIN AWD SLE-2 30,000 Miles, 1-Owner, White..... \$22,900	2014 CHEVROLET SILVERADO DOUBLE CAB LT Burgundy, 54,000 Miles..... \$26,900
2013 BUICK LACROSSE Storm Grey, 36,000 Miles, 1-Owner, Cloth..... \$16,900	2014 GMC TERRAIN AWD SLT 4 Cyl, 38,000 Miles..... \$22,900	2014 CHEVROLET SILVERADO 1500 4WD, Reg. Cab, Shortbox, 30,000 Miles, White..... \$26,900
2013 BUICK REGAL Blue, 49,000 Miles, Leather, Locally Owned..... \$16,900	2014 GMC TERRAIN SLT AWD Silver, 38,000 Miles, 4 Cyl, 1-Owner..... \$22,900	2013 CHEVROLET SILVERADO CREW CAB 4X4 LTZ Mocha Steel, 29,000 Miles, Rear Camera/Remote Start..... \$32,900
2013 CHEVY IMPALA LT Red, 31,000 Miles..... \$14,900	2014 BUICK ENCORE Satin Steel, 41,000 Miles..... \$19,900	2012 GMC SIERRA EXT. CAB SLT Black, 28,000 Miles, 5.3 V8, 1-owner..... \$29,900
2013 BUICK LACROSSE Champagne Silver, 72,000 Miles, Leather..... \$15,900	2014 BUICK ENCORE FWD Brilliant Blue, 52,000 Miles..... \$18,900	2012 GMC SIERRA EXT. CAB SLE 4X4 5.3 V8, Mocha Steel, 73,000 Miles..... \$23,900
2013 CHEVY MALIBU Black, 60,000 Miles..... \$14,900	2014 CHEVY EQUINOX LT Crystal Red, 38,000 Miles, Certified..... \$18,900	2011 GMC CREW CAB 4X4 Stealth Grey, 84,000 Miles..... \$24,900
2011 BUICK REGAL CXL Majestic Blue, 69,000 Miles..... \$14,900	2013 CHEVY TAHOE LT Burgundy/Tan leather, 55,000 Miles, Sunroof..... \$35,900	2010 GMC SIERRA CREW CAB SLT 4X4 Fire Red, 5.3 V8, 68,000 Miles..... \$24,900
2010 BUICK LUCERNE CXS White Diamond, V8, 57,000 Miles..... \$15,900	2013 BUICK ENCLAVE CXL FWD 49,000 Miles, 1-Owner..... \$25,900	2010 GMC EXT CAB SLE 4X4 White, 5.3 V8, 134,000 Miles..... \$16,900
2010 FORD FUSION SEL 4 Cyl, Red, 113,000 Miles, Sunroof..... \$8,900	2013 GMC TERRAIN Front Wheel Drive, SLT, Black, 47,000 Miles, Leather..... \$19,900	2009 GMC SIERRA EXT. CAB V8, White, 68,000 Miles, 2 Wheel..... \$15,900
2010 CHEVROLET MALIBU LTZ Silver, 102,000 Miles..... \$8,900	2013 GMC TERRAIN FWD SLE 31,000 Miles, White, 4 Cyl..... \$19,900	2007 GMC SIERRA CREW CAB DENALI Black, Loaded, 184,000 Miles..... \$16,900
2010 PT CRUISER Burgundy, 90,000 Miles, Locally Owned, 4 Cyl..... \$7,900	2013 GMC TERRAIN SLE FWD 4 Cyl, Silver, 72,000 Miles..... \$16,900	2007 CHEVROLET EXT CAB 4X4 White, 5.3 V8, 112,000 miles, Very Clean..... \$14,900
2007 CHEVROLET HHR Black, 77,000 Miles, 4 Cyl, 1-Owner..... \$9,900	2012 GMC TERRAIN FWD SLE Black, 59,000 Miles..... \$16,900	
2007 BUICK LUCERNE CXL Dk. Blue, 3800 V6, 127,000 Miles, Leather..... \$8,900	2012 GMC TERRAIN SLE FWD Burgundy, 71,000 Miles..... \$15,900	
2007 CHEVROLET HHR LT Blue, 125,000 Miles..... \$7,900	2012 CHEVROLET EQUINOX LT FWD 102,000 Miles, Goldmist..... \$11,900	
2006 CADILLAC DTS Silver, 147,000 miles, locally owned..... \$7,900	2011 GMC TERRAIN SLT AWD 69,000 Miles, 6 Cyl, Silver..... \$18,900	
2001 CADILLAC DEVILLE DHS Silver, 91,000 Miles..... \$6,900	2011 GMC TERRAIN FWD SEL Goldmist, 4cyl, 32,000 Miles..... \$16,900	
	1997 CHEVROLET SUBURBAN 4X4 Burgundy, 166,000 Miles, Excellent Shape..... \$5,900	

BENCHLEY BROS., INC.

1 Mile East of Doherty • US-10, Clare • Sales (989) 386-9900

For more info log on to: www.benchleybros.com

HOURS
8-6 Mon-Fri
9-2 Sat

Specializing in
GM Certified USED VEHICLES



MYRTLE BEACH SHOW TRIP & CHARLESTON SC



APRIL 22-30, 2017

9 DAYS/8 NIGHTS - LODGING - BREAKFAST - DINNER INCLUDED
AMAZINGLY LOW COST OF \$894 PER PERSON

SEE 4 INCREDIBLE SHOWS

Legends in Concert • Carolina Opry • One the Show • Cirque Extreme
Also receive Admission to Brookgreen Gardens plus Much More

DEPARTURES FROM

Houghton Lake • Mt. Pleasant • Ithaca • St. Johns

CALL TODAY TO BOOK YOUR RESERVATION



NORTH COUNTY TOURS, LLC

888-396-9580 • www.northcountrytours.net

JACK OF ALL TRADES
COINS1028 S. Mission
(next to Jon's Country Burger)**I BUY ALL COINS**
Silver and Gold
FREE APPRAISALS
we will come to your home
to do free appraisals for
your convenience.
*Over 25 Years experience!*Do not take your coins,
jewelry, gold, & silver to
the we buy gold places
they are not experts! We
are your only experts!
**WE PAY YOU MORE
THAN ANYONE!****I BUY ALL
COLLECTIONS**
FROM ONE COIN TO A
DUMP TRUCK FULL**We are a Full
Buy • Sell • Trade shop!**
ANTIQUES • COINS
Jewelry • Collectibles & more!Stop in or call Matt for
your free appointment
517-204-0787**DO YOU HAVE A CAR FOR SALE?**How about a boat? Or furniture? Any unwanted items?
Call to place a **Classified Ad** to sell your stuff **FAST**

Clare Automotive Inc.

214 W. Fourth St. Clare
(989) 386-7200
www.clareauto.com

FILTER SALE Feb. 20-24

**70% OFF List Price**

Begin accepting orders Feb. 1, 2017

Sell! Shop! Hunt for a job!And there's so much more! Call now and
the Classified Department can help you
place your ad today!**DON'T DRINK & DRIVE.****BRIAN'S
FRUIT & MEAT
MARKET**ASK ABOUT OUR
BULK PRICING!!**2167 S. M-76 • West Branch
(Across from Kmart)**While Supplies Last • Not responsible for printing errors
Prices good Sunday, January 15th, 2017 through Friday, January, 20th, 2017
Store Hours: Sunday 8am - 6pm • M,T,Th,Sat. 7am-7pm • Fridays 7am - 8pm**WE ARE A PACKAGED LIQUOR DEALER****We accept all major credit cards & EBT card**

BRIAN'S MEATS: 989-345-3709

LIKE US ON FACEBOOK



WWW.BRIANSFRUITANDMEATMARKET.COM

Old Time Deli SLICED KETTLE FRIED TURKEY BREAST \$5.99 lb.	Deerborn Brand SLICED HICKORY SMOKED HAM \$3.99 lb.	Dutch Farms Brand SLICED PROVOLONE CHEESE \$4.99 lb.	Koegel's Fine Meats KOEGEL VIENNA HOT DOGS \$40.00 10# box	Great on the Grill BEEF LOIN PORTER HOUSE STEAKS \$7.99 lb. T-BONES \$7.69 lb.	Beef It's What's for Dinner BONELESS BEEF RUMP ROAST \$3.99 lb.	10# SPECIALS 10# BOX POLLOCK FILETS \$19.00 10# BOX COD LOINS \$40.00 10# BOX KOEGEL VIENNA'S \$40.00
Store Ground FRESH GROUND BEEF FROM CHUCK \$2.99 lb.	Pork the Other White Meat BONELESS BUTTERFLY PORK CHOPS \$2.69 lb.	Lean & Meaty PORK LOIN BABY BACK RIBS \$3.49 lb.	Ass'd. Varieties BRIAN'S HOMEMADE FRESH BRATS \$3.99 lb.	X-tra Lean BONELESS PORK TENDERLOINS \$2.99 lb.	Breakfast Time RANCH STYLE BACON \$3.99 lb.	Fresh Never Frozen FRESH BONELESS SKINLESS CHICKEN BREAST \$1.59 lb.
						10# GROUND CHUCK \$2.89 lb. 10# BULK SAUSAGE \$2.49 lb. 10# BONELESS SKINLESS CHICKEN BREAST \$1.49 lb. 10# PORK STEAK \$1.89 lb.

BRIAN'S PRODUCE: 989-345-2891

BAREMAN'S DAIRY MILK \$2.49 gal. 1% Skim \$2.69 gal. Whole/2%	PRAIRIE FARMS YOGURTS \$5/\$2.00 6oz.	PRAIRIE FARMS ORANGE JUICE \$1.99 1/2 gallon	FARM FRESH LARGE WHITE EGGS 99¢ dozen	WILLIAMS CHEESE SPREADS & DUNKS 2/\$4.00 8oz. assorted flavors	AVOCADOS 2/\$1.00
JUMBO FRESH CANTALOUPE 2/\$3.00 ROMAINE HEARTS 2/\$3.00	FRESH BLUEBERRIES \$1.99 pint	CALIFORNIA SEEDLESS NAVEL ORANGES \$2.99 10ct. bag	MICHIGAN RUSSET BAKING POTATOES \$2.99 10# bag	HALOS \$4.99 3# bag	LETTUCE 79¢ each
FRESH CABBAGE 39¢ lb.	RED-YELLOW-ORANGE PEPPERS 99¢ each	DOLE BANANA'S 49¢ lb.	GOLDEN RIPE PINEAPPLE \$1.99 each	LABATT BLUE & LABATT BLUE LIGHT BEER \$15.99 24 pk cans + tax + deposit	HAMM'S BEER \$12.99 30 pk cans + tax + deposit

Valley Food Center

“OUR ONE AND ONLY LOCATION IN PINCONNING”
989-879-3311 • 101 E. SECOND • PINCONNING

WE WELCOME THE BRIDGE CARD, GIFT CERTIFICATES
NOT RESPONSIBLE FOR PRINTING ERRORS • ALL LOTTERY GAMES AND LOTTO HERE

MON.-SAT. 8-8, SUN. 8-6 • PRICES GOOD SUNDAY, JANUARY 15TH THROUGH SATURDAY, JANUARY 21ST, 2017

Join us on

We Now Take
Credit Cards! Visa,
Mastercard & Discover

BEEF				
GROUND CHUCK 10 LB. BAG \$34.90 LESSER QUANTITIES \$3.79 lb.	GROUND HAMBURGER 10 LB. BAG \$32.90 LESSER QUANTITIES \$3.59 lb.	NEW YORK STRIPS (WHOLE OR ½) \$2.99 lb.	ENGLISH ROASTS \$3.19 lb.	DENVER STEAKS \$3.39 lb.
PORK				
TWIN PACK SPARE RIBS \$1.99 lb.	FINGER RIBS OR PORK STEAKS \$1.69 lb.	BOSTON BUTT ROAST \$1.49 lb.	END CHOPS OR COUNTRY RIBS \$1.39 lb.	
LOIN END ROAST \$1.19 lb.	WAYSIDE BACON 10 LB. BOX \$1.79 ⁹⁰	BULK SAUSAGE (MILD, FARMERS, SWEET AND HOT) \$1.79 lb.		
CHICKEN		FROZEN		
BONELESS CHICKEN BREAST 10 LBS. OR MORE \$1.49 lb. LESSER QUANTITIES \$1.99 lb.	LEG QUARTERS 59¢ lb.	MOZZARELLA STICKS 3 LB. BAG \$7.99 WHILE SUPPLIES LAST	POLLOCK FILLETS 10 LB. BOX \$20.00	COD LOINS 10 LB. BOX \$40.00

Visit us on Facebook at www.facebook.com/valleysmarket
Or check out our new website at: www.valleymarketmi.com

assisted **Living with Heart**

Do you have a car for sale?

How about a boat?

Or maybe some furniture?

Call to place a classified ad with one of our helpful representatives & sell your no longer wanted items **FAST!**

ARBOR GROVE
Assisted Living

1320 Pine Avenue,
Alma, MI 48801
arborgroveassistedliving.com
989.463.3074

Our residents, their families, and our staff have one thing in common - we genuinely care about each other. **We have heart.**

Share life's journey in a community that cares.

Offering Independent Living Duplexes (The Villas),
Assisted Living & Moments Memory Care



SAVE A LIFE. DON'T DRIVE HOME BUZZED.
BUZZED DRIVING IS DRUNK DRIVING.

U.S. Department of Transportation

THE 2016^s MUST GO!!!

2016 Buick Encore
24 month lease
\$101 per month

2016 Buick Encore
24 month lease
\$152 per month

CONVENIENCE GROUP

2016 Encore
Convenience Group
24 month lease
\$156 per month

2016 Cascada
Premium
39 month lease
\$312 per month

2016 Regal
Premium II
Up to
\$6555
off MSRP

2016 Encore
Sport Touring
24 month lease
\$167 per month

2016 Cascada
39 month lease
\$315 per month

2016 Terrain
SLE 1
Up to
\$5460
off MSRP

No security deposit required on leases. Must qualify for GMS pricing. Must qualify for GM Financial tier A+ or A1 and have a FICO score of 620 or better for leases. Encore lease payments based on \$2000 Buick & GMC lease loyalty rebate, \$2000 competitive lease rebate, or \$2000 cash down. Cascada lease payments based on \$1500 competitive lease rebate or \$1500 cash down. Tax, title, license and dealer fees are extra and not included. Must take delivery by 1-31-2017 on all except stock # 11309. Must take delivery by 1-16-2017 on stock #11309.

USED USED USED USED USED USED USED

2016 GMC Canyon SLE Crew Cab 4X4, Cardinal Red.....	33,875	2012 GMC Terrain SLE-2, Gold Mist.....	9,995
2016 Chevrolet Impala LTZ Limited, Black.....	16,995	2012 GMC Acadia SLE, Crystal Red Tintcoat.....	17,875
2016 Ford Escape SE AWD, Deep Impact Blue.....	23,325	2011 Honda CR-V EX AWD, Crystal Black Pearl.....	13,375
2016 Chrysler Town & Country Touring, Dark Cherry Red.....	21,995	2011 GMC Terrain SLT AWD, Mocha Steel.....	14,995
2016 Chevrolet Impala LT, Blue Velvet.....	21,895	2011 GMC Acadia SLE, Gold Mist.....	14,895
2016 Chevrolet Malibu Limited, Quicksilver.....	16,385	2010 Buick Enclave CXL, Gold Mist.....	14,495
2016 Buick Enclave, Quicksilver.....	29,825	2009 Honda Civic EX-L, Polished Metal Metallic.....	7,795
2015 GMC Sierra 1500 SLT Crew Cab 4X4 All Terrain, Iridium Metallic.....	39,495	2008 Ford F150 STX SuperCab 4x4, Carbon Black.....	11,695
2014 GMC Terrain SLE-2 AWD, Atlantis Blue Metallic.....	17,595	2007 Saturn Outlook XR AWD, Charcoal.....	12,885
2014 Ford Focus SE, Ruby Red Metallic.....	11,975	2007 GMC Envoy SLE 4x4, Steel Gray Metallic.....	8,495
2014 Chevrolet Silverado 1500 LT Double Cab Z71 4x4, Black.....	29,495	2007 Chevrolet Suburban LT2 4X4, Graystone Metallic.....	15,895
2014 Cadillac ATS 2.0T Luxury AWD, Majestic Plum Metallic.....	22,895	2006 Cadillac DTS Luxury II, Blue Ice.....	6,895
2014 Buick Enclave Premium, Quicksilver.....	28,885	2006 Pontiac Torrent, Stone Gray.....	5,875
2013 Ford F150 XLT SuperCrew 4X4, Sterling Gray Metallic.....	22,985	2003 Oldsmobile Silhouette, Indigo Blue.....	3,495
2013 GMC Acadia SLT AWD, Champagne Silver.....	23,995	2002 Buick LeSabre, White.....	3,675
2013 Chevrolet Silverado 1500 LT Crew Cab 4x4, Ruby Red Metallic.....	27,485		
2013 Chevrolet Silverado LT Extended Cab, Silver Ice.....	24,795		
2013 Chevrolet Equinox LS, Silver Ice.....	15,495		
2013 Buick Verano Premium Turbo, Mocha Bronze.....	17,875		
2012 Volkswagen Beetle Turbo, Tornado Red.....	11,685		

Lee OTTO
BUICK • GMC
GLADWIN, MI

www.leeotto.com
Hours: Monday-Friday 8am-6pm
Saturday 9am-2pm

GMC 426-9489 1-888-LEE OTTO
1435 W. Cedar (M-61) • Gladwin, MI 48624



WINTER DRIVING TIPS

- Keep your equipment properly maintained and include a winter survival kit in your vehicle: an ice scraper, snow shovel and sand/salt.
- Clear snow and ice off your car – including windows, mirrors, lights, reflectors, hood, roof and trunk.
- Drive with your headlights on, and be sure to keep them clean to improve visibility.
- Avoid using cruise control in snowy or icy conditions.
- Know how to brake on slippery surfaces. Vehicles with anti-lock brakes operate much differently from those that do not have anti-lock brakes.
- If you do venture out or are unexpectedly caught in a snowstorm and encounter problems, stay in your car and wait for help. You can run the car heater to stay warm for 10 minutes every hour, but make sure your exhaust pipe is clear of snow. There is a danger of carbon monoxide poisoning if snow blocks the pipe and enables the deadly gas to build up in your car. Open your window slightly to help prevent the buildup.
- Be cautious on bridges and overpasses as they are commonly the first areas to become icy.
- Avoid passing snow plows and sand trucks.





Winter's here be ready!

FREE Winter Inspection

Oil Change \$12⁹⁵ BUMPER TO BUMPER most cars & trucks (some restrictions apply)	Wiper Program Free installation! Economy \$7⁹⁵ All Plastic Construction Profile \$17⁹⁵ No Linkage To Ice Up! One Piece spring steel design Lifetime Warranty
--	---

FREE Brake & Safety Inspection



Dagwood's Auto Repair

524 W. Fifth St. Clare 989-386-8000 M-F 8-5, Sat. 9-12 After Hours by Appt.

“Common Sense Auto Repair” 30 Years Experience





1001 N. Fancher Mt. Pleasant 989-772-9500 M-F 8-5

TRUSTED Service & Repair at LEE OTTO



FREE BATTERY TEST & INSPECTION

CERTIFIED SERVICE*
6 QUART OIL CHANGE* 4 TIRE ROTATION*
27 POINT VEHICLE INSPECTION
\$49⁹⁵
dexos 1 Synthetic Blend oil used. Excludes full synthetic oil and diesel engines.
*Balancing tires, tax and more than 6 quarts of oil extra. See dealer for eligible vehicles and details.

ACDELCO SILVER BATTERY*
\$134⁹⁵
\$24.95 installation on most GM vehicles
30-month free replacement limited warranty.
*Tax extra. Excludes AGM batteries and select vehicles. See dealer for details.

SERVICE DEPARTMENT
Monday – Friday • 8am – 5pm



GMC Certified Service **300,000 MILE WARRANTY** **www.leeotto.com**
CERTIFIED PRE-OWNED GMC 426-9489 1-888-LEE OTTO
CHEVROLET BUICK GMC **1435 W.Cedar (M-61) • Gladwin, MI 48624**
No Worries.™

Lee's Auto Service Center, Inc.

989-435-3301

Get Ready For Winter **FREE** Winterizing Special!

- 2 & 4 Wheel Alignments • Tires • Brakes • Suspension
- Shocks & Struts • Tune-Ups • Oil Changes • Exhausts
- Pipe Bending • Diagnostics • Transmission Service

Check belt and hoses, testing coolant strength, wiper blades, and tires pressure.



3520 W. Calhoun • Corner of M-18 and W. Calhoun • Beaverton
Rick Lee • Owner
Monday-Friday 8am-5pm • www.leeautoservicecenter.com



BENCHLEY BROS., INC.

Your Buick & GM Dealer

Serving Clare for Over 35 years



Tune Ups Brake Work Wheel Alignment Transmission Service



Goodwrench.

BECAUSE WHO KNOWS WHAT'S DOWN THE ROAD

East US-10 • Clare • benchleybros.com
Service Department **989-386-3197**

14TH ANNIVERSARY CELEBRATION

Quality Products, Competitive Prices, Outstanding Service

SATURDAY, FEBRUARY 4TH 2017At least 10% off Store Wide on In Store items!
Excludes Corn - Pellets and CoalFree Coffee,
Hot Chocolate &
Donuts**FREE GIVEAWAY**
to
Every Customer**7:30 a.m.**
to
4:30 pmEnter to Win
Drawing to Win
A \$500
Gift Certificate to
Hershberger's Hardware
(on Feb 4th only)Your
\$OLUTION
to
HIGH
HEATING
COSTS**FS-HP22**
Fantastic Pellet StoveYou Won't Beat
this Deal while
Supplies Last**Comfort**
Bilt**Chain Saw**
Bar Lube **\$5.99** gallon

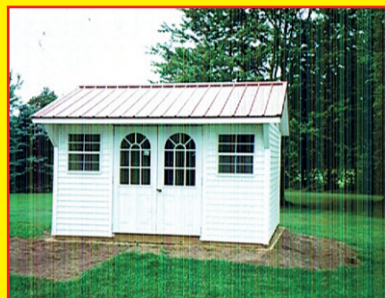
Feed your feathered friends

Bird Suet **\$4.99** ea
8pk all around**Wood Pellets • Anthracite Coal**
Wood, Coal, Corn & Pellet Stoves • All Fuel Chimney Systems**Mr. Heater**Selection of Mr. Heater Propane Heaters
and Kerosene Salamander Heaters**Low, Low Prices**
Factory Reconditioned • New Warrantyup to **35%**
Below the Cost of NewLive Coal, Wood/Pellet
Burning
Units on Display.
Lowest Prices of the Season!

Full Line of Hardware & Building Supplies • Stove & Furnaces All Fuel Chimneys

HERSHBERGER'S PRO HARDWARE
10289 N. Leaton Rd., Clare, MI 48617-9107 • **(989) 386-5338**

Quality Built. Quality Features.

TIRED OF A FULL GARAGE?
Stop by our lot. We have the perfect
storage solution for you.**COME SEE US,
WE'VE GOT YOU COVERED****10x12 Quaker**
\$2,600**12x16 Quaker**
\$3,586**12x20 Gable**
Side Entry Door, 1 Window
\$3,940**12x16 Gable**
2 windows, 2- 4 Ft. Lofts
\$3,352**Statewide Delivery - Free Delivery w/ in 70 miles!**Supplying Michigan with quality built portable
buildings for over 25 yrs.**Miller's Woodworking****3209 E. Beaverton Road • Clare**
(Voicemail) 989-465-8172

Old US 127 to Surrey West on Surrey to Grant 1 mile north on Grant

Winter Hours: Mon.-Fri. 7:30am-5:00pm
Saturday & Evenings by Chance or Appointment
Closed Sunday

Business Card Directory

**PROPANE
SOLD
HERE**We make
custom hoses
& fittings!**SALE!!**
20 LB. CYLINDER FILL
\$9.99
GPCPROPANE • HVAC • REFRIGERATION
8512 E. M-46 - VESTABURG
800-991-7477
gasproductioncompany.com**CIRCULATION
ISSUES:**
(989) 779-6000
PRESS 2**TO RESERVE
YOUR SPOT IN THIS
DIRECTORY
CALL:**
506-4640**digitalfirst**
MEDIA**Kindra Norlander**
Account ExecutiveThe Morning Sun
The Mid-Michigan Buyers GuideCall for Quotes on digital
advertising, print &
deliver, pre prints and
print advertising

knorlander@michigannewspapers.com Cell: 989-506-4640

VALET AUTO CARE, INC.

Since 1983



- A.R.E. Pickup Toppers
- Over 100 New & Used Toppers in Stock
- Truck Accessories
- Tonneau Covers

**LEEER** **ARE** Because you love your truck
LIVE LARGER **www.valetaauto.com****James Motz - Owner**610 N. Mission (3 blocks S. of Meijer) Mt. Pleasant **(989) 773-3477****Start Sewing Package****Special:**
\$299
Plus get the
Start Sewing
Kit Free!
Save \$140!Janome's MyStyle 100
gives you what you need
to make your style all
your own. **NEW Machines Start**
at \$149.95
Free Class Instruction
with machine purchase**CIRCLE SEWING & VACUUM**
1900 S. SAGINAW RD., MIDLAND **(989)-839-0800**
IN THE KMART PLAZA **circlesewingandvac.com****Advertise
in this
Spot****CAL'S PAINTING****Over 30 Years Experience**
COMMERCIAL & RESIDENTIAL

- Interior & Exterior • Power Washing & Deck Care
- Window Washing & Gutter Cleaning
- Drywall Repair • Cleaning and Refinishing Log Homes
- Cabinet, Woodwork, Door & Furniture Refinishing

GO CALL TODAY!
(989) 258-9638• Free Estimates • Work Gauranteed • Insured
Winter Rates Available**MARTIN HEATING & COOLING****DTE \$300 Rebates Available on New Furnaces for a Limited Time**
Installation • Service • Parts • Free Estimates**Amana** Heating & Air Conditioning
LASTS AND LASTS AND LASTS: 546 W. 5th street, Clare **(989) 386-3791**
Ask about Geothermal Systems and heat pumpsSPECIALIZING IN ROOFING, GARAGES, HOMES,
POLE BARNs & STEEL BUILDINGS**CALL TODAY • Let the phone ring!****J B Enterprise**
John Brenneman **(989) 386-8024**
LICENSED BUILDER

Business Card Directory

Shop these local Professionals

Call 989-506-4647
for Advertising Info



7400 S. Clare Ave. • Clare, Michigan 48617
800-292-0679
www.pioneerpole.com



600 S. Mission St.
Mt. Pleasant, MI 48858

989-779-7227
989-772-5009

Computer Center
Computer Repair • Used Computers
Custom Built • Virus Removal
And More



RESIDENTIAL • COMMERCIAL
INDUSTRIAL • FARM

STORAGE
SPACE AVAILABLE

420 Units

5'x12', 10'x12', 10'x20' Stalls

MIDSTATE RENTAL AND STORAGE, INC.
1 MILE EAST OF GLADWIN ON M-61
426-2981

FOR ALL YOUR RENTAL NEEDS

MON.-SAT. 8AM-5PM

Joyous holiday wishes to you and your family...

Maury Irwin, Agent
1011 N McEwan Street
Clare, MI 48617
Bus: 989-386-4141
maury.irwin.l8g2@statefarm.com

from your good neighbor.
May all your wishes come true this wondrous season.
Like a good neighbor,
State Farm is there.*
CALL ME TODAY

State Farm

1101450.1 State Farm, Home Office, Bloomington, IL

You **Looked** here and your customers will, too.

Call 989-506-4647 for more info.

ECOWATER SYSTEMS **Lindsay Soft Water Co.**

1209 Michigan Ave. St. Louis, MI 48880
(989) 681-5436
1-800-244-3464
www.ecowater.com

P.O. Box 401 Gladwin, MI 48624
(989) 426-4220
Cell (989) 620-1263

GABE EAREGOOD
Water Specialist

digitalfirst MEDIA

Marlene Bennett
Account Executive

The Morning Sun • The Mid-Michigan Buyers Guide
mbennett@michigannewspapers.com

For Advertising call **989-506-4647** or **989-240-0473**
For Circulation call 989-779-6000 Press 3

Pole Barn Kits

Now Available

Luthy Metal Sales
Manufacturing, Roofing, Siding & Accessories
989.433.5705
5145 N. Mission Rd. Rosebush

ABC Auto Body

313 W. Knox Road, Beaverton, MI
1/2 Mile West of M-30
989-435-2707

We Take Pride In Your Ride!

- Quality Collision Repair
- Free Estimates
- Insurance Work Welcome
- Custom Color Matching & Painting
- We Repair All Makes and Models
- Car/Light Truck
- Genuine Original Equipment Parts

Tag's Auto Repair

2 yr. 25,000 mile warranty nationwide on parts & labor

• Computer Diagnostic Service • 2 and 4 Wheel Alignment
BRAKES & FRONT END REPAIR!

Receive a \$25 VISA prepaid card on qualifying purchase of \$250 or more made on Drive Card

FREE Roadside Assistance Program Towing, Flats, Lockouts, More!
Call Us For Details!

Auto Value SERVICE CENTER

3780 N. Clare Ave. Harrison
Hours M-F 8-5, Sat 10-2
989-539-1986

\$1000 off any in-stock & non-sale pair of shoes

Expires 2.4.17

CIRCLE QUALITY SHOES

Specializing in hard to fit sizes-100's of styles to pick from
• Birkenstock • Clarks • Merrell • SAS

208 Cambridge St. 835-4853 • circlequalityshoes.com

HENRY EXCAVATING CONCRETE & TREE SERVICE LLC

POURED WALLS • CRAWL SPACES • BASEMENTS
OVER 30 YEARS EXPERIENCE • LICENSED & INSURED

COMMERCIAL & RESIDENTIAL

- Excavation
- Site Clearing
- Septic Systems
- Back hoe & Dozing
- Flat Work
- Demolition
- Driveways
- Tree Service

989-539-7542 • 3620 N. Clare Ave., Harrison

James Henry Cell 989-429-1175 | Michael Henry (Tree Service) Cell 989-339-4377

You **Looked** here and your customers will, too.

Call 989-506-4647 for more info.

DEBRIS HAULING

• Clean Out Basements Attics & Garages
• Tear Downs Sheds & Garages
• Scrap Metal
• Commercial Buildings

Free Estimates

DEBRIS HAULING
Good & Fast MOUNT PLEASANT No One Does It For Less NO ONE!!
Less than the price of a dumpster!

989-773-0735 10 Yards \$285 Dan Syzak

digitalfirst MEDIA

Marlene Bennett
Account Executive

The Morning Sun • The Mid-Michigan Buyers Guide
mbennett@michigannewspapers.com

For Advertising call **989-506-4647** or **989-240-0473**
For Circulation call 989-779-6000 Press 3

BURKHART - PRESIDIO INSURANCE AGENCY

Auto • Home • Life • Business • Amenities

"Over 60 Years of Professional Insurance Service"

222 W. Cedar Ave. • Gladwin
989-426-9278 • www.burkhart-presidio.com

Dirk Presidio Michael Murray Jim Jacobs

Auto-Owners Insurance

Gladwin Hobby Shop
Stay Fit & Have Fun

RADIO CONTROL AND BICYCLES' SALES AND SERVICE **\$ CASH**

- Plastic Model Kits
- Testors Paints
- ESTES Rockets
- Pinewood Derby

WE BUY OLD TRAINS

Puzzles, Rock Polishers, Balsa & Bass Woods, and more.

Gift Certificates Available
Visit us on Facebook

400 E. Cedar Ave. Gladwin, MI • 989-426-7300

Weidman Business Association Bingo

Every Wednesday. First game at 6:30.

\$300 Jackpot on Big Game this week. In the Community Building

Located behind Baumanns Food Pride grocery store and Isabella bank.

FREE Hearing Test & Consult

bieri HEARING SPECIALISTS

888-641-0087

Clare and Midland Locations
www.bierihearing.com

TOM'S POLE BUILDINGS
Over 30 Years Experience

POLE BUILDINGS & GARAGES ROOFING & SIDING
CONCRETE FLOORS DRIVEWAYS & FENCING

Special! FEATURING ULTRA 2000 19 colors to choose from And A 45 YEAR WARRANTY

From Beginning permit To Cleanup, We Do It All!
1-800-541-3974
We accept major credit cards. • email: tomspolebuildings@yahoo.com

24x40x10 10% Down Today Guarantees Prices

Newcombe's Family Restaurant

27 S Coldwater Rd Lake Isabella, MI 48893
(989) 644-8380

FOOD SO GREAT YOU'LL SCRAPE YOUR PLATE

Sunday 7am-8pm
Mon.-Thurs. 7am-9pm
Fri & Sat 7am-10pm

Like us on Facebook

Pioneer Metal Roofs
Residential Steel Roofing

7325 S. Clare Ave.
Clare, MI 48617
(989) 386-4444 (Office)
(800) 292-0679

www.pioneermetalroofs.com

WINTER SPECIALS

Office Space Mt. Pleasant

1,320 sq. ft. Rent,
floor plan and paint colors
negotiable.

All utilities included in
rent. 3 months free rent to
eligible tenant

Call Jennifer
989-775.7180

PAWN SHOP

Buy, Sell, Pawn

3 Month Pawn
3% + 1.00 Storage
Firearms, Gold
& More

Gladwin Trade & Sales
989-426-6811



MIAL MEADOWS MHP IS NOW UNDER NEW OWNERSHIP

WE HAVE VACANT LOTS AVAILABLE

TO MOVE IN YOUR OWN HOME

CONTACT OUR OFFICE AT

PH: 989-463-5187

TERESA & JIM DAVIDSON
RESIDENT MANAGERS

411 S. GROVER, #31
ALMA, MI 48801

Gladwin Pines Nursing & Rehabilitation Center

is accepting
applications for the
following full time and
part time positions:

RN

LPN

Certified

Nurse Aides

Apply at

www.employment.peplinskigroup.com



Bulk Food • Deli

2 Miles South of Rosebush • 2020 North Mission
Mt. Pleasant • 989-433-8200

8:30am-5:30pm, Monday-Thursday

8:30am-7:00pm, Friday • 8:30am-4pm, Saturday

Large Selection of Freezer
Food at Discounted Prices

**SPECIALS
OF THE WEEK**

Great Selection of Bulk Foods
We Accept Bridge Cards &
All Major Credit Cards

Walnut Creek
**Marble
Cheese**

Sale
\$2.99 lb.
Reg. \$3.99 lb.



Walnut Creek
**Roast Beef or
Beef Pastrami**

Sale
\$5.29 lb.
Reg. \$6.29 lb.

MORE SPECIALS



Walnut Creek
Cream Cheese
8 oz.

\$1.19 ea.



Walnut Creek
Bagels
18 oz.
All Varieties

\$1.29 ea.



Walnut Creek
Kettle Corn
8 oz.

Just \$1.19



Woodside
**Salad
Dressing**
12 oz.
All Varieties

\$2.69

**We will be closed
on Saturday
January 28th
for
family wedding**

Coffee of the week: Fog Mountain

Park it in the CLASSIFIEDS



and watch it go fast!

HELP WANTED GENERAL

Neat And Green Lawn Care
hiring **SNOW PLOW DRIVERS
& SHOVELERS.**

May lead to full-time employment.
4699 E. Airport Rd., Mt.
Pleasant or submit resume to
office@neatandgreen.com

DRIVERS

DRIVERS: GREAT Home-
time+ Miles! Up to \$1300/
wk! GR to Bertrand, MO.
CDL-A, 6mos OTR, Good
Backgrnd. www.mtstrans.com
800-748-0192

EDUCATION/TRAINING

STOP OVERPAYING for your
prescriptions! **SAVE!** Call our
licensed Canadian and Inter-
national pharmacy, compare
prices and get \$25.00 OFF
your first prescription! CALL
1-800-697-1808 Promo Code
CDC201625

INSTALLATION/ MAINTENANCE

Seeking **MAINTENANCE TECH**
for part time work at AFC
Homes. Must have own tools
and valid drivers license.
Please apply online at:
<https://bayhs.applicantpro.com>

AUCTIONS

LIVE PUBLIC Auction Every
Sunday at 2:00 PM, at 1007
Cass Ave. Vassar, MI. Fair
Grounds. New items ev-
ery week! Antiques; Tools;
Household & General Mer-
chandise. Timsauctionservice.com
989-912-8701.

FIREWOOD

HARDWOOD FIREWOOD
4' X 8' X 16"
\$50 / Delivered
989-817-6609

GIVE YOUR AD SOME
Attitude
WITH ONE OF OUR EYE CATCHERS
we can help get your ad noticed!
CALL THE
**CLASSIFIED
DEPARTMENT**
Today For More Information

FURNITURE

AMISH BUILT mini cabins
or storage sheds delivered to
your site anywhere in
Michigan! Starting under
\$1,000.00. mynextbarn.com
989-832-1866

AMISH LOG Beds, Dressers,
Rustic Table and Chairs, Mat-
tresses for Cabin or Home.
Lowest price in Michigan!
dandanthemattressman.com
989-923-1278

AN AMISH Log Headboard
and Queen Pillow Top Mat-
tress Set. Brand new-never
used, sell all for \$275. Call
anytime 989-832-2401.

MISCELLANEOUS

A PLACE for mom. The na-
tion's largest senior living
referral service. Contact our
trusted, local experts today!
Our service is FREE/no obliga-
tion. CALL 1-800-520-3521

ACORN STAIRLIFTS The
AFFORDABLE solution to
your stairs! **Limited time
-\$250 Off Your Stairlift
Purchase! **Buy Direct &
SAVE. Please call
1-800-280-1897 for FREE DVD
and brochure.

ADJUSTABLE BED Brand New
with Imcomfort gel mem-
ory foam mattress. Retail
Cost \$5,900.00, sacrifice for
\$997.00. Call for showing or
delivery: 989-615-2951.

BUILT BEST BARN
Michigan's Largest Pole Barn
Company. Best Quality, Best
Service, Fall Specials.
24'x24'x8'=\$7495.00,
24'x32'x8'=\$8495.00,
24'x40'x10'=\$10,495.00,
30'x40'x10'=\$11,495.00,
32'x48'x12'=\$16,495.00. Com-
pletely Built, (Concrete Floor
Optional) License/Insured,
1-877-802-9591 (Office)
989-205-2534 (Cell)

CENTRAL BOILER certified E-
Classic OUTDOOR WOOD FUR-
NACE. Buy NOW for instant
rebate up to \$1000. Call today!
Beaverton Outdoor Wood Fur-
nace 989-435-9240



MISCELLANEOUS

DIRECTV. NFL Sunday Ticket
(FREE!) w/Choice All-Includ-
ed Package. \$60/mo for 24
months. No upfront costs or
equipment to buy. Ask about
next day installation!
1-800-917-3607

DISH NETWORK? NEW FLEX
PACK-Select the Channels You
Want. FREE Installation. FREE
Streaming \$39.99/24 months.
ADD Internet for \$14.95 a
month. CALL 1-800-930-8959

Drive with Uber. No experi-
ence is required, but you'll
need a Smartphone. It's fun
and easy. For more informa-
tion, call: 1-800-853-0167

FAST INTERNET! HughesNet
Satellite Internet. High-
Speed. Avail Anywhere.
Speeds to 15 mbps. Starting
at \$59.99/mo. Call for Limited
Time Price! 1-800-491-8935

FREE PILLS! Viagra!!
Call today to find out, how to
get your free Pills! Price too
low to Mention! Call today
1-877-602-0194.

GET CLEAN TODAY. FREE 24/7
HELPLINE FOR ALCOHOL &
DRUG ADDICTION TREAT-
MENT. GET HELP! IT IS TIME
TO TAKE YOUR LIFE BACK!
CALL NOW: 855-667-5329

LUNG CANCER? And 60 Years
Older? If So, You And Your
Family May Be Entitled To A
Significant Cash Award. Call
800-871-9061 To Learn More.
No Risk. No Money Out Of
Pocket.

**NEW AT&T INTERNET OF-
FER.** \$20 AND \$30/MO PLANS
AVAILABLE WHEN YOU BUN-
DLE. 99% RELIABLE. 100%
AFFORDABLE. HURRY, OFFER
ENDS SOON, CALL NOW 1-800-
830-3921

PIONEER POLE BUILDINGS
Free Estimates Licensed and
Insured. 2x6 Trusses. 45 Year
Warranty Galvalume Steel-19
Colors. Since 1976 #1 in Michi-
gan Call Today 1-800-292-0679

Reach Across Michigan with a
MegaMarket Statewide Clas-
sified Ad! Over 1.2 million
weekly circulation
just \$249 per week! Buy 3 -
Get 1 Free! Call 800.783.0267

SAVE ON internet and TV bun-
dles! Order the best exclusive
cable and satellite deals in
your area! If eligible, get up to
\$300 in Visa Gift Cards. CALL
NOW! 1-800-807-1095

VIAGRA!! 52 Pills for only
\$99.00. Your #1 trusted
provider for 10 years. Insured
and Guaranteed Delivery. Call
today 1-800-404-1282

WANTED: OLD GUITARS Gui-
tar Collector Will Pay CASH
for Old Fender, Martin, Gibson
& More
USA MADE Guitars! Call Tony:
517-323-9848

MERCHANDISE WANTED

45 RPM Records Wanted
(the small ones w/big hole)
50's-60's-70's. 517-775-3989

CASH FOR OLD COINS & CURRENCY

Paying book price. Will look
up each coin with you.
989-426-7300.



BUCKLE-UP!

ESTATE SALES

**ALMA SALE
SHEASLEY LIVING
ESTATE SALE**

**240 GOLFSIDE DR.
ALMA, MI. 48801**

**THURS. JAN. 19TH 9-5:00
FRI. JAN. 20TH 9-3:00**

DIRECTIONS: Starting in
Alma on the corner of
Business 27 & West Super-
ior St. turn Right (West)
proceed 3/4 Mile to Golf-
side Dr. Turn Left (South)
to sale! Follow signs

**NOTE: FIRST SALE FOR
2017! QUALITY FURNITURE
AND HOUSEHOLD ITEMS
SPOTLESS CONDITION!**

Ethan Allen Furniture:
Cherry Dining Table W/
One Leaf & 6 Ladder-Back
Rush Seat Chairs; Maple
End Tables; Coffee Table;
Maple Rocker & Matching
Arm Chair; Maple Frame
Settee W/Cushions; Cor-
ner Drop-Leaf Table; Wing
Back Style Chair W/ Otto-
man; (2) Blue Upholstered
Chairs (One Swivel Rock-
er); King Size Bed W/ Sealy
Mattress Set; Pair Lane
Mid-Century Glass-Top Ta-
bles; Victorian Walnut Side
Chair W/ Carved Back; Ita-
ly Inlaid Table/ Music Box
& Coffee Table; Maple Stu-
dents Desk W/ Bookcase
& Chair; Octagonal Light-
ed Curio Cabinet; White
Painted Chest Of Drawers
& Desk; Pine Corner Table;
1960'S Game Table W/4
Chairs; Towle "Symphony"
Sterling Silver Flatware 79
Pcs; Antique Dishes & Cup
& Saucer Collection; John-
son England Game Birds
Dishes; Vintage Quilts &
Quilt Tops; Wool Blankets;
Pool Table; White 534-D
Surger; Singer Sewing
Machine; Folding Craft
Table; Adjustable Floor
Lamp; Mid Century Lined
Oak Record Cabinet; (2)
File Cabinets; Cosco Step
Stool; "Livestrong" Sta-
tionary Bike; Patio Table
W/4 Chairs; Yard Tools &
Garage Items; Holiday Dé-
cor; Linens; Lamps; Kitch-
en & Household Items and
Much More!

OPEN 9:00 CASH
Central Estate Sale Service
Jerry M. 989-854-1571
Patty G. 989-772-2053

BUILDING MATERIALS & SUPPLIES

BUILT BEST BARN
Michigan's Largest
Pole Barn Company
Best Quality, Best Service,
January Specials,
Order Now and Save!
24'x24'x8'=\$7495.00
24'x32'x8'=\$8495.00
24'x40'x10'=\$10,495.00
30'x40'x10'=\$11,495.00
32'x48'x12'=\$16,495.00
Completely Built,
(Concrete Floor Optional)
License/Insured
1-877-802-9591 (Office)
989-205-2534 (Cell)

**PIONEER POLE
BUILDINGS**
Free Estimates
Licensed and Insured.
2x6 Trusses.
45 Year Warranty
Galvalume Steel-19 Colors.
Since 1976 #1 in Michi-
gan Call Today 1-800-292-0679

FARM FEED & SUPPLIES

2ND CUTTING ALFALFA
\$10; Straw,
\$4/Bale; Cracked Corn
\$12/100, Shelled-Corn
\$10/100, Cob-Corn \$5/Bag,
Rye, Barley, Wheat, Oats \$12/
bag. Delivery-Available.
(989)433-5418
Cell# (989)965-1391

DUPLEXES & FLATS

ALMA DUPLEX For Rent, nice
2 BR 1 BA, laundry room
with W/D, dishwasher, refrig,
stove, A/C. Across from park,
heat paid. No pets. Refs re-
quested. \$575/mo. 517-231-
6129 No Saturday Calls.

HOUSES FOR RENT (UNFURNISHED)

FOR RENT, Pristine 3 bd, 2 ba,
Ranch, 1652 sq ft, Country
Living, \$895/mo 989-620-0683
Can be seen on Craig's List,
Item #5891789988

MT. PLEASANT nice, clean 2
bdrm home, \$700/mo + dep.
No pets. 989-772-1413

PASSENGER CARS

2011 CHEVY IMPALA LT

Low miles, heated
leather, local trade,
immaculate condition.

ONLY \$9,995
or about \$179/mo.

Dick Sovo Auto
989-828-6032
dicksovaautosales.com

2015 BUICK VERANO

Only 7,000 miles, full
power, deluxe package,
like new still.

ONLY \$16,995
or about \$249/mo.

Dick Sovo Auto
989-828-6032
dicksovaautosales.com

2015 FORD EXPLORER

4x4, full power,
low miles.

Compare anywhere!

ONLY \$26,995
or about \$389/mo.

Dick Sovo Auto
989-828-6032
dicksovaautosales.com

2016 FORD EDGE

SEL, all wheel drive,
only 7,000 miles, heat-
ed leather, navigation,
absolutely beautiful!

ONLY \$21,995
or about \$479/mo.

Dick Sovo Auto
989-828-6032
dicksovaautosales.com

PASSENGER CARS

**2016 JEEP
CHEROKEE LIMITED**

4x4, heated leather,
low miles,
absolutely sharp.

ONLY \$24,995
or about \$359/mo.

Dick Sovo Auto
989-828-6032
dicksovaautosales.com

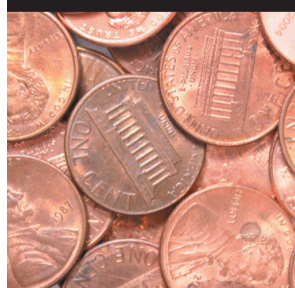
**A
SPLASH
OF COLOR
GETS
RESULTS**

Color Classified Ads
Now Available!!!

**Don't
Wreck
Your
Life!**



**Spend
Your
Pennies
Close
To Home**



**Shopping
Local
keeps your
Money
Local**



ARBOR TREE SERVICE. Storm
Damage, Landscaping, Tree
Trimming & Removing. Call
989-763-3830

West Branch Furniture's Flurry of Savings

Open Sunday 11 am - 3 pm

***12 MONTHS ~ NO INTEREST!**



\$599

Ashley Two-Tone
Reclining Sofa



Ashley Dailey
Midnight Sofa

\$399

Simmons Micro-Fiber Sofa & Loveseat



While
2-Sets Last

\$699



Liberty 7-Piece Pub Dinette

\$599



Twin/Full Bunk Bed

\$269



Ashley
Bittersweet
4 pc
Bedroom Suite



\$699



Powell 5-Piece
Dinette

\$289



\$179

Coaster
Wallaway
Recliner



\$269

Ashley
Durapella
Rocker Recliner
7 Colors



\$349

Franklin
Rocker or Wallaway
Recliner



\$369

Ashley Man Size
Recliner
Your Choice 4-Colors



\$489

Catnapper Rocker
Recliner with
Heat & Massage

Must make room for 2017 Models!



CloseOuts

Mismatched Sets

floor samples

CLEARANCE

discontinued

	TWIN SET	FULL SET	QUEEN SET	KING SET
Serta Economy Plush	\$199	\$259	\$299	N/A
MajesticSleep collection Davey Euro Top or Firm	\$279	\$359	\$399	\$599
MajesticSleep collection Gallion Euro Top or Comfort Firm	\$349	\$449	\$499	\$799
MajesticSleep collection Raftery Plush or Firm	\$459	\$559	\$599	\$899
MajesticSleep collection Stowecroft Super Pillow Top or Firm	\$649	\$749	\$799	\$1099



HUGE MARKDOWNS
Super Savings!



**136 S. Fifth St.
West Branch**
located 1 block south of
Firstbank off Houghton Ave.
989-345-5326



**Sunday 11-3
Mon.-Fri. 10-6
Sat. 10-5**

*Financing available
to qualifying buyers.
Minimum purchase \$599
with approved credit.
Not available on prior purchases.
See store for details.
*24 months no interest on all Serta
icomfort & i-series bedding sets.



"The Outlet Store That Saves You More!"



The

AUTO GROUP

OF MT. PLEASANT

Largest Inventory in Mid Michigan! Check out our complete inventory www.theautogroup.biz

Free
Lifetime
Engine
Warranty

Free 90 Day
or 3,000K Mile
Power Train
Warranty

Largest
Inventory
IN MID MI

Free
TANK
of GAS



2001 GMC SONOMA SLS
Stk. #7815A
\$4,995



2004 CHEVROLET COLORADO Z71
Stk. #7880
\$8,495



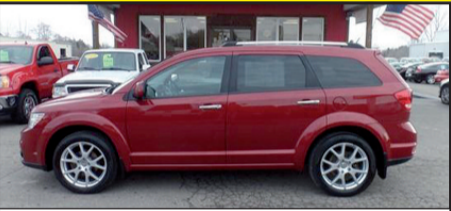
2012 KIA SOUL
Sips Gas, Stk. #7849
\$8,495



2009 FORD FLEX SEL
Stk. #7839
\$9,995



2004 CHEVROLET SILVERADO 2500 HD
Stk. #7901
\$13,495



2011 DODGE JOURNEY RT AWD
Stk. #7908
\$13,995



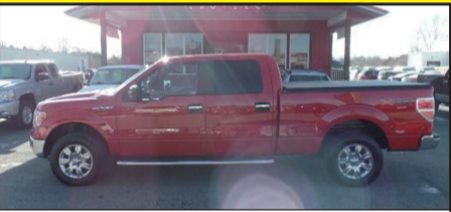
2007 FORD SPORT TRAC XLT
Stk. #7916
\$14,995



2006 FORD F150 XLT
Stk. #7881
\$15,995



2010 DODGE CHALLENGER RT
HEMI V8, Stk. #7751A
\$17,995



2010 FORD F150 CREW CAB XLT
Stk. #7917
\$18,995



2014 DODGE RAM
LOADED, Stk. #7895
\$18,995



2010 CHEVROLET SILVERADO LT
Stk. #7874
\$19,495



2009 CHEVROLET AVALANCHE LTZ
Stk. #7871
\$20,695



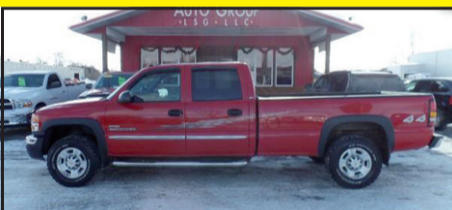
2007 CADILLAC ESCALADE
Stk. #7877A
\$21,995



2010 WRANGLER SAHARA
Stk. #7845
\$22,995



2015 GMC TERRAIN AWD
Stk. #7919
\$22,995



2005 SIERRA SLT
Diesel, Stk. #7856
\$23,495



2011 GMC SIERRA SLT
Low Miles, Stk. #7918
\$25,995



2012 GMC NAVIGATOR
LOADED, Stk. #7907
\$27,495



2015 FORD F250 SUPERDUTY
LOADED, Stk. #7875
\$29,495



2015 GMC SIERRA
17k Miles, Stk. #7905
\$29,495



2012 GMC SIERRA 2500 HD DENALI
Stk. #7894
\$31,495



2015 CHEVROLET SILVERADO LT
LOADED, Stk. #7869
\$31,495



2015 FORD F250 SUPERDUTY XLT
Stk. #7896
\$31,995



2015 FORD F150 SUPERCREW XLT
Stk. #7906
\$32,995



2013 GMC YUKON DENALI
Stk. #7900
\$36,995



2015 FORD F150 LARIAT 4X4
Stk. # 7911
\$41,995



2014 FORD F250 SUPERDUTY
W/ Plow, Stk. #7909
\$47,995

EVERYONE IS APPROVED!!! Regardless Of Your Credit History! Let Our In-House Finance Experts Help Get You Into The Vehicle Of Your Dreams!

The

AUTO GROUP

OF MT. PLEASANT

4720 E. Pickard (M-20) • Mt. Pleasant, MI
877-772-1113 OR 989-772-1113

All prices plus tax, title, plate & doc fees.

VIEW OUR COMPLETE INVENTORY AT
www.theautogroup.biz