

Mid-Michigan Buyers Guide

SUNDAY, JANUARY 22, 2017

Serving Clare, Gladwin, Gratiot, Isabella, Montcalm, & Southern Roscommon Counties

Morning Star Publishing Company powered by digitalfirst

The

AUTO GROUP OF MT. PLEASANT

Largest Inventory in Mid Michigan! Check out our complete inventory www.theautogroup.biz

**Free
Lifetime
Engine
Warranty**

**Free 90 Day
or 3,000K Mile
Power Train
Warranty**

**Largest
Inventory
IN MID MI**

**Free
TANK
of GAS**



2001 GMC SONOMA SLS
Stk. #7815A
\$4,995



2004 CHEVROLET COLORADO Z71
Stk. #7880
\$8,495



2009 FORD FLEX SEL
Stk. #7839
\$9,995



2011 DODGE JOURNEY RT AWD
Stk. #7908
\$13,995



2007 FORD SPORT TRAC XLT
Stk. #7916
\$14,995



2006 FORD F150 XLT
Stk. #7881
\$15,995



2010 DODGE CHALLENGER RT
HEMI V8, Stk. #7751A
\$17,995



2010 FORD F150 CREW CAB XLT
Stk. #7917
\$18,995



2014 DODGE RAM
LOADED, Stk. #7895
\$18,995



2010 CHEVROLET SILVERADO LT
Stk. #7874
\$19,495



2009 CHEVROLET AVALANCHE LTZ
Stk. #7871
\$20,695



2014 IMPALA LTZ
Stk. #7932
\$21,995



2007 CADILLAC ESCALADE
Stk. #7877A
\$21,995



2011 RAM SPORT
Stk. #7929
\$22,995



2010 WRANGLER SAHARA
Stk. #7845
\$22,995



2015 GMC TERRAIN AWD
Stk. #7919
\$22,995



2005 SIERRA SLT
Diesel, Stk. #7856
\$23,495



2012 RAM BIG HORN
Stk. #7924
\$24,995



2011 GMC SIERRA SLT
Low Miles, Stk. #7918
\$25,995



2012 GMC NAVIGATOR
LOADED, Stk. #7907
\$27,495



2012 SIERRA
Stk. #7923
\$27,995



2015 FORD F250 SUPERDUTY
LOADED, Stk. #7875
\$29,495



2012 GMC SIERRA 2500 HD DENALI
Stk. #7894
\$31,495



2015 CHEVROLET SILVERADO LT
LOADED, Stk. #7869
\$31,495



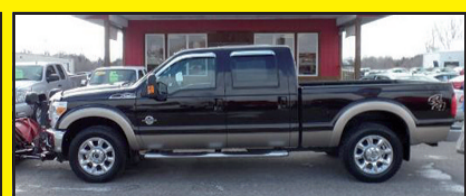
2015 FORD F150 SUPERCREW XLT
Stk. #7906
\$32,995



2013 GMC YUKON DENALI
Stk. #7900
\$36,995



2015 FORD F150 LARIAT 4X4
Stk. #7911
\$41,995



2014 FORD F250 SUPERDUTY
W/ Plow, Stk. #7909
\$47,995

EVERYONE IS APPROVED!!! Regardless Of Your Credit History! Let Our In-House Finance Experts Help Get You Into The Vehicle Of Your Dreams!

The
AUTO GROUP
OF MT. PLEASANT

4720 E. Pickard (M-20)
Mt. Pleasant, MI
877-772-1113 OR
989-772-1113

All prices plus tax, title, plate & doc fees.

VIEW OUR COMPLETE INVENTORY AT
www.theautogroup.biz

Thank You
Mr. Ewer
Mr. Kapteyn
 for joining the Culligan family and becoming valued customers.
Culligan Worldwide
Celebrating 80 years
Ken's Culligan • Alma

A SPLASH OF COLOR GETS RESULTS
 Color Classified Ads Now Available!!!

Evans Eye Centers

Are you suffering from cataracts?
Get Started today. Call for an Evaluation.

120 Warwick Alma, MI 48801 989-463-Eyes (3937)
 1203 S. Mission Mt Pleasant, MI 48858 989-775-Eyes (3937)

RE/MAX RIVER HAVEN, INC. Open Seven Days a Week to Serve You!
 www.riverhavenhomes.com Wayne R. Walts - Broker

Main Office 777 W. Cedar Riverwalk Place 989-426-6893
Wixom Lake Office 1239 Estey Road, Beaverton 989-435-7755
Sugar Springs Office 1415 W. Sugar River Rd. Gladwin, MI 48824 989-426-9239

Farwell area - 3 bedroom, 2 bath ranch, 2 car att garage. **\$49,900** MLS#166813
 Gladwin area - Newly updated 3 bedroom, 2 bath, garage, 1 acre of land close to Cedar River. **\$99,900** MLS#166588
 Lake Lancer-Sugar Springs - 2 bedroom, 2 bath condo w/den, fireplace, garage, boat dock and free golf. **REDUCED TO: \$169,900** MLS#166074

GET MORE BANG FOR YOUR BUCKS
 GOOD, CLEAN, QUALITY PRE OWNED MERCHANDISE

Jewelry, Firearms, Muzzle Loader Gear, Paintball Equipment, TVs, Musical Instruments, Tools, WII, Xbox One, PS3, PS4

SPECIAL Xbox One System \$175

DIRT CHEAP • CAR AUDIO • NEW & USED
 Tested & Inspected. Why Pay New Prices?
GLADWIN TRADE & SALES
 1-989-426-6811
 1739 N. State St. • Gladwin

Thank you for not driving buzzed last night. You saved my life.
 Liz Osaki

SAVE A LIFE. DON'T DRIVE HOME BUZZED. BUZZED DRIVING IS DRUNK DRIVING.

Ad Council U.S. Department of Transportation

This Newspaper is Recyclable



Largest Selection of Clean Used Cars in Central Michigan

GM Certified Pre-owned Vehicles = 2 Years of Oil Changes & Tire Rotations + 12 Month or 12,000 Mile Bumper to Bumper Warranty

USED CARS	USED SUVS	USED TRUCKS
2016 CHEVROLET IMPALA LT Black, 24,000 Miles..... \$21,900	2016 JEEP RENEGADE 4X4 Silver, 19,000 Miles, Sharp..... \$24,900	2016 GMC CREW CAB SLT Red, 5.3 V8, 11,000 Miles, Leather, Loaded..... \$44,900
2016 CHEVROLET CRUZE LT Dk. Gray, 13,000 Miles, 4cyl..... \$16,900	2016 JEEP CHEROKEE LIMITED 4 Cyl, 4 Wheel Drive, Black, 26,000 Miles..... \$24,900	2016 GMC SIERRA DOUBLE CAB 4X4 SLE Red, 9,000 Miles, 1-Owner, 5.3 V8..... \$34,900
2014 BUICK LACROSSE CXL FWD Crystal Red, 51,000 Miles..... \$19,900	2015 JEEP RUBICON WRANGLER 4DR Silver, 27,000 Miles..... \$38,900	2016 GMC SIERRA REG. CAB 2 Wheel, 6,000 Miles, V6, Tilt, Cruise, Air..... \$22,900
2013 BUICK LACROSSE Crystal Red, 34,000 Miles, CXL, Certified..... \$21,900	2015 GMC ACADIA SLT Dk. Blue, AWD, 45,000 Miles, 1-Owner..... \$33,900	2015 GMC DOUBLE CAB SLT Black 4X4 5.3 V8, 27,000 Miles, Leather..... \$35,900
2013 BUICK REGAL PREMIUM Diamond White, 24,000 Miles, Loaded..... \$18,900	2015 GMC ACADIA All Wheel Drive, Crimson Red, Leather, Power Lift Gate, 48,000 Miles, Heated Seats, Remote Start..... \$31,900	2014 GMC SIERRA CREW CAB DENALI BLACK DURAMAX Diesel, Loaded, 79,000 Miles..... \$46,900
2013 BUICK LACROSSE CXL 41,000 Miles, Champagne Silver..... \$18,900	2014 GMC TERRAIN SLT AWD Silver, 38,000 Miles, 4 Cyl, 1-Owner..... \$22,900	2014 GMC SIERRA CREW CAB DENALI BLACK DURAMAX Diesel, Loaded, 87,000 Miles..... \$45,900
2013 BUICK REGAL Blue, 49,000 Miles, Leather, Locally Owned..... \$16,900	2014 BUICK ENCORE Satin Steel, 41,000 Miles..... \$19,900	2014 GMC CREW SLT Black, 12,000 Miles, 1-Owner, Loaded..... \$37,900
2013 BUICK LACROSSE Champagne Silver, 72,000 Miles, Leather..... \$15,900	2014 BUICK ENCORE FWD Brilliant Blue, 52,000 Miles..... \$18,900	2014 GMC DOUBLE CAB ALL TERRAIN PKG 41,000 Miles, White, 6.2 V8, Leather..... \$34,900
2013 CHEVY IMPALA LT Red, 31,000 Miles..... \$14,900	2014 CHEVY EQUINOX LT Crystal Red, 38,000 Miles, Certified..... \$18,900	2014 CHEVROLET SILVERADO 1500 4WD, Reg. Cab, Shortbox, 30,000 Miles, White..... \$26,900
2013 CHEVY MALIBU Black, 60,000 Miles..... \$14,900	2013 CHEVY TAHOE LT Burgundy/Tan Leather, 55,000 Miles, Sunroof..... \$35,900	2013 CHEVROLET SILVERADO CREW CAB 4X4 LTZ Mocha Steel, 29,000 Miles, Rear Camera/Remote Start..... \$32,900
2011 BUICK REGAL CXL Majestic Blue, 69,000 Miles..... \$14,900	2013 BUICK ENCLAVE CXL FWD 49,000 Miles, 1-Owner..... \$25,900	2012 GMC SIERRA EXT. CAB SLT Black, 28,000 Miles, 5.3 V8, 1-owner..... \$29,900
2010 CHEVROLET MALIBU LTZ Silver, 102,000 Miles..... \$8,900	2013 GMC TERRAIN Front Wheel Drive, SLT, Black, 47,000 Miles, Leather..... \$19,900	2012 GMC SIERRA EXT. CAB SLE 4X4 5.3 V8, Mocha Steel, 73,000 Miles..... \$23,900
2010 PT CRUISER Burgundy, 90,000 Miles, Locally Owned, 4 Cyl..... \$7,900	2013 GMC TERRAIN FWD SLE 31,000 Miles, White, 4 Cyl..... \$19,900	2011 GMC CREW CAB 4X4 Stealth Grey, 84,000 Miles..... \$24,900
2007 CHEVROLET HHR Black, 77,000 Miles, 4 Cyl, 1-Owner..... \$9,900	2013 GMC TERRAIN SLE FWD 4 Cyl, Silver, 72,000 Miles..... \$16,900	2010 GMC SIERRA CREW CAB SLT 4X4 Fire Red, 5.3 V8, 68,000 Miles..... \$24,900
2007 BUICK LUCERNE CXL Dk. Blue, 3800 V6, 127,000 Miles, Leather..... \$8,900	2012 GMC TERRAIN FWD SLE Black, 59,000 Miles..... \$16,900	2010 GMC EXT CAB SLE 4X4 White, 5.3 V8, 134,000 Miles..... \$16,900
2007 CHEVROLET HHR LT Blue, 125,000 Miles..... \$7,900	2012 GMC TERRAIN SLE FWD Burgundy, 71,000 Miles..... \$15,900	2009 GMC SIERRA EXT. CAB V8, White, 68,000 Miles, 2 Wheel..... \$15,900
2006 CADILLAC DTS Silver, 147,000 miles, locally owned..... \$7,900	2012 CHEVROLET EQUINOX LT FWD 102,000 Miles, Goldmist..... \$11,900	2007 GMC SIERRA CREW CAB DENALI Black, Loaded, 184,000 Miles..... \$16,900
2001 CADILLAC DEVILLE DHS Silver, 91,000 Miles..... \$6,900	2011 GMC TERRAIN SLT AWD 69,000 Miles, 6 Cyl, Silver..... \$18,900	2007 CHEVROLET EXT CAB 4X4 White, 5.3 V8, 112,000 miles, Very Clean..... \$14,900
	2011 GMC TERRAIN FWD SEL Goldmist, 4cyl, 32,000 Miles..... \$16,900	USED VANS
	1997 CHEVROLET SUBURBAN 4X4 Burgundy, 166,000 Miles, Excellent Shape..... \$5,900	2004 OLDSMOBILE SILHOUETTE GL Ruby Red, 85,000 Miles, Locally owned..... \$5,900

BENCHLEY BROS., INC.
 1 Mile East of Doherty • US-10, Clare • Sales (989) 386-9900

For more info log on to: www.benchleybros.com Parts & Service (989) 386-3197

HOURS 8-6 Mon-Fri 9-2 Sat
 Specializing in GM Certified USED VEHICLES

12 Months Interest Free Financing Available With Approved Credit.

\$300 Minimum purchase, monthly payments required.

LARGEST RECLINER SELECTION IN MICHIGAN! SEE FOR YOURSELF!

IN STOCK AND ON SALE NOW:

Power Recliners ■ Leather Recliners ■ Big Mans Recliners ■ Ladies Recliners ■ Gliding Recliners ■ Swivel Rocker Recliners ■ Wing Chair Recliners ■ Heat & Massage Recliners ■ Life Chair Recliners ■ Reclining Loveseats ■ Reclining Sofas ■ Children's Recliners



Kubin's Mattress Sale!



Serta Select Twin Mattress \$99

Add a Pivot Head Up Box for \$544 on most models



Guaranteed Lowest Prices ON ALL SERTA MATTRESSES!

	TWIN 2pc set	FULL 2pc Set	QUEEN 2pc Set	KING 3pc set
Majestic Davey Gentle Eurotop	\$299 Sale Compare At \$449	\$379 Sale Compare At \$569	\$399 Sale Compare At \$599	\$599 Sale Compare At \$899
Majestic Gallion Support Firm or Support Eurotop	\$349 Sale Compare At \$529	\$449 Sale Compare At \$679	\$499 Sale Compare At \$749	\$799 Sale Compare At \$1199
Majestic Raftery Premium Choice Plush or Firm	\$449 Sale Compare At \$679	\$549 Sale Compare At \$829	\$599 Sale Compare At \$899	\$899 Sale Compare At \$1349
Majestic Stowcroft Choice of Super Pillowtop or Firm	\$549 Sale Compare At \$829	\$649 Sale Compare At \$979	\$699 Sale Compare At \$1040	\$999 Sale Compare At \$1498
Kubin's Exclusive, Perfect Sleeper Regal Suite, 2 Sided flipable mattress Choice of Plush or Extra Firm	\$549 Sale Compare At \$829	\$699 Sale Compare At \$1049	\$799 Sale Compare At \$1199	\$1099 Sale Compare At \$1649
Serta Perfect Sleeper Swan Harbor Choice of Luxury Pillowtop or Firm	\$899 Sale Compare At \$1349	\$969 Sale Compare At \$1459	\$999 Sale Compare At \$1499	\$1299 Sale Compare At \$1949
Serta Perfect Sleeper Hatters Evercool & Gel Memory Foam	\$899 Sale Compare At \$1349	\$969 Sale Compare At \$1459	\$999 Sale Compare At \$1499	\$1299 Sale Compare At \$1949



- Helps reduce tossing and turning**
ComfortRight™ Layers
This advanced system of foams and fluffy fibers is designed to provide instant comfort. This helps reduce the pressure points that can cause tossing and turning so you can sleep more comfortably through the night.
- Minimize impact from partner movement**
TrueSense™ Design
Serta's exclusive design helps minimize the impact of partner movements, working to isolate motion at its source so you can enjoy a peaceful night's sleep with fewer disruptions.
- Encourages proper back support & alignment**
Custom Support™ System
Every Perfect Sleeper features a system of durable, yet flexible carbon steel coils that work to promote proper support and alignment across the entire body.
- Resists sagging & edge roll-off**
ComfortLast™ Construction
Designed to enhance durability of the mattress and is thoroughly tested beyond industry standards to make sure it can resist sagging and edge roll-off. This enhanced durability can help extend the comfort life of your mattress.
- Promotes a balanced sleep temperature**
CoolBalance™ Technology
A unique combination of high-performance heat and moisture-regulating fabric and an overall mattress design that helps promote airflow. Together, these help provide a comfortable, balanced sleep temperature.

5 reasons to never count sheep again.



Kubin's Furniture & Mattresses
101 N Mill St, Corner of M46, St. Louis, Michigan, (989) 681-5043
Hours: Mon-Thurs: 9-6, Fri: 9-8, Sat: 9-5, Closed Sunday
Sign up Your Email at: <http://www.kubins.com/signup.htm>



*SEE STORE FOR DETAILS

Valley Food Center

"OUR ONE AND ONLY LOCATION IN PINCONNING"
 989-879-3311 • 101 E. SECOND • PINCONNING
 WE WELCOME THE BRIDGE CARD, GIFT CERTIFICATES
 NOT RESPONSIBLE FOR PRINTING ERRORS • ALL LOTTERY GAMES AND LOTTO HERE
 MON.-SAT. 8-8, SUN. 8-6 • PRICES GOOD SUNDAY, JANUARY 22ND THROUGH SATURDAY, JANUARY 28TH, 2017

**Home for all your
Big Game Meats and Munchies....
check out our deals!!**

BEEF		
GROUND CHUCK 10 LB. BAG \$34.90 LESSER QUANTITIES \$3.79 lb.	GROUND HAMBURGER 10 LB. BAG \$32.90 LESSER QUANTITIES \$3.59 lb.	BEEF BONELESS RIBS \$2.99 lb.
ENGLISH ROASTS \$2.79 lb.	DENVER STEAKS \$2.99 lb.	NEW YORK STRIPS (WHOLE OR 1/2) \$2.99 lb.
PORK		
PORK STEAK OR FINGER RIBS \$1.69 lb.	BOSTON BUTT PORK ROAST \$1.49 lb.	END CHOPS OR COUNTRY RIBS \$1.39 lb.
LOIN END ROAST \$1.19 lb.	BONELESS PORK LOIN \$2.29 lb.	SPARE RIBS TWIN PACK \$1.99 lb.
BULK SAUSAGE (MILD, FARMERS, HOT OR SWEET) \$1.79 lb.	WAYSIDE BACON 10 LB. BOX \$17.90	
CHICKEN		
BONELESS CHICKEN BREAST 10 LBS. OR MORE \$1.49 lb. LESSER QUANTITIES \$1.99 lb.	LEG QUARTERS 39¢ lb.	WHOLE FRYERS \$1.49 lb.
FROZEN		
KOEGEL VIENNA'S 10 LB. BOX \$34.90	KOEGEL SKINLESS FRANKS 4 LB. \$12.69	KOEGEL VIENNA'S 24 CT. \$12.99
CHICKEN NUGGETS \$2.19 lb.	TYSON PREMIUM CHICKEN STRIPS \$3.99 lb.	CENSEA SHRIMP 31/40 CT. 1 LB. PKG. \$7.49 lb.
LAMB WESTON SOUTHWEST OR CHEDDAR CHEESE SPUDZ \$9.99	ANCHOR CHEDDAR CREAM CHEESE POPPERS 32 OZ. PKG. \$9.99	BOSCO STICKS (CHEESE FILLED) 6 CT. \$3.60
STRAIGHT CUT OR CRINKLE FRIES 5 LB. BAG \$4.99	MOZZARELLA STICKS 3 LB. BAG \$7.49	BUTTON MUSHROOMS 32 OZ. \$7.99
FROZEN PARTY WINGS 5 LB. BAG \$8.99		
SNACKS		
BETTER MADE POTATO CHIPS 9-10.5 OZ. BAGS 2/\$5.00	FAYGO POP 2-LITER 4/\$5.00	RC COLA, SUNDROP, BIG RED 2-LITER 99¢ ea.
TROLL HOUSE SNACK STICKS 1.5 LB. PKG. \$7.49	BUSCH OR BUSCH LIGHT 30 PK. CANS +TAX +DEPOSIT \$17.49	CHEESE TRAYS \$14.99
DAIRY FRESH SHREDDED OR BLOCK CHEESE 8 OZ. PKGS. 3/\$6.00		

Visit us on Facebook at www.facebook.com/valleysmarket
 Or check out our new website at: www.valleymarketmi.com

SHOP LOCALLY SAVE GAS!

800 Products **18** States **57M** Americans



Do You Speak Digital?

Digital First Media, a leading provider of local news and information, is recruiting Account Executives to join our fun, fast-paced, professional team. You will have an opportunity to sell to a growing audience across an expanding network of digital platforms.

Please forward your resumé to goodrich@digitalfirstmedia.com

digitalfirst
MEDIA
www.digitalfirstmedia.com and
www.adtaxinetworks.com

Digital First Media is an EEO Employer, M/F/D/V

14th ANNIVERSARY CELEBRATION

Quality Products, Competitive Prices, Outstanding Service
SATURDAY, FEBRUARY 4th 2017
 At least 10% off Store Wide on In Store items!
 Excludes Corn - Pellets and Coal

Free Coffee, Hot Chocolate & Donuts

FREE GIVEAWAY
to Every Customer

7:30 a.m. to 4:30 pm

Enter to Win Drawing to Win A \$500 Gift Certificate to Hershberger's Hardware (on Feb 4th only)

Your SOLUTION to HIGH HEATING COSTS

FS-HP22
Fantastic Pellet Stove



You Won't Beat this Deal while Supplies Last



Chain Saw Bar Lube **\$5.99** gallon

Feed your feathered friends

Bird Suet **\$4.99** ea



Wood Pellets • Anthracite Coal
 Wood, Coal, Corn & Pellet Stoves • All Fuel Chimney Systems

Mr. Heater Selection of Mr. Heater Propane Heaters and Kerosene Salamander Heaters

Low, Low Prices up to 35%
 Factory Reconditioned • New Warranty Below the Cost of New

Live Coal, Wood/Pellet Burning Units on Display. Lowest Prices of the Season!

Full Line of Hardware & Building Supplies • Stove & Furnaces All Fuel Chimneys

HERSHBERGER'S PRO HARDWARE

10289 N. Leaton Rd., Clare, MI 48617-9107 • (989) 386-5338

DEWEY'S TRADING POST

Maple Rapids • 682-4158
 Monday-Saturday: 8 am - 7 pm, Closed Sunday

Prices In This Ad Good for weeks of January 23, 2017 - January 28, 2017

WIC • Bridge Card • VISA • Mastercard • Discover
 American Express • Debit Card & Chamber Bucks Gift Certificates.

FEATURED MEAT BUNDLE

ALL BEEF BUNDLE \$119.99

10 LB. GR CHUCK • 5 LB. BEEF ROAST • 4 LB. PATIO STEAK
 4 LB. ROUND ST • 3 LB. PETITE STEAK
 CUSTOM VACUUMED PACKED FOR YOUR FAMILY - 24HR NOTICE PLEASE

9 DIFFERENT BUNDLES AVAILABLE

"Whole" Select New York Strips 13 lb Avg \$3.19 LB <small>CUT FREE!!</small>	Smoked Picnics 9 lb Avg \$1.19 LB	"Our Own" Mushroom & Swiss Brats \$2.99 LB
"Our Own" Ball Park Brats \$2.99 LB	"New Flavor" Potato Sausage in "Links" \$2.99 LB	"Our Own" Smoked Polish Sausage \$3.99 LB
Koegel's Ring Bologna \$3.49 LB	3 lb. bags Lake Liner Patties, Nuggets, Tenders \$5.99 BAG	Choice T-Bone Steak's Everyday Price!! \$6.99 LB
Select "Boneless" "Ribeye" "Whole or 1/2" <small>WHILE SUPPLIES LAST!!</small> \$6.99 LB <small>CUT FREE!!</small>	10 lb. Bag "Fresh" Leg 1/4s 10 lb. bag \$4.99 BAG	Smoked Pork Chops \$2.99 LB
WHILE SUPPLIES LAST!!		
"Frozen" 6-8 lb. Chunks of our Double Smoked Hams \$1.99 LB	"Frozen" Our Double Smoked Ham Steaks \$2.99 LB	
FISH		
10lb Boxes Pollock \$19.99 BOX	5lb Bag Tilapia \$13.99 BAG	5lb Bag Ocean Perch \$17.99 BAG
2 1/2 Bag Cod \$9.99 BAG	"Individual" Tuna Steaks \$3.99 LB	

www.deweystradingpost.com
 LIKE us on facebook & see our WEEKLY SPECIALS!



JACK OF ALL TRADES COINS

1028 S. Mission
(next to Jon's Country Burger)

I BUY ALL COINS
Silver and Gold
FREE APPRAISALS
we will come to your home to do free appraisals for your convenience.
Over 25 Years experience!

Do not take your coins, jewelry, gold, & silver to the we buy gold places they are not experts! We are your only experts!
WE PAY YOU MORE THAN ANYONE!

I BUY ALL COLLECTIONS
FROM ONE COIN TO A DUMP TRUCK FULL

We are a Full Buy • Sell • Trade shop!
ANTIQUES • COINS
Jewelry • Collectibles & more!

Stop in or call Matt for your free appointment
517-204-0787

2017 FEEDER CATTLE SALES

Clare

Clare County Livestock Auction, LLC
David Clark, Owner/Auctioneer
Contact: 810-441-6191
Sale Barn: 989-386-9256

ALL SALES ON THURSDAY AND START AT 1:00PM
ALL CATTLE WEIGHED AT SALE TIME
ACCEPTING CATTLE ON WEDNESDAY ALL DAY!!
OVERNIGHT CATTLE WILL BE FED & WATERED!!
COLORED AND HOLSTEIN STEERS, HEIFERS & CALVES
(SOME CATTLE PRE-CONDITIONED, INFO AVAILABLE AT TIME OF SALE)

JANUARY 26, MARCH 16, APRIL 13, MAY 4

GO TO WWW.DAVIDCLARKAUCTION.COM
FOR MORE INFORMATION!!
"SALE EVERY MONDAY AT 3:00PM"

Want fast cash?

Our Classified advertisers get great results.

If you have merchandise to sell, place a classified ad by calling **877-483-3450**



assisted **Living with Heart**

ARBOR GROVE
Assisted Living

1320 Pine Avenue,
Alma, MI 48801
arborgroveassistedliving.com
989.463.3074

Our residents, their families, and our staff have one thing in common - we genuinely care about each other. **We have heart.**

Share life's journey in a community that cares.

Offering Independent Living Duplexes (The Villas), Assisted Living & Moments Memory Care



SAVING ENERGY AT HOME
IS EASIER THAN YOU THINK

Start today with these simple tips.

- ✓ **LOOK FOR THE STAR**
When replacing appliances or electronics—including clothes washers, dishwashers, refrigerators and TVs—be sure to select ENERGY STAR® models.
- ✓ **CHANGE YOUR BULBS**
LEDs use 70 to 90 percent less energy and last up to 15 times longer.
- ✓ **GET WITH THE PROGRAM**
Set your programmable thermostat at a lower temperature during times when no one is home and while you sleep.

ONLINE: michigan-energy.org PHONE: 877.296.4319



BRIAN'S FRUIT & MEAT MARKET

2167 S. M-76 • West Branch (Across from Kmart)

While Supplies Last • Not responsible for printing errors
Prices good Sunday, January 22nd, 2017 through Friday, January 27th, 2017
Store Hours: Sunday 8am - 6pm • M,T,Th,Sat. 7am-7pm • Fridays 7am - 7pm

ASK ABOUT OUR BULK PRICING!!

WE ARE A PACKAGED LIQUOR DEALER

We accept all major credit cards & EBT card

BRIAN'S MEATS: 989-345-3709 LIKE US ON FACEBOOK WWW.BRIANSFRUITANDMEATMARKET.COM

Eckrich Brand SLICED PREMIUM DELI HAM \$3.49 lb.	Butterball Brand SLICED OVEN ROASTED TURKEY BREAST \$5.99 lb.	Great Lakes Brand SLICED YELLOW AMERICAN CHEESE \$4.49 lb.	Great on the Grill BONELESS BEEF NEW YORK STRIP STEAKS \$6.99 lb.	Beef It's what's for Dinner BONELESS BEEF TOP ROUND ROAST & STEAKS \$3.99 lb.	X-tra Lean BONELESS STEWING BEEF \$4.49 lb.	10# SPECIALS 10# BOX POLLOCK FILLETS \$19.00 10# BOX COD LOINS \$40.00 10# BOX KOEGL VIENNA'S \$40.00
Store Ground FRESH GROUND BEEF FROM ROUND \$3.49 lb.	Pork the Other White Meat BONE-IN CENTER CUT PORK CHOPS \$2.69 lb.	BBQ Time LEAN & MEATY PORK SPARERIBS \$1.99 lb.	Ass'd. Varieties BRIAN'S HOMEMADE FRESH BRATS \$3.99 lb.	Save \$1.00/lb BONELESS PORK TENDERLOINS \$2.99 lb.	Fresh Never Frozen FRESH CHICKEN LEG 1/4'S \$4.90 10# bag Lesser Amounts .69¢ lb	10# GROUND CHUCK \$2.89 lb 10# BULK SAUSAGE \$2.49 lb 10# BONELESS SKINLESS CHICKEN BREAST \$1.49 lb 10# PORK STEAK \$1.89 lb

BRIAN'S PRODUCE: 989-345-2891

BAREMAN'S DAIRY MILK 1% / Skim \$2.49 gal. Whole / 2% \$2.69 gal.	PRAIRIE FARMS SOUR CREAM/CHIP DIP/COTTAGE CHEESE \$1.69 16oz.	WILLIAMS FLAVORED CHEESE SPREAD AND CHUNKS SHARP CHEDDAR 2/\$4.00 8oz.	FAMILY PAK ICE CREAM \$5.99 5qt pail	CAULIFLOWER 2/\$3.00	KIWI FRUIT 4/\$1.00
X-TRA LARGE - JUMBO CALIFORNIA SEEDLESS NAVAL ORANGES \$5.99 8lb. bag	WASHINGTON APPLES 99¢ lb. (excluding Honey Crisp)	VINE RIPE ROMA TOMATOES 99¢ lb.	DOLE BANANA'S 49¢ lb.	FRESH CABBAGE 39¢ lb.	GOLDEN RIPE PINEAPPLE \$1.99 each
FRESH APPLE CIDER \$3.99 gal	BLACK OIL SUNFLOWER SEEDS \$14.99 50 lb. bag	WILD BIRD SEED \$12.99 50 lb. bag	LABATT BLUE & LABATT BLUE LIGHT BEER \$15.99 24 pk cans + tax + deposit	HAMM'S BEER \$12.99 30 pk cans + tax + deposit	

WINTER SPECIAL

Get Your Taxes DONE RIGHT!!
 You Don't Have to Pay an Arm & a Leg
 Switch to Tax Pros and **SAVE!!!**

Bring in your last year's return and we will prepare your 2016 Taxes for **50% OFF** For new clients only.

2074 E. Surrey Road Farwell, Michigan 48622
 989-386-4554
 989-386-0777
 Fax: 989-386-4890
 hscott@taxproslc.com

5800 E. Pickard Street Mt. Pleasant, Michigan 48858
 989-953-7171
 Fax: 989-953-7170

!!!MONTHLY SALE!!!
Saturday, January 28, 2017
 (Last Saturday of the month)
 Jan., Feb., Mar.

Location:
Clare County Produce Auction Building
 6820 E. Colonville Rd., Clare, MI 48617
 (989) 802-1766 • (989) 386-6876

Time: 12:00 NOON
 Accepting Consignments
 Firewood, Hay (big & small bales),
 Surplus Building Materials

Auctioneer: Andy Hostetler
 We have the right to turn down junk

CUSTOM DESIGNS Buy Direct & Save *Indoor Showroom*

Also Available
 Cremation Vaults and Urns

Brewer Bouchey Monument Co.
 Family Owned Since 1895
 211 N. Mill St. • Downtown St. Louis
 989-681-3300 • Toll Free 888-362-2920
 Hours: Mon.-Fri. 9-5; Sat. By Appt.
 www.brewer-bouchey.com

PRICE BUSTERS

Steve's Country Market
 989-539-3110 3170 North Clare Ave., Harrison 44 Feet of Old Fashioned Meat Counter with Good Old Fashioned Service
 Hours: Sun. - Mon. 8-8 Bridge Card & Wic Accepted
 Sale Dates: January 23 - January 29, 2017
 Top Quality Meats At Rock Bottom Prices! 100% Satisfaction Guaranteed Michigan Lottery and ATM Machine
 stevescountrymarket.com

Fresh Meat, Seafood & Deli Items

GROUND CHUCK FAMILY PACK 5 LBS. OR MORE \$249 LB.	WHOLE NEW YORK STRIP LOINS \$299 LB. <i>SLICED FREE!</i>	BONELESS CHICKEN BREAST \$149 LB.	WHOLE BONELESS PORK LOINS \$199 LB. <i>SLICED FREE!</i>	USDA CHOICE T BONE STEAKS \$599 LB.
PORK STEAK OR WESTERN STRIPS \$149 LB.	USDA CHOICE BONELESS ENGLISH ROAST \$329 LB.	TOP ROUND LONDON BROIL \$349 LB.	FRESH GROUND ROUND \$369 LB.	BABY BACK RIBS \$269 LB.
POLLOCK FILLETS 10 LB. BOX \$1599 EA.	GULF WILD CAUGHT RAW SHRIMP 21-30 CT. 1 LB. PKG. \$999 EA.	TILAPIA FILLETS \$199 LB.	COD LOINS \$599 LB.	ECKRICH HARD SALAMI \$449 LB.
				ECKRICH DELI HAM \$399 LB.
				COLBY OR COJACK CHEESE \$399 LB.
				DELI POTATO OR MACARONI SALAD \$199 LB.

Fresh Produce	Fresh Dairy And Frozen	Grocery
SLICING TOMATOES 99¢ LB.	YODER'S SHREDDED OR BAR CHEESE 8 OZ. 2/\$400	KRAFT SALAD DRESSINGS 16 OZ. \$169 EA.
EXTRA LARGE GREEN PEPPERS 2/\$100	PRAIRIE FARMS CHOCOLATE OR STRAWBERRY MILK 1/2 GALLON \$249 EA.	MUELLER PASTA SELECT VARIETIES 12-16 OZ. 4/\$500
CUCUMBERS 2/\$100	SHERBET 1/2 GALLON \$299 EA.	MAXWELL HOUSE COFFEE 25.6-30.6 OZ. \$749 EA.
EXTRA LARGE CANTALOUPE \$179 EA.	4 QT. PAIL ICE CREAM \$599 EA.	HILLBILLY BREAD 20 OZ. 2/\$300
BANANAS 49¢ LB.		BUD & BUD LIGHT 15 PK. CANS PLUS DEPOSIT \$999 EA.
		AUNT MILLIE'S DELUXE HOT DOG OR HAMBURG BUNS 8 CT. 2/\$300
		FRITOS OR CHEETOS 9.5-10.25 OZ. 2/\$400
		HUNT'S MANWICH 15 OZ. 5/\$500
		COKE 20 PK. CANS PLUS DEPOSIT \$649
		YELLOWTAIL WINES 750 ML. \$599 EA.

While supplies last. Not responsible for printing errors.

WINTER *Clearance*

EXTREMELY LOW SALE PRICES

**Plus an Extra 20% OFF
STOREWIDE**

And An Extra 50% OFF

ALL INSPIRATIONAL GIFTS
BY MANUAL WEAVERS & WOODWORKERS
CLOCKS, PLAQUES, COASTERS,
PILLOWS, FIBER OPTIC WALL HANGINGS,
THROWS & WALL HANGINGS

**Symbol Mattress Blow Out
EVERY MATTRESS SET AT
LOWEST SALE PRICE**

Plus an Extra 20% OFF

Facts About Symbol Mattress

- * Symbol Mattress is the 3rd largest manufacturer in the Midwest and 12th largest in the United States out of 600.
- * Symbol Mattress has a higher customer satisfaction rating than both Serta & Sealy
- * Symbol Mattress sets normally sell for 20-30% less than the equivalent Serta or Sealy model

**LAYAWAY NOW
FOR TAX REFUND**

***Up To 36 Month No Interest Financing Available**

Free Layaway

318 N State St • Alma, MI 48801

(989) 463-1037 • Hours: 9-6 M-F • 9-5 Sat.

www.StateStreet-Furniture.com

*See Store for Details

**STATE ST
FURNITURE**





Country Corner MARKET

Bulk Food • Deli

2 Miles South of Rosebush • 2020 North Mission Mt. Pleasant • 989-433-8200

8:30am-5:30pm, Monday-Thursday
8:30am-7:00pm, Friday • 8:30am-4pm, Saturday

Large Selection of Freezer Food at Discounted Prices

Walnut Creek **Havarti Cheese**

Sale \$4.19 lb.
Reg. \$3.19 lb.

SPECIALS OF THE WEEK

Walnut Creek **Double Smoked Off The Bone Ham**
Or **Honey Off The Bone Ham**

\$2.99 lb.

Walnut Creek **Roll Butter** 2 lb.

Just \$6.99 ea.

Walnut Creek **Thick Sliced Applewood Bacon** 20 oz. size

Only \$4.49

Hospitality **Frosting** 16 oz. All Varieties

\$1.49

We will be closed on Saturday January 28th for family wedding!

Coffee of the week: Mocha Java

BENCHLEY BROS, INC.

Your Buick & GM Dealer

Serving Clare for Over 35 years



Tune Ups

Brake Work

Wheel Alignment

Transmission Service

Goodwrench.

BECAUSE WHO KNOWS WHAT'S DOWN THE ROAD

East US-10 • Clare • benchleybros.com

Service Department **989-386-3197**

Quality Built. Quality Features.

TIRED OF A FULL GARAGE?
Stop by our lot. We have the perfect storage solution for you.

COME SEE US, WE'VE GOT YOU COVERED



10x12 Quaker
\$2,600



12x16 Quaker
\$3,586



12x20 Gable
Side Entry Door, 1 Window
\$3,940



12x16 Gable
2 windows, 2-4 Ft. Lofts
\$3,352

Statewide Delivery - Free Delivery w/ in 70 miles!

Supplying Michigan with quality built portable buildings for over 25 yrs.

Miller's Woodworking

3209 E. Beaverton Road • Clare
(Voicemail) 989-465-8172

Old US 127 to Surrey West on Surrey to Grant 1 mile north on Grant

Winter Hours: Mon.-Fri. 7:30am-5:00pm
Saturday & Evenings by Chance or Appointment
Closed Sunday

"I came to New York to be a dancer, but I knew that was a short-lived career. So I got my real-estate license and started selling houses. And turned out, I love it."

- Charles Murray, Real Estate Agent

Search LOCATION NAME jobs and find the one that's right for you at COBRAND URL



digitalfirst

MONSTER

MOBILE READY.

RABIES CLINIC
Special January Rates

\$15⁰⁰
Reg \$20.⁰⁰

By Appt. 426-0203
Flexible Hours

KELLY'S KRUISSING
KRITTER KARE
Kelly Jo Kelley, DVM



Clare Automotive Inc. BUMPER TO BUMPER
Auto Parts Specialists
Clare Automotive Inc.

214 W. Fourth St. Clare
(989) 386-7200
www.clareauto.com

FILTER SALE Feb. 20-24

WIX FILTERS **70% OFF List Price**
Begin accepting orders Feb. 1, 2017

MIAL MEADOWS MHP
IS NOW UNDER NEW OWNERSHIP

WE HAVE VACANT LOTS AVAILABLE
TO MOVE IN YOUR OWN HOME
CONTACT OUR OFFICE AT
PH: 989-463-5187

TERESA & JIM DAVIDSON
RESIDENT MANAGERS

411 S. GROVER, #31
ALMA, MI 48801

Wolverine Optical

EYE EXAMS • GLASSES • CONTACTS • BIPOCALS • REPAIRS • TINTING

DOCTORS APPOINTMENTS AVAILABLE TUESDAY AFTERNOON,
WEDNESDAY ALL DAY, THURSDAY AFTERNOON AND FRIDAY
APPOINTMENTS ARE SOMETIMES AVAILABLE.

MONDAY - THURSDAY 8:00AM - 5:00PM
CLOSED FRIDAY
AND 12:00PM - 1PM DAILY

BCBS, VSP, EYE MED & DAVIS, VISION INSURANCE, MCLAREN,
MERIDIAN AND STRAIGHT MEDICAID

463-1838 • 7314 ALGER RD., ALMA, MI 48801



**Take action,
SAVE MONEY!**



Easy ways for businesses to save energy.

- CHANGE YOUR BULBS**
Replace your incandescent bulbs with LEDs. In large rooms, replace T12 fluorescent bulbs with T8s. For even more energy savings, upgrade fixtures and bulbs to high-efficiency T5s.
- SMART STRIPS ARE SMART**
Some office devices consume up to 40 watts of electricity in standby mode. Reduce wasted energy with a "smart power strip," which monitors electronic devices and turns them off when not in use.
- LIGHTS ON, LIGHTS OFF**
Occupancy sensors keep your lights off when rooms are unoccupied or when day light is detected. Sensors are most effective in bathrooms and storage areas.

ONLINE: michigan-energy.org PHONE: 877.296.4319



BUY • SELL • HUNT FOR A JOB
CLASSIFIEDS WORK. CALL TODAY!

**Buy!
Sell!
Trade!**



Lambert's Meat Market and Bakery

Taste the difference "FRESH" makes!

624 E. Cedar Ave., Gladwin (next to Family Dollar) **989-246-1850**

Winter Hours: Mon-Friday 8-6:30; Saturday 8-6:00; Sunday 8-4:00 • Sales Dates Monday, January 23 through Saturday, January 28, 2017



CHECK OUT OUR BIG GAME FROZEN FOOD SPECIALS

10LB OR MORE SALE!

<p>Pork Steak, Strips, Shoulder Roast or Breakfast Sausage</p>  <p>\$1.29 lb.</p>	<p>Boneless Skinless Chicken Breast</p>  <p>40lb bulk case \$51.60 =\$1.29/lb</p> <p>\$1.49 lb.</p>	<p>Family Pack Ground Beef Hamburger 73% lean</p>  <p>\$2.29 lb.</p>	
<p>Family Pack Ground Beef from Chuck 80% lean</p>  <p>\$2.49 lb.</p>	<p>USDA Choice Denver Steaks or English Roast</p>  <p>\$3.29 lb.</p>	<p>Boneless Pork Loins</p>  <p>CUT FREE!! \$1.99 lb.</p>	<p>Boneless Whole NR Ribeye Loins</p>  <p>\$3.79 lb.</p>

BIG GAME FROZEN FOOD SPECIALS

<p>Breaded Mozzarella Sticks 3lb bag</p>  <p>\$5.99</p>	<p>Breaded Spicy Chicken Breast Strips 5lb bag</p>  <p>\$9.99</p>	<p>Breaded Chicken Breast Patties 5lb bag</p>  <p>\$9.99</p>	<p>Red Argentine Raw Shrimp 16-21ct</p>  <p>\$7.99 1 lb.</p>	<p>Lambert's Own 18hr Smoked BBQ Pulled Pork</p>  <p>\$4.99 lb.</p>
--	--	---	---	--

BAKERY AND DELI SPECIALS

<p>Mini Danish Coffee Cakes</p>  <p>\$1.99 ea.</p>	<p>Jumbo Donut Holes (Assorted Varieties)</p>  <p>\$1.99 ea.</p>	<p>Slider Buns</p>  <p>\$2.99 dz.</p>	<p>Spinach Dip or Chili Con Queso Dip</p>  <p>\$4.99 lb.</p>	<p>Deli Honey Roasted Turkey</p>  <p>\$5.99 lb.</p>	<p>Deli Colby or Colby Jack</p>  <p>\$3.99 lb.</p>
---	---	--	--	--	---

Business Card Directory

Shop these local Professionals

Call 989-506-4647 for Advertising Info



TOM'S POLE BUILDINGS
Over 30 Years Experience
Special! POLE BUILDINGS & GARAGES
ROOFING & SIDING
CONCRETE FLOORS DRIVEWAYS & FENCING
FEATURING ULTRA 2000 19 colors to choose from
And A 45 YEAR WARRANTY
From Beginning permit To Cleanup, We Do It All!
1-800-541-3974
We accept major credit cards. • email: tompolebuildings@yahoo.com

24x40x10
10% Down
Today
Guarantees
Prices

Newcombe's Family Restaurant
27 S Coldwater Rd Lake Isabella, MI 48893
(989) 644-8380
FOOD SO GREAT YOU'LL SCRAPE YOUR PLATE
Sunday 7am-8pm
Mon.-Thurs. 7am-9pm
Fri & Sat 7am-10pm

Like us on Facebook



7400 S. Clare Ave. • Clare, Michigan 48617
800-292-0679
www.pioneerpole.com

Pioneer Metal Roofs
Residential Steel Roofing



7325 S. Clare Ave.
Clare, MI 48617
(989) 386-4444 (Office)
(800) 292-0679
www.pioneermetalroofs.com



600 S. Mission St.
Mt. Pleasant, MI 48858
989-779-7227
989-772-5009

Computer Center
Computer Repair • Used Computers
Custom Built • Virus Removal
And More

"Our Customers are our Warmest Friends"
Guaranteed On Time Certified
FREE TANK SETS
COYNE OIL & PROPANE
Clare • Gladwin • Harrison • Evart
800-386-7731 • 989-386-7731

RESIDENTIAL • COMMERCIAL
INDUSTRIAL • FARM

STORAGE SPACE AVAILABLE



420 Units
5'x12', 10'x12', 10'x20' Stalls
MIDSTATE RENTAL AND STORAGE, INC.
1 MILE EAST OF GLADWIN ON M-61
426-2981
MON.-SAT. 8AM-5PM

Paved Driveway Security Gate
FOR ALL YOUR RENTAL NEEDS



Joyous holiday wishes to you and your family...

Maury Irwin, Agent
1011 N McEwan Street
Clare, MI 48617
Bus: 989-386-4141
maury.irwin.l8gz@statefarm.com

from your good neighbor.
May all your wishes come true this wondrous season.
Like a good neighbor, State Farm is there.®
CALL ME TODAY

State Farm

1101450.1 State Farm, Home Office, Bloomington, IL



You **Looked** here and your customers will, too.

Call 989-506-4647 for more info.

ECOWATER SYSTEMS Lindsay Soft Water Co.



1209 Michigan Ave. P.O. Box 401
St. Louis, MI 48880 Gladwin, MI 48624
(989) 681-5436 (989) 426-4220
1-800-244-3464 Cell (989) 620-1263
www.ecowater.com

ISO 9001
GABE EAREGOOD
Water Specialist

digitalfirst MEDIA

Call for Quotes on digital advertising, print & deliver, pre prints and print advertising

Marlene Bennett
Account Executive
The Morning Sun • The Mid-Michigan Buyers Guide
mbennett@michigannewspapers.com
For Advertising call **989-506-4647** or **989-240-0473**
For Circulation call 989-779-6000 Press 3

Pole Barn Kits



Now Available

ABC Auto Body 313 W. Knox Road, Beaverton, MI
1/2 Mile West of M-30
989-435-2707

WE TAKE PRIDE IN YOUR RIDE!

- Quality Collision Repair
- Free Estimates
- Insurance Work Welcome
- Custom Color Matching & Painting
- We Repair All Makes and Models
- Car/Light Truck
- Genuine Original Equipment Parts

Tag's Auto Repair 2 yr. 25,000 mile warranty nationwide on parts & labor

• Computer Diagnostic Service • 2 and 4 Wheel Alignment
BRAKES & FRONT END REPAIR!

Receive a \$25 VISA prepaid card on qualifying purchase of \$250 or more made on Drive Card

FREE Roadside Assistance Program Towing, Flats, Lockouts, More!
Call Us For Details!

Auto Value SERVICE CENTER 3780 N. Clare Ave. Harrison
Hours M-F 8-5, Sat 10-2
989-539-1986

Luthy Metal Sales
Manufacturing, Roofing, Siding & Accessories
989.433.5705
5145 N. Mission Rd. Rosebush

\$1000 off any in-stock & non-sale pair of shoes
Expires 2.4.17

CIRCLE QUALITY SHOES

Specializing in hard to fit sizes-100's of styles to pick from
• Birkenstock • Clarks • Merrell • SAS
208 Cambridge St. 835-4853 • circlequalityshoes.com

HENRY EXCAVATING CONCRETE & TREE SERVICE LLC
POURED WALLS • CRAWL SPACES • BASEMENTS
OVER 30 YEARS EXPERIENCE • LICENSED & INSURED

COMMERCIAL & RESIDENTIAL

- Excavation
- Site Clearing
- Septic Systems
- Back hoe & Dozing
- Flat Work
- Demolition
- Driveways
- Tree Service

989-539-7542 • 3620 N. Clare Ave., Harrison

James Henry Cell 989-429-1175 Michael Henry (Tree Service) Cell 989-339-4377



You **Looked** here and your customers will, too.

Call 989-506-4647 for more info.

DEBRIS HAULING

- Clean Out Basements Attics & Garages
- Tear Downs Sheds & Garages
- Scrap Metal
- Commercial Buildings

Free Estimates



Good & Fast MOUNT PLEASANT No One Does It For Less. NO ONE!!!
Less than the price of a dumpster!

989-773-0735 10 Yards \$285 Dan Syzak

digitalfirst MEDIA

Call for Quotes on digital advertising, print & deliver, pre prints and print advertising

Marlene Bennett
Account Executive
The Morning Sun • The Mid-Michigan Buyers Guide
mbennett@michigannewspapers.com
For Advertising call **989-506-4647** or **989-240-0473**
For Circulation call 989-779-6000 Press 3

BURKHART - PRESIDIO INSURANCE AGENCY
Auto • Home • Life • Business • Amenities

"Over 60 Years of Professional Insurance Service"

222 W. Cedar Ave. • Gladwin
989-426-9278 • www.burkhart-presidio.com
Dirk Presidio Michael Murray Jim Jacobs

Auto-Owners Insurance

Gladwin Hobby Shop Stay Fit & Have Fun

RADIO CONTROL AND BICYCLES' SALES AND SERVICE \$ CASH

- Plastic Model Kits
- Testors Paints
- ESTES Rockets
- Pinewood Derby

for Old Coins & Currency!
WE BUY OLD TRAINS
Gift Certificates Available
Puzzles, Rock Polishers, Balsa & Bass Woods, and more. Visit us on Facebook

400 E. Cedar Ave. Gladwin, MI • 939-426-7300

Weidman Business Association Bingo

Every Wednesday. First game at 6:30.
Jackpot on Big Game this week. In the Community Building

\$300

Located behind Baumanns Food Pride grocery store and Isabella bank.

FREE Hearing Test & Consult

bieri HEARING SPECIALISTS
888-641-0087
Clare and Midland Locations
www.bierihearing.com



Do you have a car for sale?



How about a boat? Or maybe some furniture?
Call to place a classified ad with one of our helpful representatives & sell your no-longer-wanted items FAST!



**PLEASE RECYCLE
THIS
NEWSPAPER**



Business Card Directory

**CIRCULATION
ISSUES:
(989) 779-6000
PRESS 2**

**TO RESERVE
YOUR SPOT IN THIS
DIRECTORY
CALL:
506-4640**

Mission Family Chiropractic Center



Formerly Rodnick Chiropractic
11245 N. Mission Rd., Clare
989-386-KIDS (5437)

Dr. Tamara Slusher

**Make health part of your
2017 New Year's Resolution!**

**New Patient Special
\$49.95**

- Receive Spinal Exam
- 2 Plates of X-Rays (if necessary)
- Initial Adjustment

With insurance, all procedures must be billed per provider agreement.



Expires 1-31-2017

MOST INSURANCES ACCEPTED

Same Day Appointments • Digital X-rays • Emergency Care Available

Start Sewing Package

Janome MyStyle 100

Special: \$299
Plus get the Start Sewing Kit Free!
Save \$140!

NEW Machines Start at \$149.95
Free Class Instruction with machine purchase

CIRCLE SEWING & VACUUM
1900 S. SAGINAW RD., MIDLAND
IN THE KMART PLAZA (989)839-0800
circlesewingandvac.com

CAL'S PAINTING

Over 30 Years Experience
COMMERCIAL & RESIDENTIAL

- Interior & Exterior • Power Washing & Deck Care
- Window Washing & Gutter Cleaning
- Drywall Repair • Cleaning and Refinishing Log Homes
- Cabinet, Woodwork, Door & Furniture Refinishing

**GO CALL TODAY!
(989) 258-9638**

• Free Estimates • Work Gauranteed • Insured
Winter Rates Available

NO JOB TOO BIG OR SMALL

**Advertise
in this
Spot**

**HANDYMAN
BILL LEONARD**

- General Carpentry
- Repair • Maintenance
- Home Improvement Projects

E-mail: yourhandymanbill@yahoo.com
Licensed • References • Economical

(989) 681-2516

VALET AUTO CARE, INC.

Since 1983



- A.R.E. Pickup Toppers
- Over 100 New & Used Toppers in Stock
- Truck Accessories
- Tonneau Covers



LEER **A.R.E.** Because you love your truck
www.valetauto.com

James Motz - Owner
610 N. Mission (3 blocks S. of Meijer) Mt. Pleasant (989) 773-3477

**Brad Malley
Well Drilling, Inc.**

Mid Michigan's
Most Experienced Well Drillers!

**MALLEY
CONSTRUCTION
INCORPORATED**

The One Contractor That Can Do It All!
AFFORDABLE WELL PACKAGES
All Major Pump Brands Available

FREE ESTIMATES
SERVING ALL OF MID MICHIGAN
LICENSED WELL DRILLER
LICENSED CONTRACTOR
MT. PLEASANT

WWW.BRADMALLEYWELLDRIILLING.COM
989.772.2765 / 800.717.6022

PROPANE SOLD HERE

SALE!!
20 LB. CYLINDER FILL
\$9.99
GPC

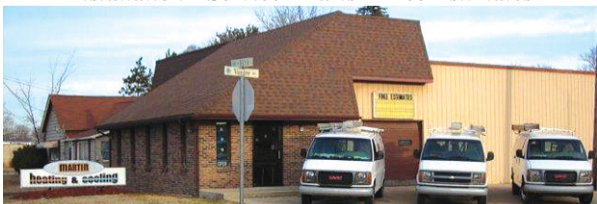


We make custom hoses & fittings!

PROPANE • HVAC • REFRIGERATION
8512 E. M-46 - VESTABURG
800-991-7477
gasproductioncompany.com

MARTIN HEATING & COOLING

DTE \$300 Rebates Available on New Furnaces for a Limited Time
Installation • Service • Parts • Free Estimates



Heating & Air Conditioning
Amana 546 W. 5th street, Clare (989) 386-3791
LASTS AND LASTS AND LASTS: Ask about Geothermal Systems and heat pumps

**digitalfirst
MEDIA**

Kindra Norlander
Account Executive
The Morning Sun
The Mid-Michigan Buyers Guide

Call for Quotes on digital advertising, print & deliver, pre prints and print advertising

knorlander@michigannewspapers.com Cell: 989-506-4640



SPECIALIZING IN ROOFING, GARAGES, HOMES,
POLE BARN & STEEL BUILDINGS

CALL TODAY • Let the phone ring!

J B Enterprise (989) 386-8024
LICENSED BUILDER

"I said pick up a dozen eggs not Cousin Peg"



**SAVE UP TO
60% OFF MSRP
PLUS FREE
AUDIOMETRIC
TESTING!**



Z Series wireless hearing aids are designed to:

- Help you hear and understand conversations better in noisy environments like restaurants
- Make loud sounds more comfortable while boosting soft sounds
- Stream TV, phone calls and more, directly to your Z-Series hearing aids



Halo 2

connects directly to your iPhone via Bluetooth to allow you to easily adjust sound settings to any particular environment. These hearing aids virtually function like wireless headphones.

Call today for a free demonstration.



0% Interest! JUST 1/2 DOWN and LOW Monthly Payments WITH NO INTEREST!

HEAR What Our Customers Say!

One of the best decisions that I have made in a long time was when I decided to open the door at Long's Hearing Care in Cadillac Michigan. I went in for a hearing test. I was treated with respect from the second that walked in the door. Melissa met me at the front counter and took care of my needs in a very professional manner. I was tested and diagnosed for hearing aids. I was then fitted and when I returned back in 3 days my hearing life was changed. I now don't have to ask people to repeat what they said or have to guess an answer to a question that I really didn't even hear. Today I hear everything loud and clear. Life has completely changed for me. Thank you to Melissa and Mike at Long's Hearing Care!!
Bob McKenzie, Grand Rapids Michigan

- Mike Long, owner of Long's Hearing Care Systems, attends training in Minnesota regularly to keep abreast of the latest techniques and technology in hearing aids.
- Your satisfaction grows our business. We offer a 100% money-back guarantee.
- We pride ourselves in offering products and services that are tailored to fit your specific needs and lifestyle.
- Outdoorsmen, musicians, and those who work in environments with extreme background noise all have different concerns that we can help address with our expertise and high-tech products.
- We pledge to always do what's right for you. Our honest business philosophy has been trusted by generations of families for over 30 years.
- We won't inflate prices to offer unbelievable discounts, buy-one-get-one-free offers, or other schemes.

**30 YEARS
= TRUST!**

**Call us today to experience
friendly, knowledgeable, professional service and quality hearing aids
at affordable prices! Serving the Community for Over 30 Years!**

Long's Hearing Care Systems

www.longshearingcare.com

CADILLAC LOCATION • CALL TOLL FREE 1-800-286-1378

1027 N. Mitchell St. • 231-779-0400

PRUDENVILLE • 1070 W. Houghton Lake Dr.

CALL TOLL FREE 1-800-286-1378

(located in the TDM Realtors North Bldg.)

TRAVERSE CITY • 4000 Eastern Sky Drive

CALL TOLL FREE 1-800-286-1378

(Off Silver Lake Road and Copper Ridge)



**Satisfaction
Guaranteed**

Rudyard Michigan Upper Peninsula Community Center



We accept most insurance plans. Payment plans also available

SUPER TAG SALE EVENT

2016 CHEVROLET
IMPALA

2016 CHEVROLET
EQUINOX
LOADED!



Starting at **\$17,995*** Starting at **\$18,995***

FOR SALE

2017

TRAVERSE
AWD PREMIER



Iridescent Pearl Tricoat with Ebony Interior, Dual Skycap Sunroof, On Star, Trailering Package.

STICKER PRICE	\$47,910⁰⁰
GM Discount	4,051 ³⁶
Consumer Cash	1,000 ⁰⁰
Sales Market	750 ⁰⁰
Chevy Loyalty	2,000 ⁰⁰
Detroit Auto Show	1,000 ⁰⁰
CTP Discount	2,000⁰⁰

YOU SAVE \$10,801³⁶ **\$37,108⁶⁴**

2016

SILVERADO 1500
Z71, 4WD, LT, DOUBLE CAB



Deep Ocean Blue Metallic With Jet Black Interior, Trailer Brake Control, Driver & Front Seat Passenger Heated Seats, 5.3L, V8 Ecotec 3, Power Sliding Rear Window, Rear Vision Camera

STICKER PRICE	\$49,720⁰⁰
GM Discount	5,140 ⁸⁸
Consumer Cash	1,500 ⁰⁰
Incremental Cash	1,000 ⁰⁰
Bonus Cash	1,000 ⁰⁰
Lease Loyalty	2,000 ⁰⁰
CTP Discount	2,000⁰⁰

YOU SAVE \$12,640⁸⁸ **\$37,079¹²**

2016

TRAX
LT, FWD



Brilliant Blue Metallic, Jet Black Interior, 4Cyl. Turbo, 6Spd Transmission, Power 6 way Driver Seat, Leather Wrap Steering Wheel, Rear Park Assist.

STICKER PRICE	\$24,035⁰⁰
GM Discount	1,637 ⁹³
Consumer Cash	750 ⁰⁰
Select Model	750 ⁰⁰
Chevy Bonus Cash	500 ⁰⁰
Select Model Cash	3,000 ⁰⁰
Chevy Lease Loyalty	2,000 ⁰⁰

YOU SAVE \$8,637⁹³ **\$15,397⁰⁷**

2016

CRUZE
4DR, SEDAN PREMIER



Siren Red Tint Coat with Jet Black Interior, 4Cyl. Turbo, 6Spd Transmission, Power Sunroof, 8" diagonal color touchscreen, Bose Premium 9 Speaker System.

STICKER PRICE	\$27,365⁰⁰
GM Discount	2,149 ⁵⁵
Consumer Cash	1,000 ⁰⁰
Select Market	1,000 ⁰⁰
Chevy Lease Loyalty	2,000 ⁰⁰
Chevy Bonus Cash	3,000 ⁰⁰

YOU SAVE \$9,149⁵⁵ **\$18,215⁴⁵**

LEASE OR BUY

2017

CRUZE
4DR, SEDAN, LT, AUTOMATIC



Kinetic Blue Metallic with Jet Black Interior, 4Cyl. Turbo, 6Sp. Auto Transmission, Power Sunroof, 8" diagonal color touchscreen, 9 speaker system, Keyless and Remote Start, Heated Front Seats.

LEASE	BUY
\$148⁰⁰ per month 24 month lease	STICKER PRICE \$25,365⁰⁰
10,000 Miles Per Year	GM Discount 1,865 ⁹⁴
GM Discount	Consumer Cash 500 ⁰⁰
Chevy Lease Loyalty	Chevy Select Market 1,000 ⁰⁰
Super Tag	Chevy Lease Loyalty 2,000 ⁰⁰
	Super Tag 1,000 ⁰⁰

YOU SAVE \$6,365⁹⁴ **\$18,999⁰⁶**

2017

EQUINOX
AWD LT



Blue Velvet Metallic with Jet Black Interior, 4 Cyl. with VVT, 6spd. Automatic Transmission, Interior Protection Package including rear Cargo Mat.

LEASE	BUY
\$171⁰⁰ per month 24 month lease	STICKER PRICE \$29,890⁰⁰
10,000 Miles Per Year	GM Discount 2,370 ⁹⁷
GM Discount	Consumer Cash 750 ⁰⁰
Chevy Lease Loyalty	Chevrolet Select Bonus 750 ⁰⁰
Super Tag	Market Cash 500 ⁰⁰
	Chevrolet Bonus Cash 1,000 ⁰⁰
	Auto Show Cash 1,000 ⁰⁰
	Super Tag 1,000 ⁰⁰

YOU SAVE \$6,370⁹⁷ **\$23,519⁴³**

2017

SILVERADO 1500
Z71, 4WD, LT, DOUBLE CAB



Deep Ocean Blue Metallic, Jet Black Interior, Trailer Brake Controller, Driver & Front passenger heated Seats, V8 Ecotec 3, 6Spd. Automatic, Remote Start, LED lighting in Cargo Box.

LEASE	BUY
\$329⁰⁰ per month 36 month lease	STICKER PRICE \$45,970⁰⁰
10,000 Miles Per Year	GM Discount 4,452 ¹⁶
GM Discount	Consumer Cash 1,000 ⁰⁰
Chevy Lease Loyalty	Incremental Cash 1,000 ⁰⁰
Super Tag	Bonus Cash 500 ⁰⁰
	Lease Loyalty 2,000 ⁰⁰
	Super Tag 1,000 ⁰⁰
	Trade In 1,000 ⁰⁰

YOU SAVE \$10,953¹⁶ **\$35,017⁸⁴**

*PLUS TAX, TITLE, PLATE. MUST BE A GM EMPLOYEE OR ELIGIBLE FAMILY MEMBER. , ALL LEASES FIGURED 10,000 MILES PER YEAR, WITH APPROVED CREDIT. SEE MCGUIRES FOR FULL DETAILS.

www.McGuireChevrolet.com



75 Years Strong!
712 W. 5th Street, Clare
989-386-7714