

# Mid-Michigan Buyers Guide

SUNDAY, JANUARY 29, 2017

Serving Clare, Gladwin, Gratiot, Isabella, Montcalm, & Southern Roscommon Counties

Morning Star Publishing Company powered by digitalfirst



## WITBECK'S AND STEVE'S BIG GAME SAVINGS

SALE DATES START JAN. 30<sup>TH</sup> 2017 THRU FEB. 5<sup>TH</sup> 2017



CURLY'S 240Z  
PRE-COOKED READY IN MINUTES  
BABY BACK RIBS

**\$7.99**

HEAT AND  
SERVE

CURLY'S 160Z  
PULLED PORK BBQ TUBS

**2/\$7.00**



SAMPLING DEMO SAT. FEB. 4<sup>TH</sup> 11AM TO 5 PM

**CURLY'S**

## MEAT DEPARTMENT SPECIALS



**5/\$5.00**

ECKRICH  
HOT DOGS  
14 OZ  
MIX AND MATCH



**5/\$5.00**

ECKRICH BOLOGNA AND  
COTTO SALAMI  
10 TO 14 OZ  
MIX AND MATCH



**\$4.99**

ECKRICH  
FAMILY PACKS  
SMOKED AND POLISH  
20% MORE FREE



**2/\$4.00**

ECKRICH  
6-1 LINKS AND 2 PIECE  
SAUSAGE  
13 TO 14 OZ



**2/\$6.00**

SMITHFIELD  
BACON  
REG. AND THICK  
12 OZ



**2/\$4.00**

ECKRICH  
SMOKY-LINKS  
ASST. FLAVORS  
8.3 OZ



**2/\$4.00**

ECKRICH  
ASST. LUNCH MEAT  
TUB'S  
7 OZ



**\$5.99**

ARMOUR  
SUMMER  
SAUSAGE  
24 OZ

## BIG GAME DELI SUB MAKING SPECIALS



**\$3.19**

LB.

ECKRICH PREMIUM  
COOKED HAM



**\$4.99**

LB.

ECKRICH PREMIUM  
SALAMI



**\$4.99**

LB.

ECKRICH PREMIUM  
HONEY HAM



**\$5.99**

LB.

ECKRICH PREMIUM  
OVEN ROASTED  
TURKEY BREAST

Available at

**Steve's Country Market**

Hours: Mon - Sun 8-8  
3170 North Clare Ave.,  
Harrison  
(989) 539-3110



Store Hours:  
Seven Days A Week  
6:30 am - 11 pm  
1026 McEwan  
Clare  
(989) 386-7591

# Lambert's Meat Market and Bakery

Taste the difference "FRESH" makes!

624 E. Cedar Ave., Gladwin (next to Family Dollar)

989-246-1850



Winter Hours: Mon-Friday 8-6:30; Saturday 8-6:00; Sunday 8-4:00 • Sales Dates Monday, January 30 through Saturday, February 4, 2017

**VOTED #1 MEAT MARKET IN CLARE AND GLADWIN COUNTIES!**



## 10LB OR MORE SALE!!

**Family Pack Ground Beef from Chuck**



**\$2.49**  
lb.

**Family Pack Ground Beef Hamburger**



**\$1.99**  
lb.

**Pork Steak, Strips, Breakfast Sausage or Shoulder Roast**



**\$1.39**  
lb.

**USDA Choice English Roast or Denver Steaks**



**\$3.29**  
lb.

**Boneless, Skinless Chicken Breast**



40lb bulk case **\$51.60**  
= \$1.29/lb. **\$1.49**  
lb.

**Wayside Bacon 10lb box**



**\$16.90**

**Lambert's Own Honey BBQ, Loaded Potato, Philly Steak or Hawaiian Brats**



Lambert's Brat Buns **\$3.29**  
**\$1.99** 4 ct. lb.

**Whole Boneless Pork Loins**



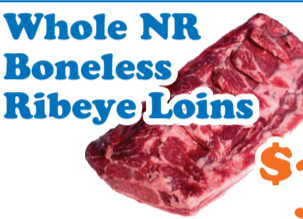
**\$1.89**  
lb.

**Whole NR New York Strip Loins**



**\$3.29**  
lb.

**Whole NR Boneless Ribeye Loins**



**\$3.89**  
lb.

## FROZEN FOOD FOOTBALL SPECIALS!!

**Breaded Mozzarella Sticks 3lb bag**



**\$5.99**

**Spicy Breaded Chicken Tenders 5lb bag**



**\$9.99**

**Breaded Chicken Breast Patties 5lb bag**



**\$9.99**

**Lambert's Own BBQ Pulled Pork**



**\$4.99**  
lb.

**Argentine Red Shrimp 16-21ct**



**\$7.99**  
1 lb.

## BAKERY AND DELI DEALS

**Sub Buns 4ct**



**\$1.99**

**Italian Bread**



**\$1.29**  
ea.

**Iced Cinnamon Fries 4ct**



**\$2.49**

**Hard Salami**



**\$3.99**  
lb.

**Kettle Fried Turkey Breast**



**\$4.99**  
lb.

**Colby or Colby Jack Cheese**



**\$3.99**  
lb.

No Rainchecks • Not Responsible for Printing Errors

# Largest Selection of Clean Used Cars in Central Michigan

**GM Certified Pre-owned Vehicles = 2 Years of Oil Changes & Tire Rotations + 12 Month or 12,000 Mile Bumper to Bumper Warranty**

### USED CARS

<b>2016 CHEVROLET IMPALA LT</b>	
Black, 24,000 Miles.....	<b>\$21,900</b>
<b>2016 CHEVROLET CRUZE LT</b>	
Dk. Gray, 13,000 Miles, 4cyl.....	<b>\$16,900</b>
<b>2014 BUICK LACROSSE CXL FWD</b>	
Crystal Red, 51,000 Miles.....	<b>\$19,900</b>
<b>2013 BUICK LACROSSE</b>	
Crystal Red, 34,000 Miles, CXL, Certified.....	<b>\$21,900</b>
<b>2013 BUICK REGAL PREMIUM</b>	
Diamond White, 24,000 Miles, Loaded.....	<b>\$18,900</b>
<b>2013 BUICK LACROSSE CXL</b>	
41,000 Miles, Champagne Silver.....	<b>\$18,900</b>
<b>2013 BUICK REGAL</b>	
Blue, 49,000 Miles, Leather, Locally Owned.....	<b>\$16,900</b>
<b>2013 BUICK LACROSSE</b>	
Champagne Silver, 72,000 Miles, Leather.....	<b>\$15,900</b>
<b>2013 CHEVY MALIBU</b>	
Black, 60,000 Miles.....	<b>\$14,900</b>
<b>2011 BUICK REGAL CXL</b>	
Majestic Blue, 69,000 Miles.....	<b>\$14,900</b>
<b>2010 CHEVROLET MALIBU LTZ</b>	
Silver, 102,000 Miles.....	<b>\$8,900</b>
<b>2010 PT CRUISER</b>	
Burgundy, 90,000 Miles, Locally Owned, 4 Cyl.....	<b>\$7,900</b>
<b>2007 CHEVROLET HHR</b>	
Black, 77,000 Miles, 4 Cyl, 1-Owner.....	<b>\$9,900</b>
<b>2007 BUICK LUCERNE CXL</b>	
Dk. Blue, 3800 V6, 127,000 Miles, Leather.....	<b>\$8,900</b>
<b>2007 CHEVROLET HHR LT</b>	
Blue, 125,000 Miles.....	<b>\$7,900</b>
<b>2006 CADILLAC DTS</b>	
Silver, 147,000 miles, locally owned.....	<b>\$7,900</b>
<b>2001 CADILLAC DEVILLE DHS</b>	
Silver, 91,000 Miles.....	<b>\$6,900</b>

### USED SUVS

<b>2016 JEEP RENEGADE 4X4</b>	
Silver, 19,000 Miles, Sharp.....	<b>\$24,900</b>
<b>2016 JEEP CHEROKEE LIMITED</b>	
4 Cyl, 4 Wheel Drive, Black, 26,000 Miles.....	<b>\$24,900</b>
<b>2015 JEEP RUBICON WRANGLER 4DR</b>	
Silver, 27,000 Miles.....	<b>\$38,900</b>
<b>2015 GMC ACADIA SLT</b>	
Dk. Blue, AWD, 45,000 Miles, 1-Owner.....	<b>\$33,900</b>
<b>2015 GMC ACADIA</b>	
All Wheel Drive, Crimson Red, Leather, Power Lift Gate, 48,000 Miles, Heated Seats, Remote Start.....	<b>\$31,900</b>
<b>2014 GMC TERRAIN SLT AWD</b>	
Silver, 38,000 Miles, 4 Cyl, 1-Owner.....	<b>\$22,900</b>
<b>2014 BUICK ENCORE</b>	
Satin Steel, 41,000 Miles.....	<b>\$19,900</b>
<b>2014 CHEVY EQUINOX LT</b>	
Crystal Red, 38,000 Miles, Certified.....	<b>\$18,900</b>
<b>2013 CHEVY TAHOE LT</b>	
Burgundy/Tan leather, 55,000 Miles, Sunroof.....	<b>\$35,900</b>
<b>2013 BUICK ENCLAVE CXL FWD</b>	
49,000 Miles, 1-Owner.....	<b>\$25,900</b>
<b>2013 GMC TERRAIN</b>	
Front Wheel Drive, SLT, Black, 47,000 Miles, Leather.....	<b>\$19,900</b>
<b>2013 GMC TERRAIN FWD SLE</b>	
31,000 Miles, White, 4 Cyl.....	<b>\$19,900</b>
<b>2013 GMC TERRAIN SLE FWD</b>	
4 Cyl, Silver, 72,000 Miles.....	<b>\$16,900</b>
<b>2012 GMC TERRAIN FWD SLE</b>	
Black, 59,000 Miles.....	<b>\$16,900</b>
<b>2012 GMC TERRAIN SLE FWD</b>	
Burgundy, 71,000 Miles.....	<b>\$15,900</b>
<b>2012 CHEVROLET EQUINOX LT FWD</b>	
102,000 Miles, Goldmist.....	<b>\$11,900</b>
<b>2011 GMC TERRAIN SLT AWD</b>	
69,000 Miles, 6 Cyl, Silver.....	<b>\$18,900</b>
<b>2011 GMC TERRAIN FWD SEL</b>	
Goldmist, 4cyl, 32,000 Miles.....	<b>\$16,900</b>
<b>2007 GMC ENVOY</b>	
Silver, 4x4, 146,000 miles.....	<b>\$9,900</b>
<b>2007 CHEVY EQUINOX AWD LT</b>	
180,000 miles, Locally Owned.....	<b>\$5,900</b>
<b>1997 CHEVROLET SUBURBAN 4X4</b>	
Burgundy, 166,000 Miles, Excellent Shape.....	<b>\$5,900</b>

### USED TRUCKS

<b>2016 GMC CREW CAB SLT</b>	
Red, 5.3 V8, 11,000 Miles, Leather, Loaded.....	<b>\$44,900</b>
<b>2016 GMC SIERRA DOUBLE CAB 4X4 SLE</b>	
Red, 9,000 Miles, 1-Owner, 5.3 V8.....	<b>\$34,900</b>
<b>2016 GMC SIERRA REG. CAB</b>	
2 Wheel, 6,000 Miles, V6, Tilt, Cruise, Air.....	<b>\$22,900</b>
<b>2015 GMC DOUBLE CAB SLT</b>	
Black 4X4 5.3 V8, 27,000 Miles, Leather.....	<b>\$35,900</b>
<b>2015 GMC CANYON EXT CAB</b>	
Copper Red, 4x4, V6, 32,000 miles.....	<b>\$28,900</b>
<b>2014 GMC SIERRA CREW CAB DENALI BLACK DURAMAX</b>	
Diesel, Loaded, 79,000 Miles.....	<b>\$46,900</b>
<b>2014 GMC SIERRA CREW CAB DENALI BLACK DURAMAX</b>	
Diesel, Loaded, 87,000 Miles.....	<b>\$45,900</b>
<b>2014 GMC CREW SLT</b>	
Black, 12,000 Miles, 1-Owner, Loaded.....	<b>\$37,900</b>
<b>2014 GMC DOUBLE CAB ALL TERRAIN PKG</b>	
41,000 Miles, White, 6.2 V8, Leather.....	<b>\$32,900</b>
<b>2014 CHEVROLET SILVERADO 1500</b>	
4WD, Reg. Cab, Shortbox, 30,000 Miles, White.....	<b>\$24,900</b>
<b>2013 CHEVROLET SILVERADO CREW CAB 4X4 LTZ</b>	
Mocha Steel, 29,000 Miles, Rear Camera/Remote Start.....	<b>\$29,900</b>
<b>2012 GMC SIERRA EXT. CAB SLT</b>	
Black, 28,000 Miles, 5.3 V8, 1-owner.....	<b>\$29,900</b>
<b>2012 GMC SIERRA EXT CAB SLE</b>	
Quick Silver, 4x4, 72,000 miles.....	<b>\$22,900</b>
<b>2011 GMC CREW CAB 4X4</b>	
Stealth Grey, 84,000 Miles.....	<b>\$24,900</b>
<b>2010 GMC SIERRA CREW CAB SLT 4X4</b>	
Fire Red, 5.3 V8, 68,000 Miles.....	<b>\$24,900</b>
<b>2010 GMC CANYON CREW CAB 4X4</b>	
Fire Red, 75,000 miles.....	<b>\$16,900</b>
<b>2010 GMC EXT CAB SLE 4X4</b>	
White, 5.3 V8, 134,000 Miles.....	<b>\$16,900</b>
<b>2009 GMC SIERRA EXT. CAB</b>	
V8, White, 68,000 Miles, 2 Wheel.....	<b>\$15,900</b>
<b>2007 GMC SIERRA CREW CAB DENALI</b>	
Black, Loaded, 184,000 Miles.....	<b>\$16,900</b>
<b>2007 CHEVROLET EXT CAB 4X4</b>	
White, 5.3 V8, 112,000 miles, Very Clean.....	<b>\$14,900</b>
<b>USED VANS</b>	
<b>2004 OLDSMOBILE SILHOUETTE GL</b>	
Ruby Red, 85,000 Miles, Locally owned.....	<b>\$5,900</b>

**BENCHLEY BROS., INC.**  
1 Mile East of Doherty • US-10, Clare • Sales (989) 386-9900

For more info log on to: [www.benchleybros.com](http://www.benchleybros.com)

Parts & Service (989) 386-3197

HOURS  
8-6 Mon-Fri  
9-2 Sat



Specializing in





**ARCTIC CAT®**  
SHARE OUR PASSION.™

FACTORY - AUTHORIZED  
**CLEARANCE**



BUY A NEW **2013-2016** ARCTIC CAT® SNOWMOBILE AND GET:

FINANCING AS LOW AS

**0%**

FOR 60 MONTHS

OR

REBATES UP TO

**\$3,000**

AND

**2 YEAR\***

LIMITED WARRANTY

BUY A NEW **2017** ARCTIC CAT SNOWMOBILE AND GET:

FINANCING AS LOW AS

**0%**

FOR 60 MONTHS

OR

REBATES UP TO

**\$1,200**

AND

**2 YEAR\*\***

LIMITED WARRANTY

**St. Helen**  
**Power Sports**  
**1901 N. Saint Helen Road**  
**Saint Helen, Michigan 48656**  
**989-389-4961**  
**[www.sthelenpowersport.com](http://www.sthelenpowersport.com)**

Offer valid on new and unused 2013-2017 Arctic Cat snowmobiles, excluding youth, race, rental, government and special services models, at participating U.S. dealers to U.S. residents. See dealer for details. \*FINANCING AS LOW AS 0% FOR 60 MONTHS or REBATES UP TO \$3,000 valid on 2013-2016 models. \*\*FINANCING AS LOW AS 0% FOR 60 MONTHS or REBATES UP TO \$1,200 valid on 2017 models. Financing available through Sheffield Financial or FreedomRoad Financial and is subject to credit approval; not all applicants will qualify for credit. Financing promotions void where prohibited. Offer subject to change without notice. See dealer for program dates and details. Excludes tax, freight and dealer setup. Always wear a helmet and don't drink and ride. ©2017 Arctic Cat Sales Inc.) Thief River Falls) MN 56701.





*Are you suffering from*  
**cataracts?**

Get Started today. Call for an Evaluation.

120 Warwick  
Alma, MI 48801  
989-463-Eyes (3937)

1203 S. Mission  
Mt Pleasant, MI 48858  
989-775-Eyes (3937)

**CountrySide Apartments**  
1346 Charles Ave., Alma  
**1, 2 & 3 Bedroom Units Available**  
**989-466-5971**  
countryside@gldmanagement.com

Units feature Central Air, Range, Dishwasher, Refrigerator, Garbage Disposal, Microwave and Washer/Dryer. Water, Sewer and Trash included in rent. Pets Welcome (restrictions may apply)

Income Limits Apply. MSHDA Vouchers accepted. Barrier Free Units Available. This institution is an equal opportunity provider. Equal Housing Opportunity. TDD 711

**GET MORE BANG FOR YOUR BUCKS**  
GOOD, CLEAN, QUALITY PRE OWNED MERCHANDISE

**Jewelry**

**TVs**

**Wii, Xbox One PS3, PS4**

**Firearms**

**Musical Instruments**

**Paintball Equipment**

**SPECIAL Xbox One System \$175**

**Tools**

**DIRT CHEAP • CAR AUDIO • NEW & USED**  
Tested & Inspected. Why Pay New Prices?  
**GLADWIN TRADE & SALES**  
**1-989-426-6811**  
1739 N. State St. • Gladwin

# Quality Built. Quality Features.

**TIRED OF A FULL GARAGE?**  
Stop by our lot. We have the perfect storage solution for you.  
**COME SEE US, WE'VE GOT YOU COVERED**

**10x12 Quaker**  
**\$2,600**

**12x16 Quaker**  
**\$3,586**

**12x20 Gable**  
Side Entry Door, 1 Window  
**\$3,940**

**12x16 Gable**  
2 windows, 2- 4 Ft. Lofts  
**\$3,352**

**Statewide Delivery - Free Delivery w/ in 70 miles!**  
Supplying Michigan with quality built portable buildings for over 25 yrs.

## Miller's Woodworking

3209 E. Beaverton Road • Clare  
(Voicemail) 989-465-8172  
Old US 127 to Surrey West on Surrey to Grant 1 mile north on Grant

Winter Hours: Mon.-Fri. 7:30am-5:00pm  
Saturday & Evenings by Chance or Appointment  
Closed Sunday

# BRIAN'S FRUIT & MEAT MARKET

ASK ABOUT OUR BULK PRICING!!

**2167 S. M-76 • West Branch (Across from Kmart)**  
While Supplies Last • Not responsible for printing errors  
Prices good Sunday, January 29<sup>th</sup>, 2017 through Friday, February, 3<sup>rd</sup>, 2017  
Store Hours: Sunday 8am - 6pm • M,T,Th,Sat. 7am-7pm • Fridays 7am - 7pm

**WE ARE A PACKAGED LIQUOR DEALER**

We accept all major credit cards & EBT card

**BRIAN'S MEATS: 989-345-3709**

**LIKE US ON FACEBOOK**

**WWW.BRIANSFRUITANDMEATMARKET.COM**

<p><b>SLICED PREMIUM HARD SALAMI</b> <b>\$5.99</b> lb.</p>	<p><b>SLICED SWISS CHEESE</b> <b>\$5.99</b> lb.</p>	<p><b>SLICED DOUBLE SMOKED HAM</b> <b>\$5.99</b> lb.</p>	<p><b>BONELESS BEEF TOP SIRLOIN STEAKS</b> <b>\$4.99</b> lb.</p>	<p><b>BONELESS BEEF SIRLOIN TIP ROAST</b> <b>\$3.99</b> lb.</p>	<p><b>FRESH GROUND BEEF FROM SIRLOIN</b> <b>\$3.69</b> lb.</p>	<p><b>FRESH CUT PORK STEAK</b> <b>\$1.29</b> lb.</p>	<b>10# SPECIALS</b> 10# BOX POLLOCK FILLETS <b>\$19.00</b> 10# BOX COD LOINS <b>\$40.00</b> 10# BOX KOEGL VIENNA'S <b>\$40.00</b>
<p><b>COUNTRY STYLE PORK SHOULDER STRIPS</b> <b>\$1.29</b> lb.</p>	<p><b>SEMI-BONELESS PORK BOSTON BUTT ROAST</b> <b>\$1.29</b> lb.</p>	<p><b>BRIAN'S HOMEMADE FRESH BRATS</b> <b>\$3.99</b> lb.</p>	<p><b>BRIAN'S HOMEMADE FRESH BULK BREAKFAST SAUSAGE</b> <b>\$1.89</b> lb.</p>	<p><b>FRESH BONELESS SKINLESS CHICKEN BREAST</b> <b>\$1.59</b> lb.</p>	<p><b>FROZEN BABY BACK RIBS</b> <b>\$2.99</b> lb. frozen 3-pks</p>	<p><b>SMOKE HOUSE DADDY FROZEN CHICKEN WINGS</b> <b>\$5.49</b> each 2.5 lb. bag</p>	10# GROUND CHUCK <b>\$2.89</b> lb 10# BULK SAUSAGE <b>\$2.49</b> lb 10# BONELESS SKINLESS CHICKEN BREAST <b>\$1.49</b> lb 10# PORK STEAK <b>\$1.89</b> lb

**BRIAN'S PRODUCE: 989-345-2891**

<p><b>BAREMAN'S DAIRY MILK</b> <b>\$2.69</b> gal. Home/2% <b>\$2.59</b> gal. Skim/1%</p>	<p><b>BAREMAN'S CHOCOLATE MILK</b> <b>\$1.69</b> 1/2 gallon</p>	<p><b>PRAIRIE FARMS ORANGE JUICE</b> <b>\$1.99</b> 1/2 gallon</p>	<p><b>RED AND GREEN SEEDLESS GRAPES</b> <b>\$1.69</b> lb.</p>	<p><b>FRESH FLORIDA STRAWBERRIES</b> <b>\$2.99</b> 1 lb. pkg</p>	<p><b>LARGE EGGS</b> <b>99¢</b> dozen</p>	<p><b>CAULIFLOWER</b> <b>\$1.99</b> each</p>	<p><b>CELERY</b> <b>89¢</b> each</p>
<p><b>99¢</b> 1 lb. pkg</p>	<p><b>\$5.99</b> 8 lb. bag</p>	<p><b>99¢</b> lb.</p>	<p><b>79¢</b> each</p>	<p><b>2/\$3.00</b> 20 oz. loaf</p>	<p><b>\$4.99</b> 32 oz jar</p>	<p><b>2/\$4.00</b> 10 oz.</p>	<p><b>\$14.99</b> 50 lb. bag</p>

<p><b>\$12.99</b> 50 lb. bag</p>	<p><b>\$2.99</b> 6 pk 16.9 oz. bottles</p>	<p><b>\$12.99</b> 20 pk bottles + tax + deposit</p>	<p><b>\$3.99</b> 750ml</p>	<b>VALENTINE'S DAY WINE SPECIALS</b> LOVE NOIR PINOT NOIR <b>\$11.99</b> 750ml MONOGAMY CABERNET SAUVIGNON <b>\$9.99</b> 750ml PRO-MIS-Q-US RED BLANC <b>\$9.99</b> 750ml
----------------------------------	--	---	----------------------------	--

**12 Months Interest  
Free Financing Available  
With Approved Credit.**

\$300 Minimum purchase,  
monthly payments required.

## LARGEST RECLINER SELECTION IN MICHIGAN! SEE FOR YOURSELF!

**IN STOCK AND ON SALE NOW:**

**Power Recliners ■ Leather Recliners ■ Big Mans Recliners ■ Ladies Recliners ■ Gliding Recliners ■ Swivel Rocker Recliners ■ Wing Chair Recliners ■ Heat & Massage Recliners ■ Life Chair Recliners ■ Reclining Loveseats ■ Reclining Sofas ■ Children's Recliners**



**People's Choice #1  
Furniture Store #1  
Customer Service #1  
Web Site**

**L A Z B O Y®**

**Flexsteel®**  
America's Seating Specialist

**Best**  
Home Furnishings

# Kubin's Mattress Sale!

**OFFICIAL MATTRESS**

**NATIONAL SLEEP  
FOUNDATION**

Waking America to the Importance of Sleep

[www.sleepfoundation.org](http://www.sleepfoundation.org)

**Serta Select Twin  
Mattress \$99**

**Add a  
Pivot Head Up Box  
for \$544 on  
most models**

**Guaranteed Lowest Prices  
ON ALL SERTA MATTRESSES!**

	TWIN 2pc set	FULL 2pc Set	QUEEN 2pc Set	KING 3pc set
<b>Majestic Davey</b> Gentle Eurotop	<b>\$299</b> Sale Compare At \$449	<b>\$379</b> Sale Compare At \$569	<b>\$399</b> Sale Compare At \$599	<b>\$599</b> Sale Compare At \$899
<b>Majestic Gallion</b> Support Firm or Support Eurotop	<b>\$349</b> Sale Compare At \$529	<b>\$449</b> Sale Compare At \$679	<b>\$499</b> Sale Compare At \$749	<b>\$799</b> Sale Compare At \$1199
<b>Majestic Raftery</b> Premium Choice Plush or Firm	<b>\$449</b> Sale Compare At \$679	<b>\$549</b> Sale Compare At \$829	<b>\$599</b> Sale Compare At \$899	<b>\$899</b> Sale Compare At \$1349
<b>Majestic Stowcroft</b> Choice of Super Pillowtop or Firm	<b>\$549</b> Sale Compare At \$829	<b>\$649</b> Sale Compare At \$979	<b>\$699</b> Sale Compare At \$1040	<b>\$999</b> Sale Compare At \$1498
<b>Kubin's Exclusive, Perfect Sleeper Regal Suite, 2 Sided flipable mattress</b> Choice of Plush or Extra Firm	<b>\$549</b> Sale Compare At \$829	<b>\$699</b> Sale Compare At \$1049	<b>\$799</b> Sale Compare At \$1199	<b>\$1099</b> Sale Compare At \$1649
<b>Serta Perfect Sleeper Swan Harbor</b> Choice of Luxury Pillowtop or Firm	<b>\$899</b> Sale Compare At \$1349	<b>\$969</b> Sale Compare At \$1459	<b>\$999</b> Sale Compare At \$1499	<b>\$1299</b> Sale Compare At \$1949
<b>Serta Perfect Sleeper Hatters</b> Evercool & Gel Memory Foam	<b>\$899</b> Sale Compare At \$1349	<b>\$969</b> Sale Compare At \$1459	<b>\$999</b> Sale Compare At \$1499	<b>\$1299</b> Sale Compare At \$1949



**Helps reduce  
tossing and turning**

**ComfortRight™ Layers**

This advanced system of foams and fluffy fibers is designed to provide instant comfort. This helps reduce the pressure points that can cause tossing and turning so you can sleep more comfortably through the night.

**Minimize impact from  
partner movement**

**TrueSense® Design**

Serta's exclusive design helps minimize the impact of partner movements, working to isolate motion at its source so you can enjoy a peaceful night's sleep with fewer disruptions.

**Encourages proper  
back support & alignment**

**Custom Support® System**

Every Perfect Sleeper features a system of durable, yet flexible carbon steel coils that work to promote proper support and alignment across the entire body.

**Resists sagging  
& edge roll-off**

**ComfortLast® Construction**

Designed to enhance durability of the mattress and is thoroughly tested beyond industry standards to make sure it can resist sagging and edge roll-off. This enhanced durability can help extend the comfort life of your mattress.

**Promotes a balanced  
sleep temperature**

**CoolBalance® Technology**

A unique combination of high-performance heat and moisture-regulating fabric and an overall mattress design that helps promote airflow. Together, these help provide a comfortable, balanced sleep temperature.

**5 reasons  
to never count  
sleep again.**



**FURNITURE  
LIFESTYLE**  
BRAND SOURCE® NATIONAL BUYING POWER



**Kubin's Furniture & Mattresses**

101 N Mill St, Corner of M46, St. Louis, Michigan, (989) 681-5043

Hours: Mon-Thurs: 9-6, Fri: 9-8, Sat: 9-5, Closed Sunday

Sign up Your Email at: <http://www.kubins.com/signup.htm>



\*SEE STORE FOR DETAILS

**RE/MAX**® Open Seven Days a Week to Serve You!  
**RIVER HAVEN, INC.** [www.riverhavenhomes.com](http://www.riverhavenhomes.com)  
 Wayne R. Walts - Broker

**Main Office**  
 777 W. Cedar  
 Riverwalk Place  
 989-426-6893

**Wixom Lake Office**  
 1239 Estey Road,  
 Beaverton  
 989-435-7755

**Sugar Springs Office**  
 1415 W. Sugar River Rd.  
 Gladwin, MI 48824  
 989-426-9239

Immaculate 2 bedroom cottage/home on all sports lake. **\$139,900**  
 MLS#165907

Newer 3 bedroom, 2 bath ranch with over 2000 sq ft of living area, sun room, 2 car att garage. **\$149,900**  
 MLS#166021

Newer 3 bedroom, 3 bath ranch with walkout lower level, 3 car att garage, 168 ft on 2000 acre all sports lake. **\$269,900**  
 MLS#165890

**ANTIQUES, HOUSEHOLD, TOOLS, FURNITURE AND MORE AUCTION**  
**FRIDAY 5:00 pm FEBRUARY 3RD 2017**  
**7880 E Colonville Rd Clare**  
**4 Miles East of Clare - 1/2 Mile East of Colonville Country Store**  
**ANTIQUE FURNITURE**

Round Oak Pedestal Base Table w/4 Matching Preshack Chairs • Brass back Windsor rocker • Mission Oak Rocker • Boston Rocking chair • Flame Grain 4 Drawer Chest w/ Hand Painted Panel • Basket Chest • Victorian Rocker • Oak Lamp Table w/ Fraybrook skirt • Oak Music Cabinet • Rustic Pine Stool • Other Furniture to include, Maple Pedestal Base Table w/6 Matching Chairs • Fantastic Solid Cherry Chippendale Style Dresser w/ Beveled Glass 3 Section Mirror By Sumter Cabinet Co. • Cherry Drop Leaf Coffee Table • Small French provincial 2 Door stand • Knee Hole Desk • Kitchen Hutch • Wardrobe w/ Drawers • Blonde Oak Mid Century Desk • Redwood Stools • Several Older Folding Bench Seats from Old Movie House • Several Side Tables • 2 Dining Room Tables • Sofa • Side Tables • Book Stand • Hoop Back Windsor Chairs • 2 Half Round Side Tables • AND MUCH MORE

**ANTIQUES AND COLLECTIBLES**

Copper Boiler w/ Lid • Enamel Kalamazoo Wood Cook Stove w/ Back Shelf • 1830s Leather Stagecoach Chest • Hump Back Trunk • Tools • Vintage Huffy Bike • Shining Silver Candlesticks • Silver Plated Home • Fall Shovel w/ Tail Poles • Tin Barn Roof Vent • Cross Cut Saws • Buck Saw • Wood Boxes • Stoneware Crock • Several Mirrors • Several Planes • Ice Tongs • Wooden Pulleys • Monkey Wrenches • Braces • Ox Yoke • Coke Trays • Hand Grinders • Axe

**GLASS, CHINA AND POTTERY**

Mid Century Art Glass • Depression Era Glass • Elegant Glass • Cut Crystal, Baskets, Vases, Stoneware & More • Group Of Early American Pattern Glass • Kestora American • Candlewick Glass • Stoneware • Noritake China • Glass Butter Churn • Royal Copenhagen • Frames • Prints • Oak Jewelry Box • Rug Beater • Stoneware Butter Churn • Wedgewood • Bone Dishes • Several Sets Of China, Lenox, Noritake And Others • Punch Bowl Sets • Flow Blue • Baskets • Blue Fruit Jars • Quilts • And More, Too Much To List.

**HOUSEHOLD & MISCELLANEOUS**

Lots Of Books • Lots Of Good Clean Towels, Quilts, Bedding And More • Children's Chairs, Yard Chairs • Cupboard Contents • Cook Ware • Coleman Ice Chest And Water cooler • Lamps • Sewing Machine • Boots • Candles • Brass Torch • New Roll Of Thick Green Canvas • Rugs • Cutlery • Kitchen Supply's • Bumper Pool Table • Games And Toys • Christmas Train Set • Many Many Box lots Of Household Goods, Way Too Much Too List

**TOOLS**

24 inch Craftsman Snow Blower • Companion 5250 watt Generator On Wheels • Rigid Pipe Wrenches • Rigid Pipe Cutter • Misc. Tool Boxes • Live Traps • Craftsman Industrial Deluxe Dovetail Jig • Several Types Of levels • NIB Multi Purpose Air Pump • Portable Profile Sander • Bench Vice • Emergency Home Escape Ladders NIB • Staple Guns • 2 Chain Vises • Ice Auger • Circle Saw Blades • Spoke Shave • Iron Hand Planes • Plunge router Base • Lawn Seed Spreader • Several Pipe Clamps • Several Tarps • Miscellaneous Hand And Yard Tools, Snow Shovels And More • Push Brooms • Boxes Of New Hardware, Nuts Bolts Nails, Fasteners, Including New 25Lb Box Of Roofing Nails • Coleman Lanterns W/ Funnel • Hand Saws • Hand Tools • Power Tools • Ladder Jacks • Roof Jacks • Husqvarna Chain Saw • Fishing Poles • Portable Outhouse • Tool Boxes Full Of hand tools • Spray Paint Gun • Much More, Too Much Too List.

Auctioneers Note: This Auction Is a Combination Of Multiple Estates Moved To a more convenient Heated location. THIS IS A PARTIAL LISTING! and Only Represents A Fraction Of The Items In This Sale. Come Join Us For An Evening Of Fun For Everyone. Concession Stand Onsite.

**SALE CONDUCTED BY GATEWAY AUCTIONS OF CLARE MICHIGAN. AUCTIONEER J.R. HOCHSTETLER**

TERMS OF SALE: Cash Or MI Check W/ Proper I.D., Sale Is Subject To 6% MI Sales Tax, Lunch on Grounds, Not Responsible for Accidents.

**THANK-YOU FOR VOTING JOHN PECK AUCTIONS**

**#1 AUCTIONEER IN CLARE & GLADWIN COUNTIES!**

**WE ARE NOW BOOKING ALL TYPES OF AUCTIONS including:**

**farm machinery, shop tools, firearms, estates, moving sales & real estate, for winter & spring months of 2017.**

**Benefit from our aggressive marketing platforms with newspapers, mailing, websites, email, etc.**

**JOHN PECK AUCTIONS LLC**  
 AUCTIONS • APPRAISALS • REAL ESTATE  
 Auctioneers for 40 Years  
**989-426-8061**  
[www.johnpeckauctions.com](http://www.johnpeckauctions.com)

**FARMLAND AUCTION**  
**42 Acres Farmland \* Seville Twp. \* Gratiot County**

**SALE SITE:** Sale held at Ithaca Community Center, ITHACA, MICHIGAN. Located at 120 N. Maple Street, One block west of traffic light, downtown Ithaca, then turn north back of Fire Hall, Gratiot County.

**WEDNESDAY, FEBRUARY 8 \* 6:00PM \***

**42 Acres Vacant Farmland** Section #26 • Seville Twp. Gratiot County

\*37.06 FSA tillable acres  
 \*Good mixture of Parkhill, Metamora/Capac & Mariette Loam soils  
 \*Random Tile  
 \*Road frontage on 2 sides  
 \*Farm NOT rented for 2017  
 \*Farm enrolled in PA116  
 \*Nice all-around good farm

See [www.PavlikLLC.com](http://www.PavlikLLC.com) for aerials, Maps & all information. Be sure to attend this Pavlik Farmland Auction!

**Directions to the farm: West of Alma on M-46 to Bliss Rd. Turn south 1 mile to the farm. Feel free to inspect the farm at your convenience.**

**Theodore (Ted) Brecht Trust, Owner**

PAVLIK AUCTION SERVICE

CALL AUCTION COMPANY FOR MORE INFORMATION 989-463-4903  
**JOHN PAVLIK & JOHN C. PAVLIK, SR.**  
 AUCTIONEERS/REALTORS  
 Pavlik Auction & Real Estate, LLC, Alma, MI 48801  
[www.pavlikllc.com](http://www.pavlikllc.com)

**ATVS - SNOWMOBILE - MOTORCYCLE AUCTION**

**Saturday February 4, 2017 @ 8:45 am**  
**One mile east of Bronson Michigan on US-12**  
**LIVE ON-SITE BIDDING PLUS LIVE ON-LINE INTERNET BIDDING.**

**YOU CAN BUY OR SELL. ONLY \$25 & 2% TO SELL.**

**Over 150 snowmobiles as new as 2016, plus ATV's, watercraft, trailers, bikes, cars, trucks, go carts, lawn equipment, golf carts, Jet skis, 4 wheelers, and much more.**

Inventory pictures, auction price reports, motel listings, maps, & all info at  
**SNOWMOBILEAUCTION.COM**  
**White Star Motorsport Auctions**  
 Phone 517-369-1153 • 10% buyer's premium

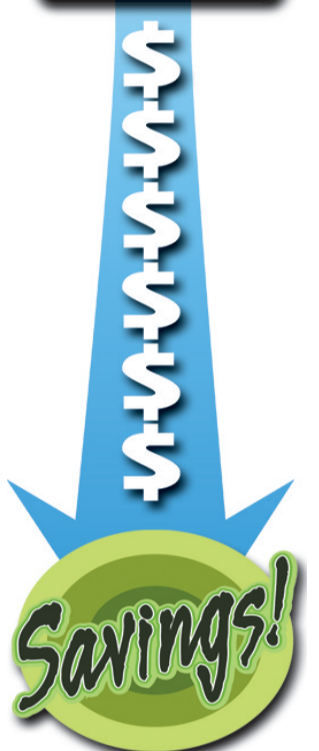
**BUY • SELL • HUNT FOR A JOB CLASSIFIEDS WORK. CALL TODAY!**

*Thank You*  
**Mr. and Mrs. Vallance**  
**Mr. Evitts**  
 for joining the Culligan family and becoming valued customers.  
**Culligan Worldwide**  
**Celebrating 80 years**  
**Ken's Culligan • Alma**

**ALL SIGNS POINT TO**



**THIS WAY**



**Country Corner MARKET**

**Bulk Food • Deli**  
 2 Miles South of Rosebush • 2020 North Mission Mt. Pleasant • 989-433-8200  
 8:30am-5:30pm, Monday-Thursday  
 8:30am-7:00pm, Friday • 8:30am-4pm, Saturday

**Large Selection of Freezer Food at Discounted Prices**

**Walnut Creek Jumping Jack Cheese**  
 Sale **\$2.99 lb.**  
 Reg. \$3.99 lb.

**Walnut Creek Honey Ham**  
 Sale **\$2.69 lb.**  
 Reg. \$3.79 lb.

**MORE SPECIALS**

**Walnut Creek Parmesan Cheese Shaker** 8 oz.  
 All **\$2.49**

**Hospitality Cake Mix** All Varieties  
**\$1.29 ea.**

**Walnut Creek Cheese Spreads** 7 oz. All Varieties  
**\$2.29 ea.**

**Uncle Mike's Jerky** 1.4 oz. House Blend, Raspberry Jalapeno, or Spicy Teriyaki  
**\$1.99 ea.**

**Coffee of the week: Costa Rican Supremo**

**Online Only Sportsman's Auction Ends Feb. 1, 2017.**



Rifles; Handguns; Muzzleloaders; BB Guns; Ammo; Regal Dog Box; Fishing & Boating Equipment & Much More!  
**FOR MORE PHOTOS, INFORMATION AND TO REGISTER, PLEASE VISIT:**

**sherwoodauctionservicellc.com**  
 (Click the online auctions tab)

**SHERWOOD AUCTION SERVICE, LLC**  
**JOE SHERWOOD, OWNER/AUCTIONEER**

HOME (989) 681-7653 • CELL (989) 640-9401  
 email: [sherwoodauctioninfo@yahoo.com](mailto:sherwoodauctioninfo@yahoo.com)

**NAA Auctioneer**

# PUBLIC SERVICE MESSAGE

## HEALTH NOTIFICATION

### Do You Struggle to Hear in Noisy Places?



A major name brand hearing aid provider wishes to field test a remarkable new digital hearing instrument in the area. This offer is free of charge and you are under no obligation.

These 100% Digital instruments use the very latest technology to comfortably and almost invisibly help you hear up to 25% BETTER THAN NORMAL HEARING! New GENIUS™ technology provides you up to 25% BETTER SPEECH RECOGNITION in challenging listening environments than people with normal hearing.\* With the amazing directional focus feature, you are able to zoom in on a conversation, even with people who are on the side or behind you!

If you wish to participate, you will be required to have your hearing screened in our office FREE OF CHARGE to determine candidacy and review your results with the hearing instruments with our hearing aid specialist.

At the end of this evaluation, you may purchase this same model instrument, if you so desire, at a TREMENDOUS SAVING for participating in this test. Special testing will be done to determine the increased benefits of this technology.

Benefits of hearing aids vary by type and degree of hearing loss, noise environment, accuracy of hearing test, and proper fit. This is a wonderful opportunity to determine if hearing help is available for your hearing loss and get hearing help at a very affordable price.

We have set aside 30 spots for FREE testing next week. Do not delay; again, there is no cost or obligation to participate. Local testing will take place at the location listed below.

**CALL NOW IF YOU WISH TO BE INCLUDED**  
**IN THIS FIELD TEST.**

**LIMITED TIME ONLY!**  
**30 SPOTS AVAILABLE NEXT WEEK!**

**Do you have insurance coverage?**  
**If so, you may qualify for hearing**  
**aids fully covered under your**  
**insurance plan.**



**Miracle-Ear Alma**  
116 W. Superior  
Heritage Towne Sq.

**Miracle-Ear Clare**  
1430 N. McEwan - Carousel Mall  
(Across from Woods & Patches)

**Miracle-Ear Gladwin**  
127 N. Arcade, Suite 2  
In the Neely Building

**Miracle-Ear Prudenville**  
828 W. Houghton Lake Dr.  
(Corner of M55 and M18)

**Miracle-Ear Mt. Pleasant**  
100 S. Mission, Suite G  
Just south of Rite Aid

Call Kim to schedule an  
appointment for the  
center nearest you  
**(888) 381-0571**

\*Hearing screening is always free. Not a medical exam. Audiometric test to determine proper amplification needs only. \*\*Hearing aids do not restore natural hearing ability. Individual experiences vary depending on severity of hearing loss, accuracy of evaluation, proper fit and ability to adapt to amplification. ^See yourr Miracle Ear representative for complete details. Field test is an in-ficce demonstration. Not valid with any other offer or discount. See your Miracle-Ear representative for complete details on all offers presented in this advertisement. Studies conducted at the University of Northern Colorado (2014) and Oldenburg Horzentrum (2013) showed that Speech Reception Thresholds (SRT) in cocktail-party situations improved up to 2.9 dB for wearers with mild to moderate hearing loss using GENIUS with Directional Focus, compared to people with normal hearing. This corresponds to over 25% improvement in speech understanding.

## Valley Food Center

"OUR ONE AND ONLY LOCATION IN PINCONNING"  
 989-879-3311 • 101 E. SECOND • PINCONNING

WE WELCOME THE BRIDGE CARD, GIFT CERTIFICATES  
 NOT RESPONSIBLE FOR PRINTING ERRORS • ALL LOTTERY GAMES AND LOTTO HERE  
 MON.-SAT. 8-8, SUN. 8-6 • PRICES GOOD SUNDAY, JANUARY 29TH THROUGH SATURDAY, FEBRUARY 4TH, 2017

**Home for all your Big Game Meats and Munchies....check out our deals!!**

BEEF						
<b>GROUND CHUCK</b> 10 LB. BAG <b>\$34.90</b> LESSER QUANTITIES <b>\$3.79 lb.</b>	<b>GROUND HAMBURGER</b> 10 LB. BAG <b>\$32.90</b> LESSER QUANTITIES <b>\$3.59 lb.</b>	<b>NEW YORK STRIP LOIN</b> "SELECT" (HALF OR WHOLE) <b>\$5.99 lb.</b>	<b>NEW YORK STRIP LOIN</b> "NO ROLL" (HALF OR WHOLE) <b>\$2.99 lb.</b>	<b>BEEF BONELESS RIBS</b> <b>\$2.99 lb.</b>	<b>ENGLISH ROAST</b> <b>\$2.79 lb.</b>	<b>DENVER STEAKS</b> <b>\$2.99 lb.</b>
PORK						
<b>PORK STEAK OR FINGER RIBS</b> <b>\$1.49 lb.</b>	<b>BOSTON BUTT ROAST</b> <b>\$1.39 lb.</b>	<b>END CHOPS OR COUNTRY RIBS</b> <b>\$1.29 lb.</b>	<b>LOIN END ROAST</b> <b>\$1.19 lb.</b>			
<b>BULK SAUSAGE</b> (MILD, FARMER, HOT, SWEET) <b>\$1.79 lb.</b>	<b>WAYSIDE BACON</b> 10 LB. BOX <b>\$17.90</b>	<b>BONELESS PORK LOIN</b> <b>\$2.19 lb.</b>	<b>TWIN PACK SPARE RIBS</b> <b>\$1.99 lb.</b>			
CHICKEN						
<b>BONELESS CHICKEN BREAST</b> 10 LB. OR MORE <b>\$1.49 lb.</b> LESSER QUANTITIES <b>\$1.99 lb.</b>	<b>LEG QUARTERS</b> <b>39¢ lb.</b>	<b>WHOLE FRYERS</b> <b>\$1.29 lb.</b>				
FROZEN						
<b>KOEGEL VIENNA'S</b> 10 LB. BOX <b>\$34.90</b>	<b>KOEGEL SKINLESS FRANKS</b> 4 LB. PKG. <b>\$12.69</b>	<b>KOEGEL 24CT. VIENNA'S</b> <b>\$12.99</b>	<b>CHICKEN NUGGETS</b> <b>\$2.19 lb.</b>	<b>TYSON PREMIUM CHICKEN STRIPS</b> <b>\$3.99 lb.</b>	<b>CENSEA SHRIMP</b> 31/40 CT. 1 LB. PKG. <b>\$7.49 lb.</b>	<b>LAMB WESTON SOUTHWEST OR CHEDDAR CHEESE SPUDZ</b> <b>\$9.99</b>
<b>ANCHOR CHEDDAR OR CREAM CHEESE POPPERS</b> 32 OZ. <b>\$9.99</b>	<b>BOSCO STICKS CHEESE FILLED</b> 6 CT. PKGS. <b>\$3.60</b>	<b>STRAIGHT CUT OR CRINKLE FRIES</b> 5 LB. PKG. <b>\$4.99</b>	<b>BATTERED MUSHROOMS</b> 32 OZ. <b>\$7.99</b>	<b>FROZEN PARTY WINGS</b> 5 LB. BAG <b>\$8.99</b>	<b>FULLY COOKED CHICKEN WING SECTIONS</b> 5 LB. BAG <b>\$12.50</b>	
SNACKS						
<b>BETTER MADE POTATO CHIPS</b> 9-10.5 OZ. <b>2/\$5.00</b>	<b>FAYGO POP 2-LITER ASSORTED FLAVORS</b> <b>4/\$5.00</b>	<b>RC COLA, BIG RED, BIG BLUE, SUNDROP 2 LITER BOTTLES</b> <b>99¢</b>	<b>TROLL HOUSE SNACK STRIPS</b> 1.5 LB. <b>\$7.49</b>	<b>BUSCH OR BUSCH LIGHT BEER</b> 30 PK. 12 OZ. CANS <b>\$17.49</b> *TAX+DEPOSIT	<b>DAIRY FRESH SHREDDED CHEESE OR BLOCK CHEESE</b> 8 OZ. PKGS. <b>3/\$6.00</b>	

Visit us on Facebook at [www.facebook.com/valleysmarket](http://www.facebook.com/valleysmarket)  
 Or check out our new website at: [www.valleymarketmi.com](http://www.valleymarketmi.com)

## JACK OF ALL TRADES COINS

1028 S. Mission  
(next to Jon's Country Burger)

**I BUY ALL COINS**  
Silver and Gold  
**FREE APPRAISALS**  
we will come to your home to do free appraisals for your convenience.

**Over 25 Years experience!**

Do not take your coins, jewelry, gold, & silver to the we buy gold places they are not experts! We are your only experts!  
**WE PAY YOU MORE THAN ANYONE!**

**I BUY ALL COLLECTIONS**  
FROM ONE COIN TO A DUMP TRUCK FULL

**We are a Full Buy • Sell • Trade shop!**  
**ANTIQUES • COINS**  
Jewelry • Collectibles & more!

Stop in or call Matt for your free appointment  
**517-204-0787**

## RABIES CLINIC

Special January Rates

**\$15<sup>00</sup>**

Reg \$20.<sup>00</sup>

By Appt. 426-0203  
 Flexible Hours

**KELLY'S KRUISSING**  
**KRITTER KARE**  
 Kelly Jo Kelley, DVM

**Clare Automotive Inc.** **BUMPER TO BUMPER**  
 214 W. Fourth St. Clare  
 (989) 386-7200  
[www.clareauto.com](http://www.clareauto.com)

**FILTER SALE Feb. 20-24**

**WIX FILTERS** **70% OFF List Price**  
 Begin accepting orders Feb. 1, 2017

**PAST ITS PEAK or shabby chic?**

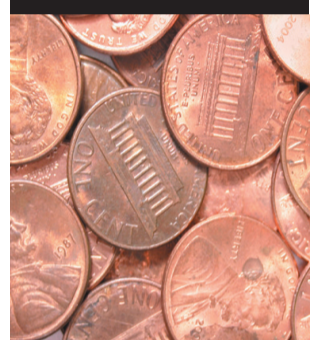
**SELL IT IN THE CLASSIFIEDS!**

## Want fast cash?

Our Classified advertisers get great results.

If you have merchandise to sell, place a classified ad by calling  
**877-483-3450**

## Spend Your Pennies Close To Home



## Shopping Local keeps your Money Local

# 14TH ANNIVERSARY CELEBRATION

Quality Products, Competitive Prices, Outstanding Service  
**SATURDAY, FEBRUARY 4th 2017**  
 At least 10% off Store Wide on In Store items!  
 Excludes Corn - Pellets and Coal

**Free Coffee, Hot Chocolate & Donuts**

**FREE GIVEAWAY to Every Customer**

**7:30 a.m. to 4:30 pm**

**Enter to Win Drawing to Win A \$500 Gift Certificate to Hershberger's Hardware (on Feb 4th only)**

**FS-HP22 Fantastic Pellet Stove**

You Won't Beat this Deal while Supplies Last

**Chain Saw Bar Lube** **\$5.99** gallon

Feed your feathered friends

**Bird Suet** 8pk all around **\$4.99 ea**

**Wood Pellets • Anthracite Coal**

Wood, Coal, Corn & Pellet Stoves • All Fuel Chimney Systems

**Mr. Heater**

Selection of Mr. Heater Propane Heaters and Kerosene Salamander Heaters

Low, Low Prices  
Factory Reconditioned • New Warranty

up to 35%  
Below the Cost of New

**Live Coal, Wood/Pellet Burning Units on Display.**  
 Lowest Prices of the Season!

Full Line of Hardware & Building Supplies • Stove & Furnaces All Fuel Chimneys

## HERSHBERGER'S PRO HARDWARE

10289 N. Leaton Rd., Clare, MI 48617-9107 • (989) 386-5338

## DEWEY'S TRADING POST

Maple Rapids • 682-4158  
 Monday-Saturday: 8 am - 7 pm, Closed Sunday  
 Prices In This Ad Good for weeks of January 30, 2017 - February 4, 2017  
 WIC • Bridge Card • VISA • Mastercard • Discover  
 American Express • Debit Card & Chamber Bucks Gift Certificates.

### FEATURE MEAT BUNDLE CAMPER'S BUNDLE

16CT PATTIES • 5LB BRATS  
 • 5LB BONELESS SKINLESS CHICKEN BREASTS  
 • 5LB BABY BACK RIBS • 5LB CHICKEN LEG QTRS

**GREAT FOR COOKOUTS!!**

<b>Eckrich "Ham off the Bone" Ham</b> <b>\$4.99 LB</b>	<b>Armour 14oz Meatballs "Regular or Italian"</b> <b>2/\$6.00</b>	<b>Select "Whole" New York Strips 13 lb. Avg.</b> <b>\$3.19 LB</b> <small>CUT FREE!!</small>
<b>5lb Bag Fresh Ground Chuck 80/20</b> <b>\$14.95 BAG</b>	<b>Bulk Colby or Colby Jack Cheese</b> <b>\$3.99 LB</b>	<b>"Our Own" Smoked Roasted Sausage</b> <b>\$5.99 LB</b>
<b>"Our Own" Beef Salami "Regular, Cheese &amp; Jalapeño"</b> <b>\$4.99 LB</b>	<b>"Our Own" Regular Brats</b> <b>\$2.99 LB</b>	<b>"Our Own" Jalapeño Brats</b> <b>\$2.99 LB</b>
<b>Our Bulk Breakfast Sausage "Regular, Spicy, Hot"</b> <b>\$1.99 LB</b>	<b>5lb Bags Jumbo Drumsticks</b> <b>\$3.49 BAG</b>	<b>5lb Bags Chicken Wings</b> <b>\$8.99 BAG</b>
<b>Choice T-Bone Steaks "Every Day"</b> <b>\$6.99 LB</b>	<b>3lb Bag Lake Liner Breaded Patties, Nuggets, Tenders</b> <b>\$5.99 BAG</b>	<b>2lb Bag Raw Shrimp "Easy to Peel" 26-30 ct.</b> <b>\$12.99 BAG</b>
		<b>2lb Box Frog Legs</b> <b>\$9.99 BOX</b>

### FISH

<b>10lb Boxes Pollock</b> <b>\$19.99 BOX</b>	<b>5lb Bag Tilapia</b> <b>\$13.99 BAG</b>	<b>5lb Bag Ocean Perch</b> <b>\$17.99 BAG</b>	<b>2 1/2 Bag Cod</b> <b>\$9.99 BAG</b>	<b>"Individual" Tuna Steaks</b> <b>\$3.99 LB</b>
---	--	--	---	---

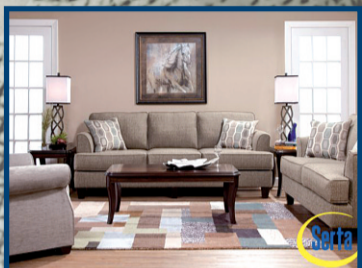
**www.deweystradingpost.com**  
**LIKE us on facebook & see our WEEKLY SPECIALS!**

# NO SALES TAX



**Every Serta Recliner 50% off Retail**  
**Buy 2 and get an extra \$100 off 2nd One**

**Plus NO SALES TAX**



**Every Serta Sofa, Love or Chair 50% off Retail**  
**Buy 2nd Piece and get an extra \$100 off 2nd Piece**

**Plus NO SALES TAX**



**Every Serta Sectional 50% off Retail**  
**Buy any Serta Sectional and get \$100 instant rebate off any other item in store**

**Plus NO SALES TAX**

## Symbol Mattress Blow Out

### Every Mattress Set on Sale Now

### FREE 10Yr Warranty Mattress Pad

### With the Purchase of Any Mattress Set

#### Facts About Symbol Mattress

- \* Symbol Mattress is the 3rd largest manufacturer in the Midwest and 12th largest in the United States out of 600.
- \* Symbol Mattress has a higher customer satisfaction rating than both Serta & Sealy
- \* Symbol Mattress sets normally sell for 20-30% less than the equivalent Serta or Sealy model

**\*Up To 36 Month No Interest Financing Available**

**Free Layaway**

**STATE ST**  
**FURNITURE**

**318 N State St • Alma, MI 48801**  
**(989) 463-1037 • Hours: 9-6 M-F • 9-5 Sat.**  
**www.StateStreet-Furniture.com**

\*See Store for Details



# No Need To Warm Newer Vehicle Engines In The Cold Weather

In the thick of winter, most people think you should step outside, start up your engine, and let it idle to warm up. But contrary to popular belief, this does not prolong the life of your engine; in fact, it decreases it by stripping oil away from the engine's cylinders and pistons.

An internal combustion engine works by using pistons to compress a mixture of air and vaporized fuel within a cylinder. The compressed mixture is then ignited to create a combustion event—a little controlled explosion that powers the engine.

When your engine is cold, the gasoline is less likely to evaporate and create the correct ratio of air and vaporized fuel for combustion. Engines with electronic fuel injection have sensors that compensate for the cold by pumping more gasoline into the mixture. The engine continues to run rich in this way until it heats up to about 40 degrees Fahrenheit.

The life of components like piston rings and cylinder liners can be significantly reduced by gasoline washing away the lubricating oil. Driving your car is the fastest way to warm the engine up to 40 degrees so it switches back to a normal fuel to air ratio. Even though warm air generated by the radiator will flow into the cabin after a few minutes, idling does surprisingly little to warm the actual engine. The best thing to do is start the car, knock the snow off your windows, and get going. It takes 5 to 15 minutes for your engine to warm up, so take it nice and easy for the first part of your drive.



**BENCHLEY BROS, INC.**

**Your Buick & GM Dealer**  
*Serving Clare for Over 35 years*



**Tune Ups  
Brake Work  
Wheel Alignment  
Transmission Service**  
 **Goodwrench.**  
BECAUSE WHO KNOWS WHAT'S DOWN THE ROAD

East US-10 • Clare • [benchleybros.com](http://benchleybros.com)  
Service Department **989-386-3197**



**Winter's here be ready!**

**FREE Winter Inspection**

**Oil Change** **\$12<sup>95</sup>**  
**most cars & trucks**  
(some restrictions apply)

**Wiper Program**  
**Free installation!**  
**Economy**  **\$7<sup>95</sup>**  
All Plastic Construction  
**Profile**  **\$17<sup>95</sup>**  
No Linkage To Ice Up! One Piece spring steel design Lifetime Warranty

**FREE Brake & Safety Inspection**



524 W. Fifth St.  
Clare  
989-386-8000  
M-F 8-5, Sat. 9-12  
After Hours by Appt.

**Dagwood's Auto Repair**  
*"Common Sense Auto Repair"*  
30 Years Experience  




1001 N. Fancher  
Mt. Pleasant  
989-772-9500  
M-F 8-5

Thank You Mid Michigan!

A big thank you to everyone who voted us People's Choice for Water Service Dealer. Call us today for your FREE water consult.

Culligan Mid Michigan  
989.465.9143  
[Culliganmidmichigan.com](http://Culliganmidmichigan.com)

**Culligan**  
better water. pure and simple.®

**Vandrie**  
Home Furnishings

**SATURDAY,  
FEB. 4TH!  
9AM - 6PM**

# SUPER SATURDAY!

**PREVIEW DAYS  
THURSDAY  
& FRIDAY!**

Rocker Recliner

**\$198**

Compare at \$599.95

**SUPER  
VALUE!**

**67%  
OFF!**



**EXTRA  
\$500 Off**

Furniture, Mattresses or Flooring with a purchase of \$3000 or more.

**\$200 Off**

**Appliances** With a purchase of \$3000 or more.

**EXTRA \$300 Off**

Furniture, Mattresses or Flooring

**\$100 off Appliances**

With a purchase of \$2000 - \$2999.

**EXTRA \$100 Off**

Furniture, Mattresses or Flooring

**\$50 off Appliances**

With a purchase of \$1000 - \$1999.

**RECLINING SOFA  
WITH 2 BUILT-IN  
RECLINERS**

**\$548**

Compare at \$1369.95

**SUPER  
VALUE!**



**SUPER  
VALUE!**

**ELECTRIC  
WASHER  
OR DRYER**

**\$288**

EACH PIECE

CAW8350EW

CED126SDW



**6 MONTHS  
SPECIAL  
FINANCING!\***

**BeautySleep**

**65%  
OFF!**

**QUEEN FIRM SET**

**\$298**

Compare at \$859.95

TWIN SET \$228

FULL SET \$278

**SUPER  
VALUE!**

## ALL FLOORING ON SALE

**KIRSCH WINDOW  
COVERINGS**

**UP TO  
70% OFF**

CADILLAC STORE ONLY

**TRU-TOUCH WOOD FINISH  
HEAVY DUTY LAMINATE**

NOW ONLY

**\$1.09<sup>SF</sup>**

While Supplies Last

**SAVE  
BIG!**

**RESISTA**

**CARPET**

**10 Year Stain Warranty  
NOW ONLY**

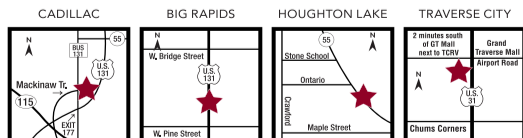
**\$1.89<sup>SF</sup>**

Compare at \$3.79

PLUS MANY MORE SPECIALS!

**You'll Like the Look...You'll Love the Price!**

**Vandrie**  
Home Furnishings



CADILLAC  
7591 BUS 131 • (231) 775-8536

BIG RAPIDS  
314 N. State • (231) 796-7667

HOUGHTON LAKE  
6455 W. Houghton Lake Dr. • (989) 422-5734

TRAVERSE CITY  
657 N. US 31 South • (231) 943-7662

Cadillac | Big Rapids  
Houghton Lake

Mon - Thurs 9am-6pm

Friday 9am-8pm

Saturday 9am-6pm

Mon - Fri 10am-8pm

Saturday 10am-6pm

**Making  
Homes Beautiful  
Since 1953!**



vandrie.com

Find us  
on Facebook



\*With approved credit on our VanDrie Card receive special financing for six months, no down payment with minimum monthly payments and 25% down payment required on special orders. Interest will be charged to your account from the purchase date at the regular APR if the balance is not paid in full within the promotional period or if you make a late payment. The current APR is 27.99%. The APR may vary. Offer valid January 30, 2017 - February 4, 2017. Financing excludes electronics, clearance items, value right, super value, floor samples and previous purchase. Cash discount offer excludes electronics, extended service plans, mattress protectors, Tempur-Pedic bedding, labor, clearance items, value right, super value, floor samples and previous purchases. Some quantities are limited and may not be available in every location. © 2017 Knorr Marketing VAND-5004 1/17

# Warm Up With GREAT Savings

## at Dean Arbour Ford of West Branch's Winter Clearance Event

 <p><b>\$181/mo</b></p> <p><b>2009 CADILLAC DTS</b></p> <p>4 SPEED AUTOMATIC, DEPENDABLE</p>	 <p><b>\$227/mo</b></p> <p><b>2013 CHEVROLET EQUINOX AWD, LT</b></p> <p>6 SPEED AUTOMATIC, DECENT MILES, GOOD CONDITION</p>	 <p><b>\$198/mo</b></p> <p><b>2012 CHEVROLET IMPALA LT</b></p> <p>AIR, CRUISE, POWER DOORS, LOCKS &amp; WINDOWS</p>	 <p><b>\$139/mo</b></p> <p><b>2009 CHEVROLET MALIBU LS</b></p> <p><b>GREAT FIRST RIDE!!</b></p>	 <p><b>\$264/mo</b></p> <p><b>2008 CHEVROLET SILVERADO 4X4 1500 EXTENDED CAB</b></p> <p>5.3 LITER V8, LOW MILES, NICE</p>	 <p><b>\$269/mo</b></p> <p><b>2008 CHEVROLET SILVERADO 4X4 1500 EXTENDED CAB</b></p> <p>V8, 4 SPEED AUTOMATIC, NICE TRUCK</p>
 <p><b>\$319/mo</b></p> <p><b>2013 CHRYSLER 300 S AWD</b></p> <p>5.7 LITER HEMI, LOW MILES</p>	 <p><b>\$459/mo</b></p> <p><b>2016 DODGE DURANGO LIMITED AWD</b></p> <p>3.6 LITER V6, EXTREMELY LOW MILES, GREAT VALUE</p>	 <p><b>\$215/mo</b></p> <p><b>2013 FORD C-MAX HYBRID SEL</b></p> <p>GAS/ELECTRIC, LOW MILES, WAGON, ECONOMICAL</p>	 <p><b>\$199/mo</b></p> <p><b>2010 FORD E-250 ECONOLINE VAN</b></p> <p>AIR, TILT, ABS BRAKES, WORK READY</p>	 <p><b>\$196/mo</b></p> <p><b>2008 FORD EDGE AWD LIMITED</b></p> <p>6 SPEED AUTOMATIC, WONDERFUL 2ND FAMILY CAR</p>	 <p><b>\$259/mo</b></p> <p><b>2013 FORD EDGE FWD SE</b></p> <p>AIR, TILT, CRUISE, POWER EVERYTHING</p>
 <p><b>\$344/mo</b></p> <p><b>2015 FORD EDGE FWD SEL</b></p> <p>LOW, LOW MILES, EXCELLENT CONDITION, LOADED</p>	 <p><b>\$167/mo</b></p> <p><b>2009 FORD ESCAPE 2WD XLT</b></p> <p>4 CYLINDER, 6 SPEED AUTOMATIC, NICE CONDITION</p>	 <p><b>\$296/mo</b></p> <p><b>2014 FORD ESCAPE 4WD TITANIUM</b></p> <p>RED, LOADED, LOW MILES</p>	 <p><b>\$255/mo</b></p> <p><b>2014 FORD ESCAPE FWD SE</b></p> <p>4 CYLINDER TURBO, AIR, CRUISE, TILT, SYNC SYSTEM</p>	 <p><b>\$227/mo</b></p> <p><b>2016 FORD ESCAPE FWD SE</b></p> <p>LOW MILES, 4 CYLINDER TURBO, NICELY EQUIPPED</p>	 <p><b>\$254/mo</b></p> <p><b>2016 FORD ESCAPE FWD SE</b></p> <p>4 CYLINDER, 6 SPEED AUTOMATIC, EXTREMELY LOW MILES</p>
 <p><b>OUT FOR BATH</b></p> <p><b>\$217/mo</b></p> <p><b>2014 FORD ESCAPE FWD TITANIUM</b></p> <p>LOW MILES, 4 CYLINDER, LOADED</p>	 <p><b>\$256/mo</b></p> <p><b>2012 FORD EXPLORER 4WD LIMITED</b></p> <p>AIR, TILT, CRUISE, HEATED SEATS, SPOILER, NICE RIDE</p>	 <p><b>\$383/mo</b></p> <p><b>2014 FORD EXPLORER 4WD LIMITED</b></p> <p>AIR, TILT, CRUISE, POWER EVERYTHING</p>	 <p><b>SAVE \$10,000</b></p> <p><b>2015 FORD EXPLORER 4WD SPORT</b></p> <p>POWER EVERYTHING, LOW MILES, LOADED</p>	 <p><b>\$288/mo</b></p> <p><b>2014 FORD EXPLORER FWD</b></p> <p>6 CYLINDER AUTOMATIC, POWER EVERYTHING, LOW MILES</p>	 <p><b>HARD TO FIND</b></p> <p><b>2013 FORD F150 4X4 SUPERCAB SVT RAPTOR</b></p> <p>LOW MILES!! 8 CYLINDER WITH TOPPER, SWEET!!</p>
 <p><b>\$257/mo</b></p> <p><b>2010 FORD F150 4X4 SUPER CREW</b></p> <p>8 CYLINDER, POWER EVERYTHING, VERY GOOD CONDITION</p>	 <p><b>\$353/mo</b></p> <p><b>2011 FORD F150 4X4 SUPER CREW</b></p> <p>8 CYLINDER, 6 SPEED AUTOMATIC, EXCELLENT CONDITION</p>	 <p><b>\$329/mo</b></p> <p><b>2012 FORD F150 4X4 SUPER CREW</b></p> <p>XLT PACKAGE, TWIN TURBO, 6 SPEED, NICELY EQUIPPED</p>	 <p><b>\$397/mo</b></p> <p><b>2013 FORD F150 4X4 SUPER CREW</b></p> <p>6 SPEED AUTOMATIC, SHORT BED, AIR, TILT, CRUISE</p>	 <p><b>\$365/mo</b></p> <p><b>2014 FORD F150 4X4 SUPER CREW</b></p> <p>V8, TONNEAU COVER, EXCELLENT CONDITION</p>	 <p><b>\$369/mo</b></p> <p><b>2014 FORD F150 4X4 SUPER CREW</b></p> <p>LOW MILES, LOADED, MINT CONDITION</p>
 <p><b>\$443/mo</b></p> <p><b>2014 FORD F150 4X4 SUPER CREW</b></p> <p>LOADED, SHORT BED WITH TOPPER</p>	 <p><b>\$441/mo</b></p> <p><b>2004 FORD F250 4X4 CREW CAB SUPER DUTY</b></p> <p>8 CYLINDER TURBO, 5.4 LITER, FULL POWER</p>	 <p><b>\$385/mo</b></p> <p><b>2011 FORD F350 4X4 REGULAR CAB SUPER DUTY</b></p> <p>WORK READY, CHASSIS CAB</p>	 <p><b>\$377/mo</b></p> <p><b>2012 FORD F350 4X4 REGULAR CAB SUPER DUTY</b></p> <p>DIESEL, 8 CYLINDER TURBO, LOADED</p>	 <p><b>\$376/mo</b></p> <p><b>2015 FORD FLEX AWD LIMITED</b></p> <p>LOW MILES, SYNC SYNC SYSTEM, AIR, AUTO, TILT, CRUISE</p>	 <p><b>\$229/mo</b></p> <p><b>2011 FORD FLEX AWD SEL</b></p> <p>6 CYLINDER, 6 SPEED, GOOD MILES, LOADED</p>
 <p><b>\$299/mo</b></p> <p><b>2013 FORD FLEX FWD SEL</b></p> <p>AUTOMATIC, POWER EVERYTHING, NICE CONDITION</p>	 <p><b>\$168/mo</b></p> <p><b>2014 FORD FOCUS SE HATCHBACK</b></p> <p>4 CYLINDER, AUTOMATIC, GOO MILES, NICE RIDE</p>	 <p><b>\$157/mo</b></p> <p><b>2013 FORD FOCUS SE SEDAN</b></p> <p>4 CYLINDER, FRONT WHEEL DRIVE, NICELY EQUIPPED</p>	 <p><b>\$167/mo</b></p> <p><b>2014 FORD FOCUS SE SEDAN</b></p> <p>6 SPEED AUTOMATIC, LOW MILES, SYNC SYSTEM, WELL EQUIPPED</p>	 <p><b>\$146/mo</b></p> <p><b>2015 FORD FOCUS SE SEDAN</b></p> <p>FLEX FUEL READY, 6 SPEED AUTOMATIC, LOW MILES, NICE</p>	 <p><b>\$199/mo</b></p> <p><b>2014 FORD FUSION SE</b></p> <p>6 SPEED TURBO, SYNC SYSTEM, POWER EVERYTHING</p>
 <p><b>\$194/mo</b></p> <p><b>2014 FORD FUSION SE</b></p> <p>6 SPEED AUTOMATIC, POWER DOORS &amp; WINDOWS, NICELY EQUIPPED</p>	 <p><b>\$245/mo</b></p> <p><b>2015 FORD FUSION SE</b></p> <p>LOW MILES, V6, NICELY EQUIPPED, PRETTY RIDE</p>	 <p><b>\$279/mo</b></p> <p><b>2015 FORD TAURUS SEL</b></p> <p>LOW, LOW MILES, LOADED</p>	 <p><b>\$246/mo</b></p> <p><b>2012 GMC ACADIA FWD SLE</b></p> <p>V6, AIR, TILT, CRUISE, NICE</p>	 <p><b>\$268/mo</b></p> <p><b>2005 GMC SIERRA CK1500 4X4 CREW CAB</b></p> <p>V8 AUTOMATIC, GOOD CONDITION, GREAT VALUE</p>	 <p><b>\$379/mo</b></p> <p><b>2016 JEEP CHEROKEE 4WD LATITUDE</b></p> <p>LOW MILES, EXCELLENT CONDITION, LOADED</p>
	 <p><b>\$326/mo</b></p> <p><b>2006 LINCOLN MARK LT 4X4</b></p> <p>8 CYLINDER, 4 SPEED AUTOMATIC, LOADED, MINT CONDITION</p>	 <p><b>\$318/mo</b></p> <p><b>2011 LINCOLN MKS AWD</b></p> <p>GREAT SHAPE, ALL THE BELLS AND WHISTLES, NICE</p>	 <p><b>\$198/mo</b></p> <p><b>2010 MAZDA 3 SEDAN</b></p> <p>GREAT 1ST RIDE, 4 CYLINDER, FRONT WHEEL DRIVE</p>	 <p><b>\$269/mo</b></p> <p><b>2015 TOYOTA CAMRY</b></p> <p>LOW MILES, SHARP!!</p>	

\*ALL PAYMENTS CALCULATED WITH 10% DOWN INCLUDING TAX, TITLE AND LICENSE FEES. WITH APPROVED CREDIT. SEE DEALER FOR DETAILS.

**dean arbour**  
of West Branch

3382 W. M-55 West Branch, MI 48661  
**989-345-1590**  
[www.deanarbourford.com](http://www.deanarbourford.com)

**CUSTOM DESIGNS**  
Buy Direct & Save

Also Available  
Cremation Vaults and Urns

**Brewer Bouchey Monument Co.**  
Family Owned Since 1895  
211 N. Mill St. • Downtown St. Louis  
989-681-3300 • Toll Free 888-362-2920  
Hours: Mon.-Fri. 9-5; Sat. By Appt.  
www.brewer-bouchey.com



### Easy ways for businesses to save energy.

- CHANGE YOUR BULBS**  
 Replace your incandescent bulbs with LEDs. In large rooms, replace T12 fluorescent bulbs with T8s. For even more energy savings, upgrade fixtures and bulbs to high-efficiency T5s.
- SMART STRIPS ARE SMART**  
 Some office devices consume up to 40 watts of electricity in standby mode. Reduce wasted energy with a "smart power strip," which monitors electronic devices and turns them off when not in use.
- LIGHTS ON, LIGHTS OFF**  
 Occupancy sensors keep your lights off when rooms are unoccupied or when day light is detected. Sensors are most effective in bathrooms and storage areas.

ONLINE: [michigan-energy.org](http://michigan-energy.org) PHONE: 877.296.4319

**E** Energy Optimization

**HOME** Tri-County Electric Cooperative



**Steve's Country Market**  
989-539-3110 3170 North Clare Ave., Harrison 44 Feet of Old Fashioned Meat Counter with Good Old Fashioned Service  
Hours: Sun. - Mon. 8-8 Bridge Card & Wic Accepted Sale Dates: January 30 - February 5, 2017  
Top Quality Meats At Rock Bottom Prices! 100% Satisfaction Guaranteed Michigan Lottery and ATM Machine [stevescountrymarket.com](http://stevescountrymarket.com)

Fresh Meat, Seafood & Deli Items

**GROUND CHUCK**  
FAMILY PACK  
5 LBS. OR MORE  
**\$2.49**  
LB.

**BONELESS CHICKEN BREAST**  
**\$1.49**  
LB.

**FRESH GROUND ROUND**  
**\$3.69**  
LB.

**USDA CHOICE T BONE STEAKS**  
**\$5.99**  
LB.

**STEVE'S OWN MARKET MADE BRATS**  
**\$2.99**  
LB.

**BABY BACK RIBS**  
**\$2.79**  
LB.

**BONELESS PORK LOINS**  
**\$1.79**  
LB. **SLICED FREE!**

**USDA CHOICE BONELESS CHUCK ROAST**  
**\$3.49**  
LB.

**WESTERN PORK STRIPS**  
**\$1.29**  
LB.

**BIG GAME SPECIAL BREADED MOZZARELLA CHEESE STICKS**  
3 LB. BAG  
**\$5.49**  
EA.

**SUPER SEAFOOD ROAD SHOW**  
FRIDAY, FEBRUARY 3 - SUNDAY, FEBRUARY 5  
GREAT DEALS ON LOBSTER, SHRIMP, CRAB, & MUCH, MUCH MORE!  
SAMPLES FRIDAY, SATURDAY AND SUNDAY.

**BROASTED CHICKEN**  
10 PC. DARK MEAT SPECIAL  
**\$4.99**  
EA.

**DELI HOT WINGS**  
10 CT.  
**\$4.99**  
EA.

**BIG GAME SPECIAL SNACKER PARTY TRAY SMALL**  
**\$19.99**  
EA.

**STEVE'S ORIGINAL HAM AND ONION DIP**  
**\$4.99**  
LB.

#### Fresh Produce

**MICHIGAN RUSSET POTATOES**  
5 LB. BAG  
**2/\$3.00**

**ROMA TOMATOES**  
**99¢**  
LB.

**BABY CARROTS**  
16 OZ.  
**\$1.29**  
EA.

**MICHIGAN APPLES**  
3 LB. BAG  
SELECT VARIETIES  
**2/\$5.00**

**BANANAS**  
**49¢**  
LB.

#### Fresh Dairy And Frozen

**FLORIDA NATURAL ORANGE JUICE**  
59 OZ.  
**2/\$6.00**

**YODER'S SHREDDED OR BAR CHEESE**  
8 OZ.  
**2/\$4.00**

**IGA FROZEN VEGETABLES**  
16 OZ.  
**99¢**  
EA.

**3 DOZEN LARGE EGGS**  
**\$2.49**  
EA.

**NORTHSTAR VARIETY PACK**  
40 CT.  
**\$12.99**  
EA.

**YODER'S SOUR CREAM**  
16 OZ.  
**\$1.99**  
EA.

**DIGIORNO PIZZA**  
27.5-31.5 OZ.  
**\$5.99**  
EA.

**HUDSONVILLE PREMIUM ICE CREAM**  
56 OZ.  
**2/\$7.00**

**SWEET BABY RAY'S WING MARINADE OR DIPPIN' SAUCE**  
14-16 OZ.  
**2/\$4.00**

**AUNT MILLIE'S DELUXE HOT DOG OR HAMBURG BUNS**  
8 CT.  
**2/\$3.00**

#### Grocery

**SOFT & GOOD GIANT LOAF WHITE BREAD**  
24 OZ.  
**2/\$3.00**

**MAXWELL HOUSE COFFEE**  
25.6-30.6 OZ.  
**\$7.49**  
EA.

**WISHBONE SALAD DRESSINGS**  
16 OZ.  
**2/\$4.00**

**HUNT'S MANWICH**  
15 OZ.  
**5/\$5.00**

**YELLOWTAIL WINES**  
750 ML.  
**\$5.99**  
EA.

**LAY'S POTATO CHIPS**  
9.5-10 OZ.  
**BUY 1 GET 1 FREE**

**TOSTITOS TORTILLA CHIPS**  
9-10 OZ.  
**2/\$6.00**

**BUSH'S BAKED BEANS**  
22-28 OZ.  
**\$1.79**  
EA.

**BUSCH OR BUSCH LIGHT**  
30 PK. CANS PLUS DEPOSIT  
**\$16.99**  
EA.

**BUD OR BUD LIGHT**  
15 PK. CANS PLUS DEPOSIT  
**\$9.99**  
EA.

While supplies last. Not responsible for printing errors.



## Gladwin City Housing Commission



Council on Aging • Community Development Program

215 S. Antler • Gladwin, MI 48624 • [info@gladwinchc.net](mailto:info@gladwinchc.net) • Office: 989.426.5721 • Fax: 989.426.6944 • TTY/Voice - Dial 711

**NO SMOKING**

**FREE HEAT AND RENT BASED ON INCOME**

If you or a family member is in need of an apartment, the Gladwin City Housing Commission has smoke-free affordable apartments in downtown Gladwin and Beaverton. Seniors and disabled citizens can rent a one bedroom apartment for 30% of their income. This includes appliances, gas, electric and water. Small pets welcome.

You'll also have access to a laundry room, arts & crafts room and lounge. Other services available include cub side pickup from the City County Transit and lunch at the Council on Aging dining centers. You do not have to live in Gladwin or Beaverton to qualify for this low income housing. So contact the Gladwin City Housing Commission at 426-5721 to see if you qualify.

#### LOW OR NOT INTEREST LOANS AVAILABLE TO GLADWIN CITY RESIDENTS FOR HOME REPAIRS

Roof • Windows • Furnace • Water Heater • Insulation • Electrical  
Plumbing • Well • Septic Tank • Drain Field • Ramp • And More

- Must be income eligible
- Own your home or purchasing it through a mortgage or land contract
- Be your principal residence for minimum of 1 year
- All property taxes must be paid up to date
- Current homeowner's insurance is required



**Clark  
Modular  
Homes**

Fully  
Licensed  
& Insured  
Builder

**Low  
Mortgage  
Rates**

Largest  
selection  
of modular  
homes in  
Michigan!



**New  
Models  
Now On  
Display**



We can handle all  
your construction  
needs, well, septic,  
foundations,  
basements,  
garages and decks.

USDA Financing  
Available

**Stop in or call today for details.**

**9826 E. Pickard Rd., Mt. Pleasant • (989) 772-2703 • modularhomesbyclark.com**

# **Brad Malley Well Drilling, Inc.**

**Mid Michigan's  
Most Experienced Well Drillers!**

**&**

**MALLEY  
CONSTRUCTION  
INCORPORATED**

**The One Contractor That Can Do It All!**

**5th  
Generation  
Driller  
With Over  
100 YEARS  
Combined  
Experience  
4 Licensed  
Drillers**



- Drilling Service & Repair
- 5" PVC Water Wells
- 24 Hour Service
- Complete Worksite Packages Available

- Water Conditioning
- Geo Thermal Drilling
- Industry
- Agriculture

- Financing Available
- Constant Pressure  
Water Systems Available

**AFFORDABLE WELL PACKAGES**  
**All Major Pump Brands Available**

**FREE ESTIMATES**

**SERVING ALL OF MID MICHIGAN • LICENSED WELL DRILLER • LICENSED CONTRACTOR  
MT. PLEASANT • WWW.BRADMALLEYWELLDILLING.COM • 989.772.2765 / 800.717.6022**

## **Concrete**

- Poured Basement Walls
- Poured Crawl Space Walls
- Garage Foundations
- Flat Work
- Curb & Gutters
- Retaining Walls

## **Excavation**

- Septic Systems
- Residential
- Commercial
- Road Building
- Demolition

- Water & Sewer
- Driveways
- Land Development
- Land Clearing
- Pond Excavation
- Hydro-Seeding

## **Trucking**

- Sand
- Gravel
- Stone
- Topsoil
- Move & Set Mobile/Modular  
Homes

**MDOT PREQUALIFIED • RESIDENTIAL & COMMERCIAL**

CLEARANCE  
FACTORY OVERSTOCKS - CLOSEOUTS & DISCONTINUED MODELS!

# West Branch Furniture

NO INTEREST FOR 12 MONTHS

**Ashley Chaise Sofa**



**\$499**

available in 7 colors

**Ashley Reclining Sofa**



**\$599**

**Ashley Dailey Midnight Sofa**  
(Choose From 3 Colors)



**\$399**

**Ashley Bittersweet 4-Piece Bedroom Suite**  
Dresser, Mirror, Chest and Headboard



**\$699**

**Wood Twin/Full Bunkbed**



**\$269**

**Ashley Power Rocker Recliner**  
Your Choice  
4 colors to choose from



**\$449**

**Micro Fiber Wallaway Recliner**



**\$179**

**Acme Faux Marble Top Cocktail & 2 End Tables**  
3 Styles To Choose From



**\$139**

**Ashley Chairside Tables**  
(Your Choice)



**\$119**

**Powell 5-Piece Wood & Metal Dinette**



**\$289**

**Rustic Rugs**  
Assorted patterns



**\$79**

**Ashley 3-Piece Dinette**



**\$299**

**Legends 48" Oak TV Console**



**\$255**

CLEARANCE  
FACTORY OVERSTOCKS - CLOSEOUTS & DISCONTINUED MODELS!

# SALE



Always Comfortable.



**Hot Buy**

**Queen size Set**

**\$299**

**All Serta Mattresses ON SALE NOW!**

	TWIN SET	FULL SET	QUEEN SET	KING SET
MajesticSleep collection <b>Davey</b> Euro Top or Firm	<b>\$279</b> 2 Pc. Set	<b>\$369</b> 2 Pc. Set	<b>\$399</b> 2 Pc. Set	<b>\$599</b> 3 Pc. Set
MajesticSleep collection <b>Gallion</b> Euro Top or Comfort Firm	<b>\$349</b> 2 Pc. Set	<b>\$459</b> 2 Pc. Set	<b>\$499</b> 2 Pc. Set	<b>\$799</b> 3 Pc. Set
MajesticSleep collection <b>Rafty</b> Plush Comfort or Firm	<b>\$459</b> 2 Pc. Set	<b>\$559</b> 2 Pc. Set	<b>\$599</b> 2 Pc. Set	<b>\$899</b> 3 Pc. Set
MajesticSleep collection <b>Storecraft</b> Super Pillow Top or Fine	<b>\$649</b> 2 Pc. Set	<b>\$749</b> 2 Pc. Set	<b>\$799</b> 2 Pc. Set	<b>\$1099</b> 3 Pc. Set

\*Financing available to qualifying buyers. Minimum purchase \$599 with approved credit. Not available on prior purchases. See store for details.  
\* Tables and lamps may not be as shown in picture.



**136 S. Fifth St.**  
**West Branch**  
located block south of  
Mercantile Bank off Houghton Ave.  
**989-345-5326**

www.westbranchfurnitureoutlet.com

**\*12 Months No Interest**

**LIFESTYLE**  
FURNITURE  
BRAND SOURCE<sup>®</sup> NATIONAL BUYING POWER

**Sunday 11-3 Mon.-Fri. 10-6 Sat. 10-5**

Find us on facebook

MasterCard DISCOVER VISA

"The Outlet Store That Saves You More!"



Still Central Michigan's #1 Tire Supplier

# Discount TIRE & BATTERY

CRYSTAL

Stanton Rd. 235-4214

EDMORE

Downtown 427-3449

ST. LOUIS

Downtown 681-4100



**DISCOUNT**  
Tire & Battery

## \$10 OFF

Lube and Oil Change

NOT TO BE COMBINED WITH OTHER OFFERS.  
St. Louis Location



**DISCOUNT**  
Tire & Battery

## FREE

Battery Inspection

NOT TO BE COMBINED WITH OTHER OFFERS.  
Crystal - Edmore - St. Louis Locations

# BATTERIES \$59<sup>95</sup> FROM



**DISCOUNT**  
Tire & Battery

## FREE

Brake Inspection

Brake Special:  
\$20 off per axle with coupon

NOT TO BE COMBINED WITH OTHER OFFERS.  
Crystal - Edmore - St. Louis Locations

# FREE ALIGNMENTS

**WITH YOUR TIRE PURCHASE**

## SERVING MICHIGAN FOR 30 YEARS

Light Truck Tires

Pricing Starting At

### \$79<sup>95</sup>

P215/75-15

BEST TIRE PRICES AROUND



Destination  
LE



Destination  
A/T



Destination  
M/T



Firehawk  
GT



Firehawk  
Indy 500

**BRIDGESTONE & Firestone** Tires

# BEST PRICE “PROMISE”

Up to 6 months financing same as cash no interest



# WELCOME TO CLARE COUNTY ... WHERE THE NORTH BEGINS!

## Life is busy...

let an agent handle your insurance, and relax knowing they have you covered.



### THE BEST LOCAL INSURANCE AGENCY

Call or visit us  
**TAYLOR INSURANCE AGENCY**  
Farwell • 989-588-8055  
taylorins@sbcglobal.net

Jan Owens, Agent  
Lynn Salinas, Agent  
Beth Wilson, Agent

**Auto-Owners**  
INSURANCE

LIFE • HOME • CAR • BUSINESS

In addition to the wonderful stores downtown, many stores in the Clare area feature items from sporting goods to Amish crafted goods. Visit the *Amish Quilt Auction, Craft Show, and Flea Market* the third weekend in May and the Friday and Saturday of the Labor Day holiday.



Biking and hiking enthusiasts will welcome touring the picturesque Pere-Marquette Rail Trail, a 30-mile paved trail from downtown Clare to Midland. This portion of the Rails to Trails system is perfect for biking, hiking or skating as no motorized vehicles are allowed. In addition, the Harrison campus of Mid Michigan Community College contains a public trail system that is open for the public to enjoy. These trails open year-round and are perfect for walking, running, biking, snow shoeing, and cross country skiing.

The city of **Harrison** is the county seat of Clare County. Year-round recreational activities are available right outside your door. The Harrison area offers great antiquing and flea market finds. Distinctive shops can be found throughout the town. Make a trip to Harrison on Memorial Day weekend to find bargains galore at the annual *Memorial Day Weekend Garage Sales* event that is held in conjunction with the *Harrison Car & Bike Show*.

**Clare**, the "City of Festivals," has festivals and events happening

throughout the year. The town turns green for the annual 4-day *Irish Festival* in March, which is one of the city's most known



and well-loved events. Enjoy a host of Irish traditions including parades, bed races, kids' fun run, craft show, musical performances, and even a Leprechaun contest! And, for a special treat, visit the world-famous *Cops & Doughnuts Bakery*.



As summer heats up, so do the festivals. The *Summerfest Celebration* provides old fashioned fun for all ages with children's games, a picnic in the park and fireworks over Shamrock Lake to end the day. During June and July the *Summer Concert Series* provides free musical entertainment in the City Park alongside the *Clare Farm & Arts Market*. The annual *Street Faire* event also includes the Main Street Car & Bike Show and Street Faire Craft Show. The grand finale to summer events is the *Old 27 Motor Tour Overnight Stop* in downtown Clare and the *Clare Brewfest*, "A sampling of Michigan's finest craft beers."

As summer turns to fall, the town prepares for two fun events: the annual *Main Street Spook-Tacular* and *Clare's Fall Doughnut Festival*, Pumpkin painting, carnival games, hayrides, kids' costume parade are just some of the activities that take place. The beginning of the holiday season is celebrated in Clare with a *Christmas Celebration* each December.

At the center of Harrison is Budd Lake, a 175-acre all-sports lake, which is stocked for great fishing including some of the biggest muskie you'll find anywhere. Try your hand at catching one in the *Annual Budd Lake Fishing Derby* held each June, usually on the Saturday of Father's Day weekend. Wilson State Park, on the shores of Budd Lake, is a favorite with campers throughout the state.

Harrison offers a spectacular *Fourth of July Celebration*, with a parade, demolition derby and fireworks. No summer would be complete without a visit to a good old-fashioned County Fair. The *Clare County Fair* has taken place in Harrison every summer since 1883.



Golfing is another great reason to enjoy the area. Play the wide variety of courses in Clare County. From tree-lined fairways carved out of a hardwood forest to courses with rolling Northern Michigan terrain, you'll find our courses challenging whatever your handicap.

Experience the thrill of a world-class zip line tour at Snow Snake. Rocks and Valleys is Snow Snake's off-road park that has over 200 acres of hills, rocks, mud and a variety of trails for different skill levels.



## Clare Electronics

Located in Downtown Clare  
511 N. McEwan Street  
(Next to Hicks Jewelers)

**386-2012**

### Prepaid air time for most phones

- TV Antennas
- Cellular Phone Accessories
- Digital Cameras & Accessories
- Home & Business Phone
- Audio & Video Cables & Accessories



Formerly **Radioshack®**



**ALL SALES ON THURSDAY AND START AT 1:00PM**  
**ALL CATTLE WEIGHED AT SALE TIME**  
**ACCEPTING CATTLE ON WEDNESDAY ALL DAY!!**  
**OVERNIGHT CATTLE WILL BE FED & WATERED!!**  
**COLORED AND HOLSTEIN STEERS, HEIFERS & CALVES**  
(SOME CATTLE PRE-CONDITIONED, INFO AVAILABLE AT TIME OF SALE)

**MARCH 16, APRIL 13, MAY 4**  
GO TO **WWW.DAVIDCLARKAUCTION.COM**  
**FOR MORE INFORMATION!!**  
**"SALE EVERY MONDAY AT 3:00PM"**

When visiting in winter, bring your golf clubs and participate in the uproarious *Frostbite Winter Festival* on frozen Budd Lake in Harrison in February.



Farwell's Lumberjack Festival on the last weekend in July is a fun time for all ages and their Holiday Lights Festival in November will delight young and not so young alike.



**MARTIN HEATING & COOLING**  
Installation • Service • Parts • Free Estimates  
DTE Rebate Available  
Heating & Air Conditioning  
**Amana**  
LASTS AND LASTS AND LASTS.  
546 W. 5th street, Clare  
**(989)386-3791**  
Ask about Geothermal Systems and heat pumps

**C.W. GORDON**  
SALES & SERVICE  
COLEMAN, MI  
Proudly Serving Mid Michigan  
Since 1972  
115 Railway St. Coleman • (989) 465-1301

**JOHNSTON ELEVATOR**  
307 N. McEwan, Clare  
**(989) 386-7271**

Check out our Monthly Specials  
**Buccilli's PIZZA**  
Daily Pizza Buffet 11-2 & 4-8 M-S  
**(989) 386-7231**  
1541 N. McEwan St, Clare  
Dine In • Carry Out • We Deliver

We've got the perfect table for you!  
**Benchley's Amish Furniture**  
Clare  
for the Largest Selection of Amish Furniture in Michigan!  
(989) 386-7951  
Open Mon. - Sat. 10 a.m. - 5 p.m. • Sunday 12 p.m. - 5 p.m.  
benchleysturniture.com

**Winter's here be ready!**  
**FREE Winter Inspection**  
Oil Change **\$12.95**  
Wiper Program Free installation!  
Economy All Plastic Construction **\$7.95**  
Profile No Linkage No Tie Up! One Piece spring steel design Lifetime Warranty **\$17.95**  
**FREE Brake & Safety Inspection**  
**Dagwood's Auto Repair**  
224 W. Fifth St. Clare  
989-386-8000  
M-F 9-5, Sat. 9-12  
After Hours by Appt.  
1001 N. Fancher Mt. Pleasant  
989-772-9500  
M-F 9-5

Get Your Taxes **DONE RIGHT!!**  
You Don't Have to Pay an Arm & a Leg  
Switch to Tax Pros and **SAVE!!!**  
Bring in your last year's return and we will prepare your 2016 Taxes for **50% OFF** For new clients only.  
2074 E. Surrey Road Farwell, Michigan 48622  
989-386-4554  
989-386-0777  
Fax: 989-386-4890  
5800 E. Pickard Street Mt. Pleasant, Michigan 48858  
989-953-7171  
Fax: 989-953-7170  
hscott@taxproslife.com

**KAPS KOINS** ANA Member  
located across from the Doherty Hotel  
Silver & Gold Coins Bought & Sold  
Integrity, Honesty & Peace of Mind.  
That's what you deserve when it comes to your Coins & Currency!!!  
Thomas Kapuscinski  
611 N. McEwan St. Clare, MI 48617  
231-357-2105 • 989-386-6500  
tkap@charter.net  
Mon-Fri. 9:30am-5:30pm  
Sat. 10:00am-2:00pm  
or by appointment  
NOW BUYING Sterling Silverware & Scrap Gold

**SEITER BROTHERS**  
Lumber & Home Center  
Stop in see us for Garage Pole Barn packages, Kitchen cabinets...  
All your home improvement needs!  
Cabinets by  
**Merillat** **Dura** **Schrock**  
Visit our website:  
**www.seiterbrothers.com**  
420 W. Fifth St., Clare, MI 48617 • 989-386-7717

**Dover Road Woodworking**  
Solid Oak and Cherry Furniture  
Oak Tables, Chairs, Hutches, Bedroom Sets, and More.  
William M. Byler  
2643 E. Dover Rd • Farwell MI 48622  
**(989) 386-4164**  
Let Ring  
3 Miles North of Clare on Old 27,  
1 and 1/2 Miles West On Dover Road  
Hours: Monday thru Saturday, Dawn to Dusk

**\$10 OFF**  
**WHEN YOU SPEND**  
**\$50 OR MORE**  
Bring in or mention this ad  
**Harrison Best Lumber**  
201 E. Beech Street, Harrison, MI  
**989-539-7136**  
Shop online @ harrisonlumber.com

**COYNE OIL & PROPANE**  
"Our Customers are our Warmest Friends"  
Guaranteed On Time and Certified  
FREE TANK SETS  
Clare • Gladwin • Harrison • Ewart  
**800-386-7731**  
**989-386-7731**  
**RESIDENTIAL COMMERCIAL INDUSTRIAL FARM**

**Cub Cadet**  
**STRENGTH RUNS IN THE FAMILY.**  
NEW CHALLENGER 400 LX  
STARTING AT: **\$6,499<sup>99</sup>**  
CHALLENGER 500  
STARTING AT: **\$8,499<sup>99</sup>**  
CHALLENGER 750 CREW  
STARTING AT: **\$11,999<sup>99</sup>**  
Special Financing Available  
\$5,999 minimum purchase required. There is a promotional fee of \$125 for this transaction. Subject to credit approval.  
GENES POWER EQUIPMENT  
981 E. RAILWAY ST. COEMAN, MI 48618  
989-465-1521  
genespowerequipment.com

**SURREY DISCOUNT FOODS**  
8989 Tobacco Drive Clare • (989) 802-1245  
Mon.-Sat. 8-5  
LARGE BROWN EGGS **99¢/Dozen**  
PORK CHOPS **69¢/lb.**  
SEAL OF MINNESOTA FLOUR **\$13.50/50ms.**  
MIRACLE WHIP **\$1.75/30oz.**

## Office Space Mt. Pleasant

1,320 sq. ft. Rent,  
floor plan and paint colors  
negotiable.

All utilities included in  
rent. 3 months free rent to  
eligible tenant

**Call Jennifer  
989-775.7180**

### HELP WANTED GENERAL

Neat And Green Lawn Care  
hiring **SNOW PLOW DRIVERS  
& SHOVELERS.**  
May lead to full-time employ-  
ment. 4699 E. Airport Rd., Mt.  
Pleasant or submit resume to  
office@neatandgreen.com

**SALESPERSON**  
For GM auto dealership in  
Alma. Full time with benefits.  
Experience a plus but will  
train the right person.  
Call Scott at 989-463-2161 or  
apply at Alma Chevy Buick  
GM 7440 N Alger Rd Alma.  
You can fax resume to  
989-466-5961 or email  
sdemul@alma  
chevybuickgmc.com

**VETERINARY ASSISTANT /  
TECHNICIAN  
AND RECEPTIONIST**  
for busy clinic in Clare.  
Immediate opening. Must  
be flexible with hours. Good  
communication skills, medi-  
cal terminology preferred.  
Fax resume 989-386-5433 or  
email kfoote@chartermi.net

### EDUCATION/TRAINING

**STOP OVERPAYING** for your  
prescriptions! **SAVE!** Call our  
licensed Canadian and Inter-  
national pharmacy, compare  
prices and get \$25.00 OFF  
your first prescription! CALL  
1-800-697-1808 Promo Code  
CDC201625

### AUCTIONS

**LIVE PUBLIC Auction** Every  
Sunday at 2:00 PM, at 1007  
Cass Ave. Vassar, MI. Fair  
Grounds. New items ev-  
ery week! Antiques; Tools;  
Household & General Mer-  
chandise. Timsauctionser-  
vice.com 989-912-8701.

Snowmobile and Motorsports  
Auction Saturday, February 4,  
2017. Buy or Sell! Information  
at [www.snowmobileauction.com](http://www.snowmobileauction.com)  
517-369-1153 White  
Star Motorsports Auction  
US 12 Bronson, MI

### FIREWOOD

**HARDWOOD FIREWOOD**  
4' X 8' X 16"  
\$50 / Delivered  
**989-817-6609**

## PAWN SHOP Buy, Sell, Pawn

3 Month Pawn  
3% + 1.00 Storage  
Firearms, Gold  
& More

Gladwin Trade & Sales  
**989-426-6811**

### FURNITURE

**AN AMISH** Log Headboard  
and Queen Pillow Top Mat-  
tress Set. Brand new-never  
used, sell all for \$275. Call  
anytime 989-832-2401.

### MISCELLANEOUS

A PLACE for mom. The na-  
tion's largest senior living  
referral service. Contact our  
trusted, local experts today!  
Our service is FREE/no obliga-  
tion. CALL 1-800-520-3521

**ACORN STAIRLIFTS** The  
AFFORDABLE solution to  
your stairs! \*\*Limited time  
-\$250 Off Your Stairlift  
Purchase! \*\*Buy Direct &  
SAVE. Please call  
1-800-280-1897 for FREE DVD  
and brochure.

**ADJUSTABLE BED** Brand New  
with Imcomfort gel mem-  
ory foam mattress. Retail  
Cost \$5,900.00, sacrifice for  
\$997.00. Call for showing or  
delivery: 989-615-2951.

**BUILT BEST BARN'S**  
Michigan's Largest Pole Barn  
Company. Best Quality, Best  
Service, Fall Specials.  
24'x24'x8'=\$7495.00,  
24'x32'x8'=\$8495.00,  
24'x40'x10'=\$10,495.00,  
30'x40'x10'=\$11,495.00,  
32'x48'x12'=\$16,495.00. Com-  
pletely Built, (Concrete Floor  
Optional) License/Insured,  
1-877-802-9591 (Office)  
989-205-2534 (Cell)

Can't Afford Medications?  
Prescription Meds, Verified  
Pharmacy Affiliate in Florida.  
Advair, Crestor, Norvasc,  
Zetia, Viagra, Cialis and many  
more.  
[www.affordablexmeds.com](http://www.affordablexmeds.com)  
1-800-811-6559 Valid Pre-  
scription Required.

**Central Boiler** certified  
Classic Edge **OUTDOOR  
WOOD FURNACE.** The per-  
fect combination of per-  
formance and value. Call  
Today! Beaverton Outdoor  
Wood Furnace **989-435-  
9240**



## MIAL MEADOWS MHP IS NOW UNDER NEW OWNERSHIP

WE HAVE VACANT LOTS AVAILABLE  
TO MOVE IN YOUR OWN HOME  
CONTACT OUR OFFICE AT  
**PH: 989-463-5187**

TERESA & JIM DAVIDSON  
RESIDENT MANAGERS

411 S. GROVER, #31  
ALMA, MI 48801

### MISCELLANEOUS

DIRECTV. NFL Sunday Ticket  
(FREE!) w/Choice All-Includ-  
ed Package. \$60/mo for 24  
months. No upfront costs or  
equipment to buy. Ask about  
next day installation!  
1-800-917-3607

**DISH NETWORK?** NEW FLEX  
PACK-Select the Channels You  
Want. FREE Installation. FREE  
Streaming \$39.99/24 months.  
ADD Internet for \$14.95 a  
month. CALL 1-800-930-8959

**FAST INTERNET!** HughesNet  
Satellite Internet. High-  
Speed. Avail Anywhere.  
Speeds to 15 mbps. Starting  
at \$59.99/mo. Call for Limited  
Time Price! 1-800-491-8935

**FREE PILLS! Viagra!!**  
Call today to find out, how to  
get your free Pills! Price too  
low to Mention! Call today  
1-877-602-0194.

GET CLEAN TODAY. FREE 24/7  
HELPLINE FOR ALCOHOL &  
DRUG ADDICTION TREAT-  
MENT. GET HELP! IT IS TIME  
TO TAKE YOUR LIFE BACK!  
CALL NOW: 855-667-5329

**LOCAL DRIVERS WANTED!**  
Be your own boss. Flexible  
hours. Unlimited earning po-  
tential. Must be 21 with valid  
U.S. drivers license, insur-  
ance & reliable vehicle. Call  
855-851-3016

**LUNG CANCER?** And 60 Years  
Older? If So, You And Your  
Family May Be Entitled To A  
Significant Cash Award. Call  
800-871-9061 To Learn More.  
No Risk. No Money Out Of  
Pocket.

NEW AT&T INTERNET OF-  
FER. \$20 AND \$30/MO PLANS  
AVAILABLE WHEN YOU BUN-  
DLE. 99% RELIABLE. 100%  
AFFORDABLE. HURRY, OFFER  
ENDS SOON, CALL NOW 1-800-  
830-3921

**PIONEER POLE BUILDINGS**  
Free Estimates Licensed and  
Insured. 2x6 Trusses. 45 Year  
Warranty Galvalume Steel-19  
Colors. Since 1976 #1 in Michi-  
gan Call Today 1-800-292-0679

**VIAGRA!!** 52 Pills for only  
\$99.00. Your #1 trusted  
provider for 10 years. Insured  
and Guaranteed Delivery. Call  
today 1-800-404-1282

### DUPLEXES & FLATS

**ALMA DUPLEX** For Rent, nice  
2 BR 1 BA, laundry room  
with W/D, dishwasher, refrig,  
stove, A/C. Across from park,  
heat paid. No pets. Refs re-  
quested. \$575/mo. 517-231-  
6129 No Saturday Calls.

### APARTMENTS FOR RENT (UNFURNISHED)

SUB-LEASER NEEDED. Base-  
ment Apt., close to CMU, all  
utilities free, WiFi. \$430/ mo  
(989) 824-0713

### COMMERCIAL RENTALS

## COMMERCIAL BUILDING FOR RENT

8000 SQUARE feet,  
next to Save-A-Lot  
Grocery Store in Itha-  
ca on Diltz Ave.

## 5000 square foot Office Building.

407 Nelson St, Green-  
ville, close to Meijer's

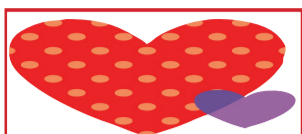
\$6.00/square feet  
plus taxes and insur-  
ance, OBO

**989-831-4227**

### PARTS & SERVICE

**BATTERIES, BATTERIES, BAT-  
TERIES!** We stock them all.  
Prices start at \$39.95. Nobody  
sells for less! Discount Tire,  
St. Louis. 989-681-4100

**SNOW TIRE CLEARANCE SALE**  
Best Prices Guaranteed. We  
Aim To Please. Discount Tire &  
Battery, St. Louis 989-681-4100



## HAPPY VALENTINE'S DAY!

YOU CAN HELP US MAKE A DIFFERENCE!  
ANYONE CAN SPONSOR A PET FROM THE  
ISABELLA COUNTY ANIMAL SHELTER  
Do it as a Birthday OR Anniversary gift,  
an in Memoriam, Valentine's Day  
or just because....  
Only \$39.87  
and includes full color!

ANY ONE CAN HELP!  
IF YOU ARE UNABLE TO ADOPT...  
SPONSOR A PET TO GET THEIR PICTURE OUT TO THOSE  
WHO CAN...FIND A GROUP OR A PAL TO HELP SHARE THE  
COST OF THE SPONSOR FEE!

This will print on Wednesday, February 15th in the Morning  
Sun. The deadline for sponsors will be Friday, February 10th  
at noon.

THE SHELTER IS FULL AND NEEDS OUR HELP!  
SPONSORS ARE NEEDED to publish the animal photos and  
descriptions. This page gives an animal a chance at a new  
home OR possibly a lost pet can be reunited with their  
owner.  
SPONSORED ARE ADOPTED!  
For more information or to participate...  
Call Cindy at 989-775-6115 or email  
ceterwilliger@michigannewspapers.com

## NEED HELP? CALL A LOCAL PROFESSIONAL FROM OUR



### ACCOUNTING & FINANCIAL

**SOCIAL SECURITY** DISABILITY  
BENEFITS. Unable to work?  
Denied benefits? We Can  
Help! WIN or Pay Nothing!  
Contact Bill Gordon & Associ-  
ates at 1-800-731-5703 to start  
your application today!

### EVENT PLANNING

**VACATION CABINS** for Rent  
in Canada. Fish for abundant  
walleye, perch, northern pike.  
Boats, motors, gasoline in-  
cluded. For free brochure call  
Hugh 1-800-426-2550  
**WWW.BESTFISHING.COM**

### HEALTH & FITNESS

**OXYGEN** - Anytime. Any-  
where. No tanks to refill. No  
deliveries. Only 4.8 pounds  
and FAA approved for air trav-  
el! May be covered by medi-  
care. Call for FREE info kit:  
855-970-1066

### LANDSCAPE & TREE MAINTENANCE

**ARBOR TREE SERVICE.** Storm  
Damage, Landscaping, Tree  
Trimming & Removing. Call  
**989-763-3830**

### REMODELING & REPAIR

**HOME IMPROVEMENT** In-  
terior/Exterior Painting,  
Roof & Drywall Repair,  
Power Washing, Kitchen/  
Bath Special, Tile, House  
Leveling. Windows, Doors,  
Flooring. Call 989-533-1006



# Business Card Directory

**CIRCULATION ISSUES:  
(989) 779-6000 PRESS 2**

**TO RESERVE YOUR SPOT IN THIS DIRECTORY  
CALL: 506-4640**

## Brad Malley Well Drilling, Inc.

**Mid Michigan's  
Most Experienced Well Drillers!**



**The One Contractor That Can Do It All!  
AFFORDABLE WELL PACKAGES  
All Major Pump Brands Available**

**FREE ESTIMATES**  
SERVING ALL OF MID MICHIGAN  
LICENSED WELL DRILLER  
LICENSED CONTRACTOR  
MT. PLEASANT  
**WWW.BRADMALLEYWELLDRIILLING.COM**  
**989.772.2765 / 800.717.6022**

**PROPANE SOLD HERE**

**SALE!!**  
20 LB. CYLINDER FILL  
**\$9.99**  
**GPC**

PROPANE • HVAC • REFRIGERATION  
8512 E. M-46 – VESTABURG  
800-991-7477  
[gasproductioncompany.com](http://gasproductioncompany.com)

We make  
custom hoses  
& fittings!

**SPECIALIZING IN ROOFING, GARAGES, HOMES,  
POLE BARN'S & STEEL BUILDINGS**

**CALL TODAY • Let the phone ring!**

**J B Enterprise  
John Brennehan  
LICENSED BUILDER**

**(989) 386-8024**

## MARTIN HEATING & COOLING

**DTE \$300 Rebates Available on New Furnaces for a Limited Time**

Installation • Service • Parts • Free Estimates

**Amana** Heating & Air Conditioning  
LASTS AND LASTS AND LASTS: 546 W. 5th street, Clare (989) 386-3791  
Ask about Geothermal Systems and heat pumps

## VALET AUTO CARE, INC.

Since 1983

- A.R.E. Pickup Toppers
- Over 100 New & Used Toppers in Stock
- Truck Accessories
- Tonneau Covers

**LEER** **ARE** Because you love your truck  
LIVE LARGER [www.valetaauto.com](http://www.valetaauto.com)

**James Motz - Owner**  
610 N. Mission (3 blocks S. of Meijer) Mt. Pleasant (989) 773-3477

**digitalfirst**  
MEDIA

**Kindra Norlander**  
Account Executive  
The Morning Sun  
The Mid-Michigan Buyers Guide

Call for Quotes on digital  
advertising, print &  
deliver, pre prints and  
print advertising

[knorlander@michigannewspapers.com](mailto:knorlander@michigannewspapers.com) Cell: 989-506-4640

**CAL'S PAINTING**

Over 30 Years Experience  
COMMERCIAL & RESIDENTIAL

- Interior & Exterior • Power Washing & Deck Care
- Window Washing & Gutter Cleaning
- Drywall Repair • Cleaning and Refinishing Log Homes
- Cabinet, Woodwork, Door & Furniture Refinishing

**GO CALL TODAY!**  
**(989) 258-9638**

Free Estimates • Work Gauranteed • Insured  
Winter Rates Available

## ALMA DOG SITTING

**989-954-7210**

Overnight Boarding  
& Doggy Daycare  
**Cage-Free • Safe  
Affordable • Fun**

[facebook.com/AlmaDogSitting](https://www.facebook.com/AlmaDogSitting)  
**We Train Puppies!**

**Mission Family** **Chiropractic Center**

Formerly Rodnick Chiropractic  
**11245 N. Mission Rd., Clare**  
**989-386-KIDS (5437)**

Dr. Tamara Slusher

**Make health part of your  
2017 New Year's Resolution!**

**New Patient Special  
\$49.95**

- Receive Spinal Exam
- 2 Plates of X-Rays (if necessary)
- Initial Adjustment

With insurance, all procedures must be  
billed per provider agreement.

**MOST INSURANCES ACCEPTED**

Same Day Appointments • Digital X-rays • Emergency Care Available

**Start Sewing Package**

**Special: \$299**  
Plus get the  
Start Sewing  
Kit Free!  
**Save \$140!**

Janome MyStyle 100  
gives you what you need  
to make your style all  
your own.

**NEW Machines Start  
at \$149.95**  
Free Class Instruction  
with machine purchase

**CIRCLE SEWING & VACUUM**  
1900 S. SAGINAW RD., MIDLAND  
IN THE KMART PLAZA  
**(989) 839-0800**  
[circlesewingandvac.com](http://circlesewingandvac.com)

# Business Card Directory

Shop these local Professionals

Call 989-506-4647  
for Advertising Info

**Gladwin Hobby Shop**

**\$ CASH for Old Coins & Currency!**

**RADIO CONTROL**

- Plastic Model Kits
- Testors Paints
- ESTES Rockets
- Pinewood Derby

Puzzles, Rock Polishers, Balsa & Bass Woods, and more.

**WE BUY OLD TRAINS**

Gift Certificates Available

Visit us on Facebook

**400 E. Cedar Ave. Gladwin, MI • 989-426-7300**

**Weidman Business Association Bingo**

Every Wednesday. First game at 6:30.

**\$300** Jackpot on Big Game this week. In the Community Building

Located behind Baumanns Food Pride grocery store and Isabella bank.

**FREE Hearing Test & Consult**

**bieri** HEARING SPECIALISTS

**888-641-0087**

**Clare and Midland Locations**

**www.bierihearing.com**

**Tom's POLE BUILDINGS**

Over 30 Years Experience

**POLE BUILDINGS & GARAGES**

**ROOFING & SIDING**

**CONCRETE FLOORS DRIVEWAYS & FENCING**

**FEATURING ULTRA 2000 19 colors to choose from And A 45 YEAR WARRANTY**

From Beginning permit To Cleanup, We Do It All!

**1-800-541-3974**

We accept major credit cards. • email: [tompolebuildings@yahoo.com](mailto:tompolebuildings@yahoo.com)

**Newcombe's Family Restaurant**

27 S Coldwater Rd Lake Isabella, MI 48893

(989) 644-8380

**FOOD SO GREAT YOU'LL SCRAPE YOUR PLATE**

Sunday 7am-8pm  
Mon.-Thurs. 7am-9pm  
Fri & Sat 7am-10pm

Like us on Facebook

**PIONEER POLE BUILDINGS INC.**

7400 S. Clare Ave. • Clare, Michigan 48617

**800-292-0679**

**www.pioneerpole.com**

**Pioneer Metal Roofs**

Residential Steel Roofing

7325 S. Clare Ave.  
Clare, MI 48617  
(989) 386-4444 (Office)  
(800) 292-0679

**www.pioneermetalroofs.com**

**O-ink** WE CUT THE FAT OUT OF INK PRICES

600 S. Mission St.  
Mt. Pleasant, MI 48858

989-779-7227  
989-772-5009

Computer Center  
Computer Repair • Used Computers  
Custom Built • Virus Removal  
And More

"Our Customers are our Warmest Friends"  
Guaranteed On Time Certified

**FREE TANK SETS**

**COYNE OIL & PROPANE**

Clare • Gladwin • Harrison • Evart

**800-386-7731 • 989-386-7731**

**RESIDENTIAL • COMMERCIAL INDUSTRIAL • FARM**

**STORAGE SPACE AVAILABLE**

420 Units

5'x12', 10'x12', 10'x20' Stalls

**MIDSTATE RENTAL AND STORAGE, INC.**

1 MILE EAST OF GLADWIN ON M-61

**426-2981**

FOR ALL YOUR RENTAL NEEDS

MON.-SAT. 8AM-5PM

Joyous holiday wishes to you and your family...

Maury Irwin, Agent  
1011 N McEwan Street  
Clare, MI 48617  
Bus: 989-386-4141  
[maury.irwin.18g2@statefarm.com](mailto:maury.irwin.18g2@statefarm.com)

from your good neighbor.  
May all your wishes come true this wondrous season.  
Like a good neighbor, State Farm is there.®  
CALL ME TODAY

**State Farm**

1101450.1 State Farm, Home Office, Bloomington, IL

**You Looked here and your customers will, too.**

**Call 989-506-4647 for more info.**

**ECOWATER SYSTEMS**

**Lindsay Soft Water Co.**

1209 Michigan Ave. St. Louis, MI 48880  
P.O. Box 401 Gladwin, MI 48624

(989) 681-5436  
1-800-244-3464

(989) 426-4220  
Cell (989) 620-1263

**www.ecowater.com**

**GABE EAREGOOD**  
Water Specialist

**digitalfirst MEDIA**

**Marlene Bennett**  
Account Executive

The Morning Sun • The Mid-Michigan Buyers Guide

[mbennett@michigannewspapers.com](mailto:mbennett@michigannewspapers.com)

For Advertising call **989-506-4647 or 989-240-0473**

For Circulation call 989-779-6000 Press 3

**Pole Barn Kits**

**Now Available**

**CALL OR STOP BY FREE ESTIMATES**

**ABC Auto Body**

313 W. Knox Road, Beaverton, MI  
1/2 Mile West of M-30  
**989-435-2707**

**We Take Pride In Your Ride!**

- Quality Collision Repair
- Free Estimates
- Insurance Work Welcome
- Custom Color Matching & Painting
- We Repair All Makes and Models
- Car/Light Truck
- Genuine Original Equipment Parts

**Tag's Auto Repair**

2 yr. 25,000 mile warranty nationwide on parts & labor

• Computer Diagnostic Service • 2 and 4 Wheel Alignment

**BRAKES & FRONT END REPAIR!**

Receive a **\$25 VISA** prepaid card on qualifying purchase of \$250 or more made on Drive Card

**FREE Roadside Assistance Program Towing, Flats, Lockouts, More! Call Us For Details!**

**Auto Value SERVICE CENTER**

3780 N. Clare Ave. Harrison  
Hours M-F 8-5, Sat 10-2  
**989-539-1986**

**Luthy Metal Sales**

Manufacturing, Roofing, Siding & Accessories

**989.433.5705**

5145 N. Mission Rd. Rosebush

**\$1000 off** any in-stock & non-sale pair of shoes

Expires 2.4.17

**CIRCLE QUALITY SHOES**

Specializing in hard to fit sizes-100's of styles to pick from

• Birkenstock • Clarks • Merrell • SAS

208 Cambridge St. 835-4853 • [circlequalityshoes.com](http://circlequalityshoes.com)

**HENRY EXCAVATING CONCRETE & TREE SERVICE LLC**

POURED WALLS • CRAWL SPACES • BASEMENTS

OVER 30 YEARS EXPERIENCE • LICENSED & INSURED

**COMMERCIAL & RESIDENTIAL**

- Excavation
- Site Clearing
- Septic Systems
- Back hoe & Dozing
- Flat Work
- Demolition
- Driveways
- Tree Service

989-539-7542 • 3620 N. Clare Ave., Harrison

James Henry Cell 989-429-1175 | Michael Henry (Tree Service) Cell 989-339-4377

**You Looked here and your customers will, too.**

**Call 989-506-4647 for more info.**

**DEBRIS HAULING**

• Clean Out Basements Attics & Garages

• Tear Downs Sheds & Garages

• Scrap Metal

• Commercial Buildings

**Free Estimates**

**DEBRIS HAULING**  
Good & Fast MOUNT PLEASANT AREA  
Quick & Quality Service  
Less than the price of a dumpster!

**989-773-0735 10 Yards \$285 Dan Syzak**

**digitalfirst MEDIA**

**Marlene Bennett**  
Account Executive

The Morning Sun • The Mid-Michigan Buyers Guide

[mbennett@michigannewspapers.com](mailto:mbennett@michigannewspapers.com)

For Advertising call **989-506-4647 or 989-240-0473**

For Circulation call 989-779-6000 Press 3

**BURKHART - PRESIDIO INSURANCE AGENCY**

Auto • Home • Life • Business • Amenities

"Over 60 Years of Professional Insurance Service"

222 W. Cedar Ave. • Gladwin  
989-426-9278 • [www.burkhart-presidio.com](http://www.burkhart-presidio.com)

Dirk Presidio Michael Murray Jim Jacobs

**Auto-Owners Insurance**



**NEW**  
**\$6.99 Lunch Menu**  
Featuring 10 of your  
Legendary Favorites!



MT. PLEASANT LOCATION ONLY  
**PONDEROSA®**  
**STEAKHOUSE**

**BACK BY POPULAR DEMAND**

**LOADED BAKED POTATO BAR**

**Served Monday-Friday, 11:00am - 2:00pm**



**The Possibilities Are Endless**

# Seeley Auto Sales Inc.

101 HIDDEN OAKS DRIVE (M-46) • ST. LOUIS, MI 48880  
989-463-AUTO (2886)

SALES FINANCING



SERVICE PARTS

Ask About Our  
**BUY HERE  
PAY HERE PROGRAM**  
SPECIALIZING IN CUSTOMERS WITH SSI,  
DISABILITY AND SOCIAL SECURITY INCOME.  
Financing Available in Select Areas  
Call For Details

**seeleycars.com**  
989-463-AUTO (2886)



**2005 CHEVROLET  
TRAILBLAZER EXT LS  
\$2,995**



**2005 PONTIAC  
VIBE  
\$2,995**



**2005 FORD  
MUSTANG 5 SPEED  
\$3,995**



**2005 PONTIAC  
GRAND PRIX  
\$3,995**



**2000 CHEVROLET  
S-10  
\$3,995**



**2007 HYUNDAI  
ELANTRA GLS  
\$4,995**



**2006 CHEVROLET  
HHR LT  
\$4,995**



**2008 PONTIAC  
TORRENT  
\$5,495**



**2007 FORD  
FOCUS ZX4 S LOW MILES  
\$5,995**



**2005 DODGE  
DAKOTA SLT 2WD  
\$5,995**



**2010 DODGE  
JOURNEY SXT  
\$6,295**



**2009 CHEVROLET  
IMPALA LS  
\$6,495**



**2005 GMC  
SIERRA 1500 SLE  
\$6,495**



**2006 JEEP  
GRAND CHEROKEE LAREDO 4X4  
\$6,595**



**2008 FORD  
EXPLORER XLT  
\$6,995**



**2011 FORD  
ESCAPE XLS  
\$7,995**



**2009 JEEP  
PATRIOT SPORT 4X4  
\$7,995**



**2012 KIA  
SOUL WAGON  
\$7,995**



**2008 CHEVROLET  
HHR SS WAGON  
\$7,995**



**2013 DODGE  
DART SE 5 SPEED  
\$7,995**



**2004 CHEVROLET  
AVALANCE 1500  
\$7,995**



**2010 FORD  
ESCAPE XLT  
\$8,295**



**2010 DODGE  
CHARGER SXT  
\$8,395**



**2013 BUICK  
VERANO  
\$8,995**



**2010 FORD  
ESCAPE XLT  
\$8,995**



**2010 CHEVROLET  
TRAVERSE LT  
\$8,995**



**2009 JEEP  
LIBERTY SPORT  
\$9,595**



**2008 GMC  
ACADIA SLE-1  
\$9,995**



**2009 FORD  
EDGE SEL  
\$9,995**



**2006 CHEVROLET  
SILVERADO 1500 LT1  
\$9,995**



**2011 DODGE  
JOURNEY LUX  
\$10,995**



**2009 FORD  
FLEX  
\$11,595**



**2010 CHEVROLET  
CAMARO LT  
\$11,995**



**2010 CHEVROLET  
TRAVERSE LT AWD  
\$11,995**



**2009 DODGE  
RAM 1500 LARAMIE  
\$12,995**



**2009 DODGE  
RAM 1500 SLT  
\$12,995**



**2008 DODGE  
RAM 1500 ST  
\$12,995**



**2007 GMC  
SIERRA 1500 SLE1  
\$13,595**



**2010 FORD  
F-150 XL  
\$14,995**



**2016 DODGE  
RAM 1500 BIG HORN  
\$37,942**

**Always Accepting Trade-Ins**  
**See Many More At: [www.seeleycars.com](http://www.seeleycars.com)**

# Our Winning Sales Team



**Bob Mihalyfi**  
Sales Manager  
38 Years Experience  
25 Years at Krapohl's



**Jeremy Haskell**  
Assit. Manager  
20 Years at Krapohl's



**Stan Miller**  
Fleet Manager  
47 Years Experience  
26 Years at Krapohl's



**Cheryl Weekley**  
Salesperson  
29 Years Experience  
26 Years at Krapohl's



**Rick O'Shay**  
Salesperson  
40 Years Experience  
10 Years at Krapohl's



**James Yun**  
Salesperson  
10 Years Experience  
7 Years at Krapohl's



**Jeremy Skelton**  
Salesperson  
24 Years Experience  
9 Years at Krapohl's



**Bob Yost**  
Salesperson  
28 Years Experience  
8 Years at Krapohl's

**ANY MAKE OR MODEL!!**

Stop in for a free buy quote appraisal. You don't have to buy from Krapohl for this service.

**SUPERIOR SALES EXPERIENCE**

# GREAT SERVICE BEFORE & AFTER THE SALE

**PRICE & PAYMENT 0 DOWN PLUS TAX TITLE DOC**



**2011 FORD F-150 XL REG. CAB**  
3.7L V6, 44,800 miles, Air conditioning, Tilt Steering. GU216  
66 pymt/  
**\$271**  
\$15,895



**2014 MAZDA CX5 AWD**  
2.5 Auto, Navigation, Red Gray Cloth, 1-Owner, Local Trade. HT023A  
**\$16,785**



**2009 NISSAN MAXIMA 3.5 SV SEDAN**  
3.5L V6, 62,806 miles, HC009A  
60 pymt/**\$238**/12,788



**2013 CHRYSLER 200 LIMITED SEDAN**  
3.6L V6, 25,412 miles, GT105B  
72 pymt/**\$234**/14,880



**2013 FORD FUSION TITANIUM SEDAN**  
2L, EcoBoost, 54,108 miles, GU210  
72 pymt/**\$256**/16,150



**2009 FORD F-150 TRUCK**  
5.4L V8, 90,000 miles, GU180A  
60 pymt/**\$316**/16,995



**2014 FORD FUSION S SEDAN**  
2.5L, 18,522 miles, GT065A  
72 pymt/**\$281**/17,725



**2010 FORD RANGER SPORT TRUCK**  
4L V6, 42,425 miles, GU146  
60 pymt/**\$344**/18,495



**2014 FORD MUSTANG V6 COUPE**  
3.7L V6, 29,176 miles, HC020A  
72 pymt/**\$314**/19,800



**2013 FORD FLEX SEL SUV**  
3.5L V6, 54,354 miles, GT415A  
72 pymt/**\$327**/20,595



**2014 KIA OPTIMA 4DR LX**  
Auto, air, full power, 1 owner, local trade black with tan cloth. GU235A  
**\$11,380** \$179/72



**2015 GMC 3/4 TON CARGO SAVANA VAN**  
4.8 V8, 8000 miles, GU232  
**\$23,850**



**2013 FORD EDGE SEL SUV**  
3.5L V6, 32,264 miles, GP043  
72 pymt/**\$291**/24,600



**2013 FORD EXPLORER XLT SUV**  
3.5L, 6-Cyl, 45,481 miles, HT059A  
72 pymt/**\$396**/24,895



**2014 F-150 CREW 4X4 STX**  
5.0 V8, 1-Owner, HT107A  
**\$25,495**

**2015 FORD ESCAPE 4 DR 4X4 TITANIUM**  
Auto, full power, leather, navigation, remote start, sunset metallic, 26K miles, 1 owner, heated seats.  
**\$23,600** 374/72



**2014 FORD FLEX SEL SUV**  
3.5L V6, 28,427 miles, GP054  
72 pymt/**\$444**/27,795



**2012 FORD EXPEDITION LIMITED SUV**  
5.4L V8, 92,945 miles, HT089A  
72 pymt/**\$444**/27,800



**2014 FORD F-150 XLT CREW 4X4**  
5.0L V8, 70,784 miles, GU100  
72 pymt/**\$456**/27,995



**2015 FORD F-150 XLT SUPERCAB**  
4x4 V6, 15,949 miles, GU127  
72 pymt/**\$474**/29,800

**2014 FORD FOCUS SE 4DR**  
4 cyl., auto, full power, 35K miles, 1 owner, local trade, red with grey cloth. GP083A. **\$11,995** 189/72



**2014 LINCOLN MKX AWD SUV**  
3.7L V6, 18,831 miles, GP075  
72 pymt/**\$478**/29,950



**2013 FORD F-150 LARIAT SUPERCAB**  
4x4, 6.2L V8, GT401A  
72 pymt/**\$495**/30,995



**2015 JEEP 4DR WRANGLER ULTD SPORT 4X4**  
6 Cyl., 26,000 miles, GU176A  
**\$30,995**



**2015 FORD F-150 XLT CREW 4X4**  
5.0L V8, Reg. Unl., GU084  
72 pymt/**\$515**/32,325

**2014 FORD F-150 REG CAB 4X4 8FT BOX XL**  
6 cyl., auto, air, stereo, trailer tow pkg, rear sliding window, bed liner, charcoal grey, grey cloth, 57K miles.  
**\$18,995** 299/72



**2016 FORD F-150 XLT CREW CAB SHORT BED TRUCK**  
V6, 24V, GDI DOHC, Twin Turbo, GU171  
60 pymt/**\$553**/34,995



**2015 FORD F-150 XLT CREW 4X4**  
V6, 8,866 miles, GU217  
72 pymt/**\$558**/34,960

**2015 DODGE CREW CAB 3/4 TON LONG BOX, 4X4**  
6.7 Cummings Turbo Diesel, auto, air, cruise, tilt, power locks, power windows, stereo, chrome wheels, trailer tow pkg, rear sliding window, bed liner, white with grey cloth, outdoorsman pkg, 36K miles,  
**\$40,950** 654/72

**2006 HONDA CRV 4DR SE SWD**  
4 cyl., auto, moon roof, full power, grey metallic. HU009A.  
**\$6,595** 169/42

**2006 FORD F-250 CREW 4X4 LARIAT**  
6.0 Diesel, auto, full power, trailer tow pkg, running boards, tan metallic. GU112C.  
**\$16,680** 429/42

**2010 FORD TRANSIT WAGON XLT 4DR**  
4 cyl., auto full power, stereo CD, 1 owner, blue metallic. GT108A.  
**\$10,650** 197/60



**2013 FORD F-250 SD XLT TRUCK W/POW**  
6.2L V8, 34,389 miles, FU201  
72 pymt/**\$638**/39,900



**2015 LINCOLN NAVIGATOR 4X4**  
6 Cyl., 1-Owner, HT178A  
**\$40,850**

# KRAPOHL'S

MT. PLEASANT 1 Block East of Meijer  
Toll Free 1-800-772-5974 • Local 772-2991



**66 YEARS STRONG!**

Visit our website  
**www.krapohl.com**  
for our entire inventory!



\*Price & Payment 0 Down Plus Tax, Plate, Doc. Payment XXX% Fiex rate and approved credit. Down payment on trade equity will lower payment. All vehicles subject to prior sale. See dealer for details.