

MEMBERSHIP DIRECTORY & COMMUNITY GUIDE

2016-2017



NORWICHCHAMBER.COM



*The Greater Norwich Area
Chamber of Commerce*

- BOZRAH
- FRANKLIN
- GRISWOLD
- LEDYARD
- LISBON
- MONTVILLE
- NORWICH
- PRESTON
- SALEM
- SPRAGUE
- VOLUNTOWN





AMERICAN AMBULANCE

American Ambulance Service, Inc.

One American Way, Norwich, CT 06360
info@americanamb.com

860.886.1463

americanamb.com

American Professional Educational Services

One American Way, Norwich, CT 06360
info@americanprotraining.com

860.886.2737

americanprotraining.com



AMERICAN PROFESSIONAL EDUCATIONAL SERVICES



get bent IN NORWICH

Get Bent in Norwich

207 North Main Street
Norwich, CT 06360
info@getbentinnorwich.com

860.886.9642

getbentinnorwich.com

MACARA Vehicle Services

207 North Main Street
Norwich, CT 06360
info@macaravehicle.com

860.887.0548

macaravehicle.com



M MACARA VEHICLE SERVICES



860-859-4300 | DIME-BANK.COM

Dime Bank

MEMBER FDIC

means BUSINESS

Expert lenders who close deals fast.
Checking and merchant services that
are built for business.

If you mean business, come bank with Dime

DIME FLEX

- NO MONTHLY MAINTENANCE FEE
- NO CHARGE FOR FIRST 25 TRANSACTIONS EACH MONTH

BETTER BUSINESS
CHECKING STARTS ON A DIME

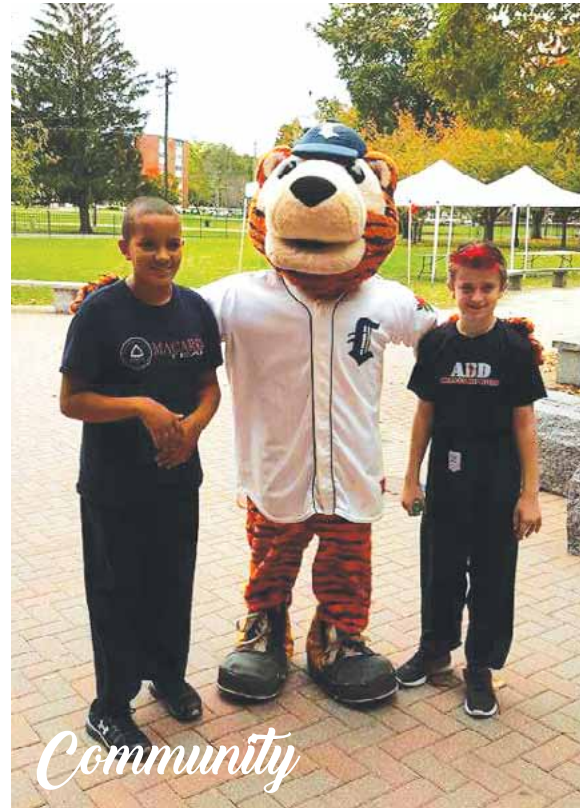


NO-00224078



TABLE OF CONTENTS

- 4 Welcome to the Greater Norwich Area Chamber of Commerce
- 4 Services and Benefits
- 5 Mission and Core Values
- 6 Networking and Membership Opportunities
- 8 GNACC Staff and Executive Board Members
- 10 Board of Directors
- 12 GNACC Committees
- 14 Why Join the Chamber?
- 14 L.E.A.D. Program
- 16 Economic Development in the Greater Norwich Area
- 16 Thank You to Our Chairman's Circle Members
- 18 City of Norwich
- 22-30 Towns We Serve
- 32 GNACC Golf Tournament
- 34 GNACC Holiday Bazaar
- 36 Rock the Docks
- 38 Healthy Living Festival
- 40 Business After Hours
- 42 Membership Directory
- 64 Welcome New Members



CONTACT US
114 Main St., Norwich, CT 06360
Phone: (860) 887-1647
Fax: (860) 887-9238
www.norwichchamber.com
info@norwichchamber.com



IT HAS BEEN SAID YOU ARE JUDGED
BY THE COMPANY YOU KEEP
(WE AGREE)

JOIN US AND OTHER GREAT COMPANIES
AT **FOUNDRY66!**

COWORKING IS...
PRODUCTIVE MOTIVATING EFFICIENT
PROFESSIONAL MODERN RELAXED
COMMUNITY SUPPORTIVE CO
FUN COLLABORATIVE INTERESTING EXCITING CREATIVE
COMMUNITY CREATIVE SOCIAL
CONVENIENT ENERGIZING NETWORKING
A SHARED WORKING SPACE AT GYM MEMBERSHIP PRICES

CALL OR STOP IN TODAY TO SEE FOR YOURSELF
66 FRANKLIN STREET; NORWICH, CT
860.887.6964 FOUNDRY66.COM
FACEBOOK.COM/FOUNDRY66



NO-00223219

WELCOME TO GNACC

CHAIRMAN'S MESSAGE



On behalf of the Greater Norwich Area Chamber of Commerce (GNACC), I welcome you to the northern half of New London County. This area is one of the best places in the nation to live, work, or play. When I travel around the country and people ask why I am so passionate about this area I simply explain: Where else can you go to a Broadway Show on a Monday, a Red Sox game on a Tuesday, the New Hampshire mountains on a Wednesday, visit the world's largest casinos on a Thursday, and Block Island on a Friday all while sleeping in your own bed every night?

Our Chamber is an energetic group of more than 450 member businesses and professionals that understand the value of collaboration and volunteerism in this community. We stay focused on business education, legislative events, networking opportunities, leadership programs, Business Assistance Team guidance, and sponsorships that will enhance your business in our region.

If you have a business that is not yet a member or you are interested in being part of the great volunteerism that makes us who we are, please feel free to reach out to our office. We would love to have you learn more about what we can do to help support your business and how you can become involved to improve the greater Norwich region.

Remember, that in the northern half of New London County, the Greater Norwich Area Chamber of Commerce is in the business of helping make your business better.

Chris Jewell, Chairman

FOUNDERS' MESSAGE

From the inception of The Greater Norwich Area Chamber of Commerce, it was our belief that Northern New London County needed a Chamber of Commerce to adequately represent our region and address the concerns of the business community. While not an insignificant undertaking, we were convinced it was the right thing to do for the region and the towns we represent. Since January of 2004, there has been overwhelming support and enthusiasm, confirmed by thousands of volunteer hours, to improving the business and economic climate in our area.

While much remains to be done, our Chamber is well on its way to lasting prominence as the business organization of choice in our region. It has been our privilege to work with so many selfless individuals and committed organizations all trying to make a difference. Thank you.

Attorney Ted Phillips & Andy Messier, CPA



SERVICES & BENEFITS

Free listing on the GNACC website under the Business Directory with a link to your website.

Weekly electronic communications: Every Monday, the GNACC weekly newsletter is sent out detailing the chamber events and how to RSVP. Every other Friday our Member to Member Communication (M2M) is designed to keep members connected to members. This communication offers members a place to advertise their events and products at no cost.

Website advertising opportunities: Take advantage of low cost advertising opportunities available on the Chamber's website for your business.

Community Calendar: Members can post their public events on the Community Calendar, located on our website, as a way to market to the business community at no cost.

Event sponsorship opportunities: From our Chairman Circle Membership, to sponsoring an event, there are always numerous opportunities to get your business marketed.

Member information displayed: Members can display literature at the Chamber office for other members, residents and visitors to take.

OUR MISSION

The Greater Norwich Area Chamber of Commerce takes a leadership role to support, promote, enhance and advance the general welfare and prosperity of the greater Norwich area so that its citizens, and its business and professional community, prosper. This organization will give emphasis to the economic, civic, commercial, cultural and educational interests of the greater Norwich area to ensure that the area is a desirable place in which to work, live, or visit.

The Greater Norwich Area Chamber of Commerce strongly encourages our members to shop members first for whatever their business or personal need might be. Members doing business with Members is our strongest avenue towards providing a healthy return on investment and our most direct connection to serve as your catalyst to profit and growth.



CORE VALUES

At the Greater Norwich Area Chamber of Commerce, we serve as your connection to profit and growth through our three core values and benefits.



- 1 Members doing business with members.
- 2 Our relentless efforts to promote and advocate for our members.
- 3 Our constant focus to create opportunities for connections, education, visibility, and support for our members.

www.norwichchamber.com

NETWORKING OPPORTUNITIES

BUSINESS AFTER HOURS

These events are held monthly from 5:30 p.m. to 7:30 p.m. and take place at a hosting member's business. Event includes food, beer, wine, door prizes and the perfect setting for making contacts and friends. Hosting a Business After Hours or a Business at Breakfast is a great way to showcase your business.

BIZBLENDER

Three-minute networking is held monthly. Speed networking guarantees to connect you with different businesses within the Chamber membership.

MEMBER BREAKFAST MEETINGS

What a great way to start the day! Get an early start to the work day with some networking and an engaging presentation. Topics can range from: business building ideas, legislative affairs, key note presentations from local leaders, or community affairs.

NEW MEMBER MEET & GREET *New to 2017*

Meet and Greet are opportunities for new Chamber members and their employees to network with other members within the organization. Our Business Education & Membership Services committee will host quarterly Meet & Greet at the Chamber office

from 8 a.m. to 9 a.m. It's a great way to help you establish valuable relationships within the business community.

COMMITTEE INVOLVEMENT

Numerous committees work on special events and areas of interest to businesses. These teams of volunteers develop special bonds and expand their business contacts while working together.

KEEP IT LOCAL

GNACC encourages businesses and the community to #EatLocal and #Shop-Local. We offer two very important programs to the area:

Restaurant Week (held in the Spring and Fall) brings a value added program to our GNACC Food & Beverage members and allows us to bring a program that the local community can participate in and enjoy.

The GNACC Holiday Bazaar is held annually on Small Business Saturday. Support your community by shopping local, and finding great one of a kind gifts made by artists and artisans right here in Eastern Connecticut.

CHAMBER ORIENTATIONS

Members attend an orientation meeting at the Chamber office. Orientations are held every other month.

GNACC MEMBERSHIP

The Greater Norwich Area Chamber of Commerce is the voice of business in Northern New London County. The majority of our members include businesses in Norwich and the 10 surrounding towns within a 20-mile radius. Chamber membership is open to any business micro to large, as well as any individual person who may have an interest in belonging.

BASIC & INDIVIDUAL MEMBERSHIP Base rate for membership is \$225. Membership cost is based on the size of your business. (Please call our office for the membership application for the dues calculation table.)

CHAIRMAN'S CIRCLE MEMBERSHIP gives you the ultimate visibility and exposure for your business. If you are interested in learning the details of a Chairman's Circle membership, call the Chamber office at (860) 887-1647. Annual commitment levels begin at \$5,000.

GNACC AMBASSADORS

Ambassadors are Chamber members who are highly visible, community spirited people. They serve as the Chamber's liaison to new Chamber members. Considered the goodwill arm of the Chamber, the Ambassador committee plays an essential role in member recruitment, communication and retention. They help to grow the Chamber's membership and are always looking to engage and encourage businesses who are not yet members of the Greater Norwich Area Chamber of Commerce to join our membership.

Upon their appointment, each Ambassador makes a commitment to build lasting relationships with the membership, particularly new Chamber members, in order to build a loyal, committed membership base that will continue to support, participate and invest in the Chamber. Ambassadors commit to spending 1-3 hours per month on their duties as Chamber liaisons.



FREEPORT-McMoRAN

Norwich Operations

**“A proud member of the
Norwich Community for
over 30 years”**

41 Wawecus Street, Norwich, CT 06360
www.fcx.com

(860) 425-6900

Fax: (860) 425-6905

NO-00224150

NO-00223223

Experience that gets Results

Let our team of professional **REALTORS** help you with your buying and selling needs.



860-887-1122

76 Salem Turnpike, Norwich

www.randallrealtors.com

GNACC EXECUTIVE BOARD



CHRIS JEWELL
Chairman
Collins & Jewell



LISA GRIFFIN
Vice Chairwoman
Eastern Savings Bank



FAWN WALKER
Vice Chairwoman
Norwich Public Utilities



ANDREW J. MESSIER, JR.
Treasurer
CPA



NANCY COWSER
Secretary
seCTer



THEODORE PHILLIPS, LLC
GNACC Attorney



ANDREW NOLLMAN
Past Chairman
Rose City Financial Services, LLC

The Greater Norwich Area Chamber of Commerce is the voice of business in the Northern New London County.

GNACC STAFF



ANGELA ADAMS
Director of Operations
angelaadams@norwichchamber.com



JENNIFER CHAUVIN
Operations Coordinator
jennchauvin@norwichchamber.com

A MESSAGE FROM THE DIRECTOR OF OPERATIONS

To make the most of your membership, we strongly encourage you to get involved and participate in the many different activities and programs GNACC has to offer, from networking, educational seminars, marketing, sponsorship opportunities, committee involvement, and more. To put it simply, the more you put into it, the more you get out.

Our Membership Directory and Community Guide is a great asset to help you find the best, most reliable and committed business/organization to complement your needs. When you support buying from your fellow chamber members, you invest in each other, keeping our economy strong. It's the right thing to do. Remember: Shop local.

Please do not hesitate to contact GNACC should you have any questions or have an interest in becoming a member of the Greater Norwich Area Chamber of Commerce.

Angela Adams, Director of Operations

Edward J. Waitte
Pat Zils
Michael J. Waitte
Debbie Froio

860 886-1961
FAX: 860 886-1965
116 BROADWAY,
NORWICH
NEXT TO NORWICH
CITY HALL

WAITTE'S INSURANCE AGENCY

SERVING THE AREA FOR OVER 100 YEARS

Visit us at: www.waittesinsurance.com

*Personalized Service
on All Types of Insurance*

- Auto • Home • Business • Life
- Group Medical • Motorcycles
- Boats • Bonds



NO-00224311



We're right in your neighborhood!



We're more than a business—we're part of your community. We were here when the big storm blew the tree through your roof... when your kitchen went up in smoke... and when your car ran over your neighbor's fence.

Like old friends, you may not call us often. But it's nice to know that we'll be here when you do.

For professional insurance advice, contact:



Dayville • Norwich

byrnesagency.com

NO-00223218

2017 BOARD OF DIRECTORS



KIM BRUNELLI
Brunelli Energy



JIM DALY
Northwestern Mutual
Financial Network



JOHN ESTELLE
Dime Bank



**NICHOLAS K.
FORTSON**
CorePlus Credit Union



RODNEY GREEN
Olde Tymes
Restaurant



JESSE JAMES
US Foods



KATHY KANE
Bouvier Insurance



LES KING
Aspen Properties, LLC



LAUREN LABELLE
Putnam Bank



STACIE LAMBERT
The American Group



LARRY LENTINE
New London County
Mutual Insurance



ALEX MASSE
Chelsea Groton
Bank



MIKE MATERA
Surplus Unlimited



NADINE MCBRIDE
The Bulletin



PAT MCMAHON
Three Rivers Young
Marines



MARISSA MILLER
Full Power Radio



JOHN PAUL MERREEN
Maple Lane Spirits/
Foggy Harbor



JAMES O'SHEA
Achievement Unlimited
of Connecticut



TODD POSTLER
Green Home
Solutions



BOB REED
Hall Communications



BARRY SHEAD
Savings Institute
Bank & Trust

EX-OFFICIO DIRECTORS

Glenn Pianka – Bozrah First Selectman
Richard Matters – Franklin First Selectman
Kevin Skulczyck – Griswold First Selectman
Michael Finkelstein – Ledyard Mayor
Deb Hinchey – Norwich Mayor
Thomas Sparkman – Lisbon First Selectman

Ron McDaniel – Montville Mayor
Robert Congdon - Preston First Selectman
Kevin Lyden – Salem First Selectman
Catherine Osten – Sprague First Selectman
Robert A. Sirpenski – Voluntown First
Selectman

COMMERCIAL • MARINE
RESIDENTIAL • INDUSTRIAL • RV

GENERAC



KOHLER
POWER SYSTEMS



Eastern CT & Western RI's Largest Factory
Authorized Servicing Dealer

Servicing
CT, MA, RI

*We won't leave you
in the dark.*

\$500 OFF

ON PERMANENTLY INSTALLED
AUTOMATIC STANDBY GENERATOR

AC/DC Industrial Electric, LLC • With coupon. Cannot be combined
with any other offers. Offer expires 6/30/17. Must present coupon.

Consulting • Design • Inspection • Troubleshooting Maintaining Generators
Customized Control Panels • Service RV & Marine



Industrial Electric, LLC

For your emergency power needs

860-886-ACDC (2232)

44 Yantic Flats Road • Yantic, CT

www.acdcindustrial.com • CT License E1-122124

\$30 OFF

YOUR
GENERATOR SERVICE

AC/DC Industrial Electric, LLC • With coupon. Cannot be combined
with any other offers. Offer expires 6/30/17. Must present coupon.

FREE 5 YEAR FULL WARRANTY ON ANY GENERAC HOME STANDBY GENERATOR 11KW TO 22KW IF PURCHASED BY 6/30/17

NC-00223212

PRIME
Eighty Two
RESTAURANT & BAR

Specializing in Lunch & Dinners

Full Cocktail Bar

Chops | Steaks | Seafood

Hours Mon-Sat 11am-12am | Sun 11am-10pm

181 West Town Street
Norwich, CT

860-949-8893

Less than 5 minutes away!



NO-00223222

GNACC COMMITTEES

BUSINESS EDUCATION & MEMBERSHIP SERVICES COMMITTEE

The Business Education and Membership Services committee organizes the Chamber's benefit services, educational programs and events throughout the year. Our goal is to add "value added" services and programs for our members to enhance their membership.

Programs and services include: Business Assistance program, also known as our "BAT" team, is a one-hour free consultation offered to our members to assist them with their business strategies.

ECONOMIC DEVELOPMENT COMMITTEE

This committee evaluates issues and proposals having an economic impact on the community and initiatives that will foster economic development in the community. It makes recommendations to the Board of Directors.

HEALTHCARE COMMITTEE

Health is a major concern for our membership, and we at the Chamber take this topic very seriously. We actively connect businesses to health and wellness resources in the community, and raise awareness of health-related issues and opportunities to keep membership informed, educated, and able to be proactive.

INSURANCE COMMITTEE

The goal of the insurance committee is to provide Chamber members with timely and relevant information pertaining to the insurance industry, including but not limited to: life, health, group medical, investments, workers compensation, business and personal auto, general liability and any other line of insurance that the committee feels would be useful and of interest to Chamber members. The information will be provided either in written format, including articles in various Chamber communications, or in a workshop/seminar format. The committee researches and reports on various insurance-related bills/regulations that could potentially have an impact on members' business operations.

The committee also serves as a resource for members who have general questions/issues relating to insurance. Any business interested in more information regarding our plans should call the Chamber at (860) 887-1647.

LEGISLATIVE AFFAIRS COMMITTEE

The purpose of the Legislative Committee is to facilitate the flow of information between our Chamber members and the State Legislators representing our 11 communities. The committee will identify opportunities to increase the level of interaction flowing from our members to our legislators, and a reciprocal flow of information from our legislators to our members.

EDUCATION COMMITTEE

Education Committee builds relationships between the businesses, educators and local students. The Committee is focused on helping high school students and their schools by opening them up to opportunities for mentoring and internship programs that may be offered by Chamber businesses. By making these connections, we aim to help students that may not have a career or higher education path in mind, find something they can be passionate about and learn some of the behaviors that help turn a job into a career. The committee refers all proposed positions, programs, and new events to the Board of Directors for approval prior to inception of new activities.

New!

LEADERSHIP EXPLORATION & DEVELOPMENT PROGRAM (L.E.A.D.)



The L.E.A.D. program helps develop knowledgeable, committed, and action-oriented leaders. Participants from diverse backgrounds and different perspectives will enhance their existing leadership skills and gain a better understanding of themselves and their role in the community. *See page 14 for more information on this exciting program.*

Your Local Hydraulic Repair House for Cylinders, Pumps, Motors & Valves



- *Mobile machinery, earthmoving, construction & truck*
- *Industrial equipment, automation, marine, machine tool*

Devine Hydraulics, Inc.

**COME VISIT US AT OUR
NEW LOCATION:
179 Gallivan Ln,
Uncasville, CT 06382**



860.859.1650 • www.dhict.com • fax 860.859.3711

NO-0023865



From Main Street to your street
we are the local agents for your
home, auto, life and business.

Call 860-859-9821

and ask for

Kathy Kane, ext. 321

or

Sue Moyer, ext. 326

for all of your *Insurance* needs.



BOUVIER®
INSURANCE

NO-0023231

WHY JOIN GNACC?

IT'S THE RIGHT THING TO DO!

Chamber members are businesses and individuals that believe in taking action rather than sitting on the sidelines. They know that being a member is an investment not just in their own business, but also in the quality of life for the whole area.

YOU CAN ADVERTISE YOUR GNACC MEMBERSHIP

Advertising your business as a Chamber member shows customers that you care about the community. When you join the Chamber, you receive a beautiful membership plaque to display at your business entrance. You also receive a Proud To Be A Member decal for your front door/window. Plus, an electronic logo is available for your website. Members display them proudly.



Photo courtesy of Tom Kaszuba

CREDIBILITY

Your membership identifies your business as one that has an interest in the community. Throughout North America, a member-in-good-standing at a Chamber of Commerce is known as a company that can be trusted to be honest and fair. The kind of company that customers seek out.

L.E.A.D. PROGRAM

The GNACC's Leadership Exploration & Development Program (L.E.A.D.) program helps develop knowledgeable, committed, and action-oriented leaders. Participants from diverse backgrounds and different perspectives will enhance their existing leadership skills and gain a better understanding of themselves and their role in the community.

THE PROGRAM IS DESIGNED TO:

- Identify emerging and existing leaders
- Enhance leadership competencies
- Foster commitment for leadership roles
- Demonstrate how strong leadership can enhance your business and support our community in reaching its goals

PARTICIPANT BENEFITS:

- Strengthened leadership abilities
- Access to a network of diverse colleagues
- Exposure to a variety of regional leaders, organizations and community leaders
- An understanding of the realities, opportunities, and challenges of our region
- An opportunity to become involved with, and bring about positive change in, our communities

Interested in joining L.E.A.D.?
Call (860) 887-1647 to learn more!



"Although I've worked in Norwich for the past decade, I was shocked to find out how unaware I was of all that's happening in the city. Through classroom time, interactive facility tours, and group collaboration work I was able to get a richer appreciation for all Norwich has to offer for its residents and those wishing to network, learn, and advance their careers. Working with other area employees who were also considering or currently in leadership and management roles helped me to see that the path doesn't always have to be direct and everyone's story is unique. I would recommend this program to anyone looking to learn more about the community and those looking to progress in their careers and are wondering where to start."
– *Katie, NPU, L.E.A.D. class of 2016*

The Chamber leadership class is a great way to be introduced to fellow members of the community who work in different industries. Hearing guest speakers' stories really inspires me to believe that you don't have to be anyone in particular, you just have to 'want' it. I was honored to be given this opportunity to be part of the 2016 leadership class. – *Erin, Dime Bank, L.E.A.D. class of 2016*

Attending L.E.A.D. has been an eye-opener. I have been an employee with the City of Norwich for over 17 years. I have been to just about every place and every business we have had our classes. I have never experienced any of these places the way I have while being involved with GNACC. I have gained a better appreciation for the businesses, organizations, and people I have met during this journey. The experience would be invaluable to anyone who is involved with the city and the connections made could only enhance its growth.
– *Michael, Norwich Police Department, L.E.A.D. class of 2016*

- Fire, Smoke & Soot
- Water Damage
- Mold Remediation
- Carpet & Upholstery
- Storm Response
- Contents Restoration



FASTER TO ANY SIZE DISASTER



of Norwich and Windham County

Like it never even happened.®

NO-00223211

24 Hour Emergency Service.

860-887-0447

www.servpronorwichwindhamcounty.com

Putnam Bank

TOGETHER WE MAKE A DIFFERENCE

We began in 1862, and **we're still here!**

If you own your own business, large or small, or you are looking to purchase or refinance a multi-family property or commercial property, we would love to talk to you. We offer very competitive rates and terms as well as local decision making authority that will help make your experience with Putnam Bank a pleasant one. We would welcome the opportunity to work with you to help your business grow.

Contact our commercial lending team today!



PUTNAM • POMFRET CENTER • DANIELSON • PLAINFIELD • GRISWOLD • NORWICH • GALES FERRY

860-928-6501

1-800-377-4424

putnambank.com



ECONOMIC DEVELOPMENT IN THE GREATER NORWICH AREA

Economic development by definition is efforts to seek to improve the economic well-being and quality of life for a community. This is generally achieved by what NCDC views as the B.R.E.A.D. of the organization: Business Retention, Expansion, Attraction and Development.

It is NCDC's goal to be able to provide top notch customer service to help your business achieve its goals. The attraction and development portions of the equation are often a harder lift.

NCDC has recognized that for small businesses getting started is costly and for many, unaffordable. The outfit of a space, monthly lease coupled with the expense of utilities, copying, phone lines and internet make for large line items in a business's budget. NCDC saw the need for assistance and has opened Foundry 66, a CoWorking space on Franklin Street in Norwich. Some major advantages to CoWorking for small businesses, freelancers or remote employees is that you don't have to worry about getting the internet turned on, fix a paper jam in a copier, or pay the electric bill. Businesses can come into the space, get work done and collaborate and network with other business people in the space. The



A VERY SPECIAL *Thank You*

TO OUR CHAIRMAN'S CIRCLE MEMBERS

Your continued support allows us the ability to maintain our mission "to support, promote, enhance and advance the general welfare and prosperity of the greater Norwich area so that its citizens, and its business and professional community, prosper."



month-to-month payment makes it easy for businesses to scale up or scale down; you are not tied into a lease.

In addition to the savings and usability of the space, 70% of co-workers reported they felt healthier than they did working in a traditional office setting, 64% of co-workers are better able to complete tasks on time and 91% have better interactions with others after working (from the Huffington Post). What does this mean for small business? It means that Foundry 66 will help with their creativity and separation of work and home life, and provide a source for networking and innovation with other like-minded business people.



HEROES WANTED

Get involved in your community by volunteering! On your own or with a group, United Way can connect you with meaningful volunteer opportunities that make a difference.

Visit us at uwsect.org/volunteer and find out how you can help. Because great things happen when we LIVE UNITED.



Connect with us on:



And text keyword **UWNEWS** to 51555 to receive up to 4 text messages from us each month, and you may opt out at any time. Stay up-to-date on all of our activities, news, and volunteer opportunities.

uwsect.org/volunteer



United Way of Southeastern Connecticut

NO-00223877

ONE YOU ENDLESS POSSIBILITIES



NORWICH FREE
ACADEMY

At Norwich Free Academy, our students are proud to point out what makes us different.

It's pretty simple, and yet it's not something many high school students get. Options.

Together with their families and faculty, NFA students build a four-year experience that is uniquely theirs—and turn their passions into a lifetime of opportunities.

Learn About Your Endless Possibilities at nfaschool.org



ALEX JACOBK
Class of 2018
Lisbon, CT

LUKE BRIGGS
Class of 2017
Norwich, CT

FRITNY FONTILUS
Class of 2017
Norwich, CT

NO-00223866

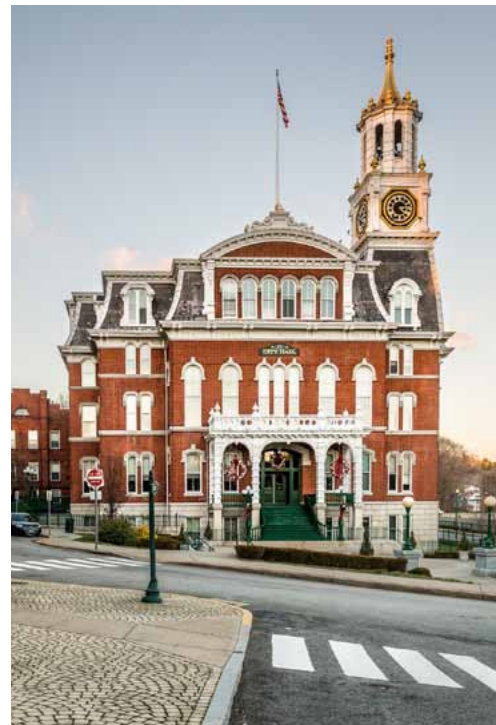


NORWICH 06360

Norwich is the birthplace of one of the most infamous figures of the American Revolution, Benedict Arnold. Other Colonial era noteworthies include Samuel Huntington, Christopher Leffingwell and Daniel Lathrop.

Through the end of the 19th century and into the early 20th century, Norwich served as home to many large mills. The population grew and became more diverse with an insurgence of different ethnic groups. These new residents helped to build the city's schools, churches, and social centers —and to transform Norwich into a thriving city.

Today, Norwich is an exciting city with a wide range of municipal services, a modern industrial park, its own utility company, and a positive outlook for residential and business growth. Locals and visitors to the city can enjoy such attractions as the Leffingwell House Museum; Norwich Arts Council & Donald L. Oat Theater; Norwich Golf Course; Norwich Ice Rink; Norwich Marina; Otis Library; Slater Memorial Museum; Chestnut Street Playhouse; Thomas J. Dodd Memorial Stadium; Veterans Memorial Rose Garden; and many more.



VETERANS MEMORIAL ROSE GARDEN

Judd Road/Rockwell Street, Norwich
(860) 823-3798

The beautiful Norwich Rose Garden is located on Rockwell Street in Mohegan Park. Situated on two acres of gently sloping parkland, the garden features 2,500 rose bushes in 120 varieties. This garden is one of 140 gardens throughout the United States that displays award winning roses in cooperation with the All American Rose Selections, Inc. The roses are at their full height during June but continue to blossom throughout the summer.

THE MARINA AT AMERICAN WHARF

1 American Wharf, Norwich, (860) 886-6363

Founded in 1988 as the vibrant, waterfront centerpiece of Norwich's Downtown, the Marina at American Wharf is located at the head of the Thames River, and mouth of the Yantic River in beautiful Norwich.



LEFFINGWELL HOUSE MUSEUM

348 Washington St., Norwich, (860) 889-9440

One of the finest restored examples of New England Colonial architecture. Visitors to this living museum catch a glimpse of early 18th century life. By the mid-18th century what was built as a simple two room house in 1675 had evolved into an elegant home. The house is filled with a fascinating assortment of pieces representative of its architectural evolution.

SLATER MEMORIAL MUSEUM

305 Broadway, Norwich, (860) 887-2505

Located on the campus of Norwich Free Academy, the Slater Museum awakens visitors to the richness and diversity of the human experience through art and history. For more than one hundred years, the Museum has displayed and interpreted the best examples of fine and decorative art, representing a broad range of world cultures of the Americas, Asia, Europe and Africa.

CITY OF NORWICH FIRE DEPARTMENT

10 N. Thames St., Norwich
(860) 892-6080



The members of the Norwich Fire Department are dedicated to serve the people of Norwich.

We provide the highest level of professional response to fire, medical, and environmental emergencies and disaster, either natural or man-made. We strive to create a safer community through fire prevention, code enforcement and education for the public. Our goal is to provide 24-hour emergency service for the protection of life and property within a four-minute response time frame with all necessary forces assembled, focused, and mission ready.





DODD STADIUM

14 Stott Ave., Norwich,
(860) 887-7962

Home of the Connecticut, a Class-A affiliate of the Detroit Tigers, Dodd Stadium provides numerous seating options ranging from premium sky box suites and private picnic areas to terrific views from premium and reserved box seats. The Tigers offer great season ticket options and affordable group rates. Connecticut Tigers Baseball...hear the roar!



OTIS LIBRARY, 261 Main St., Norwich, (860) 889-2365

Otis Library provides free access to information, ideas and services that anticipate our community's personal, educational, and professional needs. The library enriches our region by maintaining a safe and welcoming environment and by offering resources that promote lifelong learning.

NORWICH POLICE DEPARTMENT

70 Thames St., Norwich, (860) 886-5561

To protect life, safeguard property, and maintain social order within carefully prescribed ethical and constitutional restrictions while providing community-based police services with compassion and concern. Pictured: The Patrol Division is the most visible and recognizable unit of the police department, providing 24-hour response to the community. These officers are responsible for laying the foundation for a positive rapport between the public and the police department.



HOWARD T. BROWN MEMORIAL PARK

100 Chelsea Harbor Drive, Norwich

This picturesque area includes boat launch, walking trail and fishing. It's home of the Rock the Docks Summer Concert Series; GNACC Riverfest & Dragon Boat Racing; Norwich Italian Festival; Norwich Downtown Farmers Market; and more.

WILLIAM W. BACKUS HOSPITAL

326 Washington St., Norwich, (860) 889-8331

Backus Hospital delivers and coordinates a continuum of high-quality healthcare that is sensitive to the needs of individuals in eastern Connecticut. The Hospital is committed to being responsive and accountable to those for whose benefit it exists, and to improving the health of its communities.

CHESTNUT STREET PLAYHOUSE

24 Chestnut St., Norwich

(860) 886-2378

The Chestnut Street Playhouse is an intimate, professional, high-quality, black box theater that is internationally recognized for its annual dedication to the full production of new musicals.





**Bozrah Town Hall: 1
River Road, Bozrah, CT
06334**

Phone: (860) 889-2689

Fax: (860) 887-5449

Animal Control: (800) 236-1987

Assessor: (860) 889-2689 x5

Building: (860) 889-2689 x6

Director of Operations:
(860) 889-2689 x8

Bozrah Volunteer Fire Co.,
239 Fitchville Road:
(860) 887-9474

Library: 264 Hartford Road,
Salem (860) 859-1130

Police: Troop K
(860) 537-7500

Registrar of Voters:
(860) 889-2689 x7

Senior Center: (860) 383-2290

Selectman's Office:
(860) 889-2689 x1

Tax Collector: (860) 889-2689 x4

Town Clerk:
(860) 889-2689 x201



BOZRAH 06334

Bozrah was originally a part of Norwich called the Nine Mile Square, acquired from the Sachems of the Mohegan Indians in 1659; a portion that later became known as the New Concord Society.

In the early 1700s this land, west-northwest of the Norwich Town Plot, was opened to additional settlers. The nature of the region, being wild and rugged, presented a challenge to the pioneers. New Concord Society was organized and approved by the General Assembly in 1737. A site was accepted in 1739 for the construction of a meetinghouse, which was erected soon after. In 1786 the members of the New Concord Society, "hereby incorporated into a distinct Town by the name of Bozrah," and thus became the 86th town in the State of Connecticut, believed to be the only one with this name in the country. The name is of Hebrew origin meaning an enclosure or sheepfold. Local attractions include Bozrah Farmers Market, from July to October, Odetah Camping Resort, and the Acorn Acres Campground.





FRANKLIN 06254

Franklin was established in 1786 and named after statesman Benjamin Franklin. It is largely rural, with industry focused on the south end of town, and an emphasis placed on preserving its agricultural roots. Known for the “Seven Hills,” Franklin has far-reaching views of The Last Green Valley, the 35-town National Heritage Corridor in eastern Connecticut and south-central Massachusetts.

Local attractions include the Janet Carlson Calvert Library; the Ashbel Woodward Museum; Giddings Park and Pavilion; Veterans Memorial Park; and the Blue Slope Country Museum. The town also has one church, the Franklin Congregational. A world-class golf course, hotel and spa is currently under construction.

Giddings Park and Pavilion contains a ballfield complex, horse ring, tennis and basketball courts, a walking trail, a playground, and picnic areas. Veterans Memorial Park pays tribute to Franklin’s soldiers. Blue Slope Country Museum is a private organization that holds events and tours throughout the year, plus an annual festival. The Ashbel Woodward Museum also hosts several events during the year, including a Victorian Tea, Ashbel Woodward Day, and Victorian Christmas. The Calvert Library organizes events for all ages, such as the Connecticut Author Trail.

Local government business is housed at the Franklin Town Hall and overseen by the First Selectman. Meeting and banquet spaces, indoors and outdoors, are available to rent at the town hall, the fire department, and Giddings Park.



**7 Meetinghouse Hill,
Franklin, CT 06254**

Phone: (860) 642-7352

Fax: (860) 642-6606

Animal Control: Emergency:
(800) 236-1987

Assessor:
(860) 642-6475 x19

Building:
(860) 642-4338 x14

Calvert Library: 5 Tyler Drive,
(860) 642-6207

Fire Dept: (860) 642-7772

Fire Marshal: (860) 234-0154

Police: Troop K
(860) 537-7500

Public Works Town Garage: 197
Pond Road, (860) 642-7706

Transfer Station: 171 Pond Road,
(860) 642-7706

Senior Center: (860) 642-3936

Selectman’s Office:
642-6055 x16

Tax Collector:
(860) 642-7206 x11

Town Clerk: (860) 642-7352 x18

Zoning Agent: (860) 642-4338



GRISWOLD 06351

Griswold and its borough, Jewett City, is located in New London County. It is one of the 35 towns comprising the Quinebaug River Valley and Shetucket River Valley.

Griswold is a special place with a blend of nature, quality development and people who live and work in the community. It has been blessed with countless natural features such as the Pachaug State Forest, and there are large tracts of land available for development. Griswold retains much of its agricultural roots and sustainable agriculture is still encouraged.

The Southeastern Economic Region to which Griswold belongs has identified six clusters considered key to the region's economic future and Griswold is concentrating their efforts on them. They are: agriculture, defense, creative, bioscience, maritime, and tourism.

Griswold is accessible from all directions. Exits 85 and 86 off I-395 provide access to Route 138, Route 164, and Route 201. I-395 links with I-95 in East Lyme and with the Massachusetts Turnpike. Local attractions are plentiful: Stone Bridge Alpaca Farm; River Ridge Golf Course; Buttonwood Farm Ice Cream; and Pachaug Pond. Griswold is also home to Pachaug and Hopeville State Forests. At Hopeville State Park, you'll find a campground, beach and boat launch. In both Pachaug State Forest and Hopeville State Park, visitors enjoy hiking trails that wind through lovely meadows, along scenic brooks, over wooden bridges and deep into the cool, welcoming woods.



**Griswold Town Hall,
28 Main St., Griswold,
CT 06351**

Phone: (860) 376-7060

Fax: (860) 376-7070

Animal Control:
(860) 383-3993

Assessor:
(860) 376-7060 x105

Building:
(860) 376-7060 x110

Fire Marshal:
(860) 376-7060 x107

Library: (860) 376-0024

Parks & Recreation:
(860) 376-7026

Planning:
(860) 376-7060 x112

CT State, Troop E Montville:
(860) 848-6500

Borough Resident State Troopers:
(860) 376-2583

Public Works: 148 Voluntown
Road, Route 138,
(860) 376-7080

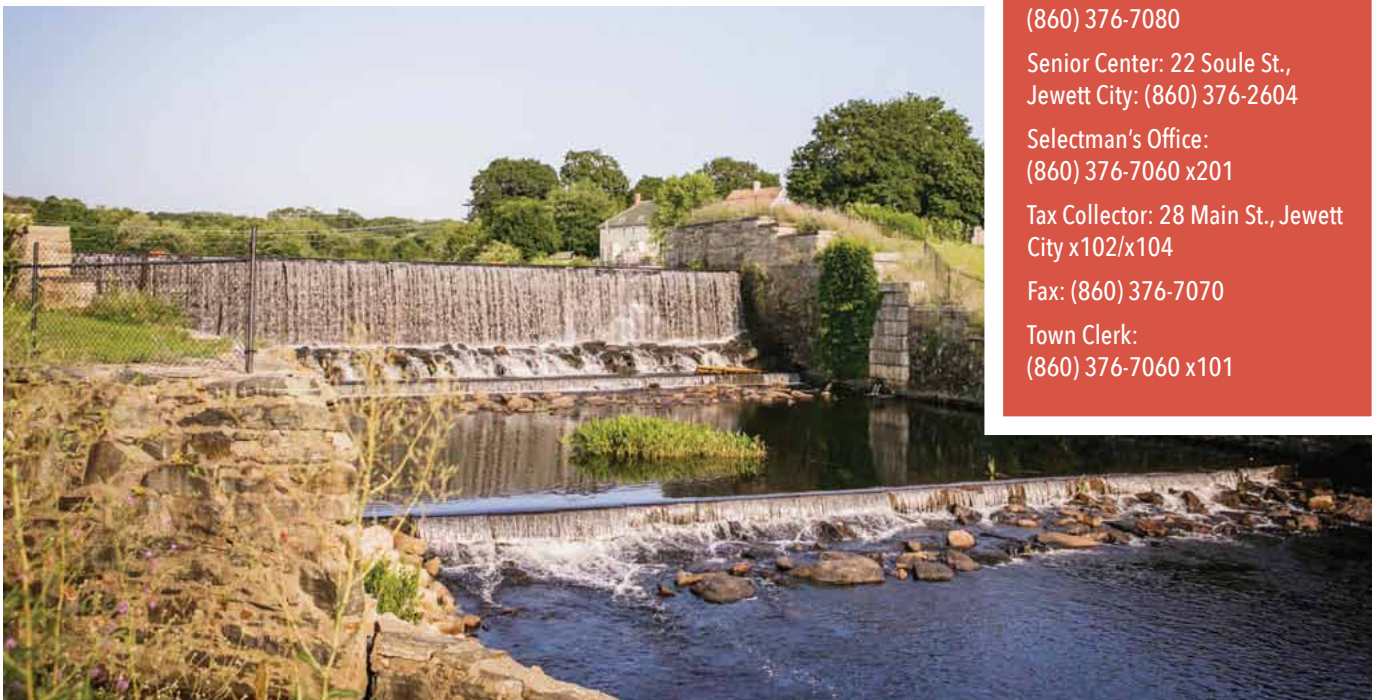
Senior Center: 22 Soule St.,
Jewett City: (860) 376-2604

Selectman's Office:
(860) 376-7060 x201

Tax Collector: 28 Main St., Jewett
City x102/x104

Fax: (860) 376-7070

Town Clerk:
(860) 376-7060 x101





LEDYARD 06339



Ledyard is a suburban community within a quiet rural niche of southeastern Connecticut. Abundant single-family residences, separated by numerous red maple swamps and rocky, rugged uplands characterize the settlement of Ledyard.

Ledyard is situated halfway between New York and Boston, and is in the midst of many cultural attractions, recreational facilities, golf courses, and beaches.

Ledyard offers space for industrial parks, commercial design districts, and horse farms with ample residential areas for families to live and grow. The community emphasizes its historical heritage and traditional New England themes. The community strongly supports planned economic development, and has prime commercial areas along Route 12, Ledyard Center, and along Route 117, all within a few miles of I-95.

Local attractions include Colonel Ledyard Park; Connecticut Wine Trail Association; Foxwoods Resort Casino; Highland Lake Park; Ledyard Glacial Park; Ledyard Up-Down Sawmill; Mashantucket Museum & Research Center; Maugle Sierra Vineyards & Winery; Nathan Lester House & Farm Tool Museum; Nathan Lester Park; and Sawmill Park.



Ledyard Town Hall:
741 Colonel Ledyard
Highway, Ledyard, CT
06339

Phone: (860) 464-8740

Fax: (860) 464-1126

Animal Control: (860) 464-9621

Assessor: (860) 464-3237

Building: (860) 464-3214

Fire Marshal: (860) 464-6858

Library: 718 Colonel Ledyard
 Hwy, Ledyard (860) 464-9912

Mayor's Office: (860) 464-3221

Parks & Recreation: 4 Blonder
 Blvd., Ledyard (860) 464-9112

Planning/Development:
 (860) 464-3215

Police: (860) 464-6400

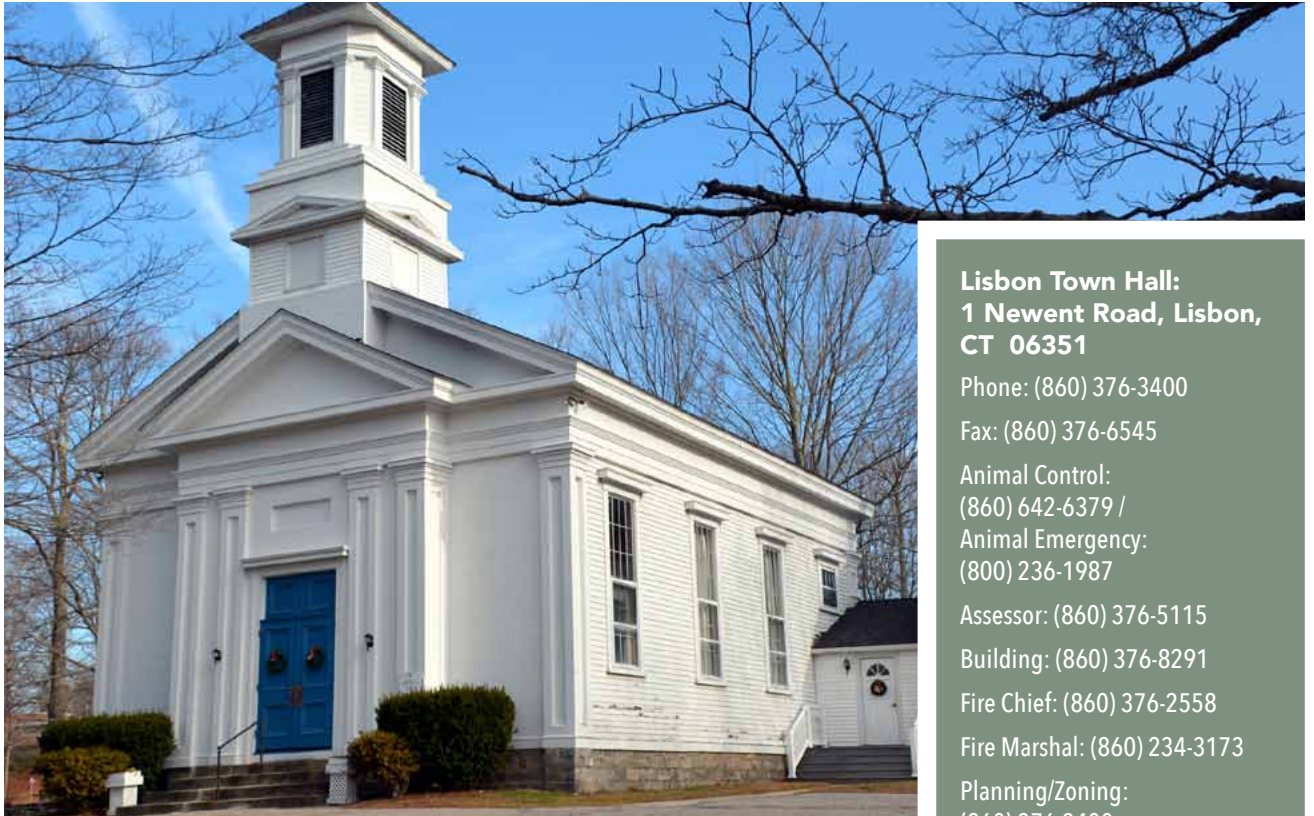
Public Works:
 (860) 464-3238 / Town Garage:
 (860) 464-9060

Senior Center: (860) 464-0478

Tax Collector: (860) 464-3233

Town Clerk: (860) 464-3257

Zoning/Wetlands:
 (860) 464-3216



Lisbon Town Hall:
1 Newent Road, Lisbon,
CT 06351

Phone: (860) 376-3400

Fax: (860) 376-6545

Animal Control:

(860) 642-6379 /

Animal Emergency:

(800) 236-1987

Assessor: (860) 376-5115

Building: (860) 376-8291

Fire Chief: (860) 376-2558

Fire Marshal: (860) 234-3173

Planning/Zoning:

(860) 376-3400

Resident Trooper:

(860) 376-8868 x 5001

Public Works: (860) 376-3400

Recreation Committee: (860)
 376-9791

Senior Center: (860) 376-2329

Selectman's Office:

(860) 376-3400

Slater Library: 26 Main St.,
 Jewett City (860) 376-0024

Tax Collector: (860) 376-4188

Town Clerk: (860) 376-2708



LISBON 06351

Lisbon is the home of the first railroad tunnel in America. This historic, quiet, rural community boasts an excellent and modern school system as well as cultural, recreational, commercial and retail opportunities in a modern and scenic setting.

Situated on I-395, in New London County, Lisbon features two large commercial/retail developments (Lisbon Landing and The Crossing at Lisbon) as well as numerous smaller food, gas and convenience stores. All of these businesses are situated on River Road (Route 12) at Exit 84, a location that has been identified as one of the largest traffic generators in the state. Whether one needs building supplies, clothing, bedding, mobile communication assistance, a place for hair, nail or dental care, all of this and much more are available in one

convenient location. The combination of a central, desirable location, attractive tax rate and business-friendly environment makes Lisbon the ideal place to start or grow a business.

Located between the Quinebaug and Shetucket Rivers, Lisbon is included in the Quinebaug and Shetucket Rivers Valley National Heritage Corridor (designated by Congress in 1994), popularly known as The Last Green Valley. The public has access to the Shetucket River, via a boat launch, for boating and fishing activities, as well as to 59 acres of land just off South Burnham Highway (Route 169) that includes baseball and soccer fields, walking trails and accommodations for picnics and small gatherings.

While the town is only 16 square miles, its recreation and historic sites, bucolic setting, shopping and dining offer visitors a variety of opportunities to explore, shop, or just relax and enjoy.





MONTVILLE 06382

Montville is a proud and growing community. Situated between the cities of Norwich and New London, it boasts an excellent education system and local business and industry with global connections. Montville residents strive to keep up with progress while maintaining a rural quality of life.

The town's closest and most prominent neighbor is the Mohegan Tribal Reservation and its renowned resort casino. A strong relationship with the Mohegan Tribe benefits both communities.

The town is a welcoming place to visitors of all ages: Boy Scouts love to visit historic Cohegan Rock and, for history buffs, there are more than 50 cemeteries located in town.

Located on more than 45 square miles, with a small population, there is room to develop and grow within Montville. The town is close enough to major cities and highways for commuters and visiting tourists; and southeastern Connecticut continues to be a vacation destination for international travelers. The town is committed to maintaining its quality of life while at the same time enhancing its position in commerce and industry in Southeastern Connecticut.



10 Norwich-New London Turnpike, Uncasville, CT 06382

Montville Town Hall:

Phone: (860) 848-3030

Fax: (860) 848-9784

Animal Control: (860) 848-3529
(office & pound)

Assessor: (860) 848-6774

Building: (860) 848-6782

Fire Marshal/Emergency Management: (860) 848-6781

Library: 832 Raymond Hill Road, Oakdale, (860) 848-9943

Mayor's Office: (860) 848-6778

Parks & Recreation: (860) 848-6780

Planning/Zoning/Wetlands: (860) 848-6779

Police: (860) 848-7510
Non-Emergency

Public Works: 225 Maple Ave., Uncasville (860) 848-7473

Senior Center: (860) 848-0422

Tax Collector: (860) 848-3030

Town Clerk: (860) 848-6784



PRESTON 06365

Preston's geography and soil have influenced its historic development. Agricultural use of the land has been conditioned by soils and topography best suited for livestock grazing and corn production. Numerous streams provided waterpower for industrial development.

While woods cover much of the town, they represent second growth forests that have gradually covered abandoned fields. The dominant species are oak and hickory. White-tailed deer and small game are numerous. Freshwater fish such as trout are found in the streams of Preston, while the waters of the Thames and the lower Shetucket host a variety of species of fish, such as striped bass, shad, alewives, eels, and menhaden. Poquetanuck Cove is rich in shellfish.

In earlier times, the Thames River provided access to distant markets. Railroads and highways have since displaced waterborne transportation. Preston still retains much of its earlier rural character despite slow residential development.

Area attractions include Strawberry Park, which is an award-winning 160-acre campground nestled in the heart of beautiful southeastern Connecticut; with electrical connections as well as log cabin and RV rentals; Long Society Meetinghouse (a historic meetinghouse in the village of Long Society); Preston Historical Society; Dalice Elizabeth Winery; Preston Ridge Vineyard; and Hallville Mill Historic District.



**Preston: 389, Route 2,
Preston, CT 06365**

Phone: (860) 887-5581

Fax: (860) 855-0171

Animal Control: (860) 887-8091

Assessor: (860) 887-5581 x115

Building: (860) 887-5581 x103

Poquetanuck Fire Department:
(860) 887-5151

Preston City Fire Company:
(860) 887-4815

Ledyard: (860) 464-1138
(non-emergency)

Library: (860) 886-1010

Parks & Recreation:
(860) 887-5581 x113

Planning: x109 / Land Use:
(860) 887-5581 x118

Resident State Trooper:
(860) 887-8232

CT State, Troop E Montville:
(860) 848-6500

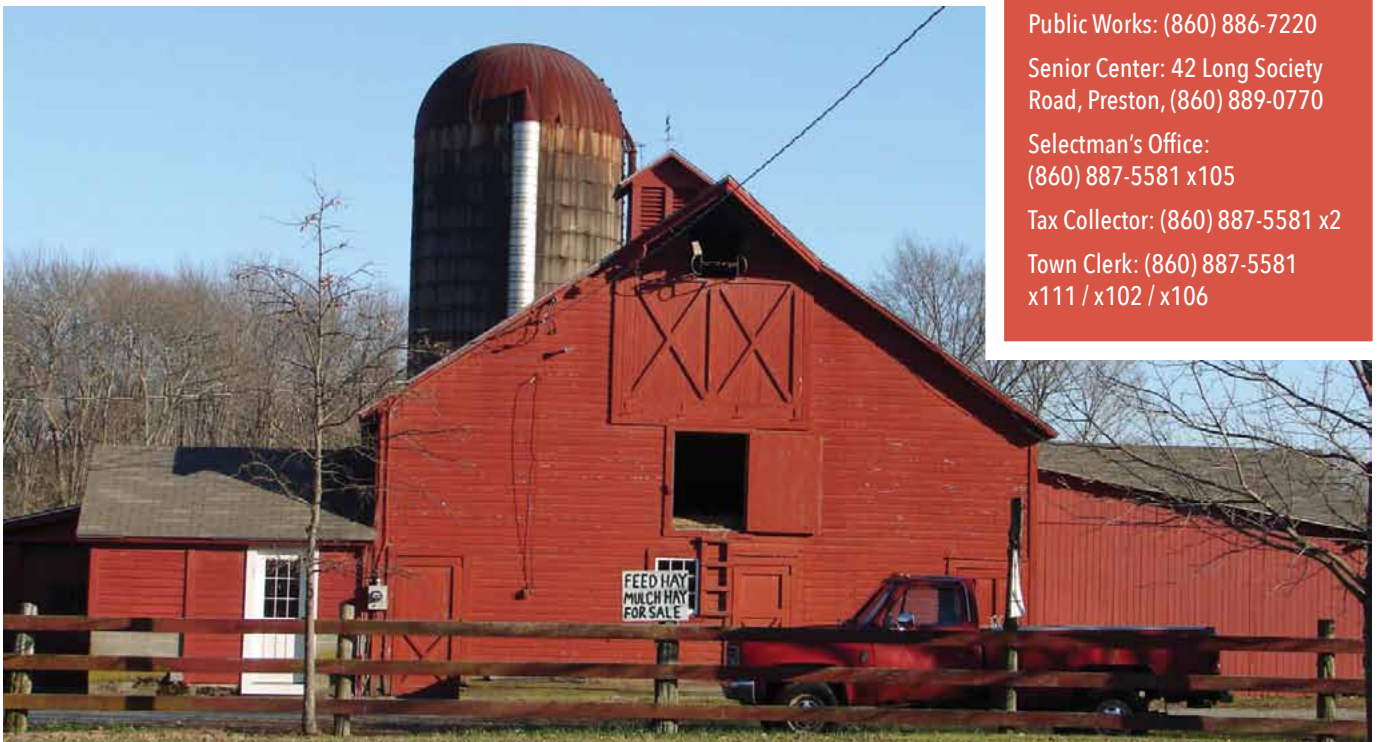
Public Works: (860) 886-7220

Senior Center: 42 Long Society
Road, Preston, (860) 889-0770

Selectman's Office:
(860) 887-5581 x105

Tax Collector: (860) 887-5581 x2

Town Clerk: (860) 887-5581
x111 / x102 / x106





SALEM 06420

Salem Town Hall:
270 Hartford Road,
Salem, CT 06420

Phone: (860) 859-3873

Fax: (860) 859-1184

Animal Control:
(860) 917-0567 Cell

Assessor:
(860) 859-3873 x130 / x140

Building:
(860) 859-3873 x240 / x250

Gardner Lake Volunteer Fire
Department: (860) 859-1743

Salem Volunteer FD:
(860) 859-0942

Library: 264 Hartford Road
(860) 859-1130

Parks & Recreation:
(860) 859-3873 x275

Planning: (860) 822-3000 x223

Troop K: (860) 537-7500

Resident Trooper:
(860) 859-2507

Public Works:
(860) 859-3873 x120

Transfer Station: 189 Rattlesnake
Ledge Road (860) 859-2964

Senior Center: (860) 859-1118

Selectman's Office:
(860) 859-3873 x110

Tax Collector: (860) 859-3873 x6

Town Clerk: (860) 859-3873 x7 /
x170 / x180

Salem is a quiet, rural community of more than 4,000 residents. Nestled among hills, wetlands and open fields astride the historic route between Hartford and the sea, the town has a heritage of agriculture. Incorporated in 1819, its residents are a friendly, caring, diverse and talented group who contribute to the manufacturing, arts, education and technology centers of central and southeastern Connecticut.

Salem is centrally located on the Historic Governor's highway with commercial connections to Hartford, Norwich, New London, Willimantic, and other metropolitan areas in the eastern region of the state. Businesses enjoy easy access to major interstate highways and state roads. The business climate is ripe for development, with available land, existing commercial infrastructure, and industrial and commercial business zones. The town welcomes new businesses who are good neighbors and who fit into the distinctly rural atmosphere.

Salem features a beautiful countryside with farms and recreational facilities. Opportunities for outdoor recreation include hiking, boating, fishing, and camping. Gardner Lake offers recreational boaters and fishermen a renovated boat launch with plenty of vehicle and trailer parking. The beach and fields provide picnic areas overlooking one of the largest lakes in southeastern Connecticut. The Walden Preserve and the Zemko Wildlife Management Area feature miles of trails. Salem also is home to four large campgrounds: Witch Meadow Lake Campground, Salem Farms Campground, Sna-z-Spot Campground, and Indian Field Campground.



Photo credit: ERTD/Mystic Country



SPRAGUE 06330

Sprague consists of three villages, Baltic, Hanover, and Versailles, and still maintains much of the turn-of-the-century mill town flavor for which it is noted.

While horses continue to graze in open fields, children play baseball at Babe Blanchette Field, and several businesses buzz, one can almost hear the clack of the looms from the departed textile mills. Although the past is ever present, implementation of an expanded infrastructure and economic development projects are underway and the dream of establishing a business park in the town's industrial area is becoming more of a reality. The town is committed to quality of life for residents, responsible growth, and maintaining the delicate balance between economic development and preservation of rural and agricultural assets ever mindful of the three small villages of long ago.

Sprague is the perfect place to live and work in eastern Connecticut. Located on the border between northeastern and southeastern Connecticut and within minutes of Route 395, it is an easy (45 minutes) commute to the New London



area, yet also close (35 minutes) to both the University of Connecticut's main campus and Eastern Connecticut State University. Its three villages, Baltic, Hanover and Versailles, are rich in history, charm and architectural significance. The entire Baltic Village is listed on the National Register of Historic Places; Baltic was home to one of the largest textile mills in the country.

Resources include unspoiled working farmland and 600+ acres of town-owned open space, including a reservoir. Downtown is located on a trophy salmon-fishing river and is part of the Last Green Valley National Heritage Corridor. Sprague is a community rich in history and of people whose families have resided in this area for many generations.

Villages of Baltic, Hanover, Versailles
Sprague Town Hall,
1 Main St., Baltic, CT
06330

Town of Sprague:

Phone: (860) 882-3000

Fax: (860) 822-3016

Animal Control: (860) 642-6379

Animal Emergency:
(800) 236-1987

Assessor: (860) 882-3000 x222

Building: (860) 822-3000 x204

Emergency Management: (860)
884-2874

Fire Marshal:
(860) 822-3000 x 220

Library: 76 Main St. (in Grist
Mill), Baltic (860) 822-3012

Parks & Recreation:
(860) 882-3000

Planning: (860) 889-2324

Police: (860) 822-6156

Public Works:
(860) 822-3000 x230

Senior Center:
(860) 822-3000 x203

Selectman's Office:
(860) 822-3000 x202

Tax Collector:
(860) 822-3000 x224

Town Clerk:
(860) 822-3000 x220

Zoning: (860) 822-3000 x204

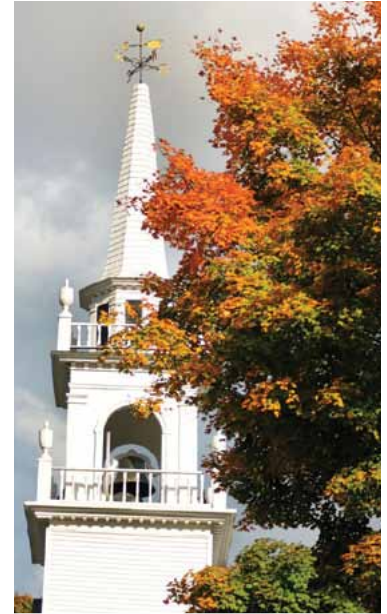


Photos credit: Sprague Historical Society



VOLUNTOWN

06384



Voluntown was incorporated in 1721 and has a rich history of textile mills, historic buildings, and the Civilian Conservation Corps Camp (CCC). The town was originally known as “Volunteer Town.”

Located in the northeast corner of New London County, Voluntown is a rural community consisting of 39.8 square miles. Two-thirds of the town is made up of state forest. Pachaug State Forest offers many outdoor activities, such as hunting, camping, and horseback riding. The Town Hall and Library

are located in the Village Center, along with the K-8 Elementary School, Constitution Field, the walking track and gazebo.

Visitors enjoy lodging at places such as Nature’s Campsite, Circle C Campground or Tamarack Lodge, and hometown cooking at popular restaurants such as Town Pizza and Claudia’s. Nearby Pachaug State Forest provides 28,000 acres of recreational opportunities and the area is known as one of the top five sites for fall foliage in Connecticut. Within town limits, visitors will also find numerous riding trails and the state’s only “horse camp,” as well as boating and fishing at Beach Pond, which has a public boat launch and is annually stocked by both Connecticut and Rhode Island.

Voluntown is home to many entrepreneurial companies offering services from carpentry and construction to antiques and motion pictures. Dairy and tree farms are an important part of the Voluntown economy.

**Voluntown Town Hall:
115 Main St., Voluntown,
CT 06384**

Phone: (860) 376-4089

Fax: (860) 376-3295

Animal Control (NECCOG): (860) 774-1253

Building/Zoning:
(860) 376-3867

Planning/Zoning:
(860) 376-4089

Public Library: (860) 376-0485

Public Works Garage:
(860) 376-2878

Police: CT State, Troop E,
Montville: (860) 848-6500

Selectman’s Office:
(860) 376-5880

Tax Collector: (860) 376-0453

Town Clerk: (860) 376-4089

Voluntown/Sterling Transfer
Station: 514 Brown Road,
Voluntown (860) 564-7750

Voluntown Volunteer Fire
Company: (860) 376-0475

13th Annual GOLF TOURNAMENT

This tournament is held annually the third Monday of May at the Norwich Golf Course. The GNACC Golf Committee would like to thank all of the sponsors, golfers, volunteers and members for making our annual GNACC Golf Tournaments such a huge success.



2016 GOLD SPONSORS

Golf Cart Sponsor: Dime Bank
 Putting Contest Sponsor: Norwich Public Utilities
 Raffle Sponsor: Byrnes Agency
 Attitude Adjustment Sponsor: The AMERICAN Group - American Ambulance Services; MACARA Vehicle Services; American Pro. Training; Get Bent in Norwich
 Awards Sponsor: Chelsea Insurance Agency
 Sign Sponsor: Camaro Signs
 Gold Sponsor: Bouvier Insurance
 Gopher Hole Sponsor: Mohegan Sun
 Networking Sponsor: Nutmeg Companies
 Gold Sponsor: Norwich Ophthalmology/Lasik

HOLE IN ONE SPONSORS

Thrifty Car Sales North Franklin
 Norwich Ophthalmology/Lasik

2016 BRONZE SPONSORS

Andre J. Messier, Jr., CPA, LLC
 Chinigo, Leone & Maruzo, LLP
 Savings Institute Bank & Trust
 Circulatory Centers of CT - Norwich
 Devine Hydraulics
 Norwich Free Academy
 Putnam Bank
 SERVPRO of Norwich & Windham County
 Towne Liquor Store - Norwich



LEARN MORE

www.norwichchamber.com/gnacc-annual-golf-tournament.html



Smart Banking. Community Trusted.



COREPLUS CREDIT UNION



860-886-0576
800-724-0779
coreplus.org

Groton • East Lyme • Waterford
Norwich • Taftville • Plainfield
Putnam Walmart Supercenter
Brooklyn Walmart Supercenter



NC00023875



Reliance
Health

40 Broadway
Norwich
(860) 887-6536

Reliance Health (formally Reliance House)
enhances health through mental wellness,
with quality care in our community.

Learn more at www.reliancehealthinc.org



NO-00223875



HOLIDAY BAZAAR

The Holiday Bazaar is held annually the Saturday after Thanksgiving in honor of Small Business Saturday. Support your community by shopping local, and finding great one of kind gifts made by artists and artisans right here in Eastern Connecticut. Visit www.norwichchamber.com/gnacc-holiday-bazaar.html to see more.





NEWLY RENOVATED HOTEL

- Indoor Heated Pool and Spa
- Expanded Exercise Room
- Complimentary Shuttle to Mohegan Sun
- The Bistro Cafe serving Starbucks Coffees
- Meeting Facilities and Business Center

181 West Town Street
 Norwich, CT 06360
 860-886-2600
www.courtyardnorwich.com



NO-00223228



Andrew H. Nollman, AIF[®] Managing Member

210 Route 32, Suite
 #104 Franklin, CT
 06254

Phone: (860) 383-6044
 Fax: (866) 878-6545
 Cell: (860) 303-2080

Mailing Address:
 P.O. Box 158
 Yantic, CT 06389



Services Offered

- IRAs
- 401k rollovers
- Asset management
- Financial planning
- Business retirement plans
- Life insurance



Registered Representative, Securities offered through Cambridge Investment Research, Inc. a Broker/Dealer, Member FINRA/SIPC.
 Investment Advisor Representative, Cambridge Investment Research Advisors, Inc., a Registered Investment Advisor.
 Rose City Financial Services, LLC and Cambridge are not affiliated.

Andrew@RoseCityFinancial.com
 /andrewnollman

www.RoseCityFinancial.com
 /RoseCityFinancialServices

NO-00223205



ROCK THE DOCKS

A free community event

The Howard Brown Park comes alive with music starting the first Wednesday after the 4th of July and runs a concert every week for six weeks from 6 p.m. - 8 p.m.

New in 2016: Rockin' The Green! Guests enjoy acoustic acts at the Norwich town green every Friday following the concerts. Bring a blanket or beach chair, sit back and relax.

Interested in sponsoring an event for 2017? Contact Angela Adams at (860) 887-1647 or angelaadams@norwichchamber.com.



The Rock the Docks is brought to you by:
 Norwich Harbor Management Commission
 The Greater Norwich Area Business Industry Foundation
 The Greater Norwich Area Chamber of Commerce



When you need an attorney who understands business.

And one who means business in protecting you.

Theodore N. Phillips II
Attorney-at-Law, LLC

Suite 207, 12 Case Street, Norwichtown
860/889-2333

TPhillips2@aol.com

Visit our Website at:

www.NorwichCTLawyer.com

Founding Chairman, Greater Norwich Area Chamber of Commerce

NO-00223232

SURPLUS OFFICE FURNITURE

Desks • Chairs • Bookcases • Work Stations
 File Cabinets • Conference Tables • Office Supplies

SAVE UPTO 70% OFF
RETAIL PRICES!

INVENTORY CHANGES WEEKLY



Willow Tree Plaza • 860.859.2083
 363 West Main Street (next to Fat Cat & Medusa) Norwich, CT
 Visit us at www.surplusunlimitedstore.com

NO-00223232

HEALTHY LIVING FESTIVAL

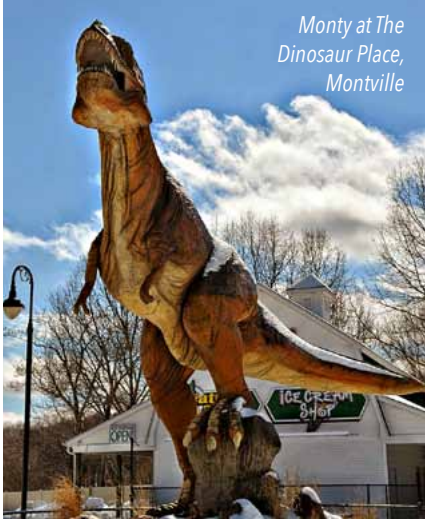
The GNACC Annual Healthy Living Festival is a free community event to showcase local health-related businesses while providing local families with a day of fun and education. The event features activities; demonstrations; screenings; speakers; and food.



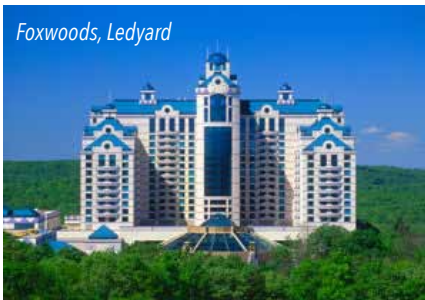
AREA Attractions



Mohegan Sun,
Uncasville



Monty at The
Dinosaur Place,
Montville



Foxwoods, Ledyard



Holmberg Orchards,
Ledyard



...because it takes a
community

The Learning Campus is a state-approved private school specializing in behavioral and developmental services; The learning Campus provides intensive, student-centered learning experiences for students ages 7 to 21.



The Light House has been supporting individuals with intellectual/developmental disabilities and their families in CT for over 20 years

Offering a continuum of services from education to independent living, the Light House is dedicated to fostering social, emotional, and cognitive development for lifelong independence.

Sites in Niantic & Groton | www.lhcampus.com | 860.445.7626

NO-00224174



- The **BEST** selection of wine, beer, and spirits
- The **MOST** knowledgeable staff
- The **FRIENDLIEST** service

Selection, Service
and Knowledge!



32 Town Street • Norwich, CT
(across from Goodyear Tire) 860-889-4637

NO-00223221



BUSINESS AFTER HOURS

Business After Hours events are held monthly from 5:30 p.m. to 7:30 p.m. and take place at a hosting member's business. The event includes food, beer, wine, door prizes and is the perfect setting for creating new contacts and friends. Hosting a Business After Hours or a Business at Breakfast also is a great way to showcase your business.





OIL DELIVERY

WITH 100% CUSTOMER SATISFACTION GUARANTEED!

got
oil?

Back to Basics with Pricing & Service

- Automatic Delivery
- Burner Service
- Home Heating Oil
- Diesel Fuel
- Volume Discounts
- Senior Discounts
- Service Plans
- Budget Programs



**EMERGENCY
OIL DELIVERY**
860-889-4442



Brunelli Energy is Family Owned & Operated.
Oil • Plumbing • Heating

NO HIDDEN FEES • NO FALSE PROMISES • NO SMALL PRINT

WE DO PLUMBING!!



**Brunelli
ENERGY LLC**

Wrap Around Service

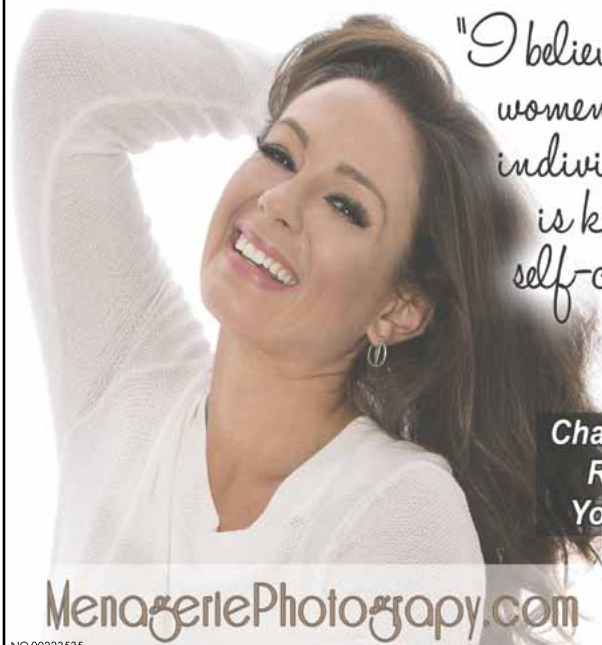
www.brunellienergy.com



NO-00223230

P1-204851 S7-386550 HOD 794

Specializing in Women's Portraiture



"I believe empowering women to see their individual beauty is key to their self-confidence."

-Marilyn Riel

**Chamber Members
Receive 20% Off
Your Session Fee**

MenageriePhotography.com 860-376-5514

NO-00223535

GREATER NORWICH CHAMBER OF COMMERCE MEMBERSHIP DIRECTORY

Addiction Services - Alcoholism & Drug Dependence

S.C.A.D.D.

Jack Malone
37 Camp Mooween Road, Lebanon, CT 06249
(860) 886-2495 Fax: (860) 887-0007
jackmalone@snet.net
www.scadd.org

Advertising

Outfront Media

Patrice Attolino
355 Washington, North Haven, CT 06473
(203) 985-0430 FAX: (203) 985-0420
patrice.attolino@outfrontmedia.com
www.outfrontmedia.com

Chairman's Circle Member The Bulletin

Nadine McBride
10 Railroad Road, Norwich, CT 06360
(860) 887-9211
Nmcbride@norwichbulletin.com
www.norwichbulletin.com

Ambulance Service

Chairman's Circle Member American Ambulance Service, Inc.

Michael Aliano
One American Way, Norwich, CT 06360
(860) 886-1463 Fax: (860) 887-1138
maliano@americanamb.com
http://americanamb.com

Antiques

Encore Justified

Jill Fritzsche
102 Main St, Norwich, CT 06360
(860) 908-2497
canterbury_estates@charter.net
www.facebook.com/encorejustified

Apartments

Aspen Properties, LLC

Les King
36 Boswell Ave., PO Box 71
Norwich, CT 06360
(860) 886-9558 / l.king@snet.net

Country Place Apartments

Carol Danielski
One Birch Circle, Colchester, CT 06415
(860) 537-1770 FAX: (860) 537-3440
country.place.apts@snet.net
www.colchesterapartments.com/apt02

Meadow Ridge & Cambridge Estates

Carrie Rowley
4B Plumtree Dr, Norwich, CT 06360
(860) 889-2828 FAX: (860) 892-1605
crowley@solomonorg.com
www.norwichapts.com

Appliances

Keith's Appliances & TVs

Jessica Burzycki
320 West Thames St., Norwich, CT 06360
(860) 889-2093 FAX: (860) 886-5051
jessicab@keithsappliance.com
www.keithsappliances.com

Art

Christ Church School of the Arts, Inc.

Louise Lillpopp
78 Washington St., Norwich, CT 06360
(860) 425-0663 FAX: (860) 425-0663
ccsartsmail@yahoo.com
www.ccsarts.org

Norwich Arts Center

Thom Keaney
62 Broadway, Norwich, CT 06360
(860) 887-2789 FAX: (860) 887-0079
administration@norwicharts.org
www.norwicharts.org

Attorneys — Law Firms

Block, Janney & Associates, LLC

Mark Block
138 Main St., Norwich, CT 06360
(860) 889-3855 FAX: (860) 886-6352
mblock@bjplawyers.com
http://bjplawyers.com

Brown Jacobson P.C.

Lisa Southers
22 Courthouse Square, Norwich, CT 06360
(860) 889-3321 FAX: (860) 886-0673
lsouthers@brownjacobson.com
www.brownjacobson.com

Chinigo, Leone and Maruzo, LLP

Jerry Smith
141 Broadway, Norwich, CT 06360
(860) 889-8900 FAX: (860) 887-1744
gsmith@99main.com
www.chinigoleoneandmaruzollp.com

Kevin Wickless LAW, LLC

Attorney Kevin Wickless
99 Main St., Suite 3 A
Norwich, CT 06360
(860) 889-8804 FAX: (860) 889-8806
kevinwickless@gmail.com

Law Office of Theresa I. Madonna, LLC

Theresa Madonna
110 Main St., Jewett City, CT 06351
(860) 376-9993 FAX: (860) 376-5555
madonnalaw@att.net
www.madonnalawoffice.com/index.html

Lucas Law, P.C.

Stan Lucas
116 Sachem St., Norwich, CT 06360
(860) 889-3353 FAX: (860) 886-4469
slucas@lucaslaw.comcastbiz.net

Michael E. Jewell, Attorney At Law

Michael E. Jewell
257 Main St., Suite 510
Norwich, CT 06360
(860) 887-9714 FAX: (860) 889-5886
mejewellesq@sbcglobal.net

Sayet and Seder, Attorneys At Law

Bart A. Sayet Esq.
126 Main St., Norwich, CT 06360
(860) 889-2369
FAX: (860) 889-4386
bsayet@sayetandseder.com
www.sayetandseder.com

TCORS, Tobin, Carberry, O'Malley, Riley & Selinger P.C.

Heather Danaher
43 Broad St., New London, CT 06320
(860) 447-0335 FAX: (860) 442-3469
attorneys@tcors.com
www.tcors.com

Theodore N. Phillips, II, Attorney-At-Law

Ted Phillips II
12 Case St., Suite 207
Norwich, CT 06360
(860) 889-2333 FAX: (860) 889-9669
TPhillips2@aol.com

Auctioneer

Adams Auctioneers / Appraisers

Sara Adams
727 Boswell Ave., Norwich, CT 06360
(860) 887-8052 FAX: (860) 859-9321
Sara@adams.bid
<http://adams-auctions.com/>

Automotive

Falvey Motors Inc.

Tim Falvey
395 West Thames St., Norwich, CT 06360
(860) 889-3371
timothyfalvey@falveys.com

Kleemann Towing Svc LLC

Robert Kleemann
401 North Main St., Norwich, CT 06360
(860) 889-0045
kleemannauto@gmail.com
www.kleemannauto.com

Ledyard Auto LLC

Jay McQuown
1504 Route 12, Gales Ferry, CT 06335
(860) 464-2706 FAX: (860) 464-0250
ledyardautobody@aol.com
www.ledyardautollc.com

Chairman's Circle Member MACARA Vehicle Services, Inc.

Michael Aliano
207 North Main St.
Norwich, CT 06360
(860) 887-0548 FAX: (860) 823-6248
MALiano@americanamb.com
www.macarainc.com

Napa Auto Parts

Michael St. Germain
400 West Thames St., Norwich, CT 06360
(860) 889-2664 FAX: (860) 887-3732
michael.stgermain@att.net
www.napaonline.com/ct/norwich/tst-inc

Sabby's Auto LLC

Sabby Contino
253C Talman St. Ext.
Norwich, CT 06360
(860) 886-5683 / sabby@sabbys-auto.com
www.sabbys-auto.com

Thrifty Car Sales of Franklin

Ellis V Disch
114 A Route 32, North Franklin, CT 06254
(860) 383-4750 FAX: (860) 499-5050
ellisvdisch@gmail.com
www.thriftyfranklin.com

Bakery

Poppy & Rye Bakery Cafe

Tom Adams
137 Norwich Ave., Taftville, CT 06386
(860) 383-2026 / poppy-and-rye@outlook.com
www.poppyrye.com

Banks & Financial

Charter Oak Federal Credit Union

Namie Tedford
1 Connecticut Ave., Norwich, CT 06360
(860) 446-8085 FAX: (860) 887-9823
callcenter@cofcu.com
www.charteroak.org

Chairman's Circle Member Chelsea Groton Bank - Glastonbury

273 Hebron Ave.,
Glastonbury, CT 06033
(860) 934-1300
www.chelseagroton.com

Chelsea Groton Bank - Groton Branch

904 Poquonnock Road, Groton, CT 06340
(860) 448-4252
www.chelseagroton.com

Chelsea Groton Bank - Holly Green Plaza

391 Norwich Westerly Road
North Stonington, CT 06359
(860) 572-4052
www.chelseagroton.com

Chelsea Groton Bank - Mystic Auto Express

50 Stonington Road, Mystic, CT 06355
(860) 572-4082
www.chelseagroton.com

Chelsea Groton Bank - Mystic Branch

2 Water St., Mystic, CT 06355
(860) 572-4012
www.chelseagroton.com

Chelsea Groton Bank - New London Branch

1 Montauk Ave., New London, CT 06320
(860) 448-4232
www.chelseagroton.com

Chelsea Groton Bank - Niantic Branch

21 Pennsylvania Ave., Niantic, CT 06357
(860) 739-4742
www.chelseagroton.com

Chelsea Groton Bank - One Franklin Square

Alex Masse
1 Franklin Square, Norwich, CT 06360
(860) 823-4912
FAX: (860) 823-4907
www.chelseagroton.com

Chelsea Groton Bank - Pawcatuck Branch

116 West Broad St., Pawcatuck, CT 06379
(860) 599-2406
www.chelseagroton.com

Chelsea Groton Bank - Salem Branch

20 Hartford Road
Salem Marketplace, Salem, CT 06420
(860) 823-4942 FAX: (860) 859-1129
www.chelseagroton.com

Chelsea Groton Bank - Waterford Branch

157 Boston Post Road, Waterford, CT 06385
(860) 448-4262
www.chelseagroton.com

Chelsea Groton Bank - Center Groton Branch

1319 Gold Star Highway, Groton, CT 06340
(860) 448-4242
www.chelseagroton.com

Chelsea Groton Bank - Norwich/Westside Branch

444 West Main St., Norwich, CT 06360
(860) 823-4962 FAX: (860) 823-4967
www.chelseagroton.com

Chelsea Groton Bank - Norwichtown Branch

50 Town St., Norwich, CT 06360
(860) 823-4922
FAX: (860) 823-4927
www.chelseagroton.com

Chelsea Groton Bank - Sprague Branch

156 Williamantic Road, Sprague, CT 06330
(860) 822-1110
www.chelseagroton.com

Chairman's Circle Member CorePlus Credit Union - Brooklyn Walmart Supercenter

Nicholas Fortson
450 Providence Road
Brooklyn, CT 06234
(860) 412-0446 FAX: (860) 412-0449
www.coreplus.org

CorePlus Credit Union - East Lyme

Nicholas K Fortson
125 Boston Post Road, East Lyme, CT 06333
(860) 886-0576 or (800) 724-0779
www.coreplus.org

CorePlus Credit Union - Groton

Nicholas K Fortson
255 Route 12, Groton, CT 06340
(860) 886-0576
www.coreplus.org

**CorePlus Credit Union -
Norwich - Main Office**

Nicholas K Fortson
202 Salem Turnpike, Norwich, CT 06360
(860) 886-0576
www.coreplus.org

CorePlus Credit Union - Plainfield

Nicholas K Fortson
67 Lathrop Road, Plainfield, CT 06374
(860) 886-0576
www.coreplus.org

**CorePlus Credit Union -
Putnam Walmart Supercenter**

Nicholas K Fortson
625 School St.
Putnam, CT 06260
(860) 315-9148 FAX: (860) 315-9245
www.coreplus.org

CorePlus Credit Union - Taftville

Nicholas K Fortson
30 Norwich Ave., Norwich, CT 06360
(860) 886-0576
www.coreplus.org

CorePlus Credit Union - Waterford

Nicholas K Fortson
40 Boston Post Road, Waterford, CT 06385
(860) 886-0576 or (800) 724-0779
www.coreplus.org

Chairman's Circle Member

Dime Bank - Broadway

Monica MacNeil
33 Broadway, Norwich, CT 06360
(860) 889-2318 FAX: (860) 892-4687
info@dime-bank.com
https://dime-bank.com

Dime Bank - Colchester

Chuck Maynard
139 South Main St., Colchester, CT 06415
(860) 531-1120
info@dime-bank.com
https://dime-bank.com

Dime Bank - Corporate Office

Todd Bower
290 Salem Turnpike, Norwich, CT 06360
(860) 859-4300
tbower@dime-bank.com
https://dime-bank.com

Dime Bank - East Lyme

18 Chesterfield Road, East Lyme, CT 06333
(860) 739-2192
https://dime-bank.com

Dime Bank - Ledyard Branch

Donna Ceccarelli
744 Colonel Ledyard Highway, Ledyard, CT 06339
(860) 464-8925
dceccarelli@dime-bank.com
https://dime-bank.com

Dime Bank - Montville

Ornet Hines
563 Norwich - New London Turnpike
Uncasville, CT 06382
(860) 848-0659
mmacneil@dime-bank.com
https://dime-bank.com

Dime Bank - New London

Becky Frechette
668 Bank St., New London, CT 06320
(860) 437-4366
bfrechette@dime-bank.com
https://dime-bank.com/index.php

Dime Bank - New London (in ShopRite)

Becky Frechette
351 North Frontage Road, New London, CT 06320
(860) 437-6222 / bfrechette@dime-bank.com
https://dime-bank.com

Dime Bank - Norwichtown

Lorie Mocek
115 West Town St., Norwich, CT 06360
(860) 892-4047 / lmocek@dime-bank.com
https://dime-bank.com

Dime Bank - Stonington Borough

Erin Tirrell
4 Cannon Square, Stonington, CT 06378
(860) 535-0034 / etirrell@dime-bank.com
https://dime-bank.com

Dime Bank - Taftville

Kate Tiffany
630 Norwich Ave., Taftville, CT 06380
(860) 887-0554
ktiffany@dime-bank.com
https://dime-bank.com

Dime Bank - Westerly

Kevin Owren
131 Franklin St., Westerly, RI 02891
(401) 596-4744
kowren@dime-bank.com
https://dime-bank.com

Chairman's Circle Member

Eastern Savings Bank - Jewett City

1 Slater Ave., Jewett City, CT 06351
(860) 376-2548
TSchmitt@eastern-savings.com
www.eastern-savings.com

**Eastern Savings Bank - Main St.
Branch & Corporate Offices**

Lisa Griffin
257 Main St., P.O. Box 709, Norwich, CT 06360
(860) 425-0123 FAX: (860) 889-4304
lgriffin@eastern-savings.com
www.eastern-savings.com

Eastern Savings Bank - Norwichtown

220 West Town St., Norwich, CT 06360
(860) 383-1660
www.eastern-savings.com

Eastern Savings Bank - Plainfield

14 Lathrop Road, Plainfield, CT 06374
(860) 564-0006 / TSchmitt@eastern-savings.com
www.eastern-savings.com

Eastern Savings Bank - West Main Norwich

666 West Main St., Norwich, CT 06360
(860) 886-1419 FAX: (860) 886-1290
www.eastern-savings.com

Liberty Bank

Diana George
77 Salem Tpk, Suite 101, Norwich, CT 06360
(860) 892-2503 FAX: (860) 383-1296
dgeorge@liberty-bank.com
www.liberty-bank.com

People's United Bank

Dianne Kent
45 Town St., Norwich, CT 06360
(860) 892-6331 FAX: (860) 886-6588
dianne.kent@peoples.com
www.peoples.com

People's United Bank - Super Stop & Shop

2020 Norwich-New London Turnpike
Uncasville, CT 06382
(860) 892-6425
www.peoples.com

People's United Bank - Super Stop & Shop

42 Town St., Norwich, CT 06360
(860)-892-6465
www.peoples.com

People's United Bank

624 West Main St.,
Marcus Plaza, Norwich, CT 06360
(860) 889-4711
www.peoples.com

Chairman's Circle Member

Putnam Bank - Danielson

Rockie Alix
125 Wauregan Road,
Danielson, CT 06239
(860) 779-5880
lbourque@putnambank.com
www.putnambank.com

Putnam Bank - Gales Ferry

Deb Tavernier
2 Chapman Lane, Unit #13, Gales Ferry, CT 06335
(860) 464-2247
lbourque@putnambank.com
www.putnambank.com

Putnam Bank - Griswold

Lauren LaBelle
461 Voluntown Road
Griswold, CT 06351
(860) 376-2541
lbourque@putnambank.com
www.putnambank.com

Putnam Bank - Loan Center

50 Canal St.
Putnam, CT 06260
(860) 963-4953
lbourque@putnambank.com
www.putnambank.com

Putnam Bank - Main Office

Brandy Hapgood
40 Main St., Putnam, CT 06260
(860) 928-6501
lbourque@putnambank.com
www.putnambank.com/

Putnam Bank - Norwich

Carrie Szymanski
40 High St., Norwich, CT 06360
(860) 823-0957
billing@putnambank.com
www.putnambank.com

Putnam Bank - Plainfield

Kathy Croteau
11 Pratt Road, Plainfield, CT 06374
(860) 564-1930
lbourque@putnambank.com
www.putnambank.com

Putnam Bank - Pomfret

Tonya Brock
100 Averill Road
Pomfret Center, CT 06259
(860) 928-0545
lbourque@putnambank.com
www.putnambank.com

Putnam Bank - Price Chopper

Tammy Bragdon
251 Kennedy Drive, Putnam, CT 06260
(860) 928-5543
lbourque@putnambank.com
www.putnambank.com

Savings Institute Bank & Trust

Barry Shead
108 Salem Turnpike, P.O. Box 957
Norwich, CT 06360
(860) 889-1939 / barry_shead@banksi.com
www.savingsinstitute.com

Beauty Salons**Antenna Hair Salon**

John Donner
190 West Town St., Norwich, CT 06360
(860) 886-6211
crown06467@aol.com
www.Antennasalon.com

Details Hair Studio, LLC

Heidi Duff
16 New London Turnpike
Norwich, CT 06360
(860) 887-0187 FAX: (860) 887-0187
detailshairstudio@att.net
www.detailshairstudio.net

Hair Cuttery

Tabitha Simons
42 Town St., Suite 800
Norwich, CT 06360
(860) 859-1949
crobertson@ratnerco.com
http://haircuttery.com/

Hair Unique Salon

Lisa Courter
77 Salem Turnpike, Suite 106
Norwich, CT 06360
(860) 886-5355
leebeth44@sbcglobal.net
http://hairuniquesalon.com

PINK cut & color studio

Holly Pennell-Salegna
488 North Main St., Norwich, CT 06360
(860) 373-9199
holly@pinkcutcolor.com
www.pinkcutcolor.com

Beverages**Coca-Cola Company of Southeast N.E.**

Art Ryone
150 Waterford Pkwy South
Waterford, CT 06385
(860) 443-2816 FAX: (860) 442-0301
aryone@ccnne.com
www.cocacolaofsene.com

Epicure Brewing

Jennifer Vincent
40 Franklin St., Norwich, CT 06360
epicurebrewing@gmail.com
www.epicurebrewing.com

Maple Lane Spirits, LLC.

John Paul Mereen
50 N.W. Corner Road
Preston, CT 06365
(860) 334-0079 / jp@foggyharbor.com
http://foggyharbor.net

Norwich Wine & Spirits

Jeffery Pierce
273 West Main St., Norwich, CT 06360
(860) 887-0822
norwichdiscount@gmail.com
http://norwichwineandspirits.com

Towne Liquor Store

Betsy A. Eichholz
32 Town St., Norwich, CT 06360
(860) 889-4637 / 32towne@sbcglobal.net
www.towneliquorstore.com

Bowling**Norwich Bowling & Entertainment Center**

Frank Rubin
188 West Town St., Norwich, CT 06360
(860) 889-3361 FAX: (860) 887-2372
frank.rubin@gmail.com
www.norwichbowling.com

Business Marketing**Greater Norwich Area Chamber of Commerce**

114 Main St., Norwich, CT 06360
(860) 887-1647 / info@norwichchamber.com
norwichchamber.com

Cable Television**Comcast Cable**

Stephanie Dumont
222 New Park Drive, Berlin, CT 06037
(860) 505-2104 FAX: (866) 550-4546
Charlie_Tzoumas@cable.comcast.com
www.comcast.com

Frontier Communications

Robert Moore
114 New Park Ave., Franklin, CT 06254
(860) 887-2712 / robert.a.moore@ftr.com
https://frontier.com

Camp Youth**Channel 3 Kids Camp**

Susan Baroni-Schaeffer
73 Times Farm Road, Andover, CT 06332
(860) 742-2267 FAX: (860) 742-8027
s.baronischaeffer@channel3kidscamp.org
www.channel3kidscamp.org

Car Sales**Scranton Chevy of Norwich**

Matt Scranton
774 W. Thames St., Norwich, CT 06360
(860) 883-3333 FAX: (860) 889-2684
matt@scrantonchevy.com
www.scrantonchevy.com

Casino

Chairman's Circle Member

Foxwoods Resort Casino

Jessica Baran
350 Trolley Line Blvd.
Mashantucket, CT 06338
(860) 312-3275 FAX: (860) 312-3329
kmarcks@foxwoods.com
<http://foxwoods.com>

Chairman's Circle Member

Mohegan Sun

Marc Provost
1 Mohegan Sun Blvd.
Uncasville, CT 06382
(860) 862-7415
FAX: (860) 862-7545
mprovost@mohegansun.com
www.mohegansun.com

Catering

Matthew's Catering Company, LLC

Matthew Johnson
15 East Main St., Unit #2, PO Box 176
Central Village, CT 06332
(860) 564-3543 FAX: (860) 564-6909
info@matthewscatering.com
www.matthewscatering.com

Panera Bread

Diana Donatello
Lisbon Landing, Route 12, Lisbon, CT 06351
(860) 376-9100 FAX: (860) 376-9400
wendy.kopp@panerabread.com

Stott's at Bat Catering and Baking

Jean Stott
Norwich, CT 06360
(860) 885-1802 / Stottsatbat@yahoo.com
www.stottsatbat.net

Certified Public Accountant

Andre J. Messier, Jr., CPA, LLC

Andre J. Messier Jr.
12 Case St., Suite 201
Norwich, CT 06360
(860) 887-9004 FAX: (860) 887-2340
andy@messiercpa.com

Doherty, Beals & Banks, P.C.

Amy Buckley
187 Williams St., New London, CT 06320
(860) 443-2033 FAX: (860) 444-7056
amybuckley@dbbcpa.com
www.dbbcpa.com

Edwin R. Muenzner CPA, LLC

Ed Muenzner
210 Route 32, Franklin, CT 06254
(860) 892-1040 FAX: (860) 892-1042
ed@edmcpcallc.com
www.edmcpcallc.com

Goldblatt Bokoff LLC

Rosa Goldblatt
457 West Main St.
Norwich, CT 06360
(860) 886-5108 FAX: (860) 889-8683
rosa@goldblattbokoff.com
www.goldblattbokoff.com

O'Connor Davies, LLP

Marcia L. Marien
100 Great Meadow Road
Wethersfield, CT 06109
(860) 257-1870 FAX: (860) 257-1875
mmarien@odpkf.com
www.odpkf.com

Peter Wm. Maneri, Jr., CPA, LLC

Peter Maneri Jr.
21 Stott Ave., Norwich, CT 06360
(860) 889-3825 FAX: (860) 889-5224
pmaneri@snet.net

Timothy S. Ashburner, CPA

758 Boswell Ave.
Norwich, CT 06360
(860) 886-1483 FAX: (860) 885-0064
tsashburner@att.net
www.timothysashburnercpa.com

Child Care Services

Little Learners at Three Rivers

Linda Fecteau
574 New London Turnpike
Norwich, CT 06360
(860) 215-9033
linda@littlearnerscc.com
<http://littlearnerscc.com/>

The Global Child, LLC

Virginia Brown
55 Otrobando Ave.
Norwich, CT 06360
(860) 889-3528
vbrown@globalchildschool.com
www.globalchildschool.com

Childrens Entertainment

Super Smiley's Hop House, LLC

Desiree Desilus
Norwich, CT 06360
(860) 383-5597
Smileyshophouse@gmail.com
[Www.CTHopHouse.co](http://www.CTHopHouse.co)

Wacky Factory Entertainment

Joe Hynds
35 Sholes Ave., Norwich, CT 06360
(860) 885-8926
stretch@stretchthec clown.com
<http://stretchthec clown.com>

Church

Central Baptist Church

2 Union Square, Norwich, CT 06360
(860) 889-8313 / cbc.pastor@yahoo.com
www.centralbaptistnorwich.com

Cleaning Service

SERVPRO of Norwich/Windham County

John O'Sullivan
435 Salem Turnpike, Bozrah, CT 06334
(860) 887-0447 FAX: (860) 889-2701
servpro8745@snet.net
www.servpronorwichwindhamcounty.com

Coffee Shop

American Honey Creamery

Jo-Ellen Converse
19 Route 165a, Preston, CT 06365
(860) 303-1112
mamajo1970@comcast.net

Dixie Donuts, LLC

Kathy Burkart
275 West Town St., Norwich, CT 06360
(860) 889-8992
kmb06321@yahoo.com
www.facebook.com/pages/Dixie-Donuts-LLC/207925767852?fref=ts

Starbucks

Mike Sobol
88 Salem Turnpike
Norwich, CT 06360
(860) 889-6256 / s19356@retail.starbucks.com
www.starbucks.com/store-locator

Computer - Sales & Service

Optical Software Solutions, Inc.

Jennifer Stred
1031 Norwich New London Turnpike
Uncasville, CT 06382
(860) 848-8222 FAX: (860) 848-8296
jennifer@opticalsoftware.com
www.opticalsoftware.com

Computer - Website Design

Weblink International

3905 West Vincennes Road, Suite 210
Indianapolis, IN 46268
(877) 231-4970 FAX: (317) 872-3929
Info@weblinkinternational.com
<http://weblinkinternational.com>

Consulting

Be On Purpose

Jerry Sinnamon
43 Willetts Ave., Apt 3
New London, CT 06320-5753
(860) 437-3922
jas@be-on-purpose.com
www.be-on-purpose.com

Bozrah St. Enterprises

Mary E Barbee "Biddy"
313 Bozrah St., Bozrah, CT 06334
(860) 884-2652
biddy59@comcast.net

Contractors - General

CertaPro Painters

David Messier
112 Stockhouse Road, P.O. Box 300
Bozrah, CT 06334
(860) 886-2900
dpmessier@aol.com
http://norwich-glastonbury.certapro.com

DC Sheetmetal, LLC

Don Cormier
135 Yantic Road, Yantic, CT 06389
(860) 887-3936 FAX: (860) 887-2453
dondsheetmetal@gmail.com

David Geigenmiller Home Improvement

David Geigenmiller
Baltic, CT 06360
860-961-8720 / dgeigenmiller@snet.net

Exterior Solutions LLC

Dino R Tudisca
53 Scott Hill Road, Bozrah, CT 06334
(860) 608-1842 FAX: (860) 859-0739
exterior@sbcglobal.net
http://thehousedoktor.com

Floor Covering Shop, Inc.

Jonathan Graf
385 Central Ave.
Norwich, CT 06360
860-887-3523 FAX: 860-886-1664
floorcoveringshop@yahoo.com
www.floorcoveringshopinc.com

G. Schnip Construction, Inc.

Gary Schnip
107 Forest St.
Norwich, CT 06360
(860) 889-2854 FAX: (860) 887-2574
gary@gschnip.com

High Tech Home Improvements, LLC

Bob Noe
Lisbon, CT 06351
(860) 861-3040 / 1hightech2012@gmail.com

Nutmeg Companies, Inc.

Evert Gawendo
1 Ohio Ave., Norwich, CT 06360
(860) 823-1780 FAX: (860) 885-1421
evert@nutmegcompanies.com
www.nutmegcompanies.com

Rogers Kitchens

Jim Smith
130 Chestnut St., Norwich, CT 06360
(860) 886-0505 FAX: (860) 886-0506
rogerskitchens@99main.com
www.rogerskitchens.com

Contractors - Locksmith

AA Lock & Key, Inc.

Deborah Vessels
1055 Colonel Ledyard Hwy
Ledyard, CT 06339
(860) 464-8664 FAX: (860) 464-1541
deb@aalockkey.com
http://aalockkey.com

Credit Card Processing

1st Merchant PowerPay

Dan Ginnetti
415 Lisbon Road, Canterbury, CT 06331
(860) 546-2110 FAX: (860) 546-2143
dan.ginnetti@snet.net
www.powerpay.biz

Capital Bankcard - New England, LLC

Bill Morrone
26 Barrett Hill Road
Brooklyn, CT 06234-1500
(860) 774-8210 FAX: (866) 745-5542
bill@capitalbankcardne.com
www.capitalbankcardne.com

Custom Framing

Xuare, LLC

Peter T. Obuchowski
471 North Main St., Norwich, CT 06360
860-383-8863 / peter@xuare.com
www.xuare.com

Dentist

Family Orthodontic Care

Jennifer J. Lowney, DMD
100 Sherman St.
Norwich, CT 06360
(860) 886-1466 FAX: (860) 886-1163
jenlowney@aol.com
www.familyorthodonticcare.com

Greene Dental Group

Jonathan Greene, DDS
65 Sachem St., Norwich, CT 06360
(860) 889-8427 FAX: (860) 204-9402
drgreene@greenedentalgroup.com
www.greenedentalgroup.com

Griswold Dental Associates, PC

Dr. Norman Katzoff
87 Slater Ave., Jewett City, CT 06351
(860) 376-2624 FAX: (860) 376-9855
drk@griswolddental.net
www.griswolddental.net

HI Dental Care

Jung Kim
598 West Main St., Suite 3
Norwich, CT 06360
(860) 823-1080 FAX: (860) 357-6122
kimjh83@hotmail.com
http://hidentalcare.com

Norwich Family & Cosmetic Dentistry

Tina Dempsey
117 Lafayette St., Norwich, CT 06360
(860) 887-2231 FAX: (860) 892-1953
syousufold@msn.com
www.norwichsmiles.com

Disc Jockey Service

Pro Digital Sounds Mobile Disc-Jockey Service

Harry Thomas
PO Box 1575, New London, CT 06320
actorhlt@aol.com

Doggy Daycare

A Dog's World

Monty Aune
396 Salem Turnpike, Bozrah, CT 06334
(860) 383-2487 / adogsworld2015@gmail.com
www.adogsworldct.com

Doors

Overhead Door Company of Norwich

Gary Wolinski
88 Route 2A
Preston, CT 06365
(860) 889-3848 FAX: (860) 889-7711
gwolinski@ohdct.com
www.ohdct.com

Drivers Education

AAA Driving School

Matt McShane
113 Salem Turnpike, Suite 103
Norwich, CT 06360
(800) 594-0346
briarwoodacd@sbcglobal.net
www.aaa.com/scripts/WebObjects.dll/ZipCode.
woa/wa/route

Economic Development

CT Business & Industry Association

Adam Ney
350 Church St., Hartford, CT 06103
(860) 244-1900
neya@cbia.com

Global Guild LLC

Stephanie Fear
71 Main St., Norwich, CT 06360
(860) 207-5194
globalguildllc@gmail.com

Norwich Community Development Corporation

Bob Mills
66 Franklin St., Norwich, CT 06360
(860) 887-6964 FAX: (860) 887-3438
admin@askncdc.com
www.askncdc.com

Southeastern CT Enterprise Region (seCTer)

Sean Nugent
19-B Thames St., Groton, CT 06340
(860) 437-4659 FAX: (860) 437-4662
smackenzie@secter.org
www.secter.org

Education

Chairman's Circle Member

American Professional Educational Services

Gregory Allard
1 American Way
Norwich, CT 06360
(860) 886-1463
GAllard@americanamb.com
www.americanprotraining.com

Integrated Day Charter School

Anna James
68 Thermos Ave., Norwich, CT 06360
(860) 892-1900 FAX: (860) 892-1902
AnnaJ@idcs.org
www.idcs.org

Norwich Free Academy

David Klein
305 Broadway, Norwich, CT 06360
(860) 425-5500 FAX: (860) 887-2004
dufortt@nfaschool.org
www.norwichfreeacademy.com

Norwich Public Schools

Athena Nagel
90 Town St., Norwich, CT 06360
(860) 823-4245
pwaubin@norwichpublicschools.org

Three Rivers Community College

Mary Ellen Jukoski Ed. D.
574 New London Turnpike
Norwich, CT 06360
(860) 215-9001 FAX: (860) 215-9917
SFinton@trcc.commnet.edu
www.trcc.commnet.edu

Electricians

Barber Electric, Inc.

Scott S Barber
178 Fitchville Road, Bozrah, CT 06334-1105
(860) 887-9889 FAX: (860) 886-2054
scott@barberelectric.com

Employee Benefits

Carol Hopkins - Barnum Financial Representative

Carol Hopkins
45 Glastonbury Blvd., Glastonbury, CT 06033
(860) 575-0183 FAX: (860) 218-2899
chopkins@metlife.com

Employment & Training

Achievement Unlimited of CT

James O'Shea
7 East Ave., Norwich, CT 06360
(860) 334-2031
jimoshea57@gmail.com
www.achievementunlimitedct.com

Workforce Transition Training LLC

Rob Austin
9 Mayfair Drive, Waterford, CT 06385
(860) 501-3257 FAX: (860) 442-3257
robaut10@yahoo.com
www.mywtt.com/

The Workplace

Jonathan Childs
841 Route 32, Suite 12A, North Franklin, CT 06254
(860) 642-8121
jchilds@workplace.org
www.workplace.org

Energy Company

Covanta

John Vinson
132 Military Hwy, Preston, CT 06365
(860) 889-4900
jvinson@covantaenergy.com
www.covantaenergy.com

East River Energy

401 Soundview Road, PO Box 388
Guilford, CT 06437
(203) 453-1200 FAX: (203) 453-3899
dlm@eastriverenergy.com
www.eastriverenergy.com

Chairman's Circle Member Norwich Public Utilities

John Bilda
16 South Golden St.
Norwich, CT 06360
(860) 887-2555 FAX: (860) 823-4580
johnbilda@npumail.com
www.norwichpublicutilities.com

Wheelabrator Lisbon, Inc.

John Horgan
425 South Burnham Highway
Lisbon, CT 06351
(860) 885-3512 FAX: (860) 889-7669
jhorgan@wtienergy.com
www.wheelabratortechnologies.com

Energy Solutions

Lantern Energy, LLC

Craig Frenkel
33 Wisconsin Ave., Norwich, CT 06360
(877) 878-3006 FAX: (877) 808-7840
craig@lanternenergy.com
www.lanternenergy.com

ReEnergy Sterling

John O'Rourke
10 Exeter Drive, P.O. Box 188
Sterling, CT 06377
(860) 564-7000 FAX: (860) 564-7816
www.reenergyholding.com

Engineers

Arico Engineering Inc.

John Arico
841 Route 32 Unit 19
Franklin, CT 06254
(860) 642-7040 FAX: (860) 642-6004
jarico@aricoengineering.com
www.aricoengineering.com

CLA Engineers

Tom Cummings
317 Main St., Norwich, CT 06360
(860) 886-1966 FAX: (860) 886-9165
tcummings@claengineers.com
www.claengineers.com

Design Learned, Inc.

Scott Learned
116 Main St., Norwich, CT 06360
(860) 889-7078
AnnBlock@designlearned.com
www.designlearned.com

Entertainment

Chestnut St. Playhouse

Lisa Foss
24 Chestnut St., Norwich, CT 06360
(860) 886-2378 FAX: (860) 859-2672
ChestnutSt.Playhouse@gmail.com
www.chestnutst.playhouse.org/

Connecticut Tigers

Eric Knighton
14 Stott Ave., Norwich, CT 06360
(860) 887-7962 FAX: (860) 886-5996
info@cttigers.com
www.cttigers.com

Digiplex Lisbon Cinema 12

Melanie Sanborn
162 River Road, Lisbon, CT 06351
(860) 376-3965 FAX: (860) 376-5172
msanborn@carmike.com
www.digiplexdest.com

Franco's COMEDY For Your CAUSE

Franco Frank Carofano
PO Box 323, Bozrah, CT 06334
(860) 884-2300
Franco@ComedyForYourCause.com
comedyforyourcause.com

MD Productions

Marlon Delgado
Norwich, CT 06360
(860) 861-7301
mardel3244@yahoo.com

Naskart - Indoor

Kart Racing & Trampoline Park

Rachel Hannas-Metz
1 Sachatello Industrial Drive
Montville, CT 06370
(860) 444-7700
info@NaskartRacing.com
www.naskarttracing.com/

Equipment Repair Service

Misery Hill Equipment Repair

Andrew Seager
71 Lebanon Road
Franklin, CT 06254
(860) 857-4873 FAX: (860) 642-6558
seager71@comcast.net

Service Station Equipment, Inc.

Martin McKinney
33 Leffingwell Road
Uncasville, CT 06382
(860) 848-2278 FAX: (860) 848-4449
md.mckinney@sse-inc.net
http://sse-inc.net/

Eye Care

TotalVision Eye Health Center, LLC

Regina Strand
2020 Norwich New London Tpke
Uncasville, CT 06382
(860) 848-8777 FAX: (860) 848-3388
regina_strand2000@yahoo.com
www.eyecarect.com

Financial Services

Ron Bettez, Barnum Financial Group

Financial Adviser / Financial Services Representative
Norwich, CT 06360
(860) 258-3875 FAX: (860) 218-2899
rbettez@barnumfg.com
www.barnumfinancialgroup.com

Financial Services & Investments

Rose City Financial Services, LLC

Andrew Nollman
210 Route 32- Suite #104
Franklin, CT 06254
(860) 383-6044 FAX: 866-878-6545
Andrew@RoseCityFinancial.com
www.RoseCityFinancial.com

Fire Department

Norwich Fire Department Local 892

Chris Zaugg
10 North Thames St., Norwich, CT 06360
(860) 886-1378
admin@local892.org
www.local892.org/

Taftville Fire Department

Timothy Jencks
134 Providence St., Taftville, CT 06380
(860) 887-6676 FAX: (860) 887-3909
timjencks@taftvillefire.org
http://taftvillefire.org

Fire Equipment - Sales - Inspections

Coastline Fire Protection

Mike Chauvin
Servicing CT, MASS, RI
Plainfield, CT 06374
(860) 319-9194
coastlinefireprotection@yahoo.com

Flower Shop & Gift Store

Hart's Greenhouse & Florist, LLC

Joyce Hart
43 Clinton Ave., Norwich, CT 06360
(860) 886-4278 FAX: (860) 885-1411
daveandjoyce
@hartsgreenhouseflorist.com
www.hartsgreenhouseflorist.com

LeFrancois Floral & Gifts, LLC

Joanne LeFrancois
50 Pine St., Norwich, CT 06360
860-887-4695
FAX: (860) 887-9461
lefrancoisfloral@gmail.com
www.lefrancoisfloral.net/

McKenna's Flower Shop

Michael Rankowitz
520 Boswell Ave., Norwich, CT 06360
(860) 887-2479 or (800) 889-0909
service@mckennasflowershop.com
www.mckennasflowershop.com

Food Service Distributors

Chairman's Circle Member

US Foods

Jesse James
222 Otrobando Ave.
Norwich, CT 06360
(860) 425-3008 FAX: (860) 425-3009
jesse.james@usfoods.com
www.usfoods.com

Fuel

Brunelli Energy

Kimberly Brunelli
2 Rachel Drive, Bozrah, CT 06334
(860) 889-4442 FAX: (860) 889-4443
kim.brunellienergy@att.net
www.brunellienergy.com

Funeral Home

Cummings-Gagne Funeral Home

Mark R. Gagne
82 Cliff St., Norwich, CT 06360
(860) 887-4285 FAX: (860) 885-1778
mrg2ski@aol.com
www.cummings-gagnefh.com

Furniture Sales

Gorins Furniture, Inc.

Wendy Gorin Ladd
49 New London Turnpike, Norwich, CT 06360
(860) 887-2579 FAX: (860) 887-9375
wendy@gorinsfurniture.com
www.gorinsfurniture.com

Mek's Amazing Furniture

Kerri Theriault
599 Norwich Ave., Taftville, CT 06380
860-204-9811
FAX: (860) 204-9822
kerri.theriault@yahoo.com
www.amazingfurnitureonline.com

Surplus Office Store

Michael Matera
363 West Main St., Norwich, CT 06360
(860) 859-2083
http://surplusunlimitedstore.com

Generators

AC/DC Industrial Electric, LLC

Charles Carroll
44 Yantic Flats Road
Yantic, CT 06389
860-886-2232
FAX: 860-425-0622
charlie@acdcindustrial.com
www.acdcindustrial.com

Golf Courses

Norwich Golf Course

Mike Svab
685 New London Turnpike, Norwich, CT 06360
(860) 889-6973 FAX: (860) 886-5684
msvab@norwichgolf.com
www.norwichgolf.com

The Windham Club

Bob Cusumano
184 Club Road, North Windham, CT 06256
(860) 456-4211
rfcusumano@aol.com
www.windhamclub.com

Government

City of Norwich

Marixsa Romanella
100 Broadway, Norwich, CT 06360
(860) 823-3742 FAX: (860) 885-2914
mayorsoffice@cityofnorwich.org
www.norwichct.org

Congressman Joe Courtney

Joe Courtney
101 Water St., Suite 301, Norwich, CT 06360
(860) 886-0139
Info@JoeCourtney.com

Connecticut Commission on Human Rights and Opportunities

Lucia Leise
100 Broadway, Second Floor
Norwich, CT 06360
(860) 886-5703 FAX: (860) 886-2550
lucia.leise@ct.gov
www.ct.gov/chro/site/default.asp

DECD

Carol Wallace
505 Hudson St., Hartford, CT 06106-7106
(860) 270-8000
DECD@po.state.ct.us

DORS - Bureau of Rehabilitation Services

Megan Provost
113 Salem Turnpike, North Building
Norwich, CT 06360
(860) 859-5720 FAX: (860) 859-5733
megan.provost@ct.gov
www.ct.gov/brs/site/default.asp

Governor's Eastern Connecticut Office

171 Salem Turnpike, Norwich, CT 06360
(860) 886-0555

Lt Governor Nancy Wyman

Nancy Wyman
Executive Office
55 Elm St., Hartford, CT 06106
(860) 702-3314
Martin.Heft@po.state.ct.us

Mohegan Tribe of Indians of Connecticut

Charles Bunnell
5 Crow Hill Road
Uncasville, CT 06382
(860) 862-6120 FAX: (860) 862-6162
cbunnell@moheganmail.com
http://mohegansun.com

Norwich Police Department

Patrick Daley
70 Thames St., Norwich, CT 06360
(860) 886-5561 FAX: (860) 886-4552
http://norwichct.org/index.aspx?nid=255

Senator Catherine Osten

Catherine Osten
187 Scotland Road, Baltic, CT 06330
(860) 240-8600
catherine.osten@cga.ct.gov

Senator Heather Somers

Heather Somers
67 Ramsdell St., Groton, CT 06340
heather@somers2016.com

Senator Paul Formica

Paul Formica
20 Bush Hill Dr #A, Niantic, CT 06357
(860) 240-8800
Paul.Formica@cga.ct.gov
http://ctsenaterepublicans.com/home-formica

State Representative Christine Conley

Christine Conley
90 Crown Knoll Court
Groton, CT 06340
cconley4grotonledyard@gmail.com

State Representative Doug Dubitsky

Doug Dubitsky
PO Box 70, North Windham, CT 06256
(800) 842-1423
doug.dubitsky@housegop.ct.gov
http://cthousegop.com/doug-dubitsky/

State Representative Emmett Riley

Emmett Riley
25 Sherwood Lane, Norwich, CT 06360
(860) 240-8585
emmett.riley@cga.ct.gov
www.housedems.ct.gov/Riley/

State Representative Holly Cheeseman

Holly Cheeseman
16 Mitchell Drive, Niantic, CT 06357
holly.cheesemanxx@gmail.com

State Representative

Kathleen McCarty

Kathleen McCarty
226 Great Neck Road, Waterford, CT 06385
(860) 240-8700
Kathleen.McCarty@housegop.ct.gov
http://cthousegop.com/kathleen-mccarty

State Representative Kevin Ryan

Kevin Ryan
21 Terrace Drive, Oakdale, CT 06353
(860) 240-8585
kryan27620@aol.com

State Representative Kevin Skulczyk

Kevin Skulczyk
Jewett City, CT 06351
mskulczyk@yahoo.com

State Representative Mike France

Mike France
17 Garden Drive, Gales Ferry, CT 06335
860-240-8700
mike.france@housegop.ct.gov
http://cthousegop.com/mike-france/

Town of Bozrah

Glenn Pianka
1 River Road, Bozrah, CT 06334
(860) 889-2689 FAX: (890) 887-5449
http://townofbozrah.org/

Town of Franklin

First Selectman Richard Matters
7 Meetinghouse Hill Road
Franklin, CT 06254
(860) 642-6055 FAX: (860) 642-6606
franklin@99main.com
www.franklinct.com

Town of Griswold

First Selectman Kevin Skulczyk
28 Main St.
Griswold, CT 06351
(860) 376-7060 FAX: (860) 376-7106
firstselectman@griswold-ct.org
www.griswold-ct.org/

Town of Ledyard

Michael Finkelstein
741 Colonel Ledyard Hwy
Ledyard, CT 06339
(860) 464-3221
mayor@ledyardct.org
www.town.ledyard.ct.us/

Town of Lisbon

Thomas Sparkman
1 Newent Road, Lisbon, CT 06351
(860) 376-3400
FAX: (860) 376-6545
tsparkman@lisbonct.com
www.lisbonct.com

Town of Montville

Mayor Ronald K McDaniel
310 Norwich-New London Turnpike
Montville, CT 06382
(860) 848-3030
cmalchiodi@montville-ct.org
www.townofmontville.org

Town of Preston

First Selectman Robert Congdon
Town Hall- 389 Route 2
Preston, CT 06365
(860) 887-5581 FAX: (860) 885-1905
congdon@preston-ct.org
www.preston-ct.org

Town of Salem

First Selectman Kevin Lyden
270 Hartford Road, Salem, CT 06420
(860) 859-3873 FAX: (860) 859-1184
kevin.lyden@salemct.gov
www.salemct.gov

Town of Sprague

Catherine A. Osten
1 Main St., Baltic, CT 06330
(860) 822-3000
c.osten@ctsprague.org
www.ctsprague.org

Town of Voluntown

First Selectman Robert A. Sirpenski
115 Main St., Voluntown, CT 06384
(860) 376-4089 FAX: (860) 376-3295
RSirpenski@Voluntown.gov
www.voluntown.gov

Graphic Design

Midagraphics, Inc.

Michelle Fontaine-Calkins
90 Papermill Road, Baltic, CT 06330
(860) 822-3024 FAX: (860) 822-3028
production@midagraphics.com
http://midagraphics.com/index.htm

Miranda Creative, Inc.

Maria Miranda
18 Elm Ave., Norwich, CT 06360
(860) 887-6882 FAX: (860) 887-9089
mmiranda@mirandacreative.com
www.mirandacreative.com

Grocery Store

Shop-Rite Supermarkets, Inc.

Scott Capano
634 West Main St., Norwich, CT 06360
(860) 887-6088
scott.capano@wakefern.com
www.shoprite.com/pd/stores/CT/Norwich/Shop-
Rite-of-Norwich/BFDE400

Health & Beauty

Go Soap Yourself, LLC

Valerie Espeleta
PO Box 271, Plainfield, CT 06374
(860) 933 3345
info@gosoapyourselfllc.com
www.gosoapyourselfllc.com

Health & Wellness

Generational Wellness

Massage Therapy
Karin Jones
29 John St., Norwich, CT 06360
joneskarin20@gmail.com
www.generationallwellnessct.com

Chairman's Circle Member
Get Bent Baptiste Inspired Yoga
Jesse James
Stacie Lambert
207 North Main St., (Rte 12)
Norwich, CT 06360
(860) 886 9642
info@getbentinnorwich.com

Qivana Doreen McKeag

Doreen McKeag
Norwich, CT 06360
(860) 334 2938
doreen.mckeag@gmail.com
doreenmckeag.myqivana.com

Visaluz

Louis Maynard
46 Walnut Drive, Uncasville, CT 06382
(860) 389 5950
coachlouis@myvi.net

Healthcare

PhysicianOne Urgent Care

Alexandra Paindiris
607 West Main St.
Norwich, CT 06360
(860) 892 9000
FAX: (860) 892 9001
apaindiris@physicianoneurgentcare.com

United Community & Family Services

Jennifer Granger
34 East Town St., Norwich, CT 06360
(860) 889 2375 FAX: (860) 889 3450
jgranger@ucfs.org

Historical Society

The Forgotten Founders

Patricia C Williams
86 Town St., Norwich, CT 06360
(860) 887 5676 FAX: (860) 639 5888
patriciaw77@yahoo.com
www.theforgottenfounders.com

Leffingwell House Museum/ Society of the Founders of Norwich

Greg Farlow
348 Washington St., Norwich, CT 06360
(860) 889 9440
president@leffingwellhousemuseum.org
www.leffingwellhousemuseum.org

Norwich Historical Society

Bill Champagne
307 Main St., Norwich, CT 06360
(860) 889 0303
www.norwichhistoricalsociety.org

Homecare

Assured Quality Homecare, LLC

Caleb Roseme
116 Broadway, Unit 2 2
Norwich, CT 06360
(860) 373 0428 FAX: (860) 909 0013
info@asqhomecare.com
www.asqhomecare.com

Companions & Homemakers

Marnie Wilson
1 Washington St.
Norwich, CT 06360
(860) 859 1141
FAX: (860) 859 3993
marnie.wilson@elderlycare.com
www.companionsandhomemakers.com

Primary Prevention Homecare, LLC

Blair Eddy
106 Route 32, Franklin, CT 06254
(860) 244 9119 FAX: (860) 244 9163
e.eddy@pphomecare.com
primarypreventionhomecare.com

PSA Healthcare

Tina Ferreira
102 Salem Turnpike, Norwich, CT 06360
(860) 383 1909 FAX: (860) 383 1914
tferreira@psahealthcare.com
www.psahealthcare.com

QC Home Care Solutions, LLC

Christine Baker
P.O. Box 330, Bozrah, CT 06334
(860) 383 2290
d.mccollum@qchomecare.com
www.qchomecare.com

Hospice Care

Center for Hospice Care Southeast Connecticut

Carol Mahier, RN, MSN
227 Dunham St., Norwich, CT 06360
(860) 848 5699 FAX: (860) 886 0434
cmahier@hospicesect.org
www.hospicesect.org

Hospital

Natchaug Hospital, Inc.

Patricia Rehmer
11 A Stott Ave., Norwich, CT 06360
(860) 823 5320 FAX: (860) 859 1440
patricia.rehmer@hhhealth.org
www.natchaug.org

Chairman's Circle Member
William W. Backus Hospital
Steve Coates
326 Washington St., Norwich, CT 06360
(860) 889 8331 FAX: (860) 892-2728
www.backushospital.org

Hotels & Accommodations

AmericInn Lodge & Suites of Griswold

Laura Wheatley
375 Voluntown Road, Griswold, CT 06351
(860) 376 3200 FAX: (860) 376 3229
griswold.ct@americinn.com
www.americinn.com/hotels/CT/Griswold

Best Western Cristata Inn

Lynn Nazarko
2255 Norwich New London Turnpike
Uncasville, CT 06382
(860) 848 0660 FAX: (860) 848 8941
lnazarko@crisatatainn.com
www.crisatatainn.com

Comfort Suites • Choice Hotels

Sabrina McIntyre
275 Otrobando Ave., Norwich, CT 06360
(860) 892 9292 FAX: (860) 892 9198
sabrnam@prestigeheg.com
www.choicehotels.com/connecticut/norwich

Courtyard by Marriott Norwich

Matt Biggins
181 West Town St., Norwich, CT 06360
(860) 886 2600 FAX: (860) 889 2001
mbiggins@courtyardnorwich.com
www.marriott.com/goncy

Holiday Inn Norwich

Richelle Meneses
10 Laura Boulevard, Norwich, CT 06360
(860) 889 5201 FAX: (860) 889 1767
richelle.meneses@hhmlp.com
www.holidaynorwichhotel.com

Hyatt Place at Mohegan Sun

Heather Harris
2049 Norwich New London Turnpike
Uncasville, CT 06382
(860) 383-1234 FAX: (860) 848-1233
heather.harris@hyatt.com
www.uncasville.place.hyatt.com

Microtel Inn & Suites by Wyndham

Traci LaShomb CHA
1954 Norwich New London Turnpike
Uncasville, CT 06382
(860) 367 0880 FAX: (860) 367 0770
gm@microteluncasville.com

Human Resource

Human Resource Leadership Association of Eastern CT

Karen Eichstaedt
C/O UCFS
34 East Town St., Norwich, CT 06360
(860) 213 1600 FAX: (860) 823 6218
president@hrfact.org

HVAC

AllTemp Climate Control

Brian Jolicoeur
Gales Ferry, CT 06335
(860) 464 9315
service@alltemp.us

Hydraulic Services

Devine Hydraulics, Inc.

Brian A Devine
179 Gallivan Lane, Uncasville, CT 06382 0091
(860) 859 1650
FAX: (860) 887 1130
sharon@dhct.com

Ice Skating

Norwich RoseGarden Ice Arena

Shannon Fitzgerald
641 New London Turnpike
Norwich, CT 06360
(860) 892 2555 FAX: (860) 892 2559
rosegardenicearena@gmail.com
rosegardenicearena.com

Individual Member

Gary & Romer Young Friends of GNACC

Romer Young
Norwich, CT 06360
rgaryyoung@att.net

Thomas R. McCarthy

3909 Nachand Lane, Louisville, KY 40218
(502) 491 2200

Harry Raucher

13660 Morocca Lake Lane
Delray Beach, FL 33446
(561) 865 9031
hbarb1@adelphia.net

Rear Admiral Lotring

Arnie Lotring
2601A Paul Jones St.
Great Lakes, IL 06688 2845
arnold.lotring@navy.mil

Industrial Installers

Collins & Jewell Company

Chris Jewell
5 Rachel Drive, Bozrah, CT 06334
(860) 887 8813 FAX: (860) 886 5359
cjewell@collinsjewell.com



Capital Bankcard
New England, LLC
Merchant Services

Credit Card Processing Terminals • Wireless Credit Card Terminals
Retail Merchant Accounts • Mobile Processing
Point of Sale Systems • Website Processing • Gift Cards

Bill Morrone
Founder
Office: 860-774-8210
Mobile: 860-234-1110

.....
- FOR A FREE COMPETITIVE QUOTE -
Please fax a current statement to 1-866-745-5542
E-Mail: bill@capitalbankcardne.com
Website: www.capitalbankcardne.com
26 Barrett Hill Road, Brooklyn, CT 06234-1500

Capital Bankcard is a registered ISO/MSP of Wells Fargo Bank, N.A., Walnut Creek, CA



**AMAZING
FURNITURE
&
SLEEP SHOP**

Located in the Historic Ponemah Mills
599 Norwich Ave., Taftville, CT
**Open: Mon - Fri 10-6
Sat 9-5 & Sun 11-5**

860.204.9811
amazingfurn.com



ASHLEY
FURNITURE INDUSTRIES, INC.
New England's Authorized Distributor

Insurance

AllState Insurance

The D'Errico Agency, LLC

Joseph D'Errico
647 West Main St., Norwich, CT 06360
(860) 886 6707 FAX: (860) 886 1546
derricoagency@allstate.com
www.allstateagencies.com/derricoagency

Bearingstar Insurance

Tammy Blais
352 Salem Turnpike, Bozrah, CT 06334
(860) 859 2061 FAX: (860) 889 3904
tammy.blais@bearingstar.com
www.bearingstar.com

Bouvier Insurance

Kathy Kane
80 Norwich New London Turnpike
Uncasville, CT 06382
(860) 859 9821 FAX: (860) 561 8778
kkane@binsurance.com
www.binsurance.com

Chairman's Circle Member

Byrnes Agency Insurance

Jay Byrnes
6 Consumers Ave.
Norwich, CT 06360
(860) 886 5498 FAX: (860) 859 5075
jbyrnes@byrnesagency.com
www.byrnesagency.com

Byrnes Agency Insurance – Dayville

Jay Byrnes
394 Lake Road, Dayville, CT 06241
(860) 774 8549 FAX: (860) 779 3799
jbyrnes@byrnesagency.com
www.byrnesagency.com/dayville office

Byrnes Agency Insurance – Woodstock

Jay Byrnes
1226 Connecticut 169, Woodstock, CT 06281
(860) 928 7928 FAX: (860) 928 1809
jbyrnes@byrnesagency.com
www.byrnesagency.com/woodstock office

Chelsea Insurance Agency, LLC

Steve Dumont
124 West Town St., Norwich, CT 06360
(860) 886 1400 FAX: (860) 886 1499
steve@chelseainsurance.com
www.chelseainsurance.com

Farmers Insurance Afanador Agency

Luis Almanzar
2 Central Ave., Office A, Norwich, CT 06360
(860) 887 8000
luis.almanzar@farmersct.com
farmersct.com

Liberty Mutual Insurance

Paul Martinez
77 Salem Turnpike, Suite 111
Norwich, CT 06360
(860) 889 3811 ext.52643 FAX: (860) 886 5904
Paul0189.Martinez@libertymutual.com
www.libertymutual.com/paul martinez

New London County Mutual Insurance

Larry Lentine
101 High St., Norwich, CT 06360
(800) 962 0800 FAX: (860) 886 8270
larry.lentine@nlcinsurance.com
www.nlcinsurance.com

Northwestern Mutual

James F. Daly, CLU
115 Lafayette St., Norwich, CT 06360
(860) 889 8075 FAX: (860) 889 1574
james.daly@nm.com
www.james daly.com

People's United Insurance Agency

Julie Spencer
One Goodwin Square, Hartford, CT 06103
(860) 524 7630 FAX: (844) 714 1791
julie.spencer@peoples.com
www.peoples.com

Smith Brothers Insurance

William Buonaiuto
68 National Drive, Glastonbury, CT 06003
(860) 652 3235 FAX: (860) 652 3236
wbuonaiuto@smithbrothersusa.com
smithbrothersusa.com

Smith Insurance

Colin Burr
15 Liberty Way, Niantic, CT 06357
(860) 739 3322 FAX: (860) 691 4164
lhart@smithins.com
www.smithins.com

Strickland Agency

Eagleview Employee Center

Skeet Strickland
1 Mohegan Sun Boulevard, P.O. Box 391
Uncasville, CT 06382
(860) 887 5551 FAX: (860) 887 5594
strickskt@aol.com
www.progressiveagent.com

Sumner & Sumner Insurance Agency

Brendan Quinn
757 Main St., Willimantic, CT 06226
(860) 423 7733 FAX: (860) 450 7240
bquinn@sumnerandsumner.com
www.sumnerandsumner.com

CENTRAL BAPTIST CHURCH OF NORWICH

It's not what you think.

LIKE US ON FACEBOOK

WWW.CENTRALBAPTISTNORWICH.COM

NC-00223217



For people with intellectual
and development disabilities

Follow us!



Visit us!

TheArcNLC.org

Achieve with us.®

NC-00223216

Waitte's Insurance Agency, Inc.
Jay Waitte
116 Broadway, Norwich, CT 06360
(860) 886 1961 FAX: (860) 886 1965
ewaitte@snet.net

Intellectual Disability Support

The Arc New London County
Kathleen Stauffer
125 Sachem St., Norwich, CT 06360
(860) 889 4435 FAX: (860) 889 4662
kstauffer@thearcncl.org
www.thearcncl.org

The Light House
Kathy Greene
P.O. Box 271, Old Mystic, CT 06372-0271
(860) 445 7626 FAX: (860) 449 1378
kgreene@lhcampus.com
www.lhcampus.com

Janitorial Services

Sure Bright Commercial Cleaning Services
Chris and Patsy Heller
598 West Main St., Norwich, CT 06360
(860) 887 9785 FAX: (860) 887 9792
chris@surebrightinc.com
www.surebrightcleaningct.com

Tripper's Land Warrior, LLC.
Nicholas Tripp
94 Reservoir Road, Colchester, CT 06415
(860) 471-2062 / tripperslandwarrior@gmail.com
tripperslandwarrior.com

Landscape Design

Algiers's Landscaping, LLC
Michelle Algiers
770 Hopeville Road, Griswold, CT 06351
(860) 376 2895
algierslandscaping@gmail.com
algierslandscaping.com

Landscaping Services & Irrigation

American Landscape and Lawn Science
Steven Bousquet
766 Route 32, North Franklin, CT 06254
(860) 642 9966 FAX: (860) 608 8366
americanlandscape@yahoo.com
www.lawnscience.com

DiRoma Home and Garden Center, LLC
Maria Landry
1111 Voluntown Road, Griswold, CT 06351
(860) 591 1066 FAX: (860) 591 1032
marialandrydhgc@hotmail.com
www.dirosas.com

Hyde Park Landscape, Inc.
Brandon Hyde
401 Plain Hill Road, Norwich, CT 06360
(860) 859 2141
brandon@hydeparklandscape.com
www.hydeparklandscape.com

Stewarts Landscape & Lawn Care Service
190 Baltic Road, Norwich, CT 06360
(860) 822 6299 / jas7@sbcglobal.net
stewartslandscape Norwich CT

Licensed Loan Originator

Ava M. Colonna
Ava M. Colonna, Licensed Loan Originator
Moosup, CT 06354
(860) 303 3758 / avacolonna@yahoo.com

Literacy

Otis Library
Bob Farwell
261 Main St., Norwich, CT 06360
(860) 889 2365 FAX: (860) 889 2533
bfarwell@otis.lioninc.org
otisliterarynorwich.org

Manufacturing

Gunther International, LTD
Julie Bantle
1 Winnenden Road, Norwich, CT 06360
(860) 823 1427 FAX: (860) 823 3026
julie.bantle@guntherintl.com

Manufacturing and Industrial Supplies

Consumers Interstate Corporation
Nancy Smullen
2 Consumers Ave., Norwich, CT 06360
(860) 889 8481 FAX: (860) 886 6537
(800) 223 7475
n@cicgo.com

Marina

The Marina at American Wharf, a Joyal Capital Management Company
Michael Valentine
One American Wharf, Norwich, CT 06360
(860) 886 6363 FAX: (860) 887 2467
mvalentine@americanwharf.com
americanwharf.com

Marketing & Advertising

Comcast Spotlight
Michelle Blondin
15 Thames St., Suite 321
Groton, CT 06340
(860) 333 9203
michelle_blondin@cable.comcast.com
comcastspotlight.com



KEVIN WICKLESS
LAW, LLC

Attorney Kevin D. Wickless

99 Main Street, Suite 3A
Norwich, CT 06360
kevinwickless@gmail.com

Office 860.889.8804
Fax 860.889.8806

NO-00224079

- Patios & Steps
- Driveways & Walkways
- Grill Islands & Firepits



Hyde Park Landscape, Inc.
Landscape Design, Installation & Maintenance

NO-00223209

FREE ESTIMATES

- Lawn Maintenance
- Landscape Maintenance
- Perennial Gardens

Call 860-859-2141. Visit our portfolio at
www.HydeParkLandscape.com



Touching Clients

April Heavens Woodcock
PO Box 39, Franklin CT 06254
(860) 591 9244 FAX: (888) 711 3198
awoodcock@touchingclients.com
www.touchingclients.com

Meat Market

Salem Prime Cuts, Inc.

John M. Fusaro
12 New London Road, Salem, CT 06420
(860) 859 0741
jomf@snet.net

Media & Communication

Cumulus Media

Jessica Vargas
7 Governor Winthrop Boulevard
New London, CT 06320
(860) 443 1980 FAX: (860) 444 7970
jessica.vargas@cumulus.com
www.q105.fm

Full Power Radio WBMW/106.5 WWRX/107.7

John Fuller
P.O. Box 357, Ledyard, CT 06339
(860) 464 1066
john@wbmw.com
www.wbmw.com

Chairman's Circle Member

Hall Communications Radio Group

Bob Reed
40 Cuprak Road, Norwich, CT 06360
(860) 887 3511 FAX: (860) 886 7649
bobr@hallradio.net
www.wcty.com

Red Wolf Broadcasting

John Fuller
P.O. Box 351, Ledyard, CT 06339
(860) 464 1066 FAX: (860) 464 8143
john@wbmw.com
www.wbmw.com

Wolverine Media / Wolverine Radio

Michael Minarsky
2 North Main St., PO Box 1690
Jewett City, CT 06351
(860) 710 8119 FAX: (860) 376 4215
mike.minarsky@wolverine.radio.com
wolverine.radio.com

Medical — Physician

Connecticut GI

Kolala Sridhar MD
105 Wawecus St., Norwich, CT 06360
(860) 859 9061
timveena@hotmail.com
www.connecticutgi.org

International Vein Clinics

Christine Warner
113 Salem Turnpike, Norwich, CT 06360
(800) VEINS 90
CWarner@internationalveinclinics.com
internationalveinclinics.com

Mental Health Services

Reliance Health, Inc. (Non Profit)

Carrie Dyer
40 Broadway, Norwich, CT 06360
(860) 887 6536 FAX: (860) 885 1970
cdyer@reliancehealthinc.org
www.reliancehealthinc.org

Southeastern Mental Health Authority

Cheryl Jacques
401 West Thames St., Bldg. 301
Norwich, CT 06360
(860) 859 4534 FAX: (860) 859 4797
cheryl.jacques@po.state.ct.us

Therapy Ward, LLC.

John Ward LCSW, LADC
99 Main St., Suite 3B, Norwich, CT 06360
(860) 889 6411 FAX: (860) 889 6413
speak@therapyward.com

Mold Remediation

Green Home Solutions of Eastern CT

Todd C. Postler
Norwich, CT 06360
(860) 608 0745
todd_postler@yahoo.com

Museum & Galleries

Slater Museum NFA

Vivian Zoe
108 Crescent St., Norwich, CT 06360
(860) 887 2506
museum@nfaschool.org
www.slatermuseum.org

Networking

Norwich Rotary Club

Norwich, CT 06360
(860) 887 7421
www.norwichrotary.org

Norwich Sunrise Rotary Foundation

Peter Maneri Jr.
21 Stott Ave., Norwich, CT 06360
(860) 889 3825
pmaneri@snet.net

The Arts: Inspiring minds... Enriching the community

Christ Church School of the Arts (CCSArts), located at 78 Washington Street, in Norwich, Connecticut, offers private instruction for students of all ages in classical guitar, guitar, organ, piano, strings, voice, woodwinds and brass. CCSArts also offers music and movement programs for pre-kindergarten and kindergarten-aged children, including the exciting MozartMath curriculum. Please take a moment to browse our website, meet our outstanding faculty, and learn more about our programs! [Web: www.ccsarts.org](http://www.ccsarts.org) [Email: info@ccsarts.org](mailto:info@ccsarts.org)

NO-00223227



**Provides Services Which Strengthen Families,
Promote Health, and Prevent Child Abuse and Neglect**
*Madonna Place also Helps Dads through the Fatherhood
Initiative to help Build Healthy Family Relationships*

Call Jason at 860-886-6600 ext. 117

NO-00223798

Rose City BNI

Norwich, CT
 (860) 892 1040
 www.rosecitybnict.com

Southeastern Connecticut Women's Network

Kathy Greene
 P.O. Box 1448, New London, CT 06320
 (860) 949 7014
 president@sectwomensnetwork.org
 sectwomensnetwork.org

Nonprofit Organization**Chelsea Gardens Foundation**

Hugh Schnip
 21 Stott Ave., Norwich, CT 06360
 (860) 889 3825
 chelseagardens@gmail.com
 www.chelseagardens.org

Eastern CT Workforce Investment Board

Virginia Sampietro
 108 New Park Ave., Franklin, CT 06254
 (860) 859 4100 FAX: (860) 859 4111
 information@ewib.org
 www.ewib.org

Easterseals Capital Region & Eastern CT

Andrea Mascaro
 24 Stott Ave., Norwich, CT 06360
 (860) 859 4148 FAX: (860) 859 4156
 amascaro@escrec.org
 www.easterseals.com/hartford

Habitat for Humanity of ECT., Inc

Terri O'Rourke
 377 Broad St.
 New London, CT 06320
 (860) 442 7890 FAX: (860) 701 1334
 torourke@habitatect.org
 www.habitatect.org

Haitian Health Foundation

Dr. Jeremiah J. Lowney Jr.
 97 Sherman St., Norwich, CT 06360
 (860) 886 4357 FAX: (860) 859 9887
 hhf@haitianhealthfoundation.org
 www.haitianhealthfoundation.org

Madonna Place, Inc.

Nancy Gentes
 240 Main St., Norwich, CT 06360
 (860) 886 6600 FAX: (860) 892 5411
 ngentes@madonnaplace.org
 www.madonnaplace.org

N.A.A.C.P. Norwich Branch

Jacqueline Owens
 241 Main St., P.O. Box 24
 Norwich, CT 06360
 (860) 887 4888
 jbo2931@aol.com
 www.norwichbranchnaacp.org

Norwich Public Schools Education Foundation

Mark Cook
 90 Town St., Norwich, CT 06360
 (860) 367 1812
 npseeducationfoundation@gmail.com
 www.npseducationfoundation.org

Norwich Youth & Family Services

Patricia Dixe
 80 Broadway, Norwich, CT 06360
 (860) 823 3783 FAX: (860) 823 3793
 pdixe@cityofnorwich.org
 www.norwichct.org

Relay for Life of Southeastern CT

James Russell
 825 Brook St., I 91 Tech Center
 C/O American Cancer Society, Inc.
 Rocky Hill, CT 06067
 (860) 886 2996
 jamesrussell8581@gmail.com
 relayforlife.org/southeasternct

Rotary Community Corps of Norwich (RCC)

Tammy Matlock
 Norwich, CT 06360
 (860) 303 4569
 tomkazi@aim.com
 rccofnorwich.org

The Salvation Army

Captain Jerry A Uttley II
 (860) 889 2329
 jerry.uttley@use.salvationarmy.org

Senior Resources Agency on Aging

Joyce Gootkin
 19 Ohio Ave., Suite 2
 Norwich, CT 06360
 (860) 887 3561 FAX: (860) 886 4736
 jgootkin@seniorresourcesec.org
 seniorresourcesec.org

T.V.C.C.A., Inc.

Deborah Monahan
 One Sylvandale Road, Jewett City, CT 06351
 (860) 889 1365 FAX: (860) 376 8782
 exec@tvcca.org
 www.tvcca.org

The Connection

Beth Connor
 100 Ros Common Drive, Suite 203
 Middletown, CT 06457
 (860) 343 5500
 bconnor@theconnectioninc.org
 www.theconnectioninc.org

The Last Green Valley, Inc

Lois Bruinooge
 203B Main St., Danielson, CT 06239
 (860) 774 3300 FAX: (860) 774 8543
 Lois@tlgv.org
 www.thelastgreenvalley.org

United Way of Southeastern CT, Inc.

Virginia Mason
 283 Stoddards Wharf Road, Gales Ferry, CT 06335
 (860) 464 3310 FAX: (860) 464 6362
 virginia.mason@uwsect.org
 www.uwsect.org

Office Machines**KOTA, A Mohegan LDI Enterprise**

Rashawn Lee
 13 Crow Hill Road, Uncasville, CT 06382
 (860) 862 6401 FAX: (860) 862 6140
 rlee@kotasolutions.com
 www.kotasolutions.com

Ophthalmology**Norwich Ophthalmology Group / Norwich Lasik**

Dr. Anish U. Shah
 79 Wawecus St., Suite 105, Norwich, CT 06360
 (860) 886 0161 FAX: (860) 899 5999
 info@norwichlasik.com
 www.norwichlasik.com

Packaging**Amgraph Packaging, Inc.**

Dawn Twerdy
 90 Papermill Road, Baltic, CT 06330
 (860) 822 2060 FAX: (860) 822 6468
 dawn.twerdy@amgraph.com
 www.amgraph.com

Party Rental**Robin's Ice Cream**

Robin Jablanski
 32 Church Lane, East Lyme, CT 06333
 (860) 884 7517 / robinsicecream2@gmail.com

Payroll Services**ASM Consulting, LLC**

Sheila Messier
 12 Case St., Suite 201, Norwich, CT 06360
 (860) 887 9004 FAX: (860) 887 2340
 sheila@messiercpa.com

Pharmacy**Greenville Drug Store, Inc.**

Lisa Scronce
 213 Central Ave., Norwich, CT 06360
 (860) 889 9857 FAX: (860) 886 0950
 greenvilledrug@snet.net

Photography**Donner Photographic, Inc.**

Robin Wilber
 187 West Town St., Norwich, CT 06360
 (860) 886-2475 or (800) 776-2475
 FAX: (860) 886-1015
 RobinW@Donner photo.com
 www.donner photo.com

Menagerie Photography

Marilyn Riel
53 Kinsman Hill Road, Lisbon, CT 06351
(860) 376 5514
info@MenageriePhotography.com
www.MenageriePhotography.com

Pools & Spas

Treats Pools and Spas

John Gould
22 Avery Road, Uncasville, CT 06382
(860) 848 1268 FAX: (860) 848 7941
treatspools@mac.com
www.treatspools.com

Printing Services

Copies Plus More

Kelly Whipple
31 Halls Hill Road, Colchester, CT 06415
(860) 537 0082 FAX: (860) 537 2711
Sales@copiesplusmorect.com

Minuteman Press

Laura Harrington
595 West Main St., Norwich, CT 06360
(860) 887 7468 FAX: (860) 887 7376
steve@mmpct.com
www.mmpct.com

Promotional Products

BMTees, Inc.

Debra Bilda
338 Norwich Ave., Taftville, CT 06380
(860) 889 4674 FAX: (860) 886 0606
bmtteesinc@gmail.com
www.bmttees.com

Propane Gas

Suburban Propane

Scott Osborne
262 Gallivan Lane, Uncasville, CT 06382
(860) 848 5510 FAX: (860) 848 5517
sosborne@suburbanpropane.com
www.suburbanpropane.com

Uncas Gas

Thomas Green
906 Rte 32, PO Box 17, N. Franklin, CT 06254
(860) 423 9271 FAX: (860) 642 4171
(800) 689 7700 / tgreen@uncasgas.com
uncasgas.com

Property Maintenance / Management

Chairman's Circle Member

The AMERICAN Group

Michael Aliano
One American Way, Norwich, CT 06360
(860) 886 1463
americangroupcompany.com

PD Properties

Alex Gebbie
194 Fitchville Road, Bozrah, CT 06334
(860) 887-2792 FAX: (860) 642 7750
info@pd properties.com
www.pd properties.com

Radio Station

Chairman's Circle Member

ROXY FM 100.9

40 Cuprak Road, Norwich, CT 06360
(860) 887 7699
apelletier@hallradio.net
www.radioroxym.com

Chairman's Circle Member

WCTY 97.7

40 Cuprak Road, Norwich, CT 06360
(860) 886 1515
apelletier@hallradio.net
www.wcty.com

Chairman's Circle Member

WICH 1310

40 Cuprak Road, Norwich, CT 06360
(860) 886 1515
apelletier@hallradio.net
www.wcty.com

Chairman's Circle Member

WNLC 98.7

40 Cuprak Road, Norwich, CT 06360
(860) 887 3511
apelletier@hallradio.net
www.wnlc.com/default.asp

Real Estate

Allyn Associates, Realtors

Fred Allyn III
2 Chapman Lane, Unit 11
Gales Ferry, CT 06335 1222
(860) 892 1335 FAX: (860) 892 1336
fred3@allynrealtors.com
www.allynrealtors.com

Eastern CT Association of REALTORS

Susy Hurlbert
106 Route 32, North Franklin, CT 06254
(860) 892 2595 FAX: (860) 892 2599
susy.hurlbert@easternctrealtors.com
www.easternctrealtors.com

Excel Home Inspections of CT and RI, LLC

Debbie Odom
P.O. Box 842, Waterford, CT 06385
(860) 334 2314
excelhomeinsp@aol.com
www.excelhomeinspectionct.com

Foundry 66

Bob Mills
66 Franklin St., Norwich, CT 06360
info@Foundry66.com



McKenna's Flower
has been proudly serving
Norwich since 1942.

- Weddings
- Funeral
- Everyday Floral Needs

Norwich Magazine's Best Florist Award Winner!

520 Boswell Ave. • Norwich, CT 06360

toll free (800)889-0909



TVCCA is dedicated improving the overall well being of individuals and families in need in our community.

- Housing
- Energy Assistance
- Food & Nutrition
- Financial Services
- Case Management



**Thames Valley Council
for Community Action, Inc.**

860. 889.1365 • TVCCA.ORG

Jan Mallett, Raveis Real Estate

Jan Mallett
86 Town St., Norwich, CT 06360
(860) 884 1145 FAX: (860) 823 1965
jan.mallett@raveis.com
www.raveis.com

Janice L. Dennis, Realtor

Janice L Dennis
92 Sherwood Lane, Norwich, CT 06360
(860) 884 1225 / dand1944@comcast.net
jandennis.cbintouch.com

Lord Properties

Jeff Lord
241 Main St., Norwich, CT 06360
(860) 859 7109
artkath@gmail.com

Mary Miskiewicz Real Estate

Mary Miskiewicz
209 Rockwell St., Norwich, CT 06360
(860) 886 1457 FAX: (860) 887 9678
mary.miskiewicz@snet.net

Nicola Companies, LLC

Joe Fatone
2035 Norwich New London Turnpike
PO Box 325, Uncasville, CT 06382
(860) 367 0778 FAX: (860) 367 0787
s.soderberg@snet.net

Randall Realtors

Wendy Wallace
76 Salem Turnpike, Norwich, CT 06360
(860) 887 1122 FAX: (860) 887 1144
wendy@randallrealtors.com
www.randallrealtors.com

Sprague Development LLC

Tucker Braddock
868 Scotland Road, Norwich, CT 06360
(860) 912 1336
htuckerbraddock@gmail.com

Sylvia Little, Realtor for Re/Max Realty Group

Sylvia Little
1641 Route 12, Gales Ferry, CT 06335
(860) 460 2885 FAX: (860) 464 6185
slittle Realtor@yahoo.com

Recruiting Services

US Army Recruiting

Anthony Leis
77 Salem Turnpike, Suite 105, Norwich, CT 06360
(860) 885 1264 FAX: (860) 885 1270
jose.a.gomez5.mil@mail.mil
www.goarmy.com

Rehabilitation

JACC Healthcare Center of Norwich: Three Rivers

Dan Brencher
60 Crouch Ave., Norwich, CT 06360
(860) 889 2631 FAX: (860) 889 0266
dbrencher@jacchealthcare.com
www.jacchealthcare.com

Norwichtown Rehabilitation & Care Center

John Miller
93 West Town St., Norwich, CT 06360
(860) 889 2614 FAX: (860) 823 1329
jmiller@norwichtownrehab.com

Orchard Grove Specialty Care Center

Paula McFee
5 Richard Brown Drive, Uncasville, CT 06382
(860) 848 8466 FAX: (860) 848 5675
pmmcfee@apple rehab.com
www.apple rehab.com

Residential Care — Women

Bethsaida Community, Inc.

Claire Silva
120 Cliff St., Norwich, CT 06360
(860) 886 7511 FAX: (860) 886 7512
claires@bethsaidact.org

Restaurants, Bars, Night Clubs

1000 Degrees Neapolitan Pizzeria

Bill Neilson
160 River Road, Lisbon Landing
Lisbon, CT 06351
(860) 639 6696
1000degreespizza.bill@gmail.com
www.1000degreespizza.com
Billy Wilson's Ageing Still

Paul Siefert
57 Broadway, Norwich, CT 06360
(860) 887 8733
paul@billywilsons.com

Brick & Basil

John Ryan
276 W. Town St., Norwich, CT 06360
(860) 889 9663
pizza@brickandbasil.com
www.brickandbasil.com

Brown Derby Lounge & Cafe

Doug Adams
158 Norwich New London Turnpike / Route 32
Uncasville, CT 06382
(860) 848 3407
Lizz@ct.metrocast.net

Caddy Shack Cafe 2

Jason Bromley
685 New London Turnpike, Norwich, CT 06360
(860) 887 8231 FAX: (860) 859 2060
www.caddyshackcafe2@gmail.com

ALL FRIENDS ANIMAL HOSPITAL

PET CARE You Can Trust

Melissa DeBlok, DVM
Elizabeth Friday, DVM
Lori Gervais, DVM
Kathleen Tangari, DVM
Catherine Newman, DVM

- In-house lab & Digital X-rays
- Dental Services
- Alternative Therapies
- Out-Patient Services
- Pet products & food
- & Lots of Love!

Ask about our Wellness Plans

Visit Our Website:
www.allfriendsanimalhospital.com

Monday-Thursday 8am-8pm
Friday 8am-6pm
Saturday 8am-noon

2016 BEST OF NORWICH AWARDS

Convenient Online Store

Call 860-886-0125 • Fax 860 889-8531
420 New London Turnpike • Norwich, CT 06360

Flanders Fish Market & Restaurant

Devon Sullivan
22 Chesterfield Road, PO Box 87
East Lyme, CT 06333
(860) 739 8866 FAX: (860) 739 4178
(800) 638 8189
catering@flandersfish.com
www.flandersfish.com

Harp & Dragon Pub, LLC

Scott Capano
130 Main St., Norwich, CT 06360
(860) 885 0147 / scott.capano@wakefern.com
www.mytogo.co/Harp_and_Dragon

Illiano's Grill

Vincenzo Race
257 West Town St.
Yantic, CT 06389
(860) 889 6165 FAX: (860) 889 6169
vincenzoct@comcast.net
illianosgrill.com

Irene's Family Restaurant LLC

Irene Marasiotis
58 Town St., Norwichtown, CT 06360
(860) 887 0075 FAX: (860) 889 8690
www.irenesfamilyrestaurant.com

Jack's Brick Oven Pizzeria

Jack Djombali
493 West Main St., Norwich, CT 06360
(860) 887 1100 FAX: (860) 887 1106
jack@jacksbrickoven.com
jacksbrickoven.com

Long Shots Sports Cafe

Carlos Veracruz
2020 Norwich New London Tpke
Uncasville, CT 06382
(860) 892 8811
libras92782@gmail.com
longshotssportscafe.com

Mommy's Delicious Food

Mirlande Daniel
595 West Main St., Norwich, CT 06360
(860) 383 2079 / pierre8981@ah.net
www.facebook.com/mommysdeliciousfood

Namoo Korean Eatery

Jason O
289 Main St., Norwich, CT 06360
(860) 859 0852
ojason65@hotmail.com
www.facebook.com/namookoreaneatery

Olde Tymes Restaurant, Inc.

Rodney Green
360 West Main St., Norwich, CT 06360
(860) 887 6865 FAX: (860) 887 8515
rodney@oldetymes.com
www.oldetymes.com

Pantry Cafe

Chef Lori King
308 Otrobando Ave., Norwich, CT 06360
(860) 383 4456 FAX: (860) 383 4269
ThePantry.CC@gmail.com
atthepantrycafe.com

Prime 82

Mario Bekiaris
181 West Town St., Norwich, CT 06360
(860) 949 8893 FAX: (860) 383 2491
alexprime82@gmail.com
prime82restaurantandbar.com

Sunset Burger Company

1 American Wharf Road, Norwich, CT 06360
(860) 949 8712
www.sunsetburgercompany.com

These Guys Brewing Company, LLC.

Rebecca Alberts
78 Franklin St., Norwich, CT 06360
(860) 949 8550
becka@theseguysbrewing.com
www.theseguysbrewing.com

Uncasville Diner

Kerim Ayvaci
884 Norwich New London Turnpike
Uncasville, CT 06382
(860) 848 7932 FAX: (860) 848 4337
uncasvillediner@gmail.com
www.uncasvillediner.com

Uncle D's Blazin' BBQ

Angelina & Iris Dewayne Gardner
146 West Town St., Norwich, CT 06360
(860) 383 4002
blazinbbq@att.net
www.facebook.com

Yantic River Inn

Martha Lawton
270 West Town St., Yantic, CT 06389
(860) 887 4300
mاتيacton@aol.com
www.yanticriverinnct.com

Retail Store

Ace Hardware 43 Corp

Andy Grant
1 South Golden St., Norwich, CT 06360
FAX: (860) 886 5148
a.grant@snet.net

Lindt Chocolate

MaryBeth Peret
Tanger Outlets Foxwoods
455 Trolley Line Boulevard
Mashantucket, CT 06338
(860) 204 0435
st472usa@lindt.com
www.tangeroutlet.com/foxwoods/store/lindt
chocolate

WALKWAYS and PLANTINGS



and more...

860-887-2344

www.lawnscience.com



NO-00223208

Superior East

251 West Thames St., Norwich, CT 06360
(860) 886 9997
bcreasy@superiornetwork.com
www.superioreast.com

Surplus Unlimited

Michael Matera
381 West Main St., Norwich, CT 06360
(860) 887 1400 FAX: (860) 887 5694
surplusunlimited@yahoo.com
surplusunlimitedstore.com

The Ideal Skate Shop

Jeff Blayman
175 Central Ave., Norwich, CT 06360
(860) 334 5277
jeffb@worshipskateboards.com
www.worshipskateboards.com

Security Services

Alarm Design, LLC

Scott Barbarossa
Norwich, CT 06360
(860) 889-7576 / alarmdesignllc@aol.com
www.alarmdesignllc.com

Vivint Smart Home

4931 N 300 W, Provo, UT 84604
(877) 873 9883 FAX: (801) 377 4116
www.vivint.com

Shoes

R.E.M. Boot Company

Mary Barber
789 Long Hill Road, Groton, CT 06360
(860) 446 1238 FAX: (860) 446 0816
(800) 998 2212
kimary618@gmail.com
www.rembootco.com

Signage

Camaro Signs, Inc.

John Hansen
58 Yantic Flats Road, Unit 1, Yantic, CT 06389
(860) 886 1553 FAX: (860) 886 2613
john@camarosigns.com
www.camarosigns.com

Grand Slam Signs

Heidi James
Ledyard, CT 06339
(972) 896 1483
heidi@grandslamsigns.com
www.grandslamsigns.com

Prokop Sign Company

Fran Houle
238 Boswell Ave., Norwich, CT 06360
(860) 889 6265 FAX: (860) 889 5059
fran@prokopsigns.com
www.prokopsigns.com

Software — Custom

DocXellent, Inc.

Gary Carignan
257 Main St., Norwich, CT 06360
(860) 887 2900 FAX: (860) 859 1634
gcarignan@docxellent.com
docxellent.com

Spa

The Spa at Norwich Inn

James A. Boucher
607 West Thames St., Norwich, CT 06360
(860) 425 3682 FAX: (860) 886 9299
jboucher@thespaatnorwichinn.com
www.thespaatnorwichinn.com

Sports & Fitness

Advantage Personal Training

Christy Wolinski
5 Freedom Way, Niantic, CT 06357
860 334 1918
christy@advantagepersonaltraining.com
www.advantagepersonaltraining.com

Anytime Fitness Lisbon

Julie Sollenberger
160 River Road, Lisbon, CT 06351
(860) 376 3225
lisbonct@anytimefitness.com
www.anytimefitness.com

Anytime Fitness Uncasville

Dawn Gilday
2020 Norwich New London Turnpike
Uncasville, CT 06382
(860) 848 0383
uncasvillect@anytimefitness.com
www.anytimefitness.com

Summit Fitness and Sports

Jolene Bowers
2 Wisconsin Ave., Norwich, CT 06360
(860) 887 3591 FAX: (860) 889 5361
info@summitfitnessandsports.com

Team Strike Zone LLC

Darryl MarcAurele Sr.
31 Clinton Ave., Suite #6, Norwich, CT 06360
(860) 908 2710
strikezonemma@aol.com
www.strikezonemma.com

Tiger Strength Performance

Lauren Nadwairski
32 A White St., Norwich, CT 06360
(860) 367 6213
laurennadwairski@yahoo.com
www.facebook.com/tigerstrengthperformance

State Marshal

John P. Sullivan, State Marshal

Janet Lefevre
154 Main St., Norwich, CT 06360
(860) 886 5555 FAX: (860) 886 5555
statemarshals@att.net



AmericInn
LODGE & SUITES

- Business Center
- Extended Stay Suites
- Fitness Center On-Site
- Free, Hot, Home-Style Breakfast
- Free, Hotel-Wide, High-Speed Internet
- Guest Laundry Facilities
- Indoor Heated Pool & Hot Tub
- Meeting Room • Motorcoach Parking
- Pet-Friendly • Shuttle Service (Call for details)
- Whirlpool & Fireplace Suites

EAT
Free, Hot Home-Style Breakfast

CONNECT
Free, Hotel-Wide Internet

PLAY
Fun for the Whole Family

RECHARGE
Welcome to Genuine Comfort

EARN
Easy Rewards - Bank Some Bucks

EXPERIENCE
AmericInn's Golden Promise

375 Voluntown Rd,
Griswold, CT 06351 | (860) 376-3200

NO-0022870

Support Group

Open Arms LGBTQIA+ Support Group

Renee Benoit
Norwich, CT 06360
(860) 823 1833

Tax Preparation Services

Mikasa Financial Services

Miguel Afanador
2 Central Ave., Office B, Norwich, CT 06360
(860) 442 8000 FAX: (860) 896 8388
afanador@mikasatax.com
mikasatax.info

Travel Service

Cruise Planners

Marc Bokoff
88 Weber Farm Road, Norwich, CT 06360
(844) 768-2799
marc.bokoff@cruiseplanners.com
www.bookthatescape.com

Joshua's Limousine

Joshua McKeon
172 Stoddards Wharf Road
Gales Ferry, CT 06335-1128
(866) 217 5674 / gary@joshuaslimousine.com
www.joshuaslimousine.com

Trophies & Plaques

Dragon Hollow Design/ Dragon Hollow Promotions

Chris "Wolf" Carter
Norwich, CT 06360
(860) 861 6200
wolf@dragonhollowdesign.com
www.dragonhollowdesign.com

New England Awards

Barbara Kenyon
47 Rte. 171, PO Box 43, Woodstock, CT 06267
(860) 928 7877 OR (860) 886 2227
FAX: (860) 928 4744
getrecognizednewengland@gmail.com

Veterinary Hospital

All Friends Animal Hospital

Lona Baker Harrelle
420 New London Turnpike, Norwich, CT 06360
(860) 886 0125 FAX: (860) 889 8531
afahnorwich@yahoo.com
www.allfriendsanimalhospital.com

Videography

Bizflix LLC

Scott Dube
PO Box 183, Yantic, CT 06389
(860) 334 8027
scott@bizflix.net
bizflix.net

Weddings

Holiday Hill Day Camp Holiday Hill Weddings & Parties

Dudley Hamlin
41 Chaffeeville Road, Mansfield Center, CT 06250
(860) 423 1375
dudley@holidayrecreation.com
www.holidayrecreation.com

Wholesale

Maple Lane Farms

Allyn Brown III.
57 Northwest Corner Road, Preston, CT 06365
860 889 3766 FAX: (860) 887 3087
allyn@maplelane.com
www.maplelane.com

Windows & Doors

New England Glass & Mirror Co.

Carl Reiser
31 Connecticut Ave., Norwich, CT 06360
(860) 887 1649 FAX: (860) 889 1882
service@neglassmirror.com
www.neglassmirror.com

Wire Products

Freeport McMoRan Copper & Gold

Jim Hodson
41 Wawecus St., Norwich, CT 06360
(860) 886 2661 FAX: (860) 889 8421
james_hodson@fmi.com
www.fcx.com

Youth Services

Three Rivers Young Marines

VFW Post 594
30 Connecticut Ave., Norwich, CT 06360
(860) 222 5024
ptm78usmc@sbcglobal.net

André J. Messier Jr. CPA, LLC Certified Public Accountant & Business Advisor

12 Case Street
Suite 201 Norwich,
CT 06360

Phone: (860) 887-9004
Fax: (860) 887-2340



MEMBERSHIP DIRECTORY

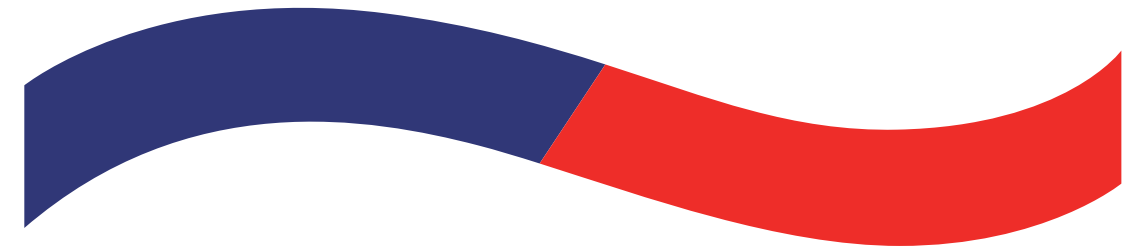
(ALPHABETICAL ORDER)

- 1000 Degrees Neapolitan Pizzeria
- 1st Merchant PowerPay
- A Dog's World
- AA Lock & Key, Inc.
- AAA Driving School
- AC/DC Industrial Electric, LLC
- Ace Hardware - 43 Corp
- Achievement Unlimited of CT
- Adams Auctioneers / Appraisers
- Advantage Personal Training
- Alarm Design, LLC
- Algieri's Landscaping, LLC
- All Friends Animal Hospital
- AllState Insurance - The D'Errico Agency, LLC
- AllTemp Climate Control
- Allyn Associates, Realtors
- American Ambulance Service, Inc.
- The AMERICAN Group
- American Honey Creamery
- American Landscape and Lawn Science
- American Profesional Educational Services
- AmericInn Lodge & Suites of Griswold
- Amgraph Packaging, Inc.
- Andre J. Messier, Jr., CPA, LLC
- Antenna Hair Salon
- Anytime Fitness Lisbon
- Anytime Fitness Uncasville
- The Arc New London County
- Arico Engineering Inc.
- ASM Consulting, LLC
- Aspen Properties LLC
- Assured Quality Homecare, LLC
- Ava M. Colonna
- Barber Electric, Inc.
- Be On Purpose
- Bearingstar Insurance
- Best Western Cristata Inn
- Bethsaida Community, Inc.
- Billy Wilson's Ageing Still
- Bizflix LLC
- Block, Janney & Associates, LLC
- BMTees, Inc.
- Bouvier Insurance
- Bozrah Street Enterprises
- Richard W. Brewer
- Brick & Basil
- Brown Derby Lounge & Cafe
- Brown Jacobson P.C.
- Brunelli Energy
- The Bulletin
- Byrnes Agency Insurance
- Caddy Shack Cafe 2
- Camaro Signs, Inc.
- Capital Bankcard - New England, LLC
- Carol Hopkins - Barnum Financial Representative
- Center for Hospice Care Southeast Connecticut
- Central Baptist Church
- CertaPro Painters
- Channel 3 Kids Camp
- Charter Oak Federal Credit Union
- Chelsea Gardens Foundation
- Chelsea Groton Bank
- Chelsea Insurance Agency, LLC
- Chestnut Street Playhouse
- Chinigo, Leone and Maruzo, LLP
- Christ Church School of the Arts, Inc.
- City of Norwich
- CLA Engineers
- Coastline Fire Protection
- Coca-Cola Company of Southeast N.E.
- Collins & Jewell Company
- Comcast Cable
- Comcast Spotlight
- Comfort Suites * Choice Hotels
- Companions & Homemakers
- Congressman Joe Courtney
- Connecticut Commission on Human Rights and Opportunities
- Connecticut GI
- Connecticut Tigers
- The Connection
- Consumers Interstate Corporation
- Copies Plus More
- CorePlus Credit Union
- Country Place Apartments
- Courtyard by Marriott Norwich
- Covanta
- Cruise Planners
- CT Business & Industry Association
- Cummings-Gagne Funeral Home
- Cumulus Media
- DC Sheetmetal, LLC
- DECD
- Design Learned, Inc.
- Details Hair Studio, LLC
- Devine Hydraulics, Inc.
- David Geigenmiller Home Improvement
- Digiplex Lisbon Cinema 12
- Dime Bank
- DiRoma Home and Garden Center, LLC
- Dixie Donuts, LLC
- DocXellent, Inc.
- Doherty, Beals & Banks, P.C.
- Donner Photographic, Inc.
- DORS - Bureau of Rehabilitation Services
- Dragon Hollow Design/Dragon Hollow Promotions
- East River Energy
- Eastern CT Association of REALTORS
- Eastern CT Workforce Investment Board
- Eastern Savings Bank
- Easterseals Capital Region & Eastern CT
- Edwin R. Muenzner CPA, LLC
- Encore Justified
- Epicure Brewing
- Excel Home Inspections of CT and RI, LLC
- Exterior Solutions LLC
- Falvey Motors Inc.
- Family Orthodontic Care
- Farmers Insurance - Afanador Agency
- Flanders Fish Market & Restaurant
- Floor Covering Shop, Inc.
- The Forgotten Founders
- Foundry 66
- Foxwoods Resort Casino
- Franco's COMEDY For Your CAUSE
- Freeport-McMoRan Copper & Gold
- Frontier Communications
- Full Power Radio WBMW/106.5 WWRX/107.7
- G. Schnip Construction, Inc.
- Gary & Romer Young Friends of GNACC
- Generational Wellness Massage Therapy
- Get Bent Baptiste-Inspired Yoga
- The Global Child, LLC
- Global Guild LLC
- Go Soap Yourself, LLC
- Goldblatt Bokoff LLC
- Gorins Furniture, Inc.
- Governor's Eastern Connecticut Office
- Grand Slam Signs
- Greater Norwich Area Chamber of Commerce
- Green Home Solutions of Eastern CT
- Greene Dental Group
- Greenville Drug Store, Inc.
- Griswold Dental Associates, PC
- Gunther International, LTD
- Habitat for Humanity of ECT., Inc
- Hair Cattery
- Hair Unique Salon
- Haitian Health Foundation
- Hall Communications Radio Group
- Harp & Dragon Pub, LLC
- Hart's Greenhouse & Florist, LLC
- HI Dental Care
- High Tech Home Improvements, LLC
- Holiday Hill Day Camp - Holiday Hill Weddings & Parties
- Holiday Inn Norwich
- Honary Member William Diodato - Native Son/Daughter Award November 2012 Recipient
- Human Resource Leadership Association of Eastern CT
- Hyatt Place at Mohegan Sun
- Hyde Park Landscape, Inc.
- The Ideal Skate Shop
- Illiano's Grill
- Integrated Day Charter School
- International Vein Clinics
- Irene's Family Restaurant LLC
- JACC Healthcare Center of Norwich: Three Rivers
- Jack's Brick Oven Pizzeria
- Jan Mallett - Raveis Real Estate
- Janice L. Dennis, Realtor
- John P. Sullivan State Marshal
- Joshua's Limousine
- Keith's Appliances & TVs
- Kevin Wickless LAW, LLC
- Kleemann Towing Svc LLC
- KOTA - A Mohegan LDI Enterprise
- Lantern Energy, LLC
- The Last Green Valley, Inc
- Law Office of Theresa I. Madonna, LLC
- Ledyard Auto LLC
- Leffingwell House Museum / Society of the Founders of Norwich
- LeFrancois Floral & Gifts, LLC
- Liberty Bank
- Liberty Mutual Insurance
- The Light House
- Lindt Chocolate
- Little Learners at Three Rivers
- Long Shots Sports Cafe
- Lord Properties

- Lt Governor Nancy Wyman
- Lucas Law, P.C.
- MACARA Vehicle Services, Inc.
- Madonna Place, Inc.
- Maple Lane Farms
- Maple Lane Spirits, LLC.
- The Marina at American Wharf
- Mary Miskiewicz Real Estate
- Mashantucket Pequot Tribal Nation
- Matthew's Catering Company, LLC
- Thomas R. Mccarthy
- McKenna's Flower Shop
- MD Productions
- Meadow Ridge & Cambridge Estates
- Mek's Amazing Furniture
- Menagerie Photography
- Michael E. Jewell, Attorney At Law
- Microtel Inn & Suites by Wyndham
- Midagraphics, Inc.
- Mikasa Financial Services
- Minuteman Press
- Miranda Creative, Inc.
- Misery Hill Equipment Repair
- Mohegan Sun
- Mohegan Tribe of Indians of Connecticut
- Mommy's Delicious Food
- N.A.A.C.P. Norwich Branch
- Namoo Korean Eatery
- Napa Auto Parts
- Naskart - Indoor Kart Racing & Trampoline Park
- Natchaug Hospital, Inc.
- New England Awards
- New England Glass & Mirror Co.
- New London County Mutual Insurance
- Nicola Companies, LLC
- Northwestern Mutual
- Norwich Arts Center
- Norwich Bowling & Entertainment Center
- Norwich Community Development Corporation
- Norwich Family & Cosmetic Dentistry
- Norwich Fire Department Local 892
- Norwich Free Academy
- Norwich Golf Course
- Norwich Historical Society
- Norwich Ophthalmology Group / Norwich Lasik
- Norwich Police Department
- Norwich Public Schools
- Norwich Public Schools Education Foundation
- Norwich Public Utilities
- Norwich Public Works Department
- The Norwich Rose
- Norwich RoseGarden Ice Arena
- Norwich Rotary Club
- Norwich Sunrise Rotary Foundation
- Norwich Wine & Spirits
- Norwich Youth & Family Services
- Norwichtown Rehabilitation & Care Center
- Nutmeg Companies, Inc.
- O'Connor Davies, LLP
- Olde Tymes Restaurant, Inc.
- Open Arms LGBTQIA+ Support Group
- Optical Software Solutions, Inc.
- Orchard Grove Specialty Care Center
- Otis Library
- Outfront Media
- Overhead Door Company of Norwich
- Panera Bread
- Pantry Cafe
- PD Properties
- People's United Bank
- People's United Insurance Agency
- Peter Wm. Maneri, Jr., CPA, LLC
- PhysicianOne Urgent Care
- PINK cut & color studio
- Poppy & Rye Bakery Cafe
- Primary Prevention Homecare, LLC
- Prime 82
- Pro Digital Sounds Mobile Disc-Jockey
- Prokop Sign Company
- PSA Healthcare
- Putnam Bank
- QC Home Care Solutions, LLC
- Qivana - Doreen McKeag
- R.E.M. Boot Company
- Randall Realtors
- Harry Raucher
- Rear Admiral Lotring
- Red Wolf Broadcasting
- ReEnergy Sterling
- Relay for Life of Southeastern CT
- Reliance Health, Inc. *Non-Profit
- Robin's Ice Cream
- Rogers Kitchens
- Ron Bettez, Barnum Financial Group
- Rose City BNI
- Rose City Financial Services, LLC
- Rotary Community Corps of Norwich (RCC)
- ROXY FM 100.9
- Sabby's Auto LLC
- Salem Prime Cuts, Inc.
- The Salvation Army
- Savings Institute Bank & Trust
- Sayet and Seder, Attorneys At Law
- Scranton Chevy of Norwich
- Senator Catherine Osten
- Senator Heather Somers
- Senator Paul Formica
- Senior Resources Agency on Aging
- Service Station Equipment, Inc.
- SERVPRO of Norwich/Windham County
- Shop-Rite Supermarkets, Inc.
- Slater Museum-NFA
- Smith Brothers Insurance
- Smith Insurance
- Southeastern Connecticut Women's Network
- S.C.A.D.D.
- Southeastern CT Enterprise Region (seCTer)
- Southeastern Mental Health Authority
- The Spa at Norwich Inn
- Sprague Development LLC
- Starbucks
- State Representative Christine Conley
- State Representative Doug Dubitsky
- State Representative Emmett Riley
- State Representative Holly Cheeseman
- State Representative Kathleen McCarty
- State Representative Kevin Ryan
- State Representative Kevin Skulczyck
- State Representative Mike France
- Stewarts Landscape & Lawn Care Service
- Stott's at Bat Catering and Baking
- Strickland Agency - Eagleview Employee Center
- Suburban Propane
- Summit Fitness and Sports
- Sumner & Sumner Insurance Agency
- Sunset Burger Company
- Super Smiley's Hop House, LLC
- Superior East
- Sure-Bright Commercial Cleaning Services
- Surplus Office Store
- Surplus Unlimited
- Sylvia Little - Realtor for Re/Max Realty Group
- Taftville Fire Department
- TCORS, Tobin, Carberry, O'Malley, Riley & Selinger P.C.
- Team Strike Zone LLC
- T.V.C.C.A., Inc.
- Theodore N. Phillips, II, Attorney-At-Law
- Therapy Ward, LLC.
- These Guys Brewing Company, LLC.
- Three Rivers Community College
- Three Rivers Young Marines
- Thrifty Car Sales of Franklin
- Tiger Strength Performance
- Timothy S. Ashburner, CPA
- TotalVision Eye Health Center, LLC
- Touching Clients
- Town of Bozrah
- Town of Franklin
- Town of Griswold
- Town of Ledyard
- Town of Lisbon
- Town of Montville
- Town of Preston
- Town of Salem
- Town of Sprague
- Town of Voluntown
- Towne Liquor Store
- Treats Pools and Spas
- Tripper's Land Warrior, LLC.
- Uncas Gas
- Uncasville Diner
- Uncle D's Blazin' BBQ
- United Community & Family Services
- United Way of Southeastern CT, Inc.
- US Army Recruiting
- US Foods
- Visalus
- Vivint Smart Home
- Wacky Factory Entertainment
- Waitte's Insurance Agency, Inc.
- WCTY 97.7
- Weblink International
- Wheelabrator Lisbon, Inc.
- WICH 1310
- William W. Backus Hospital
- The Windham Club
- WNLC 98.7
- Wolverine Media / Wolverine Radio
- Workforce Transition Training LLC
- The WorkPlace
- Xuare, LLC
- Yantic River Inn

GNACC WELCOMES NEW MEMBERS





the nutmeg companies inc.

***Design/Build
General Contracting
Mechanical Contracting
Pre-Engineered
Metal Buildings***



Fulton Hall, U.S. Submarine Base- Building dedication



Eastern Savings Bank, Norwichtown Branch



1 Ohio Ave., Norwich, CT 06360

860-823-1780 / fax 860-885-1421

AN AFFIRMATIVE ACTION/ EQUAL OPPORTUNITY EMPLOYER

S1-303617 P1-203699 F1-10466

her education
Because ~~it~~ matters.
^

my retirement
Because ~~it~~ matters.
^

my business
Because ~~it~~ matters.
^

OUR HOME
Because ~~it~~ matters.
^

Whatever your financial needs are. If it matters to you, it matters to us.



Because it matters.



Member FDIC

860-889-7381 / eastern-savings.com / Norwich / Jewett City / Plainfield