

C Cornerstone Investments
 Chuck Riggensch
 Financial Planner
**IRAs can be a
 wise investment!**
 108 W. Jefferson St. (641) 664-3700
 Bloomfield, IA 52537
 Securities offered through Questar Capital Corporation (QCC)
 Member FINRA/SIPC. Advisory Services offered through Questar
 Asset Management (QAM) a registered investment advisor.
 Cornerstone Investments is independent of QCC and QAM.

Tri-County SHOPPER

National
FFA WEEK
 FEBRUARY 20-26, 2016



STANDARD
 MAIL
 U.S. POSTAGE
PAID
 TRI-COUNTY
 SHOPPER, INC.
 POST OFFICE BOXHOLDER
 LOCAL RURAL BOXHOLDER
 OCCUPANT
**CIRCULATION
 OVER 11,750
 THIRD CLASS**

P.O. Box 168 • Bloomfield, IA 52537 • www.tri-countyshopper.com
 Phone 641-664-1333 • Fax 641-664-3761 • E-mail shopper@netins.net



Vol. 45, No. 07
 Wednesday, February 15, 2017



Check Out These Presidential Deals!

#30387A

2012 Chevy Traverse
 LTZ, loaded, 46K, nice

#P16-5005A

2014 Chevy Traverse
 50k, AWD, Nice

#30334A

2014 Ford Explorer
 4x4, 64k, 7 Passenger

#P16-5032

2015 Buick Encore
 AWD, 32k

#30170A

2012 Ford Escape
 very nice, NOW \$9,995

#P16-4489

2016 Buick Enclave CXL
 AWD, 13k

#P16-5021

2016 Chevy Tahoe LT
 Leather, 4x4, 13k

#30331A1

1990 Corvette
 \$7,995

#P16-5007

2015 Ford Edge
 AWD, Titanium, 12k

#30220A

2010 Mustang GT
 V-8, Auto, Runs GREAT!

#P16-5022

2016 Ford Escape
 AWD, 27k

#P16-5005

2016 Ford Explorer
 4x4, 14k

#P16-4445A

2010 Chevy Equinox LT
 AWD, \$10,983

#P16-5029

2016 Chevy Impala
 15k Miles, Now \$20,989

#30113A

2014 Silverado 1/2 Crew
 4x4, 25k, High Country

#P16-5020

2010 Ford F250 Crew
 4x4, XLT, Leather, Diesel, 81k

#P16-5010

2016 Ford Flex
 AWD, Limited, 20K, \$35,995

#P16-5032

2015 Buick Encore
 AWD, Now \$19,893

#30071A

2013 Silverado Crew
 4x4, V-8, 46k

#30304A

2010 Lincoln MKS
 One Owner, Loaded Luxury, \$13,562

#P16-5017

2014 Ford Escape SE
 Now \$18,784

#30281A

2012 F150 Super Crew
 XLT, 4x4, 40k

#20850B

2011 F150 Crew
 4x4, 70k

**JOIN OUR WINNING
 TEAM**

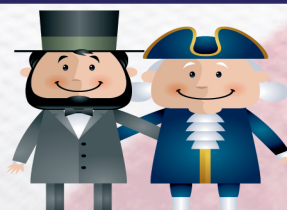
**Automotive
 Technician Opportunities**
 Experienced GM/ASE Certified Trained
 Tech or Ford Tech needed for our service
For Our Service Department
 Please bring resume to Brian Starnes or email brian@feslerautomall.com

#30297A

2007 Silverado Crew
 4x4, LT, V-8

#30232A

2011 Silverado Ext
 4x4, LT, V-8



Check Out These 4X4's



#30323A

2015 Chevy Suburban
 LTZ, Leather, 4x4

#P16-4488A

2015 Silverado Crew
 4x4, Blackout Pkg. 4x4, 26k

#30251A

2015 Toyota Tacoma Crew
 4x4, 27k

#30289A

2015 Ford Explorer
 4x4, XLT, 23K, nice, \$30,995

FESLER AUTO MALL

Hwy 34 West, Fairfield • 641-472-3121 • 800-422-5269 • www.feslerautomall.com
 OPEN: Monday - Friday 8:00 AM - 5:00 PM • Saturday 8:00 AM - 3:00 PM

Universal Antifreeze
 Reg. \$11.99
SALE PRICE \$9.99
 Good until 28th of February

DEF FLUID \$7.99
 Good until 28th of February
Wiper Blades
 Anco brand in stock
 Can order any brand!



ZIMMERMAN AUTO LLC TRAILER INC.
 101 North St. • Cantril, IA
319-238-7380
319-397-2406

FOR SALE: 62 registered Angus 18-month old bulls. Feed efficiency tested. Ultrasounded. All weights and EPDs available. Will keep until June. *Werner Family Angus*, Diagonal, IA. WernerFamilyAngus.com
 PH: 641-344-5059 11

FREE: House to be moved in Cantril, IA. For more information call.
 PH: 319-288-0958. 08

FOR SALE: Round bales of grass hay near Hwy. 63 Floris turnoff, \$20 each.
 PH. 319-465-3588. 11

FOR SALE: Dark blue reclining sofa in good condition.
 PH. 641-664-2831. 08

FOR SALE: Taurus Judge 45/410 revolver 3 in. barrel. Includes 9 boxes Winchester PDX1 410 Defender (90 rounds), \$415. Must have permit to buy. 325 rounds box 22LR Federal Automatch, \$25.
 PH. 641-680-3876, Ottumwa. 08

NEED A POLE BARN PACKAGE OR A HOUSE ROOF?
CALL TODAY!
WAGLER METAL
 19049 ICE AVE. • BLOOMFIELD
641-722-3692



FOR SALE: 2009 Polaris Sportsman 850, winch, blade, cargo box, 174 miles, like new.
 PH. 660-956-2177. 08

WANTED CLEANING LADY 5-10 hours per week. Also interior painting if possible.
 PH. 660-956-2177. 08

FRIESEN CONSTRUCTION
 New Houses
 Remodeling
 Garages Electrical
 Plumbing
 Custom Cabinets
Arlen 664-3270
Cell 641-208-0170
Bloomfield, Iowa

YOUNG FARMER looking to expand operation and rent some more farmland for 2017 and beyond. Pasture, row crop, hay ground.
 PH. 641-895-0128. 08

FOR SALE: Huskvarna quilting machine. Includes 12' table with shelf below and quilting patterns.
 PH. 660-216-9968 or 660-355-4460. 08

NEW MATTRESSES FOR SALE!
 Selling individually or in sets. Factory warranty.
TWIN - FULL - QUEEN - KING
641-664-3060

YODER'S INDIAN CREEK FURNITURE investing your tax return money in quality furniture. Will become heirloom treasures for future generations. Offering a large selection of dining room, living room, bedroom, office & children's furniture. Unique handmade clocks, rustic log furniture. Also offering quality pre-finished hardwood flooring. Located 4 miles North of Cantril on RT. V64, 22769 Rt. V64 Milton, Iowa. PH. 319-538-7332 TF




Insurance Claims Welcome
 We'll handle the paperwork and deal directly with your insurance company.

Hertz
 Rentals for all Occasions!
 Great Rates!

We Put Collision Damage In Reverse

Complete Collision Repair
 Paintless Dent Removal
 Custom Paint Service
 Expert Color Matching
 Frame & Unibody Repair



Walker Motors
 375 S. Main St. | Memphis, MO
 660-465-2159 | Shop Phone/Fax

We will be Closed Monday, Feb. 20th

In Honor of Presidents' Day!

We will resume normal business hours on Tuesday, February 21st

Success BANK

Bloomfield, IA • 641-664-2006
 Offices in Moulton & Milton • www.success.bank

FOR SALE: 3 bedroom, 2 bath, mobile home (26x64). 1456 sq. ft. **MOVE IN READY. MUST SELL \$45,000.00.** Bloomfield, Iowa. Call: PH: 641-675-3250 07

FOR SALE: 3 bedroom, 2 bath, mobile home (26x64). 1456 sq. ft. **MOVE IN READY. MUST SELL \$45,000.00.** Bloomfield, Iowa. Call: PH: 641-675-3250 09

LOST CALF: Red white face heifer with pink pregnancy tag on back, weighing around 600 lbs. Lebanon, IA Area. Call Willy and leave a message.
 PH: 641-656-4476 07

Fox Valley Welding

No matter what size the project customer satisfaction is always our first priority.

| | | |
|-----------------------------------|--------------------|---|
| Tig & Aluminum Welding Milwork | Lathe New Steel | Fabricating CNC Machining CNC Cutting |
|-----------------------------------|--------------------|---|

Hours: M-F 8-5:30
 641-656-4684 • 12190 East Hwy. 2 • Milton, IA

Order your building now ahead of the spring rush!



No matter your building need, BIG or small, we can help you at...

Cantril Lumber & Hardware
 319-397-2351 • 319-397-2354
 Mon-Fri 7-5 & Sat 7-12

Davis County HOSPITAL
Dedicated. Compassionate. Healthcare.

ACCEPTING NEW PATIENTS







Dr. Robert Floyd Internal Medicine Dr. Trina Settles Family Practice Dr. Mary Graeff Pediatrics Haleigh Skaggs Family Practice Beverly Oliver Family Practice

DAVIS COUNTY HOSPITAL MEDICAL ASSOCIATES

To schedule an appointment call 641-664-3832.

509 N. Madison • Bloomfield, Iowa 52537
www.DavisCountyHospital.org

MAST VINYL WINDOWS
THERMO-PRO WINDOWS
Custom Size Is Our Specialty
Professional Installation Available
THERMA-TRU DOORS
FREE ESTIMATES
22172 Hwy. 63
Bloomfield, IA 52537
800-206-9949

WANTED: Hunting lease. Looking for a small farm to accomodate a party of 3 responsible hunters. Perfer something long term/year round. MO only. No brokers please. Call or text
PH: 314-226-8992 07

FOR SALE: 1st, 2nd, & 3rd cutting alfalfa/orchard grass mix, and some clover. 4x6 big round, net wrapped bales-approximately 1250 lbs. Excellent condition - put up dry.
PH: 319-288-1800 08



Invest your tax refund dollars in a high quality mattress & box springs or a fine piece of heirloom quality hardwood furniture for future generations to enjoy also.



VM: 641-664-0207
1 Mile East of Drakesville on Jade Ave.
Mon.-Sat. 9:00 AM - 5:00 PM

FOR SALE: 2015 Alfalfa hay, large squares & rounds. Mark Rogers
PH: 641-919-9447 08


SHADY LANE VARIETY

- Pizza Baking Stones
- Mini Muffin Pans

Great Selection Of Gloves, Bird Feeders And Gifts

1 mi. E. of Drakesville on Jade Ave. • 641-664-0207 8-5 Mon. thru Sat.

FOR SALE: Small square bales of grass hay. Feeder pigs 50-100 lbs. Samuel Schwartz. 27005 Fort Madisonway Greentop, MO. 63546 07



Driving Moccasin WDM0010
Men's & Women's Available
Small Variety Available
We will do special orders!

Graber's COUNTRY STORE LLC
2 miles South & 1 mile East of Drakesville

FOR SALE: 2 Beagle puppies, 12 wks old.
VM: 641-664-3732 ext. 1 07

FOR SALE: Harrogher 22ft. with hydrolic wings. \$1,400. JD 290 corn planter, new tires, good boxes; \$500.
PH: 319-750-1968 07

Slayton Polaris Authorized Polaris dealers since 1988

Get out and play!

New & Used Polaris Rangers & ATV's



660-328-6627 BLOOMFIELD, IA
8 mi. S. & W. from Pulaski or 6 mi. W of Memphis then 13 mi. N. on Route B

FOR SALE: Oreck upright vacuum sweeper includes portable Oreck w/attachments, \$80.
PH: 641-683-3554. 08

FOR SALE: 2016 good quality mixed grass hay. 1st & 2nd cutting, big round bales, plastic twine tied.
PH: 641-459-2275 08

LAN-DOW BUILDINGS

Lancaster Lumber, Inc.

Toll Free 800-424-5071 Fax 660-457-3133

Hardware • Plumbing • Electrical • Paint
500 Green Street • Lancaster, MO 63548

L&M Country Store

1 1/2 miles south of west Hwy 2 & 63 jct.
Mon-Sat. 8am-5pm CLOSED SUNDAYS
VM: 641-664-1936

Apples: Cameo, Fuji and Jonagold

2.5 oz. Oscar Mayer fully cooked bacon.....99¢
50# red potatoes.....\$7.50
Elbow macaroni.....69¢/ lb
12 oz. Kraft sliced yellow American cheese..\$1.49
16 oz. sliced pepper jack processed cheese . \$1.29
32 oz. Dannon vanilla yogurt, case of 6 \$1.99

LOST CALF: Red white face heifer with pink pregnancy tag on back, weighing around 600 lbs. Lebanon, IA Area. Call Willy and leave a message.
PH: 641-656-4476 07

FOR SALE: 95 Ford Windstar, wheel chair accessible with built-in ramp, enough room for 3 wheel chairs. 74,764 miles, green. \$5,000 OBO.
PH: 319-850-8236 08

FOR SALE: Propane barn heater, hanging type, 65,000 BTU asking \$70 OBO. Drakesville area.
PH: 641-938-2182 07

STOR MOR MINI STORAGE
QUEEN CITY, MO

10 x 10 Unit- \$35/mo.
10 x 20 Unit- \$50/mo.
515-720-7180
or
660-766-2228
"NUF SED"

LIQUIDATION SALE!!

Good Outdoor Brands! Clothing & Footwear

BLOOMFIELD, IA
2 1/2 MILES W. OF BLOOMFIELD ON HWY. 2
OPEN TUESDAY, FRIDAY, SATURDAY 9-5

\$URPLUS BARGAIN BARN

FOR SALE: Clover frost seeding time. Clover cleaned and bagged; clover timothy mixed, cleaned and bagged, 50# bags.
660-341-2837 14

NOTICE: We are now set up to exchange your oxygen & acetylene tanks. Also selling welding supplies.
B & H Welding,
PH: 641-664-2997, ext. 1. 07

FEBRUARY SPECIALS

Ground Hog Day • Valentine's Day
President's Day

SPECIAL PRICES & CLEARANCE BARGAINS!

Large Selection of jackets & coats
Save 20% to 40%

Hooded Sweatshirts - Wigwam Socks - Underwear
1/2 PRICE WITH ONE AT REG. PRICE
ALSO JEANS - SLACKS- SHIRTS

KIDS Rubber Insulated Boots
\$19.99

Muck Insulated & Regular Boot- 20% OFF
Ladies • Mens • Kids

Western - Work - Dress - Casual Boots

Footwear: Justin - Tony Lama - Rocky Wolverine Red Wing - Durango New Balance - Hush Puppies - Irish Setters

SAVE on Warm Clothing and Footwear Storewide

Cook's Mens Store
116 S. Market • E. side of Square • Memphis, MO
Ph. 660-465-2511 • Fax 660-465-8905
Monday-Friday: 8-5 & Saturday: 8-9
Short-Big-Tall • Narrow to Extra Wide • Tux Rentals
Gift Certificates

TINGLEY DeLONG Lyntone Belts Samsonite

2012 GMC 1500 4DOOR, LEATHER, 4WD, 33,000 MILES
NOW \$25,900

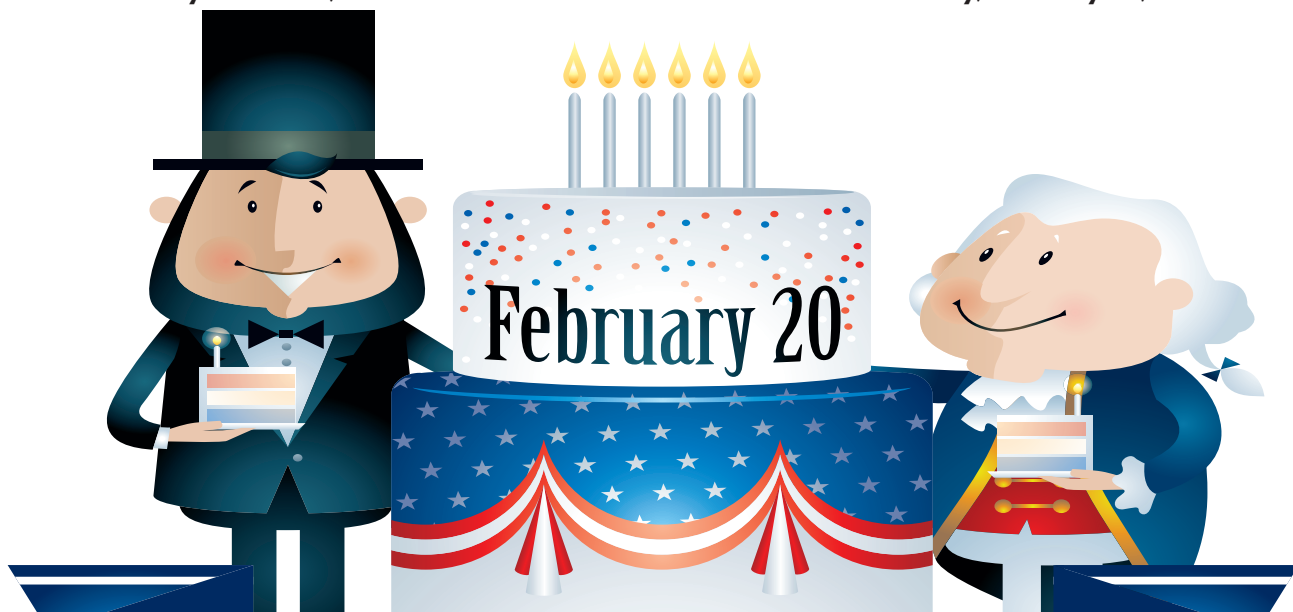
2003 SILVERADO RED, 4WD, 80,000 MILES
NOW \$10,900

Check out these great deals!

Kollision Korner

504 South Drake St
Bloomfield, IA 52537
PH: 641-664-2648 • Fax: 641-664-2948

John says, "Like us on Facebook!"



Presidents' Day

Check Out All The Fun

Activities Going On!



SATURDAY, FEBRUARY 18TH
11:00 A.M. - 12:30 P.M.

**Turkey & noodles with
mashed potatoes, trimmings and desserts**

GOOD SHEPHERD LUTHERAN CHURCH
 19419 Lilac Avenue, Bloomfield, North end of West St.
 Delivery in Bloomfield after 12:15 P.M.

*Caring for our community with God's help!
ELCA Hunger Grant*

Need a ride? Call 664-3242
Worship time: Sunday 9:00 AM

**Sausage & Pancake
Supper**

Sat., February 18th
5PM - 8PM

Cantril Fire Station

Free will offering

Sponsored by
Cantril Dayz Committee
 Proceeds to Cantril Dayz Activities

**4 pt. Pitch
Tournament**

Hosted by Women's Auxiliary #78

Sat., Feb. 18th - 2 p.m.

American Legion
 Bloomfield, IA

Friday, February 17th

Choice of 12 or 14 oz. Ribeye
with sides Serving at 6:00 P.M.

Dine In **722-3355** Carry Out

RAY'S LONGBRANCH
 Drakesville, IA

**WESTERN'S
SMOKEHOUSE**

- Nationwide Shipping
- Cut to Order Meat Bundles

Snack Sticks & Beef Jerky

Visit our retail shop in Greentop, MO
 www.westerns-smokehouse.com

Mon. - Fri. 7am - 5pm • Sat. 8am - 4pm
 660-949-2445 • 1-800-456-0250

**Sportsman's
Banquet**

March 11, 2017
 2:00 - 7:30pm

Menu:
 Deer & Noodles, Meatloaf,
 Mashed Potatoes, Coleslaw,
 Beans, Bread, Salads,
 Desserts

FREE WILL OFFERING

Young hunters encouraged to
 come and hear the speakers.

Silent Auction - Door Prizes

*Something for
everyone!*

Living Hope Bible Church
 201 W. Walnut, Eldon
 641-652-3420

CITY OF BLOOMFIELD
 is accepting applications for a

Parks & Recreation Laborer

Candidate must be dependable and show initiative. Weekend availability is required. Salary set by Union contract and will be commensurate with experience. Successful candidate will be subject to pre-employment physical exam, functionality testing and drug and alcohol testing; as well as random drug and alcohol testing.

*Applications available at Bloomfield City Hall
 or online at www.CityOfBloomfield.org
 Job description available upon request.*

Submit resume & application to:
 Mayor, City of Bloomfield
 111 W. Franklin St., Bloomfield, IA 52537
 Applications close 2/24/17 at Noon. EOE

Hawkins - Harrison Insurance

SHOPPER ADS CAN BE DROPPED OFF HERE!

Proud to be your partner.

| | |
|--|--|
| P.O. Box 365 Lancaster, MO 63548 660-457-3020 | 103 W. Monroe St., Memphis, MO 63555 660-465-8533 |
|--|--|

**Preschool
Luncheon and
Auction**

**February 25th,
2017**

Luncheon starts at
11:00am

Auction starts at
12:30pm

Free will offering.
COME AND HAVE FUN!

Living Hope Bible Church
 201 W. Walnut, Eldon
 641-652-3420

**IOWA THEATER
BLOOMFIELD, IOWA**

"A Dog's Purpose"
 Every dog happens for a reason.

Friday, Feb. 17th
 Saturday, Feb. 18th
 7:00 PM
 Sunday, Feb. 19th
 4:00 PM

PG

Coming Soon: "La La Land"
 and "Lego Batman"

Iowa Permit To Carry Classes
 For New Permits & Permit Renewals

Friday, February 17th • 6PM
 Garmon Firearms in Pulaski, IA

Friday, March 17th • 6PM
 Garmon Firearms in Pulaski, IA

Cost for New Permit Certification: \$40
 Cost for Renewal Permit Certification: \$20

No Testing Or Shooting

Class Taught By Josh Davenport:
 Certified & Insured Instructor
641-208-0061
 soapcreekarmory@gmail.com
www.soapcreekarmory.com

DAVIS & LEWIS, CPA

Let our years of tax experience benefit you!

- Individual & Business tax preparation and planning
- Monthly accounting & payroll service
- Financial statement preparation
- Business consulting
- Auditing



Keith W. Lewis, CPA

Carol S. Howard, CPA

641-682-8117

639 E. Pennsylvania Ave.
Ottumwa, IA 52501

641-664-1999

205 N. Washington St.
Bloomfield, IA 52537

ATTENTION CONTRACTORS!

We stock push fit fittings, valves, toilets, faucets, Pex, PVC, CPVC, Copper Pipe & Fittings.



19091 180th St
Bloomfield, IA
VM 641-664-2814

3/4 miles east of Drakesville, south side

FOR SALE: Manual tire machine, uses air; \$200. B&B cordless drill, one battery bad; \$50. Round pedestal oak table, 4 chairs, 2 leaves; \$300. Livingroom set, recliner, reclining sofa, 3 pc. table set, 2-lamps; \$2,200 less than 1 year old. Queen size bedroom set, night stand, dresser/mirror; \$1,800 less than 1 year old. Covered patio swing set; \$100.

PH: 641-208-5136 09

FOR SALE: Small square bales 1st & 2nd cutting grass hay. 1st cutting big round bales grass hay. Hedge posts, corner & lines. Randy Garnett, Memphis, MO. PH. 660-216-4651. 07

FOR SALE: A Victorian side by side secretary desk and bookcase about 1900s. Carved of oak with lion paw feet, restored finish is in excellent condition. Asking \$675.

PH: 660-342-1559 07



Hinds Realty

Hwy. 15 N, Memphis, Mo.

660-465-8526

www.hindsrealty.com

Hind's Realty... "Since 1975".....Thanks

FOR SALE: Granger, MO

39 acres m/l. hunting farm. 19 acres CRP, 6 acres hay, remainder steep wooded draws. County gravel on 3 sides. Rural water access. \$120,000.

FOR SALE: Remington model 700 mag. 7mm, bolt action, 3x9 variable scope-sling, Bob Allen padded case. Nice.

PH: 641-208-5529 09

FOR SALE: Border Collie puppies. Born 1-1-17. Excellent bloodlines. Vet checked. Registered. Great stock dog.

PH: 319-367-5090. 09

LINE-X OF OTTUMWA



KEEP YOUR RIDE IN GREAT SHAPE!
PROTECT IT WITH A LINE-X COATING!

Bring it in and we can LINE-X® it!

Brad Lisk
15514 Blackhawk Rd., Ottumwa, IA

Gift Cards Available!

641-683-9334

HAY FOR SALE: Big Squares, Alfalfa & Alfalfa Orchard. Jeff Wuthrich

PH: 641-208-4311 09

FOR SALE: 50 acres crop ground, \$3,000 per acre or best offer.

PH: 641-664-1059, Ex. 2 08



Oberholtzer Farm Supply LLC

Specializing in feeding equipment for dairy & beef.

Available in stationary or trailer models



Can be run with electric 3 phase soft start converter panel or can be powered by diesel. Many different models and sizes available.



Rt. #1 Box 84 • Memphis Mo.
Phone/Fax: 660-945-3053
Cell: 660-341-8234

Look for our booth at the Southern Iowa Grazing Conference

HOUSE FOR SALE: 524 E. Arkansas Ave. Bloomfield, IA. Ranch Home. 3 bd. or (2 bd. w/office - shop & separate entrance.) 4 bath, large Livingroom & Family room w/ fireplace. Furnished apartment & finished basement. Has 2 additional bedrooms , kitchen & bath. New roof, new ground source heating & AC. Close to schools. Patty Spurgeon Estate. \$115,000 PH: 641-680-2152

We BUY used manufactured homes, single wides and double wides. Call 641-672-2344 (MCN)



Oscar Mayer Pre-cooked Bacon, 2.52 oz...99¢

Graham Crackers, 14 oz.99¢

Market Pantry Deli Honey Ham, 16 oz.99¢

Crunchy Peanut Butter, 28 oz.\$1.49

Blueberry Yogurt, 12-4 oz. cups99¢

Dandy Blend Herbal Beverage,
No Caffeine, All Sizes Available



3/4 mi. E. of Drakesville, IA on 180th St.

Mon-Sat: 8:30am - 5:00pm

VM: 641-664-2661

FOR SALE: Balancer Gelbvieh Bulls. Low birth weight for heifers. PH: 641-664-2345 or 641-208-4311 09

FOR SALE: Baby bottle goats. Does & Billies. Beautiful, all colors. \$25-does. \$10-Billies. VM: 641-664-3677 09

NOW OPEN!

Tri-State Timber

DBA Stihl

660-465-2975

353 1/2 Grand Ave. Memphis, Mo.

5% OFF

Stihl Chain Saws & Chain Saw Accessories

FOR SALE: Beagle puppies, 8 weeks old, had shots; Free black & tan coonhound. VM: 641-664-3609. 08

FOR SALE: 50 acres crop ground, \$3,000 per acre or best offer. PH: 641-664-1059, Ex. 2 08

Pleasant Ridge Specialties

Helping Farmers from Seed to Marketing

We have barges to fill
With NonGMO Soybeans!

Barge 1 (Nov.-Dec.): \$0.75 Premium

Barge 2 (Mar.-Apr.): \$0.85 Premium

Barge 3 (June-Jul.): \$0.85 Premium

Through Scoular River Price

We have the seed you need! Very competitive prices.

Call Nolan @ 660-341-2752

Email: nkgood@marktwain.net



| | | |
|---|--|---|
| HOURS 8 A.M. to 5:00 P.M. DAILY EXCEPT SUNDAY | Zimmerman's Store Rutledge, MO 660-883-5766 | <i>Our Everyday Low Prices!</i> |
|---|--|---|

No. 1 White Potatoes 50 lbs. - \$8.95

Wheat Montana Products are Grown Chemical Free!

Wheat Montana All Natural White Flour..... 5 lbs./\$2.98 , 50 lbs./\$25.55
Wheat Montana Prairie Gold Flour..... 50 lbs./\$21.08
Wheat Montana Whole Spelt Flour..... 50 lbs./\$52.45

Quinoa

Bulk White Quinoa.....\$2.37/ lb.
Red Quinoa Gluten Free All Natural.....\$23.89
Black Quinoa Gluten Free All Natural.....\$23.25

PRINCE

**Small Shell Macaroni, Elbows, Spaghetti, and Angel Hair
10 lbs. - \$1.25 a lb.**

Bulk Himalayan Pink Salt.....\$2.69/lb.
Lt. Grey Celtic Sea Salt.....1 lb./\$3.98

Necessary Food Cookbook\$22.99
Ceramic Coated Fry Pan.....\$6.98
9" Glass Pie Plate.....\$2.39
Adjustable Cheese Slicer.....\$4.39
2 pk. Stainless Steel Saucers.....\$1.19

Try a 300 pc. PUZZLE for your winter hobby!

Ginger Scissors.....\$24.95
Asst. Fat Quarter Fabrics.....2/\$1.00
Embroidered Fleece Baby Blanket.....\$3.98

DRIVE A LITTLE & SAVE A LOT

WE SERVICE ALL MAJOR APPLIANCES!

Whirlpool MAYTAG
Speed Queen **Amana**

MEMPHIS APPLIANCES
MERCANTILE SALES & SERVICE
EST 2016

South Side of the Square in Memphis
660-465-2345

15% OFF
all in stock
Tupperware!
Makes a great gift!

MEMPHIS
MERCANTILE
EST 2010

115 E. Monroe • Memphis, MO
660-465-2102

Monday - Friday: 9:00 AM to 5:00 PM • Saturday • 9:00 AM to 3:00 PM / Sunday CLOSED

FOR SALE: 2nd & 3rd cutting alfalfa & grass, small square bales. Also 150 hedge posts.
PH: 641-208-5216. 08

JOE'S BARBER SHOP
Hours: Thursday & Friday 8:00-5:00 & Saturday 8:00-Noon. 210 E. Franklin St., Bloomfield, IA.
PH: 641-664-2020, 641-208-5561 TF

RENT TO OWN CUSTOM BUILT PAINTED & VINYL BUILDING & SHEDS **16 YEARS EXPERIENCE**

Many Styles & Optional Features Available
FREE DELIVERY WITHIN 30 MILES

Hillview Mini Barns
DAVID W. SCHROCK VM: 641-664-2842
15383 180TH ST. • DRAKESVILLE, IA

FARM AUCTION

SATURDAY, FEBRUARY 25, 2017 10:00 AM
SALE TO BE CONDUCTED AT THE PROPERTY LOCATED
1709 LAKE ROAD, OTTUMWA, IOWA
OR From the Shaul Cemetery, in the SW portion of the City of Ottumwa,
Go South on Lake Road approx. 1-1/4 miles
Auction Signs Will Be Posted

TRACTORS, COMBINE, BULLDOZER: 2010 John Deere 7330, cab, 16-spd, power-quad, left-hand reverser, FWA, 42" rear tires, dual outlets, quick-hitch, 3931 hours, sells w/John Deere H360 quick-attach loader, new Frontier bale stabber for loader, tractor always shedded; 1973 John Deere 4630, cab, new 20.8x38 rear tires, dual outlets, quad-range, front weights, hub-mount duals, approx. 9,000 hours; New Holland TC35D tractor, diesel, hydro, FWA, open station, 3-pt, single outlet w/ New Holland 914A 84" mower deck, 632 hours; 1983 John Deere 7720 turbo combine, cab, RWA, bin extension, hydro, straw chopper, approx. 3800 hours, always shedded; John Deere 643 corn head w/poly conversion; John Deere 920 grain head, 20' w/poly reel; Parker 4-wheel head cart; John Deere 850 BLT dozer, 10' semi-U blade, hydraulic tilt, cab, good undercarriage, just through the shop.

TRUCK, JOHN DEERE GATOR & EQUIPMENT: 1981 IH tandem truck, diesel, 5x2, w/Omaha Standard 20' alum. bed, cargo doors, twin-post hoist, Shurlock roll tarp; 2016 John Deere 855D Gator, PS, elec. dump, diesel, approx. 65 hours, like new; 6x20 Kiefer gooseneck stock trailer; Brandt 420 grain cart; John Deere 7200 12-row vacuum planter, front-fold w/monitor; Glencoe 9-shank disc chisel w/harrow attachment; International 4800 24' hydraulic-fold field cultivator; Taylor-Way 3-pt. posthole digger w/9" & 12" augers, like new; (2) EZ Flow 300-bu. gravity boxes on heavy-duty Westendorf gears; Parker gravity wagon on Westendorf gear w/hydraulic drive seed auger; New Idea 1-row pull-type picker; New Holland 1-row pull-type chopper; Westfield 10"x61" PTO auger w/swing hopper; Fetro 8"x32' PTO auger; 3-pt. bale stabber; Pacer gas-powered transfer pump; 12v. chemical transfer pump; 500-gal. fiberglass water tank.

DIRT BIKE & TOOLS: Yamaha TT-R125 dirt bike; Near new Cub Cadet RT65 rear-tine tiller; (2) Stihl chain saws; Hobart gas-powered port. welder/generator, near new; Hobart 125EZ wire welder; John Deere 225,000 BTU blast heater, like new; Upright 110 air compressor; 25-gal. & 15-gal. ATV sprayers; Gas-powered posthole digger; John Deere lawn sprayer; Lawn roller; Elec.-powered ATV spreader; Approx. 20 cattle panels; Steel posts; Pipe gates; Elec. fences; Elec. tank heater; High tinsel wire, on roller; Wire tools; 150-gal. fuel barrel; Asst. of shop tools; Hoes, rakes, shovels; Hand & garden tools; 10' dog kennel; Plastic culverts; Pickup toolboxes; Set of chains for New Holland tractor.

AUCTIONEER'S NOTE: Scott Hubbel is discontinuing his farming operation. Scott is an excellent caretaker with most items always shedded and well-maintained. Check website for pictures www.almartinauction.net.

TERMS: CASH/GOOD CHECK POSITIVE ID REQUIRED **MASTERCARD/VISA DEBIT/CREDIT CARDS**

All property must be settled for before removal - All items sold as is where is - Not responsible in case of accidents. Announcements made day of sale take precedence over any advertising.

SCOTT & MARY HUBBEL, OWNERS
641-799-0045

JIM KOSMAN, ROGER CLINGAN, & TODD CARROLL - AUCTIONEERS
RANDY SIEREN -- 641-777-9039

AL MARTIN REAL ESTATE & AUCTION CO., INC.
307 Church St., Ottumwa, IA 52501 • 641-682-5465 • www.almartinauction.net

Country Cut Meats

Beef • Pork • Deer
Custom Butchering
641-675-3683
Aaron Martin 26824 Vetch Ave. Pulaski, IA
CALL FOR APPOINTMENT

FOR SALE: AK 47 with 2,400 rounds. For details call: PH: 641-680-2297 07

FOR SALE: Firewood at RJ Lumber, \$15 a pickup load. 18989 160th St., Drakesville, IA 52552. TF

FOR SALE: Purebred Great Pyrenees puppies out of working parents. Excellent livestock guard dogs. Muck boots, 5 mens/6 womens. Honcho 4-wheeler. Boar Billy. PH: 641-680-8752

FOR SALE: Purebred Great Pyrenees puppies out of working parents. Excellent livestock guard dogs. Muck boots, 5 mens/6 womens. Honcho 4-wheeler. Boar Billy. PH: 641-680-8752 07

**JOIN US FOR BUILDING VALUE DAYS,
OUR BIGGEST SALES EVENT
OF THE YEAR AND THE BEST CHANCE
FOR YOU TO GET YOUR MORTON FOR LESS!**



January 1st-February 28th
Locally at
641-472-3184
Fairfield, IA

MORTON BUILDINGS
800-447-7436 • mortonbuildings.com

Certain restrictions apply. A listing of CC licenses available at mortonbuildings.com/licenses. Reference Code 043.

Garages | Hobby Shop | Farm Building | Equestrian | Commercial | General Purpose | Homes

CALVING TIME IS HERE

STOP AND CHECK OUT OUR HELPFUL CALVING SUPPLIES

FILTER DAYS

FEB. 1st - FEB. 28th



15% OFF All Baldwin Filters

Baldwin has over 3,300 different filters available for oil, air, fuel, coolant, transmission, hydraulic & many other applications.

Unimilk • Iodine • O.B. Gloves
Latex Gloves • O.B. Lube
Calf Claim • Oral Calf Feeders
Nursing Bottles • Kick Start
Uterin Bolus • O.B. Straps & Chains

Calf Catchers & Blankets



Calving Pens



Red Brand
42" Cattle Fence
Woven wire, 8 ga., 330'/roll
\$179.95

Red Brand
48" Cattle Fence
Woven wire, 9 ga., 330'/roll
\$199.95



For-Most Cattle Chutes

Various Sizes



Hamilton Produce Co.

105 W. Franklin • Bloomfield, IA 52537

641-664-2459 or 1-800-469-7749

BLOOMFIELD MINI STORAGE. Serving you from 2 safe, convenient locations.
PH: 641-664-1066. TF

FOR SALE: Beagle cross male dog. Neutered, 5 years old, handsome, and friendly. \$50.
PH: 641-664-1090 08

FOR SALE: Small square bales oat straw, \$3.50. Levi Mast 19636 Flora Ave. Bloomfield, IA 52537
PH: 641-722-3080 07

Your oil and filter HEADQUARTERS.

Oil and Filter Sale the entire month of February

12% off | **10% off**

all in-stock filters* | John Deere branded oil*

11 MISSOURI LOCATIONS | www.sydenstrickers.com

*Offers valid 2/1/17 - 2/28/17. Certain restrictions apply. See dealer for complete details.

YOUR PROPERTY PARTNER FOR 73 YEARS

JOHN DEERE | SYDENSTRICKER

FOR SALE: 2- Debbie Baughman prints. Davis Co. Courthouse & Pulaski Depo. Professionally framed & matted. \$75 each or \$125 for both.
PH: 641-208-5529 09

FOR SALE: 3 yearling Kiko doelings. Dad regular NZ buck. Moms 90% Kiko, \$350 each. All for \$1,000. Located N. of Cantril.
PH: 217-260-1876 09

DRIVE WITH UBER. You'll need a Smartphone. It's fun and easy. For more information, call: 1-800-902-9366 (MCN)

C.H.I. MIDWEST LiftMaster
Overhead Door

✓ Out Our Competitive Prices! 21387 Route V64 Keosauqua, IA 52565
660-216-0812

Our goal is to keep your doors rolling smooth!
Sales • Parts • Service ~ Free Estimates
We sell new doors and openers or we'll service your old one.

FOR SALE: 2004 BCS 722 tiller, 20 in. \$1500.
PH: 660-397-2684

FOR SALE: Round bales, Alfalfa mix hay.
PH: 641-208-5961 09

Handyman Home Improvements

Decks, Porches, Siding, Drywall, Windows, Roofing, New or Remodel - No job too small!

Joe Rohrer Free Estimates
Bloomfield, IA **641.208.6930**

FREE: Barn Cats.
641-777-2822 09

FOR SALE: 14x70 mobile home trailer. In livable condition. \$2,000 OBO.
VM: 641-664-3453 ext. 1

JOB OPENINGS!

Performance Pipe, A Division of Chevron Phillips Chemical Co., LP, located in Bloomfield, IA **has job openings.**

Please log on to www.cpchem.com to view job descriptions & to apply

PERFORMANCE PIPE
A DIVISION OF CHEVRON PHILLIPS CHEMICAL COMPANY LP

Performance Pipe is an Equal Opportunity Employer.

KALA'S HEAVENLY HOGS

Purebred Berkshire Show Hogs.

Perfect for the summer fairs. Several to choose from. Taking orders now!

641-895-4543

AUTO PARTS

00-24

If it ain't in stock we know where to get it

SPILMAN AUTO PARTS

20311 Old Hwy. 2 • PO Box 31
Bloomfield, IA
641-664-2463 • 1-800-477-1367
M-F 8AM-5PM • Sat. 8AM-12Noon
www.SpilmanAuto.com

| | | | | |
|--|--|---|--|--|
| <p>Dippin' Sticks carrots & ranch dip 2.75 oz. pk 50¢ A PK OR 6 CT. \$2.50</p> | <p>Oscar Mayer smoked ham, 6 oz. pk 49¢ each</p> | <p>Borden lowfat cottage cheese 5lb. tub \$3.99 each</p> | <p>Sliced pepperoni, approx. 2 lb. pk \$1.69 lb.</p> | <p>Lemon 1/2 oz. \$8.75 For aromatic dietary or topical use. Air purifying, hypertension, obesity, furniture polish, laundry grease remover, colds, flus, stress. Avoid direct sunlight 12 hours after application.</p> |
| <p>Fresh load of cheese! Marble, colby & colored cheddar JUST IN</p> | <p>State Fair turkey corn dogs, 6 lb. box/ a \$1.19 lb. \$7.14</p> | <p>SeaPak shrimp poppers, 25 oz. pk \$4.25 each</p> | <p>Uncooked young chickens 17.85 lb. box 49¢ lb.</p> | <p>Ginger 1/2 oz. \$10.65 For aromatic, dietary or topical use: Digestion, rheumatism, fevers, flu symptoms. Used as a cooking spice. Caution: Avoid direct sunlight 6 hours after use.</p> |
| <p>Farm Rich buffalo style breaded chicken wings 17 oz. \$3.00 a pk</p> | <p>Large red potatoes 50 lb. burlap bag \$7.95</p> | <p>Beef porterhouse steak \$4.49 a lb. or 10 lb. box/ \$3.99 a lb.</p> | <p>Savile shampoo 1200ml compare to \$18.75 \$6.99</p> |  |
| <p>Palmolive shampoo, 1 liter \$6.99</p> | <p>Folgers Perfect Measures coffee, 8.39 oz. \$2.99 each</p> | <p>19686 Hwy. 2, • Bloomfield, IA Approx. 2 miles west of Bloomfield Mon. - Sat. 8:30am - 5:00pm VM: 641-664-1187</p> | | |

JR FEED & SUPPLY
641-722-3045
17599 200TH STREET • BLOOMFIELD
STOP BY MON.-FRI. 8-5 & SAT. 8-12

Complete line of bagged feed in stock!
Lamb & Goat Milk Replacer

BIRD FEEDING NEEDS WILD BIRD SEED SUNFLOWERS/CHIPS

DONATE YOUR CAR TO CHARITY. Receive maximum value of write off for your taxes. Running or not! All conditions accepted. Free pickup. Call for details. 855-752-6680 (MCN)

FOR SALE: 28'x52' Manufactured home 5 years old. Excellent condition. 3 bedrooms, 2 full baths. Easy to relocate. \$55,000
PH: 641-242-0065 09

MARK HOLT CONSTRUCTION

Styrofoam Foundation • Concrete Driveways • Replacement Windows Patios • Pole Barns & Metal Cabins/Homes Sidewalks • Vinyl Siding • Metal Roofs

Cell: 660-341-8139
Home: 660-945-3032

MACHINERY CON-SIGNMENT SALE, Mon., March 6th, 2017 at 9:00 A.M. Consign early by Feb. 17, 2017 for complete advertising. No Small Items, Tires or Pallet Items Accepted After Friday, Feb. 24. Next Machinery Consignment Sale is April 3, 2017. Gilbert's Sale Yard, 641-398-2218. 2 Mi. N. of Floyd, IA On Hwy. 218. Tractor House Internet Bidding Available. www.gilbertsaleyard.com (MCN)


TRAILER CLOSE-OUT SALE! New ST205/75D15 on mod wheel \$69.00; 4 place snowmobile trailers 20' & 24'; Fuel Tank trailers: 500 gallon, 990 gallon & no tank trailers; 7'X16' V-nose ramp door \$4,199.00; 14,000# skidloader trailer \$3649.00. Trailer Repairs, Hitches, Parts and much more. 515-972-4554 www.FortDodgeTrailerWorld.com for prices & information!(MCN)

Woodruff Angus
Milton, IA
BULL SALE
Monday, Feb. 27th, 2017 • 6:30 pm
Scotland Country Livestock
Memphis Mo.

SELLING:

- 40 bulls, yearlings & 2 yrs old
- 10 bred heifers

For more information call:
Roy Woodruff: 641-799-6912 or Randy Woodruff: 319-470-6999



LAND AUCTION

64.56 TOTAL ACRES in 2 Tracts
SELLERS: THOMAS E. & BETH A. BLENKHORN

TUESDAY, FEBRUARY 28, 2017
3:00 PM AT THE
CANTRIL TOWNSHIP HALL, 601 W NORTH ST.

| | |
|--|--|
| <p>TRACT 1</p> <ul style="list-style-type: none"> • 33.47 acres • Approximately 15.2 acres tillable • CSR2 is 47.1 | <p>TRACT 2</p> <ul style="list-style-type: none"> • 31.09 acres • Approximately 13.7 acres tillable - CSR2 is 42.6 |
|--|--|

MOSSYOAK PROPERTIES
Boley Real Estate
America's Land Specialist
(C) 641-919-2801
Agent, Nick Boley
nboley@mossyoakproperties.com
For more information, go to our website, stop in, or give us a call!
707 1st St. • Keosauqua, IA 52565

www.MOSSYOAKPROPERTIES.com

High Spring Consignment Auction
AUCTION SERVICE, LLC.

Location: Downing, Missouri: take Hwy 136 West 1 mile to auction site.

Friday, March 24, 2017 @ 9:00 a.m.

Taking consignments of Tractors, Farm Equipment, Trucks, Trailers, ATV's, Lawn Mowers & Livestock Equipment

(No Household Items) Flyer advertising deadline is February 20, 2017, so call now to get the best advertising for your consignments!

Call: Randy 660.216.0515 ~ Clair 660.341.1687 ~ Kris 660.342.8634
Email: highauction@marktwain.net

TRUCKLOAD SALE

FEBRUARY SALE



\$2.99 per Gallon
Sliced PEACHES in pear juice

Breakstone's Fat Free Cottage Cheese **50¢** 4/4oz.

\$2.99 per lb.
Whole Beef Flank Steak

\$1.69 per lb.
Frozen 80/20 Ground BEEF

Whole Wheat Flour Tortilla 12 pk. - 25¢

\$1.66 per lb.
John Morrell Premium Black Quality Sliced Bacon

Sold as 16 oz box \$24.95

99¢ 12 oz.
Jimmy Dean® Reduced Fat Pork Sausage

\$7.49 50# bag
White Potatoes

\$1.75 Jumbo 25 oz. bag
Peanut Butter Colossal Crunch

69¢ 2 pack
Pillsbury® Pie Crusts

\$2.75 Gallon
Prairie Farms Chocolate MILK

\$5.99 1 Liter
12oz. - \$2.99
Mexican Vanilla

\$1.59 1 lb.
Strawberries

\$3.99 3 lb.
Clementines

3/1
Extra Large Green Peppers

79¢
Xtra Large Stalk Celery

\$3.99 gallon
MIRACLE WHIP Salad Dressing

49¢ 10.5 oz.
Chicken Noodle SOUP

\$1.19 46 oz.
Tomato Juice

ATTENTION QUILT MAKERS
Now is the time to start that new Quilt!

15% OFF

45" 100% Cotton Prints & Plain Color Cotton

Thousands of Colors & Patterns to Choose from!

\$1.99 each
700 ft avg. length
High Quality Brown Paper Roll Towels

\$5.99 1 Gallon = 64 Loads
Dutchman's Laundry Detergent

2/3
Bath Towels

15% OFF
Hobbs® Bonded Fibers QUILT BATTING

20% OFF
All- Berne® Insulated Overalls & Jackets

The Car Spa

Auto Body Shop
Auto Glass
Automotive Restoration
Hand Detailing Service

KARR COLLISION CENTER & AUTO DETAILING
Shawn Scott, Owner
701 Karr Ave. • Bloomfield, IA
641-664-1024

CAR DETAILING GIFT CERTIFICATES AVAILABLE!

FOR SALE: 95 Ford Windstar, wheel chair accessible with built-in ramp, enough room for 3 wheel chairs. 74,764 miles, green. \$5,000 OBO. PH: 319-850-8236 08

FOR SALE: New crop red clover seed cleaned and bagged in 50 pound bags. \$1.50. Greentop area. PH: 660-341-5168 07

Friesen Excavating

Specializing in Septic Systems
Certified For Peat Tanks and Sand Filters.
Can Also Do Other Drains and Water Lines
Call or Text Shawn @ 641-208-0861
Bloomfield, IA
Free Quotes Available

FOR SALE: 150 ft. new 4/0 entrance cable, \$150; Used GE chest freezer, 7 cu. ft., like new, \$75. Purchased at Sam's Club. PH. 660-342-2330. 07

FOR SALE: Salon sink chair combo with foot rest. Paid \$285. New in box. Asking \$250. Call or text 641-799-9540. 07

YODER EQUIPMENT
BLOOMFIELD, IOWA

GEO STAR & PRIDE OF THE FARM
ENERGY FREE WATERS

Extra Heavy
10 Gauge Bale Rings

- CONTINUOUS FENCING
- LARGE VARIETY OF FARM GATES

19887 Jade Ave
2 1/2 Miles W of Bloomfield
V.M. 641-664-2797



DUTCHMAN'S STORE Division Street - CANTRIL, IA - (319) 397 2322 SALE PRICES Feb.15-21, 2017
STORE HOURS • Weekdays, 8a.m. - 6 p.m. • Saturday 8a.m. - 5 p.m. • Sunday Closed • View our specials at - www.DutchmansStore.com

NATIONAL FFA WEEK

FEBRUARY 20-26, 2017

National FFA Week is an opportunity for FFA members, alumni & sponsors to advocate for agricultural education & FFA. It's a time to share with local, state & national audiences what FFA is & the impact it has on members every day.

The Bike & Trophy Shop

641-682-2024
btferg@pcsia.net

AMERICAN FAMILY INSURANCE

Craig D. Heemsbergen
Ottumwa, IA • 641-683-1891

Greiner Implement Co.

10845 73rd • Ottumwa, IA
641-683-1691

Cattle Auctions Weekly

P.O. Box 104 • Moulton, IA
Beth Withrow • 844-876-3493
CattleAuctionsWeekly.net

Lynch Law Office & Abstracting

207 S. Washington • Bloomfield
641-664-3188

citizens mutual

114 W. Jefferson • Bloomfield
641-664-2074
www.mycmtech.com

Hoskin Elevator Inc.

Feed • Grain
29067 Juniper • Bloomfield, IA
641-929-3568

Crop Production Services

Memphis, Missouri
660-328-6211
Queen City, Missouri
660-766-2325

Tri-County Electric Coop.

16875 US Hwy 63
Lancaster, MO
888-457-3734

Schuyler County Nursing Home

Queen City, MO
660-766-2291



Margaret Sapp & Stephanie March
Queen City, MO
660-766-2505

Norman Funeral Home

Lancaster, MO
660-457-3137

Tallman Auto Parts

AutoPlus.
Lancaster, MO
660-457-2191



Greentop, MO
800-456-0250

Chuck's Body Shop & Garage

Hwy 63
Queen City, MO
660-766-2312

Beeler Motor Co.

Lancaster, MO
660-457-3718

Johns Seed & Supply

Queen City, MO
660-766-2711

MFA Agri Services

Lancaster, MO
660-457-3728

Success Bank FDIC

641-664-2006

Randy's Auto Body

Lancaster, MO
660-342-0920

Feeds & Needs

1 mile N of Downing
Mon-Fri 8-5
660-379-2055

Sidwell Seeds

Queen City, MO
660-766-2737

Slayton Polaris

8 mi. S. & W. from Pulaski or 6 mi. W. of
Memphis then 13 mi. N. on Route B
660-328-6627

J.C. Zeitler D.V.M

M-F 8-5 • Milton, IA
641-656-4616

Kay Eggleston Bookkeeping & Tax

Memphis, MO
660-465-2684

Cantril Feed & Grain

Cantril, IA
319-397-2215

Hometown Animal Health

Hwy 136 • Memphis, MO
660-465-2967

COOK'S MENS STORE

Memphis, MO
M-F 8-5, Sat. 8-9

Cantril Lumber

Cantril, IA
319-397-2351
1-888-791-9273



Greg Shelley
388 S. Clay St. #A
Memphis, MO • 660-465-2623

DAVIS COUNTY CHAPTER



SCHUYLER COUNTY CHAPTER



SCOTLAND COUNTY CHAPTER



HISTORY OF FFA

READ MORE AT WWW.FFA.ORG

In 1928, 33 students from 18 states gathered in Kansas City, Mo., to form the Future Farmers of America. The roots of FFA originate from a time when boys were losing interest and leaving the farm. Walter S. Newman, who in September 1925 became the Virginia State Supervisor of Agricultural Education, sought a solution to the problem with Edmund C. McGill, Harry W. Sanders and Henry C. Groseclose, staff members of the Virginia Polytechnic Institute Agricultural Education Department.

Newman proposed forming an organization that offered farm boys "a greater opportunity for self-expression and for the development of leadership. In this way they will develop confidence in their own ability and pride in the fact that they are farm boys."

Henry C. Groseclose immediately began work on a constitution and bylaws for the new organization, and J.O. Hoge later suggested a name: Future Farmers of Virginia.

The idea was presented during an annual vocational rally in the state in April 1926, where it was met positively. The Future Farmers of Virginia was born.

Two years later, the idea reached the national stage during the American Royal Livestock Show in Kansas City, Mo. That's when 33 young students from 18 states gathered at the Hotel Baltimore to establish the Future Farmers of America. The group elected Leslie Applegate of Freehold, N.J., as its first president and adopted the national emblem – a mark similar to that of the original Virginia emblem – during the new organization's first convention.

In 1929, national blue and corn gold became the official colors of FFA. A year later, delegates adopted the official FFA Creed and by 1933 the familiar Official Dress of blue corduroy jackets was adopted after convention delegates were enthralled by the jackets worn to Kansas City by members of the Fredericktown, Ohio, FFA chapter. Members wear FFA Jackets in 1933

The New Farmers of America

Less than a decade after the formation of the Future Farmers of America in 1928, a national organization for African-American boys interested in agriculture formed in Tuskegee, Ala. The New Farmers of America was modeled after another Virginia organization – the New Farmers of Virginia – and began in 1935. The New Farmers of Virginia was instrumentally started by G.W. Owens and J.R. Thomas, teacher-educators in agricultural education at Virginia State College, and Dr. H.O. Sargent, a federal agricultural education official who later proposed NFA.

NFA Members in the 1950s The NFA and FFA shared common beliefs. The NFA Creed had six paragraphs, each beginning with "I believe," and its emblem featured only one stylistic difference: an outline in the shape of a cotton boll instead of an ear of corn. A total of 13 states received NFA charters, and by 1965 the NFA and FFA consolidated in recognition of shared missions for agricultural education.

In 1974, Texas' Fred McClure became the first African-American national FFA officer, and in 1994 Chicago's Corey Flournoy became the first African-American national FFA president.

Female Members Gain Official Standing

Girls were restricted from the earliest forms of FFA membership by delegate vote at the 1930 national convention. The decision to deny female members for many years denied recognition of the key role women have played on farms and in agriculture since the days of the American pioneers.

It wasn't until 1969 that females gained full FFA membership privileges by vote of the national convention delegates, despite many state associations permitting female members long before. New York's Anita Decker and New Jersey's Patricia Krowicki became the first two female delegates to the national convention in 1970.

Today, females represent more than 45 percent of FFA members and roughly half of all state leadership positions. In 1976, Washington's Julie Smiley became the first female national FFA officer. California's Jan Eberly became the first female National FFA President in 1982. In 2002, Wisconsin's Karlene Lindow became the first female FFA member to earn the prestigious American Star Farmer Award.





THESE BUSINESSES WOULD LIKE TO SALUTE THEIR LOCAL FFA CHAPTER!

WE BELIEVE IN THE FUTURE OF AGRICULTURE.

Bradley Insurance

Tonya Bradley, Owner
226 S. Market • Memphis, MO
660-465-2764

Memphis Auto & Truck Parts

300 S Market • Memphis, MO
660-465-2470



Hwy. 136 E.
Memphis, MO • 660-465-8597

Memphis Farm & Home

S. Market St. • Memphis, MO
660-465-8678

Memphis Lumber Co.

Memphis, MO
660-465-8595

Payne Funeral Chapel

202 E Madison St. • Memphis, MO
660-465-7135

Rose Hardware

109 S. Main • Memphis, MO
660-465-2495

Tri-County SHOPPER

Bloomfield, IA
641-664-1333



641-664-1801

Kollision Korner

504 S Drake St. • Bloomfield, IA
641-664-2648

Kincart Physical Therapy Services

641-664-7086

Crop Services Inc.

Drakesville, IA
641-722-3293

Clearview Animal Hospital

601 Weaver Rd. • Bloomfield, IA
641-664-2399

Harris Distributing

West Grove, IA
641-929-3379 800-727-5589

Hamilton Produce Company Inc.

Bloomfield, IA
641-664-2459

Crop Production Services

906 Karr Ave.
Bloomfield, IA
641-664-1045



Bloomfield 641-664-1362
Birmingham ... 319-498-4500
Keosauqua 319-293-3794
Cantril 319-397-2401

North Side Insurance

106 E. Jefferson • Bloomfield
641-664-2362



603 S. West
Bloomfield
641-208-6890

Troy Elevator Inc.

105 S Madison • Bloomfield, IA
641-664-1919

Animal Health Center

Lancaster, MO
660-457-3086

D.C. Diesel

Pump Injectors
Turbos
641-664-1632



Memphis, MO
660-465-2441

TLS Equipment

Memphis, MO
660-465-2441

B&B Propane & Jet Gas/Bentler Oil

Pulaski, IA
641-675-3354



Welding and Fabrication, Inc.
Bloomfield, IA
Ph: 641-664-3480
Fx: 641-664-3482

All 50 states and two U.S. territories are currently chartered members of the national organization. It's a testament to the power of common goals and the strong ideals of the FFA founders. Their mission was to prepare future generations for the challenges of feeding a growing population. They taught us that agriculture is more than planting and harvesting – it's a science, it's a business and it's an art. Today, the National FFA Organization remains committed to the individual student, providing a path to achievement in premier leadership, personal growth and career success through agricultural education.



Our policy is serving you.
104 E Franklin • Bloomfield, IA
641-664-2135

CR Cattle Co

Purchasing a good bull doesn't cost, it pays:

50 extra pounds X 20 Calves = 1000 extra pounds X \$1.60 per pound = \$1600 extra dollars per year.

Why Red Angus and Red Angus cross Bulls?

Crossbreeding hybrid vigor—Why breed black on black for yrs and lose all the hybrid vigor?

A red bull on black cows will produce black calves—I can explain.

Keep high quality maternal heifer replacements

Why purchase from CR Cattle Co?

Half down secures the bull until May 1st

Bulls are developed for longevity—not pampered

Bulls are easy to handle—no injury to people or equipment

Jennifer Gardner

Selma, Iowa

641-895-4116

Give us a call to discuss your bull needs.



We provide materials & expertise for all building projects.



New Homes Remodels Decks Kitchens ICF Basements Pole Buildings

Josh & Emily Hill
218 S. 2nd St. • Pulaski, IA

641-675-3405

THE CITY OF DOWNING, MO IS ACCEPTING BIDS for the 2017 season for the mowing of the Downing Cemetery. Interested parties should contact City Clerk at P.O. Box 24, Downing Mo, 63536 or call 660-379-2515 to obtain a bid sheet. All bids must be returned by 4:00 p.m. March 30, 2017. Bids will be per season and per mowing. Mowers will be required to provide proof of liability insurance and sign a contract prior to mowing. We reserve the right to reject any and all bids.

KEOSAUQUA SALE CO.

20511 Hwy. 1, Keosauqua, IA

| | |
|-------------------------------|--------------------------|
| Results from Feb. 11th |\$135.00-141.00/cwt |
| Butchers | \$42.00-49.50/cwt |
| Ewes | \$67.50-83.00/cwt |
| Sows | \$26.00-38.50/cwt |
| Kid goats 40-70# | \$90.00-170.00/hd |
| Lambs under 80# | \$235.00-255.00/cwt |
| Cull nannies | \$70.00-190.00/hd |
| Lambs over 110# | |

Pound cows low yielding \$46.00-51.50/cwt
High yielding \$55.00-64.50/cwt
Pound bulls \$78.00-84.50/cwt

SPECIAL CATTLE SALE SAT FEB 18

- 30 hd 500-700 blk & bwf bulls & hfrs weaned - L Head
- 18 hd 450-650 blkx strx & hfrs, green tagged, weaned - D Beckman
- 15 hd 550-650 bwf strx, green tagged, weaned - Barker
- 25 hd 500-650 blkx strx & hfrs, MO gold tagged - Hayes
- 30 hd 600-750 blk mostly hfrs, few strx precondition weaned - Yahnke

Thank You For Your Business!

For More Information Contact:

Selling Times
Hogs.....9:30 a.m.
Sheep & Goats.....10:00 a.m.
Outside Merch.....11:00 a.m.
Cattle.....Noon

Keosauqua Sale Co.
319-293-3508
Bill Goehring
641-919-9365

www.keosauquasaleco.com

FOR SALE: Two self feeding Hitzer Stoves. Nice condition; \$875 each. **Chris Graber** 17328 St. Hwy Y Greentop, Mo. 63546

FOR SALE: Balancer Gelbvieh Bulls. Low birth weight for heifers. **PH: 641-664-2345 or 641-208-4311 09**

FOR SALE: Collie-Coonhound cross puppies. Born 12-8-16. \$45. Also miniature bantams. No Sunday sales. **William Miller** 25674 Main Street Greentop, Mo. 63546

ATTENTION!! Did you or someone know lose a set of keys North of the Floris turn off on Hwy. 63? If so come to the Shopper Mon. -Fri. 8 am- 5 pm to claim your keys. Thank You.

ORDER NOW THRU APRIL 1ST FOR 10% DISCOUNT ON:

FRUIT TREES & STRAWBERRY PLANTS
Arrive around April 15th

HILLTOP GREENHOUSE Mon-Sat 8:00am-6:00pm
11049 HWY 2, MOULTON IA BETWEEN WEST GROVE & MOULTON 641-929-3036

LANDSCAPE SPECIALS

8 FT. RAILROAD TIES!
Check them out at...
Spilman's Auto Parts
20311 Old Hwy. 2 • Bloomfield, IA
641-664-2463

FOR SALE: Beagle puppies, 8 weeks old, had shots; Free black & tan coonhound. VM: 641-664-3609. 08

FOR SALE: G.E. Electric water heater, 55 gal capacity. \$20. VM: 6941-664-3453 ext. 1

Sales & Service of Outdoor Power Equipment
641-664-2784 • 502 E. Franklin • Bloomfield, IA

Scotland County LIVESTOCK AUCTION

P.O. Box 111 • Hwy 15 North • Memphis, MO
660-465-7213 • Jerry & Barb Blomme
660-341-0069 • Grant Blomme

CATTLE SALE

Sat., February 18th @ 12:30 PM

SPECIAL CATTLE SALE

Sat., February 25th @ 12:30 PM

WOODRUFF ANGUS BULLS SALE

Mon., February 27th @ 6:30 PM

DAIRY SALE

Wed., March 1st @ 10:30 AM

Market Report for Sat., Feb. 11th: **TOP STEERS:** 280# - \$187.00, 430# - \$170.00, 442# - \$176.00, 505# - \$166.50, 526# - \$159.00, 588# - \$143.50, 645# - \$135.00, 696# - \$125.00, 781# - \$122.50. **TOP HEIFERS:** 303# - \$151.00, 368# - \$147.00, 392# - \$142.00, 459# - \$139.00, 477# - \$132.00, 536# - \$136.00, 570# - \$130.50, 603# - \$129.00, 661# - \$122.50, 683# - \$123.00, 726# - \$120.00. **TOP BULLS:** 330# - \$177.50, 365# - \$176.00, 435# - \$154.00, 510# - \$152.00, 573# - \$138.50, 710# - \$122.50. **BRED COWS:** Young - \$1,400 to \$1,800, Mid age - \$1,000 to \$1,500. **HOLSTEIN VEALS:** \$85.00 to \$160.00. **LB COWS:** \$48.00 to \$55 Top \$60.50

www.ScotlandCountyLivestock.com

ANNUAL SPRING FARM MACHINERY / EQUIPMENT AUCTION

SATURDAY, APRIL 8th • 9 AM

SELLING ALL KINDS OF EQUIPMENT, POSTS, FENCING, ATV'S, LAWN/GARDEN, TOOLS, HAY, ANY FARM RELATED ITEMS.

THIS IS OUR 50TH YEAR IN THE AUCTION BUSINESS. THANKS EVERYONE FOR YOUR PATRONAGE. THE EARLIER YOU LIST, THE BETTER AUCTION WE CAN HAVE FOR EVERYONE. CALLS COMING IN.

DEMRY AUCTION, LLC

HWY 5 & GREEN ST. • CENTERVILLE, IA
JANET DEMRY 641-895-4310 641-856-6408
TOM DEMRY 641-895-2508
PEGGY VANDENBERG 641-891-7258
KENNY VANDENBERG 641-891-1472
JUNIOR LAWSON 641-895-0037

Fabius Creek Angus

26th Annual Star Search Production Sale

Friday • March 3, 2017 • 6 PM

Bloomfield Livestock Market, Bloomfield, Iowa

Selling 70 Head

50 Bulls (Spring Yearlings

Fall Yearlings • Two-Year-Olds)

20 Females (Show Heifers • Bred Cows)

The Get and Service of these Sires Sell!

Update on yearling bulls:

| Sire | Lot | Birth Wt. | WW | YW | Adj RE |
|--------|-----|-----------|-----|------|--------|
| Duty | 1 | 80 | 818 | 1669 | 15 |
| Duty | 2 | 80 | 876 | 1660 | 14.7 |
| Duty | 3 | 80 | 830 | 1472 | 15.7 |
| Duty | 4 | 80 | 799 | 1445 | 15.5 |
| Duty | 5 | 80 | 830 | 1526 | 16.3 |
| Duty | 6 | 80 | 807 | 1543 | 16 |
| Duty | 7 | 75 | 682 | 1559 | 14.8 |
| Duty | 8 | 70 | 675 | 1419 | 14.3 |
| Duty | 9 | 70 | 746 | 1456 | 14.2 |
| Duty | 10 | 85 | 707 | 1499 | 15.6 |
| Duty | 11 | 75 | 723 | 1425 | 17.1 |
| Duty | 12 | 80 | 750 | 1606 | 16.5 |
| Duty | 13 | 80 | 713 | 1441 | 18.2 |
| Duty | 14 | 75 | 703 | 1463 | 16 |
| Double | 15 | 80 | 700 | 1463 | 16.4 |
| Double | 16 | 75 | 739 | 1517 | 17 |
| Double | 17 | 75 | 720 | 1474 | 14.8 |
| Double | 18 | 80 | 674 | 1519 | 15.8 |
| Double | 19 | 85 | 669 | 1461 | 13.8 |
| Double | 20 | 80 | 715 | 1411 | 15.8 |
| Double | 21 | 80 | 746 | 1543 | 15.9 |



Quaker Hill Rampage OA36

| CED | BW | WW | YW | CEM | MILK | CW | Marb | RE | FAT |
|-----|------|--------|------|---------|------|--------|------|---------|-------|
| +9 | +1.6 | +81 | +139 | +13 | +35 | +85 | +36 | +1.74 | -.028 |
| | | \$W | | \$F | | \$G | | \$B | |
| | | +83.12 | | +117.29 | | +36.11 | | +191.83 | |

Continued Update on yearling bulls:

| Sire | Lot | Birth Wt. | WW | YW | Adj RE |
|----------------|-----------|-----------|------------|-------------|-------------|
| Rampage | 23 | 75 | 630 | 1372 | 14.1 |
| Rampage | 24 | 85 | 707 | 1561 | 17.1 |
| Rampage | 25 | 75 | 824 | 1683 | 18.9 |
| Rampage | 26 | 80 | 790 | 1577 | 15.6 |
| Rampage | 27 | 70 | 747 | 1510 | 17 |
| 4222 | 28 | 85 | 754 | 1562 | |

Other Sired Represented: Double Vision, Hoover Dam, SydGen

CC&7, Ten X and RB Tour Of Duty 177

For more information and sale book contact:

Fabius Creek Angus

Dean & Nancy Hougland (641) 929-3208

Dean's Cell (641) 208-9626 • Nancy's Cell (641) 208-0434

Sale Day Phone: (641) 664-2435

BLOOMFIELD LIVESTOCK MARKET



Wed., Feb. 22ndFat Cattle, Slaughter Cows & Bulls..... 9AM

.....Special Feeder 11:30AM

Wed., March 1stFat Cattle, Slaughter Cows & Bulls..... 9AM

Reports from Thursday, Feb. 8th , 2017 • Selling 1,931 Head

HEIFERS

| | | |
|--------------------------------|---------------|----------|
| Gravett Farms INC .6 BLK | 393 lb | \$146.00 |
| Bob Burrell..... | 9 BLK | \$143.50 |
| Richard Taylor..... | 8 BLK | \$138.00 |
| Chad Schinstock..... | 19 BLK | \$137.00 |
| Tony Hill..... | 4 BLK | \$136.50 |
| Mike Hoenig..... | 14 BLK | \$133.50 |
| TF Cattle..... | 19 BBWF | \$132.00 |
| TF Cattle..... | 15 BRC..... | \$130.00 |
| Tony Hill..... | 10 BLK | \$129.50 |
| Scott Batterson..... | 16 BLK | \$125.00 |
| Ervin and Arlene | | |
| Nolt Trust..... | 71 BLK | \$124.75 |
| Fred B. Linn..... | 13 BLK | \$124.00 |
| Kevin Good..... | 52 BLK | \$123.00 |
| Rob Melvin..... | 36 BLK | \$121.25 |
| TF Cattle..... | 7 BLK | \$120.00 |

STEERS

| | | |
|------------------------------|--------------|----------|
| Forest Okeane..... | 4 BLK | \$174.00 |
| Gravett Farms INC .6 BBWF... | 405 lb | \$172.00 |
| Randall Oberholtzer.. | 5 BLK | \$171.00 |
| Eli H. Mast..... | 3 BLK | \$161.00 |
| Bob Burrell..... | 8 BLK | \$159.00 |
| Mike Hoenig..... | 13 BLK | \$157.50 |
| Chad Schinstock..... | 9 BLK | \$151.00 |

STEERS CONTINUED

| | | |
|------------------------|---------------|----------|
| Fred B. Linn..... | 6 BLK | \$150.25 |
| Franklin Wheeler | 12 BLK | \$149.00 |
| Tony Hill..... | 12 BLK | \$147.00 |
| TF Cattle..... | 10 BBWF | \$146.00 |
| Scott Batterson..... | 9 BLK | \$144.75 |
| Dave Weir..... | 9 BLK | \$142.00 |
| TF Cattle..... | 49 BLK | \$136.00 |
| Erik Hopp..... | 72 BLK | \$133.35 |
| Brad Klodt..... | 31 BLK | \$132.10 |
| Blaine Dehart | | |
| Esate | 7 BLK | \$132.00 |
| Triple B | 66BBWF | \$130.35 |
| Triple B | 66 BWF | \$128.75 |
| Tom White..... | 12 BLK | \$126.00 |
| Rob Melvin..... | 30 BLK | \$123.75 |
| Mark Henderson..... | 57 BLK | \$120.25 |
| Darin Westhoff..... | 21 BLK | \$118.50 |



**SALE BARN OPEN UNTIL 9:00 PM
EVERY TUESDAY TO RECEIVE LIVESTOCK**

Phil Schooley 641-664-3450
Ron Schooley..... 641-777-0302
Roman Schooley 515-450-3685

We appreciate your business!
Tyler Schooley 641-208-5442
Barn Phone 641-664-2435

HWY. 63 NORTH • BLOOMFIELD, IA

SAVE UP TO 40% OFF FILTERS! Offer valid through February 20th-25th, 2017
Call Ahead and talk to Alan or Tammy to Pre-Order Filters!

Have lunch with us
MONDAY, FEBRUARY 20TH
11:30 AM - 2:00 PM
BBQ Pork • Chips • Baked Beans

MEMPHIS AUTO & TRUCK PARTS
300 S. Market • Memphis, MO • 660-465-2470

CUSTOM SKID LOADER WORK. Clean & Rebuilds terraces, removing trees from CRP ground, Ditch crossings, field washouts, \$55/hour. Also sm. square baling at 50¢. Downing Area. Contact Tommy Anderson PH: 660-341-4575 07

Vinyl Windows
Replacement & New Construction

Window Features...
Fusion Welded
Triple Weather Strip
Aluminum Reinforced

Sliding/Swinging
Patio Doors

Gerkin
"Quality products since 1932"
FREE ESTIMATES

Yoder Glass & Window
641-722-3667
19467 Driftwood Blvd.
Bloomfield, IA 52537

Premium Metal Roofing

- Buy Direct & Save
- Fast Service
- Cut-to-length
- Professional Contractors Available

AW Metal LLC
Metal Roofing Headquarters

641-664-3990 • awmetal.net

ANGUS BULLS YEARLINGS & 2 YR. OLDS

- ★ CALVING EASE
- ★ GROWTH
- ★ THICK
- ★ GENTLE DISPOSITIONS

Sired by Musgrave Reachout 530

SELECT YOUR BULL NOW

DORAN BOLLMAN
PULASKI, IOWA
641-675-3467

Bring your plans in for a FREE ESTIMATE

Trusses Engineered and Designed to Your Specs

Complete building packages for:

- Commercial • Agriculture • Residential •

17893 212th Street • Bloomfield, IA 52537
641-722-3605 • Mon.-Fri. 7 AM to 5 PM