

BUY IT!
TRADE IT!
SELL IT!

PENNY PINCHER

Serving the Tri-County Area

www.pennypincherpa.com

February 15, 2017

WINDOW SHOPPING?

FAMILY OWNED SINCE 1949
GRABOYES
WINDOW & DOOR

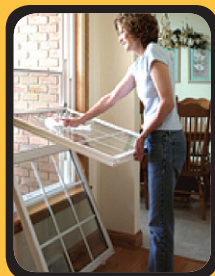
Best Prices, always!

The Professional
Window People
FAMILY OWNED
67 Years In Business

610-279-3905

Why go anywhere else?

www.graboyeswindows.com



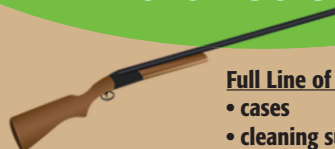
GORDON'S SPORT SUPPLY GUNS WANTED!

PISTOLS • RIFLES • SHOTGUNS

(Just Outside of Marsh Creek State Park)

129 Pottstown pk., Eagle

610-458-5153



Full Line of Fire Arms & Accessories

- cases
- cleaning supply's & More.

www.gordonssportssupply.com

Quality Masonry

At Affordable Prices

- BRICK • BLOCK • STONE
- CONCRETE • FLAGSTONE • HARDSCAPE
- POINTING • RETAINING WALLS • CHIMNEYS

General Contractors
Welcome

FARMHOUSE & BARN RESTORATION

Free Estimates

Fully Licensed & Insured

610-369-4963

PA-037504

CASH

\$100-\$1000

for junked, wrecked or
unwanted vehicles

Serving

Southeastern
Pennsylvania

484-955-8386

Heating Oil

Pump your own.

\$2.09⁹

Also offer Kerosene!

Prices Subject to Change



1203 Twp Line Rd

610-948-7113

See Our OPEN HOUSE AD on PAGE 2!

HOUCK HOMES, INC.

ROUTE 61 - 1365 POTTSVILLE PIKE SHOEMAKERSVILLE

www.houckhomesinc.com

OPEN HOUSE

**FEBRUARY 17TH,
18TH & 19TH**

(Snow/Ice Dates: Feb 24th, 25th & 26th)

FRI. 10am - 7pm

SAT. & SUN. 10am - 5pm

**BEAUTIFULLY
DECORATED
HOMES ON DISPLAY**

**SPECIAL PURCHASE INCENTIVES
IF YOU BUY DURING
OPEN HOUSE!**

HARLEY SAYS:
The More You Look At
Homes, The Better Our
Homes Look!



Don't Break Your Advertising Budget!

Call us for low-cost, highly effective advertising solutions.

We have something for everyone's budget.

24 N. Hanover Street, Pottstown, PA 19464

610-850-0237 • www.pennypincherpa.com





BULLETIN BOARD

Handyman Services

Drywall and Plaster Repairs
Interior and Exterior Painting
Carpentry-Electrical-Plumbing
Third Generation of Craftsmanship

SENIOR DISCOUNT-FREE ESTIMATE

Pottstown, PA 19464

610-948-7500 • Ask for John

Custom Construction

Professional Quality Craftsmanship

Carpentry Services,
Bathroom, Kitchen & Basement Remodeling,
Door/Window Replacement,
Renovation/Additions/Porch/Deck Projects,
Interior/Exterior Painting,
Deck Refinishing. PA08437

-All phases of construction-
Lic/Ins. Over 20 yrs Exp

484-350-2205

psschreier@gmail.com

TAX PREPARATION SERVICE

Licensed CPA
\$Fast Refunds\$
~ \$50 for Referrals ~
Refund Advance
(up to \$1,250)

CALL 484-447-1396

J. Knipe Electrical LLC

My Prices Won't Shock You!

EMERGENCY SERVICE AVAILABLE

NO JOB TOO SMALL!

Res/Comm. Master Electrician

Whatever Your Electrical Problem is,
I CAN SOLVE IT!!

LICENSED & INSURED • SENIOR DISCOUNTS

f 267-312-2127

www.JKnipeElectrical.com

WANTED: PAYING CASH

ATV, ATC, Motorcycles
Go Karts or Mini Bikes
Running or Not
Any Condition
2, 3 or 4 Wheelers
ANY YEAR, ANY MODEL

Please Call 610-656-3158



BUYING FIREARMS

One Piece or
Entire Collection
Call for Appointment
215-453-8984

HARLEY SAYS:
The More You Look At
Homes, The Better Our
Homes Look!



HOUCK HOMES, INC.

ROUTE 61 - 1365 POTTSVILLE PIKE, SHOEMAKERSVILLE

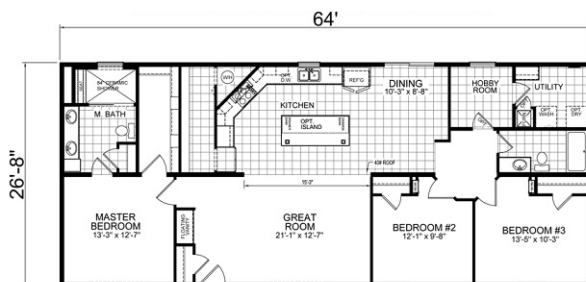
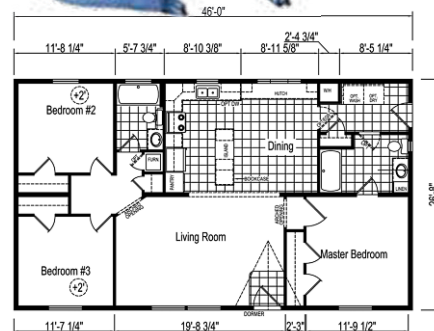
www.houckhomesinc.com

OPEN HOUSE

(Snow/Ice Dates: Feb. 24th, 25th & 26th)

FRI. 10am - 7pm • SAT. & SUN. 10am - 5pm

BEAUTIFULLY DECORATED HOMES ON DISPLAY



- Prices Posted in Each Home
- No High Pressure Sales
- Contracted Improvements
- Financing Available for Qualifies Buyers
- Delivery-First 150 Miles FREE
- Family Owned & Operated
- SERVICE AFTER THE SALE IS OUR COMMITMENT!

SPECIAL PURCHASE INCENTIVES IF YOU BY DURING OPEN HOUSE!



STOP IN & VISIT PIGGY VILLA!

Celebrating 56 Years! 1961-2017

Check Out Our New Home with a **HIDDEN PANTRY!**

"Why Buy Elsewhere, Pay More & Get Less? It's Worth Your Time to Check Us Out!"

CALL FOR MORE INFORMATION 610-562-5128



PENNY PINCHER

Open to see even more great ways to save!

QUARRY BLOCKS
2'x2'x6'

For Making
Mulch Bins,
Retaining
Walls, etc...

**WINTER
SALE
\$15 ea**

Exp. 2/28/17 or until Supplies last!
Pick-up only @ Collegeville

**TRANS-FLEET
CONCRETE
610-489-8884**

Shabby chic
or
past its peak?

*Sell it in the
Penny Pincher!*

FOR RENT CAMPSITES



**LAZY K
CAMPGROUND**

Want to Save
Money on Rent?

Camp by
Month/Yearly
Sites as Low as
\$475/month

610-367-8576

**AUGUSTINE'S
HANDY SERVICE, LLC**

INTERIOR & EXTERIOR SERVICES
PAINTING, PLUMBING

HOME REPAIR LANDSCAPING

ANY AND ALL ODD JOBS! NO JOB TOO SMALL!

QUALITY WORK/REASONABLE PRICES
FULLY INSURED ** FREE ESTIMATES*



1-484-919-6210

PA003294

Need Interior Painting or
Drywall Finishing Work Completed?

**Andy Astheimer
(610) 970-5626**

Drywall Finishing
Interior/Exterior Painting
Interior Plastering Repair
Stucco & Stucco Repair
Stucco Foundation
Brick & Stone Pointing
30 yrs exp - fully insured
PA #006322

BUYING HARLEY'S

1903-2011 Big Twin Models
Licensed Dealer
Safe/Secure Transaction
Also Buying Original
Condition CORVETTES

TOP \$\$\$ PAID TODAY!!!

We Also Buy Collectible Cars & Trucks!

484-941-4245

or visit: www.east-11.com/sell

We Buy Used Car Batteries!
Recycled the proper way.



INTERSTATE BATTERY SYSTEM
OF READING, INC.
1742 SWAMP PIKE
GILBERTSVILLE, PA 19525

610-323-3296
Toll Free 800-427-1500



**Digital Marketing
Got You Confused?**

With our help the solution is easy.

digitalfirst
MEDIA

www.digitalfirstmediapa.com

(610) 235-2731

Success is Simple



BUY IT! TRADE IT! SELL IT!

BARN HOMES AND SAFE INDOOR/OUTDOOR HOMES NEEDED FOR ADULT CATS CAGE SET-UP PROVIDED IF NECESSARY. All cats are neutered and vaccinated 610-277-6187

CATS LOUNGE on armchairs in our cage-free cozy Kitty Cottage Adoption Center, 317 West Johnson Hwy., E. Norristown. Helping PA SPCA cats find homes. Call 610-731-0101 www.kittycottage.org

SAY HELLO to the most mobile marketplace in the area - the Insider Classifieds.

DOBERMANS, various AGES, AVAILABLE FOR ADOPTION TO APPROVED HOMES. DOGS ARE VETTED. ADOPTION FEE REQUIRED. CONTACT SHARON, 610-935-0896. WWW.DVDPA.ORG FOR AN APPLICATION & INFO

HOW TO WRITE a classified ad that sells: First - Be complete. Second - Include the price. And third - Be available. Call today and we will be happy to help you write the most effective ad.

SPEND YOUR REFUND HERE

Several Abandoned Mfg. Homes 4 Sale in the Honey Brook and Limerick area.

2 & 3 BR

Priced to sell at \$500-\$4000

Call (610) 942-4663



Open Your Heart and Home!

We are looking for compassionate individuals and families to share their lives with a local child or adult with special needs. Provide foster care (adoption possible in some cases), Lifesharing, or occasional weekend respite. Our host families choose who they will take into their homes. We have a reputation of being a supportive organization.

Earn \$80-\$100/day (taxable/short-term respite) or \$1325-\$1475/month (non-taxed/long-term care)

Benefits: \$250 sign-on bonus, training and 24 hr. on-call support, referral and training bonuses also available

ACCESS SERVICES

Creating better ways to serve people with special needs

Contact Donna at 215-540-2150, ext. 304 or DDONNELLY@accessservices.org www.accessservices.org

William B. Carr Construction

General Contractor

- Additions & Garages
- Custom Bathrooms
- Custom Ceramic Tile
- Roofing & Siding

27 Years Experience

Free Estimates
(215) 679-0677
(610) 369-5990

PA#080917



Thank you for

40 Years

of Caring & Sharing

ENTER TO WIN a \$40 Care & Share Gift Card. Winners to be drawn each month.

Care & Share THRIFT SHOPPES

Clothing • Furniture • Variety Used Books • Thrift Outlet • eBay

215.723.0315

careandsharethriftshops.org

Souderton Center

783 Rt 113, Souderton, PA

Shop: Mon.-Wed. 9-5; Thurs.-Fri. 9-8; Sat. 9-5

THE BIG SALE

February 17th

Doors open at 9 am

Everything is 50% OFF

Some restrictions may apply. See individual Shoppes for details.

FIRST STATE GREYHOUND RESCUE, INC. - Saving a Greyhound will not change the world, but it will change the world for that ONE Greyhound!! If you are looking for a great family pet or companion, call Jennifer Esterly, Lehigh Valley area representatives at 610-285-6873 or email me at: esterjgrevs@yahoo.com for more info.

FOR ADOPTION, GERMANY SHORTHAIRED POINTERS! CONTACT THE GERMANY SHORTHAIRED POINTER RESCUE OF PA. FOR MORE INFORMATION USE OUR WEB SITE: WWW.QSPRESERVEPA.COM

GERMAN SHEPHERDS available for adoption through rescue. Application & adoption fee required. Foster homes also needed. Call 215-969-4115 or E-mail LM19115@aol.com

GREAT DANE RESCUE - VOLUNTEERS NEEDED FOR MID ATLANTIC GREAT DANE RESCUE LEAGUE. CAN YOU FOSTER, HELP WITH TRANSPORTATION, ADOPT A GENTLE GIANT? FOR MORE INFO/ APPLICATIONS GO TO WWW.PADANERESCUE.COM OR 610-983-9445

HUMANE SOCIETY of Berks County has lots of wonderful pets waiting for adoption. 24 HOUR emergency service for strays, 1801 N. 11th St., Reading, 610-921-2348

KITTENS AND ADULT CATS (some Siamese) available for adoption, neutered, vaccinated and vetted, some declawed. 610-277-6187 to apply or www.spayandsave.org

KITTENS: Rescued & IN NEED OF CARING HOMES. M/F, ASSORTED COLORS, NEUTERED & VACCINATED, SWEET & FRIENDLY. DONATIONS & REFERENCES REQUIRED. STRAY CAT BLUES, 215-631-1851, OR EMAIL: STRAYCATBLUES.PET-FINDER.ORG

KITTY ADOPTION TEAM (KAT) has many adorable young kittens and some young cats looking for forever, loving homes. All have had 1st vaccinations and worming. 610-272-4970

LAB4RESQURE. A Labrador Retriever rescue, has many dogs available for adoption. Please check them out on the website www.lab4rescue.com. Be sure to read all the information, as to how to proceed with an adoption of one of our wonderful Labradors. There is an application and adoption fee to cover the costs. A home visit is required. All dogs are spayed and/or neutered and have all shots. Foster homes are also desperately needed. For more info call (610)966-4636 or email: japhart@pdt.net

SAFE INDOOR/OUTDOOR and barn homes needed for healthy adult cats, neutered, vaccinated plus cage setup included. 610-277-6187

SAVE A YORKSHIRE TERRIER! Foster homes needed in your area. Volunteer to make phone calls, to drive, donate. Do it now! Go to our website: www.SaveAYorkieRescue.org

VOLUNTEERS NEEDED for German Shorthaired Pointer Rescue of PA. Can you foster or find a GSP a home? Help w/ evaluations or assist w/travel? Web site: www.gsprescuepa.com

VOLUNTEERS NEEDED to care for our cats in local no kill cat shelter.

Fill out volunteer application at CatAngel.org or call (610)385-6714

WINDING CREEKS FARM. Has lovely pets and quality breeding animals, Miniature donkeys \$350 and up. Miniature horses, highland calves, llamas \$100 and up. (717)865-4473

SELL YOUR... unwanted items in the classifieds.

WONDERFUL, neutered, VACCINATED AND HEALTHY KITTIES AVAILABLE FOR INDOOR/OUTDOOR HOMES AND/OR BARN. PLEASE HELP THEM WHILE THEY HELP YOU AS RODENT PATROLS. CAGE SET-UPS PROVIDED. 610-277-6187

2013 CHEVROLET CAMARO COUPE 1LT

Black, Black, 3.6l 6 cyl Direct Injection, Automatic, 7,686 Miles\$21,495

2007 SATURN VUE FWD 4DR V6 AUTO

Storm Gray, Gray, 3.5l 6 cyl Fuel Injected, Automatic, 62,437 Mile\$6,995

2010 JEEP LIBERTY 4WD 4DR SPORT

Light Sandstone Metallic Clear Coat, Dark Slate Gray, 3.7l 6 cyl Fuel Injected, Automatic, 73,166 Miles\$11,995

2009 JEEP GRAND CHEROKEE 4WD 4DR LAREDO

Red Rock Crystal Pearl Coat, Khaki, 3.7l 6 cyl Fuel Injected, Automatic, 76,106 Miles\$12,995

Selling Prices Subject to Change After 2/22/17

Quigley Chevrolet

Route 100, Bally, PA 610-845-7575

E-mail: quigchev@pdt.net

69 GTO 455 Rebuilt, L88 4spd suspension, fenders, 750 Holley project convertible, \$8000. 484-886-0880.

Bunk bed. Good condition hardwood. Will deliver AG or Kennet District. \$59. **610-764-5067**

BUYING FIREARMS

One Piece or Entire Collection

Call for Appointment 215-453-8984

BUYING HARLEY'S 1903-2011 Big Twin models. Licensed dealer, safe/secure transaction. Also buying original condition Corvettes. Top \$\$\$ Paid Today!!! We also buy collectible Cars & Trucks! 484-941-4245, or visit www.east.11.com/sell

CUSTOM CONSTRUCTION. Professional Quality Craftsmanship. Carpentry Services. Bathroom, Kitchen and Basement Re-modeling. Door and Window replacement. Renovation/Additions/Porch/Deck projects. Interior/Exterior Painting. Deck Refinishing. PA #084327. All phases of construction. Licensed and Insured. Over 15 years experience. Contact Peter 484-350-2205 or psschreier@gmail.com

Gordon's Sports Supply GUNS WANTED

Pistols, rifles, shotguns. (Just outside of Marsh Creek State Park)

129 Pottstown Pike Eagle 610-458-5153

www.gordonssportssupply.com

Handyman Services

Drywall and Plaster Repairs. Interior and Exterior Painting. Carpentry-Electrical-Plumbing. Third Gen. of Craftsmanship. SENIOR DISCOUNT-FREE ESTIMATE

Pottstown, PA 19464 610-948-7500 Ask for John

HOUCK HOMES INC. OPEN HOUSE!

Feb. 17, 18 & 19 10am-7pm Fri. 10am-5pm Sat.-Sun.

Specializing in customized modular & manufactured homes. Come see our beautifully furnished & decorated homes on display. Design one for yourself. Affordable & Accommodating. Unlimited Possibilities!

Route 61 - 1365 Pottsville Pike Shoemakersville 610-562-5128

www.houckhomesinc.com

THE CLASSIFIEDS ... they go where you can't... into thousands of homes. And they do all in one day!

Need interior painting or drywall finishing work completed? **Andy Astheimer, 610-970-5626.** Drywall finishing, interior/exterior painting, interior plastering repair, stucco and stucco repair, stucco foundations, brick and stone painting. 30 years experience. fully insured. PA#006322

QUALITY MASONRY

at affordable prices. Brick, Block, Stone, Concrete, Flagstone, Hardscape, Pointing, Retaining Walls, Chimneys. General Contractors welcome. Farmhouse and barn restoration. Free Estimates. Fully licensed and insured. 610-369-4963 PA37504

QUARRY BLOCKS. 2' X 2' X 6'. For making mulch bins, Retaining Walls, etc. Fall/Winter Sale \$15ea. exp. 2/28/17 or until supplies last! Pick-up only at Collegeville. Trans-Fleet Concrete (610)489-8884.

QUARRY RIDGE Roofing & Siding Corp.

153 Quarry Rd. Kutztown. Featuring Everlast Roofing's, New OMNI Panel... Manufactured for Superior Strength, Long Lasting Durability, Attraction Design, Westhertight Sidelaps. Limited Lifetime Warranty. M-F 7 to 5. Closed Sat. 610-683-5312 www.quarryridge.roofingco.com

SHIRK POLE BUILDINGS 40 Year G-100 Painted Steel Siding and Roofing Insist on the best! Call toll free, (877)845-6888, www.shirkpolebuildings.com

SPEND YOUR REFUND HERE

Several Abandoned Mfg. Homes 4sale in the Honey Brook and Limerick area. 2 & 3 BR. Priced to sell at \$500-\$4000. Call (610) 942-4663

THE BIG SALE. Friday, Feb. 17th. Doors open at 9 am. Everything is 50% off! Clothing, Furniture, Variety. Used Books. Thrift Outlet. eBay. (215)723-0315 careandsharethriftshops.org. Souderton Center, 783 Rt. 113, Souderton, Mon-Wed 9-5, Thurs-Fri 9-8, Sat. 9-5. Thank You for 40 Years of Caring & Sharing!

WANTED: PAYING CASH for ATV, ATC, Motorcycles, Go Karts, or Mini bikes. Running or not, any condition. 2, 3 or 4 wheelers. Please call 610-656-3158

William B. Carr Construction.

Additions & Garages Custom Bathrooms/Kitchens Custom Ceramic Tile Roofing & Siding 27 Years Experience

610-369-5990 215-679-0677 (610)-369-5990 PA#013222

Window Shopping?

Graboyes Best Prices. Always! Window and door. The Professional window people. Family Owned, 64 years in business. 610-279-3905

We've Got What You LOVE!! (At Prices You'll Adore) Treat Yourself At... THE SWAMP DOOR ANTIQUE & CURIOSITIES

Unusual finds! Great deals! Th/Sat 10-6 Sun/Mon 10-4 Th/Fri 10-8 Closed Tue/Wed 2030 Swamp Pk, Gilbertsville 484-949-8130

3 Tons Debarbed Oak Slab Wood 14' long pcs. \$150 delivered. **Rock Solid LLC (484) 641-3442**

A One Firewood - Seasoned, premium mixed hardwood, \$185/cord. Free Delivery. (610) 495-9992

Firewood: \$190/cord Delivery or pickup (fee for delivery) Limerick, PA area **Call for details (215) 778-4890**

LUTZ'S COAL & WOOD

Bulk or bag coal available (610) 584-2858

MAKE YOUR WALLET HAPPY shopping the classifieds. They offer a variety of affordable goods & services.

EITHER BUYING, selling, or trading, a classified is a good investment.

PAYLESS OIL

Lowest cash price in town! New customers take an additional 56c off. **Call (484) 984-8484**

Premium Anthracite, Wood Pellets.

Pottstown Roller Mills

625 Industrial Hwy. (610)323-8620

BASSETT BEDROOM SET - Triple Dresser w/ Mirror, Nightstand, Headboard, & Frame. Dbl or Queen. Light colored wood. \$400 obso. Must pick up in Douglassville. 484-437-4553

Largest Consignment Store on East Coast

Browse our 20,000 Sq Ft store

FURNITURE - LIGHTING VINTAGE PIECES DECORATIVE ITEMS

Wed-Sat - 10AM - 6PM Sunday - 11 AM - 5PM

RESELLERS CONSIGNMENT GALLERY

480 Lancaster Pike Frazer, PA 19355 610-647-1000

ResellersConsignment.com

4 SECTIONS steel spring loaded scaffolding W/rollers & levers - \$450. **4 SECTIONS** aluminum rolling step scaffolding - \$850. **Bechtels** vinyl area. **Call (610) 476-1841**

72" Rockhound Attach. for Case Skid Steer Loader, great shape. \$6,500. **Auger Attach.** for Case Skid Steer Loader, \$1,100 obso. **Meticulously kept Radisson 12' Flat Canoe.** compl. w/ Frabill fishing net, 2 life vests, bait bucket, anchor & rope, tool box, spare prop, seat attach., Honda 2 HP 4-stroke Outboard Motor, 5 rod holders, \$1,100 obso. **Schwenksville area. Serious inquiries only. Call 215-527-6808, Iv. msg.**

ALL FIREARMS: Military, Hunting, Antique Guns, Swords & Bayonets. We can appraise & buy. **Call John NOW! 610-716-5353** antiqueandreguns@gmail.com

★ ALWAYS BUYING ★ Old Books, **COSTUME JEWELRY**, Postcards, Pre-1950s Photos, Pottery, Old Furniture, Antiques, Full & Part Estates. **Call Cara - (484) 356-3123 or (610) 918-2528**

Wanted: Old toys, trains, space toys, cars, trucks, banks, wind ups. **George, 610-286-2177.**

Roses are red, violets are blue; I have Kittens just for YOU! I have Kitts today! I have Kitts today! (small adoption fee; Phenixville area)

SHIH TZU/APSO PUPPIES 1 Female/2 Males. \$500 each. Have 1st set of shots. Puppy-pod trained. Royersford area. **Call (484) 926-0128**

APT. COMPLEX CLEANER

Reliable trans. & valid DL req. Cleaning exp. prev. 20-30 hrs/week. **Travel Bwn Con-shocken & Troper.** Must be able to navigate local hwy's **Email turntovercleaning@comcast.net**

BARTENDER / COOK / SERVER, PR SHOP, & GROUNDS

Limerick area golf course seeking FT and PT employees. **Email: JFAHJA436@gmail.com**

KENNEL HELP - PT, various hours, weekends/evenings. Energetic Person. Will train. **Call (610) 326-6346**

CAN'T FIND what you're looking for? Find it the fast & easy, effective way by using the classifieds! Call and place a low cost classified ad under "Wanted To Buy" in next week's paper.

Part Time CIRCULATION DISTRICT MANAGER

Early morning hours a must. Duties include store collections, coverage of home delivery routes, and some office work. Part time pay between \$12-15k/year. **Reliable vehicle is a must.**

Fill out an application at: The Mercury

24 N. Hanover St Pottstown, PA 19464

Or email resume to: gerygey@pottsmmerc.com

Pharmacy Cashier / Clerk - PT, evenings & wkends. Must be dependable & friendly. **Apply in person: Professional Pharmacy**, 920 N Charlotte St, Pottstown, PA 19464. **PT cleaners needed** M-F, Pennsburg & Pottstown areas; PM hrs. **Call (610) 286-0363**

Pharmacy Tech - FT, temporary, Exp. pref. **Apply in person: Professional Pharmacy**, 920 N. Charlotte St, Pottstown, PA 19464. **PT cleaners needed** M-F, Pennsburg & Pottstown areas; PM hrs. **Call (610) 286-0363**

AUTO BODY & PAINT TECHS Immed. openings. 3 yrs exp. DOMINICK'S AUTO BODY, Phoenixville, PA. **Contact Tom, (610) 933-0929**

Paratransit Drivers/Aides/Bus Washers. P/T/FT. Enjoy driving & working w/people! Come work for us! Drivers must be 25 yrs w/valid DL/good driving record. Flex hrs, ch training/vac bnfts. 110 Industrial Pkwy, Pottstown. **(610) 495-5640**

SCHOOL BUS & VAN DRIVERS needed for Boyertown area. PT positions driving morning, afternoon or both. **Will train.** Apply in person (9am-5pm) at 326 Main Street, Bally, PA. **Quigley Bus Service, Inc. Bally, PA 19503 - 610-369-7684**

CNA/HHA FT (chester county) opening for a flexible person must be able to easily adapt to a flexible schedule. 40 hrs per wk. Duties include, assisting clients with ADL, taking clients to appointment, filling in for staff, possible overnights necessary. Salary neg. w/ Medical benefits. **Contact Dawn at 610-935-0904 10a-4p**

FORK LIFT OPERATOR

Pottstown area. 2nd Shift 1-11pm. Experience req'd with ability to operate sit-down forklift in warehouse environment. \$16/Hour with benefits to start; must pass criminal background check and drug screening. **Call 215-997-0935.**

1987 GMC 7000 15' Stake Bed Dump w/ 1 Ton Elec. Hydraulic Tailgate. 10-spd gas. 28,500 GVW. 57k orig. mi. Insp. & good shape. Well maintained. \$6,500 obso. **Schwenksville area. Serious inquiries only. Call 215-527-6808, Iv. msg.**

EL-MOR CHEVROLET

Rt. 23, Morgantown 1-800-852-9157

******* KASDRAS ELECTRIC *******

Lowest prices. Quality work. 610-323-8899

HANDYMAN SERVICE STUMP GRINDING (610) 705-3601

John's Hauling & Removal - Any thing big or small, 7 days. Last min. service. **Call anytime 610-454-1449**

Junk & Trash Removal

Houses, Garages Trade svcs for salable items. **John - (610)326-9617**

ABSOLUTE BEST PAINTING

Deck Refinish. Power Wash. **JAMES JOHNS PAINTING** (610)935-2924 Off: (610)948-2327

Rogers Painting (We respond)

Power washing, Painting, Drywall & Wallpaper Removal. **Call 610-705-3601**

KULP & SONS INC SEPTIC SERVICE 610-948-4593

REMEMBER - when placing a classified to get fast results be sure to include:

- 1) all the details
- 2) include the price
- 3) be available to callers As easy as 1 - 2 - 3!

CONSTRUCTION

Regional drilling & blasting contractor seeking **EXP'D DRILLER** for site development work in the Tri-State area. Challenging opportunity for self-motivated, team-oriented individual. Only applicants with clean driving & background records need apply. Drug free work place. **Fax resume: (610) 279-5035 or Email: info@rockworkinc.com**

APARTMENTS/ROOMS

Furnished, daily/weekly, private bath, sec. system. **CALL 610-948-7874**

Gilbertsville - 3BR, W/D, OSP. No pets. \$1,100 incl HT/HW. **1st Month FREE! (610)754-6086**

Linden Apartments 1, 2 & 3 BR Start at \$775/mo. HT/HW incl. No pets. **Call 610-458-5012**

NORCO APARTMENTS

1 & 2 BR. No Pets. HT/HW incl. \$775-875/mo. **(610) 458-5012**

North Coventry - 1 & 2 Bdrm. Apts. HT/HW incl. Near Mall! **Call (610) 326-4050**

POTTSTOWN - 1BD, 1st Flr, Front & Back Yard, \$550/mo + utills & sec dep. **(484) 686-8320**

POTTSTOWN SM 1BR, 2nd fl, inc W/S/T & heat, No smoking, \$500/mo. 610-326-6064

POTTSTOWN/N. END - Small cottage w/ yard, \$515/mo. **Call (484) 400-6699**

Pottstown/N. End 1BD with den available. **Bandy/Patio, C/A.** Lovely residential area. **Call (610) 326-4050**

SANATOGEA - Cozy 1BD in beautiful, quite setting, over looking creek, 2nd flr. Close to 422. No smkg/pets. \$725/mo. **(610) 909-3676.**

SPACIOUS 1, 2, & 3 BR Apts. Quiet setting, Pet Friendly, convenient access to Routes 422, 663 & 100. For more information call 610-750-8917. Bring this ad with you and we will waive all application fees.

Yorkshire Apts - 2 BR. No pets. Elevator on Premises. \$975/mo., HT/HW incl. **610-458-5012**

STOWE - 2BD Townhouse w/ full bsmt, \$950/mo + utills. No pets. **Call (610) 858-0493 or (610) 334-2741**

CHATEAU - Boyertown area. Clean, secure, private parking. **\$100wk+. Call (610) 367-5112**

ALWAYS BUYING USED, UNWANTED, & JUNK AUTOS \$100 & up. (484) 374-8079

We Pay Cash for Junk Cars \$150; Trucks \$250! Old Cars Pay More!

610-948-8180 / 484-486-4097

1987 GMC 7000 15' Stake Bed Dump w/ 1 Ton Elec. Hydraulic Tailgate. 10-spd gas. 28,500 GVW. 57k orig. mi. Insp. & good shape. Well maintained. \$6,500 obso. **Schwenksville area. Serious inquiries only. Call 215-527-6808, Iv. msg.**

EL-MOR CHEVROLET

Rt. 23, Morgantown 1-800-852-9157

******* KASDRAS ELECTRIC *******

Lowest prices. Quality work. 610-323-8899

HANDYMAN SERVICE STUMP GRINDING (610) 705-3601

John's Hauling & Removal - Any thing big or small, 7 days. Last min. service. **Call anytime 610-454-1449**

Junk & Trash Removal

Houses, Garages Trade svcs for salable items. **John - (610)326-9617**

ABSOLUTE BEST PAINTING

Deck Refinish. Power Wash. **JAMES JOHNS PAINTING** (610)935-2924 Off: (610)948-2327

Rogers Painting (We respond)

Power washing, Painting, Drywall & Wallpaper Removal. **Call 610-705-3601**

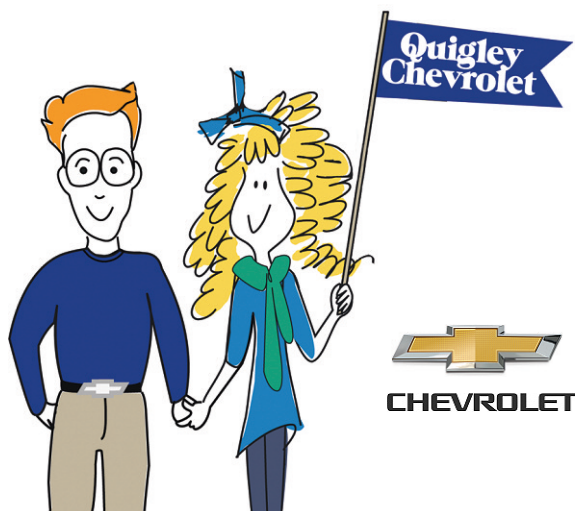
KULP & SONS INC SEPTIC SERVICE 610-948-4593

Est. Plymouth Mfg Auto Repair business since 1962. Fully operating shop (\$250k in yearly sales), equip., inventory, Full stock of filters, fluids, exhaust parts, trailer parts. 5 bays, 3 lifts, tow truck. \$75k buy-in, **serious inquiries only. Call Jim for info: (484) 941-4660**

BARN HOMES AND SAFE INDOOR/OUTDOOR HOMES NEEDED FOR ADULT CATS CAGE SET-UP PROVIDED IF NECESSARY. All cats are neutered and vaccinated 610-277-6187

CATS LOUNGE on armchairs in our cage-free cozy Kitty Cottage Adoption Center, 317 West Johnson Hwy., E. Norristown. Helping PA SPCA cats find homes. Call 610-731-0101 www.kittycottage.org

DOBERMANS, various AGES, AVAILABLE FOR ADOPTION TO APPROVED HOMES. DOGS ARE VETTED. ADOPTION FEE REQUIRED. CONTACT SHARON, 610-935-0896. WWW.DVDPA.ORG FOR AN APPLICATION & INFO</



2013 CHEVROLET CAMARO COUPE 1LT
Black, Black, 3.6L 6 cyl Direct Injection,
Automatic, 7,686 Miles **\$21,495**

2007 SATURN VUE FWD 4DR V6 AUTO
Storm Gray, Gray, 3.5L 6 cyl Fuel Injected,
Automatic,
62,437 Miles **\$6,995**

2010 JEEP LIBERTY 4WD 4DR SPORT
Light Sandstone Metallic Clear Coat,
Dark Slate Gray, 3.7L 6 cyl Fuel Injected,
Automatic, 73,166 Miles **\$11,995**

**2009 JEEP GRAND CHEROKEE
4WD 4DR LAREDO**
Red Rock Crystal Pearl Coat, Khaki,
3.7L 6 cyl Fuel Injected, Automatic,
76,106 Miles **\$12,995**

2014 CHEVROLET IMPALA 2LTZ
Blue Ray Metallic, Jet Black/Mojave,
3.6L 6 cyl Fuel Injected, Automatic,
21,925 Miles **\$26,995**

**2013 CHEVROLET SILVERADO 1500
EXTENDED CAB STANDARD BOX
4-WHEEL DRIVE LT**
Indigo Blue, Ebony, 5.3L 8 cyl
Fuel Injected Flex Fuel, Automatic,
25,008 Miles **\$27,995**

**2003 FORD EXPLORER
4DR 114" WB 4.0L XLT 4WD**
Mineral Gray Clearcoat Metallic, Graphite,
4.0L 6 cyl Sequential-Port F.I., Automatic,
77,656 Miles **\$6,495**



2016 CHEVROLET MALIBU LIMITED 1LTZ
Champagne Silver Metallic, Cocoa/light Neutral,
2.5L 4 cyl Fuel Injected, Automatic,
33,378 Miles **\$16,995**

**2010 CHEVROLET SILVERADO 1500
CREW CAB SHORT BOX 4-WHEEL DRIVE LT**
Sheer Silver Metallic, Ebony,
5.3L 8 cyl Fuel Injected, Automatic,
94,298 Miles **\$19,995**

2015 CHEVROLET IMPALA 1LT
Silver Ice Metallic, Jet Black/Dark Titanium,
2.5L 4 cyl Fuel Injected, Automatic,
9,519 Miles **\$21,995**

**2008 CHEVROLET TRAILBLAZER
4WD 4DR FLEET W/1FL**
Black, Light Gray/dark Gray,
4.2L 6 cyl Fuel Injected, Automatic,
99,156 Miles **\$8,995**

2006 CHEVROLET IMPALA 4DR SDN LT 3.9L
Sport Red Metallic, Ebony,
3.9L 6 cyl Fuel Injected, Automatic,
73,229 Miles **\$7,995**

2012 CHEVROLET MALIBU 1LT
Gold Mist Metallic, Ebony,
2.4L 4 cyl Fuel Injected, Automatic,
39,075 Miles **\$11,995**

**2016 CHEVROLET TRAVERSE
AWD 2LT**
Mosaic Black Metallic, Ebony, 3.6L 6 cyl Fuel
Injected, Automatic, 14,241 Miles **\$29,995**

**2010 DODGE JOURNEY AWD
4DR SXT**
Brilliant Black Crystal Pearl Coat, Dark Slate
Gray, 3.5L 6 cyl Fuel Injected, Automatic,
71,208 Miles **\$9,995**

**2009 CHEVROLET TRAVERSE
ALL-WHEEL DRIVE LT 1LT**
Silver Moss Metallic, Ebony,
3.6L 6 cyl Fuel Injected, Automatic,
83,983 Miles **\$12,995**

**2014 CHEVROLET CRUZE SEDAN 1LT
(AUTOMATIC)**
Silver Ice Metallic, Jet Black,
1.4L 4 cyl Turbocharged, Automatic,
27,171 Miles **\$13,495**

Selling Prices Subject to Change After 2/22/17

Quigley Chevrolet

f t Route 100, Bally, PA. • **610-845-7575** • E-mail: quigchev@ptd.net



WWW.SHIRKPOLEBUILDINGS.COM

TOLL FREE 877-845-6888
FAX 717-445-3001

**40 YEAR G-100
PAINTED STEEL SIDING AND ROOFING**



*PICTURE MAY DIFFER FROM AD

**DRAWINGS AVAILABLE
UPON REQUEST**

20X20X8	\$5,500	40X60X12	\$18,950
24X24X8	\$6,400	40X80X12	\$23,400
24X40X10	\$9,300	40X80X14	\$24,950
30X32X10	\$8,950	40X80X16	\$26,750
30X64X10	\$14,300	40X96X14	\$28,500
30X48X12	\$12,850	50X96X14	\$32,900
32X40X10	\$10,950	60X100X16	\$44,900
36X48X10	\$13,950	60X120X16	\$49,950

THESE PRICES INCLUDE FLUSH EAVES, 40 YEAR G-100 PAINTED STEEL SIDING AND ROOFING, A FULL TRIM PACKAGE, INSTALLATION, 1 - ALL FIBERGLASS & VINYL ENTRY DOOR AND 1 - CLOPAY OVERHEAD DOOR