

Your Ad Could Be Here!

Call today for details!

641-664-1333

Tri-County SHOPPER

Every Moment Is A Fresh Beginning.

T.S. Eliot

STANDARD MAIL U.S. POSTAGE PAID TRI-COUNTY SHOPPER, INC. POST OFFICE BOXHOLDER LOCAL RURAL BOXHOLDER OCCUPANT CIRCULATION OVER 11,750 THIRD CLASS

P.O. Box 168 • Bloomfield, IA 52537 • www.tri-countyshopper.com
Phone 641-664-1333 • Fax 641-664-3761 • E-mail shopper@netins.net



Vol. 45, No. 08
Wednesday, February 22, 2017



Fabius Creek Angus

26th Annual Star Search Production Sale

Friday • March 3, 2017 • 6 PM

Bloomfield Livestock Market, Bloomfield, Iowa

Selling 70 Head

50 Bulls (Spring Yearlings

Fall Yearlings • Two-Year-Olds)

20 Females (Show Heifers • Bred Cows)

The Get and Service of these Sires Sell!

Update on yearling bulls:

Sire	Lot	B wt.	WW	YW	Adj RE
Duty	1	80	818	1669	15
Duty	2	80	876	1660	14.7
Duty	3	80	830	1472	15.7
Duty	4	80	799	1445	15.5
Duty	5	80	830	1526	16.3
Duty	6	80	807	1543	16
Duty	7	75	682	1559	14.8
Duty	8	70	675	1419	14.3
Duty	9	70	746	1456	14.2
Duty	10	85	707	1499	15.6
Duty	11	75	723	1425	17.1
Duty	12	80	750	1606	16.5
Duty	13	80	713	1441	18.2
Duty	14	75	703	1463	16
Double	15	80	700	1463	16.4
Double	16	75	739	1517	17
Double	17	75	720	1474	14.8
Double	18	80	674	1519	15.8
Double	19	85	669	1461	13.8
Double	20	80	715	1411	15.8
Double	21	80	746	1543	15.9
Rampage	23	75	630	1372	14.1
Rampage	24	85	707	1561	17.1
Rampage	25	75	824	1683	18.9
Rampage	26	80	790	1577	15.6
Rampage	27	70	747	1510	17
4222	28	85	754	1562	

Woodruff Angus

MILTON, IOWA

BULL SALE



When: Feb. 27, 2017 • 6:30 PM

Where: Scotland County Livestock
Memphis, MO

Selling: 40 Bulls Yearlings & 2 Yr Olds
-10 bred Heifers

For More Information Call:

Roy Woodruff: 641-799-6912

Randy Woodruff: 319-470-6999

For more information and sale book contact:

Fabius Creek Angus

Dean & Nancy Houglund

(641) 929-3208

Dean's Cell

(641) 208-9626

Nancy's Cell

(641) 208-0434

Sale Day Phone:

(641) 664-2435



Quaker Hill Rampage OA36



Other Sired Represented: Double Vision, Hoover Dam,
SydGen CC&7, Ten X and RB Tour Of Duty 177

SURPLUS INVENTORY REDUCTION CLEARANCE SALE!

Check out our bargain tables!

Lots of items:

- Household
 - Toys
 - Kitchen & Misc
- 50% OFF** all items on tables

SHEETS & SHAMS - 40% OFF

All Other **TOYS** (not on sale table) - **20% OFF**

CLOTHES & FOOTWEAR - 35% OFF

BIG SAVINGS ON BRAND NEW ITEMS

BLOOMFIELD, IA
2 1/2 MILES W. OF

BLOOMFIELD ON HWY. 2

OPEN TUESDAY, FRIDAY, SATURDAY 9-5



Free Estimates

We Fix Doors

5% OFF

Before Spring Sale

THRU MARCH 20th, 2017

COUPON REQUIRED

MAST OVERHEAD DOORS

641-680-2016

105 S. Dodge St., Bloomfield, IA 52537

Quality Products + Quality Workmanship = Quality Customers

MAST OVERHEAD DOORS

641-680-2016

105 S. Dodge St., Bloomfield, IA

JOB OPENINGS!

Performance Pipe, A Division of Chevron Phillips Chemical Co., LP, located in Bloomfield, IA

has job openings.

Please log on to www.cpchem.com to view job descriptions & to apply



Performance Pipe is an Equal Opportunity Employer.

FOR SALE: Taurus Judge 45/410 revolver 3 in. barrel. Includes 9 boxes Winchester PDX1 410 Defender (90 rounds), \$415. Must have permit to buy. 325 rounds box 22LR Federal Automatch, \$25. PH. 641-680-3876, Ottumwa.

SPRING IS COMING: Now is the time to bring your power equipment to be serviced. Selling Troy-built mowers, Dolmar, Efc chain saws & trimmers, and Vanguard engines. We service all brands. Miller's Small Engines 28358 Wheat Ave. Milton, IA 52570

10

Come see us at our **NEW** location!

WE'VE

moved

OUR NEW ADDRESS IS:

{ 106 S. Madison St. }
Bloomfield, Iowa

Let us help you get in a new home for Spring!

Lynch
REALTY, INC.

641-664-2275
lynchrealtyinc.com

Licensed in Iowa
Stephanie Lynch,
Broker



We'll Put Collision Damage in Reverse

Let our certified technicians quickly restore your vehicle to pre-accident condition with a satisfaction guarantee.

State-of-the-Art
Frame Straightening
Dents, Dings & Scratches Removed
Custom Color Matching Service
WE'LL DEAL DIRECTLY WITH YOUR INSURANCE COMPANY
FREE Estimates.



Hertz

Rentals for all Occasions!

Great Rates!

WALKER MOTORS

375 S. Main St. • Memphis, Mo • 660-465-2159

DAVIS & LEWIS, CPA

Let our years of tax experience benefit you!

- Individual & Business tax preparation and planning
- Monthly accounting & payroll service
- Financial statement preparation
- Business consulting
- Auditing



Keith W. Lewis, CPA

Carol S. Howard, CPA

641-682-8117

639 E. Pennsylvania Ave.
Ottumwa, IA 52501

641-664-1999

205 N. Washington St.
Bloomfield, IA 52537

L&M Country Store

1 1/2 miles south of west Hwy 2 & 63 jct.
Mon-Sat. 8am-5pm CLOSED SUNDAYS
VM: 641-664-1936

Apples: Fuji, Jonagold & Golden Delicious

- Frozen hardwood smoked bacon, 16 oz\$1.29
- or 24 ct. case.....\$1.25 ea.
- Cottage Cheese 4-4 oz50¢
- or 8 ct. case.....\$3.80
- Orange juice form concentrate, 64 oz.....\$1.95
- Yellow American cheese single, 12 oz\$1.49
- Mandarin Oranges, 24 oz.....\$1.29
- Cherry pie filling, 20 oz..\$1.29

WANTED CLEANING LADY 5-10 hours per week. Also interior painting if possible.
PH. 660-956-2177. 08

FOR SALE: 2009 Polaris Sportsman 850, winch, blade, cargo box, 174 miles, like new.
PH. 660-956-2177. 08

Senior Life Solutions
at Davis County Hospital

Designed to meet the unique needs of older adults who struggle with **depression, anxiety**, or feelings of **sadness, grief**, and **hopelessness**.

- If you've recently experienced a:
- traumatic event;
 - loss of spouse or loved one;
 - change in health or physical abilities;
 - change in your home environment;
 - or other difficult life transitions

Call Senior Life Solutions at Davis County Hospital. **WE CAN HELP**

Davis County
HOSPITAL

Dedicated. Compassionate. Healthcare.

For more information call 641-664-3851 or visit DavisCountyHospital.org

FRIESEN CONSTRUCTION

New Houses
Remodeling
Garages Electrical
Plumbing
Custom Cabinets

Arlen 664-3270
Cell 641-208-0170
Bloomfield, Iowa

HONEY BEES FOR SALE: 2 & 3 lb. Packages, Italian or Carniolan Queen, early April delivery Drakesville area, \$30 deposit. Fewer packages this year. Please order early
641-682-8333 or 641-799-9266 08, 10, 12

FOR SALE: Manual tire machine, uses air; \$200. B&B cordless drill, one battery bad; \$50. Round pedestal oak table, 4 chairs, 2 leaves; \$300. Livingroom set, recliner, reclining sofa, 3 pc. table set, 2-lamps; \$2,200 less than 1 year old. Queen size bedroom set, night stand, dresser/mirror; \$1,800 less than 1 year old. Covered patio swing set; \$100.
PH: 641-208-5136 09



We provide materials & expertise for all building projects.



New Homes
Remodels
Decks
Kitchens
ICF Basements
Pole Buildings

Josh & Emily Hill
218 S. 2nd St. • Pulaski, IA

641-675-3405



Invest your tax refund dollars in a high quality mattress & box springs or a fine piece of heirloom quality hardwood furniture for future generations to enjoy also.



VM: 641-664-0207
1 Mile East of Drakesville on Jade Ave.
Mon.-Sat. 9:00 AM - 5:00 PM

FOR SALE: 2- Debbie Baughman prints. Davis Co. Courthouse & Pulaski Depo. Professionally framed & matted. \$75 each or \$125 for both.
PH:641-208-5529 09

HAY FOR SALE: Big Squares, Alfalfa & Alfalfa Orchard. Jeff Wuthrich
PH: 641-208-4311 09

FREE: Barn Cats.
641-777-2822 09

SHADY LANE VARIETY

- Pizza Baking Stones
 - Mini Muffin Pans
- Great Selection
Of Gloves,
Bird Feeders
And Gifts

1 mi. E. of Drakesville on Jade Ave. • 641-664-0207
8-5 Mon. thru Sat.

BLOOMFIELD MINI STORAGE. Serving you from 2 safe, convenient locations.
PH. 641-664-1066. TF



Driving Moccasin WDM0010
Men's & Women's Available
Small Variety Available
We will do special orders!

FOR SALE: 1st, 2nd, & 3rd cutting alfalfa/ orchard grass mix, and some clover. 4x6 big round, net wrapped bales-approximately 1250 lbs. Excellent condition - put up dry.
PH: 319-288-1800 08

Slayton Polaris

Your Adventure Awaits!

New & Used Polaris Rangers & ATV's



660-328-6627 BLOOMFIELD, IA
8 mi. S. & W. from Pulaski or 6 mi. W of Memphis then 13 mi. N. on Route B

FOR SALE: 2004 BCS 722 tiller, 20 in. \$1500. PH: 660-397-2684
FOR SALE: Round bales, Alfalfa mix hay. PH: 641-208-5961 09

Kollision Corner

2012 GMC 2500 HD
4 WD, 6.0 GAS, AUTO, BEDLINER, TOW PACKAGE
\$20,500

2012 GMC 1500
4 DOOR, LEATHER, 4 WD, 33,000 MILES
WAS \$26,500 NOW \$25,900

2003 SILVERADO
RED, 4 WD, 80,000 MILES
NOW \$10,900

Get yourself in a new vehicle before spring!

504 South Drake St
Bloomfield, IA 52537
PH: 641-664-2648
Fax: 641-664-2948

Like us on Facebook John says, "Like us on Facebook!"



ATTENTION CONTRACTORS!

We stock push fit fittings, valves, toilets, faucets, Pex, PVC, CPVC, Copper Pipe & Fittings.

GINGERICH STOVES and PLUMBING

19091 180th St
Bloomfield, IA
VM 641-664-2814
3/4 miles east of Drakesville, south side

FOR SALE: 14x70 mobile home trailer. In livable condition. \$2,000 OBO. VM: 641-664-3453 ext. 1

FOR SALE: Amish built quality custom pole barn. Call Alex for quotes. PH: 641-242-0098 08

Davis County Quail Forever Annual Banquet

Sat., March 11th • Mutchler Community Center • Bloomfield, IA

Happy Hour 5:00 PM • Meal Catered by Bailey's BBQ 6:00 PM
Program and Auction 7:00 PM

For more info. contact Michelle 515-669-3762 or Josh 641-777-5805

GAMES! SILENT AUCTIONS! LIVE AUCTIONS!

LANDSCAPE SPECIALS

8 FT. RAILROAD TIES!

Check them out at...

Spilman's Auto Parts
20311 Old Hwy. 2 • Bloomfield, IA
641-664-2463

FOR SALE: Balancer Gelbvieh Bulls. Low birth weight for heifers. PH: 641-664-2345 or 641-208-4311 09

FOR SALE: 2016 good quality mixed grass hay. 1st & 2nd cutting, big round bales, plastic twine tied. PH: 641-459-2275 08

IOWA THEATER BLOOMFIELD, IOWA

"La La Land"

7 GLOBOS DE OURO VENCEDOR 8 VENCEDOR

RYAN GOSLING EMMA STONE
LA LA LAND
MICHAEL ASSIC

Friday, Feb. 24th
Saturday, Feb. 25th
7:00 PM
Sunday, Feb. 26th
4:00 PM
PG-13
Coming Soon: "Lego Batman"

SO MUCH TO DO

Preschool Luncheon and Auction

February 25th, 2017

Luncheon starts at 11:00am
Auction starts at 12:30pm

Free will offering.
COME AND HAVE FUN!

Living Hope Bible Church
201 W. Walnut, Eldon
641-652-3420

Sportsman's Banquet

March 11, 2017
2:00 - 7:30pm

Menu:
Deer & Noodles, Meatloaf, Mashed Potatoes, Coleslaw, Beans, Bread, Salads, Desserts

FREE WILL OFFERING

Young hunters encouraged to come and hear the speakers.

Silent Auction - Door Prizes
Something for everyone!

Living Hope Bible Church
201 W. Walnut, Eldon
641-652-3420

Fabius Creek Livestock Solutions LLC.

Open by Appointments
Evenings & Weekends

12718 275th Street • Bloomfield, IA 52537
641-895-0128

ADM Alliance Nutrition
TARTER FARM AND RANCH EQUIPMENT

Revival Services

Lancaster Baptist Church

Alan Sipe, Evangelist

He is the Missouri Baptist Children's Home Representative.
Alan is an amazing & accomplished Southern Gospel Singer.

Services nightly at
7 pm March 23rd - March 26th

Come and enjoy this mans love for the Lord.

Eulenspiegel Puppets Presents

Freedom Star: "Gertie's Journey on the Underground Railroad"

Thursday, March 9th • 2017
At 7 PM

Iowa Theater • Bloomfield, Ia

Admission: \$5 Adults / \$3 grades 4 & under

Funded in part by:
Davis County Community Foundation Grant & Partners in Education Group

Sponsored by: DCFAC Spectrum for the Arts

Music by Ron Hillis

Friday, February 24th

Hawg Wild Wings

with sides Serving at 6:00 P.M.

Dine In **722-3355** Carry Out

RAY'S LONGBRANCH
Drakesville, IA

PRIME RIB CAPITAL OF THE WORLD!
SERVED ON FRIDAY & SATURDAY NIGHTS!

Breakfast • Lunch • Dinner

Daily Hot Specials & Evening Features!

Catering & banquet facilities available for many occasions!

Southfork MOTEL & GRILL

JUNCT. OF HWY 2 & 63 • BLOOMFIELD • 641-664-1063
TUES. - THUR. 7AM-9PM • FRI. - SAT. 7AM-10PM
SUN. 7AM-2PM • CLOSED MONDAY

Country Side Grocery

Pre-cooked Bacon99¢
Graham Crackers, 14 oz.99¢
Golden Puff Cereal, 14.5 oz.....\$1.25
Crunchy Peanut Butter, 28 oz.....\$1.49
Blueberry Yogurt, 12-4 oz. cups.....99¢
Winona Flour, 50 lbs.....\$12.50

Food Supplements
Vitamins

3/4 mi. E. of Drakesville, IA on 180th St.
Mon-Sat: 8:30am - 5:00pm
VM: 641-664-2661

ONLINE AUCTION

BIDDING ENDS WEDNESDAY, MARCH 1ST @ 6:30 PM

- 2014 Rice 32' deckover 7k axles trailer, 3 ramps
- 2014 Loadmax 32' straight deck trailer dual tandem electric brakes
- John Deere 2840 with 720 John Deere loader with bucket 2wd 18.4x34 rubber 4673 hrs. (Jim Baughman Estate)
 - John Deere 760-A scraper, (Jim Baughman Estate)
 - Bush Hog 3pt tiller RTH 88 (Jim Baughman Estate)
- Homemade 8' push blade for John Deere loader (Jim Baughman Estate)
 - 2008 Ford Ranger 4x4 XLT 39,000 miles ext cab 2008 v6 4.0 (Jim Baughman Estate)
 - John Deere 666 3pt snow blower 540 PTO
- 2009 Chevy Colorado ext cab, vin# 1GCCS19E198147227, 194K Miles, 2wd, Check Engine Light is on
- 2010 Chevy Colorado ext cab, vin# 1GCESCDE5A8133363, 190K Miles, 2wd, Dead Battery
- 2010 Chevy Colorado ext cab, vin# 1GCESCDE9A8113505, 183k Miles, 2wd Change Oil Light is on
- 2008 Chevy Colorado ext. cab, vin# 1GCCS39E888215985, 143K Miles, 2wd
- 2011 Chevy Colorado ext. cab, vin# 1GCESCFFXB8115875, 140K Miles, 2wd
- 2009 Chevy Colorado ext. cab, vin# 1GCCS19E698144226, 200k Miles, 2wd, Service TPM and Check Engine light is on
- 2008 Chevy Colorado ext. cab, vin# 1GCCS39EX88184917, 187k Miles, 2wd, Check Engine and Low Tire light are on
- 2011 Chevy Colorado ext. cab, vin# 1GCESCFF4B8106380, 184k Miles, 2wd
 - Brand New Campbell Hausfield 80 gal air compressor 3 phase
 - (14) IH 90lb. suitcase weights
 - Grain-O-Vator, tandem axle, good condition

**CHECK OUT OUR ONLINE AUCTION OR
DOWNLOAD OUR APP!**



Terms: All items are sold "as is". All items must be paid for prior to removal. All announcements made day of sale take precedence over ad. Not responsible for accidents or theft.

WWW.LYNCHBOYS.COM

**BLOOMFIELD, IA
641-2083649**

**Trojan Hill Farms has a good selection
of Angus & Charolais Bulls.**
Come take a look!

Trojan Hill Farms



Phil Archer
641-675-3769 - Home
641-680-6769 - Cell



FOR SALE: Round bales of grass hay near Hwy. 63 Floris turnoff, \$20 each. PH. 319-465-3588. 11

FOR SALE: Border Collie puppies. Born 1-1-17. Excellent bloodlines. Vet checked. Registered. Great stock dog. PH. 319-367-5090. 09

HOURS
8 A.M.
to
5:00 P.M.
DAILY EXCEPT
SUNDAY



Spring is coming- get your garden seed NOW!

Seed potatoes are in:
Kennebec, Red Norland, Red Pontiac, Yukon Gold.....
.....35¢/lb. or 50 lbs. for \$13.00
Cascade Seed Potatoes.....41¢/lb. or 50 lbs. for \$13.75

Copper Sulfate Root Killer 2 lbs. for \$2.59

Cherry tomatoes.....\$1.69 a pint
Peppers- Red, Yellow & Orange.....\$1.75
Radishes.....\$1.45/lb.
Jumbo Yellow Onions.....35¢/lb.

Fresh Ground Beef 5 lbs.....\$12.95
Cooked Cured Beef Crumbles 5 lbs.....\$6.15
1 liter Extra Virgin Olive Oil- All Natural.....\$5.95
Nestles Coffee Mate Coffee Creamer.....35.3 oz.-\$5.85

Pure USA Maple Syrup....1 gallon-\$41.05....4 lbs.-\$20.09....30 oz.-\$8.45
Aloe Vera Juice1 gallon-\$13.35....1 quart-\$5.65

SALE SALE SALE

Organic Virgin Coconut Oil.....54 oz.-\$17.69

Hot Melt Glue Gun.....\$5.79
6 pk. Glue Stick.....\$1.19
108" Quilt Backing..... Assorted Prints & Prices
100 % Cotton Printed Flat Folds.....\$2.98/ yd.
Child's Broom.....\$4.79
John Deere Fleece Throw.....\$19.95

DRIVE A LITTLE & SAVE A LOT

FOR SALE: Used Whirlpool Cabrio electric dryer. Large capacity with steam option. Top of the line. Works great. \$200 PH: 641-208-5354. 10

FOR SALE: Timothy, brome & clover hay, no rain, 2nd cutting, \$3/small squares. \$40 net wrapped big round, N. of Drakesville. PH: 641-722-3283 10

FOR SALE: 3 yearling Kiko doelings. Dad regular NZ buck. Moms 90% Kiko, \$350 each. All for \$1,000. Located N. of Cantril. PH: 217-260-1876 09

FOR SALE: Two self feeding Hitzer Stoves. Nice condition; \$875 each. Chris Graber 17328 St. Hwy Y Greentop, Mo. 63546

FOR SALE: 2nd & 3rd cutting alfalfa & grass, small square bales. Also 150 hedge posts. PH. 641-208-5216. 08

FOR SALE: Baby bottle goats. Does & Billies. Beautiful, all colors. \$25-does. \$10-Billies. VM: 641-664-3677 09

Handyman Home Improvements
Decks, Porches, Siding, Drywall, Windows, Roofing, New or Remodel - No job too small!
Joe Rohrer Free Estimates
Bloomfield, IA **641.208.6930**

FOR SALE: Collie-Coonhound cross puppies. Born 12-8-16. \$45. Also miniature bantams. No Sunday sales. William Miller 25674 Main Street Greentop, Mo. 63546

FOR SALE: Black Frigidaire LP range with electric ignition & convection oven, \$100. PH. 641-722-3038, Ext. 2, 18155 200th St., Bloomfield. 10

Pleasant Ridge Specialties

Helping Farmers from
Seed to Marketing

**We have barges to fill
With NonGMO Soybeans!**

Barge 1 (Nov.-Dec.): \$0.75 Premium
Barge 2 (Mar.-Apr.): \$0.85 Premium
Barge 3 (June-Jul.): \$0.85 Premium
Through Scoular River Price

We have the seed you need! Very competitive prices.

Call Nolan @ 660-341-2752
Email: nkgood@marktwain.net



Fox Valley Welding

No matter what size the project customer satisfaction is always our first priority.

**Tig & Aluminum
Welding
Milwork**

**Lathe
New Steel**

**Fabricating
CNC Machining
CNC Cutting**

Hours: M-F 8-5:30

641-656-4684 • 12190 East Hwy. 2 • Milton, IA



Tux Rentals

Early ordering your tux will ensure you get exactly what you are looking for!

FREE boutonniere with all tux rentals!

Making Memories Flowers & Gifts



When it's special make it a memory.

108 S. Madison • Bloomfield • 641-664-1600

Scott & Brandi Moore

Crop Insurance Sales Closing on Spring Crops

March 15th is deadline to:

- Purchase coverage/New Applications
- Transfer
- Adding crops and/or counties
- Changes in plan, level of coverage, options
- Adding High Risk coverage

Specializing In Crop Insurance
Serving Missouri & Iowa

Bradley Insurance Agency

Memphis Mo

(660) 465-2764

Tonya Bradley-Fleshner: Owner/Agent

Dorothy Kussman: Secretary/Agent

REMINDER:
Report 2016
Production!



Custom Pea Huller FOR SALE

Always protected from the weather, great condition

Call:

660-341-1927



\$600 OBO

NEW MATTRESSES FOR SALE!

Selling individually or in sets. Factory warranty.

TWIN - FULL - QUEEN - KING

641-664-3060

FOR SALE: G.E. Electric water heater, 55 gal capacity. \$20.

VM: 6941-664-3453 ext. 1

FOR SALE: Beagle cross male dog. Neutered, 5 years old, handsome, and friendly. \$50. PH: 641-664-1090

WE SERVICE ALL MAJOR APPLIANCES!



South Side of the Square in Memphis
660-465-2345

Monday - Friday: 9:00 AM to 5:00 PM • Saturday • 9:00 AM to 3:00 PM / Sunday CLOSED

NEW!

15 colors of felt by the yard

Nice selection of adult & children's aprons

15% OFF Tupperware!
Ends Feb. 28th



115 E. Monroe • Memphis, MO
660-465-2102

RENT AT



MFA- Agri Services
Memphis

PO Box 253 • Memphis, MO 63555 • 660-465-2603



Rent me to complete your small spreading jobs such as pond dams or your yard. MFA carries bagged fertilizer, bagged lime and various grass seeds for all your needs. If your time is limited.... Rent a MFA employee and 4 wheeler to do the job for you!

Call for more information: 660-465-2603



Shopper's Specials

AT WORTHWHILE SAVINGS

\$5.99
15 dozen case
White Eggs

\$1.99
16 oz.
Corn King Smoked Bacon

\$1.49
per lb.
Whole Frozen Pork Loin

69¢
11.5 oz.
Oats & Treasures Marshmallow Cereal

\$2.49
Large 5lb. bag
Carrots
88¢ 1 lb.
Baby Carrots

50¢
4/4oz.
Breakstone's Fat Free Cottage Cheese

69¢
2 pack
Pillsbury® PIE Crusts

\$5.99
5 lb.
20 Qtr. Lb. Franks!
Bar S JUMBO JUMBOS FRANKS

\$3.99
2 lb.
Velveeta Cheese

Available Now!
Seed Potatoes & Onion Sets

BULK Garden Seeds
Earthway® Garden Seeder **\$85**

15% OFF
price per yard
Wide Quilt Backing

\$5.99
plus deposit
24 PACK 12 oz. Cans
Coke® Products

\$1.49
2lb. pk.
Oscar Mayer Thin Sliced Oven Roasted
Turkey Breast

\$1.69
per lb.
Breaded Cod & Tilapia Fish Portions



DUTCHMAN'S STORE Division Street - CANTRIL, IA - (319) 397 2322 **SALE PRICES February 22-28, 2017**
STORE HOURS • Weekdays, 8a.m. - 6 p.m. • Saturday 8a.m. - 5 p.m. • Sunday Closed • View our specials at - www.DutchmansStore.com

FOR SALE: JD 7000 4-row planter, dry fertilizer, precision bean, & corn meters. Excellent-always shedded. Retired - can deliver.
PH: 641-799-6120 09

FOR SALE: 95 Ford Windstar, wheel chair accessible with built-in ramp, enough room for 3 wheel chairs. 74,764 miles, green. \$5,000 OBO.
PH: 319-850-8236 08

ATTENTION!! Did you or someone you know lose a set of keys North of the Floris turn off on Hwy. 63? If so come to the Shopper Mon. -Fri. 8 am-5 pm to claim your keys. Thank You.

WANT TO BUY: 9 1/2' cab-over camper, hard side, no leaks. Want to include: stove, refrigerator, furnace, shower, toilet, jacks on all 4 corners, hand or hydraulic.
PH. 660-341-8738. 10

FOR SALE: 2003 Polaris Ranger, 1077 hrs. with engine OH @ 880 hrs. New drive clutch then and recent front suspension OH. It's ready to go \$3,000.
PH: 641-656-4956 10

FOR SALE: Torch Kit. 1 partial tank of acetylene, 1 partial tank of oxygen, 1 full tank of argon. Along with cart, hoses & gauges. Asking \$500 for everything.
PH: 641-722-3075 10

Spring is on it's way...



Call now to lock in a good deal on your spring building projects!



Cantril Lumber & Hardware
319-397-2351 • 319-397-2354
Mon-Fri 7-5 & Sat 7-12

To view pictures and information visit www.edsmachinery.com



Tri-Annual Consignment AUCTION

FRIDAY MARCH 10, 2017

Financing Available to qualified customers as low as 3.25% . Call for Details!

Online Bidding Available Through



TRACTOR

- 09 JD 9230 3491 Hr, 5 Scv, PTO
- 97 JD 9100 5232 Hr, 4Scv, 24 Spd, BB
- 2- JD 8630 3Pt, PTO
- 10 JD 8295R 3653 Hr, 4Scv PS, 1500 Front Axle
- 00 JD 8110 2971 Hr, 3 Scv, 1000 PTO, 1 Owner!
- 96 JD 7800 4000 Hr, 19 Spd, Rebuilt Trans
- 05 JD 7420 5390 Hr, 3 Scv, 24 Spd PQ, LH Reverser, W/ 741 Loader
- 09 JD 7330, 3169 Hr, 4 Scv, 20 Spd, Auto Quad, Susp
- 02 JD 6420 3025 Hr, 2 Scv, 16 Spd, JD 640 Loader
- 99 JD 6410 5593 Hr, 3 Scv, 16 Spd, PQ, 640 Loader
- 13 JD 6130M 946Hr, 24 Spd, PQ, LH Reverser
- 13 JD 5085E, 519 Hr, MFWD, Cab, H260 Loader
- 14 JD 5085E 610 Hr, Loader, Cab
- 14 JD 5065E 249 Hr, Canopy, 2WD, JD 512 Loader, One Owner!
- 14 JD 5065E 30 Hr, w/ H240 Loader, Cab, MFWD
- 11 JD 5045E 480 Hr, 1 Scv, 3PT, Canopy, MFWD, Loader
- 84 JD 4850 3 Scv, MFWD, PS, 1000 PTO, Duals, Rough
- 81 JD 4840, 11,000Hr, 2 Scv, 1000 PTO, PS
- 91 JD 4755 7322 Hr, 3 Scv, 15 Spd, 2Wd, PS
- 91 JD 4755 4400 Hr, 3 Scv, MFWD
- 89 JD 4455 5015 Hr, 3Scv, QR, MFWD, One Owner!!
- 83 JD 4450 6727 Hr, 2 Scv, 15 Spd PS, 2WD
- 82 JD 4240 6398 Hr, 3Scv, PS
- 90 JD 4055 7048 Hr, 2 Scv, MFWD, PS, JD 265 Loader
- 01 JD 4020, 1 Scv, 7113 Hrs, PS, 3 PT, Propane

- 01 CH STX 275 6800Hr, w/ PTO
- 05 CH MXU125 6454 Hr, 2 Scv, Loader
- 05 CH MXU135 6455 Hr, 2 Scv, CX156 Loader
- 06 CH MX 275 6200 Hr, 4 Scv, Duals, Auto Steer Ready
- 01 CH MX 270, 6492 Hrs, 4 Scv, 18 Spd PS
- 11 CH Magnum 315 2713 Hr, 4 Scv, PS, Suspension
- 13 CH Magnum 260, 1085 Hr, 3 Scv, PS, Front Duals
- 99 CH MX180 6000 Hr, Duals, Westendorf XTA 700 Loader w/ Bucket
- CH 9130 7837 Hr, Pto, 3 Pt, Duals, Row Crop Special, PS
- 87 CH 2294 8315 Hr, Duals
- 81 White 2-135 2468 Hr, 2wd, 2 Scv
- 11 NH T8.390 800 Hr, 5 Scv, MFWD, Front Suspension, Auto Steer, Front Duals
- 07 NH TG215 1600 Hr, Supersteer, Loader
- NH 7635 2670Hr, 12Sp, MFWD, NH 7310 Loader
- 12 NH T5060 9 Hr, 825TL Loader
- 01 NH TM 150 4021 Hr, 4 Scv, LH Reverser, MFWD
- 12 Kubota M135X, 1440 Hrs, MFWD, LA2253 Loader
- Kubota M135GX 2 Scv, 813 Hr, LH Reverser
- Kubota M126X 1459 Hr, w/ Loader, 2 Scv, LA2253 Loader
- 13 Kubota M126GX 1200 Hr, MFWD, w/ Loader
- 11 Kubota M126X 2200 Hr, Loader, MFWD
- 10 Kubota M6040HD 530 Hr w/ Loader
- 88 Ford TW-35 5497 Hr, 16 Spd, MFWD
- Ford 6610 2WD 10,000+ Hr
- Ford 5610 6203 Hr, 4 Scv, 2WD
- Ford 4000 Gas, 3566 Hr, 3 Scv, 540 PTO
- Ford 2000 7528 Hr, Gas, Wide Front,

- 3- CAT Challenger MT 945C, 2360-2960 Hr, 4 Scv, 3 PT, '11
- 96 Cat Challenger 85D, 4200 Hr, Excellent Tracks!
- 01 Cat 85E 4 Scv, 8500 Hr
- 02 Cat Challenger MT745 2626Hr, 5 Scv, 24" Tracks, 3 Pt, Trimble Guidance
- Cat CH55 6923 Hr, 4 Scv, PS, 3 PT, PTO
- 12 Case Farmall 95 152 Hr 2Scv, CH L735 Loader
- 04 Versatile 2210 3900 Hr, 4 Scv, Supersteer, PS
- 11 Versatile 305 Full Guidance, Front Duals
- AC 6060, 540 PTO, 2 Scv
- AC 190XT
- 76 AC 7000
- ZB Minneapolis Moline Narrow Front, Hyd, 3 Pt Farmall M

Mechanic Specials

- IH 966(Knock In The Engine)
- IH 460 (Engine stuck)

Loaders

- Versatile 3895 SLR
- JD 741SL
- 2- JD 740, SL, 00 & 30 Series Mounts
- JD 720 85" Bucket, Joystick
- Farmhand 883
- CH L700
- Agco FL 500

COMBINES

- 12 Claus Lexion 730, 888/523 Hr, Auto Contour, 4x4
- 13 JD 5890 1510/1024 Hr, 4x4, 650 Duals, Pwr Bin, Pwr Tailboard
- 13 JD 5670 1728 /1071 Hrs, 2wd, 3 Spd Trans, CM, Duals
- 04 JD 9860 2427/ 1622 Hr, 4x4, CM, Duals
- 11 JD 9670, 2010/1314 Hr, CM, 4x4, 900's
- JD 9670 2161/ 1452 Hr, 2WD, CM
- 08 JD 9670 2101 /1587 Hr, CM, Duals, 2wd
- 08 JD 9670, 2284/1668 Hr, 2wd, CM, Duals
- 08 JD 9570, 1408/943 Hr, 2WD, 30.5

- JD 9510 4172/2986 Hr 4WD,
- 98 JD 9510 3815/2929 Hr, 2wd
- 95 JD 9500 3020 Hr, 2wd, Duals
- 89 JD 9500 4247/2887 Hr 2WD, Rebuilt Concaves
- JD 7720 4X4, Estimate 4000 Hr
- JD 6600 2898 Hr
- CH 3408 Knife Rolls, Hyd Deck Rolls
- CH 1660
- CH 1660 3246 Hr, AFS Monitor, Chopper, 2wd
- 13 NH CR 8090 1638/1195 Hr, 2wd, Duels, Ag Leader
- 11 NH CR 9070 2096/1540 Hr, 2wd, Floaters
- Gleaner M2, 4R Head, 15" Bean Head
- Oxbo Harvester 3881/2540 Hr, 4X4

HEADS & HEAD TRAILERS

- 09 Lexion F540 40'
- 98 JD 693 Knife Rolls
- 3- JD 643
- 4- JD 635F Years '11 '10 '05
- JD 630F CM Shaft, Single PT HookUp, Full Finger
- 4 JD 630F Years '14 & '09
- 09 JD 612C Hyd & Knife
- 11 JD 612C Stalkmaster
- 09 JD 608C Stalkmaster
- 2- JD 608C Hyd & Knife, Years '11 '08
- 3- JD 930F Poly Snouts, Full Finger
- JD 925F, Full Finger, CM Shafts
- 6- JD 925F Fore/Aft
- JD 922F Fore/Aft, Full Fingers
- 2- JD 920
- 4- JD 893 CM, Hyd Deck Years: '07 '05 '98 '97
- JD 843, 8R 30", Poly Snouts
- JD 444
- JD 222
- 11 Macdon FD70 40' Only 2500 Acers!
- 09 CH 3408 8R 30"
- 12 CH 3208 Only 1600 Acers
- CH 2412 12R 30", Single Point Hook-Up,
- 2- CH 2020 35", Full Finger
- 2- CH 2020 30", Full Finger
- 2- CH 1083, Knife Rolls
- CH 1020 With Air Reel 25'
- 87 CH 1020 Flex 15'
- 2- CH 1020 25'
- 09 Geringhoff RD800 8Row, CM
- Agco 830 Hopper, Poly
- Assortment of 20' - 40' Head Trailers

PLANTERS & DRILLS

- 07 Kinze 3800 ASD, 24 Row, Bulk Fill, N/T KPM III Monitor
- 09 Kinze 3660 ASD 12/23, Agleader Insight, Air Clutches
- 09 Kinze 3660 ASD 12/23 Precision 20/20, N/T
- 15 Kinze 3660, 12 Row, 30" Planter, Hyd Drive, Ag-Leader, No Display, NEW!
- Kinze 3650 16/31, N/T, Boxes, Manual Shut off
- Kinze 3600 16 Row 30" Liquid Fert, Ground Drive
- Kinze 3600 16R 30" Liquid Fert, Ag Leader, Monitor
- 06 Kinze 3600 16R30, KPM II
- Kinze 3500 N/T 8/15, KPM II Monitor
- Kinze 2600 16/31 N/T, Ground Drive
- Kinze 2600 12/23 N/T
- Kinze 2200, 12 Row 30" Liquid Fert, N/T
- 93 Kinze 2200 12 Row 30" N/T
- Kinze 6R Rough
- JD 7240 6/11 N/T
- JD 7200 16R 30" N/T
- JD 7200 12R w/ N/T Finger Pickup
- JD 7200 6 Row
- JD 7000 8R 30" w/ Liquid Fert
- 2- JD 7000, 6Row, Conservation, Dry Fert
- JD 7000 6R, Fert Tanks
- 4- JD 7000 6R 30" N/T
- JD 7000 4Row
- 99 JD 1770 16R 30" Row Cleaners & Seed Star W/ Display
- JD 1760, 8R, 30" Max Emerge, Yetter Trash Whipper N/T
- Combo, PHEN
- GP YP2425 4R 30" CCS Trash Whippers
- GP 1225 12R Twin, N/T, w/ Liquid
- 10 CH 1260 36 R 30" PHEN, Air Clutches, Precision 20/20
- No Display
- 13 CH 1250, 12/30 Early Riser, Phen, Ground Drive, One Owner, 1600 Acres!
- 97 JD 1770 16R N/T
- 09 White 8186 16R 30" N/T

Heads & Seed Tenders

- Tye 114-4360, 15", N/T, Grass
- JD 8300
- JD 8300 w/ Grass
- 2- JD 750 15', 7.5" Spacing
- JD 750 15' w/ Markers
- JD 450, 21 Hole, Press Wheel, 7.5" Spacing
- JD 1590 10', Dolly, 7.5" Spacing, Grass
- JD 1590 w/ 15' Dolly
- 09 JD 1560 15' Grass, Markers
- Great Plains 1520 15'
- Great Plains 15' 3 Pt
- Crustbuster 3400 All Plant 15', Harrow
- CH 5500, 30", 15" Spacing
- CH 5400 15'
- 10 Parkan Seed Tender Triple Axle, Gooseneck Hitch, Roll Tarp
- 2- Weigh Wagon
- Gravity Wagon Seed Tender
- Convey-All HDF20XT Trailerless Seed Tender

- 14 Kinze 1300, Scale, Tarp, Like New!
- Kinze 850, Scales
- 2- Kinze 850 w/ Tarps
- Kinze 600
- 13 Demco 1050, Roll Tarp, Tracks
- 14 Unverferth 9250, Tracks
- Parker 838
- Parker 4500
- J&M 875
- J&M 675
- 3- J&M 350
- Brent 572
- Brent 472
- Brent 1594
- Demco 450, Tarps, Brakes, Lights
- 2- Grain O Vator, Wagons
- Wheatheart 10x81 Auger, w/ Swing Hopper
- Hutchison-Mayrath 10"x71" Swing Away
- 18" Belt Conveyor
- Peck 10X31 PTO Truck Auger, NEW!

GRAIN HANDLING

- Grain Handling
- 14 Kinze 850, Scales
- 2- Kinze 850 w/ Tarps
- Kinze 600
- 13 Demco 1050, Roll Tarp, Tracks
- 14 Unverferth 9250, Tracks
- Parker 838
- Parker 4500
- J&M 875
- J&M 675
- 3- J&M 350
- Brent 572
- Brent 472
- Brent 1594
- Demco 450, Tarps, Brakes, Lights
- 2- Grain O Vator, Wagons
- Wheatheart 10x81 Auger, w/ Swing Hopper
- Hutchison-Mayrath 10"x71" Swing Away
- 18" Belt Conveyor
- Peck 10X31 PTO Truck Auger, NEW!

TILLAGE

- 2- GP 3000TT 30" Turbo Till, Reel & Rolling Basket
- 10 CH 330VT 33.5" Rolling Basket, Gauge Wheels
- 13 Landoll 7431 VT 33"
- 11 Landoll 7431 VT 23"

Disks

- Sunflower 1433 32" Gauge Wheels
- Landoll 6230 26"
- 13 Kuhn Krause 8300 34", 26" Blades
- Krause 4990 34"
- Krause 14"
- CH RMX 340 29" w/ Harrow
- CH 3950 26" Harrow
- CH 3950 25"
- CH 596 30"
- CH 3900 28" 7.5" Spacing
- CH 3900 19 1/2" 21" Blades
- CH 596 23", Harrow
- CH 496 32" 20" Blades
- CH 496 30" 9" Spacing
- CH 496 22" CH Turbo Blades
- CH 6500 13", 18" Blades
- 99 JD 637 39"
- JD 637 32", Spring Tooth Harrow
- JD 630 25"
- JD 630, 25.6", Coil Tine Harrow
- GP 3326 26" 9" Spacing, 3 Bar Harrow NEW!
- Baker 31 9" Spacing 3 Bar Harrow
- AC 16"
- Kewanee 18" Flat Fold
- 3pt, 6"
- 7" Disk

Field Cultivator

- 13 Kuhn Krause 5635 42' NICE!
- Krause 4100 24' 3 Bar
- 2- CH 4800 32" w/ Harrow
- JD 2200 31.5' 3 Bar Coil Tine Harrow
- JD 1010 22"
- JD 980 27"
- JD 960 26"
- Kongskilde Triple K w/ Rolling Basket
- Landoll 30" w/ Harrow
- White 226 20'

Mulchers

- Brillion Packer/Roller 25'
- CH 415, 26", Flat Fold
- IH 315 21"
- JD 15'
- WB20 28"
- Kewanee 24'

Harrow & Plows

- Wako 36' 9 Bar Spike Tooth Drag Harrow
- 2- McFarlane HDL-32
- 2- McFarlane 30' 8 Bar Drag
- Furest 24' Harrow on Odgen Cart

- Delta 24' Manual Fold
- JD 995 6 Bottom 3 pt. Switch Plow
- JD 5 Bottom
- Oliver 6342 4 Bottom 16"
- 2 Bottom Plow

Rippers & Disk Chisels

- 08 CH 527B 5 Shank Ripper
- 2- JD 915 7 Shank Ripper
- DMI 527 Ripper, 5 Shank
- DMI 730B, 7 Shank
- Landoll 2320 5 Shank
- Krause 4515 17 Shank Disk Chisel
- Glencoe SoilSaver 9 Tooth Disk Chisel
- Glencoe SS7400 Chisel 12", 20" Blades
- Kewanee 12", Disk Chisel w/ Harrow
- CH 6500 Chisel 13", 19" Blades

Misc. Tillage

- Sima Solo 300 Tillage Train, 12'
- GP 2327 27" Crumbler w/ Lights
- J&M TF215, 40" Crumbler
- 09 Krause Dominator 4850 18'
- M&W 1930 Rotary Hoe
- M&W 15' Rotary Hoe
- JD 400 15' Rotary Hoe
- JD 8R 3Pt Row Cultivator
- Hiniker 5000 8R Cultivator
- IH 183 12R 30" Row Cultivator
- Loftness 240 20" Stalk Chopper
- Loftness 12 R, 30" Stalk Chopper
- Besler 1230, 30", Wing Fold, Stalk Chopper
- JD 520, 1000 PTO Stalk Chopper
- Hiniker 5620 HC, End Transport, Stalk Chopper Low Acres!
- IGN 6' 3PT, Rotary Tiller

HAY & FORAGE

Chopping Equipment

- 99 JD 6850 3555/2710 Hr, 4X4, KP
- JD 3955
- JD 3970 7' Hay Head
- JD 3950
- 05 NH FP230, Processor, Tandem Axle
- NH 892
- NH 790 w/ 6' Hay Head & 2 Row Corn Head
- NH 892 w/ Hay Head & Corn Head
- NH 900 Chopper w/ Processor
- Claus 664, 4 Row, (Fits 5000 Series JD)
- JD 3 Row
- JD 2RN Silage
- 05 2 FP 7' Hay Head
- Forage Wagons
- 3- H&S Twin Auger 18" Front & Rear Unload, Open Top
- H&S TA 18" W/ Meyer Gear
- H&S TA 16" W/ Meyer Gear
- H&S, Wide Body, 18" Rear Unload Truck Box
- 2- H&S 7+4 HD
- Badger 1200 18"
- Gehl 980 18"
- Gehl 970
- 2- Meyer TSS 500 16"
- Fargo 12' High Dump Wagon
- UFT 4205 High Dump Wagon

Discines & Haybines

- NH WDX1901 Self Propelled, 1448 Hrs, RDX161 Head
- 03 JD 4895 Self-Propelled, 3365 Hr, Sells w/ JD 895 18" Sickle Head
- JD 946 w/ Steel Rolls
- 3- JD 946 w/ Impeller
- 2- JD 946 Moco
- 97 JD 945
- 14 MF 1375
- NH H7330 10' 4" Cut NICE!
- 14 NH H6750 9'
- N7450
- NH 617 9' 3Pt
- Krone 283
- Krone 9'
- MDX91 3PT, 9'
- Hesston 1345

Rakes & Tedders

- Claas Liner 880, 2 Basket, 3 PT, 540 PTO
- H&S X-10 15 Wheel, Like New!
- Vermeer WR V-10
- Pequa TR10, 10 Wheel
- JD 705 Twin Rake
- IH 705 10 Wheel
- NH 260
- NH 258
- Frontier TC1123 Tedder
- Tedder 4 Basket

Grinders

- Gehl 170, Scales
- Artsway 500
- Gehl 125



Ed's Machinery LLC

quality machinery since 1997

Business (660) 883-5501 • Fax (660) 883-5702
Hwy 136 • Memphis, MO • 1 Mile West of Memphis on Hwy 136
www.edsmachinery.com

Terms & Conditions prior to purchasing equipment on auction day with fee of \$25 will be charged 30 days. Due to daily construction items and com for serial numbers loading fees, or tear down

LUNCH WILL BE SURROUNDING

Consignment AUCTION

MARCH 10, 2017 • 8:30 A.M.

Online Bidding Available Through



Upcoming Auctions in
2017: March 10, August 11,
December 8

THANK YOU TO ALL
CONSIGNERS AND BUYERS.
YOU ARE APPRECIATED!



- Delta 24' Manual Fold
- JD 995 6 Bottom 3 pt. Switch Plow
- JD 5 Bottom
- Oliver 6342 4 Bottom 16"
- 2 Bottom Plow
- Rippers & Disk Chisels**
- 08 CIH 527B 5 Shank Ripper
- JD 915 7 Shank Ripper
- 2- DMI 527 Ripper, 5 Shank
- DMI 730B 7 Shank
- Landoll 2320 5 Shank
- Krause 4515 17 Shank Disk Chisel
- Glencoe SoilSaver 9 Tooth Disk Chisel
- Glencoe SS7400 Chisel 12", 20" Blades
- Kewanee 12", Disk Chisel w/ Harrow
- CIH 6500 Chisel 13", 19" Blades
- Misc Tillage**
- Sima Solo 300 Tillage Train, 12'
- GP 2327 27' Crumbler w/ Lights
- J&M TF215, 40' Crumbler
- 09 Krause Dominator 4850 18'
- M&W 1930 Rotary Hoe
- M&W 15' Rotary Hoe
- JD 400 15' Rotary Hoe
- JD 8R 3PT Row Cultivator
- Hiniker 5000 8R Cultivator
- IH 183 12R 30" Row Cultivator
- Loftness 240 20' Stalk Chopper
- Loftness 12 R, 30" Stalk Chopper
- Besler 1230, 30", Wing Fold, Stalk Chopper
- JD 520, 1000 PTO Stalk Chopper
- Hiniker 5620 HC, End Transport, Stalk Chopper Low Acres!
- IGN 6' 3PT, Rotary Tiller

HAY & FORAGE

- Chopping Equipment**
- 99 JD 6850 3555/2710 Hr, 4X4, KP
- JD 3955
- JD 3970 7' Hay Head
- JD 3950
- 05 NH FP230, Processor, Tandem Axle
- NH 892
- NH 790 W/ 6' Hay Head & 2 Row Corn Head
- NH 892 w/ Hay Head & Corn Head
- NH 900 Chopper w/ Processor
- Claus 664, 4 Row, (Fits 5000 Series JD)
- JD 3 Row
- JD 2RN Silage
- 05 2 FP 7' Hay Head
- Forage Wagons**
- 3- H&S Twin Auger 18' Front & Rear Unload, Open Top
- H&S TA 18' W/ Meyer Gear
- H&S TA 16' W/ Meyer Gear
- H&S, Wide Body, 18' Rear Unload Truck Box
- 2- H&S 7+4 HD
- Badger 1200 18'
- Gehl 980 18'
- Gehl 970
- 2- Meyer TSS 500 16'
- Fargo 12' High Dump Wagon
- UFF 4205 High Dump Wagon

Discblines & Haybines

- NH WDX1901 Self Propelled, 1448 Hrs, RDX161 Head
- 03 JD 4895 Self-Propelled, 3365 Hr, Sells w/ JD 895 18' Sickle Head
- JD 946 w/ Steel Rolls
- 3- JD 946 w/ Impeller
- 2- JD 946 Moco
- 97 JD 945
- 14 MF 1375
- NH H7330 10' 4" Cut NICE!
- 14 NH H6750 9'
- N7450
- NH 617 9' 3PT
- Krone 283
- Krone 9'
- MDX91 3PT, 9'
- Hesston 1345
- Rakes & Tedders**
- Claas Liner 880, 2 Basket, 3 PT, 540 PTO
- H&S X-10 15 Wheel, Like New!
- Vermeer WR V-10
- Pequa TR10, 10 Wheel
- JD 705 Twin Rake
- JD 705 10 Wheel
- NH 260
- NH 258
- Frontier TC1123 Tedder
- Tedder 4 Basket
- Grinders**
- Gehl 170, Scales
- Artsway 500
- Gehl 125

- NH 355
- NH 357
- NH 359
- FarmHand 810

TMR Mixers

- Gehl 8435 540 PTO, Scales
- SAC 4750 Small 1000, Scale
- Knight Real Auggie 3250
- Rissler 1072 Electromix w/ Scale
- Patz V950
- Valmetal

Misc. Hay & Forage

- Haybuster 2800 Bale Processor
- Haybuster 2650 Bale Processor
- Woods Alloway 20' 3PT Flail
- NH 30 Blower
- Bale Rack Wagon
- Kewanee 50' Elevator w/ Drag
- Kverneland UN 7515 Bale Wrapper Hyd Drive
- Homemade 10' Bagger (like Roto Press)
- NI 324 Corn Picker 540 PTO, 2 R 30"

BALERS

- CIH LBX331, 1000 PTO, 3X3, w/ 3 Bale Accumulator
- Claas Rollant 62, 4X5, 54" Pick-up, Net / Twine
- CIH 8575, 3X3
- CIH 8460 Twine, Monitor
- Vermeer 605M 1000 Pto, Twine/Net, DCF, Pickup
- Vermeer 605F, Hyd Twine Tie
- 03 NH BR780 Hyd Kicker, 1000 Pto, Twine
- NH 855, Twine
- NH 640 Fast, Net
- NH 276 Sq.
- JD 336 Sq. w/ Thrower, Twine
- 6- JD 568 w/ Wrap Years: '07 '09 '12 With 8500 Bales And Up.
- JD 566 w/ Wrap
- JD 535 Net, Kicker
- JD 459 1000 Bales, Wrap, Like New!
- JD 100 Big Sq.
- Hesston 945 Wrap
- Hesston 580
- Hesston 5800, 540 PTO

MANURE HANDLING

- Leon V425 Vertical Beaters, Like New!
- 2- H&S 425 Hydra Push, Vertical Beaters
- NI 3743
- NI 3632
- NH 195
- NH 185
- NH 145 w/ Tailgate
- JD 550

CONSTRUCTION

- 12 Cat 930K 5190 Hr, High Lift, Wheel Loader
- 06 Cat 930G 10,210 Hr, w/ Front Hyd Wheel Loader
- Case W36 8774 Hr, Forks & Bucket, Wheel Loader
- JD 624E 16763 Hr, GP Bucket, QH Wheel Loader
- 85 Komatsu D85E 3 Spd, 12' Blade, OROPS, PS Trans Dozer
- 79 JD 750C Rebuilt Pumps Dozer
- Cat D6D Cab, Dozer
- CAT D7H Series II LGP Winch
- Case 580M Backhoe 4791 Hr, MFD
- NH LM 435 6423 Hr, Bucket, Power Shuttle
- 93 Case 688 Excavator 2819 Hr, 36" Bucket,
- Komatsu PC750U Excavator 3348 Hr, New Tracks
- Hitachi EX200 6194 Hr, Excavator
- Case 9020 Excavator, 8650 Hr, 36" Bucket
- IHI 9NX Mini Excavator 1231 Hr
- 08 IHI 25NX2 1655 Hr, Mini Excavator
- CAT 303CR Mini Excavator 1623 Hr, Hyd Grapple, 24" & 12" Buckets
- 06 Bobcat 323J Mini Excavator, Canopy
- Genie V-2470RT Scissor Lift, 24' 70" Basket
- M-470 Vermeer Trencher
- Fiat/Allis G75 Grader, 3763 Hr
- Baldwin Grader, Cab, 12' Blade, Cummins
- Noble 417B, Direct Mount Scraper, 17' Laser Mast
- 11 Ashland I-950 Scraper
- Man Lift Snorkel 2000
- Reynold 10C Dirt Scraper, Ag Hitch
- Eversman 600 Dirt Pan
- Westendorf Landscaper 12' Blade
- Bush Hog 120-09 Blade 9', 3 PT Blade
- JD 524 9' Dozer Blade
- Landpride 8' Blade
- United Implement 12' 10' 8' Box Blades NEW!
- Skidsteers**
- Cat 246C 884Hr, Cab
- 08 Cat 289C 1290 Hr, Tracks, High Flow
- 08 Caterpillar 2365B Series II
- 08 Gehl CTL70 2500 Hr, One Owner!
- Gehl 6625 3312 Hr

- Gehl 4840E
- Gehl 4240 Cab, 1750 Hr, One Owner!
- 12 Bobcat S570 225 Hr, Cab, BobTach
- NH L565 w/ Bucket
- NH L 175, 1117 Hr
- NH LS 170 2650 Hr
- Case 570LXT, 4WD, 4-in-1 Bucket
- Case 450, 1781 Hr, Cab

TRUCKS & TRAILERS

- 09 Peterbilt 386 Semi, 648,000 MI, Cummins, 10 Spd
- 95 IH 9400 Diesel, Allison, 18' Box
- 04 Sterling Acterra Railroad Truck
- 84 Peterbilt 18' Grain Box, Tarp, Heavy Front Axle
- 00 Ford F-450 Diesel Engine, 72,192 Miles, w/ Service Bed
- 88 Chevrolet C70 Gas Engine, 5+2 Trans, Air Brakes, 16' Bed, 144,043 Miles
- Mac Cabover w/ Spreader Box
- 86 IH S1900 Diesel Engine, Manual Trans, 15' Bed, 82,167 Miles
- 03 Wilson Commander HopperBottom, Air Ride, Power Tarp
- 00 Wilson Hopperbottom 41' Air Ride
- 95 Wilson Hopperbottom 41', Alum Wheels, New Tarp
- 88 Timppte Hopperbottom 40' Spring Ride, Front & Rear Damage
- 09 Timppte Hopperbottom 40' Standard Hoppers, Air Ride
- 09 Jet Aluminum HopperBottom 38', SpringRide, Tanker Trailers
- 09 Middlebury Enclosed Trailer
- Duo Lift 20', Sprayer Trailer, Air Brakes
- 05 Carson Bumper Trailer W/ Hobart Welder
- 11 Haul-Rite Skidsteer Trailer
- 01 Jeep 60th Edition 90,000 Miles (w/ Engine Noise)
- 8 Bale Trailer NEW!

SPRAYERS & APPLICATORS

- Spray Coupe 4440 3312Hr, 60' Boom, Auto Trans, 400 Gal,
- Spray-Coupe 3430, 2191 Hr, 60' Boom, 300 Gal Tank
- 98 Tyler Patriot 150 3834 Hr, 80' Boom, 750 Gal Tank, Foamer
- Hagie 8250 60' Booms
- Willmar 750 60' Booms, 750 Gal Tank, 2900 Hrs, Raven Monitor
- 09 Hardi 4000 Navigator, 1200 Gal, 90' Booms, Control Box & Monitor
- 05 Sprayer Specialties Xlrd 1500, 90' Boom, 1500 Gal, Raven 450
- Demco Booms 90' 3PT
- Top Air TA 1100, 60' XFold, 1100 Gal, Foam Marker
- Hardi, 40' Booms, 500 Gal
- Century 750 Gal Sprayer
- Jacto Cannon AJ401, For Sweet Corn & Orchids
- JD 2510H 15 Knife, NH3, Dual Raven Coolers,
- JD Rate Controller
- Orthman 836-015 Strip Till 12R30, 2-500 Gal Tanks
- DMI 5250 19 Knife NH3 Monitor, 201/2" Blades
- DMI 12 Knife NH3
- CIH 2800 30' Lq Fert, 1300 Gal
- Progressive 1300 6Knife, NH3 New!
- KBH Liquid 11 Knife, 700 Gal Tank
- NH 3 Tool Bar 9 Knife, 3PT
- Clark 5 Shank
- Super 600 Willmar Fertilizer Spreader 40' Spread
- 3- 1025 Gal, Nurse Tank

BRUSHCUTTERS

- Land Pride 15' Batwing
- 3- Bushog 2715 Legend 15'
- 2- Bushog 2615L 1000 PTO, 15'
- Bushhog 8' 3pt
- JD 1518
- 5' Brushcutter

MISC.

- Lawnmowers**
- Exmark Lazer Z Lawnmower, 269 Hrs, 60"
- 09 Scag Turf Tiger 61" Deck
- Scag STT61A 61" Deck
- Bush Hog ES2052 Zero Turn
- Gravelly ZT2660HD
- JD Z920M
- JD Z910A
- 3- JD Z445-54
- JD 1435 72" Deck
- JD 455- 60"
- 14 Hustler Raptor 51" Deck
- Cub Cadet 3654 Zero Turn 48" Deck
- Cub Cadet RZT50KH-60
- Cub Cadet LT1024
- LandPride ZR52
- JD 445
- JD X720
- JD 325-44P
- 3- JD X320 48" Deck
- 05 JD 737 1787 Hrs
- JD X300
- JD 285 50" Deck
- JD 2655

- JD LX266
- JD LA 175
- JD LA140
- JD L130
- Masport Walk Behind 21" Deck NEW!
- Versatile 305
- Simplicity 20 VH

Misc

- RTV 1140 1812 Hr, w/ Cab
- 2- JD 8501 RTV Year '12, 1090 & 1255 Miles
- 15 JD 8251 Cab 3000 Miles
- 13 JD 8251 400 Miles
- 3- Polaris 400 UTV
- 96 Honda Fourwheeler
- Briggs & Starton 6000 Watt Generator
- Briggs & Starton 5000 Watt Generator
- Briggs & Starton 3500 Watt Generator
- 10 SuperStall 7' Free Stall
- 60 Free Stalls
- 27 SuperStall 6.5'
- 34 6.5' Hoover Stalls
- 58 Cow mattresses
- Double 8 low-Line Milking System, w/ Automatic Take-Off
- 60- 24'X 66" Freestanding Panels
- 6- 10' Gates
- Diamond Plate Alum 10' Truck Bed
- Chandler Fertilizer Tender Bed
- New Soucy ST-100DS Combine Tracks, Rubber, 32"
- Oklahoma Pride 16' Cattle Feeder
- Ren 24, RollerMill 20 HP Electric Motor
- Speed Air 35WC72 Air Compressor, 120 Gal Tank, 460 Volt
- Rem GTS2000 Drive Over Hopper
- Lowe Hyd Auger Skidsteer Attach. NEW!
- Lowe Grapples Skidsteer Attach. NEW!
- Lowe 48" Pallet Forks New
- Lowe Treepuller

FREDDIE HENDERSON 660.341.4393 & RODGER RIEBEL

- JD 7810 6695 Hr, 3 Scv, PS, MFWD, 18.4.42 Duels
- JD 4440 9104 Hr, 2 Scv, PS, Duels (1200 Hr, on Eng O/H)
- JD 3020 Side Console, 5766 Hr, Gas, Sycro, Joystick & 158 Loader
- CIH 7140 Shows 4761 Hr, 4 Scv, MFWD, PS, 20.8.38 Duels
- JD 7200 Planter 8R 30" N/T, Coulters
- JD 1780 8/15, Coulters, 3 Bu. Boxes, Vacuum, PTO Pump
- IH 800 16R Planter On 18" Centers
- Wilrich FCW 25' Field Cultivator W/ Harrow
- Glencoe 4500 Field Finisher 25' 5 Bar Harrow
- IH 496 Disk 28' 7.5" Spacing w/ Harrow
- Mcfarlane 30' 8 Bar Harrow
- Killbro's Gravity Wagon 375 Bu, 2 Compartments & Auger, Tarp
- JD 945 Discbine w/ Rebuilt CutterBar

JIM SNYDER 641.242.0558 MILTON IA

- 10 CIH 305 2237 Hr, 3 Pto's, Front Duals, Full Guidance
- 99 CIH 9350 4242 Hr, 4 Scv, MFWD, PS
- 12 Kubota M135X 1928 Hr, MFWD, w/ LA2253 Loader
- 11 White 8831 CFS 16/31 N/T, 3R Shutoffs, Variable Rate
- CIH SPX 4260 Sparyer 3858 Hr, 1200 Gal, SS. Tank, 60'-90' Booms, Outback Guidance
- Great Plains 3000 TT w/ Reel & Rolling Basket
- Glencoe 24' Finisher
- CIH 496 32' 7.5" Spacing Excellent Blades!
- Meridan 4 Box Seed Tender
- 77 Tech Steel 25 Ton Lowboy
- 97 Talbert 48X102 Stepdeck
- Rem 3700 Grain Vac 53 Hr
- 1800 Gal SS Tank
- 1600 Gal SS Tank

SINCLAIR TRACTOR

- 08 JD 9330 2454 Hr, 4 Scv, PS, 710-42
- 93 JD 7800 6234 Hr, 3 Scv, MFWD, PS
- Kinze 3700 24/R30" N/T, Finger Pick-Up
- 2- JD 1770 N/T 16R 30" NoTill Box
- 06 CIH 1200 16R30" Hyd Drive, Liquid Fertilizer
- 2- JD 726 27' Finisher
- JD 726 33' 5 Bar Bar Spike Harrow
- JD 980 36' w/ 3 Bar Harrow
- Brent HVC-2000 40' 5 Bar Harrow
- Wilrich Quad 5 47' 5 Bar Harrow
- 99 DMI Tigermate II 50' 3 Bar Harrow
- 2- JD 568 w/ Wrap
- 06 NH BR 780A w/ Wrap
- 05 Hardi 1100 Navigator 60' Booms
- 08 Top Air TA-1200 60' Boom 1200 Gal
- Sprayer Specialty XLM V-1010 60' Booms
- Yetter Seed Jetll 4 Box
- 10 BlueJet AT 3000 15 Knife, Applicator

Eds Machinery LLC
Machinery since 1997
50) 883-5702
Memphis on Hwy 136
com

Terms & Conditions: First time buyers must provide a bank reference letter prior to purchasing equipment. All items are sold "as-is" and must be paid for in full on auction day with cash, cashier check, personal, or company check. A title fee of \$25 will be charged to consignors and buyers. All items must be removed in 30 days. Due to daily business, list is subject to change! Sales tax applicable on construction items and lawn mowers. Visit our website at www.edsmachinery.com for serial numbers and more information. NO on-site buyers premiums, loading fees, or tear down fees! Selling with three rings!

LUNCH WILL BE PROVIDED BY MENNONITES OF THE SURROUNDING AREA TO SUPPORT LOCAL SCHOOLS.



BIG DEAL

SHOOTOUT

265/75R16 Hankook Dynapro ATM RF10, 10 ply

Reg. Price **SALE**
\$154.10 **\$135.00**

Good Till March 4th



B&W TRAILER HITCHES



Cargo Control Corner

Saturday, March 4th

8 BOLT WHITE
STEEL WHEEL
235/80 R16 - 10 PLY COMBO
REG: \$139
NOW \$109

ONLY

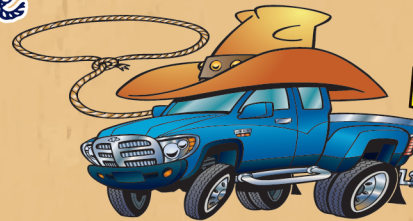
8 BOLT DUALY
GRAY WHEEL
235/80 R16 - 10 PLY COMBO
REG: \$149
NOW \$119



Fab Four Bumpers



Wrangle up some good deals!



WeatherTech Floor mats




Take 10% Off
Your next purchase!
Excludes Labor Expires March 4th
Coupon Required to receive discount.

ZIMMERMANN AUTO LLC TRAILER INC.

101 North St.
Cantril, IA
319-397-2406





*Dr. David Rasmussen
Dr. Nancy Houglund
Dr. Marilyn Brown*

Did you AI your beef cows or heifers for fall calving? If so, February is the time to ultrasound them to determine the fetal sex and whether they are AI bred. Cattle must be bred 30 days or more for pregnancy diagnosis and 60-90 days for fetal aging and sexing.

Call for your appointment
641-664-2399

CLEARVIEW ANIMAL HOSPITAL P.C.
601 Weaver Rd. • Bloomfield, IA 52537
www.clearviewanimalhospital.com

The Car Spa

Auto Body Shop
Auto Glass
Automotive Restoration
Hand Detailing Service

KARR COLLISION CENTER & AUTO DETAILING
Shawn Scott, Owner
701 Karr Ave. • Bloomfield, IA
641-664-1024

CAR DETAILING GIFT CERTIFICATES AVAILABLE!



FOR SALE: 28'x52' Manufactured home 5 years old. Excellent condition. 3 bedrooms, 2 full baths. Easy to relocate. \$55,000
PH: 641-242-0065 09

FOR SALE: Remington model 700 mag. 7mm, bolt action, 3x9 variable scope-sling, Bob Allen padded case. Nice.
PH: 641-208-5529 09

FOR SALE: 1994 Volvo 4 dr. Sedan, runs good, it's blue/gray interior, \$750.
PH: 660-341-7263. 10

FOR SALE: JD 7200 12 row planter with JD 250 monitor, radar, vacuum planter, no till coulters, \$10,000.
PH: 641-208-5059. 10

STOR MOR MINI STORAGE QUEEN CITY, MO

10 x 10 Unit- \$35/mo.
10 x 20 Unit- \$50/mo.
515-720-7180
or
660-766-2228
"NUF SED"

NOTICE: Will the Amish man who bought 13 Light Brahma hens please make arrangements to return my cage.
PH: 641-799-2404. 10

FOR SALE: JD 7000 4-row planter, dry fertilizer, precision bean, & corn meters. Excellent-always shedded. Retired - can deliver.
PH: 641-799-6120 09

LINE-X OF OTTUMWA 



KEEP YOUR RIDE IN GREAT SHAPE!
PROTECT IT WITH A LINE-X COATING!

Bring it in and we can LINE-X® it!

Brad Lisk
15514 Blackhawk Rd., Ottumwa, IA

Gift Cards Available!
641-683-9334



Your Lookout in the Field

Helping you maximize growth potential on your farm!

See us for your seed, feed & fertilizer needs.

CROP SERVICES, INC
John & Kathy Bos, Owners
Drakesville, IA • 641-722-3293




CALVING TIME IS HERE

STOP AND CHECK OUT OUR HELPFUL CALVING SUPPLIES

FILTER DAYS
FEB. 1st - FEB. 28th



15% OFF All Baldwin Filters
Baldwin has over 3,300 different filters available for oil, air, fuel, coolant, transmission, hydraulic & many other applications.

Unimilk • Iodine • O.B. Gloves
Latex Gloves • O.B. Lube
Calf Claim • Oral Calf Feeders
Nursing Bottles • Kick Start
Uterin Bolus • O.B. Straps & Chains
Calf Catchers & Blankets
Colostrum



Calving Pens



Red Brand 42" Cattle Fence
Woven wire, 8 ga., 330'/roll
\$179.95

Red Brand 48" Cattle Fence
Woven wire, 9 ga., 330'/roll
\$199.95



For-Most Cattle Chutes
Various Sizes



Hamilton Produce Co.
105 W. Franklin • Bloomfield, IA 52537

641-664-2459 or 1-800-469-7749




Tri-State Timber DBA Stihl

660-465-2975

353 1/2 Grand Ave. Memphis, Mo.
Behind Shelly B's

5% OFF

Stihl Chain Saws & Chain Saw Accessories

Thru March 31st

Come Check Us Out!



FOR SALE OR RENT: 24 ft. enclosed horse trailer. Bumper hitch. In very good condition.
PH: 641-722-3230 ext. 3 10

FOR SALE: Australian Shepherd puppies. Out of good working parents. \$250 OBO. PH: 660-988-1200

FOR SALE: Balancer Gelbvieh Bulls. Low birth weight for heifers.
PH: 641-664-2345 or 641-208-4311 09

FREE: House to be moved in Cantril, IA. For more information call.
PH: 319-288-0958. 08

MOVING NEWBORN CALVES WITH EASE

Calf Sleds



Calf Sleds

To minimize stress when moving a new mother and her calf try one of these. These calf sleds are designed and built by Daryl with quality steel. The long skids and heavy framework make it stable and durable. The sleds help make moving and working calves easy and efficient, eliminating wearing the newborn calf out and putting some protection between you and the cow while you work the calf.

Daryl Wiegand, Drakesville, IA 52552
641-208-5360 or
641-722-3860

HAY, STRAW AND FIREWOOD AUCTION

Southern Iowa Produce Auction
Sales every 2nd & 4th Saturday, November thru March

Saturday, February 25th - 10 A.M.

Early Listings: Assorted Round Bales: including 7 bales wheat straw.
Large Squares: 1-semi load Colorado Alfalfa (216 RFV, 22.8% Protein), 1-semi load (3x3x8) 1st cutting Alfalfa, 1-semi load (3x4x8) 1st & 2nd cutting Grass, 2-semi loads (3x3x8) 1st & 2nd cutting Grass/Alfalfa, 12-(3x3x6) 2nd cutting Grass Certified Organic),
Small Squares: Normal run including: 100- 1st cutting Timothy, 100- 2nd cutting Grass/Alfalfa (Nice), 150- bales of wheat straw.
Misc: Assortment of Black Locust post. **MORE EXPECTED BY SALE.**

Unloading Available **Friday** Before Sale

1914 Ice Ave. Bloomfield, IA
Call 641-722-3623 on auction days or leave a message.
Market Report or Information call 712-432-8593

NOTICE:

Large Assortment of Plugs and Plants to be sold starting @ 12 Noon on Sat., Feb. 25th

FOR SALE: Walnut slabs, various shapes & sizes. Perfect for making coffee tables & so forth. Check them out at RJ Lumber. Between 7am-4pm. 10

FOR SALE: Tons of large square wheat straw, delivered \$100-\$105/ton. Dairy alfalfas, low potassium Teff grass, also rounds. Small square straw and hay at all times.
GINGERICH FORAGE
1 mile East of Drakesville.
PH. 641-664-2744. 10



Oberholtzer

Farm Supply LLC

Specializing in feeding equipment for dairy & beef.

Available in stationary or trailer models




VALMETAL

Can be run with electric 3 phase soft start converter panel or can be powered by diesel. Many different models and sizes available.

Rt. #1 Box 84 • Memphis Mo.
Phone/Fax: 660-945-3053
Cell: 660-341-8234

Look for our booth at the Southern Iowa Grazing Conference

YOUNG FARMER looking to expand operation and rent some more farmland for 2017 and beyond. Pasture, row crop, hay ground.
PH. 641-895-0128. 08

FOR SALE: Huskvarna quilting machine. Includes 12' table with shelf below and quilting patterns.
PH. 660-216-9968 or 660-355-4460. 08

FOR RENT: 1 or 2 bedroom apartments Milton, IA. Kitchen appliances & heat furnished. Very reasonable rent.
PH: 641-757-0201 10

NOTICE

Beechy & Son's Horse Shoeing

are wanting to expand our services. We are available to take care of all your trimming and shoeing needs. Also horse training services available.

20 YEARS EXPERIENCE!

HARLEY, GLEN & IVAN BEECHY
VM: 641-664-3801

WANTED: Need someone with bulldozer to clear a lot east of Troy, IA.
For more info
PH: 641-675-3452 10

FOR SALE: Oreck upright vacuum sweeper includes portable Oreck w/attachments, \$80.
PH. 641-683-3554. 08

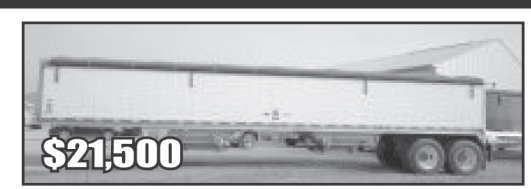
OBERHOLTZER

TRAILER REPAIR

*Specializing in Aluminum Hopper Trailers
Repair & Rebuild*

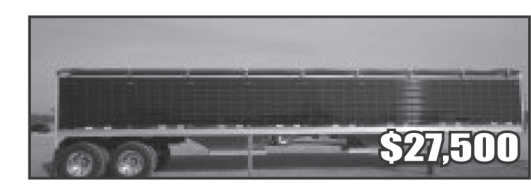
3 miles east of Gorin, Mo. on Route U

660-341-6027




\$21,500

2012 Wilson Pacesetter Ag hopper, SS rear, new tarp, tires 90% steel wheels,



\$27,500

2014 Timpte Super Hopper, 42x96x66, black, 2 rows of 9 lights, tires at 75%, SS rear, new tarp, Nice!!!



\$26,500

2015 Timpte Super Hopper, 40x72x96, Hi Flow hopper, new brakes, tires at 75%, SS rear, southern trailer, no rust

We install tarps & power tarps

MAST VINYL WINDOWS

THERMO-PRO WINDOWS
Custom Size Is Our Specialty
Professional Installation Available

FREE ESTIMATES
22172 Hwy. 63
Bloomfield, IA 52537
800-206-9949

Lee County, Iowa Real Estate & Personal Property Auction

THURS., MARCH 16TH @ 10:00 A.M.

REAL ESTATE SELLS AT 12:00 NOON

TO BE HELD ONSITE: 1395 303RD AVE., WEVER, IA 52658



OPEN HOUSE: FRIDAY, MARCH 3RD • 4:00 P.M. – 5:00 P.M.

11 Acres • 1 Tract

RURAL PROPERTY BUYERS TAKE A LOOK!

This property features a 1 story, 3 bedroom home with an attached 1 car garage and a finished walk out basement. Other improvements include a detached garage, a metal carport and a pole building. All of this is situated on over 11 acres that is nicely landscaped, offers a nearly 1 acre stocked pond and is conveniently located just north of Denmark, Iowa and only minutes from U.S. Hwy. 61.

ALSO SELLING: Lawn mower, Honda ATV, tractor, farm & acreage equipment, shop tools, household & collectibles and more!

BENJAMIN J. GILBERT – OWNER

ATTORNEY: Thomas T. Skewes • Johnson & Skewes
516 7th Street • Fort Madison, Iowa 52627 • Phone: (319) 372-2532

DETAILS, MAPS & PHOTOS AVAILABLE ONLINE @:
www.sullivanauctioneers.com

FOR ADDITIONAL INFORMATION, CONTACT:
Jim Huff (319) 931-9292 or Jeff Hoyer (319) 759-4320

SULLIVAN AUCTIONEERS, LLC • TOLL FREE (844) 847-2161
www.sullivanauctioneers.com • IL Lic. #444000107

Friesen Excavating

Specializing in Septic Systems
Certified For Peat Tanks and Sand Filters.

Can Also Do Other Drains and Water Lines

Call or Text Shawn @
641-208-0861

Bloomfield, IA
Free Quotes Available

MONTANA POST DRIVER



E Series

Fastest Driver on the Market.

Rental Unit Available!

All models are available with excavator or skid steer mounts.

YODER EQUIPMENT
BLOOMFIELD, IOWA
19887 Jade Ave
2 1/2 Miles W of Bloomfield
V.M. 641-664-2797

CR Cattle Co

Purchasing a good bull doesn't cost, it pays:
50 extra pounds X 20 Calves = 1000 extra pounds X \$1.60 per pound = \$1600 extra dollars per year.

Why Red Angus and Red Angus cross Bulls?

Crossbreeding hybrid vigor—Why breed black on black for yrs and lose all the hybrid vigor?

A red bull on black cows will produce black calves—I can explain.

Keep high quality maternal heifer replacements

Why purchase from CR Cattle Co?

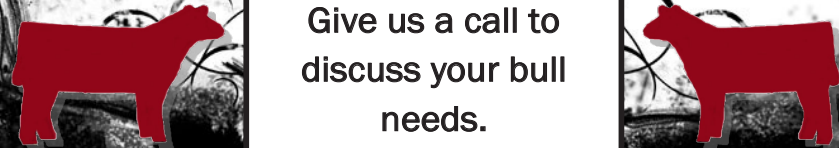
Half down secures the bull until May 1st

Bulls are developed for longevity—not pampered

Bulls are easy to handle—no injury to people or equipment

Jennifer Gardner
Selma, Iowa
641-895-4116

Give us a call to discuss your bull needs.



C.H.I. **MIDWEST** LiftMaster

Overhead Door

21387 Route V64
Keosauqua, IA 52565
660-216-0812

Our goal is to keep your doors rolling smooth!

Sales • Parts • Service ~ Free Estimates

We sell new doors and openers or we'll service your old one.

FOR SALE: New Holland 353 grinder mixer. In fair condition, with extendable auger.
PH: 641-664-3571 ext. 1 10

RICK SPEES AUCTIONEER

PRIME FARMLAND AUCTION

Wed. March 1st, 2017 • 10 AM

Located at Corner of 250th St. & Juniper Ave. South of Fairfield, Iowa.
DIRECTIONS: GO 5 MILES SOUTH OF FAIRFIELD ON HWY 1 TURN WEST
THENCE 3 MILES ON 257TH STREET TO 250TH STREET
AUCTION WILL BE HELD AT JEFFERSON COUNTY COURTHOUSE, FAIRFIELD, IOWA.

108 ACRES M/L OF HIGHLY PRODUCTIVE TILLABLE JEFFERSON COUNTY FARMLAND

This farm offers some of the best soils in SE Iowa.
106.18 tillable acres.
Main soils are Haig and Grundy.
This ground is a great flat, highly productive, all farmable, piece of land.
One of the best farms in Jefferson County.
At the request of the Jefferson County Supervisors bidding will start at \$7,700 an acre.

TERMS & CONDITIONS
TERMS: 20% down day of auction. Balance to be paid on or before April 3rd, 2017 upon delivery of merchantable abstract and deed.
POSSESSION: Full possession when paid in full.
REAL ESTATE TAXES: \$2,785.38 and will be prorated to date of possession.
GENERAL AND/OR SPECIFIC INFORMATION: Rick Spees, 641-919-4786

The County of Jefferson County, Iowa, Owner
Closing Attorney: County Attorney, Tim Dille

RICK SPEES
Auctioneer - Realtor
641-919-4786

1960 Libertyville Rd Fairfield, IA 52556
Any announcement made day of auction holds precedence over advertising.
Not responsible for accidents. Complete Listing at www.speesauction.com

Van Buren County Hospital
Simply Remarkable

Outpatient February Clinic Schedule

March 3 rd	Audiology	Greg Moore
March 3 rd	Psychiatry	Dr. Morcuende
March 7 th	Cardiology	Dr. Muellerleile
March 8 th	Urology	Dr. Kreder
March 10 th	General Surgery	Dr. Roe
March 11 th	Dermatology	Dr. Quest
March 11 th	Dermatology	Dr. Little
March 13 th	Cardiology	Dr. El Accaoui
March 15 th	Pulmonology	Dr. Wilson
March 17 th	Psychiatry	Dr. Morcuende
March 21 st	Cardiology	Dr. Muellerleile
March 22 nd	Podiatry	Dr. Holte
March 23 rd	Neurology	Dr. Pogel
March 24 th	General Surgery	Dr. Roe
March 24 th	Rheumatology	Shayla Sanders
March 27 th	Cardiology	Dr. El Accaoui

Other Services Available at Van Buren County Hospital:

CT Scans	Ultrasounds
Fluoroscopy	OB/GYN
Digital Mammography	Surgical Consultations
Nuclear Med Scans	Colonoscopy
Magnetic Resonance Imaging	EGD
Epidural Steroid Injections	

Call Van Buren County Hospital
Outpatient Scheduling
319-293-3171 Ext 8731
Schedules are subject to change by physicians.

Kirksville Livestock LLC

Kirksville, Missouri

SPECIAL CATTLE SALE MONDAY, FEBRUARY 27 • 11 AM

Early Listings

288 blk & red str & hfrs, LTW, 3 rds, 30 blk (Brinkley genetics) and 50 red hf, replacement quality 650-750 lbs.
 110 blk & red str & hfrs, LTW, 2 rds 500-650 lbs.
 70 blk str & hfrs, LTW, 2 rds 600-650 lbs.
 60 yearling blk str, RO, 2 rds 850-900 lbs.
 52 red & blk str & hfrs, LTW, 2 rds 500-650 lbs.
 45 blk str & hfrs, LTW, 2 rds 450-650 lbs.
 30 blk & blkwf str, RO, LTW, 1rd 650-750 lbs.
 20 blk str & hfrs, 1 rd 450-550 lbs.
 30 blk & blkwf str & hfrs, LTW, 2 rds 500-600 lbs.
 Also selling: 100 hedge posts, corner & line

SPECIAL BRED HEIFER, COW & BULL SALE FRIDAY, MARCH 3 • 6 PM

Early Listings

140 mx cows, RA, bred to angus & hereford bulls, complete dispersal
 60 mostly blk cows, 4-7yrs, bred to blk bulls, start calving end of April, comp vac program
 45 blk cows, 3-8 yrs, bred to blk bulls, Mar. calving, 2-3 yr old bulls, complete dispersal
 15 red cows, 2-8 yrs, bred to red bull, Mar. 1 calving
 22 blk & blkwf cows with big fall calves by side, 4-7 yrs old, blk bull turned in Dec. 1 for 60 days
 20 blk & blkwf cows, 4-7 yrs, bred to blk bulls, start calving Mar. 15
 1 yrly blk bull
 1 yrly ang/sim bull

"Proud to Serve Area Livestock Producers"
YOUR BUSINESS IS VERY MUCH APPRECIATED
 We are open on Sundays to receive your livestock.

Phone for information: Nancy Baker, Office 660-665-9804

Chuck Ambrosia...660-342-3530 Al Ashmead..... 660-216-8730
 Caleb Randolph....641-919-8539 Roger Jarman 660-651-3683
 Harry Durflinger... 660-341-1080 Doug Fleshman.....660-626-7148
 Mark Herbold.....515-720-8667 Daniel Smith 660-341-8396


Visit our website at www.KirksvilleLivestock.com

HAY FOR SALE: 80 bales 2nd cutting reeds canary and alfalfa mixed legumes. Average weight 1,400 lb. per bale. \$45 a bale. No rain. Nice green hay. Call anytime.
Ron Campbell
 641-777-6187 10

FOR SALE: 2003 Pontiac Montana, 7 passenger van, 2 tone silver, dark gray on bottom, gray interior, 152,000 miles, good rubber, runs great, \$1,550.
PH. 660-341-7263.

FOR SALE: 62 registered Angus 18-month old bulls. Feed efficiency tested. Ultrasounded. All weights and EPDs available. Will keep until June. *Werner Family Angus*, Diagonal, IA. WernerFamilyAngus.com
PH: 641-344-5059 11

FOR SALE: Firewood at RJ Lumber, \$15 a pickup load. 18989 160th St., Drakesville, IA 52552. **TF**
FOR SALE: 2015 Alfalfa hay, large squares & rounds. Mark Rogers
PH: 641-919-9447 08



Scotland County LIVESTOCK AUCTION
 P.O. Box 111 • Hwy 15 North • Memphis, MO
660-465-7213 • Jerry & Barb Blomme
660-341-0069 • Grant Blomme

SPECIAL CATTLE SALE

Sat., February 25th @ 12:30pm

Early listings
10 Black Cow/Calf Pairs 4-7 yrs. old Fancy
10 Mix Cow/Calf Pairs
6 Bred Cows P3
25 Black Strs & Hfrs 500 lbs.
20 Red Bulls & Hfrs 500 lbs.
13 Black Bulls & Hfrs 550 lbs.

WOODRUFF ANGUS BULL SALE

Mon., February 27th @ 6:30pm

Selling 40 Bulls, Yearlings and 2 year old Bulls & 10 Commercial Heifers

DAIRY SALE

Weds., March 1st @ 10:30am

Selling 4 herd dispersals including 50 Registered Holstein Herd, Jersey Herd, Local Herd and 110 herd dispersal. Also selling 1000 holstein steers & veals.

Market Report for Sat., February 18th: Steers: 458#-\$161, 543#-\$154; Bulls: 518#-\$143, 620#-\$130, 660#-\$137, 765#-\$126.50; Heifers: 392#-\$143, 455#-\$130, 545#-\$128, 564#-\$127, LB Cows: \$54 to \$67; Bulls: \$77 to \$92.50; Holstein Veals: \$85 to \$120.

www.ScotlandCountyLivestock.com

KEOSAUQUA SALE CO.

20511 Hwy. 1, Keosauqua, IA

Results from Feb. 18th

Butchers	\$48.00-51.25/cwt	Ewes	\$145.00-150.00/cwt
Sows	\$23.00-37.00/cwt	Kid goats 40-70#	\$62.50-91.00/cwt
Lambs under 80#	\$185.00-257.50/cwt	\$100.00-220.00/hd
Lambs over 110#	Cull nannies	\$65.00-205.00/hd

Pound cows low yielding \$41.00-56.00/cwt
 High yielding \$57.00-63.00/cwt

Pound bulls \$80.00-91.00/cwt

STR			HFRS		
Blk	320	194.00	Bwf	282	161.00
Blk	405	169.00	Bwf	380	150.00
Blk	526	157.00	Blk	445	141.00
Blk	589	148.75	Blk	530	148.00
Blk	614	145.25	Blk	583	129.00
Blk	673	134.00	Blk	665	123.50
Blk	708	130.25			

REGULAR SALE SAT FEB 25
 12 hd black gelv heifers, bred Angus bulls, due Mar.

Thank You For Your Business! For More Information Contact:
 Selling Times
 Hogs.....9:30 a.m.
 Sheep & Goats.....10:00 a.m.
 Outside Merch.....11:00 a.m.
 Cattle.....Noon
Keosauqua Sale Co.
319-293-3508
Bill Goehring
641-919-9365

www.keosauquasaleco.com

KALA'S HEAVENLY HOGS



Purebred Berkshire Show Hogs.
 Perfect for the summer fairs.
 Several to chose from.
 Taking orders now!

641-895-4543

FOR SALE: 50 acres crop ground, \$3,000 per acre or best offer.
PH. 641-664-1059, Ex. 2 08

FARMS FOR SALE: 1.) 100 acres, 4 lakes, timber, brush, great hunting and recreation. 2.) 131 acres, timber, food plots. 3.) 285 acres, 105 crop, 105 C.R.P.
Fountain Realty.
PH: 641-645-3410 09



GET YOUR FIELD READY!

Springfield, MO - Ag Lime
 Low-Mag • High Calcium

Call us for competitive pricing!

Cantril Feed & Grain

610 West North St. • Cantril, Iowa • 319-397-2215

Vinyl Windows

Replacement & New Construction

Window Features...
 Fusion Welded
 Triple Weather Strip
 Aluminum Reinforced

Sliding/Swinging Patio Doors

Gerkin
 "Quality products since 1932"
FREE ESTIMATES

Yoder Glass & Window
 641-722-3667
 19467 Driftwood Blvd.
 Bloomfield, IA 52537



Sidwell Seeds

Your complete seed headquarters!
seed corn
seed beans
small seed

- Selling Pfister

Sidwell Seeds
Queen City, MO
660-766-2737
660-216-6380

STEP UP YOUR YIELD
with Refuge Advanced powered by SmartStax!
Makes a significant difference in root protection and yield.






We are your local, full-service contractor, dedicated to meeting all of your home improvement and home building needs with integrity and quality craftsmanship.

- Metal Roofing
- FREE estimates!
- Crews available
- Call today!

WAGLER METALS
19049 Ice Ave., Bloomfield, IA
641-722-3692
M-F 7:30AM-5PM • Sat. 8-11:30AM





Sales & Service of Outdoor Power Equipment
641-664-2784 • 502 E. Franklin • Bloomfield, IA

Garages • Pole Barns Commercial Free Estimates

LAN-DOW BUILDINGS

Lancaster Lumber, Inc.

We Stock a Complete Line of Building Materials Complete Buildings or Packages Available

Toll Free 800-424-5071 Fax 660-457-3133

Hardware • Plumbing • Electrical • Paint
500 Green Street • Lancaster, MO 63548

ORDER NOW THRU APRIL 1ST FOR 10% DISCOUNT ON:

FRUIT TREES & STRAWBERRY PLANTS
Arrive around April 15th

HILLTOP GREENHOUSE Mon-Sat 8:00am-6:00pm
11049 HWY 2, MOULTON IA 641-929-3036
BETWEEN WEST GROVE & MOULTON

<p>Hillshire Farms smoked sausage 3- 1lb. pkgs \$3.89 each</p>	<p>Hillshire Farms beer brats 16 oz. \$1.29 each</p>	<p>lans (gluten free) fish filet 8 oz. \$1.69 each</p>	<p>Farmland hickory smoked sausage, 14 oz. \$1.19 each</p>	<p>Myrtle 1/2 oz. \$19.95 For aromatic, dietary or topical use, chest congestion, hormone imbalances, hypothyroidism, deodorizing, bronchitis, throat, lung, sinus, infections</p>
<p>Spring Hill hardwood smoked bacon 1 lb. pk. \$1.59 each</p>	<p>All Natural ground beef, 48 oz. \$4.79 each</p>	<p>Libby's green beans, 13 oz. 29¢ each OR 12 FOR \$3.00</p>	<p>Dole organic mango chunks, 16- 4 oz. cups \$1.99 a case</p>	<p>OREGANO Oils 1/2 oz. \$13.95 For aromatic, dietary or topical use: viral infections, arthritis, colds, respiratory, digestive issues. CAUTION: can cause extreme skin irritations.</p>
<p>Various brands ripe olives 5.75 oz. \$1.00 each</p>	<p>Hillshire Farms polska kielbasa, 11 lb. pk \$12.49</p>	<p>Sliced roast beef, approx. 2 lb. pks \$2.49 lb</p>	<p>Horizon organic colby & jack cheese bites, 1 oz. 25¢ each</p>	<p>Butterball buffalo style chicken breast, approx. 6 lb. \$4.49 each</p>
<p>Velveeta Original, 2 pk \$6.79 each</p>	<p>Kraft Miracle Whip, 1 gallon jug \$2.65 each</p>	<p>Hunts Ketchup 24 oz. \$1.05 each</p>	<p>Ceylon bulk organic black tea Use: aide in influenza, boost immune system, stress, brain alertness</p>	<p>Highway 2 DISCOUNT Groceries L.L.C. 19686 Hwy. 2, Bloomfield, IA Approx. 2 miles west of Bloomfield Mon. - Sat. 8:30am - 5:00pm VM: 641-664-1187</p>

BLOOMFIELD



LIVESTOCK MARKET

Wed., March 1stFat Cattle, Slaughter Cows & Bulls..... 9AM
 Fri., March 3rdHouglan Angus Sale..... 6PM
 Wed., March 8thFat Cattle, Slaughter Cows & Bulls..... 9AM
Special Feeder..... 11:30AM
 Wed., March 15thFat Cattle, Slaughter Cows & Bulls..... 9AM

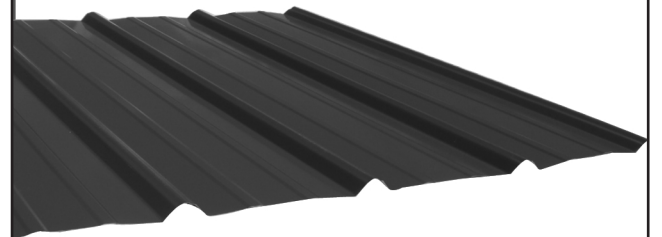
**SALE BARN OPEN UNTIL 9:00 PM
 EVERY TUESDAY TO RECEIVE LIVESTOCK**

Phil Schooley 641-664-3450
 Ron Schooley..... 641-777-0302
 Roman Schooley 515-450-3685

We appreciate your business!
 Tyler Schooley 641-208-5442
 Barn Phone 641-664-2435

HWY. 63 NORTH • BLOOMFIELD, IA

Premium Metal Roofing



- Buy Direct & Save
- Fast Service
- Cut-to-length
- Professional Contractors Available

A W Metal LLC
 Metal Roofing Headquarters

641-664-3990 • awmetal.net

ANGUS BULLS YEARLINGS & 2 YR. OLDS



Sired by Musgrave Reachout 530

- ★ CALVING EASE
- ★ GROWTH
- ★ THICK
- ★ GENTLE DISPOSITIONS

SELECT YOUR BULL NOW

DORAN BOLLMAN
 PULASKI, IOWA
 641-675-3467

SAVE UP TO 40% OFF FILTERS! Offer valid through February 20th-25th, 2017
 Call Ahead and talk to Alan or Tammy to Pre-Order Filters!

MEMPHIS AUTO & TRUCK PARTS
 300 S. Market • Memphis, MO • 660-465-2470

YODER'S INDIAN CREEK FURNITURE investing your tax return money in quality furniture. Will become heirloom treasures for future generations. Offering a large selection of dining room, living room, bedroom, office & children's furniture. Unique handmade clocks, rustic log furniture. Also offering quality pre-finished hardwood flooring. Located 4 miles North of Cantril on RT. V64, 22769 Rt. V64 Milton, Iowa. PH. 319-538-7332 TF

FOR SALE: Beagle puppies, 8 weeks old, had shots; Free black & tan coonhound. VM: 641-664-3609. 08

Equine Meeting

with



www.equi-lete.com

Hosted by Marlin Mast of Willow Creek Equine

When: March 7, 2017
 Meal at 6:30pm
 Meeting at 7:00pm

Where: Wagler Metals
 19049 Ice Ave, Bloomfield, IA

Featuring: Don Weaver
 Founder of Equi-lete®

8% Discount on Equi-lete Products!
 Meeting Day Only

FREE BBQ Chicken, Ice Cream, Beverages, Cookies and more!

Door Prizes

- High Step • Fortification
- High VAULTage • Performance
- Physique • Bones & Tissue
- Fertility EQ • Reproduction
- Triple Play • Champion

- ★ Healthy Growing Foals
- ★ Energy and Endurance
- ★ Excellent Breeding
- ★ Fit to Sell



If possible, reply to Marlin Mast at (641) 664-2769 by March 3rd if you plan to attend!



Bring your plans in for a **FREE ESTIMATE**

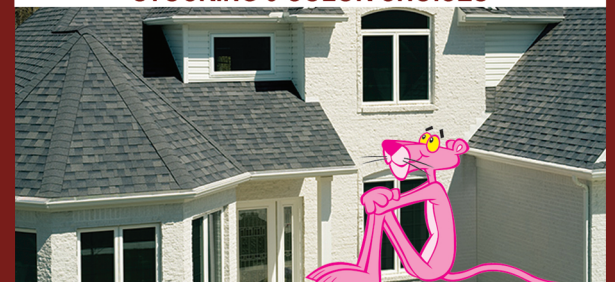


Trusses **Engineered and Designed to Your Specs**

FOAMBOARD • SHINGLES • INSULATION

Count on us for quality building supplies. Good results begin with a solid foundation, and that requires the right materials for the job. Trust us for a comprehensive selection of professional grade tools, hardware, lumber and supplies, plus our selection and service with competitive prices.

STOCKING 9 COLOR CHOICES



17893 212th Street • Bloomfield, IA 52537
 641-722-3605 • Mon.-Fri. 7 AM to 5 PM