



Elkhart Lake Depot Dispatch

U.S. Postage
PRESORTED STANDARD
Elkhart Lake, WI 53020
Permit No. 14
Postal Patron
Carrier Route
Box Section

www.depotdispatch.com

December 2015

www.depotdispatch.com

www.elkhartlake.com

FREE

Published by the Elkhart Lake Chamber of Commerce to support and promote its members and provide a service to the community

ELGHS unveils new projects

By Dr. Ann Buechel Haack

ELG School District Administrator

On Sunday, October 25, approximately 200 parents, students, community members, and area business people attended the District's Greenhouse Ribbon Cutting Ceremony and Open House.

The purpose of the afternoon was to showcase all the positive advancements and expanded opportunities that have been developed for our students at ELGS.

Let me provide a brief history:

While we've always provided a very sound educational experience at ELGS and our graduates have done well, our focus during these recent years has been on how we could provide more for our students to even better prepare them for life after high school—to be ready for whatever their post-h.s. plans may be—college, technical school, joining the work force, military, etc. They need to leave school ready for college and/or career. For this we put together a multi-phased approach which included the following:

Step one: We expanded college credit offerings available on-site at ELGHS from eight credits to over 60 currently. Credits are available in all core academic and several elective areas, including physical education and the career/technical education (CTE). In addition, students can now also earn certifications in various CTE areas. Many students are graduating from ELG with over 20 credits already earned for college, and several students have over 30. This is giving our students a huge advantage as they are starting as second semester freshmen or possibly even as sophomores.

Step 2: Next, we began to further address the needs of those students who did not plan to go to a four-year college as this



The Elkhart Lake-Glenbeulah community was invited to an open house in late October to show off the progress of the new greenhouse addition, along with other advancements at the high school. A ribbon was cut for the addition above, while demonstrations were offered in the greenhouse, technology education and culinary arts kitchen.

Les Tension photos

is not the plan for all our students—nor should it be. There are so many other options available for our students to explore and pursue and it was our responsibility as educators to prepare our students for these areas also.

Under Mrs. Roehl's guidance and extreme persistence, ELGHS has developed a very robust Youth Apprenticeship program, of which we usually have

Turn to **OPEN HOUSE**/page 6



Osthoff offers culinary cooking classes in December

The kitchen becomes a hub of holiday merry making during the holiday season so why not shine like a celebrity chef this year. The L'ecole de la Maison, the culinary cooking school at the Osthoff Resort offers a wide variety of cooking classes that will help you prepare sumptuous meals and desserts for this holiday season. The L'ecole de la Maison uses the finest local and seasonal organic foods along with premium imports to prepare exquisite menu items that will be the star of any holiday

gathering. The culinary school is offering the following classes:

Dec. 4 La Creperie—a weekend course, \$125

Dec. 11 Macarons and Truffles—a weekend course, \$125

Dec. 12 Burgundy Cuisine—a one-day course, \$185

The classes begin at 9 a.m. with the exception of Fridays—the courses start at 2 p.m. The courses run anywhere from two to five hours and are designed to teach

and inspire tantalizing European cuisine from start to finish. “We love offering Culinary classes at The Osthoff,” stated General Manager Lola Roeh. “It gives our guests the opportunity to have a different level of luxury travel and to learn something new!”

The school offers a gorgeous custom kitchen with all of the tools necessary to prepare great dishes. Culinary wantabees and experienced culinary enthusiasts will

gain tips and tricks in a helpful teaching environment that guides students from preparation to completion.

Join us at L'ecole de la Maison at The Osthoff Resort. For more information or to register for courses, please call (877) 804-8630 or email cookingschool@osthoff.com.

Van Horn group makes donations to causes

The Van Horn Automotive Group donated \$5,000 to the Rawhide Boys Ranch located in New London. These funds were put towards a vehicle for the Rawhide Boys Ranch for transportation purposes and events. Rawhide Boys Ranch is a faith-based recognized charity offering programs for at risk youth in Wisconsin. They offer residential care and outpatient mental health services dedicated to helping at-risk youth. Rawhide has redirected the lives of thousands of youth that have lived either on their residential campus or have received services through their numerous outpatient counseling clinics.

On Oct. 29, Van Horn Chrysler Dodge Jeep Ram helped Horizon Elementary raise \$790 at a “Drive for the Kids” fun-

draising event held during the school's parent/student Halloween party. Participants earned a \$10 contribution to the school from the Chrysler brand by taking a brief test drive in a 2015 model Town & Country, Chrysler 200, or Chrysler 300 vehicle during the event.

Since its inception in 1993, the Chrysler brand's “Drive for the Kids” program has contributed more than \$6 million directly to local schools. The program has helped parents and educators in communities across the nation raise needed funds for everything from playgrounds and field trips, to reading programs and new computers. For more information, visit www.drive4kids.com.



INTRODUCING A NEW MENU

Lola's Restaurant is happy to announce the arrival of our new seasonal menu beginning November 27. Enjoy new culinary creations infused with local and homegrown ingredients while taking in breathtaking panoramic views of Elkhart Lake.

New Features...

Salmon Wellington, Pepper Seared Scallops

To view a complete menu, visit our website. Reservations encouraged.



ELKHART LAKE • 920.876.5840 • WWW.LOLASONTHELAKE.COM





NEUMANN
Plumbing & HVAC
Residential, Commercial,
Industrial & Remodeling

Residential Homes • Apartments • Hotels • Multi-Unit
Buildings • Restaurants • Assisted Living Facilities

**Call Neumann for ALL Your
Plumbing and HVAC Needs**

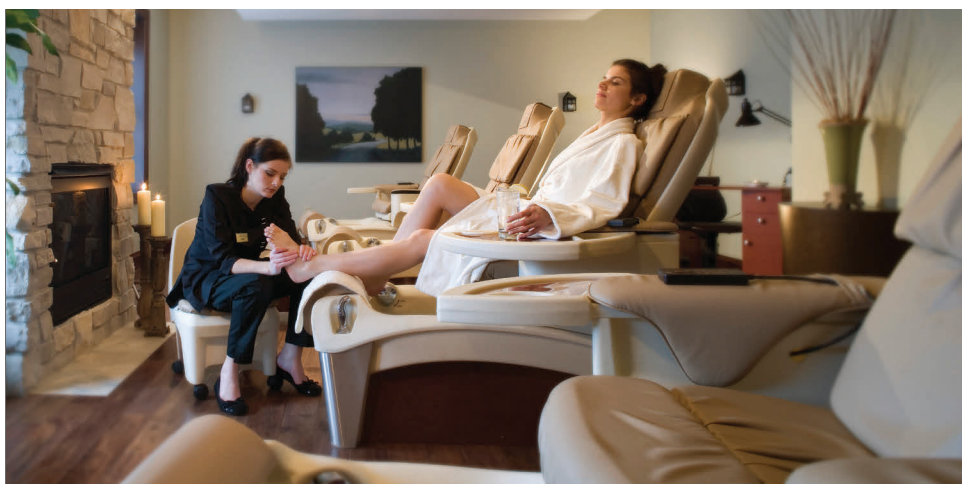
24 HOUR SERVICE
920-565-3345
www.neumannplumbing.com



turn to the experts

1114 Millersville Ave
Howards Grove

OVER 50 YEARS OF QUALITY WORKMANSHIP



Look and Feel Great for the Holidays

with **50% off**

a second service, Monday-Thursday (excluding holidays),
through December 31, 2015.

While you shop for the perfect gift in the Boutique,
join us for a SPA-liday event on December 10.
Mini facials, makeovers, chair and hand massages, and more!
Remember, Aspira gift cards make great holiday presents!
For more Spa-liday information or to make appointments,
call 920.876.5843.




101 Osthoff Avenue • Elkhart Lake • www.aspiraspa.com



Give Your Family *Time Together* at The Osthoff Resort.

Own a beautiful one-, two- or three-bedroom, fully furnished condominium on Elkhart Lake. A great vacation home with rental income and no work or worry for you! Prices range from \$129,000 to \$575,000.

It's a great time to buy!

For ownership information, contact:

Kay Kulow, Broker

kay@osthoff.com

920.876.5854

800.876.3399, ext. 854



OSTHOFF RESORT REALTY, LLC

www.osthoffrealty.com

Sharing our Journeys

By Carol Edler Baumann



Oh, Christmas Tree, Oh, Christmas Tree!

A couple of months ago, I wrote an article entitled "Seasons Come—and Seasons Go" which was devoted to the idea not only of how seasons change from month to month, but also of how our own attitudes and activities, as well as our clothing also change along with those seasons of the year. Thus, January passes from serious (and some not so serious) New Year's resolutions to a February of heart-throbbing valentines loaded with the passions of unrequited love. March brings the harbingers of an early spring (or the last gasps of winter) and April gives in to the latent foolishness that tends to be released on April Fools' day. And so on. May of course, sports May flowers, and the summer months of June through August open the country highways, rural parks and nature preserves to those inclined to revel in the arms of Mother Nature. Finally, those of us blessed with more than one season per year can enjoy the brilliant colors of the autumn months of September and October, while November lingers just off-stage before introducing the super-season splendors of a December Christmas—and the Christmas tree!

The Christmas tree, you might think, is one thing that just doesn't change. From the sentimental ode of Joyce Kilmer ("I think that I shall never see a poem lovely as a tree.") to the religious implications of the cross as the tree on which Jesus finally died, trees have historically played several different and unique roles in their relationships to people. For most of us today, however, at least one of the most important roles played by trees is that played by the Christmas tree. Ask any kid (or any adult, for that matter) what are the things about Christmas that they most remember from their childhood or that they think of when they think of Christmas—and you can be 95 percent sure that "the Christmas tree" will be at least one of five of the items mentioned.

But, you may ask, which Christmas tree are they talking about? After all, even today in the computer age of automatic print-outs of pre-planned Christmas trees on stationary, napkins, mail envelopes, "all-item" sales, Christmas parades, special TV and film programs, family and friends presents, and home decorations, the Christmas tree stands out as an essential and irreplaceable part of our Christmas celebrations. Now, it's quite true (as the purists among us might insist) that there are myriads of types and kinds of Christmas trees, most of which have special places in our hearts and memories. My own Christmas tree favorite was probably the tree that suddenly appeared in our living room two or three days before Christ-

mas when my brother and I returned home after a trip downtown. We often complained that we should really stay at home to catch the "Old Fellow" when making his rounds with his sleigh and reindeer, but our parents always managed to persuade us that if he did come while we were gone, he would certainly still be there when we returned. Of course, he was gone, but the beauty and magic of the tree he left behind more than compensated for his absence.

But, you might argue, what are all those "types and kinds" of Christmas trees that somehow emerge on or before Christmas Day? Most of us are familiar with the spruce, cedar or pine examples of "real" trees that not only bring with them their own special smells, but also the inevitable fallen needles that permeate our floors and carpets. To counter or compensate for the onslaught of dead branches and dried-out needles, many tree lovers have turned to artificial trees of aluminum to provide the essence of "our Christmas tree" without the mess of the needles. Other substitutes include painted branches without needles, and the use of sprays to preserve the needles, which insist on clinging to the tree even when the beauty that they once exhibited has faded or disappeared. Elaborate artificial Christmas scenes are also often erected in public places where onlookers can enjoy the scenery without the labor of erecting it or cleaning up after it when it starts to fall apart.

Despite the work, however, the refrain of "Oh, Christmas tree, oh, Christmas tree," will remain as a Christmas tree anthem for many Christmas tree enthusiasts long after the season is past and our "real" trees have left the scene.

And even when we embrace the Christmas tree as one of the true symbols of Christmas, we may also feel a kinship with other trees, the unadorned trees of poetry which reaffirm our love for them and for the beauty and comfort they provide, as in:

Trees

By Joyce Kilmer

I think that I shall never see
A poem lovely as a tree.
A tree whose hungry mouth is prest
Against the earth's sweet flowing
breast;
A tree that looks at God all day,
And lifts her leafy arms to pray;
A tree that may in Summer wear
A nest of robins in her hair;
Upon whose bosom snow has lain;
Who intimately lives with rain.
Poems are made by fools like me,
But only God can make a tree.

Elkhart Lake tree lighting is Nov. 28

Elkhart Lake's Village Square Train Depot will literally brighten up on Saturday, Nov. 28.

That's the date for the Elkhart Lake Chamber of Commerce's annual Tree Lighting Ceremony, set for 6:45 p.m.

Santa Claus is expected to arrive by Elkhart Lake Fire Department escort at 6:30 p.m. for a visit with the children of the community.

The Elkhart Lake-Glenbeulah High School Chorus will perform a few selections. In addition, the High School Jazz

Band and Kohler Madrigal Singers will provide musical entertainment.

Visitors will be able to enjoy cookies and other treats to help keep them warm. Hot cider or hot chocolate with candy canes and marshmallows will be available as visitors sit around the warming fires tended by the Elkhart Lake firefighters.

Elkhart Lake restaurants will be open past the lighting ceremony.

For more information, call 877-355-3554 or 876-2922. You can also email chamber@elkhartlake.com.

DEPOT DISPATCH

December 2015 - No. 350

Published 12 times yearly
by the Elkhart Lake Area
Chamber of Commerce,
to support and promote its members
and provide a service to the community

© 2015 Depot Dispatch
All Rights Reserved

Publisher, **Pam Mathes and the
Delta Publications staff**

Executive Director, **Kari Wimmer**

Membership Representatives,
Ron Nielsen, Jaelyn Stuart,

Rachel Montaba and Julie Sebranek

Columnists, **Carol Baumann;**

Marcia Schamberger; Dr. Nic Giebler

www.depotdispatch.com

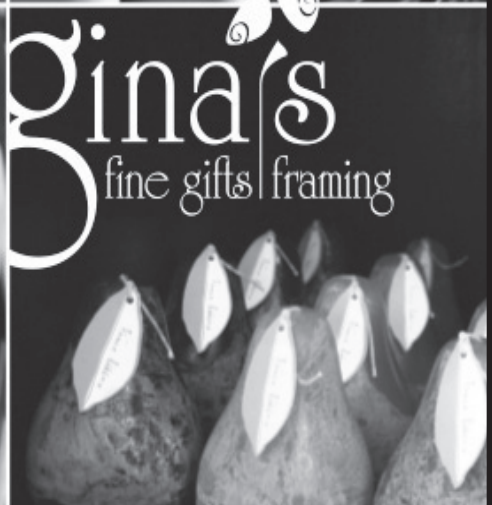
Accounting, **Mia McMillian**
Distribution, **Rachel Risse
and Delta Publications**
Contributing Sponsors
**Wisconsin Bank & Trust;
Friends of the Library
and Sohn Mfg.**

Subscriptions
**\$15.00/year (Third Class)
\$20.00/year (First Class)**

Address correspondence or questions to the
DEPOT DISPATCH, P.O. Box 294, Elkhart Lake, WI
53020, or call (920-876-2922) between
9 a.m. and 4 p.m. For advertising questions, please call
and ask for Pam Mathes (920-894-2828).
E-mail address: depotdispatch@elkhartlake.com

The Depot Dispatch accepts non-member advertisements. It encourages and welcomes story contributions, press releases and event promotions from all members. Materials submitted for consideration will be reviewed by the editor, who reserves the right to adapt, as necessary. Submitted materials will not be returned unless specifically requested at the time of submission and accompanied by a stamped, self-addressed envelope.

www.elkhartlake.com



44 GOTTFRIED STREET
ELKHART LAKE
WISCONSIN 53020
920 876 2874

www.GinasCustomFraming.com
shop@GinasCustomFraming.com

Professional & Affordable
Custom Framing

Perfect Gifts
for Any Occasion

Read the Depot Dispatch online 24/7!
Go to... www.depotdispatch.com



Wine was the theme for an educational tour this summer of the Lodi, California area. Elkhart Lake Sommelier Jaclyn Stuart took part in the tour as part of the ongoing education she holds out for herself to enhance her wine stewarding profession. The vine behind the glass is over 120 years old. Lodi has lots of remarkable 100-plus-year-old vines like the one pictured here.



The Lodi wine and visitor center offers tastings and seminars.

Stuart adds Lodi insights to her sommelier credits

By Mike Mathes
for the Depot Dispatch

In the French language, term sommelier is reserved for a professional wine steward—a trained, knowledgeable person who helps in selecting wines and wine/food pairings.

Proprietor Jaclyn Stuart, the resident sommelier at Vintage-Elkhart Lake, takes her role as a wine steward seriously. That means keeping up her education and certification.

Stuart recently took part in a four-day whirlwind of the Lodi, California vineyard and winemaking region for that purpose. What she brought back was a wealth of information, and some great new wines to share with her customers.

Lodi is located due east of San Francisco on the southern tip of California's wine country.

"Everyone knows about Napa and Sonoma," Stuart said. "But Lodi supplies a lot of grapes to the wineries in those regions that people don't know about."

Vineyards and wineries

As part of the tour, the Elkhart Lake sommelier visited both vineyards and wineries, getting the opportunity to sample some of the Lodi varieties.

"To me the most exciting part of the trip is getting to speak to the people behind the wines, and get a feeling for their passion about the wine they make. I like to know why they are doing what they are doing, because winemaking is not easy. It's a labor of love," Stuart said.

For Stuart, the knowledge of those passions, and the connections to the vineyards help improve the level of service she can offer to her clientele at Vintage-Elkhart Lake.

"It truly helps me when speaking to my customers about the wines I have here at Vintage," Stuart said. "It's one of the things that sets me apart, I personally select every wine that comes into this shop and vouch for it."

Stuart said the connections also give her a better sense of appropriate food pairings for the varieties of wines.

"It helps me be a more well-rounded 'somm,'" she said.

"The most important thing is that it helps the customer know that they are taking home a bottle of wine that isn't going to disappoint them when they get home and open it. They know what to expect," she added.

For the general public, it's easy to get duped by the way a label or a bottle speaks to them in a grocery store. "I always tell people that labels can lie....it's marketing, and people get paid a lot to create those labels."

Stuart smiled, noting that it's almost impossible to sort out what wines a person will like just by looking at their packaging.

"You can't judge a book by its cover, and you shouldn't judge a wine by its label either," Stuart added.

Softness in the reds

The Lodi area has traditionally had a reputation of producing wines with a high alcohol content and a really "jammy, in-your-face style," according to Stuart.

This reverts back to an older style of wine that was popularized a while ago.

Today's Lodi offerings include reds without harsh or overwhelming tannins. Thus, the cabernet and zinfandels from the Lodi area tend to have more of a softness.

"I found quite a bit of white wine on my journey, and some real off-the-beaten path wines," she said.

In the vineyards, Stuart noted the presence of traditional vines, with Portuguese, Spanish and ancient French grapes taking on a presence in more recent plantings.

A particular interesting grape that Stuart encountered on the trip was a grenache, a red Spanish variety that is growing in popularity.

Diverse travels

A certified sommelier for the past nine years, Stuart opened Vintage Elkhart Lake in 2012. Her Lodi trip represents only one of the many wine destinations Stuart has visited to perfect her trade.

She has been to the Napa Valley several times, and previously served as a judge for wine competitions there. Her travels

Turn to **VINTAGE**/page 5



SUN
GRAPHICS
Design • Print • Mail

Design • Print • Mail

Terry & Mary Kay Evans, Owners 2829 Eastern Avenue, Plymouth
www.sungraphicsprinting.com E-mail sungraphics@excel.net

PHONE 920-892-2331 FAX 920-892-2390

ORGANIZATIONAL PRINTING

newsletters • posters • calendars
raffle tickets • letterhead • envelopes

ADVERTISING NEEDS

- brochures
- catalogs
- postcards
- flyers Check out our newspaper insert specials

WE CAN HANDLE ALL YOUR SMALL OR LARGE BUSINESS NEEDS

business cards • envelopes • letterhead
invoices • checks • computer forms
tags • carbonless forms

Visit our State of the Art COPY CENTER

- high speed full color and black and white
- blueprint copies
- do-it-yourself copies (saves you money)

COMPLETE MAILING SERVICES

mailing list management • inkjet addresses
business class & first class mailing



Jaclyn Stuart of Vintage Elkhart Lake was one of a group of wine professionals that toured Lodi, California area wineries and vineyards to help improve their knowledge base. Most were from California, but some came from Minnesota, Illinois, Hawaii and Nevada.

Vintage

continued from page 4

have also taken her to the wine country in France and Germany twice, and to Santa Barbara and Sonoma in California. Stuart plans to host one of her ever-popular wine academies in 2016 to tout the wines of the Lodi area. The next wine academy on the docket at Vintage is December 16, when the sommelier plans to talk about sparkling wines for the holidays. Reservations are required for all Vintage Wine Academy events. Vintage Elkhart Lake is also involved in two other holiday seasonal events. On Saturday, Nov. 28, Vintage will be one of three stops for the evening Holiday

Wine Tasting event. A total of 40 different wines will be offered at three locations, including Vintage, Paddock Club and Lake Street Cafe. This marks the sixth year for the fundraising event. On Saturday, Dec. 5 the Vintage Elkhart Lake holiday open house will feature wine tasting, sampling and discounts throughout the store. Vintage Elkhart Lake offers a wide selection of wines and fine foods at its location at 100 East Rhine Street. To learn more about Vintage Elkhart Lake's upcoming events, visit www.VintageElkhartLake.com.



THANK YOU

Thank you to Gary Lisowe Family for the generous donation of the tree for downtown Elkhart Lake that will be used for the Tree Lighting Ceremony.

Also thank you to the Village Crew, Members of the Elkhart Lake Fire Department & Jeff Rudnick for transporting and putting up the tree.

Tree Lighting Ceremony
November 28 • 6:45pm



DISCOVER *the difference*

Happy Holidays from the Residents and Staff...

at The Waterford at Plymouth a warm and caring relaxed lifestyle. Our Assisted Living community offers thoughtfully designed apartment homes to world-class services. Our caring staff is available 24 hours.

Make the move today before the snow flies!
Call or visit us online for more information.

THE WATERFORD AT PLYMOUTH

2586 Valley Road
Plymouth, WI 53073
tel 920-892-4635

www.waterfordatplymouth.com



Fac ID#: 0015204

SHOPPING MADE EASY!
Gift Certificates Available for the following services & products:
Complete Hair & Nail Services
Pedicures • Ear Piercing • Tanning
Full Body Waxing • Ear Candles



Full Service Salon for the Entire Family
920-627-HAIR (4247) Mon.-Thurs. 9am-7pm
435 E. Mill St. • Plymouth Fri. 9am-4pm Sat. 8am-Noon

Call or book your appointments online at: www.klipsntips.com

PLEASANT VIEW REALTY

These Days, Serious Buyers Are Looking at Homes Online 24/7, Even Through the Holidays. If the Right Home Appears, They're Ready to Move. Give Todd a Call When You're Ready and the Time is Right!

ANY TIME OF YEAR IS A GOOD TIME TO BUY OR SELL!

Todd Smith REALTOR®
Proudly Serving the Community He Calls Home
(920) 838-1770
Todd@PleasantViewRealty.com
www.PleasantViewRealty.com

PLEASANT VIEW REALTY

View ALL Area Listings, Daily Updates & Detailed Information at:
www.PleasantViewRealty.com
Kiel 894.7713 • Plymouth 892.7711
327 Fremont St, Kiel • N6050 Pleasant View Rd, Plymouth



BY APPOINTMENT
W4507 State Road 32, Elkhart Lake
4 bedrooms, 2 full and 2 half baths, finished lower level, 4.54 acres. \$328,000



BY APPOINTMENT
491 Paulina Place, Elkhart Lake
3 bedrooms, 3 baths, gas fireplace, finished walk-out lower level. \$365,500



BY APPOINTMENT
N207 Plymouth Trail, New Holstein
4 bedrooms, 3.5 baths, 75 x 60 horse barn, 14.65 acres. \$354,900



BY APPOINTMENT
N345 Plymouth Trail, New Holstein
5 bedrooms, 2 full and 2 half baths, 36 x 50 shop + 1.5 detached garage, 15.01 acres. \$375,000



Merry Christmas and Happy New Year

| | | | | | | | | |
|----------------------|-----------------------|----------------------|------------------------|-----------------------|------------------------|------------------------|----------------------|------------------------------|
| MATT 207-5450 | GAIL 946-2693 | JIM 946-2854 | KARI 980-0431 | LINDA 286-1949 | JEANNE 629-0866 | CONNIE 918-0698 | TY 918-0615 | SHARON 286-1944 |
| MARK 207-4768 | JANET 286-1968 | TODD 838-1770 | DEBBIE 627-4750 | WAYNE 286-0463 | ANN 207-2039 | JOHN 980-2539 | CLEO 331-3567 | BRIDGETT 262-224-7553 |

Open house

continued from page 1

the highest percentage of students from any of the school systems in Sheboygan County. Next, attention was directed to improving/enhancing our CTE pathways. It is on these areas which we are focused at our recent Open House. With administrative support, the CTE faculty was encouraged to put together plans of how they would like to update their respective areas to better serve their students. Being energetic and enthusiastic, the ideas were soon forthcoming for ideas for curriculum modification, program enhancements, equipment upgrades, and facility renovations. Our motto was "Let's not focus on what we're not doing, let's figure out how we can do it."

Due to this can-do attitude, and with board and community support, we have made great strides in being able to provide top quality educational experiences, facilities, and equipment in our CTE areas of Culinary Arts (Family and Consumer Science—no longer Home Ec.), technical ed./drafting/robotics, and agri-science.

The first renovations occurred with the installation of a commercial restaurant-style kitchen for use by the culinary arts students which provided for them simulated real-work experience. In addition, curriculum enhancements and additions were made with the incorporation of ServSafe, ProStart, and Customer Service certifications which students can earn.

In the Technical Education/Drafting/Robotics areas, Mr. John Ostermann planned and prepared for many upgrades and additions to the equipment and technology. These included the installation of a CNC router, laser engraver, 3-D printer, and robotics. The drafting lab was completely updated so students had the capability of being involved in Computer-Assisted Drafting (CAD). The newest addition has been the purchase of a drone—new technology on which students can be trained to stay current with technology advancements. With the new equipment came new curricula to maximize the students' learning and opportunities to grow in their technical education skills.

The greenhouse construction was instrumental in providing the environment conducive to moving not only the agri-science program forward, but also making an impact on so many other curricular areas not only in the high school – but districtwide. Students in JK-grade 12 will benefit and even the 3-year old day care students have already visited and joined in the greenhouse activities. Mrs. Michelle Arbuckle and Mrs. Jamie Beyer were instrumental in researching and planning for this project—both the actual greenhouse building and the student programming and course curriculum which would then follow.

To look at the greenhouse, one can feel pride in seeing what the District was able to build. I still am amazed at the sequence of events that occurred for this to become a reality. It has reinforced in me, that when you have support, anything can be possible.

This fantastic state-of-the art greenhouse facility was not the original plan. Until last year, we had two hoop-style greenhouses in that area, and while they had been effective in meeting the needs of the program for many years, they were long past their prime and no longer worked properly.

Mary Hayssen started the momentum for replacing the greenhouses when she attended the spring FFA plant sale and saw the condition of the greenhouses being used at that time. It wasn't long before the District received a \$15,000 donation from the Hayssen Foundation to start the fundraising for a replacement. Soon after the EL Lions and the ELG Education Foundation also got on board, providing additional financial assistance—so it meant a new, larger hoop-style greenhouse was in our future—or that was the original plan.

Never having facilitated the building of a greenhouse of any sort, or to be honest, never having even been successful growing a house plant, I knew we'd need help with this project. Steve Schmitt was called as he had been helpful with guiding our District through the roofing project. It was

also known he had greenhouse experience so he was the logical choice to tap into for assistance.

This was the best move ELGS could have made. Steve met with school staff to explore not only what we felt was needed, but all the possibilities. As Steve explained to us, "This was our opportunity to move forward." And once he lit the fire, the ideas flowed, a new concept materialized, and a visionary design was created. However, with the new design came a much larger price tag. It was "Good bye hoop greenhouse; Hello new attached, expanded-design greenhouse" on the condition that funds could be raised to offset the expense as there were not sufficient funds in the general budget to cover a project of this scale.

Would this be doable? Steve was confident, I became convinced and the Board was supportive with the caveat that construction could proceed only when and if we met our goal of \$222,500 for the project.

Amazingly this goal was not only reached, but surpassed by over \$10,000 within approximately four months of when the "official" fundraising campaign was started. And the beauty of this was the support came from such a variety of sources—individuals, families, businesses, foundations, and community organizations all contributed. And as a re-

sult, ELGS now has a new state-of-the art, 1,625 sq. ft. greenhouse facility complete with irrigation, aquaponics, in-floor heat, and much more. This facility has already opened up curricular avenues into other areas and all because of the outpouring of support from generous donors.

There are so many to thank. These changes are actually the accomplishments of all the residents of the ELG School District, as it was only through the additional revenue flexibility provided through the passage of the last two referendums that the District was able to undertake and assist with the funding of the enhancements to all our CTE programs. So thank you all. As a district, we're all in this together.

Often people have the very common, but totally inaccurate perception, that when they hear of a small school district such as ELGS they equate small to mean limited. That could not be further from the truth. I know those who have visited our District and/or took the tour during our Open House will agree. We may be a small district, but we're offering big opportunities for our students.

In closing, thank you for your support of the ELGS school system, especially our CTE program areas, and most importantly, our students. If you were unable to attend the Open House/Ribbon Cutting, please call and/or stop in. We'd love to arrange a tour for you!



Join us
for an open house!
Wednesday, Dec. 9
1:30 - 3:30 p.m.
Cedar Bay at Elkhart Lake

Enjoy a delightful afternoon of
Christmas tea featuring our residents'
favorite Christmas cookies!

Tours available, call 920.876.4050 for details.
Ask about our respite apartment now open!



Cedar Bay
assisted living at cedar landing
a division of Cedar Community

101 Cedar Lane
Elkhart Lake, WI 53020
920.876.4050
www.cedarlanding.org





Men's & Women's
Apparel & Shoes

Perfect Style
for your Active Life



Elkhart Lake-Glenbeulah High School Student Gary Higgins demonstrates a 3D Printer by printing a bubble gumball machine at the open house. Les Tension photos



You will like our haircuts and love our price!

Cutting With Style

Dyanna Muldoon and her father Willie Mueller provide haircuts, styles, colors and perms for men and women.

Mueller's Barber & Styling

325 Fremont St. • Kiel • 894-3939

BUSINESS HOURS: Tues.-Fri. 8 a.m. - 5:30 p.m. • Sat. 8 a.m. - Noon



Technology education teacher Mr. Ostermann explaining the school's drone during the open house and greenhouse dedication.

Cedar Bay at Cedar Landing hosts Christmas tea open house

It's Christmastime and that means cookies! The Cedar Bay Assisted Living culinary team will be whipping up batches of their residents' Top Five favorite Christmas cookies to share with visitors at a special Christmas Tea Open House Wednesday, Dec. 9 from 1:30-3:30 p.m. at 101 Cedar Lane on the Cedar Landing campus in Elkhart Lake.

The event will include tours of the Cedar Landing clubhouse and assisted living one- and two-bedroom apartments. Visitors can also learn about the new respite apartment now open for short-term visits.

"Those caring for a loved one can now say, 'Yes!' to vacations or family trips, knowing an older loved one will be in good hands," said Cedar Landing director Kathy Simpson, RN. "Respite care also is a godsend for those facing their own medical issue concerned about what would happen to the person they care for while they recover," Simpson said.

The event is free and open to all. Those unable to attend but interested in a private tour are invited to call Kathy at 920.876.4050 for an appointment.

DECEMBER BARGAINS of the MONTH

DURACELL SAVE 20% or more YOUR CHOICE **9.99**

16-Pk. AA or AAA Coppertop Alkaline Batteries Duracell Power Preserve™ technology allows the batteries to stay fresh in the package for 10 years. E 137 963, 962 B12 While supplies last.

12-Pk. AA or AAA Quantum Alkaline Batteries Hi-Density Core™ technology provides unbeatable long-lasting power. E 137 581, 582 B12 While supplies last.

GE SAVE 35% or more **13.99**

2-Pk., 90W Halogen Floodlights 1,700 lumens of light, 1.4 years rated life. Perfect for indoor or outdoor use. E 150 911 B3 While supplies last.

DEWALT SAVE 35% or more **29.99**

34-Pc. Socket Set Includes 72-tooth, 3/8-in. drive ratchet, 1/4-in., 3/8-in. drive, 6-point sockets in standard and metric sizes. Shatter-resistant case. Lifetime warranty. R 202 751 2 While supplies last. 120, 121

Lulloff Hardware

Kiel • 894-3236

www.truevalue.com/lulloff
OPEN: Mon.-Fri. 6-6 • Sat. 7-5 • Sun. 9-2



BEHIND EVERY PROJECT IS A *True Value*

Visit Rhine Auto, Inc. for your WINTER TIRES

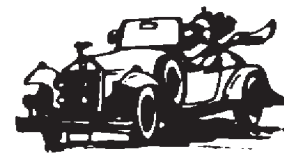
Huge selection of used tires sized 14" - 20"

Over 2000 tires in-stock!

Buying scrap vehicles.

Call for current price. Must be delivered.

Buying batteries. \$5 each



W5695 Garton Rd, Plymouth • 876-2779 • Mon - Fri 7:30 - 5:00
www.rhineauto.com

OPEN 24 HOURS

Full Service Laundromat

- Fluff & Fold
- Commercial Laundry
- Ironing

Imperial Cleaners Dry Cleaning Drop Off & Pick Up Services

Sippel's Lost Sock Laundromat
510B East Rhine Street
Elkhart Lake • 920-946-1750

Maid-Rite Cleaning Service LLC
Elkhart Lake • 920-946-1750

RESIDENTIAL COMMERCIAL

Clean-ups, Move Outs & More!

Bring this ad in & receive a free wine stopper with any purchase over \$15! (while supplies last)

HONEY, DON'T FORGET TO PICK UP SOME WINE, BEER & SNACKS FROM VINTAGE!!

Vintage ELKHART LAKE

Wine Shop & Fine Foods
100 E Rhine St • Elkhart Lake
www.VintageElkhartLake.com • (920)876-4846
OPEN YEAR-ROUND TUESDAY-SUNDAY!
Follow us on Facebook for Events & More!

Support your local Elkhart Lake businesses! Shop local this holiday season!

Holiday High Tea tradition initiated

By Mike Mathes

for the Depot Dispatch

As the holiday season unfolds, two Elkhart Lake businesses are pooling their efforts to start a new seasonal tradition.

The Jay Lee Inn Bed & Breakfast and Sain Rx will jointly host the inaugural Holiday High Tea event scheduled for seven December dates in Elkhart Lake.

The site for the Holiday High Tea will be the Victorian House that hosts the bed and breakfast at 444 S. Lake Street.

"For many years, people have come to Jay Lee Inn and asked if we do tea," proprietor Monica Lettow said. "We have always disappointed them by telling them no, that we are just a bed and breakfast."

This season, things will be different though, as Monica opens the first floor dining room and adjacent spaces to the Holiday High Tea.

"The whole affair will have a Victorian feel, with an elegant backdrop," she said.

A memorable tradition

Monica said the conversation grew when she was discussing the opportunity with Dr. Grace Hameister of Sain Rx. The two saw an opportunity to mesh the elegance of the Jay Lee Inn and the upscale, health conscious menu choices offered by Sain Rx.

"We are excited to begin what should be a memorable tradition for friends and families to come and experience this holiday event in a Victorian and classic setting, with an upscale menu, one that is not only decadent in its offerings, but health-conscious as well," Dr. Grace said.

"We want to offer people huge flavor without having to be concerned about huge waistlines at the end of the holiday season."

The event will take on the classic perspective of a high tea, but the menu choices will be health-conscious and indulgent, but include gluten-free offerings.

Dr. Grace said the apéritifs would come in three courses, a salad, a savory and a sweet course, all paired nicely with the teas being offered.

"We want to create a visual odyssey for the guests as well as a great flavor experience," she added.

The menu includes a salad nestled in an in-house made parmesan tulle cup, gluten free, organic aperitif sandwiches with free-range ingredients, mini pumpkin and ginger-spiced donuts, and mini

cheese cakes that use carrot cake crusts in place of the traditional graham cracker bottoms—again gluten free.

"Monica and the Jay Lee Inn are exceptional when it comes to every little detail on the tea service and place settings. This will be a great experience for those who attend," Dr. Grace noted.

"It will be a chance for guests to experience the traditions and decadence of the holidays without having to compromise their health or their health goals."

Dates offered

The Holiday High Tea is being offered on six different dates, starting December 6 and 7. Other dates are December 10-13, then, finally close to Christmas on Dec. 22.

Reservations are highly recommended as seating is limited, and only one seating will take place each day from 3-5 p.m.

To make reservations, guests or groups may contact the Jay Lee Inn at 920-876-2910, or by email—tea@jayleeinn.com.



Thanks for reading the **Elkhart Lake Depot Dispatch**

Abler Art Glass offers Holiday Open House

Abler Art Glass, located along STH 32/57 just southeast of Kiel, is having its annual Holiday Open House Nov. 27, 9-5; Nov. 28, 9-4; Nov. 29, 11-3.

The open house is free to the public and will include glass blowing demonstrations.

"Treasured gifts are handcrafted works of art," said Bonnie Abler of Abler Art Glass. "We will help make your holiday gift giving easy by providing a gift giving experience that supports individual quality artisans from local to around the country."

Extended holiday hours (Thanksgiving to Dec. 23) at Abler Art Glass are Mondays to Fridays, 9 a.m.-5 p.m.; Saturdays, 9 a.m.-4 p.m.; and Sundays, 10 a.m.-4 p.m.

SAVE THE DATE

Elkhart Lake Chamber of Commerce

UPCOMING EVENTS

TREE LIGHTING

Saturday, Nov. 28 • 6:45 pm

Village Square Train Depot



Santa arrives at 6:30 by fire truck.

SCHNEE DAYS

January 29, 30 & 31

www.depotdispatch.com • www.elkhartlake.com



Intuitive Massage, LLC

Mark Novitovic

Licensed Massage Therapist

262-237-4719

www.massagointuitive.com



❖Offering rejuvenating customized massage

- Deep tissue & relaxation
- Myofascial release
- Sports massage
- Hot Stone
- Headache
- Lymphedema
- Burn scarring

Mark's Studio is located at:

Charlene's of Elkhart
511 East Rhine
Elkhart Lake
920-876-3258

❖Chair massage also available for your next event





On Nov. 11, the annual Veteran's Day observance was held Elkhart Lake-Glenbeulah High School. Local veterans of the armed services were invited to attend. The band played selected patriotic arrangements and the choir sang. Lt. Col. Brian Stout, US Army-retired, was the featured speaker. After the conclusion of the ceremony everyone shook the hands of all the vets who have served. The foods classes at the high school prepared a lunch for the service members.

Les Tension photos



Ed Carter

Custom Home Remodeling

**Kitchens • Bathrooms • Decks
Rec Rooms • Additions
Handyman Services**

920-876-2154



WINE TASTING EVENT

Saturday, November 28 • 4-6:30pm

Sample & purchase quality restaurant wines & beers at great prices.

\$15 gets you into all three locations.



21 S. Lake Street
ELKHART LAKE
920.876.2142
www.lakestreetcafe.com



paddockclub
elkhart lake

61 S. Lake Street
ELKHART LAKE
920.876.3288
www.paddockclubelkhartlake.com



100 E. Rhine Street
ELKHART LAKE
920.876.4846
www.vintageelkhartlake.com

All proceeds are donated to Plymouth Food Pantry.

Painting • Wallcoverings • Drywall • Woodgraining • Faux Finishes
Wood Finishing • Deck Restoration • Free Estimates • Fully Insured



REFERENCES • FULLY INSURED

20+ YEARS OF EXPERIENCE

Ron Gerharz **920-207-2479**

Interior • Exterior
Residential • Commercial



www.hitechpaintingdecorating.com

Serving The Entire
Sheboygan County Area

Russ cutting Ryan Pafford's hair.

Quality hair care products to fit all your needs like Paul Mitchell & American Crew.

Requests accepted for special products.

GOODFELLAS BARBERSHOP

"Cut the way you like it!"

| | | | |
|----------------------------|-------------|--------------------|-------------|
| Men & Women Cut.. | \$13 | Shampoo & Cut..... | \$16 |
| 12 & Under or 65 & Over .. | \$12 | Beard Trim | \$4 |

APPOINTMENTS APPRECIATED
WALK-INS WELCOME

RUSS HORNECK, Barber
894-HAIR or 894-4247
630 Fremont St., Kiel
Fades, Taper & Flat Tops

Mon. 12-8 • Tues. 8:30-5:30 • Wed. 8:30-8
Thurs. 8:30-5:30 • Fri. 8:30-5:30
Cash or check.

www.goodfellasbarbershopinc.com

- Quality Custom Homes
- Commercial
- Additions
- Remodeling
- Decks
- Siding
- Roofing

Our
Commitment to You...

Relationships
Integrity • Trust

510 Belitz Drive • Kiel
920-894-7008
www.krausconstruction.biz

MAKING SPIRITS BRIGHT

a service project of the SHEBOYGAN COUNTY ROTARY CLUBS

Rotary

CELEBRATE THE HOLIDAYS

with family and friends when you drive through this festive lights show choreographed to music in **Evergreen Park**.

Admission is free.

Pantry item donations are requested to help stock the Sheboygan County Food Bank. Cash donations support future growth and maintenance of this event, in addition to being distributed to local organizations through grant requests.

Visit with Santa at the **Quarryview Center** and enjoy entertainment, concessions, and wreath raffles. Start a trolley ride here for \$2 on Fridays and Saturdays.

| | |
|---|--|
| <p>Lights Show open every night Nov. 27 - Dec. 31, 5:00 - 9:00 PM (closed Dec. 24)</p> | <p>Quarryview open Thurs. - Sun. Nov. 27 - Dec. 20 5:00 - 9:00 PM</p> |
|---|--|

www.MakingSpiritsBright.com



Sarah Henschel, Collin Leibham, Summer Henschel and Jessica Mehre, members of the Elkhart Lake-Glenbeulah FFA Chapter attended the Wisconsin FFA leadership conferences Nov. 13-14 in Stevens Point.

FFA students attend conferences

Over 800 students and advisors from FFA chapters across Wisconsin attended the 212° and 360° Leadership Conferences. These conferences are an activity of the National FFA Organization made possible by title sponsor Syngenta as a special project of the National FFA Foundation. Sarah Henschel, Collin Leibham, Summer Henschel and Jessica Mehre, members of the Elkhart Lake-Glenbeulah FFA Chapter attended the event Nov. 13-14 in Steven's Point.

212° - the temperature at which water boils - focuses on taking students to the boiling point of personal leadership. At 211° water is extremely hot, but just one more degree gets us to the next level. The two-day 212° Leadership Conference is focused on student development and helps FFA members become aware of all aspects of personal growth. FFA members attended sessions on mental, emotion, physical and social growth. Students leave this experience with a personal plan for self-improvement.

360° - takes students full circle in terms of chapter leadership. The two-day 360° conference is focused on the importance of influence and how to become an influential leader. Students spent their time in sessions understanding the importance of building healthy relationships, being trustworthy, making critical decisions and collaborating with others. Students leave this conference with the necessary understanding and skills to be an agent of change in their chapters and communities.

This school year, more than 7,500 students across the nation will participate in a 212° or 360° Leadership Conference.

The National FFA Organization provides leadership, personal growth and career success training through agricultural education to 629,367 student members who belong to one of 7,757 local FFA chapters throughout the U.S., Puerto Rico and the Virgin Islands.

The Wisconsin Association of FFA is comprised of 250 local FFA chapters with over 19,000 members statewide.



Community UCC assembled kits for people being displaced

The values of Community United Church of Christ called the church to answer the desperate pleas of mothers, fathers and children searching for safety and assistance in their darkest hour.

Community UCC assembled 27 hygiene kits to be sent to Church World Services for people who are displaced. These hygiene kits included one-hand towel, one

washcloth, one wide-tooth comb, one nail clipper, one bar of soap, one toothbrush and six Band-Aids.

While these items seem small and insignificant to most of us, these are the basic essentials needed to try and stay healthy for struggling families. Thank you to everyone for supporting this mission.

Love Lights assist Elkhart Lake Library

Seasonal holidays shine with lights - small and white, big bright and colored. The holiday lights reflect memories past in the eyes of adults and holidays present, which shine in the eyes of children.

The Elkhart Lake Library holiday tree is decorated with very special lights. The lights on our tree are lit by the supporters of the Friends of the Library. We are asking you to join in lighting our annual "Lights of Love" tree. All proceeds will be used to enrich the quality and amount of materials which the library provides to our community.

Hundreds of lights are waiting to be lit. These lights can reflect your remembrance of a loved one, joyous event, favorite teacher or someone you want to honor.

All the contributions with your name or the person or occasion you wish to honor will be posted in the library. Send contributions to Lights of Love, PO Box 432, Elkhart Lake WI 53020 or fill out a form in the library.

Love Lights chairperson Nancy Hanlon, a member of the Friends of the Library group, said the lighting program is one way for the community to support its library, "For such a small community, our library is just a treasure, The Friends organization is just there to help do a few extra things."

She added, "Our library does a great job with its budget, but we just like to do a few fun additional things, programs, and such.



On Tuesday, Oct. 27 students in grades JK-4, along with their families, were invited to a special literacy event called "Spooky Stories Night." Students and their parents/grandparents spent the evening reading in the library with flashlights and enjoyed a fall snack together in the dark. After the reading event, families were invited to the cafeteria where each child made a "Spooky Graham Cracker House" to take home. More than 55 families attended this school community gathering.



Schwaller's Painting & Staining

(920) 876-4020

www.schwallerpainting.com

Professional interior & exterior painting & staining

STEFFES BUILDERS, INC.

Full Service General Contractor

Family owned & operated since 1949

810 Church St. • St. Cloud • (920) 999-2091

www.steffesbuilders.com

Abler Art Glass Gallery

16205 Little Elkhart Lake Road
Kiel, WI 53042 (920)894-7391

www.ablerartglass.com

Holiday Hours

Thanksgiving to Christmas

Monday- Friday.....9-5

Saturday.....9-4

Sunday.....11-3



CELEBRATE

New Year's Eve

AT LOLA'S ON THE LAKE RESTAURANT!

Ring in 2016 with fabulous dinner entrées, party favors and a midnight toast. Chicago-based band *Quiet Storm* will perform a variety of R&B, funk, rock and blues from 9 p.m.–1 a.m.

Receive a complimentary **GLASS OF CHAMPAGNE** with the purchase of an entrée.

ALSO ON NEW YEAR'S EVE...

Milwaukee singer-songwriter *Ethan Keller* performs a fusion of rock, jazz and funk in The Elk Room, from 9 p.m.–1 a.m!

For reservations, call
920.876.5840.

The Osthoff Resort • Elkhart Lake • www.lolasonthelake.com

Joyful GIVING



Give someone special the gift of a journey to relaxation and rejuvenation with an Aspira Spa holiday gift card. To purchase your Aspira gift card, call 920.876.5843.



Surprise someone special with an elegant dinner enjoyed lakeside. Our dining gift cards make wonderful presents for anyone on your holiday list. To purchase your Lola's gift card, call 920.876.5840.



Feed your passion and enhance your cooking skills with our culinary workshops and courses. Our chef instructors are welcoming and helpful, and courses are geared toward you and your kitchen. To purchase your L'ecole de la Maison gift card, call 920.876.3366.



The Osthoff Resort • Elkhart Lake, WI • www.osthoff.com

Dec. 5 & 6, 12 & 13 • A Wade House Christmas • 10 a.m. - 4 p.m.



If this doesn't put you in the Christmas spirit, nothing will.

Experience the magic of a mid-19th-century Christmas celebration. Yankee and German holiday traditions including rooms bedecked with fresh evergreen garlands, period crafts and games for young and old, stories from yesteryear and horse-drawn wagon rides will make for a memorable experience.



Highway 23 in Greenbush WI • www.WadeHouse.org
920.526.3271

Local Comfort.



Local Bank.

Experience the comfort of a local bank with big bank abilities.

- ✓ Online & Mobile Banking with Check Deposit
- ✓ Online Account Opening
- ✓ Online Loan Applications
- ✓ Warm & friendly customer service

This winter, there's no need to drive-up when you can stay in... but we are here if you need us.

www.nebat.com

Member FDIC



National Exchange
Bank & Trust

54 South Lake Street
Elkhart Lake





The ELKAN chapter of the National Honor Society recently inducted 17 new members. The group is pictured here. In the front row, from left, are Summer Henschel, Jessica Mehre, Sonia Schubert, Mandy McLaughlin, Jade Henschel, and Kayla Theel. The middle row includes Ellie Salzwedel, Allie Wisman, Erica Heinig, Michaela Wallace, Emily Holzmann, Paige Nelson, Raechel Grunewald, Holly Zorn, Alyssa Bartlett, and Lauren Boos. The back row includes Andrew Sitko, Jacob Starnitcky, Tyler Schultz, Owen Kalbacken, Ashley Ayen, Monica Ruh, Stephan Clemens, Becca Diestler, Eliza Meyers, Holly Francis, and Rachael Flora.

Les Tension photo

Students inducted to National Honor Society chapter at ELGHS

The ELKAN Chapter of the National Honor Society at Elkhart Lake-Glenbeulah High School recently inducted 17 new members during a dinner meeting at the Osthoff in Elkhart Lake.

Student inductees: Alyssa Bartlett, Lauren Boos, Holly Francis, Raechel Grunewald, Jade Henschel, Summer Henschel, Mandy McLaughlin, Jessica Mehre, Owen Kalbacken, Paige Nelson, Sonia Schubert, Tyler Schultz, Andrew Sitko, Jacob Starnitcky, Kayla Theel, Allie

Wisman and Holly Zorn.

Senior members: Emily Holzmann (Pres.), Ashley Ayen, Stephan Clemens, Becca Diestler, Rachael Flora, Erica Heinig, Eliza Meyers, Monica Ruh, Ellie Salzwedel and Michaela Wallace.

Each new inductee was presented with a pin, membership card, and certificate. Seniors will also wear an honors stole during graduation ceremonies.

Mr. Troy Wittman, teacher from Menasha, was the guest speaker.



December 4-13, 2015
Open 10 a.m.-5 p.m. daily

Featuring authentic gifts from international and regional artisans, European food specialties, Father Christmas and more!

\$6 per person; children 14 and under free with adult ticketholder.

Bring this ad along to receive a \$5 admission, Monday-Thursday.

Visit www.christmasmarketatosthoff.com.
The Osthoff Resort • 920.876.3366

Sponsored by:



DD

SHOP LOCAL

Buy Elkhart Lake Chamber Cash and help support your community!

Available at the **Elkhart Lake Chamber of Commerce**
41 E. Rhine St., 920-876-2922
www.depotdispatch.com
www.elkhartlake.com

Salzwedel

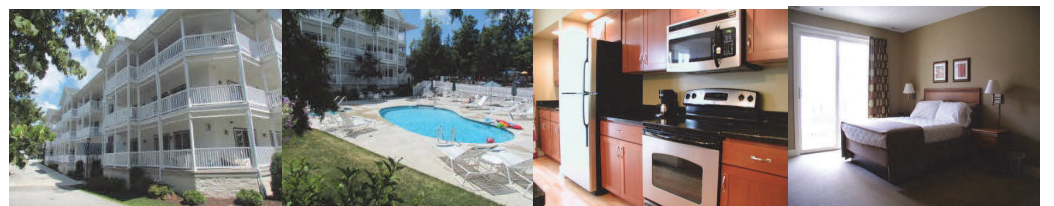
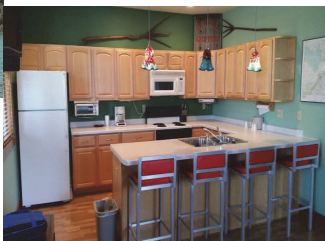
Woods & Water Real Estate

I have BUYERS WAITING for a LAKE HOME w/private lakefront & VILLAGE HOMES within walking distance to downtown & beach! Call me for a fast discreet sale! Call NOW!



AT WATER'S EDGE!

#C27 is a large 1BR/1BA newly decorated furnished condo w/lake views & deck at Victorian Village Resort at **BEST VALUE \$159,000!** Lots of fun! Rent back avail.



SIEBKENS Best View! Wonderful 2BR/2BA condo w/luxury finishings, fully equipped kitchen w/stainless appliances, all furnishing incl. Walk to downtown Elkhart Lake and beach, enjoy restaurants, taverns, shops and Road America, golf nearby! Rentback for \$! Call right away **\$365,000**



LAKE VIEWS!

276B Poets Cove 2BR/2.5BA, this sweet townhouse is on the upper level w/LAKE VIEWS, 1.5 car garage at Victorian Village Resort in Elkhart Lake! **REDUCED \$239,900!**



WATCH THE SUNSET OVER THE LAKE!

#C29 is a 1BR/1BA furnished condo freshly decorated right on the lake for **\$200,000** at Victorian Village Resort, enjoy your own little getaway in charming Elkhart Lake! **Don't Wait!**



ROOMY CONDO W/DECK OVERLOOKING ELKHART!

#C28 is a 2BR/2BA cute furnished condo w/deck overlooking the lake at Victorian Village Resort, just **\$225,000!** CALL NOW!



FABULOUS LAKE HOME!

VICTORIAN MASTERPIECE on private lot at Victorian Village Resort w/5BR/6BA, 2 fireplaces, 2 offices, His&Hers master baths, beautifully crafted interior, lake views, 3 decks, 4+ garage for your lake toys & all the amenities of the resort. **One of the finest homes on Elkhart Lake. You will fall in love with this home immediately! \$1,199,000**

Call **JUDITH SALZWEDEL** today @ 920-876-3713 or cell 920-918-5449 or email judithsalzwedel@vicvill.com for ANY lake property for s ale! **NO ONE** has more SALES in Elkhart Lake than **JUDITH SALZWEDEL!**
www.salzwedelwoodsandwater.com **Call me 1st!**



HOST YOUR

Holiday PARTY

AT THE OSTHOFF RESORT

Gather your group and celebrate the Yuletide season in one of our elegant ballrooms at the beautiful Osthoff Resort. Choose from a variety of delicious holiday-themed plated and buffet menus. At the end of the evening, take the elevator home with reduced overnight rates for groups reserving ten rooms or more!

Special rates are based on availability.

Call 920.876.5827 for reservations or more information on holiday parties at The Osthoff Resort.



Elkhart Lake, WI • www.osthoff.com



SIMON PEARCE

Friends. Family. Nest.



823 N. 8th Street
Downtown Sheboygan
www.nesthomestore.com
920.803.NEST

WISCONSIN'S
Elkhart Lake
A legendary getaway

See you at Tree Lighting - Nov. 28



LET'S TALK JINGLE BELLS

And a little extra jingle in your pocket.

1.51% APY¹
On balances
\$.01 to \$20,000

A Cash Rewards Checking account makes it possible.
Contact us to help you make **Great Things Happen!**[™]

www.WisconsinBankandTrust.com



¹Annual Percentage Yields (APY) are accurate as of 10/26/15. 1.51% APY applies to balances of \$0.01-\$20,000 and 0.11% APY to balances over \$20,000 if qualifications are met each monthly statement cycle. 0.01% APY applies to balance of \$0.01-\$20,000 and 0.11% APY to balances over \$20,000 if qualifications are not met. The rates may change after the account is opened. To earn rewards: Sign up for eStatements, use direct deposit and post 15 signature debit transactions within your monthly statement cycle. Limit one account per household in the bank's market area. Minimum \$25 to open. Fees may reduce earnings. ATM surcharge fees of up to \$20 per monthly statement cycle will be refunded if reward requirements are met. Member FDIC.



Celebrate the Holidays with Camp Y-Koda!

Santa will be visiting Camp Y-Koda on Dec. 13 and 20 for Brunch with Santa and Girls and Dolls Cookies with Santa! Later in the month, send the kids out to Camp Y-Koda for their days off of school for Winter Break Day Camp!

Brunch with Santa is a great opportunity for children age 4-10 to enjoy a pancake brunch and visit with Santa while parents get caught up on holiday shopping or take some time to relax. Children will also participate in holiday craft making, sledding and other fun winter activities. This event is on Sunday, Dec. 13 from 11 a.m.-2 p.m.

Girls and Dolls Cookies with Santa is a wonderful event for girls of all ages and their mothers or grandmothers. Girls can come dressed for the holidays along with their dolls for an afternoon of fun. Participants will visit with Santa, enjoy refreshments, make a special craft for their doll, and enter for a chance to win great prizes

like an American Girl Doll, doll outfits or a gift certificate to American Girl Cafe! All proceeds benefit Camp Y-Koda's youth programs. This event is on Sunday, Dec. 20 from 1-3:30 p.m.

Dec. 28-31 will be spent sledding, snowshoeing, building winter forts, playing winter games, keeping warm around campfires and more! Summer Camp counselors are home for winter break and ready for winter fun! Children age 4-12 can sign up for one day or multiple days for a discounted rate from 8:30 a.m.-4 p.m. and extended care is available before and after camp hours.

Pre-registration is required for these events.

For additional information, please visit www.campykoda.org or call 920-467-6882 or stop at the Sheboygan or Sheboygan Falls YMCA to complete a registration form.



D&D Carpentry, Inc.

"Our name stands for quality"

OUR SPECIALTIES INCLUDE:
Additions • Remodel Work
Repairs • New Homes

Doug and Dan Daun, General Contractors
 36 years of Serving our Community
 Glenbeulah • (920) 526-3648
www.ddcarpentry.com



Join us at the
OSTHOFF RESORT
 for celebrated and cherished
 holiday traditions.

Old World Christmas Market
 December 4-13

**Breakfast with Santa Claus,
 Children's Workshops, Holiday Hayrides**
 December 5, 12 & 19

Brunch with St. Nicholas and his Reindeer
 December 6 & 13

Christmas Day Buffet
 December 25

New Year's Eve Celebration
 December 31

Celebrate at Lola's on the Lake Restaurant
 with special fare, live entertainment and
 midnight champagne toast.

**To register, or for more information,
 call 920.876.3366.**



THE OSTHOFF RESORT™
 Elkhart Lake, WI • www.osthoff.com



Come warm up this season with
Our Vintage Classic Cocktails

- **Original Wisconsin Old Fashioned • Hot Peppermint Patty**
- **House Recipe Bloody Mary**

Or, try our freshly infused strawberry, orange,
 lime, pepper and mocha vodkas!

Sunday Brunch Special
8 a.m.-12 p.m., every Sunday

Farm-Fresh Eggs • Cinnamon French Toast
 Quiche-Red Herb Potatoes • Muffins and More!

Serving breakfast, lunch and dinner daily.
**For reservations or more information,
 call 920.876.5857.**

Located on first floor of The Osthoff Resort.
 101 Osthoff Avenue, Elkhart Lake • www.osthoff.com

CHRISTMAS DAY

Buffet

AT THE OSTHOFF RESORT
Seatings from 11 a.m.-3 p.m.

- Golden Beet Salad with Toasted Hazelnuts, Tender Butter Lettuce and Riesling-Vanilla Bean Vinaigrette
- Couscous Salad with Grilled Sweet Bell Peppers, Olives, Tomato, Chèvre and Sherry Vinaigrette
- House-Smoked Atlantic Salmon with Traditional Condiments
- Chef-Prepared Omelets and Eggs Benedict
- Rosemary-Garlic Roasted Angus Prime Rib with Bordelaise Sauce and Horseradish Sauce
- House-Smoked Ham with Brown Sugar Ginger Glaze
- Garlic & Herb Roasted Chicken with Chanterelle Sherry Wine Jus
- Pecan Crusted Atlantic Salmon with Apple-Spiced Butter Sauce
- Three Cheese Tortellini, Confit Tomatoes, Braised Swiss Chard with Classic Mornay Sauce Finished with Fontina Cheese
- Buttermilk Mashed Potatoes, Homemade Gravy and Roasted Garlic
- Grand Display of Homemade Holiday Desserts

To view the full menu, visit www.osthoff.com.

\$28.95 per adult, \$1 per year of child's age (ages 4-12), plus tax & gratuity

Christmas Day Dinner Specials Offered in Otto's and Lola's Restaurants.

Reservations are required, 920.876.5857.

Elkhart Lake, WI • www.osthoff.com



Veterans who were recognized by Community UCC for their service, included the back row of Merlin Miller, John Kline, Roger Rortvedt; the middle row of Eugene Kohlmann, Merlin Limberg, Wayne Keyes, Mark Sanchez (church member) and the front row of Joseph Benauer (church member).

Community United Church of Christ celebrated Veterans Day

Community United Church of Christ celebrated Veterans Day during their worship service on Nov. 15. They invited members of Greenbush American Legion Post 285 to celebrate. Church members who also served in the military were asked to join the service to be honored. The worship service started with the American Legion posting the colors, followed by the

singing of patriotic songs, a sermon by Pastor Deborah Tyler devoted to her mom who was the wife of an Army Chaplain.

The sermon consisted of the family moves and the Mother's commitment to keep the family's life as normal as possible with each move. The service ended with the retiring of the colors and the playing of Taps.

Do forget to contribute to Christmas gift tree program

The shopping season has already begun for Christmas, but please remember those in need. The trees are up here at Grace Lutheran, Anchor Lanes, All Seasons Restaurant, Off the Rail, and Vintage Elkhart Lake, all in Elkhart Lake. Help the families in need in our area have a happier Christmas this year.

Here's how you help for the Gift Tree

- Go to any of the five locations.
- Take a children's ornament from the tree.

- Purchase an age appropriate gift.
- Wrap the gift.
- Securely attach the ornament to the package.

- Return the gift to Grace Lutheran Church, All Seasons, Anchor Lanes, Off the Rail or Vintage Elkhart Lake all of Elkhart Lake by Sunday, Dec. 20 so we can make them available for pick-up.

Here's how you help for the Gift Tree plus

- Go to any of the five locations.
- Take a "Gift Card" ornament from the tree.

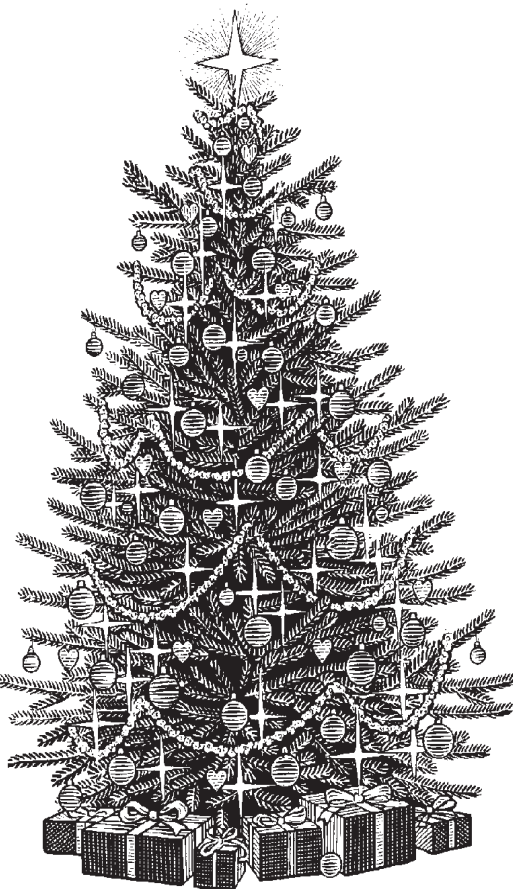
- Purchase a \$25 gift card at the business of your choice that will provide either gas or groceries as designated on the "Gift Card" ornament.

- Securely attach the ornament to the actual gift card.

- Return the gift card to Grace Lutheran Church, All Seasons, Anchor Lanes, Off the Rail or Vintage Elkhart Lake, all of Elkhart Lake by Sunday, Dec. 20 so we

can distribute them prior to the Christmas season.

Thank you in advance for your support of this project. If you have any questions, please call Grace Lutheran Church at 920-876-2341 and speak with Pastor Peter Peitsch or leave a message and he will return your call. God bless you with a wonderful Christmas!



Making Spirits Bright holiday show offers thousands of lights

Nearly a quarter million lights are in place and ready to light the route for the Making Spirits Bright holiday lights show opening Friday, Nov. 27. Evergreen Park in Sheboygan will be brighter than ever before for this family-oriented holiday event, a service project of the Rotary clubs of Sheboygan County.

"On behalf of the Rotary clubs and all the volunteers, we are thrilled to present the fourth annual Making Spirits Bright lights show," said Gerry Plehn, chairperson of the event. "We are looking forward to another successful year of delighting our visitors with a multitude of displays, while collecting pantry items to stock the shelves of all our local food pantries," she said. "Through the generosity of our many sponsors, especially David and Sandy Sachse, and hundreds of volunteers, we are able to provide this event at no charge, but we do request donations of food and pantry items for the Sheboygan County Food Bank."

The light show designers and volunteers have added a number of new and more elaborate, colorful displays along the entire route, including the spectacular Mega Tree which has doubled in size. As in the past, the displays are synchronized to holiday music that visitors can hear over their car radios set to 89.1FM. "It takes the combined efforts of over 600 volunteers from the Rotary clubs and many Sheboygan-area businesses, organizations

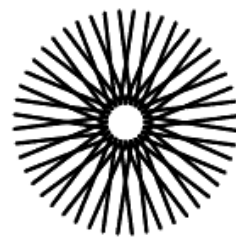
and churches, some working nearly year-round to provide this spectacular show," added Plehn. "On behalf of the Making Spirits Bright board we are so very grateful to all of them for their many hours of work. We are also thankful for the past generosity of those visiting the lights show; since the event's inception we've been able to collect over 150,000 pounds of items for the Food Bank. We've also raised enough funds to make grants totaling \$10,000 for the Sheboygan County Food Bank, \$1,000 for Meals on Wheels and \$5,000 for the Lakeshore Community Health Care."

The Making Spirits Bright holiday light show opens Friday, Nov. 27 and remains open every night but Christmas Eve until Thursday, Dec. 31, from 5 to 9 p.m. The display is located in Evergreen Park at 2200 Calumet Drive in Sheboygan. On Thursdays through Sundays from Nov. 27 until Dec. 20, visitors are also welcome to stop at the Quarryview Center across the street from the park to enjoy free holiday entertainment, have a photo taken with Santa, enter a raffle of seasonal wreaths created by local designers and artists, and enjoy concessions. On Friday and Saturday nights, the Discovery Trolley will be available from the Center's parking lot for a unique ride through the park. There is a \$2 fee (children under one ride free) for the Trolley ride.

For more information, visit MakingSpiritsBright.com.

WISCONSIN'S
Elkhart Lake
A legendary getaway

Schnee days • January 29-31!



SOEL
ELKHART LAKE

Fitness Studio & Boutique

Indoor Cycling • Yoga • TRX
Cardio & Strength Training Classes
Open to all levels of ability



Text to reserve 920-254-7313

90A West Rhine St. • Elkhart Lake • 920-254-7313

www.SOEL-EL.com



Old World Christmas market set for 10-day run

If you're the kind of shopper who eschews generic gift cards and made-by-the-millions products for artisan-crafted finds and tradition-rich gifts, then do get to the Old World Christmas Market at the Osthoff Resort in Elkhart Lake this year.

The 10-day run of the Market begins Friday, Dec. 4 and wraps up Sunday, Dec. 13 and is open daily from 10 a.m. to 5 p.m.

For those who have never been, this is Wisconsin's take on the centuries-old Christkindlesmarkt of Nuremberg, Germany, complete with fresh pine trees, twinkling lights, 68 booths filled with the wares of artisans from around the world, food court, and an appearance by Father Christmas, all staged in a heated tent the size of a football field.

For details, log on to www.ChristmasMarketAtOsthoff.com or call 877.517.4596. Admission is \$6 per adult, with children 14 and under receiving complimentary admission with an adult ticketholder. Discounted ticket prices for groups of 10 or more are available.

The resort is located at 101 Osthoff Avenue.

Now let's get to that shopping list:

- For mom: Woolen wraps and sweaters from Estonia, fashionable fur accessories, amber jewelry, alpaca apparel.

- For dad: German cuckoo clock, carved nutcracker, gourmet chocolates. New this year - pewter sculptures.

- For grandparents: New this year - homemade jams and jellies. Pair with a wreath of fresh greens.

- For best friends: Turkish pashmina shawl, stained glass, German lace.

- For neighbors: Czech blown-glass ornaments, homemade candles and soaps.

- For collectors: Russian nesting dolls, hand-painted Russian Santas, Polish pottery, Scandinavian items.

To keep energy levels up and spirits high, make your way to the Old World food court while at the Market, where you'll find Nuremberg bratwurst made from a secret recipe, sauerbraten, potato pancakes, roasted almonds and apple strudel. Warm up with a hot glühwein or a hot cocoa. New this year - authentic Bavarian soft pretzels.

Overnight Packages

The AAA Four Diamond Osthoff Re-

sort offers a holiday package during the run of the Christmas Market that includes a one-night stay and two tickets to the Market with rates starting at \$154 plus tax (premium rates on weekends apply). For reservations, call 800.876.3399 or book online at www.Osthoff.com.

Also taking place during the Market

Let's not leave out the little ones, as there are magical happenings just for them.

- Children's Holiday Workshops - Dec. 5, 12 & 19: Cookie decorating, hayrides, and ornament-making workshops for children (ages 4-10) assisted by Mrs. Claus.

- Holiday Hayrides - Dec. 5, 12 & 19: Horse-drawn wagon rides, hot chocolate, and Christmas carols.

- Breakfast with Santa Claus - Dec. 5, 12 & 19: A festive knee-high breakfast buffet in honor of Santa Claus. Children will

receive a special gift from the jolly old elf.

- Brunch with St. Nicholas and His Reindeer - Dec. 6 & 13: Bring along your last-minute wish list. Accompanying St. Nicholas is one of his trusty reindeer!

About The Osthoff Resort

The Osthoff is a AAA Four Diamond property featuring elegant suites and guestrooms, a stunning lakefront setting, two restaurants, Aspira Spa, L'ecole de la Maison cooking school, year-round recreation, spa and gift boutiques, and grand conference rooms and meeting spaces.

It is located just one hour north of Milwaukee, less than two hours from Madison and approximately three hours from Chicago.

The Osthoff was named one of the "Top 500 Hotels and Resorts in the World for 2014" by the readers of Travel + Leisure magazine.

Cedar Community picks new executive director

For only the third time in its 62-year history, Cedar Community has announced a new Chief Executive Officer. Lynn Olson, President/CEO of Hannibal Regional Hospital, Hannibal, Mo., has accepted the leadership position in anticipation of Cedar Community CEO Steve Jaberg's retirement on Jan. 22, 2016. Olson will start at Cedar Community on Jan. 4, 2016, ensuring a smooth transition for residents, staff, families and volunteers. The announcement comes following a 10-month search process spearheaded by the Cedar Community Board of Directors, according to Joan Adler, board president. "After a thorough and intensive nationwide search, we are very excited to be welcoming an executive with Lynn's leadership capabilities, professional experience and passion for our mission," said Adler.

"I am excited about the opportunity to serve Cedar Community, and look forward to the privilege of working with a dedicated team of employees, volunteers and board members," said Olson. "Cedar Community has a rich history of providing compassionate, Christian-based, high-quality senior living and related services. I look forward to being part of that tradition, and continuing their commitment to excellence. My wife Rene and I thoroughly enjoyed our time in West Bend during the interview process, and we look forward to becoming an active part of the community."

Jaberg joined the West Bend-based organization in 1984 as administrator under founding CEO Rev. Louis Riesch, and was named CEO in 1991 following Riesch's retirement. During Jaberg's tenure, Cedar Community grew from one campus setting to its present six campuses, now serving more than 700 employees and 1100 residents from skilled nursing and inpatient rehabilitation to assisted living, memory loss care and independent homes and apartments. Jaberg oversaw expansion into home-based health care, hospice and supportive care in six southeast Wisconsin counties, as well as home medical

equipment. He has served on state and national boards for LeadingAge, a national association of not-for-profit senior care providers, and has spoken extensively across the country, most recently on Cedar Community's state-of-the-care memory loss assisted living, the Cottages at Cedar Run. "What has been so interesting, in my nearly 32 years here, has been both the tremendous amount of change in our organization, and yet how little changed in our mission to meet the needs of our community," said Jaberg. "We are facing a new wave of seniors who will come to us with great expectations. I believe we are poised to meet the challenges ahead, and will continue to thrive."

Turn to **DIRECTOR**/page 16



ENCHANTED FLORALS
of Elkhart Lake

(920)781-5017 

Christmas is Coming to Enchanted Florals!

Dec. 4 • 11am-9pm
Dec. 5: 10am-4pm
An Enchanted Christmas Open House

Dec. 7 & 8 • 6-7pm
Glitter Box Workshops

Signature Sign Classes December 14 & 22

Custom Floral Designs • Plants • Home Décor • Unique Gifts & Jewelry

141 East Rhine Street, Elkhart Lake • www.enchantedfloralsofelkhartlake.com

A

DRYWALL & PAINTING



Hanging and Finishing ♦ Texturing ♦ Staining Interior / Exterior

Al Rittenhouse
W4089 Skyline Rd., Elkhart Lake
www.ajdrywallandpainting.net

P: 920.565.3618
F: 920.565.2149

The Friendliest Place in Town!

Black Dog Bistro

N8898 Rhine Rd, Rhine Center • 920-876-2575
west of 57 at the corner of Rhine Rd & Co Rd MM



MONDAY
Large 4 Topping Pizza
11am-9pm • with pitcher of beer, \$14.99
soda or 2 cocktails.....

TUESDAY
Kids Eat Free
11am-9pm • from kids menu
12 & under w/accompanying adult

WEDNESDAY
Full Menu • 11am-9pm

THURSDAY
Steak & Lobster
8 oz. tail & 8 oz. NY strip w/salad \$19.99
bar and choice of potato

FRIDAY
Full Menu w/Salad Bar
seven varieties of seafood

SATURDAY
Baby Back Ribs
Fall off the bone delicious! Our own tangy BBQ sauce with baked or twice baked potato, vegetable & salad bar.
Half rack \$13.99 • Full rack \$18.99
Also serving full menu.

SUNDAY
3 Meat Buffet
1-8pm • Mashed potatoes, stuffing, vegetable, dinner roll, homemade soup, salad bar..... **\$12.99**
Also serving full menu.

CHRISTMAS DAY BUFFET

Serving 11am-7pm
Turkey, Prime Rib, and all the Fixings.
Adults \$15.95
Children 5-12 Half Price
4 & Under FREE
Reservations Appreciated



Ask about our Birthday Club!

Onsite catering!
Let us host your holiday or bachelor/bachelorette party!



Wade House takes part in Big Bundle Up effort

Wade House historic site in Greenbush invites residents to drop off new or gently used coats, sweaters, hats, mittens and other warm clothing items as part of the Wisconsin Department of Tourism's "The Big Bundle Up" charity campaign. "The Big Bundle Up" is a statewide collection program running now through Jan. 3, 2016.

This is the fifth year of the program. To date, the program has collected more than 49,300 warm winter items to help warm up families in need. In addition to Wade House, other collection sites are located throughout the state. Visit TravelWisconsin.com for a full listing of donation sites.

With the spirit of the holiday season upon us, donating winter items is the perfect way to give back. A donation box will be located in the new Wade House Visitor Center and Wesley W. Jung Carriage Museum for donors to drop off warm

clothing items. All items donated at this location will be given to Safe Harbor and Bridgeway House in Sheboygan and Solutions Center and Support Services in Fond du Lac.

For more information about Wade House's participation in "The Big Bundle Up," contact Bridgitt Zielke, manager - marketing, public programs and event services, at 920-526-3271 or via email at bridgitt.zielke@wisconsinhistory.org.

WHO: Wade House historic site
 WHAT: Collecting coats, sweaters, hats, mittens and other warm clothing to donate to local charities this winter season.
 WHEN: Now through Jan. 3, 2016
 WHERE: New Wade House Visitor Center and Wesley W. Jung Carriage Museum, W7965 Highway 23, Greenbush, WI 53026.

Your Beautiful Holidays Start Here!

Beautiful Millhome Grown Poinsettias
 Variety of colors & sizes

Buy from the grower & SAVE!

Fresh Hand Crafted Wreaths

OPEN HOUSE
 Fri, Dec. 4, 9-5 / Sat, Dec. 5, 9-4

Millhome
 Nursery and Greenhouses, LLC
 Landscaping & Garden Center

N9469 Rhine Rd. (Cty E)
 Elkhart Lake • 894-7877
www.millhomenursery.com

M-F 9-5 • Sat 9-4 • Closed Sundays

FRANKLIN HAUS
 Historic Gathering Hall,
 Tavern & Market

Party at the Sheboygan River
 Local Original Art, Antiques
 Spirits, Coffee, Juices, Teas, Wines
 "Sehr gut!" (So Good)

920-565-2565 • wicar@tds.net
www.franklinhauswisconsin.com
 N8133 Franklin Rd, Village of Franklin
 Five miles east of Elkhart Lake

Open Thur, Fri & Sat 11am-5pm
 or by appointment

Est. 1857

Grace Lutheran Church

Sunday Divine Service.....8 & 10:15 am
 Thursday Divine Service..... 7 pm
 Bible Class
 • Wednesday.....9 am and 7 pm
 • Sunday.....9:15 am

Advent Supper.... Thurs., Dec. 3, 10, 17
 5-6:30 • Soup & Sandwiches • Service to follow at 7 pm
 Childrens Program...Dec. 20, 10:15 am
 Christmas Eve Service..... 4 pm
 Christmas Day Service..... 9 am
 With Communion
No Worship December 31

Hwy 67, Elkhart Lake

Merry Christmas
 from Quit Qui Oc

Christmas Gift Certificates Available
 Buy a \$50 Gift Certificate
 and Receive a \$10 Gift
 Certificate for Free!

Gift certificates are limited to restaurant, greens fees, and golf cart purchases. Excludes pro shop items and membership dues. Limit of \$40 in free gift certificates per person.



www.QuitQuiOc.com | www.facebook.com/quitquioc | (920) 876-2833

SIEBKENS RESORT
 284 S. Lake Street, Elkhart Lake
www.siebkens.com • 920.876.2600

Stop-Inn Tavern
 OPEN
 Friday & Saturday
 Evenings
 5pm to Late

**Open Year Round
 for Lodging and
 Special Events**
 Standard & Deluxe Hotel Rooms,
 1, 2 & 3 Bedroom Condominiums

Call for Reservations ~ 920.876.2600

BUSINESS DIRECTORY

Sohn Manufacturing Inc.
"Sohn has meant quality for over 60 years."
 544 Sohn Drive
 Elkhart Lake, WI 53020
920-876-3361
 email: sohn@sohnmanufacturing.com
www.sohnmanufacturing.com

The "Hard to Buy for" Gift Solution

Wash Books (10 Packs)

| | |
|---------------------------|--------------------|
| Ultimate Wash Book | \$75 ⁰⁰ |
| Regular \$100 • NOW | |
| Super Wash Book | \$67 ⁵⁰ |
| Regular \$90 • NOW | |
| Premium Wash Books | \$60 ⁰⁰ |
| Reg. \$80 • NOW | |

Gift Cards
 Receive a FREE \$10 wash for every
 Gift Card Valued at \$20 or More.
 Give the gift of a clean car!

Laziboy
 CAR WASH

1404 Eastern Ave., Plymouth
 (920) 893-0130

Happy Thanksgiving!

EXCEPTIONAL PROPERTY

W5865 Riverview Ct., Plymouth
 6,600 sq.ft. of living space in this Frank Lloyd Wright inspired home. In-ground pool, river, wildlife, water features & gardens. Striking synergy of elegance, craftsmanship & life are nestled into this private 6.8 acres. The perfect setting for entertaining & relaxing thru-out the seasons. **\$895,000**



KATY CAIN
Katy@AvenueRET.com
 920.980.9302
 (Avenue Real Estate Team)

AVENUE
 Real Estate LLC

www.AvenueRET.com

NEW OFFICE LOCATION:
 506 E. Mill St., Plymouth • Suite A/B
 Office Phone: 920.893.3001

Thanks for reading the
Elkhart Lake Depot Dispatch



Elkhart Lake Village Report

Spring election notice

NOTICE OF SPRING ELECTION
VILLAGE OF ELKHART LAKE
APRIL 5, 2016
STATE OF WISCONSIN
VILLAGE OF ELKHART LAKE

NOTICE IS HEREBY GIVEN that an election will be held in the election district of the Village of Elkhart Lake on Tuesday, April 5th, 2016. The following offices are to be elected to succeed the present incumbents listed. The term for the Village Trustees begins on April 19th, 2016. All terms are for two years.

Trustee positions up for re-election for a two-year term are:

| | |
|-----------------|-----------------|
| OFFICE | INCUMBENT |
| Village Trustee | Steven Kapellen |
| Village Trustee | Lynn Shovan |
| Village Trustee | Pamela Garton |

Candidates must circulate nomination papers that can be obtained at the Village Hall. Dec. 1, 2015, is the first day you can circulate papers. Twenty valid signatures are required. Nomination papers must be filed with the Village Clerk by Jan. 5, 2016, at 5 p.m. You can sign three trustee petitions.

Village Tree Lighting

The Village Tree Lighting will take place on Saturday, Nov. 28 in the Village Square. The ceremony starts at 6:45 p.m.

Village Holiday Hours

The Village offices will be closed on Dec. 24 and 25th and Dec. 31, 2015 and Jan. 1, 2016.

Winter Parking Rules in Effect

Winter parking regulations went into effect on Nov. 15. As a reminder, here is the ordinance.

PARKING REGULATIONS

6.02 (3) All Night Parking Regulated.

(a) No parking of any motor vehicle shall be permitted on either side of any Village street, or within six feet of the edge/curb of the street between the hours of 2:00 o'clock A.M. and 6:00 o'clock A.M. commencing the fifteenth (15th) day of November and ending on the first (1st) day of April of every year.

(b) No parking of any motor vehicle shall be permitted in any Village parking lot as posted on the fifteenth (15th) day of November and ending on the first (1st) day of April of every year.

(c) Any vehicle parked in violation of the provisions of this ordinance shall be removed from the parking lot or streets and stored, and such removal and storage shall be at the expense of the owner of said vehicle.

Vehicles violating this ordinance will be ticketed.

Snow Removal & Snow Removal Warnings

Chapter 10.03 - Removing Snow from Sidewalks: Residents must clean snow from sidewalks within 14 hours of any snowfall in a 24 hour period. Snow cannot be blown or plowed onto Village Streets. Residents must also shovel out any hydrants near their home.

As in past years, you will not be notified that snow needs to be removed. If

you have not shoveled in the prescribed time, the village will shovel your walk and bill the property owner. Also, the entire sidewalk must be shoveled. A path is not sufficient and you will be in violation.

Tax Collection

Tax Bills will be in mail by approximately Dec. 11. You can pay these at the Village Offices at 40 Pine Street from 9 a.m. to 4:30 p.m. Monday-Friday. We will be closed on Dec. 24, 25, and 31, 2015 and Jan. 1, 2016. If the Village office is closed, payments can be dropped in the Police depository, located on the outside of the building to the west of the Pine Street entrance. You can also drop your payment off at Community Bank or National Exchange Bank in Elkhart Lake. If you have any questions, please call the Administrator/Clerk-Treasurer's office at 876-2122.

Auto Pay Your Water/Sewer Bill

The Village of Elkhart Lake accepts Automatic Clearing House (ACH) payments for your water/sewer bills. If you have not signed up for ACH Water/Sewer Payments you may do so by contacting the Village Clerk's Office at 920-876-2122, email clerk@elkhartlakewi.gov, or stop in the Village office and fill out a simple form.

Email Notification List

The Village would like to keep you informed of news and changes that may occur on occasion. We would like your email address. These will be kept confidential. We will remind you of changes in the garbage collection schedule and any other things that come up periodically. Please email clerk@elkhartlakewi.gov to ask to be added to the notification list.

Village Ordinance Regarding Drones

There has been a great deal of discussion concerning drones. The FAA has issued new federal rules governing the use of drones. The Village of Elkhart Lake passed an ordinance which created Chapter 26 of the Municipal Code last year. This ordinance has guidelines for the use of drones and other forms of aviation in the Village.

The drone industry has announced that this will be the biggest year for the sale of drones. Please read the ordinance before you make the investment. Chapter 26.07 reads:

SCALE MODEL AIRCRAFT & DRONES. The line of sight operation of non-turbine powered scale model aircraft and drones for non-business purposes is permitted from and over the owner's property and open public recreational areas when conducted in a safe manner that does not endanger persons or property. The FAA recommends that altitude should be restricted to 400 feet (AGL) or less.

Water & Sewer Rate Increase

The Elkhart Lake Water Utility applied to the Public Service Commission for a water rate increase. The Elkhart Lake Village Board will also be increasing the sewer rates in order to cover the rate increase that Northern Moraine Utility is implementing in 2016. These rates will become effective on January 1, 2015, or

the April 15, 2015 billing. Below are the new updated rates. If you have any questions, please contact the Village Hall at 920-876-2122.

Charges for water:

- First 3000 cubic feet used each quarter-\$2.02 per 100 cubic feet + meter chg.
- Next 17,000 cubic feet used each quarter-\$1.74 per 100 cubic feet + meter chg.
- Next 30,000 cubic feet used each quarter-\$1.41 per 100 cubic feet + meter chg.
- Over 50,000 cubic feet used each quarter-\$1.08 per 100 cubic feet + meter chg.

Meter charges:

- 5/8" meters --\$18.73 per quarter 3/4"
- 1" meters --\$18.73 per quarter
- 1 1/4" meters --\$22.99 per quarter 1 1/4"
- 1 1/2" meters --\$29.56 per quarter 2"
- 1 3/4" meters --\$36.13 per quarter 2"
- 2" meters --\$59.12 per quarter
- 3" meters --\$108.40 per quarter 4"
- 4" meters --\$164.23 per quarter

CHARGES FOR SEWER

\$5.50 per 100 cubic feet of water consumption beginning + \$23.00 meter fee per quarter.

Please contact the Village Administrator/Clerk-Treasurer's Office at (920) 876-2122 or clerk@elkhartlakewi.gov if you have questions related to water billing.

Caboose Update

Our caboose restoration has begun. The windows have been removed so that they can be worked on over the winter. You will not see a lot of activity over the winter, but

Elkhart Lake Village Board Members

If you have concerns or questions call any of our Village Trustees

PRESIDENT: Alan Rudnick, Pres. (611 Otto Way) — 876-3113. Email: arudnick@elkhartlakewi.gov

TRUSTEE: Mike Wolf (POB 506) — 876-3100. Email: mwolf@elkhartlakewi.gov

TRUSTEE: Steven Kapellen (POB 271) — 876-2177. Email: skapellen@elkhartlakewi.gov

TRUSTEE: Pamela Garton (674 Birchwood) — 876-2376. Email: pgarton@elkhartlakewi.gov

TRUSTEE: Richard Sadiq (POB 188) — 876-3732. Email: rsadiq@elkhartlakewi.gov

TRUSTEE: Lynn Shovan (POB 682) — (920) 207-4561. Email: lshovan@elkhartlakewi.gov

TRUSTEE: Richard Baumann (22 Cedar Lane) — 920-781-2030. Email: rbaumann@elkhartlakewi.gov

parts are being fabricated so that work can begin on site in spring.

Have a great holiday season,
Alan Rudnick, Village President

Four Seasons Comfort LLC
"Quality Service with Your Comfort in Mind"
W2074 Garton Rd., Sheboygan
Office: 920-565-2095
633 Eastern Ave., Plymouth
Office: 920-893-8900
www.fourseasonscomfortllc.com

**Infloor Heating • Heating
Air Conditioning • Sales & Service**

Licensed / Insured
Mike Pelzel • Jeremy Lensmire

JAY LEE INN
Bed & Breakfast

~ 7 Bedrooms, 5 with Private Baths
~ Full Breakfast!
~ Lake View
~ Walking distance from Elkhart Lake activities!

444 South Lake St. • Elkhart Lake, WI 53020
920-876-2910
www.jayleeinn.com

Seasons Greetings!

HomeReview Inspection Services, Inc.
RESIDENTIAL AND COMMERCIAL INSPECTION

SERVICES:

- Residential Inspections
- Commercial Inspections
- New Construction Inspections
- Phase Inspections
- Warranty Inspections
- Caretaking Inspections
- Radon Screening

Serving Sheboygan, Manitowoc, Ozaukee, Washington and Fond du Lac Counties

Bob Turicik
920-892-7654
www.HomeReview.biz
www.facebook.com/HomeReviewWI

December mystery photo



Down Memory Lane—
Recognize these photos?

Take a look at December's mystery photo at the top. Do you know anything about it? Where was the location? What was the approximate year? Do you know anyone in the photo?

from the November photo, so please dig deep for your answers.

If so, let us know!

Send an email or letter with as many details as you can include. The person with the best submission will receive a finely matted, quality enlarged print of the original, courtesy of Schamberger Gallery in Elkhart Lake.

Email your entry to depotdispatch@elkhartlake.com, or mail it to: Depot Dispatch, P. O. Box 294, Elkhart Lake, WI 53020-0294.

We also have yet to receive any entries

November photo



Crystal Schipper's design was selected to be the featured ornament design for the 11th annual ELG Education Foundation Ornament Fundraiser. Les Tension photo

Schipper designs ornament for annual fundraising effort

A horse-pulled sleigh created by Crystal Schipper was selected to be the featured ornament design for the 11th annual ELG Education Foundation Ornament Fundraiser. These commemorative ornaments are available by making a \$20 donation to ELGEF. This is a perfect way to make a contribution in honor or memory of someone special, or to give a collectible stocking stuffer. After the holidays, The ELG School District's newspaper, the Resorter Reporter, will publish an acknowledgment listing those who have contributed and in whose honor or memory the donations have been made.

This year's featured ornament, designed by sixth grade student, Crystal Schipper, is the eleventh in a series of ornaments created by students in the ELG district. Crystal is the daughter of Sanya DeBlay and Aaron Schipper and her art teacher is

Amy Hammes. Ornaments are available at both school offices, Wisconsin Bank and Trust in Elkhart Lake, and National Exchange Bank and Trust in Glenbeulah and Elkhart Lake. If you missed the first ornaments in the series, you can round out your collection for an extra \$5 donation for each, while supplies last. If you have any questions or would like to order an ornament, please contact Ann Buechel Haack at 876-3381. Add to your collection or start now.

The Elkhart Lake Glenbeulah Education Foundation, a 501(c)(3) tax-exempt organization, supports the School District in its mission to provide a caring, innovative learning environment. The ELGEF provides resources and enhances opportunities not included in the school district's operating budget.

Buy a 16" Two-Topping Pizza for \$10.95 and...

Get a 12" Two-Topping Pizza **\$5** for

All Seasons Family Restaurant
510 E. Rhine Street • Elkhart Lake • 920-876-2839
Next to Marshall's One Stop
M, T, W, & Th 6am-3pm • F 6am-8pm • Sa & Su 6am-3pm

SENIOR CITIZEN DINNERS AVAILABLE - 11 AM TO CLOSE

THE Holiday Shop
at ROAD AMERICA

FREE Vintage Graphic T-Shirt with purchase of \$40 or more!
While supplies last!

INDY CAR, 1983

www.RoadAmerica.com
DECEMBER 1-18 • MONDAY-FRIDAY 9-4
Located in Admin Office • Enter Gate 6 on Hwy 67

Bill's Piggly Wiggly in Howards Grove... Fighting to Save you Money!

COUPON PLU 50

\$5.00 off Your order totaling \$75 or more (excludes spirits).

With coupon. Good only at Bill's Piggly Wiggly, Howards Grove, WI. One coupon per person. Valid through 12-31-15.

The Road to Wellness



By Dr. Nic Giebler D.C.
drnic@gieblerchiropractic.com

What makes an immune response healthy vs. unhealthy?

It's "cold and flu season"! Oh no! Everyone, inside! Grab the hand sanitizer! Avoid body contact at all costs!

Okay, not really. I will agree that we are more likely to get sick at this time of year, but it has less to do with the cold weather outside and much more to do with our own body's immune system strengths and weaknesses.

Have you ever heard of "the hygiene hypothesis"? The idea is that environmental sensitivities that lead to allergies and auto-immune disorders may also be caused by a lack of childhood exposure to infectious agents, probiotics, and parasites. Living in super-clean environ-

ments (for example, spending a great deal of time indoors without pets) may leave a child's immune system uncalibrated and over-sensitive, resulting in a host of allergies and hypersensitive reactions to innocuous substances later on.

In fact, a recent research article cited antimicrobial soaps as problematic, and actually destructive, to health. One common antimicrobial agent, Triclosan, has been found in many bodily fluids, including the urine of pregnant women, and the cord blood of newborn infants.

The study, published in Environmental Science and Technology, studied 180 expectant mothers in Brooklyn, New

York. The researchers found triclosan in 100 percent of the women's urine samples, and triclocarban (another common antimicrobial agent) in 87 percent of the samples. Of the 33 cord blood samples they looked at, 46 percent contained triclosan and 23 percent contained triclocarban.

Triclosan and triclocarban, which are also common in toothpaste and lotions, are also endocrine disruptors. The risk there is that the chemicals can mimic thyroid hormones, potentially disrupting the metabolism and causing weight gain or weight loss. Previous research has also shown a connection between higher levels of triclosan in urine, and allergy diagnoses in children.

On a side note, a patient of mine, who works in the industrial plumbing industry, noted that his company recently completed a job re-plumbing the vast majority of a major hospital. He stated that many of the pipes are breaking down, and the mass breakdown is due to the pipes' constant exposure to anti-bacterial hand soaps and creams. If those hand sanitizers can do that to the pipes in a hospital, imagine the effect they may be having on you!

The thing about antibacterial soaps (containing triclosan and triclocarban), is that there's little evidence they are any better at keeping people from getting sick than regular old soap, according to the Food and Drug Administration. In December of 2013, the FDA issued a proposed rule (for which public comment is now closed) that would require companies to show that their antimicrobial products are not only safe, but more effective than soap. If they can't, they would have to remove the offending ingredients, or stop labeling the products "antibacterial."

I think it's sound advice to get back to the basics. Let your kids get a little dirty every now and then! Get outside. It'll get you a bit more Vitamin D (a very important factor in your immune system!) and get you some exercise (also an immune system strengthener). And there's nothing wrong with plain old-fashioned soap, when it comes to cleaning up afterwards. Your immune system can be your best friend...or worst enemy!

ELKHART LAKE Public Library News

Grashorn Civic Center
40 Pine Street, P. O. Box 387
Elkhart Lake, WI 53020
920-876-2554
elkhartlakepubliclibrary.org

Library Hours

Monday thru Thursday 10 - 7
Friday 10 - 5
Saturday 10 - 2

The library will be **CLOSED** Dec. 24 and 25 for the Christmas Holidays and **CLOSED** at 2 p.m. on Dec. 31 and Jan. 1 for New Years.

For more information see our website www.elkhartlakepubliclibrary.org

New Books for Adult Readers

ADULT FICTION

After Alice, Gregory Maguire
All Dressed in White, Mary Higgins Clark
Along the Infinite Sea, Beatriz, Williams
Avenue of Mysteries, John Irving
Bazaar of Bad Dreams, Stephen King
Banquet of Consequences, Elizabeth George
Bittersweet Dreams, V.C. Andrews
Born of Betrayal, Sherrilyn Kenyon
Career of Evil, Robert Galbraith
Christmas Bells, Jennifer Chiaverini
Crimson Shore, Preston & Child
Cross of Justice, James Patterson
Crossing, Michael Connelly
Guilty, David Baldacci
Host, Robin Cook
Immortal Nicholas, Glenn Beck
Improbability of Love, Hannah Rothschild
Japanese Lover, Isabel Allende
Lake House, Kate Morton
Likely Story, Jenn McKinlay
Magic Strings of Frankie Presto, Mitch Albom
Mistletoe Inn, Richard Paul Evans
Muralist, B. A. Shapiro
One Man's Flag, David Downing
Playing with Fire, Tess Gerritsen
Revenant, Michael Punke
Slade House, David Mitchell
Sound of Glass, Karen White
Stars of Fortune, Nora Roberts
Theory of Death, Faye Kellerman
Thrill Me, Susan Mallery
Tightrope, Simon Mawer
Together for Christmas, Katherine Spencer
Tricky Twenty Two, Janet Evanovich
Welcome to Night Vale, Joseph Pink

When Secrets Strike, Marta Perry
Wild Swans and Other Tales, Michael Cunningham
Woman Who Walked in Sunshine, Alexander McCall Smith

ADULT NON-FICTION

Car Crazy, G. Wayne Miller
Cider Made Simple, Jeff Alworth
Clementine, Sonia Purnell
Common Struggle, Patrick Kennedy
Dear Mr. You, Mary-Louise Parker
Destiny and Power, Jon Meacham
Frommer's Easyguide to Australia
Last of the President's Men, Bob Woodward
Lights Out, Ted Koppel
Little Victories, Jason Gay
Rosemary, Kate Larson
SPQR, Mary Beard
Wildflower, Drew Barrymore

(LP) LARGE PRINT

Crimson Shore, Preston & Child
Guilty, David Baldacci
If You Only Knew, Kristan Higgins
Killing Reagan, Bill O'Reilly
Scam, Janet Evanovich
See Me, Nicholas Sparks
Tricky Twenty Two, Janet Evanovich
Winter Stroll, Elin Hilderbrand

New Books for Youth Readers

(YA) TEEN

Conjurer's Riddle, Andrea Cremer
Game of Lives, James Dashner
Seeing off the Johns, Rene S. Perez II
Soundless, Richelle Mead

(+) PICTURE BOOKS

Autumn Visitors, Karel Hayes
I Can't Wait, Amy Schwartz
Sharing the Bread, Pat Zietlow Miller
Strictly No Elephants, Lisa Matchev
Very Stuffed Turkey, Kathrine Kenah

(E) EASY READER

Aaron Loves Apples and Pumpkins, P.D. Eastman

(I) INTERMEDIATE READER

Castle Crime, Ron Roy

Operation Orca, Ron Roy
Warm Welcome, Erica David

(J PB) JUVENILE PAPERBACK SERIES

Daisy, Ellen Miles

(J) JUVENILE FICTION

Adventures from the Land of Stories, Chris Colfer
Adventures of Miss Pettifour, Anne Michaels
Diary of a Wimpy Kid: Old School, Jeff Kinney
Fast Break, Mike Lupia
Lego Legends of Chima: Wings for a Lion, Yannick Grotholt
Webster Tale of an Outlaw, Ellen Emerson White

(J) JUVENILE (NON-FICTION)

Finding Winnie, Lindsay Mattick

Audio -- DVD -- CD ROM -- Music

DVDS

Aladdin (Diamond Edition)
Dr. Mulholland
Minnie's Pet Salon

Pixels
Southpaw
Vacation

AUDIO-BOOKS

Rogue Lawyer, John Grisham
Saturn Run, John Sandford

Events at the Library

STORY TIME (LIBRARY)

Wednesday, Dec. 2 • 10:30 a.m.
Colors.

Wednesday, Dec. 16 •
10:30 a.m. Gingerbread Boys.

LEGO CLUB

Monday, Dec. 21 • 4-5 p.m.
Children under 7 must be accompanied by an adult.
Kids over 9 years old can work on our new Technic kit.

HOLIDAY MAKE AND TAKE

Thursday, Dec. 3 • 3-5 p.m.
Holiday craft projects will be available to all to make and take home. All ages welcome.

BOOK CLUB ON THE MOVE

Friday, Dec. 11 • 1 p.m. Winter Street by Elin Hilderbrand.
Meet at Elk Room at the Osthoff. Copies are available at the library.

BOOK CHAT AND COFFEE HOUR

Every Wednesday morning at 10 a.m. Come and see our new books and enjoy the conversation.

TECH THURSDAYS

Need help with downloading digital books from Overdrive

to your reader or iPad? Want to learn more about digital magazines? Need help getting started with Ancestry Library Edition? Drop by Thursdays from 11 a.m.-2 p.m. and we will help you out. Or call and make an appointment with us at 876-2554.

FRIENDS OF THE LIBRARY'S LIGHTS OF LOVE

Help light the bulbs on our Christmas tree.

SPONSORED BY



Our Family's Passion is *Cheese.*

Schneider named student of month

The Elkhart Lake-Glenbeulah Student Government recognizes Alex Schneider as the Student of the Quarter. Alex, an eighth grader, was nominated by Hannah Donhauser. Alex's peers described her as helpful during basketball practice, and also for her kindness to others at lunch and on the playground. Congratulations, Alex, on this well-deserved award.



Kossman earns Lakeland math medal

On Monday, Nov. 9, the Elkhart Lake-Glenbeulah Middle School participated in the 23rd annual Lakeland College Middle School Math Meet.

One team of eight students was selected to participate in four individual events and one team event. This year's participants were Anders Waage, Madeline Buechel, Louie Hartfield, Morgan Vollbrecht, Deegan Kossman, Paige Lehrke, Sklyer Brusky, and Joe Schuler.

One seventh grade student, Deegan Kossman, placed 12th overall out of 336 students in the individual event competition.

Students from all over the Sheboygan County area participated in the math meet. Deegan received honorable mention and recognition during the meet's award ceremony as well as a medal. This is Deegan's second year participating in this event.



Deegan Kossman

Congratulations to all of those who competed and a special congratulation to Deegan Kossman.

Tenpas named to retail banking manager post

Wisconsin Bank & Trust is pleased to announce that Amber Tenpas has been promoted to Vice President, Retail Banking Manager with retail oversight for all 18 banking centers statewide.

Tenpas, who joined the bank in 2013, will be responsible for all aspects of retail banking including growing consumer deposits and sales, consumer loans, small business deposits and small business loan growth as well as providing day-to-day leadership, coaching and development of the retail staff. Tenpas, who has held the position on an interim basis since August, will continue to be based from Sheboygan's Downtown Branch. Her previous positions with Wisconsin Bank & Trust included Assistant Vice President Commercial Banker, Business Banker and Banking Center Manager.

Prior to that she held banking positions in the Milwaukee area, most recently as a Business Banking Officer with US Bank in Brookfield. She also was a Branch Manager for Associated Bank in Mequon.

Tenpas, who grew up in Cedar Grove, is active in the community. Her involvement includes serving as vice president of the Girl Scouts of Manitou Council, president elect of Women in Management, Inc. and board member at Sheboygan Senior Community, Inc.

Said Kevin Tenpas, President and CEO of Wisconsin Bank & Trust (no relation to Amber Tenpas) "Amber's expertise and perspective, along with her involvement in the Sheboygan community are invaluable to the bank and to our customers. We look forward to her leadership in this



senior role."

Amber Tenpas will be based from Sheboygan's Downtown Branch, 604 North 8th Street and can be reached at 920-453-7144 or atenpas@wisconsinbankandtrust.com.

Classified Ads

In the Depot Dispatch!

Sell an item, send a birthday, anniversary, congratulatory or thank you message, list an employment ad, list an event, etc.

\$10 for the first 15 words and 35 cents each additional word.

To include a Classified Ad in the next edition, email depotdispatch@elkhartlake.com by the 15th of every month. Include billing information.

www.depotdispatch.com

CLASSIFIED AD

Cleaning

Robin's Cleaning Service
Residential, Bonded and Insured, please call
920-570-9972

For Sale

SNOWBLOWER
36" Ariens. 12 hp.
Electric start. \$650
Call 920-698-1750.

Join **ST. JOHN LUTHERAN CHURCH** and the **WELCOME TABLE** for Fellowship and Food on **Christmas Day**

Noon-1:30pm
St. John Lutheran Church
222 N. Stafford Street, Plymouth

Call **SJL at 893-3071** for reservations.

Meal is served at no cost to our guests. Handicap Accessible.

www.stjohnplymouth.com



Suhrke Insurance Agency

Where Service Counts!

1215 Eastern Ave.
Plymouth

893-8108

www.suhrke.com

Let us build your new website!

We work with you to design your website, then turn the keys over to you allowing you to make easy, instant updates to your site anytime you want or have us make them for you! It's up to you.

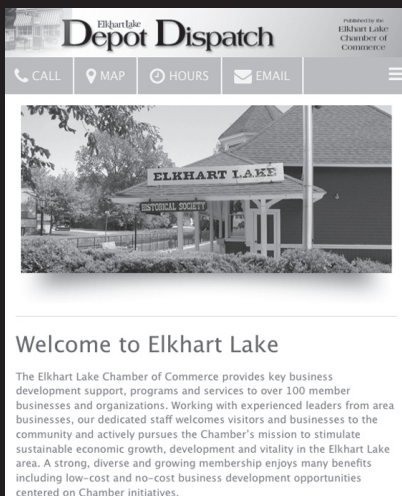
Site build and design **\$199**

Monthly hosting - \$49

ready **GoWebSite!**.com

(includes easy-to-use online software)

a division of Delta Publications, Inc.



Welcome to Elkhart Lake

The Elkhart Lake Chamber of Commerce provides key business development support, programs and services to over 100 member businesses and organizations. Working with experienced leaders from area businesses, our dedicated staff welcomes visitors and businesses to the community and actively pursues the Chamber's mission to stimulate sustainable economic growth, development and vitality in the Elkhart Lake area. A strong, diverse and growing membership enjoys many benefits including low-cost and no-cost business development opportunities centered on Chamber initiatives.

Call us today for a free, design consultation.

920-894-2828



Elkhart Lake Chamber's TREE LIGHTING CEREMONY

Saturday, Nov. 28 • 6:45 pm
Village Square Train Depot

- Santa Claus arrives at 6:30 pm via an Elkhart Lake fire truck.
- Shortly after Santa's arrival the Tree Lighting Ceremony will begin.
- Several members of the Elkhart Lake-Glenbeulah High School Chorus will perform a few selections. In addition, the High School Jazz Band and Kohler Madrigal Singers will provide musical entertainment.
- Visitors will be able to enjoy cookies and keep warm by sipping hot cider or hot chocolate with candy canes and marshmallows while gathered around toasty warming fires manned by our dedicated Elkhart Lake volunteer firefighters. Many area restaurants will be open past the ceremony. Be sure to visit our area restaurants & retail businesses.
- For more info, contact us at 877-355-3554 or (920) 876-2922, or email chamber@elkhartlake.com.

Hosted by the Elkhart Lake Chamber of Commerce
www.depotdispatch.com • www.elkhartlake.com



Elkhart Lake Chamber Calendar

NOV 24
Community United Church of Christ
 AA Meeting 10 a.m. Women only 6 p.m.

NOV 25
Elkhart Lake Public Library
 Book Chat and Coffee Hour 10 a.m. Come and see our new books and enjoy the conversation.

NOV 27
Paddock Club
 Live Music, Paul Sucherman on keyboard and Auggie on drums 7-11 p.m.

NOV 28
Elkhart Lake Chamber of Commerce
 Tree Lighting Ceremony. Village Square Train Depot 6:45 p.m. Santa visit. The Elkhart Lake-Glenbeulah High School Chorus will perform a few selections. In addition, the High School Jazz Band and Kohler Madrigal Singers will provide musical entertainment.

Vintage Elkhart Lake
 Wine Tasting event 4-6:30 p.m. \$15 admission. All proceeds will benefit the Plymouth Food Pantry.

Lake Street Cafe
 Wine Tasting event 4-6:30 p.m. \$15 admission. All proceeds will benefit the Plymouth Food Pantry.

Paddock Club
 Wine Tasting event 4-6:30 p.m. \$15 admission. All proceeds will benefit the Plymouth Food Pantry.

DECEMBER 1
Community United Church of Christ
 AA Meeting 10 a.m. Women only 6 p.m.

DECEMBER 2
Elkhart Lake Public Library
 Story Time 10:30 a.m. Colors.

Elkhart Lake Public Library
 Book Chat and Coffee Hour 10 a.m. Come and see our new books and enjoy the conversation.

DECEMBER 3
Community United Church of Christ
 AA Meetings 7 p.m.

Elkhart Lake Public Library
 Tech Thursdays. Need help with downloading digital books from Overdrive to your reader or iPad? Want to learn more about digital magazines? Need help getting started with Ancestry Library Edition? Drop by Thursdays from 11 a.m.-2 p.m. and we will help you out. Or call and make an appointment with us at 876-2554.

Elkhart Lake Public Library
 Holiday Make and Take 3 to 5 p.m. Holiday craft projects will be available to all to make and take home. All ages' welcome.

DECEMBER 4
Osthoff Resort
 Old World Christmas Market at Osthoff Resort. 10 a.m.-5 p.m. christmasmarketatosthoff.com. 920-876-5845.

Paddock Club
 Live Music, Paul Sucherman on keyboard and Auggie on drums 7-11 p.m.

Millhome Nursery & Greenhouses
 Holiday Open House 9 a.m.-5 p.m. Poinsettias, fresh hand-crafted wreaths.

DECEMBER 5
Osthoff Resort
 Old World Christmas Market at Osthoff Resort. 10 a.m.-5 p.m. christmasmarketatosthoff.com. 920-876-5845.

Osthoff Resort
 Join us for the arrival of Santa Claus as he gathers last-minute requests from children of all ages. This family event includes a knee-high breakfast buffet, Christmas caroling and a special gift for the children from Santa's sack of surprises. Also traditional Christmas cookie decorating, ornament making and hayrides.

Plymouth Arts Center
 Acoustic Open Mic. Doors open at 6 p.m. Performances at 7 p.m. Free show. People of all ages welcome to participate.

Wade House Historical House
 A Wade House Christmas. Guests will experience the magic of a mid-19th-century Christmas celebration at the Wade House stagecoach hotel.

Millhome Nursery & Greenhouses
 Holiday Open House 9 a.m.-4 p.m. Poinsettias, fresh hand-crafted wreaths.

Plymouth Arts Center
 Children ages 3-10 accompanied by an adult are invited to create holiday gift tags/cards with art teacher Mary Rowe 10 a.m.-2 p.m. Enjoy cookies and punch.

Vintage Elkhart Lake, Gina's Custom Framing & Specialty Gifts, Elkhart Lake Outfitters, Two Fish Gallery, and other Elkhart Lake retailers

Annual Holiday Open House 4-8 p.m. There will be complimentary wine tastings, treats, and specials at Vintage.

DECEMBER 6
Osthoff Resort
 Old World Christmas Market at Osthoff Resort. 10 a.m.-5 p.m. christmasmarketatosthoff.com. 920-876-5845.

Osthoff Resort
 Families are invited to join St. Nicholas for a special holiday brunch buffet. Accompanying St. Nicholas from the North Pole are some of his trusty reindeer.

Wade House Historical House
 A Wade House Christmas. Guests will experience the magic of a mid-19th-century Christmas celebration at the Wade House stagecoach hotel.

DECEMBER 7
Elkhart Lake Board of Trustee
 Village of Elkhart Lake Board of Trustee meeting, Grashorn Civic Center 7 p.m.

Elkhart Lake Lions Club
 Directors meeting 7:00 p.m. Quit Qui Oc.

Elkhart Lake Study Club
 Dusty and Lefty and AFS Students. Noon lunch at Lola's.

Osthoff Resort
 Old World Christmas Market at Osthoff Resort. 10 a.m.-5 p.m. christmasmarketatosthoff.com. 920-876-5845.

DECEMBER 8
Community United Church of Christ
 AA Meeting 10 a.m. Women only 6 p.m.

Elkhart Lake Chamber of Commerce
 Chamber board meeting 8:30 a.m. Grashorn Civic Center.

Osthoff Resort
 Old World Christmas Market at Osthoff Resort. 10 a.m.-5 p.m. christmasmarketatosthoff.com. 920-876-5845.

DECEMBER 9
Osthoff Resort
 Old World Christmas Market at Osthoff Resort. 10 a.m.-5 p.m. christmasmarketatosthoff.com. 920-876-5845.

Elkhart Lake Public Library
 Book Chat and Coffee Hour 10 a.m. Come and see our new books and enjoy the conversation.

Cedar Landing at Elkhart Lake
 Open House 1:30-3:30 p.m. Enjoy Christmas tea featuring our residents' favorite Christmas cookies.

DECEMBER 10
Community United Church of Christ
 AA Meetings 7 p.m.

Osthoff Resort
 Old World Christmas Market at Osthoff Resort. 10 a.m.-5 p.m. christmasmarketatosthoff.com. 920-876-5845.

Elkhart Lake Public Library
 Tech Thursdays. Need help with downloading digital books from Overdrive to your reader or iPad? Want to learn more about digital magazines? Need help getting started with Ancestry Library Edition? Drop by Thursdays from 11 a.m.-2 p.m. and we will help you out. Or call and make an appointment with us at 876-2554.

Plymouth Arts Center
 Christmas musical production of "Jingle All The Way" 7:30 p.m. A celebration of all that is Christmas in both story and song.

DECEMBER 11
Osthoff Resort
 Old World Christmas Market at Osthoff Resort. 10 a.m.-5 p.m. christmasmarketatosthoff.com. 920-876-5845.

Paddock Club
 Live Music, Paul Sucherman on keyboard and Auggie on drums 7-11 p.m.

Plymouth Arts Center
 Christmas musical production of "Jingle All The Way" 7:30 p.m. A celebration of all that is Christmas in both story and song.

Elkhart Lake Public Library
 Book Club on the Move 1 p.m. Winter Street by Elin Hilderbrand. Meet at Elk Room at the Osthoff. Copies are available at the library.

DECEMBER 12
Aviation Heritage Center of Wisconsin
 "Santa Fly-in" at Sheboygan County Memorial Airport 12-3 p.m.

Osthoff Resort
 Old World Christmas Market at Osthoff Resort. 10 a.m.-5 p.m. christmasmarketatosthoff.com. 920-876-5845.

Osthoff Resort
 Join us for the arrival of Santa Claus as he gathers last-minute requests from children of all ages. This family event includes a knee-high breakfast buffet, Christmas caroling and a special gift for the children from Santa's sack of surprises. Also traditional Christmas cookie decorating, ornament making and hayrides.

Sheboygan Symphony Orchestra
 The Glory of Christmas concert, 7:30 p.m.

Wade House Historical House
 A Wade House Christmas. Guests will experience the magic of a mid-19th-century Christmas celebration at the Wade House stagecoach hotel.

Plymouth Arts Center
 Christmas musical production of "Jingle All The Way" 7:30 p.m. A celebration of all that is Christmas in both story and song.

DECEMBER 13
Osthoff Resort
 Old World Christmas Market at Osthoff Resort. 10 a.m.-5 p.m. christmasmarketatosthoff.com. 920-876-5845.

Osthoff Resort
 Families are invited to join St. Nicholas for a special holiday brunch buffet. Accompanying St. Nicholas from the North Pole are some of his trusty reindeer.

Wade House Historical House
 A Wade House Christmas. Guests will experience the magic of a mid-19th-century Christmas celebration at the Wade House stagecoach hotel.

Camp Y-Koda
 Brunch with Santa 11 a.m.-2 p.m.

Plymouth Arts Center
 Christmas musical production of "Jingle All The Way" 2 p.m. A celebration of all that is Christmas in both story and song.

DECEMBER 16
Elkhart Lake Public Library
 Story Time 10:30 a.m. Gingerbread Boys.

Elkhart Lake Public Library
 Book Chat and Coffee Hour 10 a.m. Come and see our new books and enjoy the conversation.

DECEMBER 17
Pourvino Wine Bar
 Art & Vino 7-9 p.m. The event is \$35 and includes all materials and your choice of one of any wine offer our glass pour menu. Reservations are required.

Elkhart Lake Public Library
 Tech Thursdays. Need help with downloading digital books from Overdrive to your reader or iPad? Want to learn more about digital magazines? Need help getting started with Ancestry Library Edition? Drop by Thursdays from 11 a.m.-2 p.m. and we will help you out. Or call and make an appointment with us at 876-2554.

Quit Qui Oc Golf Club
 Rib Night 5-8 p.m.

DECEMBER 18
Paddock Club
 Live Music, Paul Sucherman on keyboard and Auggie on drums 7-11 p.m.

DECEMBER 19
Osthoff Resort
 Join us for the arrival of Santa Claus as he gathers last-minute requests from children of all ages. This family event includes a knee-high breakfast buffet, Christmas caroling and a special gift for the children from Santa's sack of surprises. Also traditional Christmas cookie decorating, ornament making and hayrides.

DECEMBER 20
Camp Y-Koda
 Girls and Dolls Cookies with Santa 1-3:30 p.m.

DECEMBER 21
Elkhart Lake Public Library
 LEGO Club 4-5 p.m. Children under 7 must be accompanied by an adult. Kids over 9 years old can work on our new Technic kit.

Elkhart Lake Lions Club
 All member meeting at Anchor Lanes 6 p.m. social hour. 7 p.m. meeting & dinner.

Elkhart Lake Board of Trustee
 Village of Elkhart Lake Board of Trustee meeting, Grashorn Civic Center 7 p.m.

DECEMBER 23
Elkhart Lake Public Library
 Book Chat and Coffee Hour 10 a.m. Come and see our new books and enjoy the conversation.

DECEMBER 24
Community United Church of Christ
 Christmas Eve services will be held at 6 & 8 p.m. Everyone is welcome to attend.

Elkhart Lake Public Library
 Tech Thursdays. Need help with downloading digital books from Overdrive to your reader or iPad? Want to learn more about digital magazines? Need help getting started with Ancestry Library Edition? Drop by Thursdays from 11 a.m.-2 p.m. and we will help you out. Or call and make an appointment with us at 876-2554.

Osthoff Resort
 Families are invited to enjoy Christmas Eve Day with traditional activities including an old-fashioned horse-drawn hay wagon ride, hot chocolate, and Christmas cookies.

DECEMBER 25
Osthoff Resort
 Spend time with family and friends enjoying our sumptuous Christmas Day Buffet 11 a.m.-3 p.m.

DECEMBER 28
Camp Y-Koda
 Winter Day Break Camp. Are you looking for something fun for your kids to do during their winter break? Send them to Camp Y-Koda to enjoy the brisk winter air and great outdoor activities.

DECEMBER 29
Camp Y-Koda
 Winter Day Break Camp. Are you looking for something fun for your kids to do during their winter break? Send them to Camp Y-Koda to enjoy the brisk winter air and great outdoor activities.

DECEMBER 30
Elkhart Lake Public Library
 Book Chat and Coffee Hour 10 a.m. Come and see our new books and enjoy the conversation.

Camp Y-Koda
 Winter Day Break Camp. Are you looking for something fun for your kids to do during their winter break? Send them to Camp Y-Koda to enjoy the brisk winter air and great outdoor activities.

DECEMBER 31
Elkhart Lake Public Library
 Tech Thursdays. Need help with downloading digital books from Overdrive to your reader or iPad? Want to learn more about digital magazines? Need help getting started with Ancestry Library Edition? Drop by Thursdays from 11 a.m.-2 p.m. and we will help you out. Or call and make an appointment with us at 876-2554.

Lola's on the Lake Restaurant and Lounge
 Ring in 2016 with fabulous dinner entrées, party favors and a midnight toast. Chicago-based band Quiet Storm performs a variety of R&B, funk, rock and blues from 9 pm - 1 am.

Camp Y-Koda
 Winter Day Break Camp. Are you looking for something fun for your kids to do during their winter break? Send them to Camp Y-Koda to enjoy the brisk winter air and great outdoor activities.

DEPOT DISPATCH DEADLINES January 2016 issue

- December 11 - Contributing writer stories due.
- December 11 - Ad design changes/space reservations due.
- December 15 - Print ready ads due.
- December 22 - Issue on newsstands

CALENDAR SPONSORED BY

LET'S TALK RELAXATION

While your money works for you. A Cash Rewards Checking Account makes Great Things Happen!SM

1.51% APY¹

On balances \$0.01 to \$20,000

WISCONSIN BANK & TRUSTSM
www.WisconsinBankandTrust.com

¹Annual Percentage Yields (APY) are accurate as of 08/19/15. 1.51% APY applies to balances of \$0.01-\$20,000 and 0.11% APY to balances over \$20,000 if qualifications are met each monthly statement cycle. 0.01% APY applies to balance of \$0.01-\$20,000 and 0.11% APY to balances over \$20,000 if qualifications are not met. The rates may change after the account is opened. To earn rewards: Sign up for eStatements, use direct deposit and post 15 signature debit transactions within your monthly statement cycle. Limit one account per household in the bank's market area. Minimum \$25 to open. Fees may reduce earnings. ATM surcharge fees of up to \$20 per monthly statement cycle will be refunded if reward requirements are met. Member FDIC.

Director

continued from page 16

Olson has more than 28 years' combined leadership experience in acute care and elder care settings. He holds a bachelor's degree in business administration from Winona State University and a master's of science in health care administration from the University of St. Francis, Joliet, Ill. He joined Hannibal Hospital, a 99-bed acute care provider in rural Missouri with a 100-member medical staff and 850 employees, in 2011, overseeing initiatives to revitalize their home-based services, implement computerized medical records and develop strategic alliances with rehab services and physician's groups to improve financial performance and

quality of care.

Cedar Community is a not-for-profit, United Church of Christ-affiliated leader whose mission is to model Christ's love for humanity by creating life-enhancing relationships, services and environments. Cedar Community is proud to provide a continuum of care including independent and assisted living, skilled nursing care, rehabilitation, hospice, memory loss services, home medical equipment and subacute and home care. For more information visit their website at cedarcommunity.org. Cedar Community 5595 County Road Z, West Bend, 262.306.2100.

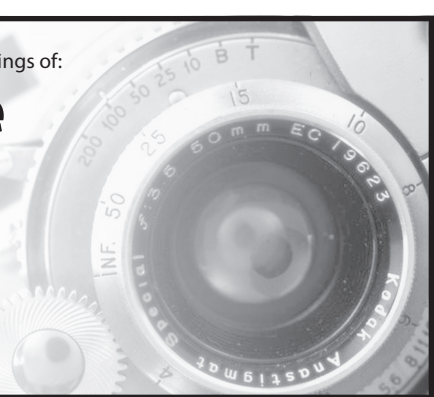
Come join your fellow shutterbugs at the monthly meetings of:

The Elkhart Lake Camera Club

Meeting held 3rd Monday of each month • 7-8:30pm

Cedar Landing Club House
102 Cedar Lane, Elkhart Lake

For more information call 920-781-5004



Your Elkhart Lake Real Estate Specialists

RE/MAX Realty Plus
Bill Cain Team
Realtors/Auctioneers



Bill Cain Cell 920-980-2588
Cheryl Schommer Cell 920-893-9596
Dale Becker Cell 920-918-9907

920-893-8842
433 E. Mill Street,
Plymouth
www.billcain.com
www.billcain@remax.net



New Listing

N5463 Hwy 57, Plymouth

Great business opportunity ♦ Sales office w/1056 sq. ft. ♦ Garage heated w/2 overhead doors
\$179,900 / MLS #: 1448676



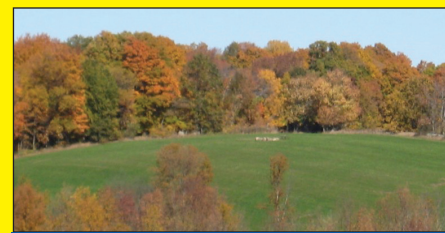
N128 Dorn Rd., New Holstein

25.22 acres w/several barns ♦ 7 BR, 2 full BA w/2,700 sq. ft. ♦ Many updates throughout
\$299,900 / MLS #: 1448748



18725 Point Creek Rd., Kiel

108 acres w/5 acre, spring fed lake ♦ 43 acres tillable land ♦ 3 BR, 3 BA farm house
\$950,000 / MLS #: 1448839



47 Acres Sugarbush Rd., Glenbeulah

Secluded property w/superior views ♦ 35 acres tillable w/woods & open land ♦ Southern exposure
\$349,000 / MLS #: 1447231



W500 Gerber Lake Rd., Plymouth

Custom built home on 26 acres m/l ♦ 3 BR/3 BA ♦ Spring fed pond, 3 stall attached garage, finished walkout LL
\$554,000 / MLS #: 1424877



W6299 Linda Ln., Plymouth

21 acres m/l w/1-2 acre pond ♦ 3 BR/3BA raised ranch ♦ 2 car attached garage & 2 level, 2 car detached garage
\$349,900 / MLS #: 1442307

We have qualified cash buyers looking for homes on Elkhart Lake & Crystal Lake!

Read the Depot Dispatch ONLINE...24-7.

Find us @ depotdispatch.com



CHRISTINE KRIEG

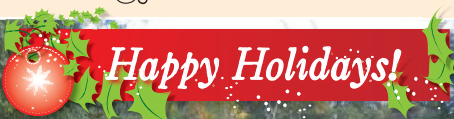
(414)840-8486

kriegconnection@gmail.com



FIRSTWEBER REALTORS

The human side of real estate.



7542 N. Summit Road, Town of Plymouth

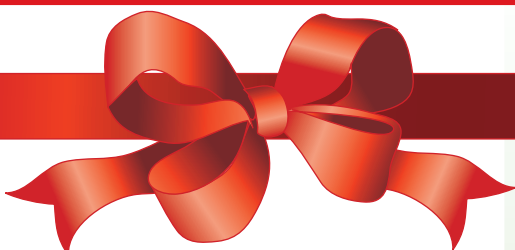
ELKHART LAKE & GOLF COURSE VIEWS!

Remodeled 3BR, 1.5BA mid century ranch home set on a wooded hillside. Beautiful golf course and rural views! Located within a mile of Crystal and Elkhart Lakes and the Road America race track, this home has it all! Freshly painted and carpeted, this home is a condo alternative with all main level living, but has a huge slightly finished LL rec room for additional entertaining space (1/2 bath too) or lots of storage room! Supersized garage has workbench and room to store your toys. Rolling green hillside abuts private woods!

\$211,000

Directions: South of Elkhart Lake on AJ, before Crystal Lake take a left on Summit, house on right. Only 1 mile from Road America!

www.chriskrieg.firstweber.com



One Gift Card, Three Great Restaurants!

Happy Holidays from our family to yours.



16524 Lax Chapel Rd., Kiel
920-894-7414

www.millhomesupperclub.com

Hours: Tues-Sat: Bar 3:30; Dinner 4:30-9
Sun: Champagne Brunch 9-2
Dinner 4-8 • Closed Mon



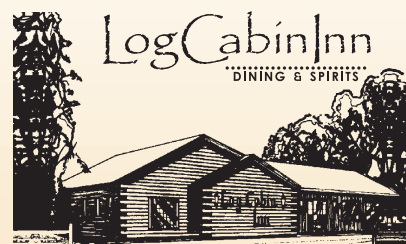
The area's only restaurant dedicated to real BBQ

819 Service Rd, Kiel
920-894-7499

Open for Lunch & Dinner.
Hours: Tue-Sat 11-9; Sun 11-8

DINE IN • CARRY OUT • DELIVERY

www.parkerjohns.com



633 Madison • Howards Grove
920-565-2712

Full Menu Online at:
www.logcabinfood.com

NEW HOURS:

Mon - Thurs • 6am-8pm
Fri & Sat • 6am-9pm
Sun • 7am-8pm

Breakfast is Served Off Menu
Until 11am Daily
Sunday Breakfast Buffet • 7am-12pm



Lynn Schwensow

"Premier Property Specialist" Century 21 Rautmann/Schilo

Call: 920-946-4054 Cell/Text

e-mail: Lynn@Lynn-Sells.com

www.c21rs.com/lynn



~From My Home to Your Home~

Wishing You and Your Family A Beautiful Holiday Season Filled With Love, Blessings and Joy!



Merry Christmas!



WISCONSIN'S Elkhart Lake A legendary getaway

Tree lighting is Saturday, Nov. 28!



Start your holidays off with style and shop downtown Plymouth!



Maggie's Closet

Fashion and Home Décor on consignment



The place to go for all your holiday wardrobe, gift & holiday home décor needs.

The consignment shop that feels like a boutique!

Gift Certificates Available

127 E. Mill St., Plymouth

920-892-4400 • www.maggiescloset.net

Mon 10-5 • Tues 10-5 • Wed 10-7 • Thurs - Sat 10-5 • Sun 12-4

Celebrate in Style!

Gift Giving Made Easy!



We Buy Gold & Silver

- ALEX AND ANI
- Forever Locketts & Charms
- Spirit by Chelsea Taylor
- Unique Clothing S-3X
- Purses & Accessories

Alléchant Boutique LLC

217 East Mill St. • Plymouth • 920-893-9888

Open Most Days 10am to 5pm

Extra Hours By Appointment

