



IMPACT

Postal Customer Local
PRSR
STD
US Postage Paid
IMPACT
ECRWSS



Big second quarter sends Laurel back to the "Big House" ...page 2

The Krewe of Blue Mardi Gras Parade...page 13

Laurel • 601.649.1129

Volume 41, No. 9 • March 1, 2017

47,129 total circulation

www.impact360.ms

Serving Jones, Jasper, Smith, Wayne and Washington & Choctaw County, AL

Advertising that works!

Hill's Jewelers introduces a special Laurel time piece

By Linda Cranford

In February and March of this year the owners of Hill's In-House Jeweler, Jeffrey and Courtney Hill, will celebrate their seventh business anniversary as well as their seventh wedding anniversary. They are also announcing the addition of a unique time piece honoring the city of Laurel to the Hill's Jeweler Collection – the Laurel Watch Co. ladies' and men's watch.

Jeffrey's career as a jeweler began in 2003 when he joined Doyle Webb at Burton's Jeweler and Gifts, one of Laurel's landmark jewelry stores. From the 1980's until the day it closed in 2010 Burton's offered a special Burton's Jeweler watch. The Hills have brought this unique product back to Laurel with their own specially designed watch. The Laurel Watch Co. watch is hand assembled here in the Unit-

ed States with quality Swiss parts offering a one-of-a-kind design, made in America, classical time piece.

Throughout the seven years of working at Burton's Jeffrey said he attended several trade schools to increase his knowl-

— See LAUREL WATCH, page 2



Here is one of the Men's watches and a Ladies' watch. The Ladies' watch has 11 diamonds on the face.



Hill's In-House Jeweler owners Courtney and Jeffrey Hill. Photos/Linda Cranford

DERKSEN PORTABLE BUILDINGS

BUY OR RENT TO OWN starting at... **\$69²¹** PER MONTH

NO CREDIT CHECK!

- FREE DELIVERY & SET-UP
- NO SECURITY DEPOSIT • NO SLAB NEEDED

ALL STYLES AVAILABLE • CABINS • BARNES
UTILITY/SIDE UTILITY • GARAGES • CARPORTS

AS SHOWN 10X12 \$123.84 MONTH Rent to Own

WWW.ELLISVILLEMOTORS.COM **601-323-0464**

12 Months SAC *wac 303 HWY. 11 S. ELLISVILLE, MS • LOCATED BETWEEN PIZZA HUT & JCJC

coupon

KaRazy Kones

50¢ OFF ANY SMALL
\$1.00 OFF ANY LARGE

Limit 2 each per coupon. Expires April 15, 2017

Located next to KaRocks • Ellisville • Across from JCJC

Total Foot Care Clinic of Laurel
NEW LOCATION BEHIND MIMI'S BRIDAL OFF HWY 15N

Specializing in surgical and non surgical treatment of all foot problems.

Dr. Michael Zaleski, Diplomate Board Certified
Dr. Gachavis M. Green, Board Eligible Foot Doctor

NOW SCHEDULING MONDAY APPOINTMENTS

- Ingrown Toenails • Heel & Arch Pain • Diabetic Ulcers
- Tired Foot Conditions • Bunions • Corns and much more...

New Location 528 N. 15th Ave. • Ste E • Laurel
Call and schedule your appointment today
601.268.0400

IT'S HERE AGAIN! NEED CASH?? COME SEE US!!!

2017 SPRING BREAK

LAUREL LOANS INC.

601-649-7121 • 744 West 5th • Laurel

CALL TONYA, KRISTY OR TERESE TODAY!
for EMERGENCY CASH call 601-649-3106

Stretch Your Tax Refund

Amana
25 CU. FT. FRENCH DOOR REFRIGERATOR
In Stainless Steel, Black or White

- External Ice/Water Dispenser • Full Width Pantry Drawer
- Fast Cool Option • Spillsaver Glass Shelves

While They Last!

WAS \$1,899
\$1,499

Delivery & Setup Available

Alexander's
SELECTION • SERVICE • VALUE

Bay Springs 601-764-2161
Ellisville 601-477-3312

SPEND YOUR TAX REBATE HERE!

ROOM FULL OF FURNITURE... \$699

HOUSE FULL OF FURNITURE... \$1499

ATTENTION SHOPERS THE MOST AMAZING TAX REFUND SALES EVENT HAS BEGUN

24 Months Financing!!!

BEDROOM SUITES \$369
SECTIONALS \$499
SOFA LOVESEAT GROUPS \$488
ROCKER RECLINERS \$139
QUEEN PILLOW SOFT MATTRESS \$149
KING PILLOW TOP MATTRESS \$299

SOUTHERN FURNITURE AND MATTRESS
2909 Wheeler Drive • Laurel, MS 601-649-0733
Next to Bob Palmer's Chancellor Motor Group
See us on Facebook and Instagram at Southern Furniture & Mattress

Classified Index

Apartments for Rent	8
Appliances	7
Attorneys	3
ATVs	11
Autos - Cars	9
Auto Services	9
Autos - Motorcycles	10
Autos - SUVs	10
Autos - Trucks	10
Buildings	9
Campers	7
Carports	11
Commercial	8
Estate Sale	7
Farm	3
Fish	7
Furniture	7
Garage Sales	9
General	3
Handyman	6
Help Wanted	11
Houses for Rent	8
Houses for Sale	8
Land	3
Massage	6
Mobile Home for Rent	8
Mobile Home Lots	8
Mobile Homes	7
Musical	9
Pets	6
Portable Buildings	9
Services Offered	6
Sporting Goods	3
Timber and Lumber	8
Trailers	3
Vacation	9
Wanted to Buy	8

IMPACT 
#1 in Advertising

Ronnie Buckley
 Publisher

Kevin Williamson
 Manager

Jerry Clark
 Circulation Supervisor

Ryan Griffin
 National Sales Consultant

Betty Busby
 Laurel Sales Representative

Kim Wilbanks
 Laurel Sales Representative

Trish Irwin
 Laurel Graphic Artist

Jennifer Clark
 Graphic Production Manager

Terica Roberson
 Graphic Artist

Candice Pittman
 Graphic Artist

Russ Farris
 Graphic Artist

Sherry Hearn
 Administrative Assistant

Linda Cranford
 Writer/Photographer

www.impact601.com

WHILE THE IMPACT makes every effort to verify the offerings made in these ads, we cannot guarantee the integrity of every advertiser. We strongly recommend that readers investigate the companies involved before sending them any money.

Classified and ROP Ad Deadline
 Sunday Edition -
 Wednesday at 12:00 Noon
 Wednesday Edition -
 Thursday at 3:00

IMPACT
 1010 N. 16th Ave
 Laurel, MS 39441
 Ph. 601.649.1129
 Fax: 601.649.0424
 Email:
 admin@laurelimpact.com

Circulation Audited By

LAUREL WATCH, continued from page 1

edge of the jewelry industry and the art of jewelry repair and design. He is currently working on his Graduate Diamonds Degree at the Gemological Institute of America (GIA) and has currently received his certification in Diamond Essentials.

Cortney also worked at Burton's for a little over a year in floor sales and bridal consulting. She has since received certification as a Jeweler of America Certified Senior Sales Professional (CSSP) and has earned her certification in Pearls from the GIA.

As a true "bench jeweler," Jeffrey is able to design, cast and repair all types of jewelry in house providing faster quality service. "We pride ourselves on being a Master Jeweler Store," said Jeffrey. "There are only 4 or 5 in the state." Hill's In-House



Here are a few of the new Laurel Watch Co. time pieces from Hill's In-House Jeweler. Photo/Linda Cranford

Jeweler is also a member of the Independent Jeweler Organization (IJO).

The Laurel Watch Co. time piece is a beautiful addition to the exclusive

Hill's Collection with its bridal line of fine jeweler custom made to the customer's desire. The watch will have several design options for customers

to choose from – diamonds or no diamonds, silver or gold, and silver and gold. Each watch comes with a scratch resistant genuine Sapphire Crystal face and is water resistant up to 330 feet. The dive watch is water resistant up to 660 feet. Each watch also come with a lifetime battery replacement.

OLD SOUTH FARM SUPPLY

FRUIT TREES ARE HERE

It is also time to fertilize your Fruit & Nut Trees.

WE HAVE Fertilome Fruit, Citrus & Pecan Fertilize and Hi-Yield Pecan & Fruit Food in stock.

COME LET US HELP YOU WITH YOUR LAWN & GARDEN NEEDS!
 Bo Welborn-Owner • Mickey Holloway-Manger
244 E. Hickory Street • Laurel • 601-428-7447

The whole month of February is the time to treat your yard for sandspurs! Use Fertilome St. Augustine Weed or Feed with Atrazine or Spray with Hi-Yield Atrazine Concentrate.

One 32 Lb. bag treats 5000 Sq.Ft.
 1 Qt. will treat up to 3720 Sq. Ft.

GARDEN SEEDS & BONNIE PLANTS ARE COMING IN WEEKLY

The Children's Depot, LLC
 CHILD CARE & PRESCHOOL

Limited openings Register today!



601.342.5240
 224 Lower Myrick Rd

Big second quarter sends Laurel back to the "Big House"

By Zac Chamblee

Laurel is headed back to Jackson. The Golden Tornadoes used a balanced scoring attack and a strong second quarter push to down West Harrison, 78-59, Saturday night, clinching a sixth-straight trip to the "Big House".

"It's a great feeling," Laurel coach Marcus Price said after the win. "We're just really excited about it. I'm trying to make sure our guys seize the moment."

Price's team, the defending Class 5A champions, really seized the moment in the second quarter of Saturday's contest. The Golden Tornadoes, who led 16-10 after the first quarter, put together a 17-0 scoring run in the middle of the quarter and did not look back from there. The team eventually took a 36-20 lead into halftime. That lead would balloon even more in the second half, as Laurel cruised to victory. No, it wasn't a complete game from the Golden Tornadoes, but Price will take it for obvious reasons.

"At this point in the season, every win is a good win," Price said. "We didn't do some of the things we wanted to do in terms of playing to the Tornado standard, but like I said, at the end of the day it's a good win."

Dontario Drummond and Matthew Tillman led the way for the Golden Tornadoes with 15 points apiece. Drummond, a football star signed to East Mississippi, has been a factor on Price's team for years now.

"Dontario is special," Price said. "He is one of those guys that can just do things, and he has another level. He's humble, works hard and does all the little things you ask of him."

And Price calls Tillman, a Southwest Community College football signee, the "unsung hero" of this Laurel team. "Matthew Tillman is kind of our 'glue guy' and kind of does what Octavious Cooley [Ole Miss tight end] did for us last year," Price explained. "He's our bruiser and our guy that gets all the loose balls. He does all the little things for us. He's a really good player and a really good guy."

Troymain Crosby, an Alcorn State signee, added 14 points for the Golden Tornadoes (20-8), who advance to the state quarterfinals that will be held later this week at Jackson State. West Harrison finishes their season 9-18. They were led in Saturday's contest by Quieran Gray, who had 26 points.



Laurel's Rasaad Pettis (14) races by the West Harrison defense.



Laurel's Dontario Drummond (5) goes up for a layup against West Harrison. Photos/Zac Chamblee



Laurel's Charles Winston (1) added 10 points for the Golden Tornadoes.



Laurel's Troymain Crosby (23) leads a fast break against West Harrison.

MAYTAG
4.2 CU. FT. HIGH EFFICIENCY TOP LOAD WASHER
 ✓ STAINLESS STEEL WASH BASKET
 ✓ 11 WASH CYCLES
 ✓ POWER WASH CYCLES
 ✓ DEEP WATER WASH OPTION MVMCS65FW

7 CU. FT. ELECTRIC DRYER
 ✓ 15 DRYING CYCLES
 ✓ 4 TEMPERATURE SETTINGS
 ✓ WRINKLE CONTROL OPTION
 ✓ HEAVY DUTY CYCLE MEDC215EW



REG \$649
\$479
 PRICES GOOD THRU 3-18-17

REG \$549
\$429
 PRICES GOOD THRU 3-18-17

STRETCH YOUR TAX REFUND!
 Delivery & Setup Available!
Alexander's
 SELECTION • SERVICE • VALUE
 Bay Springs 601-764-2161
 Ellisville 601-477-3312

SPORTING GOODS

Super savings at mooney Creek Pawn & Trade, Collins. AR Rifle on sale for only \$499.99 while supplies last. Call 601-765-6150.

GENERAL

Circle 3 Self Storage hereby makes notice that contents for Melanie Clairmont, Robert Moore and Cindy Jones will be sold to the highest bidder March 11, 9:00 a.m. at 1199 Hwy 15 South, Laurel, MS. 601-649-0479.

Flag Pole Super Sale! 24ft. Liberty Deluxe Double Flyer (reg. \$299) now only \$199. Call American Flag Pole Co. Today! 601-649-0748. God Bless America.

Lawncare: Serving Hattiesburg, Lumberton, Laurel, Sumrall, Petal, Brooklyn, Ellisville, Purvis and Mosselle areas. Reasonable rates. 601-325-5008. www.fullservicelawncares.com

Elite Fitness 5: Half off special \$45 a month - first 50 New Members only. Call 601-329-9914.

Cape Cod dishes from Avon. Hard to find. Collection of 12 pieces. \$250. 601-319-1069.

Brand New Michael Kors Purse. \$275.00. Never used. Burnt orange. Brand new Michael Kors wallet. \$75.00. Never used. Coral. I bought them at separate times and I thought they were a match but they did not match. Both purchased at the Michael Kors Outlet Store in Pearl, MS. And still in the Michael Kors shopping bag. All tags still attached. Serious inquiries only. No low ballers please. I bought another set and just trying to recoup some of my money

on these. For photos, Text: 601-408-0556.

ATTORNEYS

Divorce, personal injury, custody, DUI, adoption, will disputes, Worker's Comp, wrongful termination, land & property disputes. Call Sam Creel 601-498-8968.

Bankruptcy & Social Security, Tracy A. Walley, 1616 West 3rd Street, Laurel, 601-651-2186

FARM

2016 Yanmar YT 235. \$24,900 at Paul Garner Motors. (844) 452-4569. See more at Cars601.com.

Farm Barns. 40x30x16-\$9500. 30x30x10-\$7500. Metal roof and sides. Price includes labor. 601-296-0550.

Mid-winter Special on 200 lb. 28% Protein Low Moisture Tubs. Only \$75. Contact Terry Loftis at Loftis Supply in Seminary, MS. Call 601-408-6872. Ignite your animal's health. loftissupply@bellsouth.net

(2) Rhode Island Red hens & rooster, \$51; (2) Black Astralorpe hens & black rooster, \$51; (6) 3 month old chicks, \$5 each. 601-323-6031.

TRAILERS

B&B Trailers. Utility and equipment. 8201 US Hwy 98W, Hattiesburg. We take trade-ins. 0% financing. 12 months same as cash. WAC. Check out our new website. BBTRAILERS.NET 601-264-6711.

LAND

Stringer, MS: This excellent 92 acre parcel is located in the heart of Stringer School District. The property consist of various merchantable timber types with multiple home sites. With an abundance of wildlife the property could also be used as a hunting retreat. The property can be divided. Priced to sell at \$207,000. Contact Marc 601-670-5429 at Walley Properties, LLC.

+/- 219 Acres priced to Sell Quick! Located on just outside of Topton, AL, and one hour from Mobile, AL.

Has road frontage on CR 19 along with power and water available. Has great secluded House/Camp Site sitting underneath beautiful mature longleaf pines and hardwoods. Dark and Rich Waters of Bilbo Creek runs through the property with Hardwoods make for great wildlife habitat. Has Lake. Has several cleared areas that will make large and plentiful food plots. Has some young pine and some thickets for deer to bed in. This tract truly has it all! Don't miss this one of a kind Hunting/Recreational Tract. Reduced \$306,600. Call Woods & Waters Realty at 800-526-3961. See more at mfmland.com

South Jones County +/- 78 acres -minutes from Ellisville. Beautiful home site ,15 acre lake, recently thinned pine plantation. \$296,400 For more details, call Bennett today 601-913-0340 at Walley Properties, LLC. Or visit our website walleyproperties.com for maps and more information of this listing.

Lake Eddins: a great Place To Be. Now offering Offwater Lots As Low As \$3500.00. Call CrossRoads Realty 601-727-7653.

Jones County +/- 29 Acres : Only 5 miles south of Ellisville down Hwy 29 East located on Busby Road. This Property with road frontage has recently been chipped, leaving residential/shade trees which would make for a perfect home-site, or mini farm. \$71,050. For more information call Bennett 601-913-0340 at Walley Properties LLC or visit walleyproperties.com for maps of this listing

Jones County +/- 57 Acres: Must see! Located in South Jones County on Rainey Road. 10 Miles from Hattiesburg and Laurel right off the Sanford Road Exit on I-59. This property would be perfect for a home-site or

mini-farm with plenty of recreational opportunities. Price: \$153,500. For more details, Contact Bennett 601-913-0340 at Walley Properties, LLC. Or visit our website walleyproperties.com for maps and more information of this listing.

Highlands. Finance a lot, \$1500 down, pay for your lot over 3 years - then use your lot as down payment at your bank. Call: 601-649-9459.

20 acre farm/ranch in Janice, Ms. With custom built home, wrap around porch, Pond, horse stalls, fenced and cross fenced, huge shop. Bordered on two sides by National Forest lands. Lots of wildlife call Shawn, Southern Coastal Realty, LLC 601-408-3570.

Continued on ... Page 5

SEMINARY FARM CENTER
 "Your Full Service Farm Supply"
 • Spreader Service • Spraying Service • Chemicals
 • Fencing Materials • Feed & Seed • Fertilizer
 101 NORTH BEECH ST. • SEMINARY, MS • 601.722.4163
 "Family Owned & Operated for 28 Years"
 Owners: Steve Sanford / Brett Sanford

NEED CASH FAST?
 COME SEE TIFFANY
 CITY PAYDAY LOANS
 CAR TITLE LOANS
 716 SPRING STREET
 WAYNESBORO
 601-735-5353

WALLEY PROPERTIES LLC.
 LAND?
 BUYING OR SELLING
 www.walleyproperties.com
 601-477-3014

INCOME TAX
 Don't Monkey Around... Get Sylvia to Figure Your Taxes!!!

SYLVIA CRANE TAX SERVICE
 601-648-2286
 601-410-3891
 Tuesday, Wednesday, & Thursday
 8:00 a.m. - 5:00 p.m.
 Buckatunna, MS

100 Years of Laurel's BEST CASH DEALS

(Assorted Fabrics)
SOFA & LOVE \$599

(Assorted Fabrics)
SOFA & LOVE \$699

MASSIVE SECTIONAL \$849

BEDROOM SUITES
 (DRESSER, MIRROR, 5 DRAWER CHEST, HEADBOARD)
\$499

DINETTES
\$249

SOLID WOOD BUNKBEDS
 (BEDDING INCLUDED)
\$425

QUEEN MATTRESS SETS
\$249

LAUREL'S FINEST

LOTTFURNITURE
 SINCE 1917

WWW.LOTTFURNITURE.CO • 320 FRONT ST. • DOWNTOWN LAUREL • 601-428-5782

Bobwhite quail can reach speed of 50 mph

By James L. Cummins

The bobwhite quail (*Colinus virginianus*) is famous for its whistling of its name. During the spring and summer months, the "bob-bob-white" call rings loud and clear across prime quail country as lonesome males seek the company of a mate and proclaim their territory. The bobwhite is a round-bodied small bird. Adult males measure between 9 and 10 inches in length, have a wingspan of 14 to 15 inches and weigh anywhere from 5 to 6 ounces. The most conspicuous markings found on the bobwhite quail are the throat patch and broad stripe above the eye, extending from the bill to the base of the neck.

The male bobwhite has a white throat patch and stripe, while the fe-

male's patch and stripe is a buff or pale yellow color. The bobwhite's breast, back, rump, wings and tail are reddish brown with black markings. The belly and flanks consist of white feathers with dark markings on the edges giving the belly a scaled appearance. The bird's bill, eyes, legs and feet are black. The bobwhite has short, cupped wings that are well-designed for fast take-offs and flying short distances. Bobwhite quail can reach their top speed of 50 mph almost immediately, but then must set their wings and glide to their destination.

Bobwhite quail prefer a diverse habitat which can be found in and around idle or fallow fields, open woodlands, old fields, crop fields such as corn, milo and soybeans with

weedy growth and certain types of pastures. These areas provide food sources with suitable escape cover. Approximately 80 to 85 percent of a bobwhite quail's diet consists of seeds, leaves, stems and flowers of ragweed, lespedeza, smartweed, corn, sorghum, bristle grass, wheat, small acorns, cowpeas, sunflowers and panic grasses. The remainder of their diet consists of animal matter such as insects, caterpillars, earthworms, snails and slugs.

Bobwhite quail are very prolific with clutch sizes of 12 to 15 eggs on average. The female will lay one egg per day until the clutch is completed. Incubation requires 23 days and once the chicks have hatched, both parents participate in raising them. After only 10 days the chicks

are able to fly short distances and at the age of 3 weeks have fully-developed flight feathers. Like other ground nesting birds, bobwhites face a constant danger of predation from raccoons, fox, snakes, skunk, bobcats, coyotes and house cats. The bobwhite's greatest enemy, however, is the change in land use (large fields, small fields growing-up in trees, etc.) leading to loss of habitat.

James L. Cummins is executive director of Wildlife Mississippi, a non-profit, conservation organization founded to conserve, restore and enhance fish, wildlife and plant resources throughout Mississippi. Their web site is www.wildlifemiss.org.

44th ANNUAL GOSPEL SINGING JUBILEE
 Featuring **THE SINGING ECHOES**
 AND TERRY JOE TERRELL

SATURDAY • MARCH 11 • 6:30 P.M.
 SOUTH SHADY GROVE CHURCH OF GOD
 118 SCR 108 • MAGEE, MS

• **TIM FRITH & GOSPEL ECHOES**
 • **REVELATIONS**
 • **CAROLYN NORRIS**

Advanced Tickets \$10
 At The Door \$12

for more information & tickets:
 Baptist Bible & Book House

• 601-906-0677 • 601-720-8870

Woodland Trails

Come Join Us:
FIRST SUNDAY LUNCH
MARCH 5TH
 Serving Lunch from
 11am - 1pm on Wednesdays

601-765-8812 27 DAN & JOYCE LANE
 SEMINARY, MS
 (1 mile outside Collins)

WOODLANDTRAILS4@YAHOO.COM

LOW COST DENTURES SINCE 1978
DENTAL SERVICES OF SOUTH MS. P.A.
GENERAL DENTISTS
 2019 Hardy Street • Hattiesburg, MS

• Dentures • Reline
 • Partial • Repair

Call Toll Free
 Within 55 Mile Radius
 (601) 545-1905
 (877) 545-1905

LISTING OF THESE PREVIOUSLY
 MENTIONED AREAS OF PRACTICE DOES NOT INDICATE
 ANY CERTIFICATION OF EXPERTISE THEREIN.

March 4
Miss Okatoma Queen Magnolia State Pageant will be held in Collins. Winners will advance to the state pageants, where over \$14,000 in cash and four Caribbean cruises are awarded. Contact Jaclyn Lee Rogers at 601-942-0577 or email her at JACLYNLEE@ATT.NET. Entry forms are also available at www.missmagnoliastate.com.

Jones County Alcorn Alumni Chapter's monthly meeting will be Saturday at noon in the Cook Avenue Center. For more information, contact Ann Martin at 601-729-2334.

March 5
You are cordially invited to come and worship with Pleasant Valley MB Church of Laurel in our five night "Put a Praise On It" revival services beginning Sunday, March 5 - Thursday, March 9. There will be a different guest speaker each night.

United MB Church, Laurel, invites you to attend our Spring Revival starting Sunday, March 5 at 3:00 p.m. and climaxing on Sunday, March 10. Rev. Author Lewis Johnson, pastor of Paulding in Charge, Paulding, will bring the opening message for the March 5 service with dinner following. Weekly services will start at 7:15 nightly. There will be a different guest speaker each night.

Friendship MB Church will celebrate their pastor's anniversary (Rev. Kirk Keller, Sr.) eighth year anniversary on Sunday at 3:00 p.m. The speaker for the occasion is Rev. Randolph Hamilton, pastor of Mt. Wade MB Church, Brookhaven, MS.

The public is invited to attend.

Mt. Pleasant Baptist Church, Sandersville, invites everyone to Pastor Herbert Walker's anniversary celebration at 2:30 p.m. The guest speaker will be Rev. Ricky Chambers, pastor of New Vision Baptist Church, Waynesboro. He will be accompanied by his choir & church congregation.

Pleasant Grove Moss MB Church Mission Department presents "Women of Valor" at 2:00 p.m. Your mission department, choir, soloists and all church members are invited.

The public is invited to a special program at First Baptist Church, Soso. Squire Parsons will be in concert beginning at 11:00 a.m. There is no charge. A love offering will be taken. If you have any questions, contact the church at 601-729-8806.

Magnolia Baptist Church, 1040 Wansley Road, Laurel, will hold homecoming service on Sunday. Frank Harmon will be the morning worship leader, and Gloria Ladner will lead the music. Sunday school will begin at 9:15 a.m. and morning worship will begin at 10:30 a.m. with lunch to follow. A time capsule was buried at Magnolia Baptist Church 25 years ago, and the contents of this capsule will be opened and displayed at homecoming. For more information call the church office at 601-649-5660.

March 6
The Jones County Federation of Democratic Women will hold their monthly meeting at 6:00 p.m. in the Cook Avenue Center.

The Smith County Republicans will meet at 7:00 p.m. at the Chancery Court Building in Raleigh. State Representative Mark Tullos will be the speaker unless the legislative session keeps him working too late! Join us! For more info call 601-725-4544.

We are celebration the 37th anniversary of Laurel Toastmasters Club. We are not about champagne but about improving communication and leadership skills in a positive environment. Monday mornings we meet at South Central Regional Medical Center from 6:30 to 7:30 in the executive meeting room. You will like our approach to eliminating the pressure, worry, and nervousness we all have when getting up to talk to a group, whether it be at church or civic club, school PTO or business setting. You will feel very confident in conveying your message to whomever. To come visit a meeting, enter the hospital front doors, take a right, go between the front desk and the gift shop, continue straight (towards Subway), 1st double doors on the right. For more info, contact Rich Hollingsworth at 601-580-9500.

March 7
The Jasper County Genealogical and Historical Society will meet at 6:00 p.m. at the Old Post Office in Bay Springs. The guest speaker will be Rev. Leo Beatty of Montrose, MS. Rev. Beatty will be speaking on his grandfather's old cane mill and making sugar cane syrup. Refreshments of hots biscuits and Rev. Leo's can syrup will be served. Anyone interested is invited to attend. Please come and bring a friend.

March 11
Gospel sing beginning at 6:30 p.m. at Sanford Community Center, located at 663 Old Highway 49, Sanford. The

featured guests will be "Southern Heritage," "Joel & Mechelle Duckworth" and "Faithway Singers." Admission is free; a love offering will be received. For more information, call 601-765-6485.

Heidelberg High Class of 1981 will be having a meeting on March 11 at 2:00 p.m. at the Beat 5 building Ebenezer. You may call Lora Kennedy at 601-935-0618 or Brenda Singleton at 601-935-1107 for more information. The class reunion will be June 24 & 25.

March 18
Johnson School Reunion will be at 10:00 a.m. at the Johnson Community Center, Ellisville. Please come and bring something good to eat. Questions call Tom or Margaret Beech at 601-344-7137.

March 19
There will be a tent revival at the walking track behind Myrick Community Center starting Sunday, March 19 and running through Friday, March 24. Services will start at 7:00 each night. Shane Byrd, pastor of Grace & Truth Church, Sunrise, will preach 3/19 & 3/22. Bill Myers, pastor of Mill Creek Church, will preach 3/20 & 3/23. Thomas Cochran, pastor of Faith Baptist Church, Ovett, will preach 3/21 & 3/24.

Pleasant Valley Usher's Ministry of Laurel will have their annual Usher Day program at 3:00 p.m. The guest speaker for this occasion will be Rev. George Dawson of St. John MB Church of Laurel. The theme is: "Working the Post at God's House."

March 22
The Sewing Basic Series is scheduled for Wednesday, March 22; Friday, March 24; Monday, March 27; Wednesday, March 29 and Friday, March 31 - each day at 10:00 a.m. at the Mississippi State University Extension Service, Wayne County Office. This will be a good class whether you want to learn to sew or you haven't sewed in a while. Call Lanette Crocker at 601-735-2243 or email l.crocker@msstate.edu to register and for a list of material you will need to bring.

Miscellaneous
You are invited to join Wayne County 4-H. This is one of the only youth organizations that you can join where there is no enrollment fee. There are educational meetings, workshops, and more. 4-H is for youth ages 5-18. Call 601-735-2243 or drop by the Wayne County Extension Office at 810-A Chickasawhay Street to find out more. If you have FaceBook, you can also like our Wayne County Extension Office page to see some of the things we have going on.

On the last Tuesday of each month, Covington County Hospital hosts a cancer support group at 5:30 p.m. in the hospital's classroom. For more information, or call 601-765-6711.

Al-Anon meetings are held each Monday night at 7:00 at the 24-hour Society Club House at 626 N. Magnolia Street (corner of 7th Street, Laurel). Al-Anon is for families and friends for those who have addiction problems. Al-Anon hotline is 601-426-4688.

TOPS (Take Off Pounds Sensibly) meets every week on Thursday, 9:15 a.m., in the Magnolia Baptist Church fellowship hall, 1040 Wansley Road in Laurel. For more information, call or text 601-323-0830 or 601-319-6931.

New Creation Apostolic Church, 204 Ford Street, Taylorsville, invites everyone to join us for Sunday school at 10:00 a.m. and morning worship at 11:30 a.m. We also have a prayer service on Tuesdays and Bible study on Thursdays at 7:00 p.m. The pastor is Rev. Elder Bolton.

Brenda Cassman's Ladies Night Out Ministry will be held on the second Thursday of every month from 7:30 - 8:30 p.m. with food and fellowship beginning at 6:30 p.m. The location is 7 Orange Drive, Tuckers Crossing Community Center, Laurel. Information: 601-344-8110 or 601-580-1302.

A Shepherd's Heart: The troubling tongue

Dr. Timothy L. Hubbard

"The trouble is in the tongue." "Those who control their tongue will have a long life; opening your mouth can ruin everything." (Proverbs 13:3, NLT)



Have you ever said something to someone that you wished you could take back? I remember hearing a story one time of how a teacher taught a student a lesson concerning this very thing. The student had spread a terrible rumor about another classmate and when the teacher heard it, she decided to teach a life lesson to her students. The next day the teacher brought a feather pillow into the classroom and asked the girl who had spread the rumor to come to the front of the classroom. She instructed her to take the pillow, cut a hole in the end and to scatter the feathers around the entire classroom. After the girl had emptied the contents of the pillow, the teacher then looked at her and said, "Now then, pick them all up and put them back into the pillow case."

The girl stood there for a moment then began to pick up feathers and stuff them back into the pillowcase. After a few minutes, she looked at all the feathers floating around the room, and finally turned to the teacher and said, "There is no way that I can put them all back!"

"Exactly!" proclaimed the teacher, "The same is true of our words; when we speak them, they are just like these feathers - it is impossible to take them all back."

Wow! What a lesson! The writer of Proverbs was giving us a hint as to the importance of controlling our tongues in Proverbs 13:3. He states first to those who control their tongue that they will have a long life. Then he says in contrast that opening your mouth could ruin everything. There is a big contrast between living a long life and ruining everything. This is not the only place we find the issue of the tongue in Scripture.

One such reference is found in the letter of James. The writer of James compares the tongue to the rudder of a ship, the bit in a horse's mouth and also the fire that ignites a forest fire. These words found in the third chapter of James certainly lead us to understand the power of the tongue and the words formed there on. I remember a statement my mother used to say to my siblings and me. She would say, "If you can't say something nice, say nothing at all!" Little did I know then that her words of correction to us was nothing more than wisdom from God's Word. Paul said it this way, "Let no unwholesome word proceed from your mouth, but only such a word as is good for edification according to the need of the moment, so that it will give grace to those who hear." (Ephesians 4:29 NASB)

Well, all of this is to encourage us to think before we speak. I pray that you and I will do a better job of controlling our tongues in the days to come. Let's make an honest effort to not heed my mother's challenge to her four children. Who knows, we may see what a difference it will make in our world where it is so obvious that "The trouble is the tongue."

SOUTHERN CROSS ANIMAL RESCUE

Pet of the Week

Ember

Ember is absolutely gorgeous! She is an energetic pit bull mix who can be a little bit of a diva when it comes to other dogs. She wants her family to give her all of the attention, so a home with no other pets would be ideal. A homecheck and a fence is required for Ember.

We're open Mondays, Wednesdays and Saturdays from 10-2 and Fridays from 10-6. For more information on SCAR, call 601-433-5807, email scarofms@gmail.com or visit our facebook page at <https://www.facebook.com/SouthernCrossAnimalRescue>

DEBBIE HERRING



**BUY IT...
 SELL IT...
 TRADE IT...**

**THE MOST
 COVERAGE FOR
 YOUR MONEY!
 CALL TODAY
 601.649.1129**

IMPACT

Outdoorsman's Paradise!! Perry County. 90 +/- Acres Located on the beautiful Tallahala Creek. This property is located on Highway 29 South right outside of Runnelstown, MS only 10 miles from the city of Petal. This property is every outdoorsman's dream, with over a 1/2 mile of river frontage, sand bars, gorgeous hardwood bottoms, pine plantations, shooting houses and food plots. The plentiful abundance of wildlife such as: Deer, Turkey, small game and fish will keep you occupied year-round. \$333,000. Call Bennett 601-913-0340 at Walley Properties LLC. Please visit walleyproperties.com for maps of this listing.

McCraw 601-498-9143 for more information or to set up an appointment to view this beautiful piece of land!! \$161,000. Woods & Waters Realty, www.mfmland.com.

Lazy Leaf River Estates, Moselle. Beautiful 3.34 acre corner lot. Community river access. No direct river access from this lot. \$18,000. 601-410-4643.

Small acreage for sale, owner finance, NE Jones area. 601-426-3696 or 601-470-7772.

1 acre of land for sale in Jones County, Hoy Community. \$5000. 313-415-8368.

& Wayne County line off 84 East. \$120,000. 601-428-7191.

Covington County 85 +/- Acres. Price Reduced! Located in the Seminary School District 4 miles North of Seminary at the intersection of Hwy 535 and Lebanon Church Road. Would make for a great home site. Features a mix of young pine plantations and hardwood stands along the creek bottom. Excellent timber investment and hunting opportunity. \$191,250 Call Bennett 601-913-0340 at Walley Properties LLC. Please visit walleyproperties.com for maps of this listing

+/- 80 Acres Located on the Jasper/Clarke County Line just North of Heidelberg, MS, on CR 1151 this tract offers a good timber investment and great hunting and recreation. The property has a good road system in place. With the tract only being a mile off of MS Hwy 11, makes getting to the property quick and easy!!!! This property is made for the avid hunter!! \$144,000. Call Woods & Waters Realty at 800-526-3961. See more at mfmland.com.

+/- 49 Acres Located on County Road 6 Just off MS Hwy 11, Heidelberg, MS. This tract consists of 23 year old merchantable pine timber with scattered hardwoods. Tract has small creek that runs on the NE Corner and several great camp/home sites. Great hunting tract and close to amenities. Power/Water available. \$125,000. Call Woods & Waters Realty at 800-526-3961. See more at mfmland.com.

Covington County +/- 74 Acres. New Listing! Located 4 miles from downtown Seminary off hwy 590 on the corner of Shirley Sanford Road and Johnny Sanford Road. This property would be perfect for a home-site with plenty of recreational opportunities. Property consist of mature pine plantation, gorgeous hardwoods, and a stream that flows throughout the property. Great for hunting. \$244,200. For more details, call Bennett today 601-913-0340 at Walley Properties, LLC. Or visit our website walleyproperties.com for maps and more information of this listing.

+/- 46 Acres Pastures Located on Lower Myrick Road and Mollie Boutwell Rd, this property is made up of Pasture and has 4 Ponds. Perfect place to raise cattle or horses or to build your dream home. Call Rob

+/- 46 Acres We have just made this 46 acres available separately from the total of 83 acres. Located on 5 miles South of Ellisville, MS with road frontage on both Augusta Road and Kitchens Loop. Clear Creek running through the property. Several great lake sites. Merchantable Mixed pine/hwd timber and good road system. Food plots in place for the abundance of wildlife and hunting. Great Site index for timber investment. Several Great House Sites. Power and water available. This place is beautiful! \$125,000. Call Woods & Waters Realty, 601-408-0615. See more at mfmland.com

For Sale 45 acres, 2 old houses, 2 ponds, 4 water meters, Jones

+/- 60 Acres Located on Holliman Road just West of Richton, this tract consists of +/- 55 acres in 2 year old pine plantation and +/- 5 acres in hardwoods. Has several great house sites. Also has signs of gravel on property. Power and water available. Asking \$150,000. Call Rob McCraw 601-498-9143. See more at mfmland.com

+/- 46 Acres Located on Lower Myrick Road and Mollie Boutwell Rd, this property is made up of Pasture and has 4 Ponds. Perfect place to raise cattle or horses or to build your dream home. Call Rob McCraw at 601-498-9143 for more information or to set up an appointment to view this beautiful piece of land! \$161,000. See more at mfmland.com

24 acres in Runnells town. Lots of mature timber and wildlife. Unbelievable hunting!! May subdivide. Call

Shawn with Southern Coastal Realty at 601-408-3570.

+/- 37 Acres Located on Augusta Road 5 miles South of Ellisville, MS. This tract is made up of merchantable timber with both pine and hardwood. Has two large food plots in place. Great hunting and recreation. Has a house sites with power and water available. 1/4 mile black top frontage on Augusta Road. \$96,200. Call Woods & Waters Realty at 800-526-3961. See more at mfmland.com

Land sales: Let us assist you with your land sale or purchase. We provide full service forestry consulting and land brokerage. Call Woods & Waters Realty at 601-498-9143

Continued on ... Page 6

BUDDY'S

HOME FURNISHINGS

BuddyRents.com

Get More For Less!

3 ROOMS OF FURNITURE

only! \$3999

Sofa, Loveseat, Dresser, Mirror, Headboard, Footboard, Nightstand, 5 Piece Dining Room & 3 Tables.

\$15999

Cash Price \$2079**





LIVING ROOM



SET OF TABLES



DINING ROOM



BEDROOM

ELECTRONICS • FURNITURE • APPLIANCES • COMPUTERS • SMARTPHONES

ARTÍCULOS ELECTRÓNICOS • MUEBLES • ELECTRODOMÉSTICOS • COMPUTADORAS • TELÉFONOS • INTELIGENTES

acer Amana ASHLEY CORSTER HP Kenmore LG SONY Whirlpool

YOU'RE PRE-APPROVED TO RECEIVE UP TO \$3,000 IN-STORE CREDIT AT BUDDY'S!

LISTED ESTA PREAPROBADO PARA RECIBIR UN CREDITO DE HASTA \$3,000 EN LA TIENDA EN BUDDY'S

LEASE OWNERSHIP ARRENDAMIENTO FINANCIERO • NO CREDIT NEEDED NO SENECSITA CRÉDITO

2031 B HWY. 15 N. • Laurel 601-651-6117

Your 24 FITNESS CENTER & TANNING



GET 2 MONTHS ANY PACKAGE FOR ONLY... \$11

March- \$5.00, April - \$5.00 + Enrollment Fee \$1 (Regular Price Begins in May)

• ZUMBA • SPIN

• POWER TONE

• BOOT CAMP

PLUS MANY MORE!

your247fitnessandtanning.com

1705 Parker Drive • Laurel 601.342.2948



Southern Tire Mart

2926 Ellisville Blvd., Laurel

stmtires.com

601-428-4375

M-F: 7a-5p Sat: 8a-12p

Best in Class Service on America's Favorite Brands



WEATHER OR NOT, HERE I COME.

BFGoodrich Tires

NOW OFFERING PM SERVICE ON SEMI TRUCKS AND TRAILERS



10% OFF

- SUSPENSION
- A/C
- BRAKES
- TUNE UP
- BATTERIES
- LEVELING KITS
- OIL CHANGE
- ALIGNMENT

WITH COUPON Expires 3/15/17 CAN NOT BE COMBINED WITH OTHER OFFERS

FULL SYNTHETIC OIL CHANGE

UP TO 5 QTS \$39⁹⁵

Most vehicles, excludes diesels

WITH COUPON Expires 3/15/17 CAN NOT BE COMBINED WITH OTHER OFFERS

OIL CHANGE SPECIAL

UP TO 5 QTS \$29⁹⁵

Most vehicles, excludes diesels

WITH COUPON Expires 3/15/17 CAN NOT BE COMBINED WITH OTHER OFFERS

4 WHEEL ALIGNMENT

Most Vehicles \$49⁹⁵

WITH COUPON Expires 3/15/17 CAN NOT BE COMBINED WITH OTHER OFFERS

- FULL SERVICE
- 3 AXLE ALIGNMENT
- A/C SERVICE
- SHOCKS
- KING PINS
- BUSHINGS
- TRAILER ALIGNMENT
- BRAKES

3 AXLE ALIGNMENT

\$225

WITH COUPON Expires 3/15/17 CAN NOT BE COMBINED WITH OTHER OFFERS

\$50 CREDIT

TOWARDS FIRST SERVICE

WITH COUPON Expires 3/15/17 CAN NOT BE COMBINED WITH OTHER OFFERS

SERVICE DIRECTORY

Where the Pine Belt goes to get things done!

A&A SEPTIC SERVICES, LLC
 68554
Install and Repair
 • Septic tanks
 • Treatment Plants
 • Field Line • Grease Traps
 In business for 34 years
FAMILY OWNED AND OPERATED
601-649-8838
601-433-2947
 IN GOD WE TRUST

Right at Home
 In Home Care & Assistance
THE RIGHT CARE---RIGHT AT HOME
 Locally Owned
 Do you or someone you know need help with:
 • Transportation to Appointments
 • Grocery Shopping/Hair Appointments
 • Light Housekeeping
 • Recovering from a Hospital Stay
 • Basic Companionship
 • And Much More!
FREE CONSULTATIONS
601.426.6333
 68550

Kimble Coats
 Owner
KC CONSTRUCTION
 205729
 • New Construction
 • Remodeling
 • Decks
 • Vinyl Siding
 • General Construction
 • Foundations & Slabs
601-433-6996

BOLIVAR'S
Mobile Home Delivery & Setup
Statewide Moving
 • Licensed
 • Insured
Nathan Bolivar
601-580-9900
 BAB644

J's ToolBox
 RESIDENTIAL CONSTRUCTION
 • BARNs • SHEDs
 • REMODELS
 • ADDITIONS • FLOORING
 • ROOFs • PORCHES
 • DECKs • CABINETS
 • AND MORE!
 16+ Years Experience
601-323-2564
 79464

HAIGLER ROOFING & REPAIR
 • New Construction • Leaks
 • Repairs • Shingles • Metal
 • Flat Roofs • Chimneys
FREE ESTIMATES
30 Yrs. Experience
Call Dennis Haigler
601-319-2522
 bab129

FARRIS
Mobile Home TRANSPORT
 Statewide Moving
 Licensed & Insured
 Transporting since 1979
Tony Farris
601-422-4144
 79464

Fence Repairs, Installations, Custom Gates
 All Types of Fence • 40 Years Experience
 Licensed & Insured
 Thagard Fence • 601-550-5203

CARPORTS • PORTABLE BUILDINGS • RED IRON BUILDINGS
VARIETY BUILDINGS
 2 Locations • Laurel - 1508 Horne Dr. / Hwy 15N • Waynesboro - 501 Azalea Dr.

RENT TO OWN - FINANCING AVAILABLE
LAUREL 601-498-5944 **WAYNESBORO 601-509-4246**
INSULATION AND SHELVING OPTION

+/- 163 Acres Located just North of Sandersville, MS with frontage on Hwy 11. This tract is "One of a Kind". Has +/- 120 Acres in Merchantable Hardwoods, +/-15 acres of Mature Pine/Hardwood and has a beautiful +/-25 acre Beaver Pond for duck hunting. Beautiful Bogue Homa Creek runs across the property. Property has a powerline that runs across property that has been recently planted for deer season. Updated road system. Several great camp/cabin/sites with power and water available. This is a hard to find Hardwood Tract with great Hunting and Recreation close to amenities and Interstate 59. Don't let this one pass you by! Shown By Appointment Only...Priced to sell Quickly! \$295,000. 601-408-0615. Woods & Waters Realty, www.mfm-land.com.

SOUTHERN MISSISSIPPI WATER WELL DRILLING and SERVICE
601-344-1005
601-716-6837
662-803-5459
 New Augusta, MS 101507

MASSAGE
Message One. \$45.00 Introductory 1 Hr. Massage session. By Robert Lowe L.M.T.#1362. Call to book yours today! 601-466-2199 www.MessageOne.us May your days be stress free!

HANDYMAN
Handyman: electrical, remodeling, painting, porches, interior, exterior, and more. No job too small. Laurel and surrounding area. Call 601-935-8325.

ADVERTISING IS NOT AN EXPENSE . . . ADVERTISING IS AN INVESTMENT.
Call 649-1129
IMPACT

3B'S MINI STORAGE
NEW LOWER RATES
Openings Available Now
511 COURT ST. WAYNESBORO 251-366-6560

SERVICES OFFERED

Flooring Hardwood floors, ceramic tile, linoleum. For all your flooring needs. Quality work, references available. Licensed & Insured. Wilson 8:21 LLP II Corinthians 8:21. 601-268-7603.

Kool-Seal Mobile homes, travel trailers, campers, sheds, etc. Energy efficient, 10% reduction. Pressure washing available. Call Craig or leave message, 601-544-9614

PARKER
Electrical Heating • Cooling
Commercial • Residential • Oilfield
601-310-0950

Flowers, Sand & Gravel: We now install septic systems, grinder pumps and spray systems. We deliver all types of gravel, fill material, sand, rock and topsoil, soil mix and mulch. Dozier and track-hoe service available. Foundations, roads, ponds, etc. We also have Above Ground Precast Storm Shelters, several sizes available. Give us a call. 601-498-5983 or 601-477-2767.

Dependable, Retired Christian Man. Cuts grass, trims, pressure washing. Gas Prices Dropped and So Did Mine. Call for estimates, 601-583-9996, 601-325-6939. Leave message.

Flooring problems? Need An Experienced & Dependable Contractor? From storm damage or sub-floor repairs, to complete re-installs, We can fix it. If your floors are buckling, cracking or just need staining, call Steve today! 601.818.3457

Miller Tree Service: bucket truck, professional, 30 years experience, insured; bob cat - dump truck and chipper available, senior citizen discount, free estimates. 601-498-3836, 601-649-0174.

Quality Pressure Washing at affordable prices. Licensed, Insured, Affordable, Professional, Christian company. Free Estimates. References available Commercial and Residential. Wilson 8:21 Painting & More. II Corinthians 8:21. 601-268-7603

Bostick Tree Service: tree removal, stump and root grinding with precision for easy mowing and tree health, fully insured, free estimates, serving Pine Belt area, 601-283-8667

Daniels Plumbing Services, Waynesboro, Your plumbing problem now has a solution, call day or night, 601-735-1827, 601-381-1040

Flooring, all types. Remodeling, all types, decks-cabinets. For all your home improvement needs. No job too small. Commercial and residential. Licensed and insured, references available. Wilson 8:21. Painting, remodeling and more. II Corinthians 8:21. 601-268-7603.

Lawncare: Serving Hattiesburg, Lumberton, Laurel, Sumrall, Petal, Brooklyn, Ellisville, Purvis and Moselle areas. Reasonable rates. 601-325-5008. www.fullservicelawnca-rems.com

House Leveling Foundation Repairs. Replace bad sills, floor joist, or flooring. Sagging or shaky floor or dragging door, we can fix this. Let us make your foundation safe. Insured. 601-543-7007

Lonnie LOFTON
Roofing Contracting
Since 1968
Free Estimates
All Work Guaranteed
Laurel, MS PHONE (601) 425-4484
 68079

KC Construction, Kimble Coats owner. New construction, remodeling, decks, vinyl siding, foundations, slabs. 601-433-6996

1/2 price stump removal 5 or more average size, 24in. diameter, 6in. tall, with truck access. \$15 each. Best price on grinding uprooted stumps. Expires 3/31/17. 601-371-8733. The Tree Barber, Matthew 16:26.

The Reno Company, Licensed & Insured. Painting, lawn care, renovation, maintenance, A/C filter service, pressure washing. Call 601-342-0995.

L and L Lawn Care Service: Quality Work at Affordable Prices! Mowing, Weedeating, Trimming, Pressure Washing, General Services. 17 Years Experience. Fall and Winter Clean Up. Fully Insured! Call Lewis for a Free Estimate today! 601-433-1531 or 601-477-3862.

Roofing & Repair, new construction, leak repairs, shingles, metal, flat roofs, chimneys, all types roofing and repair, free estimates, 25 years experience, call Dennis Haigler. 601-319-2522.

Junk Cars: Get rid of those snake dens and rat dens. Bring 'em to us, or we'll pick 'em up! Springer Auto Salvage. Call 601-649-4238.

Quality Painting at affordable prices. Pressure washing and more. Licensed, Insured, Affordable, Professional, Christian company. Free Estimates. Commercial and Residential. References available. Wil-

VACUUM CLEANER REPAIR
 • We Repair All Makes
 • Free Estimates
 • Complete Line of Parts & Bags
 • Kirby • Electrolux
 • Eureka • Hoover • Compact
 • Filter Queen • Many Others
TAYLOR'S
Sewing Machine Center
 Parkside Plaza Shopping Center
 Next Door To Roses Store - Laurel, MS
425-1832
 70021

son 8:21 Painting & More LLP II Corinthians 8:21. 601-268-7603

A&A Septic Tank. We clean, install and repair septic tanks treatment plants, field line, grease traps. In business for 34 years. Family owned and operated. 601-649-8838. In God We Trust.

PINE BELT GUTTERS & REMODELING
 Specializing in seamless gutters, vinyl siding, patio covers, replacement windows & doors. We also offer gutter cleaning. 55647
WE WILL BEAT ANY COMPETITOR'S PRICE!
FREE ESTIMATES 601-265-6010

Painting, Remodeling, Drywall, Pressure Washing, Decks, Cabinets and more! Licensed, Insured, Affordable, honest, dependable Christian company. Commercial and Residential. Quality, professional work. Over 20 years experience. References available. Call for a free estimate. If no answer, please leave a message. We will return your call. Wilson 8:21 Painting & More. II Corinthians 8:21. 601-268-7603.

Thrash Pressure Washing: Residential, Commercial & Concrete. Call 601-470-2296.

Right At Home: In home care & assistance. Do you or someone you know need help with: Transportation to appointments; grocery shopping/hair appointments; light housekeeping; recovering from a Hospital stay; basic companionship and much more. For a free consultation call 601-426-6333.

B&B Tree Service: Call the best for less, fully insured, senior citizen discount, 38 years experience. We do all tree work and clean up at your request - bucket truck also available; call day or night, free estimates. May God bless you. Proverbs 11:30. 601-433-5257

Raybourn Construction: Roofing and repairs, general construction, remodeling, painting, heating & a/c service, and more. 30 years experience, insured State Licensed Contractor. Call 601-580-7540 or 601-649-0780.

Thames Concrete Finishing: Set forms, patios, finishing slabs, driveways, Brick work . painting & roofing great work Percy Thames. 601-543-8712.

Bolivar's Mobile Home Delivery and Setup. Statewide moving. Licensed and insured. Nathan Bolivar: 601-580-9900.

I buy junk cars, buses and heavy equipment. U Call. We Haul! We pickup 24/7. Call 601-297-2778.

Dozer, trackhoe, backhoe, bush-hogging work, fill dirt, clay, gravel, sand, delivered, mobile home pads, ponds, driveways built, repaired, clearing, site prep, Mark Butler, 601-433-6459 or 601-425-1747

Need a Private Sitter? 33 years experience. References available upon request. Call 601-433-4504 Or 601-283-0804.

PETS
 2 half chocolate lab males. 1 year old. All vaccinations given & heart-guard. \$75 each. Healthy dogs. 601-319-0865.

Propane Industrial Gases
RESIDENTIAL COMMERCIAL INDUSTRIAL TANK SET SPECIAL
 Ellisville: 601-477-3462
 Collins: 601-765-6800
 Hattiesburg: 601-583-6269
 Taylorsville: 601-785-4789
Mon. - Fri. 7 A.M. - 4 P.M.
 77935

BUSH
Construction Company, Inc.
 MEMBERS: MRBA & ABC
ASPHALT PAVING
 NO JOB TO BIG! • ROADS • NO JOB TO SMALL!
 • PARKING LOTS
 • DRIVEWAYS
NEW CONSTRUCTION AND OVERLAY
 "BUILDING A STRONGER MISSISSIPPI FOR EIGHTY YEARS AND COUNTING"
601-428-6074 EXT. 22
 MATTHEW DAVIS - Pres. P.O. BOX 8337 • LAUREL
 matthew@bushconstructionco.com Fax: 601-428-6077
 BAB1330

SPARTAN MOWER DAYS!
FEBRUARY 24TH NOON - 5PM
FEBRUARY 25TH 8AM - 4PM

TRACTORS UNLIMITED
1507 N MAIN STREET HATTIESBURG, MS 601-583-6453
 Visit Us Online **SPARTANMOWERS.COM**
 AM1376

NEED CASH?



Call Verna She will hold your personal check and give you **CASH!**

Loans from \$50 to \$410

LAUREL CHECK CASHING
134 Beacon St., Ste. C
Laurel • 601-426-2432

JUST PAWZ 

Hotel & Doggy Day Care

Full Time Groomer **Monday - Friday** New Owner
Cooki Oxner

303 VICTORY RD. **Laurel** **601.425.5788**

Don't take the heat! 

NEW LOCATION!!!
Now Located At **42 Kelly Lane • Seminary**
(Formerly located at Camper City in Hattiesburg for 13 years)

UNIVERSITY GLASS TINTING
601-329-1823
www.universityglasstinting.com

15% OFF On All New Tint
Offer good thru 3-31-17.

Business Hours: Mon-Fri 8am-5pm, Sat by Appt Only

AUTO • COMMERCIAL • RESIDENTIAL

Owner: **Chris Brown**

2 beautiful **CKC** Toy male puppies. All shots given. \$250 each. Please call 601-600-6836 or 601-577-7254.

For sale **CKC** registered miniature Dachshund puppies. 1 red female a chocolate male, \$350. Had first shot and wormed. Call 601-433-6260 after 9 a.m.

ESTATE SALE

Estate Sale Tom and Fran Casey, 1006 Broadway Drive (off Old Bay Springs Road), Laurel, MS. Friday, March 3rd, 7am-5pm; Saturday, March 4th, 8am-4pm. Over 200 first edition books by Hemingway, O. Henry, James Street, Harte, Churchill, Ferber, Eisenhower, Irving and many more, Madam Alexander Dolls, Designer ladies clothes by Eileen Fisher, J Jill, Talbots, Chicco, Coldwater Creek and many more designers, Junior clothes by Mudd, Rue 21, Eyeshadow and many more, Designer shoes and purses by Coach, David J. Pliner, Picasso, Gucci and more, Men's suits by Hunter, Glen, Austen Read, Givenchy, Christian Dior and more, washer and dryer, sofas and chairs, game tables, dresser/mirror with matching lingerie chest, Victorian Setae, Futon bed/mattress, single bed mattresses, luggage, room size rugs and area rugs, small desk, dining table with 8 chairs with matching sideboard, Crystal, China by Mellow, Spode, Lenox and more, Old Lap desk, Lincoln Rocker with leather, 50" Sony TV, DVD/VHS player, electronics, Shearwater Potter, over 30 pieces, Microwaves and other kitchen appliances, cookbooks and brand name cookware, Art by local artists, Wicker Patio set, 5700 watt generator, blower, tools, 14.8 refrigerator, coolers, dump cart, table and floor lamps, costume jewelry and watches, Christmas decor, vin-

tage linens, pre 1914 World Airways Poster and Quilts. And much, much, more!!! DP (Pictures on Estate Sales.net).

Estate Sale off University Avenue, 5 Ole Miss Drive, Apt. A-7, March 3rd, 7am-5pm. No early sales. 601-342-2872.

FURNITURE

Mama's Mattress Max! 20 different styles to try out. Sets start at twin \$145, full \$165, queen \$185, king \$295. Will split sets. Blackwell's Furniture 5200 Hwy 84 West at Calhoun. 601.649.6111.

Rest assured we've got your back! King mattress sets \$488, queen mattress sets \$288. A&J Rentals, 1123 Hardy Street, Hattiesburg, 601-544-0080.

APPLIANCES

RCA black electric glass top self-cleaning oven. \$200. 601-433-6086.

FISH

Brewer Fishery. Coppernose, Shellcracker and Hybrid Bream, Black Crappie, Channel Catfish fingerlings, Bass, Fathead Minnows, Grass Carp, and Gold Fish. State licensed and delivery available. www.istockponds.com 601-270-1268, 601-989-2466.

Slade Channel Catfish Fingerlings, Bass, Bream, Grass Carp, KOI fathead-tuffy Minnows, Electro-fishing, etc. Free water analysis. State licensed. Randall Slade 601-796-2000 www.sladesfish.com

CAMPERS

Bumper pull travel camper, 2013 AR 19 Extreme, sleeps 6, has bathroom & kitchen, like new, 2000 lbs. \$8600. 601-470-2122.

8x38 bumper pull, good condition. \$3000. 601-422-3003.

MOBILE HOMES

Golf Cart Giveaway, March 4th! Wholesale Home Center, 7389 Hwy 49, Hattiesburg, MS 39402.

2017 5BR/3BA, central A/C, skirting, delivery, set up and tie down, only \$69,900. 601-307-2114, 601-261-6005.

2005 16x80 3br/2ba, partially furnished, washer/dryer. \$18,000 obo. 601-381-1688.

New, used, repo, home and land, whatever you want. We have it or we will get it for you. Call Blake 601-319-1316.

A Must See! 5 bed 2 bath double wide. Perfect layout, open concept, gorgeous floors for you to add to. Vinyl siding and shingle roof. Price \$25,000 as is. Call 601-520-0710.

Tired of Renting? We have new and used homes with 100% guaranteed approval! Call Tony Purvis from Purvis at 601-543-9022 "Can't fail with Wholesale".

2009 mobile home 16x80, 3br/2ba. I bought new in 2010, it is semi furnished, has shingle roof and vinyl siding. \$25,000. Call or text 601-433-4446 for additional info.

Largest used inventory in the state. Wholesale Home Center. Call 601-319-1316.

"Mobile homes, mobile homes" arriving daily at TB Sales on Hwy 49 North, Hattiesburg, next to the Bouie River. We have used, repo, remodeled, fixer upper, all homes, all sizes at unbelievable prices, our guarantee no one will beat our prices for what we do. 601-520-0710 or TB Sales @ Facebook.

ASSUME PAYMENTS!

**3BR/SW \$249 PER MO.
3BR/DW \$349 PER MO.
2BR/DW \$399 PER MO.
205-541-4131**

I guarantee you a home with \$8,000 down and payments of \$575/month for only 13 years. I don't care if you are in a bankruptcy, you are automatically approved when you put \$8,000 down on a Brand new single wide mobile home. Call Tiny, 601-307-2114.

Eagerly waiting for you, 16x80, 3BR/2BA., huge kitchen, wrap around master bath, vinyl siding, shingle roof, Zone II, \$18,500, singlewide. Call 601-520-0710

Blake's Mobile Home Transport: We specialize in moving single-wide, double-wide, and triple-wide mobile homes. Also offer re-leveling and tie-down service. Licensed and insured. Call 601-422-8588

Repo, single wide, Clayton, 16x80, 3+2, call 601-310-9262.

Assume payments. Singlewides, doublewides, land and home pack-

ages. Call for details, 601-307-2114, 601-261-6005.

Factory Direct pricing. Nobody beats our prices. wholesalemobile-homecenter.com 601-296-7960.

GOOD CREDIT. BAD CREDIT. NO CREDIT. NO PROBLEM! NEW, USED & REPO HOMES AVAILABLE. NO CREDIT CHECK. OVER 100 HOMES TO CHOOSE FROM. **Payments starting at \$250 per month** FOR MORE INFO: **205-541-4131**

Contact: Ray Ardis, Hattiesburg Home Center, 601-261-6005.

Lots of space for a small price. 16x80, 2BR/2BA., Belmont, spacious beds and baths, singlewide, freshly painted, needs your personal touch. \$13,500. Call 601-520-0710.

Blue for you! 16x80, 3BR/2BA., new plywood on floors, new sheet-rock and paint, very spacious, vinyl siding and tin roof, singlewide, \$19,000, Call 601-520-0710

Won't Last Long! 3 bed/2 bath Double Wide, stone fireplace, gorgeous cabinets, vinyl siding, shingle roof. Must see to appreciate! Price \$17,500 as is. Call 601-520-0710.

Used Doublewide, 4BR/2BA., central A/C, skirting, delivery, set up and tie down, only \$44,900. 601-307-2114, 601-261-6005.

Bad Credit? Need a new home? Come see me at Wholesale Home Center, 7389 Hwy 49 Hattiesburg or call me at 601-543-9022. I guarantee to get you approved today.

Plenty of room! 5 bed, 2 bath double wide. Lots of space for all your loved ones. Vinyl siding and shingle roof. Zone 2! Won't last long. Price \$26,000 as is, call 601 520 0710

"Who Let the Dogs Out!" 16x80, Belmont, 3BR/2BA., this spacious home has new carpet, paint and vinyl flooring with built-in entertainment center, very large rooms and island bar in kitchen, won't last long, \$17,900. 601-520-0710 or check TB Sales @ Facebook.

"Legendary" 16x80, 3BR/2BA., new carpet, new vinyl flooring, new paint with a beautifully designed kitchen with island bar and lots of cabinets. Become legendary and own this home today for only \$18,900. 601-520-0710. Check us out on Facebook@TB Sales.

Hunting Camp. 14x80, 3BR/2BA., will deliver and set up. \$7,995. 601-307-2114, 601-261-6005.

NEW

**3BR 2BA Doublewide - \$349 mo
4BR 2BA Doublewide - \$399 mo
5BR 3BA Doublewide - \$499 mo**

Delivered, Setup, A/C & Skirted

601-447-4538

March 3rd, 4th, 5th. Wholesale Home Center. Buy to Spin and Win Event. Live music, free food and lowest prices of the year. Call Tony or Blake at 601-296-7960.

Used singlewide, \$5,000 cash. Zone 2. Call Tony 601-543-9022.

Continued on ... Page 8

Wholesale's buy to spin & win event

over \$25,000 in prize giveaways!

Spin for a chance to win big prizes on our **Wholesale Wheel** when you put down a deposit on a new home!

ALL DEPOSITS WILL BE ENTERED IN OUR GOLF CART GIVEAWAY

The bank will be here to approve you that day. **NO WAITING OR WONDERING!**

when:
March 3rd & 4th: 8am until last customer
March 5th: 1pm to 5pm

NO CREDIT CHECK PROGRAM \$5,000 DOWN GUARANTEES A HOME

NEW SINGLEWIDE STARTING AT \$35,900
NEW DOUBLEWIDE STARTING AT \$49,900
NEW 5 BEDROOM STARTING AT \$69,900

Largest Selection of Used Inventory in Mississippi!

Vendors: Priority Alert, Cowboy Maloney, Mugshots, Padgett's Decks, Brown's Furniture, Brackman's Mowers

TAX SEASON SAVINGS!

13 Piece Package Groups, Starting at \$999

20 Over 10 Package Groups Available!

MODEL CLOSEOUT MATTRESS SETS OVER 10 MODELS TO CHOOSE FROM! LIMITED TO STOCK ON HAND!

WE HAVE THE LARGEST SELECTION OF FURNITURE IN OUR SERVICE AREA!

OVER 50 SOFA & LOVESEAT/SECTIONALS! **OVER 30 BEDROOM SETS** **OVER 100 RECLINERS!**

OVER 18 DINING ROOM SETS

Up to 24 months same as cash. *wac
*Due to the number of styles available, pieces may vary from illustrations. Closeouts, Scratch & Dent, Cash & Carry, and Hot Buys are limited quantities.

WE DON'T MARK IT UP TO MARK IT DOWN AND CALL IT A SALE!

TODAY'S FURNITURE

106 Leontyne Price Blvd. Laurel **601-425-1551**
Mon. - Thurs. 9-5:30
Fri. 9-5 • Sat 9-12

www.todaysfurnitureonline.com

WHOLESALE HOME CENTER
"Largest Mobile Dealer In The State"
7389 US Hwy 49, Hattiesburg • 601-296-7960
www.wholesalemobilehomecenter.com

TODAY'S FURNITURE
www.todaysfurnitureonline.com

COME GET THE BED OF YOUR DREAMS

Sleepy Sam's

MATTRESS CLUB

Nobody beats our deals!

WWW.SLEEPYSAMSMATTRESSCLUB.COM

FREE FINANCING • NO CREDIT CHECK

1504 W. 3rd St. • LAUREL
ACROSS FROM PASQUALE'S

601.433.3968

Quality Aluminum Fencing & Automated Security Systems

Commercial & Residential
Many Styles

TONY THORNSBERRY
601.577.0927

COOK AVENUE APARTMENTS

Now Accepting Application for Low Income Apartments for Persons 50 Years or Older Disabled or Handicapped

• Central Heat & Air • Stove • Refrigerator

For More Information Call 649-4204
Office Located 415 Sorrell Dr., Laurel, MS
Hours: 8 a.m. • 5 p.m., Mon. - Fri.

"Used and Repo Dealer" 10 acres of mobile homes, sold as is or completely remodeled. Have it your way at TB Sales. We will get you in the right home. 601-520-0710.

New, used, and repo'd mobile homes for sale. Call Tony and The Tiger at 601-543-9022. Our prices are better than great, they're wholesale.

Need Zone II or III home? Call 601-307-2114.

Stop renting and own your own home now. Single wides for \$400.00 a month and double wides for \$600 a month. Call 601-307-2114.

New, used, repos, with guaranteed approval. Call Blake at 601-319-1316.

Used singlewides, payments under \$350. Call Blake 601-319-1316.

Used singlewides, 2BR/1BA., delivery and set up, only \$17,900. 601-307-2114, 601-261-6005.

Farris Mobile Home Transporting: Statewide moving, licensed & insured. Transporting since 1979. Tony Farris 601-422-4144.

Wholesalemobilehomecenter.com has new, used, and repo singlewides and doublewides. Lowest prices in the state. Check us out on the web or call 601-296-7960.

Foreclosurers, repos, used, land home packages, and new mobile

homes. Call Chase today for details. 601-310-9262.

Mobile homes for sale. New, used, repos, foreclosurers, land-home packages. Call Repo Man, 601-310-9262.

**NEED A HOME?
PAST CREDIT PROBLEMS?**

**We have new, used, & repos
with low monthly payments**

601-296-7960

2000 16x80, 3 bedroom 2 bath. Clear title, taxes paid. Bright pretty home. It needs a few minor things but overall it's in great shape and ready to live in. Needs to be moved. \$17,500. If you would like to see pictures or set an appt to view call or text me at 601-520-5918.

Handyman Special. 2 to choose from. \$2,500. 601-307-2114, 601-261-6005.

Good credit, bad credit, no credit. Call the credit expert, Repo Man, 601-310-9262.

MOBILE HOME FOR RENT

14x52 trailer 2br/1ba to rent or sale, Sandersville. 601-433-8713.

1985 14x70, 2br/1ba, all electric, c/h/a in trailer park, water provided.

\$325 \$200 deposit. West Jones District. 601-498-2488.

1998 model 16x80, 3br/2ba. All electric, c/h/a, \$500.00 and \$300 deposit. Water provided, South Jones School District, in trailer park. 601-498-2488, Rhonda.

2br/1ba \$385 month, \$300 deposit. Glade community, Lower Myrick area. No pets. 601-498-3890.

**2016 MODELS MUST GO!
2017 ARRIVING!**

**NEW DOUBLEWIDES
AS LOW AS \$399 PER MO.**

601-296-7960

wholesalemobilehomecenter.com

MOBILE HOME LOTS

Four months free space rent. Move your mobile home in with us! Spaces available at Bellecrest. Nicest mobile home park in Hattiesburg. Bellecrest Mobile Home Park 63 Sullivan Kilrain Road Hattiesburg, MS. 601-545-1300

HOUSES FOR SALE

For sale by owner, near Waynesboro: 3br/2ba, living room, den, kitchen, all furniture included, double carport, 17ac +/- mostly pasture, some timber. Two free standing carports with lots of storage amenities. \$165,000. 601-381-2745 or 601-735-6632.

For sale by owner: Brick house, approx. 2400 sq.ft. 4br/2.5ba, 2 car carport, hot tub, 16x36 swimming pool, 18 acres, large workshop 40x25, very large car storage shop with carport 35x55, utility bldg 10x20, green house, small pond, in Eucutta, Wayne Co. MS. \$200,000. 601-735-5581.

2br/2ba, house with 2 acres of land in Rushton Community. For sale or will consider rent to own. 601-470-5064.

HOUSES FOR RENT

3br/1ba all electric, c/h/a, located on a dead-end road. Water & garbage included in price. \$615, \$300 deposit, 10 Thiac Dr. 601-498-2488, Rhonda. Serious inquiries only.

1507 Airport Drive, Laurel, 3br/1ba available for rent or Section 8. 601-283-0804, 601-433-4504.

2/3 bedroom homes for rent. 601-649-4075.

For Rent: 3 bedroom, 2 bath brick house located at 1156 West 20th Street. Has central h/a, large den, large yard. \$1,000/month plus deposit. Call 601-577-2576 for more info.

Why Rent when you can Own your own home. Bonvie Home Builders, LLC. Building custom homes since 1974. View our homes at bonviehomebuildersms.com. Coming together after the Storm. Let us help you build a brand new home in 45 days or less! Free appliance credit to every tornado victim who rebuilds a new home with Bonvie. Don't be fooled by contractors passing through. Bonvie Homes is a local builder with a local office. A builder you can trust. We've been building new homes in this community, which is our community, for over 40 years. Licensed, bonded, insured. The

good life home builders. Come visit us at 5317 Old Hwy 11, Ste. 12, Hattiesburg, 601-544-6007.

For Rent: 2br/1ba brick home. Laurel near West Jones Elementary. \$650 or \$600 with discount program. Credit check required. 601-319-9484.

North Laurel: 2809 Carter Ave. 2 Bed, 1 Bath. \$400.00 deposit. \$575 Month. 601-319-2938

House for rent, 1700 sq.ft., 3br/2ba, garbage and water provided. \$800/mth, \$400/dep. 601-498-1086.

APARTMENTS FOR RENT

Highlands. Paying Rent? A house payment could be less. Call us today and see how you can build your dream home. Call: 601-649-9459.

One room efficiency apartment in great location in downtown Laurel, upstairs at 541 Central Avenue. \$600/month includes utilities, use of washer/dryer, and an additional storage room. Perfect for single or couple with no children. Call 601-577-2576 for more info.

Move In Special. 1BR, \$550 month in Oak Grove. Washer/dryer included. Gated Complex. Good deal! 1/2 off rent, 1st month. Better Deal! Bring a friend and both get 1/2 off for 2 months, (2 leases). 1-866-991-7444, Ext. 117.

For rent: Taylorsville New one bed-room apartments. \$500 down, \$500 monthly. 601-649-9459.

Westhill Apartments for rent. \$475 to \$650 month. Call 601-438-9456.

COMMERCIAL

Warehouse space available in Covington County Mississippi: Up to 20,000 square feet.; Safe, Clean Building; Loading Docks; Burglar Alarm to Central Station; Shipping Service/Receiving Service/Inventory Control/ is available. Building is right off Hwy. 49. Brokers Welcome. Tenant must have references. If interested, please call Rebecca at 601-797-4811.

For Lease: Commercial office behind Tillery Dental. For more information, call 601.649.9459.

2-Washateria's for sale, one with land. Good investment for a young person. Both are located in Laurel City limits. The number to call is 601-763-7503.

WANTED TO BUY

Buy junk cars, 18-wheelers, van trailers, buses, equipment and more. Pay cash on spot. We pickup. Call day, night. 601-408-0856.

A Mississippi Car License Plate. 1964 - must have Jasper County on it. Will pay top dollar for tag in good shape and will pay \$100 if you locate one and I buy it. Call Dwight Jasper, 601-942-5190.

I buy junk cars, buses and heavy equipment. U Call. We Haul! We pickup 24/7. Call 601-297-2778.

TIMBER AND LUMBER

Know the value of your timber before you sell. We provide timber appraisals and help landowners market their timber for the highest value. Walley Forestry Consultants, Inc., www.walleyforestry.com, 601-477-3014.

Continued on ... Page 9

SAVE \$100'S! TAX SEASON SAVINGS

10% OFF PORTABLE BUILDINGS

GREAT SAVINGS ON 30X30 A-FRAMES & HORIZONTAL TUBING BUILDINGS!!

WHILE SUPPLIES LAST!

\$10,995* **\$11,995***

*Installed w/ Cement Slab & Insulation

WE HAVE RENT TO OWN AVAILABLE FOR THE PORTABLE BUILDINGS!

GUARANTEED LOWEST PRICES!
ON METAL ROOFING IN A VARIETY OF COLORS
29 GAUGE PAINTED (W/ 40 YR WARRANTY)
29 GAUGE BARE GALVALUME

CHATHAM ENTERPRISES, INC.
PORTABLE BUILDINGS & METAL ROOFING
601-727-4951 4631 MS-18, ROSE HILL
www.ChathamEnterprisesInc.com

scrmc.com

Approximately 2.2 million Americans live with epilepsy.

Join us for lunch!

- SPRING SALAD WITH RASPBERRY VINAIGRETTE
- SEASONED ROAST BEEF OVER FRIED CREOLE GRIT CAKE
- HOMEMADE ROLL
- WHITE CHOCOLATE BREAD PUDDING
- TEA, WATER AND COFFEE

-\$8.50-

INTRODUCING THE NEW EPILEPSY MONITORING UNIT

GULSHAN OBEROI, MD
NEUROLOGIST
JEFFERSON MEDICAL ASSOCIATES

FRIDAY, MARCH 10TH | SOUTH CENTRAL PLACE | 12:00 P.M.
REGISTER TODAY BY CALLING 601.399.0506.
REGISTRATIONS DUE BY TUESDAY, MARCH 7TH.

KEY FURNITURE CO. COMPLETE HOME FURNISHINGS

"AT YOUR SERVICE"

STRETCH YOUR TAX REFUND!

SOFA & LOVE \$599

4 PC. BEDROOM GROUP \$499

WHILE IT LASTS! Whirlpool SPRING AIR FRANKLIN STANDARD

707 WAYNE ST. • WAYNESBORO (located next to Walker Memorial Co.) 601-735-2919

Use your Tax Refund to get your New Manufactured Home!

GREAT DEALS!

New Homes Have Arrived!

Farris Mobile Homes

Locally owned and operated by Tony & Sandy Farris

If you don't know mobile homes...Know your mobile home dealer!
CALL TODAY! Located at Intersection of Hwy. 84 and 28 in Calhoun

601-422-4144

DOUBLE B FARMS



- Bull Dozer
- Trac Hoe
- Dump Truck

• BUSH HOGGING
• LAND CLEARING
• DRIVEWAYS
• ROAD BUILDING
• HOUSE PADS

Certified Septic Tank Installation

Brian Sciortino • Rose Hill, MS **601-479-2074**

Cypress Lumber for sale. Rough or planed. T&G&V and beaded. Beveled and log siding, white and yellow pine and Poplar. T&G&V. Cypress beams, cut up to 32 foot long. Open 7:00AM-3:30PM, Monday-Friday, Saturday, 7:00AM-12PM. 601-315-5533, fax 601-344-0950. frankssawmill.com

DON'T GIVE YOUR TIMBER AWAY!

Call Mike West
601-270-6066

BUYING PINE & HARDWOOD

RICHTON TIE & TIMBER LLC

Timber Procurement • Forestry Consulting • Real Estate

VACATION

Gulf Shores Condos, \$125/nights. Houses, \$250/nights. Weekly specials available. Connie Daughdrill, 1-251-510-3090.

GARAGE SALES

1203 East Pine Street, Ellisville on March 3-4. Recliner, porch sofa, 2-tv's, fishing items, many other things.

Huge Sale: Friday-Saturday, (March 3-4), 509 Hwy 11 North, Ellisville. Small appliances, furniture, bedding, linens, clothes & shoes, preemies to adult. Too much to list. Don't Miss It!

Grace baptist church rummage sale. Saturday, March 4th and Saturday, March 11th. 8:00 til 3:00 each day. located out 84E of Laurel on Big Richardson Road, look for signs. Concession stand. Rain or shine! 601-649-3993.

Large rummage sale, 59 Harris Estate Road, March 3rd & 4th. 8am-until.

Multi family rummage sale Big multi family annual rummage sale. Thursday March 2nd and Friday March 3rd 7AM-4PM. White house on the corner of Masonite Lake Rd and Lower Myrick Rd. Ladies, mens, and children's clothing, furniture, accessories, home decor, toys and much much more.

Moving Sale, down sizing, like new sofa & love seat, queen bed, table/chairs, tools, book shelf, playpen, dishes, fishing poles, pastoral books, and much more. March 3-4, Fri.-Sat. 163 Bogue Homa Estates.

Huge 2 Family Yard Sale March 2nd, 3rd, & 4th (Thur., Fri., & Sat.) at 7 Clyde Beech Road, Ellisville; at the split on Augusta and Old Schoolhouse Road. 7AM-until. Tons of household items, toys, kids clothes, shoes, vintage glass, small appliances, etc. Don't Miss This One. 601-466-6149

MUSICAL

Lynn Evans Piano Service: Registered craftsman with Piano Technicians Guild. Used pianos for sale. B.M.E. USM. 601-729-2823

BUILDINGS

Farm Barns. 40x30x16-\$9500. 30x30x10-\$7500. Metal roof and sides. Price includes labor. 601-296-0550.

Carports and Buildings: Financing Available! 22Wx26Lx9T- \$5,050 , 24Wx31Lx9T- \$6,010 Fully Enclosed with two 9X8 Roll-up Doors. Price includes installation. We also offer storage buildings and barns. Call John @ 601-323-0464, 303 Hwy 11 S, Ellisville (between Pizza Hut & JCJC)

WE HAVE AN EYE FOR THE BOTTOM LINE!

HAWKEYE TAX SERVICES

HAWKEYE TAX SERVICE
144 Buford Gandy Rd. • Waynesboro, MS 39367
601-671-3779

PORTABLE BUILDINGS

30x30 Tubing Building: Includes 2 Roll-Up Doors, 1 Walk-Through Door, Insulation, Cement Slab, and Installation. \$10,995. Call 601-727-4951.

AUTO SERVICES

Hartfield's Auto Repair: 25 years experience. Located in Stringer MS. Open Monday - Thursday, 8-5. Friday 8-3. Call 601-470-3220

AUTOS - CARS

2014 Hyundai Sonata \$13,995 at Laurel Ford, Lincoln, Kia, (844) 319-5854. See more at Cars601.com.

2015 Nissan Altima at Southeastern Auto Sales, Laurel. Call 601-649-4746. See more at Cars601.com.

2017 Ford Fiesta. \$15,610 at Laurel Ford, Lincoln, Kia, (844) 319-5854. See more at Cars601.com.

2006 Chrysler 300-Series. \$3,800 at Vara Auto Sales, call 601-335-3972. See more at Cars601.com.

1996 Jaguar XJ Series Sedan. \$6,995 at Harris Hankins in Bay Springs. Call 844-329-7227 or text A6MI to 27414. See Cars601.com for more.

2016 Buick Lacrosse \$28,419. Call Harold 601-641-3400.

2016 Kia Forte, \$19,135 at Laurel Ford, Lincoln, Kia, (844) 319-5854. See more at Cars601.com.

2015 Nissan Sentra CVT SV. \$14,980. Call Michael Galloway. 601-517-2387.

2017 Hyundai Elantra. \$21,315. Mack Grubbs Hyundai, (844) 373-0806. See more at Cars601.com.

2015 Chrysler 200. \$16,995 at Hattiesburg Cars. Call our Local toll free number 855-242-0775. See more at Cars601.com

2008 Infiniti G35 Sport, 4-dr Sedan, \$11,995. Call 601-606-5769.

1973 Volkswagon, good body, new engine. Has not been used in long time. \$1500 obo. 601-735-6919.

2014 Nissan Altima \$13,893 at Laurel Ford, Lincoln, Kia, (844) 319-5854. See more at Cars601.com.

2011 Dodge Avenger at Southeastern Auto Sales, Laurel. Call 601-649-4746. See more at Cars601.com.

2016 Kia Optima \$17,995 at Laurel Ford, Lincoln, Kia, (844) 319-5854. See more at Cars601.com.

2010 Chevrolet Impala. \$7,950 at Paul Garner Motors. (844) 452-4569. See more at Cars601.com.

2009 Pontiac G6. \$8,900 at Paul Garner Motors. (844) 452-4569. See more at Cars601.com.



HOLLY'S PARTY JUMPS

Jumps • Combos • Slides • Wetslides • Slip-N-Slides

601-763-8851

WWW.HOLLYSPARTYJUMPS.COM

2016 Chevrolet Malibu LTD. \$19,725. Call Michael Mills 601-270-2065.

2013 Ford Fusion. \$14,990 at Woolwine Ford in Collins, (844) 332-1854. See more at Cars601.com.

2014 Hyundai Genesis Coupe. \$14,000 at Ryan Chevrolet. (855) 534-3769. See more at Cars601.com

2016 Ford Fusion. \$14,194 at Laurel Ford, Lincoln, Kia, (844) 319-5854. See more at Cars601.com.

2017 Chevrolet Cruze. \$24,797 at Ryan Chevrolet. (855) 534-3769. See more at Cars601.com

2014 Ford Mustang GT. \$24,770. Call Maurice Shows. 601-517-1667.

2016 Buick Regal. \$18,500 at Ryan Chevrolet. (855) 534-3769. See more at Cars601.com

2011 Chevrolet Camaro. \$13,999 at Auto Express in Laurel, (844) 402-3154. See more at Cars601.com.

2012 Toyota Avalon Limited, \$17,980. Call Brandon Sullivan, 601-606-4465, Sullivan Motors, Collins.

2016 Chevrolet Malibu LTD, \$19,725. Call Brandon Sullivan, 601-606-4465, Sullivan Motors, Collins.

2013 Chevrolet Cruze. \$12,900 at Paul Garner Motors. (844) 452-4569. See more at Cars601.com.

2011 Dodge Charger. \$14,999 at Auto Express in Laurel, (844) 402-3154. See more at Cars601.com.

2010 Nissan Altima. 100k miles, clean car fax, \$7500. Call Ricky 601-517-5657.

2015 Kia Optima LX \$15,980. Call Maurice Shows. 601-517-1667.

2009 Nissan Maxima at Southeastern Auto Sales, Laurel. Call 601-649-4746. See more at Cars601.com.

2015 Ford Mustang. \$17,290 J&S AutoPlex 601-342-2293. See more at Cars601.com.

2001 Chevrolet Impala. \$5,950 at Paul Garner Motors. (844) 452-4569. See more at Cars601.com.

Continued on ... Page 10

SELLING or SHOPPING? WE FINANCE IMPACT CLASSIFIED ITEMS

JONES COUNTY FINANCE
105 S 16th Ave. • Laurel
601-649-1944

Butler Dental

Across from Court House, Butler, Alabama

Julie Utsey, D.M.D.P.C.
General Dentistry

205-459-2700 1-888-851-8512
Tuesday thru Friday 8 a.m. - 5 p.m.

- ONE DAY DENTURES
- PARTIALS AND EXTRACTIONS
- FREE CONSULTATIONS

	Single	Set
Set Standard Dentures.....	\$200.00	\$300.00
Set Deluxe Dentures.....	\$350.00	\$600.00
*Reline Included: Savings of \$130.00 per unit		
Set Custom Deluxe Dentures	\$550.00	\$1,000.00
*Reline Included: Savings of \$130.00 per unit		
Cast Metal Partial - \$625.00	• Acrylic Partial - \$200.00	
• Extractions - \$100.00	• X-Rays Included	
• Simple Extraction - \$70.00	• Surgical - \$100.00	



HAS IMMEDIATE OPENINGS FOR GOOD OTR Truck Drivers and Owner Operators

HIRING ALL DIVISIONS

Benefits include:

- Health Insurance • Vision Insurance
- Dental Insurance • Paid Vacation

NOW OFFERING SIGN ON BONUS

- SAFETY BONUS • REVENUE BONUS
- RETENTION BONUS

If You Want To Work For A Great Company With Great Benefits

call us at **601-342-2314 today!**

Located in Ellisville, MS



Kubota Z122R
Because you aren't just a homeowner, you're a neighborhood role model.

Put a Kubota Z122R zero-turn mower in your garage for \$3,899*.

- Air-cooled Kawasaki ER engine - 21.5 HP**
- 4.5" deep fully welded durable 42" mower deck
- Patented steering system design for superior handling and ease of operation
- Bag, mulch and hitch kit available

We are Kubota.

Circle C Tractor

1510 Azalea Dr. • Waynesboro
601-735-3103

www.kubota.com

*See www.kubota.com for specific Z100 model information and applicable limited time promotional pricing. **For complete warranty, safety and product information, consult your local Kubota dealer and the product operator's manual. Power (HP/KW) and other specifications are based on various standards or recommended practices. Optional equipment may be shown. © Kubota Tractor Corporation, 2016

FARRIS

MOBILE HOME TRANSPORTING

Statewide moving, licensed & insured.
Transporting since 1979

Tony Farris
601-422-4144

2006 Chevrolet Cobalt \$3,700 at Vara Auto Sales, call 601-335-3972. See more at Cars601.com.

2005 Chevrolet Cavalier \$3,222 at Harris Hankins in Bay Springs. Call 844-329-7227. See Cars601.com for more.

2015 Chevrolet Cruze \$13,500 at Ryan Chevrolet. (855) 534-3769. See more at Cars601.com

2011 Toyota Camry \$10,995 at Quality Auto. Call 601-394-9313. See more at Cars601.com.

2017 Chevrolet Cruze \$23,399 at Ryan Chevrolet. (855) 534-3769. See more at Cars601.com

2016 Chevrolet Cruze \$23,145 at Harris Hankins in Bay Springs. Call 844-329-7227. See Cars601.com for more.

2011 Chevrolet Camaro 1SS \$18,980. Call Michael Mills 601-270-2065.

2016 Chevrolet Cruze Limited \$15,999 at Auto Express in Laurel, (844) 402-3154. See more at Cars601.com.

2006 Chevrolet Cobalt at Southeastern Auto Sales, Laurel. Call 601-649-4746. See more at Cars601.com.

2016 Ford Fusion \$19,999 at Woolwine Ford in Collins, (844) 332-1854. See more at Cars601.com.

2015 Toyota Camry \$15,990. J&S AutoPlex 601-342-2293. See more at Cars601.com.

2008 BMW S series, \$8,995. Call Quality Auto. 601-765-1828.

2016 Hyundai Sonata \$19,963. Mack Grubbs Hyundai, (844) 373-0806. See more at Cars601.com.

1999 Ford crown Victoria 4 door police interceptor with 4.6 liter with a 5 speed tranny out of a 2001 mustang. It needs a pressure plate, clutch and throw out bearing but runs great and is a fast car I am selling because I am leaving to go in the Military. I have the Manuals, Will consider all reasonable offers, no low ball offers please - call 601-270-2237 after 5:00 pm

2015 Kia Optima \$13,890 J&S AutoPlex 601-342-2293. See more at Cars601.com.

2006 Chevrolet UpLander LT. Many Features. \$6,790. Call Dean @ Sullivan Motors. 601-433-0796.

2016 Chevrolet Corvette 3LT \$57,380. Call Brandon Sullivan, 601-606-4465, Sullivan Motors, Collins

2016 Chevrolet Impala \$19,995 at Harris Hankins in Bay Springs. Call 844-329-7227. See Cars601.com for more.

2012 Toyota Avalon \$20,995 at Hattiesburg Cars. Call our Local toll free number 855-242-0775. See more at Cars601.com

2014 Chevrolet Cruze 1LT \$15,480. Call Michael Galloway 601-517-2387.

2017 Kia Rio \$17,485 at Laurel Ford, Lincoln, Kia, (844) 319-5854. See more at Cars601.com.

Affordable Auto Insurance, especially if you don't have any now. Call 601-765-4060

1998 Toyota Camry \$2,995 at Quality Auto. Call 601-394-9313. See more at Cars601.com.

2006 Chevrolet Malibu \$3,900 at Vara Auto Sales, call 601-335-3972. See more at Cars601.com.

2017 Hyundai Elantra \$19,140. Mack Grubbs Hyundai, (844) 373-0806. See more at Cars601.com.

AUTOS - MOTORCYCLES

2005 Harley Fatboy with detachable windshield, backrest, 2 stage, all braided lines, Jack Daniel Hand Grips, saddle bags, luggage bags just replaced battery last week 25,000 miles, has been serviced on time every time, for more information or questions please call after 5:00 p.m. 601.270.2237, asking \$6700.00 will consider reasonable offer

AUTOS - SUVs

2016 Chevrolet Equinox LTZ \$28,982. Call Harold 601-641-3400.

2011 Ford Expedition EL \$19,990 at Woolwine Ford in Collins, (844) 332-1854. See more at Cars601.com.

2014 GMC Terrain slt-2 \$21,980. Call Dean Phipps 601-433-0796.

2014 Ford Escape \$16,990. J&S AutoPlex 601-342-2293. See more at Cars601.com.

2015 Chevrolet Captiva Sport Fleet \$15,922 at Harris Hankins in Bay Springs. Call 844-329-7227. See Cars601.com for more.

2009 Hyundai Santa Fe \$10,999 at Auto Express in Laurel, (844) 402-3154. See more at Cars601.com.

2011 Toyota Highlander \$17,450 at Ellisville Motors. Call 844-737-5629. See more at Cars601.com.

2003 Chevrolet Tahoe \$5,300 at Vara Auto Sales, call 601-335-3972. See more at Cars601.com.

2017 Kia Soul \$18,570 at Laurel Ford, Lincoln, Kia, (844) 319-5854. See more at Cars601.com.

2012 GMC Acadia \$19,863 Mack Grubbs Hyundai, (844) 373-0806. See more at Cars601.com.

2010 Nissan Pathfinder \$15,555 at Woolwine Ford in Collins, (844) 332-1854. See more at Cars601.com.

2005 Gmc yukon xl \$8,790. Call Dean @ Sullivan Motors: 601-433-0796.

2010 Toyota Venza \$14,963. Mack Grubbs Hyundai, (844) 373-0806. See more at Cars601.com.

2005 Gmc yukon \$9,995 at Quality Auto. Call 601-394-9313. See more at Cars601.com.

2008 Gmc yukon xl \$14,999 at Auto Express in Laurel, (844) 402-3154. See more at Cars601.com.

2008 Gmc yukon xl \$16,500 at Ellisville Motors. Call 844-737-5629. See more at Cars601.com.

2010 Chevrolet Tahoe 1500LT, only \$14,980. Call Brandon Sullivan 601-606-4465 Sullivan Motors, Collins.

2013 Ford Explorer \$20,995 at Laurel Ford, Lincoln, Kia, (844) 319-5854. See more at Cars601.com.

2014 Chevrolet Equinox \$20,990. J&S AutoPlex 601-342-2293. See more at Cars601.com.

AUTOS - TRUCKS

2013 Toyota Tacoma \$30,780. Call Brandon Sullivan, 601-606-4465, Sullivan Motors, Collins

2012 Toyota Tacoma \$27,888 at Toyota of Hattiesburg. (855) 221-8310. See more at Cars601.com.

2005 Chevrolet Silverado 2500HD \$12,995 at Hattiesburg Cars. Call our Local toll free number 855-242-0775. See more at Cars601.com

2005 Ford F-250 Power-stroke. Diesel, \$6,996. Call Quality Auto. 601-765-1828.

2014 Toyota Tacoma \$23,199 at Toyota of Hattiesburg. (855) 221-8310. See more at Cars601.com.

1999 Chevrolet S-10 \$3,950 at Ellisville Motors. Call 844-737-5629. See more at Cars601.com.

2014 Ford F-150 xlt \$26,378. Call Brandon Sullivan, 601-606-4465, Sullivan Motors, Collins.

2005 GMC Sierra 2500hd \$13,995 at Quality Auto. Call 601-394-9313. See more at Cars601.com.

2013 Ram Ram Pickup 1500 \$26,888 at Toyota of Hattiesburg. (855) 221-8310. See more at Cars601.com.

2011 Ford Ranger, Extended Cab, Super Clean, \$10,995. Call Quality Auto: 601-765-1828.

2004 Chevrolet Avalanche, 4x4 Crew Cab, Z71, \$8,995. Call Quality Auto: 601-765-1828.

2008 Toyota 4Runner \$14,995 at Hattiesburg Cars. Call our Local toll free number 855-242-0775. See more at Cars601.com

2004 Toyota Tundra \$10,995 at Hattiesburg Cars. Call our Local toll free number 855-242-0775. See more at Cars601.com

2011 Ford F-150 \$16,599 at Toyota of Hattiesburg. (855) 221-8310. See more at Cars601.com.

2014 Dodge Ram 1500 at Southeastern Auto Sales, Laurel. Call 601-649-4746. See more at Cars601.com.

2016 Chevy Silverado 2500HD \$47,980. Call Michael Mills 601-270-2065.

1998 Chevrolet Silverado 1500 \$3,500 at Vara Auto Sales, call 601-335-3972. See more at Cars601.com.

2007 Chevrolet Silverado 1500, Extended cab, \$7,480. Call Dean @ Sullivan Motors 601-433-0796.

2016 Chevrolet Colorado \$22,980. Call Dean Phipps 601-433-0796.

2005 Ford Ranger XLT, Standard Cab, V6, RWD \$8,995. Call Quality Auto: 601-765-1828.

2009 Toyota Tacoma \$21,999 at Toyota of Hattiesburg. (855) 221-8310. See more at Cars601.com.

Continued on ... Page 11

MONEY LENDERS



WE FINANCE VEHICLES

601-426-7600
134 Beacon St. Laurel

CLARKE - WAYNE Tax Service

"THE TAX EXPERTS"



Serving This Area for Over 54 Years

1600 East Azalea Dr. • Waynesboro

JENNIFER RABOURN ANGI TYNES

OFFICE: 601-735-4211 FAX: 601-735-4410

EAGLE CARPORTS & BUILDINGS

NOW OFFERING RENT TO OWN

NO CREDIT CHECK

- Garages • Combo Units
- Horsebarns • Most Carports

Like our page Eagle Metal Buildings on Facebook

CALL JOHN FOR DETAILS 601-323-0464

WWW.ELLISVILLEMOTORS.COM • 303 HWY. 11 S. ELLISVILLE, MS • LOCATED BETWEEN PIZZA HUT & JCJC

Norman's Food Outlet

#209 Waynesboro Food Outlet

PRICES EFFECTIVE MARCH 1, - MARCH 7, 2017

<p>USDA FRESH WHOLE BONELESS PORK LOINS \$1.28 LB. Plus 10% at Checkout</p>	<p>USDA FRESH CUT BEEF CHUCK ROAST \$2.98 LB. Plus 10% at Checkout</p>
<p>2 LITER ALL FLAVORS COCA-COLA PRODUCTS 88¢ EA. Plus 10% at Checkout</p>	<p>8 LB. BAG RUSSET POTATOES \$1.67 EA. Plus 10% at Checkout</p>
<p>6 PACK 12 OZ. BOTTLES ALL FLAVORS GATORADE \$2.74 EA. Plus 10% at Checkout</p>	<p>USDA FRESH CUT FAMILY PACK BONELESS PORK CHOPS \$1.74 LB. Plus 10% at Checkout</p>

WE'VE APPRECIATED YOUR BUSINESS OVER THE LAST 9 YEARS AND WE WILL CONTINUE TO STRIVE IN THE FUTURE TO HELP YOUR FAMILY BY LOWERING YOUR GROCERY BILL

GREAT PRICES • GREAT TASTE • GREAT SAVINGS

OPEN 7 DAYS A WEEK
MONDAY - SATURDAY 7 A.M. - 7:30 P.M. / SUNDAY 8 A.M. - 6 P.M.

LOCATED IN THE AZALEA MART SHOPPING CENTER WAYNESBORO, MS **601-735-4344**

Premier Drop-Off Laundry

Bring us your dirty laundry --- we wash it, dry it and fold it! You pick up the next day.

Also available for extra charge...

- Same Day service
- Expedited 4 Hour Service

*Restrictions Apply

FREE PICKUP & DELIVERY *with minimum of 15 lbs. within 8 miles - over 8 miles \$5 service charge • maximum 15 miles

SEVERAL choices of detergents and fabric softeners to choose from.

YOUR laundry will never be mixed with anyone else's!

Like us on Facebook @ Premier Drop Off Laundry Service to keep up with our specials or promotions....

Grand Opening Special! \$10.00* Through March 1, 2017 flat rate fee

15# of Laundry *Every pound over 15# charged @ \$1.00 per pound!

725 COURT ST. • WAYNESBORO
Call or text Miranda Woods for drop off times and location:
601-381-4908

USE YOUR TAX REFUND AND GET A GREAT RIDE

Aaron Williams Auto Sales

True In-House Financing On The Spot!

<p>2007 CADILLAC ESCALADE ESV LOADED!!!!</p>	<p>07 DODGEDAKOTA QUAD CAB LESS THAN A HUNDRED THOUSAND MILES</p>
<p>2012 TOYOTA CAMRY SE - LOADED!! HEATED SEATS, NAV, BU CAMERA, SUNROOF</p> <p>ONLY 21,900 MILES!</p>	<p>2011 FORD FOCUS LESS THAN 60,000 MILES ON IT \$7,499</p>

• LUXURY • SPORTS • SUV'S • TRUCKS

1428 MS DR. • WAYNESBORO **601-735-3916**

DEAL ON THE HILL

2004 Toyota 4Runner SR5, V6, \$22,980. Call Dean @ Sullivan Motors, 601-433-0796.

2013 Ford F-150 King Ranch, \$22,980. Call Brandon Sullivan, 601-606-4465, Sullivan Motors, Collins.

2007 Ford F-150 \$11,995 at Quality Auto. Call 601-394-9313. See more at Cars601.com.

2007 Ford F-150 Lariat 4dr, Super-Crew, 4WD, Style-side, 5.5 ft. SB. Only \$10,995. Call 601-606-5769.

2006 Toyota Tundra. \$13,950 at Ellisville Motors. Call 844-737-5629. See more at Cars601.com.

2005 Ford F-250 King Ranch \$15,980. Call Maurice Shows 601-517-1667.

2005 GMC Sierra 1500. \$14,950 at Ellisville Motors. Call 844-737-5629. See more at Cars601.com.

2010 Ford F-150. 4x4 Super-Crew, Style-side, 5.5 ft. SB. \$14,900. Call 601-765-4402.

ATVS

2000 Yamaha Big Bear 450 4-wheeler. In great shape, recently serviced, automatic, 4x4, winch, tow package, large rack, bright lights, ready to ride. \$2250. 601-520-5918.

2006 Yamaha Rhino 4x4 side by side. Runs good. Lots of extras. You must see. \$4300. 601-862-9498.

EML Motorsports, 2116 North Frontage Road, Meridian, MS, authorized dealer for HiSun & Linhai ATVs/UTVs. Great deals on motorcycles, scooters and go-carts. We service Harley Davidson, Victory and Indian Motorcycles. info@emlmotorsports.com. 601-207-5058.

HELP WANTED

Now hiring Drivers: Southeastern Concrete is now hiring ready mix drivers in Hattiesburg. Must have class A or B CDL, 2 yrs driving experience and clean MVR. Call 601-544-7000, or apply at 105 Industrial Drive Hattiesburg, MS 39402.

Mechanic needed for tune ups, repairs, brakes, AC. Competitive salary plus commission. Must have your own tool. Apply in person at Spee Dee/Midas on Hwy 98 West, Hattiesburg.

Now taking applications for lube bay technicians. Apply in person. Spee Dee Midas, Highway 98, Hattiesburg. No phone calls please.

Local part-time construction help wanted. Must have some carpentry experience, any additional experience a plus. Please call for information and paid rates, 601-470-1239, anytime.

Mr. Rooter Plumbing seeks highly motivated individuals for plumbers with 2 years experience and resume. Join a growing company, a family environment. We offer bonuses based on performance. Company supplied van, equipment, and uniform. Candidates must have a clean driving record. This winning team maintains a drug free environment. Call 601-671-3444 or 251-846-2565.

Armed Security Officers: Part Time W/E work in Laurel/Hattiesburg. Need Security Gun Permit. Call 601-500-7806. \$12.00/hr. Armstrong National Security Force, LLC.

Local drivers needed: SEC is now hiring qualified drivers. Must have class A or B CDL, clean driving record and 2 yrs experience. Benefits include: competitive pay, 401K, va-

cation, insurance. Home every afternoon. Call 601-544-7000.

CARPORITS

Carpports and Buildings: Financing Available! 22Wx26Lx9T- \$5,050 , 24Wx31Lx9T- \$6,010 Fully Enclosed with two 9X8 Roll-up Doors. Price includes installation. We also offer storage buildings and barns. Call John @ 601-323-0464, 303 Hwy 11 S, Ellisville (between Pizza Hut & JCJC)

WHITESTONE TRANSPORTATION



WELCOME TO OUR HOME

NOW HIRING DRIVERS

- OTR/Regional Drivers, Short and Long Haul
- Dedicated Lanes, Reefer and Flatbed
- Sign-on Bonuses
- Bonuses for Performance, Safety Teams & Specialty Hauls
- Blue Cross and Blue Shield Insurance

Moselle 800-408-5542
WHITESTONETRANS.COM

Bedford

CARE CENTER OF HATTIESBURG

Immediate Full-Time positions available:

- Registered Nurse •Licensed Practical Nurse
- Certified Nurse Aide

Full Time Status with Full Benefits Available

Apply at Bedford Care Center of Hattiesburg
#10 Medical Boulevard • Hattiesburg
601-264-3709
Monday-Friday 8:00 a.m - 4:30 p.m

Equal Opportunity Employer



READY MIX, LLC

28 TAYLOR CIRCLE • LAUREL, MS

STRAIGHT TRUCK CONCRETE DRIVERS

Laurel Location

- Must hold a class B or better commercial driver's license with a good driving record. (Class A w/Tanker a plus)
- At least 3 years driving experience.
- Hourly Pay • Benefits
- Home Every Night

Apply in person

Monday thru Friday 8 a.m. to 5 p.m.

No interviews will be given without a completed employment application.
NO PHONE CALLS PLEASE.

Sideline View: Ole Miss could face serious NCAA penalties

By Dale McKee

Ole Miss was hit hard this past week with news of the NCAA's claim that the Rebels football team has been charged with 21 allegations since 2012. The Rebels have 90 days to respond to the charges. Ole Miss has self-imposed several penalties, including not playing in a postseason bowl this season. That alone will cost Ole Miss over \$7 million in SEC bowl money. The fallout from these



allegations could be felt in other SEC towns down the road. The rest of the college football world (outside of the South) has been hoping the NCAA would hammer the SEC, and that day may be fast approaching. The news in Oxford could be worse in the weeks ahead.

The good news from Oxford is that it is finally baseball season. The Rebels enter the week 7-0 and were scheduled to play Memphis early in the week before hitting the road to Houston for the Shriners Hospitals for Children College Classic (Friday, March 3 - Sunday, March 5). Ole Miss will play Baylor, Texas Tech and TCU at Minute Maid Park. USM baseball went 3-1 last week to improve to 6-1. The Eagles were slated to meet Tulane Wednesday night before heading to Lafayette, Louisiana, to tangle with the Ragin' Cajuns. The Mississippi State baseball team won three of five games this week to conclude a 6-3 home stand. The Bullies will head to Oregon to meet the Beavers this weekend in a three-game set.

The local guys trying to make major league baseball rosters had a good weekend.

See MCKEE, page 12

CNA POSITIONS AVAILABLE!



Taking applications now for
Full Time 3-11 Shift
Competitive Pay & Benefits Package

MS CARE CENTER OF RALEIGH
309 Magnolia Drive • Raleigh, MS
601-782-4244

Please apply in person Monday - Friday from 8am - 4:30pm
We are building a TEAM at MS Care Center of Raleigh!

DRIVERS, are you tired of having to jump through hoops, such as gimmicky revenue and retention bonuses? Do you want to earn what you are worth? At **Baggett Transportation**, we pay you what you are worth, without the hassle!

We offer the best benefits in town, which include

- Health Insurance • Company Matching 401-K Plan • Paid Vacation




Pay starting at **42¢** per mile!

Now leasing Owner Operators! Flats or Vans. Call for details.

601-426-3462 or 855-435-5021

Call for more information or apply in person at: 2815 Industrial Blvd. • Laurel, MS



WAYNE FARMS

Success Driven Team Members Wanted At Wayne Farms

Our recipe for success begins with the highest quality ingredients: our employees. We seek hard working, success driven individuals to join our team. Launch yourself into a successful career with an outstanding company with industry leading benefits and a philosophy of being partners with their employees and community. Poultry experience is not necessary. We will train the right people. We currently are hiring for the following:

- **Experienced Truck Drivers (Valid CDL required)**

Visit our website www.waynefarms.com and choose "Laurel, MS" location for more information on these career opportunities.

Wayne Farms is an Equal Opportunity Employer. Wayne Farms does not accept unsolicited or agency resumes and is not responsible for any recruiting fees.

NOW HIRING

- ASSISTANT DIRECTOR OF NURSING
- RN SUPERVISOR - 3-11 SHIFT
- CNA 7-3, 3-11, AND 11-7 SHIFTS



Hillcrest Nursing Center

1401 1ST AVENUE N. EAST • MAGEE
APPLY IN PERSON • NO PHONE CALLS PLEASE
Equal Opportunity Employer

State of Mississippi



State Veterans Affairs Commission

NOW ACCEPTING APPLICATIONS FOR

- CNA'S (ALL SHIFTS)
- LPN'S (ALL SHIFTS)
- RN UNIT MANAGER (7-3 SHIFT)
- RN SUPERVISOR (3-11 SHIFT)
- RN SUPERVISOR (11-7 SHIFT)

APPLY IN PERSON AT:
Ms State Veterans Home
3261 Hwy 49 South • Collins
Covington County, MS

Apply on the MS State Personnel Board website:
WWW.MSPB.MS.GOV
Equal Opportunity Employer

MCKEE, continued from page 11

Tyler Moore of the Miami Marlins hit the game winning home run in a game against St. Louis. Former Richton Rebel JaCoby Jones had two hits for Detroit. Petal's Anthony Alford doubled for Toronto in a game against Atlanta.

Basketball News

The Mississippi High School Activities Association will host their state tournaments that begin this Thursday. Eight teams from each of the six classifications will compete for the big Gold Ball. The girls will play their opening games in the Mississippi Coliseum while the guys will play at Jackson State. The boys will then join the girls next week at the Coliseum. Three boys teams (Laurel, Wayne County and Bay Springs) will represent the area. The girls representing the area will be South Jones, West Jones, Laurel and Hattiesburg (all in 5-A), Northeast Jones (4-A), and Bay Springs and Heidelberg ladies (2-A). The Sylva-Bay Saints will be playing in the Overall MAIS Basketball Tournament this week at Mississippi College. The Saints finished third in the 2-A state tournament.

The Mississippi State Lady Bulldogs moved up to number two nationally earlier in the week before suffering two disappointing losses to Kentucky and Tennessee. The Lady Bulldogs lost their chance at winning an SEC team title in ladies sports for the first time in school history. The Lady Bulldogs (27-3, 13-3) will head to the SEC tournament this week in Greenville, South Carolina. USM Lady Golden Eagles moved to 20-9 with a lopsided win over North Texas this past weekend. This was the 15th season with 20 or more wins for the Lady Eagles. The Ole Miss Rebels basketball team downed MSU in overtime and nipped Missouri to improve their record (18-11, 9-7). The Rebels are a long shot to be invited to the NCAA tournament but an NIT bid could be in the cards. The Rebels are on the road at Alabama and host South Carolina to end regular season play.

Busch finally wins Daytona 500

Kurt Busch won the Daytona 500 for the first time. Busch grabbed the lead on the final lap to win the Super Bowl of NASCAR. It was the first time in 59 years that the winner led only one lap. It was Busch's first win in 16 tries for #41. The lead changed four times over the final three laps.

JCJC Awesome!

The tweet of the week had to be the success of the spring's sport teams at JCJC. Both basketball teams enter the state tournament this Tuesday at JCJC with 22-1 records. The baseball team entered the week with a 10-0 mark and a number one ranking in the country, while the Lady Cats softball nine were 9-0 entering the week.

Contact Dale at ddmckee18@yahoo.com

JCSD host Active Shooter Training

By Linda Cranford

Ear piercing screams (from a recording) and the pop pop pop of gunfire echoed through the Jones County Sheriff's Department Training Center Wednesday, February 22, during an Active Shooter Training session.

Major Jamie Tedford said 18-20 law enforcement officers from several local agencies participated in the training, which included classroom and hands-on training. The training gave the officers an opportunity to experience different lifelike settings of an active shooter in a controlled environment. This enabled them to critique their performance, discuss the mistakes that were made and what could have been done better.

The officers entered the building in twos with a training officer following them. The two officers had no clue what they would encounter inside the building; only that they must stop an ac-



The officers entered the building in twos with a training officer following them.

Photo/Linda Cranford

tive shooter. The officers encountered several innocent victims before reaching the active shooter.

"An active shooter situation is seen more today than ever before," said Tedford. He stated how important it was

to give officers as much education and training has possible. "You never expect things to happen. But, if it does, knowing you provided the training for your officers helps to ensure they come home," said Tedford

Dinner and Bingo at the YWCO



Over 60 people enjoyed the Dinner and Bingo at the YWCO Saturday, April 25. Photos/Linda Cranford

Hubbert Dental Clinic General Dentistry



Dental Fact: There are 10-12 teaspoons of sugar in a single can of soda!

New Patients & Children Welcome!
Call for appointment and let us help you have a healthy life.

WE ACCEPT: Medicaid (Magnolia & United HealthCare) C.H.I.P.S. and Private Insurance.
• Exams, Cleanings and X-Rays are covered every 6 months. • Financing Available.

99 Highway 511 E. Quitman, MS 39355 Dr. Michael W. Hubbert D.M.D.
601-776-3370 Hours: Mon.-Thurs. 8-11am & 1-4pm Tanya Barnett R.D.H.

We're Here to Help! Half Price Stump Removal

Good until Mar 31, 2017



SPECIAL

- 5 or more average stumps
- 24 in. diameter
- 6 in. tall

\$15 each
(with truck access)
large quantities even less
\$75 Minimum

BEST PRICE ON GRINDING UPROOTED STUMPS

40 Years of the Best Price & The Best Service in Mississippi

WE HAVE THE MOST POWERFUL STUMP GRINDER IN THE STATE!

The Tree Barber

601-371-8733

Wayne K. Barber, Owner Matthew 16:26



Randy Sherrell was the first to Bingo and chose a prize for his two-year old daughter, Ellie.



Melissa and Matthew Alawine said they were enjoying the evening.



Enjoying the event are L-R, Mary Alred, Ellen Paul, Dawn Stoll, Rob Stoll, and Renee Herrington.

The Krewe of Blue Mardi Gras Parade

Photos/Linda Cranford



The streets of Laurel were lined Saturday, February 25, with hundreds of people shouting "Throw me some beads mister," during the Krewe of Blue Mardi Gras Parade. All proceeds from the parade went to fund the charitable projects of the Fraternal Order of Police Laurel Lodge #2.



Riding in the Laurel Carriage is Lt. Tony Stiles and his wife Tina.



Chief Tyrone Stewart, with flag, and Mayor Johnny Magee.



Laurel Ford Photo/Kim Wilbanks



Jones County Republican Women



Magnolia State Bank



It's Party Time!!! Photo/Kim Wilbanks



Laurel Cancer Care Photo/Kim Wilbanks

LET OUR PROFESSIONALS AT
LAUREL A-1 TIRE CENTER
SERVICE, REPAIR & MAINTAIN YOUR VEHICLE
BEST PRICES IN TOWN - CHECK WITH US FIRST!

- MECHANIC WORK
- DIAGNOSTICS
- FRONT END
- A/C
- BRAKES
- TUNE-UPS
- BATTERIES
- WHEEL BALANCE
- ROTATION
- WINDSHIELD WIPER BLADES

OIL CHANGE SPECIAL
 Up to 5 Qts most vehicles excludes diesels
\$24⁹⁵
WITH COUPON EXPIRES 3/15/2017

4 WHEEL ALIGNMENT
 Cars Only **\$44⁹⁵**
WITH COUPON EXPIRES 3/15/2017

219 Ellisville Blvd., Laurel, MS
 M-F 7:30 A.M.-5:00 P.M. SAT. 7:30 - NOON
601.425.4616



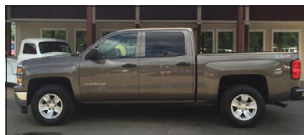
CARS601.com

Auto Showcase

Call the toll-free number or text the red 4 digit code to 27414 for photos and details.



TEXT 9F4T TO 27414
2012 AUDI S5
SE Auto Brokers
(844) 312-8785 **\$31,900**



TEXT M6E7 TO 27414
2014 CHEVY SILVERADO
SE Auto Brokers
(844) 312-8785 **\$28,900**



TEXT 2IKK TO 27414
2011 FORD F-150
SE Auto Brokers
(844) 312-8785 **\$27,900**



TEXT 2HUA TO 27414
2014 JEEP GRAND CHEROKEE
SE Auto Brokers
(844) 312-8785 **\$28,900**



TEXT 4BJD TO 27414
2011 JEEP WRANGLER
SE Auto Brokers
(844) 312-8785 **\$28,900**



TEXT 8TMP TO 27414
2013 RANGE ROVER
SE Auto Brokers
(844) 312-8785 **\$28,900**



TEXT 4BLU TO 27414
2013 BMW 3-SERIES
J&S Autoplex
(601) 342-2293 **\$27,990**



TEXT 1JNA TO 27414
2003 CHEVY SSR
J&S Autoplex
(601) 342-2293 **CALL**



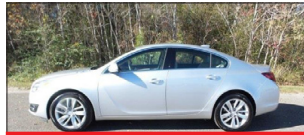
TEXT 4BUJ TO 27414
2011 GMC SIERRA 1500
J&S Autoplex
(601) 342-2293 **\$28,990**



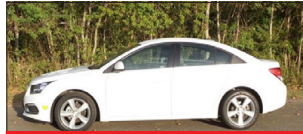
TEXT 002T TO 27414
2011 JEEP WRANGLER
J&S Autoplex
(601) 342-2293 **\$32,990**



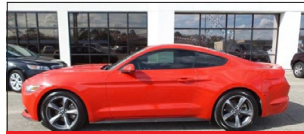
TEXT 4BGH TO 27414
2012 MERCEDES-BENZ
J&S Autoplex
(601) 342-2293 **\$25,990**



TEXT 7ZNN TO 27414
2016 BUICK REGAL
Ryan Chevy
(855) 534-3769 **\$18,500**



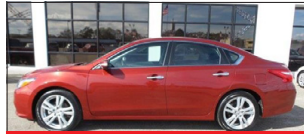
TEXT 9007 TO 27414
2015 CHEVY CRUZE
Ryan Chevy
(855) 534-3769 **\$13,500**



TEXT 9NVP TO 27414
2015 FORD MUSTANG
Ryan Chevy
(855) 534-3769 **\$19,000**



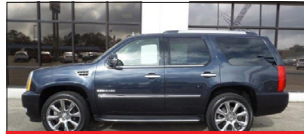
TEXT A3EZ TO 27414
2011 FORD TAURUS
Ryan Chevy
(855) 534-3769 **\$11,000**



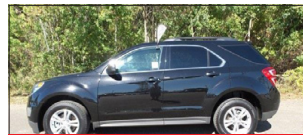
TEXT 9NVV TO 27414
2016 NISSAN ALTIMA
Ryan Chevy
(855) 534-3769 **\$21,000**



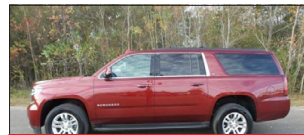
TEXT 4ATK TO 27414
2013 CHEVY SILVERADO
Ryan Chevy
(855) 534-3769 **\$20,000**



TEXT 5CD2 TO 27414
2013 CADILLAC ESCALADE
Ryan Chevy
(855) 534-3769 **\$36,000**



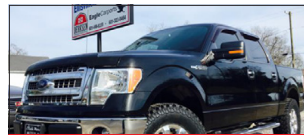
TEXT PRM7 TO 27414
2016 CHEVY EQUINOX
Ryan Chevy
(855) 534-3769 **\$20,000**



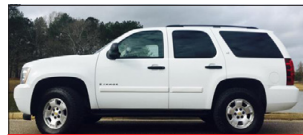
TEXT HS6U TO 27414
2016 CHEVY SUBURBAN
Ryan Chevy
(855) 534-3769 **\$45,500**



TEXT 7773 TO 27414
2005 GMC YUKON XL
Ryan Chevy
(855) 534-3769 **\$7,500**



TEXT 1GW3 TO 27414
2013 FORD F-150
Ellisville Motors
(844) 737-5629 **\$23,950**



TEXT 3BLX TO 27414
2009 CHEVY TAHOE
Ellisville Motors
(844) 737-5629 **\$16,500**



TEXT 0TJR TO 27414
2007 GMC ENVOY
Ellisville Motors
(844) 737-5629 **\$9,950**



TEXT 1GT0 TO 27414
2008 GMC YUKON XL
Ellisville Motors
(844) 737-5629 **\$16,500**



TEXT 1HM9 TO 27414
2011 TOYOTA HIGHLANDER
Ellisville Motors
(844) 737-5629 **\$17,450**



TEXT N3SR TO 27414
2015 CHEVY CRUZE
Hattiesburg Cars
(855) 242-0775 **\$19,995**



TEXT I90I TO 27414
2016 CHEVY IMPALA LTD
Hattiesburg Cars
(855) 242-0775 **\$19,995**



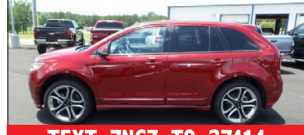
TEXT U04Z TO 27414
2013 SCION FR-S
Hattiesburg Cars
(855) 242-0775 **\$23,995**



TEXT HL90 TO 27414
2007 CHEVY SILVERADO
Hattiesburg Cars
(855) 242-0775 **\$8,995**



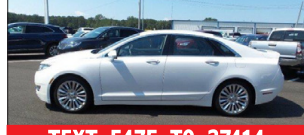
TEXT 7034 TO 27414
2010 TOYOTA TACOMA
Hattiesburg Cars
(855) 242-0775 **\$23,995**



TEXT 7NCZ TO 27414
2013 FORD EDGE
Woolwine Ford
(844) 332-1854 **\$29,965**



TEXT 6ILV TO 27414
2016 FORD MUSTANG
Woolwine Ford
(844) 332-1854 **\$24,989**



TEXT E47F TO 27414
2014 LINCOLN MKZ
Woolwine Ford
(844) 332-1854 **\$26,899**



TEXT 6JMK TO 27414
2016 FORD EXPEDITION
Woolwine Ford
(844) 332-1854 **\$44,859**



TEXT 38FD TO 27414
2016 LINCOLN MKX
Woolwine Ford
(844) 332-1854 **\$39,979**



TEXT HB7L TO 27414
2016 FORD EDGE
Laurel Ford
(844) 319-5854 **\$28,347**



TEXT 53HI TO 27414
2016 FORD FUSION
Laurel Ford
(844) 319-5854 **\$14,194**



TEXT 8Z0A TO 27414
2016 FORD MUSTANG
Laurel Ford
(844) 319-5854 **\$29,995**



TEXT HB2X TO 27414
2016 FORD TAURUS
Laurel Ford
(844) 319-5854 **\$26,800**



TEXT 1MYK TO 27414
2014 HYUNDAI SONATA
Laurel Ford
(844) 319-5854 **\$13,995**



TEXT 28KM TO 27414
2014 NISSAN ALTIMA
Laurel Ford
(844) 319-5854 **\$16,995**



TEXT 35N5 TO 27414
2015 TOYOTA CAMRY
Laurel Ford
(844) 319-5854 **\$20,739**



TEXT 3CK8 TO 27414
2016 FORD EXPLORER
Laurel Ford
(844) 319-5854 **\$31,995**



TEXT 3VS3 TO 27414
2015 LINCOLN MKC
Laurel Ford
(844) 319-5854 **\$28,995**



TEXT 7B1N TO 27414
2014 MAZDA CX-5
Laurel Ford
(844) 319-5854 **\$17,853**



TEXT S5GI TO 27414
2015 BUICK VERANO
Harris Hankins
601-764-4452 **\$15,922**



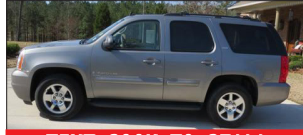
TEXT VE8Y TO 27414
2016 CHEVY MALIBU LTD
Harris Hankins
601-764-4452 **\$19,888**



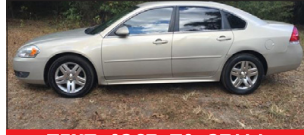
TEXT 5J6I TO 27414
1996 JAGUAR XJ
Harris Hankins
(844) 329-7227 **\$6,995**



TEXT S5I8 TO 27414
2015 CHEVY CAPTIVA SPT
Harris Hankins
601-764-4452 **\$15,922**



TEXT 290K TO 27414
2009 GMC YUKON
Harris Hankins
601-764-4452 **\$14,995**



TEXT 03GZ TO 27414
2011 CHEVY IMPALA
Vara Auto Sales
(601) 335-3972 **\$5,500**



TEXT 01GY TO 27414
2012 CHEVY MALIBU LTD
Vara Auto Sales
(601) 335-3972 **\$7,000**



TEXT 0PWX TO 27414
2013 FORD C-MAX HYBRID
Vara Auto Sales
(601) 335-3972 **\$6,800**



TEXT 0S1V TO 27414
2000 MERCEDES E320
Vara Auto Sales
(601) 335-3972 **\$5,300**



TEXT 35LP TO 27414
2006 JEEP COMMANDER
Vara Auto Sales
(601) 335-3972 **CALL**



TEXT S58T TO 27414
2013 CHEVY CRUZE
Paul Garner Motors
(844) 452-4569 **\$12,900**



TEXT S576 TO 27414
2010 HYUNDAI ACCENT
Paul Garner Motors
(844) 452-4569 **\$8,950**



TEXT M4AA TO 27414
2014 TOYOTA CAMRY
Paul Garner Motors
(844) 452-4569 **\$15,900**



TEXT 00I9 TO 27414
2010 FORD F-150
Paul Garner Motors
(844) 452-4569 **\$13,900**



TEXT 0FFH TO 27414
2006 MERCURY MOUNTAINEER
Paul Garner Motors
(844) 452-4569 **\$8,950**



TEXT AZ7Z TO 27414
2007 MERCEDES ML320
SE Auto Sales
(601) 649-4746 **CALL**



TEXT 0XRN TO 27414
2013 CHEVY MALIBU LTD
SE Auto Sales
(601) 649-4746 **CALL**



TEXT 0JZA TO 27414
2011 CHEVY SILVERADO
SE Auto Sales
(601) 649-4746 **CALL**



TEXT 0C07 TO 27414
2014 GMC SIERRA 2500
SE Auto Sales
(601) 649-4746 **CALL**



Msg & Data Rates May Apply; Ts & Cs and Privacy Policy: <http://autoconx.com/terms>

Text the red 4 digit code to 27414 for photos and details to your phone



WE WANT YOU! TO COME TO OUR INVENTORY REDUCTION SALE

- | | | |
|--|--|---|
| 
#P12455
2015 CHRYSLER 200 LIMITED SEDAN
VERY NICE
\$15,995 | 
#P12497
2015 FORD MUSTANG GT
20K MILES
\$31,500 | 
#P12462
2013 DODGE JOURNEY SXT SUV
HATCHBACK
\$15,995 |
| 
#18998A
2014 SUBARU XV CROSSTREK 2.0i PREMIUM SUV
4 DOOR
\$17,995 | 
#P12459
2014 FORD FOCUS SE
HATCHBACK
\$13,995 | 
#P12453
2015 LINCOLN MKZ SEDAN
42K MILES
\$22,495 |
| 
#18242A
2011 TOYOTA TUNDRA GRADE
6-SPEED AUTOMATIC
\$20,495 | 
#P12491
2016 CADILLAC XTS SEDAN
LUXURY COLLECTION
\$29,495 | 
#P12484
2016 RAM 1500 SLT TRUCK QUAD CAB
28K MILES
\$26,995 |


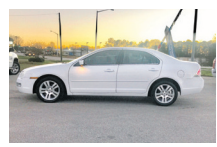







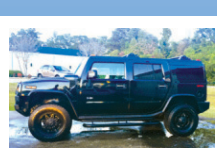
KIA & **LAUREL**  **844-319-5854**
www.kiaoflaurelms.com www.laurelfordlincoln.com

\$5.00 OFF YOUR NEXT SERVICE
MUST HAVE COUPON. EXP. 03-15-17
CANT BE COMBINED WITH ANY OTHER OFFERS.

TAX TIME = CAR TIME

SOUTHEASTERN Auto Sales, LLC

1st MONTH'S INSURANCE ON US!
GUARANTEED APPROVAL

- | | |
|--|---|
| 
2008 GMC Denali
Loaded, Rear Entertainment
\$14,995 | 
2007 Ford Fusion SLE
\$5,995 |
| 
2004 Chevy Z71 Offroad
\$8,995 | 
2005 Dodge Ram 1500
\$8,995 |
| 
2013 Chevy Silverado
Rocky Ridge Package
\$33,995 | 
2014 Dodge Ram 1500 4WD
\$29,995 |
| 
2011 Dodge Avenger
\$8,995 | 
2006 Dodge Charger
\$6,995 |
| 
2010 Nissan Altima
\$10,995 | 
2006 Hummer H2
\$18,995 |

WWW.SASLAUREL.COM
2711 HIGHWAY 15 N. | LAUREL | 601-466-3535

grand opening Celebration

TEXT RAPID TO 51660
TO RECEIVE
\$20 OFF*
FIRST RENTAL TERM
Cannot be combined with any other offers. Expires 3/31/17.

JOIN US FOR THE RIBBON CUTTING AT OUR NEW LOCATION IN FOREST, MS ON MARCH 3, 2017!

2 pc. Living Room Group
includes sofa and loveseat
\$60⁰⁰ MO
FOR 24 MO
Signature DESIGN ASHLEY



PANEL BEDROOMS
5 pc. Bedroom Group
includes dresser, mirror, headboard, rails & chest
\$60⁰⁰ MO
FOR 24 MO
Signature DESIGN ASHLEY



AMANA WASHER & DRYER SET
\$68⁰⁰ MO
FOR 24 MO
reg \$76⁰⁰ MO

WHIRLPOOL WASHER & DRYER SET
\$88⁰⁰ MO
FOR 24 MO
reg \$96⁰⁰ MO

43" Hisense Smart TV
\$68⁰⁰ MO
FOR 12 MO

65" LG 4k Smart TV
\$120⁰⁰ MO
FOR 24 MO

60" Samsung Smart TV
\$80⁰⁰ MO
FOR 24 MO

Rapid Rentals

Rental Purchase
FURNITURE • APPLIANCES • ELECTRONICS

grand opening
Celebration
ENTER TO WIN A
60" SAMSUNG SMART TV
AND MANY MORE PRIZES!
See store for details.

Your Location: 9-G Bay Avenue • Bay Springs, MS 39422 • 601.764.9805

NEW LOCATION: 326 Woodland Drive Forest, MS 39074 601.469.2151	125 Old HWY Loop Newton, MS 39345 601.683.7800	818 Main Street Collins, MS 39428 601.765.4181	105 HWY 35 North Carthage, MS 39051 601.298.0999
---	--	--	--

Visit Us Online @ www.RAPIDRTO.com



J&S AUTOPLEX

4029 HWY 15 NORTH LAUREL
601-342-2123



2010 Jeep Wrangler Unlimited Sahara
 Lift Kit, Oversized Tires & Wheels,
 Tow Pkg, Hardtop & More!
\$29,990 or \$399/mo



2011 Jeep Wrangler Rubicon
\$31,990 or \$429/mo



2014 Jeep Wrangler Unlimited Sahara
 Hardtop, Loaded
\$31,990 or \$454/mo



2011 Mercedes GLK
\$27,990 or \$379/mo



2012 Mercedes Benz C250
\$17,990 or \$249/mo



2012 Mercedes Benz E-Class
\$30,990 or \$399/mo



2012 Mercedes Benz GLK
\$25,990 or \$349/mo



64k Miles

2008 Lexus ES 350
\$14,990 or \$219/mo



59k Miles

2011 Lexus IS 250
\$19,999 or \$279/mo



47k Miles

2012 Lexus ES 350
\$21,990 or \$319/mo



36k Miles

2012 Lexus LS 460 Luxury
\$33,990 or \$469/mo

SOUTH MISSISSIPPI'S NEW HOME FOR QUALITY TRANSPORTATION



2015 Chevrolet Camaro Convertible
\$20,890 or \$308/mo

48k Miles



2016 Ford Mustang Convertible
\$25,990 or \$349/mo

45k Miles



2013 Chrysler 200 Limited Convertible
\$19,990 or \$259/mo

36k Miles



2008 Volkswagen New Beetle
 Leather, Sunroof
 One Owner
\$9,900

29k Miles



2014 Hyundai Santa Fe
\$17,990 or \$249/mo

18k Miles



2014 Lincoln MKZ Turbo
 Panoramic Sunroof,
 THX Stereo, Tech Pkg.
\$21,990 or \$319/mo

25k Miles



2012 Toyota 4Runner SR5
\$23,990 or \$339/mo

31k Miles



2013 Toyota Tacoma
 Lift Kit, Backup Cam.
 Towing Pkg
\$28,995 or \$399/mo



2014 Ford F150
\$27,490 or \$379/mo



2014 Nissan Frontier S Crew Cab
\$25,990 or \$359/mo



2015 GMC Sierra 1500 SLT
\$39,990 or \$549/mo

MANAGER'S SPECIALS!

2001 PORSCHE BOXSTER

Convertible, Navigation,
 Traction Control,
 Premium Stereo,
 Immaculate,
 New Factory MSRP
\$68,400
 Our Price
\$14,900



36K Miles!

2003 CHEVY SSR LS

Hardtop Convertible
 V8, Bose Premium
 Stereo, Fiberglass
 Painted Bedcover,
 Tow Pkg, 1 Owner,
 Limited Production
 New Factory MSRP
\$49,650
 Our Price
\$14,900



18K Miles!

2003 PORSCHE 911 CARRERA

Tiptronic Transmission,
 Traction Control,
 Bose Premium Stereo,
 Power Sunroof
 Prestine Condition
 New Factory MSRP
\$89,400
 Our Price
\$32,990



48K Miles!

2007 MERCEDES BENZ SL ROADSTER

Hardtop Convertible,
 Navigation,
 Bose Stereo/Harman
 Kardon Stereo,
 Very Clean,
 In A Class Of It's Own!
 New Factory MSRP
\$111,725
 Our Price
\$31,990 or \$429/mo



38K Miles!

2013 BMW 328i6

Hardtop Convertible,
 Driver Assist Pkg,
 Harman Kardon Stereo,
 Navigation,
 Sport Pkg, One Owner
 New Factory MSRP
\$45,000
 Our Price
\$17,990 or \$249/mo



24K Miles!

FULL SERVICE DEPARTMENT

OPEN TO THE PUBLIC - FREE DIAGNOSTIC CHECKS

- Six Service Bays • Four Hydraulic Lifts
- Front End Alignment Machine
- State's Only Quadriga 1000 Tire Machine!

OUR SERVICE DEPARTMENT WILL BEAT ANY QUOTE!

Bring your quote and this coupon and J&S Autoplex will beat any price, period!



Shop 24/7 online

jandsautoplex.com