

Mid-Michigan Buyers Guide

SUNDAY, MARCH 19, 2017

Serving Clare, Gladwin, Gratiot, Isabella, Montcalm, & Southern Roscommon Counties

Morning Star Publishing Company powered by digitalfirst



The

AUTO GROUP OF MT. PLEASANT



March Mania Markdown

**Free
Lifetime
Engine
Warranty**

**Largest
Inventory
IN MID MI**

**Free
TANK
of GAS**

**Free 90 Day
or 3,000K Mile
Power Train
Warranty**



2009 FORD F150
SUPERCAB XLT
6.5' Bed, 4WD
Stk. #8026
\$17,995



2007 CHEVY SILVERADO
1500 EXT. CAB
4WD, Leather,
Stk. #8022
\$17,995



2010 GMC SIERRA
1500CREW CAB SLE
4WD, 5.3L V8.
Stk. #7992
\$19,995



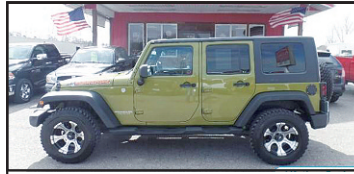
2014 HARLEY
DAVIDSONELECTRA
GLIDE ULTRA
Limited Lots of Extras
Stk. #7960A
\$20,995



2015 DODGEJOURNEY
R/T AWD
19K Miles
Stk. #8029
\$20,995



2015 DODGEJOURNEY
R/T AWD
19K Miles
Stk. #8029
\$20,995



2010 JEEP WRANGLER
UNLIMITED 4WD
Stk. #8050
\$21,495



2016 JEEP CHEROKEE
LTD.
Loaded, 4WD, Leather,
Stk. #8005
\$22,995



2010 CHEVY SUBURBAN
1500 LT
4WD, Leather, 5.3L V8
Stk. #7966
\$23,995



2016 VW TIGUAN SEL
AWD, Leather
Stk. #8041
\$24,995



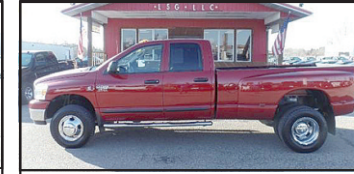
2013 GMC SIERRA 1500
CREW CAB SL
4WD, V8.
Stk. #8034
\$24,995



2014 FORD EXPLORER
4WD, V6, Leather
Stk. #8031
\$25,995



2014 GMC SIERRA 1500
4WD, 61K Miles
Stk. #8023
\$27,925



2007 RAM QUAD CAB
SLT
Cummins, Dually, 4WD
Stk. #8033
\$28,995



2014 FORD F-150
SUPERCREW XLT
4WD, 5.0L V8.
Stk. #7995
\$29,495



2016 DODGE
CHALLENGER R/T
10K miles
Stk. #7944
\$29,700



2013 FORD F-150
SUPERCREW LIMITED
Stk. #7981B
\$32,995



2015 FORD F150
SUPERCAB XLT
6.5' Bed, Low Mi., V6
Stk. #7994
\$32,995



2013 RAM 2500
QUAD CAB
Diesel, 4WD.
Stk. #8025
\$34,995



2013 CHEVY SILVERADO
2500HD CREW CAB
Diesel, 4WD,
Stk. #8032
\$39,995



2016 FORD EXPEDITION
PLATINUM
4WD, Leather, V6, Sharp!
Stk. #7937
\$42,400



2014 FORD F250
CREW CAB LARIAT
6.7L Diesel V8, 4WD,
Leather and Loaded!
Stk. #7909
\$42,700



2013 GMC 3500HD SLE
27K miles Duramax 4WD
Stk. #7989
\$42,995



2014 GMC 2500HD SLT
Duramax 4WD
Stk. #8044
\$43,995



2016 FORD F350SD
CREW CAB LARIAT
Diesel, 4WD, Leather
Stk. #7997
\$54,995

EVERYONE IS APPROVED!!! Regardless Of Your Credit History!
Let Our In-House Finance Experts Help Get You Into The Vehicle Of Your Dreams!

The
AUTO GROUP
OF MT. PLEASANT

4720 E. Pickard (M-20)
Mt. Pleasant, MI

**877-772-1113 OR
989-772-1113**

All prices plus tax, title, plate & doc fees.

**March
Mania
Markdown**





Steve's Country Market

989-539-3110 3170 North Clare Ave., Harrison 44 Feet of Old Fashioned Meat Counter with Good Old Fashioned Service



Hours: Sun. - Mon. 8-8 Bridge Card & Wic Accepted

Sale Dates: March 20 - March 26, 2017

Top Quality Meats At Rock Bottom Prices!

100% Satisfaction Guaranteed

Michigan Lottery and ATM Machine
stevescountrymarket.com

Fresh Meat, Seafood & Deli Items

GROUND CHUCK
80% LEAN
FAMILY PACK
5 LBS. OR MORE

\$2.69
LB.

WHOLE NEW YORK STRIP LOINS

\$3.19
LB. **SLICED FREE!**

WHOLE RIBEYE LOINS

\$3.99
LB. **SLICED FREE!**

WHOLE BONELESS PORK LOINS

\$1.59
LB. **SLICED FREE!**

COMBINATION PORK & BEEF ROAST

\$2.99
LB.

FRESH GROUND ROUND
93% LEAN

\$3.69
LB.

PORK STEAK OR WESTERN STRIPS

\$1.49
LB.

STEVE'S OWN MARKET MADE BULK SAUSAGE

\$1.49
LB.

USDA CHOICE BONELESS ENGLISH ROAST

\$2.99
LB.

ECKRICH FRANKS
REG. OR CHEESE
14 OZ.

2/\$3.00

LENTEN SPECIALS

CRAB STUFFED PORTABELLA MUSHROOMS

\$5.99
LB.

LOBSTER TAILS
6-7 OZ.

\$9.99
EA.

POLLOCK FILLETS
10 LB. BOX

\$15.00
EA.

TILAPIA FILLETS
5 LB. BAG

\$9.99
EA.

WHOLEY BRAND RAW SHRIMP
PEELED AND DEVEINED
21-25 CT. • 1 LB. BAG

\$6.99
EA.

COD LOINS
10 LB. BOX

\$32.90
EA.

SMOKED SALMON OR WHITEFISH DIP

\$6.49
LB.

Deli

Fresh Produce

Fresh Dairy And Frozen

Grocery

ARMOUR DELI TURKEY

\$2.99
LB.

ECKRICH DELI HAM

\$3.99
LB.

AMERICAN CHEESE
WHITE OR YELLOW

\$3.99
LB.

BROASTED CHICKEN
8 PC.

\$6.99
EA.

HEAD LETTUCE

99¢
EA.

WHOLE WHITE MUSHROOMS
8 OZ.

99¢
EA.

CALIFORNIA CLEMENTINES
3 LB.

\$3.99
EA.

BABY CARROTS
1 LB.

99¢
EA.

MICHIGAN YELLOW ONIONS
3 LB. BAG

99¢
EA.

PRAIRIE FARMS COTTAGE CHEESE
24 OZ.

\$2.69
EA.

YODER'S SHREDDED OR BAR CHEESE
8 OZ.

2/\$4.00

TOTINO'S PIZZAS
10.2-10.9 OZ.

99¢
EA.

COLE'S MINI GARLIC LOAF
7-8 OZ.

99¢
EA.

PRAIRIE FARMS PREMIUM ICE CREAM
1/2 GALLON

2/\$7.00

SWEET BABY RAY'S BBQ SAUCE
18 OZ.

4/\$5.00

BETTY CROCKER HAMBURGER HELPER
5-7.6 OZ.

\$1.00
EA.

KELLOGG'S CORN FLAKES OR RICE KRISPIES
12-18 OZ.

2/\$5.00

GENERAL MILLS CEREALS
SELECT VARIETIES
10.7-11.8 OZ.

2/\$4.00

NABISCO SNACK CRACKERS
SELECT VARIETIES
7.5-10 OZ.

2/\$5.00

DORITOS
10-11 OZ.

2/\$5.00

AUNT MILLIE'S HOMESTYLE BREADS
24 OZ.

\$1.69
EA.

AUNT MILLIE'S HONEY HOT DOG OR HAMBURG BUNS
8 CT.

\$1.69
EA.

COKE
20 PKGS CANS

\$6.49
EA.
PLUS DEPOSIT

While supplies last. Not responsible for printing errors.

Largest Selection of Clean Used Cars in Central Michigan

GM Certified Pre-owned Vehicles = 2 Years of Oil Changes & Tire Rotations + 12 Month or 12,000 Mile Bumper to Bumper Warranty Certified 1.9% up to 60 months!

USED CARS		USED SUVs		2011 GMC TERRAIN FWD SEL	
2016 BUICK VERANO Crystal Red, 3,500 Miles, 4 Cyl.....	\$22,900	2017 BUICK ENCLAVE 17,000 miles, CXL, Iridium, AWD.....	\$37,900	Goldmist, 4cyl, 32,000 Miles.....	\$16,900
2016 CHEVROLET IMPALA LT Black, 24,000 Miles, Certified.....	\$21,900	2017 CHEVY TRAVERSE 2LT Remote Start, Rear Camera, FWD, 14,000 Miles, Certified.....	\$33,900	2009 GMC ACADIA FWD SLE Goldmist, 113,000 Miles.....	\$11,900
2016 CHEVROLET CRUZE LT Dk. Gray, 13,000 Miles, 4cyl, Certified.....	\$16,900	2016 CHEVY TRAVERSE White, FWD, 19,000 Miles, Rear Camera.....	\$25,900	2007 GMC ENVOY Silver, 4x4, 146,000 miles.....	\$9,900
2014 BUICK LACROSSE CXL FWD Crystal Red, 51,000 Miles, Certified.....	\$19,900	2016 JEEP RENEGADE 4X4 Silver, 19,000 Miles, Sharp.....	\$22,900	USED TRUCKS	
2013 BUICK LACROSSE Crystal Red, 34,000 Miles, CXL, Certified.....	\$19,900	2016 JEEP CHEROKEE LIMITED 4 Cyl, 4 Wheel Drive, Black, 26,000 Miles.....	\$23,900	2016 CHEVROLET SILVERADO 2500 EXT. CAB 4X4 6.0 V8, 11,000 Miles.....	\$33,900
2013 BUICK REGAL PREMIUM Diamond White, 24,000 Miles, Loaded.....	\$16,900	2015 JEEP RUBICON WRANGLER 4DR Silver, 27,000 Miles.....	\$35,900	2016 GMC SIERRA REG. CAB 2 Wheel, 6,000 Miles, V6, Tilt, Cruise, Air.....	\$22,900
2013 BUICK REGAL Blue, 49,000 Miles, Leather, Locally Owned.....	\$16,900	2015 GMC ACADIA SLT-2 Dk. Blue, AWD, 45,000 Miles, 1-Owner.....	\$30,900	2015 GMC DOUBLE CAB SLT Black 4X4 5.3 V8, 27,000 Miles, Leather.....	\$34,900
2013 CHEVY MALIBU 39,000 Miles, Atlantic Blue.....	\$15,900	2015 GMC ACADIA SLT-1 All Wheel Drive, Crimson Red, Leather, Power Lift Gate, 48,000 Miles, Heated Seats, Remote Start.....	\$29,900	2014 GMC SIERRA CREW CAB DENALI BLACK DURAMAX Diesel, Loaded, 79,000 Miles.....	\$45,900
2013 BUICK LACROSSE Champagne Silver, 72,000 Miles, Leather.....	\$15,125	2014 GMC TERRAIN SLT AWD Silver, 38,000 Miles, 4 Cyl, 1-Owner.....	\$21,900	2014 CHEVROLET SILVERADO 1500 4WD, Reg. Cab, Shortbox, 30,000 Miles, White.....	\$24,900
2013 CHEVY MALIBU Black, 60,000 Miles.....	\$13,500	2014 BUICK ENCORE White Pearl, 20,000 miles, 1-owner, Heated Seats, Remote Start.....	\$19,900	2013 CHEVROLET SILVERADO CREW CAB 4X4 LTZ Mocha Steel, 29,000 Miles, Rear Camera/Remote Start.....	\$29,900
2011 BUICK REGAL CXL Majestic Blue, 69,000 Miles.....	\$14,900	2014 GMC TERRAIN AWD SLE Carbon Black, 34,000 Miles.....	\$20,500	2012 GMC SIERRA EXT. CAB SLT Black, 28,000 Miles, 5.3 V8, 1-owner.....	\$29,900
2011 CHEVROLET MALIBU LT Gray, 4 Cyl, 63,000 Miles.....	\$12,900	2014 BUICK ENCORE Satin Steel, 41,000 Miles, Certified.....	\$19,900	2012 GMC SIERRA CREW CAB SLE 4X4 DK. Blue, 5.3 V8, 56,000 Miles.....	\$26,500
2010 BUICK LUCERNE CXL Cyber Gray, 82,000 Miles.....	\$10,900	2014 CHEVY EQUINOX LT Crystal Red, 38,000 Miles, Certified.....	\$18,900	2012 GMC SIERRA EXT CAB SLE Quick Silver, 4x4, 72,000 miles.....	\$22,400
2010 CHEVROLET MALIBU LTZ Silver, 102,000 Miles.....	\$9,900	2013 CHEVY TAHOE LT Burgundy/Tan leather, 55,000 Miles, Sunroof.....	\$33,900	2011 GMC CREW CAB 4X4 Stealth Grey, 84,000 Miles.....	\$24,900
2010 PT CRUISER Burgundy, 90,000 Miles, Locally Owned, 4 Cyl.....	\$6,900	2013 BUICK ENCLAVE CXL FWD 49,000 Miles, 1-Owner.....	\$24,400	2011 GMC SIERRA CREW CAB 4X4 SLE White, 110,000 Miles.....	\$19,900
2008 BUICK LUCERNE CXL 3,800, V6, Goldmist, 129,000 Miles.....	\$8,900	2013 GMC TERRAIN Front Wheel Drive, SLT, Black, 47,000 Miles, Leather.....	\$18,900	2010 GMC SIERRA CREW CAB SLT 4X4 Fire Red, 5.3 V8, 68,000 Miles.....	\$24,900
2007 CHEVROLET HHR Black, 77,000 Miles, 4 Cyl, 1-Owner.....	\$7,900	2013 GMC TERRAIN FWD SLE 31,000 Miles, White, 4 Cyl.....	\$18,900	2010 CHEVROLET SILVERADO 1500 4X4 EXT CAB White, 78,000 Miles, 5.3 V8.....	\$19,900
2007 CHEVROLET HHR LT Blue, 125,000 Miles.....	\$6,900	2013 GMC TERRAIN SLE FWD 4 Cyl, Silver, 72,000 Miles.....	\$16,900	2010 GMC EXT CAB SLE 4X4 White, 5.3 V8, 134,000 Miles.....	\$16,200
2001 BUICK LESABRE LIMITED Silver Blue, Leather, 3800, V6, 52,000 Miles.....	\$6,900	2012 GMC TERRAIN FWD SLE Black, 59,000 Miles.....	\$15,200	2007 CHEVROLET EXT CAB 4X4 White, 5.3 V8, 112,000 miles, Very Clean.....	\$14,900
2001 CADILLAC DEVILLE DHS Silver, 91,000 Miles.....	\$4,900	2012 GMC TERRAIN SLE FWD Burgundy, 71,000 Miles.....	\$14,900		
		2012 CHEVROLET EQUINOX LT FWD 102,000 Miles, Goldmist.....	\$11,900		
		2011 GMC TERRAIN SLT AWD 69,000 Miles, 6 Cyl, Silver.....	\$18,900		

BENCHLEY BROS., INC.
1 Mile East of Doherty • US-10, Clare • Sales (989) 386-9900

HOURS
8-6 Mon-Fri
9-2 Sat



For more info log on to: www.benchleybros.com

Parts & Service (989) 386-3197



TAX REFUND Sale

BEAUTY, QUALITY & FUNCTION ON SALE NOW!



ORDER FROM OVER 1,000 FABRICS



18 MONTHS INTEREST FREE!*

On any purchase of \$599 or more.

SALE PRICES PLUS BONUS COUPON SAVINGS!



BONUS COUPON SAVINGS

\$50 OFF

Any purchase of \$499

Prior orders excluded. One coupon per purchase per household. Purchases must total \$499 before sales tax. EXPIRES 4/2/17

BONUS COUPON SAVINGS

\$100 OFF

Any purchase of \$999

Prior orders excluded. One coupon per purchase per household. Purchases must total \$999 before sales tax. EXPIRES 4/2/17

BONUS COUPON SAVINGS

\$150 OFF

Any purchase of \$1,499

Prior orders excluded. One coupon per purchase per household. Purchases must total \$1,499 before sales tax. EXPIRES 4/2/17

*Subject to credit approval. Minimum monthly payments required. See store for details.

SUPER SAVINGS on all CLEARANCE - CLOSEOUTS & DISCONTINUED MODELS!

MODEL YEAR END



FACTORY SELECT TWIN MATTRESS

\$99

CLEARANCE!

SAVINGS EVENT

LOWEST PRICES this year - Once they're gone, they are gone!

	\$399	Majestic Davey Gentle Eurotop
	Queen Set	
	was \$599	
	COMPARE AT	SALE
Twin Set	\$449	\$299
Full Set	\$569	\$379
King Set	\$899	\$599

	\$599	Majestic Raftery Premium Choice Plush or Firm
	Queen Set	
	was \$899	
	COMPARE AT	SALE
Twin Set	\$679	\$449
Full Set	\$829	\$549
King Set	\$1349	\$899

	\$799	Kubin's Exclusive, Perfect Sleeper Regal Suite, 2 Sided flipable mattress Choice of Plush or Extra Firm
	Queen Set	
	was \$1199	
	COMPARE AT	SALE
Twin Set	\$829	\$549
Full Set	\$1049	\$699
King Set	\$1649	\$1099

	\$499	Majestic Gallion Support Firm or Support Eurotop
	Queen Set	
	was \$749	
	COMPARE AT	SALE
Twin Set	\$529	\$349
Full Set	\$679	\$449
King Set	\$1199	\$799

	\$699	Majestic Stowcroft Choice of Super Pillowtop or Firm
	Queen Set	
	was \$1040	
	COMPARE AT	SALE
Twin Set	\$829	\$549
Full Set	\$979	\$649
King Set	\$1498	\$999

	\$999	Serta Perfect Sleeper Your Choice: Luxury Pillowtop, Firm or Evercool Gel Memory Foam
	Queen Set	
	was \$1499	
	COMPARE AT	SALE
Twin Set	\$1349	\$899
Full Set	\$1459	\$969
King Set	\$1949	\$1299

Queen Adjustable Base From \$575

With Set Purchase



Over 200 Recliners in Stock and on Sale!

EXTRA BONUS

up to **18 MONTHS No Interest FINANCING!**

Wow! W.A.C.



Kubin's Furniture & Mattresses

101 N Mill St, Corner of M46, St. Louis, Michigan, (989) 681-5043
Hours: Mon-Thurs: 9-6, Fri: 9-8, Sat: 9-5, Closed Sunday
Sign up Your Email at: <http://www.kubins.com/signup.htm>





If you would like your Ad in this directory, Call **Cindy** at **989-779-6115** or email cterwilliger@michigannewspapers.com

H&R BLOCK

COMPLICATED TAXES? BRING IT ON.

TAXES ARE COMPLICATED.
Getting your taxes done isn't enough - you need your taxes done right. That's where we come in. We hire and train the most qualified tax professionals to ensure you claim every credit and deduction you deserve so you get your maximum refund. Guaranteed.*

YOUR LOCAL OFFICE(S):
126 W SUPERIOR
ALMA, MI 48801
989-463-5556

*If you discover an H&R Block error on your return that entitles you to a larger refund (or smaller tax liability), we'll refund the tax prep fee for that return. Refund claims must be made during the calendar year in which the return was prepared. DBTP#B13696 ©2015 HRB Tax Group, Inc.

Better Call Joe!

Joseph Byrne

Ajs Tax & Mortgage
Accounting, Insurance, Mortgages & Tax Preparation

(989) 775-6643
(989) 400-2116 (cell)
ajstax@winnetel.net

123 East Broadway Suite 7
Mount Pleasant, MI 48858

Blystone & Bailey, CPAs, PC

Certified Public Accountants

Jill Bourland, CPA, CEO
Anthony J. Wilmot, CPA
Paul G. Truman, CPA
Glen D. Blystone, CPA
Thomas J. Bailey, CPA
Leah M. Rau, CPA
Jonathon T. Crowley, CPA
DeAnne A. Rydman, CPA
Nathan J. Haines, CPA
Shawn R. Stressman, CPA

- Tax Planning and Return Preparation Services
- Accounting/Bookkeeping Services
- Payroll Services
- Data Processing
- Auditing Services
- Personal and Business Planning Services

www.blystonebailey.com

619 S. Mission St., Mt. Pleasant, MI 48858
989-772-4673



2004 DODGE 5.9 DIESEL QUAD 4X4

LARAMIE STOCK # 50156357
\$22,900

2014 RAM 1500 CREW 4X4

ONE OWNER 43K STOCK # 55211312
\$27,900

2013 CHRYSLER 200 TOURING

50K STOCK # 50547199
\$167 A MONTH

2013 DODGE CHARGER R/T

88K, HEMI STOCK # 50634884
WAS \$19,995 NOW \$16,900

2015 RAM QUAD CAB 4X4 SLT

STOCK # 55661455
\$350 A MONTH

2013 FORD MUSTANG GT

35K LOADED STOCK # 55206040
WAS \$24,875 NOW \$21,900

2014 CHRYSLER TOWN AND COUNTY LIMITED

STOCK # 55454084
LOADED ONE OWNER

2015 RAM 3500 DIESEL 4X4

DUALY, SLT # 55585841
\$39,995

2011 NISSAN FRONTIER

4X4 CREW STOCK # 50414932A
WAS \$17400 NOW \$14,900

McDonaldChrysler.com • 624 W 5th Street • Clare **(989) 386-7770**

JACK OF ALL TRADES COINS

1028 S. Mission
(next to Jon's Country Burger)

I BUY ALL COINS
Silver and Gold
FREE APPRAISALS
we will come to your home
to do free appraisals for
your convenience.
Over 25 Years experience!

Do not take your coins,
jewelry, gold, & silver to
the we buy gold places
they are not experts! We
are your only experts!
**WE PAY YOU MORE
THAN ANYONE!**

I BUY ALL COLLECTIONS
FROM ONE COIN TO A
DUMP TRUCK FULL

**We are a Full
Buy • Sell • Trade shop!**
ANTIQUES • COINS
Jewelry • Collectibles & more!

Stop in or call Matt for
your free appointment
517-204-0787

A-1 MOBILE ROOF SYSTEM



- White enameled aluminum stops any and all leaks for the full life of your mobile — GUARANTEED!
- Thick Layer of foam insulation drastically reduces winter heating by 35% or more — GUARANTEED!
- Over-hang at eaves eliminates stains and streaking. No more coating and caulking.

Made in Good Old USA!
START TO FINISH
We MANUFACTURE Your Roof
We INSTALL Your Roof

12X60 \$3,280 INSTALLED \$3,980 14X70

GET YOUR FREE ESTIMATE TODAY!
BANK FINANCING AVAILABLE!
1-800-872-2089

VISA MasterCard BBB

!!!MONTHLY SALE!!!

Saturday, March 25, 2017
(Last Saturday of the month)
Location:
Clare County Produce Auction Building
6820 E. Colonville Rd., Clare, MI 48617
(989) 802-1766 • (989) 386-6876
Time: 12:00 NOON

Accepting Consignments
Firewood, Hay (big & small bales),
Surplus Building Materials

Auctioneer: Andy Hostetler
We have the right to turn down junk

GET MORE BANG FOR YOUR BUCKS

GOOD, CLEAN, QUALITY PRE OWNED MERCHANDISE

Jewelry
Firearms
Muzzle Loader Gear
Paintball Equipment

TVs
Musical Instruments

Wii, Xbox One
PS3, PS4
Tools

SPECIAL Xbox One System \$175

DIRT CHEAP • CAR AUDIO • NEW & USED
Tested & Inspected. Why Pay New Prices?
GLADWIN TRADE & SALES
1-989-426-6811
1739 N. State St. • Gladwin

SHOP LOCALLY SAVE GAS!

AUCTION

ANTIQUES, TOOLS, FURNITURE AND MORE AUCTION

FRIDAY 5:00 pm MARCH 24th 2017 - DOORS OPEN AT 4:00 PM

7880 E Colonville Rd Clare Michigan 48617
4 Miles East of Clare - 1/2 Mile East of Colonville Country Store
INDOOR HEATED FACILITY WITH SEATING

ANTIQUITY FURNITURE
Quarter Sawm Desser W/Mirror By Larkin Co. • Nice Hotel Step Down Commode Dresser W/Mirror • 5 Drawer Spoon Carving • Chest Of Drawers • Small Spoon Carved Nightstand • Glass Front Corner China Cabinet • Quarter Sawm Oak Half Moon Glass Front China Cabinet • 6' Tall Hall Tree • 18 Compartment Organizer Wooden Bin W/Writing • Wooden Rocker • 2 Quarter Sawm Oak Chairs • 4 Matching Captain Chairs • Wooden Rocker • 2 Quarter Sawm Oak Chairs By Newton And Holt Co. Chicago • 6 Matching Chairs By Empire State • Very Nice 3' Tall Yarn Holder Wood • 4 Matching Straight Back Chairs • Fancy Eastlake Lamp Stand • Eastlake Magazine Rack.

FURNITURE
• 2 High Back Cushioned Chairs • Several Cushioned Chairs • Glider • Recliner • 6' Hide-A-Bed • 6' Sofa W/Pinecones - Nice White Sofa • Several Twin Bed Frames • Full Bed Frames • 6' Tall Book Shelf • Small Knee Hole Desk • Nightstands • 3 Drawer Metal Files • TV Stand • Plant Stands And More.

ANTIQUES
Midland Dairy Co. Bottles W/Carrier • Leather Bottles • Ceramic Door Knobs • Old Eye Glasses • Postal Scales • Collection Of Brass Bells • Box Of Kennedy Pictures • Tin Adv. Cans • Straight Razors • Razor Straps Leather W/Advertising • Candlestick • Phone By Stromberg • Wooden Western Electric Phone • Windup Clock • Mirror W/Cherubs • Nick Selection Of Crocks, 10 Gal, 5 Gal, 2 Gal, 1 Gal, 3 Gal Churn • 5 Gal Crock W/Large Glue Swirl • Wagner Aluminum Keltner • Small Anvil • Monarch Lantern • Rug Beaters • 18" Horse Statue • Milk Cans • Horse Hardware Display • Sled • Cast Iron Horse Head • Crosscut Saw • Ice Tongs • Wooden Pulleys • Hatchet • Washboard • Stanley Planes • Wooden Bowls • Flat Top Trunk. Marked Saginaw MI • Remington Typewriters • Collection Of Cast Sad Irons • Cow Bells • Butter Press • Cast Bowl • Cast Nut Cracker • 7' Long Leather Strap W/Brass Bells • Glass Lamp, Consolidated, Rayo • Approx 500 45 Records • Old Automotive Calendars • Unsigned Oil Painting Very Old • Vintage Rocking Horse • Armspear R.R. Lantern • 4 Qt. Dazey Churn W/Tulip Jar • Grand Rapids Vacuum • Copper Boiler • J.C. Ulmer Surveyor, Nice! And More.

MINI ANTIQUES
Mini Anvils • Mini Butter Press • Mini Leather Tape

TOOLS
Multi Compartments Loaded • Jumper Cables • Gun Kit • Tool Boxes • Box Lots Of Wrenches, Screwdrivers Brushes, Torch Tips, Files, Oil Cans And More • Hammers, Handsaws • Shop Towels • Black And Decker Skill Saw • Sprinklers • Gas Can • Ice Chest • Eastwing Hatchet • C Clamps • Rigid Pipe Wrenches • Bench Vise • Bolt Cutters • Bars • Golf Balls • Meat Grinder • Electrical • Lufkin Folding Rules • New Stanley Level In Box Heavy Cast • Meat Saw • Mohr Threading Dies • Small Tool Cabinet On Wheels • Torch Tips • Aluminum Ext. Ladder • Step Ladder • Metal Shelves • Ariens 522 Snow Blower • Craftsman 6.5 Hp Lawn Mower • Lawn Boy Mower • Weber Grill • Mini Weber Grill • Lawn Spreader • Numerous Handtools Rakes, Shovels Brooms, Axes, And More • Portable Work Bench W/Vise • Pipe Vise And More.

BOOKS
Large German Bible 1889 Grand Rapids • Hardcover Zane Grey • Numerous Battlefield Books • Baseball Books • Louis Lamour • Shakespeare And More.

GLASSWARE
Nesting Hens • Collectible Bottles • Beam Bottles • Carnival Glass • Depression • Large Bell Collection • Figurines • Nice Rose Dish Set • Canning Jars.

HOUSEWARES
Blender • Silverware • Vases • Stainless Steel Cookware • Pitcher Collection • Olympia Typewriter • Walking Sticks • Small Sewing Machine.

AUCTIONEERS NOTE: JOIN US FOR A NIGHT OF FUN FOR EVERYONE. LOTS OF GOOD USABLE TOOLS. LOTS OF GOOD ANTIQUES. GREAT SELECTION OF FURNITURE. ABSENTEE BIDS ACCEPTED

SALE CONDUCTED BY GATEWAY AUCTIONS OF CLARE MICHIGAN.
AUCTIONEER J.R. HOCHSTETLER
TERMS OF SALE: Cash Or Mi Check W/ Proper I.D., Sale Is Subject To 6% MI Sales Tax, Lunch On Grounds, Not Responsible For Accidents.

Lambert's Meat Market and Bakery

Taste the difference "FRESH" makes!

624 E. Cedar Ave., Gladwin (next to Family Dollar) **989-246-1850**

Winter Hours: Mon-Friday 8-6:30; Saturday 8-6:00; Sunday 8-4:00 • Sales Dates Monday, March 20 through Saturday, March 25, 2017

LIKE US ON FACEBOOK AND FIND OTHER WEEKLY SPECIALS



10LB OR MORE SALE!!

2 Pack Frozen Pork Shoulders  \$1.29 lb.	Frozen 4oz Boneless Skinless Chicken Fillets  \$25.80 20 lb. box	Pork Steak, Pork Strips, Pork Shoulder Roast or Breakfast Sausage  \$1.69 lb.	USDA Choice Denver Steaks or English Roast  \$3.39 lb.	Family Pack Ground Beef Hamburger 73% Lean  \$2.19 lb.	Family Pack Ground Beef from Chuck 80% Lean  \$2.69 lb.
		Wayside Bacon  \$19.90 10lb box	Whole New York Strip Loins NR  \$3.59 lb. SLICED FREE!	Whole Ribeye Loins NR  \$3.99 lb.	Little Link Sausage  \$22.99 6lb box

FROZEN FOOD SPECIALS

Pre-cooked Chicken Wing Sections  \$13.99 5 lb. bag JUST ADD SAUCE!	Mozzarella Sticks  \$5.99 3 lb. bag	Chicken Tenders or Spicy Fillets  \$9.99 5 lb. bag	Onion Rings  \$6.99 2.5 lb. bag	Alaskan Salmon Fillets  \$28.99 5 lb. box	Pollock Fillets  \$15.90 10 lb. box	Cod Loins  \$35.99 10 lb. box
----------------------------------------------------------------------------------------------------------------------------------------------------------------------------	--------------------------------------------------------------------------------------------------------------------------------------------	-----------------------------------------------------------------------------------------------------------------------------------------------------------	----------------------------------------------------------------------------------------------------------------------------------------	--------------------------------------------------------------------------------------------------------------------------------------------------	---------------------------------------------------------------------------------------------------------------------------------------------	----------------------------------------------------------------------------------------------------------------------------------------

MARCH MADNESS BRAT SPECIALS

Horseradish Cheddar Brats or Southern Apple Whiskey Brats


\$3.49 lb.

Brat Buns

\$1.99 4 ct.

Deli Boiled Ham

\$1.99 lb.

BAKERY AND DELI DEALS

Hot Dog or Hamburger Buns  \$1.99 8 ct.	Mini Blueberry or Cherry Crumb Pies  \$2.99 ea.	Deli Swiss Cheese  \$3.99 lb.	Kretschmar Horseradish Cheddar Cheese  \$5.99 lb.	Deli Mustard Potato Salad or Macaroni Salad  \$1.99 lb.
------------------------------------------------------------------------------------------------------------------------------------------------	--------------------------------------------------------------------------------------------------------------------------------------------------------	--------------------------------------------------------------------------------------------------------------------------------------	----------------------------------------------------------------------------------------------------------------------------------------------------------	----------------------------------------------------------------------------------------------------------------------------------------------------------------

RE/MAX® **RIVER HAVEN, INC.** Open Seven Days a Week to Serve You!
 www.riverhavenhomes.com
 Wayne R. Walts - Broker

Main Office
 777 W. Cedar Riverwalk Place
 989-426-6893

Wixom Lake Office
 1239 Estey Road, Beaverton
 989-435-7755

Sugar Springs Office
 1415 W. Sugar River Rd. Gladwin, MI 48824
 989-426-9239



Elbow Lake-Newly updated 2 bedroom cottage with 65 ft of sandy beach on private all sports lake.
\$139,900
 MLS#165907

Harrison Area-3 bedroom, 2 bath, 2000 sq ft, sun room, 2 car att garage, close to State Park. REDUCED TO:
\$148,900
 MLS#166021

Sugar Springs Golf Course home-3 bedroom, 3 bath chalet, 2+ car att garage. Located on 2nd fairway.
\$164,900
 MLS#167009

ALL SIGNS POINT TO



THIS WAY



Savings!

MIAL MEADOWS MHP AVAILABLE SOON!!

HAVE NEW 3-BEDROOM HOMES AND USED 2-BEDROOM HOMES FOR RENT OR SALE!! WE ALSO HAVE EMPTY LOTS AVAILABLE FOR YOU TO MOVE IN YOUR OWN HOME!!! MORE INFORMATION
CALL 989-463-5187

TERESA & JIM DAVIDSON RESIDENT MANAGERS 411 S. GROVER, #31 ALMA, MI 48801

ROSS LAKE VILLAGE APARTMENTS

398 W. Brown Street, Beaverton
 Central Air, dishwasher, garbage disposal, microwave, range, refrigerator, washer & dryer in units. Playground, Basketball hoop. Water, sewer & trash included in rent.
 Current Special \$350 Security Deposit and your 1st Month Rent is Free!

989-435-4495
 rosslake@gldmanagement.com

LIHTC Property. Income Limits & Student Restrictions Apply. Section 8 Vouchers Accepted. Barrier Free Units Available. TDD 711 Equal Housing Opportunity

CUSTOM DESIGNS Buy Direct & Save *Indoor Showroom*

Also Available Cremation Vaults and Urns

Brewer Bouchey Monument Co.
 Family Owned Since 1895
 211 N. Mill St. • Downtown St. Louis
 989-681-3300 • Toll Free 888-362-2920
 Hours: Mon.-Fri. 9-5; Sat. By Appt.
 www.brewer-bouchey.com

RABIES CLINIC
 Special March Rates

\$15⁰⁰

Reg \$20.⁰⁰

By Appt. 426-0203
 Flexible Hours
KELLY'S KRUISSING
KRITTER KARE
 Kelly Jo Kelley, DVM




Auctions

ONLINE ONLY TOOL AUCTION

AUCTION CLOSING WED., MARCH 22, 2017 AT 8:00 PM

Items include: Tool Chest, Welders, Snap On Air Tools, Nail.Guns, Saws, Drills, Many Milwaukee Tools, Ladders Fiberglass & Wood, Abrasive Cutting Blades for Concrete, Metal & Asphalt, Testers of all Kinds and Much More!



To Register and Bid, Please visit our Web site **sherwoodauctionservicellc.com**
 Also booking Live Auctions for spring and summer.

SHERWOOD AUCTION SERVICE, LLC
 Joe Sherwood Auctioneer
 (989)640-9401



SYKORAAUCTIONS.COM PRESENTS! LIVE & ONLINE BIDDING

LIVE/SIMULCAST FARM AUCTION

STONEMAN FARMS 6387 N. McCLELLAND RD. BRECKENRIDGE, MI. 48615
 HAVING DECIDED TO MAKE OPERATIONAL EFFICIENCY IMPROVEMENTS, LIVE/SIMULCAST PUBLIC AUCTION LOCATED APPROX. 25 MILES WEST OF SAGINAW, MI. ON M-46 TO BRECKENRIDGE, MI., THEN 1 1/2 MILES SOUTH TO 6387 N. McCLELLAND RD. (GRATIOT CO.)
THURSDAY MARCH 23, 2017 @10:00 AM


FOR ALL INFO CALL 8 AM TO 4 PM. STONEMAN FARM OFFICES @ 989-842-5461

2014 CASE/IH STEIGER 4X4 470 ROWTRAC TRACTOR - JD COMBINE 9760 STS 4WD & HEADS - BOBCAT T190 - 6 ROAD TRACTORS - 6 ALUMINUM HYD. DUMP & FLAT TRAILERS - 2015 KRINGSTAD 4600 CROP SHUTTLE - 2011 JD 1770NT 24R PLANTER & TENDERS TILLAGE AND MACHINERY - GRAIN HANDLING - 28% LIQUID FERTILIZER EQUIPMENT - MOWERS - MANURE SPREADER - FUEL TRAILER & GEN SET - TRAVEL TRAILER - POLARIS UTV - FM HANDHELD RADIOS - MISC. FROM AROUND THE FARM & SHOP

FOR INFO. & INSPECTION CONTACT THE STONEMAN FARM OFFICE DURING BUS. HRS. @ 989-842-5461

STONEMAN FARMS 6387 N. McCLELLAND RD. BRECKENRIDGE, MI. 48615

SYKORA AUCTION SERVICE INC.
 Scott Sykora, Auctioneer (989) 386-9694 • Fax (989) 386-2246
 John McConnell, Auctioneer (989) 429-0444
 Clare, Michigan • Visit our website www.sykorauctions.com



SHOP MOM-&-POP!



Support locally owned businesses.

Retirement Sale!

EVERYTHING GOES!

TOTAL LIQUIDATION!

**BUSINESS
FOR SALE
OR
BUILDING
FOR SALE
OR LEASE**

EVERYTHING 50-80% OFF

**DELIVERY
TRUCK
AND ALL
FIXTURES &
EQUIPMENT
FOR SALE**



ALL SERTA
UPHOLSTERY
at LEAST
55% OFF

ALL SYMBOL
MATTRESSES
at LEAST
60% OFF

ALL POWERLIFT
RECLINERS
at LEAST
55% OFF

ALL LANG
BEDROOM
FURNITURE
at LEAST
50% OFF

ALL
GLIDER
ROCKERS
at LEAST
50% OFF

ALL
INSPIRATIONAL
GIFT
at LEAST
50% OFF

EVERYTHING MUST GO! COME EARLY FOR BEST SELECTION

**NEW STORE HOURS STARTING
THURSDAY 3/16/17
MON-FRI 8AM - 7PM
SAT 8AM - 6PM • SUN NOON - 5 PM**

**\$600,000
IN MERCHANDISE
MUST GO**



318 N State St • Alma, MI 48801
(989) 463-1037
www.StateStreet-Furniture.com



BRIAN'S FRUIT & MEAT MARKET

2167 S. M-76 • West Branch (Across from Kmart)

While Supplies Last • Not responsible for printing errors
 Prices good Sunday, March 19th through Friday, March 24th
 Store Hours: Sunday 8am - 6pm • M,T,Th,Sat. 7am-7pm • Fridays 7am - 7pm

ASK ABOUT OUR BULK PRICING!!

WE ARE A PACKAGED LIQUOR DEALER

We accept all major credit cards & EBT card

BRIAN'S MEATS: 989-345-3709

LIKE US ON FACEBOOK



WWW.BRIANSFRUITANDMEATMARKET.COM

Butterball Brand SLICED OVEN ROASTED TURKEY BREAST \$5.99 lb.	Eckrich Brand SLICED PREMIUM DELI HAM \$3.49 lb.	Eckrich Brand SLICED PREMIUM HARD SALAMI \$5.99 lb.	Hoffman's Brand SLICED SUPER SHARP CHEDDAR CHEESE \$5.99 lb.	Great for Grillin' BONELESS BEEF TOP SIRLOIN STEAKS \$5.99 lb.	Beef...it's what's for Dinner BONELESS BEEF SIRLOIN TIP ROASTS \$3.99 lb.	NOW TAKING EASTER ORDERS FOR HAMS, LAMB, SAUSAGE, ETC. CALL OR STOP IN TODAY!!	LENTEN SPECIALS 4-6 OZ PORTIONS PACIFIC COD LOINS \$4.99 lb or \$40.99 10 lb box 16 OZ PACKAGES POLLOCK FILLETS \$2.99 lb or \$19.00 10 lb box 31-40 CT. COOKED PEELLED & DEVEINED SHRIMP \$8.99 lb 8-10 OZ FILLETS WHITEFISH FILLETS \$7.99 lb 8-10 OZ FILLETS YELLOW FIN TUNA STEAKS \$7.49 lb 1# PACKAGES TILAPIA FILLETS \$3.99 ea 16OZ PACKAGES ORANGE ROUGHY FILLETS \$7.99 lb
Heart Smart FRESH GROUND BEEF FROM SIRLOIN \$3.99 lb or \$36.99 10 lb's or more	Pork the other White Meat BONELESS PORK SIRLOIN SIZZLERS \$1.99 lb.	Uncle Ben's Stuffing STUFFED BONELESS PORK CHOPS \$2.69 lb.	Assorted Varieties BRIAN'S HOMEMADE FRESH BRATS \$3.99 lb.	Great for Pulled Pork SEMI-BONELESS PORK BOSTON BUTT ROAST \$1.79 lb.	Fresh Never Frozen FRESH BONELESS SKINLESS CHICKEN BREAST \$1.99 lb or \$17.99 10 lb's or more		

BRIAN'S PRODUCE: 989-345-2891

BAREMAN'S DAIRY MILK Skim/1% gal. \$2.59 Whole/2% gal. \$2.69	PRAIRIE FARMS YOGURT Light Original 6 oz. 5/\$2.00	PRAIRIE FARMS ORANGE JUICE 1/2 gallon \$1.79	DUTCH FARMS CREAM CHEESE Original Cream Cheese 8 oz. block \$1.09	BILL KNAPP'S NUTTY DUNKERS 2/\$5.00	HILLBILLY BREAD 20 oz. loaf 2/\$3.00	
MICHIGAN WHITE POTATOES 10 lb. bag \$1.99	PINEAPPLES ea. \$1.99	ROMA TOMATOES lb. 79¢	MUSHROOMS 12 oz. pkg. \$1.99	MICHIGAN APPLES lb. 99¢	COOKING ONIONS lb. 99¢	KIWI 3/\$1.00
NEW KLONDIKE ROSE POTATOES 5 lb. bag \$2.99	CALIFORNIA SEEDLESS NAVEL ORANGES 8 lb. bag \$5.99	SEEDLESS CUCUMBERS ea. 79¢	WILD BIRD SEED 50 lb. bag \$10.99	BLACK OIL SUNFLOWER SEED 50 lb. bag \$14.99	BUSCH AND BUSCH LIGHT 30pk cans +tax +deposit \$16.99	HAMM'S AND HAMM'S LIGHT 30pk cans +tax +deposit \$11.99

A Frame Auto

 2009 MAZDA 5 \$5,200 SILVER 145K Miles, Third Row, New All Season Tires, Local Trade	 2007 GMC CANYON \$7,495 WHITE Work Truck With Key and Lock Topper. 92K Miles	 2009 BUICK ALLURE \$7,995 TAN 109K Miles, 3.8L V6. Awesome Car	 2003 CHEVROLET AVALANCHE \$9,495 RED 4WD, Leather, 154k Miles
--------------------------------------------------------------------------------------------------------------	------------------------------------------------------------------------------------------------------	----------------------------------------------------------------------------------------	---------------------------------------------------------------------------------------

Good Credit Bad Credit No Credit WE FINANCE!

Large inventory of Autos/SUV's/Vans/Pick-ups on our Sales Lot, including large selection of 4X4 SUV'S. Completely serviced, quality used vehicles!

CARS		SUV		TRUCK	
2000 VOLKSWAGEN BEETLE BLUE Manual, 178K Miles, GLS \$3,995	2009 SATURN AURA GRAY 82K Miles, Sharp Ride, Sedan \$8,300	2008 SATURN VUE WHITE AWD, 81K Miles, XR, V6 \$9,995	2009 JEEP PATRIOT RED 76K Miles, Trade In, 4WD, Great Gas Mileage \$9,995	2009 FORD ESCAPE BLACK FWD, Limited, 82K Miles \$11,500	1994 FORD F 350(with camper) WHITE 112K Miles Diesel Truck w/ camper \$3,995
2005 BUICK LESABRE BLUE 3.8 L V-6 Local Trade, Leather \$3,995	2013 FORD FUSION GRAY FWD, Great Gas Mileage 129K Miles \$8,995	2007 GMC CANYON WHITE Work Truck With Key and Lock Topper. 92K Miles \$7,495	2003 DODGE RAM 1500 SILVER 136K Miles, 4WD, Quad Cab \$8,295	2007 CHEVROLET COLORADO GRAY 4WD, Crew Cab, 167K Miles \$9,495	2007 FORD F150 BROWN 4WD, Supercrew Lariat, Leather Loaded, 172K Miles \$10,995
2001 SAAB 9-3 BLACK Convertible, Florida Car, 75K Miles \$4,495	2012 CHEVROLET MAILBU BROWN 85K Miles, FWD, 2.4 4 cyl, Great Gas Mileage \$9,495	2003 CHEVROLET AVALANCHE RED 4WD, Leather, 154k Miles \$9,495	2007 CHEVROLET COLORADO GRAY 4WD, Crew Cab, 167K Miles \$9,495	2012 CHEVROLET COLORADO BLUE 2WD, Local Trade, Crew Cab, 113K Miles \$11,500	2002 GMC SAVANA WHITE Cargo Van, Great for work, 156K Miles \$5,000
2005 SATURN ION BURGUNDY Manual, 108K Miles, Great Gas Mileage \$4,700	2010 TOYOTA COROLLA RED 4 cyl, Great Gas Mileage, 42K Miles \$10,300	2004 CHEVROLET TRAILBLAZER WHITE 4WD, Ext, Local Trade \$4,995	2004 FORD EXPEDITION GREEN 4WD, EDDIE BAUER, Third Row \$4,995		
2006 CHRYSLER PT CRUISER BLACK Sharp PT, 117K Miles FWD \$4,995	2011 MAZDA 3 GRAY 50K Miles, Great Gas Mileage, Automatic \$10,995	2004 FORD EXPEDITION GREEN 4WD, EDDIE BAUER, Third Row \$4,995	2008 HYUNDAI SANTA FE WHITE FWD, 145K Miles, Limited \$7,700		
2009 MAZDA 5 SILVER 145K Miles, Third Row, New All Season Tires, Local Trade \$5,200	2004 CHEVROLET TRAILBLAZER WHITE 4WD, Ext, Local Trade \$4,995	2008 HYUNDAI SANTA FE WHITE FWD, 145K Miles, Limited \$7,700	2009 PONTIAC VIBE RED 77K Miles, 2.4 4 cyl. \$7,995		
2004 BUICK LESABRE GRAY 3.8l v6, 128K Miles, Limited, Sharp Car \$5,995	2004 FORD EXPEDITION GREEN 4WD, EDDIE BAUER, Third Row \$4,995	2009 PONTIAC VIBE RED 77K Miles, 2.4 4 cyl. \$7,995	2007 GMC DENALI GRAY Local Trade, Loaded up, 170K Miles, 4WD \$8,495		
2007 PONTIAC GRAND PRIX BLUE 114K Miles, 3.8 V6, Great Car \$6,495	2008 HYUNDAI SANTA FE WHITE FWD, 145K Miles, Limited \$7,700	2007 GMC DENALI GRAY Local Trade, Loaded up, 170K Miles, 4WD \$8,495	2005 JEEP GRAND CHEROKEE BLUE 4WD, 108K Miles, Nice Jeep! \$8,995		
2006 PONTIAC G6 GT SILVER GT, 83K Miles, Sporty \$7,495	2009 PONTIAC VIBE RED 77K Miles, 2.4 4 cyl. \$7,995	2005 JEEP GRAND CHEROKEE BLUE 4WD, 108K Miles, Nice Jeep! \$8,995	2008 JEEP LIBERTY GREEN Local Trade, 4WD 109K Miles \$9,495		
2012 MAZDA 3 SILVER Sport, Great Gas Mileage 80K Miles \$7,995	2007 GMC DENALI GRAY Local Trade, Loaded up, 170K Miles, 4WD \$8,495	2008 JEEP LIBERTY GREEN Local Trade, 4WD 109K Miles \$9,495	2007 BUICK RANIER GRAY CXL, 80K Miles, Awesome Ride \$9,695		
2009 FORD FUSION TAN AWD, 133K Miles \$7,995	2005 JEEP GRAND CHEROKEE BLUE 4WD, 108K Miles, Nice Jeep! \$8,995	2007 BUICK RANIER GRAY CXL, 80K Miles, Awesome Ride \$9,695			
2009 PONTIAC G6 GOLD 3.5L V6, 100K Miles \$7,995	2008 JEEP LIBERTY GREEN Local Trade, 4WD 109K Miles \$9,495				
2008 PONTIAC GRAND PRIX GRAY 3.8 V6, 84K Miles, FWD \$7,995	2007 BUICK RANIER GRAY CXL, 80K Miles, Awesome Ride \$9,695				
2009 BUICK ALLURE TAN 109K Miles, 3.8L V6. Awesome Car \$7,995					

All Inventory & more information can be found at www.aframeauto.com !



Now Offering In-House Financing With Only PL/PD Insurance

989-681-4000
Sales Rep - Bradly Mott

1984 W. Monroe Road St. Louis
 1 mile east of US-127 on M-46
East end of Miller Auto Sales
 Mon.-Fri. 8-6 Sat 9-2 or by appointment

Lucky YOU!

Miracle-Ear Hearing Center is looking for **24 qualified people** to test their latest technology, GENIUS,[®] **FREE***

HOW CAN YOU BE ONE OF THE LUCKY ONES?

- Must have difficulty hearing and understanding in background noise
- Hearing must fall in the range of the hearing aid
- Be available to evaluate and provide feedback on Miracle-Ear's advanced digital hearing solution, GENIUS[®]

The lucky few selected will evaluate our instruments for 30 days, RISK FREE.** At the end of the trial period, if you are satisfied with the improvement in your hearing, you may keep the instrument at TREMENDOUS SAVINGS!

THERE IS A LIMITED TIME TO BE LUCKY!

Schedule your appointment before March 31, 2017 to qualify for this FREE TRIAL!

This offer is valid on Miracle-Ear models ME1, ME2 and ME3 only.

**FREE refers to in-office demonstration.*

***RISK FREE refers to a 30-day trial with money-back guarantee.*

FREE!

COMPLETE ELECTRONIC SCREENING & CONSULTATION with our hearing instrument specialist

HEARING AID CHECK & CLEANING All makes and models. Expires 3/31/17

VIDEO OTOSCOPE INSPECTION

See inside your ear canal — your hearing trouble may just be ear wax!

IS COST A CONCERN?

Miracle-Ear has nearly invisible, 100% digital hearing aid options

\$33/month, NO MONEY DOWN

12-month, no interest programs

Many options FULLY COVERED under most insurance



ACT TODAY! THIS OFFER ONLY VALID NOW THROUGH MARCH 31

99¢ BATTERIES
Good for all makes and models. Per pack, limit 4 packs. Expires 3/31/2017

Call Kim, Toll Free, to Schedule an Appointment at the Center Nearest You! (888) 381-0571

Miracle-Ear[®]

Miracle-Ear Mt. Pleasant
100 S. Mission, Suite G
Just south of Rite Aid

Miracle-Ear Alma
116 W. Superior
Heritage Towne Square

Miracle-Ear Prudenville
828 W. Houghton Lake Dr.
Corner of M55 and M18

Miracle-Ear Clare
1430 N. McEwan / Carousel Mall
Across from Woods & PUNCHES

Miracle-Ear Gladwin
127 N. Arcade, Suite
In the Neely Building

BUILDING SUPPLIES

TRUSSES • LUMBER • SIDING • ROOFING
NEW HOUSES • POLE BARN
GARAGES • DECKS & PORCHES
QUALITY PRODUCTS
COMPETITIVE PRICING
OUTSTANDING SERVICE



- Chain saws
- Trimmers
- Blowers



MT4400 CHAINSAW

DS 2400 S TRIMMER
10% OFF REGULAR RETAIL PRICES

SA 3000 BLOWER

See us for Your Drainage Needs
4' to 6' Corrugated Tile
8' - 15' Poly Culverts
Big Inventory

COMPLETE OUTDOOR COOKER

Welcome to the Big Green Egg®
 the Original American Designed Ceramic Cooker
A Smoker • A Grill • An Oven

HERSHBERGER'S PRO HARDWARE
 10289 N. Leaton Rd., Clare, MI 48617-9107
(989) 386-5338
 Full Line of Hardware & Building Supplies
 Stove & Furnaces All Fuel Chimneys



Are you suffering from cataracts?

Get Started today. Call for an Evaluation.

120 Warwick
 Alma, MI 48801
 989-463-Eyes (3937)

1203 S. Mission
 Mt Pleasant, MI 48858
 989-775-Eyes (3937)

Spend Your Pennies Close To Home



Shopping Local keeps your Money Local

DO YOU HAVE A CAR FOR SALE?
 How about a boat? Or furniture? Any unwanted items?
 Call to place a Classified Ad to sell your stuff FAST



Bulk Food • Deli

2 Miles South of Rosebush • 2020 North Mission Mt. Pleasant • 989-433-8200
 8:30am-5:30pm, Monday-Thursday
 8:30am-7:00pm, Friday • 8:30am-4pm, Saturday

Large Selection of Freezer Food at Discounted Prices

SPECIALS OF THE WEEK

Great Selection of Bulk Foods
 We Accept Bridge Cards & All Major Credit Cards

Walnut Creek Mild Swiss

Sale \$3.29 lb.
 Reg. \$4.29 lb.



Walnut Creek Virginia Ham

Sale \$2.79 lb.
 Reg. \$3.79 lb.

MORE SPECIALS



Walnut Creek Corn Meal Mush 2 lb. **\$1.89 ea.**



Willy's Salsa All Varieties **\$2.39 ea.**



Walnut Creek Noodles All Varieties **\$1.79 ea.**



Walnut Creek Cheese Curds Crunchy or Original **\$1.49 ea.**

Coffee of the week: Guatamala 17

A Family Tradition Since 1992!



Coming To Mt. Pleasant!

SHIPSHEWANA®

On the Road

- JEWELRY - CRAFTS - TOYS
- CLOTHING
- NEW MERCHANDISE
- SPECIALTY FOODS & MORE!

Saturday, April 1
9am to 6pm
 &
Sunday, April 2nd
10am to 5pm

Soaring Eagle Casino & Resort Entertainment Hall
 6800 Soaring Eagle Blvd.,
 Mt. Pleasant, MI

Shop 100's Of Vendors! 1,000's Of Items!
 Something For Everyone!
 Huge Savings On Everything You Need!

Admission \$4,
 Children Under 12 FREE



SHIPSHEWANA®

On the Road

ATM Available
 FREE PARKING!

Quality Built. Quality Features.

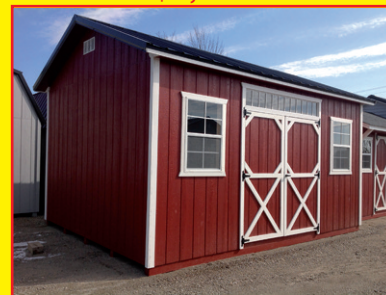
STOP BY OUR LOT AND CHECK OUT THE GREAT SELECTION OF BUILDINGS ON THE LOT - READY TO GO!
INVEST YOUR TAX RETURN ON A BUILDING YOU CAN ENJOY FOR YEARS TO COME!!



14x28
 1 Entry Door, 3 Windows, 8 Ft. Loft
\$5,770



12x20 Gable
 2 Windows, 4 Ft. Loft
\$3,543



12x16 Gable
 3 Windows, 2- 4 Ft. Lofts
\$3,291



12x20
 7x7 Roll up door
\$3,790

Statewide Delivery - Free Delivery w/ in 70 miles!

Supplying Michigan with quality built portable buildings for over 25 yrs.

Miller's Woodworking

3209 E. Beaverton Road • Clare
 (Voicemail) 989-465-8172

Old US 127 to Surrey West on Surrey to Grant 1 mile north on Grant

Mon.-Fri. 7:30am-5:00pm
 Saturday 8:30-3:00 & Evenings by Chance or Appointment
 Closed Sunday



269-979-8888
 www.ShipshewanaOnTheRoad.com





Great Annuity Rates

Annuities up to **4.50%** Current First Year Rate¹ on select annuities

We accept IRA rollovers

ANNUITY	ISSUE AMOUNTS	CURRENT FIRST YEAR BASE INTEREST RATE	FIRST YEAR BONUS INTEREST RATE	TOTAL FIRST YEAR ANNUITY RATE
PLATINUM BONUS ANNUITY®	\$3,000 – \$49,999	2.00%	1.50%	3.50%
	\$50,000 – \$499,999	2.00%	2.00%	4.00%
	\$500,000 and above	2.00%	2.50%	4.50%

Contact your licensed AAA Life Insurance Specialist Today!

Tom Westhoff, CLTC
Mount Pleasant
Office: 989-779-5064

All rates shown are annual effective yields. ¹The first-year declared interest rate is guaranteed for the first contract year only and is separate from the guaranteed minimum rate effective for all contract years. Base rate of 2.00% (Platinum Bonus Annuity) is current as of 2-14-17 and is subject to change without notice. The minimum guaranteed interest rate is 1.0%. Annuities are usually purchased to meet long-term goals. Product and its features may not be available in all states. Under current tax law, earnings withdrawn before age 59½ may be subject to IRS penalty and taxable. During the surrender charge period, withdrawals exceeding 10% will be subject to a surrender charge that may be higher than fees associated with other types of financial products and may reduce principal. For complete terms of the annuity, please refer to the contract. AAA Life Insurance Company and its agents do not provide legal or tax advice. Therefore, you may wish to seek independent legal, tax, or financial advice prior to the purchase of any contract. Product and its features are not available in all states. Life insurance underwritten and annuities offered by AAA Life Insurance Company, Livonia, MI. AAA Life is licensed in all states except NY. Contract Form Series: ICC11-4111, DA - 4111. ALMI-18568-514-XX

DEWEY'S TRADING POST

Maple Rapids • 682-4158
Monday-Saturday: 8am - 7pm, Closed Sunday

Prices In This Ad Good for weeks of March 20, 2017 - March 25, 2017

WIC • Bridge Card • VISA • Mastercard • Discover
American Express • Debit Card & Chamber Bucks Gift Certificates.

Select "Whole" New York Strips 13 lb. Avg. \$299 LB	"Choice" Boneless Top Round Steak \$399 LB	"Boneless" Butterfly Chops \$249 LB
"Whole" Boneless Pork Loin 9 lb. Avg. \$199 LB	TIME TO ORDER!!! Double Smoked Hams for Easter!! 14 lb. Avg. \$249 LB	
Boneless Skinless Chicken Breast \$239 LB	"Eckrich" Spicy Pineapple Ham Deli "Gluten & MSG Free!!" \$499 ILB	Our Own Cherry Brats \$299 LB
Our Own Pineapple Teriyaki Brats \$299 LB	Koegels Ring Bologna \$349 LB	10 lb. Box Pollock \$1799 BOX
2 lb. Box Frog Legs \$999 BOX	White Lake Perch Fillets \$799 LB	5 - 1 lb. Bags Smelt \$1699 PKG
5 lb. Bags Ocean Perch \$1799 BAG	2 1/2 Bags Cod \$999 BAG	"Hot Deli" 12pc Broasted Chicken w/ 8 Wedges \$1399 + TAX
Friday-"Hot Deli Special" Broasted Fish \$499 LB	Chops \$299 EACH	Our Own "Beef Salami" \$499 LB

Check out all of our Bulk Supplies for your Baking Needs!!

DeweysTradingPost.biz
LIKE us on Facebook & see our WEEKLY SPECIALS!



PROPANE SOLD HERE **SALE!!**
20 LB. CYLINDER FILL
\$9.99
GPC
PROPANE • HVAC • REFRIGERATION
8512 E. M-46 – VESTABURG
800-991-7477
gasproductioncompany.com

KALMBACH FEEDS OF MICHIGAN, LLC.
50 Years & Growing
Breckenridge, MI
989-842-1075 • 866-243-7027

NATIONAL AG DAY
March 21, 2017

RIVERDALE FEED & GRAIN
Wishes to Thank Our Agricultural Community For Everything They Do
We now make our own custom feed pellets
(989) 833-2308 or (989) 833 7757
6658 Mill St, Riverdale, MI
Mon - Fri 7am - 4pm

AFC ADVANCED FARM EQUIPMENT, LLC
LENCO Manufacturer of Lenco Equipment
www.lenco-harvesters.com
5773 Crystal Road Vestaburg, MI 48891
989-268-5711
GOOD LUCK WOLVERINES!

MOBILE SEED SERVICE, INC.
371 S. Osborn Road • Sumner, MI 48889
Ph. 989-875-4367 • Email: mobileseed@yahoo.com

- Seed Cleaning
- Seed Treating
- Seed Sales

Serving Michigan Agriculture Since 1993
Dirk Longanbach 989-620-7870
Dane Longanbach 989-620-7869

Pavlik Auction & Real Estate LLC
John D. Pavlik
Auctioneer/Realtor
Farmland Auction Specialists
Over 60,000 Acres SOLD at Auction in Central Michigan
637 Wright Ave • Alma, MI 48801 • (989) 463-4903
www.PavlikLLC.com

Owned by Michigan Hunters for Michigan Hunters
Seeds are specially selected for Michigan's Northern climate.

Supporting local farmers for over a century...
PARTNER

Call Jennifer Whitford or Johnny Thompson in Alma at 989-463-3146

NMLS #657592
NMLS # 1543255

GreenStone FARM CREDIT SERVICES
www.greenstonefcs.com

Wildlife Seed Supply LLC.

Your #1 Seed Source for all of your food plot needs

- Turnips
- Clover
- Soybeans
- Rye
- Snow Peas
- Radish
- Alfalfas
- Wheat
- Corn
- Small Grains
- Warm/Cool Season Grasses

We offer a bulk selection of seed that will fit your food plot needs!
1 lb. to 50 lb. bags

Ryan Longanbach
(989) 763-1051 • 371 S. Osborn Rd., Sumner, MI 48889
wildlifeseedsupply@gmail.com • www.wildlifeseedsupply.com
www.facebook.com/WildlifeSeedSupply

26th Annual

Lunch Available **CRAFT SHOW and MARKETPLACE**

Booth Space only \$30. Call for details.

Saturday, March 25, 2017
9am-3pm

FARWELL HIGH SCHOOL GYM

For further information or registration call 1-989-588-3140

Sponsored by the Farwell Area Women's Club

Vandrie
Home Furnishings

BIG SAVINGS Are A SLAM DUNK!

PLUS! SPECIAL 'til 2020!*
FINANCING

STOREWIDE SAVINGS UP TO 71%!



EURO TOP QUEEN SET
~~\$699~~
\$599
Compare At \$1399.95

HURRY IN! LIMITED TIME ONLY!

FREE DELIVERY FREE SET UP
With \$699 Minimum Purchase

BeautySleep PILLLOW TOP		Beautyrest PILLLOW TOP		Beautyrest WORLD CLASS PILLUSH PILLLOW TOP	
Queen Set	Twin Set	Queen Set	Twin Set	Queen Set	Twin Set
\$799	\$699 \$779	\$999	\$899 \$979	\$1699	\$1599 \$1679
COMPARE AT \$1599.95	King Set \$1099	COMPARE AT \$1999.95	King Set \$1299	COMPARE AT \$3399.95	King Set \$1999

add an adjustable base to your set starting at **\$849**

Vandrie Home Furnishings

You'll Like the Look...You'll Love the Price!

CADILLAC 7591 BUS 131 • (231) 775-8536
BIG RAPIDS 314 N. State • (231) 796-7667
HOUGHTON LAKE 6455 W. Houghton Lake Dr. • (989) 422-5734

TRaverse CITY 657 N. US 31 South • (231) 943-7662

Cadillac | Big Rapids | Houghton Lake
Mon - Thurs 9am-6pm
Friday 9am-8pm
Saturday 9am-6pm

TRAVERSE CITY
Mon - Fri 10am-8pm
Saturday 10am-6pm

vandrie.com

*With approved credit on your VanDrie card and a purchase of \$999 and above on Furniture receive special financing for 3 years, no down payment with equal monthly payments required. 25% down payment required on special orders. Purchases of \$998 and below receive special financing for 1 year no down payment with minimum monthly payments required. 25% down payment required on special orders. Interest will be charged to your account from the purchase date at the regular APR if the balance is not paid in full within the promotional period or if you make a late payment. The current APR is 27.99%. The APR may vary. Offer valid March 13, 2017 - March 25, 2017. Financing excludes electronics, clearance items, value right, super value, floor samples and previous purchase. Some quantities are limited and may not be available in every location. © 2017 Knorr Marketing VAND-5037 3/17



The quickest way to become extinct is to NOT advertise!

Call today & let us help keep you off the Endangered List

214 W. Fourth St. Clare
CLARE (989) 386-7200
www.clareauto.com

BUMPER BUMPER
Auto Parts Specialist

Deka BATTERIES Lawn and Garden Batteries from **\$23.95**

Marine Deep Cycle Batteries from **\$76.95** Marine Starting Batteries from **\$59.95**



assisted **Living with Heart**

ARBOR GROVE
Assisted Living

1320 Pine Avenue,
Alma, MI 48801
arborgroveassistedliving.com
989.463.3074

Our residents, their families, and our staff have one thing in common - we genuinely care about each other. **We have heart.**

Share life's journey in a community that cares.

Offering Independent Living Duplexes (The Villas), Assisted Living & Moments Memory Care

Get your RV ready for your Summer of Fun!

Don't be caught broke down on the side of the road on vacation. Let Quality Truck and Tire take care of your needs.

Let us keep you by the fire longer.



10532 N. Mission Rd., Clare
(989) 271-7019
RV Towing Specialists

QUALITY TRUCK AND TIRE
Heavy Duty Truck and Trailer Repair

PAST ITS PEAK or shabby chic?

SELL IT IN THE CLASSIFIEDS!



WorkShare

A Smart Alternative to Layoffs




Keep Your Employees In Tough Times

Learn more about how Work Share can help you keep your workers in tough times

Advantages of Work Share

- Minimizes or eliminates the need for layoffs.
- Saves money and keeps your skilled workforce intact.
- Employees are spared the hardship of full unemployment and receive more income than if they were fully laid off.
- Businesses can reduce employee work hours to reflect decreases in business demand.

For information about Michigan's Work Share program, visit

michigan.gov/uia

or call 1-844-WORKSHR (967-5747)




GET READY FOR SPRING!

Front End Alignment Special
\$62.95
 Most Vehicles w/Coupon
 Expires 3-31-17

4-WHEEL SPECIAL
\$94.45
 Most Vehicles w/Coupon
 MMBG
 Expires 3-31-17

Two Great Services for ONE Great Price!
Get Your Tires... ROTATED
 Plus...

LUBE, OIL & FILTER SPECIAL
 Change Oil, Change Oil Filter Check
 All Fluid Levels and Lubricate Fittings

ALL FOR \$45.00

Most Vehicles w/Coupon - 5 qt. Max Dexos Extra \$10
 Expires 3-31-17 MMBG

Dexos Lube, Oil, Filter Special
 Change Oil, Change Oil Filter
 Check All Fluid Levels & Lubricate Fittings
 Up to 5 qts. - Additional oil or fluids extra
\$38.50
 Expires 3-31-17 MMBG

COOLING SYSTEM FLUSH
\$114.45
 Most Vehicles w/Coupon
 Expires 3-31-17 MMBG

Automatic Transmission Service All Fluid Flush SPECIAL \$127.05
 Change All Fluids - 12 qts.
 Most Vehicles w/Coupon
 Expires 3-31-17 MMBG

Any Repair 10% OFF
 Most Vehicles w/Coupon
 Not valid with tire sale or any other coupon offer
 Expires 3-31-17 MMBG

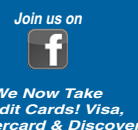


70 Years Strong!
www.McGuireChevrolet.com
989-386-7714



Valley Food Center

"OUR ONE AND ONLY LOCATION IN PINCONNING"
989-879-3311 • 101 E. SECOND • PINCONNING
 WE WELCOME THE BRIDGE CARD, GIFT CERTIFICATES
 NOT RESPONSIBLE FOR PRINTING ERRORS • ALL LOTTERY GAMES AND LOTTO HERE
MON.-SAT. 8-8, SUN. 8-6 • PRICES GOOD SUNDAY, MARCH 19TH THROUGH SATURDAY, MARCH 25TH, 2017



BEEF

GROUND CHUCK 10 LB. BAG \$34.90	GROUND HAMBURGER 10 LB. BAG \$32.90	ENGLISH ROAST \$2.99	BONELESS BEEF RIBS \$2.99	DENVER STEAK \$3.19
-----------------------------------------------------	---------------------------------------------------------	---------------------------------------	--------------------------------------------	--------------------------------------

PORK

BONELESS PORK LOIN \$1.99	BOSTON BUTT ROAST \$1.59	PORK STEAK OR FINGER RIBS \$1.69
--------------------------------------------	-------------------------------------------	---------------------------------------------------

LOIN END ROAST \$1.19	BONE-IN PORK LOIN 1/2 OR WHOLE \$1.79	COUNTRY RIBS OR END CHOPS \$1.39	BULK SAUSAGE (MILD, FARMER, SWEET, HOT) \$1.79
----------------------------------------	-----------------------------------------------------------	---------------------------------------------------	-----------------------------------------------------------------

CHICKEN

BONELESS CHICKEN BREAST 10 LB. BAG \$1.89	LEG QUARTERS LESSER QUANTITIES \$2.49	WHOLE FRYERS 59¢	WHOLE FRYERS \$1.39
---------------------------------------------------------------	-----------------------------------------------------------	-----------------------------------	--------------------------------------

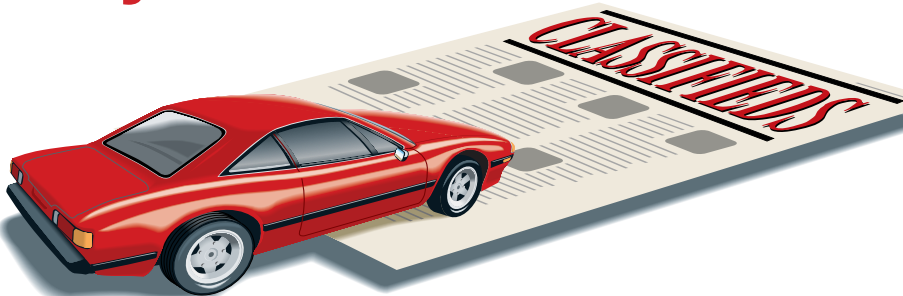
LENT SPECIALS

PERCH FILLETS	\$6.99 LB
POLLOCK FILLETS 10#BOX	\$20.00
COD LOINS 10#BOX	\$45.00
CAT FISH NUGGETS	\$11.99 BAG
CENSEA 31/40 SHRIMP	\$7.49 LB
BATTERED CLAM STRIPS	\$3.99 LB
BREADED BUTTERFLY SHRIMP 16/20 3#BOX	\$19.49

NEW LENTEN BUNDLE
 CONTAINS: 1-10# BOX POLLOCK FILLETS; 1-5# BAG FRIES (STRAIGHT OR CRINKLE CUT); 2# S POTATO SALAD OR COLESLAW; 1# HUSH PUPPIES; 1PKG. HAWAIIAN ROLLS
\$30.00 OR UPGRADE TO COD FOR \$25.00 ADDITIONAL

Visit us on Facebook at www.facebook.com/valleymarket
 Or check out our new website at: www.valleymarketmi.com

Do you have a car for sale?



How about a boat? Or maybe some furniture?
 Call to place a classified ad with one of our helpful representatives & sell your no-longer-wanted items FAST!



WELCOME TO THE MID MICHIGAN FARM & GARDEN SHOW

March 25 at the **GLADWIN COMMUNITY ARENA**
 402 James Robertson Dr. (behind Shopko)



DINGS EXCAVATING
989-345-9660

Excavating & Trucking
 Residential, Commercial & Agricultural
 Licensed & Insured
 Professional - Reliable - Experienced

now on display...

 Rated for 90 minutes at 1200°F
 from the makers of our...

HEATMOR
 Quality Since 1984
 Stainless Steel Outdoor Wood Stoves
 Quality Since 1984

MID-MICHIGAN FARM & GARDEN SHOW



Saturday, March 25, 2017
 10:00 am - 5:00 pm
 Gladwin Community Arena
 402 James Robertson Drive,
 Gladwin, MI 48624
 (Just off M-61, behind Shopko)

Free Admission Free Ebel's hot dog to first 100 people at 4:00 pm.

- Exhibitor Tradeshow 10:00 A.M. - 5:00 P.M.
 - Youth Scavenger Hunt 10am - 2pm
 - Concessions by Dawn Fresh Catering (Ebels)
- For more information, including a list of exhibitors and sponsors, visit:
FARMANDGARDENSHOW.COM

2017 Mid-Michigan Farm & Garden Show Exhibitors

- Adio Chiropractic
- Bader & Sons Co.
- BSA Troop 779
- Burkhart Presidio Insurance
- Capital Equipment Clare
- Charles Wangler's Sales LLC
- Clare Conservation District
- Dan Durga State Farm
- Department of Natural Resources
- Ebels General Store
- Edward Jones
- Flynn Lumber & Supply Co.
- Forward Energy
- Gene's Power Equipment
- Gladwin Business & Professional Association
- Gladwin Conservation District
- Gladwin County Fair
- Gladwin County Farm Bureau
- Gladwin County Master Gardeners
- Gladwin Farmers Market
- Growers Mineral Solutions
- G's Kustom Karts
- Hive Made Products
- Jims Automotive Inc.
- Johnston Elevator Co.
- King Lumber and Supply

- Little Forks Conservancy
- Lowco Small Engine
- MI Department of Agriculture and Rural Development
- MI Soybean Promotion Committee
- Mid Michigan Community College
- Mid Michigan Medical Center

- Gladwin Volunteers
- Mike's Improvement Service
- Miscisin Brothers, Inc.
- Mitten Mowing, LLC
- Morgan Composting, Inc.
- MSU Extension
- Myers for Tires & Auto Parts
- Nagy's Tractor Sales, Inc.
- North Country Power

- Real Estate One
- Red's Repair LLC
- Sacred Heart Mission
- Schuh's Services
- Spink Seed Co LLC
- Standish Milling Inc.
- Stone Cottage Gardens
- USDA-NRCS

New & Used TIRES
 >>> CAR TRUCK FARM <<<
GLADWIN TIRE CO.

1650 W. M-61 Gladwin
989-426-3866

SERVICE CALLS - USED TIRES-CAR-TRUCK-FARM

New & Used TIRES
 >>> CAR TRUCK FARM <<<
CLARE TIRE CO.

989-386-3089
 210 N. McEwan St. Clare

Crystal Flash
 Reliable. Flexible. Expert.
 Bringing the energy that powers your success!

**Propane • Fuel Oil
 Lubricants • Gasoline
 Premium Diesel**

420 N State Street • Gladwin • MI
 989-426-8851 • 866-996-9500
www.crystalflash.com

Business Card Directory



CIRCULATION ISSUES:
(989) 779-6000
PRESS 2

TO RESERVE YOUR SPOT IN THIS DIRECTORY
CALL: 506-4640



We carry

Used and Reconditioned Sewing Machines and Vacuums



1900 S. SAGINAW RD., MIDLAND
IN THE KMART PLAZA
(989)-839-0800



Colonville Canvas

Quality Detailed Craftsmanship

- Marine Upholstery
- Bimini Tops
- Boat Covers
- Awnings



William Miller, Owner
6723 E. Colonville Rd. Clare **989-802-9083**

Now Buying

Antiques, Primitive, Crocks or Stoneware, Tools, Furniture, Collections, Sporting Goods & Anything old

We Buy Estates
JR Hostetler - (989)802-9443

CAL'S PAINTING



Over 30 Years Experience
COMMERCIAL & RESIDENTIAL
• Interior & Exterior • Power Washing & Deck Care
• Window Washing & Gutter Cleaning
• Drywall Repair • Cleaning and Refinishing Log Homes
• Cabinet, Woodwork, Door & Furniture Refinishing

GO CALL TODAY!
(989) 258-9638

• Free Estimates • Work Guaranteed • Insured
Winter Rates Available

VALET AUTO CARE, INC.

Since 1983



- A.R.E. Pickup Toppers
- Over 100 New & Used Toppers in Stock
- Truck Accessories
- Tonneau Covers



ARE Because you love your truck
LEER LIVE LARGER
www.valetauto.com

James Motz - Owner
610 N. Mission (3 blocks S. of Meijer) Mt. Pleasant **(989) 773-3477**

MARTIN HEATING & COOLING

DTE \$300 Rebates Available on New Furnaces for a Limited Time
Installation • Service • Parts • Free Estimates



Heating & Air Conditioning
Amana 546 W. 5th street, Clare **(989) 386-3791**
LASTS AND LASTS AND LASTS: Ask about Geothermal Systems and heat pumps

ANDY'S AUCTION
The Sound That Sells!

Specializing in
Livestock • Real Estate
Estate Auctions
Benefit Auctions
Contract Auctioneering

Andy Hostetler
(989) 802-9164

1115 S. Athey Ave.
Clare



PROPANE SOLD HERE

SALE!!
20 LB. CYLINDER FILL

\$9.99
GPC



We make custom hoses & fittings!

PROPANE • HVAC • REFRIGERATION
8512 E. M-46 - VESTABURG
800-991-7477
gasproductioncompany.com

soft water. soft skin.



Soft water allows the skin's natural oils to keep your skin soft and supple. Hard water is abrasive and removes these natural oils leading to dry and cracking skin.

Rent or Own a Softener

rent a water softener
only \$29.95 a month!
+ 6% Sales Tax

Designed to conquer Michigan's most difficult water.

mywatersystem.com

Upgrade to a twin tank system for increased performance and longevity. Alternates between 2 tanks eliminating downtime for regenerations.



ALPINE
Appliance Service

Appliance RE + make the Green choice

Free In-home water test
(989) 386-5359 • 1395 N McEwan - Clare, MI

digitalfirst
MEDIA

Kindra Norlander

Account Executive
The Morning Sun
The Mid-Michigan Buyers Guide

Call for Quotes on digital advertising, print & deliver, pre prints and print advertising

knorlander@michigannewspapers.com Cell: 989-506-4640

Brad Malley
Well Drilling, Inc.

Mid Michigan's Most Experienced Well Drillers!



MALLEY
CONSTRUCTION
INCORPORATED

The One Contractor That Can Do It All!
AFFORDABLE WELL PACKAGES
All Major Pump Brands Available

FREE ESTIMATES
SERVING ALL OF MID MICHIGAN
LICENSED WELL DRILLER
LICENSED CONTRACTOR
MT. PLEASANT
WWW.BRADMALLEYWELLDRIILLING.COM
989.772.2765 / 800.717.6022

Do you have a car for sale?

How about a boat?

Or maybe some furniture?

Call to place a classified ad with one of our helpful representatives & sell your no longer wanted items **FAST!**



Business Card Directory

Shop these local Professionals
Call 989-506-4647 for Advertising Info

POLE BARNS

James Morche Builders

YOUR BUILDER FROM START TO FINISH
garages • pole barns • concrete work
FREE estimates

James Morche Cell 989-429-3479 • 989-539-9126
Licensed & Insured

Fully Insured *Takin' Names and Kickin' Grass!!*

Mitten Mowing LLC

Residential & Commercial Services:
Lawn Mowing
Seasonal Cleanups
Lawn Maintenance Programs
and more!!
Senior & Veteran/Active Military
Discount
Call Today for a FREE estimate!
(989) 708-9191

"Our Customers are our Warmest Friends"
Guaranteed On Time and Certified
FREE TANK SETS

COYNE OIL & PROPANE

Clare • Harrison • Mt. Pleasant • Evart • Gladwin
Cadillac • Merrill • Interlochen
800-386-7731 • 989-386-7731

RESIDENTIAL • COMMERCIAL
INDUSTRIAL • FARM

RAGLE'S REMODELING

★ Power Washing, Interior & External Painting, Drywall Installation & Repair, Ceramic Tile Installation & Repair, Kitchen & Bathroom Remodeling, Roofing, Windows, Doors & Floors, House Leveling
40 Years Experience
- Free Estimates

HANDYMAN
2 YOUR RESCUE
989-533-1006

See why millions trust us for Home & Auto.

Maury Irwin, Agent
1011 N McEwan Street
Clare, MI 48617
Bus: 989-386-4141
maury.irwin.ig@statefarm.com

I'm here to help life go right™, by saving you time and money when you combine your home and auto insurance.
CALL ME TODAY.

State Farm
State Farm Mutual Automobile Insurance Company
State Farm Indemnity Company
State Farm Fire and Casualty Company
State Farm General Insurance Company
Bloomington, IL

Weidman Business Association Bingo

Every Wednesday. First game at 6:30.

\$650 Jackpot on Big Game this week. In the Community Building

Located behind Baumanns Food Pride grocery store and Isabella bank.

Tag's Auto Repair

2 yr. 25,000 mile warranty nationwide on parts & labor

- Computer Diagnostic Service
- 2 and 4 Wheel Alignment

BRAKES & FRONT END REPAIR!

Receive a \$25 VISA prepaid card on qualifying purchase of \$250 or more made on Drive Card

FREE Roadside Assistance Program Towing, Flats, Lockouts, More!
Call Us For Details!

3780 N. Clare Ave. Harrison
Hours M-F 8-5, Sat 10-2
989-539-1986

O-ink

WE CUT THE FAT OUT OF INK PRICES

600 S. Mission St.
Mt. Pleasant, MI 48858
989-779-7227
989-772-5009

Computer Center
Computer Repair • Used Computers
Custom Built • Virus Removal
And More

Pole Barn Kits

Now Available

CALL OR STOP BY
FREE ESTIMATES

Luthy Metal Sales

Manufacturing, Roofing, Siding & Accessories
989.433.5705
5145 N. Mission Rd. Rosebush

ABC Auto Body

313 W. Knox Road,
Beaverton, MI
1/2 Mile West of M-30
989-435-2707

We Take Pride In Your Ride!

- Quality Collision Repair
- Free Estimates
- Insurance Work Welcome
- Custom Color Matching & Painting
- We Repair All Makes and Models
- Car/Light Truck
- Genuine Original Equipment Parts

ECOWATER SYSTEMS

Lindsay Soft Water Co.

1209 Michigan Ave. St. Louis, MI 48880
(989) 681-5436
1-800-244-3464

P.O. Box 401 Gladwin, MI 48624
(989) 426-4220
Cell (989) 620-1263
www.ecowater.com

GABE EAREGOOD
Water Specialist

BURKHART - PRESIDIO INSURANCE AGENCY

Auto • Home • Life • Business • Amenities

"Over 60 Years of Professional Insurance Service"

222 W. Cedar Ave. • Gladwin
989-426-9278 • www.burkhart-presidio.com
Dirk Presidio Michael Murray Jim Jacobs

Auto-Owners Insurance

DEBRIS HAULING

Free Estimates

- Clean Out Basements Attics & Garages
- Tear Downs Sheds & Garages
- Scrap Metal
- Commercial Buildings

10 Yards \$285

(989) 773-0735
Dan Syzak

digitalfirst MEDIA

Call for Quotes on digital advertising, print & deliver, pre prints and print advertising

Marlene Bennett

Account Executive

The Morning Sun • The Mid-Michigan Buyers Guide
mbennett@michigannewspapers.com

For Advertising call 989-506-4647 or 989-240-0473
For Circulation call 989-779-6000 Press 3

Gladwin Hobby Shop

\$ CASH for Old Coins & Currency!

RADIO CONTROL
• Plastic Model Kits
• Testors Paints
• ESTES Rockets
• Pinewood Derby

WE BUY OLD TRAINS

Puzzles, Rock Polishers, Balsa & Bass Woods, and more.

Gift Certificates Available
Visit us on Facebook

400 E. Cedar Ave. Gladwin, MI • 989-426-7300

STORAGE SPACE AVAILABLE

420 Units

Paved Driveway Security Gate

FOR ALL YOUR RENTAL NEEDS

5'x12', 10'x12', 10'x20' Stalls
MIDSTATE RENTAL AND STORAGE, INC.
1 MILE EAST OF GLADWIN ON M-61
426-2981
MON.-SAT. 8AM-5PM

FREE Hearing Test & Consult

bieri HEARING SPECIALISTS

888-641-0087
Clare and Midland Locations
www.bierihearing.com

TOM'S POLE BUILDINGS

Over 30 Years Experience

Special! POLE BUILDINGS & GARAGES
ROOFING & SIDING
CONCRETE FLOORS DRIVEWAYS & FENCING

FEATURING ULTRA 2000 19 colors to choose from
And A 45 YEAR WARRANTY

From Beginning permit To Cleanup, We Do It All!
1-800-541-3974
We accept major credit cards. • email: tomspolebuildings@yahoo.com

24x40x10 10% Down Today Guarantees Prices

Newcombe's Family Restaurant

27 S Coldwater Rd Lake Isabella, MI 48893
(989) 644-8380

FOOD SO GREAT YOU'LL SCRAPE YOUR PLATE

Sunday 7am-8pm
Mon.-Thurs. 7am-9pm
Fri & Sat 7am-10pm

Like us on Facebook

PIONEER POLE BUILDINGS INC.

7400 S. Clare Ave. • Clare, Michigan 48617
800-292-0679
www.pioneerpole.com

Pioneer Metal Roofs

Residential Steel Roofing

7325 S. Clare Ave.
Clare, MI 48617
(989) 386-4444 (Office)
(800) 292-0679

www.pioneermetalroofs.com

digitalfirst MEDIA

Call for Quotes on digital advertising, print & deliver, pre prints and print advertising

Marlene Bennett

Account Executive

The Morning Sun • The Mid-Michigan Buyers Guide
mbennett@michigannewspapers.com

For Advertising call 989-506-4647 or 989-240-0473
For Circulation call 989-779-6000 Press 3

You looked here and your customers will, too.

Call **989-506-4647** for more info.

Park it in the CLASSIFIEDS *and watch it go fast!*



HELP WANTED GENERAL

FLOOR COVERING INSTALLER
Wood- Tile- Vinyl- Carpet.
989-944-5886

HELP WANTED FULL TIME

DRYWALL FINISHER needed to work in high end custom home market. 989-529-7499

DRIVERS

LOCAL AND OTR TRANSPORT DRIVERS. Positions open: Alma & St. Johns location. Competitive wages and benefit package. Fax Resume 989-681-5921 or apply in person 9575 N. Alger Rd Alma, MI email: kathy@ispmtg.com

EDUCATION/TRAINING

STOP OVERPAYING for your prescriptions! SAVE! Call our licensed Canadian and International pharmacy, compare prices and get \$25.00 OFF your first prescription! CALL 1-800-697-1808 Promo Code CDC201625

APPAREL

CLEARANCE SALE! at the ICDC Thrift Shop, 307 S. Mission, Mt. Pleasant. Week of **March 20-25.** 1/2 off* **Open 10am-4pm Daily. Saturday 11-3**

FIREWOOD

ASH, \$50 - face cord.
989-620-1766

HARDWOOD FIREWOOD
4' X 8' X 16"
\$50 / Delivered
989-817-6609

HARDWOOD, DRY firewood, \$45 per face cord delivered. 989-487-9312

HELP WANTED GENERAL

Mid Michigan Buyers Guides Delivery

Need extra cash?
Weekend delivery routes provide a great second income!

The Mid Michigan Buyers Guide is looking for applicants to deliver this weekend product in the following counties:

Clare, Gladwin, Gratiot, Houghton Lake, Isabella, and Roscommon

Applicants must be able to deliver on weekends, have dependable vehicle with current auto insurance and valid driver's license. Delivery experience would be beneficial.

For more information contact:
customerservice@michigannews.com
Or 989-779-6152, please reply with name, Phone number, address, and area of interest

MANUFACTURING/OPERATIONS

OLYMPIAN TOOL LLC. located in St. Johns Michigan is a reputable company, established in 1977, which provides precision machining, fabrication and production manufacturing to customers in the Aerospace, Agricultural, Automotive, Plastics and Automation industries. Olympian seeks to add multiple experienced CNC Machinists/Manual Machinists to our valued employee base.

SUMMARY: Perform machinist duties in a number of areas which may include operation of milling, lathe and grinding, both CNC and manual and specialty machines.

EDUCATION AND/OR EXPERIENCE:
1. High School Diploma or GED required
2. Graduation from Technical School Preferred
3. Journeyman Status Preferred
4. CNC Machine experience required
5. Technical knowledge of machine operations/functions required

SPECIFIC DUTIES
• Set up, operate, or tend machines for metal or plastic materials.
• Study machining instructions, job orders, or blueprints to determine dimensional or finish specifications, sequences of operations, setups, or tooling requirements.
• Select and set cutting speeds, feed rates, depths of cuts, and cutting tools, according to machining instructions or knowledge of metal properties.
• Observe milling machine operation and adjust controls to ensure conformance with specified tolerances.
• Lift workpieces onto work tables either manually or with hoists.
• Clean and lubricate machines.
Duties, responsibilities and activities may change at any time.

WORK ENVIRONMENT
All work is done in our heated or air conditioned facilities. Medical, dental, vision insurances and 401k available after completing 90 days of employment.

FOR CONSIDERATION PLEASE MAIL RESUME TO:
Olympian Tool LLC
PO Box 416
St. Johns, MI 48879
Attn: Human Resource

or remit via email info@olympiantool.com

FURNITURE

AN AMISH Log Headboard and Queen Pillow Top Mattress Set. Brand new-never used, sell all for \$275. Call anytime 989-832-2401.

IF YOU HAD HIP OR KNEE REPLACEMENT SURGERY AND SUFFERED AN INFECTION between 2010 and the present time, you may be entitled to compensation. Call Attorney Charles H. Johnson 1-800-535-5727

IF YOU USED THE BLOOD THINNER XARELTO and suffered internal bleeding, hemorrhaging, required hospitalization or a loved one died while taking Xarelto between 2011 and the present time, you may be entitled to compensation. Call Attorney Charles H. Johnson 1-800-535-5727

LIVE ESTATE Auction April 7 & 8, 2017, 10:30 a.m. 3639 N. French Rd. Caro, MI. Military Items; 1973 Pontiac convertible; Farm equipment; Collectibles, Household & More! TimsAuctionService.com 989-912-8701

TWO ONLINE Only Estate Auctions: Lake Orion, MI ending March 28 & Plymouth, MI ending March 30, 2017: Digital Baby Grand; Thomasville Solid Oak Furniture; More! EstateSaleExperts.com 313-600-8356

MISCELLANEOUS

A PLACE for mom. The nation's largest senior living referral service. Contact our trusted, local experts today! Our service is FREE/no obligation. CALL 1-800-520-3521

ACORN STAIRLIFTS The AFFORDABLE solution to your stairs! **Limited time -\$250 Off Your Stairlift Purchase!** *Buy Direct & SAVE. Please call 1-800-280-1897 for FREE DVD and brochure.

HELP WANTED GENERAL

MISCELLANEOUS

ADJUSTABLE BED Brand New with Imcomfort gel memory foam mattress. Retail Cost \$5,900.00, sacrifice for \$997.00. Call for showing or delivery: 989-615-2951.

BUILT BEST BARN Michigan's Largest Pole Barn Company. Best Quality, Best Service, March Specials. Order Now and Save! 24'x24'x8'=\$7495.00, 24'x32'x8'=\$8495.00, 24'x40'x10'=\$10,495.00, 30'x40'x10'=\$11,995.00, 30' X 40 X 12 = \$12,995.00, 30'x48'x12'=\$16,495.00. Completely Built, (Concrete Floor Optional) License/Insured, 1-877-802-9591 (Office) 989-205-2534 (Cell)

Central Boiler certified E-Classic OUTDOOR WOOD FURNACE. More heat. Less wood and time required. Call Today! Beaverton Outdoor Wood Furnace 989-435-9240

DISH TV - BEST DEAL EVER! Only \$39.99/mo. Plus \$14.99/mo Internet (where avail.) FREE Streaming. FREE Install (up to 6 rooms.) FREE HD-DVR. Call 1-800-840-9379

DONATE YOUR CAR TO CHARITY. Receive maximum value of write off for your taxes. Running or not! All conditions accepted. Free pickup. Call for details. 855-413-9672

FAST INTERNET! HughesNet Satellite Internet. High-Speed. Avail Anywhere. Speeds to 15 mbps. Starting at \$59.99/mo. Call for Limited Time Price! 1-800-491-8935

FREE PILLS! Viagra/Cialis! 100 MG/20MG Prices to low to Mention! Call today 1-877-602-0194

LOCAL DRIVERS WANTED! Be your own boss. Flexible hours. Unlimited earning potential. Must be 21 with valid U.S. drivers license, insurance & reliable vehicle. Call 855-851-3016

LUNG CANCER? And 60+ Years Old? If So, You And Your Family May Be Entitled To A Significant Cash Award. Call 800-838-0520 To Learn More. No Risk. No Money Out Of Pocket.

MEET SINGLES RIGHT NOW! No paid operators, just real people like you. Browse greetings, exchange messages and connect live. Try it free. Call now: 800-993-0464

NEW AT&T INTERNET OFFER. \$20 AND \$30/MO PLANS AVAILABLE WHEN YOU BUNDLE. 99% RELIABLE. 100% AFFORDABLE. HURRY, OFFER ENDS SOON, CALL NOW 1-800-830-3921

Reach Across Michigan with a MegaMarket Statewide Classified Ad! Over 1.2 million weekly circulation just \$249 per week! Buy 3 - Get 1 Free! Call 800.783.0267

SAVE ON internet and TV bundles! Order the best exclusive cable and satellite deals in your area! If eligible, get up to \$300 in Visa Gift Cards. CALL NOW! 1-800-807-1095

TOP CASH PAID! For old motorcycles! 1900-1979. Dead or alive! 920-371-0494.

GENERAL ANNOUNCEMENTS

CELEBRATION PAGE

DO YOU HAVE A BIRTHDAY, AN ANNIVERSARY, BIRTH ANNOUNCEMENT, OR MEMORIAL AD THAT YOU WOULD LIKE TO SHARE IN PRINT? FOR PRICING STOP IN THE ALMA OFFICE AND ASK FOR CINDY. YOU CAN CALL HER AT 989-779-6115 OR EMAIL HER AT cterwilliger@michigannews.com

AnnaBelle Recker will be celebrating her 90th Birthday on March 6th. Her family would like to throw her a Card Shower. Please send birthday wishes to:

AnnaBelle Recker
4707 Louis Dr.
Zephyrhills, FL 33542

Brennen Christopher Wood

6th 11 months they have been on Jan. 11, 2017 at 12:01 pm at Mid Michigan Medical Center - Gratiot, Alma, MI

to Amanda Stone and Christopher Wood of Alma, MI

Special grandparents are John and Debra Wiggins, St. Louis, Michigan; Judith Wood, St. Louis, Michigan and Mike Singer, St. Louis, Michigan

MISCELLANEOUS

Switch to DIRECTV. Lock in 2-Year Price Guarantee (\$50/month) w/ AT&T Wireless. Over 145 Channels PLUS Popular Movie Networks for Three Months, NO Cost! Call 1-800-917-3607

VIAGRA!! 52 Pills for only \$99.00. Your #1 trusted provider for 10 years. Insured and Guaranteed Delivery. Call today 1-800-404-1282

MERCHANDISE WANTED

45 RPM Records Wanted (the small ones w/big hole) 50's-60's-70's. 517-775-3989

ESTATE SALES

ESTATE SALE- 520 N University Ave., Mt. Pleasant. March 23,24,25 9am-5pm. Lots of new items in box's, pots & pans, small kitchen appliances, dish's, glass-ware, curier & lves dish's, dozens of canning jars, washer/dryer, jewelry, to many items to mention.

BUILDING MATERIALS & SUPPLIES

BUILT BEST BARN Michigan's Largest Pole Barn Company Best Quality, Best Service, February Specials, Order Now and Save! 24'x24'x8'=\$7495.00, 24'x32'x8'=\$8495.00, 24'x40'x10'=\$10,495.00, 30'x40'x10'=\$11,995.00, 30'x40'x12'=\$12,995.00, 30'x48'x12'=\$16,995.00. Completely Built, (Concrete Floor Optional) License/Insured 1-877-802-9591 (Office) 989-205-2534 (Cell)

FARM FEED & SUPPLIES

2ND CUTTING ALFALFA \$10; Straw, \$4/Bale; Cracked Corn \$12/100, Shelled-Corn \$10/100, Cob-Corn \$5/Bag, Rye, Barley, Wheat, Oats \$12/bag. Delivery-Available. (989)433-5418 Cell# (989)965-1391

DUPLEXES & FLATS

ALMA DUPLEX For Rent, nice 2 BR 1 BA, laundry room with W/D, dishwasher, refig, stove, A/C. Across from park, heat paid. No pets. Refs requested. \$575/mo. 517-231-6129 No Saturday Calls.

APARTMENTS FOR RENT (UNFURNISHED)

IMMEDIATE OPENINGS

SHEPLEY APARTMENTS

1-2 Bedrooms
Includes water, sewer and trash removal.
Rent based on Income.
Starting at
\$360 (1-bedroom)
\$395 (2-bedroom)
Barrier Free Units
Call 989-463-2586 or apply at
1050 Bridge Ave.
Bldg J, Alma, MI
TDD# 711
Security deposit required

This Institution is an Equal Opportunity Provider

GENERAL ANNOUNCEMENTS

OFFICE SPACE FOR RENT

OFFICE SPACE for Rent, Downtown Alma, Many options available, flexible pricing. Call Ron at 989-444-9067

PASSENGER CARS

2015 CHEVY CRUISE LT

Only 11,000 miles, full power, great gas mpg.

ONLY \$14,995 or about \$219/mo.

Dick Sovo Auto
989-828-6032
dicksovaautosales.com

2015 FORD F-150

4x4 crew cab, 4 door, full power, 20" factory chrome wheels, must see this truck!

ONLY \$34,995 or about \$489/mo.

Dick Sovo Auto
989-828-6032
dicksovaautosales.com

2016 FORD EDGE

All wheel drive, only 11,000 miles, full power sun roof, 100% like new

ONLY \$29,995 or about \$429/mo.

Dick Sovo Auto
989-828-6032
dicksovaautosales.com

2016 FORD FUSION

All wheel drive, heated leather, navigation, absolutely beautiful, must drive!

ONLY \$20,995 or about \$329/mo.

Dick Sovo Auto
989-828-6032
dicksovaautosales.com

2017 JEEP CHEROKEE

4x4, great color, compare anywhere!

ONLY \$23,995 or about \$349/mo.

Dick Sovo Auto
989-828-6032
dicksovaautosales.com

NEED HELP? CALL A LOCAL PROFESSIONAL FROM OUR Professional Services Directory

ACCOUNTING & FINANCIAL

SOCIAL SECURITY DISABILITY BENEFITS. Unable to work? Denied benefits? We Can Help! WIN or Pay Nothing! Contact Bill Gordon & Associates at 1-800-731-5703 to start your application today!

EVENT PLANNING

VACATION CABINS for Rent in Canada. Fish for abundant walleye, perch, northern pike. Boats, motors, gasoline included. For free brochure call Hugh 1-800-426-2550 WWW.BESTFISHING.COM



PICKUP TRUCKS

2004 SILVERADO Crew Cab, 3/4 ton. All the bells & whistles. Good Solid Truck! 5th wheel rails, 91,100 miles \$14,000 OBO 989-387-1488

PARTS & SERVICE

BATTERIES, BATTERIES, BATTERIES! We stock them all. Prices start at \$39.95. Nobody sells for less! Discount Tire, St. Louis. 989-681-4100

FOR ALL your service needs. From Oil Changes to Transmissions. WE DO IT ALL! ASE Certified. Reasonable rates. Fast in & out service. Discount Tire St. Louis. 989-681-4100

YOU'LL NEVER KNOW THE VALUE of CLASSIFIED UNTIL YOU USE IT!

great BIG ADS

great BIG RESULTS

LAKESIDE CONDOMINIUMS 989-435-4495 rosslake@gldmanagement.com

A beautiful lakeside condo with a unique offering -- both waterfront and golf activities right outside your doors! 1,936 sq. ft. lake front condo nestled between Lake Lancer and Lakeside Golf Course in Sugar Springs. This two-level condo features 3 bedrooms, 2 baths, a private dock, fireplace, whirlpool tub, basement, granite counter tops, attached garage and more. Only \$1,000 per month. Call today!

PAWN SHOP
Buy, Sell, Pawn

3 Month Pawn
3% + 1.00 Storage
Firearms, Gold & More

Gladwin Trade & Sales
989-426-6811

Village North Apartments 1, 2 & 3 Bedroom Units Available
519 Clendening, Gladwin

NEWLY RENOVATED units with Central Air, garbage disposal, microwave, refrigerator, range and washer/dryer in each unit. Water, sewer & trash charges included in rent.

989-426-4566

villageeast@gldmanagement.com • Office: 1389 N. Colony Square

LIHTC Property. Income Limits & Student Restrictions Apply. Section 8 Vouchers Accepted. Barrier Free Units Available. TDD 711 Equal Housing Opportunity

Thank You Mr. and Mrs. Butler Ms. Fitzpatrick for joining the Culligan family and becoming valued customers.

Culligan Worldwide Celebrating 80 years

Ken's Culligan • Alma



Has Arrived.....

Only at West Branch Furniture

Ashley 2-Piece Sectional



*Optional Ottoman
\$299

\$899

6pc. Colver Dinette



Table,
4 chairs
& bench

\$499

Carnell Rocker Recliner



**Limited
Quantities

\$299



Lang 5
Drawer Chest
Available
in White

\$129

Twin Black Metal Bunkbed



\$189

Ashley Tulen Reclining Sofa



*available in
chocolate, gray
and mocha

\$566

Micro Fiber Wall Away Recliner



\$179

Ashley Chaise Sofa



\$499

Rustic Room Size Rugs



*ad not exactly
as shown
Asstd. prints

\$79

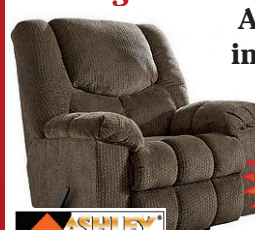
Ashley Dailey Midnight Sofa



3 colors
to choose from

\$399

Ashley Turboprop Big Mans Recliner



Available
in 3-colors

\$369

Acme Faux Marble Top Cocktail & 2 End Tables



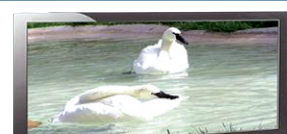
\$139

Ashley 4-Piece Bedroom Suite



*Dresser, Mirror,
5-Drawer Chest, Queen
Size Panel Headboard

\$599



48" Oak TV Console

\$255



Ashley Wallaway Recliner

\$249



**All Serta
Mattresses
ON SALE NOW!**

Queen Size Adjustable Bed

Featuring 680 pocketed coil mattress



\$999

*While Supply Lasts

	TWIN SET	FULL SET	QUEEN SET	KING SET
MajesticSleep Collection Davey Euro Top or Firm	\$279 2 Pc. Set	\$369 2 Pc. Set	\$399 2 Pc. Set	\$599 3 Pc. Set
MajesticSleep Collection Gallion Euro Top or Comfort Firm	\$349 2 Pc. Set	\$459 2 Pc. Set	\$499 2 Pc. Set	\$799 3 Pc. Set
MajesticSleep Collection Raftyery Plush Comfort or Firm	\$459 2 Pc. Set	\$559 2 Pc. Set	\$599 2 Pc. Set	\$899 3 Pc. Set
MajesticSleep Collection Storecraft Super Pillow Top or Fine	\$649 2 Pc. Set	\$749 2 Pc. Set	\$799 2 Pc. Set	\$1099 3 Pc. Set

*Financing available to qualifying buyers. Minimum purchase \$599 with approved credit. Not available on prior purchases. See store for details.
* Tables and lamps may not be as shown in picture.



136 S. Fifth St.
West Branch
located block south of
Mercantile Bank off Houghton Ave.
989-345-5326

www.westbranchfurnitureoutlet.com

***12 Months
No Interest**



Find us on
facebook



"The Outlet Store That
Saves You More!"



Sunday 11-3 Mon.-Fri. 10-6 Sat. 10-5



Place your order for you 2018 Snowmobile before April 15th, 2017 with a \$500 deposit and receive:

- ♦ One year Factory Warranty and Two additional years of Y.E.S. Warranty (excludes the SnoScoot)
- ♦ Up to \$600 in Yamaha Accessories and Parts (\$100 for the SnoScoot)
- ♦ An FXR bag and a 50th Anniversary hat (Youth version for the SnoScoot)

St. Helen Power Sports

1901 N. Saint Helen Road
Saint Helen, Michigan 48656

989-389-4961 www.sthelenpowersports.com

Product and specifications subject to change without notice. Professional rider on closed course under controlled conditions. Always wear an approved helmet, eye protection and protective clothing. Ride responsibly and always ride within your capabilities, allowing time and distance for maneuvering, and respect others around you. Know the conditions. Observe all state and local laws. Don't drink and ride. ©2016 Yamaha Motor Corporation, U.S.A. All rights reserved • Yamaha-Snowmobiles.com



THE NEW
VLX 700
\$5,999 U.S. MSRP



MORE MUSCLE FOR LESS MONEY.

Everybody wants more for less. With the brand-new Arctic Cat® VLX 700, that's what you'll get — more power for less money. This machine offers 700cc power at a 400cc price, closed-loop EFI, Duramatic™ automatic transmission, high-strength steel structure, and racks in the front and rear. Stop by today and find more for less.



St. Helen Power Sports

1901 N. Saint Helen Road
Saint Helen, Michigan 48656

989-389-4961

www.sthelenpowersports.com

ATVs can be hazardous to operate. For your safety, each rider must wear an approved helmet, eye protection and protective clothing. Avoid excessive speeds. The minimum operator age is 16 for ATVs. Arctic Cat recommends that all riders take a training course. For safety or training information in the U.S., see your dealer or contact the ATV Safety Institute at (800) 887-2887. ©2017 Arctic Cat Sales Inc., Thief River Falls, MN 56701.



THE VALUE MACHINE FOR THOSE WHO VALUE MACHINES.

— THE NEW 2017 ALTERRA 300 ATV, STARTING AT \$4,299 US MSRP —

Few things offer as much in a small package like the all-new Alterra™ 300 ATV from Arctic Cat.® This 2WD machine has the highest ground clearance in its class, plus the largest fuel tank and highest rack capacity. And that's in addition to its new eye-catching Alterra body style, 300-lb. towing capacity and single-lever hydraulic disc brakes. Come in and check one out today.



THE WIDE WORLD OF ARCTIC CAT

St. Helen Power Sports

1901 N. Saint Helen Road
Saint Helen, Michigan 48656

989-389-4961

www.sthelenpowersports.com

ATVs can be hazardous to operate. For your safety, each rider must wear an approved helmet, eye protection and protective clothing. Avoid excessive speeds. The minimum operator age is 16 for ATVs. Arctic Cat recommends that all riders take a training course. For safety or training information in the U.S., see your dealer or contact the ATV Safety Institute at (800) 887-2887. In Canada, see your dealer or contact the Canada Safety Council at (613) 739-1535. ©2016 Arctic Cat Sales Inc., Thief River Falls, MN 56701.



NOW THROUGH
APRIL 18TH.

GET THE GUARANTEED BEST DEALS OF
THE SEASON ON 2018 SNOWMOBILES



0%
FINANCING
FOR 60 MONTHS

OR

4YEAR
LIMITED WARRANTY

OR

2YEAR
LIMITED WARRANTY
+
\$700
ARCTIC CAT
APPAREL &
ACCESSORIES*

FOR DETAILS, VISIT YOUR DEALER OR ARCTICCAT.COM



St. Helen Power Sports

1901 N. Saint Helen Road
Saint Helen, Michigan 48656

989-389-4961

www.sthelenpowersports.com

*Offer valid on new and unused 2018 Arctic Cat snowmobiles, excluding youth (120 & 200), race, rental, government and special services models, at participating U.S. dealers to U.S. residents. 0% FINANCING FOR 60 MONTHS is financed through Sheffield Financial or FreedomRoad Financial and is subject to credit approval; not all applicants will qualify for credit. Financing promotions void where prohibited. Offer subject to change without notice. Excludes tax, freight and dealer setup. Always wear a helmet and don't drink and ride. ©2017 Arctic Cat Sales Inc., Thief River Falls, MN 56701.

