



Let Tiffany Kinsler help you with all your advertising needs!

Tri-County SHOPPER  
641-664-1333

# Tri-County SHOPPER



STANDARD MAIL  
U.S. POSTAGE  
**PAID**  
TRI-COUNTY SHOPPER, INC.  
POST OFFICE BOXHOLDER  
LOCAL RURAL BOXHOLDER  
OCCUPANT  
**CIRCULATION OVER 11,750  
THIRD CLASS**

P.O. Box 168 • Bloomfield, IA 52537 • www.tri-countyshopper.com  
Phone 641-664-1333 • Fax 641-664-3761 • Email shopper@netins.net



Vol. 45, No. 12  
Wednesday, March 22, 2017



**2017 FORD FOCUS SEDAN**  
MSRP \$18,745  
Sale Price \$18,227  
Bonus Cash -\$1,500  
Fast Cash Certificates -\$500  
FMCC Financing -\$250  
**YOUR PRICE \$15,977\***  
**AND 0% FINANCING FOR 60 MONTHS+**



**2016 FORD F150 SUPER CAB 4X4 XLT**  
MSRP \$50,625  
XLT Chrome Discount -\$2,000  
= \$48,625  
Sale Price \$45,420  
Rebate -\$2,250  
FMCC Rebate -\$500\*  
Bonus Cash -\$1,000  
Retail Bonus Cash -\$1,500  
**YOUR PRICE \$40,170\***

+ Plus tax, title and license. FMCC financing required. Not all buyers will qualify. Must take delivery on or before April 3, 2017. See salesperson for details.

## MARCH BLOWOUT!



2016 Ford Escape  
AWD, 27k



2016 Ford Explorer  
4x4, 14k



2010 Chevy Equinox LT  
AWD, \$10,983



2016 Chevy Impala  
15k Miles, Now \$20,989



2014 Silverado 1/2 Crew  
4x4, 25k, High Country



2010 Ford F250 Crew  
4x4, XLT, Leather, Diesel, 81k



2016 Ford Flex  
AWD, Limited, 20K, \$35,995



2015 Buick Encore  
AWD, Now \$19,893



2013 Silverado Crew  
4x4, V-8, 46k



2010 Lincoln MKS  
One Owner, Loaded Luxury, \$13,562



2012 Chevy Traverse  
LTZ, loaded, 46K, nice



2014 Chevy Traverse  
50k, AWD, Nice



2014 Ford Explorer  
4x4, 64k, 7 Passenger



2015 Buick Encore  
AWD, 32k



2012 Ford Escape  
very nice, NOW \$12,983



2016 Buick Enclave CXL  
AWD, 13k



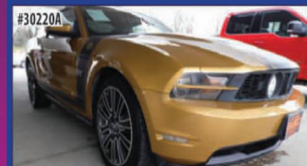
2016 Chevy Tahoe LT  
Leather, 4x4, 13k



1990 Corvette  
\$7,995



2015 Ford Edge  
AWD, Titanium, 12k



2010 Mustang GT  
V-8, Auto, Runs GREAT!



2015 Chevy Suburban  
LTZ, Leather, 4x4



2015 Silverado Crew  
4x4, Blackout Pkg, 26k



2015 Toyota Tacoma Crew  
4x4, 27k



2015 Ford Explorer  
4x4, XLT, 23k, Nice, \$30,995



2015 Lincoln MKC  
Only 6K miles, Now \$42,808



2010 Silverado  
3/4 LT, Diesel, auto, only 52K  
one owner miles, Nice, \$24,995



2008 Chrysler 300C  
84K, Clean, \$9,980



2014 Chevy Spark  
Low Miles, \$14,530



2014 Kia Optima  
52k, Now \$11,765



2014 Ford Escape SE  
Now \$18,784



2011 F150 Crew  
4x4, 70k



2007 Silverado Crew  
4x4, LT, V-8



2011 Silverado Ext  
4x4, LT, V-8

# FESLER AUTO MALL

Hwy 34 West, Fairfield • 641-472-3121 • 800-422-5269 • www.feslerautomall.com  
OPEN: Monday - Friday 8:00 AM - 5:00 PM • Saturday 8:00 AM - 3:00 PM





# GET YOUR FIELD READY!

Springfield, MO - Ag Lime  
Low-Mag · High Calcium

**Thanks,  
Farmers,**  
For Taking Such Good Care of Us!

Call us for  
competitive  
pricing!

## Cantril Feed & Grain

610 West North St. • Cantril, Iowa • 319-397-2215

# FOR SALE

3 mini. Australian Shepherd puppies. Weaned 3 weeks ago. Ready to go.

**LaVern**  
**(660)**  
**216-0812**

Nature Trails large selection of quality Purple Martin & Blue Bird products for your unique needs. We also mentor you along the way to help you achieve a successful colony of Purple Martin.  
Mahlon Gingerich  
VM: 641-664-2723. 13

**HUGE SALE:** Recliners and More Recliners: Stoves: Refrigerators (nice, ice & water in door); Clothes baby to adult; Furniture of all shapes & sizes; Washer & Dryer. 807 West Maple (Hwy2) Centerville, Mon. -Sat. 10-4 or call 641-895-2966. 12

# HOOVER RENTAL

Manlifts • Telehandlers • Minihoes  
Skidloaders & Skidloader Attachments

**RENT BY**  
Hour • Day • Week • Month • Long Term  
Call us for your construction needs!  
**660-216-8230**  
Mt. Sterling, Iowa  
2 miles East of Cantril on Hwy 2



FOR SALE: 2004 Buick LeSabre Limited, 181k, full power, leather, 3800 motor. Allen Fitzgerald, Gorin, Mo. 660-282-3470 or 660-216-5984. 14

FOR SALE: Ranch Style home, 2/3 bedrooms, 1 bath, single level, 2 car detached garage 30FWx32FL, 2 acres in Davis County. Call or Text 641-208-7484 for more information. 14

## 2<sup>ND</sup> Half Property Taxes

**Due Now!**  
Last Day to Pay without Penalty  
**Friday, March 31st, 2017**  
Penalty Starts Sat., April 1st. Penalty Per Month 1.5%.

**Hours:**  
8 a.m.- 4:30 p.m. Monday - Friday

**Driver's Licenses:** Tuesday - Friday 8:30 AM-3:30 PM  
Closed on Mondays

**Written Tests:** Tuesday - Friday 8:30 AM-2:30 PM

**Car Drives:** Thursdays by appointment only.

**Driver's License Station CLOSED March 29, 30 & 31.**  
The county treasurer is now accepting "in office" payments with debit cards, Discover, Master Card and Visa credit cards.

**A service delivery fee will apply.**  
Applicable fees:  
Credit Cards - 2.5% plus \$1.50 per transaction  
Debit Cards - motor vehicle or property tax - \$2.00 per transaction

**Pay Your Taxes On The Internet at**  
[www.iowatreasurers.org](http://www.iowatreasurers.org)  
24-Hours A Day ---- 7 Days A Week  
*A service delivery fee is charged for this service.*

**Online Tag Renewals at [www.iowatreasurers.org](http://www.iowatreasurers.org)**

**Motor Vehicle Registration Renewals-**You can't do them without the PIN number which will be on the renewal notice you receive in the mail.  
A service delivery fee is charged for this service.

**Davis County Treasurer**  
Phone 641-664-2155  
100 Courthouse Sq. Bloomfield

Come In, Mail Your Payment in , or use the Payment Drop Box located on the northeast corner of the Courthouse lawn.

## BUYING? SELLING? TALK to LOCAL SPECIALISTS in the FIELD!

With more than 100 years of combined experience, you can count on our team to expertly navigate the complexities of your real estate transaction and protect your best interest.

**Nancy Holt**  
Agent

**Ashley Rupe**  
Agent

**Brandee Lynch**  
Agent

**Stephanie Lynch**  
Broker

**Rod Lynch**  
Agent

**Lincoln Lynch**  
Agent

**Susan Davis**  
Agent

**Lois Lynch**  
Assoc. Broker

**Pam Price**  
Office Manager

**Thanks To Our  
AG  
Industry!**

**Lynch REALTY, INC.**  
641-664-2275  
[lynchrealtyinc.com](http://lynchrealtyinc.com)

106 S. Madison St.  
Bloomfield, IA  
Licensed in Iowa   
Stephanie Lynch, Broker

**CALL SID TODAY  
FOR YOUR 2017 SEED NEEDS**

Let Pfister help  
your production  
grow.

Sidwell Seeds  
Queen City, MO  
660-766-2737

**THUMBS  
UP TO OUR  
FARMERS!**

**Something To Think About:** If You Can See What Your **Good Old Neighbor** Is Doing That's One Thing. If You Can Smell What Your **Good Old Neighbor** Is Doing That's Quite Another.

**FOR SALE:** 10 ft. tilt utility trailer, 8 ft. folding heavy duty ramps. Self propelled Lawn Boy lawn mower. 2- 5 gal. buckets Pittsburgh neutral color paint.  
PH: 641-664-3958 12

FREE Estimates

**Quality in  
Collision Repair**

Our commitment to our customers shines through in every job we do.

We handle every aspect of the collision repair process, from rental car arrangements to claims handling and 100% satisfaction guarantee. Our highly trained technicians used today's most advanced tools and equipment to achieve the best quality results.

Our state-of-the-art facility features  
Frame & Unibody Machine • Heated downdraft spray booth • Computerized color matching

Rental Cars Available for all Occasions!  
**Hertz** Great Rates!

**Walker Motors  
Collision Repair**  
375 S. Main St. | Memphis, MO  
660-465-2159 | Shop Phone/Fax

DONATE YOUR CAR, TRUCK OR BOAT TO HERITAGE FOR THE BLIND. Free 3 Day Vacation, Tax Deductible, Free Towing, All Paperwork Taken Care Of. 1-800-283-0205 (MCN)

**Friesen  
Excavating**

Specializing in Septic Systems  
Certified For Peat Tanks and Sand Filters.  
Can Also Do Other Drains and Water Lines  
Call or Text Shawn @  
641-208-0861  
Bloomfield, IA  
Free Quotes Available

**National  
Agriculture Day!**

**We salute our  
Farmers!**

Come see Randy and the staff at MFA  
for all your farming needs!

- Feed • Mineral • Fertilizer • Seed •
- Chemicals • Farm Supplies •

**MFA Agri  
Services**

Memphis, MO  
660-465-2603  
660-341-1422



# DAVIS & LEWIS, CPA

Let our years of tax experience benefit you!

- Individual & Business tax preparation and planning
- Monthly accounting & payroll service
- Financial statement preparation
- Business consulting
- Auditing



**Keith W. Lewis, CPA**

641-682-8117  
639 E. Pennsylvania Ave.  
Ottumwa, IA 52501



**Carol S. Howard, CPA**

641-664-1999  
205 N. Washington St.  
Bloomfield, IA 52537

**HOME FOR SALE:** Brick home. 507 W. Walnut, Bloomfield. 3 bed, 2 bath, finished basement. 2,893 sq. ft. 30x56 heated shop. Move-in ready. \$162,000. PH: 641-799-4770 12

**FOR SALE:** 1976 Ford LTD, 2 dr., rebuilt 400 motor, \$4,195; 1950 Plymouth, 4 dr., \$3,150. Both cars original & run & drive. PH. 641-777-7475 before 5 pm. 12

**FOR SALE:** 30x48' greenhouse complete setup for flower baskets, tables included; Hog back mulcher layer, 3 raised beds, \$1,100; 12 big round 2nd cutting hay, clover & grass mix, very little rain, \$30 per bale. VM: 641-664-1896. 12

**City of Floris** is accepting bids for 2017 Mowing Season for the following:

**1 Bid for Hall & City Park**  
**1 Bid for Veteran's Memorial Park**

*Includes Mowing & Trimming of all Properties*

**MUST HAVE A CERTIFICATE OF LIABILITY OF INSURANCE TO BE AWARDED THE JOB**

Sealed bids must be received no later than **4:00 PM on Sat., April 1st., 2017**  
Bids can be mailed to:  
**Floris City Clerk**  
Mowing Bid  
Box 37, Floris, IA, 52560  
*City Council reserves the right to reject any & all bids.*

**For More Info. Call 641-680-4345**

**FOR SALE:** 2 bottom plow, model 10-1, Dearborn 3 point. Excellent. PH: 641-208-5911 13

**HELP WANTED**

**Full time and Part time RN's, LPN's, Certified Nurse Aides & Certified MedTech's**

**SCHUYLER COUNTY NURSING HOME**  
Queen City, MO.

**CALL 660-766-2291**  
or stop by and pick up an application.  
We are located on Hwy. 63 north in Queen City, MO  
An equal opportunity employer, services provided on a non-discriminatory basis.

## L&M Country Store

1 1/2 miles south of west Hwy 2 & 63 jct.  
Mon-Sat. 8am-5pm **CLOSED SUNDAYS**  
VM: 641-664-1936

**We have Seed Potatoes & Onion Sets**

Mixed Fruit, 29 oz.....	\$1.49
Mushroom Soup, 10 oz.....	59¢
Mozzarella String Cheese, 12 oz.....	\$1.49
Butter Quarters, 16 oz.....	\$2.59
Breaded Tilapia, 10 lbs.....	\$16.90
Blueberry Mini Spooners, 15 oz.....	\$1.50

**Apples- Fuji & Golden Delicious**

## March Tax Refund Blitz Sale!

*All in stock complete bedroom suites on sale thru April 15th.*

*100's of dollars in discounts.*

*Special discounts on orders.*



VM: 641-664-0207  
1 Mile East of Drakesville on Jade Ave.  
Mon.-Sat. 9:00 AM - 5:00 PM

**FOR SALE:** Bale fork, 1-3 pt. blade, \$100; post hole digger, \$50; 20 Century welder, \$100; Toyota Dolphin camper, \$2,500. PH. 515-669-4815, Pulaski, IA. 12

**Paying too much for car insurance?** Not sure? Want better coverage? Call now for a free quote and learn more today! 855-417-7382 (MCN)

## ESTATE SALE

### COMPLETE HOUSEHOLD

*Betty Spilman*

**Thursday, March 30th - 8 am-6 pm**  
**Friday, April 1st - 8 am - 6 pm**  
**Saturday, April 2nd 9 am - 2 pm**

Appliances, antique dishware, perfume bottle collection, thimble collection.  
Lots of kitchen items & misc. Copper steam table, copper boiler oil lanterns, costume jewelry, 3 pc. bedroom set with mattress.  
**403 E. Arkansas, Bloomfield, IA**

**WANTED—ESTIMATES FOR:** Mowing 6 cemeteries in Wyacondah Township. PH: 641-929-3326 12

**FOR SALE:** 14 ft. V-bottom boat and trailer with 4 horse Mercury motor, \$750. PH. 641-684-0903. 12

## BANK OF THE WEST

*is hiring*

### Bloomfield, IA Location

*Motivated salesperson with customer service experience. Will support business development and customer transactions. High School Diploma/GED required. Great benefits!*

Apply at:  
**www.bankofthewest.com/careers.**  
**Job ID: 028061**

## SHADY LANE VARIETY

Assorted  
**Bird Feeders.**  
.....  
**Hummingbird**  
**Feeders & Swings**  
**Oriole Feeders**  
**Nectar Protectors**  
.....  
**Cute Wind Chimes**

1 mi. E. of Drakesville on Jade Ave. • 641-664-0207  
8-5 Mon. thru Sat.

**FOR SALE:** 6 month old APRI registered Beagle female. **SOLD** PH: 641-929-3995 13

## GINGERICH GREENHOUSE

**Bulk Garden Seeds & More!**

**Seed Potatoes, Onion Sets & Plants**

**Strawberry Plants**

**Early Vegetable & Bedding Plants**

1 mile East & 1/2 mile North of Drakesville, IA on Jade Ave.

**MOTORCYCLES:** TOP CASH PAID! For Old Motorcycles! 1900-1979. DEAD OR ALIVE! 920-371-0494 (MCN)

**Have you or a loved one had lung cancer?** Call NOW to see if you are eligible for compensation! 855-553-4502 (MCN)

## Slayton Polaris

Authorized Polaris dealer since 1988

### Get out and play!

*New & Used Polaris Rangers & ATV's*



**660-328-6627**

**BLOOMFIELD, IA**  
8 mi. S. & W. from Pulaski or 6 mi. W of Memphis then 13 mi. N. on Route B

**STUDENT LOAN PAYMENTS got you down?** We can help reduce payments and get finances under control, call: 866-871-1626 (MCN)



**\$25,900**

**2012 GMC 1500**  
4 DOOR, LEATHER, 4 WD,  
33,000 MILES



**\$20,500**

**2012 GMC 2500 HD**  
4 WD, 6.0 GAS, AUTO,  
BEDLINER, TOW PACKAGE



**\$10,900**

**2003 silverado**  
RED, 4 WD, 80,000 MILES

**We support National Ag Week!**  
*Say "Thank You" to a farmer!*

## Kollision Korner



504 South Drake St  
Bloomfield, IA 52537  
PH: 641-664-2648  
Fax: 641-664-2948



**SPRING has SPRUNG!**  
SUPPORT YOUR LOCAL RETAILERS

**PRIME RIB CAPITAL OF THE WORLD!**  
SERVED ON FRIDAY & SATURDAY NIGHTS!  
Breakfast • Lunch • Dinner  
Daily Hot Specials & Evening Features!  
Catering & banquet facilities available for many occasions!

**Southfork**  
**MOTEL & GRILL**  
JUNCT. OF HWY 2 & 63 • BLOOMFIELD • 641-664-1063  
TUES. - THUR. 7AM-9PM • FRI. - SAT. 7AM-10PM  
SUN. 7AM-2PM • CLOSED MONDAY

**Lilac Hill GREENHOUSE**  
660-342-9554

**Pansies Are Blooming!**  
10" hanging baskets \$8 each  
Pansy color bowls \$10 each

- Onion Sets • Seed Potatoes
- Bulk & Packaged Garden Seeds • Onion Plants
- Vegetable & Flower • Bedding Plants • Mulch

**SHOP EARLY FOR BEST SELECTIONS!**

Hours: Monday - Saturday • 9-4  
Closed Sundays  
Hwy. 136 2 miles W. of Downing

**Friday, March 24<sup>th</sup>**  
**Hawg Wild Wings**  
with sides Serving at 6:00 P.M.  
Dine In **722-3355** Carry Out  
**RAY'S LONGBRANCH**  
Drakesville, IA

Potatoes, Onion Plants & Sets  
Large Variety of Seeds!

**HILLTOP GREENHOUSE** Mon-Sat  
8:00am-6:00pm  
11049 HWY 2, MOULTON IA 641-929-3036  
BETWEEN WEST GROVE & MOULTON

Lower than Cell Phone Bill. Get 2 lines of unlimited data for \$100/mo. with AutoPay-taxes & fees included. Video Streaming & Mobile Hotspot included. Limited offer/Restrictions Apply. Call Today and Save. 855-549-9399 (MCN)

Make \$1000 Weekly Mailing Brochures From Home! No Experience Required. Helping home workers since 2001! Genuine Opportunity. Start Immediately! [www.IncomeMallers.net](http://www.IncomeMallers.net) (VOID IN SD, WI) (MCN)

*Revival Services*  
**Lancaster Baptist Church**  
Alan Sipe, Evangelist  
He is the Missouri Baptist Children's Home Representative. Alan is an amazing & accomplished Southern Gospel Singer.  
Services nightly at  
7 pm March 23rd - March 26th  
Come and enjoy this mans love for the Lord.

The Davis County Middle School presents  
**THE PRINCESS WHO HAD NO NAME**

By Brian D. Taylor /Pioneer Drama Service Produced by special arrangement with Pioneer Drama Service, Inc., Englewood, CO

IOWA THEATRE, BLOOMFIELD, IOWA  
THURSDAY, MARCH 23, 2017  
FRIDAY, MARCH 24, 2017  
7:00 PM

\$5 for Children under 12 • \$8 for Adults  
Tickets available Mon-Weds, March 20-22  
11:30 am-1 pm at the MS Cafeteria and at the door.  
Doors open at 6:15 p.m.

Directed by Joy Orwig

**Country Side Grocery**

Co-Jack, Colby, & Cheddar Cheese.....\$1.89/lb.  
Skin On French Fries, 5 lb. Bag.....\$1.99  
Fun Size Snickers Candy Bars, 10.59 oz.....\$1.39  
Wilson Deli Fresh Honey Ham.....\$1.49/lb.  
Kraft White American Sliced Cheese 5 lbs.....\$8.95  
Doritos, 9 3/4 oz.....\$1.99

3/4 mi. E. of Drakesville, IA on 180<sup>th</sup> St.  
Mon-Sat: 8:30am - 5:00pm  
VM: 641-664-2661

**BENEFIT AUCTION!**  
*Something for everyone!*  
Dairy, Beef, Pigs, Goats & Much More!

**Tuesday, March 28<sup>th</sup>**  
Scotland County Livestock Auction  
Memphis, MO  
CHICKEN BBQ SUPPER - 5:30 PM  
with all the fixings!!  
AUCTION - 7:00 PM

100% of proceeds of this year's auction will again be used to place Bibles, Bible study courses, & other discipleship materials into the hands of prisoners all across the country.

*We would be Blessed to see you there!*  
**Gospel Express Ministries**  
For donations & more info call  
Delmar Martin • (660)-216-0548

**IOWA THEATER 15<sup>TH</sup> ANNUAL BLUEGRASS SHOW**  
BLOOMFIELD, IA • SAT., MARCH 25 • 7PM

**BLUEGRASS BLONDIES** [www.bluegrassblondies.com](http://www.bluegrassblondies.com)  
**LORI KING & JUNCTION 63** [www.junction63.com](http://www.junction63.com)  
**FOUR MILE CREEK** [www.fourmilecreekbluegrass.com](http://www.fourmilecreekbluegrass.com)

IN CASE OF INCLEMENT WEATHER CALL AHEAD BEFORE TRAVELING  
FOR MORE INFORMATION CONTACT: LORI KING 641-799-1442

TICKETS At the Door  
ADULTS \$15 • YOUTH 13-16 \$5  
12 AND UNDER FREE  
Or at  
203 E. Franklin St.  
Bloomfield, IA  
**IOWA THEATER**  
107 S. Washington  
Bloomfield • 641-664-9588  
[www.iowabluegrassmusic.com](http://www.iowabluegrassmusic.com)

Before the show join us in the afternoon from 3-5 pm in the Kay Burchett Room(next to the Iowa Theater) for an open jam session. Bring your acoustic instrument and finger foods. Also bring a non-perishable food item to donate to Davis County Food Pantry.  
No admission fee. Jammers and listeners welcomed. Open to the public.

**Burkholder's** 660-397-4115  
4 miles north of Edina, MO  
[www.burkholdergreenhouse.com](http://www.burkholdergreenhouse.com)

Troyer Purple Martin Plastic Gourds AND Alumium Racks  
Alumium Poles Designed to Ascend and Desend

**SEE US FOR ALL YOUR Gardening NEEDS:**  
Asparagus Crowns  
Sweet Onion • Plants & Bulbs  
**Bulk Seeds, Plants, Fertilizers**  
Compost, Topsoil

**Strawberry Plants, Grapes, Blackberries, Raspberries, Blueberries, FRUIT TREES**






## Fox Valley Welding

No matter what size the project customer satisfaction is always our first priority.

Tig & Aluminum Welding Milwork	Lathe New Steel	Fabricating CNC Machining CNC Cutting
--------------------------------------	--------------------	---

Hours: M-F 8-5:30  
641-656-4684 • 12190 East Hwy. 2 • Milton, IA

FOR SALE: Firewood at RJ Lumber, \$15 a pickup load. 18989 160th St., Drakesville, IA 52552. TF

FOR SALE: 2016 Alfalfa hay, large squares & rounds. Mark Rogers PH: 641-919-9447 13

YODER'S INDIAN CREEK FURNITURE investing your tax return money in quality furniture. Will become heirloom treasures for future generations. Offering a large selection of dining room, living room, bedroom, office & children's furniture. Unique handmade clocks, rustic log furniture. Also offering quality pre-finished hardwood flooring. Located 4 miles North of Cantril on RT. V64, 22769 Rt. V64 Milton, Iowa. PH. 319-538-7332 TF

## LANDSCAPE SPECIALS

### 8 FT. RAILROAD TIES!

Check them out at...

### Spilman's Auto Parts

20311 Old Hwy. 2 • Bloomfield, IA  
641-664-2463

FOR SALE: Registered Red Bone Coon Hound Puppies, 8 wks old, 1st. round of shots. Contact Glen. PH: 660-216-4756 12

FOR SALE: 8 unfinished new sturdy Oak kitchen chairs. Will finish if desired. Emanuel Miller PH: 641-208-6276 12



**We provide materials & expertise for all building projects.**



**New Homes Remodels Decks Kitchens ICF Basements Pole Buildings**

Josh & Emily Hill  
218 S. 2nd St. • Pulaski, IA  
641-675-3405

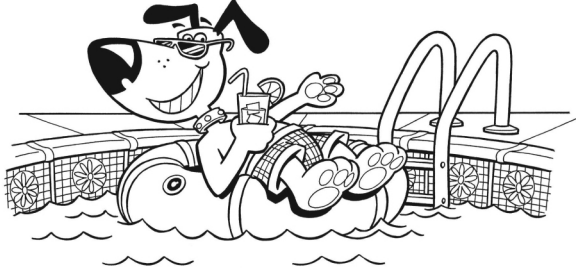
HELP WANTED: Local company is needing an OTR Truck Driver. Competitive paid mileage and home weekends. Contact Mark Drummond at All-States Equipment 660-465-8572 or after hours at 660-216-6227.

## City of Bloomfield

is taking applications for Seasonal Help

### Lifeguards

Deadline is Friday, March 31st



FOR SALE: 1 good family cow Jersey X Shorthorn, gentle, milks easy, just fresh, \$1,400. PH: 641-664-2060. 13

FOR SALE: 2 Holstein veal bull calves, \$150 each or best offer. 16246 Jade Ave, John Earl Kuhns, VM: 641-664-2336. 13

BLOOMFIELD MINI STORAGE. Serving you from 2 safe, convenient locations. PH. 641-664-1066. TF

## LINE-X OF OTTUMWA



**KEEP YOUR RIDE IN GREAT SHAPE! PROTECT IT WITH A LINE-X COATING!**

Bring it in and we can LINE-X® it!

Brad Lisk  
15514 Blackhawk Rd., Ottumwa, IA  
641-683-9334

Gift Cards Available!




GOING OUT OF BUSINESS • GOING OUT OF BUSINESS • GOING OUT OF BUSINESS

# GOING OUT OF BUSINESS

## PRICE CRASH

Take an additional 31% OFF on quality brand name bedding & furniture

Select from these name brands:

- Benchmaster • Best
- Coaster • J.P. Wynn
- Ther-A-Pedic • American
- Perdue • Sealy and much more

**SHOP NOW** for the best selection and savings....  
An Extra 31% OFF\* The Lowest Marked Price!

**RECLINERS BY BEST!** from \$297\* Final Price

**Twin Mattress Sets from \$187\* Final Price**

**Queen Mattress Sets from \$277\* Final Price**

# 1 BIG WEEK

## THE RESTSTOP MATTRESS & FURNITURE CENTER

641-954-9718  
321 Richmond Ave. Ottumwa, IA 52501

SALE HOURS:  
Mon - Fri: 10 - 6  
Saturday: 10 - 5  
Sunday: Noon - 4

DISCOVER NETWORK VISA MasterCard  
Cash or Check

GOING OUT OF BUSINESS • GOING OUT OF BUSINESS • GOING OUT OF BUSINESS





# Let Our Service Technicians COME TO YOU!



Going on now thru 3/31/17

## SPECIAL SALE ON FIRESTONE AG TIRES

Wagons, Tractors, or Implements

108 Smith Street • Bloomfield  
TOLL FREE 1-888-855-8740  
641-664-1801



## ON THE FARM TIRE REPAIR SERVICE

We'll Get You Going In No Time!



## We have the right insurance plan for all your needs!

Auto • Home • Farm • Business  
Life • Annuities • Health

Your life is full of important things that need to be protected. Our insurance affords you and your family that protection by being your personal safety net.

www.NorthSideIns.com

106 E. Jefferson  
Bloomfield, IA  
641-664-2362

109 W. Van Buren St.  
Centerville, IA  
641-856-3333



HOME FOR SALE: Brick home. 507 W. Walnut, Bloomfield. 3 bed, 2 bath, finished basement. 2,893 sq. ft. 30x56 heated shop. Move-in ready. \$162,000.  
PH: 641-799-4770 TFN

## The Car Spa

Auto Body Shop  
Auto Glass  
Automotive Restoration  
Hand Detailing Service

**KARR COLLISION CENTER & AUTO DETAILING**  
Shawn Scott, Owner  
701 Karr Ave. • Bloomfield, IA  
641-664-1024

CAR DETAILING GIFT CERTIFICATES AVAILABLE!



## NOTICE

### Beechy & Son's Horse Shoeing

are wanting to expand our services. We are available to take care of all your trimming and shoeing needs. Also horse training services available.

## 20 YEARS EXPERIENCE!

**HARLEY, GLEN & IVAN BEECHY**  
VM: 641-664-3801

**ADM**

## AMPT

ADVANCED MINERAL PERFORMANCE TECHNOLOGY

### Positively charged!

AMPT™ is revolutionizing beef cattle mineral nutrition as we know it. Advanced research and new technologies have led to the development of greatly improved mineral sources. Never before has a mineral company combined these technologies into one package. AMPT precisely targets optimum nutrient levels, complementing forage, to deliver the best performance — nothing more, nothing less. That's the revolution of precision supplementation.

Join the revolution.

**ADM**

## AMPT

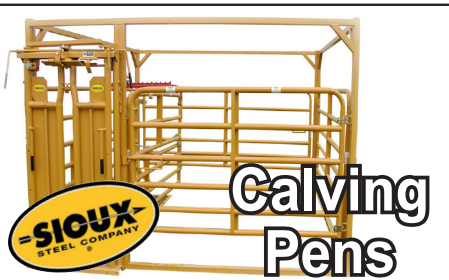
Open by appointments **Fabius Creek Livestock Solutions LLC.**  
641-895-0128  
12718 275th Street • Bloomfield, IA 52537

LEARN MORE AT [www.admani.com/AMPT](http://www.admani.com/AMPT)  
ADM Animal Nutrition™, Quincy, IL • 866-666-7626  
AN\_BeefHelp@adm.com

## WE SALUTE OUR LOCAL FARMERS!

WE ARE PROUD TO SERVE YOU WITH EVERYTHING YOU NEED TO KEEP YOUR CALVING SEASON RUNNING SMOOTHLY!

Unimilk • Iodine • O.B. Gloves • Latex Gloves • O.B. Lube • Calf Claim  
Oral Calf Feeders • Nursing Bottles • Kick Start • Uterin Bolus  
O.B. Straps & Chains • Calf Catchers • Blankets • Colostrum



### Calving Pens



### Calving Pens

**FM For-Most Livestock Equipment**



### Cattle Chutes

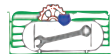
Various Sizes

## THANK YOU FARMERS!



### Circular Maternity Pens

## Hamilton Produce Co.



105 W. Franklin • Bloomfield, IA 52537



641-664-2459 or 1-800-469-7749

## FOR SALE

Driveway Fabric Rolls  
Commercial, Heavy Duty,  
Designed for Heavy Traffic

12' 5" Wide  
432' Long  
\$370/ roll

660-216-0938

### THINK SPRING!

## LILAC LANE VARIETY

Fresh garden seeds in stock  
Onions • Seed Potatoes  
Strawberry Plants  
Grape Plants & Asparagus Roots

Come now for the best selection

**5% OFF Muck Boots**

Hwy 63 to Rt. E then East 1 mile Queen City, Mo.

## WE SALUTE OUR FARMERS DURING AG WEEK!

Greg Shelley, Career Agent  
Farm Bureau Financial Services

388 S. Clay Street, Suite A  
Memphis, MO  
Business 660-465-2623  
Home 660-328-6603  
gshelley@mofb.com

• Home • Farm • Life • Health • Auto  
• Long Term Care • Annuities



<p><b>Chobani strawberry yogurt, 12-4 oz. cups</b> <b>\$1.49</b></p>	<p><b>LiBerte whole milk yogurt, 12-5.5 oz. cups</b> <b>\$1.49</b></p>	<p><b>Pro 2 Snax, sweet gala apple &amp; almonds, 2.4 oz. pks</b> <b>10¢ each or 50¢ for 6 ct. case</b></p>	<p><b>ConTigo medium salsa, 8 lb. container</b> <b>\$1.25 each</b></p>	<p><b>Dole 100% Pineapple juice, 59 oz.</b> <b>75¢ each</b></p>	<p><b>Lunchables pizza with pepperoni 4.3 oz. pks.</b> <b>10¢ each or \$1.59 for 6 ct. case</b></p>
<p><b>Shullsburg muenster, approx. 6 lb. chunks</b> <b>\$2.70 a lb.</b></p>	<p><b>Chicken pattie fritters, fully cooked</b> <b>99¢ lb.</b></p>	<p><b>Chicken breast nuggets, fully cooked</b> <b>99¢ lb.</b></p>	<p><b>Our Family Fiber Max oats &amp; chocolate bars, 7.0 oz</b> <b>\$1.25 each</b></p>	<p><b>Hershey's milk chocolate fudge topping, 7.6 lbs.</b> <b>\$4.99 each</b></p>	<p><b>Harvest Valley pickled whole beets, 6 lb. 9 oz</b> <b>\$4.45 each</b></p>
<p><b>Harvest Valley fruits for salad (in heavy syrup) 6 lb. 12 oz.</b> <b>\$5.39 each</b></p>	<p><b>Deshler brand sweetened apple sauce, 6 lb. 12 oz.</b> <b>\$3.79 each</b></p>	<p><b>Harvest Valley cling peach halves (sweetened with sucrose) 6 lb. 10 oz.</b> <b>\$5.59 each</b></p>	<p><b>Chicken of the Sea pink salmon 2.5 oz</b> <b>35¢ each or 12 ct. case \$3.99</b></p>	<p><b>Kraft Miracle Whip, 1 gallon</b> <b>\$3.99 each</b></p>	<p><b>Dole Romaine lettuce</b> <b>Reg. \$1.69</b> <b>NOW \$1.39 each</b></p>
<p><b>Meijer grahams (honey) 14.4 oz. Reg. \$1.00</b> <b>SALE 79¢ each</b></p>	<p><b>Farm Rich buffalo style breaded chicken wings, 17 oz. Reg. \$3.00</b> <b>SALE \$1.99 each</b></p>	<p><b>Fyffes Banana</b> <b>49¢ a lb.</b></p>	<p><b>Organic bulk Earl Grey black tea</b> Use: Good for Your Teeth, Digestion and increased Energy <b>3 oz. pk. \$6.36 each</b></p>	<div style="text-align: center;">  <p><b>Highway 2 DISCOUNT Groceries L.L.C.</b></p> <p>19686 Hwy. 2, Bloomfield, IA Approx. 2 miles west of Bloomfield <b>Mon. - Sat. 8:30am - 5:00pm</b> <b>VM: 641-664-1187</b></p> </div>	
<p><b>Meadowview Theeves Oil 1/2 oz: \$11.25 1 oz: \$18.75</b></p> <p>For aromatic dietary or topical use: Formulated after the famed remedy that kept the thieves healthy in the black plague years ago from infections, flus and colds</p>	<p><b>True Melaleuca 1/2 oz \$11.00</b> Suggested usage: Fungal, sinus/lung infections, tooth/gum disease, promotes cleaning &amp; purity</p>				

**HOURS**  
8 A.M. to 5:00 P.M. DAILY EXCEPT SUNDAY

**Zimmerman's Store**  
Rutledge, MO  
660-883-5766

*Our Everyday Low Prices!*

---

Strawberry yogurt, 12/ 4 oz. cups, 98¢ - out of code

Dole 100% pineapple juice, 59 oz., 95¢ or case of 8 \$5.50 ~ out of code

Broccoli, Cauliflower, cabbage & lettuce plant..... \$1.25 - 4 pk

**NEW** Organic unsweetened coconut milk, 32 oz. ....\$2.59

Organic chicken broth, free range, 32 oz. ....\$3.65

Frozen Shrimp, 2 lbs .....\$14.15

Limes ..... 25¢ each or 5 for \$1.00

Fugi apples.....69¢ a lb., of \$15.00 a bushel

Grape tomatoes..... \$1.15 a pint

---

5 lb. block Peter's caramel for candy making..... \$16.15

English walnuts..... \$4.05 a lb.

Medium pecan pieces ..... \$8.97 a lb.

Hospitality Crisp Rice, 35 oz. .... \$4.19

Hospitality Toasted Oats, 35 oz. .... \$4.05

32 oz. light corn syrup ..... \$2.89

---

Dr. Woods Castile Liquid soaps, almond, baby mild, black soap, lavender, peppermint and tea tree.....32 oz. \$7.69 or 16 oz. \$5.19

Back Again dish detergent in the gallon jug .....\$7.79

Mr. Clean .....40 oz. \$2.98 or 24 oz \$2.09

Sidewalk Chalk, 15 pcs.....\$1.29

---

**DRIVE A LITTLE & SAVE A LOT**

FOR SALE: Boxer cross puppies. Tan & Brindle; \$45 each.  
PH: 660-883-5878 14

Stop paying too much for cable, and get DISH today. Call 855-589-1962 to learn more about our special offers! (MCN)

Free Pills! Viagra!! Call today to find out how to get your free Pills! Price too low to Mention! Call today 1-877-560-0997 (MCN)

**Now Offering Occupational Therapy**



Front Row: Brian Sharp, PT; Jackie Wells, DPT; Karen Kincart; PT  
Back Row: Miranda Simmers, COTA; Dana Armstrong, PTA; Deb Campbell, PTA; Olivia Hewitt, Office Manager; Kim Garland, PT Tech. Not pictured, Brenda Coram, OTR/L.

**Help us welcome our new Physical Therapist, Jacqueline Wells, DPT**

Have you heard about our new Direct Access? You can refer yourself for services!



**Kincart Physical Therapy Services**



**Davis County HOSPITAL**  
Dedicated. Compassionate. Healthcare.  
**641-664-7086**






**Superior Form & Function for Your Farm**

603 S. West • Bloomfield, Iowa  
641-208-6890





**PIONEER**  
BRAND PRODUCTS

**GET READY FOR SPRING!**

- Basketball Sets
- Exercise Equipment
- Baby Strollers
- Booster Seats
- Toys
- Tools

**Check out our bargain tables!**

**GREAT DEALS**

**\$URPLUS BARGAIN BARN**

BLOOMFIELD, IA  
2 1/2 MILES W. OF  
BLOOMFIELD ON HWY. 2  
OPEN TUESDAY, FRIDAY, SATURDAY 9-5

**NEW MATTRESSES FOR SALE!**  
Selling individually or in sets. Factory warranty.

**TWIN - FULL - QUEEN - KING**

**641-664-3060**

**National Ag Week!**  
March 19th-25th

**Thank a Farmer Today!**

Spring is just around the corner. Come see us for all your fertilizer needs!

- Soil testing • Dry & liquid fertilizer • Liquid nitrogen
- Custom application of fertilizer & chemicals

**Crop Production Services** 

Memphis, Missouri 660-328-6211      Queen City, Missouri 660-766-2325

**Davis County HOSPITAL**  
Dedicated. Compassionate. Healthcare.

*No matter where you plan to deliver...*



We can take care of you before & after your baby arrives!

Prenatal & Postnatal Care  
Take care of you, so you can take care of your baby.

Call 641-664-7091 to Schedule Your Appointment Today

509 N. Madison • Bloomfield, Iowa 52537  
www.DavisCountyHospital.org



**2013 Nissan NV3500 SV**  
12 passenger, V8, navigation, 34,000 miles

**\$19,500**

Any questions call:  
**660-397-2684**

**National Ag Week**  
We support our local farmers!



**Jessie's Sewing Room**  
207 E. Franklin  
Bloomfield, IA  
(C) 641-208-5036

**BULLS FOR SALE:**  
Limousin, Lim-Flex, Red Angus, yearlings, calving ease, bulls with performance that will add pounds to your calves, black or red, polled, docile, complete performance data, free delivery when you want them. Schrock Cattle  
PH: 660-988-1163      17

**FOR SALE:** 65 registered Angus yearling bulls. Excellent quality. Guaranteed breeders. Werner Family Angus, Diagonal, IA. www.WernerFamilyAngus.com 641-344-5059.      22

**DON'T BE A FOOL!!**

**Go to Spilman's for the best deals on auto parts.**

**You Gotta Be Jokin'**

Find the auto parts you need at discount prices...no foolin' here!

**SPILMAN AUTO PARTS**

20311 Old Hwy. 2, Bloomfield, IA  
641-664-2463 or 1-800-477-1367  
M-F 8AM-5PM, Sat. 8AM-12Noon  
www.SpilmanAuto.com

**Only 1 more week to use your \$50 coupon on all major appliances**

Must present coupon!



**MEMPHIS MERCANTILE APPLIANCES SALES & SERVICE**  
EST 2016

South Side of the Square in Memphis  
660-465-2345  
Monday - Friday: 9:00 AM to 5:00 PM • Saturday • 9:00 AM to 3:00 PM / Sunday CLOSED

**SPRING IS HERE!**  
10% OFF all Ertl toys, such as John Deere, New Holland & Case IH.  
Sale ends March 31st.



**MEMPHIS MERCANTILE**  
EST 2010  
115 E. Monroe • Memphis, MO  
660-465-2102





# WOW! What Food SAVINGS



**2/1**  
1 lb. packs  
Oscar Mayer  
Classic & Bun Length  
**WEINERS**

**\$1.89**  
16 oz.  
Oscar Mayer  
Maple & Regular  
Smoked Sliced  
**BACON**

**\$1.49**  
per lb.  
Smithfield®  
Anytime  
**BONELESS  
HAM STEAKS**

**\$2.29**  
per lb.  
**Rack of Pork  
RIBS**

**10/10**  
2.52 oz.  
Oscar Mayer  
Fully Cooked  
**BACON**

**\$1.99**  
20 oz.  
Velveeta  
Mini Blocks  
**CHEESE**

**2/3**  
pounds  
Mini Sweet  
**Peppers**

**59¢**  
per lb.  
Fuji • Red Delicious  
• Cameo • Brauburn  
**APPLES**

**\$10.95**  
12 pack  
that's only 91¢  
per 18 oz. bottle  
**Gold Peak  
TEA**

**BULK  
Garden Seeds**  
Seed Potatoes  
Onion Plants  
Onion Sets  
Mulch  
Soil

**\$1.59**  
50 pk.  
Heavy  
**PAPER  
CUPS**  
w/ Lids

**\$2.49**  
12 oz.  
McCafe®  
Columbian  
**COFFEE**

**\$1.29**  
11 oz.  
Troyer®  
WRAPS  
• Whole Wheat • Spinach • Regular

**\$2.49**  
per lb.  
Troyer  
**Virginia  
HAM**  
Sliced Fresh from our Deli!

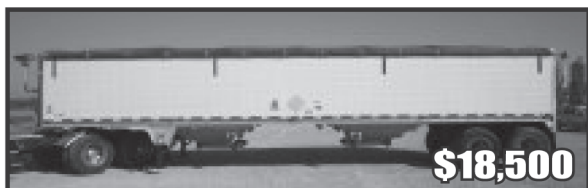
**\$1 OFF**  
2 lb. Roll 14  
regular \$8.99  
Troyer®  
**Amish Style  
Roll  
BUTTER**



**DUTCHMAN'S STORE** Division Street - CANTRIL, IA - (319) 397 2322 SALE PRICES March 22-28, 2017  
STORE HOURS • Weekdays, 8a.m. - 6 p.m. • Saturday 8a.m. - 5 p.m. • Sunday Closed • View our specials at - [www.DutchmansStore.com](http://www.DutchmansStore.com)

## BERHOLTZER TRAILER REPAIR

Specializing in Aluminum Hopper Trailers  
Repair & Rebuild  
3 miles east of Gorin, Mo. on Route U  
**660-341-6027**



2005 Wilson 41 x 72 x 96, Shurco Power Tarp, Good Tires, Brakes at 50%, Ag Hoppers, Aluminum Wheels

**We install tarps & power tarps**

FOR SALE: John Deere WH52A commercial walk behind mower, 30 hrs; \$5,000. PH: 641-799-7474 14

WANTED TO BUY: Dairy bottle calves born after March 1st. 641-208-6598 14

FOR SALE: Older Nakajima short arm quilting machine, works good, \$400 or best offer. Douds. PH. 641-919-8971. 14

FOR SALE: Small square bales mixed grass hay, \$2.50. Lancaster area. PH. 660-341-3379 no answer leave message. 12

**Need somewhere to put those spring chickens?**

Come see us today about a new chicken coop!

All Steel Siding • Wood Frame

**Cantril Lumber & Hardware**  
319-397-2351 • 319-397-2354 • Mon-Fri 7-5 & Sat 7-12





# Oberholtzer

## Farm Supply LLC

Specializing in feeding equipment for dairy & beef.



NDE 804, 2008 model, front door with 4 1/2' folding conveyor, 9 knives, 640XL scale, 4 new tires, light use, excellent machine  
**\$21,900**



Valmetal model 5600 Agri chopper, hydraulic chute, rotation, 1,000 RPM PTO  
**NEW IN STOCK**



Valmetal V-Mix 400 vertical mixer, front unload with 48" folding conveyor, rubber top, 640XL scale.  
**NEW IN STOCK**

Rt. #1 Box 84 • Memphis Mo.  
Phone/Fax: 660-945-3053 • Cell: 660-341-8234

**MAST VINYL WINDOWS**  
THERMO-PRO WINDOWS  
Custom Size Is Our Specialty  
Professional Installation Available  
THERMA-TRU DOORS  
**FREE ESTIMATES**  
22172 Hwy. 63  
Bloomfield, IA 52537  
**800-206-9949**

FOR SALE: Rossi 223 single shot rifle with sling & 5 boxes ammo, \$245; Federal Automatch 22LR 325 round box, \$25. Must have permit for rifle.  
PH. 641-680-3876, Ottumwa. 12

FOR RENT: 1 or 2 bedroom apartments Milton, IA. Kitchen appliances & heat furnished. Very reasonable rent.  
PH: 641-757-0201 14

HAY FOR SALE: 30 bales 2nd cutting reeds canary and alfalfa mixed legumes. Average weight 1,400 lb. per bale. \$45 a bale. No rain. Nice green hay. Call anytime. Ron Campbell 641-777-6187 14



**Your Birthday is a reel BIG deal!**  
**Happy Birthday Josh!**  
We Love You, Tiffany and Alexis



SUPPORTING LOCAL FARMERS...

WE ARE HONORED TO TAKE CARE OF YOUR PRIZED POSSESSIONS!

**Clearview Animal Hospital P.C.**

601 Weaver Rd. • Bloomfield, IA 52537  
www.clearviewanimalhospital.com

**641-664-2399**

Dr. David Rasmussen Dr. Nancy Houglund  
Dr. Marilyn Brown

MILTON HERITAGE RUMMAGE SALE: March 31: Noon- 7 p.m. and April 1: 8 a.m. - 5 p.m. Many household items, books, Christmas items, canning jars and many more items. 13

**J.C. Zeitler, D.V.M**



We support our local beef farmers!

Milton, IA  
641-656-4616  
Cell: 641-777-0598

Energetix window systems | **By** Yoder GLASS & WINDOW 641.722.3667  
Local Mfg. of Quality, Fusion Welded, Vinyl Windows  
• Replacement  
• New Construction  
• Custom Built to Your Specs  
• Many Glass & Color Options  
• Lifetime Warranty  
19467 Driftwood Blvd. • Bloomfield, IA 52537  
Call Today: 641. 722. 3667 **Free Estimates**

SOMETHING TO THINK ABOUT! How many beer cans per mile are there on Davis County roads? Why are they empty and how did they get there? 17

FOR SALE: 1996 Dixon riding lawn mower, Model DM-542, 42" deck. Good clean, well cared for, ready to go to work, \$1,000.  
PH. 641-208-5171. 14

Happy Birthday Regina Bremer  
\*\*\*\*\* Wishing you a PURRRRRfect day! \*\*\*\*\*  
Sending lots of love from the whole family!



# Slayton Polaris

Authorized Polaris dealer since 1988

## Get out and play!

New & Used Polaris Rangers & ATV's



**660-328-6627**

**BLOOMFIELD, IA**  
8 mi. S. & W. from Pulaski or 6 mi. W of Memphis then 13 mi. N. on Route B

**Handyman Home Improvements**  
Decks, Porches, Siding, Drywall, Windows, Roofing, New or Remodel - No job too small!  
**Joe Rohrer** Free Estimates  
Bloomfield, IA **641.208.6930**

## Chick Days

LAYERS, BROILERS, GUINEAS, TURKEYS, BANTAMS, DUCKS & MORE!!



Order April 1 for May 5 pickup



50726 State Hwy 15  
Baring, MO 63531  
660-892-4537

Hometown Animal Health

RR 1 Box 147B  
Memphis, MO 63555  
660-465-2967



ADOPTION. Loving Couple promises baby warm home, secure future. Top education, devoted grandparents, gentle pets. Living expenses paid. Chad and Mary (720)515-0286 or attorney (310)663-3467.(MCN)

We BUY used manufactured homes, single wides and double wides. Call 641-672-2344 (MCN)

**ZIMMERMAN  
AUTO LLC  
TRAILER INC.**

101 North St. • Cantril, IA  
319-397-2406



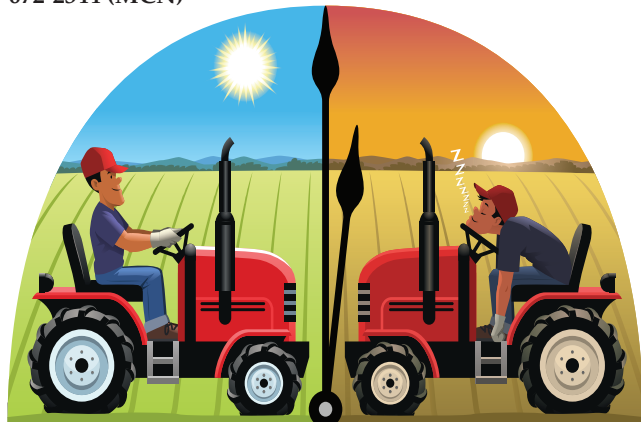
Every \$50 you spend or pay on your account or every \$500 spent on a trailer, you will be entered to win a set of

**WeatherTech floor mats.**  
\*Offer good now through March 31st.

# WEEKLY SPECIAL

## \$3.00 OFF

5 gal. bucket of **Sureguard Hydraulic Fluid**



## SALUTING ALL FARMERS!

Thank you to all the farmers who work from sun up to sun down. We appreciate all your hard work!

110 N. Washington  
Bloomfield, IA  
641-664-1362  
Keosauqua | Birmingham  
Cantril | Bloomfield



FOR SALE: 27 ga. Brite white metal roofing. 66 pieces; 33' 9" long, 1.50 per L.F.  
PH: 641-722-3505 TFN

FOR SALE: 2016 good quality mixed grass hay. 1st cutting, big round bales, plastic twine tied.  
PH: 641-459-2275 14

**JR**  
**FEED & SUPPLY**  
**641-722-3045**  
17599 200TH STREET • BLOOMFIELD  
STOP BY MON.-FRI. 8-5 & SAT. 8-12

Complete line of bagged feed in stock!  
**Lamb & Goat Milk Replacer**

**BIRD FEEDING NEEDS** WILD BIRD SEED SUNFLOWERS/CHIPS

**BCS 737 Tiller**  
• 4 speed  
• Honda Engine  
• Steering Brakes  
• Differential  
• New 26" Tiller Box

**\$2,000**

Any questions call:  
**660-397-2684**

**C.H.I. MIDWEST LiftMaster**  
**Overhead Door**

✓ Out Our Competitive Prices! 21387 Route V64 Keosauqua, IA 52565 **660-216-0812** Our goal is to keep your doors rolling smooth!

Sales • Parts • Service ~ Free Estimates  
We sell new doors and openers or we'll service your old one.

**Tri-State Timber DBA Stihl**  
**660-465-2975**  
353 1/2 Grand Ave. Memphis, Mo.  
Behind Shelly B's  
**5% OFF**  
**Stihl Chain Saws & Chain Saw Accessories**  
Thru March 31st  
Trade-Ins Welcome!

**Gingerich Construction**  
Pole Building • Garages  
Remodeling • Additions  
Roofing • Siding  
**No job too big or small... We can do it all!**  
**FREE ESTIMATES** **David Gingerich**  
Lancaster, Mo.  
**641-891-5765**

ACCEPTING YARDS FOR 2017 SEASON in Moulton, Bloomfield, West Grove area. Liability insured. Call Benjamin Harris at 641-895-9625. 17

HAY FOR SALE: Approx. 100 round bales of mixed hay; \$45/bale. Also 100 round bales of silage; \$50/bale.  
PH: 641-799-7474 14

"AGRICULTURE IS THE MOST HEALTHFUL, MOST USEFUL AND MOST NOBLE EMPLOYMENT OF MAN."  
- GEORGE WASHINGTON

We proudly support National Ag week. Thank You Farmers!  
**HARRIS DISTRIBUTING**  
1-800-727-5589 OR 641-929-3379  
WEST GROVE, IA

**RALCO** **MIX 30** THE HIGH ENERGY LIQUID FEED

**Drive safely.**

You may not encounter many traffic hazards when operating farm machinery, but driving safely should still be your first priority. Especially when equipment is near power lines.

Any contact between farm machines and electric lines is potentially lethal. Plan your path to be sure you will clear power lines by at least 10 feet, especially when making turns and when entering and leaving the job site. This institution is an equal opportunity provider & employer.

**Southern Iowa Electric Cooperative**  
A Touchstone Energy Cooperative  
22458 Hwy. 2 • Bloomfield, IA 52537 • (641) 664-2277 • sie.coop

**CHICK DAYS!**  
Starting in April  
Order Anytime All Summer

**ATTENTION: FFA & 4-H KIDS**  
Start your show season with us!  
**We support our local ag youth!**

**SHOW-RITE** Show Feeds... Done Right! **HUBBARD**

**FEEDS & NEEDS** 660-379-2055 Mon-Fri: 8-5  
1 mile N of Downing, MO on Rt N



# National Agriculture Week

## March 19<sup>th</sup> - 25<sup>th</sup>



### WHAT IS AG DAY?

It's a day to recognize and celebrate the abundance provided by agriculture. Every year, producers, agricultural associations, corporations, universities, government agencies and countless others across America join together to recognize the contributions of agriculture.

**Kincart**  
Physical Therapy  
Services  
641-664-7086

**DAVIS**  
COUNTY  
INSURANCE  
641-664-1801

**AMERICAN FAMILY**  
INSURANCE  
Craig D. Heemsbergen  
409 Church St.  
Ottumwa, IA  
641-683-1891

**Cattle Auctions**  
Weekly  
844-876-3493  
cattleauctionsweekly.net  
Moulton, Iowa

**MOULTON**  
**LOCKER**  
112 S. Main St.  
Moulton, IA  
641-642-3422

**MEMPHIS**  
**LUMBER**  
CO.  
Memphis, MO  
660-465-8595

**Hoskin**  
**Elevator**  
PURINA  
641-929-3568



**MFA**  
**AGRI**  
**SERVICES**  
Lancaster, MO  
660-457-3728

*Slayton*  
*Polaris*  
Bloomfield, IA  
660-328-6627

**CANTRIL**  
**LUMBER**  
Cantril, IA  
319-397-2351  
1-888-791-9273

Tri-County  
**SHOPPER**  
641-664-1333

**MILTON**  
CREAMERY  
Mon-Fri: 9-5 Sat: 9-4  
202 E. Hwy 2  
Milton, IA  
641-656-4094

**J'S**  
FOODS  
Hwy. 136 E.  
Memphis, MO  
660-465-8597

**TLS**  
**EQUIPMENT**  
Memphis, MO  
660-465-2441

**Saluting Our Farmers!**

**Harvest More From Your Operation!**  
Let us help you with all your seed, feed & fertilizer needs.  
We have all you need to keep your business thriving.

**CROP SERVICES, INC**  
John & Kathy Bos, Owners  
Drakesville, IA  
641-722-3293

TRI-COUNTY SHOPPER CLASSIFIED AD DEADLINE IS FRIDAY, 5 P.M. EVERY WEEK. Classified ads must be paid for in advance. Mail your ad to Tri-County Shopper, P.O. Box 168 Bloomfield, IA. 52537. For questions call us at 641-664-1333.

FOR SALE: Road Cart, \$350. PH: 641-929-3036 12

FOR SALE: Clover frost seeding time: Clover cleaned and bagged; clover timothy mixed, cleaned and bagged, 50# bags. 660-341-2837 14

MEET SINGLES RIGHT NOW! No paid operators, just real people like you. Browse greetings, exchange messages and connect live. Try it free. Call now: 800-357-4970 (MCN)

**JOB OPENINGS!**  
Performance Pipe, A Division of Chevron Phillips Chemical Co., LP, located in Bloomfield, IA has job openings.  
Please log on to [www.cpchem.com](http://www.cpchem.com) to view job descriptions & to apply

Performance Pipe is an Equal Opportunity Employer.

**BETTER SEED. BETTER YIELDS.**

Protect your crops and increase profits by selecting the right seed with the best traits & genetics.

We Salute The Agricultural Industry During **NATIONAL AGRICULTURE WEEK** March 19-25, 2017

**OVERSTREET, INC.**  
606 Railroad St. • Bloomfield, IA  
Channel Seedsman  
Bob Overstreet: 641-664-1004

[www.channel.com](http://www.channel.com)  
Bob.Overstreet@channelseedsman.com

Seedmanship At Work



# THANK YOU FARMERS!!!

<p><b>MEMPHIS AUTO &amp; TRUCK PARTS</b> 300 S. Market Memphis, MO 660-465-2470</p>	<p><b>ZIMMERMAN AUTO LLC TRAILER INC.</b> Cantril, IA 319-397-2406</p>	<p><b>BRADLEY INSURANCE</b> Tonya Bradley Owner 226 S. Market St. Memphis, MO 660-465-2764</p>	<p><b>MEMPHIS FARM &amp; HOME</b> S. Market St. Memphis, MO 660-465-8678</p>	<p><b>KAY EGGLESTON BOOKKEEPING &amp; TAX</b> Memphis, MO 660-465-2684</p>
---	--	--	--	--

<p><b>LYNCH LAW OFFICE &amp; ABSTRACTING</b> 207 S. Washington Bloomfield, IA 641-664-3188</p>	<p><b>KARR COLLISION CENTER</b> 701 Karr Ave Bloomfield, IA 641-664-1024</p>	<p><b>Hamilton Produce Co., Inc.</b> Bloomfield, IA 641-664-2459</p>	<p><b>SCHUYLER COUNTY MUTUAL INSURANCE COMPANY</b> Queen City, MO 660-766-2505 Margaret Sapp &amp; Stephanie March</p>	<p><b>SIDWELL SEEDS</b> Queen City, MO 660-766-2737</p>
--	--	--	--	---

<p><b>GREINER IMPLEMENT CO.</b> 10845 73rd Ottumwa, IA 641-683-1691</p>	<p><b>The Bike &amp; Trophy Shop</b> 641-682-2024 btferg@pcsia.net</p>	<p><b>Crop Services Inc.</b> Drakesville, IA 641-722-3293</p>	<p><b>citizens mutual</b> 114 W. Jefferson Bloomfield, IA 641-664-2074</p>	<p><b>Schuyler County Nursing Home</b> 1306 US Hwy 63 Queen City, MO 660-766-2291</p>
---	--	---	--	---

<p><b>Beeler Motor Co.</b> Lancaster, MO 660-457-3718</p>	<p><b>Kollision Korner</b> Bloomfield, IA PH: 641-664-2648 Fax: 641-664-2948</p>	<p><b>Image Shapers</b> 641-664-1650</p>	<p><b>Davencorp</b> Bloomfield, IA 641-664-3480 www.Davencorp.com</p>	<p><b>CHUCK'S BODY SHOP &amp; GARAGE</b> Hwy. 63 Queen City, MO 660-766-2312</p>
---	--	--	---	--

FOR SALE: Used garden tillers. Rear and front tine. Lots of Troy-Bilts. Many choices. Also used DR brush mowers. Kahoka, MO. PH. 660-216-1809. 14

MOBILE HOMES FOR SALE ON CASH OR CONTRACT. Also 2008 Chevy Silverado 4x4, 1500. PH. 641-680-7833. 12

CALL NOW 1-800-305-7705 For Trustworthy Advice, 2017 Interpreted, The Unknown Truth & Fast Results To Benefit Your Life 24/7/365! (MCN)

DIGITAL HEARING AIDS - Now offering a 45-Day Risk Free Offer! FREE BATTERIES for Life! Call to start your free trial! 855-982-0724 (MCN)

FOR SALE: Pair of Golden retriever breeding stock, \$1,200 for pair. Must take both, not related. PH. 641-891-3867. 13

WANT TO RENT PASTURE in Davis County for 2017 season. PH. 641-664-1520, Ext. 3, leave message 12

**Pleasant Ridge Specialties**  
Helping Farmers from Seed to Marketing

**We have barges to fill**  
With NonGMO Soybeans!

Barge 1 (Nov.-Dec.2017): \$0.75 Premium  
Barge 2 (Mar.-Apr.2018): \$0.85 Premium  
Barge 3 (June-Jul.2018): \$0.85 Premium  
Through Scouler River Price. Filling at Canton Barge Dock.

**We have the seed you need! Very competitive prices.**  
Call Nolan @ 660-341-2752  
Email: nkgood@marktwain.net

**Partners Brand**

**HUFF'S POLLED HEREFORD BULLS FOR SALE**


*Raising Hereford Cattle Since 1915*

- Sires are selected for calving ease, maternal traits, calm dispositions, & rapid growth. Superior EPD's!!
- Raised on a diet that encourages growth not fat, they are ready to work!
- Docile & easy to handle - the disposition you always wanted.
- 2015: inducted into the Missouri Hereford Hall of Fame.
- 2016: Recipient of the American Hereford Association's Legacy Award.

**HUFF'S POLLED HEREFORDS**  
RR1 BOX 192 • RUTLEDGE, MO 63563

LeRoy & Jane Huff, Home: 660-883-5684 or Cell: 660-341-6392  
Sean & Nichole Huff, Home: 660-883-5383 or Cell: 417-499-3639

GIVE US A CALL & VISIT OUR FARM TO SEE FOR YOURSELF THE QUALITY DESCRIBED!



**These bulls represent the best genetics of the breed!**



# KEOSAUQUA SALE CO.

20511 Hwy. 1, Keosauqua, IA

### Results from March 18th

Butchers.....	\$41.00-48.00/cwt	.....	\$139.00-141.00/cwt
Sows.....	\$36.00-45.00/cwt	Ewes.....	\$70.00-90.00/cwt
Lambs under 80#.....	\$182.00-252.00/cwt	Kid goats 40-70#.....	\$110.00-160.00/hd
Lambs over 110#.....	.....	Cull nannies.....	\$75.00-175.00/hd

**Pound cows** low yielding \$ 50.00-61.00/cwt  
High yielding \$62.50-73.50/cwt  
**Pound bulls** \$82.50-95.00/cwt

<b>STRS</b>		<b>HFRS</b>	
Red 434	170.00	Blk 419	153.00
Red 528	169.00	Blk 480	152.00
Blk 571	164.00	Blk 534	144.00
Blk 628	152.00	Blk 583	133.50
Red 679	144.00	Blk 646	135.00
Blk 798	133.00 load	Blk 670	129.00
Mix 809	130.00 load	Red 727	130.00
Mix 923	126.00 load	Bwf 768	124.50

## REGULAR SALE SAT., MAR 25TH

## SPECIAL CATTLE SALE SAT., APRIL 1ST

## BRED COW SALE SAT., APRIL 8TH

Thank You For Your Business!

For More Information Contact:

### Selling Times

Hogs.....	9:30 a.m.
Sheep & Goats.....	10:00 a.m.
Outside Merch.....	11:00 a.m.
Cattle.....	Noon

Keosauqua Sale Co.  
319-293-3508  
Bill Goehring  
641-919-9365

[www.keosauquasaleco.com](http://www.keosauquasaleco.com)

**GELBIEH BULLS FOR SALE:** Excellent quality yearling bulls & 1) - 2 year old.

**HOBBS GELBIEH**  
PH. 641-203-0863 or 641-766-6779. 13

**FOR SALE:** John Deere 12 ft. Model B grain drill, double disc openers, grass seed attachment, always shedded, \$1,100; 20 ft. harrowgater, \$1,000.  
PH. 319-750-1968. 12

Garages • Pole Barns Commercial Free Estimates

**LAN-DOW BUILDINGS**

**Lancaster Lumber, Inc.**

We Stock a Complete Line of Building Materials Complete Buildings or Packages Available

Toll Free 800-424-5071 Fax 660-457-3133

Hardware • Plumbing • Electrical • Paint  
500 Green Street • Lancaster, MO 63548

# SPRING PLANTING SEASON

Don't hesitate to start applying your fertilizer and chemicals for the spring season.

- Soil testing
- Dry & liquid fertilizer
- Liquid nitrogen
- Custom application of fertilizer & chemicals
- Spreading
- Small seeds



906 Karr Street • Bloomfield, IA 52537

For information & prices on our spring special call 888-664-1045 today!



## Sales & Service of Outdoor Power Equipment

641-664-2784 • 502 E. Franklin • Bloomfield, IA

## MAST OVERHEAD DOORS, INC.

105 S. Dodge St., Bloomfield, IA 52537



**GARAGE DOORS**  
Residential & Commercial  
Doors & Operators

641-680-2016

CALL FOR AN APPOINTMENT

Quality Products  
+ Quality Workmanship  
= Quality Customers

Free Estimates We Fix Doors

## POSITIONS AVAILABLE

- Truck Drivers (CDL)
  - Plant Employee (Mechanical Capabilities)
- Pay based on experience!
- BENEFITS**
- IRA • Health Insurance • Vacation

**Ewing Enterprises, INC**  
604 Depot St. • Clio, IA 50052  
641-876-2444

# Scotland County LIVESTOCK AUCTION

P.O. Box 111 • Hwy 15 North • Memphis, MO  
660-465-7213 • Jerry & Barb Blomme  
660-341-0069 • Grant Blomme

## SPECIAL CATTLE SALE

Sat., March 25th @ 12:30 PM

- 45 - Black Steers & Heifers, 450 - 650 lbs.
- 20 - Black Steers & Heifers, 400 lbs.
- 18 - Char X Steers & Heifers, 500 lbs.
- 12 - Black Bulls & Heifers, 550 lbs.

Expecting More Cattle By Sale Time.

Market Report for Sat., Mar. 18th: **Feeders:** Lite Test. **Veals:** \$110 - \$155. **Beef Veals:** \$400 - \$500. **LB Cows:** \$59.00 to \$72.00.

[www.ScotlandCountyLivestock.com](http://www.ScotlandCountyLivestock.com)

**HONEY BEES FOR SALE:** 2 & 3 lb. Packages, Italian or Carniolan Queen, early April delivery Drakesville area, \$30 deposit. Fewer packages this year. Please order early  
641-682-8333 or 641-799-9266 08, 10, 12

**FOR SALE:** 2009 Polaris 850xp Sportsman, 174 miles, blade, winch, windshield, cargo box, like new; Homemade wood splitter trailer type, 25 horse, Kohler engine; Samsung Galaxy S6 Edge phone, like new.  
PH. 660-956-2177. 14

## HAY, STRAW AND FIREWOOD AUCTION

Southern Iowa Produce Auction  
Sales every 2nd & 4th Saturday, November thru March

## Saturday, March 25th - 10 A.M.

**Early Listings:** Assorted Round Bales: Approx. 100-120 bales including 60 bales of 1st & 2nd cutting alfalfa. **Large Squares:** 2 semi loads 3x3 1st & 2nd cutting alfalfa grass mix; 3 semi loads 3x4 1st cutting alfalfa, 1st & 2nd cutting grass and rye hay. **Small Squares:** Normal run including: 150 wheat straw; Approx. 300 2nd cutting alfalfa grass mix. **MISC:** 60 black locust post & 50 - 100 assorted hedge post

**MORE EXPECTED BY SALE.**

Unloading Available **Friday** Before Sale

19141 Ice Ave. Bloomfield, IA

Call 641-722-3623 on auction days or leave a message.  
Market Report or Information call 712-432-8593

## NOTICE:

Large Assortment of Plugs and Plants to be sold starting @ 12 Noon on Sat., March. 25th

Change the way you watch TV- Get rid of cable and get DIRECTV! You may also qualify to receive \$100 VISA gift card when you sign up today - Limited time Only. CALL NOW! 844-359-1203 (MCN)

## Private Treaty Bull Sale

Call or email [jllangus@outlook.com](mailto:jllangus@outlook.com) for a complete sale book today!!!



Conneally Comrade 1385 #17031465 Sons Sell

**Jager Land & Livestock**  
March 26, 2017 Yrlg & 2 Yr. olds  
TOP A.I. Sires Calving Ease Available  
Viewing 1 p.m. Bid Offs 2 p.m. Held at the Farm

Curt & Lorie Jager  
2371 330th Street  
Curt 641-660-0771

Gina & Dan Hoy  
Eddyville, Iowa 52553  
Office 641-969-4600

Videos of bulls available at: [jllangus.com](http://jllangus.com)

Excellent Dispositions | Ultrasound & Performance Data | Parentage Verified | Semen Evaluated  
Genomic Profiles | BVD Free | Free Housing of Yearling Bulls till June 1, 2017 | Guaranteed



**Phil Archer**  
641-675-3769 - Home  
641-680-6769 - Cell





# ANNUAL OPEN HOUSE

Post & Pole Frame Buildings



Specializing In:

Post Frame Buildings (Up to 100' Wide Clear Span) • Agricultural • Commercial • Residential • Equine • Heat Formed Metal Roofing & Siding With 50 Year Warranty

Quality Workmanship • Best Quality Material

## STOP IN AND SEE US ON FRIDAY

# MARCH 31<sup>ST</sup>

Lunch 11 am - 2 pm

Mark your calendars!



2 Miles N. of Drakesville on pavement  
888-371-4710 641-722-3505  
17549 Husky Trail Drakesville, IA 52552



**FOR SALE:** Border Collie Heeler Cross puppies out of working parents, excellent stock dogs, choice of 9. \$100 each. Double Max Trophy Whitetail mineral, \$18 for 20 lb. bucket.  
VM. 641-664-2570. 13

**FOR SALE:** Red barn boards off Sunny Plain Farm barn built in 1874, \$1.50 per sq. ft. OBO. Also approximately 1,300 sq. ft. of corrugated metal, make offer.  
**Kenneth Mullett**  
25719 Timber Ave.  
Pulaski, IA 53584 12

**DOWNSIZING!** 46" rear projection Hitachi TV, \$125, great picture, bought on 12/29/04! Lots and lots of scrap booking supplies including a Personal Electric Cutter (Cricut) with two cartridges, new needles, Cricut ink color markers and tools, \$100 for all!; lots of Creative Memories supplies-some never opened, \$20; 12x12 scrap booking paper organizer rack storage with cover, \$15; tons of embroidery thread, \$10; several Terra Cotta large flower pots (6-10) \$20.  
PH. 641-664-2588. 13

**FOR SALE:** Big round bales 1st cutting grass hay, \$25 per bale. Net wrapped. Can deliver. PH. 641-929-3659 or 641-799-8365. 13



**We are your local, full-service contractor, dedicated to meeting all of your home improvement and home building needs with integrity and quality craftsmanship.**

- Metal Roofing
- FREE estimates!
- Crews available
- Call today!

## WAGLER METALS

19049 Ice Ave., Bloomfield, IA  
641-722-3692  
M-F 7:30AM-5PM • Sat. 8-11:30AM

Retirement Sale-After 58 years of farming

# Public Auction

**Monday, March 27, 2017**  
10 a.m. Hayrack items, 11 a.m. Sharp selling Tractors, Combine, Hay Equipment  
**at 24050 Hwy. 63, Bloomfield, Iowa**  
8 miles southwest of Bloomfield



### Tractors

1997 7810 John Deere, MFWD, 8,000 hours, 16 spd., power shift, quick hitch, 3 rear hyd., 1000/540 pto, selling with duals and hubs  
2003 7320 John Deere with JD 740 Classic loader, 5600 hrs., left hand reverse, joystick, 7' bucket with homemade bale stabber, quick hitch, 3 rear hyd., 16 spd. powerguard, brand new front tires, 1000/540 pto  
1992 4255 John Deere, 7000 hours, 2 WD, power range transmission  
1983 4050 John Deere, 6100 hours, 2 WD, power shift, 466 motor with blower

2009 John Deere 568 round baler, mega wide plus, twine and net wrap kicker, 540 RPM, less than 5000 bales  
2009 H&S 12 wheel high capacity rake with kicker wheels  
New Holland 258 and 260 hay rakes with cart, left and right hand  
2000 Easy Haul hay trailer, 7 bale, inline, side dump, gooseneck  
(4) 8'x16' hay racks on John Deere 963 gears

### Misc.

New Holland 358 grinder mixer, hay table, scales, 540 pto  
Gehl 3310 skid loader  
High Line 6600 bale processor, Bale Pro H&S manure spreader, Model 262, 2 speed with 540 pto, slop gate  
John Deere HX 15 brush cutter, 1000 pto  
Land Pride 8' 3 pt. blade, hyd. swing  
Werts 8' front end blade  
(3) Brent 640 grain wagons, truck tires, brakes and lights (2 green, 1 red)  
Demco 650 grain wagon, truck tires, brakes and lights  
Hydraulic auger, wagon mount, 6", 12' long  
1000 gallon fuel barrel, electric pump  
120 gallon transfer tank with hand pump  
Lincoln welder  
Century welder  
Shop press  
Hand tools  
Hay rack items too numerous to mention

### Combine

1989 1660 Case IH, 3860 hours, straw chopper, hopper extension  
1020 20' bean table with header cart  
1060 6 row cornhead, all poly, no cart

### Tillage Equipment

John Deere Model 8300 grain drill with seed attachment, 13'  
Glenco 18' soil finisher with harrow attachment  
John Deere 950 mulcher, 15'  
John Deere 1710 A disk chisel, 13'  
John Deere 960 field cultivator, 28' with harrow attachment  
Unifort Model 130 rolling harrow, 35'  
Case IH 496 disk, 25'  
Case IH 720 5 bottom plow, toggle trip  
Blue Jet 5 shank ripper, 3 pt.  
6 narrow noble cultivator  
4 section harragator  
Kinze double frame 12 row planter, 17'  
John Deere 400 rotary hoe, 6 row, narrow 3 pt.  
Brandt 60' 10" Auger  
540 PTO Swing-Away auger, hyd. lift

### Hay Equipment

2013 New Holland 7450 Mow Max, 13' rubber roles, hydra swing, draw bar hitch, less than 700 acres!

### Pickup-Trailers

1996 Dodge 2500 flat bed, regular cab, 4x4, diesel, 250K plus  
1979 WW stock trailer, gooseneck. 6x20 with title  
Homemade gooseneck flatbed trailer  
Homemade four wheeler trailer

### Cattle Equipment

Foremost cattle chute with automatic catch head gate, Model 150  
(2) 2 ton creep feeders on wheels with gates

Lunch will be available by L&M Cafe. Will load merchandise the day of sale.

Max and Jeani Leyda are well know citizens in the community. An excellent opportunity to purchase well taken care of machinery. everything is in excellent condition. Follow signs day of sale.

For more information or to view equipment contact Josh Williams, 641-208-5414

## Max and Jeani Leyda, Owners

Max: Home: 641-929-3318 Cell: 641-208-2021 • 24050 Hwy 63, Bloomfield, Iowa 52537

Terms: Cash or good check. \$35.00 returned check fee. Not responsible in case of accident  
The information in this sale brochure was obtained from the best reliable sources available to us. However, the Auctioneers or their employees will not be held liable should the above information be incorrect. Any announcement made day of sale will take precedence over any previous advertising.

### SALE CONDUCTED BY Don Horn Auctioneering Service

209 East Jefferson, Bloomfield, IA  
Phone: 641-664-1385 • 641-722-3796 -Home  
• 641-208-0254 -Cell



"We don't talk service, we give it."

Auctioneers:

Don Horn • Jerry Bish  
Rodney Lawson • Josh Williams • Trevor Nightingale



EXTRA HEAVY 10 GAUGE BALE RINGS & HAY SAVERS

CONTINUOUS FENCING

Mineral Feeders  
Feed Bunks  
Water Tanks

19887 Jade Ave  
2 1/2 Miles W of Bloomfield  
V.M. 641-664-2797



# BLOOMFIELD



# LIVESTOCK MARKET

Wed., March 29th.....Fat Cattle, Slaughter Cows & Bulls..... 9AM  
 Wed., April 5th.....Fat Cattle, Slaughter Cows & Bulls..... 9 AM  
 .....Special Grass Cattle Sale..... 11:30AM  
 Wed., April 12th.....Fat Cattle, Slaughter Cows & Bulls..... 9AM  
 .....Special Yearling Sale..... 11:30AM  
 Wed., April 19th.....Fat Cattle, Slaughter Cows & Bulls..... 9AM  
 Wed., April 26th.....Fat Cattle, Slaughter Cows & Bulls..... 9AM  
 .....Special Feeder Sale..... 11:30AM



## National Ag Week

March 19th - 25th

# Thank YOU FARMERS

**SALE BARN OPEN UNTIL 9:00 PM  
EVERY TUESDAY TO RECEIVE LIVESTOCK**

Phil Schooley ..... 641-664-3450  
 Ron Schooley..... 641-777-0302  
 Roman Schooley ..... 515-450-3685

*We appreciate your business!*

Tyler Schooley ..... 641-208-5442  
 Barn Phone ..... 641-664-2435

## HWY. 63 NORTH • BLOOMFIELD, IA

**FOR SALE:** 5 large round bales alfalfa mix hay. No rain. Net wrapped. \$30 a bale. You load. Near Pioneer Ridge.  
 PH: 641-459-3320 12

**FOR SALE:** Troy Built Pony Tiller. Nikon binoculars. Also 12 ft. boat with ores & trolling motor.  
 PH: 641-664-2831 13

**FOR SALE:** House and barns on 8 acres, room for horses and some calves. South of Kirksville.  
 PH. 641-929-3213. 13

**HOUSE FOR SALE:** 406 E. Chestnut, Bloomfield, IA. One story, 2 bedroom home with 1 bath situated on full unfinished basement. Home has 1 car attached garage with newer roof, vinyl windows and vinyl siding. Home also has a new furnace and central air. Home furnished with stove, refrigerator and stacked washer and dryer.  
 Betty Shumate Estate, \$68,500. PH. 641-208-3882 or 641-208-5756. 12

**FRIESEN CONSTRUCTION**  
 New Houses  
 Remodeling  
 Garages Electrical  
 Plumbing  
 Custom Cabinets  
 Arlen 664-3270  
 Cell 641-208-0170  
 Bloomfield, Iowa

## National Ag Week

March 19th - 25th



We would like to take the time to **THANK** our **LOCAL** Farmers for all their hard work.



### Tri-County Electric Cooperative

® A Touchstone Energy® Cooperative  
 PO Box 159, 16894 US Highway 63  
 Lancater, Missouri 63548

**Be Safe**  
 Watch for power lines while entering & existing fields.

## Building Packages



**We Can Roll Your Metal While You Wait!**



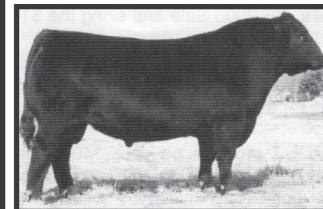
**A W Metal LLC**  
 Metal Roofing Headquarters

Free 12 pack of **A&W Root Beer®** with your next purchase of \$500 or more!



641-664-3990 awmetal.net

## ANGUS BULLS YEARLINGS & 2 YR. OLDS



Sired by Musgrave Reachout 530

- ★ CALVING EASE
- ★ GROWTH
- ★ THICK
- ★ GENTLE DISPOSITIONS

**SELECT YOUR BULL NOW**

**DORAN BOLLMAN**  
 PULASKI, IOWA  
 641-675-3467



Bring your plans in for a **FREE ESTIMATE**



**Trusses Engineered and Designed to Your Specs**

**Imagine a Lifetime of Beauty with the strength of steel.**

As the original stone coated steel roofing system, the DECRA product line represents a perfect blending of over 50 years of research and practical experience. Offering the ultimate in performance and engineering design is what DECRA roofing systems are all about.

**SHINGLE XD DECRA SHAKER XD**  
 Stone Coated Steel Roofing Systems



17893 212th Street • Bloomfield, IA 52537  
 641-722-3605 • Mon.-Fri. 7 AM to 5 PM