



IMPACT

Postal
Customer Local
PRSR
STD
US Postage Paid
IMPACT
ECRWSS



LRMA's 2017 Spring Break Festival...page 12

SCRMC's 9th Annual Art of Healing
Fundraiser...page 13

Laurel • 601.649.1129

Volume 41, No. 13 • March 29, 2017

47,129 total circulation

www.impact360.ms

Serving Jones, Jasper, Smith, Wayne and Washington & Choctaw County, AL

Advertising that works!

“Home Town” brings excitement to Downtown Laurel

By Linda Cranford

The long awaited premier of HGTV's new series, “Home Town,” featuring Laurel's favorite couple Ben and Erin Napier, finally aired Tuesday night, March 21. The TV show was projected onto the side of the building of Ben and Erin's new retail store The Laurel Mercantile which is located on Front Street in downtown Laurel.

The crowd began arriving shortly after 5 p.m. in the downtown area for the Block Party before the show sponsored by the Jones County EDA and the new Chamber of Commerce Board of Directors. Magnolia Street was closed from Central Avenue to Oak Street and all of Oak Street was also closed as several of the downtown businesses remained open. Food and beverage vendors were also set up throughout downtown and rumor has it that they all ran out of food. According to members of the Chamber Board, an estimated 1,500 people

roamed through Downtown Laurel Tuesday evening with several hundred remaining for the showing of the premier.

The vacant lot on the corner of Front Street and Oak Street next to The Laurel Mercantile building was filled with lawn chairs, blankets, and people sitting on bleachers or standing in a vacant spot to enjoy the music of Country Music Artist Amber Hayes prior to the showing of “Home Town.”

Ben and Erin were there and did a live-stream on HGTV Facebook answering questions from fans from all around the country.

Jim Rasberry, EDA Board chair, served as emcee for the evening. Ross Tew, who, along with his wife, Laura, were in the pilot show of “Home Town” was around and shot out free T-Shirts to the crowd.

At the end of each segment when the

See HOMETOWN, page 4

Sunbelt Fans & Lighting, LLC
 201 N. 16th Ave - LAUREL 601.425.5177 www.sunbeltlighting.net

SAVE \$\$\$ LED BULBS

NEW LOCATION OPENING SOON IN BATESVILLE, MS
 HATTIESBURG - MADISON - MERIDIAN - PICAYUNE - FLOWOOD - GULFPORT - BATON ROUGE - LAFAYETTE

Your 24 FITNESS CENTER & TANNING

Selected Insurance Companies will pay for your gym membership fees:
 • Cigna • Magnolia Health • Humana • Silver Sneakers • plus many more...

WE OFFER • ZUMBA • SPIN • POWER TONE • BOOT CAMP • PLUS MANY MORE

GET 2 MONTHS ANY PACKAGE FOR ONLY... \$11
 APRIL- \$5.00, MAY - \$5.00 + ENROLLMENT FEE \$1 - (Regular Prices Begin in June)

your24fitnessandtanning.com 601.342.2948
 1705 Parker Drive • Laurel

TRADITIONAL FAMILY PRACTICE WITH URGENT CARE CONVENIENCE!

JFMC Ellisville
 601-719-0092
 Mon. - Fri. 8 am - 6 pm
 Across from Subway

Bryn Whitehead, FNP-C
 www.jonesfamilymedicineclinic.com

Medicaid, MS CAN, Magnolia, BC MISS, CHIPS & many more!

CUSTOM BUILT PORTABLE BUILDINGS

Office Units Available

WE COME TO YOU
WE CUSTOM BUILD QUALITY PORTABLE BUILDINGS TO FIT YOUR PLANS
 Locally Owned and Operated in Jones County

T. THORNSBERRY SERVICES, LLC 601.577.0927

HOME OF THE \$69 MATTRESS

QUEEN SIZE MATTRESS SET ON SALE \$199

\$199 Sales EVENT 24 MONTHS FINANCING! WITH APPROVED CREDIT

QUEEN SIZE ASHLEY METAL BED ON SALE \$199

DINING TABLE AND 4 CHAIRS ON SALE \$199

ASHLEY 3 PIECE COFFEE & END TABLE SET DON'T MISS THIS DEAL! \$199

SOUTHERN FURNITURE AND MATTRESS
 2909 Wheeler Drive • Laurel, MS 601-649-0733
 Next to Bob Palmer's Chancellor Motor Group

SPRING FASHION LINEUP!

NEW ITEMS HAVE JUST ARRIVED!

It's time to spruce up your closet with fresh and fabulous looks for Spring and Summer.

MISSBEHAVIN' BOUTIQUE
 528 N 15th Ave, Ste C • Laurel, MS • 601.425.1441

Classified Index	
Apartments for Rent	10
Attorneys	3
ATVs	11
Autos - Cars	10
Autos - Motorcycles	11
Autos - SUVs	11
Autos - Trucks	11
Buildings	8
Business Opportunities	6
Campers	8
Carports	11
Commercial	10
Estate Sale	6
Farm	3
Fish	6
Furniture	6
Garage Sales	8
General	3
Handyman	8
Help Wanted	8
Houses for Rent	10
Houses for Sale	10
Land	3
Massage	6
Mobile Home for Rent	10
Mobile Home Lots	10
Mobile Homes	9
Musical	6
Pets	6
Portable Buildings	8
Services Offered	7
Timber and Lumber	8
Trailers	3
Vacation	8
Wanted to Buy	8

Jones County Republican Women attend Legislative Day at the Capitol

Submitted

On Wednesday 3/8/17, the Mississippi Federation of Republican Women (MFRW), along with Mississippi's GOP elected officials, gathered at the State Capitol in Jackson for the annual Red Coat Legislative Day. Nancy Bell, Tiffany Parrish, Danielle Ashley, Debbie Griffin, Susan Perkins, Jane McArthur and Beth Henson represented the Jones County Republican Women for this annual event. They attended meetings and had lunch with Senator Chris McDaniel, Representatives Gary Staples and Donnie Scoggin, Public Service Commissioner Sam Britton, State Auditor Stacey Pickering, Insurance commissioner Mike Chaney, State Treasure Lynn Fitch, Representative John Read and other elected officials. The Old Capitol Inn was the venue for the annual luncheon. The ladies visited with First Lady of MS, Debra Bryant at the Governor's mansion that afternoon. The Jones County club is currently the largest in Mississippi and ranked 5th in the Nation.

The Republican women are among the most effective Republican organizations in American and Mississippi politics. Their tireless efforts and consistent dedication have elected countless Republicans in Mississippi and nationwide. The grassroots support they continually provide makes the difference in so many elections and at all levels of government, proving they truly are the backbone of our great Party.



Photo/submitted

Laurel School District Elementary Speech and Debate League holds final competition of the year



The Laurel School District Elementary Speech and Debate League recently held its last competition of the year. The league focuses on developing the oral, written and critical thinking skills of fourth and fifth grade students. Teams from all four elementary schools provide students the opportunity for competition and skills development. The humorous interpretation winners were (pictured left to right) first place Tristan Hutton from Oak Park Elementary, second place Takarla Newell from Oak Park Elementary and third place Olivia Mozee from Nora Davis Magnet. *Photo/submitted*



The Laurel School District Elementary Speech and Debate League recently held a humorous interpretation competition and the finalists were (L-R) Tristan Hutton, Takarla Newell, Olivia Mozee, Mikhayla Abney, Kimberly McCormick and Lauren Lanier. The students went on to compete in the final round of the competition where overall winners were named. *Photo/submitted*



The Laurel School District Elementary Speech and Debate League's volunteer judges for the final competition of the season were (front L-R) New York Life Agent Nicole Lavigne, Jones County Sheriff's Department Public Relations Allyson Knotts, MSU Extension Service Brooke Knight, (middle L-R) Jones County Sheriff's Department Grant Administrator Lance Chancellor, Rev. Davion Brown, Child Service Specialist Dyon Ruffin, (back L-R) New York Life Agent Johnny Quiroz and Dr. Curtis Windham. *Photo/submitted*

IMPACT
#1 in Advertising

Ronnie Buckley
Publisher

Kevin Williamson
Manager

Jerry Clark
Circulation Supervisor

Ryan Griffin
National Sales Consultant

Betty Busby
Laurel Sales Representative

Kim Wilbanks
Laurel Sales Representative

Trish Irwin
Laurel Graphic Artist

Jennifer Clark
Graphic Production Manager

Terica Roberson
Graphic Artist

Candice Pittman
Graphic Artist

Russ Farris
Graphic Artist

Sherry Hearn
Administrative Assistant

Linda Cranford
Writer/Photographer

WHILE THE IMPACT makes every effort to verify the offerings made in these ads, we cannot guarantee the integrity of every advertiser. We strongly recommend that readers investigate the companies involved before sending them any money.

Classified and ROP Ad Deadline

Sunday Edition -
Wednesday at 12:00 Noon

Wednesday Edition -
Thursday at 3:00

IMPACT

1010 N. 16th Ave
Laurel, MS 39441
Ph. 601.649.1129
Fax: 601.649.0424

Email:
admin@laurelimpact.com

VISA

MasterCard

Discover

Amex

Circulation Audited By

CIRCULATION
VERIFICATION
COUNCIL

IFPA

INDEPENDENT FREE PAPERS
OF AMERICA

EDA

of Jones County

Join us
for our **FREE** Spring Design Seminars

11:00am & 1:00 pm

Refreshments • Door Prizes • Fun

Wear your favorite **EASTER HAT** to be entered in the drawing!

Spring open house

2 DAY SALE
Friday, March 31st
& Saturday, April 1st
20% OFF
STOREWIDE

SATURDAY, APRIL 1, 2017
8:30am-3:00pm

CITY HOME CENTER

2139 HWY. 15 North
Laurel
601-426-2800
M-F 8:30-5:30, Sat. 8:30-1:00

Locally Owned and Operated

PARISH TRANSPORT

HAS IMMEDIATE OPENINGS FOR GOOD

OTR Truck Drivers and Owner Operators

HIRING ALL DIVISIONS

Benefits include:

- Health Insurance • Vision Insurance
- Dental Insurance • Paid Vacation

NOW OFFERING SIGN ON BONUS

- SAFETY BONUS • REVENUE BONUS
- RETENTION BONUS

If You Want To Work For A Great Company With Great Benefits

call us at 601-342-2314 today!

Located in Ellisville, MS

GENERAL

Straight Talk cellphone for sale, brand new \$10. Handicap bench for bathtub, \$50. 601-250-4068.

Lawncare: Serving Hattiesburg, Lumberton, Laurel, Sumrall, Petal, Brooklyn, Ellisville, Purvis and Mosselle areas. Reasonable rates. 601-325-5008. www.fullservicelawnca-rems.com

Prayer & healing services: Every Thursday at 7:00 p.m. at Forget-Me-Not" Christian Books and Gifts, 5317 Old Hwy 11, Suite 1, Hattiesburg, MS, West Oaks Shopping Center, 601-264-2191.We are more than just a bookstore. If you need prayer or a healing, you need to be here! James 5:14. Storewide Inventory Reduction Sale. Up to 90% off select items. Books, Bibles, music, prayer, shawls. We also carry the Tallit and other Holy Land gifts. We have a private prayer room dedicated just for you to use for prayer. www.shop-forgetmenot. com Pray, Heal and Shop! 601-264-2191.

Flag Pole Super Sale! 24ft. Liberty Deluxe Double Flyer (reg. \$299) now only \$199. Call American Flag Pole Co. Today! 601-649-0748. God Bless America.

Super sale! On. Lawn, garden, home, ranch items and more. Vegetable plants, 6 pack, cabbage, lettuce, tomatoe, \$2.49 per 6PK. Planting Tools, Cultivator/trowel, your choice, \$3.99EA., Garden Tools, rake/shovel, your choice, \$6.99EA. Miracle Gro, Earth Gro, Nature Scapes Soils and Mulch. Organic Humus, 40# Bag \$2.49. Topsoil, 40# bag \$1.99. Compost, 1 cu ft. \$2.09. Red Mulch, 2 cu ft. \$3.99. 1 cu ft.garden soil, \$4.49, 2 cu ft garden soil, \$7.49, 1 cu ft. potting mix, \$7.99, 2 cu ft potting mix, \$12.99. Char Broil, 3 burners, \$139.00. Tiller Rental available. Portable Tail Gater, \$199.00. Steel Farm Gates, beginning at \$89.99ea. 8', 10' 12', 14', 16' available. Barb Wire, 4 point, 15-1/2GA \$38.95 P/R/L. Griddle/Grille, \$199.00. Headquarters for Tamko shingles and Torshel shelters. Bel-leco Home Center. Hattiesburg, MS. 601-261-0198. .

Spring Fling at 4-Way Stop in Taylorsville, Saturday, April 1, 2017, 9:00a.m.-5:00p.m. Arts, Craft, Specialty Gifts and More!

3B's Mini Storage located at 511 Court Street in Waynesboro, MS, hereby makes notice that the contents of Cathy Everett will be disposed of on April 8.

ATTORNEYS

Bankruptcy & Social Security, Tracy A. Walley, 1616 West 3rd Street, Laurel, 601-651-2186

Divorce, personal injury, custody, DUI, adoption, will disputes, Worker's Comp, wrongful termination, land & property disputes. Call Sam Creel 601-498-8968.

FARM

Farm Barns. 40x30x16-\$9500. 30x30x10-\$7500. Metal roof and sides. Price includes labor. 601-296-0550.

TRAILERS

Trailer for sale, bumper pull, 16x6.5 ft. tandem axle, pipe rails, good tires, good floor, wiring & lights. Call 601-410-6008.

B&B Trailers. Utility and equipment. 8201 US Hwy 98W, Hattiesburg. We take trade-ins. 0% financing. 12 months same as cash. WAC. Check out our new website: bbtrailers.net. 601-264-6711.

LAND

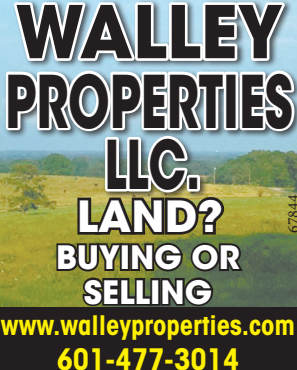
+/- 49 Acres Located on County Road 6 Just off MS Hwy 11, Heidelberg, MS. This tract consists of 23 year old merchantable pine timber with scattered hardwoods.Tract has small creek that runs on the NE Corner and several great camp/home sites. Great hunting tract and close to amenities. Power/Water available. \$125,000. Call Woods & Waters Realty at 800-526-3961. See more at mfmiland.com

24 acres in Runnells town. Lots of mature timber and wildlife. Unbelievable hunting!! May subdivide. Call Shawn with Southern Coastal Realty at 601-408-3570.

+/- 46 Acres Pastures Located on Lower Myrick Road and Mollie Boutwell Rd, this property is made up of Pasture and has 4 Ponds. Perfect place to raise cattle or horses or to build your dream home. Call Rob McCraw 601-498-9143 for more information or to set up an appointment to view this beautiful piece of land!! \$161,000. Woods & Waters Realty, www.mfmiland.com.

+/- 132 Acres Located on Hwy 57 just North of Leakesville, MS. This tract consists of thinned mature pine and a mix of younger hwd/pine timber. Great hunting and recreation. Good roads in place with food plots. Priced to sale Quickly! \$211,200. Call Woods & Waters Realty at 800-526-3961. See more at mfmiland.com.

+/- 219 Acres priced to Sell Quick! Located on just outside of Topton, AL, and one hour from Mobile, AL. Has road frontage on CR 19 along with power and water available. Has great secluded House/Camp Site sitting underneath beautiful mature longleaf pines and hardwoods. Dark and Rich Waters of Bilbo Creek runs



WALLEY PROPERTIES LLC.
LAND?
BUYING OR SELLING
www.walleyproperties.com
601-477-3014

LOW COST DENTURES SINCE 1978

DENTAL SERVICES OF SOUTH MS. P.A.
GENERAL DENTISTS
2019 Hardy Street • Hattiesburg, MS

- Dentures
- Reline
- Partial
- Repair

Call Toll Free
Within 55 Mile Radius
(601) 545-1905
(877) 545-1905

LISTING OF THESE PREVIOUSLY MENTIONED AREAS OF PRACTICE DOES NOT INDICATE ANY CERTIFICATION OF EXPERTISE THEREIN.

through the property with Hardwoods make for great wildlife habitat. Has Lake. Has several cleared areas that will make large and plentiful food plots. Has some young pine and some thickets for deer to bed in.This tract truly has it all! Don't miss this one of a kind Hunting/Recreational Tract. Reduced \$306,600. Call Woods & Waters Realty at 800-526-3961. See more at mfmiland.com

For Sale 45 acres, 2 old houses, 2 ponds, 4 water meters, Jones

MONEY LENDERS



WE FINANCE ATV'S
601-426-7600
134 Beacon St.
Laurel

LOW COST DENTURES SINCE 1978

DENTAL SERVICES OF SOUTH MS. P.A.
GENERAL DENTISTS
2019 Hardy Street • Hattiesburg, MS

- Dentures
- Reline
- Partial
- Repair

Call Toll Free
Within 55 Mile Radius
(601) 545-1905
(877) 545-1905

LISTING OF THESE PREVIOUSLY MENTIONED AREAS OF PRACTICE DOES NOT INDICATE ANY CERTIFICATION OF EXPERTISE THEREIN.

& Wayne County line off 84 East. \$120,000. 601-428-7191.

Stringer, MS: This excellent 92 acre parcel is located in the heart of Stringer School District. The property consist of various merchantable timber types with multiple home sites. With an abundance of wildlife the property could also be used as a hunting retreat. The property can be divided. Priced to sell at \$207,000.

Contact Marc 601-670-5429 at Walley Properties, LLC.

Covington County 85 +/- Acres. Price Reduced! Located in the Seminary School District 4 miles North of Seminary at the intersection of Hwy 535 and Lebanon Church Road. Would make for a great home site. Features a mix of young pine plantations and hardwood stands along the creek bottom. Excellent timber

investment and hunting opportunity. \$191,250 Call Bennett 601-913-0340 at Walley Properties LLC. Please visit walleyproperties.com for maps of this listing

78+/- Acres located in Smith Co., in Mize School District. Live creek throughout. \$2900 per acre. Call 601-818-3597.

Continued on ... Page 5

SPRING SAVINGS!

Amana®

26 CU. FT. SIDE BY SIDE REFRIGERATOR

- External Ice/Water Dispenser With Filtration
- 3 Adjustable Spill Saver Glass Shelves
- Adjustable Gallon Door Bins
- Deli Drawer
- Dispenser Control Lockout ASD2575BRS, W, B

REG \$999

\$849

BLACK OR WHITE

REG. \$1199

\$949

STAINLESS STEEL



WHILE THEY LAST!

Delivery & Setup Available!

Alexander's

Bay Springs 601-764-2161
Ellisville 601-477-3312

SELECTION • SERVICE • VALUE

NOW OPEN!

J&S AUTOPLEX LLC

J&S AUTOPLEX

4029 HWY 15 NORTH LAUREL

601-342-2123

<p>36K Miles!</p> <p>LAST CHANCE!</p>  <p>2001 PORSCHE BOXSTER</p> <p>ONLY \$12,990</p>	<p>48K Miles!</p> <p>LAST CHANCE!</p>  <p>2003 PORSCHE 911 CARRERA COUPE</p> <p>ONLY \$29,990</p>	<p>40K Miles!</p>  <p>2015 KIA OPTIMA LX</p> <p>\$13,990 or \$199/mo</p>	<p>50K Miles!</p>  <p>2013 CHRYSLER 300 C</p> <p>Leather, Navigation</p> <p>\$16,990 or \$239/mo</p>	<p>50K Miles!</p>  <p>2014 ACURA TL LOADED</p> <p>\$18,990 or \$269/mo</p>	<p>50K Miles!</p>  <p>2012 MERCEDES BENZ GLK</p> <p>\$24,990 or \$349/mo</p>
--	--	---	--	--	--

FULL SERVICE DEPARTMENT

OPEN TO THE PUBLIC -

FREE DIAGNOSTIC CHECKS

- Six Service Bays
- Four Hydraulic Lifts
- Front End Alignment Machine
- State's Only Quadriga 1000 Tire Machine!

<p>47K Miles!</p> <p>REDUCED</p>  <p>2012 LEXUS ES 350</p> <p>\$20,990 or \$299/mo</p>	<p>REDUCED</p>  <p>2011 JEEP WRANGLER RUBICON</p> <p>\$30,990 or \$429/mo</p>	<p>REDUCED</p>  <p>2014 JEEP WRANGLER UNLIMITED SAHARA</p> <p>Hardtop, Loaded</p> <p>\$29,990 or \$419/mo</p>	<p>50K Miles!</p>  <p>2013 HONDA ACCORD LX LOADED</p> <p>\$14,990 or \$209/mo.</p>	<p>40K Miles!</p>  <p>2014 NISSAN ALTIMA</p> <p>\$13,990 or \$199/mo.</p>	<p>36K Miles!</p>  <p>2014 LINCOLN MKZ LOADED!!!</p> <p>\$19,990 or \$279/mo</p>
<p>17K Miles!</p> <p>REDUCED</p>  <p>2015 CHEVROLET SILVERADO K2500 HEAVY DUTY LTZ 4X4 CREW CAB</p> <p>Leather, Navigation, Sunroof, Heated Seats, EVERY OPTION!</p> <p>\$44,990</p>	<p>25K Miles!</p> <p>REDUCED</p>  <p>2014 NISSAN FRONTIER SL CREW CAB</p> <p>\$24,990 or \$349/mo</p>	<p>40K Miles!</p>  <p>2013 SONATA GLS</p> <p>\$13,990 or \$199/mo</p>	<p>Only 29K Miles!</p>  <p>2013 NISSAN MAXIMA SV PREMIUM PACKAGE</p> <p>\$20,990 or \$299/mo</p>	<p>16K Miles!</p>  <p>2014 FORD ESCAPE</p> <p>\$16,990 or \$239/mo</p>	<p>18K Miles!</p> <p>REDUCED</p>  <p>2014 FORD F150 CREW CAB</p> <p>\$26,990 or \$379/mo</p>

YOUR NEW, #1 PRE-OWNED DEALERSHIP IN SOUTH MISSISSIPPI

All payments 72 mos. with 10% down, plus tt&l. W.A.C. 72 months at 3.99%

Shop 24/7 online
jandsautoplex.com

Two days after the premier, Ben said that an estimated 2.3 million people watched the series premier and that HGTV was very pleased with the show. The young couple will soon begin traveling around the country promoting the series.



A group of people, including a young boy, standing outdoors in front of a large sign for 'Fairbairn McCasville Co.' and 'Loomis'. The sign also mentions 'McGowan Harts' and 'Durable Goods'. The group is gathered on a paved area, possibly a walkway or plaza, with trees and a building in the background.



Pet of the Week

SPONSORED BY: JIM CLARK



Archie

and his siblings were surrendered as puppies to the Animal Rescue League back in 2011. All of the pups were adopted, except for Archie and his sister Cooper.

Cooper recently passed away, and Archie desperately needs a loving adopter. He is very shy and will need an extremely patient person who is willing to work with him and allow him time to adjust to a family. Archie is around six years old and has been neutered and vaccinated. He is heartworm negative and is on monthly heartworm prevention. Archie is available at the Animal Rescue League, located at 2511 Moose Drive in Laurel. ARL is open Monday-Saturday, from 10 a.m.-2 p.m. If you have any questions about adopting, volunteering, or donating, you can call us at 601-649-0821. You can also find us on Facebook as the Laurel Jones County Animal Rescue League or visit our website at <http://arllaurel.webs.com>.

ARL is currently in need of Purina Dog Chow, Purina Puppy Chow, cat litter, laundry detergent, and bleach.

State Farm®

Providing Insurance and Financial Services

Jim Clark, Agent

P.O.Box 548 • Ellisville, MS

601.477.9336

jim.clark.b2r5@statefarm.com



Like a good neighbor, State Farm is there.®

The Wayne Co. Cattlemen will be hosting a forage test plot field day at 6:00 p.m. located at G.A.R.R. Farms, LLC, off of Hwy 145 South. Those interested in joining the Wayne Co. Cattlemen dues are \$45 and payable that evening. If you plan on attending this field day please call the Wayne Co. Extension Office at 601-735-2243.

April 4

The Jasper County Genealogical and Historical Society will hold its monthly meeting at the Bay Springs Library at 6:00 pm. The program will be presented by Marsha Green Lay on her father, M. B. Green. Mr. Green is widely acclaimed as a gifted artisan who designs and fabricates various types of stringed instruments of exceptional quality. All interested persons are invited to attend. Refreshments will be served.

Jones County +/- 57 Acres: Must see! Located in South Jones County on Rainey Road. 10 Miles from Hattiesburg and Laurel right off the Sanford Road Exit on I-59. This property would be perfect for a home-site or mini-farm with plenty of recreational opportunities. Price: \$153,500. For more details, Contact Bennett 601-913-0340 at Walley Properties, LLC.. Or visit our website walley-properties.com for maps and more information of this listing.

Land sales: Let us assist you with your land sale or purchase. We provide full service forestry consulting and land brokerage. Call Woods & Waters Realty at 601-498-9143

Covington County: 40 acres located 6 miles east of Collins. Intersection of Highways 84 & 37. Bordered at West by Okawoods Creek. Great location for truck stop/convenience store. \$95K. Call 601-517-6940

+/- 90 Acres Located on Jernigan Road just South of Leakesville, MS. Tract is new cut over with scattered trees. Has good road system. Great Hunting and Recreation. Could be made into pasture. Several good house sites. Power available Owner

is will to split the property up into an 110 acre and 90 acre tract. Has creek running across the property. \$135,000 Call Woods & Waters Realty at 800-526-3961. See more at mfmiland.com

69 acres near Highway 15, Stringer MS. This property offers endless possibilities from home sites to commercial opportunities or just recreational use. Some dirt work has already been completed for new tenants. The property has some mature hardwood and some planted hardwood and an excellent internal road system along with frontage on Hwy. 15. \$320,000. Contact Marc at 601-670-5429. Walley Properties, LLC

+/- 31 Acres Located on Jr. Steede Road, just off of New Hwy 63, on the George/Jackson County Line. The timber has been recently cut but some hardwoods are left. Has a house site on the East side of the property. Power and Water available. Price to sale quickly!!!! \$37,200. Call Woods & Waters Realty at 800-526-3961. See more at mfmiland.com.

Lake Eddins: a great Place To Be. Now offering Offwater Lots As Low

As \$3500.00. Call CrossRoads Realty 601-727-7653.

Highlands. Finance a lot, \$1500 down, pay for your lot over 3 years - then use your lot as down payment at your bank. Call: 601-649-9459.

+/- 37 Acres Located on Augusta Road 5 miles South of Ellisville, MS. This tract is made up of merchantable timber with both pine and hardwood. Has two large food plots in place. Great hunting and recreation. Has a house sites with power and water available. 1/4 mile black top frontage on Augusta Road. \$96,200. Call Woods & Waters Realty at 800-526-3961. See more at mfmiland.com

Land for Sale: 90 acres various age plantation pine, stream thru property, hardwood bottom. \$2800 per acre. 601-668-7003

Outdoorsman's Paradise!! Perry County. 90 +/- Acres Located on the beautiful Tallahala Creek. This property is located on Highway 29 South right outside of Runnelstown, MS only 10 miles from the city of Petal. This property is every outdoorsman's dream, with over a 1/2 mile

of river frontage, sand bars, gorgeous hardwood bottoms, pine plantations, shooting houses and food plots. The plentiful abundance of wildlife such as: Deer, Turkey, small game and fish will keep you occupied year-round. \$333,000. Call Bennett 601-913-0340 at Walley Properties LLC. Please visit walleyproperties.com for maps of this listing.

20 acre farm/ranch in Janice, Ms. With custom built home, wrap around porch, Pond, horse stalls, fenced and cross fenced, huge shop. Bordered on two sides by National Forest lands. Lots of wildlife call Shawn, Southern Coastal Realty, LLC 601-408-3570.

+/- 160 Acres Located on Poppa Parnell Ln, just West of Leakesville, MS, this tract consists of 4 year old pine timber with some hardwoods. Has beautiful views and camp or house site. Power available. Great

hunting and recreation. Priced to sale! \$256,000. Call Woods & Waters Realty at 800-526-3961. See more at mfmiland.com.

Covington County +/- 74 Acres. New Listing! Located 4 miles from downtown Seminary off hwy 590 on the corner of Shirley Sanford Road and Johnny Sanford Road. This property would be perfect for a home-site with plenty of recreational opportunities. Property consist of mature pine plantation, gorgeous hardwoods, and a stream that flows throughout the property. Great for hunting. \$244,200. For more details, call Bennett today 601-913-0340 at Walley Properties, LLC. Or visit our website walleyproperties.com for maps and more information of this listing.

Lazy Leaf River Estates, Moselle. Beautiful 3.34 acre corner lot. Community river access. No direct river

access from this lot. \$18,000. 601-410-4643.

Wayne County +/- 158 Acres. This beautiful property won't last long! Located on the Mabry Graham Road just north of Beat 4 in Wayne Co., MS. This remarkable tract of land offers endless possibilities. The timber consist of 8-10 year old pine plantation. The property offers plenty of road frontage in a remote setting with an excellent internal road system as well as a natural gas pipeline for great access. Grass patches are in place and an abundance of wildlife that is sure to please any hunter or outdoor sportsman. This property is offered at \$312,050.00. Contact Marc at Walley Properties, LLC. 601-670-5429, or visit walleyproperties.com for maps of this listing.

Continued on ... Page 6

STEP INTO THE MIRACULOUS

SPECIAL GUEST: JIM HOCKADAY

APRIL 2-4, 2017

SUNDAY 10:30AM & 7PM
MONDAY & TUESDAY 7PM

1208 E. Hardy Street, Hattiesburg

601-544-8485

www.VictoryChurchHattiesburg.org

Southern Tire Mart

Best in Class Service on America's Favorite Brands

2926 Ellisville Blvd., Laurel

stmtires.com

601-428-4375

M-F: 7a-5p Sat: 8a-12p

NOW OFFERING PM SERVICE ON SEMI TRUCKS AND TRAILERS

- FULL SERVICE
- 3 AXLE ALIGNMENT
- A/C SERVICE
- SHOCKS
- KING PINS
- BUSHINGS
- TRAILER ALIGNMENT
- BRAKES

3 AXLE ALIGNMENT

\$225

WITH COUPON Expires 3/31/17
CAN NOT BE COMBINED WITH OTHER OFFERS

\$50 CREDIT

TOWARDS FIRST SERVICE

WITH COUPON Expires 3/31/17
CAN NOT BE COMBINED WITH OTHER OFFERS

FULL SYNTHETIC OIL CHANGE

UP TO 5 QTS Most vehicles, excludes diesels

\$39⁹⁵

WITH COUPON Expires 3/31/17
CAN NOT BE COMBINED WITH OTHER OFFERS

OIL CHANGE SPECIAL

UP TO 5 QTS Most vehicles, excludes diesels

\$29⁹⁵

WITH COUPON Expires 3/31/17
CAN NOT BE COMBINED WITH OTHER OFFERS

4 WHEEL ALIGNMENT

Most Vehicles

\$49⁹⁵

WITH COUPON Expires 3/31/17
CAN NOT BE COMBINED WITH OTHER OFFERS

10% OFF

- SUSPENSION
- A/C
- BRAKES
- TUNE UP
- BATTERIES
- LEVELING KITS
- OIL CHANGE
- ALIGNMENT

WITH COUPON Expires 3/31/17
CAN NOT BE COMBINED WITH OTHER OFFERS

JUST PAWZ

Hotel & Doggy Day Care

Full Time Groomer
Monday - Friday

303 VICTORY RD.
Laurel

New Owner
Cooki Oxner

601.425.5788

+/- 6 Acres Located on Old Salem Road at Strengthford, MS. This piece of property has a spot cleared for a house site. Nice timber on property. Call Rob McCraw Today 601-498-9143. \$21,000. See more at mfm-land.com.

+/- 90 Acres Located on CR 62/ Gum Ave in Heidelberg, MS this tract consists of 50 acres of 10 year old pine plantation, and 40 acres on Natural Regeneration. Has beautiful creek running across property. This property is holding a very large deer population, must see to believe. More tracts than you can count. With a little TLC this tract will be one of the best hunting tracts around Jasper County! Power/water available, several good house sites/camp house sites. \$180,000. Call Woods & Waters Realty at 800-526-3961. See more at mfm-land.com.

+/- 80 Acres Located on the Jasper/ Clarke County Line just North of Heidelberg, MS, on CR 1151 this tract offers a good timber investment and great hunting and recreation. The property has a good road system in place. With the tract only being a mile off of MS Hwy 11, makes getting to the property quick and easy!!!! This property is made for the avid hunter!! \$144,000. Call Woods &

Waters Realty at 800-526-3961. See more at mfm-land.com.

Jones County +/- 29 Acres : Only 5 miles south of Ellisville down Hwy 29 East located on Busby Road. This Property with road frontage has recently been chipped, leaving residential/shade trees which would make for a perfect home-site, or mini farm. \$71,050. For more information call Bennett 601-913-0340 at Walley Properties LLC or visit walleyproperties.com for maps of this listing

Small acreage for sale, owner finance, NE Jones area. 601-426-3696 or 601-470-7772.

6 acres of land, 100-feet wide by 2613.6 feet long, approximately 4 miles from Stringer High School. Approximately 2200ft. is adjacent to and parallel with CR 19 in Jasper Co. Interested parties please submit your bids by May 1, 2017. Bid awarded to highest qualified bidder. Send bids to: Roy D. Glenn, 2711 CR 23, Bay Springs, MS 39422 or royglenn@gmail.com.

+/- 46 Acres Located on Lower Myrick Road and Mollie Boutwell Rd, this property is made up of Pasture and has 4 Ponds. Perfect place to raise cattle or horses or to build your dream home. Call Rob McCraw

COME GET THE BED OF YOUR DREAMS

Sleepy Sam's MATTRESS CLUB

Nobody beats our deals!

WWW.SLEEPYSAMSMATTRESSCLUB.COM

FREE FINANCING • NO CREDIT CHECK

1504 W. 3rd St. • LAUREL 601.433.3968

ACROSS FROM PASQUALE'S

at 601-498-9143 for more information or to set up an appointment to view this beautiful piece of land! \$161,000. See more at mfm-land.com

PETS

"Invisible" Fence of South Mississippi offers industry leading technology to protect your pet. Call today for our special offer! 601-336-1078'.

MASSAGE

Massage One. \$45.00 Introductory 1 Hr. Massage session. By Robert Lowe L.M.T.#1362. Call to book yours today! 601-466-2199 www.MassageOne.us May your days be stress free!

BUSINESS OPPORTUNITIES

Established Business for Sale: Florist, Weddings, Wedding Rentals & Tuxedos. Located in Waynesboro, MS. Owner Retiring. By appointment only. Call 251-846-2178 or 601-735-4453.

ESTATE SALE

Huge Estate Sale, 502 Longleaf Dr. Petal, Ms (off hwy 11 just past wdam), Mar 31st & April 1st 8:00-5:00. Sofa's, antique linen press, oak china cabinet, inlaid wood server, wool rugs, oak dining table, metal & glass entrance table, broyhill oak king bedroom suit, jewelry armoire, tea cart, painted chest, electric love seat, end tables, occasional tables, 2 57" flat screen rear projection tv, 2 wing back recliners, desk chairs, double screen with etched glass, cedar wardrobe, book cases, chrome & glass book shelf, sofa w/recliners on each end, wingback chair, recliner, arts & crafts style futon, 2 vintage round speakers, bistro set, plastic shelves, 4 bamboo room dividers, jewelry including gold & diamonds, sterling silver & costume, ladies & mens watches, (invicta, seiko), cake plates, corning ware, stoneware dishes, utensils, corelle, baking pans, cast iron cookware, lots sm. kitchen appliances, comforter sets, table cloths, shower & window curtains, towels, sheets, retroney fine china jade garland, crystal lamps, stemware, waterford clock, crystal vases, pictures, baskets, table & floor lamps, antique photo's, books, ladies hanky's, ladies & mens clothing shoes & purses, metal advertising signs, marbles,

HOLLY'S PARTY JUMPS

Jumps • Combos • Slides • Wetslides • Slip-N-Slides

601-763-8851

WWW.HOLLYSPARTYJUMPS.COM

board games, luggage & totes, elvis memorabilia, guitars, antique wood butter mold, delta airline airplanes, bb guns, brother sewing machine, camcorders, camera's, cd's, speakers, laptops, dvd players, ion profile pro turntable, receivers, vhs players, cassette decks, blue ray disc, compact disc automatic changer, cell phones, clocks, cassette conversion system, monitors, roku player in box, binoculars, movies, cd's, vhs movies, records, phone chargers, projector & screen, beany babies, christmas trees, wreath & decor, washer & dryer, 3 refrigerators, zone air ac unit, smoke hollow grill all attached gas & charcoal grill, single burner & smoke box, flower pots, 2 square glass top table & chairs, tools, filing cabinet, gardening supplies, ping pong table, gazelle supra exercise machine, storage containers, yard tools, ladders, fertilizer spreader, metal storage racks, green glass top table & chairs, concrete table & 3 benches, fans, utility trailer, iron seatee, basketball goal, plus a lot more. www.estatesales.net. Regina: 601-433-7716.

FURNITURE

Mama's Mattress Max! 20 different styles to try out. Sets start at twin \$145, full \$165, queen \$185,

king \$295. Will split sets. Blackwell's Furniture 5200 Hwy 84 West at Calhoun. 601.649.6111.

7 piece bedroom set, business equipment, desks, file cabinet, jewelry case, etc. 601-606-9168 or 601-606-5981.

MUSICAL

Lynn Evans Piano Service: Registered craftsman with Piano Technicians Guild. Used pianos for sale. B.M.E. USM. 601-729-2823

FISH

Brewer Fishery. Coppernose, Shellcracker and Hybrid Bream, Black Crappie, Channel Catfish fingerlings, Bass, Fathead Minnows, Grass Carp, and Gold Fish. State licensed and delivery available. www.istockponds.com 601-270-1268, 601-989-2466.

Slade Channel Catfish Fingerlings, Bass, Bream, Grass Carp, KOI fathead-tuffy Minnows, Electrofishing, etc. Free water analysis. State licensed. Randall Slade 601-796-2000 www.sladesfish.com

Continued on ... Page 7

DERKSEN PORTABLE BUILDINGS

BUY OR RENT TO OWN starting at... **\$69²¹** PER MONTH

NO CREDIT CHECK!

- FREE DELIVERY & SET-UP
- NO SECURITY DEPOSIT • NO SLAB NEEDED

ALL STYLES AVAILABLE • CABINS • BARNs • UTILITY/SIDE UTILITY • GARAGES • CARPORTS

WWW.ELLISVILLEMOTORS.COM **601-323-0464**

12 Months SAC *wac 303 HWY. 11 S. ELLISVILLE, MS • LOCATED BETWEEN PIZZA HUT & JCJC

AS SHOWN 10X12 \$123.84 MONTH Rent to Own

PICK YOUR POWER

FS 38 GAS TRIMMER

\$129⁹⁵

FSA 45 BATTERY TRIMMER

BG 50 HANDHELD BLOWER

\$139⁹⁵

★★★★★

"It is a great piece of equipment for the price, plus with the STIHL name, it has dependability I can count on."

— user TL805

FS 56 RC-E TRIMMER

\$219⁹⁵

★★★★★

"Reliable and tough with Easy2Start™ and ease of handling thrown in. It's a combination that's hard to beat."

— user Mac56

FREE

STIHL HP Ultra Oil™

6-PACK OF 1 GALLON MIX (2.6 OZ. BOTTLES)

WITH FS 56 RC-E OR FS 70 R TRIMMER PURCHASE

Plus! DOUBLE YOUR WARRANTY™ FOR FREE!

A \$12.84 SSW-SRP Value!

*Offer valid through 6/18/17 at participating dealers while supplies last.

**Double limited warranty protection applies to STIHL gasoline-powered products purchased and registered for personal non-income producing, family and household purposes only. Other restrictions apply. See dealer for details.

Check out these reviews and others on the product pages at STIHLdealers.com.

All prices are SSW-SRP. Available at participating dealers while supplies last. © 2017 STIHL SSW17-142-135959-1

Mississippi Ag Company

1601 Bush Dairy Road | Laurel

601-426-3204 | JonesSales.biz

STIHLdealers.com

LS Tractor

Excel in Your Field™

GARDEN SPECIAL

- **YG3025 LS Tractor with Front End Loader**
- 25HP • 4WD • Shuttle Shift • Synchro Mesh Transmission
- 18' Utility Trailer with Tube Top
- 5' King Cutter Tiller - Gear Driven
- 5-1/2' King Cutter Disc with Tube Frame

FREE ROWMAKER WITH PACKAGE PURCHASE Must be 18 Years Old to Qualify

\$19,899 + TAX

www.tractorsunlimitedms.com MON-FRI 7:30-4:30, SAT 8-4

TRACTORS UNLIMITED, LLC

601-583-6453 1507 N. MAIN STREET HATTIESBURG, MS **800-321-2701**

United Country Real Estate

Gibson Realty & Land Company

Shane Cook - Land Specialist

(601) 670-1446

shanecookland@gmail.com

www.gibsonrealtyms.com

Great Land for Hunting, Fishing, Home Sites or Just to Get Away for the Weekend

Smith County Hunting

- Timberland / joins forest land.
- 220 Acres.
- Trophy Deer. **\$525,000**

Fishermen's Dream

- 355 acre tract... fisherman's dream.
- 55 acre lake.
- Great views of the lake and wildlife. **\$1,026,000.**

Jones County Hunting

- 21 acres north of Laurel
- Hardwood timber
- Road frontage **\$42,000**

VACUUM CLEANER REPAIR

- We Repair All Makes
- Free Estimates

- Complete Line of Parts & Bags
- Kirby • Electrolux
- Eureka • Hoover • Compact
- Filter Queen • Many Others

TAYLOR'S

Sewing Machine Center

Parkside Plaza Shopping Center
Next Door To Roses Store - Laurel, MS
425-1832

7021

SERVICES OFFERED

KC Construction, Kimble Coats owner. New construction, remodeling, decks, vinyl siding, foundations, slabs. 601-433-6996

Dependable, Retired Christian Man. Cuts grass, trims, pressure washing. Gas Prices Dropped and So Did Mine. Call for estimates, 601-583-9996, 601-325-6939. Leave message.

PINE BELT GUTTERS & REMODELING

Specializing in seamless gutters, vinyl siding, patio covers, replacement windows & doors.
We also offer gutter cleaning.

WE WILL BEAT ANY COMPETITOR'S PRICE!
FREE ESTIMATES 601-265-6010

55647

Flooring, all types. Remodeling, all types, decks-cabinets. For all your home improvement needs. No job too small. Commercial and residential. Licensed and insured, references available. Wilson 8:21. Painting, remodeling and more. II Corinthians 8:21. 601-268-7603.

I clean houses, offices & churches. Laurel and close proximity. Naomi: 601-470-3859.

S&S Lawn Care: Mowing, trimming, edging. For the Laurel, Ellettsville, Taylorsville and surrounding area. Commercial and residential. Free estimates. 601-517-7599.

Lonnie LOFTON

Roofing Contracting

Since 1968

Free Estimates

All Work Guaranteed

Laurel, MS PHONE (601) 425-4484

66079

I buy junk cars, buses and heavy equipment. U Call. We Haul! We pickup 24/7. Call 601-297-2778.

Miller Tree Service: bucket truck, professional, 30 years experience, insured; bob cat - dump truck and chipper available, senior citizen discount, free estimates. 601-498-3836, 601-649-0174.

SOUTHERN MISSISSIPPI WATER WELL DRILLING and SERVICE

601-344-1005
601-716-6837
662-803-5459

New Augusta, MS

111587

Flowers, Sand & Gravel: We now install septic systems, grinder pumps and spray systems. We deliver all types of gravel, fill material, sand, rock and topsoil, soil mix and mulch. Dozier and track-hoe service available. Foundations, roads, ponds, etc. We also have Above Ground Precast Storm Shelters, several sizes available. Give us a call. 601-498-5983 or 601-477-2767.

L and L Lawn Care Service: Quality Work at Affordable Prices! Mowing, Weedeating, Trimming, Pressure Washing, General Services. 17 Years Experience. Fully Insured! Call Lewis for a Free Estimate today! 601-433-1531 or 601-477-3862.

A&A Septic Tank. We clean, install and repair septic tanks treatment plants, field line, grease traps. In

The Children's Depot, LLC

CHILD CARE & PRESCHOOL

Limited openings Register today!

601.342.5240
224 Lower Myrick Rd

68992

business for 34 years.Family owned and operated. 601-649-8838. In God We Trust.

Kool-Seal Mobile homes, travel trailers, campers, sheds, etc. Energy efficient, 10% reduction. Pressure washing available. Call Craig or leave message, 601-544-9614

Bostick Tree Service: tree removal, stump and root grinding with precision for easy mowing and tree health, fully insured, free estimates, serving Pine Belt area, 601-283-8667

Daniels Plumbing Services, Waynesboro, Your plumbing problem now has a solution, call day or night, 601-735-1827, 601-381-1040

Raybourn Construction: Roofing and repairs, general construction, remodeling, painting, heating & a/c service, and more. 30 years experience, insured State Licensed Contractor. Call 601-580-7540 or 601-649-0780.

PARKER

Electrical Heating • Cooling

Commercial • Residential • Oilfield

601-310-0950

68554

Junk Cars: Get rid of those snake dens and rat dens. Bring 'em to us, or we'll pick 'em up! Springer Auto Salvage. Call 601-649-4238.

Flooring Hardwood floors, ceramic tile, linoleum. For all your flooring needs. Quality work, references available. Licensed & Insured.Wilson 8:21 LLP II Corinthians 8:21. 601-268-7603.

Quality Pressure Washing at affordable prices. Licensed, Insured, Affordable, Professional, Christian company. Free Estimates. References available Commercial and Residential. Wilson 8:21 Painting & More. II Corinthians 8:21. 601-268-7603

BUSH

Construction Company, Inc.

MEMBERS: MRBA & ABC

ASPHALT PAVING

NO JOB TO BIG!
• ROADS
• PARKING LOTS
• DRIVEWAYS
NO JOB TO SMALL!

NEW CONSTRUCTION AND OVERLAY

"BUILDING A STRONGER MISSISSIPPI FOR EIGHTY YEARS AND COUNTING"

601-428-6074 EXT. 22

MATTHEW DAVIS - Pres.
matthew@bushconstructionco.com

P.O. BOX 8337 • LAUREL
Fax: 601-428-6077

BAB1130

ATTORNEY AT LAW

Tracy A. Walley

1616 WEST 3RD STREET • LAUREL

601.651.2186

•Bankruptcy •Social Security •Uncontested Divorces

*BACKGROUND INFORMATION AVAILABLE UPON REQUEST

78158

Thames Concrete Finishing: Set forms, patios, finishing slabs, drive-ways, Brick work . painting & roofing great work Percy Thames. 601-543-8712.

Bolivar's Mobile Home Delivery and Setup. Statewide moving. Licensed and insured. Nathan Bolivar: 601-580-9900.

LOW PRESSURE ROOF CLEANING

NO BLEACH!

PINE BELT Xpress

A DIVISION OF PINE BELT GUTTERS

601-550-2686

BEFORE

AFTER

FREE ESTIMATES

120 ATWOOD RD SEMINARY

1115302

Right At Home: In home care & assistance. Do you or someone you know need help with: Transportation to appointments; grocery shopping/ hair appointments; light housekeeping; recovering from a Hospital stay; basic companionship and much more. For a free consultation call 601-426-6333.

Vinyl siding - metal roofing - seam-less gutter. 601-498-6333.

SOUTHERN MISSISSIPPI WATER WELL DRILLING and SERVICE

601-344-1005
601-716-6837
662-803-5459

New Augusta, MS

111587

Roofing & Repair, new construction, leak repairs, shingles, metal, flat roofs, chimneys, all types roofing and repair, free estimates, 25 years experience, call Dennis Haigler. 601-319-2522.

House Leveling Foundation Repairs. Replace bad sills, floor joist, or flooring. Sagging or shaky floor or dragging door, we can fix this. Let us make your foundation safe. Insured. 601-543-7007

Dozer/trackhoe services, Land-clearing, Dirt hauling Residential/ commercial sitework/landclearing, dozer/trackhoe work, trailer/house

pads, roads, ponds, etc. We haul gravel, fill dirt, topsoil, sand, and mulch. Estimates call 601-498-8485.

Quality Painting at affordable prices. Pressure washing and more. Licensed, Insured, Affordable, Professional, Christian company. Free Estimates. Commercial and Residential. References available. Wilson 8:21 Painting & More LLP II Corinthians 8:21. 601-268-7603

Sawmill Service: .25 board ft. will travel 50 miles, over 50 miles .30 board ft. Call 601-433-3573.

CLARK LAWN SERVICE LLC

Lawn Maintenance
Sod Work • Odd Jobs
Pressure Washing
Shrub Trimming

601-466-9715

1112123

Painting, Remodeling, Drywall, Pressure Washing, Decks, Cabinets and more! Licensed, Insured, Affordable, honest, dependable Christian company. Commercial and Residential. Quality, professional work. Over 20 years experience. References available. Call for a free estimate. If no answer, please leave a message. We will return your call. Wilson 8:21 Painting & More. II Corinthians 8:21. 601-268-7603.

Joey's Remodeling & Construction: No job too big or too small. We got ya covered! Free estimates. 601-543-3928. We appreciate your business.

Continued on ... Page 8

NEED CASH?

Call Verna She will hold your personal check and give you **CASH!**

Loans from \$50 to \$410

LAUREL CHECK CASHING

134 Beacon St., Ste. C

Laurel • 601-426-2432

79218

SERVICE

DIRECTORY

Where the Pine Belt goes to get things done!

68550

Right at Home

In Home Care & Assistance

THE RIGHT CARE---RIGHT AT HOME

Locally Owned

Do you or someone you know need help with:

- Transportation to Appointments
- Grocery Shopping/Hair Appointments
- Light Housekeeping
- Recovering from a Hospital Stay
- Basic Companionship
- And Much More!

FREE CONSULTATIONS

601.426.6333

68550

HAIGLER

ROOFING & REPAIR

- New Construction • Leaks
- Repairs • Shingles • Metal
- Flat Roofs • Chimneys

FREE ESTIMATES

30 Yrs. Experience

Call Dennis Haigler

601-319-2522

1114229

A&A SEPTIC SERVICES, LLC

Install and Repair

- Septic tanks
- Treatment Plants
- Field Line • Grease Traps

In business for 34 years

FAMILY OWNED AND OPERATED

601-649-8838

601-433-2947

IN GOD WE TRUST

68554

FARRIS

Mobile Home TRANSPORT

Statewide Moving

Licensed & Insured

Transporting since 1979

Tony Farris

601-422-4144

79464

Joey's Remodeling & Construction

Handyman Work

NO JOB TOO BIG OR TOO SMALL

We got ya covered!

FREE ESTIMATES

601-543-3928

WE APPRECIATE YOUR BUSINESS

69023

BOLIVAR'S

Mobile Home Delivery & Setup

Statewide Moving

- Licensed
- Insured

Nathan Bolivar

601-580-9900

BAB644

GMW Siding Specialist

- Mastic Elite Contractor
- 35th Year serving the Pine Belt
- Winner of "7" National Awards
- Mastic Vinyl Siding Products
- 6" Seamless Gutter

601-428-5595

BAB1475

Kimble Coats Owner

KC CONSTRUCTION

- New Construction
- Remodeling
- Decks
- Vinyl Siding
- General Construction
- Foundations & Slabs

601-433-6996

67507

Premier Drop-Off Laundry

WE WASH IT DRY IT FOLD IT...

YOU

Special! \$10.00*

15# of Laundry

•Washed •Dry • Folded

flat rate fee

*Every pound over 15# charged @ \$1.00 per pound!

Bring us your dirty laundry --- we wash it, dry it and fold it! You pick up the next day.

Also available for extra charge...

• Same Day service • Expedited 4 Hour Service

*Restrictions Apply

FREE PICKUP & DELIVERY *with minimum of 15 lbs. within 8 miles - over 8 miles \$5 service charge • maximum 15 miles

•SEVERAL choices of detergents and fabric softeners to choose from.

•YOUR laundry will never be mixed with anyone else's!

Like us on Facebook @ Premier Drop Off Laundry

Service to keep up with our specials or promotions....

725 COURT ST. • WAYNESBORO

Call or text Miranda Woods for drop off times and location:

601-381-4908

COMPLETE CANCER CARE IN LAUREL

Chemotherapy • General Surgery • Radiation Oncology • Plastic Surgery

LAUREL CANCER CARE

601-425-2999

South Central Cancer Center

A Division of South Central Reginal Medical Center

601-518-7054

67943

SAVE \$100'S!

TAX SEASON SAVINGS

WHILE SUPPLIES LAST!

10% OFF PORTABLE BUILDINGS

GREAT SAVINGS ON 30X30 A-FRAMES & HORIZONTAL TUBING BUILDINGS!!

\$10,995*

\$10,995*

\$11,995*

*Installed w/ Cement Slab & Insulation

*Installed w/ Cement Slab & Insulation

WE HAVE RENT TO OWN AVAILABLE FOR THE PORTABLE BUILDINGS!

CHATHAM ENTERPRISES, INC.

PORTABLE BUILDINGS & METAL ROOFING

601-727-4951

4631 MS-18, ROSE HILL

www.ChathamEnterprisesInc.com

GUARANTEED LOWEST PRICES!

ON METAL ROOFING IN A VARIETY OF COLORS

29 GAUGE PAINTED (W/ 40 YR WARRANTY)

29 GAUGE BARE GALVALUME

111709



WHITESTONE
TRANSPORTATION

Welcome to our home

NOW HIRING DRIVERS

- OTR/Regional Drivers, Short and Long Haul
- Dedicated Lanes, Reefer and Flatbed
- Sign-on Bonuses
- Bonuses for Performance, Safety Teams & Specialty Hauls
- Blue Cross and Blue Shield Insurance

Moselle 800-408-5542

WHITESTONETRANS.COM

University Glass Tinting, formerly located at Camper City in Hattiesburg, for 13 years has a New Location! Come see us at 42 Kelly Lane, Seminary or call owner Chris Brown at 601-329-1823. www.universityglasstinting.com or follow us on Facebook. We provide auto, commercial, and residential services. Get a 15% discount on all new tint thru March 31, 2017. Business hours : Monday-Friday 8:00 a.m - 5:00 p.m., Saturday by appointment only.

Thrash Pressure Washing: Residential, Commercial & Concrete. Call 601-470-2296.

Glass Express, LLC. We service Commercial, Residential, and Automotive Needs including mirrors, shower doors, replacement windows, store fronts, and auto glass. We are located at 2693 Hwy. 49 Collins. Call Doug Russell or Michael

McRaney at 601-765-3861. Open Mon-Friday, 8am-5pm.

Dozer, trackhoe, backhoe, bush-hogging work, fill dirt, clay, gravel, sand, delivered, mobile home pads, ponds, driveways built, repaired, clearing, site prep, Mark Butler, 601-433-6459 or 601-425-1747

1/2 price stump removal 5 or more average size, 24in. diameter, 6in. tall, with truck access. \$15 each. Best price on grinding uprooted stumps. Expires 3/31/17. 601-371-8733. The Tree Barber, Matthew 16.26.

B&B Tree Service: Call the best for less, fully insured, senior citizen discount, 38 years experience. We do all tree work and clean up at your request - bucket truck also available; call day or night, free estimates. May God bless you. Proverbs 11:30. 601-433-5257

Expert Foundation Repair: Replace Worn or Rotten Beams & Pillars. Stop Shaking Floors & Doors that won't Close. Fully Insured. 601-466-5099.

Lawn care: Serving Hattiesburg, Lumberton, Laurel, Sumrall, Petal, Brooklyn, Ellisville, Purvis and Moselle areas. Reasonable rates. 601-325-5008. www.fullservicelawnca-rems.com

University Glass Tinting, formerly located at Camper City in Hattiesburg, for 13 years has a New Location! Come see us at 42 Kelly Lane, Seminary, or call owner Chris Brown at 601-329-1823. www.universityglasstinting.com or follow us on Facebook. We provide auto, commercial, and residential services. Get a 15% discount on all new tint thru March 31, 2017. Business hours : Monday-Friday 8:00 a.m -

HUDDLE HOUSE®

Now Accepting Applications for MANAGEMENT

Apply in person at 1304 Chantilly St. • Laurel (across from Hardees)
8 a.m. - 11 a.m. & 2 p.m. - 4 p.m.
Fax resume to 601-735-6151
or email to MJAMES8205@AOL.COM

- Background Check Required
- Experience preferred but not required

BAB1102

DRIVERS, are you tired of having to jump through hoops, such as gimmicky revenue and retention bonuses? Do you want to earn what you are worth? At **Baggett Transportation**, we pay you what you are worth, without the hassle!

We offer the best benefits in town, which include

- Health Insurance • Company Matching 401-K Plan • Paid Vacation



Baggett
TRANSPORTATION

Pay starting at 42¢ per mile!

Now leasing Owner Operators! Flats or Vans. Call for details.

601-426-3462 or 855-435-5021

Call for more information or apply in person at: 2815 Industrial Blvd. • Laurel, MS

68621

HI HOWARD INDUSTRIES

The world's leading manufacturer of electrical distribution transformers, located in the South Laurel Industrial Park is now accepting applications for:


WELDERS, COIL WINDERS, LACERS, HELPERS & MANY OTHER POSITIONS

AT LEAST ONE YEAR EXPERIENCE IS PREFERRED, BUT WELDER TRAINING IS AVAILABLE TO QUALIFIED APPLICANTS.

Howard Industries, Inc. offers excellent pay and benefits to qualified employees.
Benefits include: Employee Health, Life Insurance, Paid Vacation, Holiday Pay & more!

Apply Online at
www.howard.com/jobs

EQUAL OPPORTUNITY EMPLOYER VET/DISABLED



25



NEED CASH FAST?

COME SEE TIFFANY

CITY PAYDAY LOANS

CAR TITLE LOANS

716 SPRING STREET
WAYNESBORO

601-735-5353

78553

5:00 p.m., Saturday by appointment only.

HANDYMAN

Handyman: electrical, remodeling, painting, porches, interior, exterior, and more. No job too small. Laurel and surrounding area. Call 601-935-8325.

HELP WANTED

Onin Staffing: Jobs! Jobs! Poultry Processing, Basic Electrical (High School Diploma), Basic Carpentry (High School Diploma) Jobs available immediately! Now Hiring! 2261 Hwy 15, Laurel. 601-398-9625. Onin Staffing, Equal Opportunity Employer.

Mechanic needed for tune ups, repairs, brakes, AC. Competitive salary plus commission. Must have your own tool. Apply in person at Spee Dee/Midas on Hwy 98 West, Hattiesburg.

Career Opportunities @ Woolwine Ford in Collins. Full-time Certified Trained Technicians and Entry level Mechanics. Great Benefits and

WE HAVE AN EYE FOR THE BOTTOM LINE!

HAWKEYE

TAX SERVICES

HAWKEYE TAX SERVICE

144 Buford Gandy Rd. • Waynesboro, MS 39367

601-671-3779

BAB1309

Pay based on Experience. Call Chip today: 601-765-4461.

Mid-Coast Inc. We are looking to hire OTR drivers for short haul and long haul loads. If interested please call James at 601-797-3090.

Now taking applications for lube bay technicians. Apply in person. Spee Dee Midas, Highway 98, Hattiesburg. No phone calls please.

Wanted: Concrete Plant Batch Operator in Glendale, MS. High School diploma or equivalent; Prior experience in Ready Mix Concrete preferred. Salary with excellent benefits. (601) 354-3801. EOE

Huddle House is now accepting applications for management. Apply in person at 1304 Chantilly St., Laurel (across from Hardees). 8am-11am & 2pm-4pm. Fax resume to 601-735-6151 or email to mjames8205@aol.com. Background check required, experience preferred but not required.

Local CDL Drivers wanted. Pine Belt Ready Mix is now hiring. Ready Mix Concrete Mixer Drivers. Home every day! Great compensation package. Insurance, bonus, 401(k), paid sick days, paid vacation. Class



READY MIX, LLC

28 TAYLOR CIRCLE • LAUREL, MS

STRAIGHT TRUCK CONCRETE DRIVERS

Laurel Location

- Must hold a class B or better commercial driver's license with a good driving record. (Class A w/Tanker a plus)
- At least 3 years driving experience.
- Hourly Pay • Benefits
- Home Every Night

Apply in person

Monday thru Friday 8 a.m. to 5 p.m.

No interviews will be given without a completed employment application.
NO PHONE CALLS PLEASE.

79679

State of Mississippi



State Veterans Affairs Commission

NOW ACCEPTING APPLICATIONS FOR:

- CNA'S (ALL SHIFTS)**
- LPN'S (ALL SHIFTS)**
- RN WOUND CARE (8a-4:30p)**
- RN UNIT MANAGER (7-3 SHIFT)**
- RN SUPERVISOR (3-11 SHIFT)**
- RN SUPERVISOR (11-7 SHIFT)**
- FLOOR TECH/HOUSEKEEPER (7a-3:30p)**

APPLY IN PERSON AT:
Ms State Veterans Home
3261 Hwy 49 South • Collins
Covington County, MS

Apply on the MS State Personnel Board website:
WWW.MSPB.MS.GOV

Equal Opportunity Employer

LU1770

A or B CDL required. "Home Grown and American Owned" Call now and start building your future! 601-292-3906. EOE.

TIMBER AND LUMBER

Cypress Lumber for sale. Rough or planed. T&G&V and beaded. Beveled and log siding, white and

DON'T GIVE YOUR TIMBER AWAY!

Call Mike West 601-270-6066

BUYING PINE & HARDWOOD

RIGHTON TIE & TIMBER LLC

Timber Procurement • Forestry Consulting • Real Estate



yellow pine and Poplar. T&G&V. Cypress beams, cut up to 32 foot long. Open 7:00AM-3:30PM, Monday-Friday, Saturday, 7:00AM-12PM. 601-315-5533, fax 601-344-0950. frankssawmill.com

Know the value of your timber before you sell. We provide timber appraisals and help landowners market their timber for the highest value. Walley Forestry Consultants, Inc., www.walleyforestry.com, 601-477-3014.

WANTED TO BUY

Buy junk cars, 18-wheelers, van trailers, buses, equipment and more. Pay cash on spot. We pickup. Call day, night. 601-408-0856.

Wanted! 40 Foot Metal Shipping Container (pay up to) \$ 1000. Wanted! 40 Foot Metal Shipping Container can pay up to \$1000 each Call Joel 917-536-0667

I buy junk cars, buses and heavy equipment. U Call. We Haul! We pickup 24/7. Call 601-297-2778.

VACATION

Gulf Shores Condos, \$125/nights. Houses, \$250/nights. Weekly specials available. Connie Daughdrill, 1-251-510-3090.

GARAGE SALES

April 4-6, Tue-Thursday, 8 a.m.-6 p.m. Rummage Sale inside Gym, Laurel Adventist Church next to Wal-Mart 1606 W 15th St. Clothing clean & organized, Infants to Adult. Baby play pen, regular bed frame, easy chair, dresser/chest, Miscellaneous Kitchen & furniture items.

Huge Rummage Sale: 12 Robert Gentry Road, Laurel, MS., behind David's Grocery. All sizes in clothes & shoes, pictures & furniture, March 31st, April 1st.

Rain or shine, Friday, March 31st, Saturday, June 1st, 3440 Audubon Drive. Too much to list.

3/31-4/1, 7am-until, 1958 Hwy 29 North, Ellisville (moving sale) (everything must go).

BUILDINGS

Carports and Buildings: Financing Available! 22Wx26Lx9T- \$5,050 , 24Wx31Lx9T- \$6,010 Fully Enclosed with two 9X8 Roll-up Doors. Price includes installation. We also offer storage buildings and barns. Call John @ 601-323-0464, 303 Hwy 11 S, Ellisville (between Pizza Hut & JCJC)

Best Rent-to-Own deal around! Call us for all your building needs. Chatham Enterprises 601-727-4951

Farm Barns. 40x30x16-\$9500. 30x30x10-\$7500. Metal roof and sides. Price includes labor. 601-296-0550.

PORTABLE BUILDINGS

30x30 Tubing Building: Includes 2 Roll-Up Doors, 1 Walk-Through Door, Insulation, Cement Slab, and Installation. \$10,995. Call Chatham Enterprises 601-727-4951.

EAGLE CARPORTS & BUILDINGS

NOW OFFERING RENT TO OWN

NO CREDIT CHECK

- Garages • Combo Units
- Horsebarns • Most Carports

Like our page Eagle Metal Buildings on Facebook

CALL JOHN FOR DETAILS 601-323-0464

WWW.ELLISVILLEMOTORS.COM • 303 HWY. 11 S. ELLISVILLE, MS • LOCATED BETWEEN PIZZA HUT & JCJC



68565

“Mobile homes, mobile homes” arriving daily at TB Sales on Hwy 49 North, Hattiesburg, next to the Bouie River. We have used, repo, remodeled, fixer upper, all homes, all sizes at unbelievable prices, our guarantee no one will beat our prices for what we do. 601-520-0710 or TB Sales @ Facebook.

New, used, and repo’d mobile homes for sale. Call Tony and The Tiger at 601-543-9022. Our prices are better than great, they’re whole-sale.

Plenty of room! 5 bed, 3 bath double wide. Lots of space for all your loved ones. Vinyl siding and shingle roof. Zone 2! Won’t last long. Price \$26,000 as is, call 601 520 0710.

New, used, repo, home and land, whatever you want. We have it or we will get it for you. Call Blake 601-319-1316.

Mobile home park for sale. Generates \$3000 per month. Seven homes plus land, located on Wheeler Drive in North Laurel. \$120,000. 601-433-2316.

March 3rd, 4th, 5th. Wholesale Home Center. Buy to Spin and Win Event. Live music, free food and lowest prices of the year. Call Tony or Blake at 601-296-7960.

Mobile homes for sale. New, used, repos, foreclosurers, land-home packages. Call Repo Man, 601-310-9262.

Largest used inventory in the state. Wholesale Home Center. Call 601-319-1316.

New, used, repos, with guaranteed approval. Call Blake at 601-319-1316.

Contact: Ray Ardis, Hattiesburg Home Center, 601-261-6005.

Tired of Renting? We have new and used homes with 100% guaranteed approval!! Call Tony Purvis from Purvis at 601-543-9022 “Can’t fail with Wholesale”.

Lots of space for a small price. 16x80, 2BR/2BA., Belmont, spacious beds and baths, singlewide,

freshly painted, needs your personal touch. \$13,500. Call 601-520-0710.

Farris Mobile Home Transporting: Statewide moving, licensed & insured. Transporting since 1979. Tony Farris 601-422-4144.

You will be amazed, 28x70, 3 bed 2 bath, gorgeous stone wall in entry way, fireplace with beautiful mantel. If your looking for a huge master tub, this is the one for you. Vinyl siding shingle roof price \$16,500 as is call 601-520-0710.

Used singlewides, 2BR/1BA., delivery and set up, only \$17,900. 601-307-2114, 601-261-6005.

Wholesalemobilehomecenter.com has new, used, and repo singlewides and doublewides. Lowest prices in the state. Check us out on the web or call 601-296-7960.

MOBILE HOME FOR RENT

1995 16x80, 3br/2ba, all electric, c/h/a in trailer park, water provided. \$450, \$300 deposit. West Jones District. 601-498-2488.

3br/1.5ba, 14x75, \$400 month, water & garbage furnished. 601-381-5390.

3BR and 2BR mobile homes. Weekly payments available. Pendorff area. West Jones School District. \$150/deposit, rent starting \$300 up. 601-577-2055, 601-577-7385.

MOBILE HOME LOTS

Four months free space rent. Move your mobile home in with us! Spaces available at Bellecrest. Nicest mobile home park in Hattiesburg. Bellecrest Mobile Home Park 63 Sullivan Kilrain Road Hattiesburg, MS. 601-545-1300

2 mobile home lots for rent. Accessible for travel trailer, cannot accommodate trailers over 65ft. 2004 Wansley Road. \$125/mth. 601-323-5470.

HOUSES FOR SALE

6 year old house with 2 acres for sale near Maynor Creek Lake. 2500 sq.ft. heat and cooled, 4br/3ba, with double carport and barn with power and water. Price \$239,000. No rent. Phone 601-480-1053.

For sale by owner, near Waynesboro: 3br/2ba, living room, den, kitchen, all furniture included, double carport, 17ac+/-mostly pasture, some timber. Two free standing carports with lots of storage amenities. \$165,000. 601-381-2745 or 601-735-6632.

For sale by owner: Brick house, approx. 2400 sq.ft. 4br/2.5ba, 2 car carport, hot tub, 16x36 swimming pool, 18 acres, large workshop 40x25, very large car storage shop with carport 35x55, utility bldg 10x20, green house, small pond, in Eucuttia, Wayne Co. MS. \$200,000. 601-735-5581.

Rach style home 3ac., located in South Jones School District. 3-4br/2ba recently remodeled, hardwood flooring throughout, fully furnished kitchen. 12x20 storage shed. Quiet neighborhood, only minutes from Leaf River. \$139,000. 601-319-9386 or 601-325-3171.

HOUSES FOR RENT

2/3 bedroom homes for rent. 601-649-4075.

3br/2ba, w/screened porch & deck, \$650/mth, \$400/dep. 601-433-3310.

House for rent 1524 Larry Dr., North Laurel. 3br, large living room. Credit and background check required. \$700/mth. Call 601-580-8585. Realtor, owner.

3br/2ba home, \$700/month, \$400/dep. 601-433-3310.

3BR/2BA Brick Home for rent, JCSD. Summerland-Hatten community. West JSCD \$600/\$400 month. 601-580-2126

For Rent: 2br/1ba brick home. Laurel near West Jones Elementary. \$650 or \$600 with discount program.

SELLING or SHOPPING? WE FINANCE

IMPACT CLASSIFIED ITEMS

JONES COUNTY FINANCE

105 S 16th Ave. • Laurel

601-649-1944

68729

Credit check required. 601-319-9484

APARTMENTS FOR RENT

For rent: Taylorsville New one bedroom apartments. \$500 down, \$500 monthly. 601-649-9459.

One room efficiency apartment in great location in downtown Laurel, upstairs at 541 Central Avenue. \$600/month includes utilities, use of washer/dryer, and an additional storage room. Perfect for single or couple with no children. Call 601-577-2576 for more info.

1 bedroom apartment in North Laurel. Call 428-7940.

Westhill Apartments for rent. \$475 to \$650 month. Call 601-438-9456.

Highlands. Paying Rent? A house payment could be less. Call us today and see how you can build your dream home. Call: 601-649-9459.

COMMERCIAL

1244 Susie Ruffin Avenue, building and land for sale. 601-422-9245.

For Lease: Commercial office behind Tillery Dental. For more information, call 601.649.9459.

AUTOS - CARS

For sale: Honda Civic. 2008 2 Door Silver Honda Civic. \$144,000 . Great Condition. \$5500. Call 601.297.4018

2015 Chrysler 200. \$17,995 at Laurel Ford, Lincoln, Kia, (844) 319-5854. See more at Cars601.com.

2015 Ford Mustang. \$17,290. J&S AutoPlex. 601-342-2293. See more at Cars601.com.

2014 Mitsubishi Lancer. \$7,400 at Vara Auto Sales, call 601-335-3972. See more at Cars601.com.

2015 Nissan Altima. \$15,990 at Woolwine Ford in Collins, (844) 332-1854. See more at Cars601.com.

SEMINARY FARM CENTER

"Your Full Service Farm Supply"

- Spreader Service •Spraying Service •Chemicals
- Fencing Materials •Feed & Seed •Fertilizer

101 NORTH BEECH ST. • SEMINARY, MS • 601.722.4163

"Family Owned & Operated for 28 Years"
Owners: Steve Sanford / Brett Sanford

LU1536

2015 Chevrolet Cruze. \$16,000 at Ryan Chevrolet. (855) 534-3769. See more at Cars601.com

2006 Chevrolet Malibu. \$3,900 at Vara Auto Sales, call 601-335-3972. See more at Cars601.com.

2014 Ford Fusion \$16,989 at Woolwine Ford in Collins, (844) 332-1854. See more at Cars601.com.

2016 Toyota Corolla. \$17,888 at Toyota of Hattiesburg. (855) 221-8310. See more at Cars601.com.

2015 Toyota Camry. \$15,990. J&S AutoPlex. 601-342-2293. See more at Cars601.com.

2017 Chevrolet Sonic. \$20,468 at Ryan Chevrolet. (855) 534-3769. See more at Cars601.com

2017 Ford Fiesta. \$16,860 at Laurel Ford, Lincoln, Kia, (844) 319-5854. See more at Cars601.com.

2013 Ford Fusion. \$14,559 at Woolwine Ford in Collins, (844) 332-1854. See more at Cars601.com.

2015 Hyundai Sonata. \$15,000 at Ryan Chevrolet. (855) 534-3769. See more at Cars601.com

2014 Ford Mustang. \$15,990 at Woolwine Ford in Collins, (844) 332-1854. See more at Cars601.com.

2012 Ford Focus. \$8,950 at Paul Garner Motors. (844) 452-4569. See more at Cars601.com.

2008 Toyota Sienna, white, \$6,000. Call or text Andy, 601-602-5003.

2008 Toyota Prius, silver, \$7,000. Call or text Drew: 601-602-5800.

2014 Toyota Camry Hybrid. \$18,995 at Hattiesburg Cars. Call our Local toll free number 855-242-0775. See more at Cars601.com

2017 Chevrolet Cruze. \$22,915 at Ryan Chevrolet. (855) 534-3769. See more at Cars601.com

2010 Mazda Mazda3. \$9,150 at Paul Garner Motors. (844) 452-4569. See more at Cars601.com.

2007 Kia Optima. \$3,700 at Vara Auto Sales, call 601-335-3972. See more at Cars601.com.

2004 Nissan 350Z. \$10,500 at Ryan Chevrolet. (855) 534-3769. See more at Cars601.com

2015 Chrysler 200. \$14,000 at Ryan Chevrolet. (855) 534-3769. See more at Cars601.com

2007 Toyota Corolla. \$4,000 at Vara Auto Sales, call 601-335-3972. See more at Cars601.com.

1996 Cadillac Deville. \$3,995 at Laurel Ford, Lincoln, Kia, (844) 319-5854. See more at Cars601.com.

2015 Chevrolet Sonic. \$12,000 at Ryan Chevrolet. (855) 534-3769. See more at Cars601.com

2008 BMW 5 Series. \$8,995 at Quality Auto. Call 601-394-9313. See more at Cars601.com.

2011 Nissan Maxima. \$16,900. Southeastern Auto Brokers, (844) 312-8785. See more at Cars601.com

2015 Toyota Camry. \$19,999 at Toyota of Hattiesburg. (855) 221-8310. See more at Cars601.com.

1996 Jaguar XJ Series Sedan. \$6,995 at Harris Hankins in Bay Springs. Call 844-329-7227. See Cars601.com for more.

2006 Chevrolet Cobalt at Southeastern Auto Sales, Laurel. Call 601-649-4746. See more at Cars601.com.

2010 Chevrolet Impala. \$7,950 at Paul Garner Motors. (844) 452-4569. See more at Cars601.com.

2014 Toyota Prius. \$14,995 at Hattiesburg Cars. Call our Local toll free number 855-242-0775. See more at Cars601.com

2014 Ford Focus. \$11,963. Mack Grubbs Hyundai, (844) 373-0806. See more at Cars601.com.

2014 Toyota Camry. \$15,995 at Hattiesburg Cars. Call our Local toll free number 855-242-0775. See more at Cars601.com

2008 Lexus ES 350. \$14,990. J&S AutoPlex. 601-342-2293. See more at Cars601.com.

Continued on ... Page 11

It's Crawfish Season



#300100



100 Qt. Crawfish Cooker
\$699⁹⁹

#300160



160 Qt. Crawfish Cooker
\$999⁹⁹

#KDS182



82 Qt. Pot & Cooker
\$199⁹⁹

#300440



Crawfish Table
\$89⁹⁹

Great Selection of Pots, Cookers & Cast Iron Cookware



10% OFF
VISION GRILLS

25% Off Hunting Supplies
some exclusions apply

PHILLIPS BUILDING SUPPLY

1104 HWY 15N • LAUREL • 601-649-0855
WWW.PHILLIPSBUILDINGSUPPLY.COM

69069

Norman's Food Outlet

#209 Waynesboro Food Outlet

PRICES EFFECTIVE MARCH 29, - APRIL 4, 2017

USDA FRESH CUT WHOLE LOIN ECONOMY RIBEYES

\$2⁹⁸ LB.

Plus 10% at Checkout

USDA FRESH CUT FAMILY PACK WESTERN STYLE RIBS

98¢ LB.

Plus 10% at Checkout

USDA FRESH CUT FAMILY PACK BONELESS PORK CHOPS

\$1²⁸ LB.

Plus 10% at Checkout

GOLDEN RIPE CHIQUITA BANANAS

28¢ LB.

Plus 10% at Checkout

12 OZ. PACK BRYAN WIENERS

98¢ EA.

Plus 10% at Checkout

12 OZ. PACK REG. OR THICK CUT BRYAN BOLOGNA

98¢ EA.

Plus 10% at Checkout

WE'VE APPRECIATED YOUR BUSINESS OVER THE LAST 9 YEARS AND WE WILL CONTINUE TO STRIVE IN THE FUTURE TO HELP YOUR FAMILY BY LOWERING YOUR GROCERY BILL

GREAT PRICES • GREAT TASTE • GREAT SAVINGS

OPEN 7 DAYS A WEEK

MONDAY - SATURDAY 7 A.M. - 7:30 P.M. / SUNDAY 8 A.M. - 6 P.M.

LOCATED IN THE AZALEA MART SHOPPING CENTER
WAYNESBORO, MS

601-735-4344

BAB1480

DOUBLE B FARMS



- Bull Dozer
- Trac Hoe
- Dump Truck



- BUSH HOGGING
- LAND CLEARING
- DRIVEWAYS
- ROAD BUILDING
- HOUSE PADS

Certified Septic Tank Installation

Brian Sciortino • Rose Hill, MS **601-479-2074**

2005 Nissan Murano, pearl white, \$9,000. Call or text James 601-602-5806.

2007 Infiniti, G35, \$11,995. Call or text Drew, 601-602-5800.

2012 Scion tC at Southeastern Auto Sales, Laurel. Call 601-649-4746. See more at Cars601.com.

2017 Hyundai Elantra, \$19,210. Mack Grubbs Hyundai, (844) 373-0806. See more at Cars601.com.

2017 Hyundai Elantra, \$19,980. Mack Grubbs Hyundai, (844) 373-0806. See more at Cars601.com.

2012 Chrysler 300. Call or text, Andy, 601-602-5003.

2005 Honda Accord, red, \$6,000. Call or text Daniel: 601-620-4597.

2005 Chevrolet Cavalier, \$2,333 at Harris Hankins in Bay Springs. Call 844-329-7227. See Cars601.com for more.

2015 Chevrolet Malibu, \$19,888 at Harris Hankins in Bay Springs. Call 844-329-7227. See Cars601.com for more.

2014 Toyota Corolla, \$14,990 at Woolwine Ford in Collins, (844) 332-1854. See more at Cars601.com.

2015 Chevrolet Camaro, \$20,890. J&S AutoPlex. 601-342-2293. See more at Cars601.com.

2006 Toyota Avalon, \$12,990. J&S AutoPlex. 601-342-2293. See more at Cars601.com.

2013 Nissan Altima, \$12,900. Southeastern Auto Brokers, (844) 312-8785. See more at Cars601.com.

2004 Scion, 4 door, \$3,000. Call or text Brandon, 601-620-4879.

2014 Ford Fusion, \$16,995 at Hattiesburg Cars. Call our Local toll free number 855-242-0775. See more at Cars601.com

2017 Kia Rio, \$17,485 at Laurel Ford, Lincoln, Kia, (844) 319-5854. See more at Cars601.com.

2008 Toyota Camry Solara, \$10,999 at Toyota of Hattiesburg. (855) 221-8310. See more at Cars601.com.

2001 Cadillac Deville DHS, \$3,400 at Vara Auto Sales, call 601-335-3972. See more at Cars601.com.

2014 Chevy Express Van, \$21,995. Daniel, 601-620-4597.

Affordable Auto Insurance, especially if you don't have any now. Call 601-765-4060

2016 Kia Rio, \$19,895 at Laurel Ford, Lincoln, Kia, (844) 319-5854. See more at Cars601.com.

2011 Infiniti M37, \$17,900. Southeastern Auto Brokers, (844) 312-8785. See more at Cars601.com

2011 Dodge Avenger at Southeastern Auto Sales, Laurel. Call 601-649-4746. See more at Cars601.com.

2017 Ford Focus, \$18,745 at Laurel Ford, Lincoln, Kia, (844) 319-5854. See more at Cars601.com.

AUTOS - MOTORCYCLES

2005 Harley Fatboy with detachable windshield, backrest, 2 stage, all braided lines, Jack Daniel Hand Grips, saddle bags, luggage bags just replaced battery last week 25,000 miles, has been serviced on time every time, for more information or questions please call after 5:00 p.m. 601.270.2237, asking \$6700.00 will consider reasonable offer

AUTOS - SUVS

2011 Mini Cooper Countryman, \$10,995 Southeastern Auto Brokers, (844) 312-8785. See more at Cars601.com

2017 Chevrolet Equinox, \$25,698 at Ryan Chevrolet. (855) 534-3769. See more at Cars601.com

2016 Kia Forte5, \$19,135 at Laurel Ford, Lincoln, Kia, (844) 319-5854. See more at Cars601.com.

2006 Pontiac Torrance, \$4,495 at Harris Hankins in Bay Springs. Call 844-329-7227. See Cars601.com for more.

2012 Nissan Xterra, \$11,999 at Auto Express in Laurel, (844) 402-3154. See more at Cars601.com.

2007 Mercedes-Benz ML320 at Southeastern Auto Sales, Laurel.

CLARKE - WAYNE Tax Service

"THE TAX EXPERTS"



Serving This Area for Over 54 Years

1600 East Azalea Dr. • Waynesboro

JENNIFER RABOURN ANGI TYNES

OFFICE FAX

601-735-4211 601-735-4410

Call 601-649-4746. See more at Cars601.com.

2008 Gmc yukon, \$18,950 at Ellisville Motors. Call 844-737-5629. See more at Cars601.com.

2008 Gmc envoy, \$9,950 at Ellisville Motors. Call 844-737-5629. See more at Cars601.com.

2007 GMC Yukon xl, \$10,999 at Auto Express in Laurel, (844) 402-3154. See more at Cars601.com.

2010 Mercedes-Benz E-Class, \$17,900. Southeastern Auto Brokers, (844) 312-8785. See more at Cars601.com

2016 Kia Forte5, \$19,135 at Laurel Ford, Lincoln, Kia, (844) 319-5854. See more at Cars601.com.

2011 Dodge Grand Caravan, \$7,999 at Auto Express in Laurel, (844) 402-3154. See more at Cars601.com.

2006 Mercury Mountaineer, \$8,950 at Paul Garner Motors. (844) 452-4569. See more at Cars601.com.

2005 Dodge Grand Caravan. Seats 7. stow and go seating. AM.FM,CD player. DVD player. \$3000. Call and leave a message. 601-764-7253

2011 GMC Terrain, \$12,000 at Ryan Chevrolet. (855) 534-3769. See more at Cars601.com

2010 Gray Trail Teams Preimun 4WD-Runner, rare. \$22,995. James, 601-602-5806.

2007 Nissan Murano, \$8,999 at Auto Express in Laurel, (844) 402-3154. See more at Cars601.com.

2016 Kia Forte5, \$19,430 at Laurel Ford, Lincoln, Kia, (844) 319-5854. See more at Cars601.com.

2007 Gmc yukon, \$12,999 at Auto Express in Laurel, (844) 402-3154. See more at Cars601.com.

2010 Subaru Outback, \$13,000 at Ryan Chevrolet. (855) 534-3769. See more at Cars601.com

2016 Toyota Camry, \$18,888 at Toyota of Hattiesburg. (855) 221-8310. See more at Cars601.com.

2008 Chevrolet Tahoe, \$15,999 at Toyota of Hattiesburg. (855) 221-8310. See more at Cars601.com.

2013 Chrysler Town & Country, \$16,963. Mack Grubbs Hyundai, (844) 373-0806. See more at Cars601.com.

2011 Kia Sorento, \$12,963. Mack Grubbs Hyundai, (844) 373-0806. See more at Cars601.com.

2009 Gmc yukon, \$12,933 at Harris Hankins in Bay Springs. Call 844-329-7227. See Cars601.com for more.

AUTOS - TRUCKS

2007 Ford F-150, \$16,950 at Ellisville Motors. Call 844-737-5629. See more at Cars601.com.

2007 Dodge Durango, seats seven, \$7,000. Brad, 601-620-4607.

2008 Dodge Ram 1500, \$18,950 at Ellisville Motors. Call 844-737-5629. See more at Cars601.com.

2010 Chevrolet Silverado 1500, \$18,450 at Ellisville Motors. Call 844-737-5629. See more at Cars601.com.

Woodland Trails



Come Join Us:
FIRST SUNDAY LUNCH
APRIL 2ND
Serving Lunch from
11am - 1pm on Wednesdays

601-765-8812 27 DAN & JOYCE LANE
SEMINARY, MS
(1 mile outside Collins)

WOODLANDTRAILS4@YAHOO.COM

For Sale: 2011 Chevrolet 1500 Z71, LT, 4WD, Priced to move. \$17,900 Mauldin Motors, 3069 Hwy 49 Collins, MS. Call 601-765-4402.

2011 Chevrolet Silverado 1500, \$18,995 at Quality Auto. Call 601-394-9313. See more at Cars601.com.

2014 Dodge Ram 1500 at Southeastern Auto Sales, Laurel. Call 601-649-4746. See more at Cars601.com.

2011 Ford F-150, \$15,995 at Quality Auto. Call 601-394-9313. See more at Cars601.com.

2008 Chevrolet Silverado 2500HD, \$14,995 at Quality Auto. Call 601-394-9313. See more at Cars601.com.

2013 Red z71, 4 wd, Chevy Silverado, XCA, only 20,986 miles, \$29,995. Shawn, 601-602-5805.

2006 Toyota Tacoma, \$14,995 at Hattiesburg Cars. Call our Local toll free number 855-242-0775. See more at Cars601.com

2005 Chevy Trailblazer, runs really good. \$9,000. Text or call Shawn, 601-602-5805.

2003 Ford F-150, \$6,995 at Quality Auto. Call 601-394-9313. See more at Cars601.com.

2011 Chevy Colorado, \$12,000, white, 87,000 miles. 601-422-3532.

ATVS

EML Motorsports, 2116 North Frontage Road, Meridian, MS, authorized dealer for HiSUN & Linhai ATVs/UTVs. Great deals on motorcycles, scooters and go-carts. We service Harley Davidson, Victory and Indian Motorcycles. info@emlmotorsports.com. 601-207-5058.

2016 Cub Cadet challenger, \$7,950 at Paul Garner Motors. (844) 452-4569. See more at Cars601.com.

CARPORTS

Carports and Buildings: Financing Available! 22Wx26Lx9T- \$5,050

RUSTIN METAL BUILDINGS AND CONSTRUCTION

Laurel, Mississippi
Rustin Construction Since 1933
COMMERCIAL • RESIDENTIAL

26 Gauge Colored Panels
Licensed General Contractor in MS and LA

WE MANUFACTURE AND WE BUILD

Red Iron Metal Buildings 601-649-9949

GET READY FOR Spring!

New Wicker Arrivals!



Crazy Quilt Mattress Sets
Twin....\$129.99
Full....\$149.99
Queen....\$189.99

HOEFELICH

WHOLESALE FURNITURE CO.

710 Station St. • WAYNESBORO, MS **601-735-6050**

LET OUR PROFESSIONALS AT LAUREL A-1 TIRE CENTER

SERVICE, REPAIR & MAINTAIN YOUR VEHICLE

BEST PRICES IN TOWN - CHECK WITH US FIRST!

- MECHANIC WORK
- DIAGNOSTICS
- FRONT END
- A/C
- BRAKES
- TUNE-UPS
- BATTERIES
- WHEEL BALANCE
- ROTATION
- WINDSHEILD WIPER BLADES

OIL CHANGE SPECIAL

Up to 5 Qts
most vehicles
excludes diesels
WITH COUPON
PRICES SUBJECT TO CHANGE WITHOUT NOTICE

\$24⁹⁵

4 WHEEL ALIGNMENT

Cars Only
WITH COUPON
PRICES SUBJECT TO CHANGE WITHOUT NOTICE

\$44⁹⁵

219 Ellisville Blvd., Laurel, MS
M-F 7:30 A.M.-5:00 P.M. SAT. 7:30 - NOON

601.425.4616

250 CARS IN STOCK THIS WEEK!

TAX REFUND SALE

HUGE SELECTION

STARTING AT \$199/mo

EXAMPLE

2014 Toyota Camry
ZERO DOWN \$199/mo

Woolwine Ford

3080 HWY49 • Collins, MS

Daniel Richard John

"Where we'll treat you, like we want to be treated... Thank you!"

www.woolwineford.com
Call now
601-921-4673

LRMA's 2017 Spring Break Festival

Photos by Linda Cranford



Rylee Gardner and her cousin Sydney Wooten, left, are enjoying making a bead necklace.

Lola and Faith Kay didn't want to stop petting the approximate 19 pound Giant Flemish Rabbit, originally from Belgian, which was brought to the festival by Amee Foster, Outreach Coordinator with the Hattiesburg Zoo.



Betty Taylor shows 5-year old William how to make a Lady Bug Collage as little Mary Segrest Taylor looks on. Museum volunteer Marilyn Biglane, right, helps little Ali McDonald with her collage.



LRMA Curator of Education Mandy Buchanan paints a Green Dinosaur on 4-year old Lincoln Satcher as his sister Andi, and grandmother, Janice Reddock look on.



Five-year old Finn Goggans shows off his Rabbit with carrot face painting.

BIG LOTS!
FRIENDS & FAMILY
SUNDAY, APRIL 2, 2017 ONLY!
OPEN 8 AM - 10 PM

**buzz club
rewards®**

20% OFF EVENT
SATURDAY APRIL 1, 8 AM - 10 PM

Just use your rewards card at checkout.

Not a buzz club rewards® member yet? Sign up today and start saving. Ask an associate for more details.

PRESENT THIS COUPON IN STORE OR USE ONLINE

20% OFF
YOUR ENTIRE PURCHASE*

NOW ALSO BUY ONLINE! Discount Automatically Applied at Checkout.

*Promotional offer valid only at Big Lots stores and biglots.com on pre-tax purchases. Limit one coupon per customer, per transaction. This offer does not apply to shipping charges, previous transactions, price holds, non-purchases such as rentals, deposits, charitable donations, purchases of milk, dairy products, eggs and/or purchases of gift cards. Cannot be used in combination with any other offer, coupon, discount or associate discounts. Value is forfeited if item is returned. By attempting to redeem this offer, user unconditionally agrees that decisions of Big Lots are final on all matters of interpretation, fact and procedure with respect to this offer. Valid only on in stock goods. Void where prohibited. No cash value or cash back. Coupon may not be sold. For Buzz Club Rewards members, online offer valid 4/1/17 @ 12:00 am EST until 11:59 pm EST only. To redeem online, sign in to Buzz Club Rewards account before checkout, and offer will be automatically applied. For Buzz Club Rewards members, in store offer valid all day 4/1/17 open until close. To redeem in store, present Buzz Club Rewards card at checkout. For all customers, online offer valid 4/2/17 @ 12:00 am EST until 11:59 pm PST. Online discount automatically applied at checkout. For all customers, in store offer valid all day 4/2/17 open until close. To redeem in store, present coupon to cashier at checkout.

BIG LOTS!

FRIENDS & FAMILY



HA105

Audiology Services

Hearing Health Care

DeAnne Harris, M.S., CCC-A

Certified Audiologist

Credentials & Service Make the Difference

- ◇Bachelor's Degree in Communicative Disorders
- ◇Master's Degree in Audiology
- ◇Certified with American Speech & Hearing Association
- ◇Private Practice in Newton for 19 years

601.683.3086 Newton, MS
TheAudiologyServices.com



68476

Butler Dental

Across from Court House, Butler, Alabama

Julie Utsey, D.M.D.P.C.
General Dentistry

205-459-2700 1-888-851-8512
Tuesday thru Friday 8 a.m. - 5 p.m.

- ONE DAY DENTURES
- PARTIALS AND EXTRACTIONS
- FREE CONSULTATIONS

	Single	Set
Set Standard Dentures.....	\$200.00	\$300.00
Set Deluxe Dentures.....	\$350.00	\$600.00
*Reline Included: Savings of \$130.00 per unit		
Set Custom Deluxe Dentures	\$550.00	\$1,000.00
*Reline Included: Savings of \$130.00 per unit		
Cast Metal Partial - \$625.00	• Acrylic Partial - \$200.00	
• Extractions - \$100.00	• X-Rays Included	
• Simple Extraction - \$70.00	• Surgical - \$100.00	

72407

SCRMC's 9th Annual Art of Healing Fundraiser

By Linda Cranford

The South Central Health Care Foundation of South Central Regional Medical Center is dedicated to improving the health of the Laurel/Jones County community by offering free health care screenings, support groups and other community initiatives. For the past nine years local artists and artist across the country and abroad have donated their creative pieces of art to be auctioned to raise funds for the foundation. Saturday night, March 25, the foundation held its 9th Annual Art of Healing Auction and Exhibition fundraiser. Hundreds gathered at The Gables for an evening of delicious food, entertainment a chance to give to a good cause and take home beautiful paintings, woodwork, jewelry, mixed media, pottery, iron work, hand carved knives, and other types of art. Over 150 pieces of art were donated this year by artists from all over Mississippi and the Pine Belt area, and throughout the United States.

There were a couple of firsts for this year's Art of Healing. The Silent Auction was handled electronically this year with all bids being placed online through a special app. Everyone was able to keep up with the bidding on their smartphone or tablet and was notified when someone outbid them on an item. In addition to the electronic bidding, a "Wine Pull" was introduced to Jones County. Guests paid \$20 dollars a pull, and the number on the pull corresponded with a bottle of wine. The wines ranged from inexpensive wine to the \$100 per bottle wine.

Local artist Mark Landis was on hand and created a painting from a small photograph of Downtown Laurel back in its early days. Landis reprimanded Linda Gavin, SCRMC Vice President of Marketing, for giving him such a small photograph to work from. His finished painting was later purchased during the live auction by Pam Shell of Ellisville for \$750. Another local artist, Terry Lee Bustin, was also on hand painting in his unique style of using a toothpick to create a very detailed work of art.

As the crowd of more than 500 filled The Gables, the song "Celebrate" by Three Dog Night could be heard playing in the background. In addition to be the annual fundraiser event for the foundation, the evening was also an opportunity to celebrate SCRMC's 65th anniversary. Throughout the evening, a slideshow of old photographs of former employees and doctors of SCRMC was projected onto the big screen.

Dr. Thomas Dobbs spoke briefly about working at SCRMC. "Not only is it a great place to work, but Laurel is a great place to live and raise a family," exclaimed Dobbs. He and his wife Dr. Kimberly Dobbs moved to Laurel in 2008. Dobbs accepted the position of state epidemiologist for the Stat Department of Health and traveled back and forth to Jackson. In 2016 he resigned from that position and is now the Chief Medical Officer at the hospital. "The future is bright, and we have great leadership in place," stated Dobbs.

SCRMC President and Chief Executive



Internationally Acclaimed Artist Mark Landis, who now lives in Laurel, created a painting that was later sold in the Live Auction.



Pam Shell of Ellisville purchased Mark Landis' painting of Downtown Laurel during the early days in the Live Auction for \$750. Landis created the painting from a small black and white photograph and completed the painting at the event.

Officer Doug Higginbotham, also spoke briefly recognizing SCRMC Board of Trustees present, Becky Brewer and Lewis Goins. He also recognized the physicians and SCRMC employees in attendance. He recognized and commended Gavin and Becky Collins, Director of Community Relation and the Health Care Foundation, and their marketing staff, Karen Vanderslice, Allison Evans, Sonya Myers, and Nikki McCraney for a job well done on the night's event.

During his comments, Higginbotham pointed out that 70 percent of the people who work at the hospital and use the facilities are from Jones County. He reminded the people in attendance that the funds raised during the event will help fund several events that will help the members of the community.

Entertainment for the evening was provided by Dr. Zarr's Amazing Funk Monster. The menu for the evening included Carved Brisket with assorted bread and sauces, a pasta station with a chef to personalize each dish, hand-tossed sensation salad, open face tomato bacon sandwich served on crostini, shrimp and grits, shrimp toast bites, warm spinach and artichoke dip with toast points, warm chicken salad served with crostini, dessert assortment, and a beverage and coffee station. To celebrate the 65th Anniversary of SCRMC, a special cake presentation was made during the event.



There were over 150 items donated for the silent and live auction. Photos/Linda Cranford



Allison Evans, left, is helping Dana Blackledge, right, with online bidding.



Mike and Trish Morgan



Dr. Rusty Stevens and his wife Cherilon.



Dr. Mary Moore and her mother Allean Rogers.



Tim and Barbara Tillery dance the "Bolero" to the music of Dr. Zarr's Amazing Funk Monster.

Start your spring off right
with a loan from...

LAUREL LOANS, INC.

for **EMERGENCY CASH** call
601-649-3106

CALL TONYA, KRISTY OR TERESE TODAY!

744 West 5th • Laurel • 601-649-7121

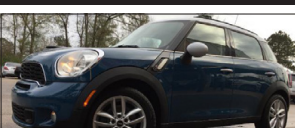
PINE BELT CASHING SERVICE



CARS601.com

Auto Showcase

Call the toll-free number or text the **red 4 digit** code to **27414** for photos and details.



TEXT M4K3 TO 27414
2011 MINI COOPER
 SE Auto Brokers
 (844) 312-8785 **\$10,995**



TEXT 2S34 TO 27414
2013 NISSAN ALTIMA
 SE Auto Brokers
 (844) 312-8785 **\$12,900**



TEXT 20AL TO 27414
2016 BMW 3-SERIES
 Laurel Ford
 (844) 319-5854 **\$27,495**



TEXT 93AK TO 27414
2017 KIA SPTAGE
 Laurel Ford
 (844) 319-5854 **\$21,295**



TEXT D5QH TO 27414
2012 TOYOTA TUNDRA
 Hattiesburg Cars
 (855) 242-0775 **\$26,995**



TEXT 1HM9 TO 27414
2011 TOYOTA HIGHLANDER
 Ellisville Motors
 (844) 737-5629 **\$16,950**



TEXT EB14 TO 27414
2014 FORD FUSION
 Ryan Chevy
 (855) 534-3769 **\$13,000**



TEXT I384 TO 27414
2013 HYUNDAI SONATA
 J&S Autoplex
 (601) 342-2293 **\$13,990**



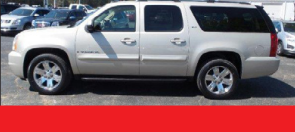
TEXT AAR6 TO 27414
2013 FORD EDGE
 Woolwine Ford
 (844) 332-1854 **\$16,690**



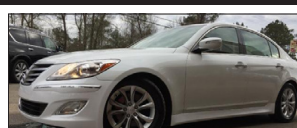
TEXT HT8K TO 27414
2017 GMC TERRAIN
 Harris Hankins
 601-764-4552 **\$28,635**



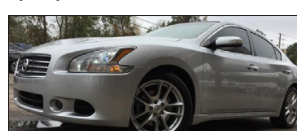
TEXT 28KU TO 27414
2007 DODGE RAM 2500
 Paul Garner Motors
 (844) 452-4569 **\$11,900**



2007 GMC YUKON
 Sullivan Motors
 601-606-4465 **\$12,980**



TEXT ET54 TO 27414
2013 HYUNDAI GENESIS
 SE Auto Brokers
 (844) 312-8785 **\$14,900**



TEXT 4BK1 TO 27414
2011 NISSAN MAXIMA
 SE Auto Brokers
 (844) 312-8785 **\$16,900**



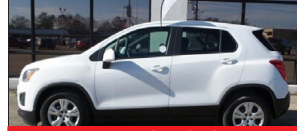
TEXT 8PA7 TO 27414
2014 CHRYSLER 200
 Laurel Ford
 (844) 319-5854 **\$15,995**



TEXT HB9C TO 27414
2016 LINCOLN MKX
 Laurel Ford
 (844) 319-5854 **\$33,814**



TEXT GE62 TO 27414
2005 CHEVY TRAILBLAZER
 Hattiesburg Cars
 (855) 242-0775 **\$8,995**



TEXT 4UL2 TO 27414
2015 CHEVY TRAX
 Ryan Chevy
 (855) 534-3769 **\$16,000**



TEXT B0EP TO 27414
2015 HYUNDAI SONATA
 Ryan Chevy
 (855) 534-3769 **\$15,000**



TEXT I388 TO 27414
2015 NISSAN ROUGE
 J&S Autoplex
 (601) 342-2293 **\$39,990**



TEXT E3RV TO 27414
2014 FORD ESCAPE
 Woolwine Ford
 (844) 332-1854 **\$16,290**



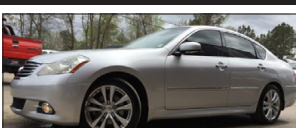
TEXT 290K TO 27414
2009 GMC YUKON
 Harris Hankins
 601-764-4552 **\$12,933**



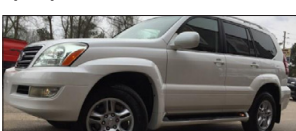
2010 CHEVY EQUINOX LT
 Sullivan Motors
 601-606-4465 **\$13,980**



TEXT AZ7Z TO 27414
2017 MERCEDES-BENZ ML320
 SE Auto Sales
 (601) 649-4746 **CALL**



TEXT 932X TO 27414
2010 INFINITI M35
 SE Auto Brokers
 (844) 312-8785 **\$13,900**



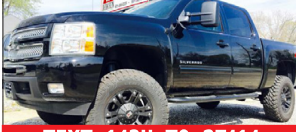
TEXT 2HOW TO 27414
2007 LEXUS GX 470
 SE Auto Brokers
 (844) 312-8785 **\$21,900**



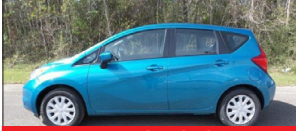
TEXT 8ZQA TO 27414
2016 FORD MUSTANG
 Laurel Ford
 (844) 319-5854 **\$28,995**



TEXT 97SW TO 27414
2014 SUBARU XV CROSSTREK
 Laurel Ford
 (844) 319-5854 **\$18,995**



TEXT 143U TO 27414
2012 CHEVY SILVERADO
 Ellisville Motors
 (844) 737-5629 **\$34,950**



TEXT EBL6 TO 27414
2016 NISSAN VERSA NOTE
 Ryan Chevy
 (855) 534-3769 **\$12,000**



TEXT 5008 TO 27414
2004 NISSAN 350Z
 Ryan Chevy
 (855) 534-3769 **\$10,500**



TEXT I38U TO 27414
2015 CHEVY CRUZE
 J&S Autoplex
 (601) 342-2293 **\$14,990**



TEXT 36ZU TO 27414
2014 FORD ESCAPE
 Woolwine Ford
 (844) 332-1854 **\$15,990**



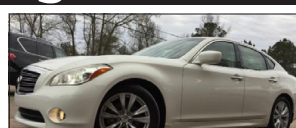
TEXT S5CI TO 27414
2013 CHEVY IMPALA
 Paul Garner Motors
 (844) 452-4569 **\$12,900**



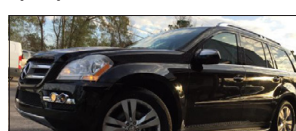
2004 CHEVY TRAIL BLAZER
 Sullivan Motors
 601-606-4465 **\$6,980**



TEXT AY9A TO 27414
2012 SCION TC
 SE Auto Sales
 (601) 649-4746 **CALL**



TEXT ET5B TO 27414
2011 INFINITI M37
 SE Auto Brokers
 (844) 312-8785 **\$17,900**



TEXT M5W9 TO 27414
2010 MERCEDES-BENZ GL
 SE Auto Brokers
 (844) 312-8785 **\$22,900**



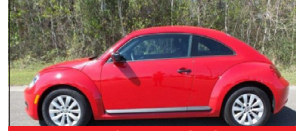
TEXT 44G9 TO 27414
2013 LINCOLN MKS
 Laurel Ford
 (844) 319-5854 **\$20,995**



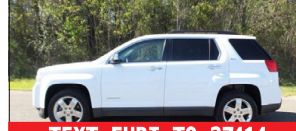
TEXT N3SR TO 27414
2015 CHEVY CRUZE
 Hattiesburg Cars
 (855) 242-0775 **\$19,995**



TEXT 10UL TO 27414
2012 FORD F-150
 Ellisville Motors
 (844) 737-5629 **\$24,950**



TEXT 8TLL TO 27414
2015 VOLKSWAGEN
 Ryan Chevy
 (855) 534-3769 **\$13,500**



TEXT SURI TO 27414
2012 GMC TERRAIN
 Ryan Chevy
 (855) 534-3769 **\$16,500**



TEXT I38M TO 27414
2014 FORD ESCAPE
 J&S Autoplex
 (601) 342-2293 **\$18,490**



TEXT JVB2 TO 27414
2017 BUICK REGAL
 Harris Hankins
 601-764-4552 **\$30,050**



TEXT S54N TO 27414
2013 HYUNDAI ELANTRA
 Paul Garner Motors
 (844) 452-4569 **\$12,900**



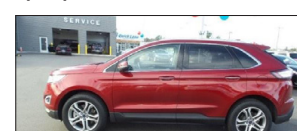
2012 HYUNDAI TUCSON GLS
 Sullivan Motors
 601-606-4465 **\$12,970**



TEXT 0JZA TO 27414
2011 CHEVY SILVERADO
 SE Auto Sales
 (601) 649-4746 **CALL**



TEXT 9F6U TO 27414
2010 MERCEDES-BENZ E
 SE Auto Brokers
 (844) 312-8785 **\$17,900**



TEXT HB7L TO 27414
2016 FORD EDGE
 Laurel Ford
 (844) 319-5854 **\$28,495**



TEXT DN36 TO 27414
2008 GMC SIERRA
 Laurel Ford
 (844) 319-5854 **\$14,995**



TEXT ONN0 TO 27414
2012 TOYOTA AVALON
 Hattiesburg Cars
 (855) 242-0775 **\$20,995**



TEXT 3BLX TO 27414
2009 CHEVY TAHOE
 Ellisville Motors
 (844) 737-5629 **\$16,500**



TEXT 3P0I TO 27414
2015 CHEVY SONIC
 Ryan Chevy
 (855) 534-3769 **\$13,000**



TEXT 4GYN TO 27414
2011 GMC TERRAIN
 Ryan Chevy
 (855) 534-3769 **\$12,000**



TEXT 3IEC TO 27414
2016 FORD FUSION
 Woolwine Ford
 (844) 332-1854 **\$18,490**



TEXT 8SXT TO 27414
2005 CHEVY CAVALIER
 Harris Hankins
 601-764-4552 **\$2,333**



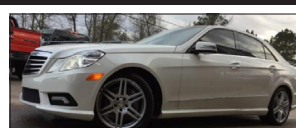
TEXT 8810 TO 27414
2015 NISSAN ALTIMA
 Paul Garner Motors
 (844) 452-4569 **\$14,900**



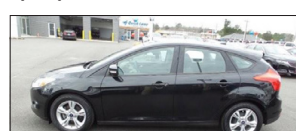
2005 GMC SIERRA 2500
 Sullivan Motors
 601-606-4465 **\$18,970**



TEXT AX8T TO 27414
2014 DODGE RAM 1500
 SE Auto Sales
 (601) 649-4746 **CALL**



TEXT 7RPR TO 27414
2010 MERCEDES-BENZ E
 SE Auto Brokers
 (844) 312-8785 **\$17,900**



TEXT 8Y4B TO 27414
2014 FORD FOCUS
 Laurel Ford
 (844) 319-5854 **\$13,995**



TEXT DE9R TO 27414
2016 FORD EXPLORER
 Laurel Ford
 (844) 319-5854 **\$35,995**



TEXT 7034 TO 27414
2010 TOYOTA TACOMA
 Hattiesburg Cars
 (855) 242-0775 **\$23,995**



TEXT 10G7 TO 27414
2005 GMC YUKON
 Ellisville Motors
 (844) 737-5629 **\$11,950**



TEXT EBJ0 TO 27414
2014 DODGE CHARGER
 Ryan Chevy
 (855) 534-3769 **\$16,000**



TEXT 80CW TO 27414
2006 TOYOTA AVALON
 J&S Autoplex
 (601) 342-2293 **\$12,990**



TEXT 7SCT TO 27414
2014 TOYOTA COROLLA
 Woolwine Ford
 (844) 332-1854 **\$15,990**



TEXT HK8G TO 27414
2015 CHEVY MALIBU
 Harris Hankins
 601-764-4552 **\$19,888**



TEXT 333T TO 27414
2013 NISSAN ALTIMA
 Paul Garner Motors
 (844) 452-4569 **\$13,900**



2015 NISSAN SENTRA
 Sullivan Motors
 601-606-4465 **\$13,860**



TEXT 0C07 TO 27414
2014 GMC SIERRA 2500
 SE Auto Sales
 (601) 649-4746 **CALL**

Msg & Data Rates May Apply; Ts & Cs and Privacy Policy: <http://autoconx.com/terms>

Text the red 4 digit code to 27414 for photos and details to your phone

Eagle Scout Guthrie recognized by Supervisors

By Linda Cranford

During the Jones County Board of Supervisors meeting Monday, March 20, President Jerome Wyatt presented a proclamation to recognize and applaud Miles Guthrie in achieving the rank of Eagle Scout of the Boy Scouts of America.

According to the proclamation, “the mission of the Boy Scouts of America is to prepare young people to make ethical and moral choices over their lifetime and to become responsible, participating citizens and leaders by instilling in them the values of the Scout Oath and Law. The Eagle Scout rank is the Boy Scouts of America’s highest ranking and requires true dedication and commitment.”

Guthrie, a senior at South Jones High School, is a member of Troop 466 of Seminary, and completed the requirements to receive the rank of Eagle Scout on October 5, 2016. His Eagle Scout Project was the building of a Wheelchair ramp for the Big Creek Water Park making both entrances Wheelchair accessible. As a student, Guthrie is involved in many school activities and serves as videographer for the South Jones Braves Football Team.

In the past two years, Guthrie has proven his outstanding leadership skills by volunteering as an assistant leader to Cub Scout Pack 446. He is also an active member of Lowery Creek Baptist Church.



Miles Guthrie is pictured with his Supervisor David Scruggs of District Four.
Photo/Linda Cranford

Dixie Electric Hosts Annual Golf Tournament

Submitted

The weather was beautiful; the course was challenging; and the crowd was great for the ninth annual charity golf tournament sponsored by Dixie Electric Power Association to benefit the American Cancer Society’s Relay For Life.

Thirty-six teams participated in the four-man scramble tournament held on Thursday, March 23, at the Laurel Country Club. The tournament raised more than \$10,500 for the American Cancer Society.

The highlight of the day was a hole-in-one hit by Mark Smith of Hattiesburg on hole 4. Mark won a set of irons from Kim’s No Bull. This is the second hole-in-one hit in the nine year history of this charity tournament.

“It was a great day for our charity tournament. Not only was the weather beautiful, the support from our vendors and the local community was incredible,” tournament coordinator Pollyanna Magee said.

Hole-in-one prizes were provided by Kim’s Chrysler Dodge Jeep Toyota and Woolwine Ford of Collins, and closest to the hole prizes were sponsored by Laurel Coun-

try Club. The flight winners received gifts provided by Canebrake Country Club and Dixie Electric. Lunch was donated by Bush Construction and R&C Sons, LLC.

Morning Flight Winners: Randy Smith presented prizes to the following teams.

First Place: The Dwain Strickland Team - Mike Kennedy, Joey Landrum, Dwain Strickland, and Thomas Prine

Second Place: Burns & McDonnell Team – Ted Cannon, Trey Cannon, Mark Smith and Scott Strawn

Third Place: Walters Construction Team – Gerald Henderson, Makenzie Walters, Scottie Walters and Joseph Henderson

Afternoon Flight: Pollyanna Magee presented the prizes.

First Place: Hugh Parker Team – Donald Coleman, Hugh Parker, Jim Henderson and Steve Brantley

Second Place: The Prince Team – Alec Barlow, Colby Prince, Markas Holifield and Gene Prince

Third Place: First State Bank – Rick Sumrall, Rodney Cockerham, Kelvin Hall and Vernon Tew



First Place, Afternoon Flight: Hugh Parker Team – Donald Coleman, Hugh Parker, Jim Henderson and Steve Brantley. Pollyanna Magee presented the prizes. Photo/submitted



First Place, Morning Flight: The Dwain Strickland Team - Mike Kennedy, Joey Landrum, Dwain Strickland, and Thomas Prine. Photo/submitted

For Local News & Sports every day,
visit our web site:

Impact601.com

**WE WANT YOU!
TO COME TO OUR
INVENTORY
REDUCTION
SALE**

<p>#P12506 2016 TOYOTA COROLLA L SEDAN 5,075 MILES, \$19,495</p>	<p>#P12492 2015 CHRYSLER 200 S SEDAN 41,164 MILES, \$15,995</p>	<p>#P12502 2016 KIA SOUL + FWD HATCHBACK 39,896 MILES, \$16,495</p>
<p>#1908A 2016 LINCOLN MKZ SEDAN 34,567 MILES, \$23,784</p>	<p>#P12493 2016 CHRYSLER 300 S SEDAN 34,779 MILES, \$27,995</p>	<p>#P12476 2016 CHEVROLET IMPALA LT 17,926 MILES, \$22,395</p>
<p>#P12474 2016 HYUNDAI SANTA FE SE SUV 32,130 MILES, \$22,795</p>	<p>#P12491 2016 CADILLAC XTS SEDAN LUXURY COLLECTION \$29,495</p>	<p>#19097B 2015 CHEVROLET SILVERADO 1500 LT 61,992 MILES, \$32,995</p>

www.kiaoflaurelms.com www.laurelfordlincoln.com

\$5.00 OFF YOUR NEXT SERVICE
MUST HAVE COUPON. EXP. 04-30-17
CAN'T BE COMBINED WITH ANY OTHER OFFERS.

HEY KIDS! **COME ON OVER**

www.sawmillsquarecenter.com

Have Your Picture Taken with the Easter Bunny!

ARRIVING AT CENTER COURT April 1, 2017

SAWMILL SQUARE MALL

910 Sawmill Road
601-426-6320

Laurel Tornado Haskins signs with ECCC



Laurel High School basketball standout Tamirra Haskin signed a letter of intent with East Central Community College. She was recently selected to play in the Mississippi-Alabama All-Star game in Montgomery, Alabama, where the Mississippi team was victorious. She has received numerous awards for her skills on the court including being named 2017 Region 5-5A Co-Offensive Player of the Year, Clarion Ledger Top Performer of the Week and State Girl of the Week. She was selected most valuable player for Region 5-5A in 2016, was named to the All-District Team and was named East Central Community College Tournament MVP. Haskin is a member of the Beta Club, Interact and Student Council. She is a Superintendent's Scholar, Mississippi Scholar and is dual enrolled at Jones County Junior College. Tamirra plans to study physical therapy. Pictured: (seated L-R) her mother Roslyn Haskin, Tamirra Haskin, father Chris Haskin, (standing L-R) aunt Dessy Parker, friend Ashley Breland, pastor and godfather Rev. Vernon Graves, LHS assistant coach Shasta Husband, head coach Alphaka Moore, assistant coach Kamita Thigpen, aunt Tonya Weathersby, brother Donovan Haskin and grandmother Margaret Weathersby. *Photo/submitted*

LHS vocational students visit Laurel Middle School

The Laurel High School Career and Technical Center students recently visited with students at Laurel Middle School to introduce the course selections currently available at the CTC. Students from Welding, Marketing, Health Science, Culinary Arts, Child Care and Construction had the opportunity to discuss the course curriculum and the future professions related to each of the vocational classes. Pictured: Laurel High School Career and Technical Center Health Science students Da'Taisha Cooley and Breanna King assist Laurel Middle School sixth grader Akil Dixon with proper CPR techniques. *Photo/submitted*



SHOOT OUT SAVINGS
APRIL 1ST - 29TH ONLY

KICK BACK AND ENJOY THE EXCITEMENT!

STOP BY ONE OF OUR CONVENIENT LOCATIONS TODAY!

TEXT RAPID TO 51660 TO RECEIVE **\$20 OFF*** FIRST RENTAL TERM
Cannot be combined with any other offers.

YOUR CHOICE \$29.95/WEEK

TULEN Gray Recliner, Reclining Loveseat & Reclining Sofa
also available in **only \$120.00 MO FOR 24MO**

TAFTON Reclining Sofa & Loveseat **only \$120.00 MO FOR 24MO**

MILHAVEN Black Reclining Sofa & Loveseat
also available in **only \$120.00 MO FOR 24MO**

43" & 50" BUNDLE
43" Hisense Smart TV PLUS 50" Hisense Smart TV with Roku
BOTH only \$96.00 MO FOR 24MO \$23.90 WK

43" & 60" BUNDLE
43" Hisense Smart TV PLUS 60" Samsung Smart TV
BOTH only \$120.00 MO FOR 24MO \$29.90 WK

50" & 60" BUNDLE
50" Hisense Smart TV with Roku PLUS 60" Samsung Smart TV
BOTH only \$128.00 MO FOR 24MO \$31.90 WK

ELECTRONICS DOUBLE TEAM!

APPLIANCE SPECIAL ALL MONTH LONG! (SEE STORE FOR DETAILS)

AMANA WASHER & DRYER SET
only \$68.00 MO FOR 24MO

FRIGIDAIRE CHEST FREEZERS
Variety of Sizes Available from 5 Cu. Ft. to 15 Cu. Ft.
only \$72.00 MO FOR 18MO \$17.95 WK

FRIGIDAIRE REFRIGERATORS
Available in Black or White
18 Cu. Ft. **only \$72.00 MO FOR 18MO \$17.95 WK**
26 Cu. Ft. Side x Side with Ice & Water Dispenser **only \$96.00 MO FOR 24MO \$23.95 WK**

**All photos for illustration purposes only.*

Rapid Rentals Rental Purchase
FURNITURE • APPLIANCES • ELECTRONICS

BAY SPRINGS STORE IS ACCEPTING APPLICATIONS FOR PART TIME DELIVERY HELP

Your Location: 9-G Bay Avenue • Bay Springs, MS 39422 • 601.764.9805

326 Woodland Drive Forest, MS 39074 601.469.2151
125 Old HWY Loop Newton, MS 39345 601.683.7800
818 Main Street Collins, MS 39428 601.765.4181
105 HWY 35 North Carthage, MS 39051 601.298.0999

Visit Us Online @ www.RAPIDRTO.com

Like us on facebook

LUT7801