



IMPACT

Postal Customer Local
PRSR
STD
US Postage Paid
IMPACT
ECRWSS



Vern Geddie's Western Auto closes... page 4

Laurel McAlister's Deli Manager receives special award...page 10

Laurel • 601.649.1129
www.impact360.ms

Volume 41, No. 14 • April 5, 2017

47,129 total circulation
Advertising that works!

Serving Jones, Jasper, Smith, Wayne and Washington & Choctaw County, AL

Loblolly Boutique opens in Downtown Laurel

By Linda Cranford

Thursday afternoon, March 23, The Loblolly Boutique, located on Magnolia Street in Downtown Laurel, held its grand opening and ribbon-cutting ceremony. The little children's boutique offers affordable clothing for children age 0 to 12. Approximately 4 years ago, when Wayne and Melissa Bryant's daughter, Alysabeth, was eight years old and began developing an affinity for clothes, Melissa dreamed of opening a children's boutique. "This was all God's doing," said Melissa. "In the first of January, Wayne suddenly came home and said 'let's open up a boutique in Downtown Laurel,' and by February 11, we were opening the doors to the business for the first time."

Wayne's sister Hope Husband and her husband Joey joined the couple in opening the new business. "It's definitely a family business," said Wayne. All of their

four children participate in the business. Alysabeth, helps pick out the clothes; Rob sweeps the floor; Summer manages the money, and 2.5-year old Bentley helps run the place.

Matt Olson, pastor of First Baptist Church Sharon, gave the invocation and Larkin Simpson, Jones County EDA vice president and Chamber of Commerce director, presented the owners with their first dollar of profit, and a commemorative Chamber of Commerce membership poster with a print of local artist Lisa Thames' oil painting of Euclid Park in the historic district of Laurel.

The Loblolly Boutique is located at 327 N. Magnolia Street, across from J Parker and Adam Trest Home, and is open Monday through Friday 10:30 a.m. until 6 p.m. and on Saturday from 10 a.m. until 5 p.m. For more information call 601-325-3263.



L-R, Melissa Bryant, Hope Husband, Summer Ingram, and Wayne and Bentley Bryant. Photos/Linda Cranford

DERKSEN PORTABLE BUILDINGS

BUY OR RENT TO OWN starting at... **\$69²¹** PER MONTH

NO CREDIT CHECK!

- FREE DELIVERY & SET-UP
- NO SECURITY DEPOSIT • NO SLAB NEEDED

ALL STYLES AVAILABLE • CABINS • BARNES
UTILITY/SIDE UTILITY • GARAGES • CARPORTS

WWW.ELLISVILLEMOTORS.COM 601-323-0464

12 Months SAC *wac 303 HWY. 11 S. ELLISVILLE, MS • LOCATED BETWEEN PIZZA HUT & JCJC

AS SHOWN 10X12 \$123.84 MONTH Rent to Own

PAYNE PORTABLE BUILDINGS 601-426-9484
601-319-3555

Office located at 342 Maxey Rd. • Hwy. 84 W, Laurel
12 MO. SAME AS CASH or RENT TO OWN FINANCING AVAILABLE. WAC

SOUTHEASTERN AUTO SALES LLC

SERVICE DEPARTMENT NOW OPEN

- Brakes
- Tune-Ups
- Mechanic on Duty

Extended Warranty Service Contract Provided

2711 Highway 15 N. | Laurel | 601.649.4746

Voice of Hope with Sandra Hancock

Free Admission! All are Welcome!
"Come Expecting Your Miracle"

Saturday • April 8, 2017 • 10:30 AM - 12:30 PM

THE GATHERING PLACE
3227 AUDUBON DR. • LAUREL • OVERFLOW PARKING IN REAR

Voice of Hope TV Show Saturdays
WHLT 6:30 - 7 am • WJTV 5:30 - 6 am

For more information:
1.800.579.7350 • Sandra Hancock Ministries
www.sandrahancock.com

HOME OF THE \$69 MATTRESS

\$199 Sales EVENT
24 MONTHS FINANCING! WITH APPROVED CREDIT

QUEEN SIZE ASHLEY METAL BED ON SALE **\$199**

DINING TABLE AND 4 CHAIRS ON SALE **\$199**

ASHLEY 3 PIECE COFFEE & END TABLE SET DON'T MISS THIS DEAL! **\$199**

QUEEN SIZE MATTRESS SET ON SALE **\$199**

SOUTHERN FURNITURE AND MATTRESS
2909 Wheeler Drive • Laurel, MS 601-649-0733

Next to Bob Palmer's Chancellor Motor Group

WOOD PELLET GRILLS

GRILL IT, SMOKE IT, BAKE IT, ROAST IT, OR SEAR IT!

REAL WOOD FIRED FLAVOR! SET IT AND FORGET IT!

- 818 SQ. IN COOKING SURFACE
- FLAME BROILER FOR DIRECT/INDIRECT GRILLING
- IDEAL FOR LARGE FAMILIES AND ENTERTAINING GUESTS
- HOPPER HOLDS UP TO 19 LBS. OF PELLET FUEL
- COOK FROM 180 DEGREES TO 500 DEGREES F

\$699

Alexander's
SELECTION • SERVICE • VALUE

Bay Springs 601-764-2161
Ellisville 601-477-3312

Classified Index

Apartments for Rent	9
Appliances	7
Attorneys	3
Autos - Cars	9
Autos - SUVs	11
Autos - Trucks	13
Buildings	9
Business Opportunities	7
Carports	13
Commercial	9
Farm	3
Fish	7
Furniture	7
Garage Sales	9
General	3
Handyman	6
Help Wanted	8
Houses for Rent	9
Houses for Sale	9
Land	3
Lawn and Garden	9
Lost and Found	7
Massage	6
Mobile Home for Rent	9
Mobile Home Lots	9
Mobile Homes	7
Musical	9
Pets	7
Portable Buildings	9
Services Offered	6
Timber and Lumber	9
Trailers	3
Vacation	9
Wanted to Buy	9

A Shepherd's Heart – There stands a Cross

By Dr. Timothy L. Hubbard

“And as Jesus was going up to Jerusalem, he took the twelve disciples aside, and on the way he said to them, “See, we are going up to Jerusalem. And the Son of Man will be delivered over to the chief priests and scribes, and they will condemn him to death and deliver him over to the Gentiles to be mocked and flogged and crucified, and he will be raised on the third day.” (Matthew 20:17-19 ESV) In his book, “On a Hill Too Far Away,” John Fischer tells of a cross that is found in a church in Old Greenwich, Connecticut.

As he describes this cross he states that the cross is a sturdy wooden cross, standing some ten feet tall and made of raw untreated wood. As he continues his description, the most unusual thing about this cross is where it is positioned in the church. Most of us are accustomed to seeing crosses merely as decorations in churches. They are usually positioned on the walls behind the pulpit, over the baptistery, embedded in the stained glass windows or on the tops of our steeples. This was certainly the case for Fischer, as well, until he saw The Old Greenwich Cross. This cross was positioned right in the center of the floor in front of the pulpit, right in everyone’s

line of sight. Fischer states, “The minute I walked into the church in Old Greenwich and encountered this startling placement of the cross, I felt as if I had discovered something truly significant. For just as the cross has been placed squarely in the center of this church, so it has always stood in the center of history and in the center of any life that has truly embraced it.

And just as the placement of this cross seems so uncomfortable, so it is . . . and should be. There is nothing comfortable about the cross.” (Fischer p. 16) As Jesus walked the roads with his disciples, he was instructing them each step of the way. Always seizing the opportunity to prepare them for his death, burial and resurrection. Matthew records at least three occasions where Jesus basically said to his disciples, “Hey, guys, listen closely, there stands a cross, and I’m headed there!” (My rendering)

Jesus was fully aware of the work of reconciliation that God the Father had sent him to earth to accomplish. John the Baptist had proclaimed at the baptism of Jesus that he (Jesus) was the Lamb of God who would take away the sins of the world. (John 1:29) Yes, Jesus knew the path that He must trod in order to accomplish God’s plan for the

redemption of mankind. That path led to a cross on a hill called Calvary.

Back to the placement of the cross in Old Greenwich, Connecticut: its placement seems odd indeed. However, if we could but learn the lesson that John Fischer shares about this particular cross, we too may be led to move the cross of Calvary out of the past tense and into the present tense as we live our lives daily. It should cause us discomfort to the degree that we never forget the price that was paid to purchase our pardon.

The cross demands a response! Isaac Watts stated this challenge well in his beloved hymn, “When I Survey the Wondrous Cross” – “When I survey the wondrous cross, on which the Prince of Glory died, My richest gain I count but loss, and pour contempt on all my pride. Forbid it, Lord, that I should boast, save in the death of Christ, my God; All the vain things that charm me most, I sacrifice them to His blood. See, from His head, His hands, His feet, sorrow and love flow mingled down; Did e’er such love and sorrow meet, or thorns compose do rich a crown. Were the whole realm of nature mine, that were a present far too small; Love so amazing, so divine, demands my soul, my heart, my all!”



Laban Blakeney, a senior at Sylva-Bay Academy, was selected to the 2017 MAIS Class AA Basketball All-Star Team. He is the son of Grant and Bethany Blakeney of Taylorsville. Photo/Submitted

The Children's Depot, LLC
CHILD CARE & PRESCHOOL

Limited openings
Register today!

601.342.5240
224 Lower Myrick Rd

PARISH TRANSPORT

HAS IMMEDIATE OPENINGS FOR GOOD
OTR Truck Drivers and Owner Operators
HIRING ALL DIVISIONS

Benefits include:
• Health Insurance • Vision Insurance
• Dental Insurance • Paid Vacation

NOW OFFERING SIGN ON BONUS
• SAFETY BONUS • REVENUE BONUS
• RETENTION BONUS

If You Want To Work For A Great Company With Great Benefits

call us at
601-342-2314 today!

Located in Ellisville, MS

IMPACT #1 in Advertising

Ronnie Buckley
Publisher

Kevin Williamson
Manager

Jerry Clark
Circulation Supervisor

Ryan Griffin
National Sales Consultant

Betty Busby
Laurel Sales Representative

Kim Wilbanks
Laurel Sales Representative

Trish Irwin
Laurel Graphic Artist

Jennifer Clark
Graphic Production Manager

Terica Roberson
Graphic Artist

Candice Pittman
Graphic Artist

Russ Farris
Graphic Artist

Sherry Hearn
Administrative Assistant

Linda Cranford
Writer/Photographer

LS Tractor Excel in Your Field™

GARDEN SPECIAL

- XG3025 LS Tractor with Front End Loader
• 25HP • 4WD • Shuttle Shift • Synchro Mesh Transmission
- 18' Utility Trailer with Tube Top
- 5' King Cutter Tiller - Gear Driven
- 5-1/2' King Cutter Disc with Tube Frame

FREE ROWMAKER WITH PACKAGE PURCHASE Must be 18 Years Old to Qualify

\$19,899 + TAX

www.tractorsunlimitedms.com MON-FRI 7:30-4:30, SAT 8-4

TRACTORS UNLIMITED, LLC
601-583-6453 1507 N. MAIN STREET HATTIESBURG, MS 800-321-2701

OLD SOUTH FARM SUPPLY

The Green House is stocked...
Get ready for Good Friday planting!!

- BEDDING PLANTS
- VEGETABLES
- GARDEN SEEDS

Fertilize
Herbicides
Pesticides

Full Line of:
Nutrena SEED AND FEED

AGRILIFE ALFA/OAT PELLETS
12% Protein - 5% Fat **\$8.95**
50 Lb. Bag

COME LET US HELP YOU WITH YOUR LAWN & GARDEN NEEDS!
Bo Welborn-Owner • Mickey Holloway-Manger
244 E. Hickory Street • Laurel • 601-428-7447

BancorpSouth

TOUCH A TRUCK

APRIL 8, 2017

9:00 AM TO 2:00 PM
NO HORN HOUR:
10 - 11AM & 1-2 PM
LIBRARY STREET PARKING LOT
DOWNTOWN LAUREL

Tickets: \$5 Each | Children 2 & Under FREE
ADVANCED FAMILY PACK: 4 FOR \$15

WWW.LAURELMAINSTREET.COM

WHILE THE IMPACT makes every effort to verify the offerings made in these ads, we cannot guarantee the integrity of every advertiser. We strongly recommend that readers investigate the companies involved before sending them any money.

Classified and ROP Ad Deadline
Sunday Edition -
Wednesday at 12:00 Noon
Wednesday Edition -
Thursday at 3:00

IMPACT
1010 N. 16th Ave
Laurel, MS 39441
Ph. 601.649.1129
Fax: 601.649.0424
Email: admin@laurelimpact.com

VISA MasterCard DISCOVER

Circulation Audited By
CIRCULATION VERIFICATION COUNCIL

IFPA EDA
of Jones County



THREE DAY MATTRESS SALE!

PLUSH QUEEN SET \$399 - 10 YEAR WARRANTY

TWIN \$299
FULL \$349
KING \$599
 Price for Set!

Foam Encased 13 Inch Thick Mattress With High Coil Count
Alexander's
 FURNITURE
 Bay Springs 601-764-2161



Quality Aluminum Fencing & Automated Security Systems



Commercial & Residential
 Many Styles
TONY THORNSBERRY
 601.577.0927

GENERAL

Band saw and sander combination on a stand. Used 5 hours. \$185. 601-425-5328.

3B's Mini Storage located at 511 Court Street in Waynesboro, MS, hereby makes notice that the contents of Cathy Everett will be disposed of on April 8.

Lawncare: Serving Hattiesburg, Lumberton, Laurel, Sumrall, Petal, Brooklyn, Ellisville, Purvis and Mosselle areas. Reasonable rates. 601-325-5008. www.fullservicelawnca-rems.com

Prayer & healing services: Every Thursday at 7:00 p.m. at Forget-Me-Not Christian Books and Gifts, 5317 Old Hwy 11, Suite 1, Hattiesburg, MS, West Oaks Shopping Center, 601-264-2191. We are more than just a bookstore. If you need prayer or a healing, you need to be here! James 5:14. Storewide Inventory Reduction Sale. Up to 90% off select items. Books, Bibles, music, prayer, shawls. We also carry the Tallit and other Holy Land gifts. We have a

private prayer room dedicated just for you to use for prayer. www.shop-forgetmenot.com Pray, Heal and Shop! 601-264-2191.

Super sale! On. Lawn, garden, home, ranch items and more. Vegetable plants, 6 pack, cabbage, lettuce, tomato, \$2.49 per 6PK. Planting Tools, Cultivator/trowel, your choice, \$3.99EA., Garden Tools, rake/shovel, your choice, \$6.99EA. Miracle Gro, Earth Gro, Nature Scapes Soils and Mulch. Organic Humus, 40# Bag \$2.49. Topsoil, 40# bag \$1.99. Compost, 1 cu ft. \$2.09. Red Mulch, 2 cu ft. \$3.99. 1 cu ft. garden soil, \$4.49, 2 cu ft garden soil, \$7.49, 1 cu ft. potting mix, \$7.99, 2 cu ft potting mix, \$12.99. Char Broil, 3 burners, \$139.00. Tiller Rental available. Portable Tail Gater, \$199.00. Steel Farm Gates, beginning at \$89.99ea. 8', 10' 12', 14', 16' available. Barb Wire, 4 point, 15-1/2GA \$38.95 P/RL. Griddle/Grille, \$199.00. Headquarters for Tamko shingles and Torshel shelters. Belleco Home Center. Hattiesburg, MS. 601-261-0198.

LOW COST DENTURES SINCE 1978

DENTAL SERVICES OF SOUTH MS. P.A. GENERAL DENTISTS

2019 Hardy Street • Hattiesburg, MS
 • Dentures • Reline
 • Partial • Repair
 Call Toll Free Within 55 Mile Radius
 (601) 545-1905
 (877) 545-1905



LISTING OF THESE PREVIOUSLY MENTIONED AREAS OF PRACTICE DOES NOT INDICATE ANY CERTIFICATION OF EXPERTISE THEREIN.

Sunal Tanning Bed for sell. New top and bottom glass and in excellent condition. \$300.00 Serious enquires only 601-433-3628

Flag Pole Super Sale! 24ft. Liberty Deluxe Double Flyer (reg. \$299) now only \$199. Call American Flag Pole Co. Today! 601-649-0748. God Bless America.

ATTORNEYS

Bankruptcy & Social Security, Tracy A. Walley, 1616 West 3rd Street, Laurel, 601-651-2186

FARM

Farm Barns. 40x30x16-\$9500. 30x30x10-\$7500. Metal roof and sides. Price includes labor. 601-296-0550.

TRAILERS

B&B Trailers. Utility and equipment. 8201 US Hwy 98W, Hattiesburg. We take trade-ins. 0% financing. 12 months same as cash. WAC.

Check out our new website: bbrailers.net. 601-264-6711.

LAND

+/- 37 Acres Located on Augusta Road 5 miles South of Ellisville, MS. This tract is made up of merchantable timber with both pine and hardwood. Has two large food plots in place. Great hunting and recreation. Has a house sites with power and water available. 1/4 mile black top frontage on Augusta Road. \$96,200. Call Woods & Waters Realty at 800-526-3961. See more at mfmiland.com

Lazy Leaf River Estates, Moselle. Beautiful 3.34 acre corner lot. Community river access. No direct river access from this lot. \$18,000. 601-410-4643.

+/- 90 Acres Located on CR 62/ Gum Ave in Heidelberg, MS this tract consists of 50 acres of 10 year old pine plantation, and 40 acres on Natural Regeneration. Has beautiful creek running across property. This property is holding a very large deer population, must see to believe. More tracts than you can count. With a little TLC this tract will be one of the best hunting tracts around Jasper County! Power/water available, several good house sites/camp house sites. \$180,000. Call Woods &

Laurel-Jones County Household Hazardous Waste Collection

Reduce Reuse Recycle
One Day Free Proper Disposal Turn-In Event
SATURDAY • APRIL 8TH
8A.M. UNTIL 12 P.M.
 Laurel Fairgrounds Parking Lot Main Entrance - Doncurt Rd

ITEMS ACCEPTED

PAINT, Paint Thinner, Aerosols, Cleaners, Ammonia, ANTI-FREEZE, Auto Cleaners, Batteries, Brake Fluid, TIRES, Chlorine Bleach, Pool Chemicals, Glass Cleaner, Disinfectants, Drain Opener, Furniture Polish, Gasoline, Oil, Herbicides, Insecticides, Pesticides, Rodent Poisons, Rubber Cement, Silver Polish, Tub & Tile Cleaner, Water Seal, Wood Finish, Detergents, Fertilizers, Lighter Fluid, Glues, Oven Cleaner, Appliances, Photographic Chemicals, Fluorescent Light Bulbs, Electronic Waste, Old Furniture, Household Debris, Building supplies, **PRESCRIPTION DRUGS & AMMUNITION**

DO NOT BRING THESE ITEMS
 Explosives, Radioactive Materials, PCB's, Medical Waste, Syringes & Laboratory Chemicals,

ABSOLUTELY NO COMMERCIAL WASTE WILL BE ACCEPTED, ONLY HOUSEHOLD HAZARDOUS WASTE

For more information, Please call 1-800-689-5656 or 601-428-3138

Waters Realty at 800-526-3961. See more at mfmiland.com.

20 acre farm/ranch in Janice, Ms. With custom built home, wrap around porch, Pond, horse stalls, fenced and cross fenced, huge shop. Bordered on two sides by National Forest lands. Lots of wildlife call Shawn, Southern Coastal Realty, LLC 601-408-3570.

Jones County +/- 123 Acres. Great Location! Located 5 miles from downtown Ellisville off of Hwy. 29 South on Pecan Grove Road. This Property has endless opportunities! From hunting, fishing, building a home/farm, or just for an investment. Property contains mature pine plantation and a fully stocked pond that

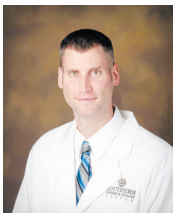
would be great to build a home/camp next too. \$455,100. For more details, call Bennett today, 601-913-0340, at Walley Properties, LLC. Or visit our website walleyproperties.com

Stringer, MS: This excellent 92 acre parcel is located in the heart of Stringer School District. The property consist of various merchantable timber types with multiple home sites. With an abundance of wildlife the property could also be used as a hunting retreat. The property can be divided. Priced to sell at \$207,000. Contact Marc 601-670-5429 at Walley Properties, LLC.

Continued on ... Page 5



SOUTHERN SURGERY & UROLOGY CENTER



We are pleased to announce our new general surgical office in Laurel, MS. The office is located at **1104 West 1st Street, Suite 4.**

We will be providing outpatient surgical services at **Laurel Surgery and Endoscopy Center, LLC.** We will also offer inpatient procedures at Merit Health Wesley in Hattiesburg, MS.

Inpatient Service

- Thyroidectomy, Parathyroidectomy
- Colectomy - laparoscopic and open
- Incisional hernias, component separations
 - Breast Surgery
 - Laparoscopic Adrenalectomy
- Laparoscopic Anti-Reflux Surgery

Outpatient Services

- Hernias - open and laparoscopic, umbilical hernias, inguinal hernias
- Skin lesions, cancers, abscesses
 - Breast Surgery
 - Endoscopy
 - Gallbladders
 - Infusaports
 - Anorectal disorders - hemorrhoids, fistulas, fissures

To schedule an office consultation please **Contact Sandy Federowski at 601-450-2424, fax 601-450-2433.**

LAUREL CANCER CARE

Compassionate care....Close to Home
Dr. Cameron Pimperl, Radiation Oncologist
601-425-2999
 127 South 13th Avenue • Laurel, MS 39440
 laurelcancercare.com

QUINN PHARMACY & GIFTS

Find something for every bunny!
Monogrammed Easter Bags
ONLY \$14.99 (includes personalization)
 Let us Custom Design your Special Easter Basket!
 • Plush Animals • Gifts
 • Whiffer Sniffers in several scents
 • A Large Selection of New Vintage Toys
 • Chocolate Easter Bunnies
 • Bean Boozle Jelly Belly's Game
 • Nail and Hair Accessories
 • Basket can be cellophaned with Shred & Quinn's Signature Bows!

Get ready for the Beach!
 • SUMMER BEACH BAGS • FLOATS
 • TOWELS • SWIM ACCESSORIES

3160 AUDUBON DRIVE
 NORTH LAUREL SHOPPING CENTER
601-428-0688

Vern Geddie's Western Auto closes after 48 years

By Linda Cranford

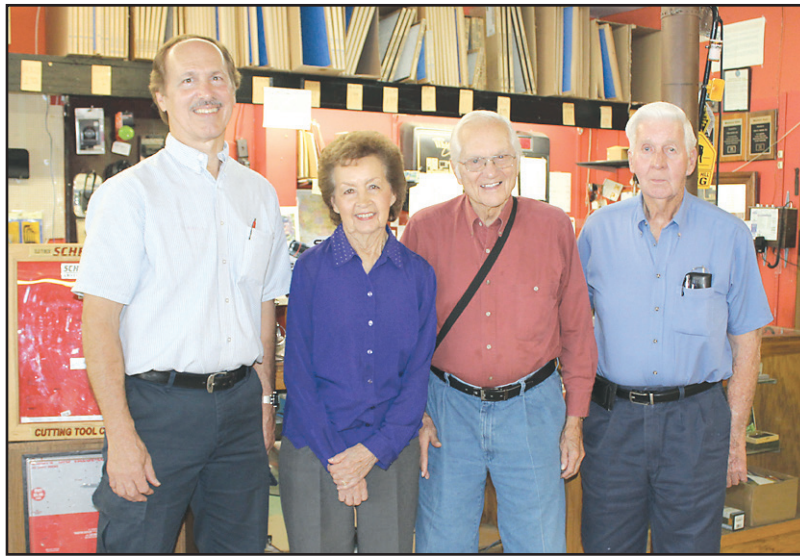
On Friday, March 31, after 48 years in business, Vern Geddie's Western Auto in Ellisville closed the doors. However, they have opened a small office just two doors down. "We will continue to take account payments at the new office, as well as water bill payments," said Steve Geddie.

The building has been purchased by John Robert and Blaine Carpenter. The main store area will become an antique mall, and the adjacent space will become an office for the couple's other business, Complete Pest Control.

The family business began in 1969, when Vern Geddie and his wife, Joan, decided to move back to Jones County with their two children. "We purchased the Western Auto Dealership and then spent two weeks in Garland, TX in dealership training," said Joan. Looking at her son Steve, who has run the family business for the past 20 years, Joan said smiling, "Your uncle took care of you and your sister. I think you ate hamburgers every day."

Vern was born and raised in the Tuckers Crossing area of Jones County and Joan grew up around the Lower Myrick Road area. In 1948, after an overseas tour with the Marine Corp, Vern returned to the states and was stationed in California. He came home to Jones County on leave, and married Joan Walters. The newlywed couple returned to California to Barstow, California, a western Mojave Desert city.

After his military service, the couple moved closer to home when Vern found work at a refinery in Lake Charles, La. After living there for five years, they moved to Hattiesburg where Vern went to work at the Hess Refinery. They were living in Hattiesburg when the couple purchased the



The Geddies with Charles Prince. Photo/Linda Cranford

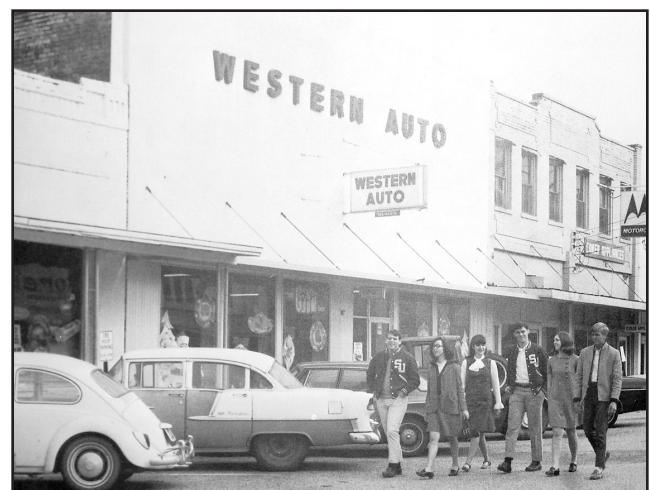
dealership and moved back home to Ellisville and Jones County.

Vern said that in 1997 he had been thinking of the best way to handle the transition for Steve to take over the business. As it turned out, he and Joan spent three months in Alaska that year. He said he figured when he got back that he would still have to help Steve out in the business for a while. However, he knew the transition was complete when he would go to the front door to greet the customers, and when he asked if he could help them, they replied, "No, I want to see Steve." Both Vern and Joan have remained a part of the business, but Steve has been running the business since 1997.

Steve was almost 16 years old when his parents purchased the dealership in January of 1969. "I don't think we had a clue about what we were doing, but I got to work here every day after school," exclaimed Steve. In 1972, he said

he began working full time with his dad. His sister, Pam Geddie Nunes, also worked in the store while growing up, but chose to enter the medical field instead of working in the business.

All three of the Geddies said they had no specific plans at the moment. Vern and Joan may have a trip or two to take in the near future, but that have to wait for Vern to heal from his lawn mower accident last year. Steve said with a farm, there was always something to be done, and he helps out at his parent's house, too. He plans to continue to help folks out around Ellisville when they need it, too. "I'm going to work here in the office for two or three days, and Mr. Charles is going to help out a couple of days," said Steve. "Mr. Charles" is Charles Prince, who has been working with the Geddies for 38 years. The main doors to Vern Geddie Western Auto have closed, however, from the sound of it, Steve Geddie plans to remain the go-to guy for Ellisville and the surrounding area for a while longer.



Vern Geddie's Western Auto, downtown Ellisville 1969.

Photo/submitted

Laurel student one of two students to earn Eli Lilly training internship

Submitted

University of Southern Mississippi business students Justin McCool and Morgan Musgrove have been selected for the 2017 Eli Lilly Sales Internship – a 10-week training program with the global pharmaceutical company. McCool and Musgrove, both Healthcare Marketing majors, competed against students from other schools to earn the training opportunity. There were only 60 internships awarded across the country for Eli Lilly's program. The Lilly Sales Internship is designed to give students real world experience in pharmaceutical sales. The program will consist of sales training at the company's headquarters in Indianapolis, Indiana, followed by the interns calling on physicians in assigned territories in Mississippi and Alabama. McCool's internship begins in May, while Musgrove is scheduled to start hers in June.

"Our healthcare marketing program prepares students to compete with the best as these internships show," said Dr. Faye Gilbert, Dean of the USM College of Business. Dr. Kelli King (Professor of Practice) is an exceptional leader with industry experience who guides our students in learning and making the transition to exceptional careers. My congratulations to Justin McCool and Morgan Musgrove for this honor and my thanks to them for the hard work they will complete as they reflect well on Southern Miss business programs during this internship with Eli Lilly."

King commends Rob Dezso, Eli Lilly District sales manager, for supporting the Southern Miss Healthcare

Marketing program and helping to create the partnership with Eli Lilly. "Our participation in this internship would not have happened without his vision and initiative," said King.

McCool and Musgrove agree that the training program will provide invaluable experience as they progress toward the ultimate goal of a career in the healthcare field.

"I hope to gain experience in the pharmaceutical world and to fine polish my professionalism and communication skills," said McCool, a senior from Magee, Miss. "Upon graduation, I would love to get a full-time position with Lilly and eventually move in to a high-management position within the company."

"Southern Miss, along with the Department of Healthcare Marketing, has developed a unique curriculum directly addressing and perfecting the skills needed to be successful in this industry," said Musgrove, a senior from Laurel, Miss. "Through this internship my hope is to put these skills into practice, perfecting the techniques presented to me by Southern Miss and Eli Lilly."

Musgrove notes that she too hopes to parlay her internship into a full-time position with Eli Lilly before possibly returning to Southern Miss one day as an instructor.

Eli Lilly was ranked No.141 on the Fortune 500 list for 2016 and has been named one of Fortune's "World's Most Admired Companies" for 2017. The company was founded in 1876 by Col. Eli Lilly, a pharmaceutical chemist and veteran of the American Civil War, after whom the company is named. Lilly, with offices in Puer-



Southern Miss business students Justin McCool, left, and Morgan Musgrove have been selected to participate in the 2017 Eli Lilly Sales Training Internship program. / Photo by Kelly Dunn

to Rico and 17 other countries, was the first company to mass-produce penicillin, the Salk polio vaccine, and insulin.

McCool is the son of Roger and Amy McCool of Magee, Miss. Musgrove is the daughter of Keith and Lisa Musgrove of Laurel, Miss., and Gary and Patricia Chiason of Nashville, Tenn.

April 6

United Blood Services is asking you to "Hop on in" to any of the numerous mobile drives taking place throughout the Jones County area during the month of April! Donate blood April 1-16 and receive a "Donating with my Peeps" t-shirt for your efforts! Schedule your appointment to donate today at www.BloodHero.com, or call 877-UBS-HERO (877) 827-4376. Donors can donate at: Friday, April 7 from 7 a.m. until 6 p.m. at South Central Regional Medical Center, conference rooms; Tuesday, April 11 from 12 p.m. to 6 p.m. at the Cameron Center, 711 North 10th Avenue; Wednesday, April 12 from 10:30 a.m. to 3:00 p.m. at the SCRMC Wellness Center, 23 Mason St.

Kindergarten pre-registration will be held at all Jones County School District Elementary Schools on the following two days: Thursday, April 6 from 4:00 p.m. until 6:00 p.m. and Friday, April 7 from 8:00 a.m. until 2:00 p.m. This pre-registration will be for all new kindergarten students for the 2017-18 school term. For more information on items needed for registration and a list of schools please see our Laurel Impact Facebook page.

The 4-H Poultry Chain Project poultry chain is designed to educate youth about poultry and its importance in the state of Mississippi. Participants will order chicks of the designated breeds in the categories meat birds and laying birds. They will receive these chicks and grow them until approximately 20 weeks of age. During this grow out process participants will keep a record book of the bird's progress and information obtained through the process. Participants will select their top three birds to show at a county level and potentially the state level. The chain

project is for clover bud (county level only), junior and senior participants. If you are interested in learning more about this project, contact Jessica Sibley at the Wayne County Extension Office at 601-735-2243.

Once again Smith County will be host to the Magnolia Beef & Poultry Expo beginning at 9 a.m. at the Smith County Ag Complex, located off Hwy. 35 South in Raleigh. Seminars will be held on poultry and beef industry. You must attend three of the four seminars to be eligible for the grand door prize. Admission is free. A concession stand will be available for lunch. Local farmers and producers are urged to attend this event for the latest information that concerns the poultry and beef industry. If you are interested in being a vendor to highlight your products at the Expo, please call the Smith County Extension Office at 601-782-4454. For more details, please visit our Laurel Impact Facebook page.

April 7

With lights, fog, a unique sound track and loads of action, Kidz Blitz Live comes to town. A shared family experience, produced by Roger Fields, Kidz Blitz Live is a fast-paced, high-octane event for the whole family. Families will experience Biblical truths communicated through special effects and illustrative interaction. With music reworked from movie tunes and sounds from the seventies, there's as much to hear as there is to see. The event will be held at 7:00 p.m. at the South Jones High School Performing Arts Center.

April 8

The 4th Annual Ellisville Easter Egg Hunt and Children's Festival will be held at the Ellisville Courthouse lawn. Two

age divisions: 0 to 5-years old and 6 to 12-years old. Slides and jumps begins at 10 a.m. Easter egg hunt starts promptly at 11 a.m. We will be celebrating the "Rebirth of our Christ Child, Jesus." Come and experience "The Magic of Easter." Photos with the Easter bunny available after the parade. No charge for any of the children's activities. A city-wide Garage Sale in front of the Courthouse and City Hall will take place with setup at 6 a.m. \$25 per booth-must be paid prior to sale day - No Exceptions. Contact Geni Looney, 601-477-8111 or Pam Bush, 601-319-1697.

The 1977 South Jones High School "40th" class reunion will be held at the home of Randy and Julie Laird, 101 East Ivy Street, Ellisville. This is for all classmates. Bring your favorite covered dish along with a lawn chair and plan to have a great time reconnecting with former classmates. The reunion begins at 5:00 pm. For more information, contact Julie @ 601-477-8739 or Glenda Therrell @ 601-477-9556.

Bancorp South Touch A Truck will be held Saturday from 9:00 a.m. to 2:00 p.m. No Horn Hour: 10 a.m. - 11 a.m. & 1 p.m. - 2 p.m. Library street parking lot in Downtown Laurel. Tickets: \$5 Each; Children 2 & under: Free; Advance Family Pack: 4 for \$15. Sponsored by Laurel Main Street.

There will be a gospel sing Saturday, April 8th beginning at 6:30 p.m. at Sanford Community Center located at 663 Old Highway 49 Sanford. Featured guest will be "4 The Journey", "Damascus Road", and "Faithway Singers." Admission is free; a love offering will be accepted. For more information call 601-764-6485.

WALLEY PROPERTIES LLC.

LAND? BUYING OR SELLING

www.walleyproperties.com
601-477-3014

+/- 6 Acres Located on Old Salem Road at Strengthford, MS. This piece of property has a spot cleared for a house site. Nice timber on property. Call Rob McCraw Today 601-498-9143. \$21,000. See more at mfm-land.com.

Covington County: 40 acres located 6 miles east of Collins. Intersection of Highways 84 & 37. Bordered at West by Okawoods Creek. Great location for truck stop/convenience store. \$95K. Call 601-517-6940

Covington County +/- 74 Acres. New Listing! Located 4 miles from downtown Seminary off hwy 590 on the corner of Shirley Sanford Road and Johnny Sanford Road. This property would be perfect for a home-site with plenty of recreational opportunities. Property consist of mature pine plantation, gorgeous hardwoods, and a stream that flows throughout the property. Great for hunting. \$244,200. For more details, call Bennett today 601-913-0340 at Walley Properties, LLC. Or visit our website walleyproperties.com for maps and more information of this listing.

SPRING'S ON THE WAY! GET A HAT TODAY!

•KANGOL •SCALA •STACY ADAMS •AND MORE!

ALL AGES WILL LOVE OUR GREAT SELECTION!
OPEN: MON. - THURS. 8A-5:30P AND FRI & SUN 8A-5P

MCDONALD'S STORE

2543 HWY 532 • COLLINS • 601-785-4343

Land for Sale: 90 acres various age plantation pine, stream thru property, hardwood bottom. \$2800 per acre. 601-668-7003

Jones County +/- 57 Acres: Must see! Located in South Jones County on Rainey Road. 10 Miles from Hattiesburg and Laurel right off the Sanford Road Exit on I-59. This property would be perfect for a home-site or mini-farm with plenty of recreational opportunities. Price: \$153,500. For more details, Contact Bennett 601-913-0340 at Walley Properties, LLC.. Or visit our website walleyproperties.com for maps and more information of this listing.

+/- 90 Acres Located on Jernigan Road just South of Leakesville, MS. Tract is new cut over with scattered trees. Has good road system. Great Hunting and Recreation. Could be made into pasture. Several good house sites. Power available Owner is will to split the property up into an 110 acre and 90 acre tract. Has creek running across the property. \$135,000 Call Woods & Waters Realty at 800-526-3961. See more at mfm-land.com

If Yours Is A Chiropractic Case Nothing Else Will Help You!

Make An Appointment With Us And Find Out!

We Accept Blue Cross Blue Shield, United Health Care, Medicaid and most other insurance.

DR. A. R. OLSON

134 Russell Dr. • Waynesboro, MS
Phone 601-735-9373

OFFICE HOURS: MON., WED., & FRI.: 8a.m. - 12p.m. 1p.m. - 5p.m.
Tues. & Sat. 8a.m. - 11a.m.

78+/- Acres located in Smith Co., in Mize School District. Live creek throughout. \$2900 per acre. Call 601-818-3597.

Lake Eddins: a great Place To Be. Now offering Offwater Lots As Low As \$3500.00. Call CrossRoads Realty 601-727-7653.

Land sales: Let us assist you with your land sale or purchase. We provide full service forestry consulting and land brokerage. Call Woods & Waters Realty at 601-498-9143

6 acres of land, 100-feet wide by 2613.6 feet long, approximately 4 miles from Stringer High School. Approximately 2200ft. is adjacent to and parallel with CR 19 in Jasper Co. Interested parties please submit your bids by May 1, 2017. Minimum bid per acre \$2500. Bid awarded to highest qualified bidder. Send bids to: Roy D. Glenn, 2711 CR 23, Bay Springs, MS 39422 or roydglenn@gmail.com.

24 acres in Runnells town. Lots of mature timber and wildlife. Unbelievable hunting!! May subdivide. Call Shawn with Southern Coastal Realty at 601-408-3570.

+/- 31 Acres Located on Jr. Steede Road, just off of New Hwy 63, on the George/Jackson County Line. The timber has been recently cut but some hardwoods are left. Has a house site on the East side of the property. Power and Water available. Price to sale quickly!!!! \$37,200. Call Woods & Waters Realty at 800-526-3961. See more at mfm-land.com.

+/- 46 Acres Located on Lower Myrick Road and Mollie Boutwell Rd, this property is made up of Pasture and has 4 Ponds. Perfect place

Audiology Services

Hearing Health Care

DeAnne Harris, M.S., CCC-A
Certified Audiologist

Credentials & Service Make the Difference

- ◊Bachelor's Degree in Communicative Disorders
- ◊Master's Degree in Audiology
- ◊Certified with American Speech & Hearing Association
- ◊Private Practice in Newton for 19 years

601.683.3086 Newton, MS
TheAudiologyServices.com

DOUBLE B FARMS

- Bull Dozer
- Trac Hoe
- Dump Truck

BUSH HOGGING
LAND CLEARING
DRIVEWAYS
ROAD BUILDING
HOUSE PADS

Certified Septic Tank Installation

Brian Sciortino • Rose Hill, MS 601-479-2074

to raise cattle or horses or to build your dream home. Call Rob McCraw at 601-498-9143 for more information or to set up an appointment to view this beautiful piece of land! \$161,000. See more at mfm-land.com

Jones County +/- 29 Acres : Only 5 miles south of Ellisville down Hwy 29 East located on Busby Road. This Property with road frontage has recently been chipped, leaving residential/shade trees which would make for a perfect home-site, or mini farm. \$71,050. For more information call Bennett 601-913-0340 at Walley Properties LLC or visit walleyproperties.com for maps of this listing

Highlands. Finance a lot, \$1500 down, pay for your lot over 3 years - then use your lot as down payment at your bank. Call: 601-649-9459

+/- 49 Acres Located on County Road 6 Just off MS Hwy 11, Heidel-

berg, MS. This tract consists of 23 year old merchantable pine timber with scattered hardwoods. Tract has small creek that runs on the NE Corner and several great camp/home sites. Great hunting tract and close to amenities. Power/Water available. \$125,000. Call Woods & Waters Realty at 800-526-3961. See more at mfm-land.com

+/- 46 Acres Pastures Located on Lower Myrick Road and Mollie Boutwell Rd, this property is made up of Pasture and has 4 Ponds. Perfect place to raise cattle or horses or to build your dream home. Call Rob McCraw 601-498-9143 for more information or to set up an appointment to view this beautiful piece of land!! \$161,000. Woods & Waters Realty, www.mfm-land.com.

+/- 80 Acres Located on the Jasper/Clarke County Line just North

Need some help with the Easter Bunny - Come see us!

ACCEPTANCE

LOAN COMPANY, INC.

601-425-7140 2001 MS HWY. 15N. STE A • LAUREL

*SUBJECT TO OUR STANDARD CREDIT APPROVAL PROCEDURES BAB1499

LAB DISCOUNT DRUGS

"YOUR HOMETOWN PHARMACY" Easter is Sunday, April 16

Easter Specials

- Inspirational Mugs**
- Collegiate Items** • Mossy Oak Wallets
- Hallmark** When You Care Enough to send the Very Best!
- DaVinci Beads**
- Glory Haus PHOTO FRAMES**
- Victoria Cross Jewelry**

• PANGBURNS MILLIONAIRE BUNNIES & EGGS

Easter Coke Packs

- SPRING WREATHS
- MAILBOX BOWS
- BIRD HOUSES
- PLUSH ANIMALS

Men's Fripp & Folly T-Shirts 40% OFF

Ladies Lily Grace T-Shirts 30% OFF

CHEROKEE WORKWEAR SCRUBS 10-30% OFF

LOINS CLUB CHOOSE A GUMBALL AND RECIEVE A DISCOUNT

SPIRIT JERSEY 25% OFF

Fierce Tumblers & Waterbottles Can be personalized at additional cost

Easter Gifts for the Man in your Life

- Rivers Edge
- Redneck Gifts by Fairhope Favorites
- Camo Thermal Beverage Mugs
- Car Wash Buckets

CANDLES BY CIRCLE E

HEAVENLY LIGHTS (MADE IN MISSISSIPPI)

Custom Designed Easter Baskets

Buy 4 Beads GET 1 FREE!*

Buy 7 Beads GET FREE BRACELET!*

your 24 FITNESS CENTER & TANNING

Selected Insurance Companies will pay for your gym membership fees:

- Cigna • Magnolia Health • Humana
- Silver Sneakers • plus many more...

WE OFFER • ZUMBA • SPIN • POWER TONE • BOOT CAMP • PLUS MANY MORE

GET 2 MONTHS ANY PACKAGE FOR ONLY... \$11

APRIL- \$5.00, MAY - \$5.00 + ENROLLMENT FEE \$1 - (Regular Prices Begin in June)

your247fitnessandtanning.com 1705 Parker Drive • Laurel 601.342.2948

BUDDY'S HOME FURNISHINGS

NEW ARRIVALS!

Electronic Bundle

Bundle Includes: 65" Polaroid Television, LG 1000 Watt Home Theater with Smart Blu-Ray, Bluetooth, 70" Edward TV Stand

AIR CONDITIONERS

WASHER/DRYER COMBOS

KING AND QUEEN PILLOW TOP MATTRESSES

ELECTRONICS • FURNITURE • APPLIANCES • COMPUTERS • SMARTPHONES

ARTÍCULOS ELECTRÓNICOS • MUEBLES • ELECTRODOMÉSTICOS • COMPUTADORAS • TELÉFONOS • INTELIGENTES

acer Amana ASHLEY CORSTEN Kenmore LG SONY Whirlpool

YOU'RE PRE-APPROVED TO RECEIVE UP TO \$3,000 IN-STORE CREDIT AT BUDDY'S!

LEASE OWNERSHIP ARRENDAMIENTO FINANCIERO • NO CREDIT NEEDED NO SENECESTA CRÉDITO

2031 B HWY. 15 N. • Laurel 601-651-6117

JUST PAWZ



Hotel & Doggy Day Care

Full Time Groomer
Monday - Friday

303 VICTORY RD.
Laurel

New Owner
Cooki Oxner

601.425.5788

COME GET THE BED OF YOUR DREAMS

Sleepy Sam's MATTRESS CLUB

Nobody beats our deals!

WWW.SLEEPYSAMSMATTRESSCLUB.COM

FREE FINANCING • NO CREDIT CHECK

1504 W. 3rd St. • LAUREL
ACROSS FROM PASQUALE'S

601.433.3968




HOLLY'S PARTY JUMPS

Jumps • Combos • Slides • Wetslides • Slip-N-Slides

601-763-8851

WWW.HOLLYSPARTYJUMPS.COM

MONEY LENDERS



WE FINANCE MOTORCYCLES

601-426-7600

134 BEACON ST.
LAUREL

& Wayne County line off 84 East. \$120,000. 601-428-7191.

Outdoorsman's Paradise!! Perry County. 90 +/- Acres Located on the beautiful Tallahala Creek. This property is located on Highway 29 South right outside of Runnelstown, MS only 10 miles from the city of Petal. This property is every outdoorsman's dream, with over a 1/2 mile of river frontage, sand bars, gorgeous hardwood bottoms, pine plantations, shooting houses and food plots. The plentiful abundance of wildlife such as: Deer, Turkey, small game and fish will keep you occupied year-round. \$333,000. Call Bennett 601-913-0340 at Walley Properties LLC. Please visit walleyproperties.com for maps of this listing.

Small acreage for sale, owner finance, NE Jones area. 601-426-3696 or 601-470-7772.

+/- 219 Acres priced to Sell Quick! Located on just outside of Topton, AL, and one hour from Mobile, AL. Has road frontage on CR 19 along with power and water available. Has great secluded House/Camp Site sitting underneath beautiful mature longleaf pines and hardwoods. Dark and Rich Waters of Bilbo Creek runs through the property with Hardwoods make for great wildlife habi-

tat. Has Lake. Has several cleared areas that will make large and plentiful food plots. Has some young pine and some thickets for deer to bed in. This tract truly has it all! Don't miss this one of a kind Hunting/Recreational Tract. Reduced \$306,600. Call Woods & Waters Realty at 800-526-3961. See more at mfmland.com

+/- 132 Acres Located on Hwy 57 just North of Leakesville, MS. This tract consists of thinned mature pine and a mix of younger hwd/pine timber. Great hunting and recreation. Good roads in place with food plots. Priced to sale Quickly! \$211,200. Call Woods & Waters Realty at 800-526-3961. See more at mfmland.com.

69 acres near Highway 15, Stringer MS. This property offers endless possibilities from home sites to commercial opportunities or just recreational use. Some dirt work has already been completed for new tenants. The property has some mature hardwood and some planted hardwood and an excellent internal road system along with frontage on Hwy. 15. \$320,000. Contact Marc at 601-670-5429. Walley Properties, LLC

Wayne County +/- 158 Acres. This beautiful property won't last long! Located on the Mabry Graham Road

just north of Beat 4 in Wayne Co., MS. This remarkable tract of land offers endless possibilities. The timber consist of 8-10 year old pine plantation. The property offers plenty of road frontage in a remote setting with an excellent internal road system as well as a natural gas pipeline for great access. Grass patches are in place and an abundance of wildlife that is sure to please any hunter or outdoor sportsman. This property is offered at \$312,050.00. Contact Marc at Walley Properties, LLC. 601-670-5429, or visit walleyproperties.com for maps of this listing.

+/- 160 Acres Located on Poppa Parnell Ln, just West of Leakesville, MS, this tract consists of 4 year old pine timber with some hardwoods. Has beautiful views and camp or house site. Power available. Great hunting and recreation. Priced to sale! \$256,000. Call Woods & Waters Realty at 800-526-3961. See more at mfmland.com.

MASSAGE

Massage One. \$45.00 Introductory 1 Hr. Massage session. By Robert Lowe L.M.T.#1362. Call to book yours today! 601-466-2199 www.MassageOne.us May your days be stress free!

HANDYMAN

Handyman: electrical, remodeling, painting, porches, interior, exterior, and more. No job too small. Laurel and surrounding area. Call 601-935-8325.

SERVICES OFFERED

Sims Construction: Remodeling of all kinds. Kitchens, baths, whole house, decks, sun rooms, additions and painting. 3rd generation builder. 601-310-3473.

Dozer/trackhoe services, Land-clearing, Dirt hauling Residential/commercial sitework/landclearing, dozer/trackhoe work, trailer/house pads, roads, ponds, etc. We haul gravel, fill dirt, topsoil, sand, and mulch. Estimates call 601-498-8485.

Vinyl siding - metal roofing - seamless gutter. 601-498-6333.

Painting, Remodeling, Drywall, Pressure Washing, Decks, Cabinets and more! Licensed, Insured, Affordable, honest, dependable Christian company. Commercial and Residential. Quality, professional work. Over 20 years experience. References available. Call for a free estimate. If no answer, please leave a message. We will return your call. Wilson 8:21

Painting & More. II Corinthians 8:21. 601-268-7603.

Quality Pressure Washing at affordable prices. Licensed, Insured company. Free Estimates. References available Commercial and Residential. Wilson 8:21 Painting & More. II Corinthians 8:21. 601-268-7603

Flowers, Sand & Gravel: We now install septic systems, grinder pumps and spray systems. We deliver all types of gravel, fill material, sand, rock and topsoil, soil mix and mulch. Dozier and track-hoe service available. Foundations, roads, ponds, etc. We also have Above Ground Precast Storm Shelters, several sizes available. Give us a call. 601-498-5983 or 601-477-2767.

B&B Tree Service: Call the best for less, fully insured, senior citizen discount, 38 years experience. We do all tree work and clean up at your request - bucket truck also available; call day or night, free estimates. May God bless you. Proverbs 11:30. 601-433-5257

Sawmill Service: .25 board ft. will travel 50 miles, over 50 miles .30 board ft. Call 601-433-3573.

Continued on ... Page 7

• 13th Annual •

WHISTLE STOP

Arts & Crafts Festival

Saturday, April 8, 2017
10 a.m. - 4 p.m.
Waynesboro, Mississippi

SPONSORED BY **TEAM W**

Check us out on Facebook



BA1508



United Country

Real Estate

Gibson Realty & Land Company

Shane Cook - Land Specialist
(601) 670-1446
shanecookland@gmail.com
www.gibsonrealtym.com

Great Land for Hunting, Fishing, Home Sites or Just to Get Away for the Weekend

<p>Smith County Hunting</p> <ul style="list-style-type: none"> • Timberland / joins forest land. • 220 Acres. • Trophy Deer. <p>\$525,000</p>	<p>Fishermen's Dream</p> <ul style="list-style-type: none"> • 355 acre tract... fisherman's dream. • 55 acre lake. • Great views of the lake and wildlife. <p>\$1,026,000.</p>	<p>Jones County Hunting</p> <ul style="list-style-type: none"> • 21 acres north of Laurel • Hardwood timber • Road frontage <p>\$42,000</p>
--	---	--



TAKE AIM AT REWARDS

GET \$ **70**

BY MAIL* ON A BRIDGESTONE VISA® PREPAID CARD* WHEN YOU BUY A SET OF 4 ELIGIBLE TIRES.

INCREASE YOUR REWARD TO

\$100 WHEN YOU MAKE A QUALIFYING TIRE PURCHASE WITH YOUR NEW OR EXISTING CFNA CREDIT CARD ACCOUNT.**

OFFER VALID MARCH 30-APRIL 30, 2017

INCLUDING **ECOPIA DRIVEGUARD TURANZA POTENZA DUELER**

^Offer good in the U.S. Void in Puerto Rico. Claim form required. Certain restrictions and limitations apply. For eligible tires and complete details, see your participating Bridgestone retailer or BridgestoneTire.com. Eligible tires must be purchased from a participating Bridgestone retailer's inventory March 30 - April 30, 2017. OFFER EXCLUDES COSTCO AND GM PURCHASES. Limit 1 reward per each set of 4 eligible tires. Limit 2 claims per household, customer or address. Not redeemable for cash. Call 1-877-TIRE USA to find a retailer near you. Cannot be combined with any other offer.

^The Visa Prepaid Card is issued by The Bancorp Bank pursuant to a license from Visa U.S.A. Inc. and may be used everywhere Visa debit cards are accepted. The Bancorp Bank; Member FDIC. The prepaid card is given to you as a reward and no money has been paid by you for the card. No cash access or recurring payments. Card valid for up to 6 months, unused funds forfeit at midnight EST the last day of the month of the valid thru date. Card terms and conditions apply; see www.BridgestoneRewards.com/CardTerms. All trademarks and brand names belong to their respective owners.

**To receive the \$100 Bridgestone Visa Prepaid Card by mail you must purchase a set of 4 eligible Bridgestone tires with your new or existing CFNA credit card account. The full 9-digit account number must be provided at time of submission. The new CFNA account cannot be closed within 7 days of its opening. The Bridgestone Visa Prepaid Card cannot be used to pay any CFNA credit card balance. CFNA reserves the right to alter, change or terminate the higher value reward option at any time. Offer valid only in the U.S. and where permitted. The Bancorp Bank is not affiliated in any way with this credit card offer and does not endorse or sponsor this credit card offer. See participating retailers for further details.

<p>FULL SYNTHETIC OIL CHANGE</p> <p>UP TO 5 QTS \$39.95</p> <p>Most vehicles, excludes diesels</p> <p>WITH COUPON Expires 4/16/17 CAN NOT BE COMBINED WITH OTHER OFFERS</p>	<p>OIL CHANGE SPECIAL</p> <p>UP TO 5 QTS \$24.95</p> <p>Most vehicles, excludes diesels</p> <p>WITH COUPON Expires 4/16/17 CAN NOT BE COMBINED WITH OTHER OFFERS</p>
---	--



Southern Tire Mart

Best in Class Service on America's Favorite Brands



2926 Ellisville Blvd., Laurel
stntires.com
601-428-4375
M-F: 7a-5p Sat: 8a-12p

BA1502



NOW HIRING DRIVERS

- OTR/Regional Drivers, Short and Long Haul
- Dedicated Lanes, Reefer and Flatbed
- Sign-on Bonuses
- Bonuses for Performance, Safety Teams & Specialty Hauls
- Blue Cross and Blue Shield Insurance

Moselle 800-408-5542
WHITESTONETRANS.COM

Mobile homes for sale. New, used, repos, foreclosurers, land-home packages. Call Repo Man, 601-310-9262.

New, used, repos, with guaranteed approval. Call Blake at 601-319-1316.

"Mobile homes, mobile homes" arriving daily at TB Sales on Hwy 49 North, Hattiesburg, next to the Bouie River. We have used, repo, remodeled, fixer upper, all homes, all sizes at unbelievable prices, our guarantee no one will beat our prices

for what we do. 601-520-0710 or TB Sales @ Facebook.

Lots of space for a small price. 16x80, 2BR/2BA., Belmont, spacious beds and baths, singlewide, freshly painted, needs your personal touch. \$13,500. Call 601-520-0710.

Tired of Renting? We have new and used homes with 100% guaranteed approval!! Call Tony Purvis from Purvis at 601-543-9022 "Can't fail with Wholesale".



NEED CASH FAST?

COME SEE TIFFANY
CITY PAYDAY LOANS
CAR TITLE LOANS
716 SPRING STREET
WAYNESBORO
601-735-5353

WE HAVE AN EYE FOR THE BOTTOM LINE!



HAWKEYE TAX SERVICES

HAWKEYE TAX SERVICE

144 Buford Gandy Rd. • Waynesboro, MS 39367
601-671-3779

Bedford

CARE CENTER OF HATTIESBURG

Immediate Full-Time positions available:

- Registered Nurse
- Licensed Practical Nurse
- Certified Nurse Aide

Full Time Status with Full Benefits Available

Apply at Bedford Care Center of Hattiesburg
#10 Medical Boulevard • Hattiesburg
601-264-3709
Monday-Friday 8:00 a.m - 4:30 p.m.
Equal Opportunity Employer

NOW HIRING POSITIONS AVAILABLE:

- GENERAL MANUFACTURING \$8-\$12/hr
- MACHINE OPERATORS \$12.25/hr
- ELECTRICIANS \$12-\$16/hr
- CDL DRIVERS \$10-\$15/hr
- GENERAL LABOR \$8-\$10/hr
- WELDERS \$13.25/hr
- ACCOUNTING CLERK BOE
- ADMINISTRATIVE BOE
- BOOKKEEPER BOE

Call 601-264-9060 Today
OR APPLY ONLINE AT www.expresspros.com



Vinyl siding and shingle roof. Price \$25,000 as is. Call 601-520-0710.

Assume payments. Singlewides, doublewides, land and home packages. Call for details, 601-307-2114, 601-261-6005.

Used singlewide, \$5,000 cash. Zone 2. Call Tony 601-543-9022.

Farris Mobile Home Transporting: Statewide moving, licensed & insured. Transporting since 1979. Tony Farris 601-422-4144.

Repo, single wide, Clayton, 16x80, 3+2, call 601-310-9262.

Won't Last Long! 3 bed/2 bath Double Wide, stone fireplace, gorgeous cabinets, vinyl siding, shingle roof. Must see to appreciate! Price \$17,500 as is. Call 601-520-0710.

2017 5BR/3BA, central A/C, skirting, delivery, set up and tie down, only \$69,900. 601-307-2114, 601-261-6005.

HELP WANTED

Food Service Director, Enterprise School District. Description: Direct

and supervise the district food service program/operations. Plan and implement programs that meet regulatory and nutritional requirements for students. Promote the development of sound nutritional practices and maintain a safe, sanitary environment. Qualifications: Bachelor's degree including course requirements of 9 semester hours in food and nutrition and 6 semester hours in business, management, accounting or educational administration. ServeSafe certificate or obtain certification within 30 days. Note: Applicants who meet the minimum education requirements (BS Degree) but do not have required course hours in food and nutrition and business/business management will have 2 years to complete the required nutrition and business requirements. For application packet and further information contact: Rita Windham, Enterprise School District, 503 River Road, Enterprise, Mississippi 39330. 601-659-7604.

Job Opportunity for NovaCopy! Looking for an Install Technician Trainee to service both Meridian and Hattiesburg. Mileage will be reimbursed. Pay is \$13-14/hr. Copier/printer service experience or A+/N+ certification preferred but not required. Email resume: hr@novacopy.com

Mechanic needed for tune ups, repairs, brakes, AC. Competitive salary plus commission. Must have your own tool. Apply in person at Spee Dee/Midas on Hwy 98 West, Hattiesburg.

Looking for Class A and B truck drivers. Must be able to drive a standard shift. This position requires a clean driving record, ability to stay out of town 4 nights a week, and some weekend work. \$13.00 per hour, Safety Bonus, Medical, 401K. Ideal candidate will have experience with end dump and belly dump trailers. Please apply Online at Tanerconstruction.net or in person at 677 Pecan Grove Rd. Ellisville MS. We are an Equal Opportunity Employer, and encourage women, minorities, and people with disabilities to apply.

Wanted: Concrete Plant Batch Operator in Glendale, MS. High School diploma or equivalent; Prior experience in Ready Mix Concrete preferred. Salary with excellent benefits. (601) 354-3801. EOE

Now taking applications for lube bay technicians. Apply in person. Spee Dee Midas, Highway 98, Hattiesburg. No phone calls please.

Local CDL Drivers wanted. Pine Belt Ready Mix is now hiring. Ready Mix Concrete Mixer Drivers. Home every day! Great compensation package. Insurance, bonus, 401(k), paid sick days, paid vacation. Class A or B CDL required. "Home Grown and American Owned" Call now and start building your future! 601-292-3906. EOE.

Career Opportunities @ Woolwine Ford in Collins. Full-time Certified Trained Technicians and Entry level Mechanics. Great Benefits and Pay based on Experience. Call Chip today: 601-765-4461.

Huddle House is now accepting applications for management. Apply in person at 1304 Chantilly St., Laurel (across from Hardees). 8am-11am & 2pm-4pm. Fax resume to 601-735-6151 or email to mjames8205@aol.com. Background check required, experience preferred but not required.

Continued on ... Page 9

HUDDLE HOUSE®

Now Accepting Applications for MANAGEMENT

Apply in person at 1304 Chantilly St. • Laurel (across from Hardees)
8 a.m. - 11 a.m. & 2 p.m. - 4 p.m.
Fax resume to 601-735-6151
or email to MJAMES8205@AOL.COM

- Background Check Required
- Experience preferred but not required



READY MIX, LLC

28 TAYLOR CIRCLE • LAUREL, MS

STRAIGHT TRUCK CONCRETE DRIVERS
Laurel Location

- Must hold a class B or better commercial driver's license with a good driving record. (Class A w/Tanker a plus)
- At least 3 years driving experience.
- Hourly Pay • Benefits
- Home Every Night

Apply in person

Monday thru Friday 8 a.m. to 5 p.m.
No interviews will be given without a completed employment application.
NO PHONE CALLS PLEASE.

Positions Available!

- Charge Nurse for 3-11 shift
- Med Nurse for 3-11 shift
- CNA's for 3-11 & 11-7 shifts

"We are building a TEAM at MS Care Center of Raleigh!"

MS Care Center Of Raleigh

309 Magnolia Drive • Raleigh, MS
601-782-4244

Please apply in person Monday - Friday from 8:00am - 4:30pm

State of Mississippi



State Veterans Affairs Commission

NOW ACCEPTING APPLICATIONS FOR:

- CNA'S (ALL SHIFTS)
- LPN'S (ALL SHIFTS)
- RN WOUND CARE (8a-4:30p)
- RN SUPERVISOR (3-11 SHIFT)
- RN SUPERVISOR (11-7 SHIFT)
- HOUSEKEEPER (7a-3:30p)

APPLY IN PERSON AT:
Ms State Veterans Home
3261 Hwy 49 South • Collins
Covington County, MS

Apply on the MS State Personnel Board website:
WWW.MSPB.MS.GOV

Equal Opportunity Employer

DRIVERS, are you tired of having to jump through hoops, such as gimmicky revenue and retention bonuses? Do you want to earn what you are worth? At **Baggett Transportation**, we pay you what you are worth, without the hassle!

We offer the best benefits in town, which include

- Health Insurance
- Company Matching 401-K Plan
- Paid Vacation




Pay starting at

42¢

per mile!

Now leasing Owner Operators! Flats or Vans. Call for details.

601-426-3462 or 855-435-5021

Call for more information or apply in person at: 2815 Industrial Blvd. • Laurel, MS

Stockstill Trucking, Inc.



158 Central Industrial Row
Purvis, MS
601.794.5577
800.794.5578

Norman's Food Outlet

#209 Waynesboro Food Outlet

PRICES EFFECTIVE APRIL 5, - APRIL 11, 2017

<p>USDA FRESH CUT BONELESS CHUCK ROAST</p> <p>\$2.74 LB.</p> <p><i>Plus 10% at Checkout</i></p> 	<p>20 LB. BAG RUSSET POTATOES</p> <p>\$3.98 EA.</p> <p><i>Plus 10% at Checkout</i></p> 
<p>3 LB. BAG US #1 MEDIUM YELLOW ONIONS</p> <p>98¢ EA.</p> <p><i>Plus 10% at Checkout</i></p> 	<p>USDA FRESH CUT FAMILY PACK COUNTRY STYLE RIBS</p> <p>\$1.44 LB.</p> <p><i>Plus 10% at Checkout</i></p> 
<p>USDA FRESH CUT PORK STEAKS</p> <p>\$1.44 LB.</p> <p><i>Plus 10% at Checkout</i></p> 	<p>US #1 FRESH 4 PACK RIPE TOMATOES</p> <p>68¢ EA.</p> <p><i>Plus 10% at Checkout</i></p> 

WE'VE APPRECIATED YOUR BUSINESS OVER THE LAST 9 YEARS AND WE WILL CONTINUE TO STRIVE IN THE FUTURE TO HELP YOUR FAMILY BY LOWERING YOUR GROCERY BILL

GREAT PRICES • GREAT TASTE • GREAT SAVINGS

OPEN 7 DAYS A WEEK
MONDAY - SATURDAY 7 A.M. - 7:30 P.M. / SUNDAY 8 A.M. - 6 P.M.

LOCATED IN THE AZALEA MART SHOPPING CENTER WAYNESBORO, MS 601-735-4344

EAGLE CARPORTS & BUILDINGS

NOW OFFERING RENT TO OWN

NO CREDIT CHECK

- Garages • Combo Units
- Horsebarns • Most Carports

Like our page Eagle Metal Buildings on Facebook 

CALL JOHN FOR DETAILS 601-323-0464

WWW.ELLISVILLEMOTORS.COM • 303 HWY. 11 S. ELLISVILLE, MS • LOCATED BETWEEN PIZZA HUT & JCJC

SEMINARY FARM CENTER

"Your Full Service Farm Supply"

- Spreader Service
- Spraying Service
- Chemicals
- Fencing Materials
- Feed & Seed
- Fertilizer

101 NORTH BEECH ST. • SEMINARY, MS • 601.722.4163

"Family Owned & Operated for 28 Years"
Owners: Steve Sanford / Brett Sanford

2013 Nissan Altima. \$12,900
Southeastern Auto Brokers, (844) 312-8785. See more at Cars601.com

2012 Toyota Sienna. \$17,463.
Mack Grubbs Hyundai, (844) 373-0806. See more at Cars601.com.

2014 Chevy Express Van, \$21,995.
Daniel, 601-620-4597.

2005 Nissan Murano, pearl white, \$9,000. Call or text James 601-602-5806.

2015 Kia Optima LX, super clean, 47K miles, one-owner, priced to move. Call 601-765-4402.

2013 Toyota Avalon XLE Touring, fully-loaded, one-owner, 53K miles. \$17,900. Call 601-765-4402.

2008 Lexus ES 350. \$14,990. J&S AutoPlex. 601-342-2293. See more at Cars601.com.

2010 Mazda Mazda3. \$9,150 at Paul Garner Motors. (844) 452-4569. See more at Cars601.com.

2013 Chevrolet Cruze. \$13,995 at Woolwine Ford in Collins, (844) 332-1854. See more at Cars601.com.

2017 Hyundai Elantra. \$19,940. Mack Grubbs Hyundai, (844) 373-0806. See more at Cars601.com.

2010 Silver Malibu, 57,000 miles, 4 cylinder, excellent paint and interior. Has one small dent on right rear fender and one on right rear roof pillar. Very good tires. \$8,500.00. Call Keith at (601) 410-9355.

2007 Infiniti, G35, \$11,995. Call or text Drew, 601-602-5800.

2005 Honda Accord, red, \$6,000. Call or text Daniel: 601-620-4597.

2016 Chevrolet Impala. \$20,495 at Harris Hankins in Bay Springs. Call 844-329-7227. See Cars601.com for more.

2015 Chevrolet Malibu. \$19,888 at Harris Hankins in Bay Springs. Call 844-329-7227. See Cars601.com for more.

Continued on ... Page 11

SELLING or SHOPPING? WE FINANCE IMPACT CLASSIFIED ITEMS

JONES COUNTY FINANCE

105 S 16th Ave. • Laurel
601-649-1944

ADVERTISING IS NOT AN EXPENSE . . . ADVERTISING IS AN INVESTMENT.

Call 649-1129

IMPACT 

A/C inspection, \$99.00. includes: 1lb of Freon and dye. Oil change special, \$21.95. Includes: Premium filter, 5 quarts of 5W20 or 5W30 conventional oil, free 21 point inspection. Does not include synthetic or diesels. And some specialty vehicles may be more. Also, each quart over 5 quarts will be regular price. \$2.69 a quart. Cooper RS3A, 40,000 mile treadwear protection, starting at: \$89.99. Cooper CS3, Touring, 60,000 mile, treadwear protection starting at: \$69.99. Prices do not include mounting, balancing and taxes. 1620 W. Pine St., Hattiesburg. Former Toyota of Hattiesburg Bldg. 601-620-4878.

2008 Toyota Sienna, white, \$6,000. Call or text Andy, 601-602-5003.

2016 Chevrolet Impala. \$19,995 at Harris Hankins in Bay Springs. Call 844-329-7227. See Cars601.com for more.

2007 Bmw 550i at Southeastern Auto Sales, Laurel. Call 601-649-4746. See more at Cars601.com.

2011 Toyota Avalon. \$15,688 at Toyota of Hattiesburg. (855) 221-8310. See more at Cars601.com.

2017 Ford Fiesta. \$15,610 at Laurel Ford, Lincoln, Kia, (844) 319-5854. See more at Cars601.com.

2012 Scion tC at Southeastern Auto Sales, Laurel. Call 601-649-4746. See more at Cars601.com.

2006 Chevrolet Malibu. \$3,900 at Vara Auto Sales, call 601-335-3972. See more at Cars601.com.

1993 Chevrolet Corvette. \$4,000 at Vara Auto Sales, call 601-335-3972. See more at Cars601.com.

2016 Toyota Corolla. \$17,999 at Toyota of Hattiesburg. (855) 221-8310. See more at Cars601.com.

2008 Toyota Prius, silver, \$7,000. Call or text Drew: 601-602-5800.

2016 Ford Fusion. \$19,999 at Woolwine Ford in Collins, (844) 332-1854. See more at Cars601.com.

2016 Toyota Sienna at Toyota of Hattiesburg. (855) 221-8310. See more at Cars601.com.

2017 Chevrolet Cruze. \$20,090 at Ryan Chevrolet. (855) 534-3769. See more at Cars601.com

2017 Ford Fiesta. \$15,610 at Laurel Ford, Lincoln, Kia, (844) 319-5854. See more at Cars601.com.

2012 Scion tC at Southeastern Auto Sales, Laurel. Call 601-649-4746. See more at Cars601.com.

2006 Chevrolet Malibu. \$3,900 at Vara Auto Sales, call 601-335-3972. See more at Cars601.com.

1993 Chevrolet Corvette. \$4,000 at Vara Auto Sales, call 601-335-3972. See more at Cars601.com.

WMXA

NEWS RADIO

98.1 FM

Laurel McAlister's Deli Manager receives special award

By Linda Cranford

If you've ever visited the McAllister's Deli in Laurel, chances are you've been greeted at some point during your visit by a high energy 5-foot tall blonde lady by the name of Tracie Murray, who is the manager of the Laurel location. Murray has served in management for eight of the ten years she's been with the company.

Recently, at McAlister's annual conference, which was held in Tunica, Murray was awarded the company's prestigious Red Shoe Award; the company's highest individual employee award. According to last year's recipient, Derick Trahan, the person receiving the award is voted on by their peers as being an individual who exemplifies in both their personal life and work life a giving spirit and McAlister's mission of providing that special Southern Hospitality to all their customers.

"Tracie is so well known in the community, and makes a point to know what's going on in each person's life to build a relationship with her customers," said Trahan. He said the award is a way for her peers to show her their appreciation for her energy and Good Samaritan actions. "The award is not given every year," added Trahan. "It's only given when an individual stands out during the year."

"I've had a lot of people tell me I spoil



Tracie Murray, manager McAlister's Deli - Laurel. Photo/Linda Cranford

my customers," exclaimed Murray, "but, that's who I am."

In addition to the red shoes, Murray received \$1,000. The Laurel location also had its best year in history in 2016, and was added to the company's Two Million Dollar Club. Murray received an additional \$1,000 for that achievement.

"In the ten years I've been here, we've



Pictured is McAlister's manager Tracie Murray, center, accepting the Red Shoe Award, from Mike Moss, left, area director and Cleve Luster, right, director of operations. Photo/Submitted

never accomplished that," said Murray. She contributed it to an increase in business in the past six months. "We've got more people visiting Laurel, and we are located on the main stretch going into downtown."

The Red Shoe Award also includes giving the recipient a pair of red Converse shoes and a silver medallion. The recipient must wear the shoes to next year's conference.

HELP FOR VICTIMS OF DOMESTIC ABUSE
24-Hour Crisis Line
1-800-649-1092

Toll Free in Forrest, Lamar, Marion, Jones, Covington, Wayne, Greene, Perry, Jasper, Smith, and Jefferson Davis Counties.

- Temporary Shelter
- Information, Referral, Advocacy
- Support Groups
- Counseling Service for Victims and Abusers
- Community Education



BAY SPRINGS FINANCE

Let us help you with Easter Bunny Money!

Call or come by and see Savannah
601-764-2251 Located next to Big O's Seafood in the Bay Center Shopping Center

2014 Chevrolet Cruze. \$10,995 at Laurel Ford, Lincoln, Kia, (844) 319-5854. See more at Cars601.com.

2010 Toyota Corolla. \$7,950 at Paul Garner Motors. (844) 452-4569. See more at Cars601.com.

2015 Chrysler 200. \$14,000 at Ryan Chevrolet. (855) 534-3769. See more at Cars601.com.

2006 Toyota Avalon. \$12,990. J&S AutoPlex. 601-342-2293. See more at Cars601.com.

1996 Jaguar XJ Series Sedan. \$6,995 at Harris Hankins in Bay Springs. Call 844-329-7227. See Cars601.com for more.

2015 Chevrolet Cruze. \$14,695 at Laurel Ford, Lincoln, Kia, (844) 319-5854. See more at Cars601.com.

2008 BMW 5 Series. \$8,995 at Quality Auto. Call 601-394-9313. See more at Cars601.com.

2005 Chevrolet Silverado 2500HD \$12,995 at Hattiesburg Cars. Call our Local toll free number 855-242-0775. See more at Cars601.com

2012 Nissan Maxima at Southeastern Auto Sales, Laurel. Call 601-649-4746. See more at Cars601.com.

2010 Chevrolet Impala. \$7,950 at Paul Garner Motors. (844) 452-4569. See more at Cars601.com.

2012 Ford Fusion. \$12,995 at Woolwine Ford in Collins, (844) 332-1854. See more at Cars601.com.

2011 Nissan Maxima. \$16,900 at Southeastern Auto Brokers, (844) 312-8785. See more at Cars601.com

2012 Chrysler 300. Call or text, Andy, 601-602-5003.

2007 Nissan Altima. \$5,800 at Vara Auto Sales, call 601-335-3972. See more at Cars601.com.

2017 Hyundai Elantra. \$19,140. Mack Grubbs Hyundai, (844) 373-0806. See more at Cars601.com.

2011 Hyundai Sonata. \$9,963. Mack Grubbs Hyundai, (844) 373-0806. See more at Cars601.com.

2017 Kia Rio. \$17,485 at Laurel Ford, Lincoln, Kia, (844) 319-5854. See more at Cars601.com.

2013 Hyundai Sonata. \$13,990. J&S AutoPlex. 601-342-2293. See more at Cars601.com.

2014 Chrysler 200. \$15,495 at Laurel Ford, Lincoln, Kia, (844) 319-5854. See more at Cars601.com.

2016 Chevrolet Cruze Limited. \$15,999 at Auto Express in Laurel, (844) 402-3154. See more at Cars601.com.

2015 Chevrolet Cruze. \$13,500 at Ryan Chevrolet. (855) 534-3769. See more at Cars601.com

2007 Chevrolet Suburban. \$17,975 at Ellisville Motors. Call 844-737-5629. See more at Cars601.com.

2010 Mercedes-Benz E-Class. \$17,900 Southeastern Auto Brokers, (844) 312-8785. See more at Cars601.com

2016 Kia Forte5. \$19,135 at Laurel Ford, Lincoln, Kia, (844) 319-5854. See more at Cars601.com.

2008 Gmc yukon. \$18,950 at Ellisville Motors. Call 844-737-5629. See more at Cars601.com.

AUTOS - SUVS

2011 GMC Acadia.. \$15,995 at Hattiesburg Cars. Call our Local toll free number 855-242-0775. See more at Cars601.com

2013 Hyundai Santa Fe Sport. \$15,888 at Toyota of Hattiesburg. (855) 221-8310. See more at Cars601.com.

2007 Mercedes-Benz ML320 at Southeastern Auto Sales, Laurel. Call 601-649-4746. See more at Cars601.com.

2006 Toyota Sequoia. \$9,500 at Quality Auto. Call 601-394-9313. See more at Cars601.com.

2016 Chevrolet Traverse. \$25,495 at Harris Hankins in Bay Springs. Call 844-329-7227. See Cars601.com for more.

2010 Mercedes-Benz E-Class. \$17,900. Southeastern Auto Brokers, (844) 312-8785. See more at Cars601.com

2015 Chevrolet Trax. \$15,000 at Ryan Chevrolet. (855) 534-3769. See more at Cars601.com

Continued on ... Page 13

Junior Auxiliary celebration National JA Weeks



Pictured with Laurel Mayor Johnny Magee is Bryn Nasajpour, PR chairwoman; Becky Collins, assistant to the treasurer; Brook Gatlin, treasurer; and Andrea Endom, Shareholders chairwoman.

Photo/Submitted

Submitted

The Junior Auxiliary of Laurel will be celebrating National JA week, April 2-8. On March 30, Mayor Johnny Magee signed an honorary proclamation designating the week as Junior Auxiliary week in Laurel, Mississippi. This annual celebration is a time to pause and thank the community, sponsors, and volunteer members who work so hard year-round to make a positive difference in the lives of children in Laurel and Jones County.

The Junior Auxiliary of Laurel began in 1932 with 23 Charter members and currently has 60 active members who donate over 3,500 of hours annually to the chapter's various projects. These service projects include Amblyopia screening, Child Abuse Awareness, Character Counts, Secret Meals, Family Matters, Girl Talk, Parkside Playground, Salvation Army, O The Places You Will Go, Scholarship, Very Special Arts Festival, Done in a Day, Lady Tornado Chick Chat and an annual Provisional Project. The chapter raises funds each year through Shareholders, Patrons, Frosty Frolic 5K as well as Casino Night.

"This is an exciting week for us, because it gives us a chance to thank all of the citizens of Jones County for supporting us in this work, and to recognize our wonderful corporate sponsors who finance these projects," said JA of Laurel Public Relations Chair Bryn Nasajpour. "The families and children we serve are so deserving and thankful for this assistance, and none of that would be possible without the support of the entire community."


"The National Association of Junior Auxiliaries will soon be entering into our 76th year of serving others, and many chapters have been a part of that from the beginning. Whether a chapter has been with us for 76 years or one year, the fact that our members have a heart for service and a passion for making a difference in the lives of their neighbors around them has never wavered," said Jeanne Hildebrandt, NAJA president.

The Junior Auxiliary of Laurel is a part of the National Association of Junior Auxiliaries (NAJA), a non-profit organization founded in 1941 with headquarters in Greenville, Miss. NAJA has 15,043 active, associate, and life members in 96 Chapters in Alabama, Arkansas, Florida, Louisiana, Mississippi, Missouri, and Tennessee. Junior Auxiliary members (worked or volunteered) 96,312 hours in their communities, and invested \$2,890,818 in seven southeastern states in 2015-2016. The NAJA slogan is "Care Today- Character Tomorrow." Junior Auxiliary chapters are working more than ever to provide care to those less fortunate in order to make their tomorrows better.


JUSTIN BOOTS

DOUBLE COMFORT


WORKBOOTS That Work™




Style 4765
Men's 10" Pull-On
Brier Pitstop
Steel-Toe




Style 764
Men's 8"
Lacer Aged
Bark
Steel-Toe





Style 4760
Men's 10"
Pull-On Aged Bark
Non-Steel




Style 760
Men's 8"
Lacer
Aged Bark
Non-Steel

Hours:
Monday - Friday
8:00 a.m. - 6:00 p.m.
Saturday
8:00 a.m. - 4:00 p.m.

ROYALS

WESTERN STORE

Downtown Soso • 601-729-2143



Butler Dental

Across from Court House, Butler, Alabama
Julie Utsey, D.M.D.P.C.
 General Dentistry

205-459-2700 1-888-851-8512
 Tuesday thru Friday 8 a.m. - 5 p.m.

- ONE DAY DENTURES
- PARTIALS AND EXTRACTIONS
- FREE CONSULTATIONS

	Single	Set
Set Standard Dentures.....	\$200.00	\$300.00
Set Deluxe Dentures.....	\$350.00	\$600.00
*Reline Included: Savings of \$130.00 per unit		
Set Custom Deluxe Dentures	\$550.00	\$1,000.00
*Reline Included: Savings of \$130.00 per unit		
Cast Metal Partial - \$625.00	• Acrylic Partial - \$200.00	
• Extractions - \$100.00 • X-Rays Included		
• Simple Extraction - \$70.00 • Surgical - \$100.00		

Victoria Smith receives first R.B. and Carolyn Hill scholarship

By Karyn Lewis

Thanks to a wedding anniversary and a daughter's creative gift idea, senior theatre majors at The University of Southern Mississippi will benefit from a new foundation scholarship celebrating the esteemed career of retired professor R.B. Hill, who served 30 years at Southern Miss. Hill was an associate professor, technical director and auditorium manager. The scholarship, which will help defray travel costs for theatre-related auditions and interviews the department's graduating seniors may have, is a wedding anniversary gift from Amie Hill, R.B. and Carolyn Hill's daughter.

"My parents were nearing their 50th wedding anniversary and I was still struggling to choose the perfect gift for such a momentous occasion. My mom mentioned that she always wanted to start a scholarship in my dad's name. I asked her why not both of their names? She replied, 'Well he was the professor, I was just tagging along for the ride,'" said Amie Hill, a Southern Miss alumna.

"My mom was a very integral part of my dad's success. In addition to her full time job as a guidance counselor, she brought Tupperware dinners to evening rehearsals, hosted chili parties on weekends for 20 college kids for script read-throughs and provided her unmistakable, encouraging and sometimes solo laugh from an audience on opening nights. To include both parents on a scholarship dedicated to them was without a doubt the perfect gift for their 50th anniversary," Hill added.

While at Southern Miss, R.B. Hill di-

rected "Catfish Moon" in 1995, and "The Rimers of Eldritch" in 2000, which were the first two shows from the state of Mississippi to be performed at the celebrated Kennedy Center in Washington D.C. "Since that's about as far as you can go in educational theatre, I retired," R.B. Hill joked.

Before retiring, Hill started an audition process class to better prepare theatre students for auditions at the annual Southeastern Theatre Conference (SETC). SETC hosts the nation's most reliable, longest running combined auditions. Theatre companies know they will see something special when they come to the conference. Thanks to Hill, Southern Miss theatre students are prepared.

"I started the audition class because students have to go to the Southeastern Theatre Conference, which has hundreds of participants and we wanted to better prepare our students. I figured I'd better come up with something to teach them how to audition," R.B. Hill said.

The course, which is mandatory for students who wish to be considered for the scholarship, is now taught by associate professor Sean Boyd.

"Audition Process is an absolutely critical class to prepare student-actors for the transition into the professional world. R.B.'s forethought in creating this class laid the foundations for evolving us from an academic department to a Professional Actor Training Program," Boyd said. "It was leadership like this that created a standard of excellence in our department, and has generated a multitude of graduates that have gone on to full-time careers

as actors, directors, designers and in all aspects of the business."

Funds for the scholarship were raised at the Hill's 50th wedding anniversary, which was hosted on the Southern Miss campus in Hattiesburg in late 2015. Over \$16,000 was raised by February 2016 and the scholarship will be awarded annually to a proficient student in the audition process class.

"We wanted to do something and this way we have a continuing presence within the department. We still go to performances and events. We just feel like this is the way to contribute," Carolyn Hill said.

The first R.B. and Carolyn Hill Scholarship recipient is Victoria Smith. The Waynesboro, Miss. native was awarded the scholarship at the end of the 2016 fall semester. Smith passed the SETC screen-

ings in Jackson, Miss. and has been invited to participate in auditions at the Southeastern Theatre Conference in Lexington, Ky.

"Receiving this scholarship is a complete honor and a blessing," Smith said. "It has provided the funds for me to travel and audition in this professional theatre environment."

"This scholarship has given me more than just financial aid; it has given me the opportunity to garner this valuable professional experience in order to progress my craft as a professional actor and theatre maker."

For more information about the Hill scholarship and other scholarship opportunities at Southern Miss, contact the USM Foundation at 601.266.5210 or visit www.usmfoundation.com.



Victoria Smith, center, is the first recipient of the R.B. (right) and Carolyn Hill theatre scholarship at Southern Miss. Photo/Submitted

JCJC employee service honored at recognition luncheon



Two JCJC employees were recently honored for their 25 years of employment at JCJC at the annual Employee Recognition luncheon. Pictured left to right are Clara Bynum (Jones County), financial aid; Allen Nix, (Jones County) housekeeping superintendent.

Photo/Teresa McCreery



Nine JCJC employees were recently honored for working 20 years at Jones at the Employee Recognition luncheon. Pictured left to right are Juanita Morgan, (Jones County) business office; Jennifer Suber (Jones County), Cheryl Windham, (Jones County) humanities division chair/instructor financial aid and Andrew Sharp, (Jones County) student success center. Not pictured: Randy Purdum, (Jones County) electrical technology instructor and Daphne Yeager (Covington County) business office.

Photo/Teresa McCreery



Nine JCJC employees were recently honored for working 15 years at Jones. Pictured left to right are: David Lowery (Jones County) English instructor; Danielle Brownlee (Jones County) A.D. Nursing instructor; Kari Miller (Jones County) registrar's office; Carmen Sumrall (Jones County) Workforce College; Melanie James (Wayne County) academic life coach; Michelle Shearer (Jones County) women's housing director; Jeffrey Morris (Jones County) groundskeeper and Paula Pierce (Jones County) art instructor. Not pictured: Amanda Robertson (Jones County) business office manager. Photo/Teresa McCreery

Twenty-five JCJC employees were recently honored for working five years in various roles at Jones. Pictured left to right are: Nancy Pritchard, associate degree nursing instructor; Kacie Minnix (Jones County) registrar; Kelly Vera (Hattiesburg) science instructor; Joe Everett (Jones County) physical plant director; Brad Reynolds (Jones County) campus police; Kandie Johnson (Jones County) women's housing; Alfred Griffin (Jones County), transportation; Sarita Mills (Jones County) switchboard; Claire Garretton (Jones County) recruiting; Kimberly Bradshaw (Jones County) math instructor; Jennifer Hughes (Jones County) adult education; Beth McDaniel (Jones County) scholarships; Jason Mills (Jones County) grounds and farm; Tom Wagnon (Jones County) groundskeeper; Brendan Connolly (Jones County) men's soccer coach; Tina Livingston (Jones County) housing and campus police; Greg Wascoe (Hattiesburg) fine arts instructor; Rod Tolbert (Jones County) industrial services chair/welding instructor; Tonya Moreno (Greene County) cosmetology instructor; Casey Herrington, associate degree nursing instructor; Billy Clark (Jones County) welding instructor; James Thomas (Jones County) campus police; Vickie Robinson, housekeeping; Ken Knox (Clarke County) adult basic education and Kenneth Savell (Jones County) shipping and receiving.



Thirteen JCJC employees were recently honored for working 10 years at Jones include: Ginger Keeton (Petal) marketing instructor; Dolores Deasley (Jones County) women's soccer coach; Emily Phillips (Jones County) associate degree nursing instructor; Jason Dedwylder (Clarke County) academic dean; Loretta Burns, associate degree nursing instructor; Brad Harrison (Jones County) career technical education support services and Murray Windham (Jasper County) English instructor. Not pictured: Jennifer Griffith (Jones County) assistant VP of instructional affairs for Workforce College; Megan Stringer (Jones County) science instructor; Leah Hinton (Jasper County) early childhood instructor; Sarah Ishee (Jones County) social science instructor; Kelly Atwood (Jones County) student publications/marketing and Kenneth Savell (Jones County) maintenance. Photo/Teresa McCreery

2014 Subaru XV Crosstrek. \$18,495 at Laurel Ford, Lincoln, Kia, (844) 319-5854. See more at Cars601.com.

2008 Honda cr-v. \$8,999 at Auto Express in Laurel, (844) 402-3154. See more at Cars601.com.

2016 Hyundai Santa Fe. \$22,795 at Laurel Ford, Lincoln, Kia, (844) 319-5854. See more at Cars601.com.

2010 Subaru Outback. \$12,000 at Ryan Chevrolet. (855) 534-3769. See more at Cars601.com

2005 Dodge Grand Caravan. Seats 7. stow and go seating. AM.FM,CD player. DVD player. \$3000. Call and leave a message. 601-764-7253

2008 Ford Edge. \$5,500 at Vara Auto Sales, call 601-335-3972. See more at Cars601.com.

2005 GMC Yukon xl. \$6,000 at Ryan Chevrolet. (855) 534-3769. See more at Cars601.com

2012 Dodge Journey. \$10,900 at Paul Garner Motors. (844) 452-4569. See more at Cars601.com.

2007 GMC Yukon xl. \$10,999 at Auto Express in Laurel, (844) 402-3154. See more at Cars601.com.

2010 Gray Trail Teams Preimun 4WD-Runner, rare. \$22,995. James, 601-602-5806.

2007 Nissan Murano. \$8,999 at Auto Express in Laurel, (844) 402-3154. See more at Cars601.com.

2012 Lincoln MKX \$21,888 at Toyota of Hattiesburg. (855) 221-8310. See more at Cars601.com.

2010 Nissan Pathfinder. \$15,555 at Woolwine Ford in Collins, (844) 332-1854. See more at Cars601.com.

2012 Nissan Xterra. \$11,999 at Auto Express in Laurel, (844) 402-3154. See more at Cars601.com.

2000 Ford Excursion XLT, V8, 93k miles, towing package, am/fm cd radio. \$5000. 601-323-5796, 601-498-8864.

2013 Ford Escape. \$12,989 at Woolwine Ford in Collins, (844) 332-1854. See more at Cars601.com.

AUTOS - TRUCKS

2005 Chevy Trailblazer, runs really good. \$9,000. Text or call Shawn, 601-602-5805.

2005 Chevrolet Avalanche. \$14,995 at Quality Auto. Call 601-394-9313. See more at Cars601.com.

2013 Red z71, 4 wd, Chevy Silverado, XCA, only 20,986 miles, \$29,995. Shawn, 601-602-5805.

2006 Toyota Tundra. \$14,250 at Ellisville Motors. Call 844-737-5629. See more at Cars601.com.

For Sale: 2011 Chevrolet 1500 Z71, LT, 4WD, Priced to move. \$17,900 Mauldin Motors, 3069 Hwy 49 Collins, MS. Call 601-765-4402.

2011 Chevy Colorado, \$12,000, white, 87,000 miles. 601-422-3532.

2011 Chevrolet Colorado. \$17,000 at Ryan Chevrolet. (855) 534-3769. See more at Cars601.com

2008 Toyota 4Runner. \$13,995 at Hattiesburg Cars. Call our Local toll free number 855-242-0775. See more at Cars601.com

2007 Dodge Durango, seats seven, \$7,000. Brad, 601-620-4607.

1994 Chevrolet Silverado. \$3,800 at Vara Auto Sales, call 601-335-3972. See more at Cars601.com.

2008 Dodge Ram 1500. \$18,950 at Ellisville Motors. Call 844-737-5629. See more at Cars601.com.

2006 GMC Sierra 1500. \$13,995 at Quality Auto. Call 601-394-9313. See more at Cars601.com.

2010 Chevrolet Silverado 1500. \$18,450 at Ellisville Motors. Call 844-737-5629. See more at Cars601.com.

CARPORTS

Carports and Buildings: Financing Available! 22Wx26Lx9T- \$5,050 , 24Wx31Lx9T- \$6,010 Fully Enclosed

with two 9X8 Roll-up Doors. Price includes installation. We also offer storage buildings and barns. Call John @ 601-323-0464, 303 Hwy 11 S, Ellisville (between Pizza Hut & J.C.JC)

RUSTIN METAL BUILDINGS AND CONSTRUCTION
 Laurel, Mississippi
Rustin Construction Since 1933
COMMERCIAL • RESIDENTIAL
 26 Gauge Colored Panels
 Licensed General Contractor in MS and LA

WE MANUFACTURE AND WE BUILD
 Red Iron Metal Buildings **601-649-9949**

65039

CLARKE - WAYNE Tax Service
"THE TAX EXPERTS"
 **Serving This Area for Over 54 Years**
 1600 East Azalea Dr. • Waynesboro
 JENNIFER RABOURN ANGI TYNES
 OFFICE FAX
601-735-4211 601-735-4410

We can put Cash in your Easter!
 Get up to \$410.00 pay day loan
First Choice Payday LOAN COMPANY
 1215 W. 5th Street
 (next to First Financial and Comcast)
601.428.0881
 8:30 to 5:30 Mon - Fri
 Felicia Marshall - MANAGER

**BUY IT . . .
 SELL IT . . .
 TRADE IT . . .**
 The most coverage for your money.
 Call Today -
601-649-1129
IMPACT

LAUREL A-1 TIRE CENTER
Right behind the Laurel Police Department
SPRING DRIVING SPECIALS

<p style="text-align: center;">FULL SYNTHETIC OIL CHANGE</p> <p style="text-align: center;">Up to 5 Qts most vehicles excludes diesels</p> <p style="text-align: center; font-size: 2em;">\$34⁹⁵</p> <p style="text-align: center; font-size: small;">WITH COUPON PRICES SUBJECT TO CHANGE WITHOUT NOTICE</p>	<p style="text-align: center;">OIL CHANGE SPECIAL</p> <p style="text-align: center;">Up to 5 Qts 10W30 most vehicles excludes diesels</p> <p style="text-align: center; font-size: 2em;">\$24⁹⁵</p> <p style="text-align: center; font-size: small;">WITH COUPON PRICES SUBJECT TO CHANGE WITHOUT NOTICE</p>
<p style="font-size: 2em;">4 WHEEL ALIGNMENT \$44⁹⁵</p> <p style="font-size: small;">Cars Only WITH COUPON PRICES SUBJECT TO CHANGE WITHOUT NOTICE</p>	
<p style="text-align: center; font-size: 2em;">TIRE SPECIAL</p> <ul style="list-style-type: none"> • P225/60R16.....\$59.95 • P215/60R16.....\$54.95 <p style="text-align: center; font-size: small;">PLUS INSTALLATION PRICES SUBJECT TO CHANGE WITHOUT NOTICE</p>	<p style="text-align: center; font-size: 2em;">Brake Special</p> <p style="font-size: small;">*most cars (Turn rotors for additional charge) PRICES SUBJECT TO CHANGE WITHOUT NOTICE</p> <p style="text-align: center; font-size: 2em;">\$99⁹⁵*</p> <p style="text-align: center; font-size: 2em;">Rotate & Balance</p> <p style="font-size: small;">*most vehicles PRICES SUBJECT TO CHANGE WITHOUT NOTICE</p> <p style="text-align: center; font-size: 2em;">\$30⁰⁰*</p>
<p>219 Ellisville Blvd., Laurel, MS M-F 7:30 A.M.-5:00 P.M. SAT. 7:30 - NOON</p> <p style="font-size: 2em;">601.425.4616</p>	

Husqvarna

can get you ready for Good Friday Planting!

DRT900



DRT900H



PRICES START AT \$449⁹⁵

CRT900



FT900



COOLEY MOTOR COMPANY
 SINCE 1928 • HWY 45 NORTH WAYNESBORO
601-735-4323 OR 1-800-748-8838

WE FINANCE! NO CREDIT CHECK!

tax Refund sale

 2005 CADILLAC DEVILLE WHITE W/ NAVY CANVAS TOP \$SAVE	 2008 DODGE CHARGER GREY \$SAVE	 2003 CHEVROLET SUBURBAN WHITE \$SAVE
 2005 PONTIAC G6 GT GRAY \$SAVE	 2008 DODGE AVENGER BURNT ORANGE \$SAVE	 2003 VOLKSWAGEN BEETLE YELLOW \$SAVE
 2011 CHEVROLET IMPALA WHITE \$SAVE	 2007 NISSAN ALTIMA SILVER \$SAVE	 2005 MERCURY G. MARQUIS BROWN \$SAVE
 2001 CHEVROLET TAHOE BLACK \$SAVE	 2005 FORD EXPLORER WHITE \$SAVE	 2003 FORD F-150 MAROON \$SAVE

AUTO CREDIT OF COLLINS
 2538 HWY 49 • COLLINS, MS • 601-765-0013

*Plus Tax & Title ~ Pictures for Illustration Purposes Only

ALL CARS SOLD WITH WARRANTY!

Residential electrical course offered at JCJC ATC in Ellisville

Submitted

Jones County Junior College's Workforce College will be offering a residential electrical course at the Whitehead Advanced Technology Center in Ellisville. The nine-week day class will meet Monday through Thursday, from 8 a.m. until 1 p.m., starting on Tuesday, April 18 and ending on Friday, June 23.

The residential electrical class is a hands-on, instructor-led course that teaches students basic electrician skills. In this course, students will learn skills such as electrical safety, electrical theory, conductors and cables, basic electrical drawings, residential electrical drawings and services, electrical test equipment and an introduction to electrical circuits and an introduction to the National Electrical Code.

This course is for anyone with limited or no previous electrical training with the goal of earning the National Center for Construction Education and Research transcript and a nationally recognized credential card. Also, upon successful completion of the course, students will receive a JCJC Workforce College certificate with the number of course hours completed. The cost for this course is \$150. Students are responsible for purchasing their own personal protective equipment (PPE).

To register and pay for the class please come to the Advanced Technology Center at 72 Technology Blvd, Ellisville, or call Carmen Sumrall at (601) 477-4105. For more information call the ATC at (601) 477-4114.



West Jones High School Senior Kristi Marshall recently signed a letter of intent to play basketball with Hinds Community College Lady Bulldogs. Pictured are, seated: Belinda Marshall-mom; Kristi; Deanna Thigpen-aunt; Standing: Brianna Page-teammate; Terryl Ulmer-AAU coach, Kaylin Adams-cousin, Terrance Thigpen-friend, West Jones High School coach Sharon Murray, and Lynn Lyon, WJHS supervising principal. Photo/Submitted



Tornado signs with East Central Community College Warriors

Laurel High School basketball standout Tamirra Haskin signed a letter of intent with East Central Community College. She was recently selected to play in the Mississippi-Alabama All-Star game in Montgomery, Alabama, where the Mississippi team was victorious. She has received numerous awards for her skills on the court, including being named 2017 Region 5-5A Co-Offensive Player of the Year, Clarion Ledger Top Performer of the Week and State Girl of the Week. She was selected most valuable player for Region 5-5A in 2016, was named to the All-District Team and was named East Central Community College Tournament MVP. Haskin is a member of the Beta Club, Interact and Student Council. She is a Superintendent's Scholar, Mississippi Scholar and is dual enrolled at Jones County Junior College. Tamirra plans to study physical therapy. Pictured (seated L-R): her mother Roslyn Haskin, Tamirra Haskin, father Chris Haskin, (standing L-R): aunt Dessy Parker, friend Ashley Breland, pastor and godfather Rev. Vernon Graves, LHS assistant coach Shasta Husband, head coach Alphaka Moore, assistant coach Kamita Thigpen, aunt Tonya Weathersby, brother Donovan Haskin and grandmother Margaret Weathersby.

Photo/Submitted

The Spring sales event!

at LAUREL FORD LINCOLN KIA

<p>#P12506 2016 TOYOTA COROLLA L SEDAN 5,075 MILES, \$19,495</p>	<p>#P12464 2014 TOYOTA CAMRY SE 29,518 MILES, \$18,995</p>	<p>#8514A 2015 KIA OPTIMA LX 53,278 MILES, \$14,995</p>
<p>#P12524 2014 LINCOLN MKZ 43,135 MILES, \$21,995</p>	<p>#P12484 2016 RAM 1500 SLT 24,635 MILES, \$28,998</p>	<p>#P12476 2016 CHEVROLET IMPALA LT 17,926 MILES, \$22,395</p>
<p>#P12464 2014 TOYOTA CAMRY SE 29,518 MILES, \$18,995</p>	<p>#P12519 2016 NISSAN FRONTIER 10,632 MILES, \$26,995</p>	<p>#19097B 2015 CHEVROLET SILVERADO 1500 LT 61,992 MILES, \$32,995</p>

KIA & LAUREL FORD LINCOLN 844-319-5854

www.kiaoflaurelms.com www.laurelfordlincoln.com

\$5.00 OFF YOUR NEXT SERVICE
MUST HAVE COUPON. EXP. 04-30-17
CAN'T BE COMBINED WITH ANY OTHER OFFERS

TAX TIME = CAR TIME

SOUTHEASTERN Auto Sales, LLC

1st MONTH'S INSURANCE ON US!

GUARANTEED APPROVAL

<p>2012 Nissan Altima \$10,995</p>	<p>2012 DODGE AVENGER \$8,995</p>
<p>2005 Dodge Ram 1500 \$8,995</p>	<p>2013 Chevy Silverado Rocky Ridge Package \$33,995</p>
<p>2006 TOYOTA SEQUOIA Leather, Sunroof, VERY CLEAN! \$8,995</p>	<p>2013 FORD FIESTA Economy Car, \$6,995</p>
<p>2012 NISSAN SENTRA \$6,995</p>	<p>2010 Nissan Altima \$9,995</p>

DEAL OF THE WEEK!

<p>\$19,995 2011 BMW 535i 89k Miles, LOADED!!</p>	<p>\$4,950 080 FISHER MARINE BOAT & TRAILER 04 MERCURY 4 Stroke 50HP Motor</p>
--	---

WWW.SASLAUREL.COM | LAUREL | 601-466-3535

NOW OPEN!

J&S
AUTOPLEX
LLC

J&S AUTOPLEX

4029 HWY 15 NORTH LAUREL

601-342-2123



2012 JEEP WRANGLER UNLIMITED SAHARA
LEATHER, LIFT KIT, AFTER MARKET WHEELS AND TIRES
29K, MUST SEE!
\$35,990

2011 JEEP WRANGLER RUBICON
\$30,990 OR \$429/MO

2014 JEEP WRANGLER UNLIMITED SAHARA HARDTOP, LOADED
\$29,990 OR \$419/MO



2016 BMW 428I HARDTOP CONVERTIBLE
LEATHER, NAVIGATION, DRIVER PARKING ASSIST, LIKE NEW! SEVERAL TO CHOOSE FROM
\$35,990



2014 CHEVROLET CAMARO LS
Auto, 16K, PS Power Strips
\$18,990



2015 CHRYSLER 200S
LEATHER, POWER EVERYTHING, ONE OWNER
38K
\$16,990



2010 DODGE CHALLENGER RT
Auto, 40K
\$20,990



2014 DODGE CHALLENGER
LEATHER, CHROME WHEELS, REAR SPOILER, SPORTS STRIPE
27K
\$23,990



2016 DODGE GRAND CARAVAN
Stow & Go Seats, Rear Entertainment, 32K
\$13,990



2016 FORD F150 SUPERCREW 4X4
18K, Leather, Loaded
\$36,990



2016 FORD F150 4X4
6 IN. LIFT WITH TIRES AND RIMS, LIKE NEW! SEVERAL TO CHOOSE FROM
29K
\$40,990



2015 FORD F250 4X4 SUPER CREW DIESEL
BED LINER, TOW PACKAGE, RUNNING BOARD, 50K
\$39,990



2015 FORD MUSTANG CONVERTIBLE
FIRE ENGINE RED, ALLOY WHEELS, Premier Package, Loaded
\$19,990



2016 HYUNDAI TUCSON
LOADED!!
25K
\$19,990



2012 INFINITI QX56
LIKE NEW!!
2nd Row Bench, NAV Tow, Rear Entertainment
\$49,990



2014 INFINITI QX80
PEARL WHITE, REAR ENTERTAINMENT, 2ND ROW CAPTAIN SEATING, TOW PACKAGE, 50K
\$42,990



2014 JEEP GRAND CHEROKEE LIMITED
Leather, Tow Pkg
47K
\$30,990



2010 LEXUS IS350 HARDTOP CONVERTIBLE
BLACK ON BLACK INTERIOR, ALLOY WHEELS, LEATHER, NAVIGATION, AIR CONDITION/HEATED SEATS
\$23,990

FULL SERVICE DEPARTMENT
OPEN TO THE PUBLIC -
FREE DIAGNOSTIC CHECKS

- Six Service Bays
- Four Hydraulic Lifts
- Front End Alignment Machine
- State's Only Quadriga 1000 Tire Machine!



2015 MERCEDES CLA250
PREMIUM STEREO, LIKE NEW!
\$27,990



2012 GLK 350
Loaded, Sunroof, NAV, 50K
\$24,990



2015 NISSAN ROGUE
Like New, New Bobby Style
25K
\$24,990



2015 DODGE RAM 2500 LARAMIE
4X4 SUPERCREW, CUMMINGS TURBO, LEATHER, TOW PACKAGE, NAVIGATION
\$48,990



2013 DODGE RAM 3500 LARAMIE CREWCAB, DUALY
CUMMINGS TURBO, VERY CLEAN!!
\$39,990



2014 TOYOTA CAMRY SE
ONE OWNER, ALLOY WHEELS, MUST SEE!
\$14,990



2014 NISSAN MAXIMA
LOADED, SUNROOF NAV, 44K MILES
\$18,990



2012 FORD MUSTANG GT 5.0 Premium Pkg,
Leather, Standard, LIKE NEW!
\$21,990



2016 GMC SIERRA 2500 Z71
4X4 DURAMAX DIESEL
LIFT KIT, 6 IN. LIFT, TOW PACKAGE, AFTER MARKET TIRE & WHEELS
\$59,990



2014 TOYOTA COROLLA S
ALLOY WHEELS, TINTED WINDOWS, LIKE NEW!
ONE OWNER
\$17,990

YOUR NEW, #1 PRE-OWNED DEALERSHIP IN SOUTH MISSISSIPPI

Shop 24/7 online
jandsautoplex.com

All payments 72 mos. with 10% down, plus tt&l. W.A.C. 72 months at 3.99%