

**Curtis**  
Sales & Service of Outdoor  
Power Equipment

**Yard/V Garden**

**COME CHECK OUT  
EVERYTHING  
WE HAVE TO OFFER!**

641-664-2784 • 502 E. Franklin • Bloomfield, IA

# Tri-County SHOPPER

Look inside for our fun  
crossword challenge!

STANDARD  
MAIL  
U.S. POSTAGE  
**PAID**  
TRI-COUNTY  
SHOPPER, INC.  
POST OFFICE BOXHOLDER  
LOCAL RURAL BOXHOLDER  
OCCUPANT  
**CIRCULATION  
OVER 11,750  
THIRD CLASS**

P.O. Box 168 • Bloomfield, IA 52537 • [www.tri-countyshopper.com](http://www.tri-countyshopper.com)  
Phone 641-664-1333 • Fax 641-664-3761 • Email [shopper@netins.net](mailto:shopper@netins.net)

**MFCP**  
Midwest Free Community Papers

**CIRCULATION  
VERIFICATION  
COUNCIL**  
OUR DATA SPEAKS VOLUMES

Vol. 45, No. 14  
Wednesday, April 5, 2017

VISA  
Discover  
MasterCard

## FIGHT STRONG® FOR CATTLE

**WHEN THE STRESS IS ON**  
Fight Strong® for Cattle is a natural feed additive that gets cattle eating, boosts immunity, and doesn't require a VFD

**HELPS OVERCOME:**

- Production stress
- Transportation/handling
- Poor appetite
- Suppressed immune system



**WHAT'S INSIDE:**

**STRONG ANIMALS® TECHNOLOGY**

<b>Microfused™ Essential Oils</b>	<b>Patent Pending</b>	Promote a balanced gut microflora & the health of stressed cattle while stimulation appetite.
<b>Microbial Catalyst®</b>	<b>Patented</b>	Stimulate rumen function & promote appetite.
<b>Actifibe® Prebiotic</b>		Feed beneficial gut bacteria & promote immune function.
<b>Yucca Schidigera</b>		Promote digestion & gut health.
<b>Integramos®</b>		Promote a balanced gut microflora & the health of stressed cattle

**Directions for Success:** Feed for 28 days. See tag for full directions for use.

**HARRIS DISTRIBUTING**  
1-800-727-5589 OR 641-929-3379  
WEST GROVE, IA

**NO VFD  
REQUIRED**

## Has your roof sprung a leak?

**We sell all types of  
Metal roofing, Shingles  
and rubber roofing.**



Or would you rather  
enjoy the rain?

**COME SEE US FOR  
ALL YOUR DECKING &  
RAILING NEEDS!**

# Cantril Lumber & Hardware

319-397-2351 or 319-397-2354 • Mon-Fri 7-5 & Sat 7-12

**\$38,000**



**2010 Aulick belt trailer, 42' long**

# Hoskins Elevator

29067 Juniper Ave. • Bloomfield, IA  
641-929-3568 or 641-208-6000

**SPRING IS HERE!**



**Now is the time to talk to us about all  
your spring and summer projects!**

**We are your local, full-service contractor,  
dedicated to meeting all of your building needs  
with integrity and quality craftsmanship.**

- Metal Roofing
- FREE estimates!
- Crews available
- Call today!

# WAGLER METALS

19049 Ice Ave., Bloomfield, IA  
641-722-3692  
M-F 7:30AM-5PM • Sat. 8-11:30AM



**HOURS**  
8 A.M.  
to  
5:00 P.M.  
DAILY EXCEPT  
SUNDAY

**Zimmerman's  
Store**  
Rutledge, MO  
660-883-5766

*Our  
Everyday  
Low Prices!*

50# Winona unbleached, unbromated flour.....	\$13.32
50# Winona whole wheat fine wingold .....	\$11.98
50# Winona whole wheat med. wingold .....	\$11.92
50# All Trump unbleached (hi gluten).....	\$16.30
50# All Trump bleached (hi gluten).....	\$16.52
50# General Mills king wheat flour.....	\$11.86
50# General Mills pollyanna pie cookie flour, unbleached.....	\$12.53
50# General Mills wheat-a-lax (coarse).....	\$12.04
50# Occident unbleached unbromated flour .....	\$17.05
50# Prairie Gold chemical free flour.....	\$21.08
50# Prairie Gold natural wheat.....	\$25.55
16 other flours like corn, oats, coconut, almond and more	
50# sugar granulated beet.....	\$22.12 or 49¢ a lb. bagged
50# sugar granulated cane .....	\$24.06 or 53¢ a lb. bagged
50# sugar brown .....	\$24.66 or 58¢ a lb. bagged
50# Sucanat (sugar cane natural).....	\$61.36 or \$1.39 a lb. bagged

**Nice large fuji apples..... \$15.00 bushel or 69¢ a lb.**  
**3 lb. bag pears .....**  
**Mini watermelons .....**  
**Fresh green beans..... 65¢ a lb. (1 lb. pk)**  
**Sweet mini peppers several colors.....\$1.49**

#### SPECIAL BUY

- Oscar Mayer wieners, made with chicken, turkey and pork 12/16 oz. in box \$5.05 or 49¢ each
- Pizza Hut sliced & quartered ham, fine for pizza, ect., 10# box \$7.85
- Fully cooked breaded chicken breast tenderloins, 10# box, \$25.00

**APRIL SPECIAL - Sale on all Honey Acres honey for the whole month. Come check out the prices!**

Men's black gum boots, \$12.98 Children's \$11.98 Toddler blue gumboots sizes 6&7 \$5.98

**SPECIAL BUY!!!! 2 LITER DOUBLE COLA • ONLY 69¢**

**DRIVE A LITTLE & SAVE A LOT**

### NEW MATTRESSES FOR SALE!

Selling individually or in sets. Factory warranty.

**TWIN - FULL - QUEEN - KING**

**641-664-3060**

FOR SALE: Ranch Style home, 2/3 bedrooms, 1 bath, single level, 2 car detached garage 30FWx32FL, 2 acres in Davis County. Call or Text 641-208-7484 for more information. 14

**YODER'S INDIAN CREEK FURNITURE:** Purple Martins are coming. We stock wood & poly wood Martin houses & gourd racks. Available with pole & winch. Also a great selection of bluebird & wren houses. Located 4 miles North of Cantril on RT. V64, 22769 Rt. V64 Milton, Iowa. PH. 319-538-7332. 18

**JR**  
**FEED & SUPPLY**  
**641-722-3045**  
17599 200TH STREET • BLOOMFIELD  
STOP BY MON.-FRI. 8-5 & SAT. 8-12

**Complete line  
of bagged  
feed in stock!**

**Lamb &  
Goat  
Milk  
Replacer**

**BIRD FEEDING NEEDS** WILD BIRD SEED  
SUNFLOWERS/CHIPS

**We Put Accident  
Damage in Reverse**  
collision repair • frame & unibody repair  
guaranteed paint match • rental cars



Guaranteed Craftmanship  
Insurance Specialists • Free Estimates

**Walker Motors**  
Collision Repair

375 S. Main St. • Memphis, MO • 660-465-2159

**Hertz**



**We can take away  
the stress and get  
you results!**

**Auto Body Shop  
Auto Glass  
Automotive Restoration  
Hand Detailing Service**

**KARR  
COLLISION  
CENTER  
& AUTO DETAILING**  
Shawn Scott, Owner  
701 Karr Ave. • Bloomfield, IA  
641-664-1024

**GARAGE SALE:** April 7th, 8 - 5 and April 8th 8 - 2: Small freezer, stair glider with 16 ft. track, wooden porch rockers, meat grinder, dresses, shirts, houseware, ect. Martins, 8 miles north of Memphis on 15

**BARING AREA  
COMMUNITY WIDE  
YARD SALE:** Sat., April 8th, Baring Fire House 7am - 2pm. Full size bed frame, wireless dog system, Hyla sweeper, 15" stainless steel griddle, housewares, child's table & chairs, walker, double stroller, bumbo seat, Bible story books, new womans & girls slips, children & adult clothes, boots, 55 gal. plastic barrels and misc.

#### FOR SALE

*Country Living In Town!  
Enjoy wildlife roaming  
through the park.*

*Leisure Living Estates  
700 W. Alta Vista  
Ottumwa, IA*

Century Mobile Home, 16x70, excellent condition, 2 bedroom, 2 bath, NEW: roof, furnace, hot water heater, washer, dryer, stove & dishwasher. Garage, shed & 4 decks  
**Must See! \$40,000**  
Lot 92  
**641-684-8101 or  
641-777-3017**

**FRIESEN  
CONSTRUCTION**  
**New Houses  
Remodeling  
Garages Electrical  
Plumbing  
Custom Cabinets**

**Arlen 664-3270  
Cell 641-208-0170  
Bloomfield, Iowa**

## BANK OF THE WEST

*is hiring*  
**Bloomfield, IA Location**

*Motivated salesperson with customer service experience. Will support business development and customer transactions. High School Diploma/GED required. Great benefits!*

Apply at:

**www.bankofthewest.com/careers.**  
**Job ID: 028061**

FOR SALE: '76 Ford LTD 2 Dr. \$4000. '50 Plymouth 4 Dr. \$3000. '52 Pontiac 4 Dr. \$10,000. PH: 641-777-7475 16

FOR SALE: 1992 Freightliner, good tires, runs good. For more information call: PH: 660-342-9156 16

### EXTRA DISCOUNTS

**35% OFF** Exercise Equipment  
Blankets  
Comforters

**GET  
READY  
FOR  
SPRING!**

- Basketball
- Tents
- Canopies
- Patio Furniture
- LP Gas Fire Pits
- Air Conditioners
- Cordless Lawn Mowers

**\$URPLUS  
BARGAIN  
BARN**

**BLOOMFIELD, IA**  
2 1/2 MILES W. OF  
BLOOMFIELD ON HWY. 2  
OPEN TUESDAY, FRIDAY, SATURDAY 9-5

FOR SALE: Antique china cabinet, two doors with glass & two shelves on top, one drawer in middle, two doors & two shelves on bottom, about 72 inches tall & dark wood. PH: 660-216-0214 16

Stop OVERPAYING for your prescriptions! SAVE! Call our licensed Canadian and International pharmacy, compare prices and get \$25.00 OFF your first prescription! CALL 1-800-263-4059 Promo Code CDC201625 (MCN)

## L&M Country Store

1 1/2 miles south of west Hwy 2 & 63 jct.  
Mon-Sat. 8am-5pm CLOSED SUNDAYS  
VM: 641-664-1936

### Apples- Fuji & Golden Delicious

Elbow macaroni.....	69¢ a lb.
30 oz. Miracle Whip or Real Mayonnaise .....	\$1.29
20 oz. pineapple tidbits .....	69¢
12 oz. mozzarella string cheese .....	\$1.49
Frozen 8 - 9 lb. shaved ham.....	99¢ a lb.
12 oz. yellow American cheese singles .....	\$1.49
5 lb. vanilla yogurt.....	\$1.25

**We have Seed Potatoes,  
Onion Sets & Candy Onion Plants**



# Duer's

Tobacco

Eagle 20.....	\$21.99	Carton
Cheyenne.....	\$20.99	Carton
Decade.....	\$24.79	Carton
USA Gold.....	\$33.59	Carton
Winston's.....	\$36.59	Carton
Newport Menthol (Limited Quantity).....	\$41.99	Carton
Kool.....	\$38.59	Carton
Redsupreme Loose leaf chew, box of 12.....	\$23.88	
Longhorn, 10 can roll.....	\$12.90	
Grizzly, 5 can roll.....	\$12.35	
Redseal, 5 can roll.....	\$11.29	

Missouri Hunting &amp; Fishing Permits

U-Haul Trailer &amp; Truck Rental

We Fill Propane Bottles • All Items Plus Sales Tax

**115 N. Johnson St. • Kahoka, MO 63445**  
**660-727-2621**

**Hours: Mon. - Sat. 7:00 AM - 9:00 PM**  
**Sun. 8:00 AM - 6:00 PM**

## Tax Refund Sale!

*All in stock complete  
bedroom suites on  
sale thru April 15th.*

*100's of dollars in  
discounts.*

*Special discounts on  
orders.*



VM: 641-664-0207  
1 Mile East of Drakesville  
on Jade Ave.  
Mon.-Sat. 9:00 AM - 5:00 PM

Spectrum Triple Play: TV,  
Internet & Voice for \$29.99  
ea. 60 MB per second speed.  
No contract or commitment.  
We buy your existing con-  
tract up to \$500! 1-800-919-  
3588 (MCN)

## SHADY LANE VARIETY

**Assorted  
Bird Feeders.  
Hummingbird  
Feeders & Swings  
Oriole Feeders  
Nectar Protectors  
Cute Wind Chimes**

**1 mi. E. of Drakesville  
on Jade Ave. • 641-664-0207  
8-5 Mon. thru Sat.**

SOMETHING TO THINK  
ABOUT! How many beer  
cans per mile are there on  
Davis County roads? Why  
are they empty and how did  
they get there? 17

**Driving Moccasin  
WDM0010**  
Men's & Women's Available  
Small Variety Available  
We will do special orders!

**Graber's  
COUNTRY STORE LLC**  
2 miles South & 1 mile  
East of Drakesville

Change the way you watch  
TV- Get rid of cable and  
get DIRECTV! You may  
also qualify to receive \$100  
VISA gift card when you  
sign up today - Limited  
time Only. CALL NOW!  
844-359-1203 (MCN)

## HOOVER RENTAL

**Manlifts • Telehandlers • Minihoes  
Skidloaders & Skidloader Attachments**

**RENT BY**  
Hour • Day • Week • Month • Long Term

**Call us for your construction needs!**

**660-216-8230**

**Mt. Sterling, Iowa**

**2 miles East of Cantril on Hwy 2**

## Slayton Polaris

Authorized Polaris  
dealer since 1988

**Get out and  
play!**

**New & Used  
Polaris Rangers  
& ATV's**

**POLARIS**  
The Way Out.



**660-328-6627**

**BLOOMFIELD, IA**  
8 mi. S. & W. from Pulaski or 6 mi. W  
of Memphis then 13 mi. N. on Route B

*Davis County*  
**HOSPITAL**  
Dedicated. Compassionate. Healthcare.

### ACCEPTING NEW PATIENTS



Dr. Robert Floyd Internal Medicine Dr. Trina Settles Family Practice Dr. Mary Graeff Pediatrics Haleigh Skaggs Family Practice Beverly Oliver Family Practice

**DAVIS COUNTY HOSPITAL  
MEDICAL ASSOCIATES**

To schedule an appointment call 641-664-3832.

**509 N. Madison • Bloomfield, Iowa 52537**  
**www.DavisCountyHospital.org**

## Schuyler County Times

*is looking for...*

### Office Help

- Flexible Hours Available
- Must Have Computer Skills
- Must Have Office Skills
- Will Train

Call:

**660-457-8555**

FOR SALE: Reg. Beagle  
puppies, 8 wks old. Also 6  
month old reg. Beagle male.  
VM: 641-664-2661 ext.2 15

FOR SALE: 3 yr. old Angus  
Bull. Proven breeder; \$1,600.  
Bloomfield, IA  
PH: 641-722-3020 15

## JOB OPENINGS!

**Performance Pipe, A Division of Chevron Phillips  
Chemical Co., LP, located in Bloomfield, IA**

**has job openings.**

**Please log on to [www.cpchem.com](http://www.cpchem.com)  
to view job descriptions & to apply**



**Performance  
Pipe is an Equal  
Opportunity  
Employer.**



## PRIDE LIFT CHAIRS

**The World's #1 Lift Chair**

**Years of experience in  
manufacturing. Backed by up  
to a 3 year warranty!**

- Sit with security
  - Stand with confidence
  - Finger tip controls
  - Economically Priced
- Medicare & Insurance Billing

Friendly Service

## SOUTHSIDE DRUG

337 Church St. • Ottumwa, IA  
Hours: Mon.-Sat. 8-8 • Sun. 9-5  
**641-682-3467**



**Try our rent to  
own program!**



Soda  
Fountain!  
Serving  
Real Ice  
Cream



**\$25,900**

**2012 GMC 1500  
4 DOOR, LEATHER, 4 WD,  
33,000 MILES**



**\$20,500**

**2012 GMC 2500 HD  
4 WD, 6.0 GAS, AUTO,  
BEDLINER, TOW PACKAGE**



**\$10,900**

**2003 silverado  
RED, 4 WD, 80,000 MILES**

**Happy EASTER**  
from Johnny Rabbit



**Kollision  
Korner**

504 South Drake St  
Bloomfield, IA 52537  
PH: 641-664-2648  
Fax: 641-664-2948



# NOW PLAYING=

## Lights, Camera, Action

The Davis County Players Present

*"Life at its finest,  
love at its fullest ..."*

# On Golden Pond

A play by Ernest Thompson

Friday and Saturday, April 7 and 8 at 7 p.m. | Live at the Iowa Theatre in Bloomfield  
Tickets \$8, \$6 12-and-under at the door the nights of the show.  
\$1 discount for advance tickets, available at Perfect Touch Wellness Center 9-5 p.m., or at the Iowa Theatre 5-8 p.m.

On Golden Pond is presented by special arrangement with Dramatist Play Service, Inc., New York.

### Co-Ed 8 ball POOL TOURNEY

**Saturday, April 8th**

- Hosted by the American Legion Women's Auxiliary
- Sign up at noon/ play at 1pm
- \$20 per team

**\$2.50** Bottles Coors or Miller

## American Legion

Bloomfield, IA

## Thank You....

to the Men's Basketball League Over 30 for the wonderful donation to our center. We appreciate the donation more then you know. We will be able to do so many different things with your contribution.

From all of us at the  
**Davis County Daycare  
& Preschool**

## Help Wanted

Daytime help needed.  
3-4 days a week.  
Apply at:

**North  
End  
Grill**

203 Weaver Road  
Bloomfield, IA

**PRIME RIB CAPITAL OF THE WORLD!**  
SERVED ON FRIDAY & SATURDAY NIGHTS!

Breakfast • Lunch • Dinner

**Daily Hot Specials  
& Evening Features!**

Catering & banquet facilities  
available for many occasions!

**Southfork**

## MOTEL & GRILL

JUNCT. OF HWY 2 & 63 • BLOOMFIELD • 641-664-1063  
TUES. - THUR. 7AM-9PM • FRI. - SAT. 7AM-10PM  
SUN. 7AM-2PM • CLOSED MONDAY

## Polly's Boondock

Open 6 AM to 10 PM • Mon. - Sat.  
Serving Breakfast • Lunch  
Dinner Specials

Cold beer on  
Tap, Bottles  
& Cans

Lancaster, MO • North Side Sq  
660-457-3255

## Senior Citizen's Soup Supper

FEATURING  
David Thordason's Prize Winning Chili

**Saturday, April 8<sup>th</sup>**  
**5:00 PM to 7:00 PM**

ALSO SERVING: POTATO SOUP, HOT DOGS,  
DESSERT, & BEVERAGE!

**Free Will Offering**  
ALL PROCEEDS WILL GO TO BUILDING UPKEEP

All Ages Welcome!

Senior Citizen Center  
109 E. Franklin St. • Bloomfield, IA 641-664-1167

## Friday, April 7<sup>th</sup>

**Choice of 12 or 14 oz. Ribeye**  
with sides Serving at 6:00 P.M.

Dine In **722-3355** Carry Out

## RAY'S LONGBRANCH

Drakesville, IA

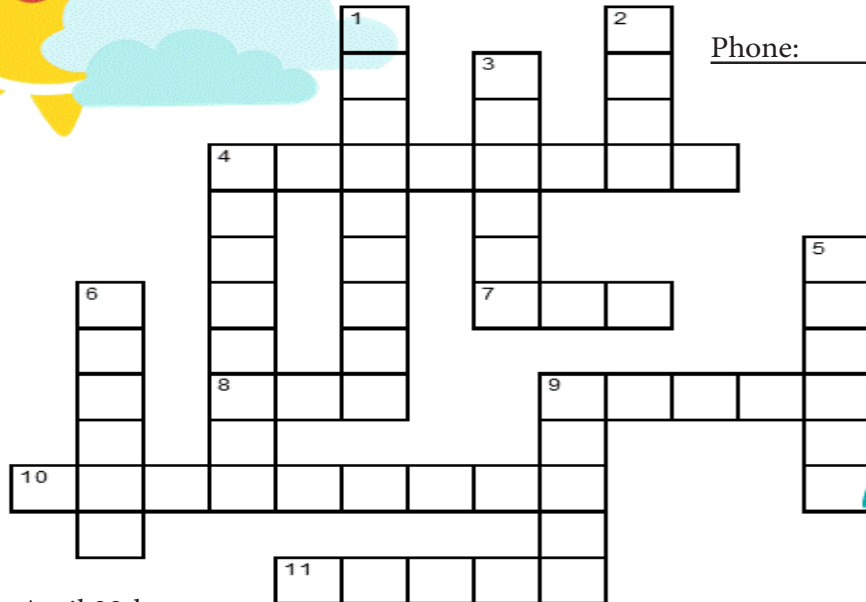




# Easter Crossword

Name: \_\_\_\_\_

Phone: \_\_\_\_\_



Deadline, April 29th



Want to WIN our Basket of Goodies? Just watch the Tri- County Shopper each week for the next clues.

Clues will be in certain ads throughout the Shopper. Deadline for entries is Friday, April 29th.

Winner will be announced in the May 3rd edition of the Shopper.

## Mail in or drop off entries at:

Tri-County Shopper  
208 Weaver Road • P.O. Box 168  
Bloomfield, IA 52537

## Other drop off locations include:

Don Harrison Agency (Memphis & Lancaster)  
Zimmerman Auto (Cantril)

## Thank You!!

Prize Basket Sponsored By:

Zimmerman Auto • Cantril Lumber & Hardware  
Slayton Polaris • Jessie's Sewing Room  
Memphis Mercantile

Stop in and check out  
our great deals on major  
appliances!



**MEMPHIS APPLIANCES**  
**MERCANTILE SALES & SERVICE**  
EST 2016

South Side of the Square in Memphis  
660-465-2345

Monday - Friday: 9:00 AM to 5:00 PM • Saturday • 9:00 AM to 3:00 PM / Sunday CLOSED

We will be closed  
**Good Friday**  
**April 14th**



115 E. Monroe • Memphis, MO  
660-465-2102

**MULTI FAMILY YARD SALE:** Sat., April 8th, 7 AM - ? 8 miles south of Memphis along Rt. 15. Lots of children's clothes, girls & boys newborn to 5T, mens shirts, household, toys, games, strollers, bassinet, large selection of shoes, baked goods, something for everyone!

**FOR SALE:** Grain fed holstein steer ready for butcher now. Can deliver to butcher of your choice within reasonable distance of Memphis, Mo. Raised w/o artificial growth hormones. Fed non-GMO corn. \$1.00 a lb. live weight. PH: 660-341-8234 16

**MULTI FAMILY GARAGE SALE:** April 7th & 8th, 8 AM to 2 PM: Size 12 month - 3T boys, booster seat, crib sets, bouncer, pack & play, jumperoo, boys jeans 30x30 and 32x36, shoes, shirts, dress fabric, purses, curtains, dish sets, electric meat grinder, bikes. Vintage dresses & more. Beside Rutledge Flea Market. Zeiset Residence.

**FOR SALE:** 2001 Dodge 1500 Ext. cab pickup, 4x4, white, grey interior, new brakes, rotors & calipers up front. High miles but runs good. \$1,750. PH: 660-341-7263

**FOR SALE:** John Deere 7000 4 row planter w/ dry fertilizer, acre counter & monitor; \$2,000. Jake Petersheim

PH: 641-664-1470 ext. 2 16

**FOR SALE:** 2000 Jayco 3320 XL. 35 ft. camper. Two slide outs, bumper hitch. Excellent condition. Asking \$11,500.

PH: 641-777-2255 16

## Accepting Mowing Bids:

Citizens Mutual is accepting bids for lawn mowing for 6 of our properties for the 2017 season.

Contact:

**Trent Gregory @ 664-2074**

for locations & expectations.

Bids are due in by 5p.m. April 14th

**RENT TO OWN**

**CUSTOM BUILT**

**16 YEARS EXPERIENCE**

**PAINTED & VINYL BUILDING & SHEDS**

Many Styles & Optional Features Available

FREE DELIVERY WITHIN 30 MILES

**Hillview Mini Barns**

DAVID W. SCHROCK VM: 641-664-2842  
15383 180TH ST. • DRAKESVILLE, IA

# New Baby on the Way?

You are invited! Moms-to-be and Family!

Experience the "journey to birth". No matter where you plan to give birth, you're welcome in this class.

## Prenatal Classes

**Monday • April 10 • 6:00 to 9:00 PM**

**Scotland Co. Hospital North Dining Room**

Entrance Parallel to SC Care Center

**FREE** Women's Center Tours • Refreshments

Classes are FREE, but please call and register at 660-465-8511.

**Next Class: Monday, July 10**





**NATIONAL LINEMAN APPRECIATION DAY**  
April 10, 2017

Rain or Shine, our linemen work around the clock to do one thing: keep the lights on! Help us honor the men who power our lives and on April 10th, **THANK A LINEMAN.**

Left to Right Front Row: Cody Pickens, Doug Wintermote, Tim Hamburg, Kevin Bulechek, Mike Gerritson, Laine King, Scott Johnson, Tom Redding  
Back Row left to right...Zach Fligg, Anthony Ondrisko, Brian Roberts



**Southern Iowa Electric Cooperative**  
A Touchstone Energy® Cooperative

22458 Hwy. 2 • Bloomfield, IA 52537 • (641) 664-2277 • sie.coop

This institution is an equal opportunity provider & employer.

## MAST OVERHEAD DOORS, INC.

105 S. Dodge St., Bloomfield, IA 52537



**GARAGE DOORS**  
Residential & Commercial  
Doors & Operators

641-680-2016

**CALL FOR AN APPOINTMENT**

Quality Products  
+ Quality Workmanship  
= Quality Customers

Free Estimates We Fix Doors

**FOR SALE:** 1st & 3rd cutting grass square bales. Also 1st cutting grass/alfalfa mix square bales.  
PH: 641-722-3881 15

**CUSTOM CHOPPING:** Spring & Fall! Front & rear unload wagons, bagger.  
Ray Boas  
PH: 641-208-6177 20

## AUCTION

### Monterey Auction House

Sunday, April 9<sup>th</sup>, 11:00 am

Located 10 miles S. of Bloomfield on 63  
then 4 miles W. on J51 or 10 mi. N. of  
Lancaster, then 4 mi. W. on J51

1996 Dodge Dakota, 318 eng., auto, 4x4, good tires, 200,000 miles; Glenwood Assembly of God Church: selling 13 church pews, 3 large show cases, gas fire place insert, aluminum appliance cart, Gibson refrigerator, maytag auto washer, Amana elect. cook stove with self cleaning oven. Craftsman radial saw, goose and duck decoys, rods & reels, Bolens weed eater, 2 press back chairs, Davis iron level, wood shoe stretchers, iron loaf pan, Wool Worthy's grocery cart, 5 gal. galvanized can, golf clubs, grand father clock made in Germany, lava lamp still in box, Helene Curtis antique commercial hair dryer, 50 pair good used blue jeans all sizes, old door knobs, cutting torch with small tank, wrenches, sockets, 2 glass humming bird feeders, gas jugs, 1 1/2 ton chain hoist, few steel post, homelit-chain saw, 2 push mowers, round oak table, dog shocking collars, oak dovetailed tool box, old tools, 1974 - 1975 U.S. proof sets, 5-20 dollar Mexican pcs., Foreign paper money, lots of antique and printed, to numerous to mention.

All Consignments Welcome!

Announcements made day of sale take precedence over any advertising. Not responsible in case of accidents.

**LAWSON AUCTION SERVICE**  
For More Info.: John Lawson 641-895-3852



19091 180th St  
Bloomfield, IA  
VM 641-664-2814  
3/4 miles east of Drakesville, south side



Grilling & Searing (Direct Cooking) One-Zone  
Grilling & Roasting (Direct & Indirect Cooking) Two-Zone  
Baking, Roasting & Smoking (Indirect Cooking) One-Zone



**Moving out of state?** Best Interstate Moving and Storage offers a FREE Quote and A Price Plus Promise. Call 855-428-6241 Now! (MCN)

**HUNTING LEASE WANTED.** Will need to accommodate a party of 3 responsible hunter. NEMO only, Possible long term preferred with year round hunting. Email: gmvk30@yahoo.com or call/text 314-226-8992.

**FOR SALE:** Like new hay equipment: 2014 JD 569 baler/silage special, \$39,900, only 1,200 bales; 2012 JD 946 mower conditioner, \$21,900; 2014 Frontier wheel rake, \$9,900. Always shedded, Bloomfield.  
PH. 319-230-6215 or 319-230-6271. 16

**BLOOMFIELD MINI STORAGE.** Serving you from 2 safe, convenient locations.  
PH. 641-664-1066. TF

**GELBVIEH BULLS FOR SALE:** Quality black yearling bulls with excellent E.P.D's. Gentle & tested. Hobbs Gelbvieh  
PH: 641-203-0863 or 641-766-6779 17

**FOR SALE:** 6ft. round net wrapped 1st cutting grass clover hay, no rain, 74 bales, organic fertilized, loading possible. \$40 per bale. Ottumwa area.  
PH: 641-777-7748 04

**HAY FOR SALE:** 30 bales 2nd cutting reeds canary and alfalfa mixed legumes. Average weight 1,400 lb. per bale. \$45 a bale. No rain. Nice green hay. Call anytime.  
Ron Campbell  
641-777-6187 14

**FOR SALE:** Used garden tillers. Rear and front tine. Lots of Troy-Bilts. Many choices. Also used DR brush mowers. Kahoka, MO.  
PH. 660-216-1809. 14

**NOTICE**

**Beechy & Son's Horse Shoeing**

are wanting to expand our services. We are available to take care of all your trimming and shoeing needs. Also horse training services available.

**20 YEARS EXPERIENCE!**

**HARLEY, GLEN & IVAN BEECHY**  
VM: 641-664-3801

**Paying too much for car insurance?** Not sure? Want better coverage? Call now for a free quote and learn more today! 855-417-7382 (MCN) Stop paying too much for cable, and get DISH today. Call 855-589-1962 to learn more about our special offers! (MCN)

## FOR SALE:

H7450 New Holland  
Mower Conditioner  
• 13' • Rubber Rolls  
• NICE  
• Well Maintained

641-777-7815

**FOR SALE:** IH Rissler, 1072 Electric mixer w/scales, good knives, new chain; \$4,500 OBO.  
PH: 660-988-1624 16

**FOR SALE:** 19 head of 1st calf heifer pairs. Black & black white face. Please call for more information.  
PH: 660-216-0356 16

## Summer technician

Citizens Mutual has an opening for a summer technician. Position is 40 hours per week with occasional overtime.

Pick up an application at:

**Citizens Mutual**

114 W. Jefferson St., Bloomfield  
EOE

## SOMETHING TO THINK ABOUT...

How deep will a road grader go looking for the gravel that isn't there? 19

**FOR SALE:** IH Rissler, 1072 Electric mixer w/scales, good knives, new chain; \$4,500 OBO.  
PH: 660-988-1624 16

**Tri-State Timber**  
**DBA Stihl**  
660-465-2975  
353 1/2 Grand Ave. Memphis, Mo.  
Behind Shelly B's

**5% OFF**  
String Trimmers

**Check Out New & Used Units!**

**Tri-County SHOPPER**

**GETTING YOU RESULTS SINCE 1971**

**LINE-X OF OTTUMWA**



**KEEP YOUR RIDE IN GREAT SHAPE!**  
PROTECT IT WITH A LINE-X COATING!

Bring it in and we can LINE-X® it!

Brad Lisk  
15514 Blackhawk Rd., Ottumwa, IA

Gift Cards Available!

641-683-9334



# BERHOLTZER TRAILER REPAIR

Specializing in Aluminum Hopper Trailers  
Repair & Rebuild

3 miles east of Gorin, Mo. on Route U

**660-341-6027**

**\$28,000 OBO**



2014 Wilson Commander, 43x72x96, SS front & rear, ag hoppers, tires are @ 60%, brakes like new, new lock down power tarp, new tarp, 2 rows of 5 bullet lights, upper brake & turn signal lights, 8 aluminum wheels

**\$32,500**



2016 Timpte 42x78x96 standard hoppers, 8 aluminum wheels, SS rear, brakes @ 60%, tires are new, 2 rows of 9 clear lens lights, vibrators on both hoppers, enclosed nose, black, LIKE NEW!

**We install tarps & power tarps**

FOR RENT: 1 or 2 bedroom apartments Milton, IA. Kitchen appliances & heat furnished. Very reasonable rent.

PH: 641-757-0201

14

Viagra!! 52 Pills for Only \$99.00! Your #1 trusted provider for 10 years. Insured and Guaranteed Delivery. Call today 1-888-403-7751 (MCN)

## HAY AND FLOWER AUCTION Southern Iowa Produce Auction

Last hay auction of the season!

**ATTENTION!!!**

1st Flower and Produce Auction

**FRIDAY., April 7th - 10 A.M.**

followed by hay, straw & firewood at 11 A.M.

Early Listings: **Round Bales:** 40 bales 1st, 2nd and 3rd cutting alfalfa grass mix; 8 bales 1st cutting grass. **Large Squares:** Appox. 4 semi loads 3x4 grass and alfalfa hay. **Small Squares:** 150 bales wheat straw, several 100 bales of grass alfalfa mix **MORE EXPECTED BY SALE.**

Unloading Available **THURSDAY** Before Sale

19141 Ice Ave. Bloomfield, IA

Call 641-722-3623 on auction days or leave a message.  
Market Report or Information call 712-432-8593

LIVING WITH KNEE OR BACK PAIN? Medicare recipients may qualify to receive a pain relieving brace at little or no cost. Call now! 844-668-4578 (MCN)

We BUY used manufactured homes, single wides and double wides. Call 641-672-2344 (MCN) EAST ZONE - ONLY RUN IF YOU ARE EAST OF I-35!

DONATE YOUR CAR, TRUCK OR BOAT TO HERITAGE FOR THE BLIND. Free 3 Day Vacation, Tax Deductible, Free Towing, All Paperwork Taken Care Of. 1-800-283-0205 (MCN)

**ZIMMERMAN  
AUTO LLC  
TRAILER INC.**

101 North St. • Cantril, IA  
319-397-2406



**CONGRATULATIONS!**

# ATTENTION

The Davis County Cattlemen are needing your help in supplying Kansas and Oklahoma with much needed fencing supplies such as: *Steel Post • Hedge Post • Rolls Of Wire*  
Monetary donations are also appreciated.

For more information or to make a donation please contact  
**Cory Fleming at 641-328-4106 or Doug Jarr at 641-777-8410**

Deadline for donations in April 15th.

*"Kindness is one of the greatest gifts you can bestow upon another. If someone is in need, lend a helping hand."*



Something To Think About: If You Can See What Your Good Old Neighbor Is Doing That's One Thing. If You Can Smell What Your Good Old Neighbor Is Doing That's Quite Another.

FOR SALE: 6-30" 7000 JD planter with liquid fert. & finger closers, \$5,800; 4600 IH field cult., new lift cylinders, \$4,600; also 495 New Holland windrower, 12 ft., \$1,500  
PH: 641-777-5586

15



2011 F350

Taking sealed bids on a 2011 F350  
4x4 • Ext cab. • 59,000 mi. • 6.2L  
Drop bids off or mail to

**Citizens Mutual**

114 W Jefferson St. • P.O. Box 130  
Bloomfield, IA 52537.

Bids will be opened at 8am on April 21st.

For questions or to view, contact

**Trent Gregory at 641-664-2074**

HOME FOR SALE: Brick home. 507 W. Walnut, Bloomfield. 3 bed, 2 bath, finished basement. 2,893 sq. ft. 30x56 heated shop. Move-in ready. \$162,000.  
PH: 641-799-4770 TFN

## Country Side Grocery

10 lb. Potatoes.....\$1.79  
NOW Pre-natal Vitamins.....10% off  
Crystal Powered Sugar.....\$1.29/2 lbs.  
Jumbo Kraft Marshmallows.....20 oz., 2/\$1.50  
Oscar Mayer Fully Cooked Bacon.....99¢ each  
Miracle Whip.....\$2.99/ 1 gal.



3/4 mi. E. of Drakesville, IA on 180<sup>th</sup> St.  
Mon-Sat: 8:30am - 5:00pm  
VM: 641-664-2661

**ZIMMERMAN  
AUTO LLC  
TRAILER INC.**

101 North St. • Cantril, IA  
319-397-2406

**WeatherTech  
floor mats  
WINNERS**

**Brian Breckenkamp and  
Smoldt Seed!**

**CONGRATULATIONS!**

**WEEKLY SPECIAL**

**10%  
OFF**

All Lights & Light  
Products  
Come see our wide  
selection today!



# Be Our Guest Open Houses

Open Saturday April 8th from 1:00-3pm



405 W. Walnut, Bloomfield  
Excellent Move in Ready 3 Bedroom Ranch Home! New Siding, Vinyl Windows, 2 Car Attached Garage and Large Fenced Back Yard. Great Basement Includes Family Room with Fireplace & possible non-conforming 4th Bedroom. Plenty of Room and Very Updated! \$129,900

23139 170th St., Bloomfield

Beautiful 3 Bedroom Acreage Between Bloomfield & Ottumwa, Excellent Location! Open Floor Plan with Updated Bathroom and New Heat & AC. New Windows, Walk-Out Basement w New French Doors Leading to a Newly Stamped Concrete Patio. 28' X 36' Heated Shop. Less than a Mile from Hwy 63 in Davis County Schools. Just Reduced! \$145,500



Hosted By The **Brown Team**  
www.DavisCountyRealtors.com

641.664.2224  
105 E Locust St., Bloomfield IA  
Licensed in Iowa



A PLACE FOR MOM. The nation's largest senior living referral service. Contact our trusted, local experts today! Our service is FREE/no obligation. CALL 1-800-442-5148 (MCN)

ALL THINGS BASEMENTY! Basement Systems Inc. Call us for all of your basement needs! Waterproofing, Finishing, Structural Repairs, Humidity and Mold Control. FREE ESTIMATES! Call 1-800-640-8195 (MCN)

PREGNANT? CONSIDERING ADOPTION? Call us first. Living expenses, housing, medical, and continued support afterwards. Choose adoptive family of your choice. Call 24/7. 855-390-6047 (Void in IL & IN) (MCN)

**PROM**  
Tux Fashions 2017

**Rent  
Your Tux  
With Us!**

**Cook's Mens Store**  
116 S. Market  
E. side of Square  
Memphis, MO  
Ph. 660-465-2511  
Mon. - Fri.: 8-5  
& Sat.: 8-9

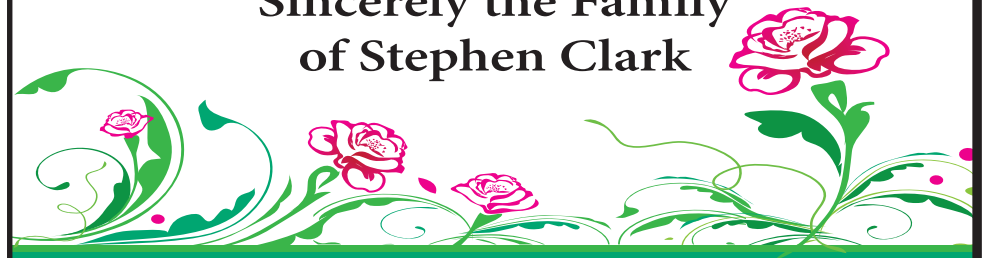
**Come see us today!**

## Thank You!

Thank you so much for all the prayers and acts of kindness you have shown us during Stephen's illness & his passing.

Your visits, cards, calls, food, flowers & memorials were so appreciated. Your acts of kindness will always be remembered in our hearts.

Sincerely the Family  
of Stephen Clark



<b>Russer cooked salami, approx. 7 lb</b> <b>49¢ a lb</b>	<b>Wunderbar bologna, approx. 5 lb</b> <b>49¢ a lb</b>	<b>Seasoned baby back ribs (fully cooked) approx. 8 lb</b> <b>\$2.99 a lb</b>	<b>Pulled pork w/ BBQ sauce, approx. 10 lb. pk</b> <b>\$1.60 a lb</b>
<b>Tyson Homestyle chicken thigh fillets, uncooked &amp; breaded approx. 2 lb. pk</b> <b>79¢ a lb</b>	<b>Virginia brand signature smoked ham, cooked, approx. 6 lb.</b> <b>79¢ a lb</b>	<b>Furlani fire roasted corn bread (topped with honey butter, 11.3 oz)</b> <b>Reg. \$1.19 SALE 99¢ each</b>	<b>Wilson smoked honey unfrozen cured ham, approx. 12 lb.</b> <b>\$1.49 a lb</b>
<b>Shullsburg butter</b> <b>Reg. \$3.19 SALE \$2.89 each</b>	<b>Prairie Farm 1/2 gallon orange juice</b> <b>\$1.99 each</b>	<b>Harvest Valley mixed fruit (in light syrup) gallon can</b> <b>\$6.25 each</b>	<b>Kraft Miracle Whip 30 oz.</b> <b>\$1.99 each</b>
<b>Chicken of the Sea tilapia fillets, mainara sauce, 3 oz.</b> <b>49¢ each</b>	<b>Pacific Coast sliced yellow cling peaches 6 lb. 9 oz</b> <b>\$6.99 each</b>	<b>Dill pickles, sliced, approx. 5 lb. pk</b> <b>99¢ each</b>	<b>Organic bulk Irish breakfast tea Health benefits: antioxidants and energy 30 oz.</b> <b>\$4.86 a pk.</b>
<b>Pampa asparagus cuts &amp; tips 6.5 oz.</b> <b>69¢ each</b>	<b>Frito Lay 2 Go Munchies sandwich crackers, peanut butter filling, 8-1.42 oz. pk.</b> <b>\$1.50 each</b>	<b>Nestle Carnation evaporated milk 12 oz. 45¢ each 5 oz. 25¢ each</b>	<b>Russet potatoes 5 lb. bag</b> <b>\$1.19 each</b>

### NOTICE!

We will be closed Fri. April 14th for Good Friday!

**Meadowview Upper Respiratory Oil 1/2 oz \$14.95**

For aromatic or topical use, congestion, sinuses, allergies, respiratory issues, cough, alternate with lower respiratory

**True Oils Inula 1/2 oz. \$55.00 each**

Sug. usage: loosens coughs, asthmatic conditions & helps with lymph drainage

**Clorox disinfecting wipes, 2 pk, 150 whips**  
**\$2.50 each**

**Clear Men scalp therapy 2 in 1 anti dandruff, 12.9 oz**  
**\$1.95 each**

**OPEN: Mon. - Sat. 8:30am - 5:00pm**  
**VM: 641-664-1187**

19686 Hwy. 2, Bloomfield, IA  
 Approx. 2 miles west of Bloomfield



# HAPPY EASTER SALE

Closed April 14 for Good Friday

**Dutchman's**  
an old time general store.

**99¢**  
per lb.  
**Boneless Skinless CHICKEN BREAST**

**FRESH PRODUCE**  
**\$1.39**  
1 lb.  
**Fresh Asparagus**  
**\$1.49**  
10# bag  
**Colorado WHITE Potatoes**

**\$1.99**  
3 lb.  
**Seedless Minneolas TANGELOS**  
**\$1.99**  
3 lb. bag  
**Fresh Express Salad Mix**

**\$1.59**  
dozen  
**Weiler All Natural BROWN EGGS**

**99¢**  
per lb.  
**LASAGNA NOODLES**

**ITS BACK!**  
**\$1.98**  
2 lb.  
**"Like Velveeta" CHEESE**

**\$2.99**  
56 oz.  
**Prairie Farms Old Recipe Ice Cream**

**89¢**  
per lb.  
**Frozen Whole TURKEY**

**69¢**  
per lb.  
**Frozen Bone-In Half HAM**

**\$1.75**  
per lb.  
**Bulk Semi Sweet BAKING CHIPS**

**\$2.49**  
1 lb. Qtrs  
**Alcam Creamery BUTTER**

**4/\$1**  
8 oz.  
**Sliced Oven Roasted TURKEY BREAST**

**75¢**  
per lb.  
**Tyson Cornish HENS**

**SALE \$1.69**  
per lb.  
**Thick & Juicy BEEF Patties**  
Sold as a 2 lb. pk for \$3.35

**\$1.29**  
per lb.  
**Smithfield® HAM Steaks**

**10% OFF**  
**Trim Healthy Mama BAKING PRODUCTS**

**100% Pure COCONUT OIL**  
**New Low Price!**  
30oz. - \$3.89  
128oz. - \$11.95

**\$11.99**  
11 oz.  
**CUSTOMER FAVORITE!**  
**WATKINS Baking VANILLA**

**\$1.89**  
29 oz.  
**Blueberries in light syrup**

**5 lb. bag \$1.99**  
**Skin On French Fries**

**\$1.29**  
per lb.  
**Breaded Pork Loin FRITTERS**  
Hungry for a Tenderloin Sandwich?

**25% OFF**  
**Metrosene THREAD**

**\$8.95**  
20# bag  
**SAVE \$1 OFF When you Buy 5+ bags**  
**LumberJack Hickory BBQ Grilling Pellets**

**25% OFF**  
**JAKE & AMOS Jar Goods**

**40+ Choices GUMMI CANDY ON SALE NOW**  
**Save up to 25% OFF**

**\$5.29**  
29 oz.  
**Yuban Pacific Coast COFFEE**

**\$10.95**  
25 Roots  
**YOU CAN Grow Your Own ASPARAGUS**

**15% OFF**  
**60" Wide DRESS FABRICS**

**15% OFF**  
**WEAVERLAND Dress Shirts & Hats**

**Huge Selection of BULK Garden Seeds**  
**Starting at 20¢**  
per Teaspoon

**Now is the Time to PLANT your SEED POTATOES**  
**35¢**  
per lb.  
buy 50# and SAVE \$\$\$

**We have Sweet ONION Plants**  
**\$1.99**  
per bunch

**Dutchman's**  
an old time general store.

**DUTCHMAN'S STORE** Division Street - CANTRIL, IA - (319) 397 2322

STORE HOURS • Weekdays, 8a.m. - 6 p.m. • Saturday 8a.m. - 5 p.m. • Sunday Closed

View our specials at - [www.DutchmansStore.com](http://www.DutchmansStore.com)

**SALE PRICES**  
**APRIL 5-11, 2017**



GOING OUT OF BUSINESS GOING OUT OF BUSINESS GOING OUT OF BUSINESS

# GOING OUT OF BUSINESS

## THE RESTSTOP

### FURNITURE & MATTRESS CENTER

**TAKE AN EXTRA  
31% OFF\***  
THE LOWEST MARKED PRICE

**FINAL  
WEEKS**

SELECT FROM THESE NAME BRANDS:  
BENCHMASTER • BEST • SERTA • J.P. WYNN  
THER-A-PEDIC • AMERICAN • PERDUE • SEALY  
AND MUCH MORE!

DESCRIPTION OF SALE ITEMS (Partial List)	COMPARE AT	SALE PRICE**
King Size Serta Perfect Sleeper Set	\$1950	\$957
Sofa (Choice of Color & Style)	\$995	\$379
Lift Recliner	\$1497	\$797
Bedroom Set (Dresser, Mirror, Headboard, Nightstand)	\$1479	\$697
14" Queen Thick Contour Gel Set	\$1299	\$797 set
Queen Wireless Remote w/ Massage Adjustable Bed	\$2599	\$1197
Ladies Rocker Recliner by Best!	\$819	\$397
Leather (Top Grain) Recliner by Best!	\$1199	\$597
Queen 2-sided Pillow-Top	\$1099	\$597
Double Recliner Sofa by Best! (Choice of Color)	\$1999	\$897
Top Grain Leather Sofa, Loveseat, Chair & Ottoman w/Nailhead Trim (Choice of Color)	\$7999	\$3997

\*Final price after 31% discount.

**RECLINERS  
BY BEST!  
FROM  
\$297\*  
FINAL PRICE**

**Queen  
Mattress Sets  
\$297\*  
FINAL PRICE**

**SOFAS  
AS LOW AS  
\$397\*  
FINAL PRICE**

**TIME IS  
RUNNING  
OUT!**

**THE RESTSTOP** 641-954-9718  
321 Richmond Ave.  
Ottumwa, IA 52501  
MATTRESS & FURNITURE CENTER CASH OR CHECK  
OTTUMWA, IA



**SALE HOURS:**  
**Mon-Fri:** 10-6  
**Saturday:** 10-5  
**Sunday:** Noon-4

GOING OUT OF BUSINESS GOING OUT OF BUSINESS GOING OUT OF BUSINESS

**CHICKEN**  
Waterers & Feeders

**TILLAGE EQUIPMENT**  
Sweeps • Sickle Sections • Disc Blades •  
Fertilizer Knives • Chisel Spikes

**HAY  
RAKE  
WHEELS**

**HYDRAULIC  
CYLINDERS**

**FAKMAX** 12-Volt Battery Fence MAG1200  
**FAKMAX** 6-Volt Solar Fencer DFS PL1  
**FAKMAX** 12-Volt Solar Fencer MAG1200

*We're  
thinkin'  
Spring*

**SIoux FEEDER**

**NOROMECTIN**  
Pour On For Cattle  
Sale \$59.95/ 5liter

**SPRING GARDENING TOOLS**  
Garden Gloves • Garden Seeder • Weed Preventer • Weed Killer • Grub Beater •  
Grass Seed • Watering Cans • Hoses • Rakes

**Hamilton Produce Co.**  
641-664-2459 or 1-800-469-7749  
105 W. Franklin • Bloomfield, IA 52537

**YODER'S INDIAN CREEK FURNITURE:** Purple Martins are coming. We stock wood & poly wood Martin houses & gourd racks. Available with pole & winch. Also a great selection of bluebird & wren houses. Located 4 miles North of Cantril on RT. V64, 22769 Rt. V64 Milton, Iowa. PH. 319-538-7332 . 18

**FOR SALE:** 14 ft. fishing boat, 25 hp. Mercury motor, 2 pedestal seats, front trolling motor, depth finder; \$2,500. PH: 641-777-3321 15

**FOR SALE:** Chicks, banties & layers. PH: 660-216-3864 15

**NOTICE:** Now set up to sharpen TMR knives. The Sharpening Center. PH: 641-664-3677 16

**Garages • Pole Barns Commercial** **Free Estimates**

**LAN-DOW BUILDINGS**

**Lancaster Lumber, Inc.**

We Stock a Complete Line of Building Materials Complete Buildings or Packages Available

Toll Free 800-424-5071 Fax 660-457-3133

Hardware • Plumbing • Electrical • Paint  
500 Green Street • Lancaster, MO 63548

**FOR SALE:** Walnut fireplace mantle. PH: 641-722-3020

**FOR SALE:** Boxer cross puppies. Tan & Brindle; \$45 each. PH: 660-883-5878 14

**HUFF'S POLLED HEREFORD BULLS FOR SALE**

*Raising Hereford Cattle Since 1915*

- Sires are selected for calving ease, maternal traits, calm dispositions, & rapid growth. Superior EPD's!!
- Raised on a diet that encourages growth not fat, they are ready to work!
- Docile & easy to handle - the disposition you always wanted.
- 2015: inducted into the Missouri Hereford Hall of Fame.
- 2016: Recipient of the American Hereford Association's Legacy Award.

**These bulls represent the best genetics of the breed!**

**HUFF'S POLLED HEREFORDS**  
RR1 BOX 192 • RUTLEDGE, MO 63563  
LeRoy & Jane Huff, Home: 660-883-5684 or Cell: 660-341-6392  
Sean & Nichole Huff, Home: 660-883-5383 or Cell: 417-499-3639  
GIVE US A CALL & VISIT OUR FARM TO SEE FOR YOURSELF THE QUALITY DESCRIBED!





# Lawn & Garden SPRING 2017



**HILLTOP GREENHOUSE**  
11049 HWY 2, MOULTON IA  
BETWEEN WEST GROVE & MOULTON

We will be closed  
Good Friday  
April 14th.

**10% OFF** on all seeds, onion plants  
& sets, seed potatoes

**READY TO PLANT:** cabbage, broccoli,  
cauliflower and lettuce plants

**WE HAVE HANGING BASKETS  
READY.**

Mon-Sat • 8:00am-6:00pm 641-929-3036



**Bloomfield Greenhouses**

Fertilizer • Weed Preventer • Grass Seed

**Garden Seeds, Onion Sets,  
Seed Potatoes, Tomatoes,  
Cabbage, Broccoli,  
Cauliflower, Flowers**

**Don't forget our  
EASTER LILIES**

708 Arkansas Ave • Bloomfield  
641-664-1622

Mon.-Sat.: 8:30 am - 6:00 pm • Closed Sunday

**Bedding Plants Are In!!**

**Get Your Spring  
Garden Supplies**

- Garden Seed
- Onion Sets & Plants
- Mulch
- Potting Soil
- Top Soil
- Potatoes
- Plants

**Memphis  
Farm & Home**

South Market St. & Business RT. 136  
Memphis, MO • 660-465-8678  
Mon. - Sat. 8-5 • Closed Sunday

**Get Ready For Spring!**

**8 FT. RAILROAD TIES**

Great for landscaping  
and garden boxes

**SPILMAN  
AUTO PARTS**  
20311 Old Hwy. 2  
PO Box 31 • Bloomfield  
641-664-2463

**THINK SPRING!  
LILAC LANE VARIETY**

Fresh garden seeds in stock  
Onions • Seed Potatoes  
Strawberry Plants  
Grape Plants &  
Asparagus Roots

**Come now for the best  
selection**

**5% OFF Muck Boots**

Hwy 63 to Rt. E then  
East 1 mile  
Queen City, Mo.

**SUNSHINE HILL  
GREENHOUSE**

**WE ARE  
OPEN!**

641-656-4203  
1 MILE EAST OF  
MILTON ON HWY. 2

**GINGERICH GREENHOUSE**

**Bulk Garden  
Seeds & More!**

**Seed  
Potatoes,  
Onion Sets  
& Plants**

**Strawberry  
Plants**

**Fruit Trees  
Arriving  
April 8th**

**Early  
Vegetable &  
Bedding  
Plants**

1 mile East & 1/2 mile North of Drakesville, IA on Jade Ave.

**Burkholder's  
GREENHOUSE**

**JUST ARRIVED!!**

**Large Shipment of Shrubs**

Hydrangeas, Butterfly Bush, Lilacs, Barberry,  
Spirea, Weigela, Viburnum, Evergreens,  
Knock Out Roses and more...

Asparagus Crowns,  
Strawberry Plants,  
Rhubarb Plants,  
Vegetable Plants

Large Selection of  
Shade Trees,  
Fruit Trees and  
Ornamental Trees.

Now is a good time to plant...

Fruit Trees • Grape Vines • Raspberry, Blackberry & Blueberry Plants

**Come see our selection!**

**Closed for Good Friday April 14**

**Hours** Mon-Sat 8 am to 5 pm  
**660-341-5777** www.burkholdergreenhouse.com  
4 miles north of Edina, MO

**Rustic Acres  
Greenhouse**

Full Line of Bedding Plants  
Variety of Herbs  
Asparagus  
Strawberry Plants  
Perennials  
Onion Sets  
Onion Plants  
Garden Seeds  
Seed Potatoes  
Garlic Bulbs  
Sweet Potatoes

Hanging Baskets,  
Planter and Empty  
Planters

**NOW OPEN  
FOR THE  
SEASON**

We custom plant your planters or baskets.

On Hwy. 2,  
West Grove 641-929-3056

**Lilac Hill  
GREENHOUSE**

660-342-9554

**JOIN US** **FREE CLASS**

**Beyond Petunias**

How to design and maintain beautiful  
hanging baskets or patio planters.

Join us for a demonstration on how to make your own  
unique hanging basket. Receive tips on: choosing the right  
container, soil and fertilizer, choosing the right plants for  
the right pot, trimming and other maintenance. If you wish  
to bring your own pot, we will be available after the class to  
assist you in creating a beautiful arrangement.

**Sat., April 8th • 1:00 PM**  
**or**  
**Tues., April 11th. • 10:00 PM**

**Call today to reserve your spot.**  
**SPACE IS LIMITED.**

Refreshments will be served • Bring a friend

Closed Sundays  
Hwy. 136 2 miles W. of Downing





# Outdoor SPRING 2017



## WE ARE YOUR NEW WIX FILTER DEALER

**WIX**  
FILTERS

Check out our discount prices on bulk orders over \$50!  
**SPECIALIZING IN: Wix Filters • A&I Products**  
**AP Air • Medium & Heavy Duty Truck Parts**  
**Call or stop in to place your order today!**

**641-664-3344**

609 S. Madison • Bloomfield  
Emily • Bryan

*We provide competitive prices and exceptional service.*



*Agricultural Commercial Residential*

**Jet**  
Tankwagon

**B&B**  
PROPANE  
"Safety and Service" is our Motto

Bentler Oil, Inc.

For all your Diesel & Gasoline needs

Servicing Southeast Iowa  
and Northeast Missouri

Servicing Southeast Iowa, Northeast  
Missouri, and Western Illinois

**641-675-3354**

www.jetgasco.com

www.bbpropane.com

**Sidwell Seeds**

**Your complete seed headquarters!**

seed corn  
seed beans  
small seed

**Sidwell Seeds**  
Queen City, MO  
660-766-2737  
660-216-6380

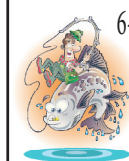
**STEP UP YOUR YIELD**  
with Refuge Advanced powered by SmartStax!  
Makes a significant difference in root protection and yield.

REFUGE ADVANCED<sup>®</sup> powered by SmartStax<sup>®</sup>

Roundup Ready<sup>®</sup>

SmartStax<sup>®</sup>

## Fish for Stocking Lakes & Ponds



Cash or  
Check

6-8" & 8-10" Catfish, Albino Catfish, Redear Sunfish, Minnows,  
Bluegills, Hybrid Bluegills, Bass, Grass Carp, Crappies, Koi.

To order call Blyzo Fish Farm

Call 641-874-5907

Friday, April 14h



LANCASTER MFA 12:30-1:30 PM

Please bring your own POND water,  
Private Deliveries Available

Taking walleye orders  
for Fall delivery  
Fish Farm open  
by Appointment.

**CANTRIL FEED & GRAIN**

610 West North St.  
Cantril, Iowa 52542  
**319-397-2215**

<b>PURINA WIND &amp; RAIN</b>	<b>BIG GAIN FEED</b>	<b>COTTON BEAN MEAL DISTILLERS</b>
Gallagher Fencing Supplies 	Gates & Bale Rings 	Miraco Waters 
Crystal Creek Feed 	<b>WET GLUTEN</b>	Gluten Pellets & Soyhull Pellets

**berholtzer**  
Farm Supply LLC  
Specializing in feeding equipment for dairy & beef.



**\$21,900**

NDE 804 2008 model, fr. door w/  
4.5' folding conveyor, 9 knives,  
640XL scale, 4 new tires, light  
use, excellent machine



**NEW IN STOCK**

Valmetal model 5600 Agri  
chopper, hydraulic chute,  
rotation, 1,000 RPM PTO



**NEW IN STOCK**

Valmetal V-Mix 400 vertical  
mixer, front unload with  
48" folding conveyor,  
rubber top, 640XL scale.

**Rt. #1 Box 84 • Memphis Mo.**  
**Phone/Fax: 660-945-3053 • Cell: 660-341-8234**

## Fox Valley Welding

No matter what size the project customer satisfaction is always our first priority.

Tig & Aluminum • Welding • Milwork • Lathe • New Steel • Sprockets • Roller Chain  
Barings • PTO Parts • Fabricating • CNC Machining • CNC Cutting

**We will be closed on Good Friday, April 14th.**

**Hours: M-F 8-5:30 • 641-656-4684 • 12190 East Hwy. 2 • Milton, IA**



**PERFECT FOR...** GARAGE • RESIDENTIAL  
BUSINESS • SHOP

**VARIETY OF COLORS!** **RESISTS WATER, GREASE, & OIL!** **FREE ESTIMATES!**

**ALLEN CUSTOM DESIGN CHIP FLOORING**

Kenneth & Christy  
641-664-1648 • 641-680-2287 • 641-208-0037  
Bloomfield, IA • www.AllenCustomFloors.com

*Home*

**SPRING 2017**



## LakeWood RV Sales & Rentals

### 2011 Copper Canyon



2 slides, exterior doors  
on both sides.  
**NICE CAMPER!!!!**

Reg. \$20,500

**SALE \$17,500**

Summer is coming.  
Plan a family camping trip.  
**WE DO RENTALS!**

**COME SEE US FOR ALL YOUR RV NEEDS!**

Hwy. 136 E., Downing, MO  
9 miles W. of Memphis or  
1 1/2 miles E. of Downing  
www.lakewoodrvsales.com

Tues. - Fri. 8-5 • Sat. 8-Noon,  
Closed Sundays & Mondays  
Phone: 660-379-2763  
Cell: 660-341-1927  
Fax: 660-379-2792



**Relax, We Have You Covered.**

*We know family is important and in today's busy world, time is hard to come by. So don't weigh yourself down with insurance worry. Let us take care of it all for you!*

**Automobile • Homeowners  
Mobile Home • Renters  
Condominium • Watercraft  
Vacant/Rental Dwellings  
Recreational Vehicles  
Motorcycle • Campers  
All-Terrain Vehicles  
Snowmobile • Golf Cart  
Classic/Antique Autos  
Umbrella • Farm**

**NORTH SIDE INSURANCE**  
www.NorthSideIns.com

109 W. Van Buren St. • Centerville, IA  
641-856-3333

106 E. Jefferson • Bloomfield, IA  
641-664-2362

**Highway 2 DISCOUNT Groceries LLC**

**The Ultimate Cooking Experience™**

*We have 5 different sizes to choose from plus accessories. Stop by and see our display.*

**Big Green Egg**



19686 HWY. 2 • BLOOMFIELD, IA • 641-664-1187 V.M. • MON.-SAT. 8 to 5

## Protect Your Investment With Quality Coverage.

### WE INSURE ALL YOUR TOYS

Boats  
Campers  
Motor Homes  
Mopeds

Golf Carts  
Motorcycles  
4-Wheelers  
Jet Skis

Count on us for quality auto insurance and responsive service when you need it most. Call or go online today for your complimentary policy review and rate quote!



### Van Mersbergen Insurance Inc.

104 E. Franklin St. • Bloomfield, IA • PH: 641-664-2135 • FX: 641-664-2108

**Doing some home improvements??** **Buying a new home??**

**We'll give you a hand with all your spring financing needs.**

**Give us a call today!**

**1st IOWA STATE BANK**  
Member FDIC

110 N. Washington  
Bloomfield, IA  
641-664-1362

Keosauqua | Birmingham  
Cantril | Bloomfield

**www.1stiowa.com**

**Lobby: Mon. - Fri. 8:30 - 4pm • Sat. 8:30 - 12 noon**  
**Drive Thru: Mon. - Thurs. 8:30 - 4:30 pm • Fri. 8:30 - 5:00 pm • Sat. 8:30 - 12 noon**



**EnergeX** window systems **By** **Yoder** GLASS & WINDOW 641.722.3667

**Local Mfg. of Quality, Fusion Welded, Vinyl Windows**

- Replacement
- New Construction
- Custom Built to Your Specs
- Many Glass & Color Options
- Lifetime Warranty

19467 Driftwood Blvd. • Bloomfield, IA 52537  
Call Today: 641. 722. 3667 **Free Estimates**



## Days are longer now that it's SPRING.

Dixon's Floors N' More can help get your list of projects done! Our staff is here to help, start to finish.

- **Solid Surface**
- **Cabinets**
- **Lighting**
- **Carpet**
- **Vinyl**
- **Wood**
- **Laminate**
- **Tile**

**FREE Estimates & Financing Available**  
**Family Owned Since 1979**

### Dixon's Floors 'N More

17599 Hwy 34 W • Ottumwa, IA 52501

Phone 641-684-5093

M-F 9:00 am - 5:00 pm & Sat. 9:00 am - 1:00 pm





# DAVIS COUNTY, IOWA LAND AUCTION

**TUESDAY, APRIL 25<sup>TH</sup> @ 1:00 P.M.**

SALE TO BE HELD AT THE AMERICAN LEGION,  
211 E JEFFERSON STREET, BLOOMFIELD, IA 52537

**273 AC.±**  
(SUBJECT TO SURVEY)  
SELLING IN 2 TRACTS

• **PRODUCTIVE TILLABLE FARMLAND!**  
• **PREMIER HUNTING & RECREATION!**

Land is located approximately 2 miles east of Floris, IA (10 miles NE of Bloomfield, IA) in Section 24 of Lickcreek Township and Sections 18 & 19 of Salt Creek Township, Davis County, IA.

The Vande Noord farm represents productive tillable farmland that has been kept in a state of high fertility, as well as income producing CRP and premier hunting & recreational acreage. If you are looking for land that offers productive tillable farmland & outstanding recreational acreage this could be the one for you!

## THE VANDE NOORD FARM

ATTORNEY: RICK LYNCH • LYNCH LAW OFFICE  
207 S WASHINGTON ST. • BLOOMFIELD, IA 52537 • PHONE: (641) 664-3188

DETAILS, MAPS & PHOTOS ONLINE @:  
**www.sullivanauctioneers.com**

FOR ADDITIONAL INFO., CONTACT SULLIVAN AUCTIONEERS'  
NATIONAL REP.: JOHN PROBASCO (641) 856-7355

**SULLIVAN AUCTIONEERS, LLC • TOLL FREE (844) 847-2161**  
**www.sullivanauctioneers.com • IL Lic. #444000107**

FOR SALE: 1st & 3rd  
cutting grass square bales.  
Also 1st cutting grass/alfalfa  
mix square bales.  
PH: 641-722-3881

15

FOR SALE: 2016 good  
quality mixed grass hay.  
1st cutting, big round bales,  
plastic twine tied.  
PH: 641-459-2275

14



**The best crops start with  
the best seeds!**

*Come see us for all your  
spring planting needs!*

*We have all you need to keep your business thriving.*

**CROP SERVICES, INC**

John & Kathy Bos, Owners  
Drakesville, IA  
641-722-3293



## STOR MOR MINI STORAGE QUEEN CITY, MO

10 x 10 Unit- \$35/mo.

10 x 20 Unit- \$50/mo.

**515-720-7180**  
OR  
**660-766-2228**  
"NUF SED"

FOR SALE: John Deere  
Harrow & John Deere Cart.  
PH: 641-652-7707

16



**GEO STAR  
&  
PRIDE OF THE  
FARM**  
ENERGY FREE WATERS  
*Extra Heavy*  
**10 Gauge Bale Rings**

• CONTINUOUS  
FENCING  
• LARGE VARIETY OF  
FARM GATES

19887 Jade Ave  
2 1/2 Miles W of Bloomfield  
V.M. 641-664-2797

# Troyer Seeds

- Baren Brug •
- Blue River Organic •
- Masterschoice •
- Epley Hybrids Conventional •

- SMALL  
GRAINS
- ALFALFA  
CLOVER
- GRASSES



**Special!**  
**Seed Oats \$700**  
bushel

**QUALITY FORAGES IS OUR #1 GOAL**



**Cover Crop  
That Pays!**

- ~ Improve Soil Fertility
- ~ Reduces Compaction
- ~ Increase Yields

**12722 245th Street Emanuel**  
**Moulton, IA 52572 Troyer**

**641-929-3381**

FOR SALE: 2009 Polaris 850xp Sportsman, 174 miles, blade,  
winch, windshield, cargo box, like new; Homemade wood  
splitter trailer type, 25 horse, Kohler engine; Samsung Galaxy  
S6 Edge phone, like new. PH. 660-956-2177.

FOR SALE: 2004 Buick  
LeSabre Limited, 181k, full  
power, leather, 3800 motor.  
Allen Fitzgerald, Gorin,  
Mo. 660-282-3470 or 660-  
216-5984.

14

## FARM AUCTION

**FRIDAY, APRIL 14, 2017 10:00 AM**

SALE TO BE CONDUCTED AT THE PROPERTY LOCATED

**8271 RIVER ROAD, OTTUMWA, IOWA**

OR From the Intersection of Hwy. 63 & River Road at the South edge of Ot-  
tumwa, Go East & South approx. 5 miles on River Road OR 1 mile East of  
the Clifford Bridge OR 6 miles northwest of Elgin on River Road, on the  
South side of the Des Moines River Auction Signs Will Be Posted

**TRACTORS, COMBINE & TRUCK:** 1996 John Deere 8200L, MFWD, deluxe cab, 4  
remotes, bolt-on front end, front & rear weights, quick-hitch, hood seat, 5,800 ac-  
tual hours, immaculate condition; 1997 New Holland 7740L, MFWD, cab, dual outlets,  
reverser, 3,421 actual hours; 1999 John Deere 9510 Maximizer combine, hydro, 2,143  
eng hrs, 1,409 sep hrs, CM, DDM, P/A, variable-speed feeder house, bin extension,  
20' unload auger, Vittoria spreader, this combine has always been skidded, with John  
Deere inspection yearly, absolutely like new, inside & out; 1961 John Deere 643 corn  
head w/poly; 2007 International tandem-axle truck, 466 diesel, Allison 5-spd, Kubota  
20' alum. box w/hoist, w/Shorlock roll tarp, good tires, str-lift tag, runs & drives like  
new.

**DUMP TRAILER & FARM EQUIPMENT:** 2011 Midstate 14' dump trailer w/RT.  
hoist & remote, tandem-axle w/ramps & hi-fold gate; 2010 Unverferth 7250 grain cart,  
w/roll tarp & scale, 410 combine w/prior, 17" corner auger, 1,000 rpm, adjustable  
sides, always skidded, like new; 2012 Case IH RMK-350 turbo-till, 25' vertical tillage,  
true-tandem, 25' blades, 7-1/2" spacing, rolling basket, less than 1,000 acres; John  
Deere 1710A match tiller; John Deere 915 3-pt. V-Ripper; International 490 24' 7"  
spacing disc w/harrow attachment, new front blades & bearings, less than 500 acres;  
Brillman 15' cult-mulcher; 2009 Land Pride 10' 3-pt. 3-way hydraulic blade, like new;  
2004 Woods 15' hydraulic-fold brush cutter; Bush Hog 2210 3-pt. 10' brush cutter; Pe-  
trol 8"x11' hydraulic-drive auger; Petrol 10' 66" PTO auger w/swing hoppers; Ma-Wes  
20' head cart; Hard seeders; Stihl chainsaw.

**AUCTIONEER'S NOTE:** This equipment will suit the most particular buyer, as Bob  
& Roberta are very particular about their equipment. Everything has been skidded,  
serviced and cleaned. We will sell on small terms. We will be selling machinery &  
equipment promptly at 10:00 AM. Sale time will be approximately 1 hour or less,  
be sure & be on time. Bob's phone: 641-777-4188; Roberta's phone: 641-777-2243.  
Check our website for pictures - [www.almartinauction.net](http://www.almartinauction.net)

**YES!! CASH/GOOD CHECK  
POSITIVE ID REQUIRED**

**MASTERCARD/VA  
DEBIT/CREDIT CARDS**

All property must be settled for before removal - All items sold as is where is - Not  
responsible in case of accidents. Announcements made day of sale take precedence  
over any advertising.

**NIMOCKS DUKE FARM, OWNER**

AL EDDMAN, BOBIE CLINGMAN, & TOD CARROLL - AUCTIONEERS  
**AL MARTIN REAL ESTATE & AUCTION CO., INC.**  
307 Church St., Ottumwa, IA 52501 • 641-902-5405 • [www.almartinauction.net](http://www.almartinauction.net)



## Kirksville Livestock LLC

Kirksville, Missouri

### Special Bred Cow Sale Friday, April 7 • 6:00 P.M.

#### Early listings:

13 blk heifer pairs • 8 blk heifer pairs  
2 red heifer pairs • 4 blk 3 yr old heifer pairs  
7 blk heifer pairs • 12 blk heifer pairs  
15 blk & blkwf heifer pairs • 4 char x 2 yr old heifers pairs  
25 blk cows, 3-6 yrs, bred to blk bull, fall calving  
20 blk cow/calf pairs  
30 blk cows, RA, bred to blk bulls, fall calving  
40 cows, (35 blk, 5 red), 3-6 yrs, AI'D to GAR Objective 7125, Balancer clean up bull, Sept calving, comp health & mineral program  
32 blk cows, 3-6 yrs, bred to blk ang bulls (Sons of Reserve) start calving May 10 for 45 days  
125 blk & char cows, 7-BM, bred to char bulls, calving now  
18 char x cows, 3-5 yrs, bred to red ang, Sept calving  
11 blk & mx cows, RA, bred to blk bulls  
2 yrlg purebred char bulls  
2 red blaze face sim yrlg bulls  
3 3 yr old ang bulls, Hougland & Ross breeding  
1 3 yr old reg blk sim bull  
1 2 yr old reg blk sim bull  
1 2 yr old char bull  
1 1 yr old reg polled hereford bull  
1 3 yr old red angus bull  
3 yrlg sim/ang bulls  
2 3yr old blk bulls  
4 1/12 yr old horned hereford bulls  
1 3 yr old angus bull, Sydenstricker breeding  
3 2 yr old red angus bulls

### Special \*Calfstravaganza\* Customer Appreciation BBQ Monday, April 10 • 11:00 A.M.

"Proud to Serve Area Livestock Producers"  
**YOUR BUSINESS IS VERY MUCH APPRECIATED**  
We are open on Sundays to receive your livestock.

Phone for information: Nancy Baker, Office 660-665-9804

Chuck Ambrosia...660-342-3530 Al Ashmead..... 660-216-8730  
Caleb Randolph ....641-919-8539 Roger Jarman ..... 660-651-3683  
Harry Durlinger... 660-341-1080 Doug Fleshman.....660-626-7148  
Mark Herbold.....515-720-8667 Daniel Smith ..... 660-341-8396

Visit our website at [www.KirksvilleLivestock.com](http://www.KirksvilleLivestock.com)

FOR SALE: 2004 Chevy Tahoe, 4x4, blue with grey interior, good body, good interior, high miles but runs good, needs transmission; \$1,150.

PH: 660-341-7263

FOR SALE: 2003 Volvo S40, 4 door sedan, light green, grey interior, new tires, new battery, high miles but runs good; \$850.

PH: 660-341-7263

## Friesen Excavating

Specializing in Septic Systems  
Certified For Peat Tanks  
and Sand Filters.  
Can Also Do Other Drains  
and Water Lines  
Call or Text Shawn @  
641-208-0861  
Bloomfield, IA  
Free Quotes Available

FOR SALE: 65 registered Angus yearling bulls. Excellent quality. Guaranteed breeders. **Werner Family Angus, Diagonal, IA.** [www.WernerFamilyAngus.com](http://www.WernerFamilyAngus.com)  
641-344-5059. 2

FOR SALE: 09' Chevy 2500 pickup, aluminum flatbed, 4 dr., leather interior, diesel, 4 WD, 260,000 miles on truck - 100,000 miles on motor; \$15,500 OBO.  
PH: 660-216-0548 16

FOR SALE: 158 plus acres M/L farmland located 1 mile off Hwy 2 in Washington Township. This farm has CPR ground, hunting & pasture. Call Brad.  
PH: 641-895-8504 16

FOR SALE: Burgundy La-Z-Boy reclining sofa, like new.  
PH: 641-664-2831 16

**Scotland County LIVESTOCK AUCTION**

P.O. Box 111 • Hwy 15 North • Memphis, MO  
**660-465-7213 • Jerry & Barb Blomme**  
**660-341-0069 • Grant Blomme**

## DAIRY SALE

Wed., April 5th @ 10:30

## SPECIAL CATTLE SALE

Sat., April 8th @ 12:30

#### Early Listings:

45 black str & hfrs, 400 - 500#  
35 black str & hfrs, 700 - 800#  
25 black & char. str & hfrs, 500#  
15 black str & hfrs, 400 - 500#  
20 black str & hfrs, 450 - 500#  
12 Char x bulls & hfrs, 650#

#### PENDING:

15 black 3 yr. old cows, coming with their second calf, bred to a LBW black Angus bulls.

**EXPECTING SEVERAL MORE CATTLE  
BY SALE TIME**

**Market Report for Sat., March 25th:**  
**Steers:** 440# - \$175.00, 513# - \$170.00, 555# - \$157.00 668# - \$136.00, 725# - \$140.00. **Heifers:** 420# - \$143.00, 511# - \$148.50. **Holstien Veals:** \$100 to \$135. **Beef Veals:** \$300.00 to \$450.00. **LB COWS:** \$59.50- \$70.00.

[www.ScotlandCountyLivestock.com](http://www.ScotlandCountyLivestock.com)

HAY FOR SALE: Approx. 100 round bales of mixed hay; \$45/bale. Also 100 round bales of silage; \$50/bale.

PH: 641-799-7474

14

SOMETHING TO THINK ABOUT... It you live in rural Davis Co., your retired, no children. What do you get for your tax dollars? It's a mystery.

18

## HAY FOR SALE

3x3 bales of western alfalfa hay, 170 RFV, 20% protein

**DELIVERY AT  
\$160.00 PER TON**

**660-216-0938**

FOR SALE: Stove length fire wood at **Beechy Sawmill** \$25 pick up load. Also 48" bundles at \$5 a pc. 4 miles West of Drakesville  
PH: 641-664-2437

YOUNG FARMER looking to expand operation and rent some more farmland for 2017 and beyond. Pasture, & hay ground.

PH. 641-895-0128.

15



**Next Chick Days!**  
April 27th & May 18th

Call for our Chick Days  
**SPECIAL!**

**FEEDS & NEEDS**

660-379-2055 Mon-Fri: 8-5  
1 mile N of Downing, MO on Rt N

## KEOSAUQUA SALE CO.

20511 Hwy. 1, Keosauqua, IA

#### Results from April 1st

Butchers..... \$44.00-47.00/cwt	.....\$148.00-155.00/cwt
Sows..... \$35.00-53.50/cwt	Ewes..... \$51.00-86.00/cwt
Lambs under 80#.....	Kid goats 40-70#.....
.....\$210.00-247.50/cwt	.....\$115.00-175.00/hd
Lambs over 110#.....	Cull nannies..... \$90.00-210.00/hd

**Pound cows** low yielding \$ 55.50-63.00/cwt  
High yielding \$65.00-70.50/cwt  
**Pound bulls** \$85.00-90.00/cwt

STRS			HFRS		
Blk	326	206.00	Blk	350	168.00
Blk	435	182.50	Blk	465	153.50
Blk	511	176.50	Blk	555	128.50
Blk	535	169.00	Blk	643	129.00
Blk	626	153.50	Blk	730	124.75
Blk	674	147.00	Red	860	124.00
Red	735	137.50			
Blk	884	129.75			

## BRED COW SALE SAT., APRIL 8TH

10 hd Red Angus heifers with red calves at side  
3 hd black heifers with black calves at side  
3 hd Beef master heifers with xbred calves at side  
10 hd Red & black heifer to calve right away- A & D Cattle  
20 hd black heifers with black calves at side fancy-Barnhart  
20 hd 3 & 4 yr old fancy black cows with month old calves  
24 hd 5 to SS blk & red cows bred Hereford bull, Due Sept 1st, dispersal fall herd- Woolrdige  
40 hd 3 & 4 Angus & bwf cows bred Hereford & Angus bulls, Due Sept 1, wormed & vaccinated- Butler  
15 blk & char cows with fancy calves- Curt  
7 hd open Angus heifers- Moffett  
2 yr old Char bull Wiggins breeding- J Plenge  
3 yr old 1/2 Red Angus 1/2 Black Angus bull- B Thomas  
3 yearling Angus bulls- Moffett  
3 yearling Angus bulls- White

#### Thank You For Your Business!

For More  
Information Contact:

#### Selling Times

Hogs.....9:30 a.m.  
Sheep & Goats.....10:00 a.m.  
Outside Merch.....11:00 a.m.  
Cattle.....Noon

Keosauqua Sale Co.  
319-293-3508  
Bill Goehring  
641-919-9365

[www.keosauquasaleco.com](http://www.keosauquasaleco.com)

*We'll Get You On The Road With Our...*  
**Complete Trailer  
Repair & Accessories.**

Wood Rot, Rubber Roofs,  
Siding Repairs, Insurance Work.



*Boat Repairs • Boat Accessories  
• Pickup Accessories*

**Whitney RV & Marine**



641-684-8284  
9418 151st Ave., Ottumwa  
Mon. - Fri. 8 a.m. - 5 p.m.



**BLOOMFIELD****LIVESTOCK MARKET**

Wed., April 12th.....Fat Cattle, Slaughter Cows & Bulls..... 9AM  
 ..... Special Yearling Sale..... 11:30AM  
 Wed., April 19th.....Fat Cattle, Slaughter Cows & Bulls..... 9AM  
 Thurs., April 20th .....Special Bred Heifer, Cow & Pair Sale ..... 6PM  
 Wed., April 26th.....Fat Cattle, Slaughter Cows & Bulls..... 9AM  
 .....Special Feeder Sale..... 11:30AM

**SALE BARN OPEN UNTIL 9:00 PM  
 EVERY TUESDAY TO RECEIVE LIVESTOCK**

Phil Schooley ..... 641-664-3450  
 Ron Schooley..... 641-777-0302  
 Roman Schooley ..... 515-450-3685

*We appreciate your business!*

Tyler Schooley ..... 641-208-5442  
 Barn Phone ..... 641-664-2435

**HWY. 63 NORTH • BLOOMFIELD, IA**

**Fabius Creek  
 Livestock Solutions LLC.**  
**Open by Appointments  
 Evenings & Weekends**  
 12718 275th Street • Bloomfield, IA 52537  
 641-895-0128

ADM Alliance Nutrition®  
 ADM

TARTER  
 FARM AND RANCH EQUIPMENT

**CUSTOM CHOPPING:**  
 Spring & Fall! Front & rear  
 unload wagons, bagger.  
 Ray Boas  
 PH: 641-208-6177 20

**FOR SALE:** 45 Big bales  
 wheat straw, some with new  
 seeding mixed in; \$35 per  
 bale.  
 PH: 660-341-5168 15

**SOMETHING TO THINK  
 ABOUT...** If you live in rural  
 Davis Co., your retired, no  
 children. What do you get  
 for your tax dollars? It's a  
 mystery.

**BULLS FOR SALE:**  
 Limousin, Lim-Flex, Red  
 Angus, yearlings, calving  
 ease, bulls with performance  
 that will add pounds to  
 your calves, black or red,  
 polled, docile, complete  
 performance data, free  
 delivery when you want  
 them. Schrock Cattle  
 PH: 660-988-1163 17

**YODER'S INDIAN CREEK  
 FURNITURE** investing  
 your tax return money  
 in quality furniture. Will  
 become heirloom treasures  
 for future generations.  
 Offering a large selection  
 of dining room, living  
 room, bedroom, office  
 & children's furniture.  
 Unique handmade clocks,  
 rustic log furniture. Also  
 offering quality pre-finished  
 hardwood flooring. Located  
 4 miles North of Cantril  
 on RT. V64, 22769 Rt. V64  
 Milton, Iowa. PH. 319-538-  
 7332 TF

**A T T E N T I O N  
 CONTRACTORS!:** We  
 Stock Push Fit Fittings,  
 Valves, Toilets, Faucets, Pex,  
 PVC, CPVC, Copper Pipe &  
 Fittings. Gingerich Stoves  
 & Plumbing LLC, 19091  
 180th St, Bloomfield, IA. 3/4  
 Miles East of Drakesville,  
 South Side.  
 VM 641-664-2814

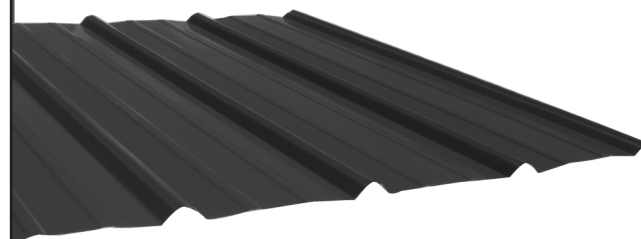
**FOR SALE:** 2004 Nomad  
 M2500 Northtrail camper,  
 27" with livingroom  
 slideout, sleeps 6, fully  
 furnished, great condition,  
 below KBB price. Leave  
 message.  
 PH: 319-396-4968 15

**FOR SALE**

**Driveway Fabric Rolls**  
 Commercial, Heavy Duty,  
 Designed for Heavy Traffic

**12' 5" Wide  
 432' Long  
 \$370/ roll**

**660-216-0938**

**Premium  
 Metal Roofing**

- Buy Direct & Save
- Fast Service
- Cut-to-length
- Professional Contractors Available

**A W Metal LLC**  
**Metal Roofing Headquarters**

**641-664-3990 • awmetal.net**

**FOR SALE:** Chicks, banties  
 & layers. PH: 660-216-3864 15  
**FOR SALE:** 3 yr. old Angus  
 Bull. Proven breeder; \$1,600.  
 Bloomfield, IA  
 PH: 641-722-3020 15

*We are different from the rest!*

Our bulls are 25% higher on IMF breed average.  
 Our ribeyes are 10% higher than the breed average.  
 This was all achieved by using a high roughage ration.

**Trojan Hill Farms**

**Phil Archer**  
**641-675-3769 - Home**  
**641-680-6769 - Cell**



**FOR SALE:** Older Nakajima  
 short arm quilting machine,  
 works good, \$400 or best  
 offer. Douds. PH. 641-919-8971. 14  
**FOR SALE:** John Deere  
 WH52A commercial walk  
 behind mower, 30 hrs;  
 \$5,000. PH: 641-799-7474 14



**Bring your  
 plans in for a  
 FREE  
 ESTIMATE**



**Trusses  
 Engineered  
 and Designed  
 to Your Specs**

**FOAMBOARD • SHINGLES • INSULATION**

Count on us for quality building supplies. Good results  
 begin with a solid foundation, and that requires the right  
 materials for the job. Trust us for a comprehensive selection  
 of professional grade tools, hardware, lumber and supplies,  
 plus our selection and service with competitive prices.  
**STOCKING 9 COLOR CHOICES**



**17893 212th Street • Bloomfield, IA 52537**  
**641-722-3605 • Mon.-Fri. 7 AM to 5 PM**

**YOUR  
 ONE\_HOP  
 Parts  
 STOP**

**If quality auto parts are on your  
 list then come fill your basket  
 with great deals!**

We have everything you need!  
 engines • mufflers • tires • bumpers  
 transmissions • alternators • much more

**SPILMAN  
 AUTO PARTS**

20311 Old Hwy. 2 • PO Box 31 • Bloomfield

641-664-2463 • 1-800-477-1367  
 M-F 8AM-5PM • Sat. 8AM-12Noon  
 www.SpilmanAuto.com

