

2017 June Fair and Fete Horse & Pony Show

June 9-10-11



FOR THE BENEFIT OF *Abington Hospital - Jefferson Health*

JUNE FETE

Welcome from the June Fete chair

Welcome to the June Fete Fair.

Now in the capacity as June Fete chair, I look back on the connections I've had to this community over the course of my lifetime. My husband and eldest daughter were born at Abington Hospital. We raised our family in the Abington community and taught in Abington schools. Our family and our students' families looked forward to the June Fete annually. So the Abington community, Abington Hospital and the June Fete are sources of pride.

It is my honor to chair the June Fete Fair. There are many moving parts which come together cohesively as hospital administrators, employees, board members, auxiliaries, friends and families, volunteers, merchants, non-profits, private entities and municipalities from the surrounding community help to realize such a spectacular outcome.

I thank the teams of June Fete Fair veterans and neophytes who have supported this event, now in its 104th year. I invite you to spend the day or the weekend with us on the June Fete fairgrounds. Bring your family and friends and spread the word on social media.

See you there, at the June Fete Fair!



JUNE FETE

The June Fete Fair – How do they do it all?



Here's a statistic for you: Did you know that a group of over 360 dedicated women, known collectively as the Abington Health Foundation Women's Board and Auxiliaries, brings the June Fete Fair to life every year?

For well over a century, our volunteers have engaged in a supremely interesting and wide array of fundraising activities in support of Abington – Jefferson Health.

You should get to know us. New volunteers are always welcome. When it comes to making a difference and giving back to your community, if you have the time, we have the place!

For more information, contact the Women's Board Office at 215-481-2500.

JUNE FETE

Have fun in support of first-rate health care

The June Fete Fair is a grand affair with a venerable cause at its heart. Beneath the surface of the three-day festival of food, fun, friendship and equine entertainment beats a 104-year history of charitable support for the essential work of Abington Hospital – Jefferson Health.

Held this year from June 9 through 11 at the June Fete Farm in Huntingdon Valley, June Fete is the premier annual fundraising event of the Abington Health Foundation Women's Board. The Women's Board provides significant charitable support for the people, programs, facilities, technologies and services that make Abington Hospital one of the region's top care providers.

An organization older than the hospital it supports

More than 100 years ago, back when a local hospital

in Abington was still just a dream, a new organization formed to make that dream a reality. In 1912, a dedicated group of local women initiated a campaign to raise funds for a hospital still in the planning stages. They organized an assortment of successful street fairs, lawn fetes and holiday bazaars to help pay for the linens, furniture and other supplies the hospital would need when it opened in 1914.

Building on their initial success, these enterprising women held their first Garden Party Fair in 1913 on the manicured grounds of the Elkins Estate in Latham Park. That event became an annual fair and acquired the name "The June Fete" in 1918. A Pony Show was added in 1922 and a Horse Show in 1923.

Still funding excellent health care

Today, the June Fete Fair

is one of the region's oldest continuously run fairs. The Women's Board takes pride in maintaining the tradition of this annual community event, which now draws more than 25,000 people over the course of the weekend.

Most important, just like that very first garden party in 1913, today's June Fete still supports Abington Hospital's essential services for the community. However, both the size of the Women's Board and its charitable contributions have grown considerably over the past century.

Today, the impact of the Women's Board and Auxiliaries is felt throughout Abington as proceeds benefit everything from employee awards in support of continuing health care education, to facility construction and expansion,



to equipment purchases, community programs, assistance for patients in need and much, much more.

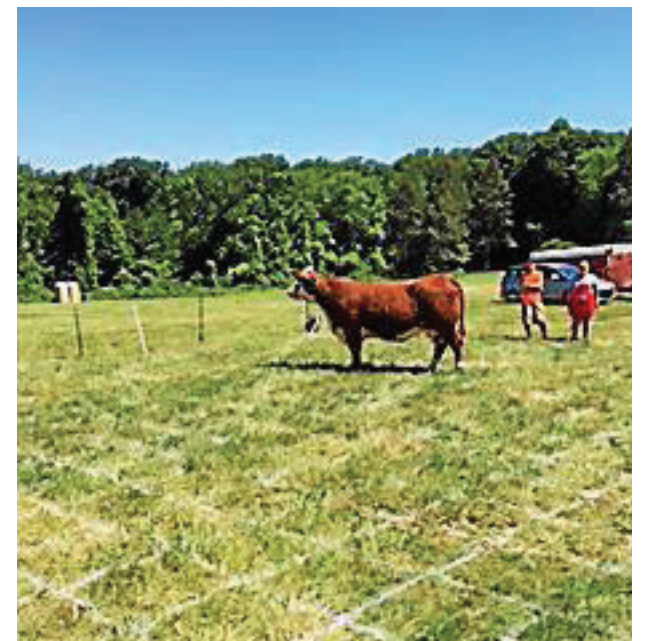
So keep in mind, come that second weekend in June, when you participate in the June Fete Fair, you are supporting your community's health – and that's truly something to celebrate.

JUNE FETE

Cow chip bingo makes a comeback

Moo-ve over – there's a new kid in town. Meet Ruby, a professional cow who is outstanding in her field. Sponsored by McArdle's Holiday Farm, Ruby will drop in for a visit at the June Fete Fair on Sunday,

June 11, at 2:30 p.m. Buy a bingo square for \$20, get a deed and wait to see if Ruby leaves her first cow chip on your square. Potential winner's pot is \$5,000! Wouldn't that just be *udderly* amazing?



JUNE FETE

Dancing Diggers thrill audiences of all ages

Back by popular demand, the Dancing Diggers will be appearing on Saturday night, June 10, and throughout the day on Sunday, June 11, at the June Fete Fair. The show is an absolute "can't-miss" opportunity to see expert operators showcase the amazing talents of their construction equipment. Witness daring stunts and choreographed moves set to music that will astound you.

**ABINGTON PEDIATRIC ASSOCIATES, LLP****Curt Parnes, MD****Lisa Hutton, MD****Pierre Chanoine, MD****Maria Stefurak, MD****Adena Greenberg, MD****Amanda Jones, MD****Tisa Taylor, MD****Jill Kampherstein, PA-C****Kristen Stegeland, PA-C****www.abingtonpeds.com**

**1047 Old York Road
Abington, PA 19001
215-886-1240**

**Commonwydds
2370 York Road (Suite A-8)
Jamison, PA 18929 • 215-491-5100**

JUNE FETE

Montgomery County 4-H Drill Team



The Montgomery County 4-H Drill Team is a group of 12 riders that practice every week to learn different moves. Drill teams started back in the days of the cavalry. This group has used some old military formations and has also made up some moves of its own. The time and dedication it takes for each one of the riders and their parents is overwhelming, but year after year, they come out and have a blast. Some years, they like to add some music or props. Come out and see what this year brings.

ABINGTON
+
ARIA
+
JEFFERSON

Better. Together.

Abington, Aria and Jefferson are bringing together everything we do best. And we're proud to say it's working. Visit Jefferson.edu to learn how we're continuing to make health care Better. Together.

 **Jefferson Health**®

Jefferson.edu

Abington Hospital | Abington – Lansdale Hospital | Aria – Bucks County Hospital
Aria – Frankford Hospital | Aria – Torresdale Hospital
Thomas Jefferson University Hospital | Methodist Hospital
Rothman Orthopedic Specialty Hospital | Jefferson Hospital for Neuroscience

HOME OF SIDNEY KIMMEL MEDICAL COLLEGE

2017 June Fete Fair and Horse & Pony Show

Special Events & Attractions

Friday June 9th • 4 pm – 11 pm

4 pm Gates Open
 4 pm – 10 pm Marketplace Tent Open
 5 pm Opening Ceremonies
Flag Raising by Upper Moreland Police & National Anthem by Steve Leonard
Murray Avenue Middle School Jazz Band
Abington High School Accapella Group
 Belmont Magic Show Located by Kiddie Rides
School of Rock
 Fireworks
 11 pm Fair Closes

Amusement Ride Special:

Mega pass unlimited amusement rides for \$35 per person all weekend during operating fair hours.

Saturday June 10th • 11 am – 10 pm

7 am – Dusk Horse & Pony Show
 10 am – 11 am Breakfast at the Fair with Briar Bush Nature Center (pre-registration required)
 11 am Gates Open
 11 am – 4 pm Amusement Ride Family Special \$20 per person
 Noon Opening Ceremonies
Flag Raising by Boy Scouts of America Troop 72 & National Anthem by Deb Gates
 Marketplace Tent Open
Shades of Green – Irish Dancing
 Belmont Magic Show Located by Kiddie Rides
Amerikick Karate Studio
 Chumley the Clown
 2:30 pm Dance 360

3 pm – 3:45 pm Belmont Magic Show Located by Kiddie Rides
 3:30 pm Smooth Edge
 6:00 Montgomery County 4H Drill Team
 6:30 Earthborne's JCB Dancing Diggers
 7 pm – 7:45 pm Belmont Magic Show Located by Kiddie Rides
 8:00 pm – closing Mike Ludwig – courtesy of Apple Tree Service
 10 pm Fair Closes

Sunday June 11th • 12 pm – 6 pm

Noon Gates Open
 Noon Opening Ceremonies
Flag Raising by Willow Grove VFW & National Anthem by Barbara C. Jackson
 Marketplace Tent Open
 Amusement Ride Family Special \$20 per person
 Belmont Magic Show Located by Kiddie Rides
 Earthborne's JCB Dancing Diggers (Dixon Horse Ring)
Germantown Academy Jazz Band
 Earthborne's JCB Dancing Diggers (Dixon Horse Ring)
 Cow Chip Bingo
Dance Arts Conservatory
 Earthborne's JCB Dancing Diggers (Dixon Horse Ring)
Hank's Cadillac
 Belmont Magic Show Located by Kiddie Rides
 Earthborne's JCB Dancing Diggers (Dixon Horse Ring)
Closing Remarks – Farewell by Liz Leonard
 Fair Closes

Entertainment listed in bold will perform at the Head of the Midway at the Barn

Along the Midway

- | | |
|-------------------------------|------------------------|
| 1 - Volunteer | 5 - Le Bistro Omelets |
| 2 - Quench your thirst — Bake | 6 - Beer |
| 3 - Smoothie | 7 - Burrito Bowl |
| 4 - Ice Cream | 8 - Humpty's Dumplings |

Mastercard, VISA and Discover now accepted for amusement rides!





Join us for Breakfast at the **JUNE FETE FAIR!**

Featuring our special guest: **Briar Bush Nature Center**

SATURDAY, JUNE 10, 2017 🐛 **10 - 11 AM**

JUNE FETE

Enjoy breakfast at the Fair

Join us for breakfast on Saturday, June 10, at 10 am, under the big white tent. Come see live animals and learn fun facts from our friends at Briar Bush Nature Center. Then, enjoy a day of games and rides and food galore, a horse and pony show, magic and oh, so much more.



JUNE FETE

Jefferson Health hospitals, specialties recognized in U.S. News & World Report's Best Hospitals listing

Jefferson Health hospitals and specialties ranked among the best in the annual U.S. News & World Report 2016-2017 Best Hospitals rankings.

Thomas Jefferson University Hospital ranked second in the Philadelphia metro area and third in Pennsylvania. Abington Hospital ranked fourth in the Philadelphia region and seventh in the state.

"Jefferson Health is honored to be named to U.S. News & World Report's Best Hospitals rankings. This year's list shows the level of excellence across our clinical enterprise," said Stephen K. Klasko, M.D., MBA, president and CEO of Thomas Jefferson University and Jefferson Health. "While this distinction points to our exceptional quality and safety, it is our physicians, nurses, health professionals and other employees' steadfast commitment to our patients that truly differentiates us. We are gratified but not satisfied, as we continue on our relentless campaign to transform the patient and student experience and reimagine health care and discovery."

U.S. News & World Report, which compiles and publishes the defining surveys in health care, ranked Abington Hospital - Jefferson Health 50th nationally in the specialty of ear, nose and throat.

Eleven Thomas Jefferson University Hospital specialties ranked among

the nation's best.

In addition to specialty rankings, U.S. News & World Report rates hospitals for nine procedures and conditions. Abington Hospital is rated as high performing in these procedures and conditions:

- heart bypass surgery
- hip replacement
- knee replacement
- chronic obstructive pulmonary disease
- congestive heart failure
- abdominal aortic aneurysm repair and
- colon cancer surgery

Thomas Jefferson University Hospital is rated as high performing for hip replacement, knee replacement, chronic obstructive pulmonary disease, congestive heart failure, abdominal aortic aneurysm repair, colon cancer surgery and lung cancer surgery. Aria-Jefferson Health is rated as a high performer in the treatment of chronic obstructive pulmonary disease and congestive heart failure.

Jefferson, through its academic and clinical entities of Thomas Jefferson University and Jefferson Health, is reimagining health care for the greater Philadelphia region and southern New Jersey. Since its mergers with Abington Health and Aria Health, Jefferson now has 23,000 people dedicated to providing the highest-quality, compassionate clinical care for patients, educating the health professionals of tomorrow and dis-

covering new treatments and therapies to define the future of care. With a university and hospital that date to 1824, today Jefferson is composed of six colleges, nine hospitals, 26 outpatient and urgent care locations and a multitude of physician practices throughout the region, serving more than 96,000 inpatients, 363,000 emergency patients and 1.9 million outpatient visits annually.

For more information and a complete listing of Jefferson services and locations, visit www.jefferson.edu.



See Clearly At June Fete!



*Avi Cohen MD, Eric George MD,
Tom Armstrong MD, Dan Will MD*



- Eye Exams
- Contact Lenses
- Full Service Optical Shop
- Cataract Surgery
- Glaucoma Treatment
- Retina Care

1550 Old York Road • Abington, PA
345 North York Road • Hatboro, PA
215-672-9030 • www.ACG-eyes.com

Proudly Affiliated with Abington Jefferson Health



See you at the fair!

THE BRAND YOU KNOW AND TRUST

Put a Property Makeover on Your Wish List

COMPARE OUR ADDED VALUES:

- Color-Coordinated, Fully-Featured Outdoor Rooms
- Patios • Poolsides
- Driveways • Walls
- Walkways

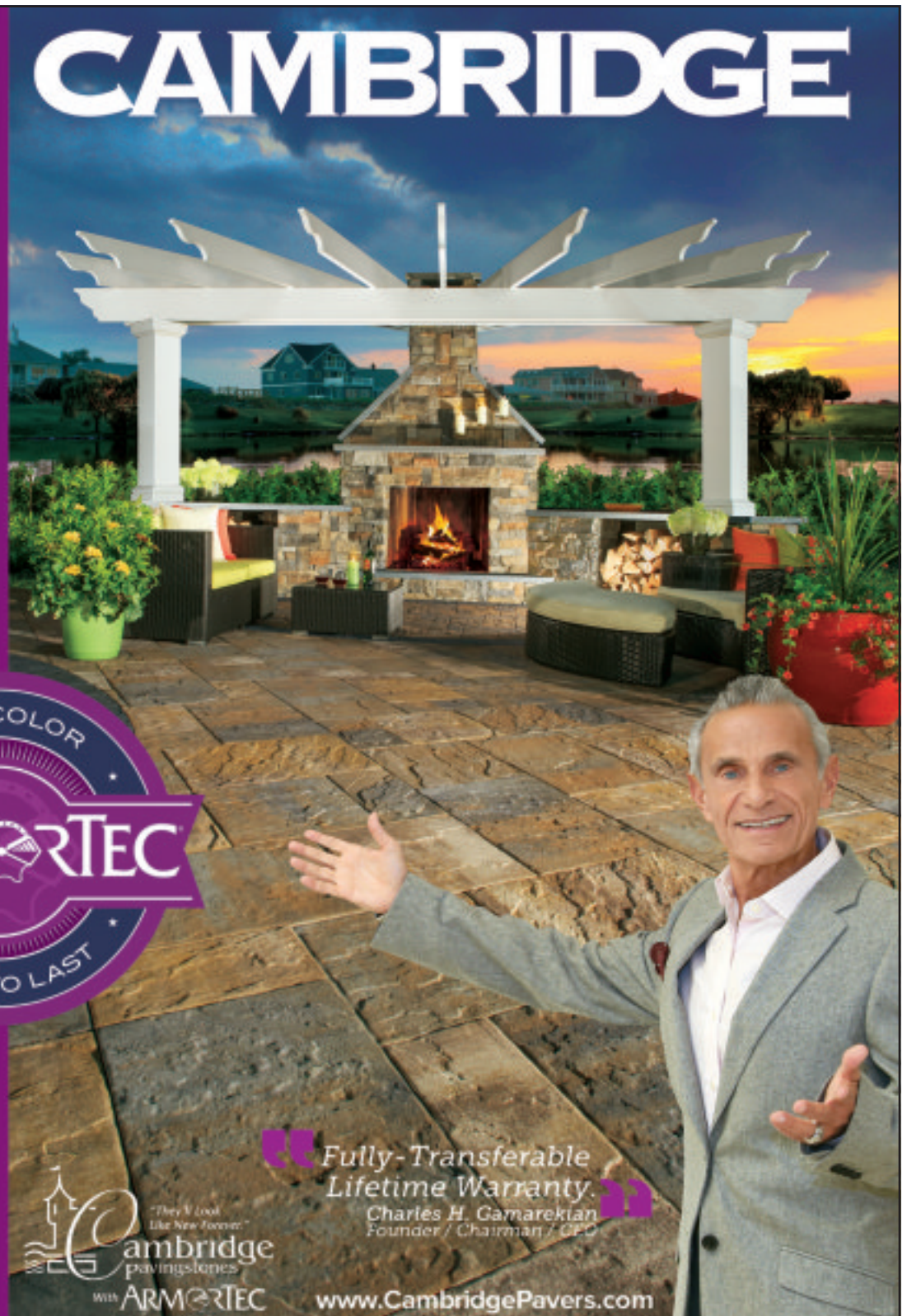
With ArmorTec®



Without ArmorTec®



Both Cambridge paving stones shown were installed in residential driveways in 2006 (Photos taken in January 2010).



"They'll Look Like New Forever!"
 Fully-Transferable Lifetime Warranty.
 Charles H. Gamarekian
 Founder / Chairman / CEO
 www.CambridgePavers.com



711 Countyline Road at Chestnut Street, Souderton, PA 18964
215-723-5506 • www.landisbc.com • info@landisbc.com

Store Hours: Monday - Friday 7am - 4pm, Saturday 7am - 12pm
 Visit our showroom. We are a Full Service Hardscape Supplier

STOP IN FOR YOUR FREE 108 PAGE CAMBRIDGE OUTDOOR LIVING ROOM GUIDE

Look For Us On



Among the **BEST**



ABINGTON HOSPITAL – JEFFERSON HEALTH

Nationally ranked for Ear, Nose and Throat
High performing in 7 procedures/conditions

Heart Bypass Surgery | Hip Replacement | Knee Replacement | Chronic Obstructive Pulmonary Disease
Congestive Heart Failure | Abdominal Aortic Aneurysm Repair | Colon Cancer Surgery

 **Abington**
Jefferson Health®

215-481-MEDI (6334) | Jefferson.edu/Abington