

FOR SALE or RENT
Contracts Considered.



MOVE IN READY!
507 W. Walnut • Bloomfield, IA
641-799-4770

Tri-County SHOPPER

MEMORIAL DAY IS MONDAY, MAY 29TH

*Remember those
who served.*
All gave some.
Some gave all.

STANDARD
MAIL
U.S. POSTAGE
PAID
TRI-COUNTY
SHOPPER, INC.
POST OFFICE BOXHOLDER
LOCAL RURAL BOXHOLDER
OCCUPANT
**CIRCULATION
OVER 11,750
THIRD CLASS**

P.O. Box 168 • Bloomfield, IA 52537 • www.tri-countyshopper.com
Phone 641-664-1333 • Fax 641-664-3761 • Email shopper@netins.net



Vol. 45, No. 21
Wednesday, May 24, 2017



20% OFF NEW CHEVROLET MALIBUS			SAVE ON NEW FORDS		
2017 Chevrolet MALIBU White #30361  MSRP: \$26,895 Fesler Price: \$26,009.46 Rebate*: -\$4,494 20% OFF PRICE \$21,516*	2017 Chevrolet MALIBU 2LZ Pepperdust #30357  MSRP: \$33,440 Fesler Price: \$32,258 Rebate*: -\$5,506 SALE PRICE \$26,752*	2017 Chevrolet MALIBU Cajun Red #30282  MSRP: \$30,185 Fesler Price: \$29,003.36 Rebate*: -\$4,855 20% OFF PRICE \$24,148*	2016 F150 Crew Cab 4x4 XLT Caribou #30299  MSRP: \$50,350 XLT Discount: -\$2,000 Fesler Discount: -\$3,989 Rebates*: -\$7,700 SALE PRICE \$36,661*	2017 Ford Focus Sedan SEL Magnetic #30491  MSRP: \$22,095 Fesler Discount: -\$828 Rebate*: -\$4,000 SALE PRICE \$17,267*	2017 Ford Escape S White Gold/Metallic #30449  MSRP: \$24,645 Fesler Discount: -\$675 Rebates*: -\$3,900 SALE PRICE \$20,070*

*See salesperson for Rebate qualifications. Must meet mfg. guidelines. Sale ends May 31, 2017. **Plus tax, title and license fees.

FESLER AUTO MALL

Hwy 34 West, Fairfield • 641-472-3121 • 800-422-5269 www.feslerautomall.com

OPEN: Monday - Friday 8:00 AM - 5:00 PM • Saturday 8:00 AM - 3:00 PM

www.feslerautomall.com

 2014 Chevy Spark NOW ONLY \$10,295	 2007 Silverado, 122k \$17,573	 2016 Ford Flex LMT, AWD, 22k \$35,995	 2007 Chevy HHR \$5,595	 2010 Chevy Equinox, Silver \$10,983
 2015 Ford Fiesta SE Certified NOW ONLY \$13,350	 2009 Chevy Silverado, 120k \$15,801	 2014 Traverse LT AWD NOW ONLY \$24,125	 2010 Mustang GT Was \$16,995 NOW \$14,899	 2014 F-150 Super Cab Lariat 4x4 NOW ONLY \$32,566
 2016 Chevy Tahoe, 13k \$52,932	 2012 Ford F-150 Crew, 4x4, Eco-Boost \$19,935	 2016 Buick Enclave, AWD, 13k \$34,995	 2007 GMC Envoy \$8,995	 2008 Colorado Crew, 4x4 \$15,995
 2013 Jeep Grand Cherokee \$20,995	 2013 Toyota Tacoma, White, 38k \$28,995	 2015 Edge SEL AWD NOW ONLY \$27,925	 2014 Ford Fusion, 30k \$15,873	 2016 Chrysler Town and Country \$22,993
 2012 Chevy 1 Ton Diesel Chassis NOW \$32,995	 2011 F150 Crew Cab Lariat 4x4 NOW ONLY \$26,671	 1998 Camaro SS, Only 11k Miles NOW \$18,983	 2016 Chevy Trax LTZ, AWD NOW \$22,995	 2014 Silverado 1500 High Country, 4x4 NOW \$36,995

www.feslerautomall.com

Check Out Our Complete Inventory at www.feslerautomall.com

Fit Chick boneless skinless chicken tenderloins, 4 oz. 99¢ a lb.	Gourmet onion rings, 16 oz. \$1.20 each	Gusto hickory smoked bacon, 48 oz. \$5.96 each	Boulevard wheat beer bratwurst, 53.2 oz. \$4.29 each	Musselman's apple pie filling, 21 oz. \$1.55 each	Musselman's key lime pie filling, 21 oz. \$1.32 each
Karlins mashed potatoes, 16 oz. \$1.45 each	Deep Sea pink salmon, 7.5 oz. \$1.15 each	RichField Farms pancake syrup, 24 oz. \$1.99 each	Palermo first cold pressed extra virgin olive oil, 101 oz. \$19.55 each	Libby's green beans & sweetcorn, 13 oz. pouch 29¢ each or \$2.69 12 count case	Member's Mark french vanilla cremer, 192 ct. \$6.99 a case
Cream cheese stuffed jalapeno peppers, approx. 3 lb. bags \$2.29 lb	Freschetta pepperoni pizza 27.35 oz. \$2.99 each	Black oak easy slice carving ham, approx. 15 lbs. 69¢ lb	Oscar Mayer jumbo weiners, 16 oz. 50¢ each	19686 Hwy. 2, Bloomfield, IA Approx. 2 miles west of Bloomfield	



Meadowview Cardamom Seed
1/6 oz. \$12.49 each
Sug. Use: Digestion,
mental clarity,
respiratory infection,
spice for cooking!



True Essential Caraway
.5 oz. \$12.00 each
Sug. use:
Reduces gas pains,
skin scalp, reduces
bruising & relives
dental pain.

NOTICE!
**We will be closed for Ascension Day,
Thursday, May 25th**



**Highway 2
DISCOUNT
Groceries
L.L.C.**

**Mon. - Sat. • 8:30am - 5:00pm
VM: 641-664-1187**

FOR SALE: 7 used 6 panel doors, (5-30", 1-24", 1-16"). pine; Also 3 carriage lamps, antique brass, outdoor lights.
PH. 641-208-0318. 23

FOR SALE: 10 older stock cows due to calve in the next 2 or 3 months, good diposition, \$1,250 OBO. 5 miles south of Milton.
PH: 660-216-0578 23

STRAWBERRIES: Place orders. Stop ins welcome. 2 miles South of Drakesville, 3/8 mile West of 200th St., 17623. Bloomfield.
PH. 641-664-1896. 23

*Thank You for your
business and loyalty!*

Whirlpool MAYTAG
Amana
MEMPHIS APPLIANCES
MERCANTILE SALES & SERVICE
EST 2016

South Side of the Square in Memphis
660-465-2345

Monday - Friday: 9:00 AM to 5:00 PM • Saturday • 9:00 AM to 3:00 PM / Sunday CLOSED


WE WILL BE CLOSED ON
Thursday, May 25th
for Ascension Day &
Monday, May 29th for
Memorial Day.

MEMPHIS
MERCANTILE
EST 2010
115 E. Monroe • Memphis, MO
660-465-2102

DON & J'S ROOFING AND PAINTING. No job too small. Call TODAY for more information.
PH: 641-722-3513 or 641-814-2256

FOR SALE: New Holland 489 mower conditioner, hyd. cylinders & 2 new belts to go with it. Used last year, not haying anymore.
PH: 641-459-2275 23

FOR SALE: 2 Duroc boars, finest quality. 5th generation champion blood line. Born 2-10-17, \$225 each.
PH. 660-342-6376. 23



FREE Estimates

*Quality in
Collision Repair*

Our commitment to our customers shines through in every job we do.

We handle every aspect of the collision repair process, from rental car arrangements to claims handling and 100% satisfaction guarantee. Our highly trained technicians used today's most advanced tools and equipment to achieve the best quality results.

Our state-of-the-art facility features
Frame & Unibody Machine • Heated downdraft spray booth • Computerized color matching

Walker Motors
Collision Repair
375 S. Main St. | Memphis, MO
660-465-2159 | Shop Phone/Fax

Rental Cars Available for all Occasions!
Hertz Great Rates!




KARR STREET AUTO
500 Karr St., Bloomfield, IA 52537

**BATTERIES, BRAKES,
COMPUTER DIAGNOSTICS,
HEATING/AC SERVICES,
TIRE MOUNTING, SERVICE & REPAIR**

8AM-5PM MONDAY-FRIDAY 641-664-2551

WE SERVICE ALL MAKES & MODELS- DOMESTICS & IMPORTS

LARGE YARD SALE:
Sunday, May 28th &
Monday, May 29th. 9 am-4
pm Cancelled if rain. 107 S.
Jefferson St., Drakesville.

LOST BETWEEN
WYNETTA CORNER &
PULASKI: DeWalt tool case
and bit pouch. Cullie Kline
641-208-2860 23

FOR SALE: JD WH52A
commercial walk behind
mower with stand on sulky,
29 hrs., \$5,250.
PH. 641-799-7474 23



**Tires, Parts &
Service...**

OH MY!

*You'll be blown away
by our great deals
and friendly service!*

**We will be closed
May 27th - 29th for Memorial Day.**

**SPILMAN
AUTO PARTS**

20311 Old Hwy. 2 • PO Box 31 • Bloomfield
641-664-2463 • 1-800-477-1367
M-F 8AM-5PM • Sat. 8AM-12Noon
www.SpilmanAuto.com

Davis County
MEDICAL ASSOCIATES
Dedicated. Compassionate. Healthcare.

FOR THOSE ILLNESSES
THAT SNEAK UP ON YOU...

SAME DAY APPOINTMENTS



To schedule an appointment at
Davis County Hospital Medical Associates
call 641-664-3832.

509 N. Madison • Bloomfield, Iowa 52537
www.DavisCountyHospital.org

FOR SALE: New Amish
made (42x60) Cherry table
w/ 6 chairs. Also 2 Magic
Chef microwaves.
PH: 660-342-7303 21

FOR SALE: 14 assorted 1
year old laying hens. \$3.00
each.
PH. 641-664-2587 leave
message. 22

FOR SALE: 2011 Impala LT
42,000 miles, tan, all leather,
new tires, fully loaded.
PH: 641-777-1445 21

FOR SALE: 1996 Dodge
Dakota Sport, reg cab, 4x4,
auto, good tires, 200k miles:
\$600. PH: 641-680-5730



NOTICE

Our office will be closed on
Monday, May 29th in observance
of Memorial Day.

*We will resume regular hours on
Tuesday, May 30th.*

Please have a safe and fun filled weekend.

FENTON MEDICAL BUILDING

Donald R. Wirtanen, D.O.
Dianne Knapp, ARNP
641-664-1400

FOR SALE: Firewood at RJ
Lumber, \$15 a pickup load.
18989 160th St., Drakesville,
IA 52552. TF

FOR SALE: JD 945 Moco,
above average condition,
\$10,250 OBO.
PH: 641-208-5522 21

Meme & Ry's BARGAIN BIN

GOING OUT
OF BUSINESS
SALE

Going on now until
inventory is gone!
Buy one item or the whole lot!

50% Most
OFF Items!

208 E. Franklin
Bloomfield
641-777-6160

BARGAIN

Hours:
Mon. - Fri. 10-5
1st & 3rd Sat. 9-12

Bloomfield
RENT-ALL
INC
CLOSED
MEMORIAL
DAY

Monday,
May 29TH

502 E. Franklin St.
Bloomfield, IA

(641)
664-3806

www.BloomfieldRent-All.com

FOR SALE: Used garden
tillers. Rear and front tine.
Lots of Troy-Bilts. Many
choices. Also used DR brush
mowers. Kahoka, MO.
PH. 660-216-1809. TFN



Poly Lawn Furniture

WE WILL BE CLOSED
ASCENSION DAY,
THURSDAY, MAY 25TH

WE ARE OPEN MEMORIAL DAY
MON., MAY 29TH



VM: 641-664-0207
1 Mile East of Drakesville
on Jade Ave.
Mon.-Sat. 9:00 AM - 5:00 PM

JOB OPENINGS!

Performance Pipe, A Division of Chevron Phillips
Chemical Co., LP, located in Bloomfield, IA

has job openings.

Please log on to www.cpchem.com
to view job descriptions & to apply



Performance
Pipe is an Equal
Opportunity
Employer.

FOR SALE: Standing hay, 15
acres of grass, 20 acres grass
alfalfa mix, price negotiable.
PH: 641-722-3075 21

FOR SALE: Stove length
fire wood at Beechy
Sawmill \$25 pickup load.
Also 48" bundles at \$5 a pc.
4 miles West of Drakesville
PH: 641-664-2437. TF

FOR SALE: 2003 Honda
1100 Sabre, windshield,
saddle bags, mustang seat,
very clean, always kept
inside, well maintained,
\$2,950
641-799-9935 21

SOMETHING TO THINK
ABOUT: If all us men think
we're so smart, why is it
that when we do things
wrong, our wives have told
us beforehand that it wasn't
right?



YODER
EQUIPMENT
BLOOMFIELD, IOWA

SOUTHERN YELLOW PINE
TREATED WOOD POSTS
Mineral Feeders
Gates
Variety of Sizes & Styles
Feed Bunks
Water Tanks
CONTINUOUS
FENCING

We will be closed May
25th for Ascension Day.

19887 Jade Ave
2 1/2 Miles W of Bloomfield
V.M. 641-664-2797

SHADY LANE VARIETY

- Vegetable/Fruit
Chopper
- Julienne Slicer
- Berry Colander
- Berry & Produce
Keepers
- Strawberry Hullers

We will be closed
Thursday, May 25th for
Ascension Day

1 mi. E. of Drakesville
on Jade Ave. • 641-664-0207
8-5 Mon. thru Sat.

FOR RENT: 1 or 2 bedroom
apartments Milton, IA.
Kitchen appliances & heat
furnished. Very reasonable
rent. PH: 641-757-0201

GET YOUR CAMPING GEAR HERE!



Graber's
COUNTRY STORE LLC

2 miles South & 1 mile
East of Drakesville

FOR SALE: 1950 Allis
Chalmers, Model WD,
tractor, wide front end,
good body & tires, \$2,000;
1998 Jeep Cherokee, 200,000
miles, good body, runs good,
new tires, air conditioning,
\$2,200. If interested call:
PH: 641-722-3267 21

Slayton Polaris

Get out and
play!

New & Used
Polaris Rangers
& ATV's



Authorized Polaris
dealer since 1988

660-328-6627

BLOOMFIELD, IA
8 mi. S. & W. from Pulaski or 6 mi. W
of Memphis then 13 mi. N. on Route B

MAST OVERHEAD DOORS, INC.

105 S. Dodge St., Bloomfield, IA 52537



GARAGE DOORS
Residential & Commercial
Doors & Operators

641-680-2016

Quality Products
+ Quality Workmanship
= Quality Customers

CALL FOR AN
APPOINTMENT

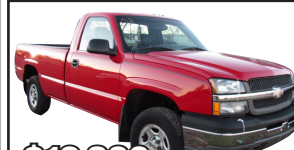
Free Estimates We Fix Doors



2012 Nissan Frontier
SL, 4X4, CREW CAB, BLUE
34,000 MILES



\$20,500
2012 GMC 2500 HD
4 WD, 6.0 GAS, AUTO,
BEDLINER, TOW PACKAGE



\$10,900
2003 silverado
RED, 4 WD, 80,000 MILES

JUSTIN
2012 Ford Escape Limited,
loaded, leather

2013 Silverado 2500 HD LTZ,
diesel, 4 wd, crew cab

Happy Memorial
Day!
**Kollision
Korner**

504 South Drake St
Bloomfield, IA 52537
PH: 641-664-2648
Fax: 641-664-2948



DOWNING DEPOT MUSEUM
ANNUAL SMORGASBORD
SUNDAY, JUNE 4
11:30 A.M.
AT THE DOWNING CITY PARK
FREE WILL DONATION

FARMERS & FRIENDS
OPEN COWBOY CHURCH
 Every Friday @ 6 PM
 Get To Gather Room
 Bloomfield, IA

Check Out These Great EVENTS



Guess who is
Turning 50
Looking 30
& Acting 15!
Initials B.A.H.
On May 30th

WESTERN'S SMOKEHOUSE
 • Nationwide Shipping
 • Cut to Order Meat Bundles
Snack Sticks & Beef Jerky
 Visit our retail shop in Greentop, MO
 www.westerns-smokehouse.com
 New Hours as of May 1st
 Mon. - Fri. 8:30am - 5pm • Sat. 8am - 4pm
 660-949-2445 • 1-800-456-0250

LakeWood RV Sales & Rentals

2013 Avenger



BEAUTIFUL
 and like NEW!!!!
 Added benefits
 are the bunk
 room and
 outdoor kitchen.

Reg. \$18,500

SALE
\$17,500

Summer is coming.
 Plan a family camping trip.
WE DO RENTALS!

COME SEE US FOR ALL YOUR RV NEEDS!

Hwy. 136 E., Downing, MO
 9 miles W. of Memphis or
 1 1/2 miles E. of Downing
 www.lakewoodrvsales.com

Tues. - Fri. 8-5 • Sat. 8-Noon
 Closed Sundays & Mondays
 Phone: 660-379-2763
 Cell: 660-341-1927
 Fax: 660-379-2792

LANCASTER, MO CITYWIDE YARD SALES

SATURDAY, JUNE 10TH

Maps Available at Casey's & BP Saturday Morning!

If you would like to be on the yard sale map please contact city hall 660-457-3022 or cityhall@marktwain.net by June 8th

ALSO, DON'T FORGET TO STOP BY
LANCASTER'S FIRE & RESCUE FUNDRAISER

FOOD ON THE SQUARE!

Serving: Tenderloins, Juicy Burgers,
 Corn Dogs, & Drinks

Please note: Lancaster City Wide's are held annually on the 2nd Saturdays of June and September.

IOWA THEATER BLOOMFIELD, IOWA

"The Fate of the Furious"



Friday, May 26th
 Saturday, May 27th
 7:00 PM
 Sunday, May 28th
 4:00 PM PG-13

This will be the last showing of the season. Have a good summer. See you in the fall.

Custom Built, Painted and Vinyl
Buildings & Sheds

~David W. Schrock~

Hillview MINI BARNS

15383 180th Street Drakesville, IA 52552 **641.664.2842** U.M.

The City of Greentop is now accepting
 Sealed bids on the following:

1984 Fiat Allis Motor Grader Model FG85

All bids must be submitted to:

Martha Woods

**Greentop City Clerk, P.O. Box 119
 Greentop, MO. 63546**

Any questions call **660-949-2520**

8:00am until 12:00pm. May be seen at the
 Greentop City Hall 8:00am until 12:00pm.

The bids must be in a sealed envelope. Bids will
 be accepted until June 16th, 2017 at 12:00 p.m.

The City Council reserves the right to
 accept or reject any or all bids.

4 PERSON BEST SHOT GOLF TOURNAMENT

JUNE 3, 2017
9:00 AM

Bloomfield Country Club

\$30 per person

Includes Lunch & Door Prizes

PROCEEDS TO:

DC ATHLETIC CLUB
 ANY QUESTIONS
 PLEASE CALL
 641-208-5354

Polly's Boondock
 Cold beer on Tap, Bottles & Cans
 Open 6 AM to 10 PM • Mon. - Sat.
 Serving Breakfast • Lunch • Dinner Specials
 • Taco Tues. - All day / All night
 • Wednesday Nights 5-9 • \$3.00 hamburgers
 • Thursday - Fried Chicken
 • Friday - Hot beef place
 Lancaster, MO • North Side Sq
 660-457-3255

BLOOMFIELD FARMERS' MARKET
BLOOMFIELD, IA COURTHOUSE LAWN
SATURDAYS
8:30 - 11:30 AM
TUESDAYS
3:00 - 6:00 PM
 For more information
 contact Patsy Boas
 641-459-3387
FRESH FROM THE FARM
 Now accepting
 Seniors, WIC, & Food Stamps

We Remember...
 In observance of
Memorial Day
 our office will be closed
Saturday, May 27th-
Monday, May 29th
 to observe Memorial Day.
 Open as usual on Tuesday, May 30th.
VMI
Van Mersbergen Insurance Inc
 Our policy is serving you.
 104 E. Franklin, Bloomfield
 641-664-2135

Check Out one of these great businesses for all your gardening needs!

Gingerich Greenhouse
22 Years of Growing Plants

Nice Variety of bedding plants & hanging baskets

Fruit trees \$5.00 Reduced

Proven Winner Shrubs! 10% OFF ALL SHRUBS!

We will be closed Thurs., May 25th for Ascension Day

Hours: Mon - Fri 8 am - 6 pm • Sat. 8 am - 5 pm
1 mile east & 1/2 mile north of Drakesville • 16577 Jade Ave.

SPRING CHECK LIST.....

- ✓ Tomatoes
- ✓ Carrots
- ✓ Green Beans
- ✓ Flowers
- ✓ Strawberries
- ✓ New Fruit Trees

Rustic Acres
Greenhouse & Produce

ALL BASKETS ON SALE
Lots of beautiful varieties to choose from!

Kale • Okra • Herbs • Lavendar
Thyme • Echinacea • Basil
MUCH MORE

We will be closed Ascension Day, Thursday, May 25th

On Hwy. 2, West Grove 641-929-3056

GARMAN? FLOWERS

660-328-6318 • 660-341-9586

Located at BP Station Gas N' More
Memphis, MO • Mon. - Sat. 9-5
Open on the farm only by appointment

THIS WEEKS SPECIAL!
10% OFF Perennials & Roses

4 Pk Wave Patunias! 10 colors to choose from!
ONLY \$2.99 Reg. \$3.99

We will be closed Ascension Day, Thursday, May 25th

FRESH STRAWBERRIES
\$3.00 a quart

To place an order, leave message.
Amos Mast
11952 Farley Ave.
Downing, Mo.

VM 641-664-1207

OSTRANDER FLOWERS & GREENHOUSES

MEMORIAL DAY 5-26-14

MEMORIAL DAY TRIBUTES
Cemetery Silks - Vases
Stone Saddles - Hanging Baskets

OPEN Memorial Day 9:00 - 1:00

Combination Planters, Baskets, Geraniums, Peonies, Rose Bushes

Mon.-Fri. 8-6 • Sat. 9-5 • Sun. 10-4
Eldon, IA • 1243 25th Ave. • 641-652-3288

WE ACCEPT DEBIT & CREDIT CARDS

SUNSHINE HILL GREENHOUSE

OPEN MEMORIAL DAY!
HANGING BASKETS BUY 5 GET ON FREE

MEMORIAL PLANTERS
641-656-4203
641-208-7609

1 MILE EAST OF MILTON ON HWY. 2

Bloomfield Greenhouses

Memorial Day May 29, 2017

MEMORIAL DAY DECORATIONS

- 1) Combo Boxes Starting at \$10.99
- 2) Cemetery Stone Saddles
- 3) Hanging Baskets

MEMORIAL WEEK
Monday - Saturday 8:00am - 7:00pm
Closed Sunday
Memorial Day 8:00am - 12:00pm
708 E. Arkansas Ave., Bloomfield
641-664-1622

All Fruit Trees & Perennials 10% TO 25% OFF!

Dogwood Tree, Gold Forsythia, Wisteria, Wisteria (tree form) Crimson King, Japanese Maple, Crab Apple, Maple Tree, Large Lilac Bushes, Magnolias, Grapes, Gooseberries, Sweet Potatoes & More

Knockout Roses • Clematis • Lilac Bushes • Garden Phlox Annuals • Astilbes • Hydrangeas • Garden Phlox • Peony Lily • Bleeding Hearts • Mini Roses • Oriental Hybrid Lilies Weigelas • Hostas • Shasta Daisy • Salvia • Hen & Chicks Barberry Bushes • Sweet Pea • Large Assor. Of Grasses

ALL BASKETS ON SALE!

Memorial Baskets

We will be closed Ascension Day Thursday, May 25th

★ OPEN MEMORIAL DAY ★

Hilltop Greenhouse

11049 HWY 2, MOULTON IA
BETWEEN WEST GROVE & MOULTON
641-929-3036

Mon-Sat 8:00 A.M.-6:00 P.M.



Burkholder's GREENHOUSE

Open Memorial Day!

Let us help you with your landscaping needs!
Blocks • Pavers • Mulch
Trees • Large Selection of Shrubs

DEAL Full Flat Bedding Plants ONLY \$8.00

We will be closed Thursday, May 25th for Ascension Day

Spring Hours
Mon-Sat 8:00 - 5:30 **660-341-5777**

See Our Catalog at www.burkholdergreenhouse.com 4 Miles North of Edina, MO

Get Ready For Spring!
8 FT. RAILROAD TIES

Great for landscaping and garden boxes

SPILMAN AUTO PARTS
20311 Old Hwy. 2
PO Box 31 • Bloomfield
641-664-2463

HOURS 8 A.M. to 5:00 P.M. DAILY EXCEPT SUNDAY	Zimmerman's Store Rutledge, MO 660-883-5766	Our Everyday Low Prices!
---	--	---

SPECIAL BUYS • CLOSE OR OUTDATED • FROZEN

12 oz. smoked ham, thin sliced	\$2.50
6 oz. smoked ham sliced, lean	49¢
9 oz. deli fresh, oven roasted turkey breast.....	99¢
12 oz. hot dogs	\$1.15
Turkey breast, no antibiotics, hormones or steroids.....	99¢ lb.
Chicken breast, made from whole chicken breast.....	95¢ lb.
8 oz. Oscar Mayer hardwood smoked.....	99¢
5 lb. bag fully cooked bacon bits.....	ONLY \$3.50 lb.
3.9 oz. cottage cheese with strawberries.....	4/\$1.00 - cheaper by the case
More yogurts, 32 oz.....	79¢
Organic strawberry, 5.3 oz.....	4/\$1.00
Oikos vanilla.....	5/\$1.00

SALE Skippy Peanut Butter!

16.3 oz. creamy, fuel the fun • \$1.89 or 48 oz. \$3.89

15 oz natural extra crunchy • \$1.89

24 oz. Original Western Dressing	\$4.19
17.5 oz. Kraft Hot & Spicy Barbecue Sauce	\$1.98

FRESH Seedless Watermelons, 14 - 15 lbs	\$5.98
FRESH Bing Sweet Cherries	\$4.29 lb.
FRESH Apricots	\$4.25 lb.
FRESH Home Grown Strawberries	\$3.98 qt. or \$1.98 pt.

HANGING BASKETS, POTTED FLOWERS & VEGETABLES, ECT.

Neon stove gas, \$1.29	Charcoal bricks, 2/ 99¢
11.6 lbs. Kingsford match light briquets, \$9.35 or 4 pk \$35.40	

Closed on Thursday, May 25th for Ascension Day.
Open on Memorial Day!

DRIVE A LITTLE & SAVE A LOT



**FEEDS
& NEEDS**
Your Locally Owned Farm Store
 We will be closed on
Monday, May 29th for Memorial Day.
Have a safe Memorial Day!
**Supports Local
Beef Producers!**
660-379-2055
Rt. N, Downing, MO **Hours:
Mon.-Fri. 8-5**

FOR SALE: Black side by side refrigerator with ice and water in door, matching cookstove, microwave & dishwasher; baby high chair, 2 real nice window AC's (1 - 5,000 BTU & 1 8,000 BTU); nice washer & dryer, matching set; 2 nice recliners, 1 leather & one cloth; floral love seat & sofa; medium size deep freeze, very nice. 807 E. Maple, Centerville, IA. PH. 641-895-2966. 23

FOR SALE: 1992 Jayco 18 ft. camper, double axles - all new, 5 new tires, marine battery, sway bar, 4 stabilizers, TV antenna, & TV that gets 32 channels. Excellent condition. PH. 660-949-2780 or 660-216-1517. 23

**GINGERICH
STOVES and
PLUMBING LLC**

✓ us out for all your
plumbing needs!

Hitz Halter Insul.

In-Stock for Radiant Floor Heat

19091 180th St., Bloomfield, 52537 • V.M. 641-664-2814
 Hours: M-F: 7:30 A.M.- 5:00 P.M. • Sat., 7:30 A.M. - 12 P.M.

Fittings & Accessories

**Competitive
pricing &
also
contractors
discount.**

1/2"x100' Pex Waterline	25¢
3/4"x100' Pex Waterline	45¢
1/2"x300' Pex Oxygen Barrier	30¢
200 lb. Test 1" x 500'	39¢
200 lb. Test 1 1/4"x500'	65¢
Boshart 4' Bury Hyd.	\$85
Any Flow 4' Bury Hyd.	\$95
Iowa 4' Bury Hyd.	\$112
Iowa 5' Bury Hyd.	\$120



**Lilac Hill
GREENHOUSE**
 660-342-9554
 Closed Sundays
 25957 US Hwy. 136 • Lancaster, Mo
 Between Lancaster & Downing

12" Hanging Baskets 2 FOR \$35
 \$6.00 each Remember your loved on with an
 Angel Daisy (Shasta Daisy) Perennial.
 Large selection of perennials, starting at \$6.00
**See our wide variety of
miniature garden supplies!**
 Great Activity for children!
 Gift Certificates Available




Miniature Trees \$10.00

LARGE YARD SALE:
 Sunday, May 28th &
 Monday, May 29th. 9 am-4
 pm Cancelled if rain. 107 S.
 Jefferson St., Drakesville.

FOR SALE: JD WH52A
 commercial walk behind
 mower with stand on sulky,
 29 hrs., \$5,250.
 PH. 641-799-7474 23

FOR SALE: Pearl gray
 guineas. 1 year old, \$10
 each. Day old \$3.50 each.
 Gold Star & Rhode Island
 Red Pullets.

Rustic Acres Poultry
 PH: 641-929-3056. 23

LINE-X OF OTTUMWA 



**KEEP YOUR RIDE
IN GREAT SHAPE!**
 PROTECT IT WITH A LINE-X COATING!
 Bring it in and we can LINE-X® it!
 Brad Lisk
 15514 Blackhawk Rd., Ottumwa, IA
 Gift Cards Available!
 641-683-9334

Seed Corn \$175 a Unit My-
cogen seed corn 2K395b -
 94 day Mycogen seed corn
 2V357a - 93 day Triple Stax
 round-up ready in Pro-
 boxes. Financing available
 if needed. Swenson Part-
 nership 38318 228th Street
 Wessington Springs, SD
 57382 Phone: 605-354-2127
 or 605-216-7287 (MCN)

A PLACE FOR MOM. The
 nation's largest senior living
 referral service. Contact our
 trusted, local experts today!
 Our service is FREE/no obli-
 gation. CALL 1-800-442-5148
 (MCN)

Lower that Cell Phone Bill.
 Get 2 lines of unlimited data
 for \$100/mo. with AutoPay-
 taxes & fees included. Video
 Streaming & Mobile Hotspot
 included. Limited offer/
 Restrictions Apply. Call To-
 day and Save. 855-549-9399
 (MCN)

NEW 2017 homes arriv-
ing including Inspiration
 manufactured home with
 1,296 sf, Very classy with
 open living area, finished
 drywall, hardwood cabi-
 nets. Delivered, set, central
 air,skirting, concrete foot-
 ings for \$80,500. CENTURY
 HOMES OF OSKALOOSA
 1-877-241-3621. (MCN)

**LIVING WITH KNEE OR
BACK PAIN?** Medicare
 recipients may qualify to re-
 ceive a pain relieving brace
 at little or no cost. Call now!
 844-668-4578 (MCN)

Help Wanted

Due to increase in census

CNAs

Full-Time / Part-Time
 All Shifts

Come join our team and
 experience the rewards of
 working with our residents.

Competitive Wage and
 Benefit Package Available.

Apply in person to:
 Laurie Buckhahn, Administrator

Applications available
 online at:
 www.goldenagecarecenter.com
 and can be emailed to
 admin@goldenagecarecenter.com

Golden Age Care Center
 1915 S 18th Street
 Centerville, IA 52544



EOE

L&M Country Store

1 1/2 miles south of west Hwy 2 & 63 jct.
 Mon-Sat. 8am-5pm **CLOSED SUNDAYS**
 VM: 641-664-1936

Elbow Macaroni	69¢/ lb.
Frozen 100% Beef Hamburger Patties.....	\$1.29/ lb.
8 oz. Sargento Assorted Shredded Cheese or Sliced...	89¢
50 lb. Raw Sugar	\$26.95
29 oz. Sliced Peaches.....	\$1.59
16 oz. Creamy Peanut Butter.....	\$1.29
Yogurt Covered Cranberries.....	99¢/ lb.

Closed Thursday, May 25th- Ascension Day.

Country Side Grocery

Teriyaki pork sirloin\$1.49 lb.
 Lite whipped topping, large size, 16 oz.79¢
 Oscar Mayer hotdogs, 16 oz.....59¢
 Cottage cheese, 24 oz.....\$1.79
 Shredded colby & monterey jack cheese, 8 oz.....89¢

Yellow Delicious & Pink Lady Apples

We will be closed Ascension Day
 Thursday, May 25th



3/4 mi. E. of Drakesville, IA on 180th St.
 Mon-Sat: 8:30am - 5:00pm
 VM: 641-664-2661

Fabius Creek Angus



Yearling Angus Bulls For Sale!
 Sired by Rampage, Tour of Duty and
 a son of CC&7. Low birth weights and
 yearling weights over 1600#.

Dean and Nancy Hougland
 29244 Ice Avenue • Bloomfield, IA
 641-929-3208 or 641-208-9626
 Nancy: 641-208-0434

FOR SALE: JD 660 5 bar
 rake, dolly wheel, new
 paint & decals, works
 good, \$1,600; New Idea
 hay conditioner 299, good,
 \$1,200. Can deliver.
 PH: 641-799-6120 23

FOR SALE: 1998 Dodge
 Ram 2WD Quad cab,
 138,000 miles, very clean,
 well maintained, \$4,700.
 PH: 641-895-2966. 23

Disc Mowers

N.H 617 9'
 M.F. 1329 9'
 N.I. 5409 9'

Rakes

N.H. HT154-14 wheel
 Hesston 12 wheel
 Vermeer 8 wheel

USED HAY TOOLS

Round Balers

2013 M.F. 2856 net
 2012 N.H. BR-7040 net
 2008 N.H. BR-7090 net
 2007 CIH RBX563 net
 2006 N.H. BR-750 tame

Disc Conditioners

2011 N.H. H7550
 2006 J.D. 946
 2006 J.D. 735
 2004 CIA DCX131
 2003 N.H. 1432
 2001 N.H. 1431

FINANCING AVAILABLE

Coltrain Implement

2066 Hwy. 5 Sq., Albia • PH: 641-932-2745
 NEW HOLLAND BUSH HOG



AUCTION

FRIDAY • JUNE 2ND • 2017 • 5 PM

15868 OAK AVE. • BLOOMFIELD, IA

Large assortment of lumber (walnut, pine, cedar, oak), Troy Built Pony tiller,
 endgate seeder, (2) red jacket well pumps, Case VAC tractor, ATV ramps,
 Old Style light, Duracraft drill press, 20 ton press, Ryobi 14" chop saw,
 over 2000 advertising hats (Davis County Ag related), toy tractors (AC
 D21, AC 970, JD 730, JD H, JD D), desk, microwave stand, sofa couch w/
 queen bed, (2) grey leather glider, king size bed and frame, misc shelving,
 bread machine, steel wagon wheels, asst of yard rocks, chains, shop fans,
 large asst of misc hand tools, pipe bender, torch cart and gauges,
 bolt bins, barge box w/hoist, 4x8 utility trailer,
 grain separator, concrete blocks, 3pt log splitter, old bicycles

Full details can be found online at www.lynchboys.com.

Roberta McClure



Terms: All items are sold "as is". All items must be paid for prior to removal.
 All announcements made day of sale take precedence over ad. Not
 responsible for accidents or theft.

WWW.LYNCHBOYS.COM

BLOOMFIELD, IA
 641-2083649

**NEW
ITEM**

Vetgun



**JUST
IN**

We also carry insecticide balls
 in 30 count pk.

Warmer weather is here....

Time to do some work on the farm!

**We Have Fencing
Supplies!**

Wood post sizes: 5x8 • 6x8 • 6x9

T post sizes: 6ft light • 6.5ft light • 6.5ft heavy • 7ft. heavy

We will be closed

May 27th - 29th.

Have a safe Memorial Day.

We pay tribute to those who
 have given their lives in our
 nation's wars.

MiraFount
 Energy Free Waterers

More Models Available.



3100



3200

Hamilton Produce Co. 105 W. Franklin • Bloomfield
 641-664-2459 or 1-800-469-7749

NOTICE!

Our deadline for the May 31st edition of the

Tri-County Shopper will be

Friday, May 26th at 10 AM.

Our office will be closed Monday, May 29th.

Tri-County SHOPPER

641-664-1333
 P.O. Box 168
 Bloomfield, IA

ZIMMERMAN American
 AUTO LLC Racing®
 TRAILER INC. Custom Wheels

101 North St. • Cantril, IA
 319-238-7367



**HELO MOTO
METAL**



NEW WHEELS FOR THE RIDE

SUMMER!!

ROLL INTO



Do you need this on your farm?

Thank you to our
local beef producers!



CLOSED Thursday, May 25th for Ascension Day.



Stocking framing nails by the box/pallets.
Call for pricing!

- Metal Roofing
- FREE estimates!
- Crews available
- Call today!

WAGLER METALS

19049 Ice Ave., Bloomfield, IA
641-722-3692

Affordable Quality Roof Restoration

- Have you got a metal building or roof that is starting to rust or leak?
- Would you like to have it leak proof? Shine for years?
- Would you like to save 70% over replacement?

If so, give me a call at **641-722-3020**

**FREE
ESTIMATES!**

ASK FOR MOSE



FOR SALE: JD 660 5 bar
rake, dolly wheel, new
paint & decals, works
good, \$1,600; New Idea
hay conditioner 299, good,
\$1,200. Can deliver.

PH: 641-799-6120

23

FOR SALE

Driveway Fabric Rolls
Commercial, Heavy Duty,
Designed for Heavy Traffic

**12' 5" Wide
432' Long
\$370/ roll**

660-216-0938

NOW HIRING

Full & Part-Time
Office Assistant

Please bring resume to:

105 E. Locust St.
Bloomfield, IA
641-664-2169

Ameriprise
Financial

GINGERICH STOVES and PLUMBING LLC



us out for all your
plumbing needs!

Hitz Halter Insul.

In-Stock for Radiant Floor Heat

Fittings & Accessories

**Competitive
pricing &
also
contractors
discount.**

1/2"x100' Pex Waterline 25¢
3/4"x100' Pex Waterline 45¢
1/2"x300' Pex Oxygen Barrier 30¢
200 lb. Test 1" x 500' 39¢
200 lb. Test 1 1/4"x500' 65¢
Boshart 4" Bury Hyd. \$85
Any Flow 4" Bury Hyd. \$95
Iowa 4" Bury Hyd. \$112
Iowa 5" Bury Hyd. \$120

19091 180th St., Bloomfield, 52537 • V.M. 641-664-2814
Hours: M-F: 7:30 A.M. - 5:00 P.M. • Sat., 7:30 A.M. - 12 P.M.



Outpatient June Clinic Schedule

June 2 nd	Audiology	Greg Moore
June 2 nd	Podiatry	Dr. Holte
June 3 rd	Dermatology	Dr. Hammel
		Dr. Price
June 6 th	Cardiology	Dr. Muellerleile
June 9 th	General Surgery	Dr. Roe
June 12 th	Cardiology	Dr. El Accaoui
June 14 th	Urology	Dr. Kreder
June 16 th	Psychiatry	Dr. Morcuende
June 20 th	Cardiology	Dr. Muellerleile
June 21 st	Pulmonology	Dr. Wilson
June 23 rd	General Surgery	Dr. Roe
June 26 th	Cardiology	Dr. El Accaoui
June 28 th	Podiatry	Dr. Holte
June 30 th	Rheumatology	Shayla Sanders

Other Services Available at Van Buren County Hospital:

CT Scans	Ultrasounds
Fluoroscopy	OB/GYN
Digital Mammography	Surgical Consultations
Nuclear Med Scans	Colonoscopy
Magnetic Resonance Imaging	EGD
Epidural Steroid Injections	

Call Van Buren County Hospital
Outpatient Scheduling
319-293-8731

Schedules are subject to change by physicians.

STRAWBERRY SEASON
IS HERE! \$2.75 a quart.
Will take orders. Please
bring containers. R&S
Strawberry Farm. 1 1/4
miles South of Junction
Hwy 2 & Hwy 15 Milton.
23

HUTCHING'S ANNUAL
MEMORIAL WEEKEND
GARAGE SALE! Antiques,
collectibles, craft supplies,
good misc. Thrus. - Sat.
8:00-5:00. 1st house south
of west 2 & 63 junct.

MILITARY ITEMS
WANTED BY LOCAL
COLLECTOR: Patches,
medals, uniforms, hats,
helmets, etc. Always
buying. Mark Warren, PH.
641-664-3705. mpwarren@
netins.net

Friesen Excavating

Specializing in Septic Systems
Certified For Peat Tanks
and Sand Filters.
Can Also Do Other Drains
and Water Lines
Call or Text Shawn @
641-208-0861
Bloomfield, IA
Free Quotes Available



In observance of Memorial Day, our
offices will be closed Monday, May 29th.
We will resume regular hours on
Tuesday, May 30th.

Success BANK

Bloomfield, IA • 641- 664-2006
Offices in Moulton & Milton • www.success.bank





FOOD BLAST

CLOSED ASENION DAY
THURSDAY MAY 25

OPEN MEMORIAL DAY
MONDAY MAY 29 8AM to 5PM

HOLIDAY WEEKEND

 <p>Smithfield® ASSORTED FLAVORS PORK Tenderloin \$1.49 per lb.</p>	 <p>\$1.29 per lb. 100% Beef BURGER PATTIES American Cheese SLICES \$1.59 per lb.</p>	 <p>\$3.99 per lb. Whole Boneless RIBEYE STEAK</p>	 <p>\$1.29 16 oz. <i>Prairie Farms</i> Party Dips</p>	 <p>\$1.29 16 oz. Mini SWEET PEPPERS</p>	 <p>\$5.95 3lb. pack Wrights® Hickory Smoked Sliced Bacon</p>	 <p>\$1.49 per lb. Smoked Boneless PORK CHOPS</p>
 <p>\$4.99 <i>Prairie Farms</i> 4 Qt. Pail ICE CREAM</p>	 <p>10 oz. Lay's 2/\$4 Potato Chips</p>	 <p>\$5.99 5 lb. That's only \$1.19 lb. Stonemill Kitchen® Potato Salad</p>	 <p>\$1.39 per lb. Fully Cooked - Stadium Style Johnsonville Bratwurst</p>	 <p>99¢ per lb. Boneless Skinless Chicken Breast</p>	 <p>2/\$7 12 pk CANS plus deposit Pepsi Products</p>	
 <p>\$11.99 40lb. bag TOP SOIL American Arborvitae Windbreak Evergreen</p>	 <p>99¢ Valley Gem® <i>Maple & Honey</i> BAKED BEANS</p>	 <p>\$2.99 24 oz. Pomegranate Scent DAWN Dish Soap</p>	 <p>\$2.49 per lb. Bulk <i>French Vanilla</i> Gourmet COFFEE</p>	 <p>\$10.50 12 pack 16 oz. bottle Gold Peak TEA</p>	 <p>\$3.50 24 pack - Half Liter Aquafina® WATER</p>	



DUTCHMAN'S STORE Division Street - CANTRIL, IA - (319) 397 2322

STORE HOURS • Weekdays, 8a.m. - 6 p.m. • Saturday 8a.m. - 5 p.m. • Sunday Closed • View our specials at - WWW.DutchmansStore.com

SALE PRICES May 24-30, 2017

WEST GROVE WILL HOST A COMMUNITY BLOOD DRIVE Tuesday, May 30 from 3:00pm to 7:00pm at 22050 Eden Ave., inside Community Hall. All donors will receive voucher for 1 BLEED RED or 1 BLEED BLUE shirt! To donate, please contact the Blood Center at (800)-452-1097 or visit www.bloodcenterimpact.org and use code 5336 to locate the drive.

HUGE FUNDRAISING SALE FOR UGANDA. (Raising money for orphans, schools, ministry). All proceeds go. June 1 - 5-8 pm, June 2 - 9 - 5, June 3, 9-12 noon (1/2 price day) Womens clothes M-XXL, Mens, L-XL. Great condition light brown loveseat, green plants for home, office or outside. Numerous house-hold items including crock pot, coffee pot, misc. 611 N. Washington St., Bloomfield

FOR SALE: Cornish cross broilers, day old \$1.40 each. FREE shipping directly to your door on pre-paid orders.
Rustic Acres Poultry
PH: 641-929-3056. 25

FOR SALE: Certified organic STRAWBERRIES ready now. Place your order or drop in. 1 mile West of 63 on 170th St., Steven Gingerich, 21353 170th St., Bloomfield.
VM: 641-664-2379. 23



Tri-State Timber
DBA Stihl
660-465-2975
353 1/2 Grand Ave. Memphis, Mo.
Behind Shelly B's

5% OFF
String Trimmers


Check Out New & Used Units!

MOHAWK

NOW ON SALE

The beauty and durability of Mohawk hardwoods can't be beat. Every style features ArmorMax™ Finish with Scotchgard™ Protector Advanced Repel Technology, which protects your hardwood from abrasion and staining with a 50-year warranty.

Get the best for less...today!



RICHWELL
CARPET & CABINET
CENTER

545 N. Weller • Ottumwa, IA
641-683-4084
www.richwellcarpet.com
Hours: M-F 9-5, Sat. 3, Thurs. 'til 7





**NO BULL ABOUT
IT! MY DAD IS
THE BEST!**



**GIVE HIM A CALL FOR ALL YOUR
UPCOMING REAL ESTATE &
AUCTION NEEDS!**

Thank you beef producers! We appreciate everything you do!

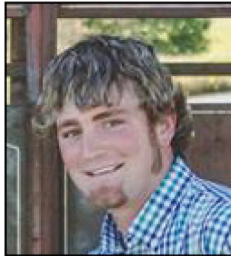
Lynch
REALTY, INC.

641-664-2275
lynchrealtyinc.com

Lincoln Lynch
641-664-2275



103 E. Franklin
Bloomfield, Iowa
641-664-2275
Licensed in Iowa
Stephanie Lynch, Broker



BEEF FACT: Polled Hereford cattle originated in Iowa.

BEEF UP YOUR RIDE

**MOVE YOUR CATTLE
WITH A NEW POLARIS!**



Authorized Polaris
dealer since 1988

Slayton Polaris

BLOOMFIELD, IA
8 mi. S & W from Pulaski or 6 mi. W
of Memphis then 13 mi. N on Route B

660-328-6627

BEEF FACT: The top two beef producing countries are U.S.A. & Brazil.

CLASS A CDL Driver.
Good home time. Stay in
the Midwest. Great pay
and benefits. Matching
401k. Bonus's and tax free
money. Experience needed.
Call Scott 507-437-9905. Ap-
ply on-line WWW.MCF-
GTL.COM (MCN)

FRESH STRAWBERRIES



**Taking
Orders
NOW!**

Located 4 miles North of
West Grove at

The Fabric Hut
14543 195th St.
Drakesville, IA
641-664-3445
Ext. 2

OXYGEN - Anytime. Any-
where. No tanks to refill.
No deliveries. The All-New
Inogen One G4 is only 2.8
pounds! FAA approved!
FREE info kit: 855-995-5653
(MCN)

Free Pills! Viagra!! Call to-
day to find out how to get
your free Pills! Price too
low to Mention! Call today
1-877-560-0997 (MCN)

FOR SALE: Yearling & 2 Yr. Old Angus Bulls
Sired By EXAR BLUE CHIP & SAV BRILLIANCE & BUTKUS
Calving Ease & Growth Bulls
Davis Farms • Bloomfield, Ia
Doug, Jolynne, Baron & Brynn
641-777-5200



NEW MATTRESSES FOR SALE!
Selling individually or in sets. Factory warranty.

TWIN - FULL - QUEEN - KING

641-664-3060

Get the perfect yard with-
out lifting a finger! Every-
thing you need from lawn
care, soil analysis, weed
control, pest control, and
more! Call Now 855-675-
5704 (MCN)



Overholtzer
Farm Supply LLC

Specializing in feeding equipment for dairy & beef.



\$21,900

NDE 804 2008 model, fr. door w/
4.5' folding conveyor, 9 knives,
640XL scale, 4 new tires, light
use, excellent machine



NEW IN STOCK

Valmetal model 5600 Agri
chopper, hydraulic chute,
rotation, 1,000 RPM PTO



NEW IN STOCK

Valmetal V-Mix 400 vertical
mixer, front unload with
48" folding conveyor,
rubber top, 640XL scale.

Rt. #1 Box 84 • Memphis Mo.
Phone/Fax: 660-945-3053 • Cell: 660-341-8234



Fabius Creek Angus
THANK YOU BEEF PRODUCERS!

Dean and Nancy Houglund 29244 Ice Avenue • Bloomfield, IA

BEEF FACT: The Fourth of July is the most popular holiday for barbecuing.

Phone: 641-929-3208

Dean Cell: 641-208-9626

Nancy Cell: 641-208-0434

ALL THINGS BASEMEN-
TY! Basement Systems Inc.
Call us for all of your base-
ment needs! Waterproof-
ing, Finishing, Structural
Repairs, Humidity and
Mold Control. FREE ES-
TIMATES! Call 1-800-640-
8195 (MCN)

MEMORIAL DAY

To the brave men & women who have sacrificed to protect the security & integrity of our great nation, we give our deepest respect & undying gratitude.

GONE BUT NEVER FORGOTTEN.

Walker Motors
COLLISION REPAIR, INC.

660-465-2159
Shop phone/fax

575 South Main St. Memphis, MO 63555



God Bless
Our Military
& Their Families



MFA Agri Services

Memphis, MO
660-465-2603
660-341-1422

Neebz

641-664-3239
Bloomfield, IA

Slayton
Polaris

8 mi. S & W from Pulaski or 6 mi. W of
Memphis then 13 mi. N. on Route B
660-328-6627

**Hamilton
Produce
Co. Inc.**

105 W. Franklin
Bloomfield, IA
641-664-2459

**1st IOWA
STATE
BANK**



110 N. Washington
Bloomfield, IA
641-664-1362

**Crop
Services**



Drakesville, IA
641-722-3293

**Memphis
Auto &
Truck Parts**

300 S. Market
Memphis, MO
660-465-2470

**Lynch Law
Office &
Abstracting**

207 S. Washington
Bloomfield, IA
641-664-3188

**Crop
Production
Services**



906 Karr Ave.
Bloomfield, IA
641-664-1045

**Chuck's
Body Shop
& Garage**

Hwy 63
Queen City, MO
660-766-2312

**Bradley
Insurance
Agency**

226 S. Market
Memphis, MO
660-465-2764

**Sidwell
Seeds**



Queen City, MO
660-766-2737

**Memphis
Lumber
Company**

Memphis, MO
660-465-8595

**Payne
Funeral
Chapel**

202 E. Madison St
Memphis, MO
660-465-7135

**Beeler
Motor Co.**

Hwy. 136 E.
Lancaster, MO
660-457-3718

**Tri-County
SHOPPER**

208 Weaver Rd.
Bloomfield, IA
641-664-1333

**citizens
mutual**

www.mycmtech.com
114 W. Jefferson
Bloomfield, IA
641-664-2074



22458 Hwy. 2
Bloomfield, IA
641-664-1801

Agri Services

Lancaster, MO
660-457-3728
Kirksville, MO
660-665-4695

**Tallman
Auto Parts**

Lancaster, MO
660-457-2191

AutoPlus.

**Harris
Distributing**



West Grove, IA
641-929-3379
1-800-727-5589

*Kollision
Korner*

Bloomfield, IA
PH: 641-664-2648
Fax: 641-664-2948



Queen City, MO
660-766-2505

**Johns Seed
& Supply
Greenhouse**

Queen City, MO
660-766-2711

**B&B Propane &
Jet Gas/
Bentler Oil**

Pulaski, IA
641-675-3354

**Tri-County
Electric Coop.**

16875 US Hwy 63
Lancaster, MO
888-457-3734

**Wagler
Funeral Home**

304 W. Jefferson
Bloomfield, IA
641-664-3421

**AMERICAN FAMILY
INSURANCE**

Craig Heemsbergen
409 Church St.
Ottumwa, IA
641-683-1891

**Spilman
Auto Parts**

20311 Old Hwy 2
Bloomfield, IA
641-664-2463

**City Of
Bloomfield**

111 W. Franklin
Bloomfield, IA
641-664-2260

**Edward M
Norman,
DDS, PC**

Lancaster, MO
660-457-3235



Get Value, Service & Selection that stand out from the herd.

Thank You Cattle Farmers! We Support You

Ask About Our
Custom Application of
Fertilizer & Chemicals

**Crop
Production
Services**



WE CAN DO:

- Soil testing
- Liquid Nitrogen
- Small Seeds
- Dry & Liquid Fertilizer
- Spreading
- Lots More!

641-652-3535 Eldon, IA 319-293-3710 Keosauqua, IA 660-328-6211 Memphis, MO

641-724-3355 Moravia, IA 660-766-2325 Queen City, MO

906 Karr Street • Bloomfield, IA • 1-888-664-1045

BEEF FACT: Cattle numbers outnumber the human population in 9 states.

YODER INDIAN CREEK FURNITURE maintenance free outdoor poly wood furniture. Large selection in stock of rockers, gliders, patio sets & pub sets. Available in 24 color combinations. Also available pergolas & gazebos. 22769 Rt. V64 Milton, Iowa. Located 4 miles North of Cantril or 3/4 miles South of Lebanon on RT. V64, Monday to Saturday 8 a.m. to 5 p.m. No Sunday sales. PH. 319-538-7332

FOR SALE: 24T JD square hay baler, \$1,250. PH. 641-777-9831. 23

Livestock Hauling



Within 100 miles of
Memphis, Mo.

DOT

Inspected & Insured
Philip Zimmerman

660-216-3079

FOR SALE: Bernese Mountain puppies, have had shots and wormed, black rust & white. PH: 641-664-2570 21

WANTED: Used grain bin panels, preferably the continuously corrugated. Roman Gingerich, 13418 Hill Blvd., Drakesville, IA PH: 641-722-3269. 22



Harvest More From Your Operation!

Let us help you with all your seed, feed & fertilizer needs.

We have all you need to keep your business thriving.

CROP SERVICES, INC

John & Kathy Bos, Owners

Drakesville, IA

641-722-3293



CUSTOM CHOPPING:

Spring & Fall! Front & rear unload wagons, bagger. Ray Boas

PH: 641-208-6177 20

FOR SALE: 290 JD 2 row corn planter, new tires, \$350; 4 bar New Idea hay rake, \$350.

PH. 319-750-1968. 22

**KEEP 'EM COOL
KEEP 'EM GRAZING**

NexGen Ag Solutions LLC

For more information, contact:
NexGen Ag Solutions, LLC
603 S. West, Bloomfield, IA 52537
641-664-2676 or 641-208-6890

VITAFERM PERFORMANCE THAT PAYS

**All in stock
Lawn Sweeps
& Trailers.**

**MEMORIAL DAY
30% OFF
SALE**

Curtis Yard & Garden

641-664-2784
502 E. Franklin • Bloomfield, IA

**CLOSED
Memorial Day
Mon., May 29th**

HOUSE FOR SALE IN CANTRIL, IA: Priced to sell. 6 lots & carport. Price negotiable. PH. 417-531-0629. 22

FOR SALE: Poulan riding lawn mower. Has a 42" cut, 17.5 hp Briggs & Stratton engine. Serviced very year. Garage kept. Have all service manuals. \$750 firm. Ask for Charlie. PH. 641-208-1099 or 641-208-2270.

PONY STALLION SERVICE: 47" registered Palomino pony. \$75.00 service fee. **Freeman Schwartz**, Bloomfield, Ia. VM: 641-722-3066 21

FOR SALE: 8' flatbed steel truck bed frame with goose neck hitch built in, black, \$400 OBO; Side by side refrigerator, stainless steel front, black sides, 36" wide, about 8 years old, \$250. PH: 641-208-6453. 23

Yoder GLASS & WINDOW
641. 722. 3667

VINYL WINDOWS

- Replacement
- New Construction
- Many Glass & Color Options

Free Estimates

We will be closed Ascension Day Thursday, May 25th

19467 Driftwood Blvd.
Bloomfield, IA 52537
Call Today: 641. 722. 3667

“What did the mama cow say to the baby cow?”



**“It’s
pasture bedtime”**

Raising cattle & farming is a family affair. We support the hard working men, women & children who are dedicated to making the beef industry better by producing only the highest quality beef. Thank You for a job well done!



Sidwell Seeds 660-766-2737
Queen City, Missouri

BEEF FACT: There were 3.95 million cattle in Iowa as of January 1, 2015.

KENT CALF CREEP

..... with **BoVantage** technology

Troy Elevator & Kent Feed salute area beef producers!

PNP® Creep Supreme™ 60B
HP Calf Creep 60B
Calf Creep 60B

TROY ELEVATOR, INC.
Bloomfield Location.....641-664-1393
Blakesburg Location.....641-938-2828
Troy Location.....641-675-3375

www.kentfeeds.com • 1-866-647-1212

PUBLIC AUCTION

HAVING SOLD MY HOME AND MOVING, WILL SELL 60-YEAR ACCUMULATION OF PERSONAL PROPERTY AT 800 SOUTH MAIN STREET IN GLENWOOD, MO STARTING AT 10:00 A.M. ON

SATURDAY, JUNE 3, 2017

HOUSEHOLD: SINGER SEWING MACHINE; ELECTRIC LIFT CHAIR; BOOKCASE; RCA TV; GLASSTOP COFFEE TABLE; OAK END TABLE W/GLASS TOP; SOFA; PLANTER BENCH; MICROWAVE CART; SMALL STORAGE CABINET; (2) 4-DRAWER FILE CABINETS; FOLDING TABLES; FRUIT JARS (PINTS, QUARTS, HALF GALLONS); GRANITE CANNERS & ROASTERS; INFRARED HEATER; HUMIDIFIER; WHIRLPOOL REFRIGERATOR; HORSESHOES GAME.

COLLECTIBLES: McCOY POTTERY; HULL POTTERY; NODDERS SALT & PEPPER SHAKERS; INDIANA GLASSWARE; LOTS OF CRYSTAL GLASSWARE; MICKEY/MINNIE MOUSE TURNABOUT COOKIE JAR; OTHER COOKIE JARS; SALT & PEPPER SHAKERS; COLLECTIBLE FRUIT JARS (GREEN & CLEAR W/ BAILS); ELVIS PRESLEY DOLL; ELVIS PRESLEY PLATES; ANTIQUE BARBED WIRE; PORCELIN DOOR KNOBS; MORE ITEMS IN STORAGE.

TOOLS: EXCEL 60 GAL UPRIGHT AIR COMPRESSOR; SNAP-ON TOOL BOX; CRAFTSMAN TOOL BOX; 3/8" CRAFTSMAN RATCHET & SOCKETS; CRAFTSMAN WRENCHES; SNAP-ON WRENCHES; MANY MISC BRAND WRENCHES; SCREWDRIVERS; PUNCHES; CHISELS; TIN SNIPS; FLARING TOOL SET; 2-TON FLOOR JACK; PIPE CUTTER; PIPE WRENCHES; STEP LADDERS; POWERCRAFT 180 WELDER; CAR RAMPS; HUSKEE SPOT SPRAYER; VICE; CREEPERS; SHOVELS; RAKES; ALUMINUM EXTENSION LADDER; HAMMERS; LEVELS; CONCRETE TOOLS; PAINT TRAYS & ROLLERS; BELT SANDER; CIRCULAR SAWS; MITER BOXES; CARPENTRY TOOLS; CORN KNIFE; HAY HOOKS; OIL SPOUTS; MISC NEW AUTO PARTS; BOLT BIN; SMALL PARTS CABINETS; MUCH MORE.

LAWN & GARDEN: DIXON ZTR 4421 MOWER; HUSKEE LAWN SWEEP; (2) GARDEN PLANTERS; LAWN CART; PUSH CULTIVATOR; PULL TYPE FERTILIZER SPREADER; TILE SPADE; LAWN RAKES; CRAFTSMAN GAS SNOW BLOWER (ELECTRIC START); GAS CANS; POST AUGER; POST JOBBERS; AXE; SLEDGE HAMMER; HOSE REELS; CRADLE SYTHE; PITCH FORKS; TATER FORK; SLED; AND MORE.

MISCELLANEOUS: LUMBER; ONE SHEET 1/2" PLYWOOD; 55 GAL METAL BARREL; GALVENIZED TUB; TIRES; WHEELS; OTHER ITEMS.

VEHICLES & RELATED: 1999 F-150 XL PICKUP (NOT RUNNING – COMPUTER PROBLEM); HARD PICKUP BOX COVER; PICKUP TOPPER TO FIT 1999 F-150; 3/4 TON FORD PICKUP FOR PARTS.

AUCTIONEERS NOTE: THIS IS A PARTIAL LISTING. MANY BUILDINGS AND BOXES HAVE NOT BEEN LOOKED THROUGH SO COME TO SEE WHAT WE FIND! POSSIBILITY OF TWO AUCTION RINGS.

LIKE US ON FACEBOOK (BEELER AUCTION SERVICE) AND CHECK OUT ADDITIONAL PHOTOS OF AUCTION ITEMS

ANNOUNCEMENTS MADE DAY OF SALE TAKE PRECEDENCE OVER ANY ADVERTISEMENTS
PROPER I.D. FOR REGISTRATION
NOT RESPONSIBLE FOR ACCIDENTS

TERMS: CASH OR CHECK

PERSONAL PROPERTY OF

NORA LOU TONEY

BEELER AUCTION, LLC
LANCASTER, MO 63548
(660) 457-2120 – HOME
(660) 216-9498 – MOBILE

BILLY BEELER, AUCTIONEER

RANDY WHITLOW, RINGMAN
CHARLES WHEELER, CLERK

WANTED: Bale elevator on wheels.

PH. 641-652-7707. 22

The Davis County Sheriff's Office is accepting application for a full time civil jailer position.

Must be at least 18 years of age with a High School diploma or equivalent and successfully pass a background investigation. Applicant will be required to work a variety of shifts, weekends and holidays. Must be: Proficient with computers; able to learn quickly and work under stressful conditions; capable of multi-tasking and working with the inmates. Upon conditional offer of employment a physical and drug screen will be required. Some training off-site and employee will be responsible for their own transportation. Applications can be obtained at:

Davis County Sheriff's Office
102 Anderson St., Bloomfield,
641-664-2385

Applications will be accepted until June 2, 2017 at 12 noon

Equal Opportunity Employer - It is the policy of Davis County to provide equal opportunity in employment to all persons. An individual shall not be denied equal access to employment opportunities because of race, creed, color, religion, national origin, sex, age or physical or mental disabilities.

NOTICE!

Our deadline for the May 31st edition of the Tri-County Shopper will be *Friday, May 26th at 10 AM.*

Our office will be closed *Monday, May 29th.*

Tri-County SHOPPER
641-664-1333
P.O. Box 168
Bloomfield, IA

LAND FOR SALE IN DAVIS COUNTY: Close to town on hard surface roads with utilities. Call for more information.
641-895-2535 22

FOR SALE: 65 registered Angus yearling bulls. Excellent quality. Guaranteed breeders. **Werner Family Angus,** Diagonal, IA. www.WernerFamilyAngus.com
641-344-5059. 22

AUCTION - SEIZED ITEMS

SATURDAY, JUNE 3, 2017 10:00 AM

SALE TO BE CONDUCTED AT THE

BRIDGE VIEW CENTER

102 CHURCH STREET, OTTUMWA, IOWA

The following items have been seized by the Southeast Iowa Inter-Agency Drug Task Force

VEHICLES: 2013 Toyota Tacoma, ext. cab, auto, PW, PL; 2004 Nissan Titan PU, 4D, auto, custom wheels & tires; 2008 Dodge Avenger, 4D, auto; 2003 Cadillac CTS, full power; 1990 Acura Integra, 2D, right-hand drive; 2000 Chev. Blazer, 2D, auto, custom wheels; 1997 Ford Expedition, 4x4, V8, auto, custom wheels & sound system; 2003 Pont. Sunfire; Ford ZX2 Escort; 1999 Dodge Ram 1/2T. quad-cab, V8, auto; 1992 Pont. Firebird; 2003 Ford F150 PU;

MOTORCYCLE & BOAT: 2004 Harley Davidson XL1200 motorcycle, 18,250 miles; 1991 VIP 18' boat w/trailer; John Deere L118 Limited Edition riding lawn mower; 2011 RAF Co. trailer w/winch; Huskee log splitter.

TOOLS & MISC: Lincoln 250 wire-matic welder; Lincoln elec. 100 weld pack; Generac 3,250-watt propane generator; Karcher high-pressure washer; Edelbrock intake manifold; Troy-bilt tiller; Cutting torch w/hoses, tanks & gauges; Stihl chains saws & weed eaters; WEN 5,500-watt generator; Remington port. propane heater; Upright Campbell Hausfield air compressor; Bench grinder; Several floor jacks; Mechanic's toolbox; Large asst. of power tools, both battery and electric, incl. Dewalt 18 & 20-volt, Milwaukee drills, grinders, saws, nail guns, Sawz-alls, routers, jigsaws; Black & Decker 7-1/2" bandsaw; Air tools; Port. air compressor; Bench-mount drill press; Battery chargers; Port-a-power; ATV ramp; Other brand name hand tools & socket sets.

AUDIO, STEREO & MISC: Large asst. of car stereo equipment incl. amplifiers; Pro Audio stereo home system; Several flat-screen TV's; Blu-ray players; Numerous DVD's; Jazzman guitar; Large telescope; (4) Bar stools; Elec. fireplace insert; Set – golf clubs; Fishing equipment; Several bicycles; Several scale model toy cars, NIB.

AUCTIONEER'S NOTE: Be sure & attend this outstanding sale. All items have been seized by the Southeast Iowa Inter-Agency Drug Task Force and will sell to the highest bidder. This is always an interesting auction, with outstanding items. Go to our website – www.almartinauction.net – for pictures.

TERMS: CASH/GOOD CHECK
POSITIVE ID REQUIRED

MASTERCARD/VISA
DEBIT/CREDIT CARDS

All property must be settled for before removal – All items sold as is where is – Not responsible in case of accidents. Announcements made day of sale take precedence over any advertising.

SOUTHEAST IOWA INTER-AGENCY DRUG TASK FORCE, OWNER

JIM KOSMAN, ROGER CLINGAN, & TODD CARROLL – AUCTIONEERS

AL MARTIN REAL ESTATE & AUCTION CO., INC.
307 Church St., Ottumwa, IA 52501 • 641-682-5465 • www.almartinauction.net

Garages • Pole Barns
Commercial

Free
Estimates

**LAN-DOW
BUILDINGS**

We Stock a
Complete Line
of Building
Materials

**Lancaster
Lumber, Inc.**

Complete
Buildings or
Packages
Available

Toll Free 800-424-5071 Fax 660-457-3133

Hardware • Plumbing • Electrical • Paint
500 Green Street • Lancaster, MO 63548

FOR RENT: 1 bedroom apt., \$285/month plus deposit. Utilities furnished. Call Glenwood MO. Housing PH: 660-457-3336.

FOR SALE: 8 ton wagon gear, good tires, \$275 OBO: 16 ft. sq. bale elevator, new, never used. PH. 641-652-7707. 22

Fox Valley Welding

No matter what size the project customer satisfaction is always our first priority.

Tig & Aluminum • Welding • Milwork • Lathe • New Steel • Sprockets • Roller Chain Barings • PTO Parts • Fabricating • CNC Machining • CNC Cutting

Hours: M-F 8-5:30 • 641-656-4684 • 12190 East Hwy. 2 • Milton, IA

Changing farm operation to strictly cattle.

Public Auction

Saturday, May 27 • 10 a.m.

10918 208th Street, Bloomfield, Iowa

15 miles east of Centerville or 15 miles west of Bloomfield. Directions: Hwy. 2 west of West Grove to Balsa Ave. north then left on 225th Street and north on Apple Ave. From Bunch, Iowa: Beachwood Ave., south to 208th Street then west. Follow auction signs.



Combine

1995 John Deere 9600, 2729 separator hours, 4089 engine hours, 150 hours on complete overhaul, rear wheel assist, hopper extension, excellent condition
John Deere 925 grain head with unverferth header cart
John Deere 643 corn head

Tractor

John Deere 4230, QR, 8000 hours on overhaul

Misc. Equipment

Brent 644 grain wagon with tarp, brakes, fenders, lights, near new
Killsboro 690 grain cart with tarp, 1000 pto
Westfield WR 80-36 truck auger, gas motor, electric start, near new
Owatonna grinder mixer, 540 pto
John Deere 5 bottom steerable plow
John Deere 336 square baler, 540 pto
John Deere 3800 2 row pull-type chopper, 1000 pto
12' Glenco Soil Saver (disc chisel)
Bush Hog 3210 mower with 540 pto
Kewanee 16' mulcher
Schuler 175 silage wagon
24' Kentfield field cultivator with sod buster
(2) International silage wagons, Model 110
(2) 300 bushel Parker grain wagons
(2) 250 bushel M&W grain wagons

40' Kewanee elevator
25' Electric elevator
16' hay rack and gears
Snapper Zero Turn lawn mower with 52" deck
4 bale hay trailer
7 wheel hayrake, left hand
Wooden hay feeders
3 pt. seeder
6' Keen Kutter finish mower
3 pt. bale spear
300 gallon fuel barrel on stand
Hand corn sheller
18.4-34 duals
Lots of used tires and wheels
Several hog panels
(2) hydraulic cylinders
Horse tack
(13) Hand Hued barn beams
Grain moisture tester
Paint brands
Truck tool box
Freeze branding number
Misc. hayrack items and other items too numerous to mention.

Guns

Savage Over & Under 4-10, 22 rifle
22 Rifle

Auctioneers comment: The above equipment has always been shedded and very well maintained.

For more information or for pictures of equipment contact:

Josh Williams, 641-208-5414. Lunch served by Krazy K Kookin'.

Ira & Kathy Hartwick, Owners

Ira Hartwick 641-642-3379 Home or 641-680-6979 Cell. 10918 208th Street, Bloomfield, Iowa 52537

Terms: Cash or good check.
\$35.00 returned check fee. Not responsible in case of accident
The information in this sale brochure was obtained from the best reliable sources available to us. However, the Auctioneers or their employees will not be held liable should the above information be incorrect. Any announcement made day of sale will take precedence over any previous advertising.

SALE CONDUCTED BY

Don Horn Auctioneering Service

209 East Jefferson, Bloomfield, IA
Phone: 641-664-1385 • 641-722-3796 -Home
• 641-208-0254 -Cell

"We don't talk service, we give it."

Auctioneers:

Don Horn • Jerry Bish

Rodney Lawson • Josh Williams • Trevor Nightingale

FOR SALE: Honda EU 2000 generator.
PH: 641-664-2831 22

WANTED: Bee Swarms.
PH: 641-208-6365 or 641-680-3350 22

YODER'S INDIAN CREEK FURNITURE investing your tax return money in quality furniture. Will become heirloom treasures for future generations. Offering a large selection of dining room, living room, bedroom, office & children's furniture. Unique handmade clocks, rustic log furniture. Also offering quality pre-finished hardwood flooring. Located 4 miles North of Cantril on RT. V64, 22769 Rt. V64 Milton, Iowa. PH. 319-538-7332 TF

HOOVER RENTAL

Manlifts • Telehandlers • Minihoes
Skidloaders & Skidloader Attachments

RENT BY

Hour • Day • Week • Month • Long Term

DOZER NOW AVAILABLE FOR RENT

Call us for your construction needs!

660-216-8230

Mt. Sterling, Iowa

2 miles East of Cantril on Hwy 2



Directions: From Memphis MO take Hwy 15 south 7 miles to site or from Edina MO take Hwy 15 north 17 miles to site. Watch for signs!!

SATURDAY, JUNE 3RD 2017 @ 10:00 AM

MACHINERY: IH 1086 cab tractor with dual hyd. JD 2030 gas tractor with dual hyd. and 3 pt. Great Plains drill no till 15ft 8in spacing 2 bar harrow (3466 acres, bought new in 2006)

GRAIN BINS

14ft diameter x 4 rings

14ft diameter x 3 rings

14ft diameter x 3 rings

(older with wooden floor)

FARM AND SHOP: Lincoln Weldan power portable

gen/welder with Kohler engine Lincoln 225 welder air

compressor wheel barrows ATV ramps shelves 5 pack of

new shingles

many

Chevy S10 1997 72,000 miles

unlisted items

4x4 LS ext. cab step side v6

Zooka baseball pitching machine with tripod

IRON: I beams: 30ft x 20in, 26ft x 24in,

22ft x 20in and 13ft x 20in various other

heavy iron and lots of scrap iron

DAVID & LANA MCROBERT
RR 3 BOX 265
MEMPHIS MO 63555

FOX AUCTION LLC lots more items online at
www.foxauctionservice.com

• JR. (ALLEN) FOX: 660-341-1453 KENNY FOX: 660-216-0700 •

FOR SALE: Cornish cross chicks, days old \$1.35. I can feed them out longer for an extra cost. Can also order different breeds of chicks. PH. 641-664-2843 Ext. 4, 15379 180th, Drakesville.

FOR SALE: High wheel push lawn mower, 4 hp, 22" cut. \$65.00 firm. Ask for Charlie. PH. 641-208-1099 or 641-208-2270. 22

LOOKING FOR YARDS TO MOW! In Bloomfield, IA or Lancaster, MO. Please call for more information. PH: 641-799-4770 TFN

MAST VINYL WINDOWS
THERMO-PRO WINDOWS
Custom Size Is Our Specialty
Professional Installation Available
THERMA TRU DOORS
FREE ESTIMATES
22172 Hwy. 63
Bloomfield, IA 52537
800-206-9949

FOR SALE: 1993 Chevy 1500, 4WD, 350 hp, 350 CI auto., runs good, \$2,500. PH. 641-242-0250. 22

FOR SALE: Pram machine (blast cabinet) newly refurbished has reclaim cyclone & pressure pot, \$3,500. PH. 641-242-0250. 22



We can take away the stress and get you results!

Auto Body Shop
Auto Glass
Automotive Restoration
Hand Detailing Service

KARR COLLISION CENTER
& AUTO DETAILING
Shawn Scott, Owner
701 Karr Ave. • Bloomfield, IA
641-664-1024

BERHOLTZER TRAILER REPAIR

Specializing in Aluminum Hopper Trailers
Repair & Rebuild

3 miles east of Gorin, Mo. on Route U

We install tarps & power tarps

660-341-6027

FOR SALE: JD MT with 2 bottom plow, \$3,500, runs good. PH. 641-242-0250. 22
FOR SALE: JD 945 Moco, above average condition, \$10,250 OBO. PH: 641-208-5522 21

THE HawkEye COUNTRY ANGUS SALE
Sunday 1:01 PM
JUNE 4, 2017
Bloomfield Livestock Market
Bloomfield, IA

One of Iowa's Largest Angus Sales!

SELLING 140 HEAD

2 Elite Herd Sires • 9 Two-Year-Old Bulls • 1 Fall Bull
41 Yearling Bulls • 25 Spring Pairs • 32 Yearling & Fall Heifers
Several Embryo Lots

Featured & Service Sires

JMB Traction 292, VAR Discovery 2240, Hoover Homestead, Baldrige Colonel C251, RB Tour of Duty 177, Baldrige Bronc, Panther Cr Incredible 6704, Werner War Party 2417, SAV Ten Speed 3022, 3F Epic 4631, TR MR Aberdeen 1068Y, SAV Resource 1441, SAV Bismarck 5682, Barstow Cash, Connealy Comrade 1385, PVF Insight 0129, SAV Conversation, KR Status 4267, and many more leading sires!

This sale will be broadcast live on the internet.
DVAuction
Broadcasting Real-Time Auctions
Real time bidding & proxy bidding available.

Auctioneer:
Al Conover
515-491-8078

Sale Managed By:
Conover Auction Service
AL & JEANNE CONOVER
641-227-3537 • 641-227-3792 (FAX)
DAVE SWEENEY • 641-373-4340
www.conoverauction.com
conover@conoverauction.com

KEOSAUQUA SALE CO.

20511 Hwy. 1, Keosauqua, IA

Results from May 20th
 Butchers \$42.00-47.00/cwt
 Sows \$41.00-55.50/cwt
 Lambs under 80#
 \$205.00-220.00/cwt

Lambs over 110#
 \$175.00-184.00/cwt
 Ewes \$59.00-78.00/cwt
 Kid goats 40-70#
 \$80.00-160.00/hd
 Cull nannies \$90.00-165.00/hd

Pound cows low yielding \$61.00-66.00/cwt
 High yielding \$69.50-87.00/cwt

Pound bulls \$87.50-103.00/cwt

REGULAR SALE - SAT., MAY 27TH



*Have a fun
& safe Memorial
Day Holiday*

Thank You For Your Business!

For More
Information Contact:

Selling Times

Hogs 9:30 a.m.
 Sheep & Goats 10:00 a.m.
 Outside Merch. 11:00 a.m.
 Cattle Noon

Keosauqua Sale Co.
 319-293-3508
 Bill Goehring
 641-919-9365

BLOOMFIELD MINI STORAGE. Serving you from 2 safe, convenient locations.
 PH. 641-664-1066. TF

FOR SALE: 2012 Yamaha golf cart, gas, fuel injected. Same as new.
 PH. 641-208-5374. 23

Scotland County LIVESTOCK AUCTION

P.O. Box 111 • Hwy 15 North • Memphis, MO
660-465-7213 • Jerry & Barb Blomme
660-341-0069 • Grant Blomme

NO SALE

Sat., May 27th

Have A Safe Memorial Day Weekend!

CATTLE SALE

Sat., June 3rd @ 12:30 a.m.

DAIRY SALE

Wed., June 7th @ 10:30 a.m.

Market Report for Sat., May 20th:

3 yr old Pairs: \$2,200. 5 to 6 year old. **Paris:** \$1,810. **SS Pairs:** \$1,650. **BM Pairs:** \$1,410. **Fall Calving Heifers:** \$1,875. **Strs & Hfrs:** Light Test. **LB Cows:** \$62 to \$74. **Holstein Veals** \$165.00 to \$195.00. **Beef Veals Up To** \$425

www.ScotlandCountyLivestock.com

FRIESEN CONSTRUCTION

**New Houses
Remodeling
Garages Electrical
Plumbing
Custom Cabinets**

**Arlen 664-3270
Cell 641-208-0170
Bloomfield, Iowa**

LARGE SEVERAL FAMILY GARAGE SALE: Held at Glenwood, MO. School House, Hwy 202 & State Route M. May 25th 8-5, May 26th 8-5, & May 27th 8-4. Several pieces of Winchester including 1920 calendar, carving set & others, slot machine, old magazines, books, sterling Indian spoons, oak table, advertising tins, oyster cans, old trunk, granite cookie jars, blasting cap tins, trunk, furby baby, snowshoes, quilts, deer rack, glass & dishes. Snapper snow blower, Rigid drain cleaner, plants including; cone flowers, phlox, yarrow, bachelor buttons, rose of sharon trees & cranberry bushes. Call for more information.
 PH: 660-457-3947 or 660-341-2265

Yearling Angus & Charolais Bulls

2 yr. Old Angus Bulls

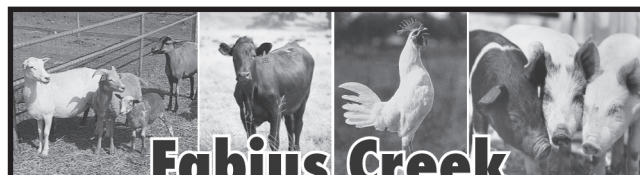
Trojan Hill Farms



Phil Archer
 641-675-3769 - Home
 641-680-6769 - Cell



LIVING WITH KNEE OR BACK PAIN? Medicare recipients may qualify to receive a pain relieving brace at little or no cost. Call now! 844-668-4578 (MCN)



Fabius Creek Livestock Solutions LLC.

Open by Appointments
 Evenings & Weekends

12718 275th Street • Bloomfield, IA 52537



ADM Alliance Nutrition®

641-895-0128

TARTER

SYDENSTRICKER

Your Preowned Equipment Destination
JOHN DEERE



15 John Deere 6145R
 268 hrs. #56452
 Kirksville. **\$119,500**



15 John Deere 6155R
 112 hrs. #56440
 Chillicothe. **\$139,500**



13 John Deere 6140M
 464 hrs. #51236
 Kirksville. **\$93,500**



14 John Deere 6115M
 354 hrs. #55232
 Palmyra. **\$74,500**



14 John Deere 6125R
 534 hrs. #54708.
 Chillicothe. **\$92,500**



14 John Deere 6140M
 453 hrs. #55238
 Macon. **\$86,500**



15 John Deere 6140R
 423 hrs. #55242
 Chillicothe. **\$109,500**



15 John Deere 6140R
 501 hrs. #55243.
 Kirksville. **\$104,500**



16 John Deere 6145R
 313 hrs. #58982
 Macon. **\$119,995**



16 John Deere 6145R
 305 hrs. #58984
 Macon. **\$119,995**



15 John Deere 6155M
 420 hrs. #58946
 Palmyra. **\$128,500**



14 John Deere 6125R
 528 hrs. #55235
 Kirksville. **\$94,500**

Visit us online at www.sydenstrickers.com

Paying too much for car insurance? Not sure? Want better coverage? Call now for a free quote and learn more today! 855-417-7382 (MCN)

FOR SALE: JD 214T square baler; NH 350 grinder mixer; Kewanee disc, 14 ft with harrow attachment, \$750 each OBO.
 PH. 319-540-4601. 22

Robert and Barbara Hamberg

Estate Tag Sale –

Friday May 26th 9 a.m. – 4 p.m.,

Saturday May 27th 9 a.m.- 3 p.m.

At 20002 205th Street, Keosauqua, Iowa: Directions: From Hwy 1 turn east at 205th – go past Keosauqua Lumber to end of road – road curves at the river.

HOUSEHOLD: Blond Bedroom Set – Dark Pine Dresser, Hutch & Chest of Drawers, Queen Bed, Couch, 2 Lift Chairs, Lamps, End Tables, TV Stand, Pictures, Knick Knacks, China Hutch, Table & 4 Chairs, Small Kitchen Appliances, Glassware, Pots and Pans, Microwave & Stand, Christmas Decorations and Village Set.

ANTIQUES: Pitcher & Bowl Set & Stand, Quilt Rack, Oil Lamps, Glassware, 2 Man Hydraulic Chain Saw, Board Games

VEHICLE: 2004 GMC Envoy – Loaded 89,000 miles

John Deer LX188 Tractor Mower

FARM EQUIPMENT: Allis Chalmers 7020 Tractor with Loader, Case IH 95 Tractor with Loader, Plow, Harrow Cart, Portable 42' Elevator, Unferth Wrapper, A.C. Corn Planter, JD Mowers & Conditioners, Hand & Power Tools, Post Hole Digger. Lots of misc.

FOR SALE: Cherry picker, 2 ton, only used once, \$175; Air compressor, 11 gal., 1.2 hp, brand new, \$150.
 PH. 641-208-0555. 23

MOTORCYCLES: TOP CASH PAID! For Old Motorcycles! 1900-1979. DEAD OR ALIVE! 920-371-0494 (MCN)



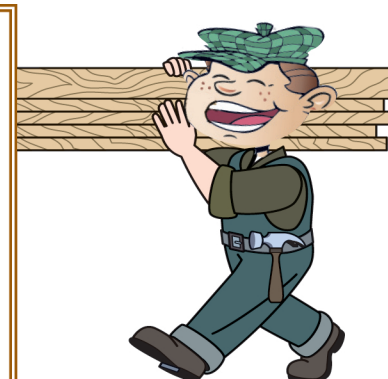
COME SEE US FOR ALL YOUR BUILDING NEEDS!

We do FREE estimates on any size building project!

• We will be closed Thursday, May 25th for Ascension Day. •

Cantril Lumber & Hardware

319-397-2351 or 319-397-2354 • Mon-Fri 7-5 & Sat 7-12



BLOOMFIELD LIVESTOCK MARKET

Wed., May 31st.....Fat Cattle, Slaughter Cows & Bulls..... 9AM
 Wed., June 7thFat Cattle, Slaughter Cows & Bulls..... 9AM
Special Feeder 11:30AM
 Wed., June 14thFat Cattle, Slaughter Cows & Bulls..... 9AM

**SALE BARN OPEN UNTIL 9:00 PM
 EVERY TUESDAY TO RECEIVE LIVESTOCK**

Phil Schooley 641-664-3450
 Ron Schooley 641-777-0302
 Roman Schooley 515-450-3685

We appreciate your business!

Tyler Schooley 641-208-5442
 Barn Phone 641-664-2435

HWY. 63 NORTH • BLOOMFIELD, IA

**American Legion
 Post #78**

MEMORIAL DAY CEREMONY

**Monday, May 29th
 11:00 A.M.**

**100F Cemetery
 Bloomfield, IA**

**In case of inclement weather the
 ceremony will be held in
 the Legion Hall**

100F AVENUE OF FLAGS

**Up Saturday, May 27 at 7 A.M.,
 Down Monday, May 29 at 3 P.M.**

ALL VOLUNTEERS APPRECIATED

**FOR SALE: NON-GMO
 shelled corn. Delivery
 available.**

**PH. 660-341-8079 or 660-
 216-9653. 21**

**FOR SALE: JD 350 9 ft. bar
 sickle mower, 3 pt. hitch,
 \$1,100; Palomino 8 ft. crank
 up pickup camper, \$2,700.**

PH. 641-919-4315. 22

**MILTON LIONS CLUB
 MEMORIAL DAY
 DINNER.** Milton Legion
 Hall, 11:30 am until 1:00 pm,
 Roast pork meal. Adults-
 \$8.00, 6-12yrs-\$4.00, 5yrs &
 under- Free.

JOE'S BARBER SHOP
 Hours: Thursday & Friday
 8:00-5:00 & Saturday 8:00-
 Noon. 210 E. Franklin St.,
 Bloomfield, IA.
 PH: 641-664-2020, 641-208-
 5561 TF



**LET US HELP IN
 YOUR HAY
 FIELD THIS
 YEAR!**

SERVICES AVAILABLE:

- Mow & Condition • Tedding & Raking
- Round Bale w/ John Deere 569 Baler
- Tubeline Wrap High-Moisture Hay
- Hauling & loading available if necessary

**We can do one or all,
 call to get on the schedule!**

CALL OR TEXT JEFF AT 641-208-2235

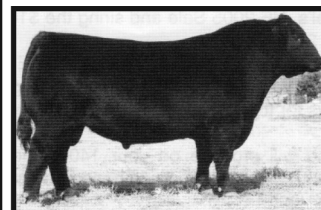
CUSTOM HAY WORK:
 Mow, rake & baling with 946
 conditioner & 568 JD baler
 with overedge net wrap.
 Double rake.

**Ron Campbell
 PH. 641-777-6187. 22**

**FOR SALE: E-Z Go golf
 cart. Has a new battery and
 a new carbuator. No tears on
 seats. Gas/oil mix. \$1,000
 firm. Ask for Charlie.**

**PH. 641-208-1099 or 641-208-
 2270. 22**

ANGUS BULLS YEARLINGS & 2 YR. OLDS



Sired by Musgrave Reachout 530

- ★ CALVING EASE
- ★ GROWTH
- ★ THICK
- ★ GENTLE DISPOSITIONS

SELECT YOUR BULL NOW

**DORAN BOLLMAN
 PULASKI, IOWA
 641-675-3467**



**Bring your
 plans in for a
 FREE
 ESTIMATE**



**Trusses
 Engineered
 and Designed
 to Your Specs**

**Imagine a Lifetime of Beauty
 with the strength of steel.**

**As the original stone coated steel roofing system, the
 DECRA product line represents a perfect blending of
 over 50 years of research and practical experience.
 Offering the ultimate in performance and engineering
 design is what DECRA roofing systems are all about.**

SHINGLE XD DECRA SHAKER XD
 Stone Coated Steel Roofing Systems



**17893 212th Street • Bloomfield, IA 52537
 641-722-3605 • Mon.-Fri. 7 AM to 5 PM**

**We will be closed
 Thursday, May 25th for Ascension Day**

**CLOSED
 MEMORIAL DAY**

**We will be closed
 Memorial Day
 Monday, May 29th**

**We will re-open
 Tuesday, May 30th**

HyVee
 PHARMACY

**301 W. Jefferson St.
 Bloomfield, IA
 641-664-2975**