

FOR SALE or RENT
Contracts Considered.



MOVE IN READY!
507 W. Walnut • Bloomfield, IA
641-799-4770

Tri-County SHOPPER



STANDARD MAIL
U.S. POSTAGE
PAID
TRI-COUNTY SHOPPER, INC.
POST OFFICE BOXHOLDER
LOCAL RURAL BOXHOLDER
OCCUPANT
**CIRCULATION OVER 11,750
THIRD CLASS**

P.O. Box 168 • Bloomfield, IA 52537 • www.tri-countyshopper.com
Phone 641-664-1333 • Fax 641-664-3761 • Email shopper@netins.net



Vol. 45, No. 22
Wednesday, May 31, 2017



We have everything for your roofing needs!

Call us for **FREE** estimate today!



Metal Roofing

Asphalt Shingles

Decra - Stone Coated Steel Shingles

Cantril Lumber & Hardware

319-397-2351 or 319-397-2354
Mon-Fri 7-5 & Sat 7-12



I'm not your average cow... I am royalty!
My grandfather was a Knight.
His name was **Sir Loir!**

**We Salute Our Beef Producers!
Thank You!**

We Do It ALL!

Southeast Iowa's full service tire and automotive service! From farm implements to over the road tire failure we can assist you to get you back on the road.

BRAKES • SHOCKS • ALL FRONT END WORK

FULL-TIME MECHANIC ON HAND







108 Smith Street • Bloomfield
TOLL FREE 1-888-855-8740
641-664-1801

MFA Agri Services Memphis
Made For Agriculture • Call us today! (660) 465-2603 or (660) 341-1422

EVERYTHING FOR YOUR BALING NEEDS

Twine, Net Wrap & Much More

Do you need this on your farm?




Stocking framing nails by the box/pallets.
Call for pricing!

- Metal Roofing
- FREE estimates!
- Crews available
- Call today!

WAGLER METALS

19049 Ice Ave., Bloomfield, IA
641-722-3692



| | | | | |
|--|--|--|---|---|
| Mother's Maid apple pie filling, 20 oz. \$1.35 each | Musselmanns chocolate creme pie filling, 21 oz. \$1.35 each | Richfield Farms pancake syrup, 12 oz. \$1.20 each | Champion raisins, 6 oz. \$1.25 each | Deli Market yellow mustard, 20 oz. \$1.05 each |
| Roundy's wide egg noodles, 16 oz. \$1.05 each | RichField orchard dark sweet cherries, pitted, in heavy syrup, 15.5 oz. 90¢ each | Del Monte sweet peas, 105 oz. Reg. \$3.99 \$2.99 each | Richfield Farm sweet potatoes, 15 oz. 95¢ each | Pampa peach & grape fruit spread, 19 oz. \$1.29 each |
| Russer cooked salami, approx. 8 lb. 49¢ lb | Wunderbar bologna, approx. 6 lb. 49¢ lb | Trident tilapia burgers, 11.2 oz. \$3.00 each | Ballpark beef hot dogs, 12 oz. 89¢ each | Uncooked popcorn chicken, approx. 5 lb. \$1.09 a lb |
| Large variety of brands & sizes of cereal COME CHECK IT OUT! | DelMonte peach, apple & pear nectar, 11.2 oz. 15¢ each or \$2.99/ 24 ct. case | Snack Pack puddings, 4- 3.25 oz. cups 80¢ each | Farmland jalapeño cheddar smokies, 14 oz. 2/ \$1.00 | Organic bulk hibiscus flower tea. Use: high blood pressure, high cholesterol, colds 3 oz. \$3.72 each |

We have an organic & gluten free shelf

COME CHECK IT OUT!

19686 Hwy. 2, Bloomfield, IA
Approx. 2 miles west of Bloomfield

Mon. - Sat. • 8:30am - 5:00pm
VM: 641-664-1187

Highway 2 DISCOUNT Groceries L.L.C.

Meadowview Carrot Seed
.5 oz. \$16.98 each

Sug. Use: vision, skin, liver blood cleanser, for aromatic, dietary or topical use.



True Essential Cardamon
.5 oz. \$15.00 each

Sug. use: digestive, urinary, scalp problems & reduced bruising.



FOR SALE: Certified organic STRAWBERRIES ready now. Place your order or drop in. 1 mile West of 63 on 170th St., Steven Gingerich, 21353 170th St., Bloomfield.
VM: 641-664-2379. 23

HUGE FUNDRAISING SALE FOR UGANDA. (Raising money for orphans, schools, ministry). All proceeds go. June 1 - 5-8 pm, June 2 - 9 - 5, June 3, 9-12 noon (1/2 price day) Womens clothes M-XXL, Mens, L-XL. Great condition light brown loveseat, green plants for home, office or outside. Numerous household items including crock pot, coffee pot, misc. 611 N. Washington St., Bloomfield

FOR SALE: 2 Duroc boars, finest quality. 5th generation champion blood line. Born 2-10-17, \$225 each.
PH. 660-342-6376. 23

FOR SALE: 1998 Dodge Ram 2WD Quad cab, 138,000 miles, very clean, well maintained, \$4,700.
PH. 641-895-2966. 23

SOMETHING TO THINK ABOUT: If all us men think we're so smart. Why is it that when we do things wrong. Our wives have told us beforehand that it wasn't right?

Hawkins - Harrison Insurance

Trusted Choice

SHOPPER ADS CAN BE DROPPED OFF HERE!

Proud to be your partner.

P.O. Box 365 Lancaster, MO 63548 660-457-3020

103 W. Monroe St., Memphis, MO 63555 660-465-8533

WANTED: Bee Swarms.
PH: 641-208-6365 or 641-680-3350 22

FOR SALE: Honda EU 2000 generator.
PH: 641-664-2831 22

BLOOMFIELD MINI STORAGE. Serving you from 2 safe, convenient locations.
PH. 641-664-1066. TF

FOR SALE: 10 older stock cows due to calve in the next 2 or 3 months, good disposition, \$1,250 OBO. 5 miles south of Milton.
PH: 660-216-0548 23

Give Your Car a Makeover!



Factory Color Matching | Dent & Scratch Repair
Frame Straightening | Unibody Repair | Collision Repair

All Paint & Bodywork Service Guaranteed!
Call or stop in anytime for a free written estimate.

Insurance Specialists
Let us handle your accident claim with no hassles.

Walker Motors Collision Repair Inc.

375 S. Main St. Memphis, MO 660-465-2159 Shop Phone/Fax

Give your car a like-new look that will last beautifully with our premium paint service.

Guaranteed Paint Match

Guaranteed Craftmanship

Hertz

Rentals Available For all Occasions. Great Rates!



SAVING YOU MONEY!

on those hard to find parts!

SPILMAN AUTO PARTS

20311 Old Hwy. 2 • Bloomfield, IA
641-664-2463 • 1-800-477-1367
M-F 8AM-5PM • Sat. 8AM-12Noon
www.SpilmanAuto.com

Davis County HOSPITAL
Dedicated. Compassionate. Healthcare.

JUNE

Specialty Clinic Schedule

| | | | |
|-----------------------|---------------------|--------------|------------------|
| Dr. Ron Graeff | Allergy/Pulmonology | 641-664-3840 | M, T, W, Th |
| Dr. Jake Settles | General Surgery | 641-664-7091 | Tues & Thurs |
| Dr. Boling | OB/GYN | 641-664-7091 | 22 |
| Jay Brewer, CRNA | Pain Clinic | 641-664-3602 | 1, 8, 15, 22, 29 |
| Dr. Burchett | Ear, Nose, Throat | 641-664-7091 | 8 |
| Dr. Ciesemier | Allergy/Immunology | 641-664-7091 | 23 |
| Dr. Cleaver | Dermatology | 660-627-7546 | 22 |
| Dr. Homedan | Orthopedics | 641-664-7091 | 7, 14, 21 |
| Dr. Holte | Podiatry | 641-664-7091 | 16 |
| Dr. Jackson | Rheumatology | 641-664-7091 | 6, 13, 20, 27 |
| Dr. Malik | Cardiology | 641-682-5349 | 1, 15 |
| Linda Schilling, ARNP | Dermatology | 641-664-7091 | 12, 26 |
| Dr. Shaeffer | Urology | 641-682-5481 | Mon, Tues, Fri |
| Susan Turner, ARNP | Women's Health | 641-664-7091 | 6, 13, 20, 27 |

509 N. Madison • Bloomfield, Iowa 52537
www.DavisCountyHospital.org

FOR SALE: 12 valve, 5.9 cummins engine, running condition w/ turbo & P/ pump; \$1,200.
PH: 660-988-4194 24

FRESH STRAWBERRIES: Will take orders. First come first served. Located 1/4 mile South of Lebanon.
VM: 319-213-8636.

NEW MATTRESSES FOR SALE!
Selling individually or in sets. Factory warranty.

TWIN - FULL - QUEEN - KING

641-664-3060

MAST VINYL WINDOWS
THERMO-PRO WINDOWS
Custom Size Is Our Specialty
Professional Installation Available
THERMATRU DOORS
FREE ESTIMATES
22172 Hwy. 63
Bloomfield, IA 52537
800-206-9949

TRAILER SALE! 2017 6X12 V-nose ramp door \$2,775.00; Scissor lift trailers, Dump Trailers; Skidloader trailers, Fuel tank trailers; 4-place snowmobile trailer, Cargo's; ST205/75D15 on mod wheel \$65.00; Trailer Parts & Repairs. 515-972-4554 www.FortDodgeTrailerWorld.com (MCN)

Friesen Excavating
Specializing in Septic Systems
Certified For Peat Tanks and Sand Filters.
Can Also Do Other Drains and Water Lines
Call or Text Shawn @ 641-208-0861
Bloomfield, IA
Free Quotes Available



Poly Lawn Furniture

GREAT FATHER'S DAY GIFTS!

T-CORNER FURNITURE
HERITAGE QUALITY
BEDROOMS DINETTES CABINETS STAIRWAYS MILLWORK
VM: 641-664-0207
1 Mile East of Drakesville on Jade Ave.
Mon.-Sat. 9:00 AM - 5:00 PM

NEW 2018 (14x66) MANUFACTURED HOME, 3 Br., 2 Ba., Thermal Windows, 2x6 Walls, Range, 18' Refrigerator, Espresso Cabinets, vinyl-shingle, FACTORY DIRECT SALES, \$29,750 Delivered in Iowa 319-239-1920 (MCN)

ATTENTION: VIAGRA AND CIALIS USERS! A cheaper alternative to high drugstore prices! 50 Pill Special - \$99 FREE Shipping! 100 Percent Guaranteed. CALL NOW: 1-800-795-9687 (MCN)

STUDENT LOAN PAYMENTS got you down? We can help reduce payments and get finances under control, call: 866-871-1626 (MCN)

Help Wanted

Due to increase in census

CNAs

Full-Time / Part-Time
All Shifts

Come join our team and experience the rewards of working with our residents.

Competitive Wage and Benefit Package Available.

Apply in person to:
Laurie Buckhahn, Administrator

Applications available online at:
www.goldenagecarecenter.com
and can be emailed to
admin@goldenagecarecenter.com

Golden Age Care Center
1915 S 18th Street
Centerville, IA 52544



SHADY LANE VARIETY

S.S. Mixing Bowls
Cake Pans
Bread Pans
Etc.
Canning Supplies

1 mi. E. of Drakesville on Jade Ave. • 641-664-0207
8-5 Mon. thru Sat.

FOR SALE: Stove length fire wood at Beechy Sawmill \$25 pick up load. Also 48" bundles at \$5 a pc. 4 miles West of Drakesville PH: 641-664-2437 . TF

HOUSE FOR SALE IN CANTRIL, IA: Priced to sell. 6 lots & carport. Price negotiable.
PH. 417-531-0629. 22

GET YOUR CAMPING GEAR HERE!

Graber's COUNTRY STORE LLC
2 miles South & 1 mile East of Drakesville

YODER INDIAN CREEK FURNITURE maintenance free outdoor poly wood furniture. Large selection in stock of rockers, gliders, patio sets & pub sets. Available in 24 color combinations. Also available pergolas & gazebos. 22769 Rt. V64 Milton, Iowa. Located 4 miles North of Cantril or 3/4 miles South of Lebanon on RT. V64, Monday to Saturday 8 a.m. to 5 p.m. No Sunday sales. PH. 319-538-7332

Slayton Polaris Authorized Polaris dealer since 1988

Get out and play!

New & Used Polaris Rangers & ATV's

POLARIS The Way Out.

660-328-6627 BLOOMFIELD, IA
8 mi. S. & W. from Pulaski or 6 mi. W. of Memphis then 13 mi. N. on Route B

FOR SALE: Cornish cross chicks, days old \$1.35. I can feed them out longer for an extra cost. Can also order different breeds of chicks. PH. 641-664-2843 Ext. 4, 15379 180th, Drakesville.

FOR SALE: E-Z Go golf cart. Has a new battery and a new carbuator. No tears on seats. Gas/oil mix. \$1,000 firm. Ask for Charlie. PH. 641-208-1099 or 641-208-2270. 22

HOURS
8 A.M. to 5:00 P.M.
DAILY EXCEPT SUNDAY

Zimmerman's Store
Ruthledge, MO
660-883-5766

Our Everyday Low Prices!

SPECIAL 8 oz. OSCAR MEYER HARDWOOD SMOKED BACON 99¢

SPECIAL BUYS • CLOSE OR OUTDATED • FROZEN

| | |
|------------------------------------|------------|
| 32 oz. Bow Easy Peel Shrimp | \$14.15 |
| 10# Pollock Fillet Frozen | \$16.25 |
| 5# Small Frog Legs Frozen | \$19.55 |
| 5# Medium & Large Frog Legs Frozen | \$16.19 |
| Bulk Pollock Fillet Frozen | \$2.00 lb. |
| Bulk Catfish Fillet Frozen | \$7.12 lb. |
| Bulk Catfish Steak Frozen | \$5.03 lb. |
| 21 oz. 8 ct. Corn Dogs Frozen | \$4.65 |

| | |
|-----------------------------------|------------------------------------|
| Gooseberries \$3.13 lb. | Rhubarb \$1.43 lb. |
| Blueberries \$2.02 lb. | Black Raspberries \$5.96 lb. |
| 5# bag Red Tart Cherries \$7.98 | 30# Pail Tart Cherries 5+1 \$29.04 |
| 5# bag Peaches \$12.25 | 5# Berry Supreme \$12.55 |
| 5# bag Whole Strawberries \$10.55 | |

| | |
|---|------------------------------------|
| 15.25 oz. Green Giant or Del-Monico Whole Kernel Corn | *****69¢ |
| 14.5 oz. Cut Green Beans only | 79¢ |
| "TRUE" Mashed Potatoes | *****\$8.55 |
| 2.72 lb. "True" Mashed Potatoes | \$4.25 |
| Lakeland Foods Vert-Green French Green Beans | *****\$5.89 gallon |
| Gold Medal Mayonnaise | \$6.98 gallon |
| Salad Dressing | *****\$6.45 |
| Pure USA Maple Syrup \$45.65 | 30 oz. \$8.45 4 lb. 11 oz. \$20.09 |
| 13 oz. Pure USA Honey Comb | \$8.40 Gallon Honey \$36.80 |
| Pure USA 24 oz. | \$6.45 |

Broadcloth Flat Folds, Assorted Colors \$1.79 yd.
Hot Iron Transfers \$1.39 pkg. Stretch Leather Gloves \$4.59

DRIVE A LITTLE & SAVE A LOT

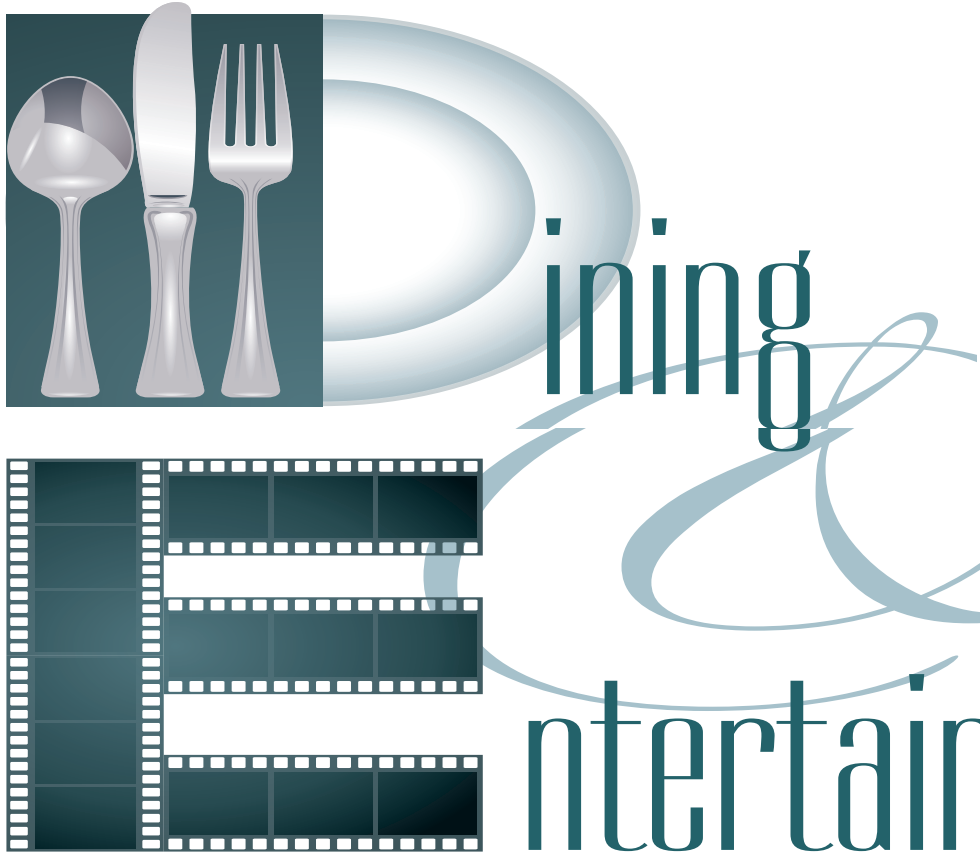
| | |
|--|---|
| | |
| 2012 Nissan Frontier SL, 4X4, CREW CAB, BLUE 34,000 MILES | \$20,500 2012 GMC 2500 HD 4 WD, 6.0 GAS, AUTO, BEDLINER, TOW PACKAGE |

| | |
|---|--|
| | JUST IN |
| \$10,900 2003 silverado RED, 4 WD, 80,000 MILES | 2012 Ford Escape Limited, loaded, leather |
| | 2013 Silverado 2500 HD LTZ, diesel, 4 wd, crew cab |

John Is Ready For SUMMER!

Kollision Korner

504 South Drake St
Bloomfield, IA 52537
PH: 641-664-2648
Fax: 641-664-2948



FLORIS QUICK STOP

Come spend the day with us in Floris as we celebrate Flag Day! Lots of games and activities for the kids and the entire family!

Saturday, June 3rd

SPECIALS Corn Dogs, Homemade Nachos, & Funnel Cakes

641-459-2300 • 104 E. Main St. • Floris, IA 52560

Friday, June 3rd

Hawg Wild Wings
with sides Serving at 6:00 P.M.

Dine In **722-3355** Carry Out

RAY'S LONGBRANCH
Drakesville, IA

Youth Fishing Derby

The Davis County Conservation Board will be holding a youth fishing derby

SATURDAY, JUNE 3rd, 2017

10:00 AM - 12:00 PM

McGowen Wildlife and Recreation Area
County Road J-40, East of Bloomfield
at the Pond by the Office.

Bait will be provided and some poles will be on hand for use.
Lunch served by Davis County Optimist Club

Over the moat
DRAWBRIDGE TO THE KING!

Vacation Bible School
June 12 - 16 • 9:00 AM - Noon
K-6 grade

Pre Register online at www.bloomfieldfirstbaptist.com
or call 641-664-2240

The First Baptist Church of Bloomfield
401 Crestview Circle • Bloomfield

BLOOMFIELD FARMERS' MARKET

BLOOMFIELD, IA COURTHOUSE LAWN

SATURDAYS
8:30 - 11:30 AM

TUESDAYS
3:00 - 6:00 PM

For more information contact Patsy Boas
641-459-3387

FRESH FROM THE FARM

Now accepting Seniors, WIC, & Food Stamps

Dunnville Baptist Church • VBS 2017

Please join us for Vacation Bible School
Monday - Friday • June 5th - 9th from 6-8:30 pm
at Dunville Baptist Church
15356 Nuthatch Ave., Bloomfield

"What A Friend We Have In Jesus" **Sunday, June 11th • 6PM**
Join us for our VBS Program.
Hot dogs & finger food after the program.

EVERYONE WELCOME

For more information call
641-459-3301 or 641-777-1512

4 PERSON BEST SHOT GOLF TOURNAMENT

JUNE 3, 2017
9:00 AM

Bloomfield Country Club
\$30 per person
Includes Lunch & Door Prizes

PROCEEDS TO:
DC ATHLETIC CLUB

ANY QUESTIONS PLEASE CALL
641-208-5354

Polly's Boondock

Open 6 AM to 10 PM • Mon. - Sat.
Serving Breakfast • Lunch • Dinner Specials

- Taco Tues. - All day / All night
- Wednesday Nights 5-9 • \$3.00 hamburgers
- Thursday - Fried Chicken
- Friday - Hot beef place

Lancaster, MO • North Side 5q
660-457-3255

PRIME RIB CAPITAL OF THE WORLD!
SERVED ON FRIDAY & SATURDAY NIGHTS!

Breakfast • Lunch • Dinner

Daily Hot Specials & Evening Features!

Catering & banquet facilities available for many occasions!

Southfork MOTEL & GRILL
JUNCT. OF HWY 2 & 63 • BLOOMFIELD • 641-664-1063
TUES. - THUR. 7AM-9PM • FRI. - SAT. 7AM-10PM
SUN. 7AM-2PM • CLOSED MONDAY

JOIN US AT CAMP VBS....

PULASKI MENNONITE CHURCH

Fri., June 9th • 5 - 7:30 PM
(meal included)

Sat., June 10th • 4 - 6:30 PM
(parents invited to campfire & meal afterwards)

CAMP OUT
GETTING S'MORE OF JESUS

FOR MORE INFORMATION CALL 641-208-5591

41st Annual Floris Flag Day Festival Saturday June 3, 2017

Start your day at 7 A.M. with pancakes provided by the Floris Baptist Church!

* Serving pancakes until 10:00 AM with all proceeds going to the Floris Fire Department *

Taylor Automotive
 11451 Floris Rd
 In the suburbs of Floris, IA
 641-459-3604
 Lonnie Taylor, Owner

1st IOWA STATE BANK
 110 N. Washington
 Bloomfield, IA
 641-664-1362
 FDIC

A DAY OF ENTERTAINMENT

- 9:00 AM CASI & Open Chili Cookoff & Bean Contest
Tasting cups available after 1:00 PM
- 9:30 AM Sign up for Baby Contest (0-3 years)
- 10:00 AM Baby Contest Starts
- 10:30 AM Sign up for Lil Miss. & Lil Mr. (ages 4-6)
Miss & Mr. Floris (ages 7-10)
DO NOT HAVE TO LIVE IN FLORIS
- 10:45 AM Contest Begins
- 11:45 AM Prayer by Pastor
- NOON Parade - Grand Marshall
- 12:30 PM Cook Shack opens (ALL DAY)
- 1-4:00 PM Kids & Adult Games in the park
- 1:30 PM Hula hoop contest
- 1-4:00 PM Cake walk
- 5:00 PM Drawings for raffle prizes
- 7-11:00 PM HARVEST BAND plays in the Shelter House

ALL PROCEEDS GO TO FLORIS FLAG DAY FESTIVAL

For information on any of the events please contact:
 Robin Fine 641-208-6260
 Russell Bales..... 641-459-3304

TICKETS SOLD ALL DAY AT THE PARK SHELTER FOR THE GAMES, RAFFLE, & CHILI CUPS!

Some raffle items include: 32" TV, Cooler bench
 Kids only raffle items: Bikes, Beach passes and MANY MORE!

NEED NOT BE PRESENT TO WIN!
 Raffle Tickets: \$1/each or 6/\$5
COME AND ENJOY THE DAY

Slayton Polaris
 8 mi. S. & W. from Pulaski
 or 6 mi. W. of Memphis
 then 13 mi. N. on Route B
 660-328-6627

Tri-County SHOPPER
 Tri-CountyShopper.com
 Hwy. 63 N
 Bloomfield, IA
 641-664-1333

DAVIS
 22458 Hwy. 2
 Bloomfield, IA
 641-664-1801

Harris Distributing
 14219 231st St.
 Bloomfield, IA
 641-929-3379
 RALCO
 Mix 30
 THE HIGH ENERGY LIQUID FEED

Lynch Law Office & Abstracting
 207 S. Washington
 Bloomfield, IA
 641-664-3188

Keith's Foods
 207 E Locust
 Bloomfield, IA
 www.keithsfoods.com
 641-664-2539

Floris Quick Stop
 104 E. Main St.
 Floris, IA 52560
 641-459-2300

citizens mutual
 114 W. Jefferson
 Bloomfield, IA
 641-664-2074

Neetz Graphics
 641-664-3239
 Bloomfield, IA

Spilman Auto Parts
 Old Hwy. 2 & 63 W.
 Bloomfield, IA
 641-664-2463
 1-800-477-1367

Clearview Animal Hospital
 641-664-2399

Crop Services
 pfister Nutrena
 Drakesville, IA
 641-722-3293

Kollision Korner
 Bloomfield, IA
 PH: 641-664-2648
 Fax: 641-664-2948

Crop Production Services
 906 Karr Ave.
 Bloomfield, IA
 641-664-1045

McClure Concrete Contractors
 12040 Rose Ave.
 Floris, IA
 641-680-3488

Spring Gardener's SPECIALS

Custom Built, Painted and Vinyl Buildings & Sheds
~David W. Schrock~

Hillview MINI BARNs



15383 180th Street Drakesville, IA 52552 **641.664.2842** v.m.



50% OFF

Blueberry Bushes

#1 ct.
Reg. \$19.95

Many more bushes and plants available.

Bloomfield Greenhouses

June Hours: M-F 8:30am - 6:00pm • Sat. 8:30am - 4:00pm
Closed Sunday
708 E. Arkansas Ave., Bloomfield • 641-664-1622

Burkholder's GREENHOUSE

SALE ON ALL PLANTS

50% OFF

Annual & Perennial Plants

Large Variety in EXCELLENT Condition

10% OFF

Large Selection
Shrubs Trees

Hours
Mon-Sat 8 am to 5 pm

660-397-4115
660-341-5777

See Our Catalog at www.burkholdergreenhouse.com
4 Miles North of Edina, MO

HILLTOP GREENHOUSE

11049 HWY 2, MOULTON IA
BETWEEN WEST GROVE & MOULTON

Hanging Basket Sale!

12" BASKETS Buy 5 • Get one FREE

BIG SALE

on ALL perennials!

FRUIT TREES

\$14 - \$16

Mon-Sat
8:00 A.M. - 6:00 P.M.
641-929-3036

COME SEE OUR WIDE SELECTION OF PERENNIALS!

Gingerich Greenhouse

22 Years of Growing Plants

Fruit trees Reduced \$5.00

Nice Variety of bedding plants & hanging baskets

Proven Winner Shrubs!
10% OFF ALL SHRUBS!

Hours: Mon - Fri 8 am - 6 pm • Sat. 8 am - 5 pm
1 mile east & 1/2 mile north of Drakesville • 16577 Jade Ave.

Lilac Hill GREENHOUSE

660-342-9554

May 31st - June 6th Unbelievable DEALS

BUY ONE get one FREE

EXCLUDES PERENNIALS, MULCH, MUM PLUGS, PATIO POTS & SUCCULENTS

Hanging Baskets • Annuals • Vegetable Plants

25% OFF PERENNIALS, SHRUBS & PATIO POTS!
SHOP EARLY FOR BEST SELECTION!

Mum Plugs \$1.50 Each
Arriving next week. Call for availability.

Local Strawberries & Tomatoes ARE HERE!

Gift Certificates Available

Small plants in your flowerbeds now. We have many colors and kinds to choose from.

SUNSHINE HILL GREENHOUSE

LARGE SELECTION OF BASKETS, BEDDING PLANTS & PERENNIALS!

GRAPES & BLUEBERRIES!

641-656-4203
641-208-7609
1 MILE EAST OF MILTON ON HWY. 2

L&M Country Store

1 1/2 miles south of west Hwy 2 & 63 jct.
Mon-Sat. 8am-5pm CLOSED SUNDAYS
VM: 641-664-1936

| | |
|---|-----------|
| Frozen 30 lb. pie cherries with sugar..... | \$32.50 |
| Frozen 32 oz. Oscar Mayer sliced turkey breast | \$1.88 |
| 16 oz. creamy ranch dressing..... | 75¢ |
| 29 oz. mixed fruit in light syrup | \$1.49 |
| 24 oz. string cheese | \$2.88 |
| Frozen 40 lb. Hormel sliced ham..... | 39¢ a lb. |

MOULTON CITY WIDE GARAGE SALE: June 2nd, 8-5 & June 3rd, 8-12. Mary Philbly & Barb Martin. 412 N. Maple Moulton, Iowa. Antique handwashing machine, table, dishes, key board, fabric & notions, sheets, purses, S&P's, plates, & misc. CROSS LINE CENTER selling rugs & Quilt tickets.

GARAGE SALE: June 2nd 9-5; June 3 9-5. Antiques, exercise bike, collectibles. Selling out. Located between House of Fashion & Laundromat in Lancaster, MO.

MOULTON CITY WIDE GARAGE SALE: June 2nd, 8-5 & June 3rd, 8-12. Mary Philbly & Barb Martin. 412 N. Maple Moulton, Iowa. Antique handwashing machine, table, dishes, key board, fabric & notions, sheets, purses, S&P's, plates, & misc. CROSS LINE CENTER selling rugs & Quilt tickets. Davis County Community Blood Drive, Tuesday, June 13, 3:00 pm - 7:00 pm Southern Iowa Electric Coop., Meeting Room, 22458 Hwy 2, Bloomfield, IA. Appointments: To donate, please contact the Blood Center at (800) 452-1097 or visit www.bloodcenterimpact.org and use code 5014 to locate the drive.

HUGE YARD SALE: June 2nd - 8-4; June 3rd 8-4. Lots of sale & pepper shakers; lots of misc., clothes. 203 W. 6th St., Greentop, MO.

CITY WIDE GARAGE SALES IN MOULTON: June 2 & 3, close to 25 sales, probably more! Clothes, toys, furniture, antiques, books, lawn furniture, knick knacks & much more. Something for everyone! Most sales will open at 8AM, some earlier. Stop at T&L Deli for a list of the sales and addresses.


HUGE GARAGE SALE: June 2nd 8-4 & June 3rd 8-1. 212 W. 8th, Moulton, IA. Lots of good kids clothes: girls sizes 4T to 14; boys sizes up to 18; mens clothes L-XXL; womens M-XL. Toys, mens bike, lots of misc. & knick knacks, metal beer signs, some furniture. You do not want to miss this one! *Get your kids ready for the new school year!*

VERA FOX ESTATE SALE: 808 Hwy. 63, Queen City, MO. Huge sale: Household & shop items. Everything must go. Rain or shine. Friday, June 2nd 9-3; Saturday, June 3rd 8-3.

HUGE GARAGE SALE: June 2nd 8 a.m.-4 p.m.; June 3rd 8 a.m.-3 p.m. June 9th 8 a.m.-4 p.m. June 10th 8 a.m.-3 p.m. Lots of things for everyone. 401 E. Chestnut, Bloomfield

IN-HOUSE ESTATE SALE: June 8th & 9th - 8 a.m.-4 p.m. ? 207 W. Jefferson, Bloomfield. Household, misc., tools, lawnmowers, etc. in the garage. Men's clothing.

KOUNTRY KORNER
Bakery



NOW OPEN
FRIDAY & SATURDAY

Full Line of Baked Goods
~ Orders Welcome ~
Cookies * Pies
Breads * and More



Located 4 miles west of Bloomfield, IA on Hwy. 2 & 63 and Ice Ave. in Yoder's Kountry Korner Furniture Store.

21050 Ice Ave.
Bloomfield, IA 52537

641-664-1747 v.m. • Fri. & Sat. 9 AM-5 PM



Custom Baling,
or on shares.
Also, Custom
Brush Cutting
641-208-5757



FRESH STRAWBERRIES:
Will take orders. First come first served. Located 1/4 mile South of Lebanon.
VM: 319-213-8636.

FOR SALE: New Idea 5209 mower/conditioner, new teeth; SWR10 Rhino wheel rake; JD458 standard round baler w/monitor.
PH. 641-938-2847

Strawberry
FOR SALE
HOME GROWN STRAWBERRIES
ready soon.
Drop-ins welcome.
To reserve leave a message.
641-664-2336
John Earl Kuhns
16246 Jade Ave.



Davis County Community Blood Drive, Tuesday, June 13, 3:00 pm - 7:00 pm Southern Iowa Electric Coop., Meeting Room, 22458 Hwy 2, Bloomfield, IA. Appointments: To donate, please contact the Blood Center at (800) 452-1097 or visit www.bloodcenterimpact.org and use code 5014 to locate the drive.

FOR SALE: 4 month old laying chicks, barred rock, buff orpington, red orpington, quineas & araucanas; also looking for a great pyrenees pup.
Blakesburg, IA
641-777-1229 24

FOR SALE
Driveway Fabric Rolls
Commercial, Heavy Duty,
Designed for Heavy Traffic

12' 5" Wide
432' Long
\$370/ roll

660-216-0938

HOOVER RENTAL
Manlifts • Telehandlers • Minihoes
Skidloaders & Skidloader Attachments

RENT BY
Hour • Day • Week • Month • Long Term
DOZER NOW AVAILABLE FOR RENT

Call us for your construction needs!
660-216-8230
Mt. Sterling, Iowa
2 miles East of Cantril on Hwy 2



CUSTOM ROUND BALING. 5 by 6 baler with option of cutter! wet or dry. 1500 + lb bales no problem! Pick your size! Priced to size!
PH. 660-216-1553. 24

STRAWBERRIES FOR SALE: \$12.00 a gallon. Put in your order.
Raymond J. Yutzy, 19198 160th St., Drakesville, IA 52552.
PH:641-664-0203 24

FARMERS & FRIENDS
OPEN COWBOY CHURCH
Every Friday @ 6 PM
Get To Gather Room
Bloomfield, IA



Yoder
GLASS & WINDOW
641. 722. 3667

VINYL WINDOWS
• Replacement
• New Construction
• Many Glass & Color Options

Free Estimates
Energy Windows
19467 Driftwood Blvd.
Bloomfield, IA 52537
Call Today: 641. 722. 3667

FOR SALE: Yearling & 2 Yr. Old Angus Bulls
Sired By EXAR BLUE CHIP & SAV BRILLIANCE & BUTKUS
Calving Ease & Growth Bulls
Davis Farms • Bloomfield, Ia
Doug, Jolynne, Baron & Brynn
641-777-5200



TRI-COUNTY SHOPPER CLASSIFIED AD DEADLINE IS FRIDAY, 5 P.M. EVERY WEEK. Classified ads must be paid for in advance. Mail your ad to Tri-County Shopper, P.O. Box 168 Bloomfield, IA. 52537. For questions call us at 641-664-1333.

JR
FEED & SUPPLY
641-722-3045
17599 200TH STREET • BLOOMFIELD
STOP BY MON.-FRI. 8-5 & SAT. 8-12

Complete line of bagged feed in stock!
Lamb & Goat Milk Replacer

BIRD FEEDING NEEDS WILD BIRD SEED
SUNFLOWERS/CHIPS

HOME GROWN STRAWBERRIES: are ready soon. Drop-ins welcome. To reserve leave a message.
PH: 641-664-2336, John Earl Kuhns, 16246 Jade Ave.

WANTED: Double wide mobile home in good condition. **FOR SALE:** 2 king size headboards.
PH. 641-208-6010. 24

Hay Equipment for Sale!

- J.D. 14T Square Baler Excellent Condition.
- New Holland 5 bar Hay Rake w/ dolly wheel, totally reconditioned w/ new paint, teeth & decals. Looks brand new.
- # 37 International 5 bar hay rake. New paint & decals. Excellent condition.

(573)-378-1004

LINE-X OF OTTUMWA 

KEEP YOUR RIDE IN GREAT SHAPE!
PROTECT IT WITH A LINE-X COATING!

Bring it in and we can LINE-X® it!

641-683-9334

Brad Lisk
15514 Blackhawk Rd., Ottumwa, IA

Gift Cards Available! 



Fabius Creek Angus



Yearling Angus Bulls For Sale!
Sired by Rampage, Tour of Duty and a son of CC&7. Low birth weights and yearling weights over 1600#.

Dean and Nancy Houglan
29244 Ice Avenue • Bloomfield, IA
641-929-3208 or 641-208-9626
Nancy: 641-208-0434

Happy 4th Birthday
to our little All-Star!

Kenzlee Rupe
June 3rd, 2017

Love You Always
Grandma & Papa




THE RESTSTOP FURNITURE & MATTRESS CENTER THE RESTSTOP FURNITURE & MATTRESS CENTER

FINAL 15 DAYS

**COMPLETE
WALL-TO-WALL
SELL OUT ORDERED!**

**A FURNITURE
TRADITION
MUST END!**

SAVE ON FURNITURE & MATTRESSES

GOING OUT OF BUSINESS SALE

**BEST,
THER-A-PEDIC,
AMERICAN, PERDUE
AND MORE!**

**TRUCKLOADS
OF MATTRESSES -
ALL SIZES -
ALL FIRMNESSES
MUST BE SOLD**

**MAKE US AN OFFER -
ALL REASONABLE OFFERS CONSIDERED!**

SALE ENDS SOON

CASH • CHECK • MASTERCARD • VISA • DISCOVER • AMEX

THER-A-PEDIC • BEST • AMERICAN • PERDUE

THE RESTSTOP

**FURNITURE
& MATTRESS
CENTER**

**321 RICHMOND AVE., OTTUMWA, IA.
MON-FRI 10-6, SAT 10-5, SUN 12-4 641-954-9718**

THE RESTSTOP FURNITURE & MATTRESS CENTER THE RESTSTOP FURNITURE & MATTRESS CENTER

THE RESTSTOP FURNITURE & MATTRESS CENTER

THE RESTSTOP FURNITURE & MATTRESS CENTER

THE RESTSTOP FURNITURE & MATTRESS CENTER

FURNITURE & MATTRESS CENTER

THE RESTSTOP FURNITURE & MATTRESS CENTER

THE RESTSTOP FURNITURE & MATTRESS CENTER

THE RESTSTOP FURNITURE & MATTRESS CENTER

THE RESTSTOP FURNITURE & MAT



HARDY SAVINGS

for Your **FOOD BUDGET!**



\$1.69 per lb.
Fully Cooked Breaded **CHICKEN Patties**
Sold as 5# - \$8.45

\$2.99 per lb.
Whole Beef NY **STRIP STEAK**

4/\$5
Fully Cooked **BACON**
Oscar Mayer

\$1.69 per lb.
Whole Boneless **PORK LOIN**

\$1.88
22 oz Mega Pack **Deli Fresh HONEY HAM**
Oscar Mayer

99¢ 6oz. pk.
Liquid **Fruit Pectin**
Mrs. Wages

99¢ 20 oz.
Duncan Hines **Sliced APPLES**

\$5.99 24 pack 12 oz. cans
COKE Products
Coca-Cola

\$1.99 59 oz.
Premium 100% **Orange Juice**
Prairie Farms
24 pack / 20 oz. **\$14.95** Variety Pack **GATORADE**

4/\$5 10 oz.
Little Debbie Mini DONUTS

\$15 OFF regular price
ROCKY
Check out our NEW! Styles
Mens WORK BOOTS

\$11.99 4/\$5 40lb. bag
TOP SOIL
American Arborvitae Windbreak Evergreen

\$2.99 24 oz.
Berry Time Scent **DAWN** Dish Soap

\$3.99 4 Pack
Colgate® Whitening TOOTHPASTE

\$6.49 30 oz.
Maxwell House COFFEE

\$1.49 per lb.
Bulk Sweetened Dried CRANBERRIES



DUTCHMAN'S STORE Division Street - CANTRIL, IA - (319) 397 2322 SALE PRICES May 31-June 6, 2017
STORE HOURS • Weekdays, 8a.m. - 6 p.m. • Saturday 8a.m. - 5 p.m. • Sunday Closed • View our specials at - www.DutchmansStore.com

FOR SALE: 1992 Jayco 18 ft. camper, double axles - all new, 5 new tires, marine battery, sway bar, 4 stabilizers, TV antenna, & TV that gets 32 channels. Excellent condition. PH. 660-949-2780 or 660-216-1517. 23

FOR SALE: 8' flatbed steel truck bed frame with goose neck hitch built in, black, \$400 OBO; Side by side refrigerator, stainless steel front, black sides, 36" wide, about 8 years old, \$250. PH: 641-208-6453. 23

YODER'S INDIAN CREEK FURNITURE investing your tax return money in quality furniture. Will become heirloom treasures for future generations. Offering a large selection of dining room, living room, bedroom, office & children's furniture. Unique handmade clocks, rustic log furniture. Also offering quality pre-finished hardwood flooring. Located 4 miles North of Cantril on RT. V64, 22769 Rt. V64 Milton, Iowa. PH. 319-538-7332 TF

FOR SALE: JD 660 5 bar rake, dolly wheel, new paint & decals, works good, \$1,600; New Idea hay conditioner 299, good, \$1,200. Can deliver. PH: 641-799-6120 23

CUSTOM HAY WORK: Mow, rake & baling with 946 conditioner & 568 JD baler with overedge net wrap. Double rake. Ron Campbell PH. 641-777-6187. 22

FOR SALE: Poulan riding lawn mower. Has a 42" cut, 17.5 hp Briggs & Stratton engine. Serviced very year. Garage kept. Have all service manuals. \$750 firm. Ask for Charlie. PH. 641-208-1099 or 641-208-2270. 22

C.H.I. MIDWEST Overhead Door MEMBER OF LiftMaster
✓ Out Our Competitive Prices! 21387 Route V64 Keosauqua, IA 52565 **660-216-0812**
Our goal is to keep your doors rolling smooth!
Sales • Parts • Service ~ Free Estimates
We sell new doors and openers or we'll service your old one.

Get Ready For Spring!
8 FT. RAILROAD TIES
Great for landscaping and garden boxes
SPILMAN AUTO PARTS
20311 Old Hwy. 2
PO Box 31 • Bloomfield
641-664-2463

Fox Valley Welding
No matter what size the project customer satisfaction is always our first priority.
Tig & Aluminum • Welding • Milwork • Lathe • New Steel • Sprockets • Roller Chain Barings • PTO Parts • Fabricating • CNC Machining • CNC Cutting
Hours: M-F 8-5:30 • 641-656-4684 • 12190 East Hwy. 2 • Milton, IA

AUCTION

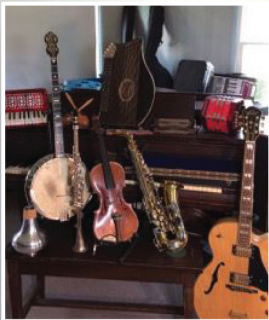
Saturday, June 10, 2017 • 10:00AM
209 N. Main St. - Milton, Iowa

Sellers: Mary Ann & the late Rolland Andrews

Auction Note-The seller welcomes you to a day of fun in Milton. Come enjoy shopping, good food, & music.

The local Amish will be serving as a fund raiser for their school: homemade donuts, fried pies, sandwiches, take home treats, coffee, tea, and more. There is also a rumor of popcorn and lemonade sponsored by local organizations.... Plus there will likely be music: as the day moves on there are plans for an impromptu jam in honor of all the music Rolland and his various bands brought to the community over the years... so if you play an instrument or have a singing voice, and want in on the action, bring yourself along... All skill levels welcome. We have a Gazebo and it needs used!!!

Property Sale: This beautiful 4+ acre residence, complete with its own covered bridge will be on the market with Lynch Realty shortly after the sale. Flyers with details will be available. Come and have a pre-market look around.



ANTIQUES AND COLLECTIBLE ITEMS - Household: 1800's platform glide rocker, sewing rocker, church pew (from Prairie View Methodist Church), upright wooden butter churn, cast iron stove with brass knobs, hand coffee grinder, 6 place setting with serving set of real silverware, 12 place setting of cut glass dishware with all hosting extras- all in perfect condition, cast iron pots and skillets, tin bakeware and flour scoop, milk glass, green milk glass, hob nail glass, many old glass oil lamps, including 2 that are blue glass and 1 that is copper, brass urn and pail, old bottles and canning jars, misc. dishes, knick-knacks and crocks, post kitchen bell, typewriter with stand, 2 portable typewriters, various musical collectible knick-knacks including one-of-a-kind tin piano set and old display instruments, various toys including dollhouse pieces and a Clydesdale full hitch and wagon, pictures and frames, very old books, various signs and license plates, Clocks and supplies/books for repairing clocks. **Equipment and Auto Parts:** Model A/T coils, Morris Minor steering wheel/hub caps and trim bits, garden push row disc, various old tools: including oil cans, hand drills, hand grinding wheel and much more, 2 old sleighs: good to fix up for decoration. **Make some good old music:** piano benches, many other old instruments: more information below. **Maple Console:** needs internal work, Mason-Hamlin Parlor Organ with stool in excellent condition, 1936 Knabe Grand piano w/bench 5'8" plays perfect: cabinet needs cosmetic work. **Household Goods - Everyday things:** Singer Model 4832C portable sewing machine, Singer Model 348 sewing machine with table, Montgomery Ward 35 CNS 1992 portable sewing machine with case, 1920's matching blond chest of drawers and mirrored dresser, matching floral sofa and settee, floral full size sofa,

corner entertainment unit, very large wall entertainment unit, Early American maple dining table w/ 4 captain's chairs and high hutch, Early American maple drop-leaf kitchen table w/ 4 chairs, Early American maple glide rocker: blue cushions, weight lifting bench, re-bouncer, treadmill, stationary bike, weights, mini refrigerator, 2 New World Distiller Corp.: The New Water Machine (brand new in box with instructions), book shelves, various: lamps, pictures, printers, tables, computer screen, Mary/Joseph/Jesus outdoor Xmas decorations, seasoned firewood 2+ cord. **Surprise Box's for everyone:** household, office equipment, medical/massage, camera supplies w/ several really old cameras, decorative, canning jars/pans, lawn&garden, paint&paper, auto fluids, auto filters, plumbing supplies, electrical, automotive, just jacks, hardware, wire, open that door, the wheels go round-n-round, etc. **Kids Fun table:** all kinds of cheap things to keep all ages happy. **Ladies Day yard sale tables:** linens, dishes, kitchen utensils, appliances, vases, fans, scales, punch bowl w/cups, candle holders...etc. **FREE table:** Come and Get them: 8-track and cassette tapes with boxes/stands to hold them. **EQUIPMENT AND TOOLS - Big Stuff:** Campbell Hausfeld air compressor 5HP 125PSI 60 gallon (nearly new), older small air compressor, Fimco sprayer, Coats 10-10 tire/wheel machine, log splitter, Master Mechanic MM1750 generator, 33-PP4 Allied Hydraulic 4 ton porta power, Miller Matic 35S Welder plus other welding tools/tanks, Auto Frame puller. **Shop furnishings:** 2 metal sorting units, 2 shop sinks, double sink in counter top, 3'x8' rolling butcher block work bench, 2 firewood containment stands, barrels, saw horses galore, shop lights, shop vacs, dollies & trollys, shop jacks, shop tables, metal filing cabinets, metal shop desk, various auto repair texts and car manuals, barn siding, planks and misc. lumber/siding **Power tools:** Black and Decker 1/2 "mounted press drill, Craftsman 1/2 " stand press drill, paint shaker, 2 scroll saws, 3 handheld circular saws, 3 wood table circular saws, Delta circular chop saw on rolling table with work tools, belt sander, flat and circular sanders, Spray guns and cups, drills, nail gun, various air tools, 4 chain saws, 2 hand held weed eater, Ryobi Expand-it heads: hedge trimmer, tiller, weed blade, Ariens 4 tine 2HP tiller, Diamond I/C 6HP Commercial push weed eater, 2 electric grinding wheels. **Hand tools:** hand saws of all kinds, staple guns, drill bits...O-SO-MANY!, socket sets and random sockets, ratchets, hammers, wrench of all kinds (a particularly impressive assortment of pipe wrenches/cutters), screw drivers, pliers, wire cutters, planers, chisels, vise-scrips, clamps&vices, magnet bars, soldering equipment, garden tools, shovels, rakes, hatchets, sledge hammers, wedges, log chains, winches, engine pullers, Micro tools for working with clocks and instruments, various rolling hand carts, 2 live traps, chimney brush, ladders...lots and lots of ladders!

MACHINERY: • Mid 50's International backhoe w/ Shawnee loader: was running when parked a couple years ago. All fluids drained to protect engine. Hydraulics, tires and over all body needs some work, but Rolland bought it new and it served him well his entire career in plumbing/heating, then on into later life. • Early 70's International Cub low boy tractor w/ under carriage mower: runs fine. • Early 70's International Cub lo boy 154: parts tractor. • Early 50's Ford 8N tractor: runs fine. • Snapper riding lawnmower LT200: works fine. • 2 small trailers. • 1994 Auto mover trailer: licensed: 2 axles with winch and new tires. • 1989 Utility trailer: licensed: 1 axle with new tires. **Machinery parts:** Woods RM59 grooming mower for tractor, Large brush mower for tractor, 2 tractor blades, other misc. tractor parts. **Car parts:** 95 Chevy 3/4 ton instrument cluster, RX7 hood, 88-89 Cavalier left and right fender, 75-81 VW Rabbit left and Right fender, 98 Honda wagon headlight mount, 2 Volvo tires, 4 195/70/14 Rabbit wheels w/new tires. Woods RM59 grooming mower for tractor, 2 tractor blades.

MUSIC AND MORE - Feel the beat: Sony portable home entertainment system (nearly new), various boom boxes, turntables and stereo components, clock radios/CD players, speakers, mics/stands, gig equipment of all kinds: Peavey speakers, mixing boards, etc. **Music room supplies:** music stands, instrument stands, pitch pipes, tuners, music lights, instrument work bench with underneath storage, piano tuning equipment and piano repair supplies, violin repair tools and supplies, strings for everything, Micro tools for repairing instruments and clocks. **Musical Instruments:** Saxophones, Clarinets, Bassoon, Flute, Recorder, Trumpet, French Horn, Trap set, Bells, Key Boards, Grand Piano, Pump Organ, Accordions, Harmonicas...More than 50!!!, Guitars, Ukuleles, Banjos, Violas, Violins, Upright Bass, Auto Harps, Zither.



ONLINE AUCTION ITEMS

Items will be available to view day of sale. On-line bidding will begin the week after sale.

Automobiles: 1953 MG TD dark green, convertible. Sold as is: cute but not running. It needs a new owner looking for a fun project.



Musical Instruments: There are too many instruments to be listed here...over 100!!! Some will be sold at the auction, some will be sold online afterwards. All will be available for viewing. There will be a complete list, with details, online, with many pictures and how each is being sold by June 5th.



For more information
 contact Lincoln Lynch
 @ 641-208-3649
WWW.LYNCHBOYS.COM

View the Shopper's FREE digital edition now!
www.Tri-CountyShopper.com



LET US HELP IN YOUR HAY FIELD THIS YEAR!

GREINER HAY COMPANY

SERVICES AVAILABLE:

- Mow & Condition • Tedding & Raking
- Round Bale w/ John Deere 569 Baler
- Tubeline Wrap High-Moisture Hay
- Hauling & loading available if necessary

We can do one or all, call to get on the schedule!

CALL OR TEXT JEFF AT 641-208-2235

FOR SALE: 88 Honda Gold-wing, 42,000 miles, runs great, tall windshield, air wings, \$4,500; 16' Larson tri-hull fiberglass boat with trailer, 115 hp outboard, \$750; Hay bale ring, bale savers, \$100 each; 3 pt. hydraulic wood splitter, \$200.
PH. 641-208-6010. 24

FOR SALE: Electric poles, hedge - corner & line posts, steel & pine posts. 3/8 galvanized table. Some used barbed & woven wire.
PH: 641-799-5970 24

FOR SALE: 160 gal. sprayer, 16 ft. boom, Raven pump, monitor & controls, electric reel, 150ft. hoes & wand, mounted on Chursman 31 horse, 4 speed automatic transmission, 2 speed diff.
PH: 641-799-5970 24

AUCTION
Monterey Auction House
Sunday, June 4th, 11:00 am

Located 10 miles S. of Bloomfield on 63 then 4 miles W. on J51 or 10 mi. N. of Lancaster, then 4 mi. W. on J51

Camel back trunk; bottle from Bloomfield Bottling; Barbie doll items from the 60's; Buddy L horse van; 5 gal. cans - Phillip 66 - DX; rinse tub on stand; horse drawn walk behind harrow; gray maytag wringer washer; 2- 55 gal drums with hand pumps; Bounty Hunter metal and mineral; detected; skill 4 HP disc grinder; 4 gal elec. hot water heater, still in box, elec. pump and tank water system; metal banding outfit; chain binders; car ramps; Huskee tractor radio; Hall Ring ridge reamer; wood working chisels; tap & die set; made in USA; pellet gun; 2 new fly sheets for horses, 75"; barn lantern; coffee tins; costume jewelry; wood planes; large gear puller; 40 boxes of old books; bottle capper; galvanized water cans; lightening rods with blue globe; hand food grinders; iron cat door stop; hand corn sheller; heavy vice; antique french fry cutter; Lots of old wrenches; bumper pool table; brass ice cream scoop; like new boys bicycle with training wheels; new yellow pine lumber including 21- 2x8 14ft, long, 5- 2x8 16ft. long; 4- 2x8 18ft long, several 2x6 green boards; over head garage door, 12ft. high and 14ft. wide with 2 windows, complete

All Consignments Welcome!
Announcements made day of sale take precedence over any advertising. Not responsible in case of accidents.

LAWSON AUCTION SERVICE
For More Info.: John Lawson 641-895-3852

GINGERICH STOVES and PLUMBING LLC

19091 180th St
Bloomfield, IA
VM 641-664-2814
3/4 miles east of Drakesville, south side



Primo CERAMIC GRILLS
American Made. Amazing Flavor.

FOR SALE: Firewood at RJ Lumber, \$15 a pickup load. 18989 160th St., Drakesville, IA 52552. TF

FOR SALE: 2 horses, good riding, children safe. White - \$200; brown \$400. Also bridle & saddle, \$35.
PH. 660-342-5532. 24

NEW ITEM  **JUST IN**

Vetgun We also carry insecticide balls in 30 count pk.

Warmer weather is here...
Time to do some work on the farm!

We Have Fencing Supplies!
Wood post sizes: 5x8 • 6x8 • 6x9
T post sizes: 6ft light • 6.5ft light • 6.5ft heavy • 7ft. heavy

GET YOUR BALING SUPPLIES HERE!
Net wrap
Baler Twine
Sisal & Plastic

MiraFount
Energy Free Waterers
More Models Available.
3100  3200 

Hamilton Produce Co. 105 W. Franklin • Bloomfield
641-664-2459 or 1-800-469-7749

FOR SALE: 24T JD square hay baler, \$1,250.
PH. 641-777-9831. 23

BERHOLTZER TRAILER REPAIR

Specializing in Aluminum Hopper Trailers Repair & Rebuild

3 miles east of Gorin, Mo. on Route U

We install tarps & power tarps

660-341-6027

FOR SALE: New Idea 5209 mower/conditioner, new teeth; SWR10 Rhino wheel rake; JD458 standard round baler w/monitor.
PH. 641-938-2847

TRENCHING SERVICES: Waterlines, hydrants, drains, electric, etc. Call for quote. Truman Gingerich, 641-722-3980 VM

HORSE & TACK SALE

Saturday, June 10, 2017

Starting at 11:00 AM on tack with horses to follow
1208 E. Garfield Street • Clarinda, IA
Selling tack & all classes of horses
20% commission on tack & 7% on saddles and horses
ABSOLUTELY NO TACK ACCEPTED AFTER 11:00 AM!!!

For more information or to consign contact:
Verl Baker • 712-542-5241 or 712-542-7938
Donkey Baker • 712-542-0300

Clarinda Livestock Auction

FOR SALE: 24T JD square hay baler, \$1,250.
PH. 641-777-9831. 23

TO GET RID OF: Wire corn crib. Jodi Jones
641-675-3754 24

Fish for Stocking Lakes & Ponds

6-8" & 8-10" Catfish, Albino Catfish, Redear Sunfish, Minnows, Bluegills, Hybrid Bluegills, Bass, Grass Carp, Crappies, Koi.

To order call Blyzo Fish Farm
Call 641-874-5907
SATURDAY, JUNE 10th

OTTUMWA - Tractor Supply 9-10AM
BLOOMFIELD - Troy Elevator 11-12 Noon

Please bring your own POND water, Taking walleye orders for Fall delivery
Private Deliveries Available Fish Farm open by Appointment.

MAST OVERHEAD DOORS, INC.
105 S. Dodge St., Bloomfield, IA 52537

MAST OVERHEAD GARAGE DOORS
Residential & Commercial
Doors & Operators

641-680-2016 **CALL FOR AN APPOINTMENT**

Quality Products + Quality Workmanship = Quality Customers
Free Estimates We Fix Doors

curts Yard'n Gard'n

LOW DOWN HIGH PRICES

Come see us today for that new mower for Spring!

curtsmowers.com
641-664-2784
502 E. Franklin • Bloomfield, IA

ZIMMERMAN AUTO LLC TRAILER INC.

101 North St. • Cantril, IA
319-238-7367

NEED TRAILER PARTS??



WE HAVE LOTS OF PARTS ON HAND. COME DOWN TO SEE US TODAY.

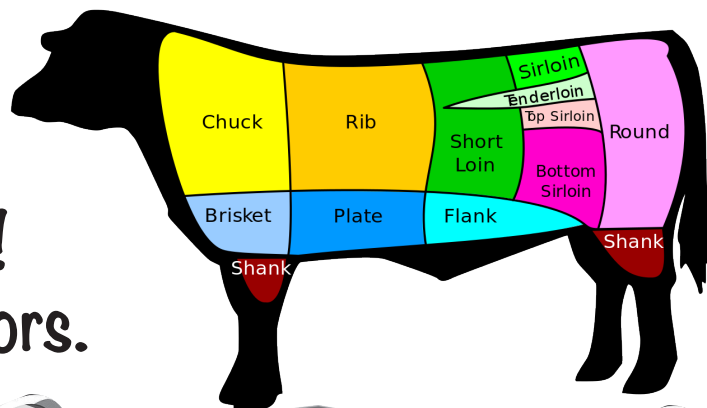
May was...



Beef Month

Cattle Farmers are some of the best in the country--hard working & determined to make their industry better by producing only the highest quality beef. We join them, during May & throughout the year, in encouraging consumers to enjoy beef often!

Thank You
to our Local
Cattle Farmers!
From these Sponsors.



Fox Valley Welding
Milton, IA
641-656-4684

Crop Production Services
906 Karr Ave.
Bloomfield, IA
641-664-1045

DAVIS COUNTY
Bloomfield, IA
641-664-1393

Slayton Polaris
Bloomfield, IA
660-328-6627

Crop Services
Drakesville, IA
641-722-3293

Memphis Farm & Home
Memphis, MO
660-465-8678

Hamilton Produce
Bloomfield, IA
641-664-2459

Kincart Physical Therapy Services
641-664-7086

Tri-County SHOPPER
641-664-1333

Cantril Lumber & Hardware
319-397-2351
888-791-9273
M.-F. 7-5, S. 7-12
Check with us for all your building needs!

Fabius Creek Angus
Dean & Nancy Houglund
641-929-3208

MFA Agri Services
Lancaster, MO
660-457-3729
Kirksville, MO
660-665-4695

Spilman Auto Parts
641-664-2463

WESTERN'S SMOKEHOUSE
SINCE 1978
Kevin Western, Manager
Greentop, MO
660-949-2445
800-456-0250

MFA Agri Services
Memphis, MO
660-465-2603
660-341-1422

ZIMMERMAN AUTO LLC TRAILER INC.
Cantril, IA
319-397-2406

Clearview Animal Hospital
641-664-2399

Greiner Implement Co.
10845 73rd
Ottumwa, IA
641-683-1691

Desktop Services LLC
235 W. Grand Ave.
Memphis, MO 63555
Cell: 660-216-1429
Phone: 660-465-2274

Sidwell Seeds
Queen City, MO
660-766-2737

Beeler Motor Co.
Lancaster, MO
660-457-3718

Bradley Insurance
For All Your Crop Insurance Needs
Memphis, MO
660-465-2764

Hometown Animal Health
Hwy 136 W.
Memphis, MO
660-465-2967

Memphis Auto & Truck Parts
300 S. Market
Memphis, MO
660-465-2470

Kollision Korner
Bloomfield, IA
PH: 641-664-2648
Fax: 641-664-2948

citizens mutual
www.mycmtech.com
Bloomfield, IA
641-664-2074

Harris Distributing
14219 231st St.
Bloomfield, IA
641-929-3379

Kay Eggleston Bookkeeping & Tax
Memphis, MO
660-465-2684

1st IOWA STATE BANK FDIC
Bloomfield, IA
641-664-1362

Community Insurance Agency
Cantril, IA
Tim Gilchrist
319-397-2401

JESSIE'S SEWING ROOM
Bloomfield, IA
641-664-5377
641-208-5036

Edward M. Norman, DDS, PC
Lancaster, Mo
660-457-3235

PUBLIC AUCTION

HAVING SOLD MY HOME AND MOVING, WILL SELL 60-YEAR ACCUMULATION OF PERSONAL PROPERTY AT 800 SOUTH MAIN STREET IN GLENWOOD, MO STARTING AT 10:00 A.M. ON

SATURDAY, JUNE 3, 2017

HOUSEHOLD: SINGER SEWING MACHINE; ELECTRIC LIFT CHAIR; BOOKCASE; RCA TV; GLASSTOP COFFEE TABLE; OAK END TABLE W/GLASS TOP; SOFA; PLANTER BENCH; MICROWAVE CART; SMALL STORAGE CABINET; (2) 4-DRAWER FILE CABINETS; FOLDING TABLES; FRUIT JARS (PINTS, QUARTS, HALF GALLONS); GRANITE CANNERS & ROASTERS; INFRARED HEATER; HUMIDIFIER; WHIRLPOOL REFRIGERATOR; HORSESHOES GAME.

COLLECTIBLES: McCOY POTTERY; HULL POTTERY; NODDERS SALT & PEPPER SHAKERS; INDIANA GLASSWARE; LOTS OF CRYSTAL GLASSWARE; MICKEY/MINNIE MOUSE TURNABOUT COOKIE JAR; OTHER COOKIE JARS; SALT & PEPPER SHAKERS; COLLECTIBLE FRUIT JARS (GREEN & CLEAR W/ BAILS); ELVIS PRESLEY DOLL; ELVIS PRESLEY PLATES; ANTIQUE BARBED WIRE; PORCELIN DOOR KNOBS; MORE ITEMS IN STORAGE.

TOOLS: EXCEL 60 GAL UPRIGHT AIR COMPRESSOR; SNAP-ON TOOL BOX; CRAFTSMAN TOOL BOX; 3/8" CRAFTSMAN RATCHET & SOCKETS; CRAFTSMAN WRENCHES; SNAP-ON WRENCHES; MANY MISC BRAND WRENCHES; SCREWDRIVERS; PUNCHES; CHISELS; TIN SNIPS; FLARING TOOL SET; 2-TON FLOOR JACK; PIPE CUTTER; PIPE WRENCHES; STEP LADDERS; POWERCRAFT 180 WELDER; CAR RAMPS; HUSKEE SPOT SPRAYER; VICE; CREEPERS; SHOVELS; RAKES; ALUMINUM EXTENSION LADDER; HAMMERS; LEVELS; CONCRETE TOOLS; PAINT TRAYS & ROLLERS; BELT SANDER; CIRCULAR SAWS; MITER BOXES; CARPENTRY TOOLS; CORN KNIFE; HAY HOOKS; OIL SPOUTS; MISC NEW AUTO PARTS; BOLT BIN; SMALL PARTS CABINETS; MUCH MORE.

LAWN & GARDEN: DIXON ZTR 4421 MOWER; HUSKEE LAWN SWEEP; (2) GARDEN PLANTERS; LAWN CART; PUSH CULTIVATOR; PULL TYPE FERTILIZER SPREADER; TILE SPADE; LAWN RAKES; CRAFTSMAN GAS SNOW BLOWER (ELECTRIC START); GAS CANS; POST AUGER; POST JOBBERS; AXE; SLEDGE HAMMER; HOSE REELS; CRADLE SYTHE; PITCH FORKS; TATER FORK; SLED; AND MORE.

MISCELLANEOUS: LUMBER; ONE SHEET 1/2" PLYWOOD; 55 GAL METAL BARREL; GALVENIZED TUB; TIRES; WHEELS; OTHER ITEMS.

VEHICLES & RELATED: 1999 F-150 XL PICKUP (NOT RUNNING - COMPUTER PROBLEM); HARD PICKUP BOX COVER; PICKUP TOPPER TO FIT 1999 F-150; 3/4 TON FORD PICKUP FOR PARTS.

AUCTIONEERS NOTE: THIS IS A PARTIAL LISTING. MANY BUILDINGS AND BOXES HAVE NOT BEEN LOOKED THROUGH SO COME TO SEE WHAT WE FIND! POSSIBILITY OF TWO AUCTION RINGS.

LIKE US ON FACEBOOK (BEELER AUCTION SERVICE) AND CHECK OUT ADDITIONAL PHOTOS OF AUCTION ITEMS

ANNOUNCEMENTS MADE DAY OF SALE TAKE PRECEDENCE OVER ANY ADVERTISEMENTS
 PROPER I.D. FOR REGISTRATION
 NOT RESPONSIBLE FOR ACCIDENTS

TERMS: CASH OR CHECK

PERSONAL PROPERTY OF

NORA LOU TONEY

BEELER AUCTION, LLC
 LANCASTER, MO 63548
 (660) 457-2120 - HOME
 (660) 216-9498 - MOBILE

RANDY WHITLOW, RINGMAN
CHARLES WHEELER, CLERK

BILLY BEELER, AUCTIONEER

STRAWBERRY SEASON IS HERE! \$2.75 a quart. Will take orders. Please bring containers. **R&S Strawberry Farm.** 1 1/4 miles South of Junction Hwy 2 & Hwy 15 Milton. 23

FOR SALE: Cherry picker, 2 ton, only used once, \$175; Air compressor, 11 gal., 1.2 hp, brand new, \$150. PH. 641-208-0555. 22

FOR RENT: 1 or 2 bedroom apartments Milton, IA. Kitchen appliances & heat furnished. Very reasonable rent. PH: 641-757-0201 22

FOR SALE: 7 used 6 panel doors, (5-30", 1-24", 1-16"). pine; Also 3 carriage lamps, antique brass, outdoor lights. PH. 641-208-0318. 23

FOR SALE: 8 ton wagon gear, good tires, \$275 OBO: 16 ft. sq. bale elevator, new, never used. PH. 641-652-7707. 22

2017 LATE SPRING CONSIGNMENT AUCTION

CONSIGNORS: TIMOTHY McELDERRY, THE LATE SHARON SMITH, AND OTHERS

AUCTION

SATURDAY, JUNE 3RD, 2017 START TIME: 10:00 A.M.
 ADDRESS: 608 SOUTH WEST STREET • BLOOMFIELD, IA 52537

Tim McElderry Items

Dewalt DW318 sabre saw
 ProTech bench grinder
 GM 2 1/2 ton rolling floor jack
 Craftsman Band saw 12"
 B&D model 7451 3 x 24 belt sander
 Skil Sandcat 3 x 18 belt sander
 6' Werner step ladder
 16' Aluminum extension ladder
 LP Gas Grill
 Snapper Self Propelled Mower
 Carpet installation tools
 Carpet cart, hoist, and unrolling stand
 Floor sander
 Linoleum roller
 Floor tile scraper machine
 Ro/Air compressor
 Lots of 2" 1&g flooring nails/ staples, etc
 Antique bench irons from Monterey, Iowa school
 Perfection heater
 Oak pedestal dining room table with 4 chairs
 (2) White wicker chairs
 5 gallon Gott cooler

Sharon Smith Estate

Coins
 Silver dimes, quarters
 Wheat pennies
 Indian head pennies

Glassware, China, and side service
 Corelle, Corning, and Pyrex
 Carnival glass, iridescent glass
 Fiesta Ware pitchers, plates, serving platters
 Pink Depression glassware
 Many sets of good china, clear glass items, pitchers
 Plated silver pitcher, sugar bowl, creamer set
 Porcelain chickens, figurines
 Several pieces of Christmas themed plates, glasses, serving plates
 Some advertising glass items
 Much quantity and quality. Too much to list!

Furniture and Antiques

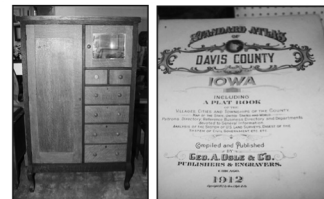
Walnut pie safe with glass panes
 Oak china cabinet
 Walnut secretary
 Antique wardrobe
 Oak and leather fainting couch
 Cedar hope chest
 Ice cream table and chair set
 Antique steamer trunk
 Antique oak dining room table (round)
 Several antique dining chairs and wooden chairs
 Oak dresser with mirror
 Birdseye maple dresser w/ mirror
 Walnut vanity w/ mirror
 Several antique mirrors
 Antique wood bed frames and headboards
 Several Antique tables
 Antique oak coffee table
 Several lamps
 Antique love seat
 Cherry Dresser drawer set
 Oak commode stand
 Old picture frames
 Antique drop leaf table with chairs
 (4) Glass battery boxes
 1912 Davis County Plat Book

General

Nesco 18 qt roaster
 Complete knife block
 GE Food processor
 Aluminum roaster pan with lid
 Some modern furniture
 Fans
 Fisher-Price toys, nice condition
 Games-toys- from the 1970s

Tools

Miscellaneous hand tools / lawn tools
 Steel lawn chairs



Please note this is only a partial listing. Announcements made the day of the auction take precedent over any advertising.

Check For Updates At: www.qualitymarkllc.com

Terms: Cash or good check • Not responsible for accidents, theft, or losses incurred at this auction.
 Items need to be paid for before removed. If you cannot take an item home the day of the auction, please make arrangements with the auctioneer ahead of time. All items need to be moved no later than noon Monday, June 5, 2017.
 All items are being offered as is, with no guarantees express or implied.

AUCTIONEER'S COMMENTS

This is an interesting mix of items. Due to health issues, Mr. McElderry is selling his tools including carpet installation tools. The McElderry's tools, household items, antiques, etc. will be sold first, including his furniture, starting at 10 Am. We plan to work fast but will run one ring only all day. There will be lots of wrapping paper, but you may want to bring boxes for packing away glass. The Sharon Smith Estate items are good quality antiques and you won't want to miss this auction! Items need to be removed the day of the auction unless arrangements are made with the auctioneer. This is an indoor facility, auction to be held rain or shine.
AUCTION HELD IN AIR CONDITIONED BUILDING



This Auction Arranged & Conducted by:

Quality Mark LLC
Auction Services
 Col. Michael Howk, Auctioneer
 For questions, please call 641.208.6453 or email questions to qualitymarkllc@gmail.com.
 See us on Auctionzip! #38275 or View more photos on www.qualitymarkllc.com
Auction Will be held Rain or Shine!
 Food service by L & M Quick Shop

FOR SALE: 10 older stock cows due to calve in the next 2 or 3 months, good diposition, \$1,250 OBO. 5 miles south of Milton. PH: 660-216-0578 23

FOR SALE: New Holland 489 mower conditioner, hyd. cylinders & 2 new belts to go with it. Used last year, not haying anymore. PH: 641-459-2275 23

The City of Greentop is now accepting Sealed bids on the following:

1984 Fiat Allis Motor Grader Model FG85

All bids must be submitted to:

Martha Woods
 Greentop City Clerk, P.O. Box 119
 Greentop, MO. 63546

Any questions call **660-949-2520**
 8:00am until 12:00pm. May be seen at the Greentop City Hall 8:00am until 12:00pm.
 The bids must be in a sealed envelope. Bids will be accepted until June 16th, 2017 at 12:00 p.m.
 The City Council reserves the right to accept or reject any or all bids.

Garages • Pole Barns Commercial Free Estimates

LAN-DOW BUILDINGS

We Stock a Complete Line of Building Materials Complete Buildings or Packages Available

Toll Free 800-424-5071 Fax 660-457-3133

Hardware • Plumbing • Electrical • Paint
 500 Green Street • Lancaster, MO 63548

Yearling Angus & Charolais Bulls

2 yr. Old Angus Bulls

Trojan Hill Farms

Phil Archer
 641-675-3769 - Home
 641-680-6769 - Cell

Tri-State Timber
 DBA Stihl
 660-465-2975
 353 1/2 Grand Ave. Memphis, Mo.
 Behind Shelly B's

5% OFF
 String Trimmers

Check Out New & Used Units!

WE SALUTE OUR BEEF PRODUCERS

Many of the top cow herds are located in Southern Iowa and Northern Missouri. Our customers supply us with some of the best quality calves and yearlings to be found anywhere. We are thankful for all of your hard work and dedication during National Beef Month.



Bloomfield Livestock Market
Hwy. 63 North • Bloomfield, Iowa
641-664-2435

WANTED: Bale elevator on wheels.
PH. 641-652-7707. 22

FOR SALE: JD 350 9 ft. bar sickle mower, 3 pt. hitch, \$1,100; Palomino 8 ft. crank up pickup camper, \$2,700.
PH. 641-919-4315. 22

FOR SALE: 65 registered Angus yearling bulls. Excellent quality. Guaranteed breeders. Werner Family Angus, Diagonal, IA. www.WernerFamilyAngus.com
641-344-5059. 22

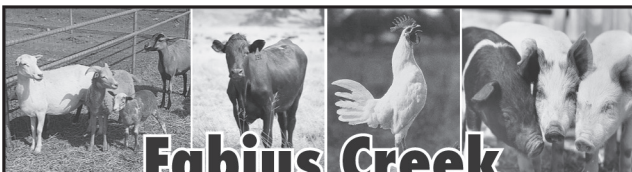
FOR SALE: 2012 Yamaha golf cart, gas, fuel injected. Same as new.
PH. 641-208-5374. 23

FRIESEN CONSTRUCTION
New Houses
Remodeling
Garages Electrical
Plumbing
Custom Cabinets
Arlen 664-3270
Cell 641-208-0170
Bloomfield, Iowa

FOR SALE: Pearl gray guineas. 1 year old, \$10 each. Day old \$3.50 each. Gold Star & Rhode Island Red Pullets.
Rustic Acres Poultry
PH: 641-929-3056. 23

FOR SALE: Black side by side refrigerator with ice and water in door, matching cookstove, microwave & dishwasher; baby high chair, 2 real nice window AC's (1 - 5,000 BTU & 1 8,000 BTU); nice washer & dryer, matching set; 2 nice recliners, 1 leather & one cloth; floral love seat & sofa; medium size deep freeze, very nice. 807 E. Maple, Centerville, IA. PH. 641-895-2966. 23

FOR SALE: Used garden tillers. Rear and front tine. Lots of Troy-Bilts. Many choices. Also used DR brush mowers. Kahoka, MO.
PH. 660-216-1809. TFN



Fabius Creek Livestock Solutions LLC.
Open by Appointments
Evenings & Weekends
12718 275th Street • Bloomfield, IA 52537
ADM Alliance Nutrition® 641-395-0128 TARTER FARM AND RANCH EQUIPMENT

FOR RENT: 1 bedroom apt., \$285/month plus deposit. Utilities furnished. Call Glenwood MO. Housing
PH: 660-457-3336.

FOR SALE: 14 assorted 1 year old laying hens. \$3.00 each.
PH. 641-664-2587 leave message. 22

KEOSAUQUA SALE CO.
20511 Hwy. 1, Keosauqua, IA

REGULAR SALES EVERY SATURDAY

June 3rd - 9:30 a.m.
June 10th - 9:30 a.m.
June 17th - 9:30 a.m.
June 24th - 9:30 a.m.

Thank You For Your Business!
Selling Times
Hogs.....9:30 a.m.
Sheep & Goats.....10:00 a.m.
Outside Merch.....11:00 a.m.
Cattle.....Noon

For More Information Contact:
Keosauqua Sale Co.
319-293-3508
Bill Goehring
641-919-9365

Kirksville Livestock LLC

Kirksville, Missouri

Special Bred Heifer, Cow & Bull Sale Friday, June 2 • 6:00 P.M.

Early listings:
20 red heifers pairs, Al'd back to red angus bull
12 fancy red 3 yr. old pairs, with black calves by side
4 red heifers, bred to Bloman red angus bulls, start calving Aug. 15
12 black heifers, bred to Woodruff angus bulls, August calving
4 black & black white face 2 yr. old heifers, bred to sons of Professional & Capitalist
39 black & black white face cows, 3-5, bred to black bulls, Sept. calving
36 black & black white face cows, 6-8, bred to black bulls, Sept. calving
65 black & black white face cows, 7-SS, bred to black sim-angus bulls, Sept. calving, complete health program, pasture dispersal
15 black cows, RA, bred to black bulls
16 black cows, 3 yrs. old, bred to son of Net Worth, Sept. calving
2 black simmental angus bulls, 16 months
1 reg. black limousin bull, 14 months

This ad written 10 days ahead of sale, many consignments pending, check out website for updated listings.

Special Sheep & Goat Sale Monday, June 5 • 9:30 A.M.

Special Cattle Sale Monday, June 12

"Proud to Serve Area Livestock Producers"
YOUR BUSINESS IS VERY MUCH APPRECIATED
We are open on Sundays to receive your livestock.

Phone for information: Nancy Baker, Office 660-665-9804

Chuck Ambrosia...660-342-3530 Al Ashmead..... 660-216-8730
Caleb Randolph641-919-8539 Roger Jarman 660-651-3683
Harry Durlflinger... 660-341-1080 Doug Fleshman.....660-626-7148
Mark Herbold.....515-720-8667 Daniel Smith 660-341-8396

Visit our website at www.KirksvilleLivestock.com

Scotland County LIVESTOCK AUCTION
P.O. Box 111 • Hwy 15 North • Memphis, MO
660-465-7213 • Jerry & Barb Blomme
660-341-0069 • Grant Blomme

CATTLE SALE

Sat., June 3rd @ 12:30 a.m.

Early Listings:

22-Blk Strs & Hfrs, 400-500 lbs. LTW
30- Blk, Strs & Hfrs, 500 lbs. LTW
20- Mix, Strs & Hfrs, 400-500 lbs.

EXPECTING MORE CATTLE BY SALE TIME

DAIRY SALE

Wed., June 7th @ 10:30 a.m.

Market Report for Sat., May 20th:
3 yr old Pairs: \$2,200. 5 to 6 year old. Paris: \$1,810. SS Pairs: \$1,650. BM Pairs: \$1,410.
Fall Calving Heifers: \$1,875. Strs & Hfrs: Light Test. LB Cows: \$62 to \$74. Holstein Veals \$165.00 to \$195.00. Beef Veals Up To \$425

www.ScotlandCountyLivestock.com

Rental Unit Available!
All models are available with excavator or skid steer mounts.

MONTANA POST DRIVER
Fastest Driver on the Market. **E Series**

YODER EQUIPMENT
BLOOMFIELD, IOWA

19887 Jade Ave
2 1/2 Miles W of Bloomfield

LET US HELP IN YOUR HAY FIELD THIS YEAR!

GREINER HAY COMPANY

SERVICES AVAILABLE:

- Mow & Condition • Tedding & Raking
- Round Bale w/ John Deere 569 Baler
- Tubeline Wrap High-Moisture Hay
- Hauling & loading available if necessary

We can do one or all, call to get on the schedule!

CALL OR TEXT JEFF AT 641-208-2235



**Iowa's Professional
Farmland Real Estate
& Auction Company**

Clifford Martin • SE Iowa Land Agent

319-677-0784

- Tillable
- Recreational
- Auctions



**The best crops start with
the best seeds!**

*Come see us for all your
spring planting needs!*

We have all you need to keep your business thriving.

CROP SERVICES, INC

John & Kathy Bos, Owners

Drakesville, IA



641-722-3293



FOR SALE: Cornish cross broilers, day old \$1.40 each. FREE shipping directly to your door on pre-paid orders.

Rustic Acres Poultry
PH: 641-929-3056. 25

MILITARY ITEMS WANTED BY LOCAL COLLECTOR: Patches, medals, uniforms, hats, helmets, etc. Always buying. Mark Warren, PH. 641-664-3705. mpwarren@netins.net

LAND FOR SALE IN DAVIS CO.: Close to town on hard surface roads with utilities. Call for more information. **641-895-2535**

FOR SALE: Pram machine (blast cabinet) newly refurbished has reclamer cyclone & pressure pot, \$3,500. PH. 641-242-0250. 22

AUCTION

FRIDAY • JUNE 2ND • 2017 • 5 PM

15868 OAK AVE. • BLOOMFIELD, IA

Large assortment of lumber (walnut, pine, cedar, oak), Troy Built Pony tiller, endgate seeder, (2) red jacket well pumps, Case VAC tractor, ATV ramps, Old Style light, Duracraft drill press, 20 ton press, Ryobi 14" chop saw, over 2000 advertising hats (Davis County Ag related), toy tractors (AC D21, AC 970, JD 730, JD H, JD D), desk, microwave stand, sofa couch w/ queen bed, (2) grey leather glider, king size bed and frame, misc shelving, bread machine, steel wagon wheels, asst of yard rocks, chains, shop fans, large asst of misc hand tools, pipe bender, torch cart and gauges, bolt bins, barge box w/hoist, 4x8 utility trailer, grain separator, concrete blocks, 3pt log splitter, old bicycles

Full details can be found online at www.lynchboys.com.

Roberta McClure



Terms: All items are sold "as is". All items must be paid for prior to removal. All announcements made day of sale take precedence over ad. Not responsible for accidents or theft.

WWW.LYNCHBOYS.COM

BLOOMFIELD, IA

641-2083649

FOR SALE: JD MT with 2 bottom plow, \$3,500, runs good. PH. 641-242-0250. 22

FOR SALE: 1993 Chevy 1500, 4WD, 350 hp, 350 CI auto., runs good, \$2,500. PH. 641-242-0250. 22

FOR SALE: 290 JD 2 row corn planter, new tires, \$350; 4 bar New Idea hay rake, \$350. PH. 319-750-1968. 22

LOST BETWEEN WYNETTA CORNER & PULASKI: DeWalt tool case and bit pouch. Cullie Kline 641-208-2860 23

HARRY HOWK'S CONSTRUCTION

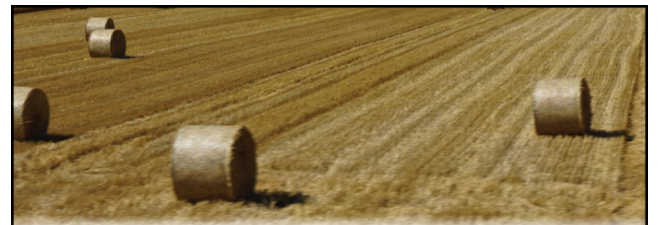


- Backhoe • Skid Loader
- Trenching • Dump Trucks
- New Septic System
- Sand Filters • Waterers
- Water Lines & Hydrants
- Post Hole Digging
- Truss Setting • Plumbing

Home: 641-675-3636 or Cell #: 641-208-5757

LOOKING FOR YARDS TO MOW! In Bloomfield, IA or Lancaster, MO. Please call for more information. PH: 641-799-4770 TFN

FOR SALE: JD WH52A commercial walk behind mower with stand on sulky, 29 hrs., \$5,250. PH. 641-799-7474 23



**SEE US FOR YOUR
BALING NEEDS!**



**Twine
Net Wrap
Much More**

**MFA
AGRI SERVICES**



Lancaster
660-457-3728
Kirksville
660-665-4695



If your vehicle is demanding to be cleaned, let us do the dirty work!

We also do:
Auto Body Shop
Auto Glass
Automotive Restoration

KARR COLLISION CENTER & AUTO DETAILING
Shawn Scott, Owner
701 Karr Ave. • Bloomfield, IA
641-664-1024

berholtzer Farm Supply LLC

Specializing in feeding equipment for dairy & beef.



\$21,900
NDE 804 2008 model, fr. door w/ 4.5' folding conveyor, 9 knives, 640XL scale, 4 new tires, light use, excellent machine



NEW IN STOCK
Valmetal model 5600 Agri chopper, hydraulic chute, rotation, 1,000 RPM PTO



NEW IN STOCK
Valmetal V-Mix 400 vertical mixer, front unload with 48" folding conveyor, rubber top, 640XL scale.

**Rt. #1 Box 84 • Memphis Mo.
Phone/Fax: 660-945-3053 • Cell: 660-341-8234**

BLOOMFIELD LIVESTOCK MARKET



Sun., June 4thHawkeye Country Angus Sale..... 1PM
 Wed., June 7thFat Cattle, Slaughter Cows & Bulls..... 9AM
Special Feeder..... 11:30AM
 Wed., June 14thFat Cattle, Slaughter Cows & Bulls..... 9AM
 Wed., June 21stFat Cattle, Slaughter Cows & Bulls..... 9AM
Special Feeder..... 11:30AM

Reports from Wednesday, May 24th, 2017 • Selling 1,015 Head

HEIFERS

| | | |
|-----------------------------------|-----|----------|
| Ledru Freyenberger.15 BLK..... | 451 | \$178.50 |
| Rodney Newland2 CharX | 492 | \$177.00 |
| Alan Yahnke9 BLK..... | 507 | \$176.00 |
| Dustin Lawson12 BLK..... | 535 | \$176.00 |
| Rodney Newland5 BLK..... | 537 | \$172.00 |
| Mark Henderson15 BLK..... | 545 | \$161.00 |
| Fabius Creek Lamb .8 BLK..... | 548 | \$157.00 |
| Ed Good70 BBWF | 740 | \$151.75 |
| Leroy Yoakum.....3 BLK..... | 583 | \$149.00 |
| Max Rupe28 B/R | 633 | \$147.75 |
| Mark Henderson29 BLK..... | 648 | \$146.10 |
| Fabius Ceek Lamb .30 BLK..... | 665 | \$143.25 |
| Davis Farms19 BLK..... | 602 | \$142.50 |

STEERS

| | | |
|-----------------------------------|-----|----------|
| Dustin Lawson.....12 BLK..... | 438 | \$201.00 |
| Daniel Troyer.....5 BLK..... | 518 | \$193.00 |
| Rodney Newland9 BLK..... | 535 | \$190.00 |
| Ledru Freyenberger.8 BLK..... | 471 | \$188.00 |
| Alan Yahnke14 BLK..... | 547 | \$186.25 |
| Steve Morris10 BLK..... | 479 | \$185.00 |
| Davis Farms9 BLK..... | 567 | \$180.00 |
| Dustin Lawson.....19 BLK..... | 575 | \$178.25 |
| Mike Deiters.....5 BLK..... | 604 | \$174.25 |
| Holtkamp Corp.....66 BLK..... | 797 | \$165.50 |
| Max Rupe18 RED..... | 653 | \$165.50 |
| Tony Rupe9 BLK..... | 652 | \$163.25 |
| Steve Landgrebe27 B/CH..... | 701 | \$157.25 |
| Denny Fenton.....10 BLK..... | 728 | \$156.00 |
| Davis Farms17 BLK..... | 694 | \$152.75 |

**SALE BARN OPEN UNTIL 9:00 PM
 EVERY TUESDAY TO RECEIVE LIVESTOCK**

Phil Schooley 641-664-3450
 Ron Schooley..... 641-777-0302
 Roman Schooley 515-450-3685

We appreciate your business!

Tyler Schooley 641-208-5442
 Barn Phone 641-664-2435

HWY. 63 NORTH • BLOOMFIELD, IA

FOR SALE: JD 214T square baler; NH 350 grinder mixer; Kewanee disc, 14 ft with harrow attachment, \$750 each OBO.
 PH. 319-540-4601. 22

LAND FOR SALE IN DAVIS COUNTY: Close to town on hard surface roads with utilities. Call for more information.
 641-895-2535 22

STRAWBERRIES: Place orders. Stop ins welcome. 2 miles South of Drakesville, 3/8 mile West of 200th St., 17623. Bloomfield.
 PH. 641-664-1896. 23

WANTED: Used grain bin panels, preferably the continuously corrugated. Roman Gingerich, 13418 Hill Blvd., Drakesville, IA
 PH: 641-722-3269. 22

CUSTOM BALING

HAY - STRAW - CORN FODDER

3 X 3 BIG BALES

NEW HOLLAND 330 CROPCUTTER™

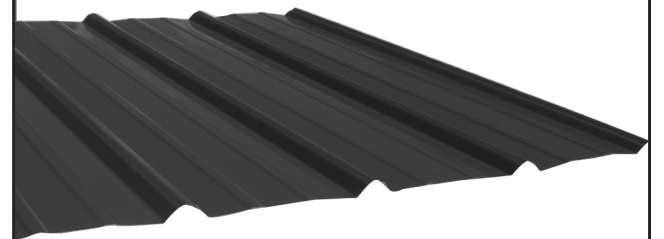
ROTOR CUTTER

☑ Rotor Cutter for the widest range of chop length

Bryan Burkholder - Arbela, MO
 660-342-2733 • bjburk@nemr.net



Premium Metal Roofing



- Buy Direct & Save
- Fast Service
- Cut-to-length
- Professional Contractors Available



641-664-3990 • awmetal.net

ANGUS BULLS YEARLINGS & 2 YR. OLDS



Sired by Musgrave Reachout 530

- ★ CALVING EASE
- ★ GROWTH
- ★ THICK
- ★ GENTLE DISPOSITIONS

SELECT YOUR BULL NOW

**DORAN BOLLMAN
 PULASKI, IOWA
 641-675-3467**



Bring your plans in for a **FREE ESTIMATE**



Trusses **Engineered and Designed to Your Specs**



- Commercial • Agriculture • Residential •

17893 212th Street • Bloomfield, IA 52537
 641-722-3605 • Mon.-Fri. 7 AM to 5 PM