

Curtis
Sales & Service of Outdoor
Power Equipment

Yard 'N' Garden

COME CHECK OUT EVERYTHING WE HAVE TO OFFER!



641-664-2784 • 502 E. Franklin • Bloomfield, IA

Tri-County SHOPPER

June is Dairy Month!



STANDARD MAIL
U.S. POSTAGE
PAID
TRI-COUNTY SHOPPER, INC.
POST OFFICE BOXHOLDER
LOCAL RURAL BOXHOLDER
OCCUPANT
CIRCULATION OVER 11,750 THIRD CLASS

P.O. Box 168 • Bloomfield, IA 52537 • www.tri-countyshopper.com
Phone 641-664-1333 • Fax 641-664-3761 • Email shopper@netins.net



Vol. 45, No. 23
Wednesday, June 7, 2017



AUCTION - Saturday, June 10, 2017 • 10:00AM 209 N. Main St. - Milton, Iowa

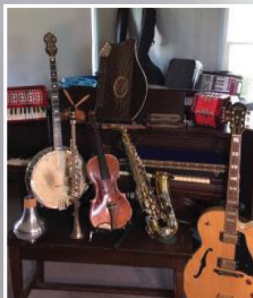
Sellers: Mary Ann & the late Rolland Andrews

Auction Note-The seller welcomes you to a day of fun in Milton. Come enjoy shopping, good food, & music.

The local Amish will be serving as a fund raiser for their school: homemade donuts, fried pies, sandwiches, take home treats, coffee, tea, and more.

There is also a rumor of popcorn and lemonade sponsored by local organizations.... Plus there will likely be music: as the day moves on there are plans for an impromptu jam in honor of all the music Rolland and his various bands brought to the community over the years... so if you play an instrument or have a singing voice, and want in on the action, bring yourself along... All skill levels welcome. We have a Gazebo and it needs used!!!

Property Sale: This beautiful 4+ acre residence, complete with its own covered bridge will be on the market with Lynch Realty shortly after the sale. Flyers with details will be available. Come and have a pre-market look around.



ANTIQUES AND COLLECTIBLE ITEMS - Household: 1800's platform glide rocker, sewing rocker, church pew (from Prairie View Methodist Church), upright wooden butter churn with brass knobs, hand coffee grinder, 6 place setting with serving set of real silverware, 12 place setting of cut glass dishware with all hosting extras- all in perfect condition, cast iron pots and skillets, tin bakeware and flour scoop, milk glass, green milk glass, hob nail glass, many old glass oil lamps, including 2 that are blue glass and 1 that is copper, brass urn and pail, old bottles and canning jars, misc. dishes, knick-knacks and crocks, post kitchen bell, typewriter with stand, 2 portable typewriters, various musical collectible knick-knacks including one-of-a-kind tin piano set and old display instruments, various toys including dollhouse pieces and a Clydesdale full hitch and wagon, pictures and frames, very old books, various signs and license plates, Clocks and supplies/books for repairing clocks.

Equipment and Auto Parts: Model A/T coils, Morris Minor steering wheel/hub caps and trim bits, garden push row disc, various old tools: including oil cans, hand drills, hand grinding wheel and much more, 2 old sleighs: good to fix up for decoration. **Make some good old music:** piano benches, many other old instruments: more information below. **Maple Console:** needs internal work, Mason-Hamlin Parlor Organ with stool in excellent condition, 1936 Knabe Grand piano w/bench 5'8" plays perfect: cabinet needs cosmetic work. **Household Goods - Everyday things:** Singer Model 4832C portable sewing machine, Singer Model 348 sewing machine with table, Montgomery Ward 35 CNS 1992 portable sewing

machine with case, 1920's matching blond chest of drawers and mirrored dresser, matching floral sofa and settee, floral full size sofa, corner entertainment unit, very large wall entertainment unit, Early American maple dining table w/ 4 captain's chairs and high hutch, Early American maple drop-leaf kitchen table w/ 4 chairs, Early American maple glide rocker: blue cushions, weight lifting bench, re-bouncer, treadmill, stationary bike, weights, mini refrigerator, 2 New World Distiller Corp.: The New Water Machine (brand new in box with instructions), book shelves, various: lamps, pictures, printers, tables, computer screen, Mary/Joseph/Jesus outdoor Xmas decorations, seasoned firewood 2+ cord. **Surprise Box's for everyone:** household, office equipment, medical/massage, camera supplies w/ several really old cameras, decorative, canning jars/pans, lawn&garden, paint&paper, auto fluids, auto filters, plumbing supplies, electrical, automotive, just jacks, hardware, wire, open that door, the wheels go round-n-round, etc. **Kids Fun table:** all kinds of cheap things to keep all ages happy. **Ladies Day yard sale tables:** linens, dishes, kitchen utensils, appliances, vases, fans, scales, punch bowl w/cups, candle holders...etc. **FREE table:** Come and Get them: 8-track and cassette tapes with boxes/stands to hold them. **EQUIPMENT AND TOOLS - Big Stuff:** Campbell Hausfeld air compressor 5HP 125PSI 60 gallon (nearly new), older small air compressor, Fimco sprayer, Coats 10-10 tire/wheel machine, log splitter, Master Mechanic MM1750 generator, 33-PP4 Allied Hydraulic 4 ton porta power, Miller Matic 35S Welder plus other welding tools/tanks, Auto Frame puller. **Shop furnishings:** 2 metal sorting units, 2 shop sinks, double sink in counter top, 3'x8' rolling butcher block work bench, 2 firewood containment stands, barrels, saw horses galore, shop lights, shop vacs, dollies & trollys, shop jacks, shop tables, metal filing cabinets, metal shop desk, various auto repair texts and car manuals, barn siding, planks and misc. lumber/siding

Power tools: Black and Decker 1/2 "mounted press drill, Craftsman 1/2 " stand press drill, paint shaker, 2 scroll saws, 3 handheld circular saws, 3 wood table circular saws, Delta circular chop saw on rolling table with work tools, belt sander, flat and circular sanders, Spray guns and cups, drills, nail gun, various air tools, 4 chain saws, 2 hand held weed eater, Ryobi Expand-it heads: hedge trimmer, tiller, weed blade, Ariens 4 tine 2HP tiller, Diamond I/C 6HP Commercial push weed eater, 2 electric grinding wheels. **Hand tools:** hand saws of all kinds, staple guns, drill bits...O-SO-MANY!, socket sets and random sockets, ratchets, hammers, wrench of all kinds (a particularly impressive assortment of pipe wrenches/cutters), screw drivers, pliers, wire cutters, planers, chisels, vise-scrips, clamps&vices, magnet bars, soldering equipment, garden tools, shovels, rakes, hatchets, sledge hammers, wedges, log chains, winches, engine pullers, Micro tools for working with clocks and instruments, various rolling hand carts, 2 live traps, chimney brush, ladders...lots and lots of ladders!

MACHINERY: • Mid 50's International backhoe w/ Shawnee loader: was running when parked a couple years ago. All fluids drained to protect engine. Hydraulics, tires and over all body needs some work, but Rolland bought it new and it served him well his entire career in plumbing/heating, then on into later life. • Early 70's International Cub lo boy tractor w/ under carriage mower: runs fine. • Early 70's International Cub lo boy 154: parts tractor. • Early 50's Ford 8N tractor: runs fine. • Snapper riding lawnmower LT200: works fine. • 2 small trailers. • 1994 Auto mover trailer: licensed: 2 axles with winch and new tires. • 1989 Utility trailer: licensed: 1 axle with new tires. **Machinery parts:** Woods RM59 grooming mower for tractor, Large brush mower for tractor, 2 tractor blades, other misc. tractor parts. **Car parts:** 95 Chevy 3/4 ton instrument cluster, RX7 hood, 88-89 Cavalier left and right fender, 75-81 VW Rabbit left and Right fender, 98 Honda wagon headlight mount, 2 Volvo tires, 4 195/70/14 Rabbit wheels w/new tires. Woods RM59 grooming mower for tractor, 2 tractor blades.

MUSIC AND MORE - Feel the beat: Sony portable home entertainment system (nearly new), various boom boxes, turntables and stereo components, clock radios/CD players, speakers, mics/stands, gig equipment of all kinds: Peavey speakers, mixing boards, etc. **Music room supplies:** music stands, instrument stands, pitch pipes, tuners, music lights, instrument work bench with underneath storage, piano tuning equipment and piano repair supplies, violin repair tools and supplies, strings for everything, Micro tools for repairing instruments and clocks. **Musical Instruments:** Saxophones, Clarinets, Bassoon, Flute, Recorder, Trumpet, French Horn, Trap set, Bells, Key Boards, Grand Piano, Pump Organ, Accordions, Harmonicas...More than 50!!!, Guitars, Ukuleles, Banjos, Violas, Violins, Upright Bass, Auto Harps, Zither.



LB Lynch Boys
You Betcha Online Auction

ONLINE AUCTION ITEMS

Items will be available to view day of sale. On-line bidding will begin the week after sale.

Automobiles: 1953 MG TD dark green, convertible. Sold as is: cute but not running. It needs a new owner looking for a fun project.
Musical Instruments: There are too many instruments to be listed here...over 100!!! Some will be sold at the auction, some will be sold online afterwards. All will be available for viewing. There will be a complete list, with details, online, with many pictures and how each is being sold by June 5th.

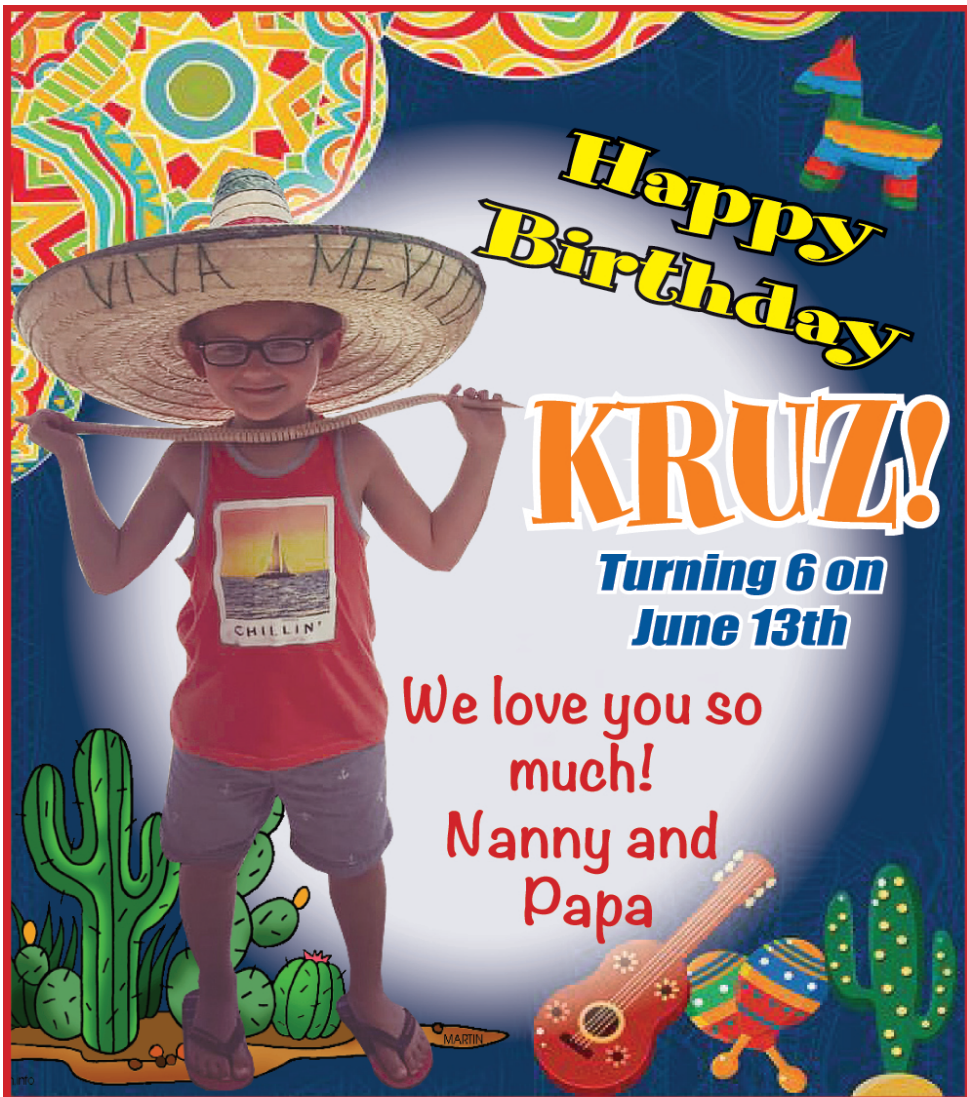


Lynch Boys
Auction Service .com

For more information
contact Lincoln Lynch

@ 641-208-3649

WWW.LYNCHBOYS.COM



SELMA REUNION will be held July 8th, at Selma Church fellowship hall. Please bring a covered dish to share for a noon meal. Table service and drinks will be furnished. **Everyone welcome, No reservations required.**

FOR SALE: Dinette set with chairs; oak entertainment center. Both in good shape. **PH: 641-656-4446 25**

GINGERICH STOVES and PLUMBING LLC

✓ us out for all your plumbing needs!

Hitz Halter Insul.

In-Stock for Radiant Floor Heat

19091 180th St., Bloomfield, 52537 • V.M. 641-664-2814
Hours: M-F: 7:30 A.M.- 5:00 P.M. • Sat., 7:30 A.M. - 12 P.M.

Fittings & Accessories

Competitive pricing & also contractors discount.

1/2"x100' Pex Waterline	25¢
3/4"x100' Pex Waterline	45¢
1/2"x300' Pex Oxygen Barrier	30¢
200 lb. Test 1" - 500'	39¢
200 lb. Test 1 1/4"x500'	65¢
Boshart 4" Bury Hyd.	\$85
Any Flow 4" Bury Hyd.	\$95
Iowa 4" Bury Hyd.	\$112
Iowa 5" Bury Hyd.	\$120

YODER'S INDIAN CREEK FURNITURE investing your tax return money in quality furniture. Will become heirloom treasures for future generations. Offering a large selection of dining room, living room, bedroom, office & children's furniture. Unique handmade clocks, rustic log furniture. Also offering quality pre-finished hardwood flooring. Located 4 miles North of Cantril on RT. V64, 22769 Rt. V64 Milton, Iowa. **PH. 319-538-7332**

HANDYMAN: Maintenance person, Carpentry, roofing, painting, computer skills. Albia Southern Iowa. Call Charles **PH: 641-931-0477, 931-200-1522, 641-980-2368, 931-200-4681 25**

We'll Put Collision Damage in Reverse

Let our certified technicians quickly restore your vehicle to pre-accident condition with a satisfaction guarantee.

State-of-the-Art
Frame Straightening
Dents, Dings & Scratches Removed
Custom Color Matching Service

WE'LL DEAL DIRECTLY WITH YOUR INSURANCE COMPANY

FREE Estamites.

Hertz
Rentals for all Occasions!
Great Rates!



WALKER MOTORS
Collision Repair Inc.
375 S. Main St. • Memphis, Mo • 660-465-2159



DAVIS COUNTY DOLLARS for SCHOLARS

The Davis County Chapter of Dollars for Scholars is again seeking applications for

Keith Burnam Memorial Scholarship

\$250 scholarship for a person in the business field; junior or senior in college.

Linda McCarty Wingett Scholarship

The \$2,000 Wingett scholarship is for any student, traditional or nontraditional, whose normal education schedule has been interrupted by financial, social or personal reasons. Each applicant must be a high school graduate or have a GED certificate and plan to attend or currently be enrolled in a post-secondary education institution this fall.

Willa Proctor Memorial Scholarship

The \$500 Proctor scholarship is awarded to a student of any age, from high school graduates to nontraditional students, in the field of special education. Examples of qualifying fields include but are not limited to special education recertification, school psychologist, occupational or physical therapist and speech pathology.

Pulaski United Methodist Church Scholarship

A \$1,500 scholarship will be awarded by Dollars for Scholars each year. Recipients may reapply for an additional year. Applicants must meet at least one requirement from each of the following categories and preferences will be given in the order listed:

Category 1:

1. Affiliation to the Pulaski United Methodist Church.
2. Davis County Resident (current or DC High School Graduate)

Category 2:

3. Student studying some area of Christian Ministry as a Graduate Level Seminary Student. (new or returning)
4. Student studying some area of Christian Ministry as an Undergraduate Student. (new or returning)
5. Post High-School student receiving specialized training in Christian Ministry through a church or reputable Christian organization with the intent of developing the person's capacity for a career in some type of Christian Ministry. (Examples include Youth With a Mission, Leadership Development Courses, Lay Speaking Courses, Training in areas such as youth, children, worship, missions, etc.)
6. Davis County High School Senior interesting in pursuing a career in medicine or education.

DC School District Employees Scholarship

- 1). \$750, Must be an undergraduate in college (junior or senior) in the coming school year majoring in education.
- 2). \$750 for a current HS teacher who is working on certification for being able to teach dual credit classes

DC Auxiliary Scholarship

\$300, Available to college students of any major; must be either a sophomore or junior.

Davis County Hospital Scholarships

Applications are available at:

Lynch Realty

106 S. Madison, Bloomfield, IA

during normal business hours.

Applications must be postmarked by June 30th and mailed to

Dollars for Scholars

608 S. Washington, Bloomfield, IA 52537

These scholarships are awarded and administered by

Davis Co. Dollars for Scholars.

Fox Valley Welding

No matter what size the project customer satisfaction is always our first priority.

Tig & Aluminum • Welding • Millwork • Lathe • New Steel • Sprockets • Roller Chain
Barings • PTO Parts • Fabricating • CNC Machining • CNC Cutting

Hours: M-F 8-5:30 • 641-656-4684 • 12190 East Hwy. 2 • Milton, IA

Davis County
MEDICAL ASSOCIATES
Dedicated. Compassionate. Healthcare.

FOR THOSE ILLNESSES THAT SNEAK UP ON YOU...

SAME DAY APPOINTMENTS



To schedule an appointment at Davis County Hospital Medical Associates call 641-664-3832.

509 N. Madison • Bloomfield, Iowa 52537
www.DavisCountyHospital.org

FOR SALE: 2004 Buick Park Avenue, 168,000 miles, mostly hwy, reg maintenance, mechanically sound. \$3,250 OBO.
PH: 660-216-2623 25

FOR SALE: 7 used 6 panel doors, (5-30", 1-24", 1-16"). pine; Also 3 carriage lamps, antique brass, outdoor lights.
PH: 641-208-0318. 23

LakeWood RV Sales & Rentals

2007 SUNNYBROOK



Fifth Wheel with 3 slides. VERY NICE CONDITION

Reg. \$17,500
SALE \$16,500

Summer is coming. Plan a family camping trip. WE DO RENTALS!

COME SEE US FOR ALL YOUR RV NEEDS!

Hwy. 136 E., Downing, MO 9 miles W. of Memphis or 1 1/2 miles E. of Downing
www.lakewoodrvsales.com

Tues. - Fri. 8-5 • Sat. 8-Noon, Closed Sundays & Mondays
Phone: 660-379-2763
Cell: 660-341-1927
Fax: 660-379-2792

FOR SALE: 10 older stock cows due to calve in the next 2 or 3 months, good diposition, \$1,250 OBO. 5 miles south of Milton.
PH: 660-216-0578 23

FOR SALE: Stove length fire wood at **Beechy Sawmill** \$25 pick up load. Also 48" bundles at \$5 a pc. 4 miles West of Drakesville
PH: 641-664-2437. TF

LIQUIDATION SALE: EVERGREEN SHARPENING SERVICE! 10% OFF all chain saw chains and accessories. Several Echo chain saws, model CS-500P, 18" bar, \$120 OFF. **FOLEY SAW GRINDER 357:** sharpens 6" to 32", misc. diamond wheels, saw polisher, acetylene torch, tall bottles nearly full, retipping jig, carbide tip, silver solder, d/p tank for hot plastic, blade stand; **CHAIN SAW GRINDER:** chain braker and riveter; **BELT SANDER; BENCH TOP GRINDER:** an automatic setter and saw blade jig; **STRAIGHT KNIFE SHARPENER** up to 36"; **AUTOMATIC SAW FILER,** automatic tooth punch and setter; hand saw jig; **BENCH TOP POLISHER,** sissor sharpener; drill sharpener for up to 2" bit; drill doctor; 40 gal. dust collector.
Call Evenings.
PH: 660-216-1710



Poly Lawn Furniture

GREAT FATHER'S DAY GIFTS!



VM: 641-664-0207
1 Mile East of Drakesville on Jade Ave.
Mon.-Sat. 9:00 AM - 5:00 PM

FOR SALE: Electric poles, hedge - corner & line posts, steel & pine posts. 3/8 galvanized table. Some used barbed & woven wire.
PH: 641-799-5970 24

L&M Country Store

1 1/2 miles south of west Hwy 2 & 63 jct.
Mon-Sat. 8am-5pm **CLOSED SUNDAYS**
VM: 641-664-1936

2.52 oz. fully cooked Oscar Mayer bacon.....	\$1.25
Frozen fully cooked breaded chicken patties	\$1.69 lb.
16 oz. creamy ranch dressing.....	75¢
15 oz. cream style corn.....	59¢
16 oz. lasagna	\$1.09
24 oz. mozzarella string cheese	\$1.25
8 oz. sliced muenster cheese.....	89¢

Taking orders for fresh Michigan blueberries!

FOR SALE: Beagle dogs, big or small, take 'em all. You might fall n love with'em ALL! Good pets, better hunters! \$50 each
PH: 641-664-2060 25

FOE SALE: 3 APRI registered Beagle pups. Parents are excellent hunters. Also selling 1 male, 2 female adult APRI registered Beagles.
VM: 641-664-2997 ext. 1 25

FOR SALE: 2) 10x9 insulated overhead doors with vinyl backing. \$550 each.
PH: 641-722-3151 25

FRIESEN CONSTRUCTION

New Houses
Remodeling
Garages Electrical
Plumbing
Custom Cabinets

Arlen 664-3270
Cell 641-208-0170
Bloomfield, Iowa

SHADY LANE VARIETY

Father's Day Gifts!

- Rhythm Clocks
- Books
- Games • Puzzles
- & Much More

1 mi. E. of Drakesville on Jade Ave. • 641-664-0207
8-5 Mon. thru Sat.

Garages • Pole Barns Commercial Free Estimates

LAN-DOW BUILDINGS

Lancaster Lumber, Inc.

We Stock a Complete Line of Building Materials Complete Buildings or Packages Available

Toll Free 800-424-5071 Fax 660-457-3133

Hardware • Plumbing • Electrical • Paint
500 Green Street • Lancaster, MO 63548

FOR SALE: New Holland 56 rake. On steel or rubber. good condition. \$800 OBO.
PH: 641-929-3036 25

GET YOUR CAMPING GEAR HERE!



Graber's COUNTRY STORE LLC

2 miles South & 1 mile East of Drakesville

FOR SALE: Used 7' BMB rotary mower, 3 pt., 540 PTO, \$900.
PH. 641-777-7978. 25

FOR SALE: Adult male beagle, AKC & APRI registered, \$50 OBO
PH: 641-664-2999 25

Slayton Polaris Authorized Polaris dealer since 1988

Your Adventure Awaits!

New & Used Polaris Rangers & ATV's



660-328-6627

BLOOMFIELD, IA
8 mi. S. & W. from Pulaski or 6 mi. W of Memphis then 13 mi. N. on Route B

FOR SALE: Small square bales & used tin off barn.
PH: 641-226-8730 25

WANTED: Used propane kitchen range in good shape.
PH: 641-664-2060 25



2012 Nissian Frontier SL, 4X4, CREW CAB, BLUE 34,000 MILES



\$20,500

2012 GMC 2500 HD 4 WD, 6.0 GAS, AUTO, BEDLINER, TOW PACKAGE



\$10,900

2003 silverado RED, 4 WD, 80,000 MILES

JUSTIN

2012 Ford Escape Limited, loaded, leather

2013 Silverado 2500 HD LTZ, diesel, 4 wd, crew cab

John Is Ready For SUMMER!

Kollision Korner

504 South Drake St
Bloomfield, IA 52537
PH: 641-664-2648
Fax: 641-664-2948



ACROSS FROM THE SCOTLAND COUNTY FAIRGROUNDS

For the way you live

WITMERS FURNITURE
MEMPHIS, MO
NOW OPEN!

MON & FRI: 9AM-8PM
TUES & SUN: CLOSED

WED, THURS & SAT: 9AM-5PM
660-465-2461



FARMERS & FRIENDS
OPEN COWBOY CHURCH
 Every Friday @ 6 PM
 Get To Gather Room
 Bloomfield, IA

WESTERN'S SMOKEHOUSE
 • Nationwide Shipping
 • Cut to Order Meat Bundles
Snack Sticks & Beef Jerky
 Visit our retail shop in Greentop, MO
 www.westerns-smokehouse.com
 New Hours as of May 1st
 Mon. - Fri. 8:30am - 5pm • Sat. 8am - 4pm
 660-949-2445 • 1-800-456-0250

Gourmet Cheeses
Award Winning Sausages

SUMMER FUN!

Friday, June 9th
Choice of 12 or 14 oz. Ribeye
with sides *Serving at 6:00 P.M.*

Dine In **722-3355** Carry Out

RAY'S LONGBRANCH
 Drakesville, IA

Davis County Fair
July 11th-16th

Advanced Carnival Coupons
 for rides July 11th-16th
 \$20 in advance - \$25 at the Fair

AVAILABLE JUNE 1ST-JULY 10TH AT THE FOLLOWING BLOOMFIELD LOCATIONS:

Bank of the West
 Community 1st Credit Union
 1st Iowa State Bank
 Success Bank

Advance coupons also available
TWO DAYS ONLY JULY 10th from 9am-6pm & **JULY 11th** from 9am-Noon at the Fair Administration Office.

BILL RILEY TALENT SEARCH
 Sunday, July 16th at 2:00 P.M.
 in the Blue Ribbon Barn on the Success Bank Stage
 Two age groups (2-12 & 13-21)
 Pre-register by calling 641-208-6012
 www.daviscountyfair.org

Polly's Boondock
 Kitchen Open 6 AM to 9 PM • Mon. - Sat.
 Serving Breakfast • Lunch • Dinner Specials

- Taco Tues. - All day / All night
- Wednesday Nights 5-9 • \$3.00 hamburgers
- Thursday - Fried Chicken
- Friday - Hot beef place

Lancaster, MO • North Side 5q
 660-457-3255

Gold beer on Tap, Bottles & Cans

JOIN US AT CAMP VBS....
PULASKI MENNONITE CHURCH

Ages 3 to 12. **Fri., June 9th • 5 - 7:30 PM** (meal included)
Sat., June 10th • 4 - 6:30 PM (parents invited to campfire & meal afterwards)

CAMP OUT
 GETTING S'MORE OF JESUS

FOR MORE INFORMATION
CALL 641-208-5591

LANCASTER, MO CITYWIDE YARD SALES
SATURDAY, JUNE 10TH
 Maps Available at Casey's & BP Saturday Morning!
 If you would like to be on the yard sale map please contact city hall 660-457-3022 or cityhall@marktwain.net by June 8th

ALSO, DON'T FORGET TO STOP BY LANCASTER'S FIRE & RESCUE FUNDRAISER

FOOD ON THE SQUARE!
 Serving: Tenderloins, Juicy Burgers, Corn Dogs, & Drinks
 Please note: Lancaster City Wide's are held annually on the 2nd Saturdays of June and September.

Southfork MOTEL & GRILL
 JUNCTION OF HWY 2 & 63
 BLOOMFIELD • 641-664-1063

Breakfast • Lunch • Dinner
 Daily Hot Specials and Evening Features
 Prime Rib Capital of the World! Served on Friday & Saturday Nights
 Banquet Facilities Available for All Occasions • Catering

Attention: We are now CLOSED on Sundays!

Tues - Thurs 7am-9pm • Fri - Sat 7am-10pm
 Closed Sunday and Monday
"Where Quality and Consistency Matter!"

HERE'S THE SCOOP!
 Ice Cream Social
SATURDAY, JUNE 17TH • 5 PM
 DRAKESVILLE CITY PARK • DRAKESVILLE, IA

Over the moat
 DRAWBRIDGE TO THE KING!

Vacation Bible School
 June 12 - 16 • 9:00 AM - Noon
 K-6 grade
 Pre Register online at www.bloomfieldfirstbaptist.com or call 641-664-2240

The First Baptist Church of Bloomfield
 401 Crestview Circle • Bloomfield

Country Side Grocery

Ketchup, 38 oz.....\$1.39
 Cottage Cheese, 24 oz.....\$1.79
 Oscar Mayer Fully Cooked Bacon\$1.35 each
 Oscar Mayer Deli Sliced Honey Ham, 22 oz.....\$1.95
 Smoked Gouda Cheese.....\$1.39/lb.
 Sliced Pepper Jack Cheese, 7.5 oz.....79¢

Food Supplements

 Vitamins

3/4 mi. E. of Drakesville, IA on 180th St.
 Mon-Sat: 8:30am - 5:00pm
 VM: 641-664-2661

If your vehicle is demanding to be cleaned, let us do the dirty work!

We also do:
 Auto Body Shop
 Auto Glass
 Automotive Restoration

KARR COLLISION CENTER & AUTO DETAILING
 Shawn Scott, Owner
 701 Karr Ave. • Bloomfield, IA
 641-664-1024

FOR SALE: John Deere 672 side delivery rake, Hydraulic driven, Excellent condition. \$1,900 OBO.
 PH: 660-341-8759 25

WANTED: Double wide mobile home in good condition. FOR SALE: 2 king size headboards.
 PH. 641-208-6010. 24

YODER INDIAN CREEK FURNITURE maintenance free outdoor poly wood furniture. Large selection in stock of rockers, gliders, patio sets & pub sets. Available in 24 color combinations. Also available pergolas & gazebos. 22769 Rt. V64 Milton, Iowa. Located 4 miles North of Cantril or 3/4 miles South of Lebanon on RT. V64, Monday to Saturday 8 a.m. to 5 p.m. No Sunday sales.
 PH. 319-538-7332

2013 Nissan NV3500 SV
 12 passenger,
 V8, navigation,
 34,000 miles

\$18,000

Any questions call:
660-397-2684

C.H.I. MIDWEST Overhead Door
 LiftMaster

✓ Out Our Competitive Prices!
 21387 Route V64 Keosauqua, IA 52565
660-216-0812
 Sales • Parts • Service ~ Free Estimates
 We sell new doors and openers or we'll service your old one.

Our goal is to keep your doors rolling smooth!

Hawkins - Harrison Insurance

Trusted Choice®

SHOPPER ADS CAN BE DROPPED OFF HERE!

Proud to be your partner.

P.O. Box 365, Lancaster, MO 63548, 660-457-3020
 103 W. Monroe St., Memphis, MO 63555, 660-465-8533

FOR SALE: 2 horses, good riding, children safe. White - \$200; brown \$400. Also bridle & saddle, \$35.
 PH. 660-342-5532. 24

FOR SALE: Guinea Keets.
 PH: 660-216-3804 25

LOOKING FOR YARDS TO MOW! In Bloomfield, IA or Lancaster, MO. Please call for more information.
 PH: 641-799-4770 TFN

LOST BETWEEN WYNETTA CORNER & PULASKI: DeWalt tool case and bit pouch. Cullie Kline
 641-208-2860 23

PRIDE LIFT CHAIRS
 The World's #1 Lift Chair

Years of experience in manufacturing. Backed by up to a 3 year warranty!

- Sit with security
- Stand with confidence
- Finger tip controls
- Economically Priced

Medicare & Insurance Billing

Friendly Service

SOUTHSIDE DRUG
 337 Church St. • Ottumwa, IA
 Hours: Mon.-Sat. 8-8 • Sun. 9-5
641-682-3467

The City of Greentop is now accepting Sealed bids on the following:

1984 Fiat Allis Motor Grader Model FG85
 All bids must be submitted to:
Martha Woods
 Greentop City Clerk, P.O. Box 119
 Greentop, MO. 63546

Any questions call **660-949-2520**
 8:00am until 12:00pm. May be seen at the Greentop City Hall 8:00am until 12:00pm.
 The bids must be in a sealed envelope. Bids will be accepted until June 16th, 2017 at 12:00 p.m.
 The City Council reserves the right to accept or reject any or all bids.

citizens mutual

GIG-CAPABLE PROVIDER
 GIG CERTIFIED BY NTEA
 THE RURAL BROADBAND ASSOCIATION

CONNECTED
 CERTIFIED COMMUNITY

SMART RURAL COMMUNITY

A Program of: NTEA THE RURAL BROADBAND ASSOCIATION

Annual Meeting | **Thursday, June 8, 2016 7 p.m.** | **Mutchler Community Center**

JUNE 18TH FATHER'S DAY
 DRIVE UP FRONT, COME IN, BE WELCOMED!

See - Feel - Smell
 The LARGE selection of
 Shirts • Slacks • Suits • Socks • Belts • Shoes • Sport Coats • Jackets
 ALL AT 20% to 50% OFF

Leather Boots, Shoes, Sandals
 Pull Ons & Lace Boots For Work Or Dress
 Casual - Western - Combat

LOWER LEVEL
 Jeans, Bibs, Jackets, Hoodies, Sweat Shirts, Caps, Lined Brown Bibs, Pocket T's up to 10X

Redwing • Wolverine • Irish Setters • Rocky • Durango • Muck Boots for the whole family!

WE DO ALTERATIONS!

Cook's Mens Store
 116 S. Market • E. side of Square • Memphis, MO
 Ph. 660-465-2511 • Fax 660-465-8905
 Monday-Friday: 8-5 & Saturday: 8-9
 Short-Big-Tall • Narrow to Extra Wide • Tux Rentals
 Gift Certificates

NORTHERNER, LONDON, HANES, RED BAIT, BIG SMITH, KEY QUALITY, TINGLEY, DeLONG, Lyantone Belts, Samsonite, HAGGAR, CAMPUS, WOLVERINE, FREEMAN, Poolandia Slim



SUNSHINE HILL GREENHOUSE
 641-656-4203
 641-208-7609
 1 MILE EAST OF MILTON ON HWY. 2

CLEARANCE ON ALL REMAINING PLANTS!

BCS 737 Tiller
 • 4 speed
 • Honda Engine
 • Steering Brakes
 • Differential
 • New 26" Tiller Box

\$1,500

Any questions call:
660-397-2684

Davis County HOSPITAL
 Dedicated. Compassionate. Healthcare.
 509 N. Madison Bloomfield, IA

Come join our exciting team...

- **Food Service Work:** full time, varied hours from 6:00 a.m. – 6:30 p.m.
- **Patient Care Tech:** full time 7:00 p.m.- 7:00 a.m.
- **Billing Specialist:** full time 8:30-5:00 p.m.
- **Scribe:** Part-time
- **RN's:** various

Check out our web site: <http://www.daviscountyhospital.org> to view complete details of these and other current openings. Applications can be completed online or at Iowa Workforce Development offices or paper applications can be picked up at the hospital. The successful candidate must pass a pre-employment physical, drug screen, and background check prior to beginning employment. E.O.E. Tobacco Free Campus.

Custom Built, Painted and Vinyl Buildings & Sheds
 ~David W. Schrock~

Hillview MINI BARNS

15383 180th Street Drakesville, IA 52552 **641.664.2842** U.M.

Gingerich Greenhouse
 22 Years of Growing Plants

Fruit trees Reduced \$5.00

15% OFF Hanging Baskets & Planters

Proven Winner Shrubs! 10% OFF ALL SHRUBS!

Hours: Mon - Fri 8 am - 6 pm • Sat. 8 am - 5 pm
 1 mile east & 1/2 mile north of Drakesville • 16577 Jade Ave.

CLASS A CDL Driver. Good home time. Stay in the Midwest. Great pay and benefits. Matching 401k. Bonus's and tax free money. Experience needed. Call Scott 507-437-9905. Apply on-line WWW.MCFGTL.COM (MCN)

TRAILER SALE! 2017 6X12 V-nose ramp door \$2,775.00: Scissor lift trailers, Dump Trailers; Skidloader trailers, Fuel tank trailers; 4-place snowmobile trailer, Cargo's; ST205/75D15 on mod wheel \$65.00; Trailer Parts & Repairs. 515-972-4554 www.FortDodgeTrailerWorld.com (MCN)

HILLTOP GREENHOUSE
 11049 HWY 2, MOULTON, IA • BETWEEN WEST GROVE & MOULTON

end-of-season Markdowns Check out our large discounts on all perennials & fruit trees!

Apple trees \$12.00 • All other fruit trees \$14.00

- Knockout Roses
- Clematis
- Carex Perennial Grasses
- Annuals
- Astilbes
- Hydrangeas
- Garden Phlox
- Lily
- Mini Roses
- Oriental Hybrid Lilies
- Creeping Phlox
- Hostas
- Peonies
- Salvia
- Hen & Chicks
- Large Maple Trees
- Crimson King

Lilac Bushes
Large Selection of Lilacs all ON SALE!
 Mon-Sat • 8:00 A.M.-6:00 P.M. **641-929-3036**

20% OFF Remaining

Apple Trees

- Honey Crisp • Cortland • Snow Sweet
- Royal Gala • Yellow Transparent
- State Fair • Kinder Crisp

Bloomfield Greenhouses
 June Hours: M-F 8:30am - 6:00pm • Sat. 8:30am - 4:00pm
 Closed Sunday
 708 E. Arkansas Ave., Bloomfield • 641-664-1622

DR We would like to announce that are now dealers for DR Power Equipment!

Turn your machine into a 4-Season WORK HORSE!
 Mount this 42" blade to spread and level loose gravel, topsoil, sand and more. Or plow snow in the winter!
 Other attachments available.

10.5 HP PREMIER-26
 Our entry model with fixed deck, at a great price! Cuts 4" high grass and 8" high weeds!

C&A REPAIR 6 mi. N. of Bloomfield on Hwy 63
641-664-3089

Burkholder's GREENHOUSE

SALE ON ALL PLANTS

50% OFF Annual & Perennial Plants
 Large Variety in EXCELLENT Condition

10% OFF Large Selection Shrubs Trees

Hours: Mon-Sat 8 am to 5 pm
660-397-4115
660-341-5777
See Our Catalog at www.burkholdergreenhouse.com
 4 Miles North of Edina, MO

WE STILL HAVE A NICE VARIETY OF BEAUTIFUL PLANTS!

Mum Plugs \$1.50 Each
 If you want to establish mums as perennials, plant these small plants in your flowerbeds now. We have many colors and kinds to choose from.

Lilac Hill GREENHOUSE
 660-342-9554

Homegrown TOMATOES

25957 US Hwy 136 • Lancaster, MO • Between Lancaster & Downing
 Mon. - Fri. 8am-8pm • Sat. 8am-5pm • Closed Sunday

Diagnosed with Mesothelioma or Asbestos Lung Cancer? If so, you and your family may be entitled to a substantial financial award. We can help you get cash quick! Call 24/7: 866-924-0504 (MCN)

GET THE PERFECT YARD WITHOUT LIFTING A FINGER! Everything you need from lawn care, soil analysis, weed control, pest control, and more! Call Now 855-675-5704 (MCN)

A PLACE FOR MOM. The nation's largest senior living referral service. Contact our trusted, local experts today! Our service is FREE/no obligation. CALL 1-800-442-5148 (MCN)

TRUCK DRIVERS NEEDED!
 For local company.

Buffalo Trucking
 Good schedules!
 Competitive Pay!
 Serious Inquiries!
660-465-8571
 After 5PM • **660-216-6227**

Help Wanted

Due to increase in census

CNAs

Full-Time / Part-Time
All Shifts

Come join our team and experience the rewards of working with our residents.

Competitive Wage and Benefit Package Available.

Apply in person to:
Laurie Buckhahn, Administrator

Applications available online at:
www.goldenagecarecenter.com
and can be emailed to
admin@goldenagecarecenter.com

Golden Age Care Center
1915 S 18th Street
Centerville, IA 52544



EOE

FOR SALE: Hardwood slab firewood, \$5 a bundle. M&M Custom Sawing 1 mile N. of Farmers Harness.
VM: 641-664-1131 24

Fish for Stocking Lakes & Ponds



6-8" & 8-10" Catfish, Albino Catfish, Redear Sunfish, Minnows, Bluegills, Hybrid Bluegills, Bass, Grass Carp, Crappies, Koi.

To order call Blyzo Fish Farm

Call 641-874-5907

SATURDAY, JUNE 10th

OTTUMWA - Tractor Supply 9-10AM

BLOOMFIELD - Troy Elevator 11-12 Noon

Please bring your own POND water, Private Deliveries Available | Taking walleye orders for Fall delivery Fish Farm open by Appointment.

FOR SALE: Cornish cross broilers, day old \$1.40 each. FREE shipping directly to your door on pre-paid orders.

Rustic Acres Poultry
PH: 641-929-3056. 25

MILITARY ITEMS WANTED BY LOCAL COLLECTOR: Patches, medals, uniforms, hats, helmets, etc. Always buying.
Mark Warren, PH. 641-664-3705. mpwarren@netins.net 23

STRAWBERRY SEASON IS HERE! \$2.75 a quart. Will take orders. Please bring containers. **R&S Strawberry Farm.** 1 1/4 miles South of Junction Hwy 2 & Hwy 15 Milton. 23

FOR RENT: 1 bedroom apt., \$285/month plus deposit. Utilities furnished. Call Glenwood MO. Housing
PH: 660-457-3336.

STOR MOR MINI STORAGE QUEEN CITY, MO

10 x 10 Unit- \$35/mo.

10 x 20 Unit- \$50/mo.

515-720-7180

or **660-766-2228**

"NUF SED"

FOR SALE: 2004 Ford van E150, 150K miles, auto, 7 passenger, P/windows, P/locks. \$4,500.
PH: 660-341-2727

HOURS 8 A.M. to 5:00 P.M. DAILY EXCEPT SUNDAY	Zimmerman's Store Rutledge, MO 660-883-5766	Our Everyday Low Prices!
---	--	---------------------------------

50# Russet Potatoes.....	\$9.15
10 # Russet Potatoes #1.....	\$2.25
15# Jumbo Baking Potatoes #1 Idaho.....	\$2.25
10# Golden Idaho Potatoes #1.....	\$3.35
5# Green Giant Red potatoes #1.....	\$2.15
Sunkist Star Ruby Grapefruit.....	69¢ each or 2/\$1.19
Fresh Nice Apricots.....	\$3.85 each.
Large Fresh Cucumbers.....	75¢
Large Fresh Carrots.....	41¢/lb.

5# Ground Beef 80% lean 20% fat.....	\$10.19
5# Rolls Pork Roll.....	\$2.85/lb.
8 oz. Shullsburg Original Snack Bits-Gluten Free.....	\$3.79
12 oz. Winesburg Meats Summer Sausages.....	\$3.98
6 oz. Oscar Mayer Lean Smoked Ham Slices.....	49¢
3.9 oz. Breakstone's Cottage Cheese Doubles- Strawberry.....	4 for \$1.00 or Case of 12 for \$1.75

128 oz. Hot Banana pepper rings *****	\$8.85
1 gal. Mild banana pepper rings.....	\$6.49
4 Kinds Jars of Stuffed Olives *****	\$14.69-\$18.59 a gallon
6 Kinds of Flavored Maruchan Ramen Noodles.....	45¢ each or 6pk for \$1.55
8.5 oz. Gatorade-Instant Powder Several Flavors.....	\$1.79 pk
50.9 oz. Gatorade-Instant Powder 5 Flavors.....	7.95 pk
Tampico Peach Punch, Hawaiian Punch.....	ONLY 3.49 gallon
"Tang" Natural Orange Drink Mix.....	\$3.59
"Kool-Aid" packets.....	3 for \$1.00
Special- "Crush" Grape 12pk.....	ONLY \$4.29

Straw Hats with Sun Visor.....	\$4.98 each
Wash Cloth 4 pk.....	\$1.69

DRIVE A LITTLE & SAVE A LOT

CUSTOM ROUND BALING. 5 by 6 baler with option of cutter! wet or dry. 1500 + lb bales no problem! Pick your size! Priced to size!
PH. 660-216-1553. 24

FOR SALE: 12 valve, 5.9 cummins engine, running condition w/ turbo & P/pump; \$1,200.
PH: 660-988-4194 24

FOR SALE: 88 Honda Gold-wing, 42,000 miles, runs great, tall windshield, air wings, \$4,500; 16' Larson tri-hull fiberglass boat with trailer, 115 hp outboard, \$750; Hay bale ring, bale savers, \$100 each; 3 pt. hydraulic wood splitter, \$200.
PH. 641-208-6010. 24

STRAWBERRIES FOR SALE: \$12.00 a gallon. Put in your order. **Raymond J. Yutzy, 19198 160th St., Drakesville, IA 52552.**
PH:641-664-0203 24

FOR SALE: 2005 Dodge Ram 1500, 2WD, V6, manual trans, 109K, new tires, \$10,000.
PH: 660-342-1949 25



FOR SALE: Yearling & 2 Yr. Old Angus Bulls
Sired By EXAR BLUE CHIP & SAV BRILLIANCE & BUTKUS
Calving Ease & Growth Bulls
Davis Farms • Bloomfield, Ia
Doug, Jolynne, Baron & Brynn
641-777-5200

FOR SALE: Pearl gray guineas. 1 year old, \$10 each. Day old \$3.50 each. Gold Star & Rhode Island Red Pullets.
Rustic Acres Poultry
PH: 641-929-3056. 23

FOR SALE: Case IH 183 6 row cultivator. Excellent condition. \$850 OBO.
Delmar Martin
PH:660-216-0548 25

FOR SALE: 7pc. living room set, 1yr. old, \$1,200. Walnut Queen size bedroom set, 1 yr old \$1,000, Round oak pedestal table, 4 chairs, 2 leaves, \$300. Portable porch swing, \$100.
PH: 641-208-5136 25

FOR SALE: 2008 Silverado, Heavy 1/2, 4WD.
PH: 641-680-9370 25

Friesen Excavating
Specializing in Septic Systems
Certified For Peat Tanks and Sand Filters.
Can Also Do Other Drains and Water Lines
Call or Text Shawn @
641-208-0861
Bloomfield, IA
Free Quotes Available

MAST VINYL WINDOWS
THERMO-PRO WINDOWS
Custom Size Is Our Specialty
Professional Installation Available
THERMA-TRU DOORS
FREE ESTIMATES
22172 Hwy. 63
Bloomfield, IA 52537
800-206-9949

CUSTOM BALING

HAY - STRAW - CORN FODDER

3 X 3 BIG BALES

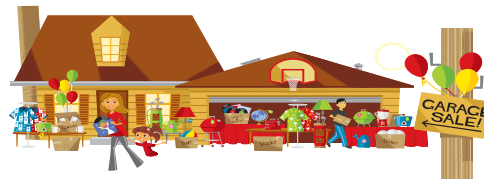
NEW HOLLAND 330 CROPCUTTER™ ROTOR CUTTER

Rotor Cutter for the widest range of chop length

Bryan Burkholder - Arbela, MO
660-342-2733 • bjburbk@nemr.net



GARAGE SALES!



4 FAMILY GARAGE SALE: Boys clothes NB - 4T, girls NB - 3T, adult clothes, dresser, treadmill, kitchen items, lots of misc. **408 S. Buckeye, Friday, June 9th, 8-5 and Saturday, June 10th, 8-1**

GARAGE SALE: 706 E. Arkansas Ave., Next to Bloomfield Greenhouse. Thurs., June 8th 4-7 Fri., June 9th, 8-4 Sat., June 10th, 8-Noon, Junior clothing, boys NB - 12 months, girls 3-5 (including dresses, home decor, toys and G.H. Bargains.

GARAGE SALE: 26246 Lilac Ave. 5 miles south, Fri., June 9th 8-5 and Sat., June 10th, 8-noon. Boys 6-12 months & 4T, girls NB-2T, juniors/womens s - lg., mens 1/xl, books, camera, car seats, bedding & more household.

MULTI FAMILY GARAGE SALE: North Lake Fisher Road, 18930 Iris Blvd., Bloomfield. Step 2 kids toys, kids & adult clothing, misc. furniture, jogging stroller, cabinet sewing machine, misc. items. **Fri, June 9th, 9-4 and Sat., June 10th 9-1.**

GARAGE SALE: Fri., June 9th, 8-4 & Sat., June 10th, 8-noon; 608 West Jefferson St., Bloomfield. Newborn to 12 months baby girl clothes, boys sizes 4 to 14, girls sizes 6 and up, some women's clothing, toys, books, baby seat, household items, curio cabinet, treadmill and misc. items. **Clyman, Marshall & Sprouse**

GARAGE SALE: 12827 Nettle, Off Floris Rd., Thurs. - Sat., 8-?, Womens jeans & western shirts size S-M, size 7 1/2 shoes, mens M-L, books, golf clubs & balls, range balls, pictures, yarn, material, (3) 18" SUV tires.

YARD SALE: Friday & Saturday, June 9th & 10th, 8-?, Vintage dishes, antiques, antique & regular fruit jars, 16 qt. pressure canner, furniture, cooking - sewing and quilt books, wedding dress size 2, material, stainless steel milk bucket, flyer sled, large baking sheet & cooling racks, life size Richard Petty cardboard poster, misc. **307 S. French St., Lancaster.**

THIS & THAT SALE! Shoes, C.D. books. Lots of clothes (cheap) Women's M & L. Men's L & 3X. **Fri. 7 to 5, Sat. 7-??. North Lake Fisher Rd. 602 W. North (Wintermote's)**

GARAGE SALE: Fri. & Sat. June 9-10, 8am -12pm. Baby carseat, stroller, boys and girls clothes to size 12. Nice entertainment center, TVs, DVD recorder, Disney movies, video games, game table, toys, quilt magazines, fabric & misc. **905 N. Madison St. Bloomfield**

GARAGE SALE: 801 S. Madison. June 9 & 10, 8am-4pm. Elliptical, furniture, much misc., tools, bedding, gas fireplace, more added daily.

BIG GARAGE SALE: Thur., June 8th, 2-7pm; Fri., June 9th, 8am - 4pm; Sat., June 10th, 8am - 11am. 411 Crestview Circle, Bloomfield: Swivel rocker, wood padded folding chairs, tupperware, house ware, linens, bedding, decor, toys, children's books, clothes: adult, teen, girls 7/8 & 10/12, shoes, formal dresses (size 10), backpacks, basketball hoop, misc.

GARAGE SALE: June 9th 9-5; June 10th 9-5. Antiques, exercise bike, collectibles, child's bike & Santa collectibles. Selling out. **Located between House of Fashion & Laundromat in Lancaster, MO.**

GARAGE SALE: Friday, June 9th, 8 am- to ?? 608 West Brown Street Lancaster, MO. Lots of mens', womens', & boys' clothing 2T to 10. Sports Equipment, futon frame, household items, & lots of miscellaneous.

HUGE FUNDRAISING SALE FOR UGANDA. (Raising money for orphans, schools, ministry). All proceeds go. June 1 - 5-8 pm, June 2 - 9 - 5, June 3, 9-12 noon (1/2 price day) Womens clothes M-XXL, Mens, L-XL. Great condition light brown loveseat, green plants for home, office or outside. Numerous household items including crock pot, coffee pot, misc. **611 N. Washington St., Bloomfield**

LARGE HOUSEHOLD SALE
Dewalt tools (new in box), motor oil, automotive supplies, small hand tools, towels & washcloths (new), cleaning supplies, household items including small kitchen appliances, Kitchen Aid mixers (new), John Deere gator (kids), toys, games, teen boys & girls clothes, many more items not listed!
**Thursday (6/8) 5pm - 7pm
Friday (6/9) 8am - 3pm
Saturday (6/10) 8am - 12pm
308 E. Arkansas, Bloomfield
Rupe, Snyder, Mefford & Stewart**

GARAGE SALE: 801 S. Madison. June 9 & 10, 8am-4pm. Elliptical, furniture, much misc., tools, bedding, gas fireplace, more added daily.

PLANT SALE & MISC. June 10 Rt. D Lancaster. Perennials, houseplants, floor steamer, Red Hat items, puzzles, craft items, Lots of misc.

FOR SALE
Driveway Fabric Rolls
Commercial, Heavy Duty,
Designed for Heavy Traffic
**12' 5" Wide
432' Long
\$370/ roll
660-216-0938**

FOR SALE: Farmhand forage box on heavy 6 bolt gear; NH 27 silage blower; IH 56 silage blower; NH 56 hay rake. All in good working condition.
**Fox Valley Enterprises
19943 Earth Lane
Bloomfield, IA
PH: 641-722-3910 25**

Yoder
GLASS & WINDOW
641. 722. 3667
VINYL WINDOWS
• Replacement
• New Construction
• Many Glass & Color Options
Free Estimates
19467 Driftwood Blvd.
Bloomfield, IA 52537
Call Today: 641. 722. 3667

FREE TO GIVE AWAY: Barn tin from barn that blew down. Memphis Area.
PH: 660-883-5571 25

NEW MATTRESSES FOR SALE!
Selling individually or in sets. Factory warranty.
**TWIN - FULL - QUEEN - KING
641-664-3060**

Advertise Your Garage Sale Here!!!

FOR SALE: Sun-lite, slid-in camper. Very clean.
PH: 660-457-3333 25

FOR SALE: 24T JD square hay baler, \$1,250.
PH. 641-777-9831. 23

Don't let your stuff get caught in the rain....

Come see us for a custom built storage shed!

Call us for **FREE** estimate today!

Cantril Lumber & Hardware
**319-397-2351 or 319-397-2354
Mon-Fri 7-5 & Sat 7-12**

Bill: Has been all over town, trying to find the right part at the right price. Still looking for the parts he needs.

OR

Dan: Went to Spilman's first! Done with his parts shopping in one stop! Got a GREAT deal!

Be Smart Like Dan! Go To....

SPILMAN AUTO PARTS

20311 Old Hwy. 2 •
PO Box 31 • Bloomfield
641-664-2463
1-800-477-1367
M-F 8AM-5PM
Sat. 8AM-12Noon
www.SpilmanAuto.com

June SALE is Dairy Month




FREE
Soft Serve
Ice Cream
Cones
Jun. 7-13



\$1.59
24 oz.
Prairie Farms
COTTAGE CHEESE



\$2.79
gallon
Prairie Farms
Chocolate MILK



\$4.99
Prairie Farms
4 Qt. Pail
ICE CREAM



\$1.69
16 oz.
Hickory Country®
Smoked
BACON



15-18 oz. **\$1.99**
selected
Post® Cereals



\$1.88
22 oz
Mega Pack
sliced
Honey HAM



\$1.29
per lb.
Country
Fried
Beef Patties



\$3.99
16 count
box
Bar S®
CORN DOGS



\$1.99
per lb.
when you buy
6lb. loaf
Wisconsin
MUENSTER
Cheese



99¢
per lb.
Fresh
Arkansas
TOMATOES



Wrangler®
Buy 2
Get \$10
mail in rebate
Wrangler Jeans



20% OFF
Little Me®
Baby Clothing



15% OFF
Bug Soother
Bug Repellent



15% OFF
SKECHERS®
FOOTWEAR



\$1.29
8 oz.
Lancaster
SOFT CRÈMES
Sea Salt
Lancaster
Caramels



\$1.95
15 pack
32 oz.
Powerade



DUTCHMAN'S STORE Division Street - CANTRIL, IA - (319) 397 2322 **SALE PRICES June 7-13, 2017**
STORE HOURS • Weekdays, 8a.m. - 6 p.m. • Saturday 8a.m. - 5 p.m. • Sunday Closed • View our specials at - www.DutchmansStore.com

FOR SALE: JD 660 5 bar rake, dolly wheel, new paint & decals, works good, \$1,600; New Idea hay conditioner 299, good, \$1,200. Can deliver. PH: 641-799-6120 23

STRAWBERRIES: Place orders. Stop ins welcome. 2 miles South of Drakesville, 3/8 mile West of 200th St., 17623. Bloomfield. PH. 641-664-1896. 23

BLOOMFIELD MINI STORAGE. Serving you from 2 safe, convenient locations. PH. 641-664-1066. TF

FOR SALE: 10 older stock cows due to calve in the next 2 or 3 months, good disposition, \$1,250 OBO. 5 miles south of Milton. PH: 660-216-0548 23



FOR SALE: 2 Duroc boars, finest quality. 5th generation champion blood line. Born 2-10-17, \$225 each. PH. 660-342-6376. 23

FOR SALE: JD WH52A commercial walk behind mower with stand on sulky, 29 hrs., \$5,250. PH. 641-799-7474 23

FOR SALE: 6 yr. old chestnut & red roan gelding, 42" tall, kid broke, to ride & drive. 4 yr. old blue healer/border collie, female, good stock dog. PH: 641-664-2570 25

FRESH STRAWBERRIES: Will take orders. First come first served. Located 1/4 mile South of Lebanon. VM: 319-213-8636.

FOR SALE: Hay rack running gear. \$50. PH: 319-498-4621

 <p>Musselman's lemon creme pie filling, 21 oz. \$1.35 each</p>	 <p>Musselman's strawberry pie filling, 21 oz. \$2.35 each</p>	 <p>Musselman's peach pie filling, 21 oz. \$1.95 each</p>	 <p>Mother's Maid blueberry pie filling, 21 oz. \$2.29 each</p>	 <p>Champion raisins, 6- .75 oz. pk \$1.09 each</p>	 <p>Richfield Farms smoked oyster pieces 3 oz. 99¢ each</p>
 <p>DelMonte four seasons & pineapple juice drink, 33.8 oz. 65¢ each</p>	 <p>Richfield Farms fruit cocktail, 16 oz. 99¢ each</p>	 <p>Kraft Jet-Puffed marshmallow crem, 7 oz. 85¢ each</p>	 <p>Hatfield St. Louis style ribs, approx. 3 lb. \$2.49 a lb.</p>	 <p>Gwalthey cooked ham, 4 oz. 19¢ each</p>	 <p>Oscar Mayer smoked sliced ham, 9 oz. 49¢ each</p>
 <p>Colgate single pk. toothbrush 99¢ each</p>	<p>Oscar Mayer Cheese Dogs COMING IN!</p>	 <p>Lykes hardwood smoked bacon, 12 oz. 89¢ each</p>	<p>Fresh Loads Of Yogurt! COMING IN!</p>	<p>EXPECTED TUESDAY! A load of milk Fresh & Cheap!</p>	
 <p>Meadowview Cedarwood .5 oz. \$10.95 each Sug. Use: ADD, ADHD, calmin, hairloss, pineal gland, diuretic, infection, skin conditions, use with caution during pregnancy. For Topical, dietary or aramaic.</p>	 <p>True Essential Cassia Oil .5 oz. \$11.00 each Sug. use: Cataracts, fungal, ring worm, candida & diabetes.</p>	<p>19686 Hwy. 2, Bloomfield, IA Approx. 2 miles west of Bloomfield</p>		<p>Mon. - Sat. • 8:30am - 5:00pm VM: 641-664-1187</p>	

NOTICE
Beechy & Son's Horse Shoeing
are wanting to expand our services. We are available to take care of all your trimming and shoeing needs. Also horse training services available.
20 YEARS EXPERIENCE!
HARLEY, GLEN & IVAN BEECHY
VM: 641-664-3801

Leaky Faucet? Broken toilet? Call NOW and get the best deals with your local plumbers. No hassle appointment setup. Call NOW! 866-865-1875 (MCN)

Got Mold- or think you might have it? Mold can be hazardous to you and your family's health! Get rid of it now! Call our experts and get a quote today! 855-398-7133(MCN)

IF YOU USED THE BLOOD THINNER XARELTO and suffered internal bleeding, hemorrhaging, required hospitalization or a loved one died while taking Xarelto between 2011 and the present time, you may be entitled to compensation. Call Attorney Charles H. Johnson 1-800-535-5727 (MCN)

ALL THINGS BASEMENT-TY! Basement Systems Inc. Call us for all of your basement needs! Waterproofing, Finishing, Structural Repairs, Humidity and Mold Control. FREE ESTIMATES! Call 1-800-640-8195 (MCN)

Stop paying too much for cable, and get DISH today. Call 855-589-1962 to learn more about our special offers! (MCN)

Buying a home and need a mortgage? Or, have a home and want to lower your monthly fees and refinance? Getting a mortgage is quicker and easier than ever. Call now! 855-715-4721 (MCN)

MEET SINGLES RIGHT NOW! No paid operators, just real people like you. Browse greetings, exchange messages and connect live. Try it free. Call now: 800-357-4970 (MCN)

DONATE YOUR CAR, TRUCK OR BOAT TO HERITAGE FOR THE BLIND. Free 3 Day Vacation, Tax Deductible, Free Towing, All Paperwork Taken Care Of. 1-800-283-0205 (MCN)

WE WANT YOUR HONEY BEES!
641-208-6365



Change the way you watch TV- Get rid of cable and get DIRECTV! You may also qualify to receive \$100 VISA gift card when you sign up today - Limited time Only. CALL NOW! 844-359-1203 (MCN)

Happy Birthday Steph!
June 13th



Love you bunches!
Jared & Kaylin

It's Hot Outside! Need a window A/C?
We have them in stock!






South Side of the Square in Memphis
660-465-2345
Monday - Friday: 9:00 AM to 5:00 PM • Saturday • 9:00 AM to 3:00 PM / Sunday CLOSED

NICE, HEAVY DUTY Shepherds Hooks
2 and 4 hooks
15% OFF All Story Hour CD sets
until June 30th



115 E. Monroe • Memphis, MO
660-465-2102

WAPELLO COUNTY FAIR

JUNE 14TH-18TH, 2017

WEDNESDAY, JUNE 14TH

- 6:30 Grandstand: Twilight Harness Racing
- 7:00 Wapello Hall: Queen Contest & Little Miss Contest
- 8:00 Bill Riley Talent Search 2017

THURSDAY, JUNE 15TH

- Senior Citizens Day**
- 12:30 Grandstand: Harness Races
- FREE GRANDSTAND & FREE LUNCH FOR ALL SENIORS!**
- All other adults \$5.00 and children 6-12 \$2.00
- FREE TRAIN RIDES FOR SENIORS provided by the Eldon Depot.
- 3pm, 4pm,
- 5:30pm The Beals One Man Band
- Free performance on the grounds
- 7:00 Grandstand: Car Races

FRIDAY, JUNE 16TH

- 3, 4 &
- 5:30 The Beals One Man Band
- Free performance on the grounds
- 5:00 Sanctioned Swine Show
- 7:00 Grandstand: Twin States Truck & Tractor Pull

SATURDAY, JUNE 18TH

- KIDS DAY!**
- 8:00 Fishing Contest Registration at Fair-Grounds pond
- 9:00 Fishing Contest (3 age groups: 0-6, 7-10, & 11-15)
- 10-11:30 Check-In Heartland FFA & Open Market Lamb Show
- 10-12:00 **FREE KIDS EVENTS/GAMES!**
- Face Painting - Desirae, Tom Terrific - the Balloon Man, Free Train Rides - by Eldon Depot, 'Sparky' from Ottumwa Fire Dept., Fire Trucks from Agency & Eldon, Cookies & Soda, Nickel Scramble MidWestOne Bank, Wapello County Farm Bureau Watermelon Feed. **LOTS OF FREE GAMES & PRIZES!**

SATURDAY, JUNE 17TH CONTD.

- 10:30 Entries for Kid's Pedal Pull (Ages 3-10)
- 11:00 Pedal Pull
- 11:00 Baby Contest Registration (Ages up to 24 months)
- 12:00 Baby Contest in Chippewa Hall
- 1:00 Heartland FFA & Open Market Lamb Show
- 1:00 Golf Cart Races
- 6:00 Grandstand: Concert
- CHASE RICE**
- Opening "Harvest Band" & "The Boys"

SUNDAY, JUNE 18TH

- 9:00-11 Car Show Registration
- Show & Shine until 3:00pm
- 9:00-12 FFA Beef Show & Open Beef Show Check-In
- FFA Market Swine Show & Open Show Check-In
- FFA Beef Show followed by Open Beef Show
- FFA Market Swine Show followed by Open Market Swine Show
- 1:00 Open Horse Show - Arena
- 1:00 **GRANDSTAND - DEMO DERBY**
- 6:00 **GRANDSTAND - CAR RACES**

FREE GATE ADMISSION! • WWW.WAPELLOCOUNTYFAIR.COM



MIDWAY
Next Generation
Shows, Inc.

GREINER IMPLEMENT CO. INC.

Cub Cadet CASE II

10845 73rd St.
Ottumwa, IA
641-683-1691

DIXON'S FLOORS & MORE

Hwy 34 W.
Ottumwa, IA
641-684-5093

AMERICAN FAMILY INSURANCE

Craig Heemsbergen
409 Church St.
Ottumwa, IA
641-683-1891

B&B PROpane Jet Gas

Eldon, IA
641-652-3211
Pulaski, IA
641-675-3354

DAVE'S APPLIANCE

525 Elm St.
Eldon, IA
641-652-7617

Slayton
Polaris

8 mi. S & W from Pulaski or 6 mi. W of Memphis then 13 mi. N. on Route B

660-328-6627

MOBILE LOCKSMITH

Mark Wagner
537 Church St.
Ottumwa, IA
641-683-1532

StateFarm Insurance Companies

Jim Carnahan
Bloomfield, IA
641-664-3266
Ottumwa, IA
641-682-3447

OSTRANDER FLOWERS & GREENHOUSES

Greenhouse sale going on now!
M-F: 9-5:00, Sat. 9-3:00

1243 25th Ave.
Eldon, IA
641-652-3288

CRANSTON FAMILY FUNERAL HOME

800 W. Elm St.
Eldon, IA
641-652-7615

Tri-County SHOPPER

208 Weaver Rd.
Bloomfield, IA
641-664-1333

BENEFIT FOR

Schuyler County Cancer Relief Fund

Saturday, June 10th



Supper & Auction

at the Downing Depot Park

Serving starts at 6 PM

(free will offering)

Auction to Follow



9 PM Dance the night away at the Hammermill!
with the Steuben Road Band!
\$5.00 cover charge All door proceeds will be given to the cancer fund.

THESE BUSINESS ENCOURAGE YOU TO ATTEND AND HELP FIGHT CANCER

Walker Motors
 COLLISION REPAIR, INC
 Memphis, MO
 660-465-2159
 Shop phone/fax

Polly's Boondock
 Lancaster, MO • North Side Sq
 660-457-3255

MFA Agri Services
 Lancaster
 660-457-3729
 Kirksville
 660-665-4695

The Cheese Post
 601 E. Prime St.
 Downing, MO
 660-379-2626



Buddy's Place
 204 N. Hwy. 63
 Lancaster, MO
 660-457-3151

J'S FOODS
 Hwy. 136 E.
 Memphis, MO
 660-465-8597

Slayton Polaris
 Bloomfield, IA
 660-328-6627

SCHUYLER COUNTY MUTUAL INSURANCE COMPANY
 Queen City, MO
 660-766-2505



Memphis Farm & Home
 463 S. Market
 Memphis, MO
 660-465-8678


Western's Smokehouse
 660-949-2445
 800-456-0250

MFA Agri Services
 Memphis, MO
 660-465-2603
 660-341-1422



Image Shapers
 641-664-1650

Neebz Graphics
 641-664-3239
 Bloomfield, IA



DAVIS
 641-664-1801



Tri-County SHOPPER
 641-664-1333

OVERCOME THROUGH COURAGE & STRENGTH



TOGETHER WE STAND STRONG!

LINE-X OF OTTUMWA



**KEEP YOUR RIDE
IN GREAT SHAPE!
PROTECT IT WITH A LINE-X COATING!**

Bring it in and we can LINE-X® it!

Brad Lisk
15514 Blackhawk Rd., Ottumwa, IA

Gift Cards Available!



641-683-9334

CATTLE TRAILER
CLEANING. Disinfect & Bedding available. Call for info & pricing. Located 10 mi. North of Memphis. PH: 660-341-8759 25

FOR SALE: Rossi 223 single shot heavy barrel rifle, with sling & 5 boxes of shells. Like new. \$250. Must have permit to buy. Ottumwa. PH: 641-680-3876 25

COMMUNITY BLOOD DRIVE: Southern Iowa Produce Auction will host a community blood drive from 9:00am to 1:00pm on Friday, June 16 at 19141 Ice Ave, inside MVRBC Bus. To donate, please contact the Blood Center at (800)-452-1097 or visit www.bloodcenterimpact.org and use code 5383 to locate the drive.

FOR SALE: Black side by side refrigerator with ice and water in door, matching cookstove, microwave & dishwasher; baby high chair, 2 real nice window AC's (1 - 5,000 BTU & 1 8,000 BTU); nice washer & dryer, matching set; 2 nice recliners, 1 leather & one cloth; floral love seat & sofa; medium size deep freeze, very nice. 807 E. Maple, Centerville, IA. PH. 641-895-2966. 23

June Is Dairy Month

SPECIAL GRILL TANK REFILL
20 LB. CYL.
\$11.86 + TAX

TILLAGE EQUIPMENT
Sweeps
Sickle Sections
Disc Blades
Chisel Spikes

DANUSER EP SERIES DRIVE UNITS

SIoux FEEDER

FOR-MOST CHUTES

WE SELL NEW STEEL

- Sheets
- Plates
- Channels
- Rounds
- Angles

HAY RAKE WHEELS

Hamilton Produce Co.
641-664-2459 or 1-800-469-7749 • 105 W. Franklin • Bloomfield, IA 52537

Thanks!

Thanks to everyone that donated and helped make Floris Flag Day a success.

Floris Flag Day Committee

FOR SALE: New Idea 5209 mower/conditioner, new teeth; SWR10 Rhino wheel rake; JD458 standard round baler w/monitor. PH. 641-938-2847

FOR SALE: Used garden tillers. Rear and front tine. Lots of Troy-Bilts. Many choices. Also used DR brush mowers. Kahoka, MO. PH. 660-216-1809. TFN

Fabius Creek Livestock Solutions LLC.
Open by Appointments Evenings & Weekends
12718 275th Street • Bloomfield, IA 52537
641-395-0128

CUT THE CABLE

The ultimate all-included offer.
Switch to DIRECTV and lock in your TV price at \$50/month for 2 years when you have AT&T Wireless!

Ask me how to Bundle and save. CALL TODAY!
TV'S SUPPORT HOLDINGS LLC

800-203-4378

FOR SALE: 1992 Jayco 18 ft. camper, double axles - all new, 5 new tires, marine battery, sway bar, 4 stabilizers, TV antenna, & TV that gets 32 channels. Excellent condition. PH. 660-949-2780 or 660-216-1517. 23

FOR SALE: 8' flatbed steel truck bed frame with goose neck hitch built in, black, \$400 OBO; Side by side refrigerator, stainless steel front, black sides, 36" wide, about 8 years old, \$250. PH: 641-208-6453. 23

HARRY HOWK'S CONSTRUCTION

- Backhoe
- Skid Loader
- Trenching
- Dump Trucks
- New Septic System
- Sand Filters
- Waterers
- Water Lines & Hydrants
- Post Hole Digging
- Truss Setting
- Plumbing

Home: 641-675-3636 or Cell #: 641-208-5757

MAST OVERHEAD DOORS, INC.

105 S. Dodge St., Bloomfield, IA 52537

GARAGE DOORS

Residential & Commercial Doors & Operators

641-680-2016 **CALL FOR AN APPOINTMENT**

Quality Products + Quality Workmanship = Quality Customers

Free Estimates We Fix Doors

ZIMMERMAN AUTO LLC TRAILER INC.

101 North St. • Cantril, IA
319-238-7367

TRUXEDO

Tonneau Covers PRO
LOW PRICE
LIMITED LIFETIME WARRANTY

CALL FOR SPECIAL PRICING!!

We like how this cover is durable, it rolls up and, keeps your groceries, luggage or whatever else you haul secure. PLUS it has a LIFETIME WARRANTY!

AUCTION LOCATION: 1 MILE WEST OF DOWNING, MO ON HWY 136.
High Summer Consignment Auction
 Friday, June 16, 2017 @ 9:00 a.m.

Tractors - Machinery & Attachments

2013 JD 3038E 4x4 tractor, w/ loader, low hours, hydro.
 1996 JD 7800 tractor, FWA 19 spd, power shift, 3 remotes, 4,000 hr.
 JD 2440 tractor w/ JD 146 loader approx. 4000 hr. (lots of recent repairs)
 Farmall 560 diesel tractor - JD 24T baler good condition
 2012 JD 568 Mega wide plus baler 7100 bales hyd. pickup auto lube
 NH 489 haybine - NH 488 haybine - NH 56 hayrake (new teeth)
 Triple K 24' finishing field cultivator w/ double rolling baskets
 IH 45 vibra shank 16' field cultivator - IH 400 cyclo 4 row planter
 NI 324 2 row corn picker (nice) - JD 33 manure spreader (new floor)
 NI no. 203 manure spreader w/ flail - NH 455 sickle mower w/ 9' bar
 JD model L ground drive manure spreader - JD 3 pt. field cultivator
 JD 7' 3 pt. brush cutter - JD 6' 3 pt. brush cutter - hayrack on steel
 Bush Hog 6' 3 pt. finish mower - JD 2 row corn planter - Arp 6' 3 pt. blade
 Reese 2400 HL 3 pt. 8' drum mower (good condition) - JD 6' 3 pt. blade
 (2) 250 bu. gravity flow wagons - Kewanee elevator w/ PTO lift
 9' x 20' hayrack on 12 ton Westendorf gear - 8x16 hayrack JD gear
 Westendorf TA 45 loader w/ IH brackets - (8) IH suit case weights
 Case 3 bottom plow - MF 3 pt. 3 bottom plow - snap coupler 314 plow
 2 compartment Grain-O-Vator - single compartment Grain-O-Vator
 Woods 8400 3 pt. finishing mower - Woods 7' 3 pt. brush cutter
 Oliver metal barge box on Westendorf 10 ton gear - JD 640 rake w/ dolly
 New hayrack on Wards gear - Husky 165 gravity flow w/ tarp bows
 New Tuff Ox tree puller w/ brush guard for skidsteer - JD 8' 3 pt. blade
 New Tuff Ox grapple bucket for skidsteer - (2) 6' 3 pt. discs
 New Tuff Ox 3 pt. bale unroller - 8' tandem disc - gravity box
 (2) 18.4-34 tires & tubes - (2) 3 pt. dirt scoops - Danuser 3 pt. blade

ATV's - Lawn & Garden

2008 Yamaha 125 dirt bike
 Polaris diesel 4x4 4-wheeler (non running)
 2004 Dixon ZTR Ram 44 20 hp Kohler, 44" deck
 Coleman generator 4000 8 hp gas engine
 MTD rear tine tiller - walk-behind weedeater
 Troy Bilt Trail Blazer walk behind sickle mower
 Troy Bilt Horse tiller w/ electric start & Kohler
 DR walk-behind weedeater - landscaping blocks
 Troy-Bilt Bronco CRT tiller - Extension ladders
 Scaffold set - 10" tile saw - 2 push lawn mowers
 Foley sawblade sharpener

Livestock Equipment & Misc.

7 ton bulk bin w/ auger - 4.5 ton bulk bin
 2 ton portable creep feeder - old steel wheels
 (11) 6'3"x12' portable corral panels w/ 4' walk thru
 Portable catch chute w/ For-Most #30 headgate
 Portable catch chute w/ squeeze on wheels
 New Tuff Ox galvanized farm gates 10'-12' & 16'
 A nice consignment of corner & line hedgeposts
 Coats 40-40 SA tire machine (nice) - Warn winch
 3 ton chain hoist - portable welder w/ engine

Building Materials & Road Tubes

Approx. 16 bundles of 2x6 yellow pine lumber 8' to 20'
 118 pc. corrugated metal 8' - Misc. tools, screws, etc.
 Vinyl replacement windows - interior doors
 Interior bi-fold doors - Smart trim, also oak trim
 18" x 30' road tube - 18" x 20' road tube
 (4) 8" risers - (9) 6" bar guards - (6) 8" bar guards

Household

Maytag washer - Whirlpool dryer - table w/ 2 chairs
 GE 24.9 cu. ft. deep freezer - China hutch - desk
 Amana microwave & stand - cabinet - desk - dresser
 Entertainment center - dropleaf table - old barn door
 Computer desk - bookcase - kitchen table - bed
 3 pc. Mahogany bedroom suite - loveseat & couch
 Necchi sewing machine & cabinet - more Misc.

Auctioneers Note: This is a partial listing as there were several items pending at time of print. We anticipate lots more than this bill reflects. Accepting consignments until Wednesday, June 14. (No Household items) Loader and personnel will be there on auction day. Thanks, Randy

High Auction Service LLC - Randy 660.216.0515 - Clair 660.341.1687 - Kris 660.342.8634

For photos & late consignments, go to High Auction at: www.auctionzip.com email: highauction@marktwain.net
 Terms: Cash or check with proper I.D. Not responsible in case of accidents or theft. Announcements day of auction take precedence over any advertising.



YODER EQUIPMENT
 BLOOMFIELD, IOWA
 SOUTHERN YELLOW PINE TREATED WOOD POSTS
 Mineral Feeders
 Gates
 Variety of Sizes & Styles
 Feed Bunks
 Water Tanks
 CONTINUOUS FENCING

19887 Jade Ave
 2 1/2 Miles W of Bloomfield
 V.M. 641-664-2797

FOR SALE: 6 yr. old chestnut & red roan gelding, 42" tall, kid broke, to ride & drive. 4 yr. old blue healer/border collie, female, good stock dog.

PH: 641-664-2570 25

LAND FOR SALE IN DAVIS CO.:
 Close to town on hard surface roads with utilities.
 Call for more information.
641-895-2535

JOE'S BARBER SHOP
 Hours: Thursday & Friday 8:00-5:00 & Saturday 8:00-Noon. 210 E. Franklin St., Bloomfield, IA.
 PH: 641-664-2020, 641-208-5561 TF

STRAWBERRY SEASON IS HERE! \$2.75 a quart. Will take orders. Please bring containers. R&S Strawberry Farm. 1 1/4 miles South of Junction Hwy 2 & Hwy 15 Milton. 23

HOOVER RENTAL
 Manlifts • Telehandlers • Minihoes
 Skidloaders & Skidloader Attachments
 RENT BY
 Hour • Day • Week • Month • Long Term
 DOZER NOW AVAILABLE FOR RENT
 Call us for your construction needs!
660-216-8230
 Mt. Sterling, Iowa
 2 miles East of Cantril on Hwy 2

FOR SALE: Organic Alfalfa, brome, orchard & timothy, 2nd, 3rd, & 4th cutting. Big squares, Big round, & small squares. Would like to sell out of field. Jonas Kurtz 14544 225th St. Bloomfield, IA 52537
 PH: 641-929-3780 Ext. 4



Harvest More From Your Operation!

Let us help you with all your seed, feed & fertilizer needs.

We have all you need to keep your business thriving.

CROP SERVICES, INC

John & Kathy Bos, Owners
 Drakesville, IA



641-722-3293



FOR SALE: 4 month old laying chicks, barred rock, buff orpington, red orpington, quineas & araucanas; also looking for a great pyrenees pup.
 Blakesburg, IA
 641-777-1229 24

FOR SALE: 8' flatbed steel truck bed frame with goose neck hitch built in, black, \$400 OBO; Side by side refrigerator, stainless steel front, black sides, 36" wide, about 8 years old, \$250.
 PH: 641-208-6453. 23

BERHOLTZER TRAILER REPAIR
 Specializing in Aluminum Hopper Trailers
 Repair & Rebuild
 3 miles east of Gorin, Mo. on Route U
We install tarps & power tarps
660-341-6027

FOR SALE: Adult male beagle, AKC & APRI registered, \$50 OBO
 PH: 641-664-2999 25

FOR SALE: Used 7' BMB rotary mower, 3 pt., 540 PTO, \$900.
 PH. 641-777-7978. 25

berholtzer Farm Supply LLC
 Specializing in feeding equipment for dairy & beef.

NDE 804 2008 model, fr. door w/ 4.5' folding conveyor, 9 knives, 640XL scale, 4 new tires, light use, excellent machine
\$21,900

Valmetal model 5600 Agri chopper, hydraulic chute, rotation, 1,000 RPM PTO
NEW IN STOCK

Valmetal V-Mix 400 vertical mixer, front unload with 48" folding conveyor, rubber top, 640XL scale.
NEW IN STOCK

Rt. #1 Box 84 • Memphis Mo.
Phone/Fax: 660-945-3053 • Cell: 660-341-8234

Tri-State Timber DBA Stihl
660-465-2975
 353 1/2 Grand Ave. Memphis, Mo.
 Behind Shelly B's
5% OFF
 String Trimmers
Check Out New & Used Units!

FOR SALE: Wall fan 36" no louvers, 110 volt. Windows with screens, sliding glass, alum. (48 1/2 x 44 1/2) 7 total. Glass storm door (60" x 80").
 PH: 641-799-9690 25

SOMETHING TO THINK ABOUT: If all us men think we're so smart. Why is it that when we do things wrong. Our wives have told us beforehand that it wasn't right?

KARR STREET AUTO
 500 Karr St., Bloomfield, IA 52537
 BATTERIES, BRAKES, COMPUTER DIAGNOSTICS, HEATING/AC SERVICES, TIRE MOUNTING, SERVICE & REPAIR
 8AM-5PM MONDAY-FRIDAY 641-664-2551
 WE SERVICE ALL MAKES & MODELS- DOMESTICS & IMPORTS

Do you need this on your farm?



Stocking framing nails by the box/pallets. Call for pricing!

- Metal Roofing
- FREE estimates!
- Crews available
- Call today!

WAGLER METALS

19049 Ice Ave., Bloomfield, IA
641-722-3692



LET US HELP IN YOUR HAY FIELD THIS YEAR!

SERVICES AVAILABLE:

- Mow & Condition
- Tedding & Raking
- Round Bale w/ John Deere 569 Baler
- Tubeline Wrap High-Moisture Hay
- Hauling & loading available if necessary

We can do one or all, call to get on the schedule!

CALL OR TEXT JEFF AT 641-208-2235

Cantril Feed & Grain appreciate the Dairymen's hardwork!



FROM MILK REPLACER TO COTTON SEED... WE HAVE WHAT YOU NEED!



610 West North St. Cantril, Iowa
319-397-2215



Premier Power Washing

Offering home power washing & gutter cleaning services. Price varies by square footage.

Call Todd Grooms → TODAY! ←

641-777-7263

Scotland County LIVESTOCK AUCTION

P.O. Box 111 • Hwy 15 North • Memphis, MO
660-465-7213 • Jerry & Barb Blomme
660-341-0069 • Grant Blomme

SPECIAL CATTLE SALE Sat., June 10th @ 12:30 a.m.

Early Listings:

- 43- black str & hfrs, 400-600#
- 30- black str & hfrs, 450#
- 38- mix str & hfrs, 500-600#
- 20- black str & hfrs, 500#
- 23- Char str & hfrs, 400#
- 15- blk str, 850#
- 10 - blk hfrs, 800#

Market Report for Sat., June 3rd:

Strs & Hfrs: Light Test. LB Cows: \$60 to \$76.50. Holstein Veals \$200 to \$240.

www.ScotlandCountyLivestock.com

OFFERING: NH & JD sq. baler parts as well as other hay equipment. We also service your equipment and Wringer Washers. Fox Valley Enterprises 19943 Earth Lane Bloomfield, IA PH: 641-722-3910 25

PUBLIC NOTICE! To all parties interested in purchasing or selling 26254 Jade Avenue, Bloomfield, IA 52537. We the next of kin, have been notified of a potential sale of this property which contains the remains of our deceased father, MR. Ricardo Hines. Please be advised we have set forth stipulations to be met prior to any real estate transactions taking place. R. Fattini & L. Reyes 25

Custom Baling, or on shares. Also, Custom Brush Cutting
641-208-5757



KEOSAUQUA SALE CO.

20511 Hwy. 1, Keosauqua, IA

Results from June 3rd

Butchers.....	\$40.00-48.00/cwt	Lambs over 110#.....	\$175.00-182.00/cwt
Sows.....	\$36.00-48.25/cwt	Ewes.....	\$55.00-78.00/cwt
Lambs under 80#.....	\$180.00-210.00/cwt	Kid goats 40-70#.....	\$75.00-160.00/hd
		Cull nannies.....	\$80.00-175.00/hd

Pound cows low yielding \$58.50—68.00/cwt
High yielding \$69.00-88.00/cwt

Pound bulls \$85.00-101.00/cwt

Strs			Hfrs		
Blk	355	212.00	Bwf	410	181.50
Blk	495	190.00	Blk	512	178.00
Red	575	185.00	Red	609	150.75
Blk	662	172.50	Blk	720	149.00
Red	812	148.00	Blk	825	144.00

REGULAR SALE
Sat., June 10th

SPECIAL CATTLE SALE
Sat., June 17th

Thank You For Your Business!

For More Information Contact:

Selling Times

Hogs.....9:30 a.m.
Sheep & Goats.....10:00 a.m.
Outside Merch.....11:00 a.m.
Cattle.....Noon

Keosauqua Sale Co.
319-293-3508
Bill Goehring
641-919-9365

FOR SALE: 160 gal. sprayer, 16 ft. boom, Raven pump, monitor & controls, electric reel, 150ft. hoes & wand, mounted on Chursman 31 horse, 4 speed automatic transmission, 2 speed diff.
PH: 641-799-5970 24

TO GET RID OF: Wire corn crib. Jodi Jones
641-675-3754 24

Davis County Community Blood Drive, Tuesday, June 13, 3:00 pm - 7:00 pm Southern Iowa Electric Coop., Meeting Room, 22458 Hwy 2, Bloomfield, IA. Appointments: To donate, please contact the Blood Center at (800) 452-1097 or visit www.bloodcenterimpact.org and use code 5014 to locate the drive.

MFA Agri Services Memphis

Made For Agriculture • Call us today! (660) 465-2603 or (660) 341-1422

“HAY” YOU!
WE HAVE EVERYTHING FOR YOUR BALING NEEDS!

Twine, Net Wrap & Much More



BLOOMFIELD



LIVESTOCK MARKET

Wed., June 14th Fat Cattle, Slaughter Cows & Bulls..... 9AM

Wed., June 21st Fat Cattle, Slaughter Cows & Bulls..... 9AM

..... Special Feeder 11:30AM

Wed., June 28th Fat Cattle, Slaughter Cows & Bulls..... 9AM

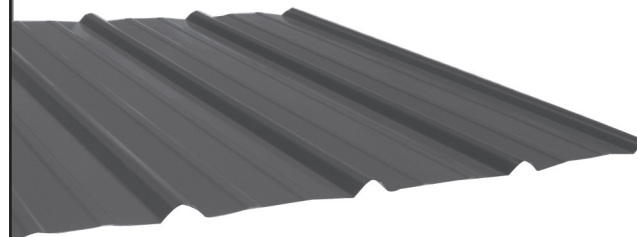
**SALE BARN OPEN UNTIL 9:00 PM
EVERY TUESDAY TO RECEIVE LIVESTOCK**

Phil Schooley 641-664-3450
Ron Schooley 641-777-0302
Roman Schooley 515-450-3685

We appreciate your business!
Tyler Schooley 641-208-5442
Barn Phone 641-664-2435

HWY. 63 NORTH • BLOOMFIELD, IA

Premium Metal Roofing

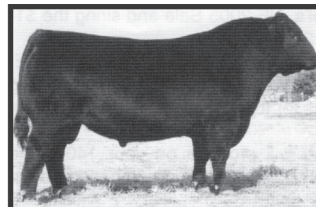


- Buy Direct & Save
- Fast Service
- Cut-to-length
- Professional Contractors Available



641-664-3990 • awmetal.net

ANGUS BULLS YEARLINGS & 2 YR. OLDS



- ★ CALVING EASE
- ★ GROWTH
- ★ THICK
- ★ GENTLE DISPOSITIONS

Sired by Musgrave Reachout 530

SELECT YOUR BULL NOW

**DORAN BOLLMAN
PULASKI, IOWA
641-675-3467**

Fabius Creek Angus



Yearling Angus Bulls For Sale!
Sired by Rampage, Tour of Duty and a son of CC&7. Low birth weights and yearling weights over 1600#.

Dean and Nancy Houglan
29244 Ice Avenue • Bloomfield, IA
641-929-3208 or 641-208-9626
Nancy: 641-208-0434

FOR SALE: Cherry picker, 2 ton, only used once, \$175; Air compressor, 11 gal., 1.2 hp, brand new, \$150. PH. 641-208-0555. 23

FOR SALE: 1998 Dodge Ram 2WD Quad cab, 138,000 miles, very clean, well maintained, \$4,700. PH. 641-895-2966. 23

JOB OPENINGS!

Performance Pipe, A Division of Chevron Phillips Chemical Co., LP, located in Bloomfield, IA

has job openings.

Please log on to www.cpchem.com to view job descriptions & to apply



Performance Pipe is an Equal Opportunity Employer.

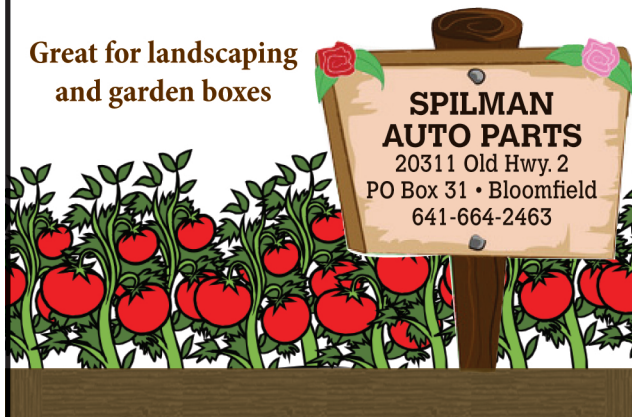
FOR SALE: Firewood at RJ Lumber, \$15 a pickup load. 18989 160th St., Drakesville, IA 52552. TF

FOR SALE: 2012 Yamaha golf cart, gas, fuel injected. Same as new. PH. 641-208-5374. 23

Get Ready For Spring!

8 FT. RAILROAD TIES

Great for landscaping and garden boxes



**SPILMAN
AUTO PARTS**
20311 Old Hwy. 2
PO Box 31 • Bloomfield
641-664-2463



You're not likely to find another company like Vermeer. We're a family-owned and operated company with an unmatched culture. Whoever you are and where you are in your career, Vermeer helps you be **Equipped to Do More™**. We are currently hiring for production roles.



View our openings at www.vermeerjobs.com and apply today!



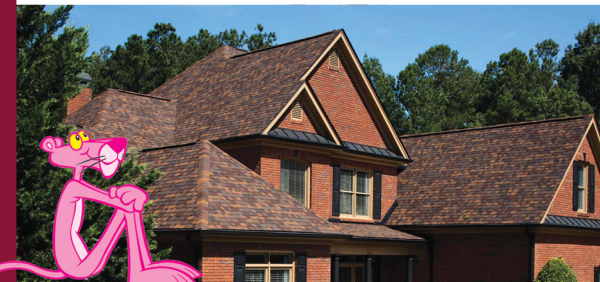
Bring your plans in for a **FREE ESTIMATE**



Trusses Engineered and Designed to Your Specs

FOAMBOARD • SHINGLES • INSULATION

Count on us for quality building supplies. Good results begin with a solid foundation, and that requires the right materials for the job. Trust us for a comprehensive selection of professional grade tools, hardware, lumber and supplies, plus our selection and service with competitive prices. **STOCKING 9 COLOR CHOICES**



17893 212th Street • Bloomfield, IA 52537
641-722-3605 • Mon.-Fri. 7 AM to 5 PM