

BUY IT!

TRADE IT!

SELL IT!



PENNY PINCHER

A. YERGER INC. DUMPSTER SERVICE

16 YARD DUMPSTER / 2 TON LIMIT: \$325.00

GRASS CUTTING:

\$45.00/CUT (ANY YARD UNDER 1 HOUR)

E-MAIL REQUESTS TO:

AYERGERINC@AOL.COM

OR CALL

610-970-1001

Serving the Tri-County Area

www.pennypincherpa.com

June 7, 2017

WINDOW SHOPPING?

FAMILY OWNED SINCE 1949
GRABOYES
WINDOW & DOOR

Best Prices, always!

The Professional
Window People
FAMILY OWNED
67 Years In Business

610-279-3905


Why go anywhere else?



www.graboyeswindows.com

DEF

Diesel Exhaust Fluid

At the Pump! 

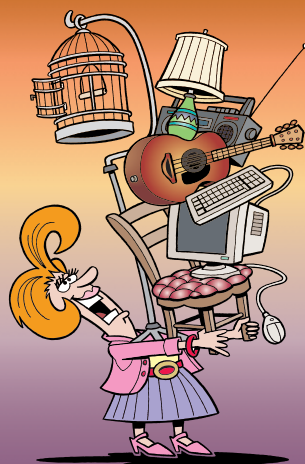
\$2.95 /gal

Compare to
\$7/gal
by jug!

 **OEHLERT BROS., Inc.**
THE ENERGY EXPERTS

1203 Twp Line Rd
610-948-7113

**GUTTER
CLEANING
610-776-2000
GUTTER DOCTOR
ROOFING**



*What's your
treasure?*

Find it in the
Penny Pincher!

Quality Masonry

At Affordable Prices

- BRICK • BLOCK • STONE
- CONCRETE • FLAGSTONE • HARDSCAPE
- POINTING • RETAINING WALLS • CHIMNEYS

General Contractors
Welcome

FARMHOUSE & BARN RESTORATION

Free Estimates

Fully Licensed & Insured

610-369-4963

PA-037504

GORDON'S SPORT SUPPLY GUNS WANTED!

PISTOLS • RIFLES • SHOTGUNS

(Just Outside of Marsh Creek State Park)

129 Pottstown pk., Eagle

610-458-5153



Full Line of Fire Arms & Accessories

- cases
- cleaning supply's & More.

www.gordonssportssupply.com

Don't Break Your Advertising Budget!

Call us for low-cost, highly effective advertising solutions.

We have something for everyone's budget.

— 24 N. Hanover Street, Pottstown, PA 19464 —

610-850-0237 • www.pennypincherpa.com





BULLETIN BOARD

Custom Construction

Professional Quality Craftsmanship

Carpentry Services,
Bathroom, Kitchen & Basement Remodeling,
Door/Window Replacement,
Renovation/Additions/Porch/Deck Projects,
Interior/exterior Painting,
Deck Refinishing. PA08437

-All phases of construction-
Lic/Ins. Over 20 yrs Exp
484-350-2205
psschreier@gmail.com

Handyman Services

Drywall and Plaster Repairs
Interior and Exterior Painting
Carpentry-Electrical-Plumbing
Third Generation of Craftsmanship

SENIOR DISCOUNT-FREE ESTIMATE

Pottstown, PA 19464
610-948-7500 • Ask for John

YOUR SEARCH FOR LOVE & COMPANIONSHIP STARTS HERE!

It's Fast, Easy & Free!

FREE: Zip Code Search - Send Unlimited
Private Messages - Custom Matching
Dating Tips - Speed Dating, Blind /Double
Dates - Entry in Drawings - Dream Date
Contests & Much More!

Check Out: www.mycustommatch.com/freedating/gr3374

GARAGES DOORS & Electric Openers

Sales, Service, Repairs & Installation.
BROKEN SPRINGS REPLACED.
\$30 discount with ad.
Senior discount.

Global Discount Door LLC
Free Angie's List
Membership with any serv.
267-804-DOOR (3667)

McPEAKE CONTRACTING

CARPENTRY • PAINTING • DOORS
WINDOWS • POWERWASHING
CUSTOM DECKS/RESTORATIONS
KITCHEN • BATHS • BASEMENTS
PORCH ENCLOSURES/SUNROOMS
GARAGES • ADDITIONS
INSURED & LIC - PA131863

484-663-4007

WANTED: PAYING CASH

ATV, ATC, Motorcycles
Go Karts or Mini Bikes
Running or Not
Any Condition
2, 3 or 4 Wheelers
ANY YEAR, ANY MODEL

Please Call 610-656-3158

J. Knipe Electrical LLC

My Prices Won't Shock You!

EMERGENCY SERVICE AVAILABLE

NO JOB TOO SMALL!
Res/Comm. Master Electrician
Whatever Your Electrical Problem is,
I CAN SOLVE IT!
LICENSED & INSURED • SENIOR DISCOUNTS

267-312-2127
www.JKnipeElectrical.com

WE BUY BOATS!!

Late Model (Up to 15 Years Old)
Bowriders & Aluminum Fish Boats
Pontoons and Center Consoles

Call Gary Wimmer @
215-536-4721
Ext. 101

YOUR AD HERE

Call Diane at
610-850-0237

WANTED

Antique Tools,
Woodworking,
Machinist
Tools by Stanley,
Tool Chests

610-363-2802



Look for
great deals
every week
in the
Penny Pincher!

COMMUNITY EVENTS

JUNE 7 - "Golden" Texas Hold 'Em from 1:00-4:00 PM the 1st, 3rd and 5th Wednesday afternoon of each month at The Center at Spring Street at Boyertown Area Multi-Service. (610) 367-2313

JUNE 7 - Bingo Nite beginning at 6:30 P. M. at Friendship Hook & Ladder, 10 Warwick St., Boyertown. For info (610)367-2300. Doors open at 5:00 P. M.

JUNE 8 - Movie Night: Split at 7PM at Phoenixville Public Library. No registration required. For info, call 610-933-3013 x132 or e-mail mpinto@ccls.org.

JUNE 8 - Musical Entertainment: Choralrama II from 1-2 PM at The Center at Spring Street at Boyertown Area Multi-Service, 200 W. Spring St. (610) 367-2313. Free admission. Ages 55 & older welcome.

JUNE 9 - Early Bird Breakfast 8:00 AM at The Center at Spring Street, 200 West Spring Street, Boyertown. Call for reservations at least 2 days in advance (610) 367-2313. Anyone 55 years of age or older is invited to join us!

JUNE 9 - Friday Nite Dance: "Dance Time" from 7:30-10:30 PM at The Center at Spring Street at Boyertown Area Multi-Service, 200 W. Spring St. (610) 367-2313. Ages 55 & older welcome.

JUNE 9 - Penn View Brass Band at 7 PM at St. James United Church of Christ, 321 South Limerick Rd. Limerick. Contact Donna Pinto (610) 792-1679, or John Shaw (610) 539-8594 for Info.

JUNE 9-10 - Indoor Flea Market at St. Luke's Lutheran Church, 3206 Bid Rd., Zieglerville, 19492. 7AM-12PM Friday/8AM-12PM Saturday.

JUNE 10 - Flea Market from 7 am to 1 pm St Peter United Church of Christ, Route 23, Knauertown. Space is available. For more info, or to donate items, call 610-913-7717.

JUNE 10 - Lower Pottsgrove Historical Society Strawberry Festival from 10-2pm, rain or shine, at 2341 E. High St.

JUNE 13 - BINGO Nite beginning at 6 PM at The Center at Spring Street at Boyertown Area Multi-Service, 200 W. Spring St. (610) 367-2313. Doors open at 4pm.

JUNE 14 - Bingo Nite beginning at 6:30 P. M. at Friendship Hook & Ladder, 10 Warwick St., Boyertown. For info (610)367-2300. Doors open at 5:00 P. M.

JUNE 15 - Musical Entertainment: One More Time from 1-2 PM at The Center at Spring Street at Boyertown Area Multi-Service, 200 W. Spring St. (610) 367-2313. Free admission. Ages 55 & older welcome.

JUNE 16 - Early Bird Breakfast 8:00 AM at The Center at Spring Street, 200 West Spring Street, Boyertown. Call for reservations at least 2 days in advance (610) 367-2313. Anyone 55 years of age or older is invited to join us!

June 16 - Comedy Comes to TriCounty Active Adult Center (Pottstown, PA) The TriCounty Active Adult Center welcomes three well-known comedians for a fundraising performance at the center at 7:00 pm. The evening includes a "beef and beverage" dinner.

JUNE 17 - Strawberry Social at St. John's Ev. Lutheran Church, 99 Church St., Hamburg, PA, Saturday, 3:30-7:30PM. Entertainment at 6:00 PM by "ONE MORE TIME", Larry & Melissa Beahm with their friend "King Henry". Strawberries & ice cream, soup, beverages, hot dogs, BBQ, & homemade baked goods.

JUNE 17 - Make-And-Sell Pierogi Sale at Holy Trinity Orthodox Church, 1236 Juniper St., Pottstown (corner of Mervine & Juniper). www.holytrinitypottstown.org or 610-327-1542

JUNE 17 - DJ Gary Wiley at Lower Frederick Fire Co., Schwenksville, 7pm-11pm. Call Frank (610)845-7624.-

JUNE 17 - The Truck Stops Here - Mobile Madness from Noon - 4PM in the parking lot at the Boyertown Museum of Historic Vehicles. Sly Fox, Mister Softee and Capt'n Chuckys are just a few of the trucks. 610-367-2090 www.boyertownmuseum.org 85 S. Walnut Street, Boyertown, PA 19512

JUNE 21 - "Golden" Texas Hold 'Em from 1:00-4:00 PM the 1st, 3rd and 5th Wednesday afternoon of each month at The Center at Spring Street at Boyertown Area Multi-Service. (610) 367-2313

JUNE 21- Bingo Nite beginning at 6:30 P. M. at Friendship Hook & Ladder, 10 Warwick St., Boyertown. For information call (610)367-2300. Bingo is held by Ladies Aux. Doors open at 5:00 P. M.

JUNE 22- The 2017 Walking Tour, Thursday-6pm-8pm, sponsored by the Pottstown Historical Society. Walk along E. High Street between Hanover and Penn Streets, to learn the long history of buildings and businesses on this short block. Meet in the lot at 220/222 E. High Street, rain or shine. Free (donations accepted). For Info, leave message at 610 970 7355, or email to PottstownHistory@gmail.com.

JUNE 23 - Community Dinner from 5:30 to 7 pm St Peter United Church of Christ, Route 23, Knauertown. Free will offering. For info, call 610-913-7717.

JUNE 23 - Book Sale from 8:00 a.m. to 5:00 p.m. Friends of the Boyertown Community Library semi-annual book sale at Good Shepherd U.C.C. Church, 35 W. Phil. Ave., Boyertown.

JUNE 23 - Early Bird Breakfast 8:00 AM at The Center at Spring Street, 200 West Spring Street, Boyertown. Call for reservations at least 2 days in advance (610) 367-2313. Anyone 55 years of age or older is invited to join us!

JUNE 24 - Bag of Books from 8:00 a.m. to 12 p.m. at Good Shepherd U.C.C. Church, 35 W. Phila. Ave., Boyertown.

JUNE 24 - VENDORS WANTED - Community Flea Market at Christ Lutheran Church, Trumbauersville. Call 215-536-3193 for info.

JUNE 24 - Chicken Barbecue or Pulled Pork Sandwich Dinner from 4:00- 6:30 PM at Coventryville United Methodist Church, 1521 Old Ridge Road, Pottstown. Dine in or take out. To order tickets call the church at 610-469-9350.

JUNE 24 - Community Day from 11 am to 3 pm at Tri-County Bible Church, 142 Burchert Rd., Gilbertsville. For info 610-473-8229.

JUNE 24 - St. Michael's Church Annual Picnic, Hamburg, PA - Flea Market 2-8 PM; Food 4-8 PM; Music by The Ringgold Band 5-8 PM.

JUNE 25 - Vintage Baseball at its Best! at Pennypacker Mills, 5 Haldeman Road, Schwenksville, 19473. 610-287-9349 Bring chairs to sit on. FREE <http://www.montcopa.org/pennypackermills>

Email event information to
classified@pottsmc.com
We reserve the right to edit copy
due to space restrictions.



PENNY PINCHER

Open to see even more great ways to save!

Shabby chic
or
past its peak?

*Sell it in the
Penny Pincher!*

**QUARRY
BLOCKS**

2'x2'x6'
For Making
Mulch Bins,
Retaining
Walls, etc...

**SPRING/SUMMER
SALE**
\$15 ea

Exp. 7/4/17 or until Supplies last!
Pick-up only @ Collegeville

**TRANS-FLEET
CONCRETE**
610-489-8884

FOR RENT CAMPSITES

**LAZY K
CAMPGROUND**



Want to Save
Money on Rent?

Camp by
Month/Yearly
Sites as Low as
\$475/month

610-367-8576

CASH
\$100-\$1000
for junked, wrecked or
unwanted vehicles
Serving
Southeastern
Pennsylvania
484-955-8386

**BUYING OR
SELLING?**

Call Today to Place Your Ad
610-850-0237

We Buy Used Car Batteries!
Recycled the proper way.

INTERSTATE BATTERY SYSTEM
OF READING, INC.
1742 SWAMP PIKE
GILBERTSVILLE, PA 19525
610-323-3296
Toll Free 800-427-1500

BUYING HARLEY'S
1903-2011 Big Twin Models
Licensed Dealer
Safe/Secure Transaction
Also Buying Original
Condition CORVETTES
TOP \$\$\$ PAID TODAY!!!
We Also Buy Collectible Cars & Trucks!
484-941-4245
or visit: www.east-11.com/sell

Need Interior Painting or
Drywall Finishing Work Completed?

Andy Astheimer
(610) 970-5626

Drywall Finishing
Interior/Exterior Painting
Interior Plastering Repair
Stucco & Stucco Repair
Stucco Foundation
Brick & Stone Pointing
30 yrs exp - fully insured
PA #006322

**AUGUSTINE'S
HANDY SERVICE, LLC**

INTERIOR & EXTERIOR SERVICES

PAINTING, PLUMBING

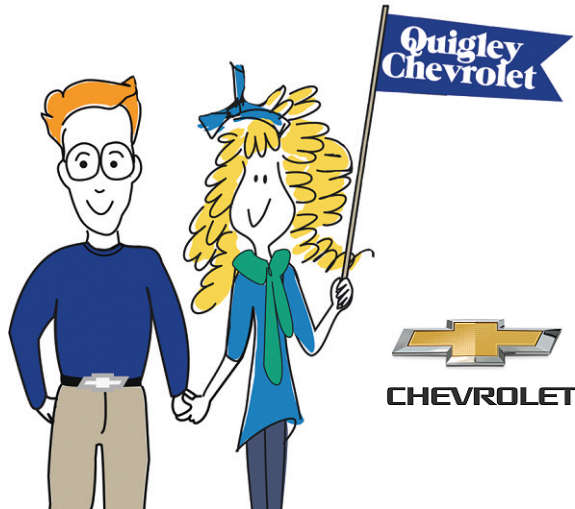
HOME REPAIR LANDSCAPING

ANY AND ALL ODD JOBS! NO JOB TOO SMALL!

QUALITY WORK/REASONABLE PRICES
FULLY INSURED ** FREE ESTIMATES*

1-484-919-6210
PA003294

Looking for a new best friend?
See inside for pet listings.



2013 KIA OPTIMA 4DR SDN LX
Snow White Pearl, Beige, 2.4L 4 Cyl,
Automatic, 56,111 Miles **\$11,995**

**2014 JEEP GRAND CHEROKEE
4WD 4DR LIMITED**
Cashmere Pearl Coat, Black/Light Frost Beige,
3.6L 6 Cyl, Automatic,
44,250 Miles **\$24,995**

2010 JEEP LIBERTY 4WD 4DR SPORT
Light Sandstone Metallic Clear Coat,
Dark Slate Gray, 3.7L 6 Cyl,
Automatic, 73,166 Miles **\$10,995**

**2009 JEEP GRAND CHEROKEE
4WD 4DR LAREDO**
Red Rock Crystal Pearl Coat, Khaki, 3.7L 6 Cyl,
Automatic, 76,106 Miles **\$12,495**

**2012 GMC SIERRA 1500
CREW CAB SHORT BOX 4-WHEEL DRIVE SLE**
Midnight Blue Metallic, Ebony, 5.3L 8 Cyl,
Automatic, 53,447 Miles **\$25,995**

**2015 CHEVROLET SILVERADO 1500
REGULAR CAB LONG BOX 2-WHEEL DRIVE WT**
Silver Ice Metallic, Dark Ash/Jet Black,
4.3L 6 Cyl, Automatic, 51,594 Miles **\$18,995**

**2012 CHEVROLET EXPRESS CARGO VAN
AWD 1500 135" YF7 UPFITTER**
Silver Metallic, Medium Pewter, 5.3L 8 Cyl,
Automatic, 76,513 Miles **\$27,995**

**2010 CHEVROLET SILVERADO 1500
CREW CAB SHORT BOX 4-WHEEL DRIVE LT**
Sheer Silver Metallic, Ebony, 5.3L 8 Cyl,
Automatic, 94,298 Miles **\$19,995**



**2009 CHEVROLET SILVERADO 1500 EXTENDED
CAB STANDARD BOX 4-WHEEL DRIVE LT**
Silver Birch Metallic, Ebony, 5.3L 8 Cyl,
Automatic, 71,369 Miles **\$18,995**

2009 CHEVROLET HHR LT 2LT
Gold Mist Metallic, Cashmere, 2.4L 4 Cyl,
Automatic, 99,591 Miles **\$5,995**

2005 CHEVROLET COBALT 4DR SDN
Sandstone Metallic, Neutral, 2.2L 4 Cyl,
Automatic, 92,860 Miles **\$5,495**

**2013 GMC TERRAIN
FWD 4DR SLE W/SLE-1**
Onyx Black, Jet Black, 2.4L 4 Cyl, Automatic,
57,192 Miles **\$15,995**

2013 CHEVROLET TRAVERSE FWD LT W/2LT
White Diamond Tricoat,
Ebony/Mojave, 3.6L 6 Cyl,
Automatic, 55,999 Miles **\$21,995**

2014 CHEVROLET IMPALA LIMITED LTZ
Ashen Gray Metallic, Ebony, 3.6L 6 Cyl,
Automatic, 30,283 Miles **\$16,995**

2014 CHEVROLET EQUINOX AWD 1LT
Silver Topaz Metallic, Jet Black, 3.6L 6 Cyl,
Automatic, 27,687 Miles **\$19,995**

2015 CHEVROLET SUBURBAN 4WD LT
Black, Jet Black/Dark Ash, 5.3L 8 Cyl,
Automatic, 68,764 Miles **\$38,995**

2015 CHEVROLET EQUINOX AWD 1LT
Crystal Red Tintcoat, Jet Black, 2.4L 4 Cyl,
Automatic, 17,538 Miles **\$22,995**

**2015 CHEVROLET CAMARO
2DR CPE LS W/LS**
Summit White, Black, 3.6L 6 Cyl, Automatic,
18,196 Miles **\$18,995**

**2015 CHEVROLET SILVERADO 2500HD
CREW CAB LONG BOX 4-WHEEL DRIVE LT**
Silver Ice Metallic, Jet Black, 6.6L 8 Cyl,
Duramax Diesel, Automatic,
44,945 Miles **\$43,995**

Selling Prices Subject to Change After 6/14/17

Quigley Chevrolet

f t Route 100, Bally, PA. • 610-845-7575 • E-mail: quigchev@ptd.net



WWW.SHIRKPOLEBUILDINGS.COM

TOLL FREE 877-845-6888
FAX 717-445-3001

**40 YEAR G-100
PAINTED STEEL SIDING AND ROOFING**



*PICTURE MAY DIFFER FROM AD

**DRAWINGS AVAILABLE
UPON REQUEST**

20X20X8	\$5,500	40X60X12	\$18,950
24X24X8	\$6,400	40X80X12	\$23,400
24X40X10	\$9,300	40X80X14	\$24,950
30X32X10	\$8,950	40X80X16	\$26,750
30X64X10	\$14,300	40X96X14	\$28,500
30X48X12	\$12,850	50X96X14	\$32,900
32X40X10	\$10,950	60X100X16	\$44,900
36X48X10	\$13,950	60X120X16	\$49,950

THESE PRICES INCLUDE FLUSH EAVES, 40 YEAR G-100 PAINTED STEEL SIDING AND ROOFING, A FULL TRIM PACKAGE, INSTALLATION, 1 - ALL FIBERGLASS & VINYL ENTRY DOOR AND 1 - CLOPAY OVERHEAD DOOR