

FLAGPOLES!
24' LIBERTY DELUXE DOUBLE FLYER
 Reg. \$299 **Now... \$199**
American Flagpole Co.
601-649-0748
 God Bless America

IMPACT

"Whoever walks with the wise becomes wise, but the companion of fools will suffer harm."
 ~ Proverbs 13:20

Postal Customer Local
 PRSRT STD
 US Postage Paid
 IMPACT
 ECRWSS

THE MISSION STORE
 Thrift Shop
 5445 Hwy. 11 N. Ellisville • 601.394.3507
Entire Store 50% off
 T-F 9a-5p • Sat. 9a-3p

Laurel • 601.649.1129
 www.impact601.com
 Serving Jones, Jasper, Smith, Wayne and Washington & Choctaw County, AL
 Volume 41, No. 30 • August 2, 2017
46,861 total circulation

HAND+made by Clairmont & Co.

By Keri Rowell, Lott Furniture Co.
 Downtown Laurel has always been a hub for people and ideas that are truly great. Supremely talented craftsmen, artisans, and creatives of all kinds proudly call The City Beautiful home, and they are bringing Laurel back.
 HAND+made by Clairmont & Co. is truly one of the most innovative and creative businesses to meet Laurel's Downtown to date. Stephen and DeShawn Clairmont built their first business, Clairmont & Co., to a well-known wholesale giant in the South just before this newest venture.
 Now, they've stepped it up even higher and brought us HAND+made, an integrated retail and DIY shopping experience. The store incorporates handmade goods to shop for, as well as goods for you to make. With wooden letters to candles, there's

something for just about anyone. Their prices range from around \$6 to \$40 in crafts, so you can make it as affordable as you want while having a large selection to choose from.
 HAND+made is great for kids, dates, and parties too! Also, they host classes and workshops frequently and do special limited time projects.
 This week, we went and tried HAND+made out for ourselves. The process was so easy and fun, we highly recommend it to everybody!
 I immediately was given the grand tour and shown everything there was to pick from. I chose to make a candle and went ahead and picked out my scent. They gave me a glass vessel to paint and ribbons to choose from. Then, I got to mix my scent

See HAND+made, page 2



Pictured are: Cassy Barnett, Sydney Baker and Amy Thames-Store Manager. Photo/submitted

CITY WIDE RUMMAGE SALE
100+ Families
FREE ADMISSION
Saturday • August 5
9am - 2pm
Indoors at the Magnolia Center!
 Antiques, Collectables, Clothing, Furniture, Jewelry...
WWW.MYRUMMAGESALES.COM
601.319.6086

MAGNOLIA TIRE & SERVICE CENTER
 We can take care of **ALL** your auto needs!
BACK TO SCHOOL SPECIALS
 MUST PRESENT COUPONS FOR SPECIAL PRICING
 MON - FRI 7:30 A.M. - 4 P.M.
 111 S. MAGNOLIA ST. • LAUREL
601.651.2043

A/C DIAGNOSTICS CHECK *UP TO 1 LB FREON \$49.95	OIL CHANGE *UP TO 5 QTS OF CONVENTIONAL OIL AND FILTER \$24.95	TIRE ROTATION \$19.95
---	--	--

KEEP DOING WHAT YOU **LOVE**
 EVEN DURING CANCER TREATMENT

LAUREL CANCER CARE

(601) 425-2999
 laurelcancercare.com

WE ACCEPT ALL TYPES OF INSURANCE, INCLUDING TRICARE

HILL STREET BAKERY
 Delicious is our Business

- COOKIE MONSTERS
- ICED SUGAR COOKIES
- THUMBPRINTS
- PETIT FOURS

and as always...
Delicious Cupcakes!!

Don't forget about our casseroles to help you with dinner!

53 Hal Crocker Road • Ellisville
TUES - FRI 9 A.M. - 5:30 P.M. / SAT 8 A.M. - 10 A.M.
601-800-8153

Head Back to School in Style!

BUNKBEDS \$199

SPECIAL DEALS!
JUST IN TIME FOR SCHOOL!

- HEADBOARDS..... **\$49**
- QUEEN MATTRESS SET.... **\$199**
- 2 PC SOFA & LOVESEAT... **\$488**
- 3 PC COFFEE AND END TABLE..... **\$119**
- 5 PC DINING TABLE SET.. **\$259**
- LAMPS..... **\$19**

4 DRAWER CHEST \$59

SOUTHERN FURNITURE AND MATTRESS
 2909 Wheeler Drive • Laurel, MS 601-649-0733
 Next to Bob Palmer's Chancellor Motor Group
VISIT US ONLINE AT SOUTHERNFURNITURE.ORG

HOT Summer Savings!

HAIER 5.0 CU. FT. CHEST FREEZER
 •Storage for up to 175 Lbs. Of Frozen Food
 •Easy Access Defrost Drain
 •Adjustable Thermostat
 •Removable Basket
 HF50CM23NW
\$169

FRIGIDAIRE 18 CU. FT. TOP FREEZER REFRIGERATOR
 •2 Crisper Drawers
 •Bright Lighting
 •Spill Safe Glass Shelves
 •Optional Ice Maker
 FFTR1814QW - WIRE SHELF
 FFTR1821QW, 8 GLASS SHELF
\$479 (WHITE ONLY)
\$499 (BLACK OR WHITE)

FRIGIDAIRE 9 CU. FT. CHEST FREEZER
 •Power On Ind. Light
 •Adj. Temp. Controls
 •Defrost Water Drain
 •Removable Basket
 FFC09M1RW
\$279

CROSLEY 10,000 BTU AIR CONDITIONER
 •Energy Saver
 •Energy Star Rated
 •Remote Control
 •110 Volt
 •Cools Up To 500 Sq. Ft.
 CACS10B1
\$299

WHILE THEY LAST!
Alexander's
 Bay Springs 601-764-2161
 Ellisville 601-477-3312
SELECTION • SERVICE • VALUE

IMPACT

#1 in Advertising

Ronnie Buckley
Publisher

Kevin Williamson
Manager

Jerry Clark
Circulation Supervisor

Betty Busby
Laurel Sales Representative

Kim Wilbanks
Laurel Sales Representative

Trish Irwin
Laurel Graphic Artist

Jennifer Clark
Graphic Production Manager

Trerica Roberson
Graphic Artist

Candice Pittman
Graphic Artist

Russ Farris
Graphic Artist

Sherry Hearn
Administrative Assistant

Linda Cranford
Writer/Photographer

WHILE THE IMPACT makes every effort to verify the offerings made in these ads, we cannot guarantee the integrity of every advertiser. We strongly recommend that readers investigate the companies involved before sending them any money.

Classified and ROP Ad Deadline
Sunday Edition -
Wednesday at 12:00 Noon
Wednesday Edition -
Thursday at 3:00

IMPACT
1010 N. 16th Ave
Laurel, MS 39441
Ph. 601.649.1129
Fax: 601.649.0424
Email:
admin@laurelimpact.com



HAND+made, continued from page 1

and pour my own candle!

It means so much more to have handmade products and decor in your home, especially if they were made by you! I for one was very impressed by my experience at HAND+made and will definitely be returning again.

At Lott Furniture Co., we can't wait to see the spark of creativity that HAND+made will light in our community. Offering up a place for us to all become makers together is a very special thing that will hopefully be cherished for years to come.

If you haven't made it over to HAND+made yet, get over there! And when you do, be sure to give Stephen and DeShawn some neighborly love and congratulations for their amazing new business.



Pictured are: McKinley Clairmont, Dean Shedd, Angie Shedd, Dakota Clairmont, Owners: Deshawn and Stephen Clairmont at ribbon cutting on Thursday, June 29. Photo/submitted

Judge Pickering speaks at Kiwanis Pastor Appreciation Day

By Linda Cranford
lindaimpact@gmail.com

To show their appreciation, the Kiwanis Club of Laurel invited local pastors to join them for lunch at their weekly meeting, Wednesday, July 26 at the Laurel Country Club. The honorable Judge Charles Pickering, retired federal judge of the 5th Circuit Court of Appeals, was the keynote speaker. Speaking to the pastors, Pickering said, "I can think of no greater privilege than to be God's representative, God's shepherd and God's spokesman."



Judge Charles Pickering
Photo/Linda Cranford

Pickering spoke on how Christianity and the church played a significant role in the development of our country not only in establishing our government but also in educating our children.

He pointed out several instances during the American Revolutionary War where the Colonists were led to victory or escaped defeat that can only be explained as an act of divine intervention. He spoke of how religion and Christianity played a role in the drafting of our Constitution by the founding fathers. He said during the first 200 years of our country our education was based on Judeo Christian principles and the two major political parties agreed to rule with Judeo Christian principles. However, for the past 50 years, Pickering said, "There has been a battle for the heart, soul, and mind of the American people."

He talked of the attempt of many to re-

write the history of our country and leave out any reference to our Christian influence. Pickering referenced the study of the French socialist and political theorist Alexis De Tocqueville who came to America in 1831 to study why the American Revolution was such a success and the French Revolution such a failure. "De Tocqueville concluded that America's success was due to the Biblical principles our country was founded upon," said Pickering. "De Tocqueville warned that if religion in America should be destroyed, confusion and ultimate conflict would result and said that people finally would have nothing to rely on, but have continuous change in personal opinion. That warning has unfortunately become a reality."

Pickering said that perhaps today we should all be asking and debating the question, "Why is America the greatest nation in the world?" He added that there has been an attempt over the past several years to silence the Christian voice, but Christians should speak up and speak out, but he warned, "As we speak up and speak out we must do so in love."

Kiwanis President-Elect Ryan Griffin thanked all for coming and provided the pastors with a list of yearly activities performed by the club and invited all to join. The yearly activities include Pancake Day; \$8,000 in local high school scholarships; distribution of math flash cards to every fourth grader in Jones County; \$7,500 to African Health Relief World Program; Boy Scout support; Jones County Chamber of Commerce support; Pastor Appreciation Day; host nursing home birthday party; Animal Rescue League support; and Key Club support, which involves Laurel High School, Laurel Christian School, South Jones, Northeast Jones and West Jones.



L-R, Dr. Scott Carson - Southeastern Baptist College, Mike Allen - West Minster Presbyterian Church, Shannon Slover - First Baptist Laurel, Judge Charles Pickering, guest speaker, Dr. Randy Turner - First Baptist Laurel, Will McLaurin - Kingston UMC, Wayne Pinkerton - First Baptist Laurel, Mark Anderson -First United Methodist Church Laurel, David Hagan - Life Church, Fr. Jeff Reich - St. John's Episcopal Church, and Luke Johnson, First Baptist Ellisville. Photo/Linda Cranford

OLD SOUTH FARM SUPPLY

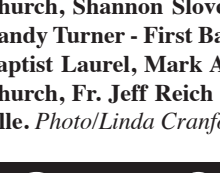
is headquarters for
Loyall Super Premium
Grain Free and All Life Stages Dog Food



FLY PROBLEMS?



Check out the best...
Bayer Quick Bayt Spot Spray
\$15.95 per Bottle
It Will Be Their Last Stop!



DOVE HUNTERS!

WE
HAVE

50 LB. BAGS

- WHITE PROSO BIRD MILLET.....\$17.50
- BIRD WHEAT.....\$8.95
- CHOPPED CORN.....\$7.95

Bo Welborn-Owner • Mickey Holloway-Manager

244 E. Hickory Street • Laurel • 601-428-7447



For Local News & Sports everyday,
visit our web site: **Impact601.com**

Bok Homa Casino
**HOT
AUGUST
NIGHTS**

Hot August Nights
Thursdays and Fridays in August

BonusBet Drawings • 6pm - 10pm
Win \$100 BonusBet!

Cash Drawings • 10:30pm
Win \$500 Cash!

See Player Services for details.

Real Winning
Bok Homa
CASINO
Real Close to Home
Sandersville, MS

PEARL RIVER RESORT PRESENTS

BRANDON BENNETT

AUGUST 25

DOORS OPEN AT 7PM CONCERT BEGINS AT 8PM

**SILVER STAR
CONVENTION CENTER**
CHOCTAW, MS NEAR PHILADELPHIA

PEARL RIVER RESORT

Dancing Rabbit
GOLF CLUB

20th Anniversary
August 19th & 20th

\$20 Per Golfer
Call to book a tee time.



**FREE
CONCERT**
BASED ON AVAILABILITY
LIMITED SEATING

Follow us!
f y t i

PEARL RIVER RESORT

Join the Experience!
CENTER OF IT ALL



TRESTLEWOOD QUEEN POST FOOTBOARD BED

MESQUITE PINE FINISH

\$599

Nightstands, Chest,
and Dresser/Mirror
**AVAILABLE AND
IN STOCK!**

Trestlewood offers a rustic look with massive structural elements showcasing seven inch posts and planked panels with a unique distress finish.

Alexander's FURNITURE

BAY SPRINGS
601-764-2161

Eternity Action Alliance back-to-school giveaway

By Linda Cranford
lindaimpact@gmail.com

Hundreds endured the sweltering heat Friday, July 28 for an opportunity to receive a backpack full of school supplies and other offers from different organizations during the Eternity Action Alliance back-to-school giveaway at St. Elmo Missionary Baptist Church in Laurel.

Executive Director Jeanella Rahming said this is the third year that Eternity Action Alliance, in conjunction with Power 101.1 radio station in Hattiesburg, has organized the giveaway for students in the Laurel area.

"We will be giving away over 400 backpacks today," said Rahming. She added, "We have had a lot of community involvement and have over 100 sponsors."

Public Relations Specialist Katherine Parker said in addition to school supplies, useful items were offered by local businesses and organizations, including free haircut vouchers and \$10 per month high speed internet.

Drinks and hot dogs were served and the children got an opportunity meet members of the Laurel Fire Department and Laurel Police Department. A dunking booth was set up and several children enjoyed dunking a LPD police officer.



Picking up school supplies are Jacquie Owens and her boys Kristen (6), left, and Marley (4), right. Photos/Linda Cranford



Back Right - Laurel Fire Department Lt. Jeffrey McLain, back right, helps Madison Smith with getting her supplies while mom Yamea Smith helps her boys, Peyton Smith and Michael Dorsey.

LPD Investigator Kim Stewart gets dunked at the dunking booth sponsored by Smile Designers Inc. - Dr. Keisha D. Quinn.



TEXT RAPID
TO 51660
TO RECEIVE
\$20 OFF*
FIRST RENTAL
TERM

Cannot be combined with any other offers. Good Thru 8/31/17.



After School Snacks
ARE READY AND WAITING



18 cu. ft.
AVAILABLE IN
BLACK OR WHITE
FRIGIDAIRE
only
\$56⁰⁰ MO
FOR 24MO
\$13⁹⁵ WK

KEEP THOSE NEW
SCHOOL CLOTHES Clean



AMANA WASHER
& DRYER SET

only
\$68⁰⁰ MO
FOR 24MO



Make Sure They Get
A GOOD NIGHT'S SLEEP



STARTING AT
\$68⁰⁰ MO
FOR 18MO
\$16⁹⁵ WK

Heavy Gauge Metal Bunk Beds
Sizes: Twin/Twin, Full/Full, Twin/Full

ADD MATCHING 5 DRAWER
CHEST FOR ONLY \$3.95/WEEK

Available in a Variety of FUN Colors: Turquoise, Raspberry, Royal Blue, Black, White and Silver



Twin/Full
Wooden
Bunk Bed
Shown with optional
trundle drawer

\$96⁰⁰ MO
FOR 18MO
\$23⁹⁵ WK



Laptops Help Make
HOMEWORK A BREEZE



YOUR CHOICE
\$76⁰⁰ MO
FOR 15MO
\$18⁹⁵ WK



HP 15.6" TOUCH Screen!
6GB RAM, 1TB Hard Drive, A6 Processor, CD/DVD

Dell Inspiron BIG 17.3" Screen!
6GB RAM, 1TB Hard Drive, A6 Processor, CD/DVD

ASK
ABOUT OUR
**120
DAYS**
PURCHASE
OPTION!

Rapid Rentals

Rental Purchase
FURNITURE • APPLIANCES • ELECTRONICS

Your Location: 9-G Bay Avenue • Bay Springs, MS 39422 • 601.764.9805

326 Woodland Drive
Forest, MS 39074
601.469.2151

125 Old HWY Loop
Newton, MS 39345
601.683.7800

818 Main Street
Collins, MS 39428
601.765.4181

105 HWY 35 North
Carthage, MS 39051
601.298.0999

VISIT US ONLINE AT WWW.RAPIDRTO.COM



A Shepherd's Heart – “A little out of tune”

Dr. Timothy L. Hubbard

I received a Christmas gift a few years back from my daughter and son-in-law . . . a “build your own” ukulele kit. Being a musician and also a novice wood worker, I was thrilled to try my hand at assembling this kit and playing some beautiful music on my hand-made ukulele. Fortunately for me, when I opened the kit to begin the project I found that the most difficult part of the woodwork had been done for me. The body of the ukulele had already been shaped and glued together. That meant I would not have to try my hand at bending wood to form the sides of the body, a process that I understand can be a pretty tedious task.

There was still much left to do. I had to shape the neck and glue the neck to the body. Then I had to attach the saddle, bridge and the nut in the just the right positions. I had to glue on the fret board and install and level the frets. I installed the tuning pegs into the headstock. I then sanded and put a finish on the entire instrument and let it dry. Finally it was time to put the strings on it and see how it sounded. With each of these steps there were very specific instructions that had to be followed. I took extreme care in accomplishing each task. However, when it came to the step of attaching the fret board to the neck, I guess I must not have checked carefully enough before I left it for the night. I realized the following evening when I got back to the project that somehow in the clamping process, I must have let the fret board slide just a fraction of an inch.

As I examined it I determined that there was no way to safely remove the fret board in order to redo it, so I made the decision to just keep going and hope for the best. I must admit that the finished product looked really good. The hours of sanding, the choice of stain, and the lacquered finish proved to be well worth the time and energy. Unless you knew to look really close, you would never notice the fret board being slightly out of line with the base of the neck. You would do just like I first did and would say, "Wow! I can't believe how good it turned out!"

However, when you picked it up to strum a chord you would quickly find out that even though it looks good, it sounds a little out of tune. I was reflecting over this project earlier today and was reminded that my life is sometimes a little out of tune as well. The reason is usually the same as it was with my ukulele project. I failed to pay close attention to the discipline of the process. I can look good on the outside, “spiritually speaking,” but if I don’t pay attention to the daily discipline of the study of God’s Word and prayer, the song of my life will certainly be out of tune. The psalmist reminded us make a joyful noise unto the Lord. He also told us to praise God with timbrel, dance, stringed instruments, flutes, etc. So whether our lives seem a little out of tune, let’s continue to faithfully sing praises to Him because He is worthy. In our praising Him, we will find that He is able to tighten the strings in our lives and in His presence our lives will sound as if they are in tune. “Let everything that hath breath Praise the Lord!” (Ps. 150: 6)

LLT presents “Joseph & the Amazing Technicolor Dreamcoat”

Submitted

Laurel Little Theatre begins its 57th year with “Another Spectacular Season!” that kicks off with the hit Andrew Lloyd Webber musical “JOSEPH & THE AMAZING TECHNICOLOR DREAMCOAT.” Running for the first two weekends of August for eight performances, it’s sure to fill LLT’s 1927 Downtown Arabian Theatre. The curtain goes up at 7:30 p.m. on August 3-4-5-11-12 and three matinees are at 2 p.m. on August 6-12-13. The LLT reservation line is now open and answers 24 hours a day at 601.428.0140.

LLT presented this show in both 1995 and 2009 to full houses, and they expect this third revival to sell out as well, so reservations are highly suggested. Telling the famous story of Joseph and his “coat of many colors” from the Bible’s Book of Genesis, it’s full of great life-lesson stories that come to vibrant life in this delightful and totally colorful and spectacular musical. Featuring a variety of musical styles from country to calypso, French cabaret to Elvis rock-n-roll, and 1920s Charleston to 1960s go-go, this show will totally entertain all ages - but to ensure enjoyment of all audience members, no children admitted under the age of four.

Long-time LLT alumni Wess Hughes is back once again to direct. He has over 300 shows to his credit with almost a quarter of those at LLT. Hughes has worked in theatres all over Mississippi and New Orleans, and he now has credits professionally producing shows in NYC. Jonathan McKenzie will also be back for his third run in the title role of ‘Joseph’ and is well known in the community after years of serving as choir director to award-winning show choirs at West Jones Middle School and South Jones High School and now at Laurel’s First Baptist Church.

Returning from LLT’s 2009 production are LLT alumni Kathy Lee and Holly Wansley in the leading role of ‘The Narrator.’ Lee appeared in leads in LLT’s “Oklahoma” and “To Kill A Mockingbird” but is more recently known for her spot-on impression as ‘Minnie Pearl’ in “Always . . . Patsy Cline.” Wansley had leads in “The Music Man,” “Peter Pan,” and “9 to 5” and sings locally with the band The Strays.

Double cast as The Pharaoh (that’s played as the more recent ‘King’, Elvis Presley) are Allen Holifield and Bruce Smith. Holifield is a music major at USM and recently sang on tour in Sweden and Norway, while Smith has just moved back to the area after performing professionally at Opryland, in Broadway touring shows and on Princess Cruise Lines. Other leads include well-known Laurel attorney Bill Mullins as



Joseph’s father Jacob and local school administrator Ken Culpepper and Bay Springs educator Frankie Bennett, as Potiphar and Mrs. Potiphar.

Stealing the show playing Joseph’s 11 brothers are actors from Collins, Ellisville, Stringer, Meridian and Laurel: Reagan Arnold, Josh Crosby, Johnny Davis, Ethan Glenn, Kade Lee,

Jacob May, Anthony Nix, Carter Poister, Paul Spurlin, Ben West and Derrick Williams. The rest of the huge cast and crew of 121 locals of ages 6 to 75 are from all over the Pine Belt, and they’ve been in rehearsals for the last two months for this ‘spectacular’ season-opener. Fiftieth anniversary stage productions are planned for “Joseph” in both NYC and London next year, as well as a new animated motion picture that will feature additional songs by Elton John. LLT actor Laura Cooley is the assistant director, West Jones High School choir director Shane Cockrell serves as the musical director and Coco Caldwell is the choreographer.

Single tickets are available, but the best deal is a 4-punch LLT season ticket that can save nearly 40 percent off the single ticket prices. After “Joseph,” LLT continues the season with the Neil Simon comedy “Brighton Beach Memoirs,” then a slamming-doors comedy farce called “Noises Off” and a 1920s costume party and silent movie showing of Charlie Chaplin’s “The Gold Rush.” The ‘spectacular season’ finally wraps up next June with the Kids’ Camp production of the musical “Shrek Jr.”

For information on season tickets, you can mail LLTLaurelMS@aol.com.

Baby Miss Laurel semi-finalist in Little Miss and Mr. Magnolia State Pageant



Annabelle Mia Stewart is the daughter of Andrew and Shaylee Stewart. She recently competed in the Little Miss and Mr. Magnolia State Pageant. Annabelle represented Laurel as Baby Miss Laurel and made it to semi-finalist (Top 12), scoring 11th place.
Photo/submitted

SUMMER CLEARANCE

UP TO 75% OFF
ENTIRE STORE

LIMITED
TIME ONLY!
Sale ends
August 18th

NO CREDIT NEEDED

428-5782
Downtown Laurel
Visit our website at
lottfurniture.co

Like Us On

McGOWEN Portable Buildings

GRACELAND
PORTABLE BUILDINGS®

2 Locations to better serve you

FREE DELIVERY AND SET UP
within 50 Miles

3 BB & H Rd, Hwy 11
MOSELLE
Phone: 601-544-0644

3965 Hwy 49 South
HATTIESBURG
Phone: 601-261-7979

ADVERTISING IS NOT AN EXPENSE . . .
ADVERTISING IS AN INVESTMENT.

Call
649-1129

MCGOWENCHEMICAL.COM

No Credit Check / Rent To Own

★★★
7 YEAR
LIMITED
WARRANTY

★★★
25 YEAR
MANUFACTURERS
WARRANTY
ON ROOF PRODUCTS

★ ★ ★
LIMITED LIFETIME
MANUFACTURERS
WARRANTY
ON TREATED WOOD PRODUCTS

AUTHORIZED DEALER

Laurel Ford donates to local schools

By Linda Cranford
lindaimpact@gmail.com

Representatives from ten local elementary schools gathered at Laurel Ford Lincoln and Kia Thursday morning, July 27 to pick up boxes of school supplies for their school. Each school received 10 boxes and each box contained 10 school supply kits.

“That’s 100 kits, and 100 students that we can help,” said Sonya Sumrall from Oak Park Elementary.

“We are so excited about this,” said Anderle Foster, supervising principal at North

Jones Elementary. “Laurel Ford’s community involvement as well as other businesses in Laurel/Jones County helps make our schools successful. We encourage others in the community to follow Laurel Ford’s example and get involved with our schools.”

According to Katy Leggett, Laurel Ford financial manager, owner Jimmy L. Walker has been providing school supplies to local schools for several years. “He does things like this all the time, but never lets anyone know. Children are everything. We’re really excited to do this.”



Showing the school supplies kit are L-R: Anderle Foster, NJE, Sonya Sumrall, Oak Park, and Stephen Brown, Glade. Photos/Linda Cranford



Local Elementary School Representatives pick up school supplies. L-R: Stephen Brown-Glade, Tina Gatwood-NJE, Anderle Foster-NJE, Sylvia Busby-EJE, Angela Brown-Mason, Katy Leggett-Laurel Ford, Shanetra Addae-Oak Park, Janet Tucker-Nora Davis Magnet School, Sonya Sumrall-Oak Park and Mike Lightsey-EJE.



Members of the Laurel Ford team load the school supplies. L-R: Raymond Evans (blue shirt), Jay Shelby (red shirt) and Rev. James Ayers (orange shirt).

DOUBLE B FARMS



- Bull Dozer
- Trac Hoe
- Dump Truck



- BUSH HOGGING
- LAND CLEARING
- DRIVEWAYS
- ROAD BUILDING
- HOUSE PADS

Certified Septic Tank Installation

Brian Sciortino • Rose Hill, MS **601-479-2074**

ADVERTISING IS NOT AN EXPENSE . . .
ADVERTISING IS AN INVESTMENT.

Call
649-1129

IMPACT

BACK TO SCHOOL SPECIALS



2015 Ford Focus
\$14,995



2016 Grand Cherokee
\$31,995



2014 Toyota Tacoma
\$26,995



2008 Pontiac G6 Convertible
\$8,795



2013 Kia Optima
\$9,995

COOLEY MOTOR COMPANY

SINCE 1928 • HWY 45 NORTH WAYNESBORO
601-735-4323 OR 1-800-748-8838




JOIN US FOR SEAFOOD NIGHT

THURSDAY & FRIDAY 4-9 P.M.
SATURDAY 4-10 P.M.

Thursday Night	Friday Night	Saturday Night
Turkey Necks	All You Can Eat Ribs	All You Can Eat Steak

5534 HWY 11 N • LAUREL 601-342-2582

Back To School Uniforms!



Dickie's Kidswear
Youth & Jr's Shorts....\$5
Youth Capris.....\$8
STAIN, WRINLE, & SHRINK RESISTANT

TOP QUALITY

1/2 Price Youth Pants
1/2 Price Youth & Jr's Shirts

MCDONALD'S STORE

2543 HWY 532 • COLLINS • 601-785-4343
MON - THURS 8AM - 5:30PM, FRI & SUN 8AM - 5PM



Hatfield's Inc.
MISSISSIPPI COLLEGE OF BEAUTY CULTURE

August Special

Repair the summer damage with



Paul Mitchell Awapuhi Wild Ginger
Keratin Treatment
Transforms dry, damaged hair to beautiful healthy hair.

FREE HAIRCUT WITH KERATIN TREATMENT THROUGH AUGUST

601-428-7043
OPEN 8 a.m. - 4:30 p.m. Tues. - Fri.
732 Sawmill Rd. • Laurel • www.hatfieldsinc.com

JCJC gives students the “EDGE” with new pilot program

By Teresa McCreery,
JCJC Media-Public
Relations Director

Homeless, dependent on government assistance and friends, 37-year-old Chris Gannon was losing hope until he applied for government assistance in Jones County. Instead of food stamps, Gannon’s financial future was about to change because of a new pilot program he was eligible for called EDGE or “Ethics, Discipline, Goals, and Employment” at Jones County Junior College.

“Chris came to us with a few degrees but was unemployed and had difficulty finding work in the field. He completed the Career Assessment program and got the employability skills and assistance he needed to get on track,” said JCJC EDGE program director Michael Yarbrough. Proudly he added, “Chris landed a part-time job at USM’s English Language Institute and in May he became a full-time employee.”

Even though Gannon was well educated, earning a bachelor’s degree in German and English at the University of Mississippi in 2005, a master’s degree in TESL (teaching English as a second language) in 2009, and a bachelor’s degree in Spanish from the University of Southern Mississippi in 2012, finding a job was more daunting. The coast native and now Hattiesburg resident explained he was so focused on graduating when his grandfather became ill he couldn’t think of himself.

“I didn’t take the time to utilize the career center while I was in college. There were many distractions. Teaching foreign languages is a very competitive field and there isn’t much demand in Mississippi.” said Gannon. “When my grandfather needed me, I took care of him.”

While trying to help his grandfather recover from knee surgery on the coast, he worked at a pharmacy until his grandfather passed away. He headed south to Austin, Texas, and eventually to St. Augustine, Florida, doing various jobs before moving back to Mississippi in 2016. He continued doing odd jobs on the coast when a friend in Ellisville found some work for him at his florist shop last summer and that’s when



Chris Gannon’s future has improved greatly with a teaching job at the University of Southern Mississippi’s English Language Institute. Photo/Teresa McCreery

The Good Life

- Custom cabinets & granite counter tops
- Brick & hardie plank exterior with architectural shingles
- Built on a monolithic slab
- R13 exterior wall insulation & blown R30 Attic insulation
- Vinyl insulated windows
- Built to meet all codes
- 10 year structure warranty

Prices Starting at

\$69 * PER SQ. FT.

*prices subject to change without notice

Bon Vie

601-544-6007

5317 Old HWY 11, Suite 12
Hattiesburg

“Like” us on facebook

Home Builders, LLC

Stick built on your land with zero down payment and closing costs to approved buyers.

\$477*

a month

P & I
to approved buyers on your land

he discovered the EDGE program.

“The class was made up of students with different needs and reasons. The EDGE program prepared, motivated and gave me hope where I didn’t have before. I didn’t know what my future held, living off the charity of others. The EDGE program gave me a reason not to be depressed,” said the grateful graduate and USM employee. “I did interview training and worked on my resume’ before targeting potential jobs. Now I have a great job and enjoy going to work, which I can’t say that about some jobs I’ve had. It’s the most rewarding job. I don’t have the same fears I had in the past.”

The EDGE pilot program is a partnership with the Mississippi Department of Human Services and five community colleges across the state, including JCJC. Because of his success, Gannon was selected to be a part of a video promotion about the EDGE program called, “Better Me, Better Mississippi.” He shared, the theme resonates with him.

“A better trained-workforce is better for the state and economy. I am humbled by, and eternally grateful for all of the assistance and resources the EDGE program has given me. It truly changed my life for the better, and it cannot be overstated exactly how vital and valuable it is to anyone in my situation. No one should take such a gift for granted because they have only to benefit from it,” said Gannon. “Instead of worrying about my future, I’m planning and dreaming of what I can do.”

The video with several testimonies like Gannon’s is expected to be completed in August. For more information about the EDGE program, contact JCJC’s program director Michael Yarbrough at 601-477-4153 or email michael.yarbrough@jcjc.edu.

CARPORTS • PORTABLE BUILDINGS • RED IRON BUILDINGS

VARIETY BUILDINGS

2 Locations •Laurel -1508 Horne Dr./Hwy 15N •Waynesboro - 501 Azalea Dr.

RENT TO OWN • NO CREDIT CHECK • FREE DELIVERY

HUGE INVENTORY TO CHOOSE FROM

Staffed: Monday, Wednesday & Friday

VARIETY BUILDINGS **LAUREL NEXT TO MILES POOL SUPPLY 601-498-5944** **WAYNESBORO 601-509-4246**

LS Tractor

Excel in Your Field™

FOOD PLOT SPECIAL

COME SEE US AT TRACTORS UNLIMITED!

- **XG3025 LS Tractor with Front End Loader**
 - 25HP
 - 4WD
 - Shuttle Shift
 - Synchro Mesh Transmission
- 18' Utility Trailer with Tube Top
- 5' King Kutter Brush Cutter
- 5-1/2' King Kutter Disc with Tube Frame

FINANCING AVAILABLE WITH APPROVED CREDIT!

FREE SEED SPREADER WITH PACKAGE PURCHASE

\$19,499 + TAX

www.tractorsunlimitedms.com **MON-FRI 7:30-4:30, SAT 8-4**

TRACTORS UNLIMITED, LLC

601-583-6453 **1507 N. MAIN STREET HATTIESBURG, MS** **800-321-2701**

BFGoodrich Tires

3 Day Weekends are made for Chasing Fun

Let us get your vehicle ready for the Back to School rush!

FULL SYNTHETIC OIL CHANGE

UP TO 5 QTS **\$39⁹⁵**

Most vehicles, excludes diesels

WITH COUPON Expires 9/30/17
CAN NOT BE COMBINED WITH OTHER OFFERS

4 WHEEL ALIGNMENT

Most Vehicles **\$49⁹⁵**

WITH COUPON Expires 9/30/17
CAN NOT BE COMBINED WITH OTHER OFFERS

OIL CHANGE SPECIAL

UP TO 5 QTS **\$24⁹⁵**

Most vehicles, excludes diesels

WITH COUPON Expires 9/30/17
CAN NOT BE COMBINED WITH OTHER OFFERS

BRAKE JOB SPECIAL WITH PREMIUM PADS

Most Vehicles **\$119⁹⁵**

WITH COUPON Expires 9/30/17
CAN NOT BE COMBINED WITH OTHER OFFERS

Southern Tire Mart

Best in Class Service on America's Favorite Brands

2926 Ellisville Blvd., Laurel
stmtires.com
601-428-4375
M-F: 7a-5p Sat: 8a-12p

National karate training event held in Jones County

By James Pugh

The 2017 Seibukan USA and Tokko National Training event was held at the D.O. Thoms P.E. Building on the campus at Jones County Junior College last Friday and Saturday. The two-day event hosted over 50 karate members from all over the Southeastern United States.

“We were fortunate enough to bring these national karate practitioners to Jones County,” said chief instructor John Chioco. “We are thankful to President Dr. Jesse Smith, who let us use the P.E. Building here at JCJC for the event.

“It’s been really good. We’ve had kids as young as eight years old to adults as old as 70 years old here, training and learning different skills. To have people attend this event from all over the United States has been special for us. We hope to do this here every year.”

The sport of karate has various styles that are both similar and different, Chioco said the event’s focus is to highlight the styles that benefit everyone.

“There’s always something for someone here that globally fits every style that’s represented,” Chioco stated. “It’s good for our local karate club and students to witness this stuff. It shows that Jones County is fairly prominent in the national scene when it comes to karate.”

The International Olympic Committee announced the addition of six new sports to the docket of the 2020 Summer Olympics in Tokyo, Japan, in August of last year. Among the new sports added were baseball, softball, surfing, skateboarding, sport climbing and karate. Chioco said several kids in attendance were aiming towards competing in the Olympics one day.

“This has been a great experience,” said 15-year-old Shodan, Skotokan and USA-NKF National Team member Braden Ivey from Clarke County. “There’s a lot of different styles here so you get to experience a little bit of everything.

This is my second time to do so. It’s nice to see what other styles have in common and their differences as well.”

Ivey, who has won medals at the national level and will later compete in the Junior Pan-American games in Argentina and the World Karate Championship in Spain, instructed the younger kids at the two-day event.

Laurel and Jones County native Dan Smith was also among the event’s instructors. Smith now resides in Atlanta, Georgia.

“I studied karate all through high school and college,” said Smith. “After graduating from USM, I went to the army and they sent me to Okinawa, Japan, of all places. I’ve been training there [Okinawa] for 48 years under the same teacher. This October, I’ll be going back [to Okinawa] for a training trip. It will be my 44th trip in the last 23 years.”

Smith said this weekend’s event has preceded that in size from last year.

“The last two years we’ve been able to get more and more people,” added Smith. “We try to get different schools of karate involve so that we have more than one voice sharing and teaching.”

The event lasted from 9 a.m. to 4:30 p.m. both days.



Sensei Dan Smith instructs karate members during last weekend’s 2017 Seibukan USA and Tokka National Training event at the D.O. Thoms P.E. Building on JCJC’s campus.

Photos/James Pugh



T. THORNSBERRY SERVICES LLC

Fencing

Automated Security Gates

Portable Buildings

TONY THORNSBERRY - 601-577-0927

NEED CASH FAST?

COME SEE TIFFANY

CITY PAYDAY LOANS

CAR TITLE LOANS

78553 716 SPRING STREET WAYNESBORO

601-735-5353

BACK TO SCHOOL LOANS

COME SEE BRENDA MOSS, COURTNEY HUTTO & JENNIFER DUBOSE AT

FAMILY CHOICE FINANCIAL

AUTHOR

TITLE

DUE DATE

BORROWER'S NAME

For All Your

BACK TO SCHOOL NEEDS!

Over 45 Years Of Combined Experience!

Call 601.426.6960 Today!

2221 Hwy 15 N • Laurel, MS



Norman's Food Outlet

#209 Waynesboro Food Outlet

PRICES EFFECTIVE AUGUST 2, - AUGUST 8, 2017

USDA FRESH CUT

TOP SIRLOIN STEAK

\$2.98 LB.

Plus 10% at Checkout

USDA FRESH 2 PACK SMALL

PORK SPARE RIBS

\$1.48 LB.

Plus 10% at Checkout

1 LB. PACK

SWEET STRAW BERRIES

\$1.50 EA.

Plus 10% at Checkout

24 PACK, 16.9 OZ.

NIAGRA BOTTLED WATER

\$1.98 EA.

Plus 10% at Checkout

USDA FRESH CUT

PORK RIBLETS

\$1.48 LB.

Plus 10% at Checkout

5 LB. BAG

RUSSET POTATOES

\$1.74 EA.

Plus 10% at Checkout

WE'VE APPRECIATED YOUR BUSINESS OVER THE LAST 9 YEARS AND WE WILL CONTINUE TO STRIVE IN THE FUTURE TO HELP YOUR FAMILY BY LOWERING YOUR GROCERY BILL

GREAT PRICES • GREAT TASTE • GREAT SAVINGS

OPEN 7 DAYS A WEEK

MONDAY - SATURDAY 7 A.M. - 7:30 P.M. / SUNDAY 8 A.M. - 6 P.M.

LOCATED IN THE AZALEA MART SHOPPING CENTER

WAYNESBORO, MS

601-735-4344

BAB1806



CAR5601.com

Call the toll-free number or text the **red 4 digit** code to **27414** for photos and details.

Auto Showcase



TEXT 08HU TO 27414

2011 LEXUS IS 250

J&S Autoplex
(601) 342-2123 **\$19,999**



TEXT 44CC TO 27414

2012 YAMAHA RAIDER SCL

J&S Autoplex
(601) 342-2123 **\$10,990**



TEXT 12 TO 27414

2013 TOYOTA AVALON

J&S Autoplex
(601) 342-2123 **\$20,490**



TEXT 0280 TO 27414

2015 FORD F-150

J&S Autoplex
(601) 342-2123 **\$39,990**



TEXT 0YCW TO 27414

2014 FORD F-150

J&S Autoplex
(601) 342-2123 **\$37,990**



TEXT 3VAC TO 27414

2007 FORD EXPEDITION EL

J&S Autoplex
(601) 342-2123 **CALL**



TEXT APP6 TO 27414

2014 KIA CADENZA

J&S Autoplex
(601) 342-2123 **\$19,102**



TEXT 0ZLJ TO 27414

2008 FORD EXPLORER SPORT TRAC

Ellisville Motors
(844) 737-5629 **\$13,200**



TEXT 110E TO 27414

2006 TOYOTA TUNDRA

Ellisville Motors
(844) 737-5629 **\$13,800**



TEXT 1PZB TO 27414

1998 GMC SIERRA 1500

Ellisville Motors
(844) 737-5629 **\$4,950**



TEXT 150C TO 27414

2008 GMC YUKON

Ellisville Motors
(844) 737-5629 **\$17,300**



TEXT 1IYB TO 27414

2005 GMC SIERRA 1500

Ellisville Motors
(844) 737-5629 **\$11,900**



TEXT 1PXC TO 27414

2006 DODGE RAM PICKUP 3500

Ellisville Motors
(844) 737-5629 **\$23,900**



TEXT 0ZBK TO 27414

2005 GMC YUKON XL

Ellisville Motors
(844) 737-5629 **\$9,300**



TEXT 7KIE TO 27414

2017 GMC SIERRA 1500

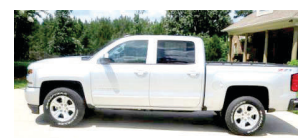
Harris Hankins
(844) 329-7227 **CALL**



TEXT ASU3 TO 27414

2017 CHEVY CAMARO

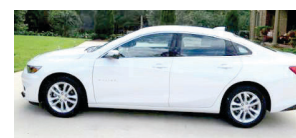
Harris Hankins
(844) 329-7227 **\$31,610**



TEXT 7SK7 TO 27414

2017 CHEVY SILVERADO 1500

Harris Hankins
(844) 329-7227 **CALL**



TEXT 80I0 TO 27414

2017 CHEVY MALIBU

Harris Hankins
(844) 329-7227 **\$29,780**



TEXT 6ZYU TO 27414

2014 NISSAN FRONTIER

Harris Hankins
(844) 329-7227 **\$19,900**



TEXT 8A2W TO 27414

2017 CHEVY TRAVERSE

Harris Hankins
(844) 329-7227 **\$36,740**



TEXT HT72 TO 27414

2017 GMC ACADIA LIMITED

Harris Hankins
(844) 329-7227 **\$47,430**



TEXT HT8F TO 27414

2017 GMC TERRAIN

Harris Hankins
(844) 329-7227 **\$35,035**



TEXT HT8K TO 27414

2017 GMC TERRAIN

Harris Hankins
(844) 329-7227 **\$28,635**



TEXT JVB2 TO 27414

2017 BUICK REGAL

Harris Hankins
(844) 329-7227 **\$30,050**



TEXT 1BBY TO 27414

2011 BUICK ENCLAVE

Quality Auto
(601) 394-9313 **\$12,995**



TEXT 0UCI TO 27414

2011 CHEVY SILVERADO 3500HD

Quality Auto
(601) 394-9313 **\$38,995**



TEXT 0S06 TO 27414

2014 TOYOTA CAMRY

Quality Auto
(601) 394-9313 **\$17,995**



TEXT 0S0J TO 27414

2013 FORD F-350 SERIES

Quality Auto
(601) 394-9313 **\$32,995**



TEXT 0YVK TO 27414

2011 FORD RANGER

Quality Auto
(601) 394-9313 **\$9,995**



TEXT 0UC5 TO 27414

2014 RAM RAM PICKUP 2500

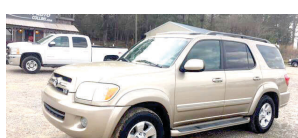
Quality Auto
(601) 394-9313 **\$39,995**



TEXT 0Z7X TO 27414

2014 DODGE DURANGO

Quality Auto
(601) 394-9313 **\$22,995**



TEXT 0UD8 TO 27414

2006 TOYOTA SEQUOIA

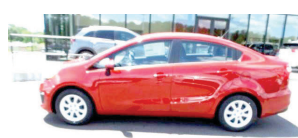
Quality Auto
(601) 394-9313 **\$9,500**



TEXT 1HF2 TO 27414

2010 TOYOTA TUNDRA

Quality Auto
(601) 394-9313 **\$16,995**



TEXT 5XD0 TO 27414

2017 KIA RIO

Laurel Ford
(844) 319-5854 **\$16,460**



TEXT 1LW3 TO 27414

2014 FORD F-150

Laurel Ford
(844) 319-5854 **CALL**



TEXT 0VW8 TO 27414

2012 TOYOTA CAMRY

Laurel Ford
(844) 319-5854 **\$16,995**



TEXT ALT3 TO 27414

2016 LINCOLN NAVIGATOR

Laurel Ford
(844) 319-5854 **\$45,995**



TEXT 4VR0 TO 27414

2016 KIA FORTE5

Laurel Ford
(844) 319-5854 **\$25,915**



TEXT 70IR TO 27414

2016 LINCOLN MKT

Laurel Ford
(844) 319-5854 **\$51,140**



TEXT C233 TO 27414

2015 HYUNDAI SONATA

Laurel Ford
(844) 319-5854 **\$16,995**



TEXT 4AK4 TO 27414

2014 TOYOTA PRIUS

Hattiesburg Cars
(855) 242-0775 **\$14,888**



TEXT 87VN TO 27414

2000 FORD TAURUS

Hattiesburg Cars
(855) 242-0775 **\$3,995**



TEXT 69LQ TO 27414

2014 FORD FUSION

Hattiesburg Cars
(855) 242-0775 **\$15,995**



TEXT ONN0 TO 27414

2012 TOYOTA AVALON

Hattiesburg Cars
(855) 242-0775 **\$16,777**



TEXT 7034 TO 27414

2010 TOYOTA TACOMA

Hattiesburg Cars
(855) 242-0775 **\$20,777**



TEXT 42S6 TO 27414

2013 TOYOTA CAMRY

Hattiesburg Cars
(855) 242-0775 **\$17,477**



TEXT 53VY TO 27414

2016 TOYOTA CAMRY

Hattiesburg Cars
(855) 242-0775 **\$18,995**



TEXT 4KRV TO 27414

2016 TOYOTA 4RUNNER

Hattiesburg Cars
(855) 242-0775 **\$32,995**



TEXT 2PUG TO 27414

2011 GMC ACADIA

Hattiesburg Cars
(855) 242-0775 **\$15,995**



TEXT 9WSG TO 27414

2015 FORD FIESTA

Auto World, Inc.
(855) 973-4210 **\$12,100**



TEXT 9XFE TO 27414

2012 INFINITI M37

Auto World, Inc.
(855) 973-4210 **\$18,990**



TEXT 9XF3 TO 27414

2016 NISSAN MAXIMA

Auto World, Inc.
(855) 973-4210 **\$32,990**



TEXT 9X5H TO 27414

2013 CHEVY TAHOE

Auto World, Inc.
(855) 973-4210 **\$26,500**



TEXT 9Y94 TO 27414

2014 CHEVY SILVERADO 1500

Auto World, Inc.
(855) 973-4210 **\$34,575**



TEXT 9W0A TO 27414

2012 JEEP WRANGLER

Auto World, Inc.
(855) 973-4210 **\$28,525**



TEXT 31SA TO 27414

2017 FORD TAURUS

Woolwine Ford
(844) 332-1854 **CALL**



TEXT 51QM TO 27414

2017 FORD F-250

Woolwine Ford
(844) 332-1854 **CALL**



TEXT 325H TO 27414

2017 FORD F-250

Woolwine Ford
(844) 332-1854 **CALL**



TEXT 5QVS TO 27414

2009 TOYOTA TACOMA

Toyota

SERVICE DIRECTORY

We're Here to Help!
1/2 Price
STUMP REMOVAL
 5 or more Avg. size
 with Truck Access
\$15 EACH
601-371-8733
 EXP: 9/29/17
The Tree Barber
 Matthew 16:26

Kimble Coats
 Owner
KC CONSTRUCTION
 • New Construction
 • Remodeling
 • Decks
 • Vinyl Siding
 • General Construction
 • Foundations & Slabs
601-433-6996

A&A SEPTIC SERVICES, LLC
 Install and Repair
 • Septic tanks
 • Treatment Plants
 • Field Line • Grease Traps
 In business for 34 years
FAMILY OWNED AND OPERATED
601-649-8838
601-433-2947
 IN GOD WE TRUST

TANNER
Dozer and Trackhoe Service
 • Build Ponds
 • Driveways
 • Clear land
 • Haul/Fill Dirt
Professional Contracting with Reasonable Rates!
601.319.6624

SQUEAKY CLEAN
RESIDENTIAL & COMMERCIAL CLEANING SERVICES
 Flexible Schedule:
 • Weekly
 • Bi-Weekly
 • Monthly Visits
 Available After Hours
FREE ESTIMATES
601-335-2152
 Licensed & Bonded
 Approximately 20 Yrs. Experience

Right at Home
 In Home Care & Assistance
THE RIGHT CARE---RIGHT AT HOME
 Locally Owned
 Do you or someone you know need help with:
 • Transportation to Appointments
 • Grocery Shopping/Hair Appointments
 • Light Housekeeping
 • Recovering from a Hospital Stay
 • Basic Companionship
 • And Much More!
FREE CONSULTATIONS
601.426.6333

FARRIS
Mobile Home TRANSPORT
 STATEWIDE MOVING
 Licensed & Insured
 TRANSPORTING SINCE 1979
SALES & SERVICE
 Tony Farris
601-422-4144

GMW
 Siding Specialist
 • Mastic Elite Contractor
 • 35th Year serving the Pine Belt
 • Winner of "7" National Awards
 • Mastic Vinyl Siding Products
 • 6" Seamless Gutter
601-428-5595

HAIGLER
ROOFING & REPAIR
 • New Construction • Leaks
 • Repairs • Shingles • Metal
 • Flat Roofs • Chimneys
FREE ESTIMATES
30 Yrs. Experience
Call Dennis Haigler
601-319-2522

VACUUM CLEANER REPAIR
 • We Repair All Makes
 • Free Estimates
 • Complete Line of Parts & Bags
 • Kirby • Electrolux
 • Eureka • Hoover • Compact
 • Filter Queen • Many Others
TAYLOR'S
 Sewing Machine Center
 Parkside Plaza Shopping Center
 Next Door To Roses Store - Laurel, MS
425-1832

BOLIVAR'S
Mobile Home Delivery & Setup
Statewide Moving
 • Licensed
 • Insured
Nathan Bolivar
601-580-9900

NEED CASH?
 Call Verna
 She will hold your personal check and give you **CASH!**
Loans from \$50 to \$410
LAUREL CHECK CASHING
 134 Beacon St., Ste. C
 Laurel • 601-426-2432

SERVICES OFFERED

Bolivar's Mobile Home Delivery and Setup. Statewide moving. Licensed and insured. Nathan Bolivar: 601-580-9900.

1/2 price stump removal 5 or more average size, 24-inch diameter, 6-in. tall, with truck access. \$15 each. Best price on grinding uprooted stumps. Expires 8/31/17. 601-371-8733. The Tree Barber, Matthew 16:26.

Lonnie LOFTON
Roofing Contracting
Since 1968
Free Estimates
All Work Guaranteed
Laurel, MS PHONE (601) 425-4484

Quality Pressure Washing at affordable prices. Licensed, Insured, Affordable, Professional, Christian company. Free Estimates. References available Commercial and Residential. Wilson 8:21 Painting & More. II Corinthians 8:21. 601-268-7603

Roofing & Repair, new construction, leak repairs, shingles, metal,

flat roofs, chimneys, all types roofing and repair, free estimates, 25 years experience, call Dennis Haigler. 601-319-2522.

Raybourn Construction: Roofing and repairs, general construction, remodeling, painting, heating & a/c service, and more. 30 years experience, insured State Licensed Contractor. Call 601-580-7540 or 601-649-0780.

AVON
 the company for women
Jenny Carr
 local avon representative
 601.335.5107

Flooring, all types. Remodeling, all types, decks-cabinets. For all your home improvement needs. No job too small. Commercial and residential. Licensed and insured, references available. Wilson 8:21. Painting, remodeling and more. II Corinthians 8:21. 601-268-7603.

Pressure washing, shrubs trimmed, gutters cleaned. 601-519-5363, Freddie, 601-580-1735, Tony. Licensed and Insured.

Miller Tree Service: bucket truck, professional, 30 years experience, insured; bob cat - dump truck and chipper available, senior citizen discount, free estimates. 601-498-3836, 601-649-0174.

Junk Cars: Get rid of those snake dens and rat dens. Bring 'em to us, or we'll pick 'em up! Springer Auto Salvage. Call 601-649-4238.

Kool-Seal Mobile homes, travel trailers, campers, sheds, etc. Energy efficient, 10% reduction. Pressure washing available. Call Craig or leave message, 601-544-9614

Flooring Hardwood floors, ceramic tile, linoleum. For all your flooring needs. Quality work, references available. Licensed & Insured. Wilson 8:21 LLP II Corinthians 8:21. 601-268-7603.

DEEP SOUTH TURF, LLC
"TURF GROWN IN THE SOUTH FOR THE SOUTH"
WHOLESALE AND RETAIL
CALL BRANDON STRINGFELLOW
 1190 Shipman Firetower Rd. • Lucedale
601-673-0137 - Cell
601-947-3973 - Office

I buy junk cars, buses and heavy equipment. U Call. We Haul! We pickup 24/7. Call 601-297-2778.

Dozer, trackhoe, backhoe, bush-hogging work, fill dirt, clay, gravel, sand, delivered, mobile home pads, ponds, driveways built, repaired, clearing, site prep, Mark Butler, 601-433-6459 or 601-425-1747

Joey's Remodeling & Construction: No job too big or too small. We got ya covered! Free estimates. 601-543-3928. We appreciate your business.

TNT Transport Mobile Home Services: Deliver, Set Up, Skirting. Li-

censed, bonded and insured. Todd Delk, owner, 601-335-4211.

Squeaky Clean Residential & Commercial Cleaning Services. Flexible schedule: weekly, bi-weekly, monthly visits. Free estimates. 601-335-2152. Licensed & insured. Approximately 20 yrs. experience.

SOUTHERN MISSISSIPPI WATER WELL DRILLING and SERVICE
NEW AUGUSTA, MS
601-344-1005
601-716-6837
662-803-5459

Knight's Sitting Service. Are you needing someone experienced and licensed to care for your loved one? Call 601-402-8740 or 601-909-6582 today for more info.

Quality Painting at affordable prices. Pressure washing and more. Licensed, Insured, Affordable, Professional, Christian company. Free Estimates. Commercial and Residential. References available. Wilson 8:21 Painting & More LLP II Corinthians 8:21. 601-268-7603

PINE BELT GUTTERS & REMODELING
 Specializing in seamless gutters, vinyl siding, patio covers, replacement windows & doors. We also offer gutter cleaning.
WE WILL BEAT ANY COMPETITOR'S PRICE!
FREE ESTIMATES 601-265-6010

Dozer/trackhoe services, Land-clearing, Dirt hauling Residential/commercial sitework/landclearing, dozer/trackhoe work, trailer/house pads, roads, ponds, etc. Clay gravel, fill dirt, topsoil, sand, wash gravel, gray rock. Free estimate call 601-498-8485.

Right At Home: In home care & assistance. Do you or someone you know need help with: Transportation to appointments; grocery shopping/hair appointments; light housekeeping; recovering from a Hospital stay; basic companionship and much more. For a free consultation call 601-426-6333.

Lawncare: Serving Hattiesburg, Lumberton, Laurel, Sumrall, Petal, Brooklyn, Ellisville, Purvis and Moselle areas. Reasonable rates. 601-325-5008. www.fullservicelawnca-rems.com

SOCIAL SECURITY DISABILITY DENIED?
 CALL ALBERT TURNAGE, ATTORNEY
 OVER 25 YEARS EXPERIENCE.
NO FEE UNLESS WE WIN YOUR CASE!
1-888-706-4708
 Free background information available upon request

Thames Concrete Finishing: Set forms, patios, finishing slabs, driveways, Brick work . painting & roofing great work Percy Thames. 601-543-8712.

A&A Septic Tank. We clean, install and repair septic tanks treatment plants, field line, grease traps. In business for 34 years.Family owned and operated. 601-649-8838. In God We Trust.

House Leveling Foundation Repairs. Replace bad sills, floor joist, or flooring. Sagging or shaky floor or dragging door, we can fix this. Let us make your foundation safe. Insured. 601-543-7007

Flowers, Sand & Gravel: We now install septic systems, grinder pumps and spray systems. We deliver all types of gravel, fill material, sand, rock and topsoil, soil mix and mulch. Dozier and track-hoe service available. Foundations, roads, ponds, etc. We also have Above Ground Precast Storm Shelters, several sizes available. Give us a call. 601-498-5983 or 601-477-2767.

Painting, Remodeling, Drywall, Pressure Washing, Decks, Cabinets and more! Licensed, Insured, Affordable, honest, dependable Christian

company. Commercial and Residential. Quality, professional work. Over 20 years experience. References available. Call for a free estimate. If no answer, please leave a message. We will return your call. Wilson 8:21 Painting & More. II Corinthians 8:21. 601-268-7603.

Bostick Tree Service: tree removal, stump and root grinding with precision for easy mowing and tree health, fully insured, free estimates, serving Pine Belt area, 601-283-8667

DON'T GIVE YOUR TIMBER AWAY!
Call Mike West
601-270-6066
BUYING PINE & HARDWOOD
RICHTON TIE & TIMBER LLC
 Timber Procurement • Forestry Consulting • Real Estate

Lawn Care: Mowing, trimming, edging. For the Laurel, Ellisville, Taylorsville and surrounding area. Commercial and residential. Free estimates. 601-517-7599.

Tanner Dozer and Trackhoe Service: We build ponds, driveways, clear land, haul fill dirt, can do almost anything, professional contracting for reasonable rates. Call Drew 601.319.6624

KC Construction, Kimble Coats owner. New construction, remodeling, decks, vinyl siding, foundations, slabs. 601-433-6996

HANDYMAN

Handyman: electrical, remodeling, painting, porches, interior, exterior, and more. No job too small. Laurel and surrounding area. Call 601-935-8325.

TIMBER AND LUMBER

Know the value of your timber before you sell. We provide timber appraisals and help landowners market their timber for the highest value. Walley Forestry Consultants, Inc., www.walleyforestry.com, 601-477-3014.



ARE YOU BEING NON-RENEWED?
IS YOUR COMPANY LEAVING THE STATE?
Let our experts help you get the coverage you need!
CALL TODAY!
JOINER-SIGLER
INSURANCE
Since 1954
Waynesboro
601-735-2871
Laurel
601-649-1121

Butler Dental
 Across from Court House, Butler, Alabama
 Julie Utsey, D.M.D.P.C.
 General Dentistry
205-459-2700 1-888-851-8512
 Tuesday thru Friday 8 a.m. - 5 p.m.

• ONE DAY DENTURES
 • PARTIALS AND EXTRACTIONS
 • FREE CONSULTATIONS

	Single	Set
Set Standard Dentures.....	\$200.00	\$300.00
Set Deluxe Dentures.....	\$350.00	\$600.00
*Reline Included: Savings of \$130.00 per unit		
Set Custom Deluxe Dentures	\$550.00	\$1,000.00
*Reline Included: Savings of \$130.00 per unit		
Cast Metal Partial - \$625.00	• Acrylic Partial - \$200.00	
• Extractions - \$100.00	• X-Rays Included	
• Simple Extraction - \$70.00	• Surgical - \$100.00	

Homes and Land

20 acre farm/ranch in Janice, Ms. With custom built home, wrap around porch, Pond, horse stalls, fenced and cross fenced, huge shop. Bordered on two sides by National Forest lands. Lots of wild-life call Shawn, Southern Coastal Realty,LLC 601-408-3570.

Jones County +/- 8.76 Acres Great Location! Great Home site! This property is located 5 miles south of Ellisville on Old School House Road in the South Jones school district. This property is ideal for anyone looking to build a house or add a mobile home. The property has over a 1/4 mile of road frontage with power, water, and septic on site. The property has a mixture of mature planted pines and a beautiful hardwood bottom that surrounds the scenic Bear Creek that runs through the south end of the property. \$37,500. For more information on this listing contact Bennett, 601-913-0340 at Walley Properties, LLC. or visit our website walleyproperties.com.

Highlands. Finance a lot, \$1500 down, pay for your lot over 3 years - then use your lot as down payment at your bank. Call: 601-649-9459.

Tallahala Creek Frontage!! Perry County 90 +/- Acres Located on the beautiful Tallahala Creek. Can be divided into 30 acre parcels. This property is located on Highway 29 South right outside of Runnelstown, MS only 10 miles from the city of Petal. This property is every outdoorsman dream, with over a 1 1/4 mile of river frontage, sand bars, gorgeous hardwood bottoms, pine plantations, shooting houses, and food plots. The plentiful abundance of wildlife such as: Deer, Turkey, Small game, and Fish will keep you occupied year-round. \$3400/Acre. Call Bennett 601-913-0340 at Walley Properties LLC. Please visit walleyproperties.com for maps of this listing.

Big Creek Frontage! Wayne County +/- 194 Acres. Excellent timber investment and recreational property in South Wayne County with frontage on Smithtown-Chicora Road. Great hunting and fishing opportunity. This property consist of mixed aged pine plantations and hardwood bottoms along the scenic Big Creek. \$445,230. Call Bennett 601-913-0340 at Walley Properties, LLC. or visit walleyproperties.com for maps and info of this listing.

+/- 219 Acres priced to Sell Quick! Located on just outside of Topton, AL, and one hour from Mobile, AL. Has road frontage on CR 19 along with power and water available. Has great secluded House/Camp Site sitting underneath beautiful mature longleaf pines and hardwoods. Dark and Rich Waters of Bilbo Creek runs through the property with Hardwoods make for great wildlife habitat. Has Lake. Has several cleared areas that will make large and plentiful food plots. Has some young pine and some thickets for deer to bed in. This tract truly has it all! Don't miss this one of a kind Hunting/Recreational Tract. Reduced \$306,600. Call Woods & Waters Realty at 800-526-3961. See more at mfmland.com

Covington County +/- 74 Acres. Located 4 miles from downtown Seminary off hwy 590 on the corner of Shirley Sanford Road and Johnny Sanford Road. This property would be perfect for a home-site with plenty of recreational opportunities. Property consist of mature pine plantation, gorgeous hardwoods, and a stream that flows throughout the property. Great for hunting. \$244,200. For more details, call Bennett today 601-913-0340 at Walley Properties, LLC. Or visit our website walleyproperties.com for maps and more information of this listing.

Pearl River County +/- 147 Acres. Great Location! Beautiful setting! This property is located 7 miles south of Poplarville just off I-59 on Savannah Millard Rd. This property would make for a great home site, weekend getaway, farm, with plenty of hunting and fishing opportunities. This property offers a variety of different timber types, fields, and has 2 stocked ponds ready to fish. The properties location would be ideal for anyone wanting to be close to New Orleans or the MS Gulf Coast. Priced at \$415,000. For more information on this listing contact Bennett 601-913-0340 at Walley Properties, LLC. or visit our website walleyproperties.com

Stringer, MS: This excellent 69 acre parcel is located in the heart of Stringer School District. The property consist of various merchantable timber types with multiple home sites. With an abundance of wildlife the property could also be used as a hunting retreat. The property can be divided. Priced to sell at \$164,025.

Contact Marc 601-670-5429 at Walley Properties, LLC.

+/- 90 Acres Located on CR 62/ Gum Ave in Heidelberg, MS this tract consists of 50 acres of 10 year old pine plantation, and 40 acres on Natural Regeneration. Has beautiful creek running across property. This property is holding a very large deer population, must see to believe. More tracts than you can count. With a little TLC this tract will be one of the best hunting tracts around Jasper County! Power/water available, several good house sites/camp house sites. \$180,000. Call Woods & Waters Realty at 800-526-3961. See more at mfmland.com.

Jones County +/- 8 Acres. Beautiful Home/Mobile Home site with power and water in place. Located on the corner of Ovett Moselle Road and Beech Cemetery Road. Property contains road frontage to the north, south, and west, and 16th section land to the east. Scenic landscape with area to build a pond. \$40,000. Call Bennett 601-913-0340 at Walley Properties, LLC or visit our website walleyproperties.com for maps and more details of this listing.

+/- 80 Acres Located on the Jasper/ Clarke County Line just North of Heidelberg, MS, on CR 1151 this tract offers a good timber investment and great hunting and recreation. The property has a good road system in place. With the tract only being a mile off of MS Hwy 11, makes getting to the property quick and easy!!!! This property is made for the avid hunter!! \$144,000. Call Woods & Waters Realty at 800-526-3961. See more at mfmland.com.

+/- 6 Acres Located on Old Salem Road at Strengthford, MS. This piece of property has a spot cleared for a house site. Nice timber on property. Call Rob McCraw Today 601-498-9143. \$21,000. See more at mfmland.com.

Small acreage for sale, water, septic and power pole, owner finance, NE Jones area. 601-426-3696 or 601-470-7772.

+/-18 Acres Located on Jim Brownlee Road in West Wayne Co. \$50,000. Call Woods & Waters Realty at 800-526-3961. See more at mfmland.com.

Wayne County +/- 84 Acres. Property will not last long! Located on the Mabry Graham Road just north of Beat 4 in Wayne County, MS. This Remarkable Tract of Land offers endless possibilities. The topography is gently rolling with sandy clay soils. The timber consist of 8-10 year old pine plantation. The property offers plenty of road frontage in a remote setting with an excellent internal road system and a natural gas pipeline for great access. Grass patches are in place and an abundance of wildlife that is sure to please any hunter. This property is offered at \$165,900.00 & can also be divided. Contact Marc 601-670-5429 at Walley Properties, LLC. or visit walleyproperties.com for maps and info of this listing.

78+/- Acres located in Smith Co., in Mize School District. Live creek throughout. \$2900 per acre. Call 601-818-3597.

Jones County +/- 29 Acres : Price Reduced! Only 5 miles south of Ellisville down Hwy 29 East located on Busby Road. This Property with road frontage has recently been chipped, leaving residential/shade trees which would make for a perfect home-site, or mini farm. \$69,6000. For more information call Bennett 601-913-0340 at Walley Properties LLC or visit walleyproperties.com for maps of this listing

17 acres with lake, mature timber, house pad, ready to build, Stringer Schools. \$127,500. Call Rob McCraw 601-498-9143.

+/- 8 Acres Located on Jim Brownlee Road in West Wayne Co. \$25,000. Call Woods & Waters Realty at 800-526-3961. See more at mfmland.com.

GENERAL

3x5 Poly Flags: USA, Mississippi and Confederate flags. Only \$5. Flag poles (5-foot to 100-foot). Flag Heads, 490 Hwy. 49, Seminary. Open 10-5 Tuesday-Friday, 10-3 on Saturday. Veterans Discount. "You won't find it at Wal-Mart."

Flag Pole Super Sale! "While Supplies Last!" Get our 24ft. Liberty Deluxe Double Flyer (reg. \$299) now only \$199. Call American Flag Pole Co., 601-649-0748.

8ft. Pool Table - 3 pc. slate-tan, felt cover with accessories. \$400 obo. 601-518-0262.

Lawncare: Serving Hattiesburg, Lumberton, Laurel, Sumrall, Petal, Brooklyn, Ellisville, Purvis and Moselle areas. Reasonable rates. 601-325-5008. www.fullservicelawnca-rems.com

ATTORNEYS

Bankruptcy & Social Security, Tracy A. Walley, 1616 West 3rd Street, Laurel, 601-651-2186

Divorce, personal injury, custody, DUI, adoption, will disputes, Worker's Comp, wrongful termination, land & property disputes. Call Sam Creel 601-498-8968.

FARM

2005 35 Farmtrac diesel tractor, 63hr, 5ft. bush hog, \$6500. 601-466-0702.

TRAILERS

B&B Trailers. Utility and equipment. 8201 US Hwy 98W, Hattiesburg. We take trade-ins. 0% financing. 12 months same as cash. WAC. Check out our new website: btrailers.net. 601-264-6711.

ESTATE SALE

Estate Sale 18 Abercrombie Knight Road, Collins, MS, August 4th & 5th, 8:00-5:00. 2 sofa's, 2 recliners, oak end table, love seat, 3 matching end tables & coffee table, king size mattress, springs & frame, tea cart, revolving oak book stand, book cases, cane sided chair, victorian marble top table, iron day trundle bed, office desk & chair, typing table, queen mattress, springs & frame, singer sewing machine in art deco cabinet, wood dresser with double mirror & 2 night stands, vanguard safe, upright frostless freezer, washer, dryer, refrigerator, bavarian china, vintage anniversary clock, mantle clock, hummel prints, art glass, split oak baskets, 3 tier wood fruit centerpiece, brass lamps, vintage luggage, quilts, afghans, blankets, sheets, towels, table cloths, picture frames, yamaha speakers, sony turntable, yamaha cassette deck, hp computer, records, wagner cast iron & aluminum cookware, microwave, toaster

oven, bread maker, vintage hamilton beach mixer, sausage grinder, pots and pans, corning ware, pyrex, books, coleman generator, wood work benches, trunks, hand tools, electric blowers, loppers, electric weed eater, yard tools, canned food, bolens 6 speed lawn tractor, 42" leaf rake, utility trailer, push mower, hydraulic floor jack, 24' extension ladder, evinrude boat motor, craftsman table vise & bench grinder, ladders & more. www.estatesales.net. Regina: 601-433-7716.

Estate Sale 60 Mixon Road, Bogue Homa exit off 84E (Magnolia Road). Follow Signs. Thurs., Fri., Sat., August 3-5, 8am-6pm. Cash Only.

GARAGE SALES

Rummage sale, Friday & Saturday, August 4th & 5th, 7am-until, White Oak Baptist Church, corner of Pecan Grove & Ira G. Odom Rd., Ellisville. In the fellowship hall behind the church. For more information call 601-425-3772.

Huge Rummage Sale. A huge variety of everything. 149 Roy Jefcoat Road, Soso. Go out Hwy 84 W and take left approximately one mile past Salem Heights Church. Friday and Saturday, August 4th and 5th. 7:00 a.m. till 2:00 p.m.

Yard sale, Aug. 1-4, 407 Devall St., Ellisville, behind Auto Zone. Several families.

Rummage Sale: Big clean out sale Name brand clothes Women Small-2X, Men Large-3x, house hold items, furniture, bedding, 8:00 a.m. on Thursday, Aug. 3rd, Friday 4th, at 356 Masonite Lake Road.

Yard sale: August 11 and 12, 7:30 a.m. 2631 Hwy 29 N, Laurel. Tools, small kitchen appliance, electronics, furniture, kitchenware, dishes decorative items and collectibles, mirrors, pictures antique clock and more.

Big Yard Sale, 114 Meador Road, Laurel, Saturday, August 5th, 7am till 2pm. A variety of everything. Furniture, home decor, dishes, clothes, shoes and more.

10th annual Eatonville Community Sale: August 5th, Saturday. 14 miles long: starts from Eatonville Exit of Hwy 59 all the way to Jones County.

COOK AVENUE APARTMENTS

WE ARE NO LONGER ACCEPTING APPLICATIONS AT THIS TIME

EFFECTIVE MARCH 31, 2017

For More Information
Call 649-4204

Office Located 415 Sorrell Dr., Laurel, MS

Hours: 8 a.m. • 5 p.m., Mon. - Fri.

FARRIS

MOBILE HOME TRANSPORTING

Statewide moving, licensed & insured.

Transporting since 1979

SALES & SERVICE

Tony Farris

601-422-4144

BAB1517

BAB1802

Kids need help too.

Adults like to think of childhood as a carefree time full of play and enjoyment, but that's not true for all kids. Children are susceptible to the same emotional health issues and mood disorders that can impact adults.

As many as one in five children and adolescents may have an identifiable disorder that requires treatment.

Psychological therapy can help with many of these issues. Therapy for kids can aid children who have such problems as anxiety, depression, bipolar disorder, attention deficit hyperactivity disorder (ADHD), and conduct disorder.

For an appointment call, 601.426.9614. Visit us at our new location.

Brett Cutrer, LPC
Therapist

South Central Behavioral Health Services

A South Central Clinic

2002 D HWY 15 North | Laurel | 601.426.9614 | scmhc.com

TE INVITO A MI IGLESIA

SERVICIOS
SABADOS: 6:00 PM
DOMINGOS: 10:00 AM

PASTORES
RAFAEL Y CECILIA
ANDERSON

Iglesia El Faro

544 East First Street • LAUREL, MS • (601)335-1453

Audiology Services

Hearing Health Care

DeAnne Harris, M.S., CCC-A
Certified Audiologist

Credentials & Service Make the Difference

- ◊Bachelor's Degree in Communicative Disorders
- ◊Master's Degree in Audiology
- ◊Certified with American Speech & Hearing Association
- ◊Private Practice in Newton for 19 years

601.683.3086 Newton, MS
TheAudiologyServices.com

68476

AUTOS - CARS

2011 Lexus IS 250. \$19,999. J&S AutoPlex. 601-342-2293. See more at Cars601.com.

2016 Hyundai Sonata. \$15,990. J&S AutoPlex. 601-342-2293. See more at Cars601.com.

2012 Infiniti M37. \$16,750 at Action Automotive. 601-340-3811.

2014 Kia Cadenza. \$19,102. J&S AutoPlex. 601-342-2293. See more at Cars601.com.

2012 Toyota Camry LE, Text: CU541217 to: 96300. \$174 per/mo*. 601-620-4760.

2006 Saturn vue, Text 6S846320 to 96300. \$99 per/mo* 601-620-4760.

2014 Buick Enclave, 45000 miles, white pearl, excellent condition-\$25,000.00 o.b.o. Call 601-606-2147 or 601-441-2664.

2013 Nissan Juke SV, Text: DT224764 to: 96300. \$160 per/mo* 601-620-4760.

2012 Chevy Traverse. Text: CJ119559 to 96300. \$188 per/mo* 601-620-4760.

2006 Lexus GS 430. \$10,950 at Action Automotive. 601-340-3811.

2014 Chevrolet Camaro at Southeastern Auto Sales, Laurel. Call 601-649-4746 for more details. See more at Cars601.com.

2011 Crown Victorian, good condition, good tires, good cold A/C. \$3950 obo. 601-422-3003.

2013 Chevrolet Cruze, Text: DT136761 to 96300. \$121 per/mo* 601-620-4760.

2014 Ford Focus SE, Text: EL241948 to: 96300. \$174 per/mo* 601-620-4760.

2014 Toyota Camry. \$15,900 at Paul Garner Motors. Toll Free (844) 452-4569. See more at Cars601.com.

2016 Hyundai Sonata. \$14,900 at Paul Garner Motors. Toll Free (844) 452-4569. See more at Cars601.com.

2014 Ford Mustang at Southeastern Auto Sales, Laurel. Call 601-649-4746 for more details. See more at Cars601.com.

2011 Infiniti M37. \$15,900 Southeastern Auto Brokers, toll free (844) 312-8785. See more at Cars601.com

Affordable Auto Insurance, especially if you don't have any now. Call 601-765-4060

2013 Chrysler 300-Series. \$17,990 J&S AutoPlex. 601-342-2293. See more at Cars601.com.

2014 Nissan Sentra, Text: EL633607 to 96300. \$174 per/mo* 601-620-4760.

2013 Dodge Charger at Southeastern Auto Sales, Laurel. Call 601-649-4746 for more details. See more at Cars601.com.

2007 Nissan Quest Van, 96,000 miles, \$7500. 601-466-0702.

2012 Toyota Camry SE, Text: CU193412 to 96300. \$194 per/mo* 601-620-4760.

2008 Infiniti G35. \$7950 at Action Automotive. 601-340-3811.

2005 Lexus RX330, \$7000 at Action Automotive. 601-340-3811.

AUTOS - SUVS

For Sale by Owner 2009 Nissan Rogue, one owner, clean, well maintained. 172,155 miles, 4 cy, automatic transmission. \$4,000.00, for more info email dlkksk@yahoo.com

2014 Ford Escape. \$18,490. J&S AutoPlex. 601-342-2293. See more at Cars601.com.

2013 Ford Edge. \$15,900. Southeastern Auto Brokers, (844) 312-8785. See more at Cars601.com

2005 Dodge Grand Caravan. Seats 7. stow and go seating. AM.FM,CD player. DVD player. \$3000. Call and leave a message. 601-764-7253

2013 RAM Cargo Van, Text: DR695811 to: 96300. \$133 per/mo* 601-620-4760.

2004 Chevrolet TrailBlazer at Southeastern Auto Sales, Laurel. Call 601-649-4746. See more at Cars601.com.

2007 Gmc acadia slt-1, \$8450 at Action Automotive. 601-340-3811.

2005 Toyota Highlander. Red hot lot sale. \$166 per/mo.* 601-620-4760.

Back-To-School Special!

Call or Text 601.641.9095

Hair Gin \$15 Girls \$10 Boys

Private, Professional Setting Salon
By Appointment Only!
113 Rogers Rd • Seminary
(7 minutes from Leaf River General Store)

2014 Nissan Rogue Select. \$15,900 at Paul Garner Motors. Toll Free (844) 452-4569. See more at Cars601.com.

2014 Ford Escape. \$16,399. Southeastern Auto Brokers, Toll Free (844) 312-8785. See more at Cars601.com

2008 Lexus LX 570. \$25,900 at Action Automotive, 601-340-3811.

2013 Jeep Compass. \$12,900 at Paul Garner Motors. Toll Free (844) 452-4569. See more at Cars601.com.

SELLING or SHOPPING? WE FINANCE IMPACT CLASSIFIED ITEMS

JONES COUNTY FINANCE

105 S 16th Ave. • Laurel
601-649-1944

AUTOS - TRUCKS

2014 GMC Sierra 2500 at Southeastern Auto Sales, Laurel. Call 601-649-4746 for more details. See more at Cars601.com.

2012 Ford F-150. \$19,500 at Action Automotive, 601-340-3811.

2008 Chevrolet Silverado 1500. \$16,900. Southeastern Auto Brokers, toll free (844) 312-8785. See more at Cars601.com

Continued on ... Page 14

REED'S METALS, INC.

• Metal Roofing • Metal Buildings • Pole Barns

Buy direct from the manufacturer and SAVE!

601-823-6516

www.reedsmetals.com

Are you ready for hurricane season?

TOP TEN *Eleven ways to prepare*

1. Emergency food, drinking water
2. Flashlights and batteries
3. Cash and credit cards
4. Medicine/prescriptions
5. First aid kit
6. Personal identification
7. Matches and lighters
8. Gas for generator or vehicle
9. Radio (battery-operated)
10. Cooler (with ice)
11. Update my phone number with Dixie Electric!

DIXIE ELECTRIC POWER ASSOCIATION

Visit prepared.dixieepa.com for tips and outage information.

A Touchstone Energy® Cooperative

Special of the week

2014 Nissan Frontier S

V-6 Automatic Transmission
56K Miles

\$17,995

DON'T MISS THIS DEAL!

Michael Naman
Phone: 601.764.4552 Cell: 601.422.5145
email: mikenaman@hotmail.com

Harris Hankins Motors
"Your No Hassle Dealer"

Hwy 15 S • Bay Springs, MS www.hankinsmotors.com

Action Automotive

www.actionautomotivems.com

2005 LEXUS RX 330  STK #10134 \$6,500	2009 CADILLAC ESCALADE  STK #10146 \$19,950	2008 INFINITI G35  STK #10136 \$7,450
2007 GMC ACADIA SLT-1  STK #JH1 \$8,450	2005 LEXUS LS 430  STK #10145 \$8,499	2012 INFINITI M37  STK #10139 \$16,450
2012 FORD F-150  STK #10142 \$18,900	2008 LEXUS LX 570  STK #10143 \$25,900	2014 TOYOTA TUNDRA LTD.  STK #10138 \$30,900

ACTION AUTOMOTIVE

4415 HWY 15 NORTH • LAUREL

601-340-3811 (Next To McMurry Pest Control)

HELP WANTED

EMPLOYMENT CLASSIFIEDS

DRIVERS NEEDED

MID-COAST INC.
Magee, MS
FULL TIME
 •Short Haul
 • Long Haul
We have a job for you!
 Please call Benny or James
601-202-3969 or
601-287-2913

2003 Ford F-350 Series. \$16,900. Southeastern Auto Brokers, toll free (844) 312-8785. See more at Cars601.com

1993 International 4700 with 26ft. box, 6 speed standard, motor runs good, transmission needs repair, selling as/is, Ron Buckley. 601-670-5806. \$3250.

2012 Ford f-150 2wd , 104,000 miles, like new- \$22,000.00 o.b.o. Call 601-606-2147 or 601-441-2664.

2014 Toyota Tundra LTD. \$31,950 at Action Automotive, 601-340-3811.

2013 Ford F-150 \$11,900 at Paul Garner Motors. Toll Free (844) 452-4569. See more at Cars601.com.

1985 Chevy Custom Deluxe, long wheel base, new motor, totally rebuilt transmission, new front end, brakes replaced front and rear, 1 driver since 1991. \$5500. 601-297-0203 or text 601-520-5918.

Mechanic needed for tune ups, repairs, brakes, AC. Competitive salary plus commission. Must have your own tool. Apply in person at Spee Dee/Midas on Hwy 98 West, Hattiesburg.

Hiring Class A CDL Drivers Tri-State Distributors 3954 Hwy 49 Collins, MS, is now hiring Class A regional drivers. Great pay/benefits, home on weekends. Apply in person or call for more information. 601-765-8307.

Drivers Needed Southeastern Concrete is currently hiring dump and mixer drivers. We offer excellent pay and benefits. Must have a class A or B license, clean MVR, and pass pre-employment drug screen. Call 601-544-7000 for more info; or fill out an application at 105 Industrial Drive, Hattiesburg, MS.

Alliance Energy is now hiring cashiers and cooks. Apply in person at Alliance, 313 South 16th Avenue, Laurel (across from Shoney's).

DRIVERS CDL-A
GREAT PAY & BENEFITS!!
 Weekly, Direct Deposit!
 Great Miles! Late Model Equipment!
 1yr Experience
TEAMS WELCOME!!
855-348-3699

Onin Staffing: Jobs! Jobs! Jobs! Poultry Processing, Basic Electrical (High School Diploma), Basic Carpentry (High School Diploma) Jobs available immediately! Now Hiring! 2261 Hwy 15, Laurel. 601-398-9625. Onin Staffing, Equal Opportunity Employer.

Wade Services Inc., in Laurel, MS, is hiring welder/fitters. Only experienced candidates need apply. Appli-

cations will be accepted on Tuesday and Thursday mornings between 9:00 a.m. and 11:00 a.m., Please come to 500 Eastview Drive, Laurel, MS, for applications, interview and welding test (bring welding hood). Call 601-399-1900 for further information.

Now taking applications for lube bay technicians. Apply in person. Spee Dee Midas, Highway 98, Hattiesburg. No phone calls please.

Looking for an experienced car sales person to work at Ryan Motors. Contact Billy Miller at 601-270-6507.

Barney's Construction. Hiring experienced skilled Stucco Plasters. Positions available. Serious Inquiries only. Call 601-447-3655 or 601-402-8740. Email: chinabarney@gmail.com or patrknight68@gmail.com

Continued on ... Page 15



DIESEL Performance Specialist

NOW HIRING

FULL TIME MECHANIC

- A minimum of 1 year experience in diesel trucks preferred, Certification would be a plus
- We work on Ford, Dodge, Chevy, engines, turbos, heads, exhaust system, and more.
- Mechanic must have their own tools.

APPLY IN PERSON AT
1022 BASE DR., LAUREL • 601.342.2477
Hours of Operation: M-F 8am-6pm plus some Saturdays



EXPERIENCED FLATBED DRIVERS

CDL Required, Tarping experience preferred, Service area is SE United States

Our drivers are home most every weekend and some nights during the week. We offer competitive pay for this area. All interested persons should apply in person:
MONDAY - FRIDAY
8a.m. - 4 p.m.
28 Taylors Circle • Laurel

MS Care Center of Raleigh is now taking applications for **Nurses:**

7am-7pm shift • 7pm-7am shift
 3-11 shift • 11-7 shift

C.N.A. s

3-11 shift & 11-7 shift
 Apply in Person Monday-Friday from 9am - 4pm

MS CARE CENTER OF RALEIGH

309 MAGNOLIA DRIVE, RALEIGH • 601-782-4244
 We are an equal opportunity employer.



FRIENDS OF CHILDREN OF MISSISSIPPI, INC

NOW HIRING

TRANSPORTER - East Jasper Head Start

- Must have a minimum of at least a High School Diploma or Equivalent
- At least one (1) year of driving experience.
- Must have a valid Mississippi Commercial Driver's License and Bus Driver Certification through the State of Mississippi.
- Medical Examination Certificate and Pre-Drug Screening required.

The Deadline for Submission: Friday, August 4, 2017

Interested Applicants may apply by submitting a Letter of Interest and Resume to:

Ms. Mary Green, Center Manager
 East Jasper Head Start Center
 P. O. Box 339 • 921 Maple Ave. • Heidelberg, MS 39439
 An Equal Opportunity Employer.



HAS IMMEDIATE OPENINGS FOR GOOD

OTR Truck Drivers and Owner Operators

HIRING ALL DIVISIONS

Benefits include:

- Health Insurance • Vision Insurance
- Dental Insurance • Paid Vacation

NOW OFFERING SIGN ON BONUS
 • SAFETY BONUS • REVENUE BONUS
 • RETENTION BONUS

If You Want To Work For A Great Company With Great Benefits

call us at 601-342-2314 today!

Located in Ellisville, MS



LAUREL
 Ford • Lincoln • Kia



www.kiaoflaurelms.com www.laurelfordlincoln.com

Now Hiring for Sales Consultants



- Some Sales Experience Necessary

All Interested Applicants should call for an appointment 601.649.4511

2018 HWY 15N • LAUREL

Bedford

CARE CENTER OF HATTIESBURG

Immediate Full-Time positions available:

12 HOUR SHIFT Registered Nurses & Licensed Practical Nurses positions available with every other weekend off

Apply at Bedford Care Center of Hattiesburg
 #10 Medical Boulevard • Hattiesburg
601-264-3709
 Monday-Friday 8:00 a.m - 4:30 p.m
 Equal Opportunity Employer

NOW HIRING



•Fabrication Welders
•Mechanics •CNC Machinists

Apply onsite at
 Human Resources Office

Top Pay & Benefits

2740 Hwy 15
Bay Springs, MS 39422
601-764-4121
www.hol-mac.com

TANNER CONSTRUCTION

IMMEDIATE OPENING FOR LOWBOY DRIVER.

Must have experience in heavy equipment hauling. (Example Track-Hoe, Crane)

Hiring Class A and B truck drivers. Must be able to drive a standard shift.

- Requires a clean driving record,
- Ability to stay out of town • Some weekend work

• \$14 - \$15 per hour • Medical • 401K

Ideal candidate will have experience with end dump and belly dump trailers.

Please apply Online at
Tannerconstruction.net
 or in person at:
677 Pecan Grove Rd, Ellisville

We are an Equal Opportunity Employer, and encourage women, minorities, and people with disabilities to apply.

DRIVERS

\$40-\$60K PER YEAR!

Paid Time Off! Late Model Equipment!

Company Pays 75% of Health Insurance!

CDL-A w/2 years Experience

844-361-0170 EXT 103

BA0872

Chatham Enterprises of Rose Hill, MS, (metal roofing, metal barns, pole barns, carports/RV covers, portable buildings) is seeking a full time lead installer. Must be experienced, have a valid driver's license, and must pass a drug test. For more information, call 601-727-4951.

Tanner Construction, Immediate Opening for Lowboy Driver. Must have experience in heavy equipment hauling (Example Trac-Hoe, Crane). Hiring Class A and B truck drivers. Must be able to drive a standard shift. Requires clean driving record, ability to stay out of town and some weekend work. \$13 per hour, safety bonuses, medical, 401k. Ideal candidate will have experience with end dump and belly dump trailers. Please apply online at tannerconstruction.net or in person at 677 Pecan Grove Rd, Ellisville. We are an equal opportunity employer, and encourage women, minorities, and people with disabilities to apply.

BOATS

Bass Bream fiber glass boat with 50hp mercury motor, 16ft. long with live wells. \$1500. 601-381-4511, 601-428-1575.

98 triton tr20. \$7500. 200 evin-rude, 70lb 24 volt trolling motor, 3 bank charger, located in Taylorsville 601.433.1517

Boat & rv storage - the toy shed, Bay St. Louis. \$85 Month, Fenced, Gated, Covered, 24/7 Access, Water/Electric, Main Road Near Buccaneer Park. \$860Year, 228-216-4998.

20ft. Party Barge, 2-stroke 40 Yamaha, on galvanized trailer, \$3500. 601-466-0702.

ATVS

2016 Polaris Sportsman 850 High-lifter Edition. 589 miles and 143 hours. Comes with new 2 inch bracket lift, still in box. Bazooka sound bar. Excellent condition. \$8500. Call 601-735-8095 after 5pm.

WANTED TO BUY

Buy junk cars, 18-wheelers, van trailers, buses, equipment and more. Pay cash on spot. We pickup. Call day, night. 601-408-0856.

I buy junk cars, buses and heavy equipment. U Call. We Haul! We pickup 24/7. Call 601-297-2778.

MASSAGE

Massage One. \$45.00 Introductory 1 Hr. Massage session. By Robert Lowe L.M.T.#1362. Call to book yours today! 601-466-2199 [www. MassageOne.us](http://www.MassageOne.us) May your days be stress free!

PRODUCE

Peas, U-pick \$7. 5 gal. bkt., Pinkeys, Crowders, Dixie Lee and Zippers, Okra \$10 bkt., Sweet Corn \$20/100. Smith Tree Farm, 793 Sanford Rd, exit 78, off I-59, go miles to farm. 601-582-2642, 601-699-9033.

Green peanuts (30 lb. bags), Jumbo \$25, Virginia \$20. Machine harvested, machine cleaned, unwashed. Rogers Farm (Hwy 37N) Collins. Call 601-765-8668 for availability/directions. Closed on Sunday.

Peanuts: Green Peanuts - (30 lb bags) Jumbo - \$25 Virginia - \$20 Machine Harvested, Machine Cleaned, Unwashed Rogers Farm (Hwy 37 N Collins) Call 601-765-8668 for availability/directions. Closed on Sunday.

MEDICAL

New Titan power chair with joystick, very comfortable. \$1000/obo. 601-381-4511, 601-428-1575.

PETS

Pretty, part lab puppies, free to a good home. 601-438-1277.

Golden Retriever male, lab mix male, both 1.5 years old. \$75. Both on Heartguard preventative. 601-319-0865.

AKC Yorkie puppies, chocolate males, \$600; black/gold females \$600; black/gold males \$500. Shots, wormed. 601-580-0542.

AKC English Bulldog Puppies for sale. The puppies are 7 weeks old and have had their first set of shots. I have 5 females and 6 males. Please

WHITESTONE

TRANSPORTATION

BA08945

Now Hiring Drivers

- OTR/Regional Drivers, Short and Long Haul
- Dedicated Lanes, Reefer and Flatbed
- Sign-on Bonuses
- Bonuses for Performance, Safety Teams & Specialty Hauls
- Blue Cross and Blue Shield Insurance

Moselle 800-408-5542

WHITESTONETRANS.COM

Welcome to our home

contact Carrie at (601)508-0481. I am asking \$2200.

4 kittens, proof of 1st shots & worming. \$10 each. 601-426-6988.

German Shepherd puppies 5 males and 4 females. Solid black and Black and Tan. AKC registrable. Mom and dad registered and on site. \$500 each. Call 601-735-1405 or 601-410-6160.

Rabbits, Florida Cottontail, good for running in pens training puppies. \$10 and up. 601-422-3537.

LOST AND FOUND

4 dogs, (3) German Shepherd and (1) black & white pit bull. Lost in Ovett area. 601-319-6445.

FURNITURE

Bring your Furniture to life! We have a great selection of elegant, distressed furniture in store. We also give Free estimates for your personal furniture. No job is too large or too small, so don't settle for plain ole' looking furniture, transform a room. Give us a call at 601-837-5151 to-day!

Mama's Mattress Max! 20 different styles to try out. Sets start at twin \$145, full \$165, queen \$185, king \$295. Will split sets. Blackwell's Furniture 5200 Hwy 84 West at Calhoun. 601.649.6111.

Wooden dining table with 6 chairs and extra leaf, good condition. Paid \$400, take \$200 cash only. 601-797-4262.

APPLIANCES

Broome appliances. We repair and sell washers, dryers, stoves and refrigerators with warranty, delivery. We buy, sell, repair, and haul off home appliances. 601-297-2472.

FISH

Slade Channel Catfish Fingerlings, Bass, Bream, Grass Carp, KOI fathead-tuffy Minnows, Electrofishing, etc. Free water analysis. State licensed. Randall Slade 601-796-2000 www.sladesfish.com

Brewer Fishery. Coppernose, Shellcracker and Hybrid Bream, Black Crappie, Channel Catfish fingerlings, Bass, Fathead Minnows, Grass Carp, and Gold Fish. State licensed and delivery available. www.istockponds.com 601-270-1268, 601-989-2466.

VACATION

Gulf Shores Condos, \$125/nights. Houses, \$250/nights. Weekly specials available. Connie Daughdrill, 1-251-510-3090.

LAWN AND GARDEN

Toro 50" zero turn time cutter, 20hp Kohler, good shape. Runs good, \$1600. 601-433-0687.

MUSICAL

Lynn Evans Piano Service: Registered craftsman with Piano Technicians Guild. Used pianos for sale. B.M.E. USM. 601-729-2823

NOW HIRING

POSITIONS AVAILABLE:

- GENERAL MANUFACTURING \$8-\$12/hr
- MACHINE OPERATORS \$12.25/hr
- ELECTRICIANS \$12-\$16/hr
- CDL DRIVERS \$10-\$15/hr
- GENERAL LABOR \$8-\$10/hr
- WELDERS \$13.25/hr
- ACCOUNTING CLERK BOE
- ADMINISTRATIVE BOE
- BOOKKEEPER BOE

Call 601-264-9060 Today

OR APPLY ONLINE AT www.expresspros.com

Express

EMPLOYMENT PROFESSIONALS

DRIVERS NEEDED!

JONES LOGISTICS

is expanding it's

OVER THE ROAD fleet!

SOME OF THE REASONS DRIVERS CHOOSE JONES LOGISTICS INCLUDE:

- ✓ Sign on Bonus \$2,000
- ✓ Start at 47¢ per mile (paid on PRACTICAL miles)
- ✓ Family Medical/Dental and 401K with Company Match

- ✓ Average 2,500-2,800 miles per week
- ✓ Ride in style in a 2015 Mack Pinnacle
- ✓ Home every 10-14 days
- ✓ Six paid holidays Per Year
- ✓ Paid Orientation!

Visit Our Website: DRIVEFORJONES.COM to apply!

BA0814

Taylor

READY MIX, LLC

28 TAYLOR CIRCLE • LAUREL, MS

STRAIGHT TRUCK

CONCRETE DRIVERS

Laurel And Waynesboro Location

- Must hold a class B or better commercial driver's license with a good driving record. (Class A w/Tanker a plus)
- At least 3 years driving experience.
- Hourly Pay • Benefits
- Home Every Night

Apply in person

Monday thru Friday 8 a.m. to 5 p.m.

No interviews will be given without a completed employment application.

NO PHONE CALLS PLEASE.

BA01751

HOLLY'S

PARTY JUMPS

Jumps • Combos • Slides • WeSlides • Slip-N-Slides

601-763-8851

WWW.HOLLYSPARTYJUMPS.COM

BA01399

30x30 Tubing Building: Includes 2 Roll-Up Doors, 1 Walk-Through Door, Insulation, Cement Slab, and Installation. \$10,995. Call Chatham Enterprises 601-727-4951.

Payne Portable Buidlings. 12 months Same as Cash or Rent to Own Financing Available wac. Office located at 342 Macey Rd., Hwy 84W, Laurel. 601-426-9484 or 601-319-3555.

CARPORTS

Carports and Buildings: Financing Available! 22Wx26Lx9T- \$5,050 , 24Wx31Lx9T- \$6,010 Fully Enclosed with two 9X8 Roll-up Doors.

Price includes installation. We also offer storage buildings and barns. Call John @ 601-323-0464, 303 Hwy 11 S, Ellisville (between Pizza Hut & JCJC)

Propane

Industrial

Gases

RESIDENTIAL

COMMERCIAL

INDUSTRIAL

TANK SET SPECIAL

Ellisville: 601-477-3462

Collins: 601-765-6800

Hattiesburg: 601-583-6269

Taylorsville: 601-785-4789

Mon.- Fri. 7 A.M. - 4 P.M.

77935

HUNTER'S NIGHT OUT

• FOOD • DOOR PRIZES • HOT DEALS

SEMINARY FARM CENTER

101 North Beech Street • Seminary, MS

601.722.4163

AUG. 24th

5-7PM

BS162

LAUREL LOANS, INC.

NEED A BACK TO SCHOOL LOAN?

Get everything they need without waiting for your paycheck.

for EMERGENCY CASH call 601-649-3106

CALL TONYA, KRISTY OR SAVANA TODAY!

744 West 5th • Laurel • 601-649-7121

PINE BELT CASHING SERVICE

BA01805

HUDDLE HOUSE®

Now Accepting Applications for

MANAGEMENT

Apply in person at 1304 Chantilly St. • Laurel (across from Hardees)

8 a.m. - 11 a.m. & 2 p.m. - 4 p.m.

Fax resume to 601-735-6151

or email to MJAMES8205@AOL.COM

• Background Check Required

• Experience preferred but not required

BA01102

DRIVERS, are you tired of having to jump through hoops, such as gimmicky revenue and retention bonuses? Do you want to earn what you are worth? At Baggett Transportation, we pay you what you are worth, without the hassle!

We offer the best benefits in town, which include

• Health Insurance • Company Matching 401-K Plan • Paid Vacation

Pay starting at

42¢

per mile!

Now leasing Owner Operators! Flats or Vans. Call for details.

601-426-3462 or 855-435-5021

Call for more information or apply in person at: 2815 Industrial Blvd. • Laurel, MS

Larry Jones Trucking

Laurel, Mississippi

Baggett

TRANSPORTATION

68621



J&S AUTOPLEX

4029 HWY 15N • LAUREL • 601-342-2123



All payments 72 mos. with 10% down, plus tt&l. W.A.C. 72 months at 3.99%

SHOP 24/7 ONLINE
jandsautoplex.com



2015 Jeep Wrangler Unlimited Sahara

\$34,990



2011 Jeep Wrangler Rubicon

\$32,990



2014 Jeep Wrangler Unlimited Sahara

\$32,990



2014 Nissan Maxima

\$17,990

39K MILES



2014 Chrysler 300 300S

\$24,990

35K MILES



2016 Hyundai Elantra

\$14,990

34K MILES



2014 Honda Accord Sedan LX

\$16,990

36K MILES



2016 Dodge Charger SXT

\$19,990

35K MILES



2013 Chevrolet Camaro LT

\$17,990

35K MILES



2016 Toyota Camry

Call for price

34K MILES



2015 Chrysler 200 S

\$15,990

34K MILES



2013 Chevrolet Camaro LT

\$17,990

35K MILES

2016 Toyota Camry

Call for price

34K MILES

2015 Chrysler 200 S

\$15,990

34K MILES

2013 Chevrolet Camaro LT

\$17,990

35K MILES

2016 Toyota Camry

Call for price

34K MILES

2015 Chrysler 200 S

\$15,990

34K MILES

2013 Chevrolet Camaro LT

\$17,990

35K MILES

2016 Toyota Camry

Call for price

34K MILES

2015 Chrysler 200 S

\$15,990

34K MILES

2013 Chevrolet Camaro LT

\$17,990

35K MILES

2016 Toyota Camry

Call for price

34K MILES

2015 Chrysler 200 S

\$15,990

34K MILES

2013 Chevrolet Camaro LT

\$17,990

35K MILES

2016 Toyota Camry

Call for price

34K MILES

2015 Chrysler 200 S

\$15,990

34K MILES

2013 Chevrolet Camaro LT

\$17,990

35K MILES

2016 Toyota Camry

Call for price

34K MILES

2015 Chrysler 200 S

\$15,990

34K MILES

2013 Chevrolet Camaro LT

\$17,990

35K MILES

2016 Toyota Camry

Call for price

34K MILES

2015 Chrysler 200 S

\$15,990

34K MILES

2013 Chevrolet Camaro LT

\$17,990

35K MILES

2016 Toyota Camry

Call for price

34K MILES

2015 Chrysler 200 S

\$15,990

34K MILES

2013 Chevrolet Camaro LT

\$17,990

35K MILES

2016 Toyota Camry

Call for price

34K MILES

2015 Chrysler 200 S

\$15,990

34K MILES

2013 Chevrolet Camaro LT

\$17,990

35K MILES

2016 Toyota Camry

Call for price

34K MILES

2015 Chrysler 200 S

\$15,990

34K MILES

2013 Chevrolet Camaro LT

\$17,990

35K MILES

2016 Toyota Camry

Call for price

34K MILES

2015 Chrysler 200 S

\$15,990

34K MILES

2013 Chevrolet Camaro LT

\$17,990

35K MILES

2016 Toyota Camry

Call for price

34K MILES

2015 Chrysler 200 S

\$15,990

34K MILES

2013 Chevrolet Camaro LT

\$17,990

35K MILES

2016 Toyota Camry

Call for price

34K MILES

2015 Chrysler 200 S

\$15,990

34K MILES

2013 Chevrolet Camaro LT

\$17,990

35K MILES

2016 Toyota Camry

Call for price

34K MILES

2015 Chrysler 200 S

\$15,990

34K MILES

2013 Chevrolet Camaro LT

\$17,990

35K MILES

2016 Toyota Camry

Call for price

34K MILES

2015 Chrysler 200 S

\$15,990

34K MILES

2013 Chevrolet Camaro LT

\$17,990

35K MILES

2016 Toyota Camry

Call for price

34K MILES

2015 Chrysler 200 S

\$15,990

34K MILES

2013 Chevrolet Camaro LT

\$17,990

35K MILES

2016 Toyota Camry

Call for price

34K MILES

2015 Chrysler 200 S

\$15,990

34K MILES

2013 Chevrolet Camaro LT

\$17,990

35K MILES

2016 Toyota Camry

Call for price

34K MILES

2015 Chrysler 200 S

\$15,990

34K MILES

2013 Chevrolet Camaro LT

\$17,990