

C Cornerstone Investments
 Chuck Riegenbach
 Financial Planner
 108 W. Jefferson St. (641) 664-3700
 Bloomfield, IA 52537
Securities offered through Questar Capital Corporation (QCC)
 Member FINRA/SIPC. Advisory Services offered through Questar
 Asset Management (QAM) a registered investment advisor.
 Cornerstone Investments is independent of QCC and QAM.

Tri-County SHOPPER



Check out our Backpack Giveaway on Page 7!!

STANDARD MAIL
 U.S. POSTAGE
PAID
 TRI-COUNTY SHOPPER, INC.
POST OFFICE BOXHOLDER
 LOCAL RURAL BOXHOLDER
 OCCUPANT
CIRCULATION OVER 11,750 THIRD CLASS

P.O. Box 168 • Bloomfield, IA 52537 • www.tri-countyshopper.com
 Phone 641-664-1333 • Fax 641-664-3761 • Email shopper@netins.net



Vol. 45, No. 32
 Wednesday, August 9, 2017



Summer Building One Project at a Time

Stocking framing nails by the box/pallets. Call for pricing!

- Metal Roofing
- Crews available
- FREE estimates!
- Call today!

WAGLER METALS

19049 Ice Ave., Bloomfield, IA • 641-722-3692

VERTEX CONTRACTING

Concrete New Construction Renovations

Clayton Hopkins
 Bloomfield, IA
 641-208-7735
vertexcontracting@icloud.com

Your oil and filter HEADQUARTERS.

Oil and Filter Sale the entire month of August

12% OFF ALL IN-STOCK FILTERS* | **10% OFF** JOHN DEERE BRANDED OIL*

Your Partner in Growing a Better Tomorrow | Visit us at www.sydenstrickers.com

MEXICO | Hwy 54 South • 573-581-5900
 MACON | Jct 36 & 63 • 660-385-2177
 ROCHEPORT | 1500 North Route J • 573-446-3030
 KIRKSVILLE | Hwy 63 North • 660-665-1500
 CHILLICOTHE | Hwy 36 East • 660-646-5493
 PALMYRA | Hwys 61 & 24 • 573-769-2112

MOSCOW MILLS | 155 John Deere Drive • 636-366-9400
 CURRYVILLE | 3691 Hwy 54 • 573-594-6493
 TIPTON | 31217 Hwy 5 • 660-433-5596
 HERMANN | 1854 Hwy 100 West • 573-486-3204
 DUTZOW | 14400 Hwy TT • 636-433-2256

*Offers valid 8/1/17 - 8/31/17. Certain restrictions apply. See dealer for complete details.

Come check out our new inventory!

Cantril Lumber & Hardware

319-397-2351 or 319-397-2354
Mon-Fri 7-5 & Sat 7-12

Check Us Out! Taking care of your vehicle never goes out of style!

NEW & USED Parts Available

We have everything you need to keep your vehicle running in tip top shape.



**Engines • Mufflers • Tires • Bumpers
Transmissions • Alternators • Much More**

PLUS FRIENDLY SERVICE!

Spilman Auto Parts

20311 Old Hwy. 2 • PO Box 31 • Bloomfield, IA
641-664-2463 • 1-800-477-1367
M-F 8AM-5PM • Sat. 8AM-12Noon
www.SpilmanAuto.com



Too Cool FOR SCHOOL

Don't forget to book your appointment for back to school haircuts!

Image Shapers

107^{1/2} E. Jefferson, Bloomfield
641-664-1650
Open Monday - Friday

NEW YEAR! NEW HAIR!

Brenda Williams-Stylist/Owner
Tiffany Panos-Stylist
Barbie Slayton-Stylist
Brittany Bremer-Stylist
Shari Yahnke-Nail Technician




EXCHANGE BANK OF NORTHEAST MISSOURI

is accepting applications for a full time teller positions at the Queen City Branch Office. Pay based on experience. Positive attitude and working well with the public a must.

Application may be picked up at
Exchange Bank of Northeast Missouri
1116 US Highway 63
Queen City Mo., 63561

Exchange Bank of Northeast Missouri is an equal opportunity/affirmative action employer supporting workforce diversity. Minority/Female/Disables/Veteran

Hawkins - Harrison Insurance



SHOPPER ADS CAN BE DROPPED OFF HERE!

Proud to be your partner.

P.O. Box 365
Lancaster, MO 63548
660-457-3020

103 W. Monroe St.,
Memphis, MO 63555
660-465-8533

FOR SALE: Rossi single shot 223 rifle with sling & 5 boxes of ammo, \$245 or without ammo \$210; Kel-Tec PF-9 9mm pistol, \$240; Federal auto match 22LR, 325 round box, \$18. Must have buyers permit for guns. Ottumwa, IA
PH: 641-680-3876 34

MAST OVERHEAD DOORS, INC.

105 S. Dodge St., Bloomfield, IA 52537



GARAGE DOORS

Residential & Commercial
Doors & Operators

641-680-2016 **CALL FOR AN APPOINTMENT**

Quality Products + Quality Workmanship = Quality Customers

Free Estimates We Fix Doors

DAVIS COUNTY COMMUNITY BLOOD DRIVE Tuesday, August 15, 3:00 pm - 7:00 pm. Southern Iowa Electric Coop., Meeting Room, 22458 Hwy 2, Bloomfield, IA To donate, please contact the Blood Center at (800) 452-1097 or visit www.bloodcenterimpact.org and use code 5014 to locate the drive.

Give Your Car a Makeover!



Factory Color Matching | Dent & Scratch Repair
Frame Straightening | Unibody Repair | Collision Repair

All Paint & Bodywork Service Guaranteed!
Call or stop in anytime for a free written estimate.

Insurance Specialists
Let us handle your accident claim with no hassles.

Walker Motors Collision Repair Inc.

375 S. Main St.
Memphis, MO
660-465-2159
Shop Phone/Fax

Guaranteed Paint Match
Guaranteed Craftmanship

Hertz
Rentals Available For all Occasions.
Great Rates!

FOR RENT: 1 bedroom apartment at 920 W. Chestnut, Bloomfield, \$685 per month. Deposit required, utilities and Dish Network included.
PH: 641-208-0285 34

Friesen Excavating

Specializing in Septic Systems
Certified For Peat Tanks and Sand Filters.
Can Also Do Other Drains and Water Lines
Call or Text Shawn @
641-208-0861
Bloomfield, IA
Free Quotes Available



PRECISION OUTDOORS LLC

Customer Appreciation Day

Saturday, August 26th • 9-2
Lunch served 10 AM - 1 PM

DOOR PRIZES!

- WE SELL -
Bows • Targets • Cross Bows
Arrows • Accessories

518 W Missouri Ave., Memphis, MO
(660) 988-0496



Yoder's KOUNTRY KORNER
We have a great selection of ...
Quilts & Gifts
 Mon.-Sat. 9 AM to 5 PM

Quality made living room furniture.

21050 Ice Avenue ~ Bloomfield, IA • 641-664-2545 v.m.

KOUNTRY KORNER Bakery
 Bakery Hours: Fri. & Sat. 9 AM-5 PM
 21050 Ice Avenue ~ Bloomfield, Iowa • 641-664-1747 v.m.

JOE'S BARBER SHOP
 Hours: Thursday & Friday 8:00-5:00 & Saturday 8:00-Noon. 210 E. Franklin St., Bloomfield, IA.
 PH: 641-664-2020, 641-208-5561 TF

FOR SALE: Used lumber 2x6 & 2x8 various lengths, car siding, plywood, joist hangers. '93 F-150 for parts with extra rims. Please leave number.
 PH: 641-722-3738 32

H&S Digging & Dozing

We do custom dirt work!
 Fence Clearing • Pond Digging
GIVE US A CALL TODAY!
 Jeremy • 641-208-6231
 Dave • 641-208-2009

FOR SALE: 1981 Tracer, 3 horse trailer w/ living quarters & tack room, \$1,000. PH: 641-799-4929

FOR SALE: Firewood at RJ Lumber, \$15 a pickup load. 18989 160th St., Drakesville, IA 52552. TF

GENE'S SURPLUS
Brands you like at prices you love
ANOTHER SHIPMENT HAS ARRIVED

Due to popular demands, we have another load of outdoor & sports items including pools, AC's, Patio furniture, Weber Smoky Mountain cooker/smoker, 8 ft. tall windmills, heavy metal tricycle with cart, canopies and Cosco 8ft. center fold tables

COME CHECK OUT WHAT'S NEW! Many styles of shoes to choose from!
ALL 1/2 PRICE!!!
 HWY 136 WEST • MEMPHIS, MO • 660-465-7445
 MON-FRI 8:00 TO 5:30, SAT 8:00 TO 4:00

Thought of the week: "A handful of patience is worth more than a bushel of brains" Dutch Proverb

Country Side Grocery

Butter, limit 10 \$2.19/lb.
 Cream Cheese, 8oz 99¢
 Fresh Blueberries, 10 lb. \$23.95
 Fiora Toilet Paper, 12pk..... \$5.99
 John Morell Hot Dogs 99¢
 Hunt's Tomato Paste, 1 gal \$5.89

Taking Orders For Bartlett Pears

3/4 mi. E. of Drakesville, IA on 180th St.
 Mon-Sat: 8:30am - 5:00pm
 VM: 641-664-2661

Mow Down High Prices

Curt's Yard 'N Garden

Come see us TODAY!
 641-664-2784
 502 E. Franklin • Bloomfield, IA

FACTORY DEFECT METAL
 We've got the metal you need!
 Various Colors & Lengths
 For more information call:
660-956-3745
 MEMPHIS, MO

FOR RENT: 1 or 2 bedroom apartments Milton, IA. Kitchen appliances & heat furnished. Very reasonable rent.
 PH: 641-757-0201 40

Poly Lawn Furniture

GREAT FOR FRIENDS & FAMILY CELEBRATIONS!

T-CORNER FURNITURE
 HEIRLOOM QUALITY
 BEDROOMS DINETTES CABINETS STAIRWAYS MILLWORK

VM: 641-664-0207
 1 Mile East of Drakesville on Jade Ave.
 Mon.-Sat. 8:00 AM - 5:00 PM

WANTED: Good used 9.00x20 truck tires on open center rims; 18-4-34 tractor tire. Milton, IA
 PH: 515-419-1232 33

FOR SALE: 2001 Chevy Impala 4 door Sedan, tan, grey interior, 170,000 miles, runs good, \$1,150
 PH: 660-341-7263

Slayton Polaris Authorized Polaris dealer since 1988

Get out and play!

New & Used Polaris Rangers & ATV's

POLARIS The Way Out.

660-328-6627 BLOOMFIELD, IA
 8 mi. S. & W. from Pulaski or 6 mi. W of Memphis then 13 mi. N. on Route B

HELP WANTED: OTR DRIVERS. Dvorak Trucking seeking Owner/Operators & Company Drivers. Valid Class CDL. Home on weekends if desired. Pulling hopper bottoms across the U.S. Minnesota Based. Call 641-220-4202. (MCN)

Stop OVERPAYING for your prescriptions! SAVE! Call our licensed Canadian and International pharmacy, compare prices and get \$25.00 OFF your first prescription! CALL 888-438-6461 Promo Code CDC201625 (MCN)

\$10,900
2003 Silverado 1500
 LONG BOX, REG. CAB, 4 WD, 80,000 MILES

\$25,900
2012 GMC
33,000 MILES

Kollision Korner
 504 South Drake St
 Bloomfield, IA
 PH: 641-664-2648
 Fax: 641-664-2948

This weather is hot and so are the deals! Stay cool by the pool and look even cooler in a new vehicle!

SHADY LANE VARIETY

Special glasses for Total Eclipse on August 21st!

 • Stainless Steel Bowls, Up to 30 qt.
 • Canning Equipment
 • Sandbox Toys
 • Wind Chimes
 • School Supplies

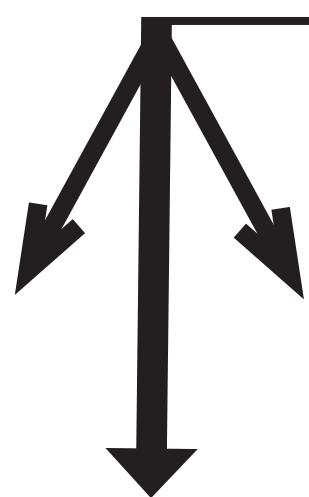
1 mi. E. of Drakesville on Jade Ave. • 641-664-0207
 8-5 Mon. thru Sat.

LARGE YARD SALE - MOVING SALE: misc. furniture items and household items. Baby boy clothes and misc. treadmill, weight bench, exerciser, ET center, kitchen table and chairs, clothing of all sizes a lot of name brand, holiday items, Very clean and nice items! **Aug. 11 from noon-7pm Aug. 12, 8-noon cancel if rain** 208 South St. Pulaski

FOR SALE: 1066 International tractor, rebuilt starter, new batteries, nice paint. Runs & drives great. \$10,000 OBO.
 PH: 319-677-6095 34

CHECK OUT ALL THESE GREAT ACTIVITIES!

Come on out to the
CATFISH PLACE
 Craft and Rummage Sale
 Sat., August 12th • 9 am - 6 pm
 Sun., August 13th • 9 am - 3 pm
 Campgrounds will have a large variety of items.
Crafters Welcome!
 Catfish Place • Arbelá, Mo
660-945-3895

FARMERS & FRIENDS
OPEN COWBOY CHURCH
 Every Friday @ 6 PM
Get To Gather Room
 Bloomfield, IA

BLOOMFIELD FARMERS' MARKET
BLOOMFIELD, IA COURTHOUSE LAWN Live us on facebook
SATURDAYS
8:30 - 11:30 AM
TUESDAYS
3:00 - 6:00 PM

For more information contact Patsy Boas
641-459-3387

FRESH FROM THE FARM
 Now accepting Seniors, WIC, & Food Stamps

ATTENTION:
DC Business Supporters of the Football Program
 The HS Football Team will NOT be selling ads for the football program this year. We appreciate the support that you have provided in the past and hopefully again in the near future.
Thank You
 2017 Football Players & Coaches

JAGID GRILL
Happy Hour • Friday 5-10
All You Can Eat • Saturday 11-10
Aug. 28th Fight Night!
 Will also be airing college football games on the big screen!
Northwest Side of the Bloomfield Square!

Friday, August 11th
Hawg Wild Wings
with sides Serving at 6:00 P.M.
 Dine In **722-3355** Carry Out
RAY'S LONGBRANCH
 Drakesville, IA

Valley Creation
 103 E. FRANKLIN ST.
 BLOOMFIELD, IA
 Monday - Friday 9-5, Saturday 9-2
 Soy Candles * Soap * Lotion * Wax Melts
 Essential Oils & Diffusers * Bath Bombs
Grand Opening
August 11th & 12th
 Door Prizes * Gift Basket Drawing * 10% off
COME SEE ALL WE HAVE TO OFFER!

Summer is here!
 Is Your Boat & Camper Ready?
 Call or stop in today to see how we can help you get on your way to summer fun!
Whitney RV & Marine
 Scott and Jennifer Poole: Owners
641-684-8284
 9418 151st Ave., Ottumwa
 Monday-Friday: 8:30 AM - 5:30 PM
 Saturday: 8 AM - 1 PM


L&M Country Store
 1 1/2 miles south of west Hwy 2 & 63 jct.
 Mon-Sat. 8am-5pm **CLOSED SUNDAYS**
 VM: 641-664-1936

| | |
|--|---------------|
| Reg. Mouth Qt. Jars | \$5.99/dozen |
| Frozen Boneless St. Louis Style Ribs Patties.... | \$1.29/lb. |
| Sliced Provolone Cheese, 2.5 lbs. | \$4.69 |
| Jalapeno Muenster Cheese | \$1.99/lb. |
| Finlandia Salted Butter, 7 oz. | 99¢ |
| Local Grown Cabbage | \$1.39/a head |

NOW TAKING ORDERS FOR BARTLETT PEARS

Southfork MOTEL & GRILL
 JUNCTION OF HWY 2 & 63
 BLOOMFIELD • 641-664-1063
 Breakfast • Lunch • Dinner
 Daily Hot Specials and Evening Features
 Prime Rib Capital of the World! Served on Friday & Saturday Nights
 Banquet Facilities Available for All Occasions • Catering
"Where Quality and Consistency Matter!"
 Tues - Thurs 7am-9pm • Fri - Sat 7am-10pm
 Closed Sunday and Monday

DAVIS COUNTY SCHOOL BUS TRIAL RUN
Thurs., Aug. 17, 2017



On the 17th of August, the Davis County School buses will make a trial run on "ONLY THE MORNING BUS ROUTE" to help parents establish the atomic time the school buses will leave their house. The school bus will completely stop at each student's house or pick-up point on the gravel roads. On the highways, the bus will slow down but not stop. Please call 664-2200 ext. 1133 if the bus does not stop for your child.

Davis County Fair Officers & Directors Would Like to Wish
Rylie Johnson
Good Luck
 at the
 Iowa State Fair Queen Contest!!
 Rylie Johnson, 2017 Davis County Fair Queen



Payne's Custom Ag Bagging
 Call **Jakob Payne**
660-342-2779



FOR SALE: Several Reg. Shetland brood mares. Call for info.
 PH: 641-777-6437 34

FOR SALE: 1998 Chevy Metro, 151,000 miles, runs, \$475
 PH: 660-341-7263

FOR SALE: 15 HP Johnson, all tune up, new power pack, runs good, \$950.00; 3 HP Evinrude, \$250.00; King Kutter Box Kutter, 3P, 6F, I bought it at Orschlen Farm Supply for \$700.00 will take \$350.00. Call Jim
 PH: 641-799-2557 34

BERHOLTZER TRAILER REPAIR



Specializing in Aluminum Grain Trailers Repair & Rebuild

3 miles east of Gorin, Mo. on Route U

660-341-6027

We install tarps & power tarps

We now offer frame correction

FOR SALE: FP240 New Holland Forage Harvester, 3 row corn & hay head, kernel processor, field ready. \$30,000. Mervin Brubaker, Milton, IA
 PH: 319-288-0932 34

FOR SALE: Small square bales of hay & straw; big round bales; firewood reasonable priced.
 PH: 641-814-2256 or 641-722-3513 34

Garages • Pole Barns Commercial Free Estimates

LAN-DOW BUILDINGS

We Stock a Complete Line of Building Materials **Lancaster Lumber, Inc.** Complete Buildings or Packages Available

Toll Free 800-424-5071 Fax 660-457-3133

Hardware • Plumbing • Electrical • Paint
 500 Green Street • Lancaster, MO 63548

Boots, Hats & Jeans Galore!
Billfolds, Purses and Home Decor!
 Gift Certificates too....
B4 you walk out the door!



Double C COWBOY COUNTRY

1123 S. Madison Ottumwa, IA
 641-684-8372
 Open: M - F 9-6 S 9-4

Must have coupon... so cut it!
 Bring in this coupon to draw for 15-20% or 30% off one regular priced item.
 Must have coupon... so cut it!

We Offer Financing!

synchrony FINANCIAL

MEMPHIS APPLIANCES SALES & SERVICE EST 2016

South Side of the Square in Memphis
660-465-2345
 Monday - Friday: 8:30 AM to 5:30 PM • Saturday • 8:30 AM to 4:00 PM / Sunday CLOSED

Deli Specials
 Baby Swiss • \$2.89 lb.
 Sweet Lebanon Bologna • \$4.29 lb.

NEW! 13 flavors Cappucino mix
 10% OFF all Mountain Meadow Herbs

MEMPHIS MERCANTILE EST 2010
 115 E. Monroe • Memphis, MO
660-465-2102



EMERGENCY

TRUCK LOADING SALE



THE RESTSTOP HAS GONE OUT OF BUSINESS. THE AUCTION IS OVER.

ALL REMAINING FURNITURE & MATTRESSES WILL BE SACRIFICED.

WE WOULD RATHER SACRIFICE IT THAN MOVE IT.

THE RESTSTOP FURNITURE AND MATTRESS
321 RICHMOND AVE., OTTUMWA, IA.
641-954-9718

VISA MasterCard DISCOVER NETWORK AMERICAN EXPRESS & CASH

All Sales Final!



*Good Luck in the State Fair
Queen Competition*

Rylie Johnson

2017 Davis County Fair Queen

**Iowa State Fair Grounds
at the
Anne & Bill Riley Stage**

Thursday, August 10 4:00 P.M. Friday, August 11 4:00 P.M. Saturday, August 12 7:00 P.M.
Candidate Introduction Candidate Introduction Crowning of Queen

Wishing you the best of luck!

| | | | |
|---|--|--|---|
|  Bloomfield, IA 641-664-1801 | <i>Image Shapers</i> Bloomfield, IA 641-664-1650 | <i>Cantril Feed & Grain</i> Cantril, IA 319-397-2215 | <i>Crop Services, Inc.</i> Drakesville, IA 641-722-3293 |
| <i>Harris Distributing</i> West Grove, IA 641-929-3379 or 1-800-727-5589 |  Bloomfield, IA 641-664-1333 | <i>Clearview Animal Hospital</i> Bloomfield, IA 641-664-2399 | <i>Slayton Polaris</i> <small>8 mi. S & W from Pulaski or 6 mi. W of Memphis then 13 mi. N. on Route B</small> 660-328-6627 |
|  Bloomfield, IA 641-664-2074 | <i>Wiggy Electrical LLC</i> Dan Wiegand Owner | <i>Kollision Korner</i> Bloomfield, IA 641-664-2648 | <i>Van Mersbergen Insurance</i> Bloomfield, IA 641-664-2135  |
| <i>Mikels Inc</i>  Bloomfield, IA 641-664-2331 | <i>Wagler Funeral Home</i> Bloomfield, IA 641-664-3421 | <i>Hamilton Produce</i> Bloomfield, IA 641-664-2459 | <i>First Iowa State Bank</i> Bloomfield, IA 641-664-1362  |

Congratulations to all the Showmanship winners at the 2017 Davis County fair!

- | | | |
|---|--|---|
| BEEF: <i>Intermediate</i> - Baron Davis <i>Junior</i> - Wyatt Sandeen DAIRY: <i>Intermediate</i> - Adrian Bales <i>Junior</i> - Nicole Derby HORSE: <i>Senior</i> - Hallie Pearson <i>Intermediate</i> - Hunter Seals <i>Junior</i> - Chelsea Smith | SWINE: <i>Senior</i> - Abby Weatherington <i>Intermediate</i> - Clayton Smith <i>Junior</i> - Kaison Heemsbergen SHEEP: <i>Senior</i> - Collin Batterson <i>Intermediate</i> - Tayden Bish <i>Junior</i> - Clara Smith GOATS: <i>Senior</i> - Clayton Smith <i>Intermediate</i> - Carson Zeitler <i>Junior</i> - Cayler Wuthrich | RABBITS: <i>Intermediate</i> - Kaitlynn Larrington <i>Junior</i> - Jocelynn Froah POULTRY: <i>Senior</i> - Kaitlynn Larrington <i>Intermediate</i> - Cadyn Hall <i>Junior</i> - Emerson Glosser DOG: <i>Senior</i> - Megan Swan <i>Intermediate</i> - Malena Followwill <i>Junior</i> - Maren Harris |
|---|--|---|

Sponsored by: **Egbert's Dustless Blasting**
Bloomfield, IA • (641) 680-1319

GOOD LUCK to the Iowa State Fair Art Hall Exhibits moving on from the Davis County Fair!

Clara Blum, Brindley Townsend, Kaden Culbertson, Rylie Johnson, Maddy Warning, Grant Hunter, Megan Swan, Adrienne Johnson, Ella Huggins, Taylor Rush, Jocelynn Froah, Ashlyn Gooden, Elle Chickering, Jaycee Townsend, Kaitlynn Larrington, Megan McClure, Klaire Fipps, Macy Hill, Conner Hanna, Clayton Garmon, Jacob Knobloch, Emerson Glosser, Luke Farley and Carter Replogle

Sponsored by: **Greiner Implement Co.**
10845 73rd, Ottumwa, IA • 641-683-1691

REMINDER



Deadline to remove arrangements from the IOOF Cemetery & Bloomfield Cemetery (South Cemetery) is **August 20, 2017.**

City workers will begin clean-up August 21, 2017.

Thank You, City of Bloomfield

FOR SALE: 3 APRI registered Beagle puppies, vaccinated & wormed, 7 wks. old, \$75 each. Also 2 yr. old female Beagle APRI & AKC registered, \$150. PH: 641-929-3995 34

FOR SALE: 2012 35' Open Range 5th wheel camper, 3 slides, outdoor kitchen, fireplace, very good condition, \$26,000. PH. 641-680-8336.

BUYING A HOME AND NEED A MORTGAGE? Or, have a home and want to lower your monthly fees and refinance? Getting a mortgage is quicker and easier than ever. Call now! 855-715-4721 (MCN)



SHOP LOCAL!

Now that's a bright idea!

Full Line of Animal Health Supplies

- Vaccines
- Wormers
- Numbered Ear Tags

MAXX AIR FANS

24", 32", 42" & pedestal



- Cattle Rubs • Bullets & Dusters • Fly Tags

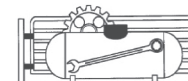
Complete line of Animal Liquid Insecticide & Dust



Don't Forget CONTRACT LP NOW FOR YOUR WINTER NEEDS!

Hamilton Produce Co.

641-664-2459 or 1-800-469-7749



105 W. Franklin Bloomfield

HELP WANTED!

Piper Auto Salvage Yard is looking for:

- PARTS PULLER
- E-BAY HELP

Apply in person for all positions at **PIPER AUTO SALVAGE** 641-664-1820



Summer is here!

Is Your Boat & Camper Ready?

Call or stop in today to see how we can help you get on your way to summer fun!



Whitney RV & Marine
 Scott and Jennifer Poole: Owners
641-684-8284
 9418 151st Ave., Ottumwa
 Monday-Friday: 8:30 AM - 5:30 PM
 Saturday: 8 AM - 1 PM

Backpack Giveaway

We are giving away 4 backpacks full of school supplies to 2 lucky boys and 2 lucky girls! Contest starts 7-28-17 and ends 8-11-17. Winners will be announced 8-16-17! Ages 5-10 only and all prizes are final.

All You Have To Do Is...

Like Our Facebook Page

Share

Comment

Our backpack giveaway post on your page!

the name and age of your child on our post!



OR... Send it in

Fill out your info and send it to
Tri-County Shopper
PO Box 168 * Bloomfield, Ia

Child's Name _____

Phone Number _____

Circle one BOY GIRL Child's Age _____

FOR SALE: 1999 Tracker, 2WD, convertible, soft top, very clean, 83,600 miles, Auto, cold air, excellent tires, \$2,200 OBO.
PH: 641-777-3539 34

FOR SALE: 16' tandem axle trailer, rails, no ramps, \$900; round oak pedestal table, 4 chairs, 2 leaves, \$300.
PH: 641-208-5136 34

GILBERT'S SALE YARD MACHINERY CONSIGNMENT SALE, SEPT. 11, 9:00 A.M.. Adverting Deadline Aug. 25,. No Small Items, Tires after Sept. 1. CONSIGN TODAY, 641-398-2218, Hwy 218, Floyd IA, www.gilbert-saleyard.com (MCN)

FOR SALE: Big round hay bales, net wrapped, mixed grass. PH: 660-216-0295 32

MAST VINYL WINDOWS
THERMO-PRO WINDOWS
Custom Size Is Our Specialty
Professional Installation Available
THERMA-TRU DOORS
FREE ESTIMATES
22172 Hwy. 63
Bloomfield, IA 52537
800-206-9949

TRI-COUNTY SHOPPER CLASSIFIED AD DEADLINE IS FRIDAY, 5 P.M. EVERY WEEK. Classified ads must be paid for in advance. Mail your ad to Tri-County Shopper, P.O. Box 168 Bloomfield, IA. 52537. For questions call us at 641-664-1333.

FOR SALE: 2017 alfalfa hay. Mark Rogers.
PH: 641-919-9447 32

Covered by Medicare and suffering from Back or Knee Pain?
RELIEVE YOUR PAIN NOW!
Give your back or knees the support and relief they need to reduce your pain
Fast and Easy Medicare Approvals
Free Nationwide Shipping
Learn for FREE how a Back or Knee Brace can help: 888-609-2485

YODER INDIAN CREEK FURNITURE: Solid hardwood furniture for every room in your home. Also a great selection of outdoor poly furniture. Check with us before you buy. Rt. V64 Milton, Iowa. Located 4 miles North of Cantril or 3/4 miles South of Lebanoin on RT. V64, Monday to Saturday 8 a.m. to 5 p.m. No Sunday sales.
PH: 319-538-7332 TF

Pure Local **HONEY**
RUSTIC ACRES FARM
14440 Hwy. 2
Bloomfield, IA 52537
641-929-3056
\$3.50 per lb.

DOG DAYS BARGAINS

\$2.99 per lb. Whole Boneless Eye of Round **BEEF ROAST**

Illinois & Missouri Peaches

\$1.59 24 oz. **Cottage Cheese**

\$1.39 per lb. sold as a 5# pk **\$6.95** **Cheddar Cheese MELT/SPREAD**

99¢ per lb. frozen **Canadian BACON**

\$4.99 per lb. Whole Boneless Ungraded **Ribeye STEAK**

69¢ 10 oz. **Li'l Smokies**

88¢ 26 oz. **Cinnamon Bliss CEREAL**

2/\$1 14 oz. **Honey Graham CRACKERS**

2/\$1 20 oz. **Ketchup**

20% OFF **CEREAL**

2/\$5 economy pak **Sterzing's Potato Chips**

\$2.99 gallon **Valley Gem Pork & Beans**

2/\$1 4oz. Glass Shaker **SPICE JAR**

3/\$1 case of 18 **25¢ each** **10" Oval White DINNER PLATES**

20% OFF **P. Graham Wall Art**

AUGUST 21ST, 2017
TOTAL AMERICAN ECLIPSE
Remember to Get your **ECLIPSE GLASSES** While Supplies Last!
99¢ each

FRUIT Update:
CO Bartlett Pears coming in Next Week
Baby Gold Peaches Available Week of August 20th

CASH PAID for unexpired, sealed DIABETIC TEST STRIPS! 1 DAY PAYMENT & PREPAID shipping. HIGHEST PRICES! Call 1-888-389-0695. www.cash4diabeticsupplies.com (MCN)

Free Pills! Viagra!! Call today to find out how to get your free Pills! Price too low to Mention! Call today 1-877-560-0997 (MCN)

ALL THINGS BASEMENTY! Basement Systems Inc. Call us for all of your basement needs! Waterproofing, Finishing, Structural Repairs, Humidity and Mold Control. FREE ESTIMATES! Call 1-800-640-8195 (MCN)

WATER DAMAGE IN YOUR HOME? Call now for a free, fast quote. Insurance approved. Help restore your piece of mind! 866-865-1875 (MCN)

EVERYTHING will be on sale until August 25th

For every 40 pound bag or every two 20 pound buckets of DAC purchased between now and August 25th your name will be put into a drawing.

1st Prize - Two Wheel Muck Cart • 2nd Prize- \$175 Gift Certificate to Farmers Harness
Winners will be announced September 1st



IT MAKES A WORLD OF DIFFERENCE

Shipping and Delivery Available • Bulk Discounts Available

Aaron Yoder • 17911 Huskey Trail, Drakesville, IA 52252 • VM: 6416642753

Also available at Farmers Harness and JR Feed and Supply

Andy Ellsworth • Territory Manager • andy@feeddac.com • 515-370-2555



WWW.FEEDDAC.COM



\$5500

For Sale: 1989 Baja Boat Force
216. 350 Chevy Engine with
580 hours. Runs great.
641-208-5916

A PLACE FOR MOM. The nation's largest senior living referral service. Contact our trusted, local experts today! Our service is FREE/no obligation. CALL 1-800-442-5148 (MCN)

LOWER THAT CELL PHONE BILL. Get 2 lines of unlimited data for \$100/mo. with AutoPay--taxes & fees included. Video Streaming & Mobile Hotspot included. Limited offer/Restrictions Apply. Call Today and Save. 855-549-9399 (MCN)

PAYING TOO MUCH FOR CAR INSURANCE? Not sure? Want better coverage? Call now for a free quote and learn more today! 855-417-7382 (MCN)

MOVING OUT OF STATE? Best Interstate Moving and Storage offers a FREE Quote and A Price Plus Promise. Call 855-428-6241 Now! (MCN)

MEET SINGLES RIGHT NOW! No paid operators, just real people like you. Browse greetings, exchange messages and connect live. Try it free. Call now: 800-357-4970 (MCN)

WANT TO PURCHASE MINERALS and other oil/gas interests. Send details to: P.O. Box 13557, Denver CO 80201(MCN)



The best crops start with the best seeds!

Come see us for all your spring planting needs!

We have all you need to keep your business thriving.

CROP SERVICES, INC

John & Kathy Bos, Owners
Drakesville, IA
641-722-3293



Tri-County Shopper gets results!

| | | |
|---|--|---------------------------------|
| HOURS 8 A.M. to 5:00 P.M. DAILY EXCEPT SUNDAY | Zimmerman's Store Rutledge, MO 660-883-5766 | Our Everyday Low Prices! |
|---|--|---------------------------------|

Baby Gold Cling Peaches Available from Michigan Must be Ordered NOW! \$37.50 a Full Bushel
More Blueberries from Michigan in about a week.
Early Gold Apples from Michigan in about a week.
Fresh Watermelons & Canteloupes

Several flavors of yogurt in 5.3 oz.
..... some 5/\$1.00...some 4/\$1.00...some 4/5.3 oz. pks. yogurt 95¢....
Plain or Vanilla, 32 oz. 79¢ ea. or Case of 6 \$1.95
..... Cheaper by the Case.....

Frozen Oscar Mayer Deli Fresh Oven Roasted Turkey Breast, 9oz .. 59¢
Frozen Butterball or Carolina Turkey Breast 99¢/lb.
Frozen Southeastern Chicken Tender Fritters, 24 oz..... \$3.79
Frozen Wayne Farms Chicken Drumsticks, 5 lbs \$5.59

Our Own Zimmermans Pizza Crusts, Frozen 15" diameter, 2/\$4.95

Canning Jars 12/qts. in box \$5.98 • Ball Jars w/ lids \$9.85
Canning Jars 12/pts. in box \$4.19 • Ball Jars w/ lids \$8.69
12- Ball reg. mouth w/ lids \$2.09 • Ball Wide mouth w/ lids \$3.09
12 ct. Mason Reg. jar lids 99¢ • 12- lids & bands \$ 1.98
Roll of 348ct. Reg. jar lids \$47.99 • 288 ct. Wide mouth \$46.25

Grandma's Canning Acid.....\$2.98 pk.
Home Canning Kit.....\$8.95
Tomato Press.....\$19.95
Rolling Chopper w/ Stainless Steel Blades...95¢

DRIVE A LITTLE & SAVE A LOT

GREAT DEALS ON MINI BARNS!
FREE DELIVERY & SET-UP*

- Perfect For Homeowners Needing Extra Space!
- Special Pricing Options Available In Store!
- Check Out Our Rent-To-Own Options!

*Within a specified area. Contact store for details.

MidWest STORAGE

— SALE GOOD THROUGH AUGUST 31ST • DETAILS IN STORE —

PELLET GRILL FUEL **\$11.95**

- For Use In All Pellet Grills
- 100% Kiln-Dried Hardwood • 20 lb Bag
- 4 Flavors: Hickory, Apple, Mesquite, Maple
- Made from 100% Natural Recycled Material

PIONEER ECO

Hometown ANIMAL HEALTH

660.465.2967 • www.hometownanimalhealth.com
 Rt. 1 Box 147B • Memphis, MO 63555 • On Highway 136 west of Memphis

NUTRITION • MEDICAL • PET • FARM • APPAREL

AUTHORIZED DEALER OF NEMO FEED.

MAKE \$1,000 WEEKLY! Paid in advance! Mailing Brochures at Home! Easy pleasant work. Begin Immediately! Age unimportant! WWW.HomeBucks.US ##### Earn \$1,000's Processing Mail! Details: Rush SASE: LISTS/IA, Springhouse, PA 19477-0396 (MCN)

Get Ready For Spring!
8 FT. RAILROAD TIES

Great for landscaping and garden boxes

SPILMAN AUTO PARTS
 20311 Old Hwy. 2
 PO Box 31 • Bloomfield
 641-664-2463

FOR SALE: Stove length fire wood at Beechy Sawmill \$25 pick up load. Also 48" bundles at \$5 a pc. 4 miles West of Drakesville PH: 641-664-2437. TF

FOR SALE: Great Pyrenees Pups: Parents are working livestock guardian dogs. Raised around livestock and grand kids. \$300 each. PH: 641-684-7958 32

NEW MATTRESSES FOR SALE!
 Selling individually or in sets. Factory warranty.
TWIN - FULL - QUEEN - KING
641-664-3060

Southern Iowa Tree Service
Tree Trimming & Removal
Nathan Olinger

Cell: 641-208-6740 P.O. Box 92 Floris, IA 52560

Stump Grinding

GOT KNEE PAIN? Back Pain? Shoulder Pain? Get a pain-relieving brace at little or NO cost to you. Medicare Patients Call Health Hotline Now! 1- 800-604-2613 (MCN)

SAVE on internet and TV bundles! Order the best exclusive cable and satellite deals in your area! If eligible, get up to \$300 in Visa Gift Cards. **CALL NOW!** 1-800-925-0146 (MCN)

Need Repair?

Let Us Help!

We can take away the stress and get you results!

Auto Body Shop
 Auto Glass
 Automotive Restoration
 Hand Detailing Service

KARR COLLISION CENTER & AUTO DETAILING
 Shawn Scott, Owner
 701 Karr Ave. • Bloomfield, IA
 641-664-1024

FOR SALE: 1989 Lowe 24' pontoon with trailer. Newer 40 hp Suzuki 4 stroke motor. Good boat. \$6,500. PH. 641-680-8336.

High Auction Service, LLC

2nd Annual Lebanon Parochial School Auction

Auction held at the Devon Weaver Farm
 14682 Rt. J40 - Lebanon, Iowa 52570

Sat., Sept. 16, 2017 @ 9:00 am

Taking consignments of: Horses, Machinery, Livestock Equip., Building Materials, Shop Tools, Antiques, and Farm Misc.

We will be accepting consignments from Tues. Sept. 12 to Fri. Sept. 15

All commission will go to the School: **Rates: up to \$100.00 15%, over \$100.00 10%, all items under \$2.00 will be donated to the School fund.**

Flyer advertising deadline is August 12, 2017. Call with your consignments! Contact Larry Weaver @ 660-216-4954 or Devon @ 319-397-2298

High Auction Service LLC - Randy High 660.216.0515

LIVING WITH KNEE OR BACK PAIN? Medicare recipients may qualify to receive a pain relieving brace at little or no cost. Call now! 844-668-4578 (MCN)

Leaky Faucet? Broken toilet? Call NOW and get the best deals with your local plumbers. No hassle appointment setup. Call NOW! 866-865-1875 (MCN)

JR FEED & SUPPLY
641-722-3045
 17599 200TH STREET • BLOOMFIELD
 STOP BY MON.-FRI. 8-5 & SAT. 8-12

Complete line of bagged feed in stock!
Lamb & Goat Milk Replacer

BIRD FEEDING NEEDS WILD BIRD SEED SUNFLOWERS/CHIPS

Hottest Deals of Summer!

Yellow Fly Tubs - \$80.00
Black Lick Tubs - \$85.00
Super 10 Mineral - \$38.00 (HWT)
Breeder Cubes - \$15.50 (HWT)
6' Steel Post - \$4.00
Bard Wire - \$60.00
Woven Wire - \$230.00
\$5 Off Any Gates
\$5 Off Mineral Feeders
\$5 Off Cement Feed Bunks
\$10 Off QLF Lick Tanks
\$10 Off Any Feed Bunks (excludes cement bunks)

MFA FARM & HOME
 PO Box 253
 Memphis, MO 63555
660-465-2603

SIZZLING SUMMER Sale!

Dried Pellet Chicken Manure
\$120 a Ton
22 ton truck loads • After Aug. 31st - \$140 a Ton

DAVID ALLEN YODER : 641-722-3037

1ST PLACE

'17 QUEEN CITY PIONEER DAYS AND JUNIOR LIVESTOCK SHOW RESULTS

1ST PLACE Partial Listing

CONGRATULATIONS TO ALL WINNERS!



BEEF: Ashlyn Laws, McKinley Aeschliman, Gus Williams, Lane Engle, Chrissy Kerby, Allison Engle, Jacie Morris and Haleigh Fowler



GOATS: Allison Engle, Claudia Dixon, Hayden Dixon, Brenna Whitlow, Jacie Morris, Madison Keim and Emma Lowe



SWINE: Ashlyn Laws, McKinley Aeschliman, Kaycee Hart, Sidney Aeschliman, Shaelyn Scoon and Clayton Droste (not pictured)



SHEEP: Hannah Whitlock



HORSE: McKinley Aeschliman, Jamie and Byrce Kittle (not pictured)



DAIRY: Shaelyn Scoon, Logan Vincent and Ashlyn Laws



CAT: Lydia Melvin



DOG: Ava Akers



WAY 2 GO!



POULTRY: Madison Fowler and Jessica Bennett



ART HALL: Madison Fowler, Lydia Melvin, Claudia Dixon, Ashlyn Laws, Emilee Byrn, Shelby Bennett, Jessica Bennett, Hayden Dixon, Aurora Harris and Brenna Whitlow



RABBIT: Gabriel Kimbrell and Alaena Aldridge

WAY 2 GO!

sidwell seeds
Queen City, MO
660-766-2737

SCHUYLER COUNTY MUTUAL INSURANCE COMPANY
Margaret Sapp & Stephanie March
Queen City, MO
660-766-2505

MFA Agri Services
Lancaster, MO
660-457-3728

Feeds & Needs
Mon.-Fri. 8-5
Downing, MO
660-379-2055

WESTERN'S SMOKEHOUSE
Greentop, MO
800-456-0250

Garnett - Ruth LLC. DBA Ruth Enterprise
Downing, MO
660-379-2391

John's seed & supply
Hwy 63 N.
Queen City, MO
660-766-2711

Tri-County Electric Coop.
16875 US Hwy 63
Lancaster, MO
888-457-3734

Schuyler County Nursing Home
1306 US Hwy 63
Queen City, MO
660-766-2291

Beeler Motor Co.
Lancaster, MO
660-457-3718

Slayton Polaris
Bloomfield, IA
660-328-6627

chuck's Body Shop & Garage
1205 Rhoads Ave.
Queen City, MO
660-766-2312

Check with us for all your trailer part needs!

Breaks • Wheels • Tires • Bearings • Fenders
Lights • Wiring • Much More

ZIMMERMAN
AUTO LLC
TRAILER INC.

101 North St. • Cantril, IA
319-397-2406 or 319-238-7367

FOR SALE: 1994 Chevy pickup 1500, 4x4, Fleet side, runs well, \$3,000 OBO
PH: 641-799-8966 33

FOR SALE: 2001 Ford Ranger, ext. cab, 4x4, 4.0L, 5 speed, 165,000 miles, \$4,250.
PH: 660-342-4902 33

FOR SALE: JD 3 row chopper corn head. No Sunday calls.
PH: 641-208-4311 32

FOR SALE: Case 2470 4wd tractor with Werts 11' dozer blade. \$8500 Lancaster, MO
Call or text 660-216-0871.

FOR SALE: New Holland 455 9' sickle bar pull type mower, \$700 OBO. Leave Message 641-799-3651 33

FOR SALE: Small square bales 3rd cutting alfalfa.
PH: 641-208-5961 34

FOR SALE: 22' camper, sleeps 5, A/C; hay rake; rear big bale hay forks; heavy duty log splitter.
PH: 641-208-1054 33

FOR SALE: Large non GMO fed pasture raised butcher hogs, \$250; Pilgrim geese, make offer; IHC in gate feeder with owners manual, \$75.
PH: 641-664-2060 34

HAY FOR SALE!
PREMIUM
Western alfalfa hay.
Raised in San Luis Valley of Colorado.
Excellent goat hay.
190 RFQ, 21% protein.
\$240 PER TON DELIVERED
660-216-0938

MILITARY WANTED BY COLLECTOR: Patches, uniforms, hats, helmets, etc. Always buying. Mark Warren, PH. 641-664-3705. mpwarren@netins.net 35

FOR SALE: 16 1/2 boar nannies, bred to reg. 100% boar billy to kid in August; Pea fowl, chicks to 3 years; Geese, goslings to 2 years; roosters.
PH: 641-680-8752 32

Fabius Creek Livestock Solutions LLC.
Open by Appointments
Evenings & Weekends
12718 275th Street • Bloomfield, IA 52537
641-895-0128

FOR SALE: Great Pyrenees puppies born and raised with goats. Vet checked and shots. Ready for new homes. \$300, Lancaster.
PH: 757-319-7639. 32

FOR SALE: John Deere 2014 MX10 semi mount 10' cutter cylinder, chains, dual laminated tires, like new, \$6,250. Leave Message PH: 641-799-3651

C.H.I. MIDWEST Overhead Door
21387 Route V64 Keosauqua, IA 52565
660-216-0812
Our goal is to keep your doors rolling smooth!
Sales • Parts • Service ~ Free Estimates
We sell new doors and openers or we'll service your old one.

Custom Built, Painted and Vinyl Buildings & Sheds
~David W. Schrock~
Hillview MINI BARNs
15383 180th Street Drakesville, IA 52552 641.664.2842 U.M.

FOR SALE: 2000 Silver Olds Alero, 172,000 miles, runs good, \$800 OBO
PH: 641-208-5961 33


FOR SALE: 2017 alfalfa hay, wheat straw Lg. square bales. Mark Rogers.
PH: 641-919-9447 32

TIM'S Oil Service
We carry Oil • Grease • Antifreeze DEF • Many other Lubricants
5 GALLON BUCKET Shell 15w40 for \$64.75
August Monthly Special
Call Tim for more information: 641-208-5059

Goods Ag Repair
46502 St. Hwy C • Baring, MO • 660-892-4717

We now have diagnostic tools for your late model tractors!
Do you have fault codes on you tractor? Give us a call!
Check with us for you aftermarket tractor and combine parts!
Discounts available now thru August. (call for details)

Doing most tractor repairs:
Major • Minor • Mechanical • Electrical • Air Conditioning

| | |
|--|---|
|  Row Unit Gear Box fits 40 and 90 series John Deere corn heads. \$1300.00 |  Gathering Chain fits most John Deere and Case IH corn heads. \$28.00 |
|--|---|

Many other parts available.

FOR SALE: Gold Star pullets, 12 weeks old, \$7 each. Should start laying mid September. Ernest Graber
PH: 641-929-3056 33

FOR SALE: Delta Contractor grade table saw. \$250. Steel storage cabinets with doors \$100 each. Several stackable steel chairs with padded seats, \$12 each
PH: 641-208-6453. 32

FOR SALE: New Idea 709 power unit; 767 super chopper; 768 3 row wide & narrow; 1995 Ford 350 dump truck. Priced to sell.
PH: 660-883-5742 33

FOR SALE
New sheet metal, assorted colors
\$30 per sq.
John Wagler
641-777-5000

FOR SALE: 4 cool air 36 inch panel fans, 2 new in box
Call 660-988-0890 33

FOR SALE: 1948 M Farmall, good condition.
PH: 641-459-2208 33

1-800-727-5589 OR 641-929-3379
Harris Distributing
West Grove, IA
All the feed your farm **NEEDS**
Chicken, Cattle, Sheep, Swine, Horse & Rabbit Feeds
Dog, Cat & Fish Food
Bird Seed and more!
COME SEE US TODAY!

SILAGE CHOPPING



BAGGED OR PITTED

CHARITON VALLEY FARMS

Ed Berry

660-341-8666

Tim Fernandez

314-346-1579

FOR SALE: Hay Tedder Sitrex ST-520-H, hydraulic fold, four basket.

PH: 641-208-5961

33

FOR SALE: 2 Gehl 970 16' forage w/tandem axle, \$3,000 each.

PH: 641-919-5493.

32

PRODUCE STAND NOW OPEN

Slicing tomatoes, canning tomatoes, candy onions, green beans, some other produce. Also selling local honey.

R&S Strawberry Farm

1 1/4 miles south of Jt. of 2 and V56, Milton

33

FRIESEN CONSTRUCTION

**New Houses
Remodeling
Garages Electrical
Plumbing
Custom Cabinets**

Arlen 664-3270

**Cell 641-208-0170
Bloomfield, Iowa**

FOR SALE: Lighted Pulaski brand Curio cabinet with glass shelves \$350. Lozier Steel shelving, like new condition. Can be set up against a wall or free standing. Good for organizing pantry space, garages, basements. May sell smaller quantities. Bloomfield area. Call 641-208-6453 for details.

32

HAY FOR SALE!

**Western
alfalfa hay.**

**Raised in Kansas.
180 RFV, 21% protein.**

**\$190 PER TON
DELIVERED**

660-216-0938

WANT TO BUY: Small gentle & broke pony for our 4 year old granddaughter. PH: 641-799-8103 or 641-799-8104.

32

FOR SALE: Oreck upright sweeper, 40th anniversary edition. Like new w/ owners manuel; \$55.00.

PH: 641-683-3554

33



Oberholtzer

Farm Supply LLC

Specializing in feeding equipment for dairy & beef.



\$16,300

New Jamesway underfloor pit pump, 8"x 8", trailer type, 2 agitation nozzles with hydrolic gate valves.



NEW IN STOCK

Valmetal model 5600 Agri chopper, hydraulic chute, rotation, 1,000 RPM PTO



NEW IN STOCK

Valmetal V-Mix 400 vertical mixer, front unload with 48" folding conveyor, rubber top, 640XL scale.

Rt. #1 Box 84 • Memphis Mo.

Phone/Fax: 660-945-3053 • Cell: 660-341-8234

AUCTION

SUNDAY, AUGUST 13, 2017 • 11:00 AM

SALE TO BE CONDUCTED AT THE PROPERTY LOCATED

11163 DAVIS-WAPELLO ROAD,

BLAKESBURG, IOWA

OR 4 Miles South of Blakesburg on the Monroe-Wapello Rd. to the County Corners, then East on Wapello-Davis Rd. 1-1/4 Miles

Auction Signs Will Be Posted

AUTOMOBILES, TRUCK & MOTORCYCLE: 1974 Volkswagon "Bug", 4-spd, 2D, runs & drives good; 2009 Chev. Aveo, 4D, 4-cyl, auto, approx. 81,000 miles, prior salvage title; 2008 Chev. 1/2T. reg. cab short-box PU, V8, auto, approx. 68,000 miles, prior salvage title; 2001 Victory TC Cruiser motorcycle, windshield, saddle bags & luggage rack, highway pegs, 13,000 miles, salvage title, looks & runs like new; Hinniker front snowblade for Chev. PU, complete w/controls, mounts, works good; Older Yellowstone 14' tandem-axle camping trailer; Polaris 400 4-wheeler, non-running.

BULLDOZER, TRACTOR, FARM EQUIPMENT: Fiat-Allis FL10 dozer/track loader, w/grouser tracks, runs goods; IH 806 tractor, diesel, WF, 3-pt, sells w/Farm Hand hydraulic loader; Like new Danuser F8 3-pt. posthole digger w/9" & 16" augers; Woods 7' 3-pt. brush cutter; Kuhn GMD700, 3-pt. disc mower; New Holland 851 baler w/auto-wrap; IH 1100 pull-type 9' sickle-bar mower; Krause 12' tandem-wheel disc; John Deere 3-bottom pull-type plow, on rubber; New Idea side-delivery rake w/front dolly wheel; 6' 3-pt. blade; John Deere AW 8' tandem disc; Fencing; Water tank.

LAWN MOWER & TOOLS: Cub Cadet 3235 riding lawn mower, hydro, w/63" deck, 3-pt, power steering; John Deere 130 riding lawn mower, 48" deck; 20" gas-powered lawn mower; Craftsman rear-tine tiller, like new; Lincoln Ranger 250 port. gas-powered welder on 2-wheel trailer; Miller Thunderbolt AC/DC copper-wound welder; Lincoln Pro-Cut 55 plasma cutter & cart; Like new contractor's port. twin-cyl. air compressor w/gas engine; New 2-1/2" trash pump; Campbell-Hausfield 5hp upright 60-gal. tank air compressor; Brand new airless paint sprayer; Near new Buddy 2,000 btu blast heater; Like new 20T. hydraulic press; Heavy-duty 1T. Gantry crane hoist; (2) 1T. chain hoists; Tire bubble balancer; Oxy-acetylene hoses & gauges; 10" table saw; Elec. mitre saw; Battery charger; 2T. engine hoist; 10T. port-a-power; Bench-mount drill press; Grinder & stand; 3/4-drive air impact; Metal chop saw; Lawn mower lift; Floor jacks; Jack stands; Parts washer; Sandblasting cabinet; Near new elec. port. cement mixer; Handyman jack; Fiberglass & alum. extension ladders; 10' fiberglass stepladder; Asst. of body tools incl. air impacts, sanders, saws, several paint guns, cut-off saw, die grinders; Drill bits; Hoes, rakes, shovels; Hand tools; Chev. 327 engine, complete; 350 & 400 Chev. transmissions; Engine stands; Asst. of shelving; 300-gal. fuel barrel & stand; 36-gal. pickup fuel tank w/pump; Asst. of wheels & tires.

HOUSEHOLD ITEMS & GUNS: King-size brown upholstered recliner; Brown upholstered 3-cushion sofa w/end recliner; Green Lazy Boy recliner; Near new wooden dining table & 4 chairs; Large asst. of VCR tapes & DVD's; Ruger stainless steel 357 Magnum revolver; Armscor 1911 model 45-cal; Raven Arms 25-cal. pistol; Jennings 9mm hand gun w/extra clip; Mossberg 500A 12-ga. pump shotgun w/2 barrels; 7.62 bolt-action rifle. **GUN PERMIT REQUIRED FOR THE PURCHASE OF ALL FIREARMS.** White-tail Bear compound bow & arrows; Buck knife; Fishing rods & reels;

**TERMS: CASH/GOOD CHECK
POSITIVE ID REQUIRED**

**MASTERCARD/VISA
DEBIT/CREDIT CARDS**

AUCTIONEER'S NOTE: Sam & Kathy have sold their farm and are moving. Selling an excellent line of equipment, tools, vehicles & guns. Be sure & attend this fine sale. Go to our website for pictures - www.almartinauction.net.

SAM & KATHY McCARTNEY, OWNERS

JIM KOSMAN, ROGER CLINGAN, & TODD CARROLL - AUCTIONEERS

AL MARTIN REAL ESTATE & AUCTION CO., INC.

307 Church St., Ottumwa, IA 52501 • 641-682-5465 • www.almartinauction.net

Public Auction

Saturday, August 12 • 10 a.m.
306 Elm Street, Bloomfield, Iowa



Car and Gem Car sell at 11 a.m.

Car and Gem Car

2000 Chrysler Sebring convertible, 100,000 miles, leather, salvage title
1999 Gem Car (Golf cart), all electric, 1186 hours

Miscellaneous

Ariens riding lawn mower with bagger, 20 HP, 46" mowing width
Murray 21" push mower
24" Snow Devil (Snow blower)
Tool Shop air compressor, 20 gallon, 2.5 HP
High pressure washer
Band saw
(2) Tool boxes on wheels
Hedge trimmer
Electric weed eater
Gas grill
Patio set with two chairs and glider

(4) Blue, (1) Red outside chairs
Seed/Fertilizer hand cart
Garden tiller
Carpet cleaner
Steam cleaner
Card table
Wooden kids table
56" TV stand
Antique milk cans
Small freezer
Double bed
Large bookcase
Cutting board cart
(2) Recliners
Curio cabinet
Wooden armed chair
12-ton press
Lots of hand tools

Donald & Carol Sines, Owners

Don: 641-208-6622, Carol: 641-208-6628 • 306 Elm Street, Bloomfield, Iowa 52537
Lunch will be served by Krazy K Kookin'

Terms: Cash or good check.
\$35.00 returned check fee. Not responsible in case of accident
The information in this sale brochure was obtained from the best reliable sources available to us. However, the Auctioneers or their employees will not be held liable should the above information be incorrect. Any announcement made day of sale will take precedence over any previous advertising.

SALE CONDUCTED BY
Don Horn Auctioneering Service
209 East Jefferson, Bloomfield, IA
Phone: 641-664-1385 • 641-722-3796 -Home
• 641-208-0254 -Cell
"We don't talk service, we give it."
Auctioneers:
Don Horn • Jerry Bish
Rodney Lawson • Josh Williams • Trevor Nightingale

No-Reserve

DEALER & FARMER AUCTION

TUES., AUG. 22ND
STARTING AT 8:00 A.M.

SULLIVAN AUCTIONEERS, LLC'S
AUCTION FACILITY,
HWY. 136 E • HAMILTON, IL

- TRACTORS
- COMBINES & HEADS
- FARM EQUIPMENT
- CONSTRUCTION EQUIPMENT
- TRUCKS & TRAILERS

Our August Dealer & Farmer Equipment Consignment Auction is historically one of our largest auctions of the year. Already consigned are five full retirements and an outstanding selection of dealer & farmer equipment.

As always, every item sells with no reserve price. Please visit our website for a detailed listing and contact information for every item.

THERE'S STILL TIME TO CONSIGN!

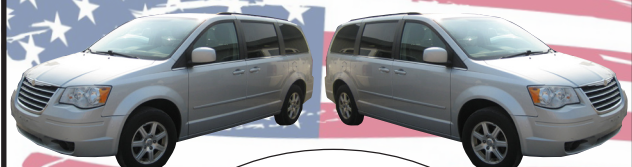
If you have one item or an entire line, feel free to contact us today.

TOLL FREE (844) 847-2161
Sold@SullivanAuctioneers.com

SULLIVAN AUCTIONEERS, LLC • TOLL FREE (844) 847-2161
DETAILED LISTING & PHOTOS ONLINE! www.SullivanAuctioneers.com
IL License #444000107



Make Summer Driving Fun In A New Car



2008 Chrysler Town & Country Touring

118,000 miles, stow & go seats
\$6,250

Save Money Money Money!

Beeler Motor Co.
Lancaster, MO
660-457-3718

HAY FOR SALE: Large Round Bales. PH: 660-216-7696 34
FOR SALE: Boxer puppies. PH: 641-664-1567 Ext. 3 34

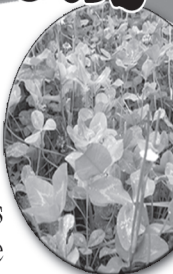
FOR SALE: Dependable 4 head moulder, model #M-150; SCMI planer, model #S-63-B; Hermance Rip Saw, model #3006; Dustcop dust system, model #60SN70PL-SP; Koger air lock, model #14-2-Q32.
PH: 660-216-1504 34

Troyer Seeds

Cover Crops

- ~ Tillage Radishes
- ~ Deep Root Annual Rye Grass
- ~ Hairy Vetch
- ~ Crimson Clover
- ~ Turnips
- ~ Mixes, Available

Seeds In Stock



Local Raised **Rye Seed** • SMALL GRAINS
Organic and Conventional • ALFALFA CLOVER
• GRASSES

12722 245th Street Emanuel Moulton, IA 52572 Troyer **641-929-3381**

FOR SALE: 1999 Lincoln Continental, 170,000 miles, well cared for, in good shape, \$1,375
PH: 660-341-7263

BLOOMFIELD MINI STORAGE. Serving you from 2 safe, convenient locations.
PH. 641-664-1066. TF

HOOVER RENTAL

Manlifts • Telehandlers • Minihoes
Skidloaders & Skidloader Attachments

RENT BY

Hour • Day • Week • Month • Long Term

DOZER NOW AVAILABLE FOR RENT

Call us for your construction needs!

660-216-8230

Mt. Sterling, Iowa
2 miles East of Cantril on Hwy 2

FOR SALE: Reg. beagles, 1 male, 2 females, also puppies.
PH: 641-664-1567 ext. 1 34

FOR SALE: Longarm quilt machine, less than 25 hrs. with wood table.
PH: 239-240-6683 34

LINE-X OF OTTUMWA



KEEP YOUR RIDE IN GREAT SHAPE!
PROTECT IT WITH A LINE-X COATING!

Bring it in and we can LINE-X® it!

Brad Lisk
15514 Blackhawk Rd., Ottumwa, IA

Gift Cards Available!

641-683-9334

Fox Valley Welding

No matter what size the project customer satisfaction is always our first priority.

Tig & Aluminum • Welding • Millwork • Lathe • New Steel • Sprockets • Roller Chain
Barings • PTO Parts • Fabricating • CNC Machining • CNC Cutting

Hours: M-F 8-5:30 • 641-656-4684 • 12190 East Hwy. 2 • Milton, IA

Scotland County LIVESTOCK AUCTION

P.O. Box 111 • Hwy 15 North • Memphis, MO
660-465-7213 • Jerry & Barb Blomme
 660-341-0069 • Grant Blomme

CATTLE SALE

Sat., Aug. 12th @ 12:30 p.m.

Early Listings:

- 6-SS cow calf pairs
- 5-5 yr. to 6 yr. black cow calf pairs
- 20 black str & hfrs, 500#
- 15 mixed str & hfrs, 450-550#

Expecting More Cattle By Sale Time.

Market Report for Wed., Aug. 2nd:

Springers: \$900 to \$1,350. **Fresh Cows:** \$1,000 to \$1,400. **Holstein Steers:** 300# - \$124.00; 311# - \$123.00; 350# - \$122.00; 377# - \$120.00; 420# - \$107.00; 504# - \$95.00; 513# - \$101.00; 590# - \$94.00. **Holstein X:** 330# - \$130.00; 480# - \$123.00; 593# - \$118.00; 652# - \$128.00. **Holstein started calves (under 300)** \$170.00 to \$330.00

www.ScotlandCountyLivestock.com

WANTED: Meat goat buck (boar or kiko); 16 month or older from proven genetics for short teats & birthing twins or triplets.
 PH: 641-722-3269 33

FOR SALE: 2014 Polaris Sportsman 570cc, power steering, fuel injected, excellent condition, \$4,700
 PH: 641-208-0665 33

FOR SALE: 2001 Dodge 1500 Ram, ext. cab pickup, 4x4, white with grey interior, good mechanical, \$1,375
 PH: 660-341-7263

FREE: Used tires to cover your silage tarps or whatever, 200 available. Milton, IA
 PH: 515-419-1232 34


IOWA LAND AUCTION
Davis County, Iowa

Saturday August 12th @ 1 PM
American Legion
Bloomfield, Iowa

36.27 m+I Acres


15 miles SW of Bloomfield Iowa off HWY 63

30.5 grassland acres



Land Agents
Cody Skinner: 515-443-6343
Clifford Martin: 319-677-0784

Auctioneer
Luke Skinner

 IowaLandCompany.com
 Farmland | Land Auctions
 515-962-5048

ALLIANCE WINDOW SYSTEMS Vinyl Windows

Introductory discount on Alliance vinyl windows ordered through August

Double Hung Lowe Argon J Channel Aluminum Screen
 36x48 • \$206.00 / 36x54 • \$215.00

ALL SIZES AVAILABLE
 Double Hung • Slider
 Casement/ Awning
 Picture
 Bay/Bow

FEATURES & BENEFITS

- Fusion welded frames & sashes
- Interlocking meeting rail
- Tilt in for easy cleaning
- Two interior wood grain options
- Integral J channel
- Transferable lifetime warranty!
- Aluminum screen

Yoder GLASS & WINDOW
 641. 722. 3667
 19467 Driftwood Blvd., Bloomfield

Call Your Dealer Today For A FREE Estimate!

SAVE THOUSANDS ON SURPRISE COSTLY HOME REPAIRS!! With Nations Home Warranty we pay 100% of covered Home repairs! CALL FOR A FREE QUOTE TODAY!! 888-925-8106 (MCN)

OWE THE IRS? You May qualify for Relief today! Stop Bank Levies & Wage Garnishments. Mon-Thurs 8-8pm, Fri 8-6pm and Saturdays 9-5pm CST Español Available, Free consultation. Call NOW 1-800-511-2181 (MCN)

We have a great variety of perennials!

- Garden Phlox
- Grasses
- Sedum
- Daylilies
- Hostas
- Hardy Hibiscus
- Shasta Daisy & More!

Lilac Hill GREENHOUSE
 660-342-9554

25957 US Hwy 136
Lancaster, MO
 M-Sat. 8:00 AM - 6:00 PM
 Closed Sundays

FOR SALE

Driveway Fabric Rolls
 Commercial, Heavy Duty, Designed for Heavy Traffic

12' 5" Wide
432' Long
\$370/ roll

660-216-0938

KEOSAUQUA SALE CO.
 20511 Hwy. 1, Keosauqua, IA

Results from August 5th

| | | | |
|-----------------------|-------------------|------------------------|--------------------|
| Butchers | \$48.00-55.00/cwt | Lambs over 110# | \$45.00-147.00/cwt |
| Sows | \$54.00-78.50/cwt | Ewes | \$50.00-100.00/cwt |
| Lambs under 80# | | Kid goats 40-70# | \$77.50-155.00/hd |
| | | Cull nannies | \$70.00-180.00/hd |

Pound cows Low yielding \$57.00-68.50/cwt
 High yielding \$69.50-81.00/cwt

Pound bulls \$88.00-94.00/cwt

| | | | |
|-------------|-----------------|-------------|------------|
| Strs | | Hfrs | |
| Blk | 255 230.00 | Blk | 335 167.50 |
| Blk | 455 179.00 | Blk | 415 161.00 |
| Blk | 555 174.00 | Bk | 580 158.00 |
| Blk | 678 162.00 | Bwf | 750 144.50 |
| Blk | 738 154.00 | Blk | 821 134.00 |
| Blk | 907 146.10 load | | |

Regular Sale
Sat., Aug. 12th

Special Cattle Sale
Sat., Aug. 19th

Thank You For Your Business!

Selling Times
 Hogs.....9:30 a.m.
 Sheep & Goats.....10:00 a.m.
 Outside Merch.....11:00 a.m.
 Cattle.....Noon

For More Information Contact:
 Keosauqua Sale Co.
 319-293-3508
 Bill Goehring
 641-919-9365

www.keosauquasaleco.com

REDUCE YOUR TOTAL CREDIT CARD PAYMENTS BY UP TO 30% TO 50%! Call Consolidated Credit NOW! 844-764-1891 (MCN)

TRENCHING SERVICES: Waterlines, Hydrants, Drains, Electric. Call for quote. Contact: TJ's Enterprises Truman Gingerich PH: 641-722-3980

Helping Hands Benefit Auction

Bear ye one another's burdens. Galatians 6:2

Supporting the Clinic for Special Children & other local needs.

The Clinic for Special Children is a non-profit medical and diagnostic service for children with inherited metabolic disorders

Saturday August 19, 2017
@ Ed's Machinery
 Memphis, MO
Auction 10:15

Partial Listing:
 Big Square Alfalfa Hay
 Big Round Grass Hay
 1 day Pontoon Rental
 Quilts & Crafts
 Theme Baskets
 Indoor & Outdoor Furniture
 Gift Certificates
 Toys & Games
 & Much More....

Candy Drop by airplane @ 9:30 Bounce House

New, quality donations are always appreciated!

Donations can be dropped off at Ed's Machinery the week of the sale or, for other pick-up locations and questions contact:
 Bryan Burkholder 660.342.2733 - Harlan Burkholder 660.341.4113
 Ed Lynn Good 660.341.3040 - Matt Witmer 660.342.0130
 Nevin Horning 660.216.0196

BLOOMFIELD



LIVESTOCK MARKET

Wed., August 16th.....Slaughter Cows, Bulls & Fats..... 9:00 PM
Special Feeder 11:00 AM
 Wed., August 23rd Slaughter Cows, Bulls & Fats 9:00 AM
 Wed., August 30th Slaughter Cows, Bulls & Fats 9:00 AM
Special Feeder 11:00 AM

Reports from Wednesday, August 2nd, 2017 • Selling 519 Head

HEIFERS

Herbert and
 Janice Harreld9BLK..... 360..... \$176.00
 Bev Ort8 BLK..... 410..... \$161.00
 Ed Good65 BBWF ..746..... \$152.25
 Darlene Martin71 BLK... 692..... \$150.50
 David Burns17 BLK... 756..... \$143.00

STEERS CONTINUED

Melvin Johnston....45 BLK... 759..... \$158.35
 Marlan Korthaus ... 11 BLK... 673..... \$154.00
 David Burns19 BLK... 788..... \$150.75
 Ervin and
 Arlene Nolt.....47 B/R ... 791..... \$150.50
 Melvin Johnston....58 BLK... 897..... \$148.25

STEERS

Dorothy Oden6 BLK..... 332..... \$184.00
 Herbert and
 Janice Harreld11 BLK... 453..... \$182.50
 Jared Schultz.....6 BLK..... 594..... \$167.75
 Ervin and
 Arlene Nolt.....17 B/R ... 636..... \$162.75

TOP BOLOGNA BULLS

4 HD\$100.00 - \$104.00
 8 HD\$94.00 - \$99.00

TOP COWS

\$70.00 - 74.00

**SALE BARN OPEN UNTIL 9:00 PM
 EVERY TUESDAY TO RECEIVE LIVESTOCK**

Phil Schooley 641-664-3450
 Ron Schooley..... 641-777-0302
 Roman Schooley 515-450-3685

We appreciate your business!

Tyler Schooley 641-208-5442
 Barn Phone 641-664-2435

HWY. 63 NORTH • BLOOMFIELD, IA

CHECK OUT THE NEW SHOWROOM!
OAKWOOD FURNITURE



FOR SALE: Troy built super bronco CRT tiller, 6 hp, briggs motor, like new. \$450.
 PH: 641-919-5493 34

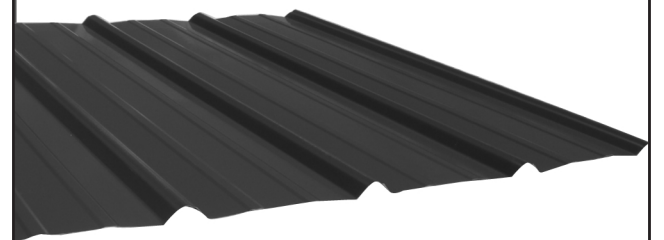
FOR SALE: 2013 Ford F150, King Ranch, crew cab, 4x4, 3.5 Eco boost, 82,000 miles, heated & cooled leather, fully loaded, rebuilt title, \$25,400. PH: 641-919-5493



SOUTHERN YELLOW PINE TREATED WOOD POSTS
 Mineral Feeders
 Gates
 Variety of Sizes & Styles
 Feed Bunks
 Water Tanks
 CONTINUOUS FENCING

19887 Jade Ave
 2 1/2 Miles W of Bloomfield
 V.M. 641-664-2797

Premium Metal Roofing



- Buy Direct & Save
- Fast Service
- Cut-to-length
- Professional Contractors Available



641-664-3990 • awmetal.net

ANGUS BULLS YEARLINGS & 2 YR. OLDS



- ★ CALVING EASE
- ★ GROWTH
- ★ THICK
- ★ GENTLE DISPOSITIONS

Sired by Musgrave Reachout 530

SELECT YOUR BULL NOW

**DORAN BOLLMAN
 PULASKI, IOWA
 641-675-3467**

ACROSS FROM THE SCOTLAND COUNTY FAIRGROUNDS



For the way you live
WITMERS
 FURNITURE
 MEMPHIS, MO
NOW OPEN!

MON & FRI: 9AM-8PM WED, THURS & SAT: 9AM-5PM
 TUES & SUN: CLOSED 660-465-2461



Bring your plans in for a
FREE ESTIMATE



Trusses Engineered and Designed to Your Specs

FOAMBOARD • SHINGLES • INSULATION

Count on us for quality building supplies. Good results begin with a solid foundation, and that requires the right materials for the job. Trust us for a comprehensive selection of professional grade tools, hardware, lumber and supplies, plus our selection and service with competitive prices.

STOCKING 9 COLOR CHOICES



17893 212th Street • Bloomfield, IA 52537
 641-722-3605 • Mon.-Fri. 7 AM to 5 PM