

Need a Wedding Videographer?

- Local • Reasonably Priced
- Professional • Quality Work
- Drone (aerial) footage available

Hattiesburg & Laurel Areas
601-467-9515

IMPACT

*"I am the vine, ye are the branches:
He that abideth in me, and I in him, the same
bringeth forth much fruit: for without me ye can do nothing."
~ John 15:5*

Postal Customer Local
PRSR
STD
US Postage Paid
IMPACT
ECRWSS

FLAGPOLES!

24' LIBERTY DELUXE DOUBLE FLYER

Reg. \$299 **Now... \$199**

American Flagpole Co.
601-649-0748
God Bless America

Laurel • 601.649.1129
www.impact601.com
Serving Jones, Jasper, Smith, Wayne and Washington & Choctaw County, AL
Volume 41, No. 32 • August 23, 2017
46,861 total circulation

Dixie Tractor Sales and Service introduces Massey Ferguson lineup

Submitted

Laurel-based Dixie Tractor Sales and Service announced it is now offering Massey Ferguson® compact and utility equipment (CUE). Compact and utility tractors are built to handle heavy workloads for large property owners, construction sites, municipalities and hobby farmers.

"We're excited to introduce this line of world-class CUE to the Laurel community," Bo Welborn, owner of Dixie Tractor said. "Whether we're working with a residential customer or a seasoned professional, these tractors will provide even more features and versatility to get the job done right."

The Massey Ferguson CUE lineup offered at Dixie Tractor includes the GC 1700, 1700, 1700E, 2600H, 2700E and 4700 Series. These tractors have engine horsepower ranging from 22 all the way up to 100, so

there is a tractor fit for everyone's needs.

"People want an affordable, dependable tractor that offers them the comfort and strength they need to get their task done," says Clint Erickson, product marketing manager for Massey Ferguson. "Our tractors deliver just that."

For more information about products offered, contact Dixie Tractor, your new local Massey Ferguson dealer at (601) 649-7470 or info@dixietractor.com.

About Dixie Tractor Sales and Service

Dixie Tractor was founded November 2001 in Laurel Mississippi by Bo Welborn and is a distributor of a large range of parts and maintenance supplies for tractors and farm equipment. Offerings include cutters, box blades, disks, fertilizer spreaders, mowers, yard equipment, and trailers.



PAYNE PORTABLE BUILDINGS 601-426-9484
601-319-3555

Office located at 342 Maxey Rd. • Hwy. 84 W, Laurel
12 MO. SAME AS CASH or RENT TO OWN FINANCING AVAILABLE. WAC

KaRock's CHIK ONA STIK

COUPON
Buy 1 Sno-Kone, Get 1 FREE!

Open Monday-Friday
10-8 p.m.
Limit 1 each per coupon.
Expires 09-30-2017

KaRazy Kones

*Does not include Dole Whip
www.karocksfood.com

814 Highway 11 South, Next to JCJC Ellisville, MS • 601-477-9956

KEEP DOING WHAT YOU **LOVE**
EVEN DURING CANCER TREATMENT

LAUREL CANCER CARE

(601) 425-2999
laurelcancercare.com

WE ACCEPT ALL TYPES OF INSURANCE, INCLUDING TRICARE

METAL ROOFING

GUARANTEED LOWEST PRICES!!!

WE NOW DELIVER!!!

OVER 20 COLORS BY VALSPAR TO CHOOSE FROM!

29 Gauge Painted (w/ 40 Year Warranty) \$1.79/FT.
29 Gauge Bare Galvalume \$1.35/FT.

PORTABLE BUILDINGS 10% OFF!

RENT TO OWN AVAILABLE!!!

CHATHAM ENTERPRISES, INC.
601-727-4951 4631 MS-18, ROSE HILL
www.ChathamEnterprisesInc.com

The Gold Mine Pawn & Gun

Mississippi Second Amendment TAX FREE

GUNS • AMMUNITION
ARCHERY EQUIPMENT • SELECT HUNTING SUPPLIES

Friday, August 25, 2017 • 9 am-Until
Saturday, August 26, 2017 • 9 am-Until

GET PRE-APPROVED TODAY!

24 MONTHS INTEREST FREE

TOWER LOANS

Sale! Sig Sauer 290rs 9mm Reg. \$549 **Sale \$369**

Sale! Taurus PT709 Slim **Sale \$209.99**

Sale! Taurus PT738 .380 **Sale \$179.99 (Black Only)**

Sale! Taurus PT111 G2 **Sale \$229**

330 NORTH 16TH AVE. • LAUREL • WWW.THEGOLDMINEPAWN.COM
601-342-2880

*While Supplies Last

LAUREL A-1 TIRE CENTER

Right behind the Laurel Police Department

TIRE SPECIAL

• P225/60R16 **\$59.95** +TAX
• P215/60R16 **\$54.95** +TAX

PLUS INSTALLATION

Rotate & Balance

*most vehicles **\$30.00** +TAX

PRICES SUBJECT TO CHANGE WITHOUT NOTICE

Brake Special

*most cars (Turn rotors for additional charge) **\$99.95** +TAX

PRICES SUBJECT TO CHANGE WITHOUT NOTICE

4 WHEEL ALIGNMENT

Cars Only **\$44.95** +TAX

WITH COUPON
PRICES SUBJECT TO CHANGE WITHOUT NOTICE

FULL SYNTHETIC OIL CHANGE

Up to 5 Gts most vehicles excludes diesels **\$36.95** +TAX

WITH COUPON
PRICES SUBJECT TO CHANGE WITHOUT NOTICE

OIL CHANGE SPECIAL

Up to 5 Gts 10W30 most vehicle excludes diesels **\$24.95** +TAX

WITH COUPON
PRICES SUBJECT TO CHANGE WITHOUT NOTICE

219 Ellisville Blvd., Laurel, MS
M-F 7:30 A.M.-5:00 P.M. SAT. 7:30-NOON
601.425.4616

IMPACT

#1 in Advertising

Ronnie Buckley

Publisher

Kevin Williamson

Manager

Jerry Clark

Circulation Supervisor

Betty Busby

Laurel Sales Representative

Kim Wilbanks

Laurel Sales Representative

Trish Irwin

Laurel Graphic Artist

Jennifer Clark

Graphic Production Manager

Trerica Roberson

Graphic Artist

Candice Pittman

Graphic Artist

Russ Farris

Graphic Artist

Sherry Hearn

Administrative Assistant

Linda Cranford

Writer/Photographer

WHILE THE IMPACT makes every effort to verify the offerings made in these ads, we cannot guarantee the integrity of every advertiser. We strongly recommend that readers investigate the companies involved before sending them any money.

Classified and ROP Ad Deadline

Sunday Edition -

Wednesday at 12:00 Noon

Wednesday Edition -

Thursday at 3:00

IMPACT

1010 N. 16th Ave

Laurel, MS 39441

Ph. 601.649.1129

Fax: 601.649.0424

Email:

admin@laurelimpact.com

VISA

MasterCard

Discover

AMERICAN EXPRESS

Circulation Audited By

CIRCULATION

VERIFICATION

COUNCIL

IFPA

ED

of Jones County

Providing a second chance

By Linda Cranford
laurelimpact@gmail.com

The daily struggles of life are hard enough but add a drug and/or alcohol addiction to it and one can totally lose their way. Conviction Ministries - “A New Growth in God’s Grace” is a new 12-step biblical recovery program that has been developed at White Oak Baptist Church; located at the corner of Ira G. Odom and Pecan Grove Road in Jones County.

“We believe everyone deserves a second chance because we serve a God of second chances, and some times more,” exclaimed program facilitator Rev. Richard Scott.

Scott explained that the Conviction Ministries is designed to work with local county and state law enforcement and judicial systems in order to provide counseling and discipleship for those that have been incarcerated and/or struggling with drug and alcohol abuse.

“We work with prison ministries to provide a before and after effect,” said Scott. He explained that the prison ministries provide what is needed “before” the release from incarceration and Conviction

Ministries assist in helping the person “after” release to be welcomed and understood in a sometimes harsh environment. The volunteers who help with the ministry are parents and spouses of abusers whose own lives have been affected. “Drug and alcohol abuse affects all the family, friends, and community,” added Scott.

“Our mission is to encourage our counselees to open their eyes, rise up, and stand on their own feet, and to turn from darkness and away from the power of Satan’s drugs and alcohol,” said Scott. He added, “And most importantly, to receive hope that is found in Jesus Christ.”

Scott said that another Conviction Ministries is scheduled to begin at Centerville Baptist Church on Tuesday, September 5 at 6:30 p.m.

“We will meet at Centerville Baptist Church each week on Tuesday at 6:30 p.m. and then at White Oak Baptist Church on Thursday at 6:30 p.m.,” said Scott. “Come, bring a friend or family member and watch a new growth in God’s grace’ begin,” exclaimed Scott.

For more information contact Rev. Scott at 601-422-9500.

Carter awarded scholarship at Mississippi Governor’s School

Wayne County senior Kalisha Carter was honored with the highest honor of excellence award at the Mississippi Governor’s School at Mississippi University for Women in Columbus. Carter was awarded a \$1,000 scholarship. While on campus, Carter participated in volunteer work and performed in the talent show that was part of the fun during her three-week stay. Former Mississippi Governor William Winter established the school in 1981. The school is a residential honors program and is designed to provide academic, creative and leadership experiences for a select number of rising juniors and seniors who have demonstrated exceptional ability and achievement in their studies.

Photo/submitted

Sideline View: The best days of your lives

By Dale McKee

We love high school football in our area. It is a focal point of our lives from August through December. The football schedules are posted on the refrigerator, and our calendar has all the high school, college and pro games marked. The field is a 100-yard stage that connects all walks of life that consumes some of us. The bank presidents to the minimum wage workers at the local store have the same bond for three hours very Friday. We have something special in Mississippi with high school football. For many of us, it is the pride of our hometown.

These are the greatest days of your lives for you high school players. The home game hype of pep rallies and the excitement of away game bus trips make fall Friday’s special. The ecstasy of wins and the agony of losses will be forever talked about. Still, the week-to-week preparation is tough. Some of you will one day remember when you wanted to quit but some parent, coach or teammate talked you into staying the course. You may wonder why you did not work harder in what you will recognize was an all too brief period

of your life. The aching memories of lifting weights, sprints, two-a-days and summer workouts will all seem like fun in a few decades. But more than the aches of preparation, you’ll remember the pride you took in your unique assignment as one of eleven working together as a team to fulfill a goal. For now, though, you have a special accountability for the total team sports that make you a better person. For now, the community is your audience, and you desire to make them proud. No other sport comes close to becoming a part of your soul as football does. To the parents and the many adult fans, please remember that these football players have put hours upon hours of incredible work in preparation for each Friday night showcase, and they deserve your full support for their efforts. We all want to be a part of these guys’ memories in a good way.

My love affair

Still on the subject of Friday night football, since 1973 I have covered high school football in the area. During those many years I have met hundreds of people in all walks of life. Some have become very dear friends. One thing I have done since about 1962 is scan the football scores every Saturday morning in the local papers. Scanning the papers again this past Saturday, I was wondering how many high school football fields I have actually visited. A rough estimate would be about 70 in the Magnolia State. Some of these fields are no longer around. It is still neat to scroll the scores from Friday nights and remember some of my visits over these last four decades to those 70 football fields.

Little Brown Jug

The 96th meeting of the Little Brown Jug game will be played this Saturday night in Laurel. Hattiesburg has won the last three Jug games. Even with those three losses, Laurel has some revenge in that they won playoff games in both 2015 and 2016. The rival game between these two former Big 8 foes began in 1922. Not even Katrina in 2005 could stop the oldest continuously played series in Mississippi history. Laurel leads the series 47-43-5.

The renewal of the Timber Bowl in Waynesboro was a great success. South Choctaw, Wayne Academy, West Jones and Wayne County fans came out to support their teams. The organizers look forward to an even greater event next season.

Contact Dale at ddmckee18@yahoo.com

Propane Industrial Gases

77935

RESIDENTIAL COMMERCIAL INDUSTRIAL TANK SET SPECIAL

Ellisville: 601-477-3462

Collins: 601-765-6800

Hattiesburg: 601-583-6269

Taylorsville: 601-785-4789

Mon. - Fri. 7 A.M. - 4 P.M.

Hubbert Dental Clinic General Dentistry

IF YOU DON'T FLOSS, YOU MISS CLEANING 35% OF YOUR TOOTH SURFACES!

New Patients & Children Welcome! Call for appointment and let us help you have a healthy life.

WE ACCEPT: Medicaid, C.H.I.P.S. Insurance & Financing Available

• Exams, Cleanings and X-Rays are covered every 6 months

99 Highway 511 E. Quitman, MS 39355 Dr. Michael W. Hubbert D.M.D.

601-776-3370 Hours: Mon.-Thurs. 8-11am & 1-4pm Tanya Barnett R.D.H.

Cash for Labor Day! Come See Us!

MONEY LENDERS

134 LEONTYNE PRICE BLVD. LAUREL 601-426-7600

AUGUST IS APPLIANCE MONTH! DON'T RENT IT. OWN IT!

When you buy a Crosley appliance, you receive one of the best warranties available in the appliance industry.

10 YEAR LIMITED WARRANTY INCLUDED AT NO EXTRA CHARGE

Crosley

FREEZERS 7 cubic feet

\$29 per month*

DRYERS Electric with 14 cycles

\$39 per month*

WASHERS Extra large capacity. High Efficiency!

\$49 per month*

ELECTRIC STOVE 30 inch. Roomy 4.2 cu. ft. oven!

\$49 per month*

GAS STOVE 30 inch. Easy clean square grates!

\$49 per month*

REFRIGERATORS 18 cubic feet, Icemaker ready!

\$69 per month*

Ribbon cutting for Star Academy in Wayne County

Wayne County Superintendent of Education Bobby Jones cuts the ribbon on the new Star Academy across from Wayne County High School. Also pictured with Jones are members of the WCSD School Board, state representatives, Deputy Superintendent Tyrone Marshall, Curriculum Coordinator Crystal Bates and Star Academy Principal Dr. Sherrell Gilmore. The state supplied a \$900,000 grant to help students who are falling behind. The main purpose of STAR Academy is to be a “drop-out prevention” and “catch-up” type program that will be implemented in fall of 2017. Bates says the initiative will help students that have been previously retained in any grade level in their academic career, focusing on eighth grade students. The academy is technology-driven, with no more than 20 students per class. “Hands-on, kinetic activity, strategies,” Bates said. “Everything is technology driven, it is group-based, and it is all about collaboration with your peers.” *Photo/submitted*



MATTRESS SALE!

PRICES GOOD THRU AUGUST 31ST



BEST BUY!

TWIN	\$299
FULL	\$349
QUEEN	\$399
KING	\$599

PRICE FOR SET!

MADISON PLUSH
FOAM ENCASED 13 INCH THICK MATTRESS W/ HIGH COIL COUNT

Alexander's
FURNITURE

Bay Springs 601-764-2161

HOT SUMMER SAVINGS!

GE 4.2 CU. FT. TOP LOAD WASHER

- AUTO SOAK LOOSENS TOUGH STAINS
- STAINLESS STEEL TUB WON'T CHIP OR RUST
- LARGE DUAL ACTION AGITATOR
- DEEP FILL ADDS MORE WATER
- DEEP RINSE REMOVES ANY LEFTOVER RESIDUE

GTW460ASJWW

GE 7.2 CU. FT. ELECTRIC DRYER

- ACCOMMODATE LARGE LOADS WITH 7.2 CU. FT. CAPACITY
- AUTO DRY SETS THE OPTIMAL DRYING TIME
- WRINKLE CARE CYCLE REDUCES WRINKLING AND CREASING
- END OF CYCLE SIGNAL
- INTERIOR LIGHT

GTD42EASJWW



REG. \$599 NOW \$469 EACH

Alexander's
FURNITURE

WHILE THEY LAST!

Bay Springs 601-764-2161
Ellisville 601-477-3312

SELECTION • SERVICE • VALUE

This could be you...

Mary R. Won \$20,000 on Triple Lucky

Betty D. Just Won \$14,400.00 On 12x Pay

Wilfred W. Just Won \$15,765.00 On Double Diamond



Real Winning  **Real Close to Home**

Bok Homa CASINO
Sandersville, MS

www.BokHomaCasino.com
1.866.44PEARL (1.866.447.3275)
A development of the Mississippi Band of Choctaw Indians

Follow Us!   

SPARTAN MOSQUITO ERADICATOR



ONLY DEALER IN JONES & WAYNE COUNTY

LAST FOR 90 DAYS

"Your Builder's Super Market"
Since 1954... But so much more

INVENTORY CLEARANCE



VISION RENDEZVOUS (white)
~~REG. \$1,699.99~~
SALE \$1,274.99

VISION RENDEZVOUS (black)
~~REG. \$1,449.99~~
SALE \$1,087.49

PHILLIPS
BUILDING SUPPLY


1104 HWY 15 N
Laurel
601-649-0855

www.phillipsbuildingsupply.com

100th Birthday Celebration



Mrs. Esther B. Holifield will celebrate her 100th birthday August 27, 2017, with a reception in her honor at Pleasant Grove Baptist Church. The reception will be from 2:00 to 4:00 p.m. in the Fellowship Hall of the Family Life Center. She is a retired teacher from the Wayne County School District. Her students will remember her as Mrs. Busby. Friends, family, and former students are invited to join her in celebrating her 100th birthday.



August 24

Southern Civitan will have their monthly meeting Thursday, August 24 from noon – 1:00 p.m. at Buffet Palace, 2132 Highway 15, Laurel, MS. Guest speakers will be Wes Brooks, The DuBard School for Language Disorders, The University of Southern Mississippi. The club is collecting school supplies for the Sharing and Caring Project. Guests are welcome. Contact southerncivitan@gmail.com, www.civitan.org or 601-422-7575 for more information.

August 25

Come to donate blood this June, July or August with United Blood Services and you are entered to win a dream vacation to the destination of your choice! For one lucky winner, United Blood Services will cover the transit and lodging cost up to \$6000, to the destination of the winner's choice. Wayne County donors can donate blood on Friday, August 25 from 10:30 a.m. to 3:30 p.m. at Wayne General Hospital Wellness/Educational Center, 950 Matthews Drive Waynesboro. Jones County donors can donate blood at one of the following blood drives: Friday, August 25 from 10:30 a.m. to 3:30 p.m. at Kim's No Bull, 1030 Hwy. 15 North; Friday, August 25 from 1 p.m. to 5 p.m. at Bok Homa Casino, 141 Choctaw Road; Monday, August 28 from 3:30 p.m. to 7:00 p.m. at Life Church family activities building, 5021 Hwy 84 West; Tuesday, August 29 from 3 p.m. to 7 p.m. at West Ellisville Baptist Church family life center, 1108 B Ave Ellisville; Wednesday, August 30 from 10:30 a.m. to 3:30 p.m. at Jones County Sheriff's Dept., 419 Yates Ave.

August 26

New Life in Christ, 226 Ellisville Blvd., is having their outreach ministry "free clothes" on Saturday, August 26 from 8:00 a.m. until 12:00 p.m.

The IMPACT will have early deadlines for classified ad submissions the week of August 28 thru September 1 due to the Labor Day holiday. To publish your classified in the Weekend edition of September 3, we would need your ad by Tuesday August 29 at 11:00 a.m. To publish your classified in the Wednesday edition, September 6, we would need your ad by 11:00 a.m. on Wednesday, August 30.

IT'S PARTY TIME!!!

PARTY SUPPLIES

BOUNCE HOUSE RENTALS

601-340-3538

NORTH LAUREL SHOPPING CENTER • MON-SAT 9AM-6PM

Number Balloons 17

Gift Balloons Available

August 27

Chapel Hill UMC, Sandersville, will host their annual revival on August 27. Morning worship will begin at 11:00 a.m. with guest speaker Rev. Herbert Walker, pastor of Mt. Pleasant Baptist Church, Sandersville. Rev. Walker will also give a second message at 1:00 p.m.

Hill Chapel MB Church, Louin, invites you to "Pack the Pew" on Sunday, August 27 at 2:00 p.m. The guest speaker will be pastor Mitchell Chatman, Mt. Pisgah, Raleigh. Musical guest will be Marvin Brown & God Anointed.

Solid Rock ME Baptist Church will celebrate our Friends and Family Day program on Sunday, August 27 at 2:30 p.m. Bishop Wilfred Bridges of Hosanna Baptist Church along with his church family will be our speaker and special guest. We look forward to seeing you as well.

Annual fall revival for Sunlight MB Church will begin on Sunday, August 27 with homecoming services at 11:00 a.m. with Pastor Dennis R. Mack Sr. and at 12:45 p.m. with Pastor Winston Buckley of Ebenezer MB Church bringing the messages. August 28-30 services will begin at 7:30 nightly with a different guest speaker each night.

Please join us on August 27 at 2:00 p.m. at the Church of Christian Unity, 1000 South 19th Avenue, Laurel, for Pastor Billy Evans Sr.'s 33rd year anniversary. The dynamic speaker of the hour will be his son, minister Billy Evans Jr.

August 28

MSU Wayne Co. office sewing group will meet Monday, August 28 at 4:00 p.m. Everyone is invited to join us whether you want to learn to sew or already do some sewing on your own. Please call Lanette Crocker at 601-735-2243 or email l.crocker@msstate.edu to pre-register and for more information.

LOW COST DENTURES SINCE 1978

DENTAL SERVICES OF SOUTH MS. P.A.

GENERAL DENTISTS

2019 Hardy Street • Hattiesburg, MS

- Dentures
- Partial
- Reline
- Repair

Call Toll Free Within 55 Mile Radius
(601) 545-1905
(877) 545-1905

LISTING OF THESE PREVIOUSLY MENTIONED AREAS OF PRACTICE DOES NOT INDICATE ANY CERTIFICATION OF EXPERTISE THEREIN.



August 29

Jones County Junior College will hold its annual "Meet the Bobcats" festivities at 7 p.m. on Aug. 29 at Bobcat Stadium/Sim Cooley Field. The Bobcat football team, cheerleaders, Touch of Gold Dance team and Maroon Typhoon Marching Band will all be introduced. The band will also perform at the event. "Meet the Bobcats" is free and open to the public.

September 1

The Ellisville Masonic Lodge will have delicious "pulled pork" bar-b-que plates for sale for Labor Day on Friday, September 1 at the Lodge in Ellisville. \$10 per plate – pulled pork, slaw and beans. Bread and cookie included. As always, limited number available, so call no to reserve yours. 601-433-5229 or 601-477-9608. If no answer, leave message with call back number.

Pleasant Grove Moss Church, Laurel, will be having their 2017 Women's Conference at Harvest Ministries Camp, Carson, MS, September 1-3. The cost for the conference is: \$35 for singles, \$70 for married couples, \$125 mother & up to 4 children. For more information call Diane Carmichael at 601-729-2811.

September 2

Rummage sale at Grace Baptist Church on Saturday, Sept. 2 and Sept. 9 from 8:00 a.m. until 3:00 p.m. All kinds of things. We are located at 62 Big Richardson Road, Laurel, off 84 East past Bogue Homa. We will have signs. For more information, call 601-649-3993. Please come and check us out!

September 3

New Jerusalem Full Gospel Church and our mission department invites you to our upcoming "Friends and Family Day" on Sunday, September 3. Worship service begins at 10:00 a.m. in the church sanctuary. We will depart for picnic immediately after morning worship at KC Bottoms Park, adjacent to Wayne Farms

GIMME SOME FOOTBALL!



GIMME SOME SPORTS **601**.COM

REED'S METALS, INC.

601-823-6516

• Metal Roofing • Metal Buildings • Pole Barns

Buy direct from the manufacturer and SAVE!

www.reedsmetals.com



HUNTER'S NIGHT OUT

• FOOD • DOOR PRIZES • HOT DEALS

SPECIAL PRICING ON ALL HUNTING SUPPLIES:

- Deer Cameras
- Stands
- Attractants
- Feeders

TOMORROW NIGHT AUG. 24th 5-7PM

SEMINARY FARM CENTER

101 North Beech Street • Seminary, MS

601.722.4163

**NEED
CASH
FAST?**

COME SEE TIFFANY

CITY PAYDAY LOANS

CAR TITLE LOANS

716 SPRING STREET
WAYNESBORO

601-735-5353

Warehouse Services Company, LLC



**Nemo Clark Dr.
Greater Laurel
Industrial Park**

- Sizes Range From 25,000 sq ft to 63,000 sq ft
- Short Term and Long Term Leases Available

Commercial & Industrial Storage

601.433.3988 • 601.433.4140

Through disappointments and hurts, we are never alone

By Dr. Bill Myers

“...for God Himself has said, “I will never, never let go of your hand: I will never, never forsake you.” So that we fearlessly say, “The Lord is my helper; I will not be afraid: what can man do to me?” Hebrews 13:5-6.



No matter what we're going through at the moment or season, God's Word reminds us that He is with us whether we "feel" it or not... Obviously, when we're going through a storm or major trial, the devil works hard to make us feel alone, abandoned, and that God is nowhere near. Friends, this is just the opposite of the Truth (Jesus is truth). He tells us in His Word that He is with us, and holding our hand through every trial we face. He protects us as a mother hen protects and shelters her babies.

“Yes, even though I walk through the valley of the shadow of death, I will fear no evil, for you O Lord, are always with me...” Psalm 23. God’s Word is encouragement and comfort. Even though trials and storms can attack with hurt and disappointments, they can become easier and turned around to victory “if” you will place your broken heart at the foot of the cross and trust His word that He’ll be with and protect you.

“O Lord, my comfort in my suffering is this: Your promise preserves my life” Psalm 119:50. When we are facing a fierce storm, which causes our emotions to be on a roller coaster, and our hearts are broken into with hurt and disappointments, His word assures us that He is beside us with open arms. He promises to comfort, shelter, and protect us. Personally, many times when my heart has been broken with disappointments, I didn’t lose hope because I always knew in my heart my Heavenly Father loved me and was with me. His word, which is truth, offers us hope, comfort, and reassurance. God desires to restore your “joy” (strength). Nehemiah 8:10. Yes, he wants you happy! Your test will become your testimony!

“The Lord is close to the brokenhearted
and saves those who are crushed in spirit”
Psalm 34:18.

Here's your bottom line: He will never leave you, no matter how you feel. He will comfort and be with you during your storms, He will restore your joy again, and help you live life abundantly!

Prayer: “Thank you, God, for walking with me each step I take...Thank you for wrapping your loving arms around me and never leaving me...Thank you for healing my heart when it’s broken...Thank you for understanding my hurts and disappointments... O, God, I’m reminded today that I am your child, you love me and I’m never alone.. I thank you that you’ll take care of me. In Jesus’ Name, amen.”

He cares about you!

Norman's Food Outlet

#209 Waynesboro Food Outlet

PRICES EFFECTIVE AUGUST 16, - AUGUST 22, 2017

12 OZ. PACK

**BRYAN
WIENERS**

98¢
EA.

Plus 10% at
Checkout

USDA FRESH CUT
FAMILY PACK

**COUNTRY
STYLE
RIBS**

\$1.44
LB.

Plus 10% at
Checkout

8 COUNT SHURFINE

**HOTDOG
BUNS**

65¢
EA.

Plus 10% at
Checkout

12 OZ. PACK
REG. OR THICK SLICED

**BRYAN
BOLOGNA**

98¢
EA.

Plus 10% at
Checkout

USDA FRESH CUT
FAMILY PACK
**PORK
STEAKS**

\$1.44
LB.

Plus 10% at
Checkout

3 LB. BAG US #1
**MEDIUM
YELLOW
ONIONS**

\$1.28
EA.

Plus 10% at
Checkout

WE'VE APPRECIATED YOUR BUSINESS OVER THE LAST 9 YEARS AND WE WILL CONTINUE
TO STRIVE IN THE FUTURE TO HELP YOUR FAMILY BY LOWERING YOUR GROCERY BILL

GREAT PRICES • GREAT TASTE • GREAT SAVINGS

OPEN 7 DAYS A WEEK

MONDAY - SATURDAY 7 A.M. - 7:30 P.M. / SUNDAY 8 A.M. - 6 P.M.

LOCATED IN THE AZALEA MART SHOPPING CENTER

WAYNESBORO, MS

601-735-4344

BAB1847

The
Good Life

Bon Vie

Home
Builders, LLC

- Custom cabinets & granite counter tops
- Brick & hardie plank exterior with architectural shingles
- Built on a monolithic slab
- R13 exterior wall insulation & blown R30 Attic insulation
- Vinyl insulated windows
- Built to meet all codes
- 10 year structure warranty

Prices
Starting at
\$69* PER
SQ. FT.

*prices subject to change without notice

601-544-6007

5317 Old HWY 11, Suite 12
Hattiesburg

Stick built on
your land with
zero down
payment and
closing costs
to approved
buyers.

\$477*
a month

P & I
to approved buyers
on your land

Sanderson Farms names new corporate processing manager

Submitted

Casey Butts has been promoted to corporate processing manager at Sanderson Farms, Inc., headquartered in Laurel, Mississippi. As a corporate processing manager, Butts will provide leadership in the management and administration of the company's 11 processing divisions and one further processing facility. He will work closely with plant management at the company's McComb, Mississippi, and Moultrie, Georgia, processing facilities by providing consultation and direction necessary to enable plant management to achieve established operational and corporate objectives.

Butts began his career with Sander-son Farms as an Advanced Trainee III in 2014. Most recently, he served as the division manager for the company's Moultrie, Georgia, processing facility. Under his leadership, the facility made progress toward operational objectives and improved in cost efficiency, employee retention and employee safety.

“At Sanderson Farms, we are all part of a successful team that ensures our company’s continued improvement, and Casey

is an integral part of that team,” said Brian Williams, director of processing at Sander-son Farms. “I have watched Casey grow, thrive and be a leader for this company. I look forward to working with him as he assumes these new responsibilities.”

Prior to joining Sanderson Farms, Butts served as an associate attorney for Maynard, Cooper & Gale, P.C. in Birmingham, Alabama, and Forman, Watkins & Krutz, LLP in Jackson, Mississippi. He is licensed to practice law in the states of Alabama, Louisiana and Mississippi. While practicing law, Butts received the Martindale-Hubbell® Preeminent AV Rating, which is the highest peer review rating for ethical standards and legal ability. He was also a financial advisor for Merrill Lynch, where he held his Series 7 and Series 66 licenses.

A graduate of the University of Mississippi, Butts earned a Bachelor of Accountancy degree and was one of ten seniors inducted into the Ole Miss Hall of Fame. He also graduated magna cum laude from the University of Mississippi School of Law, where he earned a Juris Doctor degree and served as a member of the Mississippi Law Journal.



A red Massey Ferguson 2600H Series tractor is shown in a grassy field. A man wearing a red cap and a light blue shirt is sitting on the tractor, operating it. The tractor has a large front loader and a rear PTO. The background shows a white fence and trees under a bright sky.



MASSEY FERGUSON

INTRODUCING THE 2600H SERIES
VERSATILE. DEPENDABLE. AFFORDABLE.

We're rewriting the definition of value with our new Massey Ferguson® 2600H Series, a rugged line of tough and dependable utility tractors for hardworking people who simply want a hardworking machine. One that's as affordable as it is easy to use. Speaking of value, these versatile tractors still feature everything you expect in a Massey Ferguson. A simple, open design. Steel hood, fenders and platform for rugged durability. And high-capacity hydraulics for loader and implement work. Come check them out today.

www.masseyferguson.us

CHECK OUT THE
MASSEY FERGUSON
2600H SERIES

Dixie Tractor Sales
246 E. Hickory St.
Laurel, MS 39440

601-649-7470
www.dixietractor.com



AGCO
Your Agriculture Company

©2017 AGCO Corporation. Massey Ferguson is a worldwide brand of AGCO Corporation. AGCO and Massey Ferguson are trademarks of AGCO. All rights reserved.

West Jones vs. Wayne County

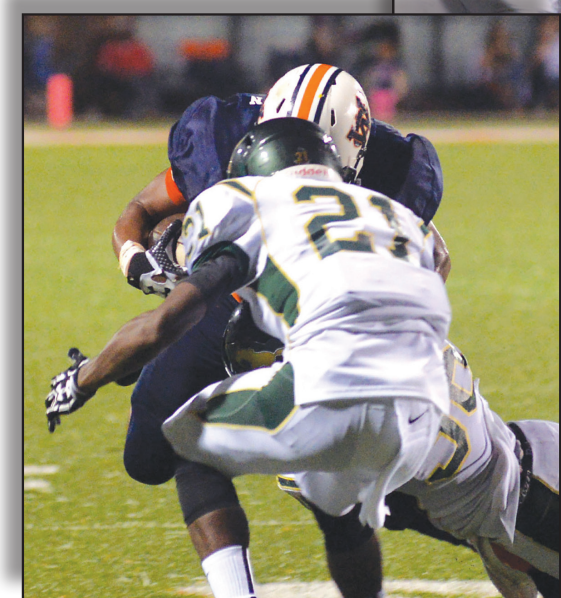
Photos by Bobby Harvison



West Jones' QB Hunter Parrish (10) looks to throw against Wayne County. The Mustangs lost their season-opener, 43-7.



A Mustang loses his helmet during a fierce collision Friday night. Wayne County hosted the Mustangs and came away with a big win.



Cedric Bender (21) tries to slow the progress of a Wayne County ball carrier. See more sports at www.sports601.com.

Three teams gear up for Rivalry Week

By James Pugh

Laurel vs Hattiesburg

The longest standing rivalry series in the state, dating back to 1922, adds another installment this week as Hattiesburg travels to Laurel Saturday night for the annual "Little Brown Jug" game.

Who has dominated the series in recent years? Well, that depends on who you ask.

Hattiesburg currently has the prize and has held it for two consecutive seasons, winning 34-32 in 2015 and 31-20 last season.

Laurel has hit Hattiesburg where it hurts, and when it really counts, getting sweet revenge on the Tigers when they meet in the playoffs. The Tornadoes have ended Hattiesburg's playoff run for two straight seasons.

Whoever wins Saturday won't likely forget it. They're bound to meet each other again this year in the Class 5A playoffs.

Both teams pulled out victories in Week 1. Laurel defeated Callaway, and its two Clarion Ledger Dandy Dozens Malik Heath and James Williams, last Friday night 24-12 on the road. Hattiesburg pulled out a thrilling 43-37 victory last Saturday night at Petal.

Stopping another CL Dandy Dozen, Hattiesburg running back Fabian Franklin, will be one of the several tasks ahead of Laurel in Week 2. The Tornadoes need to score early and often Saturday night "between the bricks" to keep the jug from returning to Hattiesburg. Last season, Laurel made a late push in the game but could not overcome the lead Hattiesburg earned earlier in the contest for the "Little Brown Jug."

Prediction: Hattiesburg +7

West Jones vs Northeast Jones

These two teams suffered losses in Week 1. Northeast Jones fell to Taylorsville 29-19, while West Jones lost big to Wayne County 43-7 in the first annual "Timber Bowl."

For Northeast Jones, the loss, unfortunately, came in more forms than the final score. After losing one of its key players on defense (junior MLB Curt Parker) earlier in

the week to an injury, the Tigers took a blow on offense with the loss of junior running back Jazaylon Morris to a season-ending leg injury.

Sophomore Tony Barnes will take the place of the injured Morris at tailback. Barnes is a different type of back according to NEJ head coach Keith Braddock. The sophomore is a big back that excels as a hard-nose north and south runner.

Northeast Jones needs to find some sort of rhythm this week, and sooner than later as the Tigers are still playing a mostly inexperienced squad.

West Jones is still looking for its first offensive touchdown. Mustangs' junior Antoine Kirk opened the game last week with a 99-yard kickoff return for a touchdown. They were shutout after that.

Some rhythm would be good for West Jones also.

Prediction: West Jones +14

South Jones vs Hancock

How about them Braves.

South Jones opened the 2017 season in Week 1 with a bang, shutting out Sumrall, 36-0.

Junior quarterback John Mitchell completed eight passes for 139 yards and three touchdowns in the win. Senior running back Henry Agee rushed for 71 yards on 11 carries and a touchdown.

This week's opponent, Hancock, had a similar start to the season in Week 1, blanking Pearl River Central, 35-0. The Hawks finished 4-7 in 2016, but are now under new management. Neil Lollar took over as head coach of the Hawks during the offseason. Week 2 will not be another easy walk in the park for South Jones.

Hancock plays out of the spread on offense, something that should cause the Braves concern by how they have struggled in the past at defending the said offensive scheme.

Prediction: Braves +4

Recently 9 members of Wayne County 4-H participated in MS 4-H Club Congress at Mississippi State University. This annual event allows 4-H members ages 14-18 to stay on campus for 3 days and 2 nights while they participate in a variety of workshops, tours, contests, general assemblies, and several fun activities. Of our 4-H members:

Harrison Daws placed 5th in Public Speaking, Grant Mills placed 2nd in Welding, Cheyenne James placed in Visual Presentation, Phoebe Bunch and Briana Bankston participated in Seed ID with Brianna placing 7th and Phoebe placing 8th, and Bo Henderson, Leigh Anne Walley, Caleb Walley, and Madison Crawford participated in Wildlife Judging with the team placing 1st, and individually Bo placed 1st, Leigh Anne placed 2nd, Caleb placed 5th, and Madison placed 6th. These youth were a great representation for Wayne County 4-H and their placings resulted from each participant working diligently and studying for their contest or presentation. We invite all youth ages 8-18 to be a member of Wayne County 4-H. There are a variety of projects to choose from and members have opportunities throughout the year to participate in numerous workshops, trainings, and contests. Please give us a call at 601-735-2243 to find out more. Back row: Harrison Daws, Grant Mills; Front: Madison Crawford, Leigh Anne Walley, Bo Henderson, Caleb Walley, Cheyenne James, Brianna Bankston, and Phoebe Bunch. *Photo/submitted*



BUDDY'S
HOME FURNISHINGS
BuddyRents.com

END OF SEASON
Summer Clearance Combo

SOFA/LOVE, MANUAL MOTION DARK BROWN

TABLE/6 CHAIRS

DRESSER/MIRROR/HEADBOARD/NIGHTSTAND

2031 B HWY. 15 N. • Laurel
601-651-6117

YOU'RE PRE-APPROVED TO RECEIVE UP TO \$3,000 IN-STORE CREDIT AT BUDDY'S!

ELECTRONIS • FURNITURE • APPLIANCES • COMPUTERS • SMARTPHONES

acer • Amora • ASHLEY • ASUS • DELL • EAGETRON • LG • MAYTAG • SAMSUNG • SHARP • SONY • TOSHIBA • Whirlpool

LEASE OWNERSHIP NO CREDIT NEEDED LEASE OWNERSHIP NO CREDIT NEEDED

Southern Miss announces 3rd annual Father/Son Camp

Submitted

The Southern Miss baseball program returns with its 3rd annual Father/Son camp set for Saturday, Aug. 26, as well as three different fall camps – Fall Instructional League, Hitting Under the Lights and Fall Showcase – at Pete Taylor Park/Hill Denson Field.

This Father Son camp will provide an outstanding bonding opportunity for the parent and child while also learning the game of baseball and developing an understanding of key fundamentals in maximizing their child's full potential. Teaching areas will include pitching, hitting, catching, infield and outfield play. The goal of this one-day camp is to provide answers and training solutions to the questions that are most often asked by today's fathers and youth league players. Southern Miss baseball camps include specific and professional caliber instruction in all phases of the game including hitting, pitching, defense, and base-running. Camp counselors and staff will include the Southern Miss baseball coaching staff, and current collegiate athletes along with a professional athletic trainer. The camp will run from 1-5 p.m., with check-in time starting at 12:15 p.m. The camp cost is \$100 (fee includes T-shirt for both child and parent and \$25 for each additional child) and is open to parents and their children entering kindergarten through 8th grade.

The Fall Instructional League Camp, which runs from Sept. 12-Oct. 1, is a three-week, six-session camp that is open to high school players. It takes place each Tuesday from 6-8 p.m., and Sunday from 2-5 p.m. Space is limited to the first 60 campers. The Tuesday night sessions will consist of an instructional practice and games will be played on Sunday nights. Campers will be divided into four teams. Current Southern Miss players, staff and coaches will instruct and coach each team. On occasion, a guest speaker will address a camp session. The camp is open to those individuals entering 9th through 12th grade and the cost is \$240 per camper for all six sessions and \$150

for the three weekend sessions. Campers will receive a t-shirt (to be worn in games) and insurance for attending the camp.

The second camp is the Hitting under the Lights at The Pete Camp, running on four consecutive Monday nights from 6-8 p.m., beginning Sept. 25, and will consist of specific hitting mechanics, approach and other instruction related to the Southern Miss baseball hitting philosophy. This camp is designed for high school hitters to learn from current Golden Eagle coaches and players about the proper steps to being a successful hitter. It will include insurance and a t-shirt as players will benefit from learning proper techniques, mental process, and repetition. The camp is open to those individuals entering 9th through 12th grade and the cost is \$150 per camper or \$125 per camper who is also enrolled in the Fall Instructional League Camp.

The final camp is the Fall Showcase Camp, Sunday, Nov. 19, at noon, with sign-in beginning at 11 a.m. It provides a great opportunity for players ranging from high school freshman to junior college sophomores (junior college freshmen must be academic qualifier). Participants will be given a chance to have their skills toned by college coaches receive specific instruction to their defensive position, speed training to improve their 60 time, as well as hitting at Pete Taylor Park. Any pitcher who is a dual player will be able to participate at both positions. Each camper will receive a camp T-shirt. Lunch will not be provided. The camp will be limited to the first 100 applicants and the cost is \$155 per camper. All camps during the fall will take place at Pete Taylor Park/Hill Denson Field.

Camp registration for all Southern Miss baseball camps can take place at www.southernmissbaseballcamps.com. Walk ups are welcome. Our camps are open to any and all entrants limited only by number, age, grade level and/or gender. For more information, contact Southern Miss assistant coach B.A. Vollmuth at 601-266-6542 or via email at bryan.vollmuth@usm.

SERVICE DIRECTORY

BOLIVAR'S
Mobile Home
Delivery & Setup

Statewide Moving

• **Licensed**
• **Insured**

Nathan Bolivar
601-580-9900

BA644

**GMW**
Siding
Specialist

• Mastic Elite Contractor
• 35th Year serving the Pine Belt
• Winner of "7" National Awards
• Mastic Vinyl Siding Products
• 6" Seamless Gutter

601-428-5595

BA1475

HAIGLER
ROOFING
& REPAIR

• New Construction • Leaks
• Repairs • Shingles • Metal
• Flat Roofs • Chimneys

FREE ESTIMATES
30 Yrs. Experience

Call Dennis Haigler
601-319-2522

bab429

TANNER
Dozer and
Trackhoe Service

• Build
Ponds
• Driveways

• Clear land
• Haul/Fill
Dirt

Professional
Contracting
with Reasonable
Rates!

601.319.6624

68554

A&A SEPTIC
SERVICES, LLC

Install and Repair
• Septic tanks
• Treatment Plants
• Field Line • Grease Traps
In business for 34 years
FAMILY OWNED
AND OPERATED
601-649-8838
601-433-2947
IN GOD WE TRUST

68554

**Right at Home**
In Home Care & Assistance

THE RIGHT CARE---RIGHT AT HOME
Locally Owned

Do you or someone you know need help with:
• Transportation to Appointments
• Grocery Shopping/Hair Appointments
• Light Housekeeping
• Recovering from a Hospital Stay
• Basic Companionship
• And Much More!

FREE CONSULTATIONS
601.426.6333

68550

We're Here to Help!
1/2 Price
STUMP REMOVAL

5 or more Avg. size
with Truck Access
\$15 EACH
601-371-8733
EXP: 9/29/17
The Tree Barber
Matthew 16:26

BA1756

SQUEAKY CLEAN
RESIDENTIAL & COMMERCIAL
CLEANING SERVICES

Flexible Schedule:
• **Weekly**
• **Bi-Weekly**
• **Monthly Visits**
Available After Hours
FREE ESTIMATES
601-335-2152

Licensed & Bonded
Approximately 20 Yrs. Experience

69261

NEED CASH?


Call Verna
She will
hold your
personal
check and
give you
CASH!

Loans from \$50 to \$410
LAUREL CHECK CASHING
134 Beacon St., Ste. C
Laurel • 601-426-2432

79218

FARRIS
Mobile Home
TRANSPORT

STATEWIDE MOVING
Licensed & Insured
TRANSPORTING SINCE 1979

SALES & SERVICE

Tony Farris
601-422-4144

BA1516

Skye's The Limit!

LET ME HELP YOU
MANAGE ENTERING &
PAYING BILLS FOR YOUR
SMALL BUSINESS!

PRICING
PLANS
START AT
\$100/MTH

601-818-1529 **Skye Dulin**
Bookkeeper

To Schedule Time, Contact
@skysthelimitbookkeeping on 

AM1510

HANDYMAN

Handyman: electrical, remodeling, painting, porches, interior, exterior, and more. No job too small. Laurel and surrounding area. Call 601-935-8325.

SERVICES OFFERED

Roofing & Repair, new construction, leak repairs, shingles, metal, flat roofs, chimneys, all types roofing and repair, free estimates, 25 years experience, call Dennis Haigler. 601-319-2522.

TNT Transport Mobile Home Services: Deliver, Set Up, Skirting. Licensed, bonded and insured. Todd Delk, owner, 601-335-4211.

PINE BELT GUTTERS
& REMODELING
Specializing in seamless gutters, vinyl siding, patio covers, replacement windows & doors. We also offer gutter cleaning. 55647
WE WILL BEAT ANY COMPETITOR'S PRICE!

FREE
ESTIMATES **601-265-6010**

55647

Reliable lawn care Lawn services offered in the Jones and Wayne county areas. Commercial and residential. 12 years experience. References available. Insured and dependable. 601-433-8133

Thames Concrete Finishing: Set forms, patios, finishing slabs, driveways, Brick work . painting & roofing great work Percy Thames. 601-543-8712.

Junk Cars: Get rid of those snake dens and rat dens. Bring 'em to us, or we'll pick 'em up! Springer Auto Salvage. Call 601-649-4238.

1/2 price stump removal 5 or more average size, 24-inch diameter, 6-in. tall, with truck access. \$15 each. Best price on grinding uprooted stumps. Expires 8/31/17. 601-371-8733. The Tree Barber, Matthew 16:26.

Right At Home: In home care & assistance. Do you or someone you know need help with: Transportation to appointments; grocery shopping/

hair appointments; light housekeeping; recovering from a Hospital stay; basic companionship and much more. For a free consultation call 601-426-6333.

Flooring Hardwood floors, ceramic tile, linoleum. For all your flooring needs. Quality work, references available. Licensed & Insured. Wilson 8:21 LLP II Corinthians 8:21. 601-268-7603.

SOCIAL SECURITY
DISABILITY DENIED?

CALL ALBERT TURNAGE, ATTORNEY
OVER 25 YEARS EXPERIENCE.
NO FEE UNLESS WE WIN YOUR CASE!

1-888-706-4708
Free background information available upon request

AM1502

Miller Tree Service: bucket truck, professional, 30 years experience, insured; bob cat - dump truck and chipper available, senior citizen discount, free estimates. 601-498-3836, 601-649-0174.

House Leveling Foundation Repairs. Replace bad sills, floor joist, or flooring. Sagging or shaky floor or dragging door, we can fix this. Let us make your foundation safe. Insured. 601-543-7007

**SOUTHERN**
MISSISSIPPI
WATER
WELL
DRILLING and SERVICE
NEW AUGUSTA, MS

601-344-1005
601-716-6837
662-803-5459

601-344-1005

Kool-Seal Mobile homes, travel trailers, campers, sheds, etc. Energy efficient, 10% reduction. Pressure washing available. Call Craig or leave message, 601-544-9614

Flooring, all types. Remodeling, all types, decks-cabinets. For all your home improvement needs. No job too small. Commercial and residential. Licensed and insured, references available. Wilson 8:21. Painting, remodeling and more. II Corinthians 8:21. 601-268-7603.

KC Construction, Kimble Coats owner. New construction, remodeling, decks, vinyl siding, foundations, slabs. 601-433-6996

Flowers, Sand & Gravel: We now install septic systems, grinder pumps and spray systems. We deliver all types of gravel, fill material, sand, rock and topsoil, soil mix and mulch. Dozier and track-hoe service available. Foundations, roads, ponds, etc. We also have Above Ground Precast Storm Shelters, several sizes available. Give us a call. 601-498-5983 or 601-477-2767.

Bostick Tree Service: tree removal, stump and root grinding with precision for easy mowing and tree health, fully insured, free estimates, serving Pine Belt area, 601-283-8667

DEEP SOUTH TURF, LLC

"TURF GROWN IN THE SOUTH FOR THE SOUTH"
WHOLESALE AND RETAIL

CALL BRANDON STRINGFELLOW
1190 Shipman Firetower Rd. • Lucedale
601-673-0137 - Cell
601-947-3973 - Office

LU1800

Quality Painting at affordable prices. Pressure washing and more. Licensed, Insured, Affordable, Professional, Christian company. Free Estimates. Commercial and Residential. References available. Wilson 8:21 Painting & More LLP II Corinthians 8:21. 601-268-7603

A&A Septic Tank. We clean, install and repair septic tanks treatment plants, field line, grease traps. In business for 34 years.Family owned and operated. 601-649-8838. In God We Trust.

Quality Pressure Washing at affordable prices. Licensed, Insured, Affordable, Professional, Christian company. Free Estimates. References available Commercial and Residential. Wilson 8:21 Painting & More. II Corinthians 8:21. 601-268-7603

Pressure washing, shrubs trimmed, gutters cleaned. 601-519-5363, Freddie, 601-580-1735, Tony. Licensed and Insured.

Anderson Home Improvement Pressure Washing, homes, trailers, decks, drives. Call 601-699-3816. Laurel.

Painting, Remodeling, Drywall, Pressure Washing, Decks, Cabinets and more! Licensed, Insured, Affordable, honest, dependable Christian company. Commercial and Residential. Quality, professional work. Over 20 years experience. References available. Call for a free estimate. If no answer, please leave a message. We will return your call. Wilson 8:21 Painting & More. II Corinthians 8:21. 601-268-7603.

LONNIE LOFTON
ROOFING
CONTRACTING

Free Estimates

since
1968



601-425-4484
601-422-3003

69347

Bolivar's Mobile Home Delivery and Setup. Statewide moving. Licensed and insured. Nathan Bolivar: 601-580-9900.

Dozer, trackhoe, backhoe, bush-hogging work, fill dirt, clay, gravel, sand, delivered, mobile home pads, ponds, driveways built, repaired, clearing, site prep, Mark Butler, 601-433-6459 or 601-425-1747

Squeaky Clean Residential & Commercial Cleaning Services. Flexible schedule: weekly, bi-weekly, monthly visits. Free estimates. 601-335-2152. Licensed & insured. Approximately 20 yrs. experience.

I buy junk cars, buses and heavy equipment. U Call. We Haul! We pickup 24/7. Call 601-297-2778.

Raybourn Construction: Roofing and repairs, general construction, remodeling, painting, heating & a/c

service, and more. 30 years experience, insured State Licensed Contractor. Call 601-580-7540 or 601-649-0780.

Lawn Care: Mowing, trimming, edging. For the Laurel, Ellisville, Taylorsville and surrounding area. Commercial and residential. Free estimates. 601-517-7599.

Lawncare: Serving Hattiesburg, Lumberton, Laurel, Sumrall, Petal, Brooklyn, Ellisville, Purvis and Mosele areas. Reasonable rates. 601-325-5008. www.fullservicelawnca-rems.com

GENERAL

Flag Pole Super Sale! "While Supplies Last!" Get our 24ft. Liberty Deluxe Double Flyer (reg. \$299) now only \$199. Call American Flag Pole Co., 601-649-0748.

Have you ever wondered how current events tie together with biblical events or prophecy? R. Dean Hubbard reveals in his book the mystery of today's happenings and shows the progression of God's work upon the earth. If translating numbers is new to you, request a copy of this book and take the journey with Hubbard as he guides you to an exciting new level of understanding the perfect will and plan of God. Contact us at merle.coats1972@gmail.com or 601-325-6190.

150 gallon butane tank for sale, barely used, \$75. 601-381-5390.

3x5 Poly Flags: USA, Mississippi and Confederate flags. Only \$5. Flag poles (5-foot to 100-foot). Flag Heads, 490 Hwy. 49, Seminary. Open 10-5 Tuesday-Friday, 10-3 on Saturday. Veterans Discount. "You won't find it at Wal-Mart."

Lawncare: Serving Hattiesburg, Lumberton, Laurel, Sumrall, Petal, Brooklyn, Ellisville, Purvis and Mosele areas. Reasonable rates. 601-325-5008. www.fullservicelawnca-rems.com

3B's Mini Storage located at 511 Court Street in Waynesboro, MS, hereby makes notice that the con-

tents of Candace Johnson will be disposed of on September 1.

TIMBER AND LUMBER

Know the value of your timber before you sell. We provide timber appraisals and help landowners market their timber for the highest value. Walley Forestry Consultants, Inc., www.walleyforestry.com, 601-477-3014.

Cypress Lumber for sale. Rough or planed. T&G&V and beaded. Bev-

DON'T GIVE YOUR
TIMBER AWAY!

Call Mike West
601-270-6066

BUYING PINE & HARDWOOD

RIGHTON TIE & TIMBER LLC
Timber Procurement • Forestry Consulting • Real Estate



eled and log siding, white and yellow pine and Poplar. T&G&V. Cypress beams, cut up to 32 foot long. Open 7:00AM-3:30PM, Monday-Friday, Saturday, 7:00AM-12PM. 601-315-5533, fax 601-344-0950. frankssaw-mill.com

FARM

(4) Registered Hereford cows, 2.5 to 4yrs. old bred to a Hereford bull; (10) Angus & Brangus cross cows, six w/calves, 4 heavy bred. 601-410-4064 or 601-410-7273.

Tractor and Equipment For Sale 2000 Farmtrac 45 with 850 Hours Has Front end Loader with bucket \$10,000. Attachments Sold Separately. Disk, Cutter, Tiller, Box Blade and a PTO Limb Chipper. Call Chris 601-283-0649.

TRAILERS

B&B Trailers. Utility and equipment. 8201 US Hwy 98W, Hattiesburg. We take trade-ins. 0% financing. 12 months same as cash. WAC. Check out our new website: btrailers.net. 601-264-6711.

Continued on ... Page 8

SOUTH CENTRAL BEHAVIORAL HEALTH SERVICES
WELCOMES AMANDEEP SINGH, MD.

Dr. Amandeep Singh completed a residency in Psychiatry and Human Behavior at University of Mississippi Medical Center. Dr. Singh joins the providers at South Central Behavioral Health Services and looks forward to treating new patients.

DR. SINGH IS ACCEPTING NEW PATIENTS.



**South Central**
Behavioral Health Services

A South Central Clinic

2002-D Hwy 15 N | Laurel, MS 39440 | 601.426.9614 | scrmc.com

Open Monday through Friday, 8 a.m. - 5 p.m.
Closed from 12 p.m. - 1 p.m.

Butler Dental

Across from Court House, Butler, Alabama

Julie Utsey, D.M.D.P.C.
General Dentistry

205-459-2700 1-888-851-8512
Tuesday thru Friday 8 a.m. - 5 p.m.

- ONE DAY DENTURES
- PARTIALS AND EXTRACTIONS
- FREE CONSULTATIONS

	Single	Set
Set Standard Dentures.....	\$200.00	\$300.00
Set Deluxe Dentures.....	\$350.00	\$600.00
*Reline Included: Savings of \$130.00 per unit		
Set Custom Deluxe Dentures	\$550.00	\$1,000.00
*Reline Included: Savings of \$130.00 per unit		
Cast Metal Partial - \$625.00	• Acrylic Partial - \$200.00	
• Extractions - \$100.00	• X-Rays Included	
• Simple Extraction - \$70.00	• Surgical - \$100.00	

77407

Classified Index

Antiques	10
Apartments for Rent	9
Appliances	10
Attorneys	10
ATVs	11
Auctions	10
Auto Parts	11
Autos - Cars	11
Autos - Classic	11
Autos - SUVs	11
Autos - Trucks	11
Buildings	10
Business Opportunities	10
Carports	11
Commercial	9
Estate Sale	10
Farm	7
Fish	10
Furniture	10
Garage Sales	11
General	7
Handyman	7
Help Wanted	10
Houses for Rent	9
Houses for Sale	9
Land	8
Massage	10
Mobile Home for Rent	9
Mobile Home Lots	9
Mobile Homes	9
Musical	10
Pets	10
Portable Buildings	10
Produce	10
Services Offered	7
Timber and Lumber	7
Trailers	7
Vacation	11
Wanted to Buy	10

Homes and Land

WALLEY PROPERTIES LLC.
LAND? BUYING OR SELLING
www.walleyproperties.com
601-477-3014

LAND

2 water front lots Off Graveline Bayou. Navigable water. Great fishing. Asking \$80k each. 228-990-1212.

Big Creek Frontage! Wayne County +/- 194 Acres. Excellent timber investment and recreational property in South Wayne County with frontage on Smithtown-Chicora Road. Great hunting and fishing opportunity. This property consist of mixed aged pine plantations and hardwood bottoms along the scenic Big Creek. \$445,230. Call Bennett 601-913-0340 at Walley Properties, LLC. or

visit walleyproperties.com for maps and info of this listing.

+/- 8 Acres Located on Jim Brownlee Road in West Wayne Co. \$25,000. Call Woods & Waters Realty at 800-526-3961. See more at mfmiland.com.

Greene County +/- 40 Acre. Beautiful 40 acre fish farm is located just east of Beaumont, MS in Greene County. The property holds 13 small ponds, multiple small sheds with concrete slabs, some remaining equipment, and multiple power sources over the property. The property has some mature longleaf pine and a cozy 1,000 square foot 3 bedroom, 1 bath block house. The property is very secluded and offers many possibilities. Priced to sell at \$165,000. Contact Jeff at Walley Properties, LLC 601-297-1958 or visit walleyproperties.com for more info and maps of this listing.

17 acres with lake, mature timber, house pad, ready to build, Stringer Schools. \$105,400. Call Rob McCraw 601-498-9143.

Highlands. Finance a lot, \$1500 down, pay for your lot over 3 years - then use your lot as down payment at your bank. Call: 601-649-9459.

Weekend Retreat 60 +/- Acres Covington County, Ms located 7 miles North of Collins (Rock Hill Road). This unique property features a 2 acre stocked lake, 20 acre mature natural Pine/Hardwood stand and 38 acre 14 year old Pine Plantation. The gated property has a camp house with power, community water and septic system. \$213,000. Contact Bennett 601-913-0340 at Walley Properties, LLC. or visit walleyproperties.com for more info

South Jones County +/- 47 Acres: Located in South Jones County on Rainey Road. 10 Miles from Hattiesburg and Laurel right off the Sanford Road Exit on i59. This property would be perfect for a home-site or mini-farm with plenty of recreational opportunities. Price: \$123,375. For more details, call Bennett today 601-913-0340 at Walley Properties, LLC. Or visit our website walleyproperties.com for maps and more information of this listing.

Land sales: Let us assist you with your land sale or purchase. We provide full service forestry consulting and land brokerage. Call Woods & Waters Realty at 601-498-9143

Lake Eddins: a great Place To Be!! End of summer blowout!!! Off-water lots as low as \$5000 and waterfront camps as low as \$62,500. Call CrossRoads Realty 601-727-7653.

Jones County +/- 8.76 Acres Great Location! Great Home site! This property is located 5 miles south of Ellisville on Old School House Road in the South Jones school district. This property is ideal for anyone looking to build a house or add a mobile home. The property has over a 1/4 mile of road frontage with power, water, and septic on site. The property has a mixture of mature planted pines and a beautiful hardwood bottom that surrounds the scenic Bear Creek that runs through the south end of the property. \$37,500. For more information on this listing contact Bennett, 601-913-0340 at

Walley Properties, LLC. or visit our website walleyproperties.com.

Stringer, MS: This excellent 69 acre parcel is located in the heart of Stringer School District. The property consist of various merchantable timber types with multiple home sites. With an abundance of wildlife the property could also be used as a hunting retreat. The property can be divided. Priced to sell at \$164,025. Contact Marc 601-670-5429 at Walley Properties, LLC.

Covington County +/- 74 Acres. Located 4 miles from downtown Seminary off hwy 590 on the corner of Shirley Sanford Road and Johnny Sanford Road. This property would be perfect for a home-site with plenty of recreational opportunities. Property consist of mature pine plantation, gorgeous hardwoods, and a stream that flows throughout the property. Great for hunting. \$244,200. For more details, call Bennett today 601-913-0340 at Walley Properties, LLC. Or visit our website walleyproperties.com for maps and more information of this listing.

Pearl River County +/- 147 Acres. Great Location! Beautiful setting! This property is located 7 miles south of Poplarville just off I-59 on Savannah Millard Rd. This property would make for a great home site, weekend getaway, farm, with plenty of hunting and fishing opportunities. This property offers a variety of different timber types, fields, and has 2 stocked ponds ready to fish. The properties location would be ideal for anyone wanting to be close to New Orleans or the MS Gulf Coast. Priced at \$415,000. For more information on this listing contact Bennett 601-913-0340 at Walley Properties, LLC. or visit our website walleyproperties.com

24 acres in Runnells town. Lots of mature timber and wildlife. Unbelievable hunting!! May subdivide. Call Shawn with Southern Coastal Realty at 601-408-3570.

Greene County +/- 40 Acres. Just in time for deer season! Located off of Hwy 63 just North of Leakesville on Smith Dale Farm Road. This prop-

erty is ideal for anyone looking to have their own personal hunting spot or investment property. This property consist of scattered hardwoods and a small creek that flows through the south end of the property. The property does have an easement and is easily accessible. This property is priced to sell at \$1800/acre. Call Bennett Burris 601-913-0340 at Walley Properties, LLC. or visit our website at walleyproperties.com for more info on this property

Jones County +/- 8 Acres. Beautiful Home/Mobile Home site with power and water in place. Located on the corner of Overt Moselle Road and Beech Cemetery Road. Property contains road frontage to the north, south, and west, and 16th section land to the east. Scenic landscape with area to build a pond. \$40,000. Call Bennett 601-913-0340 at Walley Properties, LLC or visit our website walleyproperties.com for maps and more details of this listing.

New Listing! South Jones- Rainey Community 24 +/- Acres . Great Location. South Jones School district. This beautiful property is located on the corner of Rainey Road and Sumrall Road just 3/4 of a mile south of Moselle-Seminary Road. This property has over 1/4 mile of road frontage on Sumrall road, offers multiple home sites, mature thinned plantation, and an abundance of wildlife. \$108,900. Call Bennett 601-913-0340 at Walley Properties, LLC.

Covington County 85 +/- Acres. Price Reduced!! Can be divided. Located in the Seminary School District only 4 miles Northeast of Seminary at the intersection of Hwy 535 and Lebanon Church Road. Would make for a great home site, has power and water available. Features a mix of young pine plantations with hardwood stands along the creek bottom. Excellent timber investment and hunting opportunity. \$2250/ Acre. Call Bennett 601-913-0340 at Walley Properties LLC. Please visit walleyproperties.com for maps of this listing

Lot for sale north corner of 3rd Avenue and 20th Street, Laurel. \$1000. 601-735-2415.

Power. Innovation. Efficiency. That's Our Turf.

Z100 KOMMANDER SERIES

Take command of your lawn with Kubota's top-selling residential zero-turn mower. Value-packed performance and a full 4-year, 300-hour factory warranty.*

Z700 SERIES: GAS

Engineered for the pros yet affordable enough for homeowners— with a deep mower deck, deluxe operator's seat, commercial-grade gasoline engine and up to 60" cutting widths.

ZD SERIES: DIESEL

Built for the pros with a powerful 19.3-24.8 HP** Kubota diesel engine, up to 72" wide mower deck, flat-free front caster tires and hydraulic deck lift.

BX 2670

- 4 wheel drive
- Drive over deck

MCNEIL TRACTOR & EQUIPMENT CO. INC

2635 HWY 15 NORTH • LAUREL • 601-425-3158

The Pine Belt's Tractor and Equipment Dealer since 1952

www.kubota.com

*Kubota's 2014 Limited Warranty applies. See your local Kubota dealership for details. **For complete warranty, safety and product information, consult your local Kubota dealer and the product operator's manual. Power (HP/KW) and other specifications are based on various standards or recommended practices. Optional equipment may be shown. © Kubota Tractor Corporation, 2016

FARRIS

MOBILE HOME TRANSPORTING

Statewide moving, licensed & insured.

Transporting since 1979

SALES & SERVICE

Tony Farris

601-422-4144

RUSTIN

METAL BUILDINGS AND CONSTRUCTION

Laurel, Mississippi

Rustin Construction Since 1933

COMMERCIAL • RESIDENTIAL

26 Gauge Colored Panels

Licensed General Contractor in MS and LA

WE MANUFACTURE AND WE BUILD

Red Iron Metal Buildings **601-649-9949**

PARISH TRANSPORT

HAS IMMEDIATE OPENINGS FOR GOOD

OTR Truck Drivers and Owner Operators

HIRING ALL DIVISIONS

Benefits include:

- Health Insurance • Vision Insurance
- Dental Insurance • Paid Vacation

NOW OFFERING SIGN ON BONUS

- SAFETY BONUS • REVENUE BONUS
- RETENTION BONUS

If You Want To Work For A Great Company With Great Benefits

call us at 601-342-2314 today!

Located in Ellisville, MS

Homes and Land

20 acre farm/ranch in Janice, Ms. With custom built home, wrap around porch, Pond, horse stalls, fenced and cross fenced, huge shop. Bordered on two sides by National Forest lands. Lots of wildlife call Shawn, Southern Coastal Realty, LLC 601-408-3570.

+/-18 Acres Located on Jim Brownlee Road in West Wayne Co. \$50,000. Call Woods & Waters Realty at 800-526-3961. See more at mfmiland.com.

Tallahala Creek Frontage!! Perry County 90 +/- Acres Located on the beautiful Tallahala Creek. Can be divided into 30 acre parcels. This property is located on Highway 29 South right outside of Runnelstown, MS only 10 miles from the city of Petal. This property is every outdoorsman dream, with over a 1 1/4 mile of river frontage, sand bars, gorgeous hardwood bottoms, pine plantations, shooting houses, and food plots. The plentiful abundance of wildlife such as: Deer, Turkey, Small game, and Fish will keep you occupied year-round. \$3400/Acre. Call Bennett 601-913-0340 at Walley Properties LLC. Please visit walleyproperties.com for maps of this listing.

1 acre land and 3BR/2BA. mobile home, storm shelter, \$35,000. 601-342-7952, 601-434-1290.

Wayne County +/- 84 Acres. Property will not last long! Located on the Mabry Graham Road just north of Beat 4 in Wayne County, MS. This Remarkable Tract of Land offers endless possibilities. The topography is gently rolling with sandy clay soils. The timber consist of 8-10 year old pine plantation. The property offers plenty of road frontage in a remote setting with an excellent internal road system and a natural gas pipeline for great access. Grass patches are in place and an abundance of wildlife that is sure to please any hunter. This property is offered at \$165,900.00 & can also be divided. Contact Marc 601-670-5429 at Walley Properties, LLC. or visit walleyproperties.com for maps and info of this listing.

Jones County +/- 29 Acres : Price Reduced! Only 5 miles south of Ellisville down Hwy 29 East located on Busby Road. This Property with road frontage has recently been chipped, leaving residential/shade trees which would make for a perfect home-site, or mini farm. \$69,6000. For more information call Bennett 601-913-0340 at Walley Properties LLC or visit walleyproperties.com for maps of this listing

78+/- Acres located in Smith Co., in Mize School District. Live creek throughout. \$2900 per acre. Call 601-818-3597.

+/- 6 Acres Located on Old Salem Road at Strengthford, MS. This piece of property has a spot cleared for a house site. Nice timber on property. Call Rob McCraw Today 601-498-9143. \$21,000. See more at mfmiland.com.

Land & Timber Bid Sale September 13, 2017 @ 2:00 p.m.: Lawrence County, MS Total of +/- 353 acres (Tract #1 +/- 133 acres Tract #2 +/- 220 acres) on Bahala Creek with Mature Hardwoods and Pines Power/Water. Paved road frontage. Please visit www.wnmland.com for details or call Woods & Waters Realty. 601-408-0615.

Small acreage for sale, water, septic and power pole, owner finance, NE Jones area. 601-426-3696 or 601-470-7772.

3 acres for \$19,800, beautiful home-sites, utilities available. Ellisville 601-466-2267.

MOBILE HOMES

Good credit, bad credit, no credit. Call the credit expert, Repo Man, 601-310-9262.

ASSUME PAYMENTS!

**3BR/SW \$249 PER MO.
3BR/DW \$349 PER MO.
2BR/DW \$399 PER MO.
205-541-4131**

Foreclosurers, repos, used, land home packages, and new mobile homes. Call Chase today for details. 601-310-9262.

Used Houses. Singlewides and doublewides. 3, 4, 5 and 6 bedrooms. Will deliver and setup. Call Johnny McDonald, 601-452-2113, 601-261-6005.

Eagerly waiting for you, 16x76, 3BR/2BA., huge kitchen, wrap around master bath, \$20,000, singlewide. Call 601-520-0710

A Must See! 5 bed 3 bath double wide. Perfect layout, open concept, gorgeous floors for you to add to. Vinyl siding and shingle roof. Price \$25,000 as is. Call 601-520-0710.

Blue for you! 16x80, 3BR/2BA., new plywood on floors, new sheetrock and paint, very spacious, vinyl siding and tin roof, singlewide, \$19,000, Call 601-520-0710

I guarantee you a home with \$8,000 down and payments of \$575/month for only 13 years. I don't care if you are in a bankruptcy, you are automatically approved when you put \$8,000 down on a Brand new single wide mobile home. Call Tiny, 601-307-2114.

2017 Doublewide, 5 bedrooms, 3 bath, central A/C, skirting, delivery, setup, and tie down included. Call Johnny McDonald, 601-452-2113, 601-261-6005.

"Mobile homes, mobile homes" arriving daily at TB Sales on Hwy 49 North, Hattiesburg, next to the Bouie River. We have used, repo, remodeled, fixer upper, all homes, all sizes at unbelievable prices, our guarantee no one will beat our prices for what we do. 601-520-0710 or TB Sales @ Facebook.

Farris Mobile Home Transporting: Statewide moving, licensed & insured. Transporting since 1979. Tony Farris 601-422-4144.

2017 5BR/3BA, central A/C, skirting, delivery, set up and tie down, only \$69,900. 601-307-2114, 601-261-6005.

Need Zone II or III home? Call 601-307-2114.

Blake's Mobile Home Transport: We specialize in moving single-wide, double-wide, and triple-wide mobile homes. Also offer re-leveling and tie-down service. Licensed and insured. Call 601-422-8588

Won't last long. 2BR/2BA., 2001 Horton, 16x72. Woodgrain in kitchen, w/ceramic tile counters and flooring, large master bath with garden tub and sep. shower. \$16,500 as is. 601-520-0710.

Little Fixer Upper. 14x70, 2BR/2BA., \$5,500. Needs floor work. 601-520-0710.

Stop renting and own your own home now. Single wides for \$400.00 a month and double wides for \$600 a month. Call 601-307-2114.

Mobile homes for sale. New, used, repos, foreclosurers, land-home packages. Call Repo Man, 601-310-9262.

Used Doublewide, 4BR/2BA., central A/C, skirting, delivery, set up and tie down, only \$44,900. 601-307-2114, 601-261-6005.

GOOD CREDIT. BAD CREDIT. NO CREDIT. NO PROBLEM! NEW, USED & REPO HOMES AVAILABLE. NO CREDIT CHECK. OVER 100 HOMES TO CHOOSE FROM. **Payments starting at \$250 per month** FOR MORE INFO: **205-541-4131**

\$11,500, 14x52, new laminated floors, washer, dryer (2 years old), stove, fridge (5 years old), roof resurfaced, trailer in good shape, with skirting. Call 601-335-4003.

Handyman Special. 2 to choose from. \$2,500. 601-307-2114, 601-261-6005.

3br/2ba doublewide, 2.11 acres, 2 storage sheds, Mosselle area. 601-422-3136, 601-422-9089.

We buy used homes. Good credit, bad credit, no problem. New, used and repo homes available. Over 100 homes to choose from. Payments starting at \$250 per month. Land and home packages available. For more info: 601-447-4538.

"Used and Repo Dealer" 10 acres of mobile homes, sold as is or completely remodeled. Have it your way at TB Sales. We will get you in the right home. 601-520-0710.

SELLING or SHOPPING? WE FINANCE IMPACT CLASSIFIED ITEMS
JONES COUNTY FINANCE
105 S 16th Ave. • Laurel
601-649-1944

Fema houses. 1, 2, 3 bedrooms available now. Call Johnny McDonald, 601-452-2113, 601-261-6005.

Cute Starter Home, 24x52, 3 bed/2 bth Double Wide, vinyl siding, shingle roof, ready to live in. Zone 2. Price \$15,500 as is! Call 601 520 0710.

Front porch sittin, sweet tea sippin, 28x66, 3BR/2BA., stone fireplace, lots of cabinets and island, \$17,888 as is. Call 601-520-0710.

50 Shades of Gray. 16x80, 3BR/2BA., new carpet, vinyl flooring and paint. Beautiful home, must come see it. \$21,888. 601-520-0710.

Factory Direct pricing. Nobody beats our prices. wholesalemobile-homecenter.com 601-296-7960.

Assume payments. Singlewides, doublewides, land and home packages. Call for details, 601-307-2114, 601-261-6005.

Plenty of room! 5 bed, 3 bath double wide. Lots of space for all your loved ones. Vinyl siding and shingle roof. Zone 2! Won't last long. Price \$26,000 as is, call 601 520 0710.

MOBILE HOME FOR RENT

2000 model, 14x60 3br/1ba, all electric, c/h/a, West Jones School District. Water provided. \$400 & \$200 deposit, in a trailer park. 601-498-2488, Rhonda.

1995 16x80 3br/2ba, all electric c/h/a. South Jones School District. Water & garbage provided, in a trailer park. \$500 & \$300/dep. 601-498-2488.

2br/2ba, mobile home, South Jones School District, \$650/mth, \$500/dep. 601-433-2490.

MOBILE HOME LOTS

Beautiful mobile home space with power & water in place. 1634 Sander-ville/Heidelberg Road. Call 662-627-1341 after 6pm.

Four months free space rent. Move your mobile home in with us! Spaces

available at Bellecrest. Nicest mobile home park in Hattiesburg. Bellecrest Mobile Home Park 63 Sullivan Kilrain Road Hattiesburg, MS. 601-545-1300

HOUSES FOR SALE

12 acres and house for sale, with pond, 3br/2ba, Waynesboro. \$100,000. Call for appointment. 601-671-1591, 601-410-2774.

Dixie. Beautiful Brick, 3 bedroom, 2 bath estate home on 4 plus acres in the heart of Dixie. Expansive split plan, privacy fenced back yard, screened-in back porch, 2 car garage, paved drive. I can go on and on, just call me!! It's ready to show. 601-408-3570. Shawn Stewart Southern Coastal Realty, LLC. "Find the most from here to the coast!"

House for sale or tear down for lumber. Built in 1900, heart pine used outside and inside the house. \$15,000 less cost of clean up. Located in Pineville off Highway 501 on SCR B-1 about 3 miles to 25 SCR 517A. For more information call Walter Daniel at 601-573-6781.

House, 1432 Ellisville Blvd., corner lot; Apartment, 709 1/2 Sandy T. Gavin Avenue, 2br/1.5 ba, totally remodeled. For sale or rent to own. Extra lots included. 2 portable buildings w/contents also for sale. Call 504-493-0091.

West Jones, 4br/2ba, 2238/sq.ft., granite, carport, pond, \$139,000. 601-323-3335.

4 bdrm/2.5 bath located centrally to all West Jones Schools. Open floor plan, enclosed & insulated garage in lower level for a large family or entertaining. Upstairs family friendly with Jack & Jill bathroom for 3 bedrooms plus a small bonus room. Other amenities: large bedrooms, deep cabinets and storage closets, ceramic tile, new carpet, fresh paint, attic space, outside storage, patio, and more. About 10 min from City of Laurel, 25 minutes from Hattiesburg. Priced below appraisal \$187K . 601-498-1972.

Gated private grand estate. Property perched on approximately 3 acres, breath-taking water front point, WJS District, Laurel. 4br/2.5ba, cus-

tom stone floors, fireplace, open floor plan, RV hook-up ready. Serious inquiries only. \$395,000. Call 850-619-1112.

HOUSES FOR RENT

\$1,400.00 per month, 4 Bedrooms, 2 Baths, fenced-in back yard, double carport, near Turtle Creek Mall. Call 601-441-2664.

2br house with fireplace, South Jones School District, \$650/month, \$500/dep. 601-433-2490.

West Jones School District: 2br/1ba, house, all electric, c/h/a, water provided, open floor plan, jacuzzi tub, located on a dead end road. References required. \$700 + \$300 deposit. Serious inquiries only. 601-498-2488, Rhonda.

1, 2, 3, and 4 bedroom houses and mobile homes. Hattiesburg . Call for list. 601-336-5808.

1314 Congress St. 2BR/1BA, CH&A, \$400/dep., \$550/mo., 601-319-2938.

4br/2ba brick home all electric, c/h/a, located 79 Calvin Figgers Drive in Waynesboro. \$700/month rent + utilities. 601-824-7172.

Brick 4br/2ba, central air, West Jones School, \$800/dep., \$800/rent. Text 210-478-6492.

2/3 bedroom homes for rent. 601-649-4075.

APARTMENTS FOR RENT

For rent: Taylorsville New one bedroom apartments. \$500 down, \$500 monthly. 601-649-9459.

Highlands. Paying Rent? A house payment could be less. Call us today and see how you can build your dream home. Call: 601-649-9459.

For rent: 1 bedroom duplex located @ 1024 North 13th Avenue. \$625/mth + \$400/dep. Utilities included. Call 601-577-2576 for info.

Continued on ... Page 10



We are now accepting
vendor applications at -
www.laurelmainstreet.com

The festival date is
October 7, 2017



Let us get your vehicle ready for the Back to School rush!

FULL SYNTHETIC OIL CHANGE
UP TO 5 QTS \$39⁹⁵
Most vehicles, excludes diesels
WITH COUPON Expires 9/30/17
CAN NOT BE COMBINED WITH OTHER OFFERS

4 WHEEL ALIGNMENT
Most Vehicles **\$49⁹⁵**
WITH COUPON Expires 9/30/17
CAN NOT BE COMBINED WITH OTHER OFFERS

OIL CHANGE SPECIAL
UP TO 5 QTS \$24⁹⁵
Most vehicles, excludes diesels
WITH COUPON Expires 9/30/17
CAN NOT BE COMBINED WITH OTHER OFFERS

BRAKE JOB SPECIAL
WITH PREMIUM PADS
Most Vehicles **\$119⁹⁵**
WITH COUPON Expires 9/30/17
CAN NOT BE COMBINED WITH OTHER OFFERS

Southern Tire Mart
Best in Class Service on America's Favorite Brands



2926 Ellisville Blvd., Laurel
stmtires.com
601-428-4375
M-F: 7a-5p Sat: 8a-12p

HELP WANTED

EMPLOYMENT CLASSIFIEDS

2705 Old Bay Springs Rd.,
2BR/1BA., CH&A. Across from Ma-
son Elementary School, \$300/dep.,
\$525/mo., 601-319-2938.

COMMERCIAL

For Lease: Commercial office be-
hind Tillery Dental. For more infor-
mation, call 601.649.9459.

Washateria for sale located at 509
N Cook Avenue, behind Open Air
Market. It includes land, building &
equipment. Also, new & used parts
& machines. It is a good business for
a younger person. If interested call
601-319-2940.

HELP WANTED

Now taking applications for lube
bay technicians. Apply in person.

Spee Dee Midas, Highway 98, Hat-
tiesburg. No phone calls please.

Mr. Rooter Plumbing seeks highly
motivated individuals for office per-
sonnel and plumbers with 2 years
experience and resume. Join a
growing company, a family environ-
ment. We offer bonuses based on
performance. Company supplied
van, equipment, and uniform. Candi-
dates must have a clean driving re-
cord. This winning team maintains a
drug free environment. Call 601-671-
3444 or 251-846-2565. www.apply@mrrooter.com.

Needed Body Detail Mechanic to
help restore 1950 Chevy. Must have
experience. Call Eddie, 601-498-
8582.

Chick-fil-A Sawmill Mall is now ac-
cepting applications for all shifts now
through August 31st. Please apply

online at snagajob.com. No phone
calls please.

Tanner Construction - Immediate
Opening for Lowboy Driver. Must
have experience in heavy equip-
ment hauling (Example Trac-Hoe,
Crane). Hiring Class A and B truck
drivers. Must be able to drive a stan-
dard shift. Requires clean driving re-
cord, ability to stay out of town and
some weekend work. \$13 per hour,
safety bonuses, medical, 401k. Ideal
candidate will have experience with
end dump and belly dump trailers.
Please apply online at [tannercon-](http://tannerconstruction.net)
[struction.net](http://tannerconstruction.net) or in person at 677 Pe-
can Grove Road, Ellisville. We are
an equal opportunity employer, and
encourage women, minorities, and
people with disabilities to apply.

Now seeking part-time employees
for local commercial cleaning com-
pany. Regular hours paid weekly.
Your own transportation is neces-
sary, with references, be depend-
able and drug free. Call 601-422-
7001 for further information.

Mechanic needed for tune ups,
repairs, brakes, AC. Competative
salary plus commission. Must have
your own tool. Apply in person at

Spee Dee/Midas on Hwy 98 West,
Hattiesburg.

Looking for an experienced car
sales person to work at Ryan Mo-
tors. Contact Billy Miller at 601-270-
6507.

Onin Staffing: Jobs! Jobs! Poultry
Processing, Basic Electrical (High
School Diploma), Basic Carpentry
(High School Diploma) Jobs avail-
able immediately! Now Hiring! 2261
Hwy 15, Laurel. 601-398-9625. Onin
Staffing, Equal Opportunity Em-
ployer.

Hiring Class A CDL Drivers Tri-
State Distributors 3954 Hwy 49
Collins, MS, is now hiring Class A
regional drivers. Great pay/ben-
efits, home on weekends. Apply in
person or call for more information.
601-765-8307.

Mid-Coast Inc. We are looking to
hire OTR drivers and short runs
available. Must have CDL license
and 2 years experience. Exciting
possibilities for your future. Please
call Benny or James if interested at
601-202-3969.

Needed CDL Driver, local deliver-
ies. Apply @ Endom Trailer, Ellis-
ville, MS.

ATTORNEYS

Bankruptcy & Social Security, Tra-
cy A. Walley, 1616 West 3rd Street,
Laurel, 601-651-2186

Sam Creel has closed his Magnolia
St. office but is still offering the same
reliable legal representation. Call
601-498-8968.

MESSAGE

Massage One. \$45.00 Introductory
1 Hr. Massage session. By Robert
Lowe L.M.T.#1362. Call to book
yours today! 601-466-2199 www.MassageOne.us May your days be
stress free!

PRODUCE

Green peanuts (30 lb. bags),
Jumbo \$25, Virginia \$20. Machine
harvested, machine cleaned, un-
washed. Rogers Farm (Hwy 37N)
Collins. Call 601-765-8668 for avail-
ability/directions. Closed on Sunday.

Peanuts: Green Peanuts - (30 lb
bags) Jumbo - \$25 Virginia - \$20 Ma-
chine Harvested, Machine Cleaned,
Unwashed Rogers Farm (Hwy 37 N
Collins) Call 601-765-8668 for avail-
ability/directions. Closed on Sunday.

Peas, U-pick \$7. 5 gal. bkt., Pinkkeys,
Crowders, Dixie Lee and Zippers,
Okra \$10 bkt., Sweet Corn \$20/100.
Smith Tree Farm, 793 Sanford Rd,
exit 78, off I-59, go miles to farm.
601-582-2642, 601-699-9033.

PETS

Akc english bulldog puppies We
have 11 akc reg. English bulldog
puppies, 5 females and 6 males all
have had their first and second set
of shots please contact Carrie for
photos they are very playful 1500.00
601-508-0481 (Carrie)

Registered Labrador Retriever
puppies for sale. Both parents
trained hunters. \$800. 601-670-1446

BUSINESS OPPORTUNITIES

Pasquales is expanding and now
offers unique business opportuni-
ties. Interested in owning your own
restaurant, call Mack, 601-433-7124.

ESTATE SALE

Estate Sale Friday/Saturday Au-
gust 25 & 26th. 9 a.m. - 2:00 pm
818 Oilwell Rd; Ovett. Furniture,
kitchenware, tools, linens.

FURNITURE

Couch & loveseat, bring help to
load. \$50, Moselle. 504-338-2299.

Bring your Furniture to life! We
have a great selection of elegant,

distressed furniture in store. We also
give Free estimates for your per-
sonal furniture. No job is too large or
too small, so don't settle for plain ole'
looking furniture, transform a room.
Give us a call at 601-837-5151 tu-
day!

Mama's Mattress Max! 20 differ-
ent styles to try out. Sets start at
twin \$145, full \$165, queen \$185,
king \$295. Will split sets. Blackwell's
Furniture 5200 Hwy 84 West at Cal-
houn. 601.649.6111.

APPLIANCES

Broome appliances. We repair
and sell washers, dryers, stoves and
refrigerators with warranty, delivery.
We buy, sell, repair, and haul off
home appliances. 601-297-2472.

Whirlpool Appliances and Kohler
Sinks. Whirlpool Self Cleaning
Oven, Cabinet Mounted Microwave,
and Dishwasher. These appliances
were removed from a condo; they
are in excellent condition. \$300
for all 3 together. Kohler porcelain
kitchen sink with faucets \$75. Two
hexagon shaped Kohler porcelain
bath sinks and faucets - \$75 for both.
601-433-1928

FISH

Slade Channel Catfish Finger-
lings, Bass, Bream, Grass Carp,
Koi fathead-tuffy Minnows, Elec-
trofishing, etc. Free water analysis.
State licensed. Randall Slade 601-
796-2000 www.sladesfish.com

Brewer Fishery. Coppernose,
Shellcracker and Hybrid Bream,
Black Crappie, Channel Catfish fin-
gerlings, Bass, Fathead Minnows,
Grass Carp, and Gold Fish. State li-
censed and delivery available. www.istockponds.com 601-270-1268,
601-989-2466.

Hendry's Catfish Farm: Chan-
nel Catfish, Catfish Fingerlings, all
sizes, Grass Carp, Koi (Japanese
Goldfish), Coppernose Bream, Red
Ear Native Bream. Florida Bass,
Large Mouth Bass. Pond Manage-
ment. 601-735-9870, 601-818-3182,
Waynesboro, State Licensed Hatch-
ery, a private enterprise.

ANTIQUES

Depression glass, must sale all.
Come see! 601-651-6962.

Lindsey Wagon For Sale: Lindsey
Wagon for sale in near perfect condi-
tion. It has been kept under a shed
and the wheels have been kept off
the ground. Asking \$8000 Call 601-
480-6035 and ask for Harvey. Seri-
ous inquiries only.

WANTED TO BUY

Buy junk cars, 18-wheelers, van
trailers, buses, equipment and more.
Pay cash on spot. We pickup. Call
day, night. 601-408-0856.

I buy junk cars, buses and heavy
equipment. U Call. We Haul! We
pickup 24/7. Call 601-297-2778.

AUCTIONS

European Antique Auction. Bull-
ock Road Seminary, MS. Special
Auction of fine antique furniture, Au-
gust 26th at 4pm. Auctioneer Steve
Neeley Lic#1325 www.eaa2.com.
601-543-3629 / 601-722-0130.

MUSICAL

Lynn Evans Piano Service: Regis-
tered craftsman with Piano Techni-
cians Guild. Used pianos for sale.
B.M.E. USM. 601-729-2823

Mandolin F-style, solid spruce top,
solid maple body. \$400. 601-428-
1401.

BUILDINGS

Best Rent-to-Own deal around!
Call us for all your building needs.
Chatham Enterprises 601-727-4951

Carports and Buildings: Financ-
ing Available! 22Wx26Lx9T- \$5,050
, 24Wx31Lx9T- \$6,010 Fully En-
closed with two 9X8 Roll-up Doors.
Price includes installation. We also
offer storage buildings and barns.
Call John @ 601-323-0464, 303
Hwy 11 S, Ellisville (between Piz-
za Hut & JCJC)

NOW HIRING POSITIONS AVAILABLE:

- **GENERAL MANUFACTURING** \$8-\$12/hr
- **MACHINE OPERATORS** \$12.25/hr
- **ELECTRICIANS** \$12-\$16/hr
- **CDL DRIVERS** \$10-\$15/hr
- **GENERAL LABOR** \$8-\$10/hr
- **WELDERS** \$13.25/hr
- **ACCOUNTING CLERK** BOE
- **ADMINISTRATIVE** BOE
- **BOOKKEEPER** BOE

Call 601-264-9060 Today
OR APPLY ONLINE AT www.expresspros.com



Express
EMPLOYMENT PROFESSIONALS

WHITESTONE TRANSPORTATION



NOW HIRING DRIVERS

- OTR/Regional Drivers, Short and Long Haul
 - Dedicated Lanes, Reefer and Flatbed
 - Sign-on Bonuses
 - Bonuses for Performance, Safety Teams & Specialty Hauls
 - Blue Cross and Blue Shield Insurance
- Moselle 800-408-5542**
WHITESTONETRANS.COM

Bedford

CARE CENTER OF HATTIESBURG

Immediate Full-Time positions available:

- **12 HOUR SHIFT Registered Nurses**
- **Licensed Practical Nurses positions**
available with every other weekend off
- **MAINTENANCE ASSISTANT**

Apply at Bedford Care Center of Hattiesburg
#10 Medical Boulevard • Hattiesburg

601-264-3709

Monday-Friday 8:00 a.m - 4:30 p.m

Equal Opportunity Employer

NOW HIRING

- **CNA 7-3, 3-11, AND 11-7 SHIFTS**
(SIGN ON BONUS FOR CNA'S)
- **PRN LPN'S**

Hillcrest
Nursing
Center

1401 1ST AVENUE N. EAST • MAGEE
APPLY IN PERSON • NO PHONE CALLS PLEASE

Equal Opportunity Employer



DRIVERS, are you tired of having to jump through hoops, such as gimmicky
revenue and retention bonuses? Do you want to earn what you are worth?

At **Baggett Transportation**, we pay you what you are worth, without the hassle!

We offer the best benefits in town, which include

- **Health Insurance** • **Company Matching 401-K Plan** • **Paid Vacation**



Baggett
TRANSPORTATION



Pay starting at
42¢
per mile!

Now leasing
Owner Operators!
Flats or Vans.
Call for
details.

601-426-3462 or 855-435-5021

Call for more information or apply in person at: 2815 Industrial Blvd. • Laurel, MS

TANNER CONSTRUCTION IMMEDIATE OPENING FOR LOWBOY DRIVER.

Must have experience in heavy equipment hauling.
(Example Track-Hoe, Crane)

Hiring Class A and B truck drivers.
Must be able to drive a standard shift.

- Requires a clean driving record,
- Ability to stay out of town • Some weekend work

• \$14 - \$15 per hour • Medical • 401K

Ideal candidate will have experience with
end dump and belly dump trailers.

Please apply Online at
Tannerconstruction.net
or in person at:
677 Pecan Grove Rd, Ellisville


We are an Equal Opportunity Employer, and encourage women,
minorities, and people with disabilities to apply.

T. THORNSBERRY SERVICES LLC

Fencing

Automated Security Gates

Portable Buildings



TONY THORNSBERRY - 601-577-0927

PORTABLE BUILDINGS

Payne Portable Buidlings. 12 months Same as Cash or Rent to Own Financing Available wac. Of- fice located at 342 Macey Rd., Hwy 84W, Laurel. 601-426-9484 or 601-319-3555.

30x30 Tubing Building: Includes 2 Roll-Up Doors, 1 Walk-Through Door, Insulation, Cement Slab, and Installation. \$10,995. Call Chatham Enterprises 601-727-4951.

VACATION

Gulf Shores Condos, \$125/nights. Houses, \$250/nights. Weekly specials available. Connie Daughdrill, 1-251-510-3090.

GARAGE SALES

Liquidation sale of storage build- ing, 1313 West 6th St., next to Old Shipley's Donut. Fri. & Sat., Aug. 18th & 19th, 25th & 26th, 8am until. Antique cigarette machine, baseball equipment, mattresses, hardware, furniture, TV's, books, China cabinet.

Huge Garage Sale, Laurel fair grounds. Agricultural Building, Satur- day, August 26, 7am-3pm.

AUTO PARTS

Small block Chevy rebuilt short blocks for sale. New HEI HP distribu- tors, we build transmissions, we re- build carburetors. 601-425-4852.

AUTOS - CARS

2013 Chrysler 300-Series. \$17,990. J&S AutoPlex. 601-342-2293. See more at Cars601.com.

Affordable Auto Insurance, espe- cially if you don't have any now. Call 601-765-4060

2011 Crown Victorian, good con- dition, good tires, good cold A/C. \$3950 obo. 601-422-3003.

2016 Nissan Altima, red w/grey interior, extra clean, \$40,800 miles. \$14,900. Taylorsville, paulgarnermo- tors.net, 601-785-4924.

2014 Toyota Corolla. \$16,990. J&S AutoPlex. 601-342-2293. See more at Cars601.com.

TE INVITO A MI IGLESIA

SERVICIOS

SABADOS: 6:00 PM

DOMINGOS: 10:00 AM



PASTORES

RAFAEL Y CECILIA

ANDERSON

Iglesia El Faro

544 East First Street • LAUREL, MS • (601)335-1453

2014 Buick Enclave, 45000 miles, white pearl, excellent condition- \$25,000.00 o.b.o. Call 601-606-2147 or 601-441-2664.

2010 Ford Mustang \$18,900 South- eastern Auto Brokers, (844) 312-8785. See more at Cars601.com

2015 Chrysler 200. \$15,990 J&S AutoPlex. 601-342-2293. See more at Cars601.com.

2000 Camaro Z28, 80k miles, new tires. Red with leather interior. \$6500 obo. 601-428-0250.

2011 Infiniti M37. \$15,900 South- eastern Auto Brokers, toll free (844) 312-8785. See more at Cars601. com

2016 Hyundai Santa Fe Sport. \$19,990. J&S AutoPlex. 601-342-2293. See more at Cars601.com.

AUTOS - CLASSIC

1977 Jeep Wrangler CJ7 hardtop 4x4 v8, tow bar and winch. standard transmission. phone 601.428.2205.

AUTOS - SUVs

2014 Ford Escape. \$18,490. J&S AutoPlex. 601-342-2293. See more at Cars601.com.

2013 Ford Edge. \$15,900. South- eastern Auto Brokers, (844) 312-8785. See more at Cars601.com

2005 Dodge Grand Caravan. Seats 7. stow and go seating. AM.FM,CD player. DVD player. \$3000. Call and leave a message. 601-764-7253

2011 Cadillac SRX. \$16,599. South- eastern Auto Brokers, (844) 312-8785. See more at Cars601.com

AUTOS - TRUCKS

2012 Ford f-150 2wd , 104,000 miles, like new- \$22,000.00 o.b.o. Call 601-606-2147 or 601-441-2664.



HOLLY'S PARTY JUMPS

Jumps • Combos • Slides • Wetslides • Slip-N-Slides

601-763-8851

WWW.HOLLYSPARTYJUMPS.COM

2006 Ford f150 xlt E/cab, 122,000 miles, clean vehicle, runs & drives good. \$10,900. Taylorsville, paulgar- nermotors.net, 601-785-4924.

For sale 2001 GMC Sierra SL pick- up, 4.3 6-cyl engine, auto, air (needs Freon) \$2500/obo. 601-422-9918.

2007 Dodge Ram 250, 74,000 miles, lwb, cold air, automatic, white & grey interior. Runs perfect. \$8950. Taylorsville, paulgarnermotors.net, 601-785-4924.

1993 International 4700 with 26ft. box, 6 speed standard, motor runs good, transmission needs repair, selling as/is, Ron Buckley. 601-670-5806. \$3250.

2008 Ford F-150 crew cab pick-up, new tires, 80k miles, candy apple red. \$13,000. Ph. 601-428-0250.

2008 Chevrolet Silverado 1500. \$16,900. Southeastern Auto Bro- kers, toll free (844) 312-8785. See more at Cars601.com

ATVS

Honda trx 400 2000 Honda TRX400 4 Wheel Drive for sale. Excellent Condition \$2200.00 Call Chris 601-283-0649.

CARPORTS

Carports and Buildings: Financ- ing Available! 22Wx26Lx9T- \$5,050 , 24Wx31Lx9T- \$6,010 Fully En- closed with two 9X8 Roll-up Doors. Price includes installation. We also offer storage buildings and barns. Call John @ 601-323-0464, 303 Hwy 11 S, Ellisville (between Piz- za Hut & JCJC)





JOIN US FOR SEAFOOD NIGHT

THURSDAY, FRIDAY & SATURDAY 4-9 P.M.

Thursday Night

Turkey Necks

Friday Night

All You Can Eat Ribs

Saturday Night

All You Can Eat Steak

5534 HWY 11 N • LAUREL

601-342-2582

CASH FOR LABOR-DAY HOLIDAY!



BAY SPRINGS FINANCE, LLC

9 J Bay Avenue • Bay Springs

CALL OR COME BY AND SEE TERESE

601-764-2251

Located next to Big O's Seafood in the Bay Center Shopping Center

Woolwine Proudly Announces American Makes!

At One location!

0% on most models! FORD-LINCOLN-CHRYSLER-DODGE-JEEP-RAM

2017 F-150 XLT

Your Choice!

0% APR-60 Months

or

\$10,000 OFF MSRP



2017 RAM BIG HORN CREW CAB



\$11,000 In Total Savings

THIS WEEK

265

Largest selection in MS



Pre-Owned & Program Vehicles!

(Partial listing)

See them all at

www.woolwineford.com

U8034Y	1997 Ford F-350	\$7,465
U9536X	2011 Ford Taurus	\$7,965
U0551	2005 Ford F-150	\$8,465
U3603X	2007 Chevrolet Silverado 1500	\$8,465
U6300	2003 Lexus RX 300	\$8,965
U5917	2010 Lincoln MKZ	\$9,995
U8500	2008 Ford F-150	\$10,965
U9203X	2009 Mercury Grand Marquis	\$10,990
U8678	2003 Ford Econoline	\$12,990
U7167X	2011 Chevrolet Equinox	\$12,990
WA1218	2014 Toyota Corolla	\$13,490
WA6814	2013 Chevrolet Captiva Sport	\$13,490
U9541	2010 Nissan Pathfinder	\$15,555
UA2005	2012 Chevrolet Equinox	\$15,989
U1112	2013 Ford Fusion	\$15,990
UA3550	2016 Chevrolet Malibu Limited	\$16,990
U2551	2013 Ford Escape	\$17,465
U7108	2010 Toyota Highlander	\$17,490
U2754	2012 Nissan Murano	\$19,989
U2723X	2008 Chevrolet Silverado 1500	\$19,990
UA6918	2009 Chevrolet Tahoe	\$19,990

F5628	2017 Ford Escape	\$21,989
U1310X	2007 Toyota Tundra	\$21,990
U7649	2016 Buick LaCrosse	\$21,990
U8575X	2015 Toyota Avalon	\$22,990
F9452	2016 Ford Edge	\$28,990
F5381X	2015 Lincoln MKC	\$29,333
F2494	2014 Ford Flex	\$29,455
F0108	2015 Chevrolet Colorado	\$29,859
F7093	2015 Ford F-150	\$32,990
UA2519	2017 Ford F-150	\$32,990
UA1020	2015 Ford F-150	\$32,990
U4668	2017 Lincoln MKC	\$33,465
UA1056	2017 Ford Edge	\$33,990
F7219	2017 Lincoln MKC	\$34,990
F6694	2017 Lincoln MKC	\$34,990
F9180	2014 Ford F-150	\$35,990
F7185	2015 Ford F-150	\$36,987
F3294	2016 Ford Transit Wagon	\$36,990
F5377	2017 Ford Transit Wagon	\$36,990
U3064	2014 Jeep Wrangler Unlimited	\$36,995
F6873	2015 Ford F-150	\$37,659

U9100	2015 Chevrolet Tahoe	\$37,965
U3521	2015 Toyota 4Runner	\$37,990
F6757	2017 Ford Explorer	\$37,990
F3652	2017 Ford Explorer	\$37,990
UA1717	2017 Ford Explorer	\$37,990
F7741	2015 Ford F-150	\$37,997
U1390Y	2014 Ram 2500	\$40,995
F7548X	2016 Ford Expedition	\$43,833
F3203X	2016 Lincoln MKX	\$43,990
F3479	2016 Lincoln MKX	\$43,990
F4219	2016 Ford Expedition	\$44,498
F1643	2016 Lincoln MKX	\$44,990
F9323	2017 Ford F-150	\$48,990
F0379	2017 Ford Super Duty F-250	\$48,990
U0064Y	2016 Lincoln Navigator L	\$48,990
F8797	2016 Ford Super Duty F-550	\$54,990
U5191	2016 GMC Yukon	\$57,995
U5215	2017 Ford Super Duty F-250	\$59,990
UA1752	2016 Ford Super Duty F-350	\$59,990
F5976X	2017 Ford Super Duty F-350	\$65,990
UC1203	2017 Ford Super Duty F-250	\$68,995

12 AND 15 PASSENGER VANS IN STOCK

WOOLWINE



3080 HWY49 Collins, MS



Daniel

Richard

John

"Where we'll treat you, like we want to be treated... Thank you!"

www.woolwineford.com

www.woolwinecdjr.com

Woolwine Ford 601-921-4673

Woolwine CDJR 601-765-2066



J&S AUTOPLEX

4029 HWY 15N • LAUREL • 601-342-2123



jandsautoplex.com



FREE OIL CHANGES FOR LIFE!

 25K MILES Stk:A0064 2016 Hyundai Elantra \$14,990	 35K MILES Stk:A0007 2015 Chevrolet Impala LTZ \$19,990	 59K MILES Stk:A0060 2013 Chrysler 300C \$17,990	 26K MILES Stk:A0071 2014 Kia Cadenza Premium \$18,990	 38K MILES Stk:A0010 2013 Toyota Avalon XLE \$19,990	 44K MILES Stk:A0099 2014 Nissan Maxima \$17,990
 Stk:A0123 2013 GMC Sierra 1500 SLE Crew Cab \$26,990	 16K MILES Stk:A0091 2016 Ford F-150 \$36,990	 32K MILES Stk:A0151 2011 Toyota Tundra 2WD SR5 Crew Cab \$27,990	 51K MILES Stk:A0049 2014 Jeep Wrangler Unlimited Sahara \$30,990	 19K MILES Stk:A0118 2016 Ford F-150 XLT Crew Cab 4WD \$39,990	 45K MILES Stk:A0155 2013 Jeep Wrangler Sport \$22,990
 Stk:A0152A 2007 Ford Expedition EL Limited \$10,990	 46K MILES Stk:A0111 2013 Nissan Murano \$23,990	 62K MILES Stk:A0133 2013 Chevrolet Tahoe LTZ \$37,990	 88K MILES Stk:A0106A 2009 GMC Yukon XL SLT 4WD-2nd Row Bucket Seating \$22,990	 25K MILES Stk:A0121 2016 Hyundai Tucson SE \$19,990	 Stk:A0154 1994 Jeep Wrangler S \$11,990

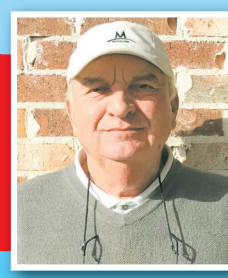
MANAGER'S SPECIAL

2016 BMW 4 Series 428i
\$32,990

2 AVAILABLE



Walter



Larry



Eric



Mike

*Plus Tax, Title, and Feed, W.A.C. See Dealer for Details. Photos for Illustration Purposes Only. Not Responsible for Typographical Errors.



Mississippi Ag Arkansas Ag



JOHN DEERE



- We make Hydraulic Hoses
- John Deere Agriculture and Hay Parts
- Net Wrap and Hay Twine

www.AgUp.com



5065E & 5075E Series

SAVE UP TO \$7,000 OFF

**Purchase a 5E Series Tractor
starting as low as \$13,995!**

+0% Financing for 60 Months

3E PACKAGE DEALS!

- STARTING AT \$21,895 • 0% FINANCING!!
- ALL OF THIS CAN BE YOURS TODAY!

- John Deere 3E Series Tractor
- John Deere D160 Loader
- Frontier RC2060 Lift-Type Rotary Cutter
- Frontier BB 2060 Standard Duty Box Blade
- Caliber Trailers 7x20



SOME RESTRICTIONS APPLY. SEE DEALER FOR DETAILS