

FLAGPOLES!
24' LIBERTY DELUXE DOUBLE FLYER
 Reg. \$299 **Now... \$199**
American Flagpole Co.
601-649-0748
 God Bless America

IMPACT

"Blessed are those who hunger and thirst for righteousness, for they shall be filled."
 ~ Matthew 5:6

Postal Customer Local
 PRSRT STD
 US Postage Paid
 IMPACT
 ECRWSS

POLE BARN SPECIAL
HUGE SAVINGS!
40X60X12 POLE BARN KIT
 STARTING AT **\$5,978** PLUS TAX
CHATHAM ENTERPRISES, INC.
601-727-4951
4631 MS-18, ROSE HILL
www.ChathamEnterprisesInc.com

Vietnam veterans honored in Jones County

By Linda Cranford
 lindainpact@gmail.com

Over 75 Vietnam veterans were honored at the Magnolia Center Saturday morning, August, 26, during a program sponsored by the Jones County Board of Supervisors.

Program organizer Chataura Sanders, Jones County Board of Supervisors chief communications officer, said the idea for the program came about when she learned of a keepsake book for Vietnam veterans being created by ladies with the Veteran Services. The keepsake book contains the names of all Vietnam veterans in Mississippi. With the help of Sally Cart, volunteer manager at Deaconess Hospice LHC Group, special certificates were made for every Vietnam Veteran in Jones County and handed out Saturday during the program along with an American Flag lapel pin.

"I am overwhelmed by the number of people who came out today," said Sanders. "With this being the first year, I wasn't sure." She added that she is thankful for the support she's received from the community



Approximately 78 Vietnam veterans from Jones County were honored at the program.
 Photo/Linda Cranford

and the Board of Supervisors. The invocation was given by Sheriff Alex Hodge followed by the presentation of colors by the Laurel High School Jr. ROTC Color Guard. The national anthem was sung by the Laurel High School concert choir

under the direction of Katrina Cox. Jones County Board of Supervisors President Jerome Wyatt presented a proclamation, dated August 23, declaring all veterans be shown honor and respect in Jones County. Keynote speaker for the program was Dr. Scott Carson, president of Southeastern Baptist College, Colonel, U.S. Army, retired chaplain.

"America remains the beacon of hope to all nations of the earth," said Carson. "And, in my opinion, though its shining light of freedom has dimmed, it is not extinguished."

"You did your duty," exclaimed Carson. "You did what others could not, or would not do. You are a special breed. The Bible

See VETS, page 2

Nationwide
 is on your side

Trey Cross
 Agency Owner
 The Cross Agency
 Nationwide Insurance

2772 HWY 15N • Bay Springs, MS • 601-764-4171
 615 N. 13th Ave • Laurel • 601-649-0808
 crosst6@nationwide.com

FAITH N' FITNESS
FITNESS FOR WOMEN
 GYM • FITNESS • CLASSES • SUPERVISED PLAYROOM • PERSONAL TRAINING
 PRE-SIGN UP September 4th-8th
 Get ONE FREE MONTH PERSONAL TRAINING
\$35 A MONTH SINGLES • \$25 A MONTH BUDDY • \$65 FAMILY PLAN
\$5 DAY RATE
 4127 HWY 15 N Laurel, MS 39440 • 601-319-1703

BEST KEPT SECRET IN JONES COUNTY!
SOUTHERN PRECISION ARMS
 • GUNS • AMMO
 • ACCESSORIES
 • GUN REPAIR
 MONDAY - FRIDAY • 5:30 P.M. - 9 P.M. / SATURDAY 2 P.M. - 9 P.M.
 1766 MILL CREEK RD. • LAUREL **601-649-6967**

Sunbelt Fans & Lighting, LLC
 201 N. 16th Ave - LAUREL 601.425.5177

SAN MIGUEL 4-LIGHT CHANDELIER 6073-4-39 **\$250⁹⁹**
 VINTAGE COPPER or PERSIAN WHITE

NEW SELECTION of 8'x10' RUGS as low as **\$159.99**

HUNTER 52" CEILING FAN w/ 3-LIGHT KIT **\$89⁹⁹**
 BRONZE or BRUSHED NICKEL
 HATTIESBURG-MADISON-MERIDIAN-BATESVILLE-PICAYUNE-FLOWOOD-GULFPORT-BATON ROUGE-LAFAYETTE
 www.sunbeltlighting.net

LABOR DAY SALE

\$399
 Queen Poster Bed

\$449
 Double Reclining Sofa or Loveseat

King Pillow Top Mattress \$299

Oversized Recliner \$299

Rugs \$49

SOUTHERN FURNITURE AND MATTRESS
 2909 Wheeler Drive • Laurel, MS 601-649-0733
 Next to Bob Palmer's Chancellor Motor Group
 VISIT US ONLINE AT SOUTHERNFURNITURE.ORG

NEW LOCATION!
Epic Styles
 Salon & Gifts
 Jewelry • Make Up • Candles • Purses • Accessories
 Walk-ins Welcome! 449 N. 6th Ave. • Laurel
 601.651.2526 Katie Jefcoat - Owner

CUSTOM HOME BUILDING & REMODELING

KENWOOD HOME SERVICES
 601.319.3113
 Licensed & Insured

We provide the highest quality home services.
 • Complete Maintenance
 • References Available

IMPACT

#1 in Advertising

Ronnie Buckley
Publisher

Kevin Williamson
Manager

Jerry Clark
Circulation Supervisor

Betty Busby
Laurel Sales Representative

Kim Wilbanks
Laurel Sales Representative

Trish Irwin
Laurel Graphic Artist

Jennifer Clark
Graphic Production Manager

Terica Roberson
Graphic Artist

Candice Pittman
Graphic Artist

Russ Farris
Graphic Artist

Sherry Hearn
Administrative Assistant

Linda Cranford
Writer/Photographer

WHILE THE IMPACT makes every effort to verify the offerings made in these ads, we cannot guarantee the integrity of every advertiser. We strongly recommend that readers investigate the companies involved before sending them any money.

Classified and ROP Ad Deadline

Sunday Edition -
Wednesday at 12:00 Noon

Wednesday Edition -
Thursday at 3:00

IMPACT

1010 N. 16th Ave
Laurel, MS 39441

Ph. 601.649.1129

Fax: 601.649.0424

Email:
admin@laurelimpact.com

VISA

MasterCard

DISCOVER

AMERICAN EXPRESS

Circulation Audited By

CIRCULATION
VERIFICATION
COUNCIL

IFPA

ED A

of Jones County

VETS, continued from page 1

tells us that we should ‘give honor to whom honor is due.’ Vietnam veterans, it is long past due to give you the honor that is due to you. Today, we acknowledge and recognize your sacrifice and your service to the citizens of the United States.”

Carson talked about the poor reception most Vietnam veterans got when they first returned home from the conflict. “When you returned, you returned to a nation torn and broken and who treated you with disrespect. They were wrong! I stand here today and say ‘thank you, Vietnam veterans, for enduring that reprehensible treat-

Program organizer Chataura Sanders, Jones County Board of Supervisors chief communications officer, welcomed everyone. Photo/Linda Cranford

Danielle Ashley, Jones County Board of Supervisors chief administrative officer, presented Vietnam Veteran Kevin West with a certificate for serving in the U.S. Air Force during the Vietnam War. Photo/Linda Cranford

ment,” exclaimed Carson.

He added, “The Bible says ‘to endure hardness as a good soldier...’ Our Vietnam Veterans have done this. It was not right, it was appalling, but it has resulted in an improved treatment of all veterans.”

Stewart recognized for achievement at council meeting

By Linda Cranford
lindaimpact@gmail.com

During the Laurel City Council Meeting, Tuesday, August 22, Mayor Johnny Magee presented Lauren Stewart, City Assistant Accountant, with a plaque for achieving the prestigious designation of Certified Municipal Clerk, awarded by the International Institute of Municipal Clerks.

In other business, the Council voted on a resolution to enter into a contract with Schneider Electric to make city facilities more energy efficient by the replacement of equipment such as air conditioners and light fixtures not to exceed \$3,000,000. “This will save the city thousands of dollars,” exclaimed Council President George Carmichael.

The Council also voted to allow Howard Industries tax exemption status on Ad Valorem taxes of approximately 9 million dollars of equipment. Ad Valorem tax exemption was also extended to Richard Plastics Co.

Mayor Johnny Magee read the information on the plaque before presenting it to Lauren Stewart, City Assistant Accountant. Photo/Linda Cranford

Need Cash for you Labor Day Celebration?

WE HAVE IT! COME SEE US TODAY!

LAUREL LOANS, INC.

CALL TONYA, KRISTY OR HILIARY TODAY!

for EMERGENCY CASH call 601-649-3106

744 West 5th • Laurel • 601-649-7121

PINE BELT
CASHING
SERVICE

BAB1874

LOW COST DENTURES SINCE 1978

DENTAL SERVICES OF SOUTH MS. P.A.

GENERAL DENTISTS

2019 Hardy Street • Hattiesburg, MS

• Dentures • Reline

• Partial • Repair

Call Toll Free

Within 55 Mile Radius

(601) 545-1905

(877) 545-1905

LISTING OF THESE PREVIOUSLY
MENTIONED AREAS OF PRACTICE DOES NOT INDICATE
ANY CERTIFICATION OF EXPERTISE THEREIN.

BX Series

B Series

M Series

L Series

ORANGE
OPPORTUNITY
SALES EVENT

Ask about
Finance Promotional
Low Rate
See dealer for details.

6
YEAR

LIMITED POWERTRAIN
WARRANTY

On Select New Kubota
BX, B, L and MX Tractors**

MCNEIL TRACTOR & EQUIPMENT CO. INC

2635 HWY 15 NORTH • LAUREL • 601-425-3158

The Pine Belt's Tractor and Equipment Dealer since 1952

www.kubota.com

*Kubota's 2014 Limited Warranty applies. See your local Kubota dealership for details.
**For complete warranty, safety and product information, consult your local Kubota dealer and the product operator's manual. Power (HP/KW) and other specifications are based on various standards or recommended practices. Optional equipment may be shown.
© Kubota Tractor Corporation, 2016

KubotaUSA.com

© Kubota Tractor Corporation, 2017

at Homecoming

First Baptist Church
of Pecan Grove in Ellisville, MS.

SEPTEMBER 24, 2017

Song service begins at 10AM

guest speaker

Judge Charles Pickering

Dinner on the grounds to follow.

Please come and join us for this special day!

special music

XTREME FITNESS

& Tanning 24/7

BACK TO SCHOOL SPECIAL

Now until the end of September, NO
joining fee and first month free with a
12 month contract.

OFFICE OPEN MONDAY-FRIDAY 9AM-5PM

35 South 3rd Street, Bay Springs

601-764-3481

Reception held for Sheriff Alex Hodge

By Linda Cranford
lindaimpact@gmail.com

Jones County Sheriff Alex Hodge, who was recently elected to the National Sheriffs' Association's Board of Directors, was honored with a reception Tuesday night, August 22, in the Magnolia Room of Magnolia State Bank in historic downtown Laurel.

Out of over 3,000 sheriffs in the United States, Sheriff Hodge was elected to serve a 3-year term on the 22-member Board. Hodge was originally appointed to the position in March 2017 by now past NSA president Greg Champagne from St. Charles Parish, Louisiana.

The National Sheriffs' Association is a non-profit organization dedicated to raising the level of professionalism among those in the law enforcement field. NSA is a key player in shaping national policy on critical criminal justice and homeland security issues important to the nation's sheriffs, deputies and police in the halls of Congress, US Courts and at the White House.

"It's not about me, it's about bringing Jones County and Mississippi to the table where major issues facing the nation are being discussed," stated Hodge in addressing those attending the reception. As a member of the NSA Board of Directors, Hodge will be able to represent Jones County and Mississippi on



L-R, Heather Brown, Magnolia State Bank, Sheriff Alex Hodge, and Sgt. Jessica Welborn. Photo/Linda Cranford

a national level with communications directly to Washington.

Hodge is only the second Mississippi Sheriff to be elected to the NSA Board of Directors. Tommy Ferrell of Adams County was the first. "Tommy went on to be elected President in 2001," said Hodge.

Butler Dental

Across from Court House, Butler, Alabama

Julie Utsey, D.M.D.P.C.
General Dentistry

205-459-2700 1-888-851-8512
Tuesday thru Friday 8 a.m. - 5 p.m.

- ONE DAY DENTURES
- PARTIALS AND EXTRACTIONS
- FREE CONSULTATIONS

	Single	Set
Set Standard Dentures.....	\$200.00	\$300.00
Set Deluxe Dentures.....	\$350.00	\$600.00
*Reline Included: Savings of \$130.00 per unit		
Set Custom Deluxe Dentures	\$550.00	\$1,000.00
*Reline Included: Savings of \$130.00 per unit		
Cast Metal Partial - \$625.00	• Acrylic Partial - \$200.00	
• Extractions - \$100.00	• X-Rays Included	
• Simple Extraction - \$70.00	• Surgical - \$100.00	

77407

REED'S METALS, INC.
601-823-6516
• Metal Roofing • Metal Buildings • Pole Barns
Buy direct from the manufacturer and SAVE!
www.reedsmetals.com



LV1416

JOIN US FOR SEAFOOD NIGHT
THURSDAY, FRIDAY & SATURDAY 4-9 P.M.

Thursday Night
Turkey Necks

Friday Night
All You Can Eat Ribs

Saturday Night
All You Can Eat Steak

5534 HWY 11 N • LAUREL **601-342-2582**



3 Day Weekends are made for Chasing Fun

Let us get your vehicle ready for the Back to School rush!

FULL SYNTHETIC OIL CHANGE
UP TO 5 QTS **\$39⁹⁵**
Most vehicles, excludes diesels
WITH COUPON Expires 9/30/17
CAN NOT BE COMBINED WITH OTHER OFFERS

4 WHEEL ALIGNMENT
Most Vehicles **\$49⁹⁵**
WITH COUPON Expires 9/30/17
CAN NOT BE COMBINED WITH OTHER OFFERS

OIL CHANGE SPECIAL
UP TO 5 QTS **\$24⁹⁵**
Most vehicles, excludes diesels
WITH COUPON Expires 9/30/17
CAN NOT BE COMBINED WITH OTHER OFFERS

BRAKE JOB SPECIAL
WITH PREMIUM PADS
Most Vehicles **\$119⁹⁵**
WITH COUPON Expires 9/30/17
CAN NOT BE COMBINED WITH OTHER OFFERS

Southern Tire Mart
Best in Class Service on America's Favorite Brands

2926 Ellisville Blvd., Laurel
stmtires.com
601-428-4375
M-F: 7a-5p Sat: 8a-12p

BA1807

YOUR HOLIDAY COOKOUT HEADQUARTERS

WHATEVER YOUR STYLE, WE'VE GOT YOU COVERED!

✓ CHARCOAL GRILLS ✓ GAS GRILLS ✓ PELLET GRILLS ✓ SMOKERS ✓ FISH COOKERS ✓ ACCESSORIES



Alexander's
BAY SPRINGS 601-764-2161
ELLISVILLE 601-477-3312
SELECTION • SERVICE • VALUE



HUNTER'S NIGHT OUT

• FOOD • DOOR PRIZES • HOT DEALS

SEMINARY FARM CENTER
101 North Beech Street • Seminary, MS
601.722.4163

AUG. 24th 5-7PM

IT'S PARTY TIME!!!

PARTY SUPPLIES

BOUNCE HOUSE RENTALS

601-340-3538

NORTH LAUREL SHOPPING CENTER • MON-SAT 9AM-6PM

Loblolly FESTIVAL

Downtown Laurel

We are now accepting
vendor applications at -
www.laurelmainstreet.com

The festival date is
October 7, 2017

BACK TO SCHOOL SPECIALS



2010 Nissan Altima
Only \$5,995



2015 Ford Focus
\$14,995



2017 Chevrolet Traverse
\$26,995



2016 Jeep Grand Cherokee
\$30,995



2016 Toyota Corolla
\$13,995



2013 Kia Optima
\$9,995

Full Service Garage!

Full Service Body Shop!

Coolley Motor Company

Since 1928

Hwy 45 North • Waynesboro, MS

601-735-4323 or 1-800-748-8838

The IMPACT will have early deadlines for classified ad submissions the week of August 28 thru September 1 due to the Labor Day holiday. To publish your classified in the Weekend edition of September 3, we would need your ad by Tuesday August 29 at 11:00 a.m. To publish your classified in the Wednesday edition, September 6, we would need your ad by 11:00 a.m. on Wednesday, August 30.

September 1

The Ellisville Masonic Lodge will have delicious "pulled pork" bar-b-que plates for sale for Labor Day on Friday, September 1 at the Lodge in Ellisville. \$10 per plate - pulled pork, slaw and beans. Bread and cookie included. As always, limited number available, so call no to reserve yours. 601-433-5229 or 601-477-9608. If no answer, leave message with call back number.

Pleasant Grove Moss Church, Laurel, will be having their 2017 Women's Conference at Harvest Ministries Camp, Carson, MS, September 1-3. The cost for the conference is: \$35 for singles, \$70 for married couples, \$125 mother & up to 4 children. For more information call Diane Carmichael at 601-729-2811.

September 2

Rummage sale at Grace Baptist Church on Saturday, Sept. 2 and Sept. 9 from 8:00 a.m. until 3:00 p.m. All kinds of things. We are located at 62 Big Richardson Road, Laurel, off 84 East past Bogue Homa. We will have signs. For more information, call 601-649-3993. Please come and check us out!

September 3

New Jerusalem Full Gospel Church and our mission department invites you to our upcoming "Friends and Family Day" on Sunday, September 3. Worship service begins at 10:00 a.m. in the church sanctuary. We will depart for picnic immediately after morning worship at KC Bottoms Park, adjacent to Wayne Farms.

The Phillips/Moseley reunion will be held on September 3 from 10:00 a.m. until, at Bay Springs City Hall. Please bring a covered dish and enjoy the fun and fellowship.

September 9

The 11th annual Jones County Junior College Bobcat Hall of Fame 5K Run and 1-Mile Fun Run will be held at 8 a.m. on September 9. The race will begin and end at Bobcat Stadium/Sim Cooley Field. Registration begins at 7 a.m. For the 5K Run, pre-registration fee is \$20 and \$15 for students and Pine Belt Pacers members. Day of the race fee is \$25. Fun Run registration fee is \$10. To pre-register, go to www.jcathletics.com and click on "For Fans" and then click on "2017 Hall of Fame 5K." Fill out the form, enclose check and mail to Jones County FCA, P.O. Box 8011, 900 South Court St., Ellisville, MS 39437 before Aug. 30. T-shirts will be given to all pre-registered participants. Registration forms are also available at www.pinebeltpacers.org. For more information, call Kelvin Smith a 601-575-0524. All proceeds from the run go to the Jones County chapter of the Fellowship of Christian Athletes.

Ribbon cutting for Mississippi Home Care of Laurel



Mississippi Home Care of Laurel held their ribbon-cutting on August 17. Their office is located at 3125 Highway 15 North, across from Tractor Supply. Pictured above are Amy Keene, Lea Green, Dr. Scott Carson, Mayor Johnny Magee, Katie Slade, Kimberly Minter, Amy Loper, Paula Cochran, Jennifer Bergeron, Memree Stevison and Kristian Gutierrez. Photo/submitted

Norman's Food Outlet

#209 Waynesboro Food Outlet

PRICES EFFECTIVE AUGUST 30, - SEPTEMBER 5, 2017

12 OZ. PACK
BRYAN WIENERS
98¢ EA.
Plus 10% at Checkout

USDA FRESH
BABY BACK RIBS
\$1.48 LB.
Plus 10% at Checkout

USDA FRESH CUT
TOP SIRLOIN STEAK
\$3.48 LB.
Plus 10% at Checkout

17.5-18 OZ. KRAFT ORIGINAL, HONEYOR HICKORY SMOKE
BBQ SAUCE
96¢ EA.
Plus 10% at Checkout

3 LB. BAG US #1
MEDIUM YELLOW ONIONS
\$1.18 EA.
Plus 10% at Checkout

12 OZ. PACK REG. OR THICK SLICED
BRYAN BOLOGNA
98¢ EA.
Plus 10% at Checkout

WE'VE APPRECIATED YOUR BUSINESS OVER THE LAST 9 YEARS AND WE WILL CONTINUE TO STRIVE IN THE FUTURE TO HELP YOUR FAMILY BY LOWERING YOUR GROCERY BILL

GREAT PRICES • GREAT TASTE • GREAT SAVINGS

OPEN 7 DAYS A WEEK
MONDAY - SATURDAY 7 A.M. - 7:30 P.M. / SUNDAY 8 A.M. - 6 P.M.

LOCATED IN THE AZALEA MART SHOPPING CENTER
WAYNESBORO, MS

601-735-4344

**ADVERTISING IS NOT
AN EXPENSE . . .
ADVERTISING IS
AN INVESTMENT.**

**Call
649-1129**

IMPACT 

**Cash for Labor Day!
Come See Us!**

MONEY LENDERS

**134 LEONTYNE PRICE BLVD.
LAUREL 601-426-7600**

Week 3 Predictions

By James Pugh

NEJ at Collins
Both teams enter Week 3 winless.
Collins may very well be the best winless team in the Pinebelt. After a three-point loss to Seminary (9-6) in Week 1, the Tigers went toe-to-toe, blow-to-blow with Jefferson Davis County. For those who may not know, Jefferson Davis County is pretty much Bassfield 2.0 after the school consolidated with Prentiss. There are those who don't believe in moral victories, but a 22-20 loss to a team associated with the former 2A powerhouse is about as close to a moral victory as one can get.

Northeast Jones, however, took a 27-0 loss to West Jones in Week 2 and in a county rivalry that's a moral defeat. Unfortunately for the Tigers, it won't get any easier this week. Collins almost tasted victory last week, and that taste only motivates.

Prediction: Collins +10

South Jones at West Harrison
The Reservation was filled with frustration in Week 2.

South Jones blew an early 14-0 lead last Friday night against Hancock, who eventually walked out of the Reservation with 27 unanswered points en-route to a 27-14 victory. The Braves committed 18 penalties in the contest and saw its center Ben Welch go down with a knee injury. It's easy to see how the frustration mounted.

West Harrison (1-1) has improved since the two teams last met according to South Jones head coach Cory Reynolds. But, then again, so have

the Braves.

Prediction: South Jones +14

Quitman at West Jones
West Jones gave an impressive defensive performance in Week 2. The Mustangs, on the road in hostile county territory, held Northeast Jones scoreless and under 100 yards of offense. On offense, West Jones put together 27 points on three rushing touchdowns in the first half from three different skill players as well as two-second half field goals.

This week's opponent, Quitman, may prove to be a tougher challenge but nothing the Mustangs at home can't handle.

Prediction: West Jones +10

Laurel at Oak Grove
How emotionally draining a loss, like the one Laurel endured last Saturday night against its biggest rival Hattiesburg in the Battle for the Little Brown Jug, can be. And to know the last play could have won the game had it gone differently. Said all of that not to throw salt on an open wound, but rather to articulate the emotions felt coming into Week 3.

On the horizon is an even mightier, a team that took Wayne County out back behind the woodshed and tore to pieces, 42-3. Oak Grove is led by quarterback John Rhys Plumlee. His stats are beyond impressive. Against the War Eagles, Plumlee scored all six touchdowns for the Warriors. Needless to say, this is a guy Laurel must focus on slowing down Friday night.

Prediction: Oak Grove +17

Prediction record on the season so far: 6-1.

The Good Life

- Custom cabinets & granite counter tops
- Brick & hardie plank exterior with architectural shingles
- Built on a monolithic slab
- R13 exterior wall insulation & blown R30 Attic insulation
- Vinyl insulated windows
- Built to meet all codes
- 10 year structure warranty

Prices Starting at \$69* PER SQ. FT.

*prices subject to change without notice

Bon Vie

601-544-6007




**5317 Old HWY 11, Suite 12
Hattiesburg**

"Like" us on facebook

Home Builders, LLC

Stick built on your land with zero down payment and closing costs to approved buyers.

\$477*
a month

P & I
to approved buyers on your land

LS Tractor

Excel in Your Field™

FOOD PLOT SPECIAL



COME SEE US AT TRACTORS UNLIMITED!

- **YG3025 LS Tractor with Front End Loader**
 - 25HP
 - 4WD
 - Shuttle Shift
 - Synchro Mesh Transmission
- 18' Utility Trailer with Tube Top
- 5' King Cutter Brush Cutter
- 5-1/2' King Cutter Disc with Tube Frame

FINANCING AVAILABLE WITH APPROVED CREDIT!

FREE SEED SPREADER WITH PACKAGE PURCHASE

\$19,499
+ TAX

www.tractorsunlimitedms.com MON-FRI 7:30-4:30, SAT 8-4

TRACTORS UNLIMITED, LLC

601-583-6453 1507 N. MAIN STREET HATTIESBURG, MS **800-321-2701**

SPARTAN MOSQUITO ERADICATOR



**ONLY DEALER IN
JONES & WAYNE COUNTY**

LAST FOR 90 DAYS

"Your Builder's Super Market"
Since 1954... But so much more

INVENTORY CLEARANCE



VISION RENDEZVOUS (white)
~~REG. \$1,699.99~~
SALE \$1,274.99

VISION RENDEZVOUS (black)
~~REG. \$1,449.99~~
SALE \$1,087.49

PHILLIPS BUILDING SUPPLY

**1104 HWY 15 N
Laurel
601-649-0855**

www.phillipsbuildingsupply.com

CELEBRATING OUR 51ST ANNIVERSARY

WITH 51 FACTORY INSTANT REBATES



SIMMONS BEAUTY REST
Buy the SET, Get the Foundation Free!

Select La Z Boy Furniture
Recliners Starting at \$299.99
Reclining Sofas Starting at \$799.99
Reclining Love Seats Starting at \$799.99

Kitchen Rolling Carts
Your Choice:
Distressed Black or Distressed White
\$199.99

Solid Wood Glide Rockers With Cushions
Starting at \$249.99

Jamison Mattress
Select Sets Up to \$300.00 Off

5 Year Furniture Warranty FREE!
Min. Pur. of \$2000.00
At Our Every Day Low Price

THRU SEPTEMBER 2

REGISTER FOR GIVEAWAYS

UP TO 24 MONTH INT FREE FINANCING WAC

SEE STORE FOR COMPLETE DETAILS

TODAY'S FURNITURE

WWW.TODAYSFURNITUREONLINE.COM

106 Leontyne Price Blvd. Laurel

601-425-1551

Mon. - Thurs. 9-5:30
Fri. 9-5 • Sat 9-12



Weekend Forecast: Football & Fun

Here we are at week three of the Mississippi high school football season, so it's time for our Weekender Forecast: Football & Fun. Each week in this column, Buzz Jack, Brian Jack, James Pugh and a guest picker will make their selections of which teams they think will be victorious the following Friday night. The guest picker for this week is Kevin Williamson. The IMPACT has early printing deadlines for the September 6 paper, so this predictions column will not be in that issue. However, you can see the picks, and many other sports

stories and videos, at www.Sports601.com.

Here are their picks for the slate of games set for the first weekend of September.

Game 1 (Northeast Jones at Collins): Brian – Collins; Buzz – NEJ; James – Collins; Kevin – Collins.

Game 2 (Laurel at Oak Grove): Brian – Oak Grove; Buzz – Oak Grove; James – Oak Grove; Kevin – Oak Grove.

Game 3 (South Jones at West Harrison): Brian – West Harrison; Buzz – South Jones; James – South Jones; Kevin – South

Jones.

Game 4 (Quitman at West Jones): Brian – West Jones; Buzz – West Jones; James – West Jones; Kevin – West Jones.

Game 5 (JCJC at East Mississippi): Brian – JCJC; Buzz – EMCC; James – EMCC; Kevin – EMCC.

Game 6 (Kentucky at USM): Brian – UK; Buzz – USM; James – UK; Kevin – UK.

Game 7 (Florida St. vs. Alabama): Brian – FSU; Buzz – Bama; James – Bama; Kevin – Bama.

Game 8 (South Alabama at Ole Miss): Brian – Ole Miss; Buzz – Ole Miss; James – Ole Miss; Kevin – Ole Miss.

Game 9 (Vanderbilt at Middle Tennessee): Brian – Vandy; Buzz – Vandy; James – Vandy; Kevin – Vandy.

Game 10 (BYU at LSU): Brian – LSU; Buzz – LSU; James – LSU; Kevin – LSU.

Game 11 (Tennessee at Georgia Tech): Brian – GT; Buzz – UT; James – UT; Kevin – GT.

Game 12 (Michigan at Florida): Brian – Michigan; Buzz – Florida; James – Michigan; Kevin – Michigan.

Game 13 (NC State at South Carolina): Brian – USC; Buzz – USC; James – USC; Kevin – USC.

Game 14 (Cal at North Carolina): Brian – North Carolina; Buzz – North Carolina; James – North Carolina; Kevin – North Carolina.

Game 15 (Texas A&M at UCLA): Brian – Texas A&M; Buzz – UCLA; James – Texas A&M; Kevin – UCLA.

KOUNTRY PROPANE

Propane and Appliance Center

FALL FILL-UP / PRE BUY SPECIAL

FOR ALL YOUR WINTER NEEDS.

ENDS SEPTEMBER 15, 2017

*some restrictions apply

Call or Come By
Our Office For Details*

104 Turner St. (Hwy. 63 S)
WAYNESBORO

601-671-0757

CARPORTS • PORTABLE BUILDINGS • RED IRON BUILDINGS

VARIETY BUILDINGS

2 Locations • Laurel - 1508 Horne Dr. /Hwy 15N • Waynesboro - 501 Azalea Dr.

RENT TO OWN • NO CREDIT CHECK • FREE DELIVERY

HUGE INVENTORY TO CHOOSE FROM

Staffed: Monday, Wednesday & Friday

VARIETY BUILDINGS

LAUREL NEXT TO MILES POOL SUPPLY

601-498-5944

WAYNESBORO

601-509-4246

CALL 8-1-1 BEFORE YOU DIG

DO YOU KNOW WHAT THESE ARE?

These are pipeline markers used to identify pipelines that carry crude oil from Hunt Crude Oil Supply Company. At Hunt, we recognize the importance of community awareness regarding the locations of our pipelines.

Hunt is committed to public safety and the preservation of the environment. Our goal is to provide you with the knowledge you need to help prevent and respond quickly to an accident.

Pipeline markers contain the name of the pipeline operator and an emergency phone number. Please call this number in the event of an emergency, or if you have questions or concerns about the pipeline.

For pipeline locations, visit www.npms.phmsa.dot.gov

FOR ANY QUESTIONS, CALL

Hunt Crude Oil Supply
(251) 771-6953

WHAT TO DO IF YOU NOTICE A SPILL

If you see any sign of an oil spill, you should leave the area immediately. Do not touch, breathe the fumes, or make contact with the spill. Do not light a match, start an engine, turn on/off any light switches or anything else that may cause a spark. From a safe location, call 9-1-1 and the pipeline company.

Signs of an Oil Spill:

- A pool of Black/Dark Brown liquid (Crude Oil) on the ground near a pipeline, rainbow sheen on water, or discolored vegetation.
- An unusual noise, such as a hissing or roaring sound.
- An unusual oily smell.

POTENTIAL HAZARDS

Close contact may irritate eyes, nose, throat and lungs. Vapors can be flammable and may cause fire and/or explosion if ignited.

HOW CAN YOU HELP PREVENT A SPILL?

Before you start digging, excavating, probing or blasting, make sure you know what is below. Contacting “One Call” at 8-1-1 is all you need to do to find out exactly what you are digging into.

“One Call” will inform all member companies with buried pipelines and utilities in your area so they can mark their lines. Within two working days, you will know if any underground utilities are located near your project.

If you have any questions or comments regarding our pipelines, please contact Hunt Crude Oil Supply Company (251-771-6953).

Thank you all for participation in last year’s Pipeline Public Awareness survey.

The 2016 Winners of the \$50 Wal-Mart Gift Cards

Mr. Becton (Choctaw Co.)
Ms. Carter (Clarke Co.)
Mr. Davis (Wayne Co.)
Ms. Jones (Wayne Co.)
Mr. Lafferty (Clarke Co.)
Ms. Thompson (Clarke Co.)
Ms. Young (Choctaw Co.)

This could be you...

Mary R. Won \$20,000 on Triple Lucky

Betty D. Just Won \$14,400.00 On 12x Pay

Wilfred W. Just Won \$15,765.00 On Double Diamond

Real Winning

Real Close to Home

Bok Homa CASINO

Sandersville, MS

www.BokHomaCasino.com
1.866.44PEARL (1.866.447.3275)
A development of the Mississippi Band of Choctaw Indians

Follow Us!

SERVICE DIRECTORY

TANNER
Dozer and Trackhoe Service

- Build Ponds
- Clear land
- Driveways
- Haul/Fill Dirt

601.319.6624

NEED CASH?

Call Verna She will hold your personal check and give you **CASH!**

Loans from \$50 to \$410

LAUREL CHECK CASHING
134 Beacon St., Ste. C
Laurel • 601-426-2432

HANDYMAN

Handyman: electrical, remodeling, painting, porches, interior, exterior, and more. No job too small. Laurel and surrounding area. Call 601-935-8325.

SERVICES OFFERED

Kool-Seal Mobile homes, travel trailers, campers, sheds, etc. Energy efficient, 10% reduction. Pressure washing available. Call Craig or leave message, 601-544-9614

Bolivar's Mobile Home Delivery and Setup. Statewide moving. Licensed and insured. Nathan Bolivar: 601-580-9900.

Lawncare: Serving Hattiesburg, Lumberton, Laurel, Sumrall, Petal, Brooklyn, Ellisville, Purvis and Mosselle areas. Reasonable rates. 601-325-5008. www.fullservicelawnca-rems.com

Pressure washing, shrubs trimmed, gutters cleaned. 601-519-5363, Freddie, 601-580-1735, Tony. Licensed and Insured.

Squeaky Clean Residential & Commercial Cleaning Services. Flexible schedule: weekly, bi-weekly, monthly visits. Free estimates. 601-335-2152. Licensed & insured. Approximately 20 yrs. experience.

KC Construction, Kimble Coats owner. New construction, remodel-

We're Here to Help!

1/2 Price STUMP REMOVAL

5 or more Avg. size with Truck Access

\$15 EACH

EXP: 9/29/17

The Tree Barber
Matthew 16:26

68554

BA81766

FARRIS

Mobile Home TRANSPORT

STATEWIDE MOVING
Licensed & Insured
TRANSPORTING SINCE 1979

SALES & SERVICE

Tony Farris

601-422-4144

BA81516

ing, decks, vinyl siding, foundations, slabs. 601-433-6996

Anderson Home Improvement Pressure Washing, homes, trailers, decks, drives. Call 601-699-3816, Laurel.

Flooring Hardwood floors, ceramic tile, linoleum. For all your flooring needs. Quality work, references available. Licensed & Insured. Wilson 8:21 LLP II Corinthians 8:21. 601-268-7603.

PINE BELT GUTTERS & REMODELING

Specializing in seamless gutters, vinyl siding, patio covers, replacement windows & doors. We also offer gutter cleaning.

WE WILL BEAT ANY COMPETITOR'S PRICE!

FREE ESTIMATES 601-265-6010

55647

A&A Septic Tank. We clean, install and repair septic tanks treatment plants, field line, grease traps. In business for 34 years. Family owned and operated. 601-649-8838. In God We Trust.

Painting, Remodeling, Drywall, Pressure Washing, Decks, Cabinets and more! Licensed, Insured, Affordable, honest, dependable Christian company. Commercial and Residential. Quality, professional work. Over 20 years experience. References available. Call for a free estimate. If no answer, please leave a message. We will return your call. Wilson 8:21 Painting & More. II Corinthians 8:21. 601-268-7603.

A&A SEPTIC SERVICES, LLC

Install and Repair

- Septic tanks
- Treatment Plants
- Field Line • Grease Traps

In business for 34 years

FAMILY OWNED AND OPERATED

601-649-8838

601-433-2947

IN GOD WE TRUST

68554

VACUUM CLEANER REPAIR

- We Repair All Makes
- Free Estimates
- Complete Line of Parts & Bags
- Kirby • Electrolux
- Eureka • Hoover • Compact
- Filter Queen • Many Others

TAYLOR'S
Sewing Machine Center
Parkside Plaza Shopping Center
Next Door To Roses Store - Laurel, MS
425-1832

70021

Junk Cars: Get rid of those snake dens and rat dens. Bring 'em to us, or we'll pick 'em up! Springer Auto Salvage. Call 601-649-4238.

Thames Concrete Finishing: Set forms, patios, finishing slabs, driveways, Brick work . painting & roofing great work Percy Thames. 601-543-8712.

SOCIAL SECURITY DISABILITY DENIED?

CALL ALBERT TURNAGE, ATTORNEY
OVER 25 YEARS EXPERIENCE.
NO FEE UNLESS WE WIN YOUR CASE!

1-888-706-4708

Free background information available upon request

2011350

1/2 price stump removal 5 or more average size, 24-inch diameter, 6-in. tall, with truck access. \$15 each. Best price on grinding uprooted stumps. Expires 8/31/17. 601-371-8733. The Tree Barber, Matthew 16:26.

Quality Pressure Washing at affordable prices. Licensed, Insured, Affordable, Professional, Christian company. Free Estimates. References available Commercial and Residential. Wilson 8:21 Painting & More. II Corinthians 8:21. 601-268-7603

Reliable lawn care Lawn services offered in the Jones and Wayne county areas. Commercial and residential. 12 years experience. References available. Insured and dependable. 601-433-8133

HAIGLER

ROOFING & REPAIR

- New Construction • Leaks
- Repairs • Shingles • Metal
- Flat Roofs • Chimneys

FREE ESTIMATES
30 Yrs. Experience

Call Dennis Haigler

601-319-2522

BA8429

BOLIVAR'S

Mobile Home Delivery & Setup

Statewide Moving

- Licensed
- Insured

Nathan Bolivar

601-580-9900

BA8644

LONNIE LOFTON

ROOFING CONTRACTING

Free Estimates

since 1968

601-425-4484

601-422-3003

69347

GMW

Siding Specialist

- Mastic Elite Contractor
- 35th Year serving the Pine Belt
- Winner of "7" National Awards
- Mastic Vinyl Siding Products
- 6" Seamless Gutter

601-428-5595

BA81475

essional, Christian company. Free Estimates. Commercial and Residential. References available. Wilson 8:21 Painting & More LLP II Corinthians 8:21. 601-268-7603

I buy junk cars, buses and heavy equipment. U Call. We Haul! We pickup 24/7. Call 601-297-2778.

DEEP SOUTH TURF, LLC

"TURF GROWN IN THE SOUTH FOR THE SOUTH" WHOLESALE AND RETAIL

CALL BRANDON STRINGFELLOW
1190 Shipman Firetower Rd. • Lucedale

601-673-0137 - Cell

601-947-3973 - Office

LU800

Right At Home: In home care & assistance. Do you or someone you know need help with: Transportation to appointments; grocery shopping/ hair appointments; light housekeeping; recovering from a Hospital stay; basic companionship and much more. For a free consultation call 601-426-6333.

TNT Transport Mobile Home Services: Deliver, Set Up, Skirting. Licensed, bonded and insured. Todd Delk, owner, 601-335-4211.

Bostick Tree Service: tree removal, stump and root grinding with precision for easy mowing and tree health, fully insured, free estimates, serving Pine Belt area, 601-283-8667

Lawn Care: Mowing, trimming, edging. For the Laurel, Ellisville,

Taylorsville and surrounding area. Commercial and residential. Free estimates. 601-517-7599.

Roofing & Repair, new construction, leak repairs, shingles, metal, flat roofs, chimneys, all types roofing and repair, free estimates, 25 years experience, call Dennis Haigler. 601-319-2522.

Dozer & Backhoe Work: \$90/hour, 4-hour minimum. Licensed/Insured. 601.620.8391.

Continued on ... Page 8

Propane Industrial Gases

RESIDENTIAL COMMERCIAL INDUSTRIAL

TANK SET SPECIAL

Ellisville: 601-477-3462

Collins: 601-765-6800

Hattiesburg: 601-583-6269

Taylorsville: 601-785-4789

Mon. - Fri. 7 A.M. - 4 P.M.

77935

DOUBLE B FARMS

- Bull Dozer
- Trac Hoe
- Dump Truck

BUSH HOGGING

LAND CLEARING

DRIVEWAYS

ROAD BUILDING

HOUSE PADS

Certified Septic Tank Installation

Brian Sciortino • Rose Hill, MS **601-479-2074**

63881

FISH DAY

NOW IS THE TIME FOR STOCKING

- Channel Catfish • Bluegill (Reg. & Hybrid)
- Redear • Largemouth Bass • 6-11" Grass Carp
- Black Crappie (If Available)
- Fathead Minnows • Koi (If available)

Thursday • September 7, 2017

The Feed Store, INC in Waynesboro, MS • 1 p.m. - 2 p.m.

TO PRE-ORDER CALL ARKANSAS PONDSTOCKERS 870-578-9773

WALK UPS ARE WELCOME

BA81869

Warehouse Services Company, LLC

Nemo Clark Dr. Greater Laurel Industrial Park

- Sizes Range From 25,000 sq ft to 63,000 sq ft
- Short Term and Long Term Leases Available

Commercial & Industrial Storage

601.433.3988 • 601.433.4140

BA81869

Refresh your driving skills with the AARP SMART DRIVER COURSE!

You will learn:

- Defensive driving techniques
- Proven safety strategies
- New traffic laws and rules of the road

Plus, there are no tests to pass. You simply sign up and learn. Upon completion you could receive a multi-year discount on your car insurance.*

When: September 21, 2017 • 8a.m. - 12 p.m.

Where: West Laurel United Methodist Church
523 N 14th Ave • Laurel, MS 39440

TO REGISTER: email brian.ginn.dr2z@statefarm.com or call 601.649.0120

Classroom Course: \$15 for AARP members • \$20 for non-members
For more information visit www.aarp.org/drive

* Upon completion you may be eligible to receive an auto insurance discount. Other restrictions may apply. Consult your agent for details.

TOYOTA

This program is supported by a generous grant from Toyota to AARP Foundation.

DRIVER SAFETY

AARP Real Possibilities

Brian Ginn
State Farm Agent 1126 Highway 15 N • Laurel • 601-649-0120

BA81852

SOUTH CENTRAL BEHAVIORAL HEALTH SERVICES

WELCOMES AMANDEEP SINGH, MD.

Dr. Amandeep Singh completed a residency in Psychiatry and Human Behavior at University of Mississippi Medical Center. Dr. Singh joins the providers at South Central Behavioral Health Services and looks forward to treating new patients.

DR. SINGH IS ACCEPTING NEW PATIENTS.

South Central Behavioral Health Services

A South Central Clinic

2002-D Hwy 15 N | Laurel, MS 39440 | 601.426.9614 | scrmc.com

Open Monday through Friday, 8 a.m. - 5 p.m.
Closed from 12 p.m. - 1 p.m.

HELP WANTED

EMPLOYMENT CLASSIFIEDS

Offering housecleaning, lots of experience & references available. Please call 601-470-3237.

Miller Tree Service: bucket truck, professional, 30 years experience, insured; bob cat - dump truck and chipper available, senior citizen discount, free estimates. 601-498-3836, 601-649-0174.

Flowers, Sand & Gravel: We now install septic systems, grinder pumps and spray systems. We deliver all types of gravel, fill material, sand, rock and topsoil, soil mix and mulch. Dozier and track-hoe service available. Foundations, roads, ponds, etc. We also have Above Ground

Precast Storm Shelters, several sizes available. Give us a call. 601-498-5983 or 601-477-2767.

HELP WANTED

Needed CDL Driver, local deliveries. Apply @ Endom Trailer, Ellisville, MS.

Mid-Coast Inc. We are looking to hire OTR drivers and short runs available. Must have CDL license and 2 years experience. Exciting possibilities for your future. Please call Benny or James if interested at 601-202-3969.

Looking for an experienced car sales person to work at Ryan Motors. Contact Billy Miller at 601-270-6507.

DRIVERS CDL-A
GREAT PAY & BENEFITS!!
Weekly, Direct Deposit!!
Great Miles! Late Model Equipment!
1yr Experience
TEAMS WELCOME!!
855-348-3699

Onin Staffing: Jobs! Jobs! Poultry Processing, Basic Electrical (High School Diploma), Basic Carpentry (High School Diploma) Jobs avail-

able immediately! Now Hiring! 2261 Hwy 15, Laurel. 601-398-9625. Onin Staffing, Equal Opportunity Employer.

Now taking applications for lube bay technicians. Apply in person. Spee Dee Midas, Highway 98, Hattiesburg. No phone calls please.

Mr. Rooter Plumbing seeks highly motivated individuals for office personnel and plumbers with 2 years experience and resume. Join a growing company, a family environment. We offer bonuses based on performance. Company supplied van, equipment, and uniform. Candidates must have a clean driving re-

cord. This winning team maintains a drug free environment. Call 601-671-3444 or 251-846-2565. www.apply@mrrooter.com.

DRIVERS
\$40-\$60K PER YEAR!
Late Model Equipment! PTO!
Company Pays 75% of
Health Insurance!
CDL-A w/2 years Experience
844-361-0170 EXT 103

Mechanic needed for tune ups, repairs, brakes, AC. Competative salary plus commission. Must have your own tool. Apply in person at Spee Dee/Midas on Hwy 98 West, Hattiesburg.

Chick-fil-A Sawmill Mall is now accepting applications for all shifts now through August 31st. Please apply online at snagajob.com. No phone calls please.

Needed Body Detail Mechanic to help restore 1950 Chevy. Must have experience. Call Eddie, 601-498-8582.

GENERAL

Circle 3 Self Storage hereby makes notice that contents for Debbie Bolivar, Whitney Hudson, and Missy Saul will be sold to the highest bidder September 9, 2017, 9:00 a.m. at 1199 Hwy 15 South, Laurel, MS. 601-649-0479.

3x5 Poly Flags: USA, Mississippi and Confederate flags. Only \$5. Flag poles (5-foot to 100-foot). Flag Heads, 490 Hwy. 49, Seminary. Open 10-5 Tuesday-Friday, 10-3 on Saturday. Veterans Discount. "You won't find it at Wal-Mart."

4 used mobile chairs for free. Must take all. 601-433-8801.

TANNER CONSTRUCTION

IMMEDIATE OPENING FOR LOWBOY DRIVER.

Must have experience in heavy equipment hauling.
(Example Track-Hoe, Crane)

Hiring Class A and B truck drivers.
Must be able to drive a standard shift.

- Requires a clean driving record,
- Ability to stay out of town
- Some weekend work

• \$14 - \$15 per hour • Medical • 401K

Ideal candidate will have experience with end dump and belly dump trailers.

Please apply Online at
Tannerconstruction.net

or in person at:

677 Pecan Grove Rd, Ellisville

We are an Equal Opportunity Employer, and encourage women, minorities, and people with disabilities to apply.

BAB1794

PARISH TRANSPORT

HAS IMMEDIATE OPENINGS FOR GOOD
OTR Truck Drivers and Owner Operators
HIRING ALL DIVISIONS

Benefits include:
• Health Insurance • Vision Insurance
• Dental Insurance • Paid Vacation

NOW OFFERING SIGN ON BONUS
• SAFETY BONUS • REVENUE BONUS
• RETENTION BONUS

If You Want To Work For A Great Company With Great Benefits

call us at 601-342-2314 today!

Located in Ellisville, MS

NOW HIRING

• CNA 7-3, 3-11, AND 11-7 SHIFTS
(SIGN ON BONUS FOR CNA'S)

• PRN LPN'S

Hillcrest
Nursing
Center



1401 1ST AVENUE N. EAST • MAGEE
APPLY IN PERSON • NO PHONE CALLS PLEASE

Equal Opportunity Employer

©9353



First on any Menu

TRUCK MECHANIC NEEDED

Must Have Own Tools

Experience Required

CDL Required Within 6 Months of Employment

Steady Monday-Friday Work

Drug Free Work Place

Paid Holidays

Benefits Include:

401K

BCBS Health

Dental & Vision

For more information, please contact Jamie Chisholm at
(601) 507-5811 or (601) 764-4964.

Fill out applications at the Live Production Office,
3683 Hwy 15 N, Bay Springs, MS

EOE/M/F/D/V

CB4523

WHITESTONE TRANSPORTATION

NOW HIRING DRIVERS

- OTR/Regional Drivers, Short and Long Haul
- Dedicated Lanes, Reefer and Flatbed
- Sign-on Bonuses
- Bonuses for Performance, Safety Teams & Specialty Hauls
- Blue Cross and Blue Shield Insurance

Moselle 800-408-5542
WHITESTONETRANS.COM



FIRST ON ANY MENU.SM

PECO FOODS, INC IN BAY SPRINGS IS HIRING A FEED MANUFACTURER

LOOKING FOR A TEAM PLAYER WITH
AN EXCELLENT ATTITUDE TO PRODUCE
QUALITY PRODUCT IN AN EXTREMELY FAST
PACED ENVIRONMENT. THIS POSITION
REQUIRES CONTINUOUS MOVEMENT,
STANDING THE ENTIRE SHIFT, AND LIFTING
UP TO 50 POUNDS CONTINUOUSLY.

NO CALLS PLEASE
APPLICANTS CAN FILL OUT AN APPLICATION AT:
PECO FOODS LIVE PRODUCTION
3983 HWY 15 N
BAY SPRINGS, MS 39422

EOE/M/F/D/V



HOLLY'S PARTY JUMPS

Jumps • Combos • Slides • Wetslides • Slip-N-Slides

601-763-8851

WWW.HOLLYSPARTYJUMPS.COM

BAB1399

Lawn care: Serving Hattiesburg, Lumberton, Laurel, Sumrall, Petal, Brooklyn, Ellisville, Purvis and Mosselle areas. Reasonable rates. 601-325-5008. www.fullservicelawnca-rems.com

Flag Pole Super Sale! "While Supplies Last!" Get our 24ft. Liberty Deluxe Double Flyer (reg. \$299) now only \$199. Call American Flag Pole Co., 601-649-0748.

Free pallets. Over 100. Must take everything. Call Ron Buckley: 601-670-5806.

3B's Mini Storage located at 511 Court Street in Waynesboro MS, hereby makes notice that the contents of Candace Johnson will be disposed of on September 1.

Have you ever wondered how current events tie together with biblical events or prophecy? R. Dean Hubbard reveals in his book the mystery of today's happenings and shows the progression of God's work upon the earth. If translating numbers is new to you, request a copy of this book and take the journey with Hubbard as he guides you to an exciting new level of understanding the perfect will and plan of God. Contact us at merle.coats1972@gmail.com or 601-325-6190.

ATTORNEYS

Sam Creel has closed Magnolia St. office but is still offering the same reliable legal representation. Call 601-498-8968.

Bankruptcy & Social Security, Tracy A. Walley, 1616 West 3rd Street, Laurel, 601-651-2186

FARM

(4) Registered Hereford cows, 2.5 to 4yrs. old bred to a Hereford bull; (10) Angus & Brangus cross cows, six w/calves, 4 heavy bred. 601-410-4064 or 601-410-7273.

Tractor and Equipment For Sale 2000 Farmtrac 45 with 850 Hours Has Front end Loader with bucket \$10,000. Attachments Sold Separately. Disk, Cutter, Tiller, Box Blade and a PTO Limb Chipper. Call Chris 601-283-0649.

For Sale: an old Fordson Dexta Tractor, runs good, needs tires. One of the tires is flat. Asking \$1200, I paid \$1500 for the tractor. It's a

DRIVERS NEEDED

MID-COAST INC.
Magee, MS

FULL TIME

- Short Haul
- Long Haul

We have a job for you!

Please call Benny or James
601-202-3969 or 601-287-2913

69182

diesel burner. Call 601-735-2614 or 601-479-4090 for information.

TRAILERS

B&B Trailers. Utility and equipment. 8201 US Hwy 98W, Hattiesburg. We take trade-ins. 0% financing. 12 months same as cash. WAC. Check out our new website: bbtrailers.net. 601-264-6711.

MESSAGE

Massage One. \$45.00 Introductory 1 Hr. Massage session. By Robert Lowe L.M.T.#1362. Call to book yours today! 601-466-2199 www.MassageOne.us May your days be stress free!

PRODUCE

Peas, U-pick \$7. 5 gal. bkt., Pinkeys, Crowders, Dixie Lee and Zippers, Okra \$10 bkt., Sweet Corn \$20/100. Smith Tree Farm, 793 Sanford Rd, exit 78, off I-59, go miles to farm. 601-582-2642, 601-699-9033.

Green peanuts (30 lb. bags), Super Jumbo \$25, Virginia \$20, Washed and Graded \$33 for either. Please call for availability. Dennis Mitchell Farms, 650 Leaf River Church Road, Collins, MS 39428. 601-765-8609.

Peanuts: Green Peanuts - (30 lb bags) Jumbo - \$25 Virginia - \$20 Machine harvested, machine cleaned, unwashed. Rogers Farm (Hwy 37 N) Call 601-765-8668 for availability/directions. Collins. Closed on Sunday.

PETS

Free to good homes, half pit bull puppies. 601-739-3543.

Registered Labrador Retriever puppies for sale. Both parents trained hunters. \$800. 601-670-1446

Akc english bulldog puppies We have 11 akc reg. English bulldog puppies, 5 females and 6 males all have had their first and second set of shots please contact Carrie for photos they are very playful 1500.00 601-508-0481 (Carrie)


Happy Tails. Grooming, LLC. Call for an appointment and I will come to you. Wanda Gayle Jones. Owner/ Groomer. happytailsgrooming@workmail.com. Hours 8:00 a.m. - 5:00 p.m. 601-517-3965.

T. THORNSBERRY SERVICES LLC

Fencing

Automated Security Gates

Portable Buildings



TONY THORNSBERRY - 601-577-0927

69206

LOST AND FOUND

Great Pyreneese mix found in Wayne Co. area. Please call 662-202-6739 to identify.

BUSINESS OPPORTUNITIES

Pasquales is expanding and now offers unique business opportunities. Interested in owning your own restaurant, call Mack, 601-433-7124.

FURNITURE

Bring your Furniture to life! We have a great selection of elegant, distressed furniture in store. We also give Free estimates for your personal furniture. No job is too large or too small, so don't settle for plain ole' looking furniture, transform a room. Give us a call at 601-837-5151 today!

Mama's Mattress Max! 20 different styles to try out. Sets start at twin \$145, full \$165, queen \$185, king \$295. Will split sets. Blackwell's Furniture 5200 Hwy 84 West at Calhoun. 601.649.6111.

APPLIANCES

Broome appliances. We repair and sell washers, dryers, stoves and refrigerators with warranty, delivery. We buy, sell, repair, and haul off home appliances. 601-297-2472.

FISH

Slade Channel Catfish Fingerlings, Bass, Bream, Grass Carp, KOI fathead-tuffy Minnows, Electrofishing, etc. Free water analysis. State licensed. Randall Slade 601-796-2000 www.sladesfish.com

Brewer Fishery. Coppernose, Shellcracker and Hybrid Bream, Black Crappie, Channel Catfish fingerlings, Bass, Fathead Minnows, Grass Carp, and Gold Fish. State licensed and delivery available. www.istockponds.com 601-270-1268, 601-989-2466.

CAMPERS

For sale: 2007 Cardinal 5th wheel, new hot water heater, new tires, 2 slide-outs. Call 601-319-6359, 601-422-7132.

WANTED TO BUY

Looking for tractor, 601-787-2312.

I buy junk cars, buses and heavy equipment. U Call. We Haul! We pickup 24/7. Call 601-297-2778.

Buy junk cars, 18-wheelers, van trailers, buses, equipment and more. Pay cash on spot. We pickup. Call day, night. 601-408-0856.

TIMBER AND LUMBER

Know the value of your timber before you sell. We provide timber appraisals and help landowners market their timber for the highest value. Walley Forestry Consultants, Inc., www.walleyforestry.com, 601-477-3014.

DON'T GIVE YOUR TIMBER AWAY!

Call Mike West
601-270-6066

BUYING PINE & HARDWOOD

RICHTON TIE & TIMBER LLC

Timber Procurement • Forestry Consulting • Real Estate



Cypress Lumber for sale. Rough or planed. T&G&V and beaded. Beveled and log siding, white and yellow pine and Poplar. T&G&V. Cypress beams, cut up to 32 foot long. Open 7:00AM-3:30PM, Monday-Friday, Saturday, 7:00AM-12PM. 601-315-5533, fax 601-344-0950. frankssawmill.com

VACATION

Gulf Shores Condos, \$125/nights. Houses, \$250/nights. Weekly specials available. Connie Daughdrill, 1-251-510-3090.



NEED CASH FAST?

COME SEE TIFFANY

CITY PAYDAY LOANS

CAR TITLE LOANS

716 SPRING STREET
WAYNESBORO

601-735-5353

78553

FISH DAY!

IT'S TIME TO STOCK YOUR POND!

Delivery Will Be:

Wednesday, September 13
Taylorsville 2:30-3:15 pm
At Taylorsville Farm Supply

Thursday, September 14
Ellisville 12:45-1:30 p.m.
At Ellisville Farm & Garden

Bay Springs 2:15-3:00 p.m.
At Circle L Farm Supply

“LIKE” us on Facebook!

FISH WAGON

To Place an Order Call
1-800-643-8439
WWW.FISHWAGON.COM

BAB1870

FIREWOOD

Dead-dry firewood, \$100 cord. 601-498-1370.

GARAGE SALES

7 Families, Labor day weekend: Sept. 1, 2, 4. 8am-3pm, 6 Hallelujah Drive off Houston Road.

1115 West 6th Street, 9/2, 7am-12pm. Household items, clothes, misc. bedding. Everything must go!

Grace Baptist Church, Saturday, Sept. 2nd & 9th, 8am until 3pm. All kinds of things. We are located 62 Big Richardson Rd., Laurel, off 84 East past Bogue Homa. We will have signs. For more info, 601-649-3993. Please come check us out!

Three family sale on Sept. 1, 2 & 4, 224 Magnolia Rd, 84E, Laurel. Women's clothing and shoes-all sizes, jewelry, books, furniture, and much decor. 601-323-0608.

Rummage/estate sale, 717 Pinehaven Drive, off Cherry Lane. Clothes, dishes, baskets and other items. Sat., Sept. 2nd, 7am.

Continued on ... Page 10

Classified Index

Apartments for Rent	11
Appliances	9
Attorneys	9
ATVs	11
Autos - Cars	11
Autos - SUVs	11
Autos - Trucks	11
Buildings	11
Business Opportunities	9
Campers	9
Carports	11
Commercial	11
Farm	9
Firewood	9
Fish	9
Furniture	9
Garage Sales	9
General	8
Handyman	7
Help Wanted	8
Houses for Rent	11
Houses for Sale	10
Land	10
Lost and Found	9
Massage	9
Mobile Home for Rent	10
Mobile Home Lots	10
Mobile Homes	10
Musical	11
Pets	9
Portable Buildings	11
Produce	9
Services Offered	7
Timber and Lumber	9
Trailers	9
Vacation	9
Wanted to Buy	9



CARE CENTER OF HATTIESBURG

Immediate Full-Time positions available:

- **12 HOUR SHIFT Registered Nurses**
- **Licensed Practical Nurses positions**
available with every other weekend off
- **MAINTENANCE ASSISTANT**

Apply at Bedford Care Center of Hattiesburg
#10 Medical Boulevard • Hattiesburg
601-264-3709
Monday-Friday 8:00 a.m - 4:30 p.m
Equal Opportunity Employer

BAB1865

DRIVERS NEEDED

MID-COAST INC.
Magee, MS

FULL TIME

- Short Haul
- Long Haul

We have a job for you!

Please call Benny or James
601-202-3969 or 601-287-2913

69182

NOW HIRING

POSITIONS AVAILABLE:

- **GENERAL MANUFACTURING** \$8-\$12/hr
- **MACHINE OPERATORS** \$12.25/hr
- **ELECTRICIANS** \$12-\$16/hr
- **CDL DRIVERS** \$10-\$15/hr
- **GENERAL LABOR** \$8-\$10/hr
- **WELDERS** \$13.25/hr
- **ACCOUNTING CLERK** BOE
- **ADMINISTRATIVE** BOE
- **BOOKKEEPER** BOE

Call 601-264-9060 Today
OR APPLY ONLINE AT www.expresspros.com



68621

DRIVERS,

are you tired of having to jump through hoops, such as gimmicky revenue and retention bonuses? Do you want to earn what you are worth? At **Baggett Transportation**, we pay you what you are worth, without the hassle!

We offer the best benefits in town, which include

- Health Insurance
- Company Matching 401-K Plan
- Paid Vacation



Pay starting at 42¢ per mile!

Now leasing Owner Operators! Flats or Vans. Call for details.

601-426-3462 or 855-435-5021

Call for more information or apply in person at: 2815 Industrial Blvd. • Laurel, MS

68621



PECO FOODS, INC IN BAY SPRINGS IS HIRING A PAYROLL/HUMAN RESOURCES CLERK

REQUIREMENTS:

- Good Work and Attendance Record
- Good Hand Writing Skills
- Basic Math Skills
- Good Communications Skills
- Positive Attitude
- Computer Skills Including Excel and Word
- Must Know How to Operate a Calculator

NO CALLS PLEASE

APPLICANTS CAN MAIL RESUMES TO THE EMPLOYER AT:
ATTN: JENNA SMITH
PO BOX 1320
Bay Springs, MS 39422
OR FAX RESUME TO ATTN: JENNA SMITH AT:
601-764-4529

EOE

Homes and Land

WALLEY PROPERTIES LLC.
LAND?
BUYING OR SELLING
www.walleyproperties.com
601-477-3014

Sept. 2, 2017, at 1231 N. 2nd Ave., 7am until. Men suits, neckties, suspenders, dress shoes and sneakers size 8-8.5, women, children's, girls clothing, child inside basketball goal, child hockey table, queen size comforter sets and much more, no sales before 7am.

Large moving sale, Aug. 31, Sept. 1 & Sept. 2, 49 East Ridge Road, Laurel. 8am-4pm. Clothes, appliances, some furniture. No early sales.

Rummage Sale! Restoration Life Christian Center, 808 Ellisville Bvd., Laurel, MS. Saturday, September 2, 2017, beginning at 6 a.m.

Rummage sale - Fri. & Sat., Sept. 1st & 2nd, 960 Paulding Road, Ellisville, MS. Baby items, furniture, clothes, lots of misc. 7am until, rain or shine.

Garage Sale: Sat., Sept. 2, 7am-2pm, at 3700 Sharon Road.

LAND

Jones County +/- 8 Acres. Beautiful Home/Mobile Home site with power and water in place. Located on the corner of Overt Moselle Road and Beech Cemetery Road. Property contains road frontage to the north, south, and west, and 16th section land to the east. Scenic landscape with area to build a pond. \$40,000. Call Bennett 601-913-0340 at Walley Properties, LLC or visit our website walleyproperties.com for maps and more details of this listing.

Price Reduced! Pearl River County +/- 147 Acres. Great Location! Beautiful setting! This property is located 7 miles south of Poplarville just off I-59 on Savannah Millard Rd. This property would make for a great home site, weekend getaway, farm, with plenty of hunting and fishing opportunities. This property offers a variety of different timber types, fields, and has 2 stocked ponds ready to fish. The properties location would be ideal for anyone wanting to be close to New Orleans or the MS Gulf Coast. Priced at \$399,000. For more information on this listing contact Bennett 601-913-0340 at Walley Properties, LLC or visit our website walleyproperties.com

Covington County +/- 74 Acres. Located 4 miles from downtown Seminary off hwy 590 on the corner of Shirley Sanford Road and Johnny Sanford Road. This property would be perfect for a home-site with plenty of recreational opportunities. Property consist of mature pine plantation, gorgeous hardwoods, and a stream that flows through-

FARRIS
MOBILE HOME TRANSPORTING
Statewide moving, licensed & insured.
Transporting since 1979
SALES & SERVICE
Tony Farris
601-422-4144

out the property. Great for hunting. \$244,200. For more details, call Bennett today 601-913-0340 at Walley Properties, LLC. Or visit our website walleyproperties.com for maps and more information of this listing.

Price Reduced! Tallahala Creek Frontage!! Perry County 90 +/- Acres Located on the beautiful Tallahala Creek. Can be divided into 30 acre parcels. This property is located on Highway 29 South right outside of Runnelstown, MS only 10 miles from the city of Petal. This property is every outdoorsman dream, with over a 1 1/4 mile of river frontage, sand bars, gorgeous hardwood bottoms, pine plantations, shooting houses, and food plots. The plentiful abundance of wildlife such as: Deer, Turkey, Small game, and Fish will keep you occupied year-round. \$3,150/ Acre. Call Bennett 601-913-0340 at Walley Properties LLC. Please visit walleyproperties.com for maps of this listing.

Greene County +/- 40 Acre. Beautiful 40 acre fish farm is located just east of Beaumont, MS in Greene County. The property holds 13 small ponds, multiple small sheds with concrete slabs, some remaining equipment, and multiple power sources over the property. The property has some mature longleaf pine and a cozy 1,000 square foot 3 bedroom, 1 bath block house. The property is very secluded and offers many possibilities. Priced to sell at \$165,000. Contact Jeff at Walley Properties, LLC 601-297-1958 or visit walleyproperties.com for more info and maps of this listing.

Jones County +/- 29 Acres : Price Reduced! Only 5 miles south of Ellisville down Hwy 29 East located on Busby Road. This Property with road frontage has recently been chipped, leaving residential/shade trees which would make for a perfect home-site, or mini farm. \$69,6000. For more information call Bennett 601-913-0340 at Walley Properties LLC or visit walleyproperties.com for maps of this listing

South Jones County +/- 47 Acres: Located in South Jones County on Rainey Road. 10 Miles from Hattiesburg and Laurel right off the Sanford Road Exit on i59. This property would be perfect for a home-site or mini-farm with plenty of recreational opportunities. Price: \$123,375. For more details, call Bennett today 601-913-0340 at Walley Properties, LLC. Or visit our website walleyproperties.com for maps and more information of this listing.

+/- 6 Acres Located on Old Salem Road at Strengthford, MS. This piece of property has a spot cleared for a house site. Nice timber on property. Call Rob McCraw Today 601-498-9143. \$21,000. See more at mfm-land.com.

Covington County 85 +/- Acres. Price Reduced! Can be divided. Located in the Seminary School District only 4 miles Northeast of Seminary at the intersection of Hwy 535 and Lebanon Church Road. Would make for a great home site, has power and water available. Features a mix of young pine plantations with hardwood stands along the creek bottom. Excellent timber investment and hunting opportunity. \$2250/ Acre. Call Bennett 601-913-0340 at Walley Properties LLC. Please visit walleyproperties.com for maps of this listing

Stringer, MS: This excellent 69 acre parcel is located in the heart of Stringer School District. The property consist of various merchantable timber types with multiple home sites. With an abundance of wildlife the property could also be used as a hunting retreat. The property can be divided. Priced to sell at \$164,025. Contact Marc 601-670-5429 at Walley Properties, LLC.

Jasper County +/- 46 Acres. This beautiful secluded property is located in the heart of Stringer School District on CR 211. This property offers multiple home sites with endless possibilities. \$110,400. Contact Marc 601-670-5429 at Walley Properties, LLC or visit walleyproperties.com for more info.

24 acres in Runnells town. Lots of mature timber and wildlife. Unbelievable hunting!! May subdivide. Call Shawn with Southern Coastal Realty at 601-408-3570.

17 acres with lake, mature timber, house pad, ready to build, Stringer Schools. \$105,400. Call Rob McCraw 601-498-9143.

Price Reduced! South Jones-Rainey Community 24 +/- Acres . Great Location. South Jones School district. This beautiful property is located on the corner of Rainey Road and Sumrall Road just 3/4 of a mile south of Moselle-Seminary Road. This property has over 1/4 mile of road frontage on Sumrall road, offers multiple home sites, mature thinned plantation, and an abundance of wildlife. \$102,000. Call Bennett 601-913-0340 at Walley Properties, LLC.

+/-18 Acres Located on Jim Brownlee Road in West Wayne Co. \$50,000. Call Woods & Waters Realty at 800-526-3961. See more at mfmiland.com.

Small acreage for sale, water, septic and power pole, owner finance, NE Jones area. 601-426-3696 or 601-470-7772.

Wayne County +/- 84 Acres. Property will not last long! Located on the Mabry Graham Road just north of Beat 4 in Wayne County, MS. This Remarkable Tract of Land offers endless possibilities. The topography is gently rolling with sandy clay soils. The timber consist of 8-10 year old pine plantation. The property offers plenty of road frontage in a remote setting with an excellent internal road system and a natural gas pipeline for great access. Grass patches are in place and an abundance of wildlife that is sure to please any hunter. This property is offered at \$165,900.00 & can also be divided. Contact Marc 601-670-5429 at Walley Properties, LLC. or visit walleyproperties.com for maps and info of this listing.

Lake Eddins: a great Place To Be!! End of summer blowout!!! Off-water lots as low as \$5000 and waterfront camps as low as \$62,500. Call CrossRoads Realty 601-727-7653.

78+/- Acres located in Smith Co., in Mize School District. Live creek throughout. \$2900 per acre. Call 601-818-3597.

Greene County +/- 40 Acres. Just in time for deer season! Located off of Hwy 63 just North of Leakesville on Smith Dale Farm Road. This property is ideal for anyone looking to

RUSTIN
METAL BUILDINGS AND CONSTRUCTION
Laurel, Mississippi
Rustin Construction Since 1933
COMMERCIAL • RESIDENTIAL
26 Gauge Colored Panels
Licensed General Contractor in MS and LA
WE MANUFACTURE AND WE BUILD
Red Iron Metal Buildings 601-649-9949

have their own personal hunting spot or investment property. This property consist of scattered hardwoods and a small creek that flows through the south end of the property. The property does have an easement and is easily accessible. This property is priced to sell at \$1800/acre. Call Bennett Burris 601-913-0340 at Walley Properties, LLC. or visit our website at walleyproperties.com for more info on this property

Price Reduced! Weekend Retreat 60 +/- Acres Covington County, Ms located 7 miles North of Collins (Rock Hill Road). This unique property features a 2 acre stocked lake, 20 acre mature natural Pine/Hardwood stand and 38 acre 14 year old Pine Plantation. The gated property has a camp house with power, community water and septic system. \$195,000. Contact Bennett 601-913-0340 at Walley Properties, LLC. or visit walleyproperties.com for more info

20 acre farm/ranch in Janice, Ms. With custom built home, wrap around porch, Pond, horse stalls, fenced and cross fenced, huge shop. Bordered on two sides by National Forest lands. Lots of wildlife call Shawn, Southern Coastal Realty, LLC 601-408-3570.

Land & Timber Bid Sale September 13, 2017 @ 2:00 p.m.: Lawrence County, MS Total of +/- 353 acres (Tract #1 +/- 133 acres Tract #2 +/- 220 acres) on Bahala Creek with Mature Hardwoods and Pines Power/Water. Paved road frontage. Please visit www.wnmland.com for details or call Woods & Waters Realty. 601-408-0615.

Jones County +/- 8.76 Acres Great Location! Great Home site! This property is located 5 miles south of Ellisville on Old School House Road in the South Jones school district. This property is ideal for anyone looking to build a house or add a mobile home. The property has over a 1/4 mile of road frontage with power, water, and septic on site. The property has a mixture of mature planted pines and a beautiful hardwood bottom that surrounds the scenic Bear Creek that runs through the south end of the property. \$37,500. For more information on this listing contact Bennett, 601-913-0340 at Walley Properties, LLC. or visit our website walleyproperties.com.

+/- 8 Acres Located on Jim Brownlee Road in West Wayne Co. \$25,000. Call Woods & Waters Realty at 800-526-3961. See more at mfmiland.com.

Land sales: Let us assist you with your land sale or purchase. We provide full service forestry consulting and land brokerage. Call Woods & Waters Realty at 601-498-9143

MOBILE HOMES

A Must See! 5 bed 3 bath double wide. Perfect layout, open concept, gorgeous floors for you to add to. Vinyl siding and shingle roof. Price \$25,000 as is. Call 601-520-0710.

"Used and Repo Dealer" 10 acres of mobile homes, sold as is or completely remodeled. Have it your way at TB Sales. We will get you in the right home. 601-520-0710.

3br/2ba doublewide, 2.11 acres, 2 storage sheds, Moselle area. 601-422-3136, 601-422-9089.

"Mobile homes, mobile homes" arriving daily at TB Sales on Hwy 49 North, Hattiesburg, next to the Bouie River. We have used, repo, remodeled, fixer upper, all homes, all sizes at unbelievable prices, our guarantee no one will beat our prices for what we do. 601-520-0710 or TB Sales @ Facebook.

Plenty of room! 5 bed, 3 bath double wide. Lots of space for all your loved ones. Vinyl siding and shingle roof. Zone 2! Won't last long. Price \$26,000 as is, call 601 520 0710.

Need Zone II or III home? Call 601-307-2114.

Foreclosurers, repos, used, land home packages, and new mobile

homes. Call Chase today for details. 601-310-9262.

Mobile homes for sale. New, used, repos, foreclosurers, land-home packages. Call Repo Man, 601-310-9262.

Blake's Mobile Home Transport: We specialize in moving single-wide, double-wide, and triple-wide mobile homes. Also offer re-leveling and tie-down service. Licensed and insured. Call 601-422-8588

50 Shades of Gray. 16x80, 3BR/2BA., new carpet, vinyl flooring and paint. Beautiful home, must come see it. \$21,888. 601-520-0710.

ASSUME PAYMENTS!
3BR/SW \$249 PER MO.
3BR/DW \$349 PER MO.
2BR/DW \$399 PER MO.
205-541-4131

Handyman Special. 2 to choose from. \$2,500. 601-307-2114, 601-261-6005.

Cute Starter Home, 24x52, 3 bed/2 bath Double Wide, vinyl siding, shingle roof, ready to live in. Zone 2. Price \$15,500 as is! Call 601 520 0710.

We buy used homes. Good credit, bad credit, no problem. New, used and repo homes available. Over 100 homes to choose from. Payments starting at \$250 per month. Land and home packages available. For more info: 601-447-4538.

GOOD CREDIT. BAD CREDIT. NO CREDIT. NO PROBLEM!
NEW, USED & REPO HOMES AVAILABLE.
NO CREDIT CHECK.
OVER 100 HOMES TO CHOOSE FROM.
Payments starting at \$250 per month
FOR MORE INFO: 205-541-4131

Front porch sittin, sweet tea sip-pin, 28x66, 3BR/2BA., stone fireplace, lots of cabinets and island, \$17,888 as is. Call 601-520-0710.

2017 Doublewide, 5 bedrooms, 3 bath, central A/C, skirting, delivery, setup, and tie down included. Call Johnny McDonald, 601-452-2113, 601-261-6005.

Used Doublewide, 4BR/2BA., central A/C, skirting, delivery, set up and tie down, only \$44,900. 601-307-2114, 601-261-6005.

Eagerly waiting for you, 16x76, 3BR/2BA., huge kitchen, wrap around master bath, \$20,000, singlewide. Call 601-520-0710

I guarantee you a home with \$8,000 down and payments of \$575/month for only 13 years. I don't care if you are in a bankruptcy, you are automatically approved when you put \$8,000 down on a Brand new single wide mobile home. Call Tiny, 601-307-2114.

Factory Direct pricing. Nobody beats our prices. wholesalemobile-homecenter.com 601-296-7960.

Little Fixer Upper. 14x70, 2BR/2BA., \$5,500. Needs floor work. 601-520-0710.

Won't last long. 2BR/2BA., 2001 Horton, 16x72. Woodgrain in kitchen, w/ceramic tile counters and flooring, large master bath with garden tub and sep. shower. \$16,500 as is. 601-520-0710.

Farris Mobile Home Transporting: Statewide moving, licensed & insured. Transporting since 1979. Tony Farris 601-422-4144.

Assume payments. Singlewides, doublewides, land and home packages. Call for details, 601-307-2114, 601-261-6005.

2017 5BR/3BA, central A/C, skirting, delivery, set up and tie down, only \$69,900. 601-307-2114, 601-261-6005.

SELLING or SHOPPING?
WE FINANCE
IMPACT CLASSIFIED ITEMS
JONES COUNTY FINANCE
105 S 16th Ave. • Laurel
601-649-1944

Used Houses. Singlewides and doublewides. 3, 4, 5 and 6 bedrooms. Will deliver and setup. Call Johnny McDonald, 601-452-2113, 601-261-6005.

Blue for you! 16x80, 3BR/2BA., new plywood on floors, new sheet-rock and paint, very spacious, vinyl siding and tin roof, singlewide, \$19,000, Call 601-520-0710

Fema houses. 1, 2, 3 bedrooms available now. Call Johnny McDonald, 601-452-2113, 601-261-6005.

Stop renting and own your own home now. Single wides for \$400.00 a month and double wides for \$600 a month. Call 601-307-2114.

Good credit, bad credit, no credit. Call the credit expert, Repo Man, 601-310-9262.

1996 Shoal Creek, 80x16, 3BR/2BA., A/C unit replaced inside and out 2 years ago. Ready for move immediately in Purvis. 228-342-8783.

MOBILE HOME FOR RENT

14x60 3br/1ba, all electric, c/h/a, West Jones School District. Water provided. \$425 & \$200 deposit, in a trailer park. 601-498-2488, Rhonda.

1989 16x80 3br/2ba, all electric c/h/a. South Jones School District. Water & garbage provided, in a trailer park. \$400 & \$200/dep. 601-498-2488.

Mobile home for rent in Ellisville. 3br/2ba, c/h/a, washer & dryer hook-up. \$575/mth., water included, \$300/dep. 601-744-6315.

2br/2ba, mobile home, South Jones School District, \$650/mth, \$500/dep. 601-433-2490.

MOBILE HOME LOTS

Four months free space rent. Move your mobile home in with us! Spaces available at Bellecrest. Nicest mobile home park in Hattiesburg. Bellecrest Mobile Home Park 63 Sullivan Kilrain Road Hattiesburg, MS. 601-545-1300

HOUSES FOR SALE

Dixie. Beautiful Brick, 3 bedroom, 2 bath estate home on 4 plus acres in the heart of Dixie. Expansive split plan, privacy fenced back yard, screened-in back porch, 2 car garage, paved drive. I can go on and on, just call me!! It's ready to show. 601-408-3570. Shawn Stewart Southern Coastal Realty, LLC. "Find the most from here to the coast!"

Highlands
PATIO HOMES
3 BDR • 2 BATH
Under \$180,000
601-649-9459

House, 1432 Ellisville Blvd., corner lot; Apartment, 709 1/2 Sandy T. Gavin Avenue, 2br/1.5 ba, totally remodeled. For sale or rent to own. Extra lots included. 2 portable buildings w/contents also for sale. Call 504-493-0091.

12 acres and house for sale, with pond, 3br/2ba, Waynesboro. \$100,000. Call for appointment. 601-671-1591, 601-410-2774.

Gated private grand estate. Property perched on approximately 3 acres, breath-taking water front point, WJS District, Laurel. 4br/2.5ba, custom stone floors, fireplace, open floor plan, RV hook-up ready. Serious inquiries only. \$395,000. Call 850-619-1112.

Shady Grove, 3br/2.5ba, pool, 2300sq.ft., outdoor man cave, 2ac. \$179,000. 601-283-0677.

Continued on ... Page 11

MS Care Center of Raleigh
is now taking applications for
Nurses:
3-11 RN Charge Nurse Position
RN or LPN
11-7 Shift
Apply in Person Monday-Friday from 9am - 4pm
MS CARE CENTER
OF RALEIGH
309 MAGNOLIA DRIVE, RALEIGH • 601-782-4244
We are an equal opportunity employer.

BI720



West Jones, 4br/2ba, 2238/sq.ft., granite, carport, pond, \$139,000. 601-323-3335.

4 bdrm/2.5 bath located centrally to all West Jones Schools. Open floor plan, enclosed & insulated garage in lower level for a large family or entertaining. Upstairs family friendly with Jack & Jill bathroom for 3 bedrooms plus a small bonus room. Other amenities: large bedrooms, deep cabinets and storage closets, ceramic tile, new carpet, fresh paint, attic space, outside storage, patio, and more. About 10 min from City of Laurel, 25 minutes from Hattiesburg. Priced below appraisal \$187K . 601-498-1972.

HOUSES FOR RENT

Brick 4br/2ba, central air, West Jones School, \$800/dep., \$800/rent. Text 210-478-6492.

2/3 bedroom homes for rent. 601-649-4075.

4br/2ba brick home all electric, c/h/a, located 79 Calvin Figgers Drive in Waynesboro. \$700/month rent + utilities. 601-824-7172.

1, 2, 3, and 4 bedroom houses and mobile homes. Hattiesburg . Call for list. 601-336-5808.

2br house with fireplace, South Jones School District, \$650/month, \$500/dep. 601-433-2490.

1314 Congress St. 2BR/1BA, CH&A, \$400/dep., \$550/mo., 601-319-2938.

3 bedroom, 2 bathrooms, den, fireplace, living room, 2 car carport, hardwood floors, fenced in back yard, washer and dryer hook up, storage shed, \$750. Call 205-292-9285.

\$1,400.00 per month, 4 Bedrooms, 2 Baths, fenced-in back yard, double carport, near Turtle Creek Mall. Call 601-441-2664.

4br/1ba, 208 Pettis, Ellisville, carport, w/d hook-up. 601-323-2830.

APARTMENTS FOR RENT

2705 Old Bay Springs Rd., 2BR/1BA., CH&A. Across from Ma-

son Elementary School, \$300/dep., \$525/mo., 601-319-2938.

For rent: Taylorsville New one bed-room apartments. \$500 down, \$500 monthly. 601-649-9459.

For rent: 1 bedroom duplex located @ 1024 North 13th Avenue. \$625/mth + \$400/dep. Utilities included. Call 601-577-2576 for info.

COMMERCIAL

Washateria for sale located at 509 N Cook Avenue, behind Open Air Market. It includes land, building & equipment. Also, new & used parts & machines. It is a good business for a younger person. If interested call 601-319-2940.

For Lease: Commercial office behind Tillery Dental. For more information, call 601.649.9459.

MUSICAL

Lynn Evans Piano Service: Registered craftsman with Piano Technicians Guild. Used pianos for sale. B.M.E. USM. 601-729-2823

BUILDINGS

Carports and Buildings: Financing Available! 22Wx26Lx9T- \$5,050 , 24Wx31Lx9T- \$6,010 Fully Enclosed with two 9X8 Roll-up Doors. Price includes installation. We also offer storage buildings and barns. Call John @ 601-323-0464, 303 Hwy 11 S, Ellisville (between Pizza Hut & JCJC)

Best Rent-to-Own deal around! Call us for all your building needs. Chatham Enterprises 601-727-4951

PORTABLE BUILDINGS

30x30 Tubing Building: Includes 2 Roll-Up Doors, 1 Walk-Through Door, Insulation, Cement Slab, and Installation. \$10,995. Call Chatham Enterprises 601-727-4951.

Finished building, 12x24 log exterior, bathroom, ceiling fan, Murphy bed, A/C, built ins, front porch. \$10,000. 601-297-0779.

Payne Portable Buidlings. 12 months Same as Cash or Rent to

Own Financing Available wac. Of- fice located at 342 Macey Rd., Hwy 84W, Laurel. 601-426-9484 or 601-319-3555.

AUTOS - CARS

2014 Buick Enclave, 45000 miles, white pearl, excellent condition- \$25,000.00 o.b.o. Call 601-606-2147 or 601-441-2664.

2016 Hyundai Santa Fe Sport. \$19,990. J&S AutoPlex. 601-342-2293. See more at Cars601.com.

2010 Ford Mustang. \$18,900. Southeastern Auto Brokers, (844) 312-8785. See more at Cars601.com

2011 Crown Victorian, good condition, good tires, good cold A/C. \$3950 obo. 601-422-3003.

2014 Toyota Corolla. \$16,990. J&S AutoPlex. 601-342-2293. See more at Cars601.com.

2015 Chrysler 200. \$15,990 J&S AutoPlex. 601-342-2293. See more at Cars601.com.

2013 Chrysler 300-Series. \$17,990. J&S AutoPlex. 601-342-2293. See more at Cars601.com.

Affordable Auto Insurance, espe- cially if you don't have any now. Call 601-765-4060

2011 Infiniti M37. \$15,900 South- eastern Auto Brokers, toll free (844) 312-8785. See more at Cars601.com

AUTOS - SUVs

2008 Toyota Highlander Hibrid, loaded, leather interior, 145,300 miles. \$12,500. Call 601-470-5430.

2011 Cadillac SRX. \$16,599. South- eastern Auto Brokers, (844) 312-8785. See more at Cars601.com

2006 Chevrolet Trail Blazer, good condition, 65,400 miles. \$5800. Call 601-426-2245.

2013 Ford Edge. \$15,900. South- eastern Auto Brokers, (844) 312-8785. See more at Cars601.com

2005 Dodge Grand Caravan. Seats 7. stow and go seating. AM.FM,CD

player. DVD player. \$3000. Call and leave a message. 601-764-7253

2014 Ford Escape. \$18,490. J&S AutoPlex. 601-342-2293. See more at Cars601.com.

AUTOS - TRUCKS

2008 Chevrolet Silverado 1500. \$16,900. Southeastern Auto Bro- kers, toll free (844) 312-8785. See more at Cars601.com

2012 Ford f-150 2wd , 104,000 miles, like new- \$22,000.00 o.b.o. Call 601-606-2147 or 601-441-2664.

1993 International 4700 with 26ft. box, 6 speed standard, motor runs good, transmission needs repair, selling as/is, Ron Buckley. 601-670-5806. \$3250.

ATVS

Honda trx 400 2000 Honda TRX400 4 Wheel Drive for sale. Excellent

Condition \$2200.00 Call Chris 601-283-0649.

CARPORTS

Carports and Buildings: Financ- ing Available! 22Wx26Lx9T- \$5,050 , 24Wx31Lx9T- \$6,010 Fully En- closed with two 9X8 Roll-up Doors. Price includes installation. We also offer storage buildings and barns. Call John @ 601-323-0464, 303 Hwy 11 S, Ellisville (between Pizza Hut & JCJC)

AUTO EXPRESS 2

AUTO SALES & AUTO REPAIRS

• Air Conditioning • Breaks • Diagnostics
• Oil Change & More

AutoExpress2.NET

<p>2002 NISSAN XTERRA</p> <p>St# 506943</p> <p>\$2,999</p>	<p>2008 CHEVROLET SILVERADO 1500 CREW CAB</p> <p>St# 253292</p> <p>\$13,899</p>	<p>2007 NISSAN FRONTIER CREW CAB</p> <p>St# 430159</p> <p>\$8,890</p>	<p>2005 DODGE RAM 1500 QUAD CAB</p> <p>St# 232460</p> <p>\$8,999</p>
--	---	---	--

FINANCING AVAILABLE

601.335.4075

OVETT, MS

Owners: Tracie Walters & George Shirley

Since 1956

RYAN

CHEVROLET

INVENTORY LIQUIDATION

FIND NEW ROADS™

**1501 W. PINE STREET
HATTIESBURG**

CALL NOW FOR YOUR APPOINTMENT

1-855-534-3769

601-584-8451

WWW.RYANAUTO.COM

2013 HYUNDAI SONATA LIMITED \$15,000*	2016 CHRYSLER TOWN & COUNTRY \$19,000*	2011 HONDA CR-V EX-L \$13,000*	2012 CHEVROLET SONIC LS \$7,000*	2011 MAZDA MIATA MX-5 TOURING \$15,000*
2009 TOYOTA TACOMA PRERUNNER \$15,000*	2004 TOYOTA TUNDRA SR5 \$6,500*	2016 HYUNDAI ELANTRA GT \$14,000*	2013 FORD ESCAPE SE \$13,500	2013 NISSAN ROGUE SL \$14,000*
2015 GMC DENALI SIERRA 1500 \$41,000*	2012 CHEVROLET CAMARO 2SL \$16,000*	2014 FORD F-150 LARIAT \$31,000*	<div style="background-color: red; color: white; padding: 10px; margin: 10px;"> <h2 style="margin: 0;">100% CREDIT APPROVAL!</h2> <p style="margin: 0;">WE GUARANTEE CREDIT APPROVAL!</p> <p style="margin: 0;">BANKRUPTCY, DIVORCE, STUDENT LOANS, CHILD SUPPORT, MEDICAL BILLS... YOU ARE APPROVED!</p> </div>	

MISSISSIPPI'S ORIGINAL CHEVROLET DEALER FOR OVER 50 YEARS!

SE HABLA ESPAÑOL

ARRIVING DAILY

2016 CHEVROLET CRUZE LIMITED CERTIFIED	\$ZERO DOWN \$179** <small>PER MO.</small>
2016 CHEVROLET IMPALA CERTIFIED	\$ZERO DOWN \$289** <small>PER MO.</small>
2016 CHEVROLET MALIBU CERTIFIED	\$ZERO DOWN \$239** <small>PER MO.</small>
2016 CHEVROLET TRAX LT CERTIFIED	\$ZERO DOWN \$249** <small>PER MO.</small>

CREDITORS ON HAND!

NO REASONABLE OFFERS REFUSED!

*Plus tax, title & fees. See dealer for details. Pictures for illustration purposes only. **W.A.C. + tax, title, fees and \$248.25 customer benefit package 72 Mo. @ 2.9%. Msg & Data Rates May Apply; Ts & Cs and Privacy Policy: <http://autoconx.com/terms>



J&S AUTOPLEX

4029 HWY 15N • LAUREL • 601-342-2123



jandsautoplex.com



FREE OIL CHANGES FOR LIFE!



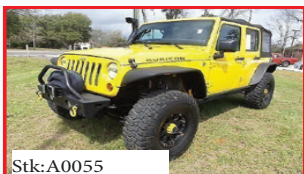
Stk:A0049
2014 JEEP WRANGLER UNLIMITED SAHARA

\$32,990



Stk:A0092A
2010 JEEP WRANGLER UNLIMITED

\$21,990



Stk:A0055
2011 JEEP WRANGLER UNLIMITED RUBICON

\$32,990



Stk:A0154
1979 JEEP RENEGADE

\$15,990



Stk:A0154
1994 JEEP WRANGLER S

\$11,990



Stk:A0155
2013 JEEP WRANGLER SPORT

\$22,990



Stk:A0123
2013 GMC SIERRA 1500 SLE

\$26,990



Stk:A0016
2015 FORD F-150 LARIAT

\$39,990



Stk:A0151
2011 TOYOTA TUNDRA 2WD TRUCK

\$27,990



Stk:A0157A
2008 TOYOTA TACOMA PRERUNNER

\$20,990



Stk:A0118
2016 FORD F-150

\$39,990



Stk:A0084A
2014 GMC SIERRA 1500 SLT

\$35,990



Stk:A0152
2007 FORD EXPEDITION EL LIMITED

\$10,990



Stk:A0111
2017 CHEVROLET EQUINOX LT

\$22,990



Stk:A0133
2013 CHEVROLET TAHOE LTZ

\$37,990



Stk:A0106A
2009 GMC YUKON XL

\$22,990



Stk:A0159
2017 CHEVROLET TAHOE LT

\$47,990



Stk:A0160
2017 CHEVROLET TAHOE LT

\$47,990

Manager's Special

2014 NISSAN MAXIMA

\$16,990



Stk:A0099



Walter



Larry



Eric



Mike

*Plus Tax, Title, and Feed, W.A.C. See Dealers For Details. Photos for Illustration Purposes Only. Not Responsible for Typographical Errors



Mississippi Ag Arkansas Ag



JOHN DEERE



WE ARE NOW IN LAUREL!

1601 BUSH DAIRY RD. • 601-426-3204

- We make Hydraulic Hoses
- John Deere Agriculture and Hay Parts
- Net Wrap and Hay Twine

www.AgUp.com



5065E & 5075E Series

**SAVE UP TO
\$7,000 OFF**

**Purchase a 5E Series Tractor
starting as low as \$13,995!**

+0% Financing for 60 Months

3E PACKAGE DEALS!

- STARTING AT \$21,895 • 0% FINANCING!!
- ALL OF THIS CAN BE YOURS TODAY!

- John Deere 3E Series Tractor
- John Deere D160 Loader
- Frontier RC2060 Lift-Type Rotary Cutter
- Frontier BB 2060 Standard Duty Box Blade
- Caliber Trailers 7x20



SOME RESTRICTIONS APPLY. SEE DEALER FOR DETAILS