

FLAGPOLES!
24' LIBERTY DELUXE DOUBLE FLYER
 Reg. \$299 **Now... \$199**
American Flagpole Co.
601-649-0748
 God Bless America

IMPACT

"Blessed are those who hunger and thirst for righteousness, for they shall be filled."
 ~ Matthew 5:6

Postal Customer Local
PRSR
STD
 US Postage Paid
IMPACT
 ECRWSS

Advanced Home Repair
 Quality Work at a Fair Price
 Jerry Heathcock
 601-498-7606

- Flooring/Tile Work
- Painting
- Decks
- Trim Work
- Bathroom Remodels

Free Estimates

Pause Espresso Bar re-opens in new location



Surrounded friends, family, staff members and Laurel Mayor Johnny Magee, Kim Guined cut the ribbon to officially re-open Pause Espresso Bar in their new location. Photo/Linda Cranford

By Linda Cranford
 lindaimpact@gmail.com

A ribbon cutting ceremony was held Tuesday morning, August 29, to celebrate the re-opening of Pause Espresso Bar in its new location at The Sawmill Market Place, 602 Carroll Gartin Blvd., Ste. 5, between Quarter Century and Goodness Gracious.

Pause Espresso Bar opened approximately one year ago in a smaller location on West 5th Street and was not opened long before owners Jeff and Kim Guined realized they would soon need a larger space. In a recent Facebook post the Guineds wrote, "Pause is first a ministry to us and second a business."

They said that when they first started they envisioned a coffee shop that was more about people and the community than anything else. "We wanted a place where people could 'press pause' and

See PAUSE, page 2

LAND and/or TIMBER SALE
 Sealed Bid 9/12/17
 80 Acres on Evergreen Rd.
 Eucutta Community - Wayne Co.
 See Website for details
walleyproperties.com
601.477.3014
WALLEY
 PROPERTIES, LLC & FORESTRY CONSULTANTS, INC.

Sunbelt Fans & Lighting, LLC
 201 N. 16th Ave - LAUREL 601.425.5177

SAN MIGUEL 4-LIGHT CHANDELIER 6073-4-39
\$250⁹⁹
 VINTAGE COPPER or PERSIAN WHITE

NEW SELECTION of 8'x10' RUGS as low as \$159.99

HUNTER 52" CEILING FAN w/ 3-LIGHT KIT
\$89⁹⁹
 BRONZE or BRUSHED NICKEL

HATTIESBURG-MADISON-MERIDIAN-BATESVILLE-PICAYUNE-FLOWOOD-GULFPORT-BATON ROUGE-LAFAYETTE
 www.sunbeltlighting.net

TOTAL FOOT CARE CLINIC OF LAUREL

Stop Living With PAIN, Call The Foot Specialist Today!
601.268.0400
 528 N. 15th Ave. Ste E Laurel
 Behind Mimi's Bridal off Hwy 15 North

Dr. Gachavis M. Green, Board Eligible Foot Doctor
 Dr. Michael Zaleski, Diplomat Board Certified
 Dr. Clifford L. Peele D.P.M.

Medicare • Medicaid • BlueCross BlueShield & most insurances accepted

KEEP DOING WHAT YOU **LOVE** EVEN DURING CANCER TREATMENT

LAUREL CANCER CARE

(601) 425-2999
 laurelcancercare.com

WE ACCEPT ALL TYPES OF INSURANCE, INCLUDING TRICARE

Need cash for the big game? Tailgating? COME SEE US!

BAY SPRINGS FINANCE
601-764-2251 **9 J Bay Avenue • Bay Springs**

LABOR DAY SALE

\$399
 Queen Poster Bed

\$449
 Double Reclining Sofa or Loveseat

King Pillow Top Mattress \$299

Oversized Recliner \$299

Rugs \$49

SOUTHERN FURNITURE AND MATTRESS
 2909 Wheeler Drive • Laurel, MS 601-649-0733
 Next to Bob Palmer's Chancellor Motor Group
 VISIT US ONLINE AT SOUTHERNFURNITURE.ORG

Speed Queen. BUILT BETTER TO LAST LONGER!

There's never been laundry equipment that's built tougher to last longer than SPEED QUEEN washers and dryers. They're built using metal where others use plastic. They're rigorously tested to insure reliable performance. And they're designed to last 25 YEARS in your home.

SPEED QUEEN REALLY "MAKES EM LIKE THEY USED TO"

INDUSTRY BEST 3 YEAR WARRANTY!

WASHER FEATURES:
 •Mechanical Controls •No Lid Lock
 •Traditional Agitator •Water Level Selector
 •1/2 H.P. Motor AWW432SP

DRYER FEATURES:
 •Mechanical Controls •7.0 Cu. Ft. Capacity
 •Up Front Lint Filter •Stainless Steel Drum
 •Interior Light ADE3SRGS

Alexander's
 Free Local Delivery & Setup
 Bay Springs 601-764-2161
 Ellisville 601-477-3312
 SELECTION • SERVICE • VALUE

IMPACT 

#1 in Advertising

Ronnie Buckley
Publisher

Kevin Williamson
Manager

Jerry Clark
Circulation Supervisor

Betty Busby
Laurel Sales Representative

Kim Wilbanks
Laurel Sales Representative

Trish Irwin
Laurel Graphic Artist

Jennifer Clark
Graphic Production Manager

Terica Roberson
Graphic Artist

Candice Pittman
Graphic Artist

Russ Farris
Graphic Artist

Sherry Hearn
Administrative Assistant

Linda Cranford
Writer/Photographer

WHILE THE IMPACT makes every effort to verify the offerings made in these ads, we cannot guarantee the integrity of every advertiser. We strongly recommend that readers investigate the companies involved before sending them any money.

Classified and ROP Ad Deadline
Sunday Edition -
Wednesday at 12:00 Noon
Wednesday Edition -
Thursday at 3:00

IMPACT
1010 N. 16th Ave
Laurel, MS 39441
Ph. 601.649.1129
Fax: 601.649.0424
Email:
admin@laurelimpact.com



Circulation Audited By
CIRCULATION VERIFICATION COUNCIL

IFPA
INDEPENDENT FREE PAPERS OF AMERICA

EDA
of Jones County

PAUSE, continued from page 1

enjoy some down time...a place where friends could enjoy chatting for hours on end... a place where Christian singles could possibly find their soulmate... a place where stay at home moms could bring their toddlers in and enjoy coffee with other moms.... a place where couples could make friends.... an atmosphere that would always honor our Father."

During the ribbon cutting ceremony Jeff said, "Thank you Laurel and Jones County for your support and our awesome staff." He added, "We not only do we have great coffee, but a great ministry that flows out of here."

Mayor Johnny Magee said, "I echo what Larkin (Simpson, Jones County EDA Vice President) said; we're glad you're moving and not leaving."

Pastor Charles Hanchey with Christ Church was on hand to give the invocation and surrounded by friends, family, and staff members, Kim cut the ribbon to officially open Pause Espresso Bar in their new location.



The old Kiln is a perfect place for Pause Espresso Bar and owners Jeff and Kim Guined said there is room for expansion. Photo/Linda Cranford

JCJC welcomes new faculty



JCJC's newest faculty gathered for a photo around the bronze Bobcat in the Student Plaza during their new faculty orientation. Pictured standing left to right are: Amy Wooten, Radiology; David Goldblatt, Fine Arts-Piano instructor; Melinda Butler, Biology; Sylvina Buckley, Cosmetology; Kristopher Grant, Fine Arts-Percussion; Tasha Thames, Biology; Mackenzie Edgley, Fine Arts-Low Brass; Amelia Cowart, AD Nursing; Amy Townsend, AD Nursing and Cody Robertson, Electronics. Not pictured is: Steven Womack, adjunct History instructor.

Photo/Teresa McCreery

Golden Vision scholarship winners



Golden Vision of Laurel held its annual scholarship luncheon early this summer at Higher Grounds Coffee Shop. Two deserving seniors were awarded scholarships: Paige Myrick of Northeast Jones High School and McCoy Walters of South Jones (holding plaques). Photo/submitted

REED'S METALS, INC.

601-823-6516

• Metal Roofing • Metal Buildings • Pole Barns

Buy direct from the manufacturer and SAVE!

www.reedsmetals.com



Estelle's
Southern Cuisine & Catering



JOIN US FOR SEAFOOD NIGHT
THURSDAY, FRIDAY & SATURDAY 4-9 P.M.

Thursday Night Turkey Necks **Friday Night All You Can Eat Ribs** **Saturday Night All You Can Eat Steak**

5534 HWY 11 N • LAUREL **601-342-2582**

Norman's Food Outlet
#209 Waynesboro Food Outlet
PRICES EFFECTIVE SEPTEMBER 6, - SEPTEMBER 12, 2017

4 LB. BOX GUIDRY'S CATFISH FILLETS \$16^{EA.}
Plus 10% at Checkout

90 CT. BAG TOTINO'S PIZZA ROLLS \$5⁵²^{LB.}
Plus 10% at Checkout

USDA FRESH CUT COUNTRY STYLE RIBS \$1⁴⁴^{LB.}
Plus 10% at Checkout

2 LITER ALL FLAVORS COCA-COLA PRODUCTS 98¢^{EA.}
Plus 10% at Checkout

8 LB. BAG RUSSET POTATOES \$1⁸⁷^{EA.}
Plus 10% at Checkout

USDA FRESH CUT PORK STEAKS \$1⁴⁴^{LB.}
Plus 10% at Checkout

WE'VE APPRECIATED YOUR BUSINESS OVER THE LAST 9 YEARS AND WE WILL CONTINUE TO STRIVE IN THE FUTURE TO HELP YOUR FAMILY BY LOWERING YOUR GROCERY BILL

GREAT PRICES • GREAT TASTE • GREAT SAVINGS
OPEN 7 DAYS A WEEK
MONDAY - SATURDAY 7 A.M. - 7:30 P.M. / SUNDAY 8 A.M. - 6 P.M.

LOCATED IN THE AZALEA MART SHOPPING CENTER WAYNESBORO, MS **601-735-4344**

Plot mixes are here from...

- Pennington
- Southern Seed
- BuckBusters
- WildLife Management Solutions
- BioLodgic

We have Attractants such as
RiceBran, MoBuck, Rak-Atak, 4sDraw and Wildgame Innovations

Moultrie ATV Spreaders

Remember Dove Wheat is still \$8.95

BO WELBORN-OWNER • MICKEY HOLLOWAY-MANGER

OLD SOUTH FARM SUPPLY
244 E. Hickory Street • Laurel • 601-428-7447



"Your Builder's Super Market" Since 1954... But so much more

PHILLIPS BUILDING SUPPLY
www.phillipsbuildingsupply.com
1104 HWY 15 N • Laurel
601-649-0855

SPARTAN MOSQUITO ERADICATOR
ONLY DEALER IN JONES & WAYNE COUNTY
LAST FOR 90 DAYS

INVENTORY CLEARANCE

VISION RENDEZVOUS (white) REG. \$1,699.99 SALE \$1,274.99

VISION RENDEZVOUS (black) REG. \$1,449.99 SALE \$1,087.49



BRANDS BY:
✓MEDLIFT
✓CATNAPPER
✓HOMESTRETCH

STARTING AT
\$799

WIDE SELECTION OF COLORS AND FABRICS AVAILABLE

SEE OUR LARGE SELECTION OF POWERLIFT RECLINERS

Alexander's FURNITURE

BAY SPRINGS
601-764-2161

f

LARGEST SELECTION OF FURNITURE IN THE PINE BELT

Mica Stevens awarded the Certified Residential Specialist Designation

Submitted

Mica Stevens of Laurel has been awarded the prestigious Certified Residential Specialist (CRS) Designation by the Council of Residential Specialists, the largest not-for-profit affiliate of the National Association of REALTORS®.

REALTORS® who receive the CRS Designation have completed advanced professional training and demonstrated outstanding professional achievement in residential real estate. Only 32,000 REALTORS® nationwide have earned the credential. Out of more than 1 million REALTORS®, less than 3% are Certified Residential Specialists. Mississippi only has a little more than 100 CRS designees across the state, and Mica is the only designee in the Laurel/Jones county area.

Home buyers and sellers can be assured that CRS Designees subscribe to the strict REALTOR® code of ethics, have been trained to use the latest tactics and technologies, and are specialists in helping clients maximize profits and minimize costs when buying or selling a home.

Stevens is a Broker Associate with Woodland Realty, Inc. Mica has been an

active residential real estate agent for more than ten years and is an annual multi-million-dollar real estate producer. Mica is a member of the Laurel Board of Realtors where she has served as President and held various chair positions.

Additionally, she is a member of the Leadership Class of 2017 for the Mississippi Association of Realtors. Mica holds a Bachelor's degree in Business Administration and International Business from Mississippi College and an Master's of Business Administration (MBA) from William Carey University. Mica also has the designations of Accredited Buyers Representative (ABR), Seller's Representative Specialist (SRS), and Real Estate Negotiation Expert (RENE).

The managing broker of Woodland Realty, Lee Boyette, stated, "We are thrilled that Mica Stevens is the first CRS designee in the Laurel/Jones county area. This is the most elite residential designation in the nation and Woodland Realty's clients will reap the benefits of her knowledge. We are so proud of Mica!"

"I chose to pursue my CRS designation from the Council of Residential Specialists to gain additional education and further my knowledge in real estate," said Stevens. "This will give me the necessary tools to continue to provide my clients superior service and representation whether they are buying or selling a home. Real estate investment is often the single



Mica Stevens

largest and most important investment a person can make. The CRS designation will allow me to stay ahead in the ever-changing real estate industry as well as provide professional and personable service to all of my clients."

Henderson represents Wayne County at 4-H conference

Recently Bo Henderson represented Wayne County 4-H at the MS 4-H Cooperative Leadership Conference. This annual event serves as a recognition for 4-H members ages 14-18 who place first in competitions at MS 4-H Club Congress. The aim of this conference is for 4-H members from across the state to come together to learn about cooperative businesses and develop leadership skills. While at the conference they got hands on experience by forming their own cooperative to sell snacks to participants. The group of about 45 youth participated in a volunteer service project at The Claiborne at Adelaide where they visited with residents and carried miniature horses for the residents to see. They also toured 4-County Electric Power Association, Farmers Grain Terminal, and StaplCotn. Photo/submitted



SEMINARY FARM CENTER

"Your Full Service Farm Supply"

- Spreader Service
- Fencing Materials

- Spraying Service
- Feed & Seed

- Chemicals
- Fertilizer

101 NORTH BEECH ST. • SEMINARY, MS • 601.722.4163

"Family Owned & Operated for 28 Years"
 Owners: Steve Sanford / Brett Sanford

LOW COST DENTURES SINCE 1978

DENTAL SERVICES OF SOUTH MS. P.A.

GENERAL DENTISTS

2019 Hardy Street • Hattiesburg, MS

- Dentures
- Reline
- Partial
- Repair

Call Toll Free
 Within 55 Mile Radius
 (601) 545-1905
 (877) 545-1905

LISTING OF THESE PREVIOUSLY MENTIONED AREAS OF PRACTICE DOES NOT INDICATE ANY CERTIFICATION OF EXPERTISE THEREIN.

LAUREL A-1

TIRE CENTER

Right behind the Laurel Police Department

TIRE SPECIAL

- P225/60R16 **\$59⁹⁵** +TAX
- P215/60R16 **\$54⁹⁵** +TAX

PLUS INSTALLATION

Rotate & Balance

*most vehicles

PRICES SUBJECT TO CHANGE WITHOUT NOTICE

\$30⁰⁰

+TAX

4 WHEEL ALIGNMENT

Cars Only
WITH COUPON

\$44⁹⁵

+TAX

PRICES SUBJECT TO CHANGE WITHOUT NOTICE

FULL SYNTHETIC OIL CHANGE

Up to 5 Qts
most vehicles
excludes diesels

\$36⁹⁵

+TAX

PRICES SUBJECT TO CHANGE WITHOUT NOTICE

OIL CHANGE SPECIAL

Up to 5 Qts 10W30
most vehicles
excludes diesels
WITH COUPON

\$24⁹⁵

+TAX

PRICES SUBJECT TO CHANGE WITHOUT NOTICE

219 Ellisville Blvd., Laurel, MS
 M-F 7:30 A.M.-5:00 P.M. SAT. 7:30-NOON **601.425.4616**

MCGOWEN Portable Buildings

GRACELAND PORTABLE BUILDINGS®

MCGOWENCHEMICAL.COM

No Credit Check / Rent To Own

★ ★ ★

7 YEAR

LIMITED WARRANTY

★ ★ ★

25 YEAR

MANUFACTURERS WARRANTY ON ROOF PRODUCTS

★ ★ ★

LIMITED LIFETIME

MANUFACTURERS WARRANTY ON TREATED WOOD PRODUCTS

2 Locations to better serve you

FREE DELIVERY AND SET UP

within 50 Miles

3 BB & H Rd, Hwy 11
MOSELLE
 Phone: 601-544-0644

3965 Hwy 49 South
HATTIESBURG
 Phone: 601-261-7979

at Homecoming
**First Baptist Church
of Pecan Grove** in Ellisville, MS.
SEPTEMBER 24, 2017
Song service begins at 10AM

guest speaker
Judge Charles Pickering



Dinner on the grounds to follow.
Please come and join us for this special day!

special music



The Bibletones
celebrating 60 years in Southern Gospel Music

September 7

The youth group of Pineview Baptist Church will be having a rummage sale Saturday, September 2 in the Title Loans parking lot on 16th Avenue from 7:00 a.m. until. Everything goes! Cheap prices!

September 9

The 11th annual Jones County Junior College Bobcat Hall of Fame 5K Run and 1-Mile Fun Run will be held at 8 a.m. on September 9. The race will begin and end at Bobcat Stadium/Sim Cooley Field. Registration begins at 7 a.m. For the 5K Run, pre-registration fee is \$20 and \$15 for students and Pine Belt Pacers members. Day of the race fee is \$25. Fun Run registration fee is \$10. To pre-register, go to www.jcathletics.com and click on "For Fans" and then click on "2017 Hall of Fame 5K." Fill out the form, enclose check and mail to Jones County FCA, P.O. Box 8011, 900 South Court St., Ellisville, MS 39437 before Aug. 30. T-shirts will be given to all pre-registered participants. Registration forms are also available at www.pinebeltpacers.org. For more information, call Kelvin Smith a 601-575-0524. All proceeds from the run go to the Jones County chapter of the Fellowship of Christian Athletes.

Sandra Hancock Ministries is hosting a Voice of Hope Conference September 9 from 10:30 a.m. to 12:30 p.m. at "The Gathering Place" 3227 Audubon Dr. in Laurel. God has given Sandra a word just for you! Bring your friends and come expecting your miracle! There are no admission costs! For more



Live In Concert GOSPEL MUSIC'S Most Awarded Trio
GREATER VISION
Friday, September 15th at 7:00 pm
HERITAGE UNITED METHODIST CHURCH
Hwy 98 West at Baracuda Drive, Hattiesburg (Oak Grove), MS
NO ADMISSION CHARGE
A \$12.00 donation will be requested at the door, but no one will be turned away. Children always welcome.
Doors open at 6:00. Open seating come early for the best seats.
For information call 601-261-3371 or 601-297-7922 or go to www.heritage-umc.org

information, call 1-800-579-7350 or see our webpage at www.sandrahancock.org.

The descendants of Tom and Minnie Livingston will have their annual family reunion on Saturday, September 9 at Antioch Community Center beginning at 10:00 a.m. Please tell all your family members and bring food, as usual. For more information, please call Joyce Knight at 601-425-1277.

The Ovett Wildwood Chapel Music Hall will host "The Magnolia Boys" gospel group on Saturday, September 9 at 6:30 p.m. Everyone welcome; a love offering only. We are located at 495 Lower Ovett Road, 3 miles on left from downtown Ovett. For more information call, 601-344-7595.


Gospel sing Saturday, September 9 beginning at 6:30 p.m. at Sanford Community Center, located at 663 Old Hwy 49, Sanford. The featured guest will be "Pilgrim Family," "Harvest Quartet" and "Faithway Singers". Admission is free; a love offering will be received. For more information, call 601-765-6485.

Being Money Smart is scheduled Saturday, September 9 starting at 8:00 a.m. at the Wayne Co. Vocational Center. After registration and a short general assembly, you will select workshops that fit your financial concern. These classes will be taught by local financial agencies and MSU Extension Agents. Call 601-735-2243 to pre-register by September 6th to be eligible for a special drawing. There will be snacks and door prizes.

September 10

Christian Valley MB Church invites you to worship with us on Sunday, September 10 at 3:00 p.m. for our annual B. T. U. pro-

Hubbert Dental Clinic General Dentistry



Tip: Remove partials or dentures at night for 6-8 hours to give your gums time to breathe & recover from the day!

WE ACCEPT: Medicaid (Magnolia & United Health Care) C.H.I.P.S. and Private Insurance.

- Exams, Cleaning and X-Rays are covered every 6 months.
- Financing Available.

99 Highway 511 E. Quitman, MS 39355
601-776-3370 Hours: Mon.-Thurs. 8-11am & 1-4pm
Dr. Michael W. Hubbert D.M.D. • Tanya Barnett R.D.H.

RUSTIN METAL BUILDINGS AND CONSTRUCTION
Laurel, Mississippi
Rustin Construction Since 1933
COMMERCIAL • RESIDENTIAL

FREE ESTIMATES

26 Gauge Colored Panels
Licensed General Contractor in MS and LA

WE MANUFACTURE AND WE BUILD
Red Iron Metal Buildings **601-649-9949**

gram with our very own associate minister Byron Arrington as our speaker for the afternoon.

Upcoming Revival at Pleasant Ridge Baptist Church, 1743 Hwy 29N, Ellisville. Revival dates are set for September 10-14! Bro. Allen Gullick will begin our services Sunday the 10 at 6:00 p.m. Services through the week will meet at 7 p.m. Special music will accompany each service and nursery will be provided!

The Creation Seminar at Trinity Baptist Church with Dr. Kent Hovind for September 10th has been cancelled due to unforeseen circumstances.

September 12

Our Crochet group meets monthly at the Mississippi State University Extension Service, Wayne County Office. Anyone who is interested in crochet is invited to join us whether you want to learn to crochet or you would just enjoy the company while you crochet. Our next meeting is Monday, September 11 at 4:00 pm. Call Lanette Crocker at 601-735-2243 or email l.crocker@ms-state.edu if you have any questions.

September 12

The Conservation Explorers 4-H Club is meeting Tuesday, September 12, 4:30 pm at the Mississippi State University Extension Service Wayne County Office. This 4-H club invites all youth ages 8-18 to participate and its FREE to join. They are currently learning about soils. Is dirt really just dirt? Come and meet with us and find out. Call Lanette Crocker at 601-735-2243 or email l.crocker@msstate.edu for more information.

The Wayne County Mississippi Homemaker Volunteers Lunch & Learn Club is meeting Tuesday, September 12, noon at the Mississippi State University Extension Service Wayne County Office. This MHV Club invites all adults to join. Call Lanette Crocker at 601-735-2243 or email l.crocker@msstate.edu for more information.



INTRODUCING THE 2600H SERIES
VERSATILE. DEPENDABLE. AFFORDABLE.

We're rewriting the definition of value with our new Massey Ferguson® 2600H Series, a rugged line of tough and dependable utility tractors for hardworking people who simply want a hardworking machine. One that's as affordable as it is easy to use. Speaking of value, these versatile tractors still feature everything you expect in a Massey Ferguson. A simple, open design. Steel hood, fenders and platform for rugged durability. And high-capacity hydraulics for loader and implement work. Come check them out today.

www.masseyferguson.us

CHECK OUT THE
MASSEY FERGUSON
2600H SERIES

Dixie Tractor Sales
246 E. Hickory St.
Laurel, MS 39440

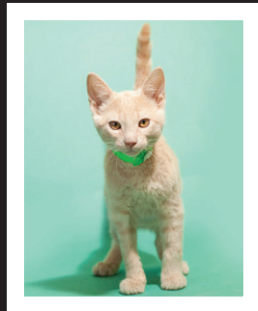
601-649-7470
www.dixietractor.com

AGCO
Your Agriculture Company

©2017 AGCO Corporation. Massey Ferguson is a worldwide brand of AGCO Corporation. AGCO and Massey Ferguson are trademarks of AGCO. All rights reserved.

ARL **Pet of the Week**

SPONSORED BY: JIM CLARK




Rex is a gentle, affectionate kitten who is between five and six months old. He has been vaccinated, dewormed, and neutered and is awaiting his own family. Rex is available at the Animal Rescue League, located at 2511 Moose Drive in Laurel. ARL is open Monday-Saturday, from 10 a.m.-2 p.m. If you have any questions about adopting, volunteering, or donating, you can call us at 601-649-0821. You can also find us on Facebook as the Laurel Jones County Animal Rescue League. ARL is currently in need of Purina Dog Chow, Purina Puppy Chow, kitten food, cat litter, laundry detergent, and bleach.

State Farm®
Providing Insurance and Financial Services

Jim Clark, Agent
P.O.Box 548 • Ellisville, MS
601.477.9336
jim.clark.b2r5@statefarm.com

Like a good neighbor, State Farm is there.®

SELECT AGENT



MONEY LENDERS



WE FINANCE ATV'S
601-426-7600
134 Beacon St. Laurel



Propane Industrial Gases

RESIDENTIAL COMMERCIAL INDUSTRIAL
TANK SET SPECIAL

Ellisville: 601-477-3462
Collins: 601-765-6800
Hattiesburg: 601-583-6269
Taylorsville: 601-785-4789
Mon.- Fri. 7 A.M. - 4 P.M.

Larkin Simpson named vice president of CLEDA

Submitted

The Central Louisiana Economic Development Alliance (CLEDA) welcomes Larkin Simpson, EDPF, IOM as Vice President of the Major Employers Division. Simpson, a Cleveland, Mississippi, native, joins CLEDA from Jones County, MS where he most recently led the Economic Development Authority of Jones County and Jones County Chamber of Commerce as a Vice President.

Holding a Master's degree in economic development with an emphasis in technology led economic development from the University of Southern Mississippi and a Bachelor's degree from Delta State University, Simpson has been recognized both on a state and Southeastern regional level for his many accomplishments in economic and community development, leadership development, marketing and advertising, and organizational management. In addition to his academic achievements, Larkin also received his Economic Development Finance Professional certification (EDFP) from the National Development Council as well as his Institute for Organizational Management (IOM) certification from the U.S. Chamber of Commerce.

As leader of the Major Employers Division, Simpson will be responsible for recruitment, retention, and expansion of businesses within the ten-parish region. The division is the primary contact for delivery of state-managed services from Louisiana Economic Development throughout the region. The Division supports and facilitates the activities of

the Central Louisiana Manufacturing Managers Council. In addition, the Division is responsible for the site certification process of the region.

"Adding Larkin to our team will be a great asset for Central Louisiana. Already we can tell he has a passion for making the community the best it can be. With his education and experience, companies and site selection professionals looking to bring investment in to the CLEDA region can be assured of a national standard of professionalism and quality of product. This is very exciting for our organization and the future of Central Louisiana," stated Jim Clinton, president & CEO of CLEDA

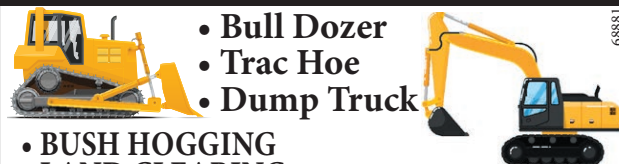
Central Louisiana Economic Development Alliance is the regional economic development organization for the ten parishes of Central Louisiana. CLEDA provides a wide variety of economic development services including recruitment, retention, and development of major employers; building knowledge platforms and networks to achieve higher levels of educational achievement and skills training; and regional innovation initiatives in entrepreneurship, food systems development, and maker communities. CLEDA prides itself on being an innovative, mission-driven organization.

Larkin and his family have taken active roles in the communities in which they have lived, serving on many boards and civic organizations. Larkin brings with him his wife, Rebekah, and two sons, Ethan (8) and Noah (4).



Larkin Simpson

DOUBLE B FARMS



- BULL DOZER
- TRAC HOE
- DUMP TRUCK
- BUSH HOGGING
- LAND CLEARING
- DRIVEWAYS
- ROAD BUILDING
- HOUSE PADS

Certified Septic Tank Installation

Brian Sciortino • Rose Hill, MS **601-479-2074**



Fire & Ice

Thursdays and Fridays in September

Drawings from 6pm to 10:30pm
Win Up To \$500 Each Night!

See Player Services for details.



FREE CONCERT!

**SATURDAY
SEPTEMBER 30 | 8PM**

**Real
Winning**



**Real
Close to Home**

Sandersville, MS

www.BokHomaCasino.com
1.866.44PEARL (1.866.447.3275)
A development of the Mississippi Band of Choctaw Indians

Follow Us!



The
Good Life

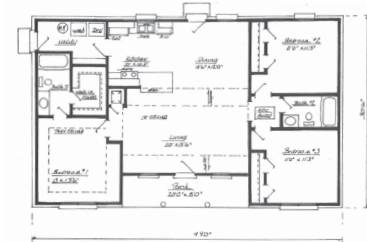
Bon Vie

Home
Builders, LLC

- Custom cabinets & granite counter tops
- Brick & hardie plank exterior with architectural shingles
- Built on a monolithic slab
- R13 exterior wall insulation & blown R30 Attic insulation
- Vinyl insulated windows
- Built to meet all codes
- 10 year structure warranty

Prices
Starting at
\$69 PER
SQ. FT.

*prices subject to change without notice



5317 Old HWY 11, Suite 12
Hattiesburg

Stick built on
your land with
zero down
payment and
closing costs
to approved
buyers.

\$477*
a month

P & I
to approved buyers
on your land

LS Tractor
Excel in Your Field™

**FOOD PLOT
SPECIAL**



COME SEE
US AT
TRACTORS
UNLIMITED!

- **XG3025 LS Tractor with Front End Loader**
 - 25HP
 - 4WD
 - Shuttle Shift
 - Synchro Mesh Transmission
- 18' Utility Trailer with Tube Top
- 5' King Cutter Brush Cutter
- 5-1/2' King Cutter Disc with Tube Frame

FINANCING AVAILABLE WITH APPROVED CREDIT!

FREE SEED SPREADER WITH PACKAGE PURCHASE

\$19,499
+ TAX

www.tractorsunlimitedms.com MON-FRI 7:30-4:30, SAT 8-4

TRACTORS UNLIMITED, LLC
601-583-6453 1507 N. MAIN STREET HATTIESBURG, MS **800-321-2701**

**WHEN IT
MATTERS MOST**



Safety is your priority.
AND OURS.

ASK ABOUT
THE MICHELIN® PREMIER® FAMILY OF TIRES



\$70

VIA
**MASTERCARD®
REWARD CARD**
after submission* with
purchase of any four new
MICHELIN® passenger or
light truck tires.

OFFER VALID 8/23/17 – 9/17/17 *See redemption form for complete offer details. Offer expires 09/17/2017. Void where prohibited. The Reward Card expires six (6) months after issuance. No cash access. MasterCard is a registered trademark of MasterCard International Incorporated. Copyright © 2017 Michelin North America, Inc. All rights reserved. The Michelin Man is a registered trademark owned by Michelin North America, Inc.

**FULL SYNTHETIC
OIL CHANGE**
UP TO 5 QTS **\$39.95**
Most vehicles,
excludes diesels
WITH COUPON Expires 9/30/17
CAN NOT BE COMBINED WITH OTHER OFFERS

4 WHEEL ALIGNMENT
Most Vehicles **\$49.95**
WITH COUPON Expires 9/30/17
CAN NOT BE COMBINED WITH OTHER OFFERS

OIL CHANGE SPECIAL
UP TO 5 QTS **\$24.95**
Most vehicles,
excludes diesels
WITH COUPON Expires 9/30/17
CAN NOT BE COMBINED WITH OTHER OFFERS

BRAKE JOB SPECIAL
WITH PREMIUM PADS
Most Vehicles **\$119.95**
WITH COUPON Expires 9/30/17
CAN NOT BE COMBINED WITH OTHER OFFERS

Southern Tire Mart
Best in Class Service on America's Favorite Brands



2926 Ellisville Blvd., Laurel
stntires.com
601-428-4375
M-F: 7a-5p Sat: 8a-12p

WJHS art students display artwork at USM



West Jones High School art students were recently selected to display their artwork in USM's George Hurst Gallery of Art and Design for the annual Make Your Mark Art competition. These pieces were exhibited in a show throughout the duration of summer. Pictured left to right: Cindy Ngo, Bailey Smith, Sara Ellzie, Cassidey Loper, Brandon Stringer, Cassie Winship, Karson Wardell, and J.P. Person. Saturday, August 19, at the closing ceremony, J.P. Person (pictured far right) won 2nd place and a cash prize for his piece, "Urban Distress." Photo/submitted

NEED CASH?

Call Verna She will hold your personal check and give you **CASH!**
Loans from \$50 to \$410
LAUREL CHECK CASHING
134 Beacon St., Ste. C
Laurel • 601-426-2432

IT'S PARTY TIME!!!
PARTY SUPPLIES
Number Balloons **17** Gift Balloons Available
BOUNCE HOUSE RENTALS
601-340-3538
NORTH LAUREL SHOPPING CENTER • MON-SAT 9AM-6PM

If Yours Is A Chiropractic Case Nothing Else Will Help You!
Make An Appointment With Us And Find Out!
Dr. A. R. Olson
We Accept Blue Cross Blue Shield, United Health Care, Medicaid and most other insurance.
134 Russell Dr. • Waynesboro, MS • 601-735-9373
OFFICE HOURS: Mon, Wed, & Fri 8am-12pm, 1pm-5pm; Tues & Sat 8am-11am

HELP FOR VICTIMS OF DOMESTIC ABUSE
24-Hour Crisis Line
1-800-649-1092
Toll Free in Forrest, Lamar, Marion, Jones, Covington, Wayne, Greene, Perry, Jasper, Smith, and Jefferson Davis Counties.
• Temporary Shelter
• Information, Referral, Advocacy
• Support Groups
• Counseling Service for Victims and Abusers
• Community Education

2018 Class of Leadership Jones County announced

By Linda Cranford
lindac3156@gmail.com

The 2018 class of Leadership Jones County (LJC) was introduced Tuesday, August 29, during a reception at the Lauren Rogers Museum of Art.

Congressman Steven Palazzo spoke briefly to the class congratulating them for being selected to participate in the program. "I challenge you to seize the moment," said Palazzo. "Take the leadership skills that you have and don't be afraid to get out of your comfort zone. But, also, grow as individuals because you are the future of Jones County."

Leadership Jones County is a program of the Community Development Foundation and was developed to identify and prepare the community's future leadership resources. LJC has provided Jones County with a network of current and emerging leaders who possess the skills and sense of commitment to improve our community.

Currently in its twenty-seventh year, the program begins in August with a two-day team building retreat followed by a two day retreat, and concludes in May with a graduation ceremony. Monthly sessions are scheduled in various locations throughout Jones County including a session at our State Capitol in Jackson. Session topics include qual-

ity of life, state and local government, social issues, education, leadership skills training and more.

In addition to Leadership Skills training, participants of the program will also work in teams to identify, develop, fund and implement a community service project to benefit the Jones County community.

The 2018 LJC class participants are: Randi Arrington – Holt & Associates, Lee Bounds – Woodland Realty, Sherry Brewer – SCRMC, Sandy Brownlee – Sander-son Farms, Delta Clark – The First, Ennis Crosby – Neel-Schaffer, Trey Crumpton – Masonite, Russ Griffin – Bancorp South, Jarrod Hennis – Dixie EPA, Betsy Ivey – B Communications, Cindy Jenkins – Magnolia State Bank, Paige Kennedy, SMPDD, Ben Morgan – Burson, Entekin, Orr, Mitchell & Lacey PA, Chris Phillips – Mississippi Power Company, Amy Ray – Trustmark National Bank, Nathan Ridgon – United Way of the Pine Belt, Sawyer Taylor – Community Bank, Brittany Ward – Sanderson Farms, and Levi Weeks – Chas. N. Clark Associates.

For additional information about LJC, contact the Jones County EDA at 601-649-3031. Also, learn more about LJC on Facebook at www.facebook.com/jonescountychamber.



2018 Class of Leadership Jones County – L-R, seated, Standy Brownlee, Cindy Jenkins, Randi Arrington, Congressman Steven Palazzo, Delta Clark, Betsy Ivey, and Sherry Brewer. L-R, standing, Ben Morgan, Chris Phillips, Russ Griffin, Lee Bounds, Levi Weeks, Trey Crumpton, Nathan Rigdon, Sawyer Taylor, Ennis Crosby, and Jerry Hennis. Photo/Linda Cranford

XTREME FITNESS
& Tanning 24/7
BACK TO SCHOOL SPECIAL
Now until the end of September, NO joining fee and first month free with a 12 month contract.
OFFICE OPEN MONDAY-FRIDAY 9AM-5PM
35 South 3rd Street, Bay Springs
601-764-3481

GOT PAIN? WE GET RESULTS!
NETHERLAND CHIROPRACTIC CLINIC
NOW ACCEPTING NEW PATIENTS
Dr. David Netherland
• 27 YEARS EXPERIENCE • WE HAVE HELPED THOUSANDS!
Mon. - Tues - Wed. - Fri. • 8:30 AM - 12 PM and 1:30 PM - 6 PM
• BACK • SHOULDER & ARM PAIN • LEG PAIN
• AUTO INJURIES • STIFFNESS, STRESS
• NECK PAIN • SLEEP PROBLEMS
Most Insurance Accepted
BC/BS • Chips • Medicaid • Medicare • Aetna
2110 SANDY LANE • LAUREL
601-399-2902

CARPORTS • PORTABLE BUILDINGS • RED IRON BUILDINGS
VARIETY BUILDINGS
2 Locations • Laurel - 1508 Horne Dr. /Hwy 15N • Waynesboro - 501 Azalea Dr.
RENT TO OWN • NO CREDIT CHECK • FREE DELIVERY
HUGE INVENTORY TO CHOOSE FROM
Staffed: Monday, Wednesday & Friday
VARIETY BUILDINGS LAUREL NEXT TO MILES POOL SUPPLY **WAYNESBORO**
601-498-5944 **601-509-4246**

SERVICE DIRECTORY

We're Here to Help!
1/2 Price
STUMP REMOVAL
 5 or more Avg. size
 with Truck Access
\$15 EACH
601-371-8733
 EXP: 10/31/17
The Tree Barber
 Matthew 16:26

IMPACT 601
SERVICE
DIRECTORY
 To advertise call
601.649.1129
 or visit our website
www.impact601.com

SERVICES OFFERED

Roofing & Repair, new construction, leak repairs, shingles, metal, flat roofs, chimneys, all types roofing and repair, free estimates, 25 years experience, call Dennis Haigler. 601-319-2522.

House Leveling Foundation Repairs. Replace bad sills, floor joist, or flooring. Sagging or shaky floor or dragging door, we can fix this. Let us make your foundation safe. Insured. 601-543-7007

Dozer, trackhoe, backhoe, bush-hogging work, fill dirt, clay, gravel, sand, delivered, mobile home pads, ponds, driveways built, repaired, clearing, site prep, Mark Butler, 601-433-6459 or 601-425-1747

Flooring, all types. Remodeling, all types, decks-cabinets. For all your home improvement needs. No job too small. Commercial and residential. Licensed and insured, references available. Wilson 8:21. Painting, remodeling and more. II Corinthians 8:21. 601-268-7603.

Saul Engineering & Surveying, 430 North 6th Avenue, Laurel. Call 601-425-3512.

Anderson Home Improvement
Pressure Washing, homes, trailers, decks, drives. Call 601-699-3816. Laurel.

Miller Tree Service: bucket truck, professional, 30 years experience, insured; bobcat - dump truck and chipper available, senior citizen discount, free estimates. 601-498-3836, 601-649-0174.

Lawn care: Serving Hattiesburg, Lumberton, Laurel, Sumrall, Petal, Brooklyn, Ellisville, Purvis and Mosselle areas. Reasonable rates. 601-325-5008. www.fullservicelawnca-rems.com

Raybourn Construction: Roofing and repairs, general construction, remodeling, painting, heating & a/c service, and more. 30 years experience, insured State Licensed Contractor. 601-580-7540 or 601-649-0780.

FARRIS
Mobile Home
TRANSPORT
 STATEWIDE MOVING
 Licensed & Insured
 TRANSPORTING SINCE 1979
SALES & SERVICE
 Tony Farris
601-422-4144

TANNER
Dozer and
Trackhoe Service
 • Build • Clear land
 • Ponds • Haul/Fill
 • Driveways • Dirt
Professional
Contracting
with Reasonable
Rates!
601.319.6624

Lonnie Lofton Roofing Contract- ing -- since 1968. Call 601-425-4484 or 601-422-3003.

I buy junk cars, buses and heavy equipment. U Call. We Haul! We pickup 24/7. Call 601-297-2778.

Dozer & Backhoe Work: \$90/hour, 4-hour minimum. Licensed/Insured. 601.620.8391.

Vision Plumbing. 601-688-1409. Simon Marshall. 24 hour plumber, insured. All work guaranteed. simon-marshall@visionplumbingms.com

SOUTHERN
MISSISSIPPI
WATER
WELL
DRILLING and SERVICE
 NEW AUGUSTA, MS
601-344-1005
601-716-6837
662-803-5459

Painting, Remodeling, Drywall, **Pressure** Washing, Decks, Cabinets and more! Licensed, Insured, Affordable, honest, dependable Christian company. Commercial and Residential. Quality, professional work. Over 20 years experience. References available. Call for a free estimate. If no answer, please leave a message. We will return your call. Wilson 8:21 Painting & More. II Corinthians 8:21. 601-268-7603.

Thames Concrete Finishing: Set forms, patios, finishing slabs, driveways, Brick work . painting & roofing great work Percy Thames. 601-543-8712.

TNT Transport Mobile Home Services: Deliver, Set Up, Skirting. Licensed, bonded and insured. Todd Delk, owner, 601-335-4211.

Kool-Seal Mobile homes, travel trailers, campers, sheds, etc. Energy efficient, 10% reduction. Pressure washing available. Call Craig or leave message, 601-544-9614

A&A Septic Tank. We clean, install and repair septic tanks treatment plants, field line, grease traps. In business for 34 years.Family owned and operated. 601-649-8838. In God We Trust.

SQUEAKY CLEAN
 RESIDENTIAL & COMMERCIAL
 CLEANING SERVICES
 Flexible Schedule:
 • **Weekly**
 • **Bi-Weekly**
 • **Monthly Visits**
 Available After Hours
FREE ESTIMATES
601-335-2152
 Licensed & Bonded
 Approximately 20 Yrs. Experience

NEED
CASH
FAST?
COME SEE TIFFANY
CITY PAYDAY LOANS
CAR TITLE LOANS
 716 SPRING STREET
 WAYNESBORO
601-735-5353

Flooring Hardwood floors, ceram- ic tile, linoleum. For all your flooring needs. Quality work, references available. Licensed & Insured. Wilson 8:21 LLP II Corthinthians 8:21. 601-268-7603.

DEEP SOUTH TURF, LLC
"TURF GROWN IN THE SOUTH FOR THE SOUTH"
WHOLESALE AND RETAIL.
 CALL BRANDON STRINGFELLOW
 1190 Shipman Firetower Rd. • Lucedale
601-673-0137 - Cell
601-947-3973 - Office

Quality Painting at affordable prices. Pressure washing and more. Licensed, Insured, Affordable, Professional, Christian company. Free Estimates. Commercial and Residential. References available. Wilson 8:21 Painting & More LLP II Corinthians 8:21. 601-268-7603

Right At Home: In home care & assistance. Do you or someone you know need help with: Transportation to appointments; grocery shopping/ hair appointments; light housekeeping; recovering from a Hospital stay; basic companionship and much more. For a free consultation call 601-426-6333.

Junk Cars: Get rid of those snake dens and rat dens. Bring 'em to us, or we'll pick 'em up! Springer Auto Salvage. Call 601-649-4238.

Squeaky Clean Residential & **Commercial** Cleaning Services. Flexible schedule: weekly, bi-weekly,

Warehouse Services Company, LLC

Nemo Clark Dr.
Greater Laurel
Industrial Park
 • Sizes Range From
 25,000 sq ft to 63,000 sq ft
 • Short Term and Long
 Term Leases Available
Commercial & Industrial Storage
601.433.3988 • 601.433.4140

A&A SEPTIC
SERVICES, LLC
Install and Repair
 • Septic tanks
 • Treatment Plants
 • Field Line • Grease Traps
 In business for 34 years
FAMILY OWNED
AND OPERATED
601-649-8838
601-433-2947
 IN GOD WE TRUST

LONNIE LOFTON
ROOFING
CONTRACTING
 Free Estimates
since
1968
601-425-4484
601-422-3003

monthly visits. Free estimates. 601-335-2152. Licensed & insured. Approximately 20 yrs. experience.

Bolivar's Mobile Home Delivery and Setup. Statewide moving. Licensed and insured. Nathan Bolivar: 601-580-9900.

Quality Pressure Washing at affordable prices. Licensed, Insured, Affordable, Professional, Christian company. Free Estimates. References available Commercial and Residential. Wilson 8:21 Painting & More. II Corinthians 8:21. 601-268-7603

SOCIAL SECURITY
DISABILITY DENIED?
 CALL ALBERT TURNAGE, ATTORNEY
 OVER 25 YEARS EXPERIENCE.
NO FEE UNLESS WE WIN YOUR CASE!
1-888-706-4708
 Free background information available upon request

Lawn Care: Mowing, trimming, edging. For the Laurel, Ellisville, Taylorsville and surrounding area. Commercial and residential. Free estimates. 601-517-7599.

Flowers, Sand & Gravel: We now install septic systems, grinder pumps and spray systems. We deliver all types of gravel, fill material, sand, rock and topsoil, soil mix and mulch. Dozier and track-hoe service available. Foundations, roads, ponds, etc. We also have Above Ground Precast Storm Shelters, several

GMW
Siding
Specialist
 • Mastic Elite Contractor
 • 35th Year serving the Pine Belt
 • Winner of "7" National Awards
 • Mastic Vinyl Siding Products
 • 6" Seamless Gutter
601-428-5595

HAIGLER
ROOFING
& REPAIR
 • New Construction • Leaks
 • Repairs • Shingles • Metal
 • Flat Roofs • Chimneys
FREE ESTIMATES
30 Yrs. Experience
Call Dennis Haigler
601-319-2522

Right at Home
In Home Care & Assistance
THE RIGHT CARE---RIGHT AT HOME
Locally Owned
 Do you or someone you know need help with:
 • Transportation to Appointments
 • Grocery Shopping/Hair Appointments
 • Light Housekeeping
 • Recovering from a Hospital Stay
 • Basic Companionship
 • And Much More!
FREE CONSULTATIONS
601.426.6333

sizes available. Give us a call. 601-498-5983 or 601-477-2767.

Bostick Tree Service: tree removal, stump and root grinding with precision for easy mowing and tree health, fully insured, free estimates, serving Pine Belt area, 601-283-8667

PINE BELT GUTTERS
& REMODELING
 Specializing in seamless gutters, vinyl siding, patio covers, replacement windows & doors.
 We also offer gutter cleaning.
WE WILL BEAT ANY COMPETITOR'S PRICE!
FREE
ESTIMATES 601-265-6010

1/2 price stump removal 5 or more average size, 24-inch diameter, 6-in. tall, with truck access. \$15 each. Best price on grinding uprooted stumps. Expires 10/31/17. 601-371-8733. The Tree Barber, Matthew 16:26.

Offering housecleaning, lots of experience & references available. Please call 601-470-3237.

HANDYMAN

Handyman: electrical, remodel- ing, painting, porches, interior, exterior, and more. No job too small.

Laurel and surrounding area. Call 601-935-8325.

ATTORNEYS

Adoption, custody, DUI, personal injury, divorce, land disputes, wrongful termination, will disputes, Call Sam Creel for an appointment 601-498-8968.

Bankruptcy & Social Security, Tracy A. Walley, 1616 West 3rd Street, Laurel, 601-651-2186

MASSAGE

Massage One. \$45.00 Introductory 1 Hr. Massage session. By Robert Lowe L.M.T.#1362. Call to book yours today! 601-466-2199 www.MassageOne.us May your days be stress free!

PETS

Happy Tails. Grooming, LLC. Call for an appointment and I will come to you. Wanda Gayle Jones. Owner/ Groomer. happytailsgrooming@workmail.com. Hours 8:00 a.m. - 5:00 p.m. 601-517-3965.

Continued on ... Page 8

T-Mobile®

Qualify and switch to America's Fastest 4G LTE Network.

Get T-Mobile® service with a discount of at least **\$9.25 a month.**

Plan includes:

- Unlimited Talk
- No Annual Service Contract
- \$19.99/month before Lifeline discount

Are you eligible?

You may qualify based on your income or if you're currently eligible to receive public assistance such as Medicaid, Food Stamps (SNAP) or Supplemental Security Income (SSI). If you're a resident of federally recognized Tribal Lands, you may qualify for additional discounts.

See if you qualify and learn how to apply at
www.T-Mobile.com/lifeline
or call 1-800-937-8997.

Discounted wireless service is provided under the Lifeline assistance program. Lifeline is a government assistance program that provides only eligible consumers with discounted service that is nontransferable and is available for only one line per household. A household is defined, for purposes of the Lifeline program, as any individual or group of individuals living at the same address that share income and expenses. T-Mobile offers Lifeline service only in areas where the company has Eligible Telecommunications Carrier status. You may find more information about Lifeline and other wireless services available from T-Mobile USA, Inc. at www.T-Mobile.com.

Limited-time offer; subject to change. Taxes and fees additional. **Unlimited talk feature for direct U.S. communications between 2 people; others (e.g. conference & chat lines, etc.) may cost extra.** Domestic only unless otherwise specified. Capable device required for LTE speeds. **Coverage** not available in some areas. **Network Management:** Service may be **slowed, suspended, terminated or restricted** for misuse, abnormal use, interference with our network or ability to provide quality service to other users, or significant roaming. See brochures and **Terms and Conditions (including arbitration provision)** at www.T-Mobile.com for additional information. T-Mobile and the magenta color are registered trademarks of Deutsche Telekom AG. © 2017 T-Mobile USA, Inc.

Butler Dental
 Across from Court House, Butler, Alabama
Julie Utsey, D.M.D.P.C.
General Dentistry
205-459-2700 1-888-851-8512
 Tuesday thru Friday 8 a.m. - 5 p.m.

- ONE DAY DENTURES
- PARTIALS AND EXTRACTIONS
- FREE CONSULTATIONS

	Single	Set
Set Standard Dentures.....	\$200.00	\$300.00
Set Deluxe Dentures.....	\$350.00	\$600.00
*Reline Included: Savings of \$130.00 per unit		
Set Custom Deluxe Dentures	\$550.00	\$1,000.00
*Reline Included: Savings of \$130.00 per unit		
Cast Metal Partial - \$625.00	• Acrylic Partial - \$200.00	
• Extractions - \$100.00 • X-Rays Included		
• Simple Extraction - \$70.00 • Surgical - \$100.00		

STOP
Refresh your driving skills with the
AARP SMART DRIVER COURSE!
You will learn:
 • Defensive driving techniques
 • Proven safety strategies
 • New traffic laws and rules of the road
Plus, there are no tests to pass. You simply sign up and learn. Upon completion you could receive a multi-year discount on your car insurance.*

When: September 21, 2017 • 8a.m. - 12 p.m.
Where: West Laurel United Methodist Church
 523 N 14th Ave • Laurel, MS 39440
TO REGISTER: email brian.ginn.dr2z@statefarm.com
 or call 601.649.0120

Classroom Course: \$15 for AARP members • \$20 for non-members
 For more information visit www.aarp.org/drive

* Upon completion you may be eligible to receive an auto insurance discount. Other restrictions may apply. Consult your agent for details.

TOYOTA
This program is supported by a generous grant from Toyota to AARP Foundation.
DRIVER SAFETY
AARP Real Possibilities
 Brian Ginn
 State Farm Agent 1126 Highway 15 N • Laurel • 601-649-0120

HELP WANTED

EMPLOYMENT CLASSIFIEDS

HELP WANTED

Mechanic needed for tune ups, repairs, brakes, AC. Competative salary plus commission. Must have your own tool. Apply in person at Spee Dee/Midas on Hwy 98 West, Hattiesburg.

Onin Staffing: Jobs! Jobs! Poultry Processing, Basic Electrical (High

School Diploma), Basic Carpentry (High School Diploma) Jobs available immediately! Now Hiring! 2261 Hwy 15, Laurel. 601-398-9625. Onin Staffing, Equal Opportunity Employer.

Now taking applications for lube bay technicians. Apply in person. Spee Dee Midas, Highway 98, Hattiesburg. No phone calls please.

Mr. Rooter Plumbing seeks highly motivated individuals for office personnel and plumbers with 2 years experience and resume. Join a growing company, a family environment. We offer bonuses based on performance. Company supplied van, equipment, and uniform. Candidates must have a clean driving record. This winning team maintains a drug free environment. Call 601-671-3444 or 251-846-2565. www.apply@mrrooter.com.

Looking for an experienced car sales person to work at Ryan Motors. Contact Billy Miller at 601-270-6507.

Mid-Coast Inc. We are looking to hire OTR drivers and short runs available. Must have CDL license and 2 years experience. Exciting possibilities for your future. Please call Benny or James if interested at 601-202-3969.

Avon. Need additional cash? You can earn it with Avon. Call Ruth @ 601-259-2062 to get started.

Maintenance position available. Simple plumbing, electrical and carpentry. Must have license and basic tools. All work in Laurel area. 601-580-6600.

BUSINESS OPPORTUNITIES

Pasquales is expanding and now offers unique business opportunities. Interested in owning your own restaurant, call Mack, 601-433-7124

GENERAL

Flag Pole Super Sale! "While Supplies Last!" Get our 24ft. Liberty Deluxe Double Flyer (reg. \$299) now only \$199. Call American Flag Pole Co., 601-649-0748.

Southern Precision Arms, best kept secret in Jones County! Guns, Ammo, Accesories, Gun Repair.

Monday-Friday, 5:30 p.m.-9:00 p.m. and Saturday, 2:00 p.m. - 9:00 p.m. 1766 Mill Creek Road, Laurel. 601-649-6967.

Free pallets. Over 100. Must take everything. Call Ron Buckley: 601-670-5806.

Lawn care: Serving Hattiesburg, Lumberton, Laurel, Sumrall, Petal, Brooklyn, Ellisville, Purvis and Moselle areas. Reasonable rates. 601-325-5008. www.fullservicelawnca-rems.com

Have you ever wondered how current events tie together with biblical events or prophecy? R. Dean Hubbard reveals in his book the mystery of today's happenings and shows the progression of God's work upon the earth. If translating numbers is new to you, request a copy of this book and take the journey with Hubbard as he guides you to an exciting new level of understanding the perfect will and plan of God. Contact us at merle.coats1972@gmail.com or 601-325-6190.

DRIVERS \$40-\$60K PER YEAR! Late Model Equipment! PTO! Company Pays 75% of Health Insurance! CDL-A w/2 years Experience **844-361-0170 EXT 103**



CARE CENTER OF HATTIESBURG

Immediate Full-Time positions available:

- **12 HOUR SHIFT Registered Nurses**
- **Licensed Practical Nurses positions** available with every other weekend off
- **MAINTENANCE ASSISTANT**

Apply at Bedford Care Center of Hattiesburg
#10 Medical Boulevard • Hattiesburg
601-264-3709
Monday-Friday 8:00 a.m - 4:30 p.m
Equal Opportunity Employer

BA1865

NOW HIRING POSITIONS AVAILABLE:

- **GENERAL MANUFACTURING** \$8-\$12/hr
- **MACHINE OPERATORS** \$12.25/hr
- **ELECTRICIANS** \$12-\$16/hr
- **CDL DRIVERS** \$10-\$15/hr
- **GENERAL LABOR** \$8-\$10/hr
- **WELDERS** \$13.25/hr
- **ACCOUNTING CLERK** BOE
- **ADMINISTRATIVE** BOE
- **BOOKKEEPER** BOE

Call 601-264-9060 Today
OR APPLY ONLINE AT www.expresspros.com



DRIVERS NEEDED MID-COAST INC. Magee, MS

FULL TIME

- Short Haul
- Long Haul

We have a job for you!

Please call Benny or James
601-202-3969 or 601-287-2913

69182



NOW HIRING DRIVERS

- OTR/Regional Drivers, Short and Long Haul
- Dedicated Lanes, Reefer and Flatbed
- Sign-on Bonuses
- Bonuses for Performance, Safety Teams & Specialty Hauls
- Blue Cross and Blue Shield Insurance

Moselle 800-408-5542
WHITESTONETRANS.COM



DRIVERS, are you tired of having to jump through hoops, such as gimmicky revenue and retention bonuses? Do you want to earn what you are worth? At Baggett Transportation, we pay you what you are worth, without the hassle!

We offer the best benefits in town, which include

- Health Insurance • Company Matching 401-K Plan • Paid Vacation



Pay starting at 42¢ per mile!

Now leasing Owner Operators! Flats or Vans. Call for details.

601-426-3462 or 855-435-5021

Call for more information or apply in person at: 2815 Industrial Blvd. • Laurel, MS

68621



First on any Menu

TRUCK MECHANIC NEEDED

Must Have Own Tools
Experience Required
CDL Required Within 6 Months of Employment
Steady Monday-Friday Work
Drug Free Work Place
Paid Holidays
Benefits Include:
401K
BCBS Health
Dental & Vision

For more information, please contact Jamie Chisholm at (601) 507-5811 or (601) 764-4964.

Fill out applications at the Live Production Office, 3683 Hwy 15 N, Bay Springs, MS

EOE/M/F/D/V

CB4523



FIRST ON ANY MENU.SM

PECO FOODS, INC IN BAY SPRINGS IS HIRING A PAYROLL/HUMAN RESOURCES CLERK

REQUIREMENTS:

- Good Work and Attendance Record
- Good Hand Writing Skills
- Basic Math Skills
- Good Communications Skills
- Positive Attitude
- Computer Skills Including Excel and Word
- Must Know How to Operate a Calculator

NO CALLS PLEASE
APPLICANTS CAN MAIL RESUMES TO THE EMPLOYER AT:
ATTN: JENNA SMITH
PO BOX 1320
Bay Springs, MS 39422
OR FAX RESUME TO ATTN: JENNA SMITH AT:
601-764-4529

EOE

3x5 Poly Flags: **USA,** Mississippi and Confederate flags. Only \$5. Flag poles (5-foot to 100-foot). Flag Heads, 490 Hwy. 49, Seminary. Open 10-5 Tuesday-Friday, 10-3 on Saturday. Veterans Discount. "You won't find it at Wal-Mart."

Circle 3 Self Storage hereby makes notice that contents for Debbie Bolivar, Whitney Hudson, and Missy Saul will be sold to the highest bidder September 9, 2017, 9:00 a.m. at 1199 Hwy 15 South, Laurel, MS. 601-649-0479.

TRAILERS

B&B Trailers. Utility and equipment. 8201 US Hwy 98W, Hattiesburg. We take trade-ins. 0% financing. 12 months same as cash. WAC. Check out our new website: bbtrailers.net. 601-264-6711.

LAND

South Jones County +/- 47 Acres: Located in South Jones County on Rainey Road. 10 Miles from Hattiesburg and Laurel right off the Sanford Road Exit on i59. This property would be perfect for a home-site or mini-farm with plenty of recreational opportunities. Price: \$123,375. For more details, call Bennett today 601-913-0340 at Walley Properties, LLC. Or visit our website walleyproperties.com for maps and more information of this listing.

Small acreage for sale, water, septic and power pole, owner finance, NE Jones area. 601-426-3696 or 601-470-7772.

Price Reduced! Pearl River County +/- 147 Acres. Great Location! Beautiful setting! This property is located 7 miles south of Poplarville just off I-59 on Savannah Millard Rd. This property would make for a great home site, weekend getaway, farm, with plenty of hunting and fishing

opportunities. This property offers a variety of different timber types, fields, and has 2 stocked ponds ready to fish. The properties location would be ideal for anyone wanting to be close to New Orleans or the MS Gulf Coast. Priced at \$399,000. For more information on this listing contact Bennett 601-913-0340 at Walley Properties, LLC. or visit our website walleyproperties.com

Jasper County +/- 46 Acres. This beautiful secluded property is located in the heart of Stringer School District on CR 211. This property offers multiple home sites with endless possibilities. \$110,400. Contact Marc 601-670-5429 at Walley Properties, LLC. or visit walleyproperties.com for more info.

SEALED BID LAND and/ or TIMBER SALE. Sealed Bid Sale on 9/12/17. Wayne County 80 +/- Acres located off of Evergreen Road in the Eucutta Community. See website for details www.walleyproperties.com or give us a call at 601-477-3014.

17 acres with lake, mature timber, house pad, ready to build, Stringer Schools. \$105,400. Call Rob McCraw 601-498-9143.

Price Reduced Covington County +/- 74 Acres. Located 4 miles from downtown Seminary off hwy 590 on the corner of Shirley Sanford Road and Johnny Sanford Road. This property would be perfect for a home-site with plenty of recreational opportunities. Property consist of mature pine plantation, gorgeous hardwoods, and a stream that flows throughout the property. Great for hunting. \$222,000. For more details, call Bennett today 601-913-0340 at Walley Properties, LLC. Or visit our website walleyproperties.com for maps and more information of this listing.

Lake Eddins: a great Place To Be!! End of summer blowout!!! Off-water lots as low as \$5000 and water-

front camps as low as \$62,500. Call CrossRoads Realty 601-727-7653.

Jones County +/- 29 Acres : Price Reduced! Only 5 miles south of Ellisville down Hwy 29 East located on Busby Road. This Property with road frontage has recently been chipped, leaving residential/shade trees which would make for a perfect home-site, or mini farm. \$69,6000. For more information call Bennett 601-913-0340 at Walley Properties LLC or visit walleyproperties.com for maps of this listing

Land & Timber Bid Sale September 13, 2017 @ 2:00 p.m.: Lawrence County, MS Total of +/- 353 acres (Tract #1 +/- 133 acres Tract #2 +/- 220 acres) on Bahala Creek with Mature Hardwoods and Pines Power/Water. Paved road frontage. Please visit www.wnwland.com for details or call Woods & Waters Realty. 601-408-0615.

24 acres in Runnells town. Lots of mature timber and wildlife. Unbelievable hunting!! May subdivide. Call Shawn with Southern Coastal Realty at 601-408-3570.

Covington County 85 +/- Acres. Price Reduced! Can be divided. Located in the Seminary School District only 4 miles Northeast of Seminary at the intersection of Hwy 535 and Lebanon Church Road. Would make for a great home site, has power and water available. Features a mix of young pine plantations with hardwood stands along the creek bottom. Excellent timber investment and hunting opportunity. \$2250/ Acre. Call Bennett 601-913-0340 at Walley Properties LLC. Please visit walleyproperties.com for maps of this listing

Greene County +/- 40 Acres. Just in time for deer season! Located off of Hwy 63 just North of Leakesville on Smith Dale Farm Road. This property is ideal for anyone looking

to have their own personal hunting spot or investment property. This property consist of scattered hardwoods and a small creek that flows through the south end of the property. The property does have an easement and is easily accessible. This property is priced to sell at \$1800/ acre. Call Bennett Burris 601-913-0340 at Walley Properties, LLC. or visit our website at walleyproperties.com for more info on this property

20 acre farm/ranch in Janice, Ms. With custom built home, wrap around porch, Pond, horse stalls, fenced and cross fenced, huge shop. Bordered on two sides by National Forest lands. Lots of wildlife call Shawn, Southern Coastal Realty, LLC 601-408-3570.

+/- 6 Acres Located on Old Salem Road at Strengthford, MS. This piece of property has a spot cleared for a house site. Nice timber on property. Call Rob McCraw Today 601-498-

WALLEY FORESTRY

TIMBER

• LAND • SALES • MANAGEMENT

www.walleyforestry.com

601-477-3014

9143. \$21,000. See more at mfm-land.com.

+/-18 Acres Located on Jim Brownlee Road in West Wayne Co. \$50,000. Call Woods & Waters Realty at 800-526-3961. See more at mfm-land.com.

Continued on ... Page 10

NOW HIRING

• CNA 7-3, 3-11, AND 11-7 SHIFTS (SIGN ON BONUS FOR CNA'S)

• PRN LPN'S

Hillcrest Nursing Center

1401 1ST AVENUE N. EAST • MAGEE

APPLY IN PERSON • NO PHONE CALLS PLEASE

Equal Opportunity Employer

Onin Staffing

Our business is people.

NOW HIRING

2261 HWY 15 N. LAUREL, MS 39440

APPLICATION 9:00AM- 4:00PM MONDAY-FRIDAY

POULRTY PLANTS

601-398-9625

POULTRY PLANTS

MOSELLE, MS

Day Shift \$9.13 an Hour

You Can Earn Up to \$7.00 a pound

Depending on Production and Experience

HATTIESBURG, MS

Night Shift \$9.80 an Hour

After 90 Days \$ 11.05 an Hour

Must Pass a Drug Test

TANNER CONSTRUCTION

Hiring Class A and B truck drivers. Must be able to drive a standard shift.

• Requires a clean driving record,

• Ability to stay out of town

• Some weekend work

• \$14 - \$15 per hour • Medical • 401K

Ideal candidate will have experience with end dump and belly dump trailers.

Please apply Online at

Tanerconstruction.net

or in person at:

677 Pecan Grove Rd, Ellisville

We are an Equal Opportunity Employer, and encourage women, minorities, and people with disabilities to apply.

PARISH TRANSPORT

HAS IMMEDIATE OPENINGS FOR GOOD

OTR Truck Drivers and Owner Operators

HIRING ALL DIVISIONS

Benefits include:

• Health Insurance • Vision Insurance • Dental Insurance • Paid Vacation

NOW OFFERING SIGN ON BONUS

• SAFETY BONUS • REVENUE BONUS • RETENTION BONUS

If You Want To Work For A Great Company With Great Benefits

call us at

601-342-2314 today!

Located in Ellisville, MS

79517

BAB1882

HMC

DUE TO INCREASED PRODUCTION DEMANDS

HOL-MAC CORPORATION

JOB FAIR

SATURDAY , SEPT. 23 8:00AM-12:00PM

JCJC JASPER COUNTY CENTER BAY SPRINGS

HIRING FOR A LARGE VARIETY OF POSITIONS!

LOOKING FOR SKILLED, DEDICATED, AND RESPONSIBLE INDIVIDUALS

FOR MORE INFORMATION CONTACT LAURA WINDHAM 601-764-4121

HOL-MAC CORPORATION IS AN EQUAL OPPORTUNITY EMPLOYER

Peco

FIRST ON ANY MENU.SM

PECO FOODS, INC IN BAY SPRINGS IS HIRING A FEED MANUFACTURER

LOOKING FOR A TEAM PLAYER WITH AN EXCELLENT ATTITUDE TO PRODUCE QUALITY PRODUCT IN AN EXTREMELY FAST PACED ENVIRONMENT. THIS POSITION REQUIRES CONTINUOUS MOVEMENT, STANDING THE ENTIRE SHIFT, AND LIFTING UP TO 50 POUNDS CONTINUOUSLY.

NO CALLS PLEASE

APPLICANTS CAN FILL OUT AN APPLICATION AT:

PECO FOODS LIVE PRODUCTION

3983 HWY 15 N

BAY SPRINGS, MS 39422

EOE/M/F/D/V

Homes and Land

FARRIS
MOBILE HOME TRANSPORTING
Statewide moving, licensed & insured.
Transporting since 1979
SALES & SERVICE
Tony Farris
601-422-4144

BAB1517

Price Reduced! Tallahala Creek Frontage!! Perry County 90 +/- Acres Located on the beautiful Tallahala Creek. Can be divided into 30 acre parcels. This property is located on Highway 29 South right outside of Runnelstown, MS only 10 miles from the city of Petal. This property is every outdoorsman dream, with over a 1 1/4 mile of river frontage, sand bars, gorgeous hardwood bottoms, pine plantations, shooting houses, and food plots. The plentiful abundance of wildlife such as: Deer, Turkey, Small game, and Fish will keep you occupied year-round. \$3,150/ Acre. Call Bennett 601-913-0340 at Walley Properties LLC. Please visit walleyproperties.com for maps of this listing.

HUB CITY MOBILE HOME PARTS
NOW OPEN:
For all your Mobile Home needs!
hubcityhomesllc.com
7385 US Hwy. 49
Hattiesburg, MS
601-264-2204

JW002

Price Reduced! South Jones-Rainey Community 24 +/- Acres . Great Location. South Jones School district. This beautiful property is located on the corner of Rainey Road and Sumrall Road just 3/4 of a mile south of Moselle-Seminary Road. This property has over 1/4 mile of road frontage on Sumrall road, offers multiple home sites, mature thinned plantation, and an abundance of wildlife. \$102,000. Call Bennett 601-913-0340 at Walley Properties, LLC.

Jones County +/- 8 Acres. Beautiful Home/Mobile Home site with power and water in place. Located on the corner of Ovett Moselle Road and Beech Cemetery Road. Property contains road frontage to the north, south, and west, and 16th section land to the east. Scenic landscape with area to build a pond. \$40,000. Call Bennett 601-913-0340 at Walley Properties, LLC or visit our website walleyproperties.com for maps and more details of this listing.

78+/- Acres located in Smith Co., in Mize School District. Live creek throughout. \$2900 per acre. Call 601-818-3597.

Stringer, MS: This excellent 69 acre parcel is located in the heart of Stringer School District. The property consist of various merchantable timber types with multiple home sites. With an abundance of wildlife

COOK AVENUE APARTMENTS
WE ARE NO LONGER ACCEPTING APPLICATIONS AT THIS TIME
EFFECTIVE MARCH 31, 2017



For More Information
Call 649-4204
Office Located 415 Sorrell Dr., Laurel, MS
Hours: 8 a.m. • 5 p.m., Mon. - Fri.

BAB1465

the property could also be used as a hunting retreat. The property can be divided. Priced to sell at \$164,025. Contact Marc 601-670-5429 at Walley Properties, LLC.

Land sales: Let us assist you with your land sale or purchase. We provide full service forestry consulting and land brokerage. Call Woods & Waters Realty at 601-498-9143

Wayne County +/- 84 Acres. Property will not last long! Located on the Mabry Graham Road just north of Beat 4 in Wayne County, MS. This Remarkable Tract of Land offers endless possibilities. The topography is gently rolling with sandy clay soils. The timber consist of 8-10 year old pine plantation. The property offers plenty of road frontage in a remote setting with an excellent internal road system and a natural gas pipeline for great access. Grass patches are in place and an abundance of wildlife that is sure to please any hunter. This property is offered at \$165,900.00 & can also be divided. Contact Marc 601-670-5429 at Walley Properties, LLC. or visit walleyproperties.com for maps and info of this listing.

Greene County +/- 40 Acre. Beautiful 40 acre fish farm is located just east of Beaumont, MS in Greene County. The property holds 13 small ponds, multiple small sheds

with concrete slabs, some remaining equipment, and multiple power sources over the property. The property has some mature longleaf pine and a cozy 1,000 square foot 3 bedroom, 1 bath block house. The property is very secluded and offers many possibilities. Priced to sell at \$165,000. Contact Jeff at Walley Properties, LLC 601-297-1958 or visit walleyproperties.com for more info and maps of this listing.

Jones County +/- 8.76 Acres Great Location! Great Home site! This property is located 5 miles south of Ellisville on Old School House Road in the South Jones school district. This property is ideal for anyone looking to build a house or add a mobile home. The property has over a 1/4 mile of road frontage with power, water, and septic on site. The property has a mixture of mature planted pines and a beautiful hardwood bottom that surrounds the scenic Bear Creek that runs through the south end of the property. \$37,500. For more information on this listing contact Bennett, 601-913-0340 at Walley Properties, LLC. or visit our website walleyproperties.com.

Lot for rent in Stringer: \$150 month all hook-ups available. 601-764-8784.

+/- 8 Acres Located on Jim Brownlee Road in West Wayne Co.

WE OFFER FINANCING
For All Types of Credit Scores!
ALL NEW HOMES INCLUDE:
★Delivery ★Setup ★Skirting
★Air Conditioning ★Steps

Stop In Today at Hub City Homes!
HUB CITY HOMES
HUBCITYHOMESLLC.COM

7385 US HWY. 49
HATTIESBURG, MS
601-268-1900

JW002
f

★★★★★

Your **#1** Dealer
of Quality Homes at
Affordable Prices

\$25,000. Call Woods & Waters Realty at 800-526-3961. See more at mfmiland.com.

MOBILE HOMES

Plenty of room! 5 bed, 3 bath double wide. Lots of space for all your loved ones. Vinyl siding and shingle roof. Zone 2! Won't last long. Price \$26,000 as is, call 601 520 0710.

Won't last long. 2BR/2BA., 2001 Horton, 16x72. Woodgrain in kitchen, w/ceramic tile counters and flooring, large master bath with garden tub and sep. shower. \$16,500 as is. 601-520-0710.

Handyman Special. 2 to choose from. \$2,500. 601-307-2114, 601-261-6005.

ASSUME PAYMENTS!
3BR/SW \$249 PER MO.
3BR/DW \$349 PER MO.
2BR/DW \$399 PER MO.
205-541-4131

SF1268

Stop renting and own your own home now. Single wides for \$400.00 a month and double wides for \$600 a month. Call 601-307-2114.

We buy used homes. Good credit, bad credit, no problem. New, used and repo homes available. Over 100 homes to choose from. Payments starting at \$250 per month. Land and home packages available. For more info: 601-447-4538.

Cute Starter Home, 24x52, 3 bed/2 bth Double Wide, vinyl siding, shingle roof, ready to live in. Zone 2. Price \$15,500 as is! Call 601 520 0710.

Need Zone II or III home? Call 601-307-2114.

Used Houses. Singlewides and doublewides. 3, 4, 5 and 6 bedrooms. Will deliver and setup. Call Johnny McDonald, 601-452-2113, 601-261-6005.

"Used and Repo Dealer" 10 acres of mobile homes, sold as is or completely remodeled. Have it your way at TB Sales. We will get you in the right home. 601-520-0710.

Blake's Mobile Home Transport: We specialize in moving single-wide, double-wide, and triple-wide mobile homes. Also offer re-leveling and tie-down service. Licensed and insured. Call 601-422-8588

"Mobile homes, mobile homes" arriving daily at TB Sales on Hwy 49 North, Hattiesburg, next to the Bouie River. We have used, repo, remodeled, fixer upper, all homes, all sizes at unbelievable prices, our guaran-

tee no one will beat our prices for what we do. 601-520-0710 or TB Sales @ Facebook.

Assume payments. Singlewides, doublewides, land and home packages. Call for details, 601-307-2114, 601-261-6005.

Mobile homes for sale. New, used, repos, foreclosurers, land-home packages. Call Repo Man, 601-310-9262.

GOOD CREDIT. BAD CREDIT. NO CREDIT. NO PROBLEM!
NEW, USED & REPO HOMES AVAILABLE.
NO CREDIT CHECK.
OVER 100 HOMES TO CHOOSE FROM.
Payments starting at \$250 per month
FOR MORE INFO: 205-541-4131

SF1267

Eagerly waiting for you, 16x76, 3BR/2BA., huge kitchen, wrap around master bath, \$20,000, singlewide. Call 601-520-0710

2017 Doublewide, 5 bedrooms, 3 bath, central A/C, skirting, delivery, setup, and tie down included. Call Johnny McDonald, 601-452-2113, 601-261-6005.

Front porch sittin, sweet tea sippin, 28x66, 3BR/2BA., stone fireplace, lots of cabinets and island, \$17,888 as is. Call 601-520-0710.

Foreclosurers, repos, used, land home packages, and new mobile homes. Call Chase today for details. 601-310-9262.

Used Doublewide, 4BR/2BA., central A/C, skirting, delivery, set up and tie down, only \$44,900. 601-307-2114, 601-261-6005.

Blue for you! 16x80, 3BR/2BA., new plywood on floors, new sheet-rock and paint, very spacious, vinyl siding and tin roof, singlewide, \$19,000, Call 601-520-0710

Factory Direct pricing. Nobody beats our prices. wholesalemobile-homecenter.com 601-296-7960.

Little Fixer Upper. 14x70, 2BR/2BA., \$5,500. Needs floor work. 601-520-0710.

I guarantee you a home with \$8,000 down and payments of \$575/month for only 13 years. I don't care if you are in a bankruptcy, you are automatically approved when you put \$8,000 down on a Brand new single wide mobile home. Call Tiny, 601-307-2114.

2017 5BR/3BA, central A/C, skirting, delivery, set up and tie down, only \$69,900. 601-307-2114, 601-261-6005.

Continued on ... Page 11

Kubota RTV X-Series
Do more with Kubota's full line of powerful 4WD workhorses.



RTV-X900

- Kubota Diesel Engine – 21.6 HP*
- Front and Extra Duty Independent Rear Suspension (IRS)
- Available in General Purpose or Worksite Models



RTV-X1100C

- Kubota Diesel Engine – 24.8 HP*
- Rugged Variable Hydro Transmission (VHT-X)
- Premium Temperature-Controlled Grand Cab with AC/Heat/Defogging



RTV-X1120D

- Kubota Diesel Engine – 24.8 HP*
- Standard Hydraulic Bed Lift
- Available in Kubota Orange or Realtree® AP Camouflage**



RTV-X1140

- Kubota Diesel Engine – 24.8 HP*
- Convertible Cargo Bed for More Seating or Additional Cargo Space
- 1,300 lbs. Towing Capacity

MCNEIL TRACTOR & EQUIPMENT CO. INC
2635 HWY 15 NORTH • LAUREL • 601-425-3158
The Pine Belt's Tractor and Equipment Dealer since 1952



www.kubota.com

*For complete warranty, safety and product information, consult your local Kubota dealer and the product operator's manual. Power (HP/KW) and other specifications are based on various standards or recommended practices. **Realtree® is a registered trademark of Jordan Outdoor Enterprises, Ltd. Optional equipment may be shown.
© Kubota Tractor Corporation, 2016



BAB1868

HOEFlich
WHOLESALE FURNITURE CO.
LAYAWAY
NOW FOR
Christmas!

CRAZY QUILT
MATTRESS
SETS

TWIN..... \$129.99
FULL..... \$149.99
QUEEN... \$189.99

DISTRESSED FURNITURE
U Load • U Haul • U Save
710 Station St. • Waynesboro • **601.735.6050**

Highlands
PATIO HOMES
3 BDR • 2 BATH
Under \$180,000
601-649-9459

B1871

Farris Mobile Home Transporting: Statewide moving, licensed & insured. Transporting since 1979. Tony Farris 601-422-4144.

Good credit, bad credit, no credit. Call the credit expert, Repo Man, 601-310-9262.

Fema houses. 1, 2, 3 bedrooms available now. Call Johnny McDonald, 601-452-2113, 601-261-6005.

50 Shades of Gray. 16x80, 3BR/2BA., new carpet, vinyl flooring and paint. Beautiful home, must come see it. \$21,888. 601-520-0710.

A Must See! 5 bed 3 bath double wide. Perfect layout, open concept, gorgeous floors for you to add to. Vinyl siding and shingle roof. Price \$25,000 as is. Call 601-520-0710.

1996 Shoal Creek, 80x16, 3BR/2BA., A/C unit replaced inside and out 2 years ago. Ready for move immediately in Purvis. 228-342-8783.

MOBILE HOME FOR RENT

1989 16x80 3br/2ba, all electric c/h/a. South Jones School District. Water & garbage provided, in a trailer park. \$400 & \$200/dep. 601-498-2488.

14x60 2br/1ba, all electric, c/h/a, West Jones School District. Water provided. \$400 & \$200 deposit, in a trailer park. 601-498-2488, Rhonda.

MOBILE HOME LOTS

Four months free space rent. Move your mobile home in with us! Spaces available at Bellecrest. Nicest mobile home park in Hattiesburg. Bellecrest Mobile Home Park 63 Sullivan Kilrain Road Hattiesburg, MS. 601-545-1300

HOUSES FOR SALE

West Jones, 4br/2ba, 2238/sq.ft., granite, carport, pond, \$139,000. 601-323-3335.

Shady Grove, 3br/2.5ba, pool, 2300sq.ft., outdoor man cave, 2ac. \$179,000. 601-283-0677.

Dixie. Beautiful Brick, 3 bedroom, 2 bath estate home on 4 plus acres in the heart of Dixie. Expansive split plan, privacy fenced back yard, screened-in back porch, 2 car garage, paved drive. I can go on and on, just call me!! It's ready to show. 601-408-3570. Shawn Stewart Southern Coastal Realty, LLC. "Find the most from here to the coast!!"

Gated private grand estate. Property perched on approximately 3 acres, breath-taking water front point, WJS District, Laurel. 4br/2.5ba, custom stone floors, fireplace, open floor plan, RV hook-up ready. Serious inquiries only. \$395,000. Call 850-619-1112.

House, 1432 Ellisville Blvd., corner lot; Apartment, 709 1/2 Sandy T. Gavin Avenue, 2br/1.5 ba, totally remodeled. For sale or rent to own. Extra lots included. 2 portable buildings w/contents also for sale. Call 504-493-0091.

HOUSES FOR RENT

3br/2.5ba, large living room and large den w/fireplace, laundry room, furnished kitchen, 2 car garage, very private, Ellisville. 601-817-9502.

SELLING or
SHOPPING?
WE FINANCE
IMPACT
CLASSIFIED
ITEMS

68729

JONES COUNTY
FINANCE

105 S 16th Ave. • Laurel
601-649-1944

4br/1ba, 208 Pettis, Ellisville, carport, w/d hook-up. 601-323-2830.

2/3 bedroom homes for rent. 601-649-4075.

Rent to Own. North Laurel. 650 Garden Drive. 3BR/1BA., C/H/A, \$650/month. Call for down payment. 601-319-2938.

Brick 4br/2ba, central air, West Jones School, \$800/dep., \$800/rent. Text 210-478-6492.

3 bedroom, 2 bathrooms, den, fire-place, living room, 2 car carport, hardwood floors, fenced in back yard, washer and dryer hook up, storage shed, \$750. Call 205-292-9285.

1314 Congress St. 2BR/1BA, CH&A, \$400/dep., \$550/month. Call 601-319-2938.

House for rent, WJS district, 2br/1ba, all electric, c/h/a, water provided, open floor plan, jacuzzi tub, located on a dead end road. References required. \$700 + \$300 deposit. Serious inquiries only. 601-498-2488, Rhonda.

1, 2, 3, and 4 bedroom houses and mobile homes. Hattiesburg . Call for list. 601-336-5808.

APARTMENTS FOR RENT

For rent: 1 bedroom duplex located @ 1024 North 13th Avenue. \$625/mth + \$400/dep. Utilities included. Call 601-577-2576 for info.

2 rooms for rent, \$300, \$350 month. 601-452-3158.

For rent: Taylorsville New one bedroom apartments. \$500 down, \$500 monthly. 601-649-9459.

COMMERCIAL

Washateria for sale located at 509 N Cook Avenue, behind Open Air Market. It includes land, building & equipment. Also, new & used parts & machines. It is a good business for a younger person. If interested call 601-319-2940.

For sale -county line Inn Bar (9 miles south of I-20 on Hwy 11). Bar is complete and ready to open. Just need water and legal fees. Priced to sell! For serious inquiries call after 11 a.m. This is the most iconic bar still available for operation in Lauderdale County and is a local landmark. 601-479-4079

PRODUCE

Peas, U-pick \$7. 5 gal. bkt., Pinkeys, Crowders, Dixie Lee and Zippers, Okra \$10 bkt., Sweet Corn \$20/100. Smith Tree Farm, 793 Sanford Rd, exit 78, off I-59, go miles to farm. 601-582-2642, 601-699-9033.

Green peanuts (30 lb. bags), Super Jumbo \$25, Virginia \$20, Washed and Graded \$33 for either. Please call for availability. Dennis Mitchell Farms, , 650 Leaf River Church Road, Collins, MS. 601-765-8609.



HOLLY'S PARTY JUMPS

Jumps • Combos • Slides • Wetslides • Slip-N-Slides

601-763-8851

WWW.HOLLYSPARTYJUMPS.COM

BAB1399

Green peanuts (30 lb. bags), Super Jumbo \$25, Virginia \$20, Washed and Graded \$33 for either. Please call for availability. Dennis Mitchell Farms, 650 Leaf River Church Road, Collins, MS 39428. 601-765-8609.

Peanuts: Green Peanuts - (30 lb bags) Jumbo - \$25 Virginia - \$20 Machine harvested, machine cleaned, unwashed. Rogers Farm (Hwy 37 N) Call 601-765-8668 for availability/ directions. Collins. Closed on Sunday.

FURNITURE

Nice dark wood piano with matching bench, like new, \$800; shabby chic desk & chair \$175; 4-drawer dark wood chest, \$250. Call 601-479-5908.

Bring your Furniture to life! We have a great selection of elegant, distressed furniture in store. We also give Free estimates for your personal furniture. No job is too large or too small, so don't settle for plain ole' looking furniture, transform a room. Give us a call at 601-837-5151 today!

Mama's Mattress Max! 20 different styles to try out. Sets start at twin \$145, full \$165, queen \$185, king \$295. Will split sets. Blackwell's Furniture 5200 Hwy 84 West at Calhoun. 601.649.6111.

APPLIANCES

Broome appliances. We repair and sell washers, dryers, stoves and refrigerators with warranty, delivery. We buy, sell, repair, and haul off home appliances. 601-297-2472.

TIMBER AND LUMBER

Know the value of your timber before you sell. We provide timber appraisals and help landowners market their timber for the highest value. Walley Forestry Consultants, Inc., www.walleyforestry.com, 601-477-3014.

DON'T GIVE YOUR
TIMBER AWAY!
Call Mike West
601-270-6066



BUYING PINE & HARDWOOD

RICHTON TIE & TIMBER LLC

Timber Procurement • Forestry Consulting • Real Estate

Cypress Lumber for sale. Rough or plained. T&G&V and beaded. Beveled and log siding, white and yellow pine and Poplar. T&G&V. Cypress beams, cut up to 32 foot long. Open 7:00AM-3:30PM, Monday-Friday, Saturday, 7:00AM-12PM. 601-315-5533, fax 601-344-0950. frankssawmill.com

FISH

Slade Channel Catfish Fingerlings, Bass, Bream, Grass Carp, KOI fat-head-tuffy Minnows, Electrofishing, etc. Free water analysis. State licensed. Randall Slade 601-796-2000 www.sladesfish.com

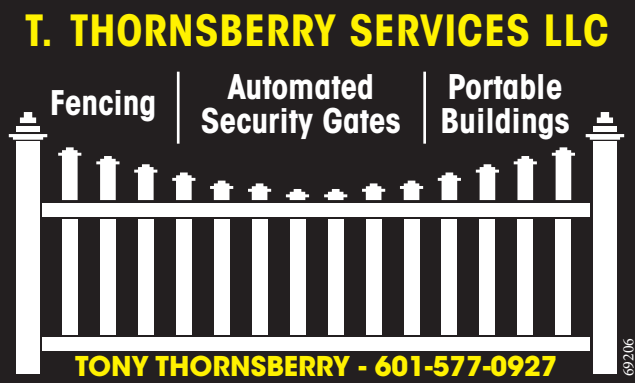
Hendry's Catfish Farm: Channel Catfish, Catfish Fingerlings, all sizes, Grass Carp, Koi (Japanese Goldfish),

T. THORNSBERRY SERVICES LLC

Fencing

Automated
Security Gates

Portable
Buildings



TONY THORNSBERRY - 601-577-0927

69206

Best Rent-to-Own deal around! Call us for all your building needs. Chatham Enterprises 601-727-4951

PORTABLE BUILDINGS

Payne Portable Buidlings. 12 months Same as Cash or Rent to Own Financing Available wac. Office located at 342 Macey Rd., Hwy 84W, Laurel. 601-426-9484 or 601-319-3555.

30x30 Tubing Building: Includes 2 Roll-Up Doors, 1 Walk-Through Door, Insulation, Cement Slab, and Installation. \$10,995. Call Chatham Enterprises 601-727-4951.

Finished building, 12x24 log exterior, bathroom, ceiling fan, Murphy bed, A/C, built ins, front porch. \$10,000. 601-297-0779.

AUTOS - CARS

2011 Crown Victorian, good condition, good tires, good cold A/C. \$3950 obo. 601-422-3003.

2014 Toyota Corolla \$16,990 J&S AutoPlex. 601-342-2293. See more at Cars601.com.

2015 Chrysler 200 \$15,990 at J&S AutoPlex. 601-342-2293. See more at Cars601.com.

2011 Infiniti M37. \$15,900 Southeastern Auto Brokers, toll free (844) 312-8785. See more at Cars601.com

1962 Pontiac Grand Prix, one owner, all new delivery papers with car. Comes with GM shop manual. This is a GM executive purchase with 89,000 miles. Car is not running but is a true barn find! 100% complete & has been on blocks for 20 years. I have clean title in hand . Make offer 601-479-4079

2010 Ford Mustang. \$18,900. Southeastern Auto Brokers, (844) 312-8785. See more at Cars601.com

2014 Buick Enclave, 45000 miles, white pearl, excellent condition- \$25,000.00 o.b.o. Call 601-606-2147 or 601-441-2664.

AUTOS - MOTORCYCLES

I hate to, but I need to sell 2006 KTM Mini 50, great little dirt racer, rebuilt, runs great. \$550 firm. Hank in Ellisville 601-433-9009.

AUTOS - SUVS

2005 Dodge Grand Caravan. Seats 7. stow and go seating. AM,FM,CD player. DVD player. \$3000. Call and leave a message. 601-764-7253

2011 Cadillac SRX. \$16,599. South-eastern Auto Brokers, (844) 312-8785. See more at Cars601.com

2008 Cadillac Escalade. \$18,900 at Ellisville Motors. Call 844-737-5629. See more at Cars601.com.

2014 Ford Escape. \$18,490. J&S AutoPlex. 601-342-2293. See more at Cars601.com.

2008 Gmc yukon xl. \$16,750 at Ellisville Motors. Call 844-737-5629. See more at Cars601.com.

AUTOS - TRUCKS

2007 Chevrolet Avalanche. \$18,500 at Ellisville Motors. Call 844-737-5629. See more at Cars601.com.

2008 Chevrolet Silverado 1500. \$16,900. Southeastern Auto Brokers, toll free (844) 312-8785. See more at Cars601.com

2012 Nissan Frontier \$18,990 J&S AutoPlex. 601-342-2293. See more at Cars601.com.

2005 GMC Sierra 3500. \$14,950 at Ellisville Motors. Call 844-737-5629. See more at Cars601.com.

2010 Ford F-150. \$17,900 at Ellisville Motors. Call 844-737-5629. See more at Cars601.com.

1993 International 4700 with 26ft. box, 6 speed standard, motor runs good, transmission needs repair, selling as/is, Ron Buckley. 601-670-5806. \$3250.

2012 Ford f-150 2wd , 104,000 miles, like new- \$22,000.00 o.b.o. Call 601-606-2147 or 601-441-2664.

CARPORTS

Carports and Buildings: Financing Available! 22Wx26Lx9T- \$5,050 , 24Wx31Lx9T- \$6,010 Fully Enclosed with two 9X8 Roll-up Doors. Price includes installation. We also offer storage buildings and barns. Call John @ 601-323-0464, 303 Hwy 11 S, Ellisville (between Pizza Hut & JCJC)



LS Tractor

Excel in Your Field™

FOOD PLOT SPECIAL





COME SEE US AT TRACTORS UNLIMITED!

- **XG3025 LS Tractor with Front End Loader**
 - 25HP
 - 4WD
 - Shuttle Shift
 - Synchro Mesh Transmission
- 18' Utility Trailer with Tube Top
- 5' King Kutter Brush Cutter
- 5-1/2' King Kutter Disc with Tube Frame

FINANCING AVAILABLE WITH APPROVED CREDIT!

FREE SEED SPREADER WITH PACKAGE PURCHASE

www.tractorsunlimitedms.com MON-FRI 7:30-4:30, SAT 8-4

TRACTORS UNLIMITED, LLC

601-583-6453 1507 N. MAIN STREET HATTIESBURG, MS 800-321-2701

AM1542

AUTO EXPRESS 2

AUTO SALES & AUTO REPAIRS

- Air Conditioning • Breaks • Diagnostics
- Oil Change & More

AUTOEXPRESS2.NET

2002 NISSAN XTERRASt# 506943
\$2,999

2008 CHEVROLET SILVERADO 1500 CREW CABSt# 253292
\$13,899

2007 NISSAN FRONTIER CREW CABSt# 430159
\$8,890

2005 DODGE RAM 1500 QUAD CABSt# 232460
\$8,999

FINANCING AVAILABLE

601.335.4075

OVETT, MS

Owners: Tracie Walters & George Shirley



J&S AUTOPLEX

4029 HWY 15N • LAUREL • 601-342-2123



SHOP 24/7 ONLINE
jandsautoplex.com



51K MILES

Stk:A0049

**2014 JEEP WRANGLER
UNLIMITED SAHARA**

\$32,990



49K MILES

Stk:A0055

**2011 JEEP WRANGLER
UNLIMITED RUBICON**

\$32,990



1979 JEEP RENEGADE

\$15,990



Stk:A0154

1994 JEEP WRANGLER S

\$11,990



45K MILES

Stk:A0155

**2013 JEEP WRANGLER
SPORT**

\$22,990



56K MILES

Stk:A0123

**2013 GMC SIERRA
1500 SLE**

\$26,990



40K MILES

Stk:A0016

**2015 FORD F-150
LARIAT**

\$39,990



32K MILES

Stk:A0151

2011 TOYOTA TUNDRA

\$27,990



Stk:A0157A

**2008 TOYOTA TACOMA
PRERUNNER**

\$20,990



20K MILES

Stk:A0118

**2016 FORD F-150
XLT 4X4**

\$39,990



45K MILES

Stk:A0084A

**2014 GMC SIERRA
1500 SLT**

\$35,990



18K MILES

Stk:A0163

**2016 CHEVROLET
SILVERADO 1500 LT**

\$35,990



18K MILES

Stk:A0052

**2003 CHEVROLET
SSR LS**

\$25,990



16K MILES

Stk:A0091

2016 FORD F-150

\$36,990



Stk:A0136

2012 NISSAN FRONTIER

\$18,990

FREE OIL CHANGES FOR LIFE



12K MILES

Stk:A0161

**2017 CHEVROLET
CRUZE LT**

\$18,990



31K MILES

Stk:A0065

**2016 HYUNDAI SONATA
2.4L SE**

\$15,990



59K MILES

Stk:A0039

2011 LEXUS IS 250

\$19,999



39K MILES

Stk:A0010

**2013 TOYOTA AVALON
XLE**

\$19,990



44K MILES

Stk:A0140

2015 KIA OPTIMA LX

\$14,990



20K MILES

Stk:A0031

**2016 CHEVROLET
MALIBU LT**

\$20,990



26K MILES

Stk:A0158

**2017 CHEVROLET
EQUINOX LT**

\$22,990



62K MILES

Stk:A0133

**2013 CHEVROLET
TAHOE LTZ**

\$37,990



Stk:A0106A

2009 GMC YUKON XL

\$22,990



18K MILES

Stk:A0166

**2017 JEEP GRAND
CHEROKEE, 2 AVAILABLE**

\$37,990



24K MILES

Stk:A0160

**2017 CHEVY TAHOE LT
2 AVAILABLE**

\$47,990



24K MILES

Stk:A0164

2017 TOYOTA RAV4 XLE

\$26,990



57K MILES

Stk:A0126A

2013 GMC TERRAIN SLE

\$15,990



25K MILES

Stk:A0115

2015 NISSAN ROGUE

\$24,990



47K MILES

Stk:A0111

2013 NISSAN MURANO

\$23,990



15K MILES

Stk:A0006

2014 FORD ESCAPE SE

\$18,490



25K MILES

Stk:A0121

**2016 HYUNDAI TUCSON
SE**

\$19,990



46K MILES

Stk:A0141

**2014 CHRYSLER
TOWN & COUNTRY**

\$19,990

FULL SERVICE DEPARTMENT



Walter



Larry



Eric



Mike