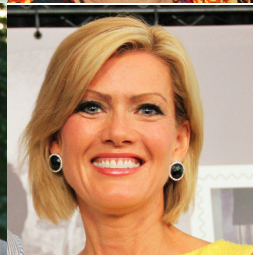


Main Line Media News'
GREEN BOOK
 2017-2018
Social Calendar



History well-preserved in Tredyffrin Township



Katie Ingelsby, Diane Lucki, Melissa Cichowicz and Jennie Skerl are 'flagged' down for a photo op before entering an 85 year-old homestead in Berwyn.



Craig Postewart gives guests Trish Gutsche, her husband, Stuart, and Melissa Vosburgh directions on which way to enter the circa 1915 barn turned duplex.

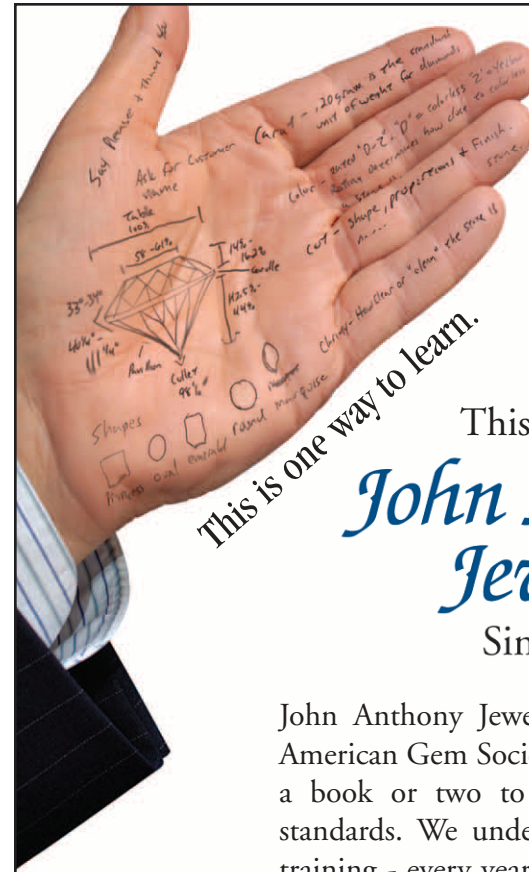
When it comes to caring for a pieces of local history, Tredyffrin's Historic Trust (THPT) is on the job. Its mission is to save from decay and instead reconstruct the Jones Barn adjacent to the Duportail Home in Chesterbrook. Reserve tickets for the 13th annual Historic House Tour event and pick them up at that location, along with maps, on Sept. 23. Preview party for the "fun-d-raiser" takes place at the venue on the 17th of the month.



Laura Heemer, curator at the Wharton Esherick Museum and Julie Gannaway, the home's executive director, point out the numerous phases the land and buildings have gone through.



Donna Lewis and Heather Yocum peruse the formal living room of a Berwyn Mansion built in the early 1930s.



This is one way to learn.

This is another.
John Anthony Jewelers
Since 1946

John Anthony Jewelers is a member of the American Gem Society®. We didn't just crack a book or two to meet their membership standards. We undergo rigorous gemological training - every year. It isn't easy. Only 5% of jewelers have met the requirements necessary for membership.



John Anthony Jr., GIA GG, RJ & CGA (AGS) is a Graduate Gemologist of the Gemological Institute of America and a Certified Gemologist Appraiser of the American Gem Society.

*John Anthony III, GIA GG
Graduate Gemologist*

*John Anthony Jewelers is an
AGS Accredited Laboratory*

133 Montgomery Avenue
Bala Cynwyd, PA 19004
610-664-8777



Member:
The National Association of Jewelry Appraisers
The Pa Jewelers Association
Main Line Chamber of Commerce

www.johnanthonyjewelers.com

Sunday	Monday	Tuesday	Wednesday	Thursday	Friday	Saturday
					1 Alex's Million Mile Run, Walk, Ride thru 30th, Nemours DuPont Art Ability thru 9/15	2
3 Thorncroft Main Streamers – Ludwig's Corner Horse Show	4 Labor Day Willistown Conservation Trust Bird Banding	5 Willistown Conservation Trust Bird Banding	6 Willistown Conservation Trust- "Just Show Up" Volunteer Wed.	7 Association Services the Blind Board Meeting, Fringe Festival thru 9/23, Cancer Support (CSCP) Pints in the Park, Fringe Arts thru 9/23,	8 Radnor Hunt Concours d'Elegance Welcome Barbecue	9 Radnor Hunt Concours d'Elegance Gala, CSCP-Run Over Cancer, Sandy Rollman Shop & Stretch, Chester County Road Rally, Girl Scouts of Eastern Penn.-Tough Cookie Adventure Challenge, Keen Games-Ingis House, Beats & Brews-Binky Lee Preserve, Main Line Art – Teaching Exhibit, Liver Foundation- Life Walk
10 Concours d'Elegance Auto Show, Main Line Chamber of Commerce Main Line Run, Wayne Art Center (WAC)- Faculty Exhibit-Opening Reception thru 10/7, WAC-Summertime Paint out-Art Sisters thru 10/7.	11 Jay Sigel 25th Anniversary Golf Tournament, Landmark American Golf Tournament	12 For Pete's Sake – 1st annual Pink Carpet Affair, Willistown Trust Sycamore Society Breakfast with Birds	13 Main Line Chamber-Society of Professional "Women-GENDERSPEAK",	14 Philly POPS at the Bellevue, Devon Fall Classic thru 9/17, Sandy Rollman-"No Evidence of Disease, Willistown Trust-Bird Banding	15 Devon Fall Classic, Jerry Segal Golf Classic, Art Ability –Nemours DuPont, Willistown Conservation – Beers at the Barn Paoli Hospital Auxiliary-Fine Art Show thru 9/17	16 Wistar 125th Anniversary Gala, Ocktoberfest at Brauhaus Schmitz, Devon Fall Classic, Sandy Rollman-Personal & Upclose w/ General Hospital, CASA Crawl, Constitution Ball-Debutantes of the Revolutions Daughters
17 Taste of Berwyn, Devon Fall Classic, Tredyfrin Historic Preservation Trust (THPT) Preview Party, Radnor Fall Festival, For Pete's Sake-Community Day at Phillies	18 Fred's Footsteps-Golf Tournament, Turning Points for Children-Golf Outing, Fringe Arts	19 Franklin Institute-Science of Wine Event	20	21 Rosh Hashanah James Logan Award-Union League, Young Friends of the Orchestra Committee-Amadeus Live	22 Remarkable Farms Gala-Radnor Hunt Young Friends of the Orchestra Committee-Amadeus Live	23 Tredyfrin Historic Preservation Trust House Tour, Bucks County Playhouse-Galavant in the Garden Gala, Sandy Rollman-"Taste Voyage", American Heart Association-Power of Laughter Young Friends of the Orchestra Committee-Amadeus Live The Clay Studio-Cold Brew Workshop
24 CHOP-Parkway Run, Daughters of the British Empire Gala-Jenkins Arboretum	25 SpArc of Philadelphia Golf Tournament, National Adoption Center Golf Tournament Speak Up! - Grandparents' Coffee	26 Dressage at Devon Horse Show thru 10/1, Main Line Chamber of Commerce – Members 1st Happy Hour	27 Lankenau Women's Board-Fashion Show at the Center The Clay Studio-Fall Class Speak Up! - Parent Coffee Discussion-Transitions to College	28 Helen a Devereux-Women In Leadership Award-Main Line Chamber, DMAX Foundation-3rd Annual Mixer, Arts & Business Council-Leadership Workshop, Pennsylvania Ballet Subscribers Party	29 Willistown Trust Junior Birding-Moth Party	30 Yom Kippur Historic Kennett Square Brew Fest, Elmwood Park Zoo- Music Fest, Bike The Brandywine for Conservancy

Notes

September 2017

Orchestra's opening nite: Ode to Bernstein



The Geater with the Heater, Jerry Blavitt, finds his seat assignment with the aid of Vicki Pohl.

Make a 'note' to be in the audience when the Philadelphia Orchestra will 'strike up the band' for another year of stellar performances at the Kimmel Center. Opening night promises to be an ode to Leonard Bernstein's symphonic feats and well-known music.



Newly elected president of the Volunteer Committees, Lisa Weber Yakulis welcomes Joe Weiss to the Orchestra's opening night festivities.

Party animals on the prowl in Philly



Jaime Howard learns more about the famous Philadelphia Zoo from board and event committee member Cackie Rogers.



Courtney Johnson stops to enjoy the company of Paul McNabb, Paul Troy and his wife, Liz.

The Philadelphia Zoo's party animals will be out in full force at this year's Global Conservation Gala on the 11th of the month. Admission aids the support of strides made in the preservation and creation of the Zoo's newest "members", human and carnivore. Come view the latest additions to Philly's fold including lemurs, pandas and lambs.

I am learning to ask,
"How might I?"



**All School
Open House**

Sunday, October 15 - 1 pm

Westtown School is a Quaker, co-ed, Pre-K-12 day school with boarding options in grades 9-12.

Daily transportation available to our 600-acre campus in West Chester, PA



WESTTOWN SCHOOL

Sunday	Monday	Tuesday	Wednesday	Thursday	Friday	Saturday
1 Dressage at Devon Horse Show ends CHOP-Buddy Walk, Out of the Darkness Community Walk	2 Peter R. Bossow, Jr. 18th Annual Golf Tournament at Commonwealth, Melmark Golf-Hubert J.P. Schoemaker Classic	3 JAFCO-An Evening at Neiman Marcus, Pennsylvania Conference For Women Sandy Rollman-Game Day	4 For Pete's Sake-Dan's Down Dog & Dash/Yoga	5 Philadelphia Orchestra- Opening Night, Bartram's Garden-Twilight Garden, Overbrook School for the Blind Fundraiser, For Pete's Sake-16th annual Peter R. Bossow, Jr. Memorial Golf Tournament, Arts & Business Leadership Workshop	6 Main Line Antiques Show-thru 10/8, Willistown Conservation Trust-Carrot Club, Pennsylvania Ballet-Fall Gala, Sandy Rollman-Memorial Golf Outing	7 National Liberty Museum: Glass Now Auction & Gala, Paws for Life Dog Walk, CHOP-Carousal Ball, Miles for Migraines, Brandywine Conservancy-Tree Planting, PSSR Musket Ball, Rotary Club-Upper Main Line- Oktober Fest, Paoli Blues Fest
8 Philadelphia-OutFest, Thorncroft Lobster Fest	9 Columbus Day	10 Franklin Institute-STEM Student Showcase, Main Line Art-Happily Ever After:FallContemporary Exhibit	11 Philadelphia Zoo Gala	12	13 For Pete's Sake-Designer Bag Bingo Barnes Museum - 5th Anniversary Gala	14 Dan's Down Dog & Dash-For Pete's Sake, Brandywine Conservancy-Dylan Gauthier Exhibit, Children's Scholarship Fund Foundation
15 Out of Darkness Community Walk, ASB-National White Cane Safety Day Wayne Art Center-Juried Fall Members Show	16 National Museum of American Jewish History-Signature Golf Classic, Adam Taliaferro-Golf Tournament, National Constitution Center-Liberty Medal Presentation	17 PA Conference for Women, Magee Rehab Art Heals Speak Up! - Haverford School & Agnes Irwin	18 Help Us Adopt, Brandywine Museum-50 years of Collecting, Main Line Wine Gala Resources for Human Development	19 Arts & Business Council-Leadership Workshop, Help Hope Live Fundraiser, Chester County Futures - Harvest Dinner	20 Speak Up! - Parent Coffee-Drugs & Alcohol	21 Abramson Center-Rainbow Ball Riverbend Shiver Fest Crohn's & Colitis Renaissance Ball Kolbe Foundation Rhythm & Blues It Takes The Village-Race & Fun Day Willistown Conseration - Run-A-Muck
22 Thorncroft Fall Horse Show	23 Philadelphia Hospitality Annual Gala	24	25 Fall for Fertility- JFCS Community Clothes Charity	26 Community Clothes Charity Speak Up! - Radnor High School	27 Community Clothes Charity	28 Community Clothes Charity Welcome Society Luncheon, Head of the Schuylkill Regatta, The Clay Studio-Afternoon Tea
29 Head of the Schuylkill Regatta	30 Main Line Chamber-Network at Noon	31 Halloween	Notes			

October 2017

Philadelphia Charity Ball keeps rolling on



Villanova resident and student at its namesake university, Emily Siegfried, waits for the party to begin with her escort, Princeton student Michael Davis.



Debutantes Julia McAleese, Dominique Mortelliti and Samantha Siegfried spend time with their best "buds" Hanna Holand and Leighton Ball.

It was a banner year for Philadelphia's 137th Charity Ball, held at the Crystal Tea Room. Ten females and a dozen young men teamed up for their presentation into "society". Accomplished, educated and philanthropic, they've all found ways to make a positive difference in the lives of others'. Proceeds from this year's party, taking place on Nov. 25, will benefit Special Olympics Pennsylvania.

Ingenuity, inspiration & ideas headline PMA's Craft Show



Debbie and Paul Kelly are quizzical about the 'time' it took artisan Richard Dunbrack to design the handcrafted whimsical clock.



Designer Elaine Unzicker (right) gets a nod of approval for her mesh clothing line from Sarah Keely and her sister, Alyssa Klavans.

If intrigued by the "unusual" or abstract in décor, dress, jewelry, and many more objects of art, made by artisans from round the world, then don't miss a trip to the Philadelphia Museum of Art's 41st annual Craft Show assembled by the Women's Committee. Opening night party promises plenty of food along with a creative touch for attendees...a make-your-own-Sundae bar with lots of fixings. Preview party on Nov. 8 at the Pennsylvania Convention Center.



Ask about our New Product



- Prescriptions
- Health and Personal Care Items
- Cosmetics
- Greeting Cards
- Salon Quality Hair Products
- Travel Items
- Medical Equipment
- Home Delivery
- State Licensed Immunizations

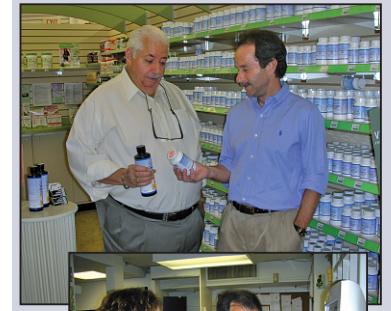
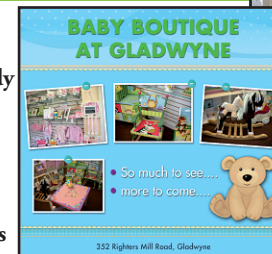
We accept most 90 day prescription plans.



- Personalized Stationery
- Weddings
- Bar & Bat Mitzvah
- Birth Announcements Parties
- Calligraphy
- Printing System on Premises

The Gift Shoppe

- Baby Boutique
- Boutique Candy
- All Occasion Gift Baskets
- Hostess Gifts
- Jewelry
- Party Essentials



352 Righters Mill Road, Gladwyne, PA 19035

Phone
610-649-1100

www.gladwynepharmacy.com

Fax:
610-649-4850

Sunday	Monday	Tuesday	Wednesday	Thursday	Friday	Saturday
			1	2 Main Line Committee for the Philadelphia Orchestra – "Notable Kitchen Tour & Chefs Showcase" Arts & Business Council-Workshop	3 Children's crisis Treatment Center (CcTC)– Round Up	4 Fred's Footsteps-Bloomingdale's Shopping Event American Heart Assoc-Philadelphia Heart Walk Art Ability at Bryn Mawr Rehab
5 Philadelphia Museum of Art-Craft Show-Preview	6	7 Election Day Speak Up! - St. Katharine of Siena	8 PMA Craft Show Preview Party	9 Philadelphia Museum of Art-Craft Show Speak Up! - Harriton High School & Lower Merion	10 Veteran's Day	11 Devereux Gala LBBC-Butterfly Ball Sandy Rollman-Tennis for Teal PAFA Wine Dinner Main Line Art-Flip Side Exhibit & Fundraiser Jephtha Abbott DAR- Patriots Ball Philadelphia Museum of Art-Craft Show
12 Alex's Lemonade Stand-Run Philadelphia Museum of Art-Craft Show	13	14 Magee Rehab-30th Humanitarian Award Speak Up! - Shipley Middle School Marion Anderson Award	15	16 Arts & Business Leadership Workshop Barnes Museum- Kiefer Rodin Exhibition Cancer Support Community-In Fashion!	17 Philadelphia Marathon Speak Up! - Parent Coffee on Mental Health	18 Philadelphia Marathon Philadelphia Classical Society-Fall Professional Day Linda Creed-Jazz Brunch Wayne Art Center-Holiday Shopping-Craft Vendor Weekend
19 Philadelphia Marathon	20	21	22	23 Thanksgiving	24 Philadelphia Orchestra-All American:Gershwin and Beyond	25 Walnut St. Theatre-A Christmas Carol Fall for Fertility - JFCS Greater Philadelphia
26 Philadelphia Orchestra-All American:Gershwin and Beyond	27 Lankenau Hospital-Tree of Life Lighting	28 Speak Up! - Shipley Upper school	29 Our Closet Fashion Show-JCFS	30 Brandywine Museum-Critter Sale Associated Services for the Blind-34th Birthday Lankenau Hospital-Holiday Fair CHOP-Holiday Boutique CHOP-Poker Event (NYC)		

Notes

November 2017

Pennsylvania Ballet-Nutcracker Magic



Joe Bush's youngest monkey, Oscar, gives the sniff test to Abram Koerper.



The Mouse King practices feints while fending off a mob of approaching children.

Members of the Pennsylvania Ballet, including the Sugar Plum Fairy, Mouse King and Tin Soldier, all stop by the Bellevue Hotel for a pre-matinee luncheon and tea party before heading to the Academy of Music for the Nutcracker Magic.

Holiday cheer's in the air at Appleford's winter solstice affair



House Committee member Margot Sullivan (second left) engages with Brett Samuels, James Franklin and her fellow Gladwyne neighbor, Pam Fish.



Sam Erlinger (center) comes by the check-in desk manned by Christine Kanter and Patricia Kolff.

When the season to be jolly comes around Villanova's little bit of heaven, known as Appleford, is aglow with good cheer and glad tidings, this year on the 8th of Dec. A smorgasbord of foods is brought by friends, neighbors and supporters of the elegant estate, along with a liberal amount of libations to quaff. Often times a sprinkling of snow makes the evening more merry and bright.



OPEN HOUSES

October 4, 2017 Middle & Upper School • 8:30 am Lower School • 9 am	October 9, 2017 Lower School • 9 am Middle & Upper School • 12:30 pm	April 19, 2018 Lower School • 9 am Middle & Upper School • 4 pm
--	---	--

Walk-in Wednesday tours each week!



Sunday	Monday	Tuesday	Wednesday	Thursday	Friday	Saturday
					1 CHOP-Holiday Boutique Main Line Art-Members Exhibit	2 West Chester Charity Ball Walnut St. Theatre-A Christmas Carol Philadelphia Orchestra-Christmas Kids' Spectacular
3 Walnut St. Theatre-A Christmas Carol	4	5	6 National Museum of American Jewish History- Corporate Partners Breakfast	7 Main Line Chamber-Meet the Chamber Breakfast Speak Up! - Sandy Run Middle School	8 CASA Youth Advocates-25th Anniversary Wayne Art Center-Craft Forms & Breaking the Glass Ceiling Appleford Holiday Party	9 Army vs. Navy Game Pennsylvania Ballet-Nutcracker Magic
10 For Pete's Sake-Christmas House Tour Tikvah-American Jewish Museum Brunch Pennsylvania Ballet-Tea with Sugar Plum Fairy Walnut St. Theatre- A Christmas Carol,	11	12 Main Line Chamber of Commerce-Young Professionals Walnut St. Theatre - Christmas Carol	13 Hanukkah	14 Philadelphia Orchestra-The Glorious Sound of Christmas	15 Walnut St. Theatre-A Christmas Carol Philadelphia Orchestra-The Glorious Sound of Christmas	16 PA Ballet-Tea with Sugar Plum Fairy Philadelphia Orchestra-The Glorious Sound of Christmas
17 Philadelphia Orchestra-The Glorious Sound of Christmas Speak Up! - Garnet Valley High School	18	19	20	21 Philadelphia Orchestra-Messiah	22 Philadelphia Orchestra-Messiah	23 Walnut St. Theatre-A Christmas Carol
24	25 Christmas	26	27	28	29	30
31	Notes					

December 2017

Philly Auto Show drives into town



Newly elected president of the Automobile Dealer Association of Greater Philadelphia, Dave Kelleher of Villanova and his wife, Marlo, are on hand to welcome guests at the opening night soiree.

You 'auto' take a look at what car manufacturing companies have in stock for the New Year by attending the Philadelphia Auto Show. From vintage to value all 'models' on display (live and stationary!) at the Convention Center evoke comments from patrons on how "wheels" have change. Proceeds from the Jan 26th Black Tie Tailgate gala benefit CHOP's Dept. of Neurology. Come view the latest in automotive engineering thru 2/4/2018.



ABC6's Monica Malpass is intrigued by a bat-winged auto.

Music of "thee" Night



Philadelphia Orchestra Music Director Yannick Nézet-Séguin basks in the glow of a successful performance and accolades from Joanna McNeil Lewis, a former president and CEO of the Academy of Music and his partner, violist Pierre Tourville.

This is "the" time to splurge on tickets for "thee" Academy Ball where A-Listers enjoy a chic-chic cocktail party, then get to see revered Maestro Yannick Nézet-Séguin conduct the famed Philadelphia Orchestra as they play their hearts out for an appreciative audience at the 161st Academy of Music Ball. When the concert ends, stroll to the Bellevue for dinner, dancing and mingling at the famed hotel.

Thirst for cancer cure continues



Guests are greeted in the Marriott lobby by ALB volunteer Dave Muscarella, Emily Liberatoscio, Alessia Dunlevy, Francesca Schneider, Rose Warren and her mom, Suzanne Cohen, a co-leader of the Girl Scout troop.

Your **Skin**,
Face & Body
Deserve Our
Experience.



CIRILLO
INSTITUTE

Bryn Mawr Skin & Cancer Institute

Cirillo Cosmetic Dermatology Spa

Cirillo Center for Plastic Surgery

Bryn Mawr Skin & Cancer Institute
610.525.5028
Medical Dermatology

Cirillo Cosmetic Dermatology Spa
610.525.5029
Cosmetic Dermatology

Cirillo Center for Plastic Surgery
610.525.0500
Plastic Surgery

BRYN MAWR * NEWTOWN SQUARE



CirilloInstitute.com

Sunday	Monday	Tuesday	Wednesday	Thursday	Friday	Saturday
	1 New Year's Day	2	3	4 Louis Braille's Birthday	5	6
7	8 Wayne Art Center-Adult Classes	9	10	11	12 Main Line Art-Professional Artist Members Exhibit	13 Alex's Lemon Ball
14	15 Martin Luther King Day	16	17	18	19 Speak Up! - Parent Coffee on Sexuality/ Gender Identity	20
21	22	23	24	25	26 Philadelphia Auto Show – CHOP Black Tie Tailgate Academy of Notre Dame Art Show 58th Annual Louis Braille Awards	27 Academy of Music Ball 18th Annual Beach Ball Gala
28 Bryn Mawr Rehabilitation Center – Art Ability ends	29	30 Speak Up! - Malvern Prep & Notre Dame, Villa Maria, Devon Prep	31	Notes		

January 2018

Fun-d raising for CHOP a sure bet



Debra Bluestein and husband Mark consider a bid on a pearl necklace.



CHOP's executive vice president Monica Taylor Lotty speaks with Walter Logan and his wife, Darlene, a member of the hospital's Foundation Board.

Organizers of the 4th annual Cheers for CHOP fundraiser, held at the Valley Forge Casino, were betting on another superlative evening of generosity and their 'numbers' came in. Attendees were aware that when a child's health is on the line is the time to double down on an ace facility for healing. Live music, food, beverages and a band who's 'beat' just might provide the help toward healing the heart of a CHOP child. Plan now to attend the next "sure bet" for fun on Feb. 24, 2018.

The beat goes on at Heart Ball

According to one popular, ole time tune you've not only "gotta have heart" but "miles and miles" of it as well. Better keep it pumping by taking advantage of a work-out on the dance floor at the Philadelphia Marriott on Feb. 10th.



Jim Trichon accompanies his wife, newscaster Stephanie Stahl along with Jane Herling, to the Heart Ball.



The evening's co-chairs, Richard Vague and wife Laura appear pleased by the more than expected turnout.



E. M. A. Opticians, Inc.

107 North Wayne Avenue

Wayne, PA

610 - 964 - 1956

www.emaopticians.com

Sunday	Monday	Tuesday	Wednesday	Thursday	Friday	Saturday
				1 Philadelphia Orchestra-Beethoven's Fifth with Eschenbach Speak Up! - Episcopal Academy	2 Philadelphia Orchestra-Beethoven's Fifth with Eschenbach	3
4 Philadelphia Auto Show ends	5	6	7	8 Speak Up! - Holy Child School at Rosemont/Sacred Heart	9	10 Heart Ball
11 Wayne Art Center-Valerie Craig Exhibit & Expressions of Radnor	12	13	14 Valentine's Day Ash Wednesday	15	16	17 PSSR-Geo. Washington's Birthday Gala
18	19 President's Day	20	21	22 Philadelphia Orchestra-Polished Brass	23	24 Cheers for CHOP Maternity Care Coalition – Celebrating Moms Brunch
25	26	27	28	Notes		

February 2018

PHS Flower Show's theme 'reigns'



Grete Greenacre runs into her neighbor, John Donaldson.



Sarah Coulson and her sister, Leslie Anne Miller (right), escort their mom, Anne, on the "trip" through Holland.

There'll be "water, water, everywhere" when guests pour into the Convention Center for the beloved Pennsylvania Horticultural Society's 190th birthday and famed Philadelphia Flower Show. The environmentally themed event shows what can be done with the precious liquid. Runs from the third of the month thru the eleventh. Preview party blossoms on the 2nd.

Red & White Ball addresses collision course of corpuscles

While strides are made every day to eradicate or mitigate blood borne cancers, the research and new protocols can't come quickly enough for some patients. Get wrapped in red or white attire for the organization's 5th annual ball.



Former Eagles player and cancer survivor Vince Papale and wife Janet head to the coat check stand.



Tina McMahan stops to speak Ardmore residents Mario Luzi and Carol Ann Seitter.



DECIDEDLY DIFFERENT FRIENDS.



A Continuing Care Retirement Community

★★★★★
Five-Star Rated Healthcare

When you join Dunwoody Village, you're not just a name on a mailbox. You're a vital part of a diverse community. Our residents thrive in a warm, welcoming atmosphere of genuine friendship. You can bond with Dunwoody friends over activities like pickleball, floral arts, yoga, current events or painting. Socialize with an after-dinner drink in our lounge or meet up at the dog park or a concert in our auditorium. There are no cliques here—only connections. Contact us today to find out how you can join the party.

1-800-DUNWOODY | (610) 359-4400 | www.dunwoody.org
Independent Living • Rehabilitation • Personal Care • Skilled Nursing • Memory Support



Sunday	Monday	Tuesday	Wednesday	Thursday	Friday	Saturday
				1	2	3
					Philadelphia Flower Show "Wonders of Water"	Fred's Footsteps-Party in the Yard
4	5	6	7	8	9	10
		Girl Scouts – Take the Lead		American Foundation for Suicide Prevention Gala Emergency Aid- 10th Annual Taste of the Main Line PA Ballet Swan Lake Premiere	Chester County Historical Society Antiques Show	Chester County Historical Society Antiques Show
11	12	13	14	15	16	17
Chester County Historical Society Antiques Show	Main Line Art-12th Annual Betsy Meyer Memorial Exhibit				Wayne Art Center-Art Quilt Elements Preview Philadelphia Orchestra-Bernstein's Age of Anxiety	St. Patrick's Day St. Patrick's Day Wayne Art Center-Art Quilt Elements Opening Philadelphia Orchestra-Bernstein's Age of Anxiety
18	19	20	21	22	23	24
				Act in Faith – 7th Annual Chefs Best		Leukemia & Lymphoma 5th Annual Red & White Ball AIDS-Black Tie Gay Bingo
25	26	27	28	29	30	31
Palm Sunday					Good Friday Passover Guide Dog Appreciation Day	

Notes

March 2018

DMAX Symposium injects dose of reality



DMAX board member Wan Shim chaperone's one of the evening's honorees, Lori Golden, who received the organization's Leadership Award.



Singer, songwriter Whitney Woerz and her mom, Chrissy, look over DMAX's promotion materials including their signature wrist bands.

From disbelief to action is how the Burstein-Maxwell family learned to keep moving forward after the suicide of their teenage son. Now they do everything they can to get the word out about depression, anxiety and the angst of parents or patients who do not know what's happening, nor how to try to fix it. Contact the non-profit at www.dmaxfoundation.org. It could be a life-saving move.

A 'donated' gift that keeps right on giving

The Gift of Life Donor Program has benefited from the experience Renee and Don Freeman had when he was waiting for a heart transplant more than seventeen years' ago.

He was critically ill when a match became available and changed his health and their world. Since then many more folks, young and old, have been aided by the organization they founded, "Donors Are Heroes". Through education programs for teens and a soft-sell to mature audiences they've made their point about helping others live on. Makes one think...what's in your wallet? Hopefully a donor card.



www.bobsredtrucks.com



bryant Factory Authorized Dealer
Heating & Cooling Systems

IT TAKES

a company you can trust.

WHATEVER IT TAKES.®

- Heating & Air Conditioning Sales and Installation
- Maintenance Agreements
- Service for All Brands & Models

Voted
Best of the Main Line™
for 17 Consecutive Years



Main Line Suburban Life
Main Line Times



As the seasons change, it's good to have equipment you can rely on, serviced by a team you can trust. At **Bob Cermignano Air Conditioning and Heating, Inc.**, we bring attention to detail, the right tools and experience straight to your door. Whether it's a quick fix or whether you need a brand new system installed, we've got Bryant® products to solve almost any problem at any budget. When it comes to bringing you whole-home comfort, we're ready to do Whatever It Takes.



Air Conditioning & Heating Inc.

610-642-6323




www.facebook.com/bobsredtrucks
Ardmore, PA 19003

Bryant Medal of Excellence Award Winner

PA006409

Sunday	Monday	Tuesday	Wednesday	Thursday	Friday	Saturday
1 Easter Sunday Main Line Art-2018 Accessible Art Exhibit	2	3	4 DAR – Jephtha Abbott Spring Lunch & Fashion Show	5 Philadelphia Orchestra-Philadelphia Voices-thru 4/7	6	7 Thorncroft – 33rd Victory Gallop
8	9	10	11	12 For Pete's Sake-19th Annual Dinner & Fashion Show	13 Philadelphia Youth Orchestra-dinner & concert	14
15	16	17	18	19 Franklin Award presentations	20 Philadelphia Antiques Show Women's Resource Center-Crystal Tea Room	21 Baker Industries Gala Lankenau Medical Center – Deaver Auxiliary Fundraiser Philadelphia Antiques Show
22 Jewish Family & Children's Services 34th Annual Benefit Philadelphia Antiques Show	23	24	25	26 Boys Latin Philadelphia Fundraiser Philadelphia Orchestra-The Pines of Rome-thru 4/28	27	28 Main Line Art-Spring Gala Exhibition – Preview Party SquashSmarts BestShot Ball
29	30	Notes				

April 2018

Making 'hay' in May for Children, Preservation & Equines



Mayor Jim Kenney (center right) welcomes Bill Gehrman, Leslie Kase and Chris Mullins to one of the city's priceless gems and favorite summertime affairs.

Besides Mothers' Day, May Day and Memorial Day there's a plethora of activities in this 'merry' month. "Must do" list? The "Evening in Franklin Square". Take a merry-go-round ride on its handsome horses, hop off and head to the betting booth to purchase tickets on what becomes a hotly contested "race" of these swirling steeds. A delectably decadent dinner under a "big top" follows. Fun in the evening sun on the 17th.

National Adoption Center

The National Adoption Center has been making forever families for over 45 years. Media outlets who've been instrumental in helping parents find a child to nurture and love were honored. Kudos to The Philadelphia Inquirer, Tribune, NBC 10 and KYW for their part in bring kids to safe havens.



National Adoption Center's staunch supporters Larry Kane and Vai Sihakema give the evening's agenda a sign of peace.

Devon's mane evening

The Devon Horse Show and Country Fair's Grand Prix night on Thur. the 31st is a 'mane' event. Championship riders from near and far take flight over hurdles in record time. "Tail-Gaiting" allowed in the stands.



Bob and Dolly Somers await the start of the Grand Prix event with Karen Meyers and her husband, Jerry.

WALTER J. COOK JEWELER

May Sale

Tuesday, May 1st to Saturday, May 12th



Just in time for
Mother's Day | May 13th

Chestnut Village Shoppes | 36 Chestnut Road | Paoli, PA 19301
610.644.5347

www.walterjcookjeweler.com

Sunday	Monday	Tuesday	Wednesday	Thursday	Friday	Saturday
		1	2 Historical Society of Pennsylvania- Founders Award	3 The Village-Artworks	4 Rock School of Dance Gala	5 Maternity Care Coalition-My Family & Me Brunch
6 Eldernet Spring Gala	7	8	9	10 PAFA Student Exhibit Lankenau Women's Spring Fair Pennsylvania Ballet -Dress Rehearsal Lunch	11 American Heart Association-Go Red for Women Lankenau Women's Spring Fair Cancer Support Community-25th Anniversary Gala	12 Wayne Art Center-Plein Air-Preview Party
13 Mother's Day	14	15	16	17 An Evening in Franklin Square	18	19 Radnor Hunt Races for Open Spaces Melmark-Dream Maker's Ball
20 Lower Merion High School 11th Annual Co-ed Youth Clinic Main Line Art-11th Annual Student Fashion & Design Show	21	22	23	24	25	26
27 Thorncroft Mainstreamers at Devon Horse Show	28 Memorial Day Radnor Memorial Day Parade	29	30	31		

Notes

May 2018

Revelers race over to Rittenhouse Square Ball



Always available for a good cause and A-list event, Joe Weiss and Sharon Pinkenson, live close to the Square.

Folks circle 'round when this ball in Rittenhouse Square breezes in for an evening about mid-June. It's the last bash before a dash to "the" shore and more. Guests are jonzin' to get on the road for trips, summer camps and exotic locales or adventures, but the party comes first. Look for A-listers at this gala.



Jonathan Morgan and wife Alexandra came into town from Bryn Mawr to support the Rittenhouse neighborhood.

Betsy Ross: Keynote speaker from the vast past

"Betsy Ross" made a trip to the 'burbs for a tell-all on her life, family, husbands, and how the first flag of the USA came into being. The story of the significance of what has become the Stars & Stripes of America was almost as good a rendering as her tales about her several spouses!!! Must have done her well as the independent gal lived into her 80s', a major feat in those days.



DAR members Linda Hawley, Val Cullen and Molly Schiller get a chuckle over the self-sufficient life Betsy Ross lived.



Mrs. Ashburn, Claypoole, a.k.a. Elizabeth Griscom "Betsy" Ross gets aid carrying her flag from Carl Hoyler and David Humphrey.

RETIREMENT LIVING AT ITS BEST



Great friends, spacious living
and expert care ...

as rare as a hole in one.



610.645.8764 • Gladwyne, PA
www.waverlyheightsltd.org

Sunday	Monday	Tuesday	Wednesday	Thursday	Friday	Saturday
					1	2
						Main Line Art-Sensory Garden Party
3	4	5	6	7	8	9
	Lankenau Women's Board Golf Classic Wayne Art Center-Summer Class Art Camp		Washington Square Dinner in the Park		Natural Lands Trust-Stoneleigh	
10	11	12	13	14	15	16
	Inglis House-Golf Tournament Associated Services for the Blind-13th Annual Vision Cup Golf	CVIM-Golf Classic			Cool Cars for Kids- Philadelphia Concurs d'Elegance – Preview Gala Associated Services for the Blind-Client Lunch & Dance	Cool Cars for Kids- Philadelphia Concurs d'Elegance, Alex's Lemonade Days-Great Chefs
17	18	19	20	21	22	23
Father's Day	Maternity Care Coalition-Fathers Golf Classic			Appleford Estate-Summer Solstice Party		
24	25	26	27	28	29	30
	Women Golfers Give Back					

Notes

June 2018

Sons of Sons solemn as bell toll's 2 P.M.



Behind the sunny day "shades" are Colonial Dame Ann Patten and Museum of the American Revolution's president and CEO Michael Quinn.

It would be hard to find a more patriotic spot in which to celebrate the birth of the United States of America than at Constitution Hall on July 4th. Bells chime as silence prevails, reminding scores of citizens and visitors of what transpired there in 1776. Tour the surrounding structures, stop by the Liberty Bell or examine the newest building that pays homage to the war for independence...the Museum of the American Revolution.



Before heading to the Liberty Bell ringing ceremonies Lanny Patten stops to speak with J. Thomas Showler and the National Park's Philadelphia superintendent Cynthia McLeod.



Dawn, Paul and Margaret Di Stefano find a spot in the shade while waiting for PSSR members to march in.

Thank You for Voting Us Best Car Insurance

GEICO Local Office®



Rob Vahey

610-992-1500

Wynnewood Office

Serving the Main Line

Some discounts, coverages, payment plans and features are not available in all states or all GEICO companies. GEICO is a registered service mark of Government Employees Insurance Company, Washington, D.C. 20076; a Berkshire Hathaway Inc. subsidiary. GEICO Gecko image © 1999-2017. © 2017 GEICO

Sunday	Monday	Tuesday	Wednesday	Thursday	Friday	Saturday
1	2	3	4 Independence Day Pennsylvania Sons of the Revolution- 4th of July Ceremonies	5	6	7
8	9	10	11	12	13	14 Alliance Française-Bastille Day Celebration
15	16	17	18	19	20	21
22	23	24	25	26 Great Valley Women's Club – Pot Luck Luncheon	27	28
29	30	31	Notes			

July 2018

Neighborhood League Shops: Best Bargains for a cause on The Main Line.



Donna Barnett begins unpacking donated glass and dinner ware.



NLS board member Janet Andersen and Biff Maddock get the showcases ready for display.

Looking for a “good deal” or a “real steal”? Then this is the place to find them. Whether its clothes for the family or dishes for the kitchen NLS can provide.

Consigning begins Aug.21st by appointment only...28th thru 31st 10-1:30

Shops open for business on Sept. 5th.



The Clothing Shop manager, Alleen Andre, scrutinizes late summer, early fall attire.



Nancy and Samantha Hill look over bargains in the “art” department.

Celebrating Over 40 Years of Excellence



Fall is a great time to paint!

“I will absolutely be using John Neill Painting for future projects! I could not be more pleased with the end result! Our Foreman was wonderful!!!!”
- Christin Brackett, Devon, Pa.

The Sign of Craftsmanship®



Call today for your Free Estimate and make sure your house is sound and protected before winter arrives.

Interior Painting
Color Consultations
Wallcoverings
Cabinet Refinishing
Finish Carpentry



Exterior Painting
Pressure Cleaning
Carpentry Repairs
Stucco & Masonry
Shutter Installation

610-664-5555

www.johnneillpainting.com

Sunday

Monday

Tuesday

Wednesday

Thursday

Friday

Saturday

1

2

3

4

5

6

7

8

9

10

11

12

13

14

15

16

17

18

19

20

21

22

23

24

25

26

27

28

29

30

31

Notes

August 2018



Alice Tarjan rides Fabrege MF in the 3 year old fillies Breeding competition.

Have a great year from the staff at Main Line Media News
mainlinemedianews.com

ARGUS PRINTING & *Invitation Studio*
invitations to life's celebrations

Full service printing, including:

Invitations

Business Cards

Note Pads

Stationery

Copies

Brochures

Photo Printing

Fliers

and more!



Named Best Invitations
by Main Line Media News

610.687.0411 168 East Lancaster Avenue Wayne, PA
mail@argusprinting.com www.argusprinting.com

Sunday

Monday

Tuesday

Wednesday

Thursday

Friday

Saturday

1

2

3 **Labor Day**

4

5

6

7

8

9

10

11

12

13

14

15

16

17

18

19

20

21

22

23

24

25

26

27

28

29

30

Notes

September 2018

Madlyn & Leonard Abramson Center for Jewish Life
1425 Horsham Rd.
No. Wales, PA 19454
215-371-1861
mgold@abramsoncenter.org
Dir of Vol. Mona Gold

A Better Chance/Lower Merion
P. O. Box 213
Ardmore, PA 19003
610-902-0590

A Better Chance – Radnor
P.O. Box 8091
Radnor PA 19087
610-520-0530

AIDS Alive
1084 E. Lancaster Ave.
Rosemont, PA 19010
610-519-9600
www.aidsalive.org
Founder Marty Gillin

Alex's Lemonade Stand
333 E. Lancaster, #414
Wynnewood, Pa 19096
610-649-3034
www.alexlemonade.org

American Cancer Society
480 Norristown Rd., Suite 150
Blue Bell, PA 19422
404-329-5140
Community & Volunteer Dir
Debbie Gaynor
debbie.gaynor@cancer.org

American Diabetes Association
150 Monument Rd., Suite 100
Bala Cynwyd, PA 19004
610-828-5003, ext. 4638
www.diabetes.org
Ex. Dir. Russel Moore
Vol. Dir. Jessica Beermann

American Heart Association
1617 JFK, Blvd., #700
Philadelphia, PA
215-575-5200, ext. 5253
Vol. Mng. Nora Stinnett

American Red Cross, Southeastern Pennsylvania
23rd & Chestnut Sts.
Philadelphia, PA 19103
215-299-4000
Vol. Dr. Sharon Jeffers
www.redcrossphilly.org

Art Ability
c/o Bryn Mawr Rehab
414 Paoli Pike
Malvern, PA 19355
610-251-5599
Dir. Spec Events Heather Zoumas-Lubeski

Arthur Ashe Youth Tennis & Education
4842 Ridge Ave.
Philadelphia, PA 19129
215-487-3477
www.ashetennis.org
Ex. Dir. Ben Hirsh
Sp. Events Dir. Rory Paolantonio

Artreach
1819 JFK Blvd.
#200
Philadelphia, PA 19103
215-568-2115
www.artreach.org
Ex. Dir. Rachel Robbins

Arts & Business Council of Greater Philadelphia
200 S. Broad St., Suite 700
Philadelphia, PA 19102-3896
215-790-3620
Pres/CEO Karen B. Davis
Chairman Stephen S. Aichele

Associated Services for the Blind & Visually Impaired
919 Walnut St.
Philadelphia, PA 19107
215-627-0600
CEO/Pres. Patricia C. Johnson
Pres. Roy Fitzgerald

Baker Industries
184 Pennsylvania Ave.
Malvern, PA 19355
610-296-9795
Pres. John "Turk" Thacher

Beatcancer.org
300 E. Lancaster Ave.
Wynnewood, PA 19096
610-642-4810
Dir. Susan Silberstein

Boys and Girls Clubs of Metropolitan Philadelphia
1518 Walnut St., Suite 712
Philadelphia, PA 19102
215-735-8818
www.BGCPhila.org
Ex. Dir. Jeffrey Waldron
Volunteer Dir. Andrea Woodle

Boy Scouts of America Cradle of Liberty Council
Cradle of Liberty Council
1485 Valley Forge Road
Wayne, PA 19087
610-688-6900
Scout Dir. Bill Dwyer

Brandywine Conservancy
P.O. Box 141
Chadds Ford, PA 19317
610-388-2700
www.brandywinemuseum.org
Ex. Dir. James Duff
Pres. George Weymouth

Breastcancer.org
7 E. Lancaster Ave., 3rd Floor
Ardmore, PA 19003
www.breastcancer.org
Ex. Dir. Marisa Weiss

Breast & Prostate Health Institute
1616 Walnut St., Suite 1520
Philadelphia, PA 19103
215-732-2300
www.FSBPH.com
Founder Shelley Schwartz

Bryn Mawr Film Institute
824 W. Lancaster Ave.
Bryn Mawr, PA 19010
610-527-9898
Founder Juliet Goodfriend
Dir. Of Development Patricia Wesley

Bryn Mawr Hospital
130 S. Bryn Mawr Ave.
Bryn Mawr, PA 19010
610-526-3058
www.MainLineHealth.org/BMHVolunteers
Vol. Dir. Joanne Marciante

Bryn Mawr Rehabilitation Hospital
414 Paoli Pike
Malvern, PA 19355
610-251-5400
Pres. Donna M. Phillips
Chair of Volunteer Board Heather Soumas-Lubeski

Business Leadership Organized for Catholic Schools (BLOCS)
222 North 17th St.
Philadelphia, PA 19103
215-587-0590
www.BLOCS.org
Ex. Dir. Deacon John K. Hunter

Catholic Philopatrin Literary Institute
1923 Walnut St.
Philadelphia, PA 19103
215-567-2909
Ex. Dir. Clive Hancock
Chairman Jack Kelly

Center For Autism
3905 Ford Rd., Suite 6
Philadelphia, PA 19131
215-878-3400
www.TheCenterforAutism.org
Ex. Dir. Jean Rutenberg
Vol. Dir. Mary Timothy

Center for Emerging & Visual Arts
237 S. 18th St., Suite 3A
Phila., PA 19103
215-546-7775
Admin coord. Julia O'Keefe Hubbard
Pres/CEO Lori Dillard Rech

Chamounix Mansion Youth Hostel
West Fairmount Park
Philadelphia, PA 19131
3250 Chamounix Dr.
215-878-3676
Philahostel.org
Gen. Mng. Andrew Victor
Pres. William O'Brien

Charity Balls Inc.
P.O. Box 1676
Phila., PA 19105
215-925-3197
Ex. Dir. Peter F. Cooke, Jr.

Chester County Historical Society
225 North High St.
West Chester, PA 19380
610-692-4800
www.CCHS-PA.org
Pres. Kim Hall

Chester County SPCA
1212 Phoenixville Pike
Suite 400 D
West Chester, PA 19380
610-692-6113, ext. 211
www.CCSPCA.org
Volunteer Manager Kathryn Sippel

Chester County Fund for Women & Girls
1025 Andrew Dr., Suite 200
West Chester, PA 19380
484-356-0940
www.cowomenandgirls.org
Pres. Heidi McPherson

Children's Crisis Treatment Center
1823 Callowhill St.
Philadelphia, PA 19130
215-496-0707
www.cctckids.org
Ex. Dir. Tony Valdes
Pres. Jim Hennessy

Children's Hospital Foundation
34th Street and Civic Center Blvd.
Philadelphia, PA 19104
215-590-1093
Dir. Vol. Tess Boyle
Pres. Dr. Steven Altschuler

Children's Literacy Initiative
2314 Market St.
Philadelphia, PA 19103
215-561-4676
www.CLInitiative.org
Ex. Dir. Linda Katz

City Year Greater Philadelphia
2221 Chestnut St.
Philadelphia, PA 19103
215-988-2118
www.cityyear.org
Ex. Dr. Wyneshia Foxworth

Community Clothes Charity
610-995-9096
info@communityclothescharity.org
Ex. Secretary Rosemarie Colyvas

Community Coalition
209 Church St.
Phoenixville, PA 19460
610-415-1167
www.thecomunitycoalition.org
Ex. Dir. Lindsay Myers

Compeer Chester County
P.O. Box 825, Paoli Pike
West Chester, PA 19380
610-436-4445
www.compeerchessco.org
Program Director Rob Chisholm

CONTACT Greater Philadelphia
P.O. Box 167
Richboro, PA 18954
610-649-8102
www.contactgreaterphiladelphia.org
Dir. Ruth Sperber
Prog. Dir. Elizabeth Brown

Creative Artists Network
1521 Locust St.
Philadelphia, PA 19103-6112
215-546-7775
www.CFEVA.org
Ex. Dir. Holly Lentz Kleeman

Crohn and Colitis Foundation
367 E. Street Road
Trevose, PA 19053
215-396-9100
www.CCFA.org
Ex. Dir. Barbara Berman
Pres. Ann Frankel

For Pete's Sake
980 Harvest Dr., Suite 203
Blue Bell, PA 19422
215-351-1400
www.crossingthefinishline.org
Ex. Dir. Marci Bossow-Shankweiler

Curtis Institute of Philadelphia
1726 Locust St.
Philadelphia, PA 19103
215-893-5252
www.curtis.edu
Pres. Roberto Diaz

Daylesford Abbey
220 South Valley Road
Paoli, PA 19301
610-647-2530 ext. 135
Director Linda Christopher

Delaware County Special Olympics
307 Lenox Rd.
Havertown, PA 19083
610-449-2199

Delaware Valley Habitat for Humanity
1829 N. 19th St.
Philadelphia, PA 19121
215-765-6000
www.habitatphiladelphia.org
Ex. Dir. Frank Monaghan

Devon Horseshow & Country Fair
P.O. Box 865
Devon, PA 19333
Pres. Wade McDevitt
Co-chairs Country Fair Sandra Shinner

Earthforce
100 Greenwood Ave.
Wynote, PA 19095
215-884-9888
www.earthforce.org/delval
Ex. Dir. Anne Rahn

Educating Communities for Parenting
919 Walnut St., 10th Flr
Philadelphia, PA 19107
215-496-9780
www.ECParenting.org
Pres./CEO Anita Kulick

ElderNet of Lower Merion-Narberth
9 S. Bryn Mawr Ave.
Bryn Mawr, PA 19010
610-525-0706
www.eldernetonline.org
Dir. Ruth Sperber
Pres. Gail Wright

Elwyn Institute
111 Elwyn Road
Elwyn, PA 19063
610-891-2000
www.elwyn.org
Ex. Dir. Stan Refif

Emergency Aid
221 Conestoga Road
Suite 300
Wayne, PA 19087
610-225-0944
www.EAFoundation.org
Chair Michele Howard

Episcopal Community Services
225 S. 3rd St.
Philadelphia, PA 19106
215-351-1400
www.ECS1870.org
Dir. Rev. John Midwood
Public Relations: Robert Formica

Federation Early Learning Services
10700 Jamison Ave.
Philadelphia, PA 19116
215-676-7550
www.Felskids.org
CEO Maddy Malis
Pres. Ron Perlstein

Ft. Mifflin
Ft. Mifflin & Hog Island Rd.
Philadelphia, PA 19153
215-685-4167
www.fortmifflin.us
Ex. Dir. Elizabeth Beatty

For Pete's Sake
980 Harvest Dr., Suite 203
Blue Bell, PA 19422
267-708-0510
www.crossingthefinishline.org
Ex. Dir. Marci Bossow-Shankweiler

Fox Chase Cancer Center
333 Cottman Ave.
Philadelphia, PA 19111
215-728-2441
www.FOCCU.edu
Board Pres. Debra Sniger
Dr. Vol. Tina McDonnell

Francisville Home for Smaller Homes
328 Upper Gulph Rd.
Wayne, PA 19087
610-688-1018
www.francisvillehome.org
Dir. Jodi Button

Franklin Institute
222 North 20th St.
Philadelphia, PA 19103-1194
215-448-1163
www.FI.edu
Pres. Dennis Wint
Vol. Dir. Jamie Collier

Free Library of Philadelphia
1901 Vine St.
Philadelphia, PA 19103
215-686-5300
www.freelibrary.org
Pres. Siobhan A. Reardon
Board Chair Robert Heim

Girl Scouts of Eastern Pennsylvania
P.O. Box 814
Valley Forge, PA 19482
610-933-7555
www.GSEP.org
CEO Natzye Paquin

Global Interdependence Center
3701 Chestnut St.
Philadelphia, PA 19104
215-898-9453
www.interdependence.org
Ex. Dir. Erin Harshorn
Chairman William Dunkeberg

Golden Slipper Club & Charities
215 N. Independence Blvd., 1st Flr
Bala Cynwyd PA 19004
610-660-0510
www.goldenslipperclub.org
Dir. Paul Geller
Pres. Stephen H. Frishberg

Guillain-Barre Foundation International
The Holy Bldg., 104 1/2 Forest Ave.
Narberth, PA 19072
610-667-0131
www.GBS-DIP.org
Ex. Dir. Estelle L. Benson

Historic Bartram's Garden
54th Street & Lindbergh Blvd.
Philadelphia, PA 19143
215-729-5281
www.bartramsgarden.org
Ex. Dir. Louise Turan

Historic Harriton
500 Harriton Road, P.O. Box 1364
Bryn Mawr, PA 19010
610-525-0201
www.harritonhouse.org
Dir. Bruce Gill
Pres. Birch Clothier

Home of the Sparrow PA
969 E. Swadestord Rd.
Exton, PA 19341
610-647-4940
www.homeofthesparrow.org
Ex. Dir. Pat McLennan
Pres. Paula King

Indigenous Pitch Dance
Collective, Inc.
10 East Athens Ave.
Ardmore, PA 19003
610-642-4630
www.indigenuspitch.org

Inglis House Wheelchair Community
2600 Belmont Ave.
Philadelphia, PA 19131
215-581-0718
Gavin Kerr, Pres & CEO
www.inglis.org

Institute of Contemporary Art
118 South 36th St.
Philadelphia, PA 19104
215-898-5911
www.ICAPhila.org
Dir. Claudia Gould

Institute for Women's Health & Leadership
1601 Cherry St., Suite 1050
Philadelphia, PA 19102
215-255-7373
Dir. Lynn Yeakel

Interfaith Hospitality Network (IHN) of the Main Line
1449 Dekalb St.
Norristown, PA 19401
610-277-0977
Ex. Dir. Susan White-Herckel

International House
3701 Chestnut St.
Philadelphia, PA 19104
215-387-5125
www.housephilly.org

Jewish Family and Children's Services
2100 Arch St., 5th fl.
Philadelphia, PA 19103
215-698-9950
www.JFCSPHilly.org
Dir. Vol. Sandy Fryer

Junior League of Philadelphia
27 W. Lancaster Ave.
Ardmore, PA 19003
610-645-9696
www.JLPhiladelphia.org
Pres. Samantha Soldan

Juvenile Diabetes Foundation
225 City Ave., Suite 104
Bala Cynwyd, PA 19004
610-664-9255
www.JDRF.org
Ex. Dir. Ellen Rubesin
Pres. John Murabito

Kimmel Center
260 So. Broad St., Suite 901
Phila., PA, 19102
Dir of Development Rose McManus

Landmarks Society
321 South 4th St.
Philadelphia, PA 19106
215-925-2251
www.philalandsmarks.org
Ex. Dir. Brandi Levine

Lankenau Hospital
100 Lancaster Ave.
Wynnewood, PA 19096
610-645-2138
www.mainlinehealth.org
Vol. Dir. Lori Watson

Laurel House
P.O. Box 764
Norristown, PA 19404
610-277-1860, ext. 109
www.laurel-house.org
Vol. Dir. Tommie Wilkins

Leukemia and Lymphoma Society
555 North Lane, Suite 5010
Conshohocken, PA 19428
610-238-0360
Ex. Dir. Ken Singleton

All Libraries
Township of Lower Merion
75 E. Lancaster Ave.
Ardmore, PA 19003
610-645-6110
Dir. Chris Steckel

Library/Ardmore

108 Ardmore Ave.
Ardmore, PA 19003
610-642-5187

Library/Bala Cynwyd

Highland and Old Lancaster roads
Bala Cynwyd, PA 19004
610-664-1196

Library/Belmont Hills

120 Mary Watersford Road
Bala Cynwyd, PA 19004
610-664-8427

Library/Gladwyne

362 Righters Mill Road
Gladwyne, PA 19035
610-642-3957

Library/Ludington, Bryn Mawr

5 South Bryn Mawr Ave.
Bryn Mawr, PA 19010
610-525-1776

Library/Penn Wynne

130 Overbrook Parkway
Penn Wynne
Wynnewood, PA 19096
610-642-7844

Library/Easttown

720 1st Ave.
Berwyn, PA 19312
610-644-0138

Library/Malvern

Warren and First avenues
Malvern, PA 19355
610-644-2878

Library/Narberth

80 Windsor Ave.
Narberth, PA 19072
610-664-2878

Library/Newtown Square

201 Bishop Hollow Rd.
Newtown Square, PA 19073
610-353-1022

Library/Paoli

18 Darby Road
Paoli, PA 19301
610-296-9796

Library/Radnor

114 W. Wayne Ave.
Wayne, PA 19087
610-687-1124

Library/Tredyffrin

582 Upper Gulph Road
Stratford/Wayne 19087
610-688-7092

Linda Creed Foundation

260 S. Broad St., Suite 1800
Philadelphia, PA 19102
215-564-3700
www.linda Creed.org
Dir. Donna Duncan

Little Brothers-Friends of the Elderly

642 N. Broad St.
Philadelphia, PA 19130
215-765-8118
www.littlebrothers.org
Es. Dr. Sandra Bartusis

Living Beyond Breast Cancer

354 W. Lancaster Ave., Suite 224
Haverford, PA 19041
610-645-4567
www.LBBC.org
Dir. Jean Sachs

Lower Merion Conservancy

1301 Rose Glen Road
Gladwyne, PA 19035
610-645-9030
www.LMConservancy.org
Pres/Ex. Dr. Keith Jones
Vol. Dir. Lindsay Smith

Lower Merion Historical Society

Lower Merion Academy
506 Bryn Mawr Ave., P.O. 2602
Bala Cynwyd, PA 19004
610-664-3216
www.lowermerionhistory.org
Pres. Jerry Hancock

Magee Rehabilitation Hospital

6 Franklin Plaza
Philadelphia, PA 19102-1177
215-587-3363
www.mageerehab.org
Dir. Jack Carroll
Vol. Dir. Susie Toland

Main Line Art Center

Old Buck Road & Lancaster Avenue
Haverford, PA 19041
610-525-0272
www.mainlineart.org
Dir. Judy Herman

Mann Center for the Performing Arts

123 South Broad St., Suite 1930
Philadelphia, PA 19109
215-546-7900
www.manncenter.org
Pres/CEO Cathy Cahill

Main Line YMCA

100 Saint George's Road
Ardmore, PA 19003
610-649-0700
Dir. Mary Francis Reilly
Pres. John Flynn

Marian Anderson Award

C/O Philadelphia Festival of Arts
One Parkway
1515 Arch St.
Philadelphia, PA 19103
215-683-2094
Dir. Pat Moran
Pres. Pamela Browner-Crawley

Marine Corps Scholarship Fund

P.O. Box 1035
Paoli, PA, 19301
610-644-1942
Attn: Tom Agnew

Maternal and Child Health Consortium

West Barnard St., Suite 1
West Chester, PA 19382
610-344-5370
Dir. Of Dev. LeeAnn K. Riloff

Maternity Care Coalition

2000 Hamilton St., Suite 205
Philadelphia, PA 19130
215-972-0700
www.momobile.org
Vol. Co. Julie Cooper

Meals on Wheels

235 Lancaster Ave.
Devon, PA 19333
610-688-8170
www.mainlinemealsonwheels.org
Ex. Dir. Patricia Siezant
Pres. Ronald Harmon

Melmark

2600 Wayland Rd.
Berwyn, PA 19312
610-353-1726
Vol. Co. Cindy Martin

Mommy's Light

P.O. Box 494
Lionville, PA 19353
610-725-9790
www.mommyslightliveson.org
Ex. Dir. Laura Munts

Moss Rehabilitation Hospital

60 E. Township Line Rd.
Elkins Park, PA 19027
215-663-6180
Vol. Dir. Lucille Hummel
5501 Old York Rd.
Philadelphia, PA 19141
215-456-7890
Vol. Co. Ellen Goldberg

Multiple Sclerosis Society

1 Reed St., Suite 200
Philadelphia, PA 19147
215-271-1500
www.nationalmssociety.org/pae
Vol. Dr. Kathie Cronk

Mustang Scholarship Foundation

303 West Lancaster Ave., #115
Wayne, PA 19087
610-688-2655
Pres. Tony McGeorge
www.Mustangscholars.com

National Adoption Center

1500 Walnut St., Suite 701
Philadelphia, PA 19102
215-735-9988
www.adopt.org
Ex. Dir. Ken Muller

National Constitution Center

525 Arch St.
Independence Mall
Philadelphia, PA 19106
215-409-6600
www.constitutioncenter.org
Pres/CEO Linda E. Johnson
Vol. Mng. Karen Kennedy Fink

National Hemophilia Foundation

Delaware Valley Chapter
222 S. Easton Road, Suite 122
Glenside, PA 19038-3918
215-885-6500
www.hemophiliasupport.org
Ex. Dir. Ann Rodgers

National Kidney Foundation

111 So. Independence Mall East,
Suite 411
Philadelphia, PA 19106
215-923-8611
www.kidney.org
CEO Joanne Spink
Chair Art Pasquarella

National Liberty Museum

321 Chestnut St.
Phila., PA 19106
215-925-2800, ext. 124
PR Dir. Jan Griesemer

National Museum of American Jewish History

101 So. Independence Mall East
Philadelphia, PA 19106-2517
215-923-3811
Pres/CEO Michael Rosenzweig
Vol. Dir. Johanna Moss

National Organization for Hearing Research

225 Haverford Ave., Suite 1
Narberth, PA, 19072-2234
610-664-3135
www.NOHFoundation.org
Ex. Dir/Founder Geraldine Fox

Neighborhood League Shops Foundation

7 Louella Court
Wayne, PA 19087
610-687-5758
Brd. Pres. Janet Anderson

PALM - Positive Aging in Lower Merion

117 Ardmore Ave.
Ardmore, PA 19003
610-642-9370
www.PALMSeniors.org
Ex. Dir. Dolores Capers
Vol. Dir. Felicia Howard

Pals For Life

939 Radnor Road
Wayne, PA 19087
610-687-1101
215-684-7949
Dir. Paula Kielich

Paoli Memorial Hospital

255 West Lancaster Ave.
Paoli, PA 19301
610-648-1000, ext. 1099
www.mainlinehealth.org/paolihospital
Pres. Barbara Tachovsky
Dir. Vol. Linda Burton

Pathways PA

310 Amosland Rd
Holmes, PA 19043
610-543-5022, ex. 205
Carol A. Finocchiaro
www.pathwayspa.org

Pennsylvania Academy of Fine Arts Women's Board

118 No. Broad St.
Philadelphia, PA 19107
215-972-0550
www.pafa.org/About/Women-s-Board/328/
Pres. Alicia Sterling
Dir. Pattie Castner

Pennsylvania Academy of Fine Arts

128 North Broad
Philadelphia, PA 19102
215-972-2002
www.pafa.org
VP of Development Melissa DeRutter

Pennsylvania Ballet Corps de Volunteers

1101 S. Broad St.
Philadelphia, Pa. 1947
215-551-7000, ext. 1201
www.paballet.org
Ex. Dir. Michael Scolaimero
Pres. Bruce Eckert

Pennsylvania Horticultural Society

100 N. 20th St., 5th Floor
Philadelphia, PA 19103
215-988-8833
ajaffee@pennhort.org
Pres. Drew Becher
PR Director Allan Jaffee

Peter's Place A Center for Grieving Children and Families

150 N. Radnor Chester Rd., Suite 130
Radnor, PA 19087
610-687-5150
www.petersplaceonline.org
Founder/Bd. Chair Eleanor Morsbach
Ex. Dir. Carrie Muleski

Philadelphia Antiques Show

250 King of Prussia Rd.
Radnor, PA 19087
610-902-2109
www.PhilaAntiques.com
Show Co-Ord. Dottie Grieb

Philadelphia Hospitality

123 So. Broad St., Suite 1710
Philadelphia, PA 19109
215-790-9901
www.philahospitality.org
Ex. Dir. Bill Miffin

Philadelphia Museum of Art

26th and Ben Franklin Parkway
Philadelphia, PA 19130
215-684-7949
www.philamuseum.org
Ex. Dir. Timothy Rub
Vol. Dir. Ann Guidera-Matey
Pres. Bd. Constance Williams

Philadelphia Orchestra

300 So. Broad St.
Phila., PA 19102
215-893-1956
Pres/CEO Allison Vulgamore
Special Events Amana Larson

Philadelphia Ronald McDonald House

3925 Chestnut St.
Philadelphia, PA 19104
215-387-8406
www.philarmh.org
Ex. Dir. Susan Campbell
Vol. Dir. Linda Parry

Philadelphia Zoo

3400 West Girard Ave.
Philadelphia, PA 19104
215-243-5200
volunteer@phillyzoo.org
Vol. Programs Mng. Terry Smith
Dir. Vik Dewan

Philadelphia Zoo Docents

215-243-5317
Pres. Docent Council: Donna McGill

Planned Lifetime Assistance Network (PLAN PA)

110 W. Lancaster Ave.
Wayne, PA 19087
610-687-4036
www.planopa.org
Ex. Dir. Ginny Koehler
Pres. Len Smiley, PhD

Presbyterian Children's Village

452 S. Roberts Road
Rosemont, PA 19010
610-525-5400
www.pcv.org
Pres./CEO Darlene Hewett
Vol. Dir. Betty Wu

RFB&D

Recording for the Blind and Dyslexic
215 W. Church Rd., Suite 111
King of Prussia, PA 19406
610-265-8090
Studio Dir. David Goldenberg

Riverbend Environmental Education Center

1950 Spring Mill Road
Gladwyne, PA 19035-1000
610-527-5234
www.riverbendec.org
Dir. Laurie Bachman
Chair Beverly Galloway

Rock School of Dance Education

1101 S. Broad St.
Philadelphia, PA 19147
215-551-7010
www.therockschool.org
Dir. Bo and Stephanie Spassoff
Chairman Caro U. Rock

Rosenbach Museum

2010 DeLancoy Place
Philadelphia, PA 19103
215-732-1600
www.rosenbach.org
Docent Co-ord. Farrar Fitzgerald

Royer Greaves School for the Blind

118 South Valley Road, P.O. Box 1007
Paoli, PA 19301
610-644-1810
www.royer-greaves.org
Ex. Dir. Dr. Joseph Coleman
Pres. Daniel Green

Saturday Club (The)

117 W. Wayne Ave.
Wayne, PA 19087
610-688-9746
Jane Frantz

Schuykill Center for Environmental Education

8480 Hagys Mill Road
Philadelphia, PA 19128
215-482-7300
www.schuykillcenter.org
Vol. Dir. Claire Morgan

St. Edmond's Home for Children

320 S. Roberts Road
Rosemont, PA 19010
610-525-8800
Ex. Dir. Denise Cloline

St. Francis Country House

1412 Lansdowne Ave.
Darby, PA 19023
610-461-6510
www.stch-phil.org
Vol. Dir. Susan Clarke

Saunders's House

100 Lancaster Ave.
Wynnewood, PA 19096
610-658-5100
www.saundershouse.org
Dir. William Grimm
Vol. Co. Jody LaVerdure

Settlement Music School

416 Queen St.
Philadelphia, PA 19147
215-320-2600
www.smsmusic.org
Ex. Dir. Robert Capanna
Dir of Comm. Kris Parsons

Special Olympics, Delaware County Chapter

307 Lenox Rd.
Haverford, PA 19083
Mng. Rick Koehler

Surrey Services for Seniors

28 Bridge Ave.
Berwyn, PA 19312
610-647-6404
www.surreyservices.org
Dir. Barbara Fentress
Vol. Dir. Linda DiMaggio

Sweet Dreams, Inc.

EmilyParker@SweetDreamsinc.org
Dir/Founder Emily Parker
443-350-6853

Terri Lynne Lokoff Child Care Foundation

100 Ross Rd., Suite 160
King of Prussia, PA 19406
610-932-1140
www.tlccf.org
Ex. Dir. Allan S. Miller
Pres. Suzanne DuPont

Thorncroft Therapeutic Horseback Riding

190 Line Road
Malvern, PA 19355
610-644-1963
www.thorncroft.org
Dir/For Saunders Dixon
Brd. Chr. George Rubin
Vol/Spec Events Lauren Jendrasak

United Way Volunteer Center of SE Pennsylvania

7 Benjamin Franklin Parkway
Philadelphia, PA 19103
215-665-2500
www.umsepa.org
Dir. Jill Michal
Vol. Dir. Heather Bertz

Upper Main Line YMCA

1416 Berwyn-Paoli Road
Berwyn, PA 19312
610-647-9622
www.umly.org
CEO Joseph Tangle
Vol. Dir. Kathy Collier

Victim Services Center of Montgomery County

18 W. Ary St., Suite 100
Norristown, PA 19401
610-277-0932
www.victimservicescenter.org
Ex. Dir. Mary Onama
Dir. of Vol. Lauren Peterson

Visiting Nurse Association of Greater Philadelphia Hospice of Philadelphia

1 Winding Drive
Philadelphia, PA 19131
215-581-2360
www.vnapilly.org
Vol. Dir. Valerie Turner

Volunteer Committees of Philadelphia Orchestra

260 S. Broad St.
Philadelphia, PA 19103
215-893-1956
Pres. of Vol. Com. Beth Mahoney
Pres. Hal Sorgenti

Volunteer Medical Services Corps/Narberth Ambulance

101 Sibley Ave.
Ardmore, PA 19003
610-645-7770
www.vmsc313.org
Ad. Dir. Suzanne Smith

Wayne Art Center

413 Maplewood Ave.
Wayne, PA 19087
610-688-3553
www.wayneart.org
Ex. Dir. Nancy Campbell

Wayne Senior Center

108 Station Road
Wayne, PA 19087
610-688-6246
www.wayneseniorcenter.com
Dir. Susan Shapiro

Wellness Community

Chamounix Drive
West Fairmount Park
Philadelphia, PA 19131
215-879-7733
www.wtccp.org
Ex. Dir. Kimberly Hinkelman
Chair Marcie Kennedy

WHYY Friends

Independence Mall West
150 North 6th Street
Philadelphia, PA 19106
215-351-1200
www.whyy.org
Pres/CEO William Marrazzo

Willistown Conservation Trust

925 Providence Rd.
Newtown Square, PA 19073
610-353-2562
www.wctrust.org
Ex. Dir. Bonnie Van Alen
Vol. Dir. Tricia Lambert

Wistar Institute

3601 Spruce St.
Phila., PA 19104
215-898-3700
Spec. Events Coord. Elyse Hoffmann

Women's Resource Center

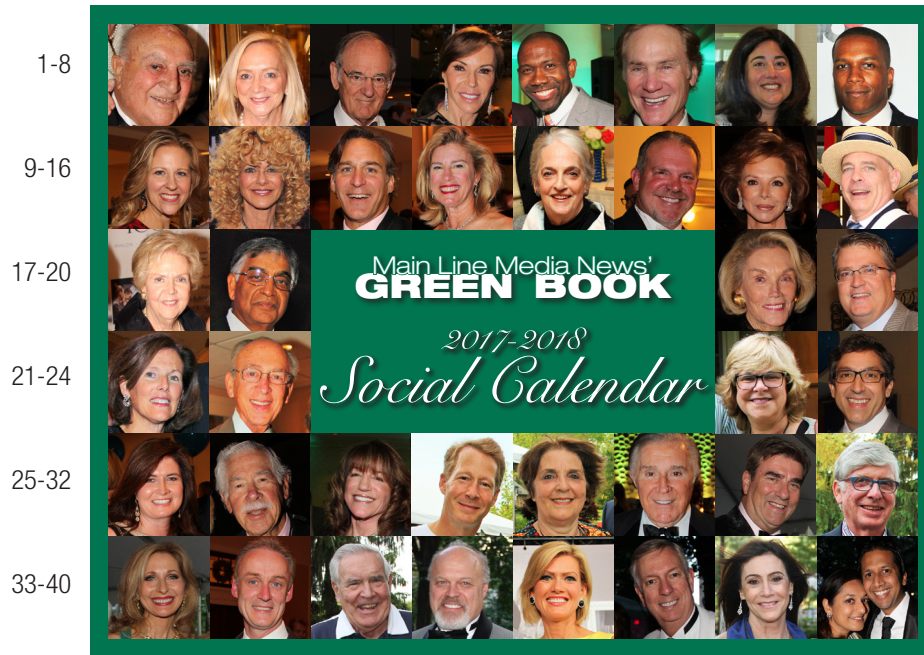
113 W. Wayne Ave, P.O. Box 596,
Wayne, PA 19087
610-687-6391
www.womensresourcecenter.net
Dir. Michelle Daly
Vol. Dir. Susan Deutch

Women's Way

123 So. Broad, Suite 1399
Philadelphia, PA 19109
215-985-3322
www.womensway.org
Ex. Dir. Melissa Weiler Gerber

World Affairs Council

1 So. Broad St., 2 Mezzanine
Philadelphia, PA 19107
215-561-4700
www.wacphila.org
Pres. Claudia McBride



Front cover, top row, left to right

- | | |
|-----------------------|-------------------------|
| 1. Milt Rock | 21. Bridget Devine |
| 2. Ann Calvert | 22. Sherman Leis |
| 3. Steve Hamelin | 23. Reed Wickham |
| 4. Caroline Kimmel | 24. Mitch Greene |
| 5. Jarit Wilson | 25. Julia Rafferty |
| 6. Remy Fox | 26. Bill Buck |
| 7. Karen Abrams | 27. Wendy Trow Fox |
| 8. Leslie Odom, Jr. | 28. Walter Buckley |
| 9. Sandra Baldino | 29. Marie-Odile Savarit |
| 10. Sharon Pinkenson | 30. Sidney Kimmel |
| 11. Greg Goldman | 31. Ian Swain |
| 12. Katherine Eyre | 32. David Boyer |
| 13. Juliet Goodfellow | 33. Linda Swain |
| 14. Chris Thompson | 34. Paul Murtagh |
| 15. Julia Harmelin | 35. Peter Cosenza |

Your **Skin,**
Face & Body
Deserve Our
Experience.


CIRILLO
INSTITUTE

Bryn Mawr Skin & Cancer Institute

Cirillo Cosmetic Dermatology Spa

Cirillo Center for Plastic Surgery

**Bryn Mawr Skin &
Cancer Institute**
610.525.5028
Medical Dermatology

**Cirillo Cosmetic
Dermatology Spa**
610.525.5029
Cosmetic Dermatology

**Cirillo Center
for Plastic Surgery**
610.525.0500
Plastic Surgery

BRYN MAWR * NEWTOWN SQUARE



CirilloInstitute.com

- | | |
|-------------------|-----------------------|
| 16. Mark Ward | 36. Fred Hagen |
| 17. Martie Gillin | 37. Cecily Tynan |
| 18. Raj Gupta | 38. Larry McMichael |
| 19. Louise Reed | 39. Faith Weiss |
| 20. Tom Bagnall | 40. Anita & Amit Shah |

41-48



49-50



Thank you to our readers and our community—

Main Line Media News is delighted to bring you the 2017-2018 Green Book/Social Calendar, our national award-winning calendar listing social events and charitable activities on the Main Line and in Philadelphia. Please accept our apologies if we were unable to include your event because of printing deadlines. Call us before August 2018 to ensure your event's listing in the 2018-2019 Green Book. For up-to-the-minute details on events, please consult our Society/People correspondents.

To have your event listed in our People and Places yearly calendar, please call or e-mail:

Susan Greenspon, Managing Editor
sgreenspon@mainlinemedianews.com

Joan A. Bang, People Correspondent
joanzb@gmail.com

Main Line Media News
110 Ardmore Ave., Ardmore, PA 19003
610-642-4300 • www.mainlinemedianews.com



Susan Greenspon Joan A. Bang

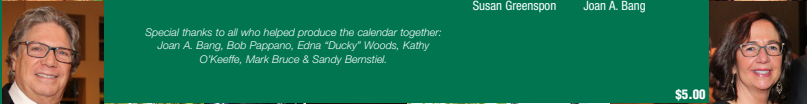
Special thanks to all who helped produce the calendar together:
Joan A. Bang, Bob Pappano, Edna "Ducky" Woods, Kathy O'Keefe, Mark Bruce & Sandy Bernstiel.

\$5.00

53-54



55-56



57-64



Back cover, top row, left to right

- | | |
|----------------------|---------------------------|
| 41. Hernán Guaracao | 53. Pamela Estadt |
| 42. Andrea Kantor | 54. Mary Landers |
| 43. Carol Tamburino | 55. Jim Trichon |
| 44. Tony Ibarguen | 56. Pam Mahoney |
| 45. Dianne Semingson | 57. Jane Herling |
| 46. Anna DiFillippo | 58. Barbara Gilbert |
| 47. Larry Kane | 59. Jamie Wyeth |
| 48. Betsy Kroll | 60. Scott & Sandy Adzick |
| 49. Sean Rooney | 61. Deborah Hamilton |
| 50. Billy Wolfe | 62. Wally Smerconish |
| 51. Peter Cooke | 63. Martyn Greenacre |
| 52. Ira Lubert | 64. Katie Adams Schaeffer |

Celebrating 32 years!

La Collina

Authentic Italian Cuisine

Famous for most Romantic Dining

Renowned for our Exotic Fish
Dover Sole • Langostinas • Branzino, etc.

Open 7 Days

Available for parties and all special occasions

37-41 Ashland Avenue
Belmont Hills • Pennsylvania 19004
Phone 610-668-1780
www.lacollina.us

13th Year!



Thank you to our readers and our community—

Main Line Media News is delighted to bring you the 2017-2018 Green Book/Social Calendar, our national award-winning calendar listing social events and charitable activities on the Main Line and in Philadelphia. Please accept our apologies if we were unable to include your event because of printing deadlines. Call us before August 2018 to ensure your event's listing in the 2018-2019 Green Book. For up-to-the-minute details on events, please consult our Society/People correspondents.

To have your event listed in our People and Places yearly calendar, please call or e-mail:

Susan Greenspon, Managing Editor
sgreenspon@mainlinemedianews.com

Joan A. Bang, People Correspondent
joanzb@gmail.com

Main Line Media News
110 Ardmore Ave., Ardmore, PA 19003
610-642-4300 • www.mainlinemedianews.com

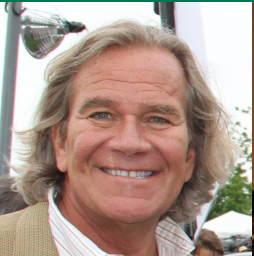
*Special thanks to all who helped produce the calendar together:
Joan A. Bang, Bob Pappano, Edna "Ducky" Woods, Kathy O'Keefe, Mark Bruce & Sandy Bernstiel.*



Susan Greenspon



Joan A. Bang



\$5.00