

## **NOT GOING OUT OF BUSINESS BLOWOUT SALE**

### **ALL OLD INVENTORY MUST GO!**

**SIGNIFICANTLY REDUCED PRICES UNTIL OUR EXCESS STOCK IS DEPLETED.**

CALL (231) 518-4094 TODAY TO TAKE ADVANTAGE OF THESE SPECIAL OFFERS!

## **NuEar Hearing Aids**

THE LATEST IN DIGITAL HEARING AID TECHNOLOGY

NuEar wireless hearing aids are designed to:

- Help you hear and understand conversations better in noisy environments like restaurants
- Make loud sounds more comfortable while boosting soft sounds
- Utilize active feedback suppressor to reduce buzzing and whistling



**All stock instruments available at UNBELIEVABLE PRICES!**

With your appointment you will receive:

## **FREE FREE**

**Hearing evaluation!**

- Otoscopic examination
- Familiar voice test
- Baseline audiogram
- Speech understanding

**Ear canal examination!**

It may just be wax! We will look in your ear canal with state-of-the-art equipment to determine if your hearing problems are related to wax issues.



**Dynamic Hearing Care Systems**

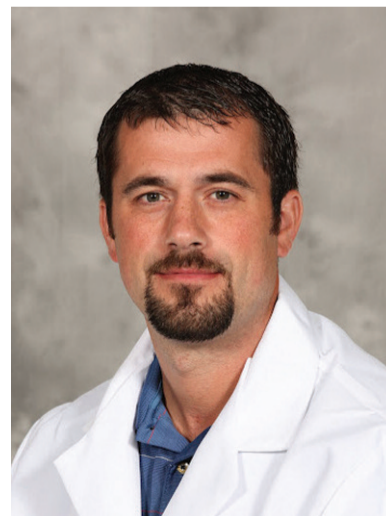
## **LIMITED TIME ONLY**

**While Supplies Last!**

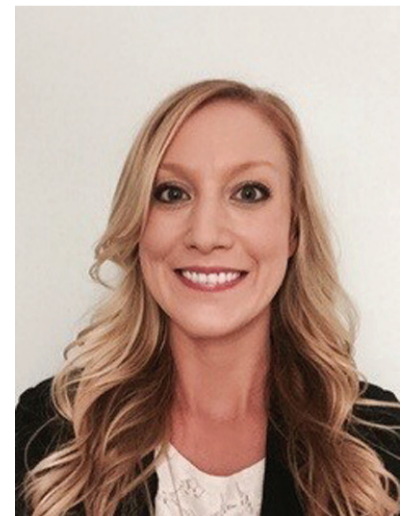
### **CALL NOW!**

### **(231) 518-4094**

101 E. Michigan • Farwell  
3225 W. Houghton Lake Dr. • Houghton Lake  
440 West Main St., Suite E • Gaylord, MI 49735  
303 North Cedar St. • Kalkaska, MI 49646  
423 East 8th St. • Traverse City, MI 49686  
106 Depot St. • Bellaire, MI 49615



**Todd Birgy**  
Owner, Hearing Instrument Specialist



**Dr. Kathryn Bazzett, Au.D.**  
Hearing Instrument Specialist



# CALL NOW! BUY FACTORY DIRECT!

Houseful of Windows Only

# \$1995



Bay & Bow Windows



Complete With Installation\*

Plus Buy Our Premium Windows & We'll Add  
**FREE Low-E Glass &**  
**FREE Marble Sills!!**  
**We Will NOT Be Undersold!**



Payments as low as \$75 a month.

\*Based on 7 double hung or slider windows up to 1200 sq. inches each. Includes basic installation.

That's Why Over 39,000 Homeowners Have Chosen Paramount

**FREE Gutters** with Roofing + Siding That's A \$1600 Value

## SIDING & ROOFING

INCLUDING METAL ROOFS

# 50% OFF

Any Roofing & Siding Installation Labor

WE OFFER NO INTEREST FINANCING OR NO PAYMENT UNTIL 2019

Factory Direct Windows

We Repair HAIL DAMAGE



## SUNROOMS

**Don't Buy Until We Quote You**  
**We Will Beat Their Price On Any Comparable Product!**

Celebrating 27 Years of Business Since 1990

## Paramount

HOME IMPROVEMENTS, LLC

Statewide Coverage

Windows • Siding • Sunrooms • Roofing

License #2101109016

Call Us Today For Your Free Estimate!

# 1-800-288-4385



# Steve's Country Market

989-539-3110 3170 North Clare Ave., Harrison 44 Feet of Old Fashioned Meat Counter with Good Old Fashioned Service

Hours: Sun. - Mon. 8-8 Bridge Card & Wic Accepted Sale Dates: October 23 - October 29, 2017

**Top Quality Meats At Rock Bottom Prices!** 100% Satisfaction Guaranteed Michigan Lottery and ATM Machine [stevescountrymarket.com](http://stevescountrymarket.com)

|                              |   |   |  |  |   |  |
|------------------------------|---|---|--|--|---|--|
| FRESH MEAT AND SEAFOOD ITEMS | <b>GROUND CHUCK</b><br>FAMILY PACK<br>5 LB. OR MORE<br><p style="text-align: center; font-size: 2em; color: red;">\$2.69</p> <p style="text-align: center;">LB.</p>       | <b>WHOLE NEW YORK STRIP LOINS</b><br><p style="text-align: center; font-size: 2em; color: red;">\$2.99</p> <p style="text-align: center;">LB. <span style="font-size: small;">SLICED FREE!</span></p> | <b>WHOLE BONELESS PORK LOINS</b><br><p style="text-align: center; font-size: 2em; color: red;">\$1.79</p> <p style="text-align: center;">LB. <span style="font-size: small;">SLICED FREE!</span></p> | <b>CENTER CUT PORK CHOPS</b><br>REGULAR OR STUFFED<br><p style="text-align: center; font-size: 2em; color: red;">\$1.69</p> <p style="text-align: center;">LB.</p> | <b>USDA CHOICE BONELESS ENGLISH ROAST</b><br><p style="text-align: center; font-size: 2em; color: red;">\$3.49</p> <p style="text-align: center;">LB.</p> | <b>BONELESS CHICKEN BREAST</b><br><p style="text-align: center; font-size: 2em; color: red;">\$1.79</p> <p style="text-align: center;">LB.</p> |
|                              | <b>FRESH GROUND ROUND</b><br>93% LEAN<br><p style="text-align: center; font-size: 2em; color: red;">\$3.99</p> <p style="text-align: center;">LB.</p>                     | <b>USDA CHOICE T BONE STEAKS</b><br><p style="text-align: center; font-size: 2em; color: red;">\$6.99</p> <p style="text-align: center;">LB.</p>  | <b>SMOKED PORK CHOPS</b><br><p style="text-align: center; font-size: 2em; color: red;">\$3.99</p> <p style="text-align: center;">LB.</p>   | <b>MARINATED CHICKEN BREAST</b><br><p style="text-align: center; font-size: 2em; color: red;">\$2.69</p> <p style="text-align: center;">LB.</p>                    | <b>BAR S HOT DOGS</b><br>1 LB.<br><p style="text-align: center; font-size: 2em; color: red;">99¢</p> <p style="text-align: center;">EA.</p>               | <b>ECKRICH FRANKS OR BOLOGNA</b><br>14 OZ.<br><p style="text-align: center; font-size: 2em; color: red;">2/\$3.00</p>                          |
|                              | <b>WHOLEY BRAND COOKED SHRIMP</b><br>41-50 ct. 1 lb. pkg.<br><p style="text-align: center; font-size: 2em; color: red;">\$7.99</p> <p style="text-align: center;">EA.</p> | <b>WHOLEY BRAND RAW SHRIMP</b><br>26-30 ct. 1 lb. pkg.<br><p style="text-align: center; font-size: 2em; color: red;">\$6.99</p> <p style="text-align: center;">EA.</p>                                | <b>POLLOCK FILLETS</b><br>10 LB. BOX<br><p style="text-align: center; font-size: 2em; color: red;">\$15.99</p> <p style="text-align: center;">EA.</p>  | <b>TILAPIA FILLETS</b><br><p style="text-align: center; font-size: 2em; color: red;">\$2.99</p> <p style="text-align: center;">LB.</p>                             | <b>COD LOINS</b><br><p style="text-align: center; font-size: 2em; color: red;">\$5.99</p> <p style="text-align: center;">LB.</p>                          |  |

| Deli  | Fresh Produce   | Fresh Dairy And Frozen  | Grocery  |
|---|---|---|--|
| <b>ECKRICH DELI HAM</b><br><p style="text-align: center; font-size: 2em; color: red;">\$3.99</p> <p style="text-align: center;">LB.</p>                   | <b>MICHIGAN APPLES</b><br>SELECT VARIETIES<br>3 LB. BAG<br><p style="text-align: center; font-size: 2em; color: red;">\$2.49</p> <p style="text-align: center;">EA.</p> | <b>PRAIRIE FARMS COTTAGE CHEESE</b><br>24 OZ.<br><p style="text-align: center; font-size: 2em; color: red;">\$2.29</p> <p style="text-align: center;">EA.</p>   | <b>DIGIORNO PIZZAS</b><br>27.5-31.5 OZ.<br><p style="text-align: center; font-size: 2em; color: red;">\$5.99</p> <p style="text-align: center;">EA.</p>                      |
| <b>ECKRICH HARD SALAMI</b><br><p style="text-align: center; font-size: 2em; color: red;">\$4.49</p> <p style="text-align: center;">LB.</p>                | <b>ON THE VINE TOMATOES</b><br><p style="text-align: center; font-size: 2em; color: red;">99¢</p> <p style="text-align: center;">LB.</p>                                | <b>PRAIRIE FARMS ORANGE JUICE</b><br>1/2 GALLON<br><p style="text-align: center; font-size: 2em; color: red;">\$1.99</p> <p style="text-align: center;">EA.</p> | <b>4 QUART PAIL ICE CREAM</b><br><p style="text-align: center; font-size: 2em; color: red;">\$5.99</p> <p style="text-align: center;">EA.</p>                                |
| <b>AMERICAN CHEESE</b><br>YELLOW OR WHITE<br><p style="text-align: center; font-size: 2em; color: red;">\$3.99</p> <p style="text-align: center;">LB.</p> | <b>COOKING ONIONS</b><br>3 LB. BAG<br><p style="text-align: center; font-size: 2em; color: red;">99¢</p> <p style="text-align: center;">EA.</p>                         | <b>YODER'S SHREDDED OR BAR CHEESE</b><br>8 OZ.<br><p style="text-align: center; font-size: 2em; color: red;">2/\$4.00</p>                                       | <b>NORTH STAR ICE CREAM CONES</b><br>6 PK.<br><p style="text-align: center; font-size: 2em; color: red;">\$2.99</p> <p style="text-align: center;">EA.</p>                   |
| <b>SANDWICH SWISS CHEESE</b><br><p style="text-align: center; font-size: 2em; color: red;">\$4.49</p> <p style="text-align: center;">LB.</p>              | <b>RUSSET POTATOES</b><br>10 LB. BAG<br><p style="text-align: center; font-size: 2em; color: red;">\$2.99</p> <p style="text-align: center;">EA.</p>                    | <b>MICHIGAN APPLE CIDER</b><br>GALLON<br><p style="text-align: center; font-size: 2em; color: red;">\$4.99</p> <p style="text-align: center;">EA.</p>           | <b>SWEET BABY RAY'S BBQ SAUCE</b><br>18 OZ.<br><p style="text-align: center; font-size: 2em; color: red;">\$1.29</p> <p style="text-align: center;">EA.</p>                  |
|   |   |   | <b>AUNT MILLIE'S DELUXE HAMBURG OR HOT DOG BUNS</b><br>8 CT.<br><p style="text-align: center; font-size: 2em; color: red;">\$1.69</p> <p style="text-align: center;">EA.</p> |
|   |   |   | <b>BUSH'S BAKED BEANS</b><br>16 OZ.<br><p style="text-align: center; font-size: 2em; color: red;">4/\$5.00</p>   |
|   |   |   | <b>COKE</b><br>20 PK. CANS PLUS DEPOSIT<br><p style="text-align: center; font-size: 2em; color: red;">\$5.99</p> <p style="text-align: center;">EA.</p>                      |
|   |   |   | <b>LAY'S POTATO CHIPS</b><br>9.5-10 OZ.<br><p style="text-align: center; font-size: 2em; color: red;">BUY 1 GET 1 FREE</p>   |
|   |   |   | <b>LEELANAU CELLARS WITCHES BREW WINE</b><br>750 ML.<br><p style="text-align: center; font-size: 2em; color: red;">\$5.99</p> <p style="text-align: center;">EA.</p>         |
|   |   |   | <b>SOFT &amp; GOOD GIANT LOAF WHITE BREAD</b><br>24 OZ.<br><p style="text-align: center; font-size: 2em; color: red;">\$1.69</p> <p style="text-align: center;">EA.</p>      |
|   |   |   | <b>BUD OR BUD LIGHT</b><br>15 PK. CANS PLUS DEPOSIT<br><p style="text-align: center; font-size: 2em; color: red;">\$9.99</p>   |

While supplies last. Not responsible for printing errors.





Always Comfortable.™

# America's Best Mattress Sale!



**55% Off!**  
**Sale \$1799**  
 Regular \$3999

Porter Bedroom Set Includes:  
 Queen platform storage bed,  
 Chest, Dresser,  
 Mirror and Nightstand.

**Super DEAL!**  
**Serta**  
**TWIN MATTRESS ONLY**  
**\$99**



|   |  |   |  |
|---|--|---|--|
| <b>SERTA SELECT</b><br>Firm<br><b>\$399</b><br>Queen 2pc Set Compare At \$599<br>COMPARE AT NOW!<br>Twin 2pc Set \$499 <b>\$299</b><br>Full 2pc Set \$569 <b>\$379</b><br>King 3pc Set \$899 <b>\$599</b>   |  | <b>HEIDLEBURG</b><br>Choice of Plush or Firm<br><b>\$499</b><br>Queen 2pc Set Compare At \$749<br>COMPARE AT NOW!<br>Twin 2pc Set \$569 <b>\$379</b><br>Full 2pc Set \$719 <b>\$479</b><br>King 3pc Set \$1199 <b>\$799</b>   |  |
| <b>WESTMARK</b><br>Choice of Plush or Firm<br><b>\$599</b><br>Queen 2pc Set Compare At \$899<br>COMPARE AT NOW!<br>Twin 2pc Set \$719 <b>\$479</b><br>Full 2pc Set \$869 <b>\$579</b><br>King 3pc Set \$1349 <b>\$899</b>   |  | <b>KUBIN'S EXCLUSIVE</b><br>2 Sided flippable mattress<br>Choice of Medium or Extra Firm<br><b>\$799</b><br>Queen 2pc Set Compare At \$1199<br>COMPARE AT NOW!<br>Twin 2pc Set \$829 <b>\$549</b><br>Full 2pc Set \$1049 <b>\$699</b><br>King 3pc Set \$1649 <b>\$1099</b>                                |  |
| <b>Serta icomfort</b><br>Comfort Reimagined™<br>Blue 100 Cool Gel Memory Foam or Applause Hybrid<br><b>\$1299</b><br>Queen 2pc Set Compare At \$1949<br>COMPARE AT NOW!<br>Twin 2pc Set \$1199 <b>\$799</b><br>Full 2pc Set \$1649 <b>\$1099</b><br>King 3pc Set \$2849 <b>\$1899</b> |  | <b>Serta icomfort</b><br>Comfort Reimagined™<br>Advisor Super Pillowtop<br>Cool Gel Memory Foam and Advanced Coil<br><b>\$1899</b><br>Queen 2pc Set Compare At \$2849<br>COMPARE AT NOW!<br>TwinXL 2pc Set \$2299 <b>\$1499</b><br>Full 2pc Set \$2549 <b>\$1699</b><br>King 3pc Set \$3749 <b>\$2499</b> |  |

**HELPS COMFORTABLY COOL & SUPPORT EVERY CURVE OF YOUR BODY**



**Serta icomfort**  
 Comfort Reimagined™

Featuring TempActiv™ Max Gel Memory Foam  
 In select models, see store for details.



**Serta icomfort**  
 HYBRID

Featuring Triple Action Gel Memory Foam with an Advanced Coil Support System

## All Serta Mattresses ON SALE NOW!

## AMERICA'S BEST RECLINER SALE!

**12 Months Interest Free Financing Available With Approved Credit.**  
 \$300 Minimum purchase, monthly payments required.

**LARGEST RECLINER SELECTION IN MICHIGAN! SEE FOR YOURSELF!**

**People's Choice #1 Furniture Store!**

**IN STOCK AND ON SALE NOW:**

- Power Recliners
- Leather Recliners
- Big Mans Recliners
- Ladies Recliners
- Gliding Recliners
- Swivel Rocker Recliners
- Wing Chair Recliners
- Heat & Massage Recliners
- Life Chair Recliners
- Reclining Loveseats
- Reclining Sofas
- Children's Recliners



**Over 10 Different Lift Chairs IN STOCK!**



### Kubin's Furniture & Mattresses

101 N Mill St, Corner of M46, St. Louis, Michigan, (989) 681-5043  
 Hours: Mon-Thurs: 9-6, Fri: 9-8, Sat: 9-5, Closed Sunday  
 Sign up Your Email at: <http://www.kubins.com/signup.htm>





# The AUTO GROUP OF MT. PLEASANT

Largest Inventory in Mid Michigan! Check out our complete inventory [www.theautogroup.biz](http://www.theautogroup.biz)

**Free Lifetime Engine Warranty**

**0 DOWN**

**Free TANK of GAS**

**Free 90 Day or 3,000K Mile Power Train Warranty**

**NO PAYMENTS till 2018**

## INVENTORY REDUCTION SALE



2012 JOURNEY RT AWD  
**\$12,995**



2010 TRAVERSE LTZ AWD  
**\$13,995**



2012 FLEX AWD SEL  
**\$14,995**



2015 FUSION AWD  
**\$15,995**



2014 ESCAPE SE 4WD  
**\$16,995**



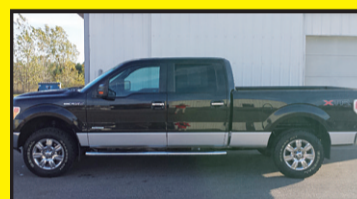
2009 F150 SUPERCAB XLT  
**\$18,995**



2011 SILVERADO LT  
**\$18,995**



2008 WRANGLER SAHARA  
**\$18,995**



2011 F150  
**\$19,995**



2006 SILVERADO 2500 DURAMAX  
**\$19,995**



2015 TRAVERSE AWD  
**\$20,995**



2013 EXPLORER XLT 4X4  
**\$20,995**



2011 F150 XLT  
**\$21,995**



2009 RAM 1500 LARAMIE  
**\$21,995**



2015 CHRYSLER 300S AWD  
**\$22,995**



2017 RENEGADE TRAILHAWK  
**\$23,495**



2016 LACROSSE AWD LEATHER  
**\$23,500**



2014 SIERRA LOADED  
**\$23,995**



2014 SIERRA SLE  
**\$24,995**



2014 PATHFINDER PLATINUM  
**\$26,295**



2014 F150 SUPERCREW XLT  
**\$27,495**



2015 ACADIA SLT  
**\$27,995**



2013 F150 SUPERCREW XLT  
**\$27,995**



2015 SILVERADO VERY SHARP  
**\$27,995**



2015 SILVERADO LT LOADED  
**\$29,495**



2017 TRAVERSE LT LOADED  
**\$29,495**



2015 F150 XLT  
**\$32,995**



2015 F150 MUST SEE  
**\$32,995**



2014 SILVERADO LTZ LOADED  
**\$34,995**



2016 F350 XLT  
**\$35,995**



2016 F150 LOADED  
**\$35,995**



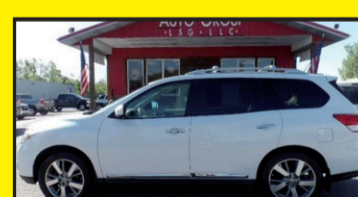
2015 SIERRA 19K MILES  
**\$37,995**



2016 SIERRA SLT ALL TERRAIN  
**\$43,595**



2016 F250 LARIAT CREW 16K MILE  
**\$47,995**



2015 YUKON DENALI  
**\$47,995**

**EVERYONE IS APPROVED!!! Regardless Of Your Credit History! Let Our In-House Finance Experts Help Get You Into The Vehicle Of Your Dreams!**



4720 E. Pickard (M-20)  
Mt. Pleasant, MI  
877-772-1113 OR  
989-772-1113

All prices plus tax, title, plate & doc fees.

**VIEW OUR COMPLETE INVENTORY AT [www.theautogroup.biz](http://www.theautogroup.biz)**



# Largest Selection of Clean Used Cars in Central Michigan

**GM Certified Pre-owned Vehicles = 2 Oil Changes in 2 years & Tire Rotations + 12 Month or 12,000 Mile Bumper to Bumper Warranty Certified 1.9% up to 36 months!**

| USED CARS   |          | 2017 GMC TERRAIN SLE AWD  |          | USED TRUCKS   |          |
|---|----------|---|----------|---|----------|
| 2017 CHEVY IMPALA LT<br>Silver, 19,000 Miles.....                                       | \$23,900 | Burgundy, 9,856 Miles.....  | \$24,900 | 2016 GMC SIERRA DOUBLE CAB<br>Crimson Red, 55,000 Miles, SLT, 4X4.....                      | \$34,900 |
| 2016 BUICK CASCADA CONVERTIBLE<br>Blue, 100 Miles, Loaded.....                          | \$29,500 | 2016 GMC YUKON SLT<br>Iridium, 4x4, 46,000 Miles.....                         | \$44,900 | 2015 GMC DOUBLE CAB SLT<br>Black, 4X4, 5.3 V8, 27,000 Miles, Leather.....                   | \$33,900 |
| 2016 BUICK LACROSSE<br>Ebony Twilight, V6, 3,400 Miles.....                             | \$26,900 | 2016 BUICK ENCORE AWD<br>Burgundy, 15,000 Miles.....                          | \$23,900 | 2015 CHEVY SILVERADO CREW CAB 4X4<br>Gray, 54,000 Miles.....                                | \$30,900 |
| 2016 BUICK LACROSSE CXL FWD<br>Champagne Silver, 37,000 Miles.....                      | \$21,900 | 2016 MAZDA CX-5<br>Silver, 28,000 Miles.....                                  | \$20,900 | 2014 GMC SIERRA DENALI<br>Black, 33,000 Miles, 6.2 V8.....                                  | \$39,900 |
| 2016 CHEVY MALIBU<br>Gray, 32,000 Miles.....  | \$17,900 | 2015 GMC ACADIA SLT-2<br>Dk. Blue, AWD, 45,000 Miles, 1-Owner.....            | \$29,900 | 2014 GMC SIERRA CREW CAB 4X4 SLE<br>Sonoma Red, 68,000 Miles.....                           | \$29,900 |
| 2016 CHEVROLET CRUZE LT<br>Dk. Gray, 13,000 Miles, 4 Cyl, Certified.....                | \$16,900 | 2015 BUICK ENCLAVE AWD<br>Champagne Silver, 77,000 Miles CXL.....             | \$24,900 | 2014 GMC SIERRA DOUBLE CAB SLE 4X4<br>Black, 49,000 Miles, 5.3 V8.....                      | \$28,900 |
| 2016 CHEVY IMPALA LT<br>White, 35,000 Miles, V6.....                                    | \$14,900 | 2015 GMC ACADIA SLE FWD<br>Silver, 42,000 Miles, 1-Owner.....                 | \$24,900 | 2014 DODGE RAM SPORT CREW CAB 4X4<br>Black.....   | \$27,900 |
| 2016 CHEVY IMPALA LT<br>White, V6, 35,000 Miles.....                                    | \$14,900 | 2015 CHEVY EQUINOX AWD<br>Summit White, 28,000 Miles.....                     | \$19,900 | 2014 CHEVROLET SILVERADO 4X4 REG. CAB<br>White, Short Box.....                              | \$24,900 |
| 2015 CHEVROLET SPARK<br>Silver, Great, 52,000 Miles.....                                | \$9,900  | 2015 NISSAN ROGUE SELECT AWD<br>White, 52,000 Miles, New Tires.....           | \$14,900 | 2013 CHEVROLET SILVERADO CREW CAB 4X4<br>Fire Red, 64,000 Miles, Leather, Heated Seats..... | \$25,900 |
| 2014 CHEVY IMPALA LTZ<br>Blue, 48,000 Miles, loaded.....                                | \$20,900 | 2014 CHEVY TRAVERSE LTZ AWD<br>Burgundy, 35,000 Miles.....                    | \$28,900 | 2013 CHEVROLET EXT. CAB 4X4<br>Stealth Grey, 75,000 Miles, 5.3 V8.....                      | \$23,900 |
| 2014 BUICK LACROSSE CXL FWD<br>Crystal Red, 51,000 Miles, Certified.....                | \$19,900 | 2014 GMC TERRAIN SLT AWD<br>Silver, 38,000 Miles, 4 Cyl, 1-Owner.....         | \$20,900 | 2013 CHEVROLET REG. CAB 2 WHEEL<br>White, 49,000 Miles.....                                 | \$14,900 |
| 2013 BUICK LACROSSE CXL<br>Crystal Red, 45,000 Miles, Certified.....                    | \$17,900 | 2014 GMC TERRAIN FWD<br>Black, 21,000 Miles.....                              | \$18,900 | 2012 CHEVROLET SILVERADO EXT. CAB 4X4<br>Stealth Grey, 65,000 Miles.....                    | \$21,900 |
| 2013 BUICK LACROSSE<br>Champagne Silver, 72,000 Miles, Leather.....                     | \$15,125 | 2014 BUICK ENCORE<br>Satin Steel, 41,000 Miles, AWD, Certified.....           | \$17,900 | 2012 GMC EXT. CAB SLT<br>White, 107,000 Miles, Leather, 5.3 V8.....                         | \$21,900 |
| 2012 BUICK LACROSSE CXL V6<br>White, 86,000 Miles.....                                  | \$12,600 | 2013 CHEVY TAHOE LT<br>Burgundy/Tan leather, 55,000 Miles, Sunroof.....       | \$30,900 | 2011 GMC SIERRA CREW CAB 4X4 SLE<br>Red, 5.3 V8, 78,000 Miles.....                          | \$22,900 |
| 2012 BUICK LACROSSE CXL V6<br>Silver, 101,000 Miles, Leather.....                       | \$11,500 | 2013 GMC TERRAIN<br>Black, Front Wheel Drive, SLT, 47,000 Miles, Leather..... | \$18,900 | 2011 GMC CREW CAB 4X4<br>Stealth Grey, 84,000 Miles.....                                    | \$22,900 |
| 2011 BUICK REGAL CXL<br>Majestic Blue, 69,000 Miles.....                                | \$14,900 | 2013 BUICK ENCORE FWD<br>White Opal, 71,000 Miles.....                        | \$16,900 | 2011 GMC SIERRA CREW CAB<br>Black, SLE, 119,000 Miles.....                                  | \$20,900 |
| 2010 PT CRUISER<br>Burgundy, 90,000 Miles, Locally Owned, 4 Cyl.....                    | \$6,900  | 2013 GMC TERRAIN SLE FWD<br>Atlantis Blue, 92,000 Miles.....                  | \$13,900 | 2011 GMC SIERRA 1500 EXT. CAB<br>White, 101,000 Miles, SLE, 5.3 V8.....                     | \$18,900 |
| 2006 GRAN PRIX GT<br>Silver, 168,000 Miles, Locally Owned.....                          | \$5,900  | 2012 GMC TERRAIN AWD<br>133,000 Miles, Goldmist.....                          | \$11,900 | 2010 GMC SIERRA CREW CAB SLE 4X4<br>Blue, 125,000 Miles.....                                | \$16,900 |
| 2003 CHEVY IMPALA LS<br>Silver, 130,000 Miles, V6, Nice Car.....                        | \$3,900  | 2011 JEEP WRANGLER 4X4 RUBICON<br>Burgundy, 106,000 Miles.....                | \$21,900 | 2010 GMC EXT CAB SLE 4X4<br>White, 5.3 V8, 134,000 Miles.....                               | \$16,200 |
| <b>USED SUVS</b>  |          | 2011 GMC ACADIA AWD<br>White Diamond, 109,000 Miles.....                      | \$20,900 | 2008 FORD SUPER DUTY<br>1-Ton w/ Plow, Diesel, 67,000 Miles.....                            | \$23,900 |
| 2017 GMC ACADIA AWD SLT<br>Burgundy, 15,000 Miles.....                                  | \$37,500 | 2010 GMC TERRAIN SLE FWD<br>Mocha Steel, 131,000 Miles.....                   | \$7,900  | 2006 CHEVY SILVERADO CREW CAB 4X4<br>Fire Red, 118,000, Very Sharp.....                     | \$15,900 |
| 2017 CHEVY TRAVERSE 2LT<br>Remote Start, Rear Camera, AWD, 14,000 Miles, Certified..... | \$31,900 | 2004 VOLKSWAGEN TOUAREG AWD<br>Dk. Blue, 95,000 Miles, Sunroof.....           | \$9,900  | 2001 CHEVROLET EXT. CAB 4X4<br>White, 1-ton, Dually, 8.1, V8, 102,000 Miles.....            | \$13,900 |
| 2017 JEEP CHEROKEE LIMITED<br>Dk Gray, 4X4, 23,000 Miles.....                           | \$25,900 | 2004 BUICK RAINIER CXL AWD<br>Silver, 154,000 Miles, 1-Owner.....             | \$6,900  |   |          |

## BENCHLEY BROS., INC.

1 Mile East of Doherty • US-10, Clare • Sales (989) 386-9900

For more info log on to: [www.benchleybros.com](http://www.benchleybros.com)

Parts & Service (989) 386-3197

**HOURS**  
8-6 Mon-Fri  
9-2 Sat



Specializing in  
**GM Certified**  
USED VEHICLES

# Lambert's Meat Market and Bakery

Taste the difference "FRESH" makes!

624 E. Cedar Ave., Gladwin (next to Family Dollar)

989-246-1850



Hours: Mon-Fri 8-6:30; Saturday 8-6; Sunday 8-5 • Sales Dates Monday, October 23 through Saturday, October 28, 2017

**DEER PROCESSING STARTING AT \$75**

24 HR. REFRIGERATED DROP OFF AVAILABLE



LIKE US ON FACEBOOK AND FIND OTHER WEEKLY SPECIALS

## FALL FILL THE FREEZER SALE!

10LBS OR MORE SALE!

|  |   |  |   |  |   |   |
|--|---|--|---|--|---|---|
| <b>Pork Steak, Pork Strips, Pork Shoulder Roast or Breakfast Sausage</b><br>\$1.49 lb. | <b>Fresh, Never Frozen! Boneless Chicken Breast</b><br>\$14.90 10lb bag | <b>Center Cut Pork Chops</b><br>\$1.89 lb.     | <b>Half Bone In Pork Loins</b><br>CUT FREE! \$1.49 lb.    | <b>Wayside Bacon</b><br>\$2.29 10lb box                    | <b>USDA Choice Denver Steaks or English Roast</b><br>\$3.19 lb.           | <b>Family Pack Ground Beef Hamburger 73% lean</b><br>\$1.99 lb. |
| <b>Family Pack Ground Beef from Chuck 80% Lean</b><br>\$2.69 lb.                       | <b>Extra Lean Ground Beef from Round</b><br>\$3.99 lb.                  | <b>Whole Boneless Pork Loins</b><br>\$1.79 lb. | <b>Whole New York Strip Loins</b><br>CUT FREE! \$3.39 lb. | <b>Whole Boneless Ribeye Loins</b><br>CUT FREE! \$4.79 lb. | <b>Beef Tenderloin Butt End Portions (2-3lbs)</b><br>CUT FREE! \$8.99 lb. | <b>Pollock Fillets</b><br>\$16.90 10lb box                      |

### FROZEN FOOD SPECIALS

|  |  |   |
|--|--|---|
| <b>Alaskan Sockeye Salmon Fillets</b><br>\$24.99 5 lb. bag | <b>Chicken Nuggets</b><br>\$10.99 5 lb. bag  | <b>French Fries</b><br>\$4.99 5 lb. bag |
| <b>Lambert's Own BBQ Pulled Pork</b><br>\$4.99 lb.         | <b>Mozzarella Sticks</b><br>\$9.99 3 lb. bag |   |

### BAKERY AND DELI DEALS

|  |                                       |                                    |
|--|---------------------------------------|------------------------------------|
| <b>Mini Crumb Pies Assorted Flavors</b><br>\$3.49 ea.  | <b>Mini Italian Bread</b><br>99¢ ea.  | <b>Hoagie Buns</b><br>\$1.99 4 ct. |
| <b>Kretschmar Bacon Encrusted Turkey</b><br>\$5.99 lb. | <b>Provolone Cheese</b><br>\$3.99 lb. |                                    |





**MIAL MEADOWS MHP**  
 HAVE NEW 3-BEDROOM HOMES AND USED 2-BEDROOM HOMES FOR RENT OR SALE!!  
 WE ALSO HAVE EMPTY LOTS AVAILABLE FOR YOU TO MOVE IN YOUR OWN HOME!!  
 MORE INFORMATION  
 STOP IN AND PICK UP AN APPLICATION AND CHECK OUT OUR HOMES!  
**CALL 989-463-5187**  
 TERESA & JIM DAVIDSON 411 S. GROVER, #31  
 RESIDENT MANAGERS ALMA, MI 48801

**BUY · SELL · HUNT FOR A JOB**  
**CLASSIFIEDS WORK. CALL TODAY!**

# AUCTION SALE

**FRIDAY, OCTOBER 27, 2017**  
**10:00 AM**  
**750 Riverside Dr – Ionia, Michigan**

Located on the corner of M66 and M21, south approximately 1 mile on M66 to Riverside Drive, east on Riverside 1/2 mile to 750 E Riverside Dr. or I 96 and M66 North 7 miles on M66 to Riverside Drive, east on Riverside 1/2 mile to 750 E Riverside Dr.


## TRACTOR – TRAILERS – TOOLS LAWNMOWERS & LAWN EQUIPMENT

**TRACTORS:** Farmall Super A 1930's (motor is free), wide front - International Farmall Cub w/mower deck (runs) - Parts: 1936 John Deere A radiator - 46" mower blades for Cub Cadet (new) - Misc tractor parts  
**TRAILERS:** 6X10 Utility trailer w/drop gate - 6X10 Tandem Utility trailer - 2" Trailer Insert - Trailer Stabilizer  
**LAWN MOWERS & EQUIPMENT:** JD GX345 riding mower w/deck & bagging system - JD Mesig bagger system - 2 pull type lawn carts - 50 gal yard sprayer - Dual wheel kit for JD mower - Power rake - Stihl gas weed eaters - Gas edger - 5" wheels - Hedge trimmer  
**TOOLS:** Sand Blaster - Power Washer - Wagner Airless Sprayer - Welder - Craftsman 36" Lathe w/tools - 3/8" Drill Press - Craftsman 10" radial arm saw w/bench - Craftsman 6" planer - Craftsman belt and disc sander - Craftsman Shop vac - Craftsman Metal Cutoff saw - Craftsman toolbox w/Napa lower - Black & Decker Multi tool - Bench Grinder - DeWalt Cut off saw - Parts washer - Body Shop bump - tools - Portable Air tanks - Jack Stands - Boot Jacks - Various lengths of board clamps - Scaffold - Hand & Power tools - Misc hardware  
**MISCELLANEOUS:** 50cal Ammo can - Triangle jack - 3 Milk cans - Wooden Cultivator handles - Dog transporter - Chain Binders - Come a longs - Tow straps (2 1/2" wide) - School Bus seats - Buggy Seats - Horse harness parts - 3 Drawer dresser - Ford Bronco radiator (1987?) - Pontiac Aztec cooler (center console) - Air horns - Christmas décor - 2 Squirrel Cage fan - Box Lots  
 Terms: Cash sale day - Checks with proper I.D. - All paid for sale day before leaving auction - Not responsible for accidents or items sold on sale day - Announcements sale day take precedence over All printed matter - Possible additions or deletions - All sold as is - No credit cards - NO BUYERS PREMIUM!  
 Owner: Fred Bishop - Sale info 616.902.0393 (between 9-5)

Auctioneer: Dave Helman 989.584.3851 www.helmanauctions.com  
 Clerk & Cashier: Gregory & Gregory

**October Specials**  
**7 in 1 Dog & Puppy Shot**  
 Special **\$20<sup>00</sup>** Reg. \$25<sup>00</sup>  
 By Appt. **426-0203**  
 Flexible Hours  
**KELLY'S KRUISSING**  
**KRITTER KARE**  
 Kelly Jo Kelley, DVM




**CUSTOM DESIGNS**  
**Buy Direct & Save**   
 Also Available  
**Cremation Vaults and Urns**  
**Brewer Bouchey Monument Co.**  
 Family Owned Since 1895  
 211 N. Mill St. • Downtown St. Louis  
 989-681-3300 • Toll Free 888-362-2920  
 Hours: Mon.-Fri. 9-5; Sat. By Appt.  
 www.brewer-bouchey.com



*Thank You*  
**Mr. and Mrs. Birgy**  
**Mr. and Mrs. Abell**  
 for joining the Culligan family and becoming valued customers.  
**Culligan Worldwide**  
 Celebrating 80 years  
**Ken's Culligan • Alma**

**Want fast cash?**  
 Our Classified advertisers get great results. If you have merchandise to sell, place a classified ad.

**RE/MAX** Open Seven Days a Week to Serve You!  
**RIVER HAVEN, INC.** www.riverhavenhomes.com Wayne R. Walts - Broker

|   |   |   |
|---|---|---|
| <p><b>Main Office</b><br/>                 777 W. Cedar<br/>                 Riverwalk Place<br/>                 989-426-6893</p>  | <p><b>Wixom Lake Office</b><br/>                 1239 Estey Road,<br/>                 Beaverton<br/>                 989-435-7755</p>  | <p><b>Sugar Springs Office</b><br/>                 1415 W. Sugar River Rd.<br/>                 Gladwin, MI 48824<br/>                 989-426-9239</p>  |
| <p>West Branch - 3 bedroom, ranch with att garage plus a 30x32 garage, newer updates across from Surline Elementary School<br/> <b>\$60,000</b><br/>                 MLS#168418</p> | <p>St. Helen - Commercial/Investment property across from Charellon Heston Academy. Has large commercial building, storage building and a 3 bedroom home.<br/> <b>BANK REPO. \$69,900</b><br/>                 MLS#167873</p> | <p>Hale Area - Nearly 58 acres, mostly wooded with trails, very close to West Londo Lake. Includes 3 bedroom, 2 bath doublewide in need of repair and 20x30 pole barn.<br/> <b>\$99,900</b><br/>                 MLS#168388</p> |

WWW.SYKORAAUCTIONS.COM PRESENTS  
**LIVING ESTATE LIVE AUCTION**  
**BOB MARSHALL - COLEMAN, MI 48618**  
 HAVING DECIDED TO SELL MY HOME AND MOVE TO SENIOR LIVING THE FOLLOWING WILL BE SOLD AT LIVE ON-SITE PUBLIC AUCTION LOCATED 2 MILES WEST OF COLEMAN, MI (OR) 7 1/2 MILES EAST OF CLARE, MI ON PERE MARQUETTE (OLD US-10) THEN SOUTH 1/2 MILE TO 8901 N. CHIPPEWA RD. COLEMAN MI 48618 (N.E. ISABELLA CO.)  
**FRIDAY OCT. 27<sup>TH</sup>, 2017 @10:00 AM**  
 ✓ RAIN OR SHINE BE ON TIME! THIS WILL BE A SHORT AUCTION!



**TRACTOR/PLOWS • FARMALL H N.F. GAS TRACTOR • HYD. TRIP LOADER, FITS FARMALL H • IH 2 X 14" TRAILER PLOW • SET OF 38" TRACTOR TIRE CHAINS • LAWN TRACTOR & YARD ITEMS • CUB CADET GT1554 54" RIDING LAWN TRACTOR • 1/2 BAG CEMENT MIXER W/ ELECT. MOTOR • HANDLED YARD TOOLS • WHEEL BARROW • 40FT. WOODEN EXTENSION LADDER • LG. ROLL OF BLACK VISQUEEN • 1 SECTION OF SCAFFOLDING W/ ADJUSTABLE LEGS • WOODSHOP AND GARAGE TOOLS • INGERSOLL RAND 60 GAL. 2HP 230V. VERTICAL SHOP AIR COMPRESSOR • CENTURY 125 AMP WIRE WELDER • LINCOLN 225 AC STICK WELDER • 2000 SUNHILL MODEL MCT-5-506 20" POWER PLANER ON CART, 1PH. • POWERMATIC 10" TABLE SAW 1PH. • WALKER - TURNER FLOOR MODEL WOOD BAND SAW • GRIZZLY 2HP DUST VAC COLLECTOR STATION • POWER KRAFT 36" BED LATHE, 5" SWING, BAD POWER FEED GEAR • LOBO 1"X8" BELT DISC SANDER/GRINDER • PORTER CABLE 4"X24" BELT SANDER • 6"X9" BELT/DISC SANDER • MILWAUKEE 3/8" ELECT. DRILL • ROUTER TABLE W/ ROUTER • DELTA 10" MITRE SAW • PORTER CABLE & BOSCH ROUTER • SKIL-SAW • MILWAUKEE SCREW GUN • SMALL TAP & DIE SET • TOTAL SHOP H.D. CLEAN AIR SYSTEM • ARTISAN 6" BENCH GRINDER • 4" BENCH VICE • SEVERAL PIPE CLAMPS • SCHUMACKER BATTERY CHARGER • ROLLER STANDS • SEVERAL C-CLAMPS • 2 SHOP VACS • 115V AIR COMPRESSOR • SEVERAL BOX LOTS OF MISC. SHOP ITEMS! • HOUSEHOLD & MISC. ITEMS • BOX LOTS OF HOUSEHOLD GOODIES!**

**INSPECTION AM SALE DAY ONLY!**  
**BOB MARSHALL - OWNER**  
 8901 N. CHIPPEWA RD., COLEMAN, MI 48618

**SYKORA AUCTION SERVICE INC.**  
 Scott Sykora, Auctioneer (989) 386-9694 • Fax (989) 386-2246  
 John McConnell, Auctioneer (989) 429-0444  
 Clare, Michigan • Visit our website www.sykorauctions.com

WWW.SYKORAAUCTIONS.COM PRESENTS!  
**MARTIN FARMLAND AUCTION**  
**82+/- AC. MOSTLY TILLABLE FARMLAND • ISABELLA TOWNSHIP, ISABELLA COUNTY, MI 48858**  
 The Subject Real Estate Will be Sold by Public Auction in Three Distinct Mostly Tillable Farmland Parcels to be Held at the *Bleeker and Sweet Lake Drums Dealership* Located at 4240 E. Rosebush Road, Rosebush, MI 48878 on November 8th, 2017 at 6:00 PM Sharp. Watch for Auction Signs.  
**November 8<sup>th</sup>, 2017 at 6:00 PM Sharp.**

**Ownership:** Clifford and Karen Martin  
**Property Directions:** From the Isabella County Fair Grounds Located 1.5 Miles North of Mt. Pleasant and at the Intersection of **Mission and Base Line Roads**, Continue North 1 Mile on Mission Road to Jordan Road, then West on Jordan Road to Site on the South Side of the Road. **PARCEL SIGNS POSTED**

**Parcel 1: Offering For Sale: 60+/- Acres Vacant Land!**  
 ■ Predominant Soils: Parkhill Loam & Ithaca Loam  
 ■ 52+/- Tillable Acres  
 ■ 8+/- Wooded Acres

**Parcel 2: Offering For Sale: 15+/- Acres Vacant Land!**  
 ■ Predominant Soils: Parkhill Loam & Ithaca Loam  
 ■ 15+/- Tillable Acres

**Parcel 3: Offering For Sale: 7+/- Acres Vacant Farmland!**  
 ■ Predominant Soils: Parkhill Loam & Ithaca Loam  
 ■ 7+/- Tillable Acres



**SYKORA AUCTION SERVICE INC.**  
 Scott Sykora, Auctioneer (989) 386-9694 • Fax (989) 386-2246  
 John McConnell, Auctioneer (989) 429-0444  
 Clare, Michigan • Visit our website www.sykorauctions.com

**RIPKE MOVING AUCTION**  
 Due To Health Issues, I Am Selling My Home & Will Sell Our Lifetime Collection At Public Auction. **Located:** From M-55 & Maple Valley Rd. (Pro Build Lumber) In Maple Valley, Go South 3 Miles On Maple Valley Rd. **OR** Approx. 8 Miles East Of Prudenville On M-55 To Maple Valley Rd., Then South 3 Miles.  
**(Maple Valley) St. Helen, MI**  
**Saturday, October 28, 2017 • 10:00 A.M.**

**Antique Furniture, Primitives & Collectibles:** Old Log Dining Table W/ 4 Matching Chairs • Hoosier Style Kitchen Cabinet • Sellers Chimney Cupboard • Quick Meal Wood Cook Stove • Pie Safes • Primitive Hat Rack • Many Primitive Hutches, Tables, Chairs & Cabinets • Several Oak Chest Of Drawers & Dressers • Full Size Iron Bed • Cedar Wardrobe • Dry Sinks • Wooden Flour Bins • Several Asst. Trunks • Fern Stand • Cedar Chest • Cut Down Library Table • Asst. Rocking & Kitchen Chairs • Wooden Kerosene Barrels W/ Spigots & Nice Advertising • Hires Wooden Soda Barrel W/ Spigot • Coca-Cola Wooden Soda Barrel W/ 3 Taps • Twisted Wrought Iron Lighting Rod W/ 5 Multi Color Balls & Chicken Vane (Rare) • (2) National #313 Brass Candy Store Cash Registers • Copper Fire Extinguisher • Double Handle Copper Pot W/ Stand • Wicker Pcs. • Several Wooden Benches, Chairs, Tables, Etc. • Many Pcs. Of Furniture To Repair & Refinish • Several Blue Swirled Stoneware Jugs & Crocks • Western 2 Gallon Water Cooler • Salt & Butter Crocks • Stoneware Butter Churns • Glass Butter Churns From Pint Size To 4 Qt. • Wooden Wringer Wash Machine • Numerous Wooden Ware Pcs. • Advertising Cans • Several Beautiful Quilts • Several Unique Table Lamps • Oil Lamps • Warming Oven • Wooden Sewing Box • Several Rolling Pins • Coffee Grinders • Old Gum Ball Machine • Coca-Cola Chest Type Cooler • Coca-Cola Dining Table & Chairs • Numerous Coca-Cola Items • Lots Of Ice Cream Parlor Items • Several Canister Sets • Blue Dinnerware • Numerous Antique Dishes • Beer Mirrors • Large Cast Iron Stove • Fanning Mill • Wooden Corn Crib • B.F. Goodrich Bicycle •

**Sporting Collectibles, Petroliana & Metal Toys:** (8) Nice Deer Mounts • Moose Antlers • Pheasant & Quail Mounts • Turkey Mount • Fish Mounts • Bear Rug • Several Sets Of Snow Shoes • Glass Minnow Traps • Several Hatchets & Hunting Knives Including Marbles • (3) Fly Rods • Trout Nets • Bait Boxes, Worm Buckets, Etc. • Powder Horn • Vintage Ammo. Boxes • Wooden Canoe Bookcase • Texaco & Gulf Wall Clocks • Numerous Oil Cans To Include Mobil, Texaco, Gulf, Etc. • Prestone Antifreeze Can • Lots Of Gas Station Related Items • Old Signs • Rossmoyne Fire Truck • Texaco Fire Truck • Structo Pressed Steel Hook & Ladder Fire Truck • Wyandotte Pressed Steel Metal Drag Line Cranes • Dump Trucks • Buddy L Pressed Steel Dump Truck W/ Snow Plow • Star Explorer Pinball Machine • Buildings Full Of Collectibles •

**Chevy El Camino, (5) Collectible Garden Tractors & Misc. Items:** 1986 Chevy El Camino, 350 High Performance Engine, 10,000 Miles, Very Good Cond. • I.H. 1000 Riding Garden Tractor • I.H. 102 Riding Garden Tractor • I.H. 70 Riding Garden Tractor • J.D. 112 Riding Garden Tractor • Wheel Horse C141 Garden Tractor • (All Above Are In Good Cond.) • David Bradley Walk Be-Hind Tractor • Pull Type Dump Cart • Snow Blower • Snow Blades • Lots Of Misc. Tools • Scaffolds • Retired Pcs. Of Farm Machinery • Misc. Scrap • **Several Farm Wagons Full Of Items • Lots Of Items Buried Away In The Buildings @ Time Of Write-Up • This Is A Very Partial Listing!**

**Auctioneers Note:** Plan To Attend This Excellent Moving Auction, This Listing Represents Only A Fraction Of What Will Be There, The Ripkes Have Collected Unique & Fine Collectibles For Years. Your Attendance Is Appreciated. **Terms Of Sale:** Cash, MI Check Or Credit Cards Accepted.

**TO VIEW A COMPLETE LISTING WITH OVER (300) PHOTO'S VISIT**  
**JOHNPECKAUCTIONS.COM**

**Peggy Ripke, Owner**  
 4924 S. Maple Valley Rd., (Maple Valley) St. Helen, MI.  
**JOHN PECK AUCTIONS LLC**  
 Gladwin, MI (989) 426-8061

**CENTER MOVING AUCTION**  
 Having Sold Our Home On The Lake & Moving To Florida, We Will Sell The Following At Public Auction. **Located:** 1 Mile South Of Hale On M-65 To Curtis Rd., Then West 4 Miles To Mill Station Rd., Then South & West 1 Mile To Woodland Dr. **OR** From M-55 & Sage Lk. Rd., (Clark Gas Station), Go North 4 Miles On Sage Lk. Rd., To Peters Rd., Then East 2 Miles To East County Line Rd., Then North 1 Mile To Riley Rd. (West Londo Lake), Then East & North 3/4 Mile To 2620 Woodland Dr.  
**Hale, MI**  
**Sunday October 29, 2017 • 12:00 Noon**

**Antiques, Collectibles & Household Furnishings:** Jelly Cabinet • 2 Door Cherry Cabinet • Wooden Stand W/ Drawer • Wooden Lodge Chair • 4 Drawer Floor Model Jewelry Chest • Singer Treadle Sewing Machine • Oak Rocking Chair • Cane Bottom Chair • Primitive Childs Chair • Oak Office Chair • Adjustable Wooden Office Chair • Lane Cedar Chest • Large Frederic Remington Print W/ Nice Frame • (3) Metal Cowboy Statues • Pitcher Pump Lamp • Double Wooden Pulley Lamp • Moose Lamp • Other Asst. Lamps • (2) Wooden Magazine Stands • Several Political Buttons Including A 1970 Al Kaline Day Button • Lots Of Costume Jewelry To Include Rings, Bracelets, Broaches, Necklaces, Etc. • Brass Spittoon • Southwest Pottery • Murano Glassware • Lefton China • Nippon H.P. China • Indian Rugs & Blankets • Vintage Linens • (3) Hand Quilted Quilts • Spring Loaded Buggy Seat • Tea Pots • Large Pickle Jar W/ Handle • Old License Plate Collection • Oil Lamp • Stoneware Jugs • Basket Collection • Cast Iron Milk Wagon • Cast Iron Coca-Cola Wagon • Other Cast Iron Pcs. • Brush Ax • Wooden Trunk • Dinner Bell • Household Items To Include; (2) Tile Top Coffee & End Tables • Small 3 Drawer Buffet • 6 Tier Mission Style Shelf • (2) Bookcases • Wooden Wine Rack • 3 Drawer File Cabinet • (2) Studio Chairs • Treadmill • Corning-Ware Dishes • Pots & Pans • Lots Of Box Lots • **Garage Related & Misc. Items:** Misc. Hand & Power Tools • Park Bench • Shepard's Hooks • Fishing Rods • Coleman Lantern • Shop Vac • Gas Grill • Bird Feeders • Lots Of Animal Yard Ornaments • Lots Of Asst. Yard Tools • Several Ext. Cords • Gas Jugs • **Lots Of Other Shop & Misc. Items • THIS IS A PARTIAL LISTING!** **Auctioneers Note:** Plan On Attending This Good Moving Auction. At This Nice Waterfront Home On West Londo Lake. Your Attendance At The Center Auction Is Appreciated. **Terms Of Sale:** Cash, MI Check Or Credit Cards Are Accepted.

**TO VIEW A COMPLETE LISTING WITH PHOTO'S VISIT**  
**JOHNPECKAUCTIONS.COM**

**Ted & Jan Center, Owners**  
 2620 Woodland Dr. (West Londo Lk.) Hale, MI  
**JOHN PECK AUCTIONS LLC**  
 Gladwin, MI (989) 426-8061



## Country Corner MARKET

### Bulk Food • Deli

2 Miles South of Rosebush • 2020 North Mission Mt. Pleasant • 989-433-8200  
8:30am-5:30pm, Monday-Thursday  
8:30am-7:00pm, Friday • 8:30am-4pm, Saturday

**SPECIALS OF THE WEEK**



**Walnut Creek Marble Cheese**  
Sale **\$2.99 lb.**  
Reg. \$3.99 lb.



**Walnut Creek Fried Chicken**  
Sale **\$4.29 lb.**  
Reg. \$4.99 lb.

**MORE SPECIALS**



**Walnut Creek Parmesan Grated Cheese**  
8 oz.  
Just **\$2.49**



**Walnut Creek Peanut Butter**  
28 oz.  
Only **\$2.99 ea.**



**Walnut Creek Sweet Potato Butter or Pumpkin Butter**  
15 oz.  
**\$2.69 ea.**



**Walnut Creek Thick Sliced Bacon**  
16 oz.  
Super Buy At **\$3.39 ea.**

APPLE SUPER SPECIAL SALE \$.55 @LB. 1/2 PECK \$2.50, PECK \$3.50, 1/2 BUSHEL \$6.00 BUSHEL \$11.50  
WE HAVE IDA RED, MUTZU, JONAGOLD, NORTHERN SPY, FUJI, GOLDEN DELICIOUS, GALA, HONEY CRISP - \$1.19 @LB. 1/2 PECK \$5.79 PECK \$11.00 1/2 BUSHEL \$21.00, BUSHEL \$41.00

**Coffee of the week: Decaf**

## FALL INVENTORY REDUCTION SALE

(Sale Prices on Lot Models Only) More Models Available

**Rent to Own 90 Days Same As Cash**

|   |   |   |
|---|---|---|
| <br>10 x 16 Quaker<br>Reg. \$3170<br>Sale <b>\$3,075.00</b><br>Rent to Own: \$142.36/Month    | <br>10 x 16 Chalet<br>Reg. \$2964<br>Sale <b>\$2,875.00</b><br>Rent to Own: \$133.10/Month     | <br>10 x 14 Chalet<br>Reg. \$2930<br>Sale <b>\$2,810.00</b><br>Rent to Own: \$130.09/Month     |
| <br>10 x 16 Gable<br>Reg. \$2365<br>Sale <b>\$2,295.00</b><br>Rent to Own: \$106.25/Month     | <br>12 x 12 Gable<br>Reg. \$2860<br>Sale <b>\$2,750.00</b><br>Rent to Own: \$127.31/Month      | <br>12 x 20 Cabin<br>Reg. \$4940<br>Sale <b>\$4,750.00</b><br>Rent to Own: \$219.91/Month      |
| <br>10x14 Gable<br>Reg. \$2395<br>Sale <b>\$2,320.00</b><br>Rent to Own: \$107.41/Month      | <br>8x8 Gabler<br>Reg. \$1315<br>Sale <b>\$1,275.00</b><br>Rent to Own: \$59.03/Month         | <br>10x10 Gable<br>Reg. \$1790<br>Sale <b>\$1,730.00</b><br>Rent to Own: \$80.09/Month        |
| <br>12 x 24 High Barn<br>Reg. \$4,650<br>Sale <b>\$4,510</b><br>Rent to Own: \$208.80/Month | <br>14 x 32 Highbarn<br>Reg. \$6550<br>Sale <b>\$6,300.00</b><br>Rent to Own: \$291.67/Month | <br>14 x 32 Highbarn<br>Reg. \$6735<br>Sale <b>\$6,540.00</b><br>Rent to Own: \$302.78/Month |

ATTENTION: DEER HUNTERS WE HAVE DEER BLINDS IN STOCK ASK ABOUT QUANTITY DISCOUNTS!

Statewide Delivery - Free Delivery w/ in 70 miles\* (Excludes Deer Blinds)

Supplying Michigan with quality built portable buildings for over 25 yrs.

**Miller's Woodworking**  
3209 E. Beaverton Road • Clare (Voicemail) 989-465-8172  
Old US 127 to Surrey West on Surrey to Grant 1 mile north on Grant

Mon.-Fri. 7:30am-5:00pm  
Saturday 8:30-3:00 & Evenings by Chance or Appointment  
Closed Sunday

## GET MORE BANG FOR YOUR BUCKS FIREARMS



**Crossbows & Crossbow Gear**  
Broadheads • Soft Cases  
Bolts • String Wax & More



**Muzzleloaders and Muzzleloader Gear**  
Pyrodex  
209 Primers  
Power Belt Bullets  
Percussion Caps & More

Tested & Inspected. Why Pay New Prices?

### GLADWIN TRADE & SALES

**1-989-426-6811**  
1739 N. State St. • Gladwin

## BRIAN'S FRUIT & MEAT MARKET

**2167 S. M-76 • West Branch (Across from Kmart)**

While Supplies Last • Not responsible for printing errors  
Prices good Sunday, October 22, 2017 through Friday, October 27, 2017  
Store Hours: Sunday 8am - 6pm • M,T,Th,Sat. 7am-7pm • Fridays 7am - 7pm

WE ARE A PACKAGED LIQUOR DEALER

We accept all major credit cards & EBT card

BRIAN'S MEATS: 989-345-3709    LIKE US ON FACEBOOK    WWW.BRIANSFRUITANDMEATMARKET.COM

|  |   |   |   |  |  |
|--|---|---|---|--|--|
| <br>Sliced Smoked Honey Turkey<br><b>\$5.99 lb.</b>       | <br>Sliced Swiss Cheese<br><b>\$5.99 lb.</b>         | <br>Sliced Premium Deli Ham<br><b>\$3.49 lb.</b>        | <br>KOEGEL PICKLED BOLOGNA & RED HOTS<br><b>\$10.49 ea.</b><br>2.5 lb. Jar | <br>BONELESS BEEF NEW YORK STRIP STEAKS<br><b>\$6.99 lb.</b>        | <br>BONELESS BEEF SWISS STEAK<br><b>\$3.99 lb.</b>  |
| <br>FRESH GROUND BEEF FROM ROUND<br><b>\$3.69 lb.</b>     | <br>STUFFED BONELESS PORK CHOPS<br><b>\$2.99 lb.</b> | <br>WHOLE BONELESS PORK CENTERLOINS<br><b>\$1.99 lb.</b> | <br>BRIANS HOMEMADE FRESH BRATS<br><b>\$3.99 lb.</b>                        | <br>BRIANS OWN HOMEMADE BULK BREAKFAST SAUSAGE<br><b>\$1.99 lb.</b> | <br>FRESH BONELESS SKINLESS CHICKEN BREAST<br><b>\$1.99 lb.</b> or <b>\$1.69 lb.</b> 10 lb. or more |
| <br>GROUND FRESH DAILY GROUND PORK<br><b>\$2.69 lb.</b> |   |   |   |  |  |

BRIAN'S PRODUCE: 989-345-2891

|  |  |  |   |  |   |
|--|--|--|---|--|---|
| <br>BAREMAN'S DAIRY MILK<br><b>\$1.99</b><br>Gallon Homo/2% Skim/1/2% | <br>RED-YELLOW-ORANGE PEPPERS<br><b>99¢ ec.</b>   | <br>BETTER MADE POTATO CHIPS<br><b>2/\$4.00</b> | <br>BLACK OIL SUNFLOWER SEEDS<br><b>\$14.99</b><br>50 lb. Bag | <br>WILD BIRD SEED<br><b>\$12.99</b><br>50 lb. Bag        | <br>FARM FRESH LARGE EGGS<br><b>99¢</b><br>Dozen                   |
| <br>FALL SQUASH<br><b>59¢ lb.</b>                                     | <br>PUMPKINS - GOURDS - INDIAN CORN - CORN STALKS FOR FALL DECORATING<br><b>19¢ lb.</b> | <br>HOME GROWN CABBAGE<br><b>\$1.49 lb.</b>     | <br>HONEY CRISP APPLES<br><b>\$1.49 lb.</b>                   | <br>FRESH APPLE CIDER<br><b>\$3.99</b><br>Gallon          | <br>MICHIGAN APPLES<br><b>\$9.99</b> 1/2 Bushel <b>\$5.99</b> Peck |
| <br>AVOCADOS<br><b>69¢ lb.</b>  | <br>WATER SOFTENER SALT<br><b>\$5.99</b><br>40 lb. Bag                                  | <br>DEER FEED BY THE BAG OR BULK                | <br>PETER VELLA BOX WINES<br><b>\$13.99</b><br>5 Liter Box    | <br>HAMM'S BEER<br><b>\$11.99</b><br>30 pk Cans + deposit | <br>BUSCH - BUSCH LIGHT BEER<br><b>\$16.99</b><br>30 pk Cans       |



# Fall Home and Garden

## 5 Tips for Early Fall Home Maintenance

### 1. Furnace Repair

You don't want to wait until the cold winter months to turn on your furnace and find that it isn't working. That's why early fall is the best time to schedule your furnace repair. This off-peak time often costs less than it will in January, and gives you plenty of flexibility to schedule the technician at your convenience. Waiting until winter to tackle this project will mean you pay a higher rate in labor fees, and you risk your furnace breaking down when you need it the most.

### 2. Install a Portable Generator

If you live in an area that sees severe weather during the fall and winter months, you may want to invest in a portable generator to help keep your home running in case of a power outage. Portable generators come in many sizes so you can find the right fit for your home. Install one in early fall before costs go up during the colder months, and ensure that you're ready for the first outage of the year. Once the snow begins to fly, you can expect the demand for generators to go through the roof driving up prices and limiting availability. Waiting too long could mean that you run the risk of not finding one at a reasonable price or that you need to go without power in the event of a storm.

### 3. Mold Remediation

After a warm, humid summer, mold is a very common problem in a lot of areas. Basements, attics, and bathrooms are all particularly susceptible to mold growth. Before you spend more time indoors in the winter, you'll want to ensure that any mold is removed before it can cause health problems. Once the weather dries out in the early fall is the best time to get this done. Mold that began in the summer months will continue to grow right through the winter, so the early fall is the best time of year to tackle this job, while the air is dryer and the mold hasn't had as much time to spread.

### 4. Install Gutter Guards

During the autumn months, leaves and pine needles drop from trees at a very fast rate. These can collect in your gutter, clogging them up and forcing water back onto your roof. A gutter guard can help prevent this by stopping the debris from entering your gutters. Take care of this issue in early fall when it isn't too hot to work on your gutters, but before the leaves start falling to get the best results. Wait too long and you may have to pay a higher cost in labor due to demand and the fact that your gutters will need to be cleaned prior to installation.



## Home sweet home

Protect all that you've built with a company you can trust.



**TAYLOR  
INSURANCE  
AGENCY**

Farwell • 989-588-8055  
Jan Owens, Agent

**Auto-Owners  
INSURANCE**

LIFE • HOME • CAR • BUSINESS



**Stop  
Leaks** Commercial  
Roof  
Coating  
Available

**Save  
Money**

**Save Energy**

**Long-Term Protection  
Satisfaction  
Guaranteed**

**See for Yourself**

**989-359-4112**

Call us today for a no cost, on site Roof Inspection

**Edwin Yoder**  
Licensed Builder

Serving the Central Michigan Area

**There is still plenty of time to  
get your pole building up before  
the snow flies!**



**Kitchen Cabinets • Hardware • Electrical • Trusses**

Classic Rib Steel  
40 year paint warranty  
15 colors available

**\$2.29/lin. ft.**

*Let us design your new home, garage or  
deck. We offer post layout, 3D renderings  
and much more.*

**We carry the highest quality  
material at competitive prices**



**SEITER  
BROTHERS**  
Lumber & Home Center

420 West 5th Street  
Clare, Michigan  
**989-386-7717**



Licensed  
Builder

Quality  
Workmanship



**David W. Byler**  
**(989) 386-3037**  
Serving Central Michigan

**SUNRISE CONSTRUCTION**  
**Licensed General Contractor**

**Specializing In:**

- Custom Built Home • Garages • Pole Barns
- Stick Built Barns • Reside • Reroof • Concrete Work



**Stanford**  
LP gas, Incorporated

**Heaters & Appliances for all  
your Home & Hearth needs!**

**stanfordlpgas.com**

**426-5000**



**CHECK OUT OUR NEW SHOWROOM • 1420 W. M-61 • GLADWIN**

**NOT JUST A PROPANE COMPANY ANYMORE**

**KITCHEN AND LAUNDRY APPLIANCES - HEATERS - WALL FURNACES - SPACE HEATERS  
NATURAL GAS OR PROPANE - DELIVERY AND INSTALLATION AVAILABLE**



# Fall Home and Garden



**Installation • Service  
Parts • Free Estimate**

**\$200 DTE Rebate**  
on new furnace installation

*Natural Gas customers only*

**989/386-2075**

## Fall Gardening Tips

- 1. Leave some leaves**  
Hooray! You don't have to rake all the leaves! It's OK not to rake up leaves under trees and shrubs and on sturdy ground covers (over time they become much-needed compost). However, must-rake leaves are those on perennial beds (they can cause crown rot) and grass lawns (they attract fungi and insects).
- 2. Protect perennials**  
As perennials fade away, mark their locations with small sticks, so you don't lose them in the spring. If you haven't brought in your house plants, do it before you turn on your heat to give them time to adjust, and wash them first to get rid of pests.
- 3. Transplant fruit plants**  
Rhubarb, raspberries and strawberries can quickly deplete the soil of nutrients, so find new locations for them every three or four years. Transplant them well before the first light frost so they can develop roots.
- 4. House the herbs**  
Dig up your herbs to grow inside. Keep them in a cool, sunny spot, and let the soil dry out before watering. Snip leaves whenever you need herbs in your cooking, but don't strip completely. For herbs that have grown prolifically, cut them back halfway and dry or freeze the extra, or share it with friends.
- 5. Hang the tomatoes**  
If you have unripe tomatoes still hanging on the vine, and frost is fast approaching, pull the vines out by the roots and hang them upside down in a cool, dark place to finish ripening.
- 6. Flash some fall color**  
Replace spent annuals with fall-blooming hardy mums. These pretty perennials provide color for weeks, and if properly planted, maintained and winterized, they'll add color to your garden every fall for years to come.
- 7. Bring on the bulbs**  
Fall is "now or never" time to plant spring bulbs. Shop early for the best selection, and don't delay too much in planting them after buying. You'll want to plant them 6-8 weeks before the first hard frost in your area.
- 8. Try new (tasty) trees**  
Fall is the best season to plant fruit trees such as apples, pears, plums, cherries, peaches, apricots and figs. Young trees should be staked to prevent roots from being pulled by fall and winter winds.

**"Our Customers are our Warmest Friends"**  
Guaranteed On Time and Certified  
FREE TANK SETS  
**COYNE OIL & PROPANE**  
Clare • Harrison • Mt. Pleasant • Evert  
Gladwin • Cadillac • Merrill • Interlochen

**RESIDENTIAL • COMMERCIAL  
INDUSTRIAL • FARM**  
800-386-7731 • 989-386-7731



**MARTIN HEATING & COOLING**

**DTE \$300 Rebates Available on  
New Furnaces for a Limited Time**

Installation • Service • Parts • Free Estimates

**Amara**  
LASTS AND LASTS AND LASTS™

546 W. 5th street, Clare  
**(989) 386-3791**

Ask about Geothermal Systems and heat pumps

**NEW STORE NOW OPEN**  
STOP BY TO SEE OUR BEAUTIFUL  
NEW SHOWROOM WITH MANY NEW ITEMS

**DOVER ROAD FURNITURE**  
HandCrafted Furniture

**GET YOUR HOME READY FOR THE HOLIDAYS!**

**Solid Oak and Cherry Furniture.**  
Tables, Chairs, Hutches,  
Bedroom Sets, Sofas, Recliners,  
Mattresses and more

MANY HOME ACCESSORIES & NEW DESIGNS



**DOVER ROAD FURNITURE**

William & Mattie Byler

2985 E. Dover Rd. Farwell, MI 48622  
(3 miles North of Clare on Old 27, 1 Mile west on Dover Road.)

**(989)386-4164 Let it Ring**  
Hrs: Mon~Sat – 10:00~5:30

**Beautiful Yards  
Made Easy**

Visit our Retail Nursery with the finest selection of plants, trees, shrubs & landscaping materials.  
Located on M-55 1/4 mile East of Springbrook Inn

**FREE ESTIMATES**  
Designing & Planting

**"Quality & Pride in Every Job!"**  
Brick Paver Walks, Patios & Fire Pits  
Flagstone Walks & Patios  
Boulder/Retaining Walls • Ponds & Waterfalls  
Hydroseed • Topsoil • Sod • Fill • Stone • Cedar Mulch

- AREA'S ONLY LICENSED UNILOCK CONTRACTOR OF PAVERS AND RETAINING WALL PRODUCTS
- DISTRIBUTOR OF NATURAL STONE • COMMERCIAL & RESIDENTIAL

Specializing In Boulder Work & Natural Settings

**T&W Landscaping Inc.**  
125 W. West Branch Road (M-55) Prudenville, MI  
**989-366-0718**  
34 Years Of Landscaping Experience • [tnwlandscaping.com](http://tnwlandscaping.com)



Voted #1  
Landscaping  
Company for 10 Years



**C240 | FEATHERWEIGHT™**

Introductory Price

**\$499<sup>99</sup>**

**SINGER Integrated Even Feed System (IEF)  
Compact and Portable Sewing Machine**

• At less than 15 pounds, the SINGER® Featherweight™ sewing machine is perfect for taking to classes! Great for sewing in smaller spaces and can be stored easily.

**Heavy Duty Metal Frame**  
70 Built-In Stitches  
Easy Touch Stitch Selection  
Adjustable Stitch Width and Stitch Length  
Built-In One Step Buttonhole  
Two LED Light Sources

**Info Button**

• Press the Info Button and the machine's LED screen will display the recommended presser foot for your selected stitch.

**Tie-off Button**

• Press the Tie-Off Button while sewing to immediately tie-off the stitch and stop sewing automatically.

**Start/Stop Button**

• Press this button to start or stop the machine if you choose to sew without using the foot control. Press once to start and press again to stop.

**Snap-on Presser Feet**

• Six snap-on presser feet are included.

**Speed Control**

Extra High Presser Foot Lift



**Free Arm**

29 Needle Positions

Programmable Needle Up/Down

Foot Control Tap Function

Push Button Reverse

Stainless Steel Bed Plate

Drop Feed

Built-in Needle Threader

• Effortlessly thread the eye of the needle, so you can start sewing faster. Eliminates eye strain, too!

Top Drop-in Bobbin with Clear View Cover

Adjustable Thread Tension

Adjustable Presser Foot Pressure

Hard Cover Included

**Alma Sewing Center**

301 E. Superior, Alma, MI 48801  
**(989) 463-3200**





## JACK OF ALL TRADES COINS

1028 S. Mission  
(next to Jon's Country Burger)

**I BUY ALL COINS**  
Silver and Gold  
**FREE APPRAISALS**  
we will come to your home to do free appraisals for your convenience.  
*Over 25 Years experience!*

Do not take your coins, jewelry, gold, & silver to the we buy gold places they are not experts! We are your only experts!  
**WE PAY YOU MORE THAN ANYONE!**

**I BUY ALL COLLECTIONS**  
FROM ONE COIN TO A DUMP TRUCK FULL

**We are a Full Buy • Sell • Trade shop!**  
ANTIQUES • COINS  
Jewelry • Collectibles & more!

Stop in or call Matt for your free appointment  
**517-204-0787**

**Clare Automotive Inc.**  
214 W. Fourth St, Clare • (989) 386-7200

**Rosebush Automotive Inc.**  
3816 E. Rosebush Rd, Rosebush • (989) 433-1004

**BUMPER TO BUMPER**  
Auto Parts Specialists

**RV Antifreeze**  
**\$2.99**  
**ALCOHOL FREE!**

**Evans Eye Centers**

Are you suffering from cataracts?  
Get Started today. Call for an Evaluation.

120 Warwick Alma, MI 48801  
**989-463-Eyes (3937)**

visit our website!

www.

**PAST ITS PEAK or shabby chic?**

**SELL IT IN THE CLASSIFIEDS!**

**BUY • SELL • HUNT FOR A JOB**  
**CLASSIFIEDS WORK. CALL TODAY!**

## GREAT LAKES ROOFING & COATING

XX RESTORATION SYSTEMS FOR RUSTING METAL ROOFS

FOAM & COATING SYSTEMS FOR EXISTING ASPHALT ROOFS

SINGLE PLY MEMBRANE SYSTEM

Stop Leaks  
Save Money  
Save Energy  
Long-Term Protection Satisfaction Guaranteed  
See for Yourself

Commercial Roof Coating Available

**989-359-4112**

Call us today for a no cost, on site Roof Inspection

**Edwin Yoder**  
Licensed Builder  
Serving the Central Michigan Area

**Living with Heart**

1320 Pine Avenue,  
Alma, MI 48801  
arborgroveassistedliving.com  
989.463.3074

Our residents, their families, and our staff have one thing in common - we genuinely care about each other. **We have heart.**

Share life's journey in a community that cares.

Offering Independent Living Duplexes (The Villas), Assisted Living & Moments Memory Care

**MURPHY BeautyCollege** OF MT. PLEASANT  
201 West Broadway  
Mt. Pleasant  
(989) 772-2339

**\$5 off Hair Cut**  
W full highlight or color

Expires: October 31, 2017

All Clinic work performed by Senior Students under Supervision of Instructors

Hours:  
Tues. Wed. & Thur. 9:30 - 4:00  
Fri. & Sat. 8:30-4:00

Next Class Starts: Nov. 20, 2017 Financial Aid available to those who qualify.

A Family Tradition Since 1992!

**Coming To Mt. Pleasant!**

**SHIPSHEWANA®**  
On the Road

- JEWELRY - CRAFTS - TOYS  
- CLOTHING - NEW MERCHANDISE  
- SPECIALTY FOODS  
- SPORTING GOODS & MORE!

**Saturday, November 4<sup>th</sup>**  
**9am to 6pm**  
&  
**Sunday, November 5<sup>th</sup>**  
**10am to 5pm**

**Soaring Eagle Casino & Resort Entertainment Hall**  
**6800 Soaring Eagle Blvd., Mt. Pleasant, MI**

Shop 100's Of Vendors! 1,000's Of Items!  
Something For Everyone!  
Huge Savings On Everything You Need For The Holidays!

Admission \$4,  
Children Under 12 FREE  
ATM Available  
FREE PARKING!

**269-979-8888**  
www.ShipshewanaOnTheRoad.com

Like us on Facebook follow us on twitter

**Your SOLUTION to HIGH HEATING COSTS**

**efco** trade in to trade up  
our power, your passion

ATTN: FIREWOOD CUTTERS AND BARGAIN HUNTERS

Don't miss our **BIGGEST** chain saw trade-in event!

GET UP TO **\$100 OFF**  
ON SELECT EFCO CHAIN SAWS

- efco, formerly known as Olympyk, is a top quality European manufacturer that backs up their saws with a 5 year, no fear warranty  
- Choose from 7 different efco chain saw models  
- Ask us for more details on how to trade-in to trade-up with efco!

10/2/17-11/30/17

**5 YEAR NO FEAR WARRANTY**  
Legendary Italian Design

**Mr. Heater**

**Mr. Heater Buddy**  
Indoor Safe Propane Heater

**Large Selection of Mr. Heater Propane Heaters at Low, Low Prices**  
Buddy Heater \$59.99

Vent Free Propane & Natural Gas Wall Heaters w/ Thermostat & Blower Starting at \$149.00

**Blaze King**

**Burn 33% less wood**

The combination of our exclusive thermostat and catalytic combustor technology makes your Blaze King stove one of the most efficient wood stoves in the world.

Blaze King has the top 2 most efficient wood stoves in North America and builds 5 of the top 8 most efficient stoves.

- Efficiency
- Long Burn Times
- Thermostat Control
- Low Emissions

Wood Pellets • Anthracite Coal  
Wood, Coal, Corn & Pellet Stoves  
All Fuel Chimney Systems

**HERSHBERGER'S PRO HARDWARE**  
10289 N. Leaton Rd., Clare, MI 48617-9107  
**(989) 386-5338**

Full Line of Hardware & Building Supplies  
Stove & Furnaces All Fuel Chimneys



# breast cancer awareness month

## Hope



It is estimated that more than 200,000 women in the United States will be diagnosed with breast cancer this year, but we find hope in knowing that there are **more than 2.9 million breast cancer survivors in the U.S. today.** Great strides have been made in early detection and treatment of breast cancer, and these survivors are living proof. During Breast Cancer Awareness Month and all year, we are committed to fighting the disease with

education outreach, screening tests, advanced treatment options and a team of dedicated medical professionals whose commitment to beating breast cancer never stops.



## Prevention

More than 200,000 women are diagnosed with breast cancer in America each year, but there are steps you can take to reduce your risk. Healthy lifestyle choices like consuming a low-fat diet, rich in fruits and vegetables, engaging in regular physical activity and avoiding cigarettes and excessive alcohol are all important steps in helping to prevent breast cancer. Early detection is also key in the fight against breast cancer, so be sure to perform a breast self-exam each month, and ask your doctor when to schedule mammograms and other screenings.

**Women's Medical Center, PC**  
*The care you need when you need it*

Obstetrics & Gynecology  
 1201 South Drive Suite 220 • Mt. Pleasant, MI 48858  
 Ph (989) 773-3411 • Fx (989) 775-3187  
 Monday-Friday 8:30am-5pm

Jerry Elliot, M.D. • Steven Podolsky, M.D. • Michael Swirtz, M.D.  
 Robin O'Dell, D.O. • Michelle Sanders, D.O.

[www.obgynmtpleasantmi.com](http://www.obgynmtpleasantmi.com)

**JOIN THE FIGHT**

**Keepsake Quilts**

4585 E Pickard Rd Suite K, Mt Pleasant MI 48858  
**989-317-8700**  
 Monday – Friday 10 AM – 5:30 PM  
 Saturday 10 AM – 3 PM

**MARTIN HEATING & COOLING**

**DTE \$300 Rebates Available on New Furnaces for a Limited Time**  
*Installation • Service • Parts • Free Estimates*

**Amana Heating & Air Conditioning**  
 LASTS AND LASTS AND LASTS: 546 W. 5th street, Clare  
**(989) 386-3791**  
 Ask about Geothermal Systems and heat pumps

**Albaugh Excavating**

City Utilities • Drainfield • Basements  
 Crawl Spaces • Land Clearing • Trucking  
 Demolition • Black Dirt • Sand • Gravel

Bill Albaugh Owner  
 Phone 989-773-2271 Cell 989-615-6570

**Cub Cadet**

**STRENGTH RUNS IN THE FAMILY**

Special Financing Available  
\$5,999 minimum purchase required. There is a promotional fee of \$125 for this transaction. Subject to credit approval.

**GENES POWER EQUIPMENT**  
 981 E. RAILWAY ST. COEMAN, MI 48618  
 989-465-1521  
[genespowerequipment.com](http://genespowerequipment.com)

**BIGARD HUGGARD DRILLING INC.**

**FIGHTING BREAST CANCER TOGETHER**

5580 Venture Way, Mt. Pleasant, MI 48858  
**(989) 775-6608**

**COYNE OIL & PROPANE**

“Our Customers are our Warmest Friends”  
 Guaranteed On Time and Certified  
 FREE TANK SETS

Clare • Harrison • Mt. Pleasant • Ewart  
 Gladwin • Cadillac • Merrill • Interlochen

**RESIDENTIAL • COMMERCIAL INDUSTRIAL • FARM**  
**800-386-7731**  
**989-386-7731**

**We Support Breast Cancer Research**

**C & R Electric, L.L.C.**

**TIM SPONSELLER OWNER**

- Commercial
- Industrial
- Generators
- Residential
- Agricultural
- Solar

6960 E. BLANCHARD RD., SHEPHERD  
**(989) 828-4020**  
 5008 W. LINCOLN RD., ALMA  
**(989) 463-5134**

**Tougher than Cancer.... Stronger Together**

We're Proud to Support the fight Against Breast Cancer

**Your Friends at:**  
**Valley Food Center**  
 989-879-3311  
 Pinconning





**Christmas Dinner Show**  
**AT TURKEYVILLE USA**  
**PLUS FIREKEEPERS**  
**CASINO OVERNIGHT TRIP**

**SUNDAY/MONDAY**  
**DECEMBER 17-18, 2017**

**COST: ONLY \$229 PP DOUBLE OCCP**

Includes round trip transportation, 1 night stay @ Firekeepers Casino, with a visit to Gun Lake Casino; PLUS: receive casino package valued at \$70 (\$50 free play + \$20 food) PLUS: Dinner & show ticket to "Rockin Around the Christmas Tree"

Pick Ups: Houghton Lake, Clare, Mt Pleasant Ithaca & St Johns areas

Loads of fun on board! Games & snacks provided

**Reservations required: 1-888-396-9580**  
**Limited Seating - Reserve Your Seat Today**

**NORTH COUNTRY TOURS L.L.C.**  
 LAKE CITY, MI 49651  
[www.northcountrytours.net](http://www.northcountrytours.net)

**Central Eavestrouthing, LLC**  
**LICENSED & INSURED • FREE ESTIMATES**

Manufacturers of...

- 5" Seamless Gutter
- 6" Commercial Seamless Gutter
- Leaf Protectors

Quality & Service Are #1!

It's Gutter Cleaning Time!

.032 Gauge Aluminum Hidden Screw Hangers

QUALITY WORKMANSHIP FAST FRIENDLY SERVICE

Jeb Gilbert • (989) 828-6279 • Shepherd, MI

**Shop Locally for Fall!**

**FALL SALE**

**LS TRACTOR**

**\$0 DOWN**

**MODEL XG3135**

- 35 HP 3 Cylinder Diesel
- 6 year engine/drive train warranty
- Hydrostat Trans
- Independent PTO
- Power steering

**MODEL XJ2025**

- with Loader
- 24.4 HP 3 Cylinder Diesel
- Hydrostat Trans
- 4WD
- 6 year engine/drive train warranty

**MODEL XR4140**

- with Loader
- 40 HP 3 Cylinder Diesel
- Hydrostat Trans
- 4WD
- 6 year engine/drive train warranty

**\$169 MONTH\***

**\$149 MONTH\***

**\$225 MONTH\***

**1946 71 2017**

**\*Limited Time Offer**  
 \*With approved credit-See store for details

**Promo Code MS1020**

**ONAGY'S TRACTOR SALES, INC.**  
 Family owned since 1946

1980 W. US-23 • OMER, MI  
**989-653-3173**  
[www.nagystractor.com](http://www.nagystractor.com)

**CLARE & GLADWIN COUNTY PEOPLE'S CHOICE**



**Vote for your #1 person, place or thing in Clare & Gladwin County and win!**

For completing and sending in your ballot, you will be entered a drawing.

**First Prize \$100 • Second Prize \$50 • Third Prize \$25**

The winners of the people's Choice Awards will be published in the Mid-Michigan Buyers Guide in December.

Don't miss the November 10th deadline!

**ENTER ONLINE!**

You can enter online at  
<http://themorningsun.com/contest?cid=cg-best17>  
 or  
<http://themorningsun.com/contest>

- |   |  |   |
|---|--|---|
| 1. Antiques _____                                   | 35. Financial Institution _____              | 69. Secretary _____                                       |
| 2. Attorney _____                                   | 36. Flower Shop _____                        | 70. Senior Care Facility _____                            |
| 3. ATV's/Power Sports _____                         | 37. Furniture Store _____                    | 71. Storage Facility _____                                |
| 4. Auctioneer _____                                 | 38. Gift Shop _____                          | 72. Tire Store _____                                      |
| 5. Auto Body Shop _____                             | 39. Golf Course _____                        | 73. Title Company _____                                   |
| 6. Auto Mechanic (Full name & shop) _____           | 40. Grocery Store _____                      | 74. Towing Service _____                                  |
| 7. Auto Oil/Lube _____                              | 41. Gym/Fitness Center _____                 | 75. Tree Service _____                                    |
| 8. Auto Parts Store _____                           | 42. Hamburger _____                          | 76. Veterinarian _____                                    |
| 9. Auto Salesperson _____                           | 43. Hardware Store _____                     | 77. Waiter/Waitress (Full name & restaurant or bar) _____ |
| 10. Auto Service _____                              | 44. Heating/Air Conditioning _____           |   |
| 11. Baked Goods _____                               | 45. Insurance Agency _____                   | 78. Water Service Dealer _____                            |
| 12. Bank Teller _____                               | 46. Investment/Financial Advisor _____       | 79. Well Driller _____                                    |
| 13. Barber _____                                    | 47. Lawn Care/Landscaping _____              |   |
| 14. Bartender (Full name & Restaurant or bar) _____ | 48. LP Gas Provider _____                    |   |
| 15. Bar/Tavern/Pub _____                            | 49. Lumber Company _____                     |   |
| 16. Beauty Salon _____                              | 50. Marina/Boat Sales _____                  |   |
| 17. Breakfast _____                                 | 51. Meat Market _____                        |   |
| 18. Bulk Food _____                                 | 52. Nurse _____                              |   |
| 19. Car Dealer (New) _____                          | 53. Nursery/Gardening _____                  |   |
| 20. Car Dealer (Used) _____                         | 54. Optometrist _____                        |   |
| 21. Caterer _____                                   | 55. Pharmacy _____                           |   |
| 22. Chiropractor _____                              | 56. Physical Therapy _____                   |   |
| 23. Clothing/Shoe Store _____                       | 57. Pizza _____                              |   |
| 24. Computer Service _____                          | 58. Place For Hunting/Fishing Supplies _____ |   |
| 25. Contractor _____                                | 59. Place for Pet Supplies/Grooming _____    |   |
| 26. Cup of Coffee _____                             | 60. Place for New or Used Vehicle _____      |   |
| 27. Day Care Provider _____                         | 61. Place for Farm/Animal Supplies _____     |   |
| 28. Dentist _____                                   | 62. Plumber _____                            |   |
| 29. Dental Hygienist _____                          | 63. Police Officer _____                     |   |
| 30. DJ/Entertainment _____                          | 64. Produce _____                            |   |
| 31. Doctor _____                                    | 65. Professional Photographer _____          |   |
| 32. Electrician _____                               | 66. Real Estate Agent & Office _____         |   |
| 33. Event Venue _____                               | 67. Rental Service Store _____               |   |
| 34. Excavator _____                                 | 68. Restaurant _____                         |   |

Name \_\_\_\_\_  
 Address \_\_\_\_\_  
 City \_\_\_\_\_ Phone \_\_\_\_\_

**Important:** Please include individual's first & last name along with name of business they work at.

One entry per person. No photo copies accepted. Must be 18 or older to enter contest. **TO BE ELIGIBLE, YOU MUST FILL OUT AT LEAST 50% OF THE POLL.** Morning Star Publishing Co. employees & their families not eligible for contest. Winners determined by ballots returned by our readers.

**Entries due by Friday, November 10, 2017**  
 Mail entire ballot to

**Mid-Michigan Buyers Guide**

Attn: People's Choice  
 311 E. Superior St. • Alma, MI 48801



## Valley Food Center

"OUR ONE AND ONLY LOCATION IN PINCONNING"  
 989-879-3311 • 101 E. SECOND • PINCONNING  
 WE WELCOME THE BRIDGE CARD, GIFT CERTIFICATES  
 NOT RESPONSIBLE FOR PRINTING ERRORS • ALL LOTTERY GAMES AND LOTTO HERE

MON.-SAT. 8-8, SUN. 8-6 • PRICES GOOD SUNDAY, OCTOBER 22, 2017 THROUGH SATURDAY, OCTOBER 28, 2017

Join us on   
 Holiday Hours Ending We will be Resuming Fall Hours on Monday 9-4-17 Mon-Sat 8am-10pm Sunday 8am-5pm  
 We Now Take Credit Cards! Visa, Mastercard & Discover

| BEEF                         |                              |                        |                      |                      |
|------------------------------|------------------------------|------------------------|----------------------|----------------------|
| <b>\$32.90</b><br>10 LB. BAG | <b>\$34.90</b><br>10 LB. BAG | <b>\$349</b><br>lb.    | <b>\$599</b><br>lb.  | <b>\$649</b><br>lb.  |
| <b>\$2.99</b><br>lb.         | <b>\$3.49</b><br>lb.         | <b>\$6.99</b><br>lb.   | <b>\$2.99</b><br>lb. | <b>\$3.49</b><br>lb. |
| <b>\$4.49</b><br>lb.         |                              |                        |                      |                      |
| PORK                         |                              |                        |                      |                      |
| <b>\$1.59</b><br>lb.         | <b>\$1.79</b><br>lb.         | <b>\$1.59</b><br>lb.   | <b>\$1.49</b><br>lb. | <b>\$1.29</b><br>lb. |
| <b>99¢</b><br>lb.            | <b>\$2.49</b><br>lb.         | <b>\$1.89</b><br>lb.   | <b>\$1.89</b><br>lb. | <b>\$1.99</b><br>lb. |
| CHICKEN                      |                              | SPECIALS               |                      |                      |
| <b>\$1.19</b><br>lb.         | <b>\$5.99</b>                | <b>\$1.79</b><br>+ dep | <b>\$3.49</b>        |                      |
| <b>\$1.79</b><br>lb.         | <b>\$19.90</b>               | <b>\$1.99</b><br>lb.   | <b>\$8.99</b><br>lb. |                      |
| <b>59¢</b><br>lb.            |                              |                        |                      |                      |

Visit us on Facebook at [www.facebook.com/valleymarket](http://www.facebook.com/valleymarket)  
 Or check out our new website at: [www.valleymarketmi.com](http://www.valleymarketmi.com)

ISABELLA COUNTY  
PEOPLE'S CHOICE  
2017

## Alwood Nursery

Est. 1977

# Thank You

## for voting us People's Choice

#1 Nursery & Landscaper & Perennials provider for 16 years in a row!!

### 40% OFF

Potted Shrubs

Get Your Beds and Garden ready for spring with Dairy Doo

Greens, Wreaths and Grave Blankets for Christmas Coming Soon

**989.773.2575**  
 2945 South Meridian Road Mt. Pleasant, MI

## FALL CAR CARE SAVINGS!

|   |  |
|---|--|
| <p><b>Front End Alignment Special</b><br/> <b>\$62.95</b> 4-WHEEL<br/>                 Most Vehicles w/Coupon<br/>                 Expires 12-29-17</p>   | <p><b>Dexos Lube, Oil, Filter Special</b><br/>                 Change Oil, Change Oil Filter<br/>                 Check All Fluid Levels &amp; Lubricate Fittings<br/>                 Up to 5 qts. - Additional oil or fluids extra<br/> <b>\$38.50</b><br/>                 Expires 12-29-17</p> |
| <p><b>Two Great Services for ONE Great Price!</b><br/>                 Get Your Tires... ROTATED Plus...<br/> <b>LUBE, OIL &amp; FILTER SPECIAL</b><br/>                 Change Oil, Change Oil Filter Check<br/>                 All Fluid Levels and Lubricate Fittings</p> |  |
| <p><b>ALL FOR \$45.00</b><br/>                 Most Vehicles w/Coupon - 5 qt. Max<br/>                 Dexos Extra \$10<br/>                 Expires 12-29-17</p>   |  |
| <p><b>COOLING SYSTEM FLUSH \$114.45</b><br/>                 Most Vehicles w/Coupon<br/>                 Expires 12-29-17</p>   |  |
| <p><b>Automatic Transmission Service All Fluid Flush SPECIAL \$127.05</b><br/>                 Change All Fluids - 12 qts.<br/>                 Most Vehicles w/Coupon<br/>                 Expires 12-29-17</p>  |  |
| <p><b>Any Repair 10% OFF</b><br/>                 Most Vehicles w/Coupon<br/>                 Not valid with tire sale or any other coupon offer<br/>                 Expires 12-29-17</p>  |  |

**70 Years Strong!**  
[www.McGuireChevrolet.com](http://www.McGuireChevrolet.com)  
**989-386-7714**

## DEWEY'S TRADING POST

Maple Rapids • 682-4158  
 Monday-Saturday: 8am - 7pm, Closed Sunday

Prices In This Ad Good for weeks of October 23, 2017 - October 28, 2017  
 WIC • Bridge Card • VISA • Mastercard • Discover  
 American Express • Debit Card & Chamber Bucks Gift Certificates.

**Whole "Select" New York Strips**  
 13 lb. avg. **\$369** LB. CUT FREE!!

BRING IN YOUR OLD VENISON OUT OF YOUR FREEZER & HAVE US MAKE YOU SAUSAGES & SNACK STICKS FOR YOUR HUNTING SEASON!!  
 New Hunting Law, We have TO HAVE Your Hunting License or Permit with your meat. Drop off!! NO - EXCEPTIONS!!  
 Effective As of Aug. 2017

**55 LB. Bundle \$189.99**  
 • 5 LB. COUNTRY STYLE RIBS • 10 LB. LEG 1/4'S • 10 LB. GR. CHUCK • 10 LB. BEEF RST. • 5 LB. PORKCHOPS • 5 LB. PATIO STEAK • 5 LB. HOT DOGS • 5 LB. SIRLOIN STEAK  
 24 HR. NOTICE - CUSTOM WRAPPED FOR YOUR FAMILY 9 DIFFERENT BUNDLES AVAILABLE!!

|   |   |   |
|---|---|---|
| Koegel's 2 1/2 LB. JARS Pickled Bologna or Red Hots <b>\$9.99</b> JAR | "Our Own" Smoked Beef Salami <b>\$4.99</b> LB.        | Smoked Picnic Hams 9 lb. avg. <b>\$1.49</b> LB. |
| "Bulk" Sliced Bacon <b>\$3.69</b> LB.                                 | Whole Boneless Pork Loin 9 lb. avg. <b>\$1.79</b> LB. | Butterfly "Boneless" Chops <b>\$2.49</b> LB.    |
| Boneless Pork Ribeye's <b>\$2.49</b> LB.                              | Choice "Boneless" Arm Roast <b>\$3.49</b> LB.         | Boneless BBQ Beef Ribs <b>\$3.99</b> LB.        |
| "Fresh" Links Sausages <b>\$3.49</b> LB.                              | 10 LB. Bags Fresh Leg 1/4's <b>\$6.49</b> LB.         | 5 LB. Bags 80/20 Gr. Chuck <b>\$17.49</b> BAG   |

Checkout our "Bulk" Baking Section for Your Fall Needs!!  
 50 LB. Bags Bread & All Purpose Flour, 25 LB. White Sugar, 50 LB. Brown Sugar, ALL Also Available in Smaller Amounts.

**DeweysTradingPost.biz**  
 LIKE us on Facebook & see our WEEKLY SPECIALS!

## Get Your RV ready for Winter!!

Let us keep you by the fire longer.

# QUALITY TRUCK AND TIRE

## Heavy Duty Truck and Trailer Repair

10532 N. Mission Rd., Clare  
**(989) 271-7019**  
 RV Towing Specialists



# National Breast Cancer Awareness Month



# LOCAL SHOPPING. LOTTA SAVINGS!

## Business Card Directory

CIRCULATION ISSUES: (989) 779-6000 PRESS 2

ADVERTISING REPRESENTATIVE: CALL KINDRA (989)506-4640 OR knorlander@michigannewspapers.com

**HANDYMAN**  
**BILL LEONARD**

- General Carpentry
- Repair • Maintenance
- Home Improvement Projects

E-mail: yourhandymanbill@yahoo.com  
Licensed • References • Economical

**(989) 681-2516**

Big Or Small - We Do Them All!  
FREE ESTIMATES

**A & M**  
METAL ROOFING  
**989-487-9066**



5023 Grass Lake Rd. - Clare

**NATURE'S CHOICE**  
TREE MANAGEMENT

**SERVING ALL CENTRAL MICHIGAN!**

LICENSED AND INSURED TREE TRIMMING AND REMOVAL

**989-259-2695**   **269-501-0024**

**PROPANE SOLD HERE**   **SALE!!**  
20 LB. CYLINDER FILL

**\$9.99**  
GPC

We make custom hoses & fittings!

PROPANE • HVAC • REFRIGERATION  
8512 E. M-46 - VESTABURG  
800-991-7477  
gasproductioncompany.com

**CAL'S PAINTING**

Over 30 Years Experience  
COMMERCIAL & RESIDENTIAL

- Interior & Exterior • Power Washing & Deck Care
- Window Washing & Gutter Cleaning
- Drywall Repair • Cleaning and Refinishing Log Homes
- Cabinet, Woodwork, Door & Furniture Refinishing

**GO CALL TODAY!**  
**(989) 258-9638**

NO JOB TOO BIG OR SMALL

• Free Estimates • Work Gauranteed • Insured  
Winter Rates Available

We Pay Cash For Your Items

**NEW MILLENNIUM 2002**

SINCE 1999   Better Than a **PAWN SHOP**   **SMILE**

**WE BUY GOLD**

Diamonds & Jewelry • DVDs • Cameras • Tools  
Musical Instruments & Equipment • Laptops  
Video Games & Systems • Sporting Goods  
Vehicles • Motorcycles & ORVs  
TVs • Tablets • Bows & GUNS

**989.779.8822**  
M-F 10-6   5281 East Pickard Street  
Sat 10-4   Mt. Pleasant, MI 48858  
mountpleasantpawnshop.com

**VACUUM CLEANERS/SEWING MACHINES**  
NEW & USED

**Circle Sewing & Vacuum Center**

FREE ESTIMATES Service On Most Brands

Sales • Services • Parts • Top Quality • Low Prices  
Serving Midland For Over 50 Years  
We Have It All!

1900 S. Saginaw Rd. • Midland   **HOURLS:**  
(989)-839-0800   M-F 9:30 - 5:30  
In the K-Mart Plaza   Sat. 9:30 - 3:30

**VALET AUTO CARE, INC.**  
Since 1983

- A.R.E. Pickup Toppers
- Over 100 New & Used Toppers in Stock
- Truck Accessories
- Tonneau Covers

**LEER**   **ARE** Because you love your truck  
www.valetauto.com

**James Motz - Owner**   (989) 773-3477  
610 N. Mission (3 blocks S. of Meijer) Mt. Pleasant

**MARTIN HEATING & COOLING**

**DTE \$300 Rebates Available on New Furnaces for a Limited Time**  
Installation • Service • Parts • Free Estimates



**Amana** Heating & Air Conditioning   546 W. 5th street, Clare   **(989) 386-3791**  
LASTS AND LASTS AND LASTS:   Ask about Geothermal Systems and heat pumps

**North Country Metals, LLP**

**(989) 386-3013**  
**Metal Roofing & Siding**

- All Steel Walk Through Doors
- Sliding Door Hardware
- Pole Barn Windows
- Moisture Barriers
- Caulk • Skylights
- Fasteners • Roof Boots

**5139 PERE MARQUETTE, CLARE**

**THIS SPOT COULD BE YOURS: CALL - KINDRA**  
**(989) 506-4640**  
**KNORLANDER@MICHIGANNEWSPAPERS.COM**

**Brad Malley Well Drilling, Inc.**

Mid Michigan's Most Experienced Well Drillers!

**MALLEY CONSTRUCTION INCORPORATED**

The One Contractor That Can Do It All!  
**AFFORDABLE WELL PACKAGES**  
All Major Pump Brands Available

**FREE ESTIMATES**  
SERVING ALL OF MID MICHIGAN  
LICENSED WELL DRILLER  
LICENSED CONTRACTOR  
MT. PLEASANT  
**WWW.BRADMALLEYWELLDRIILLING.COM**  
**989.772.2765 / 800.717.6022**



# Business Card Directory

Shop these local Professionals  
Call Marlene at 989-506-4647 for Advertising Info



**TOM'S POLE BUILDINGS**  
Over 30 Years Experience  
**Special!** POLE BUILDINGS & GARAGES  
ROOFING & SIDING  
CONCRETE FLOORS DRIVEWAYS & FENCING  
FEATURING ULTRA 2000 19 colors to choose from  
And A 45 YEAR WARRANTY  
From Beginning permit To Cleanup, We Do It All!  
**1-800-541-3974**  
We accept major credit cards. • email: tomspolebuildings@yahoo.com

24x40x10  
10% Down  
Today  
Guarantees  
Prices



**Protect your football season fortress.**  
Your home and car aren't just things. They're what you work hard for, and where you build your memories. Call me to give them the protection they deserve.  
**State Farm**  
Maury S Irwin, Insurance  
1011 N McEwan Street  
Clare, MI 48617  
Bus: 989-386-4141  
maury.irwin.igz@statefarm.com  
1706755  
State Farm Mutual Automobile Insurance Company,  
State Farm Fire and Casualty Company, Bloomington, IL

**E & K EXCAVATING**

- SEPTIC SYSTEMS
- PONDS
- DRIVEWAYS AND ROADS
- LAND CLEARING

LICENSED  
**EDWIN STEINER**



2239 EAST DENVER RD. ROSEBUSH, MI 48878  
**989-433-0004 or cell 989-430-2461**

**ECOWATER SYSTEMS** Lindsay Soft Water Co.  
1209 Michigan Ave. St. Louis, MI 48880  
P.O. Box 401 Gladwin, MI 48624  
(989) 681-5436 (989) 426-4220  
1-800-244-3464 Cell (989) 620-1263  
www.ecowater.com  
GABE EAREGOOD  
Water Specialist

ISO 9001

**RAGLE'S REMODELING**

- Power Washing, Interior & External Painting, Drywall Installation & Repair, Ceramic Tile Installation & Repair, Kitchen & Bathroom Remodeling, Roofing, Windows, Doors & Floors, House Leveling, Metal Roof Specialist

**HANDYMAN**  
2 YOUR RESCUE  
**989-533-1006**  
Free Estimates  
40 Years Experience

**Gateway Structures LLC**  
SPECIALIZING IN METAL CLAD STORAGE SHEDS



Multiple Colors & Custom Sizes • Built to Order  
**FREE Delivery** (within 70 miles)  
7136 South Clare Ave. Clare, MI  
(voicemail) **989-418-9816**

**POLE BARN**  
**James Morche Builders**  
YOUR BUILDER FROM START TO FINISH  
garages • pole barns • concrete work  
FREE estimates  
James Morche Cell **989-429-3479 • 989-539-9126**  
Licensed & Insured

**Tag's Auto Repair**  
2 yr. 25,000 mile warranty nationwide on parts & labor

- COMPUTER DIAGNOSTIC SERVICE • 2 AND 4 WHEEL ALIGNMENT
- BRAKES & FRONT END REPAIR!**
- AC CHARGING
- TIRES AND BRAKES
- OIL CHANGES

FREE ROADSIDE ASSISTANCE PROGRAM TOWING, FLATS, LOCKOUTS, MORE!  
CALL US FOR DETAILS!  
3780 N. Clare Ave. Harrison  
Hours M-F 8-5  
**989-539-1986**  
Auto Value SERVICE CENTER  
VISA MasterCard

**West Midland Family Center**  
4011 W. Isabella  
Saturday, Doors open at 4:00  
Early Birds Start at 6:00  
Progressive Jackpot: 58#  
**\$1,100**  
Proceeds go to fund the West Midland Family Center



SPECIAL BINGO NOVEMBER 3  
Doors open at 4  
Bingo starts at 6:30

**DEBRIS HAULING**  
Free Estimates

- Clean Out Basements Attics & Garages
- Tear Downs Sheds & Garages
- Scrap Metal
- Commercial Buildings

**10 Yards \$285**  
(989) 773-0735  
Dan Syzak

Good & Fast Service  
MOUNT PLEASANT AREA  
No One Does It For Less. NO ONE!!  
Less than the price of a dumpster!

**HENRY EXCAVATING & CONCRETE LLC**  
989-539-7542  
CELL: 989-429-1175

**MICHAEL HENRY TREE SERVICES LLC**  
989-539-7542  
CELL: 989-339-4377

POURED WALLS & ALL TYPES OF CONCRETE CONSTRUCTION  
COMPLETE DOZER AND BACKHOE WORK  
STUMPING • ROAD GRADING • FILL SAND  
SEPTIC SYSTEMS • BLACK DIRT  
GRAVEL • STONE • DITCHING  
CRUSHED CONCRETE  
CRUSHED ASPHALT  
FULLY INSURED

TREE REMOVAL & TRIMMING,  
BRUSH CHIPPING AND CLEAN UP  
STUMP GRINDING,  
65' BUCKET TRUCK & WOOD CHIPPER  
INSURANCE WORK WELCOME -  
STORM DAMAGE CLEAN UP  
FULLY INSURED

**SERVING ALL OF MID MICHIGAN AREA!**  
FREE ESTIMATES - 3620 N. CLARE AVE. HARRISON, MI

**PIONEER POLE BUILDINGS INC.**



7400 S. Clare Ave. • Clare, Michigan 48617  
**800-292-0679**  
www.pioneerpole.com

**STORAGE SPACE AVAILABLE**  
420 Units

Paved Driveway Security Gate  
FOR ALL YOUR RENTAL NEEDS

5'x12', 10'x12', 10'x20' Stalls  
**MIDSTATE RENTAL AND STORAGE, INC.**  
1 MILE EAST OF GLADWIN ON M-61  
**426-2981**  
MON.-SAT 8AM-5PM

You looked here and your customers will, too.



Call **989-506-4647** for more info.

**ABC Auto Body**  
313 W. Knox Road, Beaverton, MI  
1/2 Mile West of M-30  
**989-435-2707**

VISA We Take Pride In Your Ride! MasterCard

- Quality Collision Repair
- Free Estimates
- Insurance Work Welcome
- Custom Color Matching & Painting
- We Repair All Makes and Models
- Car/Light Truck
- Genuine Original Equipment Parts

**BURKHART-PRESIDIO INSURANCE AGENCY**  
GLADWIN • 989.426.9278

**Auto-Owners INSURANCE**  
LIFE • HOME • CAR • BUSINESS


**KAPS ANA Member KOINS LLC**  
located across from the Doherty Hotel

Silver & Gold Coins Bought & Sold

Integrity, Honesty & Peace of Mind.  
That's what you deserve when it comes to your Coins & Currency!!!

Thomas Kapuscinski  
611 N. McEwan St. Clare, MI 48617  
231-357-2105 • 989-386-6500  
tkap@charter.net  
Mon.-Fri. 9:30am-5:30pm  
Sat. 10:00am-2:00pm  
or by appointment

NOW BUYING Sterling Silverware & Scrap Gold



BBB ACCREDITED BUSINESS

**Pioneer Metal Roofs**  
Residential Steel Roofing



7325 S. Clare Ave. Clare, MI 48617  
(989) 386-4444 (Office)  
(800) 292-0679  
www.pioneermetalroofs.com

**FREE Hearing Test & Consult**

**bieri HEARING SPECIALISTS**  
**888-641-0087**  
Clare and Midland Locations  
www.bierihearing.com

You looked here and your customers will, too.



Call **989-506-4647** for more info.

"Our Customers are our Warmest Friends"  
Guaranteed On Time and Certified  
FREE TANK SETS  
**COYNE OIL & PROPANE**  
Clare • Harrison • Mt. Pleasant • Evart • Gladwin  
Cadillac • Merrill • Interlochen  
**800-386-7731 • 989-386-7731**

RESIDENTIAL • COMMERCIAL  
INDUSTRIAL • FARM

**digitalfirst MEDIA**  
Call for Quotes on digital advertising, print & deliver, pre prints and print advertising

**Marlene Bennett**  
Account Executive  
The Morning Sun • The Mid-Michigan Buyers Guide  
mbennett@michigannewspapers.com  
For Advertising call **989-506-4647**  
For Circulation call 989-779-6000 Press 3



# Park it in the CLASSIFIEDS



*and watch it go fast!*

## GARAGE SALES

### YARD, RUMMAGE & GARAGE SALES

**GARAGE SALE, Oct 21st, 8-1:30, 404 Pine St, Mt Pleasant.** tools, some antiques, boat motors and misc.

### EDUCATION/TRAINING

**STOP OVERPAYING** for your prescriptions! **SAVE!** Call our licensed Canadian and International pharmacy, compare prices and get \$25.00 OFF your first prescription! **CALL** 1-800-697-1808 Promo Code CDC201625

### HEALTHCARE

**SOCIAL WORKER CASE MANAGER (FULL-TIME)**  
SW needed for the Mt. Pleasant and surrounding counties to provide and coordinate social work services to resolve social or emotional problems of clients in their home according to the plan of care. A current license as a Social Worker is required. Have a limited license? We can provide supervision for you in order for you to get full licensure. Please submit your resume to: [sbvins@a-dhomecare.com](mailto:sbvins@a-dhomecare.com) Fax 989-401-7516 EOE

### PERSONALS

**2 LOTS** in Prophet's Area of Memorial Gardens in Mt Pleasant. 989-424-1227

### ANTIQUES

**ST GERMAIN ANTIQUES,** 319 N Mission, Mt Pleasant. **FALL CLEARANCE SALE!** 20-50% off select booths Limited Time Only! Tues-Sat., 10-5:30, Sun-Noon-5, Closed Mondays & Holidays 989-775-8982

### AUCTIONS

Live Auction Thurs., November 9, 2017, 1:00 P.M. 109.5 acres of tiled farm land and house. Elvin Brothers, 1569 N. Vandyrke (M-53), Bad Axe, MI 48413. Auction by Marsa Auctioneering, 989-269-7227. [www.Auctionzip.com](http://www.Auctionzip.com) ID# 5683

### FIREWOOD

**FIREWOOD FOR Sale, slab wood, \$20, pickup load, located at Nast Sawmill, 5625 W Fremont Rd, Blanchard.**

### FURNITURE

**AMISH LOG Beds, Dressers, Rustic Table and Chairs, Mattresses for Cabin or Home.** Lowest price in Michigan! [dandanthemattressman.com](http://dandanthemattressman.com) 989-923-1278

**AN AMISH Log Headboard and Queen Pillow Top Mattress Set.** Brand new-never used, sell all for \$275. Call anytime 989-832-2401.

**ONLINE ONLY Cabinet Shop & Lighting Gallery** Auction will close starting at 8:00 pm Thursday November 2, 2017. Lighting, Cabinetry, Light and Cabinet Components, Office and Shop Supplies and Much More! Details at [SHERWOODAUCTIONSERVICE.LLC.COM](http://SHERWOODAUCTIONSERVICE.LLC.COM) 989-640-9401.

### MISCELLANEOUS

**A PLACE** for mom. The nation's largest senior living referral service. Contact our trusted, local experts today! Our service is FREE/no obligation. **CALL** 1-800-520-3521

**ACORN STAIRLIFTS** The AFFORDABLE solution to your stairs! \*\*Limited time -\$250 Off Your Stairlift Purchase!\*\*Buy Direct & SAVE. Please call 1-800-280-1897 for FREE DVD and brochure.

**ADJUSTABLE BED** Brand New with Imcomfort gel memory foam mattress. Retail Cost \$5,900.00, sacrifice for \$997.00. Call for showing or delivery: 989-615-2951.

### DENTAL

**JOIN US!**

**IMPROVING LIVES ONE SMILE AT A TIME.**

MCDC has over 35 locations and is expanding. We have a full time opening for a Registered Dental Assistant in our Mt. Pleasant, Harrison, & Big Rapids Centers. **We offer:**

- Base pay and incentive compensation
- Health, vision and dental insurance
- Short and long term disability
- 403(b) retirement plan with a matching contribution up to 5%
- Life insurance
- Other benefits (uniforms, gym membership, etc.)

If you are interested in an opportunity to serve the dental needs of an ever growing population, visit our website at [mydental.org](http://mydental.org) to apply or call (231) 437-4830. My Community Dental Centers is an EOE.

### MISCELLANEOUS

**AMISH BUILT** mini cabins or storage sheds delivered to your site anywhere in Michigan! Starting under \$1,000.00. [mynextbarn.com](http://mynextbarn.com) 989-832-1866

**BUILT BEST BARNs** Michigan's Largest Pole Barn Company. Best Quality, Best Service, October Specials, Order Now and Save! 24'x24'x8'=\$7995.00; 24'x32'x8'=\$8995.00; 24'x40'x10'=\$10,995.00; 30'x40'x10'=\$12,495.00; 30'x40'x12'=\$13,495.00; 32'x48'x12'=\$17,995.00. Completely Built, (Concrete Floor Optional) License/Insured 1-877-802-9591 (Office) 989-205-2534 (Cell)

**CASH FOR CARS:** We Buy Any Condition Vehicle, 2002 and Newer. Competitive Offer! Nationwide FREE Pick Up! Call Now For a Free Quote! 888-366-5659!!!

**DIRECTV. CALL & Switch Now** - Get NFL Sunday Ticket for FREE! Every Game. Every Sunday. CHOICE™ All-included Package. Over 185 Channels. \$60/month (for 12 Months.) **CALL - 1-800-917-3607**

**DISH TV.** 190 channels. \$49.99/mo. for 24 mos. Ask About Exclusive Dish Features like Sling® and the Hopper®, PLUS HighSpeed Internet, \$14.95/mo. (Availability and Restrictions apply.) TV for Less, Not Less TV! 1-866-950-6757

**DONATE YOUR CAR TO CHARITY.** Receive maximum value of write off for your taxes. Running or not! All conditions accepted. Free pickup. Call for details. 855-413-9672

**DRINKING PROBLEM? DRUG ABUSE?** Take control of your life today. Find out the Addiction Treatment option that's right for you. Must have PPO or HMO insurance plan to qualify. Take the first step toward recovery & call now, 844-836-9326

**HEAT YOUR** entire home for free. Certified **OUTDOOR WOOD FURNACE.** Central Boiler Classic Edge. Buy NOW and save up to \$650! Call Today! Beaverton Outdoor Wood Furnace 989-435-9240

**HughesNet:** Gen4 satellite internet is ultra fast and secure. Plans as low as \$39.99 in select areas. Call 1-800-491-8935 now to get a \$50 Gift Card!

**IF YOU HAD AN IVC FILTER PLACED FOR BLOOD CLOTING,** between 2010 -present time, you may be entitled to compensation. Call Attorney Charles H. Johnson 1-800-535-5727

Lung Cancer? 60 or Older? If So, You and Your Family may be Entitled to a Significant Cash Award. Call 877-926-5276 To Learn More. No Risk, No Money Out of Pocket

**MEET SINGLES RIGHT NOW!** No paid operators, just real people like you. Browse greetings, exchange messages and connect lives. Try it free. Call now: 800-993-0464

**NEW AT&T INTERNET OFFER.** \$20 and \$30/mo plans available when you bundle. 99% reliable. 100% Affordable. **HURRY, OFFER ENDS SOON, CALL NOW** 1-800-830-3921

**OVER \$10K in Debt?** Be debt free in 24 to 48 months. No upfront fees to enroll. A+ BBB rated. Call National Debt Relief 855-900-9786.

**PIONEER POLE BUILDINGS** Free Estimates Licensed and Insured. 2x6 Trusses. 45 Year Warranty Galvalume Steel-19 colors. Since 1976 #1 in Michigan Call Today 1-800-292-0679

Reach Across Michigan with a MegaMarket Statewide Classified Ad! Over 1.2 million weekly circulation just \$249 per week! Buy 3 - Get 1 Free! Call 800.783.0267

### MISCELLANEOUS

**SMART HEALTH** Dental Insurance. Most Dental Procedures Covered. No waiting periods! Most Plans Start at About \$1 a Day! **FREE** No Obligation Quote. Call Now! 1-844-241-9927

**SMART HEALTH** Dental Insurance. Most Dental Procedures Covered. No waiting periods! Most Plans Start at About \$1 a Day! **FREE** No Obligation Quote. Call Now! 1-844-241-9927

**SPECTRUM TRIPLE** Play TV, Internet & Voice for \$29.99 ea. 60MB per second speed No contract or commitment. We buy your existing contract up to \$500! 1-866-729-0394

**TOP CASH PAID!** For old motorcycles! 1900-1979. Dead or alive! 920-371-0494.

**YOU OR** a loved one have an addiction? Very private and Confidential inpatient care. Call NOW for immediate help! 888-622-9711 Mon-Sun : 8:00 am to 12:00 am (all times Eastern)

### ESTATE SALES

**ESTATE SALE**

**410 APRICOT LANE ORCHARD GLEN CONDO'S Mt. Pleasant, MI. 48858**

**Thurs., Oct. 26, 9-5:00 Fri., Oct. 27, 9-3:00**

**DIRECTIONS:** From the corner of Broomfield Rd. & Crawford Rd. proceed West ¼ mile to Orchard Dr. turn Right (North) go 3 blocks to sale! **PARKING ON ORCHARD DR. ONLY!** Follow signs!

*CMU Professor has passed away & we will be selling the contents of the condominium. This sale includes a selection of fine furniture, household & collector's plates-all in spotless condition!*

**SMITH BROS. BROWN SOFAW/MATCHING OTTOMAN; SMALL CHERRY TABLE; LG. MAN SIZE RUST COLOR RECLINER; VICTORIAN ERA UPHOLSTERED SIDE CHAIR; LG. OAK TV STAND; OAK TV STAND/ SIDE DOORS; FLOOR LAMPS; SEVERAL PCS. OF ORIGINAL ART, PRINTS & POTTERY; TEAK END TABLE; SEVERAL BOOKCASES; FILE CABINETS; OFFICE SUPPLIES; 1940'S MAHOGANY DESKW/CHAIR; HP COPIER; COLLECTION OF DVDS PBS MYSTERY & MORE; 2015 48" SAMSUNG FLAT SCREEN TV; 2013 32" SAMSUNG FLAT SCREEN TV; POLITICAL BUTTONS & MORE; AUDIO SYSTEM W/ SPEAKERS; ADJUSTABLE TABLE TRAY; ANTIQUE OAK DINETTE SET W/4 CHAIRS; THROW RUGS & LINENS; WHITE BROS. FINE FURNITURE CHERRY CHEST OF DRAWERS & DRESSER; SERTA PERFECT SLEEPER QUEEN MATTRESS SET; ANTIQUE OAK SWIVEL OFFICE CHAIR; QUEEN SIZE MATTRESS SET; X-LARGE TALL TO X-LG. MEN'S COATS, SUITS, CLOTHING & 14W SHOES, SOME NEW; BOOKS ON HISTORY, GERMANY, HOLYLAUST, HOLLYWOOD & CELEBRITIES; COLLECTOR'S PLATES: ROCKWELL, CHINESE TRADITION, RED MANSION, RUSSIAN LEGENDS, SOUND OF MUSIC, SAMURAI; PINE CHEST OF DRAWERS; NEWER DRYING RACK; SET OF BOONTON PLASTIC WARE DISHES; STEREO EQUIPMENT; PLASTIC SHELVING; SUITCASES SOME NEW; SEWING STAND; NEW HOLMES HUMIDIFIER. OSCILLATING HEATER, MR. COFFEE MAKER; EUREKA VACUUM CLEANER; RCA RECEIVER & AMPLIFIER; HOLIDAY DÉCOR; LINENS & MORE**

**OPEN 9:00 CASH Central Estate Sale Service**  
Jerry M. 989-854-1571  
Patty G. 989-772-2053

**3RD PRIME CUT ALFALFA;** Straw, \$4/Bale; Cracked Corn \$12/100, Shelled-Corn \$10/100, Cob-Corn \$5/Bag, Rye, Barley, Wheat, Oats \$12/bag. Delivery-Available. (989)433-5418 Cell# (989)965-1391

### DUPLICES & FLATS

**DUPLIX FOR** rent. 3 bed, 2 bath. Newly updated. All new appliances and cupboards. Large yard. 1604 E High, Mt Pleasant. \$1250/month, incl water/sewer. 989-572-8491.

### HOUSING WANTED

**WANTED TO** Rent, 2 room house in Alma/St Louis area. 72 yr old sr., 38 yr retired nurse, handicap accessible needed. 231-268-8393

### PASSENGER CARS

**2006 Ford Taurus, Excellent cond., low miles. \$3500.00**  
**2007 Volkswagon Passet, 2 liter turbo, excellent cond., \$4500.00. Call Darrell: (989)506-6578**

### BUILDING MATERIALS & SUPPLIES

**BUILT BEST BARNs** Michigan's Largest Pole Barn Company Best Quality, Best Service, **OCTOBER SPECIALS, Order Now and Save!** 24'x24'x8'=\$7,995.00 24'x32'x8'=\$8,995.00 24'x40'x10'=\$10,995.00 30'x40'x10'=\$12,495.00 30'x40'x12'=\$13,495.00 32'x48'x12'=\$17,995.00 Completely Built, (Concrete Floor Optional) License/Insured 1-877-802-9591 (Office) 989-205-2534 (Cell)

**PIONEER POLE BUILDINGS** Free Estimates Licensed and Insured. 2x6 Trusses. 45 Year Warranty Galvalume Steel-19 Colors. Since 1976 #1 in Michigan Call Today 1-800-292-0679

### DOGS

**AKC West German Shep Pups** [karsonscountrycorner.com](http://karsonscountrycorner.com) **989-306-4652** Ready Now. Hip guarantee

### FARM FEED & SUPPLIES

**3RD PRIME CUT ALFALFA;** Straw, \$4/Bale; Cracked Corn \$12/100, Shelled-Corn \$10/100, Cob-Corn \$5/Bag, Rye, Barley, Wheat, Oats \$12/bag. Delivery-Available. (989)433-5418 Cell# (989)965-1391

### DUPLICES & FLATS

**DUPLIX FOR** rent. 3 bed, 2 bath. Newly updated. All new appliances and cupboards. Large yard. 1604 E High, Mt Pleasant. \$1250/month, incl water/sewer. 989-572-8491.

### HOUSING WANTED

**WANTED TO** Rent, 2 room house in Alma/St Louis area. 72 yr old sr., 38 yr retired nurse, handicap accessible needed. 231-268-8393

### PASSENGER CARS

**2006 Ford Taurus, Excellent cond., low miles. \$3500.00**  
**2007 Volkswagon Passet, 2 liter turbo, excellent cond., \$4500.00. Call Darrell: (989)506-6578**

**2015 CHEVY CRUZE LT**

Only 12,000 miles, Full power, Like New

**Only \$13,995** or about \$189/mo.

**Dick Sovo Auto Sales** (989)828-6032 [dicksovaautosales.com](http://dicksovaautosales.com)

**2015 CHEVY SILVERADO HALF-TON 4 X 4 DOUBLE CAB**

Only 17,000 miles, Full power, V8 Engine

**ONLY \$29,995** or about \$469/mo.

**Dick Sovo Auto Sales** (989)828-6032 [dicksovaautosales.com](http://dicksovaautosales.com)

**2016 BUICK ENCORE**

All Wheel Drive, only 5,000 Miles, Full Power, Absolutely Beautiful!

**Only \$21,995** or about \$319/mo.

**Dick Sovo Auto Sales** (989)828-6032 [dicksovaautosales.com](http://dicksovaautosales.com)

**2016 CHEVY EQUINOX LT**

Only 12,000 miles, SPOTLESS CONDITION, COMPARE ANYWHERE!

**ONLY \$19,995** or about \$289/mo.

**Dick Sovo Auto Sales** (989)828-6032 [dicksovaautosales.com](http://dicksovaautosales.com)

**2017 DODGE JOURNEY**

All Wheel Drive, Heated Leather, 3rd Rear Seat, only 6,000 miles! **COMPARE ANYWHERE!**

**Only \$23,995** or about \$329/mo.

**Dick Sovo Auto Sales** (989)828-6032 [dicksovaautosales.com](http://dicksovaautosales.com)

### PASSENGER CARS

**SPECIAL BUY!**

**2012 CHEVY IMPALA LT**

Low miles, excellent shape, full power **ONLY \$10,995** or about \$189/mo.

**Dick Sovo Auto Sales** (989)828-6032 [dicksovaautosales.com](http://dicksovaautosales.com)

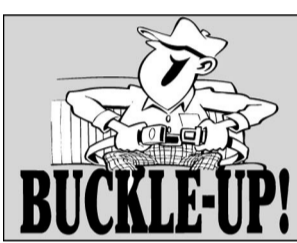
### PARTS & SERVICE

**#1 IN** brakes & front end service. Same day service, fast in & out, best prices. Discount Tire St. Louis. 989-681-4100

**ANTIFREEZE, Full strength.** WOW, only \$6.99. Best price. only at Discount Tire, St Louis. We want your business. 989-681-4100

**FOR ALL** your service needs. From Oil Changes to Transmissions. **WE DO IT ALL!** ASE Certified. Reasonable rates. Fast in & out service. Discount Tire St. Louis. 989-681-4100

**TIRE SPECIALS EVERY DAY** we will not be undersold. Discount Tire & Battery still Central Mich. #1 Tire Supplier. There must be a reason to call. 989-681-4100 St. Louis



**Nottingham Apartments**  
391 Mill Street, Farwell

1 & 2 Bedroom Units Available  
On-Site Laundry Facilities, 24 Hour Emergency Maintenance, Front & Back Yards, Close to Town. Heat, water, trash included in rent!

**989-775-7180**  
[northwinds@gldmanagement.com](mailto:northwinds@gldmanagement.com)

This property is subsidized for very low to moderate income households. Rent is based on 30% of the adjusted gross income. Barrier Free units available.

This Institution is an equal opportunity provider. Equal Housing Opportunity. TDD 711

# WANT FAST CASH?

Our Classified advertisers get great results. If you have merchandise to sell, place a classified ad.

**NEED HELP? CALL A LOCAL PROFESSIONAL FROM OUR**

**Professional Services Directory**

**HEALTH & FITNESS**

**OXYGEN** - Anytime. Anywhere. No tanks to refill. No deliveries. The All-New Inogen One G4 is only 2.8 pounds! FAA approved! FREE info kit: 855-970-1066

**LANDSCAPE & TREE MAINTENANCE**

**ARBOR TREE SERVICE.** Storm Damage, Landscaping, Tree Trimming & Removing. 20 Years Experience. Call 989-763-3830

**PAWN SHOP**  
**Buy, Sell, Pawn**

3 Month Pawn  
3% + 1.00 Storage  
Firearms, Gold & More

Gladwin Trade & Sales  
**989-426-6811**

A SPLASH OF COLOR GETS RESULTS

Color Classified Ads Now Available!!!

### AGRICULTURE & FARM

**FOR SALE** 606 International Tractor w/3000 International Loader w/bushhog & scraper. \$5900.00. Call 989-285-4881





**(989) 879-1110**



**“We Make  
the Outdoors  
Affordable!”**

**RAPTOR FX3 PRO  
CROSSBOW**



380 FPS

**\$399<sup>99</sup>** SAVE \$200

**BUCK JAM**



**\$5<sup>99</sup>**  
GALLON



**FREE 2PK**  
Game Camera  
with any BOW \$699<sup>99</sup> & up

**RENEGADE XLT**  
340 FPS WITH ACU 50



**\$699<sup>99</sup>**

**CODE RED  
ESTROUS**



Reg \$12<sup>00</sup>  
Now

**\$5<sup>99</sup>**

3 PK.

**TROPHY ROCK  
MINERAL LICK**



12 LB.



Reg \$19<sup>99</sup>  
Now

**\$14<sup>99</sup>**

**MINERAL  
BUCKET**



20 LB.

*Lucky Buck*  
Reg \$19<sup>99</sup>  
Now

**\$12<sup>99</sup>**

**BIG CAT 1250 AIR RIFLE** **GAMO**  
W/FREE BB PISTOL Precision airguns



**\$99<sup>99</sup>**

**SUMMIT VIPER  
CLASSIC TREE STAND**



Reg \$249<sup>99</sup>

**\$149<sup>99</sup>**

Buy any Wildgame Innovations camera



GET A 8GB SD CARD  
TWIN PACK  
**FREE**



\$19.99 VALUE

Buy any Stealth Cam camera



GET A 8GB SD CARD  
& CARD READER  
**FREE**

\$25 Value



**SNICKERS**

Variety  
Fun Size  
10.36 oz Bag

Reg \$3<sup>99</sup>  
Now!!

**\$1<sup>99</sup>**



**STARBURST**

14 oz. Bag  
• Sweetarts, Nerds, Laffy Taffy  
• Sweet & Sour • Fave Red  
• Original

**LIFE SAVERS**

13 oz. Bag • \*Fruit Candy

**TOOTSIE ROLLS**

11 oz. Bag  
• Fruit Chews Halloween Mix



Reg \$3<sup>99</sup>  
Now!!

**\$1<sup>99</sup>**

TWIX FUN SIZE 10.8 oz bag

SNICKER CRISPER  
Fun Size 10.61 oz.

SNICKERS W/ ALMOND  
Fun Size 10.61 oz

TWIX ASST. SNICKERS,  
TWIX MILKY WAY 12 oz.

REESES MINI CUPS 12 oz.

TWIX MINI 13 oz.

HERSHEY MILK CHOCOLATE  
10.3 oz.



Reg \$3<sup>99</sup>  
Now!!

**2/\$5<sup>00</sup>**

**MEGA  
CANDY MIX**

2.8 lb. bag

OVER 200 PIECES!!

• Jawbuster • Lollipop  
• Smarties • Now & Later  
• Bubble Gum

150 PC. ASST. 3 LB BAG

• Sweetarts • Laffy Taffy  
• Gobstoppers • Nerds



Reg \$9<sup>99</sup>  
Now!!

**\$4<sup>99</sup>**

**OPEN DAILY 6AM TO 10PM**

**229 W 5TH ST., PINCONNING, MI 48650**

CASH AND CREDIT CARDS ONLY • Now accepting American Express

**SALE GOOD THROUGH OCT. 30<sup>TH</sup> 2017 OR WHILE SUPPLIES LAST**



# Is What You Are Hearing (or NOT Hearing) Getting a Little FRIGHTENING?

Are you losing your hearing — or is it just excess ear wax?

Do you have tinnitus or buzzing/ringing in your ears?

Are you turning your TV volume up higher and higher?

Not sure what people are saying in a loud restaurant?

Can't hear well when talking on the phone?

## WE ARE HERE TO HELP!

# GET YOUR HEARING SCREENED FOR FREE!

**DON'T BE AFRAID OF YOUR HEARING LOSS ANY LONGER! NOW THROUGH THE END OF THE MONTH, you are invited to receive a FREE Video Otoscope Ear Inspection. See INSIDE YOUR EARS, easily and painlessly, with our video technology. This inspection, along with our FREE Electronic Hearing Screening Evaluation, will show you precisely what you have been missing or not missing — and the reasons why! Then you may try, for FREE in our office, the latest technology in hearing aids and learn more about your choices for hearing enhancement and tinnitus treatment.**

**APPOINTMENTS ARE FREE OF CHARGE BUT SPACE IS LIMITED!**

**Call Today to Schedule Yours!**

**(888) 381-0571**

Ask About  
Payment Plans  
AS LOW AS  
**\$33/Month**  
WITH NO MONEY  
DOWN!

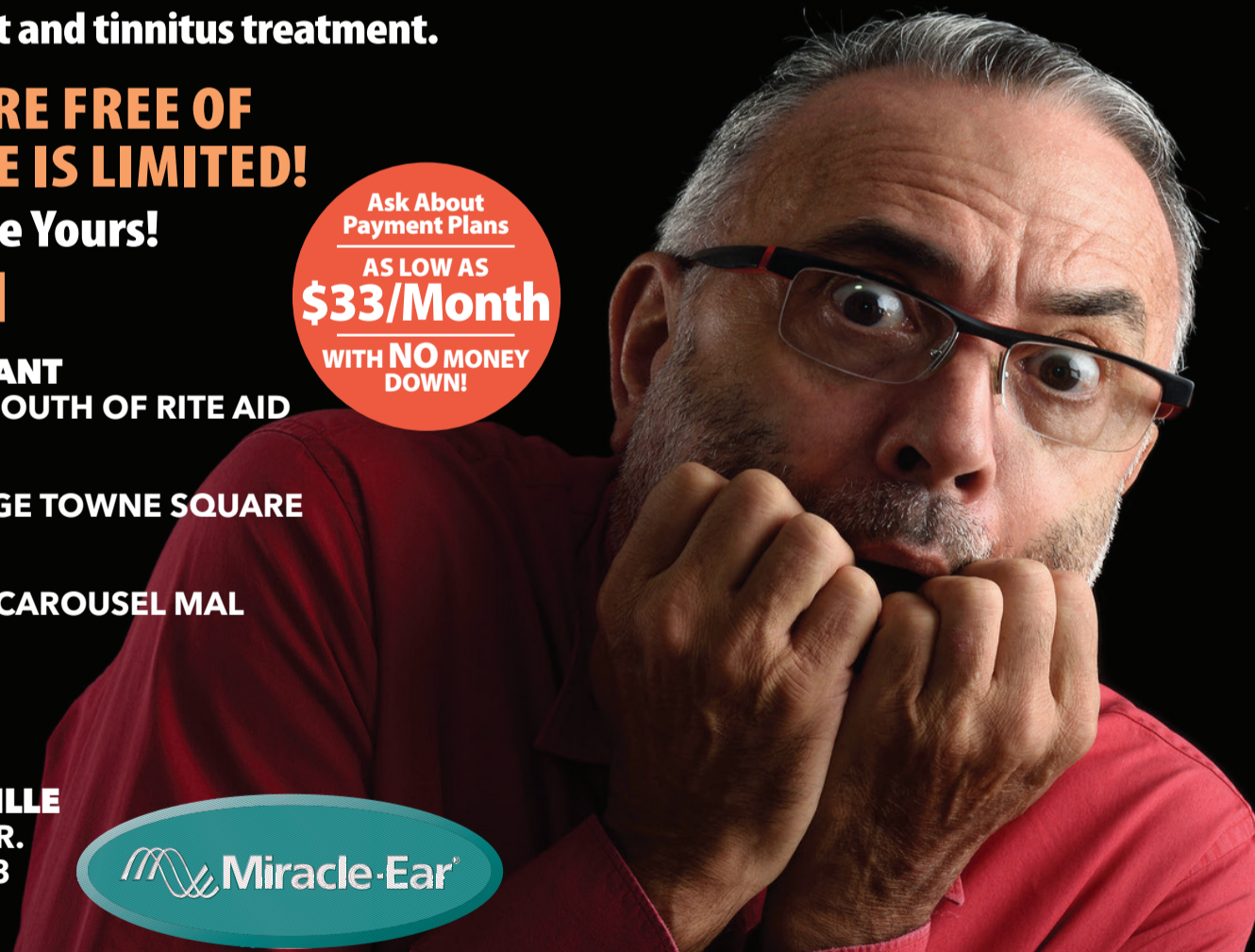
**MIRACLE-EAR® MT PLEASANT**  
100 S. MISSION, SUITE G – SOUTH OF RITE AID

**MIRACLE-EAR® ALMA**  
116 W. SUPERIOR – HERITAGE TOWNE SQUARE

**MIRACLE-EAR® CLARE**  
1430 N. MCEWAN – IN THE CAROUSEL MAL

**MIRACLE-EAR® GLADWIN**  
127 N. ARCADE, SUITE 2  
IN THE NEELY BUILDING

**MIRACLE-EAR® PRUDENVILLE**  
828 W. HOUGHTON LAKE DR.  
CORNER OF M-55 AND M-18



**HEARING HEALTH**

# FREE

**Video Otoscope Inspection<sup>†</sup>**  
See INSIDE your ear canal to find out if your trouble is just ear wax!

**Hurry! Offer expires 11/3/17**



Valid at participating Miracle-Ear® locations. One coupon per purchase. Cannot combine with any other offers. Doesn't apply to prior sales. Cash value 1/20 cent.

**HEARING HEALTH**

# FREE

**Complete Electronic Hearing Screening & Consultation<sup>†</sup> with Our Hearing Aid Specialist**

**Hurry! Offer expires 11/3/17**

Hearing screenings are always free but an appointment must be scheduled. Valid at participating Miracle-Ear® locations. One coupon per purchase. Cannot combine with any other offers. Does not apply to prior sales. Cash value 1/20 cent.

**Incredible Savings!**

# \$995

**Digital, Programmable, Completely in Canal with Lifetime Aftercare!\***

**Hurry! Offer expires 11/3/17**



Offer cannot be combined and does not apply to prior sales. Valid only on one Audiotone Pro CIC. Fits up to a 35 db loss. \*One year parts and labor warranty with free cleanings, checkups and adjustments for life of hearing aid. Valid at participating Miracle-Ear® locations. Cash value 1/20 cent.

\*Hearing aids do not restore natural hearing ability. Individual experiences vary depending on severity of loss, accuracy of evaluation, proper fit and ability to adapt to amplification. Hearing screening and video otoscope exams are always free, they are not medical exams and are used to determine proper amplification needs only. See your Miracle-Ear representative for complete details on all offers contained herein.