

**Congratulations to
Spilman Auto Parts**
Old Hwy. 2 & 63 W.
PO Box 31, Bloomfield, IA
PH: 641-664-2463 • 1-800-477-1367
www.spilmanauto.com
M-F 8AM-5PM • Sat. 8AM-12Noon
Our advertiser of the month!

Tri-County SHOPPER

*Hello
Fall*

STANDARD
MAIL
U.S. POSTAGE
PAID
TRI-COUNTY
SHOPPER, INC.
POST OFFICE BOXHOLDER
LOCAL RURAL BOXHOLDER
OCCUPANT
CIRCULATION
OVER 11,750
THIRD CLASS

P.O. Box 168 • Bloomfield, IA 52537 • www.tri-countyshopper.com
Phone 641-664-1333 • Fax 641-664-3761 • Email shopper@netins.net



Vol. 45, No. 44
Wednesday, November 1, 2017



Customer Appreciation Day!

Saturday, November 11th, 2017
8 a.m.-4 p.m.

FREE DONUTS & COFFEE • ALL MORNING!
FREE Lunch 11-2 • Serving hotdogs & hamburgers!

**Up to
5% OFF On
ALL TRAILERS**



Prize Giveaways • Free Lunch!
Storewide Discounts

Need We Say More?

**ZIMMERMAN
AUTO LLC
TRAILER INC.**

Don't Miss This Event!

**101 North St.
Cantril, IA
319-238-7367**

Check us out on Facebook



**Same Place, New Name
Cantril Truck & Trailer**

VOTE

Dan Wiegand
Candidate for Bloomfield Mayor
Make sure your option counts!
Vote November 7th!
"Focus On What Matters...
The People!"
Paid for by Dan Wiegand

Darin Garrett
Candidate for Bloomfield
City Council At Large
**Make your voice heard on
November 7th!**
"Represent Not
Rule!"
Paid for by Darin Garrett **VOTE**

Scott Moore
Candidate for Bloomfield
City Council Second Ward
**Place your vote for Scott on
November 7th!**
"Promote What
The People Want!"
Paid for by Scott Moore

FLY IN TODAY FOR SOME SPOOTACAUAR GOOD DEALS!



SPILMAN AUTO PARTS

OLD HWY. 2 & 63 W. PO BOX 31, BLOOMFIELD, IA PH: 641-664-2463 • 1-800-477-1367 WWW.SPILMANAUTO.COM M-F 8AM-5PM • SAT. 8AM-12NOON

CUSTOM BALING: Hay & corn stalks. JD568 w/net wrap. PH. 641-680-1119. TF FOR SALE: Queen-size bed and headboard. PH. 641-664-3910; Bloomfield, Iowa. 45

MAST OVERHEAD DOORS, INC. 105 S. Dodge St., Bloomfield, IA 52537



GARAGE DOORS Residential & Commercial Doors & Operators

641-680-2016

CALL FOR AN APPOINTMENT

Quality Products + Quality Workmanship = Quality Customers

Free Estimates We Fix Doors

FOR SALE: Firewood at RJ Lumber, \$15 a pickup load. 18989 160th St., Drakesville, IA 52552. TF PH: 641-208-1054 45

Give Your Car a Makeover!



Factory Color Matching | Dent & Scratch Repair Frame Straightening | Unibody Repair | Collision Repair

All Paint & Bodywork Service Guaranteed! Call or stop in anytime for a free written estimate.

Insurance Specialists

Let us handle your accident claim with no hassles.

Walker Motors Collision Repair Inc.

COUNTRY VIEW STORE 660-833-5388 Fresh Baked Items Bulk Foods Gift Items Dry Goods Free Coffee

Grid of food items: Frozen chocolate chip cookie dough, Dole mixations, Hormel pork loin fillet, Ground beef, Crider chunk turkey meat, Cool Whip, New shipment arriving of Lee & Wrangler blue jeans, Handpainted plaques, Handmade Quilts, 5 lb. cottage cheese, 2% milk, 160 slice Kraft American cheese, 5lb. tubs whipped butter, Homemade donuts.

3 miles south of Memphis on Hwy 15

MOVING SELL: 4 - 15" 5 bolt Grand Prix rims for 80's style Olds, \$100; Armorie, \$100; NEW twin bed, complete with everything, \$300; night stand, \$10; oak colored night stand, \$25; Sunbeam .7 cu. ft. microwave, \$70; Oxford media/ accent cabinet, \$100; bar stool, \$5; large brown recliner, \$150; 55 gal. barrel with hand pump, \$50; 2 - metal storage cabinets, \$25 each; small lawn dump cart, \$20; roller wooden work bench, \$20; small wooden work bench, \$10; full size metal bed, springs, linens, no mattress, \$100. Best offer on any items in next 3 weeks. PH. 641-208-5136. 44

FALL Into a New Building! Stocking framing nails by the box & pallets. Call for pricing! Metal Roofing FREE estimates! Crews available Call today! WAGLER METALS 19049 Ice Ave., Bloomfield, IA • 641-722-3692

FOR SALE: 500 lb. Angus steer, \$450. PH. 319-750-1968. 45 FIREWOOD FOR SALE: \$50 a load, you haul. PH: 641-208-5812 52

PRIDE LIFT CHAIRS The World's #1 Lift Chair Years of experience in manufacturing. Backed by up to a 3 year warranty! Sit with security Stand with confidence Finger tip controls Economically Priced Medicare & Insurance Billing Try our rent to own program! Soda Fountain! Serving Real Ice Cream

SOUTHSIDE DRUG 337 Church St. • Ottumwa, IA Hours: Mon.-Sat. 8-8 • Sun. 9-5 641-682-3467

BLOOMFIELD MINI STORAGE. Serving you from 2 safe, convenient locations. PH. 641-664-1066. TF FOR SALE: New LB white propane hanging heater w/ remote thermostat, 75,000 BTU, \$250. PH: 641-929-3056 45

Give your car a like-new look that will last beautifully with our premium paint service. Guaranteed Paint Match Guaranteed Craftmanship Hertz Rentals Available For all Occasions. Great Rates! 375 S. Main St. Memphis, MO 660-465-2159 Shop Phone/Fax

2017 Limited Edition Dodge Ram Sport Crew Cab. Ignition Orange. Wheels & Tires, Lift Kit, Fender Flares, Bed Liner, Running Boards and many more options loaded. Less than 4,000 miles. ONLY \$44,950 573-723-0709

Turning 65 and have questions about medicare?

Cornerstone Insurance Services is here to help.

I can answer your Medicare supplement questions.

Call me today!

An authorized Independent Agent for



This is a solicitation of insurance. Wellmark Medicare supplement insurance plans are not affiliated with any government agency. To be eligible, you must reside in the service area of the plan. Wellmark Blue Cross and Blue Shield for Iowa is an Independent Licensee of the Blue Cross and Blue Shield Association.

Cindy Riegenbach

Cornerstone Insurance Services

108 W. Jefferson St • Bloomfield, IA 52537

Office: 641-664-3701

FOR SALE: Small square bales of wheat straw. Bales are banded together in bundles, 21 bales per bundle. \$3.50 per bale.

Todd Unruh

PH: 641-208-5221.

45

FOR SALE: 2000 Ford ext. cab, diesel dually, \$7,000 OBO; CM 2800 Vicon mower bad gear box; 14yr. old sorrel mare, 15 hands, \$850.

PH: 660-341-9284

45

FOR SALE OR TRADE: 80 acres, 5-bedroom older home, 2 barns, R.W., Natural gas, well, pond, good woven wire fences. Ottumwa

PH: 641-680-8752

45

FOR SALE: 2006 white Buick Lucerne CXL, leather, heated seats, 19" wheels, 2 owners, good title, 133,693 miles, \$4,600 OBO.

Call Evenings:

641-642-3760

46

WE CARRY MATTRESSES & BOX SPRINGS!
Special Sizes • Double Sided Mattresses • 20 Yr Warranty
12 Gauge Innerspring

PILLOW TOPS!

HANDCRAFTED LUXURY
MONARCH REST

VM: 641-664-0207
1 Mile East of Drakesville on Jade Ave.
Mon.-Sat. 9:00 AM - 5:00 PM

Shady Lane Variety

Book Sale
Nov. 1st - 15th
10% OFF

Locally made items!
To include;
hickory rocker covers,
jean hot pads,
scrubbies, & more!

1 mi. E. of Drakesville
on Jade Ave. • 641-664-0207
8-5 Mon. thru Sat.

FOR SALE: Furniture and household items priced to sell. Couch, rocker with footstool, recliner, TV, VCR and stand, 3 drawer file cabinet, kitchen table with 4 chairs, telephone with XLG keypad, cordless telephone, misc. kitchenware.
PH. 641-664-3198 and leave a message to see items. 45

On November 7th
Vote to Re-Elect Chris Miller
for Bloomfield Mayor

* Experienced * Progressive * Accessible

"I would appreciate serving you again!"

Paid for by Chris Miller
421 N. Madison

FOR SALE: 1999 Mercury Grand Marquis LS, red, tan vinyl top, 162,000 miles, runs good, \$875.

PH: 660-341-7263

FOR SALE: Artsway grinder/mixer, 325A, low hours; 200 bu. gravity wagon on rubber.

PH. 641-722-3369.

46

2 miles west of Bloomfield on Hwy 2
21021 Jewel Ave.
Mon. - Sat. 8:30-5

Our Choices Of Sandwiches
(2 choices daily)
Beef Brisket • Sloppy Joe
Grilled Brat • BBQ Pork or Chicken

And try one of our sides:
Chips • Potato Salad • Cole Slaw

Take out or dine in our rustic "Feed" room.
Soon Serving Homemade Soup!

THANKSGIVING SUPPER & TALENT AUCTION: Barker United Methodist Church, north of Downing or South of Bloomfield on the Iowa/Missouri line. Saturday, November 18th at 5:00 PM. Turkey, dressing, ham balls, noodles, home made rolls, delicious salads and desserts. Supper followed by auction of beautiful hand crafted items and baked goods. Something for everyone. Door Prizes. Free Will Offering. Great place to do your Christmas shopping. For more information or directions call: 641-675-3439, 641-664-3859, 660-379-2615, 660-379-2848.

FOR SALE: FoxPro caller with 75 sounds downloaded. Also a Mojo Critter decoy. Both in excellent condition. For more information call 641-664-1896. 45

Lilac Hill GREENHOUSE
25957 US Hwy 136
Lancaster, MO
M-Sat. 8:00 AM - 6:00 PM
660-342-9554
Closed Sundays

LILAC LANE VARIETY
NOW ON SALE!
LOWEST PRICES!!!!
Immergood hand cranked ice cream freezers
6 & 8 quart in stock!
USA MADE
If you find it cheaper anywhere, we will compete!
LOTS OF FOOTWEAR ON SALE!
Some styles discontinued!
Up to 50% Off Reg. Price
Sale Ends Nov. 10th, 2017
Hwy 63 to Rt. E then East 1 mile • Queen City, Mo.

Slayton Polaris Authorized Polaris dealer since 1988

Your Adventure Awaits!

New & Used Polaris Rangers & ATV's

POLARIS
The Way Out.

660-328-6627

BLOOMFIELD, IA
8 mi. S. & W. from Pulaski or 6 mi. W of Memphis then 13 mi. N. on Route B

L&M Country Store

1 1/2 miles south of west Hwy 2 & 63 jct.
Mon-Sat. 8am-5pm **CLOSED SUNDAYS**
VM: 641-664-1936

- APPLES: YELLOW DELICIOUS & JONAGOLD**
- Frozen sliced ham\$1.09 lb.
 - Sweet potatoes59¢ lb.
 - 9 lb. American cheese singles\$1.49 lb.
 - Frozen popcorn chicken75¢ lb. or
.....20 lb. case \$12.95
 - Frozen 4# breaded mozzarella cheese patties\$3.69
 - Assorted flavors of yogurt\$1.99 case

John Says "Bloomfield... Make Sure To Vote Tuesday, Nov. 7th!"

- 2012 GMC**
33,000 MILES
\$25,900
- 2013 Ford F150**
47,000 MILES
\$28,150
- 2003 Silverado 1500**
LONG BOX, REG. CAB, 4 WD,
80,000 MILES
\$10,900
- 2012 Escape**
LIMITED, AWD

Come see our 2006 Impala!

504 South Drake St • Bloomfield
PH: 641-664-2648
Fax: 641-664-2948

Kollision Corner



Community Events

BLOOMFIELD UNITED METHODIST CHURCH
NOVEMBER 11, 2017

Lord's Harvest Auction AND BAZAAR

Christmas QUILT
CANDIES
Gift Certificates From Local Businesses

College Athletic Tickets
LOCALLY RAISED MEAT
22+ Tons of Road Rock
Weekend Cabin Getaway

Country Store: 3:00 pm
Dinner: 5:00 pm
Roast Beef, Mashed Potatoes & Gravy
Assorted salads and Desserts
Coffee, tea and rolls

Auction: 6:30 pm
A great variety of items you've always wanted and several that you didn't know you wanted!



Davis County Veterans Appreciation Breakfast

Friday, November 10, 2017
7:00 A.M. - 9:00 A.M.

Location:
Bloomfield Christian Church
(handicap accessible)

FREE
TO ALL DAVIS COUNTY VETERANS & SPOUSES

Sponsored by Veterans & Friends



Hee-Haw Show

At the gym in Unionville, IA
Friday Saturday
Nov. 3 & Nov. 4
Show Starts at 6:30 PM

Unionville's version of Hee-Haw!

Admission • Admission • Admission
ONLY \$6 12 & under **FREE!**



Revival

Stiles Christian Church
Sunday, Nov. 5th - Wednesday, Nov. 8th
Each Evening - 7:00 pm

Guest Speaker
Steve Long

THE PUBLIC IS CORDIALLY INVITED
28286 Peach Ave. • Bloomfield, IA



Friday, November 3rd

Choice of 12 or 14 oz. Ribeye with sides
Serving at 6:00 P.M.

Dine In **722-3355** Carry Out

RAY'S LONGBRANCH
Drakesville, IA

Election Day Lunch

Tuesday, November 7, 2017
Bloomfield Christian Church
107 N. Davis St., Bloomfield, IA
11:00 a.m. - 1:00 p.m. *Serving Lunch*

Lunch Menu: Hot Sandwiches: Chicken & Loose Meat; Soups: Chili & Potato
Homemade Pies: Fruit, Soft, Pecan & Pumpkin; Scrumptious Cookie Table

DRAWING FOR ALL HANDMADE DWF QUILT AT 1 PM

EVERYONE WELCOME

Veteran's Day Supper

Saturday, Nov. 11th
6-7 P.M. Social Hour
7 P.M. Meal
American Legion Hall
Bloomfield, IA

ALL VETERANS & THEIR FAMILIES INVITED.

Meat entrees & beverage provided.
Please bring a covered dish.



NOW IS THE TIME TO PLAN YOUR HOLIDAY PARTY!!

Dates are filling up fast, reserve yours today.

Breakfast • Lunch • Dinner
Daily Hot Specials and Evening Features
Prime Rib Capital of the World! Friday & Saturday Nights
Catering • Banquet Facilities Available for All Occasions

Southfork MOTEL & GRILL
"Where Quality and Consistency Matter!"
JUNCTION OF HWY 2 & 63 • BLOOMFIELD • 641-664-1063
Tues - Thurs 7am-9pm • Fri - Sat 7am-10pm • Closed Sunday & Monday



Annual Thanksgiving Supper!

Country Store & Auction
Saturday, November 4th
Serving starts at 4:30 pm
Auction at 7:00 pm
No Carry Outs
Auctioneers: Don Horn's Auction Service

FREEWILL OFFERING
DRAKESVILLE UNITED METHODIST CHURCH



Fall Festival
Friday, November 3, 2017

8 a.m. • Bake Sale
Silent Auction of Theme Baskets
11 a.m. - 1 p.m. • Lunch Free Will Offering
Choose from Homemade Soups, Sandwiches and Desserts
5 p.m. • Smorgasbord Free Will Offering
Turkey, Ham, Meat Loaf With all the Trimmings
Fresh Baked Rolls, Homemade Pies

Lancaster United Methodist Church
Linn St & Hwy 136 - Lancaster, MO





Colony Store

OPEN Friday and Saturday
 Nov. 3rd - 4th & 10th - 11th
 Open 8 am to 5 pm

20 % OFF MERCHANDISE
 excluded Tide soap & produce

**Pineapples, Blackberries,
 Raspberries, Potatoes & Onions**

Colony Store • Colony, MO
 660-341-2966 • 660-434-5502

FOR SALE: Dark brown recliner, like new. Also Marlin semi-automatic 22 rifle, like new.
 PH: 641-664-2831 46

FOR SALE: Australian Shepherd puppies, 12 wks old, have had shots.
 PH: 660-988-1492 45

NEW MATTRESSES FOR SALE!
 Selling individually or in sets. Factory warranty.
TWIN - FULL - QUEEN - KING
641-664-3060

10 FAMILY GARAGE SALE: Friday & Saturday, Nov. 3rd & 4th, 8:30 am to 4:30 pm. Lots of baby & children's clothes & shoes, winter coats & boots, men's & women's clothes, 2 stroller & car seat sets, jogging stroller, baby swing, tri pod, gun rack, Tupperware, Pampered Chef & china. From Hwy 15, take Hwy W 2 miles to country road 251 (right), 1/4 mile to Dale Good Residence. Rutledge area. Sale in the back in the basement.

Garages • Pole Barns Commercial Free Estimates

LAN-DOW BUILDINGS

Lancaster Lumber, Inc.

We Stock a Complete Line of Building Materials Complete Buildings or Packages Available

Toll Free 800-424-5071 Fax 660-457-3133

Hardware • Plumbing • Electrical • Paint
 500 Green Street • Lancaster, MO 63548

FOR SALE: Vent-free gas fireplace, 32,000 BTU. Brand new with all the accessories.
 PH. 641-664-1264. 45

FOR SALE: S&W M&P shield 45 acp, new in box. Never fired, \$330.00; Rossi single shot 223 rifle with sling & 5 boxes of ammo, \$245 or without ammo \$210; Kel-Tec PF-9 9mm pistol, \$230; Federal auto match 22LR, 325 round box, \$18. Must have buyers permit for guns. Ottumwa, IA
 PH: 641-680-3876 45

The Car Spa

Auto Body Shop
 Auto Glass
 Automotive Restoration
 Hand Detailing Service

KARR COLLISION CENTER & AUTO DETAILING
 Shawn Scott, Owner
 701 Karr Ave. • Bloomfield, IA
 641-664-1024

YODER EQUIPMENT
 BLOOMFIELD, IOWA

GEO STAR & PRIDE OF THE FARM

ENERGY FREE WATERS

Extra Heavy 10 Gauge Bale Rings

- CONTINUOUS FENCING
- LARGE VARIETY OF FARM GATES

19887 Jade Ave
 2 1/2 Miles W of Bloomfield
 V.M. 641-664-2797

Country Side Grocery

Miracle Whip Salad Dressing, 30 oz.\$1.99
 Rice Crispy Cereal, 12 oz.....99¢
 Nesquik Strawberry Drink Mix, 21.8 oz\$2.49
 Red Tart Pie Cherries, 1 gal.....\$3.75
 Landmark Milk Chocolate Coating \$1.89/lb.

Golden Delicious & Jonathan Apples
 \$11.75 a bushel
Buy 10 bushels get 1 FREE

Food Supplements

 Vitamins

3/4 mi. E. of Drakesville, IA on 180th St.
 Mon-Sat: 8:30am - 5:00pm
 VM: 641-664-2661

YOU'RE INVITED TO THE CHRISTMAS Co-op Connections Expo

PLEASE JOIN US FOR

FOOD & SHOPPING & PRIZES

Purchases Earn Prizes!

Monday, Nov. 13th • 4:30-8PM

Over 50 Business with Items of Interest for Men, Women & Kids!

Winter is coming!

Is Your Boat & Camper Ready?

Call or stop in today to see how we can help you get your toys winterized!

Whitney RV & Marine
 Scott and Jennifer Poole: Owners
641-684-8284
 9418 151st Ave., Ottumwa
 Monday-Friday: 8:30 AM - 5:30 PM
 Saturday: 8 AM - 1 PM

FREE: 10 layer-cross hens & roosters. PH. 641-664-2587. 46

LOST: Tri-colored female Beagle. Bloomfield area. PH. 641-929-3995. 45

Davis County Players Presents...

Disney **THE LITTLE MERMAID**

NOVEMBER 9, 10 & 11 AT 7:00PM
NOVEMBER 12 AT 2:00PM

Iowa Theatre, Bloomfield, Iowa 52537

Tickets on sale On-line at: Showtix4U.com
 and at [VanMersbergen Insurance](http://VanMersbergenInsurance.com),
 on the south side of the square in Bloomfield.
 Adults: \$15.00 • Children (12 & Under): \$7.00

ANNUAL THANKSGIVING SALE
 November 1st - December 1st

We are thankful for another year of doing business with our friends, our customers!
THANK YOU SPECIALS

Girl's & Ladies, Men's & Boys' Slacks & Jeans - 1/2 Price w/ purchase of one at regular price Dockers - Lee - Key - Levi Wrangler - Carhartt - Riggs	Men's & Boys' Shirts - 1/2 Price w/ purchase of one at regular price Western - Dress - Flannel Sport - Work
PIs, Robes, & House Slippers 20% OFF	Caps - Stetson Hats 20% OFF Western - Dress - Hunting
20% OFF - Insulated Coveralls Carhartt, Brown Duck, Big Smith, Treebark, Walls, Lee, Key, Polar Fleece & Realtree	
Insulated & Regular Overalls - 10% OFF Chestnut, Brown, Blue & Black	
Sweaters - Vests - Jackets - Suits Topcoats - Leathers - Sportcoats 20% - 40% OFF	Socks - Underwear 2nd Pair or Package 1/2 Price Wigwam - CoolMax - Outlast - Hanes Burlington - Munsingwear
Suits - Sportcoats - 20% OFF Dress - Sports - Western - Leather Superior - Panhandle Slim - Circle 8 - Sewell	Ties - Scarves - Belts - Billfolds - Gloves Suspenders - Samsonite Luggage 20% OFF
Men's - Boys' - Ladies' Rubber Insulated Boots & Overshoes - 20% OFF Northern - Red Bull - Muck - Tinglay	
Shoes - Boots - Slippers - 20% to 40% OFF Western - Work - Fashion - Moccasin - Canvas - Leather - Insulated Rocky - Gore Tex - Hush Puppies - New Balance - Chippewa - Nocona Wolverine - Justin - Durango - Red Wing - Tony Lama	

COOK'S MENS STORE
 116 S. Market • E. side of Square • Memphis, MO
 Ph. 660-465-2511 • Gift Certificates

HOURS:
 Monday - Friday 8:00am - 5:00pm
 Saturday 8:00am - 9:00pm
 Tux Rentals - Name Belts - Gift Wrapping - MasterCard - VISA

INGLEY DeLONG Quatone Belts Samsonite

HOURS 8 A.M. to 5:00 P.M. DAILY EXCEPT SUNDAY	 Zimmerman's Store Rutledge, MO 660-883-5766	 Our Everyday Low Prices!
---	--	--

Bulk Items	
Milk Chocolate Wafers	\$2.63/lb.
Dark Chocolate Wafers.....	\$2.59/lb.
Lite Chocolate Wafers	\$2.95/lb.
White Chocolate Wafers	\$2.18/lb.
Cocoa Drops, 1000 ct.	\$1.97/lb.
Cocoa Drops, 4000 ct.	\$2.04/lb.
Cocoa Drops, 10,000 ct.	\$2.04/lb.
Bittersweet Chocolate Drops, 1,000 ct.	\$2.78 /lb.
Bittersweet Chocolate Drops, 4000 ct.	\$3.15/ lb.
Sugar Free Chocolate Drops, 4000 ct.	\$5.87/lb.
Carob Drops Sweetened	\$2.42/lb. Unsweetened...\$3.04/lb.
Dutch Cocoa Powder.....	\$2.83/lb.
Cocoa Powder	\$2.54/lb.
Carob Powder	\$1.74/lb.

Also Butterscotch, White & Peanut Butter Drops!

3# Shepards Blown Pecans	\$13.95
Hickory Nuts- Hulled	\$2.49/lb.
Roasted, Salted Peanuts in Shell	\$1.45/lb.
50# 2 Idaho Russet Potatoes or Large Colorado Russets	\$10.75
10# - #1 Idaho Russet Potatoes	\$2.55
8# Jumbo Russet Potatoes	\$1.69
Water Song Butterhead or Loose Leaf Lettuce	\$2.49 ea.
Home-Grown, Large Heads Green Cabbage	\$1.75/head

FROZEN

5# Cloverdale Meats Diced Ham.....	Only \$4.95
6# Wilson Honey Cured Ham	99¢/lb.
10# Box Fully Cooked Skinless, Boneless Chicken Breast Fritter (Pcs) .	\$25.00

Special On Pillsbury Cake Mixes- 99¢

Limited Time ONLY!

White, Devils Food, Yellow, & Strawberry

Ceramic Coated Fry Pan Assorted Sizes & Prices

45" Flannel Flat Folds - \$2.98/yd.

DRIVE A LITTLE & SAVE A LOT

FOR SALE: DS circulator coal stove with waterfront, clean & new fire brick. Also custom built cabinets & furniture including, lazy suzan, magazine rack & sewing machine cabinets. Elmer Good
PH: 641-722-3038 Ext. 2 46

FOR SALE: 4 aluminum storm windows, 44x26; kitchen table & 4 chairs; Large Davenport & RickLine stove, glass in door with fan, 30,000 BTU.
PH. 641-936-7255 between noon and 2 p.m. 46



**need holiday
CASH?**
Sell your stuff in the
CLASSIFIEDS

**Tri-County
SHOPPER**
 Bloomfield, IA
 641-664-1333
www.tri-countyshopper.com



C.H.I. MIDWEST LiftMaster
Overhead Door
 21387 Route V64
 Keosauqua, IA 52565
660-216-0812
 Our goal is to keep your doors rolling smooth!
 Sales • Parts • Service ~ Free Estimates
 We sell new doors and openers or we'll service your old one.

TRI-COUNTY SHOPPER CLASSIFIED AD DEADLINE IS FRIDAY, 5 P.M. EVERY WEEK. Classified ads must be paid for in advance. Mail your ad to Tri-County Shopper, P.O. Box 168 Bloomfield, IA. 52537. For questions call us at 641-664-1333.



BERHOLTZER
TRAILER REPAIR
 Specializing in Aluminum Grain Trailers
 Repair & Rebuild
We install tarps & power tarps
We now offer frame correction
 3 miles east of Gorin, Mo. on Route U
660-341-6027

PUBLIC AUCTION

Sat., November 18th at 9 A.M.

Rathbun Regional Water Assoc., Inc.
 16166 Hwy. J29 • Centerville, IA 52544

Rathbun Regional Water Assoc. will sell at public auction the following pickups, pickup tool boxes and other miscellaneous items.

Auction will be held at:

RRWA Service Facility (1/2 mile north of Centerville on Hwy. 5)

PICKUPS:

- #30007 1998 Chevy 3500, 4x4, 5.7L, 5 spd trans with Western 8' Meyer snowplow blade, 109,896 miles
 - #30084 2007 Chevy Silverado, 1/2T, Ext. Cab, 4x4, 5.3L, auto, 173,854 miles
 - #30111 2012 Ford F150, 1/2 T, ext. cab, 4x4, auto, EcoBoost 3.5L, V6, 178,665 miles
 - #30115 2013 Ford F150, 1/2 T, ext. cab, 4x4, auto, EcoBoost 3.5L, V6, 135,483 miles
 - #30116 2013 Ford F150, 1/2 T, ext. cab, 4x4, auto, EcoBoost 3.5L, V6, 199,774 miles
 - #30201 2014 Chevy Silverado, 1/2T, ext. cab, 4x4, auto, 5.3L V8, 140,393 miles
- All mileages are approximate as of Oct, 1st 2017*

MISC:

- Weatherguard cross & side mount tool boxes for pickups
- 100 gallon transfer fuel tank with Fill Rite 15GPM 12 volt pump
- MI-T-M pressure washer, diesel, model #ZHHS-2704-Z001, 2700PSI, 4.2 GPM 220 volt
- 8- 9.50 R15.5 Firestone Transforce HT tires monted on trailer rims, 75% tread
- 5- new 9.50 R16.5 Firestone Transforce HT tires
- 2- 9.50 R16.5 trailer rims
- 6- LT225/70R19.5 12 ply Double Coin tires, 90% tread
- 9- 8.25R15TR Hankook radial TH06, 18 ply trailer tires
- 5- Rezor tube Infra-Rez heaters, natural gas with tubes & vet pipe

RRWA RESERVES THE RIGHT TO REFUSE ANY & ALL BIDS

FOR SALE: 2005 Jeep Liberty, trail rated, 4x4, 3.7 liter, 158,000 miles, new tires, \$3,500. No Trades. Rust Free!
PH: 641-919-8259 46



HOOVER RENTAL
 Manlifts • Telehandlers • Minihoes
 Skidloaders & Skidloader Attachments
RENT BY
 Hour • Day • Week • Month • Long Term
DOZER NOW AVAILABLE FOR RENT
 Call us for your construction needs!
660-216-8230
 Mt. Sterling, Iowa
 2 miles East of Cantril on Hwy 2

COLD WEATHER IS COMING!!! Keep your feet happy with good quality Quatro regular & Quatro Extreme boots. Also Reed Glaciers -58° rating. Testimonials! Lasting longer than mucks. Daniels Misc., 28738 Davis Van Buren Ave., Milton, IA 52570. 46



**Davis County
HOSPITAL**
 Dedicated. Compassionate. Healthcare.

November
Specialty Clinic Schedule

Dr. Ron Graeff	Allergy/Pulmonology	641-664-3840	M, T, W, Th
Dr. Jake Settles	General Surgery	641-664-7091	Tues & Thurs
Dr. Boling	OB/GYN	641-664-7091	23
Jay Brewer, CRNA	Pain Clinic	641-664-3602	2, 9, 16, 23, 30
Dr. Burchett	Ear, Nose, Throat	641-664-7091	9
Dr. Ciesemier	Allergy/Immunology	641-664-7091	10, 24
Dr. Cleaver	Dermatology	660-627-7546	23
Dr. Homedan	Orthopedics	641-664-7091	1, 2, 8, 15, 16, 22, 29
Dr. Holte	Podiatry	641-664-7091	17
Dr. Jackson	Rheumatology	641-664-7091	7, 14, 21, 28
Dr. Malik	Cardiology	641-682-5349	2, 16
Linda Schilling, ARNP	Dermatology	641-664-7091	13, 27

Building Better, Healthier Lives.
 509 N. Madison • Bloomfield, Iowa 52537
www.DavisCountyHospital.org

<p>Liquid Tide laundry detergent, 4 gal. \$17.99 each</p> 	<p>Organic yogurt crisps, mixed berry, 5 oz. \$1.49 each</p> 	<p>Southeastern Mills, great variety of gravy mixes, 4.5 oz. \$1.19 each</p> 	<p>JR Texas brand chili, no beans, 40 oz. \$2.99 each</p> 	<p>Progresso black beans, 19 oz. 85¢ each</p> 
<p>Mother's Maid, apple pie filling, 20 oz. \$1.35 each</p> 	<p>Trader Joe's organic hot cocoa, 10-1 oz. pkgs 75¢ a box</p> 	<p>Ty-D-Bowl cleaner, natural bleach free, 24 oz. \$1.50 each</p> 	<p>Reynold's Wrap aluminum foil, variety \$1.75 - \$4.99</p> 	<p>Ziploc freezer & storage bags, variety of sizes \$1.75 - \$6.75</p> 
<p>Hormel pork loin, original & sun dried tomato, approx. 1.5 lb. \$1.85 a lb.</p> 	<p>Black Oak easy slice carving ham, approx. 16 lb. 69¢ a lb.</p> 	<p>Pepperidge Farm red velvet layer cake, 19.6 oz. \$2.49 each</p> 	<p>Harwood smoked turkey breast, approx. 4-5 lb. \$1.49 a lb.</p> 	

Mon. - Sat. 8:30am - 5:00pm • VM: 641-664-1187 • 19686 Hwy. 2, Approx. • 2 miles west of Bloomfield



Don't Wait For Black Friday To Save Money...

We Have GREAT DEALS NOW!!!!

15% OFF IN STOCK CLOTHING!

Jeans, Shirts, Coats, Jackets, Coveralls, Bib Overalls, Chore Jackets and Hats



Hamilton Produce Co.

641-664-2459 or 1-800-469-7749
105 W. Franklin Bloomfield

FOR SALE: Blue heeler puppies. Ready to go now, \$25 each. Also FREE 20 stewing hens:
PH: 641-664-1690 44

FOR SALE: Beagle puppies 6 months old, parents are good hunters, \$75 each. Pulaski Area.
PH: 660-216-3124 45

FOR SALE
Driveway Fabric Rolls
Commercial, Heavy Duty,
Designed for Heavy Traffic

12' 5" Wide
432' Long
\$370/ roll

660-216-0938

WANTED: Bunk bed in good condition.
PH: 641-664-1891 ext. 3 46

NOTICE OF ELECTION

November 7, 2017
12:00 Noon - 8:00 P.M.
City of BLOOMFIELD, City of DRAKESVILLE,
City of FLORIS, City of PULASKI

POLLING PLACES:

CITY OF BLOOMFIELD: (WARD 1, WARD 2, WARD 3) - Bloomfield Fire Station, 501 S. West St., Bloomfield, IA;

CITY OF DRAKESVILLE: Shelter House, Drakesville Park, Drakesville, IA;

CITY OF FLORIS: Community Hall, in the City of Floris, IA;

CITY OF PULASKI: Pulaski Community Center, 106 S. 2nd St., Pulaski, IA.

For further information, please contact the County Auditor's Office
Telephone: 641-664-2101 Fax: 641-664-1395
Email: auditor@daviscountyia.org

★ ★ ★ ★ ★ ★ ★ ★ ★ ★


RE-ELECT

Jeff Anderson
City Council 2nd Ward

He has dedicated himself to the City of Bloomfield for almost 12 years.

Paid for by Jeff Anderson

★ ★ ★ ★ ★ ★ ★ ★ ★ ★



FOR SALE: Shop built stove, made from 3/8 diamond plate over 4ft. long. Electric poles. Large Stihl chain saw.
PH: 660-799-5970 45

MAST VINYL WINDOWS
THERMO-PRO WINDOWS
Custom Size Is Our Specialty
Professional Installation Available
THERMA-TRU DOORS

FREE ESTIMATES
22172 Hwy. 63
Bloomfield, IA 52537
800-206-9949

NOW OPENING AT 7 AM!!

Nice selection of candles



FINANCING AVAILABLE
We service all major appliances



MEMPHIS MERCANTILE SALES & SERVICE
EST 2016
South Side of the Square in Memphis
660-465-2345
Monday - Friday: 7:00 AM to 5:30 PM • Saturday • 7:00 AM to 4:00 PM / Sunday CLOSED

Deli Specials
Sandwich Pepperoni • \$3.89 lb
Farmers Cheese • \$2.89 lb

New shipment of **TOYS** →



MEMPHIS MERCANTILE
EST 2010
115 E. Monroe • Memphis, MO
660-465-2102



32 YEARS IN CANTRIL Anniversary Sale

November 1-7

•Free Coffee & Ice Cream Cone •Sign up to Win Door Prizes

\$13.99
50 # bag
Sunflower Seeds
for bird feeding

\$3.99
per lb.
Ribeye Steak
Whole Ungraded

\$1.99
gallon
2% Milk
Prairie Farms

\$6.95
50 # bag
White Potatoes

\$1.99
per lb.
when you buy 6lb. loaf
Wisconsin
Muenster CHEESE

\$1.99
per lb.
Russer®
Deli Fresh!
Virginia Ham

\$1.69
per lb.
1 lb. & 5lb.
80/20 Frozen Ground Beef

\$1.49
24 oz.
Cottage Cheese
Prairie Farms

\$2.99
1 lb.
Butter Qtrs.
ALCAM CREAMERY

75¢
per head
Romaine LETTUCE

\$1.29
per lb.
Wrapped Sliced American Cheese

\$1.29
per lb.
100% Beef - 1/3 lb. Burger Patties

\$3.99
per lb.
IQF Whole Catfish Fillets
Bone In Ham Steaks **\$1.49** per lb.

49¢
per lb.
Ready to Cook Breaded Popcorn Chicken

\$3.99
5 lb. bag
Tator Tots
Potato Rounds

\$5.99
1.25 gal.
Pure Wesson® Canola & Vegetable OIL

4/\$5
Little Debbie
Top Five Kinds
LITTLE DEBBIE SNACKS

\$1.99
2 lb. pack
Folgers® English Toffee Cappuccino Mix

99¢
12 oz.
KRAFT COOL WHIP Whipped Topping

\$22
50 # bag
Granulated White PURE CANE SUGAR

20% OFF
price per yard
Fall & Christmas Printed Fabric

\$4.99
40 pack
Oreo Cookies

2/\$1
16 oz.
Peanut Butter COOKIES

2/\$1
4 oz.
Bakers White Chocolate BAKING BAR

\$4.99
1 Liter
Dark or Clear Mexican VANILLA

Start your Christmas Shopping Now!
COUPON 20% OFF
One Item of Your Choice
• In Stock, Regular Priced Items Only
• Limit One Coupon per Customer
• Max Discount \$15
Expires Nov. 7, 2017

10% OFF
regular price
All - Footwear

\$9.95
28 lb. bag
Natural Balance DOG FOOD

4/\$8.88
plus deposit
Half Liter 6 Pack Bottles
COKE Products



'Tis the season for CATTLE PRODUCTS

\$5.00 OFF SELECT MLS TUBS*

- Natural protein, high performance, low-moisture cooked molasses tub supplements
- Controlled, consistent supplement delivery to almost all species of livestock
- Supplement any forage based or range feeding program



SALES GOOD THROUGH NOVEMBER 30 • *DETAILS IN STORE



10% OFF ALL STRONGHOLD PRODUCTS*

- Available in various sizes
- Use for branding, semen testing bulls, and working on hooves
- Heavy-duty bolted construction
- Easy cattle entry and holding



660.465.2967 • www.hometownanimalhealth.com
18743 US Hwy 136 • Memphis, MO 63555 • On Highway 136 west of Memphis

NUTRITION • MEDICAL • PET • FARM • APPAREL



FOR SALE: Kids bikes, 16 & 12 inches, very nice; nice baby strollers; high chair; winter coats for kids & adults; winter boots - many to choose from, kids & adults; upright deep freeze; black side-by-side refrigerator with ice in door & a cook stove, all work good; porcelain dolls; toys for kids; DVD's; Xbox games; 1995 Chevy 2 WD truck, real good pickup, high miles but runs good; nice recliner; new 5 gallons of paint in various colors (no white), \$5 per gallon, reg. \$38 a gallon; tools; 10 gal. air compressor, good shape. All nice for Christmas. PH. 641-895-2966 Centerville, IA

THANKSGIVING SUPPER & TALENT AUCTION: Barker United Methodist Church, north of Downing or South of Bloomfield on the Iowa/Missouri line. Saturday, November 18th at 5:00 PM. Turkey, dressing, ham balls, noodles, home made rolls, delicious salads and desserts. Supper followed by auction of beautiful hand crafted items and baked goods. Something for everyone. Door Prizes. Free Will Offering. Great place to do your Christmas shopping. For more information or directions call: 641-675-3439, 641-664-3859, 660-379-2615, 660-379-2848. 46

Friesen Excavating

Specializing in Septic Systems
Certified For Peat Tanks and Sand Filters.
Can Also Do Other Drains and Water Lines
Call or Text Shawn @
641-208-0861
Bloomfield, IA
Free Quotes Available




VINYL WINDOWS

- Replacement
- New Construction
- Many Glass & Color Options

Free Estimates
19467 Driftwood Blvd.
Bloomfield, IA 52537
Call Today: 641. 722. 3667

8 FT. RAILROAD TIES

Great for landscaping and garden boxes



SPILMAN AUTO PARTS
20311 Old Hwy. 2
PO Box 31 • Bloomfield
641-664-2463

FOR SALE: Red Husky proven male APRI, 2 yr. old, 60 lbs. Good with children, not house broken. Call or text 660-216-0267.

Livestock Hauling

Within 100 miles of Memphis, Mo.
DOT
Inspected & Insured
Philip Zimmerman
660-216-3079



Presents:
EQUINE NUTRITION SEMINAR



SPEAKER



Thursday, November 9, 2017
Promptly at 7:00 PM
at: **WAGLER METALS**
Drakesville, IA

GREAT DISCOUNTS AND COUPONS AVAILABLE AT MEETING

RSVP to dac@ Dealer Aaron Yoder (641) 664-2753 v.m.

MEAL TO FOLLOW MEETING *
* DOOR PRIZES * SALE PRICING *



Andy Ellsworth
andy@feeddac.com
(515) 370-2555

Direct Action Company, Inc. ~ PO Box 2205 ~ Dover, OH 44622 ~ 800-921-9121 ~ FEEDDAC.COM

FOR SALE: 2 Newton Club Seats at Newton Raceway. Best location at the track. Many benefits. Will sell for what I paid. Rumor has it there will be a NASCAR Race in the next couple years. PH. 573-723-0709 for more info. TF

FOR SALE: 2017 Limited Edition Dodge Ram Sport Crew Cab. Ignition Orange. Wheels & Tires, Lift Kit, Fender Flares, Bed Liner, Running Boards and many more options loaded. Less than 4,000 miles. \$44,950. PH. 573-723-0709. 45



Complete line of bagged feed in stock!
Lamb & Goat Milk Replacer

FEED & SUPPLY
641-722-3045
17599 200TH STREET • BLOOMFIELD
STOP BY MON.-FRI. 8-5 & SAT. 8-12

BIRD FEEDING NEEDS WILD BIRD SEED SUNFLOWERS/CHIPS

FOR SALE: 15 registered Angus 18-month-old bulls. Feed efficiency tested. All weights and EPDs available. Excellent quality. Breeding season guarantee. Werner Family Angus, Diagonal, IA. 641-344-5059. WernerFamilyAngus.com.

Ed's Machinery LLC

quality machinery since 1997

Tri-Annual Consignment Auction

December 8, 2017 8:00 AM
1 Mile West of Memphis, MO on Hwy 136
Call Us! 660-883-5501 Or Visit Our Website! www.EdsMachinery.com




Consigned equipment will be accepted until December 5th at 5 PM.

- Competitive Rates
- Nationwide Publicity
- Hundreds of Buyers in Attendance
- Advertising Deadline November 10th!

Consign Now!



Meet Your Hometown Women in Business!

We salute our local business women whose skills, hardwork, and dedication help keep our economy strong and growing.



Tonya Bradley
 Owner/Agent- 34 years
Bradley Insurance
For All Your Crop Insurance Needs
 Memphis, MO
 660-465-2764



Kylie Nebel
 Owner - 2 years

 641-664-3239
 Bloomfield, IA



Tiffany Kinsler
 Sales Rep. - 1 year
Tri-County SHOPPER
 641-664-1333



Cecil Reed
 Owner - 2 years

 603 S. West
 Bloomfield, Iowa
 641-208-6890




Kathy Bos
 Co-Owner / In the Ag Field for 29 years
Crop Services

 Drakesville, IA
 641-722-3293



Jody Aeschliman
 Office Manager - 21 years

 641-664-1801



Kallie Schooley, Liz Schooley, Joy Perkins
 Office Managers



Pam Kelly
 Customer Service Rep. - 41 years
B&B Propane & Jet Gas/ Bentler Oil
 Pulaski, IA
 641-675-3354



Jessie Garmon
 Owner - 6 years
JESSIE'S SEWING ROOM
 Bloomfield, IA
 641-664-5377
 641-208-5036

Thank You Ladies!


Bloomfield Livestock Market
 641-664-2435




Mamie Youderin
 Owner - 1 year
TheFarmersTable
 Bloomfield, IA
 CALL: 641-664-EATS or
 TEXT 641-208-0781
Homemade Goodness



Sherrie Lawson & Lisa Bell
 Agents
North Side Insurance
 Centerville Bloomfield
 641-856-3333 641-664-2362



Nicole Louderback
 Owner - 2 years

 Bloomfield, IA
 660-2743



Marcie Bengel
 Office Manager - 7 years
Harris Distributing
 14219 231st St.
 Bloomfield, IA
 641-929-3379



Kim Stephenson
 Owner - 1 year
DOWNHOME blessings
 Bloomfield, IA
 641-664-1500




Tri-County SHOPPER, Inc.

641-664-1333

Wednesday, November 1, 2017

Page 11

www.tri-countyshopper.com

Meet Your Hometown

Women in Business!

We salute our local business women whose skills, hardwork, and dedication help keep our economy strong and growing.



Heather Scott
Office Manager - 4 years

**Karr
Collision
Center**
641-664-1024



Julie Bennett
Ladies American Legion
Auxiliary Post #78 Volunteer

**American
Legion**
Bloomfield, IA



**Rochelle
Garretson**

Owner - 4 years

**SHEARS TO
YOU**
307 S. West St.
Bloomfield
641-664-1821



Valerie Bigsby, Lynn Clark, Kyndal Bodkins,
Tracy Hill and Brandy Dixon

Customer Service Reps.



www.mycmtech.com
Bloomfield, IA
641-664-2074



Jen Wright
Manager

**RT
Auto**
505 S Washington St.
Bloomfield, IA
(641)664-3000

Teresa Sears

Secretary/
Bookkeeper
3 years

Holly Lipper

Dept. Head/
Jack of all trades
8 years

**Memphis
Farm & Home**
463 S. Market • Memphis, MO
660-465-8678

BLACKBOARD PRINTING CO.

641.664.1233

ABBY YEARLING - OWNER
SARA JOHNSON - GRAPHIC DESIGNER
FELICIA DAVISON - OFFICE MANAGER

Located on the North side of the square! 
104 E. Jefferson Street • Bloomfield, Iowa



Debbie Whitacre

14 Years

**Hoskin
Elevators Inc.**

29067 Juniper Ave
Bloomfield, IA
641-929-3568



Carol Lawson

Agent
16 years

**Alyssia
Greenstreet**
Sales Associate
2 year



Gary Sprouse
712 Southwest St Suite #2
Bloomfield, IA
641-664-2238



Jenni McClure

Office Manager - 3 years

**N3
FAB** #2 Bader St.
Bloomfield
Iowa
& POWDER COATING

641-664-3993



Janai Johnson

Owner

**J's
One Stop**
641-664-1916



Lori Dewis

Teacher at Davis County
School District - 35 years

**Hoskin
Elevators Inc.**

29067 Juniper Ave
Bloomfield, IA
641-929-3568



Jamie McCarty

Graphic Designer - 1 year

**Tri-County
SHOPPER**
641-664-1333



Meet Your Hometown Women in Business!

We salute our local business women whose skills, hardwork, and dedication help keep our economy strong and growing.



Rose Wheaton

Office Manager- 10 years

**Kollision
Korner**

Bloomfield, IA
PH: 641-664-2648
Fax: 641-664-2948



Brenda Williams

Owner- 25 years

**Image
Shapers**
641-664-1650



Jeri Lyn Rupe

Owner/Publisher -35 years

**Tri-County
SHOPPER**

641-664-1333



Robin Fine

Manager - 2 years

DOLLAR GENERAL

Save time. Save money. Every day!

Bloomfield, IA
641) 664-2558



Brandee Lynch - Sales Person

Susan Davis - Sales Person

Pam Price - Office Manager

Ashely Rupe - Sales Person

Lois Lynch - Associate Broker

Nancy Holt - Sales Person

Stephanie Lynch - Broker

Lynch
REALTY, INC.

641-664-2275
lynchrealtyinc.com

106 S. Madison
Bloomfield, IA

Licensed in Iowa
Stephanie Lynch, Broker



Bloomfield.... Facts & truths you need to know!!!!

SEWER TREATMENT PLANT: The EPA fined the City for non-compliance. The initial fine was \$20,000, but was reduced to \$10,000 by hiring a lawyer out of Des Moines to help City develop a plan. The EPA forced the DNR to update their regulations which required the City to upgrade it's plant. Initial costs were estimated between \$4 and \$8 million dollars. The city is also required to fix a sewer by pass happening in the Country Club Estates area. The work was to be done in 5 years.

ELECTRICAL LINES: The City needs to do another utility pole assessment to see if more poles need changed. Need to continue replacing old feeders to help cut down on line loss. We feel our current line loss is over double the industry standard.

STREET REPAIRS: Need to continue with complete street replacement as was done on West and Franklin Streets. The south end of East Street needs to be replaced as well as the bridge on East Street. After the last inspection, a required load limit was placed on the bridge. Madison Street from the square to the Bloomfield Cemetery also needs replaced. These two streets should be top priority.

WATERLINES: One more phase on the water mains would take care of the old lines the City has left. This would reduce the water loss.

STREET LIGHTS: Street light replacement is an ongoing process. LEDs are being installed when a light goes out. The lights on the square are being replaced with LEDs, but the workers were told not to worry about them because Streetscape would replace all of them.

SOLAR FIELD: Bloomfield has already entered into a questionable agreement on a solar field which has cost the City a lot of money. The City would receive only a \$0.01/kw discount on electricity from a company owned by a third party. Then interim DPW is reportedly a salesman for this company, which raises a serious question of conflict of interest.

STREETSCAPE: In our opinion, Streetscape was designed and is being promoted by a special interest group: certain building owners on the square. As you can see, there are many places the City needs to spend our tax and utility money wisely. While some improvements need to be made on the square, they are minor compared to other problems.

- Streetscape would max out the City's bonding capacity, which would leave no money for any of these other more pressing issues.
- No street repairs for at least 5 to 10 years.
- Playing games with parking and access to existing businesses on the square that would likely put them out of business.
- It is estimated to take 2 years to complete Streetscape, restricting access to the square for construction.
- Many basements and foundations on the square cannot stand up to the stress of heavy equipment used during the construction process. Property owners on the square have been told if they have problems **THE CITY WILL PAY TO FIX THEIR BASEMENTS AND FOUNDATION** as well as pay for their sidewalks. This will effectively increase the value of those properties at the taxpayers' expense!
- Right now many of the building on the square are empty. The proponents of Streetscape claim that by beautifying the square it will attract new businesses, but there is already controversy over parking. If it attracts new businesses to those empty buildings, where will the increased customers park - not to mention the many people who live in apartments above the square.
- The way to improve Bloomfield is to lure new industry, thereby creating jobs and paying taxes so that there is money to spend on beautification projects. The current City Council is going to make Bloomfield so expensive that no one can afford to live here.
- Maintenance of Streetscape areas will require special snow removal equipment. It will also require hiring people to plant and maintain trees, shrubs and plants or contract this out to local greenhouse.

STREETSCAPE - A WANT, NOT A NEED

The Truth is: TIF = Tax Incremental Financing Grant Money

Neither of these are gifts. They are tax payers money!

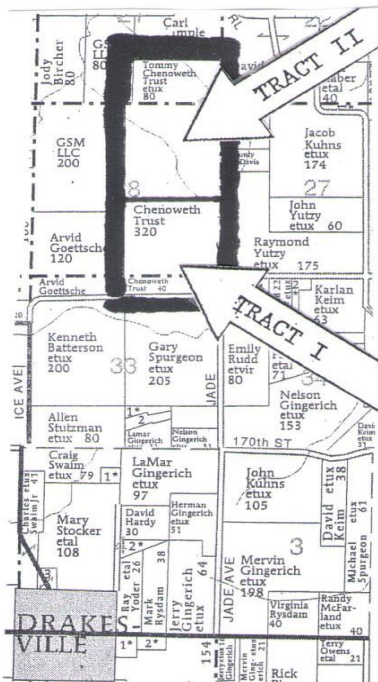
LAND AUCTION

SATURDAY, NOVEMBER 18, 2017 10:00 AM

SALE TO BE CONDUCTED AT THE FARM LOCATED
1/2 Mile East of Drakesville, Iowa on 180th Street,
 then 2 Miles North on Jade Avenue to sale site. Auction Signs Will Be Posted

440 ACRES M/L

Sections 21, 28 & 33, Soap Creek Township, Davis County, Iowa



Tract I - 160 Acres: 74 Acres or more of level to sloping cropland, with remaining acreage mostly open, rolling pasture and hayland, with a pond. Road frontage with improvements including a frame barn and open-front machine shed with rural water service.

Tract II - 280 Acres: This tract of land adjoins Tract I on the north and consists of rolling, hardwood heavy timber ground with some hayland. This parcel of land offers great wildlife habitat, as well as secluded hunting grounds, with a centrally-located large pond. Access provided via easement across the west side of Tract I.

TERMS: 20% down day of sale, balance in cash upon delivery of a Warranty Deed, accompanied by Abstract of Title showing merchantable title. Real estate taxes will be prorated to January 1, 2018. Possession given upon settlement, subject to current tenant lease agreement.

For further particulars or an appointment to inspect the property, please call the auction company: 641-682-5465.

Announcements made day of sale take precedence over any advertising.

TOMMY & JANICE CHENOWETH, OWNERS

JIM KOSMAN, ROGER CLINGAN, & TODD CARROLL - AUCTIONEERS

AL MARTIN REAL ESTATE & AUCTION CO., INC.

307 Church St., Ottumwa, IA 52501 • 641-682-5465 • www.almartinauction.net

FARM AUCTION

SATURDAY, NOVEMBER 11, 2017 10:00 AM

SALE TO BE CONDUCTED AT THE PROPERTY LOCATED
17317 - 320TH STREET, HEDRICK, IOWA
 OR From the East edge of Hedrick, go North on 160th Avenue 1 mile, then East on 320th Street 1-1/4 miles. Auction Signs Will Be Posted

TRACTORS & COMBINE: 1984 John Deere 4650, MFWD, power-shift, triple outlets, 6,715 hours, 18.4x42 hub-mount duals; 1979 John Deere 4440, power-shift, 5,600 hours, 18.4x38 radials, full set of weights, hub-mount duals, triple outlet; 1989 Case 1660 combine, cab, air, grain-scan monitor, power monitor, feeder house reverser, spreader, approx. 3,382 engine hours; Case 1063 6-row corn head, new gathering chains & sprockets; Case 1020 15' platform, SS#57169.

FARM EQUIPMENT: John Deere 7200 6x30 no-till planter, insecticide, w/population monitor; Willbeck 9-shank disc chisel; IH 490 24' hydraulic-fold disc; John Deere 724 soil finisher, 24' w/5-bar harrow; John Deere 158 loader; Brent 640 gravity wagon w/brakes & lights; Parker 525 grain chariot gravity wagon w/16.5x22.5 truck tires, brakes; Parker 4800 gravity box & gear, double-door w/16.5x16.5 L tires; Noble 4 & 6-row 3-pt. cultivators; Peck 4' hydraulic-drive unloading auger; (2) Homemade 4-wheel header trailers; (3) 500-gal. fuel barrels; Bush Hog 10' 3-pt. brush cutter, for parts; (2) John Deere hydraulic cylinders.

LAWN MOWERS, TOOLS & EQUIPMENT: John Deere 1445, 72" front mower deck, 4x4, diesel, hydro; John Deere F1145 mower w/72" front deck, hydro, diesel, approx. 2200 hours; John Deere 6-3/4hp 22" self-propelled mower; John Deere front-mount 54" hydraulic blade; Troy-bilt snowblower, 24", 10hp, like new; Husky front-tine tiller; Fimco pull-type sprayer; 2-wheel pull-type lawn cart; Lawn aerator; Like new Ingersoll Rand 60-gal. upright 8hp air compressor; Lincoln 225 welder; Hobart 120 Handler wire welder; 20T. hydraulic shop press; Steel welding table w/vises; Bench grinder & stand; Fisher wood stove; Stihl weed eater; 2-wheel dolly; (2) 4T. hydraulic floor jacks; Ladders; Tire changer; Creepers; Asst. of tires & wheels; Log chains; Spades & forks; Come-alongs; Drop cords; Heat houser; Saws; 110-gal. pickup fuel tank w/pump.

TERMS: CASH/GOOD CHECK
 POSITIVE ID REQUIRED

MASTERCARD/VISA
 DEBIT/CREDIT CARDS

All property must be settled for before removal - All items sold as is where is - Not responsible in case of accidents.

Announcements made day of sale take precedence over any advertising.

DON & HELEN HEDLUND, OWNERS

JIM KOSMAN, ROGER CLINGAN, & TODD CARROLL - AUCTIONEERS

AL MARTIN REAL ESTATE & AUCTION CO., INC.

307 Church St., Ottumwa, IA 52501 • 641-682-5465 • www.almartinauction.net

GLENWOOD Elevator

**301 State Hwy. M
 Glenwood, Mo 63541**

Logan Ford, Manager
 PH: 660-457-3973 • Cell: 660-956-3973
 Fax: 660-457-3045 • gelevator@marktwain.net

FOR SALE: 2000 Volvo S70, 4 door sedan, black/grey interior, 159,000 miles, no rust, runs good, \$850.
 PH: 660-341-7263

FOR SALE: APR-registered Corgi puppies. Healthy, farm-raised family pets. Ready to go Nov. 1st.
 PH: 641-895-3065.

FOR RENT: 2 bedroom mobile home 12 miles SE of Bloomfield.
 PH. 641-208-3176. 46

Follow the tracks to...

TRAILS END TAXIDERMY

Keosauqua, IA
 Josette Robison
 319-288-0113
 \$400 Shoulder Mounts
 josette.robison@gmail.com

FOR SALE: Purebred Old English Bantams. Very colorful.
 PH. 641-664-1264. 45

THANKSGIVING SUPPER & TALENT AUCTION: Barker United Methodist Church, north of Downing or South of Bloomfield on the Iowa/Missouri line. Saturday, November 18th at 5:00 PM. Turkey, dressing, ham balls, noodles, home made rolls, delicious salads and desserts. Supper followed by auction of beautiful hand crafted items and baked goods. Something for everyone. Door Prizes. Free Will Offering. Great place to do your Christmas shopping. For more information or directions call: 641-675-3439, 641-664-3859, 660-379-2615, 660-379-2848. 46

MFA Agri Services Memphis
 Made For Agriculture • Call us today! (660) 465-2603 or (660) 341-1422

It's more important now than ever to make sure your soils are ready for next year's crops. Yields were good. That means nutrient levels are down. So let us soil test now! Then come to us at MFA for your N, P & K. We've also got the micronutrients those crops need for top performance. It's all about maximizing your returns. So let MFA help you keep those yields coming. Great value, service and performance. Count on it at MFA.

STOP IN TODAY!

Soil Sample Day
 Fri., Nov. 3rd

Do you need to have soil samples taken?

Contact David Yoder!
 641-722-3037 Ext. 1

berholtzer Farm Supply LLC
 Specializing in feeding equipment for dairy & beef.

\$16,300

New Jamesway underfloor pit pump, 8"x 8", trailer type, 2 agitation nozzles with hydrolic gate valves.

NEW

Call For Price

NDE 1552 vertical mixer, road light kits, 8 carbide knives, 54" conv., 640 XL scale

JUST IN!

Valmetal V-Max 630 dual auger, vertical mixer, front unload with 48" folding conveyor, rubber top, 640 XL scale, road light kit, extra carbin knives.

Rt. #1 Box 84 • Memphis Mo.
 Phone/Fax: 660-945-3053 • Cell: 660-341-8234

KEOSAUQUA SALE CO.

20511 Hwy. 1, Keosauqua, IA

Results from Oct. 28th

Butchers \$40.00-45.00/cwt
Sows \$37.00-45.50/cwt
Feeder Lambs.....\$140.00-185.00/cwt

Fat Lambs.....\$125.00-131.00/cwt
Ewes..... \$50.00-80.00/cwt
Kid Goats 40-70# \$95.00-142.50/hd
Nannies..... \$70.00-170.00/hd

Pound cows Low yielding \$49.00-59.50/cwt
High yielding \$60.00-64.50/cwt
Pound bulls \$72.00-86.00/cwt

Annual Customer Appreciation BBQ & Cattle Sale Sat., Nov. 4th

- 25 hd 450-550# bwf str & hfrs, 1 rd shots - C Westercamp
- 40 hd 350-600# blk & red str & hfrs - M Keller
- 100 hd 450-650# Angus str & hfrs, 1 rd shots, fancy - Sherod Farms
- 40 hd 450-550# blk str & hfr, GT, weaned - J DaVolt
- 110 hd 550-650# blk Simm str & hfrs, GT, weaned fancy - S Blint
- 30 hd 450-550# bwf & rwf str & hfrs, GT, weaned - Hamberg & Beatty
- 120 hd 400-650# mostly blk str & hfrs, 7 way, fancy - M & G Plenge
- 45 hd 400-550# blk & bwf str & hfrs - Gaston Family
- 50 hd 500-600# blk str, 1 rd shot, no implant - D Westercamp
- 40 hd 500-625 blk simmx str & hfr, p.c. weaned - Kleine
- 85 hd 500-650# blk x str & hfrs, 2 rds shots, wean - Deb & Colby
- 23 hd 700-800# xbred yearling str - K Miller
- 75 hd 875-925# blk yearling str, fancy - Overstreet

Watch website for early listings
www.keosauquasaleco.com

Thank You For Your Business!

For More Information Contact:

Selling Times

Hogs.....9:30 a.m.
Sheep & Goats.....10:00 a.m.
Outside Merch.....11:00 a.m.
Cattle.....Noon

Keosauqua Sale Co.
319-293-3508
Bill Goehring
641-919-9365

www.keosauquasaleco.com

JOE'S BARBER SHOP
Hours: Thursday & Friday 8:00-5:00 & Saturday 8:00-Noon. 210 E. Franklin St., Bloomfield, IA.
PH: 641-664-2020, 641-208-5561 TF

MILITARY ITEMS WANTED BY LOCAL COLLECTOR: Patches, medals, uniforms, hats, helmets, etc. Always buying. Mark Warren, PH. 641-664-3705. mpwarren@netins.net

WORKING NIGHT & DAY FOR YOUR FARM

See us today for your early seed order discounts and your upcoming fertilizer needs.

Crop Services, Inc

John & Kathy Bos, Owners

Drakesville, IA
641-722-3293

Scotland County LIVESTOCK AUCTION

P.O. Box 111 • Hwy 15 North • Memphis, MO
660-465-7213 • Jerry & Barb Blomme
660-341-0069 • Grant Blomme
660-216-4674 • Rodney Garmon

DAIRY SALE
Wed., Nov. 1st • 10:30 AM

SPECIAL CATTLE SALE
Sat., Nov. 4th
Outside @ Noon & Cattle @ 12:30

Early Listing:

- 12-Fancy black first calf heifers, pelvic measured & complete vaccination program, bred to Black Angus Bull, start calving March 1st.
- 5-White park cows, running in ages, Spring calving
- 8-Red bred cows, running in ages, Spring calving
- 100-Blk, Strs & Hfrs, 500-600#
- 90-Blk, Strs & Hfrs, 400-600# LTW, Vacc X2
- 70-Blk, Strs & Hfrs, 600-700#
- 40-Blk, Strs & Hfrs, 500-600#, LTW, Vacc X2
- 30-Blk, Bulls & Hfrs, 500-550#
- 35-Blk, Strs & Hfrs, 400-500#, LTW, Vacc X1
- 30-Blk, Bulls & Hfrs, 350-450#
- 45-Blk, Strs & Hfrs, 500-600#, Vacc X1
- 50-Mixed Strs & Hfrs, 500-600#, LTW, Vacc X2
- 40-Blk & Red, Strs & Hfrs 500#
- 30-Blk, Strs & Hfrs, 500#
- 16-Blk, Strs & Hfrs, 600-700#, LTW, Vacc X2
- 27-Blk & Bwf, Strs & Hfrs, 500-600#
- 45-Blk, Bulls & Hfrs, 450-550#, LTW
- 22-Blk, Strs & Hfrs, 450-500#, Vacc X1
- 70-Blk, Strs & Hfrs, 650-700#, LTW, Vacc X2
- Pending: 100 mixed Hfrs, 650-700#, LTW, Vacc X2

www.ScotlandCountyLivestock.com

FOR SALE: Miniature pony. Kid broke to ride and drive, \$500 OBO; wine La-Z-Boy reclining couch, good condition, \$425 OBO.
PH. 641-664-3236. 46

FOR SALE: Great Plain no till drill, excellent shape, \$6,500; Allstate 400 bu. auger grain cart, good shape, \$2,500.
PH. 660-341-0788 46

TRENCHING SERVICES: Waterlines, Hydrants, Drains, Electic. Call for quote. Contact: TJ's Enterprises Truman
Gingerich PH: 641-722-3980 52

FOR SALE: 8 bale trailer, \$800., W.W. 16ft. stock trailer, bumper hitch, \$1,200. Honcho 4-wheel drive 4-wheeler, \$800.
PH: 641-680-8752 45

GINGERICH STOVES and PLUMBING

Stoves & Furnaces
WOOD • COAL
PELLET/CORN • GAS

- Many brands, sizes & styles to choose from
- Chimney SS & Blk. Stovepipe
- Plumbing Supplies

19091 180th St • Drakesville, IA • VM 641-664-2814
3/4 miles east of Drakesville, south side

Kirksville Livestock LLC

Kirksville, Missouri

SPECIAL BRED COW SALE
Friday, Nov. 3rd • 6 PM

EARLY LISTINGS:

- 75 Blk 6 to SS cows, bred to blk sim bulls, spring calving
- 50 Blk 3 & 4 yr old cows, bred to Angus & Hereford bulls, to start calving Feb. 25 with a 75 day calving period
- Complete Dispersal - 50 Blk/Char X cows, spring & fall calvers
- 46 mostly blk baldy cows, 7 to SS, bred to blk bulls
- 32 mostly blk baldy cows, 4 to 6, bred to blk bulls, to start calving Feb. 15
- 25 BBWF 2 yr old hfrs, to start calving Feb 22
- 20 blk & red hfrs, bred to blk bulls, to start calving March 1 with a 45 day calving period
- 19 blk & red cows, 3 to SS, bred to blk bulls, to start calving Feb. 15
- Complete Dipersal - 15 blk/CharX cow/calf pairs
- 15 blk & red Angus cows, bred to blk bulls
- 15 blk aged cows
- Complete Dipersal - 13 BBWF 3 to SS cows, spring calving
- Complete Dispersal - 11 BBWF bred hfrs, spring calving
- 10 blk 2 & 3 yr old cows
- 10 blk hfrs, bred to Galaxy Beef bulls, all shots, breeding soundness exam, to start calving Feb. 25, with a 40 day calving period
- 7 blk & red 4 to SS cow/calf pairs
- 1 - 18 month old blk Angus bull
- 1 - 18 month old blk Angus bull
- 1 - 20 month old blk Angus bull

Check website for updated listings.

"Proud to Serve Area Livestock Producers"
YOUR BUSINESS IS VERY MUCH APPRECIATED
We are open on Sundays to receive your livestock.

Phone for information: Patty Foster, Office 660-665-9804
Chuck Ambrosia...660-342-3530 Al Ashmead..... 660-216-8730
Caleb Randolph641-919-8539 Roger Jarman 660-651-3683
Harry Durlinger... 660-341-1080 Doug Fleshman.....660-626-7148
Mark Herbold.....515-720-8667 Daniel Smith 660-341-8396

Visit our website at www.KirksvilleLivestock.com

FOR SALE: 6 round bales, baleage, 1st cutting, moisture 39%, crude protein 22%, RFV 153, RFQ 164. Jonas Kurtz
PH: 641-929-3780 45

FOR SALE: 257 small square bales alfalfa 2nd & 3rd cutting. 2004 Harley Deuce excellent condition, 5,500 miles. Call after 4pm.
PH: 641-208-7714 45

FOR SALE: Like new Remington 7400, 270 caliber.
PH: 660-216-2542 44

FRIESEN CONSTRUCTION

New Houses Remodeling Garages Electrical Plumbing Custom Cabinets

Arlen 664-3270
Cell 641-208-0170
Bloomfield, Iowa

Fabius Creek Livestock Solutions LLC.
Open by Appointments
Evenings & Weekends
12718 275th Street • Bloomfield, IA 52537
641-895-0128

ADM Alliance Nutrition
TARTER FARM AND RANCH EQUIPMENT

NEED A KEY???

**Come see us...
We now do key cutting!**

Cantril Lumber & Hardware

**319-397-2351 or 319-397-2354
Mon-Fri 7-5 & Sat 7-12**

NOTICE ANNUAL DAC MEETINGS: Meeting #1 on November 7th, 7:00 PM at Countryside Mfg, 202 West Hwy 2, Milton, Iowa 52570. (515)-370-2555. Meeting #2 on November 27th, 7:00 PM at M&L Feed & Supply, 22387 Rte. V64, Milton, Iowa 52570. (319)-677-6402. Join us for an educational evening & learn about the importance of your horses diets and over all health. Door prizes, gift certificates, Pizza & Ice Cream!

FOR SALE: Jetted tub, rarely used. Works great, \$150. Leather motorcycle bags, \$50. 2003 Ford F350 white, single cab, dually, power stroke, 6 speed manual, Brand new front tries, 171,000 miles, \$8,500. PH: 641-799-8730 45

FOR SALE: Summit corner shower (38x38x77), glass sliding door, still in the box never used, asking \$450. Tuscan toilet still in box asking \$100. PH: 660-346-8128 45

NEED A DOG FOR RABBIT HUNTING THIS WINTER? APRI registered male beagles for sale. Good hunters also make very nice pets. VM: 641-664-2436 ext. 1 45

Montana WINTER IS COMING

\$69.95 WINTERIZATION
add \$20 for washer/dryer and ice makers

~~\$699.00~~

WINTERIZED/DEWINTERIZE
plus storage till April 1st.

Bowling Motors & RV Sales, Inc
14270 Sycamore Road - Ottumwa, IA - www.bowlingrvs.com
641-682-5497 or 800-246-5497

LINE-X OF OTTUMWA

**KEEP YOUR RIDE IN GREAT SHAPE!
PROTECT IT WITH A LINE-X COATING!**

Bring it in and we can LINE-X® it!

Brad Lisk
15514 Blackhawk Rd., Ottumwa, IA

Gift Cards Available!
641-683-9334

FOR SALE: 2007 GMC Envoy, 4x4, white w/ grey cloth interior, loaded, 2nd owner, well cared for, 143K miles, 6 cyl., runs great, \$6,300. PH: 641-642-8554 45

FOR SALE: Hide Away slide-in camper, 8-foot, self-contained with over-the-cab & dinette sleeping. New Rico Titan jacks, \$1,100 OBO. Hasn't been used in more than a year. Call to inspect. PH: 641-226-4909 45

VERTEX CONTRACTING

Concrete New Construction Renovations

Clayton Hopkins Bloomfield, IA 641-208-7735 vertexcontracting@icloud.com

AG LIME

**Hauling & Spreading
Standard Rates
GPS Variable Rates
Flotation Tires**

Over 30 years experience with satisfied repeat customers!

**641-208-3939
641-664-3630**

ALSO HAULING ROCK, SAND, & BLACK DIRT!

MAX JOHNSON TRUCKING

BLOOMFIELD LIVESTOCK MARKET



Sun., November 5th..... Hawkeye Simmental Sale 12 PM NOON
 Wed., November 8th..... Slaughter Cows, Bulls & Fats 9:00 AM
 Wed., November 15th..... Slaughter Cows, Bulls & Fats 9:00 AM
 Special Yearling Sale..... 11:30 PM
 Tue., November 21st .Special Bred Cow, Heifer & Pair Sale 6:00 PM
 Wed., November 22nd..... Slaughter Cows, Bulls & Fats 9:00 AM
 Sat., November 25th..... Annual Thanksgiving Calf Sale . 10 AM SHARP

Bloomfield, IA Feeder Cattle Auction

Feeder Cattle Weighted Average Repost for 10/23/2017

Receipts: 786

“SPECIAL I.M.B.I.O. CALF SALE”

All calves sold were weaned at least 45 days and had 2 rounds of shots. Trade Active and Demand Was Good. Receipts included 45 percent feeder cattle over 600 lbs; 66 percent of the feeders were strrs and 34 percent were hfrs.

FEEDER STEERS MEDIUM & LARGE 1

Head	Wt. Range	Avg Wt	Price Range	Avg Price	
8	382	382	\$190.00	\$190.00	
102	491	491	\$189.00	\$189.00	
9	452	452	\$165.00	\$165.00	Fleshy
36	529	529	\$168.00	\$168.00	
94	574	574	\$172.50	\$172.50	
88	604	604	\$167.00	\$167.00	Calves
18	641	641	\$152.50	\$152.50	Fleshy
80	671	671	\$160.50	\$160.50	Calves
71	717	717	\$158.50	\$158.50	Calves
3	862	862	\$140.00	\$140.00	Fleshy

FEEDER HEIFERS MEDIUM & LARGE 1

12	397	397	\$168.00	\$168.00	
36	445	445	\$160.00	\$160.00	
123	511-537	532	\$148-\$154	\$152.78	
80	608	608	\$150.00	\$150.00	Calves
7	712	712	\$135.00	\$135.00	Fleshy

Source: Iowa Dept. of Ag-USDA Market News, Des Moines, IA

**SALE BARN OPEN UNTIL 9:00 PM
 EVERY TUESDAY TO RECEIVE LIVESTOCK**

Phil Schooley 641-664-3450
 Ron Schooley..... 641-777-0302
 Roman Schooley 515-450-3685

We appreciate your business!
 Tyler Schooley 641-208-5442
 Barn Phone 641-664-2435

HWY. 63 NORTH • BLOOMFIELD, IA

Fox Valley Welding

No matter what size the project customer satisfaction is always our first priority.

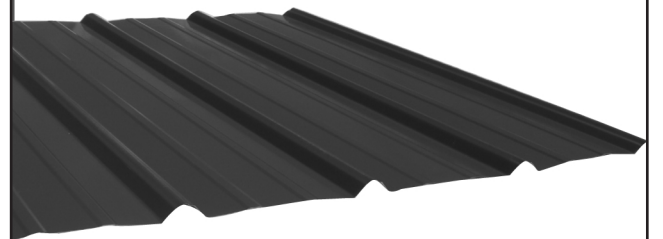
Tig & Aluminum • Welding • Milwork • Lathe • New Steel • Sprockets • Roller Chain
 Barings • PTO Parts • Fabricating • CNC Machining • CNC Cutting

Hours: M-F 8-5:30 • 641-656-4684 • 12190 East Hwy. 2 • Milton, IA

Yoder Indian Creek Furniture: Solid hardwood furniture for every room in your home. Also a great selection of outdoor poly furniture. Check with us before you buy.

Rt. V64 Milton, Iowa. Located 4 miles North of Cantril or 3/4 miles South of Lebanon on RT. V64, Monday to Saturday 8 a.m. to 5 p.m. No Sunday sales. PH. 319-538-7332 TF

Premium Metal Roofing



- Buy Direct & Save
- Fast Service
- Cut-to-length
- Professional Contractors Available

A W Metal LLC
 Metal Roofing Headquarters

641-664-3990 • awmetal.net

ANGUS BULLS

17 MO. OLD - IDEAL FOR FALL BREEDING



- ★ CALVING EASE
- ★ GROWTH
- ★ THICK
- ★ GOOD DISPOSITION

Sired by Musgrave Reachout 530

SELECT YOUR BULL NOW

Open heifers show prospects. Will make great cows. Top blood lines!

DORAN BOLLMAN
 PULASKI, IOWA
 641-675-3467



Bring your plans in for a **FREE ESTIMATE**



Trusses Engineered and Designed to Your Specs



• Commercial • Agriculture • Residential •

17893 212th Street • Bloomfield, IA 52537
 641-722-3605 • Mon.-Fri. 7 AM to 5 PM