

**C** Cornerstone Investments  
 Chuck Riggerbach  
 Financial Planner  
**Investing for your future is  
 always a smart choice!**  
 108 W. Jefferson St. (641) 664-3700  
 Bloomfield, IA 52537  
Securities offered through Questar Capital Corporation (QCC)  
 Member FINRA/SIPC. Advisory Services offered through Questar  
 Asset Management (QAM) a registered investment advisor.  
 Cornerstone Investments is independent of QCC and QAM.

# Tri-County SHOPPER

STANDARD  
 MAIL  
 U.S. POSTAGE  
**PAID**  
 TRI-COUNTY  
 SHOPPER, INC.  
 POST OFFICE BOXHOLDER  
 LOCAL RURAL BOXHOLDER  
 OCCUPANT  
**CIRCULATION  
 OVER 11,750  
 THIRD CLASS**

P.O. Box 168 • Bloomfield, IA 52537 • [www.tri-countyshopper.com](http://www.tri-countyshopper.com)  
 Phone 641-664-1333 • Fax 641-664-3761 • Email [shopper@netins.net](mailto:shopper@netins.net)



Vol. 45, No. 50  
 Wednesday, December 13, 2017



## SAVE NOW ON SEASONAL PROJECT ESSENTIALS.



**\$9.99**

**100 ct. Staylit LED Icicle  
 Light Set**

Warm white. 5.8-ft total length.  
 T 11 410 B12



**\$7.99**

**Your Choice 70 ct. Micro  
 LED Light Net**

4x6 ft. Choose warm white, cool white  
 or multi-color.  
 T179 444, 445, 443 B12



**\$19.99**

**Your Choice 20 ct. Edison  
 Light Sets**

Elongated bulbs. May be used indoors  
 or outdoors. Black wire. Choose clear  
 or red/green. T209 223, 225 B6



**\$14.99**

**Your Choice 70 ct. Synchronized  
 Twinkle LED Light Set**

Steady on or 3 speed twinkle between cool  
 white or blue. Choose hanging icicles or string  
 lights. T222 094, 093 B12



**\$39.99**

**4 ft. Woodland Berry  
 Entrance Tree**

Pre-lit artificial tree with 50 clean  
 lights. Trimmed with pine cones and  
 red berries. T223 081 1



**\$12.99**

**Your Choice 200 ct. LED C3  
 or Mini Reeled Light Sets**

Green wire with 3-in. bulb spacing. 51-ft.  
 total length. Choose cool white, warm white  
 or multi-color. T195 539, 540, 605, 607 B6

**Bloomfield True Value**

211 Weaver Rd. • Bloomfield, IA

641-664-3511 • Hours: M-F 8-6 • Saturday 8-5 &  
 Sunday 10-3

**BEHIND EVERY PROJECT IS A**  
**True Value®**

Sale ends December 24th, 2017

©2017 True Value® Company. All rights reserved.

Find the right products for your project and expert advice at True Value.



# HUSSE IN TODAY FOR THE DEAL EVEN SANTA WANTS!



## 0% FOR 48 MONTHS



Other great financing  
options on new  
Hustler Mowers!



\*Some restrictions apply.  
See your Huster dealer for details.

# True Value

211 Weaver Rd.

Bloomfield

641-664-3511

HOURS:

Monday - Friday 8-6

Saturday 8-5 & Sunday 10-3

FOR SALE: New brown leather recliner, \$175. Oak table w/ 2 leaves & 6 matching padded chairs, \$500 OBO. Also matching oak china hutch, good condition, \$400 OBO. Or both table & hutch, \$800. VM: 641-664-2661 50

FOR SALE: New wedding flowers never used. Purple, fuchsia & white. Enough for entire wedding. Bride, 4 bridesmaids, groom, 4 groomsmen. Many more. \$50 for all. PH: 641-683-3554 50

Yoder Indian Creek Furniture: Solid hardwood furniture for every room in your home. Also a great selection of outdoor poly furniture. Check with us before you buy. Rt. V64 Milton, Iowa. Located 4 miles North of Cantril or 3/4 miles South of Lebanon on RT. V64, Monday to Saturday 8 a.m. to 5 p.m. No Sunday sales. PH. 319-538-7332 TF

FOR SALE: 2006 Duramax, \$15,000; 2004 Dodge Cummings, 4x4, \$17,000; 1979 Dodge Power Wagon Flatbed, \$400. Call 660-342-7453 for more information. 50

Don't let this guy  
ruin your Holiday!

Come See Us for All Your  
Collision Repair Needs!



- Frame & Unibody Repair
- Repair All Makes & Models
- Guaranteed Paint Match
- Guaranteed Craftmanship
- Work Well With Insurance
- Free Estimates



**Hertz**

Rental Cars Available For All Occasions.  
Great Rates!



**Walker Motors**  
COLLISION REPAIR, INC.

# oh-oh-oh-so-many Great Gift Ideas!

- Award Winning Sausages
- Gourmet Cheeses
- Snack Sticks & Beef Jerky
- Cut to order Meat Bundles

Mon. - Fri. 8:30am - 5pm • Sat. 8am - 4pm  
Visit our retail shop in Greentop, Missouri!  
www.westerns-smokehouse.com  
660-949-2445 • 1-800-456-0250



FOR SALE: Seasoned firewood. Red Elm & Cherry, \$60/pickup load. RJ Lumber PH: 641-722-3348 TFN

PUPPIES FOR SALE: Chocolate Lab & Australian Shepherd cross, \$50. Ready for Christmas. PH. 641-208-5667. 50

BLOOMFIELD MINI STORAGE. Serving you from 2 safe, convenient locations. PH. 641-664-1066. TF



## NEW & USED AUTO PARTS

Rebuildable Cars & Trucks

Salvage Yard

Truck Parts

Computerized Inventory

Late Model Foreign & Domestic Auto

Happy Holidays from our family to yours!

# SPILMAN AUTO PARTS

20311 Old Hwy. 2 • Bloomfield, IA  
641-664-2463 • 1-800-477-1367  
M-F 8AM-5PM • Sat. 8AM-12Noon



SpilmanAuto.com



## 'Tis the Season for Coughs & Colds



When you need more than a dose of holiday cheer, your friendly neighborhood pharmacy has just what the doctor ordered.

Amanda Mathews, R.Ph.

Janet Zeitler, R.Ph. • Kim Burton, R.Ph.

301 W. Jefferson St.

Bloomfield, IA • 641-664-2975

Emergency Numbers South HyVee Pharmacy  
800-371-6524 or 641-683-4483

# HyVee

PHARMACY



## CUSTOM FRAME SALE

### 10-50% OFF

ALL CUSTOM FRAMES  
ON ALL NEW ORDERS FOR A LIMITED TIME!



FRAMING • ART • GIFTS • CANDLES • JEWELRY • POTTERY  
**GIFTS OF ART THAT WILL WARM THE HEART!**

**HURRY IN TODAY!**

**M&J**  
Gallery

"Beautiful Framing  
By Design"

**MANY GREAT  
CHRISTMAS GIFT  
GIVING IDEAS!**

**Extended holiday hours:**  
Mon. - Fri. 9-5; Thurs. 9-6:30;  
Sat. 9-3

2447 Northgate • Ottumwa, IA  
along Bus. 63 North, next to McDonald's  
**641-682-0434 • 800-286-0434**  
www.mjartgallery.com • mjgallery@hotmail.com

## LakeWood RV Sales & Rental

2012 CYCLONE Fifth Wheel TOY HAULER

- 40 ft.
  - 3 slides
  - Lots of room
  - 5500 watt GENERATOR
  - Brand new tires
- LOTS OF ROOM!**



**Get a gift the whole  
family can enjoy!**

Hwy. 136 E., Downing, MO  
9 miles W. of Memphis or  
1 1/2 miles E. of Downing  
www.lakewoodrvsales.com

Tues. - Fri. 8-5 • Sat. 8-Noon,  
Closed Sundays & Mondays  
**Phone: 660-379-2763**  
**Cell: 660-341-1927**  
**Fax: 660-379-2792**

**FOR SALE:** 1999  
Century mobile home  
with appliances. 14x80, 3  
bedroom, 2 bath, carport,  
wheel chair ramp, 10x16  
utility shed. \$28,000 obo.  
PH. 641-682-1074. 50

**FOR SALE:** Mueller 500  
gallon hi-performance milk  
tank with 3 HP compressor  
and automatic washer. 1600  
gallon surge milk tank(not  
for cooling)  
PH: 660-341-2160 51

*Take care of the ones you love this  
year with a gift certificate.*



**Call for gift certificates!**

**MASSAGE** works  
therapeutic massage

Heather Boas, LMT  
**641-777-1824**

112 N. Dodge St., Bloomfield, IA

**FOR SALE:** Grandfather  
clock, \$650; queen size  
Simmons sofa sleeper  
(interspring mattress), \$250;  
wooden porch swing &  
frame, \$125.  
PH: 641-675-3250 51

**FOR SALE:** Like New  
Coleman, Revolv stylecrest  
furnace, 80% efficient,  
70,000 BTU, natural gas/LP  
gas. Only used 2 months.  
Call for more information.  
PH: 641-980-0610 50



2 miles west of  
Bloomfield on  
Hwy 2  
21021 Jewel Ave.  
Mon. - Sat. 8:30-5  
641-664-1213

**Friday & Saturday Only**  
**December 15th & 16th**  
**Mention this ad at the register**  
**and draw for 5% - 30%**  
**off your purchase of toys,**  
**books and puzzles!**

**• THANK YOU •**  
We would like to thank  
everyone who came to help  
celebrate our **GRAND OPENING!**

**MILITARY ITEMS**  
**WANTED BY LOCAL**  
**COLLECTOR:** Patches,  
medals, uniforms, hats,  
helmets, etc. Always  
buying. Mark Warren, PH.  
641-664-3705. mpwarren@  
netins.net

**FOR SALE IN MEMPHIS:**  
1989 Plymouth Reliant K,  
burns no oil, excellent tires,  
body in good shape.  
PH. 660-216-3570 after 6 pm

**FOR SALE:** Proform  
treadmill about 4 yrs. old,  
new was \$650, selling for  
\$300 OBO. PH: 641-722-3271  
or 641-208-6686

Thank You  
Words cannot express  
our heartfelt gratitude  
for the kindness shown  
to us during the illness  
and passing of our  
daughter and sister.  
Donna Strait  
May God Bless You.  
Helen Sloan  
Karen & Jeff Kincart  
& Family

## Heirloom Quality Hardwood Furniture



**VM: 641-664-0207**  
1 Mile East of Drakesville  
on Jade Ave.  
Mon.-Sat. 8:00 AM - 5:00 PM

## Shady Lane Variety

**Lots of great  
Christmas gift  
ideas!**

Books

Rhythm Clocks,  
Insulated Mugs,  
Throws • Blankets  
And Much More!

1 mi. E. of Drakesville  
on Jade Ave. • 641-664-0207  
8-5 Mon. thru Sat.

**FOR SALE:** Whirlpool  
stackable Washer & Propane  
Gas Dryer \$250.00 like new,  
Multi-Matio Percussior  
By Wulitzer Music Organ  
\$350.00, Like new Lift chair  
w/ Heat and Massage  
\$350.00. Call 660-216-1633  
Jim Gooden, Downing MO  
63536. 50

## Slayton Polaris

### It's time to get Muddy!

Authorized Polaris  
dealer since 1988

New & Used  
Polaris Rangers  
& ATV's



**660-328-6627**

**BLOOMFIELD, IA**  
8 mi. S. & W. from Pulaski or 6 mi. W  
of Memphis then 13 mi. N. on Route B



**2000 Dodge  
Dakota  
4 WD, V-6,  
79,000 MILES**

**Winters  
Coming!**

**2013 Ford  
F150  
47,000 MILES  
\$28,150**



**2003 Silverado 1500  
LONG BOX, REG.  
CAB, 4 WD,  
80,000 MILES  
\$10,900**



**2012 Escape  
LIMITED, AWD**

**2009 Ford Ranger**

**SUPER CAB, BLUE,  
64,000 MILES**



504 South Drake St  
Bloomfield  
PH: 641-664-2648  
Fax: 641-664-2948

**\$11,900**

**Kollision Korner**

Custom-Made Furniture and Showroom  
**Yoder's**  
Indian Creek Furniture LLC

**Holiday Sale**

**SATURDAY, DECEMBER 16-30, 2017**

**15% OFF**  
Outdoor Wood  
Furniture and  
Windchimes

**10% OFF**  
on all Furniture Items  
Purchased or Ordered

**5% OFF**  
Poly Lawn  
Furniture  
In Stock Items Only

CLOSED ON SUNDAYS; DEC. 25th & DEC. 26th; JAN. 1st & JAN. 6th

*Quality hand-crafted, solid wood furniture to last a lifetime.*

**22769 Route V64 • Milton, IA • 319-538-7332 v.m.**  
4 miles north of Cantril or 3/4 miles south of Lebanon on Rt. V64  
**Mon. to Sat. 8 AM to 5 PM • No Sunday Sales**





# 12 DAYS Christmas

## Are you in the Christmas Spirit?

**Friday, December 15<sup>th</sup>**
**Choice of 12 or 14 oz. Ribeye**
**Saturday, December 16<sup>th</sup>**
**Grilled Ribeye Sandwich**
*Serving at 6:00 P.M. both nights*
**Dine  
In**
**722-3355**
**Carry  
Out**
**RAY'S LONGBRANCH**  
Drakesville, IA

**MOTEL & GRILL**

JUNCTION OF HWY 2 & 63  
BLOOMFIELD • 641-664-1063

Breakfast • Lunch • Dinner

Daily Hot Specials and Evening Features

Prime Rib Capital of the World! Served on Friday &amp; Saturday Nights

Banquet Facilities Available for All Occasions • Catering

*"Where Quality and Consistency Matter!"*

Tues - Thurs 7am-9pm • Fri - Sat 7am-10pm  
Closed Sunday and Monday

**Santa Is Coming To Town!**  
**Saturday, Dec. 16, 1-4 p.m.**
*(Cameras welcome)*

at The Rusty Wagon Coffee  
Shop on the Drakesville Oval.

*Receive a Reindeer Sleigh Bell  
from Santa.*

Cookies, Cocoa and Cider  
for everyone.

*Freewill donations.*
*Proceeds go to Drakesville Betterment Committee*

Recovery support for those with  
drinking or drug abuse issues.

**Mondays in Bloomfield**

At Southfork in the banquet room.

***Narcotics Anonymous - 5:45 pm***
***Alcoholics Anonymous - 7:15 pm***

Contact info: Jennifer Munoz  
641-242-0145

Caring for our community with God's help!  
ELCA Hunger Grant

Need a ride? Call 664-3242  
Worship time: Sunday 9:00 AM

**SATURDAY, DECEMBER 16<sup>TH</sup>**
**11:00 A.M. - 12:30 P.M.**
**Ham, sweet potatoes, trimmings,  
dessert and drink.**
**Worship is Christmas Eve Morning at 9:00 AM only.**
**GOOD SHEPHERD LUTHERAN CHURCH**

19419 Lilac Avenue, Bloomfield, North end of West St.  
Delivery in Bloomfield after 12:15 P.M.

**Christmas in Cantril**  
**Saturday, December 16th**

**Lighted Christmas Parade • 6PM**


**Soup Supper • 6 - 8 PM**

*At the Cantril Fire Station*
**Chili, Oyster & Cheesey Potato Soup**


**Santa & Mrs. Claus  
will be there!**
*Free will donation!*
*Sponsored by Cantril Dayz Committee*

**University of Missouri Extension Fundraiser**
**Christmas Music Program**
**December 20, 2017 • 7:00 PM**
**Memphis Theater**
**Performances by:**
**Lonnie Erwin • Angela Neese • Community Ensemble  
Nathaniel Orr • Harlo Donelson • Paige McClamroch  
Schelle Cooley • Cole and Lindsay Tippet**
**Admission: \$8.00 at the door**
**Call Scotland County Extension office at  
660-465-7255 with any questions**





**Sour Cream, 16 oz ..... 99¢**  
**Celery ..... 99¢ each**  
**Landmark Chocolate Coating .....**  
**..... \$1.79 lb.**  
**Marble & Colby Cheese... \$1.99 lb.**  
**48 ct. Grapefruit.....\$18.75**

Food Supplements  
  
 Vitamins

3/4 mi. E. of Drakesville, IA on 180<sup>th</sup> St.  
 Mon-Sat: 8:30am - 5:00pm  
 VM: 641-664-2661

**FOR SALE:** Australian shepherd border collie cross puppies, from working parents, ready for Christmas. PH: 641-208-6854

**FOR SALE:** Massey Ferguson 165, new tires, new battery, new gages, new wiring, 2 hyd remotes, excellent condition, \$4,800 OBO. PH: 641-722-3621 52

*Happy Holidays*



*Enjoy Life.*

Enjoy Peace of Mind.

Your life is full of important things that need to be protected. Our insurance affords you and your family that protection by being your personal safety net.

**Van Mersbergen Insurance Inc.**

104 E. Franklin St., • Bloomfield, IA  
 PH: 641-664-2135 • FX: 641-664-2108



**PUPPIES FOR SALE:** Border Collie Cavalier Spaniel cross. Black & white. Would make nice Christmas gift, \$50 OBO. No Sunday calls, Memphis. PH. 660-216-1392. 52

**FOR SALE:** Large baby crib, metal bunk and a half bed. PH. 660-216-3616. 52

**FOR SALE:** Belt conveyor, 16" wide, 4" sidewalls deep, 40' long. Electric motor drive, adjustable legs, \$250. **Ernest Yoder** PH. 641-664-3784. 50

**FOR SALE OR RENT:** Nice 3-bedroom house w/ garage. Great location in Bloomfield. Place for a nice garden. PH: 641-664-2278

**Yoder's KOUNTRY KORNER**

**Open December 22 and 23**  
**OPEN LATE Friday 9am- 8 pm**  
**Saturday 9am - 5 pm**  
**Discounts on select items!**



*Showroom Open*  
**Mon.-Sat. 9 AM-5 PM**

**Quilts & Gifts** Including ... 

21050 ICE AVENUE • BLOOMFIELD, IA 52537 • 641-664-2545 V.M.

**WE HAVE EVERYTHING YOU NEED FOR YOUR WINTER FUN!**

Skates Sharpeners • Hockey Runner Guard  
 Lighted Hockey Pucks • Hockey Sticks  
 Laces • Hockey Pucks • Shin Guards



Tour Roller Skates Tour Skates American Cougar Youth Summit Skate with push button adjustable sizing

**Come see our great selection of hockey skates!**

Est. 1989  
**DRAKESVILLE FABRICS**

17369 180th St.  
 Drakesville, IA 52552  
 (1 mi. W. of Drakesville)  
 VM: 641-722-3369

**HAY**

**FOR SALE!**

**Big Round**

**Bales Of**

**2nd Cutting**

**Grass Hay**

**660-216-0938**

*Follow the tracks to....*



**TRAILS END TAXIDERM**

Keosauqua, IA  
**Josette Robison**  
 319-288-0113  
**\$400 Shoulder Mounts**  
 josette.robison@gmail.com

**FOR SALE:** 2004 Silverado Z71, 4x4, ext. cab, white, truxedo cover, Bose sound system, 144K miles, good 10 ply tires, clean truck. \$9,500 PH: 641-664-1966 or 641-242-0144 52

**Friesen Excavating**

Specializing in Septic Systems  
 Certified For Peat Tanks and Sand Filters.  
 Can Also Do Other Drains and Water Lines  
 Call or Text Shawn @ 641-208-0861  
 Bloomfield, IA  
**Free Quotes Available**

**THANKSGIVING THANK YOU SPECIALS**

Specials are good all year with a large selection of clothing and footwear for the family

**ALL JEANS • SLACKS • SHIRTS SOCKS • UNDERWEAR**  
 1/2 price with one at regular price.

Jackets - Coats - Sweaters - Hoodies  
 Caps - Hats - Coveralls  
 20% off also special 40%

Ties • Leather • Belts • Billfolds  
 Suspenders • Suits • Sport Coats • Vest  
**20% to 40% OFF**

Western Work ~ Casual ~ Waterproof ~ Safety  
 Insulated Leather & Rubber Boots & Shoes  
**For women, men & kids**  
**Narrow to Wide!**

*Insulated and regular bibs for men, women & kids!*

Gift Wrapping

**THANK YOU!**

**Cook's Mens & Womens Store**

116 S. Market • E. side of Square  
 Memphis, MO  
 Ph. 660-465-2511 • Fax 660-465-8905  
 Monday-Friday: 8-5 & Saturday: 8-9  
 Short-Big-Tall • Narrow to Extra Wide • Tux Rentals  
 Gift Certificates • Alterations



**FOR SALE:** Oak gun cabinet, top 55" Tall, 10" deep, 28" wide with glass in door. Base 29" wide, 16" deep. Leave message if no answer 641-722-5227. 52

**FOR SALE:** Hunting beagle from champion blood lines, top notch hunter. 12x50 mm. Bushnell Trophy XLT binoculars. Nikon 8x42 mm. binoculars. PH: 641-664-1131 52

**FOR SALE:** Red & blue healer puppies, \$80. Nelson Gingerich PH: 641-722-3002 Ext. 2 52

**FOR SALE:** 40 large square bales of 1st. cutting grass hay, \$45 per bale. PH: 660-216-1763 52

**L&M Country Store**

1 1/2 miles south of west Hwy 2 & 63 jct.  
**Mon-Sat. 8am-5pm CLOSED SUNDAYS**  
**VM: 641-664-1936**

**Texas Grapefruits & Oranges**

14 oz. Chocolate graham crackers ..... 79¢  
 40 oz. Oreo cookies ..... \$4.99  
 20 oz. Chunk pineapple ..... 99¢  
 8 oz. Cheese Wiz..... 85¢  
 107 oz. Cheese sauce ..... \$2.99  
 Miracle Whip..... \$4.99/gal  
 Boneless smoked ham..... \$1.19/lb.

**Homemade**  
**Fruitcakes & Candies!**



**HOURS**  
8 A.M.  
to  
5:00 P.M.  
DAILY EXCEPT  
SUNDAY

**Zimmerman's  
Store**  
Rutledge, MO  
660-883-5766

Our  
Everyday  
Low Prices!

Real nice California 88 ct. oranges..... 2/79¢  
Tangerines ..... 2/89¢  
**Box prices on 48 ct. or 32 ct. Texas grapefruit & 72 ct. oranges**  
Closeout on nice Red Delicious apples .....\$12.50 bu. or 49¢ lb.  
Rome, Mutz apples, Jonagold, Jonathan, Paula Red .....  
.....\$14.50 bus. or 59¢ lb.  
#1 Yellow Delicious apples.....\$15.50 bus. or 69¢ lb.  
Gala apples ..... 65¢ lb.

8# rolls cooked salami, reduced sodium ..... 98¢ lb.  
5# pk. sliced honey cured ham, 3 pk in box ..... \$16.11  
10# box fully cooked skinless, boneless chicken breast .....\$25.00  
2# pickle ham loaf..... only 49¢ lb.  
10# ground beef, 80% lean .....\$2.85 lb.  
1# ground turkey meat.....\$1.65 lb.  
1# ground beef, 80/20 ..... only \$2.25

Pillsbury selected cake mixes ..... 99¢ each  
24 oz. Hunts tomato ketchup.....\$1.29  
20 oz. Red Globe tomato ketchup .....95¢  
30 oz. whole purple prune plums .....Check them out!  
13 oz. family size RiceARoni, chicken flavored .....\$1.98  
Bulk dry beans ..... 71¢ a lb. & up  
Whole green beans..... 60¢ lb.  
Green split peas..... 71¢ lb.

**OLFA combo special 12x18 matt, 45 mm cutter & 5 pk blades all for \$32.65**

Stanley leather gloves with thinsulate lining, \$10.98  
Poly wool tube socks, 2 pr., \$4.85 Poly cotton crew socks, 2 pr., \$1.98  
**SunsOut Puzzles! Large selection to choose from!**

**DRIVE A LITTLE & SAVE A LOT**

**FOR SALE:** Small kitchen table with 4 chairs. 2 large sofas, good condition. Regular-size bed, like new mattress. Take all for \$75. PH: 641-936-7255 51

**FOR SALE:** 2 wooden flare wagon boxes, 3ft. x 10ft. bottoms. Also selling wooden horse drawn wagon tongues. Possible delivery. PH. 319-572-6882. 52

**L & D Handyman Service** specializing in plumbing, bathroom remodels, and interior painting. Available evenings and weekends. Free estimates within 50 mile radius of Cedar Rapids Iowa. Call 319-551-7858 or 319-440-7124. Leave message and we will call you back. (MCN)

**Crazy Discount!** Christmas Lights, Garden Decorations, Landscaping Lights, More!. Free Shipping. 708-995-1996; Email: sogrand-lights@gmail.com; Visit Amazon Storefront: amzn.to/2AhQAtz (MCN)

**CLASS A TRUCK DRIVER.** North Central region. Earn up to \$70,000. No touch freight. Good benefits. All mile paid. Nice equipment. 2 years experience needed. Call 507-437-9905. Apply on-line WWW.MCF-GTL.COM

**Davis County Community School District**

**Board of Directors**

**Regular Meeting**

Date: December 18, 2017

Time: **6:00 P.M.**

Place: DC High School Library  
Bloomfield, Iowa

**TENTATIVE AGENDA**

1. Call to order/Roll call/Visitors
2. Approve tentative agenda
3. Approve consent agenda items
  - a. Positive comments
  - b. Minutes of regular board meeting for November 20, 2017
  - c. Minutes of special board meeting for December 1, 2017
  - d. Minutes of Finance Committee meeting for December 1, 2017
  - e. Payments of warrants
  - f. Monthly financial reports
4. Approve personnel contracts and resignations
5. Administrative reports
6. Approve amended September board meeting minutes
7. Approve Agreement with Izaak Walton League for high school trap team
8. Approve IDEA Section 504 Development Process
9. Discuss Special Education weighted enrollment
10. Approve Amendment to 28E Agreement with City of Bloomfield
11. Discuss FY19 budget reduction
12. Approve early retirement policy
13. Approve early resignation incentive
14. Approve Middle School board game club
15. Board policy review
16. Adjournment



# **Congratulations to the winners of our Piggy Search!**

**Esther Gingerich • Korey Weiler • Lloyd Ray Bontrager  
Marilyn Johnson • Connie Fiedler • Sandi Aldridge  
Amanda Joy Hoover • Cooper McCarty • Carrie Brubaker**

**Thank you to everyone who participated.**

**Be watching the Tri-County Shopper for more fun ways to win!**

## **A BIG THANK YOU TO OUR SPONSORS**

**Walker Motors, Cantril Truck & Trailer, Cantril Lumber,  
Slayton Polaris, Kollision Korner, Spilman Auto,  
Dutchman Store, Wagler Metals and Memphis MFA**





**HOLIDAY CLOSING HOURS:**

Saturday Dec. 23 Closing at 2pm  
CLOSED Dec. 25 for Christmas

# MERRY Christmas

**SALE!**

Dutchman's  
**GIFT CARDS**

Make a Great Last Minute Gift

Available  
Online or In Store



Two Week AD → Dec. 13-23

<p><b>3/\$1</b> Seedless Texas <b>ORANGES</b> Fresh Load - New Low Price! 72ct. case - \$17.95</p>	<p>Broccoli 59¢ lb. <b>99¢</b> per lb. <b>Country Fried Beef Steak FRITTERS</b></p>	<p><b>\$2.99</b> 2 pound Stuffed Breaded <b>SHRIMP</b> we have ... • Fresh Oysters • Alligator &amp; Duck • Lamb Burger • Mince Meat &amp; Lard</p>	<p><b>49¢</b> per lb. Tyson <b>Cornish HENS</b> 2 pk IQF <b>Catfish Nuggets</b> <b>\$1.29</b> per lb.</p>	<p><b>79¢</b> per lb. Whole Bone In <b>Turkey</b> Fresh! <b>99¢</b> per lb. Bone In &amp; Boneless <b>HAMS</b></p>	<p>Boneless Skinless <b>CHICKEN BREAST</b> <b>99¢</b> per lb. Breaded Fully Cooked <b>Chicken Strips</b></p>	<p><b>3/\$1</b> 20 oz. <b>Crystal PEPSI</b></p>
--	---	---	---	--	--	---

<p><b>\$1.25</b> each Large <b>Pineapple</b> <b>Clementines</b></p>	<p><b>\$1.39</b> per lb. In Shell R&amp;S <b>Peanuts</b> 3lb. \$13.50 Cracked In Shell <b>Pecans</b> In Shell Mixed Nuts</p>	<p><b>\$2.59</b> 1 pound Alcam® <b>Butter</b> 8oz. <b>\$1.19</b> Amish Valley® <b>Cream Cheese</b></p>	<p><b>\$5.99</b> TWIN PACK - 2 / 20 oz. <b>Parmesan Cheese</b></p>	<p><b>\$3.49</b> TWIN PACK - 2 / 30 oz. <b>Miracle WHIP</b> Salad Dressing</p>	<p><b>\$2.49</b> TWIN PACK 2 / 16 oz. that's like 62¢ per 8oz. <b>COOL WHIP</b></p>
---	--	--	--	--	---

<p><b>\$1.29</b> 24 oz. White &amp; Chocolate <b>Almond Bark</b></p>	<p><b>\$1.99</b> per lb. <b>HERSHEY'S</b> Bulk Semi Sweet Chocolate Baking Chips</p>	<p><b>\$1.49</b> dozen Weiler - Medium <b>Brown EGGS</b></p>	<p><b>\$3.29</b> 6pack 8 oz. <b>Coca-Cola</b> GLASS BOTTLES</p>	<p><b>3/\$7</b> Sterzing's <b>Potato Chips</b> Christmas <b>FRUIT CAKES</b></p>	<p><b>\$2.75</b> per lb. sold in a 6lb roll Shallburg <b>MINI HORN Cheeses</b> Cheddar · Cojack · Colby</p>	<p><b>\$2.99</b> per lb. Hickory Smoked <b>TURKEYS</b> PREMIUM SMOKED MEATS with Natural Juices! <b>\$2.49</b> per lb. Skinless Shankless <b>Whole HAMS</b></p>
--	--	--	---	---	---	---

<p><b>FRUIT Gift Baskets</b> Available Check out our selection Give us a call with your order</p>	<p><b>\$5.29</b> 21 oz. Planters® <b>Mixed Nuts</b> <b>75¢</b> 12 pk <b>CANDY CANES</b></p>	<p><b>\$4.99</b> Xtra Large 52 oz. Original <b>Hidden Valley Ranch Dressing</b></p>	<p><b>\$1.69</b> 24 oz. Prairie Farms <b>Cottage Cheese</b> <b>99¢</b> Pint Prairie Farms <b>Half &amp; Half</b></p>	<p><b>\$5.99</b> plus deposit 24 pack cans <b>COKE Products</b></p>	<p><b>\$2.49</b> per lb. sold in a 6lb loaf Zimmerman's <b>Muenster Cheese</b> <b>\$4.99</b> per lb. Guggisberg <b>Baby Swiss CHEESE WHEEL</b></p>	<p><b>25% OFF</b> Squeaky Fresh! <b>CHEESE CURDS</b></p>
---	---	---	--	---	--	--

<p><b>10% OFF</b> <b>Bulk Candy</b> 100's of kinds to choose from</p>	<p><b>\$4.99</b> Quart Pickled Sweet <b>BABY BEETS</b></p>	<p><b>\$2.25</b> per lb. DutchCountry <b>Homemade NOODLES</b></p>	<p><b>\$24.98</b> regular \$44.98 SAVES \$20 Combine, Tractor, Wagon <b>Harvesting Set</b></p>	<p><b>99¢</b> <b>UNO Cards</b></p>	<p><b>\$74.98</b> 266050 LaCrosse <b>Burly Air Grip 18" Green Waterproof Insulated Hunting Boot</b></p>	<p><b>\$39.99</b> <b>SKECHERS</b> <b>Skechers D'Lites Womens Shoes</b></p>
---	--	---	--	--	---	--

**DUTCHMAN'S STORE** Division Street CANTRIL, IA (319) 397 2322

Sale Prices December 13-23, 2017

STORE HOURS • Weekdays, 8a.m. - 6 p.m. • Saturday 8a.m. - 5 p.m. • Sunday Closed

View our specials online - [www.DutchmansStore.com](http://www.DutchmansStore.com)





# Country View Store



Head Lettuce



Cauliflower



Apples, 3 lb. bag



Sunny Acres Honey



2% Milk

**Friday Mornings**  
**Fresh**  
**Doughnuts**



White Eggs



Spiral Sliced Ham

**Just arrived**  
**Creative**  
**Memories Supplies**

660-883-5388 • 3 miles south of Memphis, MO along Hwy 15 • Hours: Mon-Fri 8-6 & Sat 8-5:30

## HOOVER RENTAL

Manlifts • Telehandlers • Minihoes  
Skidloaders & Skidloader Attachments

**RENT BY**

Hour • Day • Week • Month • Long Term

DOZER NOW AVAILABLE FOR RENT

Call us for your construction needs!

**660-216-8230**

Mt. Sterling, Iowa

2 miles East of Cantril on Hwy 2



FIREWOOD FOR SALE:  
\$50 a load, you haul.  
PH: 641-208-5812 52

FOR SALE: New hand pallet  
jacks, 6,600 lb. capacity,  
standard size, \$300 each.  
Mast Engine Service, 19658  
Flora Ave., Bloomfield.  
PH. 641-722-3080. 50

NEED A CHRISTMAS  
GIFT? Schwinn Air-Dyne  
stationary bike with book  
holder. Like new condition,  
\$150. PH: 641-664-3093

## New Year... New Career

### Career Opportunities

- DON- Full Time
- CNA- Full & Part Time

#### Enjoy Additional Benefits:

- Free Meals
- Shoe and Uniform Allowance
- Scholarship and Tuition Reimbursement

Apply in person or at [www.abcmcorp.com](http://www.abcmcorp.com)!



#### Bloomfield Care Center

800 North Davis • Bloomfield, IA 52537  
(641) 664-2699 • [www.abcmcorp.com](http://www.abcmcorp.com)

*Enhancing Relationships*

ABC Corporation is an Equal Opportunity Employer

**Keep your critters**  
**warm this winter**  
**with a**  
**NEW BARN!**

- Metal Roofing
- Crews available
- FREE estimates!
- Call today!



Stocking framing nails by the box or pallet. Call for pricing!

## WAGLER METALS LLC

19049 Ice Ave., Bloomfield, IA • 641-722-3692

Gift  
Certificates  
Available!

**10% OFF**  
**108" Quilt Backing Fabrics**

**New Holiday**  
**Donut Glaze**  
White Chocolate Peppermint

### Deli Specials

Ham & Cheese Loaf \$3.79 lb.  
Smoked Cheddar \$5.49 lb.

Whirlpool

Speed Queen

Amana

MAYTAG

MEMPHIS  
MERCANTILE  
EST 2016

APPLIANCES  
SALES &  
SERVICE

South Side of the Square in Memphis

660-465-2345

MEMPHIS  
MERCANTILE  
EST 2010

115 E. Monroe • Memphis, MO

660-465-2102

Monday - Friday: 8:00 AM to 5:30 PM • Saturday: 8:00 AM to 4:00 PM / Sunday CLOSED





**Diesel Fuel Additive**

Finish your shopping here!

GREAT BRANDS  
Power Service & Howes

**Truxedo Tonneau Covers**

**\$375 Out The Door**

**CANTRIL TRUCK & TRAILER**  
**319-238-7367**  
101 North St. • Cantril, IA

**FOR SALE:** Small squares oat straw, \$3.50 each. 25 or more, \$3.00 each. **Levi Mast** 19636 Flora Ave. Bloomfield PH: 641-722-3080 51

**FOR RENT:** 1 or 2 bedroom apartments Milton, IA. Kitchen appliances & heat furnished. Very reasonable rent. PH: 641-757-0201

**NEW MATTRESSES FOR SALE!**  
Selling individually or in sets. Factory warranty.

**TWIN - FULL - QUEEN - KING**

**641-664-3060**



**Fairview Church of the Brethren**

Send our blessings unto you in the name of our Lord and Savior, Jesus Christ as we invite you to come and join us for our Morning Service  
**December 24, 2017 • 10:45 a.m.**  
Located at 1814 County Road T61  
(2 1/2 miles South of Unionville, IA)

**8 FT. RAILROAD TIES**

Great for landscaping and garden boxes

**SPILMAN AUTO PARTS**  
20311 Old Hwy. 2  
PO Box 31 • Bloomfield  
641-664-2463

For the person who has almost everything!

# Gifts of Food or Gift Certificates

We have many different sizes & styles to choose from.



### #300 BASKET:

2 Bananas, 3 Oranges, 3 Red Delicious Apples, 2 Golden Delicious Apples, 2 Pears, Small Bunch Grapes, Christmas Nuts & Candies.

**\$19.99**



### #400 BASKET:

3 Bananas, 6 Oranges, 3 Red Delicious Apples, 2 Golden Delicious Apples, 3 Pears, Large Bunch Grapes, Christmas Nuts & Candies.

**\$29.99**



### #600 BASKET:

3 Bananas, 8 Oranges, 3 Red Delicious Apples, 3 Golden Delicious Apples, 3 Pears, Large Bunch Grapes, Christmas Nuts & Candies.

**\$32.99**

### MEAT BUNDLE #1

- 6 Fresh Boneless Beef Charcoal Steaks, Approx. 12 Oz. Ea.
- 6 Fresh Boneless Pork Loin Butterfly Chops, Approx. 8 Oz. Ea.
- 3) 1 Lb. Pkg. Of 81% Lean Ground Chuck,
- 2) 3 Lb. Best Choice IQF Boneless Chicken Breasts

**\$49.99**

### MEAT BUNDLE #2

- 6 Fresh Boneless Beef Btm Round Steaks, Approx. 12 Oz Ea.
- 8 Fresh Boneless Beef Cube Steaks, Approx. 8 Oz. Ea.
- 6 Fresh Boneless Pork Sirloin Chops, Approx. 8 Oz. Ea.
- 1 Boneless Skinless Chicken Breast, Approx. 3 Lbs.

**\$45.99**

### MEAT BUNDLE #3

- 4 Fresh Beef Ribeye Steaks Approx. 12 Oz Ea.
- 6 Fresh Bone-In Pork Center Rib Chops Approx. 12 Oz. Ea.
- 3) 1 Lb. Pkgs 81% Lean Ground Chuck
- 5) 1 Lb. Pkgs. Keith's Fresh Sausage

**\$55.99**

**Call Dave 2 days in advanced to order meat bundles!**

**Call Shellie to order your fruit baskets!**

# Keith's Foods

207 E. Locust • Bloomfield, IA

**641-664-2539**



# Brrrrr!

**Brave the cold and come shop at**  
**Cantril Lumber & Hardware**

**Windows & Doors**  
**Liner Panel Steel**  
**Fiberglass & Cellulose Insulation**  
**Forced air heaters**  
**Great Stuff expanding foam**

319-397-2351 or 319-397-2354  
 Mon-Fri 7-5 & Sat 7-12



## GET READY FOR WINTER AT HAMILTON'S!

### BOLTS & NUTS

We carry grade 2-8 bolts



**GLOVES FOR ALL  
SIZES & AGES**



We carry  
**Cobett  
 Waters**



**In Stock: Muck & LaCrosse Insulated Boots**



Carhartt Jeans, Shirts, Bib Overalls, & Hats!!

**20% OFF Through December 24th!**  
 In Stock Only!

**WINTER NEEDS**  
 Howes & Power Service Diesel Additive



Snow Shovels & Ice Melt



**RED  
 BRAND  
 CATTLE  
 FENCE**

Come see our selection



**For-Most**  
 Livestock Equipment

Gift Certificates Available

## Hamilton Produce Co.

641-664-2459 or 1-800-469-7749  
 105 W. Franklin • Bloomfield, IA 52537

FOR SALE: 1,340 lineal ft. white hi-rib metal panels w/slight damage. \$1.00 a ft. Various lengths. Horizon Buildings 17549 Husky Trl. Drakesville, IA PH: 641-722-3505

## GINGERICH STOVES and PLUMBING

**Stoves & Furnaces**  
 WOOD • COAL  
 PELLET/CORN • GAS

- Many brands, sizes & styles to choose from
- Chimney SS & Blk. Stovepipe
- Plumbing Supplies

19091 180th St •  
 Drakesville, IA •  
 VM 641-664-2814  
 3/4 miles east of Drakesville,  
 south side

FOR SALE: Viking hay & corn elevator, 40 ft. Ibeam for log splitter & hubs with it, \$100; 11 HP DEK 5000 EL, \$350; Poulan Pro 18" saw, \$65; Donahue 3 pt big bale mover, 9 ft. forks, \$250; small trailer, 35"x4 ft., new tires, \$80; tilt bed skid loader trailer, \$200.

PH: 660-216-3715

52

## MAST VINYL WINDOWS

**THERMO-PRO WINDOWS**  
 Custom Size Is Our Specialty  
 Professional  
 Installation Available



**FREE  
 ESTIMATES**

22172 Hwy. 63  
 Bloomfield, IA 52537

800-206-9949

**Frozen  
 frog  
 legs**



**\$5.20 a lb.**

**Freddy's beer  
 battered thin  
 cut onion  
 rings, 40 oz.**



**\$2.99**

**Uncooked  
 beef & pork  
 patties,  
 12# box**



**\$1.75 a lb.**

**Frozen  
 broccoli  
 cuts, 2 lb.**



**\$5.40**

**Dark  
 chocolate  
 sea salt  
 caramels**



**\$1.25**

**Hormel  
 onion garlic  
 pork roast,  
 approx. 1.5#**



**\$1.85 a lb.**

**Classic  
 Creations  
 imitation  
 crab legs,  
 1 lb.**



**\$1.39**

**Dark chocolate  
 mint M&Ms,  
 24 ct 1.50 oz.  
 packs, 36 oz.  
 total**



**\$5.99**

**Keurig Hot  
 Swiss Miss light  
 hot cocoa mix,  
 12- 0.42 oz.  
 cups, 5 oz. total**



**\$4.00 buy  
 one get one free**

**Sweetened  
 dried  
 pineapple  
 tidbits**



**\$4.10 a lb.**

**Ball Park  
 foot long  
 franks,  
 16 oz.**



**99¢**

**Hidden  
 Valley  
 ranch dips  
 mix, 1 oz.**



**50¢**

**Kraft  
 parmesan  
 cheese**



**\$1.99 a lb.**

**New  
 load of  
 yogurt!**



**CHECK IT OUT!**

**Dole Mixations,  
 variety of  
 flavors, 4- 4  
 oz. cups, 1 lb.  
 total**



**\$1.25**

**Philadelphia  
 cream cheese,  
 30 lb.  
 block**



**\$29.95**

**Grand Buffet  
 Tartan Plaid  
 holiday  
 glassware, mug  
 sets, dip mix  
 sets & more!**



**\$2.99 - \$9.99**

**20 pc.  
 Christmas  
 dinnerware set,  
 service for 4**



**\$24.99**

**FRESH HOMEMADE CANDIES!**

**Peanut Brittle • Variety of Fudge  
 Nut Clusters • Toffee • Much More**

**Sale good Wednesday, December 13th through Tuesday, December 19th.**

Mon. - Sat.

8:30am - 5:00pm

VM: 641-664-1187

19686 Hwy. 2, Approx

2 miles west of

Bloomfield

**Highway  
 2  
 DISCOUNT  
 Groceries  
 L.L.C.**



# HAY FOR SALE

## BIG SQUARE BALES OF MIXED GRASS HAY.

### 660-216-0938

**MAST OVERHEAD DOORS, INC.**  
105 S. Dodge St., Bloomfield, IA 52537



**GARAGE DOORS**  
Residential & Commercial  
Doors & Operators

641-680-2016

**CALL FOR AN  
APPOINTMENT**

Quality Products  
+ Quality Workmanship  
= Quality Customers

Free Estimates We Fix Doors



**But it is never too early to lock in  
early seed discounts! CALL TODAY!**



**PIONEER**  
BRAND PRODUCTS

603 S. West • Bloomfield, Iowa • 641-208-6890

FOR SALE: Hedge posts, lots of 10ft. corners. PH: 660-216-7516 52

FOR SALE: 8x8 walk in cooler, \$1,600 OBO. PH: 660-216-1710 52



*Specializing in Aluminum Grain Trailers  
Repair & Rebuild*

**We install tarps & power tarps**

**We now offer frame correction**

3 miles east of Gorin, Mo. on Route U  
**660-341-6027**

FOR SALE: Registered Holstein cows. High production, top genetics. Justin Wiebe.

PH: 641-208-6703 50

FOR SALE: 2006 Buick Lacerne for parts, motor & transmission good, \$450. Set of 4 new tires with wheels, \$500. PH: 660-341-4499

FOR SALE: 2006 Chrysler Town & Country Limited, 7 passenger van, tan with tan interior, high miles but runs good, like new tires, \$875, PH. 660-341-7263. 50

FOR SALE: 4 Aluminum storm windows (26-42) \$5 a piece. Wood stove brick lined glass door with blower, 30,000 BTU, \$100. PH: 641-936-7255 51

**Winter is coming!**  
*Is Your Boat & Camper Ready?*  
Call or stop in today to see how we can help you get your toys winterized!

**Whitney RV & Marine**  
Scott and Jennifer Poole: Owners  
**641-684-8284**  
9418 151st Ave., Ottumwa  
Monday-Friday: 8:30 AM - 5:30 PM  
Saturday: 8 AM - 1 PM

FOR SALE: 2 twin box springs with king size metal bed frame & wooden head boards, good condition. PH: 641-208-6010 51

FOR SALE: Young butcher sows, NON-GMO, antibiotic free, NON-Confinment, 50¢ a pound. Ernest Graber PH: 641-929-3056 50

**C.H.I. MIDWEST Overhead Door**  
21387 Route V64  
Keosauqua, IA 52565  
**660-216-0812**  
Our goal is to keep your doors rolling smooth!  
Sales • Parts • Service ~ Free Estimates  
We sell new doors and openers or we'll service your old one.

## END OF YEAR No-Reserve DEALER & FARMER AUCTION

**THURS., DEC. 28<sup>TH</sup>  
STARTING AT 8:30 A.M.**

**SULLIVAN AUCTIONEERS, LLC'S  
AUCTION FACILITY,  
HWY. 136 E • HAMILTON, IL**

**CHECK OUR WEBSITE OFTEN —  
LISTING & PHOTOS WILL BE UPDATED DAILY!  
www.SullivanAuctioneers.com**



**TRACTORS:** (2) '14 C-IH 580 QuadTracs, PTO, guidance, 1,994/2,334 hrs.; '08 C-IH 485 4WD, 2,706 hrs.; C-IH 335 Magnum, 1,739 hrs.; C-IH 8920 Magnum, 4,421 hrs.; '13 Challenger MT765D, 1,739 hrs.; '15 JD 8320R, 930 hrs.; '13 JD 8335R, 3,214 hrs.; '12 JD 7230R, 1,135 hrs.; '16 JD 6210R, 2,790 hrs.; '14 JD 6170R w/loader, 2,510 hrs.; '16 JD 6120R, 260 hrs.; '14 JD 6115M, 1,650 hrs.; '14 JD 5075E, loader, 250 hrs.; '06 JD 7820, 3,293 hrs.; '05 JD 7520, 4,670 hrs.; JD 8960 4WD, 4,896 hrs.; C-IH 9350 4WD, 6,458 hrs.; '03 NH TS100A MFWD, loader, 390 hrs.; '08 Mahindra 7110, loader, 2,500 hrs.; C-IH 7140 2wd; JD 7520 4WD; '82 JD 4640; '82 JD 4440; JD 4430; JD 4230 w/loader; JD 4020; JD 3020 w/loader; AC 8050; White 2-155; White 2-135. **COMBINES:** '13 JD S670, 1,275/903 hrs.; '08 JD 9570STS, 2,321/1,590 hrs.; '12 C-IH 8230, 1,648/1,097 hrs.; '08 C-IH 8010, 2,123/1,661 hrs.; C-IH 7010, 1,846/1,257 hrs.; JD 9650STS, 4,378/3,098 hrs.; Gleaner R65, 2,691/1,988 hrs.; C-IH 2366, 3,158/2,249 hrs.; C-IH 1660; JD 6620 Turbo; C-IH 3020 35'; (3) JD 608C; (2) JD 893; (2) JD 630F; C-IH 2208; C-IH 2020 25'. **SPRAYERS & APPLICATORS:** '09 C-IH 3320 SP; '04 C-IH SPX3185 SP; '16 Fast 9518FT PT; '10 Fast 9518 PT; Hardi Delta 3-pt.; Progressive 15-knife NH3 bar; (2) '15 B-B 2k gal. NH3 nurse tanks; Fast 1,000 gal. inboard tanks. **PLANTERS & DRILLS:** '15 JD 1775NT 24R30" ExactEmerge; '14 C-IH 1255 24R30"; '10 Monosem 24R30" twin-row; White 8180 16R30"; C-IH 955 16R30"; (3) JD 1760 12R30"; Kinze 3500 8/15; Kinze 2600 16/31; '10 JD 1590 15'. **TILLAGE EQUIPMENT:** '14 JD 2210 32" FC; Landoll 7431-33 VT; Sunflower 1434 30" disk; '08 C-IH 730C ripper; Sunflower 4411-05 ripper; NH ST250 50" FC; JD 630 24" disk; JD 726 30" finisher; DMI 45" FC; IH 490 22" disk. **GRAIN CARTS:** Brent 880; (2) Kinze 840; Killbros 1800; Brent 472; EZ Trail 850. **MISC. FARM EQUIPMENT:** Meridian 4SE tender; (2) Meridian 240RT tenders; '16 Doyle field conveyor loader; '11 JD HX15 batwing mower; Farm Star 700HR hose reel; Hesston 4750 & 590 large square balers; Brent 740 gravity wagon. **TRUCKS & TRAILERS:** '15 Ford F350 service truck (1,920 miles!); '15 Ford F250 w/plow; '14 Ford F250 flatbed; '14 GMC 3500HD dually; '07 Ford F550 service truck; '01 Ford F550 service truck; '06 Chevy C5500 crew cab service truck; '07 Freightliner Century; '06 KW T600; Ford L9000 vacuum truck; 53' steel stepdeck; several cargo trailers. **CONSTRUCTION EQUIPMENT:** Komatsu PC228US LC excavator; Cat D5M LGP; Cat D7F; Vermeer RTX750 trencher; Vermeer D16X20 boring machine; Cat D3 dozer; Cat 268B skidsteer; Astec trencher; Ditch Witch 255SX trencher; Vermeer RT950 trencher; Ditch Witch JD920 boring machine; Elgin street sweeper; (3) reel trailers; Sweepster broom for skidsteer; Drott 5550 crane truck. **LARGE SELECTION OF UTILITY VEHICLES & LAWN MOWERS!**

**SULLIVAN AUCTIONEERS, LLC • TOLL FREE (844) 847-2161  
DETAILED LISTING & PHOTOS ONLINE! www.SullivanAuctioneers.com  
IL License #444000107**

## FOX VALLEY WELDING

MILLING • LATHE WORK  
STEEL SALES • FABRICATING  
**641-656-4684**

*At the birth of our holy Savior, we  
want to wish you much peace,  
joy and enlightenment.*

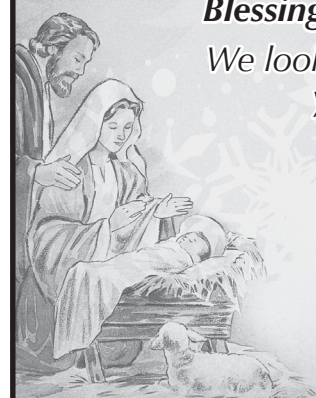
**Blessings To You!**

*We look forward to serving  
you in 2018.*

**Closed  
Dec. 25<sup>th</sup>-Jan. 1<sup>st</sup>**

**Reopen  
Jan. 2<sup>nd</sup>**

Bryan: 660-341-8217  
Elvin: 641-799-4068



**Winter Hours: M-F • 8-5:30  
12190 East Hwy. 2 • Milton, IA**



# DAIRY FARMERS

## Make plans to attend the Triple-Hil Sires meeting in Memphis, MO!

Don't miss out on this occasion! Come and learn about Triple-Hil Sires a Holstein bull stud from Maryland and our common sense approach to breeding profitable cows.

We are excited to have Dean Jackson from Mt. Glen Farms as our guest speaker. Everybody is entitled to a theory. And in today's dairy business, few folks are without one. Theories are fine, but after awhile the results must prove the theory - either true or false. We think that many decades of breeding in his herd has sufficiently proven a fundamental truth about breeding cows - Balance breeds greatness.

The Jacksons have developed a truly outstanding group of holsteins. Their philosophy is to breed for high-scoring, high-producing cows that stay around. The amazing thing about this herd is that over 50% of the cows in the barn are sired by a bull with their own Mt. Glen prefix.

Give us a call to reserve your seat. Don't miss out on the years of wisdom and experience that Dean will share!



R.S.V.P. by December 28th  
to reserve your seat.  
Call Triple-Hil Sires at  
**1-855-955-2100**

**Date:**  
Thurs. January 4, 2018

**Location:**  
Keith's Cafe  
470 S Market Street  
Memphis, MO 63555

**Speakers:**  
Galen Weber, Triple-Hil Sires, MD  
Dean Jackson, Mt. Glen Farm, PA

~ Registration @ 9:00AM  
~ Meeting @ 10:00 AM  
~ Free lunch  
~ Semen Discounts  
~ Door Prizes



The bulls that were bred to be cows

## FOR SALE

Driveway Fabric Rolls  
Commercial, Heavy Duty,  
Designed for Heavy Traffic

12' 5" Wide  
432' Long  
\$370/ roll

**660-216-0938**

**FOR SALE:** New small wood stove, never had a fire. Also small square bales of grass hay in barn. Heavy metal saddle compartment for horse trailer, holds 3 saddles, 4 ft. tall.

PH: 660-956-5973 51

**WANTED:** Used pallets, will pay \$1.50 per pallet if in decent shape. **FOR SALE:** firewood stacked on pallets.

Jonas Kurtz  
PH: 641-929-3780 51

## FRIESEN CONSTRUCTION

New Houses  
Remodeling  
Garages Electrical  
Plumbing  
Custom Cabinets

Arlen 664-3270  
Cell 641-208-0170  
Bloomfield, Iowa

**FOR SALE:** Cross Bow Excaliber Axiom with case & accessories, 2 years old, \$475 firm.

PH. 641-642-8554. 50

**FOR SALE:** 2 twin box springs with king size metal bed frame & wooden head board, good condition.

PH: 641-208-6010 51

**FOR SALE:** Large wood or saw dust furnace with duct work, make offer.

Oakwood Industries LLC  
Memphis Mo

PH: 660-465-2068

50

**FOR SALE:** Tractor chains for older J.D. B; 20 ton log splitter; Deck for J.D. lawn mower N-S.T.X38, new belt & blades. Douds

PH: 641-919-4617

51

## HELP WANTED

**Piper Auto Salvage** is looking to fill the following positions:

• **PARTS PULLER**

• **E-BAY Help** (must be familiar with E-BAY)

Apply in person at

**PIPER AUTO SALVAGE**  
641-664-1820 or email  
eric@piperautoparts.com

**FEED & SUPPLY**  
**641-722-3045**  
17599 200TH STREET • BLOOMFIELD  
STOP BY MON.-FRI. 8-5 & SAT. 8-12

**Complete line of bagged feed in stock!**

**CUSTOM BULK**

Non GMO Poultry Feed we deliver!

**BIRD FEEDING NEEDS** WILD BIRD SEED  
SUNFLOWERS/CHIPS

**FOR SALE:** 2 Newton Club Seats at Newton Raceway. Best location at the track. Many benefits. Will sell for what I paid. Rumor has it there will be a NASCAR Race in the next couple years. PH. 573-723-0709 for more info. TF

**TROPHY RIDGE**  
TAXIDERMY  
*Second Only to Nature*  
Shoulder Mounts ~ Custom Mounts  
Pedistals ~ Life-Size ~ Rugs

Mike & Cindy Tinkham  
14977 293rd St.  
Bloomfield, IA 52537  
641.929.3624/319.230.6215  
mtink@netins.net

## COUNTRY CUT MEATS

Closed Sundays

**Deer Processing**  
*Basic Cuts - \$65*

Ring Bologna  
Summer Sausage  
Snack Sticks

**Custom Butchering 641-675-3683**  
Aaron Martin • 26824 Vetch Ave. • Pulaski, IA

## MIX 30 IMPROVES COLD WEATHER TOLERANCE

- Mix 30 contains a concentrated source of linoleic fatty acid supplied from the corn and soy based fat.
- Diet energy is necessary for body heat production & maintaining body condition.
- Linoleic acid in Mix 30 is a major supplier of fuel in the cells to create body heat.
- Mix 30 improves new born calf survivability.

**Mix 30**  
www.mix30.com

**HARRIS DISTRIBUTING**  
West Grove, IA  
641-929-3379  
1-800-727-5589





It's beginning to look a lot like Christmas around here and that means it's time to offer our best wishes to our neighbors, customers, associates and friends. We appreciate your giving us so much to celebrate this holiday season.

## Clearview Animal Hospital

601 Weaver Rd., Bloomfield, IA 52537

641-664-2399 • Gift Certificates Available

DR. DAVID RASMUSSEN DR. NANCY HOUGLAND

DR. MARILYN BROWN DR. JON LOGTERMAN

clearviewanimalhospital.com



## We Will Be Closed

Monday, December 25th &  
Monday, January 1st

## Check with us for all your 2018 SEED NEEDS!



**CHAMPION  
SEED**  
**FINISH  
STRONGER**

## HORN'S

**SALES & SERVICE**  
**641-208-6233**

609 S. Madison  
Bloomfield

FOR SALE: Fresh cut hedge  
posts, all sizes. Milton, IA  
PH: 641-680-1183 50

FOR SALE: 8" x 54' auger.  
VM: 641-722-3300. 50

## Hawkins - Harrison Insurance



SHOPPER ADS CAN BE DROPPED OFF HERE!

*Proud to be your partner.*

P.O. Box 365  
Lancaster, MO  
63548  
660-457-3020

103 W. Monroe St.,  
Memphis, MO  
63555  
660-465-8533

FOR SALE: 2008 Chevy  
Silverado X-cab, 154k miles,  
1 owner, well cared for,  
topper, running boards,  
Line-X, chrome pkg., 5.3  
V8, dark blue/gray interior,  
\$14,500.

PH: 641-642-8554. 50

WANTED: 8" x 60' auger in  
good condition with swing.  
Hopper flexible on length &  
diameter.

VM: 641-722-3300. 50

FOR SALE: 1) black & white  
and 1) brown & white male  
toy Australian Shepherds,  
vaccinated, 8 weeks,  
declawed, \$450 OBO. Eli  
Gingerich 16848 Eagle  
Blvd. Drakesville, IA 52552  
VM: 641-722-3016 Ext. 2 51

NOTICE: Sharpening chain  
saw and carbide chains.  
Sharpening Center  
641-664-3677. 50



McAfee/Hayes Auction Service, LLC

375 S Johnson • Kahoka, MO

660-727-3796

www.mcafeeauctionservice.com

## ABSOLUTE MACHINERY & PERSONAL PROPERTY ESTATE AUCTION

**FRIDAY DEC 29<sup>TH</sup> - 10 AM**

Sale conducted 2 miles North of Arbela, MO on  
Hwy H then East 1/2 mile on Co Road 470, then  
South 1/4 mile on 421 to sale site.



Selling 2009 CASE IH Maxxum  
125 Pro 4WD cab tractor, 1703  
hours, Sells complete w/ CASE  
IH loader; (4) Non running  
CASE tractors, 730 (G), 830  
(D), 1030 (D) 1370 (D); Misc.  
Equipment; Livestock chute  
and equipment; Farm and Shop  
Related; Misc. Household

**RETA VIOLET KITTLE ESTATE**  
APRIL S. WILSON REPRESENTING ATTORNEY AND  
KEVIN D. BROWN REPRESENTING ATTORNEY

FOR SALE: Upright  
deep freeze, Fridgidare,  
white, 17.1 cu. ft. excellent  
condition. PH: 641-642-3652

~~FREE: Queen mattress &  
box springs from a non  
smoking home.~~  
PH: 319-293-9150 51

## HAY FOR SALE!

## Big Square Bales Of Alfalfa Orchard Grass Mix.

## 660-216-0938



## Beds for all makes & models!

## WEAVER AUCTION & EQUIPMENT, LLC

Lancaster, Mo.

**Tyler Weaver • 660-216-9735**

**Tanner Weaver • 660-216-9774**

FOR SALE: Firewood at RJ  
Lumber, \$15 a pickup load.  
18989 160th St., Drakesville,  
IA 52552. TF

FOR SALE: 40 young blk &  
bwf cow calf pairs. Call to  
look at.  
PH: 660-341-0371 51

FOR RENT: 2 bedroom  
mobile home 12 miles SE of  
Bloomfield.  
PH: 641-208-3176. 51



## berholtzer

### Farm Supply LLC

Specializing in feeding equipment for dairy & beef.



**\$16,300**

New Jamesway underfloor pit  
pump, 8"x 8", trailer type, 2  
agitation nozzles with hydraulic  
gate valves.



**Call For Price**

NDE 1552 vertical mixer,  
road light kits, 8 carbide  
knives, 54" conv.,  
640 XL scale



**JUST IN!**

Valmetal V-Max 630 dual  
auger, vertical mixer, front  
unload with 48" folding  
conveyor, rubber top, 640  
XL scale, road light kit,  
extra carbin knives.

**Rt. #1 Box 84 • Memphis Mo.**

**Phone/Fax: 660-945-3053 • Cell: 660-341-8234**



## WORKING NIGHT & DAY FOR YOUR FARM

See us today for your early  
seed order discounts and your  
upcoming fertilizer needs.

## Crop Services, Inc

John & Kathy Bos, Owners

Drakesville, IA  
641-722-3293



## Kirksville Livestock LLC

Kirksville, Missouri

**SALE DATES: JANUARY 2018**

**FRIDAY, JAN. 5TH**

**Special Bred Cow Sale • 6:00 PM**

**MONDAY, JAN. 8TH**

**Special Sheep & Goat Sale**

**MONDAY, JAN. 15TH**

**Special Cattle Sale**

**MONDAY, JAN. 22ND**

**Regular Sale**

**SATURDAY, JAN. 27**

**Midstates Horse Sale • 10:00 am**

**MONDAY, JAN. 29TH**

**Special Cattle Sale**

**"Proud to Serve Area Livestock Producers"**

**YOUR BUSINESS IS VERY MUCH APPRECIATED**

We are open on Sundays to receive your livestock.

Phone for information: Patty Foster, Office 660-665-9804

Chuck Ambrosia....660-342-3530 Al Ashmead..... 660-216-8730

Caleb Randolph ....641-919-8539 Doug Fleshman.....660-626-7148

Harry Durlinger Daniel Smith..... 660-341-8396

Mark Herbold.....515-720-8667 Jeremy Jarman .... 660-341-9879

Cory Cook .....660-651-7453

**Visit our website at [www.KirksvilleLivestock.com](http://www.KirksvilleLivestock.com)**

**Yoder**  
GLASS & WINDOW  
641.722.3667

**VINYL WINDOWS**

- Replacement
- New Construction
- Many Glass & Color Options

**EnergeX Windows** **Free Estimates**

19467 Driftwood Blvd.  
Bloomfield, IA 52537  
**Call Today: 641.722.3667**


**FOR SALE:** Solid oak rolltop desk.  
PH. 660-342-2258. 50

**TRI-COUNTY SHOPPER CLASSIFIED AD DEADLINE IS FRIDAY, 5 P.M. EVERY WEEK.** Classified ads must be paid for in advance. Mail your ad to Tri-County Shopper, P.O. Box 168 Bloomfield, IA. 52537. For questions call us at 641-664-1333.

**FOR RENT:** 1 bedroom units, all utilities paid, Gorin, MO. **PH: 660-465-2975, 660-341-8655 or 660-341-4907** 51

**FOR SALE:** Polaris 400 4x4, runs good, near new tires, \$1,200. **PH. 641-722-3621.**

**ANGUS BULLS**  
17 MO. OLD - IDEAL FOR FALL BREEDING




★ CALVING EASE  
★ GROWTH  
★ THICK  
★ GOOD DISPOSITION

Sired by Musgrave Reachout 530

**SELECT YOUR BULL NOW**

Open heifers show prospects. Will make great cows. Top blood lines!

**DORAN BOLLMAN**  
PULASKI, IOWA  
**641-675-3467**

Scotland  County  
**LIVESTOCK AUCTION**

P.O. Box 111 • Hwy 15 North • Memphis, MO  
**660-465-7213 • Jerry & Barb Blomme**  
**660-341-0069 • Grant Blomme**  
**660-216-4674 • Rodney Garman**

## SPECIAL CATTLE SALE

**Sat., December 16th • 12:30**

EARLY LISTINGS

8 Black & BWF bred heifers, due Jan. 21st, AI bred to Bismark

20 Black Show-Me-Select bred heifers

14 Black bred cows SS, due March

10 mix bred cows, P3

50 Char X str & hfrs, 450 - 600#

20 Black str & hfrs, 500#

30 Black str & hfrs, 550#

19 mostly black str & hfrs, 600#

12 Black heifers, 600#

18 Black bulls & hfrs, 500#

20 Char x str & hfrs, 550#

25 Black str & hfrs, 600#

30 Black str & hfrs, 500#

15 Red str & hfrs, 650#

Expecting more cattle by sale time.

**Results for Dairy Sale, Wed., Dec. 6th**

### SPRINGERS:

\$800 - \$1275

### FRESH COWS

\$800 - \$1300

### OPEN HEIFERS

340# - \$450.00

447# - \$650.00

448# - \$600.00

532# - \$850.00

570# - \$810.00

### STARTED CALVES, LESS THAN 300#:

\$175 to \$295

### HOL VEALS:

\$140 to \$190

### HOL STEERS:

345# - \$120.00

350# - \$109.00

361# - \$120.00

390# - \$101.00

412# - \$100.00

413# - \$99.00

462# - \$102.00

486# - \$102.00

528# - \$95.00

620# - \$92.00

**Thank you  
buyers &  
consigners!**

## OUR NEXT DAIRY SALE

**will be January 10th**

**(we are changing the sale to the 2nd Wednesday of the month)**

**Market Results for Sat. Dec. 9th**

### BULLS:

430# - \$179.00

### STRS & HFRS

Light Test

### VEALS

\$75 to \$85

### BRED HFRS

\$1750

### BULK OF THE COWS

\$44.00 to \$59.75

### BULLS

\$76.00 to \$83.50

**[www.ScotlandCountyLivestock.com](http://www.ScotlandCountyLivestock.com)**

**FOR SALE:** Oak entertainment center; 1930's cherry buffet; old desk w/7 drawers; dressing table with tiger stripe mirror; 2 drawer; burdgary couch, 3 years old; 3 old chairs, all different. All in good condition. Can text pictures. **PH. 641-642-8554.**

**FOR SALE:** 15 registered Angus 18-month-old bulls. Feed efficiency tested. All weights and EPDs available. Excellent quality. Breeding season guarantee. **Werner Family Angus, Diagonal, IA. 641-344-5059. WernerFamilyAngus.com.**

## KEOSAUQUA SALE CO.

205 I I Hwy. I, Keosauqua, IA

### Results from Dec. 9th

Butchers ..... \$38.00-45.00/cwt

Sows ..... \$33.25-45.00/cwt

Feeder Lambs.....\$159.00-230.00/cwt

Fat Lambs.....\$125.00-132.00/cwt

Ewes ..... \$50.00-67.50/cwt

Kid Goats 40-70# .....

.....\$82.50-165.00/hd

Nannies.....\$80.00-180.00/hd

**Pound cows** Low yielding \$41.00-54.50/cwt  
High yielding \$54.00-62.00/cwt

**Pound bulls** \$73.00-80.50/cwt

## SPECIAL CATTLE SALE SAT DEC 16TH

105 hd 400-650 blkx & few charx str & hfrs - J March

30 hd 400-600 blkx str & hfrs - A Goodhouse

20 hd 600-700 blkx str, 2 rds vaccine - Yeager

17 hd 600-700 blkx hfr, green - Yeager

35 hd 550-675 bwf & rwf str & hfrs, GT - J Cole

65 hd 650-700 blk & bwf str, 2 rds shots - Barnhart

65 hd 725-825 blk simmx & bwf str, P.C. - S Oilar

21 hd 550-650 blk str & hfrs, GT - L Francy

35 hd 700-850 blk & bwf str & hfrs - K Walljasper

35 hd 550-750 blkx str & hfrs, GT - D Walljasper

70 hd 450-700 bwf & rwf str & hfr, GT - G Foecke

## BRED COW SALE SAT., DEC. 23TH

Watch website for early listings [www.keosauquasaleco.com](http://www.keosauquasaleco.com)

**Thank You For Your Business!**

For More  
Information Contact:

Selling Times

Hogs.....9:30 a.m.

Sheep & Goats.....10:00 a.m.

Outside Merch.....11:00 a.m.

Cattle.....Noon

Keosauqua Sale Co.  
319-293-3508

Bill Goehring  
641-919-9365

**[www.keosauquasaleco.com](http://www.keosauquasaleco.com)**

**TRAILER SALE:** Used 6X12 Black ramp door tie downs & spare \$1,499.00, 2014 Black & Orange 6X12 Aluminum wheels ramp door V-nose \$2,299.00; Special on 25 Aluminum utility trailers; Free Spare with all 14,000# SKID Loader trailers; Extra tall 7'X14' UTV cargo trailers, V-nose, 80" ramp door. Over 150 trailers IN-STOCK! For inventory & prices: [www.FortDodgeTrailerWorld.com](http://www.FortDodgeTrailerWorld.com) 515-972-4554 (MCN)

**FOR SALE:** Solid oak early American double pedestal dinette set, table measures 44"W x 64"L plus 2 18" leaves. 2 captains chairs, 4 regular chairs, \$1,650 new, asking \$600. Excellent condition.  
**PH: 641-455-8829** 51

**FOR SALE:** Maytag washer & dryer in excellent condition. \$200 for the set  
**PH: 319-316-3619 or 641-242-1021** 50

**DOES WARM WINTERS SOUND GOOD??** Bring your RV down to the warm Rio Grande Valley. J-5 RV Park in Mission Tx. will welcome you with a country setting, friendly people and lots of activities to keep you busy. We have a special for first time visitors. Phone us at 956-682-7495 or 515-418-3214 Email j5rvparktx@gmail.com Tom and Donna Tuttle, Managers (MCN)



**If your vehicle is demanding to be cleaned, let us do the dirty work!**

**We also do:**  
Auto Body Shop  
Auto Glass  
Automotive Restoration

**KARR COLLISION CENTER & AUTO DETAILING**  
Shawn Scott, Owner  
701 Karr Ave. • Bloomfield, IA  
641-664-1024





# Goods Ag Repair

46502 St. Hwy C • Baring, MO • 660-892-4717

**NOW** is the time to schedule your  
**combine & headers** for  
**inspection, cleaning & repairs!**

**\$** All combine work scheduled  
before **JANUARY 1ST** gets a  
**\$10** per hour labor discount! **\$**

**Doing most tractor & combine repairs:**  
**Major • Minor • Mechanical • Electrical**  
**Air Conditioning • Hydro • Headers • Engines**

## CONSIGNMENTS WANTED

Southern Iowa Produce Auction  
Sales every 2nd & 4th Saturday, November thru March

**Next Sale**  
**Sat., December 23rd - 10 A.M.**

For advertising your consignments they must be  
called in by 10 A.M. Monday on the week of sale.

Unloading available by appointment.

**19141 Ice Ave. Bloomfield, IA**  
Call 641-722-3623 on auction days or leave a message.  
Market Report or Information call 712-432-8593

**FOR SALE:** 2001 GMC  
pickup, new tires, complete,  
360 see through locking  
topper w/3 doors, auto, air,  
130,000 miles, asking \$1,500  
OBO. 5 cast iron mechanical  
banks, \$30 each.  
PH: 641-777-7197 51

**FOR SALE:** Scifit exercise  
bike, electronic heart rate  
monitoring system, calorie  
burn monitor, leg & arm  
exercise control. Kincart  
Physical Therapy, \$400.  
PH: 641-208-0318 51

**FOR SALE:** Calf-tel calf  
huts, individual & mega  
hut; 2004 Dodge Grand  
Caravan, motor going bad,  
make offer; Maytag H.E.  
washing machine.  
PH: 641-208-5377 or 785-285-  
2473 50

**HOLIDAY SPECIAL:**  
Golden Retrievers, born  
9-17-17, 6 males, 2 females,  
purebred, ACA registered,  
shots & wormed, \$300!  
PH: 660-342-2657. 50

**YODER EQUIPMENT**  
BLOOMFIELD, IOWA  
**GEO STAR & PRIDE OF THE FARM**  
ENERGY FREE WATERS  
**Extra Heavy 10 Gauge Bale Rings**  
• CONTINUOUS FENCING  
• LARGE VARIETY OF FARM GATES  
19887 Jade Ave  
2 1/2 Miles W of Bloomfield  
V.M. 641-664-2797

**SIDWELL SEEDS**  
**Queen City, MO**  
**660-766-2737**

Call Sid today for  
all your 2018  
seed needs.



Let  
**Pfister**  
help your  
production  
grow.



# 'Tis the season for CATTLE PRODUCTS

**7.5% OFF BUNK FEEDERS**

- High density polyethylene liners eliminate rust
- Solidly welded one-piece main frame of tubular steel
- Built strong to withstand the test of time, weather, and animal abuse



**BW Behlen COUNTRY**

SALES GOOD THROUGH DECEMBER 31 • \*DETAILS IN STORE

**OZARK HEAT PELLETS**  
**\$3.50\***

- 40 lb. bag
- Environmentally-friendly alternative to petroleum products
- Regularly \$3.95

**NEED GIFT IDEAS?**  
WE HAVE A GREAT SELECTION OF:  
gloves, boots, toys,  
and much more!

**NEW PRODUCT**

**Hometown ANIMAL HEALTH**  
660.465.2967 • www.hometownanimalhealth.com  
18743 US Hwy 136 • Memphis, MO 63555 • On Highway 136 west of Memphis

**NUTRITION • MEDICAL • PET • FARM • APPAREL**

**NEMO FEED** AUTHORIZED DEALER OF NEMO FEED.

**FOR SALE:** motor & trans-  
mission for 1998 Dodge  
Ram Van. 318 motor, auto.  
transmission, 78,000 miles,  
\$650; 8 double hung vinyl  
replacement windows,  
various sizes, \$35 each.  
Call for sizes; 50 gal.  
propane water heater, \$25;  
4 235xR75x15 6 ply tires,  
white lettered, nearly new,  
\$75 each.  
PH: 660-216-1057 or 660-  
216-7190. 50

**Garages • Pole Barns  
Commercial**

**Free  
Estimates**

**LAN-DOW  
BUILDINGS**

We Stock a  
Complete Line  
of Building  
Materials

**Lancaster  
Lumber, Inc.**

Complete  
Buildings or  
Packages  
Available

Toll Free 800-424-5071 Fax 660-457-3133

Hardware • Plumbing • Electrical • Paint  
500 Green Street • Lancaster, MO 63548

**STAY ON TRACK**  
WITH DAVIS COUNTY TIRE'S  
**TRUCK SERVICE CENTER.**

**WE TAKE CARE OF IT ALL!**  
SEMS, MOTOR HOMES, BUSES, DUMP TRUCKS, ETC.

MAKE US YOUR TIRE SHOP WITH ALL MAJOR BRANDS AVAILABLE!

YOU HAVE ENOUGH THINGS TO WORRY ABOUT DURING THE HOLIDAYS. WE'LL MAKE SURE YOUR AUTOMOBILE ISN'T ONE OF THEM!

**GIFT CERTIFICATES AVAILABLE**

**DAVIS COUNTY TIRE**

108 Smith Street • Bloomfield  
TOLL FREE 1-888-855-8740  
641-664-1801



**BLOOMFIELD****LIVESTOCK MARKET**

Wed., December 20th..... Fat Cattle, Slaughter, Cow & Bulls ..... 9:00 AM

.....Feeder, Calf & Yearling Sale..... 11:30 AM

Wed., December 27th...IMBIO Calf Sale (No slaughter sale that morning) .... 7:00 PM

Wed., January 3rd..... Fat Cattle, Slaughter, Cow & Bulls ..... 9:00 AM

..... New Year Calf Sale ..... 11:30 AM

Mon., January 8th.....Speical Bred Cow, Heifer & Pair Sale ..... 6:00 PM

Wed., January 10th ..... Fat Cattle, Slaughter, Cow & Bulls ..... 9:00 AM

.....Speical Calf & Yearling Sale..... 11:30 AM

### Reports from Wednesday, Dec. 6th, 2017 • Selling 1315 Head

**HEIFERS**

Ronnie Mason ..... 5 BLK ..... 342 ..... \$186.00  
 Lisa Wells ..... 23 BLK ..... 621 ..... \$162.75  
 Ronnie Hart ..... 6 BLK ..... 440 ..... \$161.00  
 Debbie McGoldrick ... 44 BLK ..... 596 ..... \$159.00  
 Dave Henderson..... 17 BLK ..... 672 ..... \$158.50  
 Gary Gruwell..... 9 BLK ..... 484 ..... \$156.00  
 Erwin Ballanger ..... 8 BLK ..... 497 ..... \$154.00  
 Leo Hunting ..... 22 BLK ..... 566 ..... \$153.50  
 Debbie McGoldrick ... 20 BLK ..... 515 ..... \$152.50  
 Herman Holton ..... 10 BLK ..... 530 ..... \$152.50  
 Gary Lindquist ..... 9 BLK ..... 503 ..... \$152.00  
 Ronnie Hart ..... 30 BLK ..... 591 ..... \$151.00  
 Ed Good ..... 74 BLK ..... 754 ..... \$147.85  
 Jim Allen ..... 8 BLK ..... 786 ..... \$144.75  
 Ron Eddy..... 15 BLK ..... 849 ..... \$141.75  
 Taylor Farms..... 35 BRC .... 841 ..... \$139.00

**STEERS**

Leo Hunting ..... 3 BBWF ... 481 ..... \$188.00  
 Terry Swaim..... 27 BBWF . 602 ..... \$187.75  
 Toby Mast ..... 3 BLK ..... 486 ..... \$187.50  
 Debbie McGoldrick ... 16 BLK ..... 530 ..... \$185.25  
 Dave Lock..... 13 BLK ..... 569 ..... \$184.00  
 Debbie McGoldrick ... 27 BLK ..... 627 ..... \$180.50  
 Leo Hunting ..... 9 BLK ..... 605 ..... \$179.75  
 Alan Yahnke ..... 7 BRC ..... 637 ..... \$172.00  
 Craig Swaim ..... 39 BLK ..... 667 ..... \$169.50  
 Lisa Wells ..... 34 BLK ..... 687 ..... \$163.00  
 Arch Marshall..... 11 BLK ..... 702 ..... \$162.75  
 Ronnie Hart ..... 30 BLK ..... 664 ..... \$162.75  
 Triple B ..... 70 BLK ..... 805 ..... \$155.50  
 Jim Allen ..... 11 BLK ..... 838 ..... \$153.00

**SALE BARN OPEN UNTIL 9:00 PM  
 EVERY TUESDAY TO RECEIVE LIVESTOCK**

Phil Schooley ..... 641-664-3450  
 Ron Schooley..... 641-777-0302  
 Roman Schooley ..... 515-450-3685

*We appreciate your business!*

Tyler Schooley ..... 641-208-5442  
 Barn Phone ..... 641-664-2435

**HWY. 63 NORTH • BLOOMFIELD, IA**



**Iowa's Professional  
 Farmland Real Estate  
 & Auction Company**

**Clifford Martin | SE Iowa Land Agent**  
**AUCTION Davis County, IA 319-677-0784**

**36 Acres SOLD**

**Appanoose County, IA**  
**78 Acres SOLD**

**NEW Appanoose County, IA 83 acres**

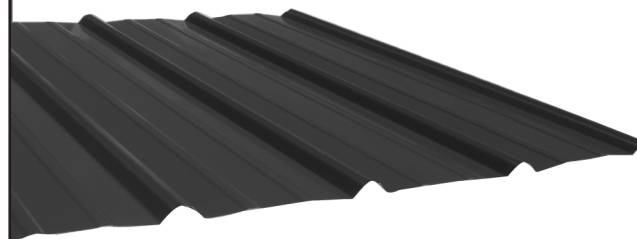
A nice recreational farm located along the Fox River. The farm is currently being grazed. The farm has row crop availability and good road access. There is no shortage of big deer in the area.  
**CALL TODAY!**



**FOR SALE:** Round oak table (1 leaf), 4 upholstered chairs on coasters. Oak sofa table (mission), very nice. Electric power lazy boy recliner. Small hutch & secretary, 3 shelves. 8 place setting of stoneware dishes, newer. Also 8 place setting of Christmas dishes. Mission oak coffee table. 2 matching blue occasional chairs. Antique oak dresser with lovely mirror too! Numbered Deer picture winter scene by artist Linda Pickens (Must See). 2- 8x10 matching area rugs, neutral colors. 5x7 area rug. Lots of table lamps. 2 harp end tables. **Larry Bollman**  
**PH: 515-669-6964 52**

**FOR SALE:** 2017 corn stalk bales.  
**PH: 641-777-0950 52**

## Premium Metal Roofing



- Buy Direct & Save
- Fast Service
- Cut-to-length
- Professional Contractors Available

**A W Metal LLC**  
**Metal Roofing Headquarters**

**641-664-3990 • awmetal.net**

## GLENWOOD Elevator

**301 State Hwy. M  
 Glenwood, Mo 63541**

**Logan Ford, Manager**

**PH: 660-457-3973 • Cell: 660-956-3973**

**Fax: 660-457-3045 • gelevator@marktwain.net**

**Have Yourself A  
 Merry Christmas  
 & Happy New Year!**

For unto you is born this day in the city of David a saviour which is Christ the Lord.

Luke 2:11

*Jesus is the reason for the season*

We here at Yoder Lumber would like to say a big thank you to all our customers for shopping here this past year. We greatly appreciate it. We look forward to serving your needs for 2018. We wish each and everyone a blessed Christmas and a Happy New Year.

**We will be CLOSED:**  
**Monday, December 25th  
 & Monday, January 1st.**

*From the folks at  
 Yoder Lumber*

Joe Yoder  
 Adin Lambright  
 David Yutzy  
 Sheryl Yutzy  
 Delmar High  
 Lowell Cruikshank

Daniel Yutzy  
 Orvie Lambright  
 Andy Yutzy  
 Justin Yutzy  
 Marlin Crady

**Yoder Lumber**

**17893 212th St. • Bloomfield**

**641-722-3605 • M-F 7:00-5:00**