



*Greater Norwich Area Chamber of Commerce*

# Membership Directory & Community Guide

[NORWICHCHAMBER.COM](http://NORWICHCHAMBER.COM)

2017-2018



- BOZRAH
- FRANKLIN
- GRISWOLD
- LEDYARD
- LISBON
- MONTVILLE
- NORWICH
- PRESTON
- SALEM
- SPRAGUE
- VOLUNTOWN







**American Ambulance  
Service, Inc.**

One American Way, Norwich, CT 06360  
info@americanamb.com

**860.886.1463**  
americanamb.com



**American Professional  
Educational Services**

One American Way, Norwich, CT 06360  
info@americanprotraining.com

**860.886.2737**  
americanprotraining.com



**Get Bent in Norwich**

207 North Main Street  
Norwich, CT 06360  
info@getbentinnorwich.com

**860.886.9642**  
getbentinnorwich.com



**MACARA Vehicle Services**

207 North Main Street  
Norwich, CT 06360  
info@macaravehicle.com

**860.887.0548**  
macaravehicle.com





**“We took our first leaps with Dime.”**

— **Krista S. Bordeleau, MA Ed., BCBA**  
*Owner & Director, First Leaps Together*



# Dime Bank

MEMBER FDIC

Why are we the region's leading local business lender?  
**Chalk it up to our experience.**

WATCH VIDEO [»» dime-bank.com/chalkitup](http://dime-bank.com/chalkitup)

**“Dime Bank makes every experience easy and seamless.”**

— **Michael C. Aliano**  
*President, American Group*

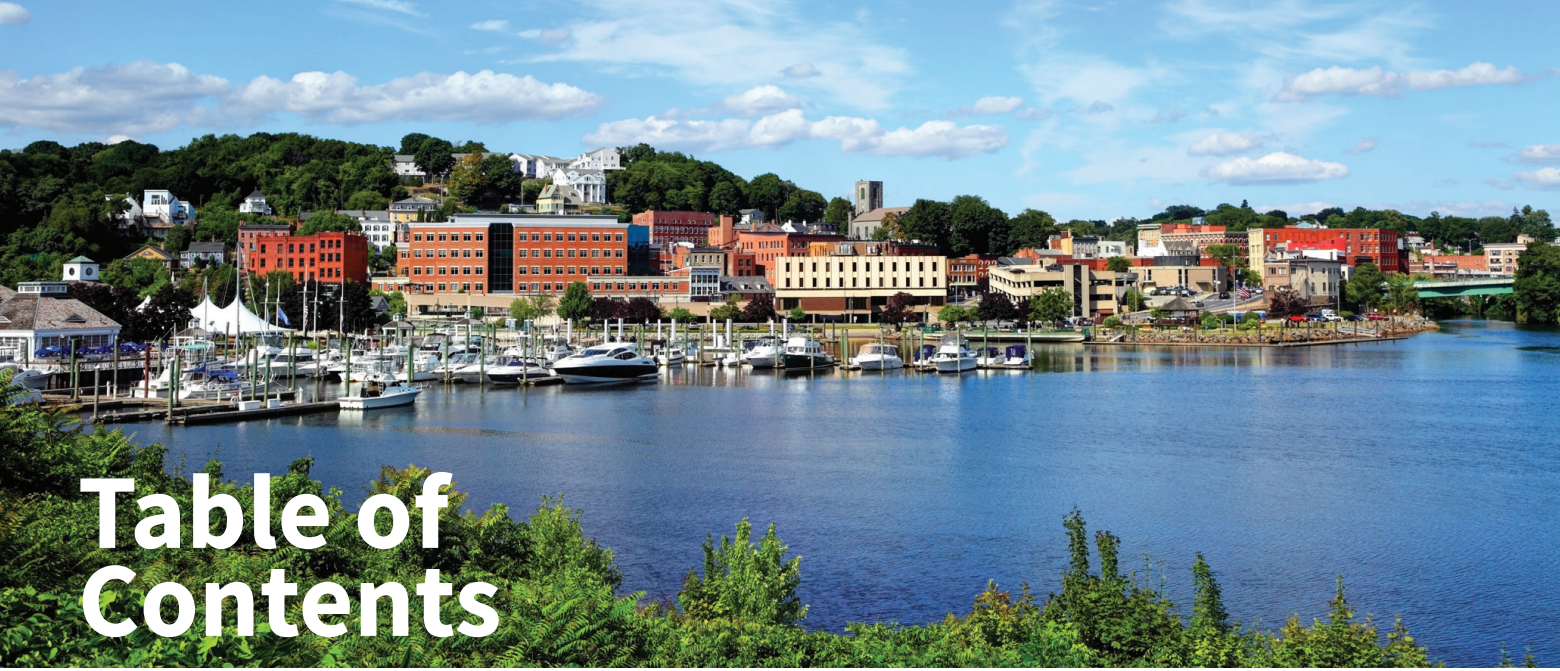


NMLS# 493990



NO-00239247



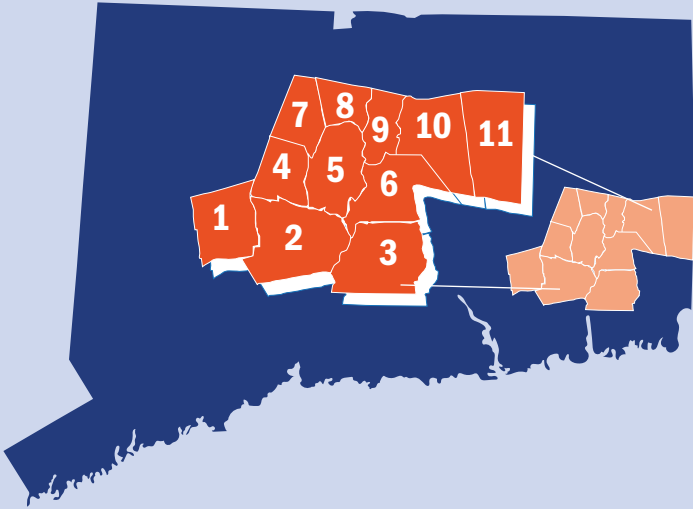


# Table of Contents

- 4 Welcome to the Greater Norwich Area Chamber of Commerce
- 6 Networking and Membership Opportunities
- 7 Services and Benefits
- 8 GNACC Staff and Executive Board Members
- 10 Board of Directors
- 12 GNACC Committees
- 14 Mark Your Calendar
- 15 L.E.A.D. Program
- 16 Economic Development
- 17 Thank You to Our Chairman's Circle Members
- 18 City of Norwich
- 22 Towns We Serve
- 32 GNACC Golf Tournament
- 34 GNACC Holiday Bazaar
- 36 Rock the Docks
- 38 Healthy Living Festival
- 40 Business After Hours
- 42 Membership Directory
- 64 Welcome New Members

## Towns We Serve

11 TOWNS • 450 MEMBERS • NORTHERN NEW LONDON COUNTY



**1**  
Salem 06420

**2**  
Montville 06353

**3**  
Ledyard 06339

**4**  
Bozrah 06334

**5**  
Norwich 06360

**6**  
Preston 06365

**7**  
Franklin 06254

**8**  
Sprague 06330

**9**  
Lisbon 06351

**10**  
Griswold 06334

**11**  
Voluntown 06351

## Contact Us

114 Main St., Norwich, CT 06360

Phone: (860) 887-1647

Fax: (860) 887-9238

[www.norwichchamber.com](http://www.norwichchamber.com)

[info@norwichchamber.com](mailto:info@norwichchamber.com)



# CREATING SMILES, ONE AT A TIME, PERSONALLY!

*Schedule Your Appointment Now!*

**New Patients Welcome • Full Family Dentistry**

Passionately committed to providing quality professional service of the highest value, we share our excitement for quality dentistry in a friendly and caring environment.



## COMPLETE FAMILY DENTISTRY

We provide comprehensive family dentistry services throughout the Norwich, CT; Waterford, CT; Preston, CT; Plainfield, CT; Colchester, CT and Lisbon, CT areas. Our team of dentists and dental professionals will help you feel comfortable and confident that you are in great hands!

We provide everything from general dentistry to teeth whitening and dental bridges to help you look your best and ensure that your dental health is up to par. Call today to schedule your appointment with us!

- *Financing Available*
- *Flexible Appointments*
- *Most Insurances Accepted*

Find us on **Facebook**

Healthcare for Uninsured Children and Youth  
 Care Credit  
**United Health Care Basic Plan**  
 Tagalog Se Habla Español

*New Providing  
 The Husky  
 A/B Plan  
 (Patients age 20 and under)*

- General Dentistry • Cosmetic Dentistry
- Mercury Free • Restorative Dentistry
- Most Insurances Accepted • Prompt Emergency Care
- 1 Hour Whitening
- Implants • Crowns
- Bridges • Dentures

**Have No Dental Insurance?**  
 Join Our Dental Savings Club!  
 Stop In or Call For Details!

**ez:white**<sup>SM</sup>  
 IN-OFFICE WHITENING SYSTEM

**NORWICH FAMILY & COSMETIC DENTISTRY**

Sami A. Yousuf, D.D.S. • Joseph Palumbo, D.D.S. • Brian Bottaro D.M.D.

117 Lafayette St., Norwich • Across from Backus Hospital • 860.887.2231 • [www.norwichsmiles.com](http://www.norwichsmiles.com)

NO-00240582

# ONE YOU ENDLESS POSSIBILITIES



- CAMERON KURASZ  
Class of 2019  
Norwich, CT
- ELIZABETH BARNES  
Class of 2019  
Norwich, CT
- TYLER BRIGGS  
Class of 2018  
Franklin, CT
- CAITLIN DOOLEY  
Class of 2020  
Brooklyn, CT



**At Norwich Free Academy, our students are proud to point out what makes us different.**  
 It's pretty simple, and yet it's not something many high school students get. Options.  
 Together with their families and faculty, NFA students build a four-year experience that is uniquely theirs—and turn their passions into a lifetime of opportunities.

**Learn About Your Endless Possibilities at [nfaschool.org](http://nfaschool.org)**

NO-00240586



# Welcome to GNACC

## CHAIRMAN'S MESSAGE



On behalf of the Greater Norwich Area Chamber of Commerce (GNACC), I welcome you to the northern half of New London County. This area is one of the best places in the nation to live, work, or play. When I travel around the country and people ask why I am so passionate about this area I simply explain. "Where else can you go to a Broadway Show on a Monday, a Red Sox game on a Tuesday, the NH mountains on a Wednesday, visit the world's largest Casinos on a Thursday, and Block Island on a Friday all while sleeping in your own bed every night."

Our Chamber is an energetic group of more than 450 member businesses and professionals that understand the value of collaboration and volunteerism in this community. We stay focused on business education, legislative events, networking opportunities, leadership programs, Business Assistance Team guidance, and sponsorships that will enhance your business in our region.

If you have a business that is not yet a member or you are interested in being part of the great volunteerism that makes us who we are, please feel free to reach out to our office. We would love to have you learn more about what we can do to help support your business and how you can become involved to improve the greater Norwich region.

Remember, that in the northern half of New London County, the Greater Norwich Area Chamber of Commerce is in the business of helping make your business better.

*Chris Jewell, Chairman*

## FOUNDERS' MESSAGE

From the inception of The Greater Norwich Area Chamber of Commerce, it was our belief that Northern New London County needed a Chamber of Commerce to adequately represent our region and address the concerns of the business community. While not an insignificant undertaking, we were convinced it was the right thing to do for the region and the towns we represent. Since January of 2004, there has been overwhelming support and enthusiasm, confirmed by thousands of volunteer hours, to improving the business and economic climate in our area.

While much remains to be done, our Chamber is well on its way to lasting prominence as the business organization of choice in our region. It has been our privilege to work with so many selfless individuals and committed organizations all trying to make a difference. Thank you.

*Attorney Ted Phillips & Andy Messier, CPA*



## Our Mission

GNACC takes a leadership role to support, promote, enhance and advance the general welfare and prosperity of the greater Norwich area so that its citizens, and its business and professional community, prosper. This organization will give emphasis to the economic, civic, commercial, cultural and educational interests of the greater Norwich area to ensure that the area is a desirable place in which to work, live, or visit.

GNACC strongly encourages members to shop members first for whatever their business or personal need might be. Members doing business with members is our strongest avenue towards providing a healthy ROI and our most direct connection to serve as your catalyst to profit and growth.

## Core Values

We serve as your connection to profit and growth through our three core values and benefits:

1



Members doing business with members.

2



Our relentless efforts to promote and advocate for our members.

3



Our constant focus to create opportunities for connections, education, visibility, and support for our members.





From Main Street to your street we are the local agents for your home, auto, life and business.

Call 860-859-9821 and ask for Kathy Kane, ext. 321 or Sue Moyer, ext. 326 for all of your Insurance needs.



**BOUVIER**<sup>®</sup>  
INSURANCE

NC-0029171



If you own your own business, large or small, or you are looking to purchase or refinance a multi-family property or commercial property, we would love to talk to you. We offer very competitive rates and terms as well as local decision making authority that will help make your experience with Putnam Bank a pleasant one. We would welcome the opportunity to work with you to help your business grow.

**Contact our commercial lending team today!**

**Kim Bushey**, SVP & Chief Commercial Lending Officer  
kbushey@putnambank.com • 1-800-377-4424 x3072

**Brenda Engel**, AVP & Commercial Loan Officer  
bengel@putnambank.com • 1-800-377-4424 x3026

**Ray De La Cruz**, Commercial Loan Officer  
rdelacruz@putnambank.com • 1-800-377-4424 x3081

**Zachary Wood**, Associate Commercial Loan Officer  
zwood@putnambank.com • 1-800-377-4424 x3024

**Front Left to Right:** Ray De La Cruz, Commercial Loan Officer; Clara Angelos, VP & Commercial Credit Manager; Billy Gallagher, Commercial Loan Credit Analyst; Pat Kovacic, Commercial Loan Closing Officer; Pauline Audette, Commercial Loan Assistant & Receptionist.  
**Back Left to Right:** Brenda Engel, AVP & Commercial Loan Officer; Thomas Borner, President & CEO; Kim Bushey, SVP Chief Commercial Lending Officer; Zachary Wood, Associate Commercial Loan Officer.

putnambank.com



NC-00298601



# Why Join GNACC?

## IT'S THE RIGHT THING TO DO!

Chamber members believe in taking action rather than sitting on the sidelines. They know that being a member is an investment not just in their own business, but also in the quality of life for the whole area.

## YOU CAN ADVERTISE YOUR MEMBERSHIP

Advertising your business as a chamber member shows customers that you care about the community. When you join, you receive a beautiful membership plaque to display at your business entrance. You also receive a Proud To Be A Member decal for your front door/window. Plus, an electronic logo is available for your website. Members display them proudly.

## CREDIBILITY

Your membership identifies your business as one that has an interest in the community. Throughout North America, a member-in-good-standing at a Chamber of Commerce is known as a company that can be trusted to be honest and fair. The kind of company that customers seek out.

# GNACC Membership

The Greater Norwich Area Chamber of Commerce is the voice of business in Northern New London County. The majority of our members include businesses in Norwich and the 10 surrounding towns within a 20-mile radius. Chamber membership is open to any business micro to large, as well as any individual person who may have an interest in belonging.

**BASIC & INDIVIDUAL MEMBERSHIP** base rate for membership is \$225. Membership cost is based on the size of your business. (Please call our office for the membership application for the dues calculation table.)

**CHAIRMAN'S CIRCLE MEMBERSHIP** gives you the ultimate visibility and exposure for your business. If you are interested in learning the details of a Chairman's Circle membership, call the Chamber office at (860) 887-1647. Annual commitment levels begin at \$5,000.

# Networking Opportunities



## BUSINESS AFTER HOURS

These events are held monthly from 5:30 p.m. to 7:30 p.m. and take place at a hosting member's business. Event includes food, beer, wine, door prizes and the perfect setting for making contacts and friends. Hosting a Business After Hours or a Business at Breakfast is a great way to showcase your business. See page 40!

## BIZBLENDER

Speed networking guarantees to connect you with different businesses within the Chamber membership.

## MEMBER BREAKFAST MEETINGS

What a great way to start the day! Get an early start to the work day with some networking and an engaging presentation. Topics can range from: business building ideas, legislative affairs, Key note presentations from local leaders, or community affairs.

## NEW MEMBER MEET & GREETINGS

Meet and Greets are opportunities for new Chamber members and their employees to network with other members within the organization. Our Business Education & Membership Services committee will host quarterly Meet & Greet at the Chamber office from 8 a.m. to 9 a.m. It's a great way to help you establish valuable relationships within the business community.

## COMMITTEE INVOLVEMENT

Numerous committees work on special events and areas of interest to businesses. These teams of volunteers develop special bonds and expand their business contacts while working together.

## KEEP IT LOCAL

GNACC encourages businesses and the community to #EatLocal and #ShopLocal. We offer two very important programs to the area:

**Restaurant Week** (held in the Spring and Fall) brings a value added program to our GNACC Food & Beverage members and allows us to bring a program that the local community can enjoy.

**The GNACC Holiday Bazaar** See page 34!

## CHAMBER ORIENTATIONS

Members attend a meeting at the Chamber office. Orientations are held every other month.

# Services & Benefits



**FREE LISTING ON THE GNACC WEBSITE** with a link to your website.

**WEEKLY ELECTRONIC COMMUNICATIONS** Every Monday, the GNACC newsletter is sent out detailing the chamber events. Every other Friday our Member to Member Communication (M2M) is designed to keep members connected. This communication offers members a

place to advertise their events and products at no cost.

**WEBSITE ADVERTISING OPPORTUNITIES** Take advantage of low cost advertising opportunities available on the Chamber's website.

**COMMUNITY CALENDAR** Members can post their public events on the Community Calendar, located on our website, as a way to market to the business community at no cost.

**EVENT SPONSORSHIP OPPORTUNITIES** From our Chairman Circle Membership, to sponsoring an event, there are always numerous opportunities to get your business marketed.

**MEMBER INFORMATION DISPLAYED** Members can display promotional literature at the Chamber office.

## GNACC AMBASSADORS

Ambassadors are Chamber members who are highly visible, community spirited people. They serve as the Chamber's liaison to new Chamber members. Considered the goodwill arm of the Chamber, the Ambassador committee plays an essential role in member recruitment, communication and retention. They help to grow the Chamber's membership and are always looking to engage and encourage businesses who are not yet members of the Greater Norwich Area Chamber of Commerce to join our membership.

Upon their appointment, each Ambassador makes a commitment to build lasting relationships with the membership, particularly new Chamber members, in order to build a loyal, committed membership base that will continue to support, participate and invest in the Chamber. Ambassadors commit to spending 1-3 hours per month on their duties as Chamber liaisons.

[www.norwichchamber.com](http://www.norwichchamber.com)

Servicing  
CT, MA, RI

## COMMERCIAL • MARINE RESIDENTIAL • INDUSTRIAL • RV

Eastern CT & Western RI's Largest Factory  
Authorized Servicing Dealer

We won't leave you  
in the dark.

Consulting • Design • Inspection • Troubleshooting Maintaining Generators  
Customized Control Panels • Service RV & Marine

\$500 OFF

ON PERMANENTLY INSTALLED  
AUTOMATIC STANDBY GENERATOR

AC/DC Industrial Electric, LLC • With coupon. Cannot be combined with any other offers. Offer expires 6/30/18. Must present coupon.

\$30 OFF

YOUR  
GENERATOR SERVICE

AC/DC Industrial Electric, LLC • With coupon. Cannot be combined with any other offers. Offer expires 6/30/18. Must present coupon.

## Industrial Electric, LLC

For your emergency power needs

860-886-ACDC (2232)

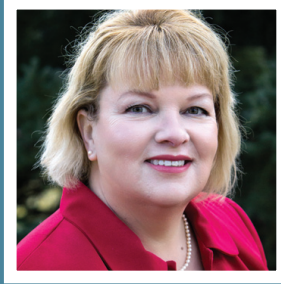
44 Yantic Flats Road • Yantic, CT  
[www.acdcindustrial.com](http://www.acdcindustrial.com) • CT License E1-122124



# GNACC Executive Board



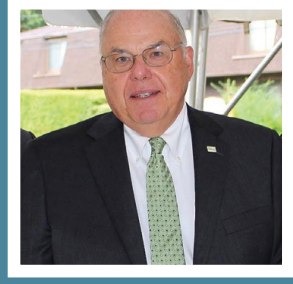
**CHRIS JEWELL**  
*Chairman*  
Collins & Jewell



**NANCY COWSER**  
*Vice-Chairwoman*  
seCTer



**FAWN WALKER**  
*Vice-Chairwoman*  
Norwich Public Utilities



**ANDRÉ J. MESSIER, JR.**  
*Treasurer*  
CPA



**LISA GRIFFIN**  
*Secretary, Eastern*  
Savings Bank



**THEODORE PHILLIPS, II**  
*GNACC Attorney*



**ANDREW NOLLMAN**  
*Past-Chairman, Rose City*  
Financial Services, LLC.

## GNACC Staff



**ANGELA ADAMS**  
*Director of Operations*  
angelaadams@  
norwichchamber.com



**JENNIFER CHAUVIN**  
*Operations Coordinator*  
jennchauvin@  
norwichchamber.com

### A MESSAGE FROM THE DIRECTOR OF OPERATIONS

To make the most of your membership, we strongly encourage you to get involved and participate in the many different activities and programs GNACC has to offer, from networking, educational seminars, marketing, sponsorship opportunities, committee involvement, and more. To put it simply, the more you put into it, the more you get out.

Our Membership Directory and Community Guide is a great asset to help you find the best, most reliable and committed business/organizations to complement your needs. When you support buying from your fellow chamber members, you invest in each other, keeping our economy strong. It's the right thing to do. Remember: Shop local.

Please do not hesitate to contact GNACC should you have any questions or have an interest in becoming a member of the Greater Norwich Area Chamber of Commerce.

*Angela Adams, Director of Operations*

### Former GNACC Chairmen and Boards of Directors

GNACC owes its success to the extraordinary leadership of these individuals. Thank you for your service to our community and to our organization.

#### Past GNACC Chairmen

Andrew H. Nollman  
2015-2016

Todd C. Postler  
2013-2014

Stacie Lambert  
2011-2012

Robert Reed  
2009-2010

André J. Messier, Jr.  
2007-2008

Theodore N. Phillips, II  
2004-2006

NETWORKING IS ESSENTIAL TO BUSINESS.  
JOIN US AND OTHER GREAT COMPANIES  
AT **FOUNDRY66!**

**COWORKING IS...**  
PRODUCTIVE MOTIVATING EFFICIENT  
PROFESSIONAL MODERN RELAXED  
COMMUNITY CREATIVE SUPPORTIVE COZY  
COLLABORATIVE INTERESTING  
**FUN** INNOVATIVE EXCITING CREATIVE  
CONVENIENT ENERGIZING NETWORKING  
A SHARED WORKING SPACE AT GYM MEMBERSHIP PRICES  
CALL OR STOP IN TODAY TO SEE FOR YOURSELF  
66 FRANKLIN STREET; NORWICH, CT  
860.887.6964 FOUNDRY66.COM  
FACEBOOK.COM/FOUNDRY66



**FREEPORT-McMoRAN**

Norwich Operations

**"A proud member of the  
Norwich Community for  
over 35 years"**

41 Wawecus Street, Norwich, CT 06360  
[www.fcx.com](http://www.fcx.com)

**(860) 425-6900**

**Fax: (860) 425-6905**

NO-00238813



# GNACC Board of Directors



**DAVID ALLARD**  
American Ambulance



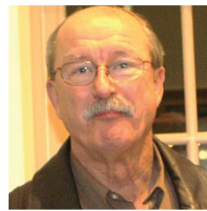
**KIM BRUNELLI**  
Brunelli Energy



**JOHN ESTELLE**  
Dime Bank



**NICHOLAS K FORTSON**  
CorePlus Credit Union



**RODNEY GREEN**  
Olde Tymes Restaurant



**BETH ANN HEATH**  
Norwichtown Rehabilitation & Care Center



**KATHY KANE**  
Bouvier Insurance



**LES KING**  
Aspen Properties, LLC



**LAUREN LABELLE**  
Putnam Bank



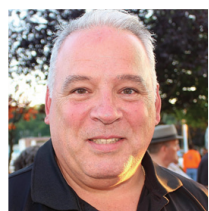
**LARRY LENTINE**  
New London County Mutual Insurance



**MIKE MATERA**  
Surplus Unlimited



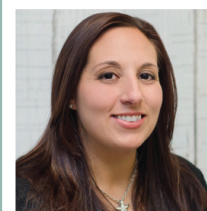
**NADINE MCBRIDE**  
The Bulletin



**PAT MCMAHON**  
Three Rivers Young Marines



**JOHN PAUL MEREEN**  
Maple Lane Spirits/  
Foggy Harbor



**MARISSA MILLER**  
Full Power Radio



**JAMES O'SHEA**  
Achievement Unlimited of Connecticut



**TODD POSTLER**  
GNACC Member



**BOB REED**  
Hall Communications



**BARRY SHEAD**  
Savings Institute Bank & Trust



**ALYSHA YEPES**  
Chelsea Groton Bank

## Ex-officio Directors

Fred B. Allyn III, Mayor, Town of Ledyard  
Todd Babbitt, Town of Griswold  
Robert Congdon, Town of Preston  
Charles Grant, Town of Franklin  
Tracey Hanson, Town of Voluntown  
Kevin Lyden, Town of Salem

Ron McDaniel, Mayor, Town of Montville  
Peter Nystrom, Mayor, City of Norwich  
Catherine Osten, Town of Sprague  
Glenn Pianka, Town of Bozrah  
Thomas Sparkman, Town of Lisbon





# TRAINING YOUR EMPLOYEES is easy when you work with Three Rivers.

## *Three Rivers Center for Business & Industry Training*

We can provide you with services including:

- Customized Training
- Manufacturing Training such as Welding and Drafting via the Manufacturing Pipeline Initiative
  - Business Consultation Services
- Online Training (business skills, Microsoft, medical, writing, computer programming, etc.)

## *We work with you.*

Three Rivers Business Center cultivates and actively works at building long-term partnerships with Chambers of Commerce, business and industry clients, state agencies, and 501(c)3 organizations.

## *Start your business growth now!*

Contact Marjorie Valentin  
at [mvalentin@threerivers.edu](mailto:mvalentin@threerivers.edu) or 860-215-9016.



NO-00239017

# We're right in your neighborhood!



We're more than a business—we're part of your community. We were here when the big storm blew the tree through your roof... when your kitchen went up in smoke... and when your car ran over your neighbor's fence.

Like old friends, you may not call us often. But it's nice to know that we'll be here when you do.

For professional insurance advice, contact:



## Dayville • Norwich

[byrnesagency.com](http://byrnesagency.com)

NO-00239096

NO-00223218





# GNACC Committees

## BUSINESS EDUCATION & MEMBERSHIP SERVICES COMMITTEE

The Business Education and Membership Services committee organizes the Chamber's benefit services, educational programs and events throughout the year. Our goal is to add "value added" services and programs for our members to enhance their membership. Programs and services include: Business Assistance program, also known as our "BAT" team, is a one-hour free consultation offered to our members to assist them with their business strategies.

## ECONOMIC DEVELOPMENT COMMITTEE

This committee evaluates issues and proposals having an economic impact on the community and initiatives that will foster economic development in the community. It makes recommendations to the Board of Directors.

## EDUCATION COMMITTEE

The Education Committee Builds relationships between the businesses, educators and local students. The committee is focused on helping high school students and their schools by opening them up to opportunities for mentoring and internship programs that may be offered by Chamber businesses. By making these connections, we aim to



help students that may not have a career or higher education path in mind, find something they can be passionate about and learn some of the behaviors that help turn a job into a career. The committee refers all proposed positions, programs, and new events to the Board of Directors for approval prior to inception of new activities.

## HEALTHCARE COMMITTEE

Health is a major concern for our membership; at the Chamber take this topic very seriously. We actively connect businesses to health and wellness resources in the community, and raise awareness of health-related issues and opportunities to keep members informed, educated, and able to be proactive.

## INSURANCE COMMITTEE

The goal of the insurance committee is to provide Chamber members with timely and relevant information pertaining to the insurance industry, including but not limited to: life, health, group medical, investments, workers compensation, business and personal auto, general liability and any other line of insurance that the committee feels would be useful and of interest to Chamber members. The information will be provided either in written format, including articles in various Chamber communications, or in a workshop/seminar format. The committee researches and reports on various insurance-related bills/regulations that could potentially have impact on members' business operations. The committee also serves as a resource for members who have general questions/issues relating to insurance. Any business interested in more information regarding our plans should call the Chamber at (860) 887-1647.

## LEGISLATIVE AFFAIRS COMMITTEE

The purpose of the Legislative Committee is to facilitate the flow of information between our Chamber members and the State Legislators representing our 11 communities. The committee will identify opportunities to increase the level of interaction flowing from our members to our legislators, and a reciprocal flow of information from our legislators to our members.

# Ready for whatever happens™ ...

## 24 Hour Emergency Service.



NC-00238807



of Norwich and Windham County

# 860-887-0447

[servpronorwichwindhamcounty.com](http://servpronorwichwindhamcounty.com)

When a storm hits, damage can happen. Whether it is your *home or business*, turn to the cleanup specialist team that's here in your community. We help get you back into your home or business fast, making storms...  
*"Like it never even happened."*

*Independently Owned and Operated*

## Your Local Hydraulic Repair House for Cylinders, Pumps, Motors & Valves



- *Mobile machinery, earthmoving, construction & truck*
- *Industrial equipment, automation, marine, machine tool*

### Devine Hydraulics, Inc.

**COME VISIT US AT OUR  
NEW LOCATION:  
179 Gallivan Ln,  
Uncasville, CT 06382**



NC-00238807

860.859.1650 • [www.dhict.com](http://www.dhict.com) • fax 860.859.3711



# Mark Your Calendars in 2018

CHAMBER BENEFITS WORKSHOP	4th Tuesday (every other month starting Jan.) Alternating am and pm sessions at GNACC.
BIZBLENDER NETWORKING	4th Tuesday (every other month starting Feb.) 11:30 a.m.—1:30 p.m. (Includes lunch). Visit <a href="http://norwichchamber.com">norwichchamber.com</a> for locations.
NEW MEMBER MEET & GREETINGS	Quarterly starting March 2018 from 8 a.m. - 9 a.m. at GNACC. This is a great opportunity to meet our newest members. Coffee and pastries provided.
RESTAURANT WEEK	April 6 - April 15 #EatLocal   Sponsored by our Chairman's Circle Members.
15TH ANNUAL GNACC GOLF TOURNAMENT	Monday, May 21, 2018   Norwich Golf Course. Sponsorship opportunities available.
ROCK THE DOCKS SUMMER CONCERT SERIES	Every Wednesday, July 11—August 15, 2018 at Howard Brown Park. Acoustic Summer Nights   Every Friday, July 13—August 17 at Norwichtown Green. Sponsorship opportunities available.
HEALTHY LIVING FESTIVAL	Free community event to showcase local health-related businesses while providing local families with a day of FUN and EDUCATION!
HOLIDAY BAZAAR	Support Small Business Saturday! Saturday, Nov. 24, 2018 from 9 a.m. - 2 p.m. Held at Holiday Inn, 10 Laura Blvd., Norwich, CT
L.E.A.D. PROGRAM (LEADERSHIP)	2nd Tuesday of each month starting March 13, 2018. GNACC's Community Leadership Program helps develop knowledgeable, committed, and action-oriented leaders.
BIZBASH	Summer 2018 (date TBA). Teambuilding event for businesses and organizations. Engage and inspire your staff to achieve more while encouraging participation through motivation.
ANNUAL UNITING FOR UNITED COMPETITIVE FOOD DRIVE <i>New in 2018!</i>	May 14-June 1, 2018. Inspiring local businesses to come together for a cause greater than them all – ending hunger in New London County. More details TBA.

*3rd Thursday of each month\*, 5:30 p.m. — 7:30 p.m. For details, visit [Chamber Calendar at \[norwichchamber.com\]\(http://norwichchamber.com\)](http://ChamberCalendar.at.norwichchamber.com).*

JAN 18	<b>GNACC Annual Meeting &amp; Awards Dinner</b> , Three Rivers Community College, 574 New London Turnpike, Norwich
FEB 15	<b>The Lofts at Ponemah Mills</b> , 607 Norwich Ave., Taftville
MAR 15	<b>The AMERICAN Group</b> , Location TBA
APRIL 19	<b>Orchard Grove Specialty Care Center</b> , 5 Richard Brown Dr., Uncasville
MAY 17	<b>The Nutmeg Co, Inc. Celebrating 30 years!</b> 1 Ohio Ave., Norwich
JUNE 21	<b>Center for Hospice Care Southeast CT</b> , 227 Dunham St., Norwich
JULY 19	<b>AC/DC Industrial Electric, LLC</b> , 44 Yantic Flats Road, Yantic
AUG 16	<b>UCFS</b> , 226 East Main St., Griswold
SEPT 20	<b>DocXellent / Eastern Savings Bank</b> , 257 Main St., Norwich (5th floor)
OCT 18	<b>The Solution Center</b> , 210 Route 32, Franklin
NOV 15	<b>Dime Bank</b> , 744 Colonel Ledyard Highway, Ledyard
*DEC (TBA)	<b>Holiday Stroll on Broadway</b> , Downtown Norwich, Broadway

*\*Exception: Change in date due to holiday.*



## L.E.A.D.

The GNACC's Leadership Exploration & Development (L.E.A.D.) program helps develop knowledgeable, committed, and action-oriented leaders. Participants from diverse backgrounds and different perspectives will enhance their existing leadership skills and gain a better understanding of themselves and their role in the community.

**The program is designed to:**

- Identify emerging and existing leaders
- Enhance leadership competencies
- Foster commitment for leadership roles
- Demonstrate how strong leadership can enhance your business and support our community in reaching its goals

**Participant benefits:**

- Strengthened leadership abilities
- Access to a network of diverse colleagues
- Exposure to a variety of regional leaders, organizations and community leaders
- An understanding of the realities, opportunities, and challenges of our region
- An opportunity to become involved with, and bring about positive change in, our communities

**Interested in joining L.E.A.D.?  
Call (860) 887-1647!**

# André J. Messier Jr.

## CPA, LLC

### Certified Public Accountant & Business Advisor

**12 Case Street  
Suite 201 Norwich,  
CT 06360**

**Phone: (860) 887-9004  
Fax: (860) 887-2340**

NCO0238812

## Smart Banking. Community Trusted.



COREPLUS CREDIT UNION

cpou

Smart Banking. Community Trusted.

860-886-0576  
800-724-0779  
coreplus.org

Groton • East Lyme • Waterford  
Norwich • Taftville • Plainfield  
Putnam Walmart Supercenter  
Brooklyn Walmart Supercenter



Equal Housing  
LENDER



NCUA  
National Credit Union Administration  
Equal Opportunity Lender

NCO0238803



# Economic Development

JOIN US, BE A PART OF THE FUTURE  
OF THE GREATER NORWICH AREA

*Economic Development is important because at its heart, it is about building healthy economies, creating a higher quality of life and an affordable, sustainable atmosphere in which to do business and raise a family. A few of the ways in which economic development helps communities:*

**Job Development** — Economic development provides better wages, benefits, and opportunities for advancement.

**Business Retention** — Businesses feel appreciated by the community and, in turn, are more likely to stay in town, contributing to the economy.

**Economic Diversification** — A diversified economic base helps expand the local economy and reduces a community's vulnerability to a single business sector.

**Self-sufficiency** — A stronger economic base means public services are less dependent on intergovernmental influences and alliances, which can change with each election.

**Productive Use of Property** — Property used for its "highest and best use" maximizes the value of that property.

**Quality of Life** — More local tax dollars and jobs raise the economic tide for the entire community, including the overall standard of living of the residents.

**Recognition of Local Products** — Successful economic development often occurs when locally produced goods are consumed in the local market to a greater degree.



## BUSINESS INVOLVEMENT IN ECONOMIC DEVELOPMENT DOES MATTER

Economic development changes continuously. It includes planning, designing, and implementing economic development strategies, as well as having conversations between public and private sectors and the community.

## BE A PART OF THE CONVERSATION

Do your local policy makers understand your industry/business and act in the best interest of development and growth of our business? Come help them understand and be a part of the future of your community.

## CULTURAL AND HERITAGE, COMMUNITY BUILDING AND ECONOMIC DEVELOPMENT

Scholars of economic development have made the case in recent years that an older model of economic development which focuses solely on luring businesses with changes and incentives, such as tax breaks, does not address the needs of the community itself. When local residents are involved in the process of planning, many issues emerge as being relevant—such as quality of life, local resident needs and experiences.

Community development and economic development in today's society are linked in such a way that one cannot prosper without consideration of the other thereby placing a certain amount of importance on factors that are not necessarily measurable using traditional economic tools.





Foundry 66 is a shared coworking space powered by Norwich Community Development Corporation (NCDC).

The Foundry currently has 25 business members operating out of the former Norwich Bulletin Building at 66 Franklin St. Current members include accountants, IT specialists, authors, videographers, HR consultants, virtual assistants, Thai message therapist, realtors, promotional product designers and more. Expansion of the second floor will include music and photography studios along with individual offices, flex space and more designated desks. Phase 2 will double the available space and will be ready early 2018. The facility currently has two conference rooms and will grow to include two more.

NCDC reports several development projects have been started in the downtown and greater Norwich area. Phase One of Ponemah Mills is nearing completion, with 116 units of housing and Phase Two is scheduled to start late fall to include 121 more units. In the downtown area, three properties on Broadway have been under rehabilitation. The Broadway buildings will include commercial retail space on the ground levels with luxury apartments above. NCDC and the City's Downtown Revitalization Programs have helped launch and solidify these developments. To learn more email [rmills@askncdc.com](mailto:rmills@askncdc.com).

Additionally, the Norwich Industrial Park has seen expansion in the last year. The former Plas- Pak Industries, Inc. now, Nordson Corporation has expanded their manufacturing capability. Levine Distributors has also expanded their operations. Charles River Labs has moved into the park. NCDC will be revamping the signage in the coming year. All these indicators and the general level of business suggests Norwich is trending in a very positive direction.

# A Very Special Thank You

## TO OUR CHAIRMAN'S CIRCLE MEMBERS

*Your continued support allows us the ability to maintain our mission "to support, promote, enhance and advance the general welfare and prosperity of the greater Norwich area so that its citizens, and its business and professional community, prosper."*



## Selection, Service and Knowledge!



- The **BEST** selection of wine, craft beer, and spirits
- The **MOST** knowledgeable staff
- The **FRIENDLIEST** service



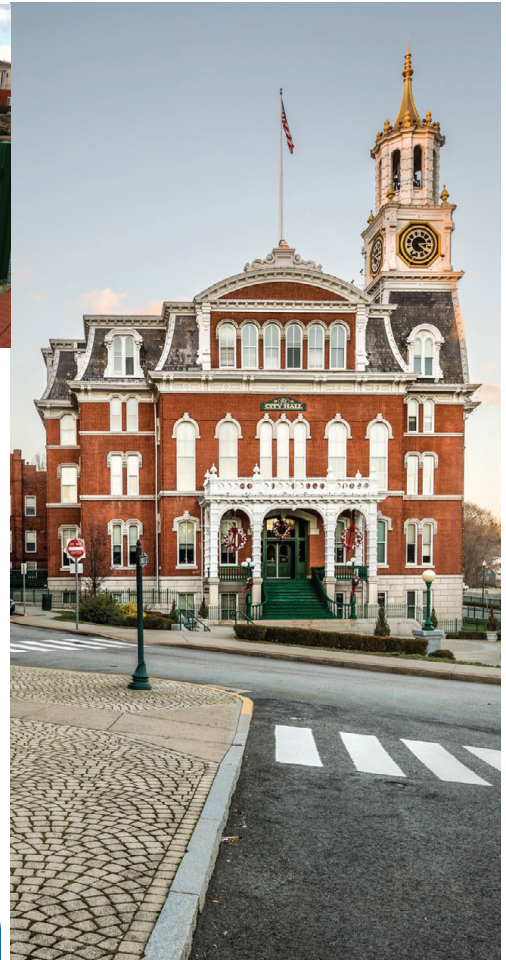
32 Town St., Norwich  
(across from Goodyear Tire)  
**860-889-4637**



# Norwich

06360

*Norwich is the birthplace of one of the most infamous figures of the American Revolution, Benedict Arnold. Other Colonial era noteworthies include Samuel Huntington, Christopher Leffingwell, and Daniel Lathrop.*



Through the end of the 19th century and into the early 20th century, Norwich served as home to many large mills. The population grew and became more diverse with an insurgence of different ethnic groups. These new residents helped to build the city's schools, churches, and social centers —and to transform Norwich into a thriving city.

Today, Norwich is an exciting city with a wide range of municipal services, a modern industrial park, its own utility company, and a positive outlook for residential and business growth. Locals and visitors to the city can enjoy such attractions as the Leffingwell House Museum; Norwich Arts Council & Donald L. Oat Theater; Norwich Golf Course; Norwich Ice Rink; Norwich Marina; Otis Library; Slater Memorial Museum; Chestnut Street Playhouse; Thomas J. Dodd Memorial Stadium; Veterans Memorial Rose Garden; and many more.

[www.norwichct.org](http://www.norwichct.org)

## **Veterans Memorial Rose Garden Judd Road/Rockwell Street, Norwich (860) 823-3798**

The beautiful Norwich Rose Garden is located on Rockwell Street in Mohegan Park. Situated on two acres of gently sloping parkland, the garden features 2,500 rose bushes in 120 varieties. This garden is one of 140 gardens throughout the United States that displays award winning roses in cooperation with the All American Rose Selections, Inc. The roses are at their full height during June but continue to blossom throughout the summer.





**The Marina  
at American  
Wharf,  
1 American  
Wharf, Norwich  
(860) 886-6363**

Founded in 1988 as the vibrant, waterfront centerpiece of Norwich's Downtown, the Marina at American Wharf is located at the head of the Thames River, and mouth of the Yantic River in beautiful Norwich.



**Leffingwell House Museum**

**348 Washington St., Norwich, (860) 889-9440**

One of the finest restored examples of New England Colonial architecture. Visitors to this living museum catch a glimpse of early 18th century life. By the mid-18th century what was built as a simple two room house in 1675 had evolved into an elegant home. The house is filled with a fascinating assortment of pieces representative of its architectural evolution.

**Slater Memorial Museum**

**305 Broadway, Norwich, (860) 887-2505**

Located on the campus of Norwich Free Academy, the Slater Museum awakens visitors to the richness and diversity of the human experience through art and history. For more than one hundred years, the Museum has displayed and interpreted the best examples of fine and decorative art, representing a broad range of world cultures of the Americas, Asia, Europe and Africa.

**City of Norwich Fire  
Department, 10 N. Thames  
St., Norwich, (860) 892-6080**

The members of the Norwich Fire Department are dedicated to serve the people of Norwich. We provide the highest level of professional response to fire, medical, and environmental emergencies and disaster, either natural or man-made. We strive to create a safer community through fire prevention, code enforcement and education for the public. Our goal is to provide 24 hour emergency service for the protection of life and property within a four-minute response time frame with all necessary forces assembled, focused, and mission ready.







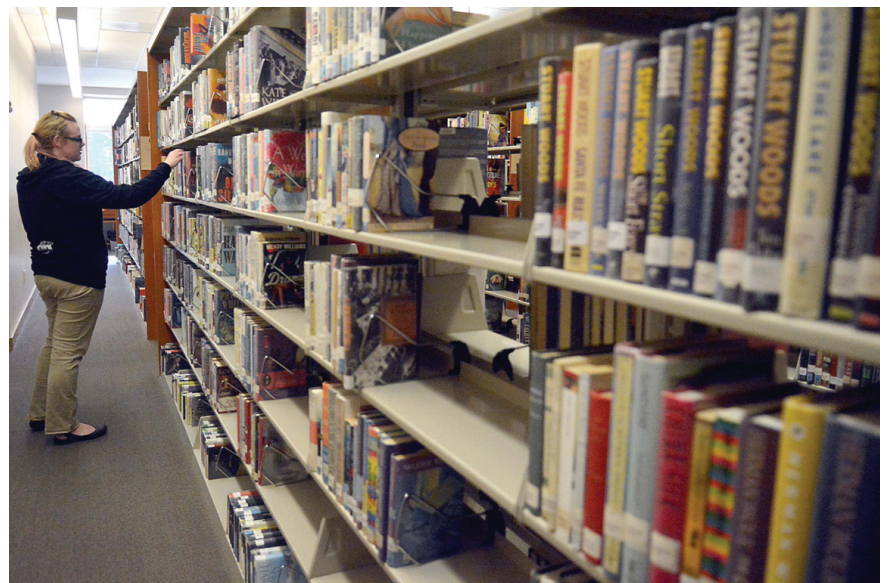
**Dodd Stadium**  
**14 Stott Ave., Norwich**  
**(860) 887-7962**

Home of the Connecticut, A Class-A affiliate of the Detroit Tigers, Dodd Stadium provides numerous seating options ranging from premium sky box suites and private picnic areas to terrific views from premium and reserved box seats. The Tigers offer great season ticket options and affordable group rates. Connecticut Tigers Baseball...hear the roar!



**Otis Library, 261 Main St., Norwich**  
**(860) 889-2365**

Otis Library provides free access to information, ideas, and services that anticipate our community's personal, educational, and professional needs. The library enriches our region by maintaining a safe and welcoming environment and by offering resources that promote lifelong learning.







**Norwich Police Department**  
**70 Thames St., Norwich, (860) 886-5561**

To protect life, safeguard property, and maintain social order within carefully prescribed ethical and constitutional restrictions while providing community-based police services with compassion and concern. Pictured: The Patrol Division is the most visible and recognizable unit of the police department, providing 24-hour response to the community. These officers are responsible for laying the foundation for a positive rapport between the public and the police department.

**William W. Backus Hospital**  
**326 Washington St., Norwich, (860) 889-8331**

Backus Hospital delivers and coordinates a continuum of high-quality healthcare that is sensitive to the needs of individuals in eastern Connecticut. The Hospital is committed to being responsive and accountable to those for whose benefit it exists, and to improving the health of its communities.



**Howard T. Brown Memorial Park**  
**100 Chelsea Harbor Drive, Norwich**

This picturesque area includes boat launch, walking trail, and fishing. It's home of the Rock the Docks Summer Concert Series; Norwich Italian Festival; Norwich Fireworks and Cultural Diversity; Norwich Downtown Farmers Market; and more.



**Norwich Heritage and Regional Visitors Center, 69 East Town St., Norwich (860) 886-1776**

The Norwich Heritage and Regional Visitors Center is located in the 1783 Dr. Daniel Lathrop Schoolhouse on the historic Norwichtown Green. Our mission is to inform residents and visitors about places of interest in the region and about Norwich's rich heritage through exhibits, presentations and activities. The Center serves as a gateway into the City of Norwich where visitors can learn about our numerous cultural sites and various local businesses. Walk Norwich self-guided trail Uncas Leap Trail and Benedict Arnold Trail brochures are available at the Center.

**Chestnut Street Playhouse**  
**24 Chestnut St., Norwich, (860) 886-2378**

The Chestnut Street Playhouse is an intimate, professional, high-quality, black box theater that is internationally recognized for its annual dedication to the full production of new musicals.







# Bozrah

06334

*Bozrah was originally a part of Norwich called "Nine miles square," acquired from the Sachems of the Mohegan Indians in 1659; a portion later became known as the New Concord Society.*

In the early 1700s this land, west-northwest of the Norwich Town Plot, was opened to additional settlers. The nature of the region, being wild and rugged, presented a challenge to the pioneers. New Concord Society was organized and approved by the General Assembly in 1737. A site was accepted in 1739 for the construction of a meetinghouse, which was erected soon after. In 1786 the members of the New Concord Society, "hereby incorporated into a distinct Town by the name of Bozrah," and thus became the 86th town in the State of Connecticut, believed to be the only one with this name in the country. The name is of Hebrew origin meaning an enclosure or sheepfold. Local attractions include Bozrah Farmers Market, from July to October, Odetah Camping Resort, and the Acorn Acres Campground.



**Bozrah Town Hall: 1  
River Road, Bozrah**

- Phone: (860) 889-2689
- Fax: (860) 887-5449
- Animal Control: (800) 236-1987
- Assessor: (860) 889-2689 x5
- Building: (860) 889-2689 x6
- Director of Operations:  
(860) 889-2689 x8
- Bozrah Volunteer Fire Co., 239  
Fitchville Road: (860) 887-9474
- Library:  
264 Hartford Rd, Salem  
(860) 859-1130
- Police: Troop K  
(860) 537-7500
- Registrar of Voters:  
(860) 889-2689 x7
- Senior Center: (860) 383-2290
- Selectman's Office:  
(860) 889-2689 x1
- Tax Collector:  
(860) 889-2689 x4
- Town Clerk:  
(860) 889-2689 x201



# Franklin 06254

Franklin was established in 1786 and named after statesman Benjamin Franklin. It is largely rural, with industry focused on the south end of town, and an emphasis placed on preserving its agricultural roots. Known for the “Seven Hills,” Franklin has far-reaching views of The Last Green Valley, the 35-town National Heritage Corridor in eastern Connecticut and south-central Massachusetts.



Local attractions include the Janet Carlson Calvert Library; the Ashbel Woodward Museum; Giddings Park and Pavilion; Veterans Memorial Park; and the Blue Slope Country Museum. The town also has one church, the Franklin Congregational. A world-class golf course, hotel and spa is currently under construction.

Giddings Park and Pavilion contains a ballfield complex, horse ring, tennis and basketball courts, a walking trail, a playground, and picnic areas. Veterans Memorial Park pays tribute to Franklin’s soldiers. Blue Slope Country Museum is a private organization that holds events and tours throughout the year, plus an annual festival. The Ashbel Woodward Museum also hosts several events during the year, including a Victorian Tea, Ashbel Woodward Day, and Victorian Christmas. The Calvert Library organizes events for all ages, such as the Connecticut Author Trail.

Local government business is housed at the Franklin Town Hall and overseen by the First Selectman. Meeting and banquet spaces, indoors and outdoors, are available to rent at the town hall, the fire department, and Giddings Park.

[www.franklinct.com](http://www.franklinct.com)



## 7 Meetinghouse Hill, Franklin

Phone: (860) 642-7352

Fax: (860) 642-6606

Animal Control: Emergency:  
(800) 236-1987

Assessor: (860) 642-6475 x19

Building: (860) 642-4338 x14

Calvert Library: 5 Tyler Dr.  
(860) 642-6207

Fire Dept: (860) 642-7772

Fire Marshal: (860) 234-0154

Police: Troop K (860) 537-7500

Public Works Town Garage: 197  
Pond Road, (860) 642-7706

Transfer Station: 171 Pond  
Road, (860) 642-7706

Senior Center: (860) 642-3936

Selectman’s Office:  
(860) 642-6055 x16

Tax Collector:  
(860) 642-7206 x11

Town Clerk: (860) 642-7352 x18

Zoning Agent: (860) 642-4338







# Griswold

06351

*Griswold and its borough, Jewett City, is located in New London County. It is one of the 35 towns comprising the Quinebaug River Valley and Shetucket River Valley.*

Griswold is a special place with a blend of nature, quality development and people who live and work in the community. It has been blessed with countless natural features such as the Pachaug State Forest, and there are large tracts of land available for development. Griswold retains much of its agricultural roots and sustainable agriculture is still encouraged.

The Southeastern Economic Region to which Griswold belongs has identified six clusters considered key to the region's economic future and Griswold is concentrating their efforts on them. They are: agriculture, defense, creative, bioscience, maritime, and tourism.

Griswold is accessible from all directions. Exits 85 and 86 off I-395 provide access to Route 138, Route 164, and Route 201. I-395 links with I-95 in East Lyme and with the Massachusetts Turnpike. Local attractions are plentiful: Stone Bridge Alpaca Farm; River Ridge Golf Course; Buttonwood Farm Ice Cream; and Pachaug Pond. Griswold is also home to Pachaug and Hopeville State Forests. At Hopeville State Park, you'll find a campground, beach and boat launch. In both Pachaug State Forest and Hopeville State Park, visitors enjoy hiking trails that wind through lovely meadows, along scenic brooks, over wooden bridges and deep into the cool, welcoming woods.



[www.griswold-ct.org](http://www.griswold-ct.org)

## **Griswold Town Hall, 28 Main St., Griswold**

Phone: (860) 376-7060

Fax: (860) 376-7070

Animal Control: (860) 383-3993

Assessor: (860) 376-7060 x105

Building: (860) 376-7060 x110

Fire Marshal: (860) 376-7060 x107

Library: (860) 376-0024

Parks & Recreation:  
(860) 376-7026

Planning: (860) 376-7060 x112

CT State, Troop E Montville:  
(860) 848-6500

Borough Resident State  
Troopers:  
(860) 376-2583

Public Works: 148 Voluntown  
Road, Route 138, (860) 376-7080

Senior Center: 22 Soule St.,  
Jewett City: (860) 376-2604

Selectman's Office:  
(860) 376-7060 x201

Tax Collector: 28 Main St.,  
Jewett City x102/x104

Fax: (860) 376-7070

Town Clerk: (860) 376-7060 x101





**Ledyard Town Hall:  
741 Colonel Ledyard  
Highway, Ledyard**

- Phone: (860) 464-8740
- Fax: (860) 464-1126
- Animal Control: (860) 464-9621
- Assessor: (860) 464-3237
- Building: (860) 464-3214
- Fire Marshal: (860) 464-6858
- Library: 718 Colonel Ledyard Hwy,  
Ledyard (860) 464-9912
- Mayor's Office: (860) 464-3221
- Parks & Recreation: 4 Blonder  
Blvd., Ledyard (860) 464-9112
- Planning/Development:  
(860) 464-3215
- Police: (860) 464-6400
- Public Works:  
(860) 464-3238 / Town Garage:  
(860) 464-9060
- Senior Center: (860) 464-0478
- Tax Collector: (860) 464-3233
- Town Clerk: (860) 464-3257
- Zoning/Wetlands: (860) 464-3216

# Ledyard

06339



*Ledyard is a suburban community within a quiet rural niche of southeastern Connecticut. Abundant single-family residences, separated by numerous red maple swamps and rocky, rugged uplands characterize the settlement of Ledyard.*

Ledyard is situated halfway between New York and Boston, and is in the midst of many cultural attractions, recreational facilities, golf courses, and beaches.

Ledyard offers space for industrial parks, commercial design districts, and horse farms with ample residential areas for families to live and grow. The community emphasizes its historical heritage and traditional New England themes. The community strongly supports planned economic development, and has prime commercial areas along Route 12, Ledyard Center, and along Route 117, all within a few miles of I-95.

Local attractions include Colonel Ledyard Park; Connecticut Wine Trail Association; Foxwoods Resort Casino; Highland Lake Park; Ledyard Glacial Park; Ledyard Up-Down Sawmill; Mashantucket Museum & Research Center; Maugle Sierra Vineyards & Winery; Nathan Lester House & Farm Tool Museum; Nathan Lester Park; and Sawmill Park.



[www.town.ledyard.ct.us](http://www.town.ledyard.ct.us)





**Lisbon Town Hall:  
1 Newent Road, Lisbon**

Phone: (860) 376-3400

Fax: (860) 376-6545

Animal Control: (860) 642-6379

Animal Emergency: (800) 236-1987

Assessor: (860) 376-5115

Building: (860) 376-8291

Fire Chief: (860) 376-2558

Marshall: (860) 234-3173

Planning/Zoning: (860) 376-3400

Resident Trooper:  
(860) 376-8868 x 5001

Public Works: (860) 376-3400

Recreation Committee:  
(860) 376-9791

Senior's Center: (860) 376-2329

Selectman's Office: (860) 376-3400

Slater Library: 26 Main St., Jewett  
City (860) 376-0024

Tax Collector: (860) 376-4188

Town Clerk: (860) 376-2708

# Lisbon 06351

*Lisbon is the home of the first railroad tunnel in America. This historic, quiet, rural community boasts an excellent and modern school system as well as cultural, recreational, commercial and retail opportunities in a modern and scenic setting.*

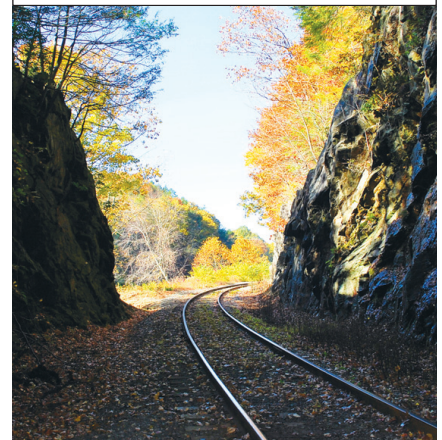


Situated on I-395, in New London County, Lisbon features two large commercial/retail developments (Lisbon Landing and The Crossing at Lisbon) as well as numerous smaller food, gas and convenience stores. All of these businesses are situated on River Road (Route 12) at Exit 84, a location that has been identified as one of the largest traffic generators in the state. Whether one needs building supplies, clothing, bedding, mobile communication assistance, a place for hair, nail or dental care, all of this and much more are available in one convenient location. The combination of a central, desirable location, attractive tax rate and business-friendly environment makes Lisbon the ideal place to start or grow a business.

Located between the Quinebaug and Shetucket Rivers, Lisbon is included in the Quinebaug and Shetucket Rivers Valley National Heritage Corridor (designated by Congress in 1994), popularly known as The Last Green Valley. The public has access to the Shetucket River, via a boat launch, for boating and fishing activities, as well as to 59 acres of land just off South Burnham Highway (Route 169) that includes baseball and soccer fields, walking trails and accommodations for picnics and small gatherings.

While the town is only 16 square miles, its recreation and historic sites, bucolic setting, shopping and dining offer visitors a variety of opportunities to explore, shop, or just relax and enjoy.

[www.lisbonct.com](http://www.lisbonct.com)







# Montville 06353

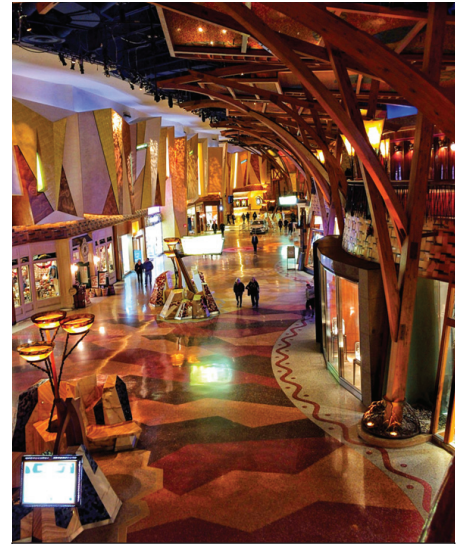
*Montville is a proud and growing community. Situated between the cities of Norwich and New London, it boasts an excellent education system and local business and industry with global connections. Montville residents strive to keep up with progress while maintaining a rural quality of life.*

The town's closest and most prominent neighbor is the Mohegan Tribal Reservation and its renowned resort casino, Mohegan Sun Casino and Mohegan Sun Arena. A strong relationship with the Mohegan Tribe benefits both communities. The villages of Chesterfield, Mohegan, Oakdale, and Uncasville are located within Montville. Oakdale and Uncasville have their own postal codes.

Located on more than 45 square miles, with a small population, there is room to develop and grow within Montville. The town is close enough to major cities and highways for commuters and visiting tourists; and southeastern Connecticut continues to be a vacation destination for international travelers. The town is a welcoming place to visitors of all ages: Boy Scouts love to visit historic Cohegan Rock and, for history buffs, there are more than 50 cemeteries located in town.

Montville is committed to maintaining its quality of life while at the same time enhancing its position in commerce and industry in Southeastern Connecticut.

[www.townofmontville.org](http://www.townofmontville.org)



## 10 Norwich-New London Tpk., Uncasville

Montville Town Hall:

Phone: (860) 848-3030

Fax: (860) 848-9784

Animal Control: (860) 848-3529  
(office & pound)

Assessor: (860) 848-6774

Building: (860) 848-6782

Fire Marshal/Emergency  
Management: (860) 848-6781

Library: 832 Raymond Hill Road,  
Oakdale (860) 848-9943

Mayor's Office: (860) 848-6778

Parks & Recreation: (860) 848-6780

Planning/Zoning/Wetlands:  
(860) 848-6779

Police: (860) 848-7510  
Non-Emergency

Public Works: 225 Maple Avenue,  
Uncasville (860) 848-7473

Senior Center: (860) 848-0422

Tax Collector: (860) 848-3030

Town Clerk: (860) 848-6784







# Preston 06365



*Preston's geography and soil have influenced its historic development. Agricultural use of the land has been conditioned by soils and topography best suited for livestock grazing and corn production. Numerous streams provided waterpower for industrial development.*

While woods cover much of the town, they represent second growth forests which have gradually covered abandoned fields. The dominant species are oak and hickory. White-tailed deer and small game are numerous. Freshwater fish such as trout are found in the streams of Preston, while the waters of the Thames and the lower Shetucket host a variety of species of fish, such as striped bass, shad, alewives, eels, and menhaden. Poquetanuck Cove is rich in shellfish.

In earlier times, the Thames River provided access to distant markets. Railroads and highways have since displaced waterborne transportation. Preston still retains much of its earlier rural character despite slow residential development.

Area attractions include Strawberry Park, which is an award-winning 160-acre campground nestled in the heart of beautiful southeastern Connecticut; with electrical connections as well as log cabin and RV rentals; Long Society Meetinghouse (a historic meetinghouse in the village of Long Society); Preston Historical Society; Dalice Elizabeth Winery; Preston Ridge Vineyard; and Hallville Mill Historic District.

[www.preston-ct.org](http://www.preston-ct.org)

## **Preston Town Hall: 389, Route 2, Preston**

Phone: (860) 887-5581

Fax: (860) 855-0171

Animal Control: (860) 887-8091

Assessor: (860) 887-5581 x115

Building: (860) 887-5581 x103

Poquetanuck Fire Department:  
(860) 887-5151

Preston City Fire Company:  
(860) 887-4815

Ledyard: (860) 464-1138 (non-emergency)

Library: (860) 886-1010

Parks & Recreation: (860) 887-5581 x113

Planning: x109 / Land Use:  
(860) 887-5581 x118

Resident State Trooper: (860) 887-8232

CT State, Troop E Montville:  
(860) 848-6500

Public Works: (860) 886-7220

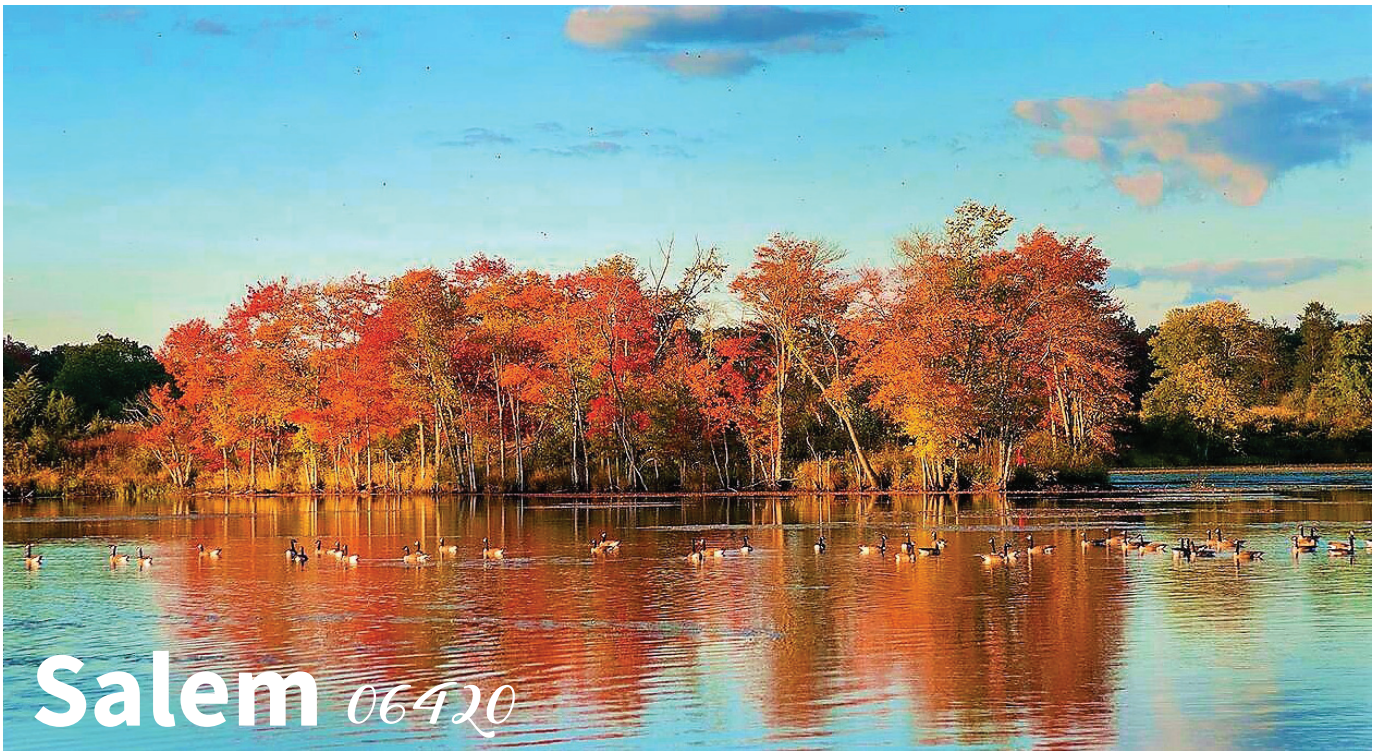
Senior's Center: 42 Long Society Road,  
Preston (860) 889-0770

Selectman's Office: (860) 887-5581 x105

Tax Collector: (860) 887-5581 x2

Town Clerk: (860) 887-5581 x111 /  
x102 / x106





# Salem 06420

*Salem is a quiet, rural community of more than 4,000 residents. Nestled among hills, wetlands and open fields astride the historic route between Hartford and the sea, the town has a heritage of agriculture. Incorporated in 1819, its residents are a friendly, caring, diverse and talented group who contribute to the manufacturing, arts, education and technology centers of central and southeastern Connecticut.*

Salem is centrally located on the Historic Governor’s highway with commercial connections to Hartford, Norwich, New London, Willimantic, and other metropolitan areas in the eastern region of the state. Businesses enjoy easy access to major interstate highways and state roads. The business climate is ripe for development, with available land, existing commercial infrastructure, and industrial and commercial business zones. The town welcomes new businesses who are good neighbors and who fit into the distinctly rural atmosphere.



Salem features a beautiful countryside with farms and recreational facilities. Opportunities for outdoor recreation include hiking, boating, fishing, and camping. Gardner Lake offers recreational boaters and fishermen a renovated boat launch with plenty of vehicle and trailer parking. The beach and fields provide picnic areas overlooking one of the largest lakes in southeastern Connecticut. Preserve and the Zemko Wildlife Management Area feature miles of trails. Salem also is home to four large campgrounds: Witch Meadow Lake Campground, Salem Farms Campground, Sna-z-Spot Campground, and Indian Field Campground.

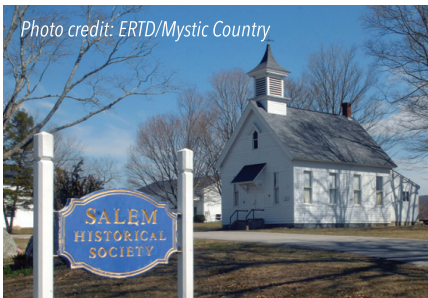


Photo credit: ERTD/Mystic Country

**Salem Town Hall:  
270 Hartford Road, Salem**

Phone: (860) 859-3873

Fax: (860) 859-1184

Animal Control: (860) 917-0567 Cell

Assessor: (860) 859-3873 x130 / x140

Building: (860) 859-3873 x240 / x250

Gardner Lake Volunteer Fire Department: (860) 859-1743

Salem Volunteer FD: (860) 859-0942

Library: 264 Hartford Road  
(860) 859-1130

Parks & Recreation: (860) 859-3873 x275

Planning: (860) 822-3000 x223

Troop K: (860) 537-7500

Resident Trooper: (860) 859-2507

Public Works: (860) 859-3873 x120

Transfer Station: 189 Rattlesnake Ledge Road (860) 859-2964

Senior’s Center: (860) 859-1118

Selectman’s Office: (860) 859-3873 x110

Tax Collector: (860) 859-3873 x6

Town Clerk: (860) 859-3873 x7 / x170 / x180

[www.salemct.gov](http://www.salemct.gov)





Photos credit: Sprague Historical Society

# Sprague 06330

*Sprague consists of three villages, Baltic, Hanover, and Versailles, and still maintains much of the turn-of-the century mill town flavor for which it is noted.*

While horses graze in open fields, children play baseball at Babe Blanchette Field, and several businesses buzz, one can almost hear the clack of the looms from the departed textile mills. Although the past is ever present, implementation of an expanded infrastructure and economic development projects are underway and the dream of establishing a business park in the Town's industrial area is becoming more of a reality. The town is committed to quality of life for residents, responsible growth, and maintaining the delicate balance between economic development and preservation of rural and agricultural assets ever mindful of the three small villages of long ago.

Sprague is the perfect place to live and work in eastern Connecticut. Located on the border between northeastern and southeastern Connecticut and within minutes of Route 395, it is an easy (45 minutes) commute to the New London area, yet also close (35 minutes) to both the University of Connecticut's main campus and Eastern Connecticut State University. Its three villages, Baltic, Hanover and Versailles, are rich in history, charm and architectural significance. The entire Baltic Village is listed on the National Register of Historic Places; Baltic was home to one of the largest textile mills in the country.

Resources include unspoiled working farmland and 600+ acres of town-owned open space, including a reservoir. Downtown is located on a trophy salmon-fishing river and is part of the Last Green Valley National Heritage Corridor. Sprague is a community rich in history and of people whose families have resided in this area for many generations.



[www.ctsprague.org](http://www.ctsprague.org)

## Villages of Baltic, Hanover, Versailles

**Address: Sprague Town Hall, 1 Main St., Baltic, CT 06330**

Town of Sprague:

Phone: (860) 882-3000

Fax: (860) 822-3016

Animal Control: (860) 642-6379

Animal Emergency: (800) 236-1987

Assessor: (860) 882-3000 x222

Building: (860) 822-3000 x204

Emergency Management:  
(860) 884-2874

Fire Marshal: (860) 822-3000 x 220

Library: 76 Main St. (in Grist Mill),  
Baltic (860) 822-3012

Parks & Recreation:  
(860) 882-3000

Planning: (860) 889-2324

Police: (860) 822-6156

Public Works: (860) 822-3000 x230

Senior's Center:  
(860) 822-3000 x203

Selectman's Office:  
(860) 822-3000 x202

Tax Collector: (860) 822-3000 x224

Town Clerk: (860) 822-3000 x220

Zoning: (860) 822-3000 x204



# Voluntown 06384

*Voluntown was incorporated in 1721 and has a rich history of textile mills, historic buildings, and the Civilian Conservation Corps Camp (CCC). The town was originally known as “Volunteer Town.”*



Located in the northeast corner of New London County, Voluntown is a rural community consisting of 39.8 square miles. Two-thirds of the town is made up of state forest. Pachaug State Forest offers many outdoor activities, such as hunting, camping, and horseback riding. The Town Hall and Library are located in the Village Center, along with the K-8 Elementary School, Constitution Field, the walking track and gazebo.

Visitors enjoy lodging at places such as Nature’s Campsite, Circle C Campground or Tamarack Lodge, and hometown cooking at popular restaurants such as Town Pizza and Claudia’s. Nearby Pachaug State Forest provides 28,000 acres of recreational opportunities and the area is known as one of the top five sites for fall foliage in Connecticut. Within town limits, visitors will also find numerous riding trails and the state’s only “horse camp,” as well as boating and fishing at Beach Pond, which has a public boat launch and is annually stocked by both Connecticut and Rhode Island.

Voluntown is home to many entrepreneurial companies offering services from carpentry and construction to antiques and motion pictures. Dairy and tree farms are an important part of the Voluntown economy.

[www.voluntown.gov](http://www.voluntown.gov)



## **Voluntown Town Hall: 115 Main St., Voluntown**

Phone: (860) 376-4089

Fax: (860) 376-3295

Animal Control (NECCOG):  
(860) 774-1253

Building/Zoning: (860) 376-3867

Planning/Zoning: (860) 376-4089

Public Library: (860) 376-0485

Public Works Garage:  
(860) 376-2878

Police: CT State, Troop E Montville:  
(860) 848-6500

Selectman’s Office: (860) 376-5880

Tax Collector: (860) 376-0453

Town Clerk: (860) 376-4089

Voluntown/Sterling Transfer Station:  
514 Brown Road, Voluntown  
(860) 564-7750

Voluntown Volunteer Fire Company:  
(860) 376-0475



# 14TH ANNUAL GNACC Golf Tournament

*This tournament is held annually the third Monday of May at the Norwich Golf Course. The GNACC Golf Committee would like to thank all of the sponsors, golfers, volunteers and members for making our annual GNACC Golf Tournaments such a huge success.*



Visit [www.norwichchamber.com/gnacc-annual-tournament.html](http://www.norwichchamber.com/gnacc-annual-tournament.html) for more information

## THANK YOU TO OUR 2017 MAJOR SPONSORS

Raffle Sponsor: Byrnes Agency

Attitude Adjustment Sponsor:  
The AMERICAN Group: American  
Ambulance Svc.; MACARA Vehicle  
Services; American Pro. Training; Get  
Bent in Norwich

Sign Sponsor: Camaro Signs

Networking Sponsor:  
The Nutmeg Companies

Gold Sponsor: Norwich  
Ophthalmology Group

Golf Cart Sponsor: Dime Bank

Putting Sponsor:  
Norwich Public Utilities

Awards Sponsor:  
Chelsea Insurance Agency



*Save the date!*

The 15th Annual GNACC Golf  
Tournament is May 21, 2018





**THANK YOU TO OUR 2017 SILVER SPONSORS**

Putnam Bank  
 Bouvier Insurance  
 Mohegan Holding Company, LLC.  
 Covanta Energy  
 Mohegan Holding Company:  
 Arroogas and Jersey Mike's Subs

**THANK YOU TO OUR BRONZE SPONSORS**

André J. Messier, Jr., CPA, LLC  
 Chapter One Fine Food & Drink  
 Devine Hydraulics, Inc  
 Kota  
 Norwich Bowling & Entertainment  
 Norwich Free Academy  
 Putnam Bank  
 Sayet & Seder Attorneys At Law  
 Savings Institue Bank & Trust  
 SERVPRO of Norwich/Windham County  
 Towne Liquor Store



**HOLE IN ONE SPONSORS**

Thrifty Car Sales North Franklin  
 Norwich Ophthalmology Group

Helping you **be sure** that you, your family and your business are protected.

**SmithBrothers.**  
 Be sure.

Insurance | Surety | Risk Management | Benefits | Financial

**Bernadette Exley** CIC, CISR  
 2 North Main Street Chester, CT  
 860-526-9587 860-430-3356  
 bexley@SmithBrothersUSA.com  
 SmithBrothersUSA.com

Glastonbury CT | Chester CT | Niantic CT | Somers CT | Windsor Locks CT | Easthampton MA | Haddonfield NJ  
 Smith Brothers Insurance, LLC NO-00239267



**Sure-Bright**

FAMILY OWNED AND OPERATED  
 DONE RIGHT | EVERY NIGHT

Commercial Cleaning Services  
 Sure-Bright Enterprises, INC.  
 Serving Connecticut Since 1994



Call **Chris** or **Patsy Heller** for a free quote today!

**(860) 887-9785**  
 www.surebrightinc.com



NO-00240086



# Holiday Bazaar



*The Holiday Bazaar is held annually the Saturday after Thanksgiving in honor of Small Business Saturday. Support your community by shopping local, and finding great one of kind gifts made by artists and artisans right here in Eastern Connecticut.*



Visit [www.norwichchamber.com/gnacc-holiday-bazaar.html](http://www.norwichchamber.com/gnacc-holiday-bazaar.html) to see more.





PHOTOS WITH SANTA!



**Eliza Huntington**  
MEMORIAL HOME  
[elizahuntington.com](http://elizahuntington.com)  
860.887.0684

The Eliza Huntington Home, established in 1872, is a residential care home for senior women. We provide rooms, meals, and supervision for adult women who cannot live independently but do not require nursing care. Our primary goals are to encourage independence and to treat our ladies with respect, dignity, and compassion. For more information or to set up a tour, contact us at 860-887-0684 or visit our website at [www.elizahuntington.com](http://www.elizahuntington.com).

Administrator - Tina M Yeitz  
Resident Care Director - Sandra Hill

NO-00240239

## SUPPORT & GUIDANCE

*In Your time of Sorrow*

We provide complete funeral, cremations and memorial services, helping you handle all the details of your loved one's final arrangements with the utmost care and dignity.

Family Owned & Operated Since 1913

Mark R. Gagne

Julie A. Gagne

Matthew D. Gagne

*Cummings-Gagne Funeral Home*

**860-887-4285**  
82 Cliff Street, Norwich, CT  
[www.cummings-gagnefh.com](http://www.cummings-gagnefh.com)

NO-00240775

For immediate assistance, please contact us.

Now offering preplanning services





# Rock the Docks

A FREE – AND FUN! – COMMUNITY EVENT

*The Howard T. Brown Park comes alive with music starting the first Wednesday after the 4th of July and runs six concerts every week from 6 p.m. - 8 p.m.*

Guests enjoy acoustic acts during Rockin' The Green! at the Norwich town green every Friday following the concerts. Bring a blanket or beach chair, sit back and relax.

Interested in sponsoring an event in 2018? Contact Angela Adams at (860) 887-1647 or [angelaadams@norwichchamber.com](mailto:angelaadams@norwichchamber.com).







**The Rock the Docks is brought to you by:**

Norwich Harbor Management Commission

The Greater Norwich Area Business Industry Foundation

The Greater Norwich Area Chamber of Commerce



**FREE FAMILY FUN!**



## Reliance Health

Enhancing health through mental wellness, with quality care in the community.

**40 Broadway, Norwich ~ (860) 887-6536**  
**www.RelianceHealthInc.org**

Serving Eastern Connecticut for over 40 years.

NO-00239172

# HMS CONSULTING

## PERSONALIZED TRAVEL SERVICE

*Serving travelers since 1998*

**Susan R. Hull ECC,**  
*Travel Consultant*

- Destination Weddings
- Exotic Honeymoons
- Walt Disney World
- Cruises
- Groups
- Certified Sandals Specialist
- Elite Cruise Counselor
- Aruba Certified Expert
- Hawaii Specialist

**QUALITY • SERVICE • INTEGRITY**

Visit us at: [www.hmstravelconsulting.com](http://www.hmstravelconsulting.com)  
 e-mail: [susan@hmstravelconsulting.com](mailto:susan@hmstravelconsulting.com)

234 Ross Hill Rd, Lisbon, CT 06351  
**PHONE: (860) 376-0774**

NO-00240224



# Healthy Living Festival

**BUILDING  
A HEALTHY  
COMMUNITY!**



*The GNACC Annual Healthy Living Festival is a free community event to showcase local health-related businesses while providing local families with a day of fun and education.*

The event features interactive activities and demonstrations; health care screenings; healthy food and farmers market; vendors; raffles; and Keynote Speaker Dr. Setu Vora. Brought to you by our GNACC Healthcare Committee.





# Area Attractions

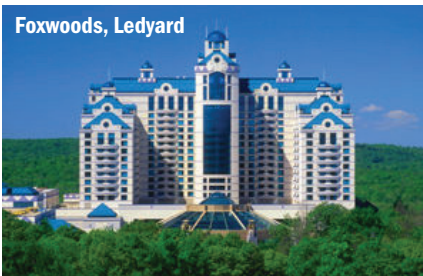
Mohegan Sun,  
Uncasville



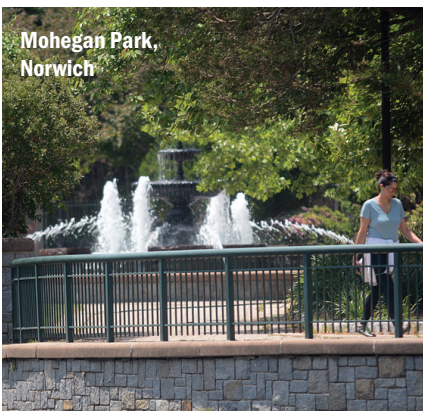
Spa at Norwich  
Inn, Norwich



Foxwoods, Ledyard



Mohegan Park,  
Norwich



# FULL SERVICE OIL COMPANY

WITH 100% CUSTOMER SATISFACTION GUARANTEED!

## DISCOUNT OIL PRICES

got  
oil ?

- Home Heating Oil
- On/Off Road Diesel
- Auto or Will Call
- Budget Programs
- Burner Service
- New Installs
- Service Plans
- Senior Discounts



DAILY PRICE  
ON WEBSITE

[www.brunellienergy.com](http://www.brunellienergy.com)



WE DO PLUMBING !!



NO00238804

**Brunelli**  
ENERGY LLC

860-889-4442



P1-204851 S7-386550 HOD-794



Indoor Heated Pool and Exercise Facility  
 Concert Shuttles to Mohegan Sun  
 Meeting Facilities and Business Center  
 The Bistro Café Serving Breakfast and Dinner  
 Including a Full Bar and Serving Starbucks Coffee

181 West Town Street  
 Norwich, CT 06360  
 860-886-2600  
[www.courtyardnorwich.com](http://www.courtyardnorwich.com)

**COURTYARD<sup>®</sup>**  
**Marriott.**

Make room for a little fun.™

NO-00240952



# Business After Hours

MONTHLY NETWORKING AT YOUR PLACE OF BUSINESS!

*Business After Hours are held monthly from 5:30 p.m. to 7:30 p.m. and take place at a hosting member's business. The event includes food, beer, wine, door prizes and is the perfect setting for creating new contacts and friends. Hosting a Business After Hours or a Business at Breakfast also is a great way to showcase your business.*



**BAH events are the #1 way to network with business leaders!**







GNACC members can purchase a year-long subscription and receive admission to all Business After Hours events for the year. You don't have to worry about registration, and if you can't make it you can send a co-worker in your place. This offer is only available for a limited time.



# SURPLUS OFFICE FURNITURE

Desks • Chairs • Bookcases • Work Stations  
File Cabinets • Conference Tables • Office Supplies

**SAVE UPTO 70% OFF**  
**RETAIL PRICES!**



NC00238310

**Willow Tree Plaza • 860.859.2083**  
363 West Main Street (next to Fat Cat & Medusa) Norwich, CT  
Visit us at [www.surplusunlimitedstore.com](http://www.surplusunlimitedstore.com)



# PET CARE You Can Trust

Melissa DeBlok, DVM  
Elizabeth Friday, DVM  
Dana Kozlowski, DVM  
Kathleen Tangari, DVM  
Catherine Newman, DVM

- In-house lab & Digital X-rays
- Dental Services
- Alternative Therapies
- Out-Patient Services
- Pet products & food
- & Lots of Love!



Convenient  
Online  
Store

Ask about our Wellness Plans

Visit Our Website:

[www.allfriendsanimalhospital.com](http://www.allfriendsanimalhospital.com)

Monday-Thursday 8am-8pm  
Friday 8am-6pm  
Saturday 8am-noon



NC000240774

Call 860-886-0125 • Fax 860 889-8531  
420 New London Turnpike • Norwich, CT 06360



# GNACC Membership Directory

## ADDICTION SERVICES - ALCOHOLISM & DRUG DEPENDENCE

### S.C.A.D.D.

Jack Malone  
37 Camp Mooween Road, Lebanon, CT  
06249  
(860) 886-2495 / FAX: (860) 887-0007  
jackmalone@snet.net / scadd.org

## ADVERTISING

### CHAIRMAN'S CIRCLE MEMBER

#### THE BULLETIN

Nadine McBride  
10 Railroad Place, Norwich, CT 06360  
(860) 887-9211  
Nmcbride@norwichbulletin.com  
norwichbulletin.com

## OUTFRONT MEDIA

Donna Lentol  
355 Washington, North Haven, CT 06473  
(203) 404-6134 FAX: (203) 985-0420  
donna.lentol@outfrontmedia.com  
outfrontmedia.com

## AMBULANCE SERVICE

### CHAIRMAN'S CIRCLE MEMBER

#### AMERICAN AMBULANCE SERVICE, INC.

Michael Aliano  
One American Way, Norwich, CT 06360  
(860) 886-1463 / FAX: (860) 887-1138  
maliano@americanamb.com  
americanamb.com

## ANTIQUES

### ENCORE JUSTIFIED

Jill Fritzsche  
102 Main St., Norwich, CT 06360  
(860) 908-2497  
canterbury\_estates@charter.net  
facebook.com/encorejustified

## APARTMENTS

### ASPEN PROPERTIES LLC

Les King  
36 Boswell Avenue, PO Box 71,  
Norwich, CT 06360  
(860) 334-6179 / l.king@snet.net

## COUNTRY PLACE APARTMENTS

Carol Danielski, One Birch Circle,  
Colchester, CT 06415  
(860) 537-1770 / FAX: (860) 537-3440  
country.place.apts@snet.net  
colchester-apartments.com

## THE LOFTS AT PONEMAH MILLS

Lynn Branciforte  
607 Norwich Ave., Taftville, CT 0680  
(860) 491-8456  
ponemahmgr@konoverresidential.com  
ponemahmills.com

## MEADOW RIDGE & CAMBRIDGE ESTATES

Carrie Rowley  
4B Plumtree Dr., Norwich, CT 06360  
(860) 889-2828 / FAX: (860) 892-1605  
crowley@solomonorg.com  
norwichapts.com

## THE WAUREGAN

Melissa Desjardins  
25 Broadway, Norwich, CT 06360  
(860) 885-6000 / FAX: (860) 885-6001  
mdesjardins@wincco.com  
thewauregan.com

## APPLIANCE STORE

### KEITH'S APPLIANCES

Jessica Burzycki  
320 West Thames St., Norwich, CT 06360  
(860) 889-2093 / FAX: (860) 886-5051  
jessicab@keithsappliance.com  
keithsappliances.com

## ART

### CHRIST CHURCH SCHOOL OF THE ARTS, INC.

Dawn Erardy  
78 Washington St., Norwich, CT 06360  
(860) 425-0663 / FAX: (860) 425-0663  
ccsartsmail@yahoo.com  
ccsarts.org

### NORWICH ARTS CENTER

Thom Keaney  
62 Broadway, Norwich, CT 06360  
(860) 887-2789 / FAX: (860) 887-0079  
administration@norwicharts.org  
norwicharts.org

## ATTORNEYS - LAW FIRMS

### BLOCK, JANNEY & SISLEY

Mark Block  
138 Main St., Norwich, CT 06360  
(860) 889-3855 / FAX: (860) 886-6352  
mblock@bjplawyers.com  
bjplawyers.com

## BROWN JACOBSON P.C.

Jeffrey R. Godley Esq.  
22 Courthouse Square, Norwich, CT 06360  
(860) 889-3321 / FAX: (860) 886-0673  
jgodley@brownjacobson.com  
brownjacobson.com

## CHINIGO, LEONE AND MARUZO, LLP

Jerry Smith  
141 Broadway, Norwich, CT 06360  
(860) 889-8900 / FAX: (860) 887-1744  
gsmith@norwichlaw.com  
chinigoleoneandmaruzollp.com

## KEVIN WICKLESS LAW, LLC

Attorney Kevin Wickless  
99 Main St., Suite 3 A, Norwich, CT 06360  
(860) 889-8804 / FAX: (860) 889-8806  
kevinwickless@gmail.com  
kevinwicklesslaw.com

## LAW OFFICE OF THERESA I.

### MADONNA, LLC

Theresa Madonna  
110 Main St., Jewett City, CT 06351  
(860) 376-9993 / FAX: (860) 376-5555  
madonnalaw@att.net  
madonnalawoffice.com/index.html

## LUCAS LAW, P.C.

Stan Lucas  
116 Sachem St., Norwich, CT 06360  
(860) 889-3353 / FAX: (860) 886-4469  
slucas@lucaslaw.comcastbiz.net  
lucaslawct.com

## MICHAEL E. JEWELL, ATTORNEY AT LAW

Michael E. Jewell  
257 Main St., Suite 510, Norwich, CT 06360  
(860) 887-9714 / FAX: (860) 889-5886  
mejewellessq@sbcglobal.net  
attorneyjewell.com

## SAYET AND SEDER, ATTORNEYS AT LAW

Bart A. Sayet Esq.  
126 Main St., Norwich, CT 06360  
(860) 889-2369 / FAX: (860) 889-4386  
bsayet@sayetandseder.com  
sayetandseder.com

## TCORS, TOBIN, CARBERRY, O'MALLEY, RILEY & SELINGER P.C.

Heather Danaher  
43 Broad St., New London, CT 06320  
(860) 447-0335 / FAX: (860) 442-3469  
attorneys@tcors.com / tcors.com



**THEODORE N. PHILLIPS, II,  
ATTORNEY-AT-LAW**

Ted Phillips II  
12 Case St., Suite 207, Norwich, CT 06360  
(860) 889-2333 / FAX: (860) 889-9669  
TPhillips2@aol.com  
norwichctlawyer.com

**AUCTIONEER**

**ADAMS AUCTIONEERS / APPRAISERS**

Sara Adams  
727 Boswell Avenue, Norwich, CT 06360  
(860) 887-8052 / FAX: (860) 859-9321  
Sara@adams.bid  
adamsliquidators.com

**AUDIO - VIDEO PRODUCTION**

**RESTAURANT OPTIMIZATION  
MARKETING**

Shawn Savage  
67 Lathrop Road, Uncasville, CT 06382  
(860) 266-1118 / FAX: (860) 383-9385  
shawnz02@snet.net  
restaurantoptimizationmarketing.com

**AUTOMOTIVE**

**THE BRAKE GUY MOBILE  
SERVICES LLC**

Todd Carlson  
476 Lebanon Road, North Franklin, CT  
06254  
(860) 383-3000 / Info@thebrakeguyllc.com  
thebrakeguyllc.com

**FALVEY MOTORS INC.**

Tim Falvey  
395 West Thames St., Norwich, CT 06360  
(860) 889-3371 / timothyfp@falveys.com  
falveys.com

**KLEEMANN TOWING SVC LLC**

Robert Kleemann  
401 North Main St., Norwich, CT 06360  
(860) 889-0045  
kleemannauto@gmail.com  
kleemannauto.com

**CHAIRMAN'S CIRCLE MEMBER**

**MACARA VEHICLE SERVICES, INC.**

Rob Janovic  
207 North Main St., Norwich, CT 06360  
(860) 887-0548 / FAX: (860) 887-1138  
service@macarainc.com  
macarainc.com

**NAPA AUTO PARTS**

Michael St. Germain  
400 West Thames St., Norwich, CT 06360  
(860) 889-2664 / FAX: (860) 887-3732  
michael.stgermain@att.net  
napaonline.com/ct/norwich/tst-inc

**NORWICH AUTO PARTS  
AND SPEED SHOP**

Rich Chaluto  
567 East Main St., Norwich, CT 06360  
(860) 887-3584 / FAX: (860) 887-9713  
norwichauto@sbcglobal.net

**SABBY'S AUTO LLC**

Sabby Contino  
253C Talman St. Ext., Norwich, CT 06360  
(860) 886-5683  
sabby@sabbys-auto.com  
sabbys-auto.com

**SCRANTON CHEVY OF NORWICH**

Meg Scranton  
774 W. Thames St., Norwich, CT 06360  
(860) 883-3333 / FAX: (860) 889-2684  
matt@scrantonchevy.com  
scrantonmotors.com

**THRIFTY CAR SALES OF FRANKLIN**

Ellis V Disch  
114 A Route 32, North Franklin, CT 06254  
(860) 383-4750 / FAX: (860) 499-5050  
ellisvdisch@gmail.com  
thriftyfranklin.com

**BAKERY / COFFEE SHOP**

**AMERICAN HONEY CREAMERY**

Jo-Ellen Converse  
19 Route 165a, Preston, CT 06365  
(860) 303-1112  
mamajo1970@comcast.net  
americanhoneycreamery.com

**THE BAKERS DOZEN - NORWICH**

Trevor Cardinal  
162 West Town St., Norwich, CT 06360  
(860) 779-7836 / FAX: (860) 779-3995  
bakersdozenoffice@gmail.com

**CRAFTSMAN CLIFF ROASTERS**

Matthew DuTrumble  
34 Broadway, Norwich, CT 06360  
(860) 608-2820  
cliff@craftsmancliffroasters.com  
craftsmancliffroasters.com

**DIXIE DONUTS, LLC**

Kathy Burkart  
275 West Town St., Norwich, CT 06360  
(860) 889-8992 / kmb06321@yahoo.com  
facebook.com/pages/Dixie-Donuts-LLC

**POPPY & RYE BAKERY CAFE**

Tom Adams  
137 Norwich Ave., Taftville, CT 06386  
(860) 383-2026  
poppy-and-rye@outlook.com  
poppyrye.com

**STARBUCKS**

Mike Sobol  
88 Salem Tpke., Norwich, CT 06360  
(860) 889-6256  
s19356@retail.starbucks.com  
starbucks.com

**BANKS & FINANCIAL**

**CHARTER OAK FEDERAL  
CREDIT UNION**

Namie Tedford  
1 Connecticut Ave., Norwich, CT 06360  
(860) 446-8085 / FAX: (860) 887-9823  
callcenter@cofcu.com / charteroak.org

**CHAIRMAN'S CIRCLE MEMBER**

**CHELSEA GROTON BANK -  
GROTON BRANCH**

904 Poquonnock Road, Groton, CT  
06340  
(860) 448-4252  
chelseagroton.com

**CHELSEA GROTON BANK -  
GLASTONBURY BRANCH**

273 Hebron Ave., Glastonbury, CT 06033  
(860) 934-1300

**CHELSEA GROTON BANK -  
HOLLY GREEN PLAZA**

391 Norwich Westerly Road, North  
Stonington, CT 06359  
(860) 572-4052

**CHELSEA GROTON BANK -  
MYSTIC AUTO EXPRESS**

50 Stonington Road, Mystic, CT 06355  
(860) 572-4082

**CHELSEA GROTON BANK -  
MYSTIC BRANCH**

2 Water St., Mystic, CT 06355  
(860) 572-4012

**CHELSEA GROTON BANK -  
NEW LONDON BRANCH**

1 Montauk Ave., New London, CT 06320  
(860) 448-4232

**CHELSEA GROTON BANK -  
NIANTIC BRANCH**

21 Pennsylvania Ave., Niantic, CT 06357  
(860) 739-4742

**CHELSEA GROTON BANK -  
ONE FRANKLIN SQUARE**

1 Franklin Square, Norwich, CT 06360  
(860) 823-4912 / FAX: (860) 823-4907

**CHELSEA GROTON BANK -  
PAWCATUCK BRANCH**

116 West Broad St., Pawcatuck, CT 06379  
(860) 599-2406

**CHELSEA GROTON BANK -  
SALEM BRANCH**

20 Hartford Road, Salem Marketplace  
Salem, CT 06420  
(860) 823-4942 / FAX: (860) 859-1129



## BANKS & FINANCIAL

### CHELSEA GROTON BANK - WATERFORD BRANCH

157 Boston Post Road, Waterford, CT 06385  
(860) 448-4262

### CHELSEA GROTON BANK - CENTER GROTON BRANCH

1319 Gold Star Highway  
Groton, CT 06340  
(860) 448-4242

### CHELSEA GROTON BANK - NORWICH / WESTSIDE BRANCH

444 West Main St., Norwich, CT 06360  
(860) 823-4962 / FAX: (860) 823-4967

### CHELSEA GROTON BANK - NORWICHTOWN BRANCH

50 Town St., Norwich, CT 06360  
(860) 823-4922 / FAX: (860) 823-4927

### CHELSEA GROTON BANK - SPRAGUE BRANCH

156 Willimantic Road, Sprague, CT 06330  
(860) 822-1110

#### CHAIRMAN'S CIRCLE MEMBER

### COREPLUS CREDIT UNION - NORWICH - MAIN OFFICE

Nicholas Fortson, 202 Salem Tpke.,  
Norwich, CT 06360  
(860) 886-0576 / coreplus.org

### COREPLUS CREDIT UNION - EAST LYME

Nicholas K Fortson, 125 Boston Post Road,  
East Lyme, CT 06333  
(860) 886-0576 / (800) 724-0779

### COREPLUS CREDIT UNION - GROTON

Nicholas K Fortson  
255 Rte. 12, Groton, CT 06340  
(860) 886-0576

### COREPLUS CREDIT UNION - BROOKLYN WALMART SUPERCENTER

Nicholas K Fortson, 450 Providence Road,  
Brooklyn, CT 06234  
(860) 412-0446

### COREPLUS CREDIT UNION - PLAINFIELD

Nicholas K Fortson, 67 Lathrop Road,  
Plainfield, CT 06374  
(860) 886-0576

### COREPLUS CREDIT UNION - PUTNAM WALMART SUPERCENTER

Nicholas K Fortson  
625 School St., Putnam, CT 06260  
(860) 315-9148 / FAX: (860) 315-9245

### COREPLUS CREDIT UNION - TAFTVILLE

Nicholas K Fortson  
30 Norwich Ave., Norwich, CT 06360  
(860) 886-0576

### COREPLUS CREDIT UNION - WATERFORD

Nicholas K Fortson  
40 Boston Post Road, Waterford, CT 06385  
(860) 886-0576 / (800) 724-0779

#### CHAIRMAN'S CIRCLE MEMBER

### DIME BANK - CORPORATE OFFICE

Stacey Taylor, 290 Salem Tpke.,  
Norwich, CT 06360  
(860) 859-4300  
staylor@dime-bank.com  
dime-bank.com

### DIME BANK - COLCHESTER

Chuck Maynard  
139 South Main St., Colchester, CT 06415  
(860) 531-1120  
info@dime-bank.com

### DIME BANK - BROADWAY

Monica MacNeil  
33 Broadway, Norwich, CT 06360  
(860) 889-2318  
mmacneil@dime-bank.com

### DIME BANK - EAST LYME

Andrea Barron  
18 Chesterfield Road, East Lyme, CT 06333  
(860) 739-2192 / info@dime-bank.com

### DIME BANK - LEDYARD BRANCH

Donna Ceccarelli, 744 Colonel Ledyard  
Highway, Ledyard, CT 06339  
(860) 464-8925  
dceccarelli@dime-bank.com

### DIME BANK - MONTVILLE

Ornet Hines, 563 Norwich - New London  
Tpke., Uncasville, CT 06382  
(860) 848-0659  
ohines@dime-bank.com

### DIME BANK - NEW LONDON

Becky Frechette, 668 Bank St., New  
London, CT 06320  
(860) 437-4366  
bfrechette@dime-bank.com

### DIME BANK - NEW LONDON (IN SHOPRITE)

Becky Frechette  
351 North Frontage Road, New London,  
CT 06320  
(860) 437-6222  
bfrechette@dime-bank.com

### DIME BANK - NORWICHTOWN

Lorie Mocek  
115 West Town St., Norwich, CT 06360  
(860) 892-4047 /  
lmocek@dime-bank.com

### DIME BANK - STONINGTON BOROUGH

Erin Tirrell  
4 Cannon Square, Stonington, CT 06378  
(860) 535-0034  
etirrell@dime-bank.com

### DIME BANK - TAFTVILLE

Kate Tiffany  
630 Norwich Ave., Taftville, CT 06380  
(860) 887-0554  
ktiffany@dime-bank.com

### DIME BANK - WESTERLY

Samantha Bazydlo  
131 Franklin St., Westerly, RI 02891  
(401) 596-4744  
SBazydlo@dime-bank.com

#### CHAIRMAN'S CIRCLE MEMBER

### EASTERN SAVINGS BANK - MAIN STREET BRANCH & CORPORATE OFFICES

Lisa Griffin  
257 Main St., PO Box 709, Norwich, CT  
06360  
(860) 425-0123 / FAX: (860) 889-4304  
lgriffin@eastern-savings.com  
eastern-savings.com

### EASTERN SAVINGS BANK - JEWETT CITY

1 Slater Ave., Jewett City, CT 06351  
(860) 376-2548  
lgriffin@eastern-savings.com

### EASTERN SAVINGS BANK - NORWICHTOWN

220 West Town St., Norwich, CT 06360  
(860) 383-1660  
lgriffin@eastern-savings.com

### EASTERN SAVINGS BANK - PLAINFIELD

14 Lathrop Road, Plainfield, CT 06374  
(860) 564-0006  
lgriffin@eastern-savings.com

### EASTERN SAVINGS BANK - WEST MAIN NORWICH

666 West Main St., Norwich, CT 06360  
(860) 886-1419 / FAX: (860) 886-1290  
lgriffin@eastern-savings.com

### LIBERTY BANK

Diana George, 77 Salem Tpke, Suite 101,  
Norwich, CT 06360  
(860) 892-2503 / FAX: (860) 383-1296  
dgeorge@liberty-bank.com  
liberty-bank.com

### PEOPLE'S UNITED BANK

Dianne Kent  
45 Town St., Norwich, CT 06360  
(860) 892-6331 / FAX: (877) 560-2405  
dianne.kent@peoples.com  
peoples.com



**PEOPLE'S UNITED BANK**

Super Stop & Shop  
2020 Norwich-New London Tpke.,  
Uncasville, CT 06382  
(860) 892-6425

**PEOPLE'S UNITED BANK**

Super Stop & Shop  
42 Town St., Norwich, CT 06360  
(860) 892-6465

**PEOPLE'S UNITED BANK**

624 West Main St., Marcus Plaza  
Norwich, CT 06360  
(860) 889-4711

**CHAIRMAN'S CIRCLE MEMBER****PUTNAM BANK – MAIN OFFICE**

Brandy Hapgood  
40 Main St., Putnam, CT 06260  
(860) 928-6501  
lbourque@putnambank.com  
putnambank.com

**PUTNAM BANK - GALES FERRY**

Deb Tavernier  
2 Chapman Lane, Unit #13, Gales Ferry, CT  
06335  
(860) 464-2247  
lbourque@putnambank.com

**PUTNAM BANK - GRISWOLD**

Melissa Stedman  
461 Voluntown Road, Griswold, CT 06351  
(860) 376-2541  
lbourque@putnambank.com

**PUTNAM BANK - LOAN CENTER**

50 Canal St., Putnam, CT 06260  
(860) 963-4953  
lbourque@putnambank.com

**PUTNAM BANK - DANIELSON**

Rockie Alix  
125 Wauregan Road, Danielson, CT 06239  
(860) 779-5880  
lbourque@putnambank.com

**PUTNAM BANK - NORWICH**

Carrie Szymanski  
40 High St., Norwich, CT 06360  
(860) 823-0957  
lbourque@putnambank.com

**PUTNAM BANK - PLAINFIELD**

Kathy Croteau  
11 Pratt Road, Plainfield, CT 06374  
(860) 564-1930  
lbourque@putnambank.com

**PUTNAM BANK - POMFRET**

Tonya Brock  
100 Averill Road, Pomfret Center, CT 06259  
(860) 928-0545  
lbourque@putnambank.com

**PUTNAM BANK - PRICE CHOPPER**

Brandy Hapgood  
251 Kennedy Dr., Putnam, CT 06260  
(860) 928-5543  
lbourque@putnambank.com

**SAVINGS INSTITUTE BANK & TRUST**

Barry Shead  
108 Salem Tpke., Norwich, CT 06360  
(860) 889-1939 / barry\_shead@banksi.com  
savingsinstitute.com

**SAVINGS INSTITUTE BANK & TRUST**

Pamela Mower  
63 Norwich Ave., Colchester, CT 06415  
(860) 537-8022  
Pamela\_Mower@banksi.com

**BEAUTY SALONS****ANTENNA HAIR SALON**

John Donner  
190 West Town St., Norwich, CT 06360  
(860) 886-6211 / crown06467@aol.com  
Antennasaloon.com

**DETAILS HAIR STUDIO, LLC**

Heidi Duff  
16 New London Tnpk., Norwich, CT 06360  
(860) 887-0187 / FAX: (860) 887-0187  
detailshairstudio@att.net  
detailshairstudio.net

**HAIR CUTTERY**

Tabitha Simons  
42 Town St., Suite 800, Norwich, CT 06360  
(860) 859-1949  
cmackenzie@ratnerco.com  
haircuttery.com

**HAIR UNIQUE SALON**

Lisa Courter, 77 Salem Tpke., Suite 106,  
Norwich, CT 06360  
(860) 886-5355  
leebeth44@sbcglobal.net  
hairuniquesalon.com

**PINK CUT & COLOR STUDIO**

Holly Pennell-Salegna  
488 North Main St., Norwich, CT 06360  
(860) 373-9199 / holly@pinkcutcolor.com  
pinkcutcolor.com

**BEVERAGES****COCA-COLA COMPANY  
OF SOUTHEAST N.E.**

Art Ryone 150 Waterford Pkwy South,  
Waterford, CT 06385  
(860) 443-2816 / FAX: (860) 442-0301  
aryone@ccnne.com  
cocacolaofsene.com

**EPICURE BREWING**

Jennifer Vincent  
40 Franklin St., Norwich, CT 06360  
(860) 213-5706  
epicurebrewing@gmail.com  
epicurebrewing.com

**MAPLE LANE SPIRITS, LLC.**

John Paul Mereen  
50 N.W. Corner Road, Preston, CT 06365  
(860) 334-0079  
jp@foggyharbor.com / foggyharbor.net

**NORWICH WINE & SPIRITS**

Jeffery Pierce  
273 West Main St., Norwich, CT 06360  
(860) 887-0822  
norwichdiscount@gmail.com  
norwichwineandspirits.com

**TOWNE LIQUOR STORE**

Betsy A. Eichholz  
32 Town St., Norwich, CT 06360  
(860) 889-4637  
32towne@sbcglobal.net  
towneliqorstore.com

**BOOKKEEPING****BOTTOM LINE BALANCE**

Jena Williams  
Norwich, CT 06360  
(910) 915-3967  
bottomlinebalance@gmail.com

**BOWLING****NORWICH BOWLING &  
ENTERTAINMENT CENTER**

Laurie Lathrop  
188 West Town St., Norwich, CT 06360  
(860) 889-3361 / FAX: (860) 887-2372  
lathrop@sbcglobal.net  
norwichbowling.com

**BUSINESS MARKETING****GREATER NORWICH AREA CHAMBER  
OF COMMERCE**

Angela Adams  
114 Main St., Norwich, CT 06360  
(860) 887-1647  
info@norwichchamber.com  
norwichchamber.com

**CABLE TELEVISION****COMCAST CABLE**

Amy Griffin  
222 New Park Dr., Berlin, CT 06037  
(860) 505-2104 / FAX: (866) 550-4546  
amy\_griffin@cable.comcast.com  
comcast.com

**FRONTIER COMMUNICATIONS**

Robert Moore  
114 New Park Ave., Franklin, CT 06254  
(860) 887-2712  
robert.a.moore@ftr.com  
frontier.com



## CAMP YOUTH

### CHANNEL 3 KIDS CAMP

Susan Baroni-Schaeffer  
73 Times Farm Road, Andover, CT 06332  
(860) 742-2267 / FAX: (860) 742-8027  
s.baronischaeffer@channel3kidscamp.org  
channel3kidscamp.org

### NEW LONDON COUNTY 4H CAMP

Sue Klimek  
37 Kahn Road, Franklin, CT 06254  
(860) 889-5266 / FAX: (860) 887-1378  
nlc4hcamp@aol.com  
my4hcamponline.com

## CASINO

### CHAIRMAN'S CIRCLE MEMBER

#### FOXWOODS RESORT CASINO

Ashley Polo  
350 Trolley Line Blvd., Mashantucket,  
CT 06338  
(860) 312-3000 / FAX: (860) 312-3329  
apolo@foxwoods.com  
foxwoods.com

### CHAIRMAN'S CIRCLE MEMBER

#### MOHEGAN SUN

Marc Provost  
1 Mohegan Sun Boulevard, Uncasville,  
CT 06382  
(860) 862-7415 / FAX: (860) 862-7545  
mprovost@mohegansun.com  
mohegansun.com

## CATERING

### MATTHEW'S CATERING COMPANY, LLC

Matthew Johnson, 15 East Main St, Unit  
#2, PO Box 176, Central Village, CT 06332  
(860) 564-3543 / FAX: (860) 564-6909  
info@matthewscatering.com  
matthewscatering.com

### STOTT'S AT BAT CATERING & BAKING

Jean Stott, Norwich, CT 06360  
(860) 885-1802 / Stottsatbat@yahoo.com  
stottsatbat.net

## CERTIFIED PUBLIC ACCOUNTANT

### ANDRE J. MESSIER, JR., CPA, LLC

Andre J. Messier Jr.  
12 Case St., Suite 201, Norwich, CT 06360  
(860) 887-9004 / FAX: (860) 887-2340  
andy@messiercpa.com

### DOHERTY, BEALS & BANKS, P.C.

Amy Buckley  
187 Williams St., New London, CT 06320  
(860) 443-2033 / FAX: (860) 444-7056  
amybuckley@dbbcpa.com  
dbbcpa.com

### EDWIN R. MUENZNER CPA, LLC

Ed Muenzner  
210 Route 32, Franklin, CT 06254  
(860) 892-1040 / FAX: (860) 892-1042  
ed@edmcpcallc.com / edmcpcallc.com

### GOLDBLATT BOKOFF LLC

Rosa Goldblatt  
457 West Main St., Norwich, CT 06360  
(860) 886-5108 / FAX: (860) 889-8683  
rosa@goldblattbokoff.com  
goldblattbokoff.com

### KIS ACCOUNTING LLC

Kate Presto  
23 NW Corner Road, Preston, CT 06365  
(860) 373-2191 / kate@kisallc.com  
kisallc.com

### O'CONNOR DAVIES, LLP

Marcia L. Marien  
100 Great Meadow Road  
Wethersfield, CT 06109  
(860) 257-1870 / FAX: (860) 257-1875  
mmarien@odpkf.com / odpkf.com

### PETER WM. MANERI, JR., CPA, LLC

Peter Maneri Jr.  
21 Stott Ave., Norwich, CT 06360  
(860) 889-3825 / FAX: (860) 889-5224  
pmaneri@snet.net / petermaneri.com

### TIMOTHY S. ASHBURNER, CPA

758 Boswell Ave., Norwich, CT 06360  
(860) 886-1483 / FAX: (860) 885-0064  
tsashburner@att.net  
timothysashburnercpa.com

## CHILD CARE SERVICES

### THE GLOBAL CHILD, LLC

Virginia Brown  
55 Otrobando Ave., Norwich, CT 06360  
(860) 889-3528  
vbrown@globalchildschool.com  
globalchildschool.com

### LITTLE LEARNERS AT THREE RIVERS

Linda Fecteau  
574 New London Tpke., Norwich, CT 06360  
(860) 215-9033  
linda@littlelearnerscc.com  
littlelearnerscc.com

## CHILDRENS ENTERTAINMENT

### SUPER SMILEY'S HOP HOUSE, LLC

Desiree Desilus  
Norwich, CT 06360  
(860) 383-5597  
Smileyshophouse@gmail.com  
CTHopHouse.com

### WACKY FACTORY ENTERTAINMENT

Joe Hynds  
35 Sholes Ave., Norwich, CT 06360  
(860) 885-8926  
stretch@stretchthec clown.com  
stretchthec clown.com

## CHURCH

### CENTRAL BAPTIST CHURCH

Pastor Nancy Forsstrom  
2 Union Square, Norwich, CT 06360  
(860) 889-8313  
Pastor@centralbaptistnorwich.com  
centralbaptistnorwich.com

## CLEANING SERVICE

### SERVPRO OF NORWICH/WINDHAM COUNTY

John O'Sullivan  
435 Salem Tpke., Bozrah, CT 06334  
(860) 887-0447 / FAX: (860) 889-2701  
servpro8745@snet.net  
servpronorwichwindhamcounty.com

## COMPUTER - SALES & SERVICE

### NATURAL 20 DESIGN

Benjamin Maerle  
66 Franklin St., Norwich, CT 06360  
(860) 373-7123  
ben@natural20design.com  
natural20design.com

### OPTICAL SOFTWARE SOLUTIONS, INC.

Jennifer Stred, 1031 Norwich New London  
Tpke., Uncasville, CT 06382  
(860) 848-8222 / FAX: (860) 848-8296  
jennifer@opticalsoftware.com  
opticalsoftware.com

## COMPUTER - WEBSITE DESIGN

### AM ASSOCIATES LLC

Mark & Alisa Mierzejewski  
44 N Canterbury Road, Canterbury, CT  
06331  
(860) 546-1203  
info@amassociatesllc.com  
amassociatesllc.com

### CAPIK CREATIVE DESIGN STUDIO

Jamie Caporaso  
30 Popple Bridge Road, Griswold, CT  
06351  
(860) 213-1264  
jamie@capikcreative.com  
capikcreative.com

### WEBLINK INTERNATIONAL

3905 West Vincennes Road, Suite 210,  
Indianapolis, IN 46268  
(877) 231-4970 / FAX: (317) 872-3929  
Info@weblinkinternational.com  
weblinkinternational.com

## COMPUTER - WEBSITE SOLUTIONS

### DB FINANCIAL AND WEB SOLUTIONS

Deni Baton  
19 Tra Mart Dr., Uncasville, CT 06382  
(860) 949-2323  
Deni.shopma@gmail.com  
mawebcenters.com/dbwebsolutions



## CONSULTING

### BE ON PURPOSE

Jerry Sinnamon, 43 Willetts Avenue, Apt 3,  
New London, CT 06320-5753  
(860) 437-3922  
jas@be-on-purpose.com  
be-on-purpose.com

### BOSS CONSULTING

Dana Dowdell, Uncasville, CT 06382  
(401) 932-0769  
dana.dowdell@bossconsultinghr.com  
bossconsultinghr.com

## CONTRACTORS - GENERAL

### CERTAPRO PAINTERS

David Messier  
112 Stockhouse Road, P.O. Box 300  
Bozrah, CT 06334  
(860) 886-2900 / dpmessier@aol.com  
norwich-glastonbury.certapro.com

### DC SHEETMETAL, LLC

Don Cormier  
135 Yantic Road, Yantic, CT 06389  
(860) 887-3936 / FAX: (860) 887-2453  
dondcsheetmetal@gmail.com

### DAVID GEIGENMILLER HOME IMPROVEMENT

David Geigenmiller, Baltic, CT 06330  
(860) 961-8720  
dgeigenmiller@snet.net

### EXTERIOR SOLUTIONS LLC

Dino R Tudisca  
53 Scott Hill Road, Bozrah, CT 06334  
(860) 608-1842 / FAX: (860) 859-0739  
exterior@sbcglobal.net  
thehousedoktor.com

### FLOOR COVERING SHOP, INC.

Jonathan Graf  
385 Central Ave., Norwich, CT 06360  
(860) 887-3523 / FAX: (860) 886-1664  
floorcoveringshop@yahoo.com  
floorcoveringshopinc.com

### HIGH TECH HOME IMPROVEMENTS, LLC.

Bob Noe, Lisbon, CT 06351  
(860) 861-3040  
1hightech2012@gmail.com

### NUTMEG COMPANIES, INC.

Evert Gawendo  
1 Ohio Ave., Norwich, CT 06360  
(860) 823-1780 / FAX: (860) 885-1421  
evert@nutmegcompanies.com  
nutmegcompanies.com

### ROGERS KITCHENS

Jim Smith  
130 Chestnut St., Norwich, CT 06360  
(860) 886-0505 / FAX: (860) 886-0506  
rogerskitchens@99main.com  
rogerskitchens.com

## CONTRACTORS - LOCKSMITH

### AA LOCK & KEY, INC.

Deborah Vessels  
1055 Colonel Ledyard Hwy, Ledyard, CT  
06339  
(860) 464-8664 / FAX: (860) 464-1541  
deb@aalockkey.com / aalockkey.com

## CONTRACTORS - WOODWORKING

### DANTE, LLC

Dante Louis Grassi  
633 Plainfield Road, Griswold, CT 06351  
(860) 376-0204 / FAX: (860) 383-0762  
dantellc@sbcglobal.net

## CREDIT CARD PROCESSING

### CAPITAL BANKCARD - NEW ENGLAND, LLC

Bill Morrone  
26 Barrett Hill Road, Brooklyn, CT 06234-1500  
(860) 774-8210 / FAX: (866) 745-5542  
bill@capitalbankcardne.com  
capitalbankcardne.com

### EVO PAYMENTS INTERNATIONAL - CT

Dan Ginnetti/Chris Walker  
415 Lisbon Road, Canterbury, CT 06331  
(860) 546-2110 / FAX: (860) 546-2143  
dan.ginnetti@snet.net  
evopayments.us

## CUSTOM FRAMING

### XUARE, LLC

Peter T. Obuchowski  
471 North Main St., Norwich, CT 06360  
(860) 383-8863  
peter@xquare.com / xquare.com

## DENTIST

### FAMILY ORTHODONTIC CARE

Jennifer J. Lowney DMD  
100 Sherman St., Norwich, CT 06360  
(860) 886-1466 / FAX: (860) 886-1163  
jenlowney@aol.com /  
familyorthodonticcare.com

### GREENE DENTAL GROUP

Jonathan Greene, DDS  
65 Sachem St., Norwich, CT 06360  
(860) 889-8427 / FAX: (860) 204-9402  
drgreene@greenedentalgroup.com  
greenedentalgroup.com

### GRISWOLD DENTAL ASSOCIATES, PC

Dr. Norman Katzoff  
87 Slater Ave., Jewett City, CT 06351  
(860) 376-2624 / FAX: (860) 376-9855  
drk@griswolddental.net  
griswolddental.net

## HI DENTAL CARE

Jung Kim  
1 Clinic Drive, Norwich, CT 06360  
(860) 823-1080 / FAX: (860) 357-6122  
kimjh83@hotmail.com  
hidentalcare.com

## NORWICH FAMILY & COSMETIC DENTISTRY

Tina Dempsey  
117 Lafayette St., Norwich, CT 06360  
(860) 887-2231 / FAX: (860) 892-1953  
syousufold@msn.com  
norwichsmiles.com

## DISC JOCKEY SERVICE

### PRO DIGITAL SOUNDS MOBILE DISC-JOCKEY SERVICE

Harry Thomas  
PO Box 1575, New London, CT 06360  
(860) 443-1004 / actorhlt@aol.com  
facebook.com/Pro-Digital-Sounds-Mobile-Disc-Jockey-Service

## DOGGY DAYCARE

### A DOG'S WORLD

Monty Aune  
396 Salem Tpke., Bozrah, CT 06334  
(860) 383-2487  
adogsworld2015@gmail.com  
adogsworldct.com

## DOORS

### OVERHEAD DOOR COMPANY OF NORWICH

Gary Wolinski  
88 Route 2A, Preston, CT 06365  
(860) 889-3848 / FAX: (860) 889-7711  
gwolinski@ohdct.com / ohdct.com

## DRIVERS EDUCATION

### AAA DRIVING SCHOOL

Teresa Estrada  
113 Salem Tpke., Suite 103, Norwich, CT 06360  
(800) 594-0346  
testrada@aaa-alliedgroup.com  
aaa.com

## ECONOMIC DEVELOPMENT

### CT BUSINESS & INDUSTRY ASSOCIATION

Adam Ney  
350 Church St., Hartford, CT 06103  
(860) 244-1900 / neya@cbia.com  
cbia.com

### NORWICH COMMUNITY DEVELOPMENT CORPORATION

Bob Mills  
66 Franklin St., Norwich, CT 06360  
(860) 887-6964 / FAX: (860) 887-3438  
admin@askncdc.com / askncdc.com



## ECONOMIC DEVELOPMENT

### SOUTHEASTERN CT ENTERPRISE REGION (SECTER)

Nancy Cowser, Executive Director  
19-B Thames St., Groton, CT 06340  
(860) 437-4659 / FAX: (860) 437-4662  
ncowser@secter.org / secter.org

## EDUCATION

### CHAIRMAN'S CIRCLE MEMBER

#### AMERICAN PROFESSIONAL EDUCATIONAL SERVICES

Gregory Allard  
1 American Way, Norwich, CT 06360  
(860) 886-1463  
info@americanprotraining.com  
americanprotraining.com

### INTEGRATED DAY CHARTER SCHOOL

Anna James  
68 Thermos Ave., Norwich, CT 06360  
(860) 892-1900 / FAX: (860) 892-1902  
AnnaJ@idcs.org / idcs.org

### NORWICH FREE ACADEMY

David Klein  
305 Broadway, Norwich, CT 06360  
(860) 425-5500 / FAX: (860) 887-2004  
dufortt@nfaschool.org  
norwichfreeacademy.com

### NORWICH PUBLIC SCHOOLS

Athena Nagel  
90 Town St., Norwich, CT 06360  
(860) 823-4245  
pwaubin@norwichpublicschools.org  
norwichpublicschools.org

### THREE RIVERS COMMUNITY COLLEGE

Mary Ellen Jukoski Ed. D., 574 New  
London Tpke., Norwich, CT 06360  
(860) 215-9001 / FAX: (860) 215-9917  
SFinton@trcc.commnet.edu  
trcc.commnet.edu

## ELECTRICIANS

### BARBER ELECTRIC, INC.

Scott S Barber  
178 Fitchville Road, Bozrah, CT 06334-  
1105  
(860) 887-9889 / FAX: (860) 886-2054  
scott@barberelectric.com  
barberelectric.com

## EMPLOYMENT & TRAINING

### ACHIEVEMENT UNLIMITED OF CT

James O'Shea  
7 East Ave., Norwich, CT 06360  
(860) 334-2031  
jimoshea57@gmail.com  
achievementunlimitedct.com

## WORKFORCE TRANSITION TRAINING LLC

Rob Austin  
9 Mayfair Dr., Waterford, CT 06385  
(860) 501-3257 / FAX: (860) 442-3257  
robaust10@yahoo.com / mywtt.com

### THE WORKPLACE

Jonathan Childs  
841 Route 32, Suite 12A, North Franklin,  
CT 06254  
(860) 642-8121 / jchilds@workplace.org  
workplace.org

## ENERGY COMPANY

### COVANTA

John Vinson  
132 Military Hwy, Preston, CT 06365  
(860) 889-4900  
jvinson@covantaenergy.com  
covantaenergy.com

### EAST RIVER ENERGY

401 Soundview Road, PO Box 388  
Guilford, CT 06437  
(203) 453-1200 / FAX: (203) 453-3899  
info@eastriverenergy.com  
eastriverenergy.com

### CHAIRMAN'S CIRCLE MEMBER

#### NORWICH PUBLIC UTILITIES

John Bilda  
16 South Golden St., Norwich, CT  
06360  
(860) 887-2555 / FAX: (860) 823-4580  
johnbilda@npumail.com  
norwichpublicutilities.com

### WHEELABRATOR LISBON, INC.

John Horgan  
425 South Burnham Highway, Lisbon, CT  
06351  
(860) 885-3512 / FAX: (860) 889-7669  
jhorgan@wtienergy.com  
wheelabratortechnologies.com

## ENERGY SOLUTIONS

### LANTERN ENERGY, LLC

Megan Hicks  
33 Wisconsin Ave., Norwich, CT 06360  
(877) 878-3006 / FAX: (877) 808-7840  
mhicks@lanternenergy.net  
lanternenergy.com

## ENGINEERS

### ARICO ENGINEERING INC.

John Arico  
841 Rte. 32 Unit 19, Franklin, CT 06254  
(860) 642-7040 / FAX: (860) 642-6004  
jarico@aricoengineering.com  
aricoengineering.com

## CLA ENGINEERS

Tom Cummings  
317 Main St., Norwich, CT 06360  
(860) 886-1966 / FAX: (860) 886-9165  
tcummings@claengineers.com  
claengineers.com

### DESIGN LEARNED, INC.

Scott Learned  
116 Main St., Norwich, CT 06360  
(860) 889-7078  
AnnBlock@designlearned.com  
designlearned.com

## ENTERTAINMENT

### AMC THEATER LISBON 12

Melanie Sanborn  
162 River Road, Lisbon, CT 06351  
(860) 376-3965 / FAX: (860) 376-5172  
msanborn@amctheaters.com  
amctheatres.com/movie-theatres/  
hartford-new-haven/amc-lisbon-12

### CHESTNUT ST. PLAYHOUSE

Lisa Foss  
24 Chestnut St., Norwich, CT 06360  
(860) 886-2378 / FAX: (860) 859-2672  
ChestnutSt.Playhouse@gmail.com  
chestnutst.playhouse.org

### CONNECTICUT TIGERS

Eric Knighton  
14 Stott Ave., Norwich, CT 06360  
(860) 887-7962 / FAX: (860) 886-5996  
info@cttigers.com / cttigers.com

### FRANCO'S COMEDY FOR YOUR CAUSE

Franco Frank Carofano  
PO Box 323, Bozrah, CT 06334  
(860) 884-2300  
Franco@ComedyForYourCause.com  
comedyforyourcause.com

### NASKART - INDOOR KART RACING & TRAMPOLINE PARK

Olivia Bouchard, 1 Sachatello Industrial  
Dr., Montville, CT 06370  
(860) 444-7700  
info@NaskartRacing.com  
naskartracing.com

### RON BETTEZ MUSICAL ENTERTAINMENT

Ron Bettez  
Griswold, CT 06351  
(860) 376-5056 / rfb.c141@gmail.com

## EQUIPMENT REPAIR SERVICE

### SERVICE STATION EQUIPMENT, INC.

Martin McKinney  
33 Leffingwell Road, Uncasville, CT 06382  
(860) 848-2278 / FAX: (860) 848-4449  
md.mckinney@sse-inc.net  
sse-inc.net



## EVENT VENUE

### TAMARACK LODGE

Valoree Longo  
21 Ten Rod Road, Voluntown, CT 06384  
(860) 376-0224 / FAX: (860) 535-2763  
tamaracklodgeconnecticut@gmail.com  
tamaracklodgect.com

## EYE CARE

### TOTALVISION EYE HEALTH CENTER, LLC

Regina Strand  
1920 Norwich New London Tpke.,  
Uncasville, CT 06382  
(860) 848-8777 / FAX: (860) 848-3388  
regina\_strand2000@yahoo.com  
heyecarect.com

## FINANCIAL SERVICES & INVESTMENTS

### ROSE CITY FINANCIAL SERVICES, LLC

Andrew Nollman  
210 Route 32- Suite #104, Franklin, CT  
06254  
(860) 383-6044 / FAX: (866) 878-6545  
Andrew@RoseCityFinancial.com  
RoseCityFinancial.com

## FIRE DEPARTMENT

### NORWICH FIRE DEPARTMENT LOCAL 892

Chris Zaugg, 10 North Thames St.,  
Norwich, CT 06360  
(860) 886-1378 / admin@local892.org  
http://local892.org

### TAFTVILLE FIRE DEPARTMENT

Timothy Jencks  
134 Providence St., Taftville, CT 06380  
(860) 887-6676 / FAX: (860) 887-3909  
timjencks@taftvillefire.org  
taftvillefire.org

## FIRE EQUIPMENT - SALES - INSPECTIONS

### COASTLINE FIRE PROTECTION

Mike Chauvin  
Plainfield, CT 06374  
(860) 319-9194  
coastlinefireprotection@yahoo.com

## FLOWER SHOP & GIFT STORE

### HART'S GREENHOUSE & FLORIST, LLC

Joyce Hart  
43 Clinton Ave., Norwich, CT 06360  
(860) 886-4278 / FAX: (860) 885-1411  
daveandjoyce@hartsgreenhouseflorist.com  
hartsgreenhouseflorist.com

## LEFRANCOIS FLORAL & GIFTS, LLC

Joanne LeFrancois  
50 Pine St., Norwich, CT 06360  
(860) 887-4695 / FAX: (860) 887-9461  
lefrancoisfloral@gmail.com  
lefrancoisfloral.net

## MCKENNA'S FLOWER SHOP

Michael Rankowitz  
520 Boswell Ave., Norwich, CT 06360  
(860) 887-2479 / (800) 889-0909  
service@mckennasflowershop.com  
mckennasflowershop.com

## FOOD SERVICE DISTRIBUTORS

### CHAIRMAN'S CIRCLE MEMBER

#### US FOODS

Jesse James  
222 Otrobando Ave., Norwich, CT  
06360  
(860) 425-3008 / FAX: (860) 425-3009  
jesse.james@usfoods.com  
usfoods.com

## FRUIT

### EDIBLE ARRANGEMENTS

Brian Hinton, 77 Salem Tpke., Salem  
Plaza, Norwich, CT 06360  
(860) 886-6999 / FAX: (860) 859-9823  
ledyardbball@aol.com  
ediblearrangements.com

## FUEL

### BRUNELLI ENERGY

Kimberly Brunelli  
2 Rachel Dr., Bozrah, CT 06334  
(860) 889-4442 / FAX: (860) 889-4443  
kim.brunellienergy@att.net  
brunellienergy.com

## FUNERAL HOME

### CUMMINGS-GAGNE FUNERAL HOME

Matthew Cummings  
82 Cliff St., Norwich, CT 06360  
(860) 887-4285 / FAX: (860) 885-1778  
cummingsgagnefh@yahoo.com  
cumming-gagnefh.com

## FURNITURE SALES

### AMAZING FURNITURE

Kerri Theriault  
599 Norwich Ave., Taftville, CT 06380  
(860) 204-9811 / FAX (860) 204-9822  
kerri.theriault@yahoo.com  
amazingfurnitureonline.com

### GORINS FURNITURE, INC.

Wendy Gorin Ladd  
49 New London Tpke., Norwich, CT 06360  
(860) 887-2579 / FAX: (860) 887-9375  
wendy@gorinsfurniture.com  
gorinsfurniture.com

## SURPLUS OFFICE STORE

Michael Matera  
363 West Main St., Norwich, CT 06360  
(860) 859-2083  
surplusunlimitedstore.com

## GENERATORS

### AC/DC INDUSTRIAL ELECTRIC, LLC

Charles Carroll  
44 Yantic Flats Road, Yantic, CT 06389  
(860) 886-2232 / FAX: (860) 425-0622  
charlie@acdcindustrial.com  
acdcindustrial.com

## GOLF COURSES

### NORWICH GOLF COURSE

Mike Svab  
685 New London Tpke., Norwich, CT 06360  
(860) 889-6973 / FAX: (860) 886-5684  
msvab@norwichgolf.com  
norwichgolf.com

### THE WINDHAM CLUB

Bob Cusumano  
184 Club Road, North Windham, CT 06256  
(860) 456-4211 / rfcusumano@aol.com  
windhamclub.com

## GOVERNMENT

### CITY OF NORWICH

Mayor Peter Nystrom | City Manager John  
Salomone  
100 Broadway, Norwich, CT 06360  
(860) 823-3742 / FAX: (860) 885-2914  
cmoffice@cityofnorwich.org  
norwichct.org

### CONGRESSMAN JOE COURTNEY

Joe Courtney  
101 Water St., Suite 301, Norwich, CT  
06360  
(860) 886-0139 / Info@JoeCourtney.com

### CONNECTICUT COMMISSION ON HUMAN RIGHTS AND OPPORTUNITIES

Lucia Leise  
100 Broadway, Second Floor, Norwich, CT  
06360  
(860) 886-5703 / FAX: (860) 886-2550  
lucia.leise@ct.gov  
ct.gov/chro/site/default.asp

### DECD

Carol Wallace  
505 Hudson St., Hartford, CT 06106-7106  
(860) 270-8000 / DECD@po.state.ct.us

### DORS - BUREAU OF REHABILITATION SERVICES

Megan Provost  
113 Salem Tpke., North Building  
Norwich, CT 06360  
(860) 859-5720 / FAX: (860) 859-5733  
megan.provost@ct.gov  
ct.gov/brs/site/default.asp



## GOVERNMENT

### GOVERNOR'S EASTERN CONNECTICUT OFFICE

171 Salem Tpke., Norwich, CT 06360  
(860) 886-0555

### LT GOVERNOR NANCY WYMAN

Nancy Wyman  
Executive Office  
55 Elm St., Hartford, CT 06106  
(860) 702-3314  
Martin.Heft@po.state.ct.us

### MOHEGAN TRIBE OF INDIANS OF CONNECTICUT

Charles Bunnell  
5 Crow Hill Road, Uncasville, CT 06382  
(860) 862-6120 / FAX: (860) 862-6162  
cbunnell@moheganmail.com  
mohegansun.com

### NORWICH POLICE DEPARTMENT

Patrick Daley  
70 Thames St., Norwich, CT 06360  
(860) 886-5561 / FAX: (860) 886-4552  
norwichct.org/index.aspx?nid=255

### SENATOR CATHERINE OSTEN

Catherine Osten  
187 Scotland Road, Baltic, CT 06330  
(860) 240-8600  
catherine.osten@cga.ct.gov  
senatedems.ct.gov/osten

### SENATOR HEATHER SOMERS

Heather Somers  
67 Ramsdell St., Groton, CT 06340  
(860) 240-8800  
heather.somers@cga.ct.gov  
ctsenaterepublicans.com/home-somers

### SENATOR PAUL FORMICA

Paul Formica  
20 Bush Hill Dr #A, Niantic, CT 06357  
(860) 240-8800  
Paul.Formica@cga.ct.gov  
ctsenaterepublicans.com/home-formica

### STATE REPRESENTATIVE CHRISTINE CONLEY

Christine Conley  
90 Crown Knoll Court, Groton, CT 06340  
(860) 240-8585  
Christine.Conley@cga.ct.gov  
housedems.ct.gov/Conley

### STATE REPRESENTATIVE DOUG DUBITSKY

Doug Dubitsky  
PO Box 70, North Windham, CT 06256  
(800) 842-1423  
doug.dubitsky@housegop.ct.gov  
cthousegop.com/doug-dubitsky

### STATE REPRESENTATIVE

#### EMMETT RILEY

Emmett Riley  
25 Sherwood Lane, Norwich, CT 06360  
(860) 240-8585  
emmett.riley@cga.ct.gov  
housedems.ct.gov/Riley

### STATE REPRESENTATIVE

#### HOLLY CHEESEMAN

Holly Cheeseman  
16 Mitchell Dr., Niantic, CT 06357  
(860) 240-8700 / holly.cheeseman@housegop.ct.gov  
cthousegop.com/cheeseman/main

### STATE REPRESENTATIVE

#### KATHLEEN MCCARTY

Kathleen McCarty  
226 Great Neck Road, Waterford, CT 06385  
(860) 240-8700  
Kathleen.McCarty@housegop.ct.gov  
cthousegop.com/kathleen-mccarty

### STATE REPRESENTATIVE KEVIN RYAN

Kevin Ryan  
21 Terrace Dr., Oakdale, CT 06353  
(860) 240-8585 / kryan27620@aol.com  
housedems.ct.gov/Ryan

### STATE REPRESENTATIVE

#### KEVIN SKULCZYCK

Kevin Skulczyck  
Jewett City, CT 06351  
(860) 240-8700 / kevin.skulczyck@housegop.ct.gov  
cthousegop.com/skulczyck/

### STATE REPRESENTATIVE

#### MIKE FRANCE

Mike France  
17 Garden Dr., Gales Ferry, CT 06335  
(860) 240-8700  
mike.france@housegop.ct.gov  
cthousegop.com/mike-france

### TOWN OF BOZRAH

First Selectman Glenn Pianka  
1 River Road, Bozrah, CT 06334  
(860) 889-2689 / FAX: (890) 887-5449  
firstselectman@bozrahct.org  
townofbozrah.org

### TOWN OF FRANKLIN

First Selectman Charles Grant  
7 Meetinghouse Hill Road, Franklin, CT 06254  
(860) 642-6055 / FAX: (860) 642-6606  
franklin@99main.com / franklinct.com

### TOWN OF GRISWOLD

First Selectman Todd Babbitt  
28 Main St., Griswold, CT 06351  
(860) 376-7060 / FAX: (860) 376-7106  
firstselectman@griswold-ct.org  
griswold-ct.org

### TOWN OF LEDYARD

Mayor Fred Allyn III  
741 Colonel Ledyard Hwy, Ledyard, CT 06339  
(860) 464-3221 / mayor@ledyardct.org  
town.ledyard.ct.us  
Town of Lisbon First Selectman Thomas Sparkman  
1 Newent Road, Lisbon, CT 06351  
(860) 376-3400 / FAX: (860) 376-6545  
tsparkman@lisbonct.com  
lisbonct.com

### TOWN OF MONTVILLE

Mayor Ronald K McDaniel  
310 Norwich-New London Tpke., Montville, CT 06382  
(860) 848-3030  
cmalchiodi@montville-ct.org  
townofmontville.org

### TOWN OF PRESTON

First Selectman Robert Congdon  
Town Hall- 389 Route 2, Preston, CT 06365  
(860) 887-5581 / FAX: (860) 885-1905  
congdon@preston-ct.org  
preston-ct.org

### TOWN OF SALEM

First Selectman Kevin Lyden  
270 Hartford Road, Salem, CT 06420  
(860) 859-3873 / FAX: (860) 859-1184  
kevin.lyden@salemct.gov  
salemct.gov

### TOWN OF SPRAGUE

First Selectman Catherine A. Osten  
1 Main St., Baltic, CT 06330  
(860) 822-3000 / c.osten@ctsprague.org  
ctsprague.org

### TOWN OF VOLUNTOWN

First Selectman Tracey Hanson  
115 Main St., Voluntown, CT 06384  
(860) 376-4089 / FAX: (860) 376-3295  
thanson@voluntown.gov  
voluntown.gov

## GRAPHIC DESIGN

### MIDAGRAPHS, INC.

Michelle Fontaine-Calkins  
90 Papermill Road, Baltic, CT 06330  
(860) 822-3024 / FAX: (860) 822-3028  
production@midagraphics.com  
midagraphics.com

## GROCERY STORE

### SHOP-RITE SUPERMARKETS, INC.

Scott Capano  
634 West Main St., Norwich, CT 06360  
(860) 887-6088  
scott.capano@wakefern.com  
shoprite.com/pd/stores/CT/Norwich/  
ShopRite-of-Norwich/BFDE400



## GYMS & FITNESS

### ADVANTAGE PERSONAL TRAINING

Christy Wolinski  
5 Freedom Way, Niantic, CT 06357  
(860) 334-1918  
christy@advantagepersonaltraining.com  
advantagepersonaltraining.com

### ANYTIME FITNESS LISBON

Julie Sollenberger  
160 River Road, Lisbon, CT 06351  
(860) 376-3225  
lisbonct@anytimefitness.com  
anytimefitness.com

### ANYTIME FITNESS UNCASVILLE

Dawn Gilday  
2020 Norwich New London Tpke.,  
Uncasville, CT 06382  
(860) 848-0383  
uncasvillect@anytimefitness.com  
anytimefitness.com/gyms/2758/  
Uncasville-CT-06382

### CROSSFIT PAYBACK

Jesse Sehl/Matt Quigley  
204 Sturtevant St., Norwich, CT 06360  
(860) 213-5849 / CFPayback@gmail.com  
crossfitpayback.com

### ROSE CITY ATHLETICS

Gina Facchini/Tony Facchini  
40R Franklin St., Norwich, CT 06360  
(860) 608-1095  
facchinifitnessllc@gmail.com  
rosecityathletics.com

### SUMMIT FITNESS AND SPORTS

Jolene Bowers  
2 Wisconsin Ave., Norwich, CT 06360  
(860) 887-3591 / FAX: (860) 889-5361  
info@summitfitnessandsports.com  
summitfitnessandsports.com

### TIGER STRENGTH PERFORMANCE

Lauren Nadwairski  
32 A White St., Norwich, CT 06360  
(860) 367-6213  
laurennadwairski@yahoo.com  
facebook.com/tigerstrengthperformance  
/?fref=ts

## HEALTH & BEAUTY

### GO SOAP YOURSELF, LLC

Valerie Espeleta  
PO Box 271, Plainfield, CT 06374  
(860) 933-3345  
info@gosoapyourselfllc.com  
gosoapyourselfllc.com/

## HEALTH & WELLNESS

### GENERATIONAL WELLNESS MESSAGE THERAPY

Karin Jones  
29 John St., Norwich, CT 06360  
(860) 639-9107  
generationalwellness@gmail.com  
generationalwellnessct.com

#### CHAIRMAN'S CIRCLE MEMBER

### GET BENT BAPTISTE- INSPIRED YOGA

Stacie Lambert  
207 North Main St., Norwich, CT 06360  
(860) 886-9642  
info@getbentinnorwich.com  
getbentinnorwich.com

### ZIJA INTERNATIONAL - DOREEN MCKEAG

Doreen McKeag, Norwich, CT 06360  
(860) 334-2938 / doreen.mckeag@gmail.  
com doreenmckeag.myzija.com

## HEALTHCARE

### GENERATIONS FAMILY HEALTH CENTER

Kathy Lopez  
330 Washington St., Suite 510, Norwich,  
CT 06360  
(860) 885-1308 / FAX: (860)450-7475  
klopez@genhealth.org / genhealth.org

### PHYSICIANONE URGENT CARE

607 West Main St., Norwich, CT 06360  
(860) 892-9000 / FAX: (860) 892-9001  
info@physicianoneurgentcare.com  
physicianoneurgentcare.com

### UNITED COMMUNITY & FAMILY SERVICES

Jennifer Granger  
34 East Town St., Norwich, CT 06360  
(860) 889-2375 / FAX: (860) 889-3450  
jgranger@ucfs.org / ucfs.org

## HISTORICAL SOCIETY

### LEFFINGWELL HOUSE MUSEUM / SOCIETY OF THE FOUNDERS OF NORWICH

Greg Farlow  
348 Washington St., Norwich, CT 06360  
(860) 889-9440  
president@leffingwellhousemuseum.org  
leffingwellhousemuseum.org

### NORWICH HISTORICAL SOCIETY

Bill Champagne  
307 Main St., Norwich, CT 06360  
(860) 889-0303  
info@norwichhistoricalsociety.org  
norwichhistoricalsociety.org

## HOMECARE

### ASSURED QUALITY HOMECARE, LLC

Caleb Roseme  
282 Franklin St., Norwich, CT 06360  
(860) 373-0428 / FAX: (860) 909-0013  
info@asqhomecare.com  
asqhomecare.com

### COMPANIONS & HOMEMAKERS

Marnie Wilson  
1 Washington St., Norwich, CT 06360  
(860) 859-1141 / FAX: (860) 859-3993  
marnie.wilson@elderly-care.com  
companionsandhomemakers.com

### PRIMARY PREVENTION HOMECARE, LLC

106 Route 32, Franklin, CT 06254  
(860) 244-9119 / FAX: (860) 244-9163  
info@pphomecare.com  
primarypreventionhomecare.com

### PSA HEALTHCARE

Margaret Sinay  
102 Salem Tpke., Norwich, CT 06360  
(860) 383-1909 / FAX: (860) 383-1914  
msinay@psahealthcare.com  
psahealthcare.com

### QC HOME CARE SOLUTIONS, LLC

Christine Baker  
P.O. Box 330, Bozrah, CT 06334  
(860) 383-2290  
c.baker@qchomecare.com  
qchomecare.com

## HOSPICE CARE

### CENTER FOR HOSPICE CARE SOUTHEAST CONNECTICUT

Carol Mahier, RN, MSN  
227 Dunham St., Norwich, CT 06360  
(860) 848-5699 / FAX: (860) 886-0434  
cmahier@hospicesect.org  
hospicesect.org

## HOSPITAL

### NATCHAUG HOSPITAL, INC.

Patricia Rehmer  
11 A Stott Ave., Norwich, CT 06360  
(860) 823-5320 / FAX: (860) 859-1440  
patricia.rehmer@hhchealth.org  
natchaug.org

#### CHAIRMAN'S CIRCLE MEMBER

### WILLIAM W. BACKUS HOSPITAL

Steve Coates, 326 Washington St.,  
Norwich, CT 06360  
(860) 889-8331 / FAX: (860) 892-2728  
backushospital.org



## HOTELS & ACCOMMODATIONS

### AMERICINN LODGE & SUITES OF GRISWOLD

Debbie Watson  
375 Voluntown Road, Griswold, CT 06351  
(860) 376-3200 / FAX: (860) 376-3229  
americinngriswold.ct@gmail.com  
americinn.com/hotels/CT/Griswold

### COMFORT SUITES \* CHOICE HOTELS

Sabrina McIntyre  
275 Otrobando Ave., Norwich, CT 06360  
(860) 892-9292 / FAX: (860) 892-9198  
sabinam@prestigeheg.com  
choicehotels.com/connecticut/norwich/  
comfort-suites-hotels/ct006

### COURTYARD BY MARRIOTT NORWICH

Matt Biggins  
181 West Town St., Norwich, CT 06360  
(860) 886-2600 / FAX: (860) 889-2001  
mbiggins@courtyardnorwich.com  
marriott.com/goncy

### FAIRFIELD INN & SUITES UNCASVILLE

Lynn Nazarko  
2255 Norwich New London Tpke.,  
Uncasville, CT 06382  
(860) 848-0660 / FAX: (860) 848-8941  
knazarko@hotelequities.com  
marriott.com/hotels/travel/hvnun-  
fairfield-inn-and-suites-uncasville/

### HOLIDAY INN NORWICH

Sharon Brouillard  
10 Laura Blvd., Norwich, CT 06360  
(860) 889-5201 / FAX: (860) 889-1767  
sharon.brouillard@hhmlp.com  
holidaynorwichhotel.com

### HYATT PLACE AT MOHEGAN SUN

Heather Harris  
2049 Norwich-New London Tpk.,  
Uncasville, CT 06382  
(860) 383-1234 / FAX: (860) 848-1233  
heather.harris@hyatt.com  
mohegansun.place.hyatt.com/en/hotel/  
home.html

### MICROTEL INN & SUITES BY WYNDHAM

Traci LaShomb CHA  
1954 Norwich New London Tpke.,  
Uncasville, CT 06382  
(860) 367-0880 / FAX: (860) 367-0770  
gm@microteluncasville.com  
microteluncasville.com

## HUMAN RESOURCE

### HR MASTERPIECE, L.L.C.

Lisa Sanders  
66 Franklin St., Norwich, CT 06360  
(860) 608-5076  
lmsanders@hrmasterpiece.net  
hrmasterpiece.net

## HUMAN RESOURCE LEADERSHIP ASSOCIATION OF EASTERN CT

Karen Eichstaedt C/O UCFS  
34 East Town St., Norwich, CT 06360  
(860) 213-1600 / FAX: (860) 823-6218  
president@hrlact.org / hrlact.org

## HVAC

### ALLTEMP CLIMATE CONTROL

Brian Jolicoeur  
Gales Ferry, CT 06335  
(860) 464-9315 / service@alltemp.us  
alltemp.us

## HYDRAULIC SERVICES

### DEVINE HYDRAULICS, INC.

Brian A Devine  
179 Gallivan Lane, Uncasville, CT 06382  
(860) 859-1650 / FAX: (860) 887-1130  
sharon@dhict.com / dhict.com

## ICE SKATING

### NORWICH ROSEGARDEN ICE ARENA

Shannon Fitzgerald  
641 New London Tpke., Norwich, CT 06360  
(860) 892-2555 / FAX: (860) 892-2559  
rosegardenicearena@gmail.com  
rosegardenicearena.com

## INDIVIDUAL MEMBER

### GARY & ROMER YOUNG

Friends of GNACC  
Romer Young  
Norwich, CT 06360

### HONORARY MEMBER HARRY RAUCHER - NATIVE SON/DAUGHTER AWARD RECIPIENT

Delray Beach, FL 33446

### HONORARY MEMBER MICHAEL MOROSKY, M.D. - NATIVE SON/DAUGHTER AWARD 2017 RECIPIENT

Glastonbury, CT 06033

### HONORARY MEMBER REAR ADMIRAL LOTRING - NATIVE SON/DAUGHTER AWARD RECIPIENT

Arnie Lotring  
Great Lakes, IL 06688-2845

### KELLY AUGUST FRIEND OF GNACC

Kelly August  
Norwich, CT 06360

### TODD C. POSTLER

Norwich, CT 06360  
(860) 608-0745  
todd\_postler@yahoo.com

### HONORARY MEMBER THOMAS R. MCCARTHY - NATIVE SON/DAUGHTER AWARD 2010 RECIPIENT

Louisville, KY 40218

## INDUSTRIAL INSTALLERS

### COLLINS & JEWELL COMPANY

Chris Jewell  
5 Rachel Dr., Bozrah, CT 06334  
(860) 887-8813 / FAX: (860) 886-5359  
cjewell@collins-jewell.com / collins-  
jewell.com

## INSURANCE

### ALLSTATE INSURANCE - THE D'ERRICO AGENCY, LLC

Joseph D'Errico  
647 West Main St., Norwich, CT 06360  
(860) 886-6707 / FAX: (860) 886-1546  
derricoagency@allstate.com  
allstateagencies.com/derricoagency

### BEARINGSTAR INSURANCE

Tammy Blais  
352 Salem Tpke., Bozrah, CT 06334  
(860) 859-2061 / FAX: (860) 889-3904  
tammy.blais@bearingstar.com  
bearingstar.com

### BOUVIER INSURANCE

Kathy Kane  
1020 Hartford Tpke., Waterford, CT 06385  
(860) 859-9821 / FAX: (860) 561-8778  
kkane@binsurance.com  
binsurance.com

### CHAIRMAN'S CIRCLE MEMBER

### BYRNES AGENCY INSURANCE

Jay Byrnes  
6 Consumers Ave., Norwich, CT 06360  
(860) 886-5498 / FAX: (860) 859-5075  
jbyrnes@byrnesagency.com  
byrnesagency.com

### BYRNES AGENCY INSURANCE - DAYVILLE

Jay Byrnes  
394 Lake Road, Dayville, CT 06241  
(860) 774-8549 / FAX: (860) 779-3799  
jbyrnes@byrnesagency.com  
byrnesagency.com/dayville-office

### CHELSEA INSURANCE AGENCY, LLC

Steve Dumont  
124 West Town St., Norwich, CT 06360  
(860) 886-1400 / FAX: (860) 886-1499  
steve@chelseainsurance.com  
chelseainsurance.com

### FARMERS INSURANCE - AFANADOR AGENCY

Luis Almanzar  
2 Central Ave., Office A, Norwich, CT 06360  
(860) 887-8000  
luis.almanzar@farmersct.com  
farmersct.com



## **LIBERTY MUTUAL INSURANCE**

Paul Martinez  
914 Hartford Tpke., Suite 103, Waterford,  
CT 06385  
(860) 889-3811 ext.52643  
FAX: (860) 886-5904  
Paul0189.Martinez@libertymutual.com  
libertymutual.com/paul-martinez

## **NEW LONDON COUNTY MUTUAL INSURANCE**

Larry Lentine  
101 High St., Norwich, CT 06360  
(800) 962-0800 / FAX: (860) 886-8270  
larry.lentine@nlcinsurance.com  
nlcinsurance.com

## **NORTHWESTERN MUTUAL**

James F. Daly, CLU  
115 Lafayette St., Norwich, CT 06360  
(860) 889-8075 / FAX: (860) 889-1574  
james.daly@nm.com / james-daly.com

## **PEOPLE'S UNITED INSURANCE AGENCY**

Julie Spencer  
One Financial Plaza, Hartford, CT 06103  
(860) 524-7630 / FAX: (844) 714-1791  
julie.spencer@peoples.com  
peoples.com

## **THE QUINTAL INSURANCE AGENCY**

Lynne Quintal-Hill  
127 Norwich Road, PO Box 405, Central  
Village, CT 06332  
(860) 564-3315 / FAX: (860) 564-3315  
info@quintalagency.com  
quintalagency.com

## **SMITH BROTHERS INSURANCE**

Bernadette Exley  
68 National Dr., Glastonbury, CT 06003  
(860) 652-3235 / FAX: (860) 652-3236  
bexley@smithbrothersusa.com  
smithbrothersusa.com

## **SMITH INSURANCE**

Colin Burr  
15 Liberty Way, Niantic, CT 06357  
(860) 739-3322 / FAX: (860) 691-4164  
cburr@smithins.com / smithins.com

## **STRICKLAND AGENCY**

Skeet Strickland  
7 Crow Hill Road, Uncasville, CT 06382  
(860) 887-5551 / FAX: (860) 887-5594  
strickskt@aol.com  
progressiveagent.com/agents/  
Connecticut/Uncasville/the-strickland-  
agency

## **SUMNER & SUMNER INSURANCE AGENCY**

Brendan Quinn  
757 Main St., Willimantic, CT 06226  
(860) 423-7733 / FAX: (860) 450-7240  
bquinn@sumnerandsumner.com  
sumnerandsumner.com

## **WAITTE'S INSURANCE AGENCY, INC.**

Jay Waitte  
116 Broadway, Norwich, CT 06360  
(860) 886-1961 / FAX: (860) 886-1965  
ewaitte@snet.net / waittesinsurance.com

## **INTELLECTUAL DISABILITY SUPPORT**

### **THE ARC NEW LONDON COUNTY**

Kathleen Stauffer  
125 Sachem St., Norwich, CT 06360  
(860) 889-4435 / FAX: (860) 889-4662  
kstauffer@thearcnlc.org / thearcnlc.org

### **THE LIGHT HOUSE**

Kassidy Brown  
P.O. Box 271, Old Mystic, CT 06372-0271  
(860) 445-7626 / FAX: (860) 449-1378  
kbrown@lvecenter.com  
lhcampus.com

### **SEABIRD ENTERPRISES**

Lori Neumann  
169 Thames St., Groton, CT 06340  
(860) 446-0882 / FAX: (860) 446-2930  
seabird@seabirdenterprises.org  
www.seabirdenterprises.org

## **INTERNET SERVICES**

### **ATLANTIC BROADBAND**

Kathy Diaz  
61 Myrock Ave., Waterford, CT 06385  
(860) 629-6743 / FAX: (860) 443-6031  
kdiaz@atlanticbb.com / atlanticbb.com

## **JANITORIAL SERVICES**

### **SURE-BRIGHT COMMERCIAL CLEANING SERVICES**

Chris and Patsy Heller  
210 Route 32, Suite 101, N. Franklin, CT  
06254  
(860) 887-9785 / FAX: (860) 887-9792  
chris@surebrightinc.com /  
surebrightcleaningct.com

### **TRIPPER'S LAND WARRIOR, LLC.**

Nicholas Tripp  
94 Reservoir Road, Colchester, CT 06415  
(860) 471-2062  
tripperslandwarrior@gmail.com  
tripperslandwarrior.com

## **LANDSCAPE DESIGN**

### **ALGIERE'S LANDSCAPING, LLC**

Michelle Algieri  
770 Hopeville Road, Griswold, CT 06351  
(860) 376-2895  
algieslandscaping@gmail.com  
algieslandscaping.com

## **LANDSCAPING SERVICES & IRRIGATION**

### **AMERICAN LANDSCAPE AND LAWN SCIENCE**

Steven Bousquet  
766 Route 32, North Franklin, CT 06254  
(860) 642-9966 / americanlandscape@  
yahoo.com  
lawnsience.com

### **DIROMA HOME AND GARDEN CENTER, LLC**

Maria Landry  
1111 Voluntown Road, Griswold, CT 06351  
(860) 591-1066 / FAX: (860) 591-1032  
marialandrydhgc@hotmail.com  
diromas.com

### **HYDE PARK LANDSCAPE, INC.**

Brandon Hyde  
401 Plain Hill Road, Norwich, CT 06360  
(860) 859-2141 / brandon@  
hydeparklandscape.com  
hydeparklandscape.com

## **LEGAL SERVICES**

### **NEW ENGLAND REMOTE PARALEGAL ASSISTANCE, LLC**

Vanessa Laro, CRP  
4 Swan Road, Bozrah, CT 06334  
(860) 373-7289 / NERPA.VL@gmail.com  
NERPA.co

## **LITERACY**

### **OTIS LIBRARY**

Bob Farwell  
261 Main St., Norwich, CT 06360  
(860) 889-2365 / FAX: (860) 889-2533  
bfarwell@otis.lioninc.org  
otislibrarynorwich.org

## **MANUFACTURING**

### **GUNTHER INTERNATIONAL, LTD**

Julie Bantle  
1 Winnenden Road, Norwich, CT 06360  
(860) 823-1427 / FAX: (860) 823-3026  
julie.bantle@guntherintl.com guntherintl.  
com/php

## **MANUFACTURING AND INDUSTRIAL SUPPLIES**

### **CONSUMERS INTERSTATE CORPORATION**

Nancy Smullen  
2 Consumers Ave., Norwich, CT 06360  
(860) 889-8481 / FAX: (860) 886-6537  
(800) 223-7475  
n@cicgo.com  
cicgo.com



## MARINA

### THE MARINA AT AMERICAN WHARF A JOYAL CAPITAL MANAGEMENT COMPANY

Michael Valentine  
One American Wharf, Norwich, CT 06360  
(860) 886-6363 / FAX: (860) 887-2467  
mvalentine@americanwharf.com  
americanwharf.com

## MARKETING & ADVERTISING

### COMCAST SPOTLIGHT

Michelle Blondin  
15 Thames St., Suite 321, Groton, CT  
06340  
(860) 333-9203  
michelle\_blondin@cable.comcast.com  
comcastspotlight.com

### MIRANDA CREATIVE, INC.

Maria Miranda  
18 Elm Ave., Norwich, CT 06360  
(860) 887-6882 / FAX: (860) 887-9089  
mmiranda@mirandacreative.com  
mirandacreative.com

### TEXTING-WORKS.COM

Jim Leblanc  
99 Rogers Road, Groton, CT 06340  
(860) 235-7092  
jimleblanc@texting-works.com  
texting-works.com

### TOUCHING CLIENTS

April Heavens-Woodcock  
Po Box 39, Franklin, CT 06254  
(860) 591-9244 / FAX: (888) 711-3198  
awoodcock@touchingclients.com  
touchingclients.com

## MEAT MARKET

### SALEM PRIME CUTS, INC.

John M. Fusaro  
12 New London Road, Salem, CT 06420  
(860) 859-0741  
jomf@snet.net / facebook.com/  
SalemPrimeCuts

## MEDIA & COMMUNICATION

### CUMULUS MEDIA Q105.FM

Jessica Vargas  
7 Governor Winthrop Blvd., New  
London, CT 06320  
(860) 443-1980 / FAX: (860) 444-7970  
jessica.vargas@cumulus.com

### FULL POWER RADIO WBMW/106.5 WWRX/107.7

John Fuller  
P.O. Box 357, Ledyard, CT 06339  
(860) 464-1066  
john@wbmw.com  
wbmw.com

## CHAIRMAN'S CIRCLE MEMBER

### HALL COMMUNICATIONS RADIO GROUP

Bob Reed  
40 Cuprak Road, Norwich, CT 06360  
(860) 887-3511 / FAX: (860) 886-7649  
bobr@hallradio.net / wcty.com

### RED WOLF BROADCASTING

John Fuller  
P.O. Box 351, Ledyard, CT 06339  
(860) 464-1066 / FAX: (860) 464-8143  
john@wbmw.com / wbmw.com

### WOLVERINE MEDIA / WOLVERINE RADIO

Michael Minarsky  
39 1/2 Wedgewood Dr., Box 1690, Jewett  
City, CT 06351  
(860) 710-8119 / FAX: (860) 376-4215  
mike.minarsky@wolverine-radio.com  
wolverine-radio.com

## MEDICAL - PHYSICIAN

### CONNECTICUT GI

Kolala Sridhar MD  
105 Wawecus St., Norwich, CT 06360  
(860) 859-9061 / timveena@hotmail.com  
connecticutgi.org/index.html

### INTERNATIONAL VEIN CLINICS

Christine Warner  
113 Salem Tpke., Norwich, CT 06360  
(800) VEINS-90 / CWarner@  
internationalveinclinics.com /  
internationalveinclinics.com

## MENTAL HEALTH SERVICES

### RELIANCE HEALTH, INC. \*NON-PROFIT

Carrie Dyer  
40 Broadway, Norwich, CT 06360  
(860) 887-6536 / FAX: (860) 885-1970  
cdyer@reliancehealthinc.org /  
reliancehealthinc.org

### SOUTHEASTERN MENTAL HEALTH AUTHORITY

Cheryl Jacques  
401 West Thames St., Bldg. 301, Norwich,  
CT 06360  
(860) 859-4534 / FAX: (860) 859-4797  
cheryl.jacques@po.state.ct.us / ct.gov/  
dmhas/cwp/view.asp?a=2917&q=335372

### THERAPY WARD, LLC.

John Ward LCSW, LADC  
99 Main St. - Suite 3B, Norwich, CT 06360  
(860) 889-6411 / FAX: (860) 889-6413  
speak@therapyward.com  
therapyward.com

## MORTGAGE LENDER

### THE CONNECTICUT HOUSING FINANCE AUTHORITY

Rita Bellinger  
999 West St., Rocky Hill, CT 06067  
(860) 571-4366 / FAX: (860) 571-3350  
rita.bellinger@chfa.org  
chfa.org

## MUSEUM & GALLERIES

### SLATER MUSEUM-NFA

Vivian Zoe  
108 Crescent St., Norwich, CT 06360  
(860) 887-2506  
museum@nfaschool.org  
slatermuseum.org

## NETWORKING

### NORWICH ROTARY CLUB

Kathleen Stauffer  
Norwich, CT 06360  
(860) 887-7421 / info@thearcnlc.org  
norwichrotary.org

### NORWICH SUNRISE ROTARY FOUNDATION

Peter Maneri Jr.  
21 Stott Ave., Norwich, CT 06360  
(860) 889-3825 / pmaneri@snet.net

### ROSE CITY BNI

Chris Heller  
Norwich, CT  
(860) 892-1040 / rosecitybni.com

### SOUTHEASTERN CONNECTICUT WOMEN'S NETWORK

Patti Rodgers-Longo  
P.O. Box 1448, New London, CT 06320  
president@sectwomensnetwork.org  
sectwomensnetwork.org

## NONPROFIT ORGANIZATION

### CHELSEA GARDENS FOUNDATION

Hugh Schnip  
21 Stott Ave., Norwich, CT 06360  
(860) 889-3825  
chelseagardens@gmail.com  
chelseabotanicalgardens.org

### THE CONNECTION

Beth Connor  
100 Ros Common Drive - Suite 203,  
Middletown, CT 06457  
(860) 343-5500  
bconnor@theconnectioninc.org  
theconnectioninc.org

### EASTERN CT WORKFORCE INVESTMENT BOARD

Virginia Sampietro  
108 New Park Ave., Franklin, CT 06254  
(860) 859-4100 / FAX: (860) 859-4111  
information@ewib.org / ewib.org



## **EASTERSEALS CAPITAL REGION & EASTERN CT**

Dawn Veillette Diana  
24 Stott Ave., Norwich, CT 06360  
(860) 859-4148 / FAX: (860) 859-4156  
ddiana@escrec.org  
easterseals.com/hartford

## **HABITAT FOR HUMANITY OF ECT., INC**

Terri O'Rourke  
377 Broad St., New London, CT 06320  
(860) 442-7890 / FAX: (860) 701-1334  
torourke@habitatect.org  
habitatect.org

## **HAITIAN HEALTH FOUNDATION**

Dr. Jeremiah J. Lowney Jr.  
97 Sherman St., Norwich, CT 06360  
(860) 886-4357 / FAX: (860) 859-9887  
hhf@haitianhealthfoundation.org  
haitianhealthfoundation.org

## **THE LAST GREEN VALLEY, INC**

Lois Bruinooge  
203B Main St., Danielson, CT 06239  
(860) 774-3300 / FAX: (860) 774-8543  
Lois@tlgv.org / thelastgreenvalley.org

## **MADONNA PLACE, INC.**

Nancy Gentes  
240 Main St., Norwich, CT 06360  
(860) 886-6600 / FAX: (860) 892-5411  
ngentes@madonnaplace.org  
madonnaplace.org

## **N.A.A.C.P. NORWICH BRANCH**

Dianne Daniels  
66 Franklin St., Suite 12, Norwich, CT 06360  
(860) 886-1686  
President@norwichbranchnaacp.org  
norwichbranchnaacp.org

## **NORWICH PUBLIC SCHOOLS EDUCATION FOUNDATION**

Mark Cook  
90 Town St., Norwich, CT 06360  
(860) 367-1812 /  
npseducationfoundation@gmail.com /  
npseducationfoundation.org

## **NORWICH YOUTH & FAMILY SERVICES**

Patricia Dixe  
80 Broadway, Norwich, CT 06360  
(860) 823-3783 / FAX: (860) 823-3793  
pdixe@cityofnorwich.org  
norwichct.org/index.aspx?NID=214

## **RELAY FOR LIFE OF SOUTHEASTERN CT**

James Russell  
825 Brook St I-91 Tech Center, C/O  
American Cancer Society, Inc., Rocky Hill,  
CT 06067  
(860) 886-2996  
jamesrussell8581@gmail.com  
relayforlife.org/southeasternct

## **ROTARY COMMUNITY CORPS OF NORWICH (RCC)**

Zechariah Stover  
Norwich, CT 06360  
(860) 303-4569  
norwich.rcc@gmail.com  
rccofnorwich.org

## **THE SALVATION ARMY**

Lieutenant Cheryl McCollum, 169 Franklin St., P.O. Box 707, Norwich, CT 06360  
(860) 889-2329  
cheryl.mccollum@use.salvationarmy.org  
ctri.salvationarmy.org/SNE/Norwich

## **SENIOR RESOURCES**

### **AGENCY ON AGING**

Joyce Gootkin  
19 Ohio Avenue, Suite 2, Norwich, CT 06360  
(860) 887-3561 / FAX: (860) 886-4736  
jgootkin@seniorresourcesec.org  
seniorresourcesec.org

## **T.V.C.A., INC.**

Deborah Monahan  
One Sylvandale Road, Jewett City, CT 06351  
(860) 889-1365 / FAX: (860) 376-8782  
exec@tvcca.org / tvcca.org

## **UNITED WAY OF**

### **ÆSOUTHEASTERN CT, INC.**

Virginia Mason  
283 Stoddards Wharf Road, Gales Ferry, CT 06335  
(860) 464-3310 / FAX: (860) 464-6362  
virginia.mason@uwsect.org  
uwsect.org

## **OFFICE MACHINES**

### **KOTA - A MOHEGAN LDI ENTERPRISE**

Lynn Foster  
13 Crow Hill Road, Uncasville, CT 06382  
(860) 862-6401 / FAX: (860) 862-6140  
lfoster@kotasolutions.com  
kotasolutions.com

## **OPHTHALMOLOGY**

### **NORWICH OPHTHALMOLOGY GROUP / NORWICH LASIK**

Dr. Anish U. Shah  
79 Wawecus St., Suite 105, Norwich, CT 06360  
(860) 886-0161 / FAX: (860) 899-5999  
info@norwichlasik.com  
norwichlasik.com

## **PACKAGING**

### **AMGRAPH PACKAGING, INC.**

Dawn Twerdy  
90 Papermill Road, Baltic, CT 06330  
(860) 822-2060 / FAX: (860) 822-6468  
dawn.twerdy@amgraph.com  
amgraph.com

## **PARTY RENTAL**

### **ROBIN'S ICE CREAM**

Robin Jablanski  
32 Church Lane, East Lyme, CT 06333  
(860) 884-7517 / robin7839@att.net

## **PAYROLL SERVICES**

### **ASM CONSULTING, LLC**

Sheila Messier  
12 Case St., Suite 201, Norwich, CT 06360  
(860) 887-9004 / FAX: (860) 887-2340  
sheila@messiercpa.com

## **PHARMACY**

### **GREENVILLE DRUG STORE, INC.**

Lisa Scronce  
213 Central Ave., Norwich, CT 06360  
(860) 889-9857 / FAX: (860) 886-0950  
greenvilledrug@snet.net

## **PHOTOGRAPHY**

### **DONNER PHOTOGRAPHIC, INC.**

Robin Wilber  
187 West Town St., Norwich, CT 06360  
(860) 886-2475 / FAX: (860) 886-1015  
(800) 776-2475  
RobinW@Donner-photo.com  
donner-photo.com

### **MENAGERIE PHOTOGRAPHY**

Marilyn Riel, 53 Kinsman Hill Road, Lisbon, CT 06351  
(860) 376-5514  
info@MenageriePhotography.com  
MenageriePhotography.com

### **SASHA DALE PHOTOGRAPHY**

Sasha Dale, 187 Central Ave., Norwich, CT 06360  
(203) 598-9441  
sashadalephotography@gmail.com  
sashadalephotography.com

## **POOLS & SPAS**

### **TREATS POOLS AND SPAS**

John Gould  
22 Avery Road, Uncasville, CT 06382  
(860) 848-1268 / FAX: (860) 848-7941  
treatspools@mac.com  
treatspools.com

## **PRINTING SERVICES**

### **COPIES PLUS MORE**

Kelly Whipple  
31 Halls Hill Road, Colchester, CT 06415  
(860) 537-0082 / FAX: (860) 537-2711  
Sales@copiesplusmorect.com  
copiesplusmorect.com

## PRINTING SERVICES

### MINUTEMAN PRESS

Laura Harrington  
595 West Main St., Norwich, CT 06360  
(860) 887-7468 / FAX: (860) 887-7376  
laura@mmpct.com / mmpct.com

## PROJECT DEVELOPMENT

### STACKSTONE GROUP

Victoria Romero  
212 Betts Ave., Bronx, NY 10473  
(860) 373-2031  
victoria@stackstonegroup.com  
stackstonegroup.com

## PROMOTIONAL PRODUCTS

### BMTEES, INC.

Debra Bilda  
338 Norwich Ave., Taftville, CT 06380  
(860) 889-4674 / FAX: (860) 886-0606  
bmteesinc@gmail.com / bmtees.com

## PROPANE GAS

### SUBURBAN PROPANE

Scott Osborne  
262 Gallivan Lane, Uncasville, CT 06382  
(860) 848-5510 / FAX: (860) 848-5517  
sosborne@suburbanpropane.com  
suburbanpropane.com

## UNCAS GAS

Thomas Green  
906 Rte 32, PO Box 17, N. Franklin, CT  
06254  
(860) 423-9271 / FAX: (860) 642-4171  
(800) 689-7700  
tgreen@uncasgas.com  
uncasgas.com

## PROPERTY MAINTENANCE / MANAGEMENT

### CHAIRMAN'S CIRCLE MEMBER

#### THE AMERICAN GROUP

Michael Aliano  
One American Way, Norwich, CT  
06360  
(860) 886-1463  
americangroupcompany.com

## PLEDGE PROPERTY MANAGEMENT

Alex Gebbie  
194 Fitchville Road, Bozrah, CT 06334  
(860)887-2792 / FAX: (860) 642-7750  
agebbie@pd-properties.com  
pledgepropertymanagement.com

## RADIO STATION

### CHAIRMAN'S CIRCLE MEMBER

#### 100.9 K-HITS

40 Cuprak Road, Norwich, CT 06360  
(860) 887-7699  
apelletier@hallradio.net  
bighitsbigfun.com

### CHAIRMAN'S CIRCLE MEMBER

#### WCTY 97.7

40 Cuprak Road, Norwich, CT 06360  
(860) 886-1515  
apelletier@hallradio.net / wcty.com

### CHAIRMAN'S CIRCLE MEMBER

#### WICH 1310

40 Cuprak Road, Norwich, CT 06360  
(860) 889-5252  
apelletier@hallradio.com  
wich.com

### CHAIRMAN'S CIRCLE MEMBER

#### WNLC 98.7

40 Cuprak Road, Norwich, CT 06360  
(860) 887-3511  
apelletier@hallradio.net  
wnlc.com/default.asp

## REAL ESTATE

### ALLYN ASSOCIATES, REALTORS

Fred Allyn III  
2 Chapman Lane, Unit 11, Gales Ferry, CT  
06335-1222  
(860) 892-1335 / FAX: (860) 892-1336  
fred3@allynrealtors.com  
allynrealtors.com

### EASTERN CT ASSOCIATION OF REALTORS

Susy Hurlbert  
106 Rt 32, North Franklin, CT 06254  
(860) 892-2595 / FAX (860) 892-2599  
susy.hurlbert@easterncrealtors.com  
easterncrealtors.com

### EXCEL HOME INSPECTIONS OF CT AND RI, LLC

Debbie Odom  
P.O. Box 842, Waterford, CT 06385  
(860) 334-2314  
excelhomeinsp@aol.com  
excelhomeinspectionct.com



INVOLVING US  
**SOONER IS  
BETTER**  
JUST CALL US...

 center for  
hospice care  
SOUTHEAST CONNECTICUT

860.848.5699  
HOSPICESECT.ORG

NC-00238816



**Capital Bankcard**<sup>®</sup>  
**ATTENTION BUSINESS OWNERS!**

Are you paying too much to accept credit cards?  
**FOR A FREE, NO OBLIGATION DETAILED  
COST ANALYSIS, CALL ME TODAY.**

**BILL MORRONE**  
**860-774-8210**

\*ASK ABOUT OUR \$300 MEET OR BEAT PROMO



NC-00240741



## FOUNDRY 66

Bob Mills  
66 Franklin St., Norwich, CT 06360  
(860) 887-6964  
info@Foundry66.com  
foundry66.com

## JANICE L. DENNIS, REALTOR

Janice L Dennis  
20 Stony Ridge Road, Norwich, CT 06360  
(860) 884-1225  
dand1944@comcast.net  
jandennis.cbintouch.com

## LORA PATALANO, REALTOR KELLER WILLIAMS

Lora Patalano  
172 Oakwood Dr., Glastonbury, CT 06033  
(401) 935-0940  
ljpatalano@gmail.com  
lorapatalano.kw.com

## LORD PROPERTIES

Jeff Lord  
241 Main St., Norwich, CT 06360  
(860) 859-7109  
artkath@gmail.com

## MARY MISKIEWICZ REAL ESTATE

Mary Miskiewicz  
209 Rockwell St., Norwich, CT 06360  
(860) 886-1457 / FAX: (860) 887-9678  
mary.miskiewicz@snet.net

## NICOLA COMPANIES, LLC

Joe Fatone  
2035 Norwich New London Tpke., PO Box 325  
Uncasville, CT 06382  
(860) 367-0778 / FAX: (860) 367-0787  
s.soderberg@snet.net (Susan Soderberg)

## RANDALL REALTORS

Bruce Drake  
76 Salem Tpke., Norwich, CT 06360  
(860) 887-1122 / FAX: (860) 887-1144  
bdrake@randallrealtors.com  
randallrealtors.com

## SYLVIA LITTLE - REALTOR FOR RE/MAX REALTY GROUP

Sylvia Little  
1641 Route 12, Gales Ferry, CT 06335  
(860) 460-2885 / FAX: (860) 464-6185  
slittle Realtor@yahoo.com  
remax.com

## WILLIAM PITT SOTHEBY'S INTERNATIONAL REALTY

Molly Bruno  
103 Halls Road, PO Box 489, Old Lyme, CT 06371  
(860) 424-2400  
mbruno@wpsir.com  
williampitt.com/agents/mollybruno

## RECRUITING SERVICES

### US ARMY RECRUITING

Anthony Leis  
77 Salem Tpke., Suite 105, Norwich, CT 06360  
(860) 885-1264 / FAX: (860) 885-1270  
anthony.m.leis@mail.mil  
goarmy.com

### REHABILITATION

#### JACC HEALTHCARE CENTER OF NORWICH: THREE RIVERS

Dan Brencher  
60 Crouch Ave., Norwich, CT 06360  
(860) 889-2631 / FAX: (860) 889-0266  
dbrencher@jacchealthcare.com  
hjacchealthcare.com

#### NORWICHTOWN REHABILITATION & CARE CENTER

John Miller  
93 West Town St., Norwich, CT 06360  
(860) 889-2614 / FAX: (860) 823-1329  
jmiller@norwichtownrehab.com  
norwichtownrehab.com

#### ORCHARD GROVE SPECIALTY CARE CENTER

Marie Osborne  
5 Richard Brown Dr., Uncasville, CT 06382  
(860) 848-8466 / FAX: (860) 848-5675  
mosborne@applehealthcare.com  
apple-rehab.com

### RESIDENTIAL CARE - WOMEN

#### BETHSAIDA COMMUNITY, INC.

Claire Silva  
120 Cliff St., Norwich, CT 06360  
(860) 886-7511 / FAX: (860) 886-7512  
claires@bethsaidact.org  
bethsaidact.org

#### THE ELIZA HUNTINGTON MEMORIAL HOME OF NORWICH INC.

Tina Yeitz  
99 Washington St., Norwich, CT 06360  
(860) 887-0684 / FAX: (860) 889-6859  
tyeitz@elizahuntington.com  
elizahuntington.com

### RESTAURANTS, BARS, NIGHT CLUBS

#### 1000 DEGREES NEAPOLITAN PIZZERIA

Bill Neilson  
160 River Road, Lisbon Landing, Lisbon, CT 06351  
(860) 376-1792  
1000degreespizza.bill@gmail.com  
1000degreespizza.com

#### BILLY WILSON'S AGEING STILL

Paul Siefert  
57 Broadway, Norwich, CT 06360  
(860) 887-8733 / paul@billywilsons.com

Pleased to announce that I have combined my art business with my consulting business and both are now located in the business district of Norwich, CT at



**Foundry 66!**  
66 Franklin St., Norwich, CT 06360

Lisa Sanders  
HR Masterpiece &  
Flower Branch Studio



"a boutique human resources firm"

**HR Masterpiece**



**Bringing the "big picture" to small businesses!**

**HR Masterpiece Consulting**

**Some HR Experience (A Little Color)**

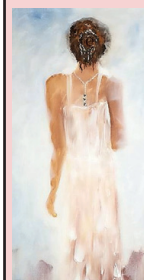
Recommended Services  
Monthly Retainer: Set rate for on-site visits once a month for 4-6 hours to work on any HR related projects or training for existing staff. This is a contracted rate for a period of 3 months.

**Formal HR Dept. (Work Overload)**

Recommended Service:  
Hourly Rate: Purchase help as needed on an hourly basis. This project based hourly rate may work best for you. Price will depend on the project scope. This is a month by month contract. It is perfect for short-term projects to assist while HR out on FMLA or needs temporary assistance.

**860-608-5076**  
**hrmasterpiece.net**

## Flower Branch Studio



The most popular collection is known as the "Girls from Behind" Collection. Girls wearing long dresses or skirts painted walking away from the viewer. All of my work is done in a dreamy, impressionistic style.



**A limited number of commissions are accepted. Contact Lisa to learn more!**

**860-608-5076**  
**www.boutiqueartbyfbs.com**

## RESTAURANTS, BARS, NIGHT CLUBS

### BRICK & BASIL

John Ryan  
276 W. Town St., Norwich, CT 06360  
(860) 889-9663  
pizza@brickandbasil.com  
brickandbasil.com

### BROWN DERBY LOUNGE & CAFE

Doug Adams  
158 Norwich New London Tpke / Route  
32, Uncasville, CT 06382  
(860) 848-3407  
Lizz@ct.metrocast.net

### CADDY SHACK CAFE 2

Jason Bromley  
685 New London Tpke., Norwich, CT  
06360  
(860) 887-8231 / FAX: (860) 859-2060  
caddyshackcafe2@gmail.com  
norwichgolf.com/caddyshack-restaurant

### CANGGIO RESTAURANT

Kristine Shustock  
20 Lafayette St., Norwich, CT 06360  
(860) 383-4805  
generalmanager@canggiorestaurant.com  
canggiorestaurant.com

### FLANDERS FISH MARKET & RESTAURANT

Devon Sullivan  
22 Chesterfield Road, PO Box 87  
East Lyme, CT 06333  
(860) 739-8866 / FAX: (860) 739-4178  
(800) 638-8189  
catering@flandersfish.com  
flandersfish.com

### HARP & DRAGON PUB, LLC

Scott Capano  
130 Main St., Norwich, CT 06360  
(860) 885-0147  
scott.capano@wakefern.com  
hndpub.com

### ILLIANO'S GRILL

Vincenzo Race  
257 West Town St., Yantic, CT 06389  
(860) 889-6165 / FAX: (860) 889-6169  
vincenzoct@comcast.net  
illianosgrill.com

### IRENE'S FAMILY RESTAURANT LLC

Irene Marasiotis  
58 Town St., Norwichtown, CT 06360  
(860) 887-0075 / FAX: (860) 889-8690  
irenesfamilyrestaurant.com

### JACK'S BRICK OVEN PIZZERIA

Jack Djombali  
493 West Main St., Norwich, CT 06360  
(860) 887-1100 / FAX: (860) 887-1106  
jack@jacksbrickoven.com

### LONG SHOTS SPORTS CAFE

Carlos Veracruz  
2020 Norwich-New London Tpke.,  
Uncasville, CT 06382  
(860) 892-8811  
libras92782@gmail.com  
longshotssportscafe.com

### MOE'S SOUTHWEST GRILL

Ramon Gergis, 624 West Main St, Suite  
200, Norwich, CT 06360  
(860) 934-5985 / rgergis@ymail.com  
moes.com

### MOMMY'S DELICIOUS FOOD

Mirlande Daniel  
595 West Main St., Norwich, CT 06360  
(860) 383-2079 / pierre8981@ah.net  
facebook.com/mommysdeliciousfood

### NAMOO KOREAN EATERY

Jason O  
289 Main St., Norwich, CT 06360  
(860) 859-0852  
ojason65@hotmail.com  
facebook.com/namoo  
koreaneatery/?fref=ts

### OLDE TYMES RESTAURANT, INC.

Rodney Green  
360 West Main St., Norwich, CT 06360  
(860) 887-6865 / FAX: (860) 887-8515  
rodney@oldetymes.com  
oldetymes.com

### PANERA BREAD

Diana Donatello  
Lisbon Landing, Route 12, Lisbon, CT  
06351  
(860) 376-9100 / FAX: (860) 376-9400  
cafe3879vpc2@panerabread.com

### PRIME 82

Mario Bekiaris  
181 West Town St., Norwich, CT 06360  
(860) 949-8893 / FAX: (860) 383-2491  
alexprime82@gmail.com  
prime82restaurantandbar.com

### PUB 45 - THE AMERICAN GATHERING PLACE

Kevin Skulczyk  
1 East Main St., Jewett City, CT 06351  
(860) 884-5150  
facebook.com/pub45ct

### STRANGE BREW PUB

Jason Wallace  
86 Water St., Norwich, CT 06360  
(860) 222-8350  
Jrwmusic3@gmail.com  
facebook.com/strangebrewpub



KEVIN WICKLESS  
LAW, LLC

NO-00240225



Attorney Kevin D. Wickless  
99 Main Street, Suite 3C  
Norwich, CT 06360  
kevinwickless@gmail.com  
Office 860.889.8804  
Fax 860.889.8806



The Arc  
New London County

Visit us!  
TheArcNLC.org

For people with intellectual  
and development disabilities

Follow us!



Achieve with us.®

NO-00240743



### THESE GUYS BREWING COMPANY, LLC

Rebecca Alberts  
78 Franklin St., Norwich, CT 06360  
(860) 949-8550  
becka@theseguysbrewing.com  
theseguysbrewing.com/

### TULLI'S FAMILY PIZZA

Mario Tulli  
500 Norwich Ave., Taftville, CT 06380  
(860) 886-6666  
tullisfamilypizza@gmail.com  
tullisfamilypizza.com

### UNCASVILLE DINER

Kerim Ayvaci  
884 Norwich New London Tpke.,  
Uncasville, CT 06382 / (860) 848-7932 /  
FAX: (860) 848-4337  
uncasvillediner@gmail.com  
uncasvillediner.com

### UNCLE D'S BLAZIN' BBQ

Angelina & Iris Dewayne Gardner  
146 West Town St., Norwich, CT 06360  
(860) 383-4002  
blazinbbq@att.net  
facebook.com/UncleDsBlazinBBQ?fref=ts

### YANTIC RIVER INN

Martha Lawton  
270 West Town St., Yantic, CT 06389  
(860) 887-4300 / matiacton@aol.com  
yanticroverinnct.com

### RETAIL STORE

#### ACE HARDWARE - 43 CORP

Andy Grant  
1 South Golden St., Norwich, CT 06360  
(860) 887-2553 / FAX: (860) 886-5148  
a.grant@snet.net  
acehardware.com

#### THE IDEAL SKATE SHOP

Jeff Blayman  
175 Central Ave., Norwich, CT 06360  
(860) 334-5277  
jeffb@worshipskateboards.com  
worshipskateboards.com

#### LINDT CHOCOLATE

Jennifer Bradlaw, Tanger Outlets  
Foxwoods, 455 Trolley Line Boulevard,  
Mashantucket, CT 06338  
(860) 204-0435  
st472usa@lindt.com  
tangeroutlet.com/foxwoods/store/lindt-  
chocolate/580

#### SUPERIOR EAST

Brian Violette  
251 West Thames St., Norwich, CT 06360  
(860) 886-9997  
BViolette@SuperiorNetwork.com  
superioreast.com

### SURPLUS UNLIMITED

Michael Matera  
381 West Main St., Norwich, CT 06360  
(860) 887-1400 / FAX: (860) 887-5694  
surplusunlimited@yahoo.com  
surplusunlimitedstore.com

### WIRELESS ZONE - NEW LONDON

Matt Mularski, 351 North Frontage Road,  
New London, CT 06320  
(860) 439 1000  
matt.mularski@wireless-zone.com  
wirelesszone.com/#OPoMb5sYl93s1szO.97

### SECURITY SERVICES

#### ALARM DESIGN, LLC

Scott Barbarossa, Norwich, CT 06360  
(860) 889-7576 / alarmdesignllc@aol.com  
alarmdesignllc.com

#### VIVINT, INC.

4931 N 300 W., Provo, UT 84604  
(877) 873-9883 / FAX: (801) 377-4116  
vivint.com

### SHOES

#### R.E.M. BOOT COMPANY

Mary Barber  
789 Long Hill Road, Groton, CT 06340  
(860) 446-1238 / FAX: (860) 446-0816  
(800) 998-2212 / kimary618@gmail.com  
rembootco.com

### SIGNAGE

#### CAMARO SIGNS, INC.

John Hansen, 58 Yantic Flats Road, Unit 1,  
Yantic, CT 06389  
(860) 886-1553 / FAX: (860)-886-2613  
john@camarosigns.com  
camarosigns.com

#### GRAND SLAM SIGNS

Heidi James, Ledyard, CT 06339  
(972) 896-1483  
heidi@grandslamsigns.com  
grandslamsigns.com

#### PROKOP SIGN COMPANY

Fran Houle  
238 Boswell Ave., Norwich, CT 06360  
(860) 889-6265 / FAX: (860) 889-5059  
fran@prokopsigns.com  
prokopsigns.com

### SOFTWARE - CUSTOM

#### DOCXELLENT, INC.

Gary Carignan  
257 Main St., Norwich, CT 06360  
(860) 887-2900 / FAX: (860) 859-1634  
gcarignan@docxellent.com  
docxellent.com

## Mortgages with you in mind.



### Are you thinking about buying a home?

Whether you're a first time homebuyer, ready for your next move, or looking to refinance to save money, talking to a Savings Institute Bank & Trust Mortgage Specialist is the smart first step. Stop by any branch or give us a call today.



**Savings Institute**  
**BANK & TRUST**

www.savingsinstitute.bank • 800-423-0142

Member FDIC  
Equal Housing Lender  
NO-00240954



## SPA

### THE SPA AT NORWICH INN

James A Boucher  
607 West Thames St., Norwich, CT 06360  
(860) 425-3682 / FAX: (860) 886-9299  
jboucher@thespaatnorwichinn.com  
thespaatnorwichinn.com

## STATE MARSHAL

### JOHN P SULLIVAN STATE MARSHAL

Janet Lefevre  
154 Main St., Norwich, CT 06360  
(860) 886-5555 / FAX: (860) 886-5555  
statemarshals@att.net

## SUPPORT GROUP

### OPEN ARMS LGBTQIA+ SUPPORT GROUP

Renee Benoit, Norwich, CT 06360  
(860) 859-1833  
reenebenoit05@yahoo.com

## TAX PREPARATION SERVICES

### MIKASA FINANCIAL SERVICES

Miguel Afanador, 2 Central Ave - Office B,  
Norwich, CT 06360  
(860) 442-8000 / FAX: (860) 896-8388  
afanador@mikasatax.com  
mikasatax.info

## TRAVEL AGENCY

### HMS TRAVEL CONSULTING

Susan Hull  
234 Ross Hill Road, Lisbon, CT 06351  
(860) 376-0774 / FAX: (860) 376-4402  
susan@hmstravelconsulting.com  
hmstravelconsulting.com

## TRAVEL SERVICE

### JOSHUA'S LIMOUSINE

Joshua McKeon, 172 Stoddards Wharf  
Road, Gales Ferry, CT 06335-1128  
(866) 217-5674  
gary@joshuaslimousine.com  
joshuaslimousine.com

### MARC BOKOFF-CRUISE PLANNERS

Marc Bokoff  
88 Weber Farm Road, Norwich, CT 06360  
(844) 768-2799 / FAX: (860) 887-3774  
marc.bokoff@cruiseplanners.com  
bookthatescape.com

## TROPHIES & PLAQUES

### DRAGON HOLLOW DESIGN/DRAGON HOLLOW PROMOTIONS

Chris "Wolf" Carter, Norwich, CT 06360  
(860) 861-6200  
wolf@dragonhollowdesign.com  
dragonhollowdesign.com

## NEW ENGLAND AWARDS

### BARBARA KENYON

47 Rte. 171, PO Box 43  
Woodstock, CT 06267  
(860) 928-7877 OR (860) 886-2227  
FAX: (860)928-4744  
getrecognizednewengland@gmail.com  
facebook.com/New-England-  
Awards-113311168748871

## VENDING

### LATHROP VENDING

Mark Lathrop  
152 Norwich New London Tpke.,  
Uncasville, CT 06382  
(860) 367-9115 | FAX: (860) 367-9195  
mark@lathropvending.com  
www.lathropvending.com

## VETERINARY HOSPITAL

### ALL FRIENDS ANIMAL HOSPITAL

Lona Baker-Harrelle  
420 New London Tpke., Norwich, CT 06360  
(860) 886-0125 / FAX: (860) 889-8531  
afahnorwich@yahoo.com  
allfriendsanimalhospital.com

## VIDEOGRAPHY

### BIZFLIX LLC

Scott Dube  
PO Box 183, Yantic, CT 06389  
(860)334-8027 / scott@bizflix.net  
bizflix.net/Home.html

## WEBSITE DEVELOPMENT & MANAGEMENT

### INNOVAST DIGITAL MARKETING

Karen Etchells  
21 Amy Road, Griswold, CT 06351  
(860) 634-3836 / karen@innovast.com  
innovast.com

### JENCKS NETWORK, LLC

Judy Jencks  
155 Preston Allen Road, Lisbon, CT 06351  
(860) 822-8712  
jmjencks@yahoo.com  
SeniorCenterCt.org

## WEDDINGS

### HOLIDAY HILL DAY CAMP - HOLIDAY HILL WEDDINGS & PARTIES

Dudley Hamlin  
41 Chaffeeville Road, Mansfield Center, CT  
06250  
(860) 423-1375  
dudley@holidayrecreation.com  
holidayrecreation.com



## Andrew H. Nollman, AIF® Managing Member

210 Route 32, Suite  
#104 Franklin, CT  
06254

Phone: (860) 383-6044  
Fax: (866) 878-6545  
Cell: (860) 303-2080

Mailing Address:  
P.O. Box 158  
Yantic, CT 06389

## Services Offered

- IRAs
- 401k rollovers
- Asset management
- Financial planning
- Business retirement plans
- Life insurance



ROSE CITY  
Financial Services, LLC

Registered Representative, Securities offered through Cambridge Investment Research, Inc. a Broker/Dealer, Member FINRA/SIPC.  
Investment Advisor Representative, Cambridge Investment Research Advisors, Inc., a Registered Investment Advisor.  
Rose City Financial Services, LLC and Cambridge are not affiliated.

Andrew@RoseCityFinancial.com

/andrewnollman

www.RoseCityFinancial.com

/RoseCityFinancialServices

NC-00238798



**WHOLESALE**

**MAPLE LANE FARMS**

Allyn Brown III.  
57 Northwest Corner Road, Preston, CT 06365  
(860) 889-3766 / FAX: (860) 887-3087  
allyn@maplelane.com / maplelane.com

**WINDOWS & DOORS**

**NEW ENGLAND GLASS & MIRROR CO.**

Carl Reiser  
31 Connecticut Ave., Norwich, CT 06360  
(860) 887-1649 / FAX: (860) 889-1882  
service@neglassmirror.com  
neglassmirror.com

**WIRE PRODUCTS**

**FREEPORT-MCMORAN  
COPPER & GOLD**

Jim Hodson  
41 Wawecus St., Norwich, CT 06360  
(860) 425-6840 / FAX: (860) 889-8421  
james\_hodson@fmi.com / fcx.com

**YOUTH SERVICES**

**THREE RIVERS YOUNG MARINES**

Patrick McMahon, VFW Post 594  
30 Connecticut Ave., Norwich, CT 06360  
(860) 222-5024  
ptm78usmc@sbcglobal.net  
youngmarines.com



**Membership Directory  
(Alphabetical order)**

**CHAIRMAN'S  
CIRCLE  
MEMBERS  
FEATURED IN  
BLUE**

**100.9 K-HITS**

1000 Degrees Neapolitan Pizzeria  
A Dog's World  
AA Lock & Key, Inc.  
AAA Driving School  
AC/DC Industrial Electric, LLC  
Ace Hardware - 43 Corp  
Achievement Unlimited of CT  
Adams Auctioneers / Appraisers  
Advantage Personal Training  
Alarm Design, LLC  
Algiere's Landscaping, LLC  
All Friends Animal Hospital  
AllState Insurance - The D'Errico Agency, LLC  
AllTemp Climate Control  
Allyn Associates, Realtors  
AM Associates LLC  
Amazing Furniture  
AMC Theater Lisbon 12

**AMERICAN AMBULANCE  
SERVICE, INC.**

**THE AMERICAN GROUP**

American Honey Creamery  
American Landscape and Lawn Science

**AMERICAN  
PROFESSIONAL  
EDUCATIONAL  
SERVICES**

AmericInn Lodge & Suites of Griswold  
Amgraph Packaging, Inc.  
Andre J. Messier, Jr., CPA, LLC  
Antenna Hair Salon  
Anytime Fitness Lisbon  
Anytime Fitness Uncasville  
The Arc New London County  
Arico Engineering Inc.  
ASM Consulting, LLC

Aspen Properties LLC  
Assured Quality Homecare, LLC  
Atlantic Broadband  
The Bakers Dozen - Norwich  
Barber Electric, Inc.  
Be On Purpose  
Bearingstar Insurance  
Bethsaida Community, Inc.  
Billy Wilson's Ageing Still  
Bizfix LLC  
Block, Janney & Sisley  
BMTees, Inc.  
Boss Consulting  
Bottom Line Balance  
Bouvier Insurance  
The Brake Guy Mobile Services LLC  
Brick & Basil  
Brown Derby Lounge & Cafe  
Brown Jacobson P.C.  
Brunelli Energy

**AAA PROVIDES A  
WORLD CLASS  
DRIVER EDUCATION EXPERIENCE**

When it's time to hand the keys to your kids, or to begin driving yourself, trust the experts at AAA to guide the way. As a leader in traffic safety, AAA has been teaching driver education for more than 80 years. Our team of state-certified Driving Instructors is ready to help you on your way to becoming a licensed driver.

**CURRENT DRIVING CLASSES AVAILABLE:**

**NORWICHTOWN @ LEE MEMORIAL CHURCH  
294 Washington St.**

38 Hour Teen Driver Education	Nov 28 to Jan 09	Tues. Wed. & Thur. 2:30-4:30
38 Hour Teen Driver Education	Jan 25 to Feb 28	Tues. Wed. & Thur. 2:30-4:30
38 Hour Teen Driver Education	Mar 13 to Apr 12	Tues. Wed. & Thur. 2:30-4:30
38 Hour Teen Driver Education	Apr 24 to May 24	Tues. Wed. & Thur. 2:30-4:30

First 2 hour class is State required Parent/Student Night and is held at 6-8pm.

Enroll Today!  
AAA.com/DrivingSchool or 800-594-0346

# Membership Directory (Alphabetical order)

## THE BULLETIN

Byrnes Agency Insurance  
 Caddy Shack Cafe 2  
 Camaro Signs, Inc.  
 Canggio Restaurant  
 Capik Creative Design Studio  
 Capital Bankcard - New England, LLC  
 Center for Hospice Care Southeast Connecticut  
 Central Baptist Church  
 CertaPro Painters  
 Channel 3 Kids Camp  
 Charter Oak Federal Credit Union  
 Chelsea Gardens Foundation  
**CHELSEA GROTON BANK**  
 Chelsea Insurance Agency, LLC  
 Chestnut Street Playhouse  
 Chinigo, Leone and Maruzo, LLP  
 Christ Church School of the Arts, Inc.  
 City of Norwich  
 CLA Engineers  
 Coastline Fire Protection  
 Coca-Cola Company of Southeast N.E.  
 Collins & Jewell Company  
 Comcast Cable  
 Comcast Spotlight  
 Comfort Suites \* Choice Hotels  
 Companions & Homemakers  
 Congressman Joe Courtney  
 Connecticut Commission on Human Rights and Opportunities  
 Connecticut GI  
 The Connecticut Housing Finance Authority  
 Connecticut Tigers  
 The Connection  
 Consumers Interstate Corporation  
 Copies Plus More  
**COREPLUS CREDIT UNION**  
 Country Place Apartments  
 Courtyard by Marriott Norwich  
 Covanta  
 Craftsman Cliff Roasters  
 CrossFit Payback  
 CT Business & Industry Association  
 Cummings-Gagne Funeral Home  
 Cumulus Media  
 Dante, LLC  
 DB Financial and Web Solutions  
 DC Sheetmetal, LLC  
 DECD

Design Learned, Inc.  
 Details Hair Studio, LLC  
 Devine Hydraulics, Inc.  
 David Geigenmiller Home Improvement  
**DIME BANK**  
 DiRoma Home and Garden Center, LLC  
 Dixie Donuts, LLC  
 DocXellent, Inc.  
 Doherty, Beals & Banks, P.C.  
 Donner Photographic, Inc.  
 DORS - Bureau of Rehabilitation Services  
 Dragon Hollow Design/Dragon Hollow Promotions  
 East River Energy  
 Eastern CT Association of REALTORS  
 Eastern CT Workforce Investment Board  
**EASTERN SAVINGS BANK**  
 Easterseals Capital Region & Eastern CT  
 Edible Arrangements  
 Edwin R. Muenzner CPA, LLC  
 The Eliza Huntington Memorial Home of Norwich Inc.  
 Encore Justified  
 Epicure Brewing  
 EVO Payments International - CT  
 Excel Home Inspections of CT and RI, LLC  
 Exterior Solutions LLC  
 Fairfield Inn & Suites Uncasville  
 Falvey Motors Inc.  
 Family Orthodontic Care  
 Farmers Insurance - Afanador Agency  
 Flanders Fish Market & Restaurant  
 Floor Covering Shop, Inc.  
 Foundry 66  
**FOXWOODS RESORT CASINO**  
 Franco's COMEDY For Your CAUSE  
 Freeport-McMoRan Copper & Gold  
 Frontier Communications  
 Full Power Radio WBMW/106.5 WWRX/107.7  
 Gary & Romer Young Friends of GNACC  
 Generational Wellness Massage Therapy  
 Generations Family Health Center  
**GET BENT BAPTISTE-INSPIRED YOGA**  
 The Global Child, LLC  
 Go Soap Yourself, LLC  
 Goldblatt Bokoff LLC  
 Gorins Furniture, Inc.

Governor's Eastern Connecticut Office  
 Grand Slam Signs  
**GREATER NORWICH AREA CHAMBER OF COMMERCE**  
 Greene Dental Group  
 Greenville Drug Store, Inc.  
 Griswold Dental Associates, PC  
 Gunther International, LTD  
 Habitat for Humanity of ECT., Inc  
 Hair Cuttery  
 Hair Unique Salon  
 Haitian Health Foundation  
**HALL COMMUNICATIONS RADIO GROUP**  
 Harp & Dragon Pub, LLC  
 Hart's Greenhouse & Florist, LLC  
 HI Dental Care  
 High Tech Home Improvements, LLC.  
 HMS Travel Consulting  
 Holiday Hill Day Camp - Holiday Hill Weddings & Parties  
 Holiday Inn Norwich  
 Honorary Member Dr. June A. Bradlaw - Native Son/Daughter Award November 2007 Recipient  
 Honorary Member Harry Raucher - Native Son/Daughter Award Recipient  
 Honorary Member Matthew K. Shaughnessy - Native Son/Daughter Award 2014 Recipient  
 Honorary Member Michael Morosky, M.D. - Native Son/Daughter Award 2017 Recipient  
 Honorary Member Nina F. Elgo- Native Son/Daughter Award November 2015 Recipient  
 Honorary Member Rear Admiral Lotring - Native Son/Daughter Award Recipient  
 Honorary Member Richard Brewer - Native Son/Daughter Award November 2013 Recipient  
 Honorary Member Thomas R. McCarthy - Native Son/Daughter Award 2010 Recipient  
 Honorary Member William Diodato - Native Son/Daughter Award November 2012 Recipient  
 HR Masterpiece, L.L.C.

Human Resource Leadership Association of Eastern CT  
 Hyatt Place at Mohegan Sun  
 Hyde Park Landscape, Inc.  
 The Ideal Skate Shop  
 Illiano's Grill  
 Innovast Digital Marketing  
 Integrated Day Charter School  
 International Vein Clinics  
 Irene's Family Restaurant LLC  
 JACC Healthcare Center of Norwich: Three Rivers  
 Jack's Brick Oven Pizzeria  
 Janice L. Dennis, Realtor  
 Jencks Network, LLC  
 John P Sullivan State Marshal  
 Joshua's Limousine  
 Keith's Appliances  
 Kelly August Friend of GNACC  
 Kevin Wickless LAW, LLC  
 KIS Accounting LLC  
 Kleemann Towing Svc LLC  
 KOTA - A Mohegan LDI Enterprise  
 Lantern Energy, LLC  
 The Last Green Valley, Inc.  
 Lathrop Vending, Inc.  
 Law Office of Theresa I. Madonna, LLC  
 Leffingwell House Museum / Society of the Founders of Norwich  
 LeFrancois Floral & Gifts, LLC  
 Liberty Bank  
 Liberty Mutual Insurance  
 The Light House  
 Lindt Chocolate  
 Little Learners at Three Rivers  
 The Lofts at Ponemah Mills  
 Long Shots Sports Cafe  
 Lora Patalano, Realtor Keller Williams  
 Lord Properties  
 Lt Governor Nancy Wyman  
 Lucas Law, P.C.  
**MACARA VEHICLE SERVICES, INC.**  
 Madonna Place, Inc.  
 Maple Lane Farms  
 Maple Lane Spirits, LLC.  
 Marc Bokoff-Cruise Planners  
 The Marina at American Wharf a Joyal Capital Management Company  
 Mary Miskiewicz Real Estate  
 Mashantucket Pequot Tribal Nation



Matthew's Catering Company, LLC  
McKenna's Flower Shop  
Meadow Ridge & Cambridge Estates  
Menagerie Photography  
Michael E. Jewell, Attorney At Law  
Microtel Inn & Suites by Wyndham  
Midagraphics, Inc.  
Mikasa Financial Services  
Minuteman Press  
Miranda Creative, Inc.  
Moe's Southwest Grill  
**MOHEGAN SUN**  
Mohegan Tribe of Indians of  
Connecticut  
Mommy's Delicious Food  
N.A.A.C.P. Norwich Branch  
Namoo Korean Eatery  
Napa Auto Parts  
Naskart - Indoor Kart Racing &  
Trampoline Park  
Natchaug Hospital, Inc.  
Natural 20 Design  
New England Awards  
New England Glass & Mirror Co.  
New England Remote Paralegal  
Assistance, LLC  
New London County 4H Camp  
New London County Mutual Insurance  
Nicola Companies, LLC  
Northwestern Mutual  
Norwich Arts Center  
Norwich Auto Parts and Speed Shop  
Norwich Bowling &  
Entertainment Center  
Norwich Community  
Development Corporation  
Norwich Family & Cosmetic Dentistry  
Norwich Fire Department Local 892  
Norwich Free Academy  
Norwich Golf Course  
Norwich Historical Society  
Norwich Ophthalmology Group /  
Norwich Lasik  
Norwich Police Department  
Norwich Public Schools  
Norwich Public Schools Education  
Foundation  
**NORWICH PUBLIC UTILITIES**  
Norwich Public Works Department  
The Norwich Rose  
Norwich RoseGarden Ice Arena  
Norwich Rotary Club  
Norwich Sunrise Rotary Foundation

Norwich Wine & Spirits  
Norwich Youth & Family Services  
Norwichtown Rehabilitation & Care  
Center  
Nutmeg Companies, Inc.  
O'Connor Davies, LLP  
Olde Tymes Restaurant, Inc.  
Open Arms LGBTQIA+ Support Group  
Optical Software Solutions, Inc.  
Orchard Grove Specialty Care Center  
Otis Library  
Outfront Media  
Overhead Door Company of Norwich  
Panera Bread  
People's United Bank  
People's United Insurance Agency  
Peter Wm. Maneri, Jr., CPA, LLC  
PhysicianOne Urgent Care  
PINK cut & color studio  
Pledge Property Management  
Poppy & Rye Bakery Cafe  
Todd C. Postler  
Primary Prevention Homecare, LLC.  
Prime 82  
Pro Digital Sounds Mobile Disc-Jockey  
Service  
Prokop Sign Company  
PSA Healthcare  
Pub 45 - The American Gathering Place  
**PUTNAM BANK**  
QC Home Care Solutions, LLC  
The Quintal Insurance Agency  
R.E.M. Boot Company  
Randall Realtors  
Red Wolf Broadcasting  
Relay for Life of Southeastern CT  
Reliance Health, Inc.  
Restaurant Optimization Marketing  
Robin's Ice Cream  
Rogers Kitchens  
Ron Bettez Musical Entertainment  
Rose City Athletics  
Rose City BNI  
Rose City Financial Services, LLC  
Rotary Community Corps of Norwich  
(RCC)  
Sabby's Auto LLC  
Salem Prime Cuts, Inc.  
The Salvation Army  
Sasha Dale Photography  
Savings Institute Bank & Trust  
Sayet and Seder, Attorneys At Law  
Scranton Chevy of Norwich

Seabird Enterprises  
Senator Catherine Osten  
Senator Heather Somers  
Senator Paul Formica  
Senior Resources Agency on Aging  
Service Station Equipment, Inc.  
SERVPRO of Norwich/Windham County  
Shop-Rite Supermarkets, Inc.  
Slater Museum-NFA  
Smith Brothers Insurance  
Smith Insurance  
Southeastern Connecticut Women's  
Network  
S.C.A.D.D.  
Southeastern CT Enterprise Region  
(seCTer)  
Southeastern Mental Health Authority  
The Spa at Norwich Inn  
StackStone Group  
Starbucks  
State Representative Christine Conley  
State Representative Doug Dubitsky  
State Representative Emmett Riley  
State Representative Holly Cheeseman  
State Representative Kathleen McCarty  
State Representative Kevin Ryan  
State Representative Kevin Skulczyk  
State Representative Mike France  
Stott's at Bat Catering and Baking  
Strange Brew Pub  
Strickland Agency  
Suburban Propane  
Summit Fitness and Sports  
Sumner & Sumner Insurance Agency  
Super Smiley's Hop House, LLC  
Superior East  
Sure-Bright Commercial Cleaning  
Services  
Surplus Office Store  
Surplus Unlimited  
Sylvia Little - Realtor for Re/Max Realty  
Group  
Taftville Fire Department  
Tamarack Lodge  
TCORS, Tobin, Carberry, O'Malley, Riley  
& Selinger P.C.  
Texting-works.com  
T.V.C.C.A., Inc.  
Theodore N. Phillips, II,  
Attorney-at-Law  
Therapy Ward, LLC.  
These Guys Brewing Company, LLC.  
Three Rivers Community College

Three Rivers Young Marines  
Thrifty Car Sales of Franklin  
Tiger Strength Performance  
Timothy S. Ashburner, CPA  
TotalVision Eye Health Center, LLC  
Touching Clients  
Town of Bozrah  
Town of Franklin  
Town of Griswold  
Town of Ledyard  
Town of Lisbon  
Town of Montville  
Town of Preston  
Town of Salem  
Town of Sprague  
Town of Voluntown  
Towne Liquor Store  
Treats Pools and Spas  
Tripper's Land Warrior, LLC.  
Tulli's Family Pizza  
Uncas Gas  
Uncasville Diner  
Uncle D's Blazin' BBQ  
United Community & Family Services  
United Way of Southeastern CT, Inc.  
US Army Recruiting  
**US FOODS**  
Vivint, Inc.  
Wacky Factory Entertainment  
Waitte's Insurance Agency, Inc.  
The Wauregan  
**WCTY 97.7**  
Weblink International  
Wheelabrator Lisbon, Inc.  
**WICH 1310**  
William Pitt Sotheby's International  
Realty  
**WILLIAM W. BACKUS  
HOSPITAL**  
The Windham Club  
Wireless Zone - New London  
**WNLC 98.7**  
Wolverine Media / Wolverine Radio  
Workforce Transition Training LLC  
The WorkPlace  
Xuare, LLC  
Yantic River Inn  
Zija International - Doreen McKeag



# Welcome New Members



**GNACC WELCOMES YOU!**



**Otto Benjamin Maerkle-Meyer,**  
Natural 20 Design

**2018 PROUD MEMBER**

Shop Local Eat Local    **Keep IT Local**    Grow Local Enjoy Local

*The Greater Norwich Area Chamber of Commerce*

representing  
Bozrah • Franklin • Griswold • Ledyard  
Lisbon • Montville • Norwich • Preston  
Salem • Sprague • Voluntown

860-887-1647  
www.norwichchamber.com

**#GNACCSupports**  
114 Main Street, Norwich CT 06360



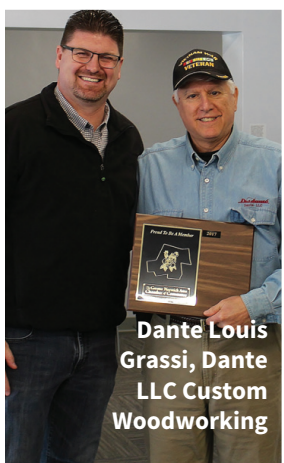
**Judy Jencks,**  
Senior Center CT.org



**Jason Vincent,**  
Epicure Brewing



**Lisa Sanders,**  
HR Masterpiece

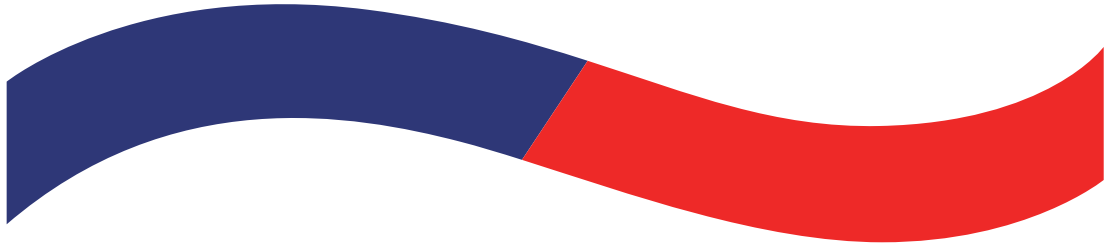


**Dante Louis Grassi,** Dante LLC Custom Woodworking



**Jesse Sehl,**  
**Matt Quigley,**  
CrossFit Payback





***the nutmeg companies inc.***

***Design/Build  
General Contracting  
Mechanical Contracting  
Pre-Engineered  
Metal Buildings***



**1 Ohio Ave., Norwich, CT 06360**

**860-823-1780 / fax 860-885-1421**

**AN AFFIRMATIVE ACTION/ EQUAL OPPORTUNITY EMPLOYER**

**S1-303617 P1-203699 F1-10466**

*her education*  
Because ~~it~~ matters.  
^

*my retirement*  
Because ~~it~~ matters.  
^

*my business*  
Because ~~it~~ matters.  
^

*OUR HOME*  
Because ~~it~~ matters.  
^

Whatever your financial needs are. If it matters to you, it matters to us.



Because it matters.



Member FDIC

860-889-7381 / [eastern-savings.com](http://eastern-savings.com) / Norwich / Jewett City / Plainfield