

NOW IN 2 LOCATIONS!
 Bloomfield, IA
 Lancaster, MO

Over 10 years of experience!

Bradford T. Martin, CLTC
 Financial Advisor
 Office: 641-664-2169
 Cell: 641-799-4770

Ameriprise Financial

Professional investment manager
 401K/IRA

Retirement & tax strategy specialist

Tri-County SHOPPER

**Turn to Page 6
 for some local
 Insurance &
 Investment
 Options!**

STANDARD MAIL
 U.S. POSTAGE
PAID
 TRI-COUNTY SHOPPER, INC.
 POST OFFICE BOXHOLDER
 LOCAL RURAL BOXHOLDER
 OCCUPANT
**CIRCULATION
 OVER 11,750
 THIRD CLASS**

P.O. Box 168 • Bloomfield, IA 52537 • www.tri-countyshopper.com
 Phone 641-664-1333 • Fax 641-664-3761 • E-mail shopper@netins.net



Vol. 44, No. 02
 Wednesday, January 13, 2016



**SAUSAGE
LINKS & PATTIES
89¢**

**5# SWISS
AMERICAN
\$10.99**

**YOGURT
SALE**

**CAULIFLOWER
\$2.99**

**MILK
\$2.65**

SAVE MONEY ON DISCOUNT GROCERIES!

Village Market

Rt. 3 Box 168-A (Hwy 136 & Hwy 15)
 Memphis, MO 63555 • 660-465-7307
 Mon. - Fri. 8:30 - 6:00 • Sat. 8:30 - 5:00 • Sun. Closed

EBT WELCOMED!

Like us on facebook

**DECLUTTER YOUR HOME!
 TRI-COUNTY SHOPPER
 CLASSIFIED FORM
 ON PAGE 5!**

**NEED
PARTS
TO GET
YOU
WHERE
YOU
WANT
TO GO?**

SPILMAN AUTO PARTS
 20311 Old Hwy. 2 • PO Box 31 • Bloomfield, IA
 641-664-2463 • 1-800-477-1367 • M-F 8AM-5PM • Sat. 8AM-12Noon
www.SpilmanAuto.com

Like us on facebook

MasterCard VISA

**MEMPHIS
MERCAANTILE**

115 E. MONROE • MEMPHIS, MO
 South Side of the Square
660-465-2102
 M-F: 8am-6pm;
 SAT.: 8am-3pm; CLOSED SUNDAY

EST 2010

Check Out Our Selection of...

- Books & Bibles
- Sweaters & Socks
- Kitchenwares
- Fabric & Notions
- Winter Decor
- Puzzles & Puzzle Glue
- Lots of Childrens & Adult Story Books

**Christmas
Fabrics
15%
Off!**

STOCK UP NOW FOR NEXT YEAR & SAVE!

Get Ready For Winter!

**HEAT
TAPE**
 EASY HEAT BRAND
 VARIETY OF
 LENGTHS!

HEAT LAMPS!

**PORTABLE
BUDDY HEATER**
 MR. HEATER BRAND
 4,000 - 9,000 BTU

**FORCED
AIR HEATER**
 DURA HEAT
 135,000 BTU
\$269.00

Ice Melt 50 lb. Bag\$9.99
 Gloves variety of types ...89¢-\$22.00

Cantril Lumber & Hardware
 319-397-2351 • Mon-Fri 7-5 & Sat 7-12

**DEALS
Deals
DEALS**

**WATCH FOR OUR UPCOMING
 FILTER DAYS**

Starting February 1st
15% OFF ALL FILTERS

WINTER NEEDS

Howes Diesel Additive & Snow Shovels

Ice Melt

**2 BRANDS
TO CHOOSE
FROM**

**FRANKLIN
Skirted Bale
Feeders**

**APPLEGATE
Heavy Duty
Hay Feeder**
 2 piece model, 14 gauge

Applegate Gates
 16 special HD Red

**16 ft. Heavy Duty
Red Gates
\$10 OFF PER GATE
Through January
(powder coated)**

**25% OFF
All Carhartt
& Key
in Stock
items**

Carhartt Jeans, Shirts, Bib Overalls, & Hats!!

**GLOVES
FOR ALL
SIZES &
AGES**


**Muck &
LaCrosse
Insulated Boots!**

**on-hand
For-Most
Cattle Chute**

Hamilton Produce Co.

105 W. Franklin • 641-664-2459 or 1-800-469-7749 • Bloomfield

Davis County
MEDICAL ASSOCIATES
Dedicated. Compassionate. Healthcare.



**PRIMARY CARE
CLOSE TO HOME**

Mary Graeff, MD • Pediatrics Robert Floyd, DO • Internal Medicine Trina Settles, DO • Family Medicine Beverly Oliver, APRN • Family Medicine

Serving Patients in all of Southeast Iowa and Northeast Missouri. To schedule an appointment please dial **641-664-3832**.

509 N. Madison, Suite 100 • Bloomfield, Iowa 52537
www.DavisCountyHospital.org

HAY FOR SALE: Small square bales grass hay, 18 large round bales grass hay, stored inside. Randy Garnett, Memphis. PH: 660-216-4651 04

JOE'S BARBER SHOP
Hours: Thursday & Friday 8:00-5:00 & Saturday 8:00-Noon. 210 E. Franklin St., Bloomfield, IA. PH: 641-664-2020, 641-208-5561 TF

LANDSCAPE SPECIALS

8 FT. RAILROAD TIES!
Check them out at...

Spilman's Auto Parts
20311 Old Hwy. 2 • Bloomfield, IA
641-664-2463

BBB

Fox Valley Welding

No matter what size the project customer satisfaction is always our first priority.

Tig & Aluminum Welding Milwork **Lathe New Steel Fabricating** **Now doing CNC PLASMA CUTTING**

Hours: M-F 8-5:30
641-656-4684 • 12190 East Hwy. 2 • Milton, IA

MOST COMBINED YEARS OF EXPERIENCE IN THE AREA

✓ Guaranteed Craftsmanship
✓ We Work Well With All Insurance Companies

Give Us A Call Today!

Walker Motors
COLLISION REPAIR, INC.

660-465-2159
Shop phone/fax
375 South Main St. Memphis, MO 63555

RENT HERE



RENTAL CARS AVAILABLE FOR ALL OCCASIONS

Great Rates Unlimited Miles **Hertz**

Hawkins - Harrison Insurance



SHOPPER ADS CAN BE DROPPED OFF HERE!

Proud to be your partner.

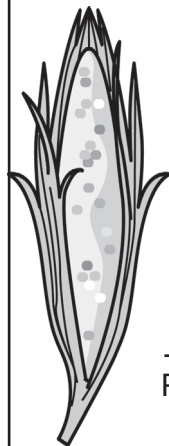
P.O. Box 365
Lancaster, MO 63548
660-457-3020

103 W. Monroe St.,
Memphis, MO 63555
660-465-8533

FOR SALE: Grass Hay \$3.25-\$4.00/per bale, quantity discount. Hedrick, IA
PH: 641-777-8265 07

FOR SALE: Big round net wrap bales mixed grass hay, delivery available. Bob Campbell, Memphis, MO.
PH: 660-341-9054 07

FREE CORN



The Davis County Conservation Board has free corn for wildlife. The corn was donated from Cargill and is available at:

McGowen Wildlife and Recreation Area
County Road J-40,
East of Bloomfield

Please bring your own buckets to pick up the corn.

FOR RENT IN MOULTON, IOWA: Newer duplex, Maytag appliances & dishwasher, 2 bedroom, carport. \$425/month, \$425 deposit.
PH: 641-898-2347 or 515-491-1801 02

CATTLE HAULING: 641-208-5961 03

We'll Get You On The Road With Our...
Complete Trailer Repair & Accessories.

Wood Rot, Rubber Roofs,
Siding Repairs, Insurance Work.



Boat Repairs • Boat Accessories
• Pickup Accessories

Whitney RV & Marine



641-684-8284

9418 151st Ave., Ottumwa
Mon. - Fri. 8 a.m. - 5 p.m.

FOR SALE: Big round bales net wrapped, grass \$35, oat \$30. **WANTED:** Pasture for 2016, Drakesville area.
PH: 641-208-7535 04

FOR SALE: 3x3x8 big square bales of cornstalks, good & dry, \$35/bale, delivery available.
PH: 660-341-2752 04

\$URPLUS BARGAIN BARN

NEW LOAD!

SPORTING HUNTING ITEMS & GREAT TOYS

VARIETY OF ITEMS!
Lots of Misc. Housewares
Small Appliances • Bedding & Sheets
Toys • Game Tables • Heaters
Exercise Equipment

- Boots
- Work Boots
- Remote Trucks
- Drones
- MUCH, MUCH MORE!

BLOOMFIELD, IA
2 1/2 MILES W. OF BLOOMFIELD ON HWY. 2
MON. - FRI. 9AM - 5PM • SAT. 9AM - 4PM

HOURS
8 A.M.
to
5:00 P.M.
DAILY EXCEPT SUNDAY

Zimmerman's Store
Rutledge, MO

660-883-5766

Our Everyday Low Prices!

50# RUSSET POTATOES \$7.95
10# PREMIERE RUSSETS..... \$2.89
50# RED POTATOES.....\$11.95
FUJI, RED DELICIOUS, ROME APPLES BY THE BUSHEL\$11.95
TEXAS ORANGES & GRAPEFRUITS • CALIFORNIA ORANGES & GRAPEFRUITS
FRESH APPLE CIDER.....\$5.29/GAL. \$2.95/1/2 GAL.
FRESH CABBAGE..... 45¢/LB.
LARGE BULK CARROTS..... 55¢/LB.
FRESH PRODUCE COMES IN TWICE WEEKLY!

5# FROZEN TART CHERRIES \$9.59
5# FROZEN SLICED PEACHES \$12.15
5# FROZEN MIXED FRUIT \$11.55

5# FROZEN FRUIT MIX BERRY SUP. \$12.65
5# FROZEN DARK SWEET CHERRIES \$20.48
5# FROZEN SLICED STRAWBERRIES \$11.39

BULK FROZEN FRUIT
BLACK RASPBERRY \$5.96
BLUEBERRIES \$2.13
GOOSEBERRY \$3.04

BLACKBERRIES \$2.65/LB.
STRAWBERRIES \$1.94
RHUBARB \$3.04

5# Frozen French Fries\$5.15
5# Frozen Tator Tots.....\$6.59
3# Frozen Hashbrowns Potatoes\$4.25

Prairie Farms Butter \$2.89
2# Amish Roll Butter \$9.59

MORE SLIGHTLY DENTS OF APPLESAUCE, PEARS, PINEAPPLES, MANDARIN ORANGES, TROPICAL FRUIT SALAD AND SEVERAL KINDS OF BEANS \$1.98 - \$3.25/EA.

34 ct. 12 oz. Foam Cups ONLY 98¢
Colored Products Below Wholesale: Disinfecting Wipes, Spray Cleaners, Bleach Spray, 409 All Purpose Cleaner
48 oz. Pine-Sol Powerful Scent & 40 oz. Pine-Sol Disinfect Cleaner
ALL ONLY \$3.09 EACH!

Apple Tree Watch & Jewelry

Quality Estate & Antique Jewelry

Buying All Watches, Clocks & Jewelry

Watch & Clock Repair

1805 180th St. Donnellson IA

Located 4 miles North of Donnellson along Hwy. 27

Wed - Fri 10-4, Sat 10-5, Sun 12-4, Closed Mon & Tues

Phone 319-470-9795



SHADY LANE VARIETY IS REOPENING NEW LOCATION


Thursday,
January
14th

16961 Jade Ave.
(1/2 mile south of previous location)

T-Corner Furniture

SAME GREAT PRODUCTS & SERVICE!

Hours
**8:00 AM -
5:00 PM**



LaCrosse
Est. 1897

Burly
#266040

**GRABER'S
COUNTRY STORE**

2 miles South & 1 mile
East of Drakesville

WE ARE GROWING

Davis Center has openings for the following departments due to our continued growth. Great benefit package for full time positions. Check out our new starting wages!

Laundry/Housekeeping

Nursing (Licensed Nurses and CNA's)

Activities

Davis Center



A DIVISION OF OPTIMAE LIFESERVICES

At your side. On your side.

Applications are available at the facility.

22425 Overland Ave. • Bloomfield, IA

641-664-3202

Optimae LifeServices is an EEO/AA employer.

NEW MATTRESSES FOR SALE!

Selling individually or in sets. Factory warranty.

TWIN - FULL - QUEEN - KING

641-664-3060

FOR SALE: Used, but working L.B. White heaters; Del-Air ventilation fans; multi-stage controllers; flex-auger feed system parts; energy free hog waterers; Vittetoe S.S. pig nursery feeders & pig nursery decks. I also have 16.9x30 band type front duals from a JD 8410 tractor.

PH: 641-656-4956

04

FOR SALE: Large round net wrapped bales mixed hay, 2nd & 3rd cutting, no rain, \$40.

PH: 641-777-6899

04

FOR SALE: Little House outdoor wood furnace, \$900.

PH: 641-895-0145

04

FOR SALE: High moisture net then plastic wrapped Alfalfa hay.

PH: 641-895-3084

07



**We provide materials
& expertise for all
building projects.**



**New Homes
Remodels
Decks
Kitchens
ICF Basements
Pole Buildings**

Josh & Emily Hill
218 S. 2nd St. • Pulaski, IA

641-675-3405



100.5 FM - AMERICA'S BEST COUNTRY

REQUEST LINE 660-465-2715

TOLL FREE AT 800-748-7875



KMEM RADIO • MEMPHIS, MO

BASKETBALL CONTINUES ON KMEM RADIO THIS WEEK AND NEXT. THIS FRIDAY NIGHT JANUARY 15TH IT'S SCHUYLER COUNTY AT KNOX COUNTY WITH THE GIRLS GAME AT 6 AND BOYS TO FOLLOW. THEN, IT'S THE 26TH ANNUAL PEPSI COLA SCOREBOARD SHOW WITH HOST DAVE BODEN. ALL NEXT WEEK IT'S THE NORTH SHELBY TOURNAMENT FEATURING KNOX COUNTY, SCHUYLER COUNTY AND SCOTLAND COUNTY TEAMS. JOIN DONNIE AND ANDY MIDDLETON FOR THE AREA'S BEST PLAY BY PLAY ON YOUR SPORTS LEADER IN THE TRI STATE AREA KMEM FM 100.5 OR STREAMING AUDIO KMEMFM.COM.

WWW.KMEMFM.COM

FOR SALE: 2008 GMC Acadia SLT2, AWD, black leather seats, 3rd row seating, tow package, new tires, tinted windows, luggage rack, power sunroof. VERY NICE CAR! \$9,500.

CALL: 660-216-9972

04

**MAST
VINYL
WINDOWS**

THERMO-PRO WINDOWS

Custom Size Is Our Specialty

Professional
Installation Available

**THERMA-TRU
DOORS**

**FREE
ESTIMATES**

22172 Hwy. 63
Bloomfield, IA 52537

800-206-9949

FOR SALE: Good used kitchen cabinets.

PH: 641-208-0150

04



CHECK WITH US FOR
**HIGH QUALITY BOX
SPRINGS & MATTRESSES!**



VM: 641-664-0207

1 Mile East of Drakesville
on Jade Ave.

Mon.-Sat. 9:00 AM - 5:00 PM

L&M Country Store

1 1/2 miles south of west Hwy 2 & 63 jct.

Mon-Sat. 8am-5pm **CLOSED SUNDAYS**

VM: 641-664-1936



**TEXAS ORANGES
& GRAPE FRUIT**



Sweetened Flake Coconut....99¢/lb. or 10 lbs. \$8.50

2 lbs. TW Light Brown Sugar \$1.39

Penne Rigate Pasta.....89¢/lb.

50 lbs. All Purpose Unbleached Winona Flour . \$12.95

4.5 oz. Assorted Gravy Mixes 99¢

10 lbs. Red Potatoes \$1.89

2002 YUKON DENALI



110,000 MILES, LOADED, NICE! \$9,900

Kollision Korner

504 South Drake St. • Bloomfield, IA 52537
PH: 641-664-2648 Fax: 641-664-2948



"Like us on Facebook!"
for more pictures.

**CHECK
THESE
OUT!**

**2009
IMPALA**

**2013
SILVERADO
3500**

Slayton Polaris

Authorized Polaris dealer since 1988




**New & Used
Polaris ATVs
& Rangers**

**BLOOMFIELD, IA
660-328-6627**

8 mi. S. & W. from Pulaski or 6 mi. W
of Memphis then 13 mi. N. on Route B

DAVIS COUNTY TOURISM WELCOME CENTER ANNUAL MEETING

Thursday, January 14th at 7pm
Southern Iowa Electric • Bloomfield, IA

Questions Call:
641-664-3997 or 641-664-2787

What's Cooking?



Featuring some
of Marilyn
Downing's
favorites...

Easy Apple Coffee Cake

3 Eggs
1 Box Yellow Cake Mix
1 20 oz. Can Apple Pie Filling

Combine cake mix with eggs. Batter will be very stiff. Add the apple pie filling and mix well without completely mashing the apples. Pour into greased & floured 9x13 pan.

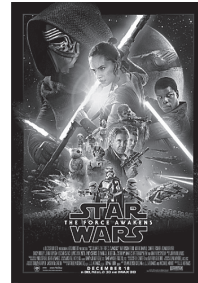
Topping: Combine 1/3 C brown sugar, 1 T butter or oleo, 1 T flour, & 1 t cinnamon until crumbly & sprinkle over cake batter. Bake 350° for 35 min. If desired drizzle thin icing over top. Serve warm.

UPCOMING EVENTS!



IOWA THEATER BLOOMFIELD, IOWA

"Star Wars: The
Force Awakens"



Friday, January 15
Saturday, January 16
7:00 PM
Sunday, January 17
4:00 PM

PG-13



OPEN HOUSE EVENT

NOTICE
we will be having our 19th annual
open house & discount day!

Saturday, January 16th
8:00 A.M. - 5:00 P.M.

**5% Discount on
all merchandise!**

COFFEE & DONUTS ALL DAY
Serving Ham & Cheese 10:00 A.M. - 2:00 P.M.

Something for everyone!

FARMER'S HARNESS SHOP

2 miles east of Drakesville, 1/4 mile north
VM: 641-722-3642

Friday, January 15th

Jumbo Shrimp

with sides Serving at 6:00 P.M.

Dine
In

722-3355

Carry
Out

RAY'S LONGBRANCH
Drakesville, IA

DAVIS COUNTY COMMUNITY SCHOOL DISTRICT BOARD OF DIRECTORS REGULAR MEETING

Date: Monday, Jan. 18, 2016

Time: **7:00 P.M.**

Place: 608 S. Washington St.
Bloomfield, Iowa

TENTATIVE AGENDA

1. Call to order/Roll call/Visitors
2. Approve tentative agenda
3. Approve consent agenda items
 - a. Positive comments
 - b. Minutes of regular board meeting December 21, 2015
 - c. Payment of warrants
 - d. Monthly financial reports
4. Approve personnel contracts and resignations
5. Administrative Reports
6. Approve Audit Report for Fiscal year 2014-15
7. Discuss early resignation notification incentive
8. Approve early resignation notification incentive
9. Presentation - Project Lead the Way
10. Approve technology use statement change in student handbooks
11. Approve purchase of wireless hardware for middle school
12. Board Professional Development - Legislative Advocacy
13. Board Policy Review
14. Adjournment

MARTIN LUTHER KING, JR. DAY

Monday, January 18th



BLOOMFIELD ONLY: Walk-Up & Drive-Up
Window will be **OPEN** on Monday, January 18th
from 7:30 A.M. - 4:00 P.M.

Moulton and Milton offices will be closed. We will resume
normal business hours on Tuesday, January 19th

Success BANK

Bloomfield, IA • 641-664-2006
Offices in Moulton & Milton • www.successbank.net



BENJAMIN MORELOCK

Will be at the
8:00AM & 10:00 AM
services January 24th
Living Hope Bible Church
201 W. Walnut, Eldon, IA

All are invited to share this
young man's Southern Gospel
music ministry.

DAVIS COUNTY CATTLEMEN'S ANNUAL MEETING

Saturday, January 23, 2016

6:00 p.m. Registration

6:30 p.m. Dinner

Bloomfield Country Club

New Year... New Career

Career Opportunities

- **DON- Full Time**
- **CNA- Full & Part Time**

Enjoy Additional Benefits:

- Free Meals
- Shoe and Uniform Allowance
- Scholarship and Tuition Reimbursement

Apply in person or at www.abcmcorp.com!



Bloomfield Care Center

800 North Davis • Bloomfield, IA 52537
(641) 664-2699 • www.abcmcorp.com

Enhancing Relationships

ABC Corporation is an Equal Opportunity Employer



DONATE YOUR CAR, TRUCK OR BOAT TO HERITAGE FOR THE BLIND. Free 3 Day Vacation, Tax Deductible, Free Towing, All Paperwork Taken Care Of. 1-800-283-0205 (MCN)

MEET SINGLES RIGHT NOW! No paid operators, just real people like you. Browse greetings, exchange messages and connect live. Try it free. Call now: 800-357-4970 (MCN)

Are you in BIG trouble with the IRS? Stop wage & bank levies, liens & audits, unfiled tax returns, payroll issues, & resolve tax debt FAST. Call 888-606-6673 (MCN)

CASH PAID for unexpired, sealed DIABETIC TEST STRIPS! 1 DAY PAYMENT & PREPAID shipping. HIGHEST PRICES! Call 1-888-389-0695. www.cash4diabeticsupplies.com (MCN)

Tired of the snow? Become a Winter Texan where the sun meets the gulf. Over 100 RV resorts and retirement communities for you to choose from. RV sites, fully furnished rentals and more. For more information visit www.rgvparks.org (MCN)

WANT CASH FOR EXTRA DIABETIC TEST STRIPS? I Pay Top Dollar Since 2005! 1-Day Fast Payment Guaranteed Up To \$60 Per Box! Free Shipping www.CashNowOffer.com or 1-888-210-5233. Get Extra \$10 Use Offer Code: CashNOW! (MCN)

19.99/mo. for DIRECTV - HD Channels + Genie HD DVR + 3 months FREE HBO, SHOW, MAX & STARZ + FREE NFL Sunday Ticket! Call Now 1-888-552-7314 (MCN)

ADT Security protects your home & family from "what if" scenarios. Fire, flood, burglary or carbon monoxide, ADT provides 24/7 security. Don't wait! Call Now! 1-888-607-9294 (MCN)

GET HELP NOW! One Button Senior Medical Alert. Falls, Fires & Emergencies happen. 24/7 Protection. Only \$14.99/mo. Call NOW 1-888-840-7541 (MCN)

CHRISTENSEN FARMS

Combine your Passion with a Growing Career

Christensen Farms is seeking

Boar Stud, Gilt Development Unit & Sow Farm Animal Care Workers

in the Bloomfield, IA area.

No Experience Required — No Layoffs

Excellent benefits including health, dental and life insurance, 401K, vision plan, paid time off and much more!

Starting pay \$12.00/hour with a pay increase to \$13.05/hour after 180 days.

Apply online at www.christensenfarms.com

or contact Kelsey in HR at 507-794-8568

Equal Opportunity Employer

Respect • Integrity • Excellence • Adaptability • Innovation

Tri-County Shopper
P.O. Box 168
Bloomfield, IA 52537

GET IT SOLD FAST!

Tri-County SHOPPER

PH: (641) 664-1333
shopper@netins.net
tri-countyshopper.com

GET IT SOLD FAST!

PERSONAL CLASSIFIED ADS

Fill in the form below as you want your ad to appear. We must receive this by Friday at 5:00 PM to appear in the following week's Shopper. This rate is for 20 words or less, with each additional word being 10¢ extra.

BUSINESS EXEMPT

1ST WEEK Only! \$8²⁵

2ND WEEK +\$1⁰⁰ \$9²⁵

3RD WEEK Wow! FREE

									5
									10
									15
									20
1 WK - \$8.35	3 WK - \$9.35	1 WK - \$8.45	3 WK - \$9.45	1 WK - \$8.55	3 WK - \$9.55	1 WK - \$8.65	3 WK - \$9.65	1 WK - \$8.75	3 WK - \$9.75
									25
1 WK - \$8.85	3 WK - \$9.85	1 WK - \$8.95	3 WK - \$9.95	1 WK - \$9.05	3 WK - \$10.05	1 WK - \$9.15	3 WK - \$10.15	1 WK - \$9.25	3 WK - \$10.25
									30
1 WK - \$9.35	3 WK - \$10.35	1 WK - \$9.45	3 WK - \$10.45	1 WK - \$9.55	3 WK - \$10.55	1 WK - \$9.65	3 WK - \$10.65	1 WK - \$9.75	3 WK - \$10.7
									35
1 WK - \$9.85	3 WK - \$10.85	1 WK - \$9.95	3 WK - \$10.95	1 WK - \$10.05	3 WK - \$11.05	1 WK - \$10.15	3 WK - \$11.15	1 WK - \$10.25	3 WK - \$11.25
									40
1 WK - \$10.35	3 WK - \$11.35	1 WK - \$10.45	3 WK - \$11.45	1 WK - \$10.55	3 WK - \$11.55	1 WK - \$10.65	3 WK - \$11.65	1 WK - \$10.75	3 WK - \$11.75
									45

Name: _____ Address: _____

City: _____ State: _____ Zip: _____ Phone: _____ Run my ad _____ times.



It's Cold Outside

It's the perfect time for inside projects!

- Interior on Pole Barns
- Liner Panels for Sidewalls & Ceilings

WAGLER METALS

19049 Ice Ave., Bloomfield, IA
641-722-3692

All Ads Are Placed On Our Online Edition FOR FREE!
www.Tri-CountyShopper.com

Insurance, Investments & Tax Directory

VMI
Van Mersbergen Insurance Inc
Our policy is serving you.

 104 E. Franklin St., PH: 641-664-2135
 Bloomfield, IA FX: 641-664-2108


Jim Carnahan, Agent
 Lisa Taylor, Office Rep.

 522 Richmond Ave. 109 S. Madison Ave.
 Ottumwa, IA Bloomfield, IA
 641-682-3447 641-664-3266

Umphrey Insurance Agency
 We sell all lines of personal, commercial, crop, life & long term care insurance!


 Luann Covington, Agent
 405 Dodge St.
 Keosauqua, IA 52565
 Phone: 319-293-3783
 Fax: 319-293-3956

Bradley
 INSURANCE AGENCY

Specializing in Crop Insurance
 ADM Crop Risk • Rain & Hail
 Great American • Farmers Mutual Hail
Tonya Bradley, Independent Agent
 (660) 465-2764 • bradlyin@nemr.net
 226 S. Market • Memphis, MO 63555

Community Insurance Agency
 A Division of 1st Iowa State Bank

Keosauqua **Cantril**
319-293-3752 **319-397-2401**
Richard Nichols **Tim Gilchrist**
Toll Free: 1-888-226-5232


Ameriprise
 Financial

Bradford T. Martin, CLTC
 Financial Advisor
 PROUDLY SERVING DAVIS COUNTY FOR OVER 30 YEARS
IRAs • Investments • Insurance
 Bloomfield, IA & Lancaster, MO
641-664-2169
 bradford.t.martin@ampf.com • www.ameriprise.com/bradford.t.martin
 An Ameriprise Financial Franchise


NORTH SIDE
 INSURANCE
 Life | Health | Annuities
 Home | Farm | Commercial

 Come see Sherrie, Lisa, or Kristi for all your insurance needs!

 N. Side of Square
 106 E. Jefferson | Bloomfield, IA | 641-664-2362


Cornerstone Investments
Chuck Riegenbach
 Financial Planner
 108 W. Jefferson St.
 Bloomfield, IA 52537 (641) 664-3700
Securities offered through Questar Capital Corporation (QCC) Member FINRA/SIPC. Advisory Services offered through Questar Asset Management (QAM) a registered investment advisor. Cornerstone Investments is independent of QCC and QAM.


SCHUYLER COUNTY
 MUTUAL INSURANCE COMPANY
 EST. 1877
 Queen City, MO 660-766-2505
 Margaret Sapp
 Stephanie March **FARMUTUAL Insurance**

Davis and Lewis
 Certified Public Accountants
Keith W. Lewis, CPA
Carol S. Howard, CPA
Brian Clark, CPA
 Ottumwa Office Bloomfield Office
 639 E. Pennsylvania Ave. 205 N. Washington St.
 P.O. Box 369 PH: (641) 664-1999
 PH: (641) 682-8117 FAX: (641) 64-3753
 FAX: (641) 682-8118
 davis_lewis@pcsia.net Call now to schedule your tax appointment!

Protecting your roof & everything underneath it.
Call an agent who cares!
GREG SHELLEY
 Memphis, Missouri
 gshelley@mofb.com
 660-465-2623
SOLID. STRONG. SECURE.
 **Missouri Farm Bureau**
 Family of Insurance Companies 


AMERICAN FAMILY
 INSURANCE®
All your protection under one roof


Craig D. Heemsbergen
 409 Church St. • Ottumwa, IA 52501-4214
 Office: 641-683-1891

Rominger Insurance Agency, Inc.

Tim Hardie Agent **Hugh Hardie Agent**
 109 W. Second St. P: 641-664-6575
 P.O. Box 159 F: 641-684-2233
 Ottumwa, IA 52501 romingerins.com


NEW LOCATION

AMERICAN FAMILY
 INSURANCE®
 American Family Life Insurance Company
 Home Office - Madison, WI 53783
 www.amfam.com
 Ron McElhinney, Agent
 100 N. Green, Ste. C
 Lancaster, MO 63548-0216
 (660) 457-3748 Bus.
 (660) 457-3748 Fax
 rmcelhin@amfam.com


John K Stookesberry
 Financial Advisor
 John.Stookesberry@edwardjones.com
 Office: 641-664-2044
 Cell: 641-680-1991
 Fax: 319-397-2323
OFFICE OPENING SOON IN BLOOMFIELD!
Edward Jones
 MAKING SENSE OF INVESTING

We watch out for you and your money.

Let one of these local specialists assess your current policy to make sure you have adequate coverage. Not sure where to invest your money? Whether you're trying to save for retirement, a home or your children's education, you need to know the best ways to invest toward a secure future. We're here to help you do just that by focusing on your needs and your future goals.

Acts 2:38

Peter replied, "Repent and be baptized, every one of you, in the name of Jesus Christ for the forgiveness of your sins. And you will receive the gift of the Holy Spirit."

Davis County High School to host community blood drive Tuesday, January 19 from 9:00 am to 2:00 pm at 106 N E St., inside concessions area. To donate, contact member of Student Council or visit www.bloodcenterimpact.org and use code 5015 to locate the drive.

LOOKING TO CLEAN RESIDENTIAL HOUSES in Bloomfield area. Over 10 years experience cleaning professionally.
PH: 641-208-7388 02

Davis County AM will host a community blood drive from 8:30 am to 12:30 pm on Friday, January 15 at 22458 Hwy. 2, inside Southern Iowa Electric Cooperative. To donate contact the Blood Center at 800-452-1097 or visit www.bloodcenterimpact.org and use code 5013 to locate the drive.

WANTED: Quilt frame & adjustable stands, in good condition.

VM: 641-664-3420 ext. 1 03

FOR SALE: Big square bales 3rd cutting alfalfa, no rain. Chris Piper.
PH: 641-208-5216 03

Stop OVERPAYING for your prescriptions! Save up to 93%! Call our licensed Canadian and International pharmacy service to compare prices and get \$15.00 off your first prescription and FREE Shipping. 1-800-263-4059. (MCN)

Got Knee Pain? Back Pain? Shoulder Pain? Get a pain-relieving brace at little or NO cost to you. Medicare Patients Call Health Hotline Now! 1- 800-604-2613 (MCN)

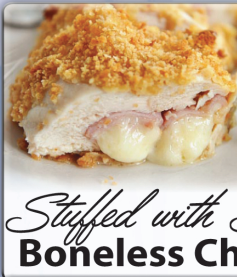
ATTENTION: VIAGRA AND CIALIS USERS! A cheaper alternative to high drugstore prices! 50 Pill Special - \$99 FREE Shipping! 100 Percent Guaranteed. CALL NOW: 1-800-795-9687 (MCN)

DISH NETWORK - \$19 Special, includes FREE Premium Movie Channels (HBO, Showtime, Cinemax, and Starz) and Blockbuster at home for 3 months. Free installation and equipment. Call NOW! 1-866-820-4030 (MCN)

HUGE JANUARY SAVINGS



\$2⁶⁹
per lb.
**Fully Cooked
Choice Beef
Pot Roast**



\$1⁶⁹
per lb.
**Uncooked Breaded
Stuffed with Swiss & Ham
Boneless Chicken Breast**



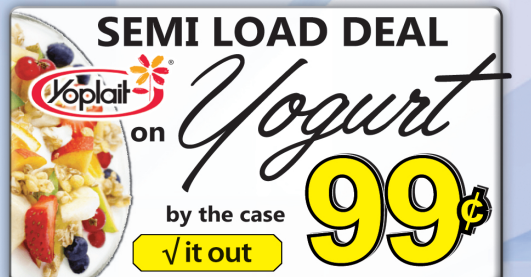
\$1⁴⁹
per lb.
**Fully Cooked
Grill Marked
Chicken Breast**



\$1⁷⁹
per lb. **10# roll**
Frozen - 80/20
Ground Beef



\$1⁴⁹
per lb.
**Fresh Whole Boneless
Pork Loin**



SEMI LOAD DEAL
Kopplait on Yogurt
by the case **99¢**
√ it out



99¢
per lb.
**Frozen Uncured
Smoked Ham**
*No Nitrates or Nitrites



8 oz. 99¢
**Oscar Mayer
Smoked Bacon**
Bacon Deal - Coming Soon !!



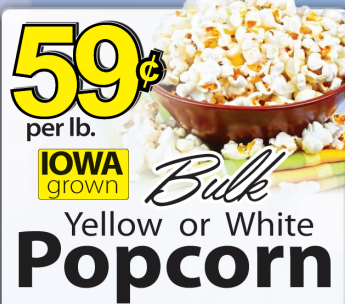
\$1²⁹
per lb.
**Uncooked
Whole Hog
Sausage Patties**



\$29⁹⁵
30# box
Frozen
Blueberries



\$5⁹⁹
per lb. regular \$12.99
**Bulk
Medium Grind
Black Pepper**



59¢
per lb. **IOWA grown Bulk**
**Yellow or White
Popcorn**



Quart - **\$2.99**
1/2 gallon - **\$4.99**
55 gallon Drum **\$199**
**Bulk
Molasses**



\$1⁸⁹
per lb.
**Fine Shredded
Mexican Blend
Cheese**



**Bulk
Flax Seed**
High in Omega-3 fatty acids
• Brown **89¢** per lb.
• Golden **89¢** per lb.
Milled Flax Seed **\$1.19** lb.
Chia Seeds **\$2.49** lb.
Quinoa **\$2.99** lb.
MORE HEALTHY GRAINS IN OUR BULK FOOD DEPARTMENT



\$1²⁹
14 oz.
**Honey Maid®
Graham Crackers**



\$1⁴⁹
13 oz.
**Ritz®
Snowflake
Crackers**



\$6⁹⁹
27-34 oz.
**Folgers
Coffee**



\$4⁹⁹ **16.9oz** was \$6.29
\$7⁹⁹ **33.8oz** was \$11.29
**Basso®
Extra Virgin
Olive Oil**



SUPPORTS YOUR IMMUNE SYSTEM
\$7⁵⁰ **30 pack**
*Raspberry
*Tangerine
*Orange
Emergen-C
1,000mg Vitamin C
Dietary Supplement



20% OFF **Unkerr's
Medicated
Salve**



DUTCHMAN'S STORE Division Street - CANTRIL, IA - (319) 397 2322 SALE PRICES Jan 13-19, 2016

STORE HOURS • Weekdays, 8a.m. - 6 p.m. • Saturday 8a.m. - 5 p.m. • Sunday Closed

View our specials at - www.DutchmansStore.com

MFA Agri Services Memphis

Made For Agriculture • Call us today! (660) 465-2603 or (660) 341-1422



Summer heat, winter cold

Doesn't matter. Cattle Charge keeps them gaining.

Feed prices have come down. Calf prices are going up. Don't miss this opportunity to add value to your calves. Typical feed to gain with Cattle Charge is 4:1. Stop by your local MFA to see how we can help you efficiently add value to your calves!

For information on MFA cattle feeds, contact your local MFA sales representative or visit www.mfa-inc.com



MADE FOR AGRICULTURE

Ezekiel 34:12

12 As a shepherd looks after his scattered flock when he is with them, so will I look after my sheep. I will rescue them from all the places where they were scattered on a day of clouds and darkness.

Central Boiler E-Classic OUTDOOR WOOD FURNACE. Limited time big savings offer. Instant rebate up to \$1500. Call today! Backyard Depot 641-722-3641 04

FOR SALE: Big round hay bales, JD. 125 grass bales & 200 alfalfa grass bales, big net wrapped. Bloomfield area.

PH: 641-777-7815 04

LIMITED NUMBER OF HONEY BEES FOR SALE: 2 & 3 lb. packages choice of Italian or Carniolan Queen, \$40 deposit will guarantee live delivery with balance due in April. Intro Bee Keeping class February 6 9:00 am - 4:00 pm, chili lunch and door prizes. May 15 10:00 am - 1:30 pm field day, \$40 for both dates. **PH: 641-682-8333 or 641-799-9266**

FOR RENT: 2 bedroom duplex at 401 N. Pine St., Bloomfield. Utilities and cable TV included. \$650 per month. **PH: 641-208-0285 04**

Cliff Viessman Inc. is accepting applications for Regional Tanker Drivers for the Cedar Rapids terminal. \$1,000 Sign On Bonus. \$50 K+ per year. Health, Dental, 401K. Profit Sharing. Paid Weekly. Monthly safe driving bonus. CDL with tanker endorsement required. Two years experience required or driving school graduate with six months experience. Some weekend work required. Contact Nate at 800-353-0344. Option 5. natev@viessmantrucking.com. www.viessmantrucking.com. "A Driver Friendly Company" (MCN)

WANTED: OLD GUITARS Guitar Collector Will Pay CASH for Old Fender, Martin, Gibson & More USA Made Guitars! Call Tony: 517-323-9848 (MCN)

Our Hunters will Pay Top \$\$\$ to hunt your land. Call for a Free Base Camp Leasing info packet & Quote. 1-866-309-1507 www.BaseCampLeasing.com (MCN)

Vinyl WindowsReplacement &
New Construction*Window Features...*
Fusion Welded
Triple Weather Strip
Aluminum ReinforcedSliding/Swinging
Patio Doors

Gerkin

Quality products since 1932

FREE ESTIMATES

Yoder Glass & Window
641-722-3667
19467 Driftwood Blvd.
Bloomfield, IA 52537**POWER SERVICE
DIESEL FUEL
SUPPLEMENT****POWER SERVICE
DIESEL 911****HOWES DIESEL
TREATMENT****HYDRAULIC FLUID
SUREGUARD 303**5 GAL. BUCKET
REG. \$31.95
**NOW
\$28.00**

SALE THRU JAN. 30TH

**CALCIUM CHLORIDE
FLAKES**

GOOD UP TO -25 DEGREES

50 LB. BAG
\$24.85

101 North St. • Cantril, IA 319-238-7367

SUPREME ALFALFA FOR SALE28 LG SQUARE 3X3X8 (2ND & 3RD CUTTING) \$70/EACH
50 ROUND SINGLE WET WRAP (4TH CUTTING) \$35/EACH
ALL SHEDDED, NO RAIN • BLOOMFIELD AREA DELIVERY AVAILABLE**319-230-6215**Garages • Pole Barns
CommercialFree
EstimatesLAN-DOW
BUILDINGSWe Stock a
Complete Line
of Building
Materials**Lancaster
Lumber, Inc.**Complete
Buildings or
Packages
Available

Toll Free 800-424-5071 Fax 660-457-3133

Ron Oliver, Owner Lancaster, MO 63548
www.lancasterlumber.com**GINGERICH
STOVES and
PLUMBING****DS
STOVES****Stoves & Furnaces**WOOD • COAL
PELLET/CORN • GAS

- Many brands, sizes & styles to choose from
- Chimney SS & Blk. Stovepipe
- Plumbing Supplies

Many Models In Stock!**19091 180th St • Drakesville, IA • VM 641-664-2814**
3/4 miles east of Drakesville, south sideFOR SALE: AR-15/DPMF 223 cal. Nikon P223 BDC scope &
Nikon mounts, 30 round clip, less than 100 rounds shot, \$700
FIRM. PH: 319-494-7733 02FOR SALE: 2 extra large
dog boxes mounted on
carrier that slides in receiver
hitch with insulated covers,
\$150; Innotek model CS
2000 shock collars controls
up to 3 dogs has 2 collars
with double charger, \$225;
Hot Wheels Johnni fighting
Matchbox collection over
300 Corvettes, no duplicates,
a few Nascar.PH: 641-680-1873 or 641-
459-3417 02FOR SALE: 100 string
wrapped big round bales
of 2015 grass/clover 2nd
cutting hay. \$30/bale.
PH: 641-777-8359 04FOR SALE: 2 male Beagles,
PROA & APRI registered, 6
years old and 5 months old.
PH. 641-664-2479 02

FOR SALE

2 TRACTS
\$4,500 an Acre
North of West Grove, IA

35.37 Acres
CRP, Row Crop

33.51 Acres
CRP, Row Crop

Lincoln Lynch
641-664-2275
103 E. Franklin
Bloomfield, Iowa
641-664-2275
Licensed in Iowa
Stephanie Lynch, Broker

Lynch
REALTY, INC.
641-664-2275
lynchrealtyinc.com

FOR SALE: 27" Snapper 2 stage snow blower, in good
condition. PH. 641-664-1370 02

The Family Gourmet Feast

- 2 (5 oz.) Filet Mignons
- 2 (5 oz.) Top Sirloins
- 2 (4 oz.) Boneless Pork Chops
- 4 Boneless Chicken Breasts (1 lb. pkg.)
- 4 (3 oz.) Kielbasa Sausages
- 4 (4 oz.) Omaha Steaks Burgers
- 15 oz. pkg. All-Beef Meatballs
- 4 (3 oz.) Potatoes au Gratin
- 4 (4 oz.) Caramel Apple Tartlets
- Omaha Steaks Seasoning Packet

40332ZMW Reg. \$219.91 | Now Only \$49.99

Call 1-800-709-3207 ask for 40332ZMW
www.OmahaSteaks.com/sp92Limit 2. Free gifts must ship with #40332. Standard S&H will be added.
Expires 5/3/16. ©2015 OCG | 601B120 | Omaha Steaks, Inc.Plus, 4 more
Kielbasa Sausages
FREE*The Car Spa*Auto Body Shop • Auto Glass
Automotive Restoration • Hand Detailing Service**KARR COLLISION CENTER
& AUTO DETAILING**

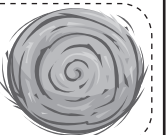
Shawn Scott, Owner • 701 Karr Ave. • Bloomfield, IA • 641-664-1024

**FRIESEN
CONSTRUCTION**New Houses
Remodeling
Garages Electrical
Plumbing
Custom CabinetsArlen 664-3270
Cell 641-208-0170
Bloomfield, Iowa**LINE-X OF OTTUMWA****KEEP YOUR RIDE
IN GREAT SHAPE!**
PROTECT IT WITH A LINE-X COATING!

Bring it in and we can LINE-X® it!

Brad Lisk • Kevin Webster
15514 Blackhawk Rd., Ottumwa, IA

Gift Cards Available!

**641-683-9334****YODER
EQUIPMENT**
BLOOMFIELD, IOWA**CONTINUOUS
FENCING**EXTRA HEAVY 10 GAUGE
BALE RINGS & HAY
SAVERSSOUTHERN YELLOW PINE
30 YR. WOOD POSTS
7-9 FT.19887 Jade Ave
2 1/2 Miles W of Bloomfield
V.M. 641-664-2797**Fabius Creek
Livestock Solutions LLC.****CHECK IT OUT!****The Krogmann BaleHandler**
Hydraulic balebed/flatbed for pickup
trucks built to handle big round hay bales!**Open by Appointments
Evenings & Weekends**12718 275th Street • Bloomfield, IA 52537
641-895-0128

ADM Alliance Nutrition®

**Goods Ag
Repair**

Repairing

Shop Rate
\$45.00/HR

Tractors

Combines

Etc.

Service Call Fee
\$75.00ANY TRACTOR TROUBLES CALL
MONDAY - FRIDAY
7:30AM - 5:30PM

46502 St. Hwy C • Baring, MO

660-892-4717

I will ghostwrite your memoirs or personal story into book or movie. Professional writer. 130 published books, 18 films. Guaranteed Quality Services www.ProfessionalWriterJayNorth.com FREE Consultation, Jay North 805-794-9126 (MCN)

WAPELLO COUNTY, IA LAND AND EQUIPMENT AUCTION

MONDAY, FEBRUARY 8TH TWO SEPARATE TIMES AND LOCATIONS— PLEASE READ CAREFULLY

PERSONAL PROPERTY SELLS @ 9:00 AM

At the farm which is located at the north edge of Ottumwa, Iowa. Physical Address: 2931 N. Court Rd., Ottumwa, IA (Hwy. 63 North).

SELLING: TRACTORS, FARM MACHINERY, TOOLS, ANTIQUES & MORE!

Detailed listing to appear soon, or visit us online for listing & photos: www.sullivanauctioneers.com

WAPELLO COUNTY, IA LAND SELLS @ 4:00 PM

AT THE BRIDGE VIEW CENTER, 102 CHURCH ST., OTTUMWA, IA

OPEN HOUSE: MON., JAN. 25 • 4:00 P.M. – 5:00 P.M.



FARM SELLS WITH FULL POSSESSION FOR '16!



160 ACRES± (SUBJECT TO SURVEY) • 2 TRACTS

The Sammons Farm is located in Section 1, Center Township, Wapello County, IA at the north edge of Ottumwa, IA on St. Hwy. 63 (2931 N. Court Rd.).

TRACT 1 – 155 ACRES ± (SUBJECT TO SURVEY)

- FSA information should indicate 144.16 acres of tillable cropland.
- Productive soils include Grundy, Arispe & Arispe-Clearfield.
- CSR 2: 65 (on the tillable portion)
- This well located tract is improved with a 36' x 56' machinery building and a very nice pond with a park like setting.
- This parcel also has had an extensive amount of conservation practices including terraces & field drainage tile, etc.
- Access is on the east by St. Hwy. 63.

TRACT 2 – EXECUTIVE HOME & 5 ACRES ± (SUBJECT TO SURVEY)

- This parcel is improved with a 2,160 sq. ft. executive home with a 2 car attached garage, large master bedroom on the main level & 2 bedrooms on the lower level. Other amenities of this fine home include Quaker Mfg. oak kitchen cabinets w/ a bar style island, a formal dining room & a large living room with brick front fireplace. The walkout lower level also features a large family room with a wood burning fireplace, an office, as well as a utility/summer type kitchen area. The home is heated by a GFA furnace w/ central air plus passive solar designed heat and this property also has public water.
- Other improvements include several nice structures such as a 38' x 88' machinery storage building w/ a heated shop area and concrete floor; an attached 28' x 30' garage; a 30' x 45' machinery storage building; and over 24,000 bu. of grain storage.
- This is all situated on a beautifully landscaped acreage which also includes a nice pond that can be viewed from a large deck on the rear of the home or from the nicely constructed gazebo.
- If you are in the market for a magnificent acreage, look no further because this one has it all! The description of this property does not do it justice — this is a must see property!
- Be sure to attend the Open House on Mon., Jan. 25th from 4:00 – 5:00 p.m.
- Access is on the east by St. Hwy. 63.

DETAILS & PHOTOS ONLINE @:
www.sullivanauctioneers.com
OR CALL FOR A DETAILED BROCHURE.

DONALD AND MABEL SAMMONS

Representing Attorney: Rick Lynch • Lynch Law Office
207 South Washington Street • Bloomfield, Iowa • Phone 641-664-3188

AUCTION MANAGER: JOHN PROBASCO (641) 856-7355

SULLIVAN AUCTIONEERS, LLC • TOLL FREE (844) 847-2161
www.sullivanauctioneers.com • IL Lic. #444000107

FRUIT TREES LOW AS \$18. Blueberry, Grape, Strawberry, Asparagus, Evergreen & Hardwood Plants. FREE catalog. WOODSTOCK NURSERY, N1831 Hwy 95, Nellsville, WI 54456. Toll Free 888-803-8733. wallace-woodstock.com (MCN)

Switch to DIRECTV and get a FREE Whole-Home Genie HD/DVR upgrade. Starting at \$19.99/mo. FREE 3 months of HBO, SHOWTIME & STARZ. New Customers Only. Don't settle for cable. Call Now 1-800-203-4378 (MCN)

ANNUAL NEW YEAR'S ANTIQUE AUCTION

TWO DAYS FRIDAY, JAN. 15TH • 5:00 PM
SATURDAY, JAN. 16TH • 10:00 AM

Located at Fairfield Arts & Convention Center (200 N. Main St.)

FRIDAY, JAN. 15TH - TOOLS & MODERN HOUSEHOLD (Partial List): 3 hay racks full of hand tools; bottle jacks; log chains; tire chains; welder; saws; drill press; tires; bolt bin; full bolts; grinder; lots hardware; queen bed; oak dresser; table & chairs; recliners; organ; usual run of household items. **STORE CLOSE-OUT:** 100 PIECES OF METAL YARD ART!

SATURDAY, JAN. 16TH - VEHICLES: 1966 Ford F250 4x4; 1976 or 1977 Chevy Concourse Nova; 1998 Dodge 2500 4x4 ext. cab; 1994 Ford Explorer.

ANTIQUES (Partial List), GUNS & KNIVES: Winchester 12-gauge model 97; long Tom shotgun; Sears 16 gauge Ranger 105-20; Coast to Coast model 320 22; Harrington Richards 22 rimfire revolver; Hopkins & Allen 32 RF model XL; Astra Cub 22 pistol; Daisy BB guns; over 100 pocket knives - Western, Buck, Army, Imperial, German, Shrader, & others; Flymaking kit & other fishing equipment; lead melting pot; lead; lures; lots of molds for sinkers; lots misc. fishing poles.

TRACTORS-HIT & MISS ENGINES, BOAT MOTORS, MOTORCYCLE, BICYCLES: Maytag motor; Case riding mower with attachments Model 130; Fordson tractor on steel wheels; 504 Farmall with 3 pt., Novo Engine Company hit & miss; Fairbank hit & miss; rear steel tractor wheels; bicycles - Firestone Cruiser, Western Flyer, Pathwind; collector chain saws; engine karts; corn grinders; horse-drawn plow; 350 Honda motorcycle; Cub Cadet Hydro 80 rider.

40+ SIGNS: Neon Budweiser; Neon Fox photo; Kodak film; open sign; old Dexter washers; Kendall motor oil; several old stop signs; Kohler engines; Briggs & Stratton service; Kawasaki engines; Citigo; large Husqvarna; Fairfield lumber; Snapper; Skelly; Harperbrush; Vinton Hybrids; bike sales; Diamond gasoline; misc. seed corn signs; ISO Vis Motor Oil.

SEWING: 6-drawer Merrick oak lift-top spool cabinet; 3-drawer J&P Coats spool cabinet; Singer featherweight sewing machine; Singer featherweight table; Singer 99 sewing machine; Singer in bentwood case; Little Grace Machine Quilting System; toy sewing machines; Brother VX1120 sewing machines; buttons; material; lots misc. sewing items; several quilts; 1848 coverlet John Seibert Lowhill PA; 1857 D. Stephenson, Jefferson Co. coverlet; chenille bedspreads; hankies; vintage clothes; old purses; hats; dollies & fancywork; flour sacks.

200+ TOYS: Over 20 cast iron toys; Ertle toys; Hot Wheels collection; model car kits; several Tonka toys; old & new dolls; games; cast iron banks; marbles.

ANTIQUES & PRIMITIVES: Cast iron bobsled runners made in Mt. Pleasant; 2 pedal cars; iron fence house decoration; corn shellers; coffee grinders; old cuspidor from dental office; copper still; copper buckets; well pumps; old advertising gas cans; oil cans; several crocks; Dazey butter churns; old cameras; enamelware; old spurs; wood stirrups; old pictures; Longaberger baskets; Griswold skillets; rug beaters; lots old wood advertising boxes; old silverware; old tractor tool boxes; old trolleys; ice tongs; hay hooks; Loudon watering bowl in original box; Loudon trolleys; Fairfield glove cutters; old corn dryer; coal buckets; oak wall telephones; coin-operated telephone; railroad train phone; lineman telephone; colored fruit jars; military coats; 48-star flag; Doughboy helmet; Boy Scout uniforms; old pulleys; meat grinders; keys; door stops; comic books; old photos; small Maytag washer; wash tubs; postcards; yardsticks; old kitchen utensils; canes.

GLASSWARE: Head vases; Shirley Temple pitcher; Westmoreland; Old advertising milk bottles; Fenton; Depression; glass baskets; Fireking; milk glass; Tea Leaf; Jadeite; Aladdin lamp; Vaseline glass; hen on nest; cookie jars; Goofus glass; Hull; tea sets; candlewick; Carnival; bubble glass; Shawnee; paperweight.

STERLING SILVER JEWELRY & MISC. SMALLS: Rings; necklaces; Cameos; collector spoons; old brooches; Parson College ring; Tiger Eye ring; tokens; old coins; Troy ounces; military buttons; dog tag; pocket watches; Sheaffer pens; smoking pipes; stamp books & albums.

BREYERHORSE COLLECTION, LIGHTER COLLECTION, BELT BUCKLE COLLECTION, SALT & PEPPER COLLECTION.

ADVERTISING: Loudon crock; Loudon catalogs; Dexter dog; Fairfield Dairy; EZ Orange bottle; EZ Orange toy van; old city directories; 1879 history Jefferson County advertising tokens & plates; Fairfield yearbooks; lots misc.

AUCTIONEER'S NOTE: Wow! What a huge variety of collections from local estates & the Brown estate from Des Moines. Vehicles, signs, & primitives are coming out of a barn that has been locked up for years. Huge auction, bring a friend, we will run 2 rings on Saturday. Pictures on website.

**MR. & MRS. VERLE DAVISSON,
HILL & BROWN ESTATES**

Rick Spees
641-919-4786

REALTOR
Rick Spees
AUCTIONEER

Not responsible
in case of
accident.

1960 Libertyville Rd., Fairfield, IA
Any announcement made day of auction holds precedence over advertising.
See complete listing at www.speesauktion.com

ALL BASEMENTY! Basement Systems Inc. Call us for all of your basement needs! Waterproofing, Finishing, Structural Repairs, Humidity and Mold Control. FREE ESTIMATES! Call 1-800-640-8195 (MCN)

THINGS LIVING WITH BACK PAIN, NECK PAIN or WRIST PAIN? Medicare recipients may qualify to receive a pain relieving brace at little or no cost, plus get Free Shipping. Call now to speak with a Rapid Relief back pain specialist! 844-887-0082 (MCN)

Curt's Yard & Garden
Sales & Service of Outdoor Power Equipment
641-664-2784
502 E. Franklin • Bloomfield, IA

Handyman Home Improvements
Decks, Porches, Siding, Drywall, Windows
Roofing, New or Remodel-No job too small!
Joe Rohrer Free Estimates
Bloomfield IA **641.208.7903**

TERRY GARMON Estate Sale

- **1992 Harley FXIR 1200**
35,000 miles, new battery, tune up, custom header muffler.
- **2008 Chrysler PT Cruiser Limited**
68,000 miles, CD, PW, PL, new flywheel, motor mounts and axle bearings.

Lynch Law Office will accept sealed bids until 5:00 P.M. ON JANUARY 15, 2016

To see the above items, please contact Lynch Law Office.
207 S Washington St • Bloomfield, IA • 641-664-3188
Seller reserves the right to accept or reject any bids.

HOUSE FOR SALE
204 West Duffield Street • Bloomfield, Iowa

PRICE REDUCED!

• Four-bedroom, two-bath home with large yard
• Many updates and lots of storage

Offered at \$109,900

For Property Details, Contact:

Farmers National Company
L-1500704

Mike Howk, Agent
Bloomfield, Iowa
Business: (641) 208-6453
MHowk@FarmersNational.com
www.FarmersNational.com/MikeHowk

www.FarmersNational.com

Real Estate Sales • Auctions • Farm and Ranch Management
Appraisal • Insurance • Consultation • Oil and Gas Management
Forest Resource Management • National Hunting Leases
Lake Management • FNC Ag Stock

"I think Morton Buildings is number one, without a doubt ... the quality is second to none."

MORTON BUILDINGS

BUILDING VALUE DAYS
Jan. 1-Feb. 29

4269

Buy Now and Save During Building Value Days
January 1st-February 29th

To Learn More
641-472-3184
mortonbuildings.com

©2016 Morton Buildings, Inc. A listing of GC licenses available at mortonbuildings.com/licenses. Certain restrictions apply. The customers and suppliers of products expressed here are those of a specific customer and should not be construed to represent all buildings, materials or products sold by Morton Buildings, Inc. Code 004.

Garages | Farm Storage | Equestrian | Commercial | Homes

LOOKING FOR A COMPUTER PROGRAMMER: Need to be able to do ASP.net, Sequel Server, & some IP work.
PH: 641-226-1325 02

AS SEEN ON TV: Burn fat quickly & effectively with Garcinia Cambogia. Blocks fat. Suppresses your appetite. Safe - 100% natural. Satisfaction Guaranteed! Free bottle with select packages! 844-587-6487 (MCN)

OWNER OPERATORS wanted. Paid all miles. No touch freight. Many operating discounts. Family run business for 75 years. Many bonuses and good home time. Direct deposit paid weekly. Call 800-533-0564 ext.205. (MCN)

Viagra!! 52 Pills for Only \$99.00! Your #1 trusted provider for 10 years. Insured and Guaranteed Delivery. Call today 1-888-403-7751 (MCN)

CLASS A CDL Driver. Good home time. Stay in the Midwest. Great pay and benefits. Matching 401k. Bonuses and tax free money. Experience needed. Call Scott 507-437-9905. Apply on-line http://www.mcfgtl.com (MCN)

MAKE \$1000 Weekly!! Mailing Brochures From Home. Helping home workers since 2001. No Experience Required. Start Immediately! www.centralmailing.net (VOID IN SD, WI) (MCN)

Scotland County LIVESTOCK AUCTION

P.O. Box 111 • Hwy 15 North • Memphis, MO
660-465-7213 • Jerry & Barb Blomme
660-341-0069 • Grant Blomme

SPECIAL CATTLE SALE
Sat., January 16th at 12:30 PM

Early Listings

- 120 Blk Strs. & Hfrs., 400-650 lbs.
- 60 Blk Strs. & Hfrs., 500 lbs.
- 50 Blk Strs. & Hfrs., 650 lbs.
- 50 Blk Hfrs., 600 lbs.
- 45 Blk Bulls & Hfrs., 500-600 lbs.
- 40 Blk & Char X Bulls & Hfrs., 500 lbs.
- 60 Blk & Red Strs. & Hfrs., 500-600 lbs.
- 40 Blk Bulls & Hfrs., 550 lbs.
- Blk Strs. & Hfrs., 500 lbs.
- 10 Blk Hfrs., 450 lbs.

Expecting More Cattle by Sale Time

MARKET REPORT FOR SAT., JAN. 9TH: STEERS: 300 lbs. \$217, 380 lbs. \$212.50, 405 lbs. \$202.50, 460 lbs. \$199.50, 516 lbs. \$176, 577 lbs. \$176.50, 635 lbs. \$159, 700 lbs. \$143; BULLS: 325 lbs. \$195, 405 lbs. \$189, 575 lbs. \$164, 623 lbs. \$140; HEIFERS: 439 lbs. \$165, 544 lbs. \$153, 592 lbs. \$147, 677 lbs. \$133.50; VEALS: \$150 to \$250; LB COWS: \$55 to \$67.

DAIRY SALE REPORT FOR THURS., JAN. 7TH: SPRINGERS: \$1200 to \$1700; FRESH COWS: \$700 to \$1550; OPEN HEIFERS: 290 lbs. \$475, 420 lbs. \$650, 585 lbs. \$685, 738 lbs. \$785; HOLSTEIN STEERS: 350 lbs. \$146, 390 lbs. \$137, 420 lbs. \$132, 478 lbs. \$117, 530 lbs. \$115, 638 lbs. \$114, 756 lbs. \$101; VEALS: \$200 to \$260; STARTED: 138 lbs. \$325, 205 lbs. \$410, 252 lbs. \$450.

www.ScotlandCountyLivestock.com

Dave's Taxidermy

RECREATING YOUR OUTDOOR MEMORIES!

SPECIALIZING IN WHITETAIL DEER AND MAMMALS!

Taxidermist - David Wenke
(641) 208-7139

13607 230th St.
Milton, Iowa 52570

FOR SALE: Factory seconds insulated garage door panels. Can be used for exterior and interior walls, ceilings & etc. 2" 77¢/sq. ft., 1 5/8" 68¢/sq. ft., 1 3/8" 64¢/sq. ft. **Country Built Portable Buildings** 902 E. Hwy. 2, Milton, IA 52570. 03

FOR SALE: Single bale stabber, electric over hydraulic, new pump, made stout, fits long bed pickup. \$1,000. PH: 660-457-3383 04

FOR SALE: 1983 Kiefer livestock trailer, 20' long. PH: 641-680-1841 03

Trojan Hill Farms
is proud to announce
we are ready for you to come & select your Angus or Charolais Yearling bulls!

The bulls are pre-priced and one half down payment will hold your bull until May 1st, 2016. The bulls are sold on a first come first serve basis. All of our bulls are fertility tested and guaranteed. Don't wait too long. We have sold out early for the last four years!!

For Sale: 15 Registered Angus Bred Cows

Call Phil Archer at 641-680-6769
to make an appointment to see the bulls.

 **Trojan Hill Farms**
Phil Archer
31625 215th Street
Bloomfield, IA 52537
(641) 675-3769
Cell (641) 680-6769
Angus and Charolais

BIG GAIN

CANTRIL FEED & GRAIN

From fences to feed to farmers
YOU'LL LOVE OUR PRICES!

We Carry:

- Soyhull Pellets
- Corn Gluten Pellets
- Dry Distillers Grain
- Cottonseed
- Soybean Meal
- Oats

We also carry:

- Gallagher Fencing
- Hay Feeders
- Corral Gates
- Miraco Watering Systems

CALL US FOR COMPETITIVE PRICING!
WE DELIVER!
610 W. NORTH STREET • CANTRIL, IA
319-397-2215

CONSIGNMENTS WANTED
Southern Iowa Produce Auction
Sales every 2nd & 4th Saturday Nov. thru March

NEXT SALE
Sat., Jan. 23rd, - 10 A.M.
HAY, STRAW, & FIREWOOD

For advertising your consignments they must be called in by 10AM Monday on the week of sale. Unloading Available Fridays before sale, otherwise by appointment.

19141 Ice Ave. Bloomfield, IA
Call 641-722-3623 on auction days or leave a message.
Market Report or Information call 712-432-8593

FOR SALE: Maytag electric glass top stove, over stove microwave & dishwasher. Kenmore fridge, washer & electric dryer. PH: 660-216-4383 03

FOR SALE: 7 x 9 solid oak blocks for firewood, \$195/cord. Also, slab firewood \$30/pickup load. 14256 Jewel Ave. PH: 641-722-3020 02

WD 63 PIPE & STEEL

NEW PIPE, NO RUST!
GREAT FOR ROAD CULVERTS & ROAD TUBES!!

SIZES
3/4" - 60"
any size or thickness

PLATE THICKNESS
1/8" - 1"
anything in between

WE NOW HAVE CABLE! 1/2" & 9/16"
Pick-up or delivery available. Call for pricing.

660.216.9061 OR 660.341.4753
Just south of Lancaster, MO off Hwy. 63
We'll Find What You Need!

KEOSAUQUA SALE CO.
20511 Hwy. 1, Keosauqua, IA

Results from Jan. 9th

Butchers.....\$49.00-55.00/cwt	Ewes.....\$80.00-113.00/cwt
Sows.....\$22.00-39.00/cwt	Kid goats 40-70 lbs.....\$70.00-150.00/hd
Lambs	Cull nannies.....\$80.00-218.00/hd
under 80 lbs.....\$200.00-280.00/cwt	
over 110 lbs.....\$120.00-121.00/cwt	
Blk bred hfrs.....\$1600-2100	3 yr old blk 1st period cows.....\$1400
8 yr old cows.....\$1300-1750	3-4 yr old Angus cows.....\$1500 - 2150
SS & aged cows.....\$900-1500	

Pound Cows
Low yielding.....\$52.00-59.00/cwt High yielding.....\$57.50-75.50/cwt
Pound bulls.....\$82.00-93.00/cwt

SPECIAL CATTLE SALE
Saturday, January 16th

- 26 hd 700-800 blk strs & hfrs Greiner
- 10 hd 450-600 blk strs & hfrs Yoder
- 160 hd 500-750 blkx str & hfrs Barnhart
- 40 hd 500-750 blk strs & hfrs Kassmeyer
- 16 hd 600-800 Angus strs & hfrs Moffett
- 22 hd 400-550 Angus strs & hfrs M Yoder
- 90 hd 500-750 blkx strs & hfrs Walljasper
- 10 hd 650-700 bwf strs Barker
- 56 hd 500-700 blk & bwf strs & hfrs Hirst
- 60 hd 825 xbred strs
- 16 hd 500-650 Angus strs & hfrs Kruse

Thank You For Your Business! For More Information Contact:
Selling Times
Hogs.....9:30 a.m.
Sheep & Goats.....10:00 a.m.
Outside Merch.....11:00 a.m.
Cattle.....Noon

Keosauqua Sale Co.
319-293-3508
Bill Goehring
641-919-9365

www.keosauquasaleco.com

BLOOMFIELD**LIVESTOCK MARKET**

Wed., January 20th NO SALE

Wed., January 27th Special Calf/Yearling Sale 11:00 AM

TUESDAY POUND COW SALE EVERY WEEK
10:30 a.m. Fat Cattle, Butcher Cows, Bulls, Veals

SALE BARN OPEN UNTIL 9:00 PM
EVERY MONDAY TO RECEIVE LIVESTOCK

Top Consignor's Report For January 6, 2016. Selling 2013 head.

STEERS

Steve & Jodie Pierce 5 BLK 424 lbs \$211.00
Troy Lyon 6 BLK 539 lbs \$202.25
Level Lane Farms 36 BLK .. 510 lbs \$201.75
Jerry Scurlock 32 BLK .. 521 lbs \$201.75
Steve & Jodie Pierce 17 BLK .. 507 lbs \$200.50
Ronnie Boyer 8 B/R 576 lbs \$195.00
Hesseltine Farms 7 BLK 591 lbs \$191.00
River Valley Ranch 77 BLK .. 595 lbs \$187.50
Jerry Scurlock 64 BLK .. 625 lbs \$185.50
Level Lane Farms 53 BLK .. 624 lbs \$184.50
Craig Neuenschwander 22 BLK .. 625 lbs \$182.75
Don Harvey 19 BRC .. 615 lbs \$182.50
Craig Neuenschwander 39 BBWF 693 lbs \$175.00
Don Harvey 39 BRC .. 713 lbs \$171.00
Joe Dotterer 24 BLK .. 713 lbs \$170.00
Tim Dotterer 86 BLK .. 706 lbs \$169.25
Craig Dotterer 70 BLK .. 738 lbs \$166.35
Chuck & Ed McCullough 14 BLK .. 781 lbs \$166.25
Lowell M Woods Family.. 42 BLK .. 784 lbs \$164.25
Keith Denning 67 BLK .. 775 lbs \$159.75

HEIFERS

Steve & Jodie Pierce 9 BLK 473 lbs \$174.00
Troy Lyon 20 BLK .. 555 lbs \$168.75
Jerry Scurlock 45 BLK .. 559 lbs \$168.00
Jerry Scurlock 14 BLK .. 469 lbs \$167.00
Hesseltine Farms 10 BLK .. 600 lbs \$166.50
River Valley Ranch 38 B/R ... 534 lbs \$165.25
Zack Western 72 BBWF 626 lbs \$164.50
Ronnie Boyer 15 BLK .. 611 lbs \$162.75
Dan Delaney 13 B/R ... 633 lbs \$160.00
Chuck & Ed McCullough 8 BLK 587 lbs \$159.50
Mike Orman 12 BBWF 456 lbs \$159.00
Koellner Bros. LTD 8 BLK 650 lbs \$158.00
Franklin Wheeler 4 BLK 646 lbs \$157.00
Koellner Bros. LTD 19 BLK .. 712 lbs \$151.50
Davis Land & Livestock 19 B/R ... 757 lbs \$145.25
Taylor Farms 10 BLK .. 806 lbs \$141.25
Richard Western 13 BLK .. 867 lbs \$140.50

Phil Schooley 641-664-3450

Ron Schooley 641-777-0302

Roman Schooley 515-450-3685

We appreciate your business!

Tyler Schooley 641-208-5442

Barn Phone 641-664-2435

HWY. 63 NORTH • BLOOMFIELD, IA

~~FOR SALE: Star UltraStar 9mm pistol, \$175; 500 round brick of CCI standard velocity 22 LR, \$42; 10 boxes - 100 rounds of PDX1 410 defender rounds 2.5", \$75. Must have permit for handgun. Ottumwa. PH: 641-680-3876~~ 02

~~FOUND: 2 miles North of Drakesville around 1st part of October. 20 lb. propane tank. Leave message. 641-722-3592, ext. 3~~ 02

~~FOR SALE: Split, seasoned firewood, \$65 a load. North of Drakesville. PH. 641-208-6959~~ 02

~~FOR SALE: 2015 Alfalfa hay, large squares & rounds. Mark Rogers PH: 641-919-9447~~ 05

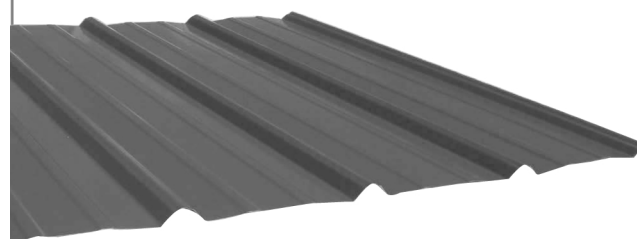
~~FOR SALE: 20x50 Harvestore Silo, unassembled, \$2,500. PH: 660-465-2068~~ 03

~~BLOOMFIELD MINI STORAGE. Serving you from 2 safe, convenient locations. PH. 641-664-1066.~~ TF

~~FOR SALE: Firewood at RJ Lumber, \$15 a pickup load. 18989 160th St., Drakesville, IA 52552.~~ TF

There are not human words to express our thankfulness and gratitude for the support we have had from the friends, customers, and churches of Davis County and in the surrounding communities. In this very difficult time we have never felt so loved and cared for! Thank you for being obedient and willing to let God use each and every one of you as a vessel for him to flow through. Whether it's been food, paper products, stamps or a card you all have thought of everything and have been a true image of a servant. Thanks for coming out in cold dreary weather and standing in line for hours just to comfort us and pay respects. Not only will we never forget our precious Mona, but we will also never forget how you all blessed us! It's our hearts desire and prayer for God to use us as a blessing in the same way. Special thanks to all who attend Mark Baptist Church and Wagler Funeral Home for helping make this process a little easier, and for helping put on a beautiful tribute! Your hospitality and support was unspeakable! Thanks for giving your time and effort putting this together. Special thanks to all those who helped in cleaning the Rec. Center and those from Bloomfield Open Bible, Pulaski Mennonite, and Ottumwa Community Churches for putting on the most beautiful meal anyone has ever seen. We are proud to know all of you, proud to be apart of this community, and proud to call you all friends. Praying God's blessings on all of you, and in Mona's famous words, "Jesus loves you!"

From the bottom of our hearts, Ron Schooley, Roman & Liz Schooley & family, Tyler & Kallie Schooley & family, and all of the extended Reyes & Schooley families.

Premium Metal Roofing

- Buy Direct & Save
- Fast Service
- Cut-to-length
- Professional Contractors Available

A W Metal Inc.
Metal Roofing Headquarters

641-664-3990 • awmetal.net

FOR SALE: 6' round bales grass clover, net wrapped, 67, 1st cutting, no rain, \$45/ bale. Loading possible, Ottumwa area.

PH: 641-777-7748

FOR RENT: 1 or 2 bedroom apartments Milton, IA. Kitchen appliances & heat furnished. Very reasonable rent.

03

PH: 641-757-0201

04

MAST OVERHEAD DOORS, INC.
105 S. Dodge St., Bloomfield, IA 52537

**GARAGE DOORS**Residential & Commercial
Doors & Operators

641-680-2016

CALL FOR AN
APPOINTMENT

Quality Products
+ Quality Workmanship
= Quality Customers

Free Estimates We Fix Doors



Bring your
plans in for a
FREE
ESTIMATE



Trusses
Engineered
and Designed
to Your Specs

FOAMBOARD • SHINGLES • INSULATION

Count on us for quality building supplies. Good results begin with a solid foundation, and that requires the right materials for the job. Trust us for a comprehensive selection of professional grade tools, hardware, lumber and supplies, plus our selection and service with competitive prices.

STOCKING 9 COLOR CHOICES

17893 212th Street • Bloomfield, IA 52537
641-722-3605 • Mon.-Fri. 7 AM to 5 PM