

C Cornerstone Investments
 Chuck Riegenbach
 Financial Planner
 108 W. Jefferson St. (641) 664-3700
 Bloomfield, IA 52537
 Securities offered through Questar Capital Corporation (QCC)
 Member FINRA/SIPC. Advisory Services offered through Questar
 Asset Management (QAM) a registered investment advisor.
 Cornerstone Investments is independent of QCC and QAM.

Tri-County SHOPPER



STANDARD MAIL
 U.S. POSTAGE
PAID
 TRI-COUNTY SHOPPER, INC.
 POST OFFICE BOXHOLDER
 LOCAL RURAL BOXHOLDER
 OCCUPANT
**CIRCULATION OVER 11,750
 THIRD CLASS**

P.O. Box 168 • Bloomfield, IA 52537 • www.tri-countyshopper.com
 Phone 641-664-1333 • Fax 641-664-3761 • E-mail shopper@netins.net



Vol. 46, No. 02
 Wednesday, January 10, 2018



Check out our variety of Truck /Car Accessories!
FAB4 GRILL GUARDS, WEATHERTECH FLOOR MATS, RIMS AND SO MUCH MORE!

10% OFF Power Service & Howes Diesel Fuel Additive
 Now until Jan. 24th

B&W Hitches

Truxedo Tonneau Covers \$375 Out The Door

CANTRIL TRUCK & TRAILER
319-238-7367
 101 North St. • Cantril, IA

WE HAVE Solar Pulse industrial solar charging system!
COME CHECK THEM OUT!!

www.cantriltruckandtrailer.com

Get Signed Up For Our GIFT CARD CHALLENGE!

Every month we will have a selected Monthly Category. Make a \$10 or larger purchase in that category each month through 2018 and receive a \$50 GIFT CERTIFICATE IN DECEMBER!

CATEGORY OF THE MONTH FOR JANUARY: KITCHENWARE • BASKETS

Don't forget your wild friends this winter!

- Wild bird feed
- Sunflower Seeds
- Ear Corn
- Bird Feeders

Hot Soup & Sandwiches SERVED DAILY!

The Red Shed
 CHOCOLATES
 GIFTS TOYS & MORE

2 miles west of Bloomfield on Hwy 2 • 21021 Jewel Ave. • Mon. - Sat. 8:30-5 • 641-664-1213

RACE INTO THE NEW YEAR WITH THIS PRODUCT!

RACING FORMULA
VITAMIN & MINERAL SUPPLEMENT
 Highly concentrated vitamin & mineral supplement intended for Race Horses & Low Energy Horses.

SPECIAL PRODUCT PRICING THROUGH JANUARY!!

FEATURES

- Biotin
- Organic Selenium
- Essential Amino Acids
- Bio-Available Trace Minerals
- Enhanced with Probiotics
- Beneficial Bacteria
- Bio-available Iron
- Vitamin E

dac
 It Makes A World Of Difference

Aaron Yoder
 17911 Husky Trail • Drakesville, IA • 641-664-2753

BUY SEED NOW

Planting season will be here before you know it! Start planning now!

See us for early orders on seed & fertilizer for all your spring needs.

CROP SERVICES, INC

John & Kathy Bos, Owners
 Drakesville, IA • 641-722-3293

pfister **Nutrena**

Country View Store



660-883-5388
3 miles south of Memphis, MO
along Hwy 15
Hours: Mon-Fri 8-6 & Sat 8-5:30



39¢/lb.

Bananas



\$1.29/lb.

Grapes



Chocolate TruMoo
3/\$1.00 or case for \$3.19



Horizon organic 2% milk, half gal.
2/\$1.00



15% OFF all cappuccino mixes



20% OFF Stickers!

CHECK OUT OUR LARGE VARIETY OF SOUP MIXES!!!

Cheddar Broccoli • Country Corn Chowder
Creamy Chicken & Noodle
MANY MORE FLAVORS

NEW MATTRESSES FOR SALE!

Selling individually or in sets. Factory warranty.

TWIN - FULL - QUEEN - KING

641-664-3060

FOR RENT: 1 or 2 bedroom apartments Milton, IA. Kitchen appliances & heat furnished. Very reasonable rent. PH: 641-757-0201

FOR SALE: Dairy boar cross bottle doelings. \$20 a head. 19126 Jade Ave. Bloomfield, IA PH: 641-664-3677 03

FOR SALE: LC 203 injets black, cyan, magenta- OBO; HP 88 injets black, cyan, magenta- OBO; Whirlpool electric stove parts: small burner elements and drip pan \$10; receptacle replacement for stovetop burner \$10; twin size box springs/mattress and bed frame like new - \$125; chest of drawers \$40. Call or Text PH: 660-216-0267 02

Walker Motors Collision Repair Inc.

- Dent & Scratch Repair
- Unibody Repair
- Factory Color Matching
- Frame Straightening

Collision Repair & Paint Specialist.

FREE Estimates

Guaranteed Paint Match

Guaranteed Craftmanship

Hertz

Rentals for all Occasions!

375 S. Main St. • Memphis, MO • 660-465-2159 • Shop Phone/Fax

MARTIN LUTHER KING, JR. DAY

Monday, January 15th



BLOOMFIELD ONLY: Walk-Up & Drive-Up Window will be OPEN on Monday, January 15th from 7:30 A.M. - 4:00 P.M.

Moulton and Milton offices will be closed. We will resume normal business hours on Tuesday, January 16th

Success BANK

Bloomfield, IA • 641- 664-2006

Offices in Moulton & Milton • www.success.bank



FOR SALE: Seasoned firewood. Red Elm & Cherry, \$60/pickup load. RJ Lumber PH: 641-722-3348 TFN

BLOOMFIELD STORAGE. Serving you from 2 safe, convenient locations. PH. 641-664-1066. TF

MINI Shepherd pups. Red Merle's, black Tri's, red Tri's, shots, wormed. Ready 12-22-17. PH. 641-919-6963. 03

DISCOUNT TOBACCO & FIREWORKS

20956 E. IA/MO Street • Lancaster, MO • 847-379-1150

Winter Hours
Mon. - Thurs. 7:00 am - 8:00 pm
Fri. & Sat. 7:00 am - 9:00 pm
Sun. 8:00 am - 8:00 pm

Marlboro
Carton

Varieties **\$45.99** plus tax



Exeter
Varieties Carton **\$24.59** plus tax

Pall Mall
Varieties Carton **\$34.99** plus tax

Berley
Varieties Carton **\$19.69** plus tax

Eagle20's
Carton

Varieties **\$21.55** plus tax



BRING IN THIS AD FOR A FREE BOTTLE OF WATER!!

BRING IN A FRIEND

BOTH PURCHASE A CARTON OF CIGARETTES AND EACH OF YOU WILL RECEIVE A

\$1.00 OFF

CLIP AND SAVE COUPON

\$3.00 OFF

WITH MINIMUM \$10.00 PURCHASE



Find us on

Facebook

All prices subject to change without notice. We reserve the right to limit quantities.



Hinds Realty

Hwy. 15 N, Memphis, Mo.
660-465-8526
www.hindsrealty.com

Hind's Realty... "Since 1975".....Thanks



FOR SALE:

**Highway 15 North Memphis MO
80 acre grass farm.**

Good fences, good all weather water.
Improvements include 3 bedroom
farmhouse with full basement, detached
garage. 45x60 machine shed, outbuildings,
feed/working lots, loafing sheds.
Highway 15 frontage. Turn key cattle farm.

FOR SALE: 40 young blk & bwf cow calf pairs. Call to look at.

PH: 660-341-0371 04

FOR SALE: Firewood at RJ Lumber, \$15 a pickup load. 18989 160th St., Drakesville, IA 52552.

TF

Skate Sharpeners • Hockey Runner Guard
Lighted Hockey Pucks • Hockey Sticks
Laces • Hockey Pucks • Shin Guards

CCM shin guards Sr. \$34.00 • Jr. \$28.00
Handheld Skate Sharpener with Diamond Stone \$59.00

Tour Roller Skates Tour Skates American Cougar Youth Summit Skate with push button adjustable sizing

Est. 1989
DRAKESVILLE FABRICS
17369 180th St.
Drakesville, IA 52552
(1 mi. W. of Drakesville)
VM: 641-722-3369

FOR SALE: Bulk antifreeze 50/50 premixed, ready to pour. Please bring your own containers, -34° freeze protection, \$6.50 gal. JT Mechanic Shop 26947 Rte V56 Milton, IA 52570 02

FOR SALE: Square bales, big & small of high quality alfalfa grass mix and alfalfa, \$5.50 for small squares. Delivery available. PH: 319-540-0313 02

L&M Country Store

1 1/2 miles south of west Hwy 2 & 63 jct.
Mon-Sat. 8am-5pm CLOSED SUNDAYS
VM: 641-664-1936

Texas Grapefruits & Oranges

Frozen fully cooked sausage patties.....\$1.79 lb.
Frozen 14 oz. cocktail smokies.....\$1.19
Frozen 40 oz. beer brats.....\$3.99
25 oz. extra virgin olive oil.....\$4.50
2 lb. processed American cheese.....\$3.99
Approx. 5 lb. sliced almonds.....\$1.89 lb.

Jona Gold Apples

WE CARRY MATTRESSES & BOX SPRINGS!

- Special Sizes
- Double Sided Mattresses
- 20 Year Warranty
- 12 Gauge Innerspring



VM: 641-664-0207
1 Mile East of Drakesville on Jade Ave.
Mon.-Sat. 8:00 AM - 5:00 PM



PILLOW TOPS!



Leaky Faucet? Broken toilet? Call NOW and get the best deals with your local plumbers. No hassle appointment setup. Call NOW! 866-865-1875 (MCN)

Paying too much for car insurance? Not sure? Want better coverage? Call now for a free quote and learn more today! 855-417-7382 (MCN)

45 +/- Acres Pastureland and Home Auction - Schuyler County -

Friday, February 2 • 6 p.m.
Scotland County Recs Plex, Memphis, MO

Tract 1: 43.8 +/- Acres Pasture, 3 barns, corral, & 2 ponds

Tract 2: 2 +/- Acres Home and small acreage, south on Hwy A, Downing, MO



Rt. 1 Box 73F • Memphis MO
Ph: 660-465-2971
www.weknowdirt.net

APARTMENT LIVING AT ITS FINEST!

Check out all the apartment rentals we have available. From 1 to 2 bedrooms, let us show you an apartment that fits your needs!

CHECK OUT OUR WEBSITE OR CALL US TODAY!



641-664-2275
lynchrealtyinc.com

106 S. Madison
Bloomfield, IA
Licensed in Iowa
Stephanie Lynch, Broker

Shady Lane Variety

WINTER IS HERE

Lots of toys, puzzles, games to entertain through the cold winter days!

Keep warm with socks, gloves and underwear!

1 mi. E. of Drakesville on Jade Ave. • 641-664-0207
8-5 Mon. thru Sat.

FOR SALE: 2 Beagle females. 1 and 3 years old. Also a 5 year old male, all APRI registered, \$150 each. All 3 for \$375.
VM: 641-664-2744. 03

Slayton Polaris

Authorized Polaris dealer since 1988

It's time to get Muddy!

New & Used Polaris Rangers & ATV's



660-328-6627

BLOOMFIELD, IA
8 mi. S. & W. from Pulaski or 6 mi. W. of Memphis then 13 mi. N. on Route B

FOR SALE: 2nd cutting alfalfa hay, 21.9% protein, RFV 126. Net wrapped. PH. 641-208-5374. 04

FOR SALE: 10 1/2 hp, 28 ton log splitter. Swisher Briggs & Stratton, \$1,000. PH. 641-459-3417. 04

2011 CHEVY TAHOE
4WD, 271, 55000 MILES
\$25,750

2003 Silverado 1500
LONG BOX, REG. CAB, 4 WD, 80,000 MILES
\$10,900

2012 Escape
LIMITED, AWD
\$11,900

2009 Ford Ranger
SUPER CAB, BLUE, 64,000 MILES
\$11,900

Come see our 2006 Impala!

It might be cold but the deals are HOT!

Kollision Korner
504 South Drake St • Bloomfield
PH: 641-664-2648 • Fax: 641-664-2948

SAVE THE DATE FOR THESE HAPPENINGS

Recovery support for those with drinking or drug abuse issues.

Mondays in Bloomfield

At Southfork in the banquet room.

Narcotics Anonymous - 5:45 pm

Alcoholics Anonymous - 7:15 pm

Contact info: Jennifer Munoz
641-242-0145



THE BOYS

Playing upstairs at
American Legion
Bloomfield, IA
Sat., January 20th • 9-1

DON'T MISS IT!



Davis County Community School District
Board of Directors
Regular Meeting
Date: January 15, 2018
Time: **7:00 P.M.**
Place: 608 S. Washington St.
Bloomfield, Iowa

TENTATIVE AGENDA

1. Call to order/Roll call/Visitors
2. Approve tentative agenda
3. Approve consent agenda items
 - a. Positive comments
 - b. Minutes of regular board meeting for December 18th, 2017
 - c. Payments of warrants
 - d. Monthly financial reports
4. Approve personnel contracts and resignations
5. Administrative Reports
6. Approve Early Retirement incentive
7. Approve Phase 2 construction design
8. Approve final pay application to Christner Contracting
9. Board Professional Development – Legislative Advocacy
10. Board Policy Review
11. Adjournment

DAVIS COUNTY SCHOOL SUPPORT FOUNDATION IS PROUD TO PRESENT

Kevin Ritz

FRIDAY, JANUARY 12, 2018

DURING THE MUSTANG VARSITY BASKETBALL GAME

DAVIS COUNTY HIGH SCHOOL GYM • 5:30PM



MEET & GREET
Card Signing With Kevin!

DAVIS COUNTY SCHOOL SUPPORT FOUNDATION

Freewill Donation!

IOWA THEATER BLOOMFIELD, IOWA

"Star Wars: The Last Jedi"



Friday, Jan. 12th
Saturday, Jan. 13th
7:00 PM
Sunday, Jan. 14th
4:00 PM **PG-13**

COMING SOON:
Jumanji

Friday, January 12th
Choice of 12 or 14 oz. Ribeye

Saturday, January 13rd
Grilled Ribeye Sandwich
Serving at 6:00 P.M. both nights

Dine In **722-3355** Carry Out

RAY'S LONGBRANCH
Drakesville, IA

Southfork MOTEL & GRILL
JUNCTION OF HWY 2 & 63
BLOOMFIELD • 641-664-1063

Breakfast • Lunch • Dinner
Daily Hot Specials and Evening Features
Prime Rib Capital of the World! Served on Friday & Saturday Nights
Banquet Facilities Available for All Occasions • Catering

"Where Quality and Consistency Matter!"
Tues - Thurs 7am-9pm • Fri - Sat 7am-10pm
Closed Sunday and Monday

KMEM FM 100.5 FM - AMERICA'S BEST COUNTRY

REQUEST LINE 660-465-2715
TOLL FREE AT 800-748-7875

ON THE RADIO

KMEM RADIO • MEMPHIS, MO

JOIN KMEM RADIO EVERY SATURDAY MORNING AT 8:05 FOR THE COUNTDOWN TO OPENING DAY SHOW. FEATURING YOUR FAVORITE ST. LOUIS CARDINAL ANNOUNCERS, STAFF AND PLAYERS. IT MAY BE WINTER, BUT THE HOT STOVE LEAGUE NEVER ENDS!!
TUNE IN EVERY SATURDAY MORNING ON KMEM 100.5 FM OR STREAMING AUDIO KMEMFM.COM

WWW.KMEMFM.COM

HUGE JANUARY SAVINGS



<p>2/\$1 16 oz. Oscar Mayer</p> <p>Jumbo Wieners</p>	<p>99¢ per lb.</p> <p>Frozen Breaded Fish Sticks</p>	<p>2/\$1 9 oz. Oscar Mayer</p> <p>Oven Roasted Turkey Breast</p>	<p>\$3.99 4 lb.</p> <p>Farmland® Hickory Smoked Ham</p>	<p>\$1.95 per pound</p> <p>Muenster Trim Cheese</p>
--	--	--	---	---

<p>30 pack \$6.99 Regular \$8.99</p> <p>Emergen - C® Vitamin C Supplement</p>	<p>99¢ 14.5 oz.</p> <p>Chef Boyardee® Big Bowl LASAGNA</p>	<p>75¢ 10 pk.</p> <p>Instant Oatmeal Packets</p>	<p>\$4.99 gallon</p> <p>Miracle Whip</p>	<p>2/\$1 16 oz.</p> <p>Finest brand Refried BEANS</p>	<p>TruckLoad SALE</p> <p>95¢ case 4/5# \$1.99</p> <p>5 lb. tub</p> <p>Upstate Farms Vanilla Yogurt</p>
---	--	--	--	---	--

<p>20% OFF</p> <p>Natures Sunshine Natural Hope Herbals Products</p>	<p>20% OFF</p> <p>Meadow View Essential Oils</p>	<p>We Have.. Bulk Sprouting SEEDS</p>	<p>75¢ per lb. \$29.99 50# bag</p> <p>Golden Barrel Raw Sugar</p>	<p>\$39.95</p> <p>Tour XLT 51 Hockey Skates</p> <p>Skate Sharpener \$19.95</p>	<p>10% OFF SALE!</p> <p>Muck Boots</p>	<p>\$14.95</p> <p>3+ bags \$13.95</p> <p>50 lb. bag</p> <p>Sunflower Seed for Bird Feeding</p>
--	--	---	--	---	--	--

DUTCHMAN'S STORE Division Street CANTRIL, IA (319) 397 2322 SALE PRICES January 10-16, 2017

STORE HOURS • Weekdays, 8a.m. - 6 p.m. • Saturday 8a.m. - 5 p.m. • Sunday Closed

View our specials online - www.DutchmansStore.com



If your vehicle is demanding to be cleaned, let us do the dirty work!

We also do:
Auto Body Shop
Auto Glass
Automotive Restoration

KARR COLLISION CENTER & AUTO DETAILING
Shawn Scott, Owner
701 Karr Ave. • Bloomfield, IA
641-664-1024

FOR SALE: 80 - 1st cutting big round grass mix hay.
PH: 641-722-3369 04

FOR SALE: Portable animal shelters & storage sheds. All custom built. All sizes available. Competitive priced!
PH: 641-656-4476
Leave Message 04

FIREWOOD FOR SALE: \$50 a load, you haul.
PH: 641-208-5812 04

Friesen Excavating
Specializing in Septic Systems
Certified For Peat Tanks and Sand Filters.
Can Also Do Other Drains and Water Lines
Call or Text Shawn @ 641-208-0861
Bloomfield, IA
Free Quotes Available

Winter is HERE!

Is Your Boat & Camper Ready For Snow?

Call or stop in today to see how we can help you get your toys winterized!

Whitney RV & Marine
Scott and Jennifer Poole: Owners
641-684-8284
9418 151st Ave., Ottumwa
Monday-Friday: 8:30 AM - 5:30 PM
Saturday: 8 AM - 1 PM

Garages • Pole Barns Commercial Free Estimates

LAN-DOW BUILDINGS

We Stock a Complete Line of Building Materials

Lancaster Lumber, Inc. Complete Buildings or Packages Available

Toll Free 800-424-5071 Fax 660-457-3133

Hardware • Plumbing • Electrical • Paint
500 Green Street • Lancaster, MO 63548

HOUSE FOR RENT IN QUEEN CITY: 3 bedroom, one car garage, stove & refrigerator furnished. 1st month + deposit. References.
PH. 660-457-3991. 04

FOR SALE: Registered purebred Gelbvieh and Balancer bulls. Reds & blacks. Yearlings and 2 year olds.
Rolling Hills Gelbvieh
Bloomfield, IA
PH: 641-777-7060 03

Hawkins - Harrison Insurance



SHOPPER ADS CAN BE DROPPED OFF HERE!

Proud to be your partner.

P.O. Box 365
Lancaster, MO 63548
660-457-3020

103 W. Monroe St.,
Memphis, MO 63555
660-465-8533

Clearance on winter fabrics and décor

20% OFF

Deli Specials

Colby Longhorn Large \$2.99 lb.
Roast Beef \$4.89 lb.

10% Off Winter Apparel

Whirlpool Speed Queen Amana MAYTAG

MEMPHIS MERCANTILE SALES & SERVICE

EST 2016

South Side of the Square in Memphis
660-465-2345

Monday - Friday: 7:00 AM to 5:30 PM / Saturday: 8:00 AM to 4:00 PM / Sunday CLOSED

MEMPHIS MERCANTILE

EST 2010

115 E. Monroe • Memphis, MO
660-465-2102

FREE PUPPIES: Black lab mix, 8 weeks old, very cute & friendly.
PH: 319-288-0932 04

FOR SALE: Grandfather clock, \$500 firm; wooden porch swing & frame, \$100
PH: 641-675-3250 04

THINK SPRING SPECIAL!

40% off Poly Lawn Furniture plus 6 month 0% financing

All in stock and custom orders. See store for details.

ACROSS FROM THE SCOTLAND COUNTY FAIRGROUNDS

For the way you live **WITMERS FURNITURE** MEMPHIS, MO

MON & FRI: 9AM-8PM WED, THURS & SAT: 9AM-5PM
TUES & SUN: CLOSED 660-465-2461

OPEN HOUSE EVENT

we will be having our 21st annual open house & discount day!

Saturday, January 13th
8:00 A.M. - 5:00 P.M.

5% Discount on all merchandise!

COFFEE & DONUTS ALL DAY
Serving Ham & Cheese 10:00 A.M. - 2:00 P.M.

Make sure to sign up for our DOOR PRIZES!!!

FARMER'S HARNESS SHOP
2 miles east of Drakesville, 1/4 mile north
VM: 641-722-3642

A PLACE FOR MOM. The nation's largest senior living referral service. Contact our trusted, local experts today! Our service is FREE/no obligation. CALL 1-855-811-8392 (MCN)

MAST VINYL WINDOWS

THERMO-PRO WINDOWS
Custom Size Is Our Specialty
Professional Installation Available

THERMA-TRU DOORS

FREE ESTIMATES
22172 Hwy. 63
Bloomfield, IA 52537
800-206-9949

FOR SALE: 15 registered Angus 18-month-old bulls. Feed efficiency tested. All weights and EPDs available. Excellent quality. Breeding season guarantee. Werner Family Angus, Diagonal, IA. 641-344-5059. WernerFamilyAngus.com. 04

Enjoy Your Sleep Study From the Comfort of Your Own Home.

Davis County Hospital is Now Offering In-Home Sleep Studies!

* Convenient
* Easy to Use
* Quick Results
* Unattended

CONVENIENT TESTING IN THE COMFORT OF YOUR OWN HOME!

Davis County HOSPITAL
Dedicated. Compassionate. Healthcare.

FOR SALE: 2 Newton Club Seats at Newton Raceway. Best location at the track. Many benefits. Will sell for what I paid. Rumor has it there will be a NASCAR Race in the next couple years. PH. 573-723-0709 for more info. TF

FOR SALE: Package Honey Bees, 2 and 3 LB with Italian or Carniolan queen, pick up in early April. \$40 deposit per package. Also: Beginner bee keeping class, \$35. PH: 641-682-8333 or 641-799-9266 05

MAST OVERHEAD DOORS, INC.
105 S. Dodge St., Bloomfield, IA 52537

GARAGE DOORS
Residential & Commercial
Doors & Operators

641-680-2016 CALL FOR AN APPOINTMENT

Quality Products + Quality Workmanship = Quality Customers
Free Estimates We Fix Doors

MILITARY ITEMS WANTED BY LOCAL COLLECTOR: Patches, medals, uniforms, hats, helmets, etc. Always buying. Mark Warren, PH. 641-664-3705. mpwarren@netins.net

DONATE YOUR CAR, TRUCK OR BOAT TO HERITAGE FOR THE BLIND. Free 3 Day Vacation, Tax Deductible, Free Towing, All Paperwork Taken Care Of. 1-800-283-0205 (MCN)

NEED THAT HARD TO FIND PART? CHECK WITH SPILMAN!

When you need a pre-owned or hard-to-find part for your vehicle, you'll find it right here at...

SPILMAN AUTO PARTS

Old Hwy. 2 & 63 W. P.O. Box 31, Bloomfield IA
Ph. 641-664-2463 • 1-800-477-1367
www.spilmanauto.com

MasterCard VISA

Scotland County Care Center
434 E. Sigler Ave • Memphis, MO

Seeking kind, compassionate individuals to fill the following positions:

R.N. - Full time, day shift
L.P.N. - Full time, all shifts
C.N.A./N.A. - Full time/Part time/PRN, all shifts
C.M.T - Full time/Part time/PRN, all shifts

Long term care experience preferred, but not required. We offer competitive wages, Paid time off, Health benefits offered to full time employees. Must be able to pass a drug test. Weekend option available for C.N.A. We will certify N.A.'s on-site

Apply in the business office Mon-Fri 8 am-4 pm or online at www.scotlandcountycarecenter.com.

For more information contact **Tammy Kirchner, H.R.**
(660) 465-7221 E.O.E.

STAY COZY & WARM THIS WINTER WITH OUR FLEECE THROWS WHILE SHARING POPCORN & HOT DRINKS WITH FAMILY & FRIENDS.....

We Have It All!


 <p>Oscar Mayer spicy monterey jack beef franks, 12 oz. 59¢</p>	 <p>Hickory country bacon, 1 lb \$2.49</p>	 <p>Jimmy Dean burrito breakfast bowl, 9 oz. 99¢</p>	 <p>Bristol Brand cooked ham, water added, 1 lb. \$2.95</p>
 <p>Roland mushrooms, pieces & stems, 4 lb. & 4 oz. \$5.99</p>	 <p>Whitman's Sampler, assorted chocolates, 12 oz. \$3.99</p>	 <p>Nabisco double stuff Oreo cookies, 15.25 oz. Reg. \$2.50 SALE \$1.89</p>	 <p>Marble cheese, 40 lb. block \$1.99 a lb.</p>
 <p>Betty Crocker & Duncan Hines cake mixes, variety, 15.25 oz - 16.5 oz. 75¢ each</p>	 <p>Dolche Premium Coffee, gourmet blend & french roast, 18 single serve capsules, 5.7 oz. Yummy!</p>	 <p>Kraft caramels 11 oz. 69¢</p>	 <p>Kraft mac & cheese cups, 1.9 oz 45¢ each</p>

Sale good Wednesday, January 10th through Tuesday, January 16th.

Mon. - Sat. 8:30am - 5:00pm

VM: 641-664-1187

19686 Hwy. 2, • Approx 2 miles west of Bloomfield

SHINGRIX

New two dose shingles vaccination (1st dose now, then next dose in 2-6 months after initial dose)
Needs doctor's prescription.

90+% EFFECTIVENESS

Billed to Medicare part D (drug plan)

Stop in any day to receive vaccination.

HyVee

PHARMACY

Amanda Mathews, R.Ph.
Janet Zeitler, R.Ph. • Kim Burton, R.Ph.
301 W. Jefferson St.
Bloomfield, IA • 641-664-2975
Emergency Numbers South HyVee Pharmacy
800-371-6524 or 641-683-4483

FOR SALE

Driveway Fabric Rolls
Commercial, Heavy Duty,
Designed for Heavy Traffic

12' 5" Wide
432' Long
\$370/ roll

660-216-0938



YODER EQUIPMENT
BLOOMFIELD, IOWA

SOUTHERN YELLOW PINE TREATED WOOD POSTS
Mineral Feeders
Gates
Variety of Sizes & Styles
Feed Bunks
Water Tanks
CONTINUOUS FENCING

19887 Jade Ave
2 1/2 Miles W of Bloomfield
V.M. 641-664-2797

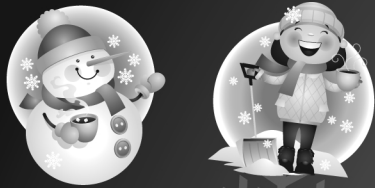
WE HAVE ALL THE FARM SUPPLIES YOU NEED TO MAKE WINTER A LITTLE EASIER!

<p>BOLTS & NUTS</p> <p>We carry grade 2-8 bolts</p> 	  <p>Carhartt Jeans, Shirts, Bib Overalls, & Hats!!</p>
 <p>We carry Cobett Waters</p> 	<p>WINTER NEEDS</p> <p>Howes & Power Service Diesel Additive</p>  <p>Snow Shovels & Ice Melt</p>  <p>RED BRAND CATTLE FENCE 42" & 48"</p>

In Stock:
Muck & LaCrosse Insulated Boots

Hamilton Produce Co.

641-664-2459 or 1-800-469-7749
105 W. Franklin • Bloomfield, IA 52537



Insurance, Investments & Tax Directory

Let one of these local specialists assess your current policy to make sure you have adequate coverage. Not sure where to invest your money? Whether you're trying to save for retirement, a home or your children's education, you need to know the best ways to invest toward a secure future. We're here to help you do just that by focusing on your needs and your future goals.

VMI
Van Mersbergen Insurance Inc

Our policy is serving you.

Trusted Choice

104 E. Franklin St., PH: 641-664-2135
 Bloomfield, IA FX: 641-664-2108

Farm Financial Strategies, Inc.

Travis Harris
Farm Legacy By Design

108 N. Dodge St. • Bloomfield, IA
 Office: 641-664-3954 Fax: 641-664-2683
 harris@farmestate.com | www.farmestate.com

Protecting your roof & everything underneath it.
Call an agent who cares!

GREG SHELLEY
 Memphis, Missouri
 gshelley@mofb.com
 660-465-2623

SOLID. STRONG. SECURE.
Missouri Farm Bureau
 Family of Insurance Companies

State Farm

Jim Carnahan, Agent
 Lisa Taylor, Office Rep.

522 Richmond Ave. 109 S. Madison Ave.
 Ottumwa, IA Bloomfield, IA
 641-682-3447 641-664-3266
 www.jcarnahaninsurance.com

NORTH SIDE INSURANCE

Life | Health | Annuities | Home | Farm & Commercial

Come see Sherrie, Lisa, or Hope for all your insurance needs!

106 E. Jefferson | Bloomfield, IA | 641-664-2362

AMERICAN FAMILY INSURANCE

All your protection under one roof

Craig D. Heemsbergen

409 Church St. • Ottumwa, IA 52501-4214
 Office: 641-683-1891

Umpfrey Insurance Agency

We sell all lines of personal, commercial, crop hail, life & long term care insurance!

Melissa Morss, Agent

405 Dodge St.
 Keosauqua, IA 52565
 Phone: 319-293-3783
 Cell: 319-677-0861
 melissa@neighborinsurance.com

Cornerstone Investments

Chuck Riggerbach
 Financial Planner

108 W. Jefferson St. (641) 664-3700
 Bloomfield, IA 52537

Securities offered through Questar Capital Corporation (QCC) Member FINRA/SIPC. Advisory Services offered through Questar Asset Management (QAM) a registered investment advisor. Cornerstone Investments is independent of QCC and QAM.

State Farm

Wes Aeschliman, Agent
Northwest Corner of the Albia Square
 3 Benton Ave. E. • Albia, IA
 Bus: 641.932.7950 Fax: 888.611.3836
 wes@insurancewithwes.com
 insurancewithwes.com

Thank you for your loyalty! We appreciate you!

Bradley INSURANCE AGENCY

Specializing in Crop Insurance
 Crop Risk Services • Rain & Hail • Great American
 Serving Iowa and Missouri
Tonya Bradley, Independent Agent
 (660) 465-2764 • bradlyin@nemr.net
 226 S. Market • Memphis, MO 63555

SCHUYLER COUNTY MUTUAL INSURANCE COMPANY
 EST. 1877

Queen City, MO 660-766-2505
 Margaret Sapp
 Stephanie Rae

Come see us today for all your insurance needs!

Gary Sprouse - Agent
 Carol Lawson - Sales Associate
 Alyssia Greenstreet - Sales Associate

IOWA FARM BUREAU
 PEOPLE. PROGRESS. PRIDE.®

712 Southwest St Suite #2
 Bloomfield, IA
 641-664-2238

AMERICAN FAMILY INSURANCE

RON MCELHINNEY
 RON MCELHINNEY AGENCY
 Bus: 660-457-3748
 Fax: 660-457-3062
 Email: rmcclhin@amfam.com

Licensed in Iowa & Missouri
 2014 American Star Certified Agency

102 N. Green Lancaster, MO 63548

Davis and Lewis
 Certified Public Accountants

*Keith W. Lewis, CPA
 Kyle R. Merry, CPA*

Ottumwa Office 639 E. Pennsylvania Ave.
 P.O. Box 369
 PH: (641) 682-8117
 FAX: (641) 682-8118
 davis_lewis@pcsa.net

Bloomfield Office 205 N. Washington St.
 PH: (641) 664-1999
 FAX: (641) 64-3753

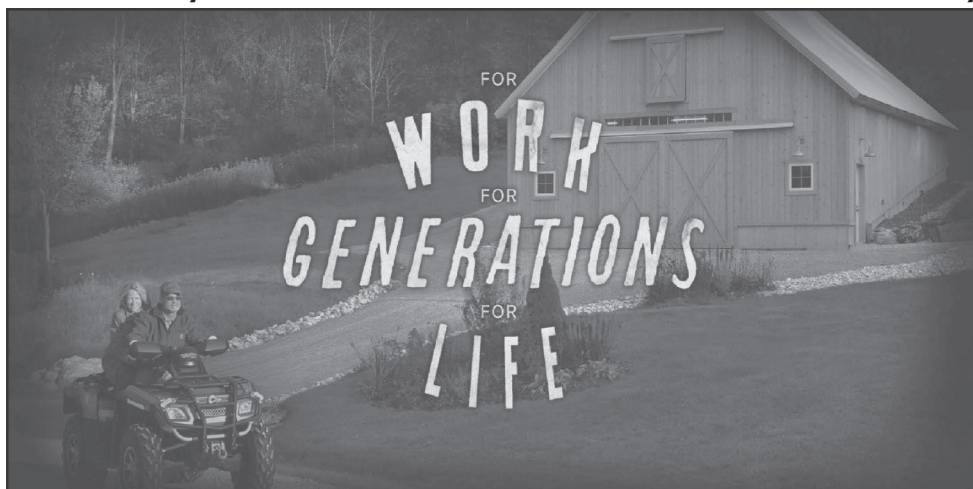
Call now to schedule your tax appointment!

Hawkins - Harrison Insurance

Trusted Choice

Proud to be your partner.

P.O. Box 365 103 W. Monroe St.
 Lancaster, MO 63548 Memphis, MO 63555
 660-457-3020 660-465-8533



Garages | Hobby Shops | Farm Buildings | Equestrian | Commercial | General Purpose | Homes



When you build with Morton, you build something that lasts. The quality of our materials, our craftsmen, and our industry-leading warranty will ensure your satisfaction for generations to come.

Buy now and save during our annual Building Value Days sale!

Call Locally at
641-472-3184
FAIRFIELD IA



800-447-7436 | mortonbuildings.com

Certain restrictions apply. A listing of GC licenses available at mortonbuildings.com/licenses.

HOURS 8 A.M. to 5:00 P.M. DAILY EXCEPT SUNDAY	Zimmerman's Store Rutledge, MO 660-883-5766	Our Everyday Low Prices!
---	--	---------------------------------

JUST IN! Fresh Load Of Yogurt!!!

Romaine Lettuce • \$1.05 Mini Sweet Peppers, 1 lb. • \$3.75
Cucumbers • 65¢ each Avacados • \$1.55 each
Portabella Mushrooms • \$4.05 Kiwi • 59¢ each

Frozen Items:

French cut green beans, 2 lb., \$1.99 • Broccoli cuts, 2 lbs., \$2.35
Petite peas 4.4 lbs., \$5.98 • Baby lima, 2 1/2 lbs., \$3.29

SPECIAL

Lite ranch dressing, 1 gal., \$1.49 (out of date)
Aqua Fusion lemonade drink mix, 19 oz., 59¢ (out of date)
Ensure Plus nutrition shake, 8 fl. oz., \$1.19
Pineapple tidbits in juice, 4/4 cups, 89¢

Bob's Red Mill:

All purpose flour, 44 oz. • \$6.19 Potato Starch, 24 oz., • \$3.39
Homemade wonderful bread mix, 16 oz. • \$4.15
Tapioca flour, 20 oz • \$2.95

Dried cranberries, \$2.81 lb. ~ Honey roasted almonds, \$6.20 lb.
Dried figs, \$4.63 ~ Small pecan halves, \$8.77 lb.
Organic maple granola, \$4.58 lb. ~ Honey roasted granola, \$1.73 lb.

Garlic salve, 1 oz \$5.25 or 4 oz \$11.95
Tasty Echinacea, 4 fl. oz \$20.15 or 2 fl. oz \$11.15
Tasty Temp Support, 2 fl. oz \$11.15
Immune Support, 4 fl. oz \$20.50 or 2 fl. oz \$11.15

EZ set Rat Trap, \$5.35 * EZ Set Mouse Trap, 2 pk. \$5.35

Fiskons Rotary Cutter, 45 mm blade, \$9.50

LOST OF NEW FABRIC PANELS

Shoe Goo to repair leather, rubber, vinal & canvas • \$5.69

DRIVE A LITTLE & SAVE A LOT

KARR STREET AUTO

500 Karr St., Bloomfield, IA 52537

BATTERIES, BRAKES,
COMPUTER DIAGNOSTICS,
HEATING/AC SERVICES,
TIRE MOUNTING, SERVICE & REPAIR

8AM-5PM MONDAY-FRIDAY 641-664-2551

WE SERVICE ALL MAKES & MODELS- DOMESTICS & IMPORTS

FOR SALE: 2011 Dodge Journey Mainstreet, 4D, 127,000 miles, it's got it all! PW, PL, A/C, cruise, CD, remote start, AWD, 7 seater, great condition. White with Black interior. Asking \$7500.00 Call Beth @ 641-208-5372. 04

FOR SALE: Small square bales corn stalks, mostly shucks, leaves & cobs, no dirt, south of Pulaski. Sam Coffman PH:515-419-1232 02

75 bales of good quality mixed grass hay, net wrapped.
If interested call:
660-342-0504
Baring, MO

GLENWOOD Elevator

**301 State Hwy. M
Glenwood, Mo 63541**

Logan Ford, Manager
PH: 660-457-3973 • Cell: 660-956-3973
Fax: 660-457-3045 • gelevator@marktwain.net

City of Bloomfield, Iowa (2,650) is accepting *electronically submitted* resumes including a cover letter of introduction until **12:00 PM, February 1, 2018** for the position of **Director of Public Works** salary range \$60,920—\$68,567 with annual adjustments.

Located in Southeast Iowa, community is noteworthy for its success in advancing new technologies toward its goal of being energy self-sufficient by 2030. City is just now undertaking a mandated multi-million-dollar sanitary sewage treatment plant/system upgrade, scheduled for construction in 2020-21. Director would lead a 12.5 FTE unionized staff responsible for four utilities (Electric, Gas, Water, Sanitary Sewage Treatment), and Streets, Grounds and Facilities with operating budgets totaling \$4 million. Graduation from a two-year accredited college or university (four-year degree desired), and 8-12 years of progressively responsible experience in Public Works or a related field required. Successful candidate will have strong project management, planning, communication and leadership qualities. Position reports to an experienced City Administrator.

Candidates are expected to make written responses to questions included in an application package that will be sent out on February 2. Finalist interviews scheduled during the last two weeks of February; start date expected no later than April 5, 2018. Full position description available at: www.cityofbloomfield.org

Resumes/cover letters addressed to:
dpw.applications@cityofbloomfield.org

City of Bloomfield—Gary Boden, City Administrator
111 West Franklin Street, Bloomfield, Iowa 52537
641.664.2260 EOE

HOOVER RENTAL

Manlifts • Telehandlers • Minihoes
Skidloaders & Skidloader Attachments

RENT BY
Hour • Day • Week • Month • Long Term

DOZER NOW AVAILABLE FOR RENT

Call us for your construction needs!
660-216-8230
Mt. Sterling, Iowa
2 miles East of Cantril on Hwy 2

C.H.I. MIDWEST LiftMaster

Overhead Door

✓ **Out Our Competitive Prices!** 21387 Route V64 Keosauqua, IA 52565 **660-216-0812** Our goal is to keep your doors rolling smooth!

Sales • Parts • Service ~ Free Estimates
We sell new doors and openers or we'll service your old one.

Country Side Grocery

Smoked sliced turkey breast,
2 1/2 lbs.....\$1.99
Ground beef, 80/20\$1.99 lb.
Oscar Mayer jumbo hot dogs,
1 lb. pk2/\$1.00
Breaded fish sticks\$1.39 lb.
Jonathan apples\$5.00 a bushel

Food Supplements
Herbs
Vitamins

3/4 mi. E. of Drakesville, IA on 180th St.
Mon-Sat: 8:30am - 5:00pm
VM: 641-664-2661

KEOSAUQUA SALE CO.

20511 Hwy. 1, Keosauqua, IA

Results from Jan. 6th
 Butchers \$45.00-48.75/cwt
 Sows.....\$33.00-44.00/cwt
 Feeder Lambs.....\$175.00-212.5/cwt
 Fat Lambs.....\$128.00-135.00/cwt
 Ewes.....\$40.00-68.00/cwt
 Kid Goats 40-70#.....\$105.00-165.00/hd
 Nannies.....\$50.00-180.00/hd

STRS		HFRS	
Blk	338	233.00	Mix 302 184.00
Bwf	415	206.00	Blk 405 175.00
Blk	487	191.50	Bwf 426 168.00
Blk	518	183.00	Blk 520 154.50
Blk	580	176.00	Bwf 539 152.00
Bwf	617	168.00	Blk 601 145.75
Blk	633	163.50	Blk 650 143.00
Mix	717	154.25	Blk 709 140.00
Blk	748	154.00	
Mix	805	152.50	

Pound cows Low yielding \$42.00-51.00/cwt
 High yielding \$51.00-58.00/cwt
Pound bulls \$68.00-77.00/cwt

BRED COW SALE SAT., JAN. 13TH

60 hd Angus bred heifers, Sandhill origin, synchronized & AI bred on May 31, June 1, June 2 to Cole Creek Cedar Ridge. Ultrasounded Oct 23rd by M Brown with 50 confirmed AI bred this is a high quality, nice disposition set of heifers. - M Christensen

8 hd Hereford bred heifers. Bred to Angus bull - Absolute son, due Feb., very nice set of home raised heifers. - J Swaim

8 hd 4 yr old to solid black cows bred Angus due Feb 1st. - J Day

25 hd 4-8 yr old blk & bwf cows bred to registered Angus bull due March 28 - J Schinstock

17 hd 5 to 10 yr old Angus cows bred to Trump Angus Bull, due Feb 1st, very fancy cows - Trump Grass & Grain

Watch website for early listings www.keosauquasaleco.com

Thank You For Your Business! For More Information Contact:
 Selling Times
 Hogs.....9:30 a.m.
 Sheep & Goats.....10:00 a.m.
 Outside Merch.....11:00 a.m.
 Cattle.....Noon
 Keosauqua Sale Co.
 319-293-3508
 Bill Goehring
 641-919-9365

www.keosauquasaleco.com

ALL THINGS BASEMENT-TY! Basement Systems Inc. Call us for all of your basement needs! Waterproofing, Finishing, Structural Repairs, Humidity and Mold Control. FREE ESTIMATES! Call 1-800-640-8195 (MCN)

GINGERICH
STOVES and PLUMBING
Stoves & Furnaces
 WOOD • COAL
 PELLET/CORN • GAS
 • Many brands, sizes & styles to choose from
 • Chimney SS & Blk. Stovepipe
 • Plumbing Supplies
 19091 180th St •
 Drakesville, IA •
 VM 641-664-2814
 3/4 miles east of Drakesville, south side

TRAILER SALE! Triton 2-Place enclosed snowmobile trailers \$150.00 off with this ad; New 6'X12' V-nose, ramp door \$2,780.00; 7'X12' V-nose, ramp tandem axle cargo \$4,019.00; Free Spare with any 14,000# equipment trailer. 500 & 990 gallon FUEL trailers; For Prices & info: www.FortDodgeTrailerWorld.com or 515-972-4554 (MCN)

FRIESEN CONSTRUCTION
New Houses Remodeling Garages Electrical Plumbing Custom Cabinets
 Arlen 664-3270
 Cell 641-208-0170
 Bloomfield, Iowa

Kirksville Livestock LLC

Kirksville, Missouri

**SPECIAL CATTLE SALE
 MONDAY, JANUARY 15
 11:00 AM**

**SPECIAL BRED COW SALE
 FRIDAY, JANUARY 19 • 6:00 PM**

"Proud to Serve Area Livestock Producers"
YOUR BUSINESS IS VERY MUCH APPRECIATED
 We are open on Sundays to receive your livestock.
 Phone for information: Patty Foster, Office 660-665-9804
 Chuck Ambrosia...660-342-3530 Al Ashmead.....660-216-8730
 Caleb Randolph641-919-8539 Doug Fleshman.....660-626-7148
 Harry Durlfingler Daniel Smith660-341-8396
 Mark Herbold.....515-720-8667 Jeremy Jarman660-341-9879
 Cory Cook660-651-7453

Visit our website at www.KirksvilleLivestock.com

BERHOLTZER
TRAILER REPAIR
 Specializing in Aluminum Grain Trailers
 Repair & Rebuild
 3 miles east of Gorin, Mo. on Route U
660-282-1012

JR
FEED & SUPPLY
641-722-3045
 17599 200TH STREET • BLOOMFIELD
 STOP BY MON.-FRI. 8-5 & SAT. 8-12
Complete line of bagged feed in stock!
CUSTOM BULK
 Non GMO Poultry Feed we deliver!
FENCING SUPPLIES • FENCING SUPPLIES

Book your winter & spring roofing projects NOW!
 • Metal Roofing
 • Pole Buildings
New Star Construction
 Aaron Yoder
 641-664-2753

Scotland County LIVESTOCK AUCTION
 P.O. Box 111 • Hwy 15 North • Memphis, MO
660-465-7213 • Jerry & Barb Blomme
660-341-0069 • Grant Blomme
660-216-4674 • Rodney Garman

SPECIAL CATTLE SALE Sat., January 13th

Early Listing:
 Partial Herd Dispersal: 20 mostly black bred cows, mated to registered black angus bulls, cows will be running in ages and will start calving March 1st
 90 Hd black & bwf hfrs, 650#, LTW, Vacc x2
 60 Hd red & black str & hfrs, 500 - 650#, LTW, Vacc x2
 50 Hd black str, 650#, LTW, Vacc x2
 50 Hd black & red bull & hfrs, 550#, LTW
 50 Hd black str & hfrs, 500#
 20 Hd black str & hfrs, 550#, LTW, Vacc x2
 15 Hd black str & hfrs, 500 - 600#
 30 Hd red str & hfrs, 550#, LTW, Vacc x2
 25 Hd black hfrs, 600#, LTW, Vacc x2
 20 Hd black str & hfrs, 600#
 20 Hd black bulls & hfrs, 500#, LTW
 39 Hd black & bwf str & hfrs, LTW, Vacc
 20 Hd black hfrs, 550#, LTW, Vacc x2
 30 Hd black hfrs, 650#
 Expecting several more cattle by sale time!

Market Results From Sat., January 6th:

BULLS:	HEIFERS CONT:
346# - \$222.00	343# - \$172.00
460# - \$189.00	385# - \$179.00
513# - \$170.00	403# - \$210.00
STEERS:	509# - \$157.00
300# - \$233.00	539# - \$153.50
384# - \$206.00	540# - \$153.00
450# - \$190.00	644# - \$141.00
510# - \$182.50	732# - \$135.00
520# - \$175.00	LB COWS
600# - \$161.00	BULK OF COWS:
618# - \$163.00	\$52.00 - \$61.00
HEIFERS:	HOL VEALS:
310# - \$179.00	\$85.00 - \$120.00

www.ScotlandCountyLivestock.com

TRI-COUNTY SHOPPER CLASSIFIED AD DEADLINE IS FRIDAY, 5 P.M. EVERY WEEK. Classified ads must be paid for in advance. Mail your ad to Tri-County Shopper, P.O. Box 168 Bloomfield, IA. 52537. For questions call us at 641-664-1333.

Hay, Straw & Firewood Auction

Southern Iowa Produce Auction
 Sales every 2nd & 4th Saturday, November thru March

Saturday, January 13th - 10 A.M.

Early Listings:
Large Square Bales: 3x3 - Approx. 2 semi loads 1st cutting alfalfa grass mix; 1 semi 1st & 2nd cutting alfalfa; 1/2 semi load 1st cutting timothy, orchard & brome mix; 12) 3x3x6 high moisture alfalfa, 19% protein, 146 RFV; Approx. 10-12 4th cutting alfalfa grass mix.
Large Round Bales: Approx. 100 assorted round bales including 16 high moisture alfalfa grass mix.
Small Square Bales: Normal run including: 100 2nd cutting alfalfa, 162 RFV, 20% protein; 150 3rd cutting alfalfa, 193 RFV, 24% protein; Also 120 bales of rye straw; approx. 100 oat straw; 100 wheat straw.
Misc: Normal run of firewood including several dump trailer loads of seasoned oak; 25-30 hedge corner post.

Unloading Available **Friday** Before Sale **By Sale Time!**
19141 Ice Ave. Bloomfield, IA
 Call 641-722-3623 on auction days or leave a message.
 Market Report or Information call 712-432-8593

It's Cold Outside!

Now is the perfect time to line & insulate your buildings. CALL FOR FREE ESTIMATES!

We stock Owens Corning blow in insulation!

Free Machine Rental With Purchase!

Cantril Lumber & Hardware
319-397-2351 • Mon-Fri 7-5 & Sat 7-12

CLASS A TRUCK DRIVER. North Central region. Earn up to \$70,000. No touch freight. Good benefits. All mile paid. Nice equipment. 2 years experience needed. Call 507-437-9905. Apply on-line WWW.MCF-GTL.COM

CALL EMPIRE Today to schedule a FREE in-home estimate on Carpeting & Flooring. Call Today! 1-800-213-9527 (MCN)

NEW AUTHORS WANTED! Page Publishing will help you self-publish your own book. FREE author submission kit! Limited offer! Why wait? Call now: 855-623-8796 (MCN)

FOR SALE: 20 bred Doeling dairy goats. Due to freshen Feb. 15, 2018. \$250 each OBO.
William Beechy, 19511 Harvest Ave., Bloomfield, IA VM: 641-722-3061. 03

FOR SALE: Beagles, several females & 1 male. AKC & APRI registered.
PH: 641-664-3609 ext. 1 03

Yoder
GLASS & WINDOW
641.722.3667

VINYL WINDOWS

- Replacement
- New Construction
- Many Glass & Color Options

Energie Windows Free Estimates

19467 Driftwood Blvd.
Bloomfield, IA 52537
Call Today: 641.722.3667

FOR SALE: Hedge posts & 20 bales grass hay.
VM: 641-664-2645. 03

Trojan Hill Farms
is proud to announce
we are ready for you to come & select your Angus or Charolais Yearling bulls!

The bulls are pre-priced and one half down payment will hold your bull until May 1st, 2018. The bulls are sold on a first come first serve basis. All of our bulls are fertility tested and guaranteed. Don't wait too long.

Call Phil Archer at 641-680-6769 to make an appointment to see the bulls.

Trojan Hill Farms
Phil Archer
31625 215th Street
Bloomfield, IA 52537

(641) 675-3769
Cell (641) 680-6769
Angus and Charolais



Don't get left OUT IN THE COLD!

7% OFF* GLOVES & MUCK BOOTS

- We carry a large assortment of affordable, yet hard-working gloves that are made in the USA.
- Muck Boots are 100% waterproof with rugged outsoles, stabilizing midsoles, and full neoprene insulation for long days on your feet.

SALES GOOD THROUGH JANUARY 31 • *DETAILS IN STORE

OSZARK HEAT PELLETS \$3.35*
40 lb. bag Regularly \$3.95

BLACK OIL SUNFLOWER SEEDS \$15.95*
50 lb. bag

BIRD FEEDERS 7% OFF*

Hometown ANIMAL HEALTH
660.465.2967 • www.hometownanimalhealth.com
18743 US Hwy 136 • Memphis, MO 63555 • On Highway 136 west of Memphis

NUTRITION • MEDICAL • PET • FARM • APPAREL

NEMO FEED AUTHORIZED DEALER OF NEMO FEED.

DOES WARM WINTERS SOUND GOOD?? Bring your RV down to the warm Rio Grande Valley. J-5 RV Park in Mission Tx. will welcome you with a country setting, friendly people and lots of activities to keep you busy. We have a special for first time visitors. Phone us at 956-682-7495 or 515-418-3214 Email j5rvparktx@gmail.com Tom and Donna Tuttle, Managers (MCN)

Yoder Indian Creek Furniture: Solid hardwood furniture for every room in your home. Also a great selection of outdoor poly furniture. Check with us before you buy.
Rt. V64 Milton, Iowa. Located 4 miles North of Cantril or 3/4 miles South of Lebanon on RT. V64, Monday to Saturday 8 a.m. to 5 p.m. No Sunday sales. PH. 319-538-7332



We are your local, full-service contractor, dedicated to meeting all of your home improvement and home building needs with integrity and quality craftsmanship.

- Metal Roofing
- FREE estimates!
- Crews available
- Call today!

WAGLER METALS LLC

19049 Ice Ave., Bloomfield, IA
641-722-3692
M-F 7:30AM-5PM • Sat. 8-11:30AM

MFA- Agri Services Memphis
PO Box 253 • Memphis, MO 63555 • 660-465-2603

Summer heat, winter cold
Doesn't matter. Cattle Charge keeps them gaining.

Feed prices have come down . Calf prices are going up. Don't miss this opportunity to add value to your calves. Typical feed to gain with Cattle Charge is 4:1. Stop by your local MFA to see how we can help you efficiently add value to your calves!

MFA INCORPORATED
Made for Agriculture
www.mfa-inc.com

BLOOMFIELD



LIVESTOCK MARKET

Wed., January 17th.... Fat Cattle, Slaughter, Cow & Bulls 9:00 AM

Wed., January 24th.... Fat Cattle, Slaughter, Cow & Bulls 9:00 AM

.....Special Calf & Yearling Sale..... 11:30 AM

Wed., January 31st.... Fat Cattle, Slaughter, Cow & Bulls 9:00 AM

Reports from Wednesday, Jan. 3th, 2018 • Selling 1777 Head

HEIFERS

Lloyd Miller	3 BLK	433	\$173.00
Chad Schinstock	8 BLK	405	\$171.00
Mustard Valley			
Cattle	4 BBWF	408	\$168.00
River Valley Ranch	28 BLK	493	\$164.25
Jerry Scurlock	14 BLK	507	\$163.75
Mustard Valley			
Cattle	17 BLK	515	\$160.75
Chad Schinstock	35 BLK	599	\$156.50
Jerry Scurlock	57 BLK	588	\$155.25
Lloyd Miller	27 BLK	629	\$153.25
River Valley Ranch	83 BLK	613	\$152.00
Prevo Farms	24 BLK	581	\$151.75
Scott Batterson	17 BLK	619	\$150.00
Jeff Kincart	55 BLK	670	\$146.00
Donnie Martin	20 RED	746	\$143.75

STEERS CONTINUED

Mustard Valley			
Cattle	16 BLK	486	\$193.50
Paul Fountain	24 BLK	508	\$188.25
Lloyd Miller	6 BLK	532	\$185.50
Level Lane Farms	14 BLK	622	\$169.00
Jerry Scurlock	80 BLK	640	\$168.00
Roman Gingerich	11 BLK	681	\$167.75
River Valley Ranch	84 BLK	656	\$166.00
Tim Dotterer	69 BLK	704	\$165.25
Duane Bass	21 RED	687	\$165.25
Lloyd Miller	32 BLK	672	\$163.75
Jeff Kincart	49 BLK	706	\$159.50
Scott Batterson	24 BBWF	756	\$156.50
Donnie Martin	26 RED	753	\$156.25
Craig Dotterer	68 BLK	772	\$154.85
River Valley Ranch	71 BLK	779	\$154.10
Level Lane Farms	70 BLK	757	\$154.00
Lowell M Woods			

STEERS

Chad Schinstock	7 BLK	400	\$204.00
Paul Fountain	5 B/CH	420	\$199.00

Family Trust	42 BLK	796	\$151.50
Jeff Wuthrich	64 BLK	862	\$147.85

**SALE BARN OPEN UNTIL 9:00 PM
EVERY TUESDAY TO RECEIVE LIVESTOCK**

Phil Schooley 641-664-3450
Ron Schooley..... 641-777-0302
Roman Schooley 515-450-3685

We appreciate your business!

Tyler Schooley 641-208-5442
Barn Phone 641-664-2435

HWY. 63 NORTH • BLOOMFIELD, IA

Fox Valley Welding

No matter what size the project customer satisfaction is always our first priority.

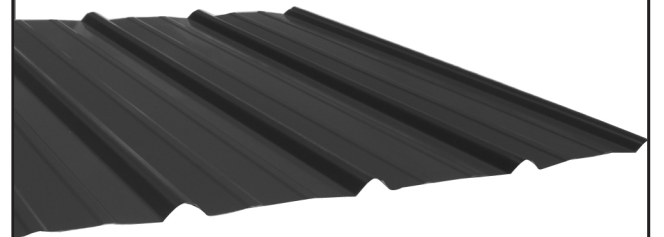
Tig & Aluminum • Welding • Milwork • Lathe • New Steel • Sprokets • Roller Chain
Barings • PTO Parts • Fabricating • CNC Machining • CNC Cutting

Hours: M-F 8-5:30 • 641-656-4684 • 12190 East Hwy. 2 • Milton, IA

MOBILE HOME FOR RENT IN CANTRIL, IA. 2 bedroom mobile home available immediately. 3 blocks from Dutchmans Store. Quiet neighborhood, huge yard. Washer/Dryer included. Utilities not included. 1st month rent + deposit at signing. Pets allowed upon approval & deposit.

Text or Call 641-919-1772.

Premium Metal Roofing



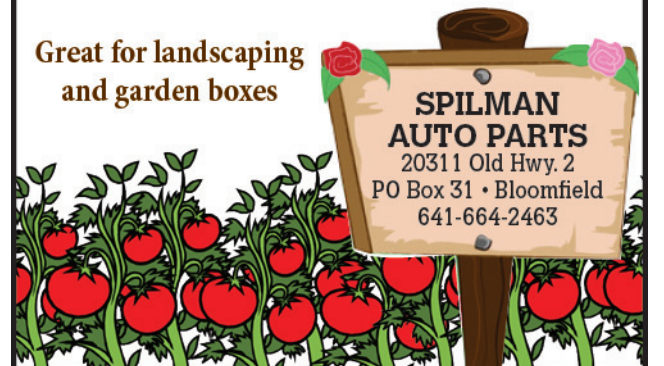
- Buy Direct & Save
- Fast Service
- Cut-to-length
- Professional Contractors Available

A W Metal LLC
Metal Roofing Headquarters

641-664-3990 • awmetal.net

8 FT. RAILROAD TIES

Great for landscaping and garden boxes



SPILMAN AUTO PARTS
20311 Old Hwy. 2
PO Box 31 • Bloomfield
641-664-2463



Bring your plans in for a **FREE ESTIMATE**



Trusses Engineered and Designed to Your Specs



• Commercial • Agriculture • Residential •

17893 212th Street • Bloomfield, IA 52537
641-722-3605 • Mon.-Fri. 7 AM to 5 PM