

Your Ad Could Be Here!
Call today for details!
641-664-1333

Tri-County SHOPPER

Look Inside
And Score
Big With
Great Deals!

STANDARD
MAIL
U.S. POSTAGE
PAID
TRI-COUNTY
SHOPPER, INC.
POST OFFICE BOXHOLDER
LOCAL RURAL BOXHOLDER
OCCUPANT
**CIRCULATION
OVER 11,750
THIRD CLASS**

P.O. Box 168 • Bloomfield, IA 52537 • www.tri-countyshopper.com
Phone 641-664-1333 • Fax 641-664-3761 • E-mail shopper@netins.net



Vol. 46, No. 05
Wednesday, January 31, 2018



Your
CHANCE TO SAVE!

CUSTOMER APPRECIATION WEEK
FEBRUARY 5TH – 10TH

10% CASH DISCOUNTS on parts and attachments¹ | **5% JOHN DEERE FINANCIAL DISCOUNT** on parts and attachments¹ | **12% OFF** all in-stock filters³ & **10% OFF** oil during February³

LAST DAY FOR FREE PICK UP AND DELIVERY IS FEBRUARY 10TH
available on Mowers, Utility Vehicles, and Compact Tractors²

Your Partner in Growing a Better Tomorrow | Visit us at www.sydenstrickers.com

11 LOCATIONS TO SERVE YOU



1 Offers expire 2/10/18. Certain restrictions apply. See dealer for complete details. 10% cash discount and 5% John Deere Financial discounts only good toward parts and attachments. 2 Offer ends February 10, 2018. Valid within a 50-mile radius of the servicing store. Valid at participating dealers only. 3 Offers valid 2/5/18 – 2/28/18. Get 12% OFF all in-stock filters and 10% OFF oil. Some restrictions apply. See dealer for complete details.



JOHN DEERE



Now is the time to be frost seed
fertilizing your crop & hay ground.

CROP SERVICES, INC

John & Kathy Bos, Owners
Drakesville, IA
641-722-3293



**FILTER
SALE!**

OPEN HOUSE WITH MEAL SERVED
Monday, February 12 • 11:00 AM - 1:00 PM

February 12 - February 17, 2018

**FILTER
SALE!**

Stock up for Spring and
Save Big up to 50% Off!
Pre-Orders Welcome!
Stop in for Lunch on
Monday, February 12th
and Place your
Filter Order!

Bloomfield Auto Parts

204 East Franklin • Bloomfield, IA 52537 • 641-664-3991

**DISCOUNT TOBACCO
& FIREWORKS**

20956 E. IA/MO Street • Lancaster, MO • 847-379-1150

**Winter Hours: Mon. - Thurs. 7 am - 8 pm
Fri. & Sat. 7 am - 9pm • Sun. 8 am - 8 pm**

First
Building
on the Left Across
the IA/MO Line
on Hwy 63.

**LOW
PRICE
CIGARETTES
AS LOW AS
\$1.99**

**We offer the lowest prices
allowed buy law!!!**



Exeter
Varieties
Carton **\$21.99** plus tax



Grizzly
Rolls **\$11.99** plus tax



Berley
Varieties
Carton **\$17.99** plus tax



Marlboro
Carton **\$39.99** plus tax
Varieties



Find us on
Facebook

All prices subject to change without notice. We reserve the right to limit quantities.

Moulton-Udell Pre-K and Kindergarten Round-up

Check It Out!

Moulton-Udell PreK and Kindergarten Round-Up will be held

February 9, from 9 to 11 and 1 to 2.

Any student that will be 4 or 5 on or before Sept. 15, 2018, is welcome to join us for the 2018-2019 school year! We provide an all-day educational experience filled with guest speakers, field trips, hands-on activities and a caring environment.

If you are unable to attend round-up but want to enroll your child or have any questions, please call the school office at 641-642-8131, we would love to visit with you!

FOR RENT: 1 or 2 bedroom apartments Milton, IA. Kitchen appliances & heat furnished. Very reasonable rent. PH: 641-757-0201

FOR SALE: Seasoned firewood. Red Elm & Cherry, \$60/pickup load. **RJ Lumber** PH: 641-722-3348 TFN

NEW - JUST IN
2018
Speed Queen
washers and dryers.

Leanin Tree Cards Value Packs 10% Off

Whirlpool
Speed Queen
Amana
MAYTAG
MEMPHIS
MERCANTILE
EST 2016
SALES & SERVICE
South Side of the Square in Memphis
660-465-2345

MEMPHIS
MERCANTILE
EST 2010
115 E. Monroe • Memphis, MO
660-465-2102

FOR SALE: Dispersed 1st, 2nd, 3rd and 4th cutting alfalfa hay.
PH: 660-216-3315 06

LakeWood RV Sales & Rentals

2016 STARCRAFT LAUNCH



Travel Trailer with electric BUNKS!!!
Family friendly all the way!
~~Reg. \$16,500~~
SALE \$15,500

Spring is coming.
Plan a family camping trip.
WE DO RENTALS!

Picks

1.) 55 2.) Eagles 3.) Eagles 4.) Patriots

Tues.- Fri. 8-5 • Sat. 8-Noon,
Closed Sundays & Mondays
Ph: 660-379-2763 Cell: 660-341-1927

Hwy. 136 E., Downing, MO
9 miles W. of Memphis or
1 1/2 miles E. of Downing
www.lakewoodrvsales.com

FOR SALE: 3- twin mattress sets. 2- twin headboard & dresser sets. Call for more information.
PH: 641-799-5079 06

FOR SALE: 2001 GMC Savanah 3500 series passenger van. 155" wheel base, 15 passenger, rear heat and air. 5.7L V8, cloth seats, hitch, includes a spare tire. Has a spring loaded torsion bar set up for stability. 62,000 miles. Asking \$8,000. Can send photos.
PH. 641-208-6453. 05

Yoder
GLASS & WINDOW
641. 722. 3667

VINYL WINDOWS

- Replacement
- New Construction
- Many Glass & Color Options

Free Estimates
Energy Windows
19467 Driftwood Blvd.
Bloomfield, IA 52537
Call Today: 641. 722. 3667

BIG GAME DAY DEALS!

Doritos & Fritos
2/\$4.00

Pepsi Products
6 pack
5/\$10.00

Go Team!

Picks

1. 47
2. Patriots
3. Eagles
4. Eagles



Hwy. 136 E.
Memphis, MO
660-465-8597

Give Your Car a Makeover!



Factory Color Matching | Dent & Scratch Repair
Frame Straightening | Unibody Repair | Collision Repair

All Paint & Bodywork Service Guaranteed!
Call or stop in anytime for a free written estimate.

Insurance Specialists
Let us handle your accident claim with no hassles.

Walker Motors
Collision Repair Inc.

Give your car a like-new look that will last beautifully with our premium paint service.

Guaranteed Paint Match

Guaranteed Craftmanship

Hertz

Rentals Available
For all Occasions.
Great Rates!

375 S. Main St.
Memphis, MO
660-465-2159
Shop Phone/Fax



John Morrell Beef Bacon, 12 oz.
.....\$1.49
Dole Mandarin Oranges, 1 gallon
.....\$4.95
String Cheese, 24 oz.\$2.10
Oscar Mayer Ham & Cheese Loaf
16 oz.99¢
Ground Beef Tray Pack\$1.79 lb.
Rich & Crisp Crackers, 14.4 oz...\$1.29



3/4 mi. E. of Drakesville, IA on 180th St.
Mon-Sat: 8:30am - 5:00pm
VM: 641-664-2661



SUPER OFFER!

2 Folding Adirondack Chairs
+ a folding end table!

JUST \$399.99!

Order by 5 PM Saturday and...

If the Eagles win by more than 8 get

2 FREE FOOTRESTS TOO!

Picks: 1.) 58 2.) Eagles 3.) Eagles 4.) Patriots

ACROSS FROM THE SCOTLAND COUNTY FAIRGROUNDS



For the way you live
WITMERS
FURNITURE
MEMPHIS, MO

MON & FRI: 9AM-8PM WED, THURS & SAT: 9AM-5PM
TUES & SUN: CLOSED 660-465-2461

WELCOME JANUARY 2018

WINTER CLOTHING & FOOTWEAR

LARGE SELECTION OF SIZES & STYLES IN STOCK ALL WINTER & SPRING!!!

Coats - Jackets - Hoodies - Sweatshirts
Thermal Underwear - Socks
ON SALE 20% - 40% and 1/2 price off!

Muck • Wolverine • Red Wing
Rocky • Durango • Justin
Irish Setters • Tony Lama • Carhartt
Hushpuppies • New Balance
SHOES - BOOTS - LACE - PULL ON
20% to 40% OFF
Narrow - Extra Wide - Infants to size 20

Jeans ~ Bibs ~ Lined Pants
Levi • Lee • Wrangler • George Strait
Key • 20X / Retro, relaxed or loose fit!

Another Year In Business!
John & Maxine Cook & Staff

Cook's Mens & Womens Store
116 S. Market • E. side of Square
Memphis, MO
Ph. 660-465-2511 • Fax 660-465-8905
Monday-Friday: 8-5 & Saturday: 8-9
Short-Big-Tall • Narrow to Extra Wide • Tux Rentals
Gift Certificates • Alterations

TINGLEY DeLONG Lyncote Belts Samsonite

NEW MATTRESSES FOR SALE!
Selling individually or in sets. Factory warranty.

TWIN - FULL - QUEEN - KING

641-664-3060

FOR SALE: Pug & Beagle cross pups. Born Nov. 26, \$50 OBO; also 2 Beagle females, 3 years old, \$30 each OBO. 23631 Dogwalk Dr., Lancaster, MO. 63548. 4 miles Southeast of Lancaster. 03

FOR SALE: Labrador retrievers, 5 month old, 1 male and 1 female, AKC registered, hunting and/or pets only, OFA parents, \$50 each. Mahlon-Gingerich VM: 641-664-2723 06

Davis County HOSPITAL
Dedicated. Compassionate. Healthcare.

February Specialty Clinic Schedule

Dr. Ron Graeff	Allergy/Pulmonology	641-664-3840	M, T, W, Th
Dr. Jake Settles	General Surgery	641-664-7091	Tues & Thurs
Dr. Boling	OB/GYN	641-664-7091	22
Jay Brewer, CRNA	Pain Clinic	641-664-3602	6, 13, 20, 27
Dr. Burchett	Ear, Nose, Throat	641-664-7091	8
Dr. Ciesemier	Allergy/Immunology	641-664-7091	9, 23
Dr. Cleaver	Dermatology	660-627-7546	22
Dr. Homedan	Orthopedics	641-664-7091	1, 7, 14, 15, 21, 28
Dr. Holte	Podiatry	641-664-7091	16
Dr. Jackson	Rheumatology	641-664-7091	6, 13, 20, 27
Dr. Malik	Cardiology	641-682-5349	1, 15
Linda Schilling, ARNP	Dermatology	641-664-7091	12

Building Better, Healthier Lives.
509 N. Madison • Bloomfield, Iowa 52537
www.DavisCountyHospital.org

FOR SALE: 3- concrete hog feeders, 2 sided, 9 holes per side.
PH: 641-799-0950 06

MISCELLANEOUS BEE-KEEPING EQUIPMENT FOR SALE.
PH: 641-208-5812. 06

The Red Shed
CHOCOLATES
GIFTS TOYS & MORE

2 miles west of Bloomfield on Hwy 2
21021 Jewel Ave.
Mon. - Sat. 8:30-5
641-664-1213

She'll love our handmade **CHOCOLATES!**
Valentine Gift Boxes
Candy • Suckers
We do custom orders!

Check out our Butter Hearts!
Don't know what a Butter Heart is?
Come in and see. You won't be disappointed!

CATEGORY OF THE MONTH FOR FEBRUARY:
CHOCOLATES

WANTED: House or acreage to rent or buy in the Pulaski area.
PH: 641-208-5181 06

FOR SALE: Package Honey Bees, 2 and 3 LB with Italian or Carniolan queen, pick up in early April. \$40 deposit per package. Also: Beginner bee keeping class, Feb. 3rd, \$35. PH: 641-682-8333 or 641-799-9266 05

WE CARRY HIGH QUALITY MATTRESSES & BOX SPRINGS! ALSO AVAILABLE IN PILLOW TOPS!
Special Sizes • Double Sided Mattresses • 20 Yr Warranty
12 Gauge Innerspring

T-CORNER FURNITURE
HEIRLOOM QUALITY
BEDROOMS • DINETTES • CABINETS • STAIRWAYS • MILLWORK
VM: 641-664-0207
1 Mile East of Drakesville on Jade Ave.
Mon.-Sat. 8:00 AM - 5:00 PM

Shady Lane Variety
WINTER IS HERE
Lots of
Gloves, Scarves,
Stocking Caps,
Puzzles, Games, Books.
New Shipments Coming Soon!
1 mi. E. of Drakesville on Jade Ave. • 641-664-0207 8-5 Mon. thru Sat.

TRI-COUNTY SHOPPER CLASSIFIED AD DEADLINE IS FRIDAY, 5 P.M. EVERY WEEK. Classified ads must be paid for in advance. Mail your ad to Tri-County Shopper, P.O. Box 168 Bloomfield, IA. 52537. For questions call us at 641-664-1333.

Slayton Polaris Authorized Polaris dealer since 1988
It's time to get Muddy!
New & Used Polaris Rangers & ATV's
POLARIS The Way Out.

660-328-6627
BLOOMFIELD, IA
8 mi. S. & W. from Pulaski or 6 mi. W of Memphis then 13 mi. N. on Route B

FREE: Toilet, olive green, 30+ years but in good shape.
PH: 641-208-0473 05

FOR SALE: 2015 grass hay, net wrapped, \$50.
PH: 641-664-2284 05

MAST OVERHEAD DOORS, INC.
105 S. Dodge St., Bloomfield, IA 52537

MAST OVERHEAD
GARAGE DOORS
Residential & Commercial
Doors & Operators

641-680-2016
Quality Products + Quality Workmanship = Quality Customers
Free Estimates We Fix Doors

CALL FOR AN APPOINTMENT

FOR SALE: 3 young Berkshire boars.
PH: 641-799-0950 06

FIREWOOD FOR SALE: \$50 a load, you haul.
PH: 641-208-5812 06

GENE'S SURPLUS
Brands you like at prices you love
NEW LOAD HAS ARRIVED!

Score **BIG** With These **GREAT DEALS!**
Lots of nice name brand toys!
A wide selection of kitchenware!
PING PONG TABLES!!!

Picks
1.) 66 2.) Patriots 3.) Patriots 4.) Eagles
HWY 136 WEST • MEMPHIS, MO • 660-465-7445
MON-FRI 8:00 TO 5:30, SAT 8:00 TO 4:00

Thought of the week: Carrots are a great thing to eat when you are hungry and want to stay that way.

2011 CHEVY TAHOE **2003 Silverado 1500**

\$25,750 **\$10,900**
4WD, 271,553 MILES LONG BOX, REG. CAB, 4WD, 80,000 MILES

Come see our 2006 Impala!

Kollision Korner
504 South Drake St. • Bloomfield, IA 52537
PH: 641-664-2648 • Fax: 641-664-2948

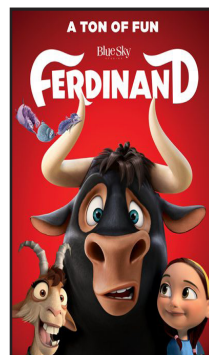
Rush in for these good deals!
Picks: 1. 54 • 2. Patriots
3. Patriots • 4. Patriots

COMMUNITY EVENTS



IOWA THEATER
BLOOMFIELD, IOWA

"Ferdinand"



Friday, Feb. 2nd
Saturday, Feb. 3rd

7:00 PM

Sunday, Feb. 4th

4:00 PM

PG

COMING SOON:
Pitch Perfect, The Greatest
Showman & Paddington

L&M Country Store

1 1/2 miles south of west Hwy 2 & 63 jct.
Mon-Sat. 8am-5pm CLOSED SUNDAYS
VM: 641-664-1936

Texas Grapefruits & Oranges

2 lb. Velveeta cheese.....	\$4.99
Frozen 7 oz. Oscar Mayer roast beef.....	59¢
21 oz. Planters nut mix.....	\$5.99
Miniature Butterfinger candy bars	\$2.49 lb.
Frozen 5 lb. ham cubes	99¢ lb.
Frozen 5 lb. tator tots.....	\$3.99
2.52 oz. Oscar Mayer fully cooked bacon	\$1.49



Recovery support for those with
drinking or drug abuse issues.

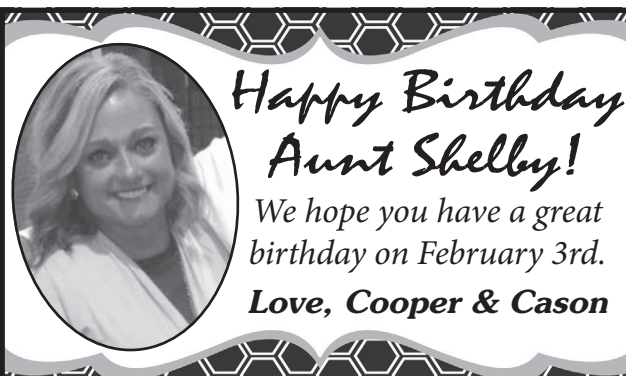
Mondays in Bloomfield

At Southfork in the banquet room.

Narcotics Anonymous - 5:45 pm

Alcoholics Anonymous - 7:15 pm

Contact info: Jennifer Munoz
641-242-0145



*Happy Birthday
Aunt Shelby!*

*We hope you have a great
birthday on February 3rd.*

Love, Cooper & Cason

INFORMATION MEETING

Davis County Babe Ruth

Thurs., February 8th • 7 PM

Bus Barn/Transportation Office

This meeting will be for
all parents with Babe Ruth
players age 13-15.

CALL 641-208-5201 WITH QUESTIONS.

Friday, February 2nd

Jumbo Shrimp with sides

Serving at 6:00 P.M.

Dine
In

722-3355

Carry
Out

RAY'S LONGBRANCH

Drakesville, IA



**Sausage & Pancake
Supper**

Sat., February 10th

5PM - 8PM (Or until gone)

Cantril Fire Station

Free will offering

Sponsored by

Cantril Dayz Committee

Proceeds to Cantril Dayz Activities

SIDWELL SEEDS

Queen City, MO

660-766-2737

**Call Sid today for
all your 2018
seed needs.**



**Let
Pfister
help your
production
grow.**



Happy Anniversary

Deb & Greg Whitacre

Wednesday, January 31st

Love, Bruce & Jeri Lyn





KARR STREET AUTO

500 Karr St., Bloomfield, IA 52537

BATTERIES, BRAKES,
COMPUTER DIAGNOSTICS,
HEATING/AC SERVICES,
TIRE MOUNTING, SERVICE & REPAIR

8AM-5PM MONDAY-FRIDAY 641-664-2551

WE SERVICE ALL MAKES & MODELS- DOMESTICS & IMPORTS

Yoder Indian Creek Furniture: Solid hardwood furniture for every room in your home. Also a great selection of outdoor poly furniture. Check with us before you buy. Rt. V64 Milton, Iowa. Located 4 miles North of Cantril or 3/4 miles South of Lebanon on RT. V64, Monday to Saturday 8 a.m. to 5 p.m. No Sunday sales. PH. 319-538-7332 TF

NOTICE, DON

LUNSFORD HAULING

has sold the business and wants to thank everyone for all the years, for your loyalty. **MY SON, KEITH LUNSFORD** has bought the business for your hauling needs. Call Keith at 641-777-4235 or 641-684-8068.

06

YODER EQUIPMENT
BLOOMFIELD, IOWA

GEO STAR & PRIDE OF THE FARM

ENERGY FREE WATERS

Extra Heavy

10 Gauge Bale Rings

• CONTINUOUS FENCING
• LARGE VARIETY OF FARM GATES

19887 Jade Ave
2 1/2 Miles W of Bloomfield
V.M. 641-664-2797

ALL THINGS BASEMENTY! Basement Systems Inc. Call us for all of your basement needs! Waterproofing, Finishing, Structural Repairs, Humidity and Mold Control. FREE ESTIMATES! Call 1-800-640-8195 (MCN)

Want to purchase minerals and other oil/gas interests. Send details to: P.O. Box 13557, Denver CO 80201(MCN)

DAVIS & LEWIS, CPA

Let our years of tax experience benefit you!

- Individual & Business tax preparation and planning
- Monthly accounting & payroll service
- Financial statement preparation
- Business consulting



Keith W. Lewis, CPA

Kyle R. Merry

641-682-8117
639 E. Pennsylvania Ave.
Ottumwa, IA 52501

641-664-1999
205 N. Washington St.
Bloomfield, IA 52537

GILBERT'S SALE YARD MACHINERY CONSIGNMENT SALE, MARCH 5, 9:00 A.M.. Advertising Deadline Feb. 16. No Small Items, Tires after Feb. 23. CONSIGN TODAY, 641-398-2218, Hwy 218, Floyd, IA, www.gilbertsaleyard.com (MCN)

MAST VINYL WINDOWS
THERMO-PRO WINDOWS
Custom Size Is Our Specialty
Professional Installation Available
THERMA-TRU DOORS
FREE ESTIMATES
22172 Hwy. 63
Bloomfield, IA 52537
800-206-9949

M-L FEED & SUPPLY
22387 Rt. V64 Milton, IA 52570 319-677-6402. Come check us out for all your animal needs. Feed by the bag or bulk. Cattle, Horses, Sheep, Goats, Chickens, Rabbits, Dog food. Check out our delivery route every 2 weeks, North of Cantril on Rt. V64.

YOU or a loved one have an addiction? Very private and Confidential Inpatient care. Call NOW for immediate help! 800-761-9934

DENIED CREDIT?? Work to Repair Your Credit Report With The Trusted Leader in Credit Repair. Call Lexington Law for a FREE credit report summary & credit repair consultation. 888-501-3159. John C. Heath, Attorney at Law, PLLC, dba Lexington Law Firm.(MCN)

CR CATTLE CO

Why Red Angus?

Crossbreeding hybrid vigor.
A red bull on black cows will produce black calves.

Why purchase from CR Cattle Co?

Half down secures the bull until May 1st
Bulls are developed for longevity
Docile and Safe to handle,
We listen & fit the bull to YOUR herd

Bulls available:

100% RA
50/50 RA Simm (RWF) and 50/50 Blk Ang (Black)
BW range 61-81 lbs
Adj WW range 686-871 lbs (No Creep)
BW EPD's range -3 to 1.3
HEIFER SAFE WITHOUT SACRIFICING GROWTH!!

Jennifer Gardner, Selma, Iowa
641-895-4116

OUR SUCCESS DEPENDS ON YOURS.

FIREWOOD FOR SALE: HAY FOR SALE: 32 lg. round bales grass mix hay. \$50 a load, you haul. \$70 a bale. Bloomfield, IA
PH: 641-208-5812 PH: 319-230-6215

07

Check with us for all your 2018 SEED NEEDS!



HORN'S

SALES & SERVICE
641-208-6233

609 S. Madison
Bloomfield

Picks

1. 50 2. Patriots 3. Patriots 4. Patriots

TRAILER SALE! Close-out on 4-place drive-on/drive-off snowmobile trailers; Triton 2-place enclosed snowmobile trailers; CM horse & livestock trailers (FREE SPARE); 2018 6'X12' V-nose, ramp door cargo \$2,780.00; 500 & 900 gallon fuel trailers \$6,299.00 & up;; 515-972-4554 or www.FortDodgeTrailerWorld.com for info & prices! (MCN)

Hawkins - Harrison Insurance



SHOPPER ADS CAN BE DROPPED OFF HERE!

Proud to be your partner.

P.O. Box 365
Lancaster, MO 63548
660-457-3020

103 W. Monroe St.,
Memphis, MO 63555
660-465-8533

WE'VE GOT YOU COVERED

THE WHOLE NINE YARDS

- DETAILING
- GLASS REPAIR
- COLLISION REPAIR

Picks

1.) 54 2.)Patriots 3.) Patriots 4.) Eagles

KARR COLLISION CENTER

Shawn Scott, Owner • 701 Karr Ave. • Bloomfield, IA
641-664-1024

Call or visit us today for booking and precise pricing!



GO TEAM GO

AMERICAN FAMILY INSURANCE®

RONALD MCELHINNEY

AGENCY

Bus: 660-457-3748

Fax: 660-457-3062

Email: rmcelhin@amfam.com

Licensed in

P.O. Box 216
102 N. Green Lancaster, MO 63548 Iowa & Missouri

Come See Us And Find Out How You Can Score Great Discounts On Your Insurance Policy!

Picks

1.) 72 3.) Eagles
2.) Patriots 4.) Eagles

HOURS 8 A.M. to 5:00 P.M. DAILY EXCEPT SUNDAY	 Zimmerman's Store Rutledge, MO 660-883-5766	 Our Everyday Low Prices!
---	--	---

Fresh Load Of Yogurt Is In!

Yogurt smoothies strawberry \$1.25 a case

Baking potatoes.....	49¢/lb.
Sweet potatoes.....	59¢/lb.
Mini sweet peppers 1 lb. bag.....	\$3.39
Black seedless grapes.....	\$2.29/lb.
Clementines.....	2 for 69¢
Pineapples.....	\$2.75 ea.

Oscar Mayer jumbo uncured wieners - No added nitrates, nitrites, artificial preservatives, colors, flavors or fillers, 12-16oz. packs - \$4.79/case

Frozen

Berry mix, 5 lbs. - \$12.55 • Peaches sliced, 5 lb. - \$12.55
Pineapple chunks, 5 lb. - \$11.39 • Mango chunks, 5 lb. - \$14.35

Frozen Beef - cooked & sliced, 12 lbs. \$17.50

Frozen Ground Beef, 80/20, 1 lbs. \$2.25

Turkey Breast, browned in oil, 2-approx. 8 lb. breasts to a case
\$7.25 or 52¢ a lb. by each.

~~~~~  
Ask for our bulk Bob's Red Mill products

Potato Flour, 25 lbs. - \$50.25

Brown Rice Flour - \$28.23

Tapioca Starch/Flour - \$26.02

We Can SPECIAL Order any Bob's Red Mill product for you!

|                                                     |                                                        |
|-----------------------------------------------------|--------------------------------------------------------|
| Professional Silicone Spatula<br>\$2.59             | Milk of Magnesia original flavor, 12 fl. oz.<br>\$2.25 |
| Adjustable Cheese Slicer<br>\$4.39                  | Acne Treatment Cream, 1 oz.<br>89¢                     |
| Chef Craft Stainless Steel Slotted Turner<br>\$1.49 | Hemorrhoid Ointment, 1 oz.<br>\$1.29                   |
| 5 pc. Plastic Measuring Spoon Set<br>\$1.29         |                                                        |

## DRIVE A LITTLE & SAVE A LOT

**DISH Network Satellite Television Service.** Now Over 190 channels for ONLY \$49.99/mo! FREE Installation, FREE Streaming, FREE HD. Add Internet for \$14.95 a month. 1-800-732-9635 (MCN)

**A PLACE FOR MOM.** The nation's largest senior living referral service. Contact our trusted, local experts today! Our service is FREE. No obligation. CALL 888-894-7038(MCN)

Medicare doesn't cover all of your medical expenses. A Medicare Supplemental Plan can help cover costs that Medicare does not. Get a free quote today by calling now. "Hours: 24/7. 1-800-854-6494 (MCN)

## SIDESTEP THE COMPETITION

Score great deals on all your automotive needs!  
Getting your automobile in tip-top shape means  
a **VICTORY** for you!

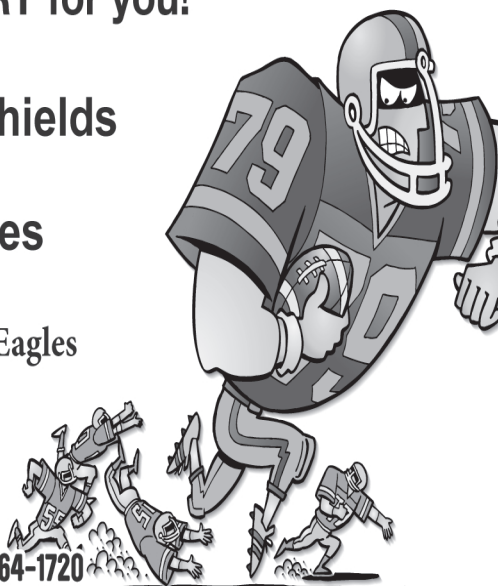
Wheel Alignments  
Oil Changes • Windshields  
Deer Removal  
Collision Repair • Tires

#### Picks

1.) 48 2.) Eagles 3.) Eagles 4.) Eagles

**Piper Body  
Shop & Glass**

N. of John Deere • Bloomfield, IA • 641-664-1720



# RUSH IN TO SPILMAN'S



Where there is no  
such thing as a...

**“HARD TO FIND AUTO PART”**

#### Picks

1.) 47 2.) Patriots 3.) Patriots 4.) Eagles

**SPILMAN  
AUTO PARTS**

20311 Old Hwy. 2 • PO Box 31 • Bloomfield, IA

641-664-2463 • 1-800-477-1367

M-F 8AM-5PM • Sat. 8AM-12Noon

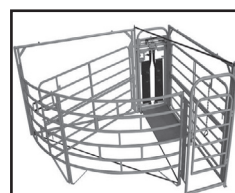
www.SpilmanAuto.com



## MAKE CALVING EASIER WITH.....



**For-Most**  
Livestock Equipment



**Calving Pen  
Care Center**



**We carry**

**Cobett Waterers**



## FILTER DAYS

**FEB. 1st - FEB. 28th**



**15% OFF All**

**Baldwin Filters**

Baldwin has over 3,300 different filters available for oil, air, fuel, coolant, transmission, hydraulic & many other applications.

**Hamilton Produce Co.**

105 W. Franklin • Bloomfield, IA 52537

641-664-2459 or 1-800-469-7749





**We are your local, full-service contractor, dedicated to meeting all of your home improvement and home building needs with integrity and quality craftsmanship.**

- Metal Roofing
- FREE estimates!
- Crews available
- Call today!

## WAGLER METALS LLC

19049 Ice Ave., Bloomfield, IA • 641-722-3692  
M-F 7:30AM-5PM • Sat. 8-11:30AM

## WANT A WEED FREE SPRING?



**Go on the defense against those pesky weeds!**

Start fighting those weeds now by calling Crop Production Services for an early spring pre.

Picks  
1.) 75 2.) Eagles 3.) Patriots 4.) Eagles


**Crop Production Services**  
641-664-1045  
Bloomfield, IA

**FOR SALE:** Primos Bipod; Bushnell 12x50 binoculars; Insulated chest waders; Remote controlled caller with decoy.  
VM: 641-664-2570

**AVAILABLE FOR CASH RENT SPRING OF 2018.** 40 row crop acres in Southern Davis County. Call Brett at 319-863-3895 for more details. 07

## 8 FT. RAILROAD TIES

Great for landscaping and garden boxes



**SPILMAN AUTO PARTS**  
20311 Old Hwy. 2  
PO Box 31 • Bloomfield  
641-664-2463

## Get a jump start on your spring building plan!

Come see us for your **FREE** estimate today!



## Cantril Lumber & Hardware

319-397-2351 • 319-397-2354  
Mon-Fri 7-5 & Sat 7-12

**WANTED TO BUY:** Bass-wood logs by truckload delivered to Dodgeville, WI. Bark intact, harvested in dormancy, delivered FRESH cut. Pre-arranged purchases only. Call Al Ladd at 608-935-2341 ext.333 (MCN)

**TIM'S OIL SERVICE:** Oil, grease & more! Buy a barrel of oil in February and receive a free box of grease and be entered to win a free Milwaukee or DeWalt cordless tool. Products now available at Bloomfield Rent All of call Time at 641-208-5059 08

## THANK YOU TO ALL OF OUR CUSTOMERS!

It is time for our annual **LUBRICATION PROMOTION!**  
**5% DISCOUNT AND FREE local delivery on orders placed by February 12th!**

Diesel Engine Oils • Gasoline Engine Oils  
Air Compressor Oils • Vacuum Pump Oils  
Bar-N-Chain Oil • 2-Cycle Oil • Greases  
Hydraulic Oils • Air Line Oils  
Skid Loader Oils • Gear Oils  
Performance Booster • Flushing Oil  
Diesel Fuel Additive • Gasoline Additive


*We would be happy to help you determine the right oil drain intervals for your application with our third party testing. Synthetic and petroleum oils available. All engine oils have a synthetic calcium sulfonate detergent system.*



For more info. contact:  
**HAWKEYE WELDING MFG**  
19498 ECHO AVE. •  
BLOOMFIELD, IA

**641-722-3088**

## 206 JONES AVE. • BLOOMFIELD • LISTING #20168522



Very Nice home, inside and out. Updated with nice carpeting. All 3 bedrooms on main floor. Nice living space in basement, with bath and separate laundry room. Basement leads out into a nice 30x30 garage, with really tall garage door openings. Also, very nice outdoor area with wooden deck.

**Lynch REALTY, INC.**  
641-664-2275  
lynchrealtyinc.com

**Call Us Today!**  
106 S. Madison  
Bloomfield, IA  
Licensed in Iowa  
Stephanie Lynch, Broker

**Newly Listed!**  
**Move In Ready!**  
**Tip Top Shape!**

**WANT TO BUY:** Old toys, pedal cars & tractors, cast banks, old bikes and trikes, scooters, wagons, BB guns, black powder guns, old wall hanger guns, any ammo, large metal traps, pocket knives & hunting knives, swords and bayonets. Any condition. Pay cash.  
PH. 641-814-2639. 06

## GINGERICH STOVES and PLUMBING

**Stoves & Furnaces**  
WOOD • COAL  
PELLET/CORN • GAS

- Many brands, sizes & styles to choose from
- Chimney SS & Blk. Stovepipe
- Plumbing Supplies

19091 180th St •  
Drakesville, IA •  
VM 641-664-2814  
3/4 miles east of Drakesville, south side





# Dutchman's

an old time general store.

|                                                                                                                                                                            |                                                                                                                                                                                                            |                                                                                                                                                                                                       |                                                                                                                                                                                            |                                                                                                                                                                                                             |
|----------------------------------------------------------------------------------------------------------------------------------------------------------------------------|------------------------------------------------------------------------------------------------------------------------------------------------------------------------------------------------------------|-------------------------------------------------------------------------------------------------------------------------------------------------------------------------------------------------------|--------------------------------------------------------------------------------------------------------------------------------------------------------------------------------------------|-------------------------------------------------------------------------------------------------------------------------------------------------------------------------------------------------------------|
|  <p><b>55¢</b> per lb.<br/><b>White or Yellow POPCORN</b><br/>→ Grown in IOWA</p>         |  <p><b>\$1.49</b><br/>2.5 oz.<br/><b>Fully Cooked BACON</b></p>                                                           |  <p><b>\$2.49</b><br/>26 oz.<br/><b>Country Pride Fully Cooked Breaded Popcorn Chicken &amp; Chicken Strips</b></p> |  <p><b>\$2.49</b> per lb.<br/>7-11 pound Avg.<br/><b>Hard Wood Smoked Fully Cooked Beef Brisket</b></p> |  <p><b>\$4.99</b><br/>2 pound<br/><b>Velveeta Cheese</b></p>                                                             |
|  <p><b>20% OFF SALE!</b><br/>Makes Great POPCORN!<br/><b>Butcher Boy Coconut Oil</b></p> |  <p><b>\$8.95</b><br/>5 pound 160 slices<br/><b>Kraft - White American Cheese</b><br/>Muenster Trim Cheese \$1.89 lb.</p> |  <p><b>\$1.49</b><br/>10.5 oz.<br/><b>Peanut M &amp; M's Fun Size Candies</b></p>                                   |  <p><b>2/\$1</b><br/>16 oz.<br/><b>Jumbo Uncured WIENERS</b></p>                                       |  <p><b>75¢</b> head<br/><b>Broccoli Crowns</b><br/><b>88¢</b> per lb.<br/><b>Cauliflower</b><br/><b>\$1.49</b> head</p> |
|  <p><b>12% OFF</b><br/><b>Mens Womens Skechers Shoes</b></p>                            |  <p><b>\$6.99</b> plus deposit<br/>24 pack cans<br/><b>PEPSI Products</b></p>                                           |  <p><b>3/\$7</b><br/><b>Sterzing's Potato Chips</b></p>                                                           |  <p><b>88¢</b><br/>12 oz.<br/><b>New Load CEREAL</b><br/>Gallon 2% Milk - \$2.29</p>                  |  <p><b>\$2.99</b><br/>5 lb. bag<br/><b>French Fries</b><br/>Steak Cut &amp; Straight Cut</p>                           |
|  <p><b>3/\$1</b><br/>5 oz. case of 12 - \$1.99<br/><b>Feta Cheese Crumbles</b></p>    |                                                                                                                                                                                                            |                                                                                                                                                                                                       |                                                                                                                                                                                            |                                                                                                                                                                                                             |




## DUTCHMAN'S STORE

Division Street CANTRIL, IA (319) 397 2322 SALE PRICES Jan. 31-Feb. 6, 2018

STORE HOURS • Weekdays, 8a.m. - 6 p.m. • Saturday 8a.m. - 5 p.m. • Sunday Closed

View our specials online - [www.DutchmansStore.com](http://www.DutchmansStore.com)



## SHINGRIX

New two dose shingles vaccination  
(1st dose now, then next dose in 2-6 months after initial dose)  
Needs doctor's prescription.

**90+% EFFECTIVENESS**  
Billed to Medicare part D (drug plan)

Stop in any day to receive vaccination.

# HyVee

PHARMACY

Amanda Mathews, R.Ph.  
Janet Zeitler, R.Ph. • Kim Burton, R.Ph.  
301 W. Jefferson St.  
Bloomfield, IA • 641-664-2975  
Emergency Numbers South HyVee Pharmacy  
800-371-6524 or 641-683-4483



## DISCOUNT BARGAINS

Buy NOW & SAVE on these products!



**Breeder's Excel:**  
Great for the breeding stallion.  
Improves semen quality.



**Breeder's Choice Plus:**  
For brood and problem mares

**\$4 Discount on 20# Buckets**  
**\$7 Discount on 40# Bags**  
**MIX & MATCH!**

**Buy 2 or more bags & get Shampoo FREE**



## Aaron Yoder

17911 Husky Trail, Drakesville, IA • 641-664-2753 Voicemail Ext.2

Also available at these fine locations: Farmers Harness and JR Feed & Supply



# GET YOUR GAME FACE ON!

The Big Game Brings Big Scores!

And our dad can help you SCORE BIG on all your real estate & auction needs!



**Lynch**  
REALTY, INC.

641-664-2275  
lynchrealtyinc.com

Lincoln Lynch  
641-664-2275

106 S. Madison  
Bloomfield, IA  
Licensed in Iowa  
Stephanie Lynch,  
Broker



Picks: 1. 58 - 2. Eagles - 3. Patriots - 4. Eagles

## ATTENTION

Would the gentleman who contacted me about my 2011 Dodge Journey please contact me if still interested.

Lost your number.

CAR IS STILL AVAILABLE.

THANK YOU - 641-208-5372

**FRUIT & NUT TREES** From \$15. Blueberry, Strawberry, Grape, Asparagus, Evergreen & Hardwood Plants & MORE! FREE Catalog. WOODSTOCK NURSERY, N1831 Hwy 95, Neillsville, WI 54456. Toll Free 888-803-8733 wallace-woodstock.com (MCN)

**DIRECTV.** Call & Switch Now - Get NFL Sunday Ticket for FREE! Every Game. Every Sunday. CHOICE-All-Included Package. Over 185 Channels. \$60/month (for 12 Months.) CALL 1-844-245-2232 (MCN)

Stop paying too much for cable, and get DISH today. Call 855-589-1962 to learn more about our special offers! (MCN)

Stop OVERPAYING for your prescriptions! SAVE! Call our licensed Canadian and International pharmacy, compare prices and get \$25.00 OFF your first prescription! CALL 888-438-6461 Promo Code CDC201725 (MCN)

# Country View Store



Large White Eggs



Giant Eagle Variety Pack Granola Bars, 18 ct.



Malt-O-Meal Frosted Corn Flakes, 11 oz. Bag



5 lb. Oscar Mayer Shaved Ham



Raley's Thin Wheat Crackers

FREE

**WEDNESDAY - SATURDAY**  
For every \$50 spent receive a fresh baked goody bag FREE

FREE

3 miles south of Memphis, MO along Hwy 15  
660-883-5388 • Hours: Mon-Fri 8-6 & Sat 8-5:30



Tell Them You Saw It In The

**Tri-County SHOPPER**

Winona Flour, 50 lb. bag

\$14.99



Oscar Mayer thick cut bacon, 1 lb.

\$2.49



Block & Barrel Imperial chicken salad, 5 lb.

\$2.99



Season's Choice gourmet onion rings, 16 oz.

\$1.20



All natural, thin sliced, boneless skinless chicken breast

\$1.29 a lb.



Smokehouse Meats ham slices

79¢ a lb.



Malt-O-Meal cocoa Dyno Bites, 12.5 oz.

49¢ each



Maxwell House decaf instant coffee, 8 oz.

\$3.50



Ginger spice Creme Between's, 15.25 oz.

59¢



Indate Heinz apple cider vinegar, 16 fl. oz.

89¢ each



Milk Chocolate M&M's, 19.20 oz.

\$2.99



Post Fruity & Cinnamon Pebbles, 11 oz.

49¢



Mom's Best Safari Cocoa Crunch, 16 oz.

49¢



Twin Pet cat food, BUY ONE GET ONE FREE!!!

\$12.99



**Highway 2 DISCOUNT Groceries L.L.C.**

Sale good Wednesday, January 31st through Tuesday, February 6th.

Mon. - Sat. 8:30am - 5:00pm • VM: 641-664-1187 19686 Hwy. 2, Approx 2 miles west of Bloomfield



*Check out these*  
**GREAT DEALS ON FENCING!**



**T-POSTS**  
Early Order, Great Buy!  
6.5 ft., 1.33 lb. per ft.  
**\$3.89\***

**CONTINUOUS FENCE PANELS**  
5 bar  
**\$69.50\***

SALES GOOD THROUGH FEBRUARY 28 • \*DETAILS IN STORE

We also have great prices on  
**STEEL PIPE POSTS!**

Don't forget! We carry  
**GRASS SEED & CLOVER SEED**  
for your spring seed needs!

**Hometown ANIMAL HEALTH**  
660.465.2967 • [hometownanimalhealth.com](http://hometownanimalhealth.com)  
18743 US Hwy 136 • Memphis, MO 63555  
On Highway 136 west of Memphis

**DON'T FORGET THOSE COWS!**  
NEMO Feed provides a balance of protein, energy, and minerals for calving cows.

**NUTRITION • MEDICAL • PET • FARM • APPAREL**

**AUTHORIZED DEALER OF NEMO FEED.**

FOR SALE: Beef-processed by Lumley Locker. 1/8 for \$220.00, 1/4 for \$440.00 or 1/2 for \$880.00. All cuts included packaged for two. Leave a message.  
PH: 660-883-5571 07

MILITARY ITEMS WANTED BY LOCAL COLLECTOR: Patches, medals, uniforms, hats, helmets, etc. Always buying. Mark Warren, PH. 641-664-3705. [mpwarren@netins.net](mailto:mpwarren@netins.net)

**FRIESEN CONSTRUCTION**  
New Houses  
Remodeling  
Garages Electrical  
Plumbing  
Custom Cabinets  
Arlen 664-3270  
Cell 641-208-0170  
Bloomfield, Iowa

WANT TO BUY: Fallen wind mills, steel and wooden wheels, metal lawn chairs, rinse tubes with or without stands, metal yard gates, wooden whiskey barrels, old wooden doors, wrought iron fencing, 4 or 6 pane wood windows, pop bottles & crates, butter churns jars. Any condition. Pay cash.  
PH. 641-814-2639. 06

**IOWA LAND COMPANY**

**Iowa's Professional Farmland Real Estate & Auction Company**

**Clifford Martin | SE Iowa Land Agent**  
**AUCTION Davis County, IA 319-677-0784**

**36 Acres SOLD**

**Appanoose County, IA**  
**78 Acres SOLD**

**NEW Appanoose County, IA 83 acres**  
A nice recreational farm located along the Fox River. The farm is currently being grazed. The farm has row crop availability and good road access. There is no shortage of big deer in the area.  
**CALL TODAY!**



FOR WORK FOR GENERATIONS FOR LIFE

Garages | Hobby Shops | Farm Buildings | Equestrian | Commercial | General Purpose | Homes

**BUILDING VALUE DAYS**

When you build with Morton, you build something that lasts. The quality of our materials, our craftsmen, and our industry-leading warranty will ensure your satisfaction for generations to come.

Buy now and save during our annual Building Value Days sale!

Call Locally at  
641-472-3184  
FAIRFIELD IA

**MORTON BUILDINGS**

800-447-7436 | [mortonbuildings.com](http://mortonbuildings.com)  
Certain restrictions apply. A listing of GC licenses available at [mortonbuildings.com/licenses](http://mortonbuildings.com/licenses).

FOR SALE: 50 registered Angus yearling bulls. Feed efficiency tested and guaranteed. Will keep till June. All weights available. Angus bulls with a little more frame. [WernerFamilyAngus.com](http://WernerFamilyAngus.com), 641-344-5059, Diagonal, IA.

WANT TO BUY: Barn lanterns, railroad lanterns, railroad locks & keys, weather vanes, train sets & cars, old license plates, truck tailgates, well & pitcher pumps and parts. Any condition. Pay cash.  
PH. 641-814-2639. 06

FOR SALE SILAGE EQUIPMENT: NH 900 pull type chopper, 200 hp drive line; 990 W hay head; 824 2-row corn head; lots of new parts, good condition, field ready; Gehl dump wagon, works nice.  
PH. 660-341-8666. 05

**Soil & Animal Health Seminar**

**ATTENTION: Horse & Dairy Owners**

**Hosted By: Cedar Ridge Stables**  
**Location: Lakeside - Rt. 1 Box 196 Rutledge MO 63563**  
**Date: Mon. Feb. 19, 2018 Time: 10:30 AM**

**Hosted By: Cedar Ridge Stables**  
**Location: Cantril Community Hall**  
**Date: Mon. Feb. 19, 2018 Time: 6:30 AM**

**Free Pizza & Ice Cream For Those Attending The Meeting!!**  
**5% Discount For Those Attending The Meeting!!**

**Meeting Agenda**

- Benefits of feeding Dynamain.
- Animal health from the soil up.
- How Soil Balance relates to animal health.
- Agri-Tonic, the nuts & bolts behind it.
- Limber Res-Q, the benefits of natural herbs.
- Equi-Sentials, Formulated For Success
- Repro-Plus, Steps for successful reproduction.
- How to effectively use these products and get the most value for your money.
- Enjoy Free Pizza & Ice Cream

**Oregon Ag LLC**  
1150 E Oregon Rd.  
Lititz PA 17543  
717-656-0067





**Game Day Check List:**

- ☒ Invite friends to the big party.
- ☒ Buy chips & salsa.
- ☒ Clean the house.
- ☐ Treat myself to a day at the beauty salon.

**Come see us at our  
SUPER  
New Location!**

**WE HAVE MOVED!**  
**208 S. Madison St.**

**Call today to make  
your appointment!**

**208 S. Madison • Bloomfield, IA • 641-680-4881**  
Picks: 1. 56 • 2. Patriots • 3. Patriots • 4 Patriots

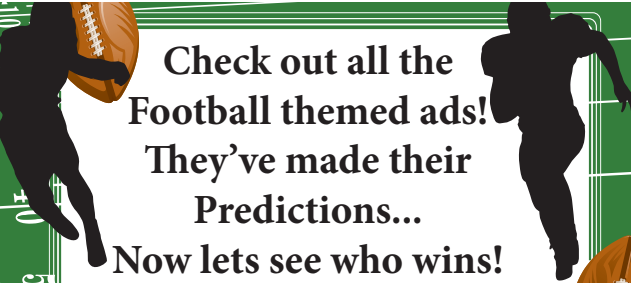
**HELP  
WANTED**

**Piper Auto Salvage** is looking to  
fill the following positions:

- **PARTS PULLER**

Apply in person at  
**PIPER AUTO SALVAGE**  
**641-664-1820 or email  
eric@piperautoparts.com**

**Sell It with the  
Tri-County  
Shopper!**




**Check out all the  
Football themed ads!  
They've made their  
Predictions...**

**Now lets see who wins!**

*They Made Their Predictions On The Following:*

1. What will the total score of the game be?
2. Which team will win?
3. Which team will score first?
4. Which team will win the coin toss?

If they get one correct answer they will be entered to win  
Prizes 1&2. If they get 2 correct answers they will be  
entered to win Prize 3. If you get 3 or more correct they  
will be entered to win Prize 4!



- PRIZE 1**  
2x4  
BLACK & WHITE  
AD
- PRIZE 2**  
2x4  
BLACK & WHITE  
AD
- PRIZE 3**  
2x5  
COLOR  
AD
- PRIZE 4**  
1/2 Page  
COLOR FRONT PAGE  
AD  
WHEN AVAILABLE

**Tri-County  
SHOPPER**

**Personal Classified Ads**

**PH: (641) 664-1333  
shopper@netins.net  
tri-countyshopper.com**

**1<sup>ST</sup> WEEK  
Only!**

**\$9<sup>25</sup>**

**2<sup>ND</sup> WEEK  
+ \$1<sup>00</sup>**

**\$10<sup>25</sup>**

**3<sup>RD</sup> WEEK  
Wow!**

**FREE**

Fill in the form below as you want your ad to appear. We must receive this by Friday at 5:00 PM to appear in the following week's Shopper. There will be an additional 10¢ charged for each word after 20.

**BUSINESS EXEMPT • WANT ADS ARE CHECK, CASH, OR CREDIT CARD**


|                |                |                |                |                |                |                |                |                |                |
|----------------|----------------|----------------|----------------|----------------|----------------|----------------|----------------|----------------|----------------|
|                |                |                |                |                |                |                |                |                | 5              |
|                |                |                |                |                |                |                |                |                | 10             |
|                |                |                |                |                |                |                |                |                | 15             |
|                |                |                |                |                |                |                |                |                | 20             |
| 1 WK - \$9.35  | 3 WK - \$10.35 | 1 WK - \$9.45  | 3 WK - \$10.45 | 1 WK - \$9.55  | 3 WK - \$10.55 | 1 WK - \$9.65  | 3 WK - \$10.65 | 1 WK - \$9.75  | 3 WK - \$10.75 |
|                |                |                |                |                |                |                |                |                | 25             |
| 1 WK - \$9.85  | 3 WK - \$10.85 | 1 WK - \$9.95  | 3 WK - \$10.95 | 1 WK - \$10.05 | 3 WK - \$11.05 | 1 WK - \$10.15 | 3 WK - \$11.15 | 1 WK - \$10.25 | 3 WK - \$11.25 |
|                |                |                |                |                |                |                |                |                | 30             |
| 1 WK - \$10.35 | 3 WK - \$11.35 | 1 WK - \$10.45 | 3 WK - \$11.45 | 1 WK - \$10.55 | 3 WK - \$11.55 | 1 WK - \$10.65 | 3 WK - \$11.65 | 1 WK - \$10.75 | 3 WK - \$11.75 |
|                |                |                |                |                |                |                |                |                | 35             |
| 1 WK - \$10.85 | 3 WK - \$11.85 | 1 WK - \$10.95 | 3 WK - \$11.95 | 1 WK - \$11.05 | 3 WK - \$12.05 | 1 WK - \$11.15 | 3 WK - \$12.15 | 1 WK - \$11.25 | 3 WK - \$12.25 |
|                |                |                |                |                |                |                |                |                | 40             |
| 1 WK - \$11.35 | 3 WK - \$12.35 | 1 WK - \$11.45 | 3 WK - \$12.45 | 1 WK - \$11.55 | 3 WK - \$12.55 | 1 WK - \$11.65 | 3 WK - \$12.65 | 1 WK - \$11.75 | 3 WK - \$12.75 |
|                |                |                |                |                |                |                |                |                | 45             |

Name: \_\_\_\_\_

Address: \_\_\_\_\_

City: \_\_\_\_\_ State: \_\_\_\_\_ Zip: \_\_\_\_\_ Phone: \_\_\_\_\_

Run my ad \_\_\_\_\_ times.



**Mail your completed ad  
form & payment to:**

**Tri-County Shopper • P.O. Box 168 • Bloomfield, IA 52537**





Picks  
1. 37 2. Eagles  
3. Eagles 4. Eagles

**HORN'S**  
SALES & SERVICE

**Motorcraft**

**ai products**

**WIX**

**MONROE**

**AP**  
AIR INC.  
IMAGE COMING SOON

**We have discount prices on PARTS, OIL & FILTERS FOR YOUR PERSONAL, AGRICULTURE AND OFF ROAD VEHICLES**

Call or stop in to place your order today!

**641-664-3344**

609 S. Madison • Bloomfield  
Bryan Horn

**WIX**

**FOR SALE:** Grain wagon, rear dump, hydraulic lift, good condition, \$400.  
PH. 641-208-5911. 07

**FOR SALE:** 16'x7' fiberglass garage door, off white, good shape, \$100  
PH. 641-208-0473. 07

**FOR SALE:** Camper, mini home, fully self contained, Astro Chevy, excellent.  
PH. 641-208-5911. 07

**WANTED:** Female Jack Russel Terrier. **FOR SALE:** Bear youth bow.  
PH. 641-664-1264 05

**WANTED:** Gehl or NH grinder mixer in good working condition.  
PH. 641-664-1459 06

**FOR SALE:** 1985 Buick Century, 2.5 L 4 cyl., AT, AC, tilt, cruise, AM/FM, 4 dr., 164,000 miles, \$800 or offer; Oxford accent/media cabinet, \$50; hall tree, \$20; wooden work bench, \$10, old chrome table, \$10, basketball hoop & pole, \$40; 4 heavy duty casters, 2 - swivel, 2 - solid, \$50 for all; small clamp-on bench vice, \$10; 2 small mower wheels, \$5; Huffy bicycle, needs work, \$50; Chamberlain 1/2 hp opener, complete, \$40.  
PH. 641-208-5136. 07

**Fox Valley Welding**

No matter what size the project customer satisfaction is always our first priority.

Tig & Aluminum • Welding • Milwork • Lathe • New Steel • Sprockets • Roller Chain Barings • PTO Parts • Fabricating • CNC Machining • CNC Cutting

Hours: M-F 8-5:30 • 641-656-4684 • 12190 East Hwy. 2 • Milton, IA

**WANT TO BUY:** Antiques, collectables, primitives, small estates, quick response. Pay cash.  
PH. 641-814-2639. 06

**FOR SALE:** Dodge Dakota pickup, 4 dr., 4WD, good air, V8, runs & drives like new, \$4,500.  
PH. 641-208-5911. 07

Garages • Pole Barns Commercial Free Estimates

**LAN-DOW BUILDINGS**

We Stock a Complete Line of Building Materials

**Lancaster Lumber, Inc.**

Complete Buildings or Packages Available

Toll Free 800-424-5071 Fax 660-457-3133

Hardware • Plumbing • Electrical • Paint  
500 Green Street • Lancaster, MO 63548

**WESTERN'S SMOKEHOUSE**

• Nationwide Shipping  
• Cut to Order Meat Bundles

**Snack Sticks & Beef Jerky**

Visit our retail shop in Greentop, MO  
www.westerns-smokehouse.com  
New Hours as of May 1st  
Mon. - Fri. 8:30am - 5pm • Sat. 8am - 4pm  
660-949-2445 • 1-800-456-0250

Gourmet Cheeses  
Award Winning Sausages

**FOR SALE:** Bright heavy square bales of straw, \$3.50. Also firewood for sale.  
Don ChearPH: 641-722-3513 or 641-814-2256 05

**MIDWEST TRUSS IS CELEBRATING 20 YEARS IN BUSINESS!** Come join us on Saturday, February 10th. Serving pancakes & sausage from 10:30 am to 1:00 pm. 7 % discount on all orders placed in February! Midwest Truss 17606 212th St. Bloomfield, IA • 641-722-3675

**Step Up Your Game With Mineral!**

**GOLD STAR MINERAL!!!**

Research indicates a calf receiving trace minerals prior to entering the feedlot tends to wean off heavier and stay healthier once put on feed.

**Be A Winner With... Picks**

1.) 51 2.) Eagles 3.) Eagles 4.) Patriots

**MFA AGRI SERVICES**

**PO Box 253  
Memphis, MO  
660-465-2603**

**Davis County Cattlemen's Young Producer Assistance Program**

This program is for children in fourth grade through high school and they must be involved in 4-H or FFA. The money from this program is to be used on a breeding beef animal project and can be used however the child wants as long as he/she completes all the following requirements:

**Must be heifer or cow.**

**Must be shown at the Davis County Fair.**

**Must present a record book on their project.**

**Must attend the Davis County Cattlemen's Banquet and give a brief update on their project.**

If all requirements are met, the Davis County Cattlemen will give the child \$300 the first year and \$100 for 2 more years. Three children will be chosen for this program. To apply for this program call Cory, Dusty or Roman for an application. Complete the application and return by mail to P.O. Box 275, Bloomfield, IA. Must be postmarked by Friday, February 16, 2018. A brief interview will be set up after all applications are completed. If you and your family would like more information about this program, please feel free to call:

**Cory Fleming @ 641-781-0668**  
**Dusty Hunter @ 641-226-7924**  
**or Roman Schooley @ 515-450-3685**

**COUNTRY CUT MEATS**

Custom Butchering

• Beef • Pork • Deer

**641-675-3683**

26824 Vetch Ave. • Pulaski, IA

**Bradley Insurance Agency**

Specializing in crop insurance.

**Independent Agency Serving:**  
Crop Risk Services, Rain & Hail L.L.C & Great American

**Insure with us! Prompt & Friendly Customer Service!**

Owner/Agent: Tonya Bradley - Fleshner  
Memphis, MO • (660) 465-2764  
Serving Missouri & Iowa

Do you have the right protection for your spring crops?  
**Don't Miss The Deadline March 15th!**



February 16th &amp; 17th, 2018



### Soil Health Workshop with Ray Archuleta

Friday, Feb. 16th, 2017

8am-4pm

Must preregister by Jan 25th: for \$150

#### Regenerating soils by mimicking nature

Learn how to reduce inputs and grow crops by mimicking natural systems resulting in more net profit.

Learn about new soil tests (Haney & Green Chemistry) which can save money on NPK

*Space is limited to 30 people*

### Grazing Conference

Saturday, Feb. 17th, 2017

8am-4pm

Pre-register: \$48 At the Door \$65

#### Speakers and Topics Include

Ray Archuleta – Soil Health

Jim Powell – Grazing Beef Cattle

Kyle Wedel – Grass Based Dairy

Weston Walker - Grazing Hair Sheep

Dairy Farmer Panel from Indiana

For more information contact:  
Robert Yoder 641-664-2060  
Anastasia Erdmann 641-664-2600\*307

Held at the  
Mutchler Community Center  
900 E North St Bloomfield IA 52537



### Specializing in Aluminum Grain Trailers Repair & Rebuild

3 miles east of Gorin, Mo. on Route U

660-282-1012

BLOOMFIELD MINI  
STORAGE. Serving you  
from 2 safe, convenient  
locations.

PH. 641-664-1066.

TF

FOR SALE: Portable creep  
feeder, usable condition.  
No gates, \$950; Cab for IH  
tractor, good glass. Make  
offer. PH. 660-216-1534.

## Memphis Farm & Home



Let Rayburn & the winning team at  
Memphis Farm & Home assist  
you with all your needs.

#### Picks

1.) 36 2.) Eagles 3.) Patriots 4.) Eagles

South Market St. & Business Rt. 136  
Memphis, MO • 660-465-8678  
Mon. - Sat. 8-5 • Closed Sunday

## ADAIR COUNTY, MISSOURI LAND AUCTION

200 ACRES± • 3 TRACTS (SUBJECT TO SURVEY)

SALE TO BE HELD AT THE KELLER BUILDING IN BRASHEAR, MO

THURS., MARCH 1 @ 5:00 P.M.

Land is located approximately 5 miles north of Brashear, MO in  
Section 5, T62N•R13W, Salt River Township.

LAND REPRESENTS HIGHLY PRODUCTIVE TILLABLE  
CROPLAND, AS WELL AS IMPROVED PASTURE LAND.

### MARK MOYER

CLOSING & TITLE WORK BY: Pickell Abstract Company  
116 South Franklin Street • Kirksville, MO • Ph: 660-665-8324

AUCTION MANAGER: BILL FRETWELL AT (660) 341-7735

SULLIVAN AUCTIONEERS, LLC • TOLL FREE (844) 847-2161  
IL LIC. #444000107 • www.sullivanauctioneers.com

FOR SALE: 2004 Silverado  
Z71, 4x4, ext. cab, white,  
truxedo cover, Bose sound  
system, 144K miles, good 10  
ply tires, clean truck. \$9,500  
PH: 641-664-1966 or  
641-242-0144

05

JOE'S BARBER SHOP  
Hours: Thursday & Friday  
8:00-5:00 & Saturday 8:00-  
Noon. 210 E. Franklin St.,  
Bloomfield, IA.

PH: 641-664-2020, 641-208-  
5561

TF

### Custom Built, Painted and Vinyl Buildings & Sheds

~David W. Schrock~



15383 180th Street 641.664.2842 V.M.  
Drakesville, IA 52552

FOR SALE: Big round bales  
2nd cutting mixed grass hay,  
\$100 per bale. No fescue.

PH: 641-664-1690

05

FOR SALE: 10 black cow  
calf pairs, 3-6 years old,  
\$2,350 each.

PH: 660-216-3640

05

## HOOVER RENTAL

Manlifts • Telehandlers • Minihoes  
Skidloaders & Skidloader Attachments

RENT BY

Hour • Day • Week • Month • Long Term

DOZER NOW AVAILABLE FOR RENT

Call us for your construction needs!

660-216-8230

Mt. Sterling, Iowa

2 miles East of Cantril on Hwy 2



FOR SALE: 2011 Chevy  
15 passenger van.  
White, 160,000 miles,  
professionally maintained.  
Excellent condition. \$10,000  
firm.

PH: 641-208-0250

06

FOR SALE: Golden  
Retriever/English Cream  
Golden Retriever female  
puppy. Family raised, cute  
& adorable, perfect baby  
sitter, ready now.

PH: 319-201-0900

05

### DRIVERS WANTED

## Hite Trucking LLC

Ottumwa, IA

\*Regional &amp; West Lanes

\*Great Home Time

\*Health • 401K • Alfac

Minimum 2 yrs. experience.

Late model trucks pulling  
Reefer trailers.

Call John at 641-682-7108



## CANTRIL FEED & GRAIN

From fences to feed to farmers  
**YOU'LL LOVE OUR PRICES!**

#### We Carry:

- Soyhull Pellets
- Corn Gluten Pellets
- Dry Distillers Grain
- Cottonseed
- Soybean Meal
- Oats

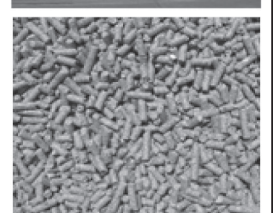
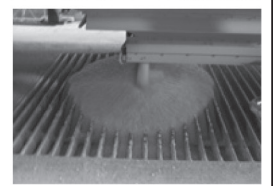
#### We also carry:

- Gallagher Fencing
- Hay Feeders
- Corral Gates
- Miraco Watering Systems

**CALL US FOR  
COMPETITIVE PRICING!  
WE DELIVER!**

610 W. NORTH STREET • CANTRIL, IA

319-397-2215



FOR SALE: 40 young blk &  
bwf cow calf pairs. Call to  
look at.

PH: 660-341-0371

07

FOR SALE: 200 ft. bag of  
corn silage; big bales of  
grass hay. East of Moulton.

PH: 641-436-6667

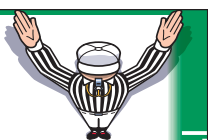
06

**GLENWOOD  
Elevator**

**301 State Hwy. M  
Glenwood, Mo 63541**

Logan Ford, Manager  
PH: 660-457-3973 • Cell: 660-956-3973  
Fax: 660-457-3045 • gelevator@marktwain.net

**Super Prices  
Super Selection  
Super Service**



## IT'S A Savings Score

Come see ALL we have to offer!

### Complete Car & Tire Care

- Under-the Hood
- Under-the Vehicle Item
- Automotive Service
- Major Systems & Components
- Electrical Check
- High Performance Tires for Farms

### DAVIS COUNTY TIRE'S TRUCK SERVICE CENTER

**WE TAKE CARE OF IT ALL!**  
SEMIS, MOTOR HOMES, BUSES, DUMP TRUCKS, ETC.

#### Picks

1.) 80 2.) Patriots 3.) Eagles 4.) Eagles



108 Smith Street • Bloomfield  
TOLL FREE 1-888-855-8740  
641-664-1801



# KEOSAUQUA SALE CO.

20511 Hwy. 1, Keosauqua, IA

**Results from Jan. 27th**  
Butchers ...\$43.00-53.00/cwt  
Sows .....\$35.00-55.00/cwt  
Feeder lambs .....\$190.00-245.00/cwt

Fat lambs .....\$130.00-131.00/cwt  
Ewes .....\$65.00-85.00/cwt  
Kid goats .....\$145.00-180.00/hd  
40-70# .....\$85.00-265.00/hd

**Pound cows**...\$49.00-55.00/cwt low yielding  
.....\$57.00-87.00/cwt high yielding  
**Pound bulls**.....\$75.00-90.00/cwt

## SPECIAL CATTLE SALE SATURDAY FEB 3

### Early Listing

40 hd 500-650 blk & bwf st, 2 rds, weaned - Cumberland  
30 hd 600-750 blk str & hfrs, GT, weaned - Durham  
15 hd 500-600 blk & bwf hfrs, 2 rds, weaned - D Beckman  
40 hd 500-700 blk & bwf str & hfrs, GT - Kester  
84 hd 500-750 Red Angus x str & hfrs,  
MFA Health program - Vogel  
30 hd 350-500 Red Angus str & hfrs, weaned, green - Coffman  
25 hd 600-800blk str & hfrs, pc weaned - Pohren  
22 hd 550-800 xbred str & hfrs, gr weaned - Stewart  
130 hd 550-750 mostly blk xbred str - Barnhart

Watch website for early listings [www.keosauquasaleco.com](http://www.keosauquasaleco.com)

Thank You For Your Business!

For More  
Information Contact:

### Selling Times

Hogs.....9:30 a.m.  
Sheep & Goats.....10:00 a.m.  
Outside Merch.....11:00 a.m.  
Cattle.....Noon

Keosauqua Sale Co.  
319-293-3508  
Bill Goehring  
641-919-9365

[www.keosauquasaleco.com](http://www.keosauquasaleco.com)

**FOR SALE:** 2 Newton Club Seats at Newton Raceway. Best location at the track. Many benefits. Will sell for what I paid. Rumor has it there will be a NASCAR Race in the next couple years. PH. 573-723-0709 for more info. TF

**FOR SALE:** 75 registered Angus 18-month-old bulls. Feed efficiency tested and guaranteed. Will keep till June. All weights available. Angus bulls with a little more frame. WernerFamilyAngus.com, 641-344-5059, Diagonal, IA.

# TAKING ORDERS

## Taking seed orders for 2018

Seed Corn, Soybeans & Alfalfa  
Discounts Still Available!

Call Ryan for  
best pricing



**641-777-9481**

GMO & Conventional Products



**Davis Seed**  
20847 Hwy J5T  
Moravia, IA

## Kirkville Livestock LLC

Kirkville, Missouri

**SPECIAL BRED COW SALE**  
**FRI., FEBRUARY 2ND • 6:00 PM**

**SPECIAL SHEEP & GOAT SALE**  
**MON., FEBRUARY 5TH • 9:30 AM**

**CHECK OUR WEBSITE FOR UPDATED LISTINGS!**

"Proud to Serve Area Livestock Producers"  
**YOUR BUSINESS IS VERY MUCH APPRECIATED**  
We are open on Sundays to receive your livestock.

Phone for information: Patty Foster, Office 660-665-9804  
Chuck Ambrosia...660-342-3530 Al Ashmead..... 660-216-8730  
Caleb Randolph ....641-919-8539 Doug Fleshman.....660-626-7148  
Harry Durlfinger Daniel Smith..... 660-341-8396  
Mark Herbold.....515-720-8667 Jeremy Jarman .... 660-341-9879  
Cory Cook.....660-651-7453

Visit our website at [www.KirkvilleLivestock.com](http://www.KirkvilleLivestock.com)

**FOR SALE:** Firewood at RJ Lumber, \$15 a pickup load. 18989 160th St., Drakesville, IA 52552. TF

**FOR SALE:** 3- Holstein veal calves, \$125 each. John Earl Kuhns VM: 641-664-2336



21387 Route V64  
Keosauqua, IA 52565  
**660-216-0812**

*Our goal is to keep your doors rolling smooth!*

Sales • Parts • Service ~ Free Estimates  
*We sell new doors and openers or we'll service your old one.*

**FOR SALE:** Big rounds alfalfa mix; square bales of alfalfa. PH: 641-208-3502

**WANT TO BUY:** Old gas pumps, gas related signs, hit miss engines, any advertising signs, old pocket watches & wrists watches, class rings, old jewelry, wood clocks, yard wind mills, old metal gliders. Any condition. Pay cash. PH. 641-814-2639. 06

## FOR SALE

**Driveway Fabric Rolls**  
Commercial, Heavy Duty,  
Designed for Heavy Traffic

12' 5" Wide  
432' Long  
\$370/ roll

**660-216-0938**

## Dear Cattlemen,

When it comes time for your investment in your herd sire, consider a program from Trojan Hill Farms. For seventy years, we have sold breeding bulls of Angus & Charolais. Our bulls are backed up by weighing information, EPD's DNA testing, ultrasounding and seman testing. We are selling at private treaty because it allows us to talk personally about your needs and goals. We are working very hard to give you what you need. Call and come take a look at what we can do or you.

**Phil & Darryl Archer**

Call today make appointment to see the bulls.



Trojan Hill Farms  
Phil Archer  
31625 215th Street  
Bloomfield, Iowa 52537  
(641) 675-3769  
Cell (641) 680-6769  
Angus And Charolais

## Scotland County LIVESTOCK AUCTION

P.O. Box 111 • Hwy 15 North • Memphis, MO  
**660-465-7213 • Jerry & Barb Blomme**  
**660-341-0069 • Grant Blomme**  
**660-216-4674 • Rodney Garman**

## CATTLE SALE

Saturday, February 3rd

## SPECIAL CATTLE SALE

Saturday, February 10th

Market Results From Sat., January 27th:

### STEERS:

291# - \$224.00  
315# - \$211.00  
395# - \$211.00  
435# - \$203.00  
452# - \$206.50  
463# - \$206.00  
475# - \$201.00  
528# - \$190.00  
590# - \$172.50  
605# - \$170.00  
649# - \$170.00

### BULLS:

350# - \$205.00  
435# - \$192.00  
470# - \$180.00  
600# - \$154.00  
695# - \$143.00

### BULLS CONT:

768# - \$132.00  
**HEIFERS:**  
310# - \$181.00  
349# - \$171.00  
380# - \$173.00  
413# - \$170.00  
444# - \$172.00  
469# - \$172.00  
525# - \$163.00  
581# - \$150.00  
812# - \$146.00

### HOL. VEALS

\$120.00-\$160.00

### BULK OF LB COWS

\$45.00-\$59.50

### LB BULLS

\$64.00-\$88.00

### SPRING CALVING HEIFERS

10 hd, 1025# - \$1800.00  
5 hd, 1052# - \$1800.00  
4 hd, 1274# - \$1800.00  
4-6 yr old spring calving cows  
3 hd, 1275# - \$1400.00  
4-6 yr old cow calf pairs  
4 hd, 1278# - \$1725.00

[www.ScotlandCountyLivestock.com](http://www.ScotlandCountyLivestock.com)

## JEFFERSON COUNTY, IOWA LAND AUCTION

**FRIDAY, MARCH 2<sup>ND</sup> @ 10:00 A.M.**

AUCTION TO BE HELD AT THE BEST WESTERN FAIRFIELD INN,  
2200 W BURLINGTON AVE, FAIRFIELD, IA

**80 ACRES± • 1 TRACT**

The Freeman Farm is located in Section 13, Cedar Township, Jefferson County, IA. (6 miles southeast of Fairfield, IA.)

Farmers & Investors mark your calendars now for this upcoming Jefferson County, IA land auction. This high quality 100% tillable farm offers a CSR2 of 77.4, is nearly 100% pattern tiled and sells with full possession for the fast approaching 2018 crop year.

DETAILS, MAPS & PHOTOS AVAILABLE ONLINE @:

[www.SullivanAuctioneers.com](http://www.SullivanAuctioneers.com)

**DAVID & PHYLLIS FREEMAN – SELLERS**

ATTY: Timothy D. Roberts • Anderson, Roberts, Porth, Wallace & Stewart LLP  
524 North Main Street, P.O. Box 1339, Burlington, IA 52601 • Ph: (319) 754-6177

**FOR ADDITIONAL INFORMATION, CONTACT:**

**Jim Huff (319) 931-9292 or Jeff Hoyer (319) 759-4320**

**SULLIVAN AUCTIONEERS, LLC • TOLL FREE (844) 847-2161**  
[www.SullivanAuctioneers.com](http://www.SullivanAuctioneers.com) • IL Lic. #444000107



## Friesen Excavating

Specializing in Septic Systems  
Certified For Peat Tanks  
and Sand Filters.  
Can Also Do Other Drains  
and Water Lines  
Call or Text Shawn @  
641-208-0861  
Bloomfield, IA  
Free Quotes Available

WANTED: 18-24' disk.  
Repaired needed ok, \$300-  
\$2,000 price range.  
PH: 641-799-5970 07

## Ken's Garage

Trenching, Excavating,  
Mechanical

Waterlines  
Hydrants  
Livestock Waters  
Drainage Pipe & Tile  
Excavation  
Repair, etc.

**641-208-7980**  
Licensed & Insured

NEW AUTHORS WANT-  
ED! Page Publishing will  
help you self-publish your  
own book. FREE author  
submission kit! Limited of-  
fer! Why wait? Call now:  
855-623-8796 (MCN)

Hormel Foods in Austin,  
Minnesota is hiring Indus-  
trial Mechanics and Elec-  
tricians. Great pay and  
benefits. Apply at [www.hormeljob.com](http://www.hormeljob.com). Hormel  
Foods Corporation is an  
EOE Minorities/Females/  
Protected Veterans/Dis-  
abled. (MCN)

CLASS A TRUCK DRIV-  
ER. North Central region.  
Earn up to \$70,000. No touch  
freight. Good benefits. All  
mile paid. Nice equipment.  
2 years experience needed.  
Call 507-437-9905. Apply  
on-line WWW.MCFGTL.  
COM (MCN)

# STAR SEARCH XXVI



**Fabius TOUR OF DUTY 7160**  
RB Tour of Duty x Hoover Dam's Full Sister  
BW: 80 205 Wt: 742 365 Wt: 1683



*Just a sample of the 50 Bulls  
that sell! Including Spring &  
Fall Yearlings and 2 Year Olds!*

Friday, March 2, 2018 • 6:00 PM  
Bloomfield Livestock Market  
Bloomfield, IA

Presented by:

## FABIUS CREEK ANGUS

Selling 70 Head of Registered Angus Bulls &  
Females Bulls will be 150K Tested



### Fabius BIG SKY 7820

Musgrave Big Sky x TC One Way  
BW: 75 205 Wt: 835 365 Wt: 1611



### Fabius RAMPAGE 7431

Quaker Hill Rampage x SAV First Class (1st calf heifer)  
BW: 70 205 Wt: 803 365 Wt: 1672

For more information contact:

Fabius Creek Angus • Dean & Nancy Hougland  
Dean: 641-208-9626 • Nancy: 641-208-0434 • Home: 641-929-3208

## TIRES • TIRES • TIRES

- HANKOOK • YOKOHAMA
- UNIROYAL • FIRESTONE • KENDA
- GENERAL GRABBER • MICHELIN
- BRIDGESTONE • BF GOODRICH

**CANTRIL**  
TRUCK & TRAILER

**319-238-7367**  
101 North St. • Cantril, IA

Picks

- 1.) 50 2.) Patriots 3.) Eagles 4.) Eagles

CALL FOR  
SPECIAL PRICING!



## SUPER SAVINGS ZONE!



We have automotive and  
farm implement parts.  
Everything you need!

We will keep a smile on your face  
and money in your pocket!  
You can't beat that!

Picks

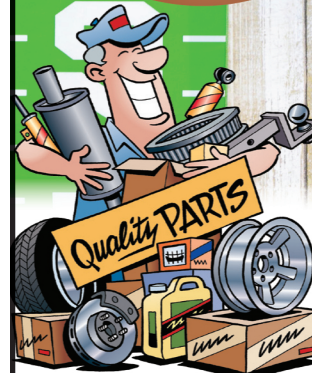
- 1.) 35 2.) Patriots 3.) Eagles 4.) Eagles

## Tallman Auto Parts

Patrick & Joanna Tallman, Owners

660-457-2191

Mon - Fri: 8:00 am - 5:00 pm • Sat: 8:00 - 12:00 pm **AutoPlus**





# BLOOMFIELD



## LIVESTOCK MARKET

### FRI. NIGHT, FEBRUARY 2ND

#### Schooley's Annual Production Sale • 6:30 PM

Offering 25 of our best herd bulls & 28 of our ELITE bred heifers!

Wed., February 7th ..... Fat Cattle, Slaughter, Cows & Bulls ..... 9:00 AM

..... Special Calf & Yearling Sale ..... 11:30 PM

Wed., February 14th .... Fat Cattle, Slaughter, Cows & Bulls ..... 9:00 AM

Wed., February 21st .... Fat Cattle, Slaughter, Cows & Bulls ..... 9:00 AM

..... Special Calf & Yearling Sale ..... 11:30 AM

Tue., February 27th..... Special Bred Cow & Heifer Sale ..... 6:00 PM

#### Reports from Wednesday, Jan. 24th, 2018 • Selling 2248 Head

##### HEIFERS

|                        |             |          |          |
|------------------------|-------------|----------|----------|
| Austin Swaim.....      | 5 BBWF ...  | 436..... | \$169.00 |
| Charles Swaim .....    | 16 BLK..... | 448..... | \$169.00 |
| Steve Bowling.....     | 8 BBWF ...  | 530..... | \$160.75 |
| Charles Swaim .....    | 42 BLK..... | 557..... | \$160.00 |
| Luke Hoover .....      | 9 BLK.....  | 587..... | \$160.00 |
| Bob Singley .....      | 7 BLK.....  | 575..... | \$159.00 |
| Lisa Silvers .....     | 9 BLK.....  | 626..... | \$155.75 |
| Harlan Heinze.....     | 8 BBWF ...  | 650..... | \$154.00 |
| Doug Kollar.....       | 31 BLK..... | 610..... | \$152.25 |
| Roger Porter.....      | 36 B/R..... | 632..... | \$152.25 |
| Ryan Gaffney.....      | 10 BLK..... | 637..... | \$149.75 |
| Wayne Schooley.....    | 69 BBWF .   | 667..... | \$146.60 |
| Stan Frederick .....   | 9 BLK.....  | 683..... | \$145.25 |
| Dan Davis.....         | 31 B/R..... | 687..... | \$144.75 |
| Garry Poe .....        | 10 BLK..... | 647..... | \$144.50 |
| Richard Shaw Jr. ....  | 17 RED ...  | 745..... | \$142.00 |
| Ed Good .....          | 72 BBWF .   | 723..... | \$140.60 |
| Justice Schlicher..... | 19 B/CH ... | 720..... | \$140.25 |

##### STEERS

|                    |            |          |          |
|--------------------|------------|----------|----------|
| Luke Hoover .....  | 5 BLK..... | 512..... | \$190.00 |
| Lisa Silvers ..... | 6 BLK..... | 527..... | \$186.75 |
| Ryan Gaffney.....  | 5 BLK..... | 541..... | \$186.50 |

##### STEERS CONTINUED

|                      |             |          |          |
|----------------------|-------------|----------|----------|
| Doug Kollar.....     | 16 BLK..... | 556..... | \$181.75 |
| Lisa Silvers .....   | 14 BLK..... | 619..... | \$179.00 |
| Alan Janssen.....    | 14 BLK..... | 585..... | \$178.00 |
| Steve Bowling.....   | 11 BBWF..   | 604..... | \$175.25 |
| Mark March.....      | 12 BLK..... | 637..... | \$174.75 |
| Brad Burns.....      | 28 B/R..... | 654..... | \$173.00 |
| Dan Davis.....       | 14 BRC ...  | 621..... | \$172.75 |
| Marlin Smith.....    | 16 BLK..... | 648..... | \$169.00 |
| Craig Swaim .....    | 28 BLK..... | 657..... | \$163.50 |
| Wayne Schooley.....  | 64 BBWF .   | 716..... | \$162.25 |
| Harlan Heinze.....   | 17 BBWF .   | 703..... | \$161.50 |
| Gary Page .....      | 143 BLK...  | 734..... | \$159.50 |
| Dan Davis.....       | 44.....     | 750..... | \$154.75 |
| Brad Burns.....      | 35 BBWF .   | 747..... | \$153.00 |
| Roger Porter.....    | 62 RED ...  | 752..... | \$150.60 |
| Stan Frederick ..... | 29 BLK..... | 772..... | \$149.75 |
| Erik Hoop.....       | 70 BLK..... | 765..... | \$149.50 |
| David & Heather      |             |          |          |
| Boas .....           | 72 BLK..... | 788..... | \$145.00 |
| Jamie Humble.....    | 31 BLK..... | 840..... | \$141.75 |
| Gerald Fredrick..... | 6 BLK.....  | 912..... | \$141.25 |

**SALE BARN OPEN UNTIL 9:00 PM**  
**EVERY TUESDAY TO RECEIVE LIVESTOCK**

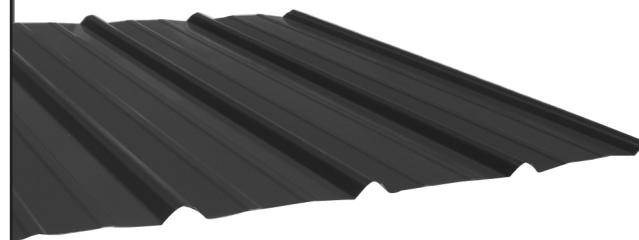
Phil Schooley..... 641-664-3450  
 Ron Schooley..... 641-777-0302  
 Roman Schooley ..... 515-450-3685

*We appreciate your business!*

Tyler Schooley ..... 641-208-5442  
 Barn Phone ..... 641-664-2435

**HWY. 63 NORTH • BLOOMFIELD, IA**

## Premium Metal Roofing



- Buy Direct & Save
- Fast Service
- Cut-to-length
- Professional Contractors Available

**A W Metal LLC**  
 Metal Roofing Headquarters

641-664-3990 • awmetal.net

### CONSIGNMENTS WANTED

Southern Iowa Produce Auction  
 Sales every 2nd & 4th Saturday, November thru March

**Next Sale**  
**Sat., February 10th - 10 A.M.**

For advertising your consignments they must be called in by 10 A.M. Monday on the week of sale.

**19141 Ice Ave. Bloomfield, IA**  
 Call 641-722-3623 on auction days or leave a message.  
 Market Report or Information call 712-432-8593

**FOR SALE:** John Deere 716 silage wagon; Hunting camper, sleeps 5, AC/heat. PH. 641-208-1054. 06

**FOR SALE:** Seasoned oak firewood, \$150 a cord. 19960 150th St., Bloomfield, IA PH: 641-722-3020 06



Bring your plans in for a  
**FREE ESTIMATE**



**Trusses Engineered and Designed to Your Specs**



• Commercial • Agriculture •  
 • Residential •

17893 212th Street • Bloomfield, IA 52537  
 641-722-3605 • Mon.-Fri. 7 AM to 5 PM