

**GARAGE DOORS**  
Residential • Commercial • Doors • Operators

Quality Products + Quality Workmanship = Quality Customers

Call us today for your • FREE door estimates.

**WE FIX DOORS!**

**MAST OVERHEAD DOORS** 105 S. Dodge St.,  
641-680-2016 Bloomfield, IA

# Tri-County SHOPPER

Don't forget to set your clocks ahead!

SPRING FORWARD!  
Sunday, March 11th



STANDARD MAIL U.S. POSTAGE PAID TRI-COUNTY SHOPPER, INC. POST OFFICE BOXHOLDER LOCAL RURAL BOXHOLDER OCCUPANT CIRCULATION OVER 11,750 THIRD CLASS

P.O. Box 168 • Bloomfield, IA 52537 • www.tri-countyshopper.com  
Phone 641-664-1333 • Fax 641-664-3761 • E-mail shopper@netins.net



Vol. 46, No. 10  
Wednesday, March 7, 2018



## SMOKERZ OUTLET

Cigarettes, Tobacco  
Beer • Adult Novelties

**Need a large order?**

Call ahead and place your order for guaranteed quantities!

Orders must be placed by noon on **Mondays & Thursdays**

**Smokin' Hot Prices!**

**Red Trailer at the line: 10104 US Hwy. 63**  
**Winter Hours** Lancaster, MO  
8am - 8pm SUN - THURS  
8am - 9pm FRI & SAT **660-457-3088**

**Now through March 13th**  
All inspirational wall decor, shelf setters and artificial plants!

# 25% OFF

ACROSS FROM THE SCOTLAND COUNTY FAIRGROUNDS

For the way you live  
**WITMERS**  
FURNITURE  
MEMPHIS, MO

MON & FRI: 9AM-8PM WED, THURS & SAT: 9AM-5PM  
TUES & SUN: CLOSED 660-465-2461

# GUARANTEED AUTO PARTS!

**GLASS SPECIAL ALL OF MARCH!!**

- Engines
- Doors
- Transmissions
- Fenders
- Headlights
- Bumpers

Get your vehicle back on the road with the right parts!

Bloomfield • 641-664-1820 • PiperAutoParts.com  
We deliver to southeast Iowa & northern Missouri

## STREET POT HOLES MAKING YOUR CAR Wobble?

Call Joe today to get your car driving straight again!

**MARCH SPECIAL!** Buy 4 tires & get an oil change at half price!

**Struts, Wheel Bearings, Ball Joints, Suspension Repair**

# Piper Body Shop

## Wheel Alignment & Glass

N. of John Deere • Bloomfield • 641-664-1720



Please join us for our  
**Annual Spring Customer Appreciation**  
**Wednesday, March 14th, 2018**  
 Lunch served by Wapello County Pork Producers


**Discounts on parts March 5th through March 17th, 2018**

**Greiner Implement Company Inc.**  
 Ottumwa, IA • 641-683-1691  
 www.greinerimplement.com



**8 FT. RAILROAD TIES**

Great for landscaping and garden boxes



**SPILMAN AUTO PARTS**  
 20311 Old Hwy. 2  
 PO Box 31 • Bloomfield  
 641-664-2463

FOR SALE: Allis Chalmers 5' brush cutter, \$300. PH: 641-208-5911 11  
 HAY FOR SALE: 2-year-old grass hay, big round bales. PH: 641-680-7031 11

**C.H.I. MIDWEST LiftMaster**  
**Overhead Door**

✓ *Out Our Competitive Prices!* 21387 Route V64 Keosauqua, IA 52565 *Our goal is to keep your doors rolling smooth!*  
**660-216-0812**  
 Sales • Parts • Service ~ Free Estimates  
*We sell new doors and openers or we'll service your old one.*

FOR SALE: 90 sq. ft. of cast natural stone, Sante Fe ledge stone, \$300. PH: 660-342-2330 10

FOR SALE: Fresh cut hedge post, all sizes, 8-10 foot. Milton, IA. PH: 641-680-1183 11

FOR SALE: Firewood at RJ Lumber, \$15 a pickup load. 18989 160th St., Drakesville, IA 52552. TF

FOR SALE: 2006 Honda 750cc shadow, Aero, excellent condition, 34,750 miles, water cooled, shaft driven, quick detach windshield, crash bar, road pegs, saddle bags, \$3,000 OBO. PH. 660-216-0741. 10

FOR SALE: 2 year old pure-bred Simmental Bull. White faced/ white belly. Beef King breeding. PH. 641-208-5966 10

FOR SALE: Double Max Trophy Builder Whitetail Mineral, 20lb. bucket, \$18 or 2 for \$17 each. PH: 641-664-2570 11

**We are your local, full-service contractor, dedicated to meeting all of your home improvement and home building needs with integrity and quality craftsmanship.**

- Metal Roofing
- FREE estimates!
- Crews available
- Call today!

**WAGLER METALS LLC**  
 19049 Ice Ave., Bloomfield, IA • 641-722-3692  
 M-F 7:30AM-5PM • Sat. 8-11:30AM



WANTED: Lama for sheep guard to keep coyotes away, prefer female. PH: 660-341-6267 10

FOR SALE: English Creme/Golden Retriever puppies, 6-males, 2 females, family raised, Ready to find their forever homes the beginning of April. Beautiful puppies. PH: 319-201-0900 11

**We'll Put Collision Damage in Reverse**

Let our certified technicians quickly restore your vehicle to pre-accident condition with a satisfaction guarantee.

State-of-the-Art  
 Frame Straightening  
 Dents, Dings & Scratches Removed  
 Custom Color Matching Service

**WE'LL DEAL DIRECTLY WITH YOUR INSURANCE COMPANY**  
 FREE Estimates.

**Hertz**  
 Rentals for all Occasions!  
 Great Rates!

**WALKER MOTORS**  
 Collision Repair Inc.  
 375 S. Main St. • Memphis, Mo • 660-465-2159



**Come See Our MARCH SPRING SALE**

Southern Home Style Pillsbury Biscuits • 89¢  
 Countrystyle Gravy Mix

Fairlife 2% Milk, 8 oz., 19¢  
 10lb of Russett Potatoes \$2.39 a bag  
 Kraft Sharp Cheddar Shredded Cheese, \$1.69

**SEED POTATOES AND ONIONS SETS!**

**Greenhouse Now Open!**  
 Watch for details for **Burkholder's Greenhouse**  
**UPCOMING OPEN HOUSE**  
 at the County View Store location!

Friday and Saturday, March 9th & 10th  
 Spend \$50.00 in store and receive a **\$5.00 Gift Card**  
**To Burkholder's Greenhouse at Country View Store location.**

**Country View Store**  
 3 miles south of Memphis, MO along Hwy 15  
 660-883-5388 • Hours: Mon-Fri 8-6 & Sat 8-5:30  
 We accept all major credit cards and EBT!





**C** Cornerstone Investments  
**Chuck Riegenbach**  
 Financial Planner  
 108 W. Jefferson St. • Bloomfield, IA 52537  
 Office (641) 664-3700

Securities offered through Questar Capital Corporation (QCC) Member FINRA/SIPC. Advisory Services offered through Questar Asset Management (QAM) a registered investment advisor. Cornerstone Investments is independent of QCC and QAM.

**IRAs... IRAs... IRAs...**

**IRA Deadline is April 17th** | Funding your IRA, Roth IRA or SEP may be a good way to plan for your retirement. | Specializing in Retirement Planning!

**Get Ready For Spring!**  
 Bulk Garden Seeds, Seed Potatoes, Onion Sets  
**Gingerich Greenhouse**  
 1 mi. East & 1/2 mi. North of Drakesville on Jade Ave.

**FRUIT & NUT TREES** From \$15. Blueberry, Strawberry, Grape, Asparagus, Evergreen & Hardwood Plants & MORE! FREE Catalog. **WOODSTOCK NURSERY**, N1831 Hwy 95, Neillsville, WI 54456. Toll Free 888-803-8733 wallace-woodstock.com (MCN)

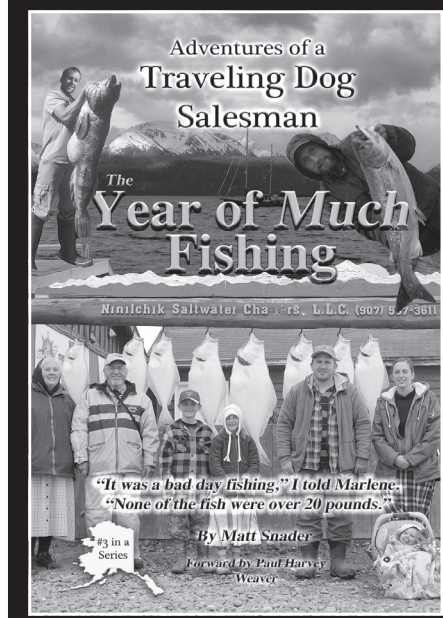
**Slayton Polaris** Authorized Polaris dealer since 1988  
**Get out and play!**  
 New & Used Polaris Rangers & ATV's  
**POLARIS** The Way Out.  
**660-328-6627** BLOOMFIELD, IA  
 8 mi. S. & W. from Pulaski or 6 mi. W. of Memphis then 13 mi. N. on Route B

**FRIESEN CONSTRUCTION**  
 New Houses  
 Remodeling  
 Garages Electrical  
 Plumbing  
 Custom Cabinets  
**Arlen 664-3270**  
**Cell 641-208-0170**  
**Bloomfield, Iowa**

**HAY FOR SALE:** 2017 grass hay, big round bales. PH: 641-680-7031. 12  
**FOR SALE:** Square bales of alfalfa. PH: 641-208-3502. 10

**Kollision Korner**  
**2003 Silverado 1500** **2007 Chevy Avalanche**  
**\$10,900** **\$18,900**  
**LONG BOX, REG. CAB, 4 WD, 80,000 MILES** **71,000 MILES**  
**2008 Tahoe LTZ** **\$20,500**  
**63,000 MILES**  
**504 South Drake St • Bloomfield**  
**PH: 641-664-2648 • Fax: 641-664-2948**

Thanks to Tommy & Joni for John's new set of wheels!



*Shady Lane Variety*  
**BOOK SIGNING**  
 Wed., March 14th • 2:30 - 7:00  
 Stop by and get your *Alaska Adventure* books volumes 1-6 and have them signed by author **Matt Snader**.

**1 mi. E. of Drakesville on Jade Ave**  
**641-664-0207**  
**8-5 Mon. thru Sat.**



**While your here check out our furniture inventory reduction sale including MATTRESSES!**  
**SPECIALS ON SELECT ITEMS**



**WANT TO BUY:** Young adult male Pomerian. Any color but black. PH. 641-777-8104. 12

**WANTED** Horse Machinery, Grain or Corn Binder, Thrasher, Silo Filler, Hay-Loader, Milk Tank, Corn Sheller, Barn for salvage Amish farmer 715-697-2916 (MCN)

**BRODALE MOVING SALE:** Rain or shine Sat., March 10, 2018, 9:00 - 2:00. The County Doctor Office, 18754 Hwy. 63, Bloomfield. Park in front of building, sale is around back inside garage. Items for home, office, tools, furniture, hunting, appliances, kitchen wares, canning gardening, decor, crafts, fabric and more!

**L&M Country Store**  
 1 1/2 miles south of west Hwy 2 & 63 jct.  
**Mon-Sat. 8am-5pm CLOSED SUNDAYS**  
**VM: 641-664-1936**  
**Yellow Delicious, Gala & Fuji Apple**  
 Frozen 16 oz. Oscar Mayer ham & cheese loaf .... 59¢  
 Frozen 14 oz. cocktail smokies..... 79¢  
 16 oz. fresh thyme butter quarters..... \$1.99  
 24 oz. sour cream ..... 75¢ or ..... case of 12 \$7.00  
 28 oz. country style baked beans..... \$1.39  
 Assorted candy bars ..... 2/\$1.00  
*We have seed potatoes & onion sets*





**Southfork MOTEL & GRILL**  
 JUNCTION OF HWY 2 & 63  
 BLOOMFIELD • 641-664-1063

Breakfast • Lunch • Dinner  
 Daily Hot Specials and Evening Features  
 Prime Rib Capital of the World! Served on Friday & Saturday Nights  
 Banquet Facilities Available for All Occasions • Catering

*"Where Quality and Consistency Matter!"*

Tues - Thurs 7am-9pm • Fri - Sat 7am-10pm  
 Closed Sunday and Monday

**TRIVIA NIGHT**  
**Saturday, March 10th • 7:00 PM**  
 at the Davis County High School Commons.

Doors open at 6 PM for sign-in.      Registration Deadline March 9th.      Teams of up to 8 people Ages high school and up.

**Theme: General Knowledge**

**Contact Terri at 641-799-5426 to register.**  
 Sponsored by the Davis County Music Boosters.

**Pulaski Volunteer Fire Association**  
**ANNUAL SOUP SUPPER**  
*All proceeds go to benefit the Pulaski Volunteer Fire Department*

Held at the Pulaski Fire House

**SATURDAY, March 10th**  
 From 5:00 pm - 7:00 pm

**Free will offering**

*Thank you to our Sponsors:*  
 B&B Propane & Jet Gas/Bentler Oil  
 Tri-County Shopper

**Davis County Quail Forever**  
**Annual Banquet**  
 Sat., March 10th • The Meadows • Bloomfield, IA

Happy Hour 5:00 PM • Meal Catered by Bailey's BBQ 6:00 PM  
 Program and Auction 7:00 PM  
 For more info. contact Michelle 515-669-3762 or Josh 641-777-5805

**GAMES! SILENT AUCTIONS! LIVE AUCTIONS!**

**QUAIL Forever**  
 The Habitat Organization

**Friday, March 9th**  
**Jumbo Shrimp with sides**  
*Serving at 6:00 P.M.*

Dine In **722-3355** Carry Out

**RAY'S LONGBRANCH**  
 Drakesville, IA

**6:00 PM MARCH 16TH**  
**Dodgeball TOURNAMENT**  
 @ DAVIS COUNTY HIGH SCHOOL GYM  
**FREE ADMISSION**

**QUILT & PIE AUCTION STARTS @ 7 PM**

PROCEEDS TO DAVIS COUNTY AFTER PROM

**Will Be Serving Fair Food From: Cattlemen & Pork Producers!**

**TACO SALADS • HAMBURGERS**  
**HOT DOGS • MR. RIBS**  
**BROWNIE SUNDAE & STRAWBERRY SHORTCAKE**

**Annual Sportsman's Banquet**  
 March 24, 2017  
 2:00 - 7:30pm  
 Menu:  
 Deer & Noodles, Meatloaf, Mashed Potatoes, Coleslaw, Beans, Bread, Salads, Desserts  
**FREE WILL OFFERING**

Speakers - 6:30 PM  
 Silent Auction - Door Prizes  
*Something for everyone!*

Living Hope Bible Church  
 201 W. Walnut, Eldon  
 641-652-3420

**IOWA THEATER BLOOMFIELD, IOWA**  
**"Peter Rabbit"**  
**PETER RABBIT**  
 AT CINEMAS MARCH 2018

Friday, March 9th  
 Saturday, March 10th  
 7:00 PM  
 Sunday, March 11th  
 4:00 PM PG

**Happy Birthday**  
**American Legion**  
 Join Us For Our 99th  
**BIRTHDAY DINNER**  
**Thursday, March 15th**  
 Social Hour 6:00-7:00 p.m.  
 Dinner 7:00 p.m.  
 Meat & Drink Furnished  
 Bring a Covered Dish

All Legion Members & Family Welcome!

**AMERICAN LEGION**  
 Reed Whisler Post #78  
 Bloomfield, IA



# DAVIS & LEWIS, CPA

Let our years of tax experience benefit you!

- Individual & Business tax preparation and planning
- Monthly accounting & payroll service
- Financial statement preparation
- Business consulting



Keith W. Lewis, CPA

Kyle R. Merry

641-682-8117

639 E. Pennsylvania Ave.  
Ottumwa, IA 52501

641-664-1999

205 N. Washington St.  
Bloomfield, IA 52537

## 1 Year Anniversary Open House

Monday, March 12th - 5-7

Serving Drinks & Treats

Product Discounts  
Pre-Booking Specials



Come see us at our new location!  
208 S. Madison

Looking for two more  
stylists for hire!

*Blush*  
beauty salon  
208 S. Madison • Bloomfield  
641-680-4881 • Brianna Steinberg

## Country Side Grocery

- Ground turkey, 3 lb ..... \$3.49 each
- Ground beef, 85% ..... \$1.89 lb.
- Bone in ham steak ..... \$1.29 lb.
- Kraft white sliced American cheese,  
5 lb. .... \$1.99 lb.
- Wheat snack crackers, 12.9 oz..... 79¢ each
- Bread & butter pickles, 1 gal..... \$2.75



3/4 mi. E. of Drakesville, IA on 180<sup>th</sup> St.  
Mon-Sat: 8:30am - 5:00pm  
VM: 641-664-2661

FOR SALE: 131 used steel roof panels, 9', 10' and 14' lengths x 2' width, \$400; Also 30 bin wall sheets for 30' bin, \$250. PH: 641-656-4956 10

FOR SALE: NON-GMO corn. Can be delivered with auger truck. NH, 3PN, 3 row chopper head, 600 acre use, \$4,750. PH: 660-216-3679

FOR SALE: Maytag commercial quality/super capacity top load washer. Maytag heavy duty electric dryer. Good condition. PH. 660-328-6318 or 660-341-9586. 10

FOR SALE: Yearling & 2 year old registered Angus bulls. AI sired by easy calving and maternal package bulls, gentle. Pick now and I will deliver first week of May. MILLER ANGUS FARM, PH. 660-341-4043. If no answer leave message. I will call back.

FOR SALE: Mission Maniac compound bow with quiver, wrist sling and stablizer, 3 pin sight, peep sight, QAD drop away rest, 28" axel to axel, 5 arrows with mission soft case, excellent condition, \$350; Bear Charge compound bow, sight peep, limb saver, arrow rest wisker, slightly used, \$275. Reasonable offers. PH: 641-777-3181 11

FOR SALE: Registered Purebred Gelbvieh and Balancer bulls. Reds & Blacks, yearlings and 2 year olds. Rolling Hills Gelbvieh, Bloomfield, IA PH: 641-777-7060 10

FOR SALE: 2003 Pontiac Montana van, 7 passenger, Grey leather, 3.4 V6, AT, New tires, Black, 142,000 mi, \$3000. PH: 660-341-6267 10

**Yoder Glass & Window**  
VINYL WINDOWS  
• Replacement  
• New Construction  
• Many Glass & Color Options  
Free Estimates  
19467 Driftwood Blvd.  
Bloomfield, IA 52537  
Call Today: 641. 722. 3667

**NEW MATTRESSES FOR SALE!**  
Selling individually or in sets. Factory warranty.  
TWIN - FULL - QUEEN - KING  
641-664-3060

FOR SALE: 2 Newton Club Seats at Newton Raceway. Best location at the track. Many benefits. Will sell for what I paid. Rumor has it there will be a NASCAR Race in the next couple years. PH. 573-723-0709 for more info. TF

## Burkholder's 660-397-4115

4 miles north of Edina, MO  
www.burkholdergreenhouse.com

Troyer Purple Martin Plastic Gourds AND Alumium Racks  
Alumium Poles Designed to Ascend and Desend

### SEE US FOR ALL YOUR Gardening NEEDS:

Seed Potatoes • Onion Sets  
Sweet Onion Plants • Veggie Plants

**Bulk Seeds,  
Fertilizers  
Compost, Topsoil**

**Strawberry Plants, Grapes,  
Blackberries, Raspberries,  
Blueberries, FRUIT TREES**



## Building Better, Healthier Lives



Now Available for Appointments at Davis County Hospital!

Providing Prenatal/ Postnatal Care,  
Gynecology, Contraception &  
Well Woman Care Services  
at Davis County Hospital

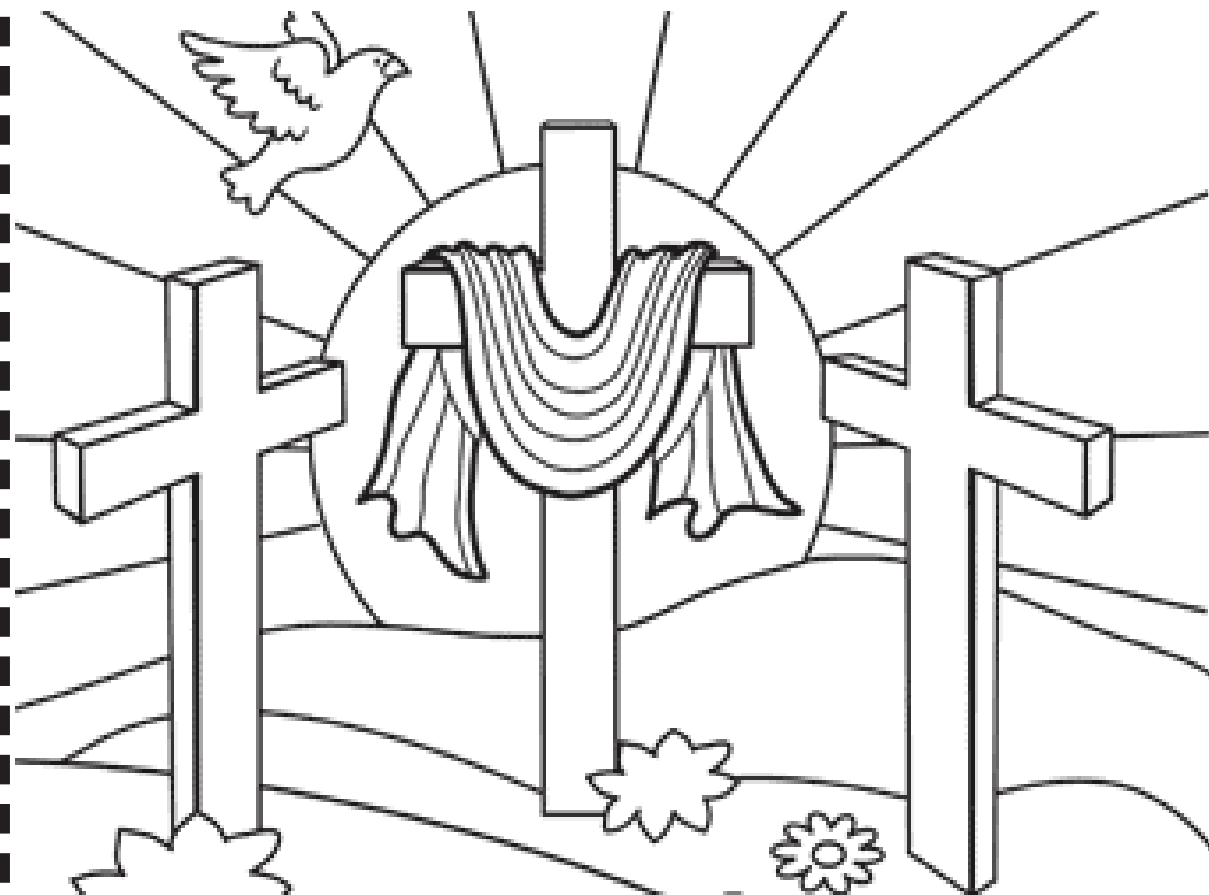
In partnership with:  
OTTUMWA  
Women's  
Health Clinic

Davis County HOSPITAL  
Dedicated. Compassionate. Healthcare.  
To schedule an appointment  
call 641-682-8761.



# EASTER COLORING CONTEST!

**Prize Baskets Sponsored by:**



I am the  
Resurrection  
and the Life

Name: \_\_\_\_\_

Parent/Guardian: \_\_\_\_\_

Address: \_\_\_\_\_ City: \_\_\_\_\_

Age: \_\_\_\_\_ Phone: ( ) \_\_\_\_\_

**Contest Rules:** 1.) Four age groups: 4 & under, 5-7, 8-10, & 11-12. One prize will be presented to the winner of each age group. 2.) Color with crayons or colored pencils only. An adult may assist on filling out the form, but not coloring the entry. 3.) One entry per child. 4.) All entries must be received by **Friday, March 23 at 3:00 PM.** 5.) Form & picture must be completed to qualify to win. **The winners will be published in the Shopper on March 28, 2017.**

### Coloring Contest Page Sponsored by:

Beeler Motors  
 Citizens Mutual  
 Crop Production Services  
 Spilman Auto  
 MFA- Memphis  
 Kollision Korner  
 Crop Services  
 Cantril Lumber  
 Cantril Truck & Trailer  
 Tri- County Electric Coop.  
 DC Tire

Image Shapers  
 Harris Distributing  
 J's Foods  
 Memphis Auto & Truck Parts  
 Hamilton Produce  
 Memphis Farm & Home  
 Dutchman Store  
 Sidwell Seeds  
 Neebz Graphix  
 Tri-County Shopper



**SHOPKO<sup>®</sup>**  
 Hometown  
 106 Smith St.  
 Bloomfield, IA  
 641-664-2052

**1<sup>st</sup>**  
 IOWA  
 STATE  
 BANK  
 110 N. Washington  
 Bloomfield, IA  
 641-664-1362  
 Keosauqua | Birmingham  
 Cantril | Bloomfield

**THE FABRIC HUT**  
 14543 195th st.  
 Drakesville, IA  
 641-664-3445 Ext. 2  
 Mon-Fri 8-5; Sat 8-4

*Shady Lane  
 Variety*  
 1 mi. E. of Drakesville  
 on Jade Ave. • 641-664-0207  
 8-5 Mon. thru Sat.

**Mail in or drop off entries at:**  
 Tri-County Shopper  
 208 Weaver Road • P.O. Box 168  
 Bloomfield, IA 52537

**Other drop off locations include:**  
 Dutchmans Store (Cantril)  
 Don Harrison Agency (Memphis & Lancaster)





# SPRING CONSIGNMENT

# Auction

Location: 1 mile West of  
Downing, Mo on Hwy 136

**Fri. March 23, 2018 @ 9:00 a.m.**

## Tractors - Machinery & Misc.

1995 JD 970 diesel tractor FWA w/ JD 440 loader 1776 hr. (nice)  
Ford 6600 diesel tractor w/ Ford loader (showing 3600 hr.)  
Gehl 100 grinder mixer - Hesston 5880 round baler  
JD 500 round baler - Gehl 1500 round baler  
Hardi TRX 500 pull type sprayer w/ 45' booms  
IH 430T small square baler always shedded (nice)  
500 gal. pull type sprayer - 2 DMI gravity flow wagons  
NH 114 hydro-swing hay conditioner  
Tuff Ox 3 pt. bale unroller (new)  
Orthman Soil Mover 7522 dirt scraper  
New Holland 1432 hydro-swing dicsbine  
Bush Hog 307 pull type brush cutter 7' - antique lime spreader  
12 IH stamped suitcase wts. - Dual mount hubs off of IH 1466  
JD cat. 2 quick hitch - (2) 1600 poly tanks on frames - (4) oil totes  
L shaped 100 gal. fuel tank w/ pump - Carolina engine hoist  
Echo CS 500P chainsaw w/ 18" bar - (2) loads of #2 building materials  
Assorted metal various length and color

*This is an early  
Listing*

*adding items daily*

*www.highauctionservice.com  
for photos and updates*

## ATV - Tillers - Lawn Mowers - Jet Ski - Etc.

Late model Kawasaki 220 Bayou ATV 2x4 (excellent condition)  
2009 eXmark XS Triton 66 diesel ZTR 920 hr. mod. 25KD665  
Gravelly Pro Ride 260 commercial ZTR 60" w/ 27 hp. Kawasaki 420 hr.  
Cub Cadet Z-Force 54" cut riding lawn mower w/ 24 hp. Kawasaki  
JD 455 Diesel hydro. riding lawn mower 60" deck 1194 hr.  
JD X 500 Multi-terrain hydro. riding lawn mower 54" deck 680 hr.  
Cub Cadet commercial M60 Tank ZTR mower w/ 31 hp. Kawasaki  
(2) Dixon Speed ZTR 42" cut lawn mowers - Ariens riding lawn mower  
TroyBilt high wheel push mower w/ bagger (like new)  
Dixon 42" ZTR mower converted to walk behind (good condition)  
Polaris SL900 Jet Ski w/ trailer - Bass Hunter 10' fiberglass fishing boat  
Manco 211cc go-cart - 2005 Polaris 400 ATV (for parts)  
Troy-Bilt Horse tiller 7 hp. Briggs PTO mod. (excellent condition)  
BCS model 205 tiller 5 hp. Briggs engine (excellent condition)  
Troy-Bilt Pony tiller 7 hp. Briggs electric start little use (like new)

**Skid Steer Attachments** (New) from *Kivel* attachments (1 yr. warranty) 2013 Challenger Series 5x8 trailer w/ fold down gate  
Assorted bale spikes - pallet forks & Buckets - (New) from Tuff Ox - tree puller - brush grapple

**Auctioneers Note:** *This is a partial listing as there were several items pending at time of print. We anticipate lots more than this bill reflects. We will possibly be selling with 2 rings part of the time. Accepting consignments until Thursday, March 21 (no household items!) Also loader and personnel there to assist on auction day. Make plans to attend!! Thanks, Randy*

## Shop Tools & Items from Jr. Elliott 660.626.3322

AC CA tractor wide front w/ belly mower (runs good)  
BDC Steam Cleaner power washer (electric)  
2 ton folding hydraulic engine hoist - Ridgid chopsaw  
All Pro 100000 BTU ready heater - Craftsman 1/2" drill  
3500 W 6.5 hp. engine Generator - CP 1" air impact  
Craftsman 33 gal. air compressor - several floor jacks  
PowerMate 3/4" impact - BlackHawk 3/4" drive sockets  
Acetylene torch set on cart w/ Victor cutting head  
Die Hard 200 amp battery charger - pipe wrenches  
Craftsman stackable tool chest full of tools *sold separately*  
Open end wrenches - Mostly Craftsman socket sets  
Lots of gear pullers - flaring kit - screw drivers - chisels  
Punches - drill bits etc. - log chains & binders  
Bottle jacks - 3'x4' welding table w/ vise - grease certs  
(2) 6' work benches (wired) - drop cords - air hoses  
6000 lb cable winch w/ remote (like new) - top links  
8N Ford tractor parts - misc. lights, parts, etc.  
(2) 11.2-38 tractor tires (new) - *Folks this is a very brief listing as we are selling the entire contents of Mr. Elliott's shop. We anticipate 2+ hayracks full of tools etc. (We will start the auction with these items at 9:00 AM)*

## Livestock & Fencing Equipment

16 ton Hog Slat bulk bin w/ boot - misc. wire  
4.5 ton bulk bin w/ slide - 8 ton bulk bin  
(4) Behlen poly feed bunks - 4.5 ton bulk bin  
(19) rolls Red Brand Ruthless barb wire (new)  
(27) rolls Red Brand Tex-Barb barb wire (new)  
(4) poly feed bunks - 150 + used T posts

## Pickup - Trailers

1996 Ford F150 4x4 reg. cab longbed 200xxx miles  
2016 American Hauler aluminum cargo trailer  
7x19 V nose front & rear ramp & side door - 5x8 tiltbed trailer

**High Auction Service LLC ~ Randy 660.216.0515 - Clair 660.341.1687 - Kris 660.342.8634**

for additional photos go to: **www.highauctionservice.com**

email: [highauction@marktwain.net](mailto:highauction@marktwain.net)

Terms: Cash or check with proper I.D. Not responsible in case of accidents or theft. Announcements day of sale take precedence over any advertising.



B E H E A L T H Y  
NATURALLY LLC



**NEED PAIN RELIEF?**  
Try our natural magnetic therapy for  
**FREE!**

*Benefits of Pulsed Electro Magnetic Frequency Therapy include:*

- Reduces pain & inflammation
- Helps sleep quality, blood pressure and cholesterol
  - Accelerates wound healing
  - Eases depression and anxiety

*And much more! Because it works on the cellular level, PEMF is one of the few treatments that offer to alleviate many different issues. FDA approved for specific applications.*

**641-954-9097**

**BeHealthyNaturallyIA.com**

Locations in Ottumwa and Bloomfield, inside Perfect Touch Wellness.

**HAY FOR SALE!**

250 big round bales of mixed grass hay, net wrapped & stored inside.

**660-216-0938**

We BUY used manufactured homes, single wides and double wides. Call 641-672-2344 (MCN)

**PRICE BUSTER HOME-**  
New arrival 2018 Velocity with 1,404 sf, three big bedrooms, open living area. Delivered anywhere in Iowa with central air, skirting for only \$69,900. CENTURY HOMES OF OSKALOOSA 1-641-672-2344. (MCN)

**GILBERT'S SALE YARD MACHINERY CONSIGNMENT SALE, APRIL 9, 9:00 A.M.** Advertising Deadline Mar. 23. No Small Items, Tires after Mar. 30. CONSIGN TODAY, 641-398-2218, Hwy 218, Floyd, IA, www.gilbertsaleyard.com (MCN)

TONY LAMA • ROCKY • DURANGO • MUCK • RED WING • KEY

BIG & TALL • NAME BELTS • TUX RENTALS



Business  
660-465-2511

Residence  
660-465-2204

JOHN S. & MAXINE COOK

WOLVERINE • HUSH PUPPIES • WALLS • WRANGLER • CARHARTT

Cool - Windy  
Warm - Rainy

**MARCH WEATHER**

Clothing all styles and sizes • 20% to 40% off

**FOOTWEAR** Men's • Women's • Kids  
Size 2 to 20  
Waterproof • Insulated

Muck • Dryshod • Irishsetters • Wolverine  
Tingley • Red Wing • Justin • Durango • Rocky  
**20 to 40% OFF and some close out prices!**

Jeans ~ Slacks ~ Shirts ~ Socks  
**1/2 price with the purchase of one at regular price**

Leather belts - Billfolds - Suspenders  
20% OFF

Blue • Striped • Duck Bibs  
Insulated & Regular 10% OFF

116 S. Market • E. side of Square Memphis, MO  
Ph. 660-465-2511 • Fax 660-465-8905  
Monday-Friday: 8-5 & Saturday: 8-9  
Short-Big-Tall • Narrow to Extra Wide • Tux Rentals  
Gift Certificates • Alterations

**HOURS**  
8 A.M.  
to  
5:00 P.M.  
DAILY EXCEPT  
SUNDAY

**Zimmerman's Store**  
Rutledge, MO  
660-883-5766

Our  
Everyday  
Low Prices!

50# Shamrock Idaho russet potatoes • \$10.75  
20# Colorado utility russet potatoes • \$4.99  
10# Green Giant #1 red potatoes • \$4.29 or 5# bag \$2.19

- 5# yellow American sliced cheese.....\$11.29
  - 5# white sliced.....\$11.35
  - 5# Shullsburg yellow American cheese.....\$11.35
  - 5# Shullsburg white sliced.....\$11.45
  - 6# block Muenster cheese.....\$2.16 lb.
  - 6# block Farmers cheese.....\$2.40 lb.
  - 6# block Brick cheese.....\$2.36 lb.
  - 4# Party loaf 4 cheese combo.....\$3.41 lb.
  - 4# variety loaf 4 cheese combo.....\$3.55 lb.
  - 12 oz. cheddar or cheddar cheese mixed curds.....\$3.75
- Many, many more kinds of cheese at affordable prices.

**FROZEN**

- 16 oz. Oscar Mayer wieners..... 49¢ or box of 12 \$4.79
- 16 oz. Oscar Mayer naturally hardwood smoked bacon.....\$1.75
- 8 lb. roll cooked salami..... 98¢ lb.
- 10 lb. breaded fried chicken breast.....\$15.00
- 10 lb. fine ground beef, 85% lean.....\$2.91 lb.
- 1 lb. fine ground beef.....\$2.25 lb.
- 2 lb. Canadian bacon • \$2.25 lb    5 lb. real bacon bits, \$7.06 lb

The Practical Produce cookbook. How to pick, prepare & preserve produce, \$12.95

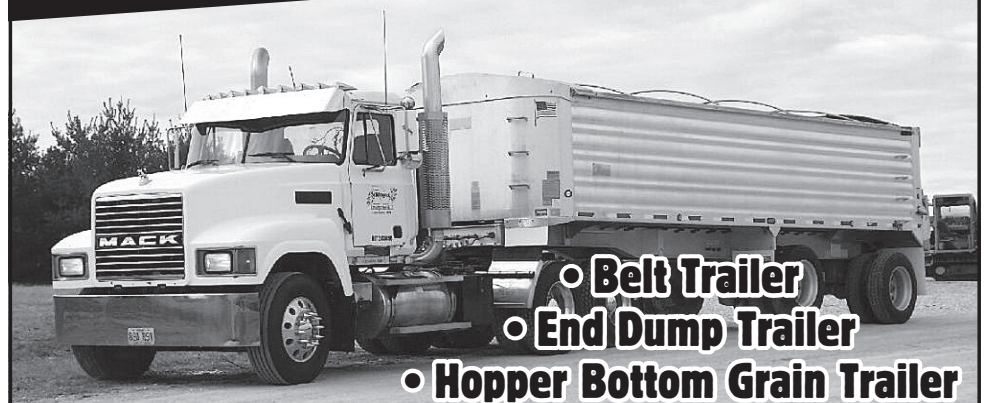
4 pc. measuring cup • \$1.19

108" printed quilt backing, various prints, colors & prices.

1/2 yard pre-cut fabric, \$2.98 each

**DRIVE A LITTLE & SAVE A LOT**

**YOU NAME IT WE HAUL IT!**



- Belt Trailer
- End Dump Trailer
- Hopper Bottom Grain Trailer

**COMPETITIVE RATES!**

**Rock - Lime - Grain - Fertilizer  
Wide Loads - Machinery - Etc.**

**NAGEL ENTERPRISES, LLC**

**660-216-0303**

**Contact Me For Wet Seed!**



**95**

*Shhhhhhhhhh it's a  
Surprise Party*  
Celebrating  
*Edith May's*  
**95th  
Birthday**  
Saturday,  
March 10<sup>th</sup>



2:00 - 6:00 pm  
Bloomfield Country Club  
No Gifts Please  
Cards Appreciated

**YES, WE HAVE YOUR COLOR!**

**Tuxedo Prom Excitement!**  
Modern fits,  
Latest styles, bold  
colors - Stand out  
from the rest!

Stop in today to pick up your coupon for our  
**2018 PROM SPECIALS!**  
• Free boutineer with a tux rental • \$10 off your tux rental

**Making Memories**  
Flowers & Gifts

**108 S. Madison, Bloomfield • 641-664-1600**

**Post & Pole Frame Buildings**



**Specializing in:**  
Post Frame Buildings (Up to 100' Wide Clear Span) • Agricultural  
Commercial • Residential • Equine Heat Formed Metal Roofing & Siding  
With 50 Year Warranty

**Quality Workmanship • Best Quality Material**

**Stop In And See Us At Our Open House On  
Thursday, March 29th**

**Free Refreshments  
Lunch 11 am - 2 pm  
Public Is Welcome!**



2 miles N. of Drakesville on pavement  
888-371-4710 • 641-722-3505  
17549 Husky Trail, Drakesville, IA 52552



**BLOOMFIELD STREETSCAPE WAR CONTINUES...**

*The war about streetscape continues in Bloomfield. The voters have been bombarded by articles and editorials in the local newspaper extolling how worthy and wonderful this project is. At the same time this same paper has ridiculed and minimized the opposing viewpoint. Even with the power of the press biased coverage, the voters realized spending \$2 million to \$3 million to get a \$600,000 grant is foolish and needs to stop so they elected a new mayor and two new councilmen. Now the streetscape supporters are trying to put the loss of this grant on the new council members for not falling in line with this flawed plan when it is they themselves who put the city in the position by accepting a grant for a project that was flawed and never worthy from the start. They have even gotten the Area XV Regional Planning executive director to attend a Bloomfield council meeting and tell them if they return this grant they will likely not receive any new grants in the future. This sound like extortion and bullying at its worst.*

*At their last ditch effort to continue this wasteful plan, they held a meeting on Feb. 27 to "enlighten" the public about how they were tricked in the recent election. This meeting was nothing more than another publicity stunt to try and brow-beat the new mayor and councilmen to get on board and renege on their campaign pledge to stop streetscape. These new council members are good people and deserve the voters' support to resist this costly project when we have greater needs.*

**Paid for by The Concerned Citizens Group  
Treasurer Mike Fitzgerald**



**Bonless skinless premium pollock fillets, 10 lbs.**



**\$19.99**

**Oscar Mayer ham & cheese loaf, 8 oz. pkg**



**25¢ each or \$2.00 9 ct. case**

**Spiral frozen sliced bone-in Frontier ham**



**99¢ a lb.**

**Sara Lee New York style cheesecake, 30 oz.**



**\$2.99**

**Silk almond milk, 2 gal. bag**



**\$2.99**

**Kraft cheese spread, approx. 7.5 lbs.**



**\$1.79 lb or \$1.49 lb for 45 lb. block**

**Soft salsa cream cheese spread, 8 oz.**



**\$1.00**

**Fresh grape tomatoes, 1 pt.**



**99¢**

**Sweet mini peppers, 1 lb. bag**



**\$1.39 each**

**Check out our nice selection of Easter gummy candies!**



**YUMMY!**

**Bruce's sweet potato pie filling, 29 oz.**



**70¢**

**Old El Paso whole wheat taco boats, 8 ct., 6.7 oz.**



**25¢**

**Gummy fruit slices, 10 oz. pkg**



**50¢ each**

**Pillsbury Grands southern homestyle biscuits, 16.3 oz.**



**50¢ each**



**Mon. - Sat. 8:30am - 5:00pm VM: 641-664-1187 19686 Hwy. 2, Approx 2 miles west of Bloomfield**

**Sale good Wednesday, March 7th through Tuesday, March 13th.**

**GINGERICH STOVES and PLUMBING L.L.C.**

**Stoves & Furnaces**  
WOOD • COAL  
PELLET/CORN • GAS

- Many brands, sizes & styles to choose from
- Chimney SS & Blk. Stovepipe
- Plumbing Supplies

**19091 180th St • Drakesville, IA • VM 641-664-2814**  
3/4 miles east of Drakesville, south side

**MULTI FAMILY GARAGE SALE:** Fri. & Sat., March 9th & 10th at 29738 STATE HWY 15. Alvin Burkholder. Approx. 1 mile north of Greensburg. Home décor, household items, girl an boy baby cloths, baby items, dresses, lots of misc.

**FOR SALE**

- Custom Built Storage Sheds
- Portable Animal Shelters

**ALL SIZES AVAILABLE Come Take a Look!**

**Willie Petersheim Milton, IA • 641-656-4476 Leave Message**

**FOR SALE:** Garden tillers, rear tine, front tine and 36" PTO pull type, Troy Built, BCS and many others. DR brush cutters and others. Kahoka, MO. PH: 660-216-1809 19

**FOR SALE:** Stewart Oster model 510A, 3" head, \$85; Stevens model 94, 410 GA, \$165; Montgomery Ward 40,000 BTU heater, \$65; John Deere deisel 820 Dyersville, 1982, Nov. 6th, \$40; electric Hawaiian guitar, New Yorker, \$250 OBO; 1950 Copy R. DEK, heavy duty commercial 5000 gen., \$450 OBO; 16.16.5 8 bolt truck wheels, \$15 each; F250 Ford, 4 spd transmission & transfercase, \$150. PH: 660-216-3715

**FOR SALE:** 30 Red Angus 1st calf heifer pairs. All Red calves by side. PH. 660-342-6310 or 660-216-6683. 12

**6 Family Garage Sale** March 9&10 Friday 8-5 & Sat. 8-3 at Raymond Burkholder Jr. 48967 St Hwy 11 Baring Swivel Easy Chair, Oak Clothes Tree, doll house & accessories, electric baby bouncer, Cal. king bed headboard & mattress, home decor, mens big & tall shirts, swimmer fabric, noodle maker, booster seat, baby bathtub, lots of clothing mens, womens, childrens, baby. **Something for everyone!**

**HAY FOR SALE:** 25- big round bales, approx. 1500 lbs. each, stored inside. 50- big round bales, approx. 1500 lbs. each, stored outside. Approx. 10, 2nd cutting alfalfa bales. PH: 641-777-6187

**FOR SALE:** Meridian 220BST seed tender. Very little use, electric start, \$8,500. PH. 641-656-4956.

**FOR SALE:** Guineas, \$10 each. PH: 660-216-3864 10

Want to purchase minerals and other oil/gas interests. Send details to: P.O. Box 13557, Denver CO 80201(MCN)

**FOR SALE**

**Driveway Fabric Rolls**  
Commercial, Heavy Duty, Designed for Heavy Traffic

**12' 5" Wide  
432' Long  
\$370/ roll**

**660-216-0938**

**Got concrete to pour? Check with us for great deals on rebar!**



**We Stock**  
**3/8" rebar**  
**1/2" rebar**  
**5/8" rebar**

**Cantril Lumber & Hardware**  
**319-397-2351 • 319-397-2354**  
**Mon-Fri 7-5 & Sat 7-12**

**PRIDE LIFT CHAIRS**  
**The World's #1 Lift Chair**

**Years of experience in manufacturing. Backed by up to a 3 year warranty!**



**Try our rent to own program!**

- Sit with security
- Stand with confidence
- Finger tip controls
- Economically Priced

Medicare & Insurance Billing

**Friendly Service**

**SOUTHSIDE DRUG**  
337 Church St. • Ottumwa, IA  
Hours: Mon.-Sat. 8-8 • Sun. 9-5  
**641-682-3467**






**Spring Forward Sale!**  
Daylight Savings time begins March 11

**\$1.69** per lb.  
**Tilapia Fish Fillets**

**\$1.29** per lb.  
**Country Fried Chicken Fritter PATTIES**

**\$2.99** 24 pack 45 oz.  
**Jumbo ANGUS BEEF FRANKS**

**\$19.99** 50# bag  
**Diamond Original Dog Food**

**29¢** per lb.  
**Fresh Cabbage**

**\$1.75** 24 oz.  
**Prairie Farms Cottage CHEESE**

**2/\$1** 8 oz.  
**Philadelphia® 1/3 less Fat Cream CHEESE**

**15% OFF SALE**  
**BUTCHER BOY® Coconut Oil**

**\$1.69** per lb.  
**Tray Pack Ground Beef**

**\$3.99** regular \$8.99  
**Makes 34 Quarts**  
**COUNTRY TIME® Lemonade Drink Mix**

**Bulk Garden Seeds**

**Seed Potatoes**

**Onion Sets**  
**Onion Plants**

**25# Bag \$15.95** Regular \$27.95  
**99¢** per lb.  
**Roasted & Salted In Shell Peanuts**

**\$11.75** 12 pack  
**Gold Peak TEA**

**2/\$5** Family Size  
**Lay's Potato Chips**

**2/\$1** 16 oz.  
**• Ham & Cheese Loaf**  
**• Thick Cut Bologna**

**DUTCHMAN'S STORE** Division Street CANTRIL, IA (319) 397 2322 SALE PRICES March 7-13, 2018

STORE HOURS • Weekdays, 8a.m. - 6 p.m. • Saturday 8a.m. - 5 p.m. • Sunday Closed

View our specials online - [www.DutchmansStore.com](http://www.DutchmansStore.com)

FOR SALE: 75 registered Angus 18-month-old bulls. Feed efficiency tested and guaranteed. Will keep till June. All weights available. Angus bulls with a little more frame. WernerFamilyAngus.com, 641-344-5059, Diagonal, IA.

TRI-COUNTY SHOPPER CLASSIFIED AD DEADLINE IS FRIDAY, 5 P.M. EVERY WEEK. Classified ads must be paid for in advance. Mail your ad to Tri-County Shopper, P.O. Box 168 Bloomfield, IA. 52537.

FOR SALE: 2005 Chevy Equinox, auto, sunroof, 159,271 miles, PW, PL, white, \$2,500. PH: 641-919-8615 12

RELOCATE ED: PH: 641-208-4289 12

FOR SALE: 2002 Ford Ranger extended cab, 2WD, V6 5 speed with topper, 123K miles, \$4,850. PH. 641-656-4956. 12

FOR SALE: 2004 Silverado ext. cab, 4x4, Linex bed, truxedo cover, Bose sound system, 144K miles, clean, runs great, \$7,900. PH: 641-664-1966 or 641-242-0144 12

FOR SALE: 2012 Tahoe LT, 4x4, new tires & wheels, leather, 139K miles, sharp, looks & drives like new, \$19,500. PH: 641-664-1966 or 641-242-0144 12

**Beechy Concrete Const.**  
We do all kinds of flatwork.

**Specializing in:**

- \* Polebarn floors
- \* Driveways
- \* Feedlots
- \* Parking Lots
- \* Radiant in-floor heat installation

Also poured walls for basements, etc.

**Over 20 Years Experience**

**Quality Work Is Our Top Priority**

Call William Beechy • 641-722-3061  
Mobile • 641-777-3948

10% OFF

10% off all in stock Tupperware through March 10th

Tupperware

Deli Specials

Oven Roasted Turkey Breast \$3.99 lb.  
Muenster Cheese \$2.39 lb.

Large selection women's Sweaters. **New styles!**

**MEMPHIS MERCANTILE**  
EST 2016

South Side of the Square in Memphis  
660-465-2345

Monday - Friday: 8:00 AM to 5:30 PM • Saturday • 8:00 AM to 4:00 PM / Sunday CLOSED

**MEMPHIS MERCANTILE**  
EST 2010

115 E. Monroe • Memphis, MO  
660-465-2102

Check us out online - [memphismercantilemo.com](http://memphismercantilemo.com)



# Ken's Garage

## Trenching, Excavation, Mechanical



- Waterlines
- Hydrants
- Livestock Waters
- Repair
- Excavation
- Drainage Pipe & Tile

### Kenneth Richardson 641-208-7980

Licensed & Insured

# CR CATTLE CO



Red Angus

Red Angus Composite Bulls



Yearlings and 2 year olds available

Bulls are developed for longevity

Bulls are gentle and safe to handle

Bulls will be fertility tested and have all vaccinations

Select your bull now and I will keep until May 1

**Jennifer Gardner, Selma, Iowa  
641-895-4116**

**OUR SUCCESS DEPENDS ON YOURS.**

GUN SHOW - Pocahontas, IA - March 17 & 18, 2018. Sat. 9-5; Sun 9-3, Pocahontas County Expo, 1 Block East of Courthouse. Food on Site. Buy \* Sell\* Trade Contact Chad Boyson 712-358-1051. (MCN)

OXYGEN - Anytime. Anywhere. No tanks to refill. No deliveries. The All-New Inogen One G4 is only 2.8 pounds! FAA approved! FREE info kit. Call 844-550-4772 (MCN)

TRAILER SALES! Skidloader trailer 14,000# with LESS LOAD ANGLE! 4' dovetail, 4' full width spring assist ramps, will fold flat on trailer. 10,000# plus payload, 16' 18' + 20' FREE 10 ply SPARE. Triton 2-place enclose snowmobile trailers; Mission 4-place open snowmobile trailers; 2018 6'X12' V-nose, ramp door \$2,780.00. 16,000# Gravity tilt bumper pull trailer. 515-972-4554 Info & prices: www.FortDodgeTrailerWorld.com (MCN)

ALL THINGS BASEMENT-TY! Basement Systems Inc. Call us for all of your basement needs! Waterproofing, Finishing, Structural Repairs, Humidity and Mold Control. FREE ESTIMATES! Call 1-800-640-8195 (MCN)

**MAST VINYL WINDOWS**  
THERMO-PRO WINDOWS  
Custom Size Is Our Specialty  
Professional Installation Available  
THERMATRU DOORS  
**FREE ESTIMATES**  
22172 Hwy. 63  
Bloomfield, IA 52537  
**800-206-9949**

A PLACE FOR MOM. The nation's largest senior living referral service. Contact our trusted, local experts today! Our service is FREE/ no obligation. CALL 1-855-811-8392 (MCN)

Paying too much for car insurance? Not sure? Want better coverage? Call now for a free quote and learn more today! 855-417-7382 (MCN)

## CALVING TIME IS HERE

STOP AND CHECK OUT OUR HELPFUL CALVING SUPPLIES

**SIGUX STEEL COMPANY**  
Calving Pens

- Unimilk • Iodine • O.B. Gloves
- Latex Gloves • O.B. Lube
- Calf Claim • Oral Calf Feeders
- Nursing Bottles • Kick Start
- Uterin Bolus • O.B. Straps & Chains

Calf Catchers  
Blankets  
Colostrum

We carry  
**Cobett Waterers**

**FM For-Most Livestock Equipment**  
Calving Pens

**FM For-Most Livestock Equipment**  
Cattle Chutes  
Various Sizes



Ready for spring?  
Tillage Equipment  
Sweeps • Sickle Sections  
Disc Blades • Chisel Spikes

Custom Hydraulic Hoses to Your Specifications

# Hamilton Produce Co.

105 W. Franklin • Bloomfield, IA 52537

641-664-2459 or 1-800-469-7749



**Bill:** Has been all over town, trying to find the right part at the right price. Still looking for the parts he needs.

# OR

**Dan:** Went to Spilman's first! Done with his parts shopping in one stop! Got a GREAT deal!

Be Smart Like Dan! Go To....

# SPILMAN AUTO PARTS

20311 Old Hwy. 2 •  
PO Box 31 • Bloomfield  
641-664-2463  
1-800-477-1367  
M-F 8AM-5PM  
Sat. 8AM-12Noon  
www.SpilmanAuto.com



# NOTICE:

## We will be CLOSED

### Friday, March 9th, 2018

*To attend our annual MFCP Spring Conference & Awards Banquet*

## Deadline for all classified ads will be Monday, March 12th @ 10 a.m.

# S

## Tri-County

# SHOPPER

P.O. Box 168  
Bloomfield, IA 52537  
641-664-1333 or  
Fax: 641-664-3761

## Tri-County SHOPPER

## Personal Classified Ads

PH: (641) 664-1333  
shopper@netins.net  
tri-countyshopper.com

**1<sup>ST</sup> WEEK** Only! **\$9<sup>25</sup>**   
 **2<sup>ND</sup> WEEK** + \$1<sup>00</sup> **\$10<sup>25</sup>**   
 **3<sup>RD</sup> WEEK** Wow! **FREE**

Fill in the form below as you want your ad to appear. We must receive this by Friday at 5:00 PM to appear in the following week's Shopper. There will be an additional 10¢ charged for each word after 20.  
**BUSINESS EXEMPT • WANT ADS ARE CHECK, CASH, OR CREDIT CARD**

										5
										10
										15
										20
1 WK - \$9.35	3 WK - \$10.35	1 WK - \$9.45	3 WK - \$10.45	1 WK - \$9.55	3 WK - \$10.55	1 WK - \$9.65	3 WK - \$10.65	1 WK - \$9.75	3 WK - \$10.75	25
1 WK - \$9.85	3 WK - \$10.85	1 WK - \$9.95	3 WK - \$10.95	1 WK - \$10.05	3 WK - \$11.05	1 WK - \$10.15	3 WK - \$11.15	1 WK - \$10.25	3 WK - \$11.25	30
1 WK - \$10.35	3 WK - \$11.35	1 WK - \$10.45	3 WK - \$11.45	1 WK - \$10.55	3 WK - \$11.55	1 WK - \$10.65	3 WK - \$11.65	1 WK - \$10.75	3 WK - \$11.75	35
1 WK - \$10.85	3 WK - \$11.85	1 WK - \$10.95	3 WK - \$11.95	1 WK - \$11.05	3 WK - \$12.05	1 WK - \$11.15	3 WK - \$12.15	1 WK - \$11.25	3 WK - \$12.25	40
1 WK - \$11.35	3 WK - \$12.35	1 WK - \$11.45	3 WK - \$12.45	1 WK - \$11.55	3 WK - \$12.55	1 WK - \$11.65	3 WK - \$12.65	1 WK - \$11.75	3 WK - \$12.75	45

Name: \_\_\_\_\_ Address: \_\_\_\_\_  
 City: \_\_\_\_\_ State: \_\_\_\_\_ Zip: \_\_\_\_\_ Phone: \_\_\_\_\_ Run my ad \_\_\_\_\_ times.



Mail your completed ad form & payment to:

Tri-County Shopper • P.O. Box 168 • Bloomfield, IA 52537





Ralco brings livestock nutrition full circle.

- Focused on Gut Health
- Formulated with Exclusive Technologies
- Customer-Focused Solutions • Research Proven

MIX 30  
THE HIGH ENERGY LIQUID FEED

DESIGNED FOR USE IN COW-CALF OPERATIONS, FEEDLOTS & GRASS FED SITUATIONS

MAXIMIZE YOUR PROFITS  
FEED MIX 30 TODAY!

16% PROTEIN - 10% FAT - THE ECONOMIC ALTERNATIVE  
PROVEN INCREASE IN CONCEPTION • SHOWN TO INCREASE CALF SURVIVABILITY

Harris Distributing

14219 231st. St.  
Bloomfield, IA  
641-929-3379  
1-800-727-5589

Book your & spring roofing projects NOW!

- Metal Roofing
- Pole Buildings
- Garages
- Re-tinning

WE MAKE OLD BARN  
LOOK NEW AGAIN!

New Star Construction

Aaron Yoder  
641-664-2753

**OBERHOLTZER**  
**TRAILER REPAIR**

*Specializing in Aluminum Grain Trailers  
Repair & Rebuild*

3 miles east of Gorin, Mo. on Route U  
**660-282-1012**

NEW AUTHORS WANTED!  
Page Publishing will help you self-publish your own book. FREE author submission kit! Limited offer! Why wait? Call now: 855-623-8796 (MCN)

CLASS A TRUCK DRIVER. North Central region. Earn up to \$70,000. No touch freight. Good benefits. All mile paid. Nice equipment. 2 years experience needed. Call 507-437-9905. Apply on-line WWW.MCFGTL.COM (MCN)

MEET SINGLES RIGHT NOW! No paid operators, just real people like you. Browse greetings, exchange messages and connect live. Try it free. Call now: 800-357-4970 (MCN)

CASH FOR CARS: We Buy Any Condition Vehicle, 2002 and Newer. Competitive Offer! Nationwide FREE Pick Up! Call Now For a Free Quote! 888-366-5659! (MCN)

Bradley Insurance Agency

Specializing in crop insurance.

Independent Agency Serving:

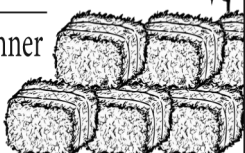
Crop Risk Services, Rain & Hail L.L.C & Great American

Insure with us! Prompt & Friendly Customer Service!

Owner/Agent: Tonya Bradley - Fleshner  
Memphis, MO • (660) 465-2764  
Serving Missouri & Iowa

Do you have the right protection for your spring crops?

Don't Miss The Deadline March 15th!



The Car Spa

Auto Body Shop  
Auto Glass  
Automotive Restoration  
Hand Detailing Service

KARR COLLISION CENTER & AUTO DETAILING  
Shawn Scott, Owner  
701 Karr Ave. • Bloomfield, IA  
641-664-1024



*Now Open!*

**Lilac Hill GREENHOUSE**  
660-342-9554

Hours:  
Monday - Saturday • 9-5  
Closed Sundays  
Hwy. 136  
2 miles W. of Downing

Bulk seeds & package seeds  
Onion sets & seed potatoes

Stop in and see our new store!

Large variety of garden supplies & decorations!

WHAT'S NEW THIS YEAR?  
Sign up for our direct email list to get all the updates on  
**SPECIALS & CLASSES**  
Email [lilachillgreenhouse@gmail.com](mailto:lilachillgreenhouse@gmail.com) today to get signed up!





# Need a NEW trailer?



Stock #	Yr.	Length	Description	Price
30301	2018	30'	Black Tandem Duals Mega Ramps	\$8,400
30004	2018	32'	Grey, 2 Ramps, Center Pop Up, Tandem Duals	\$8,400
30005	2018	25'	Grey, 2 Ramps, Center Pop Up, Tandem Duals	\$7,800
30069	2018	25'	Grey, 2 Ramps, Center Pop Up, Tandem Duals	\$7,800
30447	2017	30'	Black, 3 Ramps, Tandem Duals	\$8,000
30446	2017	25'	Black, 3 Ramps, Tandem Duals	\$7,600
30405	2016	25'	Grey, 2 Ramps, Center Pop Up, 14,000 #	\$5,400
30353	2017	14'	Dump, 14,000 #	\$6,500
30299	2017	12'	Dump, 14,000 #	\$6,300

## Slayton Polaris

**BLOOMFIELD, IA**  
 8 mi. S & W from Pulaski or 6 mi. W of Memphis then 13 mi. N on Route B  
**660-328-6627**

**FOR SALE:** Fox Terrier puppies, 6 weeks old, wormed. \$175 each.  
 VM: 641-664-1964, ext. 5 12

**FOR SALE:** 2 bedroom, 1 bath home in Downing, MO. \$7,000.  
 PH. 660-349-5015. 12

**FOR SALE:** Basset Hounds pups, 8 wks old, shots, APRI registered, wormed, males & females, tri-color, red & white, lemon & white, \$350.  
 PH: 641-919-8615 12

**FOR SALE:** Diesel engine, 3 cylinder Kubota model #D722.  
 PH: 660-216-1710 11

**SAWMILL FOR SALE:** 52 in circular "HELLE" sawmill, electric over hydraulic control, live deck & conveyer belt off load.  
 PH: 660-988-8175 11

**FOR SALE:** AKC registered German Shepherd puppies. Up to date on all shots & wormed. Ready to go now, \$550.  
 PH: 641-777-1627 11

**FOR SALE:** Package Honey Bees, 2 and 3 LB. with Italian or Carniolan queen, pick up in early April. \$40 deposit per package.  
 PH: 641-682-8333 or 641-799-9266 10

**FOR SALE:** Seasoned firewood. Red Elm & Cherry, \$60/pickup load.  
 RJ Lumber  
 PH: 641-722-3348 TFN

**BLOOMFIELD MINI STORAGE.** Serving you from 2 safe, convenient locations.  
 PH. 641-664-1066. TF

### HOOVER RENTAL

Manlifts • Telehandlers • Minihoes  
 Skidloaders & Skidloader Attachments

**RENT BY**  
 Hour • Day • Week • Month • Long Term

DOZER NOW AVAILABLE FOR RENT

Call us for your construction needs!  
**660-216-8230**  
 Mt. Sterling, Iowa  
 2 miles East of Cantril on Hwy 2

**FOR SALE:** 18' harrow gator, \$900; 2 bottom 3pt. Dearborn plow, \$300.  
 PH: 319-750-1968 12

**FOR SALE:** Loader for JD 3020. 7' hydraulic bucket, \$1,100.  
 PH. 641-656-4946. 12

**Southfork** MOTEL  
 JUNCTION OF HWY 2 & 63  
 BLOOMFIELD, IA

## Help Wanted Immediately!

### Maids & Front Desk Clerk

# SIDWELL SEEDS

Queen City, MO

660-766-2737 • 660-216-6380

Your complete seed headquarters!

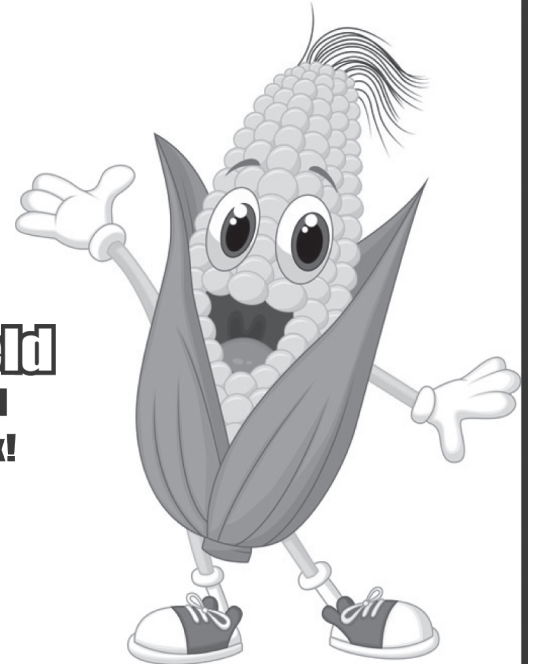
seed corn • seed beans • small seed



Step up your yield

with Refuge Advanced powered by SmartStax!

Makes a significant difference in root protection and yield.



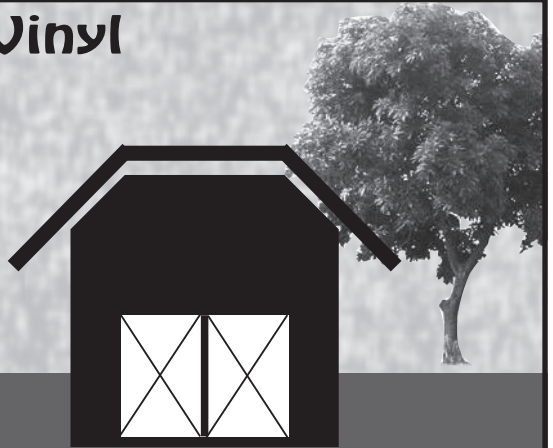
REFUGE ADVANCED  
 powered by SmartStax



## Custom Built, Painted and Vinyl Buildings & Sheds

~David W. Schrock~

# Hillview MINI BARNs



15383 180th Street  
 Drakesville, IA 52552


641.664.2842 U.M.

8'x12' Gable • \$1,587  
 10'x16' Gable • \$2,300  
 12'x24' Gable • \$3,692

10'x16' High Barn • \$2,612  
 10'x12' High Barn • \$2,253  
**Free Delivery Within 30 miles!**



# The Mighty Mosquito



**She's TOUGH**

Survives and thrives in a variety of climates and environments.

**She's MOBILE**

Lives indoors and outdoors. Willing to relocate.

Heartworms spread when a mosquito carrying larvae bites your unprotected pet.

**She's HUNGRY**

Drinks 3x her weight in blood, spreading heartworm larvae as she feeds.

**She's SNEAKY**

Mosquito "season" is impossible to predict. Protect your pets from heartworms year-round.

**PROTECT YOUR PET FROM HEARTWORM 12 MONTHS A YEAR. TEST FOR HEARTWORM EVERY 12 MONTHS.** [heartwormsociety.org](http://heartwormsociety.org)

Now is the time to be checking your canine friends for heartworms and tick borne diseases. Annual Flea, tick and heartworm sale is going on now through April 30, 2018. **10% off of all full boxes.**

## Clearview Animal Hospital P.C.

601 Weaver Rd. • 641-664-2399 • Bloomfield  
Dr. David Rasmussen • Dr. Nancy Houglund • Dr. Marilyn Brown • Dr. Jon Logterman

## March Kent Mineral Special!



# BUY 9 GET 1 FREE!





Savings on Breeder Aide & Fly Control!

---

HP Calf Creep Booking Coming Soon!

**Meet our new Kent Feed Specialist, Curt Schoonover.**

Come into the feed store and discuss the Mineral specials and feed options with him!



Bloomfield • Wed., March 14th, 11-2



Blakesburg • Thurs., March 15th, 11-2

## TROY ELEVATOR, INC.

Bloomfield Location.....641-664-1393  
Blakesburg Location.....641-938-2828  
Troy Location.....641-675-3375  
[www.kentfeeds.com](http://www.kentfeeds.com) • 1-866-647-1212

**EST. 1993**

## Little Farms SHOW PIGS

LFI

**Eugene Little**

### Little Farms Show Pigs

Purebred and Crossbred

1531 Long St.  
Murray, IA 50174  
641-414-2224  
[littlefarmsshowpigs@yahoo.com](mailto:littlefarmsshowpigs@yahoo.com)  
[www.littlefarmsshowpigs.com](http://www.littlefarmsshowpigs.com)



**MILITARY ITEMS WANTED BY LOCAL COLLECTOR:** Patches, medals, uniforms, hats, helmets, etc. Always buying. Mark Warren, PH. 641-664-3705. [mpwarren@netins.net](mailto:mpwarren@netins.net)

**Winter is HERE!**

Is Your Boat & Camper Ready For Snow?

Call or stop in today to see how we can help you get your toys winterized!




## Whitney RV & Marine

Scott and Jennifer Poole: Owners  
**641-684-8284**  
9418 151st Ave., Ottumwa  
Monday-Friday: 8:30 AM - 5:30 PM  
Saturday: 8 AM - 1 PM

**NOTICE, DON LUNSFORD HAULING** has sold the business and wants to thank everyone for all the years, for your loyalty. **MY SON, KEITH LUNSFORD** has bought the business for your hauling needs. Call Keith at 641-777-4235 or 641-684-8068.

11

**FOR SALE:** 50 registered Angus yearling bulls. Feed efficiency tested and guaranteed. Will keep till June. All weights available. Angus bulls with a little more frame. [WernerFamilyAngus.com](http://WernerFamilyAngus.com), 641-344-5059, Diagonal, IA.

**FOR SALE:** Talon Crest Farms Angus Registered Angus bulls. High quality hand fed yearling bulls with show and performance pedigrees. Guaranteed. Contact Larry @ 515-493-9110 or e-mail at [larry@taloncrestfarms.com](mailto:larry@taloncrestfarms.com). 12

Garages • Pole Barns Commercial Free Estimates

## LAN-DOW BUILDINGS

We Stock a Complete Line of Building Materials

### Lancaster Lumber, Inc.

Toll Free 800-424-5071 Fax 660-457-3133

Complete Buildings or Packages Available

Hardware • Plumbing • Electrical • Paint  
500 Green Street • Lancaster, MO 63548

## Fox Valley Welding

No matter what size the project customer satisfaction is always our first priority.

Tig & Aluminum • Welding • Millwork • Lathe • New Steel • Sprockets • Roller Chain  
Barings • PTO Parts • Fabricating • CNC Machining • CNC Cutting

**Hours: M-F 8-5:30 • 641-656-4684 • 12190 East Hwy. 2 • Milton, IA**

**HAY FOR SALE:** Silage wet wrapped. 2 years old. Round bales of alfalfa & brome. PH. 641-208-5966 10



### YODER EQUIPMENT

BLOOMFIELD, IOWA

## GEO STAR & PRIDE OF THE FARM

ENERGY FREE WATERS


Extra Heavy  
10 Gauge Bale Rings

- CONTINUOUS FENCING
- LARGE VARIETY OF FARM GATES

19887 Jade Ave  
2 1/2 Miles W of Bloomfield  
V.M. 641-664-2797

## MARCH SPRING SAVINGS!

- Wood Pellets, \$6.50 a bag
- Safe Guard Blocks, \$40.00
- Grime Stoppers, \$3.00
- E Flow Seed Lubricant, Big \$21.00 / Sm. \$6.00
- Hi Mag Mineral, \$35.00 HWT
  - Salt Blocks, \$5.50
  - Sulphur Blocks, \$6.00
  - Electric Fence Post, 25¢ off per post
- Scour Guard Tubs, \$100
- Mineral Blocks, \$7.75
- Grill, 2 Burner, \$94.00
- Smoker, \$350.00 (reg. \$382)
- Lamb Milk Replacer, \$51.25 a bag



**MFA**  
AGRI SERVICES  
FARM & HOME

PO Box 253  
Memphis, MO  
63555

## 660-465-2603



# Exceptional NO-RESERVE RETIREMENT AUCTION

## WED., MARCH 21<sup>ST</sup> AT 10:00 A.M.

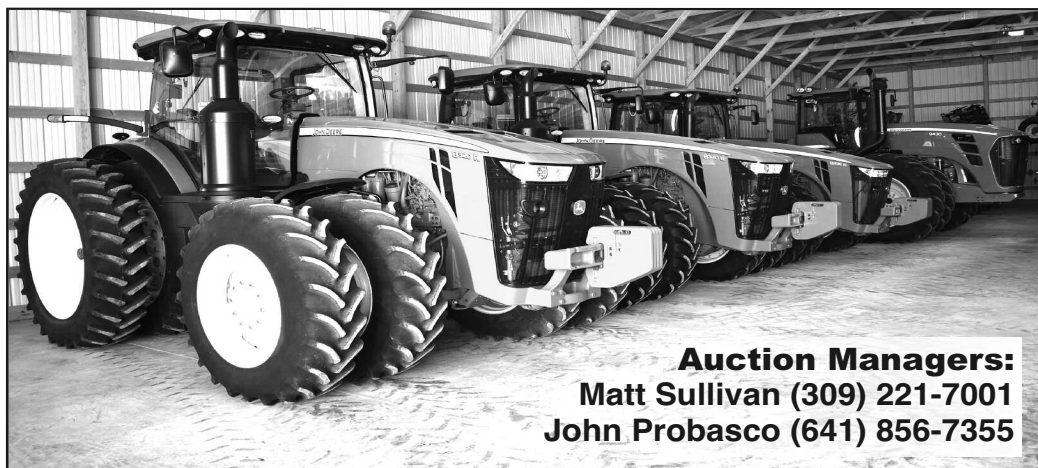
### AUCTION TO BE HELD AT THE FARM NEAR BLOOMFIELD, IOWA

From Bloomfield, IA, take Hwy. 2 east approximately 2½ miles to Nuthatch Ave., turn left or north on Nuthatch Ave. for a short distance, turn right or east on Otter Trail for ½ mile to the auction. Be watching for pre-sale directional signs.

#### EQUIPMENT QUESTIONS:

Doug Berryman . . . (641) 777-6456

Kent Berryman . . . (641) 208-6105



**Auction Managers:**  
Matt Sullivan (309) 221-7001  
John Probasco (641) 856-7355



**TRACTORS:** '14 JD 8320R MFWD tractor, ILS front suspension, PS trans., 5 hyd. outlets, 60 GPM hyd. pump, 1000 PTO, 480/80R50 rear tires and duals, 420/85R34 front tires and duals, front and rear fenders, front and rear weights, LED lighting, leather trim, Premium CommandView II cab, 10" color touch display, premium radio, refrigerator, 679 hours, SN 1RW8320RAEP094637 – Powergard Warranty until Sept. 2019; '14 JD 8320R MFWD tractor, ILS front suspension, PS trans., 5 hyd. outlets, 60 GPM hyd. pump, 1000 PTO, 480/80R50 rear tires and duals, 420/85R34 front tires and duals, front and rear fenders, front and rear weights, LED lighting, leather trim, Premium CommandView II cab, 10" color touch display, premium radio, refrigerator, 567 hours, SN 1RW8320RPEP094596 – Powergard Warranty until Aug. 2019; '11 JD 8335R MFWD tractor, ILS front suspension, PS trans., 4 hyd. outlets, 60 GPM hyd. pump, 1000 PTO, 480/80R50 rear tires and duals, 420/85R34 front tires and duals, front and rear fenders, front and rear weights, HID lighting, leather trim, Premium CommandView II cab, 7" color touch display, premium radio, 795 hours, SN 1RW8335RVBP045804; '10 JD 9430 4wd tractor, PS trans., 4 hyd. outlets, 48 GPM hyd. pump, 1000 PTO, 710/70R42 tires and duals, front and rear diff. lock, weights, HID lighting, leather trim, Deluxe cab, Deluxe comfort package, 877 hours, SN 1RW9430PVAP017636; '07 JD 6430 Premium MFWD tractor, cab, PowerQuad Plus 16 spd. trans. with left hand reverser, 3 hyd. outlets, 540/1000 PTO, 460/85R38 rear tires, 420/85R24 front tires, rear wheel weights, front and rear fenders, buddy seat, hood guard, joystick, 778 hours, SN L06430H530447, sells complete with JD 673 self-leveling loader, global hookups and 85" heavy duty material bucket.

**COMBINE & HEADS:** '14 JD S660 4wd combine, 3 spd. elec. shift trans., Contour Master, Hi Torque feeder house drive, TriStream rotor, round bar concave, deep tooth chaffer, 22.5' high rate unload auger, PowerFold bin with extension, chopper, 520/85R42 drive tires and duals, 750/65R26 steer tires, HID lighting, Premium cab, 7" color touch screen, 657 eng. hours/526 sep. hours, SN 1H0S660STE0765268; '13 JD 635FD 35' flex draper head, dual knife drive, hyd. fore and aft, single point hookup, stubble lights, SN 1H0635FD0755513; '12 JD 608C 8 row 30" corn head, RowSense sensors, hyd. deck plates, knife rolls, single point hookup, stubble lights, SN 1H0608CLCX746705; P-K 35' head cart, tandem rear axle, front dolly wheels; Harvest Hand 25' head cart, single rear axle, front dolly wheels.

**FARM EQUIPMENT:** '14 JD 1790 CCS 16/31 planter, vacuum, hyd. variable rate drive, RowCommand elec. clutches, pneumatic down pressure, no till coulters, markers, two-point hitch, SeedStar XP monitoring system, ProMax 40 corn disks, soybean disks, approx. 4,000 acres, SN 1A01790CEDA755215; '14 JD 1790 CCS 16/31 planter, vacuum, hyd. variable rate drive, RowCommand elec. clutches, pneumatic down pressure, no till coulters, markers, two-point hitch, SeedStar XP monitoring system, ProMax 40 corn disks, soybean disks, approx. 4,000 acres, SN 1A01790CTDA755217; '13 JD 2510H 15-knife high speed NH3 applicator, JD RateController, Raven AccuFlow Super Cooler, weights, SN 1A82510HKD0750323; '15 JD 2210 45'6" field cultivator, 6" spacing, floating hitch, AccuDepth depth control, 200 lb. shanks, 3-bar spike tooth harrow and flat bar rolling basket, gauge wheels, SN 1N02210XJE0760156; '10 JD 2210 35' field cultivator, 9" spacing, single point depth control, 200 lb. shanks, 2-bar coil tine harrow and round bar rolling basket, gauge wheels, SN N02210X010230; '14 Landoll 7431-33 VT-Plus 33' vertical tillage tool, 7" spacing, hyd. fore and aft, round bar rolling basket, 32x15.50-16.5SL main frame tires, SN 74K1405979; '16 McFarlane WDL-2000 60' 12-bar harrow, rear fold, SN 19824, New!; '14 McFarlane HDL-1000 50' 16-bar harrow, front fold, SN 19177; '03 JD 637 32'1" disk, 9" spacing, hyd. fore and aft leveling, single point depth control, gauge wheels, SN N00637X005604; DMI 2500 9-shank in-line ripper, pull-type hitch, gauge wheels, no-till coulters, rear hitch, SN JFH0012087.

**GRAIN HANDLING EQUIPMENT:** '14 Kinze 1300 grain cart, 36" tracks, Electronic Scales with GT 460 indicator, roll tarp, hyd. adjust spout, 1000 PTO, SN 105265; '14 Kinze 1300 grain cart, 36" tracks, Electronic Scales with GT 460 indicator, roll tarp, hyd. adjust spout, 1000 PTO, SN 105267; '15 Brent 757 gravity wagon, 455/55R22.5 tires, front and rear brakes, roll tarp, fenders, SN B32340122; '07 Demco 650 gravity wagon, 425/65R22.5 tires, rear brakes, SN 40139; REM 2700 grain vac., 1000 PTO, assorted tubing and hose, SN 0910; Westfield TF100-31 10"x31" truck auger, Kohler 20 hp. gas eng., SN 197152; Westfield WR80-31 8"x31" truck auger, 10 hp. elec. motor, SN 213282; Westfield MK100-71 10"x71" swing away auger, 540 PTO, SN 195211; Westfield MK80-71 8"x71" swing away auger, 540 PTO, SN 64925; Jet hyd. drive hopper.

**GPS EQUIPMENT:** JD GS3 2630 display, AutoTrac SF2, Section Control, 441 hours, SN PCGU2UG551688; JD GS3 2630 display, AutoTrac SF2, Section Control, RowSense, 561 hours, SN PCGU2UG554848; JD StarFire 3000 receiver, SF1, SF2 Ready, SN PCGT3TA311738; JD StarFire 3000 receiver, SF1, SF2 Ready, SN PCGT3TA315708.

**SEMIS & TRAILERS:** '06 Freightliner Columbia 120 semi, sleeper, Mercedes 460 eng., Fuller 13-spd. trans., air ride, all aluminum wheels, 220" wheel base, 401,320 miles, VIN 1FVJA6CV75LN99131; '90 Mack CH613 day cab semi, Mack E6-350 eng., MaxiTorque 8-spd. trans., air ride, 22.5" all aluminum wheels, 190" wheel base, 566,356 miles, VIN 1M2AA06Y3LW004524; '09 Timpote 40' hopper bottom grain trailer, ag hoppers, air ride, roll tarp, 22.5" wheels, VIN 1TDH400279B118850; '06 Timpote 40' hopper bottom grain trailer, ag hoppers, air ride, roll tarp, 22.5" wheels, VIN 1TDH400296B109739.

**TRUCK & TRAILER:** '06 Dodge Ram 1500 4wd truck, Big Horn, SLT, 5.7L Hemi eng., auto trans., crew cab, short bed, power windows, power locks, cloth interior, 20" wheels, red in color, 51,271 miles, VIN 1D7HU18276S631981; '09 Delta 16' bumper hitch livestock trailer, center divide gate, steel, VIN 4MWBS16249N024814.

**FUEL TRAILERS, DEF TOTE AND FARM SUPPORT ITEMS:** Fox Valley Welding 500 gal. fuel trailer, 20 GPM pump, tandem axle, bumper hitch, lights; 500 gal. fuel tank on tandem axle trailer, elec. pump, bumper hitch; Thunder Creek DTT50 DEF Transport Tote, 50 gal. capacity, elec. pump; Frontier AL12 dual tine bale spear, global hookups; JD 4-bottom plow; Danuser post hole digger, 12" bit; JD black hyd. cylinder; 3-pt. bale tote; and more!

**AUCTIONEERS' NOTE:** After a very successful near 40-year farming career, Doug and Kent have rented their ground and will be retiring from farming. Every item on the farm was purchased brand new, has been stored inside and has been meticulously cared for. There will not be any small items, so please be on time, entire auction will take less than 2 hours. Every item sells absolute, without reserve. Internet bidding will be available prior to and live during the auction. Loader and auction personnel will be available sale day. Lunch will be available. Not responsible for accidents, errors or omissions. All announcements sale day take precedence. No onsite buyer's premium.



## BERRYMAN FARMS – OWNER

SULLIVAN AUCTIONEERS, LLC • TOLL FREE (844) 847-2161 • IL LICENSE #444000107

DETAILED LISTING & PHOTOS: [www.SullivanAuctioneers.com](http://www.SullivanAuctioneers.com)



## Kirksville Livestock LLC

Kirksville, Missouri

**MON., MARCH 12 • 11:00 A.M.**

### SPECIAL CATTLE SALE

**EARLY LISTINGS:**

**KYLE OVERTON** - 150 BBWF & RRWF str & hfrs, 2nd round shots, 450-600#

**GAIL CURTIS** - 125 BBWF str & hfrs, 2nd round shots, LTW, 550-700#

**JEFF BRAWNER** - 75 BBWF yrlg hfrs, 2nd round shots, 600-700#

**BRAD & DANIAL SMITH** - 60 Blk hfrs, 2nd round shots, LTW, 600-700#

**CARLSON** - 45 BBWF & Char str & hfrs, white tag, LTW, 450-550#

**NEAL MCMANN** - 32 BBWF str & hfrs, 1 round shots, 500-700#

**DAVIS FARMS** - 25 Blk bulls & hfrs, 400-600#

**ANTHONY LINHART** - 20 Blk str & hfrs, 2nd round shots, 500-600#

**BOB PERRY** - 20 BBWF str & hfrs, White tag, LTW, 550-700#

**NELSON FERRY** - 15 BBWF str & hfrs, 1 round shots, 500-600#

**HARRIS FARMS** - 11 Blk str & hfrs, 1 round shots, LTW, 450-525#

**DANIEL SMITH** - 5 home raised Char/Red Ang X hfrs, 700# replacement quality

**CHECK OUR WEBSITE FOR UPDATED LISTINGS!**

"Proud to Serve Area Livestock Producers"

**YOUR BUSINESS IS VERY MUCH APPRECIATED**

We are open on Sundays to receive your livestock.

Phone for information: Patty Foster, Office 660-665-9804  
 Chuck Ambrosia...660-342-3530 Doug Fleshman.....660-626-7148  
 Caleb Randolph ....641-919-8539 Daniel Smith .....660-341-8396  
 Mark Herbold.....515-720-8667 Jeremy Jarman .... 660-341-9879  
 Al Ashmead..... 660-216-8730 Cory Cook .....660-651-7453

Visit our website at [www.KirksvilleLivestock.com](http://www.KirksvilleLivestock.com)

## KEOSAUQUA SALE CO.

20511 Hwy. 1, Keosauqua, IA

**Results from March 3rd**  
 Butchers...\$43.00-49.00/cwt  
 Sows.....\$37.00-50.75/cwt  
 Feeder lambs.....  
 .....\$195.00-290.00/cwt  
 Fat lambs.....  
 .....\$125.00-130.00/cwt  
 Ewes.....\$70.00-95.00/cwt  
 Kid goats.....  
 40-70# \$95.00-180.00/hd  
 Nannies.....\$70.00-235.00/hd

**Pound cows**.....\$51.00-56.00/cwt low yielding

.....\$57.00-70.00/cwt high yielding

**Pound bulls**.....\$80.00-93.00/cwt

STRS		HFRS	
<b>BWF</b>	340 200.00	<b>BLK</b>	335 196.00
<b>BLK</b>	417 180.00	<b>BLK</b>	421 171.00
<b>BLK</b>	523 182.50	<b>MIX</b>	485 166.00
<b>BLK</b>	570 163.00	<b>BWF</b>	530 156.00
<b>BLK</b>	642 164.75	<b>BLK</b>	574 149.00
<b>BLK</b>	661 158.00	<b>BLK</b>	681 137.00
<b>BLK</b>	727 142.50	<b>BLK</b>	763 137.75
<b>BLK</b>	790 143.00	<b>BLK</b>	847 139.75
<b>BLK</b>	814 140.00		

Watch website for early listings [www.keosauquasaleco.com](http://www.keosauquasaleco.com)

**Thank You For Your Business!**

For More Information Contact:

Selling Times

Hogs.....9:30 a.m.

Sheep & Goats.....10:00 a.m.

Outside Merch.....11:00 a.m.

Cattle.....Noon

Keosauqua Sale Co.  
319-293-3508

Bill Goehring

641-919-9365

[www.keosauquasaleco.com](http://www.keosauquasaleco.com)

## Chick Days



Order March 23 for April 11 pickup

50726 State Hwy 15 18743 US Hwy 136  
 Baring, MO 63531 Memphis, MO 63555  
 660-892-4537 660-465-2967



**Layers, Broilers, Guineas, Turkeys, Bantams, Hometown Ducks, & More!!** Animal Health



## Hay, Straw & Firewood Auction

Southern Iowa Produce Auction

Sales every 2nd & 4th Saturday, November thru March

**Saturday, March 10th - 10 A.M.**

Early Listings:

**Large Square Bales:** (3x3) - 1 semi load, 1st & 2nd cutting alfalfa, 2 semi loads, 1st cutting alfalfa/ grass mix. 1 1/2 semi loads grass hay. 12- bales 4th cutting alfalfa/grass. Approx. 1 semi load, 2nd & 3rd cutting alfalfa/grass mix.

(3x4) - 1/2 semi load of Kansas alfalfa. 1/2 semi load Kansas straw.

**Large Round Bales:** Approx. 200-250 lg. round bales of alfalfa, grass & alfalfa/ grass mix. 10- bales alfalfa/grass mix, certified organic. PENDING: 20-25 bales of alfalfa/grass balage.

**Small Square Bales:** Normal run including: 500- 3rd cutting alfalfa/grass mix.

**Misc:** Normal run of firewood. Approx. 20-30 Hedge posts. Approx. 20 Black Locust posts. **Also** selling 100 lbs. of Fresh Organic Tilapia.

"Lots More Expected By Sale Time"

Unloading Available

Friday Before Sale

**Plugs & Plants**

Following Hay Auction

STARTING AT 12 NOON

**19141 Ice Ave. Bloomfield, IA**

Call 641-722-3623 on auction days or leave a message. Market Report or Information call 712-432-8593

## Scotland County LIVESTOCK AUCTION

P.O. Box 111 • Hwy 15 North • Memphis, MO  
**660-465-7213 • Jerry & Barb Blomme**  
**660-341-0069 • Grant Blomme**  
**660-216-4674 • Rodney Garman**

## SPECIAL CATTLE SALE

Sat., March 10th

Early Listings:

- 35 hd- cows-local herd reduction
- 30 hd- black str & hfrs-500- 600 lbs.
- 15- mostly black bulls & hfrs-500 lbs.
- 20- black str & hfrs-400-600 lbs.

## DAIRYSALE

Wed., March 14th • 10:30 AM

Starting With Dairy Cattle, Springers, Fresh Cows & Open Heifers. Followed by Veal Calves and Steers.

Early Listings:

- 6- Holstein Springer Heifers, 1300 lbs.
- 10-Holstein Springers, 1100 lbs.
- 10- Jersey X Springers, 900 lbs.
- 20- Jersey Springer Heifers
- 40- Holstein Springer Cows

Steer Early Listings:

- 100- Holstein Steers, 500-550 lbs.
- 150- Holstein Steers, 475-525 lbs.
- 40- Holstein Steers, 400 lbs.
- 35- Holstein Steers, 500 lbs.
- 12- Holstein/Swiss X Steers, 300 lbs.
- 30- Holstein Steers, 550-600 lbs.
- 20- Holstein Steers, 450 lbs.
- 40- Holstein Steers, 550-650 lbs.
- 30- Holstein Steers, 400 lbs.
- 20- Holstein Steers, 450 lbs.
- 35- Holstein Steers, 400 lbs.
- 12- Holstein Steers, 300 lbs.

Expecting several more Cattle by Sale Time.

Along with a large run of veal calves & started calves.

Market Results for Cattle Sale Sat., Mar. 3rd.:

**STEERS:** 350 lbs. - \$208.00, 464 lbs. - \$197.00, 555 lbs.- \$176.00, 657 lbs. \$158.00; **HEIFERS:** 350 lbs. - \$178.00, 397 lbs. - \$181.00, 470 lbs. - \$168.00, 521 lbs. - \$169.50, 595 lbs. - \$142.00, 611 lbs. - \$146.50; **BULLS:** 305 lbs. - \$207.00, 408 lbs. - \$195.00, 425 lbs. - \$196.00, 438 lbs. - \$197.00, 459 lbs. - \$187.00, 470 lbs. - \$189.00, 539 lbs. - \$170.00, 619 lbs. - \$147.50, 626 lbs. - \$154.00; **BULK OF LB. COWS:** \$58.00-\$72.00; **LB. BULLS:** \$85.00-\$101.00

[www.ScotlandCountyLivestock.com](http://www.ScotlandCountyLivestock.com)

**GLENWOOD Elevator**

301 State Hwy. M  
 Glenwood, Mo 63541

Logan Ford, Manager  
 PH: 660-457-3973 • Call: 660-956-3973  
 Fax: 660-457-3045 • [gelevator@marktwain.net](mailto:gelevator@marktwain.net)

## JEFFERSON COUNTY, IOWA LAND AUCTION

FRIDAY, MARCH 16<sup>TH</sup> @ 3:00 P.M.

AUCTION TO BE HELD AT THE JEFFERSON COUNTY FAIRGROUNDS, 2606 W BURLINGTON AVE, FAIRFIELD, IA

**80 ACRES± • 1 TRACT**

The Main Farm is located in Section 36, Liberty Township, Jefferson County, IA, 1 mile north of Birmingham, IA on St. Hwy. 1. (Be watching for presale directional signs.)

Mark your calendars now for this fast approaching Jefferson County, IA land auction. This farm offers productive tillable farmland, CRP income, includes a very nice Quonset style machinery storage building & much more! This property is also conveniently located just north of Birmingham, IA on State Hwy 1.

DETAILS, MAPS & PHOTOS AVAILABLE ONLINE @:

[www.SullivanAuctioneers.com](http://www.SullivanAuctioneers.com)

**JERRY & SHARRON MAIN – SELLERS**

ATTY: David Miller • Miller Law Office • Fairfield, IA 52556 • Ph: (641) 243-4670

FOR ADDITIONAL INFORMATION, CONTACT:

Jim Huff (319) 931-9292 or Jeff Hoyer (319) 759-4320

SULLIVAN AUCTIONEERS, LLC • TOLL FREE (844) 847-2161  
[www.SullivanAuctioneers.com](http://www.SullivanAuctioneers.com) • IL Lic. #444000107

**YODER BUILDERS LLC**  
 New Construction & Remodels  
 Pole Barns • Roofing

Wilbur Yoder 18841 Echo Ave.  
 641-777-5421 Drakesville, IA 52552





**Nutrena Minerals  
SPECIAL  
through the month  
of March!**

**BUY 9 GET 1  
FREE!**

Now Through  
3/31/18

**Spring Seed Sale**

Save on our most popular seeds for spring planting!



**CROP SERVICES, INC**  
John & Kathy Bos, Owners  
Drakesville, IA  
641-722-3293



**FOR SALE:** 7 bred Kiko boer cross doelings, due April 3rd, \$320. Also Kubota lawn tractor, 3 cyl. diesel, hydrostatic drive, clutch overhauled late summer, 5 ft. deck, \$3,450 OBO. Can be seen 5 miles North of Cantil. PH: 217-260-1876 11

**FOR SALE:** 7820 John Deere, 2WD, L-H reverser, 7814 hrs, 3 hyd., new tires, \$45,950. Also selling 7810 John Deere, 2WD, PS, 8900 hrs, 3 hyd., new tires, \$36,000. PH: 660-341-6267 10

**FOR SALE:** 4755 JD tractor, very nice, approx. 6,600 hrs, always shedded; JD 1530 drill with caddy cart, yeti markers & 15 inch rows. PH: 660-216-7696 11

**FOR SALE:** Sanborn air compressor, Stihl mm 55 tiller, lawn edger, mobility scooter, wooden computer desk. PH: 641-664-3958 11

**FOR RENT:** 1 or 2 bedroom apartments Milton, IA. Kitchen appliances & heat furnished. Very reasonable rent. PH: 641-757-0201

**FOR SALE:** Purebred black Angus bulls. Select now. **Green Diamond Farms.** Queen City, MO. PH. 660-342-2550. 11

**Greiner Implement Company Inc.**  
Ottumwa, IA • 641-683-1691  
www.greinerimplement.com



**Celebrating 55 Years**

**OPEN HOUSE**

**Wednesday, March 14th, 2018**  
Lunch served by Wapello County Pork Producers

**Annual Spring Customer Appreciation**

**YOU'RE INVITED TO OUR OPEN HOUSE.**

It's a celebration for the whole family. This is our chance to say "thank you" to our customers and the community who have supported us over the years. We're proud to offer you industry-leading Case IH agricultural equipment, parts, dedicated service, and flexible financing. Please join us!

Discounts on parts March 12th - 16th, 2018

**Yearling Angus & Charolais Bulls**

**Trojan Hill Farms**

**Phil Archer**  
641-675-3769 - Home  
641-680-6769 - Cell

**FOR SALE:** 12 male Khaki Cambel ducks, 4 months old, \$10 each; Crosley electric range, 7 years old, works great, \$200. PH: 641-208-7546 11


**FOR SALE:** Brand new BF goodwrench mud tran AT, LT 265/75R16, load grading E, still have new tags on treads. \$750. PH: 641-208-0318 10

**Private Treaty Bull Sale** Videos at [jllangus.com](http://jllangus.com)

**Jager Land & Livestock**  
March 24, 2018 Yrlg. & Older Bulls  
Calving Ease Available  
Viewing 12:30 p.m. Bid Offs 1:30 p.m. Held at the Farm

**Curt & Lorie Jager**  
2371 330th Street  
Curt 641-660-0771

**Gina & Dan Hoy**  
Eddyville, Iowa 52553  
Office 641-969-4600



JLL 28 Ambush 1219 #17181271

Complete Information | Genomic Profiles | Lunch Sale Day | Free Housing Yrlg. Bulls till June 1  
Call or email [jllangus@outlook.com](mailto:jllangus@outlook.com) for a sale book

Check out these  
**GREAT DEALS ON FENCING!**

**T-POSTS**  
Early Order, Great Buy!  
6.5 ft., 1.33 lb. per ft.  
**\$3.89\***

**CONTINUOUS FENCE PANELS**  
5 bar  
**\$69.50\***


SALES GOOD THROUGH MARCH 15 • \*DETAILS IN STORE

We also have great prices on **STEEL PIPE POSTS!**

Don't forget! We carry **GRASS SEED & CLOVER SEED** for your spring seed needs!

**Hometown ANIMAL HEALTH**  
660.465.2967 • [hometownanimalhealth.com](http://hometownanimalhealth.com)  
18743 US Hwy 136 • Memphis, MO 63555  
On Highway 136 west of Memphis

**DON'T FORGET THOSE COWS!**  
NEMO Feed provides a balance of protein, energy, and minerals for calving cows.



**NUTRITION • MEDICAL • PET • FARM • APPAREL**

**NEMO** AUTHORIZED DEALER OF NEMO FEED.

Like Us On **Facebook**

**CANTRIL TRUCK & TRAILER**  
**319-238-7367**  
101 North St. • Cantril, IA  
[www.cantriltruckandtrailer.com](http://www.cantriltruckandtrailer.com)



# BLOOMFIELD LIVESTOCK MARKET



Sat., March 10th ..... Hawkeye Simmental Sale ..... 1:00 PM  
 Wed., March 14th ..... Fat Cattle, Slaughter, Cows & Bulls ..... 9:00 AM  
 Wed., March 21st ..... Fat Cattle, Slaughter, Cows & Bulls ..... 9:00 AM  
 ..... Special Calf & Yearling Sale ..... 11:30 AM  
 Wed., March 28th ..... Fat Cattle, Slaughter, Cows & Bulls ..... 9:00 AM

## Reports from Wednesday, Feb. 28th, 2018 • Selling 867 Head

### HEIFERS

Corey Buch.....	7 BLK.....	541.....	\$170.50
Wayne Meierotto .....	15.....	549.....	\$166.50
Lavern Wilbrenner ....	6 BBWF ...	559.....	\$161.00
Gary Page .....	15 BBWF..	599.....	\$157.00
Gary Page .....	37 BBWF..	675.....	\$150.75
Lavern Wilbrenner ....	20 BBWF..	731.....	\$150.00
Brad Burns.....	22 BBWF..	747.....	\$144.50
Musser Livestock.....	53 BLK.....	632.....	\$142.50
Ed Good .....	70 BLK.....	739.....	\$138.00
Musser Livestock.....	70 BLK.....	734.....	\$137.75
Jim Bremer .....	9 BBWF ...	902.....	\$125.50

### STEERS

Eric Pilcher .....	6 BLK.....	363.....	\$214.00
Eric Pilcher .....	11 BBWF..	434.....	\$205.00
Schinstock Const.....	15 BLK.....	504.....	\$196.50
Corey Buch.....	5 BBWF ...	572.....	\$194.50
Shinstock Const.....	16 BLK.....	591.....	\$178.75
Charlie Harter .....	12 BLK.....	668.....	\$173.75
Craig Dotterer.....	17 BLK.....	678.....	\$170.75
Corey Buch.....	17 BLK.....	689.....	\$170.50
Clay Hamaker.....	15 B/R.....	716.....	\$164.75
Ken Denning.....	120 BLK...	862.....	\$140.00
Andrew Perry.....	20 B/R.....	1030...	\$126.00

**SALE BARN OPEN UNTIL 9:00 PM  
 EVERY TUESDAY TO RECEIVE LIVESTOCK**

Phil Schooley ..... 641-664-3450  
 Ron Schooley..... 641-777-0302  
 Roman Schooley ..... 515-450-3685

*We appreciate your business!*  
 Tyler Schooley ..... 641-208-5442  
 Barn Phone ..... 641-664-2435

**HWY. 63 NORTH • BLOOMFIELD, IA**

**COUNTRY CUT MEATS**  
 Custom Butchering  
**Beef • Pork • Deer**  
 Homeraised Beef Available

**641-675-3683** 26824 Vetch Ave  
 Pulaski, IA

FOR SALE: Duroc's, Spots & crossbred show pigs. Great 4-H & FFA projects. Reasonably priced. Call Brett 641-777-8520. 11

FOR SALE: 4' x 6' tilt trailer w/ lights, in good condition. Also Brand New Bear compound bow w/ most of the accessories. PH: 641-664-2831 11

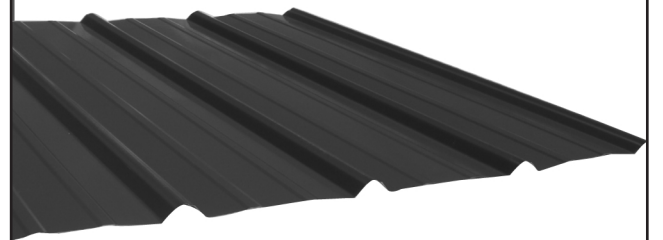
YODER INDIAN CREEK FURNITURE: Solid hardwood furniture for every room in your home. Also a great selection of outdoor poly furniture. Check with us before you buy. Rt. V64 Milton, Iowa. Located 4 miles North of Cantril or 3/4 miles South of Lebanon on RT. V64, Monday to Saturday 8 a.m. to 5 p.m. No Sunday sales. PH. 319-538-7332 TF

FOR SALE: Five boer goat bucks, born Feb. to Apr. 2017, \$375 each. No Sunday Calls. PH: 660-341-8234

### Friesen Excavating

Specializing in Septic Systems Certified For Peat Tanks and Sand Filters. Can Also Do Other Drains and Water Lines  
**Call or Text Shawn @ 641-208-0861 Bloomfield, IA Free Quotes Available**

## Premium Metal Roofing

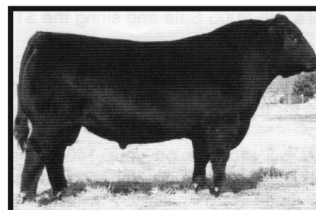


- Buy Direct & Save
- Fast Service
- Cut-to-length
- Professional Contractors Available

**AW Metal LLC**  
 Metal Roofing Headquarters

641-664-3990 • awmetal.net

## ANGUS BULLS 2 YEAR OLDS & YEARLINGS



- ★ CALVING EASE
- ★ GROWTH
- ★ THICK
- ★ GOOD DISPOSITION

Sired by Musgrave Reachout 530

**SELECT YOUR BULL NOW**

Open heifers show prospects. Will make great cows. Top blood lines!

**DORAN BOLLMAN**  
 PULASKI, IOWA  
 641-675-3467



Bring your plans in for a **FREE ESTIMATE**



Trusses Engineered and Designed to Your Specs

*Imagine a Lifetime of Beauty with the strength of steel.*

As the original stone coated steel roofing system, the DECRA product line represents a perfect blending of over 50 years of research and practical experience. Offering the ultimate in performance and engineering design is what DECRA roofing systems are all about.

SHINGLE XD **DECRA** SHAKER XD  
 Stone Coated Steel Roofing Systems



17893 212th Street • Bloomfield, IA 52537  
 641-722-3605 • Mon.-Fri. 7 AM to 5 PM



Help us celebrate this beautiful lady's  
**90th Birthday**  
 on March 9th with a card shower.  
**Carmen Schooley**  
 508 W. Main St.  
 Apartment 101  
 Wayland, IA  
 52654