

C Cornerstone Investments
 Chuck Riggenschach
 Financial Planner
**IRAs can be a
 wise investment!**
 108 W. Jefferson St. (641) 664-3700
 Bloomfield, IA 52537
 Securities offered through Questar Capital Corporation (QCC)
 Member FINRA/SIPC. Advisory Services offered through Questar
 Asset Management (QAM) a registered investment advisor.
 Cornerstone Investments is independent of QCC and QAM.

Wishin' ya luck

S Tri-County SHOPPER R

Laddy!

STANDARD MAIL
 U.S. POSTAGE
PAID
 TRI-COUNTY SHOPPER, INC.
 POST OFFICE BOXHOLDER
 LOCAL RURAL BOXHOLDER
 OCCUPANT
**CIRCULATION
 OVER 11,750
 THIRD CLASS**

P.O. Box 168 • Bloomfield, IA 52537 • www.tri-countyshopper.com
 Phone 641-664-1333 • Fax 641-664-3761 • Email shopper@netins.net



Vol. 46, No. 11
 Wednesday, March 14, 2018



Horizon BUILDINGS LLC



Post frame Buildings (up to 100' Wide Clear Span)
 • Machinery, Grain, Seed Storage
 • Cattle & Dairy Facilities Horse Stables & Arenas
 • Commercial • Residential
50 YEARS Warranty On Metal Roofing & Siding
 Quality Workmanship • Best Quality Material
888-371-4710 • 641-722-3505

Southern Iowa 7th Annual Business EXPO
Connecting Communities

Food on Site!
 Public Welcome!

Fri., March 16th & Sat., March 17th
 Located at
Davis County Fairgrounds • Bloomfield

Cantril Lumber & Hardware

For all your building needs!

Barns • Picnic Tables • Dog Houses
 & Much More!!

319-397-2351
Mon-Fri 7-5 & Sat 7-12

FREE ESTIMATES



Hilltop Greenhouse

Annuals • Perennials
 11049 Hwy. 2
 MOULTON, IA 52572
 641-929-3036

L&M Country Store 641.664.1936
 VOICEMAIL

Groceries
 Bulk Foods • Spices
 Cheese • Snacks
 Seasonal Products



• Metal Roofing • FREE estimates!
 • Crews available • Call today!

WAGLER METALS

19049 Ice Ave., Bloomfield, IA
 641-722-3692
 M-F 7:30AM-5PM • Sat. 8-11:30AM

Custom Built, Painted and Vinyl
Buildings & Sheds
 ~David W. Schrock~

Hillview MINI BARNs

15383 180th Street
 Drakesville, IA 52552 641.664.2842 v.m.



Fabric and Notions, Gifts, Toys and More

THE FABRIC HUT

14543 195th st. • Drakesville, IA
 641-664-3445 Ext. 2 • Mon-Fri 8-5; Sat 8-4
 4 miles North of West Grove off Hwy. 2

Country Side Grocery

3/4 mi. E. of Drakesville, IA on 180th St.
 Mon-Sat: 8:30am - 5:00pm
 VM: 641-664-2661



HAWKEYE HARNESS


14314 202nd St.
 Bloomfield, IA 52537

GeoStar Cattle Waterer
5% OFF Day of Expo
 Come See Our Booth!
 641-722-3188

Furniture Bakery Quilts Lawn Furniture Gifts

Yoder's KOUNTRY KORNER

21050 Ice Ave. • Bloomfield, IA • 641.664.2545 VM
 3 miles west of Expo.



Yoder Glass & Window

Design that fits your home!

Check out our ad on page 8!

Keith Keim Gliders Pie-Safes Custom Doors & More
 Karlan Keim Dressers Bed Tables Chairs Hutches

T-CORNER FURNITURE
 HEIRLOOM QUALITY

Stop by our booth to check out our lawn furniture displays!
 1 mi. E of Drakesville
 16961 Jade Ave., Bloomfield
 VM: 641-664-0207

Like Us On Facebook

CANTRIL TRUCK & TRAILER

319-238-7367
 101 North St. • Cantril, IA
 www.cantriltruckandtrailer.com
 Check Out Our Booth!

GINGERICH GREENHOUSE

Come check out our new greenhouse with it's concrete floor, wide aisles & carts to help you enjoy your shopping experience!

Full Service Greenhouse!

1 mile East & 1/2 mile North of Drakesville on Jade Ave.

Est. 1989
DRAKESVILLE FABRICS

Gift Items Quilting Stencils Ice Skates

Fabrics • Notions • Baby Items • Sewing Supplies
 Embroidery • Needlework • Quilt Blocks
 Hand Pieced Quilt Tops • Greeting Cards
 Personal Care Items • Toys • Much More
 17369 180th St.
 Drakesville, IA 52552
 641-722-3369

Soap Creek REBELS Saddle Club



* Every Third Saturday *
 12788 Copperhead Dr. • Ottumwa
 Steve Boer • 641-799-9274

Highway 2 DISCOUNT Groceries LLC

Mon. - Sat. 8:30am - 5:00pm
 VM: 641-664-1187
 19686 Hwy. 2, Approx 2 miles west of Bloomfield

Come see our booth at the Expo!

The Big Green Egg!
 Grilling at it's best!



Homestead Woodworks

Custom Kitchens • Millwork
 Solid Surface Countertops
 Custom Doors • Quartz Countertops

Abraham Schrock
641-929-3007
 21754 Driftwood Blvd. Bloomfield, IA

We "WOOD" Like To Sewe You!



QUILT & PIE AUCTION STARTS @ 7 PM

6:00 PM MARCH 16TH

Dodgeball TOURNAMENT

@ DAVIS COUNTY HIGH SCHOOL GYM
FREE ADMISSION

PROCEEDS TO DAVIS COUNTY AFTER PROM

Will Be Serving Fair Food From: Cattlemen & Pork Producers!

**TACO SALADS • HAMBURGERS
HOT DOGS • MR. RIBS**

BROWNIE SUNDAE & STRAWBERRY SHORTCAKE

Country View Store



12 oz bag Great Value pretzel pieces, honey mustard and onion **87¢**

Hidden Valley fat free ranch, 24 oz. bottle **95¢**

Malt O' Meal Raisin Bran, 16.5 oz. **\$1.59**

12.8 oz. Roundy's Multi grain Tasy-O's **\$1.79**

NEW Selection Of Polly Lawn Furniture!


Ralftonrice squares, 12 oz. box **\$1.39**

**3 miles south of Memphis, MO along Hwy 15
660-883-5388 • Hours: Mon-Fri 8-6 & Sat 8-5:30**

HAY FOR SALE: 25- big round bales, approx. 1500 lbs. each, stored inside. 50-big round bales, approx. 1500 lbs. each, stored outside. Approx. 10, 2nd cutting alfalfa bales.
PH: 641-777-6187 12

PUPPIES FOR SALE: German Shepherd/Australian Shepherd cross puppies, \$50 each. Harley Mast
PH: 641-664-1967 12

Building Better, Healthier Lives



Welcome **MELISSA GINGRICH**
Women's Health ARNP

Now Available for Appointments at Davis County Hospital!

Providing Prenatal/ Postnatal Care, Gynecology, Contraception & Well Woman Care Services at Davis County Hospital

In partnership with:
OTTUMWA Women's Health Clinic

Davis County HOSPITAL To schedule an appointment call 641-682-8761.
Dedicated. Compassionate. Healthcare.

Southfork MOTEL

JUNCTION OF HWY 2 & 63
BLOOMFIELD, IA

Help Wanted Immediately!

Maids & Front Desk Clerk

Boost Your Curb Appeal!



MAST-OVERHEAD DOORS
641-680-2016
105 S. Dodge St., Bloomfield, IA
Quality Products + Quality Workmanship = Quality Customers

GARAGE DOORS
Residential • Commercial
Doors • Operators
Call us today for your FREE door estimates.

FOR SALE: English Creme/Golden Retriever puppies, 6-males, 2 females, family raised, Ready to find their forever homes the beginning of April. Beautiful puppies.
PH: 319-201-0900 11

MILITARY ITEMS WANTED BY LOCAL COLLECTOR: Patches, medals, uniforms, hats, helmets, etc. Always buying. Mark Warren, PH. 641-664-3705. mpwarren@netins.net

Having a Little Bad **LUCK**?



Let the team at Walker Motors turn your **LUCK** around! Your FULL service collision repair shop.

WE'LL DEAL DIRECTLY WITH YOUR INSURANCE COMPANY.

Walker Motors Collision Repair, INC.
375 S. Main St. | Memphis, MO
660-465-2159 | Shop Phone/Fax

Hertz Rentals for all Occasions! Great Rates!

10% OFF ALL TOOBS!!!



Deli Specials

Deli Specials- Chopped Ham \$2.69 lb
Pepper Jack Cheese \$2.89 lb

We stock Kitchen Aid mixers, blenders, and other small appliances.

MEMPHIS MERCANTILE EST 2010
115 E. Monroe • Memphis, MO
660-465-2102

MEMPHIS MERCANTILE EST 2010
South Side of the Square in Memphis
660-465-2345
Monday - Friday: 8:00 AM to 5:30 PM • Saturday • 8:00 AM to 4:00 PM / Sunday CLOSED
Check us out online- memphismercantilemo.com



GENE'S SURPLUS

Brands you like at prices you love

NEW LOAD HAS ARRIVED!

TOYS & BEDDING & MUCH MUCH MORE!!

Large selection of Men's shirts Button Downs & Polos

\$5.00 EACH


HWY 136 WEST - MEMPHIS, MO - 660-465-7445
MON-FRI 8:00 TO 5:30, SAT 8:00 TO 4:00

Thought of the week: **Don't drive as if you own the road, drive as if you own the car.**

FOR SALE: AKC registered German Shepherd puppies. Up to date on all shots & wormed. Ready to go now, \$550.
PH: 641-777-1627 11

FOR SALE: Round glass patio table w/4 chairs w/casters, like new. Also Brand New Bear compound bow w/ most of the accessories.
PH: 641-664-2831 11

HAY FOR SALE: 2017 grass hay, big round bales.
PH: 641-680-7031. 12




Kraft cream cheese, 8 oz.2/\$1.00
Oscar Mayer bologna or ham & cheese loaf, 16 oz.....2/\$1.00
Butter, 1 lb..... \$1.99 (limit 10)
Cabbage.....39¢ lb.
Large candy bars, assorted varieties 2/\$1.00
Oscar Mayer little smokies, 14 oz.....75¢

Food Supplements
3/4 mi. E. of Drakesville, IA on 180th St.
Mon-Sat: 8:30am - 5:00pm
VM: 641-664-2661
Vitamins

FOR SALE: Yearling & 2 year old registered Angus bulls. AI sired by easy calving and maternal package bulls, gentle. Pick now and I will deliver first week of May. MILLER ANGUS FARM, PH. 660-341-4043. If no answer leave message. I will call back. 12

REMINDER



Deadline to remove
***Ground Decorations* from the**
IOOF Cemetery & South Cemetery
is March 19, 2018

Clean up will begin March 20 if weather permits.

Thank You

City of Bloomfield



Stoves & Furnaces

WOOD • COAL
PELLET/CORN • GAS

- Many brands, sizes & styles to choose from
- Chimney SS & Blk. Stovepipe
- Plumbing Supplies

19091 180th St •
Drakesville, IA •
VM 641-664-2814
3/4 miles east of Drakesville, south side

RELOCATE ED:
PH: 641-208-4289 12

FOR SALE: Garden tillers, rear tine, front tine and 36" PTO pull type, Troy Built, BCS and many others. DR brush cutters and others. Kahoka, MO.
PH: 660-216-1809 19

ORDER NOW THRU APRIL 1ST
FOR 10% DISCOUNT ON:

FRUIT TREES, STRAWBERRY PLANTS,
Arrive around 4/15 SHURBS, LILACS & MAPLE TREES

HILLTOP GREENHOUSE Mon-Sat
8:00am-6:00pm
11049 HWY 2, MOULTON IA
BETWEEN WEST GROVE & MOULTON
641-929-3036

FOR SALE: 12 male Khaki Cambel ducks, 4 months old, \$10 each; Crosley electric range, 7 years old, works great, \$200.
PH: 641-208-7546 11

FOR RENT: 1 or 2 bedroom apartments Milton, IA. Kitchen appliances & heat furnished. Very reasonable rent.
PH: 641-757-0201 19




Pre-Packaged
Garden Seeds Available
Expecting: Seed Potatoes & Onion Sets this week.

On Hwy. 2, West Grove 641-929-3056


JOE'S BARBER SHOP
Hours: Thursday & Friday 8:00-5:00 & Saturday 8:00-Noon. 210 E. Franklin St., Bloomfield, IA.
PH: 641-664-2020, 641-208-5561 TF

FOR SALE: 2004 Silverado ext. cab, 4x4, Linex bed, truxedo cover, Bose sound system, 144K miles, clean, runs great, \$7,900.
PH: 641-664-1966 or 641-242-0144 12

HAY FOR SALE: 2-year-old grass hay, big round bales.
PH: 641-680-7031 11



1 mi. E. of Drakesville on Jade Ave.
641-664-0207 • 8-5 Mon. thru Sat.



BOOK SIGNING

Wed., March 14th • 2:30 - 7:00
Stop by and get your Alaska Adventure books volumes 1-6 and have them signed by author Matt Snader.

While your here, check out our store specials!

Get Ready For Spring!

Bulk Garden Seeds, Seed Potatoes, Onion Sets & Plants



Gingerich Greenhouse

1 mi. East & 1/2 mi. North of Drakesville on Jade Ave.



Authorized Polaris dealer since 1988

It's time to get Muddy!

New & Used Polaris Rangers & ATV's




660-328-6627 **BLOOMFIELD, IA**
8 mi. S. & W. from Pulaski or 6 mi. W of Memphis then 13 mi. N. on Route B

L&M Country Store

1 1/2 miles south of west Hwy 2 & 63 jct.
Mon-Sat. 8am-5pm CLOSED SUNDAYS
VM: 641-664-1936

Apples Gala & Fuji

- Frozen 16 oz. Oscar Mayer thick sliced bologna... 59¢
- Frozen 16 oz. Oscar Mayer ham & cheese loaf 59¢
- 14 oz. graham crackers 99¢
- Hershey's milk chocolate mini kisses \$1.99 lb.
- Baked beans \$4.19 gal.
- Frozen 10 lb. breaded tilapia fish \$16.90



2007 Chevy Avalanche
71,000 MILES



2003 Silverado 1500
LONG BOX, REG. CAB, 4 WD, 80,000 MILES
\$10,900

CHECK THEM OUT!

Collision Korner

504 South Drake St
Bloomfield, IA 52537
PH: 641-664-2648 • Fax: 641-664-2948

Get lucky with one of my great deals!



John says, "Like us on Facebook!"



Happy Birthday
On March 20th



Change

Love,
Mom and Bruce

IOWA THEATER 16TH ANNUAL BLUEGRASS SHOW
BLOOMFIELD, IA
MARCH 24, 2018 7PM



Lori King and Junction 63 The Briggs Family Jimmie Allison & The Ozark Rounders

IN CASE OF INCLEMENT WEATHER CALL AHEAD BEFORE TRAVELING FOR MORE INFORMATION CONTACT: LORI KING 641-799-1442

TICKETS At the Door
ADULTS \$15 • YOUTH 13-16 \$5
12 AND UNDER FREE

IOWA THEATER
107 S. Washington
Bloomfield • 641-664-9588
www.iowabluegrassmusic.com

Friday, March 16th

Ribeye & Stuffed Shrimp
Serving at 6:00 P.M.

Dine In **722-3355** Carry Out

RAY'S LONGBRANCH
Drakesville, IA

Burkholder's GREENHOUSE

Dutch Garden Nursery

Grand Opening
Saturday • March 17

Bareroot Trees Ready to Pick Up Discounted Price SATURDAY ONLY

FREE Coffee and Doughnuts all day

10% OFF One Day Only
Everything in the Store
And All Outdoor Decor

Strawberry Roots • Vegetable Plants
Bulk Garden Seeds • Sweet Onions

Succulents Air Plants Miniature Garden Supplies

Hours Mon-Sat 8 am to 5 pm
660-341-5777 www.burkholdergreenhouse.com
4 miles north of Edina, MO

DAVIS CENTER
A DIVISION OF OPTIMAE LIFESERVICES

Open Interviews for
Activity Assistant
CNA • RN
Housekeeping/Laundry

Davis Center will be holding open interviews on
Monday, March 19, 2018
during the following times:
8:30 am - 12:00 PM and
1:30 pm - 4:00 pm
22425 Overland Ave.
Bloomfield, IA 52537

RALCO



Ralco brings livestock nutrition full circle.

- Focused on Gut Health
- Formulated with Exclusive Technologies
- Customer-Focused Solutions • Research Proven

MIX 30
THE HIGH ENERGY LIQUID FEED

DESIGNED FOR USE IN COW-CALF OPERATIONS, FEEDLOTS & GRASS FED SITUATIONS
MAXIMIZE YOUR PROFITS FEED MIX 30 TODAY!
16% PROTEIN - 10% FAT - THE ECONOMIC ALTERNATIVE
PROVEN INCREASE IN CONCEPTION • SHOWN TO INCREASE CALF SURVIVABILITY

Harris Distributing
14219 231st. St.
Bloomfield, IA
641-929-3379
1-800-727-5589

Happy Birthday

American Legion

Join Us For Our 99th
BIRTHDAY DINNER
Thursday, March 15th
Social Hour 6:00-7:00 p.m.
Dinner 7:00 p.m.
Meat & Drink Furnished
Bring a Covered Dish

All Legion Members & Family Welcome!

AMERICAN LEGION
Reed Whisler Post #78
Bloomfield, IA



Annual Sportsman's Banquet

March 24, 2018
2:00 - 7:30pm

Menu:
Deer & Noodles,
Meatloaf, Mashed Potatoes, Coleslaw, Beans, Bread, Salads, Desserts

FREE WILL OFFERING

Speakers - 6:30 PM
Silent Auction - Door Prizes
Something for everyone!

Living Hope Bible Church
201 W. Walnut, Eldon
641-652-3420

IOWA THEATER BLOOMFIELD, IOWA

"Black Panther"



Friday, March. 16th
Saturday, March. 17th 7:00 PM
Sunday, March 18th 4:00 PM PG-13

Annual Supper & Missions Auction!

Saturday, Mar. 24th beginning at 5:00 pm

Soups & Sandwiches
\$5/person - Served 5:00 to 6:00
Live Auction 6:00

Many themed gift baskets - ISU Cyclones tickets, Whole hog with processing, many other items still coming in!

All money raised goes towards Missional work worldwide & community opportunities in Davis County

Something for everyone

Grace Pointe Church of the Nazarene
20444 Hwy. 2, Bloomfield, IA

SATURDAY, MARCH 17TH
11:00 A.M. - 12:30 P.M.

Tacos, trimmings, dessert & drink.

COME AND JOIN THE FELLOWSHIP!

GOOD SHEPHERD LUTHERAN CHURCH
19419 Lilac Avenue, Bloomfield, North end of West St.
Delivery in Bloomfield after 12:15 P.M.

FREE LUNCH!

Caring for our community with God's help!
ELCA Hunger Grant

Need a ride? Call 664-3242
Worship time: Sunday 9:00 AM

DAVIS & LEWIS, CPA

Let our years of tax experience benefit you!

- Individual & Business tax preparation and planning
- Monthly accounting & payroll service
- Financial statement preparation
- Business consulting



Keith W. Lewis, CPA

641-682-8117
639 E. Pennsylvania Ave.
Ottumwa, IA 52501



Kyle R. Merry

641-664-1999
205 N. Washington St.
Bloomfield, IA 52537



Need Repair?

Let Us Help!

We can take away the stress and get you results!

Auto Body Shop
Auto Glass
Automotive Restoration
Hand Detailing Service

KARR COLLISION CENTER & AUTO DETAILING
Shawn Scott, Owner
701 Karr Ave. • Bloomfield, IA
641-664-1024

Davis County Community School District

Board of Directors Regular Meeting

Date: Tue., March 19th, 2018
Time: **7:00 P.M.**
Place: 608 S. Washington St.
Bloomfield, Iowa

TENTATIVE AGENDA

1. Call to order/Roll call/Visitors
2. Approve tentative agenda
3. Approve consent agenda items
 - a. Positive comments
 - b. Minutes of district's contract proposal to DCEA for February 14, 2018
 - c. Minutes of regular board meeting for February 20, 2018
 - d. Minutes of special meeting for March 12, 2018
 - e. Payments of warrants
 - f. Monthly financial reports
4. Approve personnel contracts and resignations
5. Administrative reports
6. Public hearing for fiscal year 2017-18 budget amendment
7. Approve fiscal year 2017-18 budget amendment
8. Approve Adoption Agreement #001 for the district's Special Pay Plan regarding early retirement
9. Approve proposal from Klinger & Associates, P.C., for construction material testing and special instructions regarding MS renovations
10. Approve asbestos abatement consulting, inspection, and testing services and asbestos/ceiling tile removal project for Middle School West Wing
11. Approve Contractor contracts for Middle School renovations
12. Approve proposal from FLR Sanders, Inc., for High School gym floor renovation
13. Approve dump trailer purchase for recycling program
14. Present FY19 Budget
15. Board Policy Review
16. Adjournment

Lucky St. Paddy's Day DEALS



Corn Beef, Point cut fresh \$2.79 lb.



Green cabbage, fresh 39¢ lb.



3/\$9.00
7 Up products, .5 liter bottles, select variety



\$1.99
Franks sauerkraut 32 oz. bag



J'S FOODS

Hwy. 136 E.
Memphis, MO
660-465-8597

FOR SALE: Sanborn air compressor, Stihl mm 55 tiller, lawn edger, mobility scooter, wooden computer desk.
PH: 641-664-3958 11

WESTERN'S SMOKEHOUSE

- Nationwide Shipping
- Cut to Order Meat Bundles

Snack Sticks & Beef Jerky

Visit our retail shop in Greentop, MO
www.westerns-smokehouse.com
New Hours as of May 1st
Mon. - Fri. 8:30am - 5pm • Sat. 8am - 4pm
660-949-2445 • 1-800-456-0250

Gourmet Cheeses
Award Winning Sausages

WANT TO BUY: Young adult male Pomerian. Any color but black.
PH: 641-799-8104. 12

FOR SALE: Diesel engine, 3 cylinder Kubota model #D722.
PH: 660-216-1710 11

FOR SALE: 2005 Chevy Equinox, auto, sunroof, 159,271 miles, PW, PL, white, \$2,500.
PH: 641-919-8615 12

FOR SALE: Double Max Trophy Builder Whitetail Mineral, 20lb. bucket, \$18 or 2 for \$17 each.
PH: 641-664-2570 11



Lilac Hill GREENHOUSE
660-342-9554



SEEDS ARE HERE!



Now OPEN

EARLY BEDDING PLANTS ARE HERE!

- * Onion Sets * Seed Potatoes
- * Bulk & Packaged Garden Seeds
- * Vegetable & Flower * Bedding Plants
- * Mulch

Time to Plant Early Vegetable Plants

Cabbage • Broccoli • Cauliflower
Brussels Sprouts
Celery • Onions • Lettuce

SHOP EARLY FOR BEST SELECTIONS!

25957 US Hwy 136 • Lancaster, MO
Mon. - Sat. 9:00 AM - 5:00 PM
Closed Sundays

2ND Half Property Taxes

Due Now!
Last Day to Pay without Penalty
Monday, April 2nd, 2018
Penalty Starts Tues., April 3rd. Penalty Per Month 1.5%.

Hours:
8 a.m. - 4:30 p.m. Monday - Friday

Driver's Licenses: Tuesday - Friday 8:30 AM-3:30 PM
Closed on Mondays

Written Tests: Tuesday - Friday 8:30 AM-2:30 PM
Car Drives: Thursdays by appointment only.

Drivers License Station CLOSED March 28, 29 and 30.
The county treasurer is now accepting "in office" payments with debit cards, Discover, Master Card and Visa credit cards.
A service delivery fee will apply.
Applicable fees:
Credit Cards - 2.5% plus \$1.50 per transaction
Debit Cards - motor vehicle or property tax - \$2.00 per transaction

Pay Your Taxes On The Internet at
www.iowatreasurers.org
24-Hours A Day ---- 7 Days A Week
A service delivery fee is charged for this service.

Online Tag Renewals at www.iowatreasurers.org
Motor Vehicle Registration Renewals-You can't do them without the PIN number which will be on the renewal notice you receive in the mail.
A service delivery fee is charged for this service.

Davis County Treasurer
Phone 641-664-2155
100 Courthouse Sq. Bloomfield

Come In, Mail Your Payment in , or use the Payment Drop Box located on the northeast corner of the Courthouse lawn.

FOR SALE: Meridian 220BST seed tender. Very little use, electric start, \$8,500.
PH: 641-656-4956. 12

FOR SALE: 30 Red Angus 1st calf heifer pairs. All Red calves by side.
PH. 660-342-6310 or 660-216-6683. 12

THE DAVIS COUNTY CONSERVATION BOARD

is accepting bids
on a pond construction project located at the
McGowen Recreation and Wildlife Area

Bid sheets can be picked up at the
Conservation Board Office located at the
McGowen Area Park Office
Monday - Friday
7:30 am to 4:00 PM

Sealed bids are due back by
Monday, April 9th by 3:30 pm

QUESTIONS CALL: 641-664-2572

HOURS		
8 A.M. to 5:00 P.M. DAILY EXCEPT SUNDAY		

Onion Sets & Bulk Garden Seeds & Seed Potatoes
Wheat grass growing kit, lots of sprouting seeds and sprouting jars etc.

Frozen Fruit & Vegetables in Bulk			
Cut Green Beans	99¢/lb.	Garden Peas	\$1.09
Mixed Vegetables	\$1.10	Peas & Carrots	\$1.12
2 1/2 lbs. Baby Lima	\$3.29	2 lb. Broccoli Florets	\$2.35
5 lb. Potato Wedges	\$5.49	2 lb. French Cut Green Bean	\$1.99
Bulk Strawberries	\$1.94/lb.	Blueberries	\$2.12/lb.
Blackberries	\$2.44/lb.	Gooseberries	\$3.59/lb.
5lb. Peaches	\$10.85	5lb. Tart Cherries	\$7.98
5lb. Mixed Fruit	\$12.55	5lb. Pineapple Chunks	\$11.39
5lb. Mango Chunks	\$14.35	5lb. Cranberries	\$6.49

Lots Of Yogurt By The Case Or Each

10lb. Elbow Macaroni, Small Shell, Rotini Macaroni.....	\$1.25/lb.
10lb. Rainbow Rotini.....	\$1.61/lb.
10lb. Large Shell.....	\$1.39/lb.
10lb. Angel Hair Spaghetti.....	\$1.13/lb.
10lb. Lasagna.....	\$1.64/lb.
5lb. Fine or Wide Noodles.....	\$1.93/lb.
5lb. Medium Noodles.....	\$2.05/lb.

- Bulk Quick Rolled Oats - 44¢/lb. • Baby Oats - 50¢/lb.
- Organic Quick Rolled Oats - 86¢/lb.

Check Out Our Prices On Our Many Kitchen Utensils!

Need Fabric?
We have over 4,000 bolts of Quilting or Dress fabric!
DRIVE A LITTLE & SAVE A LOT

MAST VINYL WINDOWS

THERMO-PRO WINDOWS
Custom Size Is Our Specialty
Professional Installation Available



FREE ESTIMATES

22172 Hwy. 63
Bloomfield, IA 52537

800-206-9949

FOR SALE: Registered Purebred Gelbvieh and Balancer bulls. Reds & Blacks, yearlings and 2 year olds. Rolling Hills Gelbvieh, Bloomfield, IA
PH: 641-777-7060 13

FOR SALE: Reg. black angus yearling bulls, semen tested, \$1,750; 2 Australian Shep pups 7 month old out of working parents.
PH: 319-540-4601 13

FOR SALE

- Custom Built Storage Sheds
- Portable Animal Shelters

ALL SIZES AVAILABLE
Come Take a Look!

Willie Petersheim
Milton, IA • 641-656-4476
Leave Message

FOR SALE: Compost manure in bulk or bags. \$80 for full size pickup or \$6.00 per bag. Quantity discounts. Call before arriving. Alan Yoder 14632 Lilac Ave. Bloomfield, IA 641-722-3230 Ext. 3 14

FOR SALE: 4 yr. old team Percheron geldings, boys can drive them, \$3,000 each; Family cow, \$850; Bull calves; Osborn hog feeders 1-1 1/2 ton, \$125 each. **John H. Yoder Bloomfield.**
VM: 641-664-0202 13

To Whom It May Concern: I am considering selling or demolishing for materials, the 1912 Hull Brothers building in Bunch, Iowa.
PH: 641-208-1595 13

CITY OF BLOOMFIELD

a community of 2,641 is currently accepting applications for the position of

POLICE OFFICER

The starting wage for this full-time position is \$33,500 per year. Candidates must meet State of Iowa minimum hiring standards for Law Enforcement Officers.

Applications are required and can be picked up and returned to the

Davis County Law Center
102 Anderson Street,
Bloomfield, Iowa 52537

Pre-employment and random drug and alcohol testing required. EOE

FOR SALE: 50 registered Angus yearling bulls. Feed efficiency tested and guaranteed. Will keep till June. All weights available. Angus bulls with a little more frame. **WernerFamilyAngus.com,** 641-344-5059, Diagonal, IA. 17

FOR SALE

Driveway Fabric Rolls
Commercial, Heavy Duty,
Designed for Heavy Traffic

12' 5" Wide
432' Long
\$370/ roll

660-216-0938

FRIESEN CONSTRUCTION

New Houses
Remodeling
Garages Electrical
Plumbing
Custom Cabinets

Arlen 664-3270
Cell 641-208-0170
Bloomfield, Iowa



Specializing in Aluminum Grain Trailers
Repair & Rebuild

3 miles east of Gorin, Mo. on Route U

660-282-1012

FREE KITTENS: Yellow & White. Across Hwy from Yoder's Kountry Corner. Perry W. Yoder 18078 Hwy 2 Bloomfield, Ia 13

FOR SALE: Percentage Red & White. Across Hwy from Angus bull. 4 year old, good disposition, easy calver, \$1,750. PH. 641-895-4913. 13

CR CATTLE CO



Red Angus
Red Angus Composite Bulls



Yearlings and 2 year olds available

Bulls are developed for longevity. They are gentle and easy to handle. Bulls will be fertility tested and have all vaccinations. Select your bull now and I will keep until May 1st.

Jennifer Gardner, Selma, Iowa
641-895-4116

OUR SUCCESS DEPENDS ON YOURS.

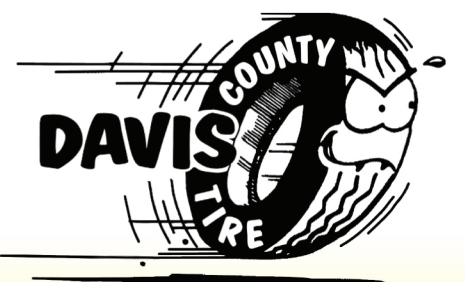
<p>Mozzarilla cheese horn, approx. 5 lb.</p>  <p>\$1.69 lb.</p>	<p>Smoked cheddar cheese, ends & pcs., 8# to 9# pkg.</p>  <p>\$1.99 lb.</p>	<p>Hillshire Farm virginia brand ham, extra lean, fully cooked, 2 lb, sliced</p>  <p>\$1.99 a lb.</p>	<p>Simply Essentials, 3 oz. black Angus custom blend beef patties, 10,125 lbs.</p>  <p>\$14.99</p>	<p>Oscar Mayer classic wieners, 3 lb. case, 30 ct.</p>  <p>\$1.49</p>
<p>Hot Pockets Food Truck Bites, fiery jalapeno lime chicken rollers, 20 oz.</p>  <p>79¢</p>	<p>Tombstone Roadhouse loaded pizza, 1 lb., 6.5 oz.</p>  <p>\$2.99</p>	<p>Fresh Tomatoes</p>  <p>\$1.09 a lb.</p>	<p>Fresh Radishes Ready To Eat! 1 lb. bags</p>  <p>\$1.39</p>	<p>Maxwell House, columbian coffee, 24.5 oz.</p>  <p>\$7.00</p>
<p>Gatorade Frost Berry Rain, 12-32 fl. oz. bottles</p>  <p>\$9.00</p>	<p>Oscar Mayer fully cooked bacon, 2.52 oz.</p>  <p>\$1.99</p>	<p>Keurig hot Green Mountain coffee, 12 0.33 oz. cups</p>  <p>\$4.00 or case of 36 \$10.99</p>	<p>Marble cheese 40 lb. block</p>  <p>\$1.99 a lb.</p>	<p>Marble, Colby, Pepper jack, Marble Pepper Jack & Muenster, approx. 6 lb. horns</p>  <p>\$2.49 a lb.</p>
<p>Yellow American cheese, 5 lb., 120 ct. sliced</p>  <p>\$1.99 a lb.</p>	<p>Fresh load of yogurt JUST IN!</p>  <p>YUMMY!</p>	<p>Irregular breaded Pollock, 3.10 oz. pieces, 10 lb. box</p>  <p>\$1.19 a lb.</p>	<p>Come visit us at the Expo! Big Green Eggs! Enjoy grilling at its best!</p>	



Mon. - Sat. 8:30am - 5:00pm VM: 641-664-1187 19686 Hwy. 2, Approx 2 miles west of Bloomfield
Sale good Wednesday, March 14th through Tuesday, March 20th.

Join us at our Eastern Iowa Tire Location in Centerville for **Eastern Iowa Tire and Davis Co. Tire's FARMER APPRECIATION DAY**

- Register To Win:**
- \$1,000 off a set of Firestone Radial Rears
 - \$500 off a set of Firestone Radial Rears
 - Flat Screen T.V.
 - Set of tickets to a NASCAR race.



FRIDAY, MARCH 16, 2018
11 am to 3 pm
Serving Pulled Pork Sandwiches

- BRAKES
- FRONT END ALIGNMENT
- TRANSMISSION FLUSH
- POWER STEERING
- ENGINE REPAIR
- U JOINTS
- ENGINE
- WATER PUMPS
- 4WD SPECIALIST
- SUSPENSION
- DIAGNOSTICS
- INJECTOR CLEANING
- FUEL SYSTEMS
- COOLANT FLUSH
- TUNE UPS
- OIL CHANGES
- A/C REPAIR

Expect the Best

Expect the Best

24/7 365 day service available for farm and commercial tires.

Hour:
Monday - Friday 8am to 5 pm
Saturdays 8 am to 12 noon

641-664-1801

Call Rob Today!
108 Smith Street
Bloomfield, IA

Vinyl Windows
Entry Doors
FREE LAY VINYL FLOORING

WHY USE FREE LAY FLOORING?
When you damage a tile or plank in the center of your floor, simply lift the offending plank and lay the new plank in it's place. It's that simple.

Discounts through the month of March!

ADDITIONAL DISCOUNTS AT SOUTHERN IOWA BUSINESS EXPO ONLY!

Robert W. Yoder
19467 Driftwood Blvd • Bloomfield • 641-722-3667

Quality work is our top priority.

BEECHY
Concrete Construction

PROVIDING:

- Pole Barn Floors
- Cattle Feed Lots
- Parking Lots
- Stamped Concrete
- Radiant In-Floor Heat

Poured concrete foundations for:

- Industrial Buildings
- Steel Frame Buildings
- Hoop Buildings

Installing foundations and above grade walls with insulated concrete forms.

v.m. **641-722-3061 • 641-777-3948** mobile
William Beechy **Over 20 years experience!** Bloomfield, IA
Do it right the first time and save money in the long run.

FOR SALE: 75 registered Angus 18-month-old bulls. Feed efficiency tested and guaranteed. Will keep till June. All weights available. Angus bulls with a little more frame. WernerFamilyAngus.com, 641-344-5059, Diagonal, IA.

C.H.I. MIDWEST
Overhead Door

✓ *Out Our Competitive Prices!*

21387 Route V64
Keosauqua, IA 52565
660-216-0812

Our goal is to keep your doors rolling smooth!

Sales • Parts • Service ~ Free Estimates
We sell new doors and openers or we'll service your old one.

FOR SALE: Seasoned firewood. Red Elm & Cherry, \$60/pickup load. RJ Lumber
PH: 641-722-3348 TFN

HOOVER RENTAL

Manlifts • Telehandlers • Minihoes
Skidloaders & Skidloader Attachments

RENT BY
Hour • Day • Week • Month • Long Term

DOZER NOW AVAILABLE FOR RENT

Call us for your construction needs!
660-216-8230
Mt. Sterling, Iowa
2 miles East of Cantril on Hwy 2

FOR SALE: Allis Chalmers 5' brush cutter, \$300.
PH: 641-208-5911 11

FOR SALE: Talon Crest Farms Angus Registered Angus bulls. High quality hand fed yearling bulls with show and performance pedigrees. Guaranteed. Contact Larry @ 515-493-9110 or e-mail at larry@taloncrestfarms.com. 12

FOR SALE: Fresh cut hedge post, all sizes, 8-10 foot. Milton, IA.
PH: 641-680-1183 11

We are your local, full-service contractor, dedicated to meeting all of your home improvement and home building needs with integrity and quality craftsmanship.

- Metal Roofing
- FREE estimates!
- Crews available
- Call today!

WAGLER METALS LLC

19049 Ice Ave., Bloomfield, IA • 641-722-3692
M-F 7:30AM-5PM • Sat. 8-11:30AM

CALVING TIME IS HERE
STOP AND CHECK OUT OUR HELPFUL CALVING SUPPLIES

Calving Pens

We carry

Cobett Waterers

Unimilk • Iodine • O.B. Gloves
Latex Gloves • O.B. Lube
Calf Claim • Oral Calf Feeders
Nursing Bottles • Kick Start
Uterin Bolus • O.B. Straps & Chains

Calf Catchers
Blankets
Colostrum

For-Most
Livestock Equipment
Calving Pens

For-Most
Livestock Equipment
Cattle Chutes
Various Sizes

Ready for spring?
Tillage Equipment
Sweeps • Sickle Sections
Disc Blades • Chisel Spikes

Custom Hydraulic Hoses to Your Specifications

Hamilton Produce Co.
105 W. Franklin • Bloomfield, IA 52537

641-664-2459 or 1-800-469-7749



BIG Spring SALE



29¢
per lb.
Fresh Cabbage



\$1.69
per lb.
Sliced Fully Cooked Corned Beef



Sold as a 24 oz. pack for \$2.98
\$1.99
per lb.
Wagon Master® Thick Sliced BACON



\$3.29
per lb.
Whole Boneless New York Strip Steak



\$1.69
6 Pack
Xtra Large Green Bell PEPPERS



99¢
per case
4 oz. 48 ct. Case
Raspberry Rainbow Trix Yogurt



99¢
per lb.
Pepper Jack Cheese



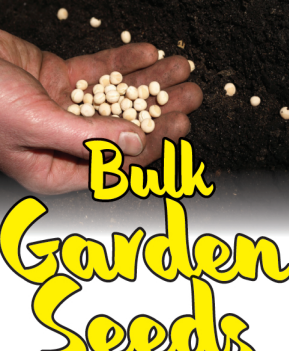
\$1.99
per lb.
when you buy 6 lb. loaf
Wisconsin Muenster CHEESE



69¢
per lb.
Briar Street Shaving HAM



5/\$5
plus deposit
2 LITER Bottles
7up Products



Bulk Garden Seeds



Seed Potatoes
Onion Sets
Onion Plants



\$1.75
per lb.
Baby Ruth Butterfingers Sweet Tarts BULK CANDY



20% SALE
ROCKY Mens Work Boots



\$2.99
gallon
Miracle Whip Salad Dressing



\$19.99
50# bag
Diamond Original Dog Food




DUTCHMAN'S STORE Division Street CANTRIL, IA (319) 397 2322 SALE PRICES March 14-20, 2018

STORE HOURS • Weekdays, 8a.m. - 6 p.m. • Saturday 8a.m. - 5 p.m. • Sunday Closed

View our specials online - www.DutchmansStore.com

YODER BUILDERS LLC
New Construction & Remodels
Pole Barns • Roofing



Wilbur Yoder 18841 Echo Ave.
641-777-5421 Drakesville, IA 52552



FEED & SUPPLY
641-722-3045
17599 200TH STREET • BLOOMFIELD
STOP BY MON.-FRI. 8-5 & SAT. 8-12

Complete line of bagged feed in stock!
CUSTOM BULK
Non GMO Poultry Feed we deliver!

FENCING SUPPLIES • FENCING SUPPLIES

HOMESTEAD WOODWORKS

Custom Kitchens
Custom Doors
Millwork
Custom Countertops
Quartz • Granite • Solid Surface

We "WOOD" Like to Serve You!

641-929-3007




Get a jump start on your spring building plan! Come see us for your **FREE estimate today!**

Cantril Lumber & Hardware
319-397-2351 • 319-397-2354 • Mon-Fri 7-5 & Sat 7-12

Book your spring roofing projects **NOW!**

- Metal Roofing
- Pole Buildings
- Garages
- Re-tinning

WE MAKE OLD BARNs LOOK NEW AGAIN!

New Star Construction
Aaron Yoder
641-664-2753

Garages • Pole Barns Commercial Free Estimates

LAN-DOW BUILDINGS

Lancaster Lumber, Inc.

We Stock a Complete Line of Building Materials Complete Buildings or Packages Available

Toll Free 800-424-5071 Fax 660-457-3133

Hardware • Plumbing • Electrical • Paint
500 Green Street • Lancaster, MO 63548

FULL TIME PARTS DISMANTLER

Spilman Auto Parts is looking for a full time parts dismantler to work in yard. Must have knowledge of vehicles, have own tools & be reliable. Benefits include health insurance, retirement benefits, vacation, sick and personal pay. Pay based on experience. We are an equal opportunity employer.

Please stop in to pick up an application:
Spilman Auto Parts
20311 Old Highway 2, Bloomfield, Iowa.
641-664-2463

COUNTRY CUT MEATS
Custom Butchering
Beef • Pork • Deer
Homeraised Beef Available

641-675-3683 26824 Vetch Ave Pulaski, IA

Fall Registered Angus Bulls. Efficient, Docile, Sound, Performance Tested. Houks Angus Blakesburg, PH: 641-777-5713. 13

FOR SALE: Several old round bales of grass hay. Make offer. Between Troy and Douds. Leonard Besick PH: 641-936-4452 13

FOR SALE: 2012 VW Beetle, 66,000 miles, salvage title, \$7,000. Memphis, MO. PH: 660-341-7970 13

FOR SALE: 18' harrow gator, \$900; 2 bottom 3pt. Dearborn gator, \$900. 2 bottom, 3 pt. Dearborn plow, \$300. PH: 319-750-1968 12

FOR SALE: 18 ft. harrow gator, \$900. 2 bottom, 3 pt. Dearborn plow, \$300. PH: 319-750-1968 13

Nutrena Minerals SPECIAL through the month of March!

BUY 9 GET 1 FREE!

Now Through 3/31/18

Fox Valley Welding

No matter what size the project customer satisfaction is always our first priority.

Tig & Aluminum • Welding • Milwork • Lathe • New Steel • Sprockets • Roller Chain Barings • PTO Parts • Fabricating • CNC Machining • CNC Cutting

Hours: M-F 8-5:30 • 641-656-4684 • 12190 East Hwy. 2 • Milton, IA

Spring Seed Sale

Save on our most popular seeds for spring planting!

CROP SERVICES, INC
John & Kathy Bos, Owners
Drakesville, IA
641-722-3293

Nutrena pfister

It's Our 7th Annual ST. PADDY'S DAY RV SALE-ABRICATION!

MARCH 15TH, 16TH & 17TH!

Door Prizes, Refreshments and 3 days worth of fun...
Huge discounts on all inventory both NEW & USED!

Bowling Motors & RV Sales, Inc
14270 Sycamore Road - Ottumwa, IA - www.bowlingrvs.com
641-682-5497 or 800-246-5497

Need a NEW trailer?



Stock #	Yr.	Length	Description	Price
30301	2018	30'	Black Tandem Duals Mega Ramps	\$8,400
30004	2018	32'	Grey, 2 Ramps, Center Pop Up, Tandem Duals	\$8,400
30005	2018	25'	Grey, 2 Ramps, Center Pop Up, Tandem Duals	\$7,800
30069	2018	25'	Grey, 2 Ramps, Center Pop Up, Tandem Duals	\$7,800
30447	2017	30'	Black, 3 Ramps, Tandem Duals	\$8,000
30446	2017	25'	Black, 3 Ramps, Tandem Duals	\$7,600
30405	2016	25'	Grey, 2 Ramps, Center Pop Up, 14,000 #	\$5,400
30353	2017	14'	Dump, 14,000 #	\$6,500
30299	2017	12'	Dump, 14,000 #	\$6,300

Slayton Polaris

BLOOMFIELD, IA
 8 mi. S & W from Pulaski or 6 mi. W
 of Memphis then 13 mi. N on Route B
660-328-6627

NEW MATTRESSES FOR SALE!

Selling individually or in sets. Factory warranty.

TWIN - FULL - QUEEN - KING

641-664-3060

FOR SALE: Beagle female 1 1/2 year old. Also 5 year old proven Beagle male, \$100 each. Also sport dog, 1225 shocking collar with remote and 1 extra color. 3/4 mile range.
 PH. 641-664-2744.

13

FOR SALE: Produce wagon (spring wagon) w/ top & stock rack, 8 horse Win., engine w/recoil start. 8 horse tecumseh engine, vertical shaft. Perry W. Yoder, 18078 Hwy 2 Bloomfield, Ia 13

MULTI FAMILY GARAGE SALE: March 9th & 10th at 29738 State Hwy 15. Alvin Burkholder. Approx. 1 mile north of Greensburg. Home decor, household items, girl and boy baby clothes, baby items, dresses, lots of misc.

FOR SALE: Troy built horse tiller. New motor, fresh paint, Exc. Cond. Just in time for Spring! \$450
 PH: 660-341-8602 13

HUGE SALE: March 29th, 4-8 pm; March 30th, 10 am-5 pm; March 31st, 10 am-2 pm Entertainment centers, chairs, tables, vintage quilt, linens, post cards, etc. Womens & mens XL-XXL, books, lamps, hand painted ceramics, bird houses, house decor, bowls, bedding, small kitchen appliances, house plants, file cabinet, tools, snowblower, chain saw, window AC units, Christmas decor, humidifier, Amish glider, bed, much more & free stuff. 611 N. Washington St., Bloomfield, IA. Bad weather, 1 week later. 13

FOR SALE: Fox Terrier puppies, 6 weeks old, wormed. \$175 each. VM: 641-664-1964, ext. 5 12



Iowa's Professional Farmland Real Estate & Auction Company

Clifford Martin | SE Iowa Land Agent
AUCTION Davis County, IA 319-677-0784

36 Acres **SOLD**

Appanoose County, IA

78 Acres **SOLD**

NEW Appanoose County, IA 83 acres

A nice recreational farm located along the Fox River. The farm is currently being grazed. The farm has row crop availability and good road access. There is no shortage of big deer in the area.

CALL TODAY!

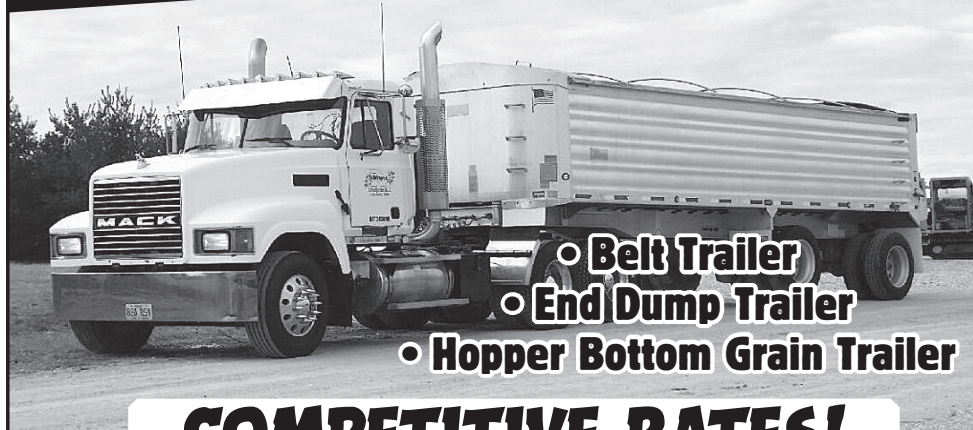


HAY FOR SALE!

250 big round bales of mixed grass hay, net wrapped & stored inside.

660-216-0938

YOU NAME IT WE HAUL IT!



- o Belt Trailer
- o End Dump Trailer
- o Hopper Bottom Grain Trailer

COMPETITIVE RATES!

Rock - Lime - Grain - Fertilizer
Wide Loads - Machinery - Etc.

NAGEL ENTERPRISES, LLC

660-216-0303

Contact Me For Wet Seed!



Saving you time & money on those hard to find auto parts!!

SPILMAN AUTO PARTS

20311 Old Hwy. 2
 Bloomfield, IA
 641-664-2463
 1-800-477-1367
 M-F 8AM-5PM
 Sat. 8AM-12Noon

www.SpilmanAuto.com

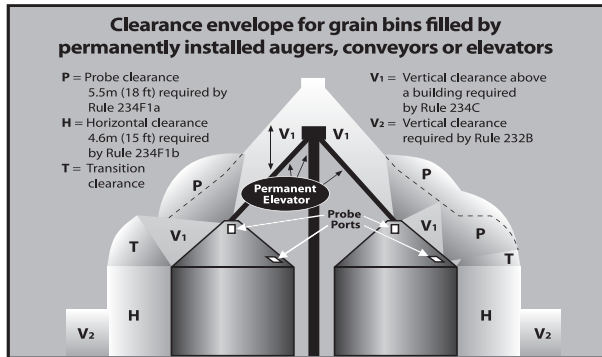


GRAIN BIN NOTICE

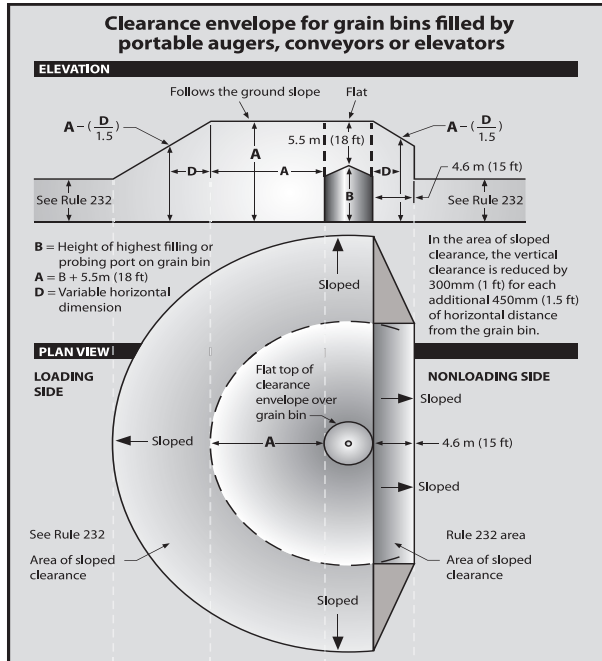
Do you have plans for a new grain bin? If so, please contact us to ensure your project meets applicable code requirements for the safety of those working and living near your operations.

Southern Iowa Electric Cooperative and Northeast Power may have distribution and/or transmission lines crossing your property in the area of your proposed bin(s). For the safety of those working and/or living around grain bins, we would like to assist you during your planning process. Specific clearances are required by the American National Standards Institute (ANSI) C2-2017 "National Electrical Safety Code," Rule 234F (as shown on these graphics).

If you have any questions concerning these graphics, please contact Southern Iowa Electric Cooperative at 641-664-2277 or Northeast Power at 573-769-2107.



From IEEE Std. C2-2017, "National Electrical Safety Code." © Copyright 2016 by IEEE. All rights reserved.



From IEEE Std. C2-2017, "National Electrical Safety Code." © Copyright 2016 by IEEE. All rights reserved. The IEEE disclaims any responsibility or liability resulting from the placement and use in the described manner.

Disclaimer: These drawings are provided as part of Iowa electric cooperatives' annual public information campaign and are based on the 2017 Edition of the National Electrical Safety Code. To view the actual drawings, refer to that publication. Every care has been taken for the correctness of the contents for these drawings. However, the Iowa Association of Electric Cooperatives and its member cooperatives accept no liability whatsoever for omissions or errors, technical inaccuracies, typographical mistakes or damages of any kind arising from the use of the contents of these drawings, whether textual or graphical.

BLOOMFIELD MINI STORAGE. Serving you from 2 safe, convenient locations.
 PH. 641-664-1066. TF

FOR SALE: Duroc's, Spots & crossbred show pigs. Great 4-H & FFA projects. Reasonably priced.
 Call Brett 641-777-8520. 11

GLENWOOD Elevator

301 State Hwy. M
 Glenwood, Mo 63541

Logan Ford, Manager
 PH: 660-457-3973 • Cell: 660-956-3973
 Fax: 660-457-3045 • gelevator@marktwain.net

YODER EQUIPMENT
 BLOOMFIELD, IOWA

SOUTHERN YELLOW PINE TREATED WOOD POSTS
 Mineral Feeders
 Gates
 Variety of Sizes & Styles
 Feed Bunks
 Water Tanks
 CONTINUOUS FENCING

19887 Jade Ave
 2 1/2 Miles W of Bloomfield
 V.M. 641-664-2797

NOTICE, DON LUNSFORD HAULING has sold the business and wants to thank everyone for all the years, for your loyalty. **MY SON, KEITH LUNSFORD** has bought the business for your hauling needs. Call Keith at 641-777-4235 or 641-684-8068. 11

Friesen Excavating

Specializing in Septic Systems
 Certified For Peat Tanks and Sand Filters.
 Can Also Do Other Drains and Water Lines
 Call or Text Shawn @ 641-208-0861
 Bloomfield, IA
 Free Quotes Available

FOR SALE: 2012 Tahoe LT, 4x4, new tires & wheels, leather, 139K miles, sharp, looks & drives like new, \$19,500. PH: 641-664-1966 or 641-242-0144 12

SIDWELL SEEDS
 Queen City, MO
 660-766-2737 • 660-216-6380

Your complete seed headquarters!
 seed corn • seed beans • small seed

Channel
 pfister

Step up your yield with Refuge Advanced powered by SmartStax! Makes a significant difference in root protection and yield.

SmartStax REFUGE ADVANCED powered by SmartStax Roundup Ready

United Country Real Estate Land Pros, LLC
 Rt. 1 Box 73F • Memphis MO
 Ph: 660-465-2971
 www.weknowdirt.net

Lewis County, MO LAND AUCTION

MARCH 24TH @ 5 P.M. AT OAK HILL INN, CANTON, MO

1 TRACT
 267 ± ACRES

Township 62N - Range 8W

FULL POSSESSION DAY OF AUCTION

LOCATION AND GENERAL INFORMATION

267 +/- Acres in Lewis County, being auctioned March 24, 2018 in one tract. FSA records show 181.45 acres of cropland. The property has a barn and outbuildings with electricity and well water. The farm is a great cattle farm, currently being pastured and has good fences, two pond waterers, and a hydrant at the barn. There is potential for row crop production if the buyer chooses. This farm represents excellent whitetail deer hunting and potential for hunting with income. The property is located on the south side of Deer Ridge Conservation Area that features 5000 acres of prime Whitetail deer and turkey hunting. There is a 66ft owned, deeded driveway that runs from Hwy Y to the property. Auction to be held at the Oak Hill Inn Suites in Canton, MO on March 24th at 5 p.m. Contact Jason Small, listing agent, for details at 660-342-3819. **Property lines on the map are thought to be accurate but they are estimated.

Driving directions from Lewistown, MO, go north 5 1/5 miles on Hwy H, then east on Hwy Y approximately 1 1/2 miles, to the sign. If coming from Monticello, MO, go west on Hwy 16, 2 miles to Hwy Y, then north approximately 6 miles to the property. This farm is approximately 15 miles west of Canton, MO.

OWNERS: GREG AND JACQUELINE JACOBS

United Country Real Estate Land Pros, LLC

KEVIN SMALL JASON SMALL DAVID SMITH TALIA HATHFIELD KENNY FOX TANNER WEAVER ROB HAMM SCOTT BRASSFIELD

FOR SALE: 7 bred Kiko boer cross doelings, due April 3rd, \$320. Also Kubota lawn tractor, 3 cyl. diesel, hydrostatic drive, clutch overhauled late summer, 5 ft. deck, \$3,450 OBO. Can be seen 5 miles North of Cantil. PH: 217-260-1876 11

EST. 1993
Little Farms SHOW PIGS
 LFI
 Eugene Little

Little Farms Show Pigs
 Purebred and Crossbred
 1531 Long St.
 Murray, IA 50174
 641-414-2224
 littleshownpigs@yahoo.com
 www.littlefarmsshowpigs.com

FOR SALE: 2 bedroom, 1 bath home in Downing, MO. \$7,000. PH. 660-349-5015. 12

FOR SALE: Loader for JD 3020. 7' hydraulic bucket, \$1,100. PH. 641-656-4946. 12

Chick Days

Order March 23 for April 11 pickup
 Order April 20 for May 9 pickup

50726 State Hwy 15 18743 US Hwy 136
 Baring, MO 63531 Memphis, MO 63555
 660-892-4537 660-465-2967

NEMO FEED LLC
 Layers, Broilers, Guineas, Turkeys, Bantams, Hometown Ducks, & More!! Animal Health

Exceptional NO-RESERVE RETIREMENT AUCTION

WED., MARCH 21ST AT 10:00 A.M.

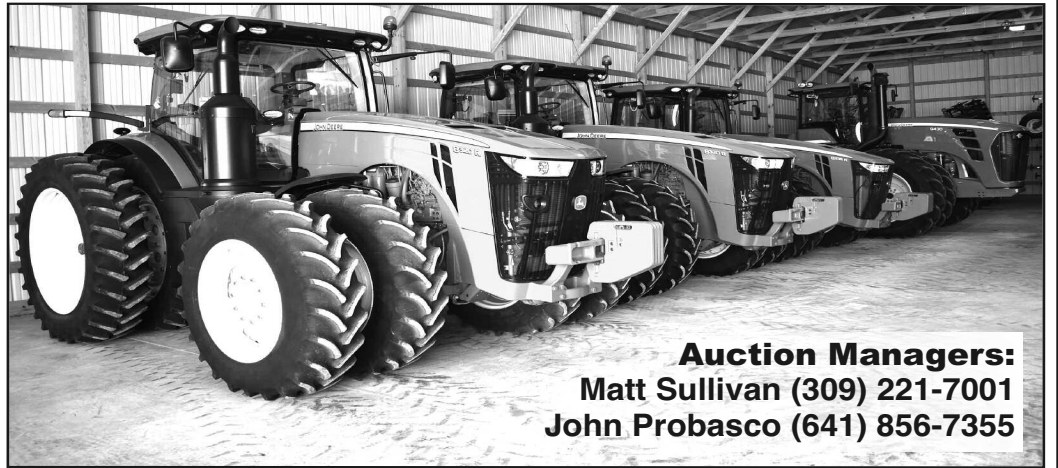
AUCTION TO BE HELD AT THE FARM NEAR BLOOMFIELD, IOWA

From Bloomfield, IA, take Hwy. 2 east approximately 2½ miles to Nuthatch Ave., turn left or north on Nuthatch Ave. for a short distance, turn right or east on Otter Trail for ½ mile to the auction. Be watching for pre-sale directional signs.

EQUIPMENT QUESTIONS:

Doug Berryman ••• (641) 777-6456

Kent Berryman ••• (641) 208-6105



Auction Managers:
Matt Sullivan (309) 221-7001
John Probasco (641) 856-7355



TRACTORS: '14 JD 8320R MFWD tractor, ILS front suspension, PS trans., 5 hyd. outlets, 60 GPM hyd. pump, 1000 PTO, 480/80R50 rear tires and duals, 420/85R34 front tires and duals, front and rear fenders, front and rear weights, LED lighting, leather trim, Premium CommandView II cab, 10" color touch display, premium radio, refrigerator, 679 hours, SN 1RW8320RAEP094637 – Powergard Warranty until Sept. 2019; '14 JD 8320R MFWD tractor, ILS front suspension, PS trans., 5 hyd. outlets, 60 GPM hyd. pump, 1000 PTO, 480/80R50 rear tires and duals, 420/85R34 front tires and duals, front and rear fenders, front and rear weights, LED lighting, leather trim, Premium CommandView II cab, 10" color touch display, premium radio, refrigerator, 567 hours, SN 1RW8320RPEP094596 – Powergard Warranty until Aug. 2019; '11 JD 8335R MFWD tractor, ILS front suspension, PS trans., 4 hyd. outlets, 60 GPM hyd. pump, 1000 PTO, 480/80R50 rear tires and duals, 420/85R34 front tires and duals, front and rear fenders, front and rear weights, HID lighting, leather trim, Premium CommandView II cab, 7" color touch display, premium radio, 795 hours, SN 1RW8335RVBP045804; '10 JD 9430 4wd tractor, PS trans., 4 hyd. outlets, 48 GPM hyd. pump, 1000 PTO, 710/70R42 tires and duals, front and rear diff. lock, weights, HID lighting, leather trim, Deluxe cab, Deluxe comfort package, 877 hours, SN 1RW9430PVAP017636; '07 JD 6430 Premium MFWD tractor, cab, PowerQuad Plus 16 spd. trans. with left hand reverser, 3 hyd. outlets, 540/1000 PTO, 460/85R38 rear tires, 420/85R24 front tires, rear wheel weights, front and rear fenders, buddy seat, hood guard, joystick, 778 hours, SN L06430H530447, sells complete with JD 673 self-leveling loader, global hookups and 85" heavy duty material bucket.

COMBINE & HEADS: '14 JD S660 4wd combine, 3 spd. elec. shift trans., Contour Master, Hi Torque feeder house drive, TriStream rotor, round bar concave, deep tooth chaffer, 22.5' high rate unload auger, PowerFold bin with extension, chopper, 520/85R42 drive tires and duals, 750/65R26 steer tires, HID lighting, Premium cab, 7" color touch screen, 657 eng. hours/526 sep. hours, SN 1H0S660STE0765268; '13 JD 635FD 35' flex draper head, dual knife drive, hyd. fore and aft, single point hookup, stubble lights, SN 1H0635FDCD0755513; '12 JD 608C 8 row 30" corn head, RowSense sensors, hyd. deck plates, knife rolls, single point hookup, stubble lights, SN 1H00608CLCX746705; P-K 35' head cart, tandem rear axle, front dolly wheels; Harvest Hand 25' head cart, single rear axle, front dolly wheels.

FARM EQUIPMENT: '14 JD 1790 CCS 16/31 planter, vacuum, hyd. variable rate drive, RowCommand elec. clutches, pneumatic down pressure, no till coulters, markers, two-point hitch, SeedStar XP monitoring system, ProMax 40 corn disks, soybean disks, approx. 4,000 acres, SN 1A01790CEDA755215; '14 JD 1790 CCS 16/31 planter, vacuum, hyd. variable rate drive, RowCommand elec. clutches, pneumatic down pressure, no till coulters, markers, two-point hitch, SeedStar XP monitoring system, ProMax 40 corn disks, soybean disks, approx. 4,000 acres, SN 1A01790CTDA755217; '13 JD 2510H 15-knife high speed NH3 applicator, JD RateController, Raven AccuFlow Super Cooler, weights, SN 1A82510HKD0750323; '15 JD 2210 45'6" field cultivator, 6" spacing, floating hitch, AccuDepth depth control, 200 lb. shanks, 3-bar spike tooth harrow and flat bar rolling basket, gauge wheels, SN 1N02210XJE0760156; '10 JD 2210 35' field cultivator, 9" spacing, single point depth control, 200 lb. shanks, 2-bar coil tine harrow and round bar rolling basket, gauge wheels, SN N02210X010230; '14 Landoll 7431-33 VT-Plus 33' vertical tillage tool, 7" spacing, hyd. fore and aft, round bar rolling basket, 32x15.50-16.5SL main frame tires, SN 74K1405979; '16 McFarlane WDL-2000 60' 12-bar harrow, rear fold, SN 19824, New!; '14 McFarlane HDL-1000 50' 16-bar harrow, front fold, SN 19177; '03 JD 637 32'1" disk, 9" spacing, hyd. fore and aft leveling, single point depth control, gauge wheels, SN N00637X005604; DMI 2500 9-shank in-line ripper, pull-type hitch, gauge wheels, no-till coulters, rear hitch, SN JFH0012087.

GRAIN HANDLING EQUIPMENT: '14 Kinze 1300 grain cart, 36" tracks, Electronic Scales with GT 460 indicator, roll tarp, hyd. adjust spout, 1000 PTO, SN 105265; '14 Kinze 1300 grain cart, 36" tracks, Electronic Scales with GT 460 indicator, roll tarp, hyd. adjust spout, 1000 PTO, SN 105267; '15 Brent 757 gravity wagon, 455/55R22.5 tires, front and rear brakes, roll tarp, fenders, SN B32340122; '07 Demco 650 gravity wagon, 425/65R22.5 tires, rear brakes, SN 40139; REM 2700 grain vac., 1000 PTO, assorted tubing and hose, SN 0910; Westfield TF100-31 10"x31' truck auger, Kohler 20 hp. gas eng., SN 197152; Westfield WR80-31 8"x31' truck auger, 10 hp. elec. motor, SN 213282; Westfield MK100-71 10"x71' swing away auger, 540 PTO, SN 195211; Westfield MK80-71 8"x71' swing away auger, 540 PTO, SN 64925; Jet hyd. drive hopper.

GPS EQUIPMENT: JD GS3 2630 display, AutoTrac SF2, Section Control, 441 hours, SN PCGU2UG551688; JD GS3 2630 display, AutoTrac SF2, Section Control, RowSense, 561 hours, SN PCGU2UG554848; JD StarFire 3000 receiver, SF1, SF2 Ready, SN PCGT3TA311738; JD StarFire 3000 receiver, SF1, SF2 Ready, SN PCGT3TA315708.

SEMI & TRAILERS: '06 Freightliner Columbia 120 semi, sleeper, Mercedes 460 eng., Fuller 13-spd. trans., air ride, all aluminum wheels, 220" wheel base, 401,320 miles, VIN 1FVJA6CV75LN99131; '90 Mack CH613 day cab semi, Mack E6-350 eng., MaxiTorque 8-spd. trans., air ride, 22.5" all aluminum wheels, 190" wheel base, 566,356 miles, VIN 1M2AA06Y3LW004524; '09 Timppte 40' hopper bottom grain trailer, ag hoppers, air ride, roll tarp, 22.5" wheels, VIN 1TDH400279B118850; '06 Timppte 40' hopper bottom grain trailer, ag hoppers, air ride, roll tarp, 22.5" wheels, VIN 1TDH400296B109739.

TRUCK & TRAILER: '06 Dodge Ram 1500 4wd truck, Big Horn, SLT, 5.7L Hemi eng., auto trans., crew cab, short bed, power windows, power locks, cloth interior, 20" wheels, red in color, 51,271 miles, VIN 1D7HU18276S631981; '09 Delta 16' bumper hitch livestock trailer, center divide gate, steel, VIN 4MWBS16249N024814.

FUEL TRAILERS, DEF TOTE AND FARM SUPPORT ITEMS: Fox Valley Welding 500 gal. fuel trailer, 20 GPM pump, tandem axle, bumper hitch, lights; 500 gal. fuel tank on tandem axle trailer, elec. pump, bumper hitch; Thunder Creek DTT50 DEF Transport Tote, 50 gal. capacity, elec. pump; Frontier AL12 dual tine bale spear, global hookups; JD 4-bottom plow; Danuser post hole digger, 12" bit; JD black hyd. cylinder; 3-pt. bale tote; and more!

AUCTIONEERS' NOTE: After a very successful near 40-year farming career, Doug and Kent have rented their ground and will be retiring from farming. Every item on the farm was purchased brand new, has been stored inside and has been meticulously cared for. There will not be any small items, so please be on time, entire auction will take less than 2 hours. Every item sells absolute, without reserve. Internet bidding will be available prior to and live during the auction. Loader and auction personnel will be available sale day. Lunch will be available. Not responsible for accidents, errors or omissions. All announcements sale day take precedence. No onsite buyer's premium.



BERRYMAN FARMS – OWNER

SULLIVAN AUCTIONEERS, LLC • TOLL FREE (844) 847-2161 • IL LICENSE #444000107
DETAILED LISTING & PHOTOS: www.SullivanAuctioneers.com

KEOSAUQUA SALE CO.

20511 Hwy. 1, Keosauqua, IA

Results from March 10th

Fat lambs.....	\$130.00-140.00/cwt
Butchers.....\$46.00-52.00/cwt	Ewes.....\$70.00-95.00/cwt
Sows.....\$37.00-48.00/cwt	Kid goats.....
Feeder lambs.....	40-70# \$100.00-155.00/hd
.....\$180.00-255.00/cwt	Nannies.....\$70.00-215.00/hd
Pound cows\$47.00-54.00/cwt low yielding	
.....\$57.00-72.500/cwt high yielding	
Pound bulls\$80.00-93.50/cwt	

SPECIAL CATTLE SALE SAT., MARCH 17TH

SPECIAL EASTER LAMB SALE

SAT., MARCH 24TH

SPECIAL EASTER LAMB SALE

SAT., MARCH 31ST

Watch website for early listings www.keosauquasaleco.com

Thank You For Your Business!

For More Information Contact:

Selling Times

Hogs.....	9:30 a.m.
Sheep & Goats.....	10:00 a.m.
Outside Merch.....	11:00 a.m.
Cattle.....	Noon

Keosauqua Sale Co.
319-293-3508
Bill Goehring
641-919-9365

www.keosauquasaleco.com

SAWMILL FOR SALE: 52 in circular "HELLE" sawmill, electric over hydraulic control, live deck & conveyer belt off load. PH: 660-988-8175 11

FOR SALE: Basset Hounds pups, 8 wks old, shots, APRI registered, wormed, males & females, tri-color, red & white, lemon & white, \$350. PH: 641-919-8615 12

HUNTER SAFETY CLASS

Saturday, April 14th

8:00 am - 3:00 pm

Izaak Walton Building
(West end of Lake Fisher Dam)

NEW! Registration must now be done online at the Iowa DNR website under hunter education classes or by calling 1-800-830-2268

Class size is limited!

After registration is completed study manuals can be picked up at the Davis County Recorder's office or the McGowen Recreation area office. Students must still pick up and complete the study manual & bring it with them to the class.

Dress for the weather as some instruction will be outside!
Class size is limited

For questions & more info. call 641-664-2572

Let Rayburn save you a pot o' gold!

- Affordable prices
- Outstanding Customer Service
- Friendly & Helpful Staff

Memphis Farm & Home

South Market St. & Business RT. 136
Memphis, MO • 660-465-8678
Mon. - Sat. 8-5 • Closed Sun.

FOR SALE: Purebred black Angus bulls. Select now. Green Diamond Farms. Queen City, MO. PH. 660-342-2550. 11

FOR SALE: 2002 Ford Ranger extended cab, 2WD, V6 5 speed with topper, 123K miles, \$4,850. PH. 641-656-4956. 12

MARCH SPRING SAVINGS!

- Wood Pellets, \$6.50 a bag
- Safe Guard Blocks, \$40.00
- Grime Stoppers, \$3.00
- E Flow Seed Lubricant, Big \$21.00 / Sm. \$6.00
- Hi Mag Mineral, \$35.00 HWT
 - Salt Blocks, \$5.50
 - Sulphur Blocks, \$6.00
 - Electric Fence Post, 25¢ off per post
 - Scour Guard Tubs, \$100
 - Mineral Blocks, \$7.75
 - Grill, 2 Burner, \$94.00
- Smoker, \$350.00 (reg. \$382)
- Lamb Milk Replacer, \$51.25 a bag



MFA
AGRI SERVICES
FARM & HOME

PO Box 253
Memphis, MO
63555

660-465-2603

CONSIGNMENTS WANTED

Southern Iowa Produce Auction
Sales every 2nd & 4th Saturday, November thru March

Next Sale
Sat., March 24th - 10 A.M.

For advertising your consignments they must be called in by 10 A.M. Monday on the week of sale.

19141 Ice Ave. Bloomfield, IA
Call 641-722-3623 on auction days or leave a message.
Market Report or Information call 712-432-8593

Scotland County LIVESTOCK AUCTION

P.O. Box 111 • Hwy 15 North • Memphis, MO
660-465-7213 • Jerry & Barb Blomme
660-341-0069 • Grant Blomme
660-216-4674 • Rodney Garman

CATTLE SALE

Sat., March 17th • 12:30 pm

Early Listing:

10 HD- Black, 5 to 7yr. old Cows Start Calving April 8th
Mated to Hoover Dam Bulls
6- Black, Cows, P3, 3-6 yrs old
6- Black, Cow/calf pairs

Market Results for Cattle Sale Sat., Mar. 10th:

STEERS: 511 lbs. - \$198.00, 695 lbs.- \$147.00, 702 lbs.- \$153.00; **HEIFERS:** 440 lbs.- \$170.00, 470 lbs.- \$167.00, 487 lbs.- \$168.00, 673 lbs.- \$135.00; **BULLS:** 460 lbs.- \$179.00, 467 lbs.- \$187.50, 511 lbs.- \$176.00, 520 lbs.- \$178.00, 556 lbs.- \$170.00; **VEALS:** \$100.00; **LB. BULLS:** \$88.00 - \$94.50; **BULK OF COWS:** \$57.00 - \$71.00

www.ScotlandCountyLivestock.com

FOR SALE: Five boer goat bucks, born Feb. to Apr. 2017, \$375 each. No Sunday Calls. PH: 660-341-8234 11

FOR SALE: Mission Maniac compound bow with quiver, wrist sling and stabilizer, 3 pin sight, peep sight, QAD drop away rest, 28" axel to axel, 5 arrows with mission soft case, excellent condition, \$350; Bear Charge compound bow, sight peep, limb saver, arrow rest wisker, slightly used, \$275. Reasonable offers. PH: 641-777-3181 11

FOR SALE: 4755 JD tractor, very nice, approx. 6,600 hrs, always shedded; JD 1530 drill with caddy cart, yeti markers & 15 inch rows. PH: 660-216-7696 11

AUCTIONS

JERRY BARRICKMAN COLLECTION
SATURDAY, MARCH 17th AT 9 AM,
LOCATED AT 23669 DEWEY ROAD, CENTERVILLE, IA (Dewey rd is just north of Wal Mart, turn East to Auction site)

15 Antique Tractors, 30 + Antique Gas Engines, TD 9 Dozer, Model T Truck for restoration, Antique Jail Cell, Rail Car, Rock Island Lines Baggage Cart, Signs, Horse Drawn Machinery, Steel Wheels, Primitives, Tools and Much Much More. SPEND THE DAY WITH US.
Web site: demryauctions.com OR Follow us on Facebook, 150 pictures

ANNUAL MACHINERY/ FARM EQUIPMENT AUCTION

SATURDAY, APRIL 14th

ALSO SELLING Lawn & Garden, Posts, Fencing, Tools, and any Farm Related Items. Equipment coming in. List yours now for proper advertising. We almost always have over 100 Sellers and give out over 300 Buyer numbers for the Auction. The quicker you list the better Auction we will have for everyone.

DEMRY AUCTION, LLC
demryauctions.com

JANET DEMRY 641-895-4310 or 641-856-6408
TOM DEMRY 641-895-2508
PEGGY VANDENBERG 641-891-7258
KENNY VANDENBERG 641-891-1472
JUNIOR LAWSON 641-895-0037

CHICK DAYS ARE HERE

at Hometown!

LAYERS, BROILERS, GUINEAS, TURKEYS, DUCKS, AND MORE!

- Order by March 23 to pick up April 11
- Order by April 20 to pick up May 9
- Order 25 chicks, get **ONE FREE BAG** of NEMO Family Flock Chick Starter*
- Order 100 chicks, get **TWO FREE BAGS** of NEMO Family Flock Chick Starter*

We carry a full line of feeders, waters, and NEMO Family Flock Chick Grower and Layer Mash!



*DEALS GOOD THROUGH APRIL 20 • DETAILS IN STORE

We also carry handmade coops for **\$995***

Hometown ANIMAL HEALTH

660.465.2967 • hometownanimalhealth.com

18743 US Hwy 136 • Memphis, MO 63555
On Highway 136 west of Memphis

NUTRITION • MEDICAL • PET • FARM • APPAREL

NEMO FEED AUTHORIZED DEALER OF NEMO FEED.



HUFF'S POLLED HEREFORD BULLS FOR SALE

Raising Hereford Cattle Since 1915

- Sires are selected for calving ease, maternal traits, calm dispositions, & rapid growth. Superior EPD's!!
- Raised on a diet that encourages growth not fat, they are ready to work!
- Docile & easy to handle - the disposition you always wanted.

HUFF'S POLLED HEREFORDS
26574 STATE RT. M • RUTLEDGE, MO 63563

LeRoy & Jane Huff, Home: 660-883-5684 or Cell: 660-341-6392
Sean & Nichole Huff, Home: 660-883-5383 or Cell: 417-499-3639

GIVE US A CALL & VISIT OUR FARM TO SEE FOR YOURSELF THE QUALITY DESCRIBED!

These bulls represent the best genetics of the breed!



FOR SALE: Stewart Oster model 510A, 3" head, \$85; Stevens model 94, 410 GA, \$165; Montgomery Ward 40,000 BTU heater, \$65; John Deere deisel 820 Dyersville, 1982, Nov. 6th, \$40; electric Hawaiian guitar, New Yorker, \$250 OBO; 1950 Copy R. DEK, heavy duty commercial 5000 gen., \$450 OBO; 16.16.5 8 bolt truck wheels, \$15 each; F250 Ford, 4 spd transmission & transercase, \$150. PH: 660-216-3715 19

Hawkins - Harrison Insurance

Trusted Choice

SHOPPER ADS CAN BE DROPPED OFF HERE!

Proud to be your partner.

P.O. Box 365
Lancaster, MO 63548
660-457-3020

103 W. Monroe St.,
Memphis, MO 63555
660-465-8533

Post & Pole Frame Buildings

Horizon BUILDINGS

Specializing in:
Post Frame Buildings (Up to 100' Wide Clear Span) • Agricultural Commercial • Residential • Equine Heat Formed Metal Roofing & Siding With 50 Year Warranty

Quality Workmanship • Best Quality Material

Stop In And See Us At Our Open House On Thursday, March 29th

Free Refreshments Lunch 11 am - 2 pm Public Is Welcome!

2 miles N. of Drakesville on pavement
888-371-4710 • 641-722-3505
17549 Husky Trail, Drakesville, IA 52552



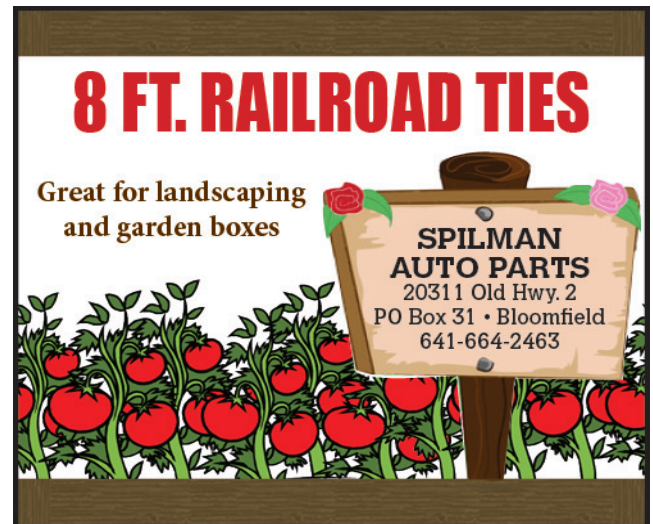
Yoder Indian Creek Furniture: Solid hardwood furniture for every room in your home. Also a great selection of outdoor poly furniture. Check with us before you buy.
Rt. V64 Milton, Iowa. Located 4 miles North of Cantril or 3/4 miles South of Lebanon on RT. V64, Monday to Saturday 8 a.m. to 5 p.m. No Sunday sales. PH. 319-538-7332 TF

FOR SALE: Firewood at RJ Lumber, \$15 a pickup load. 18989 160th St., Drakesville, IA 52552. TF

8 FT. RAILROAD TIES

Great for landscaping and garden boxes

SPILMAN AUTO PARTS
20311 Old Hwy. 2
PO Box 31 • Bloomfield
641-664-2463





1010 S. Columbia, Bloomfield
#20168159

Enjoy the outdoor space and outdoor storage space, with this close to City limits with benefits of city utilities, but county taxes. Then, go inside and relax, watching your favorite movie, on the big screen. Or, just put your feet up, on the beautiful deck and watch the sunset.



Price Reduced! #20168522
206 Jones Ave., Bloomfield

Very Nice home, inside and out. Updated with nice carpeting. All 3 bedrooms on main floor. Nice living space in basement, with bath and separate laundry room. Basement leads out into a nice 30x30 garage, with really tall garage door openings. Also, very nice outdoor area with wooden deck.



13651 315th St., Bloomfield
#20168758

80 acres M/L pasture, 2-3 bedroom home, 1 bath, 50x78 pole barn, affordable setup with tons of potential

Happy St. Patrick's Day!

Lynch REALTY, INC.
641-664-2275
lynchrealtyinc.com

106 S. Madison Bloomfield, IA
Licensed in Iowa
Stephanie Lynch, Broker

If you are in the market for a new home...
YOU ARE IN LUCK!



BLOOMFIELD LIVESTOCK MARKET



Wed., March 14th..... Fat Cattle, Slaughter, Cows & Bulls9:00 AM
 Wed., March 21st..... Fat Cattle, Slaughter, Cows & Bulls9:00 AM
Special Calf & Yearling Sale 11:30 AM
 Wed., March 28th..... Fat Cattle, Slaughter, Cows & Bulls9:00 AM
 Wed., April 4th..... Fat Cattle, Slaughter, Cows & Bulls9:00 AM
Special Annual All Grass Sale..... 11:30 AM
 Wed., April 11th..... Fat Cattle, Slaughter, Cows & Bulls9:00 AM
Special Calf & Yearling Sale 11:30 AM
 Tues., April 17th..... Special Bred Cow & Pair Sale..... 6:00 PM

Reports from Wednesday, March 7th, 2018 • Selling 1169 Head

HEIFERS

Stump Farms.....	4 BLK.....	497.....	\$171.00
Triple B.....	8 BLK.....	553.....	\$168.00
Daniel Gingerich.....	12 BLK.....	569.....	\$165.50
Sloan Farms.....	26 BLK.....	603.....	\$163.00
Cindy Stump.....	10 BLK.....	645.....	\$154.50
Bradly J. Jacobs.....	11 BLK.....	659.....	\$154.00
Fritz Engel.....	28 BLK.....	682.....	\$149.85
L. Robison Inc.....	10 BLK.....	684.....	\$149.00
Steve Hassman.....	12 BBWF.....	690.....	\$142.00
Steven Miller.....	38 BBWF.....	695.....	\$139.00

STEERS CONTINUED

Daniel Gingerich.....	6 BLK.....	634.....	\$175.50
Stump Farms.....	10 BLK.....	653.....	\$175.00
Mike McGolrick.....	11 BLK.....	668.....	\$171.75
Dustin Lawson.....	14 BLK.....	680.....	\$169.00
Sloan Farms.....	20 BLK.....	698.....	\$169.00
Tim Glosser.....	16 BLK.....	688.....	\$168.25
Alvin Holton.....	12 BLK.....	718.....	\$159.75
L. Robison Inc.....	14 B/R.....	725.....	\$159.60
Ervin and Arlene			
Nolt Trust.....	22 BLK.....	742.....	\$159.25
Tim Dotterer.....	73 BLK.....	731.....	\$157.60
Cindy Stump.....	20 BBWF.....	760.....	\$154.75
Fritz Engel.....	42 BLK.....	784.....	\$150.10
Kent Harness.....	34 BLK.....	851.....	\$142.85
Allen Martin.....	67 B/R.....	821.....	\$141.75
Jeff Bassett.....	14 BRC.....	901.....	\$135.50
Klotz.....	59 BLK.....	991.....	\$126.50

STEERS

TA Farms.....	10 BLK.....	488.....	\$204.50
Sloan Farms.....	14 BLK.....	530.....	\$191.00
Dustin Lawson.....	10 BLK.....	486.....	\$185.00
Alvin Holton.....	5 BLK.....	541.....	\$180.00
Fritz Engel.....	18 BLK.....	636.....	\$179.50

**SALE BARN OPEN UNTIL 9:00 PM
 EVERY TUESDAY TO RECEIVE LIVESTOCK**

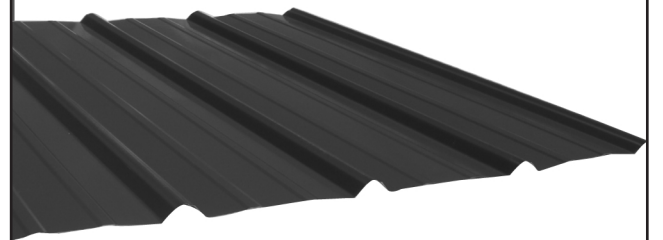
Phil Schooley..... 641-664-3450
 Ron Schooley..... 641-777-0302
 Roman Schooley..... 515-450-3685

We appreciate your business!

Tyler Schooley..... 641-208-5442
 Barn Phone..... 641-664-2435

HWY. 63 NORTH • BLOOMFIELD, IA

Premium Metal Roofing

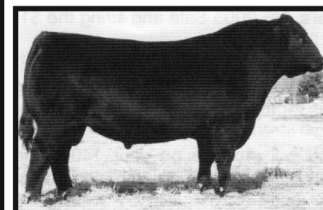


- Buy Direct & Save
- Fast Service
- Cut-to-length
- Professional Contractors Available



641-664-3990 • awmetal.net

ANGUS BULLS 2 YEAR OLDS & YEARLINGS



- ★ CALVING EASE
- ★ GROWTH
- ★ THICK
- ★ GOOD DISPOSITION

Sired by Musgrave Reachout 530

SELECT YOUR BULL NOW

Open heifers show prospects.
 Will make great cows. Top blood lines!

DORAN BOLLMAN
 PULASKI, IOWA
 641-675-3467



Bring your plans in for a
FREE ESTIMATE



Trusses Engineered and Designed to Your Specs

FOAMBOARD • SHINGLES • INSULATION

Count on us for quality building supplies. Good results begin with a solid foundation, and that requires the right materials for the job. Trust us for a comprehensive selection of professional grade tools, hardware, lumber and supplies, plus our selection and service with competitive prices.

STOCKING 9 COLOR CHOICES



17893 212th Street • Bloomfield, IA 52537
 641-722-3605 • Mon.-Fri. 7 AM to 5 PM

Private Treaty Bull Sale Videos at jllangus.com

Jager Land & Livestock

March 24, 2018 Yrlg. & Older Bulls
 Calving Ease Available

Viewing 12:30 p.m. Bid Offs 1:30 p.m. Held at the Farm

Curt & Lorie Jager
 2371 330th Street
 Curt 641-660-0771

Gina & Dan Hoy
 Eddyville, Iowa 52553
 Office 641-969-4600



Complete Information | Genomic Profiles | Lunch Sale Day | Free Housing Yrlg. Bulls till June 1
 Call or email jllangus@outlook.com for a sale book