

C Cornerstone Investments
 Chuck Riggenschach
 Financial Planner
**IRAs can be a
 wise investment!**
 108 W. Jefferson St. (641) 664-3700
 Bloomfield, IA 52537
 Securities offered through Questar Capital Corporation (QCC)
 Member FINRA/SIPC. Advisory Services offered through Questar
 Asset Management (QAM) a registered investment advisor.
 Cornerstone Investments is independent of QCC and QAM.

Tri-County SHOPPER

Happy Easter

STANDARD
 MAIL
 U.S. POSTAGE
PAID
 TRI-COUNTY
 SHOPPER, INC.
 POST OFFICE BOXHOLDER
 LOCAL RURAL BOXHOLDER
 OCCUPANT
**CIRCULATION
 OVER 11,750
 THIRD CLASS**

P.O. Box 168 • Bloomfield, IA 52537 • www.tri-countyshopper.com
 Phone 641-664-1333 • Fax 641-664-3761 • Email shopper@netins.net



Vol. 46, No. 13
 Wednesday, March 28, 2018



Stanley Sharp Shooter
 Reg. \$26.49

Sale \$16.99

SUPER SPRING SAVINGS!

Gloss black or white
 Reg. \$5.19
SALE \$3.49

Slime Tire Sealant
 Reg. \$7.28
Sale \$4.75

2-5/16" Ball Hitch
 Reg. \$11.02
Sale \$7.99

Gilmour 50' Hose
 Reg. \$29.02
Sale \$18.99

120 psi Bostitch Air compressor
 Reg. \$183.21
Sale \$109.95

Sale \$55.99

300lb Werner Ladder
 20' Reg. \$255.91
Sale \$175.99
 24' Reg. \$282.33
Sale \$195.99
 28' Reg. \$326.26
Sale \$229.99

32 GAL. Rubbermaid Trash Can
 Reg. \$32.68
Sale \$23.95

36" Vinyl Screen Door
 Reg. \$100.45

We will be closed on Good Friday, March 30th.

Cantril Lumber & Hardware
 319-397-2351 • 319-397-2354 • Mon-Fri 7-5 & Sat 7-12

CUSTOMER APPRECIATION DAYS

Wed., April 4th Through
 Friday, April 6th • 8:00a.m.-5:00p.m.
 Sat. April 7th 8:00-12:00 noon
 Refreshments will be served each day.

Family owned business in Schuyler County since 1917
 Ruth Enterprise has been in the same location in Downing, Mo for 70 years.
 We have sold and serviced zero turn radius mowers for over 40 years.

HUGE Savings on Encore Zero Turn Riding Mowers 48" -72" Commercial



Mowers starting at
 \$3,599.00- \$9,119.00
 with savings up to
\$1,367.85

Door prizes will be given away each day.

Come see us and take home a new mower, saving yourself \$\$\$\$\$\$ during the show

Garrett- RUTH LLC, DBA
RUTH ENTERPRISE
 HWY 136, DOWNING, MO 63536 • 660-379-2391

FREE DELIVERY!

BUYING USED PARTS

Will Save You Money...

BUYING FROM US

Will Save You Time!

All the parts you need at great prices! Our helpful sales staff will get you in and out in a hurry. We don't waste your time, or your money!

WE ALSO HAVE A HUGE SELECTION OF USED TIRES & BATTERIES!

Bloomfield, IA • 641-664-1820 • www.piperautoparts.com

Does Your Body Need Some Work?

- * Tires
- * Struts
- * Brake Work
- * Collision Repair
- * Frame Work
- * Glass Installation
- * Cars
- * Trucks
- * Tractors
- * Semis

WE DO IT ALL!

Piper Body Shop

Wheel Alignment & Glass

N. of John Deere • Bloomfield, IA • 641-664-1720

YOUR ONE_HOP Parts STOP

Happy Easter



If quality auto parts are on your list then come fill your basket with great deals!

We have everything you need!
engines • mufflers • tires • bumpers
transmissions • alternators • much more

SPILMAN AUTO PARTS
20311 Old Hwy. 2 • PO Box 31 • Bloomfield

641-664-2463 • 1-800-477-1367
M-F 8AM-5PM • Sat. 8AM-12Noon
www.SpilmanAuto.com

FREE KITTENS: Yellow & White. Across Hwy from Yoder's Kountry Corner. Perry W. Yoder 18078 Hwy 2 Bloomfield, Ia 13

FOR SALE: 30° Paper tape smooth shank nails, 2000pc. \$23.25. Per box pallet pricing available. Leave a message. PH: 660-988-8192 14

FOR SALE: Seasoned firewood. Red Elm & Cherry, \$60/pickup load. RJ Lumber PH: 641-722-3348 TFN

BEECHY Concrete Construction

Quality Work is our Top Priority!

We do all kinds of flat work:

- * Pole Barn Floors
- * Stamped Concrete
- * Driveways
- * Sidewalks
- * Parking Lots
- * Radiant In-Floor Heat

We also install insulated concrete forms for basements & above grade walls - these walls have insulation value of R-35. Call us for a quote.

William Beechy
Bloomfield, IA
VM: 641-722-3061 • Mobile: 641-777-3948

Over 20 Years Experience

WANTED: Large round bales of straw or old grass hay. Also 9 ft. haybine. Please state price & condition, leave message. PH: 641-722-3369 14

To Whom It May Concern: I am considering selling or demolishing for materials, the 1912 Hull Brothers building in Bunch, Iowa. PH: 641-208-1595 13

FOR SALE: Several old round bales of grass hay. Make offer. Between Troy and Douds. Leonard Besick PH: 641-936-4452 13

Give Your Car a Makeover!



Give your car a like-new look that will last beautifully with our premium paint service.

Guaranteed Paint Match

Guaranteed Craftmanship

Hertz

Rentals Available For all Occasions. Great Rates!

375 S. Main St. Memphis, MO 660-465-2159 Shop Phone/Fax

Walker Motors Collision Repair Inc.

Factory Color Matching | Dent & Scratch Repair
Frame Straightening | Unibody Repair | Collision Repair

All Paint & Bodywork Service Guaranteed!
Call or stop in anytime for a free written estimate.

Insurance Specialists
Let us handle your accident claim with no hassles.

Country View Store

Check Out Our GREENHOUSE! by Burkholder's Greenhouse

Miniature Gardens • Bedding Plants • Shrubs • Rose Bushes • Potting Soil • Bag Mulch • Much More!

We have everything a green thumb needs!



Vanilla or Chocolate Trumoo 14 oz. **39¢**

Kraft Shredded Sharp Cheddar Cheese **99¢**

DelMonte ketchup, 64 oz. **\$2.99**

10 lb. Russet potatoes **\$2.79**

We will be closed March 30th for Good Friday.

Check Out Our Poly Furniture!

3 miles south of Memphis, MO along Hwy 45
660-883-5388 • Hours: Mon-Fri 8-6 & Sat 8-5:30

FOR SALE: Stewart Oster model 510A, 3" head, \$85; Stevens model 94, 410 GA, \$165; Montgomery Ward 40,000 BTU heater, \$65; John Deere deisel 820 Dyersville, 1982, Nov. 6th, \$40; electric Hawaiian guitar, New Yorker, \$250 OBO; 1950 Copy R. DEK, heavy duty commercial 5000 gen., \$450 OBO; 16.16.5 8 bolt truck wheels, \$15 each; F250 Ford, 4 spd transmission & transercase, \$150. PH: 660-216-3715 19

FRIESEN CONSTRUCTION

**New Houses
Remodeling
Garages Electrical
Plumbing
Custom Cabinets**

**Arlen 664-3270
Cell 641-208-0170
Bloomfield, Iowa**

FOR SALE: 2004 VW Jetta TDI diesel, black, 150,000 miles, solid & dependable, great fuel mileage. PH. 660-988-0890. 15

plant your Pansies Now!

Bloomfield Greenhouses

Fertilizer • Weed Preventer • Grass Seed

Garden Seeds, Onion Sets, Seed Potatoes, Tomatoes, Cabbage, Broccoli, Cauliflower, Flowers

708 Arkansas Ave • Bloomfield
641-664-1622

Mon. - Sat. : 8:30 am - 6:00 pm • Closed Sunday

NEW MATTRESSES FOR SALE!

Selling individually or in sets. Factory warranty.

TWIN - FULL - QUEEN - KING

641-664-3060

We are your local, full-service contractor, dedicated to meeting all of your home improvement and home building needs with integrity and quality craftsmanship.



- Metal Roofing
- FREE estimates!
- Crews available
- Call today!

WAGLER METALS LLC

19049 Ice Ave., Bloomfield, IA • 641-722-3692
M-F 7:30AM-5PM • Sat. 8-11:30AM

DAVIS & LEWIS, CPA

Let our years of tax experience benefit you!

- Individual & Business tax preparation and planning
- Monthly accounting & payroll service
- Financial statement preparation
- Business consulting



Keith W. Lewis, CPA

641-682-8117
639 E. Pennsylvania Ave.
Ottumwa, IA 52501



Kyle R. Merry

641-664-1999
205 N. Washington St.
Bloomfield, IA 52537

SUNSHINE HILL GREENHOUSE

Early garden vegetables

**BLUEBERRIES,
GOOSEBERRIES,
RASPBERRIES, RHUBARB,
STRAWBERRIES,
GRAPES, & ASPARAGUS**

Fruit trees are here!

**CLOSED
GOOD FRIDAY, MARCH 30TH**

641-656-4203
1 MILE EAST OF MILTON ON HWY. 2

FOR SALE: Fancy front door, insulated, standard size 36x80; exterior window shutters; Tupperware; Home Interior; dishes & so much more. \$100 for all. Bring your truck & someone to help load.
PH. 660-465-7168. 15



Spring Cleaning Sale

March 31st - April 14th

Select floor models up to **30% OFF**

CLOSED MARCH 30th GOOD FRIDAY



VM: 641-664-0207
1 Mile East of Drakesville on Jade Ave.
Mon.-Sat. 9:00 AM - 5:00 PM

FOR SALE: Firewood at RJ Lumber, \$15 a pickup load. 18989 160th St., Drakesville, IA 52552. TF

Shady Lane Variety

New Shipment of Heritage Lace Wall Hangings Doilies, Etc.

Check out our **New Seashell Items!**

We will be closed March 30th in reverence of Good Friday.

1 mi. E. of Drakesville on Jade Ave. • 641-664-0207
8-5 Mon. thru Sat.

TRACTOR FOR SALE: 9600 Ford with a Woods loader, \$5,000. Troy, IA. Larry Bollman
PH: 515-669-4815. 15

FOR SALE: 8 foot slide in pickup camper, on board galley, heat, water storage, brand new Reico Titan jacks a \$600 value. Make me an offer by April 4th.
PH: 641-226-4909 14

Custom Built, Painted and Vinyl Buildings & Sheds

~David W. Schrock~

Hillview MINI BARNs

15383 180th Street Drakesville, IA 52552 **641.664.2842** U.M.

WANTED: Small dog or puppy. Free or small rehoming fee. Will be house dog. PH. 641-777-6361. 13

FOR SALE: 18 ft. harrow gator, \$900. 2 bottom, 3 pt. Dearborn plow, \$300. PH: 319-750-1968 13

We will be closed Good Friday, March 30th

Gingerich Logging Supply LLC

1 mile East of Drakesville, 1/8 mile North

Answering Service: **641-722-3414**

Hours: Mon. - Fri. 8-5 • Sat. 8- 12 Noon
Closed on Sunday




FOR SALE: 3 36x36 vinyl windows with good glass, \$100; 55" flat screen LG LED TV, \$100.
PH. 660-342-2330. 15

GINGERICH GREENHOUSE

Bulk Garden Seeds & More!

We will be closed Good Friday, March 30th.



Seed Potatoes, Onion Sets & Plants



Strawberry Plants



Early Vegetable & Bedding Plants

1 mile East & 1/2 mile North of Drakesville, IA on Jade Ave.

FOR SALE: 1995 Plymouth Acclaim, engine & transmission in good condition. Less than 100,000 miles.
PH: 641-799-6912 15

FREE TO GOOD HOME: 2 female Great Pyrenees & Anatolian cross pups. 6 months old. White w/black faces.
PH. 641-777-1229. 15

COUNTRY CUT MEATS

Custom Butchering

Beef • Pork • Deer

Homeraised Beef Available

641-675-3683 26824 Vetch Ave
Pulaski, IA

Slayton Polaris

Authorized Polaris dealer since 1988


Get out and play!

New & Used Polaris Rangers & ATV's



660-328-6627

BLOOMFIELD, IA
8 mi. S. & W. from Pulaski or 6 mi. W. of Memphis then 13 mi. N. on Route B



Van Buren County Hospital

Simply Remarkable

April Outpatient Clinic Schedule

April 6 th	Audiology	Greg Moore
April 6 th	Psychiatry	Dr. Morcuende
April 11 th	Urology	Dr. Kreder
April 14 th	Dermatology	Dr. Hammel
		Dr. Price
April 17 th	Cardiology	Dr. Muellerleile
April 18 th	Pulmonology	Dr. Wilson
April 20 th	Psychiatry	Dr. Morcuende
April 20 th	General Surgery	Dr. Roe
April 23 rd	Cardiology	Dr. El Accaoui
April 25 th	Podiatry	Dr. Holte
April 27 th	General Surgery	Dr. Roe
April 27 th	Rheumatology	Shayla Sanders, ARNP

Other Services Available at Van Buren County Hospital:

CT Scans	Ultrasounds
Fluoroscopy	OB/GYN
Digital Mammography	Surgical Consultations
Nuclear Med Scans	Colonoscopy
Magnetic Resonance Imaging	EGD
Epidural Steroid Injections	

Call Van Buren County Hospital Outpatient Scheduling
319-293-8731

Schedules are subject to change by physicians.

Burkholder's GREENHOUSE

Dutch Garden Nursery



Troyer Purple Martin plastic gourds and aluminum racks. Aluminum poles designed to ascend and descend.

SEE US FOR ALL YOUR GARDENING NEEDS!

Asparagus Crowns • Sweet Onions • Plants & Bulbs
*Bulk Seeds | Plants | Fertilizers
Compost | Topsoil*

Strawberry Plants

Grapes

Blackberries

Raspberries

Blueberries


Rhubarb

Fruit Trees


Shade Trees

Ornamental Trees


Hours Mon-Sat 8 am to 5 pm
660-341-5777 www.burkholdergreenhouse.com
4 miles north of Edina, MO




2007 Chevy Avalanche
71,000 MILES



2003 Silverado 1500
\$10,900
LONG BOX, REG. CAB, 4 WD,
80,000 MILES



2015 BUICK VERANO
\$12,000
51,501 MILES 4CYL, NEW TIRES,
CLEAN CAR



Check Out These Easter Bunny Approved Vehicles!

Collision Korner

504 South Drake St • Bloomfield, IA 52537
PH: 641-664-2648 • Fax: 641-664-2948



BECAUSE HE LIVES
I can face tomorrow.
BECAUSE HE LIVES
All fear is gone!
Happy Easter!

Recovery support
for those with
drinking or drug
abuse issues.

Mondays in
Bloomfield
At Southfork in the
banquet room.

*Narcotics
Anonymous:
5:45 pm*
.....
*Alcoholics
Anonymous:
7:15 pm*

Contact info:
Jennifer Munoz
641-242-0145

JOIN US EASTER SUNDAY, APRIL 1ST
for lunch served 10:30 am - 3:00 pm

Choice of:	Served With	• One Trip To The Salad Bar
• Fried Chicken	• Mashed Potatoes & Gravy	• Hot Roll
• Honey Glazed Ham	• Butter Corn or Green Beans with New Potatoes	• Many Homemade Dessert to choose from
• Meatloaf		

Adults: \$12.50 • Kids (7 & Under): \$6.00



The Grain Bin Family Steakhouse
Bloomfield, IA • 641-664-3597

BOOK SALE
April
12th, 13th, & 14th
10 am to 5 pm
Come check out our great deals!

Look Buy & Enjoy
214 N 12th St
West side of the Centerville Square.

Thank You
I would like to thank everyone who attended to my surprise birthday party. Thank you to my family for the special surprise and a special thanks to Bruce & Jeri Lyn for all their help!
Edith May

Friday, March 30th
Jumbo Shrimp with sides
Serving at 6:00 P.M.

Dine In **722-3355** Carry Out

RAY'S LONGBRANCH
Drakesville, IA

Help Wanted
Looking for daytime help. 3-4 days a week. Stop by to pick up an application!
North End Grill
203 Weaver Road • Bloomfield, IA

"Do A Good Turn Daily"

Chris Feldman Benefit

Saturday, March 31st • 1 pm to 6 pm (Auction will close at 5:30 pm)
UFCW Local 230 • 1305 E. Mary St., Ottumwa

Dinner and silent auction to help with expenses. While driving to work, Chris was struck by a semi during a snow storm and was killed. Chris left behind a wife and son. We will be serving pork sandwiches, potato salad and baked beans for \$5.00 per ticket. We will be having many items for a silent auction for you to bid on.

Contact: Randy - 641-777-3304 for tickets • Stephanie - 641-660-8091 to donate.
Come check out the auction and help show support to the family.

IOWA THEATER BLOOMFIELD, IOWA
"A Wrinkle In Time"



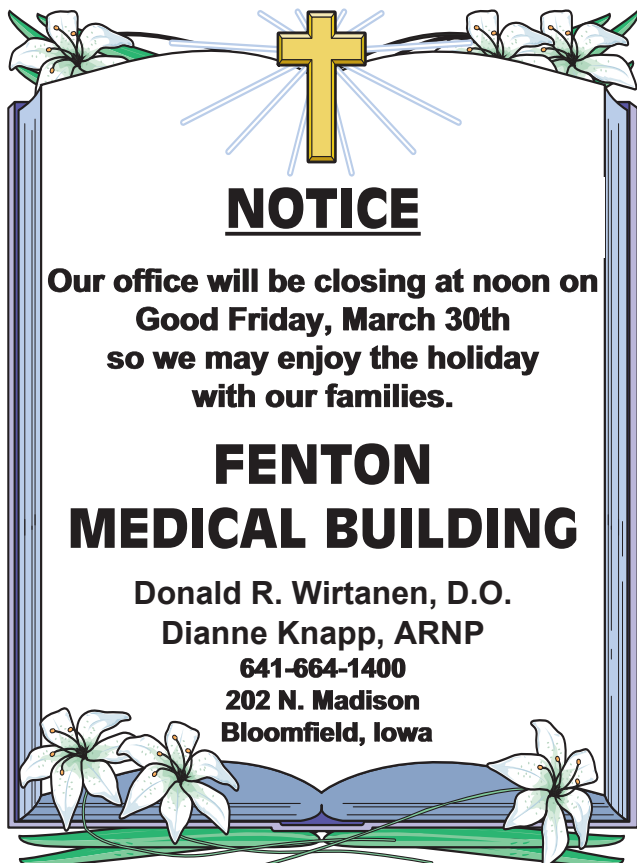
Friday, March. 30th
Saturday, March. 31st
7:00 PM
Sunday, April 1st
4:00 PM PG

Co-Ed 8 ball POOL TOURNEY
Saturday, April 14th

- Hosted by the American Legion Women's Auxiliary
- Sign up at noon/ play at 1pm
- \$20 per team

\$2.50 Bottles Coors or Miller

American Legion
Bloomfield, IA



NOTICE

Our office will be closing at noon on
Good Friday, March 30th
so we may enjoy the holiday
with our families.

**FENTON
MEDICAL BUILDING**

Donald R. Wirtanen, D.O.
Dianne Knapp, ARNP
641-664-1400
202 N. Madison
Bloomfield, Iowa

FOR SALE: Portable squeeze cattle chute with head gate. \$1,000. PH: 641-664-1470 ext. 2 14

FOR SALE: 2012 VW Beetle, 66,000 miles, salvage title, \$7,000. Memphis, MO. PH: 660-341-7970 13

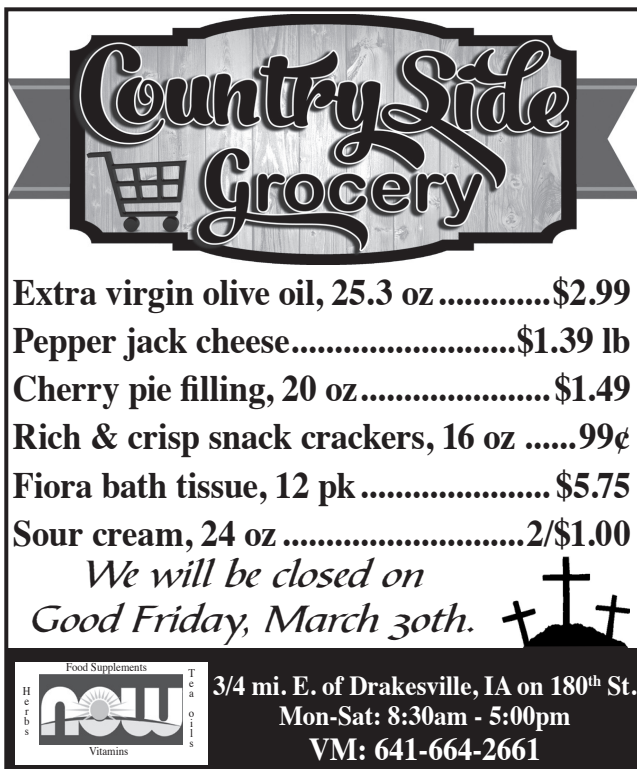


Our office
will be closed
**Good Friday,
Friday, March 30th**

VMI
Van Mersbergen Insurance Inc

Our policy is serving you.

104 East Franklin St.
Bloomfield, IA
641-664-2135
641-664-2108 fx

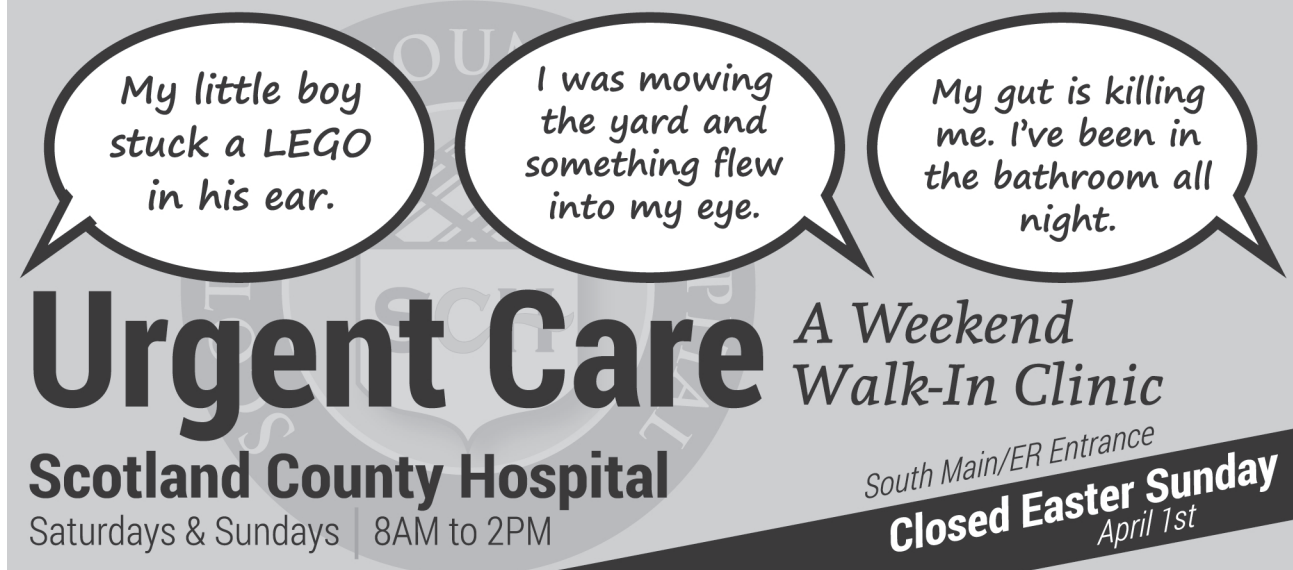


**Country Side
Grocery**

Extra virgin olive oil, 25.3 oz\$2.99
Pepper jack cheese.....\$1.39 lb
Cherry pie filling, 20 oz.....\$1.49
Rich & crisp snack crackers, 16 oz99¢
Fiora bath tissue, 12 pk\$5.75
Sour cream, 24 oz2/\$1.00

*We will be closed on
Good Friday, March 30th.*

3/4 mi. E. of Drakesville, IA on 180th St.
Mon-Sat: 8:30am - 5:00pm
VM: 641-664-2661



My little boy stuck a LEGO in his ear.

I was mowing the yard and something flew into my eye.

My gut is killing me. I've been in the bathroom all night.

Urgent Care A Weekend Walk-In Clinic

Scotland County Hospital
South Main/ER Entrance
Saturdays & Sundays 8AM to 2PM
Closed Easter Sunday April 1st

HUGE SALE: March 29th, 4-8 pm; March 30th, 10 am-5 pm; March 31st, 10 am-2 pm Entertainment centers, chairs, tables, vintage quilt, linens, post cards, etc. Womens & mens XL-XXL, books, lamps, hand painted ceramics, bird houses, house decor, bowls, bedding, small kitchen appliances, house plants, file cabinet, tools, snowblower, chain saw, window AC units, Christmas decor, humidifier, Amish glider, bed, much more & free stuff. 611 N. Washington St., Bloomfield, IA. Bad weather, 1 week later. 13

FOR SALE: Troy built horse tiller. New motor, fresh paint, Exc. Cond. Just in time for Spring! \$450 PH: 660-341-8602 13

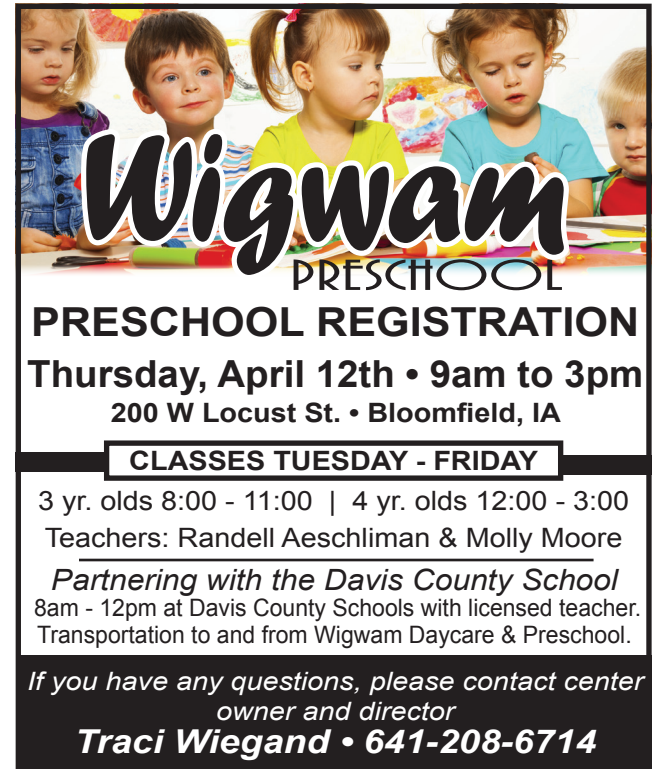
BLOOMFIELD MINI STORAGE. Serving you from 2 safe, convenient locations. PH. 641-664-1066. TF



City of Bloomfield

We are now taking applications for seasonal help.
Deadline is Saturday, March 31st

Lifeguards Wanted



Wigwam
PRESCHOOL

PRESCHOOL REGISTRATION
Thursday, April 12th • 9am to 3pm
200 W Locust St. • Bloomfield, IA

CLASSES TUESDAY - FRIDAY

3 yr. olds 8:00 - 11:00 | 4 yr. olds 12:00 - 3:00
Teachers: Randell Aeschliman & Molly Moore

Partnering with the Davis County School
8am - 12pm at Davis County Schools with licensed teacher.
Transportation to and from Wigwam Daycare & Preschool.

If you have any questions, please contact center owner and director
Traci Wiegand • 641-208-6714

NOTICE: We are looking for wholesale buyers to buy our produce thru the 2018 growing season. Let us know by April 15 what you want us to grow for you. R&S Strawberry Farm 1 1/4 M. south of Jct. 2 & Route V56, Milton.

FOR SALE: Large round bales of grass & trefoil mix. PH: 660-457-3383 14



**Bloomfield
RENT-ALL
INC**

**CLOSED
GOOD
FRIDAY,
MARCH 30TH**
Open Saturday,
March 31st
8 a.m.-Noon

502 E. Franklin St.
Bloomfield, IA

(641)
664-3806

www.BloomfieldRent-All.com



**Spring
OPEN HOUSE**

Friday & Saturday
April 6th & 7th

Bring this ad and get
\$500 OFF any camper on the lot!!!!

**Free Lunch On Saturday from
11:00 am to 1:30 pm**
Serving burgers • Hotdogs • Soda • Chips

LakeWood RV Sales & Rentals

Hwy. 136 E., Downing, MO • 9 miles W. of Memphis or
1 1/2 miles E. of Downing • Ph: 660-379-2763 Cell: 660-341-1927
Tues.- Fri. 8-5 • Sat. 8-Noon, • Closed Sundays & Mondays

www.lakewoodrvsales.com

HOURS
8 A.M.
to
5:00 P.M.
DAILY EXCEPT
SUNDAY

**Zimmerman's
Store**
Rutledge, MO
660-883-5766

Our
Everyday
Low Prices!

10 lb. roll certified Angus beef, ground, 80% lean	\$2.74 lb.
5 lbs. turkey breast tenderloins	\$5.39 lb.
1.5 lbs. chicken tender fritters.....	\$3.89
32 oz. shrimp, raw easy peel, ready to cook.....	\$19.29
Frozen catfish fillet	\$6.88 lb.
Pollock fish fillet	\$2.00 lb.
10 lb. box frozen Pollock	\$16.79
Tilapia fillets.....	\$3.15 lb.
1.31 lbs., 8 ct. corn dogs.....	\$3.89

Pan Saver Pan Liners - Electric Roaster, 2 liners.....\$1.98
 Slow Cooker, 4 liners.....\$1.98
 Ham/Turkey Bags, 2 bags....\$1.89

Bolthouse Green Goodness fruit smoothies, 11 oz.....	\$1.95
Ruby Kist cranberry juice cocktail, 10 fl. oz.....	49¢
Pure organic lemon juice, 12.5 fl. oz.....	\$4.15
Pure beet juice, organic, 32 fl. oz.....	\$5.75
Pure carrot juice, organic, 32 fl. oz.....	\$5.75

9 oz. clear drink cups, 50 ct.
\$2.39

Select paper towels, 8 rolls
\$4.59

Kleenex Facial Tissue, 90 sheets,
\$1.09

Delol Bath Tissue 2 ply, 420 sheets per roll,
\$1.95 4 pk.

4 lbs. Tom Cat with bromethalin rat & mouse bait chunks	\$25.98
Mole killer, 12 bait worms	\$21.19

9"x13"x2" foil cake pan with plastic dome.....	\$1.15
2 pk. lasagna pans.....	\$1.25

NEW ITEM: Fermentation set - to make sauerkraut, kimchi, pickles & much more.
 Check out our bulk elastic & bias tape

DRIVE A LITTLE & SAVE A LOT

GINGERICH
STOVES and
PLUMBING

19091 180th St • Bloomfield, IA
VM 641-664-2814
3/4 miles east of Drakesville, south side

We will be closed
Good Friday, March 30th.



Primo
CERAMIC GRILLS

American Made. Amazing Flavor.

TRENCHING SERVICES:
 Installation of hydrants, waters, drains etc. Call for quote. TJ's Enterprises, Truman Gingerich
 PH: 641-722-3980 OW

FOR SALE: 1995 Polaris 400
 2x4, 2 stroke, \$650; Plasma cutter, Power Max 1000, G3 Series, \$900.
 PH: 641-226-1348. 15

Yoder
Glass & Window

VINYL WINDOWS

- Replacement
- New Construction
- Many Glass & Color Options

Free Estimates

19467 Driftwood Blvd.
Bloomfield, IA 52537

Call Today: 641. 722. 3667

Stop paying too much for cable, and get DISH today. Call 855-589-1962 to learn more about our special offers! (MCN)

FRUIT & NUT TREES
 From \$15. Blueberry, Strawberry, Grape, Asparagus, Evergreen & Hardwood Plants & MORE!
 FREE catalog. WOODSTOCK NURSERY, N1831 Hwy 95, Neillsville, WI 54456. Toll Free 888-803-8733 wallace-woodstock.com (MCN)

FOR SALE: Garden tillers,
 rear tine, front tine and 36" PTO pull type, Troy Built, BCS and many others. DR brush cutters and others. Kahoka, MO.
 PH: 660-216-1809 19

FOR SALE: Craftsman
 self-propelled push mower, 5.5 HP, 22" cut, bagger, \$50; Huffy 6 spd bike, \$50; Basketball hoop & pole, \$20; 24"x79" wooden work bench, \$10.
 PH: 641-208-5136 14

Rustic Acres Greenhouse

Pre-Packaged Seeds

Seed Potatoes • Onions

- * Dusting Sulfer
- * Inoculant
- * Hot Kaps

- * Tomato Protectors
- * Natures Source Fertilizers

We will
be closed
Good
Friday,
March 30th

On Hwy. 2, West Grove 641-929-3056

WESTERN'S
SMOKEHOUSE

- Nationwide Shipping
- Cut to Order Meat Bundles

Snack Sticks & Beef Jerky

Visit our retail shop in Greentop, MO
www.westerns-smokehouse.com
New Hours as of May 1st
Mon. - Fri. 8:30am - 5pm • Sat. 8am - 4pm
660-949-2445 • 1-800-456-0250

Gourmet
Cheeses
Award Winning
Sausages

FOR SALE

80 ACRES

Mostly Tillable • Mark Area

PHONE: 641-777-5997

Lilac Hill
GREENHOUSE

Time to
plant your
Pansies!

660-342-9554

10" hanging baskets

Pansy color bowls

10" hanging baskets

Pansy color bowls

- Onion Sets • Seed Potatoes
- Bulk & Packaged Garden Seeds • Onion Plants
- Vegetable & Flower • Bedding Plants • Mulch

SHOP EARLY FOR BEST SELECTIONS!

Hours: Monday - Saturday • 9-5
 Closed Sundays
 Hwy. 136 2 miles W. of Downing

L&M Country Store

1 1/2 miles south of west Hwy 2 & 63 jct.
 Mon-Sat. 8am-5pm CLOSED SUNDAYS
 VM: 641-664-1936

Candy onion plants	\$1.99 a bunch
2 lb. Velveeta cheese	\$4.75 or
..... 12 ct. case	\$4.50 each
Frozen 40 oz. beer brats	\$3.99
Frozen 5 lb. french fries	\$2.95
24 oz. thick sliced bacon.....	\$3.29
Reese's mini peanut butter cups.....	\$1.99 lb.
Frozen 4 lb. breaded mozzarella cheese patties....	\$3.69

We will be closed on
 Good Friday, March 30th

HILLTOP GREENHOUSE

11049 HWY 2, MOULTON IA
BETWEEN WEST GROVE & MOULTON

Closed
Good Friday
March 30th

- Seed potatoes, onion plants & sets are here!
- Large variety of garden seeds!

READY TO PLANT: cabbage, broccoli, cauliflower and lettuce plants

REMINDER:
 Order by April 1st for a 10% discount on fruit trees & shrubs as well as misc. trees.
 Order by the 1st of April Call to place your order now!

Mon-Sat • 8:00am-5:00pm 641-929-3036

OBERHOLTZER



TRAILER REPAIR

Specializing in Aluminum Grain Trailers
 Repair & Rebuild

3 miles east of Gorin, Mo. on Route U
 660-282-1012

PUPPIES
FOR SALE

Great Pyrenees cross, 9 weeks old. Mother is a working guard dog with sheep, \$60.00
 Lancaster, MO
 641-799-2137

MAST
VINYL
WINDOWS

THERMO-PRO WINDOWS
 Custom Size Is Our Specialty
 Professional Installation Available
 THERMA-TRU DOORS
FREE ESTIMATES
 22172 Hwy. 63
 Bloomfield, IA 52537
 800-206-9949

HELP WANTED

Markert Iron

Duties Include:
 dismantling, sorting,
 and loading salvage parts!
Call Joe at 641-675-3000
 Pulaski, IA

Wishing you Easter Blessings

Good Friday

Good Friday commemorates the crucifixion of Jesus Christ. Jesus was condemned by his peers as King Herod and Pontius Pilate had found him not guilty of his crimes. But crowds were enraged and Pilate reluctantly ordered his crucifixion rather than face a mass riot.

For God so loved the world that He gave His only begotten Son that whosoever believeth in Him should not perish, but have everlasting life. John 3:16

Easter Sunday

A festive and celebratory day for Christians, Easter Sunday is a time for sharing the good news of Jesus' resurrection. His body is discovered missing from the tomb and Jesus appears to his followers again showing proof that He is alive. Typically, Easter Sunday is one of the most well-attended Sunday services for Christians. It also is a day to spend with family, and many families share large meals to mark the end of the Lenten season.

Harris Distributing

 THE HIGH ENERGY LIQUID FEED
 West Grove, IA
 641-929-3379

Memphis Auto & Truck Parts
 300 S. Market
 Memphis, MO
 660-465-2470


B&B Propane & Jet Gas/ Bentler Oil
 Pulaski, IA
 641-675-3354

Memphis Farm & Home
 463 S. Market
 Memphis, MO
 660-465-8678

Clearview Animal Hospital
 641-664-2399

Crop Production Services

 906 Karr Ave.
 Bloomfield, IA
 641-664-1045

1st IOWA STATE BANK FDIC

 Bloomfield, IA
 641-664-1362

citizens mutual
 114 W. Jefferson
 Bloomfield, IA
 641-664-2074

DAVIS

 641-664-1801

Bradley Insurance
 For All Your Crop Insurance Needs
 Memphis, MO
 660-465-2764

Hamilton Produce Co., Inc.
 Bloomfield, IA
 641-664-2459


Beeler Motor Co.
 Hwy. 136 E.
 Lancaster, MO
 660-457-3718

Slayton Polaris
 Bloomfield, IA
 660-328-6627

J'S FOODS

 Hwy. 136 E.
 Memphis, MO
 660-465-8597


Memphis Lumber
 Landow Buildings
 114 W. Monroe
 Memphis, MO
 660-465-8595

Crop Services
 
 John & Kathy Bos, Owners
 Drakesville, IA
 641-722-3293

WESTERN'S SMOKEHOUSE

 Greentop, MO
 660-949-2445
 800-456-0250

Tri-County Electric Coop.
 16875 US Hwy 63
 Lancaster, MO
 888-457-3734

Hoskin Elevator

 641-929-3568

Tri-County SHOPPER
 641-664-1333

Tri-County SHOPPER

We will be closed Friday, March 30th in reverence of Good Friday.

On this Good Friday may we not forget the true meaning of Easter - For when he was on the cross, you were on his mind.

DONATE YOUR CAR TO CHARITY. Receive maximum value of write off for your taxes. Running or not! All conditions accepted. Free pickup. Call for details. 855-752-6680 (MCN)

MILITARY ITEMS WANTED BY LOCAL COLLECTOR: Patches, medals, uniforms, hats, helmets, etc. Always buying. Mark Warren, PH. 641-664-3705. mpwarren@netins.net

8 FT. RAILROAD TIES

Great for landscaping and garden boxes

SPILMAN AUTO PARTS
 20311 Old Hwy. 2
 PO Box 31 • Bloomfield
 641-664-2463



Witmer's Furniture

is celebrating their

1st ANNIVERSARY!

Come see what's happening inside the store
and outside under the tent!

We will also be
hosting the
**Oakwood Seconds
Sale**
at the same time!



Anniversary & Seconds Sale

Mar 31 - April 7 Mar 31 8 - 5;
Mon - Thurs 9 - 5; Fri 9 - 8; Sat 9 - 5

Closed Mar 30

ACROSS FROM THE SCOTLAND COUNTY FAIRGROUNDS



For the way you live
WITMERS
FURNITURE
MEMPHIS, MO

Post & Pole Frame Buildings



Specializing in:

Post Frame Buildings (Up to 100' Wide Clear Span) •
Agricultural • Commercial • Residential • Equine

Heat Formed Metal Roofing & Siding With 50 Year Warranty

Quality Workmanship • Best Quality Material

Stop in and see us for our

**CUSTOMER
APPRECIATION
OPEN HOUSE**



**On Thursday,
March 29th**

**Free Refreshments
Lunch 11 am - 2 pm**

2 miles N. of Drakesville on pavement
888-371-4710 • 641-722-3505
17549 Husky Trail, Drakesville, IA 52552



RON'S CUSTOM
TILLING Gardens, New
Seeding, Food Plots or Small
fields, Small Brush Cutting
Jobs. Ron Moore
PH: 641-208-0854 14

FOR SALE: Industrial air
compressor, Brunner V4
pump, puts out 40 cfm,
3 phase, 10 hp motor, 60
gallon tank; Tops power
radial arm saw, 16" blade,
Model #45082, single phase,
5 hp motor.
PH. 660-216-6683. 15

Boost Your Curb Appeal!

MAST-OVERHEAD DOORS
641-680-2016
105 S. Dodge St., Bloomfield, IA
Quality Products + Quality Workmanship
= Quality Customers

GARAGE DOORS
Residential • Commercial
Doors • Operators
Call us today for your
FREE door estimates.

WANTED: Large chest type
freezer.
PH. 660-988-0890. 15

FOR SALE: 3rd cutting
alfalfa small square bales.
PH: 641-208-5216 15



**Iowa's Professional
Farmland Real Estate
& Auction Company**

Clifford Martin | SE Iowa Land Agent
AUCTION Davis County, IA **319-677-0784**

36 Acres **SOLD**

Appanoose County, IA

78 Acres **SOLD**

NEW Appanoose County, IA 83 acres
A nice recreational farm located along the Fox
River. The farm is currently being grazed. The
farm has row crop availability and good road ac-
cess. There is no shortage of big deer in the area.
CALL TODAY!



EASTER SALE



Closed March 30 for GOOD FRIDAY

Truckload Deal Coming Soon

Expecting Available by Saturday March 31



Land O Lakes 1lb. Butter Quarters

89¢

per lb.

Hillshire® Boneless Smoked Imperial Ham




29¢ per lb.

Fresh Whole Sweet Potatoes



\$1.29 per lb.

IBP® Whole Boneless Pork Loin



\$2.49 16 oz.

CornKing® Smoked Sliced BACON



79¢ head

Broccoli head Lettuce



89¢ 16 oz.

Green Giant® Baby Carrots



\$3.49 3 lb. bag

Mini Halo ORANGES



\$1.49 per lb.

MUENSTER CHEESE Trim Ends



69¢ per lb. sold in a 40# box

8 piece Cut up Chicken



69¢ per lb.

Bulk Instant Potato Flakes



\$2.99 per lb.

Folgers Bulk Columbian COFFEE



2/\$3 18 oz. Tub

Peanut Butter Filled PRETZEL NUGGETS



\$1.49 20 oz. Squeeze Bottle

HEINZ Ketchup



99¢ 12 oz.

Velveeta Skillets Dinner Kit



99¢ per lb. Sold as a 2lb. pack for \$2.98

Frozen Battered Green Beans

Now is the Time to PLANT your **SEED POTATOES**

35¢ per lb. buy 50# and SAVE

Huge Selection of **BULK Garden Seeds**

Starting at **20¢** per Teaspoon



YOU CAN Grow Your own Asparagus

25 Root Bunch \$10.95



\$2.75 25.3 oz.

Athenos® Extra Virgin Olive OIL



\$2.29 plus deposit 6 pack half Liter Bottles

99¢ 2 Liter Bottles

3/\$10 12 Pack Cans plus deposit



Coke Products

Gold Peak Tea 12 pack \$12.95

We have **Sweet ONION Plants**

\$1.99 per bunch




\$28.95 reg. \$32.95

Men's Kipling Ultra Lightweight Boot



15% OFF

20% OFF Regular Price per Yard



Picture Patches YARD GOODS

Soft Sweep Kitchen BROOM Customer Favorite

\$3.75




DUTCHMAN'S STORE Division Street CANTRIL, IA (319) 397 2322 SALE PRICES Mar. 28 - April 3, 2018

STORE HOURS • Weekdays, 8a.m. - 6 p.m. • Saturday 8a.m. - 5 p.m. • Sunday Closed

View our specials online - www.DutchmansStore.com

 <p>Boneless beef tenderloin, approx. 3 -3.5 lb. \$6.50 a lb.</p>	 <p>Farmland smoked cheddar pork sausage, approx. 5 lb. pkg \$1.29 a lb.</p>	 <p>Hormal skinless brats, approx. 5 lb. \$1.29 a lb.</p>	 <p>Fresh bonless pork loin, approx. 5 lbs \$1.39 a lb.</p>	 <p>Experiencias Hunts traditional tomato salsa, 680 g. 99¢</p>
 <p>Koops mustard, original yellow, gluten free, 1 lb. 8 oz. \$1.15</p>	 <p>Fresh spinach, ready to eat, 8 oz. bags \$1.89</p>	 <p>Avocadoes 69¢ each</p>	 <p>Stratford Farms grape jelly, 1 gal. \$2.99</p>	 <p>Dunkin' Donuts coffee, several flavors, 11 oz. \$5.00</p>
 <p>Sunrise milk caramel, 5.5 oz. 50¢ each</p>	 <p>Assorted large candy bars, approx. 2 lb bags \$4.99</p>	 <p>Sunwise Blue Lake cut green beans, 3 lb. 2 oz. \$1.59</p>	 <p>Krusteaz sweet potato pie mix, 17 oz. \$1.25</p>	 <p>Jello No-Bake pumpkin style pie dessert, 9.2 oz. 85¢</p>
 <p>Betty Crocker pie crust mix, 11 oz. 65¢</p>	 <p>Fresh celery by the bunch 89¢ each</p>	 <p>Philadelphia cream cheese, 8 oz. 69¢ each</p>	 <p>Gold Peak sweet tea, 89 oz. \$1.79</p>	 <p>Highway 2 DISCOUNT Groceries L.L.C.</p>

Mon. - Sat 8:30am - 5:00pm VM: 641-664-1187 19686 Hwy. 2, Approx 2 miles west of Bloomfield

Sale good Wednesday, March 28th through Tuesday, April 3rd.

We will be closed on Good Friday, March 30th

MOTORCYCLES: TOP CASH PAID! For Old Motorcycles! 1900-1979. DEAD OR ALIVE! 920-371-0494 (MCN)

Jim Baker's Unified Theory Of Everything, Book release 05/14/2017. (Save 50% Pre-Sale in store: BAKER's Books, 22237 Katy FRWY, TX) (MCN)

FOR SALE: 2004 3500 Laramie Dodge crew cab, flat bed, dually, diesel, 6 new tires, \$15,000 OBO. PH. 641-680-2138. 15

FOR SALE: 50 registered Angus yearling bulls. Feed efficiency tested and guaranteed. Will keep till June. All weights available. Angus bulls with a little more frame. WernerFamilyAngus.com, 641-344-5059, Diagonal, IA.

FOR SALE: Registered Purebred Gelbvieh and Balancer bulls. Reds & Blacks, yearlings and 2 year olds. Rolling Hills Gelbvieh, Bloomfield, IA PH: 641-777-7060 13

HOOVER RENTAL
Manlifts • Telehandlers • Minihoes
Skidloaders & Skidloader Attachments

RENT BY
Hour • Day • Week • Month • Long Term

DOZER NOW AVAILABLE FOR RENT

Call us for your construction needs!
660-216-8230
Mt. Sterling, Iowa
2 miles East of Cantril on Hwy 2




Easter Egg Hunt!
Saturday, March 31st at 10:00 am

Bloomfield City Park
(Rain Site-Fair Grounds Pavilion)

Grand Prize For Each Age Group!

FOUR AGE GROUPS: 0-3, 4-5, 6-7, 8-9
Fly high with the Optimists!

Immediately following the Easter Egg Hunt at the DC Football field. All ages through high school. Students in 4th grade & under must be accompanied by an adult.
Kites will be provided.

Sponsored By:
Bloomfield Optimist Club & Davis County High School Octagon Clubs

THE EASTER BUNNY WILL BE THERE!!



ALL NEW!

2018 Speed Queen

Deli Specials
Virginia Ham \$3.29 lb.
Baby Swiss Cheese \$3.79 lb.

Check out our nice selection of fresh produce!

MEMPHIS APPLIANCES SALES & SERVICE
EST 2016

MEMPHIS MERCHANDISE
EST 2010

South Side of the Square in Memphis
660-465-2345

115 E. Monroe • Memphis, MO
660-465-2102

Monday - Friday: 8:00 AM to 5:30 PM • Saturday • 8:00 AM to 4:00 PM / Sunday CLOSED

Check us out online- memphismercantilemo.com




Adair County, Missouri
LAND AUCTION
THURS., APRIL 26 @ 6:00 P.M.
 SALE TO BE HELD AT THE KELLER BUILDING IN BRASHEAR, MO
120 ACRES± • 1 TRACT
 Land is located approximately 5 miles north of Brashear, MO in Section 6, T62N•R13W, Salt River Township. From Brashear, MO take Hwy. J north approximately 5.5 miles to Camelot Way, then east approximately 1 mile to farm.
LAND REPRESENTS PRODUCTIVE TILLABLE CROPLAND!
CRP CONTRACT HAS BEEN TERMINATED AND FARM WILL SELL FREE & CLEAR FOR THE '18 CROP YEAR!
CHESTER LEE WADDILL REVOCABLE TRUST
MABLE G. WADDILL REVOCABLE TRUST
 Lyman Waddill - Trustee
REPRESENTING ATTORNEY: Wallace W. Trosen, LLC
 #1 Crown Drive, Suite 102 • Kirksville, MO • Ph: 660-665-4070
TITLE WORK BY: Pickell Abstract Company
 115 South Franklin Street • Kirksville, MO • Ph: 660-665-8324
AUCTION MANAGER: BILL FRETWELL AT (660) 341-7735
SULLIVAN AUCTIONEERS, LLC • TOLL FREE (844) 847-2161
IL LIC. #444000107 • www.sullivanauctioneers.com

Belden Logging
Help Wanted:
 Looking for experienced log cutter woodsmen.
NOT FIREWOOD CUTTERS.
 Must be willing to travel.
 Call Dan
319-721-2149
 FOR SALE: 2007 Dutchmen light 24' has sway bars, one slide out, air condition, heat, self contained, has TV, sleeps 5 to 6 people and has an awning. \$5,000
 PH: 641-208-2397 14

Davis County Cattlemen's
16th Annual Bottle/ Bucket Calf Show
 To be held at the 2018 Davis County Fair
 Kids may participate who have completed Kindergarten through completion of Third Grade of the current year.
 Calves must be born between February 1st - May 1st, 2018.
Applications can be completed on the Davis County Cattlemens Facebook page or picked up at Success Bank.
 Completed applications on Facebook or from Success Bank(Rodney Vetch) are due by 5pm, Friday, May 18th, 2018.
 If a calf is needed for this project contact Lincoln Lynch @ 641-208-3649




Harvest More From Your Operation!
 Let us help you with all your seed, feed & fertilizer needs.
We have all you need to keep your business thriving.
CROP SERVICES, INC
 John & Kathy Bos, Owners
 Drakesville, IA
 pfister 641-722-3293 Nutrena

HAY FOR SALE!
 Big round bales of Alfalfa
 135 RFV,
 18% protein
 Delivered @ \$170 per ton.
660-216-0938

FOR SALE
 Driveway Fabric Rolls
 Commercial, Heavy Duty,
 Designed for Heavy Traffic
 12' 5" Wide
 432' Long
 \$370/ roll
660-216-0938

YODER EQUIPMENT
 BLOOMFIELD, IOWA
 SOUTHERN YELLOW PINE TREATED WOOD POSTS
 Mineral Feeders
 Gates
 Variety of Sizes & Styles
 Feed Bunks
 Water Tanks
 CONTINUOUS FENCING
 19887 Jade Ave
 2 1/2 Miles W of Bloomfield
 V.M. 641-664-2797

Friesen Excavating
 Specializing in Septic Systems, Certified For Peat Tanks and Sand Filters. Can Also Do Other Drains and Water Lines.
 Call or Text Shawn @ 641-208-0861 • Bloomfield, IA
Free Quotes Available

COLORING CONTEST WINNERS

<p>Shania Haldeman Age: 4 Rutledge, MO WINNER OF 4 & UNDER!</p>	<p>Wilford Martin Age: 7 Memphis, MO WINNER OF 5-7!</p>
<p>Wanda Yoder Age: 9 Bloomfield, IA WINNER OF 8-10!</p>	<p>Jason LeRoy Yoder Age: 12 Bloomfield, IA WINNER OF 11-12!</p>

CONGRATULATIONS!
 * All prizes are final *
 Thank you to our prize sponsors!
PLEASE PICK UP PRIZE BY: FRIDAY, APRIL 6TH

Tri-County SHOPPER

JR FEED & SUPPLY
641-722-3045
 17599 200TH STREET • BLOOMFIELD
 STOP BY MON.-FRI. 8-5 & SAT. 8-12
FENCING SUPPLIES • FENCING SUPPLIES
 Complete line of bagged feed in stock!
CUSTOM BULK
 Non GMO Poultry Feed we deliver!



Scotland County Mo. LAND AUCTION

APRIL 7TH @ 5 P.M. AT GRAND HALL, MEMPHIS, MO

Tract 1 - 178 Acres: FSA figures indicate approx. 117.33 cropland acres Adco, Edina, Lamoni, Armstrong, and Gara soils. Hwy 136 frontage. Premier hunting/recreational tract along with timber. Building site with utilities located at the highway.

Tract 2 - 215 Acres: FSA figures indicate approx. 160.78 cropland acres with 104.34 currently in production. Highly productive tillable tract with tiled terraces in place. Adco, Edina, Lamoni, Armstrong & Gara soils. Hwy 136 frontage. Building site with utilities located nearby.

Tract 3 - 5.79 Acres: FSA figures indicate approx. 2.59 cropland acres. Highway 136 frontage. Building site with utilities located nearby.

Tract 4 - 33 Acres: FSA figures indicate approx. 23.7 cropland acres. Premier building site/recreational/tillable tract. Utilities are located nearby. Highway 136 frontage.

Tract 5 - 20 Acres: FSA figures indicate approx. 11.98 cropland acres. Access from County Rd. 652. Building site/tillable/recreation tract with utilities located across the road.

Tract 6 - 36 Acres: FSA figures indicate approx. 25.1 cropland acres with 21.5 currently in CRP. CRP is currently paying \$90/acre and expires 2020. Building site/recreation tract with utilities on site. Access from County Rd. 651.

Tract 7 - 79 Acres: FSA figures indicate approx. 44 cropland acres with 33.29 currently in CRP. 20 acres CRP expiring 2020 paying \$90/ acre and 13.29 acres CRP expiring 2022 paying \$108.35 per acre. Building site/ recreation tract with utilities on site. Excellent hunting with income and mature timber. Access from County Rd. 654.

Tract 8 - 13.83 Acres: FSA figures indicate approx. 11.31 cropland acres with 11.31 currently in CRP expiring 2022 paying \$108.35 per acre. 35x80 machine shed. Building site/recreation tract. Access from County Rd. 654. Utilites are located on site.

Tract 9 - 20.8 Acres: FSA figures indicate approx. 11.7 cropland acres. Building site/recreation tract with utilited on site. Excellent hunting with income and mature timber. Access from County Rd. 654.

Tract 10 - 115 Acres: FSA figures indicate approx. 67.81 cropland acres with 22.27 currently in production. Adco, Armstrong and Gara soils. Building site/recreation/tillable tract with utilities on site. Excellent hunting with income and mature timber. Access from County Rd. 654.

OWNERS: JARDIN AND BRANDI FULLER

19771 US Highway 136 • Memphis, MO 63555

Ph: 660-465-2971 • Fax: 660-465-2972

www.WEKNOWDIRT.net



TIM SKINNER Trucking & Excavation



**FLOTATION
AGLIME
SPREADING**
Standard Application
GPS Variable Rate
Application

NOW OFFERING VARIOUS SIZES OF RECYCLED ROCK.

HAULING: Aglime, Rock, Sand, Black Dirt or Clay
Also doing all types of excavation & dozing work.

Call for pricing today
Tim Cell: 641-777-6053
Jeremy: 641-226-7829

WANTED: Broken Concete.
Trucking available!

FOR SALE: Compost manure in bulk or bags. \$80 for full size pickup or \$6.00 per bag. Quantity discounts. Call before arriving.
Alan Yoder
14632 Lilac Ave.
Bloomfield, IA
641-722-3230 Ext. 3 14

FOR SALE: Beagle female 1 1/2 year old. Also 5 year old proven Beagle male, \$100 each. Also sport dog, 1225 shocking collar with remote and 1 extra color. 3/4 mile range.
PH. 641-664-2744. 13

FOR SALE: Produce wagon (spring wagon) w/ top & stock rack, 8 horse Win., engine w/recoil start. 8 horse tecumseh engine, vertical shaft. Perry W. Yoder, 18078 Hwy 2 Bloomfield, Ia 13

Troyer Seeds

Special!
Oats \$7.00 bu.

Masters Choice corn
Epley Hybrid corn & beans
Blue River organic corn & beans
Alfalfa • Clover • Grass

12722 245th Street Emanuel Moulton, IA 52572 Troyer **641-929-3381**

Yearling Angus & Charolais Bulls

Trojan Hill Farms

Phil Archer
641-675-3769 - Home
641-680-6769 - Cell

FOR SALE: Home raised butcher hogs, ready now.
19190 Jaguar Trail,
Bloomfield
PH: 641-664-2548 14

HORSE FARM NEEDS WEEKEND EMPLOYEE

(Friday, Saturday, Sunday)



Must have horse experience! Duties include cleaning stalls, tack, grooming horses and other duties as assigned. Background check & references required. Located in Ottumwa, Iowa.

Submit resume to P.O. Box 187 Ottumwa, IA 52501 or e-mail yatesgs@yahoo.com.

FOR SALE: 75 registered Angus 18-month-old bulls. Feed efficiency tested and guaranteed. Will keep till June. All weights available. Angus bulls with a little more frame. WernerFamilyAngus.com, 641-344-5059, Diagonal, IA.

Chick Days!

April 26th & May 24th

Call for our special!



FEEDS & NEEDS

660-379-2055 Mon-Fri: 8-5
1 mile N of Downing, MO on Rt N



CANTRIL FEED & GRAIN

From fences to feed to farmers
YOU'LL LOVE OUR PRICES!

We Carry:

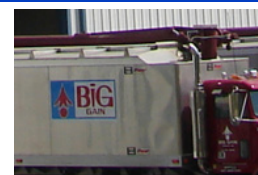
- Soyhull Pellets
- Corn Gluten Pellets
- Dry Distillers Grain
- Cottonseed
- Soybean Meal
- Oats

We also carry:

- Gallagher Fencing
- Hay Feeders
- Corral Gates
- Miraco Watering Systems

**CALL US FOR COMPETITIVE PRICING!
WE DELIVER!**

610 W. NORTH STREET • CANTRIL, IA
319-397-2215



We Salute Our Local Farmers!



A major supplier of flexible packaging used by leading food, consumer products, healthcare, and other companies worldwide. Founded in 1858, Bemis has a strong technical base in polymer chemistry, film extrusion, coating, laminating, and printing. Headquartered in Neenah, Wisconsin, Bemis employs approximately 17,000 individuals worldwide. More information about Bemis is available at our website, www.bemis.com.

Maintenance Mechanic Opening

Essential Functions

Initiate equipment modifications to increase machine productivity and reduce waste.

Work with plant preventive maintenance program to ensure effectiveness on minimizing unplanned downtime on plant and production equipment.

Position Qualifications

2-5 years' experience in industrial maintenance **OR** 2-year Technical Degree in a related field

Strong organizational skills, interpersonal skills and work ethic
Excellent Safety record

Skills & Abilities

Strong knowledge of mechanical maintenance, pneumatics, bearing, welding, hydraulics, lubrication, plumbing, blue print reading, LOTO, alignment skills

Strong analytical and problem solving skills

Required to work 12 hour shifts on night and be on call if needed.

Employee Benefits

Bemis offers competitive benefits packages that include: Medical, Dental & Vision insurance, available on the date of hire.

401(k) with a company match, gainshare incentive plan, paid vacation and holidays as well as several other generous employee benefits.

Wages based on experience, apply online at jobs.bemis.com

Equal Opportunity/Affirmative Action/Disability and Vet Employer

ESTATE AUCTION

SATURDAY, APRIL 7, 2018 10:00 AM

SALE TO BE CONDUCTED AT THE PROPERTY LOCATED
5194 – 225TH AVENUE, BLAKESBURG, IOWA

OR 2 Miles East of Blakesburg, Iowa, on the Bluegrass Road, then South 1/4 mile



FARM -- 115 Acres m/l: Bare land, with approximately 36 acres tillable, which is currently seeded and used as hayland. Balance is pasture and some timber area. Excellent combination farm with lots of wildlife.

TERMS: 20% down day of sale, balance in cash upon delivery of a Court

Officer Deed, accompanied by Abstract of Title showing merchantable title. Real estate taxes will be pro-rated to possession date, possession given upon settlement.

REAL ESTATE WILL SELL AT 12:00 NOON: For further particulars or an appointment to inspect the property, please call the auction company: 641-682-5465.

HOUSEHOLD ITEMS: Whirlpool refrigerator/freezer w/ice & water dispenser in door; Amana upright deep freeze; Whirlpool gas oven/range; Maytag Centennial auto. washer; Maytag gas dryer; Port. dishwasher; Round dinette w/2 matching swivel chairs; Like new oak formal dining table w/6 chairs; 3-door glass-door hutch; Blue tweed upholstered sectional sofa; Blue upholstered lift chair; 4-pc. bedroom suite incl. full-size bed, double dresser w/mirror, 4-drawer chest & matching nightstand; Gold upholstered Lazy Boy recliner & swivel rocker; Plant stands; Quilt racks; Straight chairs; Antique printer's cabinet; Wooden bookcase; Asst. of kitchen items incl. pots, pans, dishes, mixers, elec. skillet; Kenmore upright vacuum cleaner; Asst. of costume jewelry; Collectible glassware incl. carnival glass, pigeon blood glassware, hand-painted dishes; Dresser w/mirror; Blankets, bedding & linens; (3) Wooden barstools; RCA 25" color console TV; Floor & table lamps; Glider rocker; Old records & albums; Stools; Amana gas furnace.

COLLECTOR PICKUP: 1972 Chev. 3/4T. Cheyenne PU, V8, auto, factory air, 1-owner truck, shows 89,000 miles, excellent restoration project; 1989 Chev. 3/4T. 4x4 PU, V8, auto, 121,000 miles, runs.

TRACTORS & EQUIPMENT: White 2-85 tractor, diesel, cab w/air, dual outlets, 3-pt, shows 5,700 hours; Oliver 1750, diesel, WF, year-round cab, dual outlets, 3-pt; Oliver 1800, diesel, WF, 3-pt; International 560, diesel, NF, fast-hitch; Ford 8N, 3-pt, good tires; Farmall F20, elec. start, standard drawbar; Farmall F12, NF, standard drawbar; IH 560, for parts; Farmall F20, for parts; Massey Harris 44, WF, non-running; Massey Harris 44, for parts; Massey Harris NF pedestal; IH WF for 560; Asst. of hoods & tin for IH tractors; Fast-hitch to 3-pt conversion; Old 1-bottom pull-type plow on steel; John Deere MX10 pull-type 10' brush cutter, like new; John Deere-Van Brunt 12' grain drill, on rubber, with grass seed; IH 1150 grinder/mixer; New Holland 67 twine-tie square baler; 7x12 bargebox wagon & hoist; Hesston 10 3-pt. stack mover; Like Agco-Massey Ferguson 1329 disc mower, 3-pt, low acres; Vermeer WR-22 10-wheel rake; 6' 3-pt. blade; New Holland 456 7' pull-type sickle-bar mower; Case 14' tandem-wheel disc; 4-section harrow & cart; 18' harrow gator; IH 4-bottom fast-hitch plow; John Deere 530 baler w/monitor; Gravity wagon & gear; Harvest Hand 4-bale hay trailer; John Deere 4-bar side delivery rake, on rubber; Ford 2-bottom 3-pt. plow; IH 56 4-row planter; IH endgate seeder; Pull-type 300-gal. sprayer; Several wagon running gears; Old plows; Trailers; Asst. of farm machinery for salvage; 7' 3-pt. blade; 110 gal. pickup fuel tank; Steel stock rack for pickup; 18'x30' pole-frame building, to be moved.

TOOLS: 800w. port. generator; Craftsman 4200w. port. generator; Champion 3000w. generator; Set of platform scales; Lincoln 220 elec. welder; Floor-mount drill press; Bench grinder; Rolling tool cabinets; 20T. hydraulic press; Engine stand; Chop saw; Manual tire changer; Anglehead grinders; 1/2" drills; Rechargeable drills; Parts washer; Paint guns; Pipe vise & stand; Battery chargers; Old Pester gas pump; Implement seats; LP gas heater; Tractor & truck chains; Small engine hoist; Jacks; Log chains; Load binders; Snowblower; Port. cement mixer; Hoes, rakes, shovels; Hand & garden tools; Air greaser; Battery testers; Near new rolling tool cabinet; Asst. of used gas pipe; Hardware cabinets; Hydraulic wagon lift.

LAWN MOWER & MOTORCYCLE: Cub Cadet Z-Rider 18hp zero-turn mower; Kawasaki 100 motorcycle, non-running.

AUCTIONEER'S NOTE: This will be an extremely large sale, as Harry liked his tools & equipment. We will possibly be running two rings at least part of the day. Check our website for pictures – www.almartinauction.net.

**TERMS: CASH/GOOD CHECK
POSITIVE ID REQUIRED**

**MASTERCARD/VISA
DEBIT/CREDIT CARDS**

All property must be settled for before removal – All items sold as is where is – Not responsible in case of accidents. Announcements made day of sale take precedence over any advertising.

HARRY PILCHER ESTATE, OWNER

Doug & Scott Pilcher, Co-Executors Greg Milani, Attorney

JIM KOSMAN, ROGER CLINGAN, & TODD CARROLL – AUCTIONEERS

AL MARTIN REAL ESTATE & AUCTION CO., INC.
307 Church St., Ottumwa, IA 52501 • 641-682-5465 • www.almartinauction.net

GLENWOOD Elevator

**301 State Hwy. M
Glenwood, Mo 63541**

Logan Ford, Manager
PH: 660-457-3973 • Cell: 660-956-3973
Fax: 660-457-3045 • gelevator@marktwain.net

DAVIS COUNTY TO HOST COMMUNITY BLOOD DRIVE: Tuesday, April 3rd, 3:00 pm - 6:45 pm located at the Southern Iowa Electric Coop Meeting Room, 22458 Hwy 2, Bloomfield, IA. To donate, please contact the Blood Center at 800-452-1097 or visit www.bloodcenterimpact.org and use code 5014 to locate the drive.

CATTLE PRODUCERS

Your invited to an informational meeting on synchronization for beef cows and heifers & vaccination programs.

Guest speaker will be:

Dr. Scott Poock of the University of Missouri Extension

Dr. Roy Fisher of Boehringer Ingelheim

Thursday, April 5th, 2018 • 6:30 PM

Downing Firehouse, 109 W. Prime, Downing Mo.

A meal will be served. Please RSVP by March 30th to 641-664-2399 or clearview@netins.net



CLEARVIEW ANIMAL HOSPITAL P.C.

Dr. David Rasmussen

Dr. Nancy Hougland

Dr. Marilyn Brown

Dr. Jon Logterman

**Tri-County Shopper
appreciates your business!**

KEOSAUQUA SALE CO.

20511 Hwy. 1, Keosauqua, IA

Results from March 24th
 Butchers...\$31.00-37.00/cwt Fat lambs.....\$125.00-130.00/cwt
 Sows.....\$31.00-40.00/cwt Ewes.....\$42.00-68.00/cwt
 Feeder lambs..... Kid goats.....
\$225.00-300.00/cwt 40-70# \$95.00-162.50/hd
 Nannies.....\$70.00-200.00/hd

Pound cows.....\$46.00-51.50/cwt low yielding
\$54.00-69.00/cwt high yielding
Pound bulls.....\$78.00-93.00/cwt

EARLY LISTING FOR SAT MAR 31
 22 blk heifers with bwf bull calve, very fancy

SPECIAL GREEK EASTER LAMB SALE SAT., MARCH 31ST SPECIAL CATTLE SALE SAT., APRIL 7

Watch website for early listings www.keosauquasaleco.com

Thank You For Your Business!

For More Information Contact:

Selling Times

Hogs.....9:30 a.m.
 Sheep & Goats.....10:00 a.m.
 Outside Merch.....11:00 a.m.
 Cattle.....Noon

Keosauqua Sale Co.
 319-293-3508
 Bill Goehring
 641-919-9365

www.keosauquasaleco.com

WOODRUFF ANGUS

Since 1958 • MILTON, IA

• 20 FALL YEARLING BULLS

Semen checked & ready for service (not fat)

• REAL BEEF BULLS

priced for todays commercial cattlemen.

Roy Randy
 641-799-6912 319-470-6999

CR CATTLE CO

Red Angus
 Red Angus Composite Bulls
 Yearlings and 2 year olds available

Bulls are developed for longevity. They are gentle and easy to handle. Bulls will be fertility tested and have all vaccinations. Select your bull now and I will keep until May 1st.

Jennifer Gardner, Selma, Iowa
 641-895-4116

OUR SUCCESS DEPENDS ON YOURS.

NOTICE: There will be approx. 30 straight edge squared hedge post at the Keosauqua Sale Barn on Sat., March 31st.

Friesen Excavating

Specializing in Septic Systems Certified For Peat Tanks and Sand Filters.

Can Also Do Other Drains and Water Lines

Call or Text Shawn @

641-208-0861

Bloomfield, IA

Free Quotes Available

FOR SALE: 7810 John Deere 2wd cab, new tires, new paint and interior, 8,900 hrs., 1 owner, very clean \$35,900; 7820 John Deere 2wd CHA, new tires, new paint and interior, 7,800 hrs., 1 owner, very clean, \$44,950.

PH. 660-341-6267. 13

HUFF'S POLLED HEREFORD BULLS FOR SALE

Raising Hereford Cattle Since 1915

- Sires are selected for calving ease, maternal traits, calm dispositions, & rapid growth. Superior EPD's!!
- Raised on a diet that encourages growth not fat, they are ready to work!
- Docile & easy to handle - the disposition you always wanted.

HUFF'S POLLED HEREFORDS
 26574 STATE RT. M • RUTLEDGE, MO 63563

LeRoy & Jane Huff, Home: 660-883-5684 or Cell: 660-341-6392
 Sean & Nichole Huff, Home: 660-883-5383 or Cell: 417-499-3639

GIVE US A CALL & VISIT OUR FARM TO SEE FOR YOURSELF THE QUALITY DESCRIBED!



Scotland County LIVESTOCK AUCTION

P.O. Box 111 • Hwy 15 North • Memphis, MO
 660-465-7213 • Jerry & Barb Blomme
 660-341-0069 • Grant Blomme
 660-216-4674 • Rodney Garman

CATTLE SALE

Sat., March 31st

SPECIAL COW SALE

Sat., April 7th

Early Listing:

- 40 hd - Fancy mostly blk 1st calf hfr pairs
 - 20 hd - Fancy blk 1st calf hfr pairs
 - 22 hd - Fancy blk 1st calf hfr pairs
 - 15 hd - Fancy blk 1st calf hfr pairs
 - 15 hd - Blk 5 yr old to solid mouth cow/calf pairs
 - 20 hd - Mixed brd cows & pairs
- Serveral cattle pending by sale time. Please check our website at www.scotlandcountylivestock.com

Market Results for Wed, March 24:

STRS:312# - \$212.00; 345# - \$217.00; 503# - \$173.00. HFRS: 348# - \$157.00; 378# - \$159.00; 455# - \$155.00; 469# - \$161.00; 491# - \$155.00; 530# - \$151.00; 636# - \$146.00. FBULLS: 420# - \$181.00; 463# - \$179.00; 481# - \$180.00; 549# - \$157.00. HOL VEALS: \$75.00 - \$105.00. BEEF VEALS: UP TO \$450.00. BULK OF THE COWS: \$14.00 - \$53.00.

www.ScotlandCountyLivestock.com

FOR SALE: 3 bedroom, 2 bath home remodeled in 2010. 30'x35' heated & cooled garage. 1 acres. 7 miles West of Memphis, \$129,000. PH. 660-216-7634. 15

FOR SALE: Mixed alfalfa clover & grass hay, 4x6 net wrapped, very good quality, sheep & horse quality, 100 bales, Douds area. PH: 319-288-1800

C.H.I.

MIDWEST Overhead Door

LiftMaster PROFESSIONAL

✓ Out Our Competitive Prices!

21387 Route V64
 Keosauqua, IA 52565

660-216-0812

Our goal is to keep your doors rolling smooth!

Sales • Parts • Service ~ Free Estimates

We sell new doors and openers or we'll service your old one.

Need a NEW trailer?



Stock #	Yr.	Length	Description	Price
30301	2018	30'	Black Tandem Duals Mega Ramps	\$8,400
30004	2018	32'	Grey, 2 Ramps, Center Pop Up, Tandum Duals	\$8,400
30005	2018	25'	Grey, 2 Ramps, Center Pop Up, Tandum Duals	\$7,800
30069	2018	25'	Grey, 2 Ramps, Center Pop Up, Tandum Duals	\$7,800
30447	2017	30'	Black, 3 Ramps, Tandum Duals	\$8,000
30446	2017	25'	Black, 3 Ramps, Tandum Duals	\$7,600
30405	2016	25'	Grey, 2 Ramps, Center Pop Up, 14,000 #	\$5,400
30353	2017	14'	Dump, 14,000 #	\$6,500
30299	2017	12'	Dump, 14,000 #	\$6,300

Slayton Polaris

BLOOMFIELD, IA
 8 mi. S & W from Pulaski or 6 mi. W of Memphis then 13 mi. N on Route B
 660-328-6627



These bulls represent the best genetics of the breed!

Like Us On Facebook

CANTRIL TRUCK & TRAILER

319-238-7367

101 North St. • Cantril, IA

www.cantriltruckandtrailer.com

FOR SALE: 1993 Toyota pickup, 4x4, V6, 5 spd., 275,000 miles, \$700 OBO. PH. 641-799-4791. 15

FOR SALE: Specialty Pork butcher hogs. Organic fed. All natural raised. Memphis, Mo. PH. 660-988-0890.

CONSIGNMENTS WANTED

Southern Iowa Produce Auction
Sales every 2nd & 4th Saturday, November thru March

**NEXT SALE
FRI., APRIL 6TH - 11 A.M.**

For advertising your consignments they must be called in by 10 A.M. Monday on the week of sale.

19141 Ice Ave. Bloomfield, IA

Call 641-722-3623 on auction days or leave a message. Market Report or Information call 712-432-8593

FOR SALE: (6) 3-5 year old Herefords with red/white faced calves on side. PH. 660-216-6683 or 660-342-6310. 15

FOR SALE: Chassis liner frame machine. Truck'n Special: 2 post winch, 2 style clamps, \$5,950. PH. 660-341-6267. 13



If your vehicle is demanding to be cleaned, let us do the dirty work!

We also do:
Auto Body Shop
Auto Glass
Automotive Restoration

KARR COLLISION CENTER & AUTO DETAILING
Shawn Scott, Owner
701 Karr Ave. • Bloomfield, IA
641-664-1024

VAN BUREN HIGH SCHOOL TO HOST COMMUNITY BLOOD DRIVE: Wednesday, April 4th from 9:30 am - 1:30 pm located at the gym at 405 Fourth St., Keosauqua, IA. To donate, please contact the a member of National Honor Society or Ms. Ekle or visit www.bloodcenterimpact.org and use code 5286 to locate the drive.

CALVING TIME IS HERE

STOP AND CHECK OUT OUR HELPFUL CALVING SUPPLIES

SIOUX STEEL COMPANY

Calving Pens

Unimilk • Iodine • O.B. Gloves
Latex Gloves • O.B. Lube
Calf Claim • Oral Calf Feeders
Nursing Bottles • Kick Start
Uterin Bolus • O.B. Straps & Chains
Calf Catchers • Colostrum

We now carry

ALEXZILLA

Premium hoses, cords & attachments

We carry

Cobett Waterers

FM For-Most Livestock Equipment

Calving Pens

FM For-Most Livestock Equipment

Cattle Chutes
Various Sizes

Ready for spring?

Tillage Equipment
Sweeps • Sickle Sections
Disc Blades • Chisel Spikes

Custom Hydraulic Hoses to Your Specifications

Hamilton Produce Co.

105 W. Franklin • Bloomfield, IA 52537

641-664-2459 or 1-800-469-7749

CHICK DAYS ARE HERE
at Hometown!

LAYERS, BROILERS, GUINEAS, TURKEYS, DUCKS, AND MORE!

- Order by March 23 to pick up April 11
- Order by April 20 to pick up May 9
- Order 25 chicks, get **ONE FREE BAG** of NEMO Family Flock Chick Starter*
- Order 100 chicks, get **TWO FREE BAGS** of NEMO Family Flock Chick Starter*

We carry a full line of feeders, waters, and NEMO Family Flock Chick Grower and Layer Mash!



*DEALS GOOD THROUGH APRIL 20 • DETAILS IN STORE

We also carry handmade coops for \$995*

Hometown ANIMAL HEALTH

660.465.2967 • hometownanimalhealth.com

18743 US Hwy 136 • Memphis, MO 63555
On Highway 136 west of Memphis

NUTRITION • MEDICAL • PET • FARM • APPAREL

NEMO FEED AUTHORIZED DEALER OF NEMO FEED.

Yoder's Indian Creek Furniture. Check out our great selection of outdoor Polly lawn furniture. Maintenance free with lifetime warranty. Also Polly Martin houses & gourd racks. Rt. V64 Milton, Iowa. Located 4 miles North of Cantril or 3/4 miles South of Lebanon on RT. V64, Monday to Saturday 8 a.m. to 5 p.m. No Sunday sales. PH. 319-538-7332 TF

Garages • Pole Barns Commercial Free Estimates

LAN-DOW BUILDINGS

Lancaster Lumber, Inc.

We Stock a Complete Line of Building Materials Complete Buildings or Packages Available

Toll Free 800-424-5071 Fax 660-457-3133

Hardware • Plumbing • Electrical • Paint
500 Green Street • Lancaster, MO 63548



#20169041 • 23772 Floris Rd., Bloomfield

3 bedrooms 2 1/2 baths sitting on 1.4 acres enjoy the privacy from the back of the home surrounded by timber.hard surface road, located just off highway 63, 2 car attached garage, , large master with master bath.



#20169209 • 20095 Bluegrass Rd., Ottumwa

Sweet little acreage on hard surface road! Story and 1/2, 3 plus bedrooms, separate den, large living/dining combination and nice eat in kitchen. Full basement with outside entrance, enclosed front porch and great side porch/mudroom. 3 car garage w/ attached shed, garden shed and small pole barn.

#20169097 • 204 Larch Ave., Bloomfield

80 acres of tillable farm ground, CRP payment of \$3000.00 annually, pasture with good fence and a cattle shed with continuous fence corral and a heated office. Timber, 2 ponds, great for hunting deer and mushrooms. This farm has a combination of everything!

#20169066 • 285th St., Bloomfield

Beautiful building site for new home. 18 acres of tillable farm ground. Remainder of land is wooded timber area with a pond, excellent for hunting and fishing.

Lynch REALTY, INC.

641-664-2275
lynchrealtyinc.com

106 S. Madison Bloomfield, IA
Licensed in Iowa
Stephanie Lynch, Broker

We will be closed
Good Friday,
March 30th



BLOOMFIELD



LIVESTOCK MARKET

Wed., March 28th Fat Cattle, Slaughter, Cows & Bulls 9:00 AM
 Wed., April 4th Fat Cattle, Slaughter, Cows & Bulls 9:00 AM
 Special Annual All Grass Calf Sale 11:00 AM
 Wed., April 11th Fat Cattle, Slaughter, Cows & Bulls 9:00 AM
 Special Calf & Yearling Sale 11:00 AM
 Tues., April 17th Special Bred Cow & Pair Sale 6:00 PM

Reports from Wednesday, March 21st, 2018 • Selling 1557 Head

HEIFERS

Jeff Lindquist	11 BLK	362	\$170.00
Brain Scott	9 BLK	516	\$169.75
Richard Noe	7 BLK	569	\$166.50
Jeff Lindquist	12 BLK	452	\$166.00
Schinstock Const.	27 BLK	571	\$160.00
Marlin Smith	34 BLK	581	\$159.00
Steve Weohr	7 BLK	603	\$155.50
Rick Abel	16 BLK	658	\$153.25
Brain Scott	25 BLK	661	\$150.25
Bennett Crile	50 BBWF	735	\$148.00
Gary Taylor	32 BLK	702	\$146.25
Richard Noe	17 BLK	681	\$144.50
Harold Sanquist	81 BLK	706	\$141.50

STEERS

Jeff Lindquist	14 BLK	482	\$211.00
Kenny Epperson	7 BLK	480	\$201.00

STEERS CONTINUED

Robert Magruder	4 BLK	537	\$201.00
Tim Skinner			
Farms LLC	12 BLK	497	\$201.00
Jim Lynch	12 BLK	525	\$191.00
Brain Scott	16 BLK	571	\$186.75
Craig Dotterer	15 BLK	600	\$181.75
Gary Taylor	6 BBWF	649	\$178.50
Brain Scott	34 BLK	710	\$167.50
Rick Abel	16 BLK	716	\$167.00
Jim Wilson &			
Brian Wilson	25 BLK	722	\$159.75
Allen Martin	70 B/R	725	\$156.00
Richard Noe	21 BLK	791	\$150.50
Bennett Crile	66 BBWF	795	\$150.00
Dalene Martin	61 BLK	850	\$138.00
Scott Baylor	19 BLK	895	\$133.50
Mike Durlfing	11 BLK	965	\$131.75

**SALE BARN OPEN UNTIL 9:00 PM
 EVERY TUESDAY TO RECEIVE LIVESTOCK**

Phil Schooley 641-664-3450
 Ron Schooley 641-777-0302
 Roman Schooley 515-450-3685

We appreciate your business!

Tyler Schooley 641-208-5442
 Barn Phone 641-664-2435

HWY. 63 NORTH • BLOOMFIELD, IA

FOR SALE: 4755 JD tractor, very nice, approx. 6,600 hrs, always shedded; JD 1530 drill with caddy cart, yeti markers & 15 inch rows.
 PH: 660-216-7696 15

FOR RENT: 1 or 2 bedroom apartments Milton, IA. Kitchen appliances & heat furnished. Very reasonable rent.
 PH: 641-757-0201 19

FOR SALE: Reg. black angus yearling bulls, semen tested, \$1,750; 2 Australian Shep pups 7 month old out of working parents.
 PH: 319-540-4601 13

TRITICALE HAY FOR SALE: Round bales located in Cincinnati, IA. We can deliver! Call Bill @ 641-895-3712 or John @ 641-895-2956 15

Fox Valley Welding

No matter what size the project customer satisfaction is always our first priority.

Tig & Aluminum • Welding • Milwork • Lathe • New Steel • Sprockets • Roller Chain
 Barings • PTO Parts • Fabricating • CNC Machining • CNC Cutting

Hours: M-F 8-5:30 • 641-656-4684 • 12190 East Hwy. 2 • Milton, IA

HAY FOR SALE!

Big round bales of Wheat Straw

660-216-0938

Building Packages



We Can Roll Your Metal While You Wait!



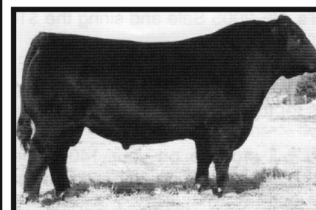
A W Metal LLC
 Metal Roofing Headquarters

Free 12 pack of A&W Root Beer® with your next purchase of \$500 or more!



641-664-3990 awmetal.net

ANGUS BULLS 2 YEAR OLDS & YEARLINGS



- ★ CALVING EASE
- ★ GROWTH
- ★ THICK
- ★ GOOD DISPOSITION

Sired by Musgrave Reachout 530

SELECT YOUR BULL NOW

Open heifers show prospects. Will make great cows. Top blood lines!

DORAN BOLLMAN
 PULASKI, IOWA
 641-675-3467



Bring your plans in for a **FREE ESTIMATE**



Trusses Engineered and Designed to Your Specs

Imagine a Lifetime of Beauty with the strength of steel.

As the original stone coated steel roofing system, the DECRA product line represents a perfect blending of over 50 years of research and practical experience. Offering the ultimate in performance and engineering design is what DECRA roofing systems are all about.

SHINGLE XD **DECRA** SHAKER XD
 Stone Coated Steel Roofing Systems



17893 212th Street • Bloomfield, IA 52537
 641-722-3605 • Mon.-Fri. 7 AM to 5 PM

We will be closed Friday, March 30th for Good Friday