

Mid-Michigan Buyers Guide

SUNDAY, APRIL 1, 2018

Serving Clare, Gladwin, Gratiot, Isabella, Montcalm, & Southern Roscommon Counties

Morning Star Publishing Company powered by digitalfirst



EASTER SUNDAY BRUNCH

Serving Bloody Marys, Bellinis and Mimosas

April 1st
10:30am - 2pm

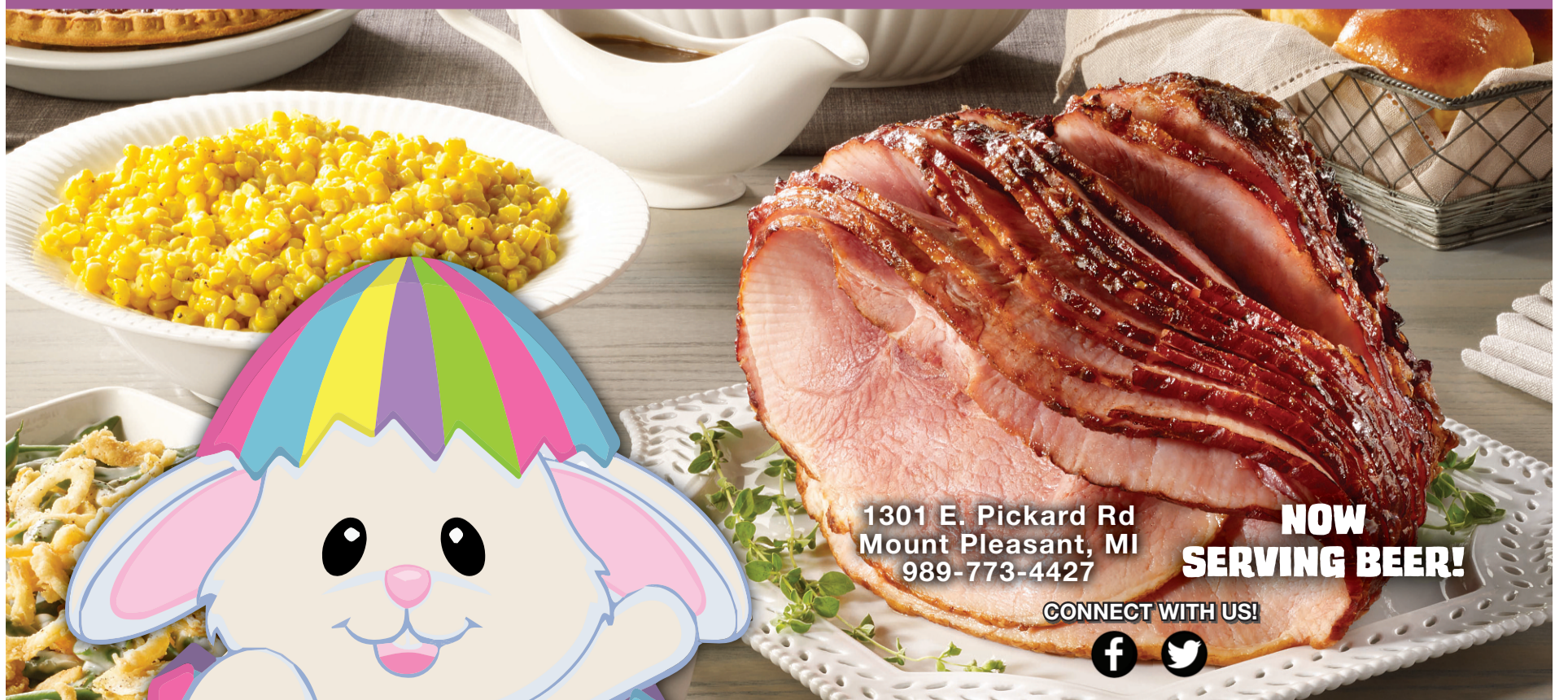
CONNECT WITH US!



Mt. Pleasant, MI 2424 S Mission St. 989-772-5002

PONDEROSA[®] STEAKHOUSE MT. PLEASANT ONLY

Easter Sunday Buffet
April 1st 12:00pm - 8:00pm



1301 E. Pickard Rd
Mount Pleasant, MI
989-773-4427

**NOW
SERVING BEER!**

CONNECT WITH US!



Largest Selection of Clean Used Cars in Central Michigan

GM Certified Pre-owned Vehicles = 2 Oil Changes in 2 years & Tire Rotations + 12 Month or 12,000 Mile Bumper to Bumper Warranty 100,000 Powertrain Warranty • Certified 1.9% up to 36 months!

USED CARS	2016 BUICK ENCORE AWD	USED TRUCKS
2017 BUICK LACROSSE PREMIUM White, Leather, Sunroof, 44 Miles, M.S.R.P. \$44,685... SALE ... \$30,900	Burgundy, 15,000 Miles..... \$20,900	2018 GMC CANYON CREW CAB SLT V6, 1,600 Miles, Marine Blue..... \$32,900
2017 CHEVY IMPALA LT Silver, 19,000 Miles, Certified..... \$23,900	2016 DODGE JOURNEY SXT FWD Maroon, 27,000 Miles..... \$18,900	2016 CHEVY 2500 4X4 CREW CAB Black, 28,000 Miles, 6.0 V8..... \$34,900
2016 BUICK REGAL AWD TURBO Burgandy, 1-Owner, 16,000 miles..... \$30,900	2015 GMC YUKON SLE Crystal Red, 52,000 Miles..... \$35,900	2016 GMC SIERRA DOUBLE CAB SLT 25,000 Miles Iridium..... \$34,900
2016 BUICK CASCADA CONVERTIBLE Blue, 100 Miles, Loaded, Certified..... \$29,500	2015 GMC ACADIA SLT-2 Dk. Blue, AWD, 45,000 Miles, 1-Owner, Certified..... \$28,900	2015 CHEVY SILVERADO CREW CAB 4X4 Gray, 54,000 Miles..... \$30,900
2016 BUICK LACROSSE CXL FWD Champagne Silver, 37,000 Miles, Certified..... \$21,900	2015 CHEVY TRAVERSE AWD LT White, 30,000 Miles, 7 Passenger, Certified..... \$25,900	2015 CHEVY SILVERADO DOUBLE CAB 4wd, Brown, 54,000 Miles..... \$26,900
2016 BUICK LACROSSE CXL Silver, 62,000 Miles..... Certified ... \$18,900	2015 CHEVY TRAVERSE AWD LT Burgundy, 42,000 Miles, 7 Passenger, Certified..... \$24,900	2014 GMC SIERRA DENALI CREW CAB Black, 33,000 Miles, 6.2 V8..... \$37,900
2016 CHEVY MALIBU Gray, 32,000 Miles, Certified..... \$17,900	2015 BUICK ENCLAVE AWD Champagne Silver, 77,000 Miles CXL..... \$23,900	2014 CHEVROLET SILVERADO CREW CAB 79,000 Miles, Navigation, High Country, White, Leather..... \$32,900
2016 CHEVROLET CRUZE LT Dk. Gray, 13,000 Miles, 4 Cyl, Certified..... \$16,900	2014 GMC YUKON SLT 4X4 DENALI Champagne Silver, 78,000 Miles..... \$34,900	2014 GMC SIERRA CREW CAB SLT White Diamond, 4x4, 110,000 Miles..... \$29,900
2014 CHEVY MALIBU LS Black, 55,000 miles..... \$12,900	2014 BUICK ENCORE Ruby Red, Leather, 15,000 Miles, Certified..... \$19,900	2014 GMC SIERRA CREW CAB SLT White Diamond, 97,000 Miles, 4X4..... \$27,900
2013 BUICK VERANO White Diamond, 18,000 Miles, 1-Owner, Certified..... \$14,900	2014 BUICK ENCLAVE CXL FWD Mocha, 96,000 Miles..... \$19,900	2014 CHEVY SILVERADO DOUBLE CAB 4X4 Red, 110,000 Miles..... \$23,900
2012 BUICK LACROSSE CXL V6 Silver, 101,000 Miles, Leather..... \$11,500	2014 GMC TERRAIN SLT AWD Silver, 38,000 Miles, 4 Cyl, 1-Owner, Certified..... \$19,900	2013 GMC SIERRA CREW 2500 4X4 SLT Silver, 1-Owner, Duramax Diesel, 78,000 miles..... \$39,900
2011 BUICK REGAL CXL Majestic Blue, 69,000 Miles..... \$12,900	2014 GMC TERRAIN FWD SLE Black, 21,000 Miles..... \$17,900	2013 CHEVROLET SILVERADO CREW CAB 4X4 Fire Red, 64,000 Miles, Leather, Heated Seats, Certified..... \$25,900
2010 PT CRUISER Burgundy, 90,000 Miles, Locally Owned, 4 Cyl..... \$6,900	2013 BUICK ENCORE FWD White Opal, 71,000 Miles, Certified..... \$15,900	2013 CHEVROLET EXT. CAB 4X4 Stealth Grey, 75,000 Miles, 5.3 V8..... \$23,900
2009 PONTIAC G6 Dk Blue, 211,000 Miles, Great Transportation..... \$4,900	2012 GMC YUKON SLT Gray 4X4, 8 Passenger, 145,000 Miles..... \$21,900	2013 GMC SIERRA CREW CAB SLE 4X4, Mocha Steel, 115,000 Miles, 5.3 V8..... \$20,900
2008 FORD FOCUS 108,000 Miles, Locally Owned..... \$7,900	2012 DODGE JOURNEY Dk. Blue, 65,000 Miles, Locally Owned..... \$12,900	2012 GMC SIERRA CREW CAB SLT 4X4 Mocha Steel, Duramax, Long Box, 1-Owner, 136,000 miles..... \$32,900
2008 BUICK LUCERNE CXL Black, 3800 V6, Very Nice, 162,000 miles..... \$5,500	2011 JEEP WRANGLER 4X4 RUBICON Burgundy, 106,000 Miles..... \$19,500	2012 CHEVROLET SILVERADO EXT. CAB 4X4 Stealth Grey, 65,000 Miles..... \$21,900
2006 GRAND PRIX GT Silver, 168,000 Miles, Locally Owned..... \$4,900	2011 GMC ACADIA AWD DENALI White Diamond, 118,000 Miles..... \$17,900	2012 GMC EXT. CAB SLT White, 107,000 Miles, Leather, 5.3 V8..... \$21,900
USED SUVs	2007 CHEVY TAHOE LTZ White, 5.3 V8, 147,000 Miles..... \$17,500	2011 GMC CREW CAB 4X4 Stealth Grey, 84,000 Miles..... \$22,900
2017 GMC ACADIA AWD SLT Carbon Metallic, 20,000 Miles, Certified..... \$34,900		2011 GMC CANYON EXTCAB 4X4 Silver, 1-Owner, 48,000 miles..... \$15,900
2017 CHEVY EQUINOX LT AWD Red, 21,000 miles, 4cyl..... \$24,900		2010 GMC SIERRA CREW CAB SLT White, 142,000 Miles, 5.3 V8..... \$17,900
		2010 GMC EXT CAB SLE 4X4 White, 5.3 V8, 134,000 Miles..... \$16,200
		2010 CHEVY REG. CAB 2 WHEELER White, V6, 132,000 Miles, 4.8 V8, Ladder Rack..... \$9,900
		USED VANS
		2017 DODGE GRAND CARAVAN SXT LT. GRAY Gray, 35,000 Miles..... \$20,900

BENCHLEY BROS., INC.

1 Mile East of Doherty • US-10, Clare • Sales (989) 386-9900

For more info log on to: www.benchleybros.com

Parts & Service (989) 386-3197

HOURS
8-6 Mon-Fri
9-2 Sat



Specializing in
GM Certified
USED VEHICLES

Steve's Country Market

989-539-3110 3170 North Clare Ave., Harrison 44 Feet of Old Fashioned Meat Counter with Good Old Fashioned Service

Hours: Sun. - Mon. 8-8 Bridge Card & Wic Accepted

Sale Dates: APRIL 2 - APRIL 8, 2018

Top Quality Meats At Rock Bottom Prices!

100% Satisfaction Guaranteed

Michigan Lottery
stevescountrymarket.com

FRESH MEAT AND SEAFOOD ITEMS	GROUND CHUCK FAMILY PACK 5 LBS. OR MORE \$2.79 LB.	CENTER CUT PORK CHOPS REG. OR STUFFED \$1.79 LB.	WHOLE BONELESS PORK LOINS \$1.69 LB. <small>SLICED FREE!</small>	BLACK CANYON ANGUS NEW YORK STRIP STEAKS \$7.99 LB.	PORK STEAK OR WESTERN STRIPS \$1.69 LB.	USDA CHOICE BONELESS ENGLISH ROAST \$3.49 LB.
	BONELESS BOSTON BUTT PORK ROAST \$1.79 LB.	BONELESS CHICKEN BREAST \$1.99 LB.	WHOLE NEW YORK STRIP LOINS \$3.99 LB. <small>SLICED FREE!</small>	STEVE'S OWN MARKET MADE BULK PORK SAUSAGE \$1.69 LB.	ECKRICH SMOKED OR POLISH SAUSAGE 42 OZ. \$5.99 EA.	ECKRICH FRANKS OR BOLOGNA 14 OZ. 2/\$3.00
	TUNA STEAKS 6-7 OZ. GREAT ON THE GRILL \$5.00 EA.	JUMBO SCALLOPS \$14.99 LB.	TILAPIA FILLETS \$2.99 LB.	COD LOINS \$5.99 LB.		

Deli	Fresh Produce	Fresh Dairy And Frozen	Grocery
ECKRICH HARD SALAMI \$4.49 LB.	SLICED WHITE MUSHROOMS OR SLICED BABY BELLA MUSHROOMS 8 OZ. 3/\$5.00	YODER'S SHREDDED OR BAR CHEESE 8 OZ. 2/\$4.00	GENERAL MILLS CHEX CEREALS 12-14 OZ. 2/\$5.00
ECKRICH DELI HAM \$3.99 LB.	CANTALOUPE \$1.99 EA.	PRAIRIE FARMS BUTTER 1 LB. \$2.99 EA.	NUNN BETTER BIRD SEED 18 L B. BAG \$5.99 EA.
COLBY OR COJACK CHEESE \$4.49 LB.	NEW CROP FLORIDA POTATOES RED OR YELLOW 3 LB. 2/\$5.00	PRIME OLD RECIPE PREMIUM ICE CREAM 56 OZ. 2/\$7.00	BUD & BUD LIGHT 15 PK. CANS PLUS DEPOSIT \$9.99 EA.
SANDWICH SWISS CHEESE \$4.49 LB.	BANANAS 49¢ LB.	Simply Orange 2/\$6.00	COKE 8 PK. 12 OZ. BOTTLES PLUS DEPOSIT 3/\$11.00
			DARK HORSE WINES 750 ML. \$6.99 EA.
			FRITOS OR CHEETOS 9.5-10.25 OZ. 2/\$4.00
			AUNT MILLIE'S FAMILY STYLE BREADS 22-24 OZ. 2/\$3.00
			AUNT MILLIE'S DELUXE HOT DOG OR HAMBURGER BUNS 8 CT. 2/\$3.00

While supplies last. Not responsible for printing errors.

GET MORE BANG FOR YOUR BUCKS

GOOD, CLEAN, QUALITY PRE OWNED MERCHANDISE

Jewelry

TVs

Wii, Xbox One, PS4

Firearms

Musical Instruments

Muzzle Loader Gear

Tools

SPECIAL

Guitar & Amp

\$100

While supplies last

Paintball Equipment

DIRT CHEAP • CAR AUDIO • NEW & USED

Tested & Inspected. Why Pay New Prices?

GLADWIN TRADE & SALES

1-989-426-6811

1739 N. State St. • Gladwin

Country Corner MARKET

Bulk Food • Deli

2 Miles South of Rosebush • 2020 North Mission Mt. Pleasant • 989-433-8200

8:30am-5:30pm, Monday-Thursday
8:30am-7:00pm, Friday • 8:30am-4pm, Saturday

Large Selection of Freezer Food at Discounted Prices

SPECIALS OF THE WEEK

Great Selection of Bulk Foods
We Accept Bridge Cards & All Major Credit Cards

<p>Walnut Creek Provolone Cheese</p> <p>Sale \$2.99 lb. Reg. \$3.99 lb.</p>	<p>Walnut Creek Brown Sugar Ham</p> <p>Sale \$2.99 lb. Reg. \$3.79 lb.</p>	
<p>Walnut Creek Apple Butter 16 oz. Regular or Fruit Sweetened</p> <p>\$2.69 ea.</p>	<p>Walnut Creek Twists All Flavors</p> <p>\$1.29 ea.</p>	
<p>Walnut Creek Sausage Links 12 oz.</p> <p>\$2.49 ea.</p>	<p>Walnut Creek Orange Juice 1/2 gal.</p> <p>\$2.29</p>	

STOCK UP WITH WALNUT CREEK HAM AND ALL THE OTHER GOODIES TO MAKE YOUR HOLIDAY EVENT DELIGHTFUL!!!!

Coffee of the week: Costa Rican Supremo

Quality Built. Quality Features.

STOP BY OUR LOT AND CHECK OUT THE GREAT SELECTION OF BUILDINGS ON THE LOT - READY TO GO!

INVEST YOUR TAX RETURN ON A BUILDING YOU CAN ENJOY FOR YEARS TO COME!!

14x36 High Barn
8x7 Garage Door, 2 3x3 Wildog, 8 Ft. Loft, 56' Shelves, 6 Ft. Double Doors on Side
\$7,773

10x16 Quaker
Vinyl Shake Siding
\$3,510

12x20 Gable
8x7 Roll Up Door, 4 Ft. Loft, 1 Wildog
\$4,208

12x16 Gable
4 Ft. Loft,
\$3,628

14x28 High Barn
8 Ft. Loft
\$6,205

12x16 High Barn
8 Ft. Loft
\$3,060

Statewide Delivery - Free Delivery w/ in 70 miles!

Supplying Michigan with quality built portable buildings for over 25 yrs.

Miller's Woodworking

3209 E. Beaverton Road • Clare
(Voicemail) 989-465-8172

Old US 127 to Surrey West on Surrey to Grant 1 mile north on Grant

Mon.-Fri. 7:30am-5:00pm
Saturday 8:30-3:00 & Evenings by Chance or Appointment
Closed Sunday

TAX REFUND Sale

BEAUTY, QUALITY & FUNCTION ON SALE NOW!

12 MONTHS INTEREST FREE!

On any purchase of \$399 or more.

SALE PRICES PLUS BONUS COUPON SAVINGS!

<p>BONUS COUPON SAVINGS</p> <p>\$50 OFF</p> <p>Any purchase of \$499</p> <p><small>Prior orders excluded. One coupon per purchase per household. Purchases must total \$499 before sales tax. EXPIRES 4/2/18.</small></p>	<p>BONUS COUPON SAVINGS</p> <p>\$100 OFF</p> <p>Any purchase of \$999</p> <p><small>Prior orders excluded. One coupon per purchase per household. Purchases must total \$999 before sales tax. EXPIRES 4/2/18.</small></p>	<p>BONUS COUPON SAVINGS</p> <p>\$200 OFF</p> <p>Any purchase of \$1999</p> <p><small>Prior orders excluded. One coupon per purchase per household. Purchases must total \$1999 before sales tax. EXPIRES 4/2/18.</small></p>	<p>BONUS COUPON SAVINGS</p> <p>\$300 OFF</p> <p>Any purchase of \$2999</p> <p><small>Prior orders excluded. One coupon per purchase per household. Purchases must total \$2999 before sales tax. EXPIRES 4/2/18.</small></p>	<p>BONUS COUPON SAVINGS</p> <p>\$500 OFF</p> <p>Any purchase of \$4999</p> <p><small>Prior orders excluded. One coupon per purchase per household. Purchases must total \$4999 before sales tax. EXPIRES 4/2/18.</small></p>
---	--	--	--	--

In-Stock & On Sale • No Waiting • Take Home Today

LAZBOY

See For Yourself...

LARGEST RECLINER SELECTION IN MICHIGAN

101 N Mill St. • Corner of M-46 • Downtown St. Louis, MI
(989) 681-5043 • www.kubins.com | Mon - Thurs: 9-6PM, Fri: 9-8PM, Sat: 9-5PM

Lyle & Joyce Vore Trust

LIVE AUCTION ~ Saturday April 7th 2018, 10 AM

11187 Jerome Rd. St. Louis, MI 48880

Directions: From Begole Rd. and M-46, follow Begole Rd. North 3 miles to Adams Rd., East 1 mile to Jerome Rd. then North to auction.

Follow the Auction Signs.



GARAGE and SHOP ITEMS; HOUSEHOLD ITEMS; GUNS – Ammo - Cases

This is a very nice auction and one you won't want to miss!

For Photos and Details Visit: www.SherwoodAuctionServiceLLC.com

SHERWOOD AUCTION SERVICE, LLC

Joe Sherwood, Owner/Auctioneer

Office Call or Text 989-640-9401

Email: Sherwoodauctioninfo@yahoo.com



108 E Center Street
Suite A
Ithaca, MI 48847
Office: 989-875-5148
Fax: 989-449-4380
Cell: 989-763-3555

Dianne Beard
Realtor

Email: dianne.beard.realtor@gmail.com

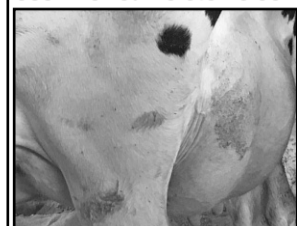
Daybreak Dairy

Complete Herd Dispersal Auction

Friday April 6, 2018
10AM, Zeeland, MI

Directions: Ottawa County, MI; From 131 Exit at 100th St. Go west 12 Miles to Farm at 4861 Adams St. Zeeland, MI (North side, Corner of Adams and 48th Ave)

500 AI Sired Holsteins Sell



91#M 4%F Tank Avg

RHA 30265 4.1 1226 3.1 937
230 Cows Avg 91# 4.0%F
3.2%P SCC-175
96 Cows 100#+ & Up to 150#
100+ 1st Lact, 70+ 2nd Lact
30 Dry Cows
100% AI Sired & Bred
Parlor / Freestall / Headlock / DHIA / Vaccinated
100 AI Bred Heifers Sell
180 Heifers From Freestall / Headlock Trained
Many Polled Cows & Heifers
Catalog & Video at
[www.uproducers.com/dairy-sales/Trucking & Lunch Available](http://www.uproducers.com/dairy-sales/Trucking%20and%20Lunch%20Available)

Owners

Daybreak Dairy, LLC

The Elzinga Family Zeeland, MI

Nate 616-218-4064

Dan 616-371-7556

Sale Managers / Auctioneers

Producers, Inc.

Paul Warner 614-296-5038

Chad Kreeger 517-294-3484

Spring Consignment Auction

Saturday, April 7, 2018 at 9:00 am

Located: North of Grand Rapids OR South of Big Rapids on US 131 to Sand Lake exit #110, East through Sand Lake to Northland Drive. North to Stanton Road (Co Rd 522), East to Trufant. OR South of Lakeview OR North from Greenville on M91 to Stanton Rd (Co Rd 522) West to Trufant
Trufant Flea Market Grounds 303 North C Street, Trufant MI 49347 Montcalm County Follow Auction Signs

TRUFANT FLEA MARKET

OPENS APRIL 5TH FOR THE SEASON!

Tractors, 1999 Ford Ranger PU, 2 School Buses, Wagons, Spreaders, Rakes, Elevators, Cultipackers, Cultivators, Grain Drills, Running Gears, Planters, Brush Hogs, Balers, Sprayers, Plows, T Chain Fall, Tree Stand, Fence Posts, Barbed Wire, Chain Saws, Tools, more than 45 guns

SEE WEBSITE FOR FULL LISTING AND SALE ORDER!

NO BUYERS PREMIUM CHARGED

Petersen Auction Service

Mike: 616-984-2573 OR 231-598-1029

Flea Market: 616-984-2168 • Messages, Ann: 616-984-5122

www.petersenauctions.com

MILLER FARM AUCTION

We are retiring from farming and will offer the following at Public auction. LOCATED: 4 miles west of Fremont, MI on M-82 to M-82 and M-120 Junction. South on M-120 1 mile to Meinert Rd. west 1/2 mile to sale. 7949 E. Meinert Rd. Fremont, MI 49412

SATURDAY, APRIL 7TH, 2018 @ 9:30 AM FREMONT, MI

PERCHERON DRAFT HORSES, BUGGIES, HARNESSES AND COLLARS

- AMOS & NOAH 8 & 9 Yr. Old Geldings, Black W/Star Well Broke To All Farm Machinery, Very Gentle Team.
- KING & CODY 10-12 Yr Old Geldings, Black Well Broke To All Farm Machinery, Sold Choice
- BILL & BRIAN 6 Yr & 13 Yr Old Geldings, Black W/Star, Well Broke To All Farm Machinery, Sold Choice.
- BESS & BEAUTY 12-16 yr old, Black, mares, well broke to all farm machinery, sold choice
- 2-Ind. Style Queen Buggies W/Lights, Rubber, And Slide Up Doors, Nice Cond.
- Pioneer 1 Horse Wagon Gear Like New • Older 1 Horse Wagon Gear • John Henry 2 Wn. Road Cart • Open Buck Board • IND. Older Single Buggy Top • Set Badia Draft Harness Like New • Set Bio Draft Harness Good Cond • Assorted Other Harnesses • Assorted 18" To 26" Draft Collars & Pads • 2-3-4-5-6 Horse Eveners • Rope & Pulley Hitch • Pony Cart

HAY EQUIPMENT

- N.H. 49912' Haybine w/new Hyd.Pump • N.H. 488 9' Haybine • GEHL 2170 Haybine & 1 For Parts • PEQUEA 910 Hay Tedder Ground Drive • N.H. 258 Hayrake • N.H. 256 Hay Rake • N.H. 55 Hay Rake • N.H. 144 Hay Inverter • Shop Built, 32' 4 Sect Hay Merger Hyd Drive • KILL BROS, 10 Ton Gear W/Truck Tires • Several Wagon Gears • N.I. 50' Hyd Elevator • Skeleton 24' Barn Elevator • J.D. Sickle Bar Hay Mower • 3 Older flat Rack Hay Wagons

HOG EQUIPMENT

- SMIDLEY 24 Hole 2 1/2 Ton Hog Feeder • 2-SMIDLEY 16 Hole 1 1/2 Ton Hog Feeders • 4 - SMIDLEY Single Hole Hog Feeders • Round Hog Feeder W/Osborn Bottom • 6' S-S Hog Feeder • 5 - S-S Nursery Feeders • Misc. Nursery Feeders • Creep Feeders & Waterers • Assorted 2 -4 Hole Automatic Waterers • 2 - 2 Ton Feed Bins, One Unassembled • HONEYVILLE 3 Ton Bin W/Extra Parts • 2 - 6 Ring 20 To 25 Ton Feed Bins • For Most Hog Catch Crate • 24 Farrowing Pens • PATZ Gutter Cleaner 96' W/Extra Parts • Sorting Panels • Large, Assorted Hog Gates 6' To 16' Some S-S • Pig Nursery Gates • Panels 4000 & 5000 Btu. L.P. Hanging Hog Heaters • PARTIAL LIST OF ITEMS, MANY MORE TOO NUMEROUS TO MENTION!

TRAILER

- 24' Tandem Axle Trailer W/Beaver Tail • 14' Tandem Axle Trailer

SHOP AND OUTDOOR MISC ITEMS

- LINCOLN Ranger 250 Elect Welder W/ 16Hp Onan • Metal Band Saw W/Air Motor • Table Saw W/Hyd Motor • 12' X 20' Insulated Kennel With Outside Run 1 Yr. Old • 48" SNAPPER Walk Behind Mower • 500 Gal. L.P. Tank • 3 Q.L.F. Lick Tanks • 2 Poly Calf Hutches • Set Steel Bolt On Rubber Tractor Wheels • Assort Implement Wheels • 9' Sq. Horse Feeder • Round Bale Horse & Cattle Feeders • Small Cast Iron Kettle W/ Jackets • Tire Scraper • 10' Silo Roof & Silo Chute • Clipper Fanning Mill W/ Screens • Wire Corn Crib • Approx. 250' 7' X 4" Treated Post • Bundle R-R Ties • Assort. Steel Fence Posts • Misc Fence Supplies • 3 Pt Buzz Rig • Hydraulic Unit On Wheels • Steel Pipe 2" - 2 1/2" - 4" And 5" • Treated Telephone Poles • Guard Rail Fence • 10' X 32' Steel Tank • Assort Steel Tanks • Ass't Drive Belts • 3 Rolls Pickets • 2 Overhead Fuel Tanks • Wheelbarrows • Pressure Washer • Alum Ext. Ladders • Picnic Table • 18" To 24" Tile Culverts • Wagon Tongues • STHL Gas Drill • Bicycles • 3 Wh Bicycle • SEVERAL MISC. GOODIE WAGONS! MANY MORE ITEMS TOO NUMEROUS TO MENTION

GUNS & TOY COLLECTION

- WINCHESTER Model 70 25/06 Bolt Action • MOSSBERG 500 Duck Unlimited 12 Ga Pump • MOSSBERG 500 12 Ga. Pump • H-R 25/06 Single Shot Rifle • JOHN DEERE 25 pc. Toy Collection

FURNITURE AND HOUSEHOLD RELATED ITEMS

- Old Oak Sq Table W/ 6 Leaves • Oak Glider Rocker • Oak 2 Pc Wardrobe/ Storage Cabinet • Assortment Of Dressers And Chest Of Drawers • Bedroom Set • Blue Love Seat • Recliner • Swivel Chairs • Sewing Machine Cabinet W/Treadle • Knee Hole Desk W/Foldout Leaves • Small Knee Hole Desk • Night Stands • Coffee Tables • Lp Gas Magic Chef Stove • Wooden Desk • Hall Trees • Wood Cloth Hamper • Sm School Desk • Quilt Frame • 2 Harness Loom • Card Table Set • Pint Jars W/Glass Lids • Blue Glass Jars • Misc Canning Jars • Coleman Gas Lanterns • Ping Pong Table • Lp Gas Grill • Kitchen Strainers • 10 Qt S-S Canner • New Handmade Quilt • Misc. Victoria Ware • MANY MORE HOUSE RELATED ITEMS NOT LISTED

AUCTIONEER'S NOTE: Sale Order: 9:30am - Misc Wagons, 10:30am - 2nd Ring Household items - Farm Machinery, Approx. 12:30 followed by Horses. Bring your trailers and enjoy a good country auction with us. Hope to see ya there! LeRoy

LUNCH & BAKE SALE BY FREMONT AMISH SCHOOLS

OWNER: FLOYD M. AND ESTHER U. MILLER 7949 E MEINERT RD FREMONT, MI 49412

Yoder Brothers Auction Service

Specializing in Successful Auctions

GUEST AUCTIONEER: STAN ROTTIER

Auctioneers LeRoy and Willis Yoder

9484 S. Rogers Ave., Clare, MI

PH: 989-366-9082

Auction Terms: Cash or approved check with proper I.D. Nothing to be removed until settled for. Not responsible for accidents. Lunch on grounds. All announcements made day of sale take precedence over all other materials. Out of state buyers must have bank letter of credit.

SYKORA AUCTIONS.COM PRESENTS!

LIVE-ONSITE W/ SIMULCAST ONLINE BIDDING

RUSS ACRES FARM 5320 S. FRIEGEL RD. OWOSSO, MI. 48867

SATURDAY APRIL 7, 2018 @ 10:00 AM

FOR INFO CALL DELANE RUESS @ 989-277-3427 ONSITE VIEWING/INSPECTIONS AFTER MARCH 23, 2018



TRACTORS 2006 CASE MX 245 MAGNUM MFWD TRACTOR -1993 JD 7800 MFWD DSL. TRACTOR-1978 JD 4400 2WD TRACTOR-1962 JD 3010 DSL. TRACTOR-DEGELMAN 34 SERIES 10' MTD. DOZER BLADE -COMBINE / HEADS/CART 2003 CASE/IH 2366 4WD AXIAL FLOW COMBINE-2006 CASE/ IH 2206 6X30" POLY CORN HEAD, -2008 CASE/IH 1020 25' GRAIN PLATFORM-BRENT 470 GRAIN CART-SPRAYER/ LIQUID-2005 SPRAY COUPE 4450 400 GAL. SP SPRAYER-TRUCKS/TRAILERS-CASE 850 DOZER - KINZE 2500 8 ROW NO-TILL PLANTER - 1999 WALINGA MT 7614 GRAIN VAC -CASE/IH 330 TURBO TILL 25' C-FLEX DISC -CASE/IH TIGERMATE II 28 1/2' CULTIVATOR AND MORE PCS OF TILLAGE -LOTS OF GOOD MISC FARM ITEMS FROM AROUND THE FARM

AUCTIONEER'S NOTE: GOOD OVERALL CONDITION ITEMS ARE NON-SMOKER UNITS.. MAKE PLANS TO ATTEND THIS QUALITY SYKORA AUCTION, BE THERE!!! - RUESS ACRES FARM NANCY & DELANE RUESS 5320 S. FRIEGEL RD. OWOSSO, MI. 48867

FOR INFO CALL DELANE @ 989-277-3427 ONSITE VIEWING/INSPECTIONS AFTER MARCH 23, 2018

SYKORA AUCTION SERVICE INC.

Scott Sykora, Auctioneer
(989) 386-9694 • Fax (989) 386-2246
Clare, Michigan • Visit our website www.sykorauctions.com

John McConnell, Auctioneer
(989) 429-0444

PUBLIC AUCTION

Thursday, April 5, 2018 @ 6:00 PM • AC Auction House, 1997 Midland Rd., Auburn, MI 48611

Directions: From Midland take US-10 east to Bay City Rd Exit, then east 1 1/2 miles to auction site, OR from I-75 & US-10 take US-10 west to Garfield Rd Exit (Auburn), then north 1/2 mile to Midland Rd. and west 3 miles.

Collectible Fishing Rods, Lures & Duck Decoys Conolon 8' 2-Pc Fly Rod • Fiber Fly Rod • Pflueger Cavalier No. 2746 Casting Rod (Not Complete) • Part of Yankee Casting Rod (Royal Oak) • 5-Hook Fishing Lure • 1940 Detroit Bait Co. Bass Caller Lure 3 1/2" • Heddon Vamp Wood Fishing Lure • CLB Castrola No. 3100 Wood Fishing Lure • Heddon Wounded Minnow Wood Fishing Lure • Heddon Zig-Wag Wood Lure • South Bend Dive-Oreno Wood Lure • CLB Pike Minnow Wood Lure • Flat Side Chub Injured Minnow Wood Lure • Moonlight 3300 Series 3 3/4" Wood Lure • South Bend Surf-Oreno Muskie Size Wood Lure • Pflueger Globe Wood Lure • South Bend Bass-Oreno Wood Lure • Pflueger Mustang Wood Lure • CLB Baby Pike Minnow Wood Lure • South Bend Bass-Oreno w/Glass Eyes • Creek Chub Baby Pink Minnow (Frog Fish) • Wood Body (Bomber Bait Co.) Lure • Heddon Game Fisher Wood Lure • CLB Baby Jointed Pike Minnow Wood Lure • Bass King Wood Lure Made By Red & Green (Detroit) • Heddon River Runt Spook Wood Lure • Heddon Chugger Spook Wood Lure • AEN Toronto Spoon Lure • 2" Midget White Beetle Wood Lure • Heddon Sonic Wood Lure • CLB S-1 Wicked Wiggler Feathered Treble Lure • Mallard Drake Decoy Made By Armstrong, Featherweight Decoys Inc. (Houston 1938-45) • Wood Duck Decoy w/Tack Eyes • Wood Duck Decoy Canvas Back • Black Wood Duck Decoy • Mason Bluebill Duck Decoy (Premier Grade) w/Original Paint & Glass Eye • Saginaw Bay Wood Duck Decoy w/Glass Eyes • **Collectible Sporting Items** Nuway Wood Knife Holder • JC Higgins No. 710 Metal Gun Cleaning Kit • Weller Gun Cleaning Kit • Org. Bartram Powder Flask 2" • Dixon Powder Flask • Powder Horn w/Trade Beads • Copper Powder Flask • Pheasant Mount • Deer Skull w/9-Pt. Antlers • **Furniture** Mid Century Drop Leaf Table w/(2) Leaves & (5) Chairs • Green 4-Dr. Dresser • Retro Black Table w/Chair • 1950s Valet Chair • Merseman Round Green Pedestal End Table • East Lake Parlor Table • Wicker Round Table • Mid Century Buffet • Antique Dressing Table • **Collectible Toys** Marx Tin Super Streamline Wind Up Race Car Toy • Marx Lumar Road Grader • Tonka Green Tractor w/Tonka Wagon • Ertl Street Van • Wyandotte Construction Co. Crane w/out Clam Bucket • Tonka Blue Jeep (All Original) • Texaco Fire Truck • Tonka Dozer • Ertl Richard Petty STP Semi Marx Kentucky Rifle Toy w/Box • Trailer w/Race Car • Imex Harley Davison 1:12 Scale Model Kit Motorcycle • Monogram Ford T Model Kit • Green Hornet (NIB) • Beatnik Bandit II Model Kit 1:25 Scale • Beatnik Bandit (Ed Big Daddy Roth) 1:25 Scale Model Kit • Outlaw Model Kit 1:25 Scale • Ala-Kart 1:25 Scale Model Kit • **Antiques & Collectibles** • WWI Canteen • Bun & Tool Spigot Hole Boring T-Handle Brace w/Bit • Vintage Shell Belt w/ (10) Brass Shells • WWI WS Co Cooking Pan • Miller Reserve Barley Draft Advertising Wood Box • Michigan Navy Beans Burlap Bag (Caro Farmers Co-Op) • Hirsch Weis Original Self Cooling Water Bag • Quantity of Quart Advertising Oil Cans • No. 10 Cleveland Cast Iron Camp Stove • Ironstone N. Clark Co. 1840 Era Lyons Crock • 6-Gal. Bee Sting Crock • Robinson Ransbottom Roseville Crock • 6-Gal. Bee Sting Crock • 6-Gal. Bee Sting Butter Churn • 3-Pc. USA Pottery Bowl Set w/Lid • Antique Leather Chest • Gulf Household Oil Drip Can • Beaded Iroquois 1800s Picture Frames • Faux Squash Blossom Necklace • Winchester No. 3081 Mini Wood Plane • Civil War Period Bone Handle Fork & Knife • Magnetic Spring Water Co. (Saginaw) Water Bottle • Jadite Fishing Bowl • (2) Large Gold Gilt Pyrex Bowls • Hand Painted Hat Pin Holder w/Pins • Jesus & Mary Chalkware Wall Busts • Numerous License Plate Sets • Coca-Cola Cooler • **This Is Only A Partial Listing!**

Auctioneers Note: Join us at our indoor, heated facility. **Visit our website for pictures and upcoming auction information.** Now accepting items for upcoming auctions to be held at this location - contact us today. **Terms of Sale:** Cash or MI check w/proper ID accepted. 6% sales tax charged on all purchases. 3% buyer's premium added to payments made by credit card. All items to be settled for in full before removal from premises. Not responsible for accidents before, during or after auction. Everything sells as is, where is. Auctioneers act as selling agents only and assume no guarantees or liabilities. Announcements made day of sale take precedence over printed matter. Concessions on grounds.

A YODER AUCTION LLC

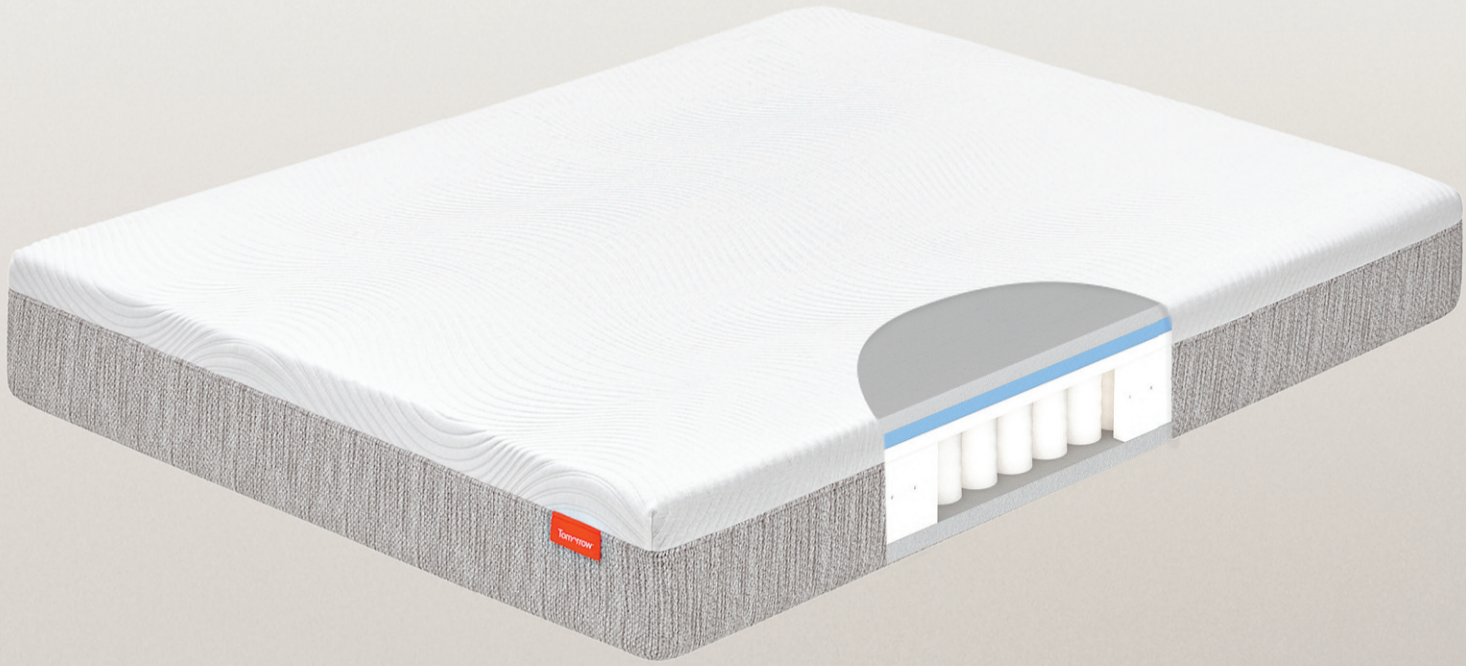
Aden Yoder, Auctioneer • (989) 429-7049 • www.ayoderauction.com • adenyoder@gmail.com



Tomorrow

Love Your Bed

Discover the new mattress and sleep system crafted for unrivaled comfort and support by the world's leading sleep experts at Serta Simmons Bedding.



Real-time Cooling

Premium temperature-regulating memory foam responds to body heat, so you don't have to.



Adaptive Comfort

Every body is different and deserves to sleep comfortably. Choose from two optimal mattress feels for side, back, and stomach sleepers.



Unbeatable Support

Our precision pocketed coils flex individually to isolate motion for undisturbed nights.

Buy Online Now for Our Limited Time Offer

\$200 off* Use Code: **WAKEUP2**

tomorrowsleep.com



Convenient Delivery in a Box



Free 2-3 Day Shipping & Returns



365 Day Mattress Trial



0% APR Financing Available



Optional Setup & Mattress Removal



*Valid on purchases worth \$500 or more at tomorrowsleep.com thru 04/29/2018. Cannot be combined with any other offers. See website for details. TS20023-14-139944-8

Lovely Senior Apartment Homes In St. Louis, MI

River View Place
401 N. Mill
1 & 2 bedroom units with awesome views of the Pine River. Located at the north end of the main St. Louis shopping district.

Greenland Place
129 Michigan
1 & 2 bedroom units with attractive landscaping & walking distance to all St. Louis has to offer

989-466-5971
countryside@glmanagement.com

Section 8 Vouchers accepted. Head of household 55 and older, all other household members 50 or older. Income limits and student restrictions apply. Equal Housing Opportunity. TDD 711.

Sell! Shop! Hunt for a job!
And there's so much more! Call now and the Classified Department can help you place your ad today!

RABIES CLINIC
Special April Rates

\$15⁰⁰

Reg \$20.⁰⁰

By Appt. 426-0203
Flexible Hours

KELLY'S KRUISSING
KRITTER KARE
Kelly Jo Kelley, DVM



Kurncz Farms
Open Heifer Dispersal
Wednesday April 4, 2018
4:00 PM
UPI St. Louis Sale Barn
(East Edge of St. Louis, MI on M-46)

500+
Holstein Heifers Sell

Weaned to Breeding Size
Many AI Sired
Vaccinated
Sleeved
Cattle Will Be Sorted & Sold in Groups

Catalog & More Info at
www.uproducers.com/dairy-sales/
Trucking Available

Owners
Kurncz Farms
St. Johns, MI
Sale Managers / Auctioneers

United Producers, Inc.
Paul Warner 614-296-5038
Chad Kreeger 517-294-3484

JET SKIS - BOATS - SNOWMOBILES - ATVS- MOTORCYCLES

AUCTION
SATURDAY APRIL 7, 2018
@ 8:45 AM

One mile east of Bronson Michigan on US-12

LIVE ON-SITE BIDDING PLUS ABSENTEE ON-LINE INTERNET BIDDING.

YOU CAN BUY OR SELL. ONLY \$25 & 3% TO SELL.

Over 100 recreational vehicles including jet skis, boats, snowmobiles, 3 & 4 wheeler ATV's, UTV's, trailers, motorcycles, cars, trucks, go carts, lawn equipment, golf carts, and much more.



Inventory pictures, auction price reports, motel listings, maps, & all info at
SNOWMOBILEAUCTION.COM
White Star Motorsport Auctions
Phone (989) 369-1153
10% buyer's premium

RE/MAX RIVER HAVEN, INC. Open Seven Days a Week to Serve You!
www.riverhavenhomes.com
Wayne R. Walts - Broker

Main Office
777 W. Cedar Riverwalk Place
989-426-6893

Wixom Lake Office
1239 Estey Road, Beaverton
989-435-7755

Sugar Springs Office
1415 W. Sugar River Rd. Gladwin, MI 48824
989-426-9239



Sugar Springs-3 bedroom, 2 bath ranch with fireplace, open floor plan
\$69,900
MLS#168922

Wiggins Lake-3 bedroom, 3 bath ranch with sandy beach on all sports lake. 2 car garage, great location.
\$119,900
MLS#168895

Sugar Springs-West Branch area-3 bedroom, 2 bath ranch with 2 car garage on 7 acres of land.
REDUCED TO: \$49,900
MLS#168790

Income Tax Pay Day
April 15



SPRING SALE

MODEL XG3135
• 35 HP 3 Cylinder Diesel
• Hydrostat Trans
• Independent PTO
• Power Steering
6 YEAR ENGINE/DRIVE TRAIN WARRANTY

LS TRACTOR

MODEL XJ2025
• with Loader
• 24 HP 3 Cylinder Diesel
• Hydrostat Trans
• 4WD
6 YEAR ENGINE/DRIVE TRAIN WARRANTY

\$189/month

\$165/month

NAGY'S TRACTOR SALES, INC.
Family owned since 1946

1946 72nd 2018

*Limited Time Offer
*With approved credit - See store for details
*Promo Code D10418

1980 W. US-23, OMER, MI
989-653-3173
www.nagytractor.com

SUPPORT YOUR LOCAL FOOD BANK



Building Supplies

Trusses • Lumber • Siding • Roofing • New Houses
Pole Barns • Garages • Remodels
Quality Products • Competitive Pricing • Outstanding Service

See us for Your Drainage Needs
8' - 15' Poly Culverts

4' to 6' Corrugated Tile
Big Inventory

COMPLETE OUTDOOR COOKER
Welcome to the Big Green Egg®
the Original American Designed Ceramic Cooker
A Smoker • A Grill • An Oven

HERSHBERGER'S PRO HARDWARE
10289 N. Leaton Rd., Clare **(989) 386-5338**
Full Line of Hardware & Building Supplies Stove & Furnaces All Fuel Chimneys



Has Arrived.... Only at West Branch Furniture

Ashley 2-Piece Sectional



*Optional Ottoman
\$229

\$899

Coaster 5-Piece Pub Set



1
Left

\$279

Your Choice 63" TV Stand



\$349

**Lang 5
Drawer Chest**
Available
in White

\$139

**5-piece Livingroom set - Sofa,
Loveseat, 2 end tables
and cocktail table**

**tables not as pictured

\$999

**5-piece Livingroom set - Sofa,
Loveseat, 2 end tables
and cocktail table**

**tables not as pictured

\$999

Ashley Bittersweet 4 pc Bedroom Set
(Dresser,
mirror, chest,
Queen Headboard)

\$699

Your Choice

Ashley Chaise Sofa

\$499

**5-piece Livingroom set - Sofa,
Loveseat, 2 end tables
and cocktail table**

**tables not as pictured

\$999

**5-piece Livingroom set - Sofa,
Loveseat, 2 end tables
and cocktail table**

**tables not as pictured

\$999

**Ashley
Bavello Sofa**

\$359

COASTER
Furniture

\$179

Coaster Wallaway Recliner

Ashley

\$249

Ashley Wallaway Recliner
Available in 2 colors

Ashley

\$269

Ashley Rocker Recliner
Available in 7 colors

Ashley

\$349

Ashley Power Recliner
Available in 2 colors

Ashley

\$449

Ashley Power Recliner
Available in 4 colors



Queen Size Adjustable Bed Featuring 711 pocketed coil mattress



\$899

*mattress not exactly as shown *While Supply Lasts

Serta
Always Comfortable.

**All Serta
Mattresses
ON SALE NOW!**

Serta	TWIN SET	FULL SET	QUEEN SET	KING SET
MajesticSleep collection Galway Place - Firm Comfort	\$279 2 Pc. Set	\$369 2 Pc. Set	\$399 2 Pc. Set	N/A
MajesticSleep collection Heidleberg - Euro Top or Comfort Firm	\$349 2 Pc. Set	\$459 2 Pc. Set	\$499 2 Pc. Set	\$799 3 Pc. Set
MajesticSleep collection Adamsom - Plush Comfort	\$399 2 Pc. Set	\$499 2 Pc. Set	\$549 2 Pc. Set	\$849 3 Pc. Set
MajesticSleep collection Westmark - Royal Comfort or Comfort Firm	\$459 2 Pc. Set	\$559 2 Pc. Set	\$599 2 Pc. Set	\$899 3 Pc. Set

*Financing available to qualifying buyers. Minimum purchase \$599 with approved credit. Not available on prior purchases. See store for details.
* Tables and lamps may not be as shown in picture.



136 S. Fifth St.
West Branch
located block south of
Mercantile Bank off Houghton Ave.
989-345-5326

www.westbranchfurnitureoutlet.com
***12 Months
No Interest**
FURNITURE
LIFESTYLE
BRAND SOURCE NATIONAL BUYING POWER
Sunday 11-3 Mon.-Fri. 10-6 Sat. 10-5

Find us on facebook
MasterCard
Discover
VISA
American Express

"The Outlet Store That Saves You More!"



DEWEY'S TRADING POST

Maple Rapids • 682-4158

Monday-Saturday: 8am - 7pm, Closed Sunday

Prices In This Ad Good for weeks of April 2, 2018 - April 7, 2018

WIC • Bridge Card • VISA • Mastercard • Discover
American Express • Debit Card & Chamber Bucks Gift Certificates.

<p>Select "Whole" New York Strips 13 lb. avg.</p>  <p style="color: red; font-size: 24px; font-weight: bold;">\$399</p> <p style="font-size: 8px;">LB. SLICED FREE!!</p>	<p>Koegel's Slicing Bologna</p>  <p style="color: red; font-size: 24px; font-weight: bold;">\$369</p> <p style="font-size: 8px;">LB.</p>	<p>Our Own Green Pepper & Onion Brats</p>  <p style="color: red; font-size: 24px; font-weight: bold;">\$349</p> <p style="font-size: 8px;">LB.</p>
<p>Our Own Jalapeno Cheddar Brats</p>  <p style="color: red; font-size: 24px; font-weight: bold;">\$349</p> <p style="font-size: 8px;">LB.</p>	<p>"All Beef" Philly Steak Brats</p>  <p style="color: red; font-size: 24px; font-weight: bold;">\$449</p> <p style="font-size: 8px;">LB.</p>	<p>Choice "Boneless" Arm Roast</p>  <p style="color: red; font-size: 24px; font-weight: bold;">\$399</p> <p style="font-size: 8px;">LB.</p>
<p>Choice "Boneless" Patio Steak</p>  <p style="color: red; font-size: 24px; font-weight: bold;">\$499</p> <p style="font-size: 8px;">LB.</p>	<p>Fresh Stew Meat</p>  <p style="color: red; font-size: 24px; font-weight: bold;">\$599</p> <p style="font-size: 8px;">LB.</p>	<p>Fresh Pork Cutlets</p>  <p style="color: red; font-size: 24px; font-weight: bold;">\$399</p> <p style="font-size: 8px;">LB.</p>
<p>"Our Own" Smoked Roasted Sausage</p>  <p style="color: red; font-size: 24px; font-weight: bold;">\$699</p> <p style="font-size: 8px;">LB.</p>	<p>"Our Own" Regular or Peppered Butt Bacon</p>  <p style="color: red; font-size: 24px; font-weight: bold;">\$349</p> <p style="font-size: 8px;">LB.</p>	<p>"Our Own" Smoked Knuckle Bones</p>  <p style="color: red; font-size: 24px; font-weight: bold;">\$179</p> <p style="font-size: 8px;">LB. WHILE SUPPLIES LAST!!</p>

AQUA STAR SHRIMP

Honey Walnut or Firecracker **2/\$10.00**

10-12 oz. Boxes WHILE SUPPLIES LAST!!

NEW "Our Own" Frozen

1 Boneless Chicken Breast 'Marinated' BBQ, Mosquito Or Italian, Teriyaki, Garlic Basil, Sun Dried Tomato 5 FLAVORS

1 Breast in pkg. Thaw Time 1/2 hour in Cold Water"

<p>"Choice" T-Bone Steaks</p>  <p style="color: red; font-size: 24px; font-weight: bold;">\$899</p> <p style="font-size: 8px;">LB. EVERY DAY!!</p>	<p>Choice Petite Steaks</p>  <p style="color: red; font-size: 24px; font-weight: bold;">\$449</p> <p style="font-size: 8px;">LB.</p>	<p>Choice Boneless BBQ Ribs "Beef"</p>  <p style="color: red; font-size: 24px; font-weight: bold;">\$499</p> <p style="font-size: 8px;">LB.</p>
---	--	---

"10% OFF" ALL MEAT BUNDLE ORDERS THIS WEEK!!

DeweysTradingPost.biz

LIKE us on Facebook & see our WEEKLY SPECIALS!






AMERICA, LET'S DO LUNCH.

Anna Bach, SINCE 1937. She came to this country and made it her home. Now, she and 1 in 6 seniors face the threat of hunger and millions more live in isolation. So pop by, drop off a hot meal and say a warm hello. Volunteer for Meals on Wheels at AmericaLetsDoLunch.org



DARELL DUNKLE & ASSOCIATES RETIREMENT AUCTION

62 ACRES OF COMMERCIAL REAL ESTATE WITH AN EXCESS OF 2500' FEET OF FRONTAGE ON NORTHBOUND US 127 AND PERSONAL PROPERTY AT 3284 E. ARNOLD LAKE ROAD, HARRISON, MI 48625

LOCATED; From the US 127/Old 27 interchange (exit 176) go north to E. Arnold Lake Road then go east to property.

THURSDAY *APRIL 12, 2018* 10:00 AM

THE REAL ESTATE SELLS AT 12:30 PM

This is a rare opportunity to purchase commercial real estate ideally located with hard to find frontage and visibility on US 127. The access is on a Class A road 1/4 mile from the 127 interchange. The property is partially cleared with the remainder being slightly rolling with hardwoods. A gated entrance secures access to the property containing a 54 X 96 X 14' high steel building with concrete floor, bathroom and office area, 40 X 60 pole building with concrete, a 20 X 80 open sided pole building and 12 X 60 office trailer, 2 electric meters and natural gas serve the property. Sales, storage, and manufacturing are some of the unlimited uses this property has to offer.

For Information, Additional Photos, and Auction Terms Log On To www.spauldingassociatesllc.com

PERSONAL PROPERTY

Construction Equipment, Pickup Sky Trak w/ bucket, forks and man cage, 2001 Witzco CHLNG Tri axle trailer, 93 GMC 1500 4X4 pickup, A/C, power locks & windows, Tomahawk 72" skid steer rock bucket, 2014 Copper River tri axle trailer w/ ramps (pintle hitch)

Consigned Items (sell after the Darell Dunkle items) 1994 Trailmobile, 48"x102", Overhead door, Logistical Posts, Air-Ride, Tandem Axle, 1998 Utility, 48' x 102", Swing Door, Air-Ride, Tandem Axle, 1995 Pine, 48'x102", Swing Door, Tandem Axle, (2) 40ft. Shipping Containers

Auction Equipment United Cashier Trailer w/ 3 clerking stations, side entry door, A/C and awning, 8' over cab auction topper w/ sound system, 8' auction topper with sound system, rolling auction podium (custom made, aluminum frame, folds up for transport), miscellaneous sign frames and signs

Horse Trailer, Saddles and Equipment 98 4 Star Aluminum 2 horse Slant load gooseneck trailer w/ living quarters, newer refrigerator (stored inside), Meadowbrook single horse cart, 2 sleighs (one fully restored), Doctor's buggy, bobsled, wicker single horse cart, Herford Youth Saddle, Basket Weave 13" Seat, Round Skirt, HH Heiser, (Makers mark 1880's-1920's) 15" Seat, Good Condition, Floral Pattern, Round Skirt, Colorado Denver Saddlery, 16" Seat, Floral Patter, Round Skirt, NEW- Double TT Saddlery 16" Seat, Floral Pattern, Round Skirt, Martin Saddlery w/ Brass Hardware, Rounded Skirt, Dark Oil, Smooth 17" Seat, Billy Cook of Sulfur CO, Roping Saddle, Smooth Dark Oil, Brass Hardware, 16 1/2" Seat, Stamped #2171, Buffalo Saddlery, Bear Trap Smooth Leather, Light Oil, Square Skirt, 15 1/2" Seat, Custom Made Buckeroo Saddle by Local Maker Jack Greer for Darell, Round Skirt, Oak Leaf/Acorn Hand Stamped, 16 1/2" Seat, Breast Collar, Backend, Like New, Roping Saddle, Wood Post Horn, Light Oil, Basket Stamp, Round Skirt, Log Style Saddle Rack, 3 Legs, Pine Saddle Rack w/ Built In Shelf For Brushes, Pine Saddle Rack w/ Built In Shelf For Brushes, Rounded Saddle Rack w/ Built In Shelf For Brushes, Metal Folding Saddle Rack on Wheels, Metal Boot Hanger Rack on Wheels, Snow Bridal, Headstall & 7' Reins, Double Side Ears, Lots of Silver, Dark Oil, miscellaneous harness

Toy Collection-DIE CAST TOYS-UNBOXED Caterpillar 998B Pay Loader 167M 1:50 Scale, Case W20C Pay Loader 214M 1:35 Scale, Komatsu WA350 Pay Loader 615S 1:50 Scale, Caterpillar 9660 Pay Loader 237M 1:50 Scale, Komatsu WA450 Pay Loader 2424 1:50 Scale, Caterpillar 936 Pay Loader 1:50 Scale, Caterpillar 920 Pay Loader 214, International 560 Pay Loader, Caterpillar IT18F Pay Loader 1:25 Scale, Caterpillar 918F Pay Loader 1:25 Scale, Komatsu WA800 Pay Loader 1:50 Scale, Komatsu D455A Bull Dozer, Komatsu D475A Bull Dozer, Caterpillar D10 Bull Dozer 285 1:50 Scale, Caterpillar DBL Bull Dozer 288 1:50 Scale, Caterpillar D10 Bull Dozer 220, John Deere 550G Bull Dozer, Caterpillar D6H Bull Dozer 2851 1:50 Scale, Caterpillar D6H Bull Dozer 2851 1:50 Scale, John Deere 850C Bull Dozer 01260, Caterpillar D9G Bull Dozer, Komatsu D355A Bull Dozer, Caterpillar D5C Bull Dozer 1:50 Scale, International TD20E Bull Dozer 03456, John Deere Bull Dozer, Caterpillar 825B Compactdozers w/ Push Blade 218, Case 760 Trencher w/ Push Blade 2966 1:35 Scale, Caterpillar P5500 Paver 1:50 Scale, Komatsu D155W Amphibious Bull Dozer, 4 pc Set Road Champ Off Road Dump Truck, Turbo Excavator, Wheel Loader, Bull Dozer 3 pc Set (2) Mobile Crane, Off Road Dump Truck, Case 850D Bull Dozer 176-208 1:35 Scale, Case 850D Bull Dozer 176-208 1:35 Scale, Case 850D Bull Dozer 176-208 1:35 Scale, John Deere 850C Series 2 Bull Dozer 17510, Case 650H Wide Track Bull Dozer 28170, JCB Loadall 525-58 SkyTrak 1:35 Scale, JCB 930 Fork Truck 1:35 Scale, Grandall 534C SkyTrak 0544839, Caterpillar 12G Road Grader 1:50 Scale, Caterpillar 12G Road Grader, John Deere 772B Road Grader, Case 1102 Roller 2703 1:35 Scale, Caterpillar 627 Earth Mover 1:50 Scale, Caterpillar 627 Earth Mover 1:50 Scale, Caterpillar 613D Earth Mover 219, Komatsu HD 320-2 Off Road Dump Truck 08-0582, Caterpillar D350D Articulated Off Road Dump Truck 1016F, Caterpillar 631 Articulated Off Road Dump Truck, Off Road Dump Truck 06456, Caterpillar 594 Winch Dozer, Thunderbolt 591 Winch Dozer 224, Caterpillar 591 Winch Dozer 224, Valmet 860 Log Tractor w/Grapple, Grove Crane Truck, Poclain 1000 Crane Excavator, Mack Dump Truck 1:50 Scale, Mack Semi Tractor, 3pc Set (2) John Deere Tractor, (1) Gator, Mack Tractor w/ Sunoco Tank Trailer, Mobil Tanker w/Trailer, Red Lowboy Trailer, International Harvester Power Wagon w/ Accessories, McCormick Farmall Dodge w/Accessories, John Deere Power Wagon w/Accessories, Texaco Gas Hauling Truck, Golden Rule Horse & Wagon Bank, John Deere 102 Truck Bank, JC Penney 1914 Ford Truck Bank, Sunoco Gas Truck Bank, Texaco Car Bank, Ford Delivery Van 1932 Bank, Ford Delivery Van 1932 True Value Bank, Sunoco Fire Truck, John Deere General Purpose Tractor

DIE CAST TOYS-BOXED Bantam C-35 Shovel, C-35 Dragline, C35 Backhoe, Corsair 1945 XF40-4 US World War II Air Craft, Minneapolis-Moline Two Star Crawler w/Blade 1:16 Scale, Case 580 Super M Series 2 Loader Backhoe 1:50 Scale, Case 885 Road Grader 1:50 Scale, Case 621B Wheel Loader 4547 1:50 Scale, Case 1850K Dozer 14306 1:50 Scale, John Deere 310SG Backhoe Loader 15231 1:50 Scale, Minneapolis-Moline "UTE" LP1 Gas Tractor 223 1:16 Scale, Oliver Super 88 Tractor 225 1:16 Scale, Caterpillar D250E Articulated Tractor 4131 1:50 Scale, Caterpillar D11R Track-Type Tractor 55025 1:50 Scale, Caterpillar 345B Series II Material Handler w/Work Tools 55080 1:50 Scale, Case 580 Super M Backhoe Loader 14132 1:16 Scale, Hitachi Zaxis 450CLC Excavator 15864 1:50 Scale, Lull Model 944E Telehandler Series I 1:32 Scale, John Deere Semi w/Wheel Loader on Lowboy Trailer Ertl, John Deere Lindeman Crawler w/Cultivator JDM-190 1:16 Scale, John Deere D6 Crawler Dozer Collector's Edition 420 Crawler 5067DA 1:16 Scale, John Deere Millennium Froelich Gas Tractor 15008, John Deere 420 Tractor w/KBL Disc Pre. Key Series 15851 1:16 Scale, John Deere 320 & 420 50th Anniversary Tractors 15788A 1:16 Scale, John Deere Model A Tractor 33532 1:43 Scale, (3) John Deere Tractors, Model 430C, Model 430L, Model 3301 #576 1:64 Scale, Timberjack 460 Grapple Skidder FX1639 1:32 Scale, Timberjack 530B Knuckle Boom Loader TJ342 1:64 Scale, Volvo BML 180C Wheel Loader 1:50 Scale, Moxi MT31 Highline Off Road Dump N501, Komatsu D475A Bull Dozer 1:50 Scale, John Deere 720 Diesel Tractor 5832 1:16 Scale, John Deere A Tractor w/Umbrella 98912 1:16 Scale, Fox Fire Farm John Deere A Tractor Red #5 5702, Fox Fire Farm John Deere AR Tractor Etery #19 5793, Fox Fire Farm John Deere Sulky Rake w/ Team & Driver 5066, Envyng No Man #23, International Harvester 175 Crawler Dozer Loader 2FG503058 1:50 Scale, International Harvester TD-15 Crawler Dozer 2FG503059 1:50 Scale, International Harvester TD-25 Crawler Dozer w/ Ripper 2FG800317 1:87 Scale, International Harvester TD-25 Crawler Dozer w/ Side Boom 2FG800317 1:87 Scale, International Harvester TD-14 (M-3) Crawler Tractor w/ Blade Diesel 790 1:16 Scale, 1950 Ford Panel Truck 3335, 1955 Pickup Truck Bank 2904 1:25 Scale, Freightliner Waste Management Rear End Loader 103287 1:34 Scale, International Harvester TD-24 Diesel Crawler W/ Superior Pipe Layer ZJD1534 1:25 Scale, Allis Chalmers H-3 Crawler w/Blade 236 1:16 Scale, Allis Chalmers K Diesel Crawler w/Blade 237 1:16 Scale, Allis Chalmers HD21 Crawler w/Offset Disk Harrow 40-0125 1:25 Scale, Mack Granite HD Dump Truck 19-3243 1:34 Scale, International 4400 Truck w/ Digger Derrick 19-3152 1:34 Scale, Ford F650 Utility Bucket Truck MVEC19-3013 1:34 Scale, Vision By Mack Truck Tractor w/48" Trailer 59-0003 1:54 Scale, International Harvester TD-25 Crawler w/Sweeps ROPS & Winch 70-0186 1:25 Scale, International Harvester TD-25 Crawler w/Sweep ROPS & Winch 70-1086 1:25 Scale, Mack B-Model w/Lowboy Trailer 49-0030 1:25 Scale, International Harvester TD-25 Crawler w/Side Boom & Counterweights ZFG-400126 1:25 Scale, Mack L Series Logging Stake Truck 19-3451 1:34 Scale, Mack R Model Dump Truck w/Plow 19-2831 1:34 Scale, 1965 Ford Mustang S55719W, Jeep Grand Cherokee S55106W, 1957 Corvette S55709W, 1955 Chevy 3100 Stepside S55602W, 1955 Ford Thunderbird S55718W, 1940 Ford Woody Wagon S55706W, Mack Granite MP Series w/Standard Mixer 19-3592 1:34 Scale, Mack Granite w/Extended Material Handler Body 10-3504 1:34 Scale, John Deere 650 H Dozer LT 15410-1HK 1:16 Scale, Valmet 911 Partek Forrest Logger Loader 0001, 1960 Mack B-61 Tractor & Folding Gooseneck Tractor 49-0109 1:25 Scale, International Harvester TD-25 Crawler w/Sweep ROPS, Ripper, Choker, Cables & Forest Fire Ready (FireBreaker) 40-0129 1:25 Scale, 1967 Chevy Corvette 92018 1:18 Scale, 1989 Porsche 911 Speedster 31802 1:18 Scale, 1955 Mercedes Benz 300S 31806 1:18 Scale, Kenworth W900 Cement Truck 11913, Kenworth W900 Dump Truck 11903

Farm Equipment Woods 72" 3pt rotary mower (like new), 1940 AC model B tractor w/ belt PTO #B48615, 2 flat racks on gears, Horst 8' front hydraulic angle blade, quick tach to fit JD loader

Shop Equipment DeVilbiss 80 gal, 2 stage air compressor, quantity of shop tools and power tools, pipe rack, Lincoln welder, Homelite 6300 generator (ele start), Miller Millermatic 250 welder complete w/ wire & gas, Rigid 14" chop saw

Guns Hunter Arms, Fulton, 12 Gauge, Double Barrell Side by Side, Ithaca Gun Co, engraved Harold Laffette Frye, 20 gauge, Remington, Gamemaster 760, 300 Savage Pump, Winchester, 9422, 22 Cal. Lever Action, Winchester, 1906, 22 Pump, Steven's, 311A, 410, Double Barrell Side by Side, 3", Marlin, 1894, Lever Action, Connecticut Valley Arms, Black Powder 45 cal, Winchester, 1200, 12 Gauge Pump, Browning, 300 Win Mag Bolt Action w/ Burris Scope, Winchester, 9422M, 22 Magnum Lever, Ithaca, 150, 12 Gauge, Side by Side, Winchester, 94AE, 356 Win Cal Lever, Marlin, Duck Unlimited, 990 DU, 22 SemiAuto, Marlin, 336-A, 3030 Lever, Lepever Arms Co, Jennings, 1872, 12 Gauge, Side by Side, Browning, 81BLR, 308 Cal Lever, GSI Inc, Turle AL, 6.5x54M Sch, Steyr, Ferdinand Ritter Von Mannlicher, SBS-96 Rifle 96 BOH, NM Quackerbush, 22 Cal, Browning, 20 Gauge Pump, Duck, Kongsberg, 393, 270 Bolt w/Sepper Kings, Winchester, 94, 32 Win Spl Lever, Ruger, 77-44, 44 Mag Bolt, Barretta, 12 Gauge O/U, Marlin, 1894, Cowboy Limited, 44 Mag Lever, Marlin, 1897, Centary Limited, 100th Anniversary, 22 Lever, Winchester, 370, 12 Gauge, 2 1/4 + 3 Chamber, Savage Arms, Fox, 16 Gauge, Model B, Barretta, 12 Gauge, 3"- Magnum-26", Benelli RI, 300 Win Rifle, SemiAuto, Highpoint, JCP, 40S-W, Taurus, PT92AF, 9MM, Ruger, GP100, 38 Special Revolver, Ruger, Vaquer, 44 Mag Revolver, Ruger, SR9, 9MM Automatic, Barrette, 92FS, 9MM Auto, Jukar, Black Powder Pistol, Ruger, New Bear Cat, 22 Revolver, Ruger, 22 Cal, New Model Single Six, Ruger, Bear Cat, 22 Revolver, American Arms Inc, NKC, 45 Revolver, American Arms Inc, 357 Magnum Revolver, Deutsche Werke, 7.65 MM, Auto, Bond Arms, Snake Slayer, 45 Colt, Double Barrel, 3in, 410, North American Arms, 22 Magnum, Holster Grip, Barretta, 21A, S/A, 9 Shot, 25 Cal

Collectibles and Miscellaneous Herring Hall Safe, office desks & chairs, large ant, branding irons, large iron kettle, quantity of limited edition western art prints, western hat brim models, Time-Life collection of American West Books, snow shoes, chafing pans, refrigerator, gas range, gas cook top



DARELL & JANET DUNKLE, Owners



121 N. Main St., Ste. 100 • Bellevue, MI
269.763.9494 Phone
269.763.9495 Fax
www.spauldingassociatesllc.com



assisted **Living with Heart**



1320 Pine Avenue,
Alma, MI 48801
arborgroveassistedliving.com
989.463.3074

Our residents, their families, and our staff have one thing in common - we genuinely care about each other. **We have heart.**

Share life's journey in a community that cares.



214 W. Fourth St. Clare
(989) 386-7200
www.clareauto.com

Beka BATTERIES Lawn and Garden Batteries from **\$23.95**
Marine Deep Cycle Batteries from **\$76.95** Marine Starting Batteries from **\$59.95**

JACK OF ALL TRADES COINS

1028 S. Mission (next to Jon's Country Burger)
I BUY ALL COINS Silver and Gold FREE APPRAISALS
we will come to your home to do free appraisals for your convenience.
Over 25 Years experience!

I BUY ALL COLLECTIONS
FROM ONE COIN TO A DUMP TRUCK FULL
We are a Full Buy • Sell • Trade shop!
ANTIQUES • COINS
Jewelry • Collectibles & more!

Stop in or call Matt for your free appointment
517-204-0787

Do not take your coins, jewelry, gold, & silver to the we buy gold places they are not experts! We are your only experts! **WE PAY YOU MORE THAN ANYONE!**

MIAL MEADOWS MHP
WE HAVE 2 & 3 BEDROOM MOBILE HOMES FOR SALE OR LEASE IN ALMA LOT RENT \$275
HOMES ARE GOING FAST, DON'T WAIT!!
CALL TERESA AT **989-528-8247**
TO SCHEDULE A TIME TO SEE YOUR NEW HOME!

TERESA & JIM DAVIDSON 411 S. GROVER, #31
RESIDENT MANAGERS ALMA, MI 48801

CUSTOM DESIGNS Buy Direct & Save *Indoor Showroom*

Also Available Cremation Vaults and Urns

Brewer Bouchey Monument Co.
Family Owned Since 1895
211 N. Mill St. • Downtown St. Louis
989-681-3300 • Toll Free 888-362-2920
Hours: Mon.-Fri. 9-5; Sat. By Appt.
www.brewer-bouchey.com

Offering Independent Living Duplexes (The Villas), Assisted Living & Moments Memory Care

A SPLASH OF COLOR GETS RESULTS

Color Classified Ads Now Available!!!

Tax Directory

Better Call Joe!

Joseph Byrne

Ajs Tax & Mortgage
Accounting, Insurance, Mortgages & Tax Preparation

(989) 775-6643
(989) 400-2116 (cell)
ajstax@winnetel.net

1302 Mission Road
Mount Pleasant, MI 48858

SUPPORT OUR LOCAL Shops & Restaurants

Lambert's Meat Market and Bakery

Taste the difference "FRESH" makes!

624 E. Cedar Ave., Gladwin (next to Family Dollar) **989-246-1850**



Hours: Mon-Fri 8-6:30; Saturday 8-6; Sunday 8-4 • Sales Dates Monday, April 2 through Saturday, April 7, 2018

IT'S WORTH THE DRIVE TO LAMBERT'S!
LESS THAN 35 MILES FROM MIDLAND, PINCONNING, WEST BRANCH AND CLARE.



f LIKE US ON FACEBOOK AND FIND OTHER WEEKLY SPECIALS

10LB OR MORE SALE!

Whole Ribeye NR Loins \$3.99 lb. CUT FREE!	Whole Boneless Pork Loin \$1.69 lb. CUT FREE!	Boneless Chicken Breast \$1.79 lb.	Pork Steak and Pork Strips \$1.69 lb.	Whole NY Strip Loin \$4.39 lb. CUT FREE!
Pork Shoulder Roast or Breakfast Sausage \$1.69 lb.	USDA Choice English Roast \$3.39 lb.	USDA Choice Denver Steaks \$3.39 lb.	Family Pack Hamburger \$2.29 lb.	Chicken Patties \$1.49 10 lb.
Family Pack Ground Beef from Chuck \$2.69 lb.	Wayside Bacon \$22.90 10lb.	Pollock Fillets \$16.90 10lb.	Chicken Nuggets \$10.99 5lb.	French Fries \$4.99 5lb.

GRILLING SPECIALS

BAKERY AND DELI DEALS

Corned Beef Flats \$2.99 lb.	USDA Choice NY Strip Steaks \$7.99 lb.	Bakery White Bread \$1.49 ea.	Mini Crumb Pies \$3.29 ea.
Marinated New York Strip Steaks \$5.99 lb.	Loaded Potato Brat or Horseradish Cheddar \$3.29 lb.	Kretschmar Roast Beef \$6.99 lb.	Swiss Cheese \$4.99 lb.

Business Card Directory

DELIVERY

ISSUES:

(989) 779-6000

PRESS 2

CALL

KINDRA

ADVERTISING

REPRESENTATIVE:

(989)506-4640

**Brad Malley
Well Drilling, Inc.**

Mid Michigan's
Most Experienced Well Drillers!

&

**MALLEY
CONSTRUCTION
INCORPORATED**

The One Contractor That Can Do It All!
AFFORDABLE WELL PACKAGES
All Major Pump Brands Available

FREE ESTIMATES
SERVING ALL OF MID MICHIGAN
LICENSED WELL DRILLER
LICENSED CONTRACTOR
MT. PLEASANT
WWW.BRADMALLEYWELLDRIILLING.COM
989.772.2765 / 800.717.6022

**PROPANE
SOLD
HERE**



We make
custom hoses
& fittings!

SALE!!

20 LB. CYLINDER FILL

\$11.00

GPC

PROPANE • HVAC • REFRIGERATION
8512 E. M-46 - VESTABURG
800-991-7477
gasproductioncompany.com

Big Or Small - We Do Them All!
FREE ESTIMATES



**A & M
METAL ROOFING
989-487-9066**

5023 Grass Lake Rd. - Clare

CAL'S PAINTING



Over 30 Years Experience
COMMERCIAL & RESIDENTIAL
• Interior & Exterior • Power Washing & Deck Care
• Window Washing & Gutter Cleaning
• Drywall Repair • Cleaning and Refinishing Log Homes
• Cabinet, Woodwork, Door & Furniture Refinishing

**GO CALL TODAY!
(989) 258-9638**

• Free Estimates • Work Gauranteed • Insured
Winter Rates Available

**Circle Sewing
& Vacuum Center**

Sales • Services • Parts
Top Quality • Low Prices

Serving Midland For
Over 50 Years
We Have It All!

1900 S. Saginaw Rd. • Midland
(989)-839-0800
In the K-Mart Plaza

HOURS: M-F 9:30 - 5:30 • Sat. 9:30 - 3:30

**VACUUM CLEANERS
SEWING MACHINES
NEW & USED**

**FREE
ESTIMATES**
Service On
Most Brands



HOT SERVICE! COOL PRICE!

**CHRISMAN
HEATING & COOLING**

Furnaces • Air Conditioner • Water Heaters
Mobile Home Furnaces • Custom Ductwork • Repairs

Tom Chrisman Free Estimates
989.386.3688 chrismanhvac@yahoo.com



Maury S. Irwin

Providing

Peace of Mind
not just a
Piece of Paper

(989) 386-4141

1011 N McEwan Street, Clare, MI 48617
maury.irwin.L8gz@statefarm.com

North Country Metals, LLP



Count on us for ALL of your
pole barn building needs!

Metal Roofing & Siding

- All Steel Walk Through Doors
- Sliding Door Hardware
- Pole Barn Windows
- Moisture Barriers • Caulk
- Skylights • Fasteners • Roof Boots

989-386-3013

5139 Pere Marquette • Clare

VALET AUTO CARE, INC.
Since 1983



- A.R.E. Pickup Toppers
- Over 100 New & Used Toppers in Stock
- Truck Accessories
- Tonneau Covers



Because you love your truck

www.valetauto.com



James Motz - Owner (989) 773-3477
610 N. Mission (3 blocks S. of Meijer) Mt. Pleasant

**PROFESSIONAL
ROOF CLEANING**

**HAWKEYE
ROOF
CLEANING**

We also clean... • Patios • Fences • Driveways
• Decks • Siding • Swing Sets • And More...

CALL TODAY: (989) 386-4196

WILLIAM BYLER

7234 S. Grant Ave. Clare

**TINY'S WELDING &
MACHINE SHOP**

FOR SALE BY OWNER.

Over 50 years in Business.
Excellent Reputation & Loyal Customer Database.
(Building, Machinery, Tools & Inventory Included)

Ready For New Owner.

1991 E. Prevo Rd., Linwood, MI • **989-423-6270**

THIS SPOT COULD BE YOURS:

CALL - KINDRA

(989) 506-4640

KNORLANDER@MICHIGANNEWSPAPERS.COM

Business Card Directory

Shop these local Professionals
Call Marlene at 989-506-4647
for Advertising Info



Tag's Auto Repair 2 yr. 25,000 mile warranty nationwide on parts & labor

- COMPUTER DIAGNOSTIC SERVICE • 2 AND 4 WHEEL ALIGNMENT
- BRAKES & FRONT END REPAIR!**
- AC CHARGING
- TIRES AND BRAKES
- OIL CHANGES

FREE ROADSIDE ASSISTANCE PROGRAM TOWING, FLATS, LOCKOUTS, MORE!
CALL US FOR DETAILS!

Auto Value SERVICE CENTER 3780 N. Clare Ave. Harrison Hours M-F 8-5
989-539-1986

HENRY EXCAVATING & CONCRETE LLC
989-539-7542
CELL: 989-429-1175

POURED WALLS & ALL TYPES OF CONCRETE CONSTRUCTION
COMPLETE DOZER AND BACKHOE WORK

STUMPING • ROAD GRADING • FILL SAND
SEPTIC SYSTEMS • BLACK DIRT GRAVEL • STONE • DITCHING
CRUSHED CONCRETE
CRUSHED ASPHALT
FULLY INSURED

SERVING ALL OF MID MICHIGAN AREA!
FREE ESTIMATES - 3620 N. CLARE AVE. HARRISON, MI

MICHAEL HENRY TREE SERVICES LLC
989-539-7542
CELL: 989-339-4377

TREE REMOVAL & TRIMMING,
BRUSH CHIPPING AND CLEAN UP
STUMP GRINDING,
65' BUCKET TRUCK & WOOD CHIPPER
INSURANCE WORK WELCOME -
STORM DAMAGE CLEAN UP
FULLY INSURED

SERVING ALL OF MID MICHIGAN AREA!
FREE ESTIMATES - 3620 N. CLARE AVE. HARRISON, MI

DEBRIS HAULING

Free Estimates

DEBRIS HAULING
Good & Fast Service
Quick & Quality Service
MOUNT PLEASANT AREA
No One Does It For Less. NO ONE!!
Less than the price of a dumpster!

- Clean Out Basements Attics & Garages
- Tear Downs Sheds & Garages
- Scrap Metal
- Commercial Buildings

10 Yards \$285

(989) 773-0735
Dan Syzak

SUPERIOR CONCRETE CONSTRUCTION
Professionally Placed Concrete

Residential • Commercial • Industrial • Agricultural

Laser Screen
Insulated Poured Walls
Waterproofing
36 Meter Concrete
Boom Pump
Excavating

Brick Textured Poured Walls
Basements and Crawl Spaces
Driveways and Sidewalks
Floors and Footings
Color Stamped Concrete
Pole Barn Floors

Licensed Contractor Harrison, MI
Office 989-539-4390 • Cell 989-429-5045
kevinsuperiorconcrete@yahoo.com

FREE Hearing Test & Consult

bieri
HEARING SPECIALISTS

888-641-0087
Clare and Midland Locations
www.bierihearing.com

TOM'S POLE BUILDINGS
Over 30 Years Experience

Special! POLE BUILDINGS & GARAGES ROOFING & SIDING
CONCRETE FLOORS DRIVEWAYS & FENCING

FEATURING ULTRA 2000 19 colors to choose from
And A 45 YEAR WARRANTY

From Beginning permit To Cleanup, We Do It All!
1-800-541-3974
We accept major credit cards. • email: tomspolebuildings@yahoo.com

ABC Auto Body

313 W. Knox Road,
Beaverton, MI
1/2 Mile West of M-30
989-435-2707

We Take Pride In Your Ride!

- Quality Collision Repair
- Free Estimates
- Insurance Work Welcome
- Custom Color Matching & Painting
- We Repair All Makes and Models
- Car/Light Truck
- Genuine Original Equipment Parts

MARTIN HEATING & COOLING

OTE \$300 Rebates Available on New Furnaces for a Limited Time

Installation • Service • Parts • Free Estimates

Amana Heating & Air Conditioning
LASTS AND LASTS AND LASTS: 546 W. 5th street, Clare (989) 386-3791
Ask about Geothermal Systems and heat pumps

BURKHART-PRESIDIO INSURANCE AGENCY
GLADWIN • 989.426.9278

Auto-Owners INSURANCE
LIFE • HOME • CAR • BUSINESS

RAGLE'S REMODELING

- Power Washing, Interior & External Painting, Drywall Installation & Repair, Ceramic Tile Installation & Repair, Kitchen & Bathroom Remodeling, Roofing, Windows, Doors & Floors, House Leveling, Metal Roof Specialist

HANDYMAN

2 YOUR RESCUE
989-533-1006
40 Years Experience Free Estimates

E & K EXCAVATING

- SEPTIC SYSTEMS
- PONDS
- DRIVEWAYS AND ROADS
- LAND CLEARING

LICENSED
EDWIN STEINER

2239 EAST DENVER RD. ROSEBUSH, MI 48878
989-433-0004 or cell 989-430-2461

POLE BARNS

James Morche Builders
YOUR BUILDER FROM START TO FINISH

garages • pole barns • concrete work
FREE estimates

James Morche Cell 989-429-3479 • 989-539-9126
Licensed & Insured

STORAGE SPACE AVAILABLE

Paved Driveway Security Gate 630 Units

FOR ALL YOUR RENTAL NEEDS

5'x12', 10'x12', 10'x20' Stalls
MIDSTATE RENTAL AND STORAGE, INC.
1 MILE EAST OF GLADWIN ON M-61
426-2981 MON.-SAT. 8AM-5PM

KAPS ANA Member KOINS LLC

located across from the Doherty Hotel

Silver & Gold Coins Bought & Sold

Integrity, Honesty & Peace of Mind.
That's what you deserve when it comes to your Coins & Currency!!!

Thomas Kapuscinski
611 N. McEwan St. Clare, MI 48617
231-357-2105 • 989-386-6500
tjkap@charter.net
Mon.-Fri. 9:30am-5:30pm
Sat. 10:00am-2:00pm
or by appointment

NOW BUYING Sterling Silverware & Scrap Gold

BBB BUSINESS

Pioneer Metal Roofs
Residential Steel Roofing

PIONEER POLE BUILDINGS INC.

7325 S. Clare Ave.
Clare, MI 48617
(989) 386-4444 (Office)
(800) 292-0679

www.pionermetalroofs.com

ECOWATER SYSTEMS Lindsay Soft Water Co.

1209 Michigan Ave. St. Louis, MI 48880 P.O. Box 401 Gladwin, MI 48624

(989) 681-5436 (989) 426-4220
1-800-244-3464 Cell (989) 620-1263
www.ecowater.com

ISO 9001 GABE EAREGOOD Water Specialist

PIONEER POLE BUILDINGS INC.

7400 S. Clare Ave. • Clare, Michigan 48617
800-292-0679
www.pioneerpole.com

"Our Customers are our Warmest Friends"
Guaranteed On Time and Certified
FREE TANK SETS

COYNE OIL & PROPANE

Clare • Harrison • Mt. Pleasant • Evart • Gladwin
Cadillac • Merrill • Interlochen
800-386-7731 • 989-386-7731

RESIDENTIAL • COMMERCIAL
INDUSTRIAL • FARM

West Midland Family Center
4011 W. Isabella

Saturday, Doors open at 4:00
Early Birds Start at 6:00
Progressive Jackpot: 50#

\$100

Proceeds go to fund the West-Midland Family Center

PINE RIVER CONSTRUCTION
3220 N. DOUGLAS RD. RIVERDALE, MI 48877

POLE BUILDINGS • GARAGES
SHOPS • ROOFS • REMODELING

CHRIS OR SAMUEL BONTRAGER **989-833-5126** LEAVE A MESSAGE

digitalfirst MEDIA

Call for Quotes on digital advertising, print & deliver, pre prints and print advertising

Marlene Bennett
Account Executive

The Morning Sun • The Mid-Michigan Buyers Guide
mbennett@michigannewspapers.com
For Advertising call **989-506-4647**
For Circulation call 989-779-6000 Press 3

YOU LOOKED HERE AND YOUR CUSTOMERS WILL, TOO.

CALL 989-506-4647 FOR MORE INFO.

GARAGE SALES

YARD, RUMMAGE & GARAGE SALES

HOUSEHOLD ITEMS, camping cot, poolbarn items, toys, \$20. & up beer signs, antique wicker tea cart, 501 N Gilmore Rd, Mt Pleasant, April 6th-7th, 8am.

HELP WANTED GENERAL

LARGE CROP FARM located in St. Louis, MI looking to hire a full/part time operator. Expected to operate farm equipment including tractors/trucks as well as perform general maintenance and repairs. Expected to work long hours during planting and harvest seasons. Some duties could include alfalfa harvest, corn harvest, manure hauling, planting work, tillage work and general shop work. Requires valid driver's license, ability to be to work on time, communicate well and work well with others. Contact Josh (906) 281-2948.

MEDICAL

STOP OVERPAYING for your prescriptions! **SAVE!** Call our licensed Canadian and International pharmacy, compare prices and get \$25.00 OFF your first prescription! CALL 1-855-403-4552 Promo Code CDC201825

FIREWOOD

FIRE WOOD for sale, seasoned hard wood. \$55./face cord, will deliver. 989-620-1111

FURNITURE

AN AMISH Log Headboard and Queen Pillow Top Mattress Set. Brand new-never used, sell all for \$275. Call anytime 989-832-2401.

LAWN & GARDEN

WILLIAMS LAWN CARE. (989) 239-0810 MOWING, TREE TRIMMING, LANDSCAPING.

MISCELLANEOUS

\$32.75/Hour! Homeworkers Needed to Complete Simple Worksheets. Flexible Hrs. No Experience Required. www.MyCashflowSecret.com

A PLACE FOR MOM has helped over a million families find senior living. Our trusted, local advisors help find solutions to your unique needs at no cost to you. Call 866-760-7235.

ACORN STAIRLIFTS The AFFORDABLE solution to your stairs! **Limited time - \$250 Off Your Stairlift Purchase! **Buy Direct & SAVE. Please call 1-800-280-1897 for FREE DVD and brochure.

ADJUSTABLE BED Brand New with Imcomfort gel memory foam mattress. Retail Cost \$5,900.00, sacrifice for \$997.00. Call for showing or delivery: 989-615-2951.

HOW TO WRITE a classified ad that sells: First - Be complete. Second - Include the price. And third - Be available. Call today and we will be happy to help you write the most effective ad.

PAWN SHOP Buy, Sell, Pawn

3 Month Pawn
3% + 1.00 Storage
Firearms, Gold & More

Gladwin Trade & Sales
989-426-6811

HELP WANTED GENERAL

Morning Sun Routes Available
Need extra cash?
Early morning delivery routes provide a great second income!
Looking for applicants to deliver 7 days a week for the following areas.
One route is in the City of Ithaca and can be run in about an hours time.
This is an independent contractor position and the right candidate must have dependable vehicles, a valid MI drivers license and insurance with open availability in the early morning hours. If you are interested, please call (989)533-3106.

MISCELLANEOUS

BATHROOM RENOVATIONS. EASY, ONE DAY updates! We specialize in safe bathing. Grab bars, no slip flooring & seated showers. Call for a free in-home consultation: 844-649-6840

BUILT BEST BARN
Michigan's Largest Pole Barn Company. Best Quality, Best Service, March Specials, Order Now and Save! 24'x24'x8'=\$7995.00; 24'x32'x8'=\$8995.00; 24'x40'x10'=\$10,995.00; 30'x40'x10'=\$12,495.00; 30'x40'x12'=\$13,495.00; 32'x48'x12'=\$17,995.00.
Completely Built, (Concrete Floor Optional) License/Insured
1-877-802-9591 (Office)
989-205-2534 (Cell)

CASH FOR CARS: We Buy Any Condition Vehicle, 2002 and Newer. Competitive Offer! Nationwide FREE Pick Up! Call Now For a Free Quote! 888-366-5659!!!

CONSIGNMENT AUCTION
April 4, 9:30am 1445 E. Lansing Rd. Morrice, MI 48857 JD750 tractor, Gehl 4400 Skid loader, horse-drawn equipment, Tools, Forklift NarhiAuctions.com John - 810.515.0710

Dealing with water damage requires immediate action. Local professionals that respond immediately. Nationwide and 24/7. No mold calls. Call Today! 800-761-9934

DIRECTV SELECT PACKAGE ? Over 150 Channels ? ONLY \$35/month (for 12 mos.) Order Now! Get a \$200 AT&T Visa Rewards Gift Card (some restrictions apply) CALL 1-888-351-0154

DISH Network. 190+ Channels. FREE Install. FREE Hopper HD-DVR. \$49.99/month (24 months) Add High Speed Internet-\$14.95 (where avail.) CALL Today & SAVE 25%! 1-866-950-6757

DONATE YOUR CAR TO CHARITY. Receive maximum value of write off for your taxes. Running or not! All conditions accepted. Free pickup. Call for details. 855-413-9672

Earthlink High Speed Internet. As Low As \$14.95/month (for the first 3 months.) Reliable High Speed Fiber Optic Technology. Stream Videos, Music and More! Call Earthlink Today 1-844-275-3510

FOAM SHEETS: Pole Barn Insulation, Dow Styrofoam, R-Tech, long lengths, Under Concrete foam, foam for under siding, in stock or special cuts. No seconds, delivery, silver sheeting. www.williamsinsulationinc.com 800-262-5774

HughesNet: Gen4 satellite internet is ultra fast and secure. Plans as low as \$39.99 in select areas. Call 1-800-491-8935 now to get a \$50 Gift Card!

PLEASE RECYCLE this newspaper



NEED HELP?
CALL A LOCAL PROFESSIONAL FROM OUR
Professional Services Directory

HEALTH & FITNESS

OXYGEN - Anytime. Anywhere. No tanks to refill. No deliveries. The All-New Inogen One G4 is only 2.8 pounds! FAA approved! FREE info kit: 855-970-1066

LANDSCAPE & TREE MAINTENANCE

ARBOR TREE SERVICE. Storm Damage, Landscaping, Tree Trimming & Removing. 20 Years Experience. Call 989-763-3830

HELP WANTED GENERAL

MISCELLANEOUS

Kent Farms Live Onsite Farm Auction W/Simulcast Bidding Available. 5546 N. Van Dyke (M-53) 1 Mile North of Kinde, MI. Wednesday, April 11, 2018, 10:00 AM. For info call Mike 989-550-7540. Photos at SykoraAuctions.com

LIVE ONSITE W/ Simulcast Online Bidding, Ruess Acres Farm Auction. Saturday, April 7, 2018 @ 10:00 AM. 5320 S. Friegel Rd. Owosso, MI. Tractors; Combine; Trucks/Trailers & More! Details at www.SykoraAuctions.com 989-386-9694.

Lyle & Joyce Vore Trust LIVE AUCTION Saturday, April 7, 2018, 10:00 AM. 11187 Jerome Rd. St. Louis, MI. Garage & Shop Items; Household Items; Guns; Ammo; Cases. Details & Photos at: www.Sherwood-AuctionServiceLLC.Com 989-640-9401

MEET SINGLES RIGHT NOW! No paid operators, just real people like you. Browse greetings, exchange messages and connect live. Try it free. Call now: 800-993-0464

METAL ROOFING & SIDING The last roof you'll ever need! 1/2 OFF on Special Colors Financing Available for 580 Credit Score or Higher. Call 517-575-3695

NEW AT&T INTERNET OFFER. \$20 and \$30/mo plans available when you bundle. 99% reliable. 100% Affordable. HURRY, OFFER ENDS SOON, CALL NOW 1-800-830-3921

Reach Across Michigan with a MegaMarket Statewide Classified Ad! Over 1.2 million weekly circulation just \$249 per week! Buy 3 - Get 1 Free! Call 800.783.0267

Snowmobile and Motorsports Auction Saturday April 7, 2018. Buy or Sell! Information at www.snowmobileauction.com 517-369-1153 White Star Motorsports Auction US 12 Bronson, MI

SPECTRUM TRIPLE Play! TV, Internet & Voice for \$29.99 ea. 60MB per second speed No contract or commitment. More channels. Faster Internet. Unlimited Voice. Call 1-866-729-0394

Unable to work due to injury or illness? Call Bill Gordon & Assoc., Social Security Disability Attorneys! FREE Evaluation. Local Attorneys Nationwide 1-888-510-8205 [Mail: 2420 N St NW, Washington DC. Office: Broward Co. FL (TX/NM Bar.)]

Vacation Cabins for Rent in Canada. Fish for abundant walleye, perch, northern pike. Boats, motors, gasoline included. For free brochure call Hugh 1-800-426-2550 www.bestfishing.com

CLASSIFIED ADS Get Results!

FARM FEED & SUPPLIES

Weekly Hay & Straw Auction
EVERY MONDAY @ 12:00
SELLING 2500+ SQUARE BALES & 200+ ROUND BALES WEEKLY (LOADER AVAILABLE)
MARLETTE LIVESTOCK AUCTIONS
6381 EUCLID ST, MARLETTE • 989-635-2183

ESTATE SALES

ESTATE SALE
APRIL 6, 7, 8 FROM 9AM-4PM
125 Indian Oaks, Prudenville
(near Bart's Fruit Market)
Furniture, beer steins, camera equipment, antique china & silver, Boyd's collectibles, vintage costume jewelry, other vintage collectibles, records, tapes & CD's, Limoges Elite China and much more.
Come for a very nice sale with great vintage items!

MISCELLANEOUS

VIAGRA & Cialis Alternative, 60 pills for \$99. 100 pills for \$150 FREE shipping. Money back guaranteed! Save Now! Call today 1-800-610-4820

BUILDING MATERIALS & SUPPLIES

BUILT BEST BARN
Michigan's Largest Pole Barn Company. Best Quality, Best Service, **SPRING SALE GOING ON NOW!** Call for Special Pricing! 24'x24'x8' 24'x32'x8 24'x40'x10' 30'x40'x10' 30'x40'x12' 32'x48'x12' Completely Built, (Concrete Floor Optional) License/Insured 1-877-802-9591 (Office) 989-205-2534 (Cell)

DOGS

AKC West German Shep Pups, 2 litters, ready now. carlsonscountrycorner.com Hip guarantee 989-306-4652

FARM - HEAVY EQUIPMENT & PARTS

WANTED TO BUY: 6-8 ft. flail Hay Mower. ALSO wanted to buy flail green chopper harvest mower. 989-352-8322 leave message & phone number.

FARM FEED & SUPPLIES

3RD PRIME CUT ALFALFA. (Call for price); Straw, \$4/Bale; Cracked Corn \$12/100; Shelled-Corn, \$10/100; Cob-Corn, \$5/Bag; Rye, Barley, Wheat, Oats \$12/bag, Delivery-Available. (989)433-5418 Cell# (989)965-1391

MOBILE HOMES FOR RENT

3 BD, 2 ba, E of Mt Pleasant, w/d, central air, \$500/mo + utilities, no pets. 989-433-5497

PASSENGER CARS

2016 CHEVY EQUINOX LT
Only 11,000 miles, beautiful light gold mist, heated seats, power lift gate, show room new.
ONLY \$19,995 or about \$298/mo.
Dick Sovo Auto Sales (989)828-6032 dicksovaautosales.com

THE CLASSIFIEDS ... they go where you can't ... into thousands of homes. Andy they do all in one day!

FARM FEED & SUPPLIES

PASSENGER CARS

2016 CHRYSTER TOWN & COUNTRY VAN
Only 12,000 miles, heated leather, full power, DVD, only 9,000 miles, spotless.
ONLY \$23,995 or about \$359/mo.
Dick Sovo Auto Sales (989)828-6032 dicksovaautosales.com

2016 JEEP CHEROKEE
4x4 limited, only 13,000 miles, heated leather, navigation, beautiful vehicle.
ONLY \$25,995 or about \$369/mo.
Dick Sovo Auto Sales (989)828-6032 dicksovaautosales.com

2017 BUICK ENCORE
This vehicle has less than 2,000 miles! Not even broken in yet. Full power. Save thousands!
ONLY \$21,995 or about \$329/mo.
Dick Sovo Auto Sales (989)828-6032 dicksovaautosales.com

2017 FORD F-150 CREW CAB
4x4, only 7,000 miles, jet black, factory chrome wheels, save thousands!
ONLY \$36,995 or about \$489/mo.
Dick Sovo Auto Sales (989)828-6032 dicksovaautosales.com

CLASSICS & EXOTICS

1953 BUICK Riviera, First V-8, 50th Anniversary Car! All Original. Wiring rough, engine redone. 989-289-6947

PARTS & SERVICE

#1 IN brakes & front end service. Same day service, fast in & out, best prices. Discount Tire St. Louis. 989-681-4100

BATTERIES, BATTERIES, BATTERIES! We stock them all. Prices start at \$59.95. Nobody sells for less! Discount Tire, St. Louis. 989-681-4100

TIRE SPECIALS EVERY DAY We will not be undersold. Discount Tire & Battery still Central Mich. #1 Tire Supplier. There must be a reason to call. 989-681-4100 St. Louis

HUNT FOR Treasures in the Classifieds

MOBILE HOMES FOR SALE

1995 DOUBLE Wide Dutch Mobile Home, 3 bd, 2 ba, new roof, new porch, dining room, seats 8, Maytag Self Cleaning Oven, nice oak rolltop desk, 4 ceiling fans, new laundry, great location, Ready April. Blind Widow in Nursing Home. Linens, just bring clothes. 3130 Bagpipe, Scotsdale Estates, Alma. \$26,000. Stop by to see.

PET ADOPTIONS



HAPPY EASTER!
YOU CAN HELP US MAKE A DIFFERENCE! ANYONE CAN SPONSOR A PET FROM THE ISABELLA COUNTY ANIMAL SHELTER Do it as a Birthday, Anniversary gift, an In Memoriam, Easter, or just because....
Only \$39.87 and includes full color!
ANY ONE CAN HELP! IF YOU ARE UNABLE TO ADOPT.... SPONSOR A PET TO GET THEIR PICTURE OUT TO THOSE WHO CAN....FIND A GROUP OR A PAL TO HELP SHARE THE COST OF THE SPONSOR FEE!
This will print on Wednesday, April 18th in the Morning Sun. The deadline for sponsors will be Friday, April 13th at noon.
THE SHELTER IS FULL AND NEEDS OUR HELP!
SPONSORS ARE NEEDED to publish the animal photos and descriptions. This page gives an animal a chance at a new home OR possibly a lost pet can be reunited with their owner.
MOST ANIMALS SPONSORED ARE ADOPTED! For more information or to participate.... Call Cindy at 989-779-6115 or email cterwilliger@michigannewspapers.com

I SHOULD PROBABLY GET A RIDE HOME.
BUZZED DRIVING IS DRUNK DRIVING
NHTSA Ad Council



Vote For Your Favorite Person, Place, Or Thing In Gratiot County & Win!

For completing and returning this entry, you will be entered into a drawing to win one of the following three prizes.
(Please, one entry per person).

1st Prize- \$100 2nd Prize- \$50 3rd Prize- \$25

ENTER ONLINE!
You can enter online at <http://themorningsun.com/contest> or go to www.themorningsun.com and click on the People's Choice logo on the lower left side of the home page

The winners of the People's Choice Awards will be published in a special edition of the Mid-Michigan Buyers Guide, June 24, 2018.

- | | | |
|---|--|--|
| 1. Best Restaurant _____ | 32. Best Pharmacist _____ | 63. Best Appliance Store _____ |
| 2. Best Restaurant for Good Service _____ | 33. Best Veterinarian _____ | 64. Best Appliance Repair _____ |
| 3. Best Fast Food Restaurant _____ | 34. Best Insurance Agent _____ | 65. Best Computer Repair _____ |
| 4. Best Place for Breakfast _____ | 35. Best Real Estate Agent _____ | 66. Best Funeral Home _____ |
| 5. Best Ethnic Food _____ | 36. Best Real Estate Agency _____ | 67. Best Elder Care Facility _____ |
| 6. Best Restaurant Burger _____ | 37. Best Accountant/CPA _____ | 68. Best Gas Station _____ |
| 7. Best Fast Food Burger _____ | 38. Best Financial Advisor _____ | 69. Best Party Store/Convenience Store _____ |
| 8. Best Salad Bar _____ | 39. Best Banker/Loan Officer & Name of Bank _____ | 70. Best Bakery _____ |
| 9. Best Place for Pizza _____ | 40. Best Bank Teller & Name of Bank _____ | 71. Best Deli _____ |
| 10. Best Cup of Coffee _____ | 41. Best Auctioneer _____ | 72. Best Furniture Store _____ |
| 11. Best Ice Cream Shop _____ | 42. Best Photographer _____ | 73. Best Pharmacy _____ |
| 12. Best Sub/Hoagie/Grinder _____ | 43. Best Secretary & Name of Business _____ | 74. Best Flower Shop _____ |
| 13. Best Tavern _____ | 44. Best Barber _____ | 75. Best Hardware Store _____ |
| 14. Best Waiter/Waitress & Name of Restaurant _____ | 45. Best Hairstylist & Name of Salon _____ | 76. Best Window Displays _____ |
| 15. Best Bartender & Name of Bar _____ | 46. Best Hair Salon _____ | 77. Best TV, Stereo, Electronics Store _____ |
| 16. Best Restaurant for Cleanliness _____ | 47. Best Place for a Massage _____ | 78. Best Antiques and Collectibles _____ |
| 17. Best Place for Pie _____ | 48. Best Tanning Salon _____ | 79. Best Lawn & Garden Store _____ |
| 18. Best New Car Dealership _____ | 49. Best Place for Nail Care _____ | 80. Pet Food & Supplies Store _____ |
| 19. Best Used Car Dealership _____ | 50. Best Gift Shop (Not eligible for any other category) _____ | 81. Best Golf Course _____ |
| 20. Best Car Salesperson & Name of Dealership _____ | 51. Best Pet Groomer _____ | 82. Best Gym/Health Club _____ |
| 21. Best Auto Service Department _____ | 52. Best Business for Customer Service _____ | 83. Best Caterer _____ |
| 22. Best Auto Body Shop _____ | 53. Best Local Website _____ | |
| 23. Best Auto Parts Store _____ | 54. Community Volunteer _____ | |
| 24. Best Quick Oil Change _____ | 55. Best Plumber _____ | |
| 25. Best Tire Store _____ | 56. Best Electrician _____ | |
| 26. Best Optometrist/Ophthalmologist _____ | 57. Best Contractor/Builder _____ | |
| 27. Best Dentist/Orthodontist _____ | 58. Best Painting Contractor _____ | |
| 28. Best Dental Hygienist & Name of Office _____ | 59. Best Place for Floor Covering _____ | |
| 29. Best Physician _____ | 60. Best Heating and Air Conditioning _____ | |
| 30. Best Nurse & Name of Office _____ | 61. Best Welding Shop _____ | |
| 31. Best Chiropractor _____ | 62. Best Lawn Maintenance _____ | |

Name _____
Address _____
Phone _____
Signature _____

- One entry per person.
- No photocopies or facsimiles accepted.
- Must be 18 years or older to enter drawing.
- To be eligible for the drawing you must fill out at least 50% of the poll

**MSP employees and families are not eligible for the drawing.*

ENTRIES DUE BY: May 1, 2018.

Return to:

Mid-Michigan Buyers Guide

Attn: People's Choice
311 E. Superior St., Alma, MI 48801
989-463-6071



2167 S. M-76 • West Branch (Across from Kmart)

While Supplies Last • Not responsible for printing errors
Prices good Monday, April 2nd thru Friday, April 6th, 2018

Store Hours: Sunday 8am - 6pm • M,T,Th,Sat. 7am-7pm • Fridays 7am - 7pm

WE ARE A PACKAGED LIQUOR DEALER

We accept all major credit cards & EBT card

BRIAN'S MEATS: 989-345-3709

LIKE US ON FACEBOOK



WWW.BRIANSFRUITANDMEATMARKET.COM

WE HAVE BULK PRICING STOP IN OR CALL TODAY

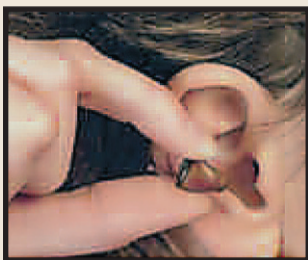
<p>SLICED OVEN ROASTED TURKEY BREAST \$6.99 lb.</p>	<p>SLICED YELLOW AMERICAN CHEESE \$4.99 lb.</p>	<p>SLICED PREMIUM DELI HAM \$3.49 lb.</p>	<p>YODER'S 2 LB. PREMIUM DELI SALADS 2/\$7.00</p>	<p>BEEF LOIN PORTERHOUSE STEAKS \$8.69 lb. \$8.99 lb.</p>	<p>10 LB. BULK SPECIALS</p> <p>10 LB. PRE BAGGED BONELESS SKINLESS CHICKEN BREAST \$18.50 ea.</p> <p>10 LB. GROUND CHUCK \$2.99 lb.</p> <p>10 LB. GROUND ROUND \$3.69 lb.</p> <p>10 LB. PORK STEAK \$1.99 lb.</p> <p>10 LB. BULK BREAKFAST SAUSAGE \$1.89 lb.</p> <p>10 LB. CHICKEN LEG 1/4'S \$6.90 ea.</p> <p>10 LB. PACIFIC COD LOINS \$45.00 ea.</p> <p>10 LB. ALASKAN POLLOCK FILLETS \$19.00 ea.</p> <p>10 LB. KOEGL VIENNAS \$40.00 ea.</p> <p>10 LB. RANCH STYLE BACON \$3.99 lb.</p>
<p>BONELESS BEEF ENGLISH ROAST & DENVER STEAKS \$3.99 lb.</p>	<p>FRESH GROUND BEEF FROM ROUND \$3.89 lb. OR \$3.69 10 lb. or more</p>	<p>BONELESS PORK SIRLOIN SIZZLERS \$1.99 lb.</p>	<p>SEMI BONELESS PORK BOSTON BUTT ROAST \$1.69 lb.</p>	<p>BRIAN'S HOMEMADE FRESH BRATS \$3.99 lb.</p>	
<p>BONELESS PORK TENDERLOINS \$2.99 lb.</p>	<p>BRIAN'S HOMEMADE BULK BREAKFAST SAUSAGE \$1.99 lb.</p>	<p>FRESH BONELESS SKINLESS CHICKEN BREAST \$2.19 lb. OR \$1.85 10 lb. or more Pre Bagged</p>			

BRIAN'S PRODUCE: 989-345-2891

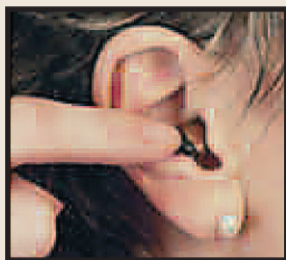
<p>PRAIRIE FARMS YOGURT 5/\$2.00 6 oz.</p>	<p>DUTCH FARMS ORANGE JUICE \$1.79 1/2 gallon</p>	<p>PRAIRIE FARMS SHERBET 2/\$5.00 1/2 gallon</p>	<p>DUTCH FARMS BUTTER QUARTERS \$2.99 1 lb. block</p>	<p>DUTCH FARMS CHEESE CHUNKS, SHREDS & SLICES 2/\$3.00 6 oz. - 8 oz.</p>	<p>ASPARAGUS \$1.99 lb.</p>
<p>BROCCOLI 99¢ ea.</p>	<p>LETTUCE 99¢ ea.</p>	<p>ROMA TOMATOES 79¢ lb.</p>	<p>CANTALOUPE \$1.99 ea.</p>	<p>PINEAPPLE \$1.99 ea.</p>	<p>BILL KNAPP'S DUNKERS 2/\$5.00 12 oz. all flavors</p>
<p>MICHIGAN APPLES 99¢ lb.</p>	<p>DOLE BANANAS 49¢ lb.</p>	<p>SEED POTATOES AND ONION SETS AVAILABLE THIS WEEK</p>	<p>MILLER LITE & COORS LIGHT \$15.49 24 pk. cans + dep.</p>	<p>MICHELOB ULTRA \$17.99 24 pk. cans + dep.</p>	<p>BUD LIGHT ORANGE \$6.99 6 pk. bottles + dep.</p>
		<p>LINDEMAN'S WINE 2/\$10.00 750 ml. assorted varieties</p>			

NOW AVAILABLE!

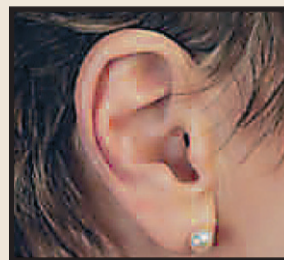
Tiny Micro-Chip In the Ear



Now You See It...



Now You Don't!



Tiny But Powerful Micro-processor

- One of the smallest custom hearing aids ever made
- 48-channel digital signal processing
- Digital engineering allows 1,000's of custom settings
- Controlled by state-of-the-art software

Space Is Limited! Call TODAY for Your FREE* Hearing Screening and RISK-FREE Trial

LIMITED TIME ONLY
CALL TOLL FREE (888) 381-0571

Mt. Pleasant
 100 S. Mission, Suite G
 South of Rite Aid

Clare
 1430 N. McEwan
 Carousel Mall

Gladwin
 127 N. Arcade, Suite 2
 In the Neely Building

Alma
 116 W. Superior, Suite 7
 Heritage Towne Square

Midland
 6841 Eastman Ave
 Behind Olive Garden

Prudenville
 828 W. Houghton Lake Dr.
 Corner of M55 & M18



Justin Hess, HIS



Brook Monte, ACA



Erica Oswald, HIS



Korrey Shoup, HIS



Greg Weidman, BC-HIS



Kyle Wilson, BC-HIS

One More Thing...

Some parts of the hearing evaluation include the use of a familiar voice, so please bring a spouse or a family member with you. Call us today to confirm your appointment time!

*Hearing Screenings are always free

THE MIRACLE-EAR ADVANTAGE

- 100% Satisfaction Guarantee†
- 3-Year Limited Warranty**
- FREE Lifetime Service
- Over 70 Years in Business
- Over 1,300 Locations Nationwide!

0% Financing Available!††

We Work with Most Insurance Plans including Teachers and UAW

2 for \$995*

Receive 2 Audiotone™ Pro Hearing Aids for \$995 for a limited time only at participating locations.

*Fits up to a 30db loss. Not valid with any other discounts or offers. Does not apply to prior purchases. Valid on model Audiotone Pro Only. Expires 4/15/2018.

† If you are not completely satisfied, the aids may be returned for a full refund within 30 days from the completion of fitting, in satisfactory condition. Fitting fee may apply.
 ††With credit approval. Down payment may be required. **Not valid on Audiotone Pro.

