

**Huge selection of Poly Lawn Furniture IN STOCK!**  
*\*Variety of colors!*  
*\*New spring designs!*

**T-CORNER FURNITURE**  
 HEIRLOOM QUALITY  
 BEDROOMS • DINETTES • CABINETS • STAIRWAYS • HALLWAYS

1 mi. E of Drakesville  
 16961 Jade Ave.,  
 Bloomfield  
 VM: 641-664-0207

# Tri-County SHOPPER

April 22<sup>nd</sup> is Earth Day!

STANDARD MAIL  
 U.S. POSTAGE  
**PAID**  
 TRI-COUNTY SHOPPER, INC.  
 POST OFFICE BOXHOLDER  
 LOCAL RURAL BOXHOLDER  
 OCCUPANT  
**CIRCULATION OVER 11,750 THIRD CLASS**

P.O. Box 168 • Bloomfield, IA 52537 • [www.tri-countyshopper.com](http://www.tri-countyshopper.com)  
 Phone 641-664-1333 • Fax 641-664-3761 • Email [shopper@netins.net](mailto:shopper@netins.net)



Vol. 46, No. 16  
 Wednesday, April 18, 2018



# FESLER AUTO MALL



Hwy. 34 West, Fairfield - 641-472-3121 - 800-422-5269 - [www.feslerautomall.com](http://www.feslerautomall.com)  
 Open Monday-Friday 8:00AM-5:00PM. Saturday 8:00AM-3:00PM



**2.9% FOR 60 MONTHS\* AND \$750 CPO FORD CREDIT CONQUEST CASH\*\* ON ALL FORD CERTIFIED PRE-OWNED VEHICLES. INCLUDES 12 MO. 12,000 MILE COMPREHENSIVE VEHICLE WARRANTY AND A 72 MO. 100,000 MILE LIMITED POWER TRAIN WARRANTY.**



**2017 Ford C-MAX Energi SE**  
 6068 miles. Was \$21,995  
**CPO Sale Price \$17,874**



**2017 Ford Explorer Sport 4WD**  
 18,269 miles. Was \$36,995  
**CPO Sale Price \$35,855**



**2017 Ford Escape S FWD**  
 18,393 miles. Was \$20,995  
**CPO Sale Price \$18,725**



**2013 Ford Expedition Limited EL 4x4**  
 Was \$33,995  
**CPO Sale Price \$28,723**



**2013 Ford Expedition Limited 4x4**  
 Was \$28,995  
**CPO Sale Price \$26,352**



**2015 Ford F-150 Super Crew 4x4 King Ranch**  
 27,329 miles. Was \$45,995  
**CPO Sale Price \$39,916**



**2015 Ford F-150 Super Crew 4x4 XLT**  
 45,830 miles. Was \$34,995  
**CPO Sale Price \$33,449**



**2016 Ford F-150 Super Crew 4x4 Lariat**  
 27,392 miles. Was \$43,995  
**CPO Sale Price \$42,550**



**2015 Ford F-150 Super Crew 4x4 XLT**  
 23,910 miles. Was \$34,995  
**CPO Sale Price \$33,548**



**2015 Ford F-150 Super Cab 4x4 XLT**  
 36,696 miles. Was \$25,931  
**CPO Sale Price \$29,826**



**2013 Ford F-150 Super-Cab 4x4 STX**  
 65,000 miles. Was \$22,995  
**CPO Sale Price \$21,995**



**2014 Ford Mustang Convertible**  
 V6, 30,277 miles. Was \$18,995  
**CPO Sale Price \$15,994**



**2016 Ford Flex Limited AWD**  
 22,515 miles. Was \$34,995  
**CPO Sale Price \$29,291**



**2015 Ford Fusion Titanium**  
 31,679 miles. Was \$19,995  
**CPO Sale Price \$18,475**



**2017 Ford Transit 15 Passenger XLT**  
 Was \$27,995  
**CPO Sale Price \$25,988**

\*Not all buyers qualify for Ford Credit financing. Take delivery from an authorized Ford Dealer's stock by 7/9/18. \*\* Requires Ford Credit financing; not all buyers qualify. Offer available on all Ford CPO vehicles to current owners of 1995 or newer or leased non-Ford Motor Company vehicles with valid proof of ownership. Trade-in not required. Take delivery from an authorized Ford Dealer's stock by 5/31/18



Searching for a good night's sleep?

Try a DutchCraft Mattress!

Amish Made  
Strong Warranty  
15+ Models on Display



Mattress Sets  
starting at \$199.99!

15 year warranties!

Adjustable base options!

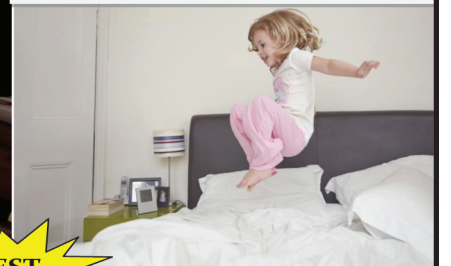
Delivery & FREE removal!

6 month 0% interest  
12 month 0% interest  
On orders over \$899



WITMER'S FURNITURE

FOR THE WAY YOU LIVE!



<p><b>Manchester Pillow Top</b></p> <p><b>\$449</b> Queen Set</p> <p>Twin Set \$349 SRP \$555 Full Set \$429 SRP \$690 King Set \$619 SRP \$1,065</p>	<p><b>Chatham Firm or Plush</b></p> <p><b>\$629</b> Queen Set</p> <p>Twin Set \$479 SRP \$735 Full Set \$589 SRP \$900 King Set \$789 SRP \$1,290</p>	<p><b>Remembrance Luxury Firm (2-sided)</b></p> <p><b>\$699</b> Queen Set</p> <p>Twin Set \$489 SRP \$690 Full Set \$649 SRP \$890 King Set \$989 SRP \$1,310</p>	<p><b>Olivia Firm or Plush</b></p> <p><b>\$939</b> Queen Set</p> <p>Twin Set \$699 SRP \$1,095 Full Set \$879 SRP \$1,350 King Set \$1,259 SRP \$1,890</p>	<p><b>Posture Perfect Gel Plush 1000 Memory Foam</b></p> <p><b>\$1,349</b> Queen Set</p> <p>Twin Set \$1,099 SRP \$1,410 Full Set \$1,279 SRP \$1,680 King Set \$1,649 SRP \$2,205 <i>Compare to Tempur-Cloud Supreme \$3,979</i></p>
---	---	---	--	---

17999 Hwy 136, Memphis, MO (across from the Scotland Co. Fairgrounds)

660-465-2461

Hours: Mon & Fri 9-8 Wed, Th & Sat 9-5, Tu & Sun closed

FOR SALE: Bantams, roosters \$2.00 and hens \$6.00.  
PH: 641-929-3036 17

FOR SALE: Border Collie X puppies, \$50. Memphis, MO.  
PH: 660-216-1710 17

FOR SALE: 50 registered Angus yearling bulls. Feed efficiency tested and guaranteed. Will keep till June. All weights available. Angus bulls with a little more frame. [WernerFamilyAngus.com](http://WernerFamilyAngus.com), 641-344-5059, Diagonal, IA. 17

FOR SALE: Beautiful completely remodeled, 4 bedroom, 2 bath home in the country just 2 miles north of Glenwood Missouri on Hwy 202. Full basement, open kitchen & living room with huge wrap around deck. Sitting on one and half acres. \$189,900  
PH: 660-988-4287 17

Garages • Pole Barns Commercial Free Estimates

**LAN-DOW BUILDINGS**

We Stock a Complete Line of Building Materials **Lancaster Lumber, Inc.** Complete Buildings or Packages Available

Toll Free 800-424-5071 Fax 660-457-3133

Hardware • Plumbing • Electrical • Paint  
500 Green Street • Lancaster, MO 63548

FOR SALE: Firewood at RJ Lumber, \$15 a pickup load. 18989 160th St., Drakesville, IA 52552. TF

FOR SALE: 2012 VW Beetle, 66,000 miles, salvage title, \$7,000. Memphis, MO.  
PH: 660-341-7970 16



FREE Estimates

Quality in Collision Repair

Our commitment to our customers shines through in every job we do.

We handle every aspect of the collision repair process, from rental car arrangements to claims handling and 100% satisfaction guarantee. Our highly trained technicians used today's most advanced tools and equipment to achieve the best quality results.

Our state-of-the-art facility features  
Frame & Unibody Machine • Heated downdraft spray booth • Computerized color matching

Rental Cars Available for all Occasions!

**Hertz** Great Rates!

**Walker Motors Collision Repair Inc.**

375 S. Main St. | Memphis, MO  
660-465-2159 | Shop Phone/Fax

**SPRING OPEN HOUSE**

**SATURDAY, APRIL 21<sup>ST</sup>**

**Our Greenhouse Is NOW OPEN!**

Supplied by Burkholder Greenhouse

**All Greenhouse items 10% OFF!**

Also check out our instore specials!

**10% OFF ALL Poly Lawn Furniture**  
Instock and orders placed on April 21st!

**FREE Soft Serve Ice Cream!**

**Country View Store**

3 miles south of Memphis, MO along Hwy 15  
660-883-5388 • Hours: Mon-Fri 8-6 & Sat 8-5:30



**APRIL 10, 1965** On the East side of the Memphis square. We thank everyone for their support!

**53 YEARS IN BUSINESS**

**Store Wide Specials!**

Thousands of Shirts - Jeans - Boots in stock!  
**20% to 50% OFF**

Suits • Sportcoats • Slacks • Shirts

**T-Shirts up to 10X - Dress shirts to 24" neck**  
 Western snap & button - long and short sleeve

**JEANS - 1/2 price with one at regular price**  
 Men's - Women's - Youth  
**LEE \* LEVI \* WRANGLER \* RIGGS \* CARHARTT**  
 Infant to 66 waist and 40 inseam  
 Slim - Regular - Relaxed - Loose

Leather Belts ~ Billfolds ~ Suspenders 20% OFF

**SHOES • BOOTS • SLIPPERS • HIKERS**  
 Red Wing - Irish Setter - Wolverine - Rocky - Durango - Justin - Chippewa  
 Tony Lama - Nocona - Muck - Hush Puppies - New Balance

**Ladies Items Also!** Justin Gypsy - Durango  
 Jewelry - Bling Belts - Jeans

**Cook's Mens & Womens Store**  
 116 S. Market • E. side of Square  
 Memphis, MO  
 Ph. 660-465-2511 • Fax 660-465-8905  
 Monday-Friday: 8-5 & Saturday: 8-9  
 Short-Big-Tall • Narrow to Extra Wide • Tux Rentals  
 Gift Certificates • Alterations • Gift Wrapping

**WOLVERINE** **LEVI'S** **STETSON HATS** **KARMA** **LEVI'S JEANSWEAR** **HAGGAR** **CAMPUS** **LONDON FOG** **STETSON HATS** **Hanes** **BIG SMITH** **KEY QUALITY** **JINGLEY** **DeLONG** **Antone Belts** **Samsonite** **Freeman** **Freeman** **Freeman**

**LOADING...**

THE OTHER PROVIDERS

**citizens mutual**

**How to make the best, better? Make it faster!**

\*Data speeds starting at 50 mg  
\*Not available in some areas

**citizens mutual** 114 W. JEFFERSON ST | BLOOMFIELD, IA 52537  
 641-664-2074 | WWW.MYCMTECH.COM  
 FIND US ON FACEBOOK!

**The Red Shed**  
 CHOCOLATES  
 GIFTS TOYS & MORE

**JUST IN!**

- Bedding Plants
- Flowers
- Hanging Baskets
- Rhubarb

**Lunch Served Daily!**

2 miles west of Bloomfield on Hwy 2  
 21021 Jewel Ave.  
 Mon. - Sat. 8:30-5  
 641-664-1213

**Shady Lane Variety**

**CHECK OUT OUR supply of Rustic Home Decor!**

Large Variety Of Rhythm & Misc. Wall Clocks!

**JUST IN!**  
 New shipment of wind chimes

1 mi. E. of Drakesville on Jade Ave. • 641-664-0207  
 8-5 Mon. thru Sat.

YODER'S INDIAN CREEK FURNITURE. Check out our great selection of outdoor Polly lawn furniture. Maintenance free with lifetime warranty. Also Polly Martin houses & gourd racks. Rt. V64 Milton, Iowa. Located 4 miles North of Cantril or 3/4 miles South of Lebanon on RT. V64, Monday to Saturday 8 a.m. to 5 p.m. No Sunday sales. PH. 319-538-7332 TF

Over \$10K in debt? Be debt free in 24-48 months. Pay a fraction of what you owe. A+ BBB rated. Call National Debt Relief 855-995-1557. (MCN)

FOR SALE: Farm Fresh Duck eggs, Memphis, MO. PH. 660-216-1392. 16

FOR SALE: Big round bales CRP. PH: 660-342-0323 17

**Slayton Polaris** Authorized Polaris dealer since 1988

**Get out and play!**

New & Used Polaris Rangers & ATV's

**POLARIS** The Way Out.

**660-328-6627** BLOOMFIELD, IA  
 8 mi. S. & W. from Pulaski or 6 mi. W of Memphis then 13 mi. N. on Route B

**NEW MATTRESSES FOR SALE!**  
 Selling individually or in sets. Factory warranty.

**TWIN - FULL - QUEEN - KING**

**641-664-3060**

**JOB OPENINGS!**

Performance Pipe, A Division of Chevron Phillips Chemical Co., LP, located in Bloomfield, IA

**HAS JOB OPENINGS**

Please log on to [www.cpchem.com](http://www.cpchem.com) to view job descriptions & to apply

Performance Pipe is an Equal Opportunity Employer.

FREE TO A GOOD HOME: 6 month old Chihuahua puppy. PH: 641-722-3812 16

FOR SALE: 11 head 1st calf heifer pairs, black, \$2,400 each. PH: 660-216-0356 17

**The Davis County Sheriff's Office is accepting applications for a full-time civil jailer position.**

Must be at least 18 years of age with a high school diploma or equivalent, and successfully pass a background investigation. Applicant will be required to work a variety of shifts, weekends and holidays. Must be proficient with computers, able to learn quickly and work under stressful conditions. Capable of multi-tasking and working with inmates. Upon conditional offer of employment a physical and a drug screen will be required. Some training is off-site and employee will be responsible for own transportation.

Applications can be obtained at the  
**Davis County Sheriff's Office**  
 102 Anderson St.,  
 Bloomfield Iowa 52537  
 641-664-2385  
 Applications will be accepted until  
 April 27th, 2018 at 12:00 Noon

FOR SALE: Garden tillers, rear tine, front tine and 36" PTO pull type, Troy Built, BCS and many others. DR brush cutters and others. Kahoka, MO. PH: 660-216-1809 19

**ATTENTION CONTRACTORS!**

We stock push fit fittings, valves, toilets, faucets, Pex, PVC, CPVC, Copper Pipe & Fittings.

**GINGERICH STOVES and PLUMBING**

19091 180th St  
 Bloomfield, IA  
 VM 641-722-3540  
 3/4 miles east of Drakesville, south side

FOR SALE: Seasoned firewood. Red Elm & Cherry, \$60/pickup load. RJ Lumber PH: 641-722-3348 TFN

LAB PUPPIES FOR SALE: AKC papered. Have had shots & wormed. Ready for their forever homes. \$500. PH: 641-208-7146 17

**Make a lasting impression with one of these vehicles!**

**2007 Chevy Avalanche**  
 71,000 MILES

**2003 Silverado 1500**  
 LONG BOX, REG. CAB, 4 WD, 80,000 MILES  
**\$10,900**

**2015 BUICK VERANO**  
 51,501 MILES 4CYL, NEW TIRES, CLEAN CAR  
**\$12,000**

**Martin Bro's Mowing**

- Mowing • Trimming
- & Weed Control

Servicing Bloomfield & Lancaster

**Call Us Today For A Quote!**

**641-799-4770**

**Kollision Korner**

504 South Drake St • Bloomfield, IA 52537  
 PH: 641-664-2648 • Fax: 641-664-2948

Equal Opportunity Employer - It is the policy of Davis County to provide equal opportunity in employment to all persons. An individual shall not be denied equal access to employment opportunities because of race, creed, color, religion, national origin, sex, age, or physical or mental disabilities.



# DINING & Entertaining

**Southfork** MOTEL & GRILL  
 JUNCTION OF HWY 2 & 63  
 BLOOMFIELD • 641-664-1063

---

Breakfast • Lunch • Dinner  
 Daily Hot Specials and Evening Features  
 Prime Rib Capital of the World! Served on Friday & Saturday Nights  
 Banquet Facilities Available for All Occasions • Catering

---

*"Where Quality and Consistency Matter!"*

Tues - Thurs 7am-9pm • Fri - Sat 7am-10pm  
 Closed Sunday and Monday

You bring the ingredients and we'll whip you up a selling ad.



**Tri-County SHOPPER**

208 Weaver Rd.  
 PO Box 168, Bloomfield, IA 52537  
 641-664-1333 • www.tri-countyshopper.com



**DINE LOCAL**

**WESTERN'S SMOKEHOUSE**

- Nationwide Shipping
- Cut to Order Meat Bundles

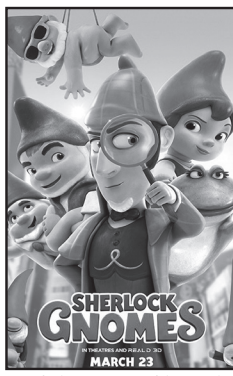
Gourmet Cheeses  
 Award Winning Sausages

**Snack Sticks & Beef Jerky**

Visit our retail shop in Greentop, MO  
 www.westerns-smokehouse.com  
 New Hours as of May 1st  
 Mon. - Fri. 8:30am - 5pm • Sat. 8am - 4pm  
 660-949-2445 • 1-800-456-0250

**IOWA THEATER BLOOMFIELD, IOWA**

*"Sherlock Gnomes"*



Friday, April 20th  
 Saturday, April 21st  
 7:00 PM  
 Sunday, April 22nd  
 4:00 PM PG



**SATURDAY, APRIL 21<sup>ST</sup>**  
**11:00 A.M. - 12:30 P.M.**  
 Chicken & noodles, mashed potatoes, trimmings & dessert  
**COME AND JOIN THE FELLOWSHIP!**

GOOD SHEPHERD LUTHERAN CHURCH  
 19419 Lilac Avenue, Bloomfield, North end of West St.  
 Delivery in Bloomfield after 12:15 P.M.

*Caring for our community with God's help!*  
 ELCA Hunger Grant

**Need a ride? Call 664-3242**  
 Worship time: Sunday 9:00 AM

**Davis County Master Gardeners' SPRING PLANT SALE**



**Saturday, April 28th • 8:30 - 12 Noon**  
**Saturday, May 5th • 8:30 - 12 Noon**

DC Extension Office at 402 E. North Street in Bloomfield  
**641-664-2730**

Perennials, annuals, house plants, compost and more! Most items \$1 and up!  
 All proceeds to MG projects in Davis County.  
 Donations welcome! Please label your donation.



Recovery support for those with drinking or drug abuse issues.

Mondays in Bloomfield  
 At Southfork in the banquet room.

**Narcotics Anonymous:**  
 5:45 pm

.....

**Alcoholics Anonymous:**  
 7:15 pm

Contact info:  
 Jennifer Munoz  
 641-242-0145

**Spring is coming!**  
 Is Your Boat & Camper Ready?

CALL OR STOP IN TODAY!

**Whitney RV & Marine**  
 Scott and Jennifer Poole: Owners  
**641-684-8284**  
 9418 151st Ave., Ottumwa  
 Monday-Friday: 8:30 AM - 5:30 PM  
 Saturday: 8 AM - 1 PM



**Friday, April 20<sup>th</sup>**

**Hawg Wild Wings with sides**  
 Serving at 6:00 P.M.

Dine In **722-3355** Carry Out

**RAY'S LONGBRANCH**  
 Drakesville, IA



# L&M Country Store

1 1/2 miles south of west Hwy 2 & 63 jct.  
 Mon-Sat. 8am-5pm **CLOSED SUNDAYS**  
 VM: 641-664-1936

*Apples:*  
**Golden Delicious & Fuji**

Smoked Gouda cheese .....	\$1.29 lb.
Frozen 16 oz. Oscar Mayer ham & cheese loaf .....	59¢
Frozen 7 oz. sliced roast beef.....	59¢
Frozen 5 lb. tator tots .....	\$3.99
107 oz. Cheddar cheese sauce.....	\$2.99

**OTR TRUCKERS NEEDED.** You're treated like family, give great pay and benefits. Drive newer equipment. Over 75 years in business. Ask about our tax-free money. Call Scott at 507-437-9905. www.MCFGTL.com (MCN)

**OXYGEN** – Anytime. Anywhere. No tanks to refill. No deliveries. The All-New Inogen One G4 is only 2.8 pounds! FAA approved! FREE info kit. Call 844-550-4772 (MCN)

**Bathe safely** and stay in the home you love with the #1 selling Walk-in Tub in North America. For an in-home appointment, call: 844-583-9021. (MCN)

## HAY FOR SALE!

**Big Square Bales Of Grass Hay**  
**660-216-0938**

**A PLACE FOR MOM.** The nation's largest senior living referral service. Contact our trusted, local experts today! Our service is FREE/no obligation. CALL 1-855-811-8392

2 Cor 5:17: Therefore, if anyone is in Christ, he is a new creation; the old has gone, the new has come!

**BATHROOM RENOVATIONS. EASY, ONE DAY updates!** We specialize in safe bathing. Grab bars, no slip flooring & seated showers. Call for a free in-home consultation: 855-598-0943 (MCN)

**Stop OVERPAYING for your prescriptions! SAVE!** Call our licensed Canadian and International pharmacy, compare prices and get \$25.00 OFF your first prescription! CALL 888-438-6461 Promo Code CDC201725 (MCN)

<b>HOURS</b> 8 A.M. to 5:00 P.M. DAILY EXCEPT SUNDAY	<b>Zimmerman's Store</b> Rutledge, MO 660-883-5766	<i>Our Everyday Low Prices!</i>
--	--	---------------------------------

## FABRIC SALE!

**Friday & Saturday, April 20th & 21st**

**10% OFF** all fabrics & sewing notions  
**20% OFF** if you empty a bolt 5 yrs. or less  
**ONE CENT SALE ON SELECTED FABRICS!**  
 Buy 1 yd at reg. price & get the second yard for 1¢

### FROZEN MEAT SALE:

Deluxe Carolina turkey breast .....	80¢ lb.
Tortillas with smoked turkey & ranch dressing.....	\$6.49 (makes 28 tortillas)
9-10# Hillshire Farms Hearthstone hams .....	\$10.25
14-15# large pit hams.....	\$1.59 lb.
6 oz. Oscar Mayer baked ham slices ...	49¢ or 12 pk case \$4.50 dated 4-18-18
8-9# cooked salami rolls .....	98¢ lb.
6 oz. Oscar Mayer uncured jumbo wieners .....	49¢ pk or 12 pk case \$4.79
10# breaded & fried chicken .....	\$15.00
10# rolls ground beef .....	\$2.85 a lb.
2# Hillshire Farm roast beef.....	\$2.89
1# Carolina ground turkey.....	\$1.65

5# bag real bacon bits.....	\$35.65 or \$7.18 lb in smaller amounts
Canadian bacon .....	\$5.39 lb.
While supply last: 1# Land O' Lakes sweet butter.....	\$2.50
1 1/2 lb. sliced mild cheddar .....	\$5.59
16 oz. Green Bay swiss cheese slices.....	\$4.75
1 1/2 lb. sliced provolone cheese.....	\$5.10
1 1/2 lb. sliced monterey jack.....	\$4.85

**DRIVE A LITTLE & SAVE A LOT**

## UPCOMING AUCTIONS

### Public Auction

**Saturday, May 5 • 10 a.m.**  
**415 N. Madison St., Bloomfield, Iowa**  
*John and Susan Martin are downsizing.*  
*Everything is rare and very well taken care of. Excellent items to sell.*  
**Antiques & Collectibles, Furniture, Outdoor Items & Misc. Items**  
**John & Susan Martin, Owners**  
 415 North Madison Street, Bloomfield, Iowa 52537

### Public Auction

**Saturday, May 12 • 10 a.m.**  
**28947 215th Street, Bloomfield, Iowa**  
**Tractors & Equipment**  
**Mr. & Mrs. Bill Thomas**  
 28947 215th Street, Bloomfield, Iowa 52537

### Public Auction

**Saturday, May 19, 2018 • 10 a.m.**  
**11982 Bunch Rd., Drakesville, Iowa**  
 Go 3.5 miles west of Drakesville, Iowa to Bunch Road—JST Blacktop thence left to sale site.  
**Tractors, Equipment, Truck, Household Goods & Miscellaneous**  
**Connie King, Owner**

SALE CONDUCTED BY

### Don Horn Auctioneering Service

209 East Jefferson, Bloomfield, IA  
 Phone: 641-664-1385 • 641-722-3796 -Home  
 • 641-208-0254 -Cell

**"We don't talk service, we give it."**  
 Auctioneers:  
 Don Horn • Rodney Lawson  
 • Josh Williams • Richard Yoder

## You're Invited to our OPEN HOUSE!

**Thursday, April 26**  
**4:30pm - 6:30pm**

- Meet our New General Surgeon &
- Tour our Newly Renovated Outpatient Facility!

**Dr. John Harrington**  
 General Surgeon

*Join us for:*

- ◊ refreshments
- ◊ tours of our newly renovated outpatient department, &
- ◊ meet our new General Surgeon - Dr. John Harrington!

**Davis County HOSPITAL**  
 Dedicated. Compassionate. Healthcare.



# Davis County Prom 2018



## Saturday, April 21st • 2018

*These businesses would like to wish all the Davis County Prom attendees a safe and fun evening.*

 <p><b>Amanda Mathews, R.Ph.</b> 301 W. Jefferson St. Bloomfield, IA 641-664-2975</p>	<p><i>Slayton</i> ★ <i>Polaris</i></p>  <p>8 mi. S. &amp; W. from Pulaski or 6 mi. W. of Memphis then 13 mi. N. on Route B 660-328-6627</p>	<p><b>HARRIS DISTRIBUTING</b></p> <p>1-800-727-5589 OR 641-929-3379 WEST GROVE, IA</p> 	<p>Lynch Law Office &amp; Abstracting</p> <p>207 S. Washington Bloomfield, IA 641-664-3188</p> <p>★ Attorneys: Rick L. Lynch, Susan E. Lynch, &amp; Ashley M. Walkup</p>	<p>I Promise to have a</p> <p><b>SAFE SOBER FUN Prom Night</b></p>
<p><b>Tri-County SHOPPER</b></p> <p>★ "Like" us on Facebook</p> <p>P.O. Box 168 • Bloomfield 641-664-1333</p>	<p><i>Crop Production Services</i> </p> <p>906 Karr Ave. Bloomfield, IA 641-664-1045</p>	<p> <b>Hamilton Produce Co., Inc.</b></p> <p>Bloomfield, IA 641-664-2459</p> <p>★ See us for all your farm supply needs!</p>	<p><i>Kollision Korner</i> ★</p> <p>Bloomfield, IA PH: 641-664-2648 Fax: 641-664-2948</p> <p>John says .... "Like us on Facebook".</p>	<p><b>Hoskin Elevators Inc.</b></p> <p>Feed • Grain 29067 Juniper Ave Bloomfield, IA 641-929-3568</p>
<p><b>Karr Collision Center</b> ★</p> <p>641-664-1024 Bloomfield</p> <ul style="list-style-type: none"> <li>• DETAILING</li> <li>• GLASS REPAIR</li> <li>• COLLISION REPAIR</li> </ul>	<p><i>Spilman Auto Parts</i></p> <p>Spilmanauto.com Old Hwy. 2 &amp; 63 W Bloomfield, IA 641-664-2463</p> <p>★ Family based business established in 1946.</p>	<p><b>JESSIE'S SEWING ROOM</b></p> <p>Bloomfield, IA 641-664-5377 641-208-5036</p> 	<p><b>North Side Insurance</b> ★</p> <p>Bloomfield, IA 641-664-2362 Centerville, IA 641-856-3333</p>	 <p>108 Smith Bloomfield, IA 641-664-1801</p>
 <p>★ 641-664-3239 Bloomfield, IA</p>	<p> <b>Van Mersbergen Insurance Inc</b></p> <p><i>Our policy is serving you.</i></p> <p>104 East Franklin St. Bloomfield, IA 641-664-2135 641-664-2108 fx</p> 	<p><i>Image Shapers</i> ★</p>  <p>107 1/2 W Jefferson Bloomfield, IA 641-664-1650</p>	<p> <b>citizens mutual</b></p> <p>Bloomfield, IA 641-664-2074</p> <p>www.mycmtech.com</p> <p>★ Like us on Facebook!</p>	<p><b>CROP SERVICES, INC</b></p> <p>John &amp; Kathy Bos, Owners Drakesville, IA 641-722-3293</p> <p>★ Come see us today for all your feed, seed and fertilizer needs.</p>



# LAWN & GARDEN GUIDE

**5<sup>TH</sup> ANNUAL OPEN HOUSE**  
**Friday & Saturday • April 20th & 21st • 8 am to 8 pm**

**DRAWINGS EACH DAY**  
 Enter to win  
 • HANGING BASKET  
 • PATIO POT  
 • \$15 GIFT CERTIFICATE

**PERENNIALS BUY 5 GET 1 FREE**  
 MORE THAN 50 VARIETIES TO CHOOSE FROM!

**10% OFF ALL**  
 Annuals in 4 1/2 inch pots.

**FREE COFFEE, DRINKS & DONUTS**  
 BEGINNING AT 8AM

**First 10 people each day receive FREE 10" HANGING STRAWBERRY BASKET**

**DOOR PRIZES!**

**FRESH Locally Grown Tomatoes!**

**FREE CLASSES**  
**Saturday**  
*Beautiful Flower Beds ON A BUDGET* at 1:00  
*Miniature Gardening Class* at 1:30 • Call or text with questions.

**\$2 JOIN US FOR LUNCH FRIDAY**  
 GRILLED HAMBURGER CHIPS & DRINK 10:30-?

**SPECIAL!**  
*Dragon Wing & Big Begonia!*  
**\$1 each**  
 Fri. & Sat. Only

**BBQ CHICKEN DINNER SATUDAY!**  
 LEG & THIGH, DINNER ROLL, COLE SLAW, CHIPS & DRINK 10:30-?  
**\$5**  
 While supplies last!

**Lilac Hill GREENHOUSE**  
 660-342-9554

**SHOP EARLY FOR BEST SELECTIONS!**  
 25957 US Hwy 136 • Lancaster, MO



**HILLTOP GREENHOUSE**  
 11049 HWY 2, MOULTON IA  
 BETWEEN WEST GROVE & MOULTON

**10% OFF** on all seeds, onion plants & sets, seed potatoes,  
**READY TO PLANT:** cabbage, broccoli, cauliflower and lettuce plants

**EMPTY POT SALE**  
 Sizes 8" to 2' pots

Mon-Sat • 8:00am-6:00pm 641-929-3036

**Rustic Acres Greenhouse**

Full Line of Bedding Plants  
 Variety of Herbs • Asparagus  
 Strawberry Plants • Perennials  
 Onion Sets • Onion Plants  
 Garden Seeds

We custom plant your planters or baskets.  
 On Hwy. 2, • West Grove • 641-929-3056

**Large Selection of Proven Winners!**

**GREAT VARIETY OF PEPPER PLANTS**  
 Fruit Trees, Rhubarb, Berry Plants, Grapevines  
 Bulk Garden Seeds & Bedding Plants

**Over 50 Varieties Of Tomatoes!**  
 Gardening Tools • Hoes, Rakes • Shovels • Seeders  
 Lawn & Garden Care Products  
 Grass Seed & Fertilizer

**TROPICAL PLANTS:**  
 Bromeliads • Crotons • Palms  
 Hibiscus Trees • Dianella

**Gingerich Greenhouse**  
 1 mile East & 1/2 mile North of Drakesville on Jade Ave. P.W. PROVEN WINNERS

**Dutch Garden Nursery**  
 Burkholder Greenhouse SAME OWNERS NEW NAME!

**FREE Cookies & Drinks!**  
**Sat., April 28th**  
 Giving away lots of door prizes  
 Plan to come out and enjoy

**ATTENTION!!!**  
**Truck load of Nursery Plants!**

Shrubs • Evergreen Bushes • Lilacs  
 Butterfly Bush • Hydrangeas • Grasses  
 Perennials • Much More

Fruit, Shade & Ornamental Trees!  
 Air Plants, Succulents, Tropicals!

**NEW SPRING HOURS!!!!**  
**Monday - Saturday • 8 AM to 6 PM**  
 4 miles north of Edina, MO • 660-341-5777 or 660-342-3854  
 www.burkholdergreenhouse.com



**SUNSHINE HILL GREENHOUSE**  
 Early garden vegetables

**BLUEBERRIES, GOOSEBERRIES, RASPBERRIES, RHUBARB, STRAWBERRIES, GRAPES, & ASPARAGUS**  
 Fruit trees are here!

641-656-4203  
 1 MILE EAST OF MILTON ON HWY. 2

**OSTRANDER FLOWERS & GREENHOUSES**  
 "We Grow Our Own!" Full Service Flower Shop

**SPRING OPEN HOUSE**  
 Fri., April 20<sup>th</sup> & Sat., April 21<sup>st</sup>  
 9:00 am - 5:00 pm  
 Sun., April 22<sup>nd</sup>  
 10:00 am - 4:00 pm

**IN-HOUSE SPECIALS FRIDAY & SATURDAY!**

• Patio Planters • Rose Bushes  
 • Hanging Baskets • Geraniums  
 • Perennials • Fruit Trees  
 Tomatoes Over 40 Varieties!  
 Asparagus Roots, Strawberry Plants, Herbs, & Peppers!

**FAMILY OWNED & OPERATED FOR OVER 60 YEARS!**

Mon.-Fri. 8-6 • Sat. 9-5 • Sun. 10-4  
 1243 25<sup>th</sup> Ave. • Eldon, IA • 641-652-3288  
 Check out our Specials on Facebook!  
 Take a short scenic drive to Eldon to see the BEST SELECTION AROUND!



**SPRING SALE**

**\$2.29** 1 lb. Qtrs  
**Land O Lakes BUTTER Quarters**

**\$1.99** per lb.  
When you buy 40# block  
**Fresh Load** ←  
• Colby • Cojack • Cheddar  
**WISCONSIN CHEESE**  
Sliced Swiss Cheese - 1lb. \$1.49

**75¢** 14 oz.  
**Oscar Mayer Smokies Smoked Sausage**

**TRUCKLOAD SALE**

**2/\$1** 9 oz.  
**Deli Fresh - Combos HONEY HAM & SMOKED TURKEY**

**39¢** per lb.  
**Bananas**

**\$2.49** 10 lb. bag  
**Idaho® Yukon Gold POTATOES**

**\$1.99** 5# bag  
**Arby's® Hash Brown Potato Cakes**

**\$8.95** 5# bag  
**Shredded Mozzarella CHEESE**  
1# \$1.29  
**Polly-O Mozzarella CHEESE**

**\$1.75** 21 oz.  
**Duncan Hines® Cherry & Blueberry Pie Filling**

**\$34.95** 30# box  
**Frozen Blueberries**

**Bulk Garden Seeds**

**\$1.99** 60 plant bunch  
**Sweet ONION PLANTS**

**\$79.95**  
**EarthWay Garden SEEDERS**

**\$1.99** 16 pack  
**Nature Valley® BISCUITS w/ Peanut Butter**

**20% OFF** selected  
**Bed Sheet Sets**

**15% OFF**  
**Leather Handbags**

**DUTCHMAN'S STORE** Division Street CANTRIL, IA (319) 397 2322 SALE PRICES April 18-24, 2018

STORE HOURS • Weekdays, 8a.m. - 6 p.m. • Saturday 8a.m. - 5 p.m. • Sunday Closed

View our specials online - [www.DutchmansStore.com](http://www.DutchmansStore.com)

FOR SALE: MUST BE MOVED: 600 sq. ft. cabin on skids. All electric, no plumbing, cathedral ceiling w/loft. \$5,000. PH. 641-895-0145. 18

FOR SALE: 1996 Chevy Trail Blazer, 8 ft. stock trailer with new floor, 5209 New Ideal disc mower conditioner in real good condition. PH: 641-664-1357 18

WANTED: Looking for full-time & part-time semi drivers. Home every weekend. If interested call 660-216-8239 or 660-342-0688. 17

FOR SALE: AKC registered Beagle pups, all shots & wormed, parents are proven hunters. Make great pets, \$200. PH. 660-342-6725.

LARGE 2 FAMILY GARAGE SALE Sat., April 21st, 8 a.m.-7 p.m. Toddler bed, dresser w/mirror, mattress w/box springs, tree stands, canning jars, bassinet, lots of clothes & kitchen items. To much to list. Daniel Kauffman Residence, 16710 210th St., Bloomfield. 16

FOR SALE: 4 year old Coffman red Angus bull. Good disposition. Low birth weight. Excellent health. Call Bryan 641-208-6233.

WANTED: Used upright or chest freezer in working condition. Also used bicycles for parts and fix-up. PH. 660-328-6278. 18

FOR SALE: John Deere 3020 gas, wide front, good tires, runs good, \$3,250 OBO. PH. 641-799-3879. 18

**Yoder Glass & Window**

**VINYL WINDOWS**

- Replacement
- New Construction
- Many Glass & Color Options

**Free Estimates**

19467 Driftwood Blvd. Bloomfield, IA 52537  
Call Today: 641. 722. 3667

**HELP WANTED**

Immediate opening for part-time *Back Office Podiatrist's Assistant* in Bloomfield.

Duties: Reading patients, sterilizing equipment, entering info into computer, taking vitals, light cleaning, some local travel is required. Good computer and people skills a must. Pay will depend upon experience. Minimum 3 to 4 days per week.

PLEASE SEND RESUME TO  
**100 N. Dodge St., Bloomfield, IA 52537**  
or fax to 641-664-3549 or email to [susancwarner@netins.net](mailto:susancwarner@netins.net)

**Freshly Ground Nut Butters**

**ALL 10% OFF**

**Deli Specials**

**Hard Salami \$4.19**  
**Sharp Cheddar \$4.29**

**15% off all in stock Little Buster Toys**

**MEMPHIS MERCANTILE** EST 2016

South Side of the Square in Memphis  
660-465-2345

Monday - Friday: 8:00 AM to 5:30 PM • Saturday: 8:00 AM to 4:00 PM / Sunday CLOSED  
**Check us out online- [memphismercantilemo.com](http://memphismercantilemo.com)**

**MEMPHIS MERCANTILE** EST 2010

115 E. Monroe • Memphis, MO  
660-465-2102



*Panna Dance Studio*  
you should be dancing!

**Happy Birthday Mommy!**  
(Mandy Jones)

Turning the big **30**  
Wed., April 25th

**We love you!  
Hayley and Hayden**

**Wortmann Machine & Welding**

- Large Steel Inventory
  - Lathe Work
  - Mill Work
  - Shear Capacity 8x10 Ga.
  - Press Work
- Oxygen & Welding Gases (Rent or Lease)
  - S. J. Smith & Midwest Airgas

910 W. Walnut  
Bloomfield, IA  
Ph: 641-664-1300

**Is your equipment ready for this season's lawn care?**

**exmark**

FS 56 RC-E Trimmer **\$189.95**  
FS 38 Trimmer **\$129.95**  
BG 56 C-E Handheld Blower

**REAL PEOPLE  
STIHL®  
STIHL PEOPLE**

**Gingerich Logging Supply LLC**  
1 mile East of Drakesville, 1/8 mile North  
STIHL Answering Service: 641-722-3414  
Hours: Mon. - Fri. 8-5 • Sat. 8-12 Noon • Closed on Sunday

<p>Russet potatoes 10 lb. bags <b>\$1.99 each</b></p>	<p>Fresh Express garden salad, 3 lb. bags <b>\$2.69 each</b></p>	<p>Lemons <b>39¢ each</b></p>	<p>Gatorade variety of flavors, 24 - 20 oz. <b>\$9.95</b></p>	<p>Pillsbury coconut pecan frosting, 15 oz. <b>85¢</b></p>
<p>Maxwell House S'mores coffee drink mix, 12 oz. <b>\$2.50</b></p>	<p>Uncle Ben's ready rice creamy four cheese, 8.5 oz. <b>45¢</b></p>	<p>PAM canola oil cooking spray, no artificial colors, flavors or preservatives, 7 oz. <b>\$1.25</b></p>	<p>Sunshine Cheez-Its, original, 21 oz. <b>\$2.50</b></p>	<p>Betty Crocker Suddenly pasta salad, creamy parmesan, 6.2 oz. <b>65¢</b></p>
<p>Jel Ease fruit pectin, 1 3/4 oz. pkg. <b>85¢</b></p>	<p>Planters raw almonds, 5.5 oz. <b>99¢</b></p>	<p>Fully cooked chicken breast fritters <b>89¢ lb.</b></p>	<p>Parkview cocktail sausages, 14 oz. <b>\$1.09</b></p>	<p>Seasoned baby back ribs, fully cooked <b>\$2.99 lb.</b></p>
<p>Blackforest organic fruity bites, berry medley, 4 oz. <b>50¢</b></p>	<p>Sugarfree Mentos pure fresh cinnamon gum, 15 pc. <b>50¢</b></p>	<p>Jimmy Dean premium pork sausage country mild, 1 lb. <b>\$1.49</b></p>	<p>Large white eggs <b>99¢ doz.</b></p>	<p><b>Highway 2 DISCOUNT Groceries L.L.C.</b></p>

**Sale good Wednesday, April 18th through Tuesday, April 24th.**

Mon. - Sat 8:30am - 5:00pm • VM: 641-664-1187 19686 Hwy. 2, Approx 2 miles west of Bloomfield





**With all the money you save, how high will you jump for joy?**

**Come see us and save money NOW!**

# SPILMAN AUTO PARTS

20311 Old Hwy. 2 • PO Box 31 • Bloomfield  
641-664-2463 • 1-800-477-1367  
M-F 8AM-5PM • Sat. 8AM-12Noon  
www.SpilmanAuto.com



**✓ Out Our Competitive Prices!** **21387 Route V64 Keosauqua, IA 52565** **660-216-0812**

*Our goal is to keep your doors rolling smooth!*

Sales • Parts • Service ~ Free Estimates  
We sell new doors and openers or we'll service your old one.

**FOR RENT:** New 5 1/2 horse vibratory packer, \$45 a day or 4 hours \$35. Also Bull Float & Fresco broom, misc. Lester Gingerich.  
PH: 641-664-2284 17

**FOR SALE:** 2010 Polaris Sportsman 550 X2 with snowplow, warn wench, 1,160 miles, excellent conditioner, \$4,500 OBO.  
PH: 641-455-4067 17

## FOR SALE

**Driveway Fabric Rolls**  
Commercial, Heavy Duty, Designed for Heavy Traffic

**12' 5" Wide  
432' Long  
\$370/ roll**

**660-216-0938**

**FOR SALE:** 2015 Ford F350, 23,000 miles, white, 6.2 w/6 spd., auto., \$22,000 OBO.  
PH: 641-799-5750.

910 W. Walnut St.  
Bloomfield, IA 52537 17

**FOR SALE:** Allis Chalmers brush cutter, 5", 3 point, \$300.  
PH: 641-208-5911 18

TRI-COUNTY SHOPPER CLASSIFIED AD DEADLINE IS FRIDAY, 5 P.M. EVERY WEEK. Classified ads must be paid for in advance. Mail your ad to Tri-County Shopper, P.O. Box 168 Bloomfield, IA. 52537. For questions call us at 641-664-1333.

**FOR SALE:** '99 Kawasaki cycle 800, Cobra pipes, foot plates, bags, 22,000 miles, \$2,500. 641-208-5911 18

**FOR SALE:** 2013 JD 333 E skid steer, high flow, EH controls with ISO & H pattern, brand new tracks. PH: 641-208-6854 18

**FREE:** Firewood, yours for the taking, load up & haul it away. PH: 641-814-6905 18

**NOTICE:** New load barn lime at Miller's Power Equipment formerly Countryside Manufacturing. Lime no longer at Elmer Mulletts.



**YODER EQUIPMENT**  
BLOOMFIELD, IOWA

**GEO STAR & PRIDE OF THE FARM**

**ENERGY FREE WATERS**

**Extra Heavy 10 Gauge Bale Rings**

- CONTINUOUS FENCING
- LARGE VARIETY OF FARM GATES

19887 Jade Ave  
2 1/2 Miles W of Bloomfield  
V.M. 641-664-2797

**GELBIEH BULLS FOR SALE:** Excellent quality. Good EPD's, tested & gentle. Hobb's Gelbvieh  
PH: 641-203-0863 or 641-766-6779 20



**Need Repair? Let Us Help!**

**We can take away the stress and get you results!**

Auto Body Shop  
Auto Glass  
Automotive Restoration  
Hand Detailing Service

**KARR COLLISION CENTER & AUTO DETAILING**  
Shawn Scott, Owner  
701 Karr Ave. • Bloomfield, IA  
641-664-1024

Mark your calendar for our **BIG PORCH SALE** APRIL 27-28

**Come for the closeout, leave with new Ariat boots! Up to 50% off closeout items on the porch and 10% off Ariat in store!**

- Refreshments served on the 28th
- New items will be added on the 28th



**SHOES • BOOTS • SOCKS • GLOVES • HATS & MORE**



**Graber's COUNTRY STORE**

2 mi S & 1 mi E of Drakesville  
641-664-3163 • 18932 200TH ST • BLOOMFIELD, IA 52537  
Open Monday - Saturday: 8am - 5pm

## Hawkins - Harrison Insurance



**SHOPPER ADS CAN BE DROPPED OFF HERE!**

*Proud to be your partner.*

P.O. Box 365  
Lancaster, MO 63548  
660-457-3020

103 W. Monroe St.,  
Memphis, MO 63555  
660-465-8533

# CALVING TIME IS HERE

STOP AND CHECK OUT OUR HELPFUL CALVING SUPPLIES



**Calving Pens**



**Unimilk • Iodine • O.B. Gloves Latex Gloves • O.B. Lube Calf Claim • Oral Calf Feeders Nursing Bottles • Kick Start Uterin Bolus • O.B. Straps & Chains Calf Catchers • Colostrum**

**We now carry**



Premium hoses, cords & attachments



**Calving Pens**



**PARMAK 12-Volt Battery Fence MAG1200**

**PARMAK 6-Volt Solar Fencer DFS PL1**

**PARMAK 12-Volt Solar Fencer MAG1200**



**Ready for spring? Tillage Equipment**  
Sweeps • Sickle Sections  
Disc Blades • Chisel Spikes




**Custom Hydraulic Hoses to Your Specifications**



# Hamilton Produce Co.

105 W. Franklin • Bloomfield, IA 52537

641-664-2459 or 1-800-469-7749



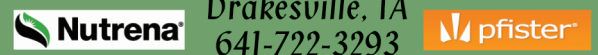
**We know how important it is to keep your cattle herd healthy.**

Nutrena mineral can help you do just that. Whether your feeding calves, heifers, cows, bulls, or steers, there's NutreBeef mineral for each stage.

**Come see us today for all your feed, seed and fertilizer needs.**

## CROP SERVICES, INC

John & Kathy Bos, Owners  
Drakesville, IA  
641-722-3293







# Scotland County & Schuyler County **PROM** | Sat. April 2018 | 28<sup>th</sup>



**Walker Motors**  
COLLISION REPAIR, INC.



660-465-2159  
Phone/Fax

**MFA Agri Services**



Memphis, MO  
660-465-2603  
660-341-1422

Memphis  
Lumber

Landow Buildings  
114 W. Monroe  
Memphis, MO  
660-465-8595



Hwy. 136 E.  
Memphis, MO  
660-465-8597

**Bradley Insurance**

For All Your Crop  
Insurance Needs  
Memphis, MO  
660-465-2764

Beeler  
Motor Co.

Lancaster, MO  
660-457-3718



Greentop, MO  
800-456-0250

Memphis Auto  
& Truck Parts

 300 S. Market  
Memphis, MO  
660-465-2470

**Tallman  
Auto Parts**

**AutoPlus.**  
Lancaster, MO  
660-457-2191

**Crop  
Production Services** 

Memphis, Missouri  
Queen City, Missouri  
660-328-6211

Tri-County  
Electric Coop.

16875 US Hwy 63  
Lancaster, MO  
888-457-3734



Greg Shelley  
388 S. Clay St. #A  
Memphis, MO  
660-465-2623

*Slayton  
Polaris*

Bloomfield, IA  
660-328-6627

**Memphis  
Farm & Home**

463 S. Market  
Memphis, MO  
660-465-8678

Chuck's Body  
Shop & Garage

Hwy 63  
Queen City, MO  
660-766-2312

**MFA  
Agri Services**



Lancaster, MO  
660-457-3728

Feeds &  
Needs

Mon.-Fri. 8-5  
Downing, MO  
660-379-2055

Tri-County  
**SHOPPER**

641-664-1333

**Gerth &  
Baskett  
Furniture**

Memphis, MO  
660-465-8579



Margaret Sapp &  
Stephanie Rae  
Queen City, MO  
660-766-2505

It's a great time of year to be a student! Seniors will be attending graduations, proms, & parties long into the summer. However, these rites of passage are often tainted by the presence of alcohol & its most deadly side effect - drunk driving. Alcohol consumption & abuse by teens have grown in recent years & continues to rise to epidemic proportions. Teens, do the right thing by having fun responsibly, without drugs & alcohol. Parents make your kids aware of the dangers of drug & alcohol abuse. These sponsors congratulate local students on being drug & alcohol free!



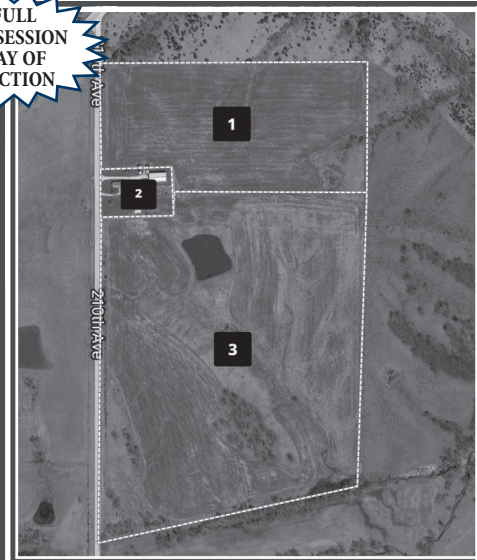


# Appanoose County. LAND AUCTION

MAY 5TH @ 5 P.M. AT WESTBRIDGE INN & SUITES, CENTERVILLE, IA



FULL POSSESSION DAY OF AUCTION



66 ± Acres in Appanoose County, Iowa, LIVE AUCTION, May 5, 2018 located at Westbridge Inn & Suites (Old Motel 60), 117 N. 18th St., Centerville, IA 52544. The property is being sold in 3 tracts. OPEN HOUSE scheduled for Saturday, April 28th from 3:00-5:00 p.m. Contact Jason Small at 660-342-3819 for auction details.

**Tract 1:** 18 ± acres subject to survey, currently in alfalfa. This tract offers a grain bin, small cabin, electricity, water and good fence are on the property.

**Tract 2:** 2 ± acres, subject to survey, this country home has 3 bedrooms, 1 bath room, is on a basement and has several outbuildings including a calving barn, a 40'x80' shed with 20'x14' doors. The middle of the shed has 6 inch concrete that is approximately 20'x80'.

**Tract 3:** 46 ± acres, subject to survey, currently in alfalfa but could be converted to row crop with good fence on the whole farm and stocked pond with catfish.

If you are looking for an excellent pasture farm for cattle or other livestock, with excellent access to blacktop road for livestock trucks or other farm machinery, check out this property. Call Jason at 660-342-3819 for details about this auction and to view the property.

Driving directions: The property is located at at 27996 210th, northeast of Cincinnati, Iowa just off State Hwy 5.

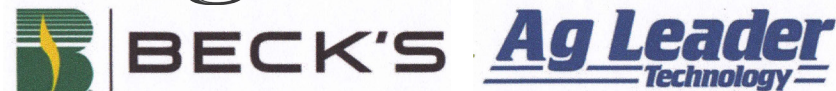
## OWNERS: DALE & GLORIA COWAN

19771 US Highway 136 • Memphis, MO 63555

Ph: 660-465-2971 • Fax: 660-465-2972

[www.WEKNOWDIRT.net](http://www.WEKNOWDIRT.net)

# Premier Ag Solution, L.L.C.



Supplying your seed and precision farming needs

Bloomfield, Iowa  
Office: 641-664-3412

Gene Joos: 641-777-5997 • Lincoln Joos: 641-777-2968  
premieragsolution@gmail.com

**JOE'S BARBER SHOP**  
Hours: Thursday & Friday 8:00-5:00 & Saturday 8:00-Noon. 210 E. Franklin St., Bloomfield, IA.  
PH: 641-664-2020, 641-208-5561 TF

FOR SALE: 2650 New Hay Buster big bale processor, never been used, great price.  
PH: 641-929-3208 18

FOR SALE: 1999 Ford E150 conversion van, 5.4 liter engine, 115,000 miles, very clean, runs great, \$4,800.  
PH: 319-293-9150 18

FOR SALE: Farm raised puppies, 6 weeks old, terrier/beagle cross, \$10 ea. Please leave message.  
PH: 641-664-1245 ext.1 18

**PLUMBING SERVICES:**  
Indoor plumbing installation, replacement and repair. TJ's Enterprises, Truman Gingerich  
PH: 641-722-3980 EW

## HELP WANTED

Seasonal Truck Drivers/ Equipment Operators.

**DOUBLE J FARMS**  
Custom Forage Harvesting

Jason Rutt • 660-956-2240

Memphis, Mo

FOR RENT: 2 bedroom house, covered parking, well located, some pets allowed.  
PH: 641-664-2278 18

**FOR SALE**

**Double Wide 28x60**  
**\$8,000 OBO**

Used as a school. Must be moved within a week after May 10th. Can be converted into an office, daycare, home, whatever you need! 2 nice sized classrooms. Boys & girls restroom. Entry with sink & water fountains. 3 exit doors with wooden steps & small porch included

**CALL 660.341.1927**  
FOR INFORMATION OR APPOINTMENT TO SEE

FOR SALE: Bradley digital smoker, \$125; Oklahoma Joe smoker, one year old, \$225; Blackstone 28" griddle cook station, \$100; 6 pc. bar patio set, \$75.  
PH. 319-494-7733. 18

**DRINKING PROBLEM? DRUG ABUSE?** Take control of your life today. Find out the Addiction Treatment option that's right for you. Must have PPO or HMO insurance plan to qualify. Take the first step toward recovery & call now 855-583-4432 (MCN)

**MAST VINYL WINDOWS**  
THERMO-PRO WINDOWS  
Custom Size Is Our Specialty  
Professional Installation Available  
THERMA-TRU DOORS  
**FREE ESTIMATES**  
22172 Hwy. 63  
Bloomfield, IA 52537  
**800-206-9949**

**Boost Your Curb Appeal!**

**MAST-OVERHEAD DOORS**  
**641-680-2016**  
105 S. Dodge St., Bloomfield, IA  
Quality Products + Quality Workmanship = Quality Customers

**GARAGE DOORS**  
Residential • Commercial  
Doors • Operators  
Call us today for your **FREE door estimates.**

FOR SALE: 2012 Ford Escape 2 wd, 4 cyl, only 27,000 miles, rebuilder, professionally repaired, you will not be disappointed. \$10,900, Lancaster, MO  
PH. 660-216-0871. 18

FOR SALE: Ford 302 engine & auto. trans., needs rebuilt but not stuck, \$400 OBO. Ford 6 cyl. & auto. trans. out of Mustang. Needs rebuilt but not stuck, \$2,500 OBO.  
PH. 641-799-3879. 18

**AUCTION**  
**Monterey Auction House**  
**Sunday, April 22<sup>nd</sup>, 11:00 am**

Located 10 miles S. of Bloomfield on 63 then 4 miles W. on J51 or 10 mi. N. of Lancaster, then 4 mi. W. on J51

Green jars with zinc lids; jars with glass lids; pre-clean dolls; Coca Cola lamp; grocery cart; wood high chair; 1918 calender; old mustard jar bank full of marbles; silver tea pot; new Ryobi reciprocating saw; new milk bucket with 5 nipples; 1950 Pulaski school annual; old True Story magazines; glass top coffee and end tables; plant stands; hand post driver; chain binders; wood clamps; cigarette lighter; air compressor; 5-cans 134A refrigerant; old nail apron from Moulton & Lancaster; old black and white photos; Holmed cool mist humidifier in box; like new Necchi sewing machine; wicker baskets; old enamel bed pans; card tables; Murray 2500 weed eater, new last year; tobacco tine; Bloomfield Iowa pop bottle; R.R. salt & pepper.

All Consignments Welcome!  
Announcements made day of sale take precedence over any advertising. Not responsible in case of accidents.

**LAWSON AUCTION SERVICE**  
For More Info.: John Lawson 641-895-3852

**Early Bird Special**

2 col. x 2" Boxed Ad for only \$500 (Regular price \$995)

Advertise in over 70 papers with a total circulation of over 843,000!

Call today 1-800-248-4061

**Hawkins - Harrison Insurance**

SHOPPER ADS CAN BE DROPPED OFF HERE!

Proud to be your partner.

P.O. Box 365  
Lancaster, MO 63548  
660-457-3020

103 W. Monroe St.,  
Memphis, MO 63555  
660-465-8533

**\$98,500**

Located in Memphis with large back yard  
3 Bedroom, 2 Bathroom, Attached 2 car garage,  
Partial unfinished basement, Appliances  
**660-341-2390 or 660-341-9057**



# TIM SKINNER

## Trucking & Excavation



**FLOTATION  
AGLIME  
SPREADING**  
Standard Application  
GPS Variable Rate  
Application

**NOW OFFERING VARIOUS SIZES OF RECYCLED ROCK.**

**HAULING:** Aglime, Rock, Sand, Black Dirt or Clay  
*Also doing all types of excavation & dozing work.*

**Call for pricing today**  
Tim Cell: 641-777-6053  
Jeremy: 641-226-7829

**WANTED: Broken Concete.**  
Trucking available!

**NEED TRENCHING DONE?** Call for quote on waterers, hydrants, drains etc. TJ's Enterprises, Truman Gingerich  
PH: 641-722-3980 EW

**FOR RENT:** 1 or 2 bedroom apartments Milton, IA. Kitchen appliances & heat furnished. Very reasonable rent.  
PH: 641-757-0201 19

**FOR SALE:** Registered Purebred Gelbvieh and Balancer bulls. Yearlings and 2 year olds. Rolling Hills Gelbvieh, Bloomfield, IA PH: 641-777-7060

**FOR SALE:** 2 Newton Club Seats at Newton Raceway. Best location at the track. Many benefits. Will sell for what I paid. Rumor has it there will be a NASCAR Race in the next couple years. PH: 573-723-0709 for more info.

**FOR SALE**  
**ANGUS BULLS**  
Yearling Registered Black Angus Bulls  
Large selection  
Pick now & we'll hold until May 1

**HENDERSON FARMS**  
David:  
641-799-3857

**FOR SALE:** 6 round bales grass alfalfa, 50/50 mix, 3rd cutting, 1,400 lbs. \$90.  
PH: 641-664-2284 16

**FOR SALE:** 6 row Kinze planter, no-till, double frame with monitor. Kenny Clatt PH. 660-282-3381.

**HELP WANTED**

## ELECTRICAL EVOLUTION, LLC

Located in the Memphis Area  
**Now Hiring Electrical Helpers**  
*Experience preferred but not required.*  
Call Randi Chabert @ 660.956.5976 or 660.945.3057  
or email [electricalevolution@yahoo.com](mailto:electricalevolution@yahoo.com)

## Fox Valley Welding

No matter what size the project customer satisfaction is always our first priority.

Tig & Aluminum • Welding • Milwork • Lathe • New Steel • Sprockets • Roller Chain Barings • PTO Parts • Fabricating • CNC Machining • CNC Cutting

Hours: M-F 8-5:30 • 641-656-4684 • 12190 East Hwy. 2 • Milton, IA



# LeRoy & Anna Borntreger

## PUBLIC AUCTION

**Auction Location:** From Downing, Mo. Go North on Rt N 4 miles to Ruth Ridge Ave. Then West 1 mile to Farm site.  
**Friday, April 27, 2018 @ 10:00 a.m.**

**Farm Machinery - Livestock Equip. & Shop Tools**  
6' tandem disc - #9 high gear hay mower, 6' bar - (2) forecarts  
2 section harrow - JD 660 hay rake w/ dolly, on steel or rubber  
(2) hay rack wagons - hay mower parts - hay feeders  
Flare box w/ gear - 10A NI manure spreader, on steel wheels  
NH 56 hay rake on steel wheels - round bale mover  
24T JD baler w/ GX690 Honda motor (sells separate)  
Rope pulleys for 6 up hitch - 2 wheeled trailer w/ steel wheels  
Grain elevator w/ motor mount - (2) hay ring feeders  
JD 10' grain drill w/ clutches, on rubber (very nice)  
9' 910 Pequea hay tedder, ground driven  
Manure spreader on 2 steel wheels - new barrel shop stove  
2" irrigation pump w/ Honda motor  
11 HP Honda motor - EZ Flow lime spreader on steel  
Bobsled w/ box and seat, nice - 2 section harrow  
Steel & wood posts - 100 gal. field sprayer, 20' boom, no hoses  
Cattle grain feeder bunk (built from LP tank) - shoeing stock  
Air fan - cattle panels - set of Brahma Webb Draft harness  
Horse collars and pads from 17" to 28" - Englander wood stove  
Horse shoe tack rack - misc. used tack - Antique horse bits  
30 gal. kerosene barrel w/ pump, on wheels

**28499 Ruth Ridge Ave.**  
**Downing, MO 63536**

**Lumber & Trim**  
Approx. 200 board ft. cedar lumber  
Approx. 100 board ft. Walnut lumber  
Rustic Cedar window trim

**Household - Collectibles & Mowers**  
Monarch L.P. refrigerator, 4 yr. old  
Hickory rocking chair  
Horse shoe rocking chair  
Portable clothesline - Ashland cookstove  
Hand (pitcher) water pump  
Wide mouth canning jars  
Adjustable bed frame  
Rustic Cedar coffee tables  
Western art relic boards  
Twin galvanized laundry tubs  
L.P. floor light and light stand cabinet  
L.P. tanks, (2)100# (2) 20#  
Cedar clothes hook boards  
Singer leather sewing machine  
Stihl weedeater - Honda lawn mower  
Snapper lawn mower - firewood  
Troy Bilt tiller (econo horse) w/ Honda  
DR 26" Brush Cutter (excellent condition)  
6x8 child's playhouse  
Cowboy boot full of coins (20 lbs.)  
Independence 1776 dinner bell w/ cradle  
Horsepullers knife (1 of 100)

**Cows - Horses & Livestock**

(9) Black bred cows and cow/calf pairs consisting of 3 hrs. & 6 - 3 to 6 yr. olds  
Cows are mostly home raised & gentle  
3 yr. old Black Angus bull  
Team of Percheron Draft horses:  
4 yr. old gel. & 10 yr. old mare (broke for anyone)  
2 yr. old Belgian cross colt  
48" pony, broke to ride & drive  
4 yr. old gelding - several baby goats  
Rooster - (6) young laying hens  
**New steel inventory consisting of:**  
Tubing - flat iron - angle iron - Etc.  
Also steel welding table - Lots of new horse shoes (some toe & heel - some drill tec)

**Lunch & Bake Sale by Amish Ladies. Proceeds for hospital bills.**

**Auctioneers Note:** As the Borntregers have sold their farm and are moving out of state, we will sell the above items at auction. This will be a nice clean auction, along with some neighboring consigned items. There will be something for everyone. Loader on site day of auction. Make plans to attend!! Thanks, Randy

High Auction Service LLC ~ Randy 660.216.0515 ~ Clair 660.341.1687 ~ Kris 660.342.8634

[www.highauctionservice.com](http://www.highauctionservice.com) e-mail: [highauction@marktwain.net](mailto:highauction@marktwain.net)

Cash or check with proper ID. Not responsible for accidents or theft. Announcements day of the sale take precedence over any advertising.

**FOR SALE:** 2001 Chevy Silverado LS 2500, heavy duty, 4x4, \$4,400.  
PH: 641-684-0903 17

### The City of Downing will be taking applications for the position of

#### Water/Waste Water and Street Maintenance Operator

The position is based on 40 hours a week and pay will be based on qualifications and experience. The position is open at this time so the selected applicant will need to start as soon as possible.

*Applications can be picked up at the*

#### Downing City Hall

**between the hours of 8am to 4pm  
Monday through Friday.**

**Applications must be turned back in to City Hall  
by 4pm on April 23, 2018.**

The board will hold a special meeting at 6pm on that date to look over the applications and make a selection.

**MILITARY ITEMS WANTED BY LOCAL COLLECTOR:** Patches, medals, uniforms, hats, helmets, etc. Always buying. Mark Warren, PH. 641-664-3705. [mpwarren@netins.net](mailto:mpwarren@netins.net)

**FOR SALE:** 3 year miniature mare, well started in cart, green broke to ride, 38" tall, great with kids.  
PH: 319-201-0900 17

## CANTRIL FEED & GRAIN

610 West North St.  
Cantril, Iowa 52542  
**319-397-2215**

<b>PURINA WIND &amp; RAIN</b>	<b>BIG GAIN FEED</b>	<b>COTTON BEAN MEAL DISTILLERS</b>
Gallagher Fencing Supplies	Gates & Bale Rings	Miraco Waters
<b>Crystal Creek Feed</b>	<b>WET GLUTEN</b>	<b>Gluten Pellets &amp; Soyhull Pellets</b>

## HUFF'S POLLED HEREFORD BULLS FOR SALE

Raising Hereford Cattle Since 1915

- Sires are selected for calving ease, maternal traits, calm dispositions, & rapid growth. Superior EPD's!!
- Raised on a diet that encourages growth not fat, they are ready to work!
- Docile & easy to handle - the disposition you always wanted.



## HUFF'S POLLED HEREFORDS

26574 STATE RT. M • RUTLEDGE, MO 63563

LeRoy & Jane Huff, Home: 660-883-5684 or Cell: 660-341-6392

Sean & Nichole Huff, Home: 660-883-5383 or Cell: 417-499-3639

**GIVE US A CALL & VISIT OUR FARM TO SEE FOR YOURSELF THE QUALITY DESCRIBED!**

These bulls represent the best genetics of the breed!



# KEOSAUQUA SALE CO.

20511 Hwy. 1, Keosauqua, IA

**Results from April 14th**  
 Butchers \$31.00-\$39.00/cwt  
 Sows..... \$35.00-\$50.00/cwt  
 Feeder lambs.....  
 .....\$200.00-\$267.50/cwt  
 Fat lambs.....  
 .....\$125.00-\$131.00/cwt

Ewes..... \$61.00-\$85.00/cwt  
 Kid goats, 40-70# .....  
 .....\$105.00-\$165.00/hd  
 Nannies \$75.00-\$210.00/hd

**Pound cows** ..... \$51.00-\$54.50/cwt low yielding  
 ..... \$57.00-\$72.00/cwt high yielding  
**Pound bulls**..... \$81.50-\$90.00/cwt

## SPECIAL CATTLE SALE SAT., APRIL 21

62 hd. 450-600 blk & bwf str., Krueger  
 60 hd. 450-600 redx str. & hfrs., MFA Health, Vogel  
 115 hd. 700-750 xbred hfrs., 2 rounds shots, Colby

Watch website for early listings [www.keosauquasaleco.com](http://www.keosauquasaleco.com)

Thank You For Your Business!

For More Information Contact:

Selling Times

Hogs.....9:30 a.m.  
 Sheep & Goats.....10:00 a.m.  
 Outside Merch.....11:00 a.m.  
 Cattle.....Noon

Keosauqua Sale Co.  
 319-293-3508  
 Bill Goehring  
 641-919-9365

[www.keosauquasaleco.com](http://www.keosauquasaleco.com)

## Friesen Excavating

Specializing in Septic Systems, Certified For Peat Tanks and Sand Filters. Can Also Do Other Drains and Water Lines. Call or Text Shawn @ 641-208-0861 • Bloomfield, IA

**Free Quotes Available**

**TRAILER SALE!** CM Horse & Livestock trailers "SAVE \$200.00"; 22,500# bumper-pull equipment trailer, 10 models of DUMP Trailers: 7'X14' GREEN enclosed cargo trailer; 6'X12' cargo \$2,780.00; 500 gallon FUEL trailer. [www.FortDodgeTrailerWorld.com](http://www.FortDodgeTrailerWorld.com) 515-972-4554 (MCN)

# ANNUAL SPRING LAWN & GARDEN AUCTION

Saturday, April 28, 2018

Plants Starting at 10:00am

Lawnmowers selling at 12:00 Noon

Now Accepting Consignments for our Annual Spring Lawn and Garden Auction. We will accept items such as Riding Lawnmowers, Push Mowers, Weed eaters, Garden Tillers, Small Garden Equipment, 4-Wheelers, and Much More. Contact us for more information.

We will be selling our usual line of Bedding Plants-Tomato Plants, Trees, Shrubs, Flowers, Hosta, and Hanging Baskets.

Announcements day of auction takes precedence over any advertising. Lunch will be served.

Terms: Cash, Check or Credit Card.



Sale Conducted by:  
**Jackson Auction Service**  
 David and Jodie Jackson  
 Memphis, MO

For more information email us at: [auctions@nemr.net](mailto:auctions@nemr.net) or call:  
 David Jackson      Jodie's Cell      Auction House  
 660-341-1762      660-216-3750      660-465-2889

# Scotland County LIVESTOCK AUCTION

P.O. Box 111 • Hwy 15 North • Memphis, MO  
 660-465-7213 • Jerry & Barb Blomme  
 660-341-0069 • Grant Blomme  
 660-216-4674 • Rodney Garman

## CATTLE SALE

Sat., April 21st

## SPECIAL CATTLE SALE

Sat., April 28th

Market Results From Sat., April 14th:

**STEERS:** 305 lbs. \$227.00; 350 lbs. \$208.00; 361 lbs. \$201.00; 450 lbs. \$190.00; 492 lbs. \$192.00; **HEIFERS:** 393 lbs. \$168.00; 396 lbs. \$172.00; 416 lbs. \$167.00; 431 lbs. \$167.00; 519 lbs. \$155; 540 lbs. \$155; **BULLS:** 308 lbs. \$223.00; 390 lbs. \$196.00; 489 lbs. \$174.00; 554 lbs. \$170.00; 595 lbs. \$160.00; **LB. COWS:** \$50.00-\$64.00; **LB. BULLS:** \$86.00-\$89.50

[www.ScotlandCountyLivestock.com](http://www.ScotlandCountyLivestock.com)



## Early Bird Special

2 col. x 2" Boxed Ad for only \$500 (Regular price \$995)

Advertise in over 70 papers with a total circulation of over 843,000!



Call today 1-800-248-4061

## COMMERCIAL REAL ESTATE & BUSINESS INVENTORY ESTATE AUCTION Quality Auto Center

SAT, MAY 5, 2018 AT 9:30 A.M. Real Estate sells @ 10 AM

Sale to be held onsite at 611 East Cottage, Centerville, Iowa



**PUBLIC SHOWING: Wednesday, April 25th from 4:30 - 6:00 p.m.**

**Real Estate Info:** Parcel 1 is improved with several structures including a 61' x 120' shop/parts storage facility that recently housed the Quality Auto Centers repair business. Also included with this structure are 2 very nice storage areas, a 25' x 36' area that includes office space and a small area utilized for retail sales. Additionally there is a 28' x 47' steel storage building on this property. Parcel 2 offers unimproved land that is zoned residential and has State Hwy. 5 frontage. This hard to find property has endless development and business potential.

**Also selling:** lifts, shop tools, bulk fluids, new inventory, new hardware, fixtures, trailers & storage units.

DETAILS, FULL LISTING & PHOTOS AVAILABLE ONLINE @:  
[www.SullivanAuctioneers.com](http://www.SullivanAuctioneers.com)

## PHIL FOGLESONG ESTATE

MARCIA FOGLESONG - SELLER

Atty: Thomas L. Anders • Centerville, IA • Phone: (641) 856-6088  
 For Additional Info, Contact: John Probasco (641) 856-7355

SULLIVAN AUCTIONEERS, LLC • TOLL FREE (844) 847-2161  
[www.SullivanAuctioneers.com](http://www.SullivanAuctioneers.com) • IL Lic. #444000107

# Troyer Seeds

Special! Oats \$7.00 bu.

Masters Choice corn  
 Epley Hybrid corn & beans  
 Blue River organic corn & beans  
 Alfalfa • Clover • Grass

12722 245th Street Emanuel 641-929-3381  
 Moulton, IA 52572 Troyer



LET US HELP IN YOUR HAY FIELD THIS YEAR!

### SERVICES AVAILABLE:

- Mow & Condition • Tedding & Raking
- Round Bale w/ John Deere 569 Baler
- Tubeline Wrap High-Moisture Hay
- Hauling & loading available if necessary



We can do one or all, call to get on the schedule!

CALL OR TEXT JEFF AT 641-208-2235

**VIAGRA & CIALIS!** 60 pills for \$99. 100 pills for \$150 FREE shipping. Money back guaranteed! 1-800-496-3171 (MCN)

**FOR SALE:** Female Cocker Spaniel puppy, buff colored, 8 weeks old, registered, all shots & wormed. PH: 660-328-6624 or 660-216-6624

## Yearling Angus & Charolais Bulls

## Trojan Hill Farms



Phil Archer  
 641-675-3769 - Home  
 641-680-6769 - Cell



**ALL THINGS BASEMENTY!** Basement Systems Inc. Call us for all of your basement needs! Waterproofing, Finishing, Structural Repairs, Humidity and Mold Control. FREE ESTIMATES! Call 1-800-640-8195 (MCN)

## NOTICE

Southern Iowa Electric Cooperative, Inc. will be spraying its powerline right-of-way in portions of Van Buren County.

Southern Iowa Electric Cooperative has hired contractors to perform this work. The work is expected to begin around May 1, 2018 and will continue throughout the year.

If you have any questions, you may contact the Cooperative toll free, 800-607-2027.



Southern Iowa Electric Cooperative

A Touchstone Energy® Cooperative

22458 Hwy. 2 • Bloomfield, IA 52537 • (641) 664-2277 • [www.sie.coop](http://www.sie.coop)



**MAKE YOUR CAR HAPPY**  
with a **NEW GARAGE**  
from **Cantril Lumber!**

**FREE ESTIMATES ON ANY BUILDING PACKAGE!**

**Cantril Lumber & Hardware**  
319-397-2351 • 319-397-2354 • Mon-Fri 7-5 & Sat 7-12

FOR SALE: Stewart Oster model 510A, 3" head, \$85; Stevens model 94, 410 GA, \$165; Montgomery Ward 40,000 BTU heater, \$65; John Deere deisel 820 Dyersville, 1982, Nov. 6th, \$40; electric Hawaiian guitar, New Yorker, \$250 OBO; 1950 Copy R. DEK, heavy duty commercial 5000 gen., \$450 OBO; 16.16.5 8 bolt truck wheels, \$15 each; F250 Ford, 4 spd transmission & transercase, \$150. PH: 660-216-3715 19

FOR SALE: Reg. Angus yearling bulls, \$1,750, 2 yr old \$2,800, all semen checked; S.H. heifer & cows to calf, \$2,700 for pair. Dean Goemaat. PH: 319-540-4601 17

Like Us On **Facebook**

**CANTRIL TRUCK & TRAILER**  
**319-238-7367**  
101 North St. • Cantril, IA  
[www.cantriltruckandtrailer.com](http://www.cantriltruckandtrailer.com)

**FRIESEN CONSTRUCTION**  
New Houses  
Remodeling  
Garages Electrical  
Plumbing  
Custom Cabinets  
Arlen 664-3270  
Cell 641-208-0170  
Bloomfield, Iowa

FOR SALE: 75 registered Angus 18-month-old bulls. Feed efficiency tested and guaranteed. Will keep till June. All weights available. Angus bulls with a little more frame. WernerFamilyAngus.com, 641-344-5059, Diagonal, IA. 17

**BLOOMFIELD MINI STORAGE.** Serving you from 2 safe, convenient locations. PH. 641-664-1066. TF  
FOR SALE: 2016 16' stock trailer bumper hitch, S&S Duraline, like new, used very little. \$4,500. PH: 641-455-4067 17



**INTRODUCING**  
the equipter roofing buggy.

RENT ME AND CUT YOUR ROOFING JOB IN HALF!

**HOOVER RENTAL**

Call us for your construction rental needs!

**660-216-8230 • Located East Of Cantril, IA**

*Spring*  
**RANGER MINERAL BOOKING**

**NEMO RANGER MINERALS**  
Purchase 1 ton, get **5 BAGS FREE\***  
Purchase 10 bags, get **1 BAG FREE\***

\*DEALS GOOD THROUGH APRIL 30 • DETAILS IN STORE

Spring is here! It's time to fire up those wood pellet grills with Pioneer Eco Pellet Grill fuel.

- 100% natural kiln-dried hardwood
- Available in 4 great flavors: Hickory, Apple, Mesquite, and Maple

**40 LB. BAG \$9.95\***

*Hometown*  
ANIMAL HEALTH

660.465.2967 • [hometownanimalhealth.com](http://hometownanimalhealth.com)  
18743 US Hwy 136 • Memphis, MO 63555  
On Highway 136 west of Memphis

NUTRITION • MEDICAL • PET • FARM • APPAREL

AUTHORIZED DEALER OF NEMO FEED.

**FIREWOOD FOR SALE:** NOTICE We have a good supply of firewood again at Petersheim Sawmill. \$25 a pickup load. 14256 Jewel Ave. Bloomfield, IA PH: 641-722-3020 17

**WANTED TO RENT:** Row crop & hay ground. Cash or crop share. Ray Boas PH: 641-208-6177 17

**FOR SALE:** 2016 2nd cutting alfalfa grass small squares, \$3.50 each. PH: 641-664-1690 17

**FOR SALE:** Yearling & 2 year old registered Angus bulls. AI sired by easy calving and maternal package bulls, gentle. Pick now and I will deliver first week of May. MILLER ANGUS FARM, PH. 660-341-4043. If no answer leave message. I will call back.

**GLENWOOD Elevator**

**301 State Hwy. M  
Glenwood, Mo 63541**  
Logan Ford, Manager  
PH: 660-457-3973 • Cell: 660-956-3973  
Fax: 660-457-3045 • [gelevator@marktwain.net](mailto:gelevator@marktwain.net)

**We are your local, full-service contractor, dedicated to meeting all of your home improvement and home building needs with integrity and quality craftsmanship.**

- Metal Roofing
- FREE estimates!
- Crews available
- Call today!

**WAGLER METALS LLC**

19049 Ice Ave., Bloomfield, IA • 641-722-3692  
M-F 7:30AM-5PM • Sat. 8-11:30AM



# BLOOMFIELD



## LIVESTOCK MARKET

Wed., April 25th..... Fat Cattle, Slaughter, Cows & Bulls .....9:00 AM  
 .....Special Feeder Sale ..... 11:30 AM

Tue., May 1st ..... Bed Cow, Pairs, Heifer Sale.....6:00 PM

Wed., May 2nd..... Fat Cattle, Slaughter, Cows & Bulls .....9:00 AM  
 ..... No Special Sale .....

Wed., May 9th..... Fat Cattle, Slaughter, Cows & Bulls .....9:00 AM  
 .....Special Cattle Sale ..... 11:30 AM

### Reports from Wednesday, April 11th, 2018 • Selling 2,334 Head

#### HEIFERS

JW Cattle.....	13 BBWF . 573.....	\$163.50
Tylar Barker.....	84 BLK..... 610.....	\$157.00
Jake Martsching.....	81 BLK..... 601.....	\$154.85
Mark Bushnell.....	30 BLK..... 746.....	\$144.00
Gary Stump.....	36 BLK..... 708.....	\$143.50
Darlene Martin.....	70 BBWF . 748.....	\$141.00
Ivan Martin.....	80 BLK..... 695.....	\$140.25
Ivan Ray Good.....	34 BLK..... 681.....	\$138.75
Dwayne Canny.....	11 BLK..... 729.....	\$137.00
Kevin Good.....	70 BLK..... 730.....	\$136.50
Ivan Martin.....	68 BLK..... 781.....	\$135.00
Keith Denning.....	85 BBWF . 832.....	\$124.50
Rider Farms.....	19 BBWF . 885.....	\$118.75

#### STEERS

Jake Martsching.....	47 BLK..... 595.....	\$176.25
Eddie Berry.....	31 BLK..... 604.....	\$170.50
Zack Western.....	71 BLK..... 728.....	\$161.60
JW Cattle.....	41 BLK..... 709.....	\$158.25
Gary Stump.....	65 BLK..... 815.....	\$151.10
Ivan Martin.....	43 BLK..... 756.....	\$149.75
Eddie Berry.....	45 BLK..... 780.....	\$148.50
Darlene Martin.....	67 BLK..... 771.....	\$148.25
Ken Denning.....	136 BLK... 818.....	\$144.50
Steve Wilson.....	64 BLK..... 817.....	\$143.00
Steve Wilson.....	66 BLK..... 823.....	\$142.00
Steve Wilson.....	66 BLK..... 834.....	\$142.00
Karen Biggs.....	14 BLK..... 858.....	\$133.00

**SALE BARN OPEN UNTIL 9:00 PM  
 EVERY TUESDAY TO RECEIVE LIVESTOCK**

Phil Schooley ..... 641-664-3450  
 Ron Schooley..... 641-777-0302  
 Roman Schooley ..... 515-450-3685

*We appreciate your business!*

Tyler Schooley ..... 641-208-5442  
 Barn Phone ..... 641-664-2435

**HWY. 63 NORTH • BLOOMFIELD, IA**

## 8 FT. RAILROAD TIES

Great for landscaping  
 and garden boxes



**SPILMAN  
 AUTO PARTS**  
 20311 Old Hwy. 2  
 PO Box 31 • Bloomfield  
 641-664-2463

FOR SALE: Riding lawn mowers: JDs 100 series to 445; late model MTD mowers; Cub Cadet zero turns; JD decks sizes 38 to 42. Albia, IA  
 PH: 641-932-2618 16

FOR SALE: New Holland 492 mower conditioner, hydraulic draw bar, excellent condition, \$2,950. 3 pt. 5 wheel hay rake, good shape, \$675. Milton, IA  
 PH: 515-419-1232 17

**OBERHOLTZER**  
**TRAILER REPAIR**

*Specializing in Aluminum Grain Trailers  
 Repair & Rebuild*

3 miles east of Gorin, Mo. on Route U  
**660-282-1012**

## Building Packages



**We Can Roll Your Metal  
 While You Wait!**



**A W Metal LLC**  
 Metal Roofing Headquarters

Free 12 pack of  
**A&W Root Beer®**  
 with your next  
 purchase of \$500 or more!



**641-664-3990 awmetal.net**

## WOODRUFF ANGUS

Since 1958 • MILTON, IA

### • 20 FALL YEARLING BULLS

Semen checked & ready for service (not fat)

### • REAL BEEF BULLS

priced for todays commercial cattlemen.

**Roy**

**Randy**

**641-799-6912**

**319-470-6999**



Bring your plans in for a  
**FREE ESTIMATE**



Trusses Engineered and Designed to Your Specs

### Imagine a Lifetime of Beauty with the strength of steel.

As the original stone coated steel roofing system, the DECRA product line represents a perfect blending of over 50 years of research and practical experience. Offering the ultimate in performance and engineering design is what DECRA roofing systems are all about.

**SHINGLE XD DECRA SHAKER XD**  
 Stone Coated Steel Roofing Systems



17893 212th Street • Bloomfield, IA 52537  
 641-722-3605 • Mon.-Fri. 7 AM to 5 PM