

**C** Cornerstone Investments  
 Chuck Riggensch  
 Financial Planner  
**Investing for your future is  
 always a smart choice!**  
 108 W. Jefferson St. (641) 664-3700  
 Bloomfield, IA 52537  
Securities offered through Questar Capital Corporation (QCC)  
 Member FINRA/SIPC. Advisory Services offered through Questar  
 Asset Management (QAM) a registered investment advisor.  
 Cornerstone Investments is independent of QCC and QAM.

# Tri-County SHOPPER

MEMORIAL DAY IS MONDAY, MAY 28<sup>TH</sup>

*Remember those  
 who served.*  
**All gave some.  
 Some gave all.**



STANDARD  
 MAIL  
 U.S. POSTAGE  
**PAID**  
 TRI-COUNTY  
 SHOPPER, INC.  
 POST OFFICE BOXHOLDER  
 LOCAL RURAL BOXHOLDER  
 OCCUPANT  
**CIRCULATION  
 OVER 11,750  
 THIRD CLASS**

P.O. Box 168 • Bloomfield, IA 52537 • [www.tri-countyshopper.com](http://www.tri-countyshopper.com)  
 Phone 641-664-1333 • Fax 641-664-3761 • Email [shopper@netins.net](mailto:shopper@netins.net)



Vol. 46, No. 21  
 Wednesday, May 23, 2018



# FESLER



## AUTO MALL



**Hwy. 34 West, Fairfield - 641-472-3121 - 800-422-5269 - [www.feslerautomall.com](http://www.feslerautomall.com)**  
**Open Monday-Friday 8:00AM-5:00PM. Saturday 8:00AM-3:00PM**

*We will be closed Monday, May 28th in observance of Memorial Day.*



**2005 Mitsubishi  
 Eclipse**  
 White. Was \$4,995  
**Now Only  
 \$3,357**



**2014 Chevy  
 Camaro**  
 Gray. 71k Miles. Was \$16,995  
**Now Only  
 \$16,150**



**2017 Buick  
 Lacrosse**  
 Blue, 25k Miles. Was \$26,995  
**Now Only  
 \$23,866**



**2001 Toyota  
 4-Runner**  
 White. Was \$4,995  
**Now Only  
 \$3,784**



**2011 Chevy  
 Avalanche**  
 Silver. Was \$20,995  
**Now Only  
 \$19,945**



**2013 Chevy  
 Tahoe LTZ**  
 White. 56k Miles. Was \$34,995  
**Now Only  
 \$33,596**



**2010 Nissan  
 Altima**  
 2.5L S. Was \$9,995  
**Now Only  
 \$8,433**



**2011 Dodge  
 Ram 1500**  
 Black. 90k Miles. Was \$18,995  
**Now Only  
 \$17,755**



**2011 GMC  
 Sierra 1500**  
 Silver. 90k Miles. Was \$22,995  
**Now Only  
 \$21,381**



**2013 Chevy  
 Silverado**  
 Red. 87k Miles. Was \$25,995  
**Now Only  
 \$23,698**



**2013 GMC Sierra Denali  
 Diesel Flatbed**  
 Was \$37,995  
**Now Only  
 \$35,844**



**2014 Chevy  
 Silverado**  
 Black. 61k Miles. Was \$39,995  
**Now Only  
 \$32,016**



**2014 Chevy  
 Silverado**  
 Red. 90k Miles. Was \$22,995  
**Now Only  
 \$20,872**



**2015 Chevy  
 Silverado**  
 Red. 34k Miles. Was \$56,995  
**Now Only  
 \$53,402**



**2015 GMC  
 Sierra 1500**  
 Black. 15k Miles. Was \$40,995  
**Now Only  
 \$37,709**



# SPRING IS HERE!



### ALL POLY 2.5 TON BIN

- Sturdy legs
- Easy ground open from the ground lid
- Smooth sides to reduce bridging

Priced to move at  
**\$1,477**



### AQUAVET PRODUCTS

- Help control moss and algae in your pond
- We also have pond dyes

Algae Control	\$40.95/gal
Pond Cleaner	\$41.90/gal
Black Pond Dye	\$42.15/gal
Blue Pond Dye	\$37.90/gal
Shoreline Weed	\$29.95/qt
Submerged Weed	\$55.95/qt

Call or stop by for more details.



### HMC 3 TON PORTABLE CREEP FEEDER

- 12 gauge G90 galvanized bottom trough with 16 gauge G90 galvanized hopper
- Painted steel frame
- Made in Missouri

**\$2,850**



660.465.2967 • [hometownanimalhealth.com](http://hometownanimalhealth.com)

18743 US Hwy 136 • Memphis, MO 63555  
On Highway 136 west of Memphis



**AUTHORIZED DEALER OF NEMO FEED.**

NUTRITION • MEDICAL • PET • FARM • APPAREL

## 246.28 ACRE FARMLAND SALE

Cody Kerby, Executor of the Carol Ann Grinstead Estate and Darwin Gary Henderson and Peggy S. Henderson are offering for sale 246.28 acres of farmland, more or less, located on both sides of the Floris Road between Floris and Eldon, Iowa, in Sections 6 and 7, Township 70, Range 12, in Davis County, Iowa, consisting of 116.75 acres of tillable land and 129.53 acres of timber. (CORRECTED TIMBER ACRES)



**SALE PROCEDURES AND TERMS OF SALE:** The Sellers will accept written sealed bids to be mailed or delivered to Lynch Law Office, 207 S. Washington, P.O. Box 129, Bloomfield, IA 52537 on or before May 31, 2018 at 4:00 o'clock p.m. at which time the sealed bids will be opened. The five highest bids will be announced and additional oral bids will be received, from those who submitted the five highest written bids on June 1, 2018 at 12:00 o'clock NOON at Lynch Law Office, 207 S. Washington, Bloomfield, Iowa. The Sellers reserve the right to reject any and all bids. If the Sellers elect to accept the final highest bid, then a real estate contract will be executed between the Sellers and the successful bidder, at which time a 10% down payment of the total sale price will be paid. Bids will be submitted on a per acre price. The remaining principal balance will be due at closing on or before July 12, 2018. Possession will be at closing, subject to current farm tenancy. A Court Officer Deed; a Trustee Warranty Deed; and merchantable abstract of title to be furnished by Sellers on or before closing. This sale is subject to approval of the Iowa District Court, Davis County, Iowa. Sellers will prorate real estate taxes to date of closing. Closing and settlement will be on or before July 12, 2018 at Lynch Law Office, 207 S. Washington, Bloomfield, Iowa

**BID SHEETS:** Available at Lynch Law Office.

### CAROL ANN GRINSTEAD ESTATE

Cody Kerby, Executor  
DARWIN GARY HENDERSON and PEGGY S. HENDERSON

**Rick L. Lynch, Lynch Law Office**

207 S. Washington, P.O. Box 129 • Bloomfield, IA 52537

PHONE 641-664-1997; FAX 641-664-3186

**ATTORNEY FOR SELLERS**



Thank you beef producers! We appreciate everything you do!

**Grandma says the phones are ringing off the hook with buyers!**

**Call today and let her and the staff get your property SOLD!**



641-664-2275  
[lynchrealtyinc.com](http://lynchrealtyinc.com)

**CLOSED: MON., MAY 28TH  
MEMORIAL DAY!**

106 S. Madison  
Bloomfield, IA  
Licensed in Iowa  
Stephanie Lynch, Broker



**Don't let your stuff get caught in the rain....**

**Come see us for a custom built storage shed!**

**Call us for FREE estimate today!**

**Cantril Lumber & Hardware**

**319-397-2351 or 319-397-2354**

**Mon-Fri 7-5 & Sat 7-12**



# Fox Valley Welding

No matter what size the project customer satisfaction is always our first priority.

Tig & Aluminum • Welding • Milwork • Lathe • New Steel • Sprockets • Roller Chain  
Barings • PTO Parts • Fabricating • CNC Machining • CNC Cutting

**Hours: M-F 8-5:30 • 641-656-4684 • 12190 East Hwy. 2 • Milton, IA**

FOR SALE: Older 414-8 Wheel horse riding mower 36" cut, 8 speed, Kohler 14 Hp., \$400.00 OBO.  
PH: 641-208-6704 23

FOR SALE: 19 yr. old mare, 12 yr old gelding, Vermeer round baler, 2003 Taurus, Troybilt tiller.  
PH: 641-777-6899 22

FOR SALE: High Top Table, dark brown depressed wood. Seats 4-6, extra leaf & 6 chairs included. Like New \$225.  
PH: 641-675-3332 23

FOR SALE: AKC registered Beagle pups, all shots & wormed, parents are proven hunters. Make great pets, \$200.  
PH: 660-342-6725. 21



## The Red Shed

GIFTS TOYS & MORE

### BEDDING PLANT SALE!

**50¢ for a 4 pack!**

### Hanging Baskets 20% OFF

**Mark Your Calendars!**  
Wed, June 6th  
**FREE BUGGY RIDES!**

2 miles west of Bloomfield on Hwy 2 • 21021 Jewel Ave.  
Mon. - Sat. 8:30-5  
641-664-1213

Enjoy the outdoors with

## Poly Lawn Furniture



- Locally Built
- Custom Colors Available



**VM: 641-664-0207**  
1 Mile East of Drakesville on Jade Ave.  
Mon.-Sat. 9:00 AM - 5:00 PM

## Shady Lane Variety

We have great gift ideas for **Fathers Day!**

Ice Cream Freezers & Much More!

**1 mi. E. of Drakesville on Jade Ave. • 641-664-0207 8-5 Mon. thru Sat.**

FOR SALE: Lots of men's items; GH Police vest, 3XR, paid \$500, Asking \$125, bought 03-2017. Has 5 year life expiration; Also holsters, tools, antique wicker bassinet, \$25. 2598 Little Soap Rd. (5 miles South of Ottumwa).  
PH: 641-684-5702. 22

# L&M Country Store

1 1/2 miles south of west Hwy 2 & 63 jct.  
Mon-Sat. 8am-5pm **CLOSED SUNDAYS**  
VM: 641-664-1936

## Local Grown Greenhouse Tomatoes

Frozen 16 oz. Oscar Mayer Jumbo Weiners.....	2/\$1
Heinz Tomato Paste.....	\$1.99 gal. pouch
1 3/4 oz. Gel-Ez Fruit Pectin .....	2/\$1
Land 'O Lakes Butter Quarters .....	\$2.29#
Frozen 1.5# Sliced Pepperoni .....	\$2.29
Frozen 4# Breaded Mozzarella Cheese Patties	\$3.69
Frozen 30 lb. IQF blueberries.....	\$34.95

*Open Memorial Day!*



## MIDWEST Overhead Door

21387 Route V64  
Keosauqua, IA 52565  
**660-216-0812**

Our goal is to keep your doors rolling smooth!

Sales • Parts • Service ~ Free Estimates  
We sell new doors and openers or we'll service your old one.

## Slayton Polaris

Authorized Polaris dealer since 1988

### Your Adventure Awaits!

New & Used Polaris Rangers & ATV's



**660-328-6627**

**BLOOMFIELD, IA**  
8 mi. S. & W. from Pulaski or 6 mi. W of Memphis then 13 mi. N. on Route B

**MAY DAY SPECIALS!**  
**MOTHER'S DAY MONTH!**

**20% OFF ALL JEWELRY**

**Spring Sandals • \$20.00**  
Mens, Womens & Youth Sizes

All Shirts & Jeans  
**BUY ONE GET SECOND ONE HALF PRICE**

Ladies Shirts & Tops 50% OFF with the purchase of one at regular price!

Some red tagged sale priced ladies capris & jeans  
**BUY ONE GET ONE HALF PRICE**

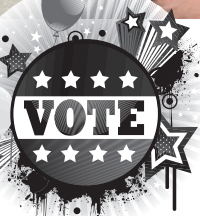
**GRADUATION GIFTS**  
Wallets & Belts 20% OFF Gym Bags/Totes 20% OFF

FREE Hemming When You Buy Your Jeans From Us!

## Cook's Mens & Womens Store

116 S. Market • E. side of Square  
Memphis, MO  
Ph. 660-465-2511 • Fax 660-465-8905  
Monday-Friday: 8-5 & Saturday: 8-9  
Short-Big-Tall • Narrow to Extra Wide • Tux Rentals  
Gift Certificates • Alterations • Gift Wrapping





**Re-Elect Rick L. Lynch for Davis County Attorney**

**Your Vote would be greatly appreciated !!**

paid for by Rick L. Lynch D.C. Attorney

**2015 BUICK VERANO**



**\$12,000**  
51,501 MILES 4CYL, NEW TIRES, CLEAN CAR

---

**2003 Silverado 1500**



**\$10,900**  
LONG BOX, REG. CAB, 4'WD, 80,000 MILES

---

**2012 Chevy Colorado**



**\$5,995**  
REG. CAB, 2'WD

---

**2011 Chevy Cruze**



**\$6,995**  
94,000 MILES, LT

# Collision Corner

504 South Drake St • Bloomfield • PH: 641-664-2648

Remembering our military men and women who gave the ultimate sacrifice.







**Plan Your Memorial Day Weekend!**



**Junior Golf League**  
Starts Monday, June 4th 9-11am  
For kids ages 6 to 14.  
\$25/kid for nonmembers of the country club, all is welcomed.  
**BCC** (641) 664-2089  
Open 7 Days A Week  
*Bloomfield Country Club*

**Brent's BBQ**  
Specializing in smoked meats and mouth - watering sides  
  
Call us for all of your catering needs. No job is to big or to small!  
PH: 641-208-0052 or 641-777-3091  
Facebook: www.facebook.com/brentsbbq  
Snapchat Code: Brentsbbq

**American Legion Post #78**

**MEMORIAL DAY CEREMONY**

**Monday, May 28th 11:00 A.M.**  
**100F Cemetery Bloomfield, IA**  
In case of inclement weather the ceremony will be held in the Legion Hall

**100F AVENUE OF FLAGS**  
Up Saturday, May 26 at 7 A.M.,  
Down Monday, May 28 at 3 P.M.

**ALL VOLUNTEERS APPRECIATED**




Single white male seeking white female, ages 45 - 72 years old in the southeast Iowa, northern Missouri or western Illinois area.  
Call Charles at 931-337-7724

Shop Local

**Bloomfield Farmers' Market**  
May 5th - Oct. 20th  
Saturdays, 8:30 - 11:30  
Tuesdays, 3 - 6

For more information contact  
Market Manager  
Patsy Boas  
641-459-3387

**Bloomfield Main Street**

Join the fun...

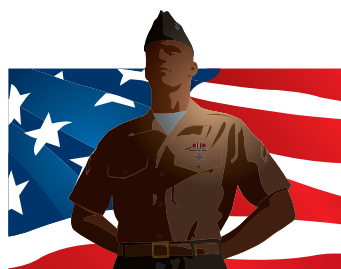
**Memorial Day Bass Tournament at Lake Fisher**  
**Monday, May 28th**  
**6:00 a.m. till noon**

\$25.00 per team.  
\$10.00 per team Biggest Bass Contest

Pick up forms at  
Mutchler Community Center or City Offices.  
Call 641-664-3939 for more info.

**Southfork MOTEL**  
JUNCTION OF HWY 2 & 63  
BLOOMFIELD, IA

**Help Wanted Immediately!**  
**Maid Service & Front Desk Clerk**  
• Apply In Person •



**DOWNING DEPOT MUSEUM**

**ANNUAL SMORGASBORD**  
**SUNDAY, JUNE 3rd**  
**11:30 A.M.**  
**AT THE DOWNING CITY PARK**  
**FREE WILL DONATION**

Recovery support for those with drinking or drug abuse issues.

Mondays in Bloomfield  
At Southfork in the banquet room.  
**Narcotics Anonymous - 5:45 pm**  
**Alcoholics Anonymous - 7:15 pm**  
Contact info: Jennifer Munoz  
641-242-0145

\*\*\*\*\*

 **NOTICE**

Our office will be closed on **Monday, May 28th** in observance of **Memorial Day.**  
*We will resume regular hours on Tuesday, May 29th.*

Please have a safe and fun filled weekend.

**FENTON MEDICAL BUILDING**  
Donald R. Wirtanen, D.O.  
Dianne Knapp, ARNP  
641-664-1400

\*\*\*\*\*



# Check Out one of these great businesses for all your gardening needs!

**OSTRANDER FLOWERS & GREENHOUSES**  
**MEMORIAL DAY 5-28-18**  
**MEMORIAL DAY TRIBUTES**  
 Cemetary Silks - Vases  
 Stone Saddles - Hanging Baskets  
 Combination Planters, Baskets, Geraniums, Peonies, Rose Bushes  
 OPEN Memorial Day 9:00 - 1:00  
 Mon.-Fri. 8-6 • Sat. 9-5 • Sun. 10-4  
 Eldon, IA • 1243 25th Ave. • 641-652-3288  
 WE ACCEPT DEBIT & CREDIT CARDS

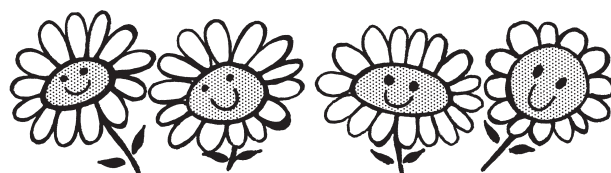
**SUNSHINE HILL GREENHOUSE**  
**OPEN MEMORIAL DAY!**  
**HANGING BASKETS BUY 5 GET ON FREE**  
**MEMORIAL PLANTERS**  
 641-656-4203  
 641-208-7609  
 1 MILE EAST OF MILTON ON HWY. 2



**Bloomfield Greenhouses**  
 ★ Combo Boxes Starting at \$9.99  
 ★ Cemetery Stone Saddles  
 ★ Hanging Baskets  
 ★ Beautiful 1 Gal. Petunias \$7.99  
**OPEN Memorial Day Monday, May 28th 8:00 am - Noon**  
 Monday - Saturday 8:00am - 7:00pm • Closed Sunday  
 708 E. Arkansas Ave., Bloomfield • 641-664-1622

**Dutch Garden Nursery**  
 Burkholder Greenhouse Same Owners-New Name  
**CUSTOMER APPRECIATION DAY SATURDAY May 26**  
**FREE FOR ALL**  
 BBQ Hot Dogs, Drinks, Soft Serve Ice Cream with Toppings  
**Large Selection of Beautiful Plants, Shrubs & Trees**  
 Open Memorial Day  
**10% OFF ALL TREES ON SATURDAY, MAY 26th**  
**GREAT DEAL!**  
 Full Flat Bedding Plants **\$9**  
**NEW Spring Hours Mon-Sat 8 am to 6 pm**  
 660-341-5777 www.burkholdergreenhouse.com  
 660-342-3854 4 miles north of Edina, MO

**Gingerich Greenhouse**  
 23 Years of Growing Plants  
**Fruit trees \$5.00 Reduced**  
 Nice Variety of bedding plants & hanging baskets  
**Proven Winner Shrubs! 10% OFF ALL SHRUBS!**  
 We have a nice selection of planters  
**OPEN Memorial Day!**  
 Hours: Mon - Fri 8 am - 6 pm • Sat. 8 am - 5 pm  
 1 mile east & 1/2 mile north of Drakesville • 16577 Jade Ave.



**Rustic Acres Greenhouse**  
 On Hwy. 2, West Grove 641-929-3056  
**Sweet potatoes ARE HERE!**  
 Nice hanging baskets  
 Lots of perennials  
**Rose or Sharon Bushes**  
**Rose Bushes**  
 Large variety of blooming plants  
**Open Memorial Day**

**Thur. May 24th - Tue., May 29th**  
**• Lots Of Gladiolus Left •**  
**- All perennials 10% OFF -**  
 ALL ROSES ON SALE  
 Buy 2 or more get \$1.00 off each!  
 Flat Sale • Large variety of grapes left  
**Basket Sale: 8", 10" or 12" baskets Buy 5 get 1 FREE**  
**Geranium mix baskets \$2.00 each**  
 Apples, Peaches, Pears, Apricots, Nectarines, Sweet Cherry, Sour Cherry, Gooseberry & Blueberries...  
**ALL FRUIT TREES ON SALE!**  
 Weeping Flowering Peach, Nanking Cherry, Flowering Cherry, Variety Of Maples, Oak, Red Bud, Hardy Almond, Hazelnut, Hickory, Sycamore, Flowering Dogwood, Pecan, Magnolia, Japanese Red Leaf Maple, Crimson King Maples, Blue Spruce, Burning Bushes and Lilacs  
**OPEN MEMORIAL DAY**  
**Hilltop Greenhouse**  
 11049 HWY 2, MOULTON IA  
 BETWEEN WEST GROVE & MOULTON  
 641-929-3036 • Mon-Sat 8:00 A.M.-6:00 P.M.

## Garden Tips & Tricks



1. Over watering is worse than under watering. It is easier to revive a dry plant than try to dry out drowned roots.
2. Compost needs time to integrate and stabilize in the soil. Apply two to three weeks prior to planting.
3. There is an easy way to mix compost into your soil without a lot of back breaking work: Spread the compost over your garden in the late fall, after all the harvesting is done. Cover with a winter mulch such as hay or chopped leaves and let nature take its course. By spring, the melting snow and soil organisms will have worked the compost in for you.
4. Water your garden in the early morning to conserve moisture loss and to help avoid powdery mildew and other fungal diseases that are often spread by high humidity levels.
5. If you're short on space, garlic, leeks and shallots make excellent container plants. They tend to have few insect or disease problems and don't require much room for roots.
6. Paint the handles of your gardens tools a bright, color other than green to help you find them amongst your plants. You can also keep a mailbox in your garden for easy tool storage.





# Been Farming Long? *The Lynch Family has!*



Thank Your Beef Producer During May's  
National Beef Month!  
*Thanks Beef Producers!*

## Lynch Law Office & Abstracting

Rick L. Lynch • Susan E. Lynch  
Ashley Leyda Walkup- Attorneys  
Traci Lynch- Abstractor  
207 S. Washington, Bloomfield • 664-3188




**LET US HELP IN  
YOUR HAY  
FIELD THIS  
YEAR!**

**SERVICES AVAILABLE:**

- Mow & Condition • Tedding & Raking
- Round Bale w/ John Deere 569 Baler
- Tubeline Wrap High-Moisture Hay
- Hauling & loading available if necessary

**We can do one or all,  
call to get on the schedule!**

CALL OR TEXT JEFF AT 641-208-2235


FOR RENT: 1 or 2 bedroom  
apartments Milton, IA. Kitchen appliances & heat  
furnished. Very reasonable  
rent. PH: 641-757-0201

**YARD & BAKE SALE**  
Fri., May 25th - 8-4  
1st house South of 2 &  
V56, Milton, IA.


Men's shirts, all sizes of  
shoes & coats, jackets,  
sweaters, size 1-8 girl's  
dresses, size 11 like new  
LaCrosse hunting boots,  
baby gear & clothes,  
lots of misc.

## 8 FT. RAILROAD TIES

Great for landscaping  
and garden boxes



**SPILMAN  
AUTO PARTS**  
20311 Old Hwy. 2  
PO Box 31 • Bloomfield  
641-664-2463




**YODER  
EQUIPMENT**  
BLOOMFIELD, IOWA

SOUTHERN YELLOW PINE  
TREATED WOOD POSTS  
Mineral Feeders  
Gates  
Variety of Sizes & Styles  
Feed Bunks  
Water Tanks  
CONTINUOUS  
FENCING

19887 Jade Ave  
2 1/2 Miles W of Bloomfield  
V.M. 641-664-2797

# NOTICE!

Our deadline for the May 30th edition  
of the Tri-County Shopper will be  
**Friday, May 25th at 10 AM.**  
Our office will be closed  
**Monday, May 28th.**



## Tri-County SHOPPER

641-664-1333  
P.O. Box 168  
Bloomfield, IA

FOR SALE: Kabota lawn tractor model B7100 clutch overhauled last fall, diesel engine, 2wd hydrostatic, 5 ft. belly mower, drive excellent mechanically, ready to mow. \$3,250 OBO. Located 5 miles North of Cantril. PH: 217-260-1876

# NEVER FORGET

In memory of many,  
in honor of all,  
thank you!

**We will be closed**  
**Sat., May 26th & Mon., May 28th**

WE BUY & SELL PRE-OWNED AUTO PARTS!

# SPILMAN AUTO PARTS

20311 Old Hwy. 2 • Bloomfield, IA  
641-664-2463 • 1-800-477-1367  
M-F 8AM-5PM • Sat. 8AM-12Noon  
www.SpilmanAuto.com



**0% 48 Months on all mowers! • Rebates up to \$300 on Snapper & Simplicity Tractors!**

**COME SEE US  
TODAY!!!**



**EGO  
POWER+ SYSTEM**

Based on power, performance, durability,  
and value, the EGO platform is rated #1  
in the industry by the leading consumer  
publication. With the convenience of  
universal battery compatibility, you can use  
any size battery for any tool in the  
EGO POWER+ lineup.

**curts  
Yard & Garden**

curtismowers.com • 641-664-2784  
502 E. Franklin • Bloomfield, IA

**Closed Memorial Day Mon., May 28th**



**HOURS**  
8 A.M.  
to  
5:00 P.M.  
DAILY EXCEPT  
SUNDAY

**Zimmerman's  
Store**  
Rutledge, MO  
660-883-5766

Our  
Everyday  
Low Prices!

50# White or Red Potatoes (unwashed) - \$ 7.95  
10# Green Giant Red Potatoes - \$4.49  
5# Green Giant Red Potatoes - \$2.25

- 6 lb. Block Muenster Cheese ..... \$2.28/lb.
- 6 lb. Block Farmers Cheese ..... \$2.53/lb.
- 6 lb. Block Brick Cheese ..... \$2.21/lb.
- 6 lb. Roll Pepper Jack Cheese ..... \$2.85/lb.
- 6 lb. Roll Baby Swiss Cheese ..... \$4.07/lb.
- 5 lb. Variety Loaf 4 Kinds ..... \$3.72/lb.
- 5 lb. Bag Shredded Mozzarella Cheese ..... \$14.25
- 5 lb. Bag Shredded Cheddar Cheese ..... \$14.19
- 5 lb. Bag Shredded Cheddar Jack Cheese..... \$13.79

Many More Kinds of Cheese!

**WHILE SUPPLIES LASTS!**

*Del Monte mixed fruit, 3.79 gallon, Dated 5-7-18*

*Miracle Whip, 4.79 gallon, Dated 3-20-18*

*Lucky Leaf butterscotch pudding, 3.98 gallon*

*33.8 oz. 1-2-3 Vegetable Oil - 99¢*

- 64 oz. Great Value Ketchup ..... Only \$2.45
- 24 oz. Hunts Tomato Ketchup ..... Only \$1.29
- 22 oz. Roundy's Real Mayonnaise ..... Only \$1.29
- 5.44 lb. "True" Mashed Potato Complete Instant ..... \$8.89  
or 2.72 lb. bag ..... \$4.75
- 15 oz. Van Camp Pork & Beans..... \$1.15
- 3 lb. 2 oz. "Gatorade" Thirst Quencher Powder, 5 flavors ..... \$7.95

**New Shipment of Mini Candy Bars**

- |                                  |                                 |
|----------------------------------|---------------------------------|
| 14" Food Tongs - \$1.19          | 10' x 10' Tarp - \$7.69         |
| 2 pc. Tongs 7" & 9" - \$1.15     | 10' x 20' Tarp - \$9.98         |
| Extendable Camping Fork - \$2.39 | 15" Folding Multi Tool - \$5.98 |

**DRIVE A LITTLE & SAVE A LOT**

**FOR SALE:** 1998 Dodge Dakota, extended cab, 4x4, 5.2L V8, AT, AC, tilt, cruise, AM/FM/CD/Tape, PW, PL, bed cover, nerf bars, 163,000 miles, \$6,500. Also 6 speed bicycle, \$50; basketball hoop & pole, \$20; 78 x 24 wooden work bench, \$10; oil & air filters for 2.5L 4 cyl. GM engine, \$20.  
PH: 641-208-5136

**GARAGE SALE:** Saturday, May 26, 8-5, 610 N. Washington., Bloomfield. Tools, household, misc., plants, life jackets, furniture & lots of misc. 21

**FOR SALE:** German Shepherd, 2 year old \$50 and pup \$100, males. Friendly. Joseph Miller, 25445 Pleasant Grove, Greentop, MO. 63546. 23

**Country Side  
Grocery**

- Gouda cheese, 7 oz.....79¢
  - Oscar Mayer thick cut bologna,  
16 oz.....75¢
  - Broccoli, 1 pk .....\$1.29
  - Ground beef patties .....\$1.69 lb.
  - Organic fresh maple syrup, 1 qt...\$16.95
  - Honey Comb cereal, 12.5 oz .....\$1.69
- WE HAVE ICE IN STOCK AGAIN!**



3/4 mi. E. of Drakesville, IA on 180th St.  
Mon-Sat: 8:30am - 5:00pm  
VM: 641-664-2661

Custom Built, Painted and Vinyl Buildings & Sheds  
~David W. Schrock~

**Hillview  
MINI BARN**

15383 180th Street Drakesville, IA 52552 **641.664.2842** U.M.

**FOR SALE:** Registered Purebred Gelbvieh and Balancer bulls. Yearlings and 2 year olds. Rolling Hills Gelbvieh, Bloomfield, IA PH: 641-777-7060 23

**Strawberry**

FOR SALE

**HOME GROWN STRAWBERRIES**

*ready soon.*

Drop-ins welcome.  
To reserve leave a message.

**641-664-2336**  
John Earl Kuhns  
16246 Jade Ave.

**The Right Man • The Right Reasons • The Right Experience**

**Matt Greiner**

The position of Davis County Supervisor provides local and state political representation for the citizens of Davis County. This position evolves by building trust and positive relationships, beginning with those within our community. Representation as a county supervisor is not a popularity contest. It is having the experience and knowledge going into the position and continuing to use that experience in a positive way. A county supervisor represents our county by serving on as many as 12 committees which convene monthly or quarterly. Matt has served as chairman on several committees, beginning in his first year as supervisor, which included sitting on a state board. Matt developed relationships with several admirable persons, including the late State Representative Curt Hanson, U.S. Representative Dave Loeb sack, and State Representative Phil Miller. Their personal assistance was notable as our county was seeking drought assistance for our farmers. Matt participated in many organizations over a 20 year time period, which he found invaluable when achieving his goal of becoming a county supervisor. Make sure you know the expected responsibilities of your county supervisor. It goes beyond replacing rock on county roads and working on budgets. Matt has served in many capacities in representation of our county. Please take into consideration the attributes and qualifications that are pertinent to the office as you mark your ballot on or before June 5th. Being a Davis County supervisor isn't working an eight hour day every Monday. Rather, it is a commitment to many hours daily, weekly, and monthly. It is my hope that you reflect on the uniqueness of our county and join me in anticipation of my husband, Matt Greiner, being re-elected as one of our county supervisors.

*Sincerely,  
Tammy*

**June 5th. VOTE**

**MATT GREINER, Democrat DAVIS COUNTY SUPERVISOR**

*Paid for by Matt Greiner*

**WANTED:** Hay Tedder (fluffer). Milton, IA. PH. 515-419-1232. 21

**FOR SALE:** 80 sticks of 1 1/4x 1/16x 20 pipe; 13 new 6x20 ft. horse panels. PH. 641-208-1253. 21

**FOR RENT:** 12' no till drill. Yoder Equipment PH: 641-664-2797 TFN

Garages • Pole Barns  
Commercial Free Estimates

LAN-DOW BUILDINGS

We Stock a Complete Line of Building Materials

**Lancaster Lumber, Inc.**

Complete Buildings or Packages Available

Toll Free 800-424-5071 Fax 660-457-3133

Hardware • Plumbing • Electrical • Paint  
500 Green Street • Lancaster, MO 63548

**FOR SALE:** 8 acres, m/1, barn, run in shed, utilities, new fencing. PH. 641-208-0325. 23

**FOR SALE:** 2 Lawn-Boy mowers, 1 with grass catcher, \$75 each. PH: 641-664-1477 or 641-208-6698 23

**SUPER SPECIAL!** 12" Hanging Baskets ONLY \$15.00 EACH

Large selection of perennials Starting at \$6.00

*Remember your loved one with an Angel Daisy (Shasta Daisy) Perennial.*

*Memorial Day Planters*

Closed Sundays

25957 US Hwy. 136 • Lancaster, Mo  
Between Lancaster & Downing

Gift Certificates Available

**Bentwood Rockers!**  
Perfect for your porch on those lazy summer days!

**Lilac Hill GREENHOUSE**  
660-342-9554



# TIRES PRICED TO ROLL

## Tire Sales and Service

Cars and Light Trucks

- New Tires - Major Brands
- Mounting • Balancing
- Tire & Mechanical Repair
- Hand Torqued Lugs

Locally Owned  
**Karr Street Automotive**  
500 Karr Ave. • Bloomfield, IA • 641-664-2551

FOR SALE: Purebred Border Collie Pups. 6 wks old, 4 females, 5 males, brown/white - Black/white-spotted. \$100 each OBO. PH: 641-664-2629

FOR SALE: 3 bedroom, 2 bath home remodeled in 2010. 30'x35' heated & cooled garage. 1 acres. 7 miles West of Memphis, \$129,000. PH. 660-216-7634.

Estate Sale-Fri., June 8, 530pm & Sat., June 9, 10am. Benton Co. Fairgrounds, Vinton IA. Fri.-good household & flea market. Sat.-antiques, vintage & collectibles. Enos Family Auctions & Appraisals, 319-504-3476. View AuctionZip listing.

## We Remember...

In observance of Memorial Day our office will be closed Saturday, May 26<sup>th</sup> - Monday, May 28<sup>th</sup>  
Open as usual on Tuesday, May 29<sup>th</sup>

VMI  
**Van Mersbergen Insurance Inc**

Our policy is serving you.

104 E. Franklin, Bloomfield  
641-664-2135

### CITY OF BLOOMFIELD is accepting bids on an hourly rate for MOWING LAWNS AND CITY PROPERTIES

on an as needed basis throughout the growing season.

Sealed bids should be submitted to  
**Deputy Clerk**  
111 W Franklin St.  
Bloomfield IA 52537  
Deadline for bids is June 5, 2018 at 4pm.

Questions should be addressed to Danny Simonson at 641-242-0556.  
City reserves the right to refuse all bids.

John 1:12: Yet to all who received him, to those who believed in his name, he gave the right to become children of God—

# HELP WANTED

Piper Auto Salvage is looking to fill the following positions:

- PART-TIME DELIVERY DRIVER
- PARTS DISMANTLER

Apply in person at  
**PIPER AUTO SALVAGE**  
641-664-1820 or email  
[eric@piperautoparts.com](mailto:eric@piperautoparts.com)

HOME SALE! Six new homes on display with factory rebates up to \$5,000 if you buy before May 31st. OPEN HOUSE May 12-14. Free delivery in Iowa CENTURY HOMES OF OSKALOOSA 641-672-2344. (MCN)

CITY WIDE GARAGE SALES IN MOULTON! June 1 & 2 - Nearly 20 sales will be going on offering a variety of items including; furniture, clothes, toys, lawn furniture, antiques, & miscellaneous. Open @ 8:00 A.M. - Some may be earlier! Maps available at T&L Deli uptown. Something for everyone so come on out and enjoy!!!! 22

## FRESH STRAWBERRIES

Taking Orders NOW!

Located 4 miles North of West Grove at  
**The Fabric Hut**  
14543 195th St.  
Drakesville, IA  
641-664-3445  
Ext. 2

Want to purchase minerals and other oil/gas interests. Send details to: P.O. Box 13557, Denver CO 80201(MCN)

NEED TRENCHING DONE? Call for quote on waterers, hydrants, drains etc. TJ's Enterprises, Truman Gingerich  
PH: 641-722-3980 TF

## May Is Beef Month!

We Salute Our Local Beef Producers!

Thanks for all you do to provide our nation with quality products! We appreciate your hard work and wish you continued success!

**1st IOWA STATE BANK**

Bloomfield 641-664-1362  
Keosauqua 319-293-3794  
Birmingham 319-498-4500  
Cantril 319-397-2401

FDIC EQUAL HOUSING LENDER

LAND FOR SALE: 65 tillable acres M/L in Davis County Iowa. Located on a gravel road (175th St.) approximately 1/2 miles from Eagle Blvd. (Drakesville Blacktop) near Lake Wapello. Contact Linda Axtell.  
PH: 641-208-0172 22

## Bloomfield RENT-ALL INC

CLOSED MEMORIAL DAY

Monday, May 28TH

502 E. Franklin St. Bloomfield, IA

(641) 664-3806

[www.BloomfieldRent-All.com](http://www.BloomfieldRent-All.com)

*I do not believe there was ever a life more attractive than Life on a Cattle Farm... -Theodore Roosevelt*

**We know how important it is to keep your cattle herd healthy.**

Nutrena mineral can help you do just that. Whether your feeding calves, heifers, cows, bulls, or steers, there's NutreBeef mineral for each stage.

Come see us today for all your feed, seed and fertilizer needs.

# CROP SERVICES, INC

John & Kathy Bos, Owners  
Drakesville, IA  
641-722-3293

Nutrena pfister



Get these  
**Picnic BASKET**  
**SPECIALS**  
OPEN Monday May 28  
8am to 4 pm

**2/\$1**  
**16 oz.**  
Frozen  
**JUMBO WEINERS**

**\$1.29**  
per lb.  
**100% BEEF  
BURGER PATTIES**

**\$1.89**  
per lb.  
Frozen  
**80% LEAN  
GROUND BEEF**

**\$4.49**  
per lb.  
Frozen NY Strip Steak  
\$3.49/lb.  
Fresh Whole Boneless  
**BEEF RIBEYE**

**\$1.59**  
per lb.  
**WHOLE  
PORK BUTT**

**99¢**  
head  
**LETTUCE**

**\$1.99**  
16 oz.  
**KRAFT  
AMERICAN CHEESE  
SINGLES**

**2/\$4**  
Family Size  
**LAYS**  
potato chips  
**2/\$4**  
10 oz.  
**STERZING'S**  
potato chips

**40 pack \$4.95**  
**ICE MOUNTAIN  
SPRING WATER**

**\$6.95**  
plus deposit  
**24 PACK CANS  
PEPSI PRODUCTS**

**39¢**  
per lb.  
**BANANAS**

**\$2.99**  
**SEEDLESS  
WATERMELON**

**\$5.99**  
5 lb.  
**Stonemill Kitchens  
Southern Style  
POTATO SALAD**

**\$4.99**  
42.5 oz.  
compare at \$9.98  
Maxwell House  
**ORIGINAL ROAST  
GROUND COFFEE**

Straight Cut  
**FRENCH FRIES**  
**\$2.99**  
5 lb. bag

**BUY 4  
GET ONE  
FREE**  
20 oz.  
**HEINZ  
KETCHUP**

Bulk  
Frozen  
**\$1.89**  
per lb.  
**RED RASPBERRIES**

**2/\$1**  
plus deposit  
20 oz.  
**Mt  
Dew  
Ice**

**\$1.29**  
per lb.  
Frozen  
**ROAST BEEF**  
**99¢**  
per lb.  
Frozen  
**BEEF PASTRAMI**

**\$1.29**  
21 oz.  
Musselman's  
**PEACH  
PIE FILLING**

**\$1.75**  
10 pack  
**Sunbelt®  
GRANOLA  
BARS**

**\$1.75**  
110 count  
Premium  
Vanity Fair  
**NAPKINS**

**DEAL!**  
**\$12**  
25# bag  
Roasted & Salted In Shell  
**PEANUTS**

**\$8**  
20 lb. bag  
**LUMBER JACK®  
Hickory BBQ  
Grilling Pellets**

**2/\$1**  
Color Your Campfire with  
**MAGICAL FLAME**  
NO MORE GNATS!  
**15% OFF SALE**  
**Bug Soother**  
All natural, DEET Free bug repellent that  
smells great, and works great!  
**SAFE FOR  
CHILDREN & PETS.**

**20% OFF**  
**INNOVA  
DISC GOLF**

**15% OFF**  
**ROME  
PIE IRONS  
& HOT DOG STICKS**

**SALE**  
**\$219**  
Regular \$289  
**6 QUART ELECTRIC  
ICE CREAM MAKER**



**DUTCHMAN'S STORE** Division Street CANTRIL, IA (319) 397 2322

SALE PRICES May 23-29, 2018  
While Supply Lasts

STORE HOURS • Weekdays, 8a.m. - 6 p.m. • Saturday 8a.m. - 5 p.m. • Sunday Closed

View our specials online - [www.DutchmansStore.com](http://www.DutchmansStore.com)



**CHICKEN**  
Waterers & Feeders

**SIOUX**  
STEEL COMPANY

**SIOUX FEEDER**

**HYDRAULIC CYLINDERS**

**SPRING GARDENING TOOLS**

Garden Gloves • Garden Seeder  
Weed Preventer • Weed Killer  
Grub Beater • Grass Seed  
Watering Cans • Hoses • Rakes

**HAY RAKE WHEELS**

**PARMAK** 12-Volt Battery Fence MAG1200  
**PARMAK** 6-Volt Solar Fencer DFS PL1  
**PARMAK** 12-Volt Solar Fencer MAG1200

**Closed Saturday, May 26th & Monday, May 28th.**  
Have a safe Memorial Day!

**Hamilton Produce Co.**  
105 W. Franklin • Bloomfield, IA 52537  
641-664-2458 or 1-800-488-7748

We carry

**Cobett Waterers**

Re-Elect

**Ron Bride**  
For Supervisor

- 42 years of experience working with the public
- Community involved and oriented

**Your Vote On Tuesday, June 5th would be appreciated.**

Paid for by Ron Bride, 23064 Mahogany Ave., Bloomfield, IA 52537

FOR SALE: Amana refrigerator, 17.4 cu. ft., freezer on top, white, 3 years old, \$100. PH. 641-208-5875. 19

FOR SALE: New Uni Hydro 45 ton Iorn Worker. Don't have enough use for it. Will sell at discounted price. PH: 660-883-5859 23

**SPECIAL**

May 18th - June 1st

**\$2.00 OFF**  
2" & 4" Ratchet Straps!

Like Us On Facebook

**CANTRIL TRUCK & TRAILER**  
319-238-7367  
101 North St. • Cantril, IA  
www.cantriltruckandtrailer.com

**CLOSED MEMORIAL DAY**

We will be closed Memorial Day Monday, May 28th

We will re-open Tuesday, May 29th

**HyVee** PHARMACY

301 W. Jefferson St. Bloomfield, IA 641-664-2975

**Grillin' Season Is Here!**

**Big Green Egg**

See Us Before Your Next BBQ!

**Highway 2 DISCOUNT Groceries L.L.C.**

Mon. - Sat 8:30am - 5:00pm  
VM: 641-664-1187  
19686 Hwy. 2, Approx 2 miles West of Bloomfield

**Sale good Wednesday, May 23rd through Tuesday, May 29th.**

- Seasoned baby back ribs, cooked **\$2.99 a lb.**
- Porter House steaks, approx. 10 lb. box **\$3.99 a lb.**
- Philadelphia garden vegetable cream cheese spread, 3 lb **\$1.99**
- Oscar Mayer baked cooked ham, lean, unfrozen, 6 oz. **29¢**
- Bulk seedless raisins **\$1.85 a lb.**
- Lunchables, variety of kinds **50¢**
- Boursin garlic & fine herbs cheese spread, 2 lb. **\$1.25**
- Pre-Cooked Italian sausage crumbles for pizza, 5lb. bags **\$1.29 a lb.**
- Oven roasted turkey breast **99¢ a lb.**
- Gwaltney polish smoked sausage, 32 oz., 14 bun size links **99¢ a lb.**
- Special purchase Kellogg's Cornflakes, bulk, bring containers **99¢ a lb.**
- Tray pack boneless skinless chicken breast **\$1.19 a lb.**
- Jamestown smoked pork chops, tray packed **\$1.39 a lb.**
- Oscar Mayer apple wood smoked thick cut bacon **\$2.19 a lb.**



## COMPREHENSIVE ORTHOPEDIC CARE

**"It's more personable than going to a bigger hospital where you're just a number. Down here, they know you by name."**

Dave Henderson  
Double knee replacement



Whether it's a shoulder or knee problem – or a broken bone, Davis County Hospital is **right here for you.**

Fellowship-trained orthopedic surgeon Shehada Homedan, MD, sees patients every Wednesday at Davis County Hospital, providing:

- General Orthopedics
- Hip & Knee Arthroplasty
- Adult Reconstruction Surgery
- Sports Medicine
- On-Site Physical Therapy Rehabilitation

Comprehensive orthopedic care. Right here, at Davis County Hospital.

Visit [daviscountyhospital.org/ortho](http://daviscountyhospital.org/ortho) to learn more.



**FOR SALE:** GH Police vest, 3XR, paid \$500, Asking \$125, bought 03-2017. Has 5 year life expiration; Also holsters, tools, antique wicker bassinette, \$25. 2598 Little Soap Rd. (5 miles South of Ottumwa). PH. 641-684-5702. 21

**FOR SALE:** Very nice IKEA brand, dark walnut color book cases 3 shelf units, \$50 each, 5 shelf \$75 each. Also one with glass doors on top half \$100. Pulaski brand matching curio cabinets with curved and beveled glass. I have one corner model and two regular ones. Choice \$225 each. Oak color Pulaski curio 48" wide \$350. All of the Pulaski brand curios are lighted."Boat Shelf" unit. 75" tall, \$75. Free standing work bench \$75. One year old Whirlpool top load washer model WTW5000DW1 \$300. PH. 641-208-6453 Bloomfield,



**INTRODUCING**  
the equipter roofing buggy.

**RENT ME AND CUT YOUR ROOFING JOB IN HALF!**

# HOOVER RENTAL

Call us for your construction rental needs!

**660-216-8230 • Located East Of Cantril, IA**

## Cub Cadet®

### STRONGER AT EVERY TURN



**RZT® L 42**  
ZERO-TURN RIDER

- 23 HP<sup>††</sup> Cub Cadet-certified Kohler® 7000 Series V-Twin OHV engine
- 42" heavy-duty mowing deck delivers the Cub Cadet Signature Cut™
- Dual hydrostatic transmission

STARTING AT:  
**\$2,399\***

**RZT® LX 54**  
ZERO-TURN RIDER

- 23 HP<sup>††</sup> Cub Cadet®-certified Kawasaki® FR series V-twin OHV engine
- 54" heavy-duty fabricated mowing deck delivers the Cub Cadet Signature Cut™
- Low-profile foot pan for easy access

STARTING AT:  
**\$3,199\***

**Z-FORCE® S 48**  
ZERO-TURN RIDER WITH STEERING WHEEL

- 24 HP<sup>††</sup> Cub Cadet-certified Kohler® 7000 series PRO V-twin OHV Engine
- 48" heavy-duty fabricated sloped-nose deck delivers the Cub Cadet Signature Cut™
- Steering wheel control and four-wheel steering
- Adjustable steering column

STARTING AT:  
**\$4,099\***

FOR FULL PRODUCT SPECS **Cub Cadet®** VISIT [CUBCADET.COM](http://CUBCADET.COM)

# GREINER IMPLEMENT COMPANY

10845 73RD • OTTUMWA, IA 52501  
641.683.1691

\*Product Price – Actual retail prices are set by dealer and may vary. Taxes, freight, setup and handling charges may be additional and may vary. Models subject to limited availability. Specifications and programs are subject to change without notice. Images may not reflect dealer inventory and/or unit specifications.†† As rated by Kohler, all power levels are stated in gross horsepower at 3600 RPM per SAE J1940 as rated by engine manufacturer. †† As required by Kawasaki, horsepower tested in accordance with SAE J1995 and rated in accordance with SAE J2723 and certified by SAE International. \*\*See your local Cub Cadet Independent Dealer for warranty details. © 2018 Cub Cadet3PV\_Q\_ECOMMERCE

**COUNTRY VIEW STORE**  
3 miles south of Memphis, MO along Hwy 15  
**660-883-5388**  
Hours: Mon-Fri 8-6 & Sat 8-5:30

Memphis, Missouri  
**MEMORIAL DAY SALE**  
Check out our new load of cereals!

Everything in the greenhouse...  
**10% OFF**  
Friday, Saturday & Monday Only

Taste our new baked goods:  
Fry Pies & Long Johns!  
Fresh From The Kitchen!

Snack Artist peanut butter filled pretzels, 18 oz.  
**\$1.39**

Delmonte Sliced Peaches 106 oz.  
**\$3.49**

Price Chopper Sweet & Salty Almond Granola Bars, 6 pk.  
**89c**

BBQ Sauce, Original & Honey Flavors, 18 oz.  
**59c**

Precooked Italian Pizza Sausage, 5 lbs.  
**\$1.39 lb.**

**Check out our many options for Polly Lawn Furniture!**  
**WE ARE OPEN MEMORIAL DAY, MONDAY, MAY 28TH**






**We are your local, full-service contractor, dedicated to meeting all of your home improvement and home building needs with integrity and quality craftsmanship.**

- Metal Roofing
- FREE estimates!
- Crews available
- Call today!


## WAGLER METALS LLC

19049 Ice Ave., Bloomfield, IA • 641-722-3692  
M-F 7:30AM-5PM • Sat. 8-11:30AM

### May Is Beef Month, Thank A Cattlemen!



Raising cattle & farming is a family affair. We support the hard working men, women & children who are dedicated to making the beef industry better by producing only the highest quality beef. Thank you for a job well done!



## Sidwell Seeds

Queen City, Missouri  
pfister 660-766-2737 pfister

### HONORING THEIR Service & Sacrifice

In observance of Memorial Day, our offices will be closed Monday, May 28th. We will resume regular hours on Tuesday, May 29th.



## Success BANK

Bloomfield, IA  
641-664-2006

Offices in Moulton & Milton • www.success.bank




### New Upholstery Showroom Opens Friday!

Check out our new lines and enlarged options!



**0% Financing Offer May 23 - 29**  
**6, 18 or 36 month options - See store for details!**

**Witmer's Furniture • 660-465-2461 • Hwy 136 • One Mile West Of Memphis**

### Are You Ready For Summer!

Get a good base tan going before lake season!

**Tanning Specials!**

- 1 month tanning \$55.00 PLUS 3 free tanning lotion pumps
- 2 months tanning \$100 PLUS \$5.00 off any bottle of lotion

Sale good May 23rd - June 30th

**ONLINE BOOKING AVAILABLE!**

Check out our Facebook page for details!

Hours: Mon. & Thurs. 8:30am - 8:00pm  
Tues. & Wed. 8:30am - 6:00pm  
Fri. 8:30am - 5:30pm • Sat. 9:00am - 3:00pm  
Closed Sunday

102 East Jefferson St.  
Bloomfield, IA • 641-664-1100







# Steven Williams Estate AUCTION

**SATURDAY JUNE 2ND 10:00AM  
510 WEAVER ROAD BLOOMFIELD, IA**

*Note: Steven was a collector of all things, many not listed. Skid loader will be available at the auction to assist with load out. Scrap Buyers are welcome. All items sold "as is" and must be paid for prior to removal. All announcements made the day of sale take precedence over this ad. Not responsible for theft or accidents.*

**Tractors:**

- International 544 Gas Hydro 3Pt Dual Hyd - 4,312 Hours
- JD 4400 Diesel M&W Head Control w/ JD Bean Head
- International 806 (Non-Running) 13423 Gas Wide Front Koyker Loader
- International 656 Utility Gear Drive Gas w/ International 2000 Loader (Non-Running)
- Case 816 Skidloader (Non-Running)
- International 856 w/ Westerdorf Loader 3Pt - 5,815 Hours (SN 2610142U030971)
- International 1206 SN 9703S-Y (Non-Running)
- Massey Furgeson 1155 w/ Fire Damage (Non-Running)

**Vehicles:**

- 1995 Ford Conventional LTLS9000 Rollback w/ 24' Bed, Cat Diesel, Fuller 8 Speed, 26,498 Miles
- 1984 Chevy C30 Rollback 454 Engine, Man. Transmission, 17' Aluminum Jarr Dun Bed, 32,837 Miles
- 1974 Ford Crew Cab (Non-Running)
- 1972 Ford 2WD Man Transmission w/ Dump Bed (Non-Running)
- 1974 Ford 4x4 (Non-Running)
- 1978 Ford 2WD Man Transmission w/ 69,311 Miles
- 1978 Ford 4x4 Auto Trans w/ 61,099 Miles
- 1978 Ford 4x4 (Non-Running)
- 1978 Ford 4x4 Auto Trans w/ 62,075 Miles (Non-Running)
- 1978 Ford 4x4 Man Trans w/ 46,823 Miles (Non-Running)
- 1979 Ford F250 4x4
- 1979 Ford F250 4x4 w/ 41,386 Miles (Non-Running)
- 1979 Ford F250 (Non-Running)
- 1989 Chevy V3500 Auto Trans w/ 25,186 Miles
- 1989 Ford F250 w/ 7.3 Diesel Man Trans, 26,162 Miles (Non-Running)
- 1997 Chevy Tahoe 4x4 w/ Leather, 167,421 Miles
- 2002 Chevy 1500 2WD w/ 167,000 Miles
- 1993 Ford Cutaway E350 Box Van (Non-Running)

**Equipment & Trailers:**

- 1977 Shelby 30' Triple Axle Deckover & 1974 Lundell 30' Deckover
- 18' Car Trailer w/ 3500 Pound Axles, Ramps
- Lincoln Lincweld 225 Welder/Generator
- (4) 16' Bumper Hitch Stock Trailers & 1981 Kiefer Gooseneck 20ft Trailer
- Multiple Gravity Flow Wagons on JD Gears
- Hawk Built & New Holland Manure Spreaders
- Variety of 3 Pt Attachments: Plow, Seeder, Stabber, Unroller

- Hutchinson 50' 8 inch auger
- (2) 500 Gallon fuel tank w/ pump
- John Deere 8 ft Push Blade
- Best Way Sprayer Pull Type 1000 Gallon Tank
- (2) JD 7000 Planter
- Multiple Silage Wagons
- International 440 Square Baler
- Flare Box on Case Running Gear
- Large Assortment of International Suitcase Weights
- 470 International Disk
- Yetter 6030 6 Row 30 Inch Planter
- 22' Field Cultivator
- Implement Trailer Square Frame
- International 3 Bottom Plow Fast Hitch
- Multiple 8 ft Flat Beds
- Yetter Running Gear
- JWG Flairbox with Hoist
- Tandem Axle Trailer w/ 1000 Gallon Tank & Pump
- 5Ft & 7Ft Buckets
- International 86 Dollywheel Rake
- International 16 Rake
- Pull Type Harrowgater
- Multiple 12' Disks
- 5' Smoker on Trailer
- (2) Pickup Bed Trailers
- Homemade Fertilizer Cart (PTO Driven)
- International 440 Square Baler
- 10Ft Single Axle Food Trailer (No Title, Needs Work)
- Yetter 6063 6 Row Planter
- International 48 18' Disk
- JD Field Cultivator
- (2) 6 Bale Bumper Hitch Hay Trailer
- Donahue Trailer
- JD 4 Bottom Pull Type Plow
- Large Assortment of Implement Tires, Wheels, & Duals

**For Full Details Visit  
www.lynchboys.com  
or call 641.208.3649**



## Lynch Boys Auction Service



### KIKO MEAT GOATS

**Quality  
breeding  
stock!**  
• Wethers  
• Livestock  
guardian dogs

**Josh  
Sprague  
Lancaster, MO  
757-319-7639  
wsrgoats@gmail.com**

**WE WANT  
TO BUY  
HONEY  
BEE  
SWARMS**  
In Bushes,  
Trees or  
Buildings!  
Give Us A  
Call Today.

641-208-6365  
or  
641-680-3350



### ATTENTION CONTRACTORS!

We stock push fit fittings, valves, toilets, faucets, Pex, PVC, CPVC, Copper Pipe & Fittings.



19091 180th St  
Bloomfield, IA  
VM 641-722-3540  
3/4 miles east of Drakesville, south side

### FOR SALE

Driveway Fabric Rolls  
Commercial, Heavy Duty,  
Designed for Heavy Traffic

12' 5" Wide  
432' Long  
\$370/ roll

**660-216-0938**

### OBERHOLTZER TRAILER REPAIR



Specializing in Aluminum Grain Trailers  
Repair & Rebuild

3 miles east of Gorin, Mo. on Route U

**660-282-1012**

**MAST  
VINYL  
WINDOWS**  
THERMO-PRO WINDOWS  
Custom Size Is Our Specialty  
Professional  
Installation Available  
THERMA-TRU  
DOORS  
**FREE  
ESTIMATES**  
22172 Hwy. 63  
Bloomfield, IA 52537  
**800-206-9949**





# ADVERTISE YOUR GARAGE SALE HERE

ONE WEEK 30 WORDS OR LESS CLASSIFIED AD FOR \$5.00.

**BUSINESS EXEMPT**

## Garage Sale Order Form

Fill in the form below as you want your ad to appear. We must receive this by Friday at 5pm to appear in that weeks Shopper. This is a SPECIAL GARAGE SALE WANT AD with the SPECIAL rate of 30 words or less for \$5.00. This rate will expire June 30, 2017. Want ads are CASH or CREDIT CARD.

**BUSINESS EXEMPT.**

					<b>5</b>
					<b>10</b>
					<b>15</b>
					<b>20</b>
					<b>25</b>
					<b>30</b>

NAME \_\_\_\_\_  
 ADDRESS \_\_\_\_\_  
 PHONE \_\_\_\_\_



**Tri-County  
SHOPPER**

BOX 168

Bloomfield, Iowa 52537

P: 641-664-1333 F: 641-664-3761





# MEMORIAL DAY

To the brave men & women who have sacrificed to protect the security & integrity of our great nation, we give our deepest respect & undying gratitude.

## GONE BUT NEVER FORGOTTEN.



**Walker Motors**  
COLLISION REPAIR, INC.

660-465-2159  
Shop phone/fax  
375 South Main St. Memphis, MO 63555

**MFA Agri Services**

Memphis, MO  
660-465-2603  
660-341-1422

**Memphis Farm & Home**

463 S. Market  
Memphis, MO  
660-465-8678

**Slayton Polaris**

8 mi. S & W from Pulaski or 6 mi. W of Memphis then 13 mi. N. on Route B  
660-328-6627

**Hamilton Produce Co. Inc.**

105 W. Franklin  
Bloomfield, IA  
641-664-2459

**1st IOWA STATE BANK**

110 N. Washington  
Bloomfield, IA  
641-664-1362

**Crop Services**

Drakesville, IA  
641-722-3293

**Memphis Auto & Truck Parts**

300 S. Market  
Memphis, MO  
660-465-2470

**Lynch Law Office & Abstracting**

207 S. Washington  
Bloomfield, IA  
641-664-3188

**Crop Production Services**

906 Karr Ave.  
Bloomfield, IA  
641-664-1045

**Clearview Animal Hospital**

641-664-2399

**Bradley Insurance Agency**

226 S. Market  
Memphis, MO  
660-465-2764

**Sidwell Seeds**

Queen City, MO  
660-766-2737

**Memphis Lumber Company**

Memphis, MO  
660-465-8595

**Neetz**

641-664-3239  
Bloomfield, IA

**Harris Distributing**

West Grove, IA  
641-929-3379  
1-800-727-5589

**Tri-County SHOPPER**

208 Weaver Rd.  
Bloomfield, IA  
641-664-1333

**citizens mutual**

www.mycmtech.com  
114 W. Jefferson  
Bloomfield, IA  
641-664-2074

**DAVIS**

22458 Hwy. 2  
Bloomfield, IA  
641-664-1801

**The Bike Barn**

20528 Nuthatch Ave.  
Bloomfield, IA  
641-664-3739

**Tallman Auto Parts**

Lancaster, MO  
660-457-2191  
AutoPlus.

**Beeler Motor Co.**

Hwy. 136 E.  
Lancaster, MO  
660-457-3718

**Kollision Korner**

Bloomfield, IA  
PH: 641-664-2648  
Fax: 641-664-2948

**SCHUYLER COUNTY MUTUAL INSURANCE COMPANY**

Queen City, MO  
660-766-2505

**Image Shapers**

641-664-1650

**B&B Propane & Jet Gas/ Bentler Oil**

Pulaski, IA  
641-675-3354

**Tri-County Electric Coop.**

16875 US Hwy 63  
Lancaster, MO  
888-457-3734

**Hoskin Elevator**

641-929-3568

**AMERICAN FAMILY INSURANCE**

Craig Heemsbergen  
409 Church St.  
Ottumwa, IA  
641-683-1891

**Spilman Auto Parts**

20311 Old Hwy 2  
Bloomfield, IA  
641-664-2463

**City Of Bloomfield**

111 W. Franklin  
Bloomfield, IA  
641-664-2260

**Premier Ag Solution LLC.**

641-664-3412



3.89 net acres of timber and homestead  
24649 215th Street Bloomfield, IA 52537  
**KEITH H. NALLEY ESTATE through KJCC, LLLP**



## OPEN HOUSES

**SATURDAY, MAY 26 1:00 P.M. to 4:00 P.M.**  
**SATURDAY, JUNE 9 1:00 P.M. to 4:00 P.M.**

1,560 sq ft home built in 1979. 3 bedrooms, 2 baths, laundry room on main level with oversized 2 car attached garage and 12' x 24' detached garage. New furnace, a/c and water heater. Full unfinished basement. Asphalt driveway. From the SE corner of the Bloomfield square go East on Franklin street which turns into 215th Street approximately 3 miles. Property on the South side of the road.

**Carla K. Petersen, Co-Executor 641-226-2149**  
**Janelle R. Nalley-Londquist, Co-Executor**

**FOR SALE:** 18' batwing mower w/540 PTO, \$850; 4 bar NI rake, \$200.  
PH. 319-750-1968. 21

**FOR SALE:** Tan/light tan sofa with hide a bed. Good condition, \$50. **Joseph Mast**  
PH: 641-722-3090 22

**FOR SALE:** Firewood at RJ Lumber, \$15 a pickup load. 18989 160th St., Drakesville, IA 52552. TF



**Get Value, Service & Selection that stand out from the herd.**

**Thank You Cattle Farmers! We Support You**

Ask About Our  
**Custom Application of Fertilizer & Chemicals**

**Crop Production Services**



**WE CAN DO:**

- Soil testing
- Liquid Nitrogen
- Small Seeds
- Dry & Liquid Fertilizer
- Spreading
- Lots More!

906 Karr Street  
Bloomfield, IA  
1-888-664-1045

**BEEF FACT:** Cattle numbers outnumber the human population in 9 states.

**FOR SALE:** Purebred Border Collie Pups, 6 weeks old, 4 females, 5 males, brown/white - black/white - spotted. \$100 each OBO.  
PH: 641-664-2629 22

**JOE'S BARBER SHOP**  
Hours: Thursday & Friday 8:00-5:00 & Saturday 8:00-Noon. 210 E. Franklin St., Bloomfield, IA.  
PH: 641-664-2020, 641-208-5561 TF

**GLENWOOD Elevator**

**301 State Hwy. M  
Glenwood, Mo 63541**

Logan Ford, Manager  
PH: 660-457-3973 • Cell: 660-956-3973  
Fax: 660-457-3045 • gelevator@marktwain.net

## CUSTOM BALING

**Hay - Straw - Corn Fodder**  
**3x3 Big Bales**  
**New Holland 330 Cropcutter™ Rotor Cutter**

- Rotor Cutter for the widest range of chop length
- Optional: Preserve Hay with Cropsaver™

**Byran Burkholder • Arbela, MO**  
**660-342-2733 • bjburk@nemr.net**

**FOR SALE:** 10' flat bottom boat; 1 yr old blue healer female dog.  
VM: 641-664-2570 22

**STRAW FOR SALE:** Big round bales wheat straw, net wrapped & stored inside.  
PH: 660-216-0938 21

**WANTED:** 3-4 pen older hog house or older greenery.  
PH: 641-652-7707 22

John 14:6: Jesus answered, "I am the way and the truth and the life. No one comes to the Father except through me."

## FIGHT STRONG® FOR CATTLE



**WHEN THE STRESS IS ON** Fight Strong® for Cattle is a natural feed additive that gets cattle eating, boosts immunity, and doesn't require a VFD  
**HELPS OVERCOME:** • Production stress • Transportation/handling • Poor appetite • Suppressed immune system

**Microfused™ Essential Oils:** Promotes a balanced gut microflora & the health of stressed cattle while stimulation appetite.  
**Microbial Catalyst®:** Stimulate rumen function & promote appetite. **Yucca Schidigera:** Promote digestion & gut health.  
**Actifibe® Prebiotic:** Feed beneficial gut bacteria & promote immune function.  
**Integramos®:** Promote a balanced gut microflora & the health of stressed cattle

**NO VFD REQUIRED**

**HARRIS DISTRIBUTING 1-800-727-5589 OR 641-929-3379 WEST GROVE, IA**

## GARAGE DOORS

Residential • Commercial • Doors • Operators

Quality Products + Quality Workmanship = Quality Customers

Call us today for your • FREE door estimates.

**WE FIX DOORS!**

**MAST OVERHEAD DOORS** 105 S. Dodge St., Bloomfield, IA  
**641-680-2016**

## May is Beef Month!



We salute our  
**Beef Producers!**



Come see Randy and the staff at MFA for all your farming needs!

- Feed • Mineral • Fertilizer • Seed •
- Chemicals • Farm Supplies •

**MFA Agri Services**



Memphis, MO  
660-465-2603  
660-341-1422





- ALL FENCING SUPPLIES
- Continuous Fence Panels
- Vet Supplies

We carry a full line of pelleted feed!

Cattle Minerals - QLF - Feed - Fencing & Much More!

**MFA**  
AGRI SERVICES



**Lancaster**  
660-457-3728  
**Kirkville**  
660-665-4695

**BEEF FACT:** Sioux County, Iowa has the most beef cattle.

**FOR SALE:** 3 year old registered Saanen billy goat, excellent milking credentials, also 8 week billy goat kids from him. PH: 641-682-8333 or 641-799-9266

22

**VACUUM TUNE UP 25% OFF! EXPIRES 5/31/18.** Vacuum Sales, Service & Supplies. MAIN STREET VACUUM, 220 E. Main St., Ottumwa, IA. PH. 641-682-4995.

22

**MILITARY ITEMS WANTED BY LOCAL COLLECTOR:** Patches, medals, uniforms, hats, helmets, etc. Always buying. Mark Warren, PH. 641-664-3705. mpwarren@netins.net

**HUFF'S POLLED HEREFORD BULLS FOR SALE**

Raising Hereford Cattle Since 1915

- Sires are selected for calving ease, maternal traits, calm dispositions, & rapid growth. Superior EPD's!!
- Raised on a diet that encourages growth not fat, they are ready to work!
- Docile & easy to handle - the disposition you always wanted.



These bulls represent the best genetics of the breed!

**HUFF'S POLLED HEREFORDS**

26574 STATE RT. M • RUTLEDGE, MO 63563  
LeRoy & Jane Huff, Home: 660-883-5684 or Cell: 660-341-6392  
Sean & Nichole Huff, Home: 660-883-5383 or Cell: 417-499-3639

GIVE US A CALL & VISIT OUR FARM TO SEE FOR YOURSELF THE QUALITY DESCRIBED!

**WANTED:** Looking for stud to breed my Teddy Bear dog. Shihtzu or Bichon Frise stud. Will pay by the pick of the litter. PH. 515-339-9360.

21

**FOR SALE:** Boys leather work horse harness with 2 collars and reins, \$500; John Deere 37 sickle mower, 7' bar, shedded, works good, \$500. PH: 641-664-3267



**VINYL WINDOWS**

- Replacement
- New Construction
- Many Glass & Color Options

Free Estimates  
19467 Driftwood Blvd.  
Bloomfield, IA 52537  
Call Today: 641.722.3667

**FOR SALE:** Purebred Red Angus, 4 year old bull with papers. Asking \$3,000. PH. 641-437-4107.

21

**FOR SALE:** 50 registered Angus yearling bulls. Feed efficiency tested and guaranteed. Will keep till June. All weights available. Angus bulls with a little more frame. WernerFamilyAngus.com, 641-344-5059, Diagonal, IA

**WANTED:** Trailer house deck in good condition. PH: 660-216-3079

21

**FOR SALE:** 2 Newton Club Seats at Newton Raceway. Best location at the track. Many benefits. Will sell for what I paid. Rumor has it there will be a NASCAR Race in the next couple years. PH. 573-723-0709 for more info. TF

**FOR SALE:** 1998 Saturn 2 dr., V6, 5 spd., red & black, deer damage to front. Have available 2 good fenders - red; red front nose cone; extra steering wheel & column, \$500 cash. Call after 5 p.m. PH. 660-988-3688.

21

Note to Accuration users:  
**IT'S NOT BRAGGING WHEN YOU LET YOUR CATTLE DO THE TALKING FOR YOU**



We salute our local beef producers during beef month!



Call us about our "On-the-farm" grain pickup!



**BEEF FACT:** NFL footballs are made out of cowhide.

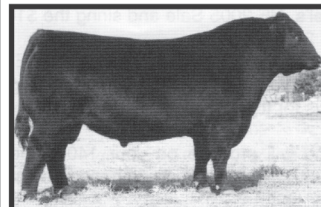
**HOSKIN ELEVATOR, INC.**

Feed • Grain

29067 Juniper. • Bloomfield, IA

641-292-3568

**ANGUS BULLS 2 YEAR OLDS & YEARLINGS**



- ★ CALVING EASE
- ★ GROWTH
- ★ THICK
- ★ GOOD DISPOSITION

Sired by Musgrave Reachout 530

**SELECT YOUR BULL NOW**

Open heifers show prospects. Will make great cows. Top blood lines!

**DORAN BOLLMAN**  
PULASKI, IOWA  
641-675-3467



is a major supplier of flexible packaging used by leading food, consumer products, healthcare, and other companies worldwide. Bemis has a strong technical base in polymer chemistry, film extrusion, coating and laminating, printing, and converting. Headquartered in Neenah, Wisconsin, Bemis employs approximately 17,000 individuals worldwide. More information about Bemis is available at our website, [www.bemis.com](http://www.bemis.com).

**Centerville, Iowa Positions**

Electronic Technician	Maintenance Mechanic
<p><b>Essential Functions</b></p> <ul style="list-style-type: none"> <li>• Troubleshoot/maintain pneumatic, hydraulic and mechanical systems.</li> <li>• Install/repair circuit boards to component level.</li> <li>• Install coaxial or fiber optic cable and other telecommunications equipment.</li> <li>• Install, connect, test, and maintain electrical systems.</li> <li>• Install/repair pumps, blowers, drives, heaters, dies, and PLC's.</li> <li>• Perform preventive maintenance on production machinery.</li> </ul> <p><b>Position Qualifications</b></p> <ul style="list-style-type: none"> <li>• Associates Degree, Electronics /Telecommunications, Diploma, Electronic Technician, or formal training <b>and /or</b> education in electronic / robotics systems</li> <li>• Preferred: 2-5 years' experience in electrical and mechanical maintenance of plant production machinery and support systems</li> <li>• Strong organizational skills, interpersonal skills and work ethic.</li> <li>• Excellent Safety record.</li> </ul> <p><b>Skills &amp; Abilities</b></p> <ul style="list-style-type: none"> <li>• 2 year Technical Degree in related field is preferred.</li> <li>• Understanding of electrical and hydraulic components and circuits.</li> <li>• Ability to program and troubleshoot PLC controls (Allen Bradley, Parker, Siemens preferred)</li> <li>• Required to work 12 hour shift and be on call if needed.</li> </ul>	<p><b>Essential Functions</b></p> <ul style="list-style-type: none"> <li>• Work with plant preventive maintenance program to ensure effectiveness on minimizing unplanned downtime on plant and production equipment.</li> </ul> <p>Initiate equipment modifications to increase machine productivity and reduce waste. Machinery includes, but is not limited to: Flexographic Printing Presses, Blown Film Extrusion Lines, EBCU's Slitters and Rewinders, Bag Making Machines HVAC and Production Support Equipment.</p> <p><b>Position Qualifications</b></p> <ul style="list-style-type: none"> <li>• Preferred: 2-5 years' experience in maintenance experience</li> <li>• Industrial Maintenance Diploma <b>or</b> equivalent industrial maintenance experience troubleshooting manufacturing equipment in a mechanical support role.</li> <li>• Strong organizational skills, interpersonal skills and work ethic.</li> <li>• Excellent Safety record.</li> </ul> <p><b>Skills &amp; Abilities</b></p> <ul style="list-style-type: none"> <li>• 2 year Technical Degree in related field is preferred.</li> <li>• Strong knowledge of mechanical maintenance, pneumatics, bearing, welding, tool &amp; die, hydraulics, lubrication, plumbing, blue print reading, LOTO, unwind/rewind and alignment skills.</li> <li>• Strong analytical and problem solving skills.</li> <li>• Required to work 8, 10, or 12 hour shift and be on call if needed.</li> </ul>

Apply online at [Job.Bemis.com](http://Job.Bemis.com)

Equal Opportunity/Affirmative Action/Disability and Vet Employer

**We are very proud of our beef producing community!**



We are your source for all your communication & entertainment needs!

**BEEF FACT:** Ground beef should always be cooked to 160° F.



Visit Our Website [www.mycmtech.com](http://www.mycmtech.com)



114 W. Jefferson  
Bloomfield, IA  
641-664-2074



# Kirksville Livestock LLC

Kirksville, Missouri

## SALE SCHEDULE

Monday, May 28

Memorial Day - NO SALE

June 2018

Friday, June 1

Special Cow Sale 6:00 P.M.

Monday, June 4

Special Sheep & Goat Sale

Monday, June 11 - Special Cattle Sale

Monday, June 18 - Regular Sale

Monday, June 25 - Special Cattle Sale

**CHECK OUR WEBSITE FOR UPDATED LISTINGS!**

"Proud to Serve Area Livestock Producers"

**YOUR BUSINESS IS VERY MUCH APPRECIATED**

We are open on Sundays to receive your livestock.

Phone for information: Patty Foster, Office 660-665-9804

Chuck Ambrosia...660-342-3530 Doug Fleshman.....660-626-7148

Caleb Randolph ....641-919-8539 Daniel Smith ..... 660-341-8396

Mark Herbold.....515-720-8667 Jeremy Jarman .... 660-341-9879

Al Ashmead..... 660-216-8730 Cory Cook .....660-651-7453

Visit our website at [www.KirksvilleLivestock.com](http://www.KirksvilleLivestock.com)

**FOR SALE:** 2006 Honda 750cc Shadow, Aero, excellent condition, 35,000 miles, water cooled, shaft driven, quick detach, windshield, crash bar, road pegs, saddle bags, \$2,750. OBO.

PH. 660-216-0741.

23

**FOR SALE:** Used electric dryer, \$90. Used Maytag gas dryer, \$100. Used Maytag Electric range, \$160. Used refrigerator, \$160. Mike Howk

PH. 641-208-6453.

23

# Scotland County LIVESTOCK AUCTION

P.O. Box 111 • Hwy 15 North • Memphis, MO  
660-465-7213 • Jerry & Barb Blomme

660-341-0069 • Grant Blomme

## NO SALE

Sat., May 26th

Have A Safe Memorial Day Weekend!

## CATTLE SALE

Sat., June 2nd

Market Report for Sat., May 19th:

Strs. & Hfrs.: Light test. Hol. Veals: \$85.00-\$100.00; LB. Cows: \$47.00-\$57.00; LB. Bulls: \$71.00-\$87.00

[www.ScotlandCountyLivestock.com](http://www.ScotlandCountyLivestock.com)

## Yearling Angus & Charolais Bulls

### Trojan Hill Farms



Phil Archer

641-675-3769 - Home

641-680-6769 - Cell



**FOR SALE:** Purebred Border Collie Pups. 6 wks old, 4 females, 5 males, brown/white - Black/white-spotted. \$100 each OBO. PH: 641-664-2629

**FRESH STRAWBERRIES:** \$3.00 a quart. To place an order leave message. Amos Mast 11952 Farley Ave. Downing, MO. VM: 641-664-1207

**FOR SALE:** 02 Dodge Caravan, 7 passenger van, Red with tan interior, 172,000 miles. Runs Good! \$1,050. PH: 660-341-7263

# WE SALUTE OUR BEEF PRODUCERS

Many of the top cow herds are located in Southern Iowa and Northern Missouri. Our customers supply us with some of the best quality calves and yearlings to be found anywhere. We are thankful for all of your hard work and dedication during National Beef Month.



**Bloomfield Livestock Market**  
Hwy. 63 North • Bloomfield, Iowa  
641-664-2435

## Hawkeye COUNTRY ANGUS SALE

Sunday 1:01 PM  
**JUNE 3, 2018**

Bloomfield Livestock Market  
BLOOMFIELD, IOWA

**SELLING 300 HEAD**

One of Iowa's Largest Angus Sales!

Includes Red Angus, Simm., & Charolais



LOT 101

Selling this direct daughter of the \$8.6 million producing SAV Blackcap May 4136 by the Pathfinder® sire, "Net Worth". Also selling are 2 ET sons and a dtr by Plattmere Weigh Up, sons by Tour of Duty, Barstow Cash; Simmental sire Profit, and a fantastic fall dtr of "Butkus". Two 2018 Payweight 1682 sons sell with their recip dams, as well as embryos.



LOT 100

A two year-old herd sire by Tour of Duty that was the top-seller at the 2017 Moore Angus Sale. His Pathfinder® dam has a NR 4@105. Recommended for heifers.

Sale Managed By:  
**Conover Auction Service**  
P.O. Box 9 - Baxter, IA 50028  
**AL & JEANNE CONOVER**  
641-227-3537 - 641-227-3792 (FAX)  
DAVE SWEENEY - 641-373-4340  
[www.conoverauction.com](http://www.conoverauction.com)  
conover@conoverauction.com

**FEATURING 2 COMPLETE DISPERSIONS**

Auctioneer  
Al Conover 515-491-8078

This sale will be broadcast live on the internet.  
**DVAuction**  
Broadcasting Real-Time Auctions  
Real time bidding & proxy bidding available.



# SPRING IS HERE!



### ALL POLY 2.5 TON BIN

- Sturdy legs
- Easy ground open from the ground lid
- Smooth sides to reduce bridging

Priced to move at  
**\$1,477**



### AQUAVET PRODUCTS

- Help control moss and algae in your pond
- We also have pond dyes

Algae Control	\$40.95/gal
Pond Cleaner	\$41.90/gal
Black Pond Dye	\$42.15/gal
Blue Pond Dye	\$37.90/gal
Shoreline Weed	\$29.95/qt
Submerged Weed	\$55.95/qt

Call or stop by for more details.



### HMC 3 TON PORTABLE CREEP FEEDER

- 12 gauge G90 galvanized bottom trough with 16 gauge G90 galvanized hopper
- Painted steel frame
- Made in Missouri

**\$2,850**



660.465.2967 • [hometownanimalhealth.com](http://hometownanimalhealth.com)

18743 US Hwy 136 • Memphis, MO 63555  
On Highway 136 west of Memphis



**AUTHORIZED DEALER OF NEMO FEED.**

NUTRITION • MEDICAL • PET • FARM • APPAREL

## 246.28 ACRE FARMLAND SALE

Cody Kerby, Executor of the Carol Ann Grinstead Estate and Darwin Gary Henderson and Peggy S. Henderson are offering for sale 246.28 acres of farmland, more or less, located on both sides of the Floris Road between Floris and Eldon, Iowa, in Sections 6 and 7, Township 70, Range 12, in Davis County, Iowa, consisting of 116.75 acres of tillable land and 129.53 acres of timber. (CORRECTED TIMBER ACRES)



**SALE PROCEDURES AND TERMS OF SALE:** The Sellers will accept written sealed bids to be mailed or delivered to Lynch Law Office, 207 S. Washington, P.O. Box 129, Bloomfield, IA 52537 on or before May 31, 2018 at 4:00 o'clock p.m. at which time the sealed bids will be opened. The five highest bids will be announced and additional oral bids will be received, from those who submitted the five highest written bids on June 1, 2018 at 12:00 o'clock NOON at Lynch Law Office, 207 S. Washington, Bloomfield, Iowa. The Sellers reserve the right to reject any and all bids. If the Sellers elect to accept the final highest bid, then a real estate contract will be executed between the Sellers and the successful bidder, at which time a 10% down payment of the total sale price will be paid. Bids will be submitted on a per acre price. The remaining principal balance will be due at closing on or before July 12, 2018. Possession will be at closing, subject to current farm tenancy. A Court Officer Deed; a Trustee Warranty Deed; and merchantable abstract of title to be furnished by Sellers on or before closing. This sale is subject to approval of the Iowa District Court, Davis County, Iowa. Sellers will prorate real estate taxes to date of closing. Closing and settlement will be on or before July 12, 2018 at Lynch Law Office, 207 S. Washington, Bloomfield, Iowa

**BID SHEETS:** Available at Lynch Law Office.

### CAROL ANN GRINSTEAD ESTATE

Cody Kerby, Executor  
DARWIN GARY HENDERSON and PEGGY S. HENDERSON

### Rick L. Lynch, Lynch Law Office

207 S. Washington, P.O. Box 129 • Bloomfield, IA 52537  
PHONE 641-664-1997; FAX 641-664-3186

**ATTORNEY FOR SELLERS**

FOR RENT: 12' no till drill. Yoder Equipment PH: 641-664-2797  
WANTED: Hay Tedder (fluffer). Milton, IA. PH: 515-419-1232. 21

## FOR SALE

Driveway Fabric Rolls  
Commercial, Heavy Duty,  
Designed for Heavy Traffic

12' 5" Wide  
432' Long  
\$370/roll

**660-216-0938**



**CLOSED MEMORIAL DAY**

Monday, May 28TH

502 E. Franklin St.  
Bloomfield, IA

(641) 664-3806

[www.BloomfieldRent-All.com](http://www.BloomfieldRent-All.com)



Thank you beef producers! We appreciate everything you do!

**Grandma says the phones are ringing off the hook with buyers!**

**Call today and let her and the staff get your property SOLD!**



641-664-2275  
[lynchrealtyinc.com](http://lynchrealtyinc.com)

**CLOSED: MON., MAY 28TH MEMORIAL DAY!**

106 S. Madison  
Bloomfield, IA  
Licensed in Iowa  
Stephanie Lynch, Broker



## May Is Beef Month!

We Salute Our Local **Beef Producers!**

Thanks for all you do to provide our nation with quality products! We appreciate your hard work and wish you continued success!



FDIC

Bloomfield 641-664-1362  
Keosauqua 319-293-3794  
Birmingham 319-498-4500  
Cantril 319-397-2401



# BLOOMFIELD



## LIVESTOCK MARKET

Wed., May 30th..... Fat Cattle, Slaughter, Cows & Bulls .....9:00 AM  
 .....No Special Feeder Sale .....

Sun., June 3rd.....Hawkeye Angus Sale ..... 1:00 PM

Wed., June 6th ..... Fat Cattle, Slaughter, Cows & Bulls .....9:00 AM  
 .....Special Feeder Sale ..... 11:30 AM

**SALE BARN OPEN UNTIL 9:00 PM  
 EVERY TUESDAY TO RECEIVE LIVESTOCK**

Phil Schooley ..... 641-664-3450  
 Ron Schooley..... 641-777-0302  
 Roman Schooley ..... 515-450-3685

*We appreciate your business!*

Tyler Schooley ..... 641-208-5442  
 Barn Phone ..... 641-664-2435

### HWY. 63 NORTH • BLOOMFIELD, IA

## Building Packages



**We Can Roll Your Metal  
While You Wait!**



**A W Metal LLC**  
 Metal Roofing Headquarters

Free 12 pack of  
**A&W Root Beer®**  
 with your next  
 purchase of \$500 or more!



**641-664-3990 awmetal.net**

Yoder's Indian Creek Furniture. Check out our great selection of outdoor Polly lawn furniture. Maintenance free with lifetime warranty. Also Polly Martin houses & gourd racks. Rt. V64 Milton, Iowa. Located 4 miles North of Cantril or 3/4 miles South of Lebanon on RT. V64, Monday to Saturday 8 a.m. to 5 p.m. No Sunday sales. PH. 319-538-7332

## We're Celebrating Our 16th Anniversary!



**Door Prizes**

**Spring Specials**

**Lunch Served  
10:30 to 2:00**

JOIN US FOR OUR

## OPEN HOUSE • FRIDAY, MAY 25th, 2018

**BUILDING PACKAGES for:**

• Commercial • Agriculture • Residential

Bring your plans in for  
a FREE ESTIMATE



- Owens Corning Shingles
- Pro Cat



- Insulation
- Insulation Board



**17893 212th Street • Bloomfield, IA • 641-722-3605 • Mon.-Fri. 7 AM to 5 PM**